

Western

CATTLE SOURCE

ANNUAL PRODUCTION SALE

THURSDAY, MARCH 19, 2026 · 1 PM MST
AT THE RANCH, CRAWFORD, NEBRASKA



Sale Schedule

THURSDAY, MARCH 19, 2026

9 a.m. MST - Cattle available for viewing

11:30 a.m. MST - Lunch available

1 P.M. MST - ANNUAL WESTERN CATTLE SOURCE PRODUCTION SALE

100 WOHLERS DRIVE, CRAWFORD, NEBRASKA 69339

DVAuction
Broadcasting Real-Time Auctions





Welcome

Jock, Skye and I would like to welcome you to our 2026 production sale. We are beyond thankful and grateful for all of our customers and friends.

Wow what a year it has been in the cattle business. With record prices and demand as high as it ever has been. I hope everyone has gotten to take advantage of the great prices and let's pray it holds for a few more years. Now is the time to invest in the future of your cow herd.

We are a family operation and our sole income is generated from our livestock operation. They have to work for us and you under real world conditions without pampering and excuses. We strive to produce cattle that will succeed under various range and environment conditions. We sent a set of calves to the feedlot and they performed as we expected doing awesome on gain and conversion & 90 percent choice and above.

Since we started in the seedstock business our customer's success is our success. As cattle prices and input costs vary, we strive to raise cattle that will make you profitable. WCS adds the most elite genetics for your success and ours. We strive to find bulls and females that combine phenotype and genotype. Stay tuned for some exciting additions to our program. Through all of this we have made great friends that are like family. **If you have a problem with one of our bulls or females, we want to be the first to know so we can make it right.**

We feel this is the strongest set of bulls with great genetic opportunities for you. The bulls are developed slowly and not pushed hard to emphasize longevity. The bred heifers are out of the heart of the replacement pen. WCS emphasizes raising cattle that will perform in every facet of the industry. Whether it is the cow calf operation, yearling operation or selling your calves on the rail. We take great pride in the advancement of our herd to add value and advancement in your herd. We strive to raise great cows with good dispositions, great feet and legs superb udders and offspring that will add performance and carcass quality to your herd. We don't take this task on with a light heart.

Contact us when you start marketing your calves as we will reach out to some of our contacts to help market your cattle.

The Lord has provided us with great friends and family. We would like to say thank you to each and everyone of you. We couldn't do this without your help and support.

Jock, Skye and I are very proud of our cattle and horses. We treasure our friendships with all of you and our future friendships. Stop by and look at the bulls and heifers prior to the sale. We look forward to seeing you all sale day and serving you a great beef dinner prior to the sale.

Sincerely,

Jock, Brenda and Skye

Sale Information

THURSDAY, MARCH 19, 2026 - 1P.M. MST

SALE DAY PHONES

Brenda Beeson - 308.430.2117
Jock Beeson - 308.430.0668

AUCTIONEER

Col. Chisum Peterson - 605.730.4214

SALE MANAGEMENT

Innovation Ag Marketing, LLC
Jered Shipman - 806.983.7226
Graham Blagg - 530.913.6418
Tim Anderson - 605.682.9343

RING STAFF

Alan Sears, Western Ag Reporter - 970.396.7521
Jim Gies, Special Assignment - 970.454.3836
Randy Rasby, American Cattlemen - 308.539.6195
Ty Groshans, Western Livestock Journal - 970.818.6016

BUYER REPRESENTATIVES

Jeremie Ruble - 406.581.7940
Quentin Smola - 402.641.3273

LODGING

Hilltop Motel
304 McPherson St. - Scottsbluff, NE
308.665.1144

Holiday Inn Express & Suites
247 Ash St. - Chadron, NE
308.747.2223

AIR TRANSPORTATION

Western Nebraska Regional Airport
Scottsbluff, NE
1 hour 15 min from the Ranch

Denver International Airport
Denver, CO
4 hour 30 min from the Ranch

HERD VETERINARIAN

Rushville Veterinary Clinic
J.H. Erquiaga, DVM - 308.360.0734
J.A. Meyer, DVM - 308.327.2128

Reid Veterinary Service
Rob Reid, DVM - 308.430-0460

VOLUME DISCOUNT

3 Bulls-3% - 4 Bulls - 4% - 5+ Bulls - 5%

YARDAGE

Bulls will be kept at Western Cattle Source until April 15, 2026 free of charge.

ANIMAL INSURANCE

Jim Gies - 970.454.3936

TERMS

Terms of sale are cash or check payable immediately upon conclusion of the sale and before animals will be removed.

ANNOUNCEMENTS

Announcements made sale day and from the auction block take precedence over printed material in this catalog or other printed material associated with this sale.

LIABILITY

Neither owners nor sale management assume any liability for any accidents that may occur to the animal after it is sold. All persons who attend the sale do so at their own risk and owners or sale personnel assume no liability for accidents.

ANIMAL RISK

Each animal becomes the risk of the purchaser as soon as sold. Animals purchased are at the purchaser's risk as to loss or injury and will be loaded according to purchasers direction. Insurance is available sale day.

HERD HEALTH

The Western Cattle Source is on a complete mineral program year round. They have been vaccinated with modified live Vista 5 VL5, MultiMin 90, 7-Way, Endovac and Guardian. Poured with Clean-Up in the spring and given Dectomax at pregnancy checking time.

Bulls were given 7-Way and MultiMin 90 at birth. At branding they were given Inforce, 7-Way with Somnus and Once-PMH In. At preconditioning they were given Once-PMH In, 7-Way with Somnus and Bovi-Shield Gold at weaning, Dectomax and Nasalgen 3 PMH, then later poured with Clean-Up. Bulls were poured again with Ivo-mec when they were semen tested. The bred heifers are under the same herd health and vaccination protocol. They have also received their Guardian shots.

TRUCKING

Shannon Nagel - 319.404.5904
Dick Coleman - 765.461.0954

ONLINE BIDDING

We are pleased to bring you real-time internet bidding and a live broadcast of this sale through DV Auction.com. If you are unable to attend for any reason, you may bid online at dvauction.com. Please register for bidder number at www.dvauction.com anytime prior to 12 Noon on Wednesday, March 18th to accommodate the approval process. After this date/time, bidder approval may be delayed. Approved bidders will be issued bidder number and access prior to the sale. For questions or sale bookings call the Office M-F 8am-6pm CT: (402) 316-5460.

DVAuction
Broadcasting Real-Time Auctions



Fellow Simmental Enthusiasts.

For nearly 30 years, Western Cattle Source has been shaped by purpose and persistence. Jock and Brenda have built their operation through intentional progression, guided by a strong work ethic and a deep-rooted commitment to both their land and their livestock. Set against the rugged landscape of western Nebraska, this program reflects a true ranching mindset—one that demands cattle capable of adapting, working, and enduring. As a result, WCS cattle are known for their versatility and their ability to succeed in a wide range of production environments.

The resilience found in this herd is no coincidence. Generations of selection under real-world conditions have instilled a natural drive and mobility that define the program. Harsh winters, dry summers, predators, expansive pastures, and limited water access have eliminated shortcuts and exposed weaknesses.

The cow herd, largely closed by design, is composed of females that have earned their place by meeting every challenge the country presents. Nowhere is that more evident than during calving season, when instinct, longevity, and maternal strength become the most valuable assets—qualities often overlooked in more forgiving regions. Although northwest Nebraska is traditionally considered Angus territory, Jock and Brenda developed their SimGenetic cattle to meet—and exceed—those expectations. The females are broody, attractive, and structurally sound, offering depth of body, rib shape, and functional design with exceptional feet and joints. They are built with balance and longevity in mind, while added performance and muscle are introduced through a thoughtfully selected and continually refined bull battery. Progress remains a constant priority, but never at the expense of practicality or environmental fitness.

A significant volume of feeder cattle originating from this region must compete in demanding markets, whether sold through video sales or high-capacity auction barns. Success in those settings requires cattle that combine look, balance, and weight with genuine functionality. At Western Cattle Source, cattle are still selected first and foremost by visual appraisal and real-world performance. While performance data is utilized, it never overrides sound fundamentals. This disciplined approach has allowed the operation to expand its cow numbers and land base while maintaining consistency and quality. Cattle engineered solely on paper have no place in this system.

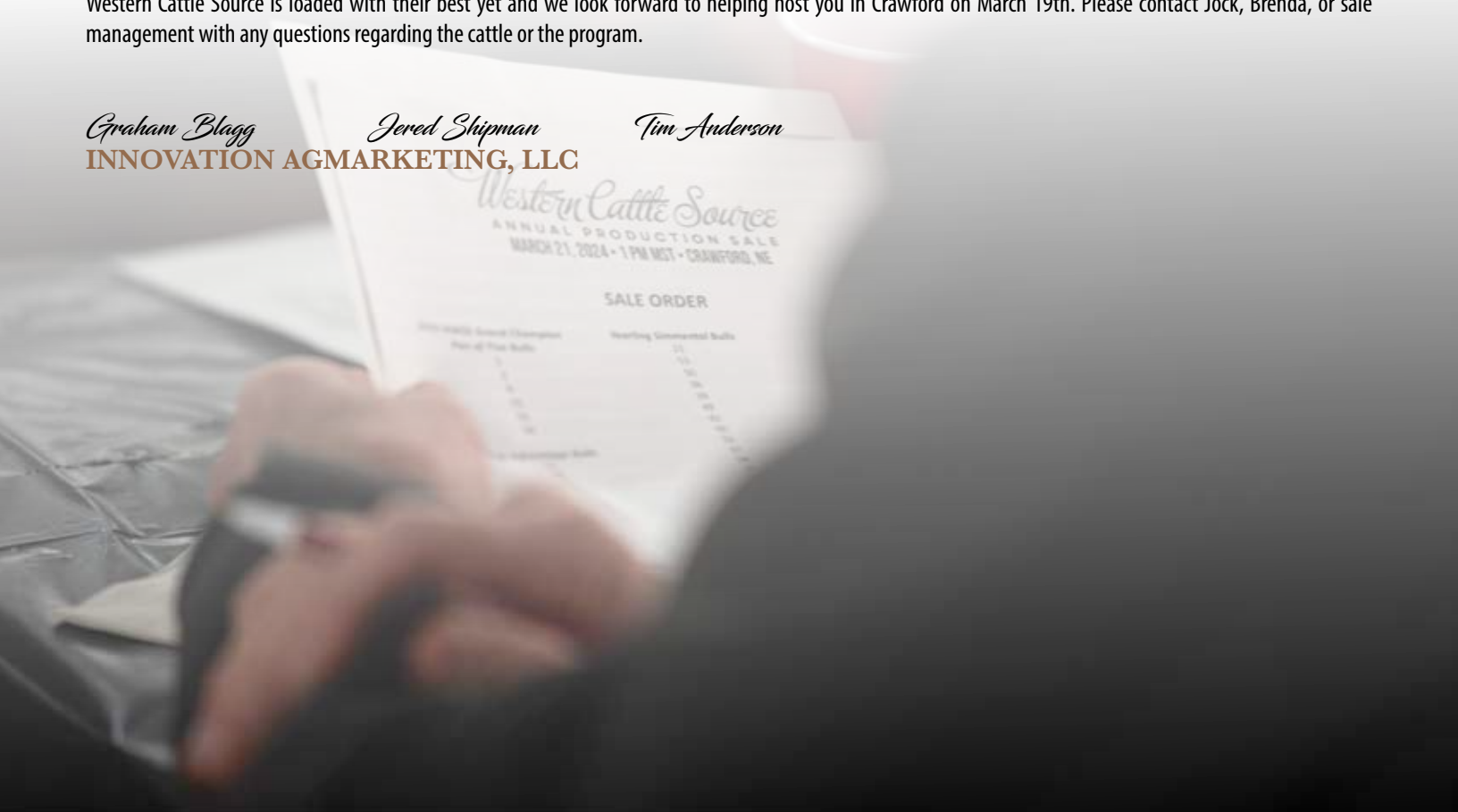
The Innovation AgMarketing team is proud to partner with Western Cattle Source and encourages breeders and commercial cattlemen alike to study the offering presented in this sale catalog. The quality just continues to prevail as most selection pressure is placed on the bull crop, and this 5th Annual Production Sale for Western Cattle Source is loaded with their best yet and we look forward to helping host you in Crawford on March 19th. Please contact Jock, Brenda, or sale management with any questions regarding the cattle or the program.

Graham Blagg

Jered Shipman

Tim Anderson

INNOVATION AGMARKETING, LLC





J

14

18

W/ EXPRESS LANE

Western

PRODUCTION SALE

Beer



The
BULLS





WHF GREATER GOOD J45
Sire of Lot 1 & 2



LRS MS ELEVATE 6019D
Dam of Lot 1-5

1

WCS MR GOOD 4410M

Reg: 4631618 DOB: 9/27/24 Tattoo: 4410M

PUREBRED SIMMENTAL **ADJ. BW: 67 | BWR: ET** **ADJ. WW: 725 | WWR: ET**

KCC1 EXCLUSIVE 116E

LRS ELEVATE 213B

WHF GREATER GOOD J45

LRS MS ELEVATE 6019D

WHF DELILAH 45D

LRS MS SHRPER IMAGE 324A

HOMOZYGOUS POLLED • HOMOZYGOUS BLACK

| CE | BW | WW | YW | ADG | MCE | MILK | MWW | |
|------|------|------|-------|------|--------|------|-------|------|
| 15.0 | -0.7 | 82.3 | 123.1 | 0.26 | 8.2 | 19.5 | 60.6 | |
| 10% | 20% | 40% | 45% | 45% | 15% | 80% | 65% | |
| STAY | DOC | CW | YG | MARB | BF | REA | API | TI |
| 12.9 | 11.2 | 33.2 | -0.37 | 0.00 | -0.074 | 0.89 | 129.4 | 81.5 |
| 75% | 60% | 55% | 45% | 85% | 40% | 50% | 55% | 55% |

- An impressive individual to lead into the 2026 Western Cattle Source bull offering. WCS MR Good 4410M is an attractive purebred Simmental with softness of center body and true shape and dimension.
- This son of WHF Greater Good J45 out of the cornerstone donor dam LRS MS Elevate 6019D is a well built fall yearling that is ready to make a big impact on a cowherd.
- Modest 67 lb. birth weight all the way up to a 725 lb. weaning weight that is among the tops in this sale offering.
- Take advantage of this calving ease genetic package.
- Top 10% CED; top 15% MCE; top 20% BW.
- Homozygous black. Homozygous polled.



Lot 2



WCS JOURNEYMAN 401M
Maternal Brother to Lot 2



WCS MS TALLADEGA 3803L
Maternal Sister to Lot 2

2

WCS MR GOOD 4415M

Reg: 4631620 DOB: 9/27/24 Tattoo: 4415M

PUREBRED SIMMENTAL **ADJ. BW: 78 | BWR: ET** **ADJ. WW: 708 | WWR: ET**

KCC1 EXCLUSIVE 116E LRS ELEVATE 213B
WHF GREATER GOOD J45 **LRS MS ELEVATE 6019D**
 WHF DELILAH 45D LRS MS SHRPER IMAGE 324A

HOMOZYGOUS POLLED • HOMOZYGOUS BLACK

| CE | BW | WW | YW | ADG | MCE | MILK | MWW | |
|------|------|------|-------|------|--------|------|-------|------|
| 15.0 | -0.7 | 82.3 | 123.1 | 0.26 | 8.2 | 19.5 | 60.6 | |
| 10% | 20% | 40% | 45% | 45% | 15% | 80% | 65% | |
| STAY | DOC | CW | YG | MARB | BF | REA | API | TI |
| 12.9 | 11.2 | 33.2 | -0.37 | 0.00 | -0.074 | 0.89 | 129.4 | 81.5 |
| 75% | 60% | 55% | 45% | 85% | 40% | 50% | 55% | 55% |

- A full brother to Lot 1, 4415M carries the same rib shape, easy doing ability with an added shot of muscle mass.
- Rarely will you go wrong when your herd bull is backed by a prolific cow like 6019D.
- This purebred Simmental in the fall yearling division posted an impressive 708 lb. weaning weight.
- His genetic indicators read like this bull could cover heifers successfully.
- Top 10% CED; top 15% MCE; top 20% BW.
- Homozygous black. Homozygous polled.



Lot 3



CHESTNUT FORCE 482
Sire of Lot 3-7



WCS MS COBRA 1808J
Maternal Sister to Lot 1-5

3

WCS MR FORCE 528N

Reg: 4626876 DOB: 2/9/25 Tattoo: 528N

1/2 SM 1/2 AN ADJ. BW: 61 | BWR: ET ADJ. WW: 710 | WWR: ET
 WILKS REGIMENT 9035 LRS ELEVATE 213B
CHESTNUT FORCE 482 **LRS MS ELEVATE 6019D**
 CHESTNUT CAPTIVATION 958 LRS MS SHRPER IMAGE 324A

HOMOZYGOUS POLLED • HOMOZYGOUS BLACK

| CE | BW | WW | YW | ADG | MCE | MILK | MWW | |
|------|------|------|-------|------|--------|------|-------|------|
| 11.5 | -0.1 | 94.0 | 154.1 | 0.38 | 7.5 | 26.0 | 72.9 | |
| 50% | 50% | 10% | 10% | 10% | 45% | 35% | 15% | |
| STAY | DOC | CW | YG | MARB | BF | REA | API | TI |
| 11.4 | 11.1 | 59.4 | -0.03 | 0.34 | -0.004 | 0.70 | 131.0 | 90.7 |
| 85% | 75% | 10% | 90% | 60% | 85% | 50% | 60% | 25% |

- 528N leads off a successful SimAngus flush of LRS MS Elevate 6019D to the powerful Angus sire Chestnut Force 482.
- He's level topped, smooth fronted, and has a stout hip and quarter to him.
- Curve bending individual performance from 61 lb. birth to 710 lb. yearling.
- His EPD profile reads as a bull that will add pounds and power back into a calf crop.
- Top 10% WW, YW, ADG, CW; top 25% TI; top 35% MILK.
- Homozygous black. Homozygous polled.

THE FORCE SIRE GROUP



Lot 4

- Next in the lineup of yearling SimAngus flush brothers is a sharp fronted prospect with added length of spine.
- Posted one of the heaviest weaning weights in the offering with his 800 lb. adjusted weight.
- His EPDs validate his power, as he is among the breed elites for growth traits.
- Top 3% WW, YW; top 4% ADG; top 5% CW; top 15% TI; top 35% MILK.
- Homozygous black. Homozygous polled.



WCS HAMMER LANE 1820J
Maternal Brother to Lot 1-5



Lot 5

- The final Chestnut Force 482 son from the flush of the 6019D donor is well built in his skeleton and carries added rib shape and volume.
- His strong 706 lb. weaning weight showcases his ability to grow and add performance.
- His EPD rankings are favorable for growth traits across the board.
- Top 10% WW, YW, ADG, CW; top 25% TI; top 35% MILK.
- Homozygous black. Homozygous polled.



WCS MS HELLCAT 1816J
Maternal Sister to Lot 1-5

4

WCS MR FORCE 57N

Reg: 4626815 DOB: 2/12/25 Tattoo: 57N

1/2 SM 1/2 AN **ADJ. BW:** 84 | **BWR:** ET **ADJ. WW:** 800 | **WWR:** ET

WILKS REGIMENT 9035

LRS ELEVATE 213B

CHESTNUT FORCE 482

LRS MS ELEVATE 6019D

CHESTNUT CAPTIVATION 958

LRS MS SHRPER IMAGE 324A

HOMOZYGOUS POLLED • HOMOZYGOUS BLACK

| CE | BW | WW | YW | ADG | MCE | MILK | MWW | |
|------|------|-------|-------|------|--------|------|-------|------|
| 11.6 | 0.6 | 101.6 | 164.5 | 0.39 | 7.5 | 26.1 | 76.9 | |
| 50% | 65% | 3% | 3% | 4% | 45% | 35% | 5% | |
| STAY | DOC | CW | YG | MARB | BF | REA | API | TI |
| 11.4 | 11.1 | 64.1 | -0.03 | 0.34 | -0.004 | 0.76 | 132.7 | 94.5 |
| 85% | 75% | 5% | 90% | 60% | 85% | 40% | 55% | 15% |

5

WCS MR FORCE 517N

Reg: 4626816 DOB: 2/11/25 Tattoo: 517N

1/2 SM 1/2 AN **ADJ. BW:** 78 | **BWR:** ET **ADJ. WW:** 706 | **WWR:** ET

WILKS REGIMENT 9035

LRS ELEVATE 213B

CHESTNUT FORCE 482

LRS MS ELEVATE 6019D

CHESTNUT CAPTIVATION 958

LRS MS SHRPER IMAGE 324A

HOMOZYGOUS POLLED • HOMOZYGOUS BLACK

| CE | BW | WW | YW | ADG | MCE | MILK | MWW | |
|------|------|------|-------|------|--------|------|-------|------|
| 11.6 | -0.1 | 94.7 | 154.7 | 0.38 | 7.5 | 26.1 | 73.4 | |
| 50% | 50% | 10% | 10% | 10% | 45% | 35% | 15% | |
| STAY | DOC | CW | YG | MARB | BF | REA | API | TI |
| 11.4 | 11.1 | 58.6 | -0.03 | 0.34 | -0.004 | 0.69 | 131.2 | 91.1 |
| 85% | 75% | 10% | 90% | 60% | 85% | 55% | 60% | 25% |



Lot 6

6

WCS MR FORCE 4400M

Reg: 4499969 DOB: 9/22/24 Tattoo: 4400M

PUREBRED ANGUS ADJ. BW: 73 | BWR: ET ADJ. WW: 680 | WWR: ET

WILKS REGIMENT 9035 KR MOJO 8520
CHESTNUT FORCE 482 **KR JUDY 0903**
 CHESTNUT CAPTIVATION 958 KR JUDY 8552

HOMOZYGOUS POLLED • HOMOZYGOUS BLACK

| CE | BW | WW | YW | ADG | MCE | MILK | MWW | |
|------|------|------|-------|------|-------|------|-------|------|
| 12.1 | 0.4 | 98.0 | 166.1 | 0.43 | 7.9 | 26.3 | 75.3 | |
| 45% | 60% | 5% | 2% | 1% | 35% | 30% | 10% | |
| STAY | DOC | CW | YG | MARB | BF | REA | API | TI |
| 9.5 | 12.7 | 74.1 | 0.19 | 0.65 | 0.038 | 0.55 | 123.2 | 86.9 |
| 95% | 55% | 1% | 99% | 20% | 99% | 75% | 70% | 40% |

- A different twist here with a purebred Angus son of Chestnut Force 482 out of a Krebs Ranch bred cow. He is a bold ribbed, deep bodied rascal.
- Modest 73 lb. birth weight on his performance measures.
- If you are looking for a bull with a big time data set, he is certainly one to consider.
- This fall born yearling is ready to go to work improving your next set of calves.
- Top 1% ADG, CW; top 2% YW; top 5% WW; top 20% MARB; top 30% MILK; top 35% MCE.
- Homozygous black. Homozygous polled.



KR JUDY 0903
Dam of Lot 6

7

WCS MR FORCE 4401M

Reg: 4499970 DOB: 9/22/24 Tattoo: 4401M

1/2 SM 1/2 AN ADJ. BW: 83 | BWR: ET ADJ. WW: 694 | WWR: ET

WILKS REGIMENT 9035 LRS TURNING POINT 3117A
CHESTNUT FORCE 482 **HARKERS CALIENTE SILK**
 CHESTNUT CAPTIVATION 958 GCF MISS CALIENTE

HOMOZYGOUS POLLED • HOMOZYGOUS BLACK

| CE | BW | WW | YW | ADG | MCE | MILK | MWW | |
|------|------|------|-------|------|--------|------|-------|------|
| 6.4 | 2.7 | 97.6 | 162.8 | 0.41 | 4.9 | 28.3 | 77.1 | |
| 95% | 95% | 10% | 3% | 2% | 85% | 20% | 5% | |
| STAY | DOC | CW | YG | MARB | BF | REA | API | TI |
| 9.4 | 11.8 | 62.3 | -0.09 | 0.43 | -0.010 | 0.89 | 122.5 | 91.6 |
| 95% | 65% | 10% | 80% | 50% | 85% | 20% | 70% | 25% |

- 4401M rounds out the Chestnut Force 482 sire group as a SimAngus option to add quality and performance.
- He's ready for a heavier workload this spring breeding season.
- Another big data set to study, focused on growth trait excellence.
- Top 2% ADG; top 3% YW; top 10% WW, CW; top 20% MILK, REA; top 25% TI.
- Homozygous black. Homozygous polled.



WCS TRIFECTA 3520L
Maternal Brother to Lot 7



Lot 8



OMF JOURNEYMAN J24
Sire of Lot 8



K-LER DOLLY'S LADY 810F
Dam of Lot 8



W/C FORT KNOX 609F
Son of a Maternal Sister to Dam of Lot 8

8

WCS MR JORNEYMAN 526N

Reg: 4627040 DOB: 2/19/25 Tattoo: 526N

3/4 SM 1/4 AN ADJ. BW: 85 | BWR: ET ADJ. WW: 632 | WWR: ET

MR SR MIC DROP G1534

W/C EXECUTIVE ORDER 8543B

OMF JOURNEYMAN J24

K-LER DOLLY'S LADY 810F

OMF DEKA D23

GW MISS GPRD 028X

HOMOZYGOUS POLLED • HOMOZYGOUS BLACK

| CE | BW | WW | YW | ADG | MCE | MILK | MWW | |
|------|------|------|-------|------|--------|------|-------|------|
| 7.9 | 1.2 | 90.4 | 149.1 | 0.37 | 5.6 | 21.5 | 66.7 | |
| 85% | 75% | 15% | 10% | 10% | 75% | 75% | 35% | |
| STAY | DOC | CW | YG | MARB | BF | REA | API | TI |
| 14.1 | 13.1 | 52.0 | -0.36 | 0.13 | -0.068 | 1.15 | 118.4 | 82.4 |
| 65% | 45% | 20% | 10% | 90% | 15% | 3% | 75% | 55% |

- WCS MR Journeyman 526N is going to be a favorite of many on sale day.
- You will appreciate the depth of body, balance, and overall herd bull quality this dude carries himself with.
- He's the only OMF Journeyman J24 son in the sale, out of a W/C Executive Order 8543B daughter. He's one of the top three-quarter Simmental bulls we will offer this year.
- Another big time growth EPD bull that will add pounds of payweight in one calf crop.
- Top 3% REA; top 10% YW, ADG, YG; top 15% WW; top 20% CW.
- Homozygous black. Homozygous polled.



Lot 9

- 4417M leads into the MR W/C Trifecta 975J sons with added length of body and a solid skeletal framework.
- His dam comes from the famous Werning program, and W/C Ms Werning 129J has found her way into our donor pen.
- An impressive 720 lb. adjusted weaning weight for this fall yearling sire prospect.
- Tie into this sire group and reap the benefits of their calves next fall at weaning.
- Top 15% YG, REA.
- Homozygous black. Homozygous polled.



W/C MISS WERNING 129J
Dam of Lot 9 & 10



Lot 10

- If you are looking for a bull that is masculine in his features with an added shot of power, study this one closely.
- A full brother to 4417M from the flush work of W/C Ms Werning 129J. This is a nice pair of three-quarter Simmental full brothers in the fall yearling pen.
- Added performance to weaning on his record with a 702 lb. adjusted weight.
- Top 15% YG; top 20% REA.
- Homozygous black. Homozygous polled.



WCS MAINSTAY 414M
Maternal Brother to Lot 9 & 10

9 **WCS MR TRIFECTA 4417M**
Reg: 4631619 DOB: 9/30/24 Tattoo: 4417M

3/4 SM 1/4 AN ADJ. BW: 84 | BWR: ET ADJ. WW: 720 | WWR: ET

BAR CK 4118B 8102F CDI CEO 281D
MR W/C TRIFECTA 975J **W/C MISS WERNING 129J**
W/C MISS WERNING 975G W/C MISS WERNING 5344C

HOMOZYGOUS POLLED • HOMOZYGOUS BLACK

| CE | BW | WW | YW | ADG | MCE | MILK | MWW | |
|------|------|------|-------|------|--------|------|-------|------|
| 8.2 | 1.9 | 78.1 | 121.8 | 0.27 | 5.0 | 22.7 | 61.7 | |
| 85% | 85% | 50% | 50% | 55% | 85% | 65% | 60% | |
| STAY | DOC | CW | YG | MARB | BF | REA | API | TI |
| 11.4 | 13.3 | 35.4 | -0.34 | 0.33 | -0.061 | 0.93 | 115.9 | 78.4 |
| 85% | 45% | 60% | 15% | 65% | 15% | 15% | 80% | 65% |

10 **WCS MR TRIFECTA 4421M**
Reg: 4499984 DOB: 10/2/24 Tattoo: 4421M

3/4 SM 1/4 AN ADJ. BW: 87 | BWR: ET ADJ. WW: 702 | WWR: ET

BAR CK 4118B 8102F CDI CEO 281D
MR W/C TRIFECTA 975J **W/C MISS WERNING 129J**
W/C MISS WERNING 975G W/C MISS WERNING 5344C

HOMOZYGOUS POLLED • HOMOZYGOUS BLACK

| CE | BW | WW | YW | ADG | MCE | MILK | MWW | |
|------|------|------|-------|------|-------|------|-------|-----|
| 8.2 | 1.9 | 78.2 | 122.1 | 0.27 | 5 | 22.9 | 61.9 | |
| 85% | 85% | 50% | 50% | 55% | 85% | 60% | 60% | |
| STAY | DOC | CW | YG | MARB | BF | REA | API | TI |
| 11.6 | 13.3 | 34.6 | -0.33 | 0.32 | -0.06 | 0.9 | 115.5 | 78 |
| 80% | 45% | 65% | 15% | 65% | 25% | 20% | 80% | 70% |



Lot 11

- 532N is a good looking bull on the profile. He is well balanced with plenty of depth of body.
- His young WINC Next Generation 0111H dam did a nice job raising this calf on her first try.
- He has a 736 lb. adjusted weaning weight, which ratios 121 among his contemporaries.
- A power packed bull physically and genetically make him one that will be a favorite.
- Top 10% WW, REA; top 15% YW; top 20% CW; top 25% ADG.
- Homozygous black. Homozygous polled.



MR W/C TRIFECTA 975J
Sire of lot 9-14

- This baldy bull is as deep bodied as any yearling bull offered in the sale this year.
- He is out of a W/C Express Lane 29G two year-old that is off to a good start in her production career.
- His weaning weight ratio calculates to a 113 in his contemporary grouping.
- Be sure to check out this rugged stockman's special of a bull on sale day.
- Top 35% WW.
- Homozygous black. Homozygous polled.



Lot 12

11 **WCS MR TRIFECTA 532N**
Reg: 4626829 DOB: 2/15/25 Tattoo: 532N

3/4 SM 1/4 AN ADJ. BW: 85 | BWR: 114 ADJ. WW: 736 | WWR: 121
BAR CK 4118B 8102F WINC NEXT GENERATION 0111H
MR W/C TRIFECTA 975J WCS MS GALAXIE 3806L
W/C MISS WERNING 975G WCS MS STAY 0402H

HOMOZYGOUS POLLED • HOMOZYGOUS BLACK

| CE | BW | WW | YW | ADG | MCE | MILK | MWW |
|------|-----|------|-------|------|-----|------|------|
| 11.9 | 0.8 | 95.1 | 146.6 | 0.32 | 7.7 | 24.4 | 71.9 |
| 50% | 70% | 10% | 15% | 25% | 40% | 50% | 15% |

| STAY | DOC | CW | YG | MARB | BF | REA | API | TI |
|------|------|------|-------|------|--------|------|-------|------|
| 15.2 | 12.5 | 51.0 | -0.23 | 0.19 | -0.028 | 1.04 | 128.9 | 86.8 |
| 50% | 55% | 20% | 40% | 85% | 65% | 10% | 60% | 40% |

12 **WCS MR TRIFECTA 53N**
Reg: 4626985 DOB: 2/21/25 Tattoo: 53N

5/8 SM 3/8 AN ADJ. BW: 73 | BWR: 98 ADJ. WW: 689 | WWR: 113
BAR CK 4118B 8102F W/C EXPRESS LANE 29G
MR W/C TRIFECTA 975J WCS MS LANE 3814L
W/C MISS WERNING 975G W/C BARBARAMERE 9135G

HOMOZYGOUS POLLED • HOMOZYGOUS BLACK

| CE | BW | WW | YW | ADG | MCE | MILK | MWW |
|------|-----|------|-------|------|-----|------|------|
| 11.5 | 0.4 | 82.9 | 124.9 | 0.26 | 6.9 | 24.0 | 65.3 |
| 50% | 60% | 35% | 45% | 65% | 55% | 50% | 45% |

| STAY | DOC | CW | YG | MARB | BF | REA | API | TI |
|------|------|------|-------|------|--------|------|-------|------|
| 12.8 | 11.7 | 34.2 | -0.11 | 0.47 | -0.011 | 0.57 | 133.5 | 86.0 |
| 75% | 65% | 65% | 75% | 40% | 75% | 75% | 55% | 40% |



Lot 13

13 **WCS MR TRIFECTA 533N**
 Reg: 4626878 DOB: 3/10/25 Tattoo: 533N

3/4 SM 1/4 AN **ADJ. BW:** 81 | **BWR:** 108 **ADJ. WW:** 710 | **WWR:** 117
 BAR CK 4118B 8102F NGDB STRUCTURE 34D
MR W/C TRIFECTA 975J **WCS MS HEMI 3800L**
 W/C MISS WERNING 975G LRS MS ELEVATE 6019D

HOMOZYGOUS POLLED • HOMOZYGOUS BLACK

| CE | BW | WW | YW | ADG | MCE | MILK | MWW | |
|------|------|------|-------|------|--------|------|-------|------|
| 9.5 | 1.5 | 92.0 | 137.1 | 0.28 | 7.2 | 20.1 | 66.0 | |
| 70% | 80% | 15% | 25% | 50% | 50% | 85% | 40% | |
| STAY | DOC | CW | YG | MARB | BF | REA | API | TI |
| 14.9 | 12.2 | 36.1 | -0.21 | 0.23 | -0.041 | 0.69 | 123.5 | 83.7 |
| 55% | 60% | 60% | 45% | 80% | 35% | 55% | 70% | 50% |

- WCS MR Trifecta 533N is a baldy bull with a promising future.
- His dam raised this sale bull on her first attempt in production.
- 117 weaning weight ratio is among the tops in his group and the sale offering.
- He has a data set that indicates growth and performance ability in his calves.
- Top 15% WW; top 25%YW.
- Homozygous black. Homozygous polled.



WCS MS HEMI 3800L
 Dam of Lot 13

14 **WCS TRIFECTA 420M**
 Reg: 4436718 DOB: 3/4/24 Tattoo: 420M

3/4 SM 1/4 AN **ADJ. BW:** 93 | **BWR:** 116 **ADJ. WW:** 660 | **WWR:** 89
 BAR CK 4118B 8102F WCS MR GLOCK 5094C
MR W/C TRIFECTA 975J **WCS MS GLOCK 24H**
 W/C MISS WERNING 975G WCS MS MINT IN 1076Y

HOMOZYGOUS POLLED • HOMOZYGOUS BLACK

| CE | BW | WW | YW | ADG | MCE | MILK | MWW | |
|------|------|------|-------|------|--------|------|-------|------|
| 5.6 | 2.8 | 73.2 | 104.2 | 0.19 | 5.4 | 18.9 | 55.4 | |
| 95% | 95% | 70% | 85% | 95% | 80% | 90% | 85% | |
| STAY | DOC | CW | YG | MARB | BF | REA | API | TI |
| 14.6 | 11.8 | 28.2 | -0.23 | 0.31 | -0.060 | 0.50 | 112.2 | 71.9 |
| 60% | 65% | 80% | 40% | 65% | 25% | 85% | 85% | 85% |

- 420M is a two-year-old bull ready for heavy service this spring.
- The MR W/C Trifecta 975J sire group is a good one, and he is the only mature option available from this offering.
- Don't overlook this three-quarter Simmental bull.
- Homozygous black. Homozygous polled.



WCS TRIFECTA 420M
 Full Brother to Lot 14

15

WCS MR PLUS 4462M

Reg: 4631621 DOB: 10/5/24 Tattoo: 4462M

1/2 SM 1/2 AN ADJ. BW: 83 | BWR: 109 ADJ. WW: 686 | WWR: 96

SRH HANNIBAL 5H WCS ANGUS

R PLUS 2141K 5C

MISS R PLUS 1337Y WCS ANGUS

HETEROZYGOUS POLLED • HOMOZYGOUS BLACK

| CE | BW | WW | YW | ADG | MCE | MILK | MWW | |
|------|------|------|-------|------|--------|------|-------|------|
| 10.4 | 1.0 | 72.7 | 112.7 | 0.25 | 6.1 | 24.6 | 60.8 | |
| 65% | 70% | 70% | 70% | 70% | 70% | 45% | 65% | |
| STAY | DOC | CW | YG | MARB | BF | REA | API | TI |
| 9.8 | 11.2 | 39.6 | -0.19 | 0.22 | -0.046 | 0.63 | 108.2 | 73.3 |
| 90% | 75% | 50% | 50% | 80% | 35% | 65% | 85% | 80% |

- A SimAngus special to enter into the R Plus 2141K sire offering with this age advantaged bull.
- A blaze faced bull with added length, shape, and presence. He will be one of the favorites in the older yearling pen when sorting those bulls.
- Improve the physical quality of your calf crop with a bull like 4462M.
- Homozygous black.



Lot 15



R PLUS 2141K
Sire of Lot 15-17

16

WCS MR PLUS 4467M

Reg: 4631617 DOB: 10/2/24 Tattoo: 4467M

1/2 SM 1/2 AN ADJ. BW: 76 | BWR: 100 ADJ. WW: 706 | WWR: 99

SRH HANNIBAL 5H WCS ANGUS

R PLUS 2141K 7U1

MISS R PLUS 1337Y WCS ANGUS

HOMOZYGOUS POLLED • HOMOZYGOUS BLACK

| CE | BW | WW | YW | ADG | MCE | MILK | MWW | |
|------|------|------|-------|------|--------|------|-------|------|
| 13.5 | -0.4 | 67.5 | 104.8 | 0.23 | 7.7 | 22.4 | 56.1 | |
| 35% | 45% | 85% | 85% | 80% | 40% | 65% | 85% | |
| STAY | DOC | CW | YG | MARB | BF | REA | API | TI |
| 9.8 | 10.0 | 38.4 | -0.18 | 0.26 | -0.044 | 0.60 | 114.7 | 73.0 |
| 90% | 85% | 55% | 55% | 75% | 35% | 70% | 80% | 85% |

- 4467M is a level topped, blaze faced prospect that really is extended in his skeleton.
- His smooth shoulder design and shape looks like the calving ease prospect his EPDs indicate he could be.
- On top of that, he posted an adjusted weaning weight over 700 lb.
- Top 35% CED.
- Homozygous black. Homozygous polled.



Lot 16



WCS TAKE CHARGE 314L
Maternal Brother to Lot 17

17

WCS MR PLUS 510N

Reg: 4626845 DOB: 2/13/25 Tattoo: 510N

3/4 SM 1/4 AN ADJ. BW: 75 | BWR: 100 ADJ. WW: 648 | WWR: 107

SRH HANNIBAL 5H W/C SON OF A BISCUIT 83E

R PLUS 2141K WCS MS BISCUIT 957G

MISS R PLUS 1337Y WCS MS MAGIC 104Y

HOMOZYGOUS POLLED • HOMOZYGOUS BLACK

| CE | BW | WW | YW | ADG | MCE | MILK | MWW | |
|------|------|------|-------|------|--------|------|-------|------|
| 13.5 | 0.5 | 81.2 | 122.4 | 0.26 | 6.5 | 19.7 | 60.2 | |
| 35% | 65% | 40% | 50% | 65% | 60% | 85% | 65% | |
| STAY | DOC | CW | YG | MARB | BF | REA | API | TI |
| 17.1 | 11.0 | 39.2 | -0.32 | 0.13 | -0.068 | 0.85 | 126.3 | 77.2 |
| 30% | 75% | 50% | 15% | 90% | 15% | 25% | 65% | 70% |

- WCS MR Plus 510N carries the trademark length of body that his paternal brothers in this sale offer.
- A three-quarter Simmental that went from 75 lb. birth to a 107 weaning weight ratio.
- The most impressive EPD profile of the sire group with his excellence for carcass and calving ease traits.
- Top 15% YG; top 25% REA; top 30% STAY; top 35% CED.
- Homozygous black. Homozygous polled.



Lot 17

THE YEARLING BULLS



Lot 18

- One of the youngest bulls in the offering, this purebred Simmental is long, stout, and sound.
- Solid 702 lb. adjusted weaning weight and good WW EPD to his credit.
- Study closely on this CCS/JS Innovator 29G son.
- Top 30% WW; top 35% CW.
- Homozygous black. Homozygous polled.



J M L ROAD KING 302L
Maternal Brother to Lot 18



Lot 19

- 511N is a yearling bull that will give you a good balanced look on the side profile.
- The only WCS Instinct 03H son in the sale carries extra muscle shape.
- Curve bending performance from 64 lb. birth weight to a 713 lb. adjusted weaning weight.
- Top 25% MILK.
- Homozygous black. Homozygous polled.



WCS REST EASY 3522L
Maternal Brother to Lot 19

18
JMLMR INNOVATOR 515N

Reg: 4631840 DOB: 4/4/25 Tattoo: 515N

PUREBRED SIMMENTAL ADJ. BW: 84 | BWR: 100 ADJ. WW: 702 | WWR: 100

CDI INNOVATOR 325D HARKERS ZERO TOLERANCE
CCS/JS INNOVATOR 29G **WCS MS ZERO 901G**
 WHF SUMMER 365C WCS MS 6088D

HOMOZYGOUS POLLED • HOMOZYGOUS BLACK

| CE | BW | WW | YW | ADG | MCE | MILK | MWW |
|-----|-----|------|-------|------|-----|------|------|
| 6.1 | 2.9 | 86.7 | 125.6 | 0.25 | 4.2 | 22.1 | 65.4 |
| 90% | 85% | 30% | 40% | 55% | 80% | 60% | 45% |

| STAY | DOC | CW | YG | MARB | BF | REA | API | TI |
|------|------|------|-------|-------|--------|------|-------|------|
| 14.2 | 11.3 | 38.3 | -0.33 | -0.01 | -0.070 | 0.88 | 112.2 | 76.4 |
| 65% | 60% | 35% | 65% | 85% | 60% | 50% | 80% | 70% |

19
WCS MR INSTINCT 511N

Reg: 4631624 DOB: 2/2/25 Tattoo: 511N

3/8 SM 5/8 AN ADJ. BW: 64 | BWR: 100 ADJ. WW: 713 | WWR: 100

W/C INSTINCT 1000F WCS ANGUS
WCS INSTINCT 03H **OR1**
 WCS MS LOADED 809F WCS ANGUS

HOMOZYGOUS POLLED • HOMOZYGOUS BLACK

| CE | BW | WW | YW | ADG | MCE | MILK | MWW |
|------|-----|------|-------|------|-----|------|------|
| 11.0 | 0.1 | 71.6 | 109.6 | 0.24 | 6.5 | 27.6 | 63.4 |
| 55% | 55% | 75% | 75% | 75% | 60% | 25% | 50% |

| STAY | DOC | CW | YG | MARB | BF | REA | API | TI |
|------|-----|------|-------|------|--------|------|-------|------|
| 8.7 | 9.8 | 37.5 | -0.13 | 0.38 | -0.016 | 0.66 | 112.7 | 76.0 |
| 95% | 85% | 55% | 70% | 55% | 75% | 60% | 85% | 75% |

20 WCS MR STATEMENT 4205M

Reg: 4450442 DOB: 7/7/24 Tattoo: 4205M

3/4 SM 1/4 AN **ADJ. BW:** 68 | **BWR:** 93 **ADJ. WW:** 728 | **WWR:** 103

ES STATEMENT GZ33 W/C EXPRESS LANE 29G

WINC STATEMENT 244K

WCS MS 2806K

WINC 023H

W/C BARBARAMERE 9135G

HOMOZYGOUS POLLED • HOMOZYGOUS BLACK

| CE | BW | WW | YW | ADG | MCE | MILK | MWW |
|-----|-----|------|-------|------|-----|------|------|
| 8.1 | 1.2 | 88.2 | 139.9 | 0.32 | 5.3 | 26.1 | 70.1 |
| 85% | 75% | 20% | 20% | 25% | 80% | 35% | 25% |

| STAY | DOC | CW | YG | MARB | BF | REA | API | TI |
|------|------|------|-------|------|--------|------|-------|------|
| 11.6 | 12.6 | 45.5 | -0.20 | 0.48 | -0.034 | 0.82 | 129.9 | 89.1 |
| 85% | 55% | 35% | 45% | 40% | 50% | 30% | 60% | 30% |

- From the first crop of WINC Statement 244K, 4205M is an older bull that is stout and soggy. He is the cowman's kind.
- He started as a 68 lb. calf and grew quickly to a 728 lb. adjusted weaning weight.
- One of the biggest data sets in the sale with a focus on growth and performance.
- Top 20% WW, YW; top 25% ADG; top 30% REA, TI; top 35% MILK, CW.
- Homozygous black. Homozygous polled.



Lot 20



21 WCS MR STATEMENT 4202M

Reg: 4450447 DOB: 6/20/24 Tattoo: 4202M

PUREBRED SIMMENTAL **ADJ. BW:** 66 | **BWR:** 90 **ADJ. WW:** 700 | **WWR:** 99

ES STATEMENT GZ33 W/C EXPRESS LANE 29G

WINC STATEMENT 244K

WCS MS 2801K

WINC 023H

LRS MS ELEVATE 6019D

HOMOZYGOUS POLLED • HOMOZYGOUS BLACK

| CE | BW | WW | YW | ADG | MCE | MILK | MWW |
|------|------|------|-------|------|-----|------|------|
| 10.3 | -0.1 | 87.5 | 137.3 | 0.31 | 6.6 | 26.0 | 69.7 |
| 50% | 30% | 25% | 20% | 20% | 40% | 35% | 25% |

| STAY | DOC | CW | YG | MARB | BF | REA | API | TI |
|------|------|------|-------|------|--------|------|-------|------|
| 13.1 | 12.1 | 46.2 | -0.32 | 0.33 | -0.057 | 1.04 | 143.5 | 92.3 |
| 75% | 50% | 20% | 70% | 30% | 75% | 25% | 35% | 20% |

- WCS MR Statement 4202M is a purebred coming two year old that surfaces to the top of the class for phenotypic quality.
- You will love his herd bull look, soft middle, while still carrying plenty of real muscle shape.
- Another big data bull! If you study the numbers, be sure to look him up.
- Top 20% YW, ADG, CW, TI; top 25% WW, REA; top 30% BW, MARB; top 35% MILK, API.
- Homozygous black. Homozygous polled.



Lot 21

22 WCS STATEMENT 4454M

Reg: 4631614 DOB: 10/10/24 Tattoo: 4454M

1/2 SM 1/2 AN **ADJ. BW:** 73 | **BWR:** 96 **ADJ. WW:** 703 | **WWR:** 99

ES STATEMENT GZ33 WCS ANGUS

WINC STATEMENT 244K

7C

WINC 023H

WCS ANGUS

HOMOZYGOUS POLLED • HOMOZYGOUS BLACK

| CE | BW | WW | YW | ADG | MCE | MILK | MWW |
|------|------|------|-------|------|-----|------|------|
| 11.9 | -1.3 | 70.1 | 113.7 | 0.27 | 8.0 | 24.2 | 59.1 |
| 50% | 30% | 80% | 65% | 55% | 35% | 50% | 70% |

| STAY | DOC | CW | YG | MARB | BF | REA | API | TI |
|------|------|------|-------|------|--------|------|-------|------|
| 7.3 | 11.3 | 42.4 | -0.15 | 0.52 | -0.022 | 0.74 | 125.4 | 82.3 |
| 99% | 70% | 40% | 60% | 35% | 65% | 45% | 65% | 55% |

- A high performance SimAngus with his 73 lb. birth weight and 703 lb. adjusted weaning weight.
- The WINC Statement 244K sons are an impressive group for his debut crop.
- Add calving ease and carcass in one stop with his genetic profile.
- Top 30% BW; top 35% MCE, MARB.
- Homozygous black. Homozygous polled.



WINC STATEMENT 244K
Sire of Lot 20-22



Lot 23

- WCS MR Relevant 58N is a really complete purebred Simmental yearling when you study his type and kind.
- He's a true product of our program, as his dam is a WCS MR Pendleton 909W daughter in the prime of her production.
- Carries a diverse EPD profile with high rankings for calving ease and maternal traits.
- Top 20% CED, MCE; top 25% BW, STAY; top 35% MILK, API.
- Homozygous black. Homozygous polled.



WINC RELEVANT 334L
Sire of Lot 23-33



Lot 24

- A WINC Relevant 334L son that is a three quarter blood Simmental with a lot of quality.
- His weaning weight ratio of 115 showcases his performance among his pasture mates.
- One of the best EPD profiles in the sale with his high rankings for traits across the board.
- Top 2% MILK; top 15% REA; top 20% WW, YW; top 25% ADG, STAY; top 35% CW.
- Homozygous black. Homozygous polled.



WCS EXPRESS LANE 305L
Maternal Brother to Lot 24

23 **WCS MR RELEVANT 58N**
Reg: 4626896 DOB: 2/6/25 Tattoo: 58N

PUREBRED SIMMENTAL **ADJ. BW: 71 | BWR: 95** **ADJ. WW: 589 | WWR: 97**

CKCC RELEVANT 0639H WCS MR PENDLETON 909W
WINC RELEVANT 334L **WCS MS HUSKER 8F**
 WINC 023H WCS MS FROST 692S

HOMOZYGOUS POLLED • HOMOZYGOUS BLACK

| CE | BW | WW | YW | ADG | MCE | MILK | MWW | |
|------|------|------|-------|------|--------|------|-------|------|
| 13.7 | -0.3 | 70.9 | 110.3 | 0.25 | 7.8 | 26.0 | 61.3 | |
| 20% | 25% | 85% | 70% | 55% | 20% | 35% | 60% | |
| STAY | DOC | CW | YG | MARB | BF | REA | API | TI |
| 18.2 | 8.0 | 29.2 | -0.24 | 0.24 | -0.032 | 0.75 | 146.3 | 80.3 |
| 25% | 90% | 70% | 90% | 40% | 95% | 80% | 35% | 55% |

24 **WCS MR RELEVANT 529N**
Reg: 4626839 DOB: 2/7/25 Tattoo: 529N

3/4 SM 1/4 AN **ADJ. BW: 79 | BWR: 106** **ADJ. WW: 697 | WWR: 115**

CKCC RELEVANT 0639H R&R RANGO B120
WINC RELEVANT 334L **WCS MS RANGO 8045F**
 WINC 023H WCS MS DESIGN 862U

HOMOZYGOUS POLLED • HOMOZYGOUS BLACK

| CE | BW | WW | YW | ADG | MCE | MILK | MWW | |
|------|------|------|-------|------|--------|------|-------|------|
| 10.2 | 1.7 | 88.5 | 139.8 | 0.32 | 6.0 | 33.4 | 77.7 | |
| 65% | 85% | 20% | 20% | 25% | 70% | 2% | 4% | |
| STAY | DOC | CW | YG | MARB | BF | REA | API | TI |
| 17.9 | 11.1 | 44.4 | -0.22 | 0.28 | -0.027 | 0.93 | 133.3 | 84.7 |
| 25% | 75% | 35% | 40% | 70% | 65% | 15% | 55% | 45% |

25

WCS MR RELEVANT 55N

Reg: 4626912 DOB: 2/19/25 Tattoo: 55N

PUREBRED SIMMENTAL **ADJ. BW: 79 | BWR: ET** **ADJ. WW: 617 | WWR: ET**

CKCC RELEVANT 0639H LRS ELEVATE 213B
WINC RELEVANT 334L **LRS MS ELEVATE 6019D**
 WINC 023H LRS MS SHRPER IMAGE 324A

HOMOZYGOUS POLLED • HOMOZYGOUS BLACK

| CE | BW | WW | YW | ADG | MCE | MILK | MWW | |
|------|------|------|-------|------|--------|------|-------|------|
| 13.9 | -0.4 | 77.6 | 122.1 | 0.28 | 7.8 | 27.1 | 65.8 | |
| 15% | 25% | 60% | 45% | 35% | 20% | 25% | 40% | |
| STAY | DOC | CW | YG | MARB | BF | REA | API | TI |
| 16.0 | 10.0 | 32.6 | -0.25 | 0.16 | -0.033 | 0.83 | 141.1 | 82.9 |
| 50% | 75% | 55% | 90% | 55% | 95% | 65% | 40% | 50% |

- A sleek fronted calving ease prospect with added shape to his quarter.
- This WINC Relevant 55N son is the kind who will be in high demand for heifer breeding projects.
- Backed by a powerful dam in our program, LRS MS Elevate 6019D.
- His genetic merits read like he will be a calving ease cowmaking herd sire.
- Top 15% CED; top 20% MCE; top 25% BW, MILK; top 35% ADG.
- Homozygous black. Homozygous polled.



Lot 25



WCS MS SUPER BEE 3804L
Maternal Sister to Lot 25-27



Lot 26

WCS MS TALLADEGA 3803L
Maternal Sister to Lot 25-27



26

WCS MR RELEVANT 527N

Reg: 4627067 DOB: 2/22/25 Tattoo: 527N

PUREBRED SIMMENTAL **ADJ. BW: 81 | BWR: ET** **ADJ. WW: 619 | WWR: ET**

CKCC RELEVANT 0639H LRS ELEVATE 213B
WINC RELEVANT 334L **LRS MS ELEVATE 6019D**
 WINC 023H LRS MS SHRPER IMAGE 324A

HOMOZYGOUS POLLED • HOMOZYGOUS BLACK

| CE | BW | WW | YW | ADG | MCE | MILK | MWW | |
|------|------|------|-------|------|--------|------|-------|------|
| 13.9 | -0.7 | 74.2 | 117.3 | 0.27 | 7.8 | 27.1 | 64.1 | |
| 15% | 20% | 75% | 55% | 40% | 20% | 25% | 50% | |
| STAY | DOC | CW | YG | MARB | BF | REA | API | TI |
| 16.0 | 10.0 | 30.8 | -0.25 | 0.16 | -0.033 | 0.81 | 140.3 | 81.2 |
| 50% | 75% | 60% | 90% | 55% | 95% | 70% | 40% | 55% |

- 527N is a bull that you will appreciate the ruggedness and masculinity he carries.
- He should be a deep bodied, easy doing type of herd bull. A full brother to 55N, the cow power behind this one is remarkable.
- His genetic profile suggests that calving ease will be his specialty.
- Top 15% CED; top 20% BW, MCE; top 25% MILK.
- Homozygous black. Homozygous polled.



Lot 27



WCS MS SHELBY 1806J
Maternal Sister to Lot 25-27

27

WCS MR RELEVANT 514N

Reg: 4626855 DOB: 2/13/25 Tattoo: 514N

PUREBRED SIMMENTAL **ADJ. BW: 66 | BWR: ET** **ADJ. WW: 653 | WWR: ET**

CKCC RELEVANT 0639H LRS ELEVATE 213B
WINC RELEVANT 334L **LRS MS ELEVATE 6019D**
 WINC 023H LRS MS SHRPER IMAGE 324A

HOMOZYGOUS POLLED • HOMOZYGOUS BLACK

| CE | BW | WW | YW | ADG | MCE | MILK | MWW | |
|------|------|------|-------|------|--------|------|-------|------|
| 13.9 | -0.3 | 78.7 | 123.6 | 0.28 | 7.8 | 27.1 | 66.4 | |
| 15% | 25% | 55% | 45% | 35% | 20% | 25% | 40% | |
| STAY | DOC | CW | YG | MARB | BF | REA | API | TI |
| 16.0 | 10.0 | 33.2 | -0.25 | 0.16 | -0.033 | 0.84 | 141.3 | 83.4 |
| 50% | 75% | 55% | 90% | 55% | 95% | 60% | 40% | 45% |

- 514N is another purebred calving ease son of the 6019D donor and the WINC Relevant 334L sire line.
- This sire group is stamped with a clean front end, smooth shoulder, and added shape.
- One that should be high on your list if you need a bull to service heifers.
- Top 15% CED; top 20% MCE; top 25% BW, MILK; top 35% ADG.
- Homozygous black. Homozygous polled.



Lot 28

WCS EXPRESS LANE 3811L
Maternal Brother to Lot 28-30



Lot 29

W/C MAINSTAY 355F
Maternal Grandsire of Lot 28-30



Lot 29



Lot 30



Lot 30

28

WCS MR RELEVANT 502N

Reg: 4626879 DOB: 2/12/25 Tattoo: 502N

PUREBRED SIMMENTAL ADJ. BW: 78 | BWR: ET ADJ. WW: 601 | WWR: ET

CKCC RELEVANT 0639H W/C MAINSTAY 355F
WINC RELEVANT 334L WCS MS STAY 0401H
WINC 023H LRS MS ELEVATE 6019D

HOMOZYGOUS POLLED • HOMOZYGOUS BLACK

| CE | BW | WW | YW | ADG | MCE | MILK | MWW | |
|------|------|------|-------|------|--------|------|-------|------|
| 11.5 | 0.3 | 83.0 | 132.5 | 0.31 | 6.6 | 26.7 | 68.1 | |
| 35% | 35% | 40% | 30% | 20% | 40% | 30% | 30% | |
| STAY | DOC | CW | YG | MARB | BF | REA | API | TI |
| 14.7 | 12.7 | 41.7 | -0.28 | 0.18 | -0.037 | 0.99 | 137.6 | 85.5 |
| 60% | 40% | 30% | 80% | 50% | 95% | 30% | 45% | 40% |

- A WINC Relevant 334L son with a blaze face, 502N is the leadoff son in a trio of flush brothers from our WCS MS Stay 0401H donor dam.
- He's got a cool front third and plenty of shape and mass from the shoulder back.
- Genetically, this is the kind of bull who adds pound without sacrificing easy calving.
- Top 20% ADG; top 30% YW, MILK, CW, REA; top 35% CED, BW.
- Homozygous black. Homozygous polled.

29

WCS MR RELEVANT 522N

Reg: 4626983 DOB: 2/19/25 Tattoo: 522N

PUREBRED SIMMENTAL ADJ. BW: 85 | BWR: ET ADJ. WW: 709 | WWR: ET

CKCC RELEVANT 0639H W/C MAINSTAY 355F
WINC RELEVANT 334L WCS MS STAY 0401H
WINC 023H LRS MS ELEVATE 6019D

HOMOZYGOUS POLLED • HOMOZYGOUS BLACK

| CE | BW | WW | YW | ADG | MCE | MILK | MWW | |
|------|------|------|-------|------|--------|------|-------|------|
| 11.5 | 0.8 | 88.3 | 140.1 | 0.32 | 6.6 | 26.7 | 70.8 | |
| 35% | 45% | 25% | 20% | 15% | 40% | 30% | 20% | |
| STAY | DOC | CW | YG | MARB | BF | REA | API | TI |
| 14.7 | 12.7 | 46.2 | -0.28 | 0.18 | -0.037 | 1.05 | 138.8 | 88.2 |
| 60% | 40% | 20% | 80% | 50% | 95% | 20% | 45% | 35% |

- WCS MR Relevant 522N is a purebred yearling that is tough to find fault in his physical build.
- When you can find a cow like WCS MS Stay 0401H this close in the pedigree, it's worth taking a second look.
- Posted an impressive 709 lb. adjusted weaning weight.
- His data set rings the bell for a wide variety of traits.
- Top 15% ADG; top 20% YW, CW, REA; top 25% WW; top 30% MILK; top 35% CED, TI.
- Homozygous black. Homozygous polled.

30

WCS MR RELEVANT 50N

Reg: 4626998 DOB: 2/15/25 Tattoo: 50N

PUREBRED SIMMENTAL ADJ. BW: 82 | BWR: ET ADJ. WW: 649 | WWR: ET

CKCC RELEVANT 0639H W/C MAINSTAY 355F
WINC RELEVANT 334L WCS MS STAY 0401H
WINC 023H LRS MS ELEVATE 6019D

HOMOZYGOUS POLLED • HOMOZYGOUS BLACK

| CE | BW | WW | YW | ADG | MCE | MILK | MWW | |
|------|------|------|-------|------|--------|------|-------|------|
| 11.5 | 0.7 | 87.3 | 138.7 | 0.32 | 6.6 | 26.7 | 70.3 | |
| 35% | 40% | 25% | 20% | 15% | 40% | 30% | 25% | |
| STAY | DOC | CW | YG | MARB | BF | REA | API | TI |
| 14.7 | 12.7 | 44.2 | -0.28 | 0.18 | -0.037 | 1.03 | 138.6 | 87.7 |
| 60% | 40% | 20% | 80% | 50% | 95% | 25% | 45% | 35% |

- A flush brother to 502N and 522N, this star faced purebred yearling is rock solid in his build with added rib shape.
- The WINC Relevant 334L sons will certainly be in high demand on sale day.
- One of the top genetic profiles in the sale when you look at his EPD rankings.
- Top 15% ADG; top 20% YW, CW; top 25% WW, REA; top 30% MILK; top 35% CED, TI.
- Homozygous black. Homozygous polled.

31

WCS MR RELEVANT 513N

Reg: 4626788 DOB: 2/26/25 Tattoo: 513N

1/2 SM 1/2 AN **ADJ. BW:** 83 | **BWR:** ET **ADJ. WW:** 574 | **WWR:** ET

CKCC RELEVANT 0639H

PVF SURVEILLANCE 4129

WINC RELEVANT 334L

W/C BARBARAMERE 9135G

WINC 023H

CARTER BARBARAMERE 7414

HOMOZYGOUS POLLED • HOMOZYGOUS BLACK

| CE | BW | WW | YW | ADG | MCE | MILK | MWW | |
|------|------|------|-------|------|-------|------|-------|------|
| 11.3 | 1.0 | 75.0 | 121.2 | 0.29 | 5.9 | 27.2 | 64.6 | |
| 55% | 70% | 65% | 55% | 45% | 70% | 25% | 45% | |
| STAY | DOC | CW | YG | MARB | BF | REA | API | TI |
| 14.4 | 11.0 | 30.7 | -0.01 | 0.47 | 0.012 | 0.40 | 133.3 | 80.8 |
| 60% | 75% | 75% | 95% | 40% | 95% | 95% | 55% | 60% |

- A SimAngus prospect in the WINC Relevant 334L sire group that introduces the W/C Barbaramere 9135G donor to this year's offering.
- Here is a yearling bull with plenty of rib shape and volume.
- Don't overlook this 513N prospect.
- Top 25% MILK.
- Homozygous black. Homozygous polled.



Lot 31

32

WCS MR RELEVANT 525N

Reg: 4626897 DOB: 2/5/25 Tattoo: 525N

PUREBRED SIMMENTAL **ADJ. BW:** 85 | **BWR:** 114 **ADJ. WW:** 664 | **WWR:** 109

CKCC RELEVANT 0639H

LRS TURNING POINT 3117A

WINC RELEVANT 334L

HARKERS CALIENTE SILK

WINC 023H

GCF MISS CALIENTE

HOMOZYGOUS POLLED • HOMOZYGOUS BLACK

| CE | BW | WW | YW | ADG | MCE | MILK | MWW | |
|------|------|------|-------|------|--------|------|-------|------|
| 6.5 | 3.5 | 86.5 | 138.6 | 0.33 | 4.1 | 29.3 | 72.5 | |
| 85% | 90% | 30% | 20% | 15% | 80% | 15% | 15% | |
| STAY | DOC | CW | YG | MARB | BF | REA | API | TI |
| 13.9 | 10.8 | 39.7 | -0.32 | 0.25 | -0.039 | 1.09 | 129.6 | 85.3 |
| 70% | 65% | 35% | 70% | 40% | 95% | 15% | 55% | 40% |

- Purebred yearling WINC Relevant 334L son that is backed by our Harkers Caliente Silk donor female. If you want a sire with cow power, he certainly has it.
- His weaning weight ratio of 109 shows the job his mother does in production.
- It's hard to beat a bull with a strong genetic profile backed by a leading donor cow.
- Top 15% ADG, MILK, REA; top 20% YW; top 30% WW; top 35% CW.
- Homozygous black. Homozygous polled.



WCS EXPRESS LANE 2821K
Maternal Brother to Lot 31

33

WCS MR RELEVANT 531N

Reg: 4626979 DOB: 2/10/25 Tattoo: 531N

PUREBRED SIMMENTAL **ADJ. BW:** 76 | **BWR:** 102 **ADJ. WW:** 612 | **WWR:** 101

CKCC RELEVANT 0639H

CDI CEO 281D

WINC RELEVANT 334L

W/C MISS WERNING 129J

WINC 023H

W/C MISS WERNING 5344C

HOMOZYGOUS POLLED • HOMOZYGOUS BLACK

| CE | BW | WW | YW | ADG | MCE | MILK | MWW | |
|------|------|------|-------|------|--------|------|-------|------|
| 8.9 | 2.4 | 81.8 | 131.4 | 0.31 | 4.9 | 26.4 | 67.2 | |
| 65% | 75% | 45% | 30% | 20% | 70% | 30% | 35% | |
| STAY | DOC | CW | YG | MARB | BF | REA | API | TI |
| 13.1 | 12.6 | 41.0 | -0.42 | 0.28 | -0.065 | 1.21 | 133.2 | 85.0 |
| 75% | 45% | 30% | 25% | 35% | 60% | 10% | 50% | 40% |

- Rounding out the WINC Relevant 334L sire group is the natural calf from the W/C Werning 129J Miss Werning 129J donor female.
- 531N is another bull that is complete in his kind from end to end.
- On paper, this is one of the top bulls in the sale for multiple traits.
- Study this yearling purebred prospect closely.
- Top 10% REA; top 20% ADG; top 25% YG; top 30% YW, CW, MILK; top 35% MARB.
- Homozygous black. Homozygous polled.



Lot 33



Lot 34



W/C BARBARAMERE 9135G
Dam of Lot 34



WCS MR EXPRESS LANE 2828K
Maternal Brother to Lot 34



WINC NEXT GENERATION 0111H
Sire of Lot 34

34 **WCS NEXT GENERATION 411M**
Reg: 4436722 DOB: 3/3/24 Tattoo: 411M

1/2 SM 1/2 AN **ADJ. BW: 73 | BWR: ET** **ADJ. WW: 648 | WWR: ET**
W/C FOUNDATION 2135E PVF SURVEILLANCE 4129
WINC NEXT GENERATION 0111H **W/C BARBARAMERE 9135G**
KAPPES SADIE T635 Y302 CARTER BARBARAMERE 7414

HOMOZYGOUS POLLED • HOMOZYGOUS BLACK

| CE | BW | WW | YW | ADG | MCE | MILK | MWW | |
|------|------|------|-------|------|--------|------|-------|------|
| 10.5 | 0.5 | 84.5 | 138.9 | 0.34 | 5.9 | 25.8 | 68.0 | |
| 65% | 65% | 30% | 25% | 20% | 70% | 35% | 30% | |
| STAY | DOC | CW | YG | MARB | BF | REA | API | TI |
| 12.3 | 13.1 | 54.8 | -0.07 | 0.10 | -0.005 | 0.77 | 113.2 | 78.1 |
| 80% | 45% | 15% | 85% | 95% | 85% | 40% | 80% | 70% |

- WCS Next Generation 411M is an older herd sire prospect with added length and mass.
- This halfblood SimAngus is out of the Angus donor W/C Barbaramere 9135G that you will notice her influence throughout this sale offering.
- Modest 73 lb. birth weight on his performance record.
- Provides a nice data set on top of all the other benefits he brings to the table.
- Top 15% CW; top 20% ADG; top 25% YW; top 30% WW; top 35% MILK.
- Homozygous black. Homozygous polled.



Lot 35

- 427M is another rugged made older bull with added shape and power.
- This purebred coming two year old bull is ready for heavy service.
- Study his data points and you will find a bull that should add pounds throughout the production cycle.
- Top 5% CW, REA; top 10% ADG; top 15% YW; top 20% WW.
- Homozygous black. Homozygous polled.



WCS NEXT GEN 427M
Maternal Brother to Lot 35



Lot 36

- WCS MR Gen 520N is another pounds heavy three quarter Simmental with added shape.
- He carries an impressive 112 weaning weight ratio on his performance sheet.
- One of the top growth trait EPD profiles in the offering.
- Top 1% REA; top 10% CW; top 15% WW, YW, ADG, YG; top 35% DOC.
- Homozygous black. Homozygous polled.

35 **WCS NEXT GEN 427M**
Reg: 4436739 DOB: 3/18/24 Tattoo: 427M

PUREBRED SIMMENTAL **ADJ. BW: 80 | BWR: 100** **ADJ. WW: 629 | WWR: 85**

W/C FOUNDATION 2135E GLS NEW DIRECTION X184
WINC NEXT GENERATION 0111H **WCS MS REDBEAR 8338F**
KAPPES SADIE T635 Y302 ZKCC COW 550X

HOMOZYGOUS POLLED • HOMOZYGOUS BLACK

| CE | BW | WW | YW | ADG | MCE | MILK | MWW | |
|------|-----|------|-------|-------|--------|------|-------|------|
| 11.0 | 1.7 | 89.0 | 145.2 | 0.35 | 5.9 | 20.1 | 64.5 | |
| 40% | 60% | 20% | 15% | 10% | 50% | 75% | 45% | |
| STAY | DOC | CW | YG | MARB | BF | REA | API | TI |
| 13.3 | 9.3 | 55.8 | -0.35 | -0.14 | -0.060 | 1.23 | 118.0 | 79.5 |
| 70% | 80% | 5% | 55% | 99% | 75% | 5% | 75% | 60% |

36 **WCS MR GEN 520N**
Reg: 4626821 DOB: 3/11/25 Tattoo: 520N

3/4 SM 1/4 AN **ADJ. BW: 82 | BWR: 110** **ADJ. WW: 678 | WWR: 112**

W/C FOUNDATION 2135E WHEATLAND BULL 680S
WINC NEXT GENERATION 0111H **WCS MS CHLOE 5222C**
KAPPES SADIE T635 Y302 TC CHLOE 5167

HOMOZYGOUS POLLED • HOMOZYGOUS BLACK

| CE | BW | WW | YW | ADG | MCE | MILK | MWW | |
|------|------|------|-------|-------|--------|------|-------|------|
| 6.8 | 2.5 | 91.5 | 147.1 | 0.35 | 4.7 | 24.7 | 70.4 | |
| 90% | 90% | 15% | 15% | 15% | 85% | 45% | 20% | |
| STAY | DOC | CW | YG | MARB | BF | REA | API | TI |
| 15.2 | 14.1 | 61.5 | -0.33 | -0.04 | -0.042 | 1.37 | 107.0 | 76.8 |
| 50% | 35% | 10% | 15% | 99% | 35% | 1% | 90% | 70% |



Lot 37

- A densely made, shapely young herd sire prospect.
- He has a massive 732 lb. adjusted weaning weight and 120 ratio.
- Big time carcass trait needle mover on his genetic figures.
- Top 1% REA; top 2% CW; top 10% WW, YW, ADG; top 30% MILK, YG.
- Homozygous black. Homozygous polled.



WCS EXPRESS 1016J
Maternal Brother to Lot 37



Lot 38

- The WINC Next Generation 0111H sons are powerful and have loads of growth potential.
- 508N is a long spined bull that should add pounds through length.
- A multi-purpose EPD profile that ranks highly for growth, carcass, and calving ease.
- Top 1% REA; top 5% CW; top 15% DOC, YG; top 20% ADG; top 25% YW; top 35% CED, WW, MCE.
- Homozygous black. Homozygous polled.

37 **WCS MR GEN 59N**
Reg: 4626877 DOB: 2/22/25 Tattoo: 59N

3/4 SM 1/4 AN ADJ. BW: 85 | BWR: 114 ADJ. WW: 732 | WWR: 120

W/C FOUNDATION 2135E LRS A PLUS 219A
WINC NEXT GENERATION 0111H WCS MS A 7250E
KAPPES SADIE T635 Y302 TC CHLOE 5167

HOMOZYGOUS POLLED • HOMOZYGOUS BLACK

| CE | BW | WW | YW | ADG | MCE | MILK | MWW | |
|------|------|------|-------|------|--------|------|-------|------|
| 8.3 | 1.8 | 95.6 | 153.3 | 0.36 | 5.8 | 26.3 | 74.0 | |
| 80% | 85% | 10% | 10% | 10% | 75% | 30% | 10% | |
| STAY | DOC | CW | YG | MARB | BF | REA | API | TI |
| 15.8 | 13.1 | 71.2 | -0.26 | 0.02 | -0.036 | 1.31 | 115.7 | 81.8 |
| 45% | 45% | 2% | 30% | 99% | 50% | 1% | 80% | 55% |

38 **WCS MR GEN 508N**
Reg: 4626825 DOB: 2/5/25 Tattoo: 508N

PUREBRED SIMMENTAL ADJ. BW: 72 | BWR: 96 ADJ. WW: 606 | WWR: 100

W/C FOUNDATION 2135E CDI CEO 281D
WINC NEXT GENERATION 0111H W/C MISS WERNING 170J
KAPPES SADIE T635 Y302 ES Z29

HOMOZYGOUS POLLED • HOMOZYGOUS BLACK

| CE | BW | WW | YW | ADG | MCE | MILK | MWW | |
|------|------|------|-------|------|--------|------|-------|------|
| 11.7 | 0.5 | 85.1 | 135.3 | 0.31 | 6.9 | 23.1 | 65.5 | |
| 35% | 40% | 35% | 25% | 20% | 35% | 55% | 45% | |
| STAY | DOC | CW | YG | MARB | BF | REA | API | TI |
| 12.8 | 15.2 | 55.3 | -0.46 | 0.00 | -0.067 | 1.49 | 126.0 | 82.7 |
| 75% | 15% | 5% | 15% | 85% | 60% | 1% | 60% | 50% |



Lot 39

39 **WCS MR GEN 523N**
 Reg: 4626964 DOB: 2/9/25 Tattoo: 523N
PUREBRED SIMMENTAL **ADJ. BW: 82 | BWR: 110** **ADJ. WW: 677 | WWR: 111**

W/C FOUNDATION 2135E LRS TURNING POINT 3117A
WINC NEXT GENERATION 0111H **WCS MS POINT 5228C**
 KAPPES SADIE T635 Y302 LE BETTIS Z-047

HOMOZYGOUS POLLED • HOMOZYGOUS BLACK

| CE | BW | WW | YW | ADG | MCE | MILK | MWW | |
|------|------|-------|-------|-------|--------|------|-------|------|
| 8.2 | 2.8 | 106.0 | 173.0 | 0.42 | 6.2 | 23.8 | 76.7 | |
| 70% | 80% | 2% | 1% | 1% | 45% | 50% | 10% | |
| STAY | DOC | CW | YG | MARB | BF | REA | API | TI |
| 13.0 | 13.8 | 75.5 | -0.39 | -0.03 | -0.061 | 1.59 | 125.1 | 91.4 |
| 75% | 30% | 1% | 40% | 90% | 60% | 1% | 65% | 25% |

- 523N is a purebred yearling who is soft middle and loaded with quality.
- Elite growth potential in this calf when you study his genetic data set.
- Posted a strong 111 weaning weight ratio among his contemporaries.
- Top 1% YW, ADG, CW, REA; top 2% WW; top 25% TI; top 30% DOC.
- Homozygous black. Homozygous polled.

41 **WCS MR GEN 4439M**
 Reg: 4499998 DOB: 10/14/24 Tattoo: 4439M
3/4 SM 1/4 AN **ADJ. BW: 82 | BWR: 103** **ADJ. WW: 696 | WWR: 95**

W/C FOUNDATION 2135E CCR THE AMERICAN 8022C
WINC NEXT GENERATION 0111H **WCSMSAMERICAN0308H**
 KAPPES SADIE T635 Y302 WCS MS BUSHMAN 5013C

HOMOZYGOUS POLLED • HOMOZYGOUS BLACK

| CE | BW | WW | YW | ADG | MCE | MILK | MWW | |
|------|------|------|-------|------|--------|------|-------|------|
| 10.1 | 1.9 | 94.4 | 152.2 | 0.36 | 6.4 | 26.1 | 73.2 | |
| 65% | 85% | 10% | 10% | 10% | 65% | 35% | 15% | |
| STAY | DOC | CW | YG | MARB | BF | REA | API | TI |
| 13.1 | 14.6 | 62.7 | -0.29 | 0.07 | -0.041 | 1.26 | 115.3 | 82.7 |
| 70% | 25% | 5% | 20% | 95% | 35% | 1% | 80% | 55% |

- Rounding out this sire group is a fall born three quarter blood Simmental that should not be overlooked.
- The WINC Next Generation 0111H sons really ring the bell for genetic prowess, and 4439M is no exception to that.
- Top 1% REA; top 5% CW; top 10% WW, YW, ADG; top 20% YG; top 25% DOC; top 35% MILK.
- Homozygous black. Homozygous polled.

40 **WCS MR GEN 4434M**
 Reg: 4499994 DOB: 10/12/24 Tattoo: 4434M
PUREBRED SIMMENTAL **ADJ. BW: 77 | BWR: 97** **ADJ. WW: 768 | WWR: 105**

W/C FOUNDATION 2135E CCR THE AMERICAN 8022C
WINC NEXT GENERATION 0111H **WCS MS AMERICAN 9177G**
 KAPPES SADIE T635 Y302 WCS MS POWER 3011A

HOMOZYGOUS POLLED • HOMOZYGOUS BLACK

| CE | BW | WW | YW | ADG | MCE | MILK | MWW | |
|------|------|------|-------|------|--------|------|-------|------|
| 10.9 | 1.4 | 94.7 | 149.4 | 0.34 | 7.0 | 23.8 | 71.1 | |
| 40% | 55% | 10% | 10% | 10% | 30% | 50% | 20% | |
| STAY | DOC | CW | YG | MARB | BF | REA | API | TI |
| 14.6 | 15.1 | 61.4 | -0.31 | 0.03 | -0.051 | 1.24 | 131.0 | 87.2 |
| 60% | 15% | 3% | 70% | 80% | 75% | 5% | 55% | 35% |

- An age advantaged purebred WINC Next Generation 0111H son.
- His 768 lb. adjusted weaning weight is good for a solid 105 weaning ratio.
- Big data bull here! There's not a trait on the sheet he doesn't excel for.
- Top 3% CW; top 5% REA; top 10% WW, YW, ADG; top 15% DOC; top 30% MCE; top 35% TI.
- Homozygous black. Homozygous polled.



WCS ROAD KING 143J
 Maternal Brother to Lot 39

42

WCS MR EMMETT 505N

Reg: 4626838 DOB: 2/22/25 Tattoo: 505N

5/8 SM 3/8 AN **ADJ. BW:** 81 | **BWR:** 108 **ADJ. WW:** 650 | **WWR:** 107

SCHOOLEY EMMETT C543 W/C MAINSTAY 355F

FELT EMMETT 877K

WCS MS STAY 131J

FELT STAR GAZING 911D

WCS MS CHLOE 5222C

HOMOZYGOUS POLLED • HOMOZYGOUS BLACK

| CE | BW | WW | YW | ADG | MCE | MILK | MWW | |
|------|------|------|-------|------|--------|------|-------|------|
| 7.0 | 2.9 | 87.1 | 131.4 | 0.28 | 4.1 | 23.2 | 66.8 | |
| 90% | 95% | 25% | 35% | 50% | 95% | 60% | 35% | |
| STAY | DOC | CW | YG | MARB | BF | REA | API | TI |
| 11.8 | 10.7 | 47.9 | -0.17 | 0.29 | -0.026 | 0.84 | 113.0 | 80.4 |
| 80% | 80% | 30% | 55% | 70% | 65% | 25% | 80% | 60% |

- WCS MR Emmett 505N is a sharp looking yearling with added eye appeal and shape.
- The only son of FELT Emmett 877K in the offering is one worth considering.
- His 107 weaning ratio validates his strong growth EPDs.
- Top 25% WW, REA; top 30% CW; top 35% YW.
- Homozygous black. Homozygous polled.



Lot 42



FELT EMMETT 877K
Sire of Lot 42



Lot 43

WCS RANSOM 409M
Maternal Brother to Lot 43



43

WCS MR CHARGE 521N

Reg: 4627038 DOB: 2/13/25 Tattoo: 521N

5/8 SM 3/8 AN **ADJ. BW:** 81 | **BWR:** 108 **ADJ. WW:** 651 | **WWR:** 107

HILB/SHER DATA BREACH

MR SR 71 RIGHT NOW E1538

FELT TAKE CHARGE 101H

WCS MS RIGHT NOW 139J

FELT JAYCEE 101D

W/C BARBARAMERE 9135G

HOMOZYGOUS POLLED • HOMOZYGOUS BLACK

| CE | BW | WW | YW | ADG | MCE | MILK | MWW | |
|------|------|------|-------|------|--------|------|-------|------|
| 9.1 | 2.1 | 87.8 | 133.4 | 0.29 | 5.4 | 24.6 | 68.3 | |
| 75% | 90% | 25% | 30% | 45% | 80% | 45% | 30% | |
| STAY | DOC | CW | YG | MARB | BF | REA | API | TI |
| 9.7 | 14.0 | 39.3 | -0.21 | 0.27 | -0.055 | 0.60 | 112.7 | 82.0 |
| 90% | 35% | 50% | 45% | 75% | 25% | 70% | 85% | 55% |

- 521N is a well balanced yearling prospect that is hard to pick a hole in.
- A FELT Take Charge 101H son, he posted a 107 weaning weight ratio.
- Top 25% WW; top 30% YW; top 35% DOC.
- Homozygous black. Homozygous polled.



Lot 44



WCS BEDROCK 40M
Maternal Brother to Lot 44

44

WCS MR CHARGE 530N

Reg: 4626812 DOB: 2/15/25 Tattoo: 530N

3/4 SM 1/4 AN **ADJ. BW:** 92 | **BWR:** 123 **ADJ. WW:** 766 | **WWR:** 126

HILB/SHER DATA BREACH

WHF/JS/CCS DOUBLE UP G365

FELT TAKE CHARGE 101H

RAINS DOUBLE UP K328

FELT JAYCEE 101D

GCC BLACKBIRD 223B

HOMOZYGOUS POLLED • HOMOZYGOUS BLACK

| CE | BW | WW | YW | ADG | MCE | MILK | MWW | |
|------|------|------|-------|------|--------|------|------|------|
| 5.0 | 4.0 | 96.7 | 140.1 | 0.27 | 3.6 | 23.0 | 71.2 | |
| 99% | 99% | 10% | 20% | 55% | 95% | 60% | 20% | |
| STAY | DOC | CW | YG | MARB | BF | REA | API | TI |
| 10.3 | 11.7 | 44.7 | -0.27 | 0.08 | -0.063 | 0.80 | 97.6 | 79.4 |
| 90% | 65% | 35% | 25% | 95% | 15% | 35% | 95% | 65% |

- A powerfully built FELT Take Charge 101H son that is sure to impress.
- He has one of the highest adjusted weaning weights in the sale at 766 lb. That was good enough to ratio at a whopping 126.
- Big time growth bull when you study his EPDs.
- Top 10% WW; top 20% YW; top 25% YG; top 35% CW, REA.
- Homozygous black. Homozygous polled.

45

WCS MR RANSOM 4465M

Reg: 4631615 DOB: 10/12/24 Tattoo: 4465M

1/2 SM 1/2 AN **ADJ. BW: 72 | BWR: 95 ADJ. WW: 721 | WWR: 101**

KBHR HIGH ROAD E283 WCS ANGUS

R&R RANSOM J182

8Y

R&R MISS CC E783

WCS ANGUS

HOMOZYGOUS POLLED • HOMOZYGOUS BLACK

| CE | BW | WW | YW | ADG | MCE | MILK | MWW | |
|------|------|------|-------|------|--------|------|-------|------|
| 12.3 | -0.7 | 77.9 | 116.8 | 0.24 | 8.3 | 25.8 | 64.7 | |
| 45% | 40% | 55% | 60% | 75% | 30% | 35% | 45% | |
| STAY | DOC | CW | YG | MARB | BF | REA | API | TI |
| 10.3 | 12.5 | 47.5 | -0.17 | 0.52 | -0.023 | 0.85 | 132.2 | 86.0 |
| 90% | 55% | 30% | 55% | 35% | 65% | 25% | 55% | 40% |

- A muscular older bull with added length of spine.
- He was a bit of a curve bender on his individual performance from a 72 lb. birth weight to a 721 lb. weaning weight.
- Carries a well-balanced EPD profile that emphasizes carcass traits.
- Top 25% REA; top 30% MCE, CW; top 35% MILK, MARB.
- Homozygous black. Homozygous polled.



Lot 45



R&R RANSOM J182
Sire of lot 45-47

46

WCS MR RANSOM 4422M

Reg: 4631616 DOB: 10/3/24 Tattoo: 4422M

1/2 SM 1/2 AN **ADJ. BW: 75 | BWR: 99 ADJ. WW: 744 | WWR: 104**

KBHR HIGH ROAD E283 WCS ANGUS

R&R RANSOM J182

7L1

R&R MISS CC E783

WCS ANGUS

HOMOZYGOUS POLLED • HOMOZYGOUS BLACK

| CE | BW | WW | YW | ADG | MCE | MILK | MWW | |
|------|------|------|-------|------|--------|------|-------|------|
| 11.3 | -0.3 | 76.9 | 115.5 | 0.24 | 7.8 | 23.0 | 61.4 | |
| 55% | 50% | 55% | 65% | 75% | 40% | 60% | 60% | |
| STAY | DOC | CW | YG | MARB | BF | REA | API | TI |
| 10.3 | 12.5 | 46.2 | -0.17 | 0.52 | -0.023 | 0.83 | 129.9 | 84.5 |
| 90% | 55% | 30% | 55% | 35% | 65% | 30% | 60% | 45% |

- 4422M is a really nice halfblood SimAngus long yearling prospect.
- One of the leaders in the group for individual performance with his 75 lb. birth weight and 744 lb. adjusted weaning weight.
- Top 30% CW, REA; top 35% MARB.
- Homozygous black. Homozygous polled.



Lot 46



WCS GENERATION 447M
Maternal Brother to Lot 47

47

WCS MR RANSOM 512N

Reg: 4626828 DOB: 2/23/25 Tattoo: 512N

3/4 SM 1/4 AN **ADJ. BW: 86 | BWR: 115 ADJ. WW: 633 | WWR: 104**

KBHR HIGH ROAD E283 CCR THE AMERICAN 8022C

R&R RANSOM J182

WCS MS AM 775E

R&R MISS CC E783

WCS MS LACE 1046Y

HETEROZYGOUS POLLED • HOMOZYGOUS BLACK

| CE | BW | WW | YW | ADG | MCE | MILK | MWW | |
|------|------|------|-------|------|--------|------|-------|------|
| 4.5 | 3.3 | 96.2 | 144.3 | 0.30 | 3.4 | 25.8 | 73.8 | |
| 99% | 99% | 10% | 15% | 40% | 95% | 35% | 10% | |
| STAY | DOC | CW | YG | MARB | BF | REA | API | TI |
| 16.1 | 16.0 | 46.9 | -0.32 | 0.39 | -0.054 | 1.06 | 127.5 | 88.3 |
| 40% | 15% | 30% | 15% | 55% | 25% | 10% | 65% | 35% |

- WCS MR Ransom 512N will be a standout yearling bull in the pens on sale day for his shape and herd bull character,
- This three quarter blood Simmental prospect really hits the mark on physical appearance.
- His EPD profile is enticing as well, ranking highly for several important traits.
- Top 10% WW, REA; top 15% YW, DOC, YG; top 30% CW; top 35% MILK, TI.
- Homozygous black.



Lot 47



Lot 48



W/C HEAVY HITTER 79L
Sire of Lot 48-53



WCS MS MAIN 242K
Maternal Sister to Lot 48



RFS HERALD H104
Paternal Grandsire of Lots 48-53

48 **WCS MR HITTER 519N**

Reg: 4626959 DOB: 3/13/25 Tattoo: 519N

3/4 SM 1/4 AN **ADJ. BW:** 81 | **BWR:** 108 **ADJ. WW:** 707 | **WWR:** 116

RFS HERALD H104 W/C LOADED UP 287D
W/C HEAVY HITTER 79L **WCS MS LOADED 805F**
HOOK'S EXPECTATION 79E WCS MS 6027D

HOMOZYGOUS POLLED • HOMOZYGOUS BLACK

| CE | BW | WW | YW | ADG | MCE | MILK | MWW | |
|------|------|------|-------|------|--------|------|-------|------|
| 9.9 | 1.1 | 79.2 | 118.5 | 0.25 | 5.4 | 24.9 | 64.5 | |
| 70% | 75% | 50% | 60% | 70% | 80% | 45% | 45% | |
| STAY | DOC | CW | YG | MARB | BF | REA | API | TI |
| 16.0 | 12.3 | 42.1 | -0.30 | 0.33 | -0.048 | 0.99 | 128.4 | 80.1 |
| 45% | 60% | 40% | 20% | 65% | 35% | 10% | 65% | 60% |

- Leading off the W/C Heavy Hitter 79L debut crop is 519N, an impressive made baldy with added depth of body.
- His 707 lb. adjusted weaning weight and 116 weaning ratio would put him near the top of the entire sale offering.
- This is a bull you do not want to miss on sale day.
- Top 10% REA; top 20% YG.
- Homozygous black. Homozygous polled.



Lot 51

51 **WCS MR HITTER 5N**
 Reg: 4626996 DOB: 2/19/25 Tattoo: 5N

PUREBRED SIMMENTAL **ADJ. BW: 77** | **BWR: 103** **ADJ. WW: 674** | **WWR: 111**
 RFS HERALD H104 WCS MR WILLIE 107Y
W/C HEAVY HITTER 79L **WCS MS CRUELLA 5140C**
 HOOK'S EXPECTATION 79E WCS JACKIES DREAM 523R

HOMOZYGOUS POLLED • HETEROZYGOUS BLACK

| CE | BW | WW | YW | ADG | MCE | MILK | MWW | |
|------|------|------|-------|------|--------|------|-------|------|
| 12.0 | 0.6 | 81.4 | 111.9 | 0.19 | 7.1 | 25.1 | 65.7 | |
| 30% | 40% | 45% | 65% | 90% | 30% | 40% | 40% | |
| STAY | DOC | CW | YG | MARB | BF | REA | API | TI |
| 16.1 | 10.4 | 32.3 | -0.46 | 0.22 | -0.083 | 1.09 | 139.6 | 84.7 |
| 45% | 70% | 55% | 15% | 45% | 25% | 15% | 45% | 45% |

- WCS MR Hitter 5N is a nice baldy bull with plenty of shape from all angles.
- Stout made bull with a 111 weaning weight ratio.
- Those that study the pens on sale day will certainly find this bull.
- Top 15% REA, YG; top 30% CED, MCE.
- Homozygous polled.



WCS MAINSTAY 323L
 Maternal Brother to Lot 51

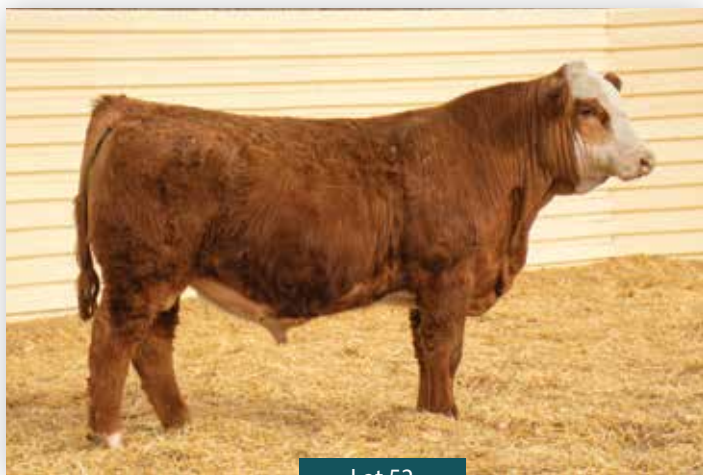
52 **WCS MR HITTER 56N**
 Reg: 4627050 DOB: 2/7/25 Tattoo: 56N

PUREBRED SIMMENTAL **ADJ. BW: 69** | **BWR: 92** **ADJ. WW: 671** | **WWR: 110**
 RFS HERALD H104 W/C EXECUTIVE 187D
W/C HEAVY HITTER 79L **WCS MS EXECUTIVE 9152G**
 HOOK'S EXPECTATION 79E WCS MS POINT 706E

HOMOZYGOUS POLLED

| CE | BW | WW | YW | ADG | MCE | MILK | MWW | |
|------|------|------|-------|------|--------|------|-------|------|
| 14.7 | -0.7 | 83.0 | 120.8 | 0.24 | 8.3 | 25.1 | 66.5 | |
| 15% | 20% | 40% | 50% | 60% | 15% | 40% | 40% | |
| STAY | DOC | CW | YG | MARB | BF | REA | API | TI |
| 15.9 | 12.1 | 42.6 | -0.41 | 0.22 | -0.070 | 1.15 | 146.8 | 88.0 |
| 50% | 50% | 25% | 30% | 45% | 60% | 10% | 35% | 35% |

- Here is a pretty special red baldy when you combine his look, genetic makeup, and overall quality.
- 56N is long bodied, stout hipped, and is loaded with eye appeal.
- Bends the growth curve with his 69 lb. birth weight up to a weaning weight that ratios 110.
- When you study EPDs, you will like this bull even more. He does many things well.
- Top 10% REA; top 15% CED, MCE; top 20% BW; top 25% CW; top 30% YG; top 35% API, TI.
- Homozygous polled.



Lot 52

53 **WCS MR HITTER 503N**
 Reg: 4627076 DOB: 3/9/25 Tattoo: 503N

3/4 SM 1/4 AN **ADJ. BW: 73** | **BWR: 98** **ADJ. WW: 661** | **WWR: 109**
 RFS HERALD H104 W/C LOADED UP 287D
W/C HEAVY HITTER 79L **WCS MS LOADED UP 998G**
 HOOK'S EXPECTATION 79E WCS MS VALLEY 46B

HOMOZYGOUS POLLED • HETEROZYGOUS BLACK

| CE | BW | WW | YW | ADG | MCE | MILK | MWW | |
|------|------|------|-------|------|--------|------|-------|------|
| 11.4 | 0.2 | 71.0 | 107.1 | 0.23 | 6.4 | 24.8 | 60.3 | |
| 55% | 60% | 75% | 80% | 80% | 65% | 45% | 65% | |
| STAY | DOC | CW | YG | MARB | BF | REA | API | TI |
| 17.3 | 13.1 | 32.1 | -0.28 | 0.29 | -0.050 | 0.80 | 136.6 | 77.2 |
| 30% | 45% | 70% | 25% | 70% | 35% | 30% | 50% | 70% |

- A three quarter Simmental yearling that rounds out the W/C Heavy Hitter 79L debut crop.
- Another curve bending individual performance data sheet. He weighed 73 lb. at birth and grew up to a 109 weaning weight ratio.
- Top 25% YG; top 30% STAY, REA.
- Homozygous polled.



Lot 54

54

WCS MR FARGO 509N

Reg: 4626804 DOB: 2/24/25 Tattoo: 509N

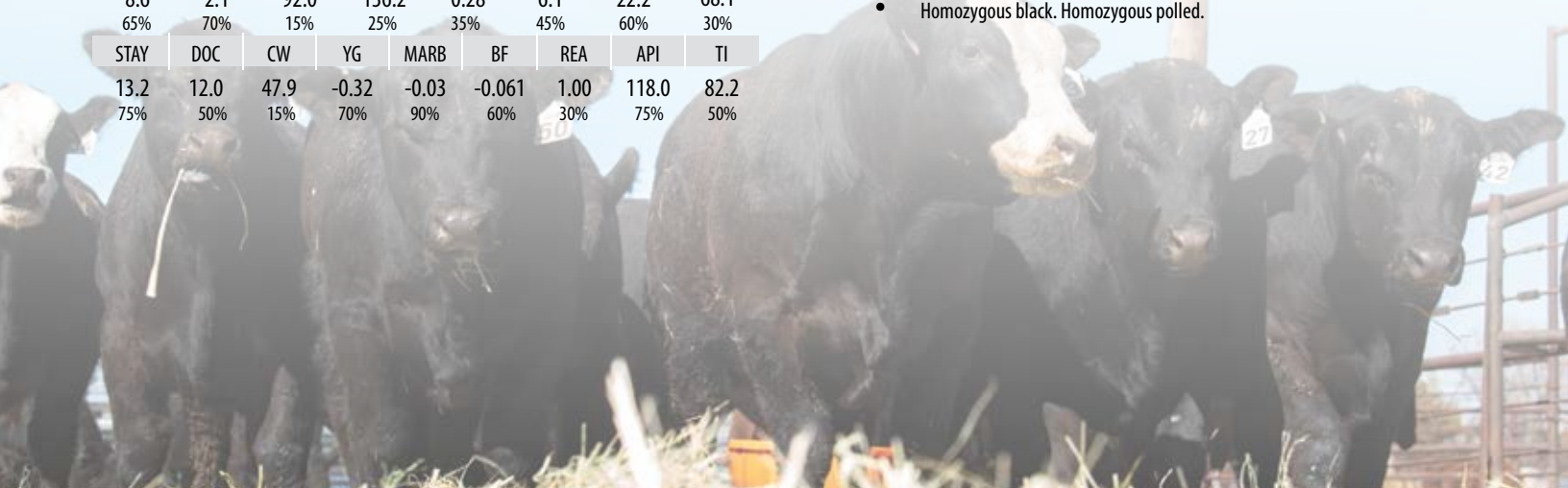
PUREBRED SIMMENTAL ADJ. BW: 73 | BWR: ET ADJ. WW: 695 | WWR: ET

W/C RELENTLESS 32C W/C MAINSTAY 355F
WCS WELLSFARGO 8304F **WCS MS STAY 0401H**
 KS SIERRA R992 LRS MS ELEVATE 6019D

HOMOZYGOUS POLLED • HOMOZYGOUS BLACK

| CE | BW | WW | YW | ADG | MCE | MILK | MWW | |
|------|------|------|-------|-------|--------|------|-------|------|
| 8.6 | 2.1 | 92.0 | 136.2 | 0.28 | 6.1 | 22.2 | 68.1 | |
| 65% | 70% | 15% | 25% | 35% | 45% | 60% | 30% | |
| STAY | DOC | CW | YG | MARB | BF | REA | API | TI |
| 13.2 | 12.0 | 47.9 | -0.32 | -0.03 | -0.061 | 1.00 | 118.0 | 82.2 |
| 75% | 50% | 15% | 70% | 90% | 60% | 30% | 75% | 50% |

- 509N is a sharp hipped yearling that should add muscle shape and depth of body.
- A purebred Simmental that is an own son of WCS MS Stay 0401H whose influence is seen throughout the sale offering.
- If you need to infuse growth in a single generation, strongly consider this guy.
- Top 15% WW, CW; top 25% YW; top 30% REA; top 35% ADG.
- Homozygous black. Homozygous polled.





Lot 55



WCS MR VEGAS 035H
Full Brother to Lot 55



WCS INSTINCT 120J
Maternal Brother to Lot 56



Lot 56

55 **WCS MR FARGO 506N**
Reg: 4626990 DOB: 3/11/25 Tattoo: 506N

3/4 SM 1/4 AN **ADJ. BW: 82** | **BWR: 110** **ADJ. WW: 726** | **WWR: 119**
W/C RELENTLESS 32C HARKERS BANDITO UNO
WCS WELLSFARGO 8304F **WCS MS UNO 540C**
KS SIERRA R992 WCS MS MAGIC 104Y

HOMOZYGOUS POLLED • HOMOZYGOUS BLACK

| CE | BW | WW | YW | ADG | MCE | MILK | MWW | |
|------|-----|------|-------|------|--------|------|-------|------|
| 7.0 | 3.1 | 90.9 | 126.7 | 0.22 | 5.2 | 21.2 | 66.6 | |
| 90% | 95% | 15% | 40% | 85% | 80% | 75% | 35% | |
| STAY | DOC | CW | YG | MARB | BF | REA | API | TI |
| 16.0 | 9.9 | 45.0 | -0.27 | 0.07 | -0.053 | 0.90 | 109.3 | 76.7 |
| 45% | 85% | 35% | 25% | 95% | 25% | 20% | 85% | 75% |

- WCS MR Fargo 506N is a stout made yearling with added muscle shape.
- Notice his 726 lb. weaning weight and 119 weaning ratio.
- His EPD profile suggests added growth in his progeny.
- Top 15% WW; top 20% REA; top 25% YG; top 35% CW.
- Homozygous black. Homozygous polled.

56 **WCS MR FARGO 507N**
Reg: 4627057 DOB: 3/13/25 Tattoo: 507N

PUREBRED SIMMENTAL **ADJ. BW: 79** | **BWR: 106** **ADJ. WW: 762** | **WWR: 125**
W/C RELENTLESS 32C W/C DOUBLE DOWN 5014E
WCS WELLSFARGO 8304F **WCS MS DOUBLE 9001G**
KS SIERRA R992 WCS MS IRISH 412B

HOMOZYGOUS POLLED • HOMOZYGOUS BLACK

| CE | BW | WW | YW | ADG | MCE | MILK | MWW | |
|------|------|------|-------|------|--------|------|-------|------|
| 7.3 | 2.5 | 90.2 | 130.1 | 0.25 | 6.2 | 24.5 | 69.3 | |
| 80% | 75% | 20% | 30% | 55% | 45% | 45% | 25% | |
| STAY | DOC | CW | YG | MARB | BF | REA | API | TI |
| 14.8 | 10.6 | 47.1 | -0.35 | 0.01 | -0.068 | 1.04 | 120.0 | 81.6 |
| 60% | 70% | 15% | 55% | 85% | 60% | 25% | 70% | 55% |

- WCS MR Fargo 507N carries added extension through his front third of his skeleton.
- His 762 lb. adjusted weaning weight is one of the tops in this year's sale offering.
- On paper, he's certainly a power bull to add growth into a calf crop.
- Top 15% CW; top 20% WW; top 25% REA; top 30% YW.
- Homozygous black. Homozygous polled.

57 **WCS MR FARGO 52N**
Reg: 4626882 DOB: 2/25/25 Tattoo: 52N

3/4 SM 1/4 AN **ADJ. BW: 81** | **BWR: 108** **ADJ. WW: 707** | **WWR: 116**
W/C RELENTLESS 32C R&R RANGO B120
WCS WELLSFARGO 8304F **WCS MS RANGO 9060G**
KS SIERRA R992 WCS MS POWER 463B

HOMOZYGOUS POLLED • HOMOZYGOUS BLACK

| CE | BW | WW | YW | ADG | MCE | MILK | MWW | |
|------|-----|------|-------|------|--------|------|-------|------|
| 7.6 | 3.1 | 91.7 | 131.8 | 0.25 | 6.1 | 25.8 | 71.6 | |
| 85% | 95% | 15% | 35% | 70% | 70% | 35% | 20% | |
| STAY | DOC | CW | YG | MARB | BF | REA | API | TI |
| 16.1 | 9.7 | 46.2 | -0.24 | 0.05 | -0.047 | 0.85 | 110.0 | 77.2 |
| 40% | 85% | 30% | 35% | 99% | 35% | 25% | 85% | 70% |

- 52N is a three quarter blood Simmental WCS Wellsfargo 8304F son with added growth capabilities.
- Posted an impressive 116 weaning weight ratio on his individual performance.
- His genetic data indicates that he should be well suited for adding power to progeny.
- Top 15% WW; top 25% REA; top 30% CW; top 35% YW, MILK, YG.
- Homozygous black. Homozygous polled.

58

WCS MR BANKER 51N

Reg: 4626769 DOB: 2/21/25 Tattoo: 51N

3/4 SM 1/4 AN **ADJ. BW: 74 | BWR: 99** **ADJ. WW: 695 | WWR: 114**

W/C MAINSTAY 355F

W/C EXPRESS LANE 29G

WCS MR FINANCIAL 037H

WCS MS LANE 2415K

WCS MS POINT 5228C

WCS MS JAKE 9190G

HOMOZYGOUS POLLED • HOMOZYGOUS BLACK

| CE | BW | WW | YW | ADG | MCE | MILK | MWW |
|-----|-----|------|-------|------|-----|------|------|
| 7.8 | 2.7 | 98.8 | 151.6 | 0.33 | 5.2 | 24.1 | 73.4 |
| 85% | 95% | 5% | 10% | 20% | 80% | 50% | 15% |

| STAY | DOC | CW | YG | MARB | BF | REA | API | TI |
|------|------|------|-------|------|--------|------|-------|------|
| 13.3 | 11.7 | 53.2 | -0.35 | 0.17 | -0.059 | 1.21 | 117.5 | 86.2 |
| 70% | 65% | 20% | 10% | 85% | 25% | 2% | 75% | 40% |

- The only son of WCS MR Financial 037H is a good one! 51N is one of the most expressive yearling bulls in the sale when you study his muscle pattern.
- His young W/C Express Lane 29G dam is doing a nice job in her early career.
- His genomic information is strong for both growth and carcass yield traits.
- Top 2% REA; top 5% WW; top 10% YW, YG; top 20% ADG, CW.
- Homozygous black. Homozygous polled.



Lot 58

59

WCS MR THREAT 501N

Reg: 4626870 DOB: 2/5/25 Tattoo: 501N

3/4 SM 1/4 AN **ADJ. BW: 70 | BWR: 94** **ADJ. WW: 671 | WWR: 110**

BAR CK 4118B 8102F

W/C REST EASY 752G

W/C TRIPLE THREAT 904J

WCS MS REST EASY 358L

W/C MISS WERNING 904G

WCS MS DIXIE 4006B

HOMOZYGOUS POLLED • HOMOZYGOUS BLACK

| CE | BW | WW | YW | ADG | MCE | MILK | MWW |
|------|------|------|-------|------|-----|------|------|
| 12.9 | -1.2 | 72.6 | 114.5 | 0.26 | 7.9 | 22.8 | 59.1 |
| 40% | 35% | 70% | 65% | 65% | 35% | 65% | 70% |

| STAY | DOC | CW | YG | MARB | BF | REA | API | TI |
|------|------|------|-------|------|--------|------|-------|------|
| 15.4 | 12.0 | 24.5 | -0.21 | 0.40 | -0.037 | 0.56 | 137.3 | 81.0 |
| 50% | 65% | 90% | 45% | 50% | 50% | 75% | 50% | 60% |

- Curve bending 70 lb. birth weight to a weaning ration of 110.
- There are only a handful of W/C Triple Threat 904J sons this year, but they are worth the added study time.
- Top 35% BW, MCE.
- Homozygous black. Homozygous polled.



Lot 60

60

JML MR THREAT 5301N

Reg: 4518433 DOB: 2/16/25 Tattoo: 5301N

5/8 SM 3/8 AN **ADJ. BW: 76 | BWR: 100** **ADJ. WW: 787 | WWR: 100**

BAR CK 4118B 8102F

WCS MR MAIN 0416H

W/C TRIPLE THREAT 904J

WCS MS MAIN 370L

W/C MISS WERNING 904G

WCS MS AMERICAN 866F

HOMOZYGOUS POLLED • HOMOZYGOUS BLACK

| CE | BW | WW | YW | ADG | MCE | MILK | MWW |
|------|-----|------|-------|------|-----|------|------|
| 12.0 | 0.0 | 86.3 | 137.5 | 0.32 | 7.3 | 26.1 | 69.2 |
| 45% | 55% | 25% | 25% | 25% | 50% | 35% | 25% |

| STAY | DOC | CW | YG | MARB | BF | REA | API | TI |
|------|------|------|-------|------|--------|------|-------|------|
| 15.9 | 13.6 | 36.7 | -0.11 | 0.47 | -0.022 | 0.54 | 143.8 | 89.3 |
| 45% | 40% | 60% | 75% | 40% | 65% | 80% | 40% | 30% |

- The more powerful option of the sire group, 5301N posted a 787 lb. adjusted weaning weight.
- His dam is a first calving W/C Rest Easy 752G daughter who did a nice job.
- His rankings for WW and YW showcase his ability to add pounds to your calf crop.
- Top 25% WW, YW, ADG; top 30% TI; top 35% MILK.
- Homozygous black. Homozygous polled.

61

WCS BISCUIT 436M

Reg: 4436766 DOB: 3/24/24 Tattoo: 436M

5/8 SM 3/8 AN **ADJ. BW: 79 | BWR: 99** **ADJ. WW: 661 | WWR: 89**

W/C SON OF A BISCUIT 83E

HARKERS BANDITO UNO

WCS MR BISCUIT 0403H

WCS MS UNO 250Z

FELT EMANUELLE 701E

WCS MS FREEDOM 761T

HOMOZYGOUS POLLED • HOMOZYGOUS BLACK

| CE | BW | WW | YW | ADG | MCE | MILK | MWW |
|-----|-----|------|-------|------|-----|------|------|
| 8.2 | 2.0 | 74.5 | 106.3 | 0.20 | 4.9 | 22.0 | 59.2 |
| 85% | 85% | 65% | 80% | 90% | 85% | 70% | 70% |

| STAY | DOC | CW | YG | MARB | BF | REA | API | TI |
|------|------|------|-------|------|--------|------|-------|------|
| 15.1 | 12.3 | 45.1 | -0.12 | 0.24 | -0.044 | 0.48 | 113.7 | 72.1 |
| 55% | 60% | 35% | 70% | 75% | 35% | 85% | 80% | 85% |

- 436M is an impressive coming two year old bull with his level top and added shape from all angles.
- The WCS MR Biscuit 0403H sons have been popular in our program for a few years now.
- This guy is ready to go to work in a big way!
- Top 35% CW.
- Homozygous black. Homozygous polled.



Lot 61



The
FEMALES





Lot 101

101 **WCS MS TRIFECTA 4005M**
 Reg: 4450554 DOB: 2/13/24 Tattoo: 4005M

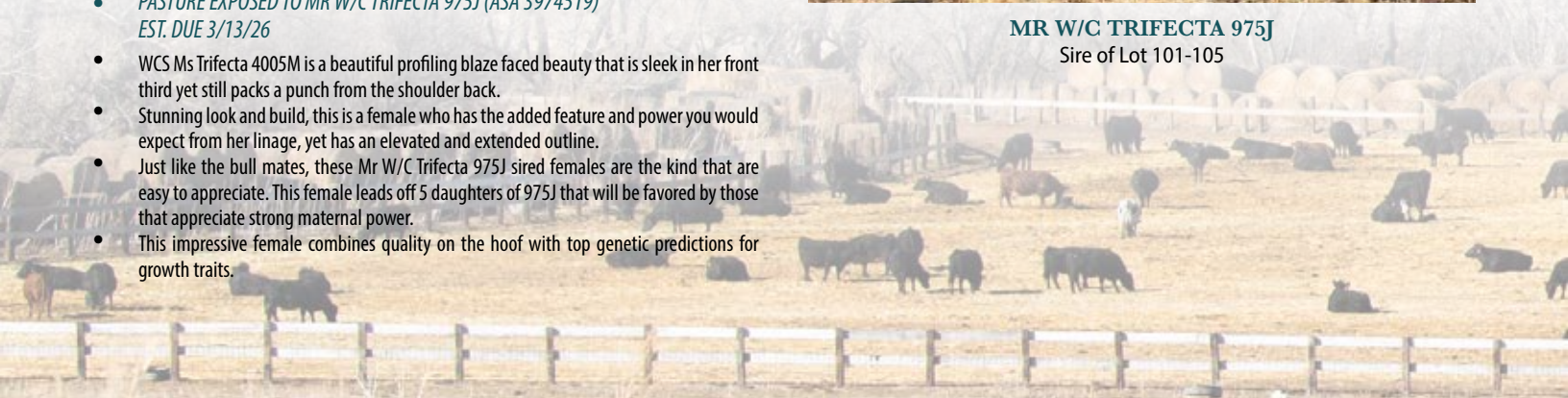
5/8 SM 3/8 AN **ADJ. BW:** 70 | **BWR:** 95 **ADJ. WW:** 496 | **WWR:** 92
 BAR CK 4118B 8102F W/C EXPRESS LANE 29G
MR W/C TRIFECTA 975J **WCS MS LANE 247K**
 W/C MISS WERNING 975G WCS MS IRISH 409B

| CE | BW | WW | YW | ADG | MCE | MILK | MWW | |
|------|------|------|-------|------|--------|------|-------|------|
| 12.1 | -0.2 | 72.0 | 109.8 | 0.24 | 8.2 | 20.9 | 56.6 | |
| 45% | 50% | 75% | 75% | 75% | 35% | 80% | 80% | |
| STAY | DOC | CW | YG | MARB | BF | REA | API | TI |
| 13.9 | 11.8 | 31.0 | -0.21 | 0.44 | -0.032 | 0.69 | 132.6 | 79.7 |
| 65% | 65% | 75% | 45% | 45% | 50% | 55% | 55% | 65% |

- *PASTURE EXPOSED TO MR W/C TRIFECTA 975J (ASA 3974519) EST. DUE 3/13/26*
- WCS Ms Trifecta 4005M is a beautiful profiling blaze faced beauty that is sleek in her front third yet still packs a punch from the shoulder back.
- Stunning look and build, this is a female who has the added feature and power you would expect from her lineage, yet has an elevated and extended outline.
- Just like the bull mates, these Mr W/C Trifecta 975J sired females are the kind that are easy to appreciate. This female leads off 5 daughters of 975J that will be favored by those that appreciate strong maternal power.
- This impressive female combines quality on the hoof with top genetic predictions for growth traits.



MR W/C TRIFECTA 975J
 Sire of Lot 101-105





Lot 102

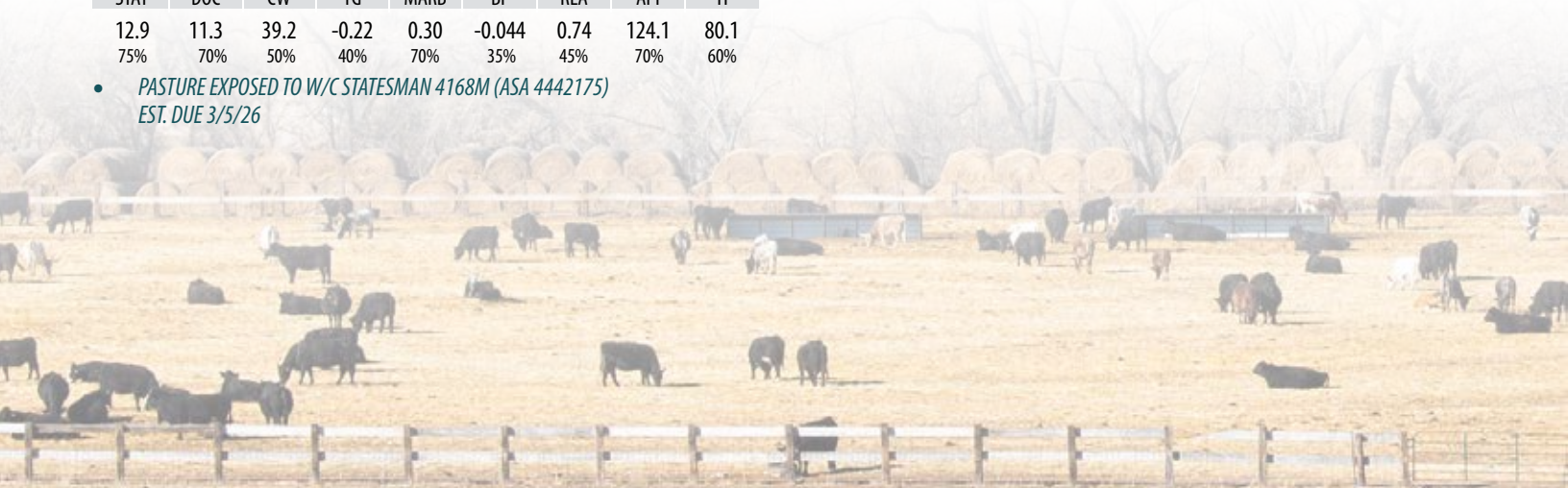
102 **WCS MS TRIFECTA 493M**
 Reg: 4450536 DOB: 2/10/24 Tattoo: 493M

5/8 SM 3/8 AN **ADJ. BW:** 69 | **BWR:** 93 **ADJ. WW:** 518 | **WWR:** 96
 BAR CK 4118B 8102F WCS MR MAIN 0412H
MR W/C TRIFECTA 975J **WCS MS MAIN 285K**
 W/C MISS WERNING 975G WCS MS POINT 599C

| CE | BW | WW | YW | ADG | MCE | MILK | MWW | |
|------|------|------|-------|------|--------|------|-------|------|
| 11.6 | 0.1 | 78.8 | 119.9 | 0.26 | 7.9 | 23.5 | 62.9 | |
| 50% | 55% | 50% | 55% | 65% | 35% | 55% | 55% | |
| STAY | DOC | CW | YG | MARB | BF | REA | API | TI |
| 12.9 | 11.3 | 39.2 | -0.22 | 0.30 | -0.044 | 0.74 | 124.1 | 80.1 |
| 75% | 70% | 50% | 40% | 70% | 35% | 45% | 70% | 60% |

• *PASTURE EXPOSED TO W/C STATESMAN 4168M (ASA 4442175)
 EST. DUE 3/5/26*

- This high powered, dense built and extra shapely female is built for speed. We love how loose and agile she is on the stride, and how neatly she balances and ties together from end to end.
- Bringing together shape and dimension, with poise and elegance, this is the kind that has huge potential in production we believe.
- She will have her first return on investment at side of sale day, a calf from the exciting W/C Statesman 4168M stud that we purchased from Werning's last year and we eagerly await the first calf crop from.





Lot 103

WCS TAKE CHARGE 314L
Maternal Brother to Dam of Lot 103



Lot 104

105 WCS MS TRIFECTA 476M
Reg: 4450538 DOB: 2/11/24 Tattoo: 476M

5/8 SM 3/8 AN ADJ. BW: 71 | BWR: 96 ADJ. WW: 564 | WWR: 105
BAR CK 4118B 8102F CCS/JS INNOVATOR 29G
MR W/C TRIFECTA 975J WCS MSINNOVATOR278K
W/C MISS WERNING 975G WCS MS HAMMER 9069G

| CE | BW | WW | YW | ADG | MCE | MILK | MWW | |
|------|------|------|-------|------|--------|------|-------|------|
| 10.9 | 0.1 | 82.8 | 125.7 | 0.27 | 7.4 | 20.7 | 62.1 | |
| 60% | 55% | 35% | 45% | 55% | 45% | 80% | 60% | |
| STAY | DOC | CW | YG | MARB | BF | REA | API | TI |
| 15.2 | 11.7 | 41.6 | -0.20 | 0.28 | -0.038 | 0.74 | 128.1 | 81.5 |
| 50% | 65% | 45% | 45% | 70% | 50% | 45% | 65% | 55% |

- *PASTURE EXPOSED TO CDI LANDMAN 277M (ASA 4432419) EST. DUE 3/4/26*
- We love the added elevation and sharpness of design here. WCS Ms Trifecta 476M is certainly an attention-grabbing heifer in the sale pens.
- The genetic package of this female is just as balanced and appealing as the look of quality that comes with the strong brood cow potential here.

103 WCS MS TRIFECTA 4073M
Reg: 4450561 DOB: 2/14/24 Tattoo: 4073M

5/8 SM 3/8 AN ADJ. BW: 69 | BWR: 93 ADJ. WW: 490 | WWR: 91
BAR CK 4118B 8102F CCS/JS INNOVATOR 29G
MR W/C TRIFECTA 975J WCS MSINNOVATOR214K
W/C MISS WERNING 975G WCS MS BISCUIT 957G

| CE | BW | WW | YW | ADG | MCE | MILK | MWW | |
|------|------|------|-------|------|--------|------|-------|------|
| 10.9 | 0.1 | 78.3 | 117.3 | 0.24 | 6.9 | 18.7 | 57.8 | |
| 60% | 55% | 50% | 60% | 75% | 55% | 90% | 75% | |
| STAY | DOC | CW | YG | MARB | BF | REA | API | TI |
| 15.0 | 11.6 | 35.0 | -0.19 | 0.30 | -0.033 | 0.66 | 126.6 | 79.0 |
| 55% | 70% | 60% | 50% | 70% | 50% | 60% | 65% | 65% |

- *PASTURE EXPOSED TO CDI LANDMAN 277M (ASA 4432419) EST. DUE 3/2/26*
- What a stunning blaze beauty that is coming with an awesome udder setup and strong maternal quality.
- You will want to sack up as many of these Mr W/C Trifecta 975J daughters as you can as they are becoming the ideal kind of production focused females in our opinion.
- Soft bodied, easy keeping and maternally focused, there is no guess to the amount of long-term value this brood cow matron has to offer!

104 WCS MS TRIFECTA 495M
Reg: 4450548 DOB: 2/18/24 Tattoo: 495M

3/4 SM 1/4 AN ADJ. BW: 68 | BWR: 92 ADJ. WW: 585 | WWR: 109
BAR CK 4118B 8102F WCS MR GLOCK 5094C
MR W/C TRIFECTA 975J WCS MS GLOCK 263K
W/C MISS WERNING 975G LRS MS ELEVATE 6019D

| CE | BW | WW | YW | ADG | MCE | MILK | MWW | |
|------|------|------|-------|------|--------|------|-------|------|
| 13.8 | -1.0 | 77.3 | 113.2 | 0.22 | 8.7 | 20.8 | 59.4 | |
| 30% | 35% | 55% | 70% | 85% | 25% | 80% | 70% | |
| STAY | DOC | CW | YG | MARB | BF | REA | API | TI |
| 14.7 | 11.3 | 32.3 | -0.22 | 0.27 | -0.047 | 0.61 | 129.2 | 79.4 |
| 55% | 70% | 70% | 40% | 75% | 35% | 65% | 60% | 65% |

- *PASTURE EXPOSED TO MR W/C TRIFECTA 975J (ASA 3974519) EST. DUE 3/4/26*
- WCS Ms Trifecta 495M comes with strong predictions for calving ease and dry matter input, and has a build that suggests she is going to be the easy keeping kind that will always be in the right flesh, yet still inject some extra oomph and power into her offspring.
- Note she stems from the leading matron in the program, and her maternal grandmother is the incredibly high production, LRS Ms Elevate 6019D that has a strong influence throughout the program.



Lot 105



Lot 106

106

WCS MS MAIN 4007M

Reg: 4450592 DOB: 3/25/24 Tattoo: 4007M

PUREBRED SIMMENTAL **ADJ. BW: 75 | BWR: 101** **ADJ. WW: 584 | WWR: 108**

W/C MAINSTAY 355F WCS WELLSFARGO 8304F
WCS MR MAIN 0416H **WCS MS FARGO 069H**
 LRS MS ELEVATE 6019D WCS MS POINT 765E

| CE | BW | WW | YW | ADG | MCE | MILK | MWW | |
|------|------|------|-------|------|--------|------|-------|------|
| 8.6 | 2.0 | 93.1 | 141.6 | 0.30 | 6.1 | 25.8 | 72.3 | |
| 65% | 70% | 15% | 15% | 25% | 45% | 35% | 15% | |
| STAY | DOC | CW | YG | MARB | BF | REA | API | TI |
| 13.8 | 10.1 | 54.5 | -0.25 | 0.06 | -0.057 | 0.93 | 125.2 | 85.6 |
| 70% | 75% | 10% | 90% | 75% | 75% | 45% | 65% | 40% |

- *PASTURE EXPOSED TO CDI LANDMAN 277M (ASA 4432419) EST. DUE 2/25/26*

- WCS Ms Main 4007M is a high powered, growth injector that is one impressive specimen in the flesh, and sorts herself to the front of the pack from a density and body substance standpoint.
- We love the outline and design of this purebred daughter of WCS Mr Main 0416H, not only is she pretty as a picture on the profile, but she still is round and bold in her ribcage, with added muscle and pin width in her rear third.
- Note her impressive roster of growth traits that set her among the best to go under the hammer in this female division.
- We think her mating with CDI Landman 277M could be very exciting, and by sale day the results will already be ready for your inspection.

THE FEMALES



Lot 107



WCS BISCUIT 2826K
Maternal Brother to Lot 107

- Another set of high growth predictions will be found here with this second WCS Mr Main 0412H daughter. Top 10% WW, YW, CW and REA figures are hard to ignore, and help paint a very intriguing outlook for this female in production.
- If you are looking to add females to the cowherd that are built with longevity, maternal function, easy fleshing ability and the potential to raise cattle that have added performance and growth then pay attention to this female that excels both on paper and in the flesh.
- *PASTURE EXPOSED TO CDI LANDMAN 277M (ASA 4432419) & SCHOOLEY MOBSTER 412M (ASA 4425202) EST. DUE 3/25/26*



Lot 108



RUST MS DREAMLOCKED 809F
Dam of Lot 108

- A homozygous polled, purebred female that always strikes a pose! She goes back to the impressive W/C RJ Miss 8543 6115D donor female that comes from the highest ROI generating Simmental female in history.
- She is a female that has longevity written all over her, one that is built with a beautiful hind leg and looks like she will have a perfect bag at calving. This is the kind of cow family that keeps a cowman in business.
- The EPD profile indicates she will continue to raise progeny with added pounds when it comes time to run over the scale at weaning and yearling. She sports a very impressive set of trait indicators across the board.
- *PASTURE EXPOSED TO MR W/C TRIFECTA 975J (ASA 3974519) EST. DUE 3/17/26*

107 **WCS MS MAIN 4072M**
 Reg: 4450419 DOB: 3/8/24 Tattoo: 4072M

PUREBRED SIMMENTAL **ADJ. BW: 73 | BWR: 99** **ADJ. WW: 591 | WWR: 110**
 W/C MAINSTAY 355F LRS TURNING POINT 3117A
WCS MR MAIN 0412H **WCS MS POINT 8004F**
 KS SIERRA R992 WCS MS LACE 1046Y

| CE | BW | WW | YW | ADG | MCE | MILK | MWW | |
|------|------|------|-------|------|--------|------|-------|------|
| 6.8 | 3.1 | 94.3 | 145.5 | 0.32 | 5.7 | 24.1 | 71.1 | |
| 85% | 85% | 10% | 10% | 15% | 55% | 45% | 20% | |
| STAY | DOC | CW | YG | MARB | BF | REA | API | TI |
| 13.5 | 10.6 | 54.9 | -0.37 | 0.05 | -0.077 | 1.15 | 121.1 | 84.9 |
| 70% | 70% | 10% | 45% | 75% | 40% | 10% | 70% | 40% |

108 **WCS MS INVESTOR 4016M**
 Reg: 4450493 DOB: 3/6/24 Tattoo: 4016M

PUREBRED SIMMENTAL **ADJ. BW: 88 | BWR: 119** **ADJ. WW: 483 | WWR: 90**
 W/C MAINSTAY 355F LFE COMMISSIONER 811Z
WCS MR FINANCIAL 037H **RUST MS DREAMLOCKED 809F**
 WCS MS POINT 5228C W/C RJ MISS 8543 6115D

HOMOZYGOUS POLLED

| CE | BW | WW | YW | ADG | MCE | MILK | MWW | |
|------|------|------|-------|------|--------|------|-------|------|
| 4.2 | 4.1 | 86.1 | 137.5 | 0.32 | 2.5 | 20.0 | 62.9 | |
| 95% | 95% | 30% | 20% | 15% | 95% | 75% | 55% | |
| STAY | DOC | CW | YG | MARB | BF | REA | API | TI |
| 10.9 | 12.5 | 43.5 | -0.45 | 0.03 | -0.074 | 1.25 | 108.1 | 78.0 |
| 90% | 45% | 25% | 20% | 80% | 40% | 4% | 90% | 65% |

THE FEMALES



Lot 109



WCS MR RUGER 186J
Maternal Brother to Lot 109

- We really like the extra shape and density that these R Plus 2141K sired cattle feed with! Not only do they come with more dimension and muscle, but they are built to carry all this extra product with ease.
- With top quarter growth and carcass traits we think her ability to sire stock that demand premiums is pretty obvious.
- She will sell with a CDI Landman 277M sired calf at side on sale.
- *PASTURE EXPOSED TO CDI LANDMAN 277M (ASA 4432419)
EST. DUE 2/23/26*



Lot 110

- WCS Ms Canada 4046M continues to prove the fact that these R Plus 2141K females are the type of cattle that make money in the real world, they have some extra scale and length of body, they are true performance cattle that grow and the heritability of this growth is high.
- This purebred female will inject not only growth but reads for impressive calving ease and low birthweights. Keep in mind that this combination of traits will play a direct influence on the profitability of your cowherd and calf crop.
- *PASTURE EXPOSED TO W/C STATESMAN 4168M (ASA 4442175)
EST. DUE 4/15/26*

109

WCS MS CANADA 498M

Reg: 4450422 DOB: 2/26/24 Tattoo: 498M

3/4 SM 1/4 AN
ADJ. BW: 82 | BWR: 111
ADJ. WW: 620 | WWR: 115

SRH HANNIBAL 5H WCS BIG JAKE 5212C
R PLUS 2141K **WCS MS JAKE 7099E**
 MISS R PLUS 1337Y WCS MS CUT 418B

110

WCS MS CANADA 4046M

Reg: 4450404 DOB: 2/16/24 Tattoo: 4046M

PUREBRED SIMMENTAL
ADJ. BW: 70 | BWR: 95
ADJ. WW: 474 | WWR: 88

SRH HANNIBAL 5H W/C EXECUTIVE 187D
R PLUS 2141K **WCS MS EXECUTIVE 9152G**
 MISS R PLUS 1337Y WCS MS POINT 706E

| CE | BW | WW | YW | ADG | MCE | MILK | MWW | |
|------|------|------|-------|------|--------|------|-------|------|
| 8.1 | 2.3 | 87.1 | 138.5 | 0.32 | 5.6 | 18.8 | 62.2 | |
| 85% | 90% | 25% | 25% | 25% | 75% | 90% | 55% | |
| STAY | DOC | CW | YG | MARB | BF | REA | API | TI |
| 17.6 | 11.8 | 46.8 | -0.31 | 0.18 | -0.068 | 0.92 | 123.5 | 79.3 |
| 25% | 65% | 30% | 20% | 85% | 15% | 20% | 70% | 65% |

| CE | BW | WW | YW | ADG | MCE | MILK | MWW | |
|------|------|------|-------|------|--------|------|-------|------|
| 13.8 | -0.2 | 73.7 | 112.1 | 0.24 | 7.6 | 24.7 | 61.5 | |
| 20% | 30% | 75% | 65% | 60% | 25% | 40% | 60% | |
| STAY | DOC | CW | YG | MARB | BF | REA | API | TI |
| 15.1 | 10.3 | 37.5 | -0.41 | 0.02 | -0.093 | 0.92 | 129.4 | 76.9 |
| 55% | 70% | 40% | 30% | 80% | 15% | 45% | 55% | 70% |

THE FEMALES



Lot 111

- WCS Ms Emmet 4034M brings lots of good to the situation, first off she is built flawlessly from the ground up, she has a foolproof set of genomic predictors, is just two generations away from raising purebred stock and offers a pedigree that very versatile going forward.
- There is serious quality all the way through this offering but the opportunity for success that comes with an investment in 4034M needs as serious consideration as any. She comes with an early return on investment sired by our proven, and trustworthy, calving ease stud, MR W/C Trifecta 975J.
- *PASTURE EXPOSED TO MR W/C TRIFECTA 975J (ASA 3974519) EST. DUE 3/18/26*



Lot 112

- Length and power are the first two things that come to mind about this bigger framed FELT Emmett 877K daughter. She is a purebred that is supported by a standout W/C Instinct 1000F daughter that stems from the illustrious WCS Ms Redbear 8338F.
- If you're interested in adding payweight to your calf crops then its females with the pedigree and build of 4052M that you need to be marking on sale day.
- Coming bred up to MR W/C Trifecta 975J will get her off to an awesome start!
- *PASTURE EXPOSED TO MR W/C TRIFECTA 975J (ASA 3974519) EST. DUE 4/3/26*

111

WCS MS EMMETT 4034M

Reg: 4450585 DOB: 2/25/24 Tattoo: 4034M

5/8 SM 3/8 AN
ADJ. BW: 80 | BWR: 108
ADJ. WW: 554 | WWR: 103

SCHOOLEY EMMETT C543 W/C MAINSTAY 355F

FELT EMMETT 877K **WCS MS STAY 131J**

FELT STAR GAZING 911D WCS MS CHLOE 5222C

112

WCS MS EMMETT 4052M

Reg: 4450597 DOB: 3/22/24 Tattoo: 4052M

3/4 SM 1/4 AN
ADJ. BW: 73 | BWR: 99
ADJ. WW: 512 | WWR: 95

SCHOOLEY EMMETT C543 W/C INSTINCT 1000F

FELT EMMETT 877K **WCS MS INSTINCT 034H**

FELT STAR GAZING 911D WCS MS REDBEAR 8338F

HOMOZYGOUS POLLED

| CE | BW | WW | YW | ADG | MCE | MILK | MWW | |
|------|------|------|-------|------|--------|------|-------|------|
| 6.8 | 2.9 | 85.8 | 129.6 | 0.27 | 4.0 | 23.2 | 66.1 | |
| 90% | 95% | 30% | 35% | 55% | 95% | 60% | 40% | |
| STAY | DOC | CW | YG | MARB | BF | REA | API | TI |
| 11.8 | 10.7 | 46.8 | -0.17 | 0.29 | -0.026 | 0.82 | 112.2 | 79.5 |
| 80% | 80% | 30% | 55% | 70% | 65% | 30% | 85% | 65% |

HOMOZYGOUS POLLED

| CE | BW | WW | YW | ADG | MCE | MILK | MWW | |
|------|-----|------|-------|------|--------|------|-------|------|
| 10.1 | 1.5 | 72.1 | 107.4 | 0.22 | 5.0 | 20.8 | 56.9 | |
| 65% | 80% | 75% | 80% | 85% | 85% | 80% | 80% | |
| STAY | DOC | CW | YG | MARB | BF | REA | API | TI |
| 11.6 | 8.2 | 34.1 | -0.20 | 0.25 | -0.040 | 0.65 | 111.4 | 72.5 |
| 85% | 95% | 65% | 45% | 75% | 50% | 60% | 85% | 85% |



Lot 113

113

WCS MS LANE 3507L

Reg: 4340615 DOB: 9/25/23 Tattoo: 3507L

PUREBRED SIMMENTAL **ADJ. BW: 73 | BWR: 101** **ADJ. WW: | WWR:**

RUBYS TURNPIKE 771E WCS MCLINTOCK 5211C
W/C EXPRESS LANE 29G **WCS MS MCLINTOCK 7272E**
 ES 229 WCS MS BROADSIDE 2227Z

| CE | BW | WW | YW | ADG | MCE | MILK | MWW | |
|------|------|------|-------|------|--------|------|-------|------|
| 9.0 | 1.6 | 82.7 | 123.3 | 0.25 | 5.8 | 20.0 | 61.3 | |
| 60% | 60% | 40% | 45% | 55% | 50% | 75% | 60% | |
| STAY | DOC | CW | YG | MARB | BF | REA | API | TI |
| 15.3 | 11.9 | 39.9 | -0.34 | 0.25 | -0.059 | 1.00 | 135.9 | 84.2 |
| 55% | 50% | 35% | 60% | 40% | 75% | 30% | 50% | 45% |

- *PASTURE EXPOSED TO CDI LANDMAN 277M (ASA 4432419) & SCHOOLEY MOBSTER 412M (ASA 4425202) EST. DUE 4/7/26*
- The legacy of excellence built by W/C Express Lane 29G is hard to argue with, and the opportunity to tap into his strong genetic background exists here with four daughters that were sorted right off the top of the replacement pen.
- Leading the charge is WCS Ms Lane 3507L, a big outlined, extra bold ribbed and wide ended purebred female that leaves little to the imagination about her chances of being a high-end producer for her new home.
- This purebred female will potentially inject pounds and growth as well as any female we will sell, keep in mind that these are direct factors that influence the profitability of your cowherd and calf crop.
- Genomic power, maternal power and phenotype power all come together here.



W/C EXPRESS LANE 29G
Sire of Lot 113-116

DVAuction
Broadcasting Real-Time Auctions



Lot 114

114

WCS MS LANE 4023M

Reg: 4450426 DOB: 2/17/24 Tattoo: 4023M

3/4 SM 1/4 AN **ADJ. BW:** 89 | **BWR:** 120 **ADJ. WW:** 613 | **WWR:** 114

RUBYS TURNPIKE 771E WCS DEADWOOD 4010B
W/C EXPRESS LANE 29G **WCS MS DEADWOOD 7016E**
 ES Z29 WCS MS CHEYENNE 973W

| CE | BW | WW | YW | ADG | MCE | MILK | MWW | |
|------|------|------|-------|------|--------|------|-------|------|
| 3.2 | 4.7 | 88.2 | 129.7 | 0.26 | 3.1 | 20.6 | 64.7 | |
| 99% | 99% | 20% | 35% | 65% | 99% | 80% | 45% | |
| STAY | DOC | CW | YG | MARB | BF | REA | API | TI |
| 16.7 | 12.1 | 36.7 | -0.35 | 0.22 | -0.053 | 1.02 | 112.1 | 76.9 |
| 35% | 60% | 60% | 10% | 80% | 25% | 10% | 85% | 70% |

- *PASTURE EXPOSED TO CDI LANDMAN 277M (ASA 4432419) & SCHOOLEY MOBSTER 412M (ASA 4425202) EST. DUE 3/22/26*
- WCS Ms Lane 4023M hits us with huge brood cow potential, her body type reads massive and dense with extreme rib shape and body depth. This power goes beyond her phenotype and can describe the set of genomic predations she sports too that suggest she will add growth and performance.
- You know that we are big fans of the W/C Express Lane 29G stock, his daughters are exceptional in production.



WCS INSTINCT 1533J
Maternal Brother to Lot 116

115

WCS MS LANE 3503L

Reg: 4340606 DOB: 10/8/23 Tattoo: 3503L

PUREBRED SIMMENTAL **ADJ. BW:** 69 | **BWR:** 95 **ADJ. WW:** | **WWR:**

RUBYS TURNPIKE 771E WCS MR MOTIVATION 546C
W/C EXPRESS LANE 29G **WCS MS MOTIVATION 7218E**
 ES Z29 WCS MS POINT 5218C

| CE | BW | WW | YW | ADG | MCE | MILK | MWW | |
|------|------|------|-------|------|--------|------|-------|------|
| 9.2 | 1.8 | 78.0 | 118.1 | 0.25 | 5.8 | 22.0 | 61.4 | |
| 60% | 65% | 60% | 55% | 55% | 50% | 60% | 60% | |
| STAY | DOC | CW | YG | MARB | BF | REA | API | TI |
| 15.2 | 11.2 | 40.1 | -0.33 | 0.29 | -0.057 | 0.97 | 136.1 | 82.4 |
| 55% | 60% | 30% | 65% | 35% | 75% | 35% | 50% | 50% |

- *PASTURE EXPOSED TO CDI LANDMAN 277M (ASA 4432419) & SCHOOLEY MOBSTER 412M (ASA 4425202) EST. DUE 4/13/26*
- WCS Ms Lane 3503L stems back to the powerful WCS Ms Point 5218C female that was a strong trident in production here at the Western Cattle Source!
- If you like cattle with extra extension in their front third, then you will love 3503L.
- From there back, she's also level topped and packs some muscle shape.

116

WCS MS LANE 3513L

Reg: 4340628 DOB: 10/11/23 Tattoo: 3513L

3/4 SM 1/4 AN **ADJ. BW:** 73 | **BWR:** 101 **ADJ. WW:** | **WWR:**

RUBYS TURNPIKE 771E R&R RANGO B120
W/C EXPRESS LANE 29G **WCS MS RANGO 8150F**
 ES Z29 WCS MS GRID 828U

| CE | BW | WW | YW | ADG | MCE | MILK | MWW | |
|------|------|------|-------|------|--------|------|-------|------|
| 7.9 | 2.6 | 84.1 | 126.9 | 0.27 | 5.1 | 26.9 | 68.9 | |
| 85% | 95% | 30% | 40% | 55% | 85% | 30% | 25% | |
| STAY | DOC | CW | YG | MARB | BF | REA | API | TI |
| 16.4 | 10.8 | 38.7 | -0.22 | 0.25 | -0.030 | 0.84 | 120.7 | 78.7 |
| 40% | 80% | 50% | 40% | 75% | 65% | 25% | 75% | 65% |

- *PASTURE EXPOSED TO CDI LANDMAN 277M (ASA 4432419) EST. DUE 3/3/26*
- This W/C Express Lane 29G is a daughter of a high-end producer in the cowherd, as her R&R Rango B120 sired dam has been the source of multiple featured bulls in the sale over the last couple of years.
- This female looks to stick with the family tradition, and will provide the goods and quick ROI for the cowboy or girl that loads her out on sale day.



Lot 117

- The homozygous polled and homozygous black WCS Ms 491M is one that offers advantages all the way across the board! It's no secret that production cattle that come easily and unassisted are more than favorable, but enviably pounds and performance also dictate profitability, here you can have the best of both worlds!
- This balance is found in the flesh too, eloquent meets power and substance in the build of 491M.
- *PASTURE EXPOSED TO
CDI LANDMAN 277M (ASA 4432419)
EST. DUE 3/18/26*



W/C TRIPLE THREAT 904J
Sire of Lot 117



Lot 118

- A higher percentage, high growth female that has an incredibly striking look from the side! There are few that can match the incredible look and feature of this female, as she is as eloquent as they come about her front third.
- WCS Ms Biscuit 484M comes with added growth and performance from a genomics standpoint, so we think that she is going to be the source of the goods in production!
- *PASTURE EXPOSED TO
CDI LANDMAN 277M (ASA 4432419)
EST. DUE 3/18/26*

117 **WCS MS 491M**
 Reg: 4450550 DOB: 3/2/24 Tattoo: 491M

3/4 SM 1/4 AN **ADJ. BW: 77 | BWR: 104** **ADJ. WW: 560 | WWR: 104**
 BAR CK 4118B 8102F W/C EXPRESS LANE 29G
W/C TRIPLE THREAT 904J **WCS MS LANE 254K**
 W/C MISS WERNING 904G WCS MS STAY 0401H

HOMOZYGOUS POLLED • HOMOZYGOUS BLACK

| CE | BW | WW | YW | ADG | MCE | MILK | MWW | |
|------|------|------|-------|------|--------|------|-------|------|
| 10.6 | 0.1 | 79.3 | 127.8 | 0.30 | 6.3 | 22.3 | 61.9 | |
| 60% | 55% | 50% | 40% | 40% | 65% | 70% | 60% | |
| STAY | DOC | CW | YG | MARB | BF | REA | API | TI |
| 14.6 | 13.8 | 30.0 | -0.18 | 0.49 | -0.023 | 0.64 | 138.1 | 85.2 |
| 60% | 35% | 75% | 55% | 40% | 65% | 60% | 50% | 45% |

118 **WCS MS BISCUIT 484M**
 Reg: 4450487 DOB: 3/20/24 Tattoo: 484M

5/8 SM 3/8 AN **ADJ. BW: 81 | BWR: 109** **ADJ. WW: 511 | WWR: 95**
 W/C SON OF A BISCUIT 83E S A V BISMARCK 5682
WCS MR BISCUIT 0403H **WCS MS BISMARCK 874F**
 FELT EMANUELLE 701E WCS MS SCHOOL 2009Z

| CE | BW | WW | YW | ADG | MCE | MILK | MWW | |
|------|------|------|-------|------|--------|------|-------|------|
| 4.4 | 3.8 | 86.5 | 132.7 | 0.29 | 3.5 | 22.5 | 65.8 | |
| 99% | 99% | 25% | 30% | 45% | 95% | 65% | 40% | |
| STAY | DOC | CW | YG | MARB | BF | REA | API | TI |
| 15.4 | 13.0 | 51.7 | -0.14 | 0.22 | -0.043 | 0.66 | 111.5 | 76.5 |
| 50% | 50% | 20% | 65% | 80% | 35% | 60% | 85% | 75% |

THE FEMALES



Lot 119

- We love the incredible look and feature of CCS/JS Innovator 29G, she is perfected proportioned, with a great look and awesome structural kind. She is built for the long haul, and is bound to be a high end producer with a high end maternal makeup and strong maternal pedigree.
- WCS Ms Innovator 4033M comes bred up to Mr W/C Trifecta 975J, a mating that we think will be the source of added value every year.
- *PASTURE EXPOSED TO*
MR W/C TRIFECTA 975J (ASA 3974519)
EST. DUE 4/4/26



Lot 120

- A purebred CCS/JS Innovator 29G daughter that will be your kind if you like cattle with extra extension about their front third. From there back, she's also level topped and packs some muscle shape, with a bold ribcage and impeccable set of feet and legs.
- We love these Innovator derived cattle in production.
- This one has the versatility to be successful when mated many ways.
- *PASTURE EXPOSED TO*
CDI LANDMAN 277M (ASA 4432419)
EST. DUE 3/17/26



WCS MS EASY 298K
Maternal Brother to Lot 120

119
WCS MS INNOVATOR 4033M

Reg: 4450532 DOB: 3/10/24 Tattoo: 4033M

3/4 SM 1/4 AN ADJ. BW: 74 | BWR: 100 ADJ. WW: 565 | WWR: 105

CDI INNOVATOR 325D CCR THE AMERICAN 8022C
CCS/JS INNOVATOR 29G **WCMSAMERICAN0290H**
 WHF SUMMER 365C WCS MS UNO 586C

120
WCS MS INNOVATOR 4004M

Reg: 4450598 DOB: 3/1/24 Tattoo: 4004M

PUREBRED SIMMENTAL ADJ. BW: 74 | BWR: 100 ADJ. WW: 557 | WWR: 103

CDI INNOVATOR 325D W/C EXECUTIVE 187D
CCS/JS INNOVATOR 29G **WCMSEXECUTIVE031H**
 WHF SUMMER 365C WCS MS MCLINTOCK 8052F

| CE | BW | WW | YW | ADG | MCE | MILK | MWW | |
|------|------|------|-------|------|--------|------|-------|------|
| 9.0 | 1.3 | 88.2 | 130.7 | 0.27 | 5.2 | 21.8 | 65.8 | |
| 75% | 75% | 20% | 35% | 55% | 80% | 70% | 40% | |
| STAY | DOC | CW | YG | MARB | BF | REA | API | TI |
| 13.5 | 13.5 | 44.5 | -0.26 | 0.13 | -0.054 | 0.84 | 113.6 | 79.4 |
| 70% | 40% | 35% | 30% | 90% | 25% | 25% | 80% | 65% |

| CE | BW | WW | YW | ADG | MCE | MILK | MWW | |
|------|------|------|-------|------|--------|------|-------|------|
| 9.1 | 0.9 | 90.5 | 133.9 | 0.27 | 6.2 | 20.8 | 65.9 | |
| 60% | 45% | 20% | 25% | 40% | 45% | 70% | 40% | |
| STAY | DOC | CW | YG | MARB | BF | REA | API | TI |
| 13.8 | 11.0 | 46.7 | -0.30 | 0.02 | -0.065 | 0.92 | 123.8 | 83.7 |
| 70% | 65% | 20% | 75% | 80% | 60% | 45% | 65% | 45% |

121

WCS MS RANSOM 4030M

Reg: 4450572 DOB: 3/22/24 Tattoo: 4030M

PUREBRED SIMMENTAL **ADJ. BW: 76 | BWR: 103** **ADJ. WW: 651 | WWR: 121**

KBHR HIGH ROAD E283 WCS MR GLOCK 9170G
R&R RANSOM J182 **WCS MS TINKER 182J**
 R&R MISS CC E783 LRS MS ELEVATE 6019D

| CE | BW | WW | YW | ADG | MCE | MILK | MWW | |
|------|------|-------|-------|------|--------|------|-------|------|
| 8.3 | 1.9 | 100.5 | 146.8 | 0.29 | 6.1 | 24.4 | 74.6 | |
| 70% | 65% | 4% | 10% | 30% | 45% | 45% | 10% | |
| STAY | DOC | CW | YG | MARB | BF | REA | API | TI |
| 17.0 | 13.2 | 52.4 | -0.35 | 0.29 | -0.065 | 1.16 | 146.3 | 95.8 |
| 35% | 35% | 10% | 55% | 35% | 60% | 10% | 35% | 15% |

- *PASTURE EXPOSED TO W/C STATESMAN 4168M (ASA 4442175) EST. DUE 3/23/26*
- WCS Ms Ransom 4030M stems from the maternal power of the incredible LRS Ms Elevate 6019D cow family that is so prevalent and has such a strong influence throughout the cowherd in Crawford. You can trust these stock to be low maintenance, designed with longevity in mind and ready to go to work.
- Check out the very high ratioing weaning weight of this female, she has always been a leader of the pack!
- There is no substitute for what high powered, maternal pedigrees can offer.



Lot 122



Lot 121

122

WCS MS RANSOM 4038M

Reg: 4450500 DOB: 2/20/24 Tattoo: 4038M

3/4 SM 1/4 AN **ADJ. BW: 76 | BWR: 103** **ADJ. WW: 565 | WWR: 105**

KBHR HIGH ROAD E283 W/C MAINSTAY 355F
R&R RANSOM J182 **WCS MS STAY 0704H**
 R&R MISS CC E783 WCS MS 6201D

HOMOZYGOUS POLLED

| CE | BW | WW | YW | ADG | MCE | MILK | MWW | |
|------|------|------|-------|------|--------|------|-------|------|
| 8.5 | 1.5 | 96.2 | 143.6 | 0.30 | 4.8 | 24.9 | 73.1 | |
| 80% | 80% | 10% | 15% | 40% | 85% | 45% | 15% | |
| STAY | DOC | CW | YG | MARB | BF | REA | API | TI |
| 13.4 | 13.0 | 55.1 | -0.34 | 0.28 | -0.057 | 1.22 | 124.6 | 88.5 |
| 70% | 50% | 15% | 15% | 70% | 25% | 2% | 70% | 35% |

- *PASTURE EXPOSED TO W/C STATESMAN 4168M (ASA 4442175) EST. DUE 3/8/26*
- WCS Ms Ransom 4038M is a homozygous polled, three quarter blood that offers strength from both a phenotype and pedigree standpoint.
- She is good in her lines and carries herself with style, being anchored with a square made hip and tail head.
- A potential sleeper in this offering that has some impressive growth genetic predictors.



Lot 123

123

WCS MS RANSOM 4011M

Reg: 4450602 DOB: 3/19/24 Tattoo: 4011M

PUREBRED SIMMENTAL **ADJ. BW: 70 | BWR: 95** **ADJ. WW: 539 | WWR: 100**

KBHR HIGH ROAD E283 W/C MAINSTAY 355F
R&R RANSOM J182 **WCS MS STAY 13J**
 R&R MISS CC E783 WCS MS PEND 3058A

| CE | BW | WW | YW | ADG | MCE | MILK | MWW | |
|------|------|------|-------|------|--------|------|-------|------|
| 10.3 | 0.8 | 93.8 | 138.6 | 0.28 | 6.5 | 23.0 | 69.8 | |
| 50% | 45% | 15% | 20% | 35% | 40% | 55% | 25% | |
| STAY | DOC | CW | YG | MARB | BF | REA | API | TI |
| 16.1 | 13.4 | 47.5 | -0.43 | 0.23 | -0.068 | 1.30 | 144.3 | 92.4 |
| 45% | 35% | 15% | 25% | 45% | 60% | 3% | 35% | 20% |

- *PASTURE EXPOSED TO MR W/C TRIFECTA 975J (ASA 3974519) EST. DUE 4/3/26*
- WCS Ms Ransom 4011M is a striking blazed faced female that paints a pretty picture every time she strikes a pose. This purebred daughter of R&R Ransom J182 carries with her a genetic package geared for adding potent additions of payweight!
- She is going to hit the ground running with her mating by Mr W/C Trifecta 975J, it won't take long for her to make a nice return on investment.

THE FEMALES



Lot 124

- We love the overwhelming curvature of this WINC Next Generation 0111H daughter, regardless of the vantage point you view her from. She is extra robust about the middle third of her body cavity, and is smooth from one end of her skeleton to the other.
- There is not a female in the offering that can match the raw data of EPD predictions of this female when it comes to growth!
- Tie into a female that reads with a lineage of proven producers in this business, this purebred female is built with longevity in mind. We know that the investment it will take to own 4019M will be small compared to what she will return in her productive life that is still to be had!
- *PASTURE EXPOSED TO
CDI LANDMAN 277M (ASA 4432419) &
SCHOOLEY MOBSTER 412M (ASA 4425202)
EST. DUE 3/24/26*



WCS MS LANE 258K
Maternal Sister to Lot 124



Lot 125

- In the strongest female offering ever made available from Western Cattle Source, you are bound to find quality all the way throughout the offering. WCS Ms Gen 487M rounds out this class on a high note.
- Growth, maternal and longevity come all-inclusive with this beauty.
- We love her mating to W/C Statesman 4168M, he is a standout from every aspect and we have very high hopes for this first calf crop. Be on the cutting edge of the program here!
- *PASTURE EXPOSED TO
W/C STATESMAN 4168M (ASA 4442175)
EST. DUE 4/9/26*

124
WCS MS GEN 4019M

Reg: 4450421 DOB: 2/8/24 Tattoo: 4019M

PUREBRED SIMMENTAL **ADJ. BW: 72 | BWR: 97** **ADJ. WW: 670 | WWR: 124**

W/C FOUNDATION 2135E KS BUSHMAN A724
WINC NEXT GENERATION 0111H **WCS MS BUSHMAN 7109E**
 KAPPES SADIE T635 Y302 WCS MS GRID 828U

| CE | BW | WW | YW | ADG | MCE | MILK | MWW | |
|------|------|-------|-------|-------|--------|------|-------|------|
| 11.8 | 1.5 | 100.4 | 160.7 | 0.38 | 6.7 | 27.3 | 77.4 | |
| 30% | 60% | 4% | 3% | 3% | 35% | 25% | 5% | |
| STAY | DOC | CW | YG | MARB | BF | REA | API | TI |
| 16.4 | 11.8 | 67.9 | -0.31 | -0.02 | -0.046 | 1.36 | 136.1 | 90.2 |
| 45% | 55% | 1% | 70% | 90% | 85% | 2% | 50% | 25% |

125
WCS MS GEN 487M

Reg: 4450408 DOB: 3/4/24 Tattoo: 487M

3/4 SM 1/4 AN **ADJ. BW: 75 | BWR: 101** **ADJ. WW: 517 | WWR: 96**

W/C FOUNDATION 2135E WCS MR HAMMER 680D
WINC NEXT GENERATION 0111H **WCS MS HAMMER 9069G**
 KAPPES SADIE T635 Y302 WCS MS PLUS 7226E

| CE | BW | WW | YW | ADG | MCE | MILK | MWW | |
|------|------|------|-------|-------|--------|------|-------|------|
| 9.6 | 1.5 | 89.1 | 146.2 | 0.36 | 6.5 | 23.1 | 67.6 | |
| 70% | 80% | 20% | 15% | 10% | 60% | 60% | 35% | |
| STAY | DOC | CW | YG | MARB | BF | REA | API | TI |
| 16.2 | 13.2 | 66.1 | -0.28 | -0.01 | -0.046 | 1.25 | 115.2 | 77.6 |
| 40% | 45% | 4% | 25% | 99% | 35% | 2% | 80% | 70% |

Western CATTLE SOURCE

THANK YOU FOR YOUR INTEREST!



INNOVATION
AgMarketing, LLC
PO Box Z
De Soto, KS 66018

Presorted
First Class
US Postage
PAID
SlateGroup

DVAuction
Broadcasting Real-Time Auctions

SELLING 60+ SERVICE AGED BULLS

AND 25 SIMMENTAL & SIMANGUS™ BRED HEIFERS

THURSDAY, MARCH 19, 2026 · 1 PM MST
AT THE RANCH, CRAWFORD, NEBRASKA

