

THE MORIONDO FARMS & MM CATTLE CO.

SPRING TURN-OUT SALE

MARCH 1, 2025 AT 1:00 PM

at the ranch in Mount Vernon, Missouri



Welcome to the Sale!





Fellow Cattlemen and Cattlewomen,

We would like to invite you out for our Annual Spring Turn-Out Sale that will be hosted at the ranch in Mount Vernon, Missouri on March 1, 2025! We have a very stout set of real-world, performance oriented bulls that are all age advantaged and ready to go to work! This set of bulls really represents what we are continuing to strive for here at Moriondo Farms. They offer real-world power and real-world statistics! They are bulls that will read well on paper and when you walk in the pen with them you will have no doubt that the stats don't lie! It is an awfully exciting time to be in the cattle business, let these bulls improve your bottom line with the pounds they will add and the longevity in which they can add to your herd, especially when it comes time to keep their daughters!

The SimAngus offering is as deep and loaded with calving ease along with performance sire options as we could ever ask for. Several big spread bulls that are heifer safe, but do not give up the growth on the other end. The bulls this spring are sired by KCC1 Walk The Line 076J, TJ Arrowhead 263G, Hoffman Salvation 1795, and E & B Wildcat 9402 to name a few. They have really performed up to the hype!

The Angus offering is highlighted by sons of E & B Wild Cat 9402. They are as complete a set of Angus bulls as we have ever produced! Not large in quantity but overwhelming in quality! These bulls are sired by time-tested, breed leading sires, and out of the cream of our Angus cowherd!

My favorite thing about sale preparation is going down through the catalog and seeing the influence of our foundation donors. These donors would include MM Pleasant Pill 212, Wallace Evergreen 1105, EA Blacklass 7120, Miss CCF Z261, and MMR Antoinette 827F MM. Their impact can be identified throughout the covers of this sale catalog! We continue to add to our donor cow battery and acquire new blood annually that will enhance our program for our customers. These new females have big shoes to fill when it comes to competing with the proven donors and their prolific daughters that are now finding themselves in the donor pen!

We will have one Horned Hereford in the offering, Mila and McCoy's little project that they have started! They bought a couple of Hereford cows almost two years ago and this bull is their first entry into the bull business. They are getting off to a great start with this one!

We would like to thank all of our customers who have made Moriondo Farms and MM Cattle Company what it is today. We had a dream 10 years ago when we got started with our registered herd to produce real world, functional, sound, power bulls that will go out and work in any environment. We believe the proof is in the calf crop, and it is always our goal to produce a better set every year. We have to keep goals in the cattle business, or we will become complacent and get left behind, however these goals cannot sacrifice the structural integrity of their feet or condition. We stand behind our bulls 100% and guarantee them to add profitability to your program!

It is a great time for the cow-calf producer, we look forward to working with you all for years to come. Please reach out to Nathan or I with any questions, we would love to visit with you about this year's offering.

God Bless,

Mark Moriondo



Welcome,

Larry and Mark Moriondo have a reputation bridged in gold locally, regionally, and nationally. Their word is what they live by, and their actions are what the word is with volume attached. Last fall, the outfit consigned a set of big steers weighing 900 on the PrimeTime video auction. Those steers topped the market and landed them some airtime on feeder flash with Corbit Wall. The father and son duo believe in what they offer to their customers each and every year and are willing to utilize bulls produced in their program with some occasional sire acquisitions outside of the circle to influence both the commercial and seed stock programs of Moriondo Farms. The cattle that topped the PrimeTime auction sale would be influenced by the same genetics represented through this offering and this offering includes the next genetic wave of what will influence the next set of sale topping feeder cattle for the program as well. If that doesn't spell product confidence that gives you the incentive to do business with fellow cattlemen, then we are lost for words.

The southwest Missouri family outfit is always on the search for the right new sire acquisition or the next donor candidate that fits the desired criteria of what the operation goals are. Persistence in knowing what they need to know to improve the product between the covers of this catalog and how to continue to gain a foot hold in the bull business are the two main focal points annually. Mark is committed to providing the best customer service possible, he wants to hear the good, but his ears are laid back and open to constructive criticism. He, too, understands that not everything always goes the way it's intended to, and knows what he expects when he makes an investment in an animal and things don't work out. Ideal customer service does not happen without open communication, Mark wants you to reach out to him when there is an issue or if you have questions about anything related to your investment in Moriondo Farms seed stock.

The firm will offer another set of SimGenetic sons by the KCC1 Walk The Line 076J herd sire, a popular sire group that was featured last fall. KCC1 Walk The Line 076J is a son of the prolific KCC1 Havana 83E donor dam that is the lead donor for the Kearns Cattle Company firm of Rushville, Nebraska. His sons will have the ability to sire scale pounding feeder cattle and daughters that are worth of retention. Significant cow power supports KCC1 Walk The Line 076J, so rest assured that the cattle will be laced with performance, end product yield, with strength in maternal traits and instinct. He is a proven, dual purpose sire that has changed the game for Moriondo Farms and his sons will do the same for your program as well!

If you have not been to a Moriondo bull sale before, we encourage you to do so as we have utmost confidence that you will be impressed with the quality of the stock offered, the hospitality is unrivaled, and we know that you will enjoy the engagement with the family and crew behind the program. Doing business with people that are willing to have skin in the game and utilize the same genetics that you have the opportunity to utilize equals huge incentive to invest in this set of herd sire prospects. Please consider this your invitation to join us on March 1, 2025. If you have any questions about the offering at Moriondo Farms, we strongly encourage you to reach out to Mark Moriondo, Nathan Arnold, or any of the team with Innovation AgMarketing with questions or acquisition assistance.

Enjoy the cattle and may God bless America.

Graham Blagg | Jered Shipman | Tim Anderson



THE MORIONDO FARMS & MM CATTLE CO.

SPRING TURN-OUT SALE

SALE LOCATION

Moriondo Farms
13531 Lawrence 1137
Mt. Vernon, MO 65712

SALE DAY CONTACTS

Mark Moriondo (417) 366-1249
Larry Moriondo (417) 366-1243
Nathan Arnold (918) 373-2410

SALE MANAGEMENT

Innovation Ag Marketing
Graham Blagg (530) 913-6418
Jered Shipman (806) 983-7226
Tim Anderson (605) 682-9343

AUCTIONEER

Jered Shipman (806) 983-7226

RING SERVICE

Mitchell Armitage (405) 641-9438
Bryce Farmer (817) 694-4049

BUYER REPRESENTATIVES

Billy Hall (918) 244-0154
Jason Pendleton (417) 437-4552
Tye Stokes (417) 316-3435
Sam Wallace (417) 316-1183
Ernie Wallace (417) 461-6652

ADVERTISING AND CATALOG DESIGN

THM Promotions, LLC
Tracy McMurphy (806) 679-0231

PHOTOGRAPHY

John Reasor (423) 290-6002

TERMS & CONDITIONS

All cattle will sell under the terms and conditions of the American Angus Association and the American Simmental Association. All sales are final.

ANNOUNCEMENTS

A supplement sheet will be available sale day with updated information, corrections and additional information. This sheet and any announcements made sale day from the auction block during the sale, will take precedence over printed material associated with the sale. Anyone attending this sale attends at their own risk. Moriondo Farms, MM Cattle Co. nor the sales team will not be held responsible for any personal injury from attending this sale.

AIRPORT

Springfield-Branson National Airport is 30 miles from the sale site
Tulsa International Airport is 146 miles from the sale site
Kansas City International Airport is 192 miles from the sale site

LODGING

Best Western

1200 E Industrial Ave - Mt. Vernon, MO 65712 - (417) 461-0230

Best Western Plus Springfield Airport Inn

4445 W Chestnut Expressway - (417) 799-2200

Courtyard Marriott

3527 W Kearney St. - Springfield, MO 65802 - (417) 869-6700

VIDEOS

Videos of cattle will be available the week prior to the sale. The videos will be available for viewing at WWW.SUPERIORLIVESTOCK.COM and WWW.INNOVATIONAGMARKETING.COM

HERD HEALTH

Flying Cow Genetics: (918) 929-3178

SALE SCHEDULE

Friday, February 28, 2025

Cattle available for viewing all day

Saturday, March 1, 2025

Cattle available for viewing all morning

12:00 PM - Lunch & Refreshment

1:00 PM - Annual Production Sale



Watch the Sale on CCI.live!

*The best, the fastest and most
comprehensive marketing & bidding tool!*

How to Bid Online...

- **As a buyer**, you do not need an account or to login to watch the sale but you must have a validated account to bid.
 - After you are logged in, you must proceed to the sale page for any and every auction and click **"Get Buyer Number."** Some auctions require a pass-code to obtain a buyer number even after you are approved by CCI.live. Pass codes generally come from the sale manager or ranch for that particular sale.
 - CCI.live will operate with ease on a **cellular device, laptop, desktop or tablet.**
- A **modern or current browser** is important and will make your experience better. You do not need to install the app on cellular devices to watch a sale. CCI.live is a browser-based application meaning it will play on most new browsers, but you can also download the CCI.live app at the Apple App Store or through Google Play.
- **For successful bidding you must have good Internet service!** It is very important to be stationary. If you are driving and bidding, expect to have some service issues. If you are stationary on a good device, with healthy Internet, expect a very successful bidding environment. If you have slow Internet watch the "asking price" on the screen - it is real time and refresh your browser if you feel like you have some lag.
- **Support line open during all sales. 405-400-9505** - Please contact the ranches for invoices and trucking.

Viewed around the world!



**SALE CATALOG, VIDEOS,
and LIVE BROADCAST...**

all at your fingertips from the sale page at
www.CCI.live! Watch live sales weekly!



www.CCI.live

(405) 400-9505 Text or Call
schedule@cci.live

Over 35 years in livestock marketing!

MISSOURI SHOW-ME SELECT REPLACEMENT HEIFER PROGRAM

The Show-Me-Select® Replacement Heifer Program uses the latest research on health, nutrition, genetics and reproductive science to ensure Missouri counties continue to be national leaders in providing quality beef. The program focuses on Missouri's farmers and is dependent upon active participation from regional extension livestock specialists and local veterinarians, each of which are critical components of the agricultural sector of this state.

This program is unique in that it is an educational program targeted at improving production efficiency through increased use of existing technology, coupled with the marketing component.

Program Objective:

Improved heifer development programs through a Total Quality Management strategy
Increased marketing opportunities for and added value for Missouri-raised heifers
Creation of reliable sources of quality replacement heifers based on management, reproduction and genetics


Genetic Requirements:

Sire requirements: Eligible sires must have known ID, be registered by their respective national breed registry, and have complete EPD (opens in new window) information. Sires will be evaluated for qualification in the program based on the EPD provided by their respective breed registry and not on EPD produced by progeny registration in any other breed or hybrid registry.

Angus minimum Calving Ease EPD of 7.0

Simmental and SimAngus minimum Calving Ease EPD of 14.0





ABOVE AVERAGE GOALS REQUIRE TARGETED BULLS


Aim High

The Targeting the Brand™ logo highlights registered Angus bulls with greater genetic potential to produce calves that meet the most challenging specifications of the *Certified Angus Beef®* brand.

Only 1 in 4 non-parent Angus bulls qualify.

Minimum Genetic Requirements

Marbling EPD (Marb)	+0.65
Dollar Grid Carcass Index (\$G)	+55.0



For more information on Targeting the Brand™ visit CABcattle.com.



OUR GUARANTEE TO YOU AND COMMITMENT TO SERVICE

OUR GUARANTEE

We guarantee that all bulls sold through our sale are fertile to the best of our knowledge. If a bull is injured anytime in the twelve months following the sale, that makes him functionally infertile, we will provide a replacement bull or issue a credit in following sales, equal to the purchase price minus the salvage value received for your bull. This is not a life insurance policy. The guarantee is in addition to the sale terms and conditions of the American Angus Association which apply also.

CUSTOMER SUPPORT

We believe in the cattle we are producing here and believe in the cattle that you are producing at home. When the time comes for you to market your calves, however that may be, if interested call myself and let me know your plans with your cattle and see if we can assist or bid on your calves however you may sell them. Extending every dollar in the cattle business is how it is made, and we would love to help if we can

VOLUME DISCOUNT

3-4 Bulls – 3% Discount | 5-9 Bulls – 5% Discount | 10+ Bulls – 10% Discount
\$50 Discount if bulls are picked up within 1 week of the sale

HERD HEALTH ON BULLS

3 Months

Nasalgen IP, Vision 7 Somnus w/
Spur, SafeGuard Dewormer

Weaning

Pyramid 5 + Presponse, Vision
7 Somnus w/ Spur, SafeGuard
Dewormer, Long Range
Dewormer, SolidBac Pinkeye IR/
PR Implant, Autogenous Pinkeye,
Clean-Up Pour-On, Fly Tag x 2
(May 1)

Post-Weaning

Express 5-HS, Vision 7, Boost
Autogenous Pinkeye

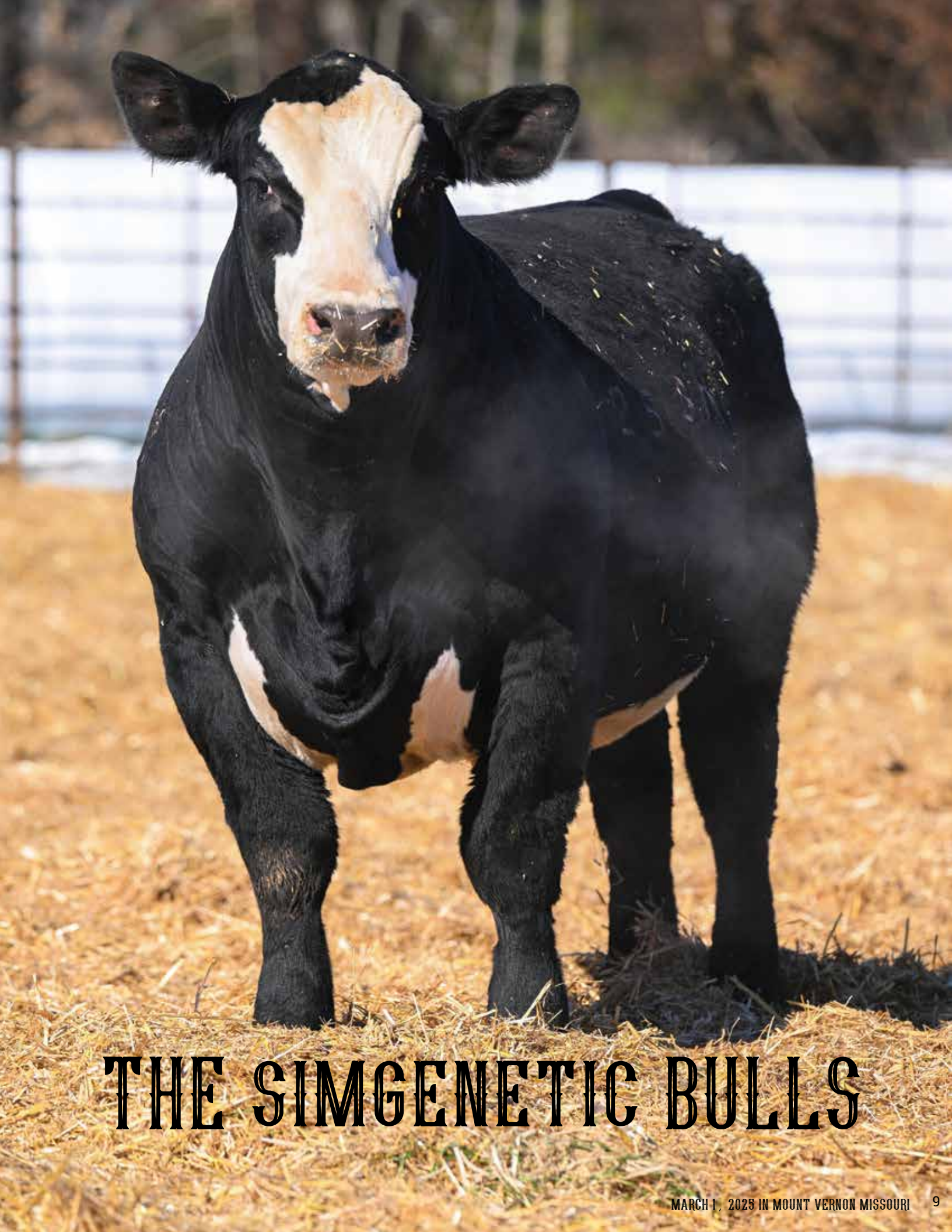
Yearling

Virashield 6 + VL5, Long Range
Dewormer, SafeGuard Dewormer,
Clean-Up Pour-On

Pre-Sale

Breeding Soundness Exam,
ViraShield 6 + VL5 HB/Somnus,
FusoGuard, Pinkeye XT4, and
Clean-Up Pour-On

SAVE THE DATE FOR THE MORIONDO FARMS & MM CATTLE CO.
ANNUAL PRODUCTION SALE
The First Saturday in November 2025



THE SIMGENETIC BULLS



LOT 1 - MMR WALK THE LINE 52L

KCC1 WALK THE LINE 076J
SIRE OF LOTS 1-13MM PLEASANT PILL 212
DAM OF LOTS 1 & 2MMR TIPSYP L410
\$30,000 FULL BROTHER TO LOTS 1 & 2

1

MMR WALK THE LINE 52L

DOB: 9/1/23

ASA: 4411816

TATTOO: 52L



1/2 SM 1/2 AN | HOMOZYGOUS POLLED | HOMOZYGOUS BLACK

Birth Wt.	Act. Weaning Wt.	Act. Yearling Wt.	SC on 12/1/24
74	792	1318	43 cm

KCC1 FOLSOM 512F

SCHIEFELBEIN EFFECTIVE 61

KCC1 WALK THE LINE 076J

MM PLEASANT PILL 212

KCC1 HAVANA 83E

MSC PLEASANT PILL

CE	BW	WW	YW	ADG	MCE	MLK	MW	STY	DOC	CW	YG	MRB	BF	REA	API	TI
18	0	85.8	133.1	0.3	5.7	17.6	60.4	17.2	13.9	21.5	-0.12	0.54	-0.02	0.34	157.6	90.3
10%		25%	25%	35%				25%	35%			30%			20%	25%

- Kicking off this year's sale offering is a stout, soggy, herd bull deluxe that is backed by the tried and true MM Pleasant Pill 212 donor. MMR Walk The Line 52L is an ET flushmate brother to MMR Walk The Line 50L.
- 52L and 50L are full brothers to MMR Topsy L410, the \$30,000 high selling bull from the 2024 Fall Bull Sale that was selected by Hanel's Black Simmentals of Kansas.
- He will certainly catch your attention with his eye appeal and design.
- One of the heaviest bulls in the sale at weaning and yearling, as well as a huge 43 cm scrotal.
- This bull brings it all together with a superb EPD profile for the most discriminating breeder.
- Homozygous black. Homozygous polled.
- Top 10% CED, top 20% API, top 25% WW, YW, STAY, TI, top 30% MARB, top 35% ADG, DOC.

TERMS ANNOUNCED SALE DAY.



LOT 2 - MMR WALK THE LINE 50L



MF MM RAINMAKER 1047
\$10,000 MATERNAL BROTHER TO LOTS 1 & 2



MMR WALK THE LINE L420
FULL BROTHER TO LOTS 1 & 2



MM MF STUNNER 1060
MATERNAL BROTHER TO LOTS 1 & 2

2

MMR WALK THE LINE 50L

DOB: 8/30/23

ASA: 4448515

TATTOO: 50L



1/2 SM 1/2 AN | HOMOZYGOUS POLLED | HOMOZYGOUS BLACK

Birth Wt.	Act. Weaning Wt.	Act. Yearling Wt.	SC on 12/1/24
76	766	1308	41.5 cm
KCC1 FOLSOM 512F		SCHIEFELBEIN EFFECTIVE 61	
KCC1 WALK THE LINE 076J		MM PLEASANT PILL 212	
KCC1 HAVANA 83E		MSC PLEASANT PILL	

CE	BW	WW	YW	ADG	MCE	MLK	MW	STY	DOC	CW	YG	MRB	BF	REA	API	TI
15.1	-0.3	72	110.4	0.24	3.9	17.6	54	10.9	13.9	22	-0.23	0.39	-0.03	0.62	128.7	78.8
25%								35%								

- A chunk of a bull, this is a flush brother to the 52L bull that leads off the sale.
- 52L and 50L are full brothers to MMR Tipsy L410, the \$30,000 high selling bull from the 2024 Fall Bull Sale that was selected by Hanel's Black Simmentals of Kansas.
- Strong performance at weaning and yearling.
- Latch on to these KCC1 Walk the Line 076J sons backed by a proven donor cow.
- Homozygous black. Homozygous polled.
- Top 25% CED, top 35% DOC.



LOT 3 - MMR WALK THE LINE 80L

- Showcases extra extension with loads of muscle dimension in his rear quarter.
- Modest birth weight bull with a 40.5 cm scrotal measure.
- Provides a solid data sheet across multiple traits.
- Here is a sire group that is sure to excite on sale day. He is a three-quarter brother in blood to 52L and 50L, the featured lots 1 and 2 bulls.
- Homozygous black. Homozygous polled.
- Top 3% REA, top 25% CED, top 30% WW, YW, CW, top 35% CW, DOC.



SCHIEFELBEIN EFFECTIVE 61
MATERNAL GRANDSIRE OF LOTS 1-3



LOT 4 - MMR WALK THE LINE 105L

- 105L is a good-looking bull with added length and a square built hip.
- Sired by KCC1 Walk the Line 076J with a shot of maternal power on the bottom side from super sire CCR Cowboy Cut 5048Z.
- Genetic profile is loaded with power yet doesn't sacrifice easy calving.
- Top 10% WW, top 20% YW, MCE, top 25% CED, CW, TI, top 30% DOC, top 35% MARB.



CCR COWBOY CUT 5048Z
MATERNAL GRANDSIRE OF LOTS 4 & 5

3

MMR WALK THE LINE 80L

DOB: 9/22/23 ASA: 4456909 TATTOO: 80L

5/8 SM 3/8 AN | HOMOZYGOUS POLLED | HOMOZYGOUS BLACK

Birth Wt.	Act. Weaning Wt.	Act. Yearling Wt.	SC on 12/1/24
74	582	1094	40.5 cm
KCC1 FOLSOM 512F	SCHIEFELBEIN EFFECTIVE 61		
KCC1 WALK THE LINE 076J	MMR MS. EFFECTIVE		
KCC1 HAVANA 83E	TUEL MS GAMECHANGER 365A		

CE	BW	WW	YW	ADG	MCE	MLK	MW	STY	DOC	CW	YG	MRB	BF	REA	API	TI
14.9	2.8	82.6	131.3	0.3	7.4	18.4	59.8	10.1	13.8	42.8	-0.42	0.4	-0.08	1.13	128.1	83
25%	30%	30%	35%						35%	30%	4%	10%	3%			

4

MMR WALK THE LINE 105L

DOB: 9/22/23 ASA: 4458121 TATTOO: 105L

PB SM | HOMOZYGOUS POLLED | HOMOZYGOUS BLACK

Birth Wt.	Act. Weaning Wt.	Act. Yearling Wt.	SC on 12/1/24
74	634	1146	35.5 cm
KCC1 FOLSOM 512F	CCR COWBOY CUT 5048Z		
KCC1 WALK THE LINE 076J	MMR MOJO 756E		
KCC1 HAVANA 83E	MMR MS. RIGHT		

CE	BW	WW	YW	ADG	MCE	MLK	MW	STY	DOC	CW	YG	MRB	BF	REA	API	TI
13.8	4.5	95.1	137.1	0.26	8	17.9	65.3	12.6	13.7	37.6	-0.36	0.28	-0.09	0.8	135.7	88.5
25%	10%	20%	20%						30%	25%	35%	30%				25%



LOT 6 - MMR WALK THE LINE 56L



MAR INNOVATION 251
MATERNAL GRANDSIRE OF LOT 6

5

MMR WALK THE LINE 58L

DOB: 9/12/23 ASA: 4477030 TATTOO: 58L

3/4 SM 1/4 AN | HOMOZYGOUS POLLED | HOMOZYGOUS BLACK

Birth Wt.	Act. Weaning Wt.	Act. Yearling Wt.	SC on 12/1/24
82	600	1042	36.5 cm
KCC1 FOLSOM 512F	CCR COWBOY CUT 5048Z		
KCC1 WALK THE LINE 076J	MMR BARB 9536G		
KCC1 HAVANA 83E	MMR MR. RIGHT		

CE	BW	WW	YW	ADG	MCE	MLK	MW	STY	DOC	CW	YG	MRB	BF	REA	API	TI
14.4	1.3	81.5	121.6	0.25	7.5	16.5	57.4	13.2	16.2	31.6	-0.28	0.35	-0.06	0.72	142.2	85.1
30%		35%						10%		30%		25%				

- The KCC1 Walk the Line 076J sons keep coming with quality.
- Bred on a similar cross to the popular 105L bull in this set.
- Provides calving ease and weaning pounds in his genetic merit profile.
- Homozygous black. Homozygous polled.
- Top 10% DOC, top 30% CED, top 35% WW.

6

MMR WALK THE LINE 56L

DOB: 9/20/23 ASA: 4456902 TATTOO: 56L

5/8 SM 3/8 AN | HOMOZYGOUS POLLED | HETEROZYGOUS BLACK

Birth Wt.	Act. Weaning Wt.	Act. Yearling Wt.	SC on 12/1/24
77	588	1172	38 cm
KCC1 FOLSOM 512F	MAR INNOVATION 251		
KCC1 WALK THE LINE 076J	MMR BARB 758E		
KCC1 HAVANA 83E	TUELL MS. MO 313A		

CE	BW	WW	YW	ADG	MCE	MLK	MW	STY	DOC	CW	YG	MRB	BF	REA	API	TI
11.4	1	80.2	133	0.33	6	13.8	53.8	15.5	14.4	44.8	-0.14	0.45	-0.02	0.7	138.5	82.9
				25%	20%					25%	25%					

- Striking presence that will immediately catch your attention.
- Balance and correctness of skeleton will make him a crowd favorite.
- This bull is designed to add pounds of payweight to your steers.
- Homozygous polled.
- Top 20% ADG, top 25% YW, DOC, CW.





LOT 7 - MMR WALK THE LINE 64L

- Deep bodied, square built, and rugged in his design.
- Bulls built like 64L are the kind that the best cowboys will flock to.
- This three-quarter Simmental traces his maternal lines back to one of the most prominent Angus cow families in the breed, the "Sara's Dream" tribe. The third generation dam of 64L is the legendary EXG Sara's Dream S609 R3.
- Homozygous polled.
- Top 25% REA.



EXG SARAS DREAM S609 R3
LEGENDARY 3RD GENERATION DAM OF LOT 7



LOT 8 - MMR WALK THE LINE 61L

- High-quality, real world beef bull when you study his type and kind.
- MMR Walk the Line 61L is one of the stoutest bulls in this class with the classic look of a herd sire.
- A leader in this division when you study his individual WW and YW data.
- Tie into this pound maker of a herd bull.
- Homozygous black. Homozygous polled.
- Top 35% ADG.



KCC1 HAVANA 83E
PATERNAL GRANDDAM OF LOTS 1-13

7

MMR WALK THE LINE 64L

DOB: 8/26/23 ASA: 4448509 TATTOO: 64L

3/4 SM 1/4 AN | HOMOZYGOUS POLLED | HETEROZYGOUS BLACK

Birth Wt.	Act. Weaning Wt.	Act. Yearling Wt.	SC on 12/1/24
76	574	1056	41 cm

KCC1 FOLSOM 512F

MR HOC BROKER

KCC1 WALK THE LINE 076J

HOF SARA 079H

KCC1 HAVANA 83E

SILVEIRAS SARAS DREAM 6322

CE	BW	WW	YW	ADG	MCE	MLK	MW	STY	DOC	CW	YG	MRB	BF	REA	API	TI	
11.6	3.2	72	115	0.27	6.1	16.2	52.7	11.9	8.8	23.2	-0.36	0.22	-0.06	0.82	111.8	70.5	
												10%	15%	25%			

8

MMR WALK THE LINE 61L

DOB: 9/11/23 ASA: 4448536 TATTOO: 61L

1/2 SM 1/2 AN | HOMOZYGOUS POLLED | HOMOZYGOUS BLACK

Birth Wt.	Act. Weaning Wt.	Act. Yearling Wt.	SC on 12/1/24
78	724	1264	39 cm

KCC1 FOLSOM 512F

HOFFMAN BLACK GRANITE 6309

KCC1 WALK THE LINE 076J

MF MM RACHEL 9808

KCC1 HAVANA 83E

3210 RACHEL 1112

CE	BW	WW	YW	ADG	MCE	MLK	MW	STY	DOC	CW	YG	MRB	BF	REA	API	TI	
12.6	0.2	76.2	124.2	0.3	5.8	17.2	55.3	15.5	12.9	37.8	-0.09	0.45	-0.02	0.55	139.1	81.6	
												35%					

9

MMR WALK THE LINE 73L

DOB: 9/2/23

ASA: 4448521

TATTOO: 73L



PB SM | HOMOZYGOUS POLLED | HOMOZYGOUS BLACK

Birth Wt.	Act. Weaning Wt.	Act. Yearling Wt.	SC on 12/1/24
82	624	1180	36.5 cm
KCC1 FOLSOM 512F	BCLR CASH FLOW C820		
KCC1 WALK THE LINE 076J	MMR MISS MO H108		
KCC1 HAVANA 83E	TUELL MS MO 3-15A		

CE	BW	WW	YW	ADG	MCE	MLK	MW	STY	DOC	CW	YG	MRB	BF	REA	API	TI
14.3	0	72.2	115.6	0.27	6.9	11	47	11.7	12.1	29.2	-0.49	0.29	-0.08	1.2	137.5	81.2
20%	30%	35%		35%	15%		35%	4%								

- Purebred candidate from the most popular sire group in this 2025 sale offering.
- Solid in his performance data and in his quality.
- A calving ease and carcass improver when you study his genetic figures.
- Homozygous black. Homozygous polled.
- Top 4% REA, top 20% CED, top 30% BW, top 35% ADG, MCE, MARB.

10

MMR WALK THE LINE 32L

DOB: 9/1/23

ASA: 4448503

TATTOO: 32L

PB SM

Birth Wt.	Act. Weaning Wt.	Act. Yearling Wt.	SC on 12/1/24
75	586	1074	36 cm
KCC1 FOLSOM 512F	SS EBONYS GRANDMASTER		
KCC1 WALK THE LINE 076J	MMR YOLANDA 104D		
KCC1 HAVANA 83E	CMB YOLANDA Y658		

CE	BW	WW	YW	ADG	MCE	MLK	MW	STY	DOC	CW	YG	MRB	BF	REA	API	TI
13.2	1.4	78.2	112.2	0.21	7.1	17.9	56.9	15.4	11.6	23.6	-0.26	0.09	-0.05	0.64	128.6	76.8
30%	30%															

- Modest birth weight, purebred son of KCC1 Walk the Line 076J.
- Perfect opportunity to add calving ease and hybrid vigor performance to the herd bull battery.
- Top 30% CED, MCE.

11

MMR WALK THE LINE 29L

DOB: 8/23/23

ASA: 4448518

TATTOO: 29L

5/8 SM 3/8 AN | HOMOZYGOUS POLLED | HOMOZYGOUS BLACK

Birth Wt.	Act. Weaning Wt.	Act. Yearling Wt.	SC on 12/1/24
79	566	1014	37.5 cm
KCC1 FOLSOM 512F	WHEATLAND RINGLEADER 834F		
KCC1 WALK THE LINE 076J	HOF MISS GRACE 0782H		
KCC1 HAVANA 83E	MCKY H MISS GRACE 4292		

CE	BW	WW	YW	ADG	MCE	MLK	MW	STY	DOC	CW	YG	MRB	BF	REA	API	TI
9.6	0	64.6	95.8	0.19	5.3	14.9	47.5	8.8	11.8	27.9	-0.25	0.33	-0.07	0.49	110	71.2
												35%	15%			

- A cool pedigree drawn up on this bull, with his dam side carrying leading Canadian genetic influence. An outcross maternal pedigree option that will keep black hides and polled heads on your calves.
- Homozygous black. Homozygous polled.

12

MMR WALK THE LINE 94L

DOB: 8/23/23

ASA: 4448523

TATTOO: 94L



5/8 SM 3/8 AN | HOMOZYGOUS POLLED | HOMOZYGOUS BLACK

Birth Wt.	Act. Weaning Wt.	Act. Yearling Wt.	SC on 12/1/24
77	612	1118	37 cm
KCC1 FOLSOM 512F	HA COWBOY UP 8308		
KCC1 WALK THE LINE 076J	HOF NEBRASKA QUEEN 0568H		
KCC1 HAVANA 83E	HOF NEBRASKA QUEEN 8843F		

CE	BW	WW	YW	ADG	MCE	MLK	MW	STY	DOC	CW	YG	MRB	BF	REA	API	TI
15	-1.4	64	97.1	0.21	7.9	14.6	46.3	15.3	14.7	15.2	-0.3	0.58	-0.05	0.65	146.8	80
25%	30%	35%		25%	25%	25%	30%									

- Here is a bull that does not have a single hole in his individual performance record.
- 94L's data sheet focuses on calving ease and carcass quality.
- Assemble a set of bulls like him and you'll look smart when the calves hit the ground.
- Homozygous black. Homozygous polled.
- Top 25% CED, DOC, MARB, top 30% BW, API, top 35% MCE.



CMB YOLANDA Y658 - MATERNAL GRANDDAM OF LOT 10

13

MMR WALK THE LINE 42L

DOB: 9/20/23

ASA: 4477029

TATTOO: 42L

1/2 SM 1/2 AN | HOMOZYGOUS POLLED

Birth Wt.	Act. Weaning Wt.	Act. Yearling Wt.	SC on 12/1/24
85	600	1102	38.5 cm
KCC1 FOLSOM 512F	MM ANGUS		
KCC1 WALK THE LINE 076J	MM 205		
KCC1 HAVANA 83E	MM ANGUS		

CE	BW	WW	YW	ADG	MCE	MLK	MW	STY	DOC	CW	YG	MRB	BF	REA	API	TI
13.1	1.2	69.6	102.1	0.2	7	17.7	68.8	14.4	12.8	21.5	-0.27	0.34	-0.05	0.6	125.7	72.7
												25%	30%	25%		

- A half-blood Simmental son of KCC1 Walk the Line 076J.
- Big scrotal measurement on this stud.
- Bulls like him are the kind that many commercial producers are seeking.



LOT 14 - MMR ARROWHEAD 48L

TJ ARROWHEAD 263G
SIRE OF LOTS 14-22MMR CHIEF 251K
FULL BROTHER TO DAM OF LOT 14MMR ANTOINETTE 827F MM
MATERNAL GRANDDAM OF LOT 14

14

MMR ARROWHEAD 48L

DOB: 8/11/23

ASA: 4448508

TATTOO: 48L



1/2 SM 1/2 AN | HOMOZYGOUS POLLED | HOMOZYGOUS BLACK

Birth Wt.	Act. Weaning Wt.	Act. Yearling Wt.	SC on 12/1/24
74	586	1122	33 cm
K C F BENNETT HOMESTEAD		TJ CHIEF 460G	
TJ ARROWHEAD 263G		MMR ANTOINETTE J324	
TJ 22X		MMR ANTOINETTE 827F MM	

CE	BW	WW	YW	ADG	MCE	MLK	MW	STY	DOC	CW	YG	MRB	BF	REA	API	TI
17.4	-3.5	75.8	113	0.23	9.3	37.5	75.2	14.4	11.9	25	-0.2	0.35	-0.03	0.61	142.8	85.8
10%	10%				20%	1%	5%									35%

- The initial piece of the TJ Arrowhead 263G sire group is a powerful baldy bull with unmatched power, performance, and substance.
- He is well balanced, deep middled, and carries shape and mass from every angle.
- Reads with an interesting data profile focused on maternal and calving ease traits.
- The maternal granddam of this stud is the very impressive MMR Antoinette 827F MM donor dam that served as the foundation of our SimGenetic breeding program.
- Homozygous black. Homozygous polled.
- Top 1% MILK, top 10% CED, BW, top 20% MCE, top 35% TI.



LOT 15 - MMR ARROWHEAD 05L

- Attractive and functional in his kind.
- Has eye-catching appeal while being perfectly proportioned and massive.
- The #2 weaning weight and #4 yearling weight measures in the sale.
- Powerful EPD profile for growth and gain ability.
- Homozygous black. Homozygous polled.
- Top 2% MILK, top 10% WW, top 15% YW, CW, TI, top 25% ADG.



TJ CHIEF 460G
MATERNAL GRANDSIRE OF LOT 15



LOT 16 - MMR ARROWHEAD 62L

- It's hard to miss a bull like MMR Arrowhead 062L.
- Rugged, stout, and functionally built to be the cowman's kind of bull.
- Outstanding performance record on his data sheet.
- Excels for a plethora of traits on his EPD profile, including both indexes.
- Homozygous black. Homozygous polled.
- Top 10% BW, MILK, top 20% CED, MCE, top 25% API, top 30% MARB, TI.



TJ GOLD 274G
MATERNAL GRANDSIRE OF LOTS 16-19

15

MMR ARROWHEAD 05L

DOB: 8/8/23 ASA: 4448504 TATTOO: 05L

5/8 SM 3/8 AN | HOMOZYGOUS POLLED | HOMOZYGOUS BLACK

Birth Wt.	Act. Weaning Wt.	Act. Yearling Wt.	SC on 12/1/24
77	802	1348	36 cm

K C F BENNETT HOMESTEAD

TJ ARROWHEAD 263G

TJ 22X

TJ CHIEF 460G

MMR BARB J343

MMR BARB 9536G

CE	BW	WW	YW	ADG	MCE	MLK	MW	STY	DOC	CW	YG	MRB	BF	REA	API	TI
14.7	0	92.3	141.8	0.31	7.6	33.4	79.3	12	12	52	-0.14	0.45	-0.05	0.62	140.7	93.3
30%		10%	15%	25%		2%	2%			15%						15%

16

MMR ARROWHEAD 62L

DOB: 8/28/23 ASA: 4458128 TATTOO: 62L

1/2 SM 1/2 AN | HOMOZYGOUS POLLED | HOMOZYGOUS BLACK

Birth Wt.	Act. Weaning Wt.	Act. Yearling Wt.	SC on 12/1/24
78	786	1302	40.5 cm

K C F BENNETT HOMESTEAD

TJ ARROWHEAD 263G

TJ 22X

TJ GOLD 274G

MMR LIBERTY J335

THOMAS MISS LIBERTY 3414

CE	BW	WW	YW	ADG	MCE	MLK	MW	STY	DOC	CW	YG	MRB	BF	REA	API	TI
15.6	-3.8	72.9	118.9	0.29	9	29.9	66.4	14.8	11.6	35.9	-0.11	0.55	-0.02	0.53	153	88.6
20%	10%					20%	10%	30%				30%			25%	30%

17

MMR ARROWHEAD 13L

DOB: 8/17/23

ASA: 4448502

TATTOO: 13L



5/8 SM 3/8 AN | HOMOZYGOUS POLLED | HOMOZYGOUS BLACK

Birth Wt.	Act. Weaning Wt.	Act. Yearling Wt.	SC on 12/1/24
73	614	1194	35 cm
K C F BENNETT HOMESTEAD		TJ GOLD 274G	
TJ ARROWHEAD 263G		MMR MS EFFECTIVE J390	
TJ 22X		MMR EFFECTIVE CHANGE 757F	

CE	BW	WW	YW	ADG	MCE	MLK	MW	STY	DOC	CW	YG	MRB	BF	REA	API	TI
16.9	-4.1	76.7	106.7	0.19	9.3	31.7	69.9	18.5	16.4	19.7	-0.19	0.63	-0.02	0.56	165.6	92.9
10%	5%				20%	4%	20%	15%	10%			20%			10%	15%

- MMR Arrowhead 13L combines phenotype and genotype to become a leading bull in this sire group.
- He's smooth in his design with ample muscle shape and dimension.
- Big numbered bull that excels for maternal and calving ease with a shot of carcass merit.
- Homozygous black. Homozygous polled.
- Top 4% MILK, top 5% BW, top 10% CED, DOC, API, top 15% STAY, TI, top 20% MCE, MARB.



LOT 17 - MMR ARROWHEAD 13L

18

MMR ARROWHEAD 63L

DOB: 8/22/23

ASA: 4458129

TATTOO: 63L



1/2 SM 1/2 AN | HOMOZYGOUS POLLED | HETEROZYGOUS BLACK

Birth Wt.	Act. Weaning Wt.	Act. Yearling Wt.	SC on 12/1/24
79	682	1258	38.5 cm
K C F BENNETT HOMESTEAD		TJ GOLD 274G	
TJ ARROWHEAD 263G		MMR QUEEN MOTHER J327	
TJ 22X		THOMAS QUEEN MOTHER 4905	

CE	BW	WW	YW	ADG	MCE	MLK	MW	STY	DOC	CW	YG	MRB	BF	REA	API	TI
16.9	-4.5	74.9	117.1	0.26	9.6	31.3	68.7	16.3	15.4	33.2	-0.21	0.76	-0.04	0.7	170.9	96.4
10%	3%				15%	5%	25%	35%	20%			10%			10%	10%

- 63L is a growthy SimAngus bull with a strong data sheet.
- His individual performance shows what he can do in a production setting.
- A top candidate in this sale when you see his combination of API and TI.
- A calving ease candidate that can do so much more.
- Homozygous polled.
- Top 3% BW, top 5% MILK, top 10% CED, MARB, API, TI, top 15% MCE, top 20% DOC, top 35% STAY.



MMR BRUTUS 257K - MATERNAL BROTHER TO DAM OF LOTS 20 & 21



LOT 20 - MMR ARROWHEAD 68L

19

MMR ARROWHEAD 10L

DOB: 8/11/23

ASA: 4448506

TATTOO: 10L



1/2 SM 1/2 AN | HOMOZYGOUS POLLED

Birth Wt.	Act. Weaning Wt.	Act. Yearling Wt.	SC on 12/1/24
72	542	1098	34 cm
K C F BENNETT HOMESTEAD		TJ GOLD 274G	
TJ ARROWHEAD 263G		MMR ELSA J338	
TJ 22X		THOMAS ELSA 3841	

CE	BW	WW	YW	ADG	MCE	MLK	MW	STY	DOC	CW	YG	MRB	BF	REA	API	TI
19.1	-4.9	70.1	105.5	0.22	11.1	30.4	65.4	15.6	10.9	20.7	0.01	0.37	0.01	0.23	147.5	83
3%	3%				4%	10%	35%								30%	

- Another TJ Arrowhead 263G son that is worthy of appraisal.
- This sire group is high-quality bulls that bring strong genetic merit to the table.
- Inject loads of calving ease genetics with a bull like 10L.
- Homozygous polled.
- Top 3% CED, BW, top 4% MCE, top 10% MILK, top 30% API.

20

MMR ARROWHEAD 68L

DOB: 8/16/23

ASA: 4448510

TATTOO: 68L

3/8 SM 5/8 AN | HOMOZYGOUS POLLED | HOMOZYGOUS BLACK

Birth Wt.	Act. Weaning Wt.	Act. Yearling Wt.	SC on 12/1/24
73	788	1386	40.5 cm
K C F BENNETT HOMESTEAD		HOOKS ADMIRAL 33A	
TJ ARROWHEAD 263G		MMR BLACKCLASS J318	
TJ 22X		EA BLACKCLASS 7120	

CE	BW	WW	YW	ADG	MCE	MLK	MW	STY	DOC	CW	YG	MRB	BF	REA	API	TI
12.7	-0.7	100.8	166.6	0.41	7.9	32.9	83	11.2	14.2	52.6	-0.2	0.5	-0.06	0.74	142.8	99.6
	2%	2%	2%	35%	3%	1%			30%	10%		35%	25%			5%

- In all possible facets, MMR Arrowhead 68L is a powerful bull.
- Deep bodied, muscle expression, and the characteristics of looking like a herd bull.
- His personal data set takes a backseat to very few bulls in this class.
- Finally, the EPD profile reads with as much growth genetic power as any in this sale.
- Homozygous black. Homozygous polled.
- Top 2% WW, YW, ADG, top 3% MILK, top 5% TI, top 10% CW, top 30% DOC, top 35% MCE, MARB.



LOT 21 - MMR ARROWHEAD 06L

- He carries himself with added length and presence without sacrificing power.
- Elite growth, gain, and carcass yield EPDs when you study his figures.
- Homozygous black. Homozygous polled.
- Top 1% WW, YW, ADG, CW, top 3% MILK, top 10% TI, top 15% REA, top 20% DOC.



HOOKS ADMIRAL 33A
MATERNAL GRANDSIRE OF LOTS 20 & 21



LOT 22 - MMR ARROWHEAD 40L

- His type and kind reads as an ideal, rugged stockman's bull.
- Posts a genetic profile that can suit the needs of many different breeding goals.
- A bull like MMR Arrowhead 40L should be on a lot of lists on sale day.
- Homozygous black. Homozygous polled.
- Top 5% MILK, top 10% BW, top 25% TI, top 30% CED, MCE, top 35% MARB, API.



CCR SANTE FE 9349Z
MATERNAL GRANDSIRE OF LOT 22

21

MMR ARROWHEAD 06L

DOB: 8/6/23 ASA: 4448505 TATTOO: 06L

3/8 SM 5/8 AN | HOMOZYGOUS POLLED | HOMOZYGOUS BLACK

Birth Wt.	Act. Weaning Wt.	Act. Yearling Wt.	SC on 12/1/24
76	636	1198	37 cm

K C F BENNETT HOMESTEAD

TJ ARROWHEAD 263G

TJ 22X

HOOKS ADMIRAL 33A

MMR BLACKLASS J314

EA BLACKLASS 7120

CE	BW	WW	YW	ADG	MCE	MLK	MW	STY	DOC	CW	YG	MRB	BF	REA	API	TI
10.9	2.7	105	177	0.45	6.8	32.9	85.1	9.8	15.1	72.3	-0.25	0.43	-0.08	0.95	130.6	96.6
	1%	1%	1%			3%	1%		20%	1%	35%		4%	15%		10%

22

MMR ARROWHEAD 40L

DOB: 8/22/23 ASA: 4411815 TATTOO: 40L

1/2 SM 1/2 AN | HOMOZYGOUS POLLED | HOMOZYGOUS BLACK

Birth Wt.	Act. Weaning Wt.	Act. Yearling Wt.	SC on 12/1/24
78	582	1144	35 cm

K C F BENNETT HOMESTEAD

TJ ARROWHEAD 263G

TJ 22X

CCR SANTA FE 9349Z

MMR MS EFFECTIVE J345

MMR MS. EFFECTIVE

CE	BW	WW	YW	ADG	MCE	MLK	MW	STY	DOC	CW	YG	MRB	BF	REA	API	TI
14.4	-3.3	80	122.8	0.27	8.3	31.1	71	13.1	12.7	20.1	-0.09	0.49	-0.02	0.31	145.5	90.3
	30%	10%				30%	5%	15%				35%		35%	25%	



TJ BRUTUS 428H - SIRE OF LOTS 23-30



LOT 23 - MMR BRUTUS 87L



LOT 24 - MMR BRUTUS 59L



MUSGRAVE 316 STUNNER - MATERNAL GRANDSIRE OF LOT 25

23

MMR BRUTUS 87L

DOB: 9/3/23

ASA: 4448517

TATTOO: 87L



1/2 SM 1/2 AN | HOMOZYGOUS POLLED | HOMOZYGOUS BLACK

Birth Wt.	Act. Weaning Wt.	Act. Yearling Wt.	SC on 12/1/24
73	756	1372	38 cm

CAMP CAMPBELL E737

HOFFMAN BLACK GRANITE 6309

TJ BRUTUS 428H

MF MM LORI 9807

TJ 5F

H MS LORI 4255 ET

CE	BW	WW	YW	ADG	MCE	MLK	MW	STY	DOC	CW	YG	MRB	BF	REA	API	TI
16.1	-1.1	79.1	125.4	0.29	10	20.5	60	15.9	14.4	36.9	-0.17	0.35	-0.03	0.67	142.7	83.5
15%	35%				10%				25%							

- Added power and muscle shape is what you will find in this front-end TJ Brutus 428H son.
- Makes the grade from birth to yearling with his impressive performance spread.
- Genetic data indicates that he will move your calving ease in a positive direction.
- Homozygous black. Homozygous polled.
- Top 10% MCE, top 15% CED, top 25% DOC, top 35% BW.

24

MMR BRUTUS 59L

DOB: 9/24/23

ASA: 4456915

TATTOO: 59L



5/8 SM 3/8 AN | HOMOZYGOUS POLLED

Birth Wt.	Act. Weaning Wt.	Act. Yearling Wt.	SC on 12/1/24
75	608	1104	36 cm

CAMP CAMPBELL E737

SCHIEFELBEIN EFFECTIVE 61

TJ BRUTUS 428H

MMR MS. EFFECTIVE

TJ 5F

TUELL MS.

CE	BW	WW	YW	ADG	MCE	MLK	MW	STY	DOC	CW	YG	MRB	BF	REA	API	TI
17.1	-0.2	76.1	114.7	0.24	8.7	25.2	62.9	13	13.4	28.4	-0.22	0.43	-0.04	0.58	138.7	83
10%					25%											

- MMR Brutus 59L is a dense, soggy, tank of a stock bull.
- He's loaded with shape from all angles and has the head and presence of a breeding bull.
- Modest birth weight at 73 lb.
- He is a maternal brother to the 80L bull selling near the front of the catalog.
- Homozygous polled.
- Top 10% CED, top 25% MCE.

25

MMR BRUTUS 31L

DOB: 9/6/23

ASA: 4456912

TATTOO: 31L



1/2 SM 1/2 AN | HOMOZYGOUS POLLED | HOMOZYGOUS BLACK

Birth Wt.	Act. Weaning Wt.	Act. Yearling Wt.	SC on 12/1/24
78	628	1188	36 cm

CAMP CAMPBELL E737

MUSGRAVE 316 STUNNER

TJ BRUTUS 428H

MF MM STUNNER 9006

TJ 5F

MF MM PRIMROSE 208

CE	BW	WW	YW	ADG	MCE	MLK	MW	STY	DOC	CW	YG	MRB	BF	REA	API	TI
13.5	-1.5	71.8	119.5	0.3	6.6	16.2	52	11.6	13.2	49.5	-0.11	0.36	-0.01	0.78	129.3	78.9
	30%		35%						15%					30%		

- 31L brings strong performance in a SimAngus genetic package.
- Keep in mind that these bulls can handle heavier service as long yearlings.
- If you need to move forward on carcass traits, strongly consider this herd sire prospect.
- Homozygous black. Homozygous polled.
- Top 15% CW, top 30% BW, REA, top 35% ADG.

26

MMR BRUTUS 47L

DOB: 9/17/23 ASA: 4458127 TATTOO: 47L

5/8 SM 3/8 AN | HOMOZYGOUS POLLED | HETEROZYGOUS BLACK

Birth Wt.	Act. Weaning Wt.	Act. Yearling Wt.	SC on 12/1/24
75	566	1040	37 cm

CAMP CAMPBELL E737

TUEL MR RECALL B4011

TJ BRUTUS 428H

MMR PRIDE 510E

TJ 5F

3210 PRIDE 612

CE	BW	WW	YW	ADG	MCE	MLK	MW	STY	DOC	CW	YG	MRB	BF	REA	API	TI
13.6	1	78.1	129.6	0.32	6.8	17.7	57	14.1	16.5	45.9	-0.11	0.42	-0.02	0.63	136.1	81.5
		30%	25%							10%	20%					

- Light birth with explosive growth genetic material.
- One that will add pounds and performance as his sons enter the feedyard.
- Homozygous polled.
- Top 10% DOC, top 20% CW, top 25% ADG, top 30% YW.

27

MMR BRUTUS 93L

DOB: 10/19/23 ASA: 4456904 TATTOO: 93L

3/4 SM 1/4 AN | HOMOZYGOUS POLLED | HOMOZYGOUS BLACK

Birth Wt.	Act. Weaning Wt.	Act. Yearling Wt.	SC on 12/1/24
80	612	1134	34 cm

CAMP CAMPBELL E737

TUEL MR RECALL B4011

TJ BRUTUS 428H

MMR MISS GAMECHANGER 763E

TJ 5F

TUEL MS GAMECHANGER 365A

CE	BW	WW	YW	ADG	MCE	MLK	MW	STY	DOC	CW	YG	MRB	BF	REA	API	TI
14.6	-2.5	74.4	116.8	0.27	5.1	23.6	60.8	13.7	12.9	34.2	0.05	0.5	0.01	0.27	139.6	83.3
		30%	15%												35%	

- The TJ Brutus 428H sons are well balanced both phenotypically and genetically.
- Buy a group of them and watch them go to work making your herd better.
- Calving ease and carcass quality in one package with this 93L bull.
- Homozygous black. Homozygous polled.
- Top 15% BW, top 30% CED, top 35% MARB.

28

MMR BRUTUS 26L

DOB: 9/7/23 ASA: 4456903 TATTOO: 26L

3/4 SM 1/4 AN | HOMOZYGOUS POLLED | HOMOZYGOUS BLACK

Birth Wt.	Act. Weaning Wt.	Act. Yearling Wt.	SC on 12/1/24
77	624	1154	34 cm

CAMP CAMPBELL E737

CCR COWBOY CUT 5048Z

TJ BRUTUS 428H

MMR EVERGREEN 520E

TJ 5F

WALLACE EVERGREEN 1105

CE	BW	WW	YW	ADG	MCE	MLK	MW	STY	DOC	CW	YG	MRB	BF	REA	API	TI
13.2	1.4	86.4	126.5	0.25	4.6	29.5	69.9	15.8	14.2	49.9	-0.02	0.65	0.01	0.68	146.7	89.8
		20%	35%			10%	20%			30%	15%			20%	35%	25%

- Keep your calf crop black and smooth polled with a herd bull like MMR Brutus 26L.
- Strong data profile that ranks highly for growth, carcass, and maternal traits.
- It's a good time to make an investment in a strong genetic piece like 26L.
- Homozygous black. Homozygous polled.
- Top 10% MILK, top 15% CW, top 20% WW, MARB, top 25% TI, top 30% DOC, top 35% API, YW.

29

MMR BRUTUS 23L

DOB: 9/14/23 ASA: 4448529 TATTOO: 23L

3/4 SM 1/4 AN | HOMOZYGOUS POLLED | HOMOZYGOUS BLACK

Birth Wt.	Act. Weaning Wt.	Act. Yearling Wt.	SC on 12/1/24
72	628	1014	36 cm

CAMP CAMPBELL E737

BAR CK BIG PAPI 913Z

TJ BRUTUS 428H

BAR CK MS 913Z 5132C

TJ 5F

BAR CK MONEY MKR A212U

CE	BW	WW	YW	ADG	MCE	MLK	MW	STY	DOC	CW	YG	MRB	BF	REA	API	TI
14.2	1.1	78.7	131.5	0.33	8.3	23.1	62.6	20.8	17.6	30.6	-0.18	0.45	-0.04	0.56	152.4	83.5
		35%	30%	20%	30%					4%	5%					25%

- Easy calving sale feature with his 72 lb. birth weight and favorable CED EPD.
- Cow-making type of bull with his high rankings for docility, longevity, and the API index.
- Homozygous black. Homozygous polled.
- Top 4% STAY, top 5% DOC, top 20% ADG, top 25% API, top 30% YW, MCE, top 35% CED.



BAR CK MS 913Z 5132C - DAM OF LOT 29



WALLACE EVERGREEN 1105 - MATERNAL GRANDDAM OF LOT 28

30

MMR BRUTUS 71L

DOB: 9/30/23 ASA: 4456908 TATTOO: 71L

1/2 SM 1/2 AN | HOMOZYGOUS POLLED | HOMOZYGOUS BLACK

Birth Wt.	Act. Weaning Wt.	Act. Yearling Wt.	SC on 12/1/24
79	554	1094	34 cm

CAMP CAMPBELL E737

EXAR EMPEROR 5972B

TJ BRUTUS 428H

JB BLACKCAP 825

TJ 5F

SPRUCE MTN BLACKCAP 3724

CE	BW	WW	YW	ADG	MCE	MLK	MW	STY	DOC	CW	YG	MRB	BF	REA	API	TI
14.1	-1.9	80	130.5	0.32	7.5	16.2	56.1	8	12.7	58	-0.05	0.58	-0.01	0.71	138.2	89.5
		35%	20%	30%	25%					5%		25%				25%

- A bull that emphasizes growth and carcass without sacrificing calving ease.
- Anchored on the bottom side by the Blackcap cow family that is legendary in the Angus breed.
- This SimAngus offering is impressive in its quality.
- Homozygous black. Homozygous polled.
- Top 5% CW, top 20% BW, top 25% ADG, MARB, TI, top 30% YW, top 35% CED.



LOT 31 - MMR FORTUNE TELLER 45L



SOUTHERN FORTUNE TELLER
SIRE OF LOTS 31 & 32

31

MMR FORTUNE TELLER 45L

DOB: 9/1/23

ASA: 4448528

TATTOO: 45L



5/8 SM 3/8 AN | HOMOZYGOUS POLLED | HOMOZYGOUS BLACK

Birth Wt.	Act. Weaning Wt.	Act. Yearling Wt.	SC on 12/1/24
79	588	1214	41 cm
LEACHMAN PROPHET J030Z SOUTHERN FORTUNE TELLER GW MISS PREM BEEF 246Z		CDI TRUSTEE 387F HOF NEBRASKA QUEEN 0477H BAR CK MS 667Z 4008B	

CE	BW	WW	YW	ADG	MCE	MLK	MW	STY	DOC	CW	YG	MRB	BF	REA	API	TI
16.2	-0.8	83.8	130.7	0.29	9.5	20.5	62.3	15.8	16.3	34.9	-0.4	0.41	-0.06	1.09	160.1	92.9
15%	30%	30%	15%					10%	5%	15%	4%	15%	15%			

- One of the most visually impressive herd sire prospects you will find in this sale book.
- Admire the length of body and raw power that he carries himself with.
- Strong in his yearling performance and scrotal measurement as well.
- You will see a bright future with MMR Fortune Teller 45L.
- Homozygous black. Homozygous polled.
- Top 4% REA, top 10% DOC, top 15% CED, MCE, API, TI, top 30% WW, YW.

32

MMR FORTUNE TELLER 103L

DOB: 9/5/23

ASA: 4448525

TATTOO: 103L



1/2 SM 1/2 AN | HOMOZYGOUS POLLED | HOMOZYGOUS BLACK

Birth Wt.	Act. Weaning Wt.	Act. Yearling Wt.	SC on 12/1/24
75	588	1128	34.5 cm
LEACHMAN PROPHET J030Z SOUTHERN FORTUNE TELLER GW MISS PREM BEEF 246Z		CCR PAY DIRT 2340C MMR ANTOINETTE H173 MISS CCF Z261	

CE	BW	WW	YW	ADG	MCE	MLK	MW	STY	DOC	CW	YG	MRB	BF	REA	API	TI
15.2	-5.1	65.6	102	0.23	8	25	57.7	15.9	11.1	43.8	-0.09	0.6	0.00	0.76	155.8	86
25%	2%				35%				25%		25%	35%	20%	35%		

- The second of the Southern Fortune Teller sons in this year's offering is moderate in his birth weight.
- Will keep your calves black hid and polled, bringing that extra dollar at the auction barn.
- Calving ease cow maker with added carcass merit genetics.
- Homozygous black. Homozygous polled.
- Top 2% BW, top 20% API, top 25% CED, CW, MARB, top 35% MCE, REA, TI.





MMR TEAR DROP H116 - MATERNAL BROTHER TO DAM OF LOT 35

33

MMR 922G 75L

DOB: 10/2/23

ASA: 4456910

TATTOO: 75L



3/4 SM 1/4 AN | HOMOZYGOUS POLLED | HOMOZYGOUS BLACK

Birth Wt.	Act. Weaning Wt.	Act. Yearling Wt.	SC on 12/1/24
75	552	1054	42 cm
BAR CK B1206Y 4196B	CCR COWBOY CUT 5048Z		
BAR CK 4196B 922G	MMR MISS CROSSROADS 9509G		
BAR CK MS B1206Y 722E	TUELL MS CROSSROADS 339A		

CE	BW	WW	YW	ADG	MCE	MLK	MW	STY	DOC	CW	YG	MRB	BF	REA	API	TI
16.1	-0.6	76.2	113.5	0.24	8.9	23.2	61.2	14.9	14.3	31.5	-0.32	0.56	-0.06	0.8	160.8	90.5
15%					20%				30%		20%	25%	25%	30%	15%	20%

- Only 75 lb. at birth with a 42 cm scrotal measurement.
- Kicks off a new sire group with a trio of Bar CK 4196B 922G sons.
- A high API bull that excels for many of the essential convenience traits.
- Homozygous black. Homozygous polled.
- Top 15% CED, API, top 20% MCE, TI, top 25% MARB, top 30% DOC, REA.

35

MMR 922G 65L

DOB: 9/1/23

ASA: 4458130

TATTOO: 65L



5/8 SM 3/8 AN | HOMOZYGOUS POLLED

Birth Wt.	Act. Weaning Wt.	Act. Yearling Wt.	SC on 12/1/24
77	612	1172	40 cm
BAR CK B1206Y 4196B	CCR ABILENE 6018C		
BAR CK 4196B 922G	MMR GAMECHANGER J387		
BAR CK MS B1206Y 722E	MMR GAMECHANGER 869F		

CE	BW	WW	YW	ADG	MCE	MLK	MW	STY	DOC	CW	YG	MRB	BF	REA	API	TI
17.4	-2.9	65.5	103.8	0.24	9.8	20.5	53.1	10.6	10.3	26.5	-0.21	0.68	-0.04	0.58	149.1	85.8
10%	15%				15%							15%			30%	35%

- The daughters of MMR 922G 65L should be exciting to watch develop.
- This sire group is stamped with calving ease and added carcass merit.
- Homozygous polled.
- Top 10% CED, top 15% BW, MCE, MARB, top 30% API, top 35% TI.

34

MMR 922G 88L

DOB: 9/30/23

ASA: 4456906

TATTOO: 88L



3/8 SM 5/8 AN | HOMOZYGOUS POLLED

Birth Wt.	Act. Weaning Wt.	Act. Yearling Wt.	SC on 12/1/24
75	632	1166	37.5 cm
BAR CK B1206Y 4196B	THOMAS WEIGH UP 7793		
BAR CK 4196B 922G	MF MM ELBA 0112		
BAR CK MS B1206Y 722E	EXAR ELBA 6267		

CE	BW	WW	YW	ADG	MCE	MLK	MW	STY	DOC	CW	YG	MRB	BF	REA	API	TI
16	-1.9	64.7	102.4	0.24	8.7	23.6	55.9	11.4	13.4	29.5	-0.14	0.61	-0.02	0.55	139.7	79.9
20%	20%				25%							20%				

- 88L posted solid performance from birth to yearling.
- Emphasizes calving ease genetics in his EPD script.
- Homozygous polled.
- Top 20% CED, BW, MARB, top 25% MCE.





LOT 36 - MMR COWBOY 28L

- Smooth made, attractive in his build, and carries extra power and shape..
- 28L posted the heaviest weaning and yearling weight of the entire sale group.
- If you are searching for raw pounds, here is your guy.
- This sale feature also brings a big-league number profile to the offering.
- Homozygous black. Homozygous polled.
- Top 10% ADG, MCE, CW, top 15% CED, YW, top 20% BW, WW, top 25% DOC, top 35% TI.



G A R QUANTUM
MATERNAL GRANDSIRE OF LOT 36



LOT 37 - MMR COWBOY 76L

- Long as a freight train, yet smooth in his design through his shoulder.
- He will make plenty of friends among those who study the bulls on the hoof.
- Big spread from birth to weaning on his individual performance data.
- As impressive of an EPD sheet as you will find in this sale book, leading the way for many traits, including being the #1 bull for both API and TI.
- Homozygous black. Homozygous polled.
- Top 4% MCE, TI, top 5% API, top 10% CED, DOC, CW, MARB, top 15% BW, YW, REA, top 20% WW, ADG.



BAR CK MS 1004Z 7183E
DAM OF LOT 37

36

MMR COWBOY 28L

DOB: 9/3/23 ASA: 4448531 TATTOO: 28L

1/2 SM 1/2 AN | HOMOZYGOUS POLLED | HOMOZYGOUS BLACK

Birth Wt.	Act. Weaning Wt.	Act. Yearling Wt.	SC on 12/1/24
76	816	1408	42 cm

CCR COWBOY CUT 5048Z
CCR 5532 COWBOY 5115F
CCR MS 2075 WD RNG 5532C

G A R QUANTUM
MF MM LUCY 094
THOMAS LUCY 3719

CE	BW	WW	YW	ADG	MCE	MLK	MW	STY	DOC	CW	YG	MRB	BF	REA	API	TI
16.6	-2.3	86.1	142.1	0.35	10.6	19.5	62.4	12.5	14.5	53	-0.07	0.24	-0.02	0.61	135.8	86.2
15%	20%	20%	15%	10%	10%					25%	10%					35%

37

MMR COWBOY 76L

DOB: 9/1/23 ASA: 4448513 TATTOO: 76L

3/4 SM 1/4 AN | HOMOZYGOUS POLLED | HOMOZYGOUS BLACK

Birth Wt.	Act. Weaning Wt.	Act. Yearling Wt.	SC on 12/1/24
75	680	1230	40 cm

CCR COWBOY CUT 5048Z
CCR 5532 COWBOY 5115F
CCR MS 2075 WD RNG 5532C

BAR CK LUCK B1206Y
BAR CK MS 1004Z 7183E
BAR CK MONEY MKR A1231U

CE	BW	WW	YW	ADG	MCE	MLK	MW	STY	DOC	CW	YG	MRB	BF	REA	API	TI
18	-2.4	87.7	140.8	0.33	11.3	20	63.8	15.7	16.5	53.3	-0.2	0.75	-0.03	0.95	172.8	100.6
10%	15%	20%	15%	20%	4%					10%	10%	10%		15%	5%	4%



E & B WILDCAT 9402 - SIRE OF LOTS 38 & 39

38

MMR WILDCAT 43L

DOB: 8/27/23

ASA: 4458126

TATTOO: 43L



1/4 SM 23/32 AN 1/32 MA | HOMOZYGOUS POLLED | HOMOZYGOUS BLACK

Birth Wt.	Act. Weaning Wt.	Act. Yearling Wt.	SC on 12/1/24
81	690	1314	38 cm
GAR DISCOVERY 6737H		TJ CHIEF 460G	
E & B WILDCAT 9402		MMR MS MO J388	
E&B LADY PLUS 643		TUELL MS MO 3-11A	

CE	BW	WW	YW	ADG	MCE	MLK	MW	STY	DOC	CW	YG	MRB	BF	REA	API	TI
16.2	-3.5	74.7	113.1	0.24	8.3	33.2	70.3	13.9	11.8	34.9	-0.16	0.41	-0.04	0.52	143.3	86
15%	10%				30%	2%	20%									35%

- MMR Wildcat 43L is a high percentage Angus bull sired by the Genex leading E&B Wildcat 9402.
- You will appreciate the weaning and yearling growth this sire group exhibits.
- Blends calving ease genetics with a strong performance track record.
- Homozygous black. Homozygous polled.
- Top 2% MILK, top 10% BW, top 15% CED, top 30% MCE, top 35% TI.

39

MMR WILDCAT 25L

DOB: 8/22/23

ASA: 4458122

TATTOO: 25L



1/4 SM 3/4 AN | HOMOZYGOUS POLLED

Birth Wt.	Act. Weaning Wt.	Act. Yearling Wt.	SC on 12/1/24
78	674	1274	37.5 cm
GAR DISCOVERY 6737H		BAR CK EARLY BIRD 7272E	
E & B WILDCAT 9402		MMR MS J389	
E&B LADY PLUS 643		BAR CK MS 7722 8114F	

CE	BW	WW	YW	ADG	MCE	MLK	MW	STY	DOC	CW	YG	MRB	BF	REA	API	TI
17	-3.2	75	118.8	0.27	9.6	30.1	68	15.7	14.1	33.5	-0.23	0.67	-0.05	0.69	163.3	92.8
10%	10%				15%	10%	25%		30%			15%				15%

- Much like his brother 43L, MMR Wildcat 25L showcase high growth with calving ease data.
- 674 lb. at weaning and 1274 lb. at yearling.
- Ranks highly for both API and TI to showcase his genetic merits.
- Homozygous polled.
- Top 10% CED, BW, MILK, top 15% MCE, MARB, API, TI, top 30% DOC.





LOT 40 - MMR SALVATION 98L

- Leading into a new sire group is a soggy, burly beast.
- His depth and power will garner plenty of attention.
- Tap into the SG Salvation sire line with a shot of Simmental power.
- He reads as an improver of carcass traits in his genetic profile.
- Homozygous black. Homozygous polled.
- Top 10% CW, top 20% DOC, top 30% MARB, top 35% BW, ADG.



SG SALVATION
PATERNAL GRANSIRE OF LOT 40-49



LOT 41 - MMR SALVATION 92L

- 92L is a head turner with his look and eye appeal.
- Only 75 lb. at birth.
- A leading growth and power genetics bull within this offering.
- Homozygous black. Homozygous polled.
- Top 2% CW, top 4% REA, top 10% WW, YW, ADG, top 30% DOC, top 35% TI.



ROCKING P LEGENDARY C918
MATERNAL GRANSIRE OF LOT 41

40

MMR SALVATION 98L

DOB: 9/16/23 ASA: 4448524 TATTOO: 98L

1/4 SM 3/4 AN | HOMOZYGOUS POLLED | HOMOZYGOUS BLACK

Birth Wt.	Act. Weaning Wt.	Act. Yearling Wt.	SC on 12/1/24													
80	512	1072	37.5 cm													
SG SALVATION		TJ TEARDROP 783F														
HOFFMAN SALVATION 1795		MMR MISS PRIDE H109														
COLEMAN DONNA 409		MMR PRIDE 510E														
CE	BW	WW	YW	ADG	MCE	MLK	MW	STY	DOC	CW	YG	MRB	BF	REA	API	TI
12.1	-1	77	125.2	0.3	4.4	19.1	58.3	11.6	15.1	56.6	0.09	0.52	0.03	0.54	132.4	82.9
35%		35%		20%		10%		30%								

41

MMR SALVATION 92L

DOB: 9/21/23 ASA: 4448522 TATTOO: 92L

3/8 SM 5/8 AN | HOMOZYGOUS POLLED | HOMOZYGOUS BLACK

Birth Wt.	Act. Weaning Wt.	Act. Yearling Wt.	SC on 12/1/24
75	546	1028	35.5 cm
SG SALVATION		ROCKING P LEGENDARY C918	
HOFFMAN SALVATION 1795		MMR MISS GAMECHANGER H154	
COLEMAN DONNA 409		TUEL MS GAMECHANGER 365A	

CE	BW	WW	YW	ADG	MCE	MLK	MW	STY	DOC	CW	YG	MRB	BF	REA	API	TI
11.3	3.9	93.9	150.5	0.35	4.7	17.7	65.2	8.9	14.3	68.3	-0.18	0.46	-0.03	1.08	122.1	86.7
10%		10%	10%	30%		2%		4%		35%						

42

MMR SALVATION 120L

DOB: 9/22/23 ASA: 4481522 TATTOO: 120L

1/2 SM 1/2 AN

Birth Wt.	Act. Weaning Wt.	Act. Yearling Wt.	SC on 12/1/24
78	486	1042	36 cm
SG SALVATION		KBHR HIGH ROAD E283	
HOFFMAN SALVATION 1795		MMR MS MO H112	
COLEMAN DONNA 409		MMR MS MO 851F	

CE	BW	WW	YW	ADG	MCE	MLK	MW	STY	DOC	CW	YG	MRB	BF	REA	API	TI
11.7	1.2	93.4	147.9	0.34	4.7	19.4	66	12.6	15.2	57.5	-0.06	0.48	0.01	0.88	137.6	90
	10%	10%	15%			35%		20%	10%					20%		25%

- SimAngus option to move your herd forward.
- Among the breed's elite for growth traits.
- Add pounds across the board with bulls like him.
- Top 10% WW, YW, CW, top 15% ADG, top 20% DOC, REA, top 25% TI.



KBHR HIGH ROAD E283 - MATERNAL GRANDSIRE OF LOT 42



W/C UNITED 956Y - MATERNAL GRANDSIRE OF LOT 43

43

MMR SALVATION 70L

DOB: 9/13/23 ASA: 4448527 TATTOO: 70L

1/4 SM 3/4 AN | HOMOZYGOUS POLLED

Birth Wt.	Act. Weaning Wt.	Act. Yearling Wt.	SC on 12/1/24
78	624	1124	34.5 cm
SG SALVATION		W/C UNITED 956Y	
HOFFMAN SALVATION 1795		MMR QUEEN H113	
COLEMAN DONNA 409		TUELL MS.	

CE	BW	WW	YW	ADG	MCE	MLK	MW	STY	DOC	CW	YG	MRB	BF	REA	API	TI
13.8	-1.5	82.7	137.4	0.34	6	24.8	66.3	11.3	12.9	52.7	-0.14	0.55	-0.03	0.78	144.7	91.6
	30%	30%	20%	15%			35%		10%		30%			30%	35%	20%

- MMR Salvation 70L is a bull you don't want to sleep on in this offering.
- Among the leading EPD profiles in the sale for all-around genetic improvement.
- Homozygous polled.
- Top 10% CW, top 15% ADG, top 20% YW, TI, top 30% BW, WW, MARB, REA, top 35% API.



LOT 45 - MMR SALVATION 35L

44

MMR SALVATION 38L

DOB: 9/11/23 ASA: 4448519 TATTOO: 38L

1/4 SM 3/4 AN | HOMOZYGOUS POLLED | HOMOZYGOUS BLACK

Birth Wt.	Act. Weaning Wt.	Act. Yearling Wt.	SC on 12/1/24
78	588	1044	36.5 cm
SG SALVATION		CCR PAY DIRT 2340C	
HOFFMAN SALVATION 1795		MMR ANTOINETTE H179	
COLEMAN DONNA 409		MISS CCF Z261	

CE	BW	WW	YW	ADG	MCE	MLK	MW	STY	DOC	CW	YG	MRB	BF	REA	API	TI
14	-1.9	78.8	127.5	0.3	7.1	25	64.4	13	12.3	51.3	-0.12	0.64	-0.02	0.77	151.5	91.6
	35%	20%	35%	35%					15%		20%			35%	25%	20%

- The Hoffman Salvation 1795 sons have a world of potential as breeding bulls.
- A carcass improver with a high-ranking API to boot. Carcass and cow maker!
- Homozygous black. Homozygous polled.
- Top 15% CW, top 20% BW, MARB, TI, top 25% API, top 35% CED, YW, ADG, REA.

45

MMR SALVATION 35L

DOB: 9/12/23 ASA: 4448520 TATTOO: 35L

3/8 SM 5/8 AN | HOMOZYGOUS POLLED | HOMOZYGOUS BLACK

Birth Wt.	Act. Weaning Wt.	Act. Yearling Wt.	SC on 12/1/24
77	642	1184	38 cm
SG SALVATION		CCR BOULDER 1339A	
HOFFMAN SALVATION 1795		HOFFMAN NEBRASKA QUEEN 0465	
COLEMAN DONNA 409		HOF NEBRASKA QUEEN 8673F	

CE	BW	WW	YW	ADG	MCE	MLK	MW	STY	DOC	CW	YG	MRB	BF	REA	API	TI
11	-0.1	89.3	142.1	0.33	5.4	19	63.6	15.8	16.3	49.3	-0.06	0.57	0.00	0.7	147.1	90.5
		15%	15%	20%						15%		25%			30%	20%

- MMR Salvation 35L is a burly, cowboy kind of bull.
- Loaded with depth and extra shape.
- Was a leading performer at weaning time.
- His growth EPDs indicate explosive returns when his progeny hit the scales.
- Homozygous black. Homozygous polled.
- Tio 10% DOC, top 15% WW, YW, CW, top 20% ADG, TI, top 25% MARB, top 30% API.



WALLACE EVERGREEN 1105 - MATERNAL GRANDDAM OF LOT 46

46

MMR SALVATION 106L

DOB: 9/18/23 ASA: 4481521 TATTOO: 106L

1/4 SM 3/4 AN | HOMOZYGOUS POLLED

Birth Wt.	Act. Weaning Wt.	Act. Yearling Wt.	SC on 12/1/24
79	588	1048	44 cm
SG SALVATION HOFFMAN SALVATION 1795 COLEMAN DONNA 409		CAMP CAMPBELL E737 MMR EVERGREEN H194 WALLACE EVERGREEN 1105	

CE	BW	WW	YW	ADG	MCE	MLK	MW	STY	DOC	CW	YG	MRB	BF	REA	API	TI
9.6	1.7	93.9	146.4	0.33	1.1	15.4	58.6	13.7	15.7	59.3	0.04	0.59	0.02	0.69	137.4	89.4
	10%	10%	20%						15%	5%		25%				25%

- MMR Salvation 106L measured one of the largest scrotal circumferences in the sale at 44 cm.
- Big growth data with added marbling merits.
- Power up your calf crop with bulls like him.
- Homozygous polled.
- Top 5% CW, top 10% WW, YW, top 15% DOC, top 20% ADG, top 25% MARB, TI.

47

MMR SALVATION 41L

DOB: 8/30/23 ASA: 4458125 TATTOO: 41L

1/4 SM 3/4 AN | HOMOZYGOUS POLLED | HOMOZYGOUS BLACK

Birth Wt.	Act. Weaning Wt.	Act. Yearling Wt.	SC on 12/1/24
75	602	1116	37 cm
SG SALVATION HOFFMAN SALVATION 1795 COLEMAN DONNA 409		NICHOLS BOND SME092 MMR RITA 0109 SHADY BROOK RITA 3559	

CE	BW	WW	YW	ADG	MCE	MLK	MW	STY	DOC	CW	YG	MRB	BF	REA	API	TI
13.3	-1.5	81.3	137.5	0.35	6.3	18	59.4	3.8	14.8	47.2	0.15	0.53	0.02	0.18	107.1	76.3
	30%	35%	20%	10%					25%	20%		30%				

- A lighter birth weight option from the Hoffman Salvation 1795 sire group.
- Anchored by the highly regarded Rita cow family in the Angus breed, with a shot of Simmental.
- He should be on your list in the search for a growthy, power bull.
- Homozygous black. Homozygous polled.
- Top 10% ADG, top 20% YW, CW, top 25% DOC, top 30% BW, MARB, top 35% WW.

48

MMR SALVATION 83L

DOB: 9/12/23 ASA: 4448532 TATTOO: 83L

1/4 SM 3/4 AN

Birth Wt.	Act. Weaning Wt.	Act. Yearling Wt.	SC on 12/1/24
78	636	1062	35 cm
SG SALVATION HOFFMAN SALVATION 1795 COLEMAN DONNA 409		WHEATLAND RINGLEADER 834F HOF MISS GRACE 0781H MCKY H MISS GRACE 4292	

CE	BW	WW	YW	ADG	MCE	MLK	MW	STY	DOC	CW	YG	MRB	BF	REA	API	TI
11.7	-1.6	82	130	0.3	5.3	12.7	54.7	6.5	13.5	48.7	0.14	0.64	0.05	0.48	130.2	88.3
	25%	35%	30%	35%					15%		20%					30%

- An option for extra carcass improvement within the sire group.
- You won't have to sacrifice growth and calving ease with 83L's genetic package.
- Top 15% CW, top 20% MARB, top 25% BW, top 30% YW, TI, top 35% WW, ADG.

49

MMR SALVATION 81L

DOB: 9/1/23 ASA: 4458120 TATTOO: 81L

1/4 SM 5/8 AN 1/8 CS | HOMOZYGOUS POLLED | HOMOZYGOUS BLACK

Birth Wt.	Act. Weaning Wt.	Act. Yearling Wt.	SC on 12/1/24
83	636	1276	39.5 cm
SG SALVATION HOFFMAN SALVATION 1795 COLEMAN DONNA 409		BCLR CASH FLOW C820 MMR TUELL H146 TUELL 571C	

CE	BW	WW	YW	ADG	MCE	MLK	MW	STY	DOC	CW	YG	MRB	BF	REA	API	TI
12.6	3.6	106.3	171.5	0.41	5	14.9	67.9	9.2	13.8	51.8	-0.1	0.35	0.00	0.83	123.8	91.6
	1%	1%	2%			25%			35%	15%				25%		20%

- Strong yearling weight and big scrotal measurement.
- Elite growth genetics from weaning through to carcass.
- Will be a favorite of buyers who sell by the pound.
- Homozygous black. Homozygous polled.
- Top 1% WW, YW, top 2% ADG, top 15% CW, top 20% TI, top 25% REA, top 35% DOC.



LOT 50 - MMR VALIDATE 37L



CONLEY SANDY 8355
\$100,000 VALUED PATERNAL GRANDDAM
OF LOTS 50-53



CONLEY VALIDATE 0110
SIRE OF LOTS 50-55

50

MMR VALIDATE 37L

DOB: 9/10/23

ASA: 4448526

TATTOO: 37L



1/4 SM 3/4 AN | HOMOZYGOUS POLLED | HOMOZYGOUS BLACK

Birth Wt.	Act. Weaning Wt.	Act. Yearling Wt.	SC on 12/1/24
76	618	1212	37 cm

MILL BRAE IDENTIFIED 4031

TJ GOLD 274G

CONLEY VALIDATE 0110

MMR MS ECHO J320

CONLEY SANDY 8355

TR MS ECHO 7459E

CE	BW	WW	YW	ADG	MCE	MLK	MW	STY	DOC	CW	YG	MRB	BF	REA	API	TI
16.6	-3.5	80.1	125	0.28	9.7	30.3	70.2	15.8	13.6	39.1	-0.1	0.58	-0.02	0.52	159.7	93.3
15%	10%				15%	10%	20%		35%			25%			15%	15%

- You will certainly admire the length and muscle pattern of MMR Validate 37L.
- Exhibits all the masculine characteristics you would expect of a top herd bull.
- Was a pounds heavy stud in the yearling pen.
- Homozygous black. Homozygous polled.
- Top 10% BW, MILK, top 15% CED, MCE, API, TI, top 25% MARB, top 35% DOC.

51

MMR VALIDATE 84L

DOB: 8/18/23

ASA: 4448511

TATTOO: 84L



1/4 SM 3/4 AN | HOMOZYGOUS POLLED | HOMOZYGOUS BLACK

Birth Wt.	Act. Weaning Wt.	Act. Yearling Wt.	SC on 12/1/24
81	598	1130	37 cm

MILL BRAE IDENTIFIED 4031

TJ GOLD 274G

CONLEY VALIDATE 0110

MMR BLACKCAP J328

CONLEY SANDY 8355

JB BLACKCAP 825

CE	BW	WW	YW	ADG	MCE	MLK	MW	STY	DOC	CW	YG	MRB	BF	REA	API	TI
17.8	-3.7	77	120.3	0.27	10.6	30.5	69.1	15.4	12.9	34.8	-0.1	0.63	-0.02	0.5	161.9	92.9
10%	10%				10%	10%	20%					20%			15%	15%

- These high-percentage Angus bulls will add quality with a shot of hybrid vigor.
- Calving ease cow maker that will inject a shot of carcass quality.
- Homozygous black. Homozygous polled.
- Top 10% CED, BW, MCE, MILK, top 15% API, TI, top 20% MARB.





LOT 53 - MMR VALIDATE 20L



TJ GOLD 274G
MATERNAL GRANDSIRE OF LOTS 50-52



BAR CKMS 4118B 8155F
DAM OF LOT 53

52

MMR VALIDATE 67L

DOB: 9/22/23 ASA: 4448512 TATTOO: 67L

1/4 SM 3/4 AN | HOMOZYGOUS POLLED | HOMOZYGOUS BLACK

Birth Wt.	Act. Weaning Wt.	Act. Yearling Wt.	SC on 12/1/24
77	546	1108	37.5 cm

MILL BRAE IDENTIFIED 4031

TJ GOLD 274G

CONLEY VALIDATE 0110

MMR CAROL J337

CONLEY SANDY 8355

THOMAS CAROL 3723

CE	BW	WW	YW	ADG	MCE	MLK	MW	STY	DOC	CW	YG	MARB	BF	REA	API	TI
18.6	-3.4	65.2	105.3	0.25	10	23.5	56.7	12.5	13.1	28.9	-0.12	0.72	-0.01	0.57	157.5	87.3
4%	10%				10%							15%			20%	30%

- The Conley Validate 0110 sire group will turn heads and move herds forward.
- High-index bull with leading calving ease and carcass traits.
- Homozygous black. Homozygous polled.
- Top 4% CED, top 10% BW, MCE, top 15% MARB, top 20% API, top 30% TI.

53

MMR VALIDATE 20L

DOB: 8/31/23 ASA: 4456901 TATTOO: 20L

3/8 SM 5/8 AN | HOMOZYGOUS POLLED | HOMOZYGOUS BLACK

Birth Wt.	Act. Weaning Wt.	Act. Yearling Wt.	SC on 12/1/24
73	662	1226	37 cm

MILL BRAE IDENTIFIED 4031

BAR CK NO EQUAL 4118B

CONLEY VALIDATE 0110

BAR CKMS 4118B 8155F

CONLEY SANDY 8355

BAR CK MS 56B 6071D

CE	BW	WW	YW	ADG	MCE	MLK	MW	STY	DOC	CW	YG	MARB	BF	REA	API	TI
15.5	-2.9	79.7	128.8	0.31	7.7	25.9	66.3	14.2	5.9	41.6	-0.2	0.73	-0.02	0.87	163.5	96.3
20%	15%	35%	25%			35%	35%			30%		10%		20%	15%	10%

- A fault-free, high-quality bull that you will like when you study the bulls in the pens.
- MMR Validate 20L is a high-performance sire prospect with his WW and YW data.
- The most impressive data profile of this sire group, making the grade for most traits on the page.
- Homozygous black. Homozygous polled.
- Top 10% MARB, TI, top 15% BW, API, top 20% REA, CED, top 25% ADH, top 30% CW, top 35% YW, MILK.

THE ANGUS BULLS

This spring we chose to register the Angus bulls within the American Simmental Association herdbook in order to help you as a buyer more easily compare their EPDs to the SimGenetic bulls. We felt that this would provide a more accurate comparison between the breeds and eliminate any confusion. Heterosis is the key to success in the beef industry, and it is our unwavering commitment to provide our customers with a product that will enhance your profit margins!





LOT 54 - MF MM WILDCAT 3500

54

MF MM WILDCAT 3500L

DOB: 8/27/23 ASA: 4483105 TATTOO: 3500L



PB ANGUS | HOMOZYGOUS POLLED | HOMOZYGOUS BLACK

Birth Wt.	Act. Weaning Wt.	Act. Yearling Wt.	SC on 12/1/24
71	682	1330	37.5 cm

GAR DISCOVERY 6737H

DOUBLE G PAYWEIGHT 7705

E & B WILDCAT 9402

MF MM RITA 1116

E&B LADY PLUS 643

SHADY BROOKL RITA 3559

CE	BW	WW	YW	ADG	MCE	MLK	MW	STY	DOC	CW	YG	MRB	BF	REA	API	TI
16.2	-1.1	93.6	157.4	0.4	9.2	28.2	74.8	9.6	12.3	68.9	0.15	1	0.03	0.55	156.2	98
15%	35%	10%	4%	3%	20%	15%	10%			1%		2%			20%	10%

- Deep sided, attractive in his build, and plenty of muscle highlight this Angus herd sire.
- Top weaning bull in the Angus offering at 682 lb.
- An incredible built, smooth made, dense bodied stud that offers tremendous length and shape. We love the job that the impressive E & B Wildcat 9402 has done for our breeding program.
- The kind of bull that will add pounds of payweight to a calf crop.
- Top 25% WW, top 35% YW, \$W.



E & B WILDCAT 9402 - SIRE OF LOTS 54-57

55

MF MM WILDCAT 3502L

DOB: 9/3/23 ASA: 4483107 TATTOO: 3502L



PB ANGUS | HOMOZYGOUS POLLED | HOMOZYGOUS BLACK

Birth Wt.	Act. Weaning Wt.	Act. Yearling Wt.	SC on 12/1/24
72	552	1004	34 cm

GAR DISCOVERY 6737H

BAR R JET BLACK 5063

E & B WILDCAT 9402

MF MM PLEASANT PILL 1080

E&B LADY PLUS 643

MSC PLEASANT PILL

CE	BW	WW	YW	ADG	MCE	MLK	MW	STY	DOC	CW	YG	MRB	BF	REA	API	TI
17	-0.7	95.2	160.5	0.41	8	24.2	72	11.1	13.1	75.7	0.2	0.86	0.04	0.54	152.1	94.5
10%	10%	3%	2%	35%		15%				1%	5%			25%	15%	

- Stout made chunk of a herd bull. His depth of body is impressive.
- These E & B Wildcat 9402 sons are being sought out across the country.
- Top 20% YW, top 25% WW.



BAR R JET BLACK 5063 - MATERNAL GRANDSIRE OF LOT 55

56

MF MM WILDCAT 3503L

DOB: 8/12/23 ASA: 4483108 TATTOO: 3503L

PB ANGUS | HOMOZYGOUS POLLED | HOMOZYGOUS BLACK

Birth Wt.	Act. Weaning Wt.	Act. Yearling Wt.	SC on 12/1/24
76	658	1400	41 cm

GAR DISCOVERY 6737H

S A V RESOURCE 1441

E & B WILDCAT 9402

MM MF PROPHET 1077

E&B LADY PLUS 643

G A R PROPHET 504

CE	BW	WW	YW	ADG	MCE	MLK	MW	STY	DOC	CW	YG	MRB	BF	REA	API	TI
12.5	0.7	96	153.9	0.36	6.3	27.2	71	11.6	13.2	72.2	0.14	0.94	0.03	0.62	148.3	94.8
	5%	5%	10%			25%	15%			1%	3%			30%	15%	

- Admire the added length of body and the framework this bull carries himself on.
- Strong weaning weight and the top yearling in the Angus division at 1,400 lb.
- Herd bulls like 3503 don't come along every day.



LOT 55 - MF MM WILDCAT 3502

57

MF MM WILDCAT 3504L

DOB: 8/31/23 ASA: 4483109 TATTOO: 3504L



PB ANGUS | HOMOZYGOUS POLLED | HOMOZYGOUS BLACK

Birth Wt.	Act. Weaning Wt.	Act. Yearling Wt.	SC on 12/1/24
73	588	1152	35 cm

GAR DISCOVERY 6737H

MAR INNOVATION 251

E & B WILDCAT 9402

MF MM EVERGREEN 1081

E&B LADY PLUS 643

WALLACE EVERGREEN 1105

CE	BW	WW	YW	ADG	MCE	MLK	MW	STY	DOC	CW	YG	MRB	BF	REA	API	TI
14.8	-0.1	94.1	161.2	0.42	8.1	27.2	74	9.9	12.7	74.5	0.14	0.92	0.04	0.69	149.7	95.2
30%	10%	2%	1%	35%		10%				1%	4%			30%	10%	

- A modest birth, solid performing E & B Wildcat 9402 son.
- Backed by the famed Wallace Evergreen 1105 cow family!
- 3504 should not be overlooked on sale day. He's a potential sleeper pick.



LOT 56 - MF MM WILDCAT 3503



WALLACE EVERGREEN 1105 - MATERNAL GRANDDAM OF LOT 57



LOT 58 - MF MM SALVATION 3510



HOFFMAN SALVATION 1795 - SIRE OF LOTS 58-60



G A R SUREFIRE - MATERNAL GRANDSIRE OF LOT 59

58

MF MM SALVATION 3510L

DOB: 10/22/23 ASA: 4483111 TATTOO: 3510L

PB ANGUS | HOMOZYGOUS POLLED | HOMOZYGOUS BLACK

Birth Wt.	Act. Weaning Wt.	Act. Yearling Wt.	SC on 12/1/24
74	502	994	39 cm
SG SALVATION		G A R QUANTUM	
HOFFMAN SALVATION 1795		MF MM BLACKBIRD 065	
COLEMAN DONNA 409		SPRUCE MTN BLACKCAP 2543	

CE	BW	WW	YW	ADG	MCE	MLK	MW	STY	DOC	CW	YG	MRB	BF	REA	API	TI
12.6	0.2	94.1	153.6	0.37	4.5	24.3	71.4	14	15.6	69.4	0.1	0.67	0.04	0.78	139.4	87.6
	10%	5%	10%			15%	15%	1%		15%	30%	30%				

- 3510 is balanced and true in his type, with shape and dimension from all angles.
- From the same Hoffman Salvation 1795 sire group that will be popular SimAngus options.
- Top 10% REA, top 15% WW, top 20% YW, top 25% \$W, \$F, top 30% ADG.

59

MF MM SALVATION 3501L

DOB: 9/20/23 ASA: 4483106 TATTOO: 3501L



PB ANGUS | HOMOZYGOUS POLLED | HOMOZYGOUS BLACK

Birth Wt.	Act. Weaning Wt.	Act. Yearling Wt.	SC on 12/1/24
74	522	1032	34.5 cm
SG SALVATION		G A R SUREFIRE	
HOFFMAN SALVATION 1795		MF MM MISS JET 0105	
COLEMAN DONNA 409		THOMAS MISS JET 41029	

CE	BW	WW	YW	ADG	MCE	MLK	MW	STY	DOC	CW	YG	MRB	BF	REA	API	TI
13.9	-0.7	87	141.6	0.34	4.8	22.5	67.9	14.9	15.6	59.4	0.16	0.77	0.05	0.56	146.4	86.5
	20%	15%	15%			25%	15%	5%		10%		35%	35%			

- MF MM Salvation 3501 combines the quality of Hoffman Salvation 1795 on top with the carcass power of the G A R Sure Fire line on the bottom side of his pedigree.
- If you're looking for added premiums on a calf crop, consider this fella.
- Top 25% \$M, top 30% \$F, \$C, top 35% \$B, ADG.

60

MF MM SALVATION 3509L

DOB: 11/1/23 ASA: 4483110 TATTOO: 3509L



PB ANGUS | HOMOZYGOUS POLLED | HOMOZYGOUS BLACK

Birth Wt.	Act. Weaning Wt.	Act. Yearling Wt.	SC on 12/1/24
75	504	1026	36 cm

SG SALVATION

HOFFMAN SALVATION 1795

COLEMAN DONNA 409

MUSGRAVE 316 STUNNER

MF MM TROJAN ERICA 010

3210 TROJAN ERICA 182

CE	BW	WW	YW	ADG	MCE	MLK	MW	STY	DOC	CW	YG	MRB	BF	REA	API	TI
12.4	-0.8	86.6	141.2	0.34	4.8	20.8	64.1	14	15.3	64.8	0.25	0.67	0.07	0.46	137.1	83.1
	20%	15%	15%						20%	2%		15%				

- The final son of Hoffman Salvation 1795 in the offering should not be overlooked for his position in the sale book.
- The top \$M offering, imagine the daughters he could leave you to build your herd on.
- Top 10% \$M, top 30% \$W, WW, top 35% BW.



MUSGRAVE 316 STUNNER - MATERNAL GRANDSIRE OF LOT 60

61

MMR VALIDATE 17L

DOB: 9/28/23 ASA: 4456917 TATTOO: 17L

PB ANGUS | HOMOZYGOUS POLLED | HOMOZYGOUS BLACK

Birth Wt.	Act. Weaning Wt.	Act. Yearling Wt.	SC on 12/1/24
77	644	1236	35 cm

MILL BRAE IDENTIFIED 4031

CONLEY VALIDATE 0110

CONLEY SANDY 8355

EXAR AVATAR 5516B

EXAR ERICA 7500

EXAR ERICA 3118

CE	BW	WW	YW	ADG	MCE	MLK	MW	STY	DOC	CW	YG	MRB	BF	REA	API	TI
12.4	0.3	74.7	121	0.29	5.8	17	54.3	15.7	12.9	37.3	-0.09	0.45	-0.02	0.54	138.6	80.6

- Strong individual performance across the board in this Angus bull.
- You will like how his black, polled steers gain when you put them in the lot.
- Homozygous black. Homozygous polled.
- Top 35% ADG.



CONLEY VALIDATE 0110 - SIRE OF LOTS 61 & 62

62

MMR VALIDATE 101L

DOB: 10/4/23 ASA: 4456914 TATTOO: 101L

PB ANGUS | HOMOZYGOUS POLLED | HOMOZYGOUS BLACK

Birth Wt.	Act. Weaning Wt.	Act. Yearling Wt.	SC on 12/1/24
75	576	1038	44 cm

MILL BRAE IDENTIFIED 4031

CONLEY VALIDATE 0110

CONLEY SANDY 8355

HOFFMAN BLACK GRANITE 6309

MF MM LORI 9806

H MS LORI 4277 ET

CE	BW	WW	YW	ADG	MCE	MLK	MW	STY	DOC	CW	YG	MRB	BF	REA	API	TI
12.5	0.3	75.8	122.9	0.29	5.9	17.3	55.1	15.7	12.9	37.3	-0.09	0.45	-0.02	0.54	139.5	81.4

- Add gain ability into your calf crops with 101L's genetic profile.
- Homozygous black. Homozygous polled.
- Top 3% ADG



THE HEREFORD BULL





LOT 63 - MIMAC RUBBLE 023L

63

MIMAC RUBBLE 023L

DOB: 9/3/23 AHA: 44633748 TATTOO: 0550

HORNED HEREFORD

Birth Wt.	Act. Weaning Wt.	Act. Yearling Wt.	SC on 12/1/24
74	548	1074	35.5 cm

KJ BJ 309C LEADER 182F
KJ TWJ 907E LIBERTY 159H ET
 KJ BJ 339A CHARDONNAY 907E ET

ECR 3116 ADVENTURE 7647 ET
BK HALLIE BEY 4119H
 BK BEYONA 4119B ET

CE	BW	WW	YW	MCE	MLK	MG	MCW	CW	FAT	REA	MRB	BMI\$	BII\$	CHB\$
4.8	1.9	64	105	-0.7	41	73	92	80	0.06	0.65	0.21	426	515	141
37%	32%	21%	17%		2%	3%		22%		18%	29%	21%	20%	19%

- The lone Hereford for your appraisal, he is an attractive horned bull with plenty of depth, good in his lines, and stout in his framework.
- Sired by the popular KJ TWJ 907E Liberty 159H bull, stemming from a cow that originated in the famed Buck Cattle Company herd in Oklahoma.
- The genetic power in this Hereford bull is strong.



MILA & MCCOY ARE NOW IN THE BULL BUSINESS!

THEY ARE PROUD TO OFFER MIMAC RUBBLE 023L AS LOT 63.



KJ TWJ 907E LIBERTY 159H ET - SIRE OF LOT 63



BK HALLIE BEY 4119H - DAM OF LOT 63



NATHAN & CANDICE ARNOLD

A SPECIAL "THANK YOU" TO NATHAN FOR HIS UNWAVERING COMMITMENT AND HARD WORK THAT HE PUTS IN DAY AFTER DAY. WE APPRECIATE ALL YOU DO!



THE MORIONDO FAMILY

LARRY & RITA MORIONDO
MARK, MARANDA, MILA, & MCCOY MORIONDO



MILA & MCCOY SINGING THE NATIONAL ANTHEM WITH THEIR AUNT LIZ!



MARK, MCCOY AND LARRY MORIONDO



MILA MAY OR MAY NOT BE AT THE SALE DEPENDING ON HER RACING SCHEDULE!



Thank you for your interest!





PO BOX Z
DE SOTO, KS 66018

Presorted
First Class
US Postage
PAID
SlateGroup

60+ AGE ADVANTAGE BULLS

SIMMENTAL | SIMANGUS | ANGUS | HEREFORD

