



Hanel's Black Simmentals

THE 7TH ANNUAL BULL SALE

MARCH 3, 2025 IN COURTLAND, KANSAS AT 1:00 PM



Maddy Hanel



Gage Hanel



Kollins Hanel



The Hanel Family

HANEL'S BLACK SIMMENTALS

Welcome to the 7th Annual Hanel's Black Simmentals Production Sale. Having sold bulls for 20 years through private treaty, we are excited to share the opportunity to buy into our Simmental program that we have been building over the past 25+ years.

Our cattle epitomize performance and have a proven history to produce a consistent calf crop year in and year out. We produce honest, hard-working cattle that are raised without any creep feed to show the true performance and function. Our cows spend most of the winter running out on stock fields right along with their calves and are raised as much like a commercial operation as we can and are asked to work for us.

This year there will be around 124 Simmental, SimAngus, SimChar, Angus bulls and 20 open replacement heifers in the offering. Every animal selling in this offering will enhance your bottom line with increased performance and carcass traits. Field Cattle Company also has a tremendous set of power real world bulls and we are excited for them to sell with us.

This operation has the upmost respect for our cattle and our beef industry. When you lay eyes on our operation you will see that in seconds, and we expect that out of our genetics! With Mother Nature starting to spread some moisture across the United States and with the lower number of cattle the future seems extremely bright for the cattle industry. These bulls selling are exactly what the beef industry is asking us as producers to utilize to enhance our operations to the next level. This set of bulls will rival any set of bulls across the entire world.

These bulls will add pounds to your calf crop and are among the top bulls to sell this spring for carcass quality for the represented breeds. These bulls will add value to you calf crop no matter how you market your calf crop. Please let me know before you sell calves out of these bulls so I can assist in the marketing process to insure you get top market value for your calf crop. The harvest data from theses genetics is second to none. Order buyers and Feed yards are always asking me when they can get a chance to buy more of our genetics. I invite you out to the ranch to look at our offering and join us for a steak lunch before the sale. I hope to see you on sale day Monday, March 3, 2025.

Also, mark your calendar for the 8th Annual Production Sale on Monday, March 2, 2026!

Thank you for your interest,
Brock Hanel, DVM



Determination, ambition, and a strong will can guide a person through life and contribute to achieving goals. When an individual has a supportive network encouraging them, allowing them to experience both the positives and negatives along the way, it's advantageous for the future as well. How one perseveres through life's challenges can influence one's future more than how they manage the positive experiences. Dr. Brock Hanel will tell you that he has been fortunate in life with a great wife and family, a nurturing background, and an excellent formal education, but it is his true life experiences that have enabled him to elevate every business venture he has pursued in his young adult life. Brock often expresses his gratitude for being able to do what he loves each day, and the sacrifices made along the way have deepened his appreciation for where he stands in the world and for those that have helped him get there.

Brock Hanel has organized one of the most talked-about annual bull events in the industry! Each year, supporters arrive in droves to enjoy one of the best pre-sale meals in the nation and then stay to invest in the future of their beef operations. This sale attracts businesses of all sizes, scopes, and affiliations, as the cattle that have been turned out do exactly what they are meant to do and they last. One appealing aspect of working with Dr. Hanel is his dedication to advancing the genetics that people are interested in. He believes wholeheartedly in what his program can contribute to the harvest stage of the market cycle and aims to own those cattle. Dr. Hanel has harvest data on the cattle that bear the genetics of his program spanning nearly two decades, and he makes genetic implementation decisions annually based on what needs improvement to make the end product the best it can be.

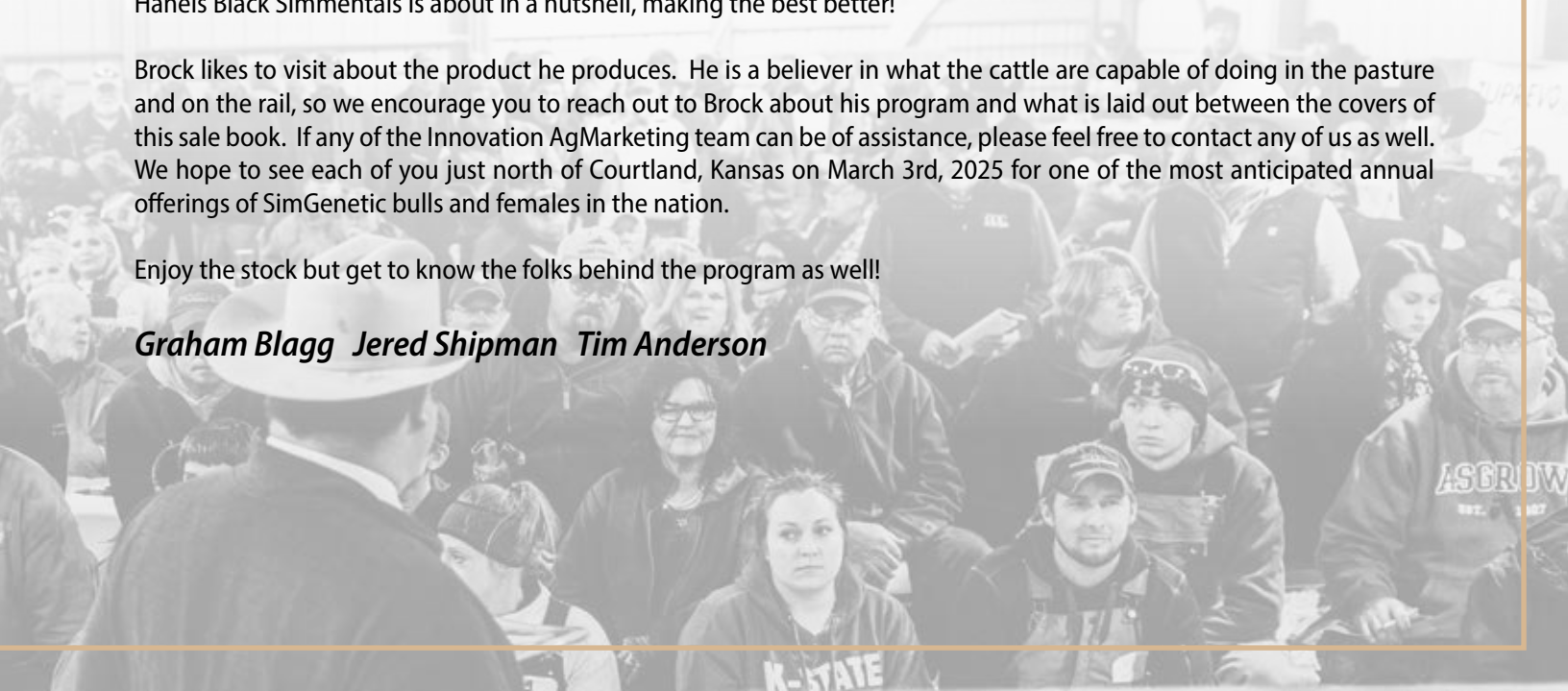
Daily, the search for the next genetic source for improvement persists for the Hanel brand. Brock's criteria can seem somewhat unconventional, but the end result is almost always how it was meant to be. His experiences in feeding cattle allow for him to experience first-hand what actually works and what doesn't. Brock will share that the extremes don't pay more but balanced trait selection does pay dividends especially for those that prefer the retained ownership experience and female retention to continue to build their cow herd with those produced under the preferred management practices of their respective operation. This thought process is why the open heifer division is met with so much appreciation each year. Those who tie in every year have been more than impressed with these females in production and that's what drives the competitive environment on the first Monday of March.

Hanel's customer service is second to none through the entire ownership experience of the brand. Brock wants to know the good, the bad, and the worst so that he can improve the product he offers annually for appraisal. Feedback is essential to the survivability of any business and the constructive, negative information is the best to make one better. If your experience is better annually, then the product is delivering on the promises that encouraged you to invest. That's what Hanel's Black Simmentals is about in a nutshell, making the best better!

Brock likes to visit about the product he produces. He is a believer in what the cattle are capable of doing in the pasture and on the rail, so we encourage you to reach out to Brock about his program and what is laid out between the covers of this sale book. If any of the Innovation AgMarketing team can be of assistance, please feel free to contact any of us as well. We hope to see each of you just north of Courtland, Kansas on March 3rd, 2025 for one of the most anticipated annual offerings of SimGenetic bulls and females in the nation.

Enjoy the stock but get to know the folks behind the program as well!

Graham Blagg Jered Shipman Tim Anderson



SALE LOCATION

Hanel's Black Simmentals
340 US-36 - Courtland, KS 66939

SALE DAY PHONES

Brock Hanel 785-275-1060
Braden Field 785-577-1924

SALE MANAGEMENT

INNOVATION AGMARKETING
Graham Blagg 530-913-6418
Jered Shipman 806-983-7226
Tim Anderson 605-682-9343

AUCTIONEER

Col. Jered Shipman 806-983-7226

RING STAFF

Craig Talkington, Special Assignment 785-623-1789
Mitchell Armitage, Special Assignment 405-641-9438
Brett Sayre, Special Assignment 573-881-1876

CONSULTANTS

Neil Bouray 402-879-5566
Kent McCune 817-602-8692
Zach Sumpter 785-545-6175

LIVESTOCK MORTALITY INSURANCE

Sheila Jensen 785-262-1116

ACCOMMODATIONS

Holiday Inn Express & Suites Concordia 785-243-2700

VETERINARIAN

Hanel Vet Clinic 785-374-4550

VIDEO PREVIEW OF SALE CATTLE

Videos of the sale cattle available online the week prior to the sale.

TERMS & CONDITIONS

All cattle will sell under the terms and conditions of their respective breed association. All sales are final.

ANNOUNCEMENTS

A supplement sheet will be available sale day with updated information, corrections, and additional information. This sheet and any announcements made sale day, from the auction block during the sale, will take precedence over printed material associated with the sale. Anyone attending this sale attends at their own risk. Hanel's Black Simmentals or the sales team will not be held responsible for any personal injury from attending this sale.

VIDEO AUCTION

All cattle will sell while being viewed on large screen monitors in the sale facility. There will be multiple large screens playing videos of the animals while the respective animal is being auctioned. Cattle will not come into the sale ring during the auction and we will not travel through equipment during the auction. Please make plans to arrive early and preview the sale offering prior to selling.

TRUCKING

The sales team will be able to help you with transportation for your cattle purchases. We will also have professional transporters available sale day.

AIR TRAVEL

Wichita Airport - 2 hours and 30 minutes from sale site
Kansas City International Airport - 3 hours and 20 minutes from sale site

SALE BOOK PREPARED BY

THM Promotions, Tracy McMurphy 806-679-0231

PHOTOGRAPHY

Noll Ernst 641-414-0404

VIDEOGRAPHY

Ideal Video Productions
Wade Fischer 254-319-5349

ONLINE BROADCAST

Wyatt Durst, CCI.LIVE 785-541-0904



Bid Live Online

www.CCI.live - Watch the Sale

(405) 400-9505 Text/Call - schedule@cci.live
Find us on the App Store and Google Play
Over 35 years in livestock marketing!



Wikus Reynecke family
A special 'Thank You' to Wikus
for the countless hours of hard
work that he has put into this
year's bull offering! We could
not do it without you!

SALE SCHEDULE

MARCH 1 & 2, 2025

Cattle on display all weekend prior to the sale.

MARCH 3, 2025

Cattle on Display - 9:00 AM

Steak Lunch Served - 12:00 PM

**HANEL'S BLACK SIMMENTALS
7TH ANNUAL BULL SALE - 1:00 PM**

BULL GUARANTEE

Unless otherwise noted, all the breeding age bulls will have passed a breeding soundness exam prior to pick up/delivery. In addition to the standard Terms and Conditions of the American Simmental Association and the American Angus Association we will provide the first breeding season (the 90-day period immediately following turn out) guarantee on all yearling and older bulls. This guarantee is not an insurance or mortality policy, but a guarantee on functional fertility. It is not a substitute or replacement for poor management. Buyer assumes all risks for injury due to running bulls together or management decisions outside genetic control. For the guarantee to apply, we ask that you contact us as soon as a condition is observed and before the animal is sold. We will work with you to determine whether the animal is returned or sold for slaughter. We will attempt to provide a suitable replacement. If one cannot be provided of equal or greater value, we will issue a sale credit to be used in a future sale for the full purchase price less the salvage value of the animal.

VOLUME DISCOUNT

Purchase 5 or more Bulls and receive 5% off your total purchase price.

SEMEN INTEREST

Retaining 1/3 semen interest in all bulls selling, unless otherwise noted or announced.

TRUCKING

Free delivery within 200 miles and \$50 sale credit if bull purchase is picked up the day of sale. Otherwise, please contact the sales team for assistance with transportation for your cattle purchases. We will work with volume buyers and those outside the 200-mile delivery range. Dick Coleman is an approved and recommended professional trucking option. (765) 461-0954.

GENETIC TESTING

All bulls will sell with genomically enhanced EPD's and are parent verified. We have submitted DNA on every bull selling to aid you in the decision making process that goes hand in hand with buying your next herd sire!

Thank you to our Meat Sponsors!



We have been doing business with Hanel family since 1971 and started incorporating there Simmental genetics into our operation in the early 2000's buying bulls and replacement heifers. Over the years we have retained heifers from our cow herd to expand our SimGenetic base. The Hanel's have AI'd our cows over the years to some of their leading herd bulls. We have noticed the drastic improvement within our cow herd over the years, which is a direct result of the Hanel genetics that we have utilized. Year after year there are more buyers looking for our calves when we take them to town. The calves are vigorous at birth with extra length and bone that make them highly sought after by feedyards, because they have the frame and size to efficiently gain. These genetics also have added tremendous carcass merit to our cattle, allowing them to fetch premiums on the rail. There is no doubt that Hanel's Simmental genetics have added profitability to our operation. This combined with the first class customer service is the main reason that we have done business with the Hanel family for over 50 years!

- DON R. BARRETT, RANDALL, KS



Hanel's Black Simmentals
THE BULL OFFERING



THE AGE ADVANTAGED BULLS

Lot 1



- Leading off the age advantaged bulls is a stout, dense made, powerhouse with tons of a future as a leading herd sire.
- His muscle shape, depth of body, and overall phenotypic quality will make him a favorite of many.
- The only son of OMF Hard Right H21 in this age group offering, this is a high-performance beast with a top-end 3.04 IMF and 17.06 REA.
- Reads with an elite EPD profile that offers genetic improvement for a variety of crucial traits.
- Homozygous black. Homozygous polled.
- Top 2% DOC, top 3% BW, top 10% CED, MCE, STAY, top 15% API, top 20% MARB, top 35% MILK.

Lot 1

HANELS HARD RIGHT L3528

GGP

4305438

BW: 81 • Scan Wt: 1500

PB SM • 8/29/23

SIRE OMF EPIC E27
OMF HARD RIGHT H21
HOOKS ANGEL 11A

DAM CLRS CONSTITUTION 311 C
CLRS EMOJI 703E
CLRS CARIA 520 C

SCAN DATA Adj. IMF: 3.04 • Adj. BF: 0.27 • Adj. REA: 17.06 Homo Polled Homo Black

CE	BW	WW	YW	ADG	MCE	MLK	MW	STY	DOC	CW	YG	MRB	BF	REA	API	TI
16.3	-3	58.8	88.6	0.19	9.3	24.8	54	20.2	18.2	17.9	-0.36	0.39	-0.06	0.77	160.2	79.6



OMF HARD RIGHT H21 - SIRE OF LOT 1

THE AGE ADVANTAGED BULLS

Lot 2



Lot 2

HANELS EPIC L3500

GGP

4305426

BW: 80 • Scan Wt: 1478

3/4 SM 1/4 AN • 8/14/23

SIRE WS ALL-AROUND Z35

OMF EPIC E27

OMF TIME LESS B100

DAM MGR TREASURE

HANELS MISS TREASURE J1504

HANELS COWBOY CUT G9520

SCAN DATA Adj. IMF: 2.36 • Adj. BF: 0.42 • Adj. REA: 17.72

CE	BW	WW	YW	ADG	MCE	MLK	MW	STY	DOC	CW	YG	MRB	BF	REA	API	TI
15.1	-2.3	82.1	129.4	0.3	9.8	23.6	65.2	16.2	13.1	41.6	-0.23	0.44	-0.02	0.97	150.3	89.2

- An impressive specimen with added length and extension from end to end.
- If you're searching for an attractive made herd sire with a good build and plenty of shape, L3500 should be one of your top candidates.
- By the renowned OMF Epic E27, he boasts a massive 17.72-inch REA and a modest 80 lb. birth weight.
- Improve carcass traits without sacrificing calving ease or growth performance.
- Top 5% BW, MCE, top 15% CED, ADG, CW, MARB, top 25% REA, API, TI, top 30% YW, top 35% DOC.



OMF EPIC E27 - SIRE OF LOTS 2 & 3

Lot 3

HANELS EPIC L3514

GGP

4305395

BW: 84 • Scan Wt: 1590

PB SM • 8/25/23

SIRE WS ALL-AROUND Z35

OMF EPIC E27

OMF TIME LESS B100

DAM HANELS DOUBLE B4252

HANELS MISS DOUBLE E7213

BROOKS MISS RENE

SCAN DATA Adj. IMF: 2.81 • Adj. BF: 0.26 • Adj. REA: 17.4

CE	BW	WW	YW	ADG	MCE	MLK	MW	STY	DOC	CW	YG	MRB	BF	REA	API	TI
14.5	-1.5	64.5	90.5	0.16	7.1	24.6	56.7	16.2	15.2	11	-0.44	0.11	-0.09	0.72	133.6	74.1

- Hanel Epic L3514 is one of the heavyweights of this age group, tipping the scale at 1590 lbs. There is no doubt that he is a must see on sale day!
- Posts an impressive combination of IMF and REA on his scan data.
- This purebred OMF Epic E27 son brings easy calving Simmental genetics to your operation.
- Top 10% BW, top 15% CED, DOC, top 30% MCE.

THE AGE ADVANTAGED BULLS

Lot 4



- Study the length and muscle shape of this stud; you will surely be impressed.
- A true power bull that will add punch and performance to a calf crop.
- Leading off the largest sire group in the sale, the Harms Hardwood sons, is a massive 18.6-inch REA measuring stud.
- Elite growth and carcass EPDs give him high marks for those that sell pounds at weaning or on the rail.
- Top 1% REA, top 5% CW, top 10% WW, YW, top 15% ADG, top 30% DOC.

Lot 4

HANELS HARDWOOD L3526

GGP

4305399

BW: 87 • Scan Wt: 1580

PB SM • 8/28/23

SIRE VJT DRIFTWOOD E55
HARMS HARDWOOD
TJ 41Z

DAM HANELS COWBOY CUT D6208
HANELS MISS COWBOY CUT H0549
HANELS MISS TANKER A3243

SCAN DATA Adj. IMF: 2.46 • Adj. BF: 0.23 • Adj. REA: 18.56

CE	BW	WW	YW	ADG	MCE	MLK	MW	STY	DOC	CW	YG	MRB	BF	REA	API	TI
11.1	5.1	95.1	143.3	0.3	6.2	22.9	70.3	16.2	13.6	48.6	-0.58	-0.24	-0.11	1.48	112.3	76.4



HARMS HARDWOOD - SIRE OF LOTS 4-23



THE AGE ADVANTAGED BULLS

Lot 5

HANELS HARDWOOD L3536

GGP

4305398

BW: 93 • Scan Wt: 1274

PB SM • 9/2/23

SIRE VJT DRIFTWOOD E55
HARMS HARDWOOD
TJ 41Z

DAM HANELS COWBOY CUT D6208
HANELS COWBOY CUT G9541
HANELS MISS PALE E7527

SCAN DATA Adj. IMF: 2.58 • Adj. BF: 0.23 • Adj. REA: 15.09

CE	BW	WW	YW	ADG	MCE	MLK	MW	STY	DOC	CW	YG	MRB	BF	REA	API	TI
9.1	-0.3	81.9	119.3	0.23	4.3	22.6	63.4	16	11.4	23	-0.33	0.16	-0.06	0.76	133.8	83.1

- If you want a bull to moderate your cattle without sacrificing performance, look in here. L3536 is bold bodied, deep sided, big topped, and thick ended.
- This purebred bull is a good option for a quality set of Angus based commercial cows to capture hybrid vigor.
- Top 25% BW.

Lot 7

HANELS HARDWOOD L3560

GGP

4305388

BW: 91 • Scan Wt: 1506

PB SM • 9/20/23

SIRE VJT DRIFTWOOD E55
HARMS HARDWOOD
TJ 41Z

DAM HANELS COWBOY CUT D6208
HANELS MISS COWBOY CUT J1536
HANELS MISS STIM A3038

SCAN DATA Adj. IMF: 2.14 • Adj. BF: 0.16 • Adj. REA: 14.7

CE	BW	WW	YW	ADG	MCE	MLK	MW	STY	DOC	CW	YG	MRB	BF	REA	API	TI
11.8	1.6	89.1	130.2	0.26	6.2	25	69.3	20.4	12.2	37.4	-0.45	0.13	-0.09	1.05	144.1	85.5

- A multi-purpose bull that meets a lot of needs for the cowman.
- His genetic predictors offer growth, carcass cutout, and daughter longevity.
- These Harms Hardwood sons are sure to impress on sale day.
- Top 10% STAY, top 15% REA, top 20% WW, top 25% YW, CW, top 35% ADG, API, TI, MILK.

Lot 6

HANELS HARDWOOD L3540

GGP

4305382

BW: 96 • Scan Wt: 1364

PB SM • 9/5/23

SIRE VJT DRIFTWOOD E55
HARMS HARDWOOD
TJ 41Z

DAM HANELS COWBOY CUT D6208
HANELS MISS COWBOY CUT J1557
HANELS MISS PALE C5037

SCAN DATA Adj. IMF: 1.81 • Adj. BF: 0.14 • Adj. REA: 14.65

CE	BW	WW	YW	ADG	MCE	MLK	MW	STY	DOC	CW	YG	MRB	BF	REA	API	TI
10.2	0.9	87.2	135.3	0.3	5.1	21.7	65.2	13.7	12.8	46.8	-0.52	0.02	-0.11	1.25	125.3	82.8

- Hanel Hardwood L3540 is a strong made, power bull to add payweight to mature cows.
- Top-end carcass and growth figures on his EPD script. A true performance bull.
- No matter your marketing endpoint, this guy brings value to the table.
- Top 3% REA, top 10% CW, top 15% ADG, top 20% YW, top 25% WW, top 35% DOC.

Lot 8

HANELS HARDWOOD L3508

GGP

4305415

BW: 91 • Scan Wt: 1594

PB SM • 8/23/23

SIRE VJT DRIFTWOOD E55
HARMS HARDWOOD
TJ 41Z

DAM CCR COWBOY CUT 5048Z
HANELS MISS COWBOY CUT G9502
HANELS MISS LEGEND W983

SCAN DATA Adj. IMF: 2.36 • Adj. BF: 0.26 • Adj. REA: 16.86

CE	BW	WW	YW	ADG	MCE	MLK	MW	STY	DOC	CW	YG	MRB	BF	REA	API	TI
10.1	2.4	96.4	142.8	0.29	5	24.9	72.9	16.1	12.7	42.1	-0.47	0.21	-0.1	1.07	140.1	91.1

- L3508 is a pounds heavy, big ribeye measuring herd sire.
- You'll see the cross of Harms Hardwood on CCR Cowboy Cut 5048Z lined females many times in this offering. It's a mating we love because it works so well.
- Big league growth bull to add pounds of payweight to a set of good SimAngus steers.
- Top 10% WW, YW, top 15% CW, REA, top 20% ADG, TI, top 35% MILK.

CCR COWBOY CUT 5048Z - MATERNAL GRANDSIRE OF LOTS 8-13



THE AGE ADVANTAGED BULLS

Lot 9

HANELS HARDWOOD L3539

4305435

GGP

BW: 89 • Scan Wt: 1386

PB SM • 9/5/23

SIRE VJT DRIFTWOOD E55
HARMS HARDWOOD
TJ 41Z

DAM CCR COWBOY CUT 5048Z
HANELS MISS COWBOY CUT G9517
M4 MS CAPITAL GAINS C75

SCAN DATA Adj. IMF: 2.54 • Adj. BF: 0.3 • Adj. REA: 14.97

CE	BW	WW	YW	ADG	MCE	MLK	MW	STY	DOC	CW	YG	MRB	BF	REA	API	TI
10.5	1.5	76.8	108.9	0.2	5.6	20.8	59.1	19.4	12.3	24.1	-0.43	0.29	-0.09	0.86	144	81.4

- Hanel Hardwood L3539 posts solid performance across the board.
- He will make a positive contribution to many commercial outfits with his genetic profile.
- Keep the daughters with their longevity and the steers will make waves on the grid with marbling.
- Top 15% STAY, top 30% MARB, top 35% API.

Lot 10

HANELS HARDWOOD L3544

4305422

GGP

BW: 82 • Scan Wt: 1366

PB SM • 9/8/23

SIRE VJT DRIFTWOOD E55
HARMS HARDWOOD
TJ 41Z

DAM CCR COWBOY CUT 5048Z
HANELS MISS COWBOY CUT G9512
HANELS MISS LEGEND W983

SCAN DATA Adj. IMF: 2.41 • Adj. BF: 0.14 • Adj. REA: 15.9

CE	BW	WW	YW	ADG	MCE	MLK	MW	STY	DOC	CW	YG	MRB	BF	REA	API	TI
13.2	2.6	102.5	154.2	0.32	6.7	24.9	76	16.4	12.7	50.9	-0.4	0.29	-0.09	1.06	151	96.8

- Heavy weighing brute from a genetic cross that has been a staple of our breeding program.
- Absolutely loaded genetic profile on this fella: growth, carcass, and maternal all in one.
- Top 2% WW, top 4% YW, CW, top 10% ADG, TI, top 15% REA, top 25% API, top 30% CED, MARB, top 35% MCE, MILK.

Lot 11

HANELS HARDWOOD L3546

4305377

GGP

BW: 86 • Scan Wt: 1248

PB SM • 9/9/23

SIRE VJT DRIFTWOOD E55
HARMS HARDWOOD
TJ 41Z

DAM CCR COWBOY CUT 5048Z
HANELS MISS COWBOY CUT F8506
M4 MS CAPITAL GAINS C75

SCAN DATA Adj. IMF: 1.99 • Adj. BF: 0.15 • Adj. REA: 16.54

CE	BW	WW	YW	ADG	MCE	MLK	MW	STY	DOC	CW	YG	MRB	BF	REA	API	TI
11	0.8	81.6	113.7	0.2	6	20.8	61.5	18.3	12.3	38.5	-0.47	0.06	-0.08	1.18	132.6	79.4

- Big ribeye bull at over 16.5-inch measurement.
- Carcass cutability will be the specialty of his progeny in your program.
- Assemble a group of these ¾ brothers to go to work for you.
- Top 5% REA, top 20% STAY, CW.

Lot 12

HANELS HARDWOOD L3548

4305375

GGP

BW: 86 • Scan Wt: 1384

PB SM • 9/10/23

SIRE VJT DRIFTWOOD E55
HARMS HARDWOOD
TJ 41Z

DAM CCR COWBOY CUT 5048Z
HANELS MISS COWBOY CUT F8508
TJ 59X

SCAN DATA Adj. IMF: 2.34 • Adj. BF: 0.26 • Adj. REA: 15.58 Homo Black

CE	BW	WW	YW	ADG	MCE	MLK	MW	STY	DOC	CW	YG	MRB	BF	REA	API	TI
10.2	0	85.9	125.2	0.25	6.3	25.8	68.6	18.1	12.5	34.6	-0.34	0.2	-0.07	0.83	142.4	86.6

- Hanel Hardwood L3548 is a special purebred stud that offers a lot of good to whoever gets the bid.
- Low birth to high growth spread on his EPD profile, with additional maternal excellence.
- Homozygous black.
- Top 25% BW, WW, STAY, top 30% MILK, CW, TI, top 35% YW, API.

Lot 13

HANELS HARDWOOD L3564

4305409

GGP

BW: 93 • Scan Wt: 1376

PB SM • 9/30/23

SIRE VJT DRIFTWOOD E55
HARMS HARDWOOD
TJ 41Z

DAM CCR COWBOY CUT 5048Z
HANELS MISS COWBOY CUT G9511
HANELS MISS LEGEND W983

SCAN DATA Adj. IMF: 2.47 • Adj. BF: 0.25 • Adj. REA: 15.3

CE	BW	WW	YW	ADG	MCE	MLK	MW	STY	DOC	CW	YG	MRB	BF	REA	API	TI
11.6	2.3	93.7	139.5	0.29	5.8	24.9	71.6	18.6	12.7	38.5	-0.39	0.22	-0.08	0.99	146.3	89.7

- Strong performance for this guy on the scale and in his carcass scan.
- Growth performance and maternal excellence all in one package as you come to expect from this genetic cross.
- Position yourself for the future with a pen of replacement females from this stud.
- Top 10% WW, top 15% YW, top 20% ADG, STAY, top 25% REA, TI, top 30% API, top 35% MILK.



THE AGE ADVANTAGED BULLS

Lot 14



Lot 14

HANELS HARDWOOD L3562

GGP

4305379

BW: 92 • Scan Wt: 1344

PB SM • 9/25/23

SIRE VJT DRIFTWOOD E55
HARMS HARDWOOD
TJ 41Z

DAM OMF EPIC E27
HANELS MISS EPIC J1517
HANELS MISS COWBOY CUT G9502

SCAN DATA Adj. IMF: 2.89 • Adj. BF: 0.2 • Adj. REA: 14.62

CE	BW	WW	YW	ADG	MCE	MLK	MW	STY	DOC	CW	YG	MRB	BF	REA	API	TI
10.6	-1.3	79.1	119.8	0.25	4.9	24.4	63.8	16.3	12.9	43.6	-0.46	0.19	-0.11	1.07	140.3	84.8

- Style to burn yet still loaded with shape in his top and quarter, here is a bull that combines look and function into a top age advantaged bull prospect.
- Impressive 2.89 IMF ranks highly among the older bull offering.
- Genetic merits offer low birth and carcass yield to the next generation.
- Top 15% BW, REA, CW, top 35% DOC, TI.

Lot 15

HANELS HARDWOOD L3565

GGP

4305434

BW: 89 • Scan Wt: 1280

PB SM • 10/3/23

SIRE VJT DRIFTWOOD E55
HARMS HARDWOOD
TJ 41Z

DAM OMF EPIC E27
HANELS MISS EPIC 1520
HANELS MISS BROAD E7509

SCAN DATA Adj. IMF: 1.62 • Adj. BF: 0.16 • Adj. REA: 15.05

CE	BW	WW	YW	ADG	MCE	MLK	MW	STY	DOC	CW	YG	MRB	BF	REA	API	TI
11.6	0.3	82.1	118.6	0.23	5.7	23.4	64.8	14.9	11.5	34.9	-0.32	0.35	-0.07	0.8	143.7	87.5



OMF EPIC E27 - MATERNAL GRANDSIRE OF LOTS 14 & 15

- A neat pedigree, stacking the Harms Hardwood mainstay sire on top of an OMF Epic E27 dam.
- An excellent choice to make top tier SimAngus calf crops from your program.
- Improve your crop's carcass traits with a bull like L3565.
- Top 25% MARB, top 30% BW, CW, TI, top 35% API.

THE AGE ADVANTAGED BULLS

Lot 16



Lot 16

HANELS HARDWOOD L3532

4305413

BW: 88 • Scan Wt: 1504

PB SM • 8/30/23

SIRE VJT DRIFTWOOD E55
HARMS HARDWOOD
TJ 41Z

DAM ELLINGSON OLIE W908
HANELS MISS OLIE Z2205
T785 DRIVE HBS

SCAN DATA Adj. IMF: 2.5 • Adj. BF: 0.25 • Adj. REA: 16.55

CE	BW	WW	YW	ADG	MCE	MLK	MW	STY	DOC	CW	YG	MRB	BF	REA	API	TI
11.2	2.8	82.8	127.9	0.28	5.6	26.5	67.7	16.2	11.3	42.7	-0.5	0.1	-0.1	1.22	130.5	80.4

- As deep bodied and bold ribbed as any bull in the offering, L3532 is also stout featured standing on a big foot and bone.
- One of the leading growth bulls in the group coupled with a 16.5-inch ribeye area. He is certain to add value to a set of feeder cattle!
- Genetic profile is loaded with power traits.
- This bull does a lot of things right to make him a sale feature.
- Top 4% REA, top 15% CW, top 25% ADG, MILK, top 30% YW, top 35% WW.

Lot 17

HANELS HARDWOOD L3503

4305384

BW: 85 • Scan Wt: 1510

PB SM • 8/21/23

SIRE VJT DRIFTWOOD E55
HARMS HARDWOOD
TJ 41Z

DAM KOCH BIG TIMBER 685D
HANELS MISS BIG TIMBER F8507
HANELS MISS RANCH D6015

SCAN DATA Adj. IMF: 2.14 • Adj. BF: 0.23 • Adj. REA: 16.84

CE	BW	WW	YW	ADG	MCE	MLK	MW	STY	DOC	CW	YG	MRB	BF	REA	API	TI
12.9	-0.7	81.1	121.4	0.25	5.9	20.9	61.4	16.3	12	35.1	-0.3	0.13	-0.07	0.75	138.4	82.9



KOCH BIG TIMBER 685D - MATERNAL GRANDSIRE OF LOT 17

- Here is a big, stout Harms Hardwood son with a monster REA.
- Mashed the scales at 1,510 lbs., making him one of the heaviest bulls in this class.
- He should sire progeny that come with ease and offer tremendous growth.
- Top 20% BW, top 30% CED, CW.

THE AGE ADVANTAGED BULLS

Lot 18

HANELS HARDWOOD L3541

GGP
4305391

BW: 88 • Scan Wt: 1401

PB SM • 9/6/23

SIRE VJT DRIFTWOOD E55
HARMS HARDWOOD
TJ 41Z

DAM HANELS PALE FACE A3024
HANELS MISS PALE E7527
T702 BEEF HBS

SCAN DATA Adj. IMF: 2.57 • Adj. BF: 0.19 • Adj. REA: 14.4

CE	BW	WW	YW	ADG	MCE	MLK	MW	STY	DOC	CW	YG	MRB	BF	REA	API	TI
11.4	0.6	76.7	107.5	0.19	5.2	23.3	61.5	18	12	24.7	-0.55	0.04	-0.11	1.04	130.4	76.9

- Hanel Hardwood L3541 is a stockman's bull with respectable performance data.
- His dam is a Hanel Pale Face A3024 daughter who raises a good one each year.
- You'll appreciate his daughters and their productivity with his upper quarter STAY EPD.
- Top 15% REA, top 25% STAY, top 35% BW.

Lot 19

HANELS HARDWOOD L3538

GGP
4305408

BW: 79 • Scan Wt: 1410

3/4 SM 1/4 AN • 9/3/23

SIRE VJT DRIFTWOOD E55
HARMS HARDWOOD
TJ 41Z

DAM BAR CK TEBOW 1006X
BAR CK MS 1006X 5155C
BAR CK MS 9106 3125A

SCAN DATA Adj. IMF: 2.84 • Adj. BF: 0.24 • Adj. REA: 16.3

CE	BW	WW	YW	ADG	MCE	MLK	MW	STY	DOC	CW	YG	MRB	BF	REA	API	TI
15.4	-3.5	61.1	94.1	0.21	7.9	23.7	54.1	16.2	9.7	7.3	-0.25	0.65	-0.04	0.43	155.5	83.2

- Study this one for performance traits.
- He is one of the best of the bunch for low birth weight and high marbling.
- Elite calving ease and high marbling genetic package on his EPD sheet.
- Top 2% BW, top 4% MARB, top 10% CED, top 20% MCE, API.

Lot 20

HANELS HARDWOOD L3513

GGP
4305414

BW: 81 • Scan Wt: 1446

3/4 SM 1/4 AN • 8/25/23

SIRE VJT DRIFTWOOD E55
HARMS HARDWOOD
TJ 41Z

DAM TJ BAR NONE 413B
TJ MISS 824E
TJ 132B

SCAN DATA Adj. IMF: 2.67 • Adj. BF: 0.35 • Adj. REA: 15.52 Homo Black

CE	BW	WW	YW	ADG	MCE	MLK	MW	STY	DOC	CW	YG	MRB	BF	REA	API	TI
14.7	-0.1	82.8	122.7	0.25	8	24	65.3	17.2	13.2	46.5	-0.17	0.21	-0.04	0.7	133.8	80.6

- Another good Harms Hardwood son out of a hard-working Triangle J bred dam that is a 2017 model.
- Study his EPD figures and you will realize he is a multi-trait improving bull.
- Carcass weight and calving ease highlight this impressive genetic layout.
- Homozygous black.
- Top 10% CW, top 15% CED, top 20% MCE, top 25% BW, top 30% DOC, top 35% WW, STAY.

Lot 21

HANELS HARDWOOD L3518

GGP
4305380

BW: 93 • Scan Wt: 1450

3/4 SM 1/4 AN • 8/26/23

SIRE VJT DRIFTWOOD E55
HARMS HARDWOOD
TJ 41Z

DAM TJ HIGH BET 236X
HANELS MISS BET A3240
ES X51

SCAN DATA Adj. IMF: 2.32 • Adj. BF: 0.3 • Adj. REA: 19.49

CE	BW	WW	YW	ADG	MCE	MLK	MW	STY	DOC	CW	YG	MRB	BF	REA	API	TI
8	2.8	88.2	138.1	0.31	3	26.9	70.9	14.1	12.2	42.9	-0.52	-0.02	-0.11	1.17	106.4	76

- Measured with the largest REA in this age group at 19.49 sq. inches.
- A powerful bull that will do a lot of good things when bred to a group of mature cows.
- Add pounds and performance all the way through the marketing chain.
- Top 5% REA, top 15% YW, ADG, CW, top 20% WW, top 25% MILK.

Lot 22

HANELS HARDWOOD L3523

GGP
4305421

BW: 90 • Scan Wt: 1320

3/4 SM 1/4 CH • 8/28/23

SIRE VJT DRIFTWOOD E55
HARMS HARDWOOD
TJ 41Z

DAM LT-WC TEMPLETON 1483 PLD ET
HANELS MISS TEMPLE C5203
HANELS MISS MO Z2238

SCAN DATA Adj. IMF: 2.33 • Adj. BF: 0.23 • Adj. REA: 16.84

CE	BW	WW	YW	ADG	MCE	MLK	MW	STY	DOC	CW	YG	MRB	BF	REA	API	TI
9.4	2.8	70.7	105.6	0.22	4.3	17.3	54.6	12.3	9.8	35.9	-0.47	0	-0.1	1.04	97.3	64.6

- This Harms Hardwood sire group is loaded with quality from start to finish.
- Take advantage of multiple sons that fit your program and put them to work.
- Measured a big 16.8 REA to improve carcass cutout on the rail.
- Top 15% REA, top 30% CW.

Lot 23

HANELS HARDWOOD L3533

GGP
4305428

BW: 82 • Scan Wt: 1454

3/4 SM 1/4 CH • 8/31/23

SIRE VJT DRIFTWOOD E55
HARMS HARDWOOD
TJ 41Z

DAM LT-WC TEMPLETON 1483 PLD ET
HANELS MISS TEMPLE C5214
HANELS MISS HUMMER Z2046

SCAN DATA Adj. IMF: 2.17 • Adj. BF: 0.26 • Adj. REA: 18.79

CE	BW	WW	YW	ADG	MCE	MLK	MW	STY	DOC	CW	YG	MRB	BF	REA	API	TI
14.3	-0.7	69.5	112.2	0.27	7.2	20.5	57.4	15.6	9.5	39.3	-0.52	0.07	-0.11	1.17	122.3	71.9

- Registers the #3 largest REA measurement of his sale contemporaries.
- Strong genetic combination of carcass and calving ease.
- Top 5% REA, top 20% CED, BW, CW, top 30% ADG, MCE.

THE AGE ADVANTAGED BULLS

Lot 24



Lot 24

WSCC/HANEL HEISMAN L69



4370163

BW: 81 • Scan Wt: 1636

PB SM • 9/4/23

SIRE TJ HEISMAN 388F
CCR HEISMAN 6056H

CCR MS WIDE RANGE 6056D

DAM CCR COWBOY CUT 5048Z
WHITESTAR MOLLY 22G

WHITE STAR BLK GLOW 123S

SCAN DATA Adj. IMF: 1.68 • Adj. BF: 0.31 • Adj. REA: 15.39

CE	BW	WW	YW	ADG	MCE	MLK	MW	STY	DOC	CW	YG	MRB	BF	REA	API	TI
8.3	2.2	88.1	134.2	0.29	5.3	22.1	66.1	14.4	13.4	37.1	-0.37	0.31	-0.08	0.9	136.9	87.9

- A rugged, dense made herd sire prospect that will make a lot of friends on sale day.
- Well-balanced with loads of shape from all angles.
- This son of CCR Heisman 6065H certainly knows how to strike a pose.
- Combines growth and carcass quality in a strong genetic package.
- Top 20% WW, YW, ADG, top 25% CW, top 30% DOC, MARB, TI.

Lot 25

WSCC/HANEL HEISMAN L43



4370158

BW: 77 • Scan Wt: 1574

3/4 SM 1/4 AN • 8/9/23

SIRE TJ HEISMAN 388F
CCR HEISMAN 6056H

CCR MS WIDE RANGE 6056D

DAM HOOKS ABSOLUTE 75A
E02

J-J454B

SCAN DATA Adj. IMF: 3.11 • Adj. BF: 0.32 • Adj. REA: 17.53

CE	BW	WW	YW	ADG	MCE	MLK	MW	STY	DOC	CW	YG	MRB	BF	REA	API	TI
9.5	0.1	73.6	120.6	0.29	6.4	24.5	61.2	10	10.9	20.2	-0.25	0.57	-0.04	0.59	130.9	84.1

- His combination of explosive growth, light birth weight, and carcass scan merits make him one of the top overall performance bulls.
- The CCR Heisman 6056H sons have some growth and power to them.
- Genetic figures indicate additional carcass quality from his progeny with an elite MARB EPD.
- Top 10% MARB, top 20% ADG, top 30% BW.



THE AGE ADVANTAGED BULLS

Lot 26



CCS/JS DOC 48H - SIRE OF LOT 26



HANELS HIGH ROAD K2504 - MATERNAL BROTHER TO LOT 26

Lot 26

HANELS DOC L3530

GGP

4305396

BW: 89 • Scan Wt: 1418

PB SM • 8/29/23

SIRE CDI INNOVATOR 325D

DAM HANELS COWBOY CUT D6208

CCS/JS DOC 48H

HANELS MISS COWBOY CUT H0537

WHF SUMMER 365C

HANELS MISS AXIS C5110

SCAN DATA Adj. IMF: 3.42 • Adj. BF: 0.41 • Adj. REA: 16.07

CE	BW	WW	YW	ADG	MCE	MLK	MW	STY	DOC	CW	YG	MRB	BF	REA	API	TI
9.9	3.6	92.8	137.8	0.28	6.1	20.2	66.5	14.2	10	36.5	-0.3	0.15	-0.06	0.8	128.1	84.6

- A well-balanced rascal with a level top, strong hip, and herd bull presence.
- The only CCS/JS Doc 48H son in this older group, Hanel Doc L3530 posted the #3 IMF score in the sale at 3.42.
- An EPD profile like his should be sought after for breeders wanting to go pounds heavy.
- Top 10% WW, top 15% YW, top 25% ADG, CW, top 35% TI.

THE AGE ADVANTAGED BULLS



CDI INNOVATOR 325D - PATERNAL GRANDSIRE OF LOTS 28-29

Lot 27

GGP

WSCC/HANEL INNOVATOR L67

4370162

BW: 78 • Scan Wt: 1434

1/2 SM 1/2 AN • 9/3/23

SIRE CDI INNOVATOR 325D
JS INNOVATOR 39G
CLRS DAIRY QUEEN 606D

DAM KR CASINO 6243
WHITE STAR QUEEN 34F
ACR DONNA 4175

SCAN DATA Adj. IMF: 3.13 • Adj. BF: 0.35 • Adj. REA: 14.64 Homo Polled

CE	BW	WW	YW	ADG	MCE	MLK	MW	STY	DOC	CW	YG	MRB	BF	REA	API	TI
11.3	-1.4	64.3	98.9	0.22	6.1	26.9	59.4	14.6	12.9	38.8	-0.04	0.26	-0.01	0.4	121.6	71.6

- Low birth, big IMF (3.13) SimAngus bull worthy of extra consideration.
- His birth weight measurement and genetic data point to him being one of the easiest calving prospects in this age group.
- Homozygous polled.
- Top 10% BW, top 20% CW, top 25% MILK, top 35% DOC, MARB.

Lot 29

GGP

WSCC/HANEL INNOVATOR L81

4370165

BW: 82 • Scan Wt: 1536

3/4 SM 1/8 AN 1/8 CS • 9/13/23

SIRE CDI INNOVATOR 325D
JS INNOVATOR 39G
CLRS DAIRY QUEEN 606D

DAM SC PAY IN CASH C15
WSCC MS CASH 51G
MCC 38

SCAN DATA Adj. IMF: 1.79 • Adj. BF: 0.28 • Adj. REA: 15.27

CE	BW	WW	YW	ADG	MCE	MLK	MW	STY	DOC	CW	YG	MRB	BF	REA	API	TI
13.7	0	90.5	141	0.32	7.4	25.2	70.3	11	13.6	67.2	-0.27	0.25	-0.06	1.14	126.8	87

- A brute of a herd bull, mashing the scales at 1,536 lb.
- L81 is a well-rounded bull that suits the most discriminating buyer.
- One of the most impressive data sets in the sale group. There aren't many traits he doesn't rank highly for.
- Top 1% CW, top 10% ADG, REA, top 15% WW, YW, top 25% CED, BW, MCE, top 30% DOC, TI, top 35% MILK, MARB.

Lot 28

GGP

WSCC/HANEL INNOVATOR L75

4370164

BW: 70 • Scan Wt: 1492

1/2 SM 1/4 AN 1/4 MX • 9/7/23

SIRE CDI INNOVATOR 325D
JS INNOVATOR 39G
CLRS DAIRY QUEEN 606D

DAM WSCC ANGUS
WSCC 102E
WSCC ANGUS

SCAN DATA Adj. IMF: 2.96 • Adj. BF: 0.33 • Adj. REA: 14.37

CE	BW	WW	YW	ADG	MCE	MLK	MW	STY	DOC	CW	YG	MRB	BF	REA	API	TI
16.4	-1.8	76.1	122.6	0.29	9.6	21.6	59.5	8.6	15.9	37.6	-0.07	0.41	-0.01	0.51	131.2	83.6

- Calving ease JS Innovator 39G son came at only 70 lb.
- Use this composite bull for an added shot of hybrid vigor on a set of commercial Angus cows.
- An IMF of almost 3.0 puts him in the upper tier of these age advantaged bulls.
- Top 5% CED, MCE, top 10% BW, DOC, top 20% ADG, MARB, top 25% CW.



WSCC/HANEL CIMARRON K49 - MATERNAL BROTHER TO LOT 28

THE AGE ADVANTAGED BULLS

Lot 30



Lot 30

HANELS OUTER LIMITS L3520

4305381

BW: 81 • Scan Wt: 1500

PB SM • 8/26/23

SIRE RUBYS TURNPIKE 771E
RUBYS OUTER LIMITS 935G
RUBYS LINDA 721E

DAM TNT AXIS X307
HANELS MISS AXIS E7051
BROOKS MISS RENE

SCAN DATA Adj. IMF: 2.33 • Adj. BF: 0.37 • Adj. REA: 19.36

CE	BW	WW	YW	ADG	MCE	MLK	MW	STY	DOC	CW	YG	MRB	BF	REA	API	TI
11	3.4	96.3	148.2	0.32	5.3	30.7	78.7	11.5	13.8	40	-0.55	0.11	-0.09	1.39	126.3	88.9

- A top end purebred in this age division that you will admire for his rib capacity and smooth muscle pattern. Hanel's Outer Limits L3520 measured with the second largest ribeye area in the entire sale.
- His genetic data indicates to use him in a program to add power and performance.
- Top 1% REA, top 10% WW, YW, ADG, MILK, top 20% CW, top 25% DOC, TI.



RUBYS OUTER LIMITS 935G - SIRE OF LOT 30



THE AGE ADVANTAGED BULLS



LCDR FAVOR 149F - SIRE OF LOT 31

Lot 31 HANELS FAVOR L3516

GGP

4305374

BW: 86 • Scan Wt: 1288

PB SM • 8/26/23

SIRE LCDR WITNESS 541C
LCDR FAVOR 149F
WS MISS SUGAR C4

DAM HANELS TOP TEN D6012
HANELS MISS TOP TEN F8521
HANELS MISS NLC X008

SCAN DATA Adj. IMF: 3.1 • Adj. BF: 0.32 • Adj. REA: 17.9

CE	BW	WW	YW	ADG	MCE	MLK	MW	STY	DOC	CW	YG	MRB	BF	REA	API	TI
11.9	-0.3	85	127.1	0.26	5.8	19	61.4	16.4	13.5	32.2	-0.29	0.27	-0.05	0.77	145.7	87.8

- A top carcass scanning bull when you consider both his IMF and REA scores.
- The only LCDR Favor 149F son in the fall born class sale offers an outcross pedigree to many of our prominent bloodlines.
- A balanced genetic profile that excels on birth to yearling spread, carcass, and both indexes.
- Top 25% BW, top 30% WW, YW, DOC, API, TI, top 35% ADG, MARB.

Lot 32 HANELS FIREPROOF L3522

GGP

4305411

BW: 89 • Scan Wt: 1464

3/4 SM 1/4 AN • 8/27/23

SIRE EGL FIRESTEEL 103F
LCDR FIREPROOF 206H
WS MISS SUGAR C4

DAM CCR COWBOY CUT 5048Z
HANELS MISS CUT F8013
TJ 59X

SCAN DATA Adj. IMF: 3.38 • Adj. BF: 0.26 • Adj. REA: 14.7 Homo Polled Homo Black

CE	BW	WW	YW	ADG	MCE	MLK	MW	STY	DOC	CW	YG	MRB	BF	REA	API	TI
8	4.6	90.9	139.2	0.3	2.9	26.6	71.9	15.8	17.1	51.7	-0.36	0.64	-0.07	1.12	142.7	91.1

- Hanels Fireproof L3522 is a strong ¾ Simmental herd bull prospect.
- 3.38 IMF ranks in the elites of the sale. Take notice if you feed out your steers.
- Smoking good data sheet on this guy, loaded with carcass quality.
- Homozygous black. Homozygous polled.
- Top 4% DOC, CW, MARB, top 10% REA, top 15% WW, YW, ADG, top 20% TI, top 25% MILK, top 35% API.

Lot 33 HANELS FIREPROOF L3535

GGP

4305437

BW: 89 • Scan Wt: 1266

5/8 SM 3/8 AN • 8/31/23

SIRE EGL FIRESTEEL 103F
LCDR FIREPROOF 206H
WS MISS SUGAR C4

DAM JMB TRACTION 292
M4 MS ATTRACTION Y85F
SFI BETTY SUE Y85T

SCAN DATA Adj. IMF: 3.44 • Adj. BF: 0.21 • Adj. REA: 14.24 Homo Polled

CE	BW	WW	YW	ADG	MCE	MLK	MW	STY	DOC	CW	YG	MRB	BF	REA	API	TI
9.3	1.4	74.2	118.9	0.28	1.5	28.1	64.8	15.5	9.9	37.4	-0.2	0.64	-0.03	0.76	142.6	84.6

- Don't overlook this LCDR Fireproof 206H son.
- The #2 IMF scan in the sale group (3.44) coupled with an elite MARB EPD.
- Ranks well for both the API and TI indexes to showcase his genetic prowess.
- Homozygous polled.
- Top 4% MARB, top 15% MILK, top 25% ADG, CW, top 35% API, TI.



HANELS EPIC K2529 - MATERNAL BROTHER TO LOT 33

THE AGE ADVANTAGED BULLS



CONNELY COMRADE 1385 SIRE OF LOT 34

Lot 34

HANELS COMRADE L3504



4305405

BW: 72 • Scan Wt: 1468

1/2 SM 1/2 AN • 8/21/23

SIRE CONNEALY CONSENSUS 7229

DAM KOCH BIG TIMBER 685D

CONNELY COMRADE 1385

HANELS MISS TIMBER H0507

HAPPY GEE OF CONANGA 919

HANELS MISS DIVIDEND F8502

SCAN DATA Adj. IMF: 3.96 • Adj. BF: 0.37 • Adj. REA: 14.53 Homo Polled

CE	BW	WW	YW	ADG	MCE	MLK	MW	STY	DOC	CW	YG	MRB	BF	REA	API	TI
19	-3.6	71.4	120.8	0.31	8.4	23.9	60.6	11.5	13.7	49.8	-0.08	0.33	0	0.79	138.7	81.9

- Light birth SimAngus option influenced by prominent Connealy Angus genetics.
- The top IMF score bull in the age advantaged group with an outstanding 3.96.
- A top line genetic profile for calving ease and carcass traits.
- Homozygous polled.
- Top 1% CED, top 2% BW, top 5% CW, top 15% ADG, MCE, top 25% DOC, MARB.

Lot 35

HANELS COMRADE L3534



4305406

BW: 89 • Scan Wt: 1542

1/2 SM 1/2 AN • 8/31/23

SIRE CONNEALY COMRADE 1385

DAM CONNEALY STIMULUS 8419

HANELS COMRADE H0030

HANELS MISS STIM A3038

HANELS MISS VASION W919

HANELS MISS VASION W940

SCAN DATA Adj. IMF: 3.18 • Adj. BF: 0.23 • Adj. REA: 14.55

CE	BW	WW	YW	ADG	MCE	MLK	MW	STY	DOC	CW	YG	MRB	BF	REA	API	TI
10.5	4	86.6	135.4	0.31	4.7	27.5	70.8	21.7	11.1	51.9	-0.23	0.36	-0.04	0.98	141.2	82.1

- A growthy rascal with a strong IMF score on his performance ledger.
- An excellent balanced EPD profile that hits high marks for growth, carcass, and longevity.
- Top 3% STAY, top 4% CW, top 15% ADG, top 20% YW, MILK, top 25% WW, MARB, REA.



THE AGE ADVANTAGED BULLS

Lot 36



Lot 36

HANELS SAFE & SOUND L3512

4305420

BW: 78 • Scan Wt: 1430

1/2 SM 1/2 AN • 8/25/23

SIRE MILL BRAE IDENTIFIED 4031
HF SAFE & SOUND 019
HF EMPRESS 804

DAM LRS ELEVATE 213B
HANELS MISS ELE E7062
HANELS MISS LEGEND W983

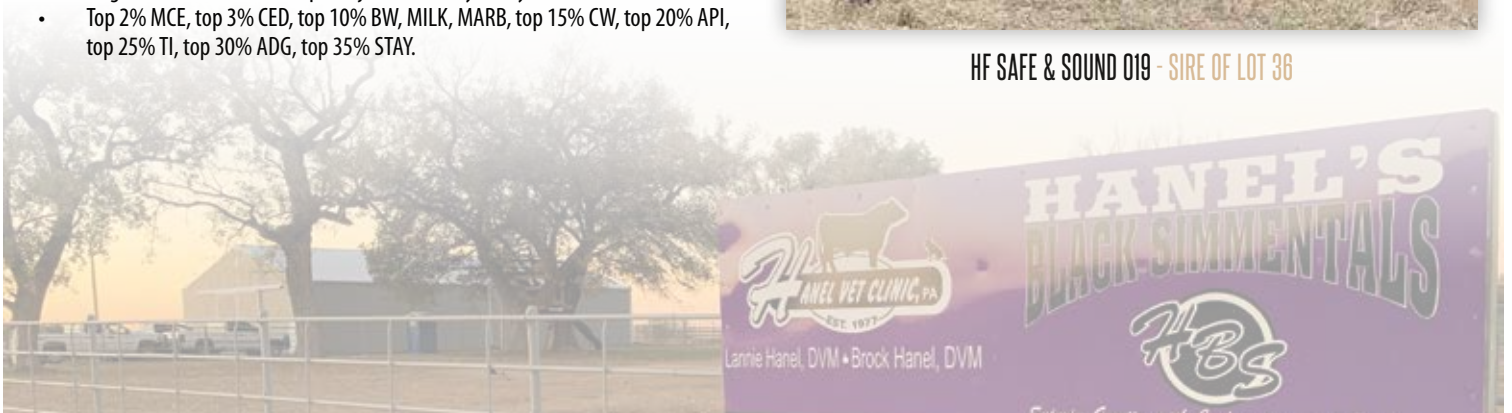
SCAN DATA Adj. IMF: 2.35 • Adj. BF: 0.35 • Adj. REA: 14.59

CE	BW	WW	YW	ADG	MCE	MLK	MW	STY	DOC	CW	YG	MRB	BF	REA	API	TI
17.5	-1.4	78.4	122.1	0.27	10.8	31	70.6	17.1	6.8	44.1	-0.02	0.55	0.02	0.68	157	88.8

- Loaded with depth, shape, and power, this is the epitome of a cowboy kind of bull in the age advantaged section.
- A sale feature with his outcross pedigree and leading performance metrics.
- Huge data sheet! He can improve just about any trait you choose to select for.
- Top 2% MCE, top 3% CED, top 10% BW, MILK, MARB, top 15% CW, top 20% API, top 25% TI, top 30% ADG, top 35% STAY.



HF SAFE & SOUND 019 - SIRE OF LOT 36



THE AGE ADVANTAGED BULLS

Lot 37



Lot 37

WSCC/HANEL CASINO L70

GGP
4370166

BW: 75 • Scan Wt: 1442

3/8 SM 9/16 AN 1/16 CS • 9/5/23

SIRE KR CASINO 6243

WHITE STAR CASINO H40

ACR EVER ENTENSE 5108

DAM CCR CIMARRON 4506F

WHITE STAR CHEERLEADER 75J

WSCC MS CASH 43F

SCAN DATA Adj. IMF: 2.79 • Adj. BF: 0.22 • Adj. REA: 12.04

CE	BW	WW	YW	ADG	MCE	MLK	MW	STY	DOC	CW	YG	MRB	BF	REA	API	TI
9.7	2.9	82.4	126.5	0.28	5	24.9	66.4	9.4	7.2	51.8	-0.06	0.25	-0.04	0.39	104.9	75.1

- As impressive as you will find in the pens on the hoof, here is an extended, powerful, bold ribbed herd sire prospect.
- Only 75 lb. at birth, he is a bull with an impressive growth curve.
- Excellent genetic script for cattlemen looking to make multi trait improvement.
- Top 4% CW, top 25% ADG, top 35% WW, YW, MILK, MARB.



KR CASINO 6243 - PATERNAL GRANDSIRE OF LOT 37



THE AGE ADVANTAGED BULLS



SFI BACK 2 BASICS J2 - SIRE OF LOT 38



TJ GOLD 274G - SIRE OF LOTS 39 & 40



WSCC/HANEL HONOR K53 - MATERNAL BROTHER TO DAM OF LOT 39



ES RIGHT TIME FA110-4 - MATERNAL GRANDSIRE OF LOT 39

Lot 38

GGP

HANELS BACK 2 BASICS L3559

4305393

BW: 93 • Scan Wt: 1418

PB SM • 9/19/23

SIRE RUBY'S CURRENCY 7134E

DAM HANELS DOWN C5067

SFI BACK 2 BASICS J2

HANELS MISS DOWN E7204

KWIN RELNTLES RILEY E913

HANELS MISS UNITED B4551

SCAN DATA Adj. IMF: 2.82 • Adj. BF: 0.25 • Adj. REA: 13.14

CE	BW	WW	YW	ADG	MCE	MLK	MW	STY	DOC	CW	YG	MRB	BF	REA	API	TI
9.4	1.7	76.7	108.7	0.2	5.6	22.7	61.1	14.6	11	23.3	-0.16	0.22	-0.05	0.29	127.3	78

- Combines solid IMF performance with a unique top side of his pedigree.
- IMF of 2.82 will move a set of steers forward while adding growth and shape.

Lot 39

GGP

WSCC/HANEL GOLD L44

4370159

BW: 80 • Scan Wt: 1610

PB SM • 8/11/23

SIRE HOOK'S EAGLE 6E

DAM ES RIGHT TIME FA110-4

TJ GOLD 274G

WHITE STAR CHEERLEADER 53J

TJ 12C

WHITE STAR BLK GLOW 60W

SCAN DATA Adj. IMF: 2.92 • Adj. BF: 0.32 • Adj. REA: 16.81

CE	BW	WW	YW	ADG	MCE	MLK	MW	STY	DOC	CW	YG	MRB	BF	REA	API	TI
14.3	-0.2	84.9	134	0.31	8.7	24	66.5	16.7	12.7	32	-0.14	0.59	-0.03	0.52	167.1	96

- Purebred prospect that hits the mark on all his individual performance figures.
- The genetic makeup on L44 is hard to ignore when you dive into the data.
- One of the top bulls in the sale when studying both API and TI together.
- Top 10% MARB, API, TI, top 15% MCE, top 20% CED, YW, top 25% BW, top 30% WW.

Lot 40

GGP

WSCC/HANEL GOLD L50

4370161

BW: 76 • Scan Wt: 1438

PB SM • 8/18/23

SIRE HOOK'S EAGLE 6E

DAM KBHR SNIPER E036

TJ GOLD 274G

WHITE STAR ABBY 62J

TJ 12C

WHITE STAR ABBY 52A

SCAN DATA Adj. IMF: 2.6 • Adj. BF: 0.26 • Adj. REA: 17.7 Hetero Black

CE	BW	WW	YW	ADG	MCE	MLK	MW	STY	DOC	CW	YG	MRB	BF	REA	API	TI
15.8	-1.4	74.6	112.9	0.24	8.8	21.1	58.2	15.8	11.1	21.3	-0.26	0.38	-0.05	0.53	153.1	86.1

- Calving ease, big ribeye, purebred son of breed leading sire TJ Gold 274G.
- 17.7 on his REA is one of the best in these older bulls.
- Add carcass quality while breeding heifers to make genetic progress.
- Top 10% CED, BW, MCE, top 20% MARB, top 25% API, top 35% TI.

THE JOURNEYMAN SIRE GROUP

Lot 41



Lot 41

HANELS JOURNEYMAN M4117

4376548

BW: 92 • Adj WW: 755 • Scan Wt: 1371

PB SM • 1/25/24

SIRE MR SR MIC DROP G1534
OMF JOURNEYMAN J24
OMF DEKA D23

DAM RUBY'S CURRENCY 7134E
M4 MS HEARTBREAKER D35G
SFI MISS HEART THROB

SCAN DATA Adj. IMF: 2.45 • Adj. BF: 0.29 • Adj. REA: 17.04 Hetero Polled Homo Black

CE	BW	WW	YW	ADG	MCE	MLK	MW	STY	DOC	CW	YG	MRB	BF	REA	API	TI
11	1.6	91	141.7	0.32	6.4	28	73.4	15.3	7.1	37.4	-0.32	0.27	-0.07	0.83	142.3	90.3

Lot 42

HANELS JOURNEYMAN 539M

4418325

BW: 88 • Adj WW: 906 • Scan Wt: 1275

PB SM • 3/8/24

SIRE MR SR MIC DROP G1534
OMF JOURNEYMAN J24
OMF DEKA D23

DAM RUBY'S CURRENCY 7134E
M4 MS HEARTBREAKER D35G
SFI MISS HEART THROB

SCAN DATA Adj. IMF: 2.97 • Adj. BF: 0.27 • Adj. REA: 16.15

CE	BW	WW	YW	ADG	MCE	MLK	MW	STY	DOC	CW	YG	MRB	BF	REA	API	TI
8.1	3.2	96.3	153	0.35	4.7	28	76.1	16.5	9.9	54.7	-0.43	0.22	-0.08	1.28	139.1	90.8

- Leading off the spring yearling bull class is a striking profiling future herd sire.
- M4117 is ideal in his balance with added style and presence. Yet, he's still plenty powerful in his construction.
- Carries one of the heaviest sale days weights and largest ribeye areas in the spring group.
- Analyze his genetic package and you will see one loaded for performance. M4117 and 539M are ET flushmate brothers that are supported by the famed M4 Ms Heartbreaker D35G donor dam. A maternal sister to this pair of brothers sold for \$40,000 to Moore Land & Cattle of Illinois. Homozygous black.
- Top 10% ADG, top 15% WW, YW, top 20% MILK, TI, top 25% CW, top 35% MARB, API.



M4 MS HEARTBREAKER D35G - DAM OF LOTS 41 & 42

- Presenting the largest weaning weight spring bull, Hanel's Journeyman 539M.
- His 16.2-inch REA will impress, but his 128 WW ratio among the spring bulls will put him on the top of plenty of shopping lists on sale day.
- Elite growth EPDs make this lad a powerful prospect. 539M is an ET flushmate brother to M4117. This pair of brothers are supported by the D35G donor that now works for Walrod Cattle Company! Top 2% REA, top 3% CW, top 4% YW, ADG, top 10% WW, top 20% MILK, TI.

THE JOURNEYMAN SIRE GROUP

Lot 43



Lot 43

HANELS JOURNEYMAN M4128



4376683

BW: 87 • Adj WW: 668 • Scan Wt: 1297

PB SM • 1/28/24

SIRE MR SR MIC DROP G1534

DAM MR SR 71 RIGHT NOW E1538

OMF JOURNEYMAN J24

M4/3R MS MAGICAL J149

OMF DEKA D23

M4 MYSTIC LADY 04E

SCAN DATA Adj. IMF: 2.48 • Adj. BF: 0.23 • Adj. REA: 14.85 Homo Polled Homo Black

CE	BW	WW	YW	ADG	MCE	MLK	MW	STY	DOC	CW	YG	MRB	BF	REA	API	TI
8.8	2.4	107.8	168.5	0.38	5.6	23.1	76.9	16.1	17.4	44.3	-0.46	-0.04	-0.1	1.15	130.8	91.8

- If you study the photo, this bull will certainly be one of your favorites.
- Ideal in his design with stunning presence, loads of dimension, and shape from all angles.
- This purebred herd sire prospect tips the scale at almost 1,300 lb.
- One of the top WW and YW EPDs in the offering coupled with strong carcass figures.
- Homozygous black. Homozygous polled.
- Top 1% WW, YW, top 2% ADG, top 3% DOC, top 10% CW, REA, top 20% TI.



OMF JOURNEYMAN J24 - \$110,000 SIRE OF LOTS 41-43



THE DOC SIRE GROUP

Lot 44



CCS/JS DOC 48H - SIRE OF LOTS 44-50



TJ MISS 63F - MATERNAL GRANDDAM OF LOT 44

Lot 44

HANELS DOC M4129

4376592

BW: 90 • Adj WW: 780 • Scan Wt: 1330

PB SM • 1/28/24

SIRE CDI INNOVATOR 325D

DAM HART STATE OF WAR 056C

CCS/JS DOC 48H

HANELS MISS STATE OF WAR J1024

WHF SUMMER 365C

TJ MISS 63F

SCAN DATA Adj. IMF: 3.15 • Adj. BF: 0.23 • Adj. REA: 15.74 Homo Polled Homo Black

CE	BW	WW	YW	ADG	MCE	MLK	MW	STY	DOC	CW	YG	MRB	BF	REA	API	TI
11.9	2.7	96.8	139.5	0.27	6.8	27.3	75.6	16.7	14.3	41.6	-0.29	0.29	-0.05	0.89	145.8	92.3

- Powerhouse herd bull prospect in this CCS/JS Doc 48H son: power and presence all put together in a smooth, eye-pleasing package.
- A 110 WW ratio, 15.7 REA, and plenty of gas in the tank with his 1,330 lb. ultrasound day weight. His maternal granddam is the powerful TJ Miss 63F donor that was bred in the Triangle J Ranch program.
- A true performance bull that will add plenty of pounds to a calf crop.
- Hanel's Doc M4129's EPD sheet is as noteworthy as you will find in this sale offering. He reaches the bar for almost every measured trait.
- Homozygous black and homozygous polled.
- Top 10% WW, top 15% YW, CW, TI, top 20% MILK, DOC, top 30% ADG, MARB, API, top 35% MCE.

THE DOC SIRE GROUP

Lot 45

HANELS DOC M4188

GGP

4376562

BW: 84 • Adj WW: 702 • Scan Wt: 1088

PB SM • 2/20/24

SIRE CDI INNOVATOR 325D
CCS/JS DOC 48H

DAM HART STATE OF WAR 056C
HANELS MISS STATE OF WAR J1006
HANELS MISS PAY DIRT G9082

WHF SUMMER 365C

SCAN DATA Adj. IMF: 2.79 • Adj. BF: 0.22 • Adj. REA: 13.28

CE	BW	WW	YW	ADG	MCE	MLK	MW	STY	DOC	CW	YG	MRB	BF	REA	API	TI
9.2	0.1	79.3	118.2	0.24	5.8	27.8	67.3	18.8	8	33.9	-0.26	0.32	-0.06	0.66	146.5	85.4

- You will appreciate the consistency of the mating of CCS/JS Doc 48H to our CDI Innovator 325D daughters.
- Load up several of these purebred studs to build the next generation of your cow herd.
- M4188 is a maternal and carcass genetic improving prospect.
- Top 15% STAY, top 20% MILK, top 30% BW, MARB, API, top 35% CW, TI.

Lot 46

HANELS DOC M4147

GGP

4376552

BW: 91 • Adj WW: 786 • Scan Wt: 1334

PB SM • 1/31/24

SIRE CDI INNOVATOR 325D
CCS/JS DOC 48H

DAM CLRS DIVIDEND 405D
HANELS MISS DIVIDEND H0078
HANELS MISS ELE F8024

WHF SUMMER 365C

SCAN DATA Adj. IMF: 2.38 • Adj. BF: 0.21 • Adj. REA: 15.99

CE	BW	WW	YW	ADG	MCE	MLK	MW	STY	DOC	CW	YG	MRB	BF	REA	API	TI
10	1.3	86.8	127.9	0.26	4.9	25.2	68.4	14.7	13.4	43.4	-0.24	0.17	-0.05	0.81	131.4	84.3

- Don't miss out on this performance stud with his 111 WW ratio among the sale bulls, as well as a 16.0-inch REA.
- Growth and gain are his genetic calling cards.
- Think of the steer calves this stud can produce in a topflight commercial herd.
- Top 15% CW, top 25% WW, top 30% YW, DOC, top 35% ADG, MILK.

Lot 47

HANELS DOC M4162

GGP

4376511

BW: 89 • Adj WW: 743 • Scan Wt: 1378

PB SM • 2/6/24

SIRE CDI INNOVATOR 325D
CCS/JS DOC 48H

DAM CCR PAY DIRT 2340C
HANELS MISS PAY DIRT H0177
HANELS MISS NLC A3506

WHF SUMMER 365C

SCAN DATA Adj. IMF: 2.27 • Adj. BF: 0.26 • Adj. REA: 17.44

CE	BW	WW	YW	ADG	MCE	MLK	MW	STY	DOC	CW	YG	MRB	BF	REA	API	TI
8.8	3.7	87.9	142	0.34	6.1	25	68.8	16.5	7.3	51.3	-0.32	-0.01	-0.07	0.96	122.7	78.7

- Hanel Doc M4162 boasts a 105 WW ratio and one of the most elite REAs in the sale.
- Tie into these CCS/JS Doc 48H sons with confidence.
- One of the top CW EPD bulls in the entire sale, with high rankings for several other traits.
- Top 4% CW, top 5% ADG, top 15% YW, top 20% WW, top 30% REA, top 35% MILK.

Lot 48

HANELS DOC M4195

GGP

4376487

BW: 85 • Adj WW: 747 • Scan Wt: 1256

PB SM • 2/22/24

SIRE CDI INNOVATOR 325D
CCS/JS DOC 48H

DAM HOOK'S BLACK HAWK 50B
HANELS MISS BLACK HAWK H0025
HANELS MISS OPT 8073

WHF SUMMER 365C

SCAN DATA Adj. IMF: 2.57 • Adj. BF: 0.24 • Adj. REA: 16.4

CE	BW	WW	YW	ADG	MCE	MLK	MW	STY	DOC	CW	YG	MRB	BF	REA	API	TI
10.7	0.9	85.1	129.1	0.28	5.6	24.2	66.7	17.7	8.2	29.7	-0.44	0.15	-0.09	0.93	139.3	84.6

- Another big weaning and REA CCS/JS Doc 48H son for your appraisal.
- 106 on his weaning weight ratio among the spring sale bulls.
- Improve growth and gain performance while using a bull like M4195.
- Top 25% ADG, top 30% WW, YW, STAY, top 35% REA, TI.

Lot 49

HANELS DOC M4161

GGP

4376616

BW: 84 • Adj WW: 737 • Scan Wt: 1172

PB SM • 2/6/24

SIRE CDI INNOVATOR 325D
CCS/JS DOC 48H

DAM HANELS LEGEND S605
HANELS MISS LEGEND C5014
HANELS MISS FWD A3000

WHF SUMMER 365C

SCAN DATA Adj. IMF: 3.21 • Adj. BF: 0.15 • Adj. REA: 15.68

CE	BW	WW	YW	ADG	MCE	MLK	MW	STY	DOC	CW	YG	MRB	BF	REA	API	TI
11.8	-0.8	71.1	107	0.22	6.1	27.3	62.5	15.1	9.8	27.3	-0.41	0.13	-0.09	0.8	131.4	77.9

- Combines strong weaning, ribeye area, and marbling on his individual performance ledger.
- This purebred will have plenty of admirers on sale day.
- The lightest birthweight selection of this sire grouping.
- Top 15% BW, top 20% MILK.

Lot 50

HANELS DOC M4142

GGP

4376646

BW: 91 • Adj WW: 785 • Scan Wt: 1286

3/4 SM 1/4 CH • 1/30/24

SIRE CDI INNOVATOR 325D
CCS/JS DOC 48H

DAM CCC MESCALITO 9038 P
HANELS MISS MESCALITO J1128
HANELS MISS OLIE Z2017

WHF SUMMER 365C

SCAN DATA Adj. IMF: 2.27 • Adj. BF: 0.18 • Adj. REA: 14.12

CE	BW	WW	YW	ADG	MCE	MLK	MW	STY	DOC	CW	YG	MRB	BF	REA	API	TI
8.1	5.4	95.6	143.4	0.3	4	24.2	73.4	10.8	8.2	54.8	-0.47	-0.08	-0.13	1.05	93.8	75.1

- A unique genetic combination with a shot of Charolais in his makeup.
- Massive 111 weaning weight ratio is one of the leaders in the spring bulls.
- Here is an opportunity for the cowboys that want to sell heavy steers by the pound.
- Top 3% CW, top 10% WW, YW, top 15% ADG, REA.

THE POWERWAGON SIRE GROUP

Lot 51



- Hanels Power Wagon M4027 is long spined, level topped and loaded with muscle shape.
- The leadoff Hanels Power Wagon J1505 son carries a massive 116 WW ratio and a 126 ratio on his IMF scan.
- Big data bull here! Loads of genetics for growth, but also maternal longevity and carcass quality.
- Top 5% YW, ADG, top 10% WW, top 15% STAY, top 20% CW, top 30% DOC, MARB, top 35% TI.

Lot 51

HANELS POWERWAGON M4027

4420780

BW: 92 • Adj WW: 820 • Scan Wt: 1388 5/8 SM 11/32 AN • 1/6/24

SIRE WS PROCLAMATION E202
HANELS POWER WAGON J1505
M4 MS CAPITAL GAINS C75

DAM CLRS DIVIDEND 405D
HARMS MELODY
HARMS ARIEL

SCAN DATA Adj. IMF: 3.97 • Adj. BF: 0.19 • Adj. REA: 14.4

CE	BW	WW	YW	ADG	MCE	MLK	MW	STY	DOC	CW	YG	MRB	BF	REA	API	TI
6.2	3	95.9	150.9	0.34	2.1	24.4	72.5	18.9	13.5	39.8	-0.14	0.29	-0.05	0.42	131.4	85.8



HANELS POWER WAGON J1505 - SIRE OF LOTS 51-82



THE POWERWAGON SIRE GROUP

Lot 53



Lot 52

HANELS POWER WAGON M4065

GGP

4376573

BW: 90 • Adj WW: 643 • Scan Wt: 1209

PB SM • 1/12/24

SIRE WS PROCLAMATION E202
HANELS POWER WAGON J1505
M4 MS CAPITAL GAINS C75

DAM CLRS DIVIDEND 405D
HANELS MISS DIVIDEND G9133
HANELS MISS BET A3014

SCAN DATA Adj. IMF: 3.2 • Adj. BF: 0.41 • Adj. REA: 14.02

CE	BW	WW	YW	ADG	MCE	MLK	MW	STY	DOC	CW	YG	MRB	BF	REA	API	TI
9.5	1	77.5	121.3	0.27	4.4	21.2	59.9	20.3	14.8	19.5	-0.18	0.34	-0.04	0.38	149.5	83.2

- Strong marbling purebred from the Hanel Power Wagon J1505 sire offering.
- His CLRS Dividend 405D dam is a rock-solid female in our herd.
- EPD profile reads as a bull that will add longevity and carcass merit.
- Top 10% STAY, top 15% DOC, top 25% MARB, API, top 30% ADG.

Lot 53

HANELS POWER WAGON M4096

GGP

4376675

BW: 91 • Adj WW: 736 • Scan Wt: 1280

PB SM • 1/20/24

SIRE WS PROCLAMATION E202
HANELS POWER WAGON J1505
M4 MS CAPITAL GAINS C75

DAM HANELS COWBOY CUT D6208
HANELS MISS COWBOY CUT G9175
HANELS MISS NLC X029

SCAN DATA Adj. IMF: 1.88 • Adj. BF: 0.32 • Adj. REA: 16.74

CE	BW	WW	YW	ADG	MCE	MLK	MW	STY	DOC	CW	YG	MRB	BF	REA	API	TI
6.2	3.7	87.2	135.1	0.3	3.5	21	64.6	17	13.8	40.8	-0.19	0.16	-0.03	0.75	127.4	80.5

- If you could use only one word to describe this beast, it would be POWERFUL.
- Stands on a massive foot and bone, with loads of rib shape and pure muscle dimension.
- Weighed in at 1,280 lb. on scan day and measured a big 16.7 REA.
- His data sheet supports his power with elite predictions for growth and gain.
- Top 15% ADG, CW, top 20% YW, top 25% WW, DOC, top 35% STAY.



THE POWERWAGON SIRE GROUP

Lot 55



Lot 54

HANELS POWER WAGON M4102

4376532

BW: 85 • Adj WW: 685 • Scan Wt: 1259

PB SM • 1/22/24

SIRE WS PROCLAMATION E202
HANELS POWER WAGON J1505
M4 MS CAPITAL GAINS C75

DAM HANELS COWBOY CUT D6208
HANELS COWBOY CUT G9520
HANELS MISS TANKER A3243

SCAN DATA Adj. IMF: 2.39 • Adj. BF: 0.3 • Adj. REA: 16.87

CE	BW	WW	YW	ADG	MCE	MLK	MW	STY	DOC	CW	YG	MRB	BF	REA	API	TI
7.5	3.2	82.8	124.8	0.26	4.5	22.8	64.1	16.4	14.8	33.3	-0.35	-0.09	-0.07	0.82	113.7	73.3

- Purebred with a sizeable 16.9-inch REA.
- The Hanel Power Wagon J1505 sons will be sure to impress those that like powerful bulls.
- Presents another strong growth EPD data sheet for analysis.
- Top 15% DOC, top 35% WW, YW, ADG, CW.

Lot 55

HANELS POWERWAGON M4009

4420783

BW: 87 • Adj WW: 735 • Scan Wt: 1179

5/8 SM 3/8 AN • 1/2/24

SIRE WS PROCLAMATION E202
HANELS POWER WAGON J1505
M4 MS CAPITAL GAINS C75

DAM CONNEALY COMRADE 1385
HANELS MISS COM E7014
HANELS MISS DOWN C5084

SCAN DATA Adj. IMF: 2.86 • Adj. BF: 0.25 • Adj. REA: 14.68

CE	BW	WW	YW	ADG	MCE	MLK	MW	STY	DOC	CW	YG	MRB	BF	REA	API	TI
10.1	-0.1	76.1	121.4	0.28	4.7	26.7	65.2	15.3	14.8	35.5	-0.18	0.08	-0.03	0.66	116.2	73.6



HANELS HARDWOOD L3131 - MATERNAL BROTHER TO DAM OF LOT 55

- A stout featured, massive made feature in this sire group.
- Study the mass and power this bull carries in his hindquarter!
- Strong 104 WW ratio for his 735 lb. weaning weight.
- Should be able to keep birth weight in check while still adding gain genetics to a calf crop.
- Top 15% DOC, top 25% BW, ADG, MILK, top 30% CW.

THE POWERWAGON SIRE GROUP

Lot 56

GGP

HANELS POWER WAGON M4012

4376625

BW: 83 • Adj WW: 687 • Scan Wt: 1187 3/4 SM 1/4 AN • 1/3/24

SIRE WS PROCLAMATION E202
HANELS POWER WAGON J1505
M4 MS CAPITAL GAINS C75

DAM HANELS WIDE RANGE D6033
HANELS MISS RANGE F8119
HANELS MISS FOCUS Y1020

SCAN DATA Adj. IMF: 2.9 • Adj. BF: 0.28 • Adj. REA: 13.41

CE	BW	WW	YW	ADG	MCE	MLK	MW	STY	DOC	CW	YG	MRB	BF	REA	API	TI
10.3	1.4	74.3	108.1	0.21	5.4	20.2	57.3	18.6	13.5	29	-0.26	0.24	-0.06	0.61	126.9	73.8

- M4012 is an intriguing 3/4 Simmental with solid performance records throughout.
- His genetic merits excel in the sought after convenience traits: longevity and docility.
- Top 20% STAY, top 30% DOC.

Lot 59

GGP

HANELS POWER WAGON M4130

4376492

BW: 97 • Adj WW: 638 • Scan Wt: 1111 PB SM • 1/28/24

SIRE WS PROCLAMATION E202
HANELS POWER WAGON J1505
M4 MS CAPITAL GAINS C75

DAM HANELS DOUBLE DOWN Y1211
HANELS MISS DOWN B4054
HANELS MISS OLIE Y1033

SCAN DATA Adj. IMF: 2.85 • Adj. BF: 0.23 • Adj. REA: 13.92

CE	BW	WW	YW	ADG	MCE	MLK	MW	STY	DOC	CW	YG	MRB	BF	REA	API	TI
5.2	4.4	80.2	124.2	0.28	2.6	20.5	60.6	16.8	12.6	44.4	-0.18	0.16	-0.06	0.56	121.7	75.2

- Purebred power bull that would be ideal on a set of Angus cows for maximum hybrid vigor.
- Combines growth, gain, and longevity as the highlights of his genetic script.
- Top 10% CW, top 25% ADG, top 35% YW, STAY.

Lot 57

GGP

HANELS POWER WAGON M4053

4376671

BW: 95 • Adj WW: 686 • Scan Wt: 1242 5/8 SM 3/8 AN • 1/10/24

SIRE WS PROCLAMATION E202
HANELS POWER WAGON J1505
M4 MS CAPITAL GAINS C75

DAM HANELS HOOVER DAM A3029
HANELS MISS HOOVER D6078
HANELS MISS STIM B4037

SCAN DATA Adj. IMF: 2.74 • Adj. BF: 0.26 • Adj. REA: 13.9

CE	BW	WW	YW	ADG	MCE	MLK	MW	STY	DOC	CW	YG	MRB	BF	REA	API	TI
5.2	4.1	85.5	130.3	0.28	2	25	67.5	19.8	13.1	36.4	-0.06	0.2	-0.03	0.28	119.3	75

- Here is a powerfully built, cow breeding machine.
- Turn this guy out on a set of mature cows and reap the benefits of performance.
- Elite stayability genetics with additional growth and punch in his EPD profile.
- Top 10% STAY, top 25% WW, YW, ADG, CW, top 35% MILK, DOC.

Lot 60

GGP

HANELS POWER WAGON M4144

4376493

BW: 97 • Adj WW: 857 • Scan Wt: 1301 PB SM • 1/30/24

SIRE WS PROCLAMATION E202
HANELS POWER WAGON J1505
M4 MS CAPITAL GAINS C75

DAM VJT DRIFTWOOD E55
HANELS MISS DRIFTWOOD H0120
HANELS MISS TANKER A3013

SCAN DATA Adj. IMF: 3.1 • Adj. BF: 0.19 • Adj. REA: 13.96

CE	BW	WW	YW	ADG	MCE	MLK	MW	STY	DOC	CW	YG	MRB	BF	REA	API	TI
2.1	7.2	107.5	164.3	0.35	1.5	26	79.8	14.7	11.6	61.9	-0.26	0.17	-0.07	0.92	119.8	88.7

- Hanel Power Wagon M4083 is the #2 weaning weight bull in the spring sale class.
- He mashed the scales at 857 lb., which ratios a 121 among the sale bulls.
- Study closely on this elite growth genetic potential bull.
- Top 1% WW, YW, CW, top 4% ADG, top 25% TI, top 30% MILK, top 35% REA.

Lot 58

GGP

HANELS POWER WAGON M4083

4376620

BW: 92 • Adj WW: 760 • Scan Wt: 1274 3/4 SM 1/4 AN • 1/17/24

SIRE WS PROCLAMATION E202
HANELS POWER WAGON J1505
M4 MS CAPITAL GAINS C75

DAM HANELS PER VISION 2020
HANELS MISS 2020 C5029
HANELS MISS EXPRES X0206

SCAN DATA Adj. IMF: 2.19 • Adj. BF: 0.23 • Adj. REA: 16.5

CE	BW	WW	YW	ADG	MCE	MLK	MW	STY	DOC	CW	YG	MRB	BF	REA	API	TI
7.6	4.3	91.6	144.7	0.33	3.6	24.2	69.8	15.3	11.2	51.2	-0.24	0.38	-0.08	0.7	127.7	84.7

- Boasts a stout 107 weaning ratio, along with measuring a 16.5 REA.
- The Hanel Power Wagon J1505 sons do many things well.
- Elite genetic potential for post-weaning gain and carcass weight.
- Top 4% CW, top 10% YW, ADG, top 15% WW, top 20% MARB, top 35% TI.



THE POWERWAGON SIRE GROUP

Lot 61



Lot 61



HANELS POWER WAGON M4097

4376594

BW: 82 • Adj WW: 695 • Scan Wt: 1264 5/8 SM 1/4 CH 1/8 AN • 1/21/24

SIRE WS PROCLAMATION E202
HANELS POWER WAGON J1505
M4 MS CAPITAL GAINS C75

DAM CCC MESCALITO 9038 P
HANELS MISS MESCILLATO J1180
HANELS MISS NLC A3506

SCAN DATA Adj. IMF: 3.08 • Adj. BF: 0.35 • Adj. REA: 16.81

CE	BW	WW	YW	ADG	MCE	MLK	MW	STY	DOC	CW	YG	MRB	BF	REA	API	TI
13.3	1.3	70.1	101.1	0.19	6.8	22.1	58.7	13.5	13.3	22.6	-0.39	0.04	-0.08	0.77	108.6	67.6

- A sharp featured bull with added muscle shape and overall eye appeal.
- Carcass traits should be exciting with his 16.8 REA and over a 3 on his IMF.
- A unique genetic blend that would be a great fit in a lot of crossbreeding programs.
- Top 30% CED, DOC, top 35% MCE.

Lot 62



HANELS POWER WAGON M4072

4376597

BW: 87 • Adj WW: 588 • Scan Wt: 1137 5/8 SM 1/4 CH 1/8 AN • 1/14/24

SIRE WS PROCLAMATION E202
HANELS POWER WAGON J1505
M4 MS CAPITAL GAINS C75

DAM CCC MESCALITO 9038 P
HANELS MISS MESCALITO J1045
HANELS MISS HUMMER X040

SCAN DATA Adj. IMF: 4.7 • Adj. BF: 0.23 • Adj. REA: 12.79

CE	BW	WW	YW	ADG	MCE	MLK	MW	STY	DOC	CW	YG	MRB	BF	REA	API	TI
11.5	1.6	71.2	104.3	0.21	5.6	21.7	58.8	16.6	11.7	30.2	-0.41	0.17	-0.09	0.85	120	71.1

- Huge IMF bull, scanning in at over a 4.7.
- This sire group offers variety of high quality stock throughout the offering.



THE HARD RIGHT SIRE GROUP

Lot 63



- Hanel Hard Right M4035 carries himself with herd bull presence and yet is loaded with rib shape and true muscle.
- A 106 WW ratio, one of the top scan day weights, and a 16.3-inch REA showcase his performance abilities.
- The EPD profile on this lad will entice the most discriminating bull buyer.
- Top 10% ADG, MILK, STAY, API, TI, top 15% YW, top 20% WW, MARB, top 25% CED, BW, MCE, DOC.

Lot 63

HANELS HARD RIGHT M4035

GGP

4376576

BW: 85 • Adj WW: 746 • Scan Wt: 1413

PB SM • 1/7/24

SIRE OMF EPIC E27

DAM HART STATE OF WAR 056C

OMF HARD RIGHT H21

HANELS MISS STATE OF WAR J1010

HOOKS ANGEL 11A

HANELS MISS BOULDER G9005

SCAN DATA Adj. IMF: 3.04 • Adj. BF: 0.2 • Adj. REA: 16.34

CE	BW	WW	YW	ADG	MCE	MLK	MW	STY	DOC	CW	YG	MARB	BF	REA	API	TI
13.6	-0.2	88.6	141.1	0.33	7.5	31.1	75	19.5	13.8	30.9	-0.28	0.41	-0.07	0.6	165	95.5



OMF HARD RIGHT H21 - SIRE OF LOTS 63-65

HANEL

THE HARD RIGHT SIRE GROUP

Lot 64



Lot 64

HANELS HARD RIGHT M4044

4376486

BW: 93 • Adj WW: 686 • Scan Wt: 1177

3/4 SM 1/4 AN • 1/8/24

SIRE OMF EPIC E27

OMF HARD RIGHT H21

HOOKS ANGEL 11A

DAM CONNEALY STIMULUS 8419

HANELS MISS STIM B4037

HANELS MISS NUGGET Y1606

SCAN DATA Adj. IMF: 2.81 • Adj. BF: 0.21 • Adj. REA: 14.33

CE	BW	WW	YW	ADG	MCE	MLK	MW	STY	DOC	CW	YG	MRB	BF	REA	API	TI
7.5	2.9	81.8	118.5	0.23	3.6	25.9	66.6	14.7	13.2	32.3	-0.46	0.25	-0.11	0.88	116.9	77.7

- Striking on the profile with added length and a stout hip and quarter.
- Take a hard look at this stud before adding him to your short list.
- Combines OMF Hard Right H21 with the influence of Connealy Angus on the bottom side.
- Top 30% MILK, DOC, top 35% MARB.

Lot 65

HANELS HARD RIGHT M4069

4376593

BW: 91 • Adj WW: 657 • Scan Wt: 1243

PB SM • 1/13/24

SIRE OMF EPIC E27

OMF HARD RIGHT H21

HOOKS ANGEL 11A

DAM HANELS CAPITALIST F8102

HANELS MISS CAPITALIST J1166

HANELS MISS TANKER A3036

SCAN DATA Adj. IMF: 4.52 • Adj. BF: 0.16 • Adj. REA: 13.36

CE	BW	WW	YW	ADG	MCE	MLK	MW	STY	DOC	CW	YG	MRB	BF	REA	API	TI
8	2.3	78.5	118.5	0.25	4.8	20.9	60.1	18.2	12.1	32.9	-0.25	0.43	-0.07	0.56	146	84.2



HANELS EPIC L3080 - 3/4 BROTHER TO LOT 64

- One of the elites for IMF in this group, checking in at a 4.52.
- His genetics are right for the times.
- Leads the way for marbling and longevity with his EPD profile.
- Top 15% MARB, top 25% STAY, top 30% API, top 35% CW.

THE KINGPIN SIRE GROUP

Lot 66



- Deep bodied, extended through his front skeleton, and standing on a solid structural foundation, here is a herd sire prospect that many will like on sale day.
- The leadoff son of MCC-PLG Kingpin 319 boasts a 103 WW ratio.
- There's not another bull in this offering that has this many high ranking EPDs as M4043.
- Homozygous black.
- Top 1% CW, top 5% WW, YW, top 10% ADG, top 15% TI, top 25% REA, API, top 30% CED, MARB, top 35% MCE, DOC.

Lot 66

HANELS KINGPIN M4043

GGP

4376524

BW: 79 • Adj WW: 729 • Scan Wt: 1338

PB SM • 1/8/24

SIRE OMF HARD RIGHT H21

MCC-PLG KINGPIN 319

W/C MISS WERNING 983G

DAM CCR COWBOY CUT 5048Z

HANELS MISS COWBOY E7034

HANELS MISS HUMMER X010

SCAN DATA Adj. IMF: 2.65 • Adj. BF: 0.3 • Adj. REA: 15.02 Homo Black

CE	BW	WW	YW	ADG	MCE	MLK	MW	STY	DOC	CW	YG	MRB	BF	REA	API	TI
13.1	1.9	97.6	150.9	0.33	6.9	22.2	70.9	16.7	13	60.2	-0.29	0.3	-0.07	0.98	151.4	94.3



MCC-PLG KINGPIN 319 - SIRE OF LOTS 66-71



THE KINGPIN SIRE GROUP

Lot 68



Lot 67

HANELS KINGPIN M4174

GGP

4376613

BW: 95 • Adj WW: 641 • Scan Wt: 1200

PB SM • 2/4/24

SIRE OMF HARD RIGHT H21

MCC-PLG KINGPIN 319

W/C MISS WERNING 983G

DAM HANELS COWBOY CUT D6208

HANELS MISS COWBOY CUT G9195

HANELS MISS WAR X0203

SCAN DATA Adj. IMF: 2.38 • Adj. BF: 0.26 • Adj. REA: 13.77

CE	BW	WW	YW	ADG	MCE	MLK	MW	STY	DOC	CW	YG	MRB	BF	REA	API	TI
9.3	3.2	86.6	139.9	0.33	5	20	63.2	14.3	13.3	43.7	-0.3	0.23	-0.07	0.86	132.5	84.1

- Hanel Kingpin M4174 is a growthy purebred rascal with tons of mating flexibility.
- Hits the high notes for growth across his genetic profile.
- Imagine the calf crop he could produce when mated to a set of mature cows.
- Top 10% ADG, top 15% YW, CW, top 25% WW, top 30% DOC.

Lot 68

HANELS KINGPIN M4177

GGP

4376544

BW: 88 • Adj WW: 689 • Scan Wt: 1180

3/4 SM 1/4 AN • 2/10/24

SIRE OMF HARD RIGHT H21

MCC-PLG KINGPIN 319

W/C MISS WERNING 983G

DAM BASIN PAYWEIGHT 1682

BROOKS PAYWEIGHT F91

SFI BETTY SUE Y85T

SCAN DATA Adj. IMF: 2.94 • Adj. BF: 0.26 • Adj. REA: 16.12 Homo Polled

CE	BW	WW	YW	ADG	MCE	MLK	MW	STY	DOC	CW	YG	MRB	BF	REA	API	TI
12.4	0.4	78.2	120.7	0.27	7.5	25.6	64.6	18.9	12.3	30.5	-0.09	0.3	-0.03	0.34	136.7	79.2



W/C MISS WERNING 983G - PATERNAL GRANDDAM OF LOTS 66-71

- Stop in your tracks eye appeal, added length of body, and a stout set of feet and legs underneath him make this bull a surefire herd sire.
- Measured an impressive 16.1-inch ribeye area.
- Study his genetics: maternal and carcass quality all rolled into a cool package.
- Homozygous polled.
- Top 15% STAY, top 25% MCE, top 30% ADG, MILK, MARB, top 35% BW.

HANEL'S SALE FACILITY • COURTLAND, KANSAS

THE KINGPIN SIRE GROUP



Lot 71

Lot 69

GGP

HANELS KINGPIN M4099

4376602

BW: 94 • Adj WW: 659 • Scan Wt: 1320 1/2 SM 1/2 AN • 1/21/24

SIRE OMF HARD RIGHT H21

DAM MILL BRAE FINAL ANSWER 0123

MCC-PLG KINGPIN 319

MILL BRAE 0123 KARAMA 4240

W/C MISS WERNING 983G

MILL BRAE MD KARAMA 8006

SCAN DATA Adj. IMF: 3.83 • Adj. BF: 0.23 • Adj. REA: 15.05

CE	BW	WW	YW	ADG	MCE	MLK	MW	STY	DOC	CW	YG	MRB	BF	REA	API	TI
9.6	1.3	82.5	127.3	0.28	3.7	21.8	62.6	17.6	12.3	45.4	-0.1	0.42	-0.02	0.61	137.4	83.1

- Big scan day weight and IMF here. 3.83 is in the upper tier of this set of spring bulls.
- Nice EPD profile on this one, as he excels in many economically important traits.
- Top 10% CW, top 20% MARB, top 25% ADG, top 30% YW, STAY, top 35% WW.

Lot 71

GGP

HANELS KINGPIN M4074

4376507

BW: 88 • Adj WW: 590 • Scan Wt: 1301 3/4 SM 1/4 CH • 1/11/24

SIRE OMF HARD RIGHT H21

DAM LT-WC TEMPLETON 1483 PLD ET

MCC-PLG KINGPIN 319

HANELS MISS TEMPLE D6047

W/C MISS WERNING 983G

HANELS MISS POWER Z2066

SCAN DATA Adj. IMF: 2.07 • Adj. BF: 0.39 • Adj. REA: 15.45

CE	BW	WW	YW	ADG	MCE	MLK	MW	STY	DOC	CW	YG	MRB	BF	REA	API	TI
11.5	0.7	80.4	128.6	0.3	6.7	21.7	65.2	14	9.9	41.4	-0.36	-0.09	-0.09	0.83	107.6	71.7

- No, you're not seeing things! This smoky hided stud is as good as you'll find in the pens. We love the genuine shape, length of body, and substance!
- Stout featured, perfectly balanced, strong topped, and full of shape and dimension.
- Your calf crop will be on fire when you let M4074 go to work in your pastures.
- Top 15% ADG, CW, top 30% YW, top 35% MCE.

Lot 70

GGP

HANELS KINGPIN M4150

4376499

BW: 79 • Adj WW: 662 • Scan Wt: 1240 3/4 SM 1/4 AN • 1/29/24

SIRE OMF HARD RIGHT H21

DAM LRS TOP TEN 104A

MCC-PLG KINGPIN 319

HANELS MISS TEN F8016

W/C MISS WERNING 983G

ES X51

SCAN DATA Adj. IMF: 2.42 • Adj. BF: 0.23 • Adj. REA: 16.75

CE	BW	WW	YW	ADG	MCE	MLK	MW	STY	DOC	CW	YG	MRB	BF	REA	API	TI
10	1.6	94.5	155.1	0.38	5.1	18.4	65.6	10.6	11.3	66.3	-0.33	-0.01	-0.08	1.1	107.8	80.7

- Hanel Kingpin M4099 is a moderate birth SimAngus with one of the top ribeye area measurements in the sale.
- Elite growth and gain figures to add pounds to your load in one generation.
- Top 1% CW, top 2% ADG, top 4% YW, top 10% WW, REA.



HANELS BLUEPRINT G9034 - MATERNAL BROTHER TO LOT 71

THE FIRESTEEL SIRE GROUP

Lot 72



- Leading into the EGL Firesteel 103F contingent is a cocky, stout hipped young sire that will certainly catch your attention.
- A performance standout, with his 112 WW ratio, strong scan weight and massive REA.
- Big data bull that is elite for carcass, while still being strong for growth and maternal merits.
- Top 2% REA, top 5% CW, top 15% STAY, DOC, MARB, top 25% MILK, API, TI, top 30% WW, top 35% CED.

Lot 72

HANELS FIRESTEEL M4029

4420781

BW: 88 • Adj WW: 792 • Scan Wt: 1333

3/4 SM 1/4 AN • 1/6/24

SIRE G A R SURE FIRE
EGL FIRESTEEL 103F
TJ 22X

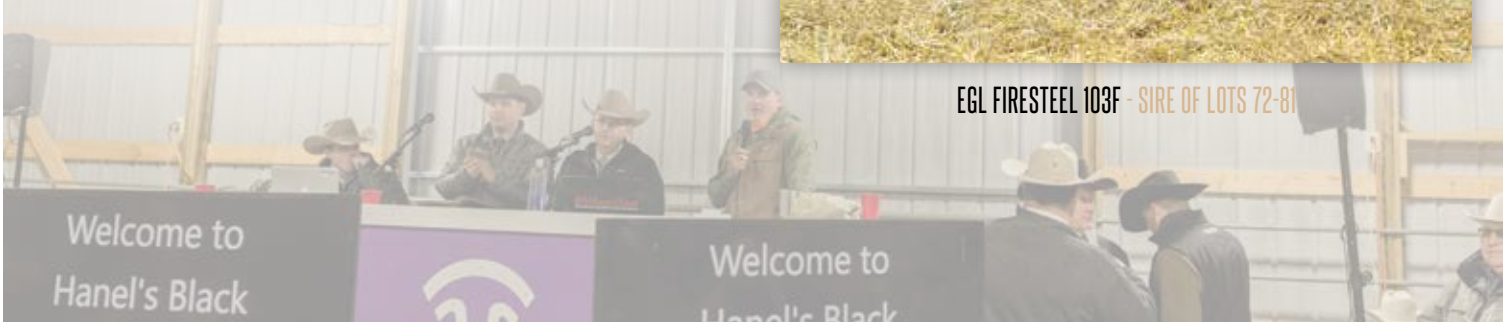
DAM HANELS COWBOY CUT D6208
HANELS MISS COWBOY CUT K2221
HANELS MISS TANKER A3242

SCAN DATA Adj. IMF: 3.06 • Adj. BF: 0.26 • Adj. REA: 15.63

CE	BW	WW	YW	ADG	MCE	MLK	MW	STY	DOC	CW	YG	MRB	BF	REA	API	TI
12.5	0.9	84.8	121.6	0.23	4.2	26.7	69	19	15	49.9	-0.45	0.49	-0.08	1.29	149.7	88.6



EGL FIRESTEEL 103F - SIRE OF LOTS 72-81



THE FIRESTEEL SIRE GROUP



Lot 73

Lot 73

GGP

HANELS FIRESTEEL M4024

4376685

BW: 74 • Adj WW: 672 • Scan Wt: 1249 1/4 SM 3/4 AN • 1/5/24

SIRE G A R SURE FIRE
EGL FIRESTEEL 103F
TJ 22X

DAM MGR TREASURE
HANELS MISS TREASURE K2003
MILL BRAETU JOANIE 6190

SCAN DATA Adj. IMF: 7.05 • Adj. BF: 0.26 • Adj. REA: 12.47 Homo Polled

CE	BW	WW	YW	ADG	MCE	MLK	MW	STY	DOC	CW	YG	MRB	BF	REA	API	TI
16.1	-1.9	79.6	127.9	0.3	7	24.2	64.3	22.1	13.6	39.5	0.09	1	0	0.12	187.3	98.4

- Balanced in his design, he carries added rib shape in a smooth package.
- You won't find many bulls of any breed with an IMF scan like his. 7.05 is industry leading.
- The top API bull in the offering, M4024 is elite within the Simmental population for marbling and longevity genetics, along with a host of other beneficial traits.
- Homozygous polled.
- Top 1% MARB, top 2% STAY, API, top 10% CED, BW, TI, top 15% ADG, top 20% CW, top 30% YW, MCE, DOC.

Lot 74

GGP

HANELS FIRESTEEL M4019

4376529

BW: 80 • Adj WW: 670 • Scan Wt: 1166 3/4 SM 1/4 AN • 1/4/24

SIRE G A R SURE FIRE
EGL FIRESTEEL 103F
TJ 22X

DAM KBHR HIGH ROAD E283
HANELS MISS HIGHROAD K2031
SFI MISS DYNASTY H2A

SCAN DATA Adj. IMF: 5.07 • Adj. BF: 0.28 • Adj. REA: 12.3 Homo Polled

CE	BW	WW	YW	ADG	MCE	MLK	MW	STY	DOC	CW	YG	MRB	BF	REA	API	TI
17.4	-1.3	83.3	128.7	0.28	6.4	22.9	64.4	21.6	17.3	33.5	-0.26	0.61	-0.06	0.66	171.8	93.3

- Modest birth weight combined with a 5.07 IMF scan that will turn heads.
- If you are looking for calving ease without sacrificing maternal quality and carcass merits, then this bull will be at the top of your short list.
- Homozygous polled.
- Top 3% CED, STAY, top 4% DOC, top 10% MARB, API, top 15% BW, TI, top 25% ADG, top 30% YW, top 35% WW, CW.

Lot 75

GGP

HANELS FIRESTEEL M4143

4376568

BW: 88 • Adj WW: 632 • Scan Wt: 1140 5/8 SM 3/8 AN • 1/30/24

SIRE G A R SURE FIRE
EGL FIRESTEEL 103F
TJ 22X

DAM HOOK'S EAGLE 6E
HANELS MISS EAGLE K2006
HANELS MISS COWBOY CUT H0104

SCAN DATA Adj. IMF: 4.56 • Adj. BF: 0.34 • Adj. REA: 15.01

CE	BW	WW	YW	ADG	MCE	MLK	MW	STY	DOC	CW	YG	MRB	BF	REA	API	TI
13.7	-0.2	97.5	154.9	0.36	3.7	21.9	70.4	21.5	20.1	39.5	-0.24	0.62	-0.05	0.76	172.3	100.6

- Another big scanning EGL Firesteel 103F son, with an IMF over 4.5.
- Backed by a young Hook's Eagle 6E daughter on the bottom side of his pedigree.
- Top of the breed for 8 different traits; this sire group will garner extra study from the most data conscious cattlemen.
- Top 1% DOC, top 3% ADG, STAY, top 4% TI, YW, top 5% WW, top 10% MARB, API, top 20% CW, top 25% CED, BW.

Lot 76

GGP

HANELS FIRESTEEL M4026

4376579

BW: 75 • Adj WW: 643 • Scan Wt: 1081 1/2 SM 1/2 AN • 1/6/24

SIRE G A R SURE FIRE
EGL FIRESTEEL 103F
TJ 22X

DAM CONNEALY BLACKHAWK 6198
HANELS MISS BLACKHAWK K2042
HANELS MISS 2020 H0061

SCAN DATA Adj. IMF: 3.99 • Adj. BF: 0.26 • Adj. REA: 13.88

CE	BW	WW	YW	ADG	MCE	MLK	MW	STY	DOC	CW	YG	MRB	BF	REA	API	TI
17.3	-2.3	69.5	107.8	0.24	5.6	24.7	59.2	24.5	15.5	13.5	-0.19	0.89	-0.02	0.48	189	93

- 75 lb. birth weight coupled with a 4.0 IMF score
- This sire group is loaded with carcass performance.
- Another of the top API bulls in the offering, Hanel Firesteel M4026 is heifer approved with the genetics to keep all his daughters and feed his sons out to profit on the grid.
- Top 1% STAY, MARB, API, top 3% CED, top 5% BW, top 15% DOC, TI, top 35% MILK.

THE FIRESTEEL SIRE GROUP

Lot 77

GGP

HANELS FIRESTEEL M4038

4376570

BW: 87 • Adj WW: 607 • Scan Wt: 1070

5/8 SM 3/8 AN • 1/7/24

SIRE G A R SURE FIRE
EGL FIRESTEEL 103F
TJ 22X

DAM HOOK'S BLACK HAWK 50B
HANELS MISS BLACK HAWK K2034
HANELS MISS CAPITALIST H0146

SCAN DATA Adj. IMF: 3.4 • Adj. BF: 0.21 • Adj. REA: 14.61

CE	BW	WW	YW	ADG	MCE	MLK	MW	STY	DOC	CW	YG	MARB	BF	REA	API	TI
15.3	-0.8	78	122.3	0.28	4.6	23.9	62.8	16.6	15.3	47.2	-0.29	0.83	-0.03	1.15	169.2	95.3

- If you need steers that grade, tie into this sire group and watch what they can do in one generation.
- A 108 IMF ratio and elite MARB EPD mark him as a surefire carcass improver.
- Top 1% MARB, top 10% CED, CW, REA, API, TI, top 15% BW, DOC, top 25% ADG.

Lot 78

GGP

HANELS FIRESTEEL M4101

4376564

BW: 77 • Adj WW: 718 • Scan Wt: 1240

3/4 SM 1/4 AN • 1/22/24

SIRE G A R SURE FIRE
EGL FIRESTEEL 103F
TJ 22X

DAM KBHR HIGH ROAD E283
HANELS MISS HIGH ROAD K2089
M4 MS BIRTHSTONE H85T

SCAN DATA Adj. IMF: 4.76 • Adj. BF: 0.25 • Adj. REA: 14.88 Homo Polled Homo Black

CE	BW	WW	YW	ADG	MCE	MLK	MW	STY	DOC	CW	YG	MARB	BF	REA	API	TI
16.7	-1	81.9	122.1	0.25	6	24.2	65	19.9	17.1	44.4	-0.32	0.7	-0.07	0.89	170.9	94.4

- M4101 shows off an impressive birth to weaning performance with a top tier 4.76 IMF.
- His KBHR High Road E283 dam has a bright future producing bulls like him.
- Another bull with a big data sheet that reads with carcass merit, cow power, and calving ease.
- Homozygous black. Homozygous polled.
- Top 3% MARB, top 4% DOC, top 5% CED, top 10% STAY, CW, API, top 15% BW, TI.

Lot 79

GGP

HANELS FIRESTEEL M4120

4376572

BW: 94 • Adj WW: 742 • Scan Wt: 1353

5/8 SM 3/8 AN • 1/26/24

SIRE G A R SURE FIRE
EGL FIRESTEEL 103F
TJ 22X

DAM HANELS COWBOY CUT D6208
HANELS COWBOY CUT K2234
BROOKS PAYWEIGHT F91

SCAN DATA Adj. IMF: 3.28 • Adj. BF: 0.26 • Adj. REA: 14.48

CE	BW	WW	YW	ADG	MCE	MLK	MW	STY	DOC	CW	YG	MARB	BF	REA	API	TI
10	2.5	89.1	136	0.29	3.1	24.8	69.2	15.3	15.3	52.6	-0.2	0.58	-0.04	0.85	143.2	90.4

- The Gardiner program's influence on these EGL Firesteel 103F sons shines through with their sale-best marbling abilities.
- M4120 is no exception when you study his actual data and his genetic merit profile.
- Top 3% CW, top 15% DOC, MARB, top 20% WW, YW, ADG, TI, 35% MILK, API.

Lot 80

GGP

HANELS FIRESTEEL M4159

4376624

BW: 85 • Adj WW: 672 • Scan Wt: 1150

5/8 SM 3/8 AN • 2/6/24

SIRE G A R SURE FIRE
EGL FIRESTEEL 103F
TJ 22X

DAM HANELS COWBOY CUT D6208
HANELS MISS COWBOY CUT K2223
HANELS MISS IRON Z2041

SCAN DATA Adj. IMF: 3.17 • Adj. BF: 0.26 • Adj. REA: 14.46

CE	BW	WW	YW	ADG	MCE	MLK	MW	STY	DOC	CW	YG	MARB	BF	REA	API	TI
13.6	-0.2	77.4	110.3	0.21	4.8	22.4	60.9	23.7	14.8	28.6	-0.34	0.56	-0.05	0.9	162.8	86.5

- A top prospect for adding longevity back into the herd via keeping his daughters.
- Ranks high for both API and TI, solidifying the genetic quality you can expect from this sire group.
- Top 1% STAY, top 15% DOC, MARB, API, top 25% CED, BW, 30% TI.

Lot 81

GGP

HANELS FIRESTEEL M4048

4376659

BW: 90 • Adj WW: 647 • Scan Wt: 1018

5/8 SM 3/8 AN • 1/9/24

SIRE G A R SURE FIRE
EGL FIRESTEEL 103F
TJ 22X

DAM HANELS TURNBUCKLE G9039
HANELS MISS TURNBUCKLE K2037
HANELS MISS TEN F8028

SCAN DATA Adj. IMF: 4.35 • Adj. BF: 0.34 • Adj. REA: 12.97

CE	BW	WW	YW	ADG	MCE	MLK	MW	STY	DOC	CW	YG	MARB	BF	REA	API	TI
12.6	-1.2	70.6	97.4	0.17	3.6	20.4	55.6	22.7	15	22.8	-0.21	0.59	-0.04	0.55	158.9	83.1

- With a 4.35 IMF and an elite STAY EPD, you have a prospect here that is worthy of extra study.
- Offers a unique twist on the bottom side of his pedigree compared to most in the offering.
- Top 1% STAY, top 15% BW, DOC, MARB, API, top 35% CED.

Lot 82

GGP

HANELS FIRESTEEL M4184

4376668

BW: 81 • Adj WW: 684 • Scan Wt: 1084

3/4 SM 1/4 AN • 2/17/24

SIRE G A R SURE FIRE
EGL FIRESTEEL 103F
TJ 22X

DAM HARMS HARDWOOD
HANELS MISS HARDWOOD K2174
HANELS MISS FREE B4214

SCAN DATA Adj. IMF: 2.77 • Adj. BF: 0.22 • Adj. REA: 14.99

CE	BW	WW	YW	ADG	MCE	MLK	MW	STY	DOC	CW	YG	MARB	BF	REA	API	TI
11.4	2.1	97.7	150.2	0.33	2.7	24.1	72.8	19.9	15.8	54.8	-0.32	0.64	-0.08	0.97	162.6	98.4

- Another standout from the EGL Firesteel 103F sire group that is backed by a first calf heifer dam sired by Harms Hardwood.
- M4184 is a performance standout that ranks among the elite individuals in the breed for weaning weight and yearling weight performance.
- A suitable option if you're looking to enhance profitability! He offers an elite data package.
- Top 4% WW, top 10% YW, MWW, STAY, CW, BF, REA, TI, top 15% DOC, API, top 20% ADG, YG, MARB.

THE GOLD STRIKE SIRE GROUP

Lot 83



Lot 83

HANELS GOLD STRIKE M4003

4376670

BW: 80 • Adj WW: 746 • Scan Wt: 1295

PB SM • 1/1/24

SIRE TJ GOLD 274G
TJ GOLD STRIKE 506J
TJ 52A

DAM HANELS WIDE TRACK H0079
HANELS MISS WIDE TRACK K2141
HANELS MISS DIVIDEND G9080

SCAN DATA Adj. IMF: 5.97 • Adj. BF: 0.38 • Adj. REA: 14.53

CE	BW	WW	YW	ADG	MCE	MLK	MW	STY	DOC	CW	YG	MRB	BF	REA	API	TI
12.4	-1.1	82.4	130.8	0.3	5.4	27.4	68.6	16.4	17.1	44.7	-0.14	0.34	-0.01	0.82	150.9	89.5

Lot 84

HANELS GOLD STRIKE M4001

4376666

BW: 83 • Adj WW: 700 • Scan Wt: 1309

PB SM • 1/1/24

SIRE TJ GOLD 274G
TJ GOLD STRIKE 506J
TJ 52A

DAM KBHR HIGH ROAD E283
HANELS MISS HIGH ROAD K2063
HANELS MISS LEGEND C5014

SCAN DATA Adj. IMF: 3.09 • Adj. BF: 0.37 • Adj. REA: 14.94

CE	BW	WW	YW	ADG	MCE	MLK	MW	STY	DOC	CW	YG	MRB	BF	REA	API	TI
14.8	-1.5	85.3	141.3	0.35	7.6	28.8	71.4	16	11.8	36.5	-0.24	0.59	-0.02	0.93	170.8	99.4

- A loaded data sheet and loaded with quality.
- Hanel's Gold Strike M4003 is good looking, dense made, and the kind of bull stockmen will appreciate.
- Possess a strong birth to yearling weight spread, with a 106 WW ratio along the way.
- His 6.0 IMF checks in as the second highest among all the spring bulls in the sale.
- His EPD profile reads with elite quality for the entire suite of measure traits.
- Top 4% DOC, top 10% CW, top 15% BW, ADG, top 20% MILK, top 25% YW, MARB, API, TI, top 35% WW.



TJ GOLD STRIKE 506J - SIRE OF LOTS 83-86

- Purebred with a heavy 1,309 yearling weight to admire.
- M4001's elite EPD profile leads him to being one of the top TI and API bulls in the sale.
- Top 4% ADG, top 5% TI, top 10% BW, API, top 15% CED, YW, MARB, MILK, top 25% MCE, CW, top 30% WW, top 35% REA.

THE GOLD STRIKE SIRE GROUP

Lot 86



Lot 85

GGP

HANELS GOLD STRIKE M4016

4376617

BW: 77 • Adj WW: 695 • Scan Wt: 1343

PB SM • 1/3/24

SIRE TJ GOLD 274G
TJ GOLD STRIKE 506J
TJ 52A

DAM LCDR FAVOR 149F
HANELS MISS FAVOR K2083
HANELS MISS BEEF F8189

SCAN DATA Adj. IMF: 2.43 • Adj. BF: 0.25 • Adj. REA: 16.15

CE	BW	WW	YW	ADG	MCE	MLK	MW	STY	DOC	CW	YG	MRB	BF	REA	API	TI
13.4	0.3	93.7	148.4	0.34	6.4	24.6	71.4	18.9	12.9	48.5	-0.3	0.33	-0.04	1.11	160.1	95.3

- An easy birth TJ Gold Strike 506J son who grew to a 1,343 lb. yearling weight.
- One of the top growth and gain genetic bulls in the sale.
- Still maintaining strong longevity and calving ease traits in this purebred sire prospect.
- Top 5% ADG, top 10% WW, YW, CW, REA, TI, top 15% STAY, API, top 25% CED, MARB, top 30% BW, top 35% DOC.

Lot 86

GGP

HANELS GOLD STRIKE M4066

4376591

BW: 90 • Adj WW: 707 • Scan Wt: 1207

5/8 SM 3/8 AN • 1/12/24

SIRE TJ GOLD 274G
TJ GOLD STRIKE 506J
TJ 52A

DAM HANELS COWBOY CUT D6205
HANELS MISS COWBOY CUT H0300
MILL BRAE TG JOANIE 5200

SCAN DATA Adj. IMF: 2.64 • Adj. BF: 0.39 • Adj. REA: 13.99

CE	BW	WW	YW	ADG	MCE	MLK	MW	STY	DOC	CW	YG	MRB	BF	REA	API	TI
11.1	-0.6	77.7	114.2	0.23	5.3	26.7	65.2	17.4	14.8	30.7	-0.16	0.46	-0.01	0.67	141.5	83.9

- Deep bodied, well proportioned, and full of shape and power.
- His 707 lb. weaning weight is sure to catch your attention.
- One of the most maternally oriented EPD profiles in the sale offering.
- Top 15% DOC, MARB, top 20% BW, top 25% MILK, top 30% STAY.



THE HIGHLIFE SIRE GROUP

Lot 86



HANELS HIGH LIFE L3040 - FULL BROTHER TO LOT 87



MR SR HIGHLIFE G1609 - SIRE OF LOTS 87-94



HANELS DOC L3044 - MATERNAL BROTHER TO LOT 88

Lot 87

HANELS HIGHLIFE M4082

GGP

4376547

BW: 83 • Adj WW: 675 • Scan Wt: 1274

PB SM • 1/17/24

SIRE KBHR HIGH ROAD E283
MR SR HIGHLIFE G1609
MISS SR D1609

DAM HANELS CAPITALIST F8102
HANELS MISS CAPITALIST H0146
HANELS MISS CUT F8045

SCAN DATA Adj. IMF: 3.24 • Adj. BF: 0.3 • Adj. REA: 15.77

CE	BW	WW	YW	ADG	MCE	MLK	MW	STY	DOC	CW	YG	MRB	BF	REA	API	TI
14.5	-1.2	73.9	118	0.28	7.5	27.7	64.6	19.1	10.8	18.1	-0.39	0.21	-0.08	0.69	150.3	82.8

- Initiating the MR SR Highlife G1609 contingent is a long, dense, high-quality individual.
- Study his easy fleshing build, yet still stout in his muscle design.
- His success for both IMF and REA give him one of the most impressive scan data sets in the entire sale.
- Calving ease and cow power highlight his genetic profile.
- Top 15% CED, BW, STAY, top 20% MILK, top 25% ADG, MCE, API.

Lot 88

HANELS HIGHLIFE M4047

GGP

4376496

BW: 81 • Adj WW: 592 • Scan Wt: 1170

PB SM • 1/9/24

SIRE KBHR HIGH ROAD E283
MR SR HIGHLIFE G1609
MISS SR D1609

DAM CLRS DIVIDEND 405D
HANELS MISS DIVIDEND H0010
HANELS MISS TEN F8027

SCAN DATA Adj. IMF: 2.42 • Adj. BF: 0.15 • Adj. REA: 18.14

CE	BW	WW	YW	ADG	MCE	MLK	MW	STY	DOC	CW	YG	MRB	BF	REA	API	TI
13.7	0	79.9	123.8	0.27	6.8	22.1	61.9	16.1	8.7	30.7	-0.43	0.07	-0.11	0.79	135.7	81

- M4047 scans with one of the biggest REAs in the sale at 18.1 inches.
- Notice the CLRS Dividend 405D dam on the bottom side of the pedigree.
- An opportunity to acquire a heifer breeding bull with some carcass merit.
- Top 25% CED, BW, top 30% ADG, top 35% MCE.

THE HIGHLIFE SIRE GROUP

Lot 89

HANELS HIGHLIFE M4095

4376520

GGP

BW: 99 • Adj WW: 713 • Scan Wt: 1318

PB SM • 1/20/24

SIRE KBHR HIGH ROAD E283
MR SR HIGHLIFE G1609
MISS SR D1609

DAM HART MOST WANTED 083G
HANELS MISS MOST WANTED J1087
M4 MS MADE TO ORDER 940G

SCAN DATA Adj. IMF: 3.04 • Adj. BF: 0.23 • Adj. REA: 16.73 Homo Polled

CE	BW	WW	YW	ADG	MCE	MLK	MW	STY	DOC	CW	YG	MRB	BF	REA	API	TI
7.7	3.7	95.8	146.2	0.31	4	27	74.8	16.5	8.2	42.4	-0.52	-0.16	-0.12	1.14	116.1	80.3

- On the plus side of the ledger for WW, YW, and REA.
- His growth and power make him ideal for breeding mature cows for maximum performance.
- Homozygous polled.
- Top 10% WW, YW, REA, top 15% ADG, CW, top 25% MILK.

Lot 90

HANELS HIGHLIFE M4125

4376585

GGP

BW: 89 • Adj WW: 649 • Scan Wt: 1146

PB SM • 1/28/24

SIRE KBHR HIGH ROAD E283
MR SR HIGHLIFE G1609
MISS SR D1609

DAM MR SR 71 RIGHT NOW E1538
M4/3R MS MAGICAL J149
M4 MYSTIC LADY 04E

SCAN DATA Adj. IMF: 2.51 • Adj. BF: 0.18 • Adj. REA: 16.68 Homo Polled Homo Black

CE	BW	WW	YW	ADG	MCE	MLK	MW	STY	DOC	CW	YG	MRB	BF	REA	API	TI
13.5	-1.5	83.4	135.9	0.33	8.1	24.4	65.9	13.8	12.5	23.7	-0.4	0.26	-0.08	0.81	146.3	90

- Genetically, this is a bull that hits nearly every mark you could ask of him.
- Huge 16.7 square inch ribeye measurement.
- Balanced EPD profile with strong rankings across the gamut of traits.
- Homozygous black. Homozygous polled.
- Top 10% BW, ADG, top 20% YW, MCE, top 25% CED, TI, top 30% API, top 35% WW, MARB.

Lot 91

HANELS HIGHLIFE M4067

4376523

GGP

BW: 89 • Adj WW: 684 • Scan Wt: 1246

PB SM • 1/13/24

SIRE KBHR HIGH ROAD E283
MR SR HIGHLIFE G1609
MISS SR D1609

DAM HANELS COWBOY CUT D6205
HANELS MISS COWBOY CUT J1162
HANELS MISS COWBOY CUT E7067

SCAN DATA Adj. IMF: 3.57 • Adj. BF: 0.23 • Adj. REA: 15.52

CE	BW	WW	YW	ADG	MCE	MLK	MW	STY	DOC	CW	YG	MRB	BF	REA	API	TI
13.6	2.5	81.7	118.7	0.23	7.3	23.2	65.1	19	8.1	36.6	-0.53	0.14	-0.11	1.13	140.1	80.7

- Purebred stud that was strong on both his IMF and REA scans.
- The MR SR Highlife G1609 sire group offers phenotypic and performance quality.
- Top 10% REA, top 15% STAY, top 25% CED, CW, top 30% MCE.

Lot 92

HANELS HIGHLIFE M4080

4376498

GGP

BW: 81 • Adj WW: 618 • Scan Wt: 1324

3/4 SM 1/4 AN • 1/15/24

SIRE KBHR HIGH ROAD E283
MR SR HIGHLIFE G1609
MISS SR D1609

DAM HANELS COWBOY CUT D6208
HANELS MISS COWBOY CUT H0104
HANELS MISS DAY B4051

SCAN DATA Adj. IMF: 2.71 • Adj. BF: 0.23 • Adj. REA: 14.59

CE	BW	WW	YW	ADG	MCE	MLK	MW	STY	DOC	CW	YG	MRB	BF	REA	API	TI
16.9	-2.3	76	118.9	0.27	10.3	23.5	61.3	15.9	9.4	30.6	-0.18	0.2	-0.04	0.57	135.9	79.5

- M4080 combines calving ease with yearling performance.
- Weighing in at 1,324 lb. to demonstrate his growth ability.
- EPD profile is one of the best in the sale for calving ease genetics.
- Top 3% MCE, top 4% CED, top 5% BW, top 30% ADG.

Lot 93

HANELS HIGHLIFE M4087

4376674

GGP

BW: 89 • Adj WW: 667 • Scan Wt: 1231

3/4 SM 1/4 AN • 1/18/24

SIRE KBHR HIGH ROAD E283
MR SR HIGHLIFE G1609
MISS SR D1609

DAM HANELS 2020 B4020
HANELS MISS 2020 D6123
HANELS MISS DESIGN W950

SCAN DATA Adj. IMF: 2.31 • Adj. BF: 0.25 • Adj. REA: 12.16

CE	BW	WW	YW	ADG	MCE	MLK	MW	STY	DOC	CW	YG	MRB	BF	REA	API	TI
13.7	-0.5	64.1	94.1	0.19	7.5	24.9	57	19.4	8.5	23.3	-0.29	0.09	-0.07	0.56	123.9	67.2

- One to certainly study if you want to raise replacements from breeding your heifers.
- Calving ease and cow power emphasize his genetic profile.
- Top 15% STAY, top 20% BW, top 25% CED, MCE, top 35% MILK.

Lot 94

HANELS HIGHLIFE M4062

4376555

GGP

BW: 84 • Adj WW: 600 • Scan Wt: 1134

3/4 SM 1/4 AN • 1/12/24

SIRE KBHR HIGH ROAD E283
MR SR HIGHLIFE G1609
MISS SR D1609

DAM CONNEALY BLACKHAWK 6198
HANELS MISS BLACKHAWK J1067
HANELS MISS OLIE Y1003

SCAN DATA Adj. IMF: 2.69 • Adj. BF: 0.18 • Adj. REA: 14.13

CE	BW	WW	YW	ADG	MCE	MLK	MW	STY	DOC	CW	YG	MRB	BF	REA	API	TI
13.7	-0.6	72.8	111.2	0.24	6.5	23.2	59.5	20	8.6	34.7	-0.3	0.2	-0.07	0.76	135.8	75.5

- Another example of how well this sire group works for contributing calving ease and cow power traits to the next generation.
- Tie into them and your calf crop will be positioned for success.
- 10% STAY, top 20% BW, top 25% CED, top 30% CW.

THE TEN PLUS SIRE GROUP

Lot 95



- A sale feature bull when you study him for his build and quality.
- Appeal, balance, density, and stout features all tied together in a smooth package.
- Strong WW and IMF individual performance, highlighted with his 4.68 IMF.
- One of the strongest EPD profiles among the SimAngus bulls in this year's offering.
- Top 4% ADG, top 10% YW, MCE, CW, top 15% MARB, TI, top 20% BW, WW, top 30% DOC, API, top 35% MILK.

Lot 95

HANELS TEN PLUS M4057

4376535

BW: 84 • Adj WW: 715 • Scan Wt: 1294 1/2 SM 1/2 AN • 1/11/24

SIRE MGR TREASURE

HANELS TEN PLUS K2002

HANELS MISS IDENTIFIED G9000

DAM HANELS COWBOY CUT D6208

HANELS COWBOY CUT G9521

HANELS MISS BEACON E7505

SCAN DATA Adj. IMF: 4.68 • Adj. BF: 0.47 • Adj. REA: 13.37

CE	BW	WW	YW	ADG	MCE	MLK	MW	STY	DOC	CW	YG	MARB	BF	REA	API	TI
11	-0.6	87.8	143.3	0.35	8.8	24.8	73	14.6	13.3	46.6	0.08	0.58	0.02	0.39	148	92.6



HANELS TEN PLUS K2002 - SIRE OF LOTS 95-97

THE TEN PLUS SIRE GROUP

Lot 96



Lot 96

HANELS TEN PLUS M4033

GGP

4376526

BW: 89 • Adj WW: 703 • Scan Wt: 1366 3/8 SM 5/8 AN • 1/7/24

SIRE MGR TREASURE

HANELS TEN PLUS K2002

HANELS MISS IDENTIFIED G9000

DAM CCR PAY DIRT 2340C

HANELS MISS PAY DIRT H0165

HANELS MISS OLIE Z2058

SCAN DATA Adj. IMF: 4.62 • Adj. BF: 0.32 • Adj. REA: 13.52

CE	BW	WW	YW	ADG	MCE	MLK	MW	STY	DOC	CW	YG	MRB	BF	REA	API	TI
8.3	1.2	84	142.6	0.37	7.8	26.3	72.6	9.9	11.6	61.8	0.17	0.68	-0.01	0.09	132.4	88.4

- You will love the herd bull look and middle density of M4033.
- Excels in YW and IMF on his individual performance sheet.
- Elite carcass and growth bull.
- He's a great fit on a set of cows to maximize the high octane in your calf crop.
- Top 1% CW, top 2% ADG, top 4% MARB, top 15% YW, top 20% MCE, top 25% MILK, top 30% WW, TI.

Lot 97

HANELS TEN PLUS M4070

GGP

4376582

BW: 89 • Adj WW: 620 • Scan Wt: 1282 1/2 SM 1/2 AN • 1/13/24

SIRE MGR TREASURE

HANELS TEN PLUS K2002

HANELS MISS IDENTIFIED G9000

DAM WS PROCLAMATION E202

HANELS MISS PROCLAMATION J1125

HANELS MISS OLIE Y1010

SCAN DATA Adj. IMF: 3.81 • Adj. BF: 0.25 • Adj. REA: 13.94

CE	BW	WW	YW	ADG	MCE	MLK	MW	STY	DOC	CW	YG	MRB	BF	REA	API	TI
9.7	0.1	85	142.4	0.36	7.9	27.4	74.3	15	13.8	58.8	0.16	0.75	0.01	0.24	154.6	94.4



HANELS SAFE & SOUND L3001 - MATERNAL BROTHER TO SIRE OF LOTS 95-97

- 121 IMF ratio will catch the attention of any cattleman wanting to infuse carcass quality.
- His data profile is one of the most impressive in the sale.
- Study this bull closely if you are a performance minded breeder.
- Top 2% CW, MARB, top 3% ADG, top 15% YW, TI, top 20% MCE, MILK, API, top 25% DOC, top 30% BW, WW.

THE FAVOR SIRE GROUP

Lot 98



LCDR FAVOR 149F
SIRE OF LOT 98



WHF SUMMER 365C
MATERNAL GRANDDAM OF LOT 98



HANELS FAVOR K2122
FULL BROTHER TO LOT 98

Lot 98

HANELS FAVOR M4106

4376672

BW: 86 • Adj WW: 683 • Scan Wt: 1194

PB SM • 1/24/24

SIRE LCDR WITNESS 541C
LCDR FAVOR 149F
WS MISS SUGAR C4

DAM CDI INNOVATOR 325D
CCS/UDE SUMMER 22H
WHF SUMMER 365C

SCAN DATA Adj. IMF: 3.23 • Adj. BF: 0.32 • Adj. REA: 15.48 Homo Polled Homo Black

CE	BW	WW	YW	ADG	MCE	MLK	MW	STY	DOC	CW	YG	MRB	BF	REA	API	TI
8.2	1.8	90.8	134.1	0.27	4.1	19.2	64.5	18.2	14.9	25.2	-0.4	0.38	-0.09	0.74	149.2	91.2

- It's not easy to make one this stout while still being smooth and eye appealing.
- Hanel's Favor M4106 is a special creature when you study his build and quality.
- A 103 IMF ratio highlights his performance ledger.
- On paper, he does so many things right. A sale feature herd sire prospect.
- Homozygous black. Homozygous polled.
- Top 15% WW, DOC, top 20% YW, MARB, TI, top 25% STAY, API, top 30% ADG.



THE COUNTERTIME SIRE GROUP

Lot 99

GGP

HANELS COUNTERTIME M4168

4376689

BW: 89 • Adj WW: 737 • Scan Wt: 1287 3/8 SM 5/8 AN • 2/10/24

SIRE KCC1 COUNTERTIME 872H
HANELS COUNTERTIME K2163
MISS HWGW G59-933

DAM
745

SCAN DATA Adj. IMF: 3.25 • Adj. BF: 0.28 • Adj. REA: 14.3

CE	BW	WW	YW	ADG	MCE	MLK	MW	STY	DOC	CW	YG	MRB	BF	REA	API	TI
8.6	3.8	88.1	149.6	0.38	4.6	20.3	64.6	9.7	13.1	59.2	0.05	0.47	-0.01	0.46	118.7	82.8

- From the first crop of Hanel Countertime K2163.
- Study his performance sheet: 104WW ratio, strong YW, and 103 on his IMF ratio.
- Elite growth and gain bull in terms of his genetic predictors.
- Top 1% CW, top 2% ADG, top 10% YW, top 15% ADG, top 20% WW, top 35% DOC.

Lot 100

GGP

HANELS COUNTERTIME M4172

4376550

BW: 91 • Adj WW: 671 • Scan Wt: 1208 5/8 SM 3/8 AN • 2/11/24

SIRE KCC1 COUNTERTIME 872H
HANELS COUNTERTIME K2163
MISS HWGW G59-933

DAM TJ MAIN EVENT 503B
HANELS MISS MAIN EVENT H0181
HANELS MISS IRON Z2026

SCAN DATA Adj. IMF: 2.28 • Adj. BF: 0.23 • Adj. REA: 16.55

CE	BW	WW	YW	ADG	MCE	MLK	MW	STY	DOC	CW	YG	MRB	BF	REA	API	TI
5.7	5.3	96.6	147.4	0.32	1.6	19.8	68.3	14.7	12	56.1	-0.33	0.3	-0.07	1.1	119.3	83.8

- With a 16.6 REA, here is a bull designed for improving carcass yields in your steers.
- Pure power bull when you study his genetic data.
- Top 2% CW, top 10% WW, YW, ADG, REA, top 30% MARB.

Lot 101

GGP

HANELS COUNTERTIME M4178

4376540

BW: 94 • Adj WW: 699 • Scan Wt: 1330 3/4 SM 1/4 AN • 2/11/24

SIRE KCC1 COUNTERTIME 872H
HANELS COUNTERTIME K2163
MISS HWGW G59-933

DAM HOOK'S BEACON 56B
HANELS MISS BEACON E7036
HANELS MISS LEGEND C5014

SCAN DATA Adj. IMF: 3.22 • Adj. BF: 0.27 • Adj. REA: 15.71

CE	BW	WW	YW	ADG	MCE	MLK	MW	STY	DOC	CW	YG	MRB	BF	REA	API	TI
9.3	1.3	78.3	127.5	0.31	4.9	24.9	64.2	15.1	12.3	43.8	-0.13	0.54	-0.03	0.62	138.2	84.2

- Hanel Countertime M4178 is a carcass scan standout if you analyze his strength for both REA and IMF.
- With his EPD rankings, this bull is certainly classified as a carcass trait improver.
- Top 15% ADG, CW, MARB, top 30% YW, top 35% MILK.

Lot 102

GGP

HANELS COUNTERTIME M4183

4376652

BW: 90 • Adj WW: 671 • Scan Wt: 1144 3/4 SM 1/4 AN • 2/16/24

SIRE KCC1 COUNTERTIME 872H
HANELS COUNTERTIME K2163
MISS HWGW G59-933

DAM W/C WIDE TRACK 694Y
HANELS MISS TRACK D6218
HANELS MISS AXIS A3246

SCAN DATA Adj. IMF: 2.75 • Adj. BF: 0.22 • Adj. REA: 15.28

CE	BW	WW	YW	ADG	MCE	MLK	MW	STY	DOC	CW	YG	MRB	BF	REA	API	TI
9.8	3.6	81.4	121.7	0.25	3.3	23	63.9	16.6	13.2	37.4	-0.26	0.34	-0.06	0.74	126.9	78.2

- A bit of an outcross pedigree from many of the prominent genetics offered in years past.
- Circle this bull in your sale book if you are looking to improve carcass characteristics.
- Top 25% CW, MARB, top 30% DOC.



KCC1 COUNTERTIME 872H - PATERNAL GRANDSIRE OF LOTS 99-102



HANELS FIREPROOF L3129 - MATERNAL BROTHER TO LOT 102

THE HARDWOOD SIRE GROUP



HARMS HARDWOOD - SIRE OF LOTS 103-109

Lot 105

HANELS HARDWOOD M4111

GGP
4376618

BW: 69 • Adj WW: 612 • Scan Wt: 1152

PB SM • 1/23/24

SIRE VJT DRIFTWOOD E55
HARMS HARDWOOD
TJ 41Z

DAM TNT TANKER U263
HANELS MISS TANKER A3242
BROOKS MISS RENE

SCAN DATA Adj. IMF: 2.68 • Adj. BF: 0.18 • Adj. REA: 17.82

CE	BW	WW	YW	ADG	MCE	MLK	MW	STY	DOC	CW	YG	MRB	BF	REA	API	TI
9.1	1.5	90.8	141.1	0.31	4.8	27.4	72.7	17.1	12.3	44.9	-0.47	0.13	-0.1	1.16	136.8	87.2

- One of the largest REA scans in the entire offering.
- Loaded genetic profile for carcass and growth, while still carrying maternal excellence.
- A versatile bull that can meet the needs of many cattle operations.
- Top 10% CW, REA, top 15% WW, YW, ADG, top 20% MILK, top 30% TI, top 35% STAY.

Lot 103

HANELS HARDWOOD M4132

GGP
4376609

BW: 79 • Adj WW: 664 • Scan Wt: 1215

PB SM • 1/24/24

SIRE VJT DRIFTWOOD E55
HARMS HARDWOOD
TJ 41Z

DAM CCR COWBOY CUT 5048Z
HANELS MISS CUT F8132
HANELS MISS STIM B4023

SCAN DATA Adj. IMF: 2.42 • Adj. BF: 0.26 • Adj. REA: 16.82

CE	BW	WW	YW	ADG	MCE	MLK	MW	STY	DOC	CW	YG	MRB	BF	REA	API	TI
11.8	1.1	92.2	129.8	0.24	6.3	21.1	67	20.2	12.6	25.3	-0.38	0.17	-0.06	0.93	147	88.1

- A purebred Harms Hardwood son leads off a highlight sire group.
- From 79 lb. birth weight to a 16.8 REA, this guy does a lot well in his performance.
- You'll love his genetic profile for both growth and maternal traits.
- Top 10% STAY, top 15% WW, top 30% YW, API, TI, top 35% REA.

Lot 106

HANELS HARDWOOD M4138

GGP
4376667

BW: 89 • Adj WW: 722 • Scan Wt: 1199

PB SM • 1/28/24

SIRE VJT DRIFTWOOD E55
HARMS HARDWOOD
TJ 41Z

DAM HANELS DOUBLE DOWN Y1211
HANELS MISS DOWN C5065
HANELS MISS OLIE Z2017

SCAN DATA Adj. IMF: 2.9 • Adj. BF: 0.16 • Adj. REA: 15.96

CE	BW	WW	YW	ADG	MCE	MLK	MW	STY	DOC	CW	YG	MRB	BF	REA	API	TI
11.7	2.9	95.9	150.8	0.34	5	22.6	70.4	12.1	11.6	55.3	-0.34	0.12	-0.08	1.01	129.1	87.9

- Purebred bull full of power and performance.
- 102 WW ratio with a big time REA.
- The growth genetics this sire carries will make him enticing to any cow herd.
- Top 2% CW, top 5% YW, ADG, top 10% WW, top 20% REA. Top 30% TI.

Lot 104

HANELS HARDWOOD M4151

GGP
4376528

BW: 80 • Adj WW: 667 • Scan Wt: 1304

PB SM • 1/30/24

SIRE VJT DRIFTWOOD E55
HARMS HARDWOOD
TJ 41Z

DAM W/C EXECUTIVE ORDER 8543B
M4 MS MADE TO ORDER 940G
KSU MISS SHEAR FORCE 6Z

SCAN DATA Adj. IMF: 2.6 • Adj. BF: 0.19 • Adj. REA: 17.02

CE	BW	WW	YW	ADG	MCE	MLK	MW	STY	DOC	CW	YG	MRB	BF	REA	API	TI
13.2	-1.4	77.7	123.5	0.29	5.8	24.8	63.6	16.1	11.7	35.9	-0.45	0.22	-0.07	1.18	145.6	85.6

- Purebred prospect was only 80 lb. at birth, yet still over 17 on his ribeye measurement.
- You won't see this maternal side of the pedigree often, so take advantage of this outcross.
- He can do so much well when you study his EPD profile.
- Top 5% REA, top 10% BW, top 20% ADG, top 30% CED, CW, API, top 35% MILK, TI.

Lot 107

HANELS HARDWOOD M4191

GGP
4376638

BW: 79 • Adj WW: 806 • Scan Wt: 1333

3/4 SM 1/4 AN • 2/17/24

SIRE VJT DRIFTWOOD E55
HARMS HARDWOOD
TJ 41Z

DAM CONNEALY LEGENDARY 644L
HANELS MISS LEGENDARY G9021
HANELS MISS PALE D6227

SCAN DATA Adj. IMF: 3.05 • Adj. BF: 0.29 • Adj. REA: 17.49 Homo Black

CE	BW	WW	YW	ADG	MCE	MLK	MW	STY	DOC	CW	YG	MRB	BF	REA	API	TI
12.4	-0.1	95	144.1	0.31	5.9	23.4	71.3	17.9	12.1	41.9	-0.34	0.38	-0.06	1.04	148.1	92.9

- Harms Hardwood son with the highest WW among the sire group, ratioing 114.
- Big REA bull as well at 17.5 sq. inches.
- A high growth bull that ranks highly for both API and TI indexes.
- Homozygous black.
- Top 10% WW, YW, top 15% ADG, CW, REA, TI, top 20% MARB, top 25% BW, STAY, top 30% API.

THE HARDWOOD SIRE GROUP

Lot 108

GGP

HANELS HARDWOOD M4139

4376534

BW: 83 • Adj WW: 681 • Scan Wt: 1165 1/2 SM 1/2 AN • 1/28/24

SIRE VJT DRIFTWOOD E55
HARMS HARDWOOD
TJ 41Z

DAM TOKACH UPDATE 9009
MILL BRAE TU JOANIE 6142
MILL BRAE IF JOANIE 9206

SCAN DATA Adj. IMF: 2.8 • Adj. BF: 0.23 • Adj. REA: 15.12

CE	BW	WW	YW	ADG	MCE	MLK	MW	STY	DOC	CW	YG	MRB	BF	REA	API	TI
12.6	-0.6	79.1	132.5	0.33	6.3	26.7	65.4	13.2	12.6	49.7	-0.15	0.3	-0.03	0.73	130.4	82.2

- SimAngus bull offers a special genetic makeup that would be dynamite on non-Angus based cattle.
- These Harms Hardwood sons get the job done.
- The genetic power that he possesses is truly impressive.
- Top 5% CW, top 10% ADG, top 20% BW, top 25% YW, MILK, top 30% MARB, top 35% CED.



HANELS COWBOY CUT L3143 - MATERNAL BROTHER TO LOT 108

Lot 109

GGP

HANELS HARDWOOD M4200

4376653

BW: 85 • Adj WW: 723 • Scan Wt: 1202 5/8 SM 3/8 AN • 2/22/24

SIRE VJT DRIFTWOOD E55
HARMS HARDWOOD
TJ 41Z

DAM HWGW MR INSIGHT B40XX-A13X
MISS HWGW G59-933
MISS FIRST LOOK-933

SCAN DATA Adj. IMF: 2.51 • Adj. BF: 0.22 • Adj. REA: 16.04

CE	BW	WW	YW	ADG	MCE	MLK	MW	STY	DOC	CW	YG	MRB	BF	REA	API	TI
9.2	1.1	82.3	133.9	0.32	3.7	22.9	64.6	14.2	12.3	54.3	-0.32	0.19	-0.06	1.09	120.6	79

- Hanel Hardwood M4200 should not be overlooked in this offering.
- Big REA bull with the genetic package to improve growth, gain, and yield.
- Top 3% CW, top 10% ADG, REA, top 20% YW, top 35% WW.



DEER VALLEY OPTIMUM 9246 - SIRE OF LOT 110

Lot 110

GGP

HANELS OPTIMUM M4045

4376543

BW: 79 • Adj WW: 653 • Scan Wt: 1252 3/8 SM 5/8 AN • 1/8/24

SIRE DEER VALLEY GROWTH FUND
DEER VALLEY OPTIMUM 9246
G A R PROGRESS 830

DAM CCR FRONTIER 0053Z
BROOKS MISS FRONTIER F19
BROOKS MISS AUGUSTUS D19

SCAN DATA Adj. IMF: 4.98 • Adj. BF: 0.39 • Adj. REA: 15.84

CE	BW	WW	YW	ADG	MCE	MLK	MW	STY	DOC	CW	YG	MRB	BF	REA	API	TI
15.5	0.3	87.1	148.7	0.38	10.5	26.6	70.1	13.9	16.5	44.5	-0.07	0.68	-0.02	0.54	154.6	93.9

- Combines style, stoutness, and substance into a smooth package.
- Big league scan data for both IMF and REA.
- Elite genetic profile can be beneficial in any breeding system.
- He will be on the top of many lists for his combination of quality and genetic merit.
- Top 2% ADG, top 3% MCE, top 4% MARB, top 10% CED, YW, DOC, CW, top 15% TI, top 20% API, top 25% WW, MILK, top 30% BW.



Lot 110

THE COMMERCE SIRE GROUP

Lot 111



Lot 111

FIELD'S MAVERIVCK M402

GGP

4425299

BW: 74 • Adj WW: 723 • Scan Wt: 1464 1/2 SM 1/2 AN • 1/4/24

SIRE G A R SUNBEAM
CONNEALY COMMERCE
AVIRA OF CONANGA 814R

DAM HART STATE OF WAR 056C
FIELD'S MISS GOOD KARMA K204
FIELD'S MISS MOON

SCAN DATA Adj. IMF: 2.73 • Adj. BF: 0.28 • Adj. REA: 15.6 Homo Polled Homo Black

CE	BW	WW	YW	ADG	MCE	MLK	MW	STY	DOC	CW	YG	MRB	BF	REA	API	TI
15.6	0.1	107.1	176.3	0.43	12.2	29.2	83.1	9.9	14.8	85.5	-0.06	0.4	-0.01	1.08	142.8	101.2

- Deep bodied with a herd bull head and neck. This guy is stylish, yet functional in his build.
- Curve bending individual growth performance coupled with a big REA measurement.
- An elite growth bull that does maternal and carcass traits well, too.
- Homozygous black. Homozygous polled.
- Top 1% MCE, CW, top 3% WW, YW, ADG, top 4% TI, top 10% CED, top 15% BW, MILK, MARB, top 25% API, top 30% DOC.

Lot 112

FIELD'S MONGO M417

GGP

4425290

BW: 86 • Adj WW: 731 • Scan Wt: 1306 1/2 SM 1/2 AN • 1/25/24

SIRE G A R SUNBEAM
CONNEALY COMMERCE
AVIRA OF CONANGA 814R

DAM HANELS LEGEND S605
HANELS MISS LEGEND Z2007
HANELS MISS POWER X0607

SCAN DATA Adj. IMF: 3.15 • Adj. BF: 0.23 • Adj. REA: 14.69 Homo Polled Homo Black

CE	BW	WW	YW	ADG	MCE	MLK	MW	STY	DOC	CW	YG	MRB	BF	REA	API	TI
13.9	1.8	91.2	147.2	0.35	10.6	26.4	72.4	11.4	10.9	56.4	-0.21	0.28	-0.03	1	127.6	86.4



FIELD'S MIC LAGE L330 - MATERNAL BROTHER TO DAM OF LOT 111

- Demonstrates his growth capabilities with his own weaning and yearling measurements.
- A SimAngus stud sired by the leading ST Genetics sire Connealy Commerce, Field's Mongo M417 will make plenty of friends on sale day.
- His EPD script reads as a bull who will power up calves without sacrificing carcass merit.
- Top 1% MCE, top 4% CW, top 10% YW, ADG, top 15% CED, WW, MARB, TI, top 25% MILK, top 30% API.

THE TRUSTEE SIRE GROUP

Lot 113



CDI TRUSTEE 387F
SIRE OF LOT 113

Lot 113 FIELD'S TRUSTEE M416

GGP

4425310

BW: 84 • Adj WW: 663 • Scan Wt: 1259

PB SM • 1/22/24

SIRE CDI REVIVAL 370D

DAM GLS DECLARATION D611

CDI TRUSTEE 387F

FIELD'S MISS INDEPENDENT

CDI MISS HOMETOWN 163C

GLS JOSIE Y104

SCAN DATA Adj. IMF: 3.38 • Adj. BF: 0.26 • Adj. REA: 13.23 Homo Polled Homo Black

CE	BW	WW	YW	ADG	MCE	MLK	MW	STY	DOC	CW	YG	MRB	BF	REA	API	TI
11.3	1.2	90.5	140.4	0.31	4.1	21.2	66.3	13.6	10.9	50.8	-0.4	0.22	-0.10	1.02	137.9	89.1

- It's hard to pick a hole in this son of CDI Trustee 387F.
- 107 IMF ratio will make you take another look at his merits.
- Don't sleep on this one because he is late in the sale book.
- Top 4% REA, top 20% WW, YW, ADG, top 30% CW, TI.



BRADEN, LAUREN, TATUM, RUSTIN & SUTTON FIELD

The Field family has brought another top notch set of bulls for your appraisal on March 3, 2025! Braden and his family will be offering lots 111 through 119. The bulls have been managed and developed with the Hanel's Black Simmentals bulls since weaning. These 9 bulls are backed by some of the top females in their program, including the GLS Miss Cut E10 donor dam, the foundation of the Field Cattle Company breeding program! These bulls are stout, rugged, and ready for heavy service!

THE YEARLING BULLS



LCDR FAVOR 149F - SIRE OF LOT 114



GLS MISS CUT E10 - DAM OF LOTS 114 & 115



OMF HARD RIGHT H21 - SIRE OF LOT 115



FIELD'S GUNSLINGER - MATERNAL BROTHER TO LOTS 114 & 115

Lot 114

FIELD'S FAVOR M437

4425325

BW: 79 • Adj WW: 661 • Scan Wt: 1225

PB SM • 1/23/24

SIRE LCDR WITNESS 541C

DAM CCR COWBOY CUT 5048Z

LCDR FAVOR 149F

GLS MISS CUT E10

WS MISS SUGAR C4

GLS MISS ROCKY X195

SCAN DATA Adj. IMF: 2.8 • Adj. BF: 0.35 • Adj. REA: 15.36 Homo Polled Homo Black

CE	BW	WW	YW	ADG	MCE	MLK	MW	STY	DOC	CW	YG	MRB	BF	REA	API	TI
7.8	1.9	94.5	139.8	0.28	3.7	24	71.2	17.5	11.4	43	-0.19	0.29	-0.03	0.8	142.6	90.6

- Showcases a low 79 lb. birth weight on his individual performance.
- Bend the growth curve with his combination of data and EPD values.
- Homozygous black. Homozygous polled.
- Top 10% WW, YW, DOC, top 15% ADG, TI, top 25% CW, MARB, top 35% STAY, API.

Lot 115

FIELD'S HARD RIGHT M412

4425302

BW: 86 • Adj WW: 712 • Scan Wt: 1243

PB SM • 1/18/24

SIRE OMF EPIC E27

DAM CCR COWBOY CUT 5048Z

OMF HARD RIGHT H21

GLS MISS CUT E10

HOOKS ANGEL 11A

GLS MISS ROCKY X195

SCAN DATA Adj. IMF: 2.93 • Adj. BF: 0.23 • Adj. REA: 17.45 Homo Polled Homo Black

CE	BW	WW	YW	ADG	MCE	MLK	MW	STY	DOC	CW	YG	MRB	BF	REA	API	TI
10.5	1.8	82.4	118.9	0.23	5.9	28.6	69.7	18.1	13	26.7	-0.38	0.37	-0.07	0.85	147.5	87.1

- Huge 17.5 REA on this OMF Hard Right H21 son.
- A maternal and carcass improving herd sire prospect.
- Homozygous black. Homozygous polled.
- Top 15% MILK, MARB, top 20% DOC, TI, top 25% WW, API, top 30% YW, top 35% ADG, STAY.

Lot 116

FIELD'S BLACKHAWK M422

4425291

BW: 89 • Adj WW: 750 • Scan Wt: 1175

PB SM • 2/1/24

SIRE HOOK'S BLACK HAWK 50B

DAM CDI TRUSTEE 387F

HANELS BLACK HAWK K2002

FIELD'S MISS TRUSTED KIN K218

HANELS MISS DIVIDEND H0000

GLS MISS CUT E10

SCAN DATA Adj. IMF: 2.68 • Adj. BF: 0.26 • Adj. REA: 14.97 Homo Polled Homo Black

CE	BW	WW	YW	ADG	MCE	MLK	MW	STY	DOC	CW	YG	MRB	BF	REA	API	TI
12.1	0.3	81.4	112.2	0.19	5.5	22.8	63.5	14.5	12.5	32.1	-0.18	0.23	0.00	0.83	134.5	83

- Field's Blackhawk M422 boasts a 750 lb. weaning weight, ratioing at 106 for the sale group.
- Use this bull to connect to a prominent breed legend while outcrossing to our usual program.
- Growth and power deluxe in his genetic offering.
- Top 10% WW, top 15% YW, ADG, CW, top 20% REA, TI.

THE YEARLING BULLS

Lot 117

GGP

FIELD'S SUMMER M411

4425300

BW: 85 • Adj WW: 716 • Scan Wt: 1170

PB SM • 1/18/24

SIRE MR SR 71 RIGHT NOW E1538

DAM ES RIGHT TIME FA110-4

MR SR MIC DROP G1534

CCS/JS SUMMER 40K

MISS SR C1534

WHF SUMMER 365C

SCAN DATA Adj. IMF: 2.63 • Adj. BF: 0.18 • Adj. REA: 17.34 Homo Polled Homo Black

CE	BW	WW	YW	ADG	MCE	MLK	MW	STY	DOC	CW	YG	MRB	BF	REA	API	TI
10.1	1.5	78.7	117.3	0.24	7.6	22.6	61.8	19.6	15.6	21.8	-0.6	-0.05	-0.12	1.12	128	75.3

- You will love the WW and REA combination this purebred carries on his data sheet.
- Growth and gain specialist in his EPD profile.
- Homozygous black. Homozygous polled.
- Top 10% ADG, DOC, top 15% YW, MCE, top 20% WW, STAY, top 35% CW.



MR SR MIC DROP G1534 - SIRE OF LOT 117

Lot 118

GGP

FIELD'S HARVEY M444

4425303

BW: 84 • Adj WW: 643 • Scan Wt: 1275

PB SM • 3/22/24

SIRE W/C BANKROLL 811D

DAM CCR COWBOY CUT 5048Z

FIELD'S KINGPIN K205

FIELD'S CUTTING EDGE

STN MISS STAR LIGHT

HANELS MISS FRONT Z2043

SCAN DATA Adj. IMF: 2.54 • Adj. BF: 0.23 • Adj. REA: 16.05 Homo Polled Homo Black

CE	BW	WW	YW	ADG	MCE	MLK	MW	STY	DOC	CW	YG	MRB	BF	REA	API	TI
9.5	3.2	82.2	125.3	0.27	5.4	25.9	67.3	13.1	15	27.8	-0.38	0.28	-0.08	0.8	130	83

- This bull exploded in his post-weaning growth.
- 16.1 REA is worthy of your appraisal.
- M444 offers good growth prowess with maternal characteristics as well.
- Top 15% DOC, top 30% WW, MILK, top 35% YW.



CCS/JS SUMMER 40K - DAM OF LOT 117

Lot 119

GGP

FIELD'S BLACKHAWK M421

4425288

BW: 84 • Adj WW: 756 • Scan Wt: 1216

5/8 SM 3/8 AN • 1/27/24

SIRE HOOK'S XAVIER 14X

DAM CCR PAY DIRT 2340C

HOOK'S BLACK HAWK 50B

HANELS MISS PAY DIRT J1179

HOOK'S YVETTE 100Y

HANELS MISS DESIGN U821

SCAN DATA Adj. IMF: 2.81 • Adj. BF: 0.25 • Adj. REA: 14.37 Homo Polled Homo Black

CE	BW	WW	YW	ADG	MCE	MLK	MW	STY	DOC	CW	YG	MRB	BF	REA	API	TI
13.7	0.4	86.5	134.9	0.3	8.3	24.2	67.4	17	12.5	57.1	-0.27	0.19	-0.03	1.27	133.2	82.5

- Rounding out the Simmental offering with a big-numbered bull that makes the grade for almost every trait on the data sheet.
- A 107 WW ratio showcases his performance qualities.
- If you can select it on paper, he likely ranks highly for the trait.
- Top 4% CW, top 10% MCE, REA, top 15% CED, ADG, top 20% BW, YW, top 25% WW, MARB, top 30% API, TI.



HOOK'S BLACK HAWK 50B - SIRE OF LOT 119

THE ANGUS BULLS

Lot 120



Lot 120

WSCC/HANEL TREASURE L46

20976009

BW: 72 • Adj WW: 772 • Scan Wt: 1608

ANGUS • 8/15/23

SIRE V A R DISCOVERY 2240

DAM KR CASINO 6243

MGR TREASURE

WHITE STAR QUEEN 33F

SJH IMPRESSION OF 6108 1614

ACR EVER ENTENSE 5108

SCAN DATA Adj. IMF: 3.01 • Adj. BF: 0.34 • Adj. REA: 15 Homo Polled Homo Black

CE	BW	WW	YW	CEM	MLK	CW	MRB	REA	FAT	\$M	\$W	\$F	\$G	\$B	\$C
9	0.6	72	131	12	18	39	0.53	0.2	0.006	59	63	77	42	119	213

- A visually impressive fall yearling to lead this Angus offering: deep, smooth, clean fronted, and plenty powerful.
- A great option for breeding heifers without sacrificing future growth and performance.
- Top 15% CEM, top 30% CED, YW, ADG, top 35% BW, WW.



MGR TREASURE
SIRE OF LOTS 120 & 121

Lot 121

WSCC/HANEL TREASURE L41

20976008

BW: 71 • Adj WW: 790 • Scan Wt: 1644

ANGUS • 8/7/23

SIRE V A R DISCOVERY 2240

DAM LD MISSING LINK 9011

MGR TREASURE

ACR EVER ENTENSE 5108

SJH IMPRESSION OF 6108 1614

A CROSS EVER ENTENSE A1537

SCAN DATA Adj. IMF: 5.21 • Adj. BF: 0.34 • Adj. REA: 15.6 Homo Polled Homo Black

CE	BW	WW	YW	CEM	MLK	CW	MRB	REA	FAT	\$M	\$W	\$F	\$G	\$B	\$C
11	-0.9	64	124	14	22	43	0.98	0.15	0.026	32	56	91	62	153	230



KR CASINO 6243
MATERNAL GRANDSIRE
OF LOT 120

- An MGR Treasure fall yearling son that should offer calving ease.
- Heifer safe with the ability to cover a large group of females with his age advantage.
- Top 5% CEM, top 15% CED, BW, ADG, top 35% \$G.

THE ANGUS BULLS

Lot 122



- Hanel Optimum M4004 is stout featured, while maintaining a smooth build and correct structure.
- If you're looking for more genetic power in the Angus offering, M4004 is a top candidate for adding growth and carcass.
- Top 15% \$W, top 25% WW, YW, MILK, MARB, top 35% CED, \$B, top 40% \$C.

Lot 122

HANELS OPTIMUM M4004

GGP

21030831

BW: 84 • Adj WW: 764 • Scan Wt: 1290

ANGUS • 1/12/24

SIRE DEER VALLEY GROWTH FUND
DEER VALLEY OPTIMUM 9246
G A R PROGRESS 830

DAM TOKACH UPDATE 9009
MILL BRAE TU JOANIE 6190
MILL BRAE IF JOANIE 9206

SCAN DATA Adj. IMF: 6.01 • Adj. BF: 0.32 • Adj. REA: 13.9 Homo Polled Homo Black

CE	BW	WW	YW	CEM	MLK	CW	MRB	REA	FAT	\$M	\$W	\$F	\$G	\$B	\$C
8	1.4	77	136	7	30	62	1.05	0.51	0.06	59	76	96	67	163	270



DEER VALLEY OPTIMUM 9246 - SIRE OF LOTS 122 & 123



THE ANGUS BULLS



CONNELY LEGENDARY 644L - MATERNAL GRANDSIRE OF LOT 123



ELLINGSON PROLIFIC - SIRE OF LOT 124

Lot 123

GGP

HANELS OPTIMUM M4003

21030808

BW: 82 • Adj WW: 706 • Scan Wt: 1188

ANGUS • 1/8/24

SIRE DEER VALLEY GROWTH FUND
DEER VALLEY OPTIMUM 9246
G A R PROGRESS 830

DAM CONNEALY LEGENDARY 644L
HANELS MISS LEGENDARY H0009
MILL BRAE STIM GLENDA 3114

SCAN DATA Adj. IMF: 5.85 • Adj. BF: 0.39 • Adj. REA: 13.3 Homo Polled Homo Black

CE	BW	WW	YW	CEM	MLK	CW	MRB	REA	FAT	\$M	\$W	\$F	\$G	\$B	\$C
2	2.3	76	132	12	26	71	0.88	0.97	0.047	67	73	117	65	182	303

- M4003 is an intriguing Deer Valley Optimum 9246 son that is worthy of further study.
- The most impressive number profile of the Angus bulls, ranking highly for several indexes, growth, and carcass traits.
- Top 15% CW, \$F, CEM, top 20% REA, \$B, \$C, top 25% \$W, WW, top 30% YW, top 35% MARB.

Lot 124

GGP

HANELS PRO M4005

21030830

BW: 89 • Adj WW: 817 • Scan Wt: 1368

ANGUS • 1/28/24

SIRE ELLINGSON PROFOUND 8155
ELLINGSON PROLIFIC
EA QUEEN 8070

DAM CTS REMEDY 1T01
CHESTNUT PF BEAUTY 753
CHESNUT PF BEAUTY 557

SCAN DATA Adj. IMF: 3.62 • Adj. BF: 0.39 • Adj. REA: 15.2 Homo Polled Homo Black

CE	BW	WW	YW	CEM	MLK	CW	MRB	REA	FAT	\$M	\$W	\$F	\$G	\$B	\$C
-7	3.9	78	141	8	20	76	0.3	1	0.018	69	58	121	40	161	278

- A powerful son of the ST Genetics leading sire, Ellingson Prolific.
- Brings the most genetic growth power of any bull in the Angus offering.
- Utilize this guy to stouten up a calf crop and add payweight.
- Top 10% CW, \$F, top 20% WW, YW, REA, top 35% \$C, top 40% \$B.





THE FEMALES

THE FEMALES

Lot 125



- Hanel Miss Doc M4186 leads off the heifer offering for good reason: standout phenotype.
- You will love this female for her extension, depth of body, angularity, and the right kind of power for a front pasture female.
- High-performing heifer with a 651 lb. weaning weight.
- To top it off, her data profile makes this heifer a special breeding piece for any operation.
- Top 5% CW, top 15% WW, top 20% YW, top 25% ADG, REA, top 35% STAY, top 40% DOC.

Lot 125

HANELS MISS DOC M4186

GGP

4376690

BW: 87 • Adj. WW: 651

3/4 SM 1/4 AN • 2/19/24

SIRE CDI INNOVATOR 325D

DAM GW PREMIUM BEEF 021TS

CCS/JS DOC 48H

HANELS MISS BEEF C5028

WHF SUMMER 365C

HANELS MISS OLIE A3001

CE	BW	WW	YW	ADG	MCE	MLK	MW	STY	DOC	CW	YG	MRB	BF	REA	API	TI
6.9	3.9	92	136.7	0.28	3.5	21.6	67.5	16.9	12.6	50.4	-0.32	0.07	-0.07	0.97	112.6	77



CCS/JS DOC 48H - SIRE OF LOT 125



THE FEMALES

Lot 126



EGL FIRESTEEL 103F - SIRE OF LOTS 126-130



HANELS TURNBUCKLE G9039 - MATERNAL GRANDSIRE OF LOTS 126-128

Lot 126



HANELS MISS FIRESTEEL M4123

4376628

BW: 85 • Adj. WW: 595

5/8 SM 3/8 AN • 1/27/24

SIRE G A R SURE FIRE
EGL FIRESTEEL 103F
TJ 22X

DAM HANELS TURNBUCKLE G9039
HANELS MISS TURNBUCKLE K2035
HANELS MISS HOOVER D6078

CE	BW	WW	YW	ADG	MCE	MLK	MW	STY	DOC	CW	YG	MRB	BF	REA	API	TI
13.6	0.5	72.9	105.2	0.2	3.9	23.2	59.4	22.3	14.3	22.5	-0.09	0.51	-0.02	0.3	152.9	80.6

- Sharp featured and smooth in her design, Hanel's Miss Firesteel M4123 is a broody female.
- Combines elegance and adequate power together so well.
- Her data is elite for longevity and marbling ability.
- Don't miss out on this front pasture prospect.
- Top 2% STAY, top 10% MARB, top 20% DOC, top 25% CED, API, top 35% BW.

Lot 127



HANELS MISS FIRESTEEL M4037

4376559

BW: 79 • Adj. WW: 578

5/8 SM 3/8 AN • 1/7/24

SIRE G A R SURE FIRE
EGL FIRESTEEL 103F
TJ 22X

DAM HANELS TURNBUCKLE G9039
HANELS MISS TURNBUCKLE K2072
KAPPES PAISLEY 224 Z633

CE	BW	WW	YW	ADG	MCE	MLK	MW	STY	DOC	CW	YG	MRB	BF	REA	API	TI
16.2	-0.8	59.7	81.9	0.14	4.6	22.8	52.8	20.5	16.6	16.1	-0.15	0.68	-0.02	0.38	158.6	78.6

- Easy 79 lb. birth weight on this EGL Firesteel 103F female.
- These progeny excel for carcass quality, and her data indicates she is no exception.
- High API female that is top of the charts for traits crucial to productivity.
- Homozygous polled.
- Top 3% MARB, top 5% DOC, CED, top 10% STAY, top 15% BW, API.

THE FEMALES

Lot 129



Lot 128

HANELS MISS FIRESTEEL M4119

4376575

GGP

BW: 83 • Adj. WW: 583

3/4 SM 1/4 AN • 1/26/24

SIRE G A R SURE FIRE
EGL FIRESTEEL 103F
TJ 22X

DAM HANELS TURNBUCKLE G9039
HANELS MISS TURNBUCKLE K2100
HANELS MISS VASION W919

CE	BW	WW	YW	ADG	MCE	MLK	MW	STY	DOC	CW	YG	MRB	BF	REA	API	TI
15	-1.8	65	91.2	0.16	4.9	20.3	52.7	26	12.6	3.4	-0.25	0.79	-0.04	0.37	178.7	85.9

- M4119 is a unique 3/4 Simmental that will have a lot of friends on sale day.
- Her genetic sheet is stamped like the other EGL Firesteel 103Fs in the sale: longevity, marbling, and calving ease.
- Top 1% STAY, top 2% MARB, top 3% API, top 10% BW, top 15% CED, top 35% TI.

Lot 129

HANELS MISS FIRESTEEL M4030

4376623

GGP

BW: 75 • Adj. WW: 561

5/8 SM 3/8 AN • 1/6/24

SIRE G A R SURE FIRE
EGL FIRESTEEL 103F
TJ 22X

DAM OMF EPIC E27
HANELS MISS EPIC K2054
M4 MS STOCK OPTION Z6H

CE	BW	WW	YW	ADG	MCE	MLK	MW	STY	DOC	CW	YG	MRB	BF	REA	API	TI
18.7	-2	67.9	92.9	0.16	6.8	23.6	57.7	22.2	17.2	28.3	-0.16	0.69	-0.02	0.6	171.1	85.6

- Elegant in her design with plenty of shape and dimension.
- Combines a sweet look with a dominant data sheet.
- An elite genetic potential female with her EPD profile.
- Don't miss this front pasture female on sale day.
- Homozygous polled.
- Top 1% CED, top 2% STAY, top 3% MARB, top 4% DOC, top 10% BW, API, top 35% MCE, TI.

Lot 130

HANELS MISS FIRESTEEL M4127

4376614

GGP

BW: 85 • Adj. WW: 605

5/8 SM 3/8 AN • 1/28/24

SIRE G A R SURE FIRE
EGL FIRESTEEL 103F
TJ 22X

DAM HANELS WIDE TRACK H0079
HANELS MISS WIDE TRACK K2116
HANELS MISS BOULDER G9005

CE	BW	WW	YW	ADG	MCE	MLK	MW	STY	DOC	CW	YG	MRB	BF	REA	API	TI
13.4	-1.4	73.5	111.8	0.24	4	25.3	61.5	18.4	13.7	27.5	-0.19	0.48	-0.04	0.54	148.6	83.5

- Stout 605 lb. weaning weight on this lady.
- Her EPD profile makes the grade for all the crucial traits.
- Top 10% BW, top 15% MARB, top 20% STAY, top 25% CED, DOC, top 30% API, top 35% MILK.



OMF EPIC E27 - MATERNAL GRANDSIRE OF LOT 129

THE FEMALES

Lot 131



- A Striking blaze faced female, Hanel's Miss Countertime M4196 will have no shortage of admirers in the pens on sale day.
- Mashed the scales at 622 lb. on her weaning weight.
- The first crop of Hanel's Countertime K2163 progeny is creating excitement around here.
- A female that should improve carcass traits.
- Top 15% CW, MARB, top 20% ADG, top 25% BW, top 30% DOC.

Lot 131

HANELS MISS COUNTERTIME M4196

GGP

4376692

BW: 84 • Adj. WW: 622

3/8 SM 5/8 AN • 2/23/24

SIRE KCC1 COUNTERTIME 872H
HANELS COUNTERTIME K2163
MISS HWGW G59-933

DAM ANGUS
726
ANGUS

CE	BW	WW	YW	ADG	MCE	MLK	MW	STY	DOC	CW	YG	MARB	BF	REA	API	TI
9.9	-0.1	70.5	117.5	0.29	5.3	20.3	55.8	10.4	13.1	42.7	0.02	0.45	-0.03	0.13	119.9	76.3



KCC1 COUNTERTIME 872H - \$230,000 PATERNAL GRANDSIRE OF LOTS 131-134



THE FEMALES



CLRS DIVIDEND 405D - MATERNAL GRANDSIRE OF LOT 133

Lot 132

GGP

HANELS MISS COUNTERTIME M4210 4376696

BW: 89 • Adj. WW: 583

3/8 SM 5/8 AN • 3/4/24

SIRE KCC1 COUNTERTIME 872H
HANELS COUNTERTIME K2163
MISS HWGW G59-933

DAM ANGUS
738
ANGUS

CE	BW	WW	YW	ADG	MCE	MLK	MW	STY	DOC	CW	YG	MRB	BF	REA	API	TI
8.3	1.5	78.8	131.6	0.33	4.3	20.3	60	6.8	13.1	59	-0.04	0.5	-0.01	0.65	114.5	80.7

- M4210 is the cowman's kind of quality female with added carcass performance.
- Elite carcass and gain figures.
- Top 1% CW, top 10% ADG, MARB, top 25% YW, top 30% DOC.

Lot 133

GGP

HANELS MISS COUNTERTIME M4216 4376596

BW: 90 • Adj. WW: 644

3/4 SM 1/4 AN • 3/19/24

SIRE KCC1 COUNTERTIME 872H
HANELS COUNTERTIME K2163
MISS HWGW G59-933

DAM CLRS DIVIDEND 405D
SFI MISS ESTEEM COMPANY G5E
SFI UNSETTLED LOVE E5

CE	BW	WW	YW	ADG	MCE	MLK	MW	STY	DOC	CW	YG	MRB	BF	REA	API	TI

- A pounds heavy 3/4 Simmental female.
- One of the top WWs in this group at 644 lb.
- Take advantage of the first cattle to be offered from this fresh sire group.

Lot 134

GGP

HANELS MISS COUNTERTIME M4207 4376694

BW: 83 • Adj. WW: 664

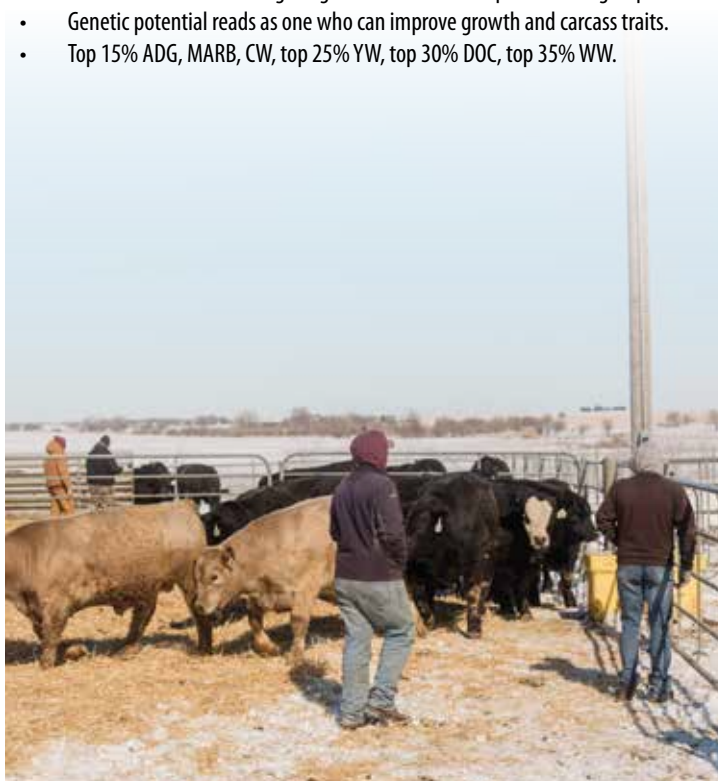
3/8 SM 5/8 AN • 2/29/24

SIRE KCC1 COUNTERTIME 872H
HANELS COUNTERTIME K2163
MISS HWGW G59-933

DAM ANGUS
702
ANGUS

CE	BW	WW	YW	ADG	MCE	MLK	MW	STY	DOC	CW	YG	MRB	BF	REA	API	TI
11.6	3	82.9	131.2	0.3	6.1	20.3	62	11.8	13.1	42.5	0	0.47	-0.02	0.33	124.2	80.4

- These Hanel Countertime K2163 daughters have true performance.
- Notice her 664 lb. weaning weight that is near the top of the sale group.
- Genetic potential reads as one who can improve growth and carcass traits.
- Top 15% ADG, MARB, CW, top 25% YW, top 30% DOC, top 35% WW.



THE FEMALES

Lot 135



Lot 135

HANELS MISS HIGHLIFE M4025

GGP

4376676

BW: 84 • Adj. WW: 623

PB SM • 1/5/24

SIRE KBHR HIGH ROAD E283
MR SR HIGHLIFE G1609
MISS SR D1609

DAM LCDR FAVOR 149F
HANELS MISS FAVOR K2086
CCS/UDE SUMMER 22H

CE	BW	WW	YW	ADG	MCE	MLK	MW	STY	DOC	CW	YG	MRB	BF	REA	API	TI
9.2	2.7	94.6	144.1	0.31	5	22.9	70.1	15	9.9	48.7	-0.49	0.23	-0.12	1.12	137.2	90.1

- Length and power are the highlights of an outstanding quality female.
- Hanel's Miss Highlife M4025 is big footed, stout made yet still looks like a lady.
- Weighed in at 623 lb. for her weaning data.
- This purebred female is a carcass trait improver with added growth.
- Homozygous black. Homozygous polled.
- Top 5% CW, top 10% WW, REA, top 15% YW, ADG, top 20% TI, top 40% MARB.



MR SR HIGHLIFE G1609 - SIRE OF LOT 135

THE FEMALES



HARMS HARDWOOD - SIRE OF LOTS 136-139



TJ 41Z - PATERNAL GRANDDAM OF LOTS 136-139

Lot 136

GGP

HANELS MISS HARDWOOD M4219

4376554

BW: 80 • Adj. WW: 596

PB SM • 3/17/24

SIRE VJT DRIFTWOOD E55
HARMS HARDWOOD
TJ 41Z

DAM CCR PAY DIRT 2340C
HANELS MISS PAY DIRT G9028
KAPPES UNITY R381 Z92

CE	BW	WW	YW	ADG	MCE	MLK	MW	STY	DOC	CW	YG	MRB	BF	REA	API	TI
12.3	0.9	88.3	141.4	0.33	8	24.3	68.4	17	11.4	40	-0.43	0.26	-0.08	1.11	148.9	90.2

- A purebred Harms Hardwood daughter that should not be overlooked.
- Solid performance across the board in her measurements.
- You will love the data sheet on this female.
- Top 10% ADG, REA, TOP 15% YW, TOP 20% WW, MCE, TI, CW, TOP 30% API.

Lot 138

GGP

HANELS MISS HARDWOOD M4140

4403098

BW: 84 • Adj. WW: 578

3/4 SM 1/4 AN • 1/28/24

SIRE VJT DRIFTWOOD E55
HARMS HARDWOOD
TJ 41Z

DAM S A V BISMARCK 5682
HANELS MISS MARK C5036
HANELS MISS HUMMER X0612

CE	BW	WW	YW	ADG	MCE	MLK	MW	STY	DOC	CW	YG	MRB	BF	REA	API	TI
12.7	-0.1	72.8	106.3	0.21	6.5	23	59.5	15.2	11.2	22.6	-0.34	0.13	-0.06	0.76	119.4	72.9

- Solid individual performance for this ¾ Simmental female.
- A calving ease genetic specialist among this offering of females.
- Homozygous black.
- Top 25% BW, top 35% CED, top 40% MCE.

Lot 137

GGP

HANELS MISS HARDWOOD M4109

4376641

BW: 80 • Adj. WW: 559

PB SM • 1/22/24

SIRE VJT DRIFTWOOD E55
HARMS HARDWOOD
TJ 41Z

DAM CDI CEO 281D
HANELS MISS CEO G9112
HANELS MISS TANKER A3021

CE	BW	WW	YW	ADG	MCE	MLK	MW	STY	DOC	CW	YG	MRB	BF	REA	API	TI
8.2	0.7	83.9	126.7	0.27	4.8	22.1	63.9	15.7	11.9	53	-0.58	0.04	-0.12	1.42	126.7	81.4

- Stack these Harms Hardwood daughters together for a foundation of the next generation of your herd.
- An elite carcass yielding genetic package that should still add growth without extra birth weight.
- Top 1% REA, top 3% CW, top 30% WW, ADG, top 35% YW, top 40% BW.

Lot 139

GGP

HANELS MISS HARDWOOD M4192

4376506

BW: 73 • Adj. WW: 527

3/4 SM 1/4 CH • 2/19/24

SIRE VJT DRIFTWOOD E55
HARMS HARDWOOD
TJ 41Z

DAM LT-WCTEMPLETON 1483 PLD ET
HANELS MISS TEMPLE D6060
HANELS MISS MFEST A3507

CE	BW	WW	YW	ADG	MCE	MLK	MW	STY	DOC	CW	YG	MRB	BF	REA	API	TI
15.3	-1.6	72	112.6	0.25	8.5	14.7	53.9	17.9	9.2	6.7	-0.46	-0.1	-0.1	0.64	120.4	69.2

- Modest 73 lb. birth weight on this Harms Hardwood daughter.
- Moderate sized female that will mature into a functional cow.
- Study her EPD profile for calving ease and longevity excellence.
- Top 10% CED, BW, top 15% MCE, top 30% STAY.

THE FEMALES



OMF HARD RIGHT H21 - PATERNAL GRANDSIRE OF LOTS 140-143

Lot 140

GGP

HANELS MISS KINGPIN M4220

4376634

BW: 79 • Adj. WW: 634

PB SM • 3/21/24

SIRE OMF HARD RIGHT H21
MCC-PLG KINGPIN 319
W/C MISS WERNING 983G

DAM HANELS PALE FACE A3024
HANELS MISS PALE E7516
HANELS MISS AXIS B4234

CE	BW	WW	YW	ADG	MCE	MLK	MW	STY	DOC	CW	YG	MRB	BF	REA	API	TI
13.8	1.1	91.5	131.1	0.25	6.5	21.7	67.3	21.8	12.9	36.1	-0.41	0.22	-0.06	1.11	155.5	89.4

- A unique breeding piece with curve bending performance.
- Stacked genetic profile on this purebred MCC-PLG Kingpin 319 daughter.
- Don't miss this one just because she didn't get a photo in the sale book.
- Top 3% STAY, top 10% REA, top 15% WW, top 20% API, top 25% CED, YW, CW, TI, top 35% DOC.

Lot 141

GGP

HANELS MISS KINGPIN M4094

4376657

BW: 79 • Adj. WW: 616

3/4 SM 1/4 AN • 1/18/24

SIRE OMF HARD RIGHT H21
MCC-PLG KINGPIN 319
W/C MISS WERNING 983G

DAM R/M IRONSTONE 4047
HANELS MISS IRON Z2026
HANELS MISS LEGEND U8147

CE	BW	WW	YW	ADG	MCE	MLK	MW	STY	DOC	CW	YG	MRB	BF	REA	API	TI
11.3	1.2	84.3	132.8	0.3	6.8	19.1	61.1	15.8	9.9	40.6	-0.34	0.27	-0.06	1	130.5	81.7

- Posts a stout 616 lb. weaning weight.
- The MCC-PLG Kingpin 319 cattle will be well received.
- A female with strong genetics for growth, gain, and carcass quality.
- Top 15% ADG, CW, top 20% REA, top 25% YW, top 30% WW, top 35% MCE, MARB.

Lot 142

GGP

HANELS MISS KINGPIN M4202

4376678

BW: 79 • Adj. WW: 594

3/4 SM 1/4 AN • 2/26/24

SIRE OMF HARD RIGHT H21
MCC-PLG KINGPIN 319
W/C MISS WERNING 983G

DAM R/M IRONSTONE 4047
HANELS MISS IRON Z2041
T786 4LANE HBS

CE	BW	WW	YW	ADG	MCE	MLK	MW	STY	DOC	CW	YG	MRB	BF	REA	API	TI
11.1	0.2	74.7	116.8	0.26	6.6	23	60.2	17.7	10.5	33.3	-0.26	0.32	-0.05	0.71	134	78.3

- Modest 79 lb. birth weight on this lady.
- She has a solid, balanced EPD profile to work with in making her breeding decisions.
- Top 30% BW, STAY, MARB, top 35% ADG, CW, top 40% MCE.

Lot 143

GGP

HANELS MISS KINGPIN M4131

4376489

BW: 74 • Adj. WW: 551

PB SM • 1/24/24

SIRE OMF HARD RIGHT H21
MCC-PLG KINGPIN 319
W/C MISS WERNING 983G

DAM ELLINGSON OLIE W908
HANELS MISS OLIE B4011
HANELS MISS IRON Z2026

CE	BW	WW	YW	ADG	MCE	MLK	MW	STY	DOC	CW	YG	MRB	BF	REA	API	TI
14.4	-0.1	74	117.3	0.27	8.1	20.5	57.3	19.7	10.6	34.9	-0.36	0.2	-0.07	0.92	148.6	80.4

- Only 74 lb. at birth.
- Her combination of genetic predictors combines for a high-ranking API female.
- Calving ease and longevity take top honors on her EPD script.
- Top 10% STAY, top 20% CED, MCE, top 25% BW, CW, top 30% ADG, API, top 35% REA.

THE FEMALES



SFI BACK 2 BASICS J2 - SIRE OF LOT 144

Lot 144

HANELS MISS BACK2BASIC M4211

4376527

BW: 89 • Adj. WW: 713

PB SM • 3/5/24

SIRE RUBY'S CURRENCY 7134E

SFI BACK 2 BASICS J2

KWIN RELNTLES RILEY E913

DAM HANELS PER VISION 2020

HANELS MISS 2020 H0061

HANELS MISS HUMMER Y1203

CE	BW	WW	YW	ADG	MCE	MLK	MW	STY	DOC	CW	YG	MRB	BF	REA	API	TI
7.7	4.4	87.9	137	0.31	4.3	26.5	70.2	11.6	10.3	50.2	-0.35	0.09	-0.08	0.99	115.1	80.2

- The #1 weaning weight heifer in the sale group at a whopping 713 lb.
- We're only offering one SFI Back 2 Basics J2 female in this year's sale.
- She's primed to be a growth and carcass improver based on her genetic profile.
- Top 5% CW, top 15% ADG, top 20% WW, YW, top 25% MILK, REA.



Join CCI.live Online for the Sale!

*The best, the fastest and most comprehensive
online marketing & bidding tool!*

BUYERS NOTE, you do not need an account or to login to watch the sale but you must have a validated account to bid.

Viewed Around the World!

**SALE CATALOG, VIDEOS,
and LIVE BROADCAST...**

all at your fingertips from the sale page
at www.CCI.live! Watch sales live weekly!



www.CCI.live

(405) 400-9505 Text or Call - schedule@cci.live
Find us on the App Store and Google Play
Over 35 years in livestock marketing!

INTRODUCING THE NEWEST MEMBERS OF THE HERD SIRE BATTERY AT HANEL'S BLACK SIMMENTALS!

SEMEN AVAILABLE



TJ GOLD RUSH 506K

ASA: 4065112 • PB SM

TJ GOLD 274G × TJ 59H (CAMP CAMPBELL E737)

THE \$32,000 2ND HIGH SELLING BULL FROM THE TRIANGLE J RANCH BULL SALE!

Owned with Greg Ahlmeyer (NE), Bonnydale Black Simmentals & Introvigne Grazing Co. (Australia)



MMR TIPSY L410

ASA: 4342415 • 1/2 SM 1/2 AN

KGC1 WALK THE LINE 076J × MM PLEASANT PILL 212 (SCHIEFELBEIN EFFECTIVE 61)

AN ELLI SUMMERS BRED BULL THAT WE SELECTED FROM THE REJECTED AKAHCHOKI FARMING AND MEAT CATTLE COMPANY PROGRAM IN MISSOURI



MCC-PLG KINGPIN 319

ASA: 4106927 • PB SM

OMF HARD RIGHT H21 X W/C MISS WERNING 983G (RUBYS TURNPIKE 771E)

AN INCREDIBLY POWERFUL SON OF OMF HARD RIGHT H21 THAT WAS BRED IN THE MYRRING CATTLE COMPANY PROGRAM OF ALLAMBE, NEBRASKA! HIS FIRST PROGENY HIGHLIGHT THIS YEAR'S SALE OFFERING!



PLG BLACKJACK 24-353

ASA: 4405406 • 3/4 SM 1/4 AN

FIVE STAR JACKSON J10 X WHF CLASSY 45J (CDI INNOVATOR 325D)

ONE OF OUR NEWEST HERD SIRES THAT WAS PURCHASED FROM POWERLINE GENETICS!



HANEL'S TEN PLUS K2002

AAA: 20582284 • ANGUS

MGR TREASURE × HANEL'S MISS IDENTIFIED 69000

THE 11TH CARCASS SIRE THAT TOPPED OUR 2015 BULL SALE AT \$85,000 TO THE TEN PLUS SYNDICATE!



HANEL'S POWER WAGON J1505

ASA: 4064388 • 3/4 SM 1/4 AN

WS PROCLAMATION E202 × M4 MS CAPITAL GAINS C75 (CONNELLY CAPITALIST 028)

2023 HIGH SELLING SIMMENTAL BULL OWNED BY WICKS CATTLE COMPANY (ND)

**HANEL'S
BLACK SIMMENTALS**

COURTLAND, KANSAS

BROCK HANEL, DVM: 785.275.1060

SEMEN AVAILABLE ON ALL HERD SIRES

**VOLUME/COMMERCIAL
DISCOUNTS AVAILABLE**

Call Brock for pricing and to discuss which bull best fits your breeding program!



INDUSTRY PARTNERS



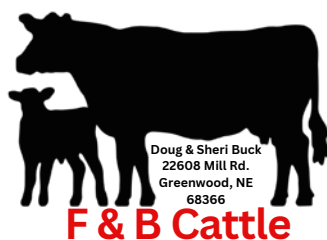
Clark County Feeders
Matt Shelor: (620) 885-4251



Klug Feedyard, LLC
Beau Klug: (402) 910-2217



Legacy Cattle Company
Trey Duensing: (402) 460-7620



Marvin Boyles: (785) 545-5611
Brock Hanel: (785) 275-1060



Mankato Livestock Inc.
Office: (785) 378-3283



Cherokee Sales Co.
Office: (580) 596-3361



Mitchell Livestock Auction
Office: (605) 996-6543

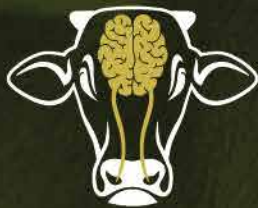


Schou Feeders
Einer Schou: (785) 747-8154

Bruns Ranch
Zach & Jen Bruns - (785) 647-2002

Golden West Feed Yards, Inc
Rick & Jacob Nekl: (402) 527-5220





FerAppease®
Maternal Bovine Appeasing Substance

**STRESS IS KILLING
YOUR CALVES.
BLOCK THE STRESS.
PROTECT YOUR CALVES.**

**Receive your Cattle
with FerAppease®.**

**Recent Texas A&M study finds that FerAppeased calves
had more than a 70% reduction in overall mortality.**

EXPERIMENTAL DESIGN

120 Intact 4-weight Angus-Influenced steers from MS auction yard
Transported for 12 h to College Station, TX
Rested for 24 h | Initial processing on day 0

Day 0:

- Vaccines, dewormer, implant, metaphylaxis, castration
- Assigned to receive FerAppease or control (n = 60/each)
- Distributed in drylot pens with 12 steers of treatment

Day 14 and on:

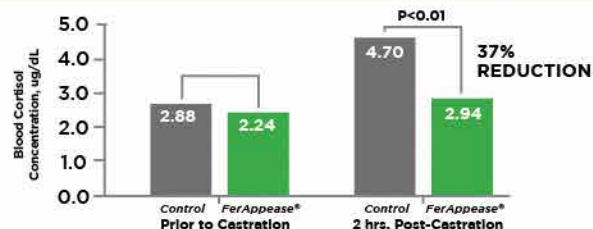
- Vaccine + FerAppease booster on day 14
- BW and sampling on days 0, 14, 28, 42, and 60
- Feed intake and incidence of BRD monitored daily

Receiving Cattle with FerAppease®

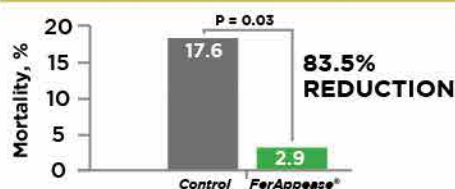
**Dosage Rate: Apply a Total Dose of 10cc. 5cc
on the muzzle + 5cc behind the poll.**

FerAppease® Reduced Blood Cortisol Levels.

Cortisol put calves into fight or flight mode. By
reducing cortisol, FerAppease mitigates the
calf's stress from castration and arrival.



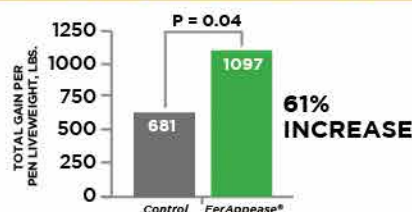
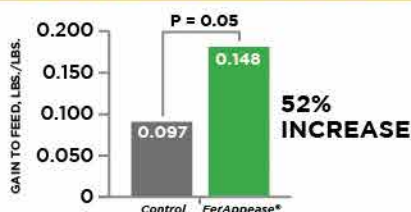
FerAppease® Reduced Mortality to BRD



Cortisol mobilizes energy to fight an immediate threat. This
action deprives the calf's immune system of energy and
weakens its ability to fight off disease, increasing mortalities.

Through the reduction of cortisol, FerAppease® keeps energy in the immune
system. Strong, energy-rich immune systems drive reduced mortalities.

FerAppease® Increased Feed Efficiency & Total Gain, lbs.



MORE CALVES + MORE POUNDS = MORE PROFIT.
Bottom-Line: FerAppease Keeps your Calves Alive.
Healthier Calves means Healthier Pockets.



Dr. Reinaldo Fernandes Cooke
Texas A&M University

**Begin treating your calves
today with FerAppease®.**



SCAN HERE
FOR MORE
INFORMATION

FOR MORE INFORMATION, VISIT
WWW.FERAAH.COM



Diagnostics
and Biologicals



PO BOX Z
DE SOTO, KS 66018

Presorted
First Class
US Postage
PAID
SlateGroup

SIMMENTAL | SIMANGUS | ANGUS

120+ YEARLING & AGED BULLS | 20+ OPEN FEMALES

