



THE VISION

ELITE BRED FEMALE SALE

JANUARY 25, 2025 // 6:00 P.M.

DES MOINES, IOWA

SALE SCHEDULE

FRIDAY, JANUARY 24, 2025

CATTLE AVAILABLE FOR VIEWING ALL DAY

SATURDAY, JANUARY 25, 2025

9:00 AM CATTLE AVAILABLE FOR VIEWING

5:00 PM DINNER SERVED

6:00 PM THE VISION ELITE BRED FEMALE SALE



WELCOME

The agricultural industry is a thriving institution everywhere one looks. It is a broad-spectrum business entity with a diverse outlook of routes, disciplines, and products aside from everything that grows and reproduces within Mother Nature's jurisdiction. From a cattleman's perspective, especially the cow/calf operator's viewpoint, the value of their commodity could be no better in comparison to history. It's not all milk and honey, but it is a notable improvement from cycles past. It's no secret that the U.S. cow numbers are at an all-time low and heifer retention is of little concern when they have the value across the scale, they have at weaning time and so the mature, bred female should have more value in theory. Bred cattle haven't reached the top end of the valuation point due to so many concerns related to feed supplies and pasture availability that can be positively or negatively affected by Mother Nature at any given time and at the drop of a hat.

When a group of cattlemen come together to assemble an offering of youthful bred cattle, like the set offered in the first annual The Vision female offering, those needing to replenish a depleted cow herd with quality should pay attention to what's being offered whether they are ready to take possession or not. This set of cattle is brought to you by an elite group of Iowa cattlemen who are not strangers for being tied to an offering that would be dense in phenotype, supported by some of the most namesake donors in the industry. These are people of reputation known for raising, selling, and exhibiting champions within their respective breed(s) of discipline. This is also a group of rounders that show no fear when it comes to making the next donor or sire acquisition, whether needed or not. They all share the same passion, goal, direction, and The Vision to reach the summit and stay put. Everyone involved loves the best of the best and will do whatever is necessary through genetic selection and mating cows to achieve excellence worth investing in.

We invite you to attend the first edition of The Vision. This marketing event will feature a high-quality sort of bred females and a handful of select, open donor and show prospects. The breed makeup would include a strong SimGenetic majority with some very elite-bred Angus and other breeds of competitive distinction. This marketing event is slated to be held at the Iowa State Fairgrounds on Saturday, the 25th of January. Hospitality and entertainment will be on the house, and the stock will be of superior quality and worthy of your evaluation and appraisal. If you should require any additional information or assistance with making your selections don't hesitate to reach out to any of the contributing partners of The Vision sale group or an Innovation AgMarketing team member.

Happy New Year! We wish you a prosperous 2025, but one of the best ways to insure prosperity for the year is to invest in one or several of the females that will meet your standards in this set of stock

ENJOY THE CATTLE.

GRAHAM BLAGG // TIM ANDERSON // JERED SHIPMAN

SALE LOCATION

IOWA STATE FAIRGROUNDS

IN THE CATTLE BARN'S PENNINGROTH MEDIA CENTER

3000 E GRAND AVENUE

DES MOINES, IA 50317

ONLINE BIDDING AVAILABLE THROUGH





GOLDEN ACRES SIMMENTALS
DOUG WENELL, 515.321.8457
CHAD WENELL, 515.231.3706
JEFF WENELL, 515.371.0764



BENNETT CATTLE COMPANY
KEVIN BENNETT, 712.251.9894



SMITH CATTLE COMPANY
BRAD SMITH, 712.209.1500
DENNIS SMITH, 712.209.4129
ZACH LINDSEY, 712.330.9197



HW CATTLE
CLINT BROWN, 641.344.9083
CLINT, CHRISTI, HADLEY & WAGER BROWN



FREKING CATTLE COMPANY
BRAD FREKING, 507.841.0402
JASON KRICK, 605.870.1802
RUSSELL PLUIMER, 765.499.4058



JS SIMMENTALS
JAY STEENHOEK, 515.238.5938
KEN STEENHOEK, 515.979.9713
SCOTT GRASS, 515.689.1012
DEREK COUNSELL, 641.715.4138
JEFF WILLIAMS, 402.380.9049



SWANSON CATTLE COMPANY
CHRIS SWANSON, 712.229.5947
TOM HANSON, 712.260.6561



SALE MANAGEMENT
GRAHAM BLAGG, 530.913.6418
TIM ANDERSON, 806.983.7226
JERED SHIPMAN, 605.682.9343

SALE MANAGEMENT

INNOVATION AG MARKETING, LLC
GRAHAM BLAGG, 530.913.6418
JERED SHIPMAN, 806.983.7226
TIM ANDERSON, 605.682.9343

AUCTIONEER

JERED SHIPMAN, 806.983.7226

CONSULTANTS

BRAD OTTO, 712.269.3473
MARK CORE, 641.780.4937
JEFF HOLMES, 515.341.2734

INSURANCE

JAMES F. BESSLER INC, 815.762.2641

TERMS & CONDITIONS

All lots sell in accordance with the suggested guidelines of the American Simmental Association, American Angus Association, or their respective breed association. For updated EPD's and information please visit www.simmental.org. Announcements made sale day from the block during the sale take precedence over printed material in this catalog. Payment will be accepted in the form of cash, cashier's check, or check. All cattle must be paid for prior to release. All funds are to be paid to Innovation AgMarketing, LLC in U.S. currency. No cattle will be transferred, delivered, or released without full payment. In the event you need expedited registration paper transfers please make plans to pay in full on sale day. All sales are final.

ANNOUNCEMENTS

A supplement sheet will be available sale day with updated information, corrections and additional information. This sheet and any announcements made sale day and from the auction block during the sale will take precedence over printed material associated with this sale.

LIABILITY

All sellers, Innovation AgMarketing, LLC, and authorized sale personnel assume NO liability for injury, accident, or damage to persons or personal property. All persons who attend the sale do so at their own risk.

BREEDING GUARANTEE

All bred females are sold under the condition "safe in calf" as attested to by a licensed veterinarian. No guarantee is given that the bred females will deliver a live calf.

TRAVEL

Des Moines International Airport, 9 miles
Omaha International Airport, 140 miles

LODGING

Holiday Inn Downtown
1050 Sixth Ave
Des Moines, IA 50314
515.283.0151

Hampton Inn & Suites Downtown

120 SW Water Street
Des Moines, IA 50309
515.244.1650



LOT 1 GA/SCC MISS 40-6 331L

GA/SCC MISS 40-6 331L

W/C RELENTLESS 32C
JSUL SOMETHING ABOUT MARY 8421
 JBSF PROUD MARY

W/C LOADED UP 1119Y
W/C RJ MISS 8543 6102D
 MISS WERNING KP 8543U

ASA
 4360984

TATTOO
 331L

DOB
 2/27/23

BREED
 PB SM

CE	BW	WW	YW	MILK	API	TI
13.7	0.3	72.6	105.7	19.4	111.5	73.1

AI BRED 5/7/24 TO SO REMEDY 7F (ASA: 3419044) SEXED FEMALE SEMEN. SAFE AI.
 ESTIMATED DUE 2/13/25.

- We start the inaugural "The Vision" Female Sale with a set of daughters out of a shining star for Golden Acres, Smith Cattle Company, Bennett Cattle Company, and Swanson Cattle Company in W/C RJ Miss 8543 6102D "40-6". She is a full sister to the \$205,000 W/C Bankroll 811D, and was a featured live lot in the 2020 Embryos on Snow that commanded \$47,000 for 50% interest. W/C Bankroll 811D remains one of the most trusted sources of quality in the Simmental sire roster, and with every calf crop, more of his progeny are added to the honor roll.
- This daughter of W/C Loaded Up 1119Y is from the most notable and highest grossing female in the breed, Miss Werning 8543U and has begun her own impressive generating career with a set of daughters that stand at the front end of programs nationwide. The 8543U influence has been prolific, and the heritability of quality has proven to be potent through her descendants.
- A notable maternal sister to the daughters to sell of "40-6" is Strawberry Wine, the red hided daughter sired by Profit, that is now a member of one of America's most illustrious donor pens, the one you'll find in Hagerstown, Indiana, for Tim Schaeffer.

W/C RJ MISS 8543 6102D
 —
 DAM OF LOT 1-8



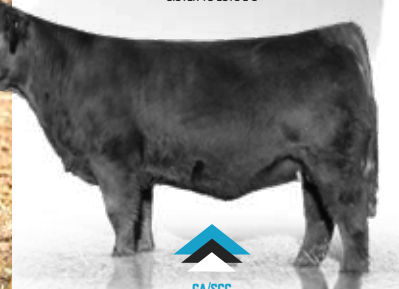
W/C BANKROLL 811D FULL BROTHER TO THE DAM OF LOT 1-8

- The mating of W/C RJ Miss 8543 6102D "40-6" with the deceased JSUL Something About Mary 8421 is perhaps the most favored to date! From a pedigree standpoint it combines two of the most dominating and high revenue generating cow families known to the modern Simmental breed. In fact her pedigree contains two shots of the \$8 million, 8543U, from W/C Relentless 32C on the topside of the pedigree.
- Phenotypically this trio excel from a body shape, depth, flexibility and balance standpoint. The black hided, 331L and 323L sisters are built extra soft in their body cavity, with an overwhelming amount of capacity, and maternal power. The red hided, 325L is one that strikes a pose with every opportunity she gets, we love the eye appeal, length of side, and high tying neck attachment that she has been built with.
- A full sister to lots 1 through 3 sold for \$13,000 in the Smith Cattle Company pasture sale this past fall. Another maternal sister by Conley Lead The Way 0738 sold for \$14,500!



LOT 2 GA/SCC MISS 40-6 323L


 GA/SCC
MISS 40-6
235K

 \$17,000 MATERNAL
SISTER TO LOTS 1-8

 GA/SCC
MISS 40-6
231K

 \$14,000 MATERNAL
SISTER TO LOTS 1-8

2
GA/SCC MISS 40-6 323L

W/C RELENTLESS 32C
JSUL SOMETHING ABOUT MARY 8421
JBSF PROUD MARY

W/C LOADED UP 1119Y
W/C RJ MISS 8543 6102D
MISS WERNING KP 8543U

ASA
4360977
TATTOO
323L
DOB
2/28/23
BREED
PB SM

CE	BW	WW	YW	MILK	API	TI
13.7	0.3	72.6	105.7	19.4	111.5	73.1

PE TO GA REMEDY 217K (ASA: 4090824). SAFE. ESTIMATED DUE 3/18/25.

3
GA/SCC MISS 40-6 325L

W/C RELENTLESS 32C
JSUL SOMETHING ABOUT MARY 8421
JBSF PROUD MARY

W/C LOADED UP 1119Y
W/C RJ MISS 8543 6102D
MISS WERNING KP 8543U

ASA
4360979
TATTOO
325L
DOB
3/15/23
BREED
PB SM

CE	BW	WW	YW	MILK	API	TI
13.7	0.3	72.6	105.7	19.4	111.5	73.1

AI BRED 5/9/24 TO SO REMEDY 7F (ASA: 3419044) SEXED FEMALE SEMEN. SAFE AI. ESTIMATED DUE 2/15/25.

LOT 3 GA/SCC MISS 40-6 325L


 STRAWBERRY
WINE

MATERNAL SISTER TO LOTS 1-8


 JSUL
SOMETHING
ABOUT MARY
8421

SIRE OF LOT 1-3





- The next daughters of W/C RJ Miss 8543 6102D "40-6" are sired by the \$200,000, EC Rebel 156F. EC Rebel 156F would be seen by many as the leading son of the \$400,000 Profit in existence. While his usage has not been as wide spread as some of the most popular AI sires in the breed, his strike rate of quality is probably as high as any. As more breeders surround themselves with his influence, there is a realization that perhaps EC Rebel 156F is one of the best kept secrets in the business.
- Daughters of EC Rebel 156F have topped several of the most highly regarded production sales in the nation, with cowboys from many walks of life appreciating the undeniable quality that seems to come standard issue with the influence.
- "40-6" is the full sister to the industry legend, W/C Bankroll 811D, the sire of multiple NAILE Supreme Champion Females, donors of distinction, sires of attraction, and cowboy approved Simgenetic cattle.
- This pair of sisters have an incredible presence and look of quality about them. They are built intriguing in their neck attachment, rugged in their structural kind and valuable in their genetic makeup.



LOT 4 GA/SCC MISS 40-6 326L

4 GA/SCC MISS 40-6 326L



CE	BW	WW	YW	MILK	API	TI
10.1	1.9	74	105.7	17.5	109.2	71.7

PE TO MADE FOR ALL. SAFE. ESTIMATED DUE 4/7/25.

5 GA/SCC MISS 40-6 330L



CE	BW	WW	YW	MILK	API	TI
10.1	1.9	74	105.7	17.5	109.2	71.7

AI BRED 5/9/24 TO SO REMEDY 7F (ASA: 3419044) SEXED FEMALE SEMEN. PE TO GA REMEDY 217K (ASA: 4090824). SAFE AI. ESTIMATED DUE 2/22/25.

LOT 5 GA/SCC MISS 40-6 330L



EC REBEL 156F

\$200,000 SIRE OF LOTS 4 & 5



• A pair of sisters that stem from the combination of the past Embryos on Snow Live Lot, "40-6" and the proven sire of champions, W/C Relentless 32C. This pair are built with all the fancy pieces that you would expect from a look into the pedigree.

• The track record of W/C RJ Miss 8543 6102D "40-6" has been impressive, both from a purebred and composite breeding standpoint. Mated to SO Remedy 7F she raised a \$30,000 heifer calf, and when bred to PVF Blacklist 7077 she had two daughters command \$20,000 and \$10,500 price tags.

• Take note of the staking up of the most prolific female to ever be blessed with an ASA registration number in the pedigree here. Miss Werning KP 8543U generated in excess of \$8 million in her lifetime, and the list of sons and daughters that lead the business is overwhelming. She appears in the 2-generation pedigree on both the maternal and paternal sides of the pedigree here.



LOT 6 GA/SCC MISS 40-6 324L

W/C
RELENTLESS
32C
SIRE OF LOT 6 & 7

6 GA/SCC MISS 40-6 324L

YARDLEY UTAH Y361	ASA 4360978
W/C RELENTLESS 32C	TATTOO 324L
MISS WERNING KP 8543U	DOB 3/9/23
W/C LOADED UP 1119Y	BREED PB SM
W/C RJ MISS 8543 6102D	
MISS WERNING KP 8543U	

CE	BW	WW	YW	MILK	API	TI
11.9	1.2	68.8	91.9	19.3	108.5	71.5

AI BRED 6/20/24 TO MADE FOR ALL SEXED FEMALE SEMEN. SAFE AI.
ESTIMATED DUE 3/29/25.

7 GA/SCC MISS 40-6 321L

YARDLEY UTAH Y361	ASA 4360975
W/C RELENTLESS 32C	TATTOO 321L
MISS WERNING KP 8543U	DOB 2/27/23
W/C LOADED UP 1119Y	BREED PB SM
W/C RJ MISS 8543 6102D	
MISS WERNING KP 8543U	

CE	BW	WW	YW	MILK	API	TI
11.9	1.2	68.8	91.9	19.3	108.5	71.5

AI BRED 5/9/24 TO SO REMEDY 7F (ASA: 3419044) SEXED FEMALE SEMEN. SAFE AI.
ESTIMATED DUE 2/15/25.

• LSF Pays To Believe ZU194 has stood the test of time, and the trends of the past decade, in this fast-paced business with another high quality daughter here. This multiple time national champion comes together with the multimillion dollar producing maternal lineage of W/C RJ Miss 8543 6102D "40-6" to prove that quality beef cattle are timeless.

• The W/C RJ Miss 8543 6102D "40-6" influence has been a very positive light for the Golden Acres and Smith Cattle Company Simmental program, there are multiple maternal sisters to this female leading the pack for their respective programs.

• She comes carrying a service to sexed female, SO Remedy 7F semen, so the opportunities for a rapid return on investment are very feasible.

8 GA/SCC MISS 40-6 322L

CNS PAYS TO DREAM T759	ASA 4360976
LLSF PAYS TO BELIEVE ZU194	TATTOO 322L
LLSF URABABYDOLL U194	DOB 2/27/23
W/C LOADED UP 1119Y	BREED PB SM
W/C RJ MISS 8543 6102D	
MISS WERNING KP 8543U	

CE	BW	WW	YW	MILK	API	TI
12	0.9	71.6	102.1	22.4	119	75.1

AI BRED 5/9/24 TO SO REMEDY 7F (ASA: 3419044) SEXED FEMALE SEMEN. SAFE AI.
ESTIMATED DUE 2/15/25.

LLSF PAYS TO BELIEVE ZU194
SIRE OF LOT 8



SO
REMEDY
7F
SERVICE SIRE



- Here we have two direct daughters of JS Dairy Queen 576 the leading daughter of CLRS Dairy Queen 606D, the featured donor dam to sell in the 2023 Midwest Made Elite Female Sale that commanded a \$74,000 hammer price selling to Hilltop Simmentals of South Dakota.
- Maternal sisters to this pair have made a splash in the past editions of the Midwest Made Elite Female Sale topping out at \$15,500 in 2024, and a maternal sister to their dam, JS Dairy Queen 566, is the many times champion that was shown by the Bayer family of Wisconsin. A maternal brother to their dam is JS Keepin It 90 39H.
- Being sired by the trusted source of real-world quality, WHF/JS/CCS Double Up G365, you can bet that they have the genetic backing to outproduce themselves once they get into production.
- On both sides of the equation you will find individuals that have quality that reach beyond the showing, they are stock that are the cowboy kind, with added maternal and performance value.

9 CCS/JS DQ 576 36L

W/C DOUBLE DOWN 5014E
WHF/JS/CCS DOUBLE UP G365
 WHF SUMMER 365C

MR HDC BROKER
JS DAIRY QUEEN 576
 CLRS DAIRY QUEEN 606D

ASA
 4258527
TATTOO
 36L
DOB
 4/13/23
BREED
 PB SM

CE	BW	WW	YW	MILK	API	TI
9.8	2.6	81.6	110.2	20.3	107.2	71.7

PE TO WHF/JS THE DEUCE K45 (ASA: 4144750). SAFE. ESTIMATED DUE 5/3/25.

10 CCS/JS DQ 576 37L

W/C DOUBLE DOWN 5014E
WHF/JS/CCS DOUBLE UP G365
 WHF SUMMER 365C

MR HDC BROKER
JS DAIRY QUEEN 576
 CLRS DAIRY QUEEN 606D

ASA
 4258528
TATTOO
 37L
DOB
 3/22/23
BREED
 PB SM

CE	BW	WW	YW	MILK	API	TI
9.8	2.6	81.6	110.2	20.3	107.2	71.7

PE TO WHF/JS THE DEUCE K45 (ASA: 4144750). SAFE. ESTIMATED DUE 3/13/25.

LOT 9 CCS/JS DQ 576 36L



LOT 10 CCS/JS DQ 576 37L



JS DAIRY QUEEN 576
DAM OF LOT 9 & 10

- JS Flirt Away 300L is sired by WHF/JS/CCS Double Up G365 and backed by the powerful JS Flirt A-Way 59Y donor dam. She is an extra stout white flanked female that is bold ribbed, sound footed and offers a captivating look of quality and style from the side.
- The most notable maternal sister to this female would be the iconic JS Black Satin 9B, more commonly known across the industry as "Boots" that was not only one of the most dominate producers to ever work for Griswold Cattle Company, but claimed the Triple Crown, and the Grand Champion Owned Simmental Female honors at the AJSA Classic to round out Jake Bloomberg's show career!
- The added consistency and generating power that comes with the backing of JS Flirt A-Way 59Y is priceless in our opinion.
- A neat breeding piece that sells safe in calf to BBR FX May We All 6D for a BIG return on investment.

11 JS FLIRT AWAY 300L

W/C DOUBLE DOWN 5014E
WHF/JS/CCS DOUBLE UP G365
 WHF SUMMER 365C

HARKERS/JS DOMINATION
JS FLIRT A-WAY 59Y
 JS FLATOUT FLIRTY 46T

ASA
 4466271
TATTOO
 300L
DOB
 3/13/23
BREED
 PB SM

CE	BW	WW	YW	MILK	API	TI
7.9	4.2	79.5	112	24.8	92.4	67

PE TO MADE FOR ALL. SAFE. ESTIMATED DUE 4/7/25.

LOT 11 JS FLIRT AWAY 300L



JS BLACK SATIN 9B MATERNAL SISTER TO LOT 11



CCS/JS/LFTZ 2024 NAILE GRAND CHAMPION PUREBRED SIMMENTAL HEIFER
SUMMER L378 MATERNAL SISTER TO LOTS 12 & 13



LOT 12 CCS/JS SUMMER 39L

12 CCS/JS SUMMER 39L

HPF QUANTUM LEAP Z952
WLE COPACETIC E02
CMFM JOY 022B

CCR WIDE RANGE 9005A
WHF SUMMER 365C
WHF ANDIE 365A

ASA
4236075
TATTOO
39L

DOB
2/20/23
BREED
PB SM

CE	BW	WW	YW	MILK	API	TI
10.1	2.4	85.1	121.5	10.9	107.1	75.3

AI BRED 5/9/24 TO WLSF FIREHOUSE 911K (ASA: 4178795). SAFE AI.
ESTIMATED DUE 2/15/25.

13 CCS/JS SUMMER 78L

CCS/WHF OLSON 48F
JS KEEPIN IT 90 39H
CLRS DAIRY QUEEN 6060

CCR WIDE RANGE 9005A
WHF SUMMER 365C
WHF ANDIE 365A

ASA
4330536
TATTOO
78L

DOB
3/26/23
BREED
PB SM

CE	BW	WW	YW	MILK	API	TI
6.6	3.7	88	122.9	18.1	115	78.2

PE TO WHF/JS THE DEUCE K45 (ASA: 4144750). SAFE. ESTIMATED DUE 7/7/25.

- CCS/JS Summer 39L is the first of two direct daughters of the American Royal Supreme Champion Female, and now dominant producer for the Steenhoek program, WHF Summer 365C ET. WHF Summer 365C ET has surpassed the million-dollar mark in lifetime earnings and has placed a stranglehold on the forefront of the business.
- This past year, a W/C Relentless 32C daughter of 365C has been exhibited by Brody Wenell to Reserve Champion Simmental Female at the FWSS, 3rd Overall Owned Purebred Female at the AJSA Classic, and Grand Champion Simmental Female at the 2024 NAILE.
- We love this snip nosed female's combination of body mass and stoutness. Her ability to combine so much volume and capacity while maintaining such an eye-catching look from the side is hard to deny.
- A full sister, CCS/JS Summer 19K, was the \$62,000 high selling female in the 2022 "Midwest Made" Female Sale that sold to Udell Cattle Company and Golden Acres Simmentals. A truly elite female that is one of the stoutest featured, boldest made daughters of the great WHF Summer 365C to date... bid with confidence!

LOT 13 CCS/JS SUMMER 78L



- CCS/JS Summer 78L is a direct daughter of the legendary WHF Summer 365C that is sired by JS Keepin It 90 39H, a son of CCS/WHF Ol' Son 48F. WHF Summer 365C has become one of the most prolific, proven and consistent sources of quality in the ASA database, not only was she a Supreme Champion in her own right but she has gone onto produce multiple champion progeny. The pedigree that supports this stout made, sound structured female aligns the influence of 365C not once, but twice!
- We love the natural turn to her rib cage, the extra stoutness that she offers from behind, and the ultra-maternal look about her front third.
- A full sister to 78L, CCS/JS Summer 1K, sold for \$19,000 in the 2022 Midwest Made Elite Female Sale to the Hotz family!
- She sells safe in calf to WHF/JS The Deuce K45, another individual that is backed by true maternal greatness and will fall inline perfectly for a fall calving program!



WHF SUMMER 365C
2017 NAILE GRAND CHAMPION PUREBRED SIMMENTAL HEIFER DAM OF LOTS 12 & 13





- A trio of full sisters that stem from the maternal power of a female that has made a significant mark on the Simmental business ever since she became the 2013 National Western Grand Champion Simmental Female, WHF/PRS/HPF Alley 247Y. The JF Milestone 999W daughter was the high selling female in the historic Hudson Pines Farms Dispersal at \$81,000 and has gone on to generate multiple daughters that work for the breeds leading programs.

- 247Y has become a household name for many Simmental breeders, because not only did she claim championships in her own right, but she has gone on to produce at the highest level. It appears there is no expiration date on the prolific Alley 247Y influence.

- The combination of Alley 247Y with JSUL Something About Mary 8421 has blended to create a very special combination. The three resulting full sisters from the flush are consistently big bodied, dense built and burly in their bone work.

- GA Alley 304L is one that captivates from the side, she is built with extra balance and authenticity, she is smooth in her lines, flawless in her transitions and moves with authority. Her AI mating with the National Champion, THSF Lover Boy B33 aligns the stars in our eyes!



LOT 14 GA ALLEY 304L

14

GA ALLEY 304L

W/C RELENTLESS 32C
JSUL SOMETHING ABOUT MARY 8421
 JBSF PROUD MARY
 JF MILESTONE 999W
WHF/PRS/HPF ALLEY 247Y
 WHF SIERRA 245S

ASA
 4237759
TATTOO
 304L
DOB
 2/8/23
BREED
 PB SM

CE	BW	WW	YW	MILK	API	TI
9.8	2.9	79.2	117.7	14	111.1	72.5

AI BRED 5/9/24 TO THSF LOVER BOY B33 (ASA: 2983443). SAFE AI. ESTIMATED DUE 2/15/25.

15

GA ALLEY 310L

W/C RELENTLESS 32C
JSUL SOMETHING ABOUT MARY 8421
 JBSF PROUD MARY
 JF MILESTONE 999W
WHF/PRS/HPF ALLEY 247Y
 WHF SIERRA 245S

ASA
 4242411
TATTOO
 310L
DOB
 4/4/23
BREED
 PB SM

CE	BW	WW	YW	MILK	API	TI
9.8	2.9	79.2	117.7	14	111.1	72.5

PE TO MADE FOR ALL. SAFE. ESTIMATED DUE 4/7/25.

- The mating of GA Alley 310L with the BBR FX May We All 6D son, Made For All, has us dreaming about the potential for a high dollar composite show heifer to be produced, type and kind wise, this could be an absolute home run.

- The massive feature and overwhelming shape of GA Alley 305L reassure us that she is set for some bright days in production, she is built with all the shape and feature that you could hope for, along with carrying a service to sexed female THSF Lover Boy B33 semen.



WHF/PRS/HPF ALLEY 247Y DAM OF LOT 14-16



LOT 15 GA ALLEY 310L



WHF/PRS/HPF
ALLEY
247Y
—
DAM OF LOT 14-16



LOT 16 GA ALLEY 305L

16 GA ALLEY 305L

W/C RELENTLESS 32C
JSUL SOMETHING ABOUT MARY 8421
—
JBSF PROUD MARY
—
JF MILESTONE 999W
WHF/PRS/HPF ALLEY 247Y
—
WHF SIERRA 245S

ASA
4237760
TATTOO
305L
DOB
2/22/23
BREED
PB SM

CE	BW	WW	YW	MILK	API	TI
9.8	2.9	79.2	117.7	14	111.1	72.5

AI BRED 5/9/24 TO THSF LOVER BOY 833 (ASA: 2983443) SEXED FEMALE SEMEN. SAFE AI. ESTIMATED DUE 2/15/25.

17 SCC DREAMS COME TRUE 3043L

W/C RELENTLESS 32C
JSUL SOMETHING ABOUT MARY 8421
—
JBSF PROUD MARY
—
ASHW WHO DA MAN
LDSC 75-1
"KELLI CLONE" — JSUL DREAM MAKER HS46

ASA
PENDING
TATTOO
3043L
DOB
3/8/23
BREED
1/2 SM 7/32 AN 1/8 MA
1/16 CA 3/32 MX

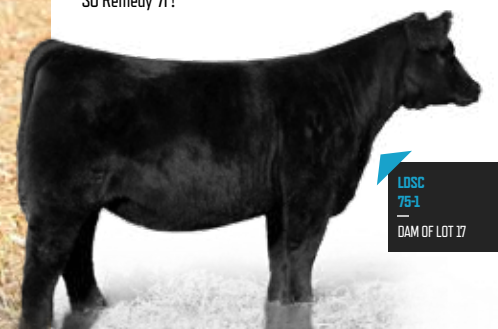
CE	BW	WW	YW	MILK	API	TI
10.4	1.6	55.9	74.7	12.9	89.6	60.8

AI BRED 5/9/24 TO SO REMEDY 7F (ASA: 3419044) SEXED FEMALE SEMEN. SAFE AI. ESTIMATED DUE 2/15/25.

LOT 17 SCC DREAMS COME TRUE 3043L



- Ladies and gentlemen, we proudly present a direct daughter of the legendary 75-1 donor dam, a clone to the iconic JSUL Dreams Come True 846U, more commonly known across the industry as "Kelli"!
- This dynamic bred female is stout featured, bold bodied, and massive in her hip and pin set. We love the natural shape, substance, and skeletal quality that she offers.
- 75-1 has become one of the hottest and most productive cows in the entire industry! This is your one way pass to own a direct daughter of the living legend! She sells safe in calf to the \$530,000 record selling SO Remedy 7F!



LDSC
75-1
—
DAM OF LOT 17



- 516C has become a staple in the Golden Acres breeding program, proving that regardless of sire choice, she has the aptitude to produce progeny that are consistently built stout and robust in their shape, powerful in their ribcage and come with added longevity. She stems from the prolific HPF Sheza Star X331 matron that produced the \$50,000 valued HPF Rockstar.
- The HPF Quantum Leap Z952 sired daughter, 302L best represents her mother, coming with an oversized set of running gear and super obtuse body cavity. As an added benefit she comes carrying a pregnancy sired by sexed female THSF Lover Boy B33 semen.
- The championship genetics of W/C Relentless 32C shine brightly through 308L, as she comes with an exquisite look from the side, being tight and angular about her front third, neat in her lines and balanced in her outlook. She will calve with a purebred calf by THSF Lover Boy B33 in the middle of February.

18 GA SHEEZA STAR 302L

HTP/SVF DURACELL T52
HPF QUANTUM LEAP Z952
 RP/MP RIGHT TO LOVE 015U
 RB HPF-GF EXPOSITION RB16Z
JF SHEEZA STAR 516C
 HPF SHEEZA STAR X331

ASA
 4242407
TATTOO
 302L
DOB
 2/19/23
BREED
 PB SM

CE	BW	WW	YW	MILK	API	TI
11.2	1.9	84.9	121.5	16.1	119.4	81.3

AI BRED 5/9/24 TO THSF LOVER BOY B33 (ASA: 2983443) SEXED FEMALE SEMEN. SAFE AI. ESTIMATED DUE 2/15/25.

19 GA SHEEZA STAR 308L

YAROLEY UTAH Y361
W/C RELENTLESS 32C
 MISS WERNING KP 8543U
 RB HPF-GF EXPOSITION RB16Z
JF SHEEZA STAR 516C
 HPF SHEEZA STAR X331

ASA
 4242409
TATTOO
 308L
DOB
 2/14/23
BREED
 PB SM

CE	BW	WW	YW	MILK	API	TI
9.9	2.5	76.9	106.2	16.5	115.9	75.4

AI BRED 5/9/24 TO THSF LOVER BOY B33 (ASA: 2983443). SAFE AI. ESTIMATED DUE 2/15/25.

LOT 18 GA SHEEZA STAR 302L



LOT 19 GA SHEEZA STAR 308L



20 FRKG DUTCHESS 350L ET

VCL FORESIGHT
STCC TECUMSEH 058J
 HF SERENA
 MR HOC BROKER
J6RA BADA BING 1602B
 GF EVENING TINGE 1X

ASA
 4465717
TATTOO
 350L
DOB
 3/6/23
BREED
 3/4 SM 1/4 AN

CE	BW	WW	YW	MILK	API	TI
7.8	3.2	75.6	115.6	17.3	100.4	68.5

AI BRED 5/22/24 TO SD REMEDY 7F (ASA: 3419044). SAFE AI. ESTIMATED DUE 2/28/25.

- The next three females are direct daughters of STCC Tecumseh 058J, the record-breaking Purebred Simmental bull that commanded \$620,000 for ½ semen interest in the 2022 Hartman Cattle Company Bull Sale. In his first two calf crops he has taken the business by storm, particularly in the fall of 2024, with multiple six-digit daughters going under the hammer. In the 2024 HCC Customer Appreciation Sale the 14 daughters of STCC Tecumseh 058J to sell averaged an astonishing \$44,571.
- The dam of Tecumseh, HF Serena, is one of the highest dollar generating females in the Simmental breed with nearly \$3 Million worth of progeny sales and over 230 head registered to her name in the ASA Herdbook.
- Maternally, FRKG Dutchess 350L ET is a daughter of J6RA Bada Bing 1602, affectionately known as "Bobbi". 1602 was campaigned by Chesney Effling to countless victories during her show career, most notably being selected as the 2015 American Royal & NAILE Grand Champion Percentage Simmental Heifer. J6RA Bada Bing 1602 was the \$40,000 high selling female in the CK Cattle Proven Female Sale and has been a very potent source of the best to come out of the South Dakota based programs, originally for the Effling's and now for Freking Cattle Company. In the 2023 "The One" Simmental Sale, Jim Bowling selected a SD Remedy 7F sired maternal sister to 350L out of the Freking Cattle Company "Pick of the Pen" offering for \$64,000.
- 350L is also a full sister to the lead off female from the Freking Cattle Company's Reserve Grand Champion Percentage Female Pen at the 2024 NWSS. Three maternal sisters by SD Remedy 7F made up their pen at the 2025 NWSS!

LOT 20 FRKG DUTCHESS 350L ET



J6RA BADA BING 1602B

2015 NAILE GRAND CHAMPION
 PERCENTAGE SIMMENTAL HEIFER
 DAM OF LOT 20



- The next daughter of STCC Tecumseh 058J stems from the \$120,000 Conley Sheza Star D3 female that was the high seller from the 2023 Conley Cattle Simmental Dispersal, selling to Lindskov's LT Ranch and Aces Wild Ranch. Conley Sheza Star D3 has evolved into one of the most potent sources of quality the Simmental breed has ever known, and truly is on the verge of reinventing herself with the progressive firms that teamed up to purchase her. 362L is a maternal sister to the \$100,000 Conley High Rise F3, a member of the illustrious herd sire battery at Hartman Cattle Company!
- The daughters of STCC Tecumseh 058J have been in heavy demand, as the finest stockmen in the nation discover that they are so much more than a pretty face, but come with the maternal support of the best in the business. In the 2024 HCC Customer Appreciation Sale, 14 daughters of Tecumseh sold for an average of \$44,571.

CONLEY SHEZA STAR D3
—
DAM OF LOT 21

LOT 21 FRKG MISS TECUMSEH 362L ET

21 FRKG MISS TECUMSEH 362L ET

VCL FORESIGHT
STCC TECUMSEH 058J
 HF SERENA
 MR HDC BROKER
CONLEY SHEZA STAR D3
 CONLEY SHEZA STAR Z32

ASA
 4464470
TATTOO
 362L
DOB
 3/8/23
BREED
 PB SM

CE	BW	WW	YW	MILK	API	TI
8.6	3.1	69.5	96.2	18.4	112.5	68.2

AI BRED 5/25/24 TO SO REMEDY 7F (ASA: 3419044). SAFE AI. ESTIMATED DUE 3/3/25.

22 FRKG DADDY'S GIRL 20L

VCL FORESIGHT
STCC TECUMSEH 058J
 HF SERENA
 PROFIT
SJP MINN DENISE F420
 BPFC SHELBY 542Z

ASA
 4257520
TATTOO
 20L
DOB
 4/24/23
BREED
 PB SM

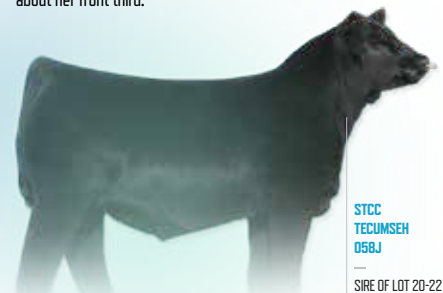
CE	BW	WW	YW	MILK	API	TI
8	3.4	75	106	14.8	108.8	72.3

PE TO BOWLING'S THOR 985K (ASA: 4148109). SAFE. ESTIMATED DUE 3/26/25.

LOT 22 FRKG DADDY'S GIRL 20L



- The third daughter of STCC Tecumseh 058J stems from the iconic, BPFC Shelby 542Z through the Profit sired daughter, SJP MINN Denise F420.
- BPFC Shelby 542Z, was the 2013 AJSA National Classic Grand Champion Percentage Simmental Heifer that was shown by the Prill family of Kansas.
- The pedigree of 20L combined with her phenotypic attributes make her a short list candidate on sale day for anyone serious about investing in an elite breeding piece!
- There is no question that 20L is one of the most unique built females in the entire sale offering. She is one of the stoutest and most three-dimensional females that we have ever offered, while maintaining an exceptional look of quality about her front third.



STCC TECUMSEH 058J
—
SIRE OF LOT 20-22



- The set of MR HOC Broker daughters you will find here are prime examples of why this lineage are trusted by the best in the business. Starting with this half-blood female that proves first-hand the outlier type phenotype that he is capable of generating! We love the eccentric look and feature of this donor prospect, she is ultra-durable in her structural build, dense and robust in her middle third and cocks off with undeniable presence. This one is fun to look at!

- Her dam is a DUFF New Edition 6108 daughter out of a full sister to the 2011 Canadian Agribition Grand Champion Angus Female. DUFF NE 664M Ericalassie 047 was the high selling female out of the 2015 Duff Cattle Company Power Plus Sale.

- DUFF NE 664M Ericalassie 047 has become a leading lady in the Golden Acres donor pen, and the flush to Broker combines the best of both worlds, creating a major league donor candidate.

- A maternal sister to GA Erica 307L sold for \$15,000 for the crew at Golden Acre Simmentals!



LOT 23 GA ERICA 307L

DUFF NE 664M
ERICA LASSIE
047
—
DAM OF LOT 23



23

GA ERICA 307L

SVF STEEL FORCE S701
MR HOC BROKER
JM BF H25

DUFF NEW EDITION 6108
DUFF NE 664M ERICALASSIE 047
O C C ERICA LASSIE 664M

ASA
4237758
TATTOO
307L
DOB
3/16/23
BREED
1/2 SM 1/2 AN

CE	BW	WW	YW	MILK	API	TI
8.1	2	66.2	96.6	17.8	96.3	62.5

PE TO GA REMEDY 217K (ASA: 4090824), ESTIMATED DUE 3/9/25.

24

SMITH MS BROKER 18L

SVF STEEL FORCE S701
MR HOC BROKER
JM BF H25

ANGUS
1398G
ANGUS

ASA
4464460
TATTOO
18L
DOB
3/3/23
BREED
1/2 SM 1/4 AN 1/4 MA

CE	BW	WW	YW	MILK	API	TI
7.5	2.3	66	94.5	17.6	85.9	59.5

AI BRED 6/16/24 TO MADE FOR ALL. SAFE AI. ESTIMATED DUE 3/29/25.

- Stockmen and women nationwide have relied on the influence of the Triple Crown winning, MR HOC Broker as one of the most potent sources of phenotypic value that the business has ever known. The MR HOC Broker daughters prove to consistently outproduce themselves with every calf crop.

- The perfect markings of 18L just begin the quality that you will find in person with this half blood prospect. She is long and elevated in her head and neck junction, impressive in her symmetry and ultra level in her outline.

- Coming bred to the BBR FX May We All 60 son, Made For All, sets up a very exciting production career for this beautiful blaze female!



MR HOC BROKER SIRE OF LOT 23-27



LOT 24 SMITH MS BROKER 18L

LOT 27 SCC MISS BETH 370L



25 GA MISS GLAMOUR GIRL 301L

SVF STEEL FORCE S701
MR HOC BROKER
 JM BF H25

SILVEIRAS STYLE 9303
UDELL GLAMOUR GIRL 18B
 JSUL RED THUNDER 9051W

ASA
 4349431
TATTOO
 301L
DOB
 2/11/23
BREED
 1/2 SM 5/16 AN 1/16 CA
 1/16 MA 1/16 MX

CE	BW	WW	YW	MILK	API	TI
8.4	2.5	62.7	92.8	17.2	93	62.9

AI BRED 5/9/24 TO THSF LOVER BOY B33 (ASA: 2983443). SAFE AI.
 ESTIMATED DUE 2/15/25.

26 SMITH MS BROKER 36L

SVF STEEL FORCE S701
MR HOC BROKER
 JB BF H25

IRISH WHISKEY
M.A.C. SHELBY 302A
 CRCC LADY DESIGN 2148 5418

ASA
 4464478
TATTOO
 36L
DOB
 2/2/23
BREED
 1/2 SM 1/4 AN 1/4 MA

CE	BW	WW	YW	MILK	API	TI
7.6	2.5	66.1	96.1	18.7	84.7	60.6

AI BRED 5/9/24 TO THSF LOVER BOY B33 (ASA: 2983443) SEXED FEMALE SEMEN. SAFE AI.
 ESTIMATED DUE 2/15/25.

27 SMITH MS BROKER 370L

SVF STEEL FORCE S701
MR HOC BROKER
 JB BF H25

MR NLC UPGRADE U8676
MISS BETH
 PARTISOVER BURGESS 795

ASA
 4470213
TATTOO
 370L
DOB
 2/1/23
BREED
 PB SM

CE	BW	WW	YW	MILK	API	TI
8.7	3.1	78	115.1	19.3	102.9	69.9

AI BRED 6/20/24 TO BBR FX MAY WE ALL (AMAA: 472785) SEXED FEMALE SEMEN. SAFE AI.
 ESTIMATED DUE 3/29/25.

- GA Miss Glamour Girl 301L is certainly one of the most tricked our show ponies in the offering, and the time it takes to find her sale day to make your own adjudication will be time well spent!
- Her dam, Udell Glamour Girl 18B has been a force towards the goals of composite show heifer creation within the Sullivan farms program. Udell Glamour Girl 18B is the dam of the 4th Overall Female at the 2021 AJSA Classic for the Adcock family and the trending young donor JSUL Beth Dutton 0113H that was a many times champion for the Martin family, and this past year was responsible for heifers at \$100,000 and \$50,000, along with steers at \$45,000, \$30,000 and \$28,000.
- She stems back a further generation to the legendary, JSUL Red Thunder 9051W that has been a million-dollar producer for the Udell firm and is certainly a catalyst towards the industry renown show heifer sale they have each fall.

UDELL
 GLAMOUR GIRL
 18B
 —
 DAM OF LOT 25



- There is no question, MR HOC Broker remains one of the most potent producers of females in the show cattle business, and what's most impressive is that it doesn't matter if the endpoint is show steer or show heifer production, they have the quality to perform at the front end of the business.
- This young, half-blood Broker daughter has a world of opportunity to produce right alongside the list of legendary sisters that have gone before her. She is just a unit of semen away from the bright lights.
- She comes carrying a high percentage Simmental calf sired by the proven calving ease and promoter of quality, THSF Lover Boy B33.

BBR FX
 MAY WE ALL
 60
 —
 MATERNAL
 BROTHER TO
 LOT 26



- Here we have an incredible MR HOC Broker daughter that doesn't need much lead time to impress as she is built so remarkable and maternal in her build, and powerful in the shape her body. All while carrying herself upon a set of ultra flexible joints, massive feet and rugged bone work.
- Her maternal granddam is renowned as one of the most visually enticing Emblazon daughters to ever have existed, she came out of the Partisover Ranch program, bred by master breeder, Randy Daniels.
- When you see this one in the flesh, and take into consideration the sisters that she finds company, then you will realize the opportunities that exist with this incredible specimen as a cornerstone breeding piece.



LOT 28 FRKG MS AMANDA 316L

28 FRKG MS AMANDA 316L

HPF/HILL UPRISING C104
SO REMEDY 7F
 B&K CREAM SODA 0D
 SS/PRS TAIL GATER 621Z
ANGEL 1B
 MLJM MISS STEEL

ASA
 4273978
TATTOO
 316L
DOB
 4/12/23
BREED
 PB SM

CE	BW	WW	YW	MILK	API	TI
11.4	2	84.4	128.8	12	103.7	74.6

AI BRED 5/25/24 TO OMF DOC LYNN L92 (ASA: 4255431). SAFE AI. ESTIMATED DUE 3/3/25.

- The \$530,000 SO Remedy 7F has changed Simmental business, he is one of the most consistent producers of quality that you will find in the industry. Here you will find a Remedy daughter out of the legendary, Angel 1B.
- This is a cow family that consistently generates at a very high level. Angel 1B, is the leading donor for the Hoblyn family of Nebraska and the mother of both Mari 785E, the 2018-2019 Triple Crown winning Purebred Simmental Heifer, and one of the premier young donors in the Bloomberg Cattle breeding program, along with Perfect Angel 58H a \$110,000 past high seller from HCC that was the 2021 IN Stock Show Supreme Champion Breeding Heifer. 58H is the mother of both the \$175,000, B0WJ Just An Angel 1K and the \$200,000 B0WJ Perfect Angel 200M. 200M is a 3/4 sister to FRKG Ms Amanda 316L.
- She ties together seamlessly from end to end, offering a look of balance from the profile that is simply breathtaking! World class pedigree and incredible phenotype come together here for a very special opportunity to position your program on the cutting edge!



MARI 785E MATERNAL SISTER TO LOT 28



PERFECT ANGEL 58H MATERNAL SISTER TO LOT 28



SO REMEDY 7F
SIRE OF LOT 28-30


LOT 29 LKCC MISS LOVELY CRYSTEEL 1L

- A direct daughter of the iconic BF Miss Crysteel Tango, to date, she has nearly 90 progeny registered with the American Simmental Association and has produced countless high sellers over the past decade!
- FRKG LKCC Miss Lovely Crysteel 1L is a FULL SISTER to Morgan Jackson's dominant champion, LKCC Miss Crysteel's Remedy 4J. She was the 2022 NWSS Grand Champion, 2022 FWSS Reserve Grand Champion, 2022 AJSA National Classic 3rd Overall Owned Heifer, 2023 AJSA National Classic Grand Champion Cow-Calf Pair, and 2023 Simmental Breeders Sweepstakes Knic Overpeck Supreme Champion. Other maternal sibs would include the \$120,000 Lady Di, \$100,000 Firefly 311A, \$70,000 VCL LKC Equity 608D, and countless others that have sold for \$25,000 to \$50,000 over the last 10 years. This is a cow family that simply does not miss!
- This SO Remedy 7F daughter is built stout and burly! She comes with worlds of maternal power, both genetically and in the flesh, and portrays the look of a future program leading donor dam.


LKCC MISS CRYSTEELS REMEDY 44J

 —
 2022 NWSS GRAND CHAMPION
 PUREBRED SIMMENTAL HEIFER
 FULL SISTER TO LOT 29

29 LKCC MISS LOVELY CRYSTEEL 1L

SO REMEDY 7F
 HPF/HILL UPRISING C104
 B&K CREAM SODA 8D
 SVF STEEL FORCE S701
BF MISS CRYSTEEL TANGO
 LLSF TANGO T194

ASA
 4256404
TATTOO
 1L
DOB
 2/20/23
BREED
 PB SM

CE	BW	WW	YW	MILK	API	TI
13.4	0.7	72.4	104	16.9	105	68.2

AI BRED 5/25/24 TO OMF DOC LYNN L92 (ASA: 4255431). SAFE AI. ESTIMATED DUE 3/3/25.

30 FRKG COUNTESS 3029 ET

SO REMEDY 7F
 HPF/HILL UPRISING C104
 B&K CREAM SODA 8D
 EC REBEL 156F
FRKG COUNTESS 12J
 HCCO COUNTESS 921G

ASA
 PENDING
TATTOO
 3029L
DOB
 3/20/23
BREED
 PB SM

CE	BW	WW	YW	MILK	API	TI
6.8	4.1	78.8	113.4	13.8	108.8	72.4

 AI BRED 5/9/24 TO WHF/JS/CCS WOODFORD J001 (ASA: 4068398) SEXED FEMALE SEMEN.
 PE TO MADE FOR ALL. SAFE AI. ESTIMATED DUE 2/20/25.

LOT 30 FRKG COUNTESS 3029 ET


- Generations of the most powerful females in the Hartman Cattle Company program stand behind this impressive purebred specimen.
- She is a direct daughter of a \$25,000 purchase from the "Summer Gala", FRKG Countess 12J. 12J is a daughter of the \$200,000 EC Rebel 156F that goes back to HCCO Countess 921G.
- Her maternal granddam, HCCO Countess 921G is a maternal sister to countless individuals that have been past high sellers, champions, and herd sires of impact. She is sired by the \$185,000 ACLL Fortune 393D and backed by the role model producing brood cow at Hartman Cattle Company, SJF Countess 130Y. 130Y has produced in excess of \$100,000 on natural calves alone.
- This SO Remedy 7F female is built with plenty of real-world shape and substance, she leaves nothing to the imagination in regards to power and density. She has the look of a high production donor female in our opinion.

FRKG COUNTESS 12J

 —
 DAM OF LOT 30



- GA Miss Hoya Saxa 341L is a FULL SISTER to the Udell Cattle Company and Black Gold Cattle Company's leading Simmental donor, KDP Miss Hoya Hayleigh. They purchased her for \$86,000 before becoming a Triple Crown winning, National Champion Female that has graduated from the showing to become one of the most incredible generators of quality that the Simmental business has ever seen. For example in 2023, 6 daughters of Hayleigh averaged \$24,500 in "The Advantage". In 2022, UDE Hayleigh 5K was purchased by Brady Edge, she went on a dominant run with Grand Championships at the FWSS, Iowa State Fair, American Royal, and NAILE, to be the 2023-24 Show Heifer of the Year.
- GA Miss Hoya Saxa 341L comes bred to SD Remedy 7F, meaning she is carrying a full sister in blood to the dominant champion, UDE Hayleigh 5K. Prior to 2024, the SD Remedy 7F daughters on KDP Miss Hoya Hayleigh were averaging \$46,750.
- This next edition to the family legacy is built with all the big parts and pieces that has made her mother such a matron in the breeding pen, they are cattle that are built with an incredible amount of ribcage, body depth, density and balance. We think her phenotype foreshadows that a monumental breeding career is just on the verge of beginning.



LOT 31 GA MISS HOYA SAXA 341L

KDP MISS HOYA HAYLEIGH

FULL SISTER TO LOT 31

31 GA MISS HOYA SAXA 341L

CNS PAYS TO DREAM T759
LLSF PAYS TO BELIEVE ZU194
 LLSF URABABYDOLL U194

K-LER MAKE IT RAIN
K-LER/RC MISS HOYA SAXA
 RC MISS KANSA D2BT

ASA
 4349429
TATTOO
 341L
DOB
 1/16/23
BREED
 PB SM

CE	BW	WW	YW	MILK	API	TI
10.1	2.3	75.2	107.4	20.7	120.4	73.5

AI BRED 5/9/24 TO SD REMEDY 7F (ASA: 3419044). SAFE AI. ESTIMATED DUE 2/15/25.

32 GA LUEBBE 344L

CNS PAYS TO DREAM T759
LLSF PAYS TO BELIEVE ZU194
 LLSF URABABYDOLL U194

MR CCF 20-20
BWL LADY OF VISION 944E
 HILB/BRKC SHOOTING STAR

ASA
 4242404
TATTOO
 344L
DOB
 4/3/23
BREED
 PB SM

CE	BW	WW	YW	MILK	API	TI
10.4	1.8	76.9	111.4	17.9	120.8	77.1

AI BRED 5/19/24 TO THSF LOVER BOY B33 (ASA: 2983443) SEXED FEMALE SEMEN. SAFE AI. ESTIMATED DUE 2/25/25.

LOT 32 GA LUEBBE 344L

- LLSF Pays To Believe ZU194 is a past NAILE Grand Champion Simmental Bull that has built a strong reputation around the breed about his ability to inject a potent amount of quality that reaches well beyond the fences of a showing. His progeny are built with more authentic muscle shape, width and substance than their contemporaries, and the pair of daughters to sell here add proof to the claim!
- GA Luebbe 344L is a direct daughter of the Golden Acres, BWL Lady Of Vision 944E donor that was purchased from Brandon Luebbe after she was named the Calf Champion in a very competitive division at the 2019 Iowa State Fair Open Simmental Show. This MR CCF 20-20 daughter has been the source of high-end quality for the program with an unquestionable ability to add mass and power while keeping structural kind and flexibility in check.
- This purebred female offers an interesting pedigree that leaves the doors fairly wide open when it comes to sire selection for generating show heifers once she enters production. The prospect of her THSF Lover Boy B33 sired pregnancy from sexed female semen leads us to believe that she is not far away from making a very feasible ROI.





LOT 33 FORD FARMS MISS 1770L

- This purebred Simmental female that is sired by GEFF County O is one that fills a big and impressive silhouette. She is long sided, wide based and very genuine in the shape to her rear two thirds. She is set to be a powerful matron once she nears maturity.
- She stems from a tried-and-true cow family that cornerstones the Ford Farms program in South Dakota, the source of several of the breeds most dynamic matrons. Her maternal granddam, JBS Miss G. Design 505M "Chiquita" has 66 registered progeny in the ASA Herdbook and has reached legendary status on the Northern Plains.
- Her dashes of chrome just complete the intriguing breeding piece that will be a highlight of the Simgenetic offering, the last weekend on January.

GEFF COUNTY O

 —

 SIRE OF LOT 33

33 FORD FARMS MISS 1770L

W/C LOADED UP 1119Y
GEFF COUNTY O
 RUBY NFF RHYTHM 475B
 MR TR HAMMER 308A ET
FORD FARMS MISS 1770H
 FORD FARMS MISS 1137Y
 ASA 4452085
TATTOO 1770L
DOB 4/17/23
BREED PB SM

CE	BW	WW	YW	MILK	API	TI
7.1	2.9	73.4	109.7	10.2	104.1	70.2

AI BRED 5/9/24 TO GCC NIGHT OWL 3104L (ASA: 4284092).
 PE TO MADE FOR ALL. SAFE AI. ESTIMATED DUE 2/20/25.

34 FRKG STCC MILEY'S POINT 26L

CCS/WHF OLSON 48F
WHF POINT PROVEN H45
 WHF DELILAH 45D
 MR HOC BROKER
CHEZ STCC MILEY 5034C
 GF/HS MILEY X243
 ASA 4258447
TATTOO 26L
DOB 5/4/23
BREED PB SM

CE	BW	WW	YW	MILK	API	TI
11.3	1.1	73.9	108.6	18.6	117.7	74.3

AI BRED 5/22/24 TO SD REMEDY 7F (ASA: 3419044). SAFE AI. ESTIMATED DUE 2/28/25.

LOT 34 FRKG STCC MILEY'S POINT 26L



- STCC Miley's Point 26L is daughter of the prolific donor dam known as CHEZ STCC Miley 5034C. She is sired by the outcross herd sire WHF Point Proven H45, one of the exciting members of the herd sire battery at Trennepohl Farms.
- She is a maternal sister to countless high sellers and champions. STCC PFK Miley 45J is the \$50,000 maternal sister to 26L that is sired by SCC SCH 24 Karat 838 and was selected as a 2023 Cattleman's Congress Reserve Division Champion for Josie Phillips.
- Her maternal granddam, GF/HS Miley X243, has produced countless high selling herd bull prospects for CK Cattle of Highmore, South Dakota. X243 was a featured lot in the CK Cattle 2019 Proven Female Sale where she was selected by Ryan Effling and is now a productive member of his breeding program.
- She offers a unique combination of stoutness and power that should complement a wide variety of today's more popular AI sire options. Her pedigree is lined with a tremendous amount of cow power and generating potential.



CHEZ STCC MILEY 5034C DAM OF LOT 34

35
FRKG DOLLY 24L

PROFIT	WS PILGRIM H182U	ASA 4258791
	WAGR PANARAMA 204Z	TATTOO 24L
OHL HIGH ON LIFE 0242H	DMCC SWITCHBOARD 50	DOB 2/24/23
	RUBY BRUP MAG LADY 15D	BREED 3/4 SM 1/4 AN

CE	BW	WW	YW	MILK	API	TI
8	4.3	75.6	106.2	15.9	101	68.7

PE TO BOWLING'S THOR 985K (ASA: 4148109). SAFE. ESTIMATED DUE 3/30/25.

- The sire of FRKG Dolly 24L will be one of the names that gets etched in the headstone of legends of the Simmental breed, Profit has shaped the foundation for several cow families that are the most dominate producers in today's industry. While his \$400,000 price tag seems significant, the impact that his influence has had on the programs that have utilized him has been priceless.
- Maternally she stems back to the famed Ruby's Magnetic Lady 328A cow family, one of the cornerstones that watched the Ruby Cattle Co. herd being built around her.

LOT 35 FRKG DOLLY 24L


36
RJ SMITH MS ROLEX 13L

W/C ROLEX 0135E	YARLEY UTAH Y361	ASA 4466046
	MISS WERNING KP 8543U	TATTOO 13L
RJ PF RITA 8288F	W/C BANKROLL 811D	DOB 3/18/23
	EXAR RITA 540G	BREED 3/4 SM 1/4 AN

CE	BW	WW	YW	MILK	API	TI
12.9	0.4	66	94.1	16	119.6	73.6

AI BRED 5/11/24 TO WHF/JS/CCS WOODFORD J001 (ASA: 4068398) SEXED FEMALE SEMEN. SAFE AI. ESTIMATED DUE 2/17/25.

- Here is a direct daughter of the \$164,000 W/C Bankroll 811D female that was the high selling lot in the 2018 RJ Cattle "Commitment to Excellence" Sale that was purchased by Sara Sullivan.
- Rita 8288F lived up to the expectations of such a high valuation when she was selected the 2019 NAILE Supreme Champion Female. She was also selected as the Supreme Champion Female at the 2019 Iowa State Fair. She endured a tremendous run in Louisville, Kentucky, as she was named Grand Champion Percentage Simmental Heifer at the 2019 AJSA Summer Classic as well as Grand Champion Percentage Simmental at the 2019 Simmental Breeders Sweepstakes Junior and Open shows before being selected as the Knic Overpeck Supreme Champion Overall. During the fall of 2019, Rita was also selected as the 2019 American Royal Grand Champion Percentage Heifer in the Junior and Open shows. Simply put, total domination!

LOT 36 RJ SMITH MS ROLEX 13L


 RJ PF RITA 8288F
DAM OF LOT 36

37
MISS SHOOTING STAR 3047L

W/C RELENTLESS 32C	YARLEY UTAH Y361	ASA PENDING
	MISS WERNING KP 8543U	TATTOO 3047L
MISS SHOOTING STAR F01	WS PILGRIM H182U	DOB 3/16/23
	MISS STAR ABOVE	BREED PB SM

CE	BW	WW	YW	MILK	API	TI
10.6	3.1	70.1	99	16.9	105.1	69.9

PE TO MADE FOR ALL. SAFE. ESTIMATED DUE 3/9/25.

- 3047 is an absolute stunner in the flesh! She is sired by the king of the ring, and promoter of unique feature, W/C Relentless 32C.
- We love the eye appeal and presence that this W/C Relentless 32C daughter struts with. She has the big features, bold body style and an awesome running gear; this is the kind that will generate show heifers with pizzazz and elegance!
- She starts her breeding career with a Made For All sired MaineTainer in early March.

LOT 37 MISS SHOOTING STAR 3047L



TL BOTTOMLINE

2017 NWSS RESERVE GRAND CHAMPION
PUREBRED SIMMENTAL BULL
FULL BROTHER TO DAM OF LOT 37



LOT 38 S&S H/W FOXY 3016L



JBSF
PLENTY FOXY
12E
DAM OF LOT 38



38 S&S H/W FOXY 3016L

SCC TRADITION OF 24
SCC SCH 24 KARAT 838
FCF PROVEN QUEEN 419
MR HOC BROKER
JBSF PLENTY FOXY 12E
JBSF MISS GOLDMINE 303A

ASA
4464181
TATTOO
3016L
DOB
3/18/23
BREED
1/2 SM 1/2 AN

CE	BW	W/W	YW	MILK	API	TI
6.3	3.6	79.5	119.4	22.8	85.2	64

AI BRED 4/24/24 TO S&S TSSC LIMITLESS 041H (ASA: 3776857). SAFE AI. ESTIMATED DUE 2/1/25.

39 TAY RELENTLESS KATE 12H

YARDLEY UTAH Y361
W/C RELENTLESS 32C
MISS WERNING KP 8543U
ZKCC CHOPPER 844U
RCF MS CHOPPER KATE 319A
B C C GODIVA

ASA
3951851
TATTOO
12H
DOB
6/1/20
BREED
3/4 SM 1/4 AN

CE	BW	W/W	YW	MILK	API	TI
7.4	3.7	74.6	102.1	15	95.1	68

AI BRED 11/26/24 TO TJSC COPING WITH DESTINY 9K (ASA: 4103854). SAFE AI. ESTIMATED DUE 8/26/25.

40 LADY LYNX

MR CCF 20-20
HOLT NIGHT VISION 457H
HOLT MS SONORA 457F
BBR FX MAY WE ALL 6D
LDSC JENNY 2J
LDSC LOT 1

ASA
4265295
TATTOO
100L
DOB
2/1/23
BREED
1/2 SM 7/32 MA 1/8 AN
1/32 CA 1/8 MX

CE	BW	W/W	YW	MILK	API	TI
11.7	0.2	61.1	80.3	14.7	100.4	67.3

AI BRED 5/23/24 TO FRKG CLASSIC 948K (ASA: 4113341). SAFE AI. ESTIMATED DUE 3/1/25.



LDSC
STELLA
152K
2023 NAILE GRAND CHAMPION
MAINTAINER HEIFER
MATERNAL SISTER TO DAM OF LOT 40



LOT 39 TAY RELENTLESS KATE 12H

- The synergy of SCC SCH 24 Karat 838 and the MR HOC Broker daughter, JBSF Plenty Foxy 12E has become a staple for the Schaeffer Tice program. The tally of champions and dollars that can be attributed to it is extravagant. JBSF Plenty Foxy's show career was short but illustrious, taking home the Third Overall Purebred banner at the 2018 Simmental Junior Nationals and the Supreme Female banner at the 2018 Keystone International Livestock Exposition in Pennsylvania.
- Yet her most prestigious days have been in production, generating over \$2 million of lifetime earnings, across an array of Angus sired matings, and many will attest the 24 Karat mating is her most potent.
- Most recently, a maternal sister to S&S H/W Foxy 3016L sired by ROSE MC Encore 0463 was purchased by the Hendrickson family and was Supreme Champion Female at the 2024 Indiana State Fair.
- We love how this one is on the verge of being overwhelming in terms of the wedge to her body shape, she is ultra square in her pin set, rugged in the build of her feet and legs, has a soft hair coat and an ultimate degree of flexibility when set in motion.

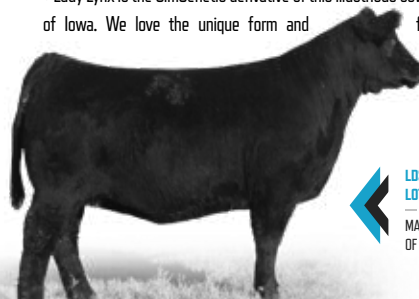
- Here is a young and very well balanced baldy female that is sired by W/C Relentless 32C and backed by the 2015 NWSS Grand Champion Percentage Simmental Heifer, RCF Ms Chopper 319A. There is no denying the pedigree, skeletal quality, and eye appeal that this female possesses.
- She sells safe in calf to the 2024 Cattleman's Congress Supreme Champion Bull, TJSC Coping With Destiny 9K. This is a mating that is lined with purple!



RCF MS CHOPPER KATE 319A
2015 NWSS GRAND CHAMPION PERCENTAGE SIMMENTAL HEIFER
DAM OF LOT 39

Retaining the right to two successful flushes with a minimum of 6 transferrable embryos per flush at the buyer's convenience and seller's expense.

- Lady Lynx is sired by Holt Night Vision 457H, the Purebred calving ease specialist that is owned by CK Cattle, Doris Cattle, and Smith Cattle, three of the most progressive firms in the industry!
- The dam of Lady Lynx is sired by the BBR FX May We All 6D, perhaps the greatest son of Daddy's Money 55Z on the market. Her dam is a direct daughter of LDSC 700E, more commonly known as "Lot 1", the NMR Maternal Made daughter that is one of the greatest producing females in the show cattle industry.
- LDSC 700E "Lot 1" is the dam of the two BBR Memphis Mafia 3E heifers that commanded \$305,000 each in the 2022 Doris Cattle Fall Pasture Sale. Those females took the business by storm as they dominated the jackpot and major show seasons across the nation.
- Lady Lynx is the SimGenetic derivative of this illustrious cow family that was bred and raised by Jeff Boddicker of Iowa. We love the unique form and feature that she combines seamlessly from end to end. Undeniable in terms of her presence with as much length and extension as any other female in the sale when it comes to describing her front third.



LDSC
LOT 1
MATERNAL GRANDDAM
OF LOT 40



- A proven donor female that offers progressive Simmental producers the opportunity to secure a flagship matron that is in the prime of her producing years!
- HTP/BRAM Cottonmaid D635 is a direct daughter of the Kenco Miley Cottontail female that truly needs no introduction to Simmental enthusiasts as she has a long résumé of progeny that led the business.
- It didn't take long for this daughter of the \$160,000 WS Revival to start hitting her stride, as her first calf was the featured live lot of the 2021 "SimMagic on Ice" Sale, JDH Executive Decision 44G that sold for \$24,000 to Reemtsma Cattle of Iowa.
- Take note of the exciting pregnancy that she is carrying to the Triple Crown winning, MR HOC Broker, where else would you find such an opportunity to take ahold of! A program defining donor female, bred up to the best there ever was. Serious opportunities for significant returns on investment exist here.



↑
JDH
EXECUTIVE
DECISION 44G
SON OF LOT 41



LOT 41 HTP/BRAM COTTONMAID D635

Retaining the right to two successful flushes with a minimum of 6 transferrable embryos per flush at the buyer's convenience and seller's expense.

41 HTP/BRAM COTTONMAID D635

LLSF UPRISING 2925
WS REVIVAL
SS NOREEN

CNS PAYS TO DREAM 1759
SS/PRS COTTONTAIL 1166Z
KENCO MILEY COTTONTAIL

ASA
3219892
TATTOO
D635
DOB
9/13/16
BREED
PB SM

CE	BW	WW	YW	MILK	API	TI
11.3	3.9	70.7	103.3	16.2	90.2	64.2

AI BRED 6/2/24 TO MR HOC BROKER (ASA: 2531081). SAFE AI. ESTIMATED DUE 3/9/25.

42 FOREVER STYLE 13E

GAMBLES HOT ROD
SILVEIRAS STYLE 9303
SILVEIRAS ELBA 2520

BR MIDLAND
LAZY H BAR FOREVER LADY 5001
V A R FOREVER LADY 4304

AAA
18881927
TATTOO
13E
DOB
2/15/17
BREED
ANGUS

CE	BW	WW	YW	MILK	\$B	\$C
-1	5.3	58	95	19	116	180

AI BRED 5/1/24 TO BBR MADE MAN 15K (AMAA: 535509). SAFE AI. ESTIMATED DUE 2/7/25.

Retaining the right to two successful flushes with a minimum of 6 transferrable embryos per flush at the buyer's convenience and seller's expense.

LOT 42 FOREVER STYLE 13E

- When it comes to comparing the most prolific Angus donor dams of the past two decades, there are few that can compare to the résumé and accolades that can be attributed to the Lazy H Bar Forever Lady 5001 influence. There are multiple daughters and granddaughters leading the donor pens for the nations most distinguished show heifer producing programs, and in turn, generating exuberant of dollars annually to those progressive firms that have trusted in the lineage.
- The first of which is Forever Style 13E, the Silveiras Style 9303 x Lazy H Bar Forever Lady 5001 female that gives show heifer breeders a first class ticket to the next generation of elite Angus show heifer production. Maternal sisters to this female include the \$50,000, Lazy H Bar Forever Lady 361 that has been a force in production for Bruhn Cattle Company. Another direct daughter of 5001 was the head turning, \$77,000 bred heifer from the 2024 First Class/Dakota Classic Female Sale that was sired by BNWZ Dignity 8017.
- Forever Style 13E finds herself in the company of the best to have ever done it and has the fortitude of pedigree to generate on the cutting edge of the business. Whatever the investment may take here, it will likely feel insignificant to the returns she is capable of making in the near future.





LOT 43 HW FOREVER LADY 3166

43 HW FOREVER LADY 3166

EXAR BLUE CHIP 1877B
CONLEY NO LIMIT
 SILVEIRAS S SIS SANDY 2355

PAPA EQUATOR 2928
LAZY H BAR FOREVER LADY 934
 LAZY H BAR FOREVER LADY 5001

AAA
 21128079
TATTOO
 3166
DOB
 2/17/23
BREED
 ANGUS

CE	BW	WW	YW	MILK	\$B	\$C
-8	5	66	106	13	114	168

AI BRED 4/24/24 TO SCC SCH 24 KARAT 838 (AAA: 19262743). SAFE AI.
 ESTIMATED DUE 2/1/25.

- This maternal granddaughter of Lazy H Bar Forever Lady 5001 stems from another successful branch of the family tree. Her dam is the PAPA Equator 2928 daughter that has become one of the shining stars of the powerful cow family, in Lazy H Bar Forever Lady 934. 934 was the Lot 1 female in the historic, Lazy H Bar Cattle Company Dispersal of 2018 and has been explosive in production. Daughters that include SLTR Forever Lady 016H, the Junior Heifer Division winner at the 2021 National Junior Angus Show for the Day family, Lazy H Bar Forever Lady 528 the \$60,000 female that was 3rd Overall Female for the Collison family at the Iowa Beef Expo, along with multiple daughters by a range of sires in the \$15,000-\$30,000 range.

- This maternal sister to the aforementioned winners has an absolutely striking look from the side, yet when you begin to break her down, you will find that she too is a big bodied, cowy prospect and will be one that makes you wonder what her bull calf crop and replacement heifers will do for a program.

- The opportunity to make very quick returns on investment exists here!



LAZY H BAR
 FOREVER LADY
 934
 —
 DAM OF LOT 43



UDE
 FOREVER LADY
 1049
 —
 \$50,000 FULL
 SISTER TO LOT 43

- You may see a couple of names from the past in the direct pedigree of these powerful sisters, but after an in-person inspection there will be no questions about whether or not they are right for the times!
- This trio of flush sisters stem from the powers of the EXAR Lutton 1831 x Lazy H Bar Forever Lady 361 flush, a mating that was leading the charge for the Lazy H Bar Program and Barry Hageman prior to his retirement from a legendary four decades in the Angus business.
- These are stock that are built absolutely incredible in their look and presence. They are just so striking and eye appealing from the side, motor with incredible flexibility and are built right in their foundations. It's no wonder why these Forever Lady lineage stock have been such a reliable source of quality for so long now!



LOT 44 HW FOREVER LADY 3040

44 FOREVER LADY 3040L

NORTHERN IMPROVEMENT 4480 GF
EXAR LUTTON 1831
 EXAR SARAS DREAM 9809
 PVF WINDFALL SCC 9005
LAZY H BAR FOREVER LADY 361
 LAZY H BAR FOREVER LADY 5001

AAA
 21149460
TATTOO
 3040L
DOB
 3/17/23
BREED
 ANGUS

CE	BW	WW	YW	MILK	\$B	\$C
3	3.1	53	92	24	124	194

AI BRED 5/9/24 TO STAG GOOD TIMES 201 ET (AAA: 19923328). SAFE AI. ESTIMATED DUE 2/16/25.

45 FOREVER LADY 3049L

NORTHERN IMPROVEMENT 4480 GF
EXAR LUTTON 1831
 EXAR SARAS DREAM 9809
 PVF WINDFALL SCC 9005
LAZY H BAR FOREVER LADY 361
 LAZY H BAR FOREVER LADY 5001

AAA
 21149474
TATTOO
 3049L
DOB
 3/9/23
BREED
 ANGUS

CE	BW	WW	YW	MILK	\$B	\$C
3	3.1	53	92	24	124	194

AI BRED 5/9/24 TO BNWZ DIGNITY 8017 (AAA: 19379119) SEXED FEMALE SEMEN. SAFE AI. ESTIMATED DUE 2/16/25.

LOT 45 HW FOREVER LADY 3049



LAZY H BAR FOREVER LADY 361
 DAM OF LOT 44-46

46 HW FRKG FOREVER LADY 3647

NORTHERN IMPROVEMENT 4480 GF
EXAR LUTTON 1831
 EXAR SARAS DREAM 9809

PVF WINDFALL SCC 9005
LAZY H BAR FOREVER LADY 361
 LAZY H BAR FOREVER LADY 5001

AAA
 21138663
TATTOO
 3647

DOB
 3/19/23
BREED
 ANGUS

CE	BW	W/W	YW	MILK	\$B	\$C
3	3.1	53	92	24	124	194

AI BRED 5/16/24 TO OMF DOC LYNN L92 (ASA: 4255431). SAFE AI.
 ESTIMATED DUE 2/22/25.

UOE FOREVER LADY 3037
 2024 NJAS 3RD OVERALL OWNED HEIFER | DAM IS A % SISTER TO DAM OF LOTS 44-46



- A young cow that was not only scouted for her talents in the ring, but one that stems from a maternal line that has reached legendary status. Collison Forever Lady 080 is a direct daughter of the iconic Moffitt Forever Lady M801, the Gables Hot Rod sired daughter of the 2003 American Royal ROV Grand Champion Angus Heifer, Roth Forever Lady 2706. 2706 is also the 3rd generation dam of the famed Silveiras Forbes 8088, the 2020-2021 ROV Show Bull of the Year!
- As a show heifer, Collison Forever Lady 080 won her class at the 2021 NJAS Bred & Owned Show, and has developed into the impressive matron you would expect from looking into the pedigree she comes from.
- She comes carrying an exciting mating to the hottest bull in the Angus breed, BNWZ Dignity 8017.

47 COLLISON FOREVER LADY 080

DAMERON FIRST CLASS
COLBURN PRIMO 5153
 SILVEIRAS SARAS DREAM 1339

GAMBLES HOT ROD
MOFFITT FOREVER LADY M801
 ROTH FOREVER LADY 2706

AAA
 19893756
TATTOO
 80

DOB
 4/6/20
BREED
 ANGUS

CE	BW	W/W	YW	MILK	\$B	\$C
2	3.6	53	90	17	105	160

AI BRED 11/19/24 TO BNWZ DIGNITY 8017 (AAA: 19379119). SAFE AI.
 ESTIMATED DUE 8/26/25.



COLLISON FOREVER LADY 080
 2021 NJAS BRED & OWNED CLASS WINNER



- This next pair of maternal sisters are from the C F Black Beauty 304A female. This is a lineage that has been strong for the Holmes Show Cattle program and we think you are set to be very impressed with the daughters you will find going under the hammer, they are the right kind for the times, plain and simple. They are built with plenty of shape, volume and power. Along with carrying themselves with lots of presence and style, they are built with worlds of maternal power, from either side of the pedigree.

- Maternally they stem back to the \$34,000 EXAR Bride 2991 donor female that was a tenured building block for the Powell program, and has played a strong influence in the breeding programs of several of the programs involved in this sale. A full sister to C F Black Beauty 304A was a \$50,000 high seller in the fall of 2013 for Holmes.

- MS TTG Black Beauty 85F is the Plum Creek Paradox 161B sired daughter of C F Black Beauty 304A that is a full sister to multiple high selling show heifer prospects. She has matured into a breeding piece that is stout featured, dense bodied and perfect outlined. She has the "out there" pieces to generate the kind that it takes to get noticed.

- The Silveiras Style 9303 sired, HSC Miss Style 7G comes carrying a BNWZ Dignity 8017 sired mating, one that has serious potential to return on investment, exponentially!



LOT 48 HSC MISS STYLE 7G

Retaining the right to two successful flushes with a minimum of 6 transferrable embryos per flush at the buyer's convenience and seller's expense.

48 HSC MISS STYLE 7G



CE	BW	WW	YW	MILK	\$B	\$C
2	4.1	48	86	16	129	168

AI BRED 11/19/24 TO BNWZ DIGNITY 8017 (AAA: 19379119). SAFE AI. ESTIMATED DUE 8/26/25.

49 MS TTG BLACK BEAUTY 85F



CE	BW	WW	YW	MILK	\$B	\$C
-1	4.8	52	93	21	120	178

AI BRED 5/1/24 TO PVF BLACKLIST 7077 (AAA: 18944889). SAFE AI. ESTIMATED DUE 2/7/25.

SILVEIRAS STYLE 9303

SIRE OF LOT 48



PLUM CREEK PARADOX 161B

SIRE OF LOT 49



LOT 49 MS TTG BLACK BEAUTY 85F



- HW Queenie 3522 is built right from the foundations, yet is still fancy featured, productive shaped and represents an exciting addition to this female offering, she comes from a cow family that we believe is set for big things in production.
- We love the way this one is constructed, her movement is fluid and effortless, her capacious center third perfectly balances with either end of her skeleton. Her outline is complimented with a pretty head and high tying neck junction, and we have high aspirations that these are highly heritable traits.
- Her mother is a maternal sister to the six-digit valued, Dieckmann HW Queenie 2621 that was a high seller in the 2022 Smith Cattle Company Pasture Sale, and was the Reserve Grand Commercial Heifer at the 2023 Indiana State Fair. She is now a leading force in the lucrative Dieckmann Cattle donor pen.

STAG
 GOOD TIMES
 201 ET
 —
 SIRE OF LOT 50

Retaining the right to two successful flushes with a minimum of 6 transferrable embryos per flush at the buyer's convenience and seller's expense.

LOT 50 HW QUEENIE 3522

50

HW QUEENIE 3522

SCC SCH 24 KARAT 838
STAG GOOD TIMES 201 ET
 SCC SCH PHYLLIS 6104

COLBURN PRIMO 5153
HW QUEENIE 0522
 CSB QUEENIE 5327

AAA
 21078280
TATTOO
 3522
DOB
 2/9/23
BREED
 ANGUS

CE	BW	WW	YW	MILK	\$B	\$C
3	2.8	57	100	19	118	185

PE TO CSB NO LIMIT 3519 (AAA: 21124861), SAFE. ESTIMATED DUE 3/11/25.

51

HW QUEENIE 3554

CONLEY NO LIMIT
CSB NO LIMIT 1519
 CSB PRIDE 9519

CONLEY NO LIMIT
HW QUEENIE 1554
 CSB QUEENIE 5327

AAA
 21136636
TATTOO
 3554
DOB
 3/5/23
BREED
 ANGUS

CE	BW	WW	YW	MILK	\$B	\$C
6	4.6	63	106	16	123	190

AI BRED 5/15/24 TO SILVEIRAS FORBES 8088 (AAA: 19131646), SAFE AI. ESTIMATED DUE 2/22/25.

LOT 51 HW QUEENIE 3554



- HW Queenie 3554 also stems maternally to the CSB Queenie 5327 donor that has built a solid reputation for producing daughters that have an incredible amount of eye appeal and balance.
- A maternal sister to her mother was purchased for over six-digits in the 2022 Smith Cattle Company Pasture Sale, and was the Reserve Grand Commercial Heifer at the 2023 Indiana State Fair.
- A powerful brood cow prospect that is dense and burly in her middle and rear thirds, yet still comes in a beautifully balanced package and is strikes an awesome pose when you catch her on the standstill.
- She comes bred up to the 2020-2021 ROV Show Bull of the Year, Silveiras Forbes 8088!

DIECKMANN HW
 QUEENIE
 2621
 —
 MATERNAL SISTER TO
 THE DAM OF LOT 50 & 51



- This pair of Silveiras Style 9303 sired females are full sisters in blood, as their dams are both the result of the trusted mating of Dameron First Class on the legendary, SCC Phyllis 051. Their pedigrees truly align the stars in the Angus business and are three quarter sisters to the million-dollar producing, FCF Phyllis 532.
- We can promise you that HW Phyllis 3125 is one of the most unique looking Angus females you will find roaming the Iowa State Fairgrounds on January 25th! Her mother, SCC SCH Phyllis 423 positioned herself as one of the most potent producing daughters of the flush, she herself was Reserve in her Division in Kansas City and is the dam of a female that was Sara Sullivan's \$40,000 half interest selection from Scheetz and Sterzbach. This female was an outlier in every facet and was 5th Overall at the NJAS.
- SFC Phyllis 2388 is a direct daughter of the FCF SCC Phyllis 602 donor. 602 has built her own reputation of excellence, full sisters to 2388 include, Kianna Hazel's Grand Champion Angus Female from the 2021 SD State Fair, and the Ferree family's, SCC SFC Phyllis 130 that was named the Supreme Female at the Kentucky Beef Expo, Reserve Grand Champion Angus at the 2022 NWSS, Reserve Supreme Female at the Ohio Beef Expo as well as numerous other wins across the nation.



LOT 52 HW PHYLLIS 3125

Retaining the right to two successful flushes with a minimum of 6 transferrable embryos per flush at the buyer's convenience and seller's expense.

52

HW PHYLLIS 3125

GAMBLES HOT ROD
SILVEIRAS STYLE 9303
 SILVEIRAS ELBA 2520
 DAMERON FIRST CLASS
SCC SCH PHYLLIS 423
 SCC PHYLLIS 051

AAA
 21078282
TATTOO
 3125
DOB
 1/20/23
BREED
 ANGUS

CE	BW	WW	YW	MILK	\$B	\$C
-3	4.6	57	101	12	125	155

AI BRED 4/27/24 TO BNWZ DIGNITY 8017 (AAA: 19379119). SAFE AI. ESTIMATED DUE 2/3/25.

53

SFC PHYLLIS 2388

GAMBLES HOT ROD
SILVEIRAS STYLE 9303
 SILVEIRAS ELBA 2520
 DAMERON FIRST CLASS
FCF SCC PHYLLIS 602
 SCC PHYLLIS 051

AAA
 20928647
TATTOO
 2388
DOB
 4/14/23
BREED
 ANGUS

CE	BW	WW	YW	MILK	\$B	\$C
0	3.9	51	88	19	121	159

AI BRED 6/10/24 TO S A V BRILLIANCE 8077 (AAA: 16107774) SEXED FEMALE SEMEN. SAFE AI. ESTIMATED DUE 3/17/25.

Retaining the right to two successful flushes with a minimum of 6 transferrable embryos per flush at the buyer's convenience and seller's expense.

LOT 53 SFC PHYLLIS 2388



SCC SCH PHYLLIS 423 DAM OF LOT 52



SCC PHYLLIS 051 LEGENDARY MATERNAL GRANDDAM OF LOTS 52 & 53



LOT 54 HW PHYLLIS 3939



LOT 56 HSC MISS ALPHA 48K

54
HW PHYLLIS 3939

— SCC TRADITION OF 24
SCC SCH 24 KARAT 838
 — FCF PROVEN QUEEN 419

— SILVEIRAS STYLE 9303
SCC SCH PHYLLIS 6104
 — SCC PHYLLIS 052

AAA
 21078281
TATTOO
 3939
DOB
 2/22/23
BREED
 ANGUS

CE	BW	WW	YW	MILK	\$B	\$C
1	3.1	55	97	23	122	185

AI BRED 4/25/24 TO BNWZ DIGNITY 8017 (AAA: 19379119). SAFE AI.
 ESTIMATED DUE 2/1/25.

- A direct daughter of the immortal SCC SCH Phyllis 6104.
- HW Phyllis 3939 is a full sister to both the Griswold sire, STAG Good Times 210 ET and the 2021 American Royal Reserve Grand Champion Angus Heifer that was campaigned by Rob Oakley of Tennessee. If you are looking to make a splash in the Angus rings, or find a dynamic breeding piece that has the credentials to create high caliber composite show heifers in a range of breeds then this elite pedigreed female positions herself high on the list of candidates.

- She is set up for early and significant success with the BNWZ Dignity 8022 sired pregnancy that she will be ready to bring into the world, shortly after sale day!

Retaining the right to two successful flushes with a minimum of 6 transferrable embryos per flush at the buyer's convenience and seller's expense.


STAG GOOD TIMES 201 ET

FULL BROTHER TO LOT 54

55
HSC MISS ALPHA 2K

— DAMERON FIRST CLASS
COLLISON ALPHA 028
 — CS GEORGINA 919

— CONLEY EXPRESS 7211
HSC MISS EXPRESS 1H
 — SH CORA 8235

AAA
 21133112
TATTOO
 2K
DOB
 10/15/22
BREED
 ANGUS

CE	BW	WW	YW	MILK	\$B	\$C
-2	3.1	53	88	21	120	182

AI BRED 11/18/24 TO STAG GOOD TIMES 201 ET (AAA: 19923328). SAFE AI.
 ESTIMATED DUE 8/25/25.

- This pair of full sisters by Collison Alpha 028 stem from a maternal lineage that have been proving their worth in the showing for quite some time now. Their mother is a maternal sister to the Colburn Primo 5153 female that the Clark family took on a very dominant run through the 2021 show season. 208 was the Reserve Champion Angus Female at the 2021 Cattleman's Congress, Grand Champion Female at the 2021 Dixie National Roll of Victory Angus Show, Grand Champion Angus at the Oklahoma Youth Expo and perhaps most impressive, Reserve Grand Champion Owned Female at the largest junior cattle show of the year, the 2021 National Junior Angus Show.

- The Collison Alpha 028 sired cattle just continue to build steam as the daughters are proving themselves in production, they come with the added benefits of udder and mothering quality, and yet come with all the bells and whistles.

- This pair both come carrying exciting matings to a sire that has seen much hype of recent, and is now no longer making semen, STAG Good Times 201 ET. They are bred up to calve in the fall, and present a serious opportunity to pay for themselves with this expected calf.

56
HSC MISS ALPHA 48K

— DAMERON FIRST CLASS
COLLISON ALPHA 028
 — CS GEORGINA 919

— CONLEY EXPRESS 7211
HSC MISS EXPRESS 1H
 — SH CORA 8235

AAA
 21125977
TATTOO
 48K
DOB
 4/10/22
BREED
 ANGUS

CE	BW	WW	YW	MILK	\$B	\$C
1	4.5	57	92	14	106	152

AI BRED 11/18/24 TO STAG GOOD TIMES 201 ET (AAA: 19923328). SAFE AI.
 ESTIMATED DUE 8/25/25.


208
 MATERNAL SISTER TO DAM OF LOT 55 & 56

208
 MATERNAL SISTER TO DAM OF LOT 55 & 56



- Forging together two powerful individuals into one pedigree is the Greimans VANZ Sandy 163 female.
- As a direct daughter of KR Casino 6243 she joins a long list of high-powered young females that programs nationwide are relying on taking their program into the next generation. He has breathed a breath of fresh air into the Angus show heifer business from a pedigree standpoint, along with injecting added substance, width and skeletal quality.
- Her dam, UDE Sandy 24E is evolving as a power female in the Greiman and Vanzee programs, generating several high dollar and show winning prospects including, Greimans VANZ Sandy 53 that was the Reserve Champion Division X Female at the 2024 NJAS and Oaklyn Plamp's, SHER The Wood 83F daughter, SHER Sandy 207K that was dominant both on the jackpot and summer show series throughout the Midwest in 2022-2023.



LOT 57 GREIMANS VANZ SANDY 163

57 GREIMANS VANZ SANDY 163

CFCC BLACK JACK 001
KR CASINO 6243
 MALSONS SAVANNAH 27Y

PVF INSIGHT 0129
UDE SANDY 24E
 SILVEIRAS SANDY 5344

AAA
 20722693
TATTOO
 163

DOB
 3/10/23
BREED
 ANGUS

CE	BW	WW	YW	MILK	\$B	\$C
2	3.2	58	102	25	127	205

AI BRED 6/23/24 TO BBR FX MAY WE ALL 60 (AMAA: 472785) SEXED FEMALE SEMEN.
 SAFE AI. ESTIMATED DUE 4/6/25.

58 HW FOREVER LADY 3705

SCC SCH 24 KARAT 838
STAG GOOD TIMES 201 ET
 SCC SCH PHYLLIS 6014

GATEWAY FOLLOW ME F163
HW FOREVER LADY 0705
 LAZY H BAR FOREVER LADY 709

AAA
 21136235
TATTOO
 3705

DOB
 2/16/23
BREED
 ANGUS

CE	BW	WW	YW	MILK	\$B	\$C
1	4.1	57	92	15	123	185

AI BRED 4/25/24 TO SILVEIRAS FORBES 8088 (AAA: 19131646). SAFE AI.
 ESTIMATED DUE 2/1/25.

- If you came to find a trendy pedigree, then look in here, as HW Forever Lady 3705 is built upon a maternal pedigree that combines several of the most exciting individuals in the Angus business. STAG Good Times 201 ET x Gateway Follow Me F163 and then back to one of the first-born daughters of the prevalent, Lazy H Bar Forever Lady 934 donor. Talk about keeping up with the Jones'!
- She is built long and elevated about her first third, square and level in her outline and incredibly crisp in her silhouette. This would be one of the most tricked out and futuristic looking females to sell on January 25th!
- Type and kind wise, the mating of Silveiras Forbes 8088 on 3705 aligns the stars in our mind, he is bound to give her a shot of added density and shape, and with those on board, this is set to be a homerun at the first swing!



←
SILVEIRAS FORBES 8088
 —
 SERVICE SIRE TO LOT 58



LOT 58 HW FOREVER LADY 3705



Retaining the right to two successful flushes with a minimum of 6 transferrable embryos per flush at the buyer's convenience and seller's expense.

LOT 59 HSC MISS 24 KARAT 46K



PLUM CREEK ANNIE LU 4472 FULL SISTER TO THE DAM OF LOT 59

59 HSC MISS 24 KARAT 46K

SCC TRADITION OF 24
SCC SCH 24 KARAT 838

FCF PROVEN QUEEN 419

GAMBLES HOT ROD
PLUM CREEK ANNIE 161C

S H MISS ANNIE LU 6087

AAA
21135244
TATTOO
46K

DOB
3/10/22

BREED
ANGUS

CE	BW	WW	YW	MILK	\$B	\$C
-2	4.9	58	99	24	115	176

AI BRED 6/21/24 TO COLBURN PRIMO 5153 (AAA: 18217480). SAFE AI.
ESTIMATED DUE 3/28/25.

60 MISS ANNIE LU L23

DAMERON FIRST CLASS
COLBURN PRIMO 5153

SILVEIRAS SARAS DREAM 1339

GAMBLES HOT ROD
S H MISS ANNIE LU 6087

S H MISS ANNIE LU 6087

AAA
21138700
TATTOO
3012

DOB
3/15/23

BREED
ANGUS

CE	BW	WW	YW	MILK	\$B	\$C
3	3	51	83	20	107	157

AI BRED 5/9/24 TO BNWZ DIGNITY 8017 (AAA: 19379119). SAFE AI.
ESTIMATED DUE 2/15/25.

LOT 60 HSC MISS ANNIE LU 3013



• It is with great pleasure and excitement that we introduce a direct daughter of the legendary S H Miss Annie Lu 6087, one of the highest dollar generating and hottest cow families in the Angus breed!

• Countless high sellers, champions, and individuals of influence trace to the famed "Annie Lu" tribe. 6087 is the dam of Plum Creek Refresh 561A, the \$125,000 half interest high selling bull in the 2016 edition of Embryos on Snow!

• Let's not forget about Plum Creek Miss Annie Lu 361C, another maternal sib to L23 that was the 2014 NAILE Reserve Grand Champion Angus Heifer for Luke Nord.

• Another derivative of the famed "Annie Lu" tribe is the high income producing Plum Creek Annie Lu 9271, the dam of the 2014 NJAS Reserve Grand Champion Owned Heifer and 2024 American Royal Grand Champion Angus Heifer for the Curtin family!

• She sells safe in calf to BNWZ Dignity 8017, a sire that has an impressive track record when mated to members of the "Annie Lu" cow family!

PLUM CREEK ANNIE LU 361C
MATERNAL SISTER TO LOT 60





- This direct daughter of the champion producer, Colburn Primo 5153 is built with added function and real-world shape.
- She stems from the highly proven PVF Missie 790 cow family. She strikes an incredible pose at every chance she gets. She is brood cow built in her body shape, and projects with ideal udder development. We would take pastures full of this kind, and her mother sets the gold standard of what a female should look like in production! The dam of this beauty is the \$150,000 valued Embryos on Snow donor known as PVF Missie 1148! Countless high sellers, champions, and individuals of influence trace to her lineage.
- She bred up early and will calve late February with a fancy featured STAG Good Times 201 ET calf!



↖
PVF
MISSIE
1148
—
DAM OF LOT 61



LOT 61 HW BLACKCAP DESIGN 3016

61 HW MISSIE 1148

DAMERON FIRST CLASS
COLBURN PRIMO 5153
SILVEIRAS SARAS DREAM 1339

PVF WINDFALL SCC 9005
PVF MISSIE 1148
PVF MISSIE 790

AAA
Pending
TATTOO
3016
DOB
3/10/23
BREED
ANGUS

DAM EPDs

CE	BW	WW	YW	MILK	\$B	\$C
-2	4.8	67	112	13	115	163

AI BRED 5/9/24 TO STAG GOOD TIMES 201 ET (AAA: 19923328).
PE TO MADE FOR ALL. SAFE AI. ESTIMATED DUE 2/20/25.

62 HW FOREVER LADY 3094L ET

BBBN X2 201X
BNWZ DATA BANK 1311C ET
BNWZ CALYPSO 28Y

SVF STEEL FORCE S701
LAZY H BAR FOREVER LADY 01A
LAZY H BAR FOREVER LADY 5001

AMAA/ASA
558459/4463832
TATTOO
3094L
DOB
3/13/23
BREED
MAINE TAINER

CE	BW	WW	YW	MILK	\$B	\$C
----	----	----	----	------	-----	-----

AI BRED 5/15/24 TO W/C BET ON RED 481H (ASA: 3808091). SAFE AI.
ESTIMATED DUE 2/22/25.

- The pairing of BNWZ Data Bank 1311C ET with the maternal powers that come from the iconic, Lazy H Bar Forever Lady 5001 dynasty aligns some of the best to exist in the show cattle business, regardless of breed. Combining the style and pizzazz that comes from the Maine Anjou sire, with the incredible body shape, maturity pattern, density and extra power that immortal Forever Lady 5001 female has proven to consistently generate and you have the ingredients for a recipe for success.
- The maternal value in this MaineTainer female is immense, she is long and refined about her front third, and underneath is built for speed with a rugged structural makeup that accompanies her neat proportions. Her body cavity is burly with lots of body shape and curvature, she is massive ribbed, wide pinned and the kind that reads for longevity and a productive career in the breeding pen.

LOT 62 HW FOREVER LADY 3094L ET



OPEN HEIFERS



LOT 63 4/B SWSN FOREVER LADY 404M

63 4/B SWSN FOREVER LADY 404M

SCC TRADITION OF 24
SCC SCH 24 KARAT 838
FCF PROVEN QUEEN 419

PVF INSIGHT 0129
4/B MISS FOREVER LADY 187K
PF FOREVER PRINCESS F10

AAA
21111476
TATTOO
404M
DOB
1/5/24
BREED
ANGUS

CE	BW	WW	YW	MILK	\$B	\$C
6	2.1	57	98	19	139	224

SCC SCH 24 KARAT 838
SIRE OF LOT 63 & 64



- The maternal pedigree of 4/B SWSN Forever Lady 404M stems back to a female that is quickly building a reputation of excellence across the show cattle business. Her maternal granddam, PF Forever Princess F10 is a direct daughter of Lazy H Bar Forever Lady 5001 and is the dam of 4/B Miss Forever Lady J57, the Supreme Champion Female from the 2022 Illinois State Fair for the Lemenager family.
- Griswold Cattle has been a big proponent of the successes surrounding the F10 influence, marketing multiple daughters over the past 4 years, including a Maine Angus female this year at \$50,000, and a three-quarter sister bred heifer at \$30,000 in 2023 Classic. Along with multiple others between \$10,000-\$25,000.
- A full sister to the dam of 404M was shown by Maggie Griswold to Champion Angus Female at the Oklahoma AGR, before getting injured and finding herself with a one-way ticket to the donor pen. She is now known as "Debbie" and is corner stoning the next generation of Angus show heifer production for the G-.
- A big footed, heavy boned female that is so smooth and angular. This is a female that should be on a lot of short lists on sale day. A bright future lies ahead!



4/B MISS FOREVER LADY J57
3/4 SISTER TO LOT 63



LOT 64 HARA SANDY 4323M

64 HARA SANDY 4323M

— SCC TRADITION OF 24
SCC SCH 24 KARAT 838
 — FCF PROVEN QUEEN 419

— SILVEIRAS STYLE 9303
HARA SANDY 1215J
 — K N C CABIN CREEK SANDY 804

AAA
 21058457
TATTOO
 4323M
DOB
 3/23/24
BREED
 ANGUS

CE	BW	WW	YW	MILK	\$B	\$C
-2	4.9	56	94	22	120	168

- HARA Sandy 4323M is one that gets the heart pumping, and for more than just the obvious incredible phenotype that she has been blessed with. A quick peer into the pedigree here reveals that she is maternal granddaughter of the legendary, K N C Cabin Creek Sandy 804 female that has made an everlasting imprint of the Angus business.
- The dam of 4323M is a full sister to multiple industry icons, including the multimillion dollar producing, Silverias S Sis Sandy 2355 that works for Conley Cattle. 2355 is the mother of the \$540,000 valued Conley Sandy 8934, a female that has also exceeded the million-dollar mark in progeny sales with a lifetime average of more than \$90,000 per head! If you could only tie into one cow family in the Angus breed, you would be hard pressed to find something more valuable than you find here.
- A full sister to this female sold for \$14,500 in the 2024 Wilson Farms Fall Female Sale.
- She is very feminine about her front third, smooth in her shoulder design, and offers an ultra-maternal turn and shape to her center body. We love the balance and eye appeal that this female brings to the table.
- HARA Sandy 4323M will be a competitive show heifer, but more importantly she will be a top generator that is backed by true maternal excellence!



←
SILVEIRAS S
SIS SANDY
2355

—
 FULL SISTER TO
 DAM OF LOT 64



↗
K N C CABIN CREEK
SANDY
804
 —
 LEGENDARY MATERNAL
 GRANDAM OF LOT 64



LOT 65 HW QUEENIE 4118

65

HW QUEENIE 4118

SCH SCH 24 KARAT 838
STAG GOOD TIMES 201 ET
 SCH SCH PHYLLIS 6104

PVF INSIGHT 0129
CSB QUEENIE 5327
 SF QUEENIE 327

AAA
 21131065
TATTOO
 4118
DOB
 2/18/24
BREED
 ANGUS

CE	BW	WW	YW	MILK	\$B	\$C
2	3.1	58	107	21	126	202

- HW Queenie 4118 is certainly a highlight of this open heifer division, and one that pleads a very feasible case towards being a valuable addition to any show string. Yet it's the prospects that she offers in production that are perhaps the most tantalizing.
- She is a full sister to the six-digit valued, Dieckmann HW Queenie 2621 that was a high seller in the 2022 Smith Cattle Company Pasture Sale, that was the Reserve Grand Commercial Heifer at the 2023 Indiana State Fair and is now a leading force in the lucrative Dieckmann Cattle donor pen.
- This daughter of STAG Good Times 201 ET is a soft haired, big ribbed, high-capacity female that is flawless on her feet and legs with a tremendous look of balance and maternal excellence from the profile. She combines so many positives, making her one of the most complete and fault free breeding pieces in the entire sale and the fact that she is backed by a power cow family only adds faith to our beliefs.



↙
DIECKMANN HW QUEENIE 2621
 —
 FULL SISTER TO LOT 65



STAG GOOD TIMES 201 ET
 —
 SIRE OF LOT 65
 ↘



LOT 66 SWSN MISS DOUBLE UP 119M

66 SWSN MISS DOUBLE UP 119M

— W/C DOUBLE DOWN 5014E	ASA 4451289
WHF/JS/CCS DOUBLE UP G365	TATTOO 119M
— WHF SUMMER 365C	DOB 2/20/24
— HPF QUANTUM LEAP Z952	BREED PB SM
JSUL LOLA 1134J	
— WPRF WISE LOLA	

CE	BW	WW	YW	MILK	API	TI
12.1	1.5	83.5	111.2	18	106.5	74.1

• SWSN Miss Double Up 119M is a purebred show heifer prospect that comes with a very intriguing set of qualities. We just love how extra complete, fault free and balanced she is on the stand, all while offering a maternal look and design about her body cavity. She is a stout hipped, thick made female that offers the look of a donor in the making!

• Her maternal pedigree reads of some of the best to walk the sacred grounds of Dunlap, Iowa. Her maternal granddam, WPRF Wise Lola was the Reserve Grand Champion Percentage Simmental female at the 2018 AJSA Classic for Sara Sullivan, and has since gone on to be a dominating force in their progressive Simmental donor pen.



↙
**WPRF WISE
LOLA**
—
MATERNAL GRANDDAM
OF LOT 66



**WHF/JS/CCS
DOUBLE UP
G365**
—
SIRE OF
LOT 66
↘



LOT 67 SWSN MISS PILGRIM 4M

67 SWSN MISS PILGRIM 4M

CNS DREAM ON L186
WS PILGRIM H182U
WS MARLA 276M

MR HOC BROKER
WAGR PANARAMA 204Z
3C MELODY M668 BZ

ASA
4451288
TATTOO
4M
DOB
1/4/24
BREED
PB SM

CE	BW	WW	YW	MILK	API	TI
7.2	4.4	75.5	103.1	18.4	100.2	70.6

- SWSN Miss Pilgrim 4M may be one of the most incredible donor cow prospects to sell this calendar year, as she is a FULL SISTER to the legendary, \$400,000, Profit.
- The Profit influence has been suffocating, and has been a driving force towards the incredible advancements that the Simmental breed has made over the past decade from a phenotype standpoint. He records over 2600 head of registered progeny in the ASA Herdbook. There is no question that this lineage has been and remains a potent source of genetic power and quality across not only the Simmental breed, but the cattle business.
- Being backed by the immortal WAGR Panarama 204Z not only links her to Profit, but a long list of proven producers. This includes the \$350,000 Justified, the sire of the \$175,000 lot 1 female from the 2022 HCC Customer Appreciation Female Sale. Charles W. Herbster, also purchased a pair of 204Z daughters known as Panarama 451C and Panarama 52C for \$200,000 and \$130,000 respectively. Another full sister to SWSN Miss Pilgrim 4M is SWSN Panarama 900G, the dam of the \$210,000 FRKG Victory 78.J.
- Needless to say, this is a cow family and female that you need to tie too, the power is certainly in the blood here.



PROFIT
—
FULL BROTHER
TO LOT 67



**WAGR
PANARAMA
204Z**
—
DAM OF LOT 67



LOT 68 KCKR MISS TAMARA 401M

68 KCKR MISS TAMARA 401M

MR CCF 20-20
VCL FORESIGHT
 HCCO COUNTESS 412D

MR HOC BROKER
JS TAMARA 88H
 JS FLIRT A-WAY 59Y

ASA
 4465940
TATTOO
 401M
DOB
 3/16/24
BREED
 PB SM

CE	BW	WW	YW	MILK	API	TI
7.2	4.2	78	110.3	21.1	102.3	71.7

- Here is a stunning March born daughter of JS Tamara 88H, the FULL SISTER to JS Black Satin 9B "Boots". A full sister to 401M brought \$12,000 alongside her maternal sister at \$35,000 in the 2024 "Two Is Better Than One" Sale for Weis this past December. 401M is sired by VCL Foresight, the sire of the \$620,000 world record selling STCC Tecumseh 058J. This female offers a "show stopping" look from the side.
- She is so refined about her front third, sleek necked, clean chested, and offers tremendous progression of depth back through her rear rib and flank. Her body shape is robust, while her pin set is wide and square. We love the skeletal integrity, joint work, and flexibility that she possesses.
- The lineage that supports 401M would rank among the most prolific and highest dollar generating cow families in the history of the Simmental breed. Her futuristic look and build suggest that she is set to be a force not only on the tanbark, but once she enters the donor pen!



JS TAMARA 88H
 — DAM OF LOT 68



KCKR WEIS TAMARA 423M
 — FULL SISTER TO LOT 68



- A trio of maternal sisters sell here next, out of the Golden Acres and Smith Cattle Company donor, W/C RJ Miss 8543 6102D "40-6". She is a full sister to the \$205,000 W/C Bankroll 811D, and was a featured live lot in the 2020 Embryos on Snow that commanded \$47,000 for 50% interest and is the dam of the lead off bred heifers in this sale!

- The purebred of the three, GA/SCC/SWSN Miss 40-6 417M is sired by the 2023 Cattleman's Congress Grand Champion Simmental Bull, R/C SFI Creedence 417J. Creedence sanctioned himself as the greatest son of the renowned JSUL Something About Mary 8421 in existence and recently went under the hammer again, with Aces Wild Ranch teaming up with JS Simmentals on his ownership for \$45,000.

- This striking baldy female is built for the long haul, she is long, elevated and chiseled about her head and neck junction, seamless in her outline and ultra-flexible in her movement. She can't help but to strike a pose at every chance she gets!

R/C SFI
CREEDENCE
417J
—
SIRE OF LOT 69



LOT 69 GA/SCC/SWSN MISS 40-6 417M

69 GA/SCC/SWSN MISS 40-6 417M

— JSUL SOMETHING ABOUT MARY 8421
R/C SFI CREEDENCE 417J
— SFI LOVE ME LATER A9X

— W/C LOADED UP 1119Y
W/C RJ MISS 8543 6102D
— MISS WERNING KP 8543U

ASA
4452953
TATTOO
417M
DOB
4/7/24
BREED
PB SM

CE	BW	WW	YW	MILK	API	TI
11.7	1.6	76.2	112.8	20.8	107.1	72.8

70 GA MISS 40-6 424M

— SILVEIRAS STYLE 9303
W/C STYLE 69E
— MISS WERNING KP 8543U

— W/C LOADED UP 1119Y
W/C RJ MISS 8543 6102D
— MISS WERNING KP 8543U

ASA
4394616
TATTOO
424M
DOB
3/18/24
BREED
3/4 SM 1/4 AN

CE	BW	WW	YW	MILK	API	TI
14.1	-1	62.4	92.1	21.1	116	69.8

LOT 70 GA MISS 40-6 424M

- The percentage daughter of the leading lady for Golden Acres and Smith is sired by the proven supplier of intrigue, W/C Style 69E or as he has become better known as, "Family Tradition". "Family Tradition" is a son of the iconic, Silveiras Style 9303 and out of the highest revenue generating female in the history of the Simmental breed, Miss Werning KP 8543U, meaning we have doubled up on the good stuff here, as 8543U appears as the granddam on both the maternal and paternal sides of the equation here!

- We love the intriguing looks of this three-quarter blood blaze faced female, her ear set comes high out her poll, her neck ties proudly off the top of her withers and she exudes quality as she struts with arrogance. She too is long sided, and smooth shouldered and still has an impressive amount of bone substance, foot size and ribcage dimension.

W/C RJ
MISS 8543
6102D
—
DAM OF LOT 69-71





- A little different approach was taken with the breeding plan here, matching up the full sister to W/C Bankroll 811D, W/C RJ Miss 8543 6102D "40-6" with one of the trendiest show heifer makers in the business. And trendy the results were, with this loud colored, stout featured female that offers a dynamic look and opportunity for breeding scenarios once her days at the end of the lead come to an end.

- This dual registered, half-blood Simmental, MainTainer female is ultra-balanced, and soft bodied, she is maternal in her muscle pattern, flat and smooth jointed, fluid in her movement and sets down square on all four points of her skeleton. She comes with a powerful, bold sprung rib shape and leaves nothing to the imagination when it comes to an awesome look and presence.



1
GA/SCC MISS 40-6 331L
MATERNAL SISTER
TO LOT 69-71

GA/SCC MISS 40-6 326L
MATERNAL SISTER
TO LOT 69-71



4

LOT 71 GA/SCC/SWSN MISS 40-6 460M

71 GA/SCC/SWSN MISS 40-6 460M

MINN LIVE ACTION 203Y
WEIS ALL ME 10F
BSC CANDI 42Z

W/C LOADED UP 1119Y
W/C RJ MISS 8543 6102D
MISS WERNING KP 8543U

ASA
4468851
TATTOO
460M
DOB
3/16/24
BREED
1/2 SM/MAINTEINER

CE	BW	WW	YW	MILK	API	TI
11.6	0.3	49.8	68	19.5	81.3	55.9

72 SCC WHO DAT SAM 66M

W/C RELENTLESS 32C
JSUL SOMETHING ABOUT MARY 8421
JBSF PROUD MARY

BLEEDING PURPLE
JSUL WHO DAT 7015E ET
JSUL WHO DAT 1602

ASA
PENDING
TATTOO
66M
DOB
3/18/24
BREED
1/2 SM/LOW CHI

CE	BW	WW	YW	MILK	API	TI
10.2	2.8	63	91.7	20.9	88	62.8

LOT 72 SCC WHO DAT SAM 66M



JSUL WHO DAT 7015E ET
DAM OF LOT 72

- Not often is there an opportunity to get into a percentage female bred as uniquely as this one!

- Her sire, JSUL Something About Mary 8421F, the popular son of JBSF Proud Mary, is one of the most heavily used AI sires in the breed for the production of high dollar generating show stock. The quality just continues at every level and each step away from that foundation female that started it all. If they hand out banners, there is a good chance that a daughter of SAM has probably claimed it over the past couple of years.

- Maternally she finds power through a very intriguing mixture of the old school, cool, Bleedin Purple and the past, yet very popular, NAILE Supreme Champion Breeding Heifer, JSUL Who Dat 1602 that was exhibited by Luke Elder. Talk

about lining up some legendary individuals that have proven to generate outlier quality!

- Needless to say, this impressive female has all the necessities on board to serve out an incredible breeding career once she is done hanging banners.



JSUL WHO DAT 1602
2012 NAILE SUPREME CHAMPION JUNIOR BREEDING HEIFER
MATERNAL GRANDDAM OF LOT 72



W/C RJ
MISS 8543
6102D

DAM OF LOTS
100A & 100B
EMBRYOS



W/C
BANKROLL
811D

\$205,000 FULL BROTHER TO DAM OF
LOTS 100A & 100B EMBRYOS



STAG
GOOD TIMES
201 ET

SIRE OF LOT 100A
EMBRYOS



R/C SFI
CREEDENCE
417J

SIRE OF LOT 100B
EMBRYOS

100

A 3 IVF SEXED FEMALE EMBRYOS

SCC SC 24 KARAT 838
STAG GOOD TIMES 201 ET
SCC SCH PHYLLIS 6104

BREED
1/2 SM 1/2 AN

W/C LOADED UP 1119Y
W/C RJ MISS 8543 6102D "40-6"
MISS WERNING KP 8543U

CE	BW	W/W	YW	MILK	API	TI
13.8	-0.6	70.8	95.2	23.6	110.2	71.3

100

B 3 IVF SEXED FEMALE EMBRYOS

JSUL SOMETHING ABOUT MARY 842L
R/C SFI CREEDENCE 417J
SFI LOVE ME LATER ASX

BREED
PB SM

W/C LOADED UP 1119Y
W/C RJ MISS 8543 6102D "40-6"
MISS WERNING KP 8543U

CE	BW	W/W	YW	MILK	API	TI
11.8	1.6	76	112.5	21.1	106.4	72

- A unique opportunity to tap into the heart of the donor pen and access the legendary W/C RJ Miss 8543 6102D donor, more commonly known across the industry as "40-6".
- This daughter of W/C Loaded Up 1119Y is from the most notable and highest grossing female in the breed, Miss Werning 8543U and has begun her own impressive generating career with a set of daughters that stand at the front end of programs nationwide. The 8543U influence has been prolific, and the heritability of quality has proven to be potent through her descendants.
- The Lot 100A embryos are sired by the popular Angus AI sire known as STAG Good Times 201 ET, one of the all-time greatest sons of SCC SCH 24 Karat 838 in existence! This mating will yield elite half-blood female progeny that stand the change to sell high and win BIG!
- Lot 100B embryos are sired by the 2023 Cattleman's Congress Grand Champion Purebred Simmental Bull, R/C SFI Creedence 417J. There is no denying that this mating aligns complimenting body styles and should result in elite Purebred show heifer prospects! R/C SFI Creedence 417J is a son of the late JSUL Something About Mary 842L, therefore this mating will result in three-quarter sibs to Lots 1 through 3 in the bred heifer division!
- Invest in the future of your breeding program by adding these elite genetics to your arsenal. "40-6" has become a "once in a lifetime" type of female that simply never misses!
- **GUARANTEEING 1 60-DAY PREGNANCY PER PACKAGE OF 3 EMBRYOS IF TRANSFERRED BY A CERTIFIED TECHNICIAN.**



JS TAMARA 88H
 —
 DAM OF LOT 101 EMBRYOS



TJSC COPING WITH DESTINY 9K
 —
 SIRE OF LOT 101 EMBRYOS

2024 CATTLEMEN'S CONGRESS SUPREME CHAMPION BULL



JS BLACK SATIN 88 "BOOTS"
 FULL SISTER TO DAM OF LOT 101 EMBRYOS



KCKR WEIS TAMARA 48M
 —
 \$35,000 MATERNAL SISTER TO LOT 101 EMBRYOS



KCKR WEIS TAMARA 423M
 —
 \$12,000 MATERNAL SISTER TO LOT 101 EMBRYOS

101 3 IVF SEXED FEMALE EMBRYOS

WLE COPACETIC E02
TJSC COPING WITH DESTINY 9K
 TJSC DIMAONDS DESTINY 134C
 MR HOC BROKER
JSTAMARA 88H
 JS FLIRT A-WAY 59Y

BREED
 PB SM

CE	BW	WW	YW	MILK	API	TI
8.1	4.0	75.5	108.2	17.6	96.8	67.2

- A very NEW and EXCITING mating from the up and coming young donor dam known as JS Tamara 88H. 88H is a FULL SISTER to the iconic "Boots", the 2015-2016 Triple Crown winning Purebred Simmental Heifer that was campaigned by Jake Bloomberg. The embryos selling represent the hottest and most cutting edge genetics in the game when it comes to producing elite Simmental seedstock.
- The embryos selling are sired by the 2024 Cattlemen's Congress Supreme Champion Bull, TJSC Coping With Destiny 9K, one of the hottest young AI sire options in the business.
- A maternal sister to this package of embryos sired by VCL Foresight sells as Lot 68. A pair of 88H daughters sold this past December in the Fitz Genetics & Weis Cattle "Two Is Better Than One" Live Auction in Oklahoma. Those two females commanded \$35,000 and \$12,000 each.
- There is simply no denying the influence that the legendary 59Y has had on the business. This is your opportunity to access one of the rising stars in the Simmental breed on January 25, 2025 in Des Moines, Iowa!
- **GUARANTEEING 1 60-DAY PREGNANCY PER PACKAGE OF 3 EMBRYOS IF TRANSFERRED BY A CERTIFIED TECHNICIAN.**



FOREVER
STYLE
13E

DAM OF LOT 102
EMBRYOS



MS TTG
BLACK BEAUTY
85F

DAM OF LOT 103
EMBRYOS



SCC SCH
24 KARAT 838
SIRE OF LOT 102
EMBRYOS



BNWZ
DIGNITY
8017
SIRE OF LOT 103
EMBRYOS

102 3 IVF SEXED FEMALE EMBRYOS

SCC TRADITION OF 24
SCC SCH 24 KARAT 838
FCF PROVEN QUEEN 419

SILVEIRAS STYLE 9303
FOREVER STYLE 13E
LAZY H BAR FOREVER LADY 5001

BREED
ANGUS

DAM EPDs

CE	BW	W/W	YW	MILK	\$B	\$C
-1	5.3	58	95	19	116	180

- Forever Style 13E is a stunning daughter of the late Silveiras Style 9303 that is out of the legendary Lazy H Bar Forever Lady 5001 donor dam, a female that has exceeded the \$1 million mark in progeny earnings.
- 13E sells as Lot 42 in this year's sale offering. There is no denying her quality look, power, and extra substance. The embryos selling are sired by the dominant sire of champions and high sellers, SCC SCH 24 Karat 838. This mating is certain to hit a home run for the winning bidder!
- **GUARANTEEING 1 60-DAY PREGNANCY PER PACKAGE OF 3 EMBRYOS IF TRANSFERRED BY A CERTIFIED TECHNICIAN.**

103 3 IVF SEXED FEMALE EMBRYOS

PVF INSIGHT 0129
BNWZ DIGNITY 8017
CCC SARA'S DREAM 5116

PLUM CREEK PARADOX 161B
MS TTG BLACK BEAUTY 85F
CF BLACK BEAUTY 304A

BREED
ANGUS

DAM EPDs

CE	BW	W/W	YW	MILK	\$B	\$C
-1	4.8	52	93	21	120	177

- MS TTG Black Beauty 85F is the Plum Creek Paradox 161B sired daughter of C F Black Beauty 304A that is a full sister to multiple high selling show heifer prospects. This powerful donor dam sells as Lot 49 in this offering. There is no denying her pedigree, phenotype, and earning potential!
- The embryos selling are sired by the very popular and proven stud known as BNWZ Dignity 8017. This mating aligns some of the most prominent and highest revenue generating cow families in the Angus breed!
- **GUARANTEEING 1 60-DAY PREGNANCY PER PACKAGE OF 3 EMBRYOS IF TRANSFERRED BY A CERTIFIED TECHNICIAN.**

**THANK
YOU**



P.O. BOX Z
DE SOTO, KS 66018



THE VISION

ELITE BRED FEMALE SALE

JANUARY 25, 2025 // 6:00 P.M.

DES MOINES, IOWA