



GRAND CHAMPION  
OWNED FEMALE  
JUNE 9-14, 2024  
Red Angus Youth Expo  
REDS ON ROUTE 66  
Chickasha, Oklahoma

2024  
RED ANGUS  
YOUTH  
EXPO  
GRAND  
CHAMPION  
OWNED  
FEMALE  
CHICKASHA, OK

**TC** REDS

# VISIONS IN RED

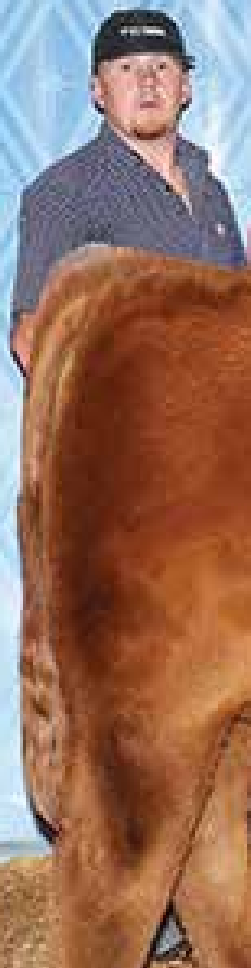
*December 7, 2024 at 7:00 pm in Saint Ansgar, Iowa*

REDS ON

Chickasha



2024  
RED ANGUS  
YOUTH  
EXPO  
GRAND  
CHAMPION  
OWNED  
FEMALE  
CHICKASHA, OK





**2024 RAYE Grand Champion Owned Heifer  
Congratulations Rex Howard!**



SALE MANAGED BY INNOVATION AGMARKETING, LLC:

Graham Blagg: (530) 913-6418

Jered Shipman: (806) 983-7226

Tim Anderson: (605) 682-9343

[WWW.INNOVATIONAGMARKETING.COM](http://WWW.INNOVATIONAGMARKETING.COM)

**AUCTIONEER:**

Col. Jered Shipman: (806) 983-7226

**RING STAFF:**

Mitchell Armitage - Special Assignment: (405) 641-9438

Austin Brandt - Lee AgriMedia: (712) 621-1829

**TERMS & CONDITIONS:**

All cattle will sell under the suggested terms and conditions of the respective breed associations in which are represented throughout the sale offering - Red Angus Association of America, American Angus Association and American Simmental Association. All sales are final. Seller reserves the right to two successful flushes on each heifer in the sale at the buyer's convenience and seller's expense unless otherwise noted.

All females are sold as sound breeders. However, if we feel that a heifer has been fed to an extreme level of obesity, we will hold the feeder responsible for any reproductive problems. Seller reserves the right to take possession of any animal(s) that presents difficulty conceiving before a sale credit will be issued. Seller guarantees each female to produce a live calf or transferrable embryos.

**ANNOUNCEMENTS:**

A supplement sheet will be available sale day with updated information, corrections, and additional information. This sheet and any announcements made sale day from the auction block during the sale, will take precedence over printed material associated with the sale.

**RETAINED FLUSH/CELL LINE**

TC Reds reserves the right to two successful flushes at the buyer's convenience and seller's expense, unless otherwise noted. TC Reds reserves the right to the DNA cell line and cloning rights on all animals sold.

**LIABILITY:**

Anyone attending this sale attends at their own risk. Sellers, facility owners, nor the sales team will not be held responsible for any personal injury from attending this sale.

**VIDEOS:**

Videos of cattle will be available prior to the sale. The videos will be available for viewing at [www.CCI.live](http://www.CCI.live)



Welcome to the 2024 edition of the TC Reds "Visions in Red" Production Sale! There is no denying the excitement and enthusiasm that is contagious throughout the beef cattle industry! This past year has seen some of the largest premiums ever offered to producers in the beef business, helping to offset the increases of input costs. At the end of the day the good business operations in the agricultural industry are sitting in pretty good shape as they look to plan for what's in store for their operations in 2025!

The Inaugural Red Angus Youth Expo in Chickasha, Oklahoma was a great success! Record numbers of Red Angus youth and their families migrated to the Sooner State for this world class event. The TC Reds team had an unbelievable show, with countless class winners, division champions and reserves, and ended the week long event with the 2024 RAYE Grand Champion Owned Heifer, TC Leta 100L, campaigned by Mr. Rex Howard! It was a show for the record books and a testament to the commitment and dedication that the Bayer family and their talented staff have for the Red Angus breed and its youth. The junior livestock program is one of the very best ways to raise a family, as exhibiting livestock will teach a young person everything they need to know about life and the reality of the world we live in!

While TC Reds is the "go-to" source for those junior show projects, it is also a tremendous outlet for high end bred females that will go out and return on investment in short fashion. Scott and Mia Bayer have raised their family on the pastures of Ringle, Wisconsin and the surrounding area. This family has a proven track record of success in the Red Angus, Angus, and Simmental breeds. Scott and Ty know how to mate them, raise them, and prepare the stock to play at the level necessary to achieve the ultimate goal. They are very hands on, and they will do all things necessary to assure your young person the success that they are familiar with. The entire family will be on your junior exhibitor's team every step of the way if you so desire. This opportunity to do business with this family will be a priceless experience if you are new to the industry or just haven't been able to acquire one of the great females from TC Reds.

This set of females are the very best that TC has ever offered, so browse, call with any questions, and be prepared to invest in the future of your child, children, or your established operation's future. One of the great families of the industry stands behind this set of stock. We know that the Bayer family will be happy to field any calls about their program and Innovation Ag Marketing's team is on board for the same task as well. We hope to see you there at the state of the art Weis Cattle Sale Facility in St. Ansgar, IA on December 7, 2024.

Enjoy the stock,

*Graham Blagg    Jered Shipman    Tim Anderson*



Scan the QR Code for more information

### SALE DAY CONTACTS

Scott Bayer: (715) 573-4943  
Ty Bayer: (715) 573-0153  
Willie Weis: (641) 220-1995  
Kale Spengler: (563) 599-3326  
Brent Wirth: (715) 760-1727

### FRIDAY, DECEMBER 6, 2024

Sale cattle on display at  
Weis Cattle sale facility

### SATURDAY, DECEMBER 7, 2024

9:00 AM - Sale cattle on display  
5:30 PM - Heavy Hors d'oeuvres  
and Hospitality  
7:00 PM - 2024 "Visions in Red"  
Production Sale

### SALE LOCATION

Weis Cattle Sale Facility  
1474 State Line Street  
Saint Ansgar, IA

Watch and bid online at CCI.live





## J2R RESOURCE 144J

J2R Resource 144J is a RED MRLA Resource 137E son that hit us awfully hard since the first moment we saw him in the spring of 2022. We realized that it was time for Red Angus breeders to reach outside the box and find a bull that had enough of the trendy pieces that it takes to get noticed in the showing, but truly had real world beef quality, one that was rock solid in his foundations, and was going to bring back the fundamentals of good livestock. J2R Resource 144J has proven to live up to the expectations we had of him, and is siring cattle that are high quality, and when we say this, it is the type of quality that can will be appreciated by all stockmen and women, regardless of their background or preferences about livestock. We truly think he is the kind to tie to going forward and represents the next generation of phenotypic excellence for our program.

The rookie heifer calf crop of J2R Resource 144J progeny was met this astounding interest. The two April born females commanded \$17,000 & \$15,000. The cheaper of this pair, TC Leta 100L is now best recognized as the 2024 Red Angus Youth Expo Grand Champion Purebred Heifer for Rex Howard. To add to this, the high selling Red Angus Bull from the 2024 TC & Weis Cattle Bull Sale was also a son of J2R Resource 144J. We don't feel loathsome saying that this trend is likely to continue with the daughters to sell in this sale also.

Additionally, the quality is built deep into 144J from a genetic standpoint, he aligns the most potent cow families of the famed Anexa cow family in the U-2 cowherd, and his dam, a daughter of RED U-2 Reckoning 149A sets the gold standard for what a high productivity, mature dam should look like. We are all in on the 144J influence, and could not be more excited to build the cowherd with his daughters, while he has already seen success, we feel like the best is yet to come!

MARCH 8, 2021

REG: 4473325 | 100% AR - A

**SIRE**

MRLA RELOAD 56C  
**RED MRLA RESOURCE 137E**  
 MRLA MISS 4422B

**DAM**

RED U-2 RECKONING 149A  
**RED U-2 ANEXA 287C**  
 RED U-2 ANEXA 13A

|          |        |        |          |
|----------|--------|--------|----------|
| ProS: 99 | HB: 61 | GM: 38 | CED: 10  |
| BW: 1.9  | WW: 61 | YW: 98 | MILK: 24 |

LOT

1

**Lot 1 A - T**

*Selling 100 units of conventional semen in packages of 5 units.*



**TC LETA 100L**  
**2024 RAYE Grand Champion Owned Heifer & Daughter of J2R Resource 144J**



JANUARY 28, 2024

REG: 4977219 | 100% AR - A

**SIRE** RED MRLA RESOURCE 137E  
**J2R RESOURCE 144J**  
 RED U-2 ANEXA 287C

**DAM** EGL GCC RED EAGLE E7194  
**TC FANCY 09J**  
 FSR LETA 135A

ProS: 84 HB: 53 GM: 31 CED: 10  
 BW: 1.4 WW: 66 YW: 101 MILK: 22

LOT

2

## TC FANCY 16M

Every once in a while, animals come along that just know they are special, they do everything right, and just continue to jump past the maturity markers you dream they will make, TC Fancy 16M has been of a special status since day one. We think there is no boundary to the possibilities for this female headed forward, and we like to think there are few that can match the quality she is blessed with. The circumference of bone and foot in this animal is overwhelming, matching terms could also be used to describe the hip and back shape of this J2R Resource 144J daughter. Her dark cherry red hide only amplifies her body density, add these traits to her ability to set down her feet with a fluid and secure gait and we think the future of this one will be filled with banners and eventual dollar signs once she enters production. These claims stand up to the precedent set by her mother, as TC Fancy 09J was one of the most decorated females to come out of the program of the past couple of years, her victories include being the Reserve Grand Champion Female for Tucker at the 2023 Cattleman's Congress Open Show, and NAILE Junior Show, and the Grand Champion Red Angus Female in the Junior Show at the Cattleman's Congress. Dig your heels in here if you are ready to make waves in the Red Angus business. **Retaining 50% embryo interest.**



**TC FANCY 09J**

2023 Cattleman's Congress Grand Champion Red Angus Heifer  
 Dam of Lot 2



MARCH 16, 2024

REG: 4980837 | 100% AR - A

SIRE

RED MRLA RESOURCE 137E  
**J2R RESOURCE 144J**  
RED U-2 ANEXA 287C

DAM

BIEBER HARD DRIVE Y120  
**FFG RUBY 8124**  
PIE RUBY 5513

ProS: 114 HB: 53 GM: 62 CED: 12  
BW: 0.7 WW: 70 YW: 112 MILK: 22

LOT

3



OPEN RED ANGUS FEMALE



CB TC RUBY 25L - Maternal Sister to Lot 3

## CB TC RUBY 83M

CB TC Ruby 83M stems from the proven producer of upper echelon quality, FFG Ruby 8124, a female that we purchased from Frank Family Genetics with Shane Bedwell. This is the type of female that screams longevity and high productivity, but in the meantime it's the incredible structural integrity, eye appeal and ultimate level of balance that is going to make her a very competitive show heifer project. We love the maternal sweep of her underline, the neatly laid in shoulder design she is blessed with and the flexible set of locomotive joints she sports. The pedigree of this J2R Resource 144J daughter sets up a very promising career in production too, as she finds her maternal backing from a cornerstone cow family for the famed Pieper operation in the Ruby's. **Retaining 50% embryo interest.**

Ruby 83M



MARCH 23, 2024

REG: 4977229 | 100% AR - A

**SIRE**

RED MRLA RESOURCE 137E  
**J2R RESOURCE 144J**  
 RED U-2 ANEXA 287C

**DAM**

NBAR HAMLEY S913  
**3 ACES TC FIONA 3605**  
 TC FIONA 48X

|          |        |        |          |
|----------|--------|--------|----------|
| ProS: 93 | HB: 57 | GM: 36 | CED: 13  |
| BW: 0.2  | WW: 57 | YW: 84 | MILK: 21 |

LOT



## TC FIONA 90M

TC Fiona 90M represents the quality that we are turning to J2R Resource 144J to create, she has all the extras and big features that are needed to find success in the showing, but is built so correct at her foundation. 90M is certainly one of the densest bodied, and most expressive muscled females in the offering, yet you will still find she is chiseled about her head and neck, giving her an extreme wow factor! She has the big and soft running gear that you need to stand out, and we love the way that she ties all these fancy features together; it begins with the eccentric ear set and traces effortlessly all the way down her spine to a big and square pin set. The dam of lot 4, 3 Aces TC Fiona 3605 sold for \$43,000 to Top Line Farms as a heifer calf, and was the Reserve Grand Champion Red Angus Female at the 2015 North American. A maternal sister to 90M was Andrew Meier's 3Aces Fiona 1037 that was slapped Reserve Champion Red Angus Female at the 2018 National Western Stock Show and raised his Champion Bred & Owned Female at this past years Red Angus Youth Expo.



**TC PHOEBE 14S**  
 3rd Generation Dam of Lot 4



**3ACES FIONA 3605**  
 2015 NAILE Reserve Grand Champion  
 Red Angus Heifer  
 Dam of Lot 4

JUNE 4, 2024

REG: RAAA PENDING | 100% AR - A

SIRE

RED MRLA RESOURCE 137E  
**J2R RESOURCE 144J**  
RED U-2 ANEXA 287C

DAM

TC DR FEELGOOD 1506  
**TC PRIMROSE 62J**  
TC PRIMROSE 33D

ProS: 88 HB: 50 GM: 38 CED: 11  
BW: 0.9 WW: 59 YW: 96 MILK: 24

LOT

5



OPEN RED ANGUS FEMALE



**TC PRIMROSE 62J**  
2022 NAJRAE 4th Overall Owned Heifer  
Dam of Lot 5

## TC TVLK PRIMROSE 130M

TC TVLK Primrose 130M is certainly one that stands out from the pack. This outlier from a presence and intrigue standpoint is one that has a world of upside potential. She is the right candidate for a family that has the long game in mind, that has some patience and is willing to feed on one just a little longer to truly unlock the immense quality that is set to be unveiled. Those that live in parts of the country that show bred heifers into the spring, then pay attention to this female. Also with this in mind, remember she will hit a division at the national shows that is typically fewer in numbers than many of the older heifer calves to sell. Regardless of her age though, this one comes with a XL sized set of feet and legs, incredible hair coat and high tying neck attachment, she will see purple throughout her show career. Her dam was the 4th Overall Owned Female for Tucker at the 2022 NAJRAE.

*Primrose*



MAY 20, 2024

REG: 4977199 | 100% AR - A

SIRE

PIE DEEP CREEK 120  
**MEADO-WEST MONTANA CREEK 413**  
 DKK MS MONTANA POWER

DAM

3 ACES SIDWAYS  
**TC SUGARCUP 02Y**  
 MEADO-WEST LUANNA

|          |        |        |          |
|----------|--------|--------|----------|
| ProS: 57 | HB: 27 | GM: 30 | CED: 9   |
| BW: 0.8  | WW: 59 | YW: 92 | MILK: 21 |

LOT



## TC SUGAR M89

The leading cow prospect of the daughters of our frontrunning, Sugarcup cow family is TC Sugar M89. She is a full sister to a trio of show heifer prospects that sold to the Howard, Kronebusch & Ward families last year, along with a \$16,500 heifer that Tyler Wilson purchased out of the 2022 sale and the lot 24 & 25 bred heifers in this sale. This is a mating that just flat works, and we think offers the peace of mind that there will be consistency built in with her generating capabilities down the road. In the flesh you will find a big bodied, round ribbed, soft made female, that remains wide pinned and based, but still gives a feminine look from the side, and ties high with a neatly chiseled head and neck design. Plain and simple this is just good quality stock, stemming from the one of best cow families we propagate from.



*TC SUGAR K78 - Full Sister to Lot 6*



*TC SUGAR L39 - Full Sister to Lot 6*

APRIL 5, 2024

REG: 4977191 | 100% AR - A

SIRE

EGL GCC RED EAGLE E7194  
**TC/HOC LONE STAR 22K**  
TC ADELLE F2

DAM

3 ACES SIDWAYS  
**TC SUGARCUP 02Y**  
MEADO-WEST LUANNA

ProS: 53   HB: 37   GM: 16   CED: 7  
BW: 1.2   WW: 63   YW: 94   MILK: 17

LOT

7



OPEN RED ANGUS FEMALE



**TC/HOC LONE STAR 22K**  
2023 World Beef Expo Reserve Supreme Champion Bull  
Sire of Lot 7-11



**TC SUGAR K7** - Maternal Sister to Lot 6-9

## TC SUGAR M34

If your goals are to be successful at the later shows, junior nationals and beyond then you certainly need to pay attention to the trio of daughters from the TC/HOC Lone Star 22K x TC Sugarcup 02Y flush that sell form lot 7 through 9. While they certainly still have enough of the neat pieces to be competitive on the jackpot scene, they are cattle that are built for the long haul! The most eccentric pieces come with the lot 7 female, she is big haired, dark toned, massive boned and absolutely struts with incredible presence. She has all the uncharacteristic features that make her an outlier of the pack, when talking about this female there aren't enough trendy terms to really sum up how futuristic in her build we think she is. She is going to make an incredible show heifer as a bred and a very unique breeding piece down the road.



APRIL 16, 2024

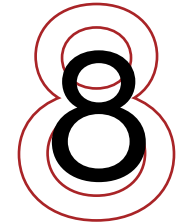
REG: 4977193 | 100% AR - A

**SIRE** EGL GCC RED EAGLE E7194  
**TC/HOC LONE STAR 22K**  
 TC ADELLE F2

**DAM** 3 ACES SIDEWAYS  
**TC SUGARCUP 02Y**  
 MEADO-WEST LUANNA

ProS: 53 HB: 37 GM: 16 CED: 7  
 BW: 1.2 WW: 63 YW: 94 MILK: 17

LOT



## TC SUGAR M172

It should be evident that we are all in on the TC/HOC Lone Star 22K sire group, he was the \$37,000 high seller from our 2023 Bull Sale, selling to David Berry of Hidden Oaks Cattle. In the fall of 2023 he was crowned Reserve Supreme Champion Bull at the World Beef Expo, and now this first crop of daughters highlights the open heifer division, this is a sire for the times. These direct daughters of TC Sugarcup 02Y are maternal sisters to a legacy of champions and high sellers, including Madison Fischer's \$31,000 high selling female and Tyler Wilson's \$16,500 daughter of Montana Creek 413, both from the 2022 Female Sale. Lot 8 would be the choice of those who opt for a more complete, long term, safer bet, as this one cannot set a foot wrong in our opinion, she has a flawless structural build and ties together her pieces in a very elite package.

*Sugar M172*



TC SUGAR K89 - Maternal Sister to Lot 6-9

MAY 2, 2024

REG: 4977195 | 100% AR - A

SIRE

EGL GCC RED EAGLE E7194  
**TC/HOC LONE STAR 22K**  
TC ADELLE F2

DAM

3 ACES SIDEWAYS  
**TC SUGARCUP 02Y**  
MEADO-WEST LUANNA

ProS: 53   HB: 37   GM: 16   CED: 7  
BW: 1.2   WW: 63   YW: 94   MILK: 17

LOT

9



OPEN RED ANGUS FEMALE



TC MS SUGAR L99 - Maternal Sister to Lot 6-9

## TC SUGAR M715

The youngest member of the TC/HOC Lone Star 22K x TC Sugarcup 02Y tribe is TC Sugar M715, for those aiming to compete in the later division you will find lot 9 to be a very competitive option across the offering, she is elongated about her front third, incredibly feminine and one that catches your attention from the profile. The TC Sugarcup 02Y female has built a very profitable cow family for our program, regardless of the mating thrown her way she yields results. We foresee a similar occurrence with the generating potential of these daughters to sell in 2024, they are the kind that will make a successful show heifer project, yet have the potency of a power pedigree to be reliable producers into the future.

Sugar M715



FEBRUARY 25, 2024

REG: 4977225 | 100% AR - A

**SIRE** EGL GCC RED EAGLE E7194  
**TC/HOC LONE STAR 22K**  
 TC ADELLE F2

**DAM** BHR DURANGO 1158  
**TC LOLA 46F**  
 TC LOLA 10B

ProS: 78 HB: 43 GM: 36 CED: 9  
 BW: 0.2 WW: 68 YW: 106 MILK: 24

LOT

10

## TC LOLA 48M

Its cattle like TC Lola 48M that prove that TC/HOC Lone Star 22K needs to be on the list of sires to use next breeding season if you haven't already. TC Lola 48M is big time good. Her dam, TC Lola 46F was a successful show heifer during her stint on the shavings, yet in production she has proven her real worth, she is also the dam of the Kleeman Family's TC Lola 28J that was the Grand Champion Red Angus Female at the 2022 Missouri State Fair. The potency of pedigree proves to be nonfiction in this female as she is built with ultimate skeletal quality, genuine dimension and robustness, width from end to end and an eye appeal that is striking. This February born female has the quality and maturity to hit the ring early and often, and yet still has the intangibles that will last the journey and make sure she is still a competitive force at the majors as a bred female. **Retaining 50% embryo interest.**

Lola 48M



**TC LOLA 28J**  
 2022 MO State Fair Grand Champion Red Angus Heifer  
 Maternal Sister to Lot 10



MAY 12, 2024

REG: 4977197 | 100% AR - A

**SIRE** EGL GCC RED EAGLE E7194  
**TC/HOC LONE STAR 22K**  
TC ADELLE F2

**DAM** RED WINDY HILL ZEPPELIN 1240  
**TC ELLIE G2**  
WEBR MS ELLIE 1024

**ProS:** 62   **HB:** 55   **GM:** 31   **CED:** 10  
**BW:** 0.2   **WW:** 70   **YW:** 105   **MILK:** 24

LOT

11



OPEN RED ANGUS FEMALE



**TC ELLIE L124**

2024 RAYE Reserve Grand Champion Bred & Owned Heifer  
Maternal Sister to Lot 11

## TC ELLIE 113M

TC Ellie 113M is a maternal sister to Tucker's, Reserve Champion Bred & Owned Female from this past summer's Red Angus Youth Expo, TC Ellie L124. Their dam, TC Ellie G2 is a direct daughter of the legendary WEBR Ms Ellie 1024 and will be making her way to the donor pen shortly, as she obviously passes along a very potent dose of heritability. 113M is a daughter of the trending, TC/HOC Lone Star 22K stud, and is built with extra balance and completeness. She is super deep sided, with a very favorable progression about the design of her underline. This young prospect will find herself in the same later born division as her champion sister, and certainly has the quality to keep the family tradition rolling.

*Ellie 113M*



FEBRUARY 2, 2024

REG: 4977227 | 100% AR - A

**SIRE**

WEBRTC CARD SHARK 1015  
**MLK BIG FOOT**  
TC CUPCAKE 03Y

**DAM**

NBAR HAMLEY S913  
**WEBR MS ELLIE 1024**  
WEBR MS. ELLIE 14S

ProS: 102 HB: 65 GM: 36 CED: 11  
BW: 0.1 WW: 56 YW: 92 MILK: 20

LOT

12

## TC MS ELLIE 27M

The one we have always been looking for from combining MLK Big Foot and WEBR Ms Ellie 1024, this February born female is the best we have had from this potent mating. WEBR Ms Ellie 1024 remains one of the most decorated females in the entire Red Angus directory, she has had close to a decade of dominance of the winner's circle, and the phenotypic quality she transmits has proven to be timeless. She continues to generate the right kind, and her daughters are taking on the role of protecting the legacy she has built. This is the only direct daughter of 1024 of the offering, and is one that makes the trip worth it. Seldom do individuals come along that are this unique in their build, so genuine in their structural integrity and so seamless about the transitions between their pieces. As you break 27M down it becomes evident that there is little further to desire, she comes with a big circumference of foot and bone, a fluid set of joints and shaggy hide. All built to carry the extra volume and mass that she has matured with. This is one that needs to be inspected in the flesh as she comes flawless in her basic build, yet excels in regard to all the extras that are trendy, it's not often can you have both. Incredible phenotype and the most powerful of cow families merge here, and has delivered a special one.



**WEBR MS ELLIE 1024**  
*Legendary Dam of Lot 12*



**TC MISS ELLIE 11L**  
*\$37,500 Maternal Sister to Lot 12*

JANUARY 22, 2024

REG: 4977221 | 100% AR - A

SIRE

WEBR TC CARD SHARK 1015  
**MLK BIG FOOT**  
TC CUPCAKE 03Y

DAM

MEADO-WEST JAZZ  
**TC MS ELLIE 55K**  
WEBR MS ELLIE 1024

ProS: 73 HB: 58 GM: 15 CED: 10  
BW: 0.7 WW: 58 YW: 96 MILK: 18

LOT

13



OPEN RED ANGUS FEMALE



MLK BIG FOOT - Sire of Lot 12 & 13

## TC ELLIE 07M

Stemming from the most recognizable cow family in the program, this maternal granddaughter of WEBR Ms Ellie 1024 combines form and function into a very complete, fault free package. Her dam, TC Ms Ellie 55K is a full sister to multiple sale highlights over the past couple of years, with 5 of them being marketed as heifer calves in the past two years to average \$8,000. Phenotypically this MLK Big Foot daughter is impressively loose structured, bold ribbed and attractive about her head and neck design, we think she reads with not only the potential for a successful show career but has breeding pieces that will set the foundations for a lucrative production portfolio. Tie to a cow family that has proven to perform on the biggest stages and yield the largest rewards.

*Ellie 07M*



MARCH 5, 2024

REG: 4977223 | 100% AR - A

SIRE

BHR DURANGO 60  
**BHR DURANGO 1158**  
 MISS BHR GRAND VAQUERO 8150

DAM

RED U6 HESSTON 14Z  
**ORAR TOPEKA RB25**  
 RED HOWE TOPEKA 263Z

ProS: 113 HB: 52 GM: 60 CED: 10  
 BW: 1.2 WW: 56 YW: 94 MILK: 25

LOT

144

## TC TOPEKA 57M

This trio of full sisters from the BHR Durango 1158 x ORAR Topeka RB25 flush bring together cattle that are built right in their foundations, have awesome upside potential, and carry the power of a pedigree that has proven itself for close to a decade. While decisions can be made about maturity pattern, show ring readiness, and hide tone, there is certainly a wave of consistent quality among the three. The March born, TC Topeka 57M is the stoutest featured, boldest shaped and biggest footed sister, she is powerful from end to end, yet still sets into motion with grace. A beautiful profiling female that has an extremely bright future!

Topeka 57M



TC TOPEKA 68L - \$14,000 Full Sister to Lot 14-16

APRIL 2, 2024

REG: 4977231 | 100% AR - A

SIRE

BHR DURANGO 60  
**BHR DURANGO 1158**  
MISS BHR GRAND VAQUERO 8150

DAM

RED U6 HESSTON 14Z  
**ORAR TOPEKA RB25**  
RED HOWE TOPEKA 263Z

ProS: 114 HB: 53 GM: 61 CED: 10  
BW: 1.2 WW: 57 YW: 96 MILK: 25

LOT

15



OPEN RED ANGUS FEMALE



ORAR TOPEKA RB25 - Dam of Lot 14-16

## TC TOPEKA 91M

The April born TC Topeka 91M reads with massive potential, she is the leanest in her condition per her age, but as she continues to mature, she continues to tie together some incredible pieces and develop in her maturity. We would not bet against this one making a very competitive bred heifer, and will be one to watch for this time next year. She is so elegant about her front third, big footed, and handles herself with comfort and ease when set into motion. As an added bonus she has been blessed with tremendous hair quality! This trio of ET flushmate sisters are supported by a cow family that will never go out of style!

Topeka 91M



MAY 20, 2024

REG: 4993243 | 100% AR - A

SIRE

BHR DURANGO 60  
**BHR DURANGO 1158**  
 MISS BHR GRAND VAQUERO 8150

DAM

RED U6 HESSTON 14Z  
**ORAR TOPEKA RB25**  
 RED HOWE TOPEKA 263Z

ProS: 111 HB: 52 GM: 59 CED: 10  
 BW: 1.2 WW: 57 YW: 96 MILK: 25

LOT

16

## TC TOPEKA M530

The late May born TC Topeka M530 is built perhaps the most complete of the three, she is super balanced from the side, and has a neck that elevates high from her withers. Her maturity pattern helps us to project that she is going to be a big and powerful show heifer that will catch the eye of even the most demanding stockman. This is a female to pay close attention to on sale day. Her flawless skeletal design suggests that she will be force on the tan bark and in production!

Topeka M530



BHR DURANGO 1158 - Sire of Lot 14-16

MARCH 9, 2024

REG: 4977187 | 100% AR - A

SIRE

RED NORTHLINE TUCKER 54E  
**TC TUCKER 65J**  
MWFS E709 EXCITE

DAM

RED WINDY HILL ZEPPELIN 1240  
**RED TOWAW FAYETTE 434B**  
RED TOWAW FAYETTE 129U

ProS: 106 HB: 56 GM: 50 CED: 11  
BW: -0.8 WW: 61 YW: 100 MILK: 21

LOT

17



OPEN RED ANGUS FEMALE



TC TUCKER 65J - Sire of Lot 17 & 18

## TC FAYETTE 63M

This daughter of TC Tucker 65J goes back to a beautiful, Canadian bred female that we purchased from the crew at Towaw Cattle Company that has recorded an impressive production career for our program. We think the same will be said about this bold bodied, deep centered, wide pinned female a decade from now after she continually returns ROI to the firm that place the final bid on her, December 7th. If you are searching for a female that will be a fun show heifer project, but realize that the most joy will come from a breeding piece that serves your program for years to come, then this is your gal.

*Fayette 63M*



MARCH 14, 2024

REG: 4977189 | 100% AR - A

**SIRE** RED NORTHLINE TUCKER 54E  
**TC TUCKER 65J**  
 MWFS E709 EXCITE

**DAM** WEBR DR. FEEL GOOD 1112  
**TC KASHMIR 33F**  
 TC KASHMIR 02W

ProS: 118 HB: 56 GM: 61 CED: 11  
 BW: 0.6 WW: 68 YW: 109 MILK: 25

LOT

18

## TC KASHMIR 77M

TC Kashmir 77M is one of the more intriguing females to sell in this offering, she has an absolutely stunning presence and an encapsulating silhouette. Additionally she has been blessed with a long and soft hair type and big, bold rib cage, to put it briefly, she brings all the trendy pieces to the table. The dam of lot 18, Kashmir 33F is one of the most exciting Kashmir descendants to date, and we see her carrying the trusted family name onto the next generation. Maternal sisters to this TC Tucker 65J sired female include the Kleeman families, MLK Big Foot daughter that was Reserve Champion Red Angus Female at the 2023 World Beef Expo and the 2021 born maternal sister to 77M was a member of the Reserve Champion Pen of Three Females at the 2022 Cattleman's Congress, and is now in production for the Belcher family of Abingdon, Virginia.

*Kashmir 77M*



TC KASHMIR 112K - Maternal Sister to Lot 18



APRIL 10, 2018

REG: 4305109 | 100% AR - A

SIRE

RED RAINBOW PROTOCOL 22Z  
**RED RAINBOW TRANSCENDENCE 29B**  
RED RAINBOW LOIS 33R

DAM

HUST CHIEF SEQUOYA R336  
**BIEBER ADELLE 311Y**  
BIEBER ADELLE 8958

ProS: 66 HB: 50 GM: 16 CED: 11  
BW: -1.3 WW: 62 YW: 88 MILK: 25

LOT

19



PROVEN RED ANGUS DONOR

## TC ADELLE F2



**TC/HOC LONE STAR 22K**

2023 World Beef Expo Reserve Supreme Champion Bull  
\$37,500 Son of Lot 19

TC Adelle F2 is the dam of the TC/HOC Lone Star 22K the \$37,000 high selling bull from the 2023 TC & Weis Cattle Bull Sale, selling to David Berry of Hidden Oaks Cattle. He was campaigned to Reserve Supreme Champion Bull at the 2023 World Beef Expo. You will find that several daughters of his rookie calf crop are highlighted lots in the open heifer division of this sale and that the cream of the crop of Red Angus heifer calves at Hidden Oaks Cattle are also daughters of Lone Star 22K. TC/HOC Lone Star 22K needs to be on your breeding list for the future, there are big things to come from his influence. With the heavy use we are planning, it allows us to be able to offer up his donor dam for public sale. This young donor is just approaching her most valuable days in production and has the genetic power to slingshot a program into the spotlight.

This Red Rainbow Transcendence 29B daughter sports a pedigree that leaves the door wide open to mating options, yet when you trace the maternal lineage that supports her you will find a long list of proven, high production matrons that work for the renowned Bieber program. Her maternal granddam, Bieber Adelle 8958 is responsible for the industry icons, Bieber Makin Hay 9913, Bieber Rough Rider 10712, and Bieber Outrider W388. This is also the same cow family that produced, the \$40,000 second high seller for Bieber in 2020, their \$30,000 high seller in 2016, the \$25,000 CL Stock Market E119 for Select Sires, and the \$30,000 Bieber CL Energize F121 that stands at ABS Global. This is truly a maternal lineage that produces genetic power, and descendants that are of legit monetary and phenotypic value.  
**SELLS OPEN & READY FOR EMBRYO PRODUCTION.**



FEBRUARY 5, 2023

REG: 4799944 | 100% AR - A

**SIRE**

RED U-2 RIFF 1213C  
**EGL GCC RED EAGLE E7194**  
 TJS SARABELA174

**DAM**

RED U-2 RECKONING 149A  
**DUCH LAKOTO 849F**  
 RED SIX MILE LAKOTO 35W

ProS: 42   HB: 17   GM: 25   CED: 9  
 BW: 0.4   WW: 64   YW: 94   MILK: 21

LOT

20

## DUCH TC MISS EAGLE 328L

This EGL GCC Red Eagle E7194 daughter highlights the bred heifer offering! She is ultra-functional and extra dense in her construction, and comes from a standout Red U-2 Reckoning 149A cow that is a maternal sister to Six Mile Game Face 164Y, being out of the legendary Red Six Mile Lakota 35W. The composition of the middle third of her body is bold and deep, and the structural integrity that forms her foundations is flexible and effortless. She comes with a preferably dark toned hide color, and balances with symmetry from the profile, she is just built right.

*AI BRED 4/19/24 TO LSF DLL LOCOMOTION (RAAA: 4620365).  
 PE 5/20/24-8/1/24 TO TC RESOURCE 130L (RAAA: 4909866).*



**SIX MILE GAME FACE 164Y**  
 Maternal Brother to Dam of Lot 20



**EGL GCC RED EAGLE E7194** - Sire of Lot 20

LOT  
**21**

## TC LETA 113L



MAY 3, 2023

REG: 4989859 | 100% AR - A

**SIRE**

RED MRLA RESOURCE 137E  
**J2R RESOURCE 144J**  
RED U-2 ANEXA 287C

**DAM**

RED COCKBURN HEAVY DUTY 518C  
**TC LETA 26H**  
FSR LETA 135A

**ProS:** 97   **HB:** 58   **GM:** 39   **CED:** 11  
**BW:** 0.9   **WW:** 58   **YW:** 88   **MILK:** 23



**TC LETA 100L**  
Maternal Sister to Dam of Lot 21

TC Leta 113L will be the first daughter of the man of the hour, J2R Resource 144J to enter production! She is certainly one stout and burly beast, that is earlier maturing in her pattern, and the easy keeping kind that will take low inputs but yield high outputs. Something interesting to note is that her dam is a maternal sister to Rex Howard's 2024 Red Angus Youth Expo Grand Champion Female, she was sired by J2R Resource 144J. She too shares her maternal granddam with the lot 2 female that leads off the open heifer division of this sale in FSR Leta 135A. Certainly a power cow in the making that has a pedigree lined with consistent generators, allowing us to believe she is bound for a very successful production career.

AI BRED 5/9/24 TO GCC JBCC HARVEST MOON 313K (RAAA: 4646137).  
PE 5/20/24-8/1/24 TO TC RESOURCE 130L (RAAA: 4909866).

LOT  
**22**

## TC TOPEKA 15L



FEBRUARY 10, 2023

REG: 4989869 | 100% AR - A

**SIRE**

BUF CRK HOBO 1961  
**3 ACES SIDWAYS**  
TROWBRIDGE LANA 707

**DAM**

RED U6 HESSTON 14Z  
**ORAR TOPEKA RB25**  
RED HOWE TOPEKA 263Z

**ProS:** 75   **HB:** 52   **GM:** 23   **CED:** 5  
**BW:** 2   **WW:** 52   **YW:** 81   **MILK:** 19



**ORAR TOPEKA RB25**  
Dam of Lot 22

There is a long list of successes that can be accounted toward the 3 Aces Sideways sire, dating back past a decade, some highlights including Andrew Meier's 2015 NAJRAE Champion Female, and of cause, TC Cupcake 03Y who was the Reserve Grand Champion Female at the 2013 NWSS Red Angus Jr. Show, and Grand Champion Red Angus Female at the 2012 Illinois State Fair. TC Cupcake 03Y is also the dam of the legendary MLK Big Foot. On the bottom side of the pedigree, TC Topeka 15L traces to the tenured ORAR Topeka RB25, a female that has been a long term producer for our program, and has a legacy of daughters retained in herd. 15L proves that true quality is timeless, because even though her pedigree is built upon legends of the past, she is well and truly right for the times.

AI BRED 4/19/24 TO LSF DLL LOCOMOTION (RAAA: 4620365).  
PE 5/20/24-8/1/24 TO TC RESOURCE 130L (RAAA: 4909866).

BRED RED ANGUS FEMALES

LOT **23** TC HANNAH 86L



MARCH 31, 2023

REG: 4989867 | 100% AR - A

SIRE  
DAM

RED SSS APPROVE 540F  
**BHR APPROVE 0149**  
 MISS BHR IMPECCABLE 647  
 PIE DEEP CREEK 120  
**MEADO-WEST TC HANNAH**  
 DKK MS MONTANA POWER

ProS: 90 HB: 37 GM: 53 CED: 12  
 BW: 0.9 WW: 67 YW: 111 MILK: 28



TC HANNA 105E

2019 NWSS Junior Show Reserve Champion  
 Red Angus Female  
 Maternal Sister to Lot 23

TC Hannah 86L is built just how we like them, being the massive middled, functional bodied kind that defines maternal quality and impressive balance. She brings a super complete phenotype to the equation and sets the stage for being a fun one to breed on. From a pedigree standpoint, take note that her dam is a full sister to the legendary Meado-West Montana Creek 413 sire that has been a steadfast in our breeding program over the past decade. She too carries the most impressive set of EPD predictions that you will find of the bred heifer offering.

AI BRED 4/16/24 TO LSF DLL LOCOMOTION (RAAA: 4620365)..  
 PE 5/20/24-8/1/24 TO TC RESOURCE 130L (RAAA: 4909866)..

LOT **24** TC SUGAR 20L



FEBRUARY 12, 2023

REG: 4989861 | 100% AR - A

SIRE  
DAM

RED NORTHLINE ATLANTIC CITY  
**RED NORTHLINE TUCKER 54E**  
 RED NORTHLINE GOLDIE 54B  
 WEBR TC CARD SHARK 1015  
**TC SUGAR H30**  
 TC SUGARCUP 02Y

ProS: 81 HB: 46 GM: 36 CED: 8  
 BW: 1.4 WW: 65 YW: 110 MILK: 25



RED NORTHLINE TUCKER 54E  
 Sire of Lot 26

A daughter of the sire of attraction, Red Northline Tucker 54E that is big scaled and has plenty of horse power. She stems from some of the best maternal genetics we employ so we feel the stage is set up here for success. Keep in mind the fact that her mother is a full sister in blood to the legendary MLK Big Foot.

†AI BRED 4/12/24 TO WEBR TC CARD SHARK 1015 (RAAA: 1371275)..  
 PE 5/20/24-8/1/24 TO TC RESOURCE 130L (RAAA: 4909866)..

LOT  
**25**

TC SUGAR L37



APRIL 28, 2023

REG: 4989865 | 100% AR - A

**SIRE** PIE DEEP CREEK 120  
**MEADO-WEST MONTANA CREEK 413**  
DKK MS MONTANA POWER

**DAM** 3 ACES SIDEWAYS  
**TC SUGARCUP 02Y**  
MEADO-WEST LUANNA



**TC SUGAR L99**  
Full Sister to Lot 24 & 25

**ProS:** 59   **HB:** 27   **GM:** 32   **CED:** 8  
**BW:** 0.8   **WW:** 59   **YW:** 92   **MILK:** 21

The TC Sugarcup 02Y cow family is quickly steaming towards legendary status in Ringle, Wisconsin! The cattle have proven to be a foolproof lineage for generating quality because of their consistently beautiful look and balance. You can trust in the program here and add a pair of very functional built, impressively designed cattle that are built for the long haul to your breeding program!

AI BRED 5/9/24 TO GCC JBCC HARVEST MOON 313K (RAAA: 4646137).  
PE 5/20/24-8/1/24 TO TC RESOURCE 130L (RAAA: 4909866).

LOT  
**26**

TC SUGAR L146



APRIL 26, 2023

REG: 4989863 | 100% AR - A

**SIRE** PIE DEEP CREEK 120  
**MEADO-WEST MONTANA CREEK 413**  
DKK MS MONTANA POWER

**DAM** 3 ACES SIDEWAYS  
**TC SUGARCUP 02Y**  
MEADO-WEST LUANNA



**TC SUGAR L521**  
Full Sister to Lot 24 & 25

**ProS:** 59   **HB:** 27   **GM:** 32   **CED:** 8  
**BW:** 0.8   **WW:** 59   **YW:** 92   **MILK:** 21

These heifers stem from the heart of the embryo program and are full sisters to a trio of show heifer prospects that sold to Howard, Kronebusch, & Ward last year, along with a \$16,500 heifer that Tyler Wilson purchased out of the 2022 sale. A maternal sister to this pair was the \$31,000 high selling female to Madison Fischer, also purchased through the 2022 Female Sale.

AI BRED 5/9/24 TO GCC JBCC HARVEST MOON 313K (RAAA: 4646137)..  
PE 5/20/24-8/1/24 TO TC RESOURCE 130L (RAAA: 4909866)..

BRED RED ANGUS FEMALES



FEBRUARY 25, 2024

REG: 21063861 | ANGUS

**SIRE** SCC TRADITION OF 24  
**SCC SCH 24 KARAT 838**  
 FCF PROVEN QUEEN 419

**DAM** COLBURN PRIMO 5153  
**SELDOM REST PIN UP GAL 8105**  
 SELDOM REST BRMF PIN UP GAL

**CED:** 1    **BW:** 4.5    **WW:** 64    **YW:** 109  
**MILK:** 21    **\$M:** 37    **\$B:** 119    **\$C:** 191

LOT

27

## CLF PIN UP GAL 40M

Absolutely one of the most incredible specimens we have raised to date, this Angus female pretty well sums up the phenotypic goals we set out to achieve. It is so difficult to build cattle this dense and burly in their rib shape and muscle pattern, yet still get them to tie together so smoothly and attractive from the side. Yet the best thing is, setting this one into motion just unlocks another degree of charm, we love how effortlessly she glides around. Her dam, Seldom Rest Pin Up Gal 8105 is starting to roll in production now, and has us very excited about the future. 8105 found success for Tucker about as often as she entered the ring, and yet we are only now finding out her true potential. Maternally she stems back to the legendary Seldom Rest BRMF Pin Up Gal donor that stands at the center of the Foster family's program. Countless success stories out of the Seldom Rest stable are attributed back to Seldom Rest BRMF Pin Up Gal, including a pair of successful full sisters to the dam of Lot 27. Seldom Rest Pin Up Gal 8134 was the Grand Champion Angus Female of the 2020 Fort Worth Stock Show, Supreme Champion Breeding Heifer at the San Antonio Stock Show, and Supreme Champion female at the Tri-State fair for Georgia Bezner. Seldom Rest Pin Up Gal 0103 was a very successful female for the Oakley clan, yet her shining glory came with the slap for the Supreme Champion Breeding Heifer at the 2022 Cattleman's Congress, a feat that only just a small handful can lay claim to. **Offering 50% embryo interest. No possession.**



**SELDOM REST PIN UP GAL 8134**  
 2020 FWSS Grand Champion  
 Angus Heifer  
 Full Sister to the Dam of Lot 27



**SELDOM REST PIN UP GAL 0103**  
 2022 Cattlemen's Congress  
 Supreme Champion  
 Junior Breeding Heifer  
 Full Sister to the Dam of Lot 27

MARCH 10, 2024

AAA PENDING | ANGUS

SIRE

SCC SCH 24 KARAT 838  
**CLF 24 KARAT 29K**  
SELDOM REST PIN UP GAL 8105

DAM

BARSTOW CASH  
**CLF LADY 38C**  
TOP LINE LADY 3300

Dam's EPDs

|                 |                 |                  |                  |
|-----------------|-----------------|------------------|------------------|
| <b>CE</b> D: 7  | <b>B</b> W: 1.7 | <b>W</b> W: 61   | <b>Y</b> W: 110  |
| <b>M</b> LK: 16 | <b>\$</b> M: 42 | <b>\$</b> B: 153 | <b>\$</b> C: 243 |

LOT

28



OPEN ANGUS FEMALE



CLF 24 KARAT 29K - Sire of Lot 28



TOP LINE LADY 3300  
2014 NAILE Grand Champion Junior Angus Heifer  
Maternal Granddam to Lot 28

## CLF LADY 69M

CLF Lady 69M is a stout built, wide based, big pinned and extra dense Angus female that will be a good show heifer prospect, and incredible cow prospect. Her sire is a full brother to the lot 27 female, who was a high seller of the 2023 Bull Sale, selling to Jacob Moore of Buck Creek Ranch. He stems from the Pin Up Gal influence that leads the Seldom Rest Program, and is becoming one of the Angus breeds most coveted and successful cow families of the past decade. The dam of lot 28, CLF Lady 38C is moving her way towards the front of the Angus cowherd, her 2023 born calf was the featured lot 4 bull in this past year's Bull Sale, and she stems back another generation to the Top Line Lady 3300 female that was crowned the Grand Champion Angus Female at the 2014 NAILE for Calli. The pedigree here reads of the best in the business.



MAY 5, 2024

REG: 4427874 | SIMMENTAL

SIRE

KRJ DAKOTA OUTLAW G974  
**NEXT LEVEL**  
 KRDL CAEDENCE C37

DAM

W/C RELENTLESS 32C  
**J6C WEIS MISS COCO 16F**  
 J6C MISS JASMIN 16B

CED: 7.9 BW: 3.8 WW: 75.9 YW: 111

MILK: 18.1 API: 104.1 TI: 70

LOT

29

## TC WEIS COCO M31

This purebred daughter of the J6C Weis Miss Coco 16F donor makes her presence known quickly because of her perfectly blazed face and intriguing presence. Her dam was the Grand Champion Purebred Simmental Female at the American Royal, and was Reserve at the NAILE, now she is becoming a leading force for our Simmental breeding program. The Next Level mating on Coco has proven to be electric, as it was also the source of quality that produced the \$16,500 May born female that sold in the 2023 Weis Cattle October Female Sale to Paislee Betts. TC Weis Coco M31 ties together that same trendy underline, bold ribcage, and ideal running gear of her sister. On the halter she further elevates in regard to her presence and eye appeal.



J6C WEIS MISS COCO 16F - Dam of Lot 29



TC WEIS COCO L268 - Full Sister to Lot 29



MAY 12, 2024

REG: 4411518 | SIMMENTAL

SIRE

W/C DOUBLE DOWN 5014E  
**WHF/JS/CCS DOUBLE UP G365**  
WHF SUMMER 365C

DAM

NV PAYS ALOT C515  
**STELLA 08E**  
JPLF/RBS YOUR THE ONE

CE: 11.1 BW: 1.5 WW: 81 YW: 112

MLK: 19.1 API: 116.4 TI: 73.7

LOT

30



OPEN SIMMENTAL FEMALE



**TCB STELLA 33K**  
\$52,000 High Selling Full Sister to Lot 30



**STELLA 08E**  
2019 NWSS Reserve Grand Champion  
Purebred Simmental Heifer  
Dam of Lot 30 & 31

## TC WEIS STELLA M387

This WHF/JS/CCS Double Up G365 sired daughter of the NWSS & FWSS Reserve Champion Simmental Female, Stella 08E is a full sister to the \$52,000 high selling Simmental Female from the 2022 Weis Cattle October Female that was purchased by the Tlach family. We think this young May born female has immense upside potential, she already gives us very good indications that she is the kind to hang big banners, she exudes quality in regard to the shape of her ribcage, flawless structural design and impeccable silhouette. When incredible phenotype and reliable cow families come together, this is the result, cattle that are more than just an incredible prospect in the showing, but a breeding piece that is bound to generate serious ROI for a long time to come. Keep in mind that pedigree wise, TC Weis Stella M387 leaves the door fairly wide open to an array of the most popular sire options being used to generate high end show heifer prospects.



MAY 15, 2024

REG: 44178773 | SIMMENTAL

**SIRE**  
 YARDLEY UTAH Y361  
**W/C RELENTLESS 32C**  
 MISS WERNING KP 8543U

**DAM**  
 NV PAYS ALOT C515  
**STELLA 08E**  
 JPLF/RBS YOUR THE ONE

**CE**: 10.4 **BW**: 2.4 **WW**: 74.5 **YW**: 104

**MLK**: 17.8 **API**: 118.6 **TI**: 72.9

LOT

31

## TC STELLA M741

TC Stella M741 is the second of the Stella 08E daughters to sell, she was Tucker's LLSF Pays To Believe ZU194 granddaughter of the legendary, JPLF/RBS Your The One 'Rudy' female that stands at the forefront of the Weis Simmental donor pen. She found success all the way through her show tenure, but it was highlighted by being crowned the Reserve Champion Purebred Simmental Female at both the National Western Stock Show and Fort Worth Stock Show. This purebred female is built extra agile and comfortable in her joint work, she strikes an awesome pose from the side, and is as elegant headed and necked as you will find a Simmental female to be designed.



**JPLF/RBS YOUR THE ONE "RUDY"**  
 Legendary Granddam of Lots 30 & 31



**WEIS MISS LILLY 35J**  
 2023 Cattlemen's Congress Grand Champion  
 Purebred Simmental Heifer  
 Maternal Sister to Dam of Lots 30 & 31



# Join CCI.live Online for the Sale!

*The best, the fastest and most comprehensive  
online marketing & bidding tool!*

BUYERS NOTE, you do not need an account or to login to watch the sale but you must have a validated account to bid.

## *Viewed Around the World!*

**SALE CATALOG, VIDEOS,  
and LIVE BROADCAST...**

all at your fingertips from the sale page  
at [www.CCI.live](http://www.CCI.live)! Watch sales live weekly!



**[www.CCI.live](http://www.CCI.live)**

(405) 400-9505 Text or Call - [schedule@cci.live](mailto:schedule@cci.live)  
Find us on the App Store and Google Play  
Over 35 years in livestock marketing!



PO Box Z  
De Soto, KS 66018

Presorted  
First Class  
US Postage  
**PAID**  
SlateGroup



DECEMBER 7, 2024 at 7:00 PM

