



# Legends

OF THE  
FLINT HILLS

SUNDAY, DECEMBER 1, 2024 | 1 PM CENTRAL

*Westmoreland, Kansas*





**SCHAAKE FARMS**  
WESTMORELAND, KANSAS  
SCOTT & KANDI SCHAAKE  
SHANE & MELISSA • SHILO & JAMIE  
[www.schaakefarmsinc.com](http://www.schaakefarmsinc.com)



**DICKSON FARMS**  
SAINT LOUISVILLE, OHIO  
MIKE, LEIGHANNE, RACHEL, OLIVIA & ABBY DICKSON



**HANEL RANCH**  
COURTLAND, KANSAS  
BROCK, ANGIE, MADDY, GAGE & KOLLINS HANEL



**M4 SIMMENTALS**  
WESTMORELAND, KANSAS  
TROY, NICOLE, LOGAN & LANEY MARPLE



**MCCRACKEN LIVESTOCK**  
KANSAS CITY, KANSAS  
ZACH, SUSIE, EMMA & MILES MCCRACKEN



**SPRING CREEK FARMS**  
PAXICO, KANSAS  
RYAN MICHAELIS, MANAGING PARTNER



**MID-AM GENETICS**  
MUSCOTAH, KANSAS  
RYAN, KAYLA, BRINLEY & BRYER BODENHAUSEN



**PITZER FAMILY**  
WESTMORELAND, KANSAS  
ROBERT, AUTUMN, KESS, RORY & KIMBER PITZER



**VOGLER CATTLE CO.**  
ASHLAND, NEBRASKA  
LES VOGLER & LOREN VOGLER  
[www.voglercattle.com](http://www.voglercattle.com)



**WALROD CATTLE CO.**  
RANDOLPH, KANSAS  
GARREN & HEIDI WALROD



**WINDWALKER CATTLE CO.**  
FRANKLIN, NEBRASKA  
JAY, KATHY, TAYLOR, MICHELLE & JORDYN FALKENSTINE



**WINTER FARM**  
HILLSBORO, KANSAS  
KEVIN WINTER



# Welcome

## TO THE FLINT HILLS

*Five years ago*, our group of fellow breeders and close friends decided to sell fewer open heifers in our fall Heritage Sale, and establish an elite bred heifer event. Hence, the Legends of the Flint Hills was born. It was my personal goal to make this the top-tier event in the country where Simmental breeders can invest in genetics that will take their program to the next level. Because of the dedication of this group and their commitment to excellence, the 5th Annual Legends of the Flint Hills event will set the bar to a whole new level!

When breeders allow me to go into their herds and select their very best females, it makes it easier to accomplish our goal in a shorter time. I identified more than 80 elite breed-leading females from a population of over 500 head. I tell these breeders, “If it doesn’t pain you to sell her, then I don’t want her.”

This sale is unique because we each have a slightly different twist on pedigrees. As a result, we have cattle that will fit into a variety of programs. Even though our genetics may differ, we have far more goals in common with one another — all these cattle have been selected to survive and reproduce in real world cow country. Traits such as soundness, foot quality, udder structure, fertility are not just current buzz words, rather traits we have all emphasized for multiple generations.

I strongly encourage you to stop by Westmoreland, KS and take a look on *Sunday, December 4<sup>th</sup>*. I have personally never walked through a set of young females as good as these. Needless to say, I’m very proud of the cattle, but perhaps more rewarding are the families that represent these great matrons!

THE SCOTT SCHAAKE FAMILY



The buzz throughout the beef industry is very positive. Sure, a lion share of the nation could use a steady drink in preparation for the winter months ahead, but for the most part, most will have enough feed and water to get to the next production cycle.

The one thing the marketplace has done is that it has encouraged producers to send a lot of heifers to town with their steer mates. It's no secret that heifer retention has been at an all-time low for many years and that cow numbers are at record lows.

Ranchers do want to add females back to their operations, they want to retain heifers in the program, but as commented previously, the marketplace is so strong on these calf prices, and mother nature just hasn't cooperated enough to give most ranchers the confidence that there will be plenty of resources for the added numbers, so we sit where we have as an industry for the last number of years. When that opportunity to add females back into the nation's working cow herd does come about, we will witness a market like never imagined and there will not be near enough of them in the pipeline so having inventory is always a good thing as preparedness generates success.

The idea behind Legends of the Flint Hills was to create a marketplace for bred cattle from people that have invested in a certain program for a number of years. Dr. Scott Schaake conceived the idea to benefit customers that have supported and still support his program approaching three decades. The people involved have invested in the best of the best of the SFI prefix and as one studies the pedigrees "SFI" will be commonplace throughout the sale book. Scott and his family have worked diligently over the years breeding Simmental and SimGenetic cattle that are competitive on the tanbark but also meet industry standards for performance and conversion. The family program has been successful on all levels of competition and have passed the industry tests and challenges of the commercial marketplace as well. The now-retired Dr. Schaake is one of the all-time greatest and most accomplished evaluators of livestock and is an individual that we are all familiar with in this era. As one reflects from the early 90s to now, the changes all species have endured is quite a load to reflect on, but good livestock will never go out of style regardless of the times or fads we may experience industry wide. We are certain that those who actually study and read the information in this sale book will recognize the fact that regardless of phenotype or genotype classification, the stock are built to work and thrive in any program that they are introduced to as many of the maternal foundations have been built and sorted on principals and traits that adversely affect longevity in production.

The cataloged females in this year's offering have a ton of depth all the way through. We believe that they are better built, more attractive, and more desirably mated than years past. The prospect of returning on investment with the first calf seems to be more likely and the number of cattle within the pages of this book that could go work in a donor pen somewhere in this nation is more considerable in number as well. Elite phenotype and elite data packages consume the pages of this sale book and so does the opportunity to advance your program in the right direction. This group of industry leaders that have brought this set of cattle to you will do anything in their power to ensure that your investment is successful, and they want to know the positive or negative so that they can continue to improve this offering year after year.

The sale has been moved up a full week this year, so mark your calendar for the Sunday after Thanksgiving and know that the cattle will be available for viewing the entire week leading up to sale day. Consider this your invitation to come take in the sale or view the stock. We also encourage you to reach out to anyone on the sales staff or the Innovation AgMarketing team with any sale day or pre-sale day questions about the offering. It will be a great event and hosted in a great facility owned by a first class family.

*Enjoy the cattle,*

JERED SHIPMAN • GRAHAM BLAGG • TIM ANDERSON



# Sale INFORMATION

## LOCATION

### SCHAAKE FARMS SALE FACILITY

9853 Myers Valley Road | Westmoreland, Kansas 66549

## SALE DAY PHONES

Scott Schaake.....	785-456-4949
Shane Schaake.....	785-456-5014
Shilo Schaake.....	785-844-2881
Ryan Bodenhausen.....	785-221-3284
Mike Dickson.....	740-501-1508
Jay Falkenstine.....	406-845-2684
Brock Hanel.....	785-275-1060
Troy Marple.....	785-250-0522
Logan Marple.....	785-250-7367
Zach McCracken.....	620-384-6176
Ryan Michaelis.....	785-456-4677
Robert Pitzer.....	785-565-1913
Les Vogler.....	402-450-2340
Loren Vogler.....	402-432-9070
Garren Walrod.....	785-565-1221
Kevin Winter.....	620-382-5563

## AUCTIONEER

Garren Walrod.....	785-565-1221
--------------------	--------------

## SALE REPRESENTATIVES

Mitchell Armitage.....	405-641-9438
Craig Talkington.....	785-623-1789
Guy Peverley.....	785-456-4390
Doug Parke.....	859-421-6100

## SALE MANAGEMENT

### INNOVATION AGMARKETING, LLC

Graham Blagg.....	530-913-6418
Tim Anderson.....	605-682-9343
Jered Shipman.....	806-983-7226

## TERMS + CONDITIONS

All cattle sell under the terms and conditions of the American Simmental Association. Every animal will be sold to the highest bidder with the auctioneer settling disputes. All cattle are the buyer's property as soon as sold and will be cared for a reasonable length of time at the buyer's risk. On embryos, buyer to pay per unit and all shipping costs. Guarantee of one 60-day pregnancy if implanted by a certified embryologist.

## ANNOUNCEMENTS

Announcements made from the auction block on sale day take precedence over printed material associated with the sale. Anyone attending this sale attends at their own risk. Sale staff, hosts and/or their representatives will not be responsible for any personal injury or damage to any attendee or his or her property. Several pregnancies have been determined by ultrasound, but do not guarantee a 100% accuracy for calf gender. EPDs listed in the catalog are current as of November 1, 2024. For updates, visit [www.simmental.org](http://www.simmental.org).

## ONLINE BIDDING + VIDEOS

The sale will be broadcasted to watch and place your live bids online. Videos of the sale cattle can be found on [cci.live](http://cci.live).



## INSURANCE

Caden McAfee, Kansas Insurance, Inc .....913-416-0155

## TRUCKING

Free delivery to Kansas buyers and we are willing to help out-of-state buyers with the most economical trucking possible.

## ACCOMMODATIONS

Please feel free to explore multiple options in Manhattan, Kansas.

## AIR TRAVEL

We are located 30 minutes from Manhattan Regional Airport (MHK), and two hours from Kansas City International Airport (MCI).

## DIRECTIONS TO THE SALE

**FROM MANHATTAN, KS** Take US Highway 24 (W) and turn right onto KS Highway 13 (N) across Tuttle Creek Dam. Stay on Highway 13 for approximately 6.8 miles. Turn right onto Myers Valley Road. Go 2.7 miles and the sale site will be on your left (N).

**FROM WAMEGO, KS** Take US Highway 99 (N) for approximately 4.7 miles and turn left (W) onto Louisville Road. Stay on Louisville Road for approximately 7.9 miles, and turn right (N) onto Flush Road. Stay on Flush Road for about 2.1 miles, then turn left (W) onto Myers Valley Road and in 3 miles, the sale site will be on your right (N).

## CATALOG DESIGN & PHOTOGRAPHY

[www.melissagrimmschaake.com](http://www.melissagrimmschaake.com)

LUNCH SPONSORED BY



**Blueville  
Nursery, Inc.**  
*Complete Landscape Service*

"Beautifying your neighborhood  
one yard at a time since 1933"

[www.bluevillennursery.com](http://www.bluevillennursery.com)

## SCHEDULE

**SATURDAY, NOVEMBER 30**

**3:00 PM** VIEWING OF CATTLE BEGINS

**7:00 PM** APPETIZERS & COCKTAILS

**SUNDAY, DECEMBER 1**

**10:00 AM** VIEWING OF CATTLE BEGINS

**12:00 PM** COMPLIMENTARY LUNCH

**1:00 PM** SALE TIME!

*Slow*





# Foundation

BRED FEMALES

FROM AN ELITE GROUP OF BREEDERS

*Lots* 1 - 46





# Lot 1



## VCL COUNTESS 255F

PB SM • 3/19/18 • ASA# 3454250 • TATTOO: 255F

MR CCF VISION PROFIT  
**MR CCF 20-20** *X* **HCCO COUNTESS 412D**  
 HTP SVF DEW THE STROKE WW3 COUNTESS 412A

CE	BW	WW	YW	MCE	MILK	CW	MARB	REA	API	TI
7.8	2.3	65.8	89.5	2.7	14.5	11.9	0.36	0.65	127.2	74

### OFFERED BY VOGLER CATTLE CO.

- What a way to initiate the 2024 offering of the Legends of the Flint Hills with a past highly decorated champion and the full sister to the sire of STCC Tecumseh 058J, VCL Foresight. VCL Countess 255F was the 2019 Indiana State Fair 4th Overall Junior Breeding Heifer for Colby Sinclair. She was praised for her squareness of build, body shape, and smooth transitions.
- She has been employed among the best of the Vogler donor pen and due to her successful embryo production record, Les and Loren have decided to offer this female in the prime of her life to the general public.
- Her proven and time tested genetic blend will never sell short on shape and balance from end to end. The progeny have been marketed through several sale settings throughout the country with the most success through the Hartman Cattle Company Customer Appreciation events.
- There are multiple options for mating this amazing creature that have not even been attempted by Vogler Cattle, and we honestly are convinced that the best is yet to come from this experienced producer of quality.

AI BRED 3/25/24 TO RUBY NFF SRIRACHA K247 (ASA: 4136078) // SAFE AI. ESTIMATED DUE 1/1/25.



VCL COUNTESS 255F  
 2019 IN STATE FAIR 4TH OVERALL JUNIOR BREEDING HEIFER



VCL FORESIGHT  
 FULL BROTHER TO LOT 1



STCC TECUMSEH 058J  
 \$620,000 SON OF VCL FORESIGHT



## LOT 2



- A very impressive, robust daughter of the past many time Champion and Reserve Champion, WHF/JS/CCS Double Up G365. This sire group has been heavily used throughout the country with very positive feedback. Due to the fact he is calving ease, the Steenhoek and Wayward Hill stud will continue to get used in the years ahead.

- The Vogler family has maintained the course set forth by the Hartman program and they have invested in the predictable in Tecumseh as this female is from another of the MR CCF 20-20, Profit, and WAGR Driver 706T genetic blend.

PE 5/6/24-7/6/24 TO RUBY NFF SRIRACHA K247  
[ASA: 4136078].

SAFE TO PE SIRE. ESTIMATED DUE 3/13/25.



WHF/JS/CCS DOUBLE UP G365  
SIRE OF LOT 2

### Lot 2 VCL 28L

PB SM • 1/11/23 • ASA# 4411528 • TATTOO: 28L

W/C DOUBLE DOWN 5014E

MR CCF 20-20

WHF/JS/CCS DOUBLE UP G365 *h* VCL COUNTESS 255F

WHF SUMMER 365C

HCCO COUNTESS 412D

CE	BW	WW	YW	MCE	MILK	CW	MARB	REA	API	TI
9.6	1.9	75.7	99.5	3.3	17.5	15.8	0.05	0.84	116	73.2

OFFERED BY VOGLER CATTLE CO.

### Lot 3 VCL 26L

PB SM • 1/10/23 • ASA# 4411523 • TATTOO: 26L

TL LEDGER

MR CCF 20-20

VCL SCREENSHOT 913G *h* VCL COUNTESS 255F

MISS A102

HCCO COUNTESS 412D

CE	BW	WW	YW	MCE	MILK	CW	MARB	REA	API	TI
8.6	2.8	68.1	94.4	4.1	17.2	17.3	0.24	0.86	116.8	72.3

OFFERED BY VOGLER CATTLE CO.

## LOT 3



- One could rename this beauty "Two Shots." Up close, you will notice that she comes with a double dose of Profit and WAGR Driver 706T. Trust us when we say this is positive from a production standpoint, not to mention phenotype.

- TL Ledger is from the proven Miss Star Above, sired by Profit, and is one that has definitely stood the absolute test of time as his stock are still very good today.

- Les and Loren got this one mated for profit as well, as she carries the service to the Griswold curve bender for low birth weight and calving ease GCC Night Owl 3104L.

AI BRED 4/19/24 TO GCC NIGHT OWL 3104L [ASA: 4284092].  
SAFE AI. ESTIMATED DUE 1/26/25.



TL LEDGER  
\$250,000 PATERNAL GRANDSIRE OF LOT 3



## LOT 4

- The greatest evaluator of all time, out did himself here. This daughter of W/C Relentless 32C will most likely be a headlining donor for whomever chooses to invest on December 1, 2024 in Westmoreland, Kansas!
  - Elegant, striking, captivating, and distinguished are all accurate in describing this female's presence as you evaluate her.
  - A definite short lister for sale day shopping.
- Do not hesitate or overthink this easy decision.

AI BRED 5/7/24 TO WHF/JS/CCS WOODFORD J001 (ASA: 4068398).  
PE 5/15/24-8/1/24 TO SFI GAME ON J10B (ASA: 3934759).



SFI MISS CUPID  
PROLIFIC DAM OF LOT 4



## Lot 4

### SFI NEED YOUR LOVIN L3B

PB SM • 1/11/23 • ASA# 4245297 • TATTOO: L3B

YARDLEY UTAH Y361

SS EBONYS GRANDMASTER

W/C RELENTLESS 32C

SFI MISS CUPID

MISS WERNING KP 8543U

SFI MISS BELOVED N13D

CE	BW	WW	YW	MCE	MILK	CW	MARB	REA	API	TI
8.5	3.1	63.4	86.4	2	30.3	24.1	0.19	0.93	120.2	69.3

OFFERED BY SCHAAKE FARMS INC.

## Lot 5

### SFI MISS BLUSHING BRIDE L82D

3/4 SM 1/4 AR • 2/12/23 • ASA# 4245294 • TATTOO: L82D

W/C RELENTLESS 32C

CDI AUTHORITY 77X

JSUL SOMETHING ABOUT MARY 8421

ES D82

JBSF PROUD MARY

EIR T207

CE	BW	WW	YW	MCE	MILK	CW	MARB	REA	API	TI
10.9	1.3	71.5	109.5	3	18.6	27.2	-0.08	0.84	108.8	67

OFFERED BY SCHAAKE FARMS INC.

## LOT 5

- Incredibly big bodied, absolutely dense from all angles, bold, and certainly attractive.
- Her phenotype is very indicative of what her pedigree suggests as both JSUL Something About Mary 8421 and CDI Authority 77X are both known for skeletal width and moderation in build.
- The mating to Rocking P Private Stock H010 should add extension while injecting another popular cow family into the equation through the great A021.

AI BRED 4/2/24 TO ROCKING P PRIVATE STOCK H010 (ASA: 3775641).  
PE 5/15/24-8/1/24 TO SFI GAME ON J10B (ASA: 3934759).



ROCKING P PRIVATE STOCK H010  
SERVICE SIRE TO LOTS 5 & 6





# Lot SIX



## SFI MISS QUEEN OF DIAMONDS

PB SM • 1/11/23 • ASA# 4245289 • TATTOO: L1H

LLSF PAYS TO BELIEVE ZU194

ACLL FORTUNE 393D

**TJSC KING OF DIAMONDS** x **SFI MISS CHITCHAT H1E**

KLS DIAMOND W516

SFI MISS BLISS E1B

CE	BW	WW	YW	MCE	MILK	CW	MARB	REA	API	TI
8.7	3	68.4	99.3	2.3	20.4	27.9	0.04	0.88	110.5	68

OFFERED BY SCHAAKE FARMS INC.

- There is no doubt in our mind that this female will be one of the highlights on December 1, 2024.
- A daughter of the past National Champion, TJSC King of Diamonds, and is from the ALL Fortune 393D sired daughter of the young influential SFI donor dam, SFI Miss Bliss E1B.
- Density, dimension, legitimate base width, and skeletal flexibility are all inclusive based on pedigree alone, but she delivers on all traits!

AI BRED 4/2/24 TO ROCKING P PRIVATE STOCK H010 (ASA: 3775641).

PE 5/15/24-8/1/24 TO SFI GAME ON J10B (ASA: 3934759).



SFI MISS BLISS E1B  
MATERNAL GRANDDAM OF LOT 6



TJSC KING OF DIAMONDS  
SIRE OF LOT 6



# Lot 7



## VCL 1L

PB SM • 1/1/23 • ASA# 4411524 • TATTOO: 1L

HPF/HILL UPRISING C104

VCL FORESIGHT

**SO REMEDY 7F**

**VCL MISS FORSIGHT 15H**

B&K CREAM SODA 8D

WAGR BRITTANY 205Z

CE	BW	WW	YW	MCE	MILK	CW	MARB	REA	API	TI
9.4	3.4	78.3	118.7	2.6	22	32	-0.05	0.91	108.3	72.2

OFFERED BY VOGLER CATTLE CO.

- An exciting, young breeding piece that comes with the service to the Griswold Cattle Company high seller, GCC Night Owl 3104L.
- SO Remedy 7F continues to sire cattle with extra skeletal integrity, depth of side, and overall look and quality.
- This one's maternal granddam is a full sister to the legendary matriarch in the Hartman program, WAGR Panarama, the dam of Profit.

AI BRED 4/19/24 TO GCC NIGHT OWL 3104L (ASA: 4284092).

SAFE AI. ESTIMATED DUE 1/26/25.



SO REMEDY 7F

\$530,000 SIRE OF LOTS 7-10



WAGR PANARAMA 204Z

MULTI-MILLION DOLLAR PRODUCING FULL SISTER TO MATERNAL GRANDDAM OF LOT 7



# LOT 8



## Lot 8 HWGW MISS K168-O45H

PB SM • 12/22/22 • ASA# 4412478 • TATTOO: K168

HPF/HILL UPRISING C104

MR CCF 20-20

**SO REMEDY 7F** X **B C R RIGHT TO LOVE 045H**

B&G CREAM SODA 8D

HPF RIGHT TO LOVE C083

CE	BW	WW	YW	MCE	MILK	CW	MARB	REA	API	TI
13.6	0.8	76.6	113.7	4.5	20	26.9	-0.08	0.84	112.5	72.9

OFFERED BY WALROD CATTLE COMPANY

- This direct daughter of SO Remedy 7F has a maternal grandmother that is a full sister to the late legend, HPF Quantum Leap Z952.
- We are certain that the mating to KCC1 Countertime 872H in a blend with the likes of the proven Mr CCF 20-20 and RP/MP Right To Love 015U will only have profit earning potential.
- Pay very close attention to the stock and you will be rewarded.

AI BRED 6/14/24 TO KCC1 COUNTERTIME 872H (ASA: 4321955).

SAFE AI. ESTIATED DUE 3/23/25.

## Lot 10 HWGW MISS K206-A13X

PB SM • 12/9/22 • ASA# 4412489 • TATTOO: K206

HPF/HILL UPRISING C104

SS/PRS HIGH VOLTAGE 244X

**SO REMEDY 7F** X **SFI MISS STROKE OF LOVE**

B&G CREAM SODA 8D

SFI LUVY DUVY X13N

CE	BW	WW	YW	MCE	MILK	CW	MARB	REA	API	TI
13.8	0.5	68.8	106.3	3.5	24	30.7	-0.02	0.83	122.5	71.6

OFFERED BY WALROD CATTLE COMPANY

- SFI Miss Stroke of Love has been a major contributor to the Walrod and Schaake programs and this direct daughter of the past National Champion SO Remedy 7F will do the exact same for her new owners.
- She comes loaded with body, shape, and a killer look of quality.
- The calf on board is sure to return on your sale day investment.

AI BRED 4/8/24 TO THSF LOVER BOY B33 (ASA: 2983443).

SAFE AI. ESTIMATED DUE 1/15/25. HEIFER CALF.



SFI MISS STROKE OF LOVE A13X  
DAM OF LOT 10



SFI MCCR SHANIA F805  
DAM OF LOT 9

## Lot 9 HWGW MISS K31-F805

PB SM • 12/12/22 • ASA# 4412491 • TATTOO: K31

HPF/HILL UPRISING C104

KMJ REVENUE

**SO REMEDY 7F** X **SFI MCCR SHANIA F805**

B&G CREAM SODA 8D

SFI MISS CUPID

CE	BW	WW	YW	MCE	MILK	CW	MARB	REA	API	TI
11.2	2	70	106.9	2	27.3	34.2	0.01	0.82	118.1	70.8

OFFERED BY WALROD CATTLE COMPANY

- Phenotype and overall quality is just what one expects even before looking at the video or any other visual footage of this female. Based on pedigree alone, one already assumes how she is in person.
- This sharp featured, bold upper ribbed female does come with the necessary shape to solidify her appraisal value.
- We are certain that the heifer calf on board should pay what you invest on December 1 without question.

AI BRED 4/7/24 TO SFI LONGS IN CHARGE K28 (ASA: 4113347).

SAFE AI. ESTIMATED DUE 1/14/25. HEIFER CALF.

## Lot 11 VCL 8L

PB SM • 1/3/23 • ASA# 4411527 • TATTOO: 8L

SO REMEDY 7F

KRMS PRIMARY CANDIDATE

**CONLEY LOUD & HEAVY 410J** X **VCL 378G**

CONLEY SHEZA STAR D3

FOXY LADY 1B

CE	BW	WW	YW	MCE	MILK	CW	MARB	REA	API	TI
8.4	4.2	73.5	107.5	3.2	21.2	33.9	-0.15	0.89	95.3	64.3

OFFERED BY VOGLER CATTLE CO.

- A very high quality bred female with two shots of the very popular MR HOC Broker from two highly proven and predictable cow families in the breed. The \$120,000 Conley Sheza Star D3 and Foxy Lady 1B.
- She sells with service to the now deceased 3BCC KCC1 Krypton 100K. His first calves have been well received and we expect this one to be towards the top end of the business with cow families stacked behind the scenes on both sides of the equation.

AI BRED 4/19/24 TO 3BCC KCC1 KRYPTON 100K (ASA: 4142616).

SAFE AI. ESTIMATED DUE 1/26/25.



CONLEY LOUD & HEAVY 410J  
SIRE OF LOT 11



LOT 12



Lot 12

HWGW MISS K44-E57

3/4 SM 1/4 AN • 11/28/22 • ASA# 4412474 • TATTOO: K44

KCC1 EXCLUSIVE 116E SFI PERFECT TIMING A6  
**SWC GAME DAY 514G** *X* **HWGW ELLEN E57-34W**  
 SWC HOC ANNIE K 214C WELLS ERICA 34W

CE	BW	WW	YW	MCE	MILK	CW	MARB	REA	API	TI
12.8	-0.4	65.9	95.9	5	19.8	22	0.14	0.67	118.6	68.5

OFFERED BY WALROD CATTLE COMPANY

- SWC Game Day 514G continues to write his own legacy in the Walrod program as he consistently sires females of substantial quality and build.
- Again, the SFI Perfect Timing A6 enhances the maternal prowess of an Angus female that carries the best from Montana and North Dakota with representation of the Hinman and Schaff Angus Valley programs.
- We are certain that one will find this female to be deep, attractive, and sound from every angle as she comes with a heifer calf on the way by the CK Cattle Company low birth weight sire of choice, HOLT Night Vision 457H.

AI BRED 4/8/24 TO HOLT NIGHT VISION 457H (ASA: 3802475).  
 SAFE AI. ESTIMATED DUE 1/15/25. HEIFER CALF.



SWC HOC ANNIE K 214C  
 PATERNAL GRANDDAM OF LOTS 12-15

Lot 13

HWGW MISS K32-A10

3/4 SM 1/4 AN • 11/27/22 • ASA# 4412476 • TATTOO: K32

KCC1 EXCLUSIVE 116E SFI WARRIOR R45L  
**SWC GAME DAY 514G** *X* **A10**  
 SWC HOC ANNIE K 214C ROBBINS MISS BURGESS 7126

CE	BW	WW	YW	MCE	MILK	CW	MARB	REA	API	TI
13.4	-0.1	69.2	104.4	5.6	20.1	26.4	0.17	0.55	118.2	71.3

OFFERED BY WALROD CATTLE COMPANY

- This female comes with the goods from the old-school class of genetics! Elligson Black Perfector, Nichols BLK Destiny D12, O C C Emblazon 854E, and Sitz Alliance 6595 all line the bottom side of this elite bred female.
- She stacks some dominating donor dams harmoniously all the way through as well. ACW Annie K 330Y, SAFN Glamour 11J, TKCC Victoria 57A, along with the Burgess cow family of the Angus circle as well.
- Garren and Kyle have her bred for success as she carries the service of KCC1 Countertime 872H.

AI BRED 4/8/24 TO KCC1 COUNTERTIME 872H (ASA: 4321955).  
 SAFE AI. ESTIMATED DUE 1/15/25. BULL CALF.



KCC1 COUNTERTIME 872H  
 \$230,000 SERVICE SIRE TO LOT 13



LOT 14



Lot 14

## HWGW MISS K42-B20

3/4 SM 1/4 AN • 11/28/22 • ASA# 4412475 • TATTOO: K42

KCC1 EXCLUSIVE 116E 3C MACHO M450 BZ  
**SWC GAME DAY 514G** *X* **B20**  
 SWC HOC ANNIE K 214C RSKY 8029 MS NEW LOOK 6002

CE	BW	WW	YW	MCE	MILK	CW	MARB	REA	API	TI
12.9	0.1	65.7	94.7	6.6	15.7	18.3	0.1	0.58	114.4	66.5

OFFERED BY WALROD CATTLE COMPANY

- One should find this moderate, durable, wide based female on sale day from her arrogant pen presence as she steps in your direction.
- Another dominant female from the resident herd sire, SWC Game Day 514G.
- Her dam is bred from the old school genetic vault as well as she bears the influence of the female making 3C Macho M450 BZ with a shot of what put the Hobart, Oklahoma program on the map, DUFF New Look 101.

AI BRED 5/23/24 TO THSF LOVER BOY B33 (ASA: 2983443).  
 SAFE AI. ESTIMATED DUE 3/1/25.

Lot 15

## HWGW MISS K43-B40

3/4 SM 1/4 AN • 11/29/22 • ASA# 4412473 • TATTOO: K43

KCC1 EXCLUSIVE 116E SFI RESPECT Y1  
**SWC GAME DAY 514G** *X* **B40**  
 SWC HOC ANNIE K 214C ROBBINS MISS WITCH 1330

CE	BW	WW	YW	MCE	MILK	CW	MARB	REA	API	TI
13.9	-0.8	62.1	86.9	6.5	16	11.9	0.09	0.6	115.8	65.2

OFFERED BY WALROD CATTLE COMPANY

- SWC Game Day 514G is the stout, three dimensional herd sire for Walrod Cattle. He is laced with dominant cow power with the influence of the past National Champion Percentage Female, ACW Annie K 330Y, as well as a past purebred National Champion Female at the National Western Stock Show, WHCC Angels Dream.
- The bottom side of this bred female's pedigree further explains her phenotypic advantages with the influence of DUFF New Edition and SFI Respect Y1.
- Square, high pinned, high tying, great running gear that sets on great set of feet is how one will find this female on sale day. She's mated for profit as well with the service to the SFI bred son of SO Remedy 7F, SFI Longs In Charge K28!

AI BRED 5/8/24 TO SFI LONGS IN CHARGE K28 (ASA: 4113347).  
 SAFE AI. ESTIMATED DUE 2/14/25.

THE *magic*  
 IS IN THE  
*cow families*



KCC1 EXCLUSIVE 116E  
 PATERNAL GRANDSIRE OF LOTS 12-15



LOT 16



MISS WERNING KP 8543U  
\$8 MILLION PRODUCING MATERNAL GRANDDAM OF LOT 16



ES RIGHT TIME FA110-4  
SIRE OF LOTS 16 & 17

Lot 16

## KWIN RIGHT TIME DOLLY L316

PB SM • 1/3/23 • ASA# 4423567 • TATTOO: L316

WELSHS DEW IT RIGHT067T REMINGTON LOCK N LOAD54U  
**ES RIGHT TIME FA110-4** *W/C RJ 8543 5043C*  
ES A110 MISS WERNING KP 8543U

CE	BW	WW	YW	MCE	MILK	CW	MARB	REA	API	TI
12.6	0.7	75.2	116.3	6.2	20.6	32.7	0.13	0.97	131.4	77.6

OFFERED BY WINTER FARM

- This daughter of ES Right Time FA110-4 is from a full sister to the very productive W/C Angel 2870Z.
- This trendy built baldy is very high quality. She is as smooth and seamless in her build as one desires. The substance, shape, look, and volume that she possesses is near ideal as well.
- She offers a balanced number profile with undeniable skeletal quality and look, so take advantage of this opportunity.

AI BRED 4/11/24 TO WHF/JS/CCS WOODFORD J001 (ASA: 4068398).  
SAFE AI. ESTIMATED DUE 1/18/25. SEXED FEMALE SEMEN.

Lot 17

## KWIN RIGHT SWEETNESS L306

3/4 SM 1/4 AN • 1/15/23 • ASA# 4423566 • TATTOO: L306

WELSHS DEW IT RIGHT067T B C LOOKOUT 7024  
**ES RIGHT TIME FA110-4** *BWL/SS/HS SWEET LOOKIN*  
ES A110 HS SWEET GEM X141N

CE	BW	WW	YW	MCE	MILK	CW	MARB	REA	API	TI
11.5	2	78.3	121	4.3	18.1	31.6	0.24	0.49	129.7	77.1

OFFERED BY WINTER FARM

- A big centered, wide based, three dimensional brood cow prospect sired by the proven and predictable ES Right Time FA110-4!
- The Sweet Gem X141N Donor female has been impactful for those that have had the opportunity to have ownership in her donor journey.
- Buy with confidence in one that will definitely be productive.

AI BRED 4/12/24 TO WHF/JS/CCS WOODFORD J001 (ASA: 4068398).  
SAFE AI. ESTIMATED DUE 1/19/25.



## LOT 18



## Lot 18 HWGW MISS L59XX-F80

3/4 SM 1/4 AN • 3/1/23 • ASA# 4412479 • TATTOO: L59XX

ES RIGHT TIME FA110-4 SFI PERFECT TIMING A6  
**KCC1 COUNTERTIME 872H** *W* **MISS HWGW F80-1216**  
 KCC1 HAVANA 83E MISS BASIC INSTINCT1216-0085

CE	BW	WW	YW	MCE	MILK	CW	MARB	REA	API	TI
11.2	2.2	77.6	119.2	5.4	19.6	36.1	0.4	0.61	132.7	78.7

OFFERED BY WALROD CATTLE COMPANY

- What we enjoy most about this set of stock, is that they are bred based on phenotype, skeletal integrity, body shape, and sorted on udder quality, fertility, and traits that adversely affect longevity.
- This female would be bred on the basics with the fundamental aspects of soundness, fleshing ability, and production as forethought.
- SFI Luvy Duvy X13N has been a mainstay cow family for many of the folks in this sale but the Angus side involves cattle bred by Paul Robbins and Kirk Duff of Oklahoma that approach the business in the same exact manner as the Walrods and others.
- She is a direct daughter of the KCC1 Countertime 872H and safe in calf to SWC Red Wave 376J to raise the odds of a potential baldy progeny.

AI BRED 6/14/24 TO SWC RED WAVE 376J (ASA: 3937607).  
 SAFE AI. ESTIMATED DUE 3/24/25.



UDE KANSA 702E  
 MATERNAL GRANDDAM OF LOTS 20 & 21

## Lot 19 KWIN COUNTER CORI L311

PB SM • 1/24/23 • ASA# 4423025 • TATTOO: L311

ES RIGHT TIME FA110-4 REMINGTON LOCK N LOAD54U  
**KCC1 COUNTERTIME 872H** *W* **WRS CHELSEA C531**  
 KCC1 HAVANA 83E JM MISS DANA N31

CE	BW	WW	YW	MCE	MILK	CW	MARB	REA	API	TI
11.6	3	85.9	134.7	6.5	20.5	38.9	0.15	0.95	133.2	82.4

OFFERED BY WINTER FARM

- This female traces back to the HC Power Drive sired maternal sister to MR HOC Broker, JM Miss Dana N31 that influenced the Windy Ridge program of Nebraska for so many years.
- A direct daughter of KCC1 Countertime 872H that posts the credentials to be your next acquisition for your program.
- This gem ranks in the top 15% for CW, the top 20% for YW and ADG, and the top 25% for WW with values for MCE, Milk, MWW, Doc, Marb, REA, and both indexes in the top half of the breed.

AI BRED 4/25/24 TO BROWN RRR EMBLEM J3541 (ASA: 3886910).  
 SAFE AI. ESTIMATED DUE 2/1/25.

## LOT 20



W/C STYLE 69E  
 "FAMILY TRADITION"  
 SERVICE SIRE TO LOT 20

## Lot 20 KWIN COUNTER CIERRA L303

PB SM • 1/3/23 • ASA# 4423565 • TATTOO: L301

ES RIGHT TIME FA110-4 CDI INNOVATOR 325D  
**KCC1 COUNTERTIME 872H** *W* **UDE KANSA 59H**  
 KCC1 HAVANA 83E UDE KANSA 702E

CE	BW	WW	YW	MCE	MILK	CW	MARB	REA	API	TI
11.1	2.1	90.4	140.4	6.3	20.6	48.3	0.44	0.99	144.3	92.4

OFFERED BY WINTER FARM

- This exceptional daughter of KCC1 Countertime 872 is from a past sale feature from the Signature Collection Sale series that was hosted by Udell Cattle Co. Kevin outlasted the competition to own the CDI Innovator 325D sired dam and has never looked back.
- Quality runs deep in the family and we certainly expect nothing less from this 872H daughter as she enters production. The "Countertime" cattle are very similar in maturity and beef industry value as the "Broker" sire group. 872H's stock come with added performance, are later in their maturity pattern, are stout featured, and have proven to be incredibly valuable in production with better than text book udder design.
- This female is very stout at the surface with added extension for both frame and length and has the center rib design and true dimension to be your next donor female.

AI BRED 4/8/24 TO W/C STYLE 69E "FAMILY TRADITION" (ASA: 3336318).  
 SAFE AI. ESTIMATED DUE 1/15/25. SEXED FEMALE SEMEN.



## LOT 21

- This direct daughter of EC Rebel 156F comes laced with the goods from the Udell program of Iowa as she hosts the TJSC Kansa 823B donor family within her lineage. The bottom side of the pedigree blends CDI Innovator 325D and TJ High Calibre 556B, both maternal giants known for high end udder design, fertility, and longevity in production.
- EC Rebel 156F will be a timeless sire that should experience long term use within the industry. He is consistent in siring cattle that are moderate, dense, bold, true and genuine in their kind, and impeccable in their overall structural design.
- This female should be easy to find in person and she does not disappoint on paper. She ranks in the top 15% for CW, the top 25% for WW and YW, and the top 30% for ADG.

AI BRED 4/6/24 TO WHF/JS/CCS WOODFORD J001 (ASA: 4068398).  
SAFE AI. ESTIMATED DUE 1/13/25. SEXED FEMALE SEMEN.



EC REBEL 156F  
\$200,000 SIRE OF LOT 21



## Lot 21

### KWIN REBEL EXIT 314L

PB SM • 1/2/23 • ASA# 4423028 • TATTOO: L314

PROFIT CDI INNOVATOR 325D  
**EC REBEL 156F** X **UDE KANSA 59H**  
DSFF COUNTLESS 357D UDE KANSA 702E

CE	BW	WW	YW	MCE	MILK	CW	MARB	REA	API	TI
7.3	3.1	84.6	128.4	3	18.7	39.4	0.16	0.91	119.3	80.5

OFFERED BY WINTER FARM

## Lot 22

### GPG HCCO COUNTLESS 187L

PB SM • 1/15/23 • ASA# 4425241 • TATTOO: 187L

WS PILGRIM H182U WAGR PROSPER 212Z  
**PROFIT** X **WILSON MISS 425B**  
WAGR PANARAMA 204Z WILSON MISS 141

CE	BW	WW	YW	MCE	MILK	CW	MARB	REA	API	TI
5.6	3.8	72.1	103.7	3.1	16.9	19.6	0.23	0.65	116.4	71.9

OFFERED BY VOGLER CATTLE CO.

## LOT 22

- 3C Melody M668 BZ is one of the greatest matriarchs of the Simmental breed. She imprinted the CK and Wager program in her productive tenure. The firms retained countless daughters and granddaughters and used sons where they could. For form, function, fertility, and productivity, she passed the bar with the ability to influence balance and look with near perfection.
- This bred female comes with three shots of the time honored matriarch and has the influences of "112" and "Right Time" Angus studs as well.
- She will calve when the weather is nice and do nothing but return on your investment. She's saturated with the tools to go to work there is no doubt.

PE 5/6/24-7/6/24 TO RUBY NFF SRIRACHA K247 (ASA: 4136078).  
SAFE TO PE SIRE. ESTIMATED DUE 3/6/25.



PROFIT  
\$400,000 SIRE OF LOT 22





## LOT 23



- A female bred to be a workhorse in production!
- The daughters of TL Bottomline are flat-out, big time producers when it comes to weaning pounds of calf and injecting power and true performance.
- When one brings the influence of PVF Insight 0129 into the equation, it just gets even more potent for producing stock with shape and eye appeal.

AI BRED 5/8/24 TO SFI LONGS IN CHARGE K28 (ASA: 4113347).  
SAFE AI. ESTIMATED DUE 2/14/25.



TL BOTTOMLINE  
\$300,000 SIRE OF LOTS 23 & 24



MLJM PATRON 17H  
\$87,500 SIRE OF LOT 25

## Lot 23 HWGW MISS K18-G52

3/4 SM 1/4 AN • 11/22/22 • ASA# 4412477 • TATTOO: K18

WS PILGRIM H182U HWGW MR INSIGHT B40XX-A13X  
**TL BOTTOMLINE** X **HWGW MISS G52-B-A29**  
MISS STAR ABOVE HWGW MISS A-29-1124

CE	BW	WW	YW	MCE	MILK	CW	MARB	REA	API	TI
8.9	2.9	68.7	104.2	2.9	19.5	18.4	0.13	0.65	101.6	66.1

OFFERED BY WALROD CATTLE COMPANY

## Lot 24 HWGW MISS K214-D123

PB SM • 12/7/22 • ASA# 4412488 • TATTOO: K214

WS PILGRIM H182U LLSF/VLF REACTOR A40  
**TL BOTTOMLINE** X **SC SHASHA D123**  
MISS STAR ABOVE SC SHASHA Z162

CE	BW	WW	YW	MCE	MILK	CW	MARB	REA	API	TI
6.4	4.1	78.3	109.8	3.1	18.8	17	0.04	0.75	97.5	71.1

OFFERED BY WALROD CATTLE COMPANY

- Here is a maternal sister to lot 38 sired by the proven TL Bottomline.
- This female blends extra substance, durability, and a brood cow look that represents the strong cow family.
- She is bred for success, just as her sister to SFI Longs In Charge K28 with a herd sire on the way.

AI BRED 4/7/24 TO SFI LONGS IN CHARGE K28 (ASA: 4113347).  
SAFE AI. ESTIMATED DUE 1/14/25. BULL CALF.

## Lot 25 VCL 63L

3/4 SM 1/4 CS • 2/20/23 • ASA# 4418627 • TATTOO: 63L

WS PILGRIM H182U SWSN CASH FLOW 81E  
**MLJM PATRON 17H** X **VCL 7H**  
MLJM CINDY SUE 11C VCL MISS NEW DIRECTION 899F

CE	BW	WW	YW	MCE	MILK	CW	MARB	REA	API	TI
10.6	1.9	76.9	101.3	4.6	19.9	19.8	-0.03	0.81	104.6	72.4

OFFERED BY VOGLER CATTLE CO.

- MLJM Patron 17H is a past sale feature of the Hartman Cattle Company Bull Sale when he commanded an \$87,500 hammer price to Maple Lane Farm of Indiana. He made several friends the day he sold as they admired his moderate but stout build that is loaded with flexibility and arrogance!
- 3BCC KCC1 Krypton 100K has certainly done a very good job in his freshman year as several high quality cattle have sold and are yet to be sold. They are very ideal in their center body design with the necessary shape to compete and look to burn. 100K is strongly influenced by his prolific and profitable dam. KCC1 SWC Harmony 847H, the full sister to KCC1 Countertime 872H has compiled just over \$113,000 average per head on 6 head sold to date. Quite impressive. One better dial in on these females carrying the service to 100K.

AI BRED 5/15/24 TO 3BCC KCC1 KRYPTON 100K (ASA: 4142616).  
SAFE AI. ESTIMATED DUE 2/21/25.



# LOT 26

- PVF Insight 0129 is proving his place within any breeding program, just as those that preceded him in regard to his sire S A V Brilliance 8077 and his grandsire S A V Bismarck 5682. He consistently leaves bulls and females both that are certainly marketable.
- This one is from one of the potent females that carries the SFI prefix, SFI Miss Girlfriend N78. Look and presence are included.
- K03 is a very striking blaze faced female that is soft and flexible at the surface, as she travels with a near perfect hind leg. She's set high in her pins, strong in her spine, and ties high out of her shoulder to establish a look of excellence.
- This future donor dam comes with the service to the KCC1 Countertime 872H for the ultimate mating success story.

AI BRED 5/5/24 TO KCC1 COUNTERTIME 872H (ASA: 4321955).  
SAFE AI. ESTIMATED DUE 2/11/25.



## Lot 26

### MISS HWGW KO3-N78H

1/2 SM 1/2 AN • 12/10/22 • ASA# 4412471 • TATTOO: K03

S A V BRILLIANCE 8077

SAC MR MT 73G

PVF INSIGHT 0129 *S* SFI MISS GIRL FRIEND N78

PVF MISSIE 790

SFI MISS X H78F

CE	BW	WW	YW	MCE	MILK	CW	MARB	REA	API	TI
8.9	1.7	70.8	109.5	2.5	25.2	38.5	0.07	0.97	115.7	67.8

OFFERED BY WALROD CATTLE COMPANY

## Lot 27

### HWGW MISS LO7-H3C

PB SM • 2/14/23 • ASA# 4412650 • TATTOO: L07

CONLEY HIGH RISE F3

GEFF COUNTY O

SWC RED WAVE 376J *S* SFI MISS EMBRACE H3C

SWC GWENDOLYN 376G

SFI MISS SEE ME NOW

CE	BW	WW	YW	MCE	MILK	CW	MARB	REA	API	TI
11.7	0.1	66	96.8	5.5	19.2	21.7	0.16	0.77	130.6	73.3

OFFERED BY WALROD CATTLE COMPANY

- What a combination of new-age red genetics in a hetero-black package.
- She is sired by the \$85,000 SWC Red Wave 376J, the red-hided stud that is consistently proving himself to be a calving ease sire of choice without sacrificing quality.
- Her dam is one of the go-to dams of quality for Garren and Heidi with the potent influence of PVF Insight 0129 on the bottom side and represents some of the genetic royalty that bears the SFI prefix.
- Many will find this round bodied, big ended, baldy maker on December 1!

AI BRED 4/7/24 TO KCC1 COUNTERTIME 872H (ASA: 4321955).  
SAFE AI. ESTIMATED DUE 1/14/25. HEIFER CALF.



SWC RED WAVE 376J  
\$85,000 SIRE OF LOT 27

# LOT 27





# LOT 28



## Lot 28 VCL 36L

PB SM • 1/17/23 • ASA# 4418622 • TATTOO: 36L

TL LEDGER

MR CCF 20-20

VCL SCREENSHOT 913G

VCL COUNTESS 254F

MISS A102

HCCO COUNTESS 409D

CE	BW	WW	YW	MCE	MILK	CW	MARB	REA	API	TI
10.4	2.2	74.7	105.1	5.4	17.2	20.9	0.16	1.01	118.2	75.6

OFFERED BY VOGLER CATTLE CO.

- The daughters of VCL Screenshot 913G have been very wet with picture perfect udder design.
- 36L has the extras in terms of look, balance, and presence and sells with the service to the in-house herd stud, Ruby NFF Sriracha K247.

AI BRED 4/21/24 TO GCC NIGHT OWL 3104L (ASA: 4284092).  
SAFE AI. ESTIMATED DUE 1/28/25.

## Lot 29 VCL 200K

3/4 SM 1/8 AN 1/8 CS • 10/11/22 • ASA# 4246325 • TATTOO: 200K

MR CCF 20-20

VCL LKC THE DUKE 633D

PERCEPTION

MISS ROCHE 8361

HCCO COUNTESS 412D

361T

CE	BW	WW	YW	MCE	MILK	CW	MARB	REA	API	TI
9.9	2.2	69.8	95	4.4	15.7	16.3	0.21	0.76	104.5	68.9

OFFERED BY VOGLER CATTLE CO.

- A direct daughter of Perception the full brother to the popular VCL Foresight.
- This female stems from a cow bred in royal western heritage. Her dam was bred in the Roche program of Idaho. The Roche cow herd is saturated with the innate ability to hustle and so the maternal instinct can be like none have ever witnessed in a very good way.
- Tie in with confidence; you will love the calf she is carrying by the "Sriracha" son! It will come with the extra vigor and performance desired for today's volatile marketplace.

AI BRED 4/19/24 TO RUBY NFF SRIRACHA K247 (ASA: 4136078).  
SAFE AI. ESTIMATED DUE 1/26/25.

# LOT 29



## Lot 30 HCCO VCL COUNTESS 203L

PB SM • 2/15/23 • ASA# 4425240 • TATTOO: 203L

MR CCF 20-20

PROFIT

PERCEPTION

HCCO COUNTESS 981F

HCCO COUNTESS 412D

SJF COUNTESS 427A

CE	BW	WW	YW	MCE	MILK	CW	MARB	REA	API	TI
8.8	2.9	71.3	98.7	4.1	15.3	17.2	0.21	0.82	118.2	72.5

OFFERED BY VOGLER CATTLE CO.

- A direct daughter of Perception, the full brother to Foresight which is the sire of STCC Tecumseh 058J.
- The daughters of Perception tend to be more moderate and modern in their build with advantages in forerib and heart.
- This female sells with the service to the son of KCC1 Havana 83E and WHF/JS/CCS Double Up G365, KCC1 Night Shift 2094K.

AI BRED 4/19/24 TO KCC1 NIGHT SHIFT 2094K (ASA: 4115436)  
SAFE AI. ESTIMATED DUE 1/26/25.



GCC NIGHT OWL 3104L  
\$170,000 SERVICE SIRE TO LOT 28



PERCEPTION  
SIRE OF LOTS 29 & 30



- What a female that comes with the extra elite features from a proven genetic combination for look and style!
- She is certainly bred for a positive return both within her lineage and her service to the proven calving ease stud, Ruby NFF Sriracha K247!

AI BRED 4/19/24 TO RUBY NFF SRIRACHA K247 (ASA: 4136078).  
SAFE AI. ESTIMATED DUE 1/26/25.



RUBY NFF SRIRACHA K247  
SERVICE SIRE TO LOT 31



## Lot 31 VCL 111L

3/4 SM1/4 AN • 1/2/23 • ASA# 4411525 • TATTOO: 111L

MR CCF 20-20 WAGR DRIVER 706T  
**VCL FORESIGHT** *MISS A102*  
HCCO COUNTLESS 412D 102

CE	BW	WW	YW	MCE	MILK	CW	MARB	REA	API	TI
9.3	2.6	72.9	106.3	4.4	21.6	17.6	0.24	0.87	109.2	72

OFFERED BY VOGLER CATTLE CO.

## Lot 32

## HWGW MISS L15X-J032

PB SM • 2/21/23 • ASA# 4413898 • TATTOO: L15X

B C R PERFECT VISION RECKONING 711F  
**B C R PERFECT VISION 300J** *B C R WICKED J032*  
RP/MP BUILT TO LOVE A021 NFF WICKED D072

CE	BW	WW	YW	MCE	MILK	CW	MARB	REA	API	TI
10	2.1	70.7	102	4	14.7	24.5	0.16	0.72	124	72.6

OFFERED BY WALROD CATTLE COMPANY

- The "Wicked" cow family maintains a strong presence in the Nelson, Ruby, and Shipman programs. It's certainly a very productive, functional, and profitable cow family in the business. The members of the family will surface in the upper echelon of nearly any working cow herd, and they generally beat the average when sold.
- The stock by the past Ft. Worth Stock Show Champion Percentage Bull, BCR Perfect Vision, hasn't disappointed to date. His females come with fault-free udders and the fertility it takes to remain profitable for any cattle operation.
- This paternal granddaughter of B C R Perfect Vision is sired by a maternal brother to RP/BCR Eminence H005, Rocking P Private Stock H010, and RP/BCR Insight G302, referred to as B C R Perfect Vision 300J.

AI BRED 4/7/24 TO KCC1 COUNTERTIME 872H (ASA: 4321955).  
SAFE AI. ESTIMATED DUE 1/14/25. BULL CALF.



B C R WICKED J032  
DAM OF LOT 32





# LOT 33



## Lot 33 DSC ADRIANA 79L

PB SM • 2/18/23 • ASA# 4298484 • TATTOO: 79L

MR CCF 20-20

K-LER MAKE IT RAIN

FRKG CKCC PLATINUM 009H ET

FBFS ADRIANA 065A

WAGR MS PROFIT 7054E

FBFS XTRAVEGANT 053X

CE	BW	WW	YW	MCE	MILK	CW	MARB	REA	API	TI
7.4	3.2	80.6	113.8	4	16.1	17.6	0.07	0.96	121.6	75.5

### OFFERED BY DICKSON SIMMENTAL CATTLE

- A direct daughter of FRKG CKCC Platinum 009H who is a high selling past sale feature for both Freking Cattle and CK Cattle. He has made his place known in the industry and has sired the likes of 3BCC KCC1 Krypton 100K and countless others.
- This female traces back to some of the vintage genetics used to build and accelerate the Foster Brothers program of Texas. This near outcross breeding piece hosts a maternal granddam that is a maternal sister to FBFS Wheel Man 649W.
- She sells safe in calf to the latest acquisition made by the Dickson firm that they refer to as "Chan", or his registered namesake Rocking P Bold Venture K095.

PE 4/1/24-6/22/24 TO ROCKING P BOLD VENTURE K095 (ASA: 4292805).  
SAFE TO PE SIRE. ESTIMATED DUE 2/20/25.

# LOT 34



FBFS ADRIANA 065A  
DAM OF LOT 33



RP/MP RIGHT TO LOVE 015U  
FAMOUS MATERNAL GRANDAM OF LOT 35

## Lot 34 DSC SHEZA DANDY 61L

PB SM • 1/5/23 • ASA# 4298491 • TATTOO: 61L

MR CCF 20-20

MR HOC BROKER

FRKG CKCC PLATINUM 009H ET

DSC SHEZA DANDY 57E

WAGR MS PROFIT 7054E

DSC SHEZA DANDY 52X

CE	BW	WW	YW	MCE	MILK	CW	MARB	REA	API	TI
8.1	3.6	82.2	115.1	2.7	14.1	19.9	-0.05	0.93	109.8	72.7

### OFFERED BY DICKSON SIMMENTAL CATTLE

- This daughter of "Platinum" comes stacked with pedigree and proven cow power on both sides of the equation.
- The maternal great granddam of this breeding piece would be a full sister to SVF Sheza Dandy J900. J900 would be the maternal granddam to the revolutionary SVF Steel Force S701.
- The descendants of this cow family trend to be stouter in terms of overall body shape and skeletal substance. Invest with confidence.

PE 4/1/24-6/22/24 TO ROCKING P BOLD VENTURE K095 (ASA: 4292805).  
SAFE TO PE SIRE. ESTIMATED DUE 3/25/25.

## Lot 35 DSC LOTSA LOVE 68L

PB SM • 1/27/23 • ASA# 4298492 • TATTOO: 68L

MR CCF 20-20

JF MILESTONE 999W

FRKG CKCC PLATINUM 009H ET

HPF LOTSA LOVE B422

WAGR MS PROFIT 7054E

RP/MP RIGHT TO LOVE 015U

CE	BW	WW	YW	MCE	MILK	CW	MARB	REA	API	TI
6.9	2.9	81.7	114.1	4.2	21.5	16.1	0.14	0.85	121.1	78.6

### OFFERED BY DICKSON SIMMENTAL CATTLE

- Mike did the right thing by sampling FRKG CKCC Platinum 009H. He didn't sacrifice any quality in doing so, as indicated by the set of females he sent to the Legends of the Flint Hills offering.
- She sells safe in calf the Rocking P bred son of LKCC Bold Venture 194E.

PE 4/1/24-6/22/24 TO ROCKING P BOLD VENTURE K095 (ASA: 4292805).  
SAFE TO PE SIRE. ESTIMATED DUE 1/25/25.



LOT 36

Lot 36

## ESK LEXI L74

PB SM • 3/22/23 • ASA# 4237824 • TATTOO: L74

GEFF COUNTY O SFI MOVIN AHEAD F11  
**SFI COBRA H57D** *X* **WWC HARMONY 32H**  
 WALROD D57-1010 WWC HARMONY 6D

CE	BW	WW	YW	MCE	MILK	CW	MARB	REA	API	TI
5.6	4.6	77.2	122	1.9	17	32.8	0.09	0.82	120	72

## OFFERED BY SPRING CREEK FARMS

• We featured several paternal sisters to this female in the 2023 Legends of the Flint Hills. The cattle sired by SFI Cobra H57D are consistently huge in their rib design, with genuine width from the ground up, and ideal in their structure.

- L74 is no different from the general flow of the H57D influence. In fact, she offers a shot more in terms of overall size and capacity.
- The calf on board by HCC Whitewater 9010 will have significant value with improved carcass merit.

AI BRED 4/25/24 TO HCC WHITEWATER 9010 (AAA: 19870506).  
 PE 5/10/24-8/1/24 TO ESK COSMO L53 (ASA: 4237833).



LOT 37

Lot 37

## ESK LYDIA L73

5/8 SM 3/8 AN • 2/16/23 • ASA# 4237828 • TATTOO: L73

GEFF COUNTY O SFI MASTERPIECE D7B  
**SFI COBRA H57D** *X* **MISS HWGW 658-909**  
 WALROD D57-1010 MISS NEW EDITION-909

CE	BW	WW	YW	MCE	MILK	CW	MARB	REA	API	TI
6.6	2.7	75.2	117.5	0.3	12.5	30.7	0.19	0.59	106.1	69.9

## OFFERED BY SPRING CREEK FARMS

- SFI Masterpiece D7B influences another high quality maternal legend in the making.
- Another SFI Cobra H57D daughter that is very high tying, bold bodied, and near ideal in her pin set with a great hind leg.
- She too sets on a very impeccable set of running gear and trends very dense and stout to the surface.

AI BRED 4/18/24 TO TJ WAR PAINT 759J (ASA: 3910125).  
 PE 5/10/24-8/1/24 TO ESK COSMO L53 (ASA: 4237833).



Lot 38

## HWGW MISS K221-D123

PB SM • 11/1/22 • ASA# 4412486 • TATTOO: K221

W/C LOADED UP 1119Y LLSF/VLF REACTOR A40  
**GEFF COUNTY O** *X* **SC SHASHA D123**  
 RUBY NFF RHYTHM 475B SC SHASHA Z162

CE	BW	WW	YW	MCE	MILK	CW	MARB	REA	API	TI
4.7	4.1	80.5	112.8	2.5	12.8	22.8	0.02	1	104.1	71.4

## OFFERED BY WALROD CATTLE COMPANY

- This black hided creature is derived from red lineage, so it is almost certain that she can produce red hided seedstock.
- She is sired by the pounds and performance leader of the W/C Loaded Up 1119Y sons of choice, GEFF County O, and from the retired Shoal Creek donor SC Sasha Z162.
- This age-advantaged bred female sells with the service to a calving ease stud that is rising in popularity as he is siring quality with marketability and allowing two-year-olds to be more productive and beneficial to those who own them.

AI BRED 4/8/24 TO SFI LONGS IN CHARGE K28 (ASA: 4113347).  
 SAFE AI. ESTIMATED DUE 1/15/25.



SFI COBRA H57D  
 SIRE OF LOTS 36 & 37



SFI LONGS IN CHARGE K28  
 SERVICE SIRE TO LOT 38



## LOT 39



WLE COPACETIC E02  
SIRE OF LOT 39 & PATERNAL  
GRANDSIRE OF LOTS 40 & 41

## Lot 39 KWIN SWEET COP L302

5/8 SM 3/8 AN • 3/10/23 • ASA# 4423026 • TATTOO: L302

HPF QUANTUM LEAP Z952

B C LOOKOUT 7024

WLE COPACETIC E02

BWL/SS/HS SWEET LOOKIN

CMFM JOY 022B

HS SWEET GEM X141N

CE	BW	WW	YW	MCE	MILK	CW	MARB	REA	API	TI
12.1	1.7	75.9	112.2	3.9	12.1	18.9	0.14	0.57	107.7	71.7

OFFERED BY WINTER FARM

- Built like you like them, genuine skeletal width, bold ribbed, big back, big pinned, and stout to the surface.
- She's bred with the good stuff as she offers the sire groups of proven nature from the best of both worlds. WLE Copacetic E02 and BC Lookout 7024 are supported by the full sister to the proven SS / PRS High Voltage 244X.

PE 5/7/25-7/12/24 TO SFI KWIN RED RAIDER (ASA: 4423814).  
SAFE TO PE SIRE.

## LOT 40



SFI MISS BELOVED N13D  
MATERNAL GRANDDAM OF LOT 40

## Lot 40 HWGW MISS K62-A13N

PB SM • 11/11/22 • ASA# 4412483 • TATTOO: K62

WLE COPACETIC E02

SVF DREAM MASTER T50

SFI LEAD OFF H35Z

SFI MISS LOVE ME NOW

SFI ENCHANTING LADY

SFI MISS BELOVED N13D

CE	BW	WW	YW	MCE	MILK	CW	MARB	REA	API	TI
7.5	3.1	66.2	100.8	2.9	24.2	22.7	0.07	0.92	110.6	68

OFFERED BY WALROD CATTLE COMPANY

- SFI Miss Beloved N13D would be another proven matriarch from the SFI donor vault. When mated to SVF Dream Master T50, N13D gave rise to the next in line, SFI Miss Love Me Now that has become a cornerstone female for the Walrod program.

- The diligently campaigned percentage stud sires this female, SFI Lead Off, that ties together one of today's proven genetic blends with "Copacetic" and "Broker".

- K62 sets square and true to the surface with as much genuine shape and width throughout her entire build. She's one to be sure and have on that sale day short list too with a KCC1 Countertime 872H calf on the way.

AI BRED 4/7/24 TO KCC1 COUNTERTIME 872H (ASA: 4321955).  
SAFE AI. ESTIMATED DUE 1/14/25. BULL CALF.

## LOT 41



SFI LEAD OFF H35Z  
SIRE OF LOTS 40 & 41

## Lot 41 WWC JEWEL 69K

PB SM • 9/30/22 • ASA# 4186787 • TATTOO: 69K

WLE COPACETIC E02

W/C RELENTLESS 32C

SFI LEAD OFF H35Z

WWC JEWEL 12F

SFI ENCHANTING LADY

EARLY SUNSET JEWEL 85C

CE	BW	WW	YW	MCE	MILK	CW	MARB	REA	API	TI
11.6	1.5	67.1	97.3	5.7	16.2	20.9	0.03	0.96	107.4	69.2

OFFERED BY WINDWALKER CATTLE CO.

- WLE Copacetic E02, MR HOC Broker, W/C Relentless 32C, and MR CCF Vision highlight and support the kind of Lot 41!

- This dynamic female was successfully campaigned by the Falkenstine Family and rightfully so.

- She is certainly sharp and crisp in her lines and features, chiseled about her head, ultra clean and flat about her neck allowing her presence to be as high end as she should appraise to be. However, she is bold in her center body, near perfect in her pin set, and she travels on impeccable running gear.

- The Falkenstine family does a very good job, and they are very passionate about the stock they produce. Don't hesitate to reach out for more details related to this lot.

AI BRED 4/19/24 TO SCHOOLEY KROWN 28K (ASA: 4115546).  
SAFE AI. ESTIMATED DUE 1/26/25.



LOT 42

Lot 42

## DSC BAILEY 75L

PB SM • 2/7/23 • ASA# 4298500 • TATTOO: 75L

W/C RELENTLESS 32C

RUBY'S CURRENCY 7134E

JSUL SOMETHING ABOUT MARY 8421

DSC MISS BAILEY 85H

JBSF PROUD MARY

DSC BAILEY 41B

CE	BW	WW	YW	MCE	MILK	CW	MARB	REA	API	TI
12	1.8	79.4	122.9	4.4	18.7	41.8	0.1	0.97	123.7	78

OFFERED BY DICKSON SIMMENTAL CATTLE

- Laced with pedigree and proven cow power!
- Yet another female tracing back to JBH Sheza Dandy. The popularity of JBH Sheza Dandy would have been very similar to JBSF Proud Mary or Peine /GS Rosie 677D would be in today's circles.
- She sells safe in calf to the stout, deep, sound built herdsire, Rocking P Bold Venture K095.

PE 4/1/24-6/22/24 TO ROCKING P BOLD VENTURE K095 (ASA: 4292805).  
SAFE TO PE SIRE. ESTIMATED DUE 1/20/25.



LOT 43

Lot 43

## WPCC REBA L209

3/4 SM 1/4 AN • 2/6/23 • ASA# 4194523 • TATTOO: L209

HTP/SVF DURACELL T52

FHEN HALFTIME A127

THSF LOVER BOY B33

WPCC REBA TIME J209

RP/MP RIGHT TO LOVE 015U

DAF REBA C85

CE	BW	WW	YW	MCE	MILK	CW	MARB	REA	API	TI
11.3	1.1	76.2	117	5.7	27.2	36.1	0.3	0.62	126.4	77.7

OFFERED BY WALROD CATTLE COMPANY

- Garren and Heidi pulled out all the stops to bring a top-notch set for the event.
- L209's dam is a full sister to JSUL Reba's Fancy 8375F, the 2020 AJSA Summer Classic Champion Percentage Female for Sara Sullivan. 8375F is now one of the more influential donors in the Dunlap, Iowa program. The maternal granddam, DAF Reba C85 is a mainstay donor in the Dunlap, Iowa program that continues to produce champion after champion as she was a many time champion as well.
- This female would be a full sister in blood to many of the high-profile percentage cattle that get campaigned annually, nationwide. The value in pedigree and genetics knows no boundaries when you find them like this one.

AI BRED 4/8/24 TO HOLT NIGHT VISION 457H (ASA: 3802475).  
SAFE AI. ESTIMATED DUE 1/15/25. BULL CALF.



Lot 44

## HWGW MISS L10-H36

3/4 SM 1/4 AN • 1/30/23 • ASA# 4412480 • TATTOO: L10

HTP/SVF DURACELL T52

SFI MASTERPIECE D7B

THSF LOVER BOY B33

HWGW MISS H36-1215

RP/MP RIGHT TO LOVE 015U

MISS FIRST LOOK 1215-2082

CE	BW	WW	YW	MCE	MILK	CW	MARB	REA	API	TI
12.3	0.6	77.1	115.9	5.2	28.3	27.5	0.29	0.53	124.5	78.6

OFFERED BY WALROD CATTLE COMPANY

- Garren has always been high on his daughters of SFI Masterpiece D78 as they consistently keep the quality in the upper echelon of the Randolph-based pastures.
- This daughter of THSF Lover Boy B33 ranks in the top 20% for Milk and close to breed average for growth. The mating to KCC1 Countertime 872H will yield 12 traits in the top half of the breed with both indexes in the top 40%.
- Study the lesson, she's worth the time.

AI BRED 4/7/24 TO KCC1 COUNTERTIME 872H (ASA: 4321955).  
SAFE AI. ESTIMATED DUE 1/14/25. HEIFER CALF.



JSUL SOMETHING ABOUT MARY 8421  
SIRE OF LOT 42



DAF REBA C85  
2017 NWSS GRAND CHAMPION PERCENTAGE SIMMENTAL  
HEIFER & MATERNAL GRANDDAM OF LOT 43



LOT 45



SFI BACK 2 BASICS J2  
SIRE OF LOT 46

Lot 45

## HWGW MISS K1-H22

PB SM • 11/1/22 • ASA# 4412481 • TATTOO: K1

SVF DREAM MASTER T50 HPF QUANTUM LEAP Z952  
SFI PERFECT TIMING A6 *X* HWGW MISS H22-A20  
SFI LUVY DUVY X13N A20

CE	BW	WW	YW	MCE	MILK	CW	MARB	REA	API	TI
8.6	3.5	72.4	103.6	1.5	24.1	29.1	0.15	0.62	117.7	72.1

OFFERED BY WALROD CATTLE COMPANY

- Garren has been a student of the game for quite some time. He doesn't get focused on one aspect but instead tries to analyze and absorb all sides of breeding SimGenetic stock. The bottom side of K1's pedigree is the proven blend of Mr HOC Broker with HPF Quantum Leap 952Z that is complimented by a dense-built Angus matron.
- SFI Perfect Timing A6 knocked it out of the park on this mature female as quality of build and kind is purely enhanced.
- You will look forward to that calf on board with the service of KCC1 Countertime 872H.

AI BRED 4/8/24 TO KCC1 COUNTERTIME 872H (ASA: 4321955).  
SAFE AI. ESTIMATED DUE 1/15/25.

Lot 46

## HANELS MISS BACK2BASICS L3190

PB SM • 2/15/23 • ASA# 4256188 • TATTOO: L3190

RUBY'S CURRENCY 7134E CCR PAY DIRT 2340C  
SFI BACK 2 BASICS J2 *X* HANELS MISS PAY DIRT G9028  
KWIN RELNTLES RILEY E913 KAPPES UNITY R381 Z92

CE	BW	WW	YW	MCE	MILK	CW	MARB	REA	API	TI
7.5	6.1	91.3	139.6	5.5	26.6	43.4	0.31	1.04	124.3	85.8

OFFERED BY HANELS BLACK SIMMENTALS

- Here's one sired by the new herd sire at Hanel Black Simmentals from a great daughter of CCR Pay Dirt 2340C.
- This female ranks in the top 10% CW, the top 15% WW, YW, and MWW, top 20% ADG and REA, and the top 25% Milk.

AI BRED 5/28/24 TO TJ GOLD RUSH 506K (ASA: 4065112).  
SAFE AI. ESTIMATED DUE 3/5/25.



CAN'T BE WITH US?  
WATCH, BID & VIEW VIDEOS ONLINE







Penelope



*Elite*

GENOTYPE & PHENOTYPE

BRED FEMALES

*Lots* 47 - 74





LOT 47



Lot 47

## M4 MS FIRE & ICE Y85L

3/4 SM 1/4 AN • 1/13/23 • ASA# 4255711 • TATTOO: Y85L

G A R SURE FIRE

TNT TOP GUN R244

EGL FIRESTEEL 103F

TJ 22X

SFI BETTY SUE Y85T

SFI MISS BETTY LOU

CE	BW	WW	YW	MCE	MILK	CW	MARB	REA	API	TI
11.4	1.5	71.9	100.5	3.7	21.6	32.8	0.46	0.96	141.3	78.5

OFFERED BY M4 SIMMENTALS

- The resident donor dam, SFI Betty Sue Y85T, knocked it plum out of Kaufman Stadium when this one hit the ground at Marple's.
- Incredible phenotype with surplus body shape and substance.
- One that is very high tying with a great hip and hind leg as well.
- She will not hurt an outfit on paper either as she charts among the top 2% for YG and BF, the top 4% for Stay, top 10% for REA, and keeps her Marb and API in the top 40% of the business as well. She is definitely one of the best from Y85T!

• Selling half interest with the option to double the purchase price for full ownership. Possession negotiable. Reach out to Troy or Logan for more details.

AI BRED 5/20/24 TO GIBBS CULMINATION (ASA: 4120425).

PE 5/15/24-7/28/24 TO FP/L JURISDICTION 103J (ASA: 3881332).

SAFE AI. ESTIMATED DUE 2/26/25. HEIFER CALF.



EGL FIRESTEEL 103F  
SIRE OF LOTS 47 & 49

Lot 48

## M4 MS BLACK BETTY L305

PB SM • 1/10/23 • ASA# 4255708 • TATTOO: L305

MR SR 71 RIGHT NOW E1538

TNT TOP GUN R244

MR SR MIC DROP G1534

MISS SR C1534

SFI BETTY SUE Y85T

SFI MISS BETTY LOU

CE	BW	WW	YW	MCE	MILK	CW	MARB	REA	API	TI
11.8	1.6	82.7	134.3	8.8	22.3	27.1	0.01	0.95	132.2	79.8

OFFERED BY M4 SIMMENTALS

- We would certainly expect nothing but genetic excellence from this mating as this paternal sister to OMF Journeyman J24 and the maternal sister to Y85L is quite impressive in her own right.
- The stock by MR SR Mic Drop G1534 carry the substance and shape as expected with subtle differences in look and balance. This one is from the right donor dam to propel any program in the right direction, no reservations.

• L305 ranks in the top 10% of the business for ADG and MCE, the top 15% for YG and BF, top 20 % for YW, and the top 25% for Stay.

AI BRED 5/20/24 TO LCDR AFFIRMED 212H (ASA: 3812282).

PE 5/15/24-7/28/24 TO FP/L JURISDICTION 103J (ASA: 3881332).

SAFE AI. ESTIMATED DUE 2/26/25. HEIFER CALF.



SFI BETTY SUE Y85T  
DAM OF LOTS 47 & 48



## LOT 49



• Troy and Logan put their best foot forward on sorting the stock for this sale! The quality runs deep phenotypically and genetically.

• This daughter of the Moriondo herd sire EGL Firesteel 103F is deep sided, broody in her build with a look of function and profit.

• She ranks in the top 10% for BW, Stay, YG, and API, as well as the top 15% for CE and Marb, and the top 30% for REA and TI.

AI BRED 3/24/24 TO LCDR PATRIOT 8K (ASA: 4113651).

PE 5/15/24-7/28/24 TO FP/L JURISDICTION 103J (ASA: 3881332).

SAFE AI. ESTIMATED DUE 1/1/25. HEIFER CALF.



EGL FIRESTEEL 103F  
SIRE OF LOT 49

## Lot 49

### M4/3R MS INSPIRE L310

5/8 SM 3/8 AN • 2/20/23 • ASA# 4255717 • TATTOO: L310

G A R SURE FIRE

HOOK'S EAGLE 6E

EGL FIRESTEEL 103F

KSU MISS EAGLE 64G

TJ 22X

KSU MISS ALL-AROUND 53E

CE	BW	WW	YW	MCE	MILK	CW	MARB	REA	API	TI
16.4	-2.8	69.9	100.4	5.2	15.1	16.4	0.65	0.8	162.9	87.3

OFFERED BY M4 SIMMENTALS

## Lot 50

### M4/3R MS FIREBIRD K260

3/4 SM 1/4 AN • 10/6/22 • ASA# 4234398 • TATTOO: K260

EGL FIRESTEEL 103F

HOOK'S EAGLE 6E

LCDR FIREPROOF 206H

KSU MISS EAGLE 64G

WS MISS SUGAR C4

KSU MISS ALL-AROUND 53E

CE	BW	WW	YW	MCE	MILK	CW	MARB	REA	API	TI
11.8	2.5	99.5	157.6	2.8	16	63.1	0.55	1.44	144.2	96.9

OFFERED BY M4 SIMMENTALS

## LOT 50



• Here's a big bodied, cowy female supported by the influence of WS Miss Sugar C4 through her sire LCDR Fireproof and Hook's Eagle 6E.

• Her build and kind is very true to her genetics on both sides.

• This female ranks in the top 1% for REA and Doc, the top 2% for WW, CW, and YG, the top 3% for YW, the top 10% for ADG and TI, and the top 25% for Marb.

AI BRED 4/11/24 TO KBHR KEYNOTE K229 (ASA: 4104347).

PE 5/15/24-7/28/24 TO FP/L JURISDICTION 103J (ASA: 3881332).

SAFE TO PE SIRE. ESTIMATED DUE 3/1/24. BULL CALF.



LCDR FIREPROOF 206H  
SIRE OF LOTS 50-52



LOT 51

Lot 51

## M4 MS KEEP THE FAITH 810L

3/4 SM 1/4 AN • 1/9/23 • ASA# 4255705 • TATTOO: 810L

EGL FIRESTEEL 103F

OMF EPIC E27

LCDR FIREPROOF 206H

M4 MS REST ASSURED J810

WS MISS SUGAR C4

M4 MS BELEAVE 810F

CE	BW	WW	YW	MCE	MILK	CW	MARB	REA	API	TI
14.3	-2.9	75.8	118.2	4.6	28.1	35.2	0.72	0.68	165	93.5

OFFERED BY M4 SIMMENTALS

- Appropriately named "Keep the Faith", this female should instill faith in us all that there can be phenotype stock that have the numbers to go with what a person evaluates from a standpoint of growth and performance.
- 810L is long sided, bigger in her outline with suitable rib shape, and substance of bone and muscle.
- This daughter of LCDR Fireproof 206H is in the top 2% for Doc, the top 10% for BW, Marb, and API, the top 15% for Stay and TI, and the top 20% for Milk. Well-rounded and ready for employment to your donor pen.

AI BRED 3/23/24 TO KBHR CHARGER K102 (ASA: 4104220).

PE 5/15/24-7/28/24 TO FP/L JURISDICTION 103J (ASA: 3881332).

SAFE AI. ESTIMATED DUE 1/1/25. BULL CALF.



LOT 52

Lot 52

## M4/3R MS SPELLBOUND JO4L

5/8 SM 3/8 AN • 1/12/23 • ASA# 4255710 • TATTOO: JO4L

EGL FIRESTEEL 103F

G A R DRIVE

LCDR FIREPROOF 206H

M4 MS MAGICAL JO4E

WS MISS SUGAR C4

M4 MYSTIC LADY O4E

CE	BW	WW	YW	MCE	MILK	CW	MARB	REA	API	TI
10.3	0.7	77	126	2.7	21.4	38.3	0.75	1	151.9	90.3

OFFERED BY M4 SIMMENTALS

- Here's one that should produce those herd sires that go out and sire a set of calves that will be bound with premiums through harvest.
- A moderate, deep sided, carcass enhanced breeding piece that ranks among the top 10% for DOC, Marb, and REA with top 20% values for YG, API, and TI as well.
- She has the gear and the credentials to be an influencer.

AI BRED 5/3/24 TO M4/3R/GF TOP NOTCH 381L (ASA: 4254227).

PE 5/15/24-7/28/24 TO FP/L JURISDICTION 103J (ASA: 3881332).

SAFE AI. ESTIMATED DUE 2/9/25. HEIFER CALF.



LEGENDARY

females

BACKED BY

notable

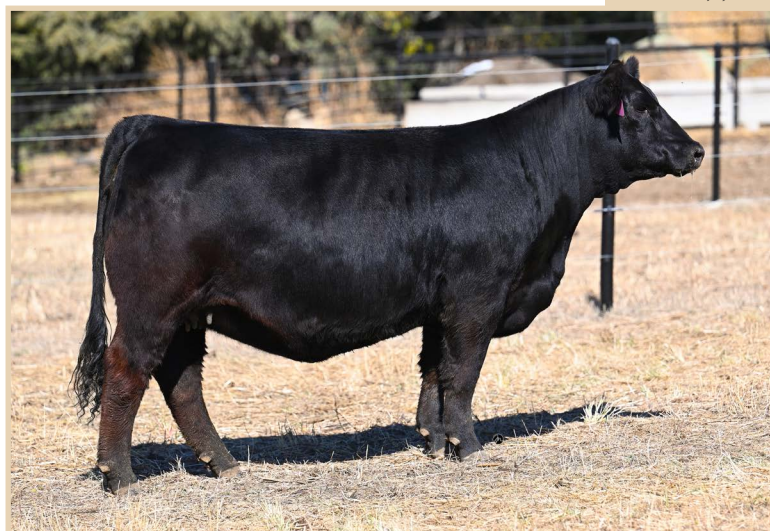
COW FAMILIES



M4 MYSTIC LADY O4E  
MATERNAL GRANDDAM OF LOT 52



## LOT 53



## Lot 53

### MID-AM GOLDEN GIRL 53L

3/4 SM 1/4 AN • 1/2/23 • ASA# 4244228 • TATTOO: 53L

HOOK'S EAGLE 6E

DEER VALLEY GROWTH FUND

TJ GOLD 274G

MID-AM MS ATHENA 43J

TJ 12C

SFI MISS MASTERPIECE

CE	BW	WW	YW	MCE	MILK	CW	MARB	REA	API	TI
12.7	1.1	85.6	141.7	6.8	27.8	52.7	0.36	0.96	133.3	86

#### OFFERED BY MID-AM GENETICS

- Trademark kind in relation to pedigree with a bit more extension and frame is how most will see this direct daughter of the highly proven and heavily used TJ Gold 247G.
- The cattle by 247G come with a bit more shape in terms of muscle and upper rib cage and have extra substance to the surface. She has more than the average "Gold" however, as she comes with the reputable influence of the ever so popular and influential Deer Valley Growth Fund as well.
- This female charts in the top 10% for ADG and CW, the top 15% for YW and REA, the top 20% for WW and MW, and the top 25% for Milk. She also posts values in the top half of the breed for CE, MCE, YG, Marb, API, and TI.
- She backs this up with ratios for WW at 102 and YW at 105.

AI BRED 4/9/24 TO LCDR ANTHEM 33K (ASA: 4113686).

PE 4/20/24-7/21/24 TO G-S GAME ON COWBOY L10 (ASA: 4247152)

SAFE AI. ESTIMATED DUE 1/16/25. HEIFER CALF.

## LOT 54



## Lot 54

### MCCR MISS GOLD DESTINY L78

3/4 SM 1/4 AN • 2/4/23 • ASA# 4263628 • TATTOO: L78

HOOK'S EAGLE 6E

G A R SURE FIRE

TJ GOLD 274G

M4 MS AUTHENTIC Z66

TJ 12C

KSU MISS SHEAR FORCE 6Z

CE	BW	WW	YW	MCE	MILK	CW	MARB	REA	API	TI
14.7	-1.3	78.3	122.3	7.2	29.1	32.7	0.62	0.81	160.6	90.7

#### OFFERED BY MCCracken LIVESTOCK

- Out of 17 total traits and index values of the American Simmental Association's paper profile, this female has only two that are not in the top half of the breed. This elite ranks in the top 10% for API and Stay, the top 15% for Marb, and the top 20% for TI and Milk. She too is balanced in her birth to yearling spread ranking in the top 30 and 40 percentiles. IMPRESSIVE!
- She's not extreme in any one trait and that is what will allow her to be an impactful breeding piece for the years ahead.
- This daughter of TJ Gold 274G is as elegant as one will find for the sire group anywhere in the land. She is beautiful and high tying out of her front third, big and bold in her rib design, and has the ideal pin width and placement with plenty of shape and turn throughout. She too is very good at the surface with plenty of bone to compliment.

AI BRED 3/24/24 TO LCDR ANTHEM 33K (ASA: 4113686).

SAFE AI. ESTIMATED DUE 1/1/25. BULL CALF.

## Lot 55

### KWIN GOLD KAYLA L308

3/4 SM 1/4 AN • 1/12/23 • ASA# 4423027 • TATTOO: L308

HOOK'S EAGLE 6E

TJ FRANCHISE 451D

TJ GOLD 274G

MID-AM MISS ACURA 133J

TJ 12C

MID-AM MERCEDES BENZ 3A

CE	BW	WW	YW	MCE	MILK	CW	MARB	REA	API	TI
13.1	0	79.9	124.6	5.4	24.4	25.7	0.51	0.63	140.2	86.5

#### OFFERED BY WINTER FARM

- Kevin Winter has always enjoyed investing in the good cow families of the breed and does a very good job of making the next matings to prove what he invested. He studies relentlessly and that's what led to the investment in this unique female's dam that was bred in the Mid-Am program.
- The group has assembled some of the very elite made daughters of TJ Gold 274G in the business. This female establishes a numeric profile that keeps her in the top end of the business. She is not extreme in the positives but more to middle and that's what turns the actual profit.
- Keep your program better than center and invest.

AI BRED 4/2/24 TO KBHR HONOR H060 (ASA: 3789447).

SAFE AI. ESTIMATED DUE 1/9/25. SEXED FEMALE SEMEN.



TJ GOLD 274G  
SIRE OF LOTS 53-55



## LOT 56



- If you are serious about advancing your program and injecting females with productive, industry merit, then give serious consideration to acquiring females that come with the goods like this daughter of OMF Epic E27 has to offer.
- This long sided, bold ribbed, stout boned, good footed witch comes with high end credentials as she charts in the top 3% for WW and Stay, the top 15% for YW, the top 25% for MWW and Doc, and the top 30% for TI. She ranks in the top half of the breed for CE, ADG, MCE, YG, REA, and API as well.

AI BRED 4/9/24 TO HANELS LAWMAKER L3010 (ASA: 4256110).  
SAFE AI. ESTIMATED DUE 1/6/25.

## LOT 57



- Here's an "Epic" daughter with a little more look and balance. She comes from a daughter of WLE Copacetic E02 and is from a dominant cow family in the SFI program.
- This elegant dream is flawless in her transitions and very sound in her angles. She is one that ratioed 101 for weaning and maintains most economically important traits in the top half of the breed.

AI BRED 4/9/24 TO DEER VALLEY OPTIMUM 9246 (AAA: 19466633)  
SAFE AI. ESTIMATED DUE 1/6/25.

## Lot 56 HANELS MISS EPIC L3030

3/4 SM 1/4 AN • 1/4/23 • ASA# 4256147 • TATTOO: L3030

WS ALL-AROUND Z35

LRS TOP TEN 104A

OMF EPIC E27 *X* HANELS MISS TEN F8028

OMF TIME LESS B100

ES X51

CE	BW	WW	YW	MCE	MILK	CW	MARB	REA	API	TI
12.9	0.7	96.4	141.2	7.1	19.9	30.4	0.18	0.68	137.2	86.6

OFFERED BY HANELS BLACK SIMMENTALS

## Lot 57 HANELS MISS EPIC L3027

PB SM • 1/3/23 • ASA# 4256196 • TATTOO: L3027

WS ALL-AROUND Z35

WLE COPACETIC E02

OMF EPIC E27 *X* SFI MISS DYNASTY H2A

OMF TIME LESS B100

SFI MISS TWO TIMEN

CE	BW	WW	YW	MCE	MILK	CW	MARB	REA	API	TI
10.5	-0.4	76.3	111.6	5.3	20.8	17.7	0.13	0.65	136.2	79.3

OFFERED BY HANELS BLACK SIMMENTALS



Lot 58

## HANELS MISS EPIC L3017

PB SM • 1/2/23 • ASA# 4256183 • TATTOO: L3017

WS ALL-AROUND Z35

QB BLUEPRINT D47

OMF EPIC E27

HANELS MISS BLUEPRINT H0038

OMF TIME LESS B100

TJ MISS 63F

CE	BW	WW	YW	MCE	MILK	CW	MARB	REA	API	TI
8.8	3.5	98.1	152.9	4.5	20.8	46.6	-0.01	0.86	121.3	84.4

## OFFERED BY HANELS BLACK SIMMENTALS

- A direct daughter of OMF Epic E27 from a near outcross dam that ratioed 106 at weaning.
- She is very bold and dense in her overall build and comes with extra substance to the surface.
- She will rank in the top 3% for YW, top 4% for WW, top 10% ADG and CW, and the top 20% for MWW.
- She's from the Hanel program, so she comes instilled with the end product in mind.

AI BRED 4/9/24 TO DEER VALLEY OPTIMUM 9246 (AAA: 19466633).  
SAFE AI. ESTIMATED DUE 1/6/25.



OMF EPIC E27  
SIRE OF LOTS 56-60



TJ GOLD RUSH 506K  
SERVICE SIRE TO LOT 59



3BCC KCC1 KRYPTON 100K  
\$450,000 SERVICE SIRE TO LOT 60

Lot 59

## HANELS MISS EPIC L3022

3/4 SM 1/4 CH • 1/3/23 • ASA# 4256112 • TATTOO: L3022

WS ALL-AROUND Z35

CCC WC RESOURCE 417 P

OMF EPIC E27

HANELS MISS RESOURCE H0022

OMF TIME LESS B100

HANELS MISS HUMMER X040

CE	BW	WW	YW	MCE	MILK	CW	MARB	REA	API	TI
13.2	-1.8	79.7	115.2	5.6	24.8	12.8	-0.1	0.9	116.4	74.1

## OFFERED BY HANELS BLACK SIMMENTALS

- Certainly, one worthy of the picture pen, but make sure to check out the video on this patented daughter of E27. She maintains the sire group advantages in terms of center body shape with true dimension.
- This Charolais influenced female is supported by the white hided legend of quality and genuine body shape bred in the Cody Cattle Company program that is referred to as CCC WC Resource 417P. A sire that has written his own chapter into the Charolais history book.
- L3022 ranks in the top 3% for YG, the top 20% for BW, Stay, and REA, the top 25% for WW and MWW, and keeps traits like CE and Milk in the upper half of the business.

AI BRED 4/9/24 TO TJ GOLD RUSH 506K (ASA: 4065112).  
SAFE AI. ESTIMATED DUE 1/6/25.

Lot 60

## VCL 14L

PB SM • 1/5/23 • ASA# 4418620 • TATTOO: 14L

WS ALL-AROUND Z35

PROFIT

OMF EPIC E27

HCCO COUNTESS 105E

OMF TIME LESS B100

COUNTESS 105Y

CE	BW	WW	YW	MCE	MILK	CW	MARB	REA	API	TI
11.9	0.5	75.4	108.4	6.5	18	22	0.23	0.67	132.4	79.6

## OFFERED BY VOGLER CATTLE CO.

- This dense bodied, stouter, more conventional built bred female is backed by the influence of a very productive, very maternal dam supported by Profit and WAGR Driver 706T both.
- The maternal blend of this futuristic brood cow is one that is tried and true in the CK program of South Dakota. Many of the sale features in Highmore have been from dams bred as such.
- We expect nothing short of top shelf from this young matron as she carries the service to the \$450,000 3BCC KCC1 Krypton 100K.

AI BRED 4/19/24 TO 3BCC KCC1 KRYPTON 100K (ASA: 4142616).  
SAFE AI. ESTIMATED DUE 1/26/25.



LOT 61



Lot 61

## M4 MS CONVICTION F3L

PB SM • 3/18/23 • ASA# 4255730 • TATTOO: F3L

MR SR 71 RIGHT NOW E1538

MR TR HAMMER 308A ET

**MR SR MIC DROP G1534**

**M4 MS BELIEF F3U**

MISS SR C1534

SFI MISS BEHOLD

CE	BW	WW	YW	MCE	MILK	CW	MARB	REA	API	TI
T1	1.9	91.3	144.2	6.2	22.9	31.4	-0.01	0.74	130.8	82.9

### OFFERED BY M4 SIMMENTALS

- This one is from one of the outfit's favorite daughters of MR TR Hammer 308A in the program. Form and function with muscle and body shape to spare.
- A broken blaze faced daughter of MR SR Mic Drop G1534 that happens to rank in the top 10% for WW, YW, and ADG, the top 15% for Doc, and the top 20% for MWW as well.
- Well rounded and well suited for any operation.

AI BRED 3/25/24 TO DAMERON VIROQUA (AAA: 19812948).

PE 5/15/24-7/28/24 TO FP/L JURISDICTION 103J (ASA: 3881332).

SAFE AI. ESTIMATED DUE 1/1/25. HEIFER CALF.



MR SR MIC DROP G1534  
SIRE OF LOTS 61 & 62

Lot 62

## M4 MS TAILORMADE F85L

PB SM • 1/14/23 • ASA# 4255708 • TATTOO: F85L

MR SR 71 RIGHT NOW E1538

W/C EXECUTIVE ORDER 8543B

**MR SR MIC DROP G1534**

**M4 MS MADE TO ORDER F85T**

MISS SR C1534

SFI BETTY SUE Y85T

CE	BW	WW	YW	MCE	MILK	CW	MARB	REA	API	TI
12.2	-1.1	78.5	129.2	8.2	26.9	27.1	0.27	0.93	148.6	87

### OFFERED BY M4 SIMMENTALS

- Here's another robust built, performance bound breeding piece from the SFI Betty Sue Y85T donor cow family.
- F85L's dam is by W/C Executive Order 8543B, which will go down in the Simmental archives as one of the truly great and diversified breeding bulls of all time. He consistently sires cattle with extra center body without sacrificing sheer substance or overall look and balance.
- This female ranks in the top 15% for BW, ADG, and Milk, the top 20% for MCE, top 25% for YW, MWW, and API, and the top 30% for Marb.

AI BRED 3/25/24 TO DAMERON VIROQUA (AAA: 19812948).

PE 5/15/24-7/28/24 TO FP/L JURISDICTION 103J (ASA: 3881332).

SAFE AI. ESTIMATED DUE 1/1/25. BULL CALF.



DAMERON VIROQUA  
SERVICE SIRE TO LOTS 61 & 62





*Lot 63*

**MCCR MISS BERTHA L05**

PB SM • 1/30/23 • ASA# 4263626 • TATTOO: L05

HOOK'S BOZEMAN 8B CCR COWBOY CUT 5048Z  
**MR SR 71 RIGHT NOW E1538** *✂* **GPAP COWGIRL UP**  
 MISS SR C1538 D NICHOLS HEIRESS R728

CE	BW	WW	YW	MCE	MILK	CW	MARB	REA	API	TI
11	0.4	83.7	1271	7.4	25	24.8	0.25	0.86	133.8	86.8

OFFERED BY MCCrackEN LIVESTOCK

- Just what one would expect from the MR SR 71 Right Now E1538, extension, power, substance, and capacity in a production oriented package.
- This powerful beast of a female ranks in the top 15% for Doc, the top 25% for MCE, the top 30% for WW, YW, and TI, and the top 35% for BW, ADG, MWW, and Marb.

AI BRED 3/24/24 TO B A R DYNAMIC (AAA: 19923789).  
 SAFE AI. ESTIMATED DUE 1/1/25. HEIFER CALF.

*Lot 64*

**HANELS MISS HIGHLIFE L3031**

PB SM • 1/5/23 • ASA# 4256156 • TATTOO: L3031

KBHR HIGH ROAD E283 CCR PAY DIRT 2340C  
**MR SR HIGHLIFE G1609** *✂* **HANELS MISS PAY DIRT H0165**  
 MISS SR D1609 HANELS MISS OLIE Z2058

CE	BW	WW	YW	MCE	MILK	CW	MARB	REA	API	TI
13.7	0	73.5	115.9	8.9	28.2	37.5	0.18	0.96	145.6	80.6

OFFERED BY HANELS BLACK SIMMENTALS

- A daughter of the rising star of performance and carcass, MR SR Highlife G1609.
- She posts a well rounded and balanced numeric profile with top 10% MCE, top 15% Milk and Stay, top 20% CE, and CW, and the top 30% for BW and API. Let's not forget the fact that she still ranks in the top half of the breed for YW, ADG, MWW, YG, REA, and TI as well.
- Her dam is one of the most attractive daughters of CCR Pay Dirt 2340C that you will set eyes on anywhere in the country.

AI BRED 4/9/24 TO HANELS LAWMAKER L3010 (ASA: 4256110).  
 SAFE AI. ESTIMATED DUE 1/6/25.



MR SR 71 RIGHT NOW E1538  
 SIRE OF LOT 63

BORN TO BE A

*legend*



## LOT 65



- A moderate, sharp featured female that comes with a genetic profile second to none in the offering.
- This direct daughter of Poss Deadwood ranks in the top 1% for WW, YW, and TI. She's in the top 3% for ADG and CW, the top 5% for MWW and Marb, the top 20% for API, and the top 25% for DOC and REA.
- She will headline the program that makes the final bid without question.

AI BRED 5/9/24 TO M4/3R/GF TOP NOTCH 381L (ASA: 4254227).  
PE 5/15/24-7/28/24 TO FP/L JURISDICTION 103J (ASA: 3881332).  
SAFE AI. ESTIMATED DUE 2/15/25. HEIFER CALF.

## Lot 65 M4/3R MS CHARISMA L313

1/2 SM 1/2 AN • 2/24/23 • ASA# 4255720 • TATTOO: L313

POSS MAVERICK CCR WIDE RANGE 9005A  
**POSS DEADWOOD** *H* **M4 MYSTIC LADY 04E**  
POSS ELLUNAMERE 399 SFI/GPAR FANCY COWGIRL

CE	BW	WW	YW	MCE	MILK	CW	MARB	REA	API	TI
8.9	3.3	106	167.5	5.2	22.5	60.5	0.83	0.83	154.3	105.1

OFFERED BY M4 SIMMENTALS



POSS DEADWOOD  
\$900,000 SIRE OF LOT 65

## Lot 66 M4 MS ENDOWMENT C55L

1/2 SM 1/2 AN • 1/3/23 • ASA# 4255700 • TATTOO: C55L

G A R SURE FIRE CONNEALY CAPITALIST 028  
**M4 PREDICTABLE 956G** *H* **M4 MS INVESTMENT C55**  
KSU MISS SHEAR FORCE 6Z SFI BETTY SUE Y85T

CE	BW	WW	YW	MCE	MILK	CW	MARB	REA	API	TI
14.2	3.1	84.3	131.3	6.4	29.3	35.9	0.43	0.77	147.3	84.3

OFFERED BY M4 SIMMENTALS

- The legacy of SFI Betty Sue Y85T continues through another granddaughter. This one comes with the Angus arsenal for sire power sporting the support of G A R Sure Fire and Connealy Capitalist 028.
- She comes with a potent numeric twist as she ranks in the top 5% for Stay, the top 15% MWW, top 20% WW and Milk, and the top 25% for YW.

AI BRED 4/12/24 TO LCDR AFFIRMED 212H (ASA: 3812282).  
PE 5/15/24-7/28/24 TO FP/L JURISDICTION 103J (ASA: 3881332).  
SAFE AI. ESTIMATED DUE 1/19/25. HEIFER CALF.

## Lot 67 HANELS MISS COWBOY CUT L3204

PB SM • 3/3/23 • ASA# 4256215 • TATTOO: L3204

CCR COWBOY CUT 5048Z SS/PRS HIGH VOLTAGE 244X  
**HANELS COWBOY CUT D6208** *H* **MISS HWGW HV64XX-Z45P**  
ES X51 SFI MISSFINAL DRIVE Z45P

CE	BW	WW	YW	MCE	MILK	CW	MARB	REA	API	TI
9.2	2	84.6	118.8	5.2	21.5	18.7	0.02	0.78	123.2	78.5

OFFERED BY WALROD CATTLE COMPANY

- CCR Cowboy Cut 5048Z and SS/PRS High Voltage 244X are known for making daughters that have a little extra in terms of size, body shape, milk, and longevity.
- L3204 sells with the service to KCC1 Countertime 872H. The \$230,000 Kearns produced, high seller is proven to sire calves that are moderate and sensible at birth with incredible growth. 872H's first daughters entered production this past spring with much praise and pounds of calf weaned as well.
- If you consider yourself a serious cattleman, producing for tomorrow and the generations that follow, one better take serious note.

AI BRED 5/9/24 TO KCC1 COUNTERTIME 872H (ASA: 4321955).  
SAFE AI. ESTIMATED DUE 2/15/25.



## LOT 68



• Harms Hardwood's sons have been very popular at the annual Hanel Black Simmentals Bull Sale and we are confident that most good cattlemen and all great stockmen or women will have a fond appreciation for Lot 68.

• This female is long and extended in her front third, deep and maternal in her rib shape, sound and collected in motion with plenty of true skeletal width that sets upon a great set of running gear.

• She is a 112 WW ratio female with just a 92 BW ratio. Numerically she ranks in the top 3% for WW, the top 4% for YW, The top 5% for MWW and Stay, the top 10% for ADG, YG, and REA, the top 20% for TI, and the top 25% for Milk. Well rounded, may be an understatement when one embraces the total package that this donor prospect has to offer your operation and the industry.

AI BRED 4/9/24 TO TJ GOLD RUSH 506K (ASA: 4065112).  
SAFE AI. ESTIMATED DUE 1/6/25.



HARMS HARDWOOD  
SIRE OF LOT 68

## Lot 68

### HANELS MISS HARDWOOD L3099

3/4 SM 1/4 AN • 1/21/23 • ASA# 4256285 • TATTOO: L3099

VJT DRIFTWOOD E55

CCR PAY DIRT 2340C

**HARMS HARDWOOD**

**HANELS MISS PAY DIRT 69023**

TJ 41Z

HANELS MISS BET A3240

CE	BW	WW	YW	MCE	MILK	CW	MARB	REA	API	TI
13	2.2	96.3	151.7	7.2	27.7	40	0.33	1.01	148.8	90.7

OFFERED BY HANELS BLACK SIMMENTALS

## Lot 69

### HANELS MISS SAFE & SOUND L3036

1/2 SM 1/2 AN • 1/5/23 • ASA# 4256200 • TATTOO: L3036

MILL BRAE IDENTIFIED 4031

CLRS DIVIDEND 405D

**HF SAFE & SOUND 019**

**HANELS MISS DIVIDEND 69133**

HF EMPRESS 804

HANELS MISS BET A3014

CE	BW	WW	YW	MCE	MILK	CW	MARB	REA	API	TI
14.9	-0.6	95.4	162.1	8.9	26.4	57.4	0.5	0.79	163	97

OFFERED BY HANELS BLACK SIMMENTALS

## LOT 69



• This incredible beast is astronomically numbered and miles above in phenotypic quality!

• Feminine as she should be, fault free in her build with the depth, width, and skeletal integrity needed to be an impactful breeding piece for any program in the business!

• She is very impressive in her data profile as she ranks in the top 2% for YW and ADG, the top 4% for WW and CW, the top 10% for MWW and TI, the top 15% for Stay and API, the top 20% for MCE, and the top 25% for CE and DOC. She also maintains rankings for BW, Milk, Marb, and REA in the top third of the business.

• She is sure to impress and one that should command the attention of those who study their lesson prior to sale day.

AI BRED 4/19/24 TO TJ GOLD RUSH 506K (ASA: 4065112).  
SAFE AI. ESTIMATED DUE 1/26/25.



HF SAFE & SOUND 019  
SIRE OF LOT 69





KBHR HONOR H060  
SIRE OF LOTS 70 & 71



MID-AM GLITZ & GLAMOUR 29G  
DAM OF LOTS 70 & 71

## Lot 70 MID-AM HONOR ROLE 58L

3/4 SM 1/4 AN • 1/26/23 • ASA# 4244242 • TATTOO: 58L

HOOK'S BEACON 56B CCR WIDE RANGE 9005A  
**KBHR HONOR H060** *H* **MID-AM GLITZ & GLAMOUR 29G**  
WS MISS SUGAR C4 MID-AM MISS GLAMOUR X11B

CE	BW	WW	YW	MCE	MILK	CW	MARB	REA	API	TI
13	0.4	86.4	132.2	6.8	22.2	45.2	0.36	1.34	147.7	87.2

OFFERED BY MID-AM GENETICS

- The Mid Am firm is certainly skilled at breeding cattle that are superior to the general population in their numeric read and they stay current with the trending sires as well.
- A direct daughter of KBHR Honor H060 that comes loaded with predictability supported only by her CCR Wide Range 9005A sired dam!
- She is without a doubt one of the biggest REA-numbered females in the breed as she reads with a whopping 1.36, putting her in the very top 1%! She also ranks in the top 4% for YG, top 10% for Stay, the top 20% for WW and CW, the top 25% for YW, and the top 30% for both API and TI.

AI BRED 4/15/24 TO JC MR PONTIAC D114K (ASA: 4029546).  
PE 4/20/24-7/21/24 TO G-S GAME ON COWBOY L10 (ASA: 4247152).  
SAFE TO PE SIRE. ESTIMATED DUE 3/20/25.

## Lot 72 DSC MISS 87L

5/8 SM 3/8 AN • 3/15/23 • ASA# 4298507 • TATTOO: 87L

EC REBEL 156F SVF STEEL FORCE S701  
**DSC DIVIDEND 45J** *H* **RATCLIFF STEEL MISS 302X**  
DSC ADRIANA'S MARK 53C D5191

CE	BW	WW	YW	MCE	MILK	CW	MARB	REA	API	TI
10.1	1.8	69.9	103.6	4	17.1	24.2	0.09	0.57	101.6	66.4

OFFERED BY DICKSON SIMMENTAL CATTLE

- The Dickson program has been built on fundamental selection and culling. Hoof quality, structure, body shape, fertility, udder design, and anything else that would affect longevity in production. They have been sorted over the years with Mike's sharp eye, so rest assured that they are built to work and return on investment.
- This female was built by the right herdsires for phenotypic quality. EC Rebel and SVF Steel Force S701 know no boundaries in siring high quality stock.

PE 4/1/24-6/22/24 TO ROCKING P BOLD VENTURE K095 (ASA: 4292805).  
SAFE TO PE SIRE. ESTIMATED DUE 2/25/25.

## Lot 71 MID-AM GLITZY GIRL 59L

3/4 SM 1/4 AN • 1/19/23 • ASA# 4244243 • TATTOO: 59L

HOOK'S BEACON 56B CCR WIDE RANGE 9005A  
**KBHR HONOR H060** *H* **MID-AM GLITZ & GLAMOUR 29G**  
WS MISS SUGAR C4 MID-AM MISS GLAMOUR X11B

CE	BW	WW	YW	MCE	MILK	CW	MARB	REA	API	TI
17.9	-2.8	77.6	117.1	10	22.2	29.4	0.37	1.01	153.9	85.9

OFFERED BY MID-AM GENETICS

- The full sister to lot 70 that maintained the advantage across the scales at both weaning and yearling time.
- 59L ranks in the top 10% for CE, MCE, Stay, and REA, the top 15% for BW and YG, the top 20% for API, and the top 35% for TI.
- What an impressive mating that offers real world figures with visual quality.

AI BRED 3/26/24 TO JC MR PONTIAC D114K (ASA: 4029546).  
PE 4/20/24-7/21/24 TO G-S GAME ON COWBOY L10 (ASA: 4247152).  
SAFE TO PE SIRE. ESTIMATED DUE 2/12/25.



ROCKING P BOLD VENTURE K095  
SON OF 2017 NWSS GRAND CHAMPION PUREBRED SIMMENTAL HEIFER,  
RP/MP TRIXIE C004!  
SERVICE SIRE TO LOT 72



## LOT 73



DEER VALLEY OPTIMUM 9246  
SIRE OF LOTS 73 & 74

*Lot 73*

### HANELS MISS OPTIMUM L3025

1/2 SM 1/2 AN • 1/3/23 • ASA# 4256247 • TATTOO: L3025

DEER VALLEY GROWTH FUND CCR COWBOY CUT 5048Z  
**DEER VALLEY OPTIMUM 9246** *H* **HANELS MISS COWBOY D6032**  
G A R PROGRESS 830 HANELS MISS OLIE Y1010

CE	BW	WW	YW	MCE	MILK	CW	MARB	REA	API	TI
12.7	1	92.5	156.3	10.1	27.2	62.3	0.7	0.5	162.5	97.4

OFFERED BY HANELS BLACK SIMMENTALS

- Whoa! What a specimen from Hanel!
- If you prefer them moderate, super dense, and loaded with center body shape and flexibility set your satchel down.
- This daughter of Deer Valley Optimum 9248 ranks in the top 2% ADG and CW, top 3% YW, top 5% TI, top 10% WW, MCE, MW, and Marb, the top 15% API, and the top 25% Milk and Stay.

AI BRED 4/9/24 TO OMF LUDACRIS L17 (ASA: 4255423).  
SAFE AI. ESTIMATED DUE 1/6/25.



HANELS LAWMAKER L3010  
\$32,000 PATERNAL BROTHER TO LOTS 73 & 74



OMF LUDACRIS L17  
\$70,000 SERVICE SIRE TO LOT 73

*Lot 74*

### HANELS MISS OPTIMUM L3000

ANGUS • 1/1/23 • AAA# 20789598 • TATTOO: L3000

DEER VALLEY GROWTH FUND CONNEALY BLACKHAWK 6198  
**DEER VALLEY OPTIMUM 9246** *H* **HANELS MISS BLACKHAWK H0005**  
G A R PROGRESS 830 MILL BRAE COM MAID 6072

CED	BW	WW	YW	CEM	MILK	CW	MARB	RE	\$B	\$C
10	1.4	100	178	10	18	70	0.75	0.71	156	246

OFFERED BY HANELS BLACK SIMMENTALS

- If Brock had a pot load of Angus females that looked like this, he would be able to experience a new set of tax issues!
- This Angus donor candidate ranks in the top 1% for both WW and YW as she spreads from 100 to 178 respectively. She's in the top 2% for MW, the top 5% for RADG, the top 10% for MH, and she is a top 10% \$W female as well.
- From a carcass standpoint, L3000 is in the top 15% for CW and posts breed average values for Marb and REA.
- She doesn't dwell on the extreme but offers balance across the board.
- L3000 is sensible in her data profile and offers phenotype that should take her directly to the donor pen. She's very good at the surface, flawless in motion, bold and deep in her rib design, crisp and true in her lines and features which only enhances her overall appeal to the industry and any discriminating cattleman or woman.

AI BRED 4/9/24 TO CONNEALY CRAFTSMAN (AAA: 20132505).  
SAFE AI. ESTIMATED DUE 1/6/25.

## LOT 74











*Red*

H I D E D  
B R E D F E M A L E S

*Lots* 7 5 - 8 3



## LOT 75



- EC Rebel 156F will sire cattle that are phenotypically superior. They will be modern in their design with density and mass.
- This red hided female may very well be one of the very best individuals in the sale in terms of build, power, and flexibility. There is little to question regarding her being able to produce breed influencing sires or high dollar junior show heifers, she comes as diversified as any.
- What a powerful, attractive beast with industry merit.

AI BRED 4/4/24 TO W/C BET ON RED 481H (ASA: 3808091).  
SAFE AI. ESTIMATED DUE 1/9/25. SEXED FEMALE SEMEN.



SFI MISS HOT LIPS G6  
DAM OF LOT 75

## Lot 75

### SFI KWIN MISS CHERRY BLOSSOM

PB SM • 1/15/23 • ASA# 4423813 • TATTOO: L305

PROFIT CCLT ALLIANCE 91C  
EC REBEL 156F SFI MISS HOT LIPS 66  
DSFF COUNTESS 357D SFI MISS ME O MY

CE	BW	WW	YW	MCE	MILK	CW	MARB	REA	API	TI
9.5	3.1	76.2	106.1	2.8	12.8	26.1	0.06	0.74	110.3	71.2

OFFERED BY WINTER FARM

## Lot 76

### PITZER MS REMI

PB SM • 1/15/23 • ASA# 4345164 • TATTOO: L55

WS PILGRIM H182U W/C BANKROLL 811D  
PROFIT PUETTS MS SADIE  
WAGR PANARAMA 204Z PUETTS MS REVIVAL

CE	BW	WW	YW	MCE	MILK	CW	MARB	REA	API	TI
7.2	3.8	76	106.2	3.9	15.9	16.3	0.06	0.78	106.1	71.3

OFFERED BY THE PITZER FAMILY

## LOT 76



- The 2024 Legends of the Flint Hills offering is loaded with quality cover to cover.
  - The red cattle are as good as one can find anywhere in the country as this group features so many genetic combinations that cross program lines and that's what breeding livestock is about.
  - W/C Bankroll 811D will keep stock wide at the surface, they will have width of chest, outward turn to their center and lower body, and true shape from behind.
  - Profit is known to sire extra look, genuine upper rib shape, back and hip shape while setting down on more bone and foot size.
  - When one crosses those "program lines", you can achieve genetic and phenotypic excellence as noted in lot 76. We think she is as impressive as the very best in the offering and should generate plenty of attention once this book hits the mailboxes.
- AI BRED 4/2/24 TO WHF/JS/CCS WOODFORD J001 (ASA: 4068398).  
SAFE AI. ESTIMATED DUE 1/9/25.



WHF/JS/CCS WOODFORD J001  
2023 NAILE GRAND CHAMPION  
PERCENTAGE SIMMENTAL BULL  
& SERVICE SIRE TO LOT 76



# LOT 77



THSF LOVER BOY B33  
SIRE OF LOT 77

## Lot 77 HWGW MISS LOVVERBOY L13-H39X

3/4 SM 1/4 AN • 3/10/23 • ASA# 4412485 • TATTOO: L13

HTP/SVF DURACELL T52

SFI MASTERPIECE D7B

THSF LOVER BOY B33

HWGW MISS H39X-1018

RP/MP RIGHT TO LOVE 015U

MISS NEW EDITION 1018

CE	BW	WW	YW	MCE	MILK	CW	MARB	REA	API	TI
12	0.6	75.9	114	4.5	26.3	27.4	0.32	0.52	124.2	78.3

### OFFERED BY WALROD CATTLE COMPANY

- For those who have visited the ranch in Randolph, Kansas owned by the Walrods, one would certainly remember the daughters of SFI Masterpiece D78 and especially those from the Angus dams that roam the pastures.
- H39X is as deep, bold, square, and genuine at the surface as any owned by the family and she certainly passed that along to her three-dimensional, bold-built daughter by THSF Lover Boy B33.
- This female very well could have a black blaze-faced heifer calf on the way by the calving ease sire of phenotype, HOLT Night Vision 457H.

AI BRED 4/8/24 TO HOLT NIGHT VISION 457H (ASA: 3802475).  
SAFE AI. ESTIMATED DUE 1/14/25. HEIFER CALF.

## Lot 78 KWIN EI85 EO ELECTRA

PB SM • 2/22/23 • ASA# 4423029 • TATTOO: L321

W/C EXECUTIVE ORDER 8543B

CCR WIDE RANGE 9005A

KWIN EO A185

KWIN WIDE RANGE KAT E712

ELM-MOUND BLT RIGHT A185

KWIN DEW IT RIGHT C189

CE	BW	WW	YW	MCE	MILK	CW	MARB	REA	API	TI
12.6	0.1	78.2	116	6.8	16.9	20.5	0.05	0.86	131.8	78.1

### OFFERED BY WINTER FARM

- One can study her image and know that she is influenced by the legendary combination sire of phenotype and genotype, W/C Executive Order 8543B.
- This stunning red head is very arrogant as she accentuates her high tying front third. Her pen presence is undeniable and when set in motion she offers as much flexibility as any in the offering.
- She is moderate but modern in her center body and is as genuine as any at the surface.
- What a phenomenal red hided donor prospect from Winter Farm.

AI BRED 4/8/24 TO KBHR SNIPER EO36 (ASA: 3312030).  
SAFE AI. ESTIMATED DUE 1/15/25.

# LOT 78





## LOT 79



- This slick, red hided female is inclusive to the good sires in the breed that share in the same hide color or have a high instance in siring the color. Bar CK Red Empire 9153G and his sire IR Imperial D948 along with the ultra proven, Simmental legends W/C Executive Order 8543B and Hook's Shear Force 38K.
- A moderate, big bodied female that ranks in the top 10% for CE, BW, and REA, she too is in the top 15% for MCE, Milk, DOC, API, and TI, the top 20% for ADG and Marb, and in the top 25% for MWW and CW.

AI BRED 4/12/24 TO CDI/NF HONOR GUARD 267H (ASA: 3801515).  
PE 5/15/24-7/28/24 TO FP/L JURISDICTION 103J (ASA: 3881332).  
SAFE TO PE SIRE. ESTIMATED DUE 3/1/24. HEIFER CALF.



BAR CK RED EMPIRE 9153G  
SIRE OF LOT 79

## Lot 79

### M4/3R MS AFFINITY G6L

PB SM • 1/20/23 • ASA# 4255715 • TATTOO: G6L

IR IMPERIAL D948

W/C EXECUTIVE ORDER 8543B

**BAR CK RED EMPIRE 9153G** *It* **M4 MS HARMONY G6Z**

WS MISS NORTHSTAR B180

KSU MISS SHEAR FORCE 6Z

CE	BW	WW	YW	MCE	MILK	CW	MARB	REA	API	TI
15.8	-1.4	80.2	128.2	8.3	27.7	35.2	0.41	1.16	159.4	92.2

OFFERED BY M4 SIMMENTALS

## Lot 80

### HWGW MISS K56X-H10

PB SM • 3/3/22 • ASA# 4243599 • TATTOO: K56X

SVF DREAM MASTER T50

GSC GCCO DEW NORTH 102C

**SFI PERFECT TIMING A6** *It* **HWGW MISS HENLEY H10-C16**

SFI LUVY DUVY X13N

EDIE

CE	BW	WW	YW	MCE	MILK	CW	MARB	REA	API	TI
10.6	1.5	68.3	98.2	3.1	25.3	26.3	0.12	0.66	123.1	71.7

OFFERED BY WALROD CATTLE COMPANY

## LOT 80



- SFI Perfect Timing is one of the quality sires that GW has been high on over the years, especially regarding female retention. Elegance, maternal instinct, and longevity are all deeply engrained within the sire group.
- K56X's Mr HOC Broker influenced dam is one impressive beast in her own right as indicated by the quality and power she possesses.
- This red, brockle faced female offers an unforgettable color pattern that enhances her value and what she could contribute to the next generation. A darker red female, aside from her white markings, that is square from hooks to pins, good in the set and travel or rear wheel and hock, bold in her body, and very extended in her front third!
- She sells with a heifer calf on the way by the \$230,000 KCC1 Countertime 872H for a quick return on investment.

AI BRED 4/7/24 TO KCC1 COUNTERTIME 872H (ASA: 4321955).  
SAFE AI. ESTIMATED DUE 1/14/25. HEIFER CALF.



# LOT 81



SWC RED WAVE 376J  
\$85,000 SIRE OF LOTS 81 & 82



W/C RED BIRD 269J  
\$90,000 SIRE OF LOT 83

## Lot 81

### MISS HWGW L55H-H55

PB SM • 1/3/23 • ASA# 4412472 • TATTOO: L55H

CONLEY HIGH RISE F3 SFI MASTERPIECE D7B  
SWC RED WAVE 376J *✶* HWGW MISS H55-D11  
SWC GWENDOLYN 376G HWGW MISS D11-N78H

CE	BW	WW	YW	MCE	MILK	CW	MARB	REA	API	TI
11.9	1	71.8	104.4	3.9	19.8	22.1	0.25	0.57	133.6	77.6

OFFERED BY WALROD CATTLE COMPANY

- Royally bred in some of the very best that helped to build the name of this sale! SFI Miss Me O My and SFI Miss Girlfriend N78 influence this modern, good-looking, blood red hided female.
- She is carrying the service to the sire of Champions in Dunlap, Iowa, and a past National Champion himself, THSF Lover Boy B33. Very likely that a red hided calf would be on the way from this youthful and future-bound breeding piece.
- She will be a major component for any operation wishing to advance the quality of their female base.

AI BRED 5/9/24 TO THSF LOVER BOY B33 (ASA: 2983443).  
SAFE AI. ESTIMATED DUE 2/15/25.

## Lot 82

### HWGW MISS L11H-H11

PB SM • 2/1/23 • ASA# 4412482 • TATTOO: L11H

CONLEY HIGH RISE F3 HOC DAKOTA 111D  
SWC RED WAVE 376J *✶* MISS HWGW H11-F72  
SWC GWENDOLYN 376G HWGW MISS F72-X14U

CE	BW	WW	YW	MCE	MILK	CW	MARB	REA	API	TI
13.2	-0.4	63.7	87.8	5.9	21.9	15.5	0.27	0.47	136.9	74.8

OFFERED BY WALROD CATTLE COMPANY

- A redhead that comes saturated with reliable and proven calving ease and productivity.
- She is laced with some of the great but unsung matrons of the business. Cows like SWC Gwendolyn 376G, WAGR Melody 5076C, EBS Dream Mosaic, and SFI Dew It Girl complement the \$120,000 valued Conley Sheza Star D3, now owned by LT Ranch of South Dakota.
- She's bred to THSF Lover Boy B33 to enhance the potential of a red hided calf the first week of March.
- This female ranks among the top 20% for BW, top 30% for CE, and the top 35% for Marb.

AI BRED 5/28/24 TO THSF LOVER BOY B33 (ASA: 2983443).  
SAFE AI. ESTIMATED DUE 3/6/25.

## Lot 83

### HWGW MISS L17-376G

PB SM • 3/19/23 • ASA# 4412487 • TATTOO: L17

W/C BANKROLL 811D W/C EXECUTIVE ORDER 8543B  
W/C RED BIRD 269J *✶* SWC GWENDOLYN 376G  
W/C MISS ANGEL 2870Z WAGR MELODY 5076C

CE	BW	WW	YW	MCE	MILK	CW	MARB	REA	API	TI
12.8	0.9	75.4	111.6	5.7	19.9	30	0.27	1	129.5	81.5

OFFERED BY WALROD CATTLE COMPANY

- When in doubt, just line the great cows up! SWC Gwendolyn 376G is a testament to how fertility should be in a program as this donor moved herself up in her calving interval just over five months in three years while raising a calf and undergoing IVF aspirations.
- SWC Gwendolyn 376G is owned by Circle N Ranch of Lubbock, TX as she was their selection from the 2023 Spring Sort. She is the dam of the \$85,000 SWC Red Wave 376J and a full sister to BLC1 Evelyn 476E, the dam behind the standout donor for the Dickson firm of Ohio, SWC Grace N Melody 329G.
- 3C Melody M668 BZ and Miss Werning 8543U KP are up fairly close in the pedigree box, so based on longevity, I would not hesitate to add this one to any program.

AI BRED 5/9/24 TO SWC RED WAVE 376J (ASA: 3937607).  
SAFE AI. ESTIMATED DUE 2/15/25.

Thank You

FOR YOUR INTEREST  
& SUPPORT



*I*NNOVATION  
— AgMarketing, LLC —  
PO Box Z  
De Soto, KS 66018

*Legends*  
OF THE  
FLINT HILLS

SUNDAY, DECEMBER 1, 2024 | 1 PM CENTRAL

*Westmoreland, Kansas*



CATALOG DESIGNED BY MELISSA GRIMMEL SCHAAKE