

THE  
**MIDWEST MADE**  
ELITE FEMALE SALE

DECEMBER 13, 2024  
FRIDAY NIGHT: 6:00 PM

GRAND CHAMPION  
4-H Breeding Heifer  
NEBRASKA ELITE FAIR  
Nothing More Nebraska  
2023



*2024 American Royal Grand Champion Percentage Simmental Heifer  
Sired by Harkers Unleashed*

**JUNIOR INCENTIVE PROGRAM**

Any junior member that purchases a heifer will receive 3 units of semen from the sire of their choice that is a member of the JS Herd Bull Battery!

**WATCH AND BID ONLINE AT**



# Welcome to the Sale



*2024 American Royal Grand Champion Purebred Simmental Heifer  
Full Sister to Lots 1-3*

## **VIEWING OF THE SALE OFFERING**

Thursday, December 12, 2024  
Cattle on display all day

## **SALE DAY SCHEDULE**

Friday, December 13, 2024  
Cattle on display all day  
4:30 PM - Dinner and Hospitality  
6:00 PM - JS Midwest Made Elite  
Female Sale Begins

## **SALE LOCATION**

JS Simmentals Sale Facility  
9713 S 88th Ave W  
Prairie City, Iowa 50228

Welcome to the 2024 edition of the Midwest Made Elite Female Sale,

As I sit down to write this I can't help but reflect on the year we've had, the livestock we've bred, and most importantly the friendships we've made both in and out of the ring! It is always a true pleasure to get to see these females go out and make a name for themselves in their new respective homes. We truly enjoy the privilege of working with new and old friends year after year. We put a heavy emphasis on service after the sale to ensure we do everything we can for everyone to have the most successful and enjoyable experience that they so desire. We are passionate about what we do and want to help our customers achieve their goals.

With that being said we would like to personally invite you out to the farm in Prairie City, Iowa this fall for your personal and careful inspection of this set of females that we have assembled. As always we will have a selection of these females on display at the NAILE in Louisville, KY. We would like to personally thank everyone who has stopped in thus far this fall and reached out on the offering. We look forward to meeting with you to discuss your goals and aspirations this fall, and as always, please feel free to reach out to any of our team members with any questions about the offering. We hope you can join us December 13th here in Prairie City for the 2024 edition of the JS Midwest Made Elite Female Sale.



### JS SIMMENTALS

Ken & Claudia Steenhoek (515) 979-9713  
Jay, Dani, Chesney & Coy Steenhoek (515) 238-5938  
Scott, Amy & Grady Grass (515) 689-1012  
Derek & Callie Counsell, Herdsman (641) 715-4138  
Jeff Williams, Herdsman (402) 380-9049

I think I can personally speak for everyone on behalf of this year's set of females that we have assembled. The careful embryo matings along with the addition of some new and young faces to our donor arsenal combined with bulls from our stud battery, along with many of the industry's leading sires have lead us to these females that we present to you this year! It's been all hands on deck this fall around the barn with countless hours put in prepping this set of females for your appraisal. Each year we set out with the same goal in mind, producing the highest quality, soundest structured, and most eye appealing Simmental, SimGenetic, and Angus cattle we can! We continue to dig deep and add to our already highly prolific donor battery and know that at the end of the day, these females will be ready to join your program. We could not be any more excited for the future of our operation and influence on yours!

Sincerely,

*Derek Counsell*

JS Simmental Herdsman



## SALE DAY CONTACTS

Jay Steenhoek (515) 238-5938  
Ken Steenhoek (515) 979-9713  
Scott Grass (515) 689-1012  
Derek Counsell (641) 715-4138  
Jeff Williams (402) 380-9049

## AUCTIONEER

Col. Jered Shipman (806) 983-7226

## SALE MANAGEMENT

Innovation AgMarketing, LLC  
Graham Blagg (530) 913-6418  
Jered Shipman (806) 983-7226  
Tim Anderson (605) 682-9343

## RING STAFF

Tom Rooney, Special Assignment (515) 491-6025  
Kent Jaecke, Special Assignment (405) 408-2440  
Shane Ryan, Special Assignment (309) 371-7490

## MARKETING AGENTS

Cole Greiman (641) 494-4570  
Kyle Greiman (641) 494-4571  
Dalton Lundy (502) 727-6898  
Buddy Robertson (580) 747-7000  
Colby Taber (309) 335-1939  
Wes Horn (479) 841-0626  
Craig Sand (405) 564-4319  
Kelvin Jorgenson (402) 366-9475  
Ryan Haefner (815) 499-0522  
Kurt Meyer (217) 273-1399  
Kelly Schmidt (406) 599-2396  
Cash Langford (254) 631-3618

## INSURANCE

Jame Secondino-Krieger (812) 208-0956  
Anna Krieger (269) 470-7553

## LODGING

Hampton Inn & Suites  
215 Adventureland Dr NW - Altoona, IA 50009  
(515) 967-5774

Holiday Inn & Suites Altoona-Des Moines  
165 Adventureland Dr NW - Altoona, IA 5009  
(515) 967-1855

## AIR TRAVEL

Des Moines International Airport – 31 Miles  
Omaha International Airport – 161 Miles  
Kansas City International Airport – 161 Miles

## PHOTOGRAPHY

John Reasor (423) 290-6002

## CATALOG DESIGN

THM Promotions, Tracy McMurphy (806) 679-0231

## NOTE TO BUYERS

JS Simmentals reserves the right to two successful flushes with a minimum of 12 embryos, unless otherwise noted. This will be done at the sellers cost and buyers convenience. We also reserve the right to create a cell line or clone any female in the offering. Disposition, quality, soundness will become the responsibility of the buyer when the animal leaves JS Simmentals. We do recommend purchasing insurance from the listed agents at the conclusion of the offering for further protection.

## TERMS AND CONDITIONS

All lots sell in accordance with the suggested guidelines of the American Simmental Association or their respective breed association. For updated EPD's and information please visit [www.simmental.org](http://www.simmental.org). Announcements made sale day from the block during the sale take precedence over printed material in this catalog. Payment will be accepted in the form of cash, cashier's check, or check. All cattle must be paid for prior to release. All funds are to be paid to Innovation AgMarketing, LLC in U.S. currency. No cattle will be transferred, delivered, or released without full payment. In the event you need expedited registration paper transfers please make plans to pay in full on sale day. All sales are final.

## ANNOUNCEMENTS

A supplement sheet will be available sale day with updated information, corrections and additional information. This sheet and any announcements made sale day and from the auction block during the sale will take precedence over printed material associated with this sale.

## LIABILITY

JS Simmentals, Innovation AgMarketing, LLC, and authorized sale personnel assume NO liability for injury, accident, or damage to persons or personal property. All persons who attend the sale do so at their own risk.

## FERTILITY & RETAINED FLUSHES

JS Simmental will retain the right to (2) two successful flushes on each female in the offering. This is to be done at the buyer's convenience and seller's expense. Females will sell in correlation with their respective breed associations.

All females are sold as sound breeders. However, if we feel that a heifer has been fed to an extreme level of obesity, we will hold the feeder responsible for any reproductive problems. Seller reserves the right to take possession of any animal(s) that presents difficulty conceiving before a sale credit will be issued. Seller guarantees each female to produce a live calf or transferrable embryos.

## VACCINATIONS

All females have been bangs vaccinated and are tagged with an EID Button. All have been vaccinated with Enforce, Once PMH, poured with Clean-Up, Dewormed with safe-guard twice, multi-min, Vision 7 with spur, and CD&T. All females have been tattooed with the bangs shield, as well as their corresponding tattoo identification.



## *I*NNOVATION — AgMarketing, LLC —

It's a privilege to work for the great family operations in the beef business that we are employed by. Everyone has the passion and drive to stay the course and keep up with the fast pace essential to survive in today and tomorrow's industry. An example of what intense ambition and eternal optimism look like is how the family and crew at JS Simmental approach the business each day. From how they conduct business at the bull stud to the high level of customer service they provide to those who buy cattle from them, it's first-class and well-intended. When it comes to the next acquisition of an industry leading donor, donor prospect, or the next breed leading AI sire, they show no reservation or fear as a testament to that drive to be the best and stay ahead of the pack!

The JS crew is fearless in their approach to breeding seedstock. They have the ability to bring out the very best in either sex, bull or female. Granted, they have invested with some of the country's finest outfits as partners, but strength is better shared than alone. JS Flirt A-Way 59Y can be credited as one of the many independent successes of the firm, but sires such as WHF/JS/CCS Double Up G365 and WHF/JS/CCS Woodford J001 are the results of a joint venture. Regardless of how the success was attained, good people do good business with other good people.

Each of you reading this letter knows the pristine reputation of the family and the crew. You have confidence in the family operation and the stock they produce because they do it for the right reasons; to make everything and everyone involved better. The set of stock between the covers of this book are the best that team JS has ever brought forth for public appraisal. These cattle are laced with well-known donor dams and reputable sires for generations. "Rome wasn't built in a day" and neither was this diversified family agricultural entity. Ken has been chipping away for nearly three decades, he knew what he wanted then and that's why they are where they are today.

You know the hospitality will be worth your attendance at the sale on December 13, so consider this your personal invitation. We encourage you to come look through the stock prior to sale day, Derek Counsell or Ken Steenhoek will be happy to show you around. If you need any presale assistance with anything feel free to contact any member of the Innovation AgMarketing team. We realize it's a busy time of year, and there is plenty to do with church, school athletic events, and family gatherings, so know that all hands are on deck to be of any assistance possible.

Thank you for your interest and enjoy the stock!

*Graham Blagg*

*Jered Shipman*

*Tim Anderson*

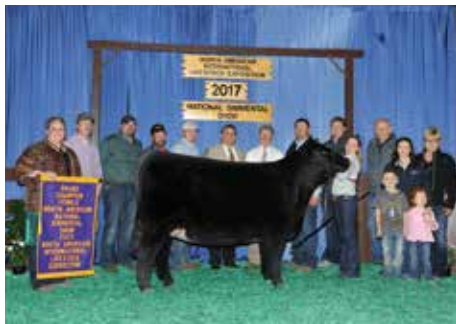
# Open

FEMALES



LOT 1 CCS/JS SUMMER 7M

THE OPEN FEMALES



**WHF SUMMER 365C**  
2017 NAILE Grand Champion  
Purebred Simmental Heifer  
Dam of Lots 1-18



**CCS/JS SUMMER 33H**  
2021 NAILE Grand Champion  
Purebred Simmental Heifer  
\$32,000 Full Sister to Lots 1-3



**CCS/JS/LFTZ SUMMER L378**  
2024 American Royal Grand Champion  
Purebred Simmental Heifer  
\$40,000 Full Sister to Lots 1-3

CCS/JS SUMMER 7M

YARDLEY UTAH Y361  
W/C RELENTLESS 32C  
MISS WERNING KP 8543U  
CCR WIDE RANGE 9005A  
WHF SUMMER 365C  
WHF ANDIE 365A

LOT 1  
PB SM

REG: 4391371  
BD: 3/8/24 TATTOO: 7M

CE	BW	WW	YW	MCE	MLK	MWW	STY	CW	YG	MRB	BF	REA	API	TI
8.2	3.3	79.3	105.8	3.9	17.1	56.7	11.9	18.2	-0.45	-0.04	-0.08	0.92	104.7	71.4

- We initiate the JS Simmentals Midwest Made Elite Female Sale with a trio of ET flushmate sisters that are supported by one of the most dynamic matings in the history of the JS Simmentals breeding program! CCS/JS Summer 7M is a FULL SISTER to the 2024 American Royal Grand Champion Purebred Simmental Heifer, CCS/JS/LFTZ Summer L378! L378 was also selected as the 2024 AJSA National Classic 3rd Overall Purebred Simmental Heifer for Brody Wenell.
- Another full sister to this trio of females, CCS/JS Summer 33H, was the 2021 NAILE Grand Champion Purebred Simmental Heifer for KayLee Langford.
- 7M is a beautiful blaze faced female that is elite in terms of her balance from the side. She is a bold ribbed female that offers a look of quality and style that is second to none! Power in the blood would be significant understatement!





LOT 2 CCS/JS SUMMER 2M



LOT 3 CCS/JS SUMMER 1M

- Here is another pair of ET flushmate sisters that are sure to be on countless short lists on sale day. Both females are solid black February born daughters of the iconic WHF Summer 365C that are sired by W/C Relentless 32C.
- CCS/JS Summer 1M was selected as the 2024 IA State Fair Winter Heifer Calf Division Champion earlier this year.
- This is a pair of females that are bred to find the backdrop!



CCS/JS SUMMER 4L  
\$90,000 Full Sister to Lots 1-3



CCS/JS SUMMER 39J  
\$44,000 Full Sister to Lots 1-3



CCS/JS SUMMER 1M  
2024 IA State Fair Winter Heifer Calf Division Champion

CCS/JS SUMMER 2M

YARDLEY UTAH Y361 W/C RELENTLESS 32C MISS WERNING KP 8543U CCR WIDE RANGE 9005A WHF SUMMER 365C WHF ANDIE 365A													
LOT 2 PB SM REG: 4408354 BD: 2/8/24 TATTOO: 2M													
CE	BW	WW	YW	MCE	MLK	MWW	STY	CW	YG	MRB	BF	REA	TI
8.2	3.3	79.3	105.8	3.9	17.1	56.7	11.9	18.2	-0.45	-0.04	-0.08	0.92	104.7 71.4

CCS/JS SUMMER 1M

YARDLEY UTAH Y361 W/C RELENTLESS 32C MISS WERNING KP 8543U CCR WIDE RANGE 9005A WHF SUMMER 365C WHF ANDIE 365A													
LOT 3 PB SM REG: 4391369 BD: 2/16/24 TATTOO: 1M													
CE	BW	WW	YW	MCE	MLK	MWW	STY	CW	YG	MRB	BF	REA	TI
8.2	3.3	79.3	105.8	3.9	17.1	56.7	11.9	18.2	-0.45	-0.04	-0.08	0.92	104.7 71.4

LOT 4 CCS/JS SUMMER 34M

THE OPEN FEMALES



WHF SUMMER 365C

2017 American Royal Supreme Champion Junior Breeding Heifer  
Dam of Lots 1-18



WHF SUMMER 005J

2023 American Royal Reserve Grand Champion Purebred Simmental Heifer  
Maternal Sister to Lots 1-18

CCS/JS SUMMER 34M

W/C RELENTLESS 32C

RECKONING 711F

RWA KRISHA-ET

CCR WIDE RANGE 9005A

WHF SUMMER 365C

WHF ANDIE 365A

LOT 4

PB SM

REG: 4408352

BD: 4/4/24 TATTOO: 34M

CE	BW	WW	YW	MCE	MLK	MWW	STY	CW	YG	MRB	BF	REA	API	TI
7.1	2.9	77.4	103.5	4.1	17.2	56.1	14.5	16.8	-0.34	-0.05	-0.05	0.75	107.4	69.8

- CCS/JS Summer 34M offers a captivating look of quality and balance from the side that is sure to catch your eye on sale day! 34M is the first of six ET flushmate sisters that are sired by the many times National Champion, Reckoning 711F, one of the great sons of W/C Relentless 32C in the business!
- 34M is a blaze faced female that ties her slender neck high at the top of her neatly laid in shoulder. She is clean chested and offers tremendous progression of depth through her rear rib and flank. She is a big hipped, stout pinned, and square made female that sets to the surface with confidence.
- One of the most elite daughters of the iconic WHF Summer 365C that has EVER been born!



LOT 5 CCS/JS SUMMER 36M

- 36M is another standout blaze faced female from the Reckoning 711F sired flush from the dynamic WHF Summer 365C donor dam! She is a bold ribbed, deep bodied female that is flawless in terms of her skeletal design.
- 36M is one of the most complete, fault-free females from an incredible flush of females. We love the consistency and quality that this mating yielded!



RECKONING 711F  
2020 NWSS Grand Champion  
Percentage Simmental Bull  
Sire of Lots 4-9



LOT 6 CCS/JS SUMMER 33M

- CCS/JS Summer 33M is a powerful female that offers an ultra-cow look in terms of her basic build and body style. She is robust in the shape of her forerib and center body, while offers tremendous stoutness from behind.
- We expect this set of ET flushmate sisters to be forceful on the tan bark, but their ultimate value will come in the production stage of their life!



WHF/JS/CCS DOUBLE UP G365  
2021 Cattlemen's Congress Reserve Grand  
Champion Purebred Simmental Bull  
Maternal Brother to Lots 1-18

CCS/JS SUMMER 36M

W/C RELENTLESS 32C  
RECKONING 711F  
RWA KRISHA-ET  
CCR WIDE RANGE 9005A  
WHF SUMMER 365C  
WHF ANDIE 365A

LOT 5  
PB SM  
REG: 4422173  
BD: 3/20/24 TATTOO: 36M

CE	BW	WW	YW	MCE	MLK	MWW	STY	CW	YG	MRB	BF	REA	API	TI
7.1	2.9	77.4	103.5	4.1	17.2	56.1	14.5	16.8	-0.34	-0.05	-0.05	0.75	107.4	69.8

CCS/JS SUMMER 33M

W/C RELENTLESS 32C  
RECKONING 711F  
RWA KRISHA-ET  
CCR WIDE RANGE 9005A  
WHF SUMMER 365C  
WHF ANDIE 365A

LOT 6  
PB SM  
REG: 4422171  
BD: 3/28/24 TATTOO: 33M

CE	BW	WW	YW	MCE	MLK	MWW	STY	CW	YG	MRB	BF	REA	API	TI
7.1	2.9	77.4	103.5	4.1	17.2	56.1	14.5	16.8	-0.34	-0.05	-0.05	0.75	107.4	69.8



LOT 7 CCS/JS SUMMER 35M

- 35M is another sharp featured, elegant designed daughter of WHF Summer 365C, the NUMBER 1 highest dollar generating cow in the donor battery at JS Simmentals.
- She is a stunning March born daughter of Reckoning 711F that is laid back in her shoulder angle, bold bodied, and deep sided.
- An incredible built female that is flawless at the surface. A maternal sister to lots 1 through 18, CCS/JS Summer 61K, commanded a \$60,000 hammer price in the 2023 JS Simmentals Midwest Made Fall Born Sale.
- Invest in the future of your breeding program with a direct daughter of the legendary WHF Summer 365C!



CCS/JS SUMMER 61K  
\$60,000 Maternal Sister to Lots 1-18



LOT 8 CCS/JS SUMMER 10M

- CCS/JS Summer 10M is a beautiful profiling, sleek fronted, smooth shouldered daughter of Reckoning 711F that offers a very futuristic look of quality!
- The dam of lots 1 through 18, WHF Summer 365C, was the 2017 American Royal Supreme Champion Junior Breeding Heifer for Chesney. She went on to be selected as the 2017 NAILE Grand Champion Purebred Simmental Heifer.
- A cow family to tie to for the long haul!

CCS/JS SUMMER 35M

W/C RELENTLESS 32C  
RECKONING 711F  
RWA KRISHA-ET  
CCR WIDE RANGE 9005A  
WHF SUMMER 365C  
WHF ANDIE 365A

LOT 7  
PB SM

REG: 4422174  
BD: 3/14/24 TATTOO: 35M

CE	BW	WW	YW	MCE	MLK	MWW	STY	CW	YG	MRB	BF	REA	API	TI
7.1	2.9	77.4	103.5	4.1	17.2	56.1	14.5	16.8	-0.34	-0.05	-0.05	0.75	107.4	69.8

CCS/JS SUMMER 10M

W/C RELENTLESS 32C  
RECKONING 711F  
RWA KRISHA-ET  
CCR WIDE RANGE 9005A  
WHF SUMMER 365C  
WHF ANDIE 365A

LOT 8  
PB SM

REG: 4422170  
BD: 2/15/24 TATTOO: 10M

CE	BW	WW	YW	MCE	MLK	MWW	STY	CW	YG	MRB	BF	REA	API	TI
7.1	2.9	77.4	103.5	4.1	17.2	56.1	14.5	16.8	-0.34	-0.05	-0.05	0.75	107.4	69.8



**CCS/JS/LFTZ SUMMER L378**  
 2024 IA State Fair Reserve Grand Champion  
 Purebred Simmental Heifer  
 3/4 Sister in Blood to Lots 4-9



**CCS/JS/LFTZ SUMMER L378**  
 2024 AJSA National Classic 3rd Overall  
 Purebred Simmental Heifer  
 3/4 Sister in Blood to Lots 4-9

**CCS/JS SUMMER 39M**

W/C RELENTLESS 32C  
**RECKONING 711F**  
 RWA KRISHA-ET  
 CCR WIDE RANGE 9005A  
**WHF SUMMER 365C**  
 WHF ANDIE 365A

**LOT 9**  
**PB SM**

REG: 4408353  
 BD: 2/27/24 TATTOO: 39M

CE	BW	WW	YW	MCE	MLK	MWW	STY	CW	YG	MRB	BF	REA	API	TI
7.1	2.9	77.4	103.5	4.1	17.2	56.1	14.5	16.8	-0.34	-0.05	-0.05	0.75	107.4	69.8

- 39M is a February born daughter of WHF Summer 365C that is sired by Reckoning 711F, making her a member of one of the most dynamic groups of flushmate sisters ever born at JS Simmentals!
- From the ground up she is flawless in terms of her joint work and angles. She takes a long and athletic stride when set into motion. There is no denying the genuine quality, dimension, and overall volume that she offers. We love the natural turn and shape to her rib cage. She is a long sided, ultra-complete female that is certain to be a contender when it truly counts!
- 39M is a true sale feature that is ready to make her way to the backdrop early and often!

LOT 10 CCS/JS SUMMER 8M

THE OPEN FEMALES



R/C SFI CREEDENCE 417J  
 2023 Cattlemen's Congress Grand Champion  
 Purebred Simmental Bull  
 Sire of Lots 10-12



CCS/JS SUMMER 8M  
 2024 IA State Fair Spring Heifer Calf Division Champion

**CCS/JS SUMMER 8M**

JSUL SOMETHING ABOUT MARY 8421  
**R/C SFI CREEDENCE 417J**  
 SFI LOVE ME LATER A9X  
 CCR WIDE RANGE 9005A  
**WHF SUMMER 365C**  
 WHF ANDIE 365A

**LOT 10**  
**PB SM**

REG: 4391370  
 BD: 3/22/24 TATTOO: 8M

CE	BW	WW	YW	MCE	MLK	MWW	STY	CW	YG	MRB	BF	REA	API	TI
8.3	3.6	86.2	126.2	3.5	16.4	59.4	13.1	28.4	-0.41	-0.17	-0.09	0.86	104.1	72.4

- 8M is the first of three ET flushmate sisters from a NEW and exciting mating that are sired by one of the resident herd bulls at JS Simmentals, R/C SFI Creedence 417J! He was the 2023 Cattlemen's Congress Grand Champion Purebred Simmental Bull and the 2024 NWSS Reserve Grand Champion Purebred Simmental Bull.
- This striking blaze faced female offers a look of quality and style from the side that will satisfy even the most discriminating eyes in the business.
- Her neck ties high at the top of her shoulder, while remaining smooth in her transitions. She is bold in the shape of her forerib, strong topped, and square hipped.
- A big league female that is destined to follow in the footsteps of her dominant sisters and legendary donor dam!



LOT 11 CCS/JS SUMMER 18M

- 18M is another daughter of the immortal WHF Summer 365C that is sired by the R/C SFI Creedence 417J. This beautiful profiling female that has a perfectly etched blaze face is one that is so elegant from every angle of evaluation.
- A late April born female that offers a very futuristic build and body style!



WHF SUMMER 365C  
Dam of Lots 1-18



LOT 12 CCS/JS SUMMER 9M

- CCS/JS Summer 9M is a solid black daughter of R/C SFI Creedence 417J that offers a unique look of quality and style. She is a stout featured, big hipped, wide pinned female that is square built. We appreciate the extra power and substance from this particular mating.
- This late February show heifer/donor prospect has the basic build, shape, and overall dimension essential to become a top tier generator!



CCS/WHF SUMMER 50F  
2019 AJSA National Classic Reserve  
Grand Champion Bred & Owned Heifer  
Maternal Sister to Lots 1-18

CCS/JS SUMMER 18M

JSUL SOMETHING ABOUT MARY 8421  
**R/C SFI CREEDENCE 417J**  
 SFI LOVE ME LATER A9X  
 CCR WIDE RANGE 9005A  
**WHF SUMMER 365C**  
 WHF ANDIE 365A

**LOT 11**  
**PB SM**  
 REG: 4422176  
 BD: 4/20/24 TATTOO: 18M

CE	BW	WW	YW	MCE	MLK	MWW	STY	CW	YG	MRB	BF	REA	API	TI
8.3	3.6	86.2	126.2	3.5	16.4	59.4	13.1	28.4	-0.41	-0.17	-0.09	0.86	104.1	72.4

CCS/JS SUMMER 9M

JSUL SOMETHING ABOUT MARY 8421  
**R/C SFI CREEDENCE 417J**  
 SFI LOVE ME LATER A9X  
 CCR WIDE RANGE 9005A  
**WHF SUMMER 365C**  
 WHF ANDIE 365A

**LOT 12**  
**PB SM**  
 REG: 4422175  
 BD: 2/20/24 TATTOO: 9M

CE	BW	WW	YW	MCE	MLK	MWW	STY	CW	YG	MRB	BF	REA	API	TI
8.3	3.6	86.2	126.2	3.5	16.4	59.4	13.1	28.4	-0.41	-0.17	-0.09	0.86	104.1	72.4



**CCS/JS SUMMER 47L**  
 2024 OH State Fair Reserve Grand Champion  
 Percentage Simmental Heifer  
 \$70,000 Full Sister to Lots 13-15



**HARKERS UNLEASHED**  
 2022 & 2023 Cattlemen's Congress Grand  
 Champion Percentage Simmental Bull  
 Sire of Lots 13-15



**CCS/JS SUMMER 50L**  
 2024 IA State Fair Grand Champion  
 Percentage Simmental Heifer  
 \$40,000 Full Sister to Lots 13-15

**CCS/JS SUMMER 49M**

SILVEIRAS STYLE 9303  
**HARKERS UNLEASHED**  
 HILB MISS OO LA LA B412  
 CCR WIDE RANGE 9005A  
**WHF SUMMER 365C**  
 WHF ANDIE 365A

**LOT 13**  
**3/4 SM 1/4 AN**  
 REG: 4422180  
 BD: 4/18/24 TATTOO: 49M

CE	BW	WW	YW	MCE	MLK	MWW	STY	CW	YG	MRB	BF	REA	API	TI
7.1	3.9	82.4	124.1	4.5	17.2	59.4	12.8	34.4	-0.27	0.17	-0.07	0.66	106.7	73.3

- A trio of females that are the result of arguably the most prolific and consistent mating from the legendary WHF Summer 365C! Sired by the now deceased Harkers Unleashed, these three beauties are FULL SISTERS to a quadrant of females that commanded the attention of the nation's top show families and breeders a year ago in Prairie City, Iowa!
- The four ET flushmate sisters that sold in last year's sale sold for \$70,000, \$40,000, \$30,000, and \$27,000 to average an impressive \$41,750 per head!
- 49M is an absolutely stunning three-quarter blood female that is elegant about her front third, bold ribbed, and extra stout featured. She has been blessed with an incredible hair coat as an added bonus!
- A true sale feature that will be a factor when it truly counts!





LOT 14 CCS/JS SUMMER 76M

- 76M is a late March born daughter of the late Harkers Unleashed that is a FULL SISTER to the \$70,000 CCS/JS Summer 47L female that was selected by the Liggett family of Ohio last year. 47L has been a force on the tan bark and is just getting started!
- 47L finished among the top 10 overall heifers at the highly competitive 2024 OH Beef Expo. She was also the 2024 OH State Fair Reserve Grand Champion Percentage Simmental Heifer in the open and junior shows alike!



CCS/JS SUMMER 46L  
\$27,000 Full Sister to Lots 13-15



LOT 15 CCS/JS SUMMER 84M

- 84M is the third ET flushmate sister from the Harkers Unleashed x WHF Summer 365C mating that has yielded so much quality and success!
- Another full sister to Megan Brown's popular blaze faced female, CCS/JS Summer 50L. She was selected as the 2024 IA State Fair Grand Champion Percentage Simmental Heifer. An April born show heifer prospect that will turn heads on sale day!



CCS/JS SUMMER 49L  
\$30,000 Full Sister to Lots 13-15

CCS/JS SUMMER 76M

SILVEIRAS STYLE 9303  
**HARKERS UNLEASHED**  
 HILB MISS 00 LA LA B412  
 CCR WIDE RANGE 9005A  
**WHF SUMMER 365C**  
 WHF ANDIE 365A

**LOT 14**  
**3/4 SM 1/4 AN**  
 REG: 4422179  
 BD: 3/20/24 TATTOO: 76M

CE	BW	WW	YW	MCE	MLK	MWW	STY	CW	YG	MRB	BF	REA	API	TI
7.1	3.9	82.4	124.1	4.5	17.2	59.4	12.8	34.4	-0.27	0.17	-0.07	0.66	106.7	73.3

CCS/JS SUMMER 84M

SILVEIRAS STYLE 9303  
**HARKERS UNLEASHED**  
 HILB MISS 00 LA LA B412  
 CCR WIDE RANGE 9005A  
**WHF SUMMER 365C**  
 WHF ANDIE 365A

**LOT 15**  
**3/4 SM 1/4 AN**  
 REG: 4422181  
 BD: 4/8/24 TATTOO: 84M

CE	BW	WW	YW	MCE	MLK	MWW	STY	CW	YG	MRB	BF	REA	API	TI
7.1	3.9	82.4	124.1	4.5	17.2	59.4	12.8	34.4	-0.27	0.17	-0.07	0.66	106.7	73.3



LOT 16 CCS/JS SUMMER 25M

- CCS/JS Summer 25M is a powerful Purebred female sired by the sensational WHF Point Proven H45, a son of CCS/WHF Ol' Son 48F that is backed by the very popular and proven WHF Delilah 45D matron that commanded \$90,000 for 50% embryo interest.
- She is a very valuable and unique breeding piece that deserves a serious look if you're in the market for a breed enhancing and program building matron! In addition to her elite phenotype, she offers an incredibly balanced number profile to further solidify her credentials.
- An incredibly unique breeding piece that aligns some of the most influential females in the Simmental breed!



WHF POINT PROVEN H45  
Sire of Lot 16



LOT 17 CCS/JS SUMMER 4M

- CCS/JS Summer 4M is an ultra-soggy, maternal built daughter of the late WLE Copacetic E02. This WHF Summer 365C daughter is from a very successful mating that yielded the \$62,000 high selling heifer from the 2022 Midwest Made Elite Female Sale that was selected by Golden Acres Simmentals and Udell Cattle Company. Another full sister, CCS/JS Summer 39L, sold for \$21,000 in last year's sale to the Zika family.
- A big ribbed, easy keeping, ultra-complete female that resembles her iconic dam in terms of power, substance, and overall capacity.



CCS/JS SUMMER 39L  
\$21,000 Full Sister to Lot 17

CCS / JS SUMMER 25M

CCS/WHF OL'SON 48F  
**WHF POINT PROVEN H45**  
 WHF DELILAH 45D  
 CCR WIDE RANGE 9005A  
**WHF SUMMER 365C**  
 WHF ANDIE 365A

**LOT 16**  
**PB SM**

REG: 4422178  
 BD: 3/14/24 TATTOO: 25M

CE	BW	WW	YW	MCE	MLK	MWW	STY	CW	YG	MRB	BF	REA	API	TI
12.4	-0.3	82	114.2	7.2	18.3	59.2	13.7	25.1	-0.43	0.04	-0.09	0.84	126.2	80.3

CCS / JS SUMMER 4M

HPF QUANTUM LEAP Z952  
**WLE COPACETIC E02**  
 CMFM JOY 02ZB  
 CCR WIDE RANGE 9005A  
**WHF SUMMER 365C**  
 WHF ANDIE 365A

**LOT 17**  
**PB SM**

REG: 4422177  
 BD: 1/25/24 TATTOO: 4M

CE	BW	WW	YW	MCE	MLK	MWW	STY	CW	YG	MRB	BF	REA	API	TI
9.8	2.5	84	120.7	5.2	13.1	55	10.3	20.5	-0.46	-0.06	-0.09	0.88	107.6	75.3

## CCS/JS SUMMER 63M

PVF INSIGHT 0129

**RP-BCR INSIGHT G302**

RP/MP BUILT TO LOVE A021

CCR WIDE RANGE 9005A

**WHF SUMMER 365C**

WHF ANDIE 365A

### LOT 18

### 3/4 SM 1/4 AN

REG: 4422182

BD: 3/23/24 TATTOO: 63M

CE	BW	WW	YW	MCE	MLK	MWW	STY	CW	YG	MRB	BF	REA	API	TI
9.2	2.4	81.3	119.5	5.2	18.7	59.4	15.7	33	-0.29	0	-0.05	0.81	107.8	70.6

- Those that study the cattle and diligently do their homework will land on CCS/JS Summer 63M on sale day! This stunning three-quarter blood Simmental female is sired by RP-BCR Insight G302, the sire of Josie Phillips 2022 AJSA National Classic Reserve Grand Champion Percentage Simmental Heifer!
- The paternal granddam of 63M, RP/MP Built To Love A021, is the prolific dam of Rocking P Private Stock H010 and RP/BCR Eminence H005. She has produced countless daughters that have sold from \$50,000 to \$150,000 over the years.
- A truly elite maternal lineage supports CCS/JS Summer 63M!



LOT 18 CCS/JS SUMMER 63M

## CCS/JS GUCCI 13M

YARDLEY UTAH Y361

**W/C RELENTLESS 32C**

MISS WERNING KP 8543U

CCR WIDE RANGE 9005A

**WHF GUCCI 366F**

WHF ANDIE 365A

### LOT 19

### PB SM

REG: 4422184

BD: 3/25/24 TATTOO: 13M

CE	BW	WW	YW	MCE	MLK	MWW	STY	CW	YG	MRB	BF	REA	API	TI
10.2	3.3	78.7	111.4	4.7	18.5	57.7	12.5	22.4	-0.43	0.04	-0.06	1.01	113.6	73.8

- Ladies and gentlemen, we proudly present a daughter of WHF Gucci 366F, the FULL SISTER to WHF Summer 365C. CCS/JS Gucci 13M is a full sister in blood to lots 1 through 3 in this year's sale offering, as well as the countless champions that have been derived from the W/C Relentless 32C x WHF Summer 365C mating.
- 13M is a maternal sister to the \$165,000 sale feature from the 17th Annual Embryos on Snow sale, JS Double Or Nothing 4k!



JS DOUBLE OR NOTHING 4K \$165,000 Maternal Brother to Lot 19

## JS MISS ANNE 11M

WS ALL-AROUND Z35

**OMF EPIC E27**

OMF TIME LESS B100

CCR WIDE RANGE 9005A

**BESH MS ANNE K59**

WHF ANDIE 365A

### LOT 20

### PB SM

REG: 4422185

BD: 3/6/24 TATTOO: 11M

CE	BW	WW	YW	MCE	MLK	MWW	STY	CW	YG	MRB	BF	REA	API	TI
13.1	-0.2	91.2	133.9	7.2	21	66.5	16.6	24	-0.37	0.06	-0.06	0.84	138.8	86.9

- 11M is yet another daughter of a FULL SISTER to the legendary WHF Summer 365C! 11M is sired by the ST Genetics stud known as OMF Epic E27, one of the most consistent and truly elite breeding bulls in the business.
- An early March born prospect that bridges the gap between the show ring and the pasture with her productive phenotype and rock solid number profile!



LOT 19 CCS/JS GUCCI 13M



LOT 20 JS MISS ANNE 11M

LOT 21 CCS/JS DAIRY QUEEN 57G 70M

THE OPEN FEMALES



**NEXT LEVEL**  
Sire of Lots 21-23



**JS DAIRY QUEEN 57G**  
Dam of Lots 21-27

**CCS/JS DAIRY QUEEN 57G 70M**

KRJ DAKOTA OUTLAW G974

**NEXT LEVEL**

KRDL CAEDENCE C37

MR HOC BROKER

**JS DAIRY QUEEN 57G**

CLRS DAIRY QUEEN 606D

**LOT 21**

**PB SM**

REG: 4422196

BD: 3/26/24 TATTOO: 70M

CE	BW	WW	YW	MCE	MLK	MWW	STY	CW	YG	MRB	BF	REA	API	TI
9.3	4	84.1	122.7	3.8	20.1	62	13.3	33.5	-0.44	-0.05	-0.09	0.96	110.6	74.2

- Exquisite, flashy, captivating... call it what you want, 70M has the "look" that is takes to compete at a very high level! CCS/JS Dairy Queen 57G 70M is the first of several daughters from the impressive JS Dairy Queen 57G donor.
- A perfect blaze face that is complimented by her extreme proportions. She is so long and extended about her front third, clean chested, and unbelievably robust in the shape of her forerib and center body. She too is a big hipped, wide pinned female that takes a long and confident stride.
- Next Level progeny continue to be in high demand, and rightfully so when they're built like 70M... bid with confidence!



LOT 22 CCS/JS DAIRY QUEEN 57G 65M

- Another Next Level daughter that is extremely complete, offering a fault-free build that is further complimented by a productive body type.
- This early March born blaze faced female is bold ribbed, deep flanked, and sound structured. A high quality female that will always compete based on the fundamentals alone!



JS DAIRY QUEEN 57G  
2021 IA State Fair Grand Champion  
Purebred Simmental Heifer  
Dam of Lots 21-27



LOT 23 CCS/JS DAIRY QUEEN 57G 64M

- 64M is the most refined about her front third of the three ET flushmate sisters. We love the extra style and presence that she brings to the equation. A solid black daughter of Next Level that is backed by the up and coming 57G donor!
- A full sister to this trio of females sold for \$10,000 in the 2023 Midwest Made Elite Female Sale to the Meyring family of Western Nebraska!



CCS/JS DQ 57G 59L  
\$10,000 Full Sister to Lots 21-23

CCS/JS DAIRY QUEEN 57G 65M

KRJ DAKOTA OUTLAW G974

NEXT LEVEL

KRDL CAEDENCE C37

MR HOC BROKER

JS DAIRY QUEEN 57G

CLRS DAIRY QUEEN 606D

LOT 22

PB SM

REG: 4422195

BD: 3/2/24 TATTOO: 65M

CCS/JS DAIRY QUEEN 57G 64M

KRJ DAKOTA OUTLAW G974

NEXT LEVEL

KRDL CAEDENCE C37

MR HOC BROKER

JS DAIRY QUEEN 57G

CLRS DAIRY QUEEN 606D

LOT 23

PB SM

REG: 4422194

BD: 2/24/24 TATTOO: 64M

CE	BW	WW	YW	MCE	MLK	MWW	STY	CW	YG	MRB	BF	REA	API	TI
9.3	4	84.1	122.7	3.8	20.1	62	13.3	33.5	-0.44	-0.05	-0.09	0.96	110.6	74.2

CE	BW	WW	YW	MCE	MLK	MWW	STY	CW	YG	MRB	BF	REA	API	TI
9.3	4	84.1	122.7	3.8	20.1	62	13.3	33.5	-0.44	-0.05	-0.09	0.96	110.6	74.2

DECEMBER 13, 2024 IN PRAIRIE CITY, IOWA



LOT 24 CCS/JS DAIRY QUEEN 57G 46M

- An extremely high quality pair of ET flushmate sisters that are from the impressive JS Dairy Queen 57G donor, one of the all-time most unique daughters of the \$74,000 CLRS Dairy Queen 606D donor. A full sister to 57G, JS Dairy Queen 56G, was very competitively shown by the Bayer family of Wisconsin.
- The sire of 46M and 67M is the widely popular WHF/JS/CCS Woodford J001, the 2023 NAILE Grand Champion Percentage Simmental Bull!
- She is a sleek made, smooth shouldered, ultra-attractive female that is destined to make her mark on the breed!



WHF/JS/CCS WOODFORD J001  
2023 NAILE Grand Champion  
Percentage Simmental Bull  
Sire of Lots 24 & 25



LOT 25 CCS/JS DAIRY QUEEN 57G 67M

- The second ET flushmate sister sired by WHF/JS/CCS Woodford J001 that is supported by the influence of 57G. CCS/JS Dairy Queen 57G 67M is robust in the shape of her rib cage, sound structured, and very complete.
- The cow power that lines the pedigree of this pair of ET flushmate sisters is simply immeasurable... they are a product of the program!

CCS/JS DAIRY QUEEN 57G 46M

EGL FIRESTEEL 103F  
WHF/JS/CCS WOODFORD J001  
WHF SUMMER 365C  
MR HOC BROKER  
JS DAIRY QUEEN 57G  
CLRS DAIRY QUEEN 606D

LOT 24  
PB SM

REG: 4422192  
BD: 4/4/24 TATTOO: 46M

CE	BW	WW	YW	MCE	MLK	MWW	STY	CW	YG	MRB	BF	REA	API	TI
10.6	1.9	79.9	113.2	3.7	18.7	58.5	17	26.7	-0.27	0.2	-0.06	0.58	134.2	79.6

CCS/JS DAIRY QUEEN 57G 67M

EGL FIRESTEEL 103F  
WHF/JS/CCS WOODFORD J001  
WHF SUMMER 365C  
MR HOC BROKER  
JS DAIRY QUEEN 57G  
CLRS DAIRY QUEEN 606D

LOT 25  
PB SM

REG: 4422193  
BD: 3/21/24 TATTOO: 67M

CE	BW	WW	YW	MCE	MLK	MWW	STY	CW	YG	MRB	BF	REA	API	TI
10.6	1.9	79.9	113.2	3.7	18.7	58.5	17	26.7	-0.27	0.2	-0.06	0.58	134.2	79.6



LOT 26 CCS/JS DAIRY QUEEN 57G 42M

- 42M is an April born show heifer prospect sired by the late Harkers Unleashed, the 2022 and 2023 Cattlemen's Congress Grand Champion Percentage Simmental Bull.
- The dam of 42M, JS Dairy Queen 57G, was the 2021 IA State Fair Grand Champion Purebred Simmental Heifer.
- A high quality percentage Simmental heifer that will produce elite Purebreds for the winning bidder!



HARKERS UNLEASHED  
Sire of Lot 26



LOT 27 CCS/JS DAIRY QUEEN 57G 66M

- 66M is a big ribbed, high capacity female that offers tremendous volume and dimension. A big footed, stout boned female that is loaded with quality and substance.
- The sire of CCS/JS Dairy Queen 57G 66M is a bull that we sampled in order to incorporate the influence of his famous dam, RP/MP Built To Love A021, one of the cornerstone Simmental females in the Circle M Farms program.
- An elite breeding piece with a world class future!



RP/MP BUILT TO LOVE A021  
Paternal Granddam of Lot 27

CCS/JS DAIRY QUEEN 57G 42M

SILVEIRAS STYLE 9303  
**HARKERS UNLEASHED**  
 HILB MISS OO LA LA B412  
 MR HOC BROKER  
**JS DAIRY QUEEN 57G**  
 CLRS DAIRY QUEEN 606D

**LOT 26**  
**3/4 SM 1/4 AN**  
 REG: 4422197  
 BD: 4/12/24 TATTOO: 42M

CE	BW	WW	YW	MCE	MLK	MWW	STY	CW	YG	MRB	BF	REA	API	TI
8	4.2	78.8	121.4	4.1	17.8	58.1	13.1	42.1	-0.19	0.28	-0.06	0.55	112.4	73.5

CCS/JS DAIRY QUEEN 57G 66M

PVF INSIGHT 0129  
**RP-BCR INSIGHT G302**  
 RP/MP BUILT TO LOVE A021  
 MR HOC BROKER  
**JS DAIRY QUEEN 57G**  
 CLRS DAIRY QUEEN 606D

**LOT 27**  
**3/4 SM 1/4 AN**  
 REG: 4422198  
 BD: 4/17/24 TATTOO: 66M

CE	BW	WW	YW	MCE	MLK	MWW	STY	CW	YG	MRB	BF	REA	API	TI
10	2.7	77.7	116.8	4.7	19.3	58.2	16	40.7	-0.21	0.11	-0.04	0.71	113.6	70.8

LOT 28 JS DAIRY QUEEN 52M

THE OPEN FEMALES



CLRS DAIRY QUEEN 606D  
\$74,000 Dam of Lots 28 & 29



JS DAIRY QUEEN 74L  
Full Sister to Lots 28 & 29

JS DAIRY QUEEN 52M

KRJ DAKOTA OUTLAW G974

NEXT LEVEL

KRDL CAEDENCE C37

CLRS AFTER SHOCK 604 A

CLRS DAIRY QUEEN 606D

CLRS BEAUTY QUEEN 420 B

LOT 28

PB SM

REG: 4422200

BD: 3/15/24 TATTOO: 52M

CE	BW	WW	YW	MCE	MLK	MWW	STY	CW	YG	MRB	BF	REA	API	TI
11.6	2	80.9	117.8	4.9	20.4	60.7	13.6	34.1	-0.4	0.05	-0.08	0.9	122.1	77.5

- A pair of ET flushmate sisters sired by the Boyert and Buck Creek Ranch owned stud, Next Level! 52M and 68M are both direct daughters of the very influential foundation matriarch known as CLRS Dairy Queen 606D.
- CLRS Dairy Queen 606D was one of the featured lots in last year's Midwest Made Elite Female Sale where she commanded a \$74,000 hammer price selling to Hilltop Simmentals of South Dakota.
- Some of the most popular maternal sisters to 52M and 68M would include JS Dairy Queen 57G, a new and exciting female in the donor pen that is extremely well represented within this year's Midwest Made Elite Female Sale. Another maternal sister, JS Dairy Queen 56G, the many times champion that was shown by the Bayer family of Wisconsin.
- A powerful female that we expect to have a very bright future in the show ring and in production!





**JS DAIRY QUEEN 53L**  
Full Sister to Lots 28 & 29



**JS DAIRY QUEEN 87L**  
2024 KILE Reserve Grand Champion Purebred Simmental Heifer  
Maternal Sister to Lots 28 & 29

**JS DAIRY QUEEN 68M**

KRJ DAKOTA OUTLAW G974

**NEXT LEVEL**

KRDL CAEDENCE C37

CLRS AFTER SHOCK 604 A

**CLRS DAIRY QUEEN 606D**

CLRS BEAUTY QUEEN 420 B

**LOT 29**

**PB SM**

REG: 4422199

BD: 2/19/24 TATTOO: 68M

- JS Dairy Queen 68M is another beautiful profiling daughter of the tried and true donor dam, CLRS Dairy Queen 606D. 68M is an ET flushmate sister to 52M, sired by the popular Next Level.
- Full sisters to 52M and 68M were featured in last year's sale offering. JS Dairy Queen 74L was selected by the Meyring family of Alliance, Nebraska. JS Dairy Queen 53L was purchased by Lauren Bayer of Albia, Iowa.
- A maternal sister to 52M and 68M, JS Dairy Queen 55J, sold for \$22,000 in the spring of 2022 to Kinser Gallagher of Elkhart, Iowa.
- This pair of females are bred to produce!

CE	BW	WW	YW	MCE	MLK	MWW	STY	CW	YG	MRB	BF	REA	API	TI
11.6	2	80.9	117.8	4.9	20.4	60.7	13.6	34.1	-0.4	0.05	-0.08	0.9	122.1	77.5

LOT 30 JS FLIRT AWAY 75M

THE OPEN FEMALES



JS FLIRT A-WAY 59Y  
Dam of Lots 30-35



JS FLIRT A-WAY 58E  
Maternal Sister to Lots 30 & 31

JS FLIRT AWAY 75M

EGL FIRESTEEL 103F  
**WHF/JS/CCS WOODFORD J001**  
 WHF SUMMER 365C  
 HARKERS/JS DOMINATION  
**JS FLIRT A-WAY 59Y**  
 JS FLATOUT FLIRTY 46T

**LOT 30**  
**PB SM**

REG: 4422188  
 BD: 3/19/24 TATTOO: 75M

CE	BW	WW	YW	MCE	MLK	MWW	STY	CW	YG	MRB	BF	REA	API	TI
8.7	3.5	76.3	113.1	3.2	23.2	61.2	13.8	21.8	-0.34	0.15	-0.07	0.7	119.8	75.2

- JS Flirt Away 75M is a stunning star headed daughter of the legendary JS Flirt Away 59Y donor, one of the most significant females in the JS Simmentals donor pen.
- 75M is sired by the 2023 NAILE Grand Champion Percentage Simmental Bull, WHF/JS/CCS Woodford J001, a son of WHF Summer 365C.
- This pair of ET flushmate sisters align two of the most important females in the Simmental breed within the first two generations of their pedigree.
- A big boned, stout featured, great structured female that offers a unique pedigree that is saturated with purple!

LOT 31 JS FLIRT AWAY 80M



THE OPEN FEMALES



WHF/JS/CCS WOODFORD J001  
2023 NAILE Grand Champion Percentage Simmental Bull  
Sire of Lots 30 & 31



JS FLIRT AWAY 80M

EGL FIRESTEEL 103F

WHF/JS/CCS WOODFORD J001

WHF SUMMER 365C

HARKERS/JS DOMINATION

JS FLIRT A-WAY 59Y

JS FLATOUT FLIRTY 46T

LOT 31

PB SM

REG: 4422189

BD: 4/2/24 TATTOO: 80M

- Exquisite quality, elite pedigree, and an incredible future... she checks all of the boxes! JS Flirt Away 80M is an incredible daughter of WHF/JS/CCS Woodford J001 that is supported by the iconic 59Y donor, therefore making her a maternal sister to the 2015-2016 PTP Ring of Champions Triple Crown winning JS Black Satin 9B, affectionally known as "Boots".
- In terms of structural integrity, foot shape, and overall soundness, it is challenging to create a Purebred female that offers so much skeletal quality. She is a wide based, square built female that handles her extra mass and dimension with ease!
- A special pair of ET flushmate sisters that have the extra eye-appeal and style to support their world class pedigree. This is a bid to own scenario!

CE	BW	WW	YW	MCE	MLK	MWW	STY	CW	YG	MRB	BF	REA	API	TI
8.7	3.5	76.3	113.1	3.2	23.2	61.2	13.8	21.8	-0.34	0.15	-0.07	0.7	119.8	75.2

DECEMBER 13, 2024 IN PRAIRIE CITY, IOWA

LOT 32 JS FLIRT AWAY 83M



JS BLACK SATIN 9B "BOOTS"

2016 NWSS Grand Champion Purebred Simmental Heifer and 2015 NAILE Grand Champion Purebred Simmental Heifer  
Full Sister to Lots 32 & 33

JS FLIRT AWAY 83M

SVF STEEL FORCE S701

MR HOC BROKER

JM BF H25

HARKERS/JS DOMINATION

JS FLIRT A-WAY 59Y

JS FLATOUT FLIRTY 46T

LOT 32

PB SM

REG: 4422187

BD: 4/11/24 TATT00: 83M

CE	BW	WW	YW	MCE	MLK	MWW	STY	CW	YG	MRB	BF	REA	API	TI
4.8	5.7	74.2	110.1	2	21.6	58.6	9.6	23.4	-0.42	-0.21	-0.09	0.81	82.4	61.7

- Ladies and gentlemen, it is with great pride that we introduce you to a pair of ET flushmate sisters that are FULL SISTERS to the legendary JS Black Satin 9B, more commonly referred to as "Boots"!
- JS Flirt Away 83M is a beautiful blaze faced female that offers tremendous rib shape, volume, and overall capacity. She is a loose built, big footed, and smooth made. As an added bonus she has been blessed with an incredible hair coat.
- If her extra power, substance, and skeletal quality doesn't get you noticed, then her beautiful profile certainly will. She's ready for the bright lights!

LOT 33 JS FLIRT AWAY 29M



- JS Flirt Away 29M is one of the most unique females in the entire sale! We absolutely love the proud presence and style that 29M possesses. She ties her long, slender neck high at the top of her neatly laid in shoulder. She further transitions into a three-dimensional rib cage and offers tremendous progression of depth through her rear rib and flank. 29M is a big hipped, stout pinned, square made female that is destined to make an impact for the program that invests on December 13th!
- Sure, we wish that she was more conservative in terms of her color pattern, but it's hard not to adore her unique features and extra power!
- A full sister will highlight the "New Beginnings" sale, as C-4 Land & Cattle disperses their Simmental breeding program in late November. Another full sister, Boss Lake Flirt A Way 740E, commanded a \$76,000 hammer price in the 2023 Griswold Cattle Company Classic Female Sale.
- Females like 29M are destined to be profitable investments that catapult breeding programs to the next level!

JS FLIRT AWAY 29M

SVF STEEL FORCE S701  
**MR HOC BROKER**  
 JM BF H25  
 HARKERS/JS DOMINATION  
**JS FLIRT A-WAY 59Y**  
 JS FLATOUT FLIRTY 46T

**LOT 33**

**PB SM**

REG: 4422186  
 BD: 3/18/24 TATT00: 29M

CE	BW	WW	YW	MCE	MLK	MWW	STY	CW	YG	MRB	BF	REA	API	TI
4.8	5.7	74.2	110.1	2	21.6	58.6	9.6	23.4	-0.42	-0.21	-0.09	0.81	82.4	61.7



**BOSS LAKE FLIRT A WAY 740E**  
 \$76,000 Full Sister to Lots 32 & 33



LOT 34 JS FLIRT AWAY 79M

- JS Flirt Away 79M is the first of two females from a BRAND NEW mating from the iconic 59Y donor dam! This duo is sired by the 2023 Cattlemen's Congress Grand Champion Purebred Simmental Bull, R/C SFI Creedence 417J.
- We love the extra length and extension that he stamps his progeny with, and this pair of sisters are no exception!
- This April born show heifer/donor prospect is one that we believe has a very bright future. Never bet against the 59Y tribe!



R/C SFI CREEDENCE 417J  
Sire of Lots 34-37



LOT 35 JS FLIRT AWAY 73M

- 73M is arguably the most extreme featured, chisel fronted female in the entire sale offering! She is simply exotic in terms of her head and neck attachment. A clean chested, smooth made, big hipped female that has a lot of upside.
- This May born female has the uniqueness to be a force when it counts. Patience is a virtue, and those that wait will be rewarded!



JS FLIRT AWAY 20K  
\$33,000 Maternal Sister to Lots 30 - 35

JS FLIRT AWAY 79M

JSUL SOMETHING ABOUT MARY 8421  
R/C SFI CREEDENCE 417J  
SFI LOVE ME LATER A9X  
HARKERS/JS DOMINATION  
JS FLIRT A-WAY 59Y  
JS FLATOUT FLIRTY 46T

LOT 34  
PB SM

REG: 4422190  
BD: 4/12/24 TATTOO: 79M

CE	BW	WW	YW	MCE	MLK	MWW	STY	CW	YG	MRB	BF	REA	API	TI
7.2	5.6	79	123.4	2.5	21.5	60.9	10.2	31.3	-0.41	-0.11	-0.09	0.87	95.4	68.2

JS FLIRT AWAY 73M

JSUL SOMETHING ABOUT MARY 8421  
R/C SFI CREEDENCE 417J  
SFI LOVE ME LATER A9X  
HARKERS/JS DOMINATION  
JS FLIRT A-WAY 59Y  
JS FLATOUT FLIRTY 46T

LOT 35  
PB SM

REG: 4422191  
BD: 5/5/24 TATTOO: 73M

CE	BW	WW	YW	MCE	MLK	MWW	STY	CW	YG	MRB	BF	REA	API	TI
7.2	5.6	79	123.4	2.5	21.5	60.9	10.2	31.3	-0.41	-0.11	-0.09	0.87	95.4	68.2



LOT 36 PEARL 5M

- JS Pearl 37E is back in 2024, and better than EVER! Two years ago, a daughter of JS Pearl 37E sired by Silveiras Style 9303 was selected by the Luebbe family of Staplehurst, Nebraska. She went on to be selected as the 2023 NE State Fair Supreme Champion 4-H Breeding Heifer!
- 37E is a FULL SISTER to JS Black Satin 9B "Boots", one of the highest dollar generating females that ever worked in the Griswold Cattle Company breeding program.
- A high quality April born female that has a bright future!



JS PEARL 37E  
Dam of Lots 36 & 37



LOT 37 PEARL 7M

- Another daughter of the powerful JS Pearl 37E donor that was bred in the Liggett family's breeding program in Dennison, Ohio.
- 7M is also sired by R/C SFI Creedence 417J, the JSUL Something About Mary 8421 son that was selected as the 2023 Cattlemen's Congress Grand Champion Purebred Simmental Bull.
- A maternal sister to this duo commanded \$29,000 in the 2022 Midwest Made Elite Female Sale.
- This May born Purebred has unlimited upside potential on the tanbark and in production!



JS PEARL 52K  
2023 NE State Fair Supreme Champion  
4-H Breeding Heifer  
Maternal Sister to Lots 36 & 37

JS PEARL 5M

JS PEARL 7M

JSUL SOMETHING ABOUT MARY 8421  
R/C SFI CREEDENCE 417J  
SFI LOVE ME LATER A9X  
MR HOC BROKER  
JS PEARL 37E  
JS FLIRT A-WAY 59Y

LOT 36

PB SM

REG: 4410553  
BD: 4/22/24 TATTOO: 5M

JSUL SOMETHING ABOUT MARY 8421  
R/C SFI CREEDENCE 417J  
SFI LOVE ME LATER A9X  
MR HOC BROKER  
JS PEARL 37E  
JS FLIRT A-WAY 59Y

LOT 37

PB SM

REG: 4410554  
BD: 5/2/24 TATTOO: 7M

CE	BW	WW	YW	MCE	MLK	MWW	STY	CW	YG	MRB	BF	REA	API	TI
8.1	4.4	79	120.5	2.7	19.1	58.5	11.5	29.5	-0.37	-0.16	-0.08	0.78	97.7	67.8

CE	BW	WW	YW	MCE	MLK	MWW	STY	CW	YG	MRB	BF	REA	API	TI
8.1	4.4	79	120.5	2.7	19.1	58.5	11.5	29.5	-0.37	-0.16	-0.08	0.78	97.7	67.8



LOT 38 JSUL PROUD MARY 4425M

- We are proud to offer a FULL SISTER to the legendary Simmental AI sire, JSUL Something About Mary 8421! She is a sharp featured, smooth made, ultra-attractive April born female that is flawless in terms of her basic build.
- The dam of 4425M is a many times champion for Sara Sullivan, JBSF Proud Mary! It's no secret that she is one of the industry's most influential matriarchs. Countless daughters are working in top firms across North America.
- An investment opportunity that is certain to enhance any program's profitability!



JSUL SOMETHING ABOUT MARY 8421  
Full Brother to Lot 38



LOT 39 JSUL PROUD MARY 4521M

- Next up, JSUL Proud Mary 4521M, another direct daughter of the legendary JSUL Proud Mary that is sired by the 2016 NWSS Grand Champion Purebred Simmental Bull, THSF Lover Boy B33!
- The pedigree that supports this female aligns the influence of Brooks Steel Magnolia X57 and RP/MP Right To Love 015U, two influential matrons within the Simmental breed that have truly left their mark on the business!



JBSF PROUD MARY  
Dam of Lots 38 & 39

JSUL PROUD MARY 4425M

YARDLEY UTAH Y361  
W/C RELENTLESS 32C  
MISS WERNING KP 8543U  
YARDLEY HIGH REGARD W242  
JBSF PROUD MARY  
BROOKS STEELMAGNOLIA X57

LOT 38  
PB SM

REG: 4423021  
BD: 4/2/24 TATTOO: 4425M

CE	BW	WW	YW	MCE	MLK	MWW	STY	CW	YG	MRB	BF	REA	API	TI
10.6	2.4	71.1	101	3.3	17.5	53	10.5	28.4	-0.37	0.04	-0.06	0.92	108.6	70.1

JSUL PROUD MARY 4521M

HTP/SVF DURACELL T52  
THSF LOVER BOY B33  
RP/MP RIGHT TO LOVE 015U  
YARDLEY HIGH REGARD W242  
JBSF PROUD MARY  
BROOKS STEELMAGNOLIA X57

LOT 39  
PB SM

REG: 4423020  
BD: 3/10/24 TATTOO: 4521M

CE	BW	WW	YW	MCE	MLK	MWW	STY	CW	YG	MRB	BF	REA	API	TI
11.7	0.8	76.8	114.5	4.2	24.7	63.1	13.4	31.7	-0.29	0.15	-0.06	0.72	127.5	79



LOT 40 JSUL REBA 4256M



THE OPEN FEMALES



**JSUL REBA'S FANCY 8375F**  
 2020 AJSA National Classic Grand Champion  
 Percentage Simmental Heifer  
 Dam of Lot 40



**DAF REBA C85**  
 2016 NWSS Grand Champion  
 Percentage Simmental Heifer  
 Maternal Granddam of Lot 40

**JSUL REBA 4256M**

EGL FIRESTEEL 103F  
**WHF/JS/CCS WOODFORD J001**  
 WHF SUMMER 365C  
 FHEN HALFTIME A127  
**JSUL REBA'S FANCY 8375F**  
 DAF REBA C85

**LOT 40**  
**5/8 SM 3/8 AN**  
 REG: 4391931  
 BD: 2/25/24 TATTOO: 4256M

CE	BW	WW	YW	MCE	MLK	MWW	STY	CW	YG	MRB	BF	REA	API	TI
11.4	0.8	70.7	107.2	4.8	21	56.6	16.8	34	-0.21	0.43	-0.04	0.66	135.4	77.4

- 4256M is a SimGenetic daughter of WHF/JS/CCS Woodford J001 that is supported by a long line of champions on the bottom side of her pedigree! This ultra-attractive, smooth made, elegant female is one that is flawless in terms of her skeletal design. She is big footed, stout boned, and sets to the surface with comfort and ease.
- The dam of 4256M is JSUL Reba's Fancy 8375F, the 2020 AJSA National Classic Grand Champion Percentage Simmental Heifer for Sara Sullivan. The dam of 8375F, DAF Reba C85, was the 2016 NWSS Grand Champion Percentage Simmental Heifer. A full sister to C85, DAF Reba C707, was the 2017 NWSS Grand Champion Percentage Simmental Heifer.
- A pedigree that is lined in purple!

DECEMBER 13, 2024 IN PRAIRIE CITY, IOWA

LOT 41 CCS MAXINE 207M



**KR CASINO 6243**  
Sire of Lot 41



**DUNK-W MAXINE 505C**  
Dam of Lot 41



**GATEWAY FOLLOW ME F163**  
Popular AI Sire & Maternal Brother to Lot 41

**CCS MAXINE 207M**

CFCC BLACK JACK 001

**KR CASINO 6243**

MALSONS SAVANNAH 27Y

GAMBLES HOT ROD

**DUNK-W MAXINE 505C**

K B LADY MAXINE LUT 857

**LOT 41**

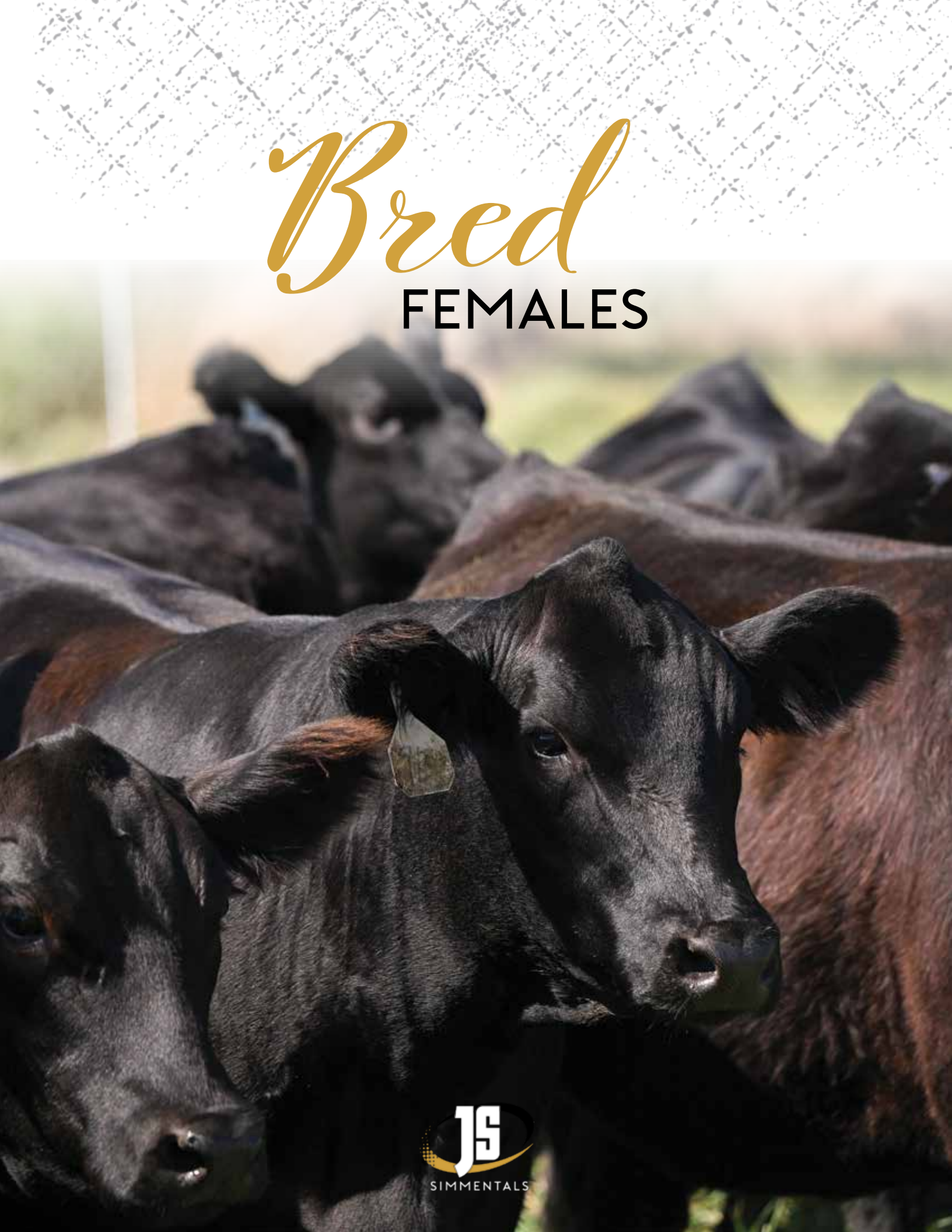
**ANGUS**

REG: 21066994

BD: 4/6/24 TATTOO: 207M

CED	BW	WW	YW	CEM	MLK	MW	MH	CW	MRB	RE	FAT	\$M	\$B	\$C
-1	4.5	57	98	3	25	51	0.6	31	0.34	0.52	0.01	38	118	191

- The lone Angus heifer calf in this year's open show heifer division is CCS Maxine 207M, a female that is arguably one of the most intriguing breeding pieces that we have EVER raised! This KR Casino 6243 sired female is a maternal sister to the iconic Gateway Follow Me F163, one of the most popular and heavily utilized Angus AI sires in the business!
- CCS Maxine 207M is so elegant in terms of her balance and style from the profile, while still offering a big hip and bold shape to her rib cage. She is flawless in terms of her skeletal design, offering a textbook set to her hip and hind leg. She ties her neck high at the top of her blade, while maintaining a chiseled look through her front third.
- We selected the dam of 207M in the 17th Annual Embryos on Snow Sale for \$72,000 from Gana Farms. There is no doubt that Dunk-W Maine 505C has proven her worth once again!
- 207M alone is worth the trip to Prairie City, Iowa . . . you'll be glad you did!
- **Terms announced sale day.**



# *Bred*

## FEMALES



LOT 42 CCS/JS SUMMER 43L

THE BRED FEMALES



CCS/JS SUMMER 47L  
\$70,000 Full Sister to Lots 42-44



CCS/JS SUMMER 50L  
\$40,000 Full Sister to Lots 42-44

CCS/JS SUMMER 43L

SILVEIRAS STYLE 9303

HARKERS UNLEASHED

HILB MISS OO LA LA B412

CCR WIDE RANGE 9005A

WHF SUMMER 365C

WHF ANDIE 365A

LOT 42

3/4 SM 1/4 AN

REG: 4330525

BD: 4/4/23 TATT00: 43L

CE	BW	WW	YW	MCE	MLK	MWW	STY	CW	YG	MRB	BF	REA	API	TI
7.1	3.9	82.4	124.1	4.5	17.2	59.4	12.8	34.4	-0.27	0.17	-0.07	0.66	106.7	73.3

DUE TO CALVE 1/20/25 TO WHF/JS THE DUCE K45 (ASA: 4144750).

- The bred heifer division of this year's sale is as loaded with as much quality, pedigree, and earning potential as EVER before! We initiate the bred heifer offering with a trio of ET flushmate sisters from the iconic WHF Summer 365C that are sired by the late Harkers Unleashed!
- Harkers Unleashed was a many times champion during his tenure on the show road. Some of his most notable victories would include his back-to-back wins at the Cattlemen's Congress in 2022 and 2023!
- 43L is the first of the three females from a highly proven and profitable flush. She is a bold bodied, dense made, sound structured female that is built for the long haul. 43L sells safe in calf to WHF/JS The Duce K45 for a quick ROI!



LOT 43 CCS/JS SUMMER 44L



LOT 44 CCS/JS SUMMER 42L

- 44L is another stout featured, big centered, easy fleshing daughter of WHF Summer 365C that is a FULL SISTER to the \$70,000 CCS/JS Summer 47L, the many times champion that is shown by the Liggett family of Ohio.
- We love the consistency and uniformity that these females offer. They are sound structured, good footed, dense made females that will be profitable brood cows for years to come!



WHF/JS THE DEUCE K45

Service sire to several females throughout the offering!

- CCS/JS Summer 42L is the third ET flushmate sister from the Harkers Unleashed sired flush from the iconic WHF Summer 365C. 42L is a big ribbed, high capacity female that is developing a textbook udder design.
- She is also a full sister to the \$40,000 CCS/JS Summer 50L, a female that has competitively shown by Megan Brown. 50L was the 2024 IA State Fair Grand Champion Percentage Simmental Heifer!
- She will calve in early February to WHF/JS The Duce K45.

CCS/JS SUMMER 44L

SILVEIRAS STYLE 9303  
**HARKERS UNLEASHED**  
 HILB MISS 00 LA LA B412  
 CCR WIDE RANGE 9005A  
**WHF SUMMER 365C**  
 WHF ANDIE 365A

**LOT 43**  
**3/4 SM 1/4 AN**  
 REG: 4330526  
 BD: 3/23/23 TATTOO: 44L

CE	BW	WW	YW	MCE	MLK	MWW	STY	CW	YG	MRB	BF	REA	API	TI
7.1	3.9	82.4	124.1	4.5	17.2	59.4	12.8	34.4	-0.27	0.17	-0.07	0.66	106.7	73.3

DUE TO CALVE 2/9/25 TO WHF/JS THE DEUCE K45 (ASA: 4144750).

CCS/JS SUMMER 42L

SILVEIRAS STYLE 9303  
**HARKERS UNLEASHED**  
 HILB MISS 00 LA LA B412  
 CCR WIDE RANGE 9005A  
**WHF SUMMER 365C**  
 WHF ANDIE 365A

**LOT 44**  
**3/4 SM 1/4 AN**  
 REG: 4330524  
 BD: 4/24/23 TATTOO: 42L

CE	BW	WW	YW	MCE	MLK	MWW	STY	CW	YG	MRB	BF	REA	API	TI
7.1	3.9	82.4	124.1	4.5	17.2	59.4	12.8	34.4	-0.27	0.17	-0.07	0.66	106.7	73.3

DUE TO CALVE 2/11/25 TO WHF/JS THE DEUCE K45 (ASA: 4144750).

LOT 45 CCS/JS SUMMER 2L

THE BRED FEMALES



**CCS/JS SUMMER 33H**  
2021 NAILE Grand Champion Purebred Simmental Heifer  
Full Sister to Lot 45



**CCS/JS/LFTZ SUMMER L378**  
2024 American Royal Grand Champion Purebred Simmental Heifer  
Full Sister to Lot 45

**CCS/JS SUMMER 2L**

YARDLEY UTAH Y361  
W/C **RELENTLESS 32C**  
MISS WERNING KP 8543U  
CCR WIDE RANGE 9005A  
WHF **SUMMER 365C**  
WHF ANDIE 365A

**LOT 45**  
**PB SM**

REG: 4330522  
BD: 1/5/23 TATTOO: 2L

CE	BW	WW	YW	MCE	MLK	MWW	STY	CW	YG	MRB	BF	REA	API	TI
8.2	3.3	79.3	105.8	3.9	17.1	56.7	11.9	18.2	-0.45	-0.04	-0.08	0.92	104.7	71.4

DUE TO CALVE 1/20/25 TO WLE COPACETIC E02 (ASA: 3299037).

- CCS/JS Summer 2L is an absolute powerhouse that is from one of the highest dollar generating matings in the history of the JS Simmental breeding program! 2L is a full sister to the \$90,000 high selling female that topped the 2023 JS Simmentals Midwest Made Elite Female Sale!
- She is also a full sister to CCS/JS Summer 33H, the 2021 NAILE Grand Champion Purebred Simmental Heifer that was shown by KayLee Langford. Another full sister, CCS/JS/LFTZ Summer L378, is the 2024 AJSA National Classic Third Overall Purebred Simmental Heifer. L378 was most recently selected as the 2024 American Royal Grand Champion Purebred Simmental Heifer.
- She sells safe in calf to the now deceased WLE Copacetic E02, a bull that has left a lasting impact on the business. The calf on board will result in a three-quarter sib to the \$62,000 high selling heifer that sold in the 2022 Midwest Made Elite Female Sale to Udell Cattle Company and Golden Acres Simmentals!



LOT 46 CCS/JS SUMMER 71L

CCS/JS SUMMER 71L

CCS/WHF OL'SON 48F  
**JS KEEPIN IT 90 39H**  
 CLRS DAIRY QUEEN 606D  
 CCR WIDE RANGE 9005A  
**WHF SUMMER 365C**  
 WHF ANDIE 365A

**LOT 46**  
**PB SM**  
 REG: 4258522  
 BD: 2/27/23 TATTOO: 71L

CE	BW	WW	YW	MCE	MLK	MWW	STY	CW	YG	MRB	BF	REA	API	TI
6.3	4.1	90.1	126.1	3.2	17.6	62.5	14.2	32.1	-0.35	0.08	-0.08	0.77	116.3	79.4

- 71L is another direct daughter of the legendary WHF Summer 365C that is sired by JS Keepin It 90 39H, a son of CCS/WHF Ol' Son 48F. The pedigree that supports this stout made, sound structured female aligns the influence of 365C not once, but twice!
- We love the natural turn to her rib cage, the extra stoutness that she offers from behind, and the ultra-maternal look about her front third.
- A full sister to 71L, CCS/JS Summer 1K, sold for \$19,000 in the 2022 Midwest Made Elite Female Sale to the Hotz family!
- She sells safe in calf to WHF/JS The Deuce K45, another individual that is backed by true maternal greatness!

DUE TO CALVE 1/20/25 TO WHF/JS THE DEUCE K45 (ASA: 4144750).



LOT 47 CCS/JS AUTUMN 7L

CCS/JS AUTUMN 7L

TJ MAIN EVENT 503B  
**CDI INNOVATOR 325D**  
 CDI MS SHEAR FORCE 49U  
 W/C EXECUTIVE ORDER 8543B  
**WHF AUTUMN 365E**  
 WHF ANDIE 365A

**LOT 47**  
**PB SM**  
 REG: 4330537  
 BD: 1/25/23 TATTOO: 7L

CE	BW	WW	YW	MCE	MLK	MWW	STY	CW	YG	MRB	BF	REA	API	TI
11.5	0.4	85.2	129.8	5.8	27.1	69.6	11.7	36.1	-0.38	0.23	-0.07	0.95	133.6	87.5

- 7L is sired by the powerful CDI Innovator 325D, the 2018 NWSS Grand Champion Percentage Simmental Bull that has left a true impact on all segments of the business!
- This powerful Purebred Simmental brood cow/donor prospect is one that needs to be at the top of everyone's short list on sale day. She is massive bodied, big hipped, smooth jointed, and travels with confidence.
- The dam of 7L, WHF Autumn 365E, is a maternal sister to the prolific WHF Summer 365C that is sired by W/C Executive Order 8543B. She stacks the most lucrative donors in the Simmental breed into a single pedigree. The sky is the limit when it comes to mating flexibility and true earning potential!

DUE TO CALVE 1/19/25 TO WHF/JS THE DEUCE K45 (ASA: 4144750).



JS KEEPIN IT 90 39H  
 Sire of Lot 46



CCS/JS SUMMER 1K  
 \$19,000 Full Sister to Lot 46



WHF AUTUMN 365E  
 Dam of Lot 47



LOT 48 CCS/JS DQ 57G 55L

- 55L is an incredible female that will be easy to notice on sale day! We love her deep, dark cherry red hide color that is further complimented by a splash of white on her forehead. She is a direct daughter of JS Dairy Queen 57G, one of the up and coming young donors in the program.
- A full sister to 55L and 70L, CCS/JS DQ 57G 69L, sold for \$30,000 to Lauren Bayer in last year's Midwest Made Elite Female Sale.
- There is no doubt in our mind that this red hided beauty will find her way to the donor pen at her new place of residence!



CCS/JS DQ 57G 69L  
\$30,000 Full Sister to Lots 48 & 49



LOT 49 CCS/JS DQ 57G 70L

- A sharp featured blaze faced daughter sired by Next Level and backed by the influence of the exciting young 57G donor dam. 70L is a true powerhouse in terms of her body mass and overall capacity.
- She is a full sister to CCS/JS DQ 57G 58L, the \$25,000 selection of Estella Smith in last year's Midwest Made Elite Female Sale!
- Power in the blood!



CCS/JS DQ 57G 58L  
\$25,000 Full Sister to Lots 48 & 49

CCS/JS DQ 57G 55L

KRJ DAKOTA OUTLAW G974

NEXT LEVEL

KRDL CAEDENCE C37

MR HOC BROKER

JS DAIRY QUEEN 57G

CLRS DAIRY QUEEN 606D

LOT 48

PB SM

REG: 4330531

BD: 4/2/23 TATTOO: 55L

CE	BW	WW	YW	MCE	MLK	MWW	STY	CW	YG	MRB	BF	REA	API	TI
9.3	4	84.1	122.7	3.8	20.1	62	13.3	33.5	-0.44	-0.05	-0.09	0.96	110.6	74.2

DUE TO CALVE 3/27/25 TO WHF/JS THE DEUCE K45 (ASA: 4144750).

CCS/JS DQ 57G 70L

KRJ DAKOTA OUTLAW G974

NEXT LEVEL

KRDL CAEDENCE C37

MR HOC BROKER

JS DAIRY QUEEN 57G

CLRS DAIRY QUEEN 606D

LOT 49

PB SM

REG: 4258534

BD: 3/19/23 TATTOO: 70L

CE	BW	WW	YW	MCE	MLK	MWW	STY	CW	YG	MRB	BF	REA	API	TI
9.3	4	84.1	122.7	3.8	20.1	62	13.3	33.5	-0.44	-0.05	-0.09	0.96	110.6	74.2

DUE TO CALVE 1/19/25 TO WHF/JS/CCS DOUBLE UP G365 (ASA: 3658592).





LOT 50 CCS/JS DQ 57G 67L

- CCS/JS DQ 57G 67L is the lone daughter of JS Dairy Queen 57G that is sired by the now deceased WLE Copacetic E02, the many times champion that left a lasting impact on the breed.
- 67L is a big footed, stout boned, wide based female that offers tremendous look and quality from the side. She sells safe in calf to the 2021 Cattlemen's Congress Reserve Grand Champion Purebred Simmental Bull, WHF/JS/CCS Double Up G365. Another dose of an elite cow family added to the mix!



CCS/JS DQ 57G 73L  
Full Sister to Lot 50



LOT 51 CCS/JS DQ 57G 3L

- Big time bred heifer/donor prospect from the impressive JS Dairy Queen 57G donor dam. 3L is sired by the deceased JSUL Something About Mary 8421, an influential sire in the Simmental breed that is backed by the prolific JBSF Proud Mary!
- We love the extra length of body, power, and genuine substance that she offers. She is safe in calf to the impressive WHF/JS/CCS Double Up G365!



JS DAIRY QUEEN 57G  
Dam of Lots 48-51

CCS/JS DQ 57G 67L

HPF QUANTUM LEAP Z952														
WLE COPACETIC E02														
CMFM JOY 02ZB														
MR HOC BROKER														
JS DAIRY QUEEN 57G														
CLRS DAIRY QUEEN 606D														
REG: 4258531														
BD: 3/25/23 TATTOO: 67L														
CE	BW	WW	YW	MCE	MLK	MWW	STY	CW	YG	MRB	BF	REA	API	TI
10.7	2.8	80.4	118	4.7	13.6	53.8	10.5	28.3	-0.38	0.05	-0.08	0.78	113.3	75.5

DUE TO CALVE 3/4/25 TO WHF/JS/CCS DOUBLE UP G365 (ASA: 3658592).

CCS/JS DQ 57G 3L

W/C RELENTLESS 32C														
JSUL SOMETHING ABOUT MARY 8421														
JBSF PROUD MARY														
MR HOC BROKER														
JS DAIRY QUEEN 57G														
CLRS DAIRY QUEEN 606D														
REG: 4330523														
BD: 1/22/23 TATTOO: 3L														
CE	BW	WW	YW	MCE	MLK	MWW	STY	CW	YG	MRB	BF	REA	API	TI
11.1	2.7	78.9	116.7	3.4	14.7	54.1	13.3	36	-0.3	-0.03	-0.06	0.78	114.2	72.5

DUE TO CALVE 2/27/25 TO WHF/JS/CCS DOUBLE UP G365 (ASA: 3658592).



LOT 52 JS DAIRY QUEEN 80L

- 80L is the first of two ET flushmate sisters from the famous CLRS Dairy Queen 606D donor that commanded a \$74,000 price tag in the 2023 Midwest Made Elite Female Sale. 606D is now a cornerstone matron in the Hilltop Simmentals breeding program in South Dakota!
- A big footed, deep bodied, soggy made daughter of the iconic JSUL Something About Mary 8421 that is sure to be a foundation matriarch for the winning bidder!



CLRS DAIRY QUEEN 606D  
\$74,000 Dam of Lots 52-55



LOT 53 JS DAIRY QUEEN 79L

- 79L is the stouter featured sister of the two ET flushmates sired by JSUL Something About Mary 8421 that is bold in her forerib, deep bodied, and offers a tremendous brood cow look.
- She is safe in calf to the 2023 NAILE Grand Champion, WHF/JS/CCS Woodford J001, with a Purebred calf on way due in January!



JSUL SOMETHING ABOUT MARY 8421  
Sire of Lots 52 & 53

JS DAIRY QUEEN 80L

W/C RELENTLESS 32C														
JSUL SOMETHING ABOUT MARY 8421														
JBSF PROUD MARY														
CLRS AFTER SHOCK 604 A														
CLRS DAIRY QUEEN 606D														
CLRS BEAUTY QUEEN 420 B														
REG: 4330534							TATTOO: 80L							
BD: 4/16/23														
CE	BW	WW	YW	MCE	MLK	MWW	STY	CW	YG	MRB	BF	REA	API	TI
13.3	0.6	75.7	111.9	4.4	15	52.8	13.7	36.6	-0.25	0.08	-0.05	0.72	125.7	75.8

DUE TO CALVE 1/19/25 TO WHF/JS/CCS DOUBLE UP G365 (ASA: 3658592).

JS DAIRY QUEEN 79L

W/C RELENTLESS 32C														
JSUL SOMETHING ABOUT MARY 8421														
JBSF PROUD MARY														
CLRS AFTER SHOCK 604 A														
CLRS DAIRY QUEEN 606D														
CLRS BEAUTY QUEEN 420 B														
REG: 4330533							TATTOO: 79L							
BD: 4/11/23														
CE	BW	WW	YW	MCE	MLK	MWW	STY	CW	YG	MRB	BF	REA	API	TI
13.3	0.6	75.7	111.9	4.4	15	52.8	13.7	36.6	-0.25	0.08	-0.05	0.72	125.7	75.8

DUE TO CALVE 1/20/25 TO WHF/JS/CCS WOODFORD J001 (ASA: 4068398).



LOT 54 JS/HOTZ DAIRY QUEEN 33L

- 33L is the next member of the CLRS Dairy Queen 606D cow family! A powerfully designed, rugged built female that is massive from every angle of evaluation. She is a big ribbed, square hipped, dense made female that is certain to be a foundation breeding piece for any program, especially if bull production is a priority!
- We love the extra volume and capacity that she offers. A role model brood cow prospect that will add power to any mating!



HARKERS UNLEASHED  
Sire of Lot 54



LOT 55 JS DAIRY QUEEN 52L

- JS Dairy Queen 52L is sired by Next Level and backed by the everlasting influence of CLRS Dairy Queen 606D. She is a huge footed, stout boned, athletic built female that is massive in the shape of her rib cage.
- A full sister, JS Dairy Queen 74L, was purchased in last year's Midwest Made Elite Female Sale by the Meyring family of Nebraska.



JS DAIRY QUEEN 74L  
Full Sister to Lot 55

JS/HOTZ DAIRY QUEEN 33L

SILVEIRAS STYLE 9303  
**HARKERS UNLEASHED**  
 HILB MISS OO LA LA B412  
 CLRS AFTER SHOCK 604 A  
**CLRS DAIRY QUEEN 606D**  
 CLRS BEAUTY QUEEN 420 B

**LOT 54**  
**3/4 SM 1/4 AN**  
 REG: 4258542  
 BD: 1/3/23 TATTOO: 33L

CE	BW	WW	YW	MCE	MLK	MWW	STY	CW	YG	MRB	BF	REA	API	TI
10.2	2.2	75.6	116.5	5.1	18.1	56.8	13.4	42.7	-0.15	0.39	-0.05	0.49	123.9	76.8

DUE TO CALVE 1/20/25 TO WHF/JS/CCS DOUBLE UP G365 (ASA: 3658592).

JS DAIRY QUEEN 52L

KRJ DAKOTA OUTLAW G974  
**NEXT LEVEL**  
 KRDL CAEDENCE C37  
 CLRS AFTER SHOCK 604 A  
**CLRS DAIRY QUEEN 606D**  
 CLRS BEAUTY QUEEN 420 B

**LOT 55**  
**PB SM**  
 REG: 4330530  
 BD: 3/27/24 TATTOO: 52L

CE	BW	WW	YW	MCE	MLK	MWW	STY	CW	YG	MRB	BF	REA	API	TI
11.6	2	80.9	117.8	4.9	20.4	60.7	13.6	34.1	-0.4	0.05	-0.08	0.9	122.1	77.5

DUE TO CALVE 1/20/25 TO WHF/JS/CCS DOUBLE UP G365 (ASA: 3658592).



LOT 56 JS FLIRT AWAY 61L

- 61L and 66L are a pair of ET flushmate sisters sired by WHF/JS/CCS Double Up G365 and backed by the powerful JS Flirt A-Way 59Y donor dam. 61L is the extra stout white flanked female that is bold ribbed, sound footed and offers a captivating look of quality and style from the side.
- The most notable maternal sister to this pair of females would be the iconic JS Black Satin 9B, more commonly known across the industry as "Boots"!
- A neat breeding piece that sells safe in calf to WLE Copacetic E02 for a BIG return on investment.



JS FLIRT A-WAY 59Y  
Prolific Dam of Lots 56 & 57



LOT 57 JS FLIRT AWAY 66L

- JS Flirt Away 66L is another maternal sister to "Boots" that deserves a hard look on sale day! She is flawless in terms of her skeletal design, bold bodied, and stout hiped. We love her extra eye appeal and balance from the side.
- The influence of 59Y is certain to add consistency and true generating power!
- She also sells safe in calf to WLE Copacetic E02, one of the most popular SimGenetic sires of the last 10 years!



WHF/JS/CCS DOUBLE UP G365  
Sire of Lots 56 & 57

JS FLIRT AWAY 61L

W/C DOUBLE DOWN 5014E  
WHF/JS/CCS DOUBLE UP G365  
WHF SUMMER 365C  
HARKERS/JS DOMINATION  
JS FLIRT A-WAY 59Y  
JS FLATOUT FLIRTY 46T

LOT 56  
PB SM

REG: 4330528  
BD: 3/24/23 TATTOO: 61L

CE	BW	WW	YW	MCE	MLK	MWW	STY	CW	YG	MRB	BF	REA	API	TI
8	4.3	78.6	110.9	3.1	23.5	62.7	11.1	22.2	-0.45	-0.19	-0.08	0.95	94	67.2

DUE TO CALVE 1/21/25 TO WLE COPACETIC E02 (ASA: 3299037).

JS FLIRT AWAY 66L

W/C DOUBLE DOWN 5014E  
WHF/JS/CCS DOUBLE UP G365  
WHF SUMMER 365C  
HARKERS/JS DOMINATION  
JS FLIRT A-WAY 59Y  
JS FLATOUT FLIRTY 46T

LOT 57  
PB SM

REG: 4258523  
BD: 3/12/23 TATTOO: 66L

CE	BW	WW	YW	MCE	MLK	MWW	STY	CW	YG	MRB	BF	REA	API	TI
8	4.3	78.6	110.9	3.1	23.5	62.7	11.1	22.2	-0.45	-0.19	-0.08	0.95	94	67.2

DUE TO CALVE 1/20/25 TO WLE COPACETIC E02 (ASA: 3299037).



LOT 58 CCS LADY NELLIE 207L

- CCS Lady Nellie 207L is a beautiful profiling, smooth made, ultra-attractive Angus female sired by the widely used and very popular SCC SCH 24 Karat 838!
- The dam of 207L is Greimans Lady Nellie 298, the impressive Dameron First Class daughter that we selected from the historic Greiman Angus program. Her dam, SCC Echo Dell Nellie 810, was produced in the Stertzbach Cattle Company program of Ohio.
- Several full sisters have been featured in the Midwest Made Elite Female Sale over the past few years!



GREIMANS LADY NELLIE 298  
Dam of Lots 58 & 59



LOT 59 CCS LADY NELLIE 214L

- Another daughter of the powerful Greimans Lady Nellie 214L that is by SCC SCH 24 Karat 838. She is a moderate framed, sound built, smooth made female that offers tremendous shape and capacity.
- Both 214L and 207L are safe in calf to TCF DPL Gambino 303, the PVF DLX King Pin 0058 son that is backed by the legendary K N C Cabin Creek Sandy 804 cow family!



TCF DLP GAMBINO 303  
Service Sire to Lots 58 & 59

CCS LADY NELLIE 207L

SCC TRADITION OF 24  
SCC SCH 24 KARAT 838  
FCF PROVEN QUEEN 419  
DAMERON FIRST CLASS  
GREIMANS LADY NELLIE 298  
SCC ECHO DELL NELLIE 810

LOT 58  
ANGUS

REG: 20758404  
BD: 2/22/23 TATTOO: 207L

CED	BW	WW	YW	CEM	MLK	MW	MH	CW	MRB	RE	FAT	\$M	\$B	\$C
2	3.6	60	96	6	25	80	0.7	32	-0.03	0.73	0.00	37	107	176

DUE TO CALVE 1/19/25 TO TCF DPL GAMBINO 303 (AAA: 20632271).

CCS LADY NELLIE 214L

SCC TRADITION OF 24  
SCC SCH 24 KARAT 838  
FCF PROVEN QUEEN 419  
DAMERON FIRST CLASS  
GREIMANS LADY NELLIE 298  
SCC ECHO DELL NELLIE 810

LOT 59  
ANGUS

REG: 20758405  
BD: 2/23/23 TATTOO: 214L

CED	BW	WW	YW	CEM	MLK	MW	MH	CW	MRB	RE	FAT	\$M	\$B	\$C
2	3.6	60	96	6	25	80	0.7	32	-0.03	0.73	0.00	37	107	176

DUE TO CALVE 2/10/25 TO TCF DPL GAMBINO 303 (AAA: 20632271).



CCS/JS Summer 50L  
2024 IA State Fair Grand Champion Percentage Simmental Heifer



CCS/JS/LFTZ Summer L378  
2024 American Royal Grand Champion Purebred Simmental Heifer



JS Dairy Queen 87L  
2024 KILE Reserve Grand Champion Purebred Simmental Heifer



CCS/JS Summer 47L  
2024 OH State Fair Reserve Grand Champion Percentage Simmental Heifer



JS Dairy Queen 87L  
2024 Harvest Classic Supreme Champion Breeding Heifer



JS Pearl 52K  
2023 NE State Fair Supreme Champion 4-H Breeding Heifer



CCS/JS/LFTZ Summer L378  
2024 AJSA National Classic 3rd Overall Purebred Simmental Heifer



WHF/JS/CCS  
Woodford J001  
2023 NAILE Grand Champion Percentage Simmental Bull



Harkers Medicine Man  
2024 World Beef Expo Supreme Champion Bull



WHF/JS/CCS Double Up G365

2021 Cattlemen's Congress Reserve Grand Champion Purebred Simmental Bull



Harkers Unleashed  
2022 Cattlemen's  
Congress Grand  
Champion Percentage  
Simmental Bull



JS Dairy Queen 56G  
2020 World Beef  
Expo Reserve Grand  
Champion Heifer



UDE Ellie 153E

2018 NAILE Grand Champion Angus Female Jr. Show



WHF Andie 369F  
2020 NWSS  
Division  
Champion



WHF Summer 365C

2017 NAILE Grand Champion Simmental Heifer



CCS WHF Summer 50F  
2019 AJSA National  
Classic Reserve  
Champion Bred &  
Owned Heifer



JS Black Satin 9B  
2016 NWSS  
Grand Champion  
Purebred Female



JS Black Satin 9B

2015 NAILE Grand Champion Purebred Female



JS Black Satin 9B  
2015 AJSA Summer  
Classic Grand  
Champion Purebred  
Female

*I*NNOVATION  
AgMarketing, LLC

PO BOX Z  
DE SOTO, KS 66018

Presorted  
First Class  
US Postage  
**PAID**  
SlateGroup

AN ELITE MULTI-BREED OFFERING SUPPORTED BY MATERNAL EXCELLENCE!



SIMMENTALS

[JSSIMMENTALS.COM](http://JSSIMMENTALS.COM)