

RICH IN HISTORY, PASSION FOR THE PRESENT, EXCITED FOR THE FUTURE

W/C *The Brand for Results*

W/C

WERNING CATTLE

FROZEN GENETIC SALE

MONDAY, APRIL 8 • 8 PM CT

CCI
.LIVE **LiveONLINE™**

STATESMAN



1

TSN STATESMAN K006

ASA 4111722 • DOB 2/11/22 • HOMO POLLED • HOMO BLACK • PB SM

HOOK'S BEACON 56B

HOOK'S EAGLE 6E

CLRS GUARDIAN 317G X TSN MISS EAGLE H345

CLRS ALWAYS XCELLENT

TSN MISS TOP GRADE A084

CE	BW	WW	YW	ADG	MCE	MILK	MWW	MARB	REA	API	TI
20.1	-3.9	91.6	134.2	0.27	11.6	32.3	78	0.68	1.13	203.4	109.5
1%	1%	10%	20%	35%	1%	3%	3%	3%	10%	1%	1%

A new member of the herd sire battery in Emery that we are extremely excited about! TSN Statesman K006 is owned with TSN Simmentals, where he was our selection from their program last year. He was the service sire to a large portion of the bred heifers in this year's sale. The first calves that have been born look incredible and we have extremely high expectations for his progeny. They are born easy, have incredible vigor, and offer superior growth. TSN Statesman K006 is elite on paper, while maintaining a phenomenal phenotype. He ranks among the elite 1% of the breed for CE, BW, MCE, MILK, STAY, API, and TI. He maintains a top 10% ranking for WW and top 20% for YW. A truly unique breeding piece that will continue to see heavy use at the W/C and at TSN Simmentals! This will be the last semen offered in 2024... bid with confidence!

1A 3 UNITS OF CONVENTIONAL SEMEN
1B 3 UNITS OF CONVENTIONAL SEMEN
1C 3 UNITS OF CONVENTIONAL SEMEN
1D 3 UNITS OF CONVENTIONAL SEMEN
1E 3 UNITS OF CONVENTIONAL SEMEN
1F 3 UNITS OF CONVENTIONAL SEMEN
1G 3 UNITS OF CONVENTIONAL SEMEN
1H 5 UNITS OF CONVENTIONAL SEMEN
1I 5 UNITS OF CONVENTIONAL SEMEN
1J 5 UNITS OF CONVENTIONAL SEMEN
1K 5 UNITS OF CONVENTIONAL SEMEN
1L 5 UNITS OF CONVENTIONAL SEMEN
1M 10 UNITS OF CONVENTIONAL SEMEN
1N 10 UNITS OF CONVENTIONAL SEMEN
1O 10 UNITS OF CONVENTIONAL SEMEN
1P 10 UNITS OF CONVENTIONAL SEMEN
1Q 10 UNITS OF CONVENTIONAL SEMEN

TRUTH BE TOLD



2

W/C TRUTH BE TOLD 6038L

ASA 4280949 • DOB 2/8/23 • HOMO POLLED • 3/4 SM 1/4 AR

WS BEEF KING W107

W/C BANKROLL 811D

W/C BEEF KING 1025F X W/C MISS WERNING 90G

EKHCC RED JEWEL 760

PELTON MISS 361B

CE	BW	WW	YW	ADG	MCE	MILK	MWW	MARB	REA	API	TI
10.2	0.2	76	108.7	0.2	6.1	19.5	57.7	0.27	1	116.6	78.6

We couldn't be more excited to offer the first semen from the \$140,000 high selling bull from the 2024 Werning Cattle Company Production Sale! W/C Truth Be Told 6038L was selected by King Cattle of Indiana this past February. He has been special since day one and he is exactly the kind of red bull we have been trying to make to be able to use on our red and red baldy females to keep them red and make them good. 6038L offers a different twist to the top side of his pedigree that should allow him to be used on a wide spectrum of cows and pedigrees across the breed. He combines stoutness and style to the highest degree! W/C Truth Be Told 6038L is another bull that will see HEAVY service at Werning Cattle Company this spring!



W/C MISS WERNING 90G
DAM OF W/C TRUTH BE TOLD 6038L

- 2A 3 UNITS OF CONVENTIONAL SEMEN
- 2B 3 UNITS OF CONVENTIONAL SEMEN
- 2C 3 UNITS OF CONVENTIONAL SEMEN
- 2D 3 UNITS OF CONVENTIONAL SEMEN

HEAVY HITTER



3

RFS HEAVY HITTER H45

ASA 3782005 • DOB 3/3/20 • HOMO POLLED • HOMO BLACK • PB SM

CDI MAINLINE 265D

REMINGTON LOCK N LOADS4U

LCDR IMPACT 134F X BCLR MISS BALDY E704

WS MISS SUGAR C4

WS MOTHER LODGE W21

CE	BW	WW	YW	ADG	MCE	MILK	MWW	MARB	REA	API	TI
9.5	4.5	118.9	187.2	0.43	3.9	18	77.4	0.07	1.57	139.1	99.7
		1%	1%	1%			3%		1%	40%	4%

RFS Heavy Hitter H45 is one of the truly great breeding bulls that we have EVER used at Werning Cattle Company! Over 50 direct progeny being sold on February 13, 2024 between the bull and female offering, **RFS HEAVY HITTER H45 PROGENY AVERAGED AN ASTONISHING \$12,097!** We love his ability to transmit skeletal quality, mass, dimensional, length, and true performance. RFS Heavy Hitter H45 is the #2 sire in the breed for WW EPD, only behind his sire. He and his progeny are right for the times, and we believe will enhance your operations bottomline!



W/C HEAVY HITTER 7023L

\$38,000 SON PURCHASED BY EMMONS RANCH, MT



W/C HEAVY HITTER 068L

\$22,000 SON PURCHASED BY HEIM RANCH, SD

3A 3 UNITS OF CONVENTIONAL SEMEN

3B 3 UNITS OF CONVENTIONAL SEMEN

3C 3 UNITS OF CONVENTIONAL SEMEN

3D 3 UNITS OF CONVENTIONAL SEMEN

HERALD



4

RFS HERALD H104

ASA 3782066 • DOB 3/12/20 • HOMO POLLED • HETERO BLACK • PB SM

CDI MAINLINE 265D

REMINGTON LOCK N LOAD54U

LCDR IMPACT 134F X BCLR MISS BALDY E704

WS MISS SUGAR C4

WS MOTHER LODGE W21

CE	BW	WW	YW	ADG	MCE	MILK	MWW	MARB	REA	API	TI
12.1	3.3	98.4	153.8	0.35	5.5	18	67.1	0.32	1.08	152.4	94.4
45%		3%	3%	4%			30%	25%	15%	20%	10%

Much like his full brother, RFS Herald H104 is a breed leader when it comes to injecting power and performance! Semen on both brothers has remained closed to the public and has only been used by ownership. It is our continued goal to create an ideal and profitable product for our customers. RFS Herald H104 is undeniably a smoother, neater featured version of his big brother, that still offers breed leading power and substance! 27 progeny between the bull and female offering averaged just shy of \$10,000 per head on February 13th in our 43rd Annual Production Sale! Don't miss this exclusive genetic opportunity to acquire semen on BOTH bulls!



W/C HALO 2304K

\$27,000 DAUGHTER PURCHASED BY RUBY CATTLE COMPANY, IA



W/C MISS WERNING 271K

\$20,000 DAUGHTER PURCHASED BY KING CATTLE COMPANY, IN

4A 3 UNITS OF CONVENTIONAL SEMEN

4B 3 UNITS OF CONVENTIONAL SEMEN

4C 3 UNITS OF CONVENTIONAL SEMEN

4D 3 UNITS OF CONVENTIONAL SEMEN

MISS WERNING



Selling Choice!

W/C MISS WERNING 964G EMBRYOS

DONOR ASA 3729670 • DONOR SIRE Rubys Turnpike 771E • DONOR DAM W/C Miss Werning 443B

3 EMBRYOS Sired by W/C KAISER 240J											
PLANNED MATING EPDs BELOW • PLANNED MATING BREED PB SM											
CE	BW	WW	YW	ADG	MCE	MILK	MWW	MARB	REA	API	TI
14.6	-1.4	76.1	120.5	0.28	5.8	27.2	65.2	0.05	0.89	126.8	78.3

3 EMBRYOS Sired by MR SR 71 RIGHT NOW E1538											
PLANNED MATING EPDs BELOW • PLANNED MATING BREED PB SM											
CE	BW	WW	YW	ADG	MCE	MILK	MWW	MARB	REA	API	TI
14.9	-1.2	77.8	124.8	0.29	8.6	29	67.8	0.07	0.98	133.6	81.5

3 EMBRYOS Sired by W/C EXECUTIVE ORDER 8543B											
PLANNED MATING EPDs BELOW • PLANNED MATING BREED 3/4 SM 1/4 AN											
CE	BW	WW	YW	ADG	MCE	MILK	MWW	MARB	REA	API	TI
13.3	0.8	80.7	133.3	0.33	6.6	30.2	70.6	-0.02	0.95	128.6	77.9

The new star of the W/C donor pen! Her very first natural calf commanded \$20,000 and her crop ET calves in this sale are so impressive. Check out her flush of W/C Kaiser 240J sons selling as lots 77 – 81. We have all these mating's coming here in 2024. She is quite a beef cow and this is the first time we have ever offered her frozen genetics! W/C guarantees 1 60-day pregnancy per package of 3 embryos if transferred by a certified technician.



W/C KAISER 6351L
\$15,000 FULL BROTHER TO LOT 5A EMBRYOS
PURCHASED BY CHAD RUDA



W/C BF MS SIMPLE MAN
\$32,500 FULL BROTHER TO LOT 6A EMBRYOS

W/C MISS WERNING 238K
FULL SISTER TO LOT 6A EMBRYOS



Selling Choice!

W/C MISS WERNING 42B EMBRYOS

DONOR ASA 2962919 • DONOR SIRE Remington Lock N Load 54U • DONOR DAM Miss Werning 715T

6A

3 EMBRYOS Sired BY W/C BET ON RED 481H

PLANNED MATING EPDs BELOW • PLANNED MATING BREED PB SM

CE	BW	WW	YW	ADG	MCE	MILK	MWW	MARB	REA	API	TI
11.8	1.5	75.7	114.8	0.25	5.4	21.8	59.6	0.2	1.05	125.9	78

6B

3 EMBRYOS Sired BY WHEATLAND DIMENSIONAL 1147J

PLANNED MATING EPDs BELOW • PLANNED MATING BREED PB SM

CE	BW	WW	YW	ADG	MCE	MILK	MWW	MARB	REA	API	TI
8.2	3.1	86	131.6	0.29	3	19.7	62.6	-0.02	1.15	114	76.7

6C

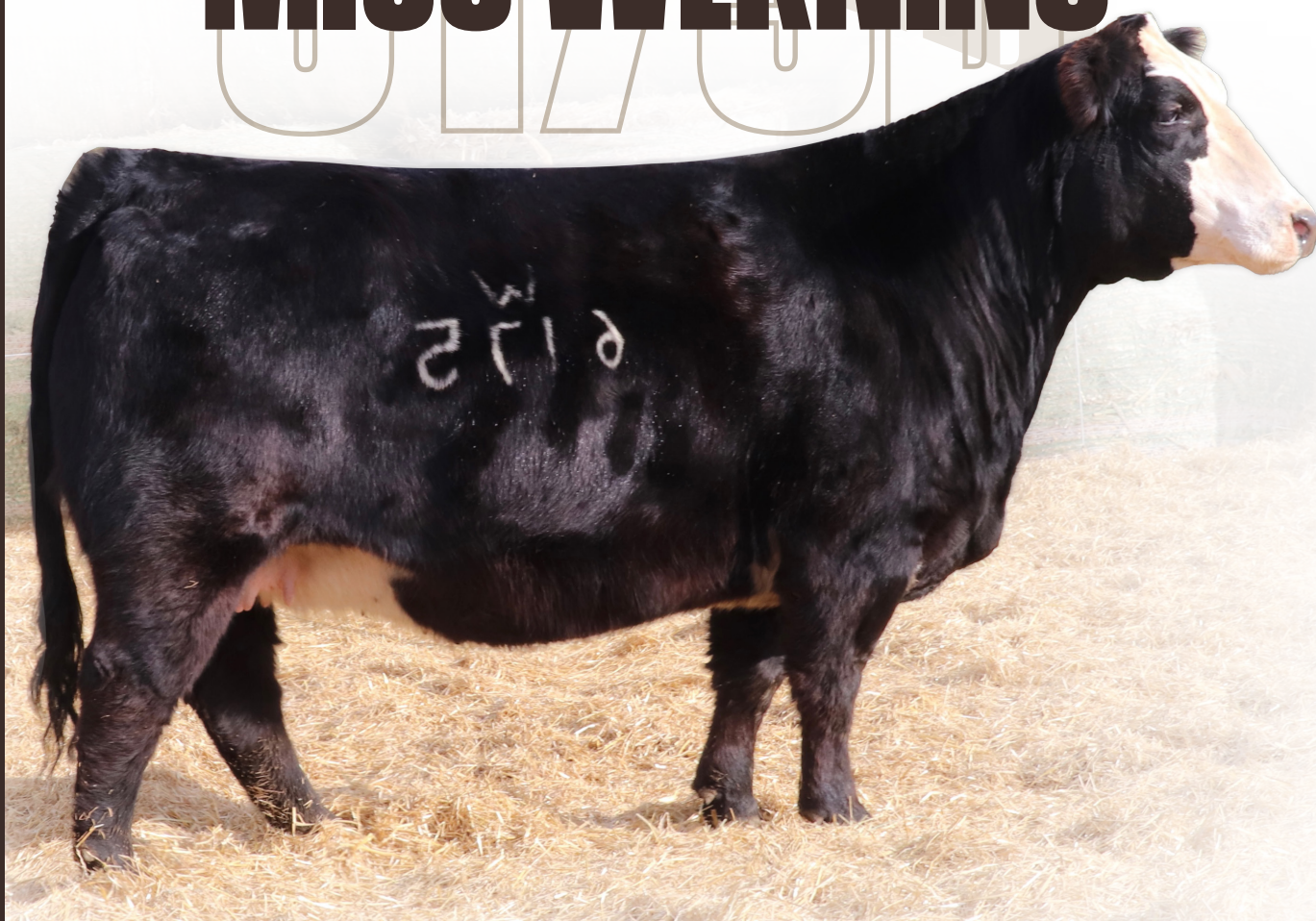
3 EMBRYOS Sired BY W/C EXECUTIVE ORDER 8543B

PLANNED MATING EPDs BELOW • PLANNED MATING BREED 3/4 SM 1/4 AN

CE	BW	WW	YW	ADG	MCE	MILK	MWW	MARB	REA	API	TI
12.4	-0.4	77.1	120	0.27	4.6	20.8	59.2	0.18	0.95	129.4	80.2

We haven't got 42B pictured yet, sorry it's on our list but she is responsible for the most impressive flush ever born at W/C. Four sons averaged \$18,000 including the top seller W/C BF MS Simple Man. The flushmate sisters highlight this years bred heifer offering. W/C guarantees 1 60-day pregnancy per package of 3 embryos if transferred by a certified technician.

MISS WERNING



Selling Choice!

W/C MISS WERNING 6175D EMBRYOS

DONOR ASA 3881215 • DONOR SIRE W/C Bullseye 3046A • DONOR DAM W/C Miss Werning A3175

7A

3 EMBRYOS SIRED BY OMF JOURNEYMAN J24

PLANNED MATING EPDs BELOW • PLANNED MATING BREED PB SM

CE	BW	WW	YW	ADG	MCE	MILK	MWW	MARB	REA	API	TI
12.6	1.1	78.3	121.7	0.27	4.9	22	61.1	-0.07	1.21	120.8	74.8

7B

3 EMBRYOS SIRED BY RUBYS TURNPIKE 771E

PLANNED MATING EPDs BELOW • PLANNED MATING BREED PB SM

CE	BW	WW	YW	ADG	MCE	MILK	MWW	MARB	REA	API	TI
11	2.2	80.3	124	0.28	2.8	23	63	-0.11	1.42	108.9	73.8

A popular donor among visitors. She has produced so many sale highlights and high sellers for us including a \$20,000 bull and bred in our 2022 sale. Her progeny again highlight this event. Offering three low risk, highly prove, high reward embryo matings. W/C guarantees 160-day pregnancy per package of 3 embryos if transferred by a certified technician.



W/C MISS WERNING 2013K
MATERNAL SISTER TO LOTS 7A-B EMBRYOS



W/C MISS AMERICA 2326K
MATERNAL SISTER TO LOTS 7A-B EMBRYOS



W/C TRADESMAN 648L
\$29,000 FULL BROTHER TO LOT 7A EMBRYOS
PURCHASED BY WHEATLAND CATTLE COMPANY

BLACKCAP MAY



Selling Choice!

S A V BLACKCAP MAY 6644 EMBRYOS

DONOR AAA 18542155 • DONOR SIRE Coleman Charlo 0256 • DONOR DAM S A V Blackcap May 4136

8A

3 EMBRYOS Sired BY COLEMAN GLACIER 041

PLANNED MATING EPDs BELOW • PLANNED MATING BREED ANGUS

CE	BW	WW	YW	ADG	MCE	MILK	MWW	MARB	REA	API	TI
14	-0.6	90.6	151	0.38	5.4	29.8	74.2	0.22	0.52	111.2	76.4

8B

3 EMBRYOS Sired BY RFS HEAVY HITTER H45

PLANNED MATING EPDs BELOW • PLANNED MATING BREED 1/2 SM 1/2 AN

CE	BW	WW	YW	ADG	MCE	MILK	MWW	MARB	REA	API	TI
12	2.5	101.5	165.9	0.4	4.4	23.5	70.5	0.25	0.89	129.5	89.6

8C

3 EMBRYOS Sired BY W/C BANKROLL 811D

PLANNED MATING EPDs BELOW • PLANNED MATING BREED 1/2 SM 1/2 AN

CE	BW	WW	YW	ADG	MCE	MILK	MWW	MARB	REA	API	TI
11.5	1.1	76.9	117.4	0.26	7.5	24.1	62.7	0.24	0.71	113.1	74.9

A key influencer for S A V and W/C! She produced the 2022 \$350,000 S A V top seller S A V Panther 1906 and her progeny again highlight the 2024 S A V sale. W/C guarantees 160-day pregnancy per package of 3 embryos if transferred by a certified technician.



COLEMAN GLACIER 041
SIRE OF LOT 8A EMBRYOS

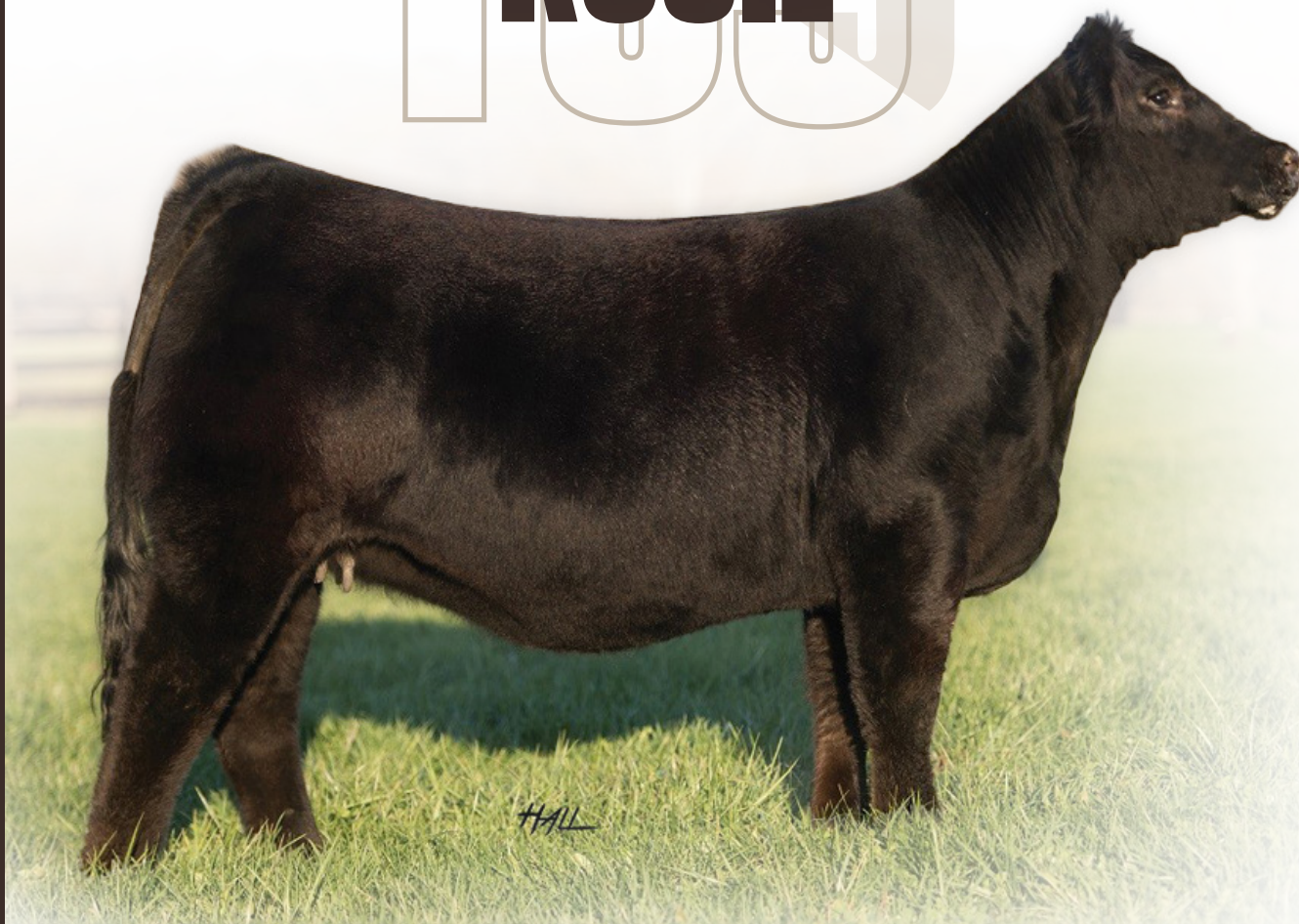


RFS HEAVY HITTER H45
SIRE OF LOT 8B EMBRYOS



W/C BANKROLL 811D
SIRE OF LOT 8C EMBRYOS

ROSIE



Selling Choice!

LAZY H ROSIE F89 EMBRYOS

DONOR ASA 3603277 • DONOR SIRE W/C Relentless 32C • DONOR DAM W/C RJ 3028A

9A

3 SEXED FEMALE EMBRYOS SIRED BY NEXT LEVEL

PLANNED MATING EPDs BELOW • PLANNED MATING BREED PB SM

CE	BW	WW	YW	ADG	MCE	MILK	MWW	MARB	REA	API	TI
11.5	2.2	74.5	105.2	0.2	4.5	20.6	57.7	0.09	1.11	117.6	74.2

9B

3 SEXED FEMALE EMBRYOS SIRED BY TRCC PANDEMIC

PLANNED MATING EPDs BELOW • PLANNED MATING BREED PB SM

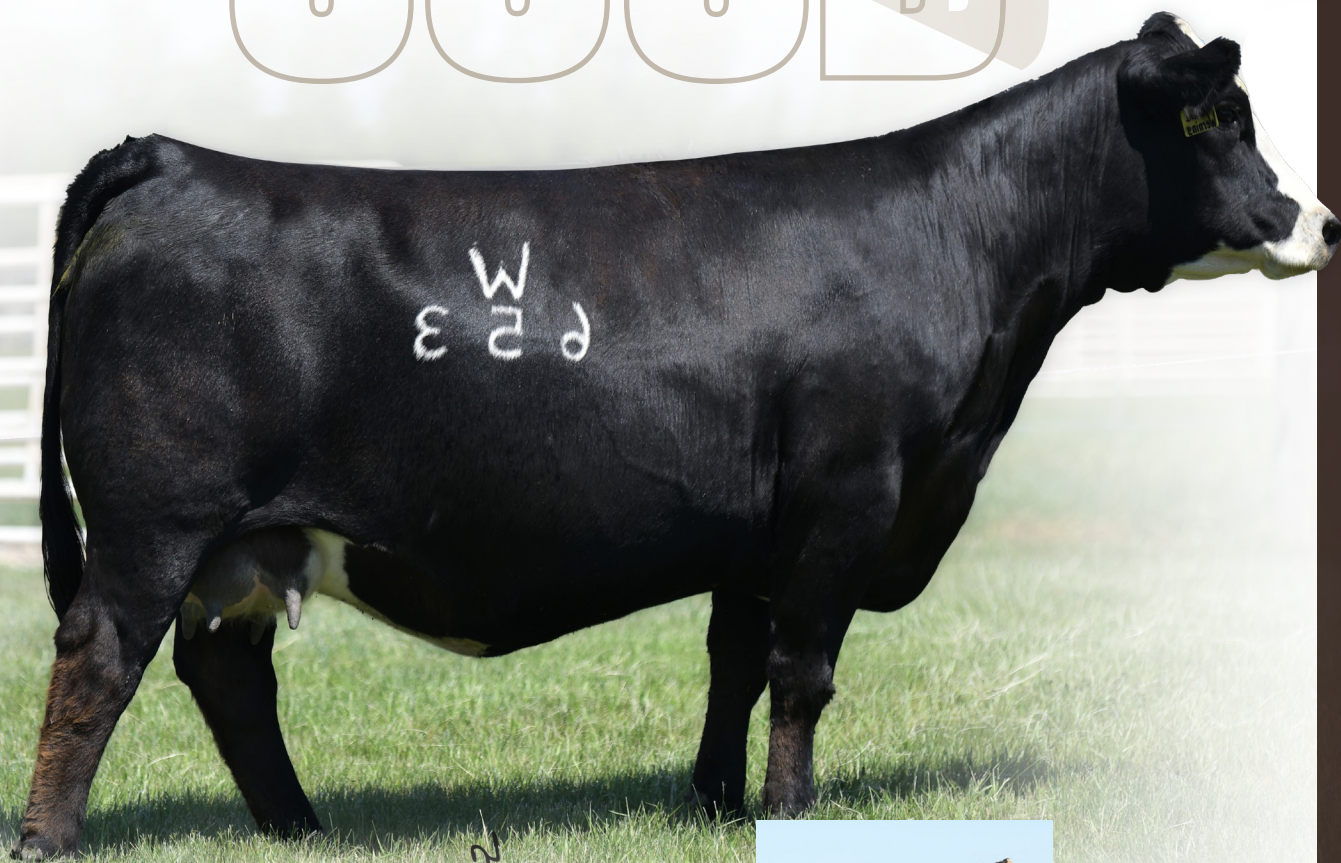
CE	BW	WW	YW	ADG	MCE	MILK	MWW	MARB	REA	API	TI
12.1	0.5	63.8	92.9	0.19	6	19.6	51.4	0.17	0.76	118.3	71.3

Her daughter's stole the show in last years sale. They sold for \$27,000 1/2 interest and \$16,000. We have implanted both of these mating's for fall 2025 calves. Major high seller potential here. W/C guarantees 1 60-day pregnancy per package of 3 embryos if transferred by a certified technician.



W/C ROSITA 1078J
\$27,000 1/2 INTEREST MATERNAL SISTER TO LOTS 9A-B
OWNED WITH PARSONS LIVESTOCK

MISS WERNING



Selling Choice!

W/C MISS WERNING 653D EMBRYOS

DONOR ASA 3253974 • DONOR SIRE CCR Spartan 9124A • DONOR DAM W/C Miss Werning 253Z

10A											
3 EMBRYOS Sired by W/C BANKROLL 811D											
PLANNED MATING EPDs BELOW • PLANNED MATING BREED PB SM											
CE	BW	WW	YW	ADG	MCE	MILK	MWW	MARB	REA	API	TI
14.2	0.4	82.3	117.3	0.22	8.3	18.6	59.7	0.26	0.81	131.3	83.5

10B											
3 EMBRYOS Sired by MR SR 71 RIGHT NOW E1538											
PLANNED MATING EPDs BELOW • PLANNED MATING BREED PB SM											
CE	BW	WW	YW	ADG	MCE	MILK	MWW	MARB	REA	API	TI
15.5	-1.4	86.5	132.2	0.29	9.9	21	64.2	0.32	0.77	147.4	89.8

10C											
3 EMBRYOS Sired by W/C DOUBLE DOWN 5014E											
PLANNED MATING EPDs BELOW • PLANNED MATING BREED											
CE	BW	WW	YW	ADG	MCE	MILK	MWW	MARB	REA	API	TI
14.9	-0.8	80.7	113.4	0.21	6.4	17.9	58.2	0.2	0.87	133.3	81.5

653D was the best heifer of the 2016 calf crop. She injects power, rib, and good looks into all of her progeny. Three solid matings here. W/C guarantees 1 60-day pregnancy per package of 3 embryos if transferred by a certified technician.



W/C BANKROLL 811D
SIRE OF LOT 10C



MR SR 71 RIGHT NOW E1538
SIRE OF LOT 10B EMBRYOS



W/C DOUBLE DOWN 5014E
SIRE OF LOT 10C EMBRYOS



DALE CELL 605.661.3625

SCOTT CELL 605.682.9610

CREIGHTEN CELL 605.656.1442

WWW.WERNINGCATTLE.COM



GRAHAM BLAGG 530.913.6418

TIM ANDERSON 605.682.9343

JERED SHIPMAN 806.983.7226

WWW.INNOVATIONAGMARKETING.COM