

FRIDAY | DECEMBER 15, 2023 | 6:00 PM



THE

YALE, OKLAHOMA

Grand Event

VOLUME IV



We would like to take a moment to welcome each of you to our Fourth Annual "Grand Event"!

This past year has been one that we will never forget; from a remarkable sale to an amazing summer run for our loyal customers during the Junior National and State Fair season that carried over through the fall majors, it has been truly humbling and has given us the extra push at the end of the day to strive for more. Heifers that sold through last year's sale endured tremendous success and we couldn't be happier for our customers! It is because of you, our loyal customers that we are constantly trying to enhance our breeding program and provide you with a superior product.

The efforts put forth by our team never go unnoticed, and we cannot thank them enough for their contributions. Garrett Cloud manages the day to day operations in Oklahoma. He and his wife, Roxie (the real boss) welcomed their son Walker earlier this year. This ranch wouldn't run the way that it does without them!

Justin Johnson manages the show and sale cattle operations of Buck Creek Ranch. He has been a great fit for our program and we couldn't be happier to have him and his family in Oklahoma!

We would also like to show our appreciation to Jeremy Clark, Carlee Clark, Chancee Clark, Jackson Mattock, Jonna McCullough, Olivia Caldwell, and Adam Miller for their continuous support this year!

Of course, none of this would be possible without your support. Please feel free to reach out to any member of the Buck Creek Ranch team or sale staff if you have questions about the offering. We invite you to join us on December 15, 2023 in Yale, Oklahoma at our new sale facility for the Fourth Annual "Grand Event"!

Respectfully,

Jacob Moore - Buck Creek Ranch General Manager



Jacob, Sarah and Krew



The Moore Family



SCHEDULE OF EVENTS

Thursday, December 14, 2023
Cattle on display all day

Friday, December 15, 2023
Cattle on display all day
5:00 PM – Dinner Served
**6:00 PM – The Buck Creek Ranch
Grand Event Vol. IV**

SALE LOCATION

Join us at our sale facility!
25407 E McElroy
Yale, OK 74085

ONLINE BIDDING



It is with great pleasure and enthusiasm that we welcome you to Buck Creek Ranch for The Grand Event Volume IV. Again, the cattle are quite impressive as you've come to expect from this firm. The offering is statured with quality options for Purebred and Percentage Simmental seedstock, as well as a select offering of elite bred Angus and Charolais genetics between the covers of this sale catalog. The intense approach over the last several years is taking hold in what appears to be one of the absolute great breeding programs in recent history that the industry has had the opportunity to witness. Consider this your personal invitation to join us for the third offering at Buck Creek Ranch at the Yale, Oklahoma location on the third Friday of December!

The initial acquisitions in the formative years were the females. The Moore family tied into what they needed from day one; they acquired the stock that were not only built good but bred in top shelf fashion. As most successful seedstock operations realize, it's the cow family that sets the pace and secures the foundation for the operation. Buck Creek Ranch's donor arsenal not only can make females that frequent the backdrop, but it has also proven to be one that can generate potent herd sires as well. Bulls such as RP/BCR Eminence H005 has secured his place among the "best of the best" when it comes to his ability to consistently sire quality. The cow power that supports his lineage needs zero introduction, and based on his progeny between the covers of this catalog we believe that you will wholeheartedly agree! Next Level, Chestnut Perfect Timing 341, STAG High Definition 110 ET are new, young acquisitions that were made over the past few years. One can rest assured that the business will hear more from them in the not-so-distant future as their impact on the future marketing and next tier genetic development at Buck Creek Ranch should prove to be substantial.

Jacob and his family have always surrounded themselves with great people. People like Doug Smith who have earned their spot and written their own page in industry history. Jacob witnessed Doug's relentless work ethic and his pursuit to do everything exactly right in a repetitious manner because it was proven to work. One who takes the time to visit with Jacob Moore will pick up on that same desire and direction, but he will be the first to admit that going at this venture alone without the right team is simply impossible! He has surrounded himself with people like Garrett and Roxie Cloud. There is no one that rides for the brand harder than Garrett, and it is evident by the consistently improving and influential product that is offered year after year. Justin Johnson and his family have been a tremendous addition to the Buck Creek Ranch team. He brings another dimension to the customer service aspect of the business and has been a great resource for the junior show families both in the state of Oklahoma and around the country. This youthful team is strong in experience, commitment and will prove to be the one to tie to today and beyond!

This evolving program continues to gain steam and momentum annually. The quality that is mass produced by this outfit is quite impressive as they continue to grow both in size and scope. Winning ways lead to winning traditions and traditions lead to legacies. Success breeds success and that becomes addictive to those who have the passion, will, and desire to do so. Make it your mission to join us December 15, 2023 for The Grand Event Volume IV at the ranch just north of Yale Oklahoma.

We wish you and your family a blessed holiday season. Enjoy the cattle!

Graham Blagg Jered Shipman Tim Anderson



SALE LOCATION

25407 E McElroy - Yale, OK 74085

SALE DAY CONTACTS

Jacob Moore (765) 717-1322
Garrett Cloud (479) 629-2840
Justin Johnson (816) 200-6516
Jeremy Clark (501) 207-1796

AUCTIONEER

Col. Jared Shipman (806) 983-7226

SALE MANAGEMENT

Innovation AgMarketing, LLC
Graham Blagg (530) 913-6418
Tim Anderson (605) 682-9343

RING STAFF

Mitchell Armitage, Special Assignment (405) 641-9438
Craig Talkington, Special Assignment (785) 623-1789
Colton Pratz, OK Cowman (405) 385-1054

INSURANCE

Jame Secondino-Krieger (812) 208-0956

TRUCKING

When the sale is over, we will have a trailer heading back to Indiana and will be making deliveries to central points along the way. Please contact Jacob for more information. Another trucking option that we recommend is Dick Coleman (765) 461-0954.

FLUSH/DNA RIGHTS

Buck Creek Ranch reserves the rights to (2) two successful flushes on each open show heifer/donor prospect in the sale at the expense of the seller and convenience of the buyer. Also, Buck Creek Ranch reserves the right to clone any female in the offering at their expense.

AIR TRAVEL

Tulsa International Airport, Tulsa – 50 Miles
Will Rogers World Airport, Oklahoma City – 91 Miles
Stillwater Regional Airport, Stillwater – 25 Miles

LODGING

Hampton Inn & Suites Stillwater – University West
715 S Country Club Road - Stillwater, OK 74074
(405) 372-2445

Residence Inn by Marriott Stillwater
800 S Murphy Street - Stillwater, OK 74074
(405) 707-0588

Best Western Plus Cushing Inn
508 E Main Street - Cushing, OK 74023
(918) 306-4299

PHOTOGRAPHY & VIDEOGRAPHY

John Reasor (423) 290-6002
Paige Wallace (417) 316-0662



Bid Live Online

www.CCI.live - Watch the Sale

(405) 400-9505 Text/Call - schedule@cci.live
Find us on the App Store and Google Play
Over 35 years in livestock marketing!

TERMS AND CONDITIONS

All lots sell in accordance with the suggested guidelines of the American Simmental Association, American Angus Association, or their respective breed association. For updated EPD's and information please visit www.simmental.org. Announcements made sale day from the block during the sale take precedence over printed material in this catalog. Payment will be accepted in the form of cash, cashier's check, or check. All cattle must be paid for prior to release. All funds are to be paid to Innovation AgMarketing, LLC in U.S. currency. No cattle will be transferred, delivered, or released without full payment. In the event you need expedited registration paper transfers please make plans to pay in full on sale day. All sales are final.

ANNOUNCEMENTS

A supplement sheet will be available sale day with updated information, corrections, and/or additional information relating to the sale offering in the form of breeding status, retained embryo interest, etc. This supplement sheet and any announcements made sale day from the auction block during the sale will take precedence over printed material associated with this sale.

LIABILITY

Buck Creek Ranch, Innovation AgMarketing, LLC, and authorized sale personnel assume NO liability for injury, accident, or damage to persons or personal property. All persons who attend the sale do so at their own risk.

DAILY CARE

Customer service and the day-to-day preparation of showing is something that we are very passionate about. We want to work with our customers and are always willing to lend a helping hand. If you would like to have your heifer clipped throughout the year prior to any show, you are welcome to bring the cattle back to Buck Creek Ranch at no additional cost to be clipped. It will be required that all animals that are left at Buck Creek Ranch to be managed must be insured. If you choose to have Buck Creek Ranch manage your heifer during her show career, the following costs are outlined below. Please contact Jacob or Garrett with any questions.

\$750 per month for daily care, feed, etc.

If cattle are taken to a show by Buck Creek Ranch a fee of \$150/day will be charged to cover labor and show expenses.

FERTILITY

All females are sold as sound breeders. However, if we feel that a heifer has been fed to an extreme level of obesity, we will hold the feeder responsible for any reproductive problems. Seller reserves the right to take possession of any animal(s) that presents difficulty conceiving before a sale credit will be issued. Seller guarantees each female to produce a live calf or transferrable embryos.

CATALOG DESIGN

THM Promotions, Tracy McMurphy (806) 679-0231

TO THOSE THAT MAKE IT HAPPEN AT BUCK CREEK RANCH

Thank You



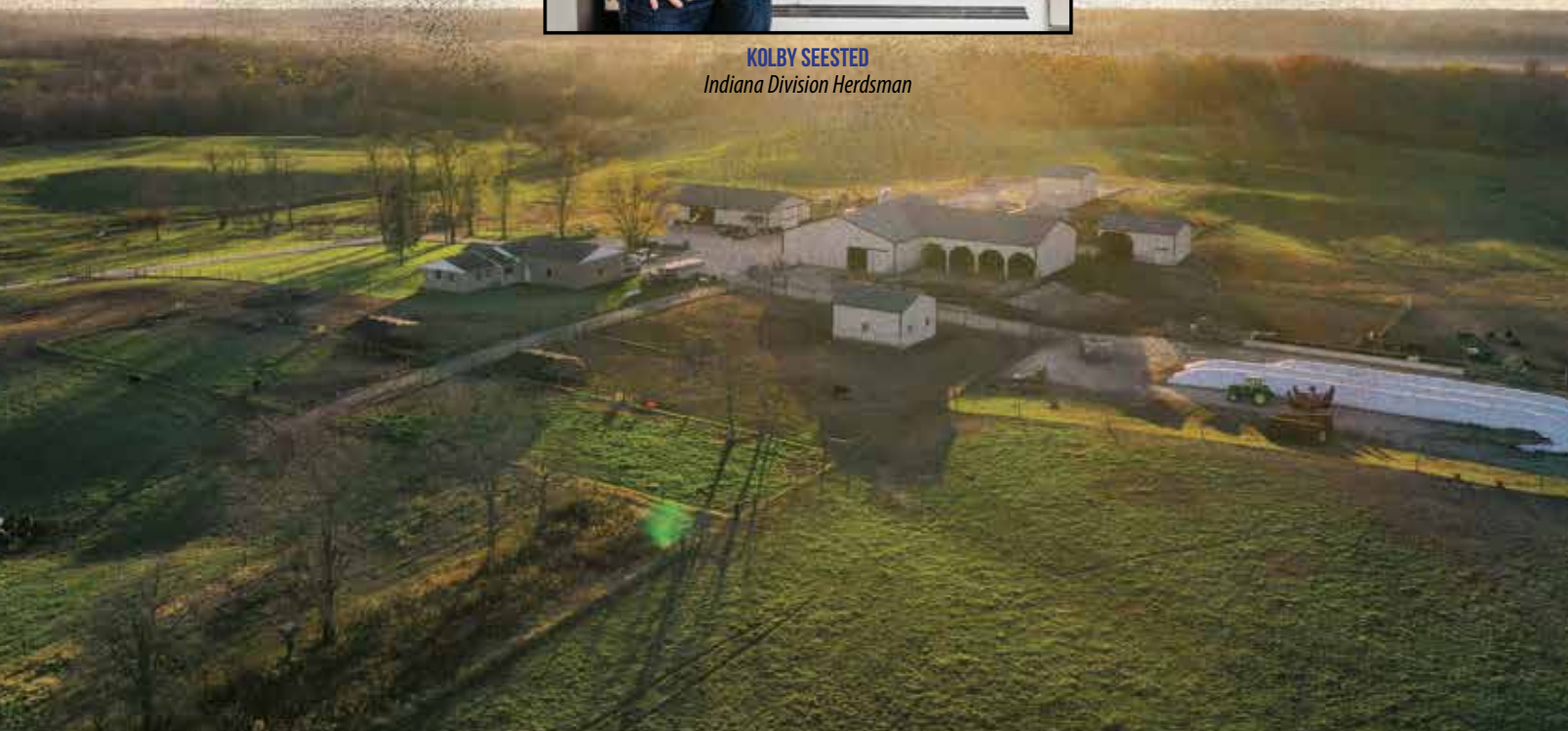
GARRETT, ROXIE & WALKER CLOUD
Oklahoma Division Manager



JUSTIN, LINDSEY, ARIA, & ASPYN JOHNSON
Show & Sale Cattle Manager



KOLBY SEESTED
Indiana Division Herdsman



ELITE SIMMENTAL, SIMANGUS AND ANGUS FEMALES



THE

Open Division

VOLUME IV

Lot 1 JSUL DREAM BIG 8992F



OPEN FEMALES

BC

We are proud to initiate the 2023 edition of the "Grand Event" at Buck Creek Ranch with a female that needs no introduction to the spotlight! JSUL Dream Big 8992F first took the breed by storm when she was selected as the 2019 NAILE Grand Champion Percentage Simmental Heifer on the green chips of Freedom Hall! She continued her winning ways in the "mile high" when she was slapped champion on "the hill" at the 2020 National Western Stock Show! Maturity did not allow this past champion to stray too far away from the look, mass, and build she offered during her show career. Massive, powerful, dense, bold featured, heavy structured, yet still exquisite for a productive beef animal. One will notice her influence throughout the offering as her progeny will surface in both the open and bred division. After witnessing the dam responsible, we believe her stock will be in utmost demand on sale day as they offer the goods and the kind it takes to fulfill big dreams and bigger goals. Invest in the future of your program!

1
LOT

ASA: 3444314

BD: 1/17/18

Tattoo: 8992F

JSUL DREAM BIG 8992F

Sire

SILVEIRAS STYLE 9303

GAMBLES HOT ROD x SILVEIRAS ELBA 2520

Dam

SVJ SHE'S THE DREAM B796

SVF STEEL FORCE S701 x SVJ SHE'S THE DREAM Y728

1/2 SM 1/2 AN

CE	BW	WW	YW	MILK	API	TI
10.1	2.8	73.8	114.5	16.3	108.9	68.6

AI Bred on 5/1/23 to NEXT LEVEL (ASA: 3981484).

PE 5/15/23-7/1/23 to CLF 24 KARAT 29K (AAA: 20553016).



JSUL DREAM BIG 8992F
2019 NAILE Grand Champion Percentage Simmental Heifer



Lot 2 B C R DREAM BIG L155



JSUL DREAM BIG 8992F
2020 NWSS Grand Champion Percentage Simmental Heifer

2

LOT

ASA: 4263503

BD: 5/10/23

Tattoo: L155

B C R DREAM BIG L155

Sire

JSUL SOMETHING ABOUT MARY 8421

W/C RELENTLESS 32C x JBSF PROUD MARY

Dam

JSUL DREAM BIG 8992F

SILVEIRAS STYLE 9303 x SVJ SHE'S THE DREAM B796

3/4 SM 1/4 AN

CE	BW	WW	YW	MILK	API	TI
11.7	2.2	75.6	117	19	108.6	69.5

OPEN FEMALES

BC

A GROWING TRADITION OF SUCCESS



B C R Time to Shine 106K

Tulsa

2023 TULSA STATE FAIR RESERVE
SUPREME CHAMPION JUNIOR BREEDING HEIFER

IN THE SHOWRING AND THE PASTURE

B C R Time to Shine 106K



Kansas City

2023 AMERICAN ROYAL GRAND CHAMPION
PERCENTAGE SIMMENTAL HEIFER

B C R Time to Shine 106K



Louisville

2023 NAILE RESERVE GRAND CHAMPION PERCENTAGE SIMMENTAL HEIFER

*Lot 3* B C R TIME TO SHINE 509L

3

LOT

ASA: 4263502

BD: 3/20/23

Tattoo: 509L

B C R TIME TO SHINE 509L*Sire***NEXT LEVEL**

KRJ DAKOTA OUTLAW G974 x KRD L CAEDENCE C37

*Dam***CMFM TIME TO SHINE 99D**

HPF QUANTUM LEAP Z952 x MISS TIME TO SHINE Y251

PUREBRED SIMMENTAL**NEXT LEVEL** | *Sire of Lot 3***CMFM TIME TO SHINE 99D** | *Dam of Lots 3-5*

CE	BW	WW	YW	MILK	API	TI
11.7	2.4	82.7	117.3	21.9	122.8	77.7

One of the perks of the new herdsire for Buck Creek Ranch, Next Level, is that his progeny can be red or black. This fabulous red head is very intriguing. She's loose in her design with an incredible amount of width, center, shape, substance, while remaining big at the surface. Certainly, one with the trendy look and kind and she happens to be a direct daughter of CMFM Time to Shine 99D.

THE DAUGHTERS OF *Time to Shine*



Lot 4 B C R TIME TO SHINE L080

Reckoning 711F is rising in popularity year after year. Breeders are seeking the consistent, striking, smooth look and build that one finds in every set that bears his service. This March baldy is very elite in her front end design, deep in her center body with hip, and the extra soft and flexible running gear that the sire group is known for. A year ago, 8 direct daughters of CMFM Time to Shine 99D averaged \$17,700. One of those was successfully campaigned by the Clark Family of Oklahoma to countless victories! These females are great property so don't shy away from the opportunity to experience what they can do for your own program.



CMFM TIME TO SHINE 99D | 2017 NAILE Reserve Grand Champion Purebred Simmental Heifer & Dam of Lots 3-5



Lot 5 B C R TIME TO SHINE 517L

This set of direct daughters of the proven producer are as good as they have ever been. The one's with the influence of the of the sire power that runs within the barbed wire owned by the Moore family are as good as any, if not better. RP/BCR Eminence H005 is the full brother to the many time champion Rocking P Private Stock H010. H005 consistently puts the body and shape to his progeny and as they mature, they become more and more striking in their overall look. This stout featured April born female has the running gear, the build, and the look that will turn heads and give her the credentials to join the donor pen when she moves on to her productive stage in her career.



B C R MISS TIME TO SHINE 509K
\$58,000 Maternal Sister to Lots 3-5

4

LOT

ASA: 4258657

BD: 3/12/23

Tattoo: L080

B C R TIME TO SHINE L080

Sire

RECKONING 711F

W/C RELENTLESS 32C x RWA KRISHA-ET

Dam

CMFM TIME TO SHINE 99D

HPF QUANTUM LEAP Z952 x MISS TIME TO SHINE Y251

PUREBRED SIMMENTAL

5

LOT

ASA: 4259783

BD: 4/15/23

Tattoo: 517L

B C R TIME TO SHINE 517L

Sire

RP/BCR EMINENCE H005

WLE COPACETIC E02 x RP/MP BUILT TO LOVE A021

Dam

CMFM TIME TO SHINE 99D

HPF QUANTUM LEAP Z952 x MISS TIME TO SHINE Y251

PUREBRED SIMMENTAL

CE	BW	WW	YW	MILK	API	TI
10.6	1.5	71.1	94.1	18	125.6	73.1

CE	BW	WW	YW	MILK	API	TI
12.8	0.6	78	111.2	18.1	135.4	80.7

OPEN FEMALES

BC



Lot 6 B C R TIME TO SHINE L041

Very captivating pen presence with a certain level of the elite factor is found in L041. Even though, RP/BCR Eminence H005 is the stouter version of the full brothers, the showcase look and kind that RP/MP Built To Love A021 was applauded for will influence what he sires. Incredible in her balance, transitions, and movement will find her on many short lists on sale day.

6

LOT

ASA: 4258658

BD: 1/28/23

Tattoo: L041

B C R TIME TO SHINE L041*Sire***RP/BCR EMINENCE H005**

WLE COPACETIC E02 x RP/MP BUILT TO LOVE A021

*Dam***B C R TIME TO SHINE 105G**

SC PAY THE PRICE C11 x CMFM TIME TO SHINE 99D

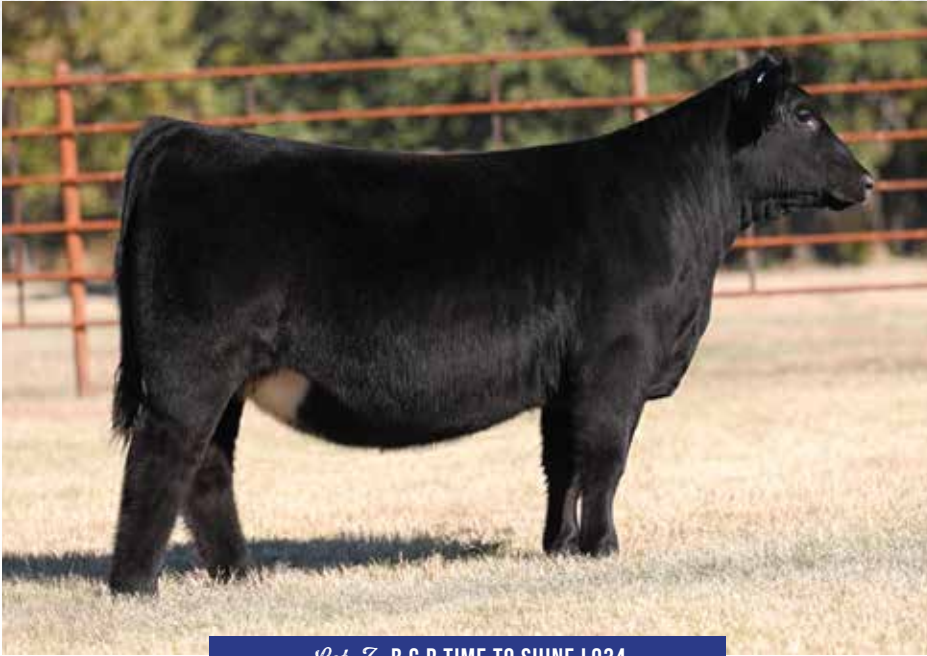
PUREBRED SIMMENTAL

CE	BW	WW	YW	MILK	API	TI
10.7	0.8	79.4	115.4	17.9	128.9	82

**B C R MISS TIME TO SHINE 105G**

2021 Cattlemen's Congress Reserve Grand Champion Purebred Simmental Heifer
& Dam of Lots 6 - 11

THE DAUGHTERS OF *Time to Shine*



Lot 7 B C R TIME TO SHINE L034

There would be so many similarities in these full sisters but the most notable would be their length and depth of side. L034 has shot more size, extension, and shape especially when one gets behind her. This white flanked female will generate interest and multiple looks from the most discriminating evaluators in the business. The facts are very clear and simple however, as the quality runs deep and the cows that stand behind them are exclusive to the Buck Creek Ranch program.



RP/BCR EMINENCE H005 | *Sire of Lots 5 - 8*



Lot 8 B C R TIME TO SHINE L012

A trio of sisters that will complicate a decision-making process on the 15th of December. L012 is so genuine in her kind throughout. She is one that comes so deep with proportional balance and the look of a true matriarch.

7

LOT

ASA: 4258655

BD: 2/4/23

Tattoo: L034

B C R TIME TO SHINE L034

Sire

RP/BCR EMINENCE H005

WLE COPACETIC E02 x RP/MP BUILT TO LOVE A021

Dam

B C R TIME TO SHINE 105G

SC PAY THE PRICE C11 x CMFM TIME TO SHINE 99D

PUREBRED SIMMENTAL

8

LOT

ASA: 4258659

BD: 3/2/23

Tattoo: L012

B C R TIME TO SHINE L012

Sire

RP/BCR EMINENCE H005

WLE COPACETIC E02 x RP/MP BUILT TO LOVE A021

Dam

B C R TIME TO SHINE 105G

SC PAY THE PRICE C11 x CMFM TIME TO SHINE 99D

PUREBRED SIMMENTAL

CE	BW	WW	YW	MILK	API	TI
10.7	0.8	79.4	115.4	17.9	128.9	82

CE	BW	WW	YW	MILK	API	TI
10.7	0.8	79.4	115.4	17.9	128.9	82

OPEN FEMALES

BC

15



Lot 9 B C R TIME TO SHINE 067L

Next in the Miss Time To Shine Y251 cow family lineup, we bring you a pair of JSUL Something About Mary 8421 daughters that are trademark to his kind. Both offer elite substance of bone, they are big and flexible at the surface, and very genuine in their skeleton. The shape of their center body is bold and deep in nature just like so many of their paternal siblings have been. In the pen they certainly know that they are high quality stock as they are high tying with a certain arrogance. B C R Time To Shine 105G is definitely a rising star from CMFM Miss Time To Shine 99D. Full sisters in blood, by LLSF Pays To Believe ZU194 averaged well over the \$30,000 mark. The 105G offering is second to none!

9

LOT

ASA: 4258635

BD: 2/27/23

Tattoo: 067L

B C R TIME TO SHINE 067L

Sire

JSUL SOMETHING ABOUT MARY 8421

W/C RELENTLESS 32C x JBSF PROUD MARY

Dam

B C R TIME TO SHINE 105G

SC PAY THE PRICE C11 x CMFM TIME TO SHINE 99D

PUREBRED SIMMENTAL

10

LOT

ASA: 4258636

BD: 3/5/23

Tattoo: 071L

B C R TIME TO SHINE 071L

Sire

JSUL SOMETHING ABOUT MARY 8421

W/C RELENTLESS 32C x JBSF PROUD MARY

Dam

B C R TIME TO SHINE 105G

SC PAY THE PRICE C11 x CMFM TIME TO SHINE 99D

PUREBRED SIMMENTAL

CE	BW	WW	YW	MILK	API	TI
11.2	1.4	77.8	114.5	21	120.9	78

CE	BW	WW	YW	MILK	API	TI
11.2	1.4	77.8	114.5	21	120.9	78



Lot 10 B C R TIME TO SHINE 071L

JSUL SOMETHING ABOUT MARY 8421

Sire of Lots 9-10





B C R MISS TIME TO SHINE 105G

2021 Cattlemen's Congress Reserve Grand Champion Purebred Simmental Heifer & Dam of Lots 6 - 11



NEXT LEVEL | Sire of Lots 11 & 12 Pregnancies



B C R TIME TO SHINE J080 | 2022 AJSA National Classic Reserve Grand Champion Percentage Simmental Heifer & Maternal Sister to Lot 12 Pregnancy

A once in a lifetime opportunity to acquire genetics from 105G and 104G, a pair of females that we have kept the frozen genetics exclusive to Embryos On Snow. We should not be selling something like this, but in an effort to offer our VERY best we thought that two heifer calf pregnancies by our herd sire, Next Level and from the two most promising young females in our donor battery was a no brainer! Dig deep and invest in the future of your breeding program with a genetic opportunity straight from the heart of the Buck Creek Ranch program!

11
LOT

Recip ASA: 2823554

Recip BD: 2/13/13

Recip Tattoo: 5LA

ET HEIFER CALF PREGNANCY

Sire
NEXT LEVEL

KRJ DAKOTA OUTLAW G974 x KRDL CAEDENCE C37

Dam

B C R TIME TO SHINE 105G

SC PAY THE PRICE C11 x CMFM TIME TO SHINE 99D

PUREBRED SIMMENTAL

12
LOT

Commercial Recip 2018

Recip Color: Red

Recip Tag: 72315

ET HEIFER CALF PREGNANCY

Sire
NEXT LEVEL

KRJ DAKOTA OUTLAW G974 x KRDL CAEDENCE C37

Dam

B C R TIME TO SHINE 104G

SC PAY THE PRICE C11 x CMFM TIME TO SHINE 99D

PUREBRED SIMMENTAL

CE	BW	WW	YW	MILK	API	TI
9.6	2.65	84.1	121.5	21.7	115.7	79.2

ET Heifer Calf Pregnancy due to calve 4/4/24.

CE	BW	WW	YW	MILK	API	TI
9.6	2.65	84.1	121.5	21.7	115.7	79.2

ET Heifer Calf Pregnancy due to calve 4/1/24.

OPEN FEMALES

BC



Lot 13 B C R TIME TO SHINE K048

13

LOT

ASA: 4264813

BD: 3/28/23

Tattoo: 096L

B C R TIME TO SHINE 096L

Sire

STAG INDEPENDENCE 110 ET

BAR-E-L NATURAL LAW 52Y x NORDS LUCY 8022

Dam

B C R TIME TO SHINE 302J

JBSF BERWICK 41F x CMFM TIME TO SHINE 99D

1/2 SM 1/2 AN



STAG INDEPENDENCE 110 ET | *Sire of Lot 13*

CE	BW	WW	YW	MILK	API	TI
8.6	2.4	80.2	115.7	16.6	102.7	71.5

As time goes, the daughters of the late JBSF Berwick 41F will be raising some of the very best the breed will have especially when they are tied to the elite Miss Time To Shine Y251 cow family. Buck Creek Ranch is very satisfied with the first offering of females that are sired by the Buck Creek Ranch Angus stud acquisition, STAG Independence 110 ET. He is the direct son of the many times champion Nords Lucy 8022 that leads the donor lineup for the Stagemeyer Family of Page, Nebraska. His transmission of density and shape is very notable as one evaluates this initial set of daughters.



Lot 14 B C R TIME TO SHINE K065

14

LOT

ASA: 4258623

BD: 1/20/23

Tattoo: 015L

B C R MISS TIME TO SHINE 015L

Sire

COLBURN PRIMO 5153

DAMERON FIRST CLASS x SILVEIRAS SARAS DREAM 1339

Dam

MISS TIME TO SHINE Y251

HTP SVF IN DEW TIME x JJ BLACK OBSESSION

1/2 SM 1/2 AN



MISS TIME TO SHINE Y251 | Dam of Lot 14

CE	BW	WW	YW	MILK	API	TI
11.2	0.7	70.7	100	17.6	124.3	73.7

Not sure how many are left in the frozen arsenal at the ranch that are bred like this one, but we would be willing to bet the opportunities are becoming rare on a daily basis. B C R Miss Time To Shine 015L is one dynamic, SimAngus breeding piece with a dominant look that should allow her many backdrop photo opportunities before entering the donor pen. 015L is not only intriguing genetically, but she too is overwhelming in terms of her volume and capacity with the extra bone and shape needed to succeed.

*Lot 15* B C R TIME TO SHINE 088K**15**
LOT

ASA: 4259785

BD: 3/10/23

Tattoo: 507L

B C R ONYX 507L*Sire***RECKONING 711F**

W/C RELENTLESS 32C x RWA KRISHA-ET

*Dam***STF BS45**

MR HOC BROKER x STF ONYX 451W

PUREBRED SIMMENTAL**B C R ONYX 519K** | Maternal Sister to Lot 15**STF ONYX 451W** | Matriarch Donor Dam of the "Onyx" Cow Family!

CE	BW	WW	YW	MILK	API	TI
10.1	2.5	63.8	87.4	16.8	105.7	63.3

B C R Onyx 507L is a maternal sister to the Buck Creek Ranch herdsire, B C R Platinum 309H. That only proves how much they believe in what this daughter of Mr HOC Broker from the two-time North American Champion female, STF Onyx 451W, can do. A maternal sister by LLSF Pays To Believe ZU194 sold for \$6500 in the 2022 edition of The Grand Event. We dig the type and kind of this daughter of Reckoning 711F without reservation. She is so balanced and proportional but has the mass, density, width, and power known to her maternal granddam. In fact, it's scary in a good tone how similar this female is to her sensational second dam!



Lot 16 B C R TIME TO SHINE 106K

16

LOT

ASA: 4258642

BD: 5/12/23

Tattoo: L149

B C R CALIENTE L149

Sire

RECKONING 711F

W/C RELENTLESS 32C x RWA KRISHA-ET

Dam

B C R CALIENTE 077F

LLSF UPRISING Z925 x GCF MISS CALIENTE

PUREBRED SIMMENTAL



GCF MISS CALIENTE

Maternal Granddam of Lot 16

CE	BW	WW	YW	MILK	API	TI
9	2	64.7	91.4	17.2	106.6	66.1

A baldy purebred that will turn heads in the summer division no matter where she goes. Just a May born with the awesome build as she is very proud in her front third with a tremendous amount of center body, and unquestionably huge hiped and pinned. The running gear is just a bonus with substance and size at the surface. GCF Miss Caliente 077F influenced many programs throughout the nation in her tenure in the business. He most notable daughter would be the only two time Champion Purebred Simmental Female at the North American International Livestock Exposition, STF Onyx 451W. B C R Caliente L149 will be one to certainly carry on the traditions and expectations that come with the maternal side of her genetic equation.

*Lot 17* B C R RIGHT TO LOVE 512L**17**
LOT

ASA: 4259782

BD: 4/12/23

Tattoo: 512L

B C R RIGHT TO LOVE 512L*Sire***JSUL SOMETHING ABOUT MARY 8421**

W/C RELENTLESS 32C x JBSF PROUD MARY

*Dam***HPF RIGHT TO LOVE C083**

HTP/SVF DURACELL T52 x RP/MP RIGHT TO LOVE 015U

PUREBRED SIMMENTALHPF RIGHT TO LOVE C083 | *Dam of Lot 17 & Maternal Granddam of Lot 18*RP/MP RIGHT TO LOVE 015U | *Maternal Granddam of Lot 17*

CE	BW	WW	YW	MILK	API	TI
13.3	0.5	76.1	110.1	20.1	121.5	74.2

An April born prospect sired by JSUL Something About Mary 8421 from the full sister to HPF Quantum Leap Z952, HPF Right To Love C083. Besides her stout lineage, she is huge in her rib design, textbook in her look, with very flexible running gear. She will undoubtedly be the very productive kind with substantial generating potential post show career. Only at The Grand Event, hosted by Buck Creek Ranch, will you find the goods bred like B C R Right To Love 512L.



Lot 18 B C R RIGHT TO LOVE 079L



Lot 19 B C R RIGHT TO LOVE L076



HPF QUANTUM LEAP Z952
Full Brother to Dam of Lot 17 & Maternal Granddam of Lot 18



RP/MP BUILT TO LOVE A021
Legendary Maternal Granddam of Lot 19



ROCKING P PRIVATE STOCK H010
Full Brother to Dam of Lot 19

18
LOT

ASA: 4264814

BD: 3/25/23

Tattoo: 079L

B C R RIGHT TO LOVE 079L

Sire
STAG INDEPENDENCE 110 ET

BAR-E-L NATURAL LAW 52Y x NORDS LUCY 8022

Dam
B C R RIGHT TO LOVE 074J

LLSF PAYS TO BELIEVE ZU194 x HPF RIGHT TO LOVE C083

1/2 SM 1/2 AN

19
LOT

ASA: 4264815

BD: 4/10/23

Tattoo: L076

B C R RIGHT TO LOVE L076

Sire
STAG INDEPENDENCE 110 ET

BAR-E-L NATURAL LAW 52Y x NORDS LUCY 8022

Dam
B C R BUILT TO LOVE 313J

WLE COPACETIC E02 x RP/MP BUILT TO LOVE A021

1/2 SM 1/2 AN

CE	BW	WW	YW	MILK	API	TI
7.5	2.4	81.4	116.4	17.1	98.5	71.3

This daughter of STAG Independence 110 ET is from a very elite young female that carries the genetic blend of LLSF Pays To Believe ZU194 and the full sister to HPF Quantum Leap Z952. The shape and body that the Bar-E-L Natural Law 52Y sire group is known for is certainly reflected in the young, high quality SimAngus female that's loaded with the great donor dams of both breeds.

CE	BW	WW	YW	MILK	API	TI
7.8	2.5	81.9	120.2	14.6	105.9	72.4

The quality and kind of the SimGenetic stock becomes elevated ever more so when one blends the potent cow families. Donors such as RP/MP Built To Love A021 and the Angus matriarch, Nords Lucy 8022 are up close in the lineage of L076. As most know, both donor dams were very successful and competitive in their respective breed lineups on the tan bark, no matter where they competed. Both are known very much so, for their contribution to their respective breeds as well. In person, what this young SimGenetic female has to offer is set forth by those that influence her. She is a bigger, stouter, more extended female with the needed shape and turn throughout her design to excel at the next level.



Lot 20 B C R MS VALENTINE L027

20

LOT

ASA: 4266310

BD: 2/22/23

Tattoo: L027

B C R MS VALENTINE L027

Sire

B C R PERFECT VISION

MR CCF 20-20 x HSF CALLIE D613

Dam

B C R MS VALENTINE G112

HTP/SVF DURACELL T52 x RP/MP MS VALENTINE 013U

PUREBRED SIMMENTAL



B C R PERFECT VISION | *Sire of Lot 20*



RP/MP MS VALENTINE 013U | *Maternal Granddam of Lot 20*

CE	BW	WW	YW	MILK	API	TI
10.2	2.7	77.7	110.2	17.1	126.2	77.6

B C R Perfect Vision continues to get the job done. His cattle are always good bodied with very genuine shape along with being smooth in their transitions. B C R Miss Valentine L027 is a granddaughter of RP/MP MS Valentine 013U that is a daughter of the quintessential SimAngus female of all time, PCC Queens Valentine R9. L027 is the solid black evidence of the quality and kind the cow family is noted for. She is extra soft and good on the go with the ideal amount of body and muscle.



Lot 21 **BRAMLET BCR BEAUTIFUL 070L**



B C R BEAUTIFUL 310K | \$80,000 Full Sister to Lot 21



BRAMLETS BEAUTIFUL E742 | Dominant Champion & Maternal Sister to Lot 21



21
LOT

ASA: 4264144

BD: 2/27/23

Tattoo: 070L

BRAMLET BCR BEAUTIFUL 070L

Sire
SCC SCH 24 KARAT 838
SCC TRADITION OF 24 x FCF PROVEN QUEEN 419

Dam
BRAMLETS BEAUTIFUL A317
YARDLEY HIGH REGARD W242 x HPF MS BEAUTIFUL S054

1/2 SM 1/2 AN

There is little to question regarding the contribution and impact that Bramlets Beautiful A317 has had on both the Bramlet and Schaeffer programs. Many champions and endless high sellers are on the donor's resume with much more in store. The mating to SCC SCH 24 Karat 838 is proven to generate! Lot 22 in the 2022 edition of The Grand Event, a full sister commanded a final bid of \$80,000 to be the high selling female of the entire offer. Bramlett BCR Beautiful 070L is seemingly stout and burly in her kind. She has the ideal amount of pride that solidifies the sumptuousness she possesses within her skeletal design. No Question that she IS a high end stock option.

CE	BW	WW	YW	MILK	API	TI
5.4	3	73.2	111.3	21.6	91.3	63.2



Lot 22 B C R ELEGANT BONNIE L099



SO REMEDY 7F
\$530,000 Sire of Lot 22



B C R ELEGANT BONNIE 521K
Maternal Sister to Lot 22



MISS CCF SHEZA BONNIE Y61 | 2013 NWSS Reserve
Grand Champion Purebred Simmental Heifer & Maternal
Granddam of Lot 22

OPEN FEMALES

22
LOT

ASA: 4258645

BD: 4/15/23

Tattoo: L099

B C R ELEGANT BONNIE L099

Sire
SO REMEDY 7F
HPF/HILL UPRISING C104 x B&K CREAM SODA 8D

Dam
MISS CCF ELEGANT BONNIE
MR CCF 20-20 x JAS JESTRESS 9015

3/4 SM 1/4 AN

From a suitably named donor family we present you the SO Remedy 7F daughter out of the MR CCF 20-20 sired Miss CCF Elegant Bonnie that is from the C&C Farms donor known as JAS Jestress 9015. We love this female's length, style, and presence from all angles. The confidence factor in what this female will feed like and mature into could be like nothing ever witnessed before. She comes loaded with a highly decorated cow family and is sired by one that consistently gets it done as far as stamping his progeny with overall quality and balance from end to end.

BC	CE	BW	WW	YW	MILK	API	TI
	15.6	1	76.6	119.5	14.2	124.4	76



Lot 23 B C R ALLEY L086

23

LOT

ASA: 4258661

BD: 4/21/23

Tattoo: L086

B C R ALLEY L086*Sire***BAR O DOUBLE DOWN 104J**

W/C DOUBLE DOWN 5014E x SWC M2C ZEREASA 825Z

*Dam***B C R ALLEY G092**

MR CCF 20-20 x WHF/PRS/HPF ALLEY 247Y

PUREBRED SIMMENTAL**MR HOC BROKER** | Triple Crown Winning Full Brother to Paternal Granddam of Lot 23**WHF/PRS/HPF ALLEY 247Y** | Maternal Granddam of Lot 23

Nearly two years ago, Buck Creek Ranch selected a direct son of W/C Double Down 5014E out of a full sister to MR HOC Broker from the Bar O Cattle Co outfit of Kansas to utilize as a natural service sire. If the stock sired by Bar O Double Down 104J are of the quality of this young April born female, then they may consider collecting him and marketing semen. Of course, this deep sided, maternal looking, good necked female comes with a load of cow power on her resume' as well. Her dam is by MR CCF 20-20 and from the famous WHF/PRS/HPF Alley 247Y. The deeper lesson here is the WHF Black Jasmine 240J female that is the maternal great granddam of 247Y is not only a past AJSA Summer Classic Champion female for Paul Allen, but she is the cornerstone foundation of all good things from Wayward Hill Farm of Kentucky. The value of B C R Alley L086 will be priceless after her show career!



Lot 24 B C R PROFITS DREAM 115L

24

LOT

ASA: 4259784

BD: 5/4/23

Tattoo: 115L

B C R PROFITS DREAM 115L

Sire

NEXT LEVEL

KRJ DAKOTA OUTLAW G974 x KRDL CAEDENCE C37

Dam

B C R PROFIT'S DREAM 102H

WLE COPACETIC E02 x BAILEY'S PROFIT'S DREAM

PUREBRED SIMMENTAL



B C R PROFIT'S DREAM 319H | Full Sister to Dam of Lot 24



BAILEY'S PROFIT'S DREAM | 2018 AJSA National Classic Grand Champion Purebred Simmental Heifer & Maternal Granddam of Lot 24

CE	BW	WW	YW	MILK	API	TI
10.1	2.9	83.5	120.9	19.7	114.5	75.6

Next Level progeny have been highly anticipated and well received this fall. The general public has been very accepting of the stock as evident by the demand and appraisals that have been witnessed online and at public auction. This blaze faced female is very high tying, chiseled, and refined about her head and neck with second to none pen presence. One that is loaded with big league volume to her rib design with punchy shape to her back and hip. The significant influence of the past champion for Sara Sullivan known as Bailey's Profit's Dream is a huge component of why she is built like she is.

THE OPEN *Simmental & SimAngus Heifers*



Lot 25 B C R KATRINA L204

What a brilliant and very tastefully made individual. She is sired by the two time National Western Champion Purebred bull, SC Pay The Price C11, and from a very fundamentally sound dam. She will come with the extra body and sharp features needed to compete and remain successful at a high level.



SC PAY THE PRICE C11
Sire of Lot 25



Lot 26 B C R KATRINA L231

We really like what the late senior herd sire, HCCO Payback 166H, is doing for the program as evident in this very attractive baldy. Elegance, body shape, pattern, and flawless structure are all inclusive.



B C R KATRINA J209
Maternal Sister to Lot 25 & Maternal Sister to Dam of Lot 26

25
LOT

ASA: 4258648

BD: 1/13/23

Tattoo: L204

B C R KATRINA L204

Sire
SC PAY THE PRICE C11
CNS PAYS TO DREAM T759 x LLSF URABABYDOLL U194

Dam
CVLS KATRINA 656D
CVLS FULL THROTTLE 405B x CVLS KATRINA 346A

PUREBRED SIMMENTAL

26
LOT

ASA: 4258650

BD: 1/14/23

Tattoo: L231

B C R KATRINA L231

Sire
HCCO PAYBACK 166H
PROFIT x HCCO COUNTLESS 477C
Dam
B C R KATRINA F131
CCR ANCHOR 9071B x CVLS KATRINA 656D

PUREBRED SIMMENTAL

CE	BW	WW	YW	MILK	API	TI
9.2	2.2	74.1	109.2	20.8	118.7	75

CE	BW	WW	YW	MILK	API	TI
10.4	1.6	76.7	109.5	20.9	121.6	77.8

OPEN FEMALES

BC

THE OPEN *Simmental & SimAngus Heifers*



Lot 27 B C R PRECIOUS L044

A maternal sister to this female commanded the final hammer price of \$22,000 in the 2022 Grand Event. A March born daughter of HPF Quantum Leap Z952 allows this one even more grace and flexibility in motion than her sister from a year ago. We love the angles and transitions that L044 offers in combination with her boldness of body and turn of shape. Her value to any junior family or serious program is very well documented so invest with utmost confidence in one that could go the next level.



B C R PRECIOUS K103 | Maternal Sister to Lot 27



Lot 28 B C R WICKED L048

A female from a long line of proven producers, with backdrop opportunities, and successful generating history as well. B C R Wicked J032, a maternal sister by Reckoning 711F, was one of the nicer bred females in the 2022 edition of The Grand Event that sold for \$8,600. We expect great things from this big ribbed, high volume female, that's very loose in her over all kind but yet has that pasture presence about her.



WLE COPACETIC E02 | Sire of Lot 28

OPEN FEMALES

27
LOT

ASA: 4258654

BD: 3/5/23

Tattoo: L044

B C R PRECIOUS L044

Sire

HPF QUANTUM LEAP Z952

HTP/SVF DURACELL T52 x RP/MP RIGHT TO LOVE 015U

Dam

B C R PRECIOUS F080

LLSF PAYS TO BELIEVE ZU194 x WOMACK PRECIOUS MISS

PUREBRED SIMMENTAL

28
LOT

ASA: 4258656

BD: 1/10/23

Tattoo: L048

B C R WICKED L048

Sire

WLE COPACETIC E02

HPF QUANTUM LEAP Z952 x CMFM JOY 02ZB

Dam

NFF WICKED D072

FBF1 COMBUSTIBLE x NFF WICKED A154

PUREBRED SIMMENTAL

CE	BW	WW	YW	MILK	API	TI	CE	BW	WW	YW	MILK	API	TI
11.8	1.3	76.2	105.7	19	113.3	75.2	12.7	2.3	79.5	118.3	14	119.3	72.9



Lot 29 B C R REBA L218



DAF REBA D248 | Maternal Granddam of Lot 29



DAF REBA C85
Full Sister to Maternal Granddam of Lot 29



JSUL OH BOY REBA 0267G | 2021 American Royal
Supreme Champion Junior Breeding Heifer &
Full Sister in Blood to Dam of Lot 29

29

LOT

ASA: 4258651

BD: 1/22/23

Tattoo: L218

B C R REBA L218

Sire

B C R PERFECT VISION

MR CCF 20-20 x HSF CALLIE D613

Dam

B C R REBA H193

THSF LOVER BOY B33 x DAF REBA D248

3/4 SM 1/4 AN

We dig this stunning blaze faced female that descends from a full sister to the highly decorated and producer of champions for Sara Sullivan, DAF Reba C85. B C R Reba L218 defines sophistication with her undeniable style and poise. She is unquestionably ideal in every point of evaluation and a January female that should rise to the top end of any class or division she competes in. Her dam is a full sister in blood to JSUL Oh Boy Reba 0267G, the 2021 American Royal Supreme Champion Junior Breeding Heifer. She is a daughter of B C R Perfect Vision from the famed "Reba" cow family with winning and earning credentials.

CE	BW	WW	YW	MILK	API	TI
8.6	2.2	77.3	112.7	19	118	74.8

OPEN FEMALES

BC



Lot 30 B C R EVERGREEN L087

30
LOT

ASA: 4258660

BD: 4/15/23

Tattoo: L087

B C R EVERGREEN L087

Sire

RP/BCR EMINENCE H005

WLE COPACETIC E02 x RP/MP BUILT TO LOVE A021

Dam

ROCKING P EVERGREEN F036

HPF QUANTUM LEAP Z952 x ROCKING P EVERGREEN A079

PUREBRED SIMMENTAL



RP/BCR EMINENCE H005

Sire of Lots 30 - 35

CE	BW	WW	YW	MILK	API	TI
11.7	0.7	79.5	117.3	17.5	128.5	80.9

What a breathtaking daughter of RP/BCR Eminence H005! A descendant of the "Evergreen" family that comes with two shots of HPF Quantum Leap Z952. She is exotic in her features beginning with her magnificent head and neck attachment that transitions smooth through her shoulder, bold in her fore and center rib, with a deep and flawless underline, in combination with enough shape, and adds density and substance to an extra loose set of running gear. Very unique and very good!



Lot 31 B C R SIOUX L042

31
LOT

ASA: 4258653

BD: 1/29/23

Tattoo: L042

B C R SIOUX L042

Sire

RP/BCR EMINENCE H005

WLE COPACETIC E02 x RP/MP BUILT TO LOVE A021

Dam

CMFM SIOUX 15SD

LLSF PAYS TO BELIEVE ZU194 x GCC SIOUX STEEL 151W

PUREBRED SIMMENTAL

CE	BW	WW	YW	MILK	API	TI
11.1	0.8	71.1	104.7	16.4	121.6	75

RP/BCR Eminence H005 consistently injects body and genuine shape into each calf he sires. When one adds the big soft hair, huge leg, and balance factors from the dam, you get the near perfect individual that resembles B C R Sioux L042. This Purebred is not only stacked with cow power, but she is certainly blessed with honest body shape and ingenuous skeletal composition that is without equal.



GCC SIOUX STEEL 151W

2011 NWSS Grand Champion Percentage Simmental Heifer & Maternal Granddam of Lot 31

THE OPEN *Simmental & SimAngus Heifers*



Lot 32 B C R ARKDALE PRIDE L098

This female stems from an Angus cow family known for density, substance, and power. Cattle that are broody and deep with scale and performance. RP/BCR Eminence H005 stayed true to his legacy by just putting that much more into this very stout cow prospect. You will be drawn to her shape and kind on the 15th of December.



Lot 33 B C R CALLIE L107

We present to you the maternal sister to the Frontier Farms herdsire B C R Perfect Vision sired by RP/BCR Eminence H005. As indicated by pedigree, this female is very sound, square, bold, neat looking, and extremely flexible when set in motion. She has as much generating potential as any in the offering and should impress when she enters production. Quite possibly the breeding piece of the fall sale season.



B C R PERFECT VISION

Many Times Champion & Maternal Brother to Lot 33

OPEN FEMALES

32
LOT

ASA: 4266492

BD: 4/27/23

Tattoo: L098

B C R ARKDALE PRIDE L098

Sire

RP/BCR EMINENCE H005

WLE COPACETIC E02 x RP/MP BUILT TO LOVE A021

Dam

SJW ARKDALE PRIDE 4104B

MR HOC BROKER x WCC ARKDALE PRIDE 8113

3/4 SM 1/4 AN

33
LOT

ASA: 4258646

BD: 4/17/23

Tattoo: L107

B C R CALLIE L107

Sire

RP/BCR EMINENCE H005

WLE COPACETIC E02 x RP/MP BUILT TO LOVE A021

Dam

HSF CALLIE D613

EXAR CLASSEN 1422B x HSF CARMELLA B410

3/4 SM 1/4 AN

BC

CE	BW	WW	YW	MILK	API	TI
10.3	1.3	77.2	114.4	16.4	114.1	73.2

CE	BW	WW	YW	MILK	API	TI
9.6	1.7	78.5	118.5	17.4	118.1	76.7

THE OPEN *Simmental & SimAngus Heifers*



Lot 34 **GCLD PROVEN QUEEN L030**

We think this January SimAngus female will have plenty of friends come sale day in Yale, OK. One that we believe is very good in her overall build, high in her quality rating, with impeccable skeletal design. She's undoubtedly one that will compete at a very high level, but she is supported by one awesome Angus matron that brings the goods at weaning time every year.



PVF PROVEN QUEEN 3033
3rd Generation Dam of Lot 34



Lot 35 **B C R QUEEN PAT L096**

Regardless of breed affiliation RP/BCR Eminence H005 keeps the consistency in the kind he sires. Bold, shapely, cowy, sound, and attractive. This SimAngus female is certainly trademark to her genetics on both sides.



RP/MP BUILT TO LOVE A021
Paternal Granddam of Lots 31-35

34
LOT

ASA: 4264951

BD: 1/15/23

Tattoo: L030

GCLD PROVEN QUEEN L030

Sire

RP/BCR EMINENCE H005

WLE COPACETIC E02 x RP/MP BUILT TO LOVE A021

Dam

PVF PROVEN QUEEN 9066

CHESTNUT UNDISPUTED GLM x PVF PROVEN QUEEN 6108

1/2 SM 1/2 AN

35
LOT

ASA: 4266332

BD: 4/11/23

Tattoo: L096

B C R QUEEN PAT L096

Sire

RP/BCR EMINENCE H005

WLE COPACETIC E02 x RP/MP BUILT TO LOVE A021

Dam

JJD QUEEN PAT 6229

BSF OPPORTUNIST Z5 x JJD QUEEN PAT 3060

1/2 SM 1/2 AN

CE	BW	WW	YW	MILK	API	TI
9.7	1.3	78.6	123.2	17.5	113.5	74.2

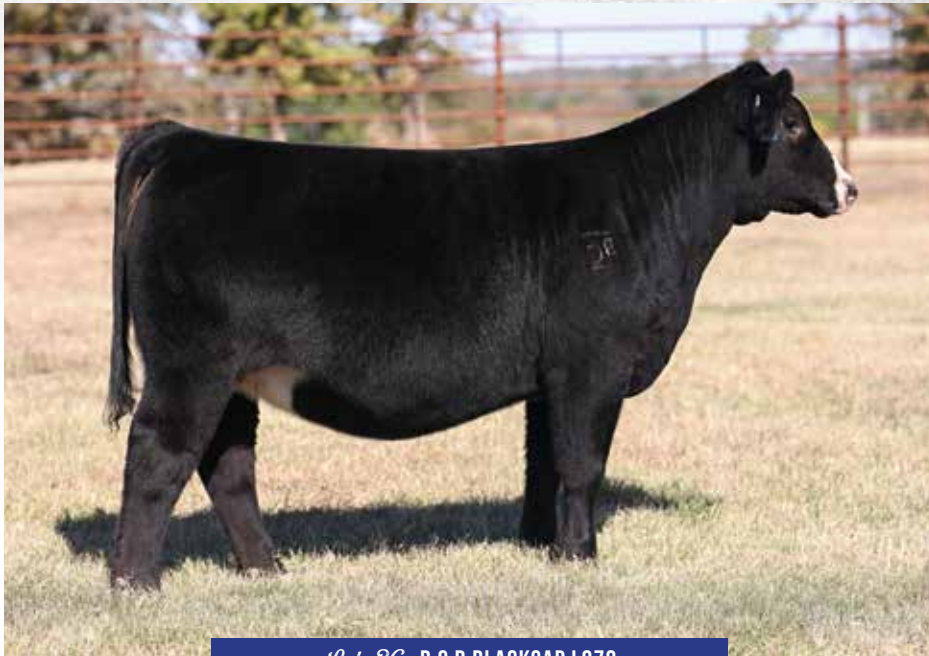
CE	BW	WW	YW	MILK	API	TI
7.5	2	82	125.6	16.7	122.3	80.5

OPEN FEMALES

BC

35

THE OPEN *Simmental & SimAngus Heifers*



Lot 36 B C R BLACKCAP L079

The sire power is very strong with in the natural service bull battery at the Buck Creek Ranch! HCCO Payback 166H was Jacob's selection from the 2021 Hartman Cattle Company Bull Sale. 166H has left quite a set of cattle for the ranch to retain and feature on their marketing endeavors as well. He is a Profit son from a MR TR Hammer 308A ET daughter of the very popular "Countess" cow line of Tecumseh. Much like this female the cattle by "Payback" are very elegant in their front third and complete in their build and look with plenty of the width and depth that help balance the equation. With the influence of JF Milestone 999W and the Angus lineage loaded with production and center body is completes the story. A high end three-quarter blood female that will flat outrun with the pack!



HCCO PAYBACK 166H | *Sire of Lots 36 & 37*



Lot 37 B C R FARRAH L095

HCCO Payback 166H continues to prove his investment worthiness and ranch contributions. This solid black May SimAngus female is very maternal in her look and presence. Her depth of side and shape throughout is unrivaled by few as she sets down on a very rugged set of running gear with longevity on board. She will be very competitive in class and division especially with the team at B C R standing behind her every step of the way.



B C R FARRAH F092 | *Dam of Lot 37*

OPEN FEMALES

36
LOT

ASA: 4266331

BD: 3/25/23

Tattoo: L079

B C R BLACKCAP L079

Sire

HCCO PAYBACK 166H

PROFIT x HCCO COUNTLESS 477C

Dam

B C R BLACKCAP G006

JF MILESTONE 999W x ACR BLACKCAP A4042

3/4 SM 1/4 AN

37
LOT

ASA: 4258643

BD: 5/20/23

Tattoo: L095

B C R FARRAH L095

Sire

HCCO PAYBACK 166H

PROFIT x HCCO COUNTLESS 477C

Dam

B C R FARRAH F092

SWEENEY FINAL TIME x SWEENEY COW D613

3/4 SM 1/4 AN

BC

CE	BW	WW	YW	MILK	API	TI	CE	BW	WW	YW	MILK	API	TI
7.3	3.8	83.4	122.6	18.7	102.6	72.9	10	1.7	77.8	114.1	21.1	110.4	73.2

36

ELITE ANGUS FEMALES



THE
*Open Angus
Division*

VOLUME IV



38

LOT

AAA: 19256963

BD: 5/28/18

Tattoo: 8070

HENNING BCII SANDY 8070

Sire

EXAR CLASSEN 1422B

DAMERON FIRST CLASS x EXAR PRINCESS 2006

Dam

BCII SANDY 0215

SILVEIRAS STYLE 9303 x KNC CABIN CREEK SANDY 905

ANGUS

Henning BCII Sandy 8070 was campaigned by Sara Sullivan and was selected as the Division V Champion of the 2019 NJAS in the owned division. Her dam, BCII Sandy 0215, was selected as the 2017 NWSS Reserve Champion Angus female for the Henning family. As one analyzes this elite producer it's a challenge to get zeroed in on the fine details as she is simply massive, dense, and overwhelming for so many points of evaluation. We are very certain that her potential has not yet been tapped and that is why we feel that this is a rare opportunity to be able to invest in one with the history and kind that she has to offer. She will calve to the influence of SCC SCH 24 Karat 838 one way or another. We sincerely believe that this could be the ticket needed to take her production to the very next level!

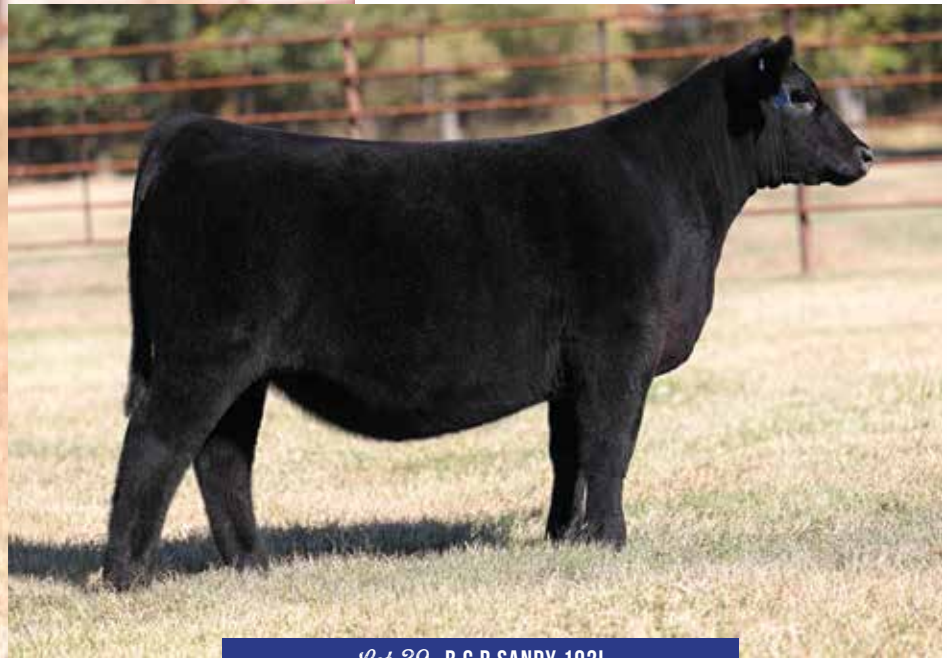
AI Bred 5/12/23 to CLF 24 KARAT 29K (AAA: 20553016).

PE 5/15/23-7/1/23 to CLF 24 KARAT 29K (AAA: 20553016).

CE	BW	WW	YW	MILK
-2	4.6	62	102	18



BCII SANDY 1315 | Maternal Sister to Dam of Lot 38



Lot 39 **B C R SANDY 102L**



BCII SANDY 0215

2017 NWSS Reserve Grand Champion Angus Heifer & Dam of Lot 38

39

LOT

AAA: 20762925

BD: 3/29/23

Tattoo: 102L

BCR SANDY 102L

Sire

SCC SCH 24 KARAT 838

SCC TRADITION OF 24 x FCF PROVEN QUEEN 419

Dam

HENNING BCII SANDY 8070

EXAR CLASSEN 1422B x BCII SANDY 0215

ANGUS

CE	BW	WW	YW	MILK
-2	5.3	62	104	28

What an extraordinary Angus show heifer prospect that stems from a royal pedigree. The maternal granddam, BCII Sandy 0215 was the 2017 NWSS Reserve Champion Angus female for the Henning Family. Henning Sandy 8070 was campaigned by Sara Sullivan and was selected as the 2019 NJAS Division V Champion Owned Heifer. We think this gem is truly a rare find late in the fall marketing season as many like this can be in very loose hands. However, the crew at Buck Creek Ranch only sells their best in The Grand Event, and that's why she is still available. Very provocative in her look, presence, and build with the substance and shape to go the distance.

OPEN FEMALES

BC

39



Lot 40 B C R LUCY L143



WALLACE LUCY 8132
Dam of Lot 40



B C R LUCY K039
\$35,000 Maternal Sister to Lot 40



B C R LUCY K017
\$18,500 Maternal Sister to Lot 40

OPEN FEMALES

40
LOT

AAA: Pending

BD: 5/26/23

Tattoo: L143

BCR LUCY L143

Sire

STAG INDEPENDENCE 110 ET

BAR-E-L NATURAL LAW 52Y x NORDS LUCY 8022

Dam

WALLACE LUCY 8132

PVF INSIGHT 0129 x WALLACE LUCY 33

ANGUS

What a phenomenal late May female from an incredible donor dam! If you are after presence and kind in an Angus female with the genuine base width, dimension, body shape, and look, you may have discovered that she will sell on December 15th. In the 2022 version of The Grand Event, maternal sisters to this diamond commanded a \$26,750 average collectively. Their dam, Wallace Lucy 8132, was the 2020 FWSS Senior Calf Champion and has since become one of the most impressive individuals on the entire ranch. She raised the bar of standards among her Angus contemporaries in the elite donor lineup at B C R without question. No risk in investing in this daughter of STAG Independence 110 ET, but there is certainly high reward in her future.

BC

CE	BW	WW	YW	MILK
-2	4.8	66	101	15

40



Lot 41 B C R QUEEN PAT L089



STAG INDEPENDENCE 110 ET
Sire of Lots 40 - 42



Lot 42 B C R PEGGY L090

Another daughter of STAG Independence 110 ET, the resident Angus herdsire. The freshman class of the sire group is very consistent from one breed to another as the Angus stock exemplify the same rib and muscle design as the SimGenetic stock towards the front of the sale book.



NORDS LUCY 8022
2020 NWSS Reserve Grand Champion Angus Heifer & Paternal Granddam of Lots 40 - 42

41
LOT

AAA: 20764129

BD: 5/3/23

Tattoo: L089

BCR QUEEN PAT L089

Sire
STAG INDEPENDENCE 110 ET
BAR-E-L NATURAL LAW 52Y x NORDS LUCY 8022

Dam
BCR QUEEN PAT F042
TEX PLAYBOOK 5437 x JJD QUEEN PAT 6229

ANGUS

42
LOT

AAA: 20764135

BD: 3/2/23

Tattoo: L090

BCR PEGGY L090

Sire
STAG INDEPENDENCE 110 ET
BAR-E-L NATURAL LAW 52Y x NORDS LUCY 8022

Dam
CHESTNUT GLM PEGGY 6121
CHESTNUT KNOCK OUT 204 x TC PEGGY 5064

ANGUS

CE	BW	WW	YW	MILK
1	3.6	61	99	22

CE	BW	WW	YW	MILK
7	4.9	62	112	28

THE OPEN *Angus Heifers*



Lot 43 B C R ARKDALE PRIDE 520L

Here's a direct daughter of the timeless sire of champions and money earners regardless of breed affiliation, Colburn Primo 5153. Her build, kind, and look are certainly all trademarked by her sire. However, her physical depth and shape are certainly enhanced by the cow family she represents. The "Arkdale Pride" family is for those that admire scale, capacity, and sheer power with production values at hand.



Lot 44 B C R LUTTON MAID 047L



BNWZ DIGNITY 8017
Sire of Lot 44

One of the most popular sire groups in the Angus business this fall would be BNWZ Dignity 8017. These cattle have been met with great reception and the quality has been extremely good where they have been found. Much like this female that comes to the auction block with two shots of the ultimate matron, EXAR Saras Dream 9809. The form and function of this very elite bred prospect is undeniable. The valuation process should be as competitive as she will be on the tan bark, any show, anywhere. 047L is as elevated in her chest as she is high in her neck attachment. High volume, high capacity, and very good in terms of her overall shape with a very ideal and textbook set and travel to all fours. More than a show heifer or a breeding piece, with believe her destination to be "matriarch" in status.

OPEN FEMALES

43
LOT

AAA: 20764412

BD: 5/19/23

Tattoo: 520L

BCR ARKDALE PRIDE 520L

Sire
COLBURN PRIMO 5153
DAMERON FIRST CLASS x SILVEIRAS SARAS DREAM 1339

Dam
CONLEY ARKDALE PRIDE 6338
PENNERS-CC DOUBLE BLACK 2257 x CONLEY ARKDALE PRIDE 1338

ANGUS

44
LOT

AAA: 20769087

BD: 2/20/23

Tattoo: 047L

BCR LUTTON MAID 047L

Sire
BNWZ DIGNITY 8017
PVF INSIGHT 0129 x CCC SARA'S DREAM 5116

Dam
LUTTON MAID 418
EXAR LUTTON 1831 x PROSPERITY MAID 1606

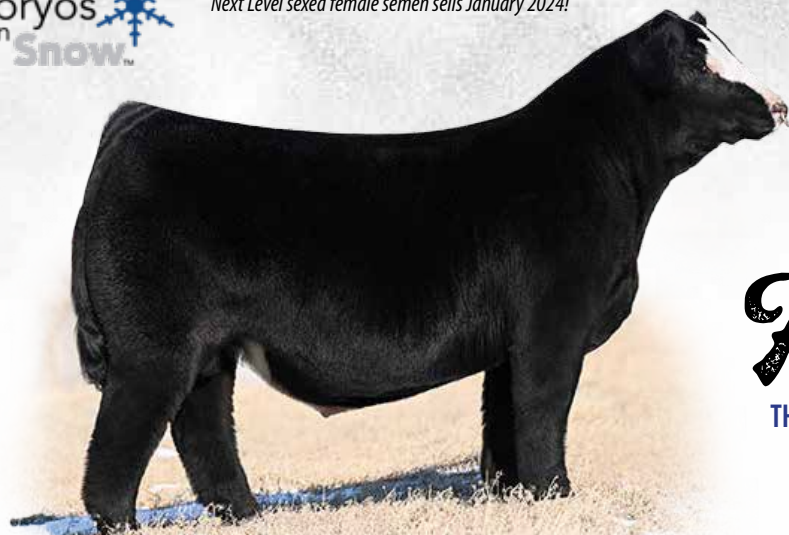
ANGUS

BC

CE	BW	WW	YW	MILK
3	3.4	64	97	15

CE	BW	WW	YW	MILK
5	2.8	58	99	21

42



Herd Sire
NEXT LEVEL

KRJ DAKOTA OUTLAW G974 X KRDL CAEDENCE C37
Owned with Boyert Show Cattle

Herd Sires

THE BREED LEADING GENETICS THAT COMPRISE THE
BUCK CREEK RANCH BULL BATTERY



Herd Sire
RP/B C R EMINENCE H005

WLE COPACETIC E02 X RP/MP BUILT TO LOVE A021



Herd Sire

B C R PERFECT VISION

MR CCF 20-20 X HSF CALLIE D613



Herd Sire

HCCO PAYBACK 166H

PROFIT X HCCO COUNTESS 477C



Herd Sire

B C R PLATINUM 309H

WLE COPACETIC E02 X STF BS45



Herd Sire

STAG INDEPENDENCE 110 ET

BAR-E-L NATURAL LAW 52Y X NORDS LUCY 8022

Owned with Stagmeyer Cattle Company



Herd Sire

CHESTNUT PERFECT TIMING 341

S&R STABILITY J824 X TR MS BLACK ROSE 8158F

Owned with Chestnut Angus Farm & Schaeffer Show Cattle



B C R TIME TO SHINE J207

2023 San Antonio Livestock Exposition Reserve Champion Simmental Heifer
Congratulations Mason Metzler!



B C R PRECIOUS K103

2023 Kansas State Fair Reserve Supreme Champion Open Breeding Heifer
Congratulations Olivia Walrod!



B C R LUCY K017

2023 Royal Winter Fair Grand Champion Angus Heifer
Congratulations Hasson family!



B C R LUCY K017

2023 Grand Champion Angus Heifer Masterfeeds National
Junior Beef Heifer Show & Top Five Overall
Congratulations Hasson family!



B C R MISS K152

2023 NE State Fair Reserve Grand Champion Simmental Heifer
Congratulations Isabella Ruda!



B C R LUCY K039

2023 Cattlemen's Congress Division III Champion
2023 NJAS Reserve Division IX Owned Heifer
Congratulations Chancee Clark!



B C R TIME TO SHINE J080
 2022 AJSA National Classic Reserve Grand Champion Owned Percentage Simmental Heifer
 Congratulations Josie Phillips



B C R PHYLLIS 092J
 2022 NJAS Grand Champion Owned Female
 Congratulations Josie Phillips

A GROWING REPUTATION FOR SUCCESS

BC



WALLCE PRIDE LASS 069H
2021 AJSA National
Classic Reserve Grand
Champion Percentage
Simmental Heifer
Congratulations
Paisley Nelson!



B C R SERENITY 052H
2021 Tulsa State
Fair Supreme
Champion Heifer
Congratulations
Ty Collum!



RP/BCR BUILT TO LOVE
2021 AJSA National
Classic 5th Overall
Percentage
Simmental Heifer
Congratulations
Josie Phillips!



B C R TIME TO SHINE 105G
2021 Cattlemen's
Congress Reserve
Grand Champion
Purebred Simmental
Heifer Congratulations
Charlee Gibson!



B C R ERICA H110
2021 Cattlemen's
Congress Division I
Champion Purebred
Simmental Heifer
Congratulations
Carter Hoge!



**B C R MISS TIME TO
SHINE J074**
2022 AJSA National
Classic 15th
Overall Purebred
Simmental Heifer
Congratulations
Macy Collum!



JSUL DREAM BIG 8992F
2020 NWSS Grand
Champion Percentage
Simmental Female



BCR PERFECT VISION
2020 FWSS
Grand Champion
Percentage Bull



JSUL DREAM BIG 8992F
2019 NAILE Grand
Champion Percentage
Simmental Female



BCR PERFECT VISION
2019 NAILE Reserve
Grand Champion
Percentage Bull



FITZ GIDEON 802F
2019 American Royal
Reserve Champion
Purebred Simmental
Bull



FITZ GIDEON 802F
2019 NAILE Reserve
Champion Purebred
Simmental Bull



FCF YF BLACKBIRD 960
2020 Indiana
State Fair
Division II Champion
Angus Heifer



CAG TR FELICIA 8557
2019 NAILE Division
Champion



BCR TIME TO SHINE 0126
2019 American Royal
Junior Heifer Calf
Champion



BCR TIME TO SHINE 0126
2020 NWSS Division II
Champion



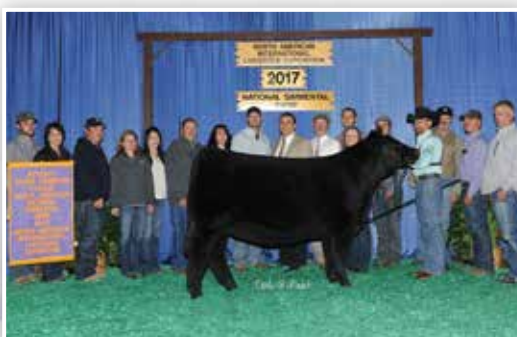
BCR TIME TO SHINE 1056
2019 NAILE Calf
Champion Simmental
Heifer



BCR TIME TO SHINE 0856
2020 FWSS Reserve
Division Champion



CMFM TIME TO SHINE 99D
2017 Simmental
Breeders Sweepstakes
Supreme Champion



CMFM TIME TO SHINE 99D
2017 NAILE Reserve
Grand Champion
Simmental Heifer

ELITE SIMMENTAL, SIMANGUS AND ANGUS FEMALES



THE
Bred

ELITE SIMMENTAL, SIMANGUS AND ANGUS FEMALES



Division

VOLUME IV



Lot 45 B C R TIME TO SHINE 160J

45
LOT

ASA: 4260618

BD: 10/3/21

Tattoo: 160J

B C R TIME TO SHINE 160J*Sire***SCC SCH 24 KARAT 838**

SCC TRADITION OF 24 x FCF PROVEN QUEEN 419

*Dam***CMFM TIME TO SHINE 99D**

HPF QUANTUM LEAP Z952 x MISS TIME TO SHINE Y251

1/2 SM 1/2 AN**B C R TIME TO SHINE 106K** | 2023 American Royal Grand Champion Percentage Simmental Heifer & Full Sister to Lot 45**B C R TIME TO SHINE 106K** | 2023 NAILE Reserve Grand Champion Junior Percentage Simmental Heifer & Full Sister to Lot 45

CE	BW	WW	YW	MILK	API	TI
9.1	1.9	76.8	108.3	20.1	109.4	71.7

Full sisters to this electrifying female averaged over \$11,000 in the open division of the 2022 version of The Grand Event. Even know the open females a year ago were some of the very best of bearing the B C R prefix, we believe many of you will prefer to take the mature version of this genetic blend. This striking female is crisp and stunning in her overall pattern with added density in bone, body, and shape. A full sister to the dominant B C R Time To Shine 106K, the 2023 Tulsa State Fair Reserve Supreme Champion Junior Breeding Heifer, 2023 American Royal Grand Champion Open Percentage Simmental Heifer, and 2023 NAILE Reserve Grand Champion Junior Simmental Heifer. She, without reservation, has the resume' to do very big things as she is the absolute total SimGenetic package.

*AI Bred on 5/18/23 to OMF EPIC E27 (ASA: 3317371).**PE 5/30/23-7/14/23 to BESH BULL KB50 (ASA: 4093514).***Confirmed Likely Safe AI. Estimated Due 2/24/24.**



Lot 46 B C R TIME TO SHINE J235

46

LOT

ASA: 4239187

BD: 10/15/21

Tattoo: J235

B C R TIME TO SHINE J235

Sire

RECKONING 711F

W/C RELENTLESS 32C x RWA KRISHA-ET

Dam

CMFM TIME TO SHINE 99D

HPF QUANTUM LEAP Z952 x MISS TIME TO SHINE Y251

PUREBRED SIMMENTAL

CE	BW	WW	YW	MILK	API	TI
10.6	1.5	71.1	94.1	18	125.6	73.1

We present you the lone Reckoning 711F sired female in the entire "Time To Shine" lineup. J235 is the very high tying daughter of 99D that comes with an impeccable pattern and seamless transitions. She is loaded with substance and the ideal set of feet and legs that are as good as one can find.

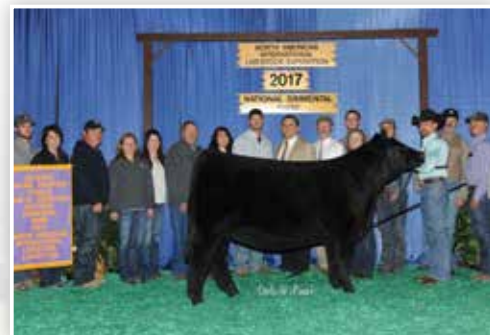
AI Bred on 5/18/23 to OMF EPIC E27 (ASA: 3317371).

PE 5/30/23-7/14/23 to BESH BULL KB50 (ASA: 4093514).

Confirmed Likely Safe AI. Estimated Due 2/24/24.



CMFM TIME TO SHINE 99D | *Dam of Lots 45 - 48*



CMFM TIME TO SHINE 99D | 2017 NAILE Reserve Grand Champion Purebred Simmental Heifer & Dam of Lots 45 - 48

BRED HEIFERS

BC

51

THE DAUGHTERS OF *Time to Shine*



Lot 47 B C R TIME TO SHINE 056K



Lot 48 B C R TIME TO SHINE 060K

One of the most dignifying characteristics of the 99D progeny is that they are always very similar in look and kind from one sire group to the next. Consistency weighs very heavy for the elite donor dam! This daughter of JSUL Something About Mary 8421 is a wild necked, strong lined, huge boned individual with flexibility and collection on the go.

AI Bred on 5/17/23 to WHF/JS/CSS WOODFORD J001 (ASA: 4068398).

PE 6/1/23-8/1/23 to B C R LOVER BOY 029K (ASA: 4259670).

Confirmed Likely Safe AI. Estimated Due 2/23/24.



B C R MISS TIME TO SHINE 509K

\$58,000 Maternal Sister to Lots 45 - 48

CMFM Time To Shine 99D is certainly a blue-chip donor that is the dam of the 2021 Cattleman's Congress Champion Purebred Female, and the maternal granddam of the 2022 AJSA National Classic Reserve Champion Percentage Simmental Female as well. A trio of flushmate sisters to B C R Time To Shine 060K averaged over \$30,000 in the 2022 version of The Grand Event and we believe that this female will rival any of the three in production. In fact, she is more modern in her size, chiseled and more refined about her head and neck, but maintains the same incredible pattern and build as those that preceded her. Loads of potential with loads of matin flexibility.

AI Bred on 5/1/23 to FHEN HALFTIME A127 (ASA: 2884737).

PE 6/1/23-8/1/23 to B C R LOVER BOY 029K (ASA: 4259670).

Confirmed Likely Safe AI. Estimated Due 2/7/24.

BRED HEIFERS

47
LOT

ASA: 4260837

BD: 2/8/22

Tattoo: 056K

B C R TIME TO SHINE 056K

Sire
JSUL SOMETHING ABOUT MARY 8421
W/C RELENTLESS 32C x JBSF PROUD MARY

Dam
CMFM TIME TO SHINE 99D
HPF QUANTUM LEAP Z952 x MISS TIME TO SHINE Y251

PUREBRED SIMMENTAL

48
LOT

ASA: 4260838

BD: 2/9/22

Tattoo: 060K

B C R TIME TO SHINE 060K

Sire
LLSF PAYS TO BELIEVE ZU194
CNS PAYS TO DREAM T759 x LLSF URABABYDOLL U194

Dam
CMFM TIME TO SHINE 99D
HPF QUANTUM LEAP Z952 x MISS TIME TO SHINE Y251

PUREBRED SIMMENTAL

BC

CE	BW	WW	YW	MILK	API	TI	CE	BW	WW	YW	MILK	API	TI
13.4	1.1	76.5	110.3	21.2	127.5	76.7	11.5	1.7	76.4	106.7	21.6	126.9	77.7

52

*Lot 49* B C R MISS TIME TO SHINE J236**49****LOT**

ASA: 4239169

BD: 10/15/21

Tattoo: J236

B C R MISS TIME TO SHINE J236*Sire***WLE COPACETIC E02**

HPF QUANTUM LEAP Z952 x CMFM JOY 02ZB

*Dam***MISS TIME TO SHINE Y251**

HTP SVF IN DEW TIME x JJ BLACK OBSESSION

PUREBRED SIMMENTAL**MISS TIME TO SHINE Y251** | *Dam of Lots 49 - 54***B C R MISS TIME TO SHINE 081J** | *Full Sister to Lots 49 - 53*

CE	BW	WW	YW	MILK	API	TI
12.8	0.8	78.4	110.6	19.7	129.5	80.1

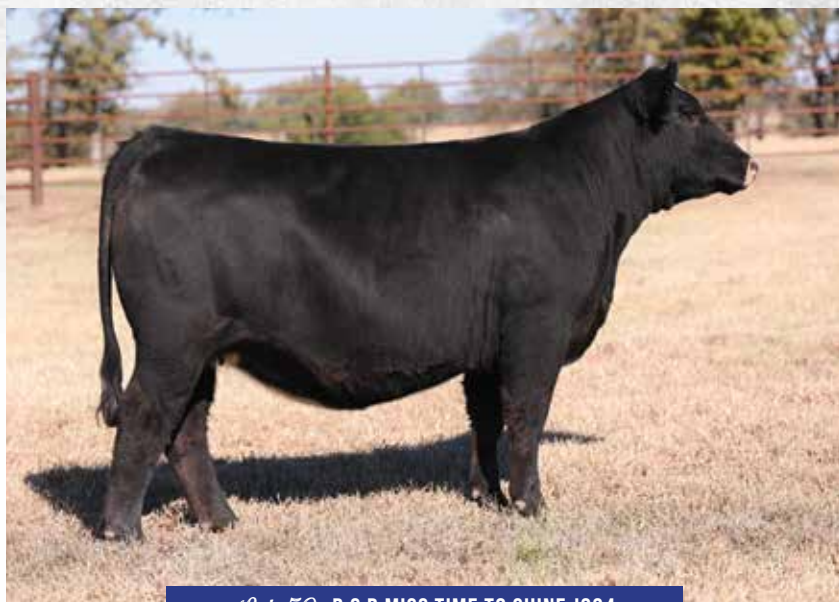
What an impressive blaze faced female that carries the credentials to enter any donor pen based on pedigree and physical presence alone. An absolute elite female from a balance standpoint, offering a look of quality and balance that is second to none! We know that B C R Miss Time To Shine J236 is one of the absolute best Y251 daughter offered at Buck Creek Ranch. She is exceptionally seamless in her transitions, with balance and symmetry as it's meant to be and when set in motion, she's simply impeccable at the surface. This one deserves serious attention by even the most critical of stockman as she defines elite.

AI Bred on 5/15/23 to OMF EPIC E27 (ASA: 3317371).

PE 5/30/23-7/14/23 to B C R EXECUTIVE ORDER 001K (ASA: 4259669).

Confirmed Likely Safe AI. Estimated Due 2/21/24.

THE DAUGHTERS OF *Time to Shine*



Lot 50 B C R MISS TIME TO SHINE J234



B C R MISS TIME TO SHINE 085K | Full Sister to Lots 49 - 53



Lot 51 B C R MISS TIME TO SHINE J233



WLE COPACETIC E02 | Sire of Lots 49 - 53

50
LOT

ASA: 4239191

BD: 10/15/21

Tattoo: J234

B C R MISS TIME TO SHINE J234

Sire
WLE COPACETIC E02

HPF QUANTUM LEAP Z952 x CMFM JOY 02ZB

Dam
MISS TIME TO SHINE Y251

HTP SVF IN DEW TIME x JJ BLACK OBSESSION

PUREBRED SIMMENTAL

51
LOT

ASA: 4239188

BD: 10/15/21

Tattoo: J233

B C R MISS TIME TO SHINE J233

Sire
WLE COPACETIC E02

HPF QUANTUM LEAP Z952 x CMFM JOY 02ZB

Dam
MISS TIME TO SHINE Y251

HTP SVF IN DEW TIME x JJ BLACK OBSESSION

PUREBRED SIMMENTAL

CE	BW	WW	YW	MILK	API	TI
12.8	0.8	78.4	110.6	19.7	129.5	80.1

There are four of these females sired by the many time percentage champion WLE Copacetic E02 from the Y251 donor dam, and while they are very different from one to the next, the quality and production value is still one in the same. Here is the stouter of the two neater featured females that reads with extra substance and dimension. Some would call her the brood cow of the group that is very bold in her center body with plenty of turn and shape.

AI Bred on 5/15/23 to OMF EPICE27 (ASA: 3317371).

PE 5/30/23-7/14/23 to BESH BULL KB50 (ASA: 4093514).

Confirmed Likely Safe AI. Estimated Due 2/21/24.

CE	BW	WW	YW	MILK	API	TI
12.8	0.8	78.4	110.6	19.7	129.5	80.1

This solid black female exudes some of the finest strength of her matriarch. She is so elegant and refined about her head and neck with a bold, deep sweeping rib cage. In motion she is one that is very collected and true with ultimate flexibility.

PE 5/30/23-7/14/23 to BESH BULL KB50 (ASA: 4093514).

Confirmed Safe. Estimated Due 4/8/24.

THE DAUGHTERS OF *Time to Shine*



Lot 52 B C R MISS TIME TO SHINE J240



Lot 53 B C R MISS TIME TO SHINE K004

In this representation of five full sisters, J240 and J233 resemble each other as much as any in the mating. Cattle that represent the utmost quality and femininity that their donor dam is rightfully known for. Very maternal and smooth in her overall build, J240 is very ideal in her front third with elevation to her chest floor and a flawless underline. She is deep sided and carries this advantage through her flank to complete the phenotypic equation of balance and appeal.

PE 5/30/23-7/14/23 to B C R EXECUTIVE ORDER 001K (ASA: 4259669).

Confirmed Safe. Estimated Due 3/12/24.



B C R MISS TIME TO SHINE 182G

Maternal Sister to Lots 49 - 53

Density and power best suit this blaze faced daughter of Miss Time To Shine Y251. The investment credentials have been established in years previous. These Y251 daughters are proven to be property of excellent value regardless of what you choose to pay for them. When mated correctly, like any other stock, the returns are invaluable as they simply will generate year after year.

AI Bred on 5/16/23 to THSF LOVER BOY B33

(ASA: 2983443).

PE 5/30/23-7/14/23 to BESH BULL KB50 (ASA: 4093514).

Confirmed Likely Safe AI. Estimated Due 2/22/24.

52
LOT

ASA: 4259779

BD: 10/16/21

Tattoo: J240

B C R MISS TIME TO SHINE J240

Sire

WLE COPACETIC E02

HPF QUANTUM LEAP Z952 x CMFM JOY 02ZB

Dam

MISS TIME TO SHINE Y251

HTP SVF IN DEW TIME x JJ BLACK OBSESSION

PUREBRED SIMMENTAL

53
LOT

ASA: 4239185

BD: 1/1/22

Tattoo: K004

B C R MISS TIME TO SHINE K004

Sire

WLE COPACETIC E02

HPF QUANTUM LEAP Z952 x CMFM JOY 02ZB

Dam

MISS TIME TO SHINE Y251

HTP SVF IN DEW TIME x JJ BLACK OBSESSION

PUREBRED SIMMENTAL

CE	BW	WW	YW	MILK	API	TI
12.8	0.8	78.4	110.6	19.7	129.5	80.1

CE	BW	WW	YW	MILK	API	TI
12.8	0.8	78.4	110.6	19.7	129.5	80.1

BRED HEIFERS

BC



Lot 54 BCR MISS TIME TO SHINE J208



Lot 56 BCR MISS TIME TO SHINE J222

54

LOT

ASA: 4239165

BD: 9/1/21

Tattoo: J208

B C R MISS TIME TO SHINE J208

Sire

B C R PERFECT VISION

MR CCF 20-20 x HSF CALLIE D613

Dam

MISS TIME TO SHINE Y251

HTP SVF IN DEW TIME x JJ BLACK OBSESSION

PUREBRED SIMMENTAL

56

LOT

ASA: 4260847

BD: 9/27/21

Tattoo: J222

B C R MISS TIME TO SHINE J222

Sire

JSUL SOMETHING ABOUT MARY 8421

W/C RELENTLESS 32C x JBSF PROUD MARY

Dam

B C R MISS TIME TO SHINE G113

HPF QUANTUM LEAP Z952 x MISS TIME TO SHINE Y251

PUREBRED SIMMENTAL

CE	BW	WW	YW	MILK	API	TI
10.8	1.4	74.1	104.2	19.3	137.2	79.8

The cattle by B C R Perfect Vision are very consistent in their look, balance, and skeletal integrity. They most definitely surface more often at the top of a contemporary group for quality and are praised when they enter production. B C R Miss Time To Shine J208 is a brood cow in the making. A genuinely, stout, big bodied female that is very productive in her overall look and balance. She is the contributing kind that will generate.

PE 5/30/23-7/14/23 to B C R EXECUTIVE ORDER 001K (ASA: 4259669).

Confirmed Safe. Estimated Due 3/20/24.

CE	BW	WW	YW	MILK	API	TI
12.8	1.4	78.5	114.7	21.2	122.6	77.9

This offering is saturated with opportunities to invest in the headlining, blue-chip Miss Time To Shine Y251 cow family. J222 would be from a full sister to the very prolific and popular CMFM Miss Time To Shine 99D. Several direct daughters of 99D consume multiple pages throughout this sale book from cover to cover. B C R Miss Time To Shine J222 is quite possibly one of the very best of the Y251 lineup. Not sure that you could draw one much better than what she already is. She is maternally stunning about her head and neck, ultra-deep in her side, and better than textbook defined structure and skeletal integrity. You will be enamored by her seamless transitions, with absolute strength to her spine, and nearly perfect in her pin set. There will be plenty to select from that represent the matriarch of the program and it is very possible that this bred female will surface to the top of many lists by December 15, 2023.

PE 5/30/23-7/14/23 to B C R EXECUTIVE ORDER 001K (ASA: 4259669).

Confirmed Safe. Estimated Due 3/30/24.

55

LOT

ASA: 4239178

BD: 10/15/21

Tattoo: J237

B C R MISS TIME TO SHINE J237

Sire

JSUL SOMETHING ABOUT MARY 8421

W/C RELENTLESS 32C x JBSF PROUD MARY

Dam

MISS TIME TO SHINE Y251

HTP SVF IN DEW TIME x JJ BLACK OBSESSION

PUREBRED SIMMENTAL

CE	BW	WW	YW	MILK	API	TI
13	0.9	73.5	107	23	129.6	76.7

A female that blends two of the absolute best cow families in the business to support her merit to acquire. Most of the public knows the impact of JBSF Proud Mary has had on the business and for those that follow the B C R prefix or are a student of Circle M Farms breeding program, already comprehend the dominant consistency of quality found in those from the Miss Time To Shine Y251 donor dam. J237 is a good looking, extended female with substance and power. Buy with confidence based on the genetic package that's offered in this awesome breeding piece.

PE 5/30/23-7/14/23 to B C R EXECUTIVE ORDER 001K (ASA: 4259669).

Confirmed Safe. Estimated Due 3/21/24.



B C R MISS TIME TO SHINE J096

Maternal Sister to Lots 49 - 55

THE DAUGHTERS OF *Time to Shine*



Lot 57 B C R TIME TO SHINE 107K

Serious connoisseurs of cow families need to study up and make sure to look this blaze faced bombshell up on their visit to Buck Creek. Not only is she a member of the Miss Time To Shine Y251 Legacy but she also ties the likes of the other notable legend, RP/MP Right to Love 015U on the sire side. Her sire is a direct son of the proven sire of champions and high end stock, LLSF Pays to Believe ZU194 and from the full sister to HPF Quantum Leap Z952, HPF Right To Love C083. The dam of this future matron is sired by Conley Express 7211 that's a direct daughter of CMFM Miss Time To Shine 99D that is represented throughout this entire offering of stock. Bred in the purple and built to produce those that will gather the purple, the hardware, or even command that ultimate dollar figure.

PE 6/1/23-8/1/23 to B C R LOVER BOY 029K
(ASA: 4259670).

Confirmed Safe. Estimated Due 3/30/24.



HPF RIGHT TO LOVE C083
Paternal Granddam of Lot 57



Lot 58 B C R TIME TO SHINE J223

This Purebred member of the "Time To Shine" family is certainly one that represents the sustainability of the great cow family when added to any operation. The top side of her pedigree is also royally aligned with the influx of power from the Bramlets Sacajalia cow family. Over her tenure "Sacajalia" had as much impact on the Bramlet program as Miss Time To Shine Y251 has had on the foundation of the Buck Creek Ranch program. Both donor dams are noted for their contributions of quality, scale, volume, dimension, and skeletal integrity to the phenotype that the stock are known for.

PE 5/30/23-7/14/23 to B C R EXECUTIVE ORDER 001K
(ASA: 4259669).

Confirmed Safe. Estimated Due 4/12/24.

57
LOT
ASA: 4263535
BD: 5/20/22
Tattoo: 107K

B C R TIME TO SHINE 107K

Sire
B C R PAYS TO BELIEVE 063H
LLSF PAYS TO BELIEVE ZU194 x HPF RIGHT TO LOVE C083

Dam
B C R TIME TO SHINE 320H
CONLEY EXPRESS 7211 x CMFM TIME TO SHINE 99D

3/4 SM 1/4 AN

CE	BW	WW	YW	MILK	API	TI
9.4	2.3	79.3	113	20.3	112.2	74.5

58
LOT
ASA: 4239168
BD: 9/27/21
Tattoo: J223

B C R TIME TO SHINE J223

Sire
B C R BIG LAR F304
HPF QUANTUM LEAP Z952 x BRAMLETS SACAJALIA

Dam
B C R TIME TO SHINE 179G
MR CCF 20-20 x MISS TIME TO SHINE Y251

PUREBRED SIMMENTAL

CE	BW	WW	YW	MILK	API	TI
9.5	2.2	79.5	114.6	16.5	120	75.8

BRED HEIFERS

BC

57



Lot 59 B C R DIAMOND J206

59

LOT

ASA: 4239186

BD: 9/1/21

Tattoo: J206

B C R DIAMOND J206

Sire

WLE COPACETIC E02

HPF QUANTUM LEAP Z952 x CMFM JOY 02ZB

Dam

TJSC DIAMOND 12D

TJSC OPTIMUS PRIME 12W x KLS DIAMOND W516

PUREBRED SIMMENTAL

CE	BW	WW	YW	MILK	API	TI
12.8	1.6	78.1	110.1	16.5	117.8	76.3

WLE Copacetic E02 will become a timeless sire of choice for many especially when he stamps them consistently with the quality and kind of J206. This female has a royal storyline on the maternal side of her pedigree as she traces back to one of the elite donor dams in the Jones Show Cattle program of Ohio, KLS Diamond W516.

AI Bred on 5/19/23 to RECKONING 711F (ASA: 3553633).

PE 5/30/23-7/14/23 to BESH BULL KB50 (ASA: 4093514).

Confirmed Likely Safe AI. Estimated Due 2/25/24.



KLS DIAMOND W516 | Maternal Granddam of Lot 59

*Lot 60* B C R ZENYATIA K022**60****LOT**

ASA: 4239174

BD: 1/3/22

Tattoo: K022

B C R ZENYATIA K022*Sire***JSUL SOMETHING ABOUT MARY 8421**

W/C RELENTLESS 32C x JBSF PROUD MARY

*Dam***DAINES ZENYATIA 32X**

ULTRA DREAM CATCHER 97U x DAINES MISS FLORA 24T

3/4 SM 1/4 AN**DAINES ZENYATIA 32X** | *Dam of Lots 60 & 61*

CE	BW	WW	YW	MILK	API	TI
10	2.7	75	113.1	22.1	101.6	67.5

The Daines Zenyatia 32X was introduced to "the states" during the reign of Circle M Farms. She was very successfully campaigned and awarded champion or reserve honors nearly every time out on the tan bark. Post show career, she went on to produce that same winning kind that are still in demand today. This pair of full sisters by JSUL Something About Mary 8421 are both of that high end caliber. A pair of full sibs that offer diversity not only in color but in kind. That diversity is all on the upside however as this dark cherry red head is certainly the bold centered, stout built brood cow of the pair. We realize that same terminology has been used throughout the writing in this sale book, but until you set foot on the ranch in Yale, Oklahoma, you cannot grasp the quality and depth through the entire offering. This red hided female will go to a program that will incorporate her into their donor lineup as it is the investment worth making.

PE 5/30/23-7/14/23 to B C R EXECUTIVE ORDER 001K (ASA: 4259669).

Confirmed Safe. Estimated Due 3/23/24.



Lot 61 B C R ZENYATIA K036

61
LOT

ASA: 4239179

BD: 1/18/22

Tattoo: K036

B C R ZENYATIA K036

Sire

JSUL SOMETHING ABOUT MARY 8421

W/C RELENTLESS 32C x JBSF PROUD MARY

Dam

DAINES ZENYATIA 32X

ULTRA DREAM CATCHER 97U x DAINES MISS FLORA 24T

3/4 SM 1/4 AN



DAINES ZENYATIA 32X

2011 NAILE Grand Champion Percentage Simmental Heifer & Dam of Lots 60 & 61



CMFM ZENYATIA 410C | 2016 NAILE Reserve Grand Champion Percentage Simmental Heifer & Maternal Sister to Lots 60 & 61

One that is elevated in her neck attachment, very maternal but refined in her throat line with a chest that is neatly placed. She is bold in her look but still smooth in her shoulder to forerib transition, with a big opened center body, and sets down on quite possibly one of the very best hind wheels in the business. A blaze marked female that is very ideal in her pattern and lines with a supporting role of illustrious donor dams on both sides of her breeding lineup. The impact of her donor dam with the influence of the great JBSF Proud Mary looks to be second to none as one evaluates this pair of full sisters of different color patterns.

PE 5/30/23-7/14/23 to B C R EXECUTIVE ORDER 001K (ASA: 4259669).

Confirmed Safe. Estimated Due 3/25/24.

CE	BW	WW	YW	MILK	API	TI
10	2.7	75	113.1	22.1	101.6	67.5

*Lot 62* B C R ONYX 522K**62**

LOT

ASA: 4259780

BD: 4/22/22

Tattoo: 522K

B C R ONYX 522K*Sire***RECKONING 711F**

W/C RELENTLESS 32C x RWA KRISHA-ET

*Dam***STF BS45**

MR HOC BROKER x STF ONYX 451W

PUREBRED SIMMENTAL**B C R ONYX 519K** | Maternal Sister to Lot 62

CE	BW	WW	YW	MILK	API	TI
10.1	2.5	63.8	87.4	16.8	105.7	63.3

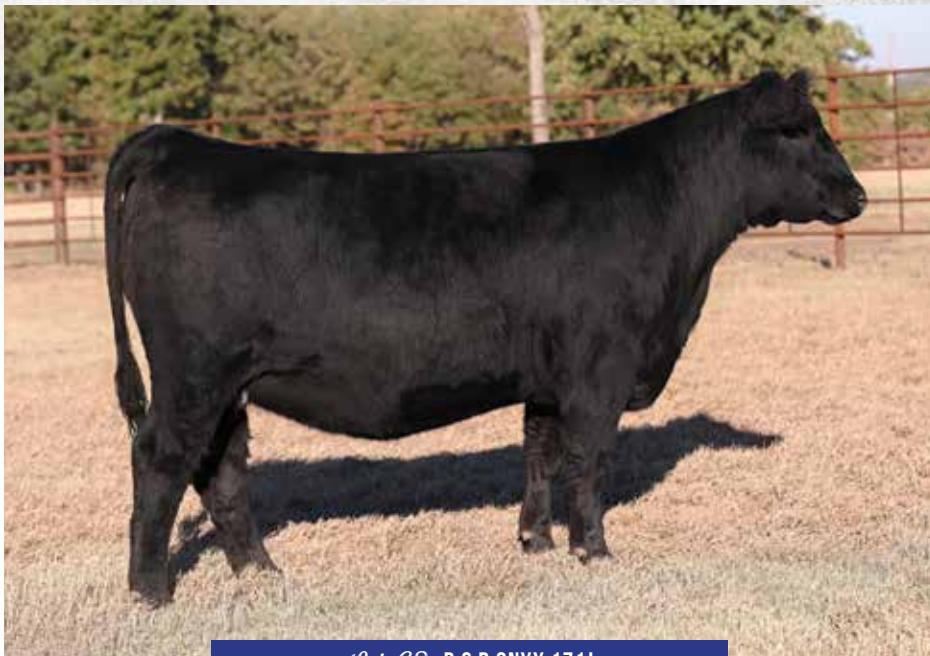
Here's another high quality bred female that has the look and features of one that should be wearing the leather. Certainly, a high tying female that is very uniform in underline, awesome in her strength of spine, and very ideal in her pin set and how she handles her perfect hind leg. The smoothness from the many time champion Reckoning 711F blends very well with the triple crown winning MR HOC Broker influence on the two time North American Champion, STF Onyx 451W.

AI Bred on 5/17/23 to WHF/JS/CSS WOODFORD J001 (ASA: 4068398).

PE 6/1/23-8/1/23 to B C R EXECUTIVE ORDER 001K (ASA: 4259669).

Confirmed Likely Safe AI. Estimated Due 2/23/24.

THE BRED *Simmental & SimAngus Heifers*



Lot 63 B C R ONYX 171J

Femininity, balance, crisp features, and a definitely lady like appearance would describe the daughter of THSF Lover Boy B33 with absolute integrity. B C R Onyx 171J bears a maternal influence like no other in the offering. Not only is the great STF Onyx 451W in her lineage but the Angus greats like S A V Net Worth 4200 and S A V Peacemaker 3179 come all inclusive. This female is certain to be very productive with high maternal value.

AI Bred on 5/17/23 to WHF/JS/CSS WOODFORD J001 (ASA: 4068398).

PE 6/1/23-8/1/23 to B C R LOVER BOY 029K (ASA: 4259670).

Confirmed Likely Safe AI. Estimated Due 2/23/24.



STF ONYX 451W

Matron of the "Onyx" Cow Family!



Lot 64 B C R KIMBERLY 068K

Here is one of the first daughters of RP/BCR Eminence H005 to sell safe in calf at public auction. She is very much like one would expect to mature into sired by her three dimensional sire and from a dam that is equal in kind and build. Her Hook's Beacon 56B sired dam is one very moderate sized, stout featured, ground sow, that carries the influence of the legendary Plainview Lutton E102 and GCF Miss Caliente, the dam of STF Onyx 451W. There is no question that this female is so modern in her kind with all the look, substance, and skeletal width to be productive for many years to come.

AI Bred on 5/17/23 to WHF/JS/CSS WOODFORD J001 (ASA: 4068398).

PE 6/1/23-8/1/23 to B C R LOVER BOY 209K (ASA: 4259670).

Confirmed Likely Safe AI. Estimated Due 2/23/24.

63

LOT

ASA: 4260617

BD: 10/5/21

Tattoo: 171J

B C R ONYX 171J

Sire

THSF LOVER BOY B33

HTP/SVF DURACELL T52 x RP/MP RIGHT TO LOVE 015U

Dam

B C R ONYX E050

S A V FIRST CLASS 0207 x STF ONYX 451W

3/4 SM 1/4 AN

64

LOT

ASA: 4260839

BD: 2/11/22

Tattoo: 068K

B C R KIMBERLY 068K

Sire

RP/BCR EMINENCE H005

WLE COPACETIC E02 x RP/MP BUILT TO LOVE A021

Dam

B C R KIMBERLY 035F

HOOK'S BEACON 56B x STF A37D

PUREBRED SIMMENTAL

CE	BW	WW	YW	MILK	API	TI
12.7	0.6	71.4	102.5	23.6	122.8	73.6

CE	BW	WW	YW	MILK	API	TI
13.3	-0.2	76.4	113.7	21.3	145.5	84.7



Lot 65 B C R MISS J225

65

LOT

ASA: 4239189

BD: 10/1/21

Tattoo: J225

B C R MISS J225

Sire

WLE COPACETIC E02

HPF QUANTUM LEAP Z952 x CMFM JOY 02ZB

Dam

B C R MISS 605E

SVF/NJC BUILT RIGHT N48 x STF MISS Y3690

PUREBRED SIMMENTAL



STF MISS Y3690 | Maternal Granddam of Lot 65

CE	BW	WW	YW	MILK	API	TI
12.7	1.7	75.3	106.3	17.6	119.4	73.3

What a picture perfect, baldy female that is supported by the very best the breed has to offer. Perfection is a bold term, but we think when you make the trip to Yale that you will readily admit that the only imperfection is the mud she found before the picture pen that's in her photo. She offers an amazing look with a super high neck attachment, an elevated chest floor with a smooth transition from heart to flank.

PE 5/30/23-7/14/23 to BESH BULL KB50 (ASA: 4093514).

Confirmed Safe. Estimated Due 3/28/24.



Lot 66 BCR PRIMA DONNA 504K



Lot 68 BCR PRIMA DONNA 164J

66

LOT

ASA: 4260840

BD: 3/8/22

Tattoo: 504K

B C R PRIMA DONNA 504K

Sire

SILVEIRAS STYLE 9303

GAMBLES HOT ROD x SILVEIRAS ELBA 2520

Dam

STF PRIMA DONNA C87

MR HOC BROKER x STF ONYX 451W

1/2 SM 1/2 AN

CE	BW	WW	YW	MILK	API	TI
10.8	2.5	66.2	97.9	15.6	103.4	62.9

Beautiful, should be her name! We are not sure where we could find a SimGenetic breeding piece with any more look and kind! She is mesmerizing to evaluate and unforgettable in kind. Her alluring presence in masterful in how she transitions throughout her entire skeletal build that is supported by utmost integrity of structure. Bred in the purple may be too general for this exotic creature, but when mated right we know she should produce the kind that will withstand the competition more often than not.

AI Bred on 5/1/23 to THSF LOVER BOY B33 (ASA: 2983443).

PE 6/1/23-8/1/23 to B C R LOVER BOY 029K (ASA: 4259670).

Confirmed Likely Safe AI. Estimated Due 2/7/24.

68

LOT

ASA: 4260620

BD: 10/15/21

Tattoo: 164J

B C R PRIMA DONNA 164J

Sire

B C R MR 20-20 160G

MR CCF 20-20 x MISS TIME TO SHINE Y251

Dam

B C R PRIMA DONNA 013H

PLUM CREEK PARADOX 161B x STF PRIMA DONNA C87

3/4 SM 1/4 AN

CE	BW	WW	YW	MILK	API	TI
10.5	2.4	76.2	110.2	17.8	96.9	66.7

Once again, the potent influence of Y251 is present in another lot offered in The Grand Event. However, this time, that said influence would be on the sire side with a son of MR CCF 20-20 from Miss Time To Shine Y251. The resident herd sire put the stamp of quality on this gem without question. Her dam is from the STF Onyx 451W matriarch with the influence of MR HOC Broker and the Angus stud known for quality, look, and show ring presence, Plum Creek Paradox 161B. This SimGenetic breeding piece has the resume backed by genetics to be a generator of awesome livestock when mated appropriately.

AI Bred on 5/16/23 to THSF LOVER BOY B33 (ASA: 2983443).

PE 5/30/23-7/14/23 to BESH BULL KB50 (ASA: 4093514).

Confirmed Likely Safe AI. Estimated Due 2/22/24.

67

LOT

ASA: 4260619

BD: 10/12/21

Tattoo: 174J

B C R PRIMA DONNA 174J

Sire

B C R BIG LAR F304

HPF QUANTUM LEAP Z952 x BRAMLETS SACAALIA

Dam

STF PRIMA DONNA C87

MR HOC BROKER x STF ONYX 451W

PUREBRED SIMMENTAL

CE	BW	WW	YW	MILK	API	TI
7.9	4.1	78.7	115.1	17.4	93.3	66.3

The body and mass remain consistent within the blend of STF Onyx 451W and the resident herdsire B C R Big Lar F304. If your preference is bold and burly, sit that satchel down right here and invest.

AI Bred on 5/16/23 to THSF LOVER BOY B33 (ASA: 2983443).

PE 5/30/23-7/14/23 to BESH BULL KB50 (ASA: 4093514).

Confirmed Likely Safe AI. Estimated Due 2/22/24.



Lot 67 BCR PRIMA DONNA 174J

THE BRED *Simmental & SimAngus Heifers*



Lot 69 B C R BEYOND BELIEF 167J

When you google incredible and you select the definition option, it will also give you similar words or phrases. One of those similar phrases is "beyond belief" which is what this female is so righteously registered as. Doug Smith is a sharp cowboy but who knew he read Webster's in his spare time. The STF Beyond Belief U337 cow family blends two of the very best again from the historic Silvertowne Farms program with the B C R flare involving the B C R Perfect Vision stud. We are huge fans of this bred female! Besides being one of centerfold status and quality, this very alluring brood cow in the making is one of the absolute best in her look with a ton of body and shape throughout. A breeding piece for some but a donor candidate for many as one thumbs through this dynamic female offering.

AI Bred on 5/19/23 to RECKONING 711F (ASA: 3553633).

PE 5/30/23-7/14/23 to BESH BULL KB50 (ASA: 4093514).

Confirmed Likely Safe AI. Estimated Due 2/25/24.



B C R PERFECT VISION | *Sire of Lot 69*



Lot 70 B C R BEYOND BELIEF J202

A female that represents two of the very best cow families that Silvertowne Farms was ever tied to! Both STF Onyx 451W and STF Desa Rae are absorbed within the lineage that helped build this very high-quality individual. Power in the blood would not be a canned phrase when referencing this female. She is simply stacked with just that not only from the maternal side, but it becomes two-fold with the influence of her paternal grandsire, Profit. J202 owns the big running gear, the big upper rib and pin set, while being built with strength and squareness from every angle.

AI Bred on 5/15/23 to THSF LOVER BOY B33

(ASA: 2983443).

PE 5/30/23-7/14/23 to B C R EXECUTIVE ORDER 001K

(ASA: 4259669).

Confirmed Likely Safe AI. Estimated Due 2/21/24.

69
LOT
ASA: 4263534
BD: 10/20/21
Tattoo: 167J

B C R BEYOND BELIEF 167J

Sire
B C R PERFECT VISION
MR CCF 20-20 x HSF CALLIE D613

Dam
STF BEYOND BELIEF U337
STF ROYAL AFFAIR Z44M x HPF MS DESA RAE U337

PUREBRED SIMMENTAL

CE	BW	WW	YW	MILK	API	TI
8.6	3.2	73.8	107.5	17.2	119.5	72.1

70
LOT
ASA: 4239166
BD: 9/1/21
Tattoo: J202

B C R BEYOND BELIEF J202

Sire
FITZ GIDEON 802F
PROFIT x FITZ POL FANTASIA S601

Dam
B C R BEYOND BELIEF 600
MR HOC BROKER x STF BEYOND BELIEF U337

PUREBRED SIMMENTAL

CE	BW	WW	YW	MILK	API	TI
7.5	3.5	71.8	103	17.3	103.8	67.3

BRED HEIFERS

BC

THE BRED *Simmental & SimAngus Heifers*



Lot 71 B C R TWINKLE TOES J212

The influence of HPF Quantum Leap Z952 on this program is very evident. In the beginning phase of the Oklahoma division his service was used extensively and with the popularity of arguably his best son, WLE Copacetic E02, more of the influenced was attained. There's no doubt that the stock that carry the Z952 influence maintains the certain look and flexibility desired by many. Utilizing the influence of MR CCF 20-20 will complement many of the positives about the HPF Quantum Leap Z952 progeny while fixing the very few negative attributes of the late herd sire. This amazing female by B C R Perfect Vision is essentially mind blowing in her balance and proportions. She is way good and very flexible in her build and kind. Rest assured this one will not have any issues with finding a new home or getting asked for the last dance at last call. Very, very good is what she simply is.

PE 5/30/23-7/14/23 to BESH BULL KB50 (ASA: 4093514).

Confirmed Safe. Estimated Due 4/19/24.



Lot 73 B C R TWINKLE TOES 023K



RP/BCR EMINENCE H005 | Sire of Lot 72

The stock by RP/BCR Eminence H005 are limited in number through the bred offering, but in the open division they are featuring a few more that will most definitely surface to the top in that marketing group. Femininity that is refined, angles that are seldom replicated, with the utmost graceful presence can be found in the daughter of "Eminence" from the SS Ebony's Grandmaster sired dam. Her maternal great granddam L A H Famous Empress 415 would be the cornerstone donor for the Horstman Cattle Company program of Indiana.

AI Bred on 5/1/23 to THSF LOVER BOY B33 (ASA: 2983443).

PE 6/1/23-8/1/23 to B C R LOVER BOY 029K

(ASA: 4259670).

Confirmed Likely Safe AI. Estimated Due 2/7/24.

71

LOT

ASA: 4239192

BD: 9/1/21

Tattoo: J212

B C R TWINKLE TOES J212

Sire

B C R PERFECT VISION

MR CCF 20-20 x HSF CALLIE D613

Dam

B C R TWINKLE TOES 114F

HPF QUANTUM LEAP Z952 x H2J2 TWINKLE TOES C06

PUREBRED SIMMENTAL

72

LOT

ASA: 4260836

BD: 1/23/22

Tattoo: 023K

B C R TWINKLE TOES 023K

Sire

RP/BCR EMINENCE H005

WLE COPACETIC E02 x RP/MP BUILT TO LOVE A021

Dam

H2J2 TWINKLE TOES C06

SS EBONY'S GRANDMASTER x LAH EMPRESS 838U

PUREBRED SIMMENTAL

BRED HEIFERS

BC

*Lot 73* B C R KATRINA J209

A little "old school flare" is found in analyzing of acquiring this female for any program! Maybe the utilization of JF Milestone 999W will surge again after the visitors lay their eyes on this female. The dominating presence and build of this outcross breeding piece should take the notoriety of the Buck Creek Ranch breeding program to a whole other level. Maternally she was bred by the Sieg Family of Southern Indiana. In the Clover Valley program, their primary concern was just making good, functional stock that were deep, wide, and maintained longevity in their structure. Stock bearing the CVLS prefix were almost always good footed, nice uddered, and fertile as well. They were not bred to go get a backdrop photo or to be featured in a high profile frozen genetic event, but they were built to outlast the competition and wean big productive stock that work anywhere they were introduced to. This sultry baldy is simply brow raising and jaw dropping from her balance, symmetry, and the power she expresses through her center body, back, and hip. She is one of the many incredible ones to witness in Yale on December 15.

AI Bred on 5/17/23 to WHF/JS/CSS WOODFORD J001 (ASA: 4068398).

PE 6/1/23-8/1/23 to B C R LOVER BOY 029K (ASA: 4259670).

Confirmed Likely Safe AI. Estimated Due 2/23/24.

73**LOT**

ASA: 4239171

BD: 9/1/21

Tattoo: J209

B C R KATRINA J209*Sire***JF MILESTONE 999W**

TNT TOP GUN R244 x MS MAXIE LOU M112S

*Dam***CVLS KATRINA 656D**

CVLS FULL THROTTLE 405B x CVLS KATRINA 346A

PUREBRED SIMMENTAL

CE	BW	WW	YW	MILK	API	TI
7.5	3	83.4	124	20.6	114.5	76



Lot 74 B C R KARRIE 104K

74

LOT

ASA: 4266323

BD: 5/4/22

Tattoo: 104K

B C R KARRIE 104K

Sire

B C R BIG LAR F304

HPF QUANTUM LEAP Z952 x BRAMLETS SACAJALIA

Dam

CLRWTR KARRIE F47

CLRWTR RESISTANCE D74H x CLRWTR KARRIE C47

PUREBRED SIMMENTAL

CE	BW	WW	YW	MILK	API	TI
5.9	5.5	86.1	130.6	17.3	111.7	74.5

B C R Big Lar F304 is a resident member of the bull battery here at Buck Creek Ranch. He furthers the influence of the late HPF Quantum Leap Z952 and is from one of the great donors produced in the Bramlet program of Illinois known as Bramlets Sacajalia. F304 doesn't get all the females here at the ranch but the ones he does service, his mark of quality is definite as one finds in 104K. We are not sure that you could ever ask more out of one regarding presence and build. She is the ground pounding variety that maintains balance and eye appeal throughout.

AI Bred on 5/17/23 to WHF/JS/CSS WOODFORD J001 (ASA: 4068398).

PE 6/1/23-8/1/23 to B C R LOVER BOY 209K (ASA: 4259670).

Confirmed Likely Safe AI. Estimated Due 2/23/24.



WHF/JS/CSS WOODFORD J001 | 2023 NAILE Grand Champion Percentage Simmental Bull & Service Sire to Lot 74

THE BRED *Simmental & SimAngus Heifers*



Lot 75 B C R MISS FROG 168J



KENCO MISS FROG 702E | *Dam of Lot 75*



Lot 76 B C R DARBY K041



FITZ GIDEON 802F | *Sire of Lots 75 - 78*

75

LOT

ASA: 4260622

BD: 10/11/21

Tattoo: 168J

B C R MISS FROG 168J

Sire

FITZ GIDEON 802F

PROFIT x FITZ POL FANTASIA S601

Dam

KENCO MISS FROG 702E

RGRS SRG TWO STEP 20Z ET x RRJS MISS FROG 238Y

PUREBRED SIMMENTAL

76

LOT

ASA: 4239184

BD: 1/23/22

Tattoo: K041

B C R DARBY K041

Sire

FITZ GIDEON 802F

PROFIT x FITZ POL FANTASIA S601

Dam

RFRJ DARBY 6842

MR NLC UPGRADE U8676 x M B DARBY 8054

3/4 SM 1/4 AN

CE	BW	WW	YW	MILK	API	TI
9	2.4	70.3	98.3	17.4	112.6	70.5

B C R Miss Frog 168J represents some of the timeless genetics in the business as she traces back to the historic Ratcliff Ranch program of Vinita, Oklahoma. The Ratcliff cattle were very much in demand, especially the very first SimGenetic stock sired by SVF Steel Force S701. This daughter of the Profit son, FITZ Gideon 802F, is certainly worthy of sale day shortlist status. She is big at the surface, stout in her bone work, deep in her rib design, with shape to her back and upper rib as well. This brood cow prospect undoubtedly maintains the poise of a producer that will contribute the necessary power and substance to her progeny.

AI Bred on 5/17/23 to THSF LOVER BOY B33 (ASA: 2983443).

PE 5/30/23-7/14/23 to BESH BULL KB50 (ASA: 4093514).

Confirmed Likely Safe AI. Estimated Due 2/23/24.

CE	BW	WW	YW	MILK	API	TI
9.9	2.2	76.7	110.5	16.8	110	72.6

This daughter of FITZ Gideon 802F is awfully good in her kind. Genuine and honest, functional, and correct, with the ideal rib and body shape. She's certainly saturated with the goods that are timeless and proven on the maternal side of her pedigree. This one will be the kind that will be a consistent producer of top end stock with true dimension.

AI Bred on 5/16/23 to THSF LOVER BOY B33 (ASA: 2983443).

PE 5/30/23-7/14/23 to BESH BULL KB50 (ASA: 4093514).

Confirmed Likely Safe AI. Estimated Due 2/22/24.

BRED HEIFERS

BC

69

THE BRED *Simmental & SimAngus Heifers*



Lot 77 B C R BEAUTIFUL DREAM J251

Yet another bred female that is simply awesome and complete in her overall look and build with high end, maternally driven credentials. Her maternal granddam is the full sister SVF Steel Force S701 and with the injection of Silveiras Style 9303 it all equates to the kind and appeal that J251 offers to the eye. Long necked, deep centered, with seamless transitions and flawless skeletal quality will allow any breeder the flexibility to mate this gem to just about any sire in the business.

AI Bred on 5/16/23 to THSF LOVER BOY B33

(ASA: 2983443).

PE 5/30/23-7/14/23 to BESH BULL KB50 (ASA: 4093514).

Confirmed Likely Safe AI. Estimated Due 2/22/24.



WCS MS HAMMER 616D

Dam of Lot 78



Lot 78 B C R HAMMER J256

Woofy and burly bodied is what first comes to mind as we evaluate this near outcross bred female that will define forage efficiency when her new owner kicks her out to grass. She is a daughter of the Profit sired, resident herd sire FITZ Gideon 802F, but her dam was acquired from Western Cattle Source of far northwest Nebraska. One will find those that carry the WCS prefix are hardy, resilient stock that will thrive on very little good feed and return two fold as evident in this quality female.

AI Bred on 5/15/23 to THSF LOVER BOY B33

(ASA: 2983443).

PE 5/30/23-7/14/23 to B C R EXECUTIVE ORDER 001K

(ASA: 4259669).

Confirmed Likely Safe AI. Estimated Due 2/21/24.

BRED HEIFERS

77

LOT

ASA: 4259781

BD: 11/22/21

Tattoo: J251

B C R BEAUTIFUL DREAM J251

Sire

FITZ GIDEON 802F

PROFIT x FITZ POL FANTASIA S601

Dam

TBSF BEAUTIFUL DREAM D32

SILVEIRAS STYLE 9303 x HS/HSF BEAUTIFUL DREAM

3/4 SM 1/4 AN

78

LOT

ASA: 4239175

BD: 10/31/21

Tattoo: J256

B C R HAMMER J256

Sire

FITZ GIDEON 802F

PROFIT x FITZ POL FANTASIA S601

Dam

WCS MS HAMMER 616D

LRS HAMMER DOWN 116B x WCS MS POWER 364A

3/4 SM 1/4 AN

BC

70

CE	BW	WW	YW	MILK	API	TI	CE	BW	WW	YW	MILK	API	TI
10.8	2	67.2	97.3	12.6	109.3	66.5	8.9	2.5	73	106.7	18.9	116.4	71.4

THE BRED *Simmental & SimAngus Heifers*



Lot 79 B C R PRECIOUS K013

THSF Lover Boy 33B leaves his mark on this modern built female. Moderate in size, three dimensional in build, with skeletal integrity, and hoof quality at the surface.
PE 5/30/23-7/14/23 to B C R EXECUTIVE ORDER 001K (ASA: 4259669).

Confirmed Safe. Estimated Due 3/20/24.



B C R GLITTER BOMB J148

Full Sister in Blood to Lot 80



Lot 80 B C R GLITTER BOMB J218

At the 2022 Cattlemen's Congress Simmental Show, Kyle Perez was the associate evaluator. In one of his general statements about a particular class he said, "this is the kind that you would want three hundred of..." We'll adopt that statement when it comes to this particular female. She's the legit, real world kind! Solid black in color, ultra-broody and maternal in her look and build with indiscriminate flexibility. She is also very big and bold in her rib design with plenty of smooth muscle design to complete the very intriguing package.

AI Bred on 5/16/23 to OMF EPIC E27 (ASA: 3317371).

PE 5/30/23-7/14/23 to BESH BULL KB50 (ASA: 4093514).

Confirmed Likely Safe AI. Estimated Due 2/22/24.

79

LOT

ASA: 4239176

BD: 1/1/22

Tattoo: K013

B C R PRECIOUS K013

Sire

THSF LOVER BOY B33

HTP/SVF DURACELL T52 x RP/MP RIGHT TO LOVE 015U

Dam

B C R PRECIOUS F080

LLSF PAYS TO BELIEVE ZU194 x WOMACK PRECIOUS MISS

PUREBRED SIMMENTAL

80

LOT

ASA: 4266330

BD: 10/10/21

Tattoo: J218

B C R GLITTER BOMB J218

Sire

THSF LOVER BOY B33

HTP/SVF DURACELL T52 x RP/MP RIGHT TO LOVE 015U

Dam

HILB/SHER GLITTER BOMB

B C LOOKOUT 7024 x HHSF BLACK GLITTER

3/4 SM 1/4 AN

CE	BW	WW	YW	MILK	API	TI
11.7	0.3	74.9	104.5	24.7	131.6	79.4

CE	BW	WW	YW	MILK	API	TI
11.2	1	76.9	110.8	23.2	122.1	76.6

BRED HEIFERS

BC

*Lot 81* GCLD PROVEN QUEEN K118**81****LOT**

ASA: 4103124

BD: 4/10/22

Tattoo: K118

GCLD PROVEN QUEEN K118*Sire***HCCO PAYBACK 166H**

PROFIT x HCCO COUNTESS 477C

*Dam***PVF PROVEN QUEEN 9019**

PVF INSIGHT 0129 x PVF PROVEN QUEEN 6197

1/2 SM 1/2 AN**GCLD PROVEN QUEEN J053** | Maternal Sister to Lot 81

CE	BW	WW	YW	MILK	API	TI
9.3	1.9	79.1	118.8	18.3	110	74

Ohhh my! If all the cattle in the program sired by HCCO Payback 166H mature like this one, then we all need to sample the resident herdsire. There's zero to question when it comes to the cow power that supports this leading SimAngus bred. PVF Proven Queen 602 is as impactful as they come in the Angus business from a cow family standpoint. One must factor the sire power involved, Dameron First Class and PVF Insight 0129, into the final equation. Predictability is absolutely established, and her phenotypic value is however one chooses to evaluate and value. This thing is very discerning as well as captivating in her overall presence and kind.

AI Bred on 5/15/23 to OMF EPIC E27 (ASA: 3317371).

PE 5/30/23-7/14/23 to BESH BULL KB50 (ASA: 4093514).

Confirmed Likely Safe AI. Estimated Due 2/21/24.



Lot 82 B C R STICKY SWEET K076



B C R STICKY SWEET J075 | Maternal Sister to Dam of Lot 82



Lot 83 MHM-RRF PRECIOUS COTTON 005K



KENCO MILEY COTTONTAIL | Maternal Granddam of Lot 83

82
LOT

ASA: 4239181

BD: 2/7/22

Tattoo: K076

B C R STICKY SWEET K076

Sire
W/C NIGHT WATCH 84E
CCR ANCHOR 9071B x MISS WERNING KP 8543U

Dam
B C R STICKY SWEET H019
HPF QUANTUM LEAP Z952 x BURKS STICKY SWEET 793D

PUREBRED SIMMENTAL

CE	BW	WW	YW	MILK	API	TI
15.4	-1.2	77.9	109.3	23.9	129.4	81.2

This female is certainly from a perfect genetic blend that lined up as it should. The density and boldness from the top side complemented the length, extension, and elegance with the maternal side to make a creature of head turning nature. Incredible at the surface with a very flexible skeletal design in coalition with a flawless pattern loaded with shape and proper turn at every angle. She only continues to prove how good the natural calving cow herd is here at Buck Creek Ranch.

AI Bred on 5/15/23 to THSF LOVER BOY B33 (ASA: 2983443).

PE 5/30/23-7/14/23 to B C R EXECUTIVE ORDER 001K (ASA: 4259669).

Confirmed Likely Safe AI. Estimated Due 2/21/24.

83
LOT

ASA: 4082911

BD: 1/18/22

Tattoo: 005K

MHM-RRF PRECIOUS COTTON 005K

Sire
WLE COPACETIC E02
HPF QUANTUM LEAP Z952 x CMFM JOY 02ZB

Dam
SS/PRS PRECIOUS COTTON
MCM TOP GRADE 018X x KENCO MILEY COTTONTAIL

PUREBRED SIMMENTAL

CE	BW	WW	YW	MILK	API	TI
11.3	1.2	75.9	110.6	22	128.8	79

This offering is unequivocally saturated with cattle that are right for the times and stocked with the very best cow families. Recent times call for cattle that have enough capacity, muscle, bone, and foot to survive and persevere through drought conditions and record cold, harsh winters. Cattle that are built like this daughter of WLE Copacetic E02 and the prolific influence of KenCo Miley Cottontail should be able to withstand all the pressures associated with seedstock production. 005K has the assets necessary to advance any program and remain in that role for years to come.

AI Bred on 5/16/23 to THSF LOVER BOY B33 (ASA: 2983443).

PE 5/30/23-7/14/23 to BESH BULL KB50 (ASA: 4093514).

Confirmed Likely Safe AI. Estimated Due 2/22/24.

THE BRED *Simmental & SimAngus* Heifers



Lot 84 B C R GUARDIAN ANGEL 169J

This bred female's kind is very true to her pedigree. She looks like one those very high quality "Montana" types. She is very good in her center body with very flexible and useful running gear. This is the productive kind with ultimate longevity bred onto her.

AI Bred on 5/15/23 to OMF EPIC E27 (ASA: 3317371).

PE 5/30/23-7/14/23 to BESH BULL KB50 (ASA: 4093514).

Confirmed Likely Safe AI. Estimated Due 2/21/24.



OMF EPIC E27

Service sire to several females throughout the offering!



Lot 85 AKP/RP HOLLEY K02

What a genetic gem with a world of breeding flexibility on board! If you like them functional in their build, productive in their kind, and very good at the surface then she will need to be on your short list for those that just make "cattle sense" to own. She comes with the influence of the Wallace and Moriondo donor CMB Yolanda Y658. Members of this family set the pace at the most recent Ladies of the Lonestar marketing event hosted by Red River Farms where they average over \$5,300. Form and function don't cost extra when Y658 influences.

AI Bred on 5/15/23 to OMF EPIC E27 (ASA: 3317371).

PE 5/30/23-7/14/23 to B C R EXECUTIVE ORDER 001K (ASA: 4259669).

Confirmed Likely Safe AI. Estimated Due 2/21/24.

BRED HEIFERS

84
LOT

ASA: 4260621

BD: 10/21/21

Tattoo: 169J

B C R GUARDIAN ANGEL 169J

Sire

LCHMN BRIGHT LIGHT L122L

GW BRIGHT LIGHT 019H x LCHM BALDY H7013

Dam

HARKERS GUARDIAN ANGEL G119

CDI INNOVATOR 325D x HILB/MBCC FAIRY DUST

PB SM

85
LOT

ASA: 4086535

BD: 5/2/22

Tattoo: K02

AKP/RP HOLLEY K02

Sire

SIJW EXIT 44 7111E

LLSF PAYS TO BELIEVE ZU194 x CMB YOLANDA Y658

Dam

FSCI MS WIDE TRACK C546

W/C WIDE TRACK 694Y x COLEMAN BLACKCAP 0208

3/4 SM 1/4 AN

BC

CE	BW	WW	YW	MILK	API	TI	CE	BW	WW	YW	MILK	API	TI
13.5	-0.1	75.9	121.2	29.3	142.3	83.8	10.1	2.6	76.6	118.6	21.1	108.5	70.5

THE BRED *Simmental & SimAngus Heifers*



Lot 86 STCC LOLA 030K



Lot 88 BCR DUCHESS J241

86

LOT

ASA: 4110404

BD: 2/17/22

Tattoo: 030K

STCC LOLA 030K

Sire

SJW EXIT 44 7111E

LLSF PAYS TO BELIEVE ZU194 x CMB YOLANDA Y658

Dam

RRF LOLA 209H

SC PAY THE PRICE C11 x OBCC LOLA 137Z

PB SM

88

LOT

ASA: 4239193

BD: 10/16/21

Tattoo: J241

B C R DUCHESS J241

Sire

SC PAY THE PRICE C11

CNS PAYS TO DREAM T759 x LLSF URABABYDOLL U194

Dam

BCR DUCHESS F013

STEVENSON TURNING POINT x CONLEY DUCHESS 6123

1/2 SM 1/2 AN

CE	BW	WW	YW	MILK	API	TI
9.1	3.2	82	122.1	20.5	113.5	76.5

The SJW Exit 44 7111E sire group is the most impressive as mature stock. They are versatile and flexible in their build, big in their center body, and very attractive in their kind. 030K is very polished in her design with a very elegant head and neck that blends into a flat smooth shoulder of the correct angle, with flex in her knee and hock that allows her to go with ease. This straight lined, correct angled beauty will have fans come sale day, and that is certain.

PE 6/1/23-8/1/23 to B C R LOVER BOY 029K (ASA: 4259670).

Confirmed Safe. Estimated Due 3/30/24.

CE	BW	WW	YW	MILK	API	TI
12.7	-0.2	72.9	110.9	19.1	125.3	77

One of the very good sire groups of the Angus business would be the proven stud, Stevenson Turning Point. Conley Cattle has had plenty of the goods sired by him or from high rent daughters of him alone to prove his worth, not to mention everywhere else he has been utilized with similar results. He is without a doubt the low birth weight sire of choice that keeps the phenotype and economically important traits on board and close at hand. SC Pay The Price C11 accented the qualities contributed by the Stevenson bred sire as he stamped this female with trademark assets. She is tricked out through the front third of her build, ideal in her pattern with a near perfect rear leg set. This one will be productive and will have the ability to produce the necessary big ticket items that keep an outfit in the black.

AI Bred on 5/15/23 to THSF LOVER BOY B33 (ASA: 2983443).

PE 5/30/23-7/14/23 to BESH BULL KB50 (ASA: 4093514).

Confirmed Likely Safe AI. Estimated Due 2/21/24.

87

LOT

ASA: Pending

BD: 3/8/22

Tattoo: 309K

B C R REBA 309K

Sire

RP/BCR EMINENCE H005

WLE COPACETIC E02 x RP/MP BUILT TO LOVE A021

Dam

B C R REBA 7190

B C LOOKOUT 7024 x JF REBA 736T

3/4 SM 1/4 AN

CE	BW	WW	YW	MILK	API	TI
11.5	0.5	55.7	84.3	22.6	112.3	59.8

This deep sided, sound structured female is broody in her overall kind. A daughter from the "Reba" line that will be ultra-productive and have the longevity on board to go the distance.

AI Bred on 5/16/23 to THSF LOVER BOY B33 (ASA: 2983443).

PE 5/30/23-7/14/23 to BESH BULL KB50 (ASA: 4093514).

Confirmed Likely Safe AI. Estimated Due 2/22/24.



Lot 87 BCR REBA 309K

BRED HEIFERS

BC



Lot 89 B C R FARRAH F092

89
LOT

ASA: 3570726

BD: 3/20/18

Tattoo: F092

B C R FARRAH F092

Sire

SWEENEY FINAL TIME

SWEENEY KEEPING TIME x MS NLC F CHOICE Z2095

Dam

SWEENEY COW D613

W/C UNITED 956Y x BLL MISS DREAM W559

1/2 SM 1/2 AN



B C R FARRAH J178 | Maternal Sister to Dam of Lot 89



B C R SWEENEY H106 | Maternal Sister to Lot 89

CE	BW	WW	YW	MILK	API	TI
12.5	-0.6	71.7	109.6	22.4	124.3	74.3

This mature female defines elegance and poise to the highest of degrees. She is proven in production as one of the highlight opens is offered in the marketing event as well. F092 is over whelming in length and look. She too comes with the foot, bone, rib, and true shape that's necessary to contribute on a high level. The mating to the son of W/C Relentless 32 from the proven Diamond M donor dam, DMCC Destiny 22D, will be ideal in complementary fashion. Your next champion or high seller could very well be on board this proven female.

AI Bred on 6/5/23 to WOOD RUTHLESS (ASA: 3878993).

PE 6/12/23-7/14/23 to B C R PLATINUM 309H (ASA: 3805107).

Confirmed Likely Safe AI. Estimated Due 3/13/24.



Lot 90 DWC FLINTINA 6YC

Breeding livestock is an art. We are always amazed by the approach of different stockmen and women and how they think when making these decisions. "6YC" offers a different twist with some very old school genetics. The end result is all that truly matters, and we believe that you will find this female to be one of the very best in her kind in the mature female division of this offering. In terms of her build and presence, we are not sure that you could make one or find one any better than what she is. Her presence is of captivating nature with all the essentials on board. We are certain that she will not be short of fans on sale day.

PE 4/24/23-7/1/23 to HCCO PAYBACK 166H (ASA: 3830414).

Confirmed Safe. Estimated Due 2/27/24.

90
LOT

ASA: 3285471

BD: 10/5/15

Tattoo: 6YC

DWC FLINTINA 6YC

Sire

DWC MODERN MARVEL 32A

AJE/PB MONTECITO 63W x OBCC ZINFINDL 32T

Dam

DRAKE MISS FLINTINA

SS SLEEP TIGHT 69U x DRAKE MISS 106U

PB SM

CE	BW	WW	YW	MILK	API	TI
10.2	1.5	65.5	99	15.8	117.2	67.6



Lot 91 JS PATCH ME PRETTY 17D



JS BARB 57F

Maternal Sister to Lot 91



B C R PERFECT VISION

2019 NAILE Reserve Grand Champion Percentage Simmental Bull, 2020
FWSS Grand Champion Percentage Simmental Bull & Son of Lot 92

91
LOT

ASA: 3125125

BD: 2/22/16

Tattoo: 17D

JS PATCH ME PRETTY 17D

Sire
SVF Z47 PATCH

JF MILESTONE 999W x SVF/NJC EXPECTATION N206

Dam
KAR BARB 1160

S A V BISMARK 5682 x KAR BARB 8134

1/2 SM 1/2 AN

92
LOT

ASA: 3152709

BD: 1/11/16

Tattoo: D613

HSF CALLIE D613

Sire
EXAR CLASSEN 1422B

DAMERON FIRST CLASS x EXAR PRINCESS 2006

Dam
HSF CARMELLA B410

LLSF UPRISING Z925 x HSF VICTORIA P30

1/2 SM 1/2 AN

CE	BW	WW	YW	MILK	API	TI
12.6	0.3	81.5	129.3	31.3	121.9	78.9

This is an incredible baldy female with pedigree and presence. Her dam was bred in the old Kim-Mac program of southeast Kansas, so the basic fundamentals of feet, fertility, and udders were selected at the forefront hence the quality found in this age advantaged producer. Most of the stock that carry the influence of S A V Bismarck 5682 cover many bases in beef production and they do it very well. That's why the blend with the JF Milestone 999W and the past Denver Champion, SVF/NJC Expectation N206 meshed so well with the 1160 dam. Maternal sisters have been high sellers and featured in many of the most recent JS Simmentals Midwest Made sales. Tie into a proven producer in the prime of her productive career.

PE 6/12/23-7/14/23 to CHESTNUT PERFECT TIMING 341 (AAA: 20095128).

Confirmed Safe. Estimated Due 3/28/24.

CE	BW	WW	YW	MILK	API	TI
6.4	3.3	77.8	118.2	19	110.8	75.1

Here is the matron responsible for producing the many time champion percentage sire of choice, B C R Perfect Vision. B C R Perfect Vision sold in the 2019 Cowtown Classic and was crowned Reserve National Champion Percentage Bull the next day behind WLE Copacetic E02. During his tenure on the tan bark, he went on to be the 2019 American Royal Champion, 2019 NAILE Reserve Champion, and the 2020 FWSS Champion. The stud has more than proved himself as a go to breeding bull of quality and cattle worthy of top tier investment status. The opportunity to tie into his dam is December 15, 2023. One should do so with utmost confidence with what she has done to this point in her career.

AI Bred on 6/5/23 to NEXT LEVEL (ASA: 3981484).

PE 6/12/23-7/14/23 to B C R PLATINUM 309H (ASA: 3805107).

Confirmed Likely Safe AI. Estimated Due 3/13/24.

THE BRED *Cows*



Lot 93 **BRAMLETS/HFS LUCY B415**

The daughters of JF Milestone 999W are extremely good property. These cattle come big at the surface with plenty of skeletal substance, with body shape, width, and dimension throughout. The "Lucy" cow family was derived from the influence of the very same line that is responsible for so many great cattle that have influenced multiple programs. The true foundation donor dam of note would be Nichols Joliette 107W. 107W not only influenced the maternal side of this age advantaged producer, Bramlets/HFS Lucy B415, but she is also the maternal granddam of CNS Dream On L186 as well as the fourth dam of SVF Steel Force S701. Pay attention to this proven matron, study the lesson aforementioned, and realize that her actual genetic contribution may not be tapped just yet. There's plenty of time and breeding flexibility in this female yet to have a full impact on the business and the breed!

PE 6/12/23-7/14/23 to B C R PLATINUM 309H (ASA: 3805107).

Confirmed Safe. Estimated Due 3/20/24.



Lot 94 **STF MISS D764**



HCCO PAYBACK 166H | *Service Sire to Lot 94*

A red head from the absolute heart of the extremely productive dams of the historic Silvertowne Farms breeding program. This red hided female is massive from her shoulders back as she comes with the additional influence of WS Beef King W107. The late Genex red sire of choice is responsible for an awesome set of females across the land and D764 is a prime example.

AI Bred on 4/3/23 to RP/BCR EMINENCE H005 (ASA: 3701500).

PE 4/24/23-7/1/23 to HCCO PAYBACK 166H (ASA: 3830414).

Confirmed Likely Safe AI. Estimated Due 1/10/24.

93
LOT

ASA: 2943341

BD: 3/6/14

Tattoo: B415

BRAMLETS/HFS LUCY B415

Sire

JF MILESTONE 999W

TNT TOP GUN R244 x MS MAXIE LOU M1125

Dam

HPF BRAM LUCY Y001

LEACHMAN SAUGAHATCHEE 3000C x HPF QUEENS LUCY N092

3/4 SM 1/4 AN

94
LOT

ASA: 3113559

BD: 2/16/16

Tattoo: D764

STF MISS D764

Sire

STF ROBERTO APL6

WS BEEF KING W107 x STF PICTURE PERFECT YU85

Dam

STF MISS X764

STF DOMINANCE T171 x STF MISS N764

PB SM

CE	BW	WW	YW	MILK	API	TI
6.4	3.9	80.1	119.9	18.4	89.6	65.1

CE	BW	WW	YW	MILK	API	TI
6.7	3.4	60.9	85.9	15.4	104.3	62.2

BRED HEIFERS

BC

79



Lot 95 B C R SANDY 018K

95

LOT

AAA: Pending

BD: 1/17/22

Tattoo: 018K

B C R SANDY 018K

Sire

CONLEY EXPRESS 7211

SMA WATCHOUT 482 x DPL SANDY 3040

Dam

HENNING BCII SANDY 8070

EXAR CLASSEN 1422B x BCII SANDY 0215

ANGUS



HENNING BCII SANDY 8070 | *Dam of Lot 95*



BCII SANDY 0215 | 2017 NWSS Reserve Grand Champion Angus Heifer & Maternal Granddam of Lot 95

CE	BW	WW	YW	MILK
-2	4.6	62	102	18

What a female from a legit cow family, BCII Sandy 0215. The direct dam of this leading Angus bred female was exhibited by Sara Sullivan and received Division V Champion honors at the 2019 NJAS in the owned division. High quality, certain of integrity, and just the right kind from the surface and beyond that's definitely investment worthy.

AI Bred on 5/1/23 to S A V BRILLIANCE 8077 (AAA: 16107774).

PE 6/1/23-8/1/23 to B C R LOVER BOY 029K (ASA: 4259670).

Confirmed Likely Safe AI. Estimated Due 2/7/24.

*Lot 96* B C R LUCY K078**96****LOT**

AAA: 20770058

BD: 4/8/22

Tattoo: K078

B C R LUCY K078*Sire***SILVEIRAS FORBES 8088**

SILVEIRAS STYLE 9303 x COLLISON FOREVER LADY 1622

*Dam***WALLACE LUCY 8132**

PVF INSIGHT 0129 x WALLACE LUCY 33

ANGUS**WALLACE LUCY 8132** | *Dam of Lot 96*

CE	BW	WW	YW	MILK
4	2.9	55	96	21

Silveiras Forbes 8088 is doing a very reputable job of siring top shelf Angus show stock that are awesome structured, near perfect in their build, with plenty of substance of bone and size at the surface. This daughter from the profitable and highlight Angus donor, Wallace Lucy 8132, would be the maternal sister to the open heifer highlights by SCC SCH 24 Karat 838 in the 2022 edition of The Grand Event that commanded over a \$26,000 average. She is one of quality with look and style to improve any progressive program.

AI Bred on 5/16/23 to S A V BRILLIANCE 8077 (AAA: 16107774).

PE 5/30/23-7/14/23 to BESH BULL KB50 (ASA: 4093514).

Confirmed Likely Safe AI. Estimated Due 2/22/24.



Lot 97 B C R LADY FAYE F007



WERNER LADY JAYNE 5037 | Dam of Lot 97



Lot 98 WERNER MADAME PRIDE 4114



CHESTNUT PERFECT TIMING 341 | Service Sire to Lot 98

97
LOT

AAA: 19483768

BD: 1/1/18

Tattoo: F007

B C R LADY FAYE F007

Sire

S FOUNDATION 514

VISION UNANIMOUS 1418 x S LADY ANN 8384

Dam

WERNER LADY JAYNE 5037

WERNER EA MOTIVATION 2031 x SPRUCE MTN LADY JAYNE 2935

ANGUS

98
LOT

AAA: 17826887

BD: 4/13/14

Tattoo: 4114

WERNER MADAME PRIDE 4114

Sire

WERNER WAR PARTY 1472

WERNER WAR PARTY 2417 x GCC DIXIE ERICA 7125

Dam

WERNER MADAME PRIDE 2109

S A V FINAL ANSWER 0035 x S A V MADAME PRIDE 3249

ANGUS

CE	BW	WW	YW	MILK
3	1.8	60	105	20

A very youthful and maternally bred angus female with tons of body and fleshing ability. The stock with the influence of Vision Unanimous 1418 have been well received on multiple fronts in multiple outfits across the globe. Pay attention here as she carries the service of one of the very good up and coming sires in the business, Chestnut Perfect Timing 341, a bull that we simply lost too soon. Take advantage of the opportunity to secure his genetics!

AI Bred 6/10/23 to CHESTNUT PERFECT TIMING 341 (AAA: 20095128).

PE 6/12/23-7/14/23 to B C R PLATINUM 309H (ASA: 3805107).

Confirmed Likely Safe AI. Estimated Due 3/18/24.

CE	BW	WW	YW	MILK
8	0.7	64	113	32

Werner Madame Pride 4114 is the prototypical Angus female of production and distinction. She maintains the textbook look and description of what an Angus female is supposed to be. From her tastefully, refined front one third that ties into her very productive center body with length and style to spare. Those that influence her up close in her lineage are certainly cattle of merit and notoriety on the positive front of the Angus world. Timeless in her breeding and priceless in her kind, what a contributor she has been and will continue to be.

AI Bred 4/24/23 to CHESTNUT PERFECT TIMING 341 (AAA: 20095128).

PE 5/4/23-7/1/23 to CHESTNUT PERFECT TIMING 341 (AAA: 20095128).

Confirmed Likely Safe AI. Estimated Due 1/31/24.



Watch the Sale on CCI.live!

*The best, the fastest and most
comprehensive marketing & bidding tool!*

How to Bid Online...

- **As a buyer**, you do not need an account or to login to watch the sale but you must have a validated account to bid.
 - After you are logged in, you must proceed to the sale page for any and every auction and click **"Get Buyer Number."** Some auctions require a pass-code to obtain a buyer number even after you are approved by CCI.live. Pass codes generally come from the sale manager or ranch for that particular sale.
 - CCI.live will operate with ease on a **cellular device, laptop, desktop or tablet.**
- A **modern or current browser** is important and will make your experience better. You do not need to install the app on cellular devices to watch a sale. CCI.live is a browser-based application meaning it will play on most new browsers, but you can also download the CCI.live app at the Apple App Store or through Google Play.
- **For successful bidding you must have good Internet service!** It is very important to be stationary. If you are driving and bidding, expect to have some service issues. If you are stationary on a good device, with healthy Internet, expect a very successful bidding environment. If you have slow Internet watch the "asking price" on the screen - it is real time and refresh your browser if you feel like you have some lag.
- **Support line open during all sales. 405-400-9505** - Please contact the ranches for invoices and trucking.

Viewed around the world!



**SALE CATALOG, VIDEOS,
and LIVE BROADCAST...**
all at your fingertips from the sale page at
www.CCI.live! Watch live sales weekly!



www.CCI.live
(405) 400-9505 Text or Call
schedule@cci.live
Over 35 years in livestock marketing!

INNOVATION
AgMarketing, LLC
PO BOX Z
DE SOTO, KS 66018

Presorted
First Class
US Postage
PAID
SlateGroup

