



the
**FALL
COLORS**
—SALE—



SATURDAY, OCTOBER 7 • 6 PM CST
Hankins Farms sale facility in Republic, Missouri

SALE

INFORMATION

LOCATION

HANKINS FARMS SALE FACILITY

13123 West State Hwy TT • Republic, Mo

SALE CONSULTANTS

Troy Thomas, 605.222.1258

David Hobbs, 913.515.1215

Matt Crutcher, 417.766.3278

Wes Chism, 281.761.5952

Jeannine Dougherty, 816.616.8838

Kiley McKinna, 402.350.3447

Kent McCune, 817.602.8629

AUCTIONEER

Cody Lowderman, 309.313.2171

SALE MANAGEMENT

Innovation AgMarketing LLC

Graham Blagg, 530.913.6418

Tim Anderson, 605.682.9343

Jered Shipman, 806.983.7226

InnovationAgMarketing.com

ACKNOWLEDGEMENTS

Dusty Morris, Photography

Crutcher Video, Videography

Taylor Gazda, Catalog Design

LODGING

Double Tree by Hilton, 417.831.3131

Spring Hill Suites by Marriott, 417.351.6981

Drury Inn and Suites, 417.863.8400

TERMS & CONDITIONS

Cattle sell under the standard terms of the American International Charolais Association and the Red Angus Association of America.

HEALTH

All cattle will sell with proper health certificates for in-state and out-of-state shipment.

VIEW & BID

View & bid on CCI.live



B/B BRADLEY CATTLE

BRUCE & JANNA BRADLEY

MARSHFIELD, MISSOURI

Bruce, 417.848.3457

brucebradleycattle@gmail.com

Bob Stewart, Ranch Manager



HANKINS FARMS

JASON, PAM, EMMA & JESSI HANKINS

SPRINGFIELD, MISSOURI

Jason, 417.861.2316

hankinsfarms1017@gmail.com

Welcome

TO THE FALL COLORS SALE

It is no secret that the families that stand behind the 'Fall Colors' Sale are strangers too few in the beef business, particularly in the central region of the United States. Whether you are in the seedstock or feeder cattle side of the industry, there is a good chance that your paths have crossed with Bruce or his reputation. If they have not yet, just know that you have the opportunity to do business with a man and program that stands behind his word, has your programs benefit and profitability at the pinnacle and will do everything in his power to ensure you are happy with your purchases. It is this mentality that has molded the cowherd, customer base and relationships that you will notice throughout the catalog, both Bruce and Jason have surrounded themselves and their families with the most progressive and observant cowmen and women in the industry. In turn they have developed cowherds that are based around the most potent genetic sources of each respective breed and represent cattle that are cutting edge from a genetic standpoint, yet suited towards the tough, ever-changing local environment.

The Charolais offering for 2023 deserves serious attention, as a special opportunity to invest in the best the Hankin's program has to offer, exists. Jason, Pam and their daughters have built an impressive cowherd of Charolais females. While several have been successful show heifers at some point for the girl's, selection pressure and breeding decisions have been made with a much more real world and production mindset. You will notice the presence of a long list of legendary figures in the pedigrees of the offering, and several females and a herdsire that themselves could reach that same status for your program or the breed in the short future. While this represents the dispersal of the Hankins Charolais cowherd, realize that this is by no means their farewell to the business or breed. They will still be a familiar face, just working alongside Bruce & Janna with Bradley Cattle, a perfect fit for two family operations that both realize the importance of customer relations and high quality, profit driven seedstock.

We know that there is a long list of high quality options when it comes time to making investments in the development of your Red Angus, Charolais or cowherd in general. Do know however that when you decide to dive into the cow families between the pages of this sale book, this isn't the type of program that just cashes a check and sends you on your way, there is a lot more than to doing business here than just a handshake and smile. Bruce and Jason need and want to be the first call you make if things don't go to plan, or if you need advice when it comes to breeding or marketing down the road. While this program is well established, it is obvious that it is still in a progressive phase of development, and that alongside its customers, is headed in a direction to maximize the profit margin for hardworking cattlemen and women. We hope you enjoy learning about the offering, and take the time to investigate the opportunities for genetic progression that will be up for offer. We are entering one of the most exciting markets the beef cattle industry has ever seen, so the opportunity for short term, significant return on investment is more plausible than ever before. If something in this offering, or the opportunity to work with these family farms down the road sparks your interest then please reach out to them, it will be time well spent.

We hope to see you sale day,

*I***NNOVATION**
— AgMarketing, LLC —

Graham Blagg · Erin Anderson · Jered Shipman

Thank You

FOR YOUR INTEREST

HANKINS FARMS

Welcome to our 3rd annual Fall Colors Sale, this year we are featuring the complete Charolais Herd Dispersal of Hankins Farms. Jason's dad bought him his first Charolais Female in 1991 with the help of Greg Alsup. From there we worked the past 32 years building our Charolais herd, with our focus being on functional cattle that are pretty enough for the show ring yet can thrive on our fescue pasture and serve many years as productive animals.

While it is a sad day to see all our white cattle leaving and it is a decision that was not made easily, we do have a plan moving forward. We have decided to transition into a calf buyback program, raising ET calves for others and ourselves. In order to grow our expanding recip herd and meet the growing demand of our customers, it was time to let the whites move on to other pastures where they can serve their full potential. That being said, we plan to stay actively involved in the Charolais breed and we will still be running a premium set of Charolais females for Bradley Cattle. As well, we will remain active in both the adult and junior MCBA and AICA associations. Pam is continuing to serve as MJCA Junior Advisor and has recently taken on the duty of chairperson for the 2025 AIJCA Junior Nationals that will occur in Springfield MO.

This set of cows, calves, and bred heifers are the result of many years of planning, culling, and selective breeding decisions. Many have been through the show barn as this offering includes the girls past show heifers and bulls. As this is a complete dispersal of Hankins Farms, nothing is being held back including our prestigious set of proven donor cows. Our farm crew consists of the 4 of us, which means these cattle are gentle. They are used to being called in with a bucket of feed, hand sorted and individually worked through a chute as needed for regular vaccinations. We have prided ourselves on providing a premier location and sale facility to welcome our cattle friends as well. The sale facility will be open for cattle viewing prior to the sale. Make plans now to attend in person, we will provide a meal prior to sale as well as social following. If you are unable to attend the sale will be broadcasted on CCI.live. As you evaluate our offering do not hesitate to contact us if we can assist in any way.

We are grateful for the last 32 years and look forward to another 32+ years in this industry.

God Bless,

THE HANKINS FAMILY

Jason, Pam, Emma & Jessi Hankins

BRADLEY CATTLE

I hope that this sale book finds you with plenty of standing forage to graze through the winter, with your hay yards and hay sheds overflowing, the board worked in your favor on the corn contracts, and all the necessary specialty risk management tools that are needed to conduct any business are in place for the next production year, all at the lowest input price possible. The time and the need to invest in the genetic side of your registered or commercial cow herd is certainly on the horizon to stay ahead not only genetically but quality wise as well. With the national cowherd at all-time record lows, why wouldn't you want to be in the driver's seat. Bradley Cattle and Hankins Farms are certainly putting their very best foot forward as we offer one of the very best sets of females that have ever assembled for your appraisal. There will be something for anyone and everyone, we are certain of that.

Big strides have been made over the past few years to get to this point and I strongly feel that there are loads to look forward to not only with the dispersion of the Hankins cows but for Bradley Cattle in the years to come. The Charolais offering will feature the service as well as live progeny by the 54th National Champion Bull, TR Legacy 1707J. We strongly believe in how he can complement the program by strengthening maternal traits with an injection of "real world" power, performance, and shape that the Charolais breed must provide for heterosis on British cows for the large commercial sector of the industry. With his service and influence moving forward we feel that he is a big piece of the puzzle as we continue to breed and improve our white hided matrons.

Since hitching our wagon to a dynamic set of cows out of South Dakota, we feel that our youthful Red Angus endeavor will be as exciting as our Charolais have been for the past few decades. The improvement made within that set of cows in the short time that we have owned them only solidifies that the right decisions have been made from a genetic selection standpoint. The bulls that we have been marketing are as high in quality as the females we have retained to build the program to represent our brand. I feel like these red hided cattle are the right thing for the fescue belt and they cross so well with our Charolais genetics as well. We feel that we can offer a blend of the two that will go out and make true cattlemen and women a real living in the industry that they are passionate about.

Janna and I, along with Jason and his family are very pumped up about this industry and what the future has in store, especially short term. These feeder cattle values are significant regardless of color or breed type. The safest food protein known as beef is not only in demand here domestically, but it has a worldly flavor and marketplace as well. The consumers want to buy U.S. grown, fed, harvested, and processed beef because of the safety measures and risk management associated with our end product. Both the Charolais and Red Angus stock have a very significant role in the industry, and we feel that the very best is yet to come in this present marketplace and beyond.

I feel like we have the very best product to date to offer to you, our customers, and friends. We sure hope that you all can make it in person Saturday evening on October the 7, but if not we encourage you to reach out to any of the Bradley or Hankins family members for any additional information about our offering or if you need assistance purchasing stock. These are very exciting times, and we feel it's a privilege to be able to share our sweat equity and financial investment with you to better the beef business.

THE BRADLEY FAMILY

Bruce & Janna Bradley



1

CIRCLE K JACKIE O

AICA F1203958 · TATTOO CK559 · DOB 4/5/15 · PAC

TR MR FIRE WATER 5792R ET THOMAS OAHE WIND 0772ET P
 THOMAS SWISSER SWEET 1764 ET
 CIRCLE K ANTOINETTE PF INFINITE JUSTICE 1001P ET
 RAC AIMEE 1023 PLD ET

CED	BW	WW	YW	MILK	REA	MARB	TSI
6.8	0.7	51	87	19	0.69	0.05	227.79

PE 12/1/22-3/25/23 TO HF CHAVEZ 1915 P (AICA M928448)

Circle K Jackie O has been a very special female for not only our cattle program but the raising of our family. This TR Mr Fire Water 5792R ET daughter is just built different, she is extra massive in her hip and pin set, wide and rugged in her structural build and so robust and burly in her body compacity. She is the kind of female that never has a bad day or strikes a weary pose. Her accolades on the show road have been the icing on the cake, taking home the Grand Champion Charolais Female Banner at the 2017 Missouri State Fair, as a cow calf pair. She had four TR CAG Carbon Copy 7630E ET daughters born in 2021 that went onto be great junior projects for the Porter, Barnes, Moon and Fowler Families. She is a full sister to Circle K Juliette that was the Grand Champion Charolais Female at the 2014 Houston Livestock Show & Rodeo, for Bayne Smith.



CIRCLE K JULIETTE
 FULL SISTER TO LOT 1





2

HF DIXIE 1920 P

AICA F1289164 · TATTOO HF1920 · DOB 10/9/19 · PAC

TR MR FIRE WATER 5792R ET

THOMAS OAHE WIND 0772ET P
 THOMAS SWISSER SWEET 1764 ET
 M6 TORNADO 815
 WCR MS PRIMECUT 7304 P

MDL MS TORNADO 341 PLD

CED	BW	WW	YW	MILK	REA	MARB	TSI
5.8	-0.1	55	90	24	0.84	-0.03	226.93

AI BRED ON 12/13/22 TO TR LEGACY 1707J ET (AICA EM960037)

PE 12/2/22-4/6/23 TO TRMR CARBON COPY 1713J ET (AICA EM960038)



TR MR FIRE WATER 5792R ET

SIRE OF LOTS 1 & 2

There is no doubting the influence that these productive TR Mr Fire Water 5792R ET daughters have had on the industry. He is responsible for as many influential individuals in the Charolais breed as any, not only did his progeny find their way to the backdrop but they were able to transmit this quality to the breeding pastures. HF Dixie 1920 P has raised two sons to this point, with one to be marketed shortly and the other selling to Keith Bronikowski of Waller, Texas. She is backed by the maternal power of the long-standing producer in our program, MDL Ms Tornado 341 PLD who sells as Lot 17, she comes from a long tradition of longevity and high performance.





3

SKS MISS CHARLOT E14

AICA EF1252365 · TATTOO E14 · DOB 10/1/17 · PAC

TR PZC MR TURTON 0794 ET

BPC MISS CHARLOT BU42 P

TR MR FIRE WATER 5792R ET
 THOMAS MS IMPRESSIVE 0641
 LT EASY PRO 1158 PLD
 MS COOLEY CHARLIE 8953R2

CED	BW	WW	YW	MILK	REA	MARB	TSI
12	-1.2	54	103	25	0.69	0.11	248.46

AI BRED ON 12/13/22 TO TR LEGACY 1707J ET (AICA EM960037)

PE 12/2/22-4/6/23 TO TR MR CARBON COPY 1713J ET (AICA EM960038)



TR PZC MR TURTON 0794 ET
 SIRE OF LOT 3

SKS Miss Charlot E14 is a direct daughter of the National Champion, TR PZC Mr Turton 0794 ET meaning she carries the influence of the legendary Thomas Ms Impressive 0641, a female who is responsible for a long list of recognizable National Champions and leading producers as any female in the AICA database. As a show heifer for Emma she was the Reserve Grand Champion FFA Heifer at the 2018 Missouri State Fair. She has since quickly become a producer of added attraction for our program, with a daughter by TR Mr Outkast 6605D selling in the 2022 edition of the 'Fall Colors' Female Sale to the Townsend Family of Wichita Falls, Texas. Her 2022, August born heifer calf also sold back to Skeans Cattle Co.





LOT 4

This PA free, long sided and flexible moving female is a daughter of the featured, SKS Miss Charlot E14 female that is lotted ahead of 155 in this same catalog. HF Miss Charlie 155 is sired by TR CAG Carbine's Vision 9700 ET, the maternal brother to both TR CAG Carbon Copy 7630E ET and M&M Outsider 4003 PLD. Take note of the opportunity that sells with this younger model of her dam, this is a cow family and maternal line that has worked well for our program. They are cattle that have added look, dimension and predictability. She was AI'd to the reigning National Champion Bull, TR Legacy 1707J ET, so a quick return on investment is just around the corner!

4

HF MISS CHARLIE 155

AICA F1319077 · TATTOO 155 · DOB 8/17/21 · PAF

TR CAG CARBINE'S VISION 9700 ET SHARODON DOUBLE VISION 1D
 M&M MS CARBINE 1567 PLD
 SKS MISS CHARLOT E14 TR PZC MR TURTON 0794 ET
 BPC MISS CHARLOT BU42 P

CED	BW	WW	YW	MILK	REA	MARB	TSI
13.2	-2.5	60	100	24	0.78	0.05	240.5

4A

HEIFER CALF SIRED BY TR LEGACY 1707J ET BORN 8/16/23

5

HF TYRA 1744 P ET

AICA EF1256998 · TATTOO HF1744 · DOB 11/8/17 · PAC

LT LONG DISTANCE 9001 PLD LT SILVER DISTANCE 5342P
 LT BELLE 7026 P
 HF TYRA 1326 P ET DCR MR SOLUTION W13
 JH TYRA 717 ET PLD

CED	BW	WW	YW	MILK	REA	MARB	TSI
11.1	-2.3	50	87	26	0.42	0.11	230.82

AI BRED ON 11/28/22 TO LT ATLAS 0251 PLD (AICA M943509)
 PE 12/2/22-4/6/23 TO TR MR CARBON COPY 1713J ET (AICA EM960038)

LOT 5



This 2017 model daughter of LT Long Distance 9001 PLD is just entering the prime producing faze of her breeding tenure. To this point however she has already proven that she is an asset to the breeding program, with a son by Leddy Hoo Doo 325Y selling to Chris Glenn, and two daughters that have been retained. A full sister to her dam, HF Tyra 1327 P ET was the \$15,000 selection of Circle Cee Charolais Farms of Canada in the 2018 Renaissance Sale and is one of our proudest breeding achievements to date. 1744 was AI bred to LT Atlas 0251 PLD, the lead off bull in the 40th Annual Lindskov-Thiel Bull Sale!



LOT 6

A young daughter of RBM TR Rhinestone Z38 that goes back to the WC Big Ben 9036 P daughter, COX Miss Bengie 2383. She is extra smooth built and symmetrical in her lines. From the profile she is still pretty headed and throated, yet transitions back into a powerful and maternal body cavity. This is the kind you could build a cowherd around, a perfect combination of longevity, structural integrity and cow power.



RBM TR RHINESTONE Z38
SIRE OF LOT 6

6

HF MISS BENGIE 067

AICA F1320541 • TATTOO HF067 • DOB 10/4/20 • PAF

RBM TR RHINESTONE Z38

LT BLUEGRASS 4017 P
HC RHINESTONE 5100
WC BIG BEN 9036 P
COX MISS FASTRACK 2043

COX MISS BENGIE 2383

CED	BW	WW	YW	MILK	REA	MARB	TSI
16.2	-2.5	55	101	19	0.48	0.17	247.25

AI BRED ON 11/28/22 TO LT GOVERNOR 1560 PLD (AICA M963060)
PE 12/2/22-4/6/23 TO TR MR CARBON COPY 1713J ET (AICA EM960038)

7

SKS MISS AMERICA H74

AICA F1294743 • TATTOO H74 • DOB 7/4/20 • PAF

TCCS SAINT CHRISTOPHER

CML DIABLO 2X
CREEK CUT GRETA 576P ET
SKS HELLS BELLS C437
SKS DOUBTFUL SUSPECT 137

SKS ELLA E23

CED	BW	WW	YW	MILK	REA	MARB	TSI
11.4	-1.9	65	118	17	9.82	0.07	261.18

AI BRED ON 12/13/22 TO TR LEGACY 1707J ET (AICA EM960037)
AI BRED ON 11/28/22 TO LT ATLAS 0251 PLD (AICA M943509)



LOT 7

The sire of SKS Miss America H74, is the 2017 National Western Stock Show Grand Champion Charolais Bull, TCCS Saint Christopher. The quality of this CML Diablo 2X son goes far beyond the tanbark though, as he sports 10 EPDS in the top third of the breed across calving, growth, maternal and carcass traits. This 2020 born fall calving female links back to legendary Ms Cooley Suspect 863U5 that was a tenured cornerstone donor in the Skeans program. On either side of this one's pedigree you will find notable individuals, yet in the same sentence, she has a pedigree that leaves a wide array of breeding options for the next generation.



8

HF CHAVEZ 1915 P

AICA M928448 · TATTOO HF1915 · DOB 6/17/19 · PAF

TR MR DIABLO 2742Z ET
TO MISS BMD 5038

CML DIABLO 2X
HF MUSTANG SALLY 904 PLD
RC BUDS MY DAD 225 POLLED
TO MISS EASE 3033 ET

CED	BW	WW	YW	MILK	REA	MARB	TSI
13.7	-1.5	50	90	23	0.6	-0.03	231.22



TR MR DIABLO 2742Z ET
SIRE OF LOT 8

Only because of the dispersal of the entire Hankins cowherd comes the opportunity to purchase this outstanding, proven herdsire. The PA Free, HF Chavez 1915 P is an impressive beast, his ability to motor with ease, yet still be so long sided and heavy muscled makes him so unique in our mind. With all the density and burliness he has, you have to appreciate how attractive and elevated he remains in his front third, from end to end this bull exudes quality. We think his generating potential reaches either end of the spectrum too, as he has the look and feature to raise stunning show heifers, but the power and product that is needed to raise bulls that are cowman approved. Interestingly he trends calving ease, so you can feel comfortable exposing him to a wide sector of the cowherd. His sire, TR Mr Diablo 2742Z ET is the product of combining two of the breeds most influential individuals in CML Diablo 2X and HF Mustang Sally 904, affectionally known as 'Linebacker' the 2742Z progeny are in heavy demand, and serve as a phenotypically approved alternative to Outsider and Carbon Copy linages. Maternally you will find the TO Miss BMD 5038 donor, a tried-and-true producer of quality for the Hankins program with close to 30 progeny on record to her name. The best that we have to offer comes backing this herdsire, and if his early progeny are any representation on what is to come then not only does he offer the opportunity to progress your own cowherd, but on an investment level there is potential to reap rewards with semen sales.



LOT 9 HF ELLIE 301

HF Ellie 1610 P ET is a daughter of one of our most reliable and consistent producers in program history, TO Miss BMD 5038. There is a long list of influential progeny that are derived from the 5038 female, including the impressive herdsire that sells as Lot 8, HF Chavez 1915 P, a genetic powerhouse you will need to look into. Between her and her full sister selling across the page you can trust that the most potent cow families sell! As a producer 1610 has followed in the footsteps of her legendary dam. Four progeny, of either sex prior to the exceptional heifer calf that sells as Lot A have gone onto work for other programs, including Lexi Huse, Jeannine Doughty, Chris Glenn, and the Van Winkle Ranch. If you are looking for the next generation of producers, and one that you could have some fun with on the tanbark beforehand then pay attention to HF Ellie 301, we think she is something special.

9

HF ELLIE 1610 P ET

AICA EF1222614 · TATTOO HF1610 · DOB 2/7/16 · PAF

WCR POLAR VORTEX 324 P
TO MISS BMD 5038

WCR BIG JIM 134 P
WCR MS FIREWATER 1242 P
RC BUDS MY DAD 225 POLLED
TO MISS EASE 3033 ET

CED	BW	WW	YW	MILK	REA	MARB	TSI
11.8	-1.7	60	112	24	0.63	0.05	253.19

AI BRED ON 4/16/23 TO LT ATLAS 0251 PLD (AICA M943509)
PE 4/30/23-6/5/23 TO TR LEGACY 1707J ET (AICA EM960037)
PE 6/10/23-8/15/23 TO HF CHAVEZ 1915 P (AICA M928448)

9A

HF ELLIE 301

AICA F1339587 · TATTOO HF301 · DOB 1/13/23 · PAF

TR CAG CARBINE'S VISION 9700 ET
HF ELLIE 1610 P ET

SHARODON DOUBLE VISION 1D
M&M MS CARBINE 1567 PLD
WCR POLAR VORTEX 324 P
TO MISS BMD 5038

CED	BW	WW	YW	MILK	REA	MARB	TSI
13.6	-3	63	104	24	0.74	0.02	243.07

SELLS OPEN

10

HF AVA 1608 P ET

AICA EF1222615 · TATTOO HF1608 · DOB 2/1/16 · PAF

WCR POLAR VORTEX 324 P
TO MISS BMD 5038

WCR BIG JIM 134 P
WCR MS FIREWATER 1242 P
RC BUDS MY DAD 225 POLLED
TO MISS EASE 3033 ET

CED	BW	WW	YW	MILK	REA	MARB	TSI
9.6	-0.7	61	114	24	0.63	0.05	253.92

AI BRED ON 5/3/23 TO LT GOVERNOR 1560 PLD (AICA M963060)
PE 4/30/23-6/5/23 TO TR LEGACY 1707J ET (AICA EM960037)
PE 6/10/23-8/15/23 TO HF CHAVEZ 1915 P (AICA M928448)

10A

HF LEGACY 321

AICA M985409 · TATTOO HF321 · DOB 2/22/23 · PAF

TR LEGACY 1707J ET
HF AVA 1608 P ET

TR CAG CARBON COPY 7630E ET
TR MS KAY 30A ET
WCR POLAR VORTEX 324 P
TO MISS BMD 5038

CED	BW	WW	YW	MILK	REA	MARB	TSI
14	-2	61	105	26	0.72	0.1	246.19

HF Ava 1608 P ET is one of only two direct daughters you will find out of the leading female for the program, TO Miss BMD 5038. This tenured donor has been a trusted source of generating influential progeny, her sons include, HF Ignite 1310 P ET & HF Chavez 1915 P; and several daughters work for cowherds across North America. The opportunity to purchase these TO Miss BMD 5038 daughters is running slim, so take hold of the opportunity whenever it may exist. It is obvious that the herd bull generating is heritable by the impressive TR Legacy 1707J ET son that stands at the side of 1608. HF Legacy 321 is an absolute standout of his cohort, he is maturing with extra mass and shape, is dense and burly in his muscle pattern, mashes down the scales and still maintains an attractive, yet masculine look.



WCR POLAR VORTEX 324 P
SIRE OF LOTS 9 & 10



LOT 11A HF MIA 300

TR CAG CARBINE'S VISION 9700 ET
SIRE OF LOT 11A

11

HF MIA 123 ET

AICA EF1323924 · TATTOO HF123 · DOB 2/2/21 · PAF

WC MILESTONE 5223 P

WC BENELLI 2134 P ET
WC LADY BLUE 0506 P
D R REVELATION 467
EXL MIA 230M

BIG CREEK MIA 1101 P ET

CED	BW	WW	YW	MILK	REA	MARB	TSI
2.7	1.3	59	101	21	0.8	0.07	241.12

AI BRED ON 4/17/23 TO GHC REAGAN 9012 (AICA EM928719)
PE 5/26/23-8/15/23 TO RBM RUSHMORE K63 (AICA M973871)

11A

HF MIA 300

AICA F1339518 · TATTOO 300 · DOB 1/12/23 · PAF

TR CAG CARBINE'S VISION 9700 ET

SHARODON DOUBLE VISION 1D
M&M MS CARBINE 1567 PLD
WC MILESTONE 5223 P
BIG CREEK MIA 1101 P ET

HF MIA 123 ET

CED	BW	WW	YW	MILK	REA	MARB	TSI
9	-1.7	63	99	22	0.83	0.03	237.29

Sale Highlight! HF Mia 123 ET is a first calving heifer that has knocked it out of the park on her first chance! This WC Milestone 5223 P daughter comes as the result of an embryo program on the Big Creek Mia 1101 P ET female that was produced by Payne Livestock of Canada and was the Reserve Senior Heifer Calf Champion at the Canadian National Show. A full brother to 1101 is the Big Creek Game Changer 192 P ET sire that was the 2012 American Royal Breeders Classic Reserve Champion Bull and the Grand Champion Charolais Bull at the Ozark Empire Fair. In her first year of production Mia 123 raised the head turning, HF Mia 300, a heifer calf that we thought enough of to break and take to the Missouri State Fair. This decision paid off, and reiterated our thoughts that she was pretty special, as the TR CAG Carbine's Vision 9700 ET daughter went on to be selected Calf Champion. A pair of females that makes decisions on where to set your satchel difficult, but you can trust that both have a long and exciting breeding careers ahead.



BIG CREEK GAME CHANGER 192 P ET
FULL BROTHER TO DAM OF LOT 11



LOT 12 BC MS MILESTONE 8070

12

BC MS MILESTONE 8070

AICA F1261455 · TATTOO 8070 · DOB 3/17/18 · PAF

WC MILESTONE 5223 P
KC MS IMPRESSED 3154 P

WC BENELLI 2134 P ET
WC LADY BLUE 0506 P
PF EL DUKE 9021 P ET
KC MS DAKOTA WIND 1354 P

CED	BW	WW	YW	MILK	REA	MARB	TSI
10.2	-0.6	57	101	24	0.8	0.13	245.12

PE 4/30/23-6/5/23 TO TR LEGACY 1707J ET (AICA EM960037)
PE 6/10/23-8/15/23 TO HF CHAVEZ 1915 P (AICA M928448)

12A

HF LEGACY 323

AICA M985410 · TATTOO HF323 · DOB 2/24/23 · PAF

TR LEGACY 1707J ET
BC MS MILESTONE 8070

TR CAG CARBON COPY 7630E ET
TR MS KAY 30A ET
WC MILESTONE 5223 P
KC MS IMPRESSED 3154 P

CED	BW	WW	YW	MILK	REA	MARB	TSI
14.3	-1.4	59	99	26	0.81	0.14	241.15

ENTERED IN THE CHAROLAIS ROYAL BREEDERS BULL CLASSIC
AT THE 2023 AMERICAN ROYAL

TR LEGACY 1707J ET
INFLUENTIAL SIRE THROUGHOUT THE OFFERING



LOT 12A HF LEGACY 323



A long and extended daughter of the high selling, ST Genetics stud, WC Milestone 5223 P. A bull that is seeing a revitalized demand because of the daughters that are appearing as exceptional producers. Her dam originates out of the Keppen Ranch of South Dakota and stems from the maternal power of the Impressed cow family. If you look into the production history you can search a long way before you find a blemish in the production records, in fact after her mother you will find 4 generations of females with 10 or more natural progeny to their name including her great granddam raising 14 natural progeny. There is no better evidence of production potential then you will find in support of 8070.



LOT 13 **CSL MISS SARA 788**

13

CFL MISS SARA 788

AICA EF1260953 · TATTOO 788 · DOB 9/3/17 · PAF

WC MILESTONE 5223 P

WC BENELLI 2134 P ET
WC LADY BLUE 0506 P
EC NO DOUBT 2022 P
CFL MISS WORD 831

CFL MISS SARA 241

CED	BW	WW	YW	MILK	REA	MARB	TSI
6.4	0	56	106	18	0.77	0.11	250.29

PE 4/30/23-6/5/23 TO TR LEGACY 1707J ET (AICA EM960037)
PE 6/10/23-8/15/23 TO HF CHAVEZ 1915 P (AICA M928448)

13A

HF SARA 345

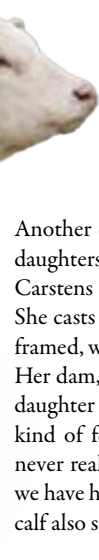
AICA F1339586 · TATTOO HF345 · DOB 3/29/23 · PAF

HF TYLER 1808 ET P

LT LONG DISTANCE 9001 PLD
HF TYRA 1326 P ET
WC MILESTONE 5223 P
CFL MISS SARA 241

CFL MISS SARA 788

CED	BW	WW	YW	MILK	REA	MARB	TSI
6.3	-0.3	54	97	20	0.62	0.11	240.02



Another one of these exceptional WC Milestone 5223 P daughters that will sell. CFL Miss Sara 788 came out of the Carstens program of Iowa, and is truly a sight to behold. She casts a massive outline, being extra-long bodied, large framed, wide constructed and carries herself with presence. Her dam, CFL Miss Sara 241 is an EC No Doubt 2022 P daughter and was a donor for Carsten Farms. This is the kind of female we are really going to miss, one that has never really had the chance to prove herself for us yet but we have huge expectations for. Her fancy, 2023 born heifer calf also sells!

WC MILESTONE 5223 P
SIRE OF LOTS 12 & 13

TR CAG CARBON COPY 7630E ET
SIRE OF LOTS 24 & 25



LOT 14 HF CASSADEE 1420

14

HF CASSADEE 1420

AICA F1198616 · TATTOO HF1420 · DOB 8/28/14 · PAC

HF LEVERAGE 929 PLD ET

GC FW TANYA 66PLD

LHD CIGAR E46
JH MS PRIME CUT 2208 PS
TR MR FIRE WATER 5792R ET
GC FUNCTION TANYA 15 P

CED	BW	WW	YW	MILK	REA	MARB	TSI
3.5	0.3	48	87	23	0.61	-0.08	225.83

PE 4/30/23-6/5/23 TO TR LEGACY 1707J ET (AICA EM960037)
PE 6/10/23-8/15/23 TO HF CHAVEZ 1915 P (AICA M928448)

14A

HF CASSADEE 346

AICA F1339596 · TATTOO HF346 · DOB 4/1/23 · PAC

HF CHAVEZ 1915 P

HF CASSADEE 1420

TR MR DIABLO 2742Z ET
TO MISS BMD 3038
HF LEVERAGE 929 PLD ET
GC FW TANYA 66PLD

CED	BW	WW	YW	MILK	REA	MARB	TSI
8.6	-0.2	49	89	23	0.6	-0.05	228.16

SELLS OPEN



LOT 14A HF CASSADEE 346

One of the most powerful females you will find in this sale offering. This HF Leverage 929 PLD ET daughter has been a tried-and-true producer for this program, she is definitely the bull making kind that is massive in her rib shape, wide in her pin set and burly in her muscle design. She is the mother of the impressive HF Tanya 010, a CCC WC Redemption 7143 PLD ET daughter that also sells as Lot 15. Another daughter, HF Cassadee 1701 P was selected by Circle Cee Charolais of Canada to cornerstone the next generation of their cowherd around. This cow family is renowned for their exceptional udder quality and fleshing ability.

15

HF TANYA 010

AICA F1292224 · TATTOO HF010 · DOB 2/14/20 · PAC

CCC WC REDEMPTION 7143 PLD ET

HF CASSADEE 1420

CCC WC RESOURCE 417 P
WC ROLLS ROYCE 3177 P ET
HF LEVERAGE 929 PLD ET
GC FW TANYA 66 PLD

CED	BW	WW	YW	MILK	REA	MARB	TSI
6.5	0.4	60	106	26	0.74	0.13	247.59

PE 4/30/23-6/5/23 TO TR LEGACY 1707J ET (AICA EM960037)
PE 6/10/23-8/15/23 TO HF CHAVEZ 1915 P (AICA M928448)

15A

HF CHAVEZ 332

AICA M985332 · TATTOO HF332 · DOB 3/10/23 · PAC

HF CHAVEZ 1915 P

HF TANYA 010

TR MR DIABLO 2742Z ET
TO MISS BMD 5038
CCC WC REDEMPTION 7143 PLD ET
HF CASSADEE 1420

CED	BW	WW	YW	MILK	REA	MARB	TSI
10.1	-1.9	55	98	25	0.67	0.05	240.74



HF TANYA 010
LOT 15 PICTURED AS A BRED HEIFER



CCC WC REDEMPTION 7143 PLD ET
SIRE OF LOT 15

A young and aspiring daughter of CCC WC Redemption 7143 PLD ET that is already making a name for herself in her short production career. Her first son by TR CAG Carbine's Vision 9700 ET sold to Glenn Farms, and the son by HF Chavez 1915 P that she raised this year is a favorite of his cohort. Maternally she stems from the HF Cassadee 1420 female that will also sell on October 7th, a tenured producer that is the kind who has kept the lights on at the Ranch. Her mating to Legacy for her next calf only adds excitement to the future of this cow's generating potential.



LOT 16 HF BELLE 1801 ET

16

HF BELLE 1801 ET

AICA EF1258018 · TATTOO HF1801 · DOB 2/4/18 · PAF

M6 BELLS & WHISTLES 258 P
MDL MISS EDGE 810

M6 COOL REP 8108 ET
M6 MS GAIN & GRADE 552 P
SCHURRTOP PERFECT EDGE
BOW MS HORIZON L109P

CED	BW	WW	YW	MILK	REA	MARB	TSI
13.7	-4.9	46	82	10	0.67	0.04	231.23

PE 4/30/23-6/5/23 TO TR LEGACY 1707J ET (AICA EM960037)
PE 6/10/23-8/15/23 TO HF CHAVEZ 1915 P (AICA M928448)

16A

HF CHAVEZ 339

AICA M985407 · TATTOO HF339 · DOB 3/24/23 · PAF

HF CHAVEZ 1915 P
HF BELLE 1801 ET

TR MR DIABLO 2742Z ET
TO MISS BMD 5038
M6 BELLS & WHISTLES 258 P
MDL MISS EDGE 810

CED	BW	WW	YW	MILK	REA	MARB	TSI
13.7	-1.9	48	86	17	0.63	0	229.89



LOT 16A HF CHAVEZ 339

HF Belle 1801 ET is the PA Free daughter of M6 Bells & Whistles 258 P that is a huge middled, massive boned and functionally orientated. This is the type of female that screams longevity and high productivity, we can promise her udder quality and structural integrity will be of the utmost quality. Even though she strikes you with a super powerful build, it will be of interest to you to turn to her EPD profile, especially if your selection criteria incorporates selection for cattle that are low birth weight and calving ease. She is a direct daughter of our MDL Miss Edge 810 donor that has clicked to every mating thrown her way.



M6 BELLS & WHISTLES 258 P
SIRE OF LOT 16



LOT 17 MDL MS TORNADO 341 PLD

17

MDL MS TORNADO 341 PLD

AICA F1171832 · TATTOO 341 · DOB 2/27/13 · PAF

M6 TORNADO 815
WCR MS PRIMECUT 7304 P

M6 TEXAS TORNADO 4215 PET
LT MS EASE 06T
WCR SIR PRIMETIME 2059 ET P
WCR MSTRADITION 4152 P

CED	BW	WW	YW	MILK	REA	MARB	TSI
9	-1.5	55	82	18	0.62	0.04	219.08

PE 4/30/23-6/5/23 TO TR LEGACY 1707J ET (AICA EM960037)
PE 6/10/23-8/15/23 TO HF CHAVEZ 1915 P (AICA M928448)

17A

HF CARBON TORNADO 329

AICA M985430 · TATTOO HF329 · DOB 3/8/23 · PAF

TR MR CARBON COPY 1713J ET
MDL MS TORNADO 341 PLD

TR CAG CARBON COPY 7630E ET
TR MS KAY 30A ET
M6 TORNADO 815
WCR MS PRIMECUT 7304 P

CED	BW	WW	YW	MILK	REA	MARB	TSI
11.1	-1.4	53	86	20	0.63	0.07	225.89

MDL Ms Tornado 341 PLD fits the age old saying, aging like a fine wine! One of the calling cards of the Charolais breed is the longevity they have, that's no doubt one of the things we admire about this matron. This daughter of M6 Tornado 815 is picture perfect, ultra-level and balanced in her outline, perfectly laid in her tailhead, long and extended in her head and neck set and has a running gear that will outlive any breeding tenure. She has been involved in our exclusive embryo transfer program, and naturally always brings one back the weaning pen that is of added value. This hard-working cow from the heart of the cowherd only continues to get better, and because of her exceptional build has a long breeding career ahead of her. Her and her calf have both tested PA Free, and are ready to add immediate profit to the bottom line of their new cowherd.



HF VISION 204
SON OF LOT 18



LOT 18 **HF ZOEY 302**



LOT 19 **HF MISS PEANUT 1931**

HF Miss Peanut 1931 is a smooth muscled, good looking and sound structured daughter of the LT Patriot 4004 PLD son, Circle K Jack. Maternally she traces back to the JH Prime Times Lady 2117 female that was a long-standing matron in our program that epitomized the expectations of a high producing and consistent producer. 2117 brought 1931 to the weaning pen at 17 years of age! We foresee this same type of production career in the future for the 2019 born edition of the matriarchy. Her mating with the reigning National Champion, TR Legacy 1707J ET aligns phenotypic traits perfectly. The return on investment may come entirely with her coming calf.

18

HF ZOEY 1800

AICA F1292674 · TATTOO 1800 · DOB 1/13/18 · PAF

HF REACT 1476 P

D R REVELATION 467

JH JO DEE 613 PLD

CIRCLE K CROWN ROYAL

BC MS ROPER 74

HF ZOEY 1611

CED	BW	WW	YW	MILK	REA	MARB	TSI
8.7	-1.8	48	85	22	0.48	0.01	226.32

PE 4/30/23-6/5/23 TO TR LEGACY 1707J ET (AICA EM960037)

PE 6/10/23-8/15/23 TO HF CHAVEZ 1915 P (AICA M928448)

18A

HF ZOEY 302

AICA F1339594 · TATTOO HF302 · DOB 1/15/23 · PAF

TR CAG CARBINE'S VISION 9700 ET

SHARODON DOUBLE VISION 1D

M&M MS CARBINE 1567 PLD

HF ZOEY 1800

HF REACT 1476 P

HF ZOEY 1611

CED	BW	WW	YW	MILK	REA	MARB	TSI
12	-3.1	57	90	22	0.67	0	229.73

SELLS OPEN

Just a 2018 model, but a female that has definitely proven herself in the breeding pasture, her three progeny to this point have all been marketed for a premium. Her first bull calf by CCC WC Resource 417 P sold to Chris Glenn, her second calf was a heifer that sold in the 2021 Fall Colors to Circle K Cattle Co of New York, and her third calf was a TR CAG Carbine's Vision 9700 ET feature of the 2023 Thomas Ranch Bull Sale, selling to Jenna Sharp. This HF React 1476 P daughter not only raises cattle that demand attention, but offers an outcross pedigree to many of the common bloodlines you will find. Her 2023 heifer calf sells as Lot A and will be a favorite of visitors because of the cow power and potential she already shows. Opportunity is knocking here, particularly when you realize what her mating to Legacy could possibly yield.

19

HF MISS PEANUT 1931

AICA F1328783 · TATTOO HF1931 · DOB 12/13/19 · PAF

CIRCLE K JACK

LT PATRIOT 4004 PLD

CIRCLE K ANTOINETTE

JH PRIME TIMES LADY 2117

JH NEON PLD ET

JH DIXIE CHICK

CED	BW	WW	YW	MILK	REA	MARB	TSI
7.8	0.3	50	90	20	0.43	0.16	244.8

PE 4/30/23-6/5/23 TO TR LEGACY 1707J ET (AICA EM960037)

PE 6/10/23-8/15/23 TO HF CHAVEZ 1915 P (AICA M928448)

19A

HF CHAVEZ 334

AICA M985414 · TATTOO HF334 · DOB 3/17/23 · PAF

HF CHAVEZ 1915 P

TR MR DIABLO 2742Z ET

TO MISS BMD 5038

HF MISS PEANUT 1931

CIRCLE K JACK

JH PRIME TIMES LADY 2117

CED	BW	WW	YW	MILK	REA	MARB	TSI
10.8	-0.8	50	90	22	0.4	0.03	230.32



HF CHAVEZ 1915 P
SIRE OF LOT 19A



LOT 20A HF LEGACY 319

20

HF FANCY 1747 P

AICA F1256999 · TATTOO HF1747 · DOB 11/9/17 · PAF

HF IGNITE 1310 P ET
WH FANCY LADY

B3 WYOMING COWBOY T752
TO MISS BMD 5038
WH GRAHAM'S ADVANTAGE 7025
WH FANCY 7098 PLD.

CED	BW	WW	YW	MILK	REA	MARB	TSI
9.5	-0.1	55	99	19	0.56	0.11	241.04

PE 4/30/23-6/5/23 TO TR LEGACY 1707J ET (AICA EM960037)
PE 6/10/23-8/15/23 TO HF CHAVEZ 1915 P (AICA M928448)

20A

HF LEGACY 319

AICA M985408 · TATTOO HF319 · DOB 2/18/23 · PAF

TR LEGACY 1707J ET
HF FANCY 1747 P

TR CAG CARBON COPY 7630E ET
TR MS KAY 30A ET
HF IGNITE 1310 P ET
WH FANCY LADY

CED	BW	WW	YW	MILK	REA	MARB	TSI
14	-2.9	58	98	23	0.68	0.13	240.88

ENTERED IN THE CHAROLAIS ROYAL BREEDERS BULL CLASSIC
AT THE 2023 AMERICAN ROYAL

There is no better proof of a high-level producer than the calf at a cows side, and the case in point paints a very pretty picture for the generating potential of this young cow down the road. HF Fancy 1747 P is a direct daughter of HF Ignite 1310 P ET and out of the WH Fancy Lady female that was a consistent producer for the program. Her bull calf at side would be one of the oldest progeny of the reigning National Champion, TR Legacy 1707J ET to date and if he is anything to go by then the future looks bright for his influence.

LOT 21 BC/HF DARMA 325



Phenotypically BC/HF DARMA 325 sets herself among a league of her own. She is certainly a highlight of this years "Fall Colors" offering and we struggle to find an element of her build we would want to change. Her sire TR Mr Carbon Copy 1713J ET is a full brother to our sire of attraction and reigning National Champion Bull, TR Legacy 1707J ET. We love the way this one is constructed, her movement is fluid and effortless, her capacious center third perfectly balances with either end of her skeleton. Her outline is complimented with a pretty head and high tying neck junction, we have high aspirations for this one hanging banners for her new home, grab on and enjoy the ride!

21

BC/HF DARMA 325

AICA F1339597 · TATTOO 325 · DOB 3/7/23 · PAC

TR MR CARBON COPY 1713J ET
C&S MS DHARMA 619

TR CAG CARBON COPY 7630E ET
TR MS KAY 30A ET
DCR MR SUBSTANCE A240
C&S MS JANIE 0373

CED	BW	WW	YW	MILK	REA	MARB	TSI
12.6	-1.2	50	89	20	0.66	0.09	232.28



TR MS KAY 30A ET
PATERNAL GRANDDAM OF LOT 21



LOT 22 BC MISS TURBO 2210

22

BC MISS TURBO 2210

AICA F1328561 · TATTOO 2210 · DOB 2/26/22 · PAF

CAG MR SIDELINE 0816H ET CAG CC SIDELINE 7063E ET
 CAG GUARDIAN 555C
BC MS TURBO 1806 SCR TUFFY 0119
 FC MS TURBO 740 P

CED	BW	WW	YW	MILK	REA	MARB	TSI
7.1	0.1	61	107	20	0.78	0.04	246.53

BC Miss Turbo 2210 has the added presence, stoutness and power that sets her apart, she is aware of her good looks as she struts around the pen, and sets down her big and square feet comfortably. She is as dense and burly in her body cavity as you can make one, and her big growth pattern leads us to believe she is the herd bull raising kind that will catch the eye of even the most demanding stockman. A daughter of CAG Mr Sideline 0816H ET, and out of BC Ms Turbo 1806, a direct daughter of the iconic FC Ms Turbo 740 P, meaning that her appeal is much more than just phenotypic.

AI BRED ON 4/17/23 TO GHC REAGAN 9012 (AICA EM928719)
 PE 5/26/23-8/15/23 TO RBM RUSHMORE K63 (AICA M973871)

23

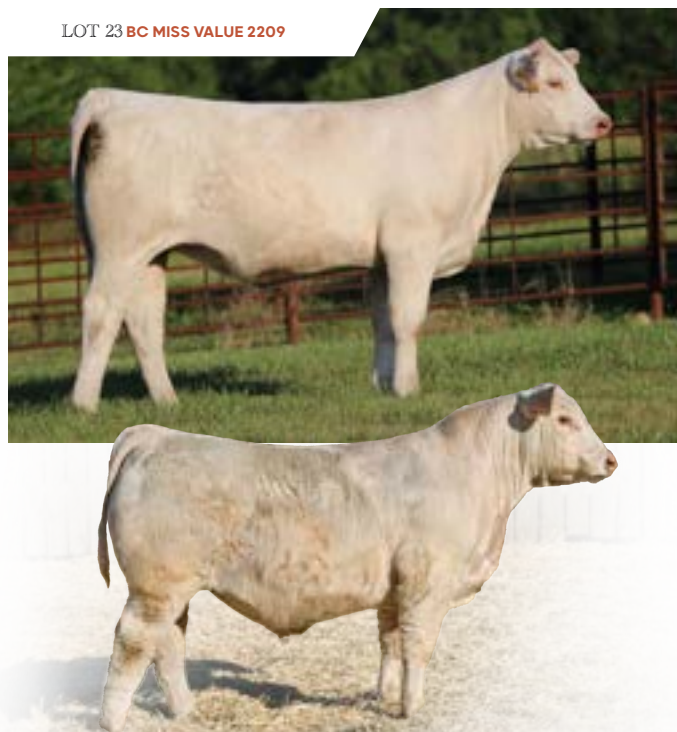
BC MISS VALUE 2209

AICA F1328563 · TATTOO 2209 · DOB 2/23/22 · PAF

CAG MR SIDELINE 0816H ET CAG CC SIDELINE 7063E ET
 CAG GUARDIAN 555C
MS IKE BLUE VALUE 8050 LT BLUE VALUE 7903 ET
 MISS IKE SLEEP EASY 6075

CED	BW	WW	YW	MILK	REA	MARB	TSI
9	9.7	56	98	23	0.62	0.21	242.42

LOT 23 BC MISS VALUE 2209



BC Miss Value 2209 is a direct daughter of our resident senior herd sire CAG Mr Sideline 0816H ET, a son of the past National Champion CAG CC Sideline 7063E ET that is leaving a very strong impression on the replacement pen here in Marshfield. His daughters are stamped with a low maintenance, easy keeping growth pattern, they are the kind that will have an extended career in the cowherd because of the structural build that comes standard issue. 2209's mother, MS IKE Blue Value 8050 is a daughter of the tried-and-true calving ease specialist LT Blue Value 7903 ET. She had a daughter that sold on as a show heifer prospect and a herd bull son that is covering cows in Oklahoma for Wade Cunningham.

AI BRED ON 4/17/23 TO GHC REAGAN 9012 (AICA EM928719)
 PE 5/26/23-8/15/23 TO RBM RUSHMORE K63 (AICA M973871)

CAG MR SIDELINE 0816H ET
 SIRE OF LOTS 22 & 23



LOT 24 BC/HF MISS MAE 219

24

BC/HF MISS MAE 219

AICA F1323882 · TATTOO 219 · DOB 3/6/22 · PAF

TR CAG CARBON COPY 7630E ET RBM TR RHINESTONE Z38
 M&M MS CARBINE 1567 PLD
 C&S MS DANNIE MAE 653 TR MR RHINESTONE 4570B
 C&S MS ANNIE MAE 1641

CED	BW	WW	YW	MILK	REA	MARB	TSI
6.9	1.5	61	108	25	0.68	0.13	246.67

BC/HF Miss Mae 219 is a great combination of cow family power and phenotypic quality, and a very balanced set of predictions accompanies this daughter of TR CAG Carbon Copy 7630E ET. We like the extra show of quality build and structural integrity that comes with the inclusion of the TR Mr Rhinestone 4570B on the bottom side of this one's pedigree, his daughters have proved themselves the right kind for this region's production ideals.

AI BRED ON 4/17/23 TO GHC REAGAN 9012 (AICA EM928719)
 PE 5/26/23-8/15/23 TO RBM RUSHMORE K63 (AICA M973871)

25

BC/HF MISS EVE 213

AICA F1323883 · TATTOO 213 · DOB 2/3/22 · PAF

TR CAG CARBON COPY 7630E ET RBM TR RHINESTONE Z38
 M&M MS CARBINE 1567 PLD
 C&S MS EVE 746 RBM TR RHINESTONE Z38
 C&S MS SISSY D 328

CED	BW	WW	YW	MILK	REA	MARB	TSI
15.2	-2.3	58	98	23	0.48	0.12	238.88

LOT 25 BC/HF MISS EVE 213



BC/HF Miss Eve 213 is built just how we like them, she has some extra punch and curvature, and struts around the pen with flexibility and comfort. We Ai'd 213 to GHC Reagan 9012, a surefire calving ease stud that's proving curve bending too, as his progeny accelerate towards weaning time. This is the kind of female that will consistently generate power and shape without sacrificing the beef production traits that drive our industry.

AI BRED ON 4/17/23 TO GHC REAGAN 9012 (AICA EM928719)
 PE 5/26/23-8/15/23 TO RBM RUSHMORE K63 (AICA M973871)



TR CAG CARBON COPY 7630E ET
 SIRE OF LOTS 24 & 25



LOT 26 BC/HF MISS ALLIE 223

26

BC/HF MISS ALLIE 223

AICA F1328572 · TATTOO 223 · DOB 3/20/22 · PAF

TR CAG CARBINE'S VISION 9700 ET SHARODON DOUBLE VISION 1D
 M&M MS CARBINE 1567 PLD
 LDSC BRCHE LUSCIOUS 1701
 WHITE ROSE LUSH ALLIE 008H PZC DARLA 5054 ET

CED	BW	WW	YW	MILK	REA	MARB	TSI
12	-2.1	57	92	23	0.77	0.04	232.52

We begin the TR CAG Carbine's Vision 9700 ET sire group with a phenotypic standout of the entire cohort of bred heifers, BC/HF Miss Allie 223. A massive bodied, perfect structured, maternal matron. We think she will get the job done for seedstock producers just as well as a commercial cow calf producer. This is the kind of female that you can bet the farm on, she is built for the long haul! Maternally she traces back to the \$42,500 TR Ms Dari 0642X through a full sister to 45th National Champion Female TR Ms Allie 3606A.

AI BRED ON 4/17/23 TO GHC REAGAN 9012 (AICA EM928719)
 PE 5/26/23-8/15/23 TO RBM RUSHMORE K63 (AICA M973871)



TR CAG CARBINE'S VISION 9700 ET
 SIRE OF LOTS 26, 27 & 28



TR MS ALLIE 3606A
 FULL SISTER TO THE GRANDDAM OF LOT 26

LOT 27 BC MISS VISION 2206



A direct daughter of the WC Sweetheart 3505 P donor female that is a very familiar face through past editions of the 'Fall Colors'. This Carbine's Vision daughter is a spitting image of her role model mother, and is a female that not only has the phenotype but also the genetic backing to generate at the highest level. She is the kind that will stand the test of time just like the illustrious list of females who have gone before her, and we foresee the breeding tenure of BC Miss Vision 2206 to be long and illustrious.

27

BC MISS VISION 2206

AICA EF1339894 · TATTOO 2206 · DOB 3/12/22 · PAF

TR CAG CARBINE'S VISION 9700 ET SHARODON DOUBLE VISION 1D
M&M MS CARBINE 1567 PLD
WC SWEETHEART 3505 P LT BLUE VALUE 7903 ET
SC SWEETHEART S182 P

CED	BW	WW	YW	MILK	REA	MARB	TSI
14	-3.4	59	96	22	0.62	0.14	238.35

AI BRED ON 4/17/23 TO GHC REAGAN 9012 (AICA EM928719)
PE 5/26/23-8/15/23 TO RBM RUSHMORE K63 (AICA M973871)



WC SWEETHEART 3505 P
DAM OF LOT 27

LOT 28 AWR KAYLEE 212K



AWR Kaylee 212K is the newest generation of a cow family that has been a household name in the Charolais business for some time now! Her maternal granddam, WELLS-JBJ Platinum Lady 336 would be one of the founding matrons of the Hansen herd in South Dakota, and her claim to fame is raising the iconic HF Mustang Sally 904, who is a full sister to the mother of 212K. Here we have a maternal pedigree that is lined with generations of high quality females that get the job done, the phenotypic design of the cattle is ideal, she is super eye appealing, faultless on the move and has an extra degree of density and shape when compared to the contemporary group.

28

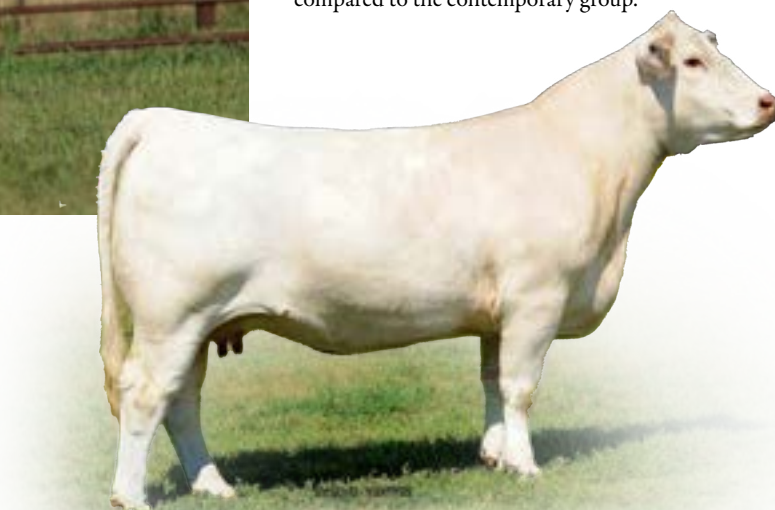
AWR KAYLEE 212K

AICA F1325833 · TATTOO 212K · DOB 2/15/22 · PAF

TR CAG CARBINE'S VISION 9700 ET SHARODON DOUBLE VISION 1D
M&M MS CARBINE 1567 PLD
AWR SHELBY 412B TR MR FIRE WATER 5792R ET
WELLS-JBJ PLATINUM LADY 336

CED	BW	WW	YW	MILK	REA	MARB	TSI
10.8	-1	64	102	26	0.90	-0.04	238.48

AI BRED ON 4/17/23 TO GHC REAGAN 9012 (AICA EM928719)
PE 5/26/23-8/15/23 TO RBM RUSHMORE K63 (AICA M973871)



HF MUSTANG SALLY 904
FULL SISTER TO THE DAM OF LOT 28



LOT 29

HF Miss Tylie 201 is extra square in her pin set, level in her spine, youthful in her look and built upon an ideal framework. You will appreciate the udder development, fleshing ability, body cavity and moderation when you see her on sale day. Just entering her most productive years, we think her combination with GHC Reagan 9012 matches up perfectly, and his added performance for a heifer suitable bull will yield a value added product in this first year. The ROI may pay for the initial investment with just the first calf.

29

HF MISS TYLIE 201

AICA F1328795 · TATTOO 201 · DOB 1/4/22 · PAF

HF TYLER 1808 ET P LT LONG DISTANCE 9001 PLD
 HF TYRA 1326 P ET
 HF CENTERFOLD 1739 HF IGNITE 1310 P ET
 HF CENTERFOLD 1102

CED	BW	WW	YW	MILK	REA	MARB	TSI
8.5	-0.3	52	93	25	0.53	0.11	235.51

AI BRED ON 4/17/23 TO GHC REAGAN 9012 (AICA EM928719)
 PE 5/26/23-8/15/23 TO RBM RUSHMORE K63 (AICA M973871)

30

BC/HF MISS GRACE 243

AICA F1322391 · TATTOO 243 · DOB 5/3/22 · PAF

HF PROGRESSIVE 003 P ET KEYS ALL STATE 149X
 CREEK CUT GRETA 576P ET
 TR CAG MS HADLEE 0759H ET TR CAG CARBON COPY 7630E ET
 TR MS RANDI 0633X

CED	BW	WW	YW	MILK	REA	MARB	TSI
7.5	-1.3	62	104	18	0.66	0.1	244.03

AI BRED ON 4/17/23 TO GHC REAGAN 9012 (AICA EM928719)
 PE 5/26/23-8/15/23 TO RBM RUSHMORE K63 (AICA M973871)



LOT 30

BC/HF Miss Grace 243 is an absolute stunner from the side profile! We love the added look and feature of this HF Progressive 003 P ET daughter, one that made the trip with us to the American Royal last fall, standing second in a competitive class of Junior Heifer Calves. She goes back to another show heifer for Emma, TR CAG Ms Hadlee 0759H ET who was a full sister to the \$100,000 Embryos on Snow live lot, CAG TR Effective 0607H ET. A generation further back you find the \$100,000 TR Ms Randi 0633X, needless to say, the pedigree aligns some of the best cows in the business.

31

HF MISS STAR 203

AICA F1328815 · TATTOO 203 · DOB 1/8/22 ·

CAG TR BC FRANCHISE 8606F ET TR MR FIRE WATER 5792R ET
 TR MS RANDI 0633X
 HF STARDUST 1604 P LT LEDGER 0332 P
 JLS NO DOUBT 1334 PLD

CED	BW	WW	YW	MILK	REA	MARB	TSI
6.5	-0.1	55	100	20	0.59	0.1	241.35

PE 3/23/23-8/15/23 TO 1BBC MR CANYON 188 (RAAA: 4595187)



TR MS RANDI 0633X
 PATERNAL GRANDDAM OF LOTS 31 & 32

Both the dam and granddam of HF Miss Star 203, have had impressive breeding careers during their tenures in the program. Her maternal granddam JLS No Doubt 1334 PLD was purchased from Utopia Genetics with 203's dam on board. She has proven to be a wise investment breeding up each year and bringing a sellable calf or replacement to the weaning pen. The type that keeps a cowman's bottom line in check.

32

HF MISS BLIZZARD 200

AICA F1328790 · TATTOO 200 · DOB 1/2/22 ·

CAG TR BC FRANCHISE 8606F ET TR MR FIRE WATER 5792R ET
 TR MS RANDI 0633X
 MDL MS TORNADO 341 PLD M6 TORNADO 815
 WCR MS QPRIMECUT 7304 P

CED	BW	WW	YW	MILK	REA	MARB	TSI
5.4	0	54	89	22	0.64	0.03	226.88

PE 3/23/23-8/15/23 TO 1BBC MR CANYON 188 (RAAA: 4595187)



CAG TR MS FRAN 8627F ET
 FULL SISTER TO THE SIRE OF LOT 31 & 32

Lot 31 and 32 are daughters of our CAG TR BC Franchise 8606F ET herd sire that has been worth his weight in gold. The Firewater son is out of the legendary TR Ms Randi 0633X, a matron that has over 150 progeny to her name in the AICA database. A full sister to 8606F was the Grand Champion Bred & Owned Female at the 2019 AIJCA National Show for Cagney Effling. The dam of HF Miss Blizzard 200 is the Lot 17 female in this sale, MDL Ms Tornado 341 PLD, a cow that writes the definition of longevity and productivity.

33

HF MISS FANCY 160

AICA F1319395 · TATTOO 160 · DOB 10/8/21 ·

GHC DRY TOWN 8004 M&M OUTSIDER 4003 PLD
 PB LEE MISS PENNY
 JH LYLEA 902 P JH WIND 5309 PLD
 JH PRIME TIMES LADY 2117

CED	BW	WW	YW	MILK	REA	MARB	TSI
13.2	-1.6	49	82	22	0.6	0.11	224.54

PE 3/23/23-8/15/23 TO 1BBC MR CANYON 188 (RAAA: 4595187)



GHC DRY TOWN 8004
 SIRE OF LOT 33

HF Miss Fancy 160 is a fall bred heifer that will calve in the spring of 2024, meaning she has an extra shot of maturity and readiness than the rest of the spring calving bred heifer offering. This GHC Dry Town 8004 daughter stems back to a cow family of Jessi's that has been a consistent source of maternal power. She will calve a buckskin colored calf by 1BBC Mr Canyon 188, just the kind to attract a premium.

RED ANGUS

DIVISION



101

1BBC HF MISS EDGE 1118

RAAA 4614197 · TATTOO 1118 · DOB 11/4/21

ROJAS TR CHIVAS 17109 PZC TMAS FIRESTORM 1800 ET
 RED BAR-E-L KASSIE 117X
 TMAS MS EDGE 7907E ET TR PZC POWERHOUSE 5770 ET
 JST BLOXY 2602

HB	GM	CED	BW	WW	YW	MILK	MARB
63	25	13	-1.5	55	90	26	0.28

SELLS WITH ERKS MULBERRY 9918 (RAAA 4137398)

HEIFER CALF AT SIDE, BORN 8/22/23

1BBC HF Miss Edge 1118 has arisen as a true standout amongst our bred heifer offering. She is extra dense and capacious, and the kind we would love to make pens full of, we are proud to offer her for your evaluation and potential investment on October 7th. She stems from a beautiful TR PZC Powerhouse 5770 ET daughter and sports a very balanced set of genomic predictors that leave the door wide open in regards to generating potential and production goals. Both her dam and granddam, JST Bloxy 2602 have been great producers, each yielding several sale bulls and replacement heifers during their breeding tenures.



LOT 102

A super complete and fault free female that is smooth muscled, bold ribbed and easy keeping. The maternal lineage of EDH HF Miss Lexi 1109 is laced with strong maternal power, featuring females like Red Bar-E-L Kassie 117X and Bieber Joan 7502, two iconic donors of the past decade within the Red Angus breed, worldwide. We see a world of value in this daughter of ROJAS TR Chivas 17109 particularly if your cowherd is in the development stages and you are planning to retain or market replacement heifers.

102

EDH HF MISS LEXI 1109

RAAA 4571817 • TATTOO 1109 • DOB 9/6/21

ROJAS TR CHIVAS 17109
SUTP MISS DENIRO 5697

PZC TMAS FIRESTORM 1800 ET
RED BAR-E-L KASSIE 117X
LEACHMAN DENIRO A090X
BIEBER JOAN 147Z

HB	GM	CED	BW	WW	YW	MILK	MARB
83	12	13	-1.4	57	89	28	0.22

AI BRED ON 11/21/22 TO ERKS MULBERRY 9918 (RAAA 4137398)
PE 12/15/22-3/5/23 TO ERKS MULBERRY 9918 (RAAA 4137398)

103

1BBC HF MISS ROYAL 1111

RAAA 4614195 • TATTOO 1111 • DOB 9/1/21

ROJAS TR CHIVAS 17109
TMAS MS ROYAL 716E

PZC TMAS FIRESTORM 1800 ET
RED BAR-E-L KASSIE 117X
TR PZC POWERHOUSE 5770 ET
TMAS MS ROYAL 409B

HB	GM	CED	BW	WW	YW	MILK	MARB
63	21	12	0	59	94	29	0.27

AI BRED ON 11/21/22 TO ERKS MULBERRY 9918 (RAAA 4137398)
PE 12/15/22-3/5/23 TO ERKS MULBERRY 9918 (RAAA 4137398)



LOT 103

This set of fall bred Red Angus heifers is the absolute cream of the crop. Here we have an attractive, heavy muscled, and powerful hipped daughter of ROJAS TR Chivas 17109. We think that the Red Angus breed needed these Chivas derived cattle to promote functional footed, big bodied and maternally powered, beef cattle. We think 1BBC HF Miss Royal 1111 offers exactly what our customers desire, a growthy yet functional breeding piece who has the structural integrity to last and yet will still add payweight and wean a big calf, putting money into the cowman's pocket.



104

1BBC HF MISS DYNAMO 2324

RAAA 4706839 · TATTOO 2324 · DOB 1/6/23

ROJAS TR CHIVAS 17109

RED U2 MS DYNAMO 382W

PZC TMAS FIRESTORM 1800 ET
 RED BAR-E-L KASSIE 117X
 RED U-2 BIG LEAGUE 544R
 RED FLYING K MS DYNAMO 3M

HB	GM	CED	BW	WW	YW	MILK	MARB
72	-15	10	0.4	52	73	27	0.13

RED U2 MS DYNAMO 382W
 DAM OF LOT 104

1BBC HF Miss Dynamo 2324 is one of the most interesting breeding pieces that will sell in this edition of the Fall Colors, this direct daughter of RED U2 Ms Dynamo 382W emerges as a first-class piece of Red Angus property. RED U2 Ms Dynamo 382W was sourced by the Rojas & Thomas programs out of the renowned U2 program of Canada, in the flesh she is one of the most ideally built females you will find. Tremendous in her depth, power, foot shape and maternal power, she is the kind that you spend a lifetime trying to make. That is the direction we see 2324 maturing towards in fact she has already started off on the right foot, winning her division in both the Open and Junior Red Angus Show's at the 2023 Missouri State Fair. She is an absolute standout from a genetic and phenotypic standpoint. Sale Feature!



105

1BBC HF MISS SHARK 2322

RAAA 4706849 · TATTOO 2322 · DOB 1/2/23

ROJAS TR CHIVAS 17109

PZC TMAS FIRESTORM 1800 ET
 RED BAR-E-L KASSIE 117X
 WEBR TC CARD SHARK 1015
 GT CITA 4060

PZC MS CARDSHARK 6759 ET

HB	GM	CED	BW	WW	YW	MILK	MARB
73	8	14	-2.3	51	84	31	0.18



GT CITA 4060
 MATERNAL GRANDDAM OF LOT 105

A maternal granddaughter of the legendary GT Cita 4060. When it comes to the who's who list of Red Angus females, there is no doubt that Cita deserves a spot at the top of the list. As a cow in production she consistently added stripes to her breeding repertoire with each calf crop and joining sire, she even worked across breeds, with a daughter by HOC Mr Broker winning the Percentage Show at the Simmental Junior National Show. Past the fun time we think you will have on the show road with this fancy heifer calf, we see the generating potential and return on investment promoting this opportunity into a highlight of the sale.



LOT 106 **1BBC HF MISS CHIVAS 2327**

106

1BBC HF MISS CHIVAS 2327

RAAA 4780015 • TATTOO 2327 • DOB 3/21/23

ROJAS TR CHIVAS 17109

PZC TMAS FIRESTORM 1800 ET
RED BAR-E-L KASSIE 117X
TR SLA CASH 434B
ANNA'S STRAWBERRY 25

TMAS MS STRAWBERRY 625D

HB	GM	CED	BW	WW	YW	MILK	MARB
74	16	14	-1	57	90	29	0.28

A direct daughter of our TMAS Ms Strawberry 625D female that we can always count on bringing a standout to the weaning pen each Fall. She hasn't let us down this year either with a stunning heifer calf that will be a tough one to let go of. Super elegant in her head and neck, yet had a wide pin set and has plenty of muscle and dimension from end to end. Maternal brothers to 2327 have been favorites in past editions of the Thomas Ranch Bull Sale.



ROJAS TR CHIVAS 17109
SIRE OF LOTS 101-107

LOT 107 1BBC HF MISS CHIVAS 2328



Another stylish heifer calf by ROJAS TR Chivas 17109 out of an outcross daughter of Loosli Right Direction 308. Her mother in fact is a full sister to the dam of TMAS Preacher 906G the high selling Red Angus Bull at the 2020 Thomas Ranch Bull Sale to Fort Hayes State University, a stud that has been changing the face of their program quickly, and is still used in herd at the Thomas Ranch. A big footed, heavy structured female that maintains an eye appealing look from the profile and soft middle third of her body.



TMAS PREACHER 906G
SON OF A FULL SISTER TO THE DAM OF LOT 107

107

1BBC HF MISS CHIVAS 2328

RAAA 4780013 · TATTOO 2328 · DOB 4/2/23

ROJAS TR CHIVAS 17109

PZC TMAS FIRESTORM 1800 ET
RED BAR-E-L KASSIE 117X
LOOSLI RIGHT DIRECTION 308
MCPHEE SILVER 4823

TMAS MS SILVER 7716E ET

HB	GM	CED	BW	WW	YW	MILK	MARB
73	18	13	-1.8	56	90	32	0.24

LOT 108 1BBC HF MISS TRUMP 2326



A Damar Trump C512 daughter of SCMH Tira 301, a female that has a perfect production resume in the herd, maintaining a sub 365-day calving interval on 9 head, and records exceptional production genomics including a top 11% ProS, top 4% GM, top 4% HPG, top 13% CEM, and top 11% Stay. This is a prime example of a female that will be one to keep a program in the green. If you enjoy Red Angus cattle that stick to what they have always been known for in regard to longevity and maternal then look in here.



DAMAR TRUMP C512
SIRE OF LOT 108

108

1BBC HF MISS TRUMP 2326

RAAA 4780017 · TATTOO 2326 · DOB 3/13/23

DAMAR TRUMP C512

RED SOO LINE POWER EYE 161X
DAMAR OH BABY W168
SLGN ROCK STAR 0505X
SCMH NADIA 002

SCMH TIRA 301

HB	GM	CED	BW	WW	YW	MILK	MARB
61	33	14	-2.3	53	82	21	0.42



109

1BBC MISS ONE 247

RAAA 4687589 · TATTOO 247 · DOB 4/3/22

PIE ONE OF A KIND 842

TMAS MS MULBERRY 407B

PIE ONE OF A KIND 352
PIE GUSTY 6015
MCPHEE REMARK ABULL 4669
DUNNS MULBERRY DAY 1106

HB	GM	CED	BW	WW	YW	MILK	MARB
81	26	15	-2.5	68	108	30	0.34

AI BRED ON 5/23/23 TO ERKS MULBERRY 9918 (RAAA 4137398)
PE 6/15/23-8/1/23 TO TMAS MULBERRY 9918 207K (RAAA 4642367)

A sale feature from a genomic standpoint. This curve bender goes from a top 18% CED, and top 37% BW, and flips to a top 22% WW and top 25% YW. Her genomic profile is further complimented by a top 9% Herd Builder, top 14% Milk, top 13% HPG, top 10% CEM, and top 19% Stay. Her dam has been a top tier producer/ donor for both our program and the Thomas Ranch, with a slew of maternal and full sibling highlighting marketing events over the past 5 years. A maternal sister by TR PZC Powerhouse 5770 ET was a feature of the Ree Heights Gathering Sale selling to Kassi Jones of Nebraska.

TMAS MS MULBERRY 712E
MATERNAL SISTER TO LOTS 109 & 110



PIE ONE OF A KIND 842
PATERNAL GRANDSIRE OF LOT 109



110

IBBC MISS BERRY 243

RAAA 4687449 · TATTOO 243 · DOB 3/28/22

ROJAS TR CHIVAS 17109 PZC TMAS FIRESTORM 1800 ET
 RED BAR-E-L KASSIE 117X
 TMAS MS MULBERRY 407B MCPHEE REMARKABULL 4669
 DUNNS MULBERRY DAY 1106

HB	GM	CED	BW	WW	YW	MILK	MARB
92	23	14	-2.4	57	89	30	0.36

PE 5/12/23-6/5/23 TO ERKS MULBERRY 9918 (RAAA 4137398)
 PE 6/17/23-8/15/23 TO TC APPROVAL 65K (RAAA 4708121)

243 is a maternal sister to 247, backed by the influential TMAS Ms Mulberry 407B donor dam. Another maternal sister to this duo is TMAS Ms Mulberry 712E, a past high selling female that was purchased by Kassi Jones of Nebraska. This female is sired by the 2020 NWSS Grand Champion Red Angus Bull, Rojas TR Chivas 17109. Her pedigree aligns the influence of the great Bar-E-L Kassie 117X, one of the great producing females in the Red Angus breed.



RED BAR-E-L KASSIE 117X
 PATERNAL GRANDDAM OF LOT 110

111

IBBC MISS CLASS 260

RAAA 4687569 · TATTOO 260 · DOB 3/8/22

ROJAS TR CHIVAS 17109
 TMAS MR CHIVAS 005H TMAS MS HIGH ROLLER 760E ET
 TMAS MS DASHING CLASS 807F SILVEIRAS MISSION NEXUS 1378
 TMAS MSDASHINGCLASS 616D

HB	GM	CED	BW	WW	YW	MILK	MARB
76	21	11	-0.4	65	104	27	0.36

AI BRED ON 5/23/23 TO ERKS MULBERRY 9918 (RAAA 4137398)
 PE 6/15/23-8/1/23 TO TMAS MULBERRY9918 207K (RAAA 4642367)

A direct daughter of the original, 2020 NWSS Grand Champion Angus Bull, ROJAS TR Chivas 17109 that a half interest in sold for \$60,000. He brings the maternal value of the iconic RED BAR- E-L Kassie 117X to the equation here. Although it's both sides of the pedigree of IBBC Miss Dora 269 that you will find notable influences, as you will find her dam is a Bieber Rollin Deep Y118 granddaughter that goes back to the highly productive, Bowden Dora Jiba B821.

LOT 111 IBBC MISS CLASS 260



TMAS MS HIGH ROLLER 760E ET
 PATERNAL GRANDDAM OF LOT 111



TMAS MR CHIVAS 005H
 SIRE OF LOT 11





RED BLAIR'S DARLINE 045B
DAM OF LOT 112



RED TOWAW DARLINE 15R
MATERNAL GRANDDAM OF LOT 112

112

1BBC MISS DARLINE 238

RAAA 4687461 · TATTOO 238 · DOB 3/3/22

DAMAR TRUMP C512 RED SOO LINE POWER EYE 161X
DAMAR OH BABY W168
RED BLAIR'S DARLINE 045B HAYCOW CUTTING EDGE 055
RED TOWAW DARLINE 15R

HB	GM	CED	BW	WW	YW	MILK	MARB
44	27	14	-2.2	51	73	23	0.44

PE 5/12/23-6/5/23 TO ERKS MULBERRY 9918 (RAAA 4137398)
PE 6/17/23-8/15/23 TO TC APPROVAL 65K (RAAA 4708121)

The more opportunity we give these daughters of Damar Trump C512, the more we appreciate having them around. As a sire group these females exude longevity, ruggedness, structural integrity, and maternal strength, however that is no indicator of a lack in performance, as a group they ratio as well as any. 1BBC Miss Darline 238 has matured into a well-balanced and complete, female that we think with the backing of her consistent cow family has the potential to generate at the highest level. Her dam, Red Blair's Darline 045B was a \$13,600 high selling female in the 2015 Blairs.Ag Online Female Sale. This female will be a high income producing female in production!

113

1BBC MISS TRU 254

RAAA 4687471 · TATTOO 254 · DOB 3/3/22

DAMAR TRUMP C512 RED SOO LINE POWER EYE 161X
DAMAR OH BABY W168
BMRA MS PGC 509 PIE LUCHT 8220
WR MS LEADER 2025

HB	GM	CED	BW	WW	YW	MILK	MARB
44	30	11	0.8	62	100	24	0.34

AI BRED ON 5/23/23 TO ERKS MULBERRY 9918 (RAAA 4137398)
PE 6/15/23-8/1/23 TO TMAS MULBERRY9918 207K (RAAA 4642367)

LOT 113 1BBC MISS TRU 254



1BBC Miss Tru 254 is a direct daughter of the National Champion, Damar Trump C512 that is supported by a productive PIE Lucht 8220 daughter that helped her to record a 105 WWR. If power and pounds are what you're searching for then mark this one for inspection on sale day. A female that comes extra dimensional in her hip shape, round in her ribcage and wide at her base.

114

1BBC MISS TRUE 248

RAAA 4687495 · TATTOO 248 · DOB 3/9/22

DAMAR TRUMP C512 RED SOO LINE POWER EYE 161X
DAMAR OH BABY W168
BMRA MS WR TRUE 603 LMG GILLS STATEMENT 4743
BMRA MS M STMT 122

HB	GM	CED	BW	WW	YW	MILK	MARB
28	36	10	1.3	63	101	22	0.4

AI BRED ON 5/23/23 TO ERKS MULBERRY 9918 (RAAA 4137398)
PE 6/15/23-8/1/23 TO TMAS MULBERRY9918 207K (RAAA 4642367)

DAMAR TRUMP C512
SIRE OF LOTS 112- 114 AND
PATERNAL GRANDSIRE OF LOT 114



ERKS MULBERRY 9918
SERVICE SIRE TO THE RED ANGUS OFFERING

A female that comes with some extra shape and scale, this power female ticks all the boxes when it comes to finding a breeding piece that will inject growth and payweight. Not only is she built with extra substance but turning to her EPD profile will reveal that her progeny is destined to mash the scales too. 1BBC Miss True 248 is derived from a cow family that was formed at the Brandon Mitchell Ranch of South Dakota and sired by the NWSS Grand Champion, Damar Trump C512.

115

IBBC MISS PG 281

RAAA 4687473 · TATTOO 281 · DOB 2/24/22

TMAS MR TRUMP 889F ET

DAMAR TRUMP C512
PZC CARIBBEAN BREEZE 115 ET
PIE LUCHT 8220
WR MS VAQUERO 2058

BMRA MS PGC 540

HB	GM	CED	BW	WW	YW	MILK	MARB
47	27	15	-2.7	57	92	21	0.3

AI BRED ON 5/23/23 TO ERKS MULBERRY 9918 (RAAA 4137398)
PE 6/15/23-8/1/23 TO TMAS MULBERRY9918 207K (RAAA 4642367)



TMAS MR TRUMP 889F ET
SIRE OF LOT 115

IBBC Miss PG 281 stems from a PIE Lucht 8220 daughter that is a tenured member of the cowherd, we have relied on her to annually bring a calf with added value to the weaning pen. A maternal brother to 281 is working in the Kline Farms program of Ava, Missouri and a maternal sister by TMAS MR Tango 931G was purchased by Richmond family of Smithville, Arkansas. If you like them soft in their body shape, long and flexible spined and with a fleshing ability that keeps them in the right rig all year long then here's your gal.

116

IBBC MISS ABIGAIL 241

RAAA 4618459 · TATTOO 241 · DOB 1/2/22

PIE FULLBACK 7005

PIE CINCH 4126
PIE MS PATRIOT 536
RED U2 MISSION 61W
ROJAS ABIGAIL 6062

BYU ABIGAIL 8038

HB	GM	CED	BW	WW	YW	MILK	MARB
54	12	11	-1.6	52	85	27	0.19

PE 5/12/23-6/5/23 TO ERKS MULBERRY 9918 (RAAA 4137398)
PE 6/17/23-8/15/23 TO TC APPROVAL 65K (RAAA 4708121)



BYU ABIGAIL 8038
DAM OF LOT 116

IBBC Miss Abigail 241 is sired by the \$132,500 PIE Fullback 7005, one of the great breeding bulls to ever be produced in the Pieper Red Angus program. He is a staple in the Bayou Creek Ranch program of Texas where he has made a substantial impact on the cowherd. Here is a female that is backed by BYU Abigail 8038, a daughter of Red U2 Mission 61W that traces to the high income producing female for Las Rojas, Six Mile Lakota 112Y. The maternal granddam of 241 is a full sister to countless high sellers, show ring champions, and individuals of influence within the Red Angus breed, including Rojas Rioja 6052. Power in the blood!



PIE FULLBACK 7005
SIRE OF LOT 116

117

IBBC SCMH 204

RAAA 4576867 · TATTOO 204 · DOB 2/10/22

BROWN ULTIMATE X7752

BECKTON NEBULA M045
BROWN MS OBJECTIVE U7837
SLGN ROCK STAR 0505X
SCMH BERRY GOOD 122

SCMH SARAH 429

HB	GM	CED	BW	WW	YW	MILK	MARB
56	39	13	-1.6	62	108	23	0.44

PE 5/12/23-6/5/23 TO ERKS MULBERRY 9918 (RAAA 4137398).
PE 6/17/23-8/15/23 TO TC APPROVAL 65K (RAAA 4708121).



BROWN ULTIMATE X7752
SIRE OF LOT 117

204 is a direct daughter of Brown Ultimate X7752, the Beckton Nebula M045 son that has been a monumental generator for ABS Global. She is backed by a daughter of SGN Rock Star 0505X that is further supported by the maternal influence of Red Fine Line Mulberry 26P. She is balanced numerically and posted a WWR at 104. Her dam has been a tried and true producer year after year.

118

IBBC MISS POLY 242

RAAA 4687553 · TATTOO 242 · DOB 1/22/22

5L GENUINE 1603-195C
 LSF SRR POLY E7441 G9025

5L GENUINE 99-85Y
 5L RUBY 21-1603
 LSF MEW X-FACTOR 6693D
 LSF SRR POLY 844 E7441

HB	GM	CED	BW	WW	YW	MILK	MARB
23	79	14	-2.1	71	118	31	0.89

PE 5/12/23-6/5/23 TO ERKS MULBERRY 9918 (RAAA 4137398).
 PE 6/17/23-8/15/23 TO TC APPROVAL 65K (RAAA 4708121).

242 is sired by 5L Genuine 1603-195C and backed by the influence of a Ludvigson bred dam on the bottom side of her pedigree. She ranks among the elite 2% of the breed for GM, top 14% WW, top 12% YW, top 11% ADG, top 10% Milk, top 1% Marb, and top 8% CW. This female is a true genetic gem from a numerical standpoint, offering exceptional mating flexibility. Don't hold back, this is the kind of female that raises herd bulls!

119

IBBC SCMh 202

RAAA 4576861 · TATTOO 202 · DOB 2/7/22

HXC DECLARATION 5504C
 SCMh STRAWBERRY 201

LEACHMAN PLEDGE A282Z
 HXC190Y
 RED FINE LINE MULBERRY 26P
 LSF GRA EMMA S635

HB	GM	CED	BW	WW	YW	MILK	MARB
58	50	16	-3	66	109	21	0.47

PE 5/12/23-6/5/23 TO ERKS MULBERRY 9918 (RAAA 4137398)
 PE 6/17/23-8/15/23 TO TC APPROVAL 65K (RAAA 4708121)

202 is a high calving ease female that is sired by HXC Declaration 5504C and backed by the immortal maternal legend, Red Fine Line Mulberry 26P. She is among the top 25% of the breed for ProS, GM, and YW, top 12% CED, top 1% HPG, and top 5% CEM. She recorded a BWR at 91 and a WWR at 105, offering true curve bending figures. This female boasts a 16 CED with a -3.0 BW EPD which adds tremendous value if you're in the market of creating calving ease herd sire prospects. High quality female with a bright future!

120

IBBC SCMh 207

RAAA 4576875 · TATTOO 207 · DOB 2/12/22

SCMh NEW DIRECTION 812
 SCMh CORI 529

ANDRAS NEW DIRECTION R240
 HCW ADDIE 707
 RED BRYLOR EBERLE 50Y
 SHY RED GEM

HB	GM	CED	BW	WW	YW	MILK	MARB
70	41	11	0.4	61	101	19	0.37

PE 5/12/23-6/5/23 TO ERKS MULBERRY 9918 (RAAA 4137398)
 PE 6/17/23-8/15/23 TO TC APPROVAL 65K (RAAA 4708121)

207 is a paternal granddaughter of Andras New Direction R240. She is out of a dam sired by Red Brylor Eberle 50Y that traces to the influential Glacier Chateau 744. A balanced number profile accompanies this female as she ranks top 22% HB and ProS, top 26% Stay, and top 29% ME.

121

IBBC SCMh 208

RAAA 4576887 · TATTOO 208 · DOB 2/24/22

SCMh NEW DIRECTION 812
 SCMh DEE DEE 610

ANDRAS NEW DIRECTION R240
 HCW ADDIE 707
 BROWN PREMIER X7876
 LSF GRA EMMA S635

HB	GM	CED	BW	WW	YW	MILK	MARB
74	65	14	-1.1	60	104	22	0.57

PE 5/12/23-6/5/23 TO ERKS MULBERRY 9918 (RAAA 4137398)
 PE 6/17/23-8/15/23 TO TC APPROVAL 65K (RAAA 4708121)

Here is one of the highest indexing female in the entire sale! 208 is another paternal granddaughter of Andras New Direction R240 that is backed by a daughter of Brown Premier X7876. She is among the top 3% for ProS, top 8% GM, top 17% ADG, top 22% HPG, top 23% Stay, and top 19% Marb. This number profile will allow for optimum mating flexibility.



TC APPROVAL 65K
 SERVICE SIRE TO THE RED ANGUS OFFERING

NEW HERD SIRES

EXCITING THINGS TO COME



TR LEGACY 1707 ET



OWNED BY
BRADLEY CATTLE
ACES WILD RANCH
THOMAS RANCH

J6 BULLETPROOF 542K

OWNED BY
BRADLEY CATTLE
HANKINS FARMS
J6 FARMS
TWIN WILLOW FARMS



INNOVATION
— AgMarketing, LLC —

*p.o. box 2
de soto, kansas 66018*



SATURDAY, OCTOBER 7 • 6 PM CST
Hankins Farms sale facility in Republic, Missouri