

Chestnut Angus

F E M A L E S A L E



2/16/20

TO CHEST



SPRING

NUT ANGUS FARM



LOT 1	<i>The most exciting genetic offering in CN history</i>
LOT 2	<i>The Maternal Granddam of Chestnut Force 482</i>
LOT 3-11	<i>The Beauty Cow Family</i>
LOT 12	<i>The Annie Oakley Cow Family</i>
LOT 13	<i>The Sandy Cow Family</i>
LOT 14	<i>The Blackbird Susan Cow Family</i>
LOT 17	<i>The Blackcap Cow Family</i>
LOT 18	<i>The Blackbird Leia Cow Family</i>
LOT 19	<i>The Lucy Cow Family</i>
LOT 20	<i>The Primrose Cow Family</i>
LOT 21	<i>The Miss Wix Cow Family</i>
LOT 22	<i>The Heather Cow Family</i>
LOT 23	<i>The Queedy Cow Family</i>
LOT 24 - 25	<i>The Queen Cow Family</i>
LOT 26 - 27	<i>The Queen Eva Cow Family</i>
LOT 28 - 29	<i>The Queen Herself Cow Family</i>
LOT 30 - 32	<i>The Lucy Cow Family</i>
LOT 33 - 35	<i>The Peg Cow Family</i>
LOT 36 - 37	<i>The Ruby Cow Family</i>
LOT 37 - 54	<i>Spring Calving Angus Cows</i>

Welcome

TO THE CHESTNUT ANGUS LIVEONLIVE™ FEMALE SALE

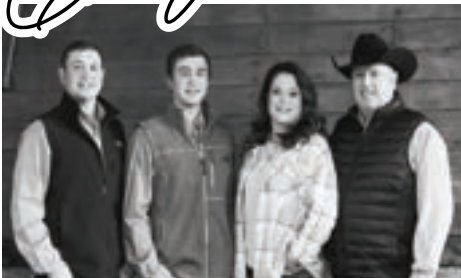
CATTLEMEN, WOMEN & FELLOW ANGUS ENTHUSIASTS,

We welcome you to Chestnut Angus Farm! We are excited to offer what we consider to be one of the deepest and most elite sets of mature cows to ever leave the farm. We have spent the last few years building our cow herd with a focus on quality and maternal functionality. This group of cows are supported by pedigrees that have been noted year after year with awesome udder quality, foot confirmation, and the stylish look and thickness that we all admire. This group of cows will carry their legacy for many years within their offspring at Chestnut Angus Farm and prove to be valuable additions to any program. We are excited about the sire choices that we hand selected for each female in the sale. We have high expectations for the resulting progeny!

A special featured attraction will be Chestnut Captivation 958, the dam of the \$130,000 Chestnut Force 482, one of the most elite individuals that has ever been raised in Pipestone, Minnesota. In addition to the dam of Chestnut Force 482, we will be offering 100% of his maternal granddam, Chestnut Captivation WJ 7118! This set of females have as many credentials as any group of young cows that we have offered to date, this will be a tough group to see go! We are confident that the females selling on September 30 have the potential to make a substantial impact on your program.

We invite you to Pipestone, Minnesota for the Chestnut Angus Farm Fall Female Sale on Saturday, September 30, 2023. The sale will be broadcast on CCI.Live for those of you that are unable to attend the auction in person. We hope you will join us for ribeye sandwiches and hospitality the evening of the sale. Stop by the farm any time prior to the sale to view the cattle selling. If you have any questions about the sale cattle, please feel free to give us a call. We would enjoy visiting about the offering with you!

Glenn Johnson



GLENN, SHERRI, WESLY & DAWSON JOHNSON

Chestnut
N ANGUS

Sale

INFORMATION

LOCATION

2242 90th Ave, Pipestone, MN 56164

SALE DAY CONTACTS

Glenn Johnson, 507.820.1502

Wesly Johnson, 507.215.7348

Chris Effling, 605.769.0142

Tony Heins, 701.400.4435

AUCTIONEER

Jered Shipman, 806.983.7226

SALE MANAGEMENT

Innovation AgMarketing LLC

Graham Blagg, 530.913.6418

Tim Anderson, 605.682.9343

Jered Shipman, 806.983.7226

InnovationAgMarketing.com

ACKNOWLEDGEMENTS

Taylor Gazda, Catalog Design, 706.248.2547

John Reasor, Photography & Videography, 701.400.4435

TRAVEL

Crossings by GrandStay Hotel & Suites Pipestone

915 7th St SE, Pipestone, MN 56164 • 507.562.1100

Joe Foss Field Airport • Sioux Falls, South Dakota

50 Miles from Chestnut Angus Farm

ANNOUNCEMENTS

Announcements made sale day and from the auction block during the sale take precedence over printed materials associated with this sale. Anyone attending this sale attends at their own risk. Chestnut Angus and sale force will not be held responsible for any personal injury for attending this sale.

TERMS & CONDITIONS

The cattle sell under the standard terms and conditions recommended by the American Angus Association.

EPDs

The EPDs listed were pulled 7/15/23. Please note that EPDs may change from the time the sale catalog is printed until registration papers are transferred. A supplement sheet with current EPDs will be available the week of the sale.

INSURANCE

We recommend serious consideration is taken about insuring your herd bull purchases. Insurance will be available sale day via James F. Bessler, LLC. James F. Bessler, 815.762.2641 • 4812 McBreyer Pl • Fort Worth, TX 76244

HERD HEALTH

All cattle will be accompanied by proper health certificates for immediate interstate shipment. Females are calfhood vaccinated. Chestnut Angus Farm has a no exceptions approach to Johnes testing and prevention via annual, whole herd testing. If a suspect animal is identified, they are culled from the herd immediately along with their calf. Herd health information is available upon request.

VIEW & BID ON CCI.LIVE



DEAR CATTLEMEN + WOMEN

Even though we understand that this sale is always a tough one for the Chestnut crew to have because annually they disperse the heart of their herd, it is definitely one of our favorite groups of cows to help market. Throughout the offering you will find a lineup of Angus females that have proven themselves at the highest level, and are still in their prime years of production. The group of females to go under the hammer this year represent a cross section of the most productive and prized cow families in the business. The Chestnut Angus cowherd has always been based with cattle that have extra dimension and power and that are derived from the most consistent cow families you will find. This year both the 2017 and 2018 year born females will sell in their entirety, along with a handful of added attractions. While researching the stories of each female in this group it becomes easy to understand why these females will be difficult to let go off. There are several highlights in the offering, and females that have been direct producers of the several recent banner winning years the CN brand has been decorated with.

Along with the dispersal of all the 2017 and 2018 born females you will find the addition of some younger females that will be calving later than the rest of the cowherd. It's not uncommon to be asked by local customers if there are some March-May calving females, this year there is a great selection to choose from! The pedigrees and cow families behind these matron's mimic those of the earlier calving cows, and to the luck of the buyer the unlocked potential in these females is immense. The maternal power you will find in this group is potent, and many members of this group are young cows just entering their prime years of production. We will have these females preg checked closer to sale day and all information, including estimated calving dates will be available on a supplement sheet prior to sale day on both the Chestnut Angus Facebook page and Innovation AgMarketing Website.

The first lot to sell is a monumental one. Glenn & Wesly have pulled the trigger and decided to offer the dam of their most impressive breeding piece to date. Although it could be argued that the female tagged Lot 1 could carry that same title, and when you see her in person you will understand that argument. Chestnut Captivation 958 is one of the most impressive specimens we have had the honor to be around, and look forward to being a part of the future of this female. We believe we have only seen the tip of the iceberg when it comes to the possibilities this legend in the making offers. Another sweetener of the deal is that her mother, Force's granddam will be the next in the ring, selling in her entirety. This sale is loaded with opportunity for genetic progress, so please reach out to Glenn, Wesly or the sale management team to discuss what these females can do for your program.

We encourage you to come to Pipestone anytime leading up to the sale, reach out to Glenn or Wesly to arrange a time, the cattle will be sorted and penned in grass traps at the home place, with plenty of options when it comes to four wheelers and side by sides to get through the cattle with. The farm is conveniently located to the intersections of Interstates 29 and 90, and with the vast number of sale cattle to view in the region, Pipestone isn't out of the way. Sale weekend will also be a great time to come view the cattle in person, sale day at Chestnut is a door wide open event for friends of the program, regardless of their interest in the sale stock. The sale format makes it just as convenient to bid from the comfort of your own home as if you were sitting in the sale barn. The CCI.Live website is designed with the buyer in mind, so be sure to log in and request bidding approval in the days leading up to the sale to become recognized with the sale site. We look forward to visiting with you about this diverse offering of females, and if you can make it in person on sale weekend we look forward to seeing you in Pipestone.

Graham Blagg • Tim Anderson • Jerod Shipman

I **INNOVATION**
— AgMarketing, LLC —





1

CHESTNUT CAPTIVATION 958

AAA 19569674 · TATTOO 958 · DOB 02/11/19 · BW 68

KG Solution 0018

MOGCK Sure Shot

R5 SOLUTION E111

KG Rito Lady 8724

R5 Brooke C5196

R5 Monument 087

R5 Brooke A3223



Barstow Bankroll B73

Barstow Cash

CHESTNUT CAPTIVATION WJ 7118

Barstow Miss Dianna Z25

H A F Captivation 1273

VAR Rocky 80029

WK Captivation 4611

CED	BW	WW	YW	CEM	MILK	\$EN			
+12	+0.3	+88	+157	+6	+29	-40			
CW	MARB	RE	FAT	\$M	\$W	\$F	\$G	\$B	\$C
+58	+0.52	+1.04	-0.03	+64	+82	+86	+55	+141	+247

• Ladies and gentlemen, it is our distinct privilege to present one of the most unique investment opportunities to EVER be offered by Chestnut Angus. This has been a decision that has been debated on ever since that Sunday Afternoon in February when her son, Chestnut Force 482 became the highest selling animal in our program's history at \$130,000.

• It is a decision that has not been taken lightly, and many may question why we would sell an interest in arguably the greatest producing female that we have ever owned, especially in one so young and that we believe is just scratching the surface of a production career that she is set in the trajectory of. We realize that to continue to build relationships with the best cattleman in the business, sometimes partnerships and decisions like this one, while may be hard, are necessary.

• 958 is a direct daughter of R5 Solution E111 that is backed by the strong maternal influence of the Barstow Bankroll B73 daughter you find selling as Lot 2. Her pedigree represents an outcross to many of the genetic lines that could compete with her EPD profile and tabulations, leaving the door wide open to the mating possibilities of this young genetic gold mine as she enters utilization in an embryo transfer program. We think that Force 482 was just the beginning of the lineup of nationally renowned and utilized herd sires that 958 will generate in her lifetime. The unique genetic tree of Chestnut Captivation 958 only adds value in the form of mating flexibility and creativity.



CHESTNUT FORCE 482

SON OF LOT 1

• From a phenotypic standpoint we believe this female sets the gold standard, everyone that sees this cow in the flesh receives validation of the hype that we feel about her and her son. Her udder quality is second to none, she has maintained such a youthful appearance, all while maturing with added width and shape, power and performance. One that makes the trip to Pipestone worth it, we only could hope to raise another genetic gem like this going forward.

• It is hard to pinpoint where we see the most value in this female, but the genomic tabulations that she reads with are a good start, she ranks top 10% CED, top 25% BW, top 1% WW, top 1% YW, top 5% RADG, top 10% YH, top 25% SC, top 5% MW, top 10% MH, top 2% Doc, top 15% CW, top 3% RE, top 10% Fat, top 15% \$AxH, top 5% \$AxJ and top 1% \$W.

SELLING 50% EMBRYO INTEREST WITH THE OPTION TO DOUBLE

In the event that the winning bidder doubles their final bid to acquire 100% embryo interest, Chestnut Angus Farm reserves the right to two successful flushes.

AI BRED TO ELLINGSON PROLIFIC (20136857) ON 5/21/23

PE TO S&R STABILITY J162 (20335485) FROM 5/25/23 - 8/25/23

SAFE ESTIMATED DUE 2/28/24



2

CHESTNUT CAPTIVATION WJ 7118

AAA 19008701 · TATTOO 7118 · DOB 03/07/17 · BW 88

Barstow Cash

BARSTOW BANKROLL B73

Barstow Miss Dianna Z25



VAR Rocky 80029

H A F CAPTIVATION 1273

WK Captivation 4611

Sitz Dash 10277

Barstow Queen W16

CAR Efficient 534

Barstow Miss Dianna X128

HARB Onward 786 J H

Vermilion Lass 0029

Stepladder Focal Point 906

WK Captivation 8076

CED	BW	WW	YW	CEM	MILK	\$EN			
+4	+2.4	+73	+129	+7	+30	-29			
CW	MARB	RE	FAT	\$M	\$W	\$F	\$G	\$B	\$C
+63	+0.38	+0.79	-0.013	+67	+67	+98	+43	+141	+250



CHESTNUT QUALITY 782
SON OF LOT 2

- Only due to the commitment to our promise to disperse the entire 2017 and 2018 year codes will you find this breeding piece for sale.
- Chestnut Captivation WJ 7118 is a Barstow Bankroll B73 daughter that encapsulates where we are headed with our program. She has real world quality, commercial acceptability and the impressive phenotype that ensures the profitability of the cowherd is long term. We love this kind, and it is obvious by the success of her daughter that sells as Lot 1 that this is the kind to tie to and propagate from, but as to make this an event worthwhile for our customers, our best sell!
- Big volume, extra round in her middle third, built with flexibility up front and sets down on a soft pastern and square foot. We love her squareness of hip and appropriate tailhead placement, the brood cow and maternal power cannot be questioned here. The heritability of her high-quality udder setup is also evident by inspecting her daughter you see across the page.

- We are believers in real world, qualitative data, and the numbers don't lie when you turn to the progeny records that Chestnut Captivation WJ 7118 shows. She records a 108 WWR and YWR on 3, as well as a 103 REAR on three, all while maintaining a 360-day calving interval.
- Her EPD tabulations rank her top 10% for WW & YW, top 25% RADG, top 15% MW, top 10% HS, top 3% Doc, top 10% CW, top 15% RE, top 20% Fat, top 25% \$AxH, top 15% \$W and top 20% \$F.
- Chestnut Captivation WJ 7118 is the Granddam of the \$130,000 high selling Chestnut Force 482.

PE TO KR INCREDIBLE 8166 (19241032) FROM 5/25/23 - 8/20/23



3

CHESTNUT BEAUTY 8141

AAA 19290437 · TATTOO 8141 · DOB 04/02/18 · BW 70

KM Broken Bow 002

STYLES BROKEN BOW V24

Styles Jasmine S44



HF Untapped 58Z

CN PF BEAUTY 597

CN PF Beauty 150

Summitcrest Complete 1P55

Summitcrest Princess 0P12

S A V Harvester 0338

Plainview Jasmine C48

HF Tiger 5T

HF Blackbird 223U

WillowCreek Reflect 932 7113

CN PF Beauty 9349

CED	BW	WW	YW	CEM	MILK	\$EN			
+13	-0.4	+58	+107	+12	+30	-20			
CW	MARB	RE	FAT	\$M	\$W	\$F	\$G	\$B	\$C
+41	+0.17	+0.7	-0.03	+58	+59	+96	+33	+129	+225



CHESTNUT DIAMOND JACK 492
SON OF LOT 3

- Chestnut Beauty 8141 has been a performance stand out from the beginning, she personally weaned off her dam at nearly 750 pounds to ratio a 117 and then powered onto yearling time to ratio a 110. However interestingly she still sports a 13 CED that ranks her top 4% of the breed.
- This Styles Broken Bow V24 daughter is more moderate in her stature, bold in her body shape, square in her pin set and hinges out of a big hip.
- Her 2022 born bull was the extra stout built, Lot 32 VZR Diamond Jack 1905 son that was purchased by Steve Hubbling. We feel her mating with Fusion is bound to yield impressive power, growth and shape!
- Her dam, CN PF Beauty 597 also raised a featured SAC Conversation son that was a part of the Chestnut Denver bull lineup in 2018 and was later purchased in the bull sale by Mike & Josh Sundsbak of North Dakota.

AI BRED TO CHESTNUT FUSION 61 (20096127) ON 4/23/23
PE TO KR INCREDIBLE 8166 (19241032) FROM 5/25/23 - 8/20/23
SAFE ESTIMATED DUE 1/31/24





PATHFINDER™ DAM

4

CHESTNUT PF BEAUTY 753

AAA 19008437 · TATTOO 753 · DOB 02/07/17 · BW 75

Connealy Thunder

Baldrige Kaboom K243 KCF

CTS REMEDY 1T01

Parka of Conanga 241



CTS 7V03 Bellemere Maid 9T02

L T 598 Bando 9074

VA First Round

SVA Rita 7V03 of 1407 502

CHESNUT PF BEAUTY 557

Dameron First Class

Chestnut Beauty 319

R&C Keystone Lady 106K-810U

Exar Sudden Impact 1537

C N Touchstone Beauty 54

CED	BW	WW	YW	CEM	MILK	SEN			
-4	+1.9	+57	+104	+8	+34	-28			
CW	MARB	RE	FAT	\$M	\$W	\$F	\$G	\$B	\$C
+39	+0.51	+0.36	+0.007	+44	+56	+86	+42	+129	+211



CHESNUT PF BEAUTY 557
DAM OF LOT 4

- Chestnut PF Beauty 753 has been a silent but fruitful producer here in Pipestone, she has checked all the rigorous qualifications for the prestigious Pathfinder™ status, and has become a trusted source of quality seedstock in our program. This is the type of female that pays the bills, and consistently outdoes herself with each calf she brings to the weaning pen. This is the kind that pays for themselves in the first year.
- She is sired by CTS Remedy 1T01, one of the most widely received Angus bulls in the business and a sire that is admired for his added foot quality and structural integrity.
- 753 is the first-born daughter of Chestnut PF Beauty 557, the Lot 14 female out of last year's Female Sale that sold to Michael Heidt. This maternal lineage is responsible for a long list of highlighted individuals to carry the CN brand.

- Chestnut PF Beauty 753 has maintained a 360-day calving interval, weaning off 4 to average a 111 ratio at weaning and 107 ratio at a year. She has stuck once again to an early AI for her end of January pregnancy sired by Ellingson Prolific.
- Her Chestnut United son in the 2023 Bull Sale sold to longtime supporter of the program, Arlin Van't Hof for \$7250.

AI BRED TO ELLINGSON PROLIFIC (20136857) ON 4/23/23
PE TO KR INCREDIBLE 8166 (19241032) FROM 5/25/23 - 8/20/23
SAFE ESTIMATED DUE 1/31/24



5

CHESTNUT BEAUTY JB 847

AAA 19290383 · TATTOO 847 · DOB 02/03/18 · BW 78

HA Outside 3008
HA COWBOY UP 5405
AGI HA Blackcap Lady 1602

Barstow Cash
CHESTNUT BEAUTY 65 324
Chestnut BEAUTY65

KG Solution 0018
HA Ever Lady 1575
Sitz Upward 307R
HA Blackcap Lady 5515
Sitz Dash 10277
Barstow Queen W16
WK Wacker
Chestnut Beauty 319

CED	BW	WW	YW	CEM	MILK	\$EN
+8	+1.3	+64	+115	+8	+19	-20
CW	MARB	RE	FAT	\$M	\$W	\$F
+39	+0.16	+0.46	-0.027	+47	+53	+82
\$G	\$B	\$C				
+29	+111	+191				



HA COWBOY UP 5405
SIRE OF LOT 5



ELLINGSON PROLIFIC
SERVICE SIRE TO SEVERAL FEMALES THROUGHOUT THE OFFERING

AI BRED TO ELLINGSON PROLIFIC (20136857) ON 4/22/23
PE KR INCREDIBLE 8166 (19241032) FROM 5/25/23 - 8/20/23
SAFE ESTIMATED DUE 1/27/24

- Chestnut Beauty JB 847 is another young female stemming from the maternal power of the Beauty tribe, she is built with that same stunning look from the side that comes standard with these females, she is also extra square in her outline, and deep and broody in her underline.
- Her obvious quality begins to shine when you turn to the genomics of this HA Cowboy Up 5405 daughter though, she sports a data package that ranks her top 30% WW, top 25% YW, top 10% RADG, top 20% MW and top 10% Fat. She is the kind to raise power bulls with, or feeder cattle that mash the scales and put dollars in your pocket.
- In the 2023 Bull Sale, her big numbered, natural son by Wilks Regiment 9035 sold to Dale Kontz for \$6,500.
- 847 stuck AI to an exciting mating with a sire that is seeing heavy use by the nation's best cowboys, Ellingson Prolific.



6

CHESTNUT BEAUTY 837

AAA 19290378 · TATTOO 837 · DOB 02/01/18 · BW 85

PVF Insight 0129

KRAMERS ENFORCE 5006



Kramers Evergreen Erica 1558

Fruhling Shadow

CN PF BEAUTY 238

CN PF Beauty 9349

S A V Brilliance 8077

PVF Missie 790

Rito 112 of 2536 Rito 616

K F Evergreen Erica 1466

Plainview Lutton E102

Fruhling Sieville Lady

S A V Net Worth 4200

Chestnut Beauty 319

CED	BW	WW	YW	CEM	MILK	SEN			
+5	+2.4	+58	+105	+12	+20	-20			
CW	MARB	RE	FAT	\$M	\$W	\$F	\$G	\$B	\$C
+42	-0.04	+0.66	+0.01	+35	+43	+103	+18	+121	+192

KRAMERS ENFORCE 5006
SIRE OF LOT 6CHESTNUT PERFECT TIMING 341
SERVICE SIRE TO LOT 6

- Chestnut Beauty 837 is an ultra-attractive, square profiling female that sports an ideal structural build and flexible gait. She lays perfectly in her tailhead and reaches with a big set of correctly shaped feet.
- 837 is a maternal sister to Chestnut Beauty 750, the mother of the \$40,000 Chestnut Turning Heads 29 that sold to Wheatland Cattle Company of Canada who she raised as a heifer. Turning Heads was the Champion Angus Bull from the 2021 Canadian Western Agribition.
- There will be no shortage of phenotypic quality with her January due pregnancy to the exciting Chestnut Perfect Timing 341 that sold to Schaeffer Show Cattle and Buck Creek Ranch in the 2022 Bull Sale.

AI BRED TO CHESTNUT PERFECT TIMING 341 (20095128) ON 4/11/23

PE TO KR INCREDIBLE 8166 (19241032) FROM 5/25/23 - 8/20/23

SAFE ESTIMATED DUE 1/16/24

7

CHESTNUT BEAUTY 819

AAA 19290371 · TATTOO 819 · DOB 01/14/18 · BW 65

Visiontopline Royal Stockman

CHESTNUT ROYAL STOCKMAN 326

CN Queen Mab 271



Ellingson Secretary 2011

CHESTNUT PF BEAUTY 634

Chestnut PF Beauty 471

Gambles Royal Flush

LaGrand Pride 7140

KF Danny 387

Cnqueen Mab 7157

Benfield Substance 8506

EA Madame Pride 0040

Bussmus PayDay 2610

CN PF Beauty 9349

CED	BW	WW	YW	CEM	MILK	\$EN			
+10	-0.1	+53	+92	+9	+22	-10			
CW	MARB	RE	FAT	\$M	\$W	\$F	\$G	\$B	\$C
+25	+0.47	+0.36	+0.019	+50	+50	+65	+39	+104	+185

• Chestnut Beauty 819 is one of the undeniably maternal, Chestnut Royal Stockman 326 daughters that will sell. She is backed by the super impressive Ellingson Secretary 2011 daughter, Chestnut PF Beauty 634 that sold to Deb & Lyle Nunnenkamp in last year's Female Sale.

• You can trace the maternal lineage of 819 back further to two legendary "Beauty" Females in CN PF Beauty 9349 and Chestnut Beauty 319.



CHESTNUT BEAUTY 819

• She has kept to a 351-day calving interval, and stuck AI once again for 2024, expecting a calf sired by Ellingson Prolific.

AI BRED TO ELLINGSON PROLIFIC (20136857) ON 5/22/23
PE TO S&R STABILITY J162 (20335485) FROM 5/25/23 - 8/25/23
SAFE ESTIMATED DUE 2/29/24

8

CHESTNUT BEAUTY 0100

AAA 19847742 · TATTOO 0100 · DOB 04/11/20 · BW 77

Panther Cr Incredible 6704

KR INCREDIBLE 8166

KR Lady May 4382



Exar Sudden Impact 1537

CHESTNUT BEAUTY 319

C N Touchstone Beauty 54

Musgrave Invision

Panther Cr JH Blackbird 409

K R Gavel 1057

WK Lady May 2347

Northern Improvement 4480 GF

B L R Blushing Pride 9097

Century Touchstone 131

C W Jestress Beauty 629

CED	BW	WW	YW	CEM	MILK	\$EN			
+2	+2.8	+58	+107	+4	+32	-20			
CW	MARB	RE	FAT	\$M	\$W	\$F	\$G	\$B	\$C
+44	+0.36	+0.4	+0.004	+47	+52	+85	+35	+121	+204

• An own daughter of our KR Incredible 8166 herd sire, she has the same length of spine, quality of structural build and foot quality that we see in him. This young female has an entire lifetime of productivity and profitability ahead of her.

• This is another direct daughter of the long-term matron, Chestnut Beauty 319 that registered 14 natural born progeny for our program. She is a maternal sister to the Chestnut Beauty PF 762 cow selling, and the \$17,500 high seller Chestnut PF The Product 62. Several other maternal sisters have formed the base to many sale highlights over the years.

PE TO CHESTNUT FUSION 61 (20096127) FROM 5/25/23 - 7/20/23

CHESTNUT PF BEAUTY 634
DAM OF LOT 7KR INCREDIBLE 8166
SIRE OF LOT 8

9

CHESTNUT BEAUTY PF 762

AAA 19003234 · TATTOO 762 · DOB 02/09/17 · BW 90

VA First Round

CHESTNUT KNOCK OUT 204

Chestnut Queen Lucy 028



Exar Sudden Impact 1537

CHESTNUT BEAUTY 319

C N Touchstone Beauty 54

Dameron First Class

R&C Keystone Lady 106K-810U

Plainview Sun Dance G39

CN Queen Lucy 2402 7337

Northern Improvement 4480 GF

B L R Blushing Pride 9097

Century Touchstone 131

C W Jestress Beauty 629

CED	BW	WW	YW	CEM	MILK	\$EN			
-1	+3.6	+59	+103	+6	+29	-16			
CW	MARB	RE	FAT	\$M	\$W	\$F	\$G	\$B	\$C
+47	+0.16	+0.48	-0.021	+42	+51	+94	+28	+123	+202

• There is no question about the impact Chestnut Knock Out 204 has made within the cowherd. His sons were always in high demand through the bull sale, however for us it's the daughter's that were retained that will carry his legacy, and etch his name among the greats of Chestnut Angus history. Chestnut Beauty PF 762 is among the last of the Knock Out daughters we will ever sell, take hold of the opportunity to take home one of these power cows!

• Chestnut Beauty PF 762 is a direct daughter of the legendary Chestnut Beauty 319, a cow that wrote the book for a role model cow in production, she was the pinnacle of longevity, working in the cowherd for close to two decades. Not only did she stand the test of time, but maternal siblings to 762 have been well sought after, including a brother, Chestnut PF The Product 62 who was the high selling bull in 2014 at \$17,500.

• 762 has brought 4 calves to the weaning pen to average a 102 WWR, and stuck to her AI with Ellingson Prolific being due 1/30/24.

AI BRED TO ELLINGSON PROLIFIC (20136857) ON 4/22/23
PE TO S&R STABILITY J162 (20335485) FROM 5/25/23 - 8/25/23
SAFE ESTIMATED DUE 1/30/24



CHESTNUT GROWTH FUND 321
MATERNAL BROTHER TO LOT 10

- A direct daughter of Stevenson Turning Point, a sire that is renowned for his ability to sire flash with function. That's exactly what you will find in this member of the "Beauty" tribe, a young cow that is balanced and correct in her outline, easy fleshing and keeping, and has a prime udder in the springtime.
- A maternal brother to Beauty 92 was one of the most sought-after Growth Fund sons to sell in our 2022 Bull Sale, selling to Brinkmeyer Farms.

PE TO VAR STATEMENT 9177 (19599578)
FROM 5/25/23 - 8/25/23

10

CHESTNUT BEAUTY 92

AAA 19578639 · TATTOO 92 · DOB 01/10/19 · BW 60

Plattemere Weigh Up K360
STEVENS ON TURNING POINT



Stevenson Pride I167x

SAC Conversation
CHESTNUT BEAUTY 778

Chestnut Beauty 027

Sitz Upward 307R
Barbara of Plattemere 337
S A V Bismarck 5682
FSHK Pride 180

Silveiras Conversion 8064
Lafins Farrah 0252
Plainview Sun Dance G39
CN Beauty 45 7477

CED	BW	WW	YW	CEM	MILK	\$EN			
+10	+0.1	+55	+101	+5	+24	-11			
CW	MARB	RE	FAT	\$M	\$W	\$F	\$G	\$B	\$C
+42	+0.41	+0.84	+0.005	+57	+52	+94	+44	+138	+236

11

CHESTNUT BEAUTY 935

AAA 19569679 · TATTOO 935 · DOB 02/03/19 · BW 91

VA First Round
CHESTNUT KNOCK OUT 204



Chestnut Queen Lucy 028

V A R Reserve 1111
CHESTNUT BEAUTY 66

CN Beauty 41

Dameron First Class
R&C Keystone Lady 106K-810U
Plainview Sun Dance G39
CN Queen Lucy 2402 7337

B/R New Day 454
Sandpoint Blackbird 8809
Benfield Substance 8506
Chestnut Beauty 8518 223

CED	BW	WW	YW	CEM	MILK	\$EN			
-6	+5.5	+68	+125	+3	+29	-33			
CW	MARB	RE	FAT	\$M	\$W	\$F	\$G	\$B	\$C
+59	+0.11	+0.56	-0.044	+48	+49	+104	+29	+133	+221



CHESTNUT BEAUTY 66
DAM OF LOT 11



CHESTNUT GROWTH FUND 902
MATERNAL BROTHER TO LOT 11

- A young daughter of Chestnut Knock Out 204 that is maturing into a stout featured, shapely built producer that hits us as the kind to raise bulls with extra substance and dimension, yet females with an eloquent look and build of longevity.
- 935 finds maternal support through a V A R Reserve 1111 daughter, Chestnut Beauty 66 that sold to Deb & Lyle Nunnenkamp in the 2022 Female Sale. She traces to the maternal excellence of the pathfinders, B/R New Day 454 and Benfield Substance 8506.

PE TO CHESTNUT FUSION 61 (20096127)
FROM 5/25/23 - 8/20/23





12

CN ANNIE OAKLEY DJ 8123

AAA 19290426 · TATTOO 8123 · DOB 03/09/18 · BW 82

Connealy Earnan 076E

BROOKING ASSET 5065

E A Rose 918



Woodhill Mel X219-A191

CN DJ ANNIE OAKLEY 565

Gimbels Annie Oakley 329

Connealy Consensus

Brazila of Conanga 3991 839A

S A V Final Answer 0035

E A Rose 738

MCATL Hoover Dam 781-326

Woodhill SW Maiden S53-X219

S A V Bismarck 5682

HA Annie Oakley T29

CED	BW	WW	YW	CEM	MILK	SEN			
+5	+1.6	+64	+109	+12	+25	-10			
CW	MARB	RE	FAT	\$M	\$W	\$F	\$G	\$B	\$C
+44	+0.44	+0.49	+0.018	+65	+61	+93	+40	+132	+236

• CN Annie Oakley DJ 8123 has several qualifications to promote her to sale highlight status, because her quality goes way beyond what you will find in the flesh. She may be one of the smoothest built, yet densest bodied and heaviest muscled cows to sell on September 30th.

• Her 2021 born E G Eyes Onyou daughter was a standout among her contemporaries, and was a promoted highlight of the "Choice of the Bred Heifers" that was offered in this same sale last year. She also had a 2022 born Wilks Regiment 9035 son in the Bull Sale this past spring.

• The dam of 8123, CN DJ Annie Oakley 565 was a high selling female in our 2020 Female Sale to a good friend of the program, Justin Blumer, he had insiders' knowledge on the ones that work!

AI BRED TO CHESTNUT FUSION 61 (20096127) ON 4/23/23
 PE TO S&R STABILITY J162 (20335485) FROM 5/25/23 - 8/25/23
 SAFE ESTIMATED DUE 1/31/24



CHESTNUT ANNIE OAKLEY 116
 DAUGHTER OF LOT 12



CN DJ ANNIE OAKLEY 565
 DAM OF LOT 12



PATHFINDER™ DAM

13

CHESTNUT SANDY 851

AAA 19290384 · TATTOO 851 · DOB 02/05/18 · BW 79

Barstow Cash

BARSTOW BANKROLL B73

Barstow Miss Dianna Z25



Chestnut Knock Out 204

CHESTNUT SANDY 647

Chestnut Sandy 175

Sitz Dash 10277

Barstow Queen W16

CAR Efficient 534

Barstow Miss Dianna X128

VA First Round

Chestnut Queen Lucy 028

Willow Creek Reflect 932 7113

CN Sandy 9469

CED	BW	WW	YW	CEM	MILK	SEN			
+1	+3.1	+67	+131	+3	+30	-30			
CW	MARB	RE	FAT	\$M	\$W	\$F	\$G	\$B	\$C
+62	+0.06	+0.54	+0.005	+52	+56	+116	+22	+138	+231

• Chestnut Sandy 851 is the big scaled, extra impressive Barstow Bankroll B73 daughter that leaves nothing to the imagination in terms of foot size, flexibility, and body shape. She is an impressive female in person, and has an undeniable presence that makes you stop and stare.

• The Sandy cow family is one of the Angus breeds most recognizable and successful. In both the production and show cattle sectors of the Angus business you will find 'Sandy' branded females that are producing at the highest level, for us, 851 works at either end of the spectrum.

• She was raised by Chestnut Sandy 647, the Chestnut Knock Out 204 daughter that VZR Angus of Sioux Center purchased in the 2022 Female Sale. Maternal siblings to 851 include Chestnut True North 841 that was purchased by Plum Creek Angus in the 2022 Bull Sale and Chestnut Sandy 17 one of the leading ladies from the 2021 cohort of replacement females.

• 851 records an average weaning weight ratio of 108 on 3 head and a 109 on 2 at yearling time. We truly believe her best production days are ahead of her, and that the opportunities for return on investment are large, as her quality goes beyond the chances she has had to this point.

AI BRED TO ELLINGSON PROLIFIC (20136857) ON 4/23/23

PE TO S&R STABILITY J162 (20335485) FROM 5/25/23 - 8/25/23

SAFE ESTIMATED DUE 1/31/24

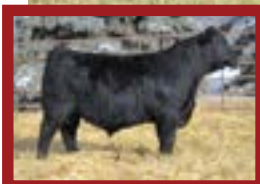
CHESTNUT SANDY 647
DAM OF LOT 13CHESTNUT SANDY 17
MATERNAL SISTER TO LOT 13CHESTNUT TRUE NORTH 841
MATERNAL BROTHER TO LOT 13

• CN Blackbird Susan 722 is one to lay your eyes on in the flesh! She is so burly and massive in her center body, yet remains square and wide in her pin set and flawless on the move. You don't make cattle every day that have the combination of presence and power that you will find with 722.

• This own daughter of Basin Payweight 1682 sets the bar high when it comes to the standard of maternal excellence that we find with the daughters of this Pathfinder™ sire. The udder quality, foot shape, muscle and density of 722 are a rare commodity to find in unison, and we project her to continue to pass down this phenotype to her progeny. She brought a sale bull to the weaning pen for the 2020 Bull Sale that was a high performer and impressive convertor.

• She is a maternal sister to Lot 15, Chestnut Blackbird Susan 896. As a pair these sisters prove the consistency of the cow family embedded in their lineage. Their MOGCK Sure Shot dam has been a pivotal cow family builder for the program, proving her ability as a female maker with three heifer calves being born from 2017-2019 that made the replacement pen and are kicking goals in production.

CHESTNUT SURE SHOT 39
SON OF LOT 14



CN BLACKBIRD SUSAN 722



AI BRED TO CHESTNUT FUSION 61 (20096127) ON 5/5/23
PE TO CHESTNUT FUSION 61 (20096127) FROM 5/25/23 - 8/20/23
SAFE ESTIMATED DUE 2/9/24

14

CN BLACKBIRD SUSAN 722

AAA 19037915 · TATTOO 722 · DOB 01/17/17 · BW 66

Basin Payweight 006S

BASIN PAYWEIGHT 1682



21AR O Lass 7017

MOGCK Sure Shot

CN BLACKBIRD SUSAN 522

CN Blackbird Susan 358

Vermilion Payweight J847

Basin Lucy 3829

HARB Pendleton 765 J H

21AR O Lass F24A

Mytty In Focus

Mogck Black Lass 2065

Chestnut Power One 19

CN Blackbird Susan 107

CED	BW	WW	YW	CEM	MILK	\$EN			
+6	+1.1	+62	+105	+8	+27	+1			
CW	MARB	RE	FAT	\$M	\$W	\$F	\$G	\$B	\$C
+43	+0.53	+0.64	+0.038	+82	+67	+89	+45	+134	+256

15

CHESTNUT BLACKBIRD SUSAN 896

AAA 19290408 · TATTOO 896 · DOB 02/18/18 · BW 73

VA First Round

CHESTNUT KNOCK OUT 204



Chestnut Queen Lucy 028

MOGCK Sure Shot

CN BLACKBIRD SUSAN 522

CN Blackbird Susan 358

Dameron First Class

R&C Keystone Lady 106K-810U

Plainview Sun Dance G39

CN Queen Lucy 2402 7337

Mytty In Focus

Mogck Black Lass 2065

Chestnut Power One 19

CN Blackbird Susan 107

CED	BW	WW	YW	CEM	MILK	\$EN			
+1	+3.3	+69	+125	+5	+26	-26			
CW	MARB	RE	FAT	\$M	\$W	\$F	\$G	\$B	\$C
+56	+0.32	+0.76	+0.001	+52	+56	+106	+38	+144	+239

PATHFINDER™ DAM

CHESTNUT BLACKBIRD SUSAN 896



• The younger model of Lot 14, that is sired by the program legend, Chestnut Knock Out 204. Chestnut Blackbird Susan 896 has notched herself the Pathfinder™ badge of excellence, that just reiterates the immense breeding piece that we already knew her as.

• The production record of 896 ranks her among the finest in the offering, she keeps a 108 WWR on 3 head and a 109 YWR on 3 head. She too has recorded at 112 ratio average for 3 head on Ribeye Area.

• Her 2022 born bull calf came to the weaning pen with 833 pounds of payweight. The son of Wilks Regiment was thick ended and extra stout.

• The EPD tabulations point in the direction of a performance leader, with a top 20% WW, top 15% YW, top 15% RADG, top 10% YH, top 20% MW, top 10% MH, top 15% CW, top 20% RE and top 10% \$F.

AI BRED TO CHESTNUT FUSION 61 (20096127)
ON 4/9/23
PE TO S&R STABILITY J162 (20335485)
FROM 5/25/23 - 8/25/23
SAFE ESTIMATED DUE 1/17/24



CHESTNUT KNOCK OUT 204
SIRE OF LOT 15

CN BLACKBIRD SUSAN 720



PATHFINDER™ DAM

16

CN BLACKBIRD SUSAN 720

AAA 19090685 · TATTOO 720 · DOB 01/14/17 · BW 70

Barstow Cash

BARSTOW BANKROLL B73

Barstow Miss Dianna Z25



Vision Unanimous 1418

CN BLACKBIRD SUSAN 553

CN Blackbird Susan 09

Sitz Dash 10277

Barstow Queen W16

CAR Efficient 534

Barstow Miss Dianna X128

Visiontopline Royal Stockman

Vision Edella 665

Plainview Sun Dance G39

CN Blackbird Susan 533 7297

CED	BW	WW	YW	CEM	MILK	SEN
+4	+1.7	+56	+105	+8	+31	-19

CW	MARB	RE	FAT	SM	SW	SF	SG	SB	SC
12	+0.26	+0.39	+0.025	+50	+55	+97	+29	+126	+213

• CN Blackbird Susan 720 completes the trio of Blackbird Susan tribe members that sell, and what a group they are, as all three-offer immense phenotype in the flesh and breeding capability from a genetic standpoint.

• One of the eight Pathfinder™ stamped females that will sell in Pipestone on September 30th. 720 as a producer hit it out of the park early with her son, Chestnut Strut that sold to Krebs Ranch for \$22,000. He has seen heavy use in our own herd and may be recognized by followers of our program as several sons have made the Bull Sale the past two years.

• Another standout son was her top 1% WW and YW ranking, G A R Ashland son, Chestnut Ashland 69 that was a sale feature of the 2020 Chestnut Bull Sale.

• The proof is in the pudding with this high performing Barstow Bankroll B73 daughter, when it comes to her progenies rankings among their contemporaries there is no question that 720 is a standout! She records on 4 a 98 BWR, 109 WWR on 4, 116 YWR on 3, 107 IMFR on 3 & 111 RIBR on 3.

AI BRED TO ELLINGSON PROLIFIC (20136857) ON 4/23/23
 PE TO S&R STABILITY J162 (20335485) FROM 5/25/23 - 8/25/23
 SAFE ESTIMATE DUE 1/31/24

CHESTNUT STRUT
SON OF LOT 16CN BLACKBIRD SUSAN 55
DAM OF LOT 16

CHESTNUT BLACKCAP 825

CHESTNUT BLACKCAP 973
MATERNAL SISTER TO LOT 17CHESTNUT BLACKCAP 665
DAM OF LOT 17

17

CHESTNUT BLACKCAP 825

AAA 19290375 · TATTOO 825 · DOB 01/16/18 · BW 70

Barstow Cash
BARSTOW BANKROLL B73

Barstow Miss Dianna Z25

Chestnut PF Up Start 760
CHESTNUT BLACKCAP 665

Chestnut Blackcap 481

Sitz Dash 10277
Barstow Queen W16
CAR Efficient 534
Barstow Miss Dianna X128Sitz Upward 307R
Chestnut Beauty 319
Mogck Bullseye
Mohnen Blackcap J530

CED	BW	WW	YW	CEM	MILK	\$EN			
+8	+0.4	+48	+95	+8	+25	-3			
CW	MARB	RE	FAT	\$M	\$W	\$F	\$G	\$B	\$C
+41	+0.53	+0.57	+0.014	+72	+47	+93	+46	+139	+252

• Strength of pedigree will be quickly noticed here; Blackcap 825 has proven her ability to pass along her powerful build to her bull progeny in consistent fashion. Her son by Alliance 210 was a multifunction, calving ease bull that sold this past February to Cody Fritz.

• The dam of Chestnut Blackcap 825 has a proven track record of outproducing herself, including a stunning maternal sister to 825 by Bruin Torque 5261 that sold for \$5,750 as an open heifer calf to Black Pine Angus. A maternal brother by E G Eyes Onyou sold for \$6,000 to Jeremy Ploetz in the 2022 Chestnut Bull Sale.

• An EPD profile that reads for added calving ease and maternal traits.

AI BRED TO ELLINGSON PROLIFIC (20136857) ON 4/23/23
PE TP S&R STABILITY J162 (20335485) FROM 5/25/23 - 8/25/23
SAFE ESTIMATED DUE 1/31/24

18

CHESTNUT BLACKBIRD LEIA 932

AAA 19578743 · TATTOO 932 · DOB 02/02/19 · BW 82

HA Prime Cut 4493
HA VALUE ADDED 7578

HA Rito Lady 3839

Chestnut PF Fire Ball 234
CN BLACKBIRD LEIA 688

CN Blackbird Leia 9359

Vermilion Sirloin
HA Miss Blackcap 9127
KG Solution 0018
HA Rito Lady 0622VA First Round
CN Queen Mab 07
S A V Bismarck 5682
CN Blackbird Leia 447

CED	BW	WW	YW	CEM	MILK	\$EN			
+2	+4	+86	+141	+8	+22	-34			
CW	MARB	RE	FAT	\$M	\$W	\$F	\$G	\$B	\$C
+63	+0.5	+0.86	-0.028	+56	+67	+114	+51	+165	+270

CN BLACKBIRD LEIA 688
DAM OF LOT 18

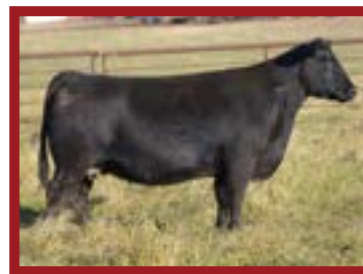
• A young daughter of HA Value Added 7578 that comes with a genomic package that forecasts her to add potent pounds and value to her progeny. She impressively ranks among the top 2% for WW, top 4% for YW and top 4% for \$F.

• She is no genetic anomaly either, as she comes with the maternal support of a standout from last year's female sale in CN Blackbird Leia 688 that sold to Dallas Hoffman. A maternal brother to 932 was the impressive Lot 20 Chestnut United son.

• Apart from her 3 traits ranking in the top 5% of the breed, you will find she sits top 10% RADG, top 20% YH, top 10% MW, top 10% MH, top 20% DOC, top 10% CW, top 10% RE, top 10% Fat, top 10% \$AxH, top 10% \$AxJ, top 20% \$W, top 15% \$B and top 15% \$C.

PE TO KR QUALITY 0163 (19819918) FROM 5/25/23 - 8/25/23

CHESTNUT WJ LUCY 790

CHESTNUT STUNNER BB 159
SON OF LOT 19CHESTNUT WJ LUCY 469
DAM OF LOT 19

19

CHESTNUT WJ LUCY 790

AAA 19003592 · TATTOO 790 · DOB 02/22/17 · BW 75

VA First Round

CHESTNUT KNOCK OUT 204

Chestnut Queen Lucy 028



CN Over the Limit 442

CHESTNUT WJ LUCY 469

CN WJ Lucy 106

Dameron First Class

R&C Keystone Lady 106K-810U

Plainview Sun Dance G39

CN Queen Lucy 2402 7337

JAF Over the Limit 14U

WK Primrose 6031

TR Mr Final Answer 9725W Et

CLF Lucy 92W

CED	BW	WW	YW	CEM	MILK	SEN			
-2	+3.2	+60	+116	+5	+28	-34			
CW	MARB	RE	FAT	\$M	\$W	\$F	\$G	\$B	\$C
+51	+0.33	+0.29	-0.01	+28	+46	+107	+34	+141	+211

• Chestnut WJ Lucy 790 is another of those Chestnut Knock Out 204 daughters that will be tough to load up post sale. She has been a long term, text book producer that every year brings one to the weaning pen of added value. She has the extra dimension, width and muscle that makes her an obvious choice when picking out potential bull makers.

• In her first year she raised a featured bull in the 2020 Bull Sale. Chestnut Stunner BB 159 was a bold sprung, dense made Musgrave Stunner 316 son that sold to the Stanek Family.

• Maternally you will find the gorgeous Chestnut WJ Lucy 469 female that sold to longtime supporters of the program, the Moeller Brothers of Pipestone.

AI BRED TO CHESTNUT FUSION 61 (20096127) ON 5/13/23

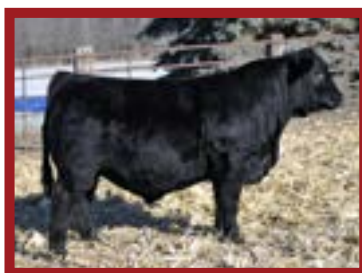
PE TO CHESTNUT FUSION 61 (20096127) FROM 5/25/23 - 8/20/23

SAFE ESTIMATED DUE 2/17/24



CHESTNUT PRIMROSE 830

PATHFINDER™ DAM

CHESTNUT DIAMOND JACK 431
SON OF LOT 20CHESTNUT PRIMROSE 35
DAM OF LOT 20

20

CHESTNUT PRIMROSE 830

AAA 19290376 · TATTOO 830 · DOB 01/21/18 · BW 84

KM Broken Bow 002

STYLES BROKEN BOW V24

Styles Jasmine S44



WK Vegas 0447

CHESTNUT PRIMROSE 352

Chestnut Primrose 048

Summitcrest Complete 1P55

Summitcrest Princess OP12

S A V Harvester 0338

Plainview Jasmine C48

WK Vegas

WK Miss 6191

Plainview Sun Dance G39

WK Primrose 6229

CED	BW	WW	YW	CEM	MILK	SEN			
+3	+2	+55	+102	+0	+27	-20			
CW	MARB	RE	FAT	SM	SW	SF	SG	SB	SC
+36	+0.61	+0.58	-0.004	+44	+49	+91	+51	+142	+228

• Chestnut Primrose 830 is an absolute powerhouse female! She is one of the heaviest structured, rugged built females that you will find in the sale paddocks come the end of September. A certified bull producer, with a phenotype to foreshadow the claim and a track record to prove it.

• This Pathfinder™ dam is the kind that we have worked generations to create, a female with all the extra shape, body, muscle and power, yet maintains a very maternal look and does a great job raising the next generation.

• Chestnut Diamond Jack 431 was her very well received son out of the 2022 Bull Sale that sold to Matt Brinkmeyer.

• This Styles Broken Bow V24 daughter sports a very balanced EPD profile but stands out when you start looking into her performance record. She personally weaned off her WK Vegas 0447 dam to ratio a 107, and maintains a 106 WWR on 3 head. She scores a 108 IMFR on 2 head also.

AI BRED TO CONNEALY CRAFTSMAN (20132505) ON 4/22/23

S&R STABILITY J162 (20335485) FROM 5/25/23 - 8/25/23

SAFE ESTIMATED DUE 1/30/24

- Chestnut Miss Wix DJ 8131 is a direct daughter of the maternal legend for our program, Kramers R Stockman 4304 TL. From a build perspective she is a prime example of how we like our females to mature, square hipped, attractive headed, perfect uddered and rugged structured. She is always in ideal flesh and has maintained a 371-day calving interval in production.
- Her son 2022 born son, Chestnut Striker 732 weaned off at 840 pounds and sold to Tate & Calli Williams of South Dakota this past Spring.
- She comes carrying an exciting mating to Ellingson Prolific, due for February.

AI BRED TO ELLINGSON PROLIFIC (20136857)
ON 5/15/23
PE TO KR INCREDIBLE 8166 (19241032)
FROM 5/25/23 - 8/20/23
SAFE DUE 2/19/24



CHESTNUT MISS WIX DJ 8131

CHESTNUT STRIKER 732
SON OF LOT 20

21

CHESTNUT MISS WIX DJ 8131

AAA 19290431 · TATTOO 8131 · DOB 03/20/18 · BW 84

Visiontopline Royal Stockman
KRAMERS R STOCKMAN 4304 TL



W C C Primrose S168

Soo Line Motive 1038

BUSSMUS MISS WIX 1448

ICC Miss Wix 7351

Gambles Royal Flush
LaGrand Pride 7140
S A V 8180 Traveler 004
W C C Primrose J237

Soo Line Motive 9016
JL Lady 06 112
Riverbend Tru-Test 4053
ICC Miss Wix 2109

CED	BW	WW	YW	CEM	MILK	\$EN			
-2	+3.6	+40	+77	+8	+14	-8			
CW	MARB	RE	FAT	\$M	\$W	\$F	\$G	\$B	\$C
+21	+0.43	+0.39	-0.033	+19	+18	+74	+42	+116	+169

22

CN HEATHER BR 782

AAA 19003231 · TATTOO 782 · DOB 02/18/17 · BW 88

Gambles Royal Flush
VISIONTOPLINE ROYAL STOCKMAN



LaGrand Pride 7140

Chestnut Onyx 167

CN HEATHER 059

C N Heather 888

B C Marathon 7022
Champion Hill Lady 703
Connealy Lead On
T C Pride 8002

Chestnut Freedom 115
CW Miss Elgaline 430
H S A F Bando 1961
CN Heather 645

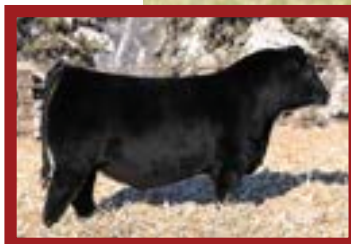
CED	BW	WW	YW	CEM	MILK	\$EN			
+1	+2.7	+63	+104	+3	+21	-16			
CW	MARB	RE	FAT	\$M	\$W	\$F	\$G	\$B	\$C
+50	+0.49	+0.44	+0.01	+49	+53	+85	+42	+127	+214

- Visiontopline Royal Stockman was initially used as a growth and power bull, but as we used him we began to find out that he offered more than just payweight, but some added maternal quality and a set of phenomenal daughters. He would also be the sire of Chestnut Royal Stockman 326 that several of the females in this sale are sired by.
- CN Heather BR 782 backs up her stout phenotype with a data set that suits, ranking top 25% WW, top 15% YW, top 20% RADG, top 4% YH, top 10% MW, top 3% MH, & top 25% \$F.
- She comes carrying a February due pregnancy sired by a high selling United son from our 2023 National Western Stock Show line up, Chestnut Extensive 12.

AI BRED TO CN EXTENSIVE 12 (20446623)
ON 5/12/23
PE TO KR INCREDIBLE 8166 (19241032)
FROM 5/25/23 - 8/20/23
SAFE ESTIMATED DUE 2/16/24



CN HEATHER BR 782

CN EXTENSIVE 12
SERVICE SIRE TO LOT 22



23

CHESTNUT QUEEDY WJ 829

AAA 19220184 · TATTOO 829 · DOB 01/19/18 · BW 67

Visiontopline Royal Stockman

CHESTNUT ROYAL STOCKMAN 326

CN Queen Mab 271



Chestnut Knock Out 204

CHESTNUT QUEEDY WJ 633

Conley Queedy 535

Gambles Royal Flush

LaGrand Pride 7140

KF Danny 387

Cnqueen Mab 7157

VA First Round

Chestnut Queen Lucy 028

Conley PR Fullback 0604

WL 788 Miss Queedy 595-1135

CED	BW	WW	YW	CEM	MILK	SEN			
+5	+2.4	+67	+120	+6	+24	-32			
CW	MARB	RE	FAT	\$M	\$W	\$F	\$G	\$B	\$C
+47	+0.08	+0.69	-0.02	+39	+54	+93	+27	+120	+195

• This Chestnut Royal Stockman 326 daughter has been a standout female of the 2018 born heifer crop from early on. We ended up breaking her and Dawson showed her, she was the Reserve Early Winter Calf Division winner at the NWWS and then went on to be slapped the Reserve Champion Supreme Female at the 2019 Minnesota State Fair.

• Her dam Chestnut Queedy WJ 633 was an absolute force in production! She was a sale highlight in last year's Female Sale selling for \$7,100 to Moeller Brothers. She has yielded both dams of distinction and sale highlight bulls. Her 2020 born bull was the Chestnut Striker 750 bull that was the \$9,000 selection of Faxon Creek Cattle. In 2019 she raised the \$20,000 Chestnut Queedy 975.

• She is much more than just a show heifer though, in production she already records a 103 WWR on 3, and in her first year raised a KR Synergy son that was tag 39 in the 2021 Bull Sale.

• One of the most exciting opportunities to take hold of in this year's offering. There is several production goals that this young matron aligns with, we think the world is her oyster.

KR INCREDIBLE 8166 (19241032) FROM 5/25/23 - 8/20/23

CHESTNUT SYNERGY 560
SON OF LOT 23CHESTNUT QUEEDY WJ 633
DAM OF LOT 23CHESTNUT QUEEDY WJ 975
MATERNAL SISTER TO LOT 23

CHESTNUT QUEEN 8103



CHESTNUT QUEEN 566
DAM OF LOT 24



CHESTNUT INCREDIBLE 580
MATERNAL BROTHER TO LOT 24

24

CHESTNUT QUEEN 8103

AAA 19290412 · TATTOO 8103 · DOB 03/03/18 · BW 87

Connealy Earnan 076E
Brooking Asset 5065
E A Rose 918
AGI VA First Round
CHESTNUT QUEEN 566
CN Queen 277

Connealy Consensus
Brazila of Conanga 3991 839A
S A V Final Answer 0035
E A Rose 738
Dameron First Class
R&C Keystone Lady 106K-810U
KF Danny 387
C N Queen 8178

CED	BW	WW	YW	CEM	MILK	\$EN			
+0	+3.8	+54	+90	+11	+25	-9			
CW	MARB	RE	FAT	\$M	\$W	\$F	\$G	\$B	\$C
+28	+0.35	+0.42	+0.02	+54	+44	+75	+34	+109	+195

• Supported by one of the programs most powerful cow families, the Queen's are appropriately named, and the branch of the family tree that 8103 stems from would be one of the most prized. Her dam, Chestnut Queen 566 was an absolute feature of the 2020 Female Sale, and would be one of the best First Round daughters we have ever raised.

• A maternal brother to 8103 was one of the first KR Incredible sons to go under the hammer and sold to the plains of South Dakota to Leann Hlavka.
• Her sire, Brooking Asset 5065 is a full brother to the \$125,000 Brooking Banknote 4040 that we purchased for herd sire duties. These females are stout and rugged, with a massive body cavity and shape. This is our kind of female!

PE TO S&R STABILITY J162 (20335485) FROM 5/25/23 - 8/25/23
SAFE ESTIMATED DUE 3/27/24

25

CHESTNUT QUEEN 877

AAA 19290396 · TATTOO 877 · DOB 02/11/18 · BW 76

EATHINGTON SUB-ZERO
K&J SUB ZERO 276
K&J Georgina 234
AGI Chestnut PF Fire Ball 234
CHESTNUT QUEEN 617
Chestnut Queen 329

Connealy Capitalist 028
KP Miss Proven Queen 21
EXAR Upshot 0562B
Champion Hill Georgina 7067
VA First Round
CN Queen Mab 07
V D A R Really Windy 4097
CN Queen 653 9279

CED	BW	WW	YW	CEM	MILK	\$EN			
+5	+2.3	+59	+98	+7	+21	-7			
CW	MARB	RE	FAT	\$M	\$W	\$F	\$G	\$B	\$C
+37	+0.1	+0.51	+0.015	+50	+51	+84	+23	+106	+187

• Chestnut Queen 877 is a K&J Sub Zero 276 daughter who continues to mature into an impressive matron, she is bold bodied, deep sided and soft in her fleshing ability. Her production record is trending in the same direction, with a Growth Fund son that sold in the 2023 Bull Sale.
• Chestnut Growth Fund 862 was a leading performance bull in the sale, with top 5% or better weaning and yearling weight EPD's. He sold to the Heartland Colony for \$6,500.
• The Chestnut Fusion 61 progeny are getting us very excited about the 2024 Bull Sale season. They are big, heavy, extra stout and maturing better than we could have expected, her AI mating to Fusion is definitely a selling point for this lot.

AI BRED TO CHESTNUT FUSION 61 (20096127) ON 4/23/23
PE TO KR INCREDIBLE 8166 (19241032) FROM 5/25/23 - 8/20/23
SAFE ESTIMATED DUE 1/31/24

CHESTNUT QUEEN 877



CHESTNUT GROWTH FUND 862
SON OF LOT 25

CHESTNUT QUEEN EVA 861



- Chestnut Queen Eva 861 is a heavy structured, massive bodied, brood cow supreme. She is one of the densest and most powerful females that you will see on your tour of the sale cows. This is a trend she has stuck with from a young age, as a heifer calf she recorded 106 and 109 weaning and yearling weight ratios, respectively.
- 861 was a member of the 2019 Champion Pen of Three Angus Heifers at the National Western Stock Show.
- She has maintained an impressive 360-day calving interval to this point and was exposed with Chestnut Fusion 61 for her next calf. Her daughter CN Queen Eva 179 is one of the young cows we look to take her place in the cowherd going forward.

PE TO CHESTNUT FUSION 61 (20096127)
FROM 5/25/23 - 8/20/23

26

CHESTNUT QUEEN EVA 861

AAA 19220185 · TATTOO 861 · DOB 02/08/18 · BW 83

Visiontopline Royal Stockman
CHESTNUT ROYAL STOCKMAN 326



CN Queen Mab 271

WK Hammer 1011

CN QUEEN EVA 6100

CN Queen Eva 376

Gambles Royal Flush
LaGrand Pride 7140
KF Danny 387
CnQueen Mab 7157

Pine Ridge Hammer S322
WK Miss 6191
Bussmus PayDay 2610
Chestnut Queen Eva 026

CED	BW	WW	YW	CEM	MILK	SEN			
+4	+5	+65	+123	+1	+17	-35			
CW	MARB	RE	FAT	\$M	\$W	\$F	\$G	\$B	\$C
+46	+0.36	+0.13	+0.022	+24	+34	+95	+30	+125	+186



CN QUEEN EVA 179
MATERNAL SISTER TO LOT 26

27

CHESTNUT QUEEN EVA 1102

AAA 20136482 · TATTOO 1102 · DOB 04/12/21 · BW 83

44 Bragging Rights 4372
H A F BRAGGING RIGHTS 1725



H A F Sadie1261

Chestnut Royal Stockman 326
CHESTNUT QUEEN EVA 861

CN Queen Eva 6100

V A R Discovery 2240
44 Ruby 2357
Pine Ridge Hammer S322
WK Sadie 4302

Visiontopline Royal Stockman
CN Queen Mab 271
WK Hammer 1011
CN Queen Eva 376

CED	BW	WW	YW	CEM	MILK	SEN			
+1	+3.6	+64	+126	+2	+22	-24			
CW	MARB	RE	FAT	\$M	\$W	\$F	\$G	\$B	\$C
+46	+0.55	+0.21	+0.024	+45	+41	+92	+41	+133	+218

- Chestnut Queen Eva 1102 is a direct daughter of Lot 26, Chestnut Queen Eva 861, this pair offer the opportunity to tie deep into a consistent cow family that combines a power phenotype and strong maternal instinct.
- She recorded a 110 YWR as a heifer, and we think has a bright future to generate the same payweight and profitability as a cow in production. A young female with a lifetime to turn profit.

PE TO MOGCK BARRICADE 1911 (20126978) FROM 5/25/23 - 8/25/23



H A F BRAGGING RIGHTS 1725
SIRE OF LOT 27

CHESTNUT QUEEN HERSELF 840



CHESTNUT QUEEN HERSELF 437
MATERNAL SISTER TO LOT 28

28

CHESTNUT QUEEN HERSELF 840

AAA 19290379 · TATTOO 840 · DOB 02/01/18 · BW 78

Visiontopline Royal Stockman
CHESTNUT ROYAL STOCKMAN 326
CN Queen Mab 271



Connealy Final Product
CHESTNUT QUEEN HERSELF 24
CN Queen Herself 042

Gambles Royal Flush
LaGrand Pride 7140
KF Danny 387
Cnqueen Mab 7157
Connealy Product 568
Ebonista of Conanga 471
Chestnut Onyx 167
Chestnut Queen Herself 2362

CED	BW	WW	YW	CEM	MILK	\$EN			
+6	+0.7	+58	+98	+10	+24	-13			
CW	MARB	RE	FAT	\$M	\$W	\$F	\$G	\$B	\$C
+28	+0.53	+0.12	+0.031	+61	+55	+66	+38	+104	+196

- Chestnut Queen Herself 840 has always been one of the bigger framed, heavy structured and longer sided females in her cohort. As a heifer calf she ratioed a 104 WWR and 106 YWR.
- The cow family she stems from is littered with high performing, power cows including her maternal sister Queen Herself 437, that raised the Chestnut Bronc 108 bull that sold to Johnson Angus.
- She shares her maternal granddam with lot 29, there you will find the CN Queen Herself 042 matron that would be one of the most potent maternal sources in Chestnut Angus history.

AI BRED TO CONNEALY CRAFTSMAN (20132505) ON 4/12/23
PE TO KR INCREDIBLE 8166 (19241032) FROM 5/25/23 - 8/20/23
SAFE ESTIMATED DUE 1/17/24

29

CHESTNUT QUEEN HERSELF 9106

AAA 19569665 · TATTOO 9106 · DOB 03/26/19 · BW 89

44 Bragging Rights 4372
H A F BRAGGING RIGHTS 1725
H A F Sadie1261



VA First Round
CHESTNUT QUEEN HERSELF 427
CN Queen Herself 042

V A R Discovery 2240
44 Ruby 2357
Pine Ridge Hammer S322
WK Sadie 4302
Dameron First Class
R&C Keystone Lady 106K-810U
Chestnut Onyx 167
Chestnut Queen Herself 2362

CED	BW	WW	YW	CEM	MILK	\$EN			
+0	+3	+42	+77	+4	+26	+1			
CW	MARB	RE	FAT	\$M	\$W	\$F	\$G	\$B	\$C
+15	+0.56	+0.27	-0.011	+62	+37	+54	+45	+99	+190



CHESTNUT WAGON BOSS 21
SON OF LOT 29

- Another of those young H A F Bragging Rights 1725 daughters that hasn't had the chance she deserves but we think would be a valuable addition to either a cow-calf or seedstock producer.
- She brought the Chestnut Wagon Boss 21 herd bull to the weaning pen as a first calf heifer. He recorded a 940-pound adj. weaning weight and took the trip to the National Western Stock Show. He went on to sell to Deal Farms of Danver, Illinois in the 2022 Bull Sale.
- She goes back to an original VA First Round daughter that was a long-term producer for our program and passed along her powerful build onto this newer generation.

PE TO CHESTNUT FUSION 61 (20096127) FROM 5/25/23 - 8/20/23

NEW DATE

MARK YOUR **CALENDARS**

ANNUAL PRODUCTION SALE

SUNDAY, FEBRUARY 25 • 2 PM



CN QUEEN LUCY 745



BROOKING BANK NOTE 4040
SIRE OF LOT 30



CHESTNUT UNITED
SERVICE SIRE TO LOT 30

30

CN QUEEN LUCY 745

AAA 19035592 · TATTOO 745 · DOB 02/04/17 · BW 78

Connealy Earnan 076E
BROOKING BANK NOTE 4040
E A Rose 918



KF Danny 387
CN QUEEN LUCY 280

CN Queen Lucy 2402 7337

Connealy Consensus
Brazila of Conanga 3991 839A
S A V Final Answer 0035
E A Rose 738

Connealy Danny Boy
K F Elsa 62
Chestnut Improvement 104
CN Queen Lucy of 320 24702

CED	BW	WW	YW	CEM	MILK	\$EN			
+4	+1.6	+46	+86	+11	+21	+1			
CW	MARB	RE	FAT	\$M	\$W	\$F	\$G	\$B	\$C
+25	+0.29	+0.5	-0.002	+54	+40	+78	+34	+112	+199

• CN Queen Lucy 745 is the kind of female that keeps cattle producers in the business. She is so complete and maternal in her make up, and pedigree wise she combines generations of cow power, sires such Connealy Danny Boy, Northern Improvement and S A V Final Answer 004 can be found further back in her lineage.

• Brooking Banknote 4040 has been used heavily, and his influence has proven to consistently transmit capacity, power and maternal. The Banknote females have proven themselves both here and for other cattlemen around the world.

• Her mating to Chestnut United compliments both her phenotype and genotype, and adds an exciting prospect to this opportunity for her new owner due towards the middle of February.

AI BRED TO CHESTNUT UNITED (19847817) ON 5/10/23
PE TO KR INCREDIBLE 8166 (19241032) FROM 5/25/23 - 8/20/23
SAFE ESTIMATED DUE 2/14/24

31

CHESTNUT QUEEN LUCY 097

AAA 19847801 · TATTOO 097 · DOB 04/10/20 · BW 69

Connealy Earnan 076E
BROOKING ASSET 5065
E A Rose 918



Benfield Substance 8506
CHESTNUT QUEEN LUCY 47
Chestnut Fortune Queen 23

Connealy Consensus
Brazila of Conanga 3991 839A
S A V Final Answer 0035
E A Rose 738

H A Image Maker 0415
Benfield Edella 1105
Connealy Final Product
CN Fortune Queen 014

CED	BW	WW	YW	CEM	MILK	\$EN			
+7	+0.8	+63	+103	+12	+27	+5			
CW	MARB	RE	FAT	\$M	\$W	\$F	\$G	\$B	\$C
+33	+0.43	+0.3	+0.054	+75	+63	+71	+34	+104	+210



CHESTNUT KNOCK OUT 68
MATERNAL BROTHER TO LOT 31

- The cattle business is booming and taking inventory on young females has never looked like such a smart investment. We look forward to some longevity of this bullish market. Chestnut Queen Lucy 097 is 2020 born, direct daughter of our full brother to the \$125,000 Brooking Banknote 4040.
- Her dam, Chestnut Queen Lucy 47 raised a Chestnut Knockout 204 maternal brother to 097 that was a performance leader of the 2018 bull crop.
- Just because this young female doesn't fall into our calving window doesn't mean that she should be penalized.

PE TO CHESTNUT FUSION 61 (20096127) FROM 5/25/23 - 8/20/23



32

CHESTNUT QUEEN LUCY 8129

AAA 19290429 · TATTOO 8129 · DOB 03/19/18 · BW 70

Barstow Cash

CLF CASH 62C

CLF Dateline Betty 84P



Kramers Apollo 317

CHESTNUT QUEEN LUCY 627

Chestnut Queen Lucy 028

Sitz Dash 10277

Barstow Queen W16

CLF Dateline VRD 07L

W H A Betty 909

Koupal Juneau 797

Kramers Evergreen Erica 1204

Plainview Sun Dance G39

CN Queen Lucy 2402 7337

CED	BW	WW	YW	CEM	MILK	\$EN			
+6	+1.1	+43	+85	+5	+28	-5			
CW	MARB	RE	FAT	\$M	\$W	\$F	\$G	\$B	\$C
+35	-0.03	+0.6	-0.001	+55	+41	+86	+19	+105	+191

• Chestnut Queen Lucy 8129 stems from some of the most potent individuals in program history. Her dam is not only a heavy structured, brood cow in her own right, but is also a maternal sister the legendary Chestnut Knock Out 204, one of the most influential herd sires we have ever raised or used.

• 8129 maintains a 110 WWR on her progeny, and herself recorded an impressive combination of above average IMF and REA, ratioing a 105 for both measurements.

AI BRED TO CHESTNUT FUSION 61 (20096127) ON 5/21/23

PE TO CHESTNUT FUSION 61 (20096127) FROM 5/25/23 - 8/20/23

SAFE ESTIMATED DUE 2/25/24



CHESTNUT QUEEN LUCY 627
DAM OF LOT 32



CHESTNUT KNOCK OUT 204
MATERNAL BROTHER TO DAM OF LOT 32



PATHFINDER™ DAM

33

CHESTNUT PEG WJ 8130

AAA 19290430 · TATTOO 8130 · DOB 03/20/18 · BW 87

Visiontopline Royal Stockman

Gambles Royal Flush

VISION UNANIMOUS 1418

LaGrand Pride 7140

Vision Edella 665

Boyd On Target 1083



Vision Edella 337

Chestnut Onyx 167

Chestnut Freedom 115

CHESTNUT PEG 9589 WJ

CW Miss Elgaline 430

LaGrand Peg 6753

LaGrand Sun Dance 4211

TC Peg 7021

CED	BW	WW	YW	CEM	MILK	\$EN			
-4	+4.1	+61	+97	+2	+19	-4			
CW	MARB	RE	FAT	\$M	\$W	\$F	\$G	\$B	\$C
+39	+0.48	+0.41	-0.001	+55	+48	+81	+42	+123	+215

• The Peg cow family has undoubtedly carried our program onto the next level, and one of the shining lights of the cow family is the dam of Chestnut Peg WJ 8130, Chestnut Peg 9589 WJ. 9589 is also the maternal granddam of Lot 34. A maternal sister to 8130 is recognizable as our Supreme Champion Female at the Black Hills Stock Show in 2017, Chestnut Peg WJ 659.

• Chestnut Peg WJ 8130 is an upper echelon breeding piece, a true product of the program, one that aligns the stars that have built Chestnut Angus. From a build standpoint she is all that we ask of our cowherd, powerful in her muscle and shape, long and symmetrical in her outline, built with a running gear of longevity and has great maternal instinct.

• Her production record ranks among the best of her class, and has qualified her as a Pathfinder™ dam with the American Angus Association, a label we are proud to associate with. She has kept to a 363-day calving interval, records a 108 WWR on 2 and a 117 IMFR on 2. • There is no question that we believe in the power of consistent cow families, and that's exactly what you find sell as Lot 33.

**CHESTNUT PEG WJ 659**

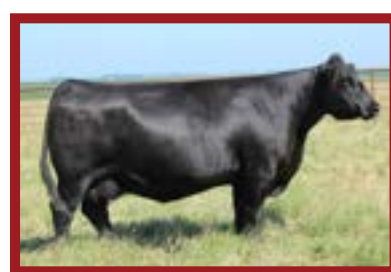
SUPREME HEIFER BHSS - MATERNAL SISTER TO LOT 33

**CHESTNUT PEG WJ 824 ET**

MATERNAL SISTER TO LOT 33

PE TO CHESTNUT FUSION 61 (20096127) FROM 5/25/23 - 8/20/23
SAFE ESTIMATED DUE 3/31/24

CHESTNUT PEG WJ 874

CHESTNUT LONG SHOT 120
SON OF LOT 34CHESTNUT PEG 9589 WJ
MATERNAL GRANDDAM OF LOT 34 & 35

34

CHESTNUT PEG WJ 874

AAA 19221046 · TATTOO 874 · DOB 02/10/18 · BW 76

HA Outside 3008

HA COWBOY UP 5405



HA Blackcap Lady 1602

VA First Round

CHESTNUT WJ PEG 436

Chestnut Peg 9589 WJ

KG Solution 0018

HA Ever Lady 1575

Sitz Upward 307R

HA Blackcap Lady 5515

Dameron First Class

R&C Keystone Lady 106K-810U

Chestnut Onyx 167

LaGrand Peg 6753

CED	BW	WW	YW	CEM	MILK	SEN			
+5	+3.5	+67	+115	+8	+21	-26			
CW	MARB	RE	FAT	\$M	\$W	\$F	\$G	\$B	\$C
+41	+0.19	+0.5	-0.039	+46	+51	+88	+32	+120	+202

• A first-class breeding piece that has backed up her cow family's notoriety with her own individual production record. The first-born son of Chestnut Peg WJ 874, Chestnut Long Shot 120 was a high growth, heavy weighing stud.

• A maternal sister to 874 was one of the two S&R Stability J824 daughters that were on display at last year's female sale as to promote the "Choice of the Bred Heifers" lot. She was mentioned by many as the pick of the pen, and she continues to mature into one of the most impressive females on the farm.

• Chestnut Peg WJ 874 is a HA Cowboy Up 5405 daughter that has an EPD profile that aligns with her phenotypic quality. 874 ranks top 20% WW, top 25% YW, top 15% RADG, top 30% DMI, top 25% YH, top 15% MW, top 15% MH, top 20% Claw, top 10% Angle and top 3% Fat.

AI BRED TO CONNEALY CRAFTSMAN (20132505) ON 4/22/23
PE TO S&R STABILITY J162 (20335485) FROM 5/25/23 - 8/25/23
SAFE ESTIMATED DUE 1/30/24

CHESTNUT WJ PEG 780

CHESTNUT PEG WJ 912
DAUGHTER OF LOT 35CHESTNUT ENLIST 812
GRANDSON OF LOT 35

35

CHESTNUT WJ PEG 780

AAA 19038125 · TATTOO 780 · DOB 02/16/17 · BW 72

Barstow Cash

BARSTOW BANKROLL B73



Barstow Miss Dianna Z25

VA First Round

CHESTNUT WJ PEG 436

Chestnut Peg 9589 WJ

Sitz Dash 10277

Barstow Queen W16

CAR Efficient 534

Barstow Miss Dianna X128

Dameron First Class

R&C Keystone Lady 106K-810U

Chestnut Onyx 167

LaGrand Peg 6753

CED	BW	WW	YW	CEM	MILK	SEN			
+5	+1.9	+62	+110	+11	+24	-18			
CW	MARB	RE	FAT	\$M	\$W	\$F	\$G	\$B	\$C
+48	+0.51	+0.76	-0.01	+62	+55	+103	+49	+152	+259

• The track record of Chestnut WJ Peg 780 is well recorded and proven in her short but successful tenure here in Pipestone. As a first calf heifer, she raised Chestnut Peg WJ 912, a \$10,000 Musgrave Stunner 316 daughter that was purchased by JB Cattle.

• We were thankfully able to retain interest in 912, and this year she realized her production capabilities with a \$32,000 Wilks Regiment 9035 son that was purchased by Vollmer Angus Ranch of Wing, ND. We are very excited to see what Chestnut Enlist 812 is set to do for the Angus Business.

• This Barstow Bankroll B73 daughter has done everything we could have asked of her as a cow in production, her progeny have helped her to record a 98 BWR on 3 head, a 107 WWR on 3, 104 YWR on 2 and 137 IMFR on 1.

AI BRED TO CHESTNUT UNITED (19847817) ON 5/16/23
PE TO KR INCREDIBLE 8166 (19241032) FROM 5/25/23 - 8/20/23
SAFE ESTIMATED DUE 2/20/24

CHESTNUT RUBY WJ 752



PATHFINDER™ DAM

CHESTNUT RUBY WJ 34
DAM OF LOT 36CHESTNUT COWBOY UP WJ 418
MATERNAL BROTHER TO LOT 36

36

CHESTNUT RUBY WJ 752

AAA 19002858 · TATTOO 752 · DOB 02/06/17 · BW 95

VA First Round
CHESTNUT KNOCK OUT 204
Chestnut Queen Lucy 028Connealy Final Product
CHESTNUT RUBY WJ 34
Chestnut Ruby WJ 118Dameron First Class
R&C Keystone Lady 106K-810U
Plainview Sun Dance G39
CN Queen Lucy 2402 7337Connealy Product 568
Ebonista of Conanga 471
WK Redo
C N Ruby 620 838

CED	BW	WW	YW	CEM	MILK	\$EN			
-2	+4.8	+66	+129	+9	+26	-24			
CW	MARB	RE	FAT	\$M	\$W	\$F	\$G	\$B	\$C
+55	+0.12	+0.58	-0.001	+47	+46	+107	+26	+133	+220

• Chestnut Ruby WJ 752 is certified Pathfinder™ because of her textbook production record. She is a direct daughter of Chestnut Knock Out 204 that goes back to a maternal icon in Chestnut Ruby WJ 34. If you share our opinion that solid investments in the cattle industry require a trustworthy cow family in support, then you can rest assured that's exactly what you will find here.

• Her Stevenson Turning Point WJ 79 sold to Shane Fey in the 2020 bull sale, and we feel her void will be filled by two beautiful daughters that have been retained in herd.

• Her 2020 born heifer calf was a member of our Reserve Champion Pen of Three Heifers at the Inaugural Cattleman's Congress in Oklahoma City.

• Her real-world data is what we regard as the most impressive segment of her resume, she has kept to a 375-day calving interval, with a 94 BWR on 4, a 109 WWR on 4, a 107 YWR on 4, a 101 IMFR on 4 and a 102 REAR on 4. It's hard to find a hole in this female's story.

AI BRED TO ELLINGSON PROLIFIC (20136857) ON 4/23/23
PE TO KR INCREDIBLE 8166 (19241032) FROM 5/25/23 - 8/20/23
SAFE ESTIMATED DUE 1/31/24

37

CHESTNUT RUBY WJ 8144

AAA 19290439 · TATTOO 8144 · DOB 04/07/18 · BW 80

Vision Unanimous 1418
CHESTNUT UNANIMOUS 345
Chestnut Winnie 023WK Vegas 0447
CHESTNUT RUBY 367
Chestnut Ruby 060Visiontopline Royal Stockman
Vision Edella 665
Pine Ridge Hammer S322
CN Winnie 46WK Vegas
WK Miss 6191
WK Redo
C N Ruby 54w 8378

CED	BW	WW	YW	CEM	MILK	\$EN			
+7	+1.1	+48	+85	+13	+29	-3			
CW	MARB	RE	FAT	\$M	\$W	\$F	\$G	\$B	\$C
+27	+0.25	+0.4	-0.015	+68	+52	+68	+31	+99	+196

• Chestnut Ruby WJ 8144 is a daughter of Chestnut Unanimous 345 that has left her mark on both the cowherd and bull sale. In the 2022 Bull Sale her presence was felt with a burly, E G Eyes Onu son that was an impressive curve bending growth stud.

• She has brought 3 to the weaning pen and records a 108 WWR.

AI BRED TO ELLINGSON PROLIFIC (20136857) ON 4/22/23
PE TO KR INCREDIBLE 8166 (19241032) FROM 5/25/23 - 8/20/23
SAFE ESTIMATED DUE 1/30/24

CHESTNUT RUBY WJ 8144

CHESTNUT EYES ONYOU 351
SON OF LOT 37



38

CHESTNUT HEATHER 759

AAA 19003587 · TATTOO 759 · DOB 02/08/17 · BW 80

Connealy Earnan 076E

BROOKING BANK NOTE 4040

E A Rose 918



Sitz Upward 307R

CHESTNUT HEATHER 071

CN Heather 645

Connealy Consensus

Brazila of Conanga 3991 839A

S A V Final Answer 0035

E A Rose 738

Connealy Onward

Sitz Henrietta Pride 81M

WK Wacker

Chestnut Heather Smoke 2242

CED	BW	WW	YW	CEM	MILK	SEN			
-2	+3.1	+71	+116	+10	+17	-12			
CW	MARB	RE	FAT	\$M	\$W	\$F	\$G	\$B	\$C
+46	+0.34	+0.74	-0.022	+59	+56	+89	+41	+131	+229

• Chestnut Heather 759 has the good looks, great structure and trademark udder quality that the Brooking Banknote 4040 females are renowned for. There is no doubting that this member of the Heather cow family is long yet bold in her shape.

• As a calf, 759 weaned off her Sitz Upward 307R dam at an impressive 731lbs. to record a 120 ratio, and returned to the scale as a yearling, to record a 114 YWR. She has personally been an absolute performance leader of her class.

• The 2020 born son of Chestnut Heather 759 was sired by Chestnut Redemption 38, and was a crowd favorite of those that came to the farm to view the offering.

AI BRED TO ELLINGSON PROLIFIC (20136857) ON 4/23/23
PE TO S&R STABILITY J162 (20335485) FROM 5/25/23 - 8/25/23
SAFE ESTIMATED DUE 1/31/24



CHESTNUT REDEMPTION 200
SON OF LOT 38

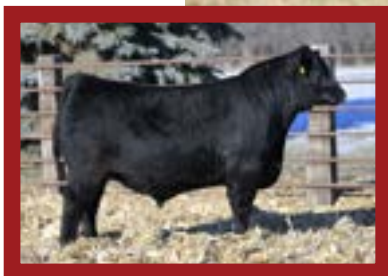


- A 5-year-old daughter of Styles Broken Bow V24 that has an ideal udder attachment and development, has maintained a 370-day calving interval and stuck to her AI again for her 2024 due Ellingson Prolific calf.
- Chestnut Miss Bando 8119 raised the Lot 36, Chestnut Strut 361 bull in the 2023 Chestnut Bull Sale, he led off the Strut sons, and recorded an impressive 868lbs. weaning weight that ratioed a 110. That same bull recorded a class leading 129 IMF ratio and sold to Randy Muller.

AI BRED TO ELLINGSON PROLIFIC (20136857)
ON 5/14/23
PE TO KR INCREDIBLE 8166 (19241032)
FROM 5/25/23 - 8/20/23
SAFE ESTIMATED DUE 2/18/24



CHESTNUT MISS BANDO 8119

CHESTNUT STRUT 361
SON OF LOT 39

39

CHESTNUT MISS BANDO 8119

AAA 19290424 · TATTOO 8119 · DOB 03/08/18 · BW 75

KM Broken Bow 002

STYLES BROKEN BOW V24

Styles Jasmine S44



VAR Rocky 80029

CHESTNUT MISS BANDO 438

CN Miss Bando 077

Summitcrest Complete 1P55
Summitcrest Princess OP12
S A V Harvester 0338
Plainview Jasmine C48HARB Onward 786 J H
Vermilion Lass 0029
Chestnut Marathon 17
T&S MISS Bando58

CED	BW	WW	YW	CEM	MILK	\$EN			
+5	+1.8	+39	+79	+9	+30	-1			
CW	MARB	RE	FAT	\$M	\$W	\$F	\$G	\$B	\$C
+35	+0.25	+0.62	-0.011	+55	+40	+84	+34	+118	+208

40

CHESTNUT MISS BANDO 8105

AAA 19290414 · TATTOO 8105 · DOB 03/05/18 · BW 95

Connealy Earnan 076E

BROOKING ASSET 5065

E A Rose 918



Vision Unanimous 1418

CHESTNUT MISS BANDO 590

CN Miss Bando 077

Connealy Consensus
Brazila of Conanga 3991 839A
S A V Final Answer 0035
E A Rose 738Visiontopline Royal Stockman
Vision Edella 665
Chestnut Marathon 17
T&S MISS Bando58

CED	BW	WW	YW	CEM	MILK	\$EN			
-5	+5.5	+64	+109	+6	+26	-17			
CW	MARB	RE	FAT	\$M	\$W	\$F	\$G	\$B	\$C
+43	+0.49	+0.4	+0.008	+50	+48	+92	+42	+133	+223

- There is no holding back on the quality in this year's female sale, as Chestnut Miss Bando 8105 is a prime example of a female that will be hard to let leave the farm. She is the dam of the 2023 Lot 2 stud, Chestnut Growth Fund 481 that would have made the trip to the National Western Stock Show and later sold to Steve Thomas for \$20,000.

- Another son, Chestnut Turning Point 130 has been retained in herd for sire duties, and sees service with open heifers in the spring, bred heifers carrying his service were featured in the commercial heifer segment of the Bull Sale this past year.

- This Brooking Asset 5065 daughter is the epitome of cow power from a phenotype standpoint, she is massive hiped, wide based, round ribbed and has a beautiful attachment and udder setup.

- 8105 offers an exclusive opportunity to one of the first Chestnut Connect 32 calves with her February due pregnancy. He is the \$18,500 Chestnut United son that was purchased by Craig Gana in the 2023 Bull Sale.

AI BRED TO CN CONNECT 32 (20446625)
ON 5/15/23
PE TO KR INCREDIBLE 8166 (19241032)
FROM 5/25/23 - 8/20/23
SAFE ESTIMATED DUE 2/19/24



CHESTNUT MISS BANDO 8105

CHESTNUT GROWTH FUND 481
SON OF LOT 40

41

K&J EVERELDA ENTENSE 228

AAA 19195231 · TATTOO 228 · DOB 01/03/18 · BW 90

Baldrige Xpand x743
BALDRIDGE COLONEL C251



Baldrige Isabel Y69

S A V Bismarck 5682

B C EVERELDA ENTENSE X026

BT Everelda Entense 567H

Hoover Dam
Baldrige Queen 587
Styles Upgrade J59
Baldrige Isabel T935

G A R Grid Maker
S A V Abigale 0451
Leachman Right Time
Sitz Everelda Entense 1905

CED	BW	WW	YW	CEM	MILK	SEN			
-6	+4	+74	+131	-3	+34	-33			
CW	MARB	RE	FAT	\$M	\$W	\$F	\$G	\$B	\$C
+53	+0.18	+0.85	-0.04	+38	+66	+86	+36	+122	+196



B C EVERELDA ENTENSE X026
DAM OF LOT 41

- We purchased this 2018 model female from K&J Angus, she is a direct daughter of their B C Everelda Entense X026 matron that has been a steadfast producer for over a decade in their Program. At 14 years of age she has a proven track record of productivity, sticking AI every year and raising twins the past three years. In 2022 two maternal twin brothers to 228 that were raised on X026 were featured Sterling Pacific Sons in the K&J Bull Sale.
- There is no question about the quality, longevity and maternal that comes engrained in the genetic power of this young female that is entering her prime years of production. She is a daughter of the record setting, \$580,000 Baldrige Colonel C251, meaning she further traces to the legendary Baldrige Isabel Y69, a multi-million dollar and herd bull generating superpower of the Angus breed.
- K&J Everelda Entense 228 has recorded 3 at weaning to ratio a 103.

PE TO CHESTNUT FUSION 61 (AAA# 20096127) FROM 5/25/23 - 8/20/23



CHESTNUT WJ PEG 780



CHESTNUT FREEDOM LADY 546
DAM OF LOT 42



CHESTNUT ATLANTIS 381
SON OF LOT 42

42

CHESTNUT FREEDOM LADY WJ 887

AAA 19290402 · TATTOO 887 · DOB 02/14/18 · BW 84

Barstow Cash
BARSTOW BANKROLL B73



Barstow Miss Dianna Z25

VA First Round

CHESTNUT FREEDOM LADY 546

Chestnut Freedom Lady 288

Sitz Dash 10277
Barstow Queen W16
CAR Efficient 534
Barstow Miss Dianna X128

Dameron First Class
R&C Keystone Lady 106K-810U
Soo Line Alternative 9127W
DS 3726 Freedom Lady 65 CW

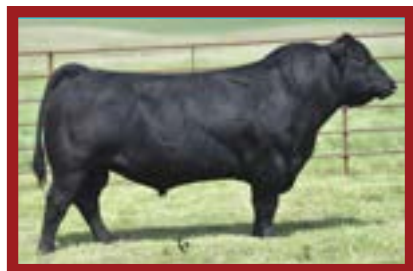
CED	BW	WW	YW	CEM	MILK	SEN			
+0	+3.1	+62	+108	+0	+27	-23			
CW	MARB	RE	FAT	\$M	\$W	\$F	\$G	\$B	\$C
+46	+0.57	+0.35	+0.03	+62	+54	+88	+43	+132	+233

- Chestnut Freedom Lady WJ 887 is a direct daughter of the Pathfinder™ sire Barstow Bankroll B73, a Barstow Cash son that adds easy fleshing ability, do ability, function and moderation.
- Her 2021 born son, Chestnut Atlantis 381 weaned off at 866lbs. and was one of the heaviest muscled, stoutest based bulls we sold in the 2022 Bull Sale. He sold for \$25,000 to the Wilson Ranch of Watford City, North Dakota.
- She ranks top third of the breed for both Weaning Weight and Yearling Weight EPD traits, top 15% HP and top 25% MW.
- 887 stuck to her AI with Ellingson Prolific and is due to calve towards the middle of February.

AI BRED TO ELLINGSON PROLIFIC (20136857) ON 5/15/23
PE TO KR INCREDIBLE 8166 (19241032) FROM 5/25/23 - 8/20/23
SAFE ESTIMATED DUE 2/19/24

• Chestnut WJ Ruby 7108 is a long bodied, big framed female that has a great look from the side and has a running gear made for a long production career. She comes from a long line of consistent producers for our program, and is the kind of female that you can trust to 'keep the lights on'.

PE TO KR INCREDIBLE 8166 (19241032)
FROM 5/25/23 - 8/20/23



CTS REMEDY 1T01
SIRE OF LOT 43



CHESTNUT WJ RUBY 7108

43

CHESTNUT WJ RUBY 7108

AAA 19008452 · TATTOO 7108 · DOB 03/03/17 · BW 75

Connealy Thunder

CTS REMEDY 1T01



CTS 7V03 Bellemere Maid 9T02

Fruhling Shadow

CHESTNUT RUBY 347

C N Ruby 620 838

Baldrige Kaboom K243 KCF

Parka of Conanga 241

L T 598 Bando 9074

SVA Rita 7V03 of 1407 502

Plainview Lutton E102

Fruhling Sieville Lady

Chestnut Wacker 36

Chestnut Ruby Dateline 620

CED	BW	WW	YW	CEM	MILK	\$EN			
+3	+1.1	+39	+83	+12	+26	-8			
CW	MARB	RE	FAT	\$M	\$W	\$F	\$G	\$B	\$C
+	+	+	+	+46	+34	+77	+	+	+

44

CHESTNUT WINNIE 7110

AAA 19003230 · TATTOO 7110 · DOB 03/05/17 · BW 70

Basin Payweight 0065

BASIN PAYWEIGHT 1682



21AR O Lass 7017

Pine Ridge Hammer S322

CHESTNUT WINNIE 023

CN Winnie 46

Vermilion Payweight J847

Basin Lucy 3829

HARB Pendleton 765 J H

21AR O Lass F24A

Hyline Right Time 338

Belmont Lady 9015 3313

WK Dateline 2160

WK Winnie 5460

CED	BW	WW	YW	CEM	MILK	\$EN			
+10	-0.2	+48	+84	+13	+22	+12			
CW	MARB	RE	FAT	\$M	\$W	\$F	\$G	\$B	\$C
+28	+0.28	+0.31	+0.013	+74	+46	+80	+29	+109	+215

• There is lots of maternal power in this Basin Payweight 1682 daughters' pedigree. The Winnie cow family on the bottom side has got it done year after year for us, and if you investigate the bull sale catalog each year you will find the Winnie's to appear on either side of the pedigree regularly.

• She is a maternal sister to Chestnut Unanimous 345 that we used in herd and a daughter of sells as Lot 37.

• She comes carrying an AI pregnancy to the exciting Chestnut United son purchased by Ryan Sorenson in the 2023 Bull Sale, CN Extensive 12. We think this is a surefire mating for success on this Winnie derivative.

AI BRED TO CHESTNUT EXTENSIVE 12 (20446623)
ON 4/23/23

PE TO S&R STABILITY J162 (20335485)
FROM 5/25/23 - 8/25/23

SAFE ESTIMATED DUE 1/31/24



BASIN PAYWEIGHT 1682
SIRE OF LOT 44



CHESTNUT WINNIE 7110

CN ELAINE 7115



• CN Elaine 7115 is one of the unsung heroes of the class, she has always put in the hard yards and returned to the weaning pen with an impressive calf. Most recognizable would be her Deer Valley Growth Fund daughter, Chestnut Elaine 175 that sold in the 2023 Chestnut Angus Bull Sale to Moeller Brothers.

• The cow family that supports 7115 is strong, her maternal sister, Chestnut Elaine 340 has been a potent breeding force, producing the past Denver standout, Chestnut Lights Out 476.

• She has maintained a 356-day calving interval, recording 4 calves to the weaning pen to average a 103 weaning weight ratio and 2 scanned for a 116 average IMF ratio.

PE TO CHESTNUT FUSION 61 (20096127)

FROM 5/25/23 - 8/20/23

SAFE ESTIMATED DUE 3/20/24



CHESTNUT ELAINE 175
DAUGHTER OF LOT 45

45

CN ELAINE 7115

AAA 19035681 · TATTOO 7115 · DOB 03/07/17 · BW 86

HF Tiger 5T

HF UNTAPPED 58Z



HF Blackbird 223U

Plainview Sun Dance G39

CN ELAINE 9309

CN Elaine 646

HF Kodiak 5R

HF Echo 84R

HF Done Right 125R

HF Blackbird 199P

LaGrand Sun Dance 4211

S C C Beauty 2100

WK Wacker

Chestnut Elaine 320 321

CED	BW	WW	YW	CEM	MILK	\$EN
-4	+5.1	+44	+83	-1	+33	-13

CW	MARB	RE	FAT	\$M	\$W	\$F	\$G	\$B	\$C
+51	+0.18	+0.43	-0.002	+39	+34	+101	+27	+129	+206

46

CN DAISEY BEAUTY 763

AAA 19002009 · TATTOO 763 · DOB 02/09/17 · BW 85

Silveiras Conversion 8064

SAC CONVERSATION



Lafllins Farrah 0252

VAR Rocky 80029

CN DAISEY BEAUTY 341

CN Daisy Beauty 433 7507

BT Crossover 758N

EXG Saras Dream S609 R3

S A V 004 Predominant 4438

Lafllins Farrah 7215

HARB Onward 786 J H

Vermilion Lass 0029

WK VRD Dateline 4081

CN Daisy Beauty 433

CED	BW	WW	YW	CEM	MILK	\$EN
-1	+3	+60	+100	+3	+35	-10

CW	MARB	RE	FAT	\$M	\$W	\$F	\$G	\$B	\$C
+49	+0.39	+0.72	+0.05	+58	+63	+92	+38	+130	+227

CN DAISEY BEAUTY 763



• CN Daisy Beauty 763 is a direct daughter of SAC Conversation a sire that adds look and style without sacrificing the beef production traits that drive our industry. The longevity and easy feeding kind of 763 means she has always been one that catches your attention.

• Her 2022 born Wilks Regiment 9035 son came to the weaning pen with a massive 872lbs, to record a 114 WWR. Chestnut Crew 792 gained at 4.11lbs per day through to weaning, and tabulated with a top 2% \$W and top 3% \$F. He sold to Grant Anderson for \$5,750.

• Dawson showed her 2021 born daughter of Growth Fund, Chestnut Daisy Beauty 126 to her fair share of titles, you don't see many performance bred cattle with a phenotype like hers.

• 763 records an impressive 108 weaning weight ratio on 3 head.

• The pregnancy that 763 is carrying may be one of the most exciting that will sell in this offering, she comes bred AI to the \$500,000 Connealy Craftsman, one of the breeds most anticipated sires of recent times.

AI BRED TO CONNEALY CRAFTSMAN (20132505)

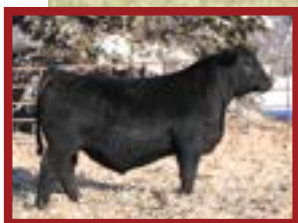
ON 4/13/23

PE S&R STABILITY J162 (20335485)

FROM 5/25/23 - 8/25/23

SAFE ESTIMATED DUE 1/21/24

CHESTNUT CREW 792
SON OF LOT 46



• Chestnut Queen Mab 748 is another one of the high producing Chestnut Knock Out 204 daughters to sell on September 30th. She has the extras when it comes to bone, pin width, foot size and just power in general. When we think of the kind of cow that makes power bulls then this is what we envision.

• As a heifer calf, 748 was a member of the Champion Pen of Three Angus Heifers at the 2018 National Western Stock Show.

• Her natural born son, Chestnut Solution 579 was the \$10,000 selection of Fox Angus of Watertown, South Dakota in the 2020 Bull Sale.

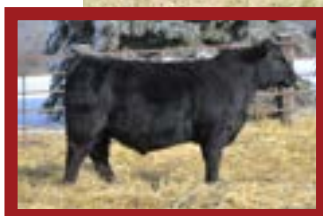
• Daughters of 748 have been retained in herd and are carrying on the family name by consistently bringing sale bulls to the weaning pen. Tracing her maternal lineage you will find 11 generations of continued Queen Mab cow family in her pedigree.

PE TO CHESTNUT FUSION 61 (20096127)
FROM 5/25/23 - 8/20/23



CHESTNUT QUEEN MAB 748

CHESTNUT SOLUTION 579
SON OF LOT 47



47

CHESTNUT QUEEN MAB 748

AAA 18936415 · TATTOO 748 · DOB 02/04/17 · BW 78

VA First Round

CHESTNUT KNOCK OUT 204

Chestnut Queen Lucy 028



KF Danny 387

CN QUEEN MAB 271

Cnqueen Mab 7157

Dameron First Class

R&C Keystone Lady 106K-810U

Plainview Sun Dance G39

CN Queen Lucy 2402 7337

Connealy Danny Boy

K F Elsa 62

WK Midland 3162

CN Queen Mab Hall Fame 32

CED	BW	WW	YW	CEM	MILK	\$EN			
+1	+3.2	+56	+102	+8	+31	-30			
CW	MARB	RE	FAT	\$M	\$W	\$F	\$G	\$B	\$C
+51	+0.39	+0.45	-0.015	+33	+48	+103	+39	+142	+217

48

CN QUEEN OF WETONKA 860

AAA 19290389 · TATTOO 860 · DOB 02/08/18 · BW 80

O C C Paxton 730P

COLEMAN CHARLO 0256

Bohi Abigale 6014



Chestnut PF The Product 63

CN QUEEN OF WETONKA 56

CN Queen CW Ultravox 327

O C C Focus 813F

O C C Blackbird 736K

Sitz Traveler 8180

S A V Abigale 6062

Connealy Final Product

Chestnut Beauty 319

CW Ultravox 48

Chestnut Queen of Wetonka 67

CED	BW	WW	YW	CEM	MILK	\$EN			
+5	+1.5	+50	+80	+5	+33	+12			
CW	MARB	RE	FAT	\$M	\$W	\$F	\$G	\$B	\$C
+25	+0.1	+0.53	+0.023	+78	+62	+65	+22	+87	+191



CN QUEEN OF WETONKA 860

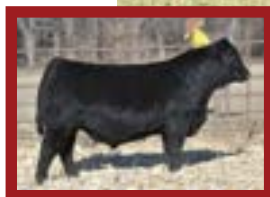
• A pedigree that aligns the legendary cow families of our program's history in the Wetonka's and the Beauty's. The maternal pedigree of 860 includes the in-herd legend Chestnut Beauty 319. Her maternal granddam was a Pathfinder™ who comes the same cow family that produced Chestnut Redemption 38 and his Embryos On Snow featured dam, Chestnut Wetonka WJ 63 that sold to Dustin Kittle of Tennessee for \$33,000.

• Her son, Chestnut Royal Stockman 380 was a very functional, balanced and rancher friendly herd bull that sold in the 2021 Bull Sale.

PE TO KR INCREDIBLE 8166 (19241032)
FROM 5/25/23 - 8/20/23



CN QUEEN OF WETONKA 56
DAM OF LOT 48



CHESTNUT ROYAL STOCKMAN 380
SON OF LOT 48

CHESTNUT GEORGINA DJ 8133



JENSEN GEORGINA 677 OF FAF
DAM OF LOT 49

49

CHESTNUT GEORGINA DJ 8133

AAA 19290433 · TATTOO 8133 · DOB 03/22/18 · BW 75

Barstow Cash
CLF CASH 62C
CLF Dateline Betty 84P



Dameron First Class
JENSEN GEORGINA 677 OF FAF
Champion Hill Georgina 7229

Sitz Dash 10277
Barstow Queen W16
CLF Dateline VRD 07L
W H A Betty 909
EXG RS First Rate S903 R3
Dameron Northern Miss 3114
Leachman Saugahatchee 3000C
L L A Georgina 419

CED	BW	WW	YW	CEM	MILK	SEN			
+4	+1.9	+57	+99	+7	+32	-25			
CW	MARB	RE	FAT	\$M	\$W	\$F	\$G	\$B	\$C
+34	+0.21	+0.49	+0.032	+43	+56	+81	+27	+108	+183

• Chestnut Georgina DJ 8133 is a super brood cow prospect, the Barstow Cash lineage is one that many cattlemen keep turning to at the breeding box, because of their easy fleshing ability, feed efficiency, mothering ability and maternal power. This female is big bodied and correct, and an impressive Dameron First Class dam supports 8133 maternally.

• The dam of 8133, Jensen Georgina 677 of FAF was purchased in the 2017 Minnesota Aberdeen Angus Breeders Sale and was a very successful show heifer for Dawson, winning Grand Champion Angus Female in the FFA show at the Minnesota State Fair and the Minnesota State Junior Show. She is a direct daughter of the legendary Champion Hill Georgina 7229.

• Daughters of 8133 are retained in herd and out producing themselves.
• She will calve in January with a CN Extensive 12 calf, that sounds like a quick return on investment or an easy sort to the replacement pen to us.

AI BRED TO CN EXTENSIVE 12 (20446623) ON 4/23/23
PE TO S&R STABILITY J162 (20335485) FROM 5/25/23 - 8/25/23
SAFE ESTIMATED DUE 1/31/24

50

CRF FOREVER LADY 901

AAA 19524261 · TATTOO 901 · DOB 02/23/19 · BW 72

VA First Round
CHESTNUT KNOCK OUT 204
Chestnut Queen Lucy 028



Werner War Party 2417
KLR FOREVER LADY 3301K
KLR Forever Lady 0005

Dameron First Class
R&C Keystone Lady 106K-810U
Plainview Sun Dance G39
CN Queen Lucy 2402 7337
Connealy Onward
BAAR USA Lady Jaye 489
S A V Bismarck 5682
Sunset Valley Lady 4504

CED	BW	WW	YW	CEM	MILK	SEN			
+2	+3.3	+73	+145	+6	+35	-48			
CW	MARB	RE	FAT	\$M	\$W	\$F	\$G	\$B	\$C
+70	+0.28	+0.67	-0.004	+44	+60	+125	+36	+160	+252



CHESTNUT STRUT 251
SON OF LOT 50

• CRF Forever Lady 901 is one that won't get a fair enough shot here in Pipestone just because she is out of our ideal calving period, but there is no question about whether or not she has the quality to raise the kind of bulls we like to sell for her new owner.

• The numerical data of this Chestnut Knock Out 204 daughter reads for extremely impressive performance, carcass and growth. 901 ranks top 10% WW, top 3% YW, top 3% RADG, top 2% YH, top 10% Milk, top 2% MW, top 1% MH, top 10% PAP, top 3% CW, and top 1% \$F.

• As a first calf heifer she raised an impressive Strut son that sold in the 2022 Bull sale, he weaned off at a massive 910lbs. She records a 118 WWR on 1 and a 121 YWR on 1.

PE TO MOGCK BARRICADE 1911 (20126978) FROM 5/25/23 - 8/25/23

• A beautiful daughter of PVF Insight 0129 that helps you to realize why many of these Insight daughters are proving themselves for cattlemen all around the nation. They have proven themselves over and over, standing the test of time, and we foresee the breeding tenure of 760 to likewise be long and profitable.

• Her dam, PVF Proven Queen 5250 was the Reserve Grand Champion Female at the 2017 Atlantic National for Korey Moser, and has proven she's worth the accolades in the donor pen, with a maternal sister to 760, PVF Proven Queen 8256, being slapped the Reserve Champion Female at the 2019 North American International Livestock Exposition for Cameron Choate.

• Her 2022 born daughter by Chestnut Redemption 38 was a member of our Reserve Champion Pen of Three Heifers at the 2023 National Western Stock Show.

• A banner worthy pedigree and a build that suits the real world, take your choice on how you breed her going forward, this is a valuable breeding piece.

PE TO CHESTNUT FUSION 61 (20096127)
FROM 5/25/23 - 8/20/23

2023 NWSS RESERVE GRAND CHAMPION
PEN OF THREE ANGUS HEIFERS



PVF PROVEN QUEEN 5250
DAM OF LOT 51

51

K&J PROVEN QUEEN 760

AAA 19829069 · TATTOO 760 · DOB 04/02/20 · BW 80

S A V Brilliance 8077

PVF INSIGHT 0129



PVF Missie 790

C&C McKinley 3000 EXAR

PVF PROVEN QUEEN 5250

PVF Proven Queen 2108

S A V Bismarck 5682

S A V Blackcap May 5270

P V F New Horizon 001

P V F Miss Raptor 024

Dameron First Class

RAC Winnie 7456

PVF Insight 0129

Dameron PVF Proven Queen 010

CED	BW	WW	YW	CEM	MILK	\$EN			
+1	+3.3	+61	+99	+7	+13	-10			
CW	MARB	RE	FAT	\$M	\$W	\$F	\$G	\$B	\$C
+37	-0.06	+1.01	+0.002	+37	+42	+94	+22	+116	+187

52

SA BLACKBIRD 147

AAA 20283392 · TATTOO 147 · DOB 03/17/21 · BW 58

Musgrave 316 Stunner

SA STUNNER 902



CN DJ Annie Oakley 738

Connealy Blackhawk 6198

SA BLACKBIRD 923

SA Blackbird 502

LD Capitalist 316

MCATL Blackbird 831-1378

Chestnut Sure Shot 54

CN DJ Annie Oakley 565

Connealy Armory

Precious of Conanga 380X

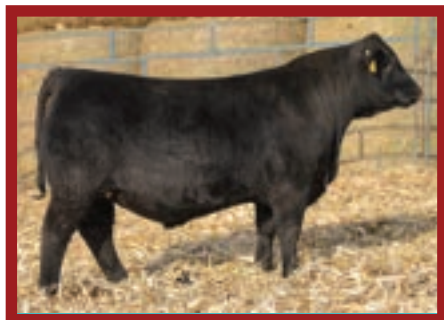
R5 Monument 087

Dandy Acres Blackbird 018

CED	BW	WW	YW	CEM	MILK	\$EN			
+8	+1	+62	+108	+3	+27	-20			
CW	MARB	RE	FAT	\$M	\$W	\$F	\$G	\$B	\$C
+	+	+	+	+73	+60	+77	+	+	+

• SA Blackbird 147 is a granddaughter of the maternal great, Musgrave Stunner 316. There is no question about the influence that the Stunner derivatives are making on the business, and this young female that's coming with her second calf has that some udder quality, structural quality and maternal power that makes her the kind to tie too.

PE TO MOGCK BARRICADE 1911 (20126978)
FROM 5/25/23 - 8/25/23



MOGCK BARRICADE 1911
SERVICE SIRE TO LOT 52



MUSGRAVE 316 STUNNER
THE INFLUENCE OF MUSGRAVE 316 STUNNER SELLS THROUGHOUT



JINDRA ACCLAIM
SIRE OF LOT 53

- The Jindra Acclaim cattle have flat proven they work, they are great structured, good looking and as cows show awesome mothering ability and udder quality. The EPD profile for 5621 reads for true calving ease, yet flips towards cattle that will grow quickly and mature with awesome carcass qualities.
- We think her mating with our Stevenson Statement 70750 son, VAR Statement 9177 is sure an exciting addition to this opportunity.

PE TO VAR STATEMENT 9177 (19599578)
FROM 5/25/23 - 8/25/23

53

CA MISS JET MIDNIGHT 5621

AAA 20198821 · TATTOO 5621 · DOB 02/17/21 · BW 65

Jindra 3rd Dimension

JINDRA ACCLAIM

Jindra Blackbird Lassy 1111



A A R Ten X 7008 S A

SVA MISS JET 5026

SVA Miss Jet 2060

Jindra Double Vision

Jindras Sapphire J 417

Connealy Impression

Jindras Enchantress J 102

Mytty In Focus

A A R Lady Kelton 5551

Whitestone Black Arrow Z101

SVA Miss Jet 8535

CED	BW	WW	YW	CEM	MILK	\$EN
+8	+0.3	+58	+113	+11	+26	-24

CW	MARB	RE	FAT	\$M	\$W	\$F	\$G	\$B	\$C
+65	+0.93	+0.52	+0.007	+38	+50	+117	+66	+183	+275

54

CHESTNUT MONICA 993

AAA 19569667 · TATTOO 993 · DOB 03/14/19 · BW 72

Barstow Cash

CLF CASH 62C



CLF Dateline Betty 84P

SAC Conversation

CHESTNUT MONICA 724

Chestnut Monica 534

Sitz Dash 10277

Barstow Queen W16

CLF Dateline VRD 07L

W H A Betty 909

Silveiras Conversion 8064

Lafins Farrah 0252

VA First Round

Chestnut Monica 221

CED	BW	WW	YW	CEM	MILK	\$EN
+5	+1.4	+51	+95	+8	+31	-17

CW	MARB	RE	FAT	\$M	\$W	\$F	\$G	\$B	\$C
+39	+0.17	+0.62	+0.017	+50	+50	+82	+28	+110	+193



CHESTNUT MONICA 534 MATERNAL
GRANDDAM OF LOT 54

- We love the extra body shape, muscle pattern and density we are getting from the CLF Cash 62C daughters, Chestnut Monica 993 is a prime example of his power. This young cow is just entering her prime production years, she goes back to a SAC Conversation daughter that was awesome built. She had a daughter by R5 Solution E111 in the 2023 Spring Sale that sold to Arrow J Angus.
- Chestnut Monica 993 has the build of longevity that is so desirable because in the end this is a serious driver of profitability.

PE TO MOGCK BARRICADE 1911 (20126978)
FROM 5/25/23 - 8/25/23

Thank you for



your interest





P.O. BOX Z
DE SOTO, KS 66018

S E P T E M B E R 3 0 . 6 P M P I P E S T O N E , M I N N E S O T A

