

# Western

CATTLE SOURCE  
**PRODUCTION SALE**

1 PM MST - MARCH 23, 2023 - AT THE RANCH CRAWFORD, NEBRASKA

# Welcome



**JOCK & BRENDA BEESON**

100 Wohlers Drive - Crawford, NE 69339

Brenda. 308-430-2117 - Jock. 308-430-0668

wcsbeeson@bbc.net - [westerncattlesource.net](http://westerncattlesource.net)

Jock, Skye and I would like to welcome you to our Annual Production Sale. We had our prayer's answered last March with the ability to adopt our daughter Skye. She has been a true blessing and joy to our lives. This year has been filled with many changes and struggles. As many of you may know I was diagnosed with breast cancer but we are going to beat it. The weather has been challenging this year as well, from a drought this summer to lots of snow cold and wind this fall. With all this snow we should have grass. Calf prices are on the rise and I believe the investment of quality genetics will really pay off in the next few years. This set of bulls is outstanding to say the least and we are proud to say that it includes the Reserve Champion Pen of 5 Purebred Bulls from the 2023 NWSS. We are flushing some of the most elite cows we have raised and purchased through the years. We place emphasis on cattle that have survivability, fertility, performance, carcass traits and longevity. We are really excited about this year's bulls as they excel in all these areas. These bulls are ranch raised, you can trust that there is no fluff and puff involved. We try to keep our bulls from being too fat early on, so they develop to be athletic and hold up during the breeding season for you. We emphasize good feet, legs and structural integrity. If you have any issues or concerns with the livestock please let us be the first ones to know and we will do what we can to sort any problems out. We search the country to select herd bulls that evolve as outliers from within their herds. A lot of the bulls we turn out are AI sire bulls or AI sire quality. We want cattle that will excel in our environment and yours.

Videos and pictures were taken Feb 4th. The bulls will be semen tested and ready to go sale day. Volume discount are available. When it comes to marketing your calves we will give a few people a call that are very interested in our genetics. Our cattle have been excelling in the feedlot for the buyers of our feeder cattle.

An exciting opportunity sells with the ability to pick from our Reserve Grand Champion Pen of 3 Purebred Heifers. It comes with mixed emotions for us as these females are the perfect example of consistency, maternal quality and what a momma cow should be. As I write this 2 have calved and what great udders and mother's they are.

Thank you to Innovation Ag Marketing team for being with us on this journey.

We look forward to seeing everyone March 23rd at the ranch. If you can't make it the sale videos and sale will be on [dvauction.com](http://dvauction.com) as well.

Sincerely,  
Jock, Brenda and Skye

*Direct from cow country in western Nebraska*



## SALE SCHEDULE

11:30 AM MST - LUNCH Served

1:00 PM MST - WESTERN CATTLE SOURCE PRODUCTION SALE

## SALE LOCATION

100 Wohlers Drive, Crawford, NE 69339

## SALE DAY PHONES

Brenda Beeson - 308.430.2117 Jock Beeson - 308.430.0668

## SALE MANAGEMENT

Innovation AgMarketing, LLC

Jered Shipman: 806-983-7226

Graham Blagg: 530-913-6418

Tim Anderson: 605-682-9343

## AUCTIONEER

Jered Shipman: 806-983-7226

## RING STAFF

Alan Sears, Western Ag Reporter: 970-396-7521

Jim Gies, Western Livestock Journal: 970-454-3836

Randy Rasby, Livestock Plus: 308-539-6195

Ed Ginkens, Sales Rep: 308-430-3805

Michael Tolstedt, All Natural Feeder Cattle & Yearlings: 308-760-5946

## HOTEL

Hilltop Motel

304 McPherson Street  
Crawford, NE 308-665-1144

Holiday Inn Express & Suites

247 Ash St.

Chadron, NE 308-747-2223

## VETERINARIAN

Reid Veterinary Service

Robert Reid, DVM: 308-430-0460

## VOLUME DISCOUNT

3 Bulls - 3%

4 Bulls - 4%

5+ Bulls - 5%

## YARDAGE

Bulls will be kept at Western Cattle Source until April 15, 2023 free of charge.

## AIR TRANSPORTATION

WESTERN NEBRASKA REGIONAL AIRPORT

Scottsbluff, NE 69361

1 HR 15 MIN from Crawford, NE

DENVER INTERNATIONAL AIRPORT

DIA - Denver, CO

4 HR 30 MIN to Crawford, NE

## PHOTOGRAPHY

Cam Behmer

## TERMS

Terms of sale are cash or check payable immediately upon conclusion of the sale and before animals will be removed.

## ANNOUNCEMENTS

Announcements made sale day and from the auction block take precedence over printed material in this catalog or other printed material associated with this sale.

## LIABILITY

Neither owners nor sale management assume any liability for any accidents that may occur to the animal after it is sold. All persons who attend the sale do so at their own risk and owners or sale personnel assume no liability for accidents.

## ANIMAL RISK

Each animal becomes the risk of the purchaser as soon as sold. Animals purchased are at the purchaser's risk as to loss or injury and will be loaded according to purchaser's direction. Insurance will be available sale day.

## ANIMAL INSURANCE

Jim Gies: 970-454-3836

## ANIMAL TRUCKING

Taylor Will: 213-527-8168

## ULTRASOUND TECHNICIAN

Chad Gordon, Ultrasound Technologies:

580-678-1918

Jeff Erquiaga, DVM: 308-360-0734

This sale will be broadcast live on the internet.

**DVAuction**  
Broadcasting Real-Time Auctions

Real time bidding & proxy bidding available.





# INNOVATION

— AgMarketing, LLC —

The Western Cattle Source has been in motion for nearly three decades. Jock and Brenda have been very driven and methodical in the evolution of their progressive program. It's one entrenched with grit and passion for the land and the cattle that graze the western Nebraska range. These cattle are ran in true western ranching fashion and will essentially thrive anywhere they are introduced. The innate ability to hustle is a significant part of their DNA due to the selection pressure of the environment over the many years WCS has been in the business.

Jock and Brenda have forged a path in the ranching world that has been full of twists and turns along the way. The stories they can share of the journey should captivate the attention of those that share the romance affiliated with western ranching practices and success stories. Putting the land and the cattle together for Western Cattle source has been done with discipline fueled by passion. Passion to succeed with sound investments in stock and country. The couple introduced a new member of the family a year ago, and to say that Skye is part of that drive and passion would be a complete and total understatement. This young lady has forever changed the hearts and longevity of Western Cattle Source and so this journey has new meaning to their lives as they surge forward.

WCS has always been very aggressive when it comes to herd bull acquisitions. They make a valiant effort to add to and enhance a very dominant herd bull battery to keep the genetics as fresh and potent behind the A.I. gun as they can in their "Big Country" setting. The bull battery is expected to adapt in very quick fashion and do sort themselves accordingly. This

all stands to reason why the cattle perform, convert, and exceed the expectations by those that have invested in the program over the years. Rest assured that this will never change for the lesser but will change exponentially for the greater good of ranching for years to come.

We already know that this set of young herd sires exceeds the set from the inaugural event a year ago. The stock will be substantial at the surface with a dense hoof built with true depth of heel and ideal toe width and spacing. Substance of bone, density of shape and body with ideal skeletal length are also inclusive in this year's bull pen. Each trait enhanced in each individual from a year ago, and we expect the stock next two years to come with the same credentials with the latest herd sire acquisitions.

It's always an advantage to buy natural calves from a true working cow herd. A working cowherd that has forced selection on hoof quality, skeletal integrity, the ability to bring a calf to the branding and weaning pen annually thus carrying the necessary fertility to be a part of those that get it done year after year. We invite you and yours to join us for a great day of cattle and ranch based fellowship hosted by a great family and ranch team. The food and hospitality will be second to none and the opportunity to invest in quality stock will be yours to take advantage of. If the Innovation AgMarketing Team can be of any assistance in your selection process, don't hesitate to reach out and as always, enjoy the stock.

*Graham Blagg    Jered Shipman    Tim Anderson*

# Bred Heifers





2023 NWSS Reserve Grand Champion Pen of Purebred Simmental Heifers



W/C TRIFECTA 975J Service Sire for Lot 1

**1 WCS MS HELLCAT 1816J**  
 dob. 3/20/21 | asa. 3959189 | tattoo. 1816J

PB SM		Homozygous Polled				Homozygous Black			
RUBYS TURNPIKE 771E W/C EXPRESS LANE 29G ES Z29		x				LRS ELEVATE 213B LRS MS ELEVATE 6019D LRS MS SHRPER IMAGE 324A			
CEB	BW	WW	YW	ADG	MCE	MILK	MWW	STAY	
13	11	83.5	127.5	0.27	7	28.3	70	14.9	
DOC	CW	YG	MARB	BF	REA	API	TI		
9.5	33.3	-0.33	0.15	-0.056	0.9	13.47	82.9		

BW - 78/Ratio - ET Adj. WW - 703/Ratio - ET  
 Estimated Due 3/11/23 to W/C Trifecta 975J (ASA: 3974519)

The initiating trio of females offer tremendous investment opportunity and there is no question that it hurts a bit to offer choice of these three females. Undoubtedly three of the most intriguing females to ever be born at Western Cattle Source!

-1816J leads off the ET flushmate sisters with an abundance of body mass and dimension, much like the prolific dam that stands behind them. LRS Ms Elevate 6019D is a true outlier for maternal excellence and her influence continues to highlight our calf crop each year.

-WCS Ms Hellcat 1816J offers an elite presence with overwhelming power and substance. She is a donor cow in the making that offers tremendous upside in terms of mating flexibility.

-W/C Express Lane 29G is proving to be one of the very best breeding bulls that we have EVER turned out in Crawford, Nebraska. Study the full sib brothers that sell as Lots 10 and 11.

-She will calve by sale day to the "Triple Threat" son that we purchased last year at Werning Cattle Company. He is a sleep all night heifer bull with an elite phenotype!



LRS MS ELEVATE 6019D - Dam of Lots 1-3



W/C REST EASY 752G - Service Sire for Lot 2

## 2 WCS MS COBRA 1808J

dob. 3/18/21 | asa. 3959169 | tattoo. 1808J

PB SM		Homozygous Polled			Homozygous Black			
RUBYS TURNPIKE 771E <b>W/C EXPRESS LANE 29G</b> ES Z29		x			LRS ELEVATE 213B <b>LRS MS ELEVATE 6019D</b> LRS MS SHRPER IMAGE 324A			
CED	BW	WW	YW	ADG	MCE	MILK	MWW	STAY
13	1.3	85	129.6	0.28	7	28.3	70.7	14.9
DOC	CW	YG	MARB	BF	REA	API	TI	
9.5	34.2	-0.33	0.15	-0.056	0.91	135.1	83.7	

BW - 69/Ratio - ET Adj. WW - 725/Ratio - ET

Estimated Due 2/24/23 to W/C Rest Easy 752G (ASA: 3644912)

- 1808J is another member of the 2023 NWSS Reserve Grand Champion Pen of Three Purebred Simmental Heifers. A favorite of many that stopped by the pen at the National Western and viewed the females in person. She is so refined about her front third, neat shouldered, and transitions into a bold forerib and center body.
- We love the udder quality that all three of these females are developing as they near production. This is a signature trait that you can count on from the 6019D cow family.
- She will calve by sale day to W/C Rest Easy 752G, the MR SR 71 Right Now E1538 son that is supported by the legendary Miss Werning 534R cow family.



W/C EXPRESS LANE 29G - Sire of Lots 1-3



WCS HAMMER LANE 1820J - Full brother to Lots 1-3

### 3 WCS MS SHELBY 1806J

dob. 3/15/21 | asa. 3959188 | tattoo. 1806J

PB SM		Homozygous Polled			Homozygous Black				
RUBYS TURNPIKE 771E		x			LRS ELEVATE 213B				
W/C EXPRESS LANE 29G					LRS MS ELEVATE 6019D				
ES Z29					LRS MS SHRPER IMAGE 324A				
CED	BW	WW	YW	ADG	MCE	MILK	MWW	STAY	
13	11	82.8	126.5	0.27	7	28.3	69.6	14.9	
DOC	CW	YG	MARB	BF	REA	API	TI		
9.5	32	-0.33	0.15	-0.056	0.88	134.6	82.6		

BW - 64/Ratio - ET Adj. WW - 728/Ratio - ET  
 Estimated Due 2/24/23 to W/C Trifecta 975J (ASA: 3974519)

- WCS Ms Shelby 1806J might be your pick on sale day, and we certainly wouldn't argue one bit! Her presence and look of balance from the side is captivating to say the very least. A real show stopper in terms of eye appeal.

- The third member of the 2023 NWSS Reserve Grand Champion Pen of Three that deserves serious consideration. This is the one that reminds us the most of her dominant producing dam, 6019D. She is so angular and refined about her front third, smooth shouldered, and perfect in her topline. She comes square off both ends of her skeleton and offers the signature maternal look that we have come to expect from this mating.

- Last year four ET flushmate brothers to this trio averaged north of \$7,000 per head in our bull sale, selling to John Harvat, Forgey/Smith Angus Ranch, Matt Fischer, and Sullivan Farms.

- She will calve by sale day to "Trifecta", the \$47,500 stud that we purchased from Werning Cattle Company in 2022 - the first calves born are living up to the expectations!



# *Yearling Bulls*





2023 NWSS Reserve Grand Champion  
Pen of Five Percentage Simmental Bulls



W/C BARBARAMERE 9135G - Dam of Lots 4-9



PVF SURVEILLANCE 4129 - Maternal Grandsire of Lots 4-9

# 4 WCS MR EXPRESS LANE 2828K

dob. 3/3/22 | asa. 4149345 | tattoo. 2828K

1/2 SM 1/2 AN		Homozygous Polled			Homozygous Black			
RUBYS TURNPIKE 771E		PVF SURVEILLANCE 4129						
<b>W/C EXPRESS LANE 29G</b>		<b>x</b>			<b>W/C BARBARAMERE 9135G</b>			
ES Z29		CARTER BARBARAMERE 7414						
CED	BW	WW	YW	ADG	MCE	MILK	MWW	STAY
12.3	2.9	88.4	136.2	0.3	5.5	28.3	72.5	14.4
DOC	CW	YG	MARB	BF	REA	API	TI	
9.4	31.1	-0.11	0.39	-0.013	0.53	132.8	84.2	
				BW - 87/Ratio - ET Adj. WW - 835/Ratio - ET				

- Awesome phenotype on this son of W/C Express Lane 29G. He leads off a powerful set of ET flushmate brothers that are supported by one of the up and coming young Angus donors in our program. He is bold ribbed, thick ended and combines power with eye appeal.
- Top 10% MWW, top 15% MILK, WW, top 20% YW, top 30% ADG, top 35% TI, top 40% MARB.
- Homozygous black and polled. His 835 lb. WW is one of the heaviest in the offering!
- Member of the 2023 NWSS Reserve Champion Pen of Five.



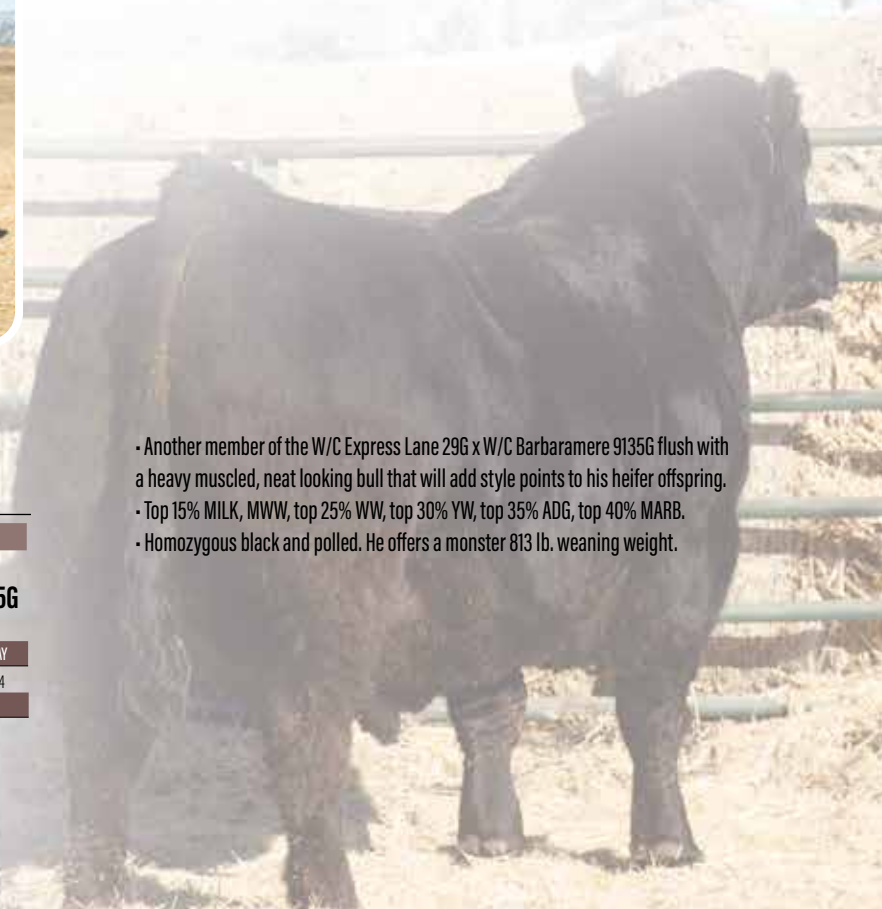
W/C EXPRESS LANE 296 - Sire of Lots 4-15

# 5 WCS EXPRESS LANE 2821K

dob. 3/5/22 | asa. 4149206 | tattoo. 2821K

1/2 SM 1/2 AN		Homozygous Polled			Homozygous Black				
RUBYS TURNPIKE 771E		PVF SURVEILLANCE 4129							
<b>W/C EXPRESS LANE 296</b>		<b>x</b>			<b>W/C BARBARAMERE 9135G</b>				
ES Z29		CARTER BARBARAMERE 7414							
CED	BW	WW	YW	ADG	MCE	MILK	MWW	STAY	
12.3	2.4	83.8	129.6	0.29	5.5	28.3	70.2	14.4	
DOC	CW	YG	MARB	BF	REA	API	TI		
9.4	29.1	-0.11	0.39	-0.013	0.5	131.8	82		
BW - 84/Ratio - ET					Adj. WW - 813/Ratio - ET				

- Another member of the W/C Express Lane 296 x W/C Barbaramere 9135G flush with a heavy muscled, neat looking bull that will add style points to his heifer offspring.
- Top 15% MILK, MWW, top 25% WW, top 30% YW, top 35% ADG, top 40% MARB.
- Homozygous black and polled. He offers a monster 813 lb. weaning weight.





LOT 6

## 6 WCS MR LANE 2819K

dob. 2/26/22 | asa. 4149276 | tattoo. 2819K

1/2 SM 1/2 AN		Homozygous Polled			Homozygous Black			
RUBYS TURNPIKE 771E W/C EXPRESS LANE 29G ES Z29		x			PVF SURVEILLANCE 4129 W/C BARBARAMERE 9135G CARTER BARBARAMERE 7414			
CED	BW	WW	YW	ADG	MCE	MILK	MWW	STAY
12.3	2.6	86	132.7	0.29	5.5	28.3	71.3	14.4
DOC	CW	YG	MARB	BF	REA	API	TI	
9.4	29.7	-0.11	0.39	-0.013	0.51	132.3	83.1	
				BW - 78/Ratio -ET Adj. WW - 728/Ratio - ET				

- This set of flush brothers will be admired for their eye appeal and ability to crush the scales.
- Top 10% MWW, top 15% MILK, top 20% WW, top 25% YW, top 35% TI, ADG, top 40% MARB.
- Homozygous black and polled. Lighter 78 lb. birth weight still grew to a 728 lb. weaning. Curve bender.



LOT 7

## 7 WCS MR LANE 2825K

dob. 2/25/22 | asa. 4149284 | tattoo. 2825K

1/2 SM 1/2 AN		Homozygous Polled			Homozygous Black			
RUBYS TURNPIKE 771E W/C EXPRESS LANE 29G ES Z29		x			PVF SURVEILLANCE 4129 W/C BARBARAMERE 9135G CARTER BARBARAMERE 7414			
CED	BW	WW	YW	ADG	MCE	MILK	MWW	STAY
12.3	2.6	85.8	132.4	0.29	5.5	28.3	71.2	14.4
DOC	CW	YG	MARB	BF	REA	API	TI	
9.4	29.4	-0.11	0.39	-0.013	0.5	132.2	82.9	
				BW - 84/Ratio -ET Adj. WW - 760/Ratio - ET				

- A half-blood Express Lane that will add pay weight to a set of feeder steers.
- Top 10% MWW, top 15% MILK, top 20% WW, top 25% YW, top 35% TI, ADG, top 40% MARB.
- Homozygous black and polled. 760 lb. weaning weight can't be ignored.

## 8 WCS MR LANE 2831K

dob. 3/4/22 | asa. 4149313 | tattoo. 2831K

1/2 SM 1/2 AN		Homozygous Polled			Homozygous Black			
RUBYS TURNPIKE 771E W/C EXPRESS LANE 29G ES Z29		x			PVF SURVEILLANCE 4129 W/C BARBARAMERE 9135G CARTER BARBARAMERE 7414			
CED	BW	WW	YW	ADG	MCE	MILK	MWW	STAY
12.3	3	89.6	137.8	0.3	5.5	28.3	73.1	14.4
DOC	CW	YG	MARB	BF	REA	API	TI	
9.4	32.1	-0.11	0.39	-0.013	0.54	133.1	84.8	
				BW - 81/Ratio -ET Adj. WW - 797/Ratio - ET				

- Here is another member of the 9135G flush that needs to be found on sale day.
- High quality individual with excellent feet and legs.
- Top 10% MWW, top 15% WW, YW, MILK, top 30% TI, ADG, top 40% MARB.
- Homozygous black and polled. Almost 800 lb. weaning weight is top quarter of this offering.

## 9 WCS MR LANE 2824K

dob. 3/1/22 | asa. 4149340 | tattoo. 2824K

1/2 SM 1/2 AN		Homozygous Polled			Homozygous Black			
RUBYS TURNPIKE 771E W/C EXPRESS LANE 29G ES Z29		x			PVF SURVEILLANCE 4129 W/C BARBARAMERE 9135G CARTER BARBARAMERE 7414			
CED	BW	WW	YW	ADG	MCE	MILK	MWW	STAY
12.3	2.7	86.9	134	0.29	5.5	28.3	71.7	14.4
DOC	CW	YG	MARB	BF	REA	API	TI	
9.4	30.9	-0.11	0.39	-0.013	0.52	132.5	83.5	
				BW - 77/Ratio -ET Adj. WW - 804/Ratio - ET				

- The final member of the lead off flush, 2824K will meet your needs for adding power and performance. A real beef bull with longevity bred in.
- Top 10% MWW, top 15% MILK, top 20% WW, YW, top 35% TI, ADG, top 40% MARB.
- Homozygous black and polled. If you like raw pounds, he's your guy with an 804 lb. WW.



LOT 10

- Deep bodied, purebred W/C Express Lane 29G x 6019D with additional calving ease genetic merit. Full brothers were among the highlights of last year's sale offering and are working for some of the top commercial and seedstock firms in the country.
- Top 20% MILK, top 25% CED, top 30% BW, MCE, top 35% MWW.
- Homozygous black and polled. Spread on his growth curve: 62 lb. BW to 726 lb. on WW.
- Full sisters to Lots 10 and 11 sell as Lots 1, 2 and 3 in this year's sale. True maternal power supports this pair of brothers!



LRS MS ELEVATE 6019D - Dam of Lots 10 & 11



WCS HIGHWAY MAN 1821J - Full brother to 10 & 11

- Flush mate to Lot 10, this pair would be perfect for a large group of heifers to breed.
- Top 25% MILK, top 25% CED, BW, top 30% MCE.
- Homozygous black & polled. One of the lightest birthweights in the yearling sale bulls.
- Expect daughters from this pair of flushmate brothers to be the first ones you set aside for the replacement pen!

10

WCS MR LANE 2822K

dob. 2/21/22 | asa. 4149178 | tattoo. 2822K

PB SM		Homozygous Polled				Homozygous Black			
RUBYS TURNPIKE 771E W/C EXPRESS LANE 29G ES Z29		x				LRS ELEVATE 213B LRS MS ELEVATE 6019D LRS MS SHRPER IMAGE 324A			
CED	BW	WW	YW	ADG	MCE	MILK	MWW	STAY	
13	0.5	76	1171	0.26	7	28.3	66.2	15.2	
DOC	CW	YG	MARB	BF	REA	API	TI		
9.5	277	-0.33	0.15	-0.056	0.82	133.4	79.1		
BW - 62/Ratio -ET					Adj. WW - 726/Ratio - ET				

11

WCS MR EXPRESSLANE 2829K

dob. 3/2/22 | asa. 4149366 | tattoo. 2829K

PB SM		Homozygous Polled				Homozygous Black			
RUBYS TURNPIKE 771E W/C EXPRESS LANE 29G ES Z29		x				LRS ELEVATE 213B LRS MS ELEVATE 6019D LRS MS SHRPER IMAGE 324A			
CED	BW	WW	YW	ADG	MCE	MILK	MWW	STAY	
13	0.1	71	110	0.24	7	28.3	63.7	15.2	
DOC	CW	YG	MARB	BF	REA	API	TI		
9.5	242	-0.33	0.15	-0.056	0.77	132.3	76.7		
BW - 49/Ratio -ET					Adj. WW - 632/Ratio - ET				



LOT 12



RUST MS DREAMLOCKED 809F - Dam of Lot 13



LOT 14



LOT 15

## 12 WCS MR LANE 2128K

dob. 3/14/22 | asa. 4149222 | tattoo. 2128K

PB SM		Homozygous Polled			Homozygous Black			
RUBYS TURNPIKE 771E W/C EXPRESS LANE 29G ES Z29		x			W/C MAINSTAY 355F WCS MS STAY 0402H LRS MS ELEVATE 6019D			
CED	BW	WW	YW	ADG	MCE	MILK	MWW	STAY
12.5	2.7	92	141.4	0.31	6.1	279	73.8	15.9
DOC	CW	YG	MARB	BF	REA	API	TI	
10	37.9	-0.36	0.2	-0.06	1.01	139.6	87.4	
BW - 89/Ratio -111 Adj. WW - 757/Ratio - 102								

- Nice pattern on this blaze face, giving an easy doing look. Big time genetic profile.
- Top 10% WW, YW, MWW, top 15% ADG, top 20% MILK, TI, top 25% REA, CW, top 30% CED, top 35% API, top 40% MARB.
- Homozygous black and polled. Strong 102 WW ratio makes him a logical option to add payweight.

## 13 WCS MR EXPRESS LANE 2124K

dob. 1/28/22 | asa. 4149166 | tattoo. 2124K

PB SM		Homozygous Polled			Homozygous Black			
RUBYS TURNPIKE 771E W/C EXPRESS LANE 29G ES Z29		x			LFE COMMISSIONER 811Z RUST MS DREAMLOCKED 809F W/C RJ MISS 8543 6115D			
CED	BW	WW	YW	ADG	MCE	MILK	MWW	STAY
11.9	3.1	78.8	122.1	0.27	4.6	22.7	62	13.8
DOC	CW	YG	MARB	BF	REA	API	TI	
12.2	29	-0.45	0.17	-0.078	1.04	127.4	78	
BW - 39/Ratio -ET Adj. WW - 560/Ratio - ET								

- 2124K is a purebred bull with diverse genetic merit to work in a variety of breeding programs.
- Top 20% REA, top 35% ADG, top 40% CED.
- Homozygous black and polled. Individual performance reads as a heifer safe option.

## 14 WCS MR LANE 2133K

dob. 3/11/22 | asa. 4149256 | tattoo. 2133K

PB SM		Homozygous Polled			Heterozygous Black			
RUBYS TURNPIKE 771E W/C EXPRESS LANE 29G ES Z29		x			WCS MR WILLIE 107Y WCS MS CRUELLA 5140C WCS JACKIES DREAM 523R			
CED	BW	WW	YW	ADG	MCE	MILK	MWW	STAY
12.7	2.1	83.2	117.4	0.21	6.7	28.4	70	16.1
DOC	CW	YG	MARB	BF	REA	API	TI	
8.3	26.4	-0.47	0.2	-0.09	0.99	136.3	82.8	
BW - 81/Ratio -101 Adj. WW - 765/Ratio - 103								

- Added length of body in this Express Lane puts on the pounds. Awesome genetic merits.
- Top 20% MILK, MWW, top 30% CED, REA, top 35% WW, TI, MCE, top 40% MARB, API.
- Homozygous polled. Modest 81 lb. BW with a 103 WW ratio.

## 15 WCS MR EXPRESS LANE 2140K

dob. 3/15/22 | asa. 4149425 | tattoo. 2140K

3/4 SM 1/4 AN		Homozygous Polled			Homozygous Black			
RUBYS TURNPIKE 771E W/C EXPRESS LANE 29G ES Z29		x			WHEATLAND BULL 680S WCS MS CHLOE 504C TC CHLOE 5167			
CED	BW	WW	YW	ADG	MCE	MILK	MWW	STAY
11.1	1.7	77.2	119.5	0.26	5.2	26.7	65.3	17.5
DOC	CW	YG	MARB	BF	REA	API	TI	
11.3	30.8	-0.33	0.22	-0.05	0.92	127.1	75.4	
BW - 78/Ratio -97 Adj. WW - 733/Ratio - 98								

- Soft, smooth, and good in his design with this high percentage stud. Strong maternal in his genetic profile.
- Top 15% REA, top 20% MILK, top 25% STAY, top 30% MWW.
- Homozygous black and polled. 733 lb. weaning weight makes the grade.



LOT 16

- Big-time power bull with a front pasture look. Lots of useful pieces in his EPD profile.
- Top 10% MWW, top 15% WW, top 20% YW, MILK, TI, top 25% DOC, CW, top 30% BW, ADG, API, top 35% MCE.
- Homozygous polled. One of the highest weaning weight ratios in the offering at 118.



W/C REST EASY 752 - Sire of Lots 16-23



LOT 17

- It will be easy to spot the bulls in this sire group with their added length of body and good frame.
- Top 3% MWW, top 5% MILK, top 10% WW, YW, ADG, top 15% CW, REA, top 20% TI, top 25% DOC, top 40% API.
- Homozygous black and polled with a stout 109 WW ratio.



MR SR 71 RIGHT NOW E1538 - Paternal Grandsire of Lots 16-23

16

WCS MR EASY 2139K

dob. 3/26/22 | asa. 4149305 | tattoo. 2139K

PB SM		Homozygous Polled				Heterozygous Black			
MR SR 71 RIGHT NOW E1538 W/C REST EASY 752G W/C MISS WERNING 752E		x				WCSSPOOLEDUPHEFUZ684D WCS MS FUZZY 055H WCS MS POWER 36A			
CED	BW	WW	YW	ADG	MCE	MILK	MWW	STAY	
11.4	0.4	89.7	133.8	0.28	6.6	28.2	73	16.8	
DOC	CW	YG	MARB	BF	REA	API	TI		
13.7	371	-0.37	0.17	-0.076	0.93	141	878		
BW - 75/Ratio -94					Adj. WW - 879/Ratio -118				

17

WCS MR EASY 2149K

dob. 3/14/22 | asa. 4149274 | tattoo. 2149K

PB SM		Homozygous Polled				Homozygous Black			
MR SR 71 RIGHT NOW E1538 W/C REST EASY 752G W/C MISS WERNING 752E		x				R&R RANGO B120 WCS MS RANGO 072H WCS MS WEST 224Z			
CED	BW	WW	YW	ADG	MCE	MILK	MWW	STAY	
10.4	1.5	94.1	145.3	0.32	5.5	31.8	78.8	16.7	
DOC	CW	YG	MARB	BF	REA	API	TI		
13.6	41.3	-0.38	0.09	-0.063	1.09	135.4	875		
BW - 84/Ratio -105					Adj. WW - 813/Ratio -109				



LOT 18



LOT 19



LOT 20

## 18 WCS MR EASY 2135K

dob. 3/4/22 | asa. 4149230 | tattoo. 2135K

PB SM		Homozygous Polled				Homozygous Black			
MR SR 71 RIGHT NOW E1538 <b>W/C REST EASY 752G</b> W/C MISS WERNING 752E		x				HARKERS ZERO TOLERANCE <b>WCS MS ZERO 0116H</b> WCS MS RANGO 7067E			
CED	BW	WW	YW	ADG	MCE	MILK	MWW	STAY	
13.2	-1.5	75.3	111.9	0.23	6.7	31.1	68.7	16.1	
DOC	CW	YG	MARB	BF	REA	API	TI		
13.8	25.9	-0.43	0.06	-0.08	0.93	133.7	79.3		
BW - 70/Ratio -87					Adj. WW - 717/Ratio - 96				

- If you need to add eye appeal and style into your hard-working cows, this guy needs to be on your short list.

- Top 10% BW, MILK, top 25% CED, MWW, DOC, top 35% MCE.

- Homozygous black and polled. 70 lb. BW and still weaned over 700 lb.

## 19 WCS MR RESTEASY 2143K

dob. 3/11/22 | asa. 4149224 | tattoo. 2143K

PB SM		Homozygous Polled				Homozygous Black			
MR SR 71 RIGHT NOW E1538 <b>W/C REST EASY 752G</b> W/C MISS WERNING 752E		x				HARKERS ZERO TOLERANCE <b>WCS MS ZERO 0104H</b> WCS MS A 7250E			
CED	BW	WW	YW	ADG	MCE	MILK	MWW	STAY	
11.8	0.6	80.7	122.2	0.26	6.3	29.8	70.1	15.5	
DOC	CW	YG	MARB	BF	REA	API	TI		
14.7	28.7	-0.4	0.12	-0.073	0.94	132.6	81.3		
BW - 83/Ratio -104					Adj. WW - 770/Ratio - 103				

- The sons of W/C Rest Easy 752G all possess genetic profiles that can work just about anywhere for any operation looking to increase profitability!

- Top 10% MILK, top 15% DOC, top 20% MWW, top 35% BW, top 40% CED, MCE.

- Homozygous black and polled. 770 lb. WW ratios at 103.

## 20 WCS MR EASY 2129K

dob. 3/12/22 | asa. 4149247 | tattoo. 2129K

PB SM		Homozygous Polled				Homozygous Black			
MR SR 71 RIGHT NOW E1538 <b>W/C REST EASY 752G</b> W/C MISS WERNING 752E		x				HARKERS ZERO TOLERANCE <b>WCS MS ZERO 0156H</b> WCS MS BUSHMAN 7109E			
CED	BW	WW	YW	ADG	MCE	MILK	MWW	STAY	
12.8	0.1	82	124.4	0.26	6.7	29.9	70.9	15.8	
DOC	CW	YG	MARB	BF	REA	API	TI		
14.3	30.3	-0.42	0.1	-0.078	0.98	135.2	82.5		
BW - 77/Ratio -96					Adj. WW - 745/Ratio - 100				

- Soggy and stylish purebred with an EPD profile to do many things well.

- Top 10% MILK, top 20% DOC, MWW, top 25% BW, top 30% CED, REA, top 35% YW, MCE, TI, top 40% API.

- Homozygous black and polled. 77 lb. to 745 lb. growth spread.



21

**WCS MR EASY 2120K**

dob. 3/26/22 | asa. 4149321 | tattoo. 2120K

PB SM		Heterozygous Polled				Homozygous Black			
MR SR 71 RIGHT NOW E1538 <b>W/C REST EASY 752G</b> W/C MISS WERNING 752E		x				W/C MAINSTAY 355F <b>WCS MS STAY 0400H</b> KS SIERRA R992			
CED	BW	WW	YW	ADG	MCE	MILK	MWW	STAY	
13.8	-0.7	91.1	139.4	0.3	74	28	73.5	15.4	
DOC	CW	YG	MARB	BF	REA	API	TI		
14.1	40	-0.42	0.03	-0.082	1.08	137.3	87.3		
BW - 72/Ratio -90		Adj. WW - 728/Ratio - 98							

- Long bodied with all around genetic excellence in his EPD profile.
- Top 10% MWW, top 15% BW, WW, YW, REA, top 20% CED, ADG, MILK, DOC, CW, TI, top 25% MCE.
- Homozygous black. This purebred was a light 72 lb. at birth.



LOT 21

22

**WCS MR EASY 2146K**

dob. 3/18/22 | asa. 4149242 | tattoo. 2146K

3/4 SM 1/4 AN		Homozygous Polled				Homozygous Black			
MR SR 71 RIGHT NOW E1538 <b>W/C REST EASY 752G</b> W/C MISS WERNING 752E		x				CCR THE AMERICAN 8022C <b>WCMSAMERICANO290H</b> WCS MS UNO 586C			
CED	BW	WW	YW	ADG	MCE	MILK	MWW	STAY	
13.2	-0.6	85.9	130.1	0.28	7	28.7	71.6	15	
DOC	CW	YG	MARB	BF	REA	API	TI		
15.8	32.8	-0.34	0.25	-0.063	0.88	133.5	84.4		
BW - 72/Ratio -90		Adj. WW - 787/Ratio - 106							

- Herd bull look and length of body best characterize this W/C Rest Easy 752G son.
- Top 10% MILK, MWW, top 15% DOC, top 20% WW, REA, top 30% YW, TI, top 35% BW.
- Homozygous black and polled with a 106 WW ratio.



KS SIERRA R992 - Maternal granddam of Lot 21

23

**WCS MR EASY 2144K**

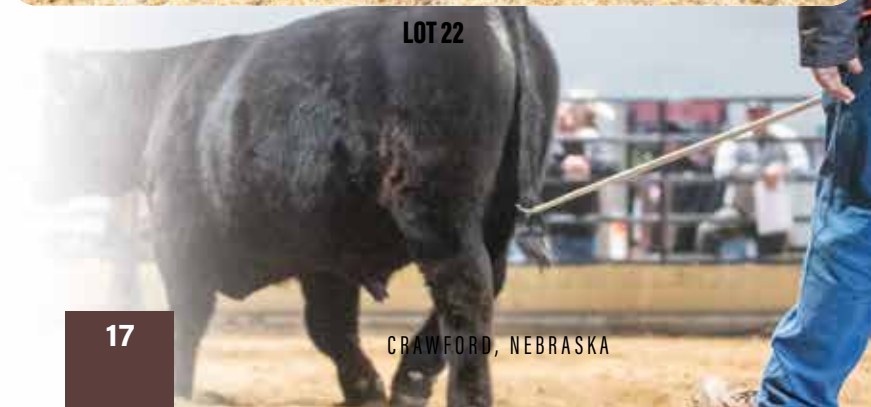
dob. 3/12/22 | asa. 4149292 | tattoo. 2144K

PB SM		Homozygous Polled				Homozygous Black			
MR SR 71 RIGHT NOW E1538 <b>W/C REST EASY 752G</b> W/C MISS WERNING 752E		x				WCS MCLINTOCK 5211C <b>WCSMSMCLINTOCK0163H</b> WCS MS JULIET 320A			
CED	BW	WW	YW	ADG	MCE	MILK	MWW	STAY	
9.9	2.4	94.5	143.7	0.31	5.7	24.9	72.1	15.6	
DOC	CW	YG	MARB	BF	REA	API	TI		
13.4	36.4	-0.47	0.11	-0.094	1.1	132.5	86.9		
BW - 89/Ratio -111		Adj. WW - 744/Ratio - 100							

- Growth and carcass bull to add value to your operation.
- Top 10% WW, YW, top 15% ADG, MWW, REA, top 20% TI, top 25% CW, top 30% DOC.
- Homozygous black and polled. Impressive 744 lb. weaning weight.



LOT 22





LOT 24

**24** **WCS MR INNOVATOR 2127K**

dob. 3/25/22 | asa. 4149325 | tattoo. 2127K

3/4 SM 1/4 AN			Homozygous Polled			Heterozygous Black		
CDI INNOVATOR 325D			W/C EXECUTIVE 187D					
<b>CCS/JS INNOVATOR 29G</b>			<b>WCS MS EXECUTIVE 825F</b>					
WHF SUMMER 365C			WCS MS 6227D					
CED	BW	WW	YW	ADG	MCE	MILK	MWW	STAY
10.2	1.8	95.8	142.8	0.29	6.3	22.9	70.8	14.7
DOC	CW	YG	MARB	BF	REA	API	TI	
10.3	40.3	-0.33	0.12	-0.068	0.89	120.6	82.9	
BW - 83/Ratio -104 Adj. WW - 806/Ratio - 108								

- It's hard to ignore his softness and structural integrity, combined with high growth genetic potential. He is a true powerhouse that comes with unmatched eye appeal.
- Top 4% WW, top 10% YW, top 15% MWW, top 20% REA, top 25% CW, top 35% ADG, TI.
- Homozygous polled. Weaned over 800 lb. with a 108 performance ratio.
- Member of the 2023 NWSS Reserve Champion Pen of Five.



LOT 25

CDI INNOVATOR 325D -  
Paternal Grand sire of Lots 24 & 25

**25** **WCS MR INNOVATOR 2137K**

dob. 3/28/22 | asa. 4149344 | tattoo. 2137K

3/4 SM 1/4 AN			Homozygous Polled			Homozygous Black		
CDI INNOVATOR 325D			WCS MCLINTOCK 5211C					
<b>CCS/JS INNOVATOR 29G</b>			<b>WCS MCLINTOCK 8060F</b>					
WHF SUMMER 365C			WCS MS GRID 814U					
CED	BW	WW	YW	ADG	MCE	MILK	MWW	STAY
12.3	-0.5	92.1	138.3	0.29	7.9	26.3	72.3	16.1
DOC	CW	YG	MARB	BF	REA	API	TI	
10.4	40.6	-0.28	0.15	-0.058	0.84	130.4	84.7	
BW - 67/Ratio -84 Adj. WW - 778/Ratio - 104								

- Bulls built like this guy should sire a sweet set of replacement heifers with added rib shape.
- Top 10% WW, MWW, top 15% YW, top 25% MILK, CW, REA, top 30% TI, MCE, top 35% ADG.
- Homozygous black and polled. Only 67 lb. at birth and grew to a 778 lb. WW, ratioing at 104.



CCS/WHF OL' SON 48F -  
Full Brother to Sire of Lots 24 & 25



2023 NWSS Reserve Grand Champion  
Pen of Five Percentage Simmental Bulls



HARKERS BANDITO UNO -  
2011 NAILE Grand Champion Percentage Simmental Bull  
Maternal Grand sire of Lot 26



W/C MAINSTAY 355F - Sire of Lots 26-28

## 26 WCS MR STAY 2121K

dob. 3/5/22 | asa. 4149241 | tattoo. 2121K

1/2 SM 1/2 AN		Heterozygous Polled				Homozygous Black			
TJ MAIN EVENT 503B <b>W/C MAINSTAY 355F</b> W/C MISS WERNING 253Z		x				HARKERS BANDITO UNO <b>WCS MS UNO 565C</b> WCS MS HEART 150Y			
CED	BW	WW	YW	ADG	MCE	MILK	MWW	STAY	
12.6	1.8	94.6	143.4	0.31	6.2	24.4	71.6	172	
DOC	CW	YG	MARB	BF	REA	API	TI		
11.9	46.1	-0.27	0.16	-0.042	0.98	130.7	83.6		
BW - 81/Ratio -101		Adj. WW - 763/Ratio - 102							

- A herd sire prospect that combines so many positive traits that will all add profitability.
- Balanced and correct, the right kind to sire some market topping blaze faced calves!
- Top 5% WW, top 10% YW, MWW, REA, top 15% CW, top 25% ADG, top 30% STAY, top 35% TI.
- Heterozygous black. Impressive 102 WW ratio.
- Member of the 2023 NWSS Reserve Champion Pen of Five.

- Bald faced stud with plenty of length and good structure. One of the most useful genetic profiles in the offering.
- Top 10% WW, STAY, REA, CW, top 15% YW, top 20% MWW, top 25% ADG, top 35% TI, top 40% API.
- Homozygous black and polled. Solid on all his performance measures.



LOT 27



TJ MAIN EVENT 503B - Paternal Grand sire of Lots 26-28

- Style to burn with his added length and extension. Still plenty powerful and massive.
- Top 10% MWW, REA, top 15% WW, MILK, top 20% YW, STAY, top 25% CW, top 35% ADG.
- Homozygous black. Big time weaning weight prospect here with a 105 ratio.



LOT 28

27

**WCS MR STAY 2131K**

dob. 2/27/22 | asa. 4149212 | tattoo. 2131K

5/8 SM 3/8 AN		Homozygous Polled				Homozygous Black			
TJ MAIN EVENT 503B		x				KS BUSHMAN A724			
<b>W/C MAINSTAY 355F</b>						<b>WCS MS BUSHMAN 7065E</b>			
W/C MISS WERNING 253Z						WCS MS STAR 182Y			
CED	BW	WW	YW	ADG	MCE	MILK	MWW	STAY	
12.8	1.5	90.9	141.3	0.31	6.6	22.2	676	19.4	
DOC	CW	YG	MARB	BF	REA	API	TI		
11.2	48	-0.32	0.2	-0.058	1.04	137.9	83.2		
BW - 79/Ratio -99					Adj. WW - 715/Ratio - 96				

28

**WCS MR STAY 2136K**

dob. 3/19/22 | asa. 4149231 | tattoo. 2136K

5/8 SM 3/8 AN		Heterozygous Polled				Homozygous Black			
TJ MAIN EVENT 503B		x				WCS MR PENDLETON 909W			
<b>W/C MAINSTAY 355F</b>						<b>WCS MS 623D</b>			
W/C MISS WERNING 253Z						WCS MS DESIGN 9050W			
CED	BW	WW	YW	ADG	MCE	MILK	MWW	STAY	
12.3	2	88.6	134.5	0.29	6.4	276	71.9	18.1	
DOC	CW	YG	MARB	BF	REA	API	TI		
11.8	41.2	-0.31	0.04	-0.048	1.01	123.3	77.4		
BW - 83/Ratio -104					Adj. WW - 783/Ratio - 105				



LOT 29

- Stockman's kind of bull with his added volume and mass throughout. Big growth figures.
- Top 10% WW, top 15% YW, MWW, CW, top 25% STAY, top 30% ADG, top 35% REA.
- Homozygous black and polled. Low percentage bull weaned off at a 103 ratio (766 lb.)



W/C MAINSTAY 355F - Paternal Grandsire of Lot 29-33



LOT 30

- Correct in his lines with a strong, level hip and quarter. You'll like the balanced genetic profile.
- Top 15% MILK, top 20% MWW, top 35% WW, top 40% MARB.
- Homozygous black & polled. Half-blood bull measured way over 700 lb. at weaning.

29

WCS MAIN 2145K

dob. 3/25/22 | asa. 4149379 | tattoo. 2145K

1/4 SM 3/8 AN 3/8 CS			Homozygous Polled			Homozygous Black		
W/C MAINSTAY 355F WCS MR MAIN 0412H KS SIERRA R992			x			TC GRID TOPPER 6116 WCS MS 036X MV MISS MT 102L		
CED	BW	WW	YW	ADG	MCE	MILK	MWW	STAY
11	2	90.6	138.1	0.3	5.6	24.1	69.4	176
DOC	CW	YG	MARB	BF	REA	API	TI	
12.1	471	-0.22	0.07	-0.054	0.76	122.4	78.2	
BW - 83/Ratio -104			Adj. WW - 766/Ratio - 103					

30

WCS MR STAY 2123K

dob. 3/11/22 | asa. 4149387 | tattoo. 2123K

1/2 SM 1/2 AN			Homozygous Polled			Homozygous Black		
W/C MAINSTAY 355F WCS MR MAIN 0416H LRS MS ELEVATE 6019D			x			5Q		
CED	BW	WW	YW	ADG	MCE	MILK	MWW	STAY
12.2	2.2	80.8	125	0.28	5.5	28.4	68.8	14.3
DOC	CW	YG	MARB	BF	REA	API	TI	
9.4	26.9	-0.11	0.39	-0.012	0.47	130.6	80.4	
BW - 82/Ratio -102			Adj. WW - 729/Ratio - 98					



LOT 31

**31** **WCS FINANCIAL 2138K**  
dob. 3/24/22 | asa. 4149381 | tattoo. 2138K

5/8 SM 3/8 AN		Homozygous Polled			Homozygous Black			
W/C MAINSTAY 355F <b>WCS MRFINANCIAL 037H</b> WCS MS POINT 5228C		x			HARKERS BANDITO UNO <b>WCS MS 633D</b> WCS MS FREEDOM 749T			
CED	BW	WW	YW	ADG	MCE	MILK	MWW	STAY
11.3	2.4	90.1	136.4	0.29	6.8	23.9	68.9	15.8
DOC	CW	YG	MARB	BF	REA	API	TI	
12	44.4	-0.31	0.11	-0.06	0.94	121	79	
BW - 83/Ratio -104		Adj. WW - 783/Ratio - 105						

- This bull exudes growth ability in his build, genetics, and individual performance.
- Top 15% WW, REA, top 20% YW, MWW, CW, top 35% ADG.
- Homozygous black and polled. Big time 105 WW ratio, creeping up on an 800 lb. weight.



LOT 32

**32** **WCS FINANCIAL 2147K**  
dob. 4/3/22 | asa. 4149347 | tattoo. 2147K

5/8 SM 3/8 AN		Homozygous Polled			Homozygous Black			
W/C MAINSTAY 355F <b>WCS MRFINANCIAL 037H</b> WCS MS POINT 5228C		x			R&R RANGO B120 <b>WCS MS RANGO 864F</b> WCS MS POWER 4011B			
CED	BW	WW	YW	ADG	MCE	MILK	MWW	STAY
9.6	3.2	103.5	159.1	0.35	5.6	27.2	78.9	16.5
DOC	CW	YG	MARB	BF	REA	API	TI	
10.4	51	-0.31	0.12	-0.054	1.1	125	86.5	
BW - 83/Ratio -104		Adj. WW - 897/Ratio - 120						

- The brockle face will get your attention, but the functional phenotype and huge growth record will keep your interest.
- Top 1% WW, MWW, top 2% YW, top 3% REA, top 10% ADG, CW, top 20% MILK, top 25% TI, top 35% STAY.
- Homozygous black & polled. Highest WW in the offering at 897 lb., rationing at 120.



LOT 33

**33** **WCS FINANCIAL 2150K**  
dob. 3/6/22 | asa. 4149395 | tattoo. 2150K

PB SM		Homozygous Polled			Homozygous Black			
W/C MAINSTAY 355F <b>WCS MRFINANCIAL 037H</b> WCS MS POINT 5228C		x			WCS MR STOUT 278Z <b>WCS MS STOUT 4076B</b> WCS MS DASH 4 CASH 017K			
CED	BW	WW	YW	ADG	MCE	MILK	MWW	STAY
10.3	2.2	95	145.3	0.31	5.7	29.3	76.8	17.2
DOC	CW	YG	MARB	BF	REA	API	TI	
10.4	47.3	-0.41	0.06	-0.079	1.16	133.9	86.4	
BW - 79/Ratio -99		Adj. WW - 756/Ratio - 101						

- This is a sire group to tie into for adding pounds to steer calves that top the market.
- Top 4% MWW, top 10% WW, YW, CW, REA, top 15% ADG, MILK, top 25% TI.
- Homozygous black & polled. Purebred prospect has a WW ratio of 101.

34

**WCS MR FARGO 2148K**

dob. 3/12/22 | asa. 4149180 | tattoo. 2148K

3/4 SM 1/4 AN	Homozygous Polled	Homozygous Black
---------------	-------------------	------------------

W/C RELENTLESS 32C  
**WCS WELLSFARGO 8304F** x  
 KS SIERRA R992

WCS BIG JAKE 5212C  
**WCS MS JAKE 7099E**  
 WCS MS CUT 418B

CED	BW	WW	YW	ADG	MCE	MILK	MWW	STAY
9.6	2.2	84.2	126	0.26	6	20.3	62.4	16.8
DOC	CW	YG	MARB	BF	REA	API	TI	
11.3	36.5	-0.32	0.15	-0.059	0.88	120.8	76	

BW - 78/Ratio - 97 Adj. WW - 700/Ratio - 94

- A no-holes kind of bull with superior growth genetic merit.
- Top 20% REA, top 25% WW, top 35% YW, STAY, CW.
- Homozygous black and polled. Weighed only 78 lb. at birth!



LOT 34

35

**WCS MR FARGO 2132K**

dob. 3/18/22 | asa. 4149255 | tattoo. 2132K

PB SM	Homozygous Polled	Homozygous Black
-------	-------------------	------------------

W/C RELENTLESS 32C  
**WCS WELLSFARGO 8304F** x  
 KS SIERRA R992

LRS TURNING POINT 3117A  
**WCS MS 6217D**  
 KS SIERRA R992

CED	BW	WW	YW	ADG	MCE	MILK	MWW	STAY
8.6	4.1	96.3	142.3	0.29	5.2	27.4	75.5	14.6
DOC	CW	YG	MARB	BF	REA	API	TI	
10.9	42.3	-0.47	0	-0.095	1.14	119.8	82.9	

BW - 87/Ratio -109 Adj. WW - 796/Ratio - 107

- A prospect that you will certainly need to find in the pens on sale day. Maximize your hybrid vigor on British females.
- Top 5% WW, top 10% YW, REA, MWW, top 15% CW, top 25% ADG, MILK, top 35% TI.
- Homozygous black & polled. Purebred with a 107 WW ratio.



LOT 35

36

**WCS MR FARGO 2126K**

dob. 3/27/22 | asa. 4149271 | tattoo. 2126K

1/2 SM 1/2 AN	Homozygous Polled	Homozygous Black
---------------	-------------------	------------------

W/C RELENTLESS 32C  
**WCS WELLSFARGO 8304F** x  
 KS SIERRA R992

PVF SURVEILLANCE 4129  
**W/C BARBARAMERE 9135G**  
 CARTER BARBARAMERE 7414

CED	BW	WW	YW	ADG	MCE	MILK	MWW	STAY
10	3.2	94	138.3	0.28	4.9	25.4	72.4	13.3
DOC	CW	YG	MARB	BF	REA	API	TI	
10.1	35.6	-0.13	0.23	-0.023	0.58	119.2	82.2	

BW - 83/Ratio -104 Adj. WW - 842/Ratio - 113

- High growth genetic potential coupled with a functionally built bull backed by the 9135G cow, dam of the leadoff flush of bulls in this sale.
- Top 10% WW, MWW, top 15% YW, top 30% MILK, top 40% TI.
- Homozygous black & polled. Huge 842 lb. WW and 113 ratio.



LOT 36

37

**WCS MR FARGO 2827K**

dob. 3/6/22 | asa. 4149361 | tattoo. 2827K

1/2 SM 1/2 AN	Homozygous Polled	Heterozygous Black
---------------	-------------------	--------------------

W/C RELENTLESS 32C  
**WCS WELLSFARGO 8304F** x  
 KS SIERRA R992

5 C

CED	BW	WW	YW	ADG	MCE	MILK	MWW	STAY
8.4	4.7	93.9	139.8	0.29	4.7	25.5	72.4	16.5
DOC	CW	YG	MARB	BF	REA	API	TI	
11.8	38.3	-0.38	0.11	-0.077	0.97	126.8	82.9	

BW - 86/Ratio -107 Adj. WW - 807/Ratio - 108

- Load up several of these Wells Fargo 8304F sons to add pounds to a calf crop.
- Top 10% WW, MWW, REA, top 15% YW, top 30% MILK, CW, top 35% ADG, STAY, TI.
- Homozygous polled. Over 800 lb. at weaning with a 108 performance ratio.



KS SIERRA R992 - Paternal Granddam of Lots 34-37

# WCS Yearling Bulls

- Certain to be a favorite on sale day, this guy is neat to look at, smooth designed, and plenty powerful!

- Top 30% MILK, MWW, top 40% WW.
- Homozygous black & polled. Big time 108 WW ratio.
- Member of the 2023 NWSS Reserve Champion Pen of Five.



**LOT 38**



W/C NIGHT WATCH 84E - Paternal Grandsire of Lot 38



RUST NIGHT WATCH 5G - Sire of Lot 38

- Stout made, soggy middled, and carries himself like a stud herd bull.

- Top 15% DOC, top 20% WW, YW, top 25% REA, top 30% ADG, top 35% CW.
- Homozygous black and polled. Purebred with a big time 769 lb. WW.



**LOT 39**



NGDB STRUCTURE 34D- Sire of Lot 39



RUST MS DREAM LOCKED 809F - Dam of Lot 39

## 38 WCS NIGHTWATCH 2152K

dob. 4/2/22 | asa. 4149229 | tattoo. 2152K

PB SM		Homozygous Polled				Homozygous Black			
W/C NIGHT WATCH 84E		x				WCS WELLSFARGO 8304F			
RUST NIGHT WATCH 5G						WCS MS FARGO 0152H			
HARRELL ANGEL 5870C						WCS MS JAKE 757E			
CED	BW	WW	YW	ADG	MCE	MILK	MWW	STAY	
10.6	1.3	81.6	115.8	0.21	4.9	26.5	672	15.6	
DOC	CW	YG	MARB	BF	REA	API	TI		
10.9	28.8	-0.35	0.01	-0.057	0.9	122.7	77		
BW - 84/Ratio -105				Adj. WW - 807/Ratio - 108					

## 39 WCS STRUCTURE 2832K

dob. 3/1/22 | asa. 4149339 | tattoo. 2832K

PB SM		Homozygous Polled				Homozygous Black			
NCB COBRA 47Y		x				LFE COMMISSIONER 811Z			
NGDB STRUCTURE 34D						RUST MS DREAMLOCKED 809F			
NGDB LOUISE 411 B						W/C RJ MISS 8543 6115D			
CED	BW	WW	YW	ADG	MCE	MILK	MWW	STAY	
5.3	5.3	88.8	133.3	0.28	2.9	18.1	62.5	13.6	
DOC	CW	YG	MARB	BF	REA	API	TI		
14.7	33.1	-0.44	0.06	-0.089	1	111.8	76.9		
BW - 88/Ratio -ET				Adj. WW - 769/Ratio - ET					



# Biscuits & Gravy sons



LOT 40



W/C SON OF A BISCUIT 83E - Paternal Grand sire of Lots 40-42

- The cowman's kind: functional with genetic merit for longevity and adding weaning pounds.
- Top 25% STAY, top 35% WW, top 45% MWW.
- Homozygous black & polled. 750 lb. WW stacks up nicely in this set of bulls.



LOT 41



HARKERS BANDITO UNO - Maternal Grand sire of Lots 40 & 41

- Excels in added rib shape and masculinity. He's ready to go be a herd bull.
- Top 35% STAY, top 45% WW, MWW.
- Homozygous black & polled. 102 WW ratio places him on the leaderboard in this set.

## 40

### WCS MR GRAVY 2130K

dob. 3/20/22 | asa. 4149252 | tattoo. 2130K

5/8 SM 3/8 AN		Homozygous Polled			Homozygous Black				
W/C SON OF A BISCUIT 83E		x			HARKERS BANDITO UNO				
<b>WCS BISCUITSGRAVY9805G</b>					<b>WCS MS UNO 540C</b>				
LRS MS ELEVATE 6019D					WCS MS MAGIC 104Y				
CED	BW	WW	YW	ADG	MCE	MILK	MWW	STAY	
10.4	1.9	80.9	118.1	0.23	5.8	22.1	62.5	17.5	
DOC	CW	YG	MARB	BF	REA	API	TI		
11.4	29.3	-0.21	0.21	-0.04	0.61	124.4	75.4		
		BW - 82/Ratio -102		Adj. WW - 748/Ratio - 100					

## 41

### WCS MR GRAVY 2151K

dob. 3/28/22 | asa. 4149383 | tattoo. 2151K

5/8 SM 3/8 AN		Homozygous Polled			Homozygous Black				
W/C SON OF A BISCUIT 83E		x			HARKERS BANDITO UNO				
<b>WCS BISCUITSGRAVY9805G</b>					<b>WCS MS UNO TANK 3008A</b>				
LRS MS ELEVATE 6019D					WCS MS TANK 780T				
CED	BW	WW	YW	ADG	MCE	MILK	MWW	STAY	
9.8	2.2	78.2	114.6	0.23	6.2	23.4	62.4	16.8	
DOC	CW	YG	MARB	BF	REA	API	TI		
11.8	28.7	-0.2	0.27	-0.044	0.52	124	74.9		
		BW - 84/Ratio -105		Adj. WW - 761/Ratio - 102					



**LOT 42**

## 42 WCS BISCUIT 2826K

dob. 3/20/22 | asa. 4149368 | tattoo. 2826K

PB SM		Homozygous Polled			Homozygous Black				
W/C SON OF A BISCUIT 83E <b>WCSBISCUITONHIGH9805G</b> LRS MS ELEVATE 6019D				x				LRS TURNING POINT 3117A <b>WCS MS POINT 8004F</b> WCS MS LACE 1046Y	

CED	BW	WW	YW	ADG	MCE	MILK	MWW	STAY
8.5	2.9	92.3	142.8	0.32	4.8	24.8	70.9	171
DOC	CW	YG	MARB	BF	REA	API	TI	
11	42.2	-0.33	0.19	-0.067	0.94	135.8	86	

BW - 82/Ratio -102 Adj. WW - 795/Ratio - 107

- Another grandson of W/C Son Of A Biscuit 83E that is correct in his structure, has good bone and plenty of muscle. A bold sprung, stout made SimGenetic bull.
- Top 10% WW, YW, ADG, top 15% CW, top 20% MWW, top 25% TI, top 40% API, MARB.
- Homozygous black & polled. Almost 800 lb. at weaning ratios a 107. Power bull.

## 43 WCS MR HIGH 2141K

dob. 4/2/22 | asa. 4149168 | tattoo. 2141K

3/4 SM 1/4 AN		Homozygous Polled			Homozygous Black				
ASR SECOND CHANCE W928 <b>ASR AIM HIGH B418</b> ASR LITTLE DESSI 2213				x				ES POWER UP XS37 <b>WCS MS POWER 463B</b> WCS MS BROADSIDE 967W	

CED	BW	WW	YW	ADG	MCE	MILK	MWW	STAY
12.7	0.9	77.7	121.7	0.28	6	22.3	61.1	16.3
DOC	CW	YG	MARB	BF	REA	API	TI	
12.4	32.3	-0.39	0.19	-0.081	0.89	127.3	76	

BW - 72/Ratio -90 Adj. WW - 745/Ratio - 100

- Only representative of this sire group, and it's hard to poke a hole in his genetics.
- Top 20% REA, top 400% STAY, ADG, top 45% YW.
- Homozygous black and polled. Spread performer: 72 lb. birth to 745 lb. WW.

## 44 WCS MR CHARGE 2122K

dob. 4/24/22 | asa. 4149300 | tattoo. 2122K

3/4 SM 1/4 AN		Homozygous Polled			Homozygous Black				
HILB/SHER DATA BREACH <b>FELT TAKE CHARGE 101H</b> FELT JAYCEE 101D				x				WCS MCCLINTOCK 5211C <b>WCS MS MCCLINTOCK8131F</b> WCS MS PIONEER 22Z	

CED	BW	WW	YW	ADG	MCE	MILK	MWW	STAY
10.5	2	87.3	132.3	0.28	5.4	25	68.6	15.9
DOC	CW	YG	MARB	BF	REA	API	TI	
12.9	38	-0.32	0.09	-0.069	0.82	118.6	72.2	

BW - 78/Ratio -97 Adj. WW - 877/Ratio - 118

- 2122K is a stylish made baldy bull with big time look and growth potential. He is a sale feature!
- Top 20% WW, MWW, top 25% REA, YW, top 35% MILK, CW.
- Homozygous black & polled. One of the highest growth numbers in the sale with his 118 WW ratio.

## 45 WCS MR CHARGE 2142K

dob. 3/23/22 | asa. 4149288 | tattoo. 2142K

5/8 SM 3/8 AN		Homozygous Polled			Homozygous Black				
HILB/SHER DATA BREACH <b>FELT TAKE CHARGE 101H</b> FELT JAYCEE 101D				x				S A V BISMARCK 5682 <b>WCS MS BISMARCK 874F</b> WCS MS SCHOOL 2009Z	

CED	BW	WW	YW	ADG	MCE	MILK	MWW	STAY
9.5	3.3	86.3	132.2	0.29	5.1	24	67.1	16.8
DOC	CW	YG	MARB	BF	REA	API	TI	
13.4	38.2	-0.21	0.13	-0.051	0.64	118.6	75.5	

BW - 88/Ratio -110 Adj. WW - 764/Ratio - 102

- Combines strong growth genetics with important convenience traits of longevity and docility.
- Top 20% WW, top 25% YW, MWW, top 30% CW, top 35% STAY, DOC, ADG.
- Homozygous black & polled. Boasts a 102 WW ratio.



FELT TAKE CHARGE 101H - Sire of Lots 44 & 45



46

**WCS MR GLOCK 2125K**

dob. 3/2/22 | asa. 4149160 | tattoo. 2125K

PB SM	Homozygous Polled	Heterozygous Black
-------	-------------------	--------------------

WCS MR GLOCK 5094C  
**WCS GLOCK357 7117E** x LRS TURNING POINT 3117A  
 WCS MS ALEXIS 114Y **WCS MS POINT542C**  
 WCS MR ENCORE 742T

CEU	BW	WW	YW	ADG	MCE	MILK	MWW	STAY
8.3	3.1	86.7	129	0.26	5.5	26.1	69.4	18.1
DOC	CW	YG	MARB	BF	REA	API	TI	
10.6	43.3	-0.35	0.24	-0.089	0.83	136.8	83.5	

BW - 77/Ratio -96 Adj. WW - 847/Ratio - 114

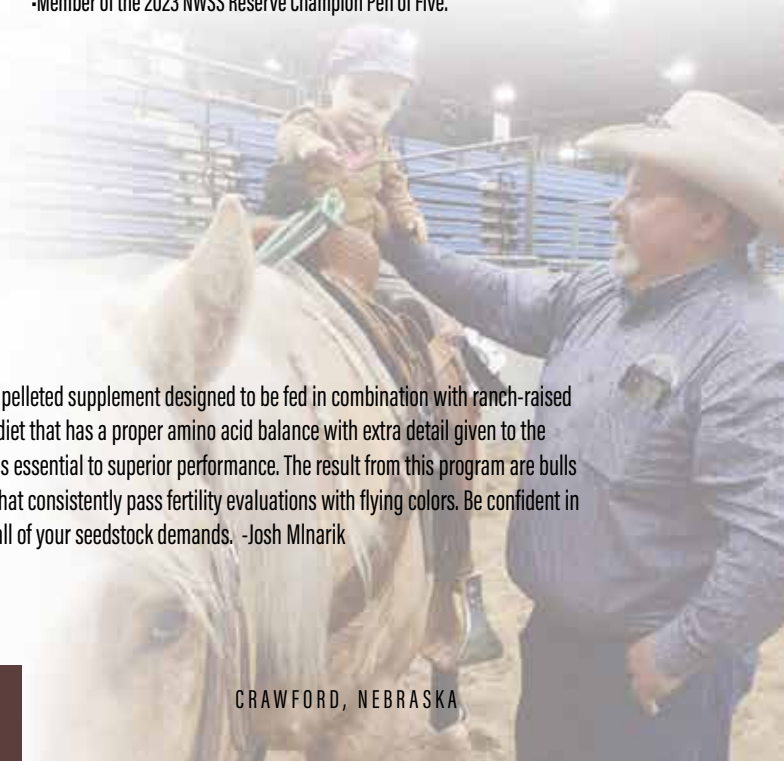
- You won't miss this bull if you study the pens. High-quality livestock with outstanding genetic merit. We love his balance, shape, and structural integrity.
- Top 10% CW, top 25% WW, YW, MWW, top 30% MILK, STAY, MARB, top 35% TI, top 40% API.
- Homozygous polled. Only 77 lb. at birth and exploded to an 847 lb. WW, ratio at 114.
- Member of the 2023 NWSS Reserve Champion Pen of Five.



**SPECIAL THANK YOU -  
 CLEARWATER FEED & GRAINS**

Josh Mlnarik - 51415 851 Road - Clearwater, NE 68726

The bulls at Western Cattle Source are developed on a pelleted supplement designed to be fed in combination with ranch-raised hay. The goal is to deliver a low calorie but digestible diet that has a proper amino acid balance with extra detail given to the amount and the ratio of all vitamins and trace minerals essential to superior performance. The result from this program are bulls that are hard muscled and durable with big testicles that consistently pass fertility evaluations with flying colors. Be confident in the livestock raised at Western Cattle Source to fulfill all of your seedstock demands. -Josh Mlnarik



# WCS Yearling Bulls

- Commanding presence and more than enough style in this purebred Glock son.
- Top 20% STAY, top 25% CW, top 35% WW, top 45% YW, MARB, API.
- Homozygous black and polled. 106 WW ratio.



LOT 47

- The only W/C Relentless 32C son is a good one! Stout built with plenty of capacity, and to top it off, a sweet, blazed face. One of 4 sons of the prolific B454 donor to sell.
- Top 40% BW, top 45% REA.
- Homozygous polled purebred stud with a 725 lb. weaning weight.



LOT 48



W/C RELENTLESS 32C - Sire of Lot 48



HSF MALLORY G903 - Maternal Sister to Dam of Lots 48-51

## 47 WCS MR GLOCK 2134K

dob. 3/18/22 | asa. 4149389 | tattoo. 2134K

PB SM		Homozygous Polled				Homozygous Black			
WCS MR GLOCK 5094C <b>WCS GLOCK357 7117E</b> WCS MS ALEXIS 114Y		x				WCS BIG JAKE 5212C <b>WCS MS JAKE 9201G</b> WCS MS DESIGN767T			
CED	BW	WW	YW	ADG	MCE	MILK	MWW	STAY	
8	3	82.6	120.1	0.23	4.7	21.2	62.5	19.3	
DOC	CW	YG	MARB	BF	REA	API	TI		
10.2	37.3	-0.4	0.17	-0.097	0.86	133.8	79.1		
BW - 82/Ratio - 102					Adj. WW - 792/Ratio - 106				

## 48 WCS RELENTLESS 2820K

dob. 3/1/22 | asa. 4149323 | tattoo. 2820K

PB SM		Homozygous Polled				Heterozygous Black			
YARDLEY UTAH Y361 <b>W/C RELENTLESS 32C</b> MISS WERNING KP 8543U		x				JF MILESTONE 999W <b>BRKC GEMSTONE B454</b> HSF/HS SHEZA BEAUTY U823			
CED	BW	WW	YW	ADG	MCE	MILK	MWW	STAY	
10.7	0.8	64.1	86.6	0.14	5.5	14	46	11.5	
DOC	CW	YG	MARB	BF	REA	API	TI		
8.3	8	-0.55	0.01	-0.101	0.92	109	66.6		
BW - 75/Ratio - ET					Adj. WW - 725/Ratio - ET				

# Bar CK Red Empire sons



**LOT 49**

- The first of three ET flushmate brothers sired by the calving ease specialist Bar CK Red Empire 9153G. He offers a bit more performance and shape with the same calving ease credentials.
- Top 4% BW, MCE, top 10% CED, top 25% REA, top 30% API.
- Homozygous polled. 752 lb. across the scales at weaning.



FELT SIZZLER STYLE 454D - 2018 NWSS Late Summer Yearling Champion & Maternal Brother to Lots 48-51



**LOT 50**

- 2830K offers added length and pounds when compared to his full brothers. Think of the blaze faced daughters he could sire!
- His sire, Bar CK Red Empire 9153G is one of the most phenotypically eye appeal bulls to ever come out of the Bar CK program.
- Top 4% MCE, top 10% CED, BW, top 15% REA, top 30% API.
- Homozygous polled. Curve bending 72 lb. up to a massive 816 lb. weaning weight.



HILB/FVF LOCKSMITH C612 - Maternal Brother to Dam of Lots 48-51

**49**

**WCS MR EMPIRE 2823K**

dob. 2/20/22 | asa. 4149177 | tattoo. 2823K

PB SM		Homozygous Polled				Red			
IR IMPERIAL D948		JF MILESTONE 999W				JF MILESTONE 999W			
<b>BAR CK RED EMPIRE 9153G</b>		<b>BRKC GEMSTONE B454</b>				<b>BRKC GEMSTONE B454</b>			
WS MISS NORTHSTAR B180		HSF/HS SHEZA BEAUTY U823				HSF/HS SHEZA BEAUTY U823			
CED	BW	WW	YW	ADG	MCE	MILK	MWW	STAY	
15.4	-2.3	65.3	95.4	0.19	9.6	19.1	51.7	171	
DOC	CW	YG	MARB	BF	REA	API	TI		
11.4	11.6	-0.53	0.18	-0.085	1.01	142.6	76.7		
BW - 51/Ratio - ET					Adj. WW - 752/Ratio - ET				

**50**

**WCS MR EMPIRE 2830K**

dob. 2/22/22 | asa. 4149278 | tattoo. 2830K

PB SM		Homozygous Polled				Red			
IR IMPERIAL D948		JF MILESTONE 999W				JF MILESTONE 999W			
<b>BAR CK RED EMPIRE 9153G</b>		<b>BRKC GEMSTONE B454</b>				<b>BRKC GEMSTONE B454</b>			
WS MISS NORTHSTAR B180		HSF/HS SHEZA BEAUTY U823				HSF/HS SHEZA BEAUTY U823			
CED	BW	WW	YW	ADG	MCE	MILK	MWW	STAY	
15.4	-1.8	70.4	102.7	0.2	9.6	19.1	54.3	171	
DOC	CW	YG	MARB	BF	REA	API	TI		
11.4	16.7	-0.53	0.18	-0.085	1.08	143.8	79.2		
BW - 72/Ratio - ET					Adj. WW - 816/Ratio - ET				



IR IMPERIAL D948 - Paternal Grand sire of Lots 49-51



BAR CK RED EMPIRE 9153G - Sire of Lots 49-51

**51 WCS MR RED EMPIRE 2818K**

dob. 3/2/22 | asa. 4149186 | tattoo. 2818K

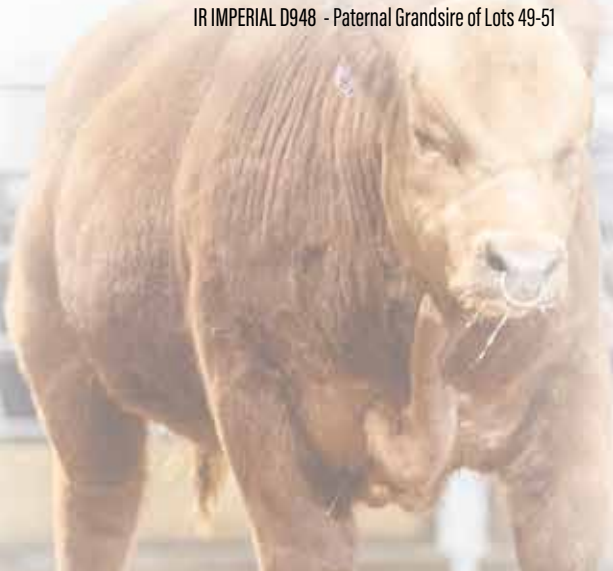
PB SM	Homozygous Polled	Red
-------	-------------------	-----

IR IMPERIAL D948 **BAR CK RED EMPIRE 9153G** x JF MILESTONE 999W **BRKC GEMSTONE B454**  
 WS MISS NORTHSTAR B180 HSF/HS SHEZA BEAUTY U823

CED	BW	VW	YW	ADG	MCE	MILK	MWW	STAY
15.4	-2.3	65.3	95.4	0.19	9.6	19.1	51.7	171
DOC	CW	YG	MARB	BF	REA	API	TI	
11.4	12.2	-0.53	0.18	-0.085	1.02	142.7	76.7	

BW - 59/Ratio - ET Adj. WW - 778/Ratio - ET

- You'll be hard-pressed to find a purebred red bull with this much rib shape, stoutness that blends it together in such a balanced package.
- Top 4% BW, MCE, top 10% CED, top 25% REA, top 30% API.
- Homozygous polled. Heifer safe with his 59 lb. BW, growing up to a 778 lb. WW.
- A true sale feature that has big time herd sire credentials!
- Member of the 2023 NWSS Reserve Champion Pen of Five.



# *Age Advantage Bulls*



- The leadoff age advantaged bull is one stout ras-cal with an elite growth genetic profile.
- Top 1% WW, MWW, top 2% YW, top 10% ADG, CW, REA, top 25% MILK, TI, top 40% STAY.
- Homozygous black & polled. Ratios a massive 114 for weaning weight.



**LOT 52**



W/C MAINSTAY 355F - Sire of Lots 52 & 53

- Mainstay son with all the functional pieces you need in a long-lasting breeding bull.
- Top 10% REA, top 15% WW, YW, ADG, MWW, CW, top 35% MILK, STAY, top 40% TI.
- Homozygous black & polled. Half-blood with a modest 77 lb. BW.



**LOT 53**



LRS TURNING POINT 3117A - Maternal Granddam of Lot 53

**52 WCS MAINSTAY 1536J**  
dob. 8/28/21 | asa. 3982235 | tattoo. 1536J

5/8 SM 3/8 AN			Homozygous Polled			Homozygous Black		
TJ MAIN EVENT 503B <b>W/C MAINSTAY 355F</b> W/C MISS WERNING 253Z			x			ASR AUGUSTUS Y1194 <b>WCS MS AGUSTUS 519C</b> WCS MS PIONEER 3019A		
CED	BW	WW	YW	ADG	MCE	MILK	MWW	STAY
12.4	3.9	105.4	160.6	0.35	6	26.4	79	16.4
DOC	CW	YG	MARB	BF	REA	API	TI	
12.1	48.4	-0.32	0.09	-0.06	1.02	126.2	86.4	
BW - 77/Ratio - 99			Adj. WW - 800/Ratio - 114					

**53 WCS MAINSTAY 1534J**  
dob. 9/10/21 | asa. 3982270 | tattoo. 1534J

1/2 SM 1/2 AN			Homozygous Polled			Homozygous Black		
TJ MAIN EVENT 503B <b>W/C MAINSTAY 355F</b> W/C MISS WERNING 253Z			x			LRS TURNING POINT 3117A <b>WCS MS 6225D</b> TC CHLOE 5167		
CED	BW	WW	YW	ADG	MCE	MILK	MWW	STAY
11.3	1.2	88.9	141.6	0.33	6.9	25.1	69.5	16.9
DOC	CW	YG	MARB	BF	REA	API	TI	
11.9	47.6	-0.27	0.22	-0.044	0.98	131.9	82.7	
BW - 77/Ratio - 99			Adj. WW - 688/Ratio - 98					





LOT 54



W/C INSTINCT 1000F - Sire of Lots 54-66

- One of the favorites in this age group on the hoof. Hard to pick a fault in this surefire female maker. Body, power, length, and real world performance!
- Top 5% MILK, MWW, top 20% WW, top 30% YW, REA, top 35% CW.
- Homozygous black & polled. Strong 101 WW ratio.



LOT 55



S A V INTERNATIONAL 2020 - Maternal Grand sire of Lot 55

- Rugged made bull with plenty of mass, ready to go to work siring productive females.
- Top 10% MILK, MWW, top 15% WW, top 25% YW, REA, top 30% YW, CW.
- Homozygous black & polled. One of the leaders in this group with a 104 WW ratio.

**54** **WCS INSTINCT 1533J**

dob. 8/28/21 | asa. 3982238 | tattoo. 1533J

3/4 SM 1/4 AN			Homozygous Polled			Homozygous Black		
CDI INNOVATOR 325D <b>W/C INSTINCT 1000F</b> MISS WERNING KP 8543U			R&R RANGO B120 <b>WCS MS RANGO 8150F</b> WCS MS GRID 828U			x		
CED	BW	WW	YW	ADG	MCE	MILK	MWW	STAY
9.7	2.5	871	1299	0.27	5.6	30.5	74	13.6
DOC	CW	YG	MARB	BF	REA	API	TI	
11.5	37.5	-0.26	0.1	-0.048	0.79	111.9	76.8	
BW - 80/Ratio - 102			Adj. WW - 714/Ratio - 101					

**55** **WCS INSTINCT 1529J**

dob. 8/29/21 | asa. 3982252 | tattoo. 1529J

3/4 SM 1/4 AN			Homozygous Polled			Homozygous Black		
CDI INNOVATOR 325D <b>W/C INSTINCT 1000F</b> MISS WERNING KP 8543U			S A V INTERNATIONAL 2020 <b>WCS MS 631D</b> WCS MS 002X			x		
CED	BW	WW	YW	ADG	MCE	MILK	MWW	STAY
7.9	2.8	89.9	130.6	0.25	2	28.6	73.6	10.7
DOC	CW	YG	MARB	BF	REA	API	TI	
11.2	39.1	-0.27	0.16	-0.054	0.82	107	78.9	
BW - 86/Ratio - 110			Adj. WW - 731/Ratio - 104					

- Soggy made and heavy muscled. The kind the rancher likes to put to work.
- Top 15% REA, MILK, top 35% MWW.
- Homozygous black & polled. A modest birth weight makes him a well rounded option.



LRS ELEVATE 213B - Maternal Grandsire of Lot 56 & 57

**LOT 56**

- Complete made bull with a bit more calving ease in his genetic profile.
- Top 25% MILK, top 40% CED, BW, MWW, top 45% REA.
- Homozygous black & polled. Nice 77 lb. birth weight.



**LOT 57**

**56**

**WCS INSTINCT 1540J**

dob. 9/5/21 | asa. 3982255 | tattoo. 1540J

3/4 SM 5/32 AN 3/32 HH Homozygous Polled Homozygous Black

CDI INNOVATOR 325D  
W/C INSTINCT 1000F  
MISS WERNING KP 8543U

x

S D S GRADUATE 006X  
WCS MS 604D  
WCS MS WIDETRACK 467B

CED	BW	WW	YW	ADG	MCE	MILK	MWW	STAY
10.2	0.2	74.3	108.3	0.21	3.9	27.9	64.9	13.1
DOC	CW	YG	MARB	BF	REA	API	TI	
11.7	28.4	-0.42	0.05	-0.081	0.91	108.1	70.9	

BW - 79/Ratio -101 Adj. WW - 661/Ratio - 94

**57**

**WCS INSTINCT 1537J**

dob. 9/4/21 | asa. 3982260 | tattoo. 1537J

PB SM Homozygous Polled Homozygous Black

CDI INNOVATOR 325D  
W/C INSTINCT 1000F  
MISS WERNING KP 8543U

x

LRS ELEVATE 213B  
WCS MS 6008D  
WCS MS POWER 405B

CED	BW	WW	YW	ADG	MCE	MILK	MWW	STAY
11.9	0.9	76.7	111.9	0.22	6.2	27.4	65.7	12.9
DOC	CW	YG	MARB	BF	REA	API	TI	
9.4	25.6	-0.43	0.12	-0.084	0.92	124.5	78.1	

BW - 77/Ratio -99 Adj. WW - 674/Ratio - 96

58

**WCS INSTINCT 1532J**

dob. 8/29/21 | asa. 3982262 | tattoo. 1532J

PB SM      Homozygous Polled      Homozygous Black

CDI INNOVATOR 325D  
**W/C INSTINCT 1000F**  
MISS WERNING KP 8543U

x

LRS TURNING POINT 3117A  
**WCS MS POINT 8331F**  
WCS MS KAYLA 5217C

CED	BW	WW	YW	ADG	MCE	MILK	MWW	STAY
9.8	2.7	85.5	128.1	0.27	5.5	275	70.3	11.5
DOC	CW	YG	MARB	BF	REA	API	TI	
11.9	35.9	-0.43	0.12	-0.084	1.03	120.1	81.2	

BW - 80/Ratio -102    Adj. WW - 680/Ratio - 97

- Burly, rugged fella that can cover lots of cows and add genetic value.
- Top 20% MWW, top 25% WW, MILK, REA, top 30% YW, CW, top 35% ADG, top 40% TI.
- Homozygous black & polled. Strong 680 lb. WW.



LRS TURNING POINT 3117A - Maternal Grand sire of Lot 58



LOT 58

59

**WCS INSTINCT 1541J**

dob. 8/30/21 | asa. 3982256 | tattoo. 1541J

PB SM      Homozygous Polled      Homozygous Black

CDI INNOVATOR 325D  
**W/C INSTINCT 1000F**  
MISS WERNING KP 8543U

x

WCS MCLINTOCK 5211C  
**WCS MS MCLINTOCK 8115F**  
WCS MS TIMEABOVE 225Z

CED	BW	WW	YW	ADG	MCE	MILK	MWW	STAY
9.7	2.5	81.5	119	0.23	5.5	26.7	67.4	12.8
DOC	CW	YG	MARB	BF	REA	API	TI	
12.5	29.5	-0.41	0.06	-0.084	0.88	117.1	77.1	

BW - 80/Ratio -102    Adj. WW - 698/Ratio - 99

- Purebred Instinct son with plenty of rib shape and mass.
- Top 30% MILK, MWW, top 40% WW, top 45% YW.
- Homozygous black and polled with a solid performance ledger.



LOT 59

60

**WCS INSTINCT 1538J**

dob. 8/17/21 | asa. 3982261 | tattoo. 1538J

3/4 SM 1/4 AN      Homozygous Polled      Heterozygous Black

CDI INNOVATOR 325D  
**W/C INSTINCT 1000F**  
MISS WERNING KP 8543U

x

CCR THE AMERICAN 8022C  
**WCS MS AM 764E**  
WCS MS KATE 901W

CED	BW	WW	YW	ADG	MCE	MILK	MWW	STAY
14.8	0.2	79.2	115.8	0.23	7.7	30.2	69.7	12.4
DOC	CW	YG	MARB	BF	REA	API	TI	
14.1	27.7	-0.27	0.21	-0.052	0.69	122.7	78.1	

BW - 67/Ratio -86    Adj. WW - 695/Ratio - 99

- Another maternal trait sire from the Instinct group, carrying additional calving ease merit.
- Top 5% MILK, top 15% MWW, top 25% CED, top 40% WW.
- Homozygous polled. 67 lb. birth weight with a near 700 lb. WW that stacks up in this division.





LOT 61

61

**WCS INSTINCT 1528J**

dob. 8/31/21 | asa. 4153060 | tattoo. 1528J

1/2 SM 1/2 AN	Heterozygous Polled	Heterozygous Black
---------------	---------------------	--------------------

CDI INNOVATOR 325D  
**W/C INSTINCT 1000F**  
 MISS WERNING KP 8543U

x

**WCS MS 7V1**

CED	BW	WW	YW	ADG	MCE	MILK	MWW	STAY
12.1	0.4	74.7	115	0.25	6.3	30.3	67.6	71
DOC	CW	YG	MARB	BF	REA	API	TI	
10.5	29.2	-0.16	0.28	-0.03	0.52	110.8	76.4	

BW - 77/Ratio -100 Adj. WW - 693/Ratio - 104

- Check out this bald-faced bull with loads of capacity through his middle third.
- Top 5% MILK, top 20% MWW.
- 77 lb. BW to a 104 WW ratio. Curve bending performance.



LOT 62

62

**WCS INSTINCT 1530J**

dob. 9/10/21 | asa. 4153054 | tattoo. 1530J

1/2 SM 1/2 AN	Heterozygous Polled	Homozygous Black
---------------	---------------------	------------------

CDI INNOVATOR 325D  
**W/C INSTINCT 1000F**  
 MISS WERNING KP 8543U

x

**WCS MS 8Y**

CED	BW	WW	YW	ADG	MCE	MILK	MWW	STAY
11.5	0.3	73	112.6	0.25	5.9	29.7	66.1	71
DOC	CW	YG	MARB	BF	REA	API	TI	
10.5	28.3	-0.16	0.28	-0.03	0.51	109.7	75.4	

BW - 79/Ratio -102 Adj. WW - 690/Ratio - 104

- Striking presence on this guy. Imagine how cool his daughters will look as bred females.
- Top 10% MILK, top 30% MWW.
- Homozygous black. Among the group leaders with his 104 WW ratio.



LOT 63

63

**WCS INSTINCT 1531J**

dob. 8/24/21 | asa. 4153056 | tattoo. 1531J

1/2 SM 1/2 AN	Homozygous Polled	Heterozygous Black
---------------	-------------------	--------------------

CDI INNOVATOR 325D  
**W/C INSTINCT 1000F**  
 MISS WERNING KP 8543U

x

**WCS MS 7C**

CED	BW	WW	YW	ADG	MCE	MILK	MWW	STAY
12.1	-0.4	65.3	101.7	0.23	6.3	26.9	59.5	71
DOC	CW	YG	MARB	BF	REA	API	TI	
10.5	24.3	-0.16	0.28	-0.03	0.45	108.8	71.4	

BW - 77/Ratio -100 Adj. WW - 624/Ratio - 94

- Touch more calving ease look and data to this Instinct son. This is a solid sire group.
- Top 20% MILK, top 40% BW.
- Homozygous polled. Only 77 lb. at birth to over 620 lb. at weaning.

64

**WCS INSTINCT 1535J**

dob. 8/28/21 | asa. 4153052 | tattoo. 1535J

1/2 SM 1/2 AN      Homozygous Polled      Heterozygous Black

CDI INNOVATOR 325D  
**W/C INSTINCT 1000F**      x      **WCS MS 7L1**  
MISS WERNING KP 8543U

CED	BW	WW	YW	ADG	MCE	MILK	MWW	STAY
11.7	-0.4	65.4	101.8	0.23	6	27	59.6	71
DOC	CW	YG	MARB	BF	REA	API	TI	
10.5	24.3	-0.16	0.28	-0.03	0.45	108.3	71.4	

BW - 79/Ratio -102    Adj. WW - 628/Ratio - 94

- These Instinct sons excel in maternal genetics. Add several of them to make your heifers.
- Top 20% MILK, top 40% BW.
- Homozygous polled. Only 79 lb. at birth for a little more calving ease.



LOT 64

65

**WCS INSTINCT 1526J**

dob. 8/31/21 | asa. 4153062 | tattoo. 1526J

1/2 SM 1/2 AN      Homozygous Polled      Heterozygous Black

CDI INNOVATOR 325D  
**W/C INSTINCT 1000F**      x      **WCS MS 7U1**  
MISS WERNING KP 8543U

CED	BW	WW	YW	ADG	MCE	MILK	MWW	STAY
12.3	0.3	73	112.7	0.25	6.4	29.7	66.2	71
DOC	CW	YG	MARB	BF	REA	API	TI	
10.5	28.4	-0.16	0.28	-0.03	0.51	110.7	75.5	

BW - 76/Ratio -98    Adj. WW - 681/Ratio - 102

- Star-faced stud that is powerful from all angles. Good bone and mass to this herd sire prospect.
- Top 10% MILK, top 30% MWW.
- Homozygous polled. Tallied a solid 102 WW ratio.



LOT 65

66

**WCS INSTINCT 1527J**

dob. 9/3/21 | asa. 4153058 | tattoo. 1527J

1/2 SM 1/2 AN      Homozygous Polled      Homozygous Black

CDI INNOVATOR 325D  
**W/C INSTINCT 1000F**      x      **WCS MS 70**  
MISS WERNING KP 8543U

CED	BW	WW	YW	ADG	MCE	MILK	MWW	STAY
12.5	0.2	72.4	111.8	0.25	6.5	29.5	65.7	71
DOC	CW	YG	MARB	BF	REA	API	TI	
10.5	28	-0.16	0.28	-0.03	0.51	110.8	75.2	

BW - 75/Ratio -97    Adj. WW - 679/Ratio - 102

- Half-blood sire that fits the mold of the Instinct sire group. Expect him to make daughters that milk and raise big calves! He charts top 10% MILK and top 30% MWW.
- Homozygous black and polled. One of the lightest BWs in the age group coupled with a 102 WW ratio.

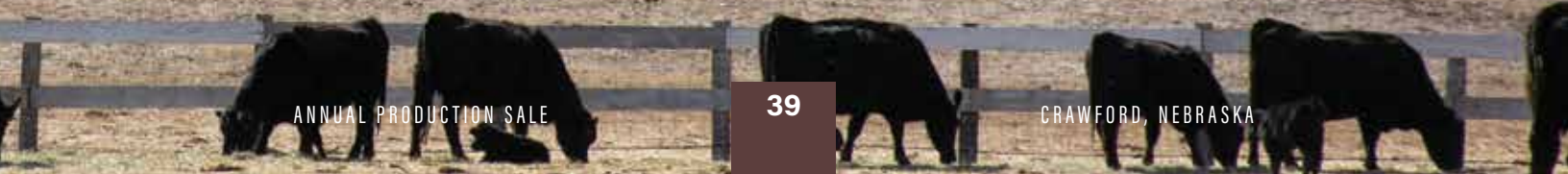






# Western

CATTLE SOURCE



*I***NNOVATION**  
— AgMarketing, LLC —

PO Box Z  
DeSoto, Kansas 66018

catalog proudly designed by sci designs  
[www.stephaniecronin.com](http://www.stephaniecronin.com) • 402-682-2570



*Western*

CATTLE SOURCE  
**PRODUCTION SALE**

1 PM MST - MARCH 23, 2023 - AT THE RANCH CRAWFORD, NEBRASKA