

TC REDS *Wests*

THE BULL SALE

MONDAY, FEBRUARY 20, 2023 AT 12:00 PM

St. Ansgar, Iowa



SIMMENTAL | ANGUS

RED ANGUS | CHAROLAIS | MAINE ANJOU



TC Reads



Weis

Saturday, February 18th

Sale cattle on display at Weis Cattle sale facility

Sunday, February 19th

Sale cattle on display at Weis Cattle sale facility

Monday, February 20th

9:00 AM – Coffee & breakfast pastries available

11:00 AM – Lunch served

12:00 PM – Sale begins

INNOVATION

— AgMarketing, LLC —

Cooperation allows for extra energy, surplus fuel for ambition, more desirable execution, and shared experiences to learn from and improve on. The inaugural event hosted by the Weis and Bayer Families will be the result of the initiating sentence of this sale book. Willie Weis and his family have set their satchel down to partner with the next generation of TC Reds and Country Lane Farm, to begin a journey filled with goals, a very determined mindset, and a set of stock to offer with production, performance, and substantial eye appeal. The breeds represented are diverse but backed by proven cow families and sires that are fundamentally fault free and correct in their build and design.

The ultimate goal moving forward with this youthfully dynamic partnership is the goal to be considered and compared by and to the best of the best. These families want to be included in the options of many nationwide while becoming the “go to” for the business. TC Reds and Country Lane Farms are considered one in the same under the Bayer family name and management. Many of you have done business over the years with Scott and Mia but rest assured that Ty and Tucker will follow in the same footsteps with a handshake and their word to be as binding as any written agreement or contract. For those that know Willie as past customers on the female side, you know what to expect and don't expect anything different when it comes to the bull side of the equation.

The outfits know that to withstand the registered business they must be able to sell the bull mates to the many successful females that they have to their record. They desire feedback and criticism to better serve you and to improve the product to fit your needs. The stock will be built right from the ground up. Feet are the most critical part of skeletal and structural integrity when it comes to longevity in the pasture or any environment they get introduced to. The partnership definitely understands that weight matters as much as visual appraisal so rest assured if you're unfamiliar with either operation they do know how to use a knife and want to only offer the very best.

We invite you to take the time to reach out to either operation, we guarantee you that you will enjoy the conversation and you will want to make the trip to set your eyes on an elite set of stock. Without question or doubt, we know that you will find this offering to be very dense in quality and pedigree with substantial cow families supporting the entire offering. The opportunity to business with people that are not going anywhere for a long time presents itself on February 20, 2023 at Willie Weis' place just north of St. Ansgar, Iowa. Please feel free to reach out to any of the Innovation AgMarketing staff as well with inquiries related to the offering as well.

Graham Blagg Jered Shipman Tim Anderson





TC REDS

SALE MANAGED BY INNOVATION AGMARKETING, LLC:

Graham Blagg: (530) 913-6418

Jered Shipman: (806) 983-7226

Tim Anderson: (605) 682-9343

WWW.INNOVATIONAGMARKETING.COM

SALE DAY CONTACTS

Willie Weis: (641) 220-1995

Scott Bayer: (715) 573-4943

Ty Bayer: (715) 573-0153

Kale Spengler: (563) 599-3326

Brent Wirth: (715) 760-1727

DVAuction
Broadcasting Real-Time Auctions



AUCTIONEER:

Col. Jered Shipman: (806) 983-7226

TRUCKING:

Dick Coleman: (765) 461-0954

Joe Taylor: (608) 697-0704

RING STAFF:

Mitchell Armitage – Special Assignment: (405) 641-9438

Austin Brandt – Lee AgriMedia: (712) 621-1829

INSURANCE:

James Bessler: (815) 762-2641

TERMS & CONDITIONS:

All cattle will sell under the suggested terms and conditions of the respective breed associations in which are represented throughout the sale offering – American Angus Association, American Simmental Association, Red Angus Association of American, American Maine-Anjou Association, and the American International Charolais Association. All sales are final.

BULL GUARANTEE:

We guarantee that all bulls sold through our sale are fertile. If a bull is injured anytime in the twelve months following the sale, that makes him functionally infertile, we will provide a replacement bull or issue a credit in following sales, equal to the purchase price minus the salvage value received for your bull. The sale credit can be used on bulls or bred heifers the following year. This is not an insurance policy. The guarantee is in addition to the sale terms and conditions suggested by the respective breed associations that are represented throughout the offering.

SEMEN INTEREST:

TC Reds & Weis Cattle will retain 1/3 semen interest on all bulls selling; meaning if either breeder should choose to collect semen on any sale bull, they would have the option to do so at the seller's expense. In addition, if semen is sold on any bull(s) that is collected, revenue shall be split with seller retaining 1/3 of proceeds. Buyer will receive 2/3 semen interest, full possession, and salvage value unless otherwise specified or announced.

SIGHT UNSEEN GUARANTEE:

If you are unable to make it to the sale, please feel free to reach out to anyone associated with the breeders, sales team, or authorized sale representatives to help find the best fit for your operation. Please reach out to TC Reds or Weis Cattle ahead of sale day to discuss the cattle in more depth. 100% customer satisfaction is guaranteed!

BULL DEVELOPMENT:

All bulls selling can be developed at no additional cost through April 15, 2023. At that point we will semen test, administer pre-breeding shots, worm, and pour your bull. If you plan to leave your purchase in our care, it is required that you insure your purchase. Any bull remaining in our care past the April 15th date are subject to yardage costs.

ANNOUNCEMENTS:

A supplement sheet will be available sale day with updated information, corrections, and additional information. This sheet and any announcements made sale day from the auction block during the sale, will take precedence over printed material associated with the sale.

LIABILITY:

Anyone attending this sale attends at their own risk. Sellers, facility owners, nor the sales team will not be held responsible for any personal injury from attending this sale.

VIDEOS:

Videos of cattle will be available prior to the sale. The videos will be available for viewing at www.DVAUCTION.com and www.INNOVATIONAGMARKETING.com

DV AUCTION:

Watch and bid online with DVAuction.com. If you have questions please contact Wyatt Durst: (785) 541-0904.

SALE INFORMATION

THE ANGUS BULLS



LOT 1



SCC SCH 24 KARAT 838 - Sire of Lots 1-3



FCF PHYLLIS 770 - Dam of Lot 1



STAG GOOD TIMES 210 ET - Full Brother in Blood to Lot 1

TC 24 KARAT 52K

REG: 20554844

PB ANGUS

DOB: 3/13/22

SCC TRADITION OF 24
SCC SCH 24 KARAT 838
 FCF PROVEN QUEEN 419
 SILVEIRAS STYLE 9303
FCF PHYLLIS 770
 SCC PHYLLIS 051

Lot
1

BW	Adj. WW	Act. Wt 1/24/23	CED	BW	WW	YW	MILK
80	683	1015	-1	4.9	56	96	22

- TC 24 Karat 52K is a standout among the Angus offering, not just from a phenotype standpoint, but genetically he raises the bar! Sired by the tried and true SCC SCH 24 Karat 838, 52K is one of the most unique individuals to ever be born in Ringle, Wisconsin.
- A truly unique herd sire prospect that is backed by the rising star in the donor pen, FCF Phyllis 707. During her campaign 707 was a many-times champion for Tucker Bayer with wins at the All American Angus Breeders' Futurity in Louisville, Kentucky where she was selected as the Grand Champion Overall Heifer. 770 was also selected 4th Overall at the 2019 National Junior Angus Show.
- The cow family that supports this herd sire prospect is the famed "Phyllis" line that has reigned supreme for nearly a decade within the Angus breed. A full brother in blood to 52K is the popular STAG Good Times 210 ET.
- 52K has the extra shape, stoutness, and style combined with the pedigree and performance to be a major force as an AI sire of significance. Here is your chance to hitch your wagon to a prospect that is on the rise!
- **Terms Announced Sale Day.**

TC Reds
 THE BULL SALE

THE ANGUS BULLS



LOT 2

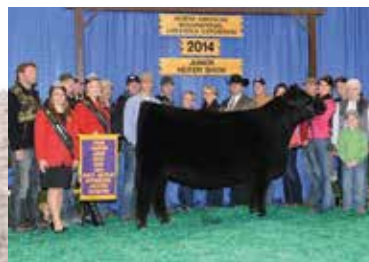
- When one discusses SCC SCH 24 Karat 838 to the general phenotype crowd within the Angus circles, one readily thinks show heifer with stellar lines, elite features, and certain balance from the profile. That's where this stud becomes the animal that changes that first thought or assumption.
- We think that this calf is very intriguing from many aspects. We do know that he is quite possibly the most opened up when one gets behind this set of Angus bulls. He's wide at his base, square in his shape with a huge pin set and substantial width to his back. So, that leaves him big up high in his upper rib with plenty of depth of side to match.
- He is extended and smooth throughout and one that brings the old school goods in terms of power from his maternal side as well. A product of the famed "Pin Up Gal" cow family that calls home to Seldom Rest Farms of Michigan.



SELDOM REST PIN UP GAL 8105
Dam of Lot 2



LOT 3



TOP LINE LADY 3330
Dam of Lot 3 & Full Sister to Dam of Lot 4

- This stud's dam was the 2014 North American International Livestock Exposition Junior Show Champion Angus Female that went on to win the Junior Angus Show at the National Western Stock Show in Denver in 2015 as well. Her dominant presence on the tan bark didn't stop there as she is one of the many productive and profitable females for the TC operation.
- Her power, dimension, and dominating presence were passed on to this son of 24 Karat that very well may be one of the most powerful and rugged of his sire group contemporaries anywhere they roam. Very intriguing pedigree and kind here!

CLF 24 KARAT 29K

REG: 20553016 PB ANGUS DOB: 3/2/22

SCC TRADITION OF 24
SCC SCH 24 KARAT 838
FCF PROVEN QUEEN 419
COLBURN PRIMO 5153
SELDOM REST PIN UP GAL 8105
SELDOM REST BRMF PIN UP GAL

Lot
2

BW	Adj. WW	Adj. YW	CED	BW	WW	YW	MILK
85	562	1272	-1	5.6	61	96	27

CLF 24 KARAT 31K

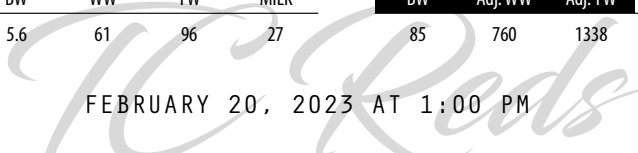
REG: 20553017 PB ANGUS DOB: 3/4/22

SCC TRADITION OF 24
SCC SCH 24 KARAT 838
FCF PROVEN QUEEN 419
EXG RS FIRST RATE S903 R3
TOP LINE LADY 3330
TOP LINE LADY 9111

Lot
3

BW	Adj. WW	Adj. YW	CED	BW	WW	YW	MILK
85	760	1338	1	4.4	63	102	23

FEBRUARY 20, 2023 AT 1:00 PM



THE ANGUS BULLS



LOT 4

- Looking at S&R Stability J824 on pasture will impress anyone that admires high quality seedstock. Big and genuine feet, substantial bone, an awesome hip, and hind leg with a significant wide pin set. He's so square in his hip design, true in his back shape, with depth of side, and open in his rib cage. To accent the package, he's balanced with look and presence.
- The dam of 30K is a FULL SISTER to Top Line Lady 3330, the 2014 NAILE Grand Champion and 2015 NWSS Grand Champion. The maternal granddam that supports 30K is the legendary Top Line Lady 9111, one of the most dominant Angus females to ever carry the Top Line prefix.
- This stud is a near exact replica of his sire, so invest with confidence.



TOP LINE LADY 9111 - Maternal Granddam of Lots 3 & 4



LOT 5

- What an intriguing quartet of sons by the proven son of Silveiras Style 9303 that continues to gain popularity with each set of calves known as S&R Stability J824.
- This Angus herd bull comes with the proven influence of PVF Insight 0129 and the legendary S A V Bismarck 5682. His dam would have been bred in the Chestnut program where substantial pressure is placed on the working female base.
- 25K has the look of a breeding bull as he is loose in his overall build, long and athletic in his stride from end to end and comes with the essentials of shape and body to complete the package.

CLF STABILITY 30K

REG: 20553020 PB ANGUS DOB: 3/4/22

SILVEIRAS STYLE 9303
S&R STABILITY J824
 S&R CANDY ANN J802
 EXG RS FIRST RATE S903 R3
TOP LINE LADY 5125
 TOP LINE LADY 9111

Lot
4

BW	Adj. WW	Adj. YW	CED	BW	WW	YW	MILK
85	712	1366	4	2.9	63	107	16

TC STABILITY 25K

REG: 20554843 PB ANGUS DOB: 2/22/22

SILVEIRAS STYLE 9303
S&R STABILITY J824
 S&R CANDY ANN J802
 KRAMERS ENFORCE 5006
CHESTNUT ANNIE OAKLEY DJ 846
 GIMBELS ANNIE OAKLEY 329

Lot
5

BW	Adj. WW	Adj. YW	CED	BW	WW	YW	MILK
80	677	1240	4	2.7	56	102	19



THE ANGUS BULLS



LOT 6

- Here would be the youngest of the Angus bulls in the offering. He is from one of the most fundamentally correct cows on the place that breeds back in a timely fashion and brings quality and weight to the weaning pen.
- The dam of 69K is sired by the popular VA First Round and further supported by the strong maternal influence of Meado-West 102Y.
- 69K would be ideal in nearly every aspect of his build and overall design.



S&R STABILITY J824 - Sire of Lots 4-7



LOT 7

- If these S&R Stability J824 sons end up looking anything like their sire, they will be accepted by many true cowboys that value what the scale states at their chosen marketplace!
- This is a rugged, long, big outlined one that should contribute pounds and performance to any set of cows that he gets introduced to.

CLF STABILITY 69K

REG: 20553021 PB ANGUS DOB: 3/22/22

SILVEIRAS STYLE 9303
S&R STABILITY J824
 S&R CANDY ANN J802
 VA FIRST ROUND
CLF 32D
 MEADO-WEST 102Y

Lot
6

BW	Adj. WW	Adj. YW	CED	BW	WW	YW	MILK
80	706	1366	2	3.1	59	105	18

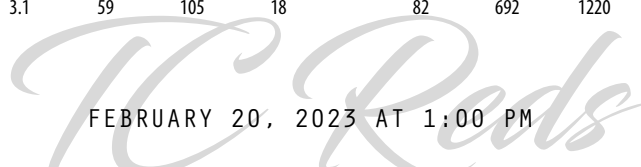
CLF STABILITY 17K

REG: 20553015 PB ANGUS DOB: 2/10/22

SILVEIRAS STYLE 9303
S&R STABILITY J824
 S&R CANDY ANN J802
 FCF INTUITION 345
CLF LADY 16E
 CLF LADY 01Y

Lot
7

BW	Adj. WW	Adj. YW	CED	BW	WW	YW	MILK
82	692	1220	6	2.3	54	97	16



FEBRUARY 20, 2023 AT 1:00 PM

THE ANGUS BULLS



LOT 8

- The influence of Barstow Cash on the industry is proven and known by many cattlemen nationwide. He contributed so many things to the business and covered a lot of bases. His influence is still discussed today in a very positive light and his daughters continue to carry the torch in his honor.
- This stud is sired by CLF Outsider 01B a direct son of Barstow Cash from a female that certainly has some substantial maternal prowess on the bottom side of her pedigree as well. Very proven genetics in this herd sire prospect on both sides of the genetic equation.
- Genetics known to be well rounded in fundamental power, performance, and maternal influence. This bull should fit just about any program looking to add or enhance quality and predictability.



CLF OUTSIDER 01B - Sire of Lot 8



LOT 9

- Mass, volume, and shear substance comes inclusive with this stud that ranks among the top 15% of the breed for WW value.
- The influence of BUBS Southern Charm AA31, Bushs Unbelievable 423, and Vin-Mar O'Reilly Factor is the tell on the way this bull is built from the ground up.
- A beef business bull with beef business merit at every angle of evaluation.



SELDOM REST LUCY 7060

3/4 Sister in blood to the Dam of Lot 8



BUBS SOUTHERN CHARM AA31 - Paternal Grandsire of Lot 9

CLF OUTSIDER 15K

REG: 20553014 PB ANGUS DOB: 2/9/22

BARSTOW CASH
CLF OUTSIDER 01B
 GAMBLES SHADOE 9102
 SILVEIRAS STYLE 9303
SELDOM REST LUCY 0056
 SELDOM REST BRMF LUCY 743

Lot
8

BW	Adj. WW	Adj. YW	CED	BW	WW	YW	MILK
78	707	1187	2	2.3	47	91	19

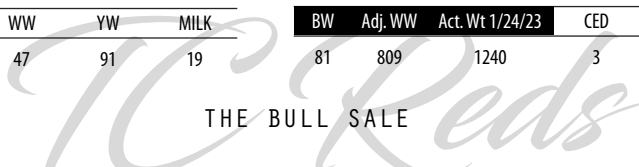
CLF NORTHERN CHARM 66K

REG: 20553019 PB ANGUS DOB: 3/20/22

BUBS SOUTHERN CHARM AA31
BUSHS CHARMER 534
 BUSHS BELIEVABLE LASS 5738
 KRAMERS ROUND 2
CLF ERICA 60D
 CLF ERIC 29A

Lot
9

BW	Adj. WW	Act. Wt 1/24/23	CED	BW	WW	YW	MILK
81	809	1240	3	2.7	67	112	27



THE RED ANGUS BULLS



LOT 10



EGL GCC RED EAGLE E7194 - Sire of Lots 10-13



TC ADELLE 54J - Dam is a Full Sister to the Dam of Lot 10

TC EAGLE 22K

REG: 4638677 **RED ANGUS** DOB: 2/16/22

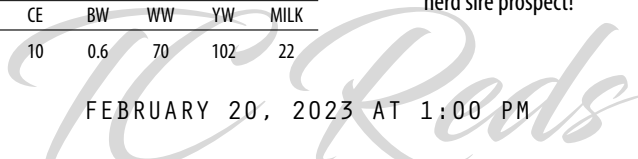
RED U-2 RIFF 1213C
EGL GCC RED EAGLE E7194
 TJS SARABEL A174
 RED RAINBOW TRANSCENDENCE 29B
TC ADELLE F2
 BIEBER ADELLE 311Y

Lot
10

- This calf is quite intriguing in his kind while offering outcross genetics to the program at TC Reds. He is definitely a herd bull worthy of attention for anyone in search of a great red hided creature.
- 22K has a big stout foot with a rugged, durable build with plenty of width and product throughout. He too is very dark and desirable in his color and ranks in the top 20% for WW.
- A truly unique herd sire prospect that brings a combination of valuable breeding attributes to the table – invest in the future of your breeding program with this herd sire prospect!

BW	Adj. WW	Adj. YW	Pro S	HB	GM	CE	BW	WW	YW	MILK
80	835	1198	36	37	-1	10	0.6	70	102	22

FEBRUARY 20, 2023 AT 1:00 PM



THE RED ANGUS BULLS



LOT 11

- A very productive deep sided stud that is loose in his build with added length and size. These sons by EGL GCC Red Eagle E7194 have impressed us this year as they have a lot to offer to the industry.
- We are certain that this sire group will continue to grow in popularity when he is siring the kind that these are. Whole lot of quality, power, and maternal significance supporting this young prospect.

TC RED EAGLE 19K

REG: 4708041 **RED ANGUS** DOB: 2/14/22

RED U-2 RIFF 1213C
EGL GCC RED EAGLE E7194
 TJS SARABEL A174
 RED RAINBOW TRANSENDENCE 29B
TC SHINNY 76E
 MEADO-WEST 917W

Lot
11



EGL GCC RED EAGLE E7194 - Sire of Lots 10 - 13

BW	Adj. WW	Adj. YW	Pro S	HB	GM	CE	BW	WW	YW	MILK
87	643	1193	36	35	1	9	0.6	65	95	23



RED RAINBOW TRANSENDENCE 29B - Maternal Grand sire of Lot 11



TC RED EAGLE 08J - Full Brother to Lot 11
 2022 High Seller to Raml Cattle

THE RED ANGUS BULLS



LOT 12

- This herd sire prospect has been a true standout since he hit the ground. TC Red Eagle 27K was a member of the 2023 Cattleman's Congress Reserve Champion Pen of Three Red Angus Bulls.
- He brings a substantial amount of mass and substance with that undeniable look of quality. He is very extended and ideal in his front third with transitional integrity from point to point and incredible when in motion.



**2023 CATTLEMAN'S CONGRESS RESERVE
GRAND CHAMPION PEN OF THREE RED ANGUS BULLS**
Member of the winning pen!



LOT 13



TC PRIMROSE 07F - Maternal Sister to Lot 13

- TC Red Eagle 38K is another son of the popular EGL GCC Red Eagle E7194 herd sire that is backed by the tried and true TC Primrose 33D. Progeny of 33D are working for Newt Hutchison, Kinsly Altena, Karlie Proesch, and Sophie Stallcop.
- Here is a smooth made, long sided bull that comes with a balanced number profile. He ranks top 12% WW, top 28% YW, and top 22% YG.
- He is the NUMBER 1 weaning weight bull of his contemporary group with an impressive WWR @ 114.



TC PRIMROSE 62J
Maternal Sister to Lot 13
4th Overall Owned Female - 2022 NAJRAE for Tucker Bayer

TC RED EAGLE 27K

REG: 4680435 **RED ANGUS** DOB: 2/21/22

RED U-2 RIFF 1213C
EGL GCC RED EAGLE E7194
TJS SARABEL A174
BHR DURANGO 1158
TC LOLA 46F
TC LOLA 10B

Lot
12

BW	Adj. WW	Adj. YW	Pro S	HB	GM	CE	BW	WW	YW	MILK
85	756	1336	53	38	15	9	0.9	70	108	25

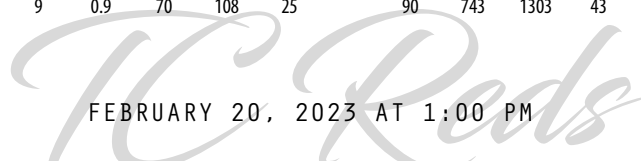
TC RED EAGLE 38K

REG: 4708043 **RED ANGUS** DOB: 3/2/22

RED U-2 RIFF 1213C
EGL GCC RED EAGLE E7194
TJS SARABEL A174
RED SSS OLY 554T
TC PRIMROSE 33D
NBAR PRIMROSE R541

Lot
13

BW	Adj. WW	Adj. YW	Pro S	HB	GM	CE	BW	WW	YW	MILK
90	743	1303	43	28	15	9	0.1	69	108	18



FEBRUARY 20, 2023 AT 1:00 PM

THE RED ANGUS BULLS



LOT 14



RED NORTHLINE TUCKER 54E - Sire of Lot 14



TC FIONA 96K - Full Sister to the Dam of Lot 14

TC THE KID 101J

REG: 4579285 **RED ANGUS** DOB: 9/18/21

RED NORTHLINE ATLANTIC CITY
RED NORTHLINE TUCKER 54E
 RED NORTHLINE GOLDIE 54B
 MLK BIG FOOT
TC FIONA 140G
 3 ACES TC FIONA 3605

Lot
14

- TC The Kid 101J would be the first of the two-age advantaged fall born 2021 bulls in the offering. He is from a young productive daughter by the great MLK Big Foot from the TC Fiona 48X cow family.
- This stud comes loaded with proof positive genetics and predictability. He was born unassisted from a first calf heifer as well. We know that many will be drawn by his length, size, and maturity in combination with his shape and overall build.
- Ready for lots of cows and a working capitalist.

BW	Adj. WW	Adj. YW	ProS	HB	GM	CE	BW	VW	YW	MILK
73	816	1267	65	51	14	10	0.7	57	93	25

THE BULL SALE



THE RED ANGUS BULLS



LOT 15

- Here is one of two age advantaged fall born of 2021 studs in the offering. He is a big framed, long bodied stud with a lot to offer any program.
- He is from a female bred in the Frank Family Genetics program of western Nebraska, so real world merit is readily available as well.
- He is very impressive in his expected values posting top 16% ADG and YW, with top 19% WW as well.



BIEBER HARD DRIVE Y120 - Maternal Grandsire of Lot 15



LOT 16

- The youngest bull of the pen that could be the highest quality of the Red Angus bulls when one analyzes his kind. He is very smooth and correct in his build from end to end with a flawless stride while remaining collected in his pattern on the go.
- These MLK Big Foot cattle mature with noticeable power and presence. Rest assure that 97K will not be any different. Look, presence, and structural integrity with a very prolific and productive cow family supporting his resume!



MLK BIG FOOT - Sire of Lots 15 & 16

TC CB BIG FOOT 106J

REG: 4714321 **RED ANGUS** DOB: 10/5/21

WEBR TC CARD SHARK 1015
MLK BIG FOOT
 TC CUPCAKE 03Y
 BIEBER HARD DRIVE Y120
FFG RUBY 8124
 PIE RUBY 5513

Lot
15

BW	Adj. WW	Adj. YW	Pro S	HB	GM	CE	BW	WW	YW	MILK
78	624	1159	90	49	41	11	0.1	69	114	26

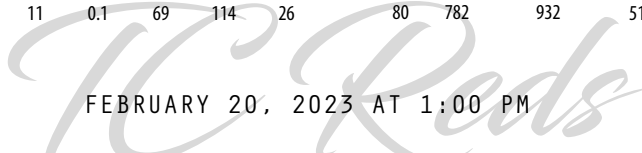
TC BW BIG FOOT 97K

REG: 4710351 **RED ANGUS** DOB: 4/20/22

WEBR TC CARD SHARK 1015
MLK BIG FOOT
 TC CUPCAKE 03Y
 SLGN REGULATOR 503R
MEADO-WEST 209Z
 DAMAR ROCK ON X051

Lot
16

BW	Adj. WW	Act. Wt. 1/24/23	ProS	HB	GM	CE	BW	WW	YW	MILK
80	782	932	51	51	0	10	0	57	93	26



FEBRUARY 20, 2023 AT 1:00 PM

THE RED ANGUS BULLS



LOT 17

- This bigger outlined, long sided stud is by the resident herd sire that was selected from Broken Heart Ranch of South Dakota. There is a lot to admire about this creature that brings some things to the table from a numerical standpoint as well.
- He is in the top 25% for HB index along with a top 20% Stay value. He combines this with performance values in regard to WW, YW, and ADG in the top third of the Red Angus business.



TC ELLIE 50K

\$10,000 member of the "Ellie 1024" cow family!



LOT 18

- Another BHR Approve 0149 son with a scale pounding presence. He is one of the most powerful of the Red Angus bull at TC Reds. He comes with added value on paper as well, sporting a top 20% GM and top 31% ProS index values.
- He blends this with significant performance as well posting top 1% ADG, top 8% YW, with a WW value that keeps his expectations in the top third of the breed.
- A cowboy bred bull for those that sell them by the pound!



C-BAR EVOLUTION 107Y - Maternal Grand sire of Lot 18

TC APPROVAL 65K

REG: 4708121 **RED ANGUS** DOB: 3/19/22

RED SSS APPROVE 540F
BHR APPROVE 0149
 MISS BHR IMPECCABLE 647
 RED WINDY HILL ZEPPELIN 1240
TC ELLIE G6
 WEBR MS ELLIE 1024

Lot
17

BW	Adj. WW	Adj. YW	Pro S	HB	GM	CE	BW	WW	YW	MILK
75	709	1281	91	68	23	13	-0.5	66	105	26

TC APPROVAL 83K

REG: 4708045 **RED ANGUS** DOB: 4/2/22

RED SSS APPROVE 540F
BHR APPROVE 0149
 MISS BHR IMPECCABLE 647
 C-BAR EVOLUTION 107Y
ROSCOE'S MISS RUBY 602D
 ROSCOE'S RUBY 408B

Lot
18

BW	Adj. WW	Adj. YW	Pro S	HB	GM	CE	BW	WW	YW	MILK
95	567	1389	86	53	33	12	-1.1	65	109	22



THE RED ANGUS BULLS

TC APPROVAL 79K

REG: 4708061 **RED ANGUS** DOB: 3/31/22

RED SSS APPROVE 540F
BHR APPROVE 0149
 MISS BHR IMPECCABLE 647
 RED U6 HESSTON 14Z
ORAR TOPEKA RB25
 RED HOWE TOPEKA 263Z

Lot
19



LOT 19

BW	Adj. WW	Adj. YW	Pro S	HB	GM	CE	BW	WW	YW	MILK
80	677	1171	83	58	26	10	0.7	62	99	25

- This would be the 2022 natural born calf from our ORAR Topeka RB25 donor female. He is one of the youngest studs in the offering.
- We believe that you will appreciate his skeletal integrity and kind. He offers a true outcross pedigree with merit to invest!

TC HAMLEY 03K

REG: 4712743 **RED ANGUS** DOB: 1/23/22

PIE BILLINGS 487
NBAR HAMLEY S913
 NBAR KELLY 913
 TC DR FEELGOOD 1506
TC ADELLE 21H
 TC ADELLE F12

Lot
20



ORAR TOPEKA RB25
 Dam of Lot 19

BW	Adj. WW	Adj. YW	Pro S	HB	GM	CE	BW	WW	YW	MILK
65	724	1126	79	71	8	14	-0.8	50	70	25

- The NBAR Hamley S913 cattle have had an instrumental part in the foundation at TC Reds. In fact, we just lot the legendary sire himself this past year at 16 years of age!
- Extreme and proven calving ease genetics with maternal merit. The daughters have been very wet and prolific in production. We love the longevity and predictivity of both the direct progeny of NBAR Hamley S913, as well as the job granddaughters and great granddaughters are doing in production.
- There is no question that this bull is very much suitable for any set of virgin heifers.



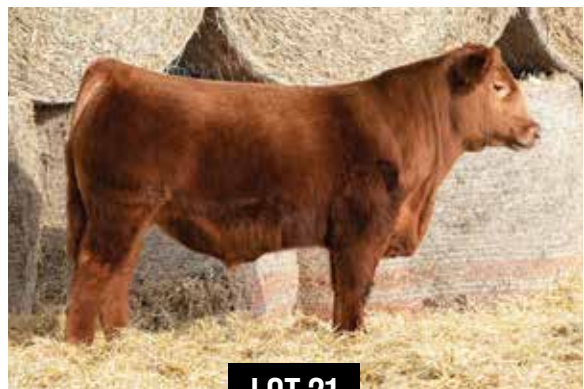
LOT 20

TC FEEL GOOD 36K

REG: 4708059 **RED ANGUS** DOB: 3/2/22

WEBR DR. FEEL GOOD 1112
TC DR FEELGOOD 1506
 MEADO-WEST WYNNONA 908W
 HXC CONQUEST 4405P
RRA RACHEL 746 220
 RRA RACHEL 246 746

Lot
21



LOT 21

BW	Adj. WW	Adj. YW	Pro S	HB	GM	CE	BW	WW	YW	MILK
85	725	1291	66	45	21	12	-1	59	98	31

- From the potent maternal influence of the silent but legendary WEBR Dr. Phil on the top side with the proven and predictable influence of HXC Conquest 4405P on the bottom.
- If you want a red hided stud that can add length and style, then the search stops, and the acquisition phase begins with 36K. There is no doubt in our mind that you will retain every daughter from this stud and to back that up even more, you will find that he ranks in top 7% of the Red Angus business for his Milk value as well.



TC DR FEELGOOD 1506
 Sire of Lot 21
 Champion Red Angus at
 Black Hills Stock Show

THE SIMMENTAL BULLS



LOT 22



**STELLA 08E - 2019 NWSS RESERVE
GRAND CHAMPION PUREBRED SIMMENTAL HEIFER**
Maternal Sister to Dam of Lot 22



**STELLA 08E - 2019 FWSS RESERVE
GRAND CHAMPION PUREBRED SIMMENTAL HEIFER**
Maternal Sister to Dam of Lot 22



TCB STELLA 33K
\$52,000 3/4 Sib in Blood to Lot 23

TCB DOUBLE 32K

REG: 4159037 3/4 SM 1/4 AN DOB: 2/28/22

W/C DOUBLE DOWN 5014E
WHF/JS/CCS DOUBLE UP G365
WHF SUMMER 365C

PLUM CREEK PARADOX 161B
WEIS MISS SNICKER G401
JPLF/RBS YOU'RE THE ONE

Lot
22

BW	Adj. WW	Adj. YW	CE	BW	WW	YW	MCE	MILK	API	TI
84	718	1182	9.1	1.6	75.4	104.8	4.8	21.2	92.1	64.1

- If you have a set of Purebred cows, there is zero to question from this bull's type and kind that he would sire an awesome set of bulls and females that would have the population knocking down your front door at the opportunity to own one or all of them.
- This three-quarter blood herd sire prospect is from a daughter of JPLF/RBS You're the One "Rudy" by Plum Creek Paradox 161B, thus tying him to the same cow family that supports the bulls selling as lots 23 through 28.
- He is sired by the proven WHF/JS/CCS Double Up 365G, which takes all the guess work out of the equation. Stacking proven cow families within a single pedigree will only enhance consistency and quality!
- This bull is so extended with an extra high neck attachment, seamless transitions from blade to spine and spine to hip with the extra width in his pin set and an awesome set of running gear to go out and get the job done. A must see on sale day!

Weis Cattle
THE BULL SALE

THE SIMMENTAL BULLS



LOT 23



WHF/JS/CCS DOUBLE UP G365 - Sire of Lots 22 & 23



JPLF/RBS YOUR THE ONE - Dam of Lots 23-28

WEIS DOUBLE UP 8K

REG: 4158111 PB SM DOB: 4/16/22

W/C DOUBLE DOWN 5014E
WHF/JS/CCS DOUBLE UP G365
 WHF SUMMER 365C
 MR HOC BROKER
JPLF/RBS YOU'RE THE ONE
 RBS YOU'RE RIGHT

Lot
23

BW	Adj. WW	Act. Wt. 1/24/23	CE	BW	WW	YW	MCE	MILK	API	TI
66	829	972	8.5	1.4	72	94.2	4.5	20.8	102	65.4

- Here is the three-quarter brother in blood to last fall's high selling Simmental female in the Weis Cattle online marketing event that commanded \$52,000. The direct son of WHF/JS/CCS Double Up G365 from "Rudy" has been a favorite since the first set of eyes landed on him.
- Big haired, very productive in his look and predictable in his overall genetic value. Finding this kind in surplus or often is nearly impossible. He is so genuine in his kind and build that no one can deny the quality that he could bring to any program.
- His near perfect structural build combined with an elite look of quality and balance only further solidifies his position as a true herd sire prospect for even the most discriminating!
- **Terms Announced Sale Day.**

FEBRUARY 20, 2023 AT 1:00 PM

Weis Cattle

THE SIMMENTAL BULLS



JPLF/RBS YOU'RE THE ONE "RUDY" - Dam of Lots 24-27



TL LEDGER - Sire of Lots 24-27

- What a stellar set of full brothers from the cornerstone matriarch of the Weis program. These studs are very elite and high end in their build and kind. Super high tying, extended through their front third, bold and robust in their center body cavity, and big and real in their overall shape and power.
- These TL Ledger sons will be some of the absolute best of their sire group in the country and with the awesome donor that is responsible for their existence behind them, the potential is endless.
- TL Ledger is the \$250,000 son of Profit that is backed by the legendary Miss Star Above female, one of the staples in the Tree Lane Farms breeding program. TL Ledger is a maternal brother to TL Bottomline, the NAILE and American Royal Grand Champion Purebred Simmental Bull. A maternal sister to these proven herd sires, STN Miss Star Light has become one of the premier young females in the business. She was the high selling lot in the 2021 Bruhn Farms Dispersal. She is now a member of the illustrious donor pen at Maple Lane Farm.
- Proof positive genetics support this group of ET flushmate brothers. If you're searching for multiple bulls to turn out, turn to these full brothers to enhance the overall uniformity and consistency of your next calf crop!



LOT 24

THE MATING FOR LOTS 24 - 27

PROFIT TL LEDGER MISS STAR ABOVE				MR HOC BROKER JPLF/RBS YOU'RE THE ONE RBS YOU'RE RIGHT			
CE	BW	WW	YW	MCE	MILK	API	TI
7.5	2.2	66.8	91.9	4.8	16.8	99.3	62.8

WEIS LEDGER 9116K

REG: 4158113	P B S M	DOB: 4/23/22
BW	69	
Adj. WW	746	
Act. Wt. 1/24/23	906	

Lot
24

Weis Cattle
THE BULL SALE

THE SIMMENTAL BULLS

WEIS LEDGER 923K

REG: 4158139 PB SM DOB: 4/16/22

BW	75
Adj. WW	770
Act. Wt. 1/24/23	990

Lot
25



STELLA 08E
2019 NWSS Reserve Grand
Champion Simmental Female
Maternal Sister to Lots 24-27
for the Bayer Family



LOT 25

WEIS LEDGER 683K

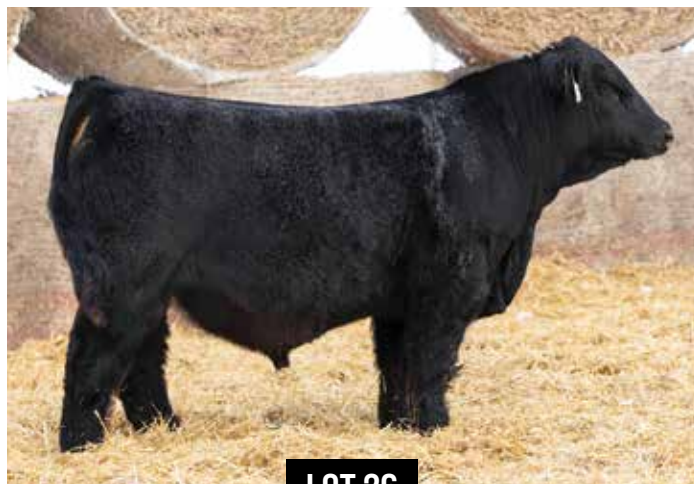
REG: 4158115 PB SM DOB: 3/18/22

BW	77
Adj. WW	814
Adj. YW	1276

Lot
26



WEIS MISS LILLY 35J
2022 American Royal Reserve
Grand Champion Purebred
Simmental Heifer
Maternal Sister to Lots 24-27
for the Roeder Family



LOT 26

WEIS LEDGER 1618K

REG: 4158116 PB SM DOB: 3/28/22

BW	75
Adj. WW	792
Adj. YW	1157

Lot
27



WEIS MISS LILLY 35J
2023 Cattleman's Congress
Grand Champion Purebred
Simmental Heifer
Maternal Sister to Lots 24-27
for the Roeder Family



LOT 27

Weis Cattle
FEBRUARY 20, 2023 AT 1:00 PM

THE SIMMENTAL BULLS



- The rare but certainly high quality and royally bred baldy of the offering. Certainly, a great built individual of skeletal and structural integrity with a substantial amount of shape and power.
- Brand New Man 001H is a son of W/C Relentless 32C that offers tremendous length, extension, and frame. One of the stoutest and most complete sons of this iconic sire.
- He's awesome footed, stout constructed, masculine, and athletic.



BRAND NEW MAN 001H - Sire of Lots 28 & 29



- Brand New Man 001H stamped this strip faced stud with his sharp chiseled features and build. What a cool creature that comes with the support of one of the most productive maternal sisters to MR HOC Broker on the bottom side with the influence of SVF/NJC Built Right N48.
- Time tested and proven genetics that will put look and balance into a set of calves that you will most likely retain all the heifers from.

WEIS BRAND NEW MAN K18

REG: 4158117 PB SM DOB: 3/19/22

W/C RELENTLESS 32C
BRAND NEW MAN 001H
 MAAC LUCKY MAYA
 MR HOC BROKER
JPLF/RBS YOU'RE THE ONE
 RBS YOU'RE RIGHT

Lot
28

TCB BRAND NEW MAN 67K

REG: 4159036 PB SM DOB: 3/21/22

W/C RELENTLESS 32C
BRAND NEW MAN 001H
 MAAC LUCKY MAYA
 SS/PRS GUNSLINGER 824X
DUCH PANDAMONIUM 564C
 WISH PANDAMONIUM

Lot
29

BW	Adj. WW	Adj. YW	CE	BW	WW	YW	MCE	MILK	API	TI
79	782	1316	5.6	3.1	72.7	100.1	2.5	17.7	99.5	65.3

BW	Adj. WW	Adj. YW	CE	BW	WW	YW	MCE	MILK	API	TI
84	649	1032	7	3.4	72.9	107.1	2.9	15.8	108.3	68.8

Weis Cattle
 THE BULL SALE

THE SIMMENTAL BULLS



LOT 30



LOT 31

- What a great pen of Simmental and SimGenetic studs these to families have assembled for your appraisal! Incredible depth of quality and beef business integrity. This next son of W/C Bankroll 811D is simply jaw dropping.
- One that sets on a big dense foot with more than enough timber that blends into a bold quarter and hip. 61K is also big backed thus big and bold in his upper rib that transitions to a smooth shoulder with a masculine and high attached neck that is extended and chiseled.
- What a specimen that any set of cows would be proud to have running with them.



W/C BANKROLL 811D - Sire of Lots 30 & 31



BSC BETH 920B ET - Dam of Lot 30



MJB MARY 141C - Dam of Lot 31

- The W/C Bankroll 811D sire group is getting it done on every level, from the champion backdrops to the scales at all phases of growth and development. This is a trademark son of W/C Bankroll 811D with the big soft center body, the stout punchy built back and quarter with added bone and dimension throughout.
- For as much substance and scale that this ground pounder offers, he's still very attractive in his overall kind.

WEIS BANKROLL 61K

REG: 4158114 1/2 SM DOB: 3/12/22

W/C LOADED UP 1119Y
W/C BANKROLL 811D
 MISS WERNING KP 8543U
 B C LOOKOUT 7024
BSC BETH 920B ET
 RADIANT

Lot
30

BW	Adj. WW	Adj. YW	CE	BW	WW	YW	MCE	MILK	API	TI
73	768	1243	9.9	2	69.2	97.8	4	16.1	95.3	65.3

WEIS BANKROLL 9K

REG: 4158112 1/2 SM DOB: 3/9/22

W/C LOADED UP 1119Y
W/C BANKROLL 811D
 MISS WERNING KP 8543U
 MAC QUARTERBACK 58Y
MJB MARY 141C
 MJB MS MOONSTONE 1127Z

Lot
31

BW	Adj. WW	Adj. YW	CE	BW	WW	YW	MCE	MILK	API	TI
69	824	1198	12.4	-0.4	67.2	97	6.1	16.9	113	69.4

Weis Cattle
 FEBRUARY 20, 2023 AT 1:00 PM

THE CHAROLAIS BULL



LOT 32



TC OUTER BANKS 01J
Full Brother to Lot 32



TC OUTER BANKS 01J
2022 CATTLEMEN'S CONGRESS RESERVE
GRAND CHAMPION CHAROLAIS BULL
Full Brother to Lot 32



TC OUTER BANKS 01J
2021 AMERICAN ROYAL GRAND CHAMPION CHAROLAIS BULL
Full Brother to Lot 32

TC OUTER LIMITS 21K

REG: P1368662 **CHAROLAIS** DOB: 2/16/22

M&M OUTSIDER 4003 PLD
BOY OUTLIER 812 ET PLD
TR MS BERKLY 4711B ET
WC MILESTONE 5223 P
BLOOM MS KATHY G801
GROVES SKY 411

Lot
32

- The lone Charolais of the offering but one that is certainly of royal status in terms of the genetics that he brings to the table. Here is a FULL BROTHER to the 2021 AICA Show Bull of the Year and the 2022 Black Hills Stock Show High Seller, TC Outer Limits 21K.
- TC Outer Banks 01J is sired by the past national champion, BOY Outlier 812 ET Pld and further supported by a beautiful young daughter of WC Milestone 5223 P.
- He is smooth made, long sided, and well balanced in terms of his phenotype. We admired the extra flexibility and comfort that this bull contributes. A true sale feature that is a must see on sale day!

BW	Adj. WW	Act. Wt. 1/24/23	CE	BW	WW	YW	MCE	MILK	TI
88	790	1195	-0.6	1.1	55	101	5.1	19	243.9

TC **Reds**
THE BULL SALE

THE MAINE ANJOU BULLS



LOT 33

- It's no secret that the Weis All Me 10F sire group has taken the business by storm! 14K is a Purebred Maine-Anjou with the goods in terms of structural integrity, flexibility, and real world performance.
- He is big footed, stout boned, and offers a rugged herd sire look. He is certain to follow in the footsteps of his dominant sire.
- The dam that supports this standout herd sire prospect is Weis Ivy 14G, the beautiful granddaughter of Daddy's Money that is a descendant of the legendary SLC Sooner 101M. Power in the blood!



WEIS IVY 14G - Dam of Lot 33



LOT 34

- Saving possibility one of the most unique herd sire prospects for last with this direct son of Weis All Me 10F that is also classified as a High Maine.
- A super good looking three-quarter blood Maine-Anjou herd sire prospect that has a look of quality and style that is simply unrivaled! His dam is a striking Maine-Angus daughter of SCC First-N-Goal GAF 114 that is further supported by BSC Simplicity 44U.
- His build, pedigree, and actual birth weight combined suggest that he should serve as a sleep all night heifer safe option with tremendous calving ease built in!



WEIS ALL ME 10F - Sire of Lots 33 & 34

WEIS ALL ME 14K

REG: 538596	MAINE ANJOU	DOB: 4/15/22
MINN LIVE ACTION 203Y		
WEIS ALL ME 10F		
BSC CANDI 42Z		
GVC I BULLY22		
WEIS IVY 14G		
BSC DEBBIE 978D ET		

Lot
33

BW	Adj. WW	Adj. YW
73	755	1265

WEIS ALL ME 57K

REG: 538597	MAINE ANJOU	DOB: 3/20/22
MINN LIVE ACTION 203Y		
WEIS ALL ME 10F		
BSC CANDI 42Z		
SCC FIRST-N-GOAL GAF 114		
WEIS 57F		
BSC BELL 208B		

Lot
34

BW	Adj. WW	Adj. YW
71	825	1109

Weis Cattle

FEBRUARY 20, 2023 AT 1:00 PM

THE BRED FEMALES



LOT 35



JPLF/RBS YOU'RE THE ONE "RUDY"
Dam of Lot 35



WEIS LILLY 35J
2022 AMERICAN ROYAL GRAND CHAMPION
PUREBRED SIMMENTAL HEIFER
Full Sister to Lot 35



WEIS LILLY 35J
2023 CATTLEMEN'S CONGRESS GRAND CHAMPION
PUREBRED SIMMENTAL HEIFER
Full Sister to Lot 35

WEIS MISS RUDY 211J

REG: 4158118 PB SM DOB: 3/13/21

HPF QUANTUM LEAP Z952

WLE COPACETIC E02
CMFM JOY 02ZB

MR HOC BROKER
JPLF/RBS YOU'RE THE ONE
RBS YOU'RE RIGHT

Lot
35

CE	BW	WW	YW	MILK	API	TI
9.6	1.6	75.7	106.9	21.1	106.2	70.4

- AI Bred on 5/20/22 to THSF Lover Boy B33 (ASA 2983443)
- PE to a half-blood son of MR ISHEE Superstout 014X
- Likely Safe AI. Estimated Due 2/26/23

- A near exact replica of the reigning 2023 Cattleman's Congress Champion Purebred Simmental Female exhibited by the great friends of the program the Jason Roeder Family. 211J is a full sib to Weis Miss Lilly 35J, the highly acclaimed female that has made and kept every friend along the show trail since this past summer's AJSA Summer Classic held in Madison, Wisconsin. Weis Miss Lilly 35J was a top five qualifier at the AJSA Summer Classic that went on to be Reserve Champion Female in both the American Royal Junior and Open shows and the Champion Female of the 2023 Cattleman's Congress.
- 211J is from the most potent genetic combination ever done at Weis Cattle. She is sired by the proven, past National Percentage Champion, WLE Copacetic E02 and from the legendary, cornerstone donor that is referred to as "Rudy" or JPLF/RBS You're the One. With that said not much more can be mentioned as the story can tell itself.
- What an attractive, very elite featured female with the pedigree and build of a Bentley! Goggle eyed, exquisite, and desirable for the most discriminating stockman in the business!

Weis Cattle
THE BULL SALE

THE BRED FEMALES



LOT 36

- The unique trait that Willie selects for stands out in each of these high quality bred females in the offering. He is absolutely relentless in the pursuit of perfection and knows how to build these creatures methodically from generation to generation. His mating mind is pure and clean in nature without interruption by pedigree or EPDs.
- This HPF Quantum Leap Z952 daughter with multiple white markings is built like the rest. Very proud headed, feminine, and maternal in her look. Deep and bold in her rib design with extreme symmetry throughout while resting on near perfect running gear. If she would have been born into a warmer climate and still had her ears, she wouldn't be a feature in this sale as she would have been sold as an open, so consider her biggest flaw your opportunity at a big gain!
- 215J stems from one of the foundation females of the operation that hails from the famed Rhythm cow family that has built the Ruby program in southern Iowa. Fierce build with fiercely proven genetics on both sides of the equation.

WEIS MISS RUBY 215J

REG: 4158120 PB SM DOB: 3/29/21

HTP/SVF DURACELL T52
HPF QUANTUM LEAP Z952
 RP/MP RIGHT TO LOVE 015U
 SS EBONYS GRANDMASTER
RUBY NFF RHYTHM B064
 RHYTHM 418P

Lot
36

CE	BW	WW	YW	MILK	API	TI
10.6	2.7	76.4	116	21	118.3	71.8

- AI Bred on 5/20/22 to THSF Lover Boy B33 (ASA 2983443)
- PE to a half-blood son of MR ISHEE Superstout 014X
- Likely Safe AI. Estimated Due 2/26/23



JPLF RHYTHM E724

2018 IOWA STATE FAIR CHAMPION FOUNDATION SIMMENTAL HEIFER

Maternal Sister to Lot 36

Weis Cattle

FEBRUARY 20, 2023 AT 1:00 PM

THE BRED FEMALES



LOT 37



CCS/JS SUMMER 33H
2021 NAILE GRAND CHAMPION PUREBRED SIMMENTAL HEIFER
 Full Sister to Lot 37



WHF SUMMER 365C
2017 NAILE GRAND CHAMPION PUREBRED SIMMENTAL HEIFER
 Dam of Lot 37



WHF SUMMER 365C
 Dam of Lot 37

CCS/JS SUMMER 99J

REG: 4167682 PB SM DOB: 3/12/21

YARDLEY UTAH Y361
W/C RELENTLESS 32C
 MISS WERNING KP 8543U
 CCR WIDE RANGE 9005A
WHF SUMMER 365C
 WHF ANDIE 365A

Lot
37

CE	BW	WW	YW	MILK	API	TI
8.4	2.9	81.2	107.6	17.8	112.5	74.2

- The genetic combination of championship caliber presents itself for acquisition once again in the full sister to the 2021 North American International Livestock Exposition Champion Junior Simmental Female for Kaley Langford.
- Undoubtedly one that is eccentric in her build and kind with dominant center stage presence and quality. She is quite possibly the most elite in her front third of any of her maternal siblings, but still has that center body and big legs affiliated with the family.
- Her dam is the cornerstone donor for JS Simmental in Prairie City, IA and consistently brings home the goods and the cash. Invest in a proven mating and a cow family that pays for more than the bills!

- AI Bred on 5/20/22 to THSF Lover Boy B33 (ASA 2983443)
- PE to a half-blood son of MR ISHEE Superstout 014X
- Likely Safe AI. Estimated Due 2/26/23

Weis Cattle
 THE BULL SALE

THE BRED FEMALES



LOT 38



LOT 39

- HILB Oracle C033R was selected by Badger Creek Cattle Co of Illinois from Hilbrands Cattle Company of Minnesota. He was initially utilized as a baldy maker for the substantial program but after use on cows, he was used on heifers as well.
- A sire group known for dominant look and presence generally with white head or facial markings. The build of this sire group is sharp in features with squareness and dimension throughout, much like 2111J.
- She is trademark in her kid to her sire with extra turn and punch with that stellar high tying front third that they are reputable for.



THSF LOVER BOY B33 - Service Sire

- The cattle by W/C Executive Order 8543B have been consistent and true from one to the next in regard to the overall amount of center body and dimension that they come with. Nearly all of them come big and bold in their center rib with beef business shape to their muscle pattern and this bred female would be no exception.
- However, 21J does offer a higher, squarer pin set than most of her contemporaries from the sire group with added elevation to the base of her chest floor with a higher tying neck set as well. The density in kind and flexibility in motion will be admired by most that view her on or prior to sale day.

WEIS MISS STAR 2111J

KRUG MISS EXECUTIVE ORDER 21J

REG: 4158119 3/4 SM 1/4 AN DOB: 3/4/21

REG: 4066818 3/4 SM 1/4 AN DOB: 3/25/21

LLSF UPRISING Z925
HILB ORACLE C033R
 SS BABYS BREATH P035
 W/C NO REMORSE 763Y
BW904
 MISS STAR BRIGHT

Lot
38

W/C UNITED 956Y
W/C EXECUTIVE ORDER 8543B
 MISS WERNING KP 8543U
 CCR WIDE RANGE 9005A
KRUG MISS WIDE RANGE 21G
 RSF UNCOMMON 6809U

Lot
39

CE	BW	WW	YW	MILK	API	TI
7.9	1.9	71.5	105.6	20.5	99.3	67.2

- AI Bred on 5/20/22 to THSF Lover Boy B33 (ASA 2983443)
- PE to a half-blood son of MR ISHEE Superstout 014X
- Likely Safe AI. Estimated Due 2/26/23

CE	BW	WW	YW	MILK	API	TI
12.6	-0.5	77.5	119.2	19.2	132.6	80.7

- AI Bred on 5/20/22 to THSF Lover Boy B33 (ASA 2983443)
- PE to a half-blood son of MR ISHEE Superstout 014X
- Likely Safe AI. Estimated Due 2/26/23

Weis Cattle

FEBRUARY 20, 2023 AT 1:00 PM

THE BRED FEMALES



LOT 40

- Here's a direct daughter of the proven great known as WEIS All Me 10F. Once again makes his presence felt in another offering of stock from Weis Cattle in this moderate, dense, punchy built female that offers significant flexibility when in production.
- She is the kind that can generate those dominant high Maine, Maintainer, Chi-Maine, or show steers that bring it all and finish the job at the backdrop of your choosing. Proven genetics, proven kind, and the right build for today's pressure and demand on the business!

SLIK HONEY 10J

REG: 538599

MAINTAINER

DOB: 4/2/21

WEIS ALL ME 10F

Lot
40

SLIK HONEYË

- *AI Bred on 5/20/22 to THSF Lover Boy B33 (ASA 2983443)*
- *PE to a half-blood son of MR ISHEE Superstout 014X*
- *Likely Safe AI. Estimated Due 2/26/23*



WEIS ALL ME 10F - Sire of Lot 40

Weis Cattle
THE BULL SALE



TC TUCKER 65J

Reserve Champion Red Angus Bull

2022 American Royal | 2022 North American Livestock Exposition

Semen is available on this great sire. Contact Scott Bayer or Ty Bayer to purchase!

Tucker



INNOVATION
AgMarketing, LLC

PO BOX Z
DE SOTO, KS 66018

Presorted
First Class
US Postage
PAID
SlateGroup

THE BULL SALE

YEARLING BULLS BRED FEMALES

DVAuction

MONDAY, FEBRUARY 20, 2023 AT 12:00 PM