

# *Chestnut Angus*

A N N U A L P R O D U C T I O N S A L E

**WEDNESDAY, FEBRUARY 22, 2023 • 1PM • PIPESTONE, MINNESOTA**



# Welcome

TO THE ANNUAL CHESTNUT ANGUS PRODUCTION SALE



*I would like to welcome and thank each and every one of you for taking the time to look through our 2023 Annual Bull Sale offering. We cannot put into words how thankful we are as a family for the relationships that this business has given us. It goes much further than just our customers, but to those that come to help on sale day, with field work in the fall, are a part of the crew in Denver, or the ones that help behind the scenes, we realize the sacrifices and work you put in to help with our success. We wouldn't want to be a part of any other family than the one we have in the cattle business and agriculture community. As always us guys at Chestnut would not have made it through this past year without the woman behind it all, my Wife Sherri, I promise we are getting closer to that new house. There wouldn't be a Chestnut Angus without my sons Wesly and Dawson, their dedication to our family operation is unquestionable and I feel that the future is in good hands with them at the helm. It's the combination of hard work and passion that they put into this operation that makes me so proud of what we have achieved and where we are headed. A massive thanks goes out to both of the boys' better halves, and the great group of friends that they have brought into our family over the years, you don't realize the amount of time and people it takes to put things like this all together.*

*We hope that you get the chance to make it to Pipestone to see these bulls in person. We couldn't be more excited about the diverse set of herd sires we have raised to sell, there are numerous types and kinds, with huge growth bulls, calving ease specialists and the largest and most impressive group of curve bending performance bulls we have ever sold. These cattle are powerful, functional, and are the kind to go on and be profitable for your operation no matter what your specific goals are. We are extremely excited about the Chestnut United sons that will debut in 2023, they come as close to our production goals as we have ever got, and are excited to hear your opinion on them. Another highlighted sire group for this year is the Wilks Regiment 9035 sons that have way exceeded our expectations, and number up incredibly.*

*It was another great trip to Denver in 2023, we are glad to watch this show continue to rebuild, with more numbers and interest again this year! We were very fortunate to have exhibited the Reserve Grand Champion Pen of 3 Bulls, as well as the Reserve Champion Pen of Heifers at the National Western Stock Show! The members of the Reserve Champion Bull Pen will sell on February 22nd.*

*Once again, I would like to welcome each and every one of you to our Annual Production Sale. The door is always open for you to stop by, we would be happy to answer any questions that you may have and how our genetics can influence your program.*

**ALL REGISTERD ANGUS BULLS HAVE BEEN GENOMIC TESTED THROUGH ANGUS GS, AS WELL AS PARENT VERIFIED AND TESTED FOR ALL NECESSARY GENETIC DEFECTS!**

*Glenn Johnson*



GLENN, SHERRI, WESLY & DAWSON JOHNSON

**Chestnut**  
**CN ANGUS**





# Sale

## INFORMATION

### SALE LOCATION

2242 90th Ave, Pipestone, MN 56164

### SALE DAY CONTACTS

Glenn, 507.820.1502

Wesly, 507.215.7348

### AUCTIONEER

Seth Weisbaar, 605.210.1124

### SALE MANAGEMENT

Innovation AgMarketing LLC

Graham Blagg, 530.913.6418

Tim Anderson, 605.682.9343

Jered Shipman, 806.983.7226

InnovationAgMarketing.com

### MARKETING REPRESENTATIVES

Chris Effling, Special Assignment, 605.769.0142

Tony Heins, Cattle Business Weekly, 701.400.4435

Donnie Leddy, Cattle Business Weekly, 605.695.0113

Justin Blumer, 507.696.1133

Andrew Swanson, 507.829.4133

Cory Thomsen, 605.730.2397

### TRAVEL

Crossings by GrandStay Hotel & Suites Pipestone  
915 7th St SE, Pipestone, MN 56164 • 507.562.1100

Joe Foss Field Airport • Sioux Falls, South Dakota  
50 Miles from Sale Site

### DELIVERY & YARDAGE

Bulls will be available for load out sale day after complete payment has been made. After March 15th Chestnut Angus will begin delivery of sale bulls within reason, visit with Glenn and Wesly Johnson for more information. Bulls that do not have prior arrangements made will be charged \$5/day after March 15th for yardage.

### ANNOUNCEMENTS

Announcements made sale day and from the auction block during the sale take precedence over printed materials associated with this sale. Anyone attending this sale attends at their own risk. Chestnut Angus and sale force will not be held responsible for any personal injury for attending this sale.

### TERMS & CONDITIONS

All cattle sell under the terms and conditions of the American Angus Association. Terms available sale day.

### EPDs

The EPDs listed are Spring 2023 numbers. Please note that EPDs may change from the time the sale catalog is printed until registration papers are transferred.

### BULLS SELLING

Chestnut Angus is retaining one-third semen interest on all bulls. Additionally, the supplement sheet will outline special terms & conditions and/or any changes in retained semen interest in any of the bulls selling.

### INSURANCE

We recommend serious consideration is taken about insuring your herd bull purchases. Insurance will be available sale day via James Bessler representing XL Catlin. James Bessler - 815.762.2641.

### SEMEN CHECK AND ULTRA SOUNDING

All bulls will be semen tested and ultra-sounded prior to sale day, results will be made available via a supplement sheet posted on Innovation AgMarketing website and the Chestnut Angus Facebook Page.

### HERD HEALTH

We have a no exceptions approach to Johnes testing and prevention here at Chestnut Angus via annual, whole herd testing. If a suspect animal is identified they are culled from the herd immediately along with their calf.

### VIEW & BID ON DV AUCTION

# DVAuction

# DEAR CATTLEMEN & WOMEN,



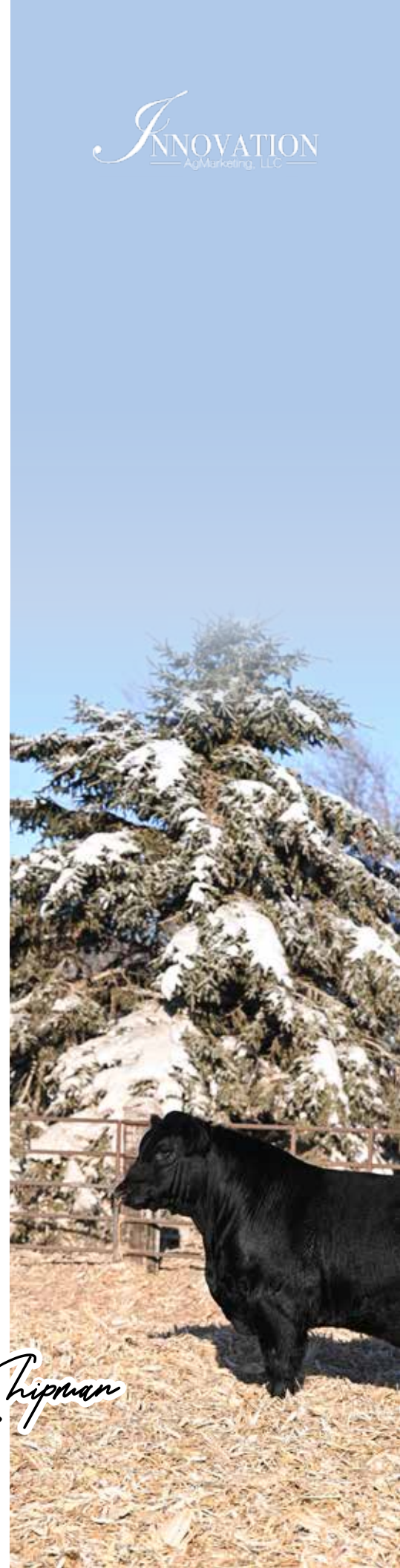
*It is always our pleasure to welcome and visit with those who have shown interest in the Chestnut Angus Program. Not only is this because Glenn and his family are some of the most welcoming and customer driven people in the business, but because they offer a world class product that is built from generations of focusing on maximizing the success and profits of anyone that invests in a breeding piece. These are cattlemen that don't source the funds elsewhere to back a hobby in the cattle business, or just enjoy ranching on the weekends when its convenient, but a family operation that realizes the importance of caring for the land, developing their breeding program and battles with the day to day hardships of raising crops and livestock in an ever changing environment and market. What you see today as the CN brand has been built solely through a dedication to performance Angus seedstock and fulfilling the needs of a growing customer base.*

*The bulls that are cataloged in the latter pages of this sale book represent not just this past year's accomplishments, but generations of meticulous selection, miles of genetic research, dollars of investment, hours of management and lives of dedication. The quality of phenotype and genotype you will find, hasn't come by luck or chance, but is a shining example of what can be achieved by sticking to an objective, and never settling, because there have been big stepping stones to get to this point. With that in mind, it may be the most elite set of bulls that Chestnut Angus has ever raised, but it's the mindset that Glenn, Wesly and Dawson have of "we can always get them better" that will drive the hustle towards the future. There are potentially industry leading herd sires that will sell in this 2023 edition of the Chestnut Angus Bull Sale, but this is a program that you can tie to with confidence in knowing that the best is yet to come. Even with the successes and accolades this program has already gathered, it may still be in its infancy as the drivers of the future are as eager, talented and motivated about the Angus business as you will find.*

*We could not endorse the Chestnut Angus program any more highly. Glenn, Sherri, Wesly & Dawson Johnson and the family like crew they associate with, continue to develop one of the most powerful Angus cowherds in America. The program they have built is geared towards those cattlemen and women who would prefer to build a long-term relationship with their genetic suppliers, they are setup to grow their cowherd alongside their customers, requiring for success on either side of the equation. We truly believe that stockmen regardless of production methods or selection criteria will find something to fit their needs in this offering. Please feel free to reach out to any member of the Innovation AgMarketing team, or the Chestnut crew with any questions or queries any time leading up to February 22nd.*

*Enjoy the cattle,*

*Graham Blagg Tim Anderson Jered Shipman*





H O M E T O T H

# Reserve Champion





E 2 0 2 3 N W S S

# Pen of Bulls







*lot one*

1

## CHESTNUT EXTENSIVE 12

AAA 20446623 · TATTOO 12 · DOB 01/02/22

Chestnut Redemption 38	3F Epic 4631
<b>CHESTNUT UNITED</b>	Chestnut Wetonka WJ 63
NSF Scotch Lady E34	GDAR Leupold 298
<b>AGI</b>	NSF Scotch Lady Z12
Conley Express 7211	Sma Watchout 482
<b>VZR MISSIE 2003</b>	DPL Sandy 3040
PVF Missie 6270	C&C Priority 1428B EXAR
	PVF Missie 0084

BW	WW	YW	MILK	\$W	\$F	\$B	\$C
+2.2	+87	+143	+22	+74	+94	+131	+219

BW	ADJ. WW
77	964



**PVF MISSIE 4149**  
FULL SISTER TO GRANDDAM OF LOT 1



**CHESTNUT UNITED**  
SIRE OF LOT 1

• Chestnut Extensive 12 is an absolute power herd sire prospect, he leads off the most dynamic set of power bulls to ever leave the farm! Pipestone, Minnesota will be the place to be on February 22nd for any bull buyers in the market of dramatically increasing the profitability of their calf crop through increased payweight!

• These sons of Chestnut United have helped cement his position among the most impressive breeding bulls we have ever utilized, let alone raised. The sire group is consistently stouter and denser than the rest, they are impressive in person!

• The maternal power of Extensive dates back to the \$70,000 PVF Missie 6270 that Rowdi VanZee showed to banners nationwide. A full sister to 6270 would be PVF Missie 4149, the Grand Champion Owned Female at the 2015 NJAS and Reserve Champion Angus Female at the NWSS for Esther McCabe, a three-quarter sister would be Cheyanne Jones Reserve Champion Owned Female at the 2016 NJAS. The Missie cow family is renowned for combining style with function and added maternal value.

• The banners are always appreciated but when it comes to real world data and growth, seldom compare to this performance standout. He weaned off with at 964 to ratio a 126, and genomically ranks in the top 3% of the breed for WW and top 10% for YW and \$W.

• Pounds = Dollars in this business, Extensive 12 = Extra Profitability in our eyes.





*lot two*

2

## CHESTNUT UNITED 692

AAA 20446622 · TATTOO 692 · DOB 01/25/22

Chestnut Redemption 38  
**CHESTNUT UNITED**  
NSF Scotch Lady E34



Chestnut PF Up Start 760  
**CHESTNUT MISS WIX DJ 638**  
Bussmus Miss Wix 1448

3F Epic 4631  
Chestnut Wetonka WJ 63  
GDAR Leupold 298  
NSF Scotch Lady Z12

Sitz Upward 307R  
Chestnut Beauty 319  
Soo Line Motive 1038  
ICC Miss Wix 7351

BW	WW	YW	MILK	\$W	\$F	\$B	\$C
+3.2	+77	+126	+29	+73	+80	+128	+245

BW	ADJ. WW
91	907

- A burly son of United that packs a punch from every angle you view him. A growth bull that recorded an impressive 4.25 WDA.
- If you like them wide based and extra expressive then this guy will make your short list. He carries his weight with extra shape up high, and is powerful in his ribcage design.
- The cow in support of 692 is a proven generator of the right kind! A maternal brother is the \$17,000 Chestnut Reclamation 520 that was purchased by Country Lane Farm in 2021. Chestnut Reclamation 520 was a member of the 2021 Cattlemen's Congress Grand Champion Pen of Three Angus Bulls and has a son selling as Lot 22. 638 also produced a son by Deer Valley Growth Fund that sold to Duane Buse of South Dakota in the 2022 Bull Sale for \$5,000.



**CHESTNUT MISS WIX DJ 638**  
DAM OF LOT 2



**CHESTNUT RECLAMATION 520**  
MATERNAL BROTHER TO LOT 2 - PURCHASED BY COUNTRY LANE FARM





*lot three*

3

## CHESTNUT FORCE 482

AAA 20445954 · TATTOO 482 · DOB 01/16/22

WAR Cavalry B063 Z044  
**WILKS REGIMENT 9035**  
Vintage Chloe 6137



R5 Solution E111  
**CHESTNUT CAPTIVATION 958**  
Chestnut Captivation WJ 7118

Connealy Cavalry 1149  
War CC&7 Z044 X029  
V A R Empire 3037  
V A R Chloe 2227

KG Solution 0018  
R5 Brooke C5196  
Barstow Bankroll B73  
H A F Captivation 1273

BW	WW	YW	MILK	\$W	\$F	\$B	\$C
+1.9	+107	+191	+31	+96	+121	+187	+314

BW	ADJ. WW
88	973



- Chestnut Force 482 has emerged as one of the most elite, performance focused specimens in the history of Chestnut Angus, there has not been a heavier, roar performance driven herdsire prospect than him.
- This Regiment son is one of our finest breeding accomplishments to date, and he ranks among the highest weaning weight and yearling weight numbered bulls in the entire registry. Not only is he an outlier at the scales, but he combines it with incredible eye appeal, a true power build and rugged structure, he will appease even the most discriminating cattleman or woman.
- This outlier stems from a pedigree that remains outcross to many of the performance leading sires of current, yet comes with the reliability of cow families that have been working hard for us in Pipestone. His maternal grandsire R5 Solution E111, has proven himself not only from an impressive performance standpoint, but via the maternally designed daughters he sires. They have been features in past sales for our partner on the bull, CK Cattle and Wager Cattle Companies of South Dakota.
- He ranks among the most elite top 1% of the Angus registry for weaning weight, yearling weight, maternal weaning and \$W. The genomically enhanced indicators point directly to this stud being one of the most elite performance orientated bulls to sell in the nation this year!

• SALE TERMS TO BE ANNOUNCED SALE DAY.

**CHESTNUT CAPTIVATION 958**  
DAM OF LOT 3





*lot four*

4

## CHESTNUT SURVEY 712

AAA 20446626 · TATTOO 712 · DOB 02/01/22

Chestnut Redemption 38  
**CHESTNUT UNITED**  
NSF Scotch Lady E34



PVF Inauguration 6174  
**CHESTNUT MS TIGER 068**

Chestnut MS Tiger DJ 613

3F Epic 4631  
Chestnut Wetonka WJ 63  
GDAR Leupold 298  
NSF Scotch Lady Z12

Dameron First Class  
PVF Missie 790  
Visiontopline Royal Stockman  
CLF MS Tiger 45Y

BW	WW	YW	MILK	\$W	\$F	\$B	\$C
-0.2	+78	+131	+25	+74	+93	+148	+237

BW	ADJ. WW
70	902

- Chestnut Survey 712 needs to be noted as one of the most dynamic calving ease to performance trending sires that will sell! He incredibly flips from top 10% CED and top 20% BW, to top 10% WW and top 20% YW, and set of traits you don't find on every street corner.
- His build is indicative of a calving ease prospect, being longer and smoother in his muscle pattern, with an angular front-end structure, neat head shape and appropriate bone size.
- This son of Chestnut United stems back to an impressive PVF Inauguration 6174 daughter out of the Tiger 613 female that sold to the Hiniker Family this past fall in the Female Sale. Back another maternal generation you will find the Pathfinder dam CLF Ms Tiger 45Y.



**CHESTNUT MS TIGER DJ 613**  
MATERNAL GRANDDAM OF LOT 4



**CHESTNUT MS TIGER DJ 881**  
MATERNAL SISTER TO MATERNAL GRANDDAM OF LOT 4





*lot five*

5

## CHESTNUT CONNECT 32

AAA 20446625 · TATTOO 32 · DOB 01/02/22

Chestnut Redemption 38  
**CHESTNUT UNITED**  
NSF Scotch Lady E34



S A V Bismarck 5682  
**CHESTNUT BLACKBIRD 416**  
Chestnut Blackbird 216

3F Epic 4631  
Chestnut Wetonka WJ 63  
GDAR Leupold 298  
NSF Scotch Lady Z12  
G A R Grid Maker  
S A V Abigale 0451  
MCATL Pure Product 903-55  
CN Blackbird 068

BW	WW	YW	MILK	\$W	\$F	\$B	\$C
+0.8	+62	+106	+35	+71	+78	+128	+233

BW	ADJ. WW
89	877

- Chestnut Connect 32 has caught the gaze of many of the astute cattlemen that have seen him in person. He is certainly one unique built specimen!
- He weaned off his picture-perfect S A V Bismarck 5682 dam to ratio a 115, and recorded close to a 4 pounds per weight per day of age. His dam stems from the prolific Blackbird cow family that has become a staple cow family for America's most progressive Angus seedstock providers.
- He has matured into one that not only mashes the scales but a rugged and athletic built herdsire that will sire value not just to those marketing feeder cattle but ranchers looking to retain females with added maternal value.







*lot six*

6

## CHESTNUT REGIMENT 972

AAA 20445985 · TATTOO 972 · DOB 02/20/22

WAR Cavalry B063 Z044

**WILKS REGIMENT 9035**

Vintage Chloe 6137



C&C McKinley 3000 EXAR

**CHESTNUT WETONKA 785**

Chestnut Wetonka 7207

Connealy Cavalry 1149

War CC&7 Z044 X029

V A R Empire 3037

V A R Chloe 2227

Dameron First Class

RAC Winnie 7456

Connealy Danny Boy

CN Wetonka Fortune 515

BW	WW	YW	MILK	\$W	\$F	\$B	\$C
-0.4	+87	+159	+21	+74	+117	+163	+267

BW  
77

ADJ. WW  
886

• Chestnut Regiment 972 took his promotion to "The Hill" in Denver seriously, as he was slapped Reserve Champion Calf Champion. He was commented on being massive and bold in his build, yet still delivering this muscle in an ultra-smooth and symmetrical package. If you are like us and prefer to breed cattle with an easy keeping, low maintenance look, that are robust in their ribcage then this stud will be your kind, regardless of the banners, this kind gets it done in the real world! He comes with the support of the Wetonka cow family, one that has reigned supreme here at Chestnut for raising herd changing sires, including United!

• A very versatile breeding piece that delivers massive growth, but not by sacrificing calving ease. He entered the world with a mere 77-pound birthweight, and is supported by top 15% CED, top 20% BW and an elite top 1% CEM, a number that many cattlemen are beginning to take very seriously and see proof positive results from selecting for.

• A herd bull that will add performance in just about every breeding situation he is thrown, he ranks among the performance breed leaders for WW, YW, RADG, MW and \$F.



**CHESTNUT WETONKA 631 ET**  
FULL SISTER TO THE DAM OF LOT 6



**CHESTNUT WETONKA 645**  
\$25,000 MATERNAL SISTER TO THE DAM OF LOT 6

CHESTNUT ANGUS FARM







*lot seven*

7

## CHESTNUT REGIMENT 812

AAA 20445956 · TATTOO 812 · DOB 01/29/22

WAR Cavalry B063 Z044  
**WILKS REGIMENT 9035**  
Vintage Chloe 6137



Musgrave 316 Stunner  
**CHESTNUT PEG WJ 912**  
Chestnut WJ Peg 780

Connealy Cavalry 1149  
War CC&7 Z044 X029  
V A R Empire 3037  
V A R Chloe 2227  
  
LD Capitalist 316  
MCATL Blackbird 831-1378  
Barstow Bankroll B73  
Chestnut WJ Peg 436

BW	WW	YW	MILK	\$W	\$F	\$B	\$C
-1.7	+74	+132	+32	+79	+106	+178	+304

BW	ADJ. WW
73	827



**CHESTNUT PEG WJ 912**  
DAM OF LOT 7



**CHESTNUT PEG 9589 WJ**  
4TH GENERATION DAM OF LOT 7

- We aren't sure if you could build a more impressive set of EPD's than you will find in this Wilks Regiment 9035 son.
- More impressive is the fact that this genomic standout is also built with shape and power, so not only does he read impressive, but he has a phenotype to suffice the strictest checklists when on the search to find a herd builder!
- His dam has been a standout from early on, she featured in our 2021 Female Sale and was the second high seller, she is set to be a cow we focus the breeding program around in the future. The Peg tribe has been a strong maternal base for sourcing several generations of the finest CN branded breeding pieces.
- Genomically the results shine brightly, Regiment 812 ranks top 10% CED, top 5% BW, top 20% WW, top 15% YW, top 20% RADG, top 15% Milk, top 20% for both foot quality traits, top 20% CW, top 20% Marb, top 15% RE.
- When it comes to profitability indexes he cements his portfolio with a top 5% \$W, top 15% \$F, top 15% \$G, top 10% \$B and top 10% \$C.





*lot eight*

8

## CHESTNUT UNIFIED 62

AAA 20446620 · TATTOO 62 · DOB 01/05/22

Chestnut Redemption 38  
**CHESTNUT UNITED**  
NSF Scotch Lady E34



Bushs High Caliber 674  
**CHESTNUT BLACKCAP 081**  
Chestnut Blackcap 514

3F Epic 4631  
Chestnut Wetonka WJ 63  
GDAR Leupold 298  
NSF Scotch Lady Z12  
Panther Cr Incredible 6704  
Bushs Factor Gal 3099  
Woodhill Daybreak U280-X20  
Chestnut Blackcap 342

BW	WW	YW	MILK	\$W	\$F	\$B	\$C
-2.1	+67	+120	+31	+74	+86	+133	+258

BW	ADJ. WW
72	835

- Chestnut Unified 62 is a surefire calving ease option!
- There is no need to sacrifice growth and payweight in your search for a sleep all night heifer bull candidate when the opportunity to purchase Chestnut Unified 62 is up for grabs! He flips from a -2.1 BW figure to a 120 YW number.
- This United son came small and unassisted at a mere 72 pounds. And then exploded to wean off his first calving mother with a 109 WWR with an 835 Adj weaning weight. He made the trip to Denver and impressed onlookers with the unexpected shape and width you wouldn't typically find in a bull with such calving ease predictions.
- We believe the added look, feature and later maturing growth trend of this United son make him a sire prospect that is worth promotion, with the maternal power of the Blackcap family in support, the female retention of this stunner we think will be high!







*lot nine*

9

## CHESTNUT REGULATE 522

AAA 20445967 · TATTOO 522 · DOB 01/18/22

WAR Cavalry B063 Z044  
**WILKS REGIMENT 9035**  
Vintage Chloe 6137



Barstow Bankroll B73  
**CHESTNUT FANNIE BR 812**  
CNBR Fannie 684

Connealy Cavalry 1149  
War CC&7 Z044 X029  
V A R Empire 3037  
V A R Chloe 2227

Barstow Cash  
Barstow Miss Dianna Z25  
Kramers R Stockman 4304 TL  
CN Fannie 365

BW	WW	YW	MILK	\$W	\$F	\$B	\$C
+0.6	+79	+145	+21	+65	+112	+157	+260

BW	ADJ. WW
83	841

- An absolutely massive and dense beef bull!
- There is nothing to hide about this powerful bovine, truly an awe-striking unit that redefines boldness and ruggedness of build. We love the extra masculinity and explosiveness of muscle shape and product that this Wilks Regiment 9035 son is built with. With that in mind realize the moderate 83-pound birth weight that ratioed a 98.
- Chestnut Regulate 522 reads exactly as you would predict, adding growth and performance to his progeny with top 10% rankings for WW, YW, RADG, CW & \$F. The predictions indicate this power comes in the form of muscle from his top 1% Fat and top 15% RE rankings. A bull that will potentially add red meat yield to his progeny, so not only is he a great option for those that sell by the pound, but he can be a very important breeding tool for those that retain ownership or market via the grid.



**CN FANNIE 682**  
MEMBER OF THE FAMED  
"FANNIE" COW FAMILY!



**CHESTNUT FANNIE 64**  
MEMBER OF THE FAMED  
"FANNIE" COW FAMILY!



**CHESTNUT EYES ONLYOU 331**  
\$21,000 MATERNAL BROTHER TO LOT 9  
PURCHASED BY DOUG SCHROEDER IN 2022





*lot ten*

10

## CHESTNUT REGIMENT 702

AAA 20445986 · TATTOO 702 · DOB 01/25/22

WAR Cavalry B063 Z044

**WILKS REGIMENT 9035**

Vintage Chloe 6137



Woodhill Mel X219-A191

**CN DJ ANNIE OAKLEY 565**

Gimbels Annie Oakley 329

Connealy Cavalry 1149

War CC&7 Z044 X029

V A R Empire 3037

V A R Chloe 2227

MCATL Hoover Dam 781-326

Woodhill SW Maiden S53-X219

S A V Bismarck 5682

HA Annie Oakley T29

BW	WW	YW	MILK	\$W	\$F	\$B	\$C
-1.6	+60	+115	+34	+69	+75	+135	+226

BW  
83

ADJ. WW  
650

- Chestnut Regiment 702 is the perfect combination of style and stoutness. He is long sided, cool necked and has the big flexible running gear that will allow him to have along and comfortable breeding tenure.
- The added eye appeal and soundness of build allowed for 702 to make plenty of friends in the yards of Denver this year. But don't take his good looks as the only point of conversation on this Regiment son.
- Turn to the incredible calving ease traits of this looker, he charts a +17 on CED to rank him among the elite 1% of the breed, further supported with a top 5% BW trait. He is set to sire progeny that come unassisted even on the most powered up set of replacement heifers.



**CN DJ ANNIE OAKLEY 565**  
DAM OF LOT 10



**CHESTNUT ANNIE OAKLEY 116**  
MEMBER OF THE "ANNIE OAKLEY" COW FAMILY!





*lot eleven*

11

## CHESTNUT REGIMENT 822

AAA 20445971 · TATTOO 822 · DOB 01/30/22

WAR Cavalry B063 Z044  
**WILKS REGIMENT 9035**  
Vintage Chloe 6137



VA First Round  
**CHESTNUT BLACKBIRD DJ 6102**  
Chestnut Blackbird 216

Connealy Cavalry 1149  
War CC&7 Z044 X029  
V A R Empire 3037  
V A R Chloe 2227  
Dameron First Class  
R&C Keystone Lady 106K-810U  
MCATL Pure Product 903-55  
CN Blackbird 068

BW	WW	YW	MILK	\$W	\$F	\$B	\$C
+5.0	+78	+138	+37	+68	+109	+159	+260

BW	ADJ. WW
91	838



- Chestnut Regiment 822 is genetically and phenotypically geared for performance. His dam, Chestnut Blackbird DJ 6102 is a leading daughter of the in herd legend, VA First Round, she is the powerful, three-dimensional brood cow that sold to Chad Nelson last fall in our Female Sale.
- Without a doubt this is the kind of sire prospect that will add value to the program if your marketing scenario involves running your calf crop over the scale. He himself registered a 110 WWR, with just shy of a 4.00 WDA.
- Long gone are the days that you have to sacrifice calving ease to get paid a premium at the end. These next generation United sons allow you to have your cake and eat it too. He ranks top 10% for WW, top 10% YW, top 25% RADG and top 3% Milk. He reads with a top 15% tabulation for TI.



**CHESTNUT BLACKBIRD DJ 6102**  
DAM OF LOT 11



**SIRE OF LOTS 1, 2, 4, 5, 8, & 12-21**

# **CHESTNUT** *United*



**AAA \*19847817 DOB 1.15.2020 TATTOO 80**

**CHESTNUT REDEMPTION 38 x NSF SCOTCH LADY E34 (GDAR LEUPOLD 298)**

BW	WW	YW	MILK	\$W	\$F	\$B	\$C
<b>-.1</b>	<b>+78</b>	<b>+136</b>	<b>+24</b>	<b>+82</b>	<b>+96</b>	<b>+131</b>	<b>+245</b>

**SEMEN AVAILABLE - CONTACT OWNERS TO PURCHASE FOR THIS COMING BREEDING SEASON!**

**CHESTNUT ANGUS FARM** PIPESTONE, MINNESOTA | **TK ANGUS** WOOD LAKE, NEBRASKA | **LAZY TV RANCH** SHELBY, SOUTH DAKOTA | **RYAN BELGUM** ROCA, NEBRASKA



- Chestnut United 52 begins the most impressive sire group we have raised here at Chestnut Angus. We are awfully proud of the group of United sons that we will sell on February 22nd.
- This deep sided, bold sprung stud checks boxes in a wide range of areas! He breaks the rules in regard to the combination of elite calving ease that flips to growth, with top quarter of the breed rankings for all calving traits, and then sits top 10% weaning weight and top 3% at a year.
- There is no need to sacrifice calving ease to get paid a premium come market time. These next generation United sons allow you to have the best of both worlds.
- He stems back to the productive Queen Eva 532 matron, a maternal sister to 52's mother would have raised the third high seller in the 2021 Bull Sale, Chestnut Point Taken 180, that sold to Nordlund Stock Farm.



**CHESTNUT QUEEN EVA 133**  
\$88,000 MATERNAL SISTER  
TO THE DAM OF LOT 12



**CHESTNUT UNITED 52**

12

## CHESTNUT UNITED 52

AAA 20446634 · TATTOO 52 · DOB 01/02/22

Chestnut Redemption 38

**CHESTNUT UNITED**

NSF Scotch Lady E34



CLF Cash 62C

**CHESTNUT QUEEN EVA 090**

Chestnut Queen Eva 532

3F Epic 4631

Chestnut Wetonka WJ 63

GDAR Leupold 298

NSF Scotch Lady Z12

Barstow Cash

CLF Dateline Betty 84P

Vision Unanimous 1418

C N Queen Exa 56 8168

BW	WW	YW	MILK	\$W	\$F	\$B	\$C
+0.1	+81	+152	+22	+65	+107	+135	+212

BW	ADJ. WW
71	845

13

## CHESTNUT UNITED 122

AAA 20446631 · TATTOO 122 · DOB 01/06/22

Chestnut Redemption 38

**CHESTNUT UNITED**

NSF Scotch Lady E34



RBM Next Step F05

**CHESTNUT QUEEN HERSELF 053**

Chestnut Queen Herself 62

3F Epic 4631

Chestnut Wetonka WJ 63

GDAR Leupold 298

NSF Scotch Lady Z12

Prairie Pride Next Step 2036

Basin Charisma U691

Chestnut PF The Product 63

CN Queen Herself 437

BW	WW	YW	MILK	\$W	\$F	\$B	\$C
+0.1	+54	+100	+40	+66	+73	+129	+237

BW	ADJ. WW
77	789

## CHESTNUT WAGON BOSS 21

MATERNAL BROTHER TO DAM OF LOT 13



- Chestnut United 122 went from a below average birthweight to above average weaning weight. This curve bending bull continues to mature with added muscle and rib shape and will look like a smart investment when covering cows out on green grass this summer.

- His mother is a direct daughter of RBM Next Step F05 and goes back to a long lineage of the Queen Herself cow family that has been a staple for the Chestnut program for several generations.
- Maternal value in mass sells here.



**CHESTNUT QUEEN HERSELF 62**  
MATERNAL GRANDDAM OF LOT 13



**CHESTNUT UNITED 122**





//////////////////////////////////// **CHESTNUT UNITED 1212**

**14** **CHESTNUT UNITED 1212**

AAA 20445952 · TATTOO 1212 · DOB 03/26/22

Chestnut Redemption 38  
**CHESTNUT UNITED**  
 AGI NSF Scotch Lady E34  
 Chestnut Knock Out 204  
**CHESTNUT QUEEN 670**  
 Chestnut Queen 170

3F Epic 4631  
 Chestnut Wetonka WJ 63  
 GDAR Leupold 298  
 NSF Scotch Lady Z12  
 VA First Round  
 Chestnut Queen Lucy 028  
 KF Danny 387  
 CN Queen Precision 2102

BW	WW	YW	MILK	\$W	\$F	\$B	\$C
+0.7	+63	+114	+34	+67	+79	+122	+223
BW		ADJ. WW					
88		856					

- Chestnut United 1212 may be the youngest bull in the offering by some margin, but do not let that sway you from the quality he obviously has inherited and matured with.
- This late March born United son has had his foot on the throttle every day since his arrival, allowing for him to catch and surpass several of the cohort!
- It takes a lot for us to sift these younger bulls into the sale pen just because of the fact they struggle to fit from a maturity standpoint, there is no questioning the validity of 1212's sale promotion.

**15** **CHESTNUT UNITED 722**

AAA 20446630 · TATTOO 722 · DOB 01/25/22

Chestnut Redemption 38  
**CHESTNUT UNITED**  
 AGI NSF Scotch Lady E34  
 Chestnut Rocky 922  
**CHESTNUT QUEEN 7132**  
 CN Queen 040

3F Epic 4631  
 Chestnut Wetonka WJ 63  
 GDAR Leupold 298  
 NSF Scotch Lady Z12  
 VAR Rocky 80029  
 CN Queen Eva 025  
 S A V Bismarck 5682  
 CN Queen 8178

BW	WW	YW	MILK	\$W	\$F	\$B	\$C
+0.1	+60	+100	+32	+65	+84	+108	+200
BW		ADJ. WW					
76		862					

- Another United son that's influence will truly be realized next calving season with the lack of difficulty he will sire. Further stripes will be added to his resume when those same progeny hit the scale for the first time!
- We put a lot of faith in these United sons to sire added muscle shape and density. You will notice Chestnut United 722 has extra muscle shape and thickness when you view him in the pens on sale day.
- Chestnut United 722 weaned off his Chestnut Rocky 922 x Queen cow family mother to ratio a 113, and record 4.04 pounds of weight per day of age.



- Chestnut United 442 is a balanced beef builder that trends curve bending in his performance and maturity pattern.
- This top third of the breed calving trait sire would qualify to see use on younger cows this first season and after monitoring results, perhaps see use on heifers in the future.
- The dam of 442 was a highlight of the Female Sale this past fall, the Musgrave Big Sky daughter sold as Lot 24 and made a very happy customer of Jared Dick at Shaggy Meadows Red Angus in Freeman, South Dakota.
- This would be the third son of Chestnut PF Monica 680 to be marketed, the two maternal brothers include Chestnut El Rio 561 a son by Frenzen El Rio that sold for \$9,000 to Jerry Bush of South Dakota in the 2022 Bull Sale and Chestnut Bronc JW 168, sired by Balldridge Bronc that sold in the 2019 Bull Sale. A maternal sister has been retained in herd!



**CHESTNUT EL RIO 561**  
MATERNAL BROTHER TO LOT 16



**CHESTNUT PF MONICA 680**  
DAM OF LOT 16

**CHESTNUT UNITED 442**

16

## CHESTNUT UNITED 442

AAA 20446632 · TATTOO 442 · DOB 01/15/22

Chestnut Redemption 38

**CHESTNUT UNITED**

NSF Scotch Lady E34



Musgrave Big Sky

**CHESTNUT PF MONICA 680**

Chestnut Monica 122

3F Epic 4631

Chestnut Wetonka WJ 63

GDAR Leupold 298

NSF Scotch Lady Z12

Connealy Earnan 076E

SAV Primrose 7861

S A V Providence 6922

TRMS Monica 7002T

BW	WW	YW	MILK	\$W	\$F	\$B	\$C
+0.0	+62	+104	+40	+81	+68	+119	+250

BW	ADJ. WW
85	767

17

## CHESTNUT UNITED 992

AAA 20446624 · TATTOO 992 · DOB 02/15/22

Chestnut Redemption 38

**CHESTNUT UNITED**

NSF Scotch Lady E34



Chestnut Power 19 134

**CN PF BEAUTY 668**

CN PF Beauty 150

3F Epic 4631

Chestnut Wetonka WJ 63

GDAR Leupold 298

NSF Scotch Lady Z12

Chestnut Power One 19

Chestnut Freedom Lady 288

WillowCreek Reflect 932 7113

CN PF Beauty 9349

BW	WW	YW	MILK	\$W	\$F	\$B	\$C
+0.1	+68	+119	+37	+76	+74	+116	+208

BW	ADJ. WW
87	794

- Chestnut United 992 is a later born son of United that is projecting to continue gaining on the gap he started with from a maturity point. By sale day we think he will be one of the premier choices for a cowboy or girl looking at adding a phenotypic and genomic curve bending sire to their bull battery.
- Maternally he stems from the Beauty tribe, and was well supported by his Chestnut Power 19 134 sired dam to allow him to wean off with a 104 WWR at just shy of 800 pounds.
- His EPD tabulations are highlighted by top 15% CED, top 25% BW, top 30% WW, top 35% YW, top 3% Milk and top 10% \$W.



**CHESTNUT HAUS 231**  
\$50,000 MATERNAL BROTHER TO DAM OF LOT 17



**CHESTNUT UNITED 992**





**CHESTNUT INCREDIBLE 230**  
MATERNAL BROTHER TO LOT 18



**CHESTNUT PF BEAUTY 557**  
MATERNAL GRANDDAM OF LOT 18

# VIEW & BID

## DVAuction

18

### CHESTNUT UNITED 642

AAA 20446627 · TATTOO 642 · DOB 01/21/22

Chestnut Redemption 38  
**CHESTNUT UNITED**  
NSF Scotch Lady E34  
AGI  
CTS Remedy 1T01  
**CHESTNUT PF BEAUTY 753**  
Chestnut PF Beauty 557

3F Epic 4631  
Chestnut Wetonka WJ 63  
GDAR Leupold 298  
NSF Scotch Lady Z12  
Connealy Thunder  
CTS 7V03 Bellemere Maid 9T02  
VA First Round  
Chestnut Beauty 319

BW	WW	YW	MILK	\$W	\$F	\$B	\$C
-0.1	+64	+114	+35	+70	+76	+120	+224
BW		ADJ. WW					
79		765					

- We admire the functional build, powerful muscle type and fleshing ability of this United son. He will sire the easy keeping type that suits a wide range of environments.
- He came easy and unassisted with a 79-pound birthweight.
- A maternal brother to Chestnut United 642 sold in the 2021 Bull Sale to Zach Davis of Wyoming.

19

### CHESTNUT UNITED 422

AAA 20446621 · TATTOO 422 · DOB 01/15/22

Chestnut Redemption 38  
**CHESTNUT UNITED**  
NSF Scotch Lady E34  
AGI  
Stevenson Turning Point  
**CHESTNUT BEAUTY 92**  
Chestnut Beauty 778

3F Epic 4631  
Chestnut Wetonka WJ 63  
GDAR Leupold 298  
NSF Scotch Lady Z12  
Plattmeyer Weigh Up K360  
Stevenson Pride 1167x  
SAC Conversation  
Chestnut Beauty 027

BW	WW	YW	MILK	\$W	\$F	\$B	\$C
+2.7	+71	+127	+21	+57	+88	+132	+223
BW		ADJ. WW					
88		800					

- A real-world performance bull that stacks the likes of United, Stevenson Turning Point and SAC Conversation into one package.
- The dam of Chestnut United 422 is a maternal sister to the leadoff Growth Fund son that was tag 11 in last year's Bull Sale that sold to Matt Brinkmeyer.
- He ranks top quarter of the breed for WW, YW, RADG and RE.

20

### CHESTNUT UNITED 752

AAA 20446619 · TATTOO 752 · DOB 01/27/22

Chestnut Redemption 38  
**CHESTNUT UNITED**  
NSF Scotch Lady E34  
AGI  
Chestnut PF Fire Ball 234  
**CN BLACKBIRD LEIA 688**  
CN Blackbird Leia 9359

3F Epic 4631  
Chestnut Wetonka WJ 63  
GDAR Leupold 298  
NSF Scotch Lady Z12  
VA First Round  
CN Queen Mab 07  
S A V Bismarck 5682  
CN Blackbird Leia 447

BW	WW	YW	MILK	\$W	\$F	\$B	\$C
+1.0	+63	+102	+22	+62	+86	+113	+217
BW		ADJ. WW					
89		777					

- Chestnut United 752 is built for the long haul, he will excel for his ability to generate extra pounds in his calf crop.
- A Chestnut PF Fire Ball 234 grandson who charts above breed average for both calving ease and performance traits.
- His dam CN Blackbird Leia 688 was without a doubt one of the most powerful females that sold in the September Female Sale to Dallas Hoffman, she was truly a role model brood cow!



**CN BLACKBIRD LEIA 688**  
DAM OF LOT 20

21

### CHESTNUT UNITED 352

AAA 20446629 · TATTOO 352 · DOB 01/09/22

Chestnut Redemption 38  
**CHESTNUT UNITED**  
NSF Scotch Lady E34  
AGI  
Connealy Danny Boy  
**CHESTNUT WETONKA 7207**  
CN Wetonka Fortune 515

3F Epic 4631  
Chestnut Wetonka WJ 63  
GDAR Leupold 298  
NSF Scotch Lady Z12  
Connealy Timeline  
Energy of Conanga 4851  
WK Wacker  
CN Wetonkas Fortune 292

BW	WW	YW	MILK	\$W	\$F	\$B	\$C
+0.3	+70	+127	+29	+68	+108	+146	+250
BW		ADJ. WW					
82		853					

- You will notice a huge spread from birth to yearling in this Chestnut United son.
- An in-person appraisal of his phenotype will not disappoint either, a big, stout and powerful herd sire prospect that's built for the long haul. He mashed the scale at weaning with over 850 pounds to ratio a 112.
- Cattleman across the nation admire daughters of Connealy Danny Boy because of females like 352's Wetonka dam. He ranks top quarter of the breed for WW, YW, RADG, MW, RE and \$W. He ranks top 10% for \$F.



- Chestnut Reclamation 622 is built with real world confirmation.
- His sire Chestnut Reclamation 520, is a direct son of Chestnut Redemption 38 that sold for \$17,000 to Country Lane Farm in the 2021 Bull Sale. 520 was a member of the 2021 Cattlemen's Congress Grand Champion Pen of Three Angus Bulls.
- He came with a moderate birth weight, however didn't let that hold him back when it came to running over the scale at weaning time with over 800 pounds of payweight.



**CHESTNUT RECLAMATION 520**  
SIRE OF LOT 22



**CHESTNUT RECLAMATION 622**

22

## CHESTNUT RECLAMATION 622

AAA 20446194 · TATTOO 622 · DOB 01/21/22

Chestnut Redemption 38  
**CHESTNUT RECLAMATION 520**  
Chestnut Miss Wix DJ 638



Styles Broken Bow V24  
**CHESTNUT RUBY WJ 998**  
Chestnut Ruby 540

3F Epic 4631  
Chestnut Wetonka WJ 63  
Chestnut PF Up Start 760  
Bussmus Miss Wix 1448

KM Broken Bow 002  
Styles Jasmine S44  
VA First Round  
Chestnut Ruby 249

BW	WW	YW	MILK	\$W	\$F	\$B	\$C
+1.6	+63	+111	+21	+58	+77	+107	+218

BW	ADJ. WW
83	807



**CHESTNUT JAGGER 620**  
SIRE OF LOT 23

23

## CHESTNUT JAGGER 842

AAA 20446191 · TATTOO 842 · DOB 01/30/22

Chestnut Redemption 38  
**CHESTNUT JAGGER 620**  
TR MS Celeste 5734C Et



Chestnut Onyx 167  
**CHESTNUT QUEEN 041**  
C N Queen 8408

3F Epic 4631  
Chestnut Wetonka WJ 63  
EXAR Classen 1422B  
TR Ms Katinka 3208N

Chestnut Freedom 115  
CW Miss Elgaline 430  
K F Traveler 106  
WK Queen 6564

BW	WW	YW	MILK	\$W	\$F	\$B	\$C
+3.5	+60	+101	+27	+55	+66	+121	+205

BW	ADJ. WW
90	792



**CHESTNUT QUEEN 652**  
MATERNAL SISTER TO LOT 23

- Chestnut Jagger 842 stems from another Redemption 38 son that was the high selling Angus Bull at the 2021 Black Hills Stock Show to Mangan Angus Ranch of Montana.
- Turn to the genomics of this powerhouse to show how potently he will sire pounds and performance!
- Huge additions of performance can be expected after adding 842 to the breeding roster. This true power bull ranks top 4% WW, top 10% YW, and top 15 %MW. For those at higher elevations, make note of his top 1% PAP ranking.





//////////////////////////////////// **CHESTNUT REDEMPTION 402**

- The sons of Chestnut Redemption 38 have been fan favorites for several bull sale seasons now, this may be the only direct son of his sell this year, but his influence can be heavily felt throughout the catalog via sons and daughters.
- Chestnut Redemption 402 is a bigger framed, longer sided stud that will add to his progeny from increasing length.
- He came light, with a 73-pound birthweight.



**CHESTNUT REDEMPTION 38**  
SIRE OF LOT 24

**24**

## CHESTNUT REDEMPTION 402

AAA 20446195 · TATTOO 402 · DOB 01/11/22

3F Epic 4631

**CHESTNUT REDEMPTION 38**

Chestnut Wetonka WJ 63



Merit Sting 7047E

**CHESTNUT FREEDOM LADY 028**

Chestnut Freedom Lady 288

Varilek Product 2010 04

Zebo Queen 1072

HAYNES Outright 452

Chestnut Wetonka A S 461

Bar S Range Boss 4002

Merit Socialite 5121C

Soo Line Alternative 9127W

DS 3726 Freedom Lady 65 CW

BW	WW	YW	MILK	SW	SF	\$B	\$C
+2.1	+67	+125	+19	+52	+97	+142	+246

BW	ADJ. WW
73	778

**25**

## CHESTNUT STRIKER 732

AAA 20446190 · TATTOO 732 · DOB 01/25/22

Conley Express 7211

**CHESTNUT STRIKER**

Chestnut Queedy WJ 633



Kramers R Stockman 4304 TL

**CHESTNUT MISS WIX DJ 8131**

Bussmus Miss Wix 1448

Sma Watchout 482

DPL Sandy 3040

Chestnut Knock Out 204

Conley Queedy 535

Visiontopline Royal Stockman

W C C Primrose S168

Soo Line Motive 1038

ICC Miss Wix 7351

BW	WW	YW	MILK	SW	SF	\$B	\$C
+6.4	+61	+113	+22	+31	+106	+157	+216

BW	ADJ. WW
95	840



//////////////////////////////////// **CHESTNUT STRIKER 732**

- Chestnut Striker 732 combines performance and maternal strength in one powerful package. With a proven pedigree of cow makers and an impressive EPD profile, this son of Chestnut Striker will enhance your programs bottom line with extra growth towards weaning time.
- 732 is backed by a daughter of the maternal legend Kramers R Stockman 4304 TL. He is appropriate framed, heavy muscled and deep bodied, he hits us with a true beef bull look.



**CHESTNUT STRIKER**  
SIRE OF LOT 25



**CHESTNUT QUEEDY WJ 633**  
PATERNAL GRANDDAM OF LOT 25





26

## CHESTNUT STRUT 182

AAA 20445849 · TATTOO 182 · DOB 01/08/22

G A R Ashland

CHESTNUT STRUT

CN Blackbird Susan 720



KR Synergy

CHESTNUT ERICA LUCY 019

Chestnut Erica Lucy 822

G A R Early Bird

Chair Rock Ambush 1018

Barstow Bankroll B73

CN Blackbird Susan 553

KR Cadillac Jack

Dickaus 2U66 FW 416

Barstow Bankroll B73

Chestnut Erica Lucy 624

BW	WW	YW	MILK	\$W	\$F	\$B	\$C
+0.2	+75	+126	+36	+84	+83	+112	+231
BW		ADJ. WW					
77		794					



- Chestnut Strut 182 is a rancher approved kind that is athletic and masculine. He has a build that will allow him to cover ground and service lots of cows!
- A curve bending prospect that reflected his EPD predictions with his own growth pattern, coming to the world at 77 pounds and weaning off his first calving KR Synergy dam at almost 800 pounds.
- His genomics rank top 15% CED, top 30% BW, top 15% WW, top 25% YW, top 15% CEM, top 4% Milk and top 20% RE. His \$ values are even more impressive with a top 4% \$Maternal and top 2% \$Weaning.

**CHESTNUT ERICA LUCY 624**  
3RD GENERATION DAM OF LOT 26



27

## CHESTNUT STRUT 362

AAA 20446975 · TATTOO 362 · DOB 01/10/22

G A R Ashland

CHESTNUT STRUT

CN Blackbird Susan 720



Chestnut Redemption 38

CHESTNUT WINNIE 047

Chestnut Winnie 698

G A R Early Bird

Chair Rock Ambush 1018

Barstow Bankroll B73

CN Blackbird Susan 553

3F Epic 4631

Chestnut Wetonka WJ 63

Bussmus PayDay 2610

Chestnut Winnie 069

BW	WW	YW	MILK	\$W	\$F	\$B	\$C
+2.7	+77	+142	+31	+68	+108	+152	+239
BW		ADJ. WW					
76		862					



**CHESTNUT WINNIE 658**  
MEMBER OF THE FAMED  
"WINNIE" COW FAMILY!

- A Strut son that is impressive from every angle, long sided, capacious and growthy, without sacrificing eye appeal.
- A bull that's presence has always been felt, he stands out in the bull pen and weaned of his first calving mother with 862 pounds of weaning weight.
- His strong maternal background doesn't end with his productive Chestnut Redemption 38 dam, its generations long. Whether you need replacement females or feeder cattle that mash the scales, this Chestnut Strut son deserves your attention.
- When it comes to comparing 362 to the breed registry he ranks top 15% WW, top 10% YW, top 15% RADG, top 20% Milk, top 25% \$W and top 10% \$F. He is a standout among his sire group and our offering.

28

## CHESTNUT STRUT 42

AAA 20446193 · TATTOO 42 · DOB 01/03/22

G A R Ashland

CHESTNUT STRUT

CN Blackbird Susan 720



Ellingson Homestead 6030

CHESTNUT BLACK LADY 011

Chestnut Black Lady WJ 817

G A R Early Bird

Chair Rock Ambush 1018

Barstow Bankroll B73

CN Blackbird Susan 553

CTS Remedy 1T01

EA Erica 1082

3F Epic 4631

Chestnut Black Lady WJ 672

BW	WW	YW	MILK	\$W	\$F	\$B	\$C
+ -0.4	+68	+120	+31	+69	+96	+148	+246
BW		ADJ. WW					
64		816					

- Chestnut Strut 42 follows in the impressive combination of calving ease and growth that the Strut sons exhibit consistently.
- We think a lot of the sons out of our tried-and-true herdsire, Chestnut Strut, the leading son of G A R Ashland we raised. Not only are they built how we like them with smooth joints, balanced phenotype and are easy keeping, it's on paper that they really begin to shine. This son charts top 15% CED, top 20% BW, top 30% WW, top 35% YW, top 30% CEM, top 20% CW, top 35% RE, top 20% \$W, and top 20% \$F.



**CHESTNUT STRUT**  
SIRE OF LOTS 26-28





//////////////////// **CHESTNUT GROWTH FUND 862**

- The Growth Fund sons were a favored sire group in 2022! This year only two will sell, but trust that both are high quality beef bulls that will find many friends on sale day.
- Chestnut Growth Fund 862 will add pounds in just about every breeding scenario he enters, he is bold and massive in his muscle design, with extra top and hind quarter shape. If you need to add substance and dimension then this stud will be one to mark for inspection.
- He weaned off of his K&J Sub Zero 276 dam with almost 850 pounds of payweight and genomically is forecasted to sire the same impressive growth trend with top 3% WW and top 5% YW rankings.
- This Growth Fund son ranks among the most elite 1% for the \$W index, one that predicts profitability differences in progeny due to genetics from birth to weaning. The index is built to reflect the profitability of a bull's impact when 20% of his female progeny are kept as replacements and the rest of the females and their male counterparts are sold as feeder calves.



**DEER VALLEY GROWTH FUND**  
SIRE OF LOT 29 & 30

**29**

## CHESTNUT GROWTH FUND 862

AAA 20445968 · TATTOO 862 · DOB 01/30/22

Basin Payweight 1682

**DEER VALLEY GROWTH FUND**

Deer Valley Rita 36113



K&J Sub Zero 276

**CHESTNUT QUEEN 877**

Chestnut Queen 617

Basin Payweight 006S

21AR O Lass 7017

Plattmeyer Weigh Up K360

Deer Valley Rita 9457

EATHINGTON SUB-ZERO

K&J Georgina 234

Chestnut PF Fire Ball 234

Chestnut Queen 329

BW	WW	YW	MILK	\$W	\$F	\$B	\$C
+1.7	+88	+148	+32	+89	+111	+139	+253

BW	ADJ. WW
89	849

**30**

## CHESTNUT GROWTH FUND 902

AAA 20445982 · TATTOO 902 · DOB 02/02/22

Basin Payweight 1682

**DEER VALLEY GROWTH FUND**

Deer Valley Rita 36113



V A R Reserve 1111

**CHESTNUT BEAUTY 66**

CN Beauty 41

Basin Payweight 006S

21AR O Lass 7017

Plattmeyer Weigh Up K360

Deer Valley Rita 9457

B/R New Day 454

Sandpoint Blackbird 8809

Benfield Substance 8506

Chestnut Beauty 8518 223

BW	WW	YW	MILK	\$W	\$F	\$B	\$C
+0.9	+69	+123	+38	+77	+88	+117	+236

BW	ADJ. WW
91	790



//////////////////// **CHESTNUT GROWTH FUND 902**

- We love the combination of phenotype and EPD predictions that the Growth Fund sons possess, they are stout in their feature, rugged about their structural design and powerful in their muscle shape.
- 902 finds maternal support through a V A R Reserve 1111 daughter that sold to Deb & Lyle Nunnenkamp in the Female Sale this past fall. She traces to the maternal excellence of the pathfinders, B/R New Day 454 and Benfield Substance 8506.



- We predict progeny of lot 30 will mash down the scale and be heavier muscled than the rest of the cohort.

**CHESTNUT BEAUTY 66**  
DAM OF LOT 30



**CHESTNUT WJ BEAUTY 6120 ET**  
MEMBER OF THE "BEAUTY" COW FAMILY!



- A phenotypic standout! We love the functional build of this VZR Diamond Jack 1905 son, he has some added extras in regard to look and feature too.
- Chestnut Diamond Jack 562 is not just a favorite because of his great build, but he has shown real world growth all the way through his development. He came off his young dam with over 800 pounds of weaning weight.
- His sire, VZR Diamond Jack 1905 took the breed by storm on his debut at the 2019 North American, where he was slapped Grand Champion Angus Bull as a calf. He was also a division winner at the NWSS in Denver and the American Royal in Kansas City.



**CHESTNUT GLM PEGGY 6122**

FULL SISTER TO MATERNAL GRANDSIRE OF LOT 31

**CHESTNUT MONICA 641**  
MATERNAL GRANDDAM OF LOT 31



**CHESTNUT DIAMOND JACK 562**

**31**

## CHESTNUT DIAMOND JACK 562

AAA 20445904 · TATTOO 562 · DOB 01/19/22

5T Power Chip 4790  
**VZR DIAMOND JACK 1905**  
PVF Blackbird 7047



Chestnut Undisputed GLM  
**CHESTNUT MONICA 918**  
Chestnut Monica 641

EXAR Blue Chip 1877B  
5T Miss Wix 8002  
PVF Insight 0129  
ALL PVF Blackbird 645

Chestnut Knock Out 204  
TC Peggy 5064  
V A R Index 3282  
Chestnut Monica 213

BW	WW	YW	MILK	\$W	\$F	\$B	\$C
+0.8	+62	+116	+33	+64	+86	+131	+229

BW	ADJ WW
81	804

**32**

## CHESTNUT DIAMOND JACK 492

AAA 20445906 · TATTOO 492 · DOB 01/17/22

5T Power Chip 4790  
**VZR DIAMOND JACK 1905**  
PVF Blackbird 7047



Styles Broken Bow V24  
**CHESTNUT BEAUTY 8141**  
CN PF Beauty 597

EXAR Blue Chip 1877B  
5T Miss Wix 8002  
PVF Insight 0129  
ALL PVF Blackbird 645

KM Broken Bow 002  
Styles Jasmine S44  
HF Untapped 58Z  
CN PF Beauty 150

BW	WW	YW	MILK	\$W	\$F	\$B	\$C
+1.9	+73	+133	+32	+72	+110	+153	+258

BW	ADJ WW
90	784

- Big muscled, big bodied, wide based, thick topped and packed full of red meat. If you're in the business of marketing beef cattle that need to be powerful and profitable then you need to make sure you inspect this son of VZR Diamond Jack 1905.
- We think he will consistently sire progeny with added shape and product that fit the mold that demand a premium from feeders. He was raised by a high value daughter of Styles Broken Bow V24, 492 is backed with maternal power.
- He tabulates with a top 20% ranking for WW, top 15% YW, top 10% RADG, top 4% CEM, top 15% Milk, top 15% CW, top 15% \$W, top 10% \$F.



**VZR DIAMOND JACK 1905**  
SIRE OF LOT 31 & 32



**CHESTNUT DIAMOND JACK 562**





**CHESTNUT INCREDIBLE 912**

- Chestnut Incredible 912 is one of our favorite KR Incredible 8166 sons we have raised to date. He is extra-long bodied, expressive in his back shape, powerful in his hip design and burly in his stifle. He comes with an extra shot of scale and has never slowed down in his growth pattern.
- Big growth numbers support this power bull, he ranks top 3% for both WW and YW, top 2% RADG, top 4% MW, top 20% CW, top 15% Fat, top 10% \$W and top 20% \$F. A great beef bull that will add stretch and pounds to a calf crop.
- One of the heaviest weaning weight bull of all that stayed home from Denver at 873 pounds!
- We love the Werner Flat Top cow you find on the bottom side of this stud's pedigree.



**KR INCREDIBLE 8166**  
SIRE OF LOTS 33-36

**33**

## CHESTNUT INCREDIBLE 912

AAA 20445883 · TATTOO 912 · DOB 02/02/22

Panther Cr Incredible 6704

**KR INCREDIBLE 8166**

KR Lady May 4382



Werner Flat Top 4136

**CHESTNUT MISS BLANCHE WJ 926**

CN WJ Miss Blanche 588

Musgrave Invision

Panther Cr JH Blackbird 409

K R Gavel 1057

WK Lady May 2347

Connealy Black Granite

Werner Lady 0304

Bussmus PayDay 2610

MFA Miss Blanche Y04

BW	WW	YW	MILK	\$W	\$F	\$B	\$C
+2.1	+87	+155	+28	+77	+101	+134	+231

BW	ADJ. WW
94	873

**34**

## CHESTNUT INCREDIBLE 932

AAA 20445820 · TATTOO 932 · DOB 02/02/22

Panther Cr Incredible 6704

**KR INCREDIBLE 8166**

KR Lady May 4382



Stevenson Turning Point

**CHESTNUT SANDY 922**

Chestnut Sandy 647

Musgrave Invision

Panther Cr JH Blackbird 409

K R Gavel 1057

WK Lady May 2347

Plattemere Weigh Up K360

Stevenson Pride 1167x

Chestnut Knock Out 204

Chestnut Sandy 175

BW	WW	YW	MILK	\$W	\$F	\$B	\$C
+3.9	+77	+141	+37	+69	+115	+150	+247

BW	ADJ. WW
96	843



**CHESTNUT INCREDIBLE 912**

- A super powerful, wide based and thick ended herd sire prospect, you'll notice the extra dimension of this KR Incredible 8166. Across the nation you'll find that these are the type of cattle that are making for happy cowboys, quick growing, performance orientated, consistent generating seedstock.

- Apart from his rugged phenotype, Chestnut Incredible 932 is top 15% WW, top 10% YW, top 10% RADG, top 2% Milk, top 10% CW, top 20% \$W and top 10% \$F.



**CHESTNUT SANDY 17**  
MATERNAL SISTER TO LOT 34

**CHESTNUT SANDY 647**  
MATERNAL GRANDDAM  
OF LOT 34





- Who says that performance cattle can't be good looking and athletic! This is an ultra-good-looking KR Incredible 8166 son that has caught our attention at every stage of development.
- The bottom side of his pedigree shows one of the most asked about cows in the arsenal after last year's bull sale! The HA Cowboy Up 5405 daughter he stems from raised the S&R Stability J824 son that Tim Schaeffer purchased for \$30,000. Now known as 'Perfect Timing' he has seen access to the leading show heifer producing cows in America! We look forward to hearing of the success stories this coming year with his first calf crop hitting the ground.
- This 2022 born edition has the same eye-catching looks as last year's sale highlight, with big additions of performance.



**CHESTNUT PERFECT TIMING 341**  
MATERNAL BROTHER TO LOT 35



**CHESTNUT INCREDIBLE 922**

35

## CHESTNUT INCREDIBLE 922

AAA 204446188 · TATTOO 922 · DOB 02/02/22

Panther Cr Incredible 6704  
**KR INCREDIBLE 8166**  
KR Lady May 4382



HA Cowboy Up 5405  
**TR MS BLACK ROSE 8158F**  
TR Ms Black Rose 0272X

Musgrave Invision  
Panther Cr JH Blackbird 409  
K R Gavel 1057  
WK Lady May 2347

HA Outside 3008  
HA Blackcap Lady 1602  
Chestnut Wacker 36  
TR Ms Black Rose 7196T

BW	WW	YW	MILK	\$W	\$F	\$B	\$C
+2.7	+78	+140	+32	+75	+87	+125	+239

BW	ADJ. WW
84	774

36

## CHESTNUT INCREDIBLE 942

AAA 20445781 · TATTOO 942 · DOB 02/06/22

Panther Cr Incredible 6704  
**KR INCREDIBLE 8166**  
KR Lady May 4382



Werner Flat Top 4136  
**CHESTNUT PRIMROSE 955**  
Chestnut Primrose 583

Musgrave Invision  
Panther Cr JH Blackbird 409  
K R Gavel 1057  
WK Lady May 2347

Connealy Black Granite  
Werner Lady 0304  
VA First Round  
CN Primrose 9679

BW	WW	YW	MILK	\$W	\$F	\$B	\$C
+3.9	+81	+147	+32	+71	+123	+174	+282

BW	ADJ. WW
95	857

- We round out the KR Incredible 8166 sons with the most moderate framed of the paternal brothers.
- Quality comes standard issue here, 942 is soft bodied and easy fleshing, we know he will sire an awesome set of replacements while still siring rapid growing feeder cattle.
- He charts impressive if you want to add payweight with top 10% WW, YW and RADG. Other highlights include top 15% Milk, top 20% MW, top 4% CW, top 15% \$W, top 3% \$F, top 15% \$B and top 15% \$C.



**CHESTNUT PRIMROSE 729**  
MATERNAL SISTER TO DAM OF LOT 36



**CHESTNUT INCREDIBLE 922**





**CHESTNUT RUBY WJ 34**  
MATERNAL GRANDDAM OF LOT 37



**CHESTNUT REGIMENT 982**

- Here is an ideal blend of performance, carcass, and power that is going to add growth in an automatic fashion! This bull is a true standout from a numeric standpoint, with his genomics returning a very elite profile that positions him among the elite 1% for weaning weight, yearling weight, rate of average daily gain and ribeye area.
- Apart from the top 1% ranks, you will find that Chestnut Regiment 982 ranks top 3% SC, top 2% CEM, top 10% MW, top 4% MH, top 2% CW, top 3% Fat, top 15% \$W, top 2% \$F, 10% \$B and top 10% \$C.
- He stems from a line of maternal excellence, his dam Chestnut Ruby WJ 752 is a Pathfinder, with two awesome daughters retained in herd and a son working for Shane Fey. His Granddam, Chestnut Ruby WJ 34 is a stunning brood cow that offers exceptional production in terms of consistently bringing a high quality and marketable calf to the weaning pen. She has maintained a 372-day calving interval on 7 natural calves!
- A Wilks Regiment 9035 son whose progeny will yield a premium when it comes to selling by the pound.

**37**

## CHESTNUT REGIMENT 982

AAA 20445980 · TATTOO 982 · DOB 02/13/22

WAR Cavalry B063 Z044

**WILKS REGIMENT 9035**

Vintage Chloe 6137



Chestnut Knock Out 204

**CHESTNUT RUBY WJ 752**

Chestnut Ruby WJ 34

Connealy Cavalry 1149

War CC&7 Z044 X029

V A R Empire 3037

V A R Chloe 2227

VA First Round

Chestnut Queen Lucy 028

Connealy Final Product

Chestnut Ruby WJ 118

BW	WW	YW	MILK	\$W	\$F	\$B	\$C
+4.0	+93	+177	+26	+72	+125	+173	+293

BW  
94

ADJ. WW  
816

**38**

## CHESTNUT REGIMENT 602

AAA 20445964 · TATTOO 602 · DOB 01/20/22

WAR Cavalry B063 Z044

**WILKS REGIMENT 9035**

Vintage Chloe 6137



Coleman Charlo 0256

**CN QUEEN OF WETONKA 860**

CN Queen Of Wetonka 56

Connealy Cavalry 1149

War CC&7 Z044 X029

V A R Empire 3037

V A R Chloe 2227

O C C Paxton 730P

Bohi Abigale 6014

Chestnut PF The Product 63

CN Queen CW Ultravox 327

BW	WW	YW	MILK	\$W	\$F	\$B	\$C
+2.4	+72	+120	+32	+74	+86	+131	+248

BW  
91

ADJ. WW  
856



**CHESTNUT REGIMENT 982**

- This dense bodied creature comes loaded for bear with all the substance and beef business one can ask for.
- His Coleman Charlo 0256 dam stems from the famed Wetonka cow family that is responsible for generating United! She brought this bell ringer to the weaning pen to ratio 112 with his 856-pound weaning weight. Real world performance means a lot in our selection criteria.
- Power bull that reads for profitability with his dollar indexes.



**CN QUEEN OF WETONKA 56**  
MATERNAL GRANDDAM OF LOT 38





39

## CHESTNUT REGIMENT 542

AAA 20445927 · TATTOO 542 · DOB 01/18/22

WAR Cavalry B063 Z044

Connealy Cavalry 1149

WILKS REGIMENT 9035

War CC&amp;7 Z044 X029

Vintage Chloe 6137

V A R Empire 3037



V A R Chloe 2227

HA Value Added 7578

HA Prime Cut 4493

CHESTNUT BLACKBIRD LEIA 932

HA Rito Lady 3839

CN Blackbird Leia 688

Chestnut PF Fire Ball 234

CN Blackbird Leia 9359

BW	WW	YW	MILK	\$W	\$F	\$B	\$C
+3.6	+88	+149	+28	+75	+120	+189	+299
BW		ADJ WW					
93		819					

- Chestnut Regiment 542 is another Regiment son from the HA Value Added 7578 influenced dam with an impressive top 3% for WW, top 4% YW. A serious power and performance stud that needs to be used in a cowherd that is in need of added payweight come marketing time.
- Pounds will come from added length of body and impressive muscle shape. He has an impressive 107 WWR because of his 819-pound weaning weight.



40

## CHESTNUT REGIMENT 652

AAA 20445966 · TATTOO 652 · DOB 01/21/22

WAR Cavalry B063 Z044

Connealy Cavalry 1149

WILKS REGIMENT 9035

War CC&amp;7 Z044 X029

Vintage Chloe 6137

V A R Empire 3037



V A R Chloe 2227

HA Cowboy Up 5405

HA Outside 3008

CHESTNUT BEAUTY JB 847

HA Blackcap Lady 1602

Chestnut Beauty 65 324

Barstow Cash

Chestnut BEAUTY65

BW	WW	YW	MILK	\$W	\$F	\$B	\$C
-0.3	+85	+157	+31	+82	+115	+172	+284
BW		ADJ WW					
81		821					

- An incredible set of curve bending EPD projections accompany this herd sire!
- You will not find bulls every day that read with +12 CED that flip to and +85 and +157 weaning and yearling weight, respectively.
- We love the genetic combination that this stud offers, a Regiment son from an incredible phenotype dam by the proven HA Cowboy Up 5405. Density and power through and through.
- Then when you analyze the data he is top 10% CED, top 20% BW, top 4% WW, top 2% YW, top 2% RADG, top 10% CED, top 20% Milk, top 10% MW, top 10% MH, top 5% CW, top 10% RE, top 2% Fat, top 3% \$W and top 5% \$F.



41

## CHESTNUT CREW 792

AAA 20445981 · TATTOO 792 · DOB 01/28/22

WAR Cavalry B063 Z044

Connealy Cavalry 1149

WILKS REGIMENT 9035

War CC&amp;7 Z044 X029

Vintage Chloe 6137

V A R Empire 3037



V A R Chloe 2227

SAC Conversation

Silveiras Conversion 8064

CN DAISEY BEAUTY 763

Lafkins Farrah 0252

CN Daisey Beauty 341

VAR Rocky 80029

CN Daisey Beauty 433 7507

BW	WW	YW	MILK	\$W	\$F	\$B	\$C
+2.6	+88	+152	+36	+85	+121	+161	+268
BW		ADJ WW					
93		872					

- Chestnut Crew 792 continues the trend of these massive growth Regiment sons.
- He brings breed leading predictions for added growth and pay weight. He has always been at the front of the pack, 792 has been one that you always notice among his contemporaries because of his impressive growth trends and ground pounding stature.
- He recorded a 114 WWR, with 872 pounds of profitability, because of his 4.11 WDA. This real-world data adds validity to the top 3% rankings he has for both WW and YW.
- The dollar indexes that support Crew 792 promote him as a surefire addition of profitability for an operation with a top 2% \$W and top 3% \$F figure.





**CHESTNUT BLACKCAP 10**  
HER DAM IS A MATERNAL SISTER TO LOT 45



**CHESTNUT ANNIE OAKLEY 116**  
MATERNAL SISTER TO LOT 43

- The introduction of Wilks Regiment 9035 to the breeding program has resulted in a set of consistently burly, big ended, long sided power house beef bulls!
- You will notice the massive weaning weights and WDA records of these Regiment sons from the collection data we collated and in the genomic predictions that his sons read for. We have experienced the 'proof in the pudding' with this group of 2022 born sons, several of which led the conversation of visitors to our pen at the National Western Stock Show in Denver.
- Wilks Regiment 9035 is a leading member of the Select Sires sire lineup, he was the high selling bull in the 2020 National Western Angus Bull sale and offers an outcross to a large majority of the power bull genetics we have used to date. Meaning his sons present a perfect mating opportunity for past customers of the program who may have retained daughters, but still want to keep impressive growth in their future calf crops.
- If you want to add pounds and performance quickly, then trust in these sons of Regiment, they are the kind to get the job done in the first breeding season.

42

## CHESTNUT REGIMENT 1042

AAA 20445962 · TATTOO 1042 · DOB 02/21/22

WAR Cavalry B063 Z044

**WILKS REGIMENT 9035**



Vintage Chloe 6137

Chestnut Knock Out 204

**CHESTNUT BLACKBIRD SUSAN 896**

CN Blackbird Susan 522

Connealy Cavalry 1149

War CC&7 Z044 X029

V A R Empire 3037

V A R Chloe 2227

VA First Round

Chestnut Queen Lucy 028

MOGCK Sure Shot

CN Blackbird Susan 358

BW	WW	YW	MILK	\$W	\$F	\$B	\$C
+3.0	+86	+161	+27	+71	+113	+164	+276

BW	ADJ WW
97	833

43

## CHESTNUT REGIMENT 472

AAA 20445960 · TATTOO 472 · DOB 01/16/22

WAR Cavalry B063 Z044

**WILKS REGIMENT 9035**



Vintage Chloe 6137

Brooking Asset 5065

**CN ANNIE OAKLEY DJ 8123**

CN DJ Annie Oakley 565

Connealy Cavalry 1149

War CC&7 Z044 X029

V A R Empire 3037

V A R Chloe 2227

Connealy Earnan 076E

E A Rose 918

Woodhill Mel X219-A191

Gimbels Annie Oakley 329

BW	WW	YW	MILK	\$W	\$F	\$B	\$C
+1.8	+85	+152	+27	+77	+119	+169	+288

BW	ADJ WW
87	772

44

## CHESTNUT REGIMENT 452

AAA 20445958 · TATTOO 452 · DOB 01/16/22

WAR Cavalry B063 Z044

**WILKS REGIMENT 9035**



Vintage Chloe 6137

3F Epic 4631

**CHESTNUT BLACK LADY WJ 817**

Chestnut Black Lady WJ 672

Connealy Cavalry 1149

War CC&7 Z044 X029

V A R Empire 3037

V A R Chloe 2227

Varilek Product 2010 04

Zebo Queen 1072

Chestnut Knock Out 204

CN Black Lady WJ 140

BW	WW	YW	MILK	\$W	\$F	\$B	\$C
-0.5	+88	+158	+34	+89	+119	+182	+291

BW	ADJ WW
76	877

45

## CHESTNUT REGIMENT 672

AAA 20445975 · TATTOO 672 · DOB 01/23/22

WAR Cavalry B063 Z044

**WILKS REGIMENT 9035**



Vintage Chloe 6137

Brooking Asset 5065

**CHESTNUT BLACKCAP 765**

Chestnut Blackcap 481

Connealy Cavalry 1149

War CC&7 Z044 X029

V A R Empire 3037

V A R Chloe 2227

Connealy Earnan 076E

E A Rose 918

Mogck Bullseye

Mohnen Blackcap J530

BW	WW	YW	MILK	\$W	\$F	\$B	\$C
-1.4	+82	+142	+32	+88	+97	+136	+246

BW	ADJ WW
76	780

46

## CHESTNUT REGIMENT 1002

AAA 20445996 · TATTOO 1002 · DOB 02/16/22

WAR Cavalry B063 Z044

**WILKS REGIMENT 9035**



Vintage Chloe 6137

Connealy Final Product

**CHESTNUT QUEEN HERSELF 24**

CN Queen Herself 042

Connealy Cavalry 1149

War CC&7 Z044 X029

V A R Empire 3037

V A R Chloe 2227

Connealy Product 568

Ebonista of Conanga 471

Chestnut Onyx 167

Chestnut Queen Herself 2362

BW	WW	YW	MILK	\$W	\$F	\$B	\$C
+1.2	+70	+128	+31	+72	+88	+130	+241

BW	ADJ WW
86	845

47

## CHESTNUT REGIMENT 582

AAA 20445990 · TATTOO 582 · DOB 01/19/22

WAR Cavalry B063 Z044

**WILKS REGIMENT 9035**



Vintage Chloe 6137

EXAR Classen 1422B

**TR MS CELESTE 5734C ET**

TR Ms Katinka 3208N

Connealy Cavalry 1149

War CC&7 Z044 X029

V A R Empire 3037

V A R Chloe 2227

Dameron First Class

EXAR Princess 2006

TR Mr Dateline 0061

W A Katinka 811

BW	WW	YW	MILK	\$W	\$F	\$B	\$C
+3.2	+80	+134	+28	+72	+99	+158	+272

BW	ADJ WW
89	807



- This is the initiating son of Crawford Guarantee 9137. Chestnut Guarantee 92 is a stout, heavy constructed power bull that smashed the scales at weaning with 835 pounds that came from 3.46 pounds of gain per day. He came with a very sensible 80-pound birthweight.

- This descendant of the Beauty cow family is definitely a bigger spread stud with multiple highlighting traits. Top 10% WW, top 4% YW, top 20% RADG.

- The Guarantee sons still sport impressive growth, but offer some added calving ease and lower birthweights than some of the other large sire groups to sell on February 22nd.



**CHESTNUT BEAUTY 551**  
MATERNAL GRANDDAM OF LOT 48



**CHESTNUT GUARANTEE 92**

**48**

## CHESTNUT GUARANTEE 92

AAA 20445976 · TATTOO 92 · DOB 01/03/22

Connealy Payraise  
**CRAWFORD GUARANTEE 9137**  
Crawford Ms Armory D40



EXAR Monumental 6056B  
**CHESTNUT BEAUTY 031**  
Chestnut Beauty 551

Basin Payweight 1682  
Pride Fair of Conanga 351  
Connealy Armory  
G A R New Day N2290

3F Epic 4631  
FWY 7008 of C085 4029  
Vision Unanimous 1418  
C N Beauty 8538

BW	WW	YW	MILK	\$W	\$F	\$B	\$C
+1.7	+81	+149	+24	+70	+101	+161	+272

BW	ADJ. WW
80	835

**50**

## CHESTNUT GUARANTEE 172

AAA 20445963 · TATTOO 172 · DOB 01/08/22

Connealy Payraise  
**CRAWFORD GUARANTEE 9137**  
Crawford Ms Armory D40



Bushs High Caliber 674  
**CHESTNUT QUEEN MAB 086**  
Chestnut Queen Mab 748

Basin Payweight 1682  
Pride Fair of Conanga 351  
Connealy Armory  
G A R New Day N2290

Panther Cr Incredible 6704  
Bushs Factor Gal 3099  
Chestnut Knock Out 204  
CN Queen Mab 271

BW	WW	YW	MILK	\$W	\$F	\$B	\$C
+1.0	+77	+141	+36	+78	+102	+145	+243

BW	ADJ. WW
79	796

**49**

## CHESTNUT GUARANTEE 312

AAA 20445974 · TATTOO 312 · DOB 01/09/22

Connealy Payraise  
**CRAWFORD GUARANTEE 9137**  
Crawford Ms Armory D40



Chestnut Redemption 38  
**CHESTNUT BEAUTY 048**  
Chestnut Beauty 539

Basin Payweight 1682  
Pride Fair of Conanga 351  
Connealy Armory  
G A R New Day N2290

3F Epic 4631  
Chestnut Wetonka WJ 63  
Barstow Cash  
Chestnut BEAUTY65

BW	WW	YW	MILK	\$W	\$F	\$B	\$C
-0.3	+74	+136	+30	+78	+98	+146	+270

BW	ADJ. WW
71	847

- This one's pedigree aligns the best we have, Crawford Guarantee 9137 x Chestnut Redemption 38 x the iconic Beauty cow family that has become a staple in the breeding program here in Pipestone!

- You can trust in the consistency of maternal power here, there is nothing more important than cow family when it comes to heritability.

- Curvebender! He sits in the top 20% of the breed for CED, BW, WW & YW. Growth genetics that don't require you to sacrifice calving ease. He flipped from a 71-pound birthweight to 847 pounds weaning off his first calving dam.

- This son of Crawford Guarantee 9137 ratioed a 104 at weaning with just under 800 pounds coming of his first calving Bush's High Caliber 674 dam. He is certainly quite impressive on paper as well and possibly as balanced as we have offered to this point in the offering.

- This stud should have the necessities to be a herd sire of longevity and leave a set of daughters to build around.



**CHESTNUT SOLUTION 579**  
\$10,000 MATERNAL BROTHER TO THE DAM OF LOT 50





- A herd bull that brings together a blend of performance and calving ease that is a long sided and big scaled. He has a very sensible 84-pound BW especially when you take into account the massive 847 pounds he brought to the weaning pen.
- Shear pounds and performance with ideal look and kind can be found in this profit bound generator.



**CHESTNUT PRINCESS 13**  
MATERNAL SISTER TO LOT 51

51

## CHESTNUT GUARANTEE 152

AAA 20445987 · TATTOO 152 · DOB 01/07/22

Connealy Payraise

**CRAWFORD GUARANTEE 9137**

Crawford Ms Armory D40



H A F Bragging Rights 1725

**CHESTNUT PRINCESS 9100**

Chestnut Princess 531

Basin Payweight 1682

Pride Fair of Conanga 351

Connealy Armory

G A R New Day N2290

44 Bragging Rights 4372

H A F Sadie1261

MCATL By-Product 269-1394

Chestnut Princess 134

BW	WW	YW	MILK	\$W	\$F	\$B	\$C
+0.4	+77	+144	+29	+75	+98	+155	+265

BW	ADJ. WW
84	847

53

## CHESTNUT GUARANTEE 592

AAA 20445989 · TATTOO 592 · DOB 01/20/22

Connealy Payraise

**CRAWFORD GUARANTEE 9137**

Crawford Ms Armory D40



Kramers R Stockman 4304 TL

**CHESTNUT BLACKBIRD SUSAN 991**

CN Blackbird Susan 553

Basin Payweight 1682

Pride Fair of Conanga 351

Connealy Armory

G A R New Day N2290

Visiontopline Royal Stockman

W C C Primrose S168

Vision Unanimous 1418

CN Blackbird Susan 09

BW	WW	YW	MILK	\$W	\$F	\$B	\$C
+1.6	+65	+117	+21	+54	+100	+146	+232

BW	ADJ. WW
79	777

52

## CHESTNUT GUARANTEE 112

AAA 20445959 · TATTOO 112 · DOB 01/06/22

Connealy Payraise

**CRAWFORD GUARANTEE 9137**

Crawford Ms Armory D40



Kramers R Stockman 4304 TL

**CHESTNUT BLACK LADY 093**

Chestnut Black Lady WJ 672

Basin Payweight 1682

Pride Fair of Conanga 351

Connealy Armory

G A R New Day N2290

Visiontopline Royal Stockman

W C C Primrose S168

Chestnut Knock Out 204

CN Black Lady WJ 140

BW	WW	YW	MILK	\$W	\$F	\$B	\$C
-2.1	+65	+125	+24	+63	+92	+137	+238

BW	ADJ. WW
67	777

- Chestnut Guarantee 112 offers sleep all night calving ease, and would be a very logical choice for a management situation that require low labor inputs.
- Top 2% CED and top 3% BW, he came easy and unassisted at only 67 pounds!



**CN BLACKBIRD SUSAN 553**  
MATERNAL GRANDDAM OF LOT 53





54

## CHESTNUT GUARANTEE 772

AAA 20445953 · TATTOO 772 · DOB 01/27/22

Connealy Payraise

**CRAWFORD GUARANTEE 9137**

Crawford Ms Armory D40



EZAR Gold Rush 6001

**DANDY ACRES BLACKBIRD 2039**

Dandy Acres Blackbird 116

Basin Payweight 1682

Pride Fair of Conanga 351

Connealy Armory

G A R New Day N2290

V A R Discovery 2240

V A R Blackcap 1059

Connealy Forward

Dandy Acres Blackbird NG438

BW	WW	YW	MILK	\$W	\$F	\$B	\$C
+0.4	+78	+140	+32	+80	+91	+169	+288

BW	ADJ. WW
75	817

- This herd bull candidate comes to you with all of the basics covered. He has a very sensible birth weight of 75 with a scale pounding weaning weight of 817 to ratio 107.
- Ranchers' kind that charts impressive for both calving ease and performance. He is the kind that will raise progeny that are profitable at the end point, but also require less inputs to get there.



55

## CHESTNUT GUARANTEE 762

AAA 20445961 · TATTOO 762 · DOB 01/27/22

Connealy Payraise

**CRAWFORD GUARANTEE 9137**

Crawford Ms Armory D40



MOGCK Entice

**CHESTNUT LUCY HEATHER 09**

Chestnut Lucy Heather 872

Basin Payweight 1682

Pride Fair of Conanga 351

Connealy Armory

G A R New Day N2290

SydGen Enhance

MOGCK Erica 2255

Kramers Enforce 5006

CN Lucy Heather 561

BW	WW	YW	MILK	\$W	\$F	\$B	\$C
+1.1	+99	+174	+28	+93	+120	+176	+292

BW	ADJ. WW
76	896

- Breed leading performance beast! This is THE Guarantee that will deliver roar performance stats in a quick fashion.
- From a 1.1 BW to a 99 WW, truly the next generation kind of growth stud, plus he is still athletic and rugged in his structural build. He weaned off his first calving dam with just shy of 900 pounds of weaning weight, at a WDA of 3.90, to register a 117 WWR. The stats reveal there is no questioning the genomics here.
- Supported by a Mogck Entice daughter, the Mogck & Sons high seller from the rookie Enhance calf crop that drove the hype behind the breeds heaviest used sire of recent.

56

## CHESTNUT GUARANTEE 1072

AAA 20445994 · TATTOO 1072 · DOB 03/03/22

Connealy Payraise

**CRAWFORD GUARANTEE 9137**

Crawford Ms Armory D40



S&R Roundtable J328

**S&R ELLEN J817**

PVF Ellen 9100

Basin Payweight 1682

Pride Fair of Conanga 351

Connealy Armory

G A R New Day N2290

Plainview Lutton E102

PVF Proven Queen 786

PVF ALL PAYDAY 729

Hyline Ellen 410

BW	WW	YW	MILK	\$W	\$F	\$B	\$C
+2.1	+74	+122	+30	+78	+85	+121	+233

BW	ADJ. WW
90	807

- Power with added look and structural integrity. He stems back to the maternal influence of the 2014 NJAS Grand Champion Bull for S & R Angus, before being purchased by Express Ranches. He has since sired multiple six figure show heifers that have won banners at the nation's most competitive shows!
- A March bull that caught up to the older bulls with close to 4 pounds of average daily gain.

57

## CHESTNUT GUARANTEE 322

AAA 20445977 · TATTOO 322 · DOB 01/09/22

Connealy Payraise

**CRAWFORD GUARANTEE 9137**

Crawford Ms Armory D40



Werner Flat Top 4136

**CHESTNUT GEORGINA 023**

Chestnut Georgina DJ 8133

Basin Payweight 1682

Pride Fair of Conanga 351

Connealy Armory

G A R New Day N2290

Connealy Black Granite

Werner Lady 0304

CLF Cash 62C

Jensen Georgina 677 of FAF

BW	WW	YW	MILK	\$W	\$F	\$B	\$C
+0.4	+75	+133	+39	+87	+104	+149	+271

BW	ADJ. WW
71	799

- Rounding out the Guarantee sons with one that represents exactly why we used him in the breeding program! A industry leading curve bending sire that drastically accelerates performance wise from a low birth weight to massive weaning and yearling weights.
- Top 35% CED, top 30% BW, top 15% WW and top 15% YW. 71-pound birth weight to a pound shy of 800 at weaning time, raised by a first calving heifer.





//////////////////////////////////// **CHESTNUT QUALITY 782**

- Three sons of our resident herd sire, KR Quality 0163 that was a highlight out of the 2021 Krebs Ranch Bull Sale. He is a surefire provider of payweight, yet maintains the added phenotypical and structural integrity that we demand.
- These are long sided, big framed bulls that convert well, mature early and will hit the ground running!
- Turn these bulls out with mature cows to see a quick injection of mass, length and scale pressure to your bottom line!

**58**

## CHESTNUT QUALITY 782

AAA 20445855 · TATTOO 782 · DOB 01/28/22

KR Quality 8525  
**KR QUALITY 0163**  
KR Ellen Erica 5103  
 Barstow Bankroll B73  
**CHESTNUT CAPTIVATION WJ 7118**  
H A F Captivation 1273

TEF Outside 514  
KR Lucy Rose 6587  
Connealy Black Granite  
Esco 078 Equator 2121  
Barstow Cash  
Barstow Miss Dianna Z25  
VAR Rocky 80029  
WK Captivation 4611


BW	WW	YW	MILK	\$W	\$F	\$B	\$C
+5.6	+90	+157	+29	+70	+106	+149	+266

BW	ADJ WW
95	815

**59**

## CHESTNUT QUALITY 1082

AAA 20445907 · TATTOO 1082 · DOB 03/10/22

KR Quality 8525  
**KR QUALITY 0163**  
KR Ellen Erica 5103  
 SAC Conversation  
**CN BLACKBIRD SUSAN 754**  
CN Blackbird Susan 09

TEF Outside 514  
KR Lucy Rose 6587  
Connealy Black Granite  
Esco 078 Equator 2121  
Silveiras Conversion 8064  
Lafins Farrah 0252  
Plainview Sun Dance G39  
CN Blackbird Susan 533 7297


BW	WW	YW	MILK	\$W	\$F	\$B	\$C
+2.2	+63	+118	+26	+57	+83	+124	+215

BW	ADJ WW
95	801

**60**

## CHESTNUT QUALITY 72

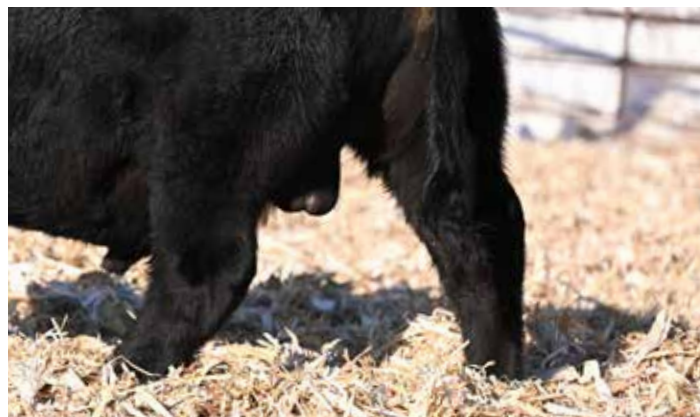
AAA 20445868 · TATTOO 72 · DOB 01/03/22

KR Quality 8525  
**KR QUALITY 0163**  
KR Ellen Erica 5103  
 VAR Little Joe 5105  
**CHESTNUT RUBY WJ 9118**  
Chestnut Ruby 087 418

TEF Outside 514  
KR Lucy Rose 6587  
Connealy Black Granite  
Esco 078 Equator 2121  
KR Little Joe  
VAR Precision Lady 787  
JAF Over the Limit 14U  
Chestnut Ruby 087

BW	WW	YW	MILK	\$W	\$F	\$B	\$C
+1.2	+58	+102	+27	+55	+85	+116	+198

BW	ADJ WW
77	756







63

**CHESTNUT ALLIANCE 82**

AAA 20446189 · TATTOO 82 · DOB 01/03/22

KR Synergy

**CHESTNUT ALLIANCE 210**

Chestnut Wetonka WJ 63



Barstow Bankroll B73

**CHESTNUT BLACKCAP 825**

Chestnut Blackcap 665

KR Cadillac Jack

Dickaus 2U66 FW 416

HAYNES Outright 452

Chestnut Wetonka A S 461

Barstow Cash

Barstow Miss Dianna Z25

Chestnut PF Up Start 760

Chestnut Blackcap 481

BW	WW	YW	MILK	\$W	\$F	\$B	\$C
-1.8	+55	+103	+27	+56	+97	+144	+262

BW	ADJ. WW
82	754

**CHESTNUT BLACKCAP 665**  
MATERNAL GRANDDAM OF LOT 63

• Chestnut Alliance 82 needs to be on your must-see list if you are hunting a calving ease addition to the herd sire battery. We would highly recommend his several be used on first calf heifers as both sides of his pedigree read for low birth weight and added calving ease.

• His sire, Chestnut Alliance 210 is a maternal brother to Chestnut Redemption 38, meaning that the \$33,000 Embryos on Snow live lot, Chestnut Wetonka WJ 63 can be found in his paternal pedigree.

64

**CHESTNUT HAYDAY 332**

AAA 20445859 · TATTOO 332 · DOB 01/10/22

Connealy Finnegan

**CONNEALY HAYDAY**

Hershey of Conanga 7467



KR Synergy

**CHESTNUT PEG 030**

Chestnut WJ Peg 436

Connealy Niobrara 5451

Black Ceyla of Conanga 0267

Deer Valley Old Hickory

Hester of Conanga 5507

KR Cadillac Jack

Dickaus 2U66 FW 416

VA First Round

Chestnut Peg 9589 WJ

BW	WW	YW	MILK	\$W	\$F	\$B	\$C
+0.8	+73	+126	+23	+71	+86	+124	+250

BW	ADJ. WW
67	765

65

**CHESTNUT HAYDAY 892**

AAA 20445842 · TATTOO 892 · DOB 02/01/22

Connealy Finnegan

**CONNEALY HAYDAY**

Hershey of Conanga 7467



Ridl Roosevelt 820

**CHESTNUT FORTUNE 062**

CN Fortune 039

Connealy Niobrara 5451

Black Ceyla of Conanga 0267

Deer Valley Old Hickory

Hester of Conanga 5507

Vermilion Roughrider

Ridl Katrina 326

Sitz Upward 307R

CN Fortune Ultravox 333

BW	WW	YW	MILK	\$W	\$F	\$B	\$C
+0.2	+58	+103	+39	+77	+63	+129	+255

BW	ADJ. WW
84	828

• Two great calving ease options for those that don't want to sacrifice payweight at marketing time! One of the first Hayday daughters we have seen was the \$12,500 Angus Female for Payton & Harper Scott at the 2023 Black Hills Stock Show.

• Two sons of Connealy Hayday that will make for a happy cowboy if you are needing to keep growth and performance in your cowherd, yet want to add maternal value and ability. Their sire was the \$35,000 choice of the Krebs Ranch from the 2021 Connealy Bull Sale, we liked what we saw in this pair and he was used a lot heavier this past year, with many more progeny hitting the ground now! Both of these bulls stem back to integral cow families at Chestnut, and are cut from the mold that we strive for! Bigger framed, power bulls that are built right from the ground up.

**CHESTNUT PEG 138**  
MATERNAL SISTER TO DAM OF LOT 64**CHESTNUT PF FORTUNE 256**  
MATERNAL SISTER TO DAM OF LOT 65





66

## CNWJ EQUITY 872K

ASA 4141872 · TATTOO 872K · DOB 2/3/22  
BREEDS 3/4 SM 1/4 AN

PROFIT

VCL LKC EQUITY 608D

BF MISS CRYSTEEL TANGO



MR HOC BROKER

BROKER 618D

361

BW	WW	YW	MILK	MWW	REA	API	TI
+1	+70.1	+97.6	+24.1	+59.1	+0.36	+94.4	+64.7

BW	ADJ. WW
89	

- The Simmental division remains small but mighty here in Pipestone, but the two you will find slated for sale in 2023 are some of the best ones we have raised to date
- The first of the pair, CNWJ Equity 872K is an absolute stunner from the side, with added back and pin shape, big and rugged bone makeup, a cool look from the side and impeccable structural build. He is built ready to see use this first season with an early maturity pattern and athletic stature.
- His dam was the highlighting Simmental in the Female Sale this past September. Broker 618D sold to Les Edwards of Missouri for \$9000 after weaning off this VCL LKC Equity 608D sired stud!



**VCL LKC EQUITY 608D**  
SIRE OF LOT 66 & 67



**BROKER 618D**  
DAM OF LOT 66





67

## CNWJ EQUITY 1202K

ASA 4141871 · TATTOO 1202K · DOB 3/6/22  
BREEDS 3/4 SM 1/4 AN

PROFIT

VCL LKC EQUITY 608D

BF MISS CRYSTEEL TANGO



S A V BRILLIANCE 8077

RTZ D23

RTZ MIDNIGHT B79

BW	WW	YW	MILK	MWW	REA	API	TI
+0.2	+68.1	+94.6	+18.9	+52.9	+0.46	+106.1	+65.7

BW  
89

ADJ. WW

• The second VCL LKC Equity 608D son follows his maternal brother in regard to added feature and look, a trait that shows to be highly heritable after looking into his maternal pedigree. His dam, RTZ D23 also sold in our 2022 Female Sale to Beck Farms. In 2022 her striking son, CNWJ Profit 721J sold to Douglas Willard.

• VCL LKC Equity 608D is the \$140,000 valued, Profit son that comes from the legendary BF Miss Crystal Tango, a female that has been one of the cornerstone matrons that built the Hartman Cattle Company program. The maternal power embedded in these two paternal brothers comes from one of the most powerful and exclusive Simmental sires in the business.



**RTZ D23**  
DAM OF LOT 67





*Good* HI



# ELIERS





- Chestnut Daisey Beauty 126 leads of this quality driven group of females that will sell on February 22nd.

- The E G Eyes Onyou cattle have been well received here in Pipestone, last year several paternal brothers to 126 found their way to Denver in our string and found many friends on sale day. They are cattle that are extra boldly constructed, massive in their rib shape, and are big scaled.

- A maternal brother by KR Synergy was a class leader in the 2021 Bull Sale, and their young dam has been building a strong record of brining payweight to the weaning pen.

- If you're searching to add a female that is built awesome, backed by a great cow family and reads for a long and successful breeding career then mark this bred heifer as one for inspection.



**CHESTNUT SYNERGY 30**  
MATERNAL BROTHER TO LOT 71



**CHESTNUT DAISEY BEAUTY 126**

71

## CHESTNUT DAISEY BEAUTY 126

AAA 20140336 · TATTOO 126 · DOB 01/12/21 · BW 85

Hoover No Doubt  
**E G EYES ONYOU**

Baldridge Isabel D275  
**AGI**

CTS Remedy 1T01

**CHESTNUT DAISY BEAUTY 82**

Chestnut Daisey Beauty 615

Mogck Bullseye  
Miss Blackcap Ellston J2  
HAYNES Outright 452  
Baldridge Isabel Y69

Connealy Thunder  
CTS 7V03 Bellemere Maid 9T02  
K C F Bennett Southside  
CN Daisey Beauty 341

CED	BW	WW	YW	CEM	MILK	\$EN
-3	+2.4	+74	+140	+7	+23	-29

CW	MARB	RE	FAT	\$M	\$W	\$F	\$G	\$B	\$C
+64	+0.88	+0.45	+0.041	+66	+60	+114	+59	+173	+290

SERVICE SIRE CHESTNUT WAGON BOSS 449 (AAA# 19545859) · DUE 4/2/23

72

## CHESTNUT RUBY 182

AAA 20136469 · TATTOO 182 · DOB 02/23/21 · BW 86

Panther Cr Incredible 6704  
**KR INCREDIBLE 8166**

KR Lady May 4382  
**AGI**

Barstow Bankroll B73

**CHESTNUT RUBY WJ 897**

Chestnut Ruby WJ 663

Musgrave Invision  
Panther Cr JH Blackbird 409  
K R Gavel 1057  
WK Lady May 2347

Barstow Cash  
Barstow Miss Dianna Z25  
Chestnut Knock Out 204  
Chestnut Ruby WJ 118

CED	BW	WW	YW	CEM	MILK	\$EN
-3	+5.2	+71	+137	+0	+30	-38

CW	MARB	RE	FAT	\$M	\$W	\$F	\$G	\$B	\$C
+59	+0.13	+0.8	-0.007	+61	+48	+115	+32	+148	+253

SERVICE SIRE CHESTNUT WAGON BOSS 449 (AAA# 19545859) · DUE 3/20/23

- One of two direct daughters of our resident herd sire, KR Incredible 8166. We love the extra body shape, muscle pattern and density we are getting from this sire group of either sex. But these daughters are particularly impressive in how they read for added maternal strength looking forward.

- She reads for added growth genomically, and stems from a lineage that supports this with her dam weaning 3 at an average 105 WWR.

- Chestnut Ruby 182 goes back to a Barstow Cash granddaughter, and we foresee her breeding tenure to be successful due to her build of longevity, in the end, that is a major component of profitability. She will calve towards the end of March to Chestnut Wagon Boss 449.



**KR INCREDIBLE 8166**  
SIRE OF LOT 72



**CHESTNUT RUBY 182**

73

**CHESTNUT BEAUTY 2191**

AAA 20157938 · TATTOO 2191 · DOB 04/01/21 · BW 78

44 Bragging Rights 4372

V A R Discovery 2240

**H A F BRAGGING RIGHTS 1725**

44 Ruby 2357

H A F Sadie1261

Pine Ridge Hammer S322



WK Sadie 4302

Chestnut Royal Stockman 326

Visiontopline Royal Stockman

**CHESTNUT BEAUTY 819**

CN Queen Mab 271

Chestnut PF Beauty 634

Ellingson Secretary 2011

Chestnut PF Beauty 471

CED	BW	WW	YW	CEM	MILK	SEN
+8	+0.5	+53	+100	+6	+24	+10

CW	MARB	RE	FAT	SM	SW	SF	SG	SB	SC
+25	+0.54	+0.53	+0.01	+57	+48	+67	+47	+114	+205

SERVICE SIRE CHESTNUT WAGON BOSS 449 (AAA# 19545859) · DUE 4/24/23

**CHESTNUT PF BEAUTY 634**  
MATERNAL GRANDDAM OF LOT 73

- Chestnut Beauty 2191 is a great combination of genomic and phenotypic quality; a very balanced set of predictions accompanies this daughter of H A F Bragging Rights 1725.
- We like the extra show of mass and width that comes with the inclusion of the Chestnut Royal Stockman 326 x Beauty cow family on the bottom side of this one's pedigree, his daughters have proved themselves the right kind for this region's production ideals. Her maternal granddam, Chestnut PF Beauty 634 has been a reliable producer for the Chestnut Angus program putting three daughters including 2191's mother back into production.

74

**CHESTNUT QUEEN 192**

AAA 20136474 · TATTOO 192 · DOB 03/13/21 · BW 80

44 Bragging Rights 4372

V A R Discovery 2240

**H A F BRAGGING RIGHTS 1725**

44 Ruby 2357

H A F Sadie1261

Pine Ridge Hammer S322



WK Sadie 4302

KF Danny 387

Connealy Danny Boy

**CHESTNUT QUEEN 170**

K F Elsa 62

CN Queen Precision 2102

Twin Valley Precision E161

G J Queen Eva 22

CED	BW	WW	YW	CEM	MILK	SEN
+6	+1.1	+31	+72	+5	+26	+4

CW	MARB	RE	FAT	SM	SW	SF	SG	SB	SC
+21	+0.34	+0.67	-0.028	+47	+27	+71	+42	+114	+195

SERVICE SIRE CHESTNUT WAGON BOSS 449 (AAA# 19545859) · DUE 4/24/23

**CHESTNUT QUEEN 670**  
MATERNAL SISTER TO LOT 74

- The second H A F Bragging Rights 1725 daughter that will sell on February 22nd, a sire group that we have trusted to provide calving ease while increasing carcass quality and function.
- Chestnut Queen 192 is built just how we like them, she has some extra punch and curvature, and struts around the pen with flexibility and comfort. We have 192 bred up our home raised, Chestnut Wagon Boss 449, a sire that adds look and style without sacrificing the beef production traits that drive our industry.

75

**CA RITA BREEZY 7021**

AAA 20198671 · TATTOO 170 · DOB 03/02/21 · BW 70

Chestnut Knock Out 204

VA First Round

**CHESTNUT KNOCK OUT 637**

Chestnut Queen Lucy 028

Chestnut Beauty 441

CN Final Product 122



Chestnut Beauty 236

PA Fortitude 2500

GAR-EGL Protege

**PA RITA 2725-763**

G G Clara 0171

PA Rita 9094-2725

Summitcrest Complete 1P55

B B R Rita 9094

CED	BW	WW	YW	CEM	MILK	SEN
+5	+2.1	+67	+124	+9	+29	-38

CW	MARB	RE	FAT	SM	SW	SF	SG	SB	SC
+56	+0.51	+0.67	-0.007	+38	+59	+118	+49	+167	+255

SERVICE SIRE CHESTNUT WAGON BOSS 449 (AAA# 19545859) · DUE 5/17/23

**CHESTNUT KNOCK OUT 637**  
SIRE OF LOT 75

- A direct daughter of Chestnut Knock Out 637, a past Lot 2, Denver team member that has proven to sire the trademark 'Knock Out' power, body shape, foot quality and maternal value that led our program through the past decade.
- Maternally supported by the Rita cow family that has become synonymous for generating females that combines perfect build, eye appeal and maternal instinct. You will notice that CA Rita Breezy 7021 recorded an impressive 724 adj weaning weight and reads top third of the breed or better for WW and YW.





76

## CHESTNUT ELAINE 175

AAA 20140354 · TATTOO 175 · DOB 02/20/21 · BW 86

Basin Payweight 1682

### DEER VALLEY GROWTH FUND

Deer Valley Rita 36113



HF Untapped 58Z

### CN ELAINE 7115

CN Elaine 9309

Basin Payweight 006S

21AR O Lass 7017

Plattmire Weigh Up K360

Deer Valley Rita 9457

HF Tiger 5T

HF Blackbird 223U

Plainview Sun Dance G39

CN Elaine 646

CED	BW	WW	YW	CEM	MILK	\$EN			
+2	+3.7	+71	+131	+7	+33	-34			
CW	MARB	RE	FAT	\$M	\$W	\$F	\$G	\$B	\$C
+68	+0.51	+0.37	+0.048	+54	+58	+115	+40	+155	+255

SERVICE SIRE CHESTNUT WAGON BOSS 449 (AAA# 19545859) · DUE 4/2/23

• The Deer Valley Growth Fund cattle have made friends nationwide, he has become one of the most reliable sources of proven quality the Angus breed has seen in recent history!

• A massive bodied, perfect structured, maternal matron. This is a female that will prove herself over and over, the kind that will stand the test of time just like the females who have gone before her, and we foresee the breeding tenure of Chestnut Elaine 175 to be long and illustrious.

• This kind of female will get the job done for seedstock producers just as well as a commercial cow calf producer. These are females that you can bet the farm on, built for the long haul!



### DEER VALLEY GROWTH FUND

SIRE OF LOT 76



### CN ELAINE 340

MATERNAL SISTER TO DAM OF LOT 76



**CHESTNUT MONICA 534**  
MATERNAL GREAT GRANDDAM OF LOT 77



**CHESTNUT PF BEAUTY 557**  
MATERNAL GRANDDAM OF LOT 78



**CHESTNUT WAGON BOSS 449**  
SERVICE SIRE TO A MAJORITY OF  
THE FEMALES SELLING

77

## CHESTNUT MONICA 154

AAA 20136462 · TATTOO 154 · DOB 01/29/21 · BW 77

KG Solution 0018

### R5 SOLUTION E111

R5 Brooke C5196



CLF Cash 62C

### CHESTNUT MONICA 993

Chestnut Monica 724

MOGCK Sure Shot

KG Rito Lady 8724

R5 Monument 087

R5 Brooke A3223

Barstow Cash

CLF Dateline Betty 84P

SAC Conversation

Chestnut Monica 534

CED	BW	WW	YW	CEM	MILK	\$EN			
+3	+1.9	+68	+122	+4	+28	-27			
CW	MARB	RE	FAT	\$M	\$W	\$F	\$G	\$B	\$C
+49	+0.46	+0.51	+0.029	+62	+59	+90	+41	+131	+232

SERVICE SIRE CHESTNUT WAGON BOSS 449 (AAA# 19545859) · DUE 4/24/23

78

## CHESTNUT BEAUTY 152

AAA 20136461 · TATTOO 152 · DOB 01/29/21 · BW 67

KG Solution 0018

### R5 SOLUTION E111

R5 Brooke C5196



Kramers R Stockman 4304 TL

### CHESTNUT BEAUTY 986

Chestnut PF Beauty 557

MOGCK Sure Shot

KG Rito Lady 8724

R5 Monument 087

R5 Brooke A3223

Visiontopline Royal Stockman

W C C Primrose S168

VA First Round

Chestnut Beauty 319

CED	BW	WW	YW	CEM	MILK	\$EN			
+1	+2	+65	+114	+4	+19	-20			
CW	MARB	RE	FAT	\$M	\$W	\$F	\$G	\$B	\$C
+36	+0.66	+0.28	+0.016	+40	+49	+78	+48	+126	+203

SERVICE SIRE CHESTNUT WAGON BOSS 449 (AAA# 19545859) · DUE 5/3/23

- Two daughters out of our tried and true, female making heifer bull, R5 Solution E111 that personify the standard of excellence he has set both here and in Highmore for our partners on him, CK Cattle.
- You can trust that the milking ability, udder quality and structural integrity of the sisters will make for a pleased cowman. They are out of first calving heifers that have matured well in the cowherd and are members of some of our best cow families.

79

## SA PRIDE MAY 126

AAA 20283390 · TATTOO 126 · DOB 02/23/21 · BW 95

HA Cowboy Up 5405

### SA COWBOY UP 824

Chestnut Ruby WJ 118



PA Full Power 1208

### SA PRIDE MAY 820

CN Pride May 273

HA Outside 3008

HA Blackcap Lady 1602

WK Redo

C N Ruby 620 838

PA Power Tool 9108

Pine View SQR Rita W091

KF Danny 387

CN Pridemay 532

CED	BW	WW	YW	CEM	MILK	\$EN			
-6	+5.9	+48	+91	-1	+23	-6			
CW	MARB	RE	FAT	\$M	\$W	\$F	\$G	\$B	\$C
+21	+0.46	+0.42	-0.022	+55	+25	+68	+44	+112	+200

SERVICE SIRE CHESTNUT WAGON BOSS 449 (AAA# 19545859) · DUE 4/24/23

- The newest generation of the Pride May cow family that has been a staple producer, and foundation cow family for our program!
- Her maternal pedigree is lined with generations of high-quality females that get the job done, the phenotypic design of the cattle is ideal, they are super eye appealing, faultless on the move and have an extra degree of density and shape when compared to the contemporary group.

80

## CHESTNUT QUEEN 195

AAA 20136476 · TATTOO 195 · DOB 03/15/21 · BW 66

Casino Bomber N33

### WILDES BOMBER 6118

Wildes 4010 Ms Queen 6118



Kramers R Stockman 4304 TL

### CHESTNUT QUEEN 9123

CN Queen 653 9279

KM Broken Bow 002

Casino Annie K48

Lafins Wampum 1305

Wildes 8PV50 Ms Queen 4010

Visiontopline Royal Stockman

W C C Primrose S168

Plainview Sun Dance G39

CN Queen 653

CED	BW	WW	YW	CEM	MILK	\$EN			
+6	+1.5	+55	+101	+8	+22	-20			
CW	MARB	RE	FAT	\$M	\$W	\$F	\$G	\$B	\$C
+36	+0.56	+0.46	+0.012	+41	+44	+81	+47	+128	+207

SERVICE SIRE CHESTNUT WAGON BOSS 449 (AAA# 19545859) · DUE 5/11/23

- Chestnut Queen 195 is supported by the influence of the outcross, Casino Bomber N33 on the topside and the Kramers R Stockman 4304 TL x Queen cow family maternally. You will appreciate this one in the flesh for her added softness of body, ease of fleshing and ultimate balance.
- She will calve on green grass to Chestnut Wagon Boss 449.



- We begin the cow offering with an absolute phenotypic stand out and herd bull making machine, in the 2021 Bull Sale she had the Cattleman's Congress team member, Chestnut Bonus 610 and 2022 she had the Lot 12 Growth Fund son that sold to the Mitteness Family!

- This direct daughter of the industry renowned, EXAR Denver 2002B is built just about as perfect as you could make one. She is extra square in her pin set, level in her spine, youthful in her look and built upon an ideal framework. You will appreciate the udder quality, fleshing ability, body cavity and moderation when you see her on sale day.

- A cow that is just entering her most productive years, we think her combination with KR Quality 0163 matches up perfectly, and his added performance with yield a value-added product in this first year. The ROI may pay for the initial investment in this first year.



**BUSSMUS MINA ET2**

**81**

## BUSSMUS MINA ET2

AAA 18706942 · TATTOO ET2 · DOB 02/01/16 · BW 70

EXAR Upshot 0562B  
**EXAR DENVER 2002B**



Exar Royal Lass 1067

Crook Mt Really Windy 141

**MINA 08-268**

Mina 03-9103

Sitz Upward 307R  
EXAR Barbara T020  
EXAR 263C  
BR Royal Lass 19-132

A A R Really Windy 1205  
Revolution 155 of Crook MT  
Centennial Hero 7002  
C A Mina 99-710

CED	BW	WW	YW	CEM	MILK	\$EN			
+10	+1.9	+61	+107	+11	+29	-14			
CW	MARB	RE	FAT	\$M	\$W	\$F	\$G	\$B	\$C
+47	+0.72	+0.38	+0.032	+59	+61	+87	+51	+138	+238

SERVICE SIRE KR QUALITY 0163 (AAA# 19819918) · DUE 4/24/23



**CHESTNUT BONUS 610**  
SON OF LOT 81



**CHESTNUT GROWTH FUND 551**  
SON OF LOT 81

**83**

## CHESTNUT BLACKBIRD SUSAN 055

AAA 19847777 · TATTOO 055 · DOB 02/20/20 · BW 84

3F Epic 4631  
**EXAR MONUMENTAL 6056B**  
FWY 7008 of C085 4029



Chestnut Knock Out 204

**CHESTNUT BLACKBIRD SUSAN 650**

CN Blackbird Susan 09

Varilek Product 2010 04  
Zebo Queen 1072  
A A R Ten X 7008 S A  
FWY Rita C085

VA First Round  
Chestnut Queen Lucy 028  
Plainview Sun Dance G39  
CN Blackbird Susan 533 7297

CED	BW	WW	YW	CEM	MILK	\$EN			
-3	+5.1	+76	+151	+7	+29	-52			
CW	MARB	RE	FAT	\$M	\$W	\$F	\$G	\$B	\$C
+79	+0.68	+0.6	-0.017	+31	+50	+138	+56	+195	+284

SERVICE SIRE WOODHILL VERDICT D7-J188 (AAA# \*20071275) · DUE 4/24/23

- A young EXAR Monumental 6056B daughter that is that is supported by a role model Chestnut Knock Out 204 daughter. She is the type and kind that will work in a wide range of production scenarios.

- The added presence and eye appeal remains a constant in this Blackbird Susan daughter, but she is also supported with a genomic profile that reads for added massive performance with a top 10% ranking for WW and top 2% YW rank.

- Top 10% RADG, top 2% MW, top 2% MH, top 1% CW, top 15% Fat, top 1% \$F, top 1% \$B and top 10% \$C.

**82**

## CHESTNUT SANDY 080

AAA 19847788 · TATTOO 080 · DOB 03/10/20 · BW 70

Sma Watchout 482  
**CONLEY EXPRESS 7211**  
DPL Sandy 3040



KR Cadillac Jack

**KR SANDY 6042**

KR Sandy 3475

Silveiras Watchout 0514  
2K Beauty 961  
Silveiras Style 9303  
K N C Cabin Creek Sandy 804

CFCC Black Jack 001  
WK Blackbird 5066  
K R Gavel 1057  
WK Sandy 1013

CED	BW	WW	YW	CEM	MILK	\$EN			
+1	+2.2	+50	+94	+4	+15	-16			
CW	MARB	RE	FAT	\$M	\$W	\$F	\$G	\$B	\$C
+26	+0.37	+0.3	-0.014	+26	+30	+78	+38	+116	+176

SERVICE SIRE KR QUALITY 0163 (AAA# 19819918) · DUE 4/24/23

- We love the added feature and looks of this young cow! She stems from the combination of some of the most phenotypically elite Angus seedstock you will find in the nation.

- Both sides of the pedigree find maternal power from the legendary Sandy cow family that originated in the Whitestone Krebs program, and since have been huge revenue and banner generators for the country's leading Angus show heifer programs.

- The mating flexibility remains wide open for show cattle production, with a lack of First Class or Style in her pedigree.



**MUSGRAVE 316 STUNNER**  
SIRE OF LOT 84



**CHESTNUT PEG WJ 912**  
MATERNAL SISTER TO LOT 85

84

## SA PRIDE MAY 025

AAA 19952333 · TATTOO 025 · DOB 02/29/20 · BW 84

LD Capitalist 316

**MUSGRAVE 316 STUNNER**

MCATL Blackbird 831-1378



S A V Bismarck 5682

**SA PRIDE MAY 506**

CN Pride May 273

Connealy Capitalist 028

LD Dixie Erica 2053

MCATL Pure Product 903-55

MCATL Blackbird 1378-573

G A R Grid Maker

S A V Abigale 0451

KF Danny 387

CN Pridemay 532

CED	BW	WW	YW	CEM	MILK	SEN
+5	+1.3	+54	+92	+3	+30	-10

CW	MARB	RE	FAT	\$M	\$W	\$F	\$G	\$B	\$C
+38	+0.52	+0.68	+0.035	+67	+54	+91	+46	+137	+245

SERVICE SIRE CHESTNUT WAGON BOSS 449 (AAA# 19545859) · DUE 5/11/23

• SA Pride May 025 is a 2020 born daughter of the legendary Musgrave 316 Stunner and out of awesome S A V Bismarck 5682 cow. Her EPD profile may not be breed leading, but her build and kind read for a long and successful breeding career.

• She comes carrying the service of our in-herd calving ease specialist, Chestnut Wagon Boss 449.

85

## CHESTNUT PEG 087

AAA 19847792 · TATTOO 087 · DOB 03/16/20 · BW 85

Panther Cr Incredible 6704

**KR INCREDIBLE 8166**

KR Lady May 4382



Barstow Bankroll B73

**CHESTNUT WJ PEG 780**

Chestnut WJ Peg 436

Musgrave Invision

Panther Cr JH Blackbird 409

K R Gavel 1057

WK Lady May 2347

Barstow Cash

Barstow Miss Dianna Z25

VA First Round

Chestnut Peg 9589 WJ

CED	BW	WW	YW	CEM	MILK	SEN
-2	+4.9	+66	+125	+3	+31	-31

CW	MARB	RE	FAT	\$M	\$W	\$F	\$G	\$B	\$C
+54	+0.63	+0.64	+0.01	+59	+49	+109	+52	+161	+268

SERVICE SIRE KR QUALITY 0163 (AAA# 19819918) · DUE 5/13/23

• An added growth and performance leading, KR Incredible 8166 daughter that stems from the maternal power of the Peg cow family that any follower of our program will recognize! Additionally, she goes back the legendary Barstow Cash influence via her maternal grandsire, Barstow Bankroll B73.

• Her productive dam has recorded a 107 WWR ratio on three and continues the trend with a 104 YWR on two.

86

## CHESTNUT ELAINE 9107

AAA 19569692 · TATTOO 9107 · DOB 03/27/19 · BW 89

KM Broken Bow 002

**STYLES BROKEN BOW V24**

Styles Jasmine S44



Musgrave Big Sky

**CHESTNUT ELAINE 582**

Chestnut Elaine 129

Summitcrest Complete 1P55

Summitcrest Princess OP12

S A V Harvester 0338

Plainview Jasmine C48

Connealy Earnan 076E

SAV Primrose 7861

WK Redo

C N Elaine 8438

CED	BW	WW	YW	CEM	MILK	SEN
+0	+3.2	+53	+86	+12	+19	-4

CW	MARB	RE	FAT	\$M	\$W	\$F	\$G	\$B	\$C
+20	+0.57	+0.36	+0.021	+57	+41	+59	+45	+104	+192

SERVICE SIRE KR QUALITY 0163 (AAA# 19819918) · DUE 5/11/23

• A pair of paternal sisters by the good looking, most impressive KM Broken Bow 002 son we have laid our eyes on, Styles Broken Bow V24. These daughters' trend with the same functional build, eye appeal and overall balance that led us to purchasing their calving ease sire. Several sisters to this pair are retained in herd and are kicking goals in production. The only reason you find these two up for grabs is driven by an effort to tighten up our calving period but their quality runs with the heart of the herd, and we know they will add profitability to their new owners' bottom line.

87

## CHESTNUT WINNIE 8111

AAA 19290418 · TATTOO 8111 · DOB 03/07/18 · BW 80

KM Broken Bow 002

**STYLES BROKEN BOW V24**

Styles Jasmine S44



VA First Round

**CHESTNUT WINNIE 556**

Chestnut Winnie 171

Summitcrest Complete 1P55

Summitcrest Princess OP12

S A V Harvester 0338

Plainview Jasmine C48

Dameron First Class

R&C Keystone Lady 106K-810U

KF Danny 387

C N Winnie 858

CED	BW	WW	YW	CEM	MILK	SEN
+5	+2	+46	+85	+8	+17	-11

CW	MARB	RE	FAT	\$M	\$W	\$F	\$G	\$B	\$C
+32	+0.32	+0.68	-0.028	+42	+31	+81	+42	+122	+200

SERVICE SIRE KR INCREDIBLE 8166 (AAA# +\*19241032) · DUE 4/20/23



H O M E T O T H

# Reserve Champion





E 2 0 2 3 N W S S

# Pen of Heifers







**PO BOX Z**  
**DE SOTO, KANSAS 66018**

