



FLAT WATER GANG *Red Angus*
ANNUAL BULL SALE

MARCH 20, 2023 AT 1 PM IN BROKEN BOW, NE

at the One Box Convention Center in the Cobblestone Hotel & Suites

Where Maternal Matters!



Sale Location

Join us for a video auction at The One Box Convention Center at the Cobblestone Hotel & Suites
2750 South 27th Avenue - Broken Bow, NE 68822 - Phone: (308) 767-2060

Cattle on Display

Bulls will be on display at Broken Bow Livestock
614 N B Street, Broken Bow, NE 68822

Sale Schedule

March 20, 2023

9:00 am Bulls on Display

12:00 pm Lunch served at the Cobblestone Hotel & Suites

1:00 pm Flat Water Gang Annual Bull Sale

For more information and updates visit

FLATWATERREDANGUSGANG.COM

DVAuction
Broadcasting Real-Time Auctions



Welcome to the Sale!

Welcome to the Flat Water Red Angus Gang's 14th Annual Bull Sale. It is with great excitement and pride that we bring this set of bulls to sale day for your evaluation and consideration. Again this year, we will have the bulls on display prior to the sale and available for viewing at the Broken Bow Livestock market. We feel that this change allows for easier viewing of the bulls and a more desirable buying experience for our customers.

Cooksley Red Angus membership number is 25621, and they became association members in 1989. Sandbur Ridge membership number is 48779, and they became association members in 1996. The point of this is to let, you, our customers, friends, neighbors, and fellow cattlemen know that we have been working on and striving towards problem free, well balanced, multi-faceted, cattle production for 34 and 27 years respectively. This commitment of time, research and investment is to bring you the best, most well-balanced product available in the industry today!

We have seen a steady improvement in our cow herds using a balanced approach to seedstock production. The fertility of the cow herds, the ability to breed, wean a calf, survive multiple years of harsh weather, and do it all over again year after year for 10 years and more is evidenced by the number of older cows represented in the catalog. We have seen a steady improvement in the scrotal circumference's and strength of the semen evaluation, in our yearling bulls, as well. The commitment to our customers to deliver the best product we can for the long-term profitability of your operation remains unwavering and our most important objective.

The bulls have been developed for sustainability and soundness. We are very pleased with the expertise and service we receive from Mitch Ziebell and the entire crew at the Darr Bull Development Center, near Cozad NE. Mitch and crew are very accommodating to having visitors stop in and look over the bulls. There are several breeds of bulls developed annually at Darr and we encourage you to stop in and look things over if you are near the area.

We are genuinely thankful and appreciative of the people that we serve and the relationships we have. Please reach out to us with any questions. Our goal is your success, and we would enjoy helping you find the right bull for your operation. We invite you to join us on March 20, 2023 in Broken Bow, Nebraska for an offering of Red Angus bulls that we believe to be the highest quality set of herd bull prospect that we have ever brought to town!

Thank you for your interest and we look forward to seeing you on sale day and all throughout the year!

Ross Knott Ben Cooksley



COOKSLEY
RED ANGUS
Ben & Jilleen Cooksley
(308) 872-1007

SANDBUR RIDGE
RED ANGUS
Ross & Dani Knott
(402) 843-8726

*I*NNOVATION — AgMarketing, LLC —

Fellow Red Angus Enthusiasts,

It is again our distinct pleasure to welcome you to the 2023 edition of the Flat Water Gang Red Angus Bull Sale in the heart of cattle country, Broken Bow, Nebraska! Despite many of the challenges that we have faced over the course of the past 5 years it is safe to say that exciting times in the beef business are on the horizon and red hided cattle continue to surge in demand!

This offering of bulls is comprised of the efforts and years of strategic breeding decisions that have been made by both Ross Knott and Ben Cooksley, with the common goal of improving their customer's bottom line. Seems simple, right? Fast moving trends, and fads may come and go in the cattle industry, but one thing you can count on with this set of Red Angus herd sire prospect is that they are backed by a female that has earned her keep the old fashioned way! These bulls are supported by females that are required to calve unassisted, re-breed within the same interval, raise a big calf, and maintain their flesh while doing so. Flat Water Gang Red Angus is truly where "Maternal Matters"!

Sandbur Ridge Red Angus and Cooksley Red Angus take great pride in the fundamental basic principles of hoof quality, skeletal integrity, fertility, pounds of calf weaned, and overall balance and phenotype. The sires of these bulls are selected after much evaluation and pressure application to traits of industry importance that affect the outcome of the end product phase for each and every operation. A problem free calving experience, growth achievement to weaning time, and ultimate carcass improvement are all factored in this offering. The people backing the bulls are very disciplined and customer service focused as they have a devout understanding of the seriousness of your bull selection and the impact this purchase will have on your program over the next 10 years, literally.

We have listed the age of the dams that are responsible for this year's offering to give you a better understanding of the longevity, durability, and fertility that these cattle represent. Genetics don't cost, they pay... so invest in the type and kind of cattle that will leave a lasting impact on your program for decades to come.

We invite you to Broken Bow the 20th of March for the Annual Flat Water Gang offering. We are sure that your expectations will be met by the cattle in this offering. However, if you need any assistance or information prior to the sale please feel free to reach out to any of the sale staff to assist with your prospective purchases. Again this year, the bulls will be on display at Broken Bow Livestock. They will still sell on video at the One Box Convention Center that is attached to the Cobblestone Inn & Suites.

Please feel free to reach out to Ben, Ross, or any of the sale staff associated with this great set of Red Angus beef bulls. We look forward to seeing each of you in Broken Bow, Nebraska!

Graham Blagg Jered Shipman Tim Anderson

Innovation Ag Marketing, LLC



75+ Red Angus Bulls

Sale Day Contacts:

Ross Knott: (402) 843-8726
Ben Cooksley: (308) 872-1007
Graham Blagg: (530) 913-6418

Auctioneer:

Col. Scott Weishaar: (701) 872-5299

Sale Management:

Graham Blagg: (530) 913-6418
Jered Shipman: (806) 983-7226
Tim Anderson: (605) 682-9343
Innovationagmarketing.com

Ring Staff:

Randy Rasby, Livestock Plus: (308) 539-6195
Chris Beutler, Livestock Digital: (402) 380-8244
Jake St. Amant, Tri State Livestock News: (308) 568-9084

Consultants:

Andrew Gaffney, Broken Bow Livestock: (308) 872-1105

Special Guests:

Harold Bertz, Red Angus Association of America: (816) 661-2289

Accommodations in Broken Bow:

Cobblestone Hotel & Suites: (308) 767-2060
The Arrow Hotel: (308) 872-6662

Cattle Viewing:

The bulls will be available to be inspected on Sunday, March 19 and Monday, March 20 at Broken Bow Livestock. Please call for me details if you would like to view the bulls prior to the dates listed.

Broken Bow Livestock

614 N B Street - Broken Bow, NE 68822

Delivery and Load-out:

We are offering free delivery to all points in Nebraska. Delivery to other states will be at the lowest cost possible from the seller's base operation. Bulls not delivered by April 15 will incur a \$5 per day feeding cost thereafter. A \$100 credit will be offered for bulls taken home on sale day by the new owner.

In Herd Semen Use:

Seller(s) reserves the right to in herd semen use on all bulls in the offering. Collection will be negotiated with the new owner. All costs associated with the collection of in herd use semen to be covered by the seller.

Photography:

John Reasor: (423) 290-6002

Advertising and Catalog Design:

THM Promotions - Tracy McMurphy - (806) 679-0231

GGP 50K:

Over 10 years of genomics research is distilled in the new GGP 50K. Detects gene markers that have the greatest influence on economically important traits and the most impact on key traits that cattle inherit from their parents. All bulls with the GGP logo on their pedigree box have had DNA submitted and are on file at the Red Angus Association of America.



Bull Guarantee:

Unless otherwise noted, all the breeding age bulls will have passed a breeding soundness exam prior to pick up/delivery. In addition to the standard Terms and Conditions of the Red Angus Association of America, we will provide the first breeding season (the 90-day period immediately following turn out) guarantee on all yearling and older bulls. This guarantee is not an insurance or mortality policy, but a guarantee on functional fertility. It is not a substitute or replacement for poor management. Buyer assumes all risks for injury due to running bulls together or management decisions outside genetic control. For the guarantee to apply, we ask that you contact us as soon as a condition is observed and before the animal is sold. We will work with you to determine whether the animal is returned or sold for slaughter. We will attempt to provide a suitable replacement. If one cannot be provided of equal or greater value, we will issue a sale credit to be used in a future sale for the full purchase price less the salvage value of the animal.

Terms and Conditions:

The Auctioneer will settle any bidding disputes and his decision on such matters will be final. All sales are cash in U.S. funds unless prior arrangements have been made with the sellers. Any announcements made on sale day take precedence over printed material. Health certificates will be furnished for shipment anywhere in the United States. Any death or injury after the animal is sold is at the buyers' risk. Anyone attending this sale attends at his/her own risk. A retained interest by the seller will be designated as such in the sale. The buyer receives full possession and full salvage value on all bulls with a retained ownership interest. All registered cattle sell under the suggested Sale Terms and Conditions set forth by the Red Angus Association of America.

Online Bidding:

We are pleased to bring you real-time internet bidding and a live broadcast of this sale through DVAuction.com. If you are unable to attend for any reason, you may bid online at dvauction.com. Please register for bidder number at www.dvauction.com anytime prior to 12 Noon on Friday, March 18 to accommodate the approval process. After this date/time, bidder approval may be delayed. Approved bidders will be issued bidder number and access prior to the sale. For questions or sale bookings call the Office M-F 8am-6pm CT: (402) 316-5460.





The Cornerstone Cow

The Cornerstone cow program is a tool for producers to utilize when selecting seed stock for their operation. The word Cornerstone is an architectural term meaning the first stone set in construction. The stone in which all the building depends. For our purpose, the Cornerstone Cow is a measure of the following:

Fertility + Production + Longevity = Profitability

This scoring model ranks the components of fertility, production to weaning, and longevity, within a herd and age group of females. The categories being scored are based upon the actual data submitted to the American Red Angus Association as a part of total herd reporting. Any cow scoring 90% or higher earns the title of a **CORNERSTONE COW**.

By scoring our cow herd we are attempting to provide you with an easy-to-understand value for each female in our herd. The Table below summarizes the scores for each age group of cows in production:

Age of Female	Best Possible Score	Top 25%	Top 50%
9 + years old	35	26.25	17.5
8 years old	33	24.75	16.5
7 years old	31	23.25	15.5
6 years old	29	21.75	14.5
5 years old	27	20.25	13.5
4 years old	25	18.75	12.5
3 years old	23	17.25	11.5
2 years old	21	15.75	10.5

The definitions on the next page explain the criteria that is used in the scoring model.



MPPA

7	108 or higher
6	105-107.9
5	103-104.9
4	100-102.9
3	97-99.9
2	94-96.9
1	93.9 or Less

MOST PROBABLE PRODUCING ABILITY (MPPA) – An estimate of a cow’s future productivity for a trait (such as progeny weaning ratio) based on her past productivity. For example, a cow’s MPPA for weaning ratio is calculated from the cow’s average progeny weaning ratio, the number of her progeny with weaning record, and the repeatability of weaning weight.

CALVING INTERVAL

6	368 or less*
5	369-375
4	376-397**
3	398-417
2	418-439
1	440 or more

CALVING INTERVAL – The amount of time (days or months) between the birth of a calf and the birth of a subsequent calf, both from the same cow. *Calving interval of 368 or less is assigned to Donor females that are 6 years old and older. **Calving Interval of 376 to 397 is assigned to Donor Females that are 5 years old and younger.

RATIO CHANGE

6	+15 or more
5	+7 thru +14
4	0 thru +6
3	-1 thru -7
2	-8 thru -14
1	-15 or less

RATIO CHANGE – The difference between the birth weight ratio within a known population to the weaning weight ratio within the same population of individuals. Ratio change for this measure is the difference between the cows actual average birth ratio of all her calves and the weaning ratio of all her calves.

AGE

8	9 plus
7	8
6	7
5	6
4	5
3	4
2	3
1	2

AGE OF COWS – Cows can live for over 20 years, but on commercial farms the age at slaughter varies considerably. Farms with poor management, high-yielding cattle or high disease rates will slaughter their animals at a much younger age, normally after four lactations (around 5-6 years old), but sometimes after 2 or 3. Cows should be able to consistently breed and rebreed through about 8 years of age and performance should be maintained until around 12 years of age, that is when you might see a steeper decline in reproductive performance.

OF NATURAL CALVES

8	8 plus
7	7
6	6
5	5
4	4
3	3
2	2
1	1

NATURAL CALVES – These are the calves that are conceived either by artificial insemination or natural service. These calves are carried by the dam and raised by the dam within the population of the operation. The number of natural calves is an indicator of the cow’s ability to raise a calf and rebreed within their environment over a longer period.





LOT 1 - COOKSLEY QUARTERBACK 2822

1 **COOKSLEY QUARTERBACK 2822**

BD: 2/19/22 Reg: 4705917 A - 100% AR Tattoo: 2622

PIE QUARTERBACK 789
PIE QUARTERBACK 001
 PIE FAYETTE 8398
 1DRA FUSION 5037
MS FUSION 8588 SCN
 CHOAT BOSS 2505-140Y

PIE STOCKMAN 4051 BW: 84
 PIE RUBY 520 AWW: 622
 MCD SPUR 6111 AYW: 1120
 PIE FAYETTE 3071
 ANDRAS FUSION R236 WDA: 3.02
 1DRA HANNAH 127
 S A PICTURE PERFECT 73 633
 BC BOSS



DMPPA	Dam's Age		Adj. IMF	Adj. REA	Adj. BF	CC Score								
100	5		3.67	14.41	0.29	-								
CED	BW	WW	YW	ADG	DMI	MILK	ME	HPG	CEM	MRB	YG	CW	REA	FAT
13	-3.2	53	82	0.18	1.84	21	8	12	7	0.62	0.09	34	0.34	0.04

- A fitting recipient of the Lot 1 designation with his combination of phenotypic power and genetic strengths. Massive and powerful, yet smooth and complete in his design. Big time herd sire prospect.
- Sired by a top son of the \$155,000 PIE Quarterback 789, this herd sire prospect comes equipped with the extra mass and dimension that sets him into a league of his own.
- Top 10% BW, top 12% MILK, top 13% CED, MARB, top 14% CEM, top 22% ProS, top 23% GM, top 32% YW, top 35% REA.
- 101 WW ratio, 101 YW ratio, and 114 REA ratio.



PIE QUARTERBACK 789 - Paternal Grandsire of Lot 1

ELITE HERD SIRE PROSPECT BY QUARTERBACK



LOT 2 - RIDGE PORTFOLIO 2006

2

RIDGE PORTFOLIO 2006

BD: 1/27/22 Reg: 4622031 A - 100% AR Tattoo: 2006

BIEBER CL STOCKMARKET E119
BIEBER STOCKMARKET H198
 BIEBER ROSE 183E

PIE STOCKMAN 4051
 BIEBER CL ADELLE 475C
 BIEBER RREDS TAKEOUT 305A
 BIEBER ROSE 521C

BW: 73
 AWW: 689
 AYW: 1264

5L ZENITH 1425-5767
RIDGE MONA 8162-2057
 RIDGE MONA 620-8162

5L MTN NORSE 71-7994
 5L OSCE 233-1425
 MUSHRUSH LTJULIAN LG 5005
 RIDGE MONA 303-620

WDA: 3.39



DMPPA	Dam's Age		Adj. IMF	Adj. REA	Adj. BF	CC Score								
106	11		4.74	14.43	0.17	31/35 - 89%								
CED	BW	WW	YW	ADG	DMI	MILK	ME	HPG	CEM	MRB	YG	CW	REA	FAT
16	-4.1	65	109	0.27	1.72	32	2	14	8	0.48	0.1	11	0.06	0.04



BIEBER STOCKMARKET H198 - Sire of Lots 2-4

- A stud of a herd bull prospect with added volume, plenty of muscle, a balanced look, and a genetic profile built to sire awesome replacement females.
- Top 2% HB, top 4% STAY, top 7% MILK, top 11% ProS, CED, top 13% BW, top 22% CEM, top 26% YW, top 33% WW, top 34% MARB.
- A performance outlier with his 73 lb. BW, and ratios of 108 for WW, 106 for YW, 102 for REA and 110 for IMF, scanning a 4.74.



LOT 3 RIDGE PORTFOLIO 2026



5L BOURNE 117-48A
Maternal Grandsire of Lot 3

- This Stock Market son is powerful from end to end, in both phenotype and his EPD profile.
- Top 5% CEM, top 11% YW, top 13% CED, top 14% WW, top 17% HB, top 23% ProS, REA, top 30% BW, STAY, top 31% MILK.
- His 1291 lb. YW ratios at 108. 14.75 in. REA and a 4.31 IMF both ratio over 100.

LOT 4 RIDGE PORTFOLIO 2075



RIDGE EXPRESS 1037
Maternal Brother to Lot 4

- You can't miss this bull with his look and presence. Appreciate him for his added length of body and hip. Yet another genetic profile designed for creating replacement females and adding carcass merit to feeder cattle.
- Top 7% STAY, top 14% REA, top 16% HB, top 23% YW, top 25% CED, top 28% WW, MARB, top 29% CEM.
- Only 72 lb. at birth up to 1233 lb. at yearling (103 ratio). He set the pace on scan day with a 5.03% IMF (116 ratio) and 15.03 REA (106 ratio).

3

RIDGE PORTFOLIO 2026

BD: 1/31/22 Reg: 4621995 A - 100% AR Tattoo: 2026

BIEBER CL STOCKMARKET E119
BIEBER STOCKMARKET H198
BIEBER ROSE 183E

5L BOURNE 117-48A
RIDGE AQUILA 8066-8028
RIDGE AQUILA 552-8066

PIE STOCKMAN 4051
BIEBER CL ADELLE 475C
BIEBER RREDS TAKEOUT 305A
BIEBER ROSE 521C
5L ADVANTAGE 3267-221Y
5L ROXIE 854-117
5L NORMANDY CANYON 6024
RIDGE AQUILA 213-552

BW: 75
AWW: 656
AYW: 1291
WDA: 3.43

DMPPA	Dam's Age		Adj. IMF	Adj. REA	Adj. BF	CC Score								
101	5		4.31	14.78	0.37	21/27 - 78%								
CED	BW	WW	YW	ADG	DMI	MILK	ME	HPG	CEM	MRB	YG	CW	REA	FAT
16	-2.9	71	118	0.29	1.9	28	8	12	10	0.44	0.03	22	0.26	0.02

4

RIDGE PORTFOLIO 2075

BD: 2/6/22 Reg: 4621899 A - 100% AR Tattoo: 2075

BIEBER CL STOCKMARKET E119
BIEBER STOCKMARKET H198
BIEBER ROSE 183E

MLK CRK EXPRESS 9141
MLK CRK BLOCKANA 3106
MLK CRK BLOCKANNA 777

PIE STOCKMAN 4051
BIEBER CL ADELLE 475C
BIEBER RREDS TAKEOUT 305A
BIEBER ROSE 521C
5L GRAND EXPRESS 453-5655
MLK CRK SHEBA 079
BUF CRK GIULIANI L851
MLK CRK BLOCKANNA 065

BW: 72
AWW: 654
AYW: 1233
WDA: 3.34


DMPPA	Dam's Age		Adj. IMF	Adj. REA	Adj. BF	CC Score								
102	10		5.02	15.03	0.36	29/35 - 83%								
CED	BW	WW	YW	ADG	DMI	MILK	ME	HPG	CEM	MRB	YG	CW	REA	FAT
15	-2.5	67	111	0.28	1.95	23	10	11	8	0.51	0	9	0.33	0.04



LOT 5 - COOKSLEY STOCK MARKET 2605

5 COOKSLEY STOCK MARKET 2605

BD: 2/11/22 Reg: 4705949 B - 93.3% ARX Tattoo: 2605

PIE STOCKMAN 4051	LSF SAGA 1040Y	BW: 77
BIEBER CL STOCKMARKET E119	PIE LAKOTA 046	AWW: 558
BIEBER CL ADELLE 475C	ANDRAS FUSION R236	AYW: 1017
GALLS BLACK CAT 8619	BIEBER ADELLE 297Y	WDA: 2.6
MISS KATIE 078	LWNBRG CROSS OVER 66B	
MS ROLLIN DEEP 8274 SCN	GALL'S MS DIANN 6191	
	BIEBER ROLLIN DEEP Y118	
	BD3P DURHEIM 5	

DMPPA	Dam's Age			Adj. IMF	Adj. REA	Adj. BF	CC Score							
96	3			5.76	11.55	0.28	-							
CED	BW	WW	YW	ADG	DMI	MILK	ME	HPG	CEM	MRB	YG	CW	REA	FAT
14	-1.4	84	141	0.35	1.95	22	8	9	9	0.87	0.22	32	0.12	0.06

- A standout in the pens for his added volume, masculinity, and all-around quality. You'll look long and hard to find another bull with his genetic combination for growth and carcass quality.
- Top 1% WW, YW, top 2% MARB, top 7% GM, top 19% CW, top 21% CEM, top 30% CED, top 31% ProS.
- His 5.76 IMF on scan day ratios 122 and is at the top of the leaderboard in this sale.



BIEBER CL STOCKMARKET E119 - Sire of Lots 5-7

THE SONS OF STOCKMARKET

LOT 6 - COOKSLEY STOCK MARKET 2610



BIEBER ROUSE SAMURAI X22
Sire of influence throughout the offering!

6 COOKSLEY STOCK MARKET 2610

BD: 2/15/22 Reg: 4705939 A - 100% AR Tattoo: 2610

PIE STOCKMAN 4051
BIEBER CL STOCKMARKET E119
BIEBER CL ADELLE 475C
BIEBER IRON WARRIOR C124
MISS WARRIOR 090
BIEBER DYNAMO 490A

LSF SAGA 1040Y
PIE LAKOTA 046
ANDRAS FUSION R236
BIEBER ADELLE 297Y
BIEBER ROUSE SAMURAI X22
BIEBER LINCOLN 189A
BIEBER ROOSEVELT W384
BASIN DYNAMO 3016

BW: 70
AWW: 584
AYW: 1004
WDA: 2.52

GGP

DMPPA		Dam's Age		Adj. IMF		Adj. REA		Adj. BF		CC Score				
98		3		5.87		9.76		0.33		-				
CED	BW	WW	YW	ADG	DMI	MILK	ME	HPG	CEM	MRB	YG	CW	REA	FAT
14	-2.8	70	116	0.29	1.93	22	10	9	9	0.81	0.4	28	-0.1	0.12

- Good looking, smooth shouldered bull that has the look and genetic package to be a top-tier candidate for breeding heifers.
- Top 3% MARB, top 13% YW, top 14% CEM, top 15% WW, top 28% GM, top 31% CW, top 32% CED, BW.
- 70 lb. birth weight adds to his calving ease portfolio, while his 5.87 IMF and a ratio of 124 add to the value of his steer progeny.

7 COOKSLEY STOCK MARKET 2616

BD: 2/14/22 Reg: 4705927 A - 100% AR Tattoo: 2616

PIE STOCKMAN 4051
BIEBER CL STOCKMARKET E119
BIEBER CL ADELLE 475C
RED LWNBRG HARVESTOR 175E
MISS HARVESTOR 071
PEGGY 7168 SCN

LSF SAGA 1040Y
PIE LAKOTA 046
ANDRAS FUSION R236
BIEBER ADELLE 297Y
TED HARVESTOR 154A
RED LWNBRG FUSION 117C
BIEBER IRON WARRIOR C124
BROWN MS P707 Y7692

BW: 78
AWW: 631
AYW: 1189
WDA: 3.04

GGP

DMPPA		Dam's Age		Adj. IMF		Adj. REA		Adj. BF		CC Score				
101		3		8.09		12.32		0.2		-				
CED	BW	WW	YW	ADG	DMI	MILK	ME	HPG	CEM	MRB	YG	CW	REA	FAT
13	-1.3	78	128	0.31	2.12	21	11	8	8	0.71	0.1	33	0.21	0.03

- If you need to add growth and crank up your carcass quality, this is a bull that can sure do it.
- Top 4% WW, YW, top 6% MARB, top 13% GM, top 16% CW, top 32% REA.
- 102 WW ratio, 108 YW ratio, and a 172 IMF ratio. That's an 8.09 IMF on scan day.



LOT 8 - COOKSLEY STOCKMAN 2604

8

COOKSLEY STOCKMAN 2604

BD: 3/1/22 Reg: 4705951 A - 100% AR Tattoo: 2604

PIE STOCKMAN 4051
BIEBER STOCKMAN G270
 BIEBER ROSE 327D

5L BLAZIN RED 1354-6166
COOKSLEY TARA 4566
 MLK CRK SHEBA 043

LSF SAGA 1040Y
 PIE LAKOTA 046
 BIEBER SPARTACUS A193
 BIEBER ROSE 507A
 5L BLAZIN HOB0 404-5654
 5L REBA 60-1354
 BJR PROOF 224-159
 MLK CRK SHEBA 869

BW: 78
 AWW: 579
 AYW: 1058
 WDA: 2.93



DMPPA		Dam's Age		Adj. IMF		Adj. REA		Adj. BF		CC Score				
98	9	4.3	13.18	0.26	-									
CED	BW	WW	YW	ADG	DMI	MILK	ME	HPG	CEM	MRB	YG	CW	REA	FAT
14	0.5	56	85	0.19	1.69	20	2	11	7	0.47	0.17	35	0.14	0.04

- Certainly, as stylish of a herd sire prospect as there is in this offering with an all-around solid genetic profile.
- Top 13% WW, top 18% HB, STAY, top 23% YW, top 31% ProS, top 33% CW.
- Combines adequate growth performance with a 13.2 in. REA that ratios a 105.



PIE STOCKMAN 4051 - Paternal Grandsire of Lots 5-16

THE SONS OF STOCKMAN



LOT 9
COOKSLEY STOCKMAN 2602

- This young bull will certainly add to the quality of your herd sire battery.
- Top 13% WW, top 21% YW, top 22% MARB, top 25% STAY, top 32% MILK, top 34% CW, REA.
- Ratios 103 for both WW and YW with a 114 ratio on REA.



COOKSLEY HUGHES 024
Maternal Brother to Lot 9



LOT 10
COOKSLEY STOCKMAN 2615

- Soggy made, well-balanced type that will sire good calves to take to town.
- Top 13% WW, top 16% CEM, STAY, top 17% YW, top 18% HB, top 20% CED, top 29% ProS, REA, top 32% CW, top 35% MILK.
- 13 in. REA ratios a 103, adding cutability to his offspring.



ANDRAS FUSION R236
Sire of influence throughout the offering!

9 COOKSLEY STOCKMAN 2602

BD: 2/15/22 Reg: 4705955 B - 95.1% AR Tattoo: 2602

PIE STOCKMAN 4051	LSF SAGA 1040Y	BW: 85
BIEBER STOCKMAN G270	PIE LAKOTA 046	AWW: 634
BIEBER ROSE 327D	BIEBER SPARTACUS A193	AYW: 1141
CHAT 832U	BIEBER ROSE 507A	WDA: 3.1
BIEBER DURHEIM 352Z	GLACIER CHATEAU 744	
BD3P DURHEIM 909	FEMALE 832H	
	5L RED DIRECTION 691-6046	
	DURHEIM 562	

DMPPA	Dam's Age	Adj. IMF	Adj. REA	Adj. BF	CC Score									
100	11	3.68	14.36	0.22	-									
CED	BW	WW	YW	ADG	DMI	MILK	ME	HPG	CEM	MRB	YG	CW	REA	FAT
10	0.1	72	111	0.25	1.89	28	8	10	7	0.55	0.11	27	0.19	0.04

10 COOKSLEY STOCKMAN 2615

BD: 3/10/22 Reg: 4705929 A - 100% AR Tattoo: 2615

PIE STOCKMAN 4051	LSF SAGA 1040Y	BW: 82
BIEBER STOCKMAN G270	PIE LAKOTA 046	AWW: 586
BIEBER ROSE 327D	BIEBER SPARTACUS A193	AYW: 1020
1DRA FUSION 5037	BIEBER ROSE 507A	WDA: 2.81
MS RUTH 7150 SCN	ANDRAS FUSION R236	
TESS 379-591 SCN	1DRA HANNAH 127	
	5L BLAZIN RAM 5166-7504	
	PEGGY 591-331	

DMPPA	Dam's Age	Adj. IMF	Adj. REA	Adj. BF	CC Score									
98	6	3.72	12.99	0.29	-									
CED	BW	WW	YW	ADG	DMI	MILK	ME	HPG	CEM	MRB	YG	CW	REA	FAT
15	-2.8	50	78	0.17	1.89	20	5	9	9	0.36	0.15	29	0.22	0.06



LOT 11
COOKSLEY STOCKMAN 2617

- Bold in his rib shape and stout in his muscle pattern with big time growth genetic potential.
- Top 3% WW, YW, top 10% CW, top 21% ProS, top 22% MILK, top 24% MARB, GM, top 34% STAY.
- Strong 12.9 in. REA and 4.47 IMF on scan day.



LOT 12
COOKSLEY STOCKMAN 2619

- Stockman's kind of bull with his volume and mass in a masculine build. Female maker.
- Top 2% WW, top 5% YW, top 17% REA, top 22% STAY, top 23% MILK, CW, top 29% HB, top 33% CEM.
- 104YW ratio and 113 REA ratio stamp his performance credentials.

11 **COOKSLEY STOCKMAN 2617**
BD: 3/5/22 Reg: 4705925 B - 99.9% AR Tattoo: 2617

PIE STOCKMAN 4051 LSF SAGA 1040Y BW: 88
BIEBER STOCKMAN G270 PIE LAKOTA 046 AWW: 598
 BIEBER ROSE 327D BIEBER SPARTACUS A193 AYW: 1068
 BIEBER ROSE 507A WDA: 2.91
 ROUSE MIGHTY PACKER A52 BIEBER MIGHTY PACKER X178
MS PACKER 8280 SCN ROUSE LENA X10
 COOKSLEY MARY 5503 SHERMAN 3023 SCN
 TERRI 450 SCN

DMPPA	Dam's Age		Adj. IMF	Adj. REA	Adj. BF	CC Score								
100	5		4.47	12.91	0.28	-								
CED	BW	WW	YW	ADG	DMI	MILK	ME	HPG	CEM	MRB	YG	CW	REA	FAT
10	0.5	64	103	0.24	1.83	22	8	11	5	0.64	0.39	52	-0.15	0.07

12 **COOKSLEY STOCKMAN 2619**
BD: 3/5/22 Reg: 4705921 B - 96.9% AR Tattoo: 2619

PIE STOCKMAN 4051 LSF SAGA 1040Y BW: 86
BIEBER STOCKMAN G270 PIE LAKOTA 046 AWW: 597
 BIEBER ROSE 327D BIEBER SPARTACUS A193 AYW: 1151
 BIEBER ROSE 507A WDA: 3.19
 BIEBER H HUGHES W109 BASIN HOBO 0545
BIEBER DURHEIM 282A BASIN ROSE 06T0
 BD3P DURHEIM 710 BROWN-LSF CELEBRATION
 DURHEIM 541

DMPPA	Dam's Age		Adj. IMF	Adj. REA	Adj. BF	CC Score								
106	10		3.88	14.25	0.23	-								
CED	BW	WW	YW	ADG	DMI	MILK	ME	HPG	CEM	MRB	YG	CW	REA	FAT
10	-0.2	51	74	0.14	1.84	22	7	10	7	0.42	0.12	31	0.21	0.04



LOT 13
COOKSLEY STOCKMAN 2621

- Well-rounded in his phenotype and genetic merit from his index rankings.
- Top 7% WW, YW, top 10% CW, top 23% STAY, top 25% ProS, top 27% HB, CEM, top 32% REA.
- 11.4 REA and 3.76 IMF make him a balanced carcass performer.



COOKSLEY HUGH 1713
Maternal Brother to Lot 13



LOT 14
COOKSLEY STOCKMAN 2625

- Big middled rascal with plenty of shape to his quarter and a herd bull presence.
- Top 14% WW, top 17% YW, top 22% MILK, top 23% CW, top 33% MARB, top 34% CED.
- His 616 lb. WW puts him the top end of this calf crop, plus an almost 4.0 on his IMF.

13 **COOKSLEY STOCKMAN 2621**
BD: 3/3/22 Reg: 4705959 A - 100% AR Tattoo: 2621

PIE STOCKMAN 4051 LSF SAGA 1040Y BW: 79
BIEBER STOCKMAN G270 BIEBER SPARTACUS A193 AWW: 654
 BIEBER ROSE 327D BIEBER ROSE 507A AYW: 1127
 BECKTON EPIC R397 K BECKTON EPIC K F075 WDA: 3.11
MLK CRK THELMA 414 BECKTON KIT F468 JL
 MLK CRK THELMA 435 VGW TITLEIST 1106
 MLK CRK THELMA 076

DMPPA	Dam's Age		Adj. IMF	Adj. REA	Adj. BF	CC Score								
99	9		3.79	11.36	0.27	-								
CED	BW	WW	YW	ADG	DMI	MILK	ME	HPG	CEM	MRB	YG	CW	REA	FAT
14	-2	55	88	0.2	1.66	20	10	10	9	0.43	0.24	44	0.14	0.06

14 **COOKSLEY STOCKMAN 2625**
BD: 3/5/22 Reg: 4705911 A - 100% AR Tattoo: 2625

PIE STOCKMAN 4051 LSF SAGA 1040Y BW: 85
BIEBER STOCKMAN G270 BIEBER SPARTACUS A193 AWW: 616
 BIEBER ROSE 327D BIEBER ROSE 507A AYW: 1019
 UPHOLD 2325 SCN OCC UPHOLD 831U WDA: 2.82
MS MARIAN 3618 SCN RIDGE SHEILA 212-5103
 MS RESISTAL 3011 SCN BHR RESISTOL 1391 CL
 CHOAT SHEILA 6114-57Y

DMPPA	Dam's Age		Adj. IMF	Adj. REA	Adj. BF	CC Score								
101	8		3.94	11.15	0.23	-								
CED	BW	WW	YW	ADG	DMI	MILK	ME	HPG	CEM	MRB	YG	CW	REA	FAT
14	-1	57	86	0.18	1.97	22	6	9	8	0.64	0.23	38	0.06	0.05



LOT 15 - COOKSLEY STOCKMAN 2627



COOKSLEY HARVESTOR 020 - Maternal Brother to Lot 16



COOKSLEY STOCKMAN 1702 - Full Brother to Lot 16

15 COOKSLEY STOCKMAN 2627

BD: 3/8/22 Reg: 4705907 A - 100% AR Tattoo: 2627

PIE STOCKMAN 4051 LSF SAGA 1040Y BW: 82
BIEBER STOCKMAN G270 PIE LAKOTA 046 AWW: 586
 BIEBER ROSE 327D BIEBER SPARTACUS A193 AYW: 1014
 BIEBER ROSE 507A WDA: 2.81
 ROUSE MIGHTY PACKER A52 BIEBER MIGHTY PACKER X178
LENA 6173 SCN ROUSE LENA X10
 ANN 4473 SCN 1DRA REDBIRD 903

DMPPA	Dam's Age		Adj. IMF		Adj. REA		Adj. BF		CC Score					
99	7		4.67		11.48		0.25		-					
CED	BW	WW	YW	ADG	DMI	MILK	ME	HPG	CEM	MRB	YG	CW	REA	FAT
12	-0.3	61	99	0.24	1.94	21	9	11	7	0.71	0.33	36	-0.14	0.07

- The Stockman sons are all good quality bulls. This one excels on all 3 Red Angus indexes.
- Top 3% YW, top 4% WW, top 9% CW, top 13% ProS, top 20% MARB, GM, top 22% STAY, top 26% HB, MILK, top 31% REA.
- Big time 4.67 IMF with his 11.5 in. REA.

16 COOKSLEY STOCKMAN 2620

BD: 3/3/22 Reg: 4705919 A - 100% AR Tattoo: 2620

PIE STOCKMAN 4051 LSF SAGA 1040Y BW: 65
BIEBER STOCKMAN G270 PIE LAKOTA 046 AWW: 659
 BIEBER ROSE 327D BIEBER SPARTACUS A193 AYW: 1180
 BIEBER ROSE 507A WDA: 3.24
 MUSHRUSH IMPRESSIVE CA U236 BUF CRK LANCER R017
MS IMPRESSIVE 3007 SCN MUSHRUSH MADAM LT R265
 CBR MISS DAKOTA 167-1324 SODAK OSCAR 3406/T324
 CBR MISSGOLDY 167-9106

DMPPA	Dam's Age		Adj. IMF		Adj. REA		Adj. BF		CC Score					
100	10		4.71		12.43		0.3		-					
CED	BW	WW	YW	ADG	DMI	MILK	ME	HPG	CEM	MRB	YG	CW	REA	FAT
17	-3	57	87	0.19	1.81	20	8	10	10	0.55	0.37	40	-0.17	0.08

- As strong of an individual performance ledger as any bull in the sale.
- Top 8% WW, top 13% YW, top 23% CW, top 24% STAY, top 34% MILK top 36% HB.
- Boasts a 107 ratio for both WW and YW; 4.71 IMF and 12.4 in. REA rank strong in this group.



LOT 17 - RIDGE SUMO 2092

17

RIDGE SUMO 2092

BD: 2/9/22 Reg: 4621865 A - 100% AR Tattoo: 2092

5L BLOCKADE 2218-30B
5L BODY BUILDER 4434-68D
 5L RED BIRD 411-4434
 5L TRADN SIGN 127-85W
RIDGE TESS 5309-2032
 RIDGE TESS 5166-5309

5L DEFENDER 560-30Z BW: 98
 5L OPAL 656-2218 AWW: 653
 5L CRAFTSMAN 1134-150X AYW: 1219
 5L RED BIRD 1312-411 WDA: 3.29
 5L TRADITION 203-6145
 5L ADINA 983-127
 5L OUTFITTER 97-2221
 BIEBER TESS 5166



DMPPA	Dam's Age		Adj. IMF	Adj. REA	Adj. BF	CC Score								
100	11		3.33	13.45	0.32	29/35 - 83%								
CED	BW	WW	YW	ADG	DMI	MILK	ME	HPG	CEM	MRB	YG	CW	REA	FAT
7	2.3	71	113	0.26	1.94	27	6	11	2	0.34	-0.1	15	0.28	-0.01

- A brute of a bull with added mass, power, foot, and bone. He will be a sale day favorite.
- Top 15% WW, top 18% YW, top 21% REA, top 40% MILK, STAY.
- Mashes the scales with a WW ratio of 103 and YW ratio of 104.



5L BLOCKADE 2218-30B - Paternal Grand sire of Lots 17-23

THE SONS OF BODY BUILDER





LOT 18 - RIDGE SUMO 2083

18

RIDGE SUMO 2083

BD: 2/6/22 Reg: 4621883 A - 100% AR Tattoo: 2083

5L BLOCKADE 2218-30B 5L DEFENDER 560-30Z BW: 91
5L BODY BUILDER 4434-68D 5L OPAL 656-2218 AWW: 671
 5L RED BIRD 411-4434 5L CRAFTSMAN 1134-150X AYW: 1256
 5L RED BIRD 1312-411 5L RED BIRD 1312-411 WDA: 3.43
 5L ADVANTAGE 3267-221Y BUF CRK THE RIGHT KIND U199
RIDGE LAKOTA 9085-5037 5L ADINA 195-3267
 RIDGE LAKOTA 7132-9085 MUSHRUSH LTJULIAN LG S005
 RIDGE LAKOTA 2290-7132

DMPPA	Dam's Age	Adj. IMF	Adj. REA	Adj. BF	CC Score									
98	8	7.73	13.71	0.36	25/33 - 76%									
CED	BW	WW	YW	ADG	DMI	MILK	ME	HPG	CEM	MRB	YG	CW	REA	FAT
8	0.3	61	98	0.23	1.83	26	3	13	4	0.39	0.18	19	-0.08	0.05

- Another eye-catching Body Builder son with added look and plenty of capacity. He does many things well.
- Top 3% STAY, top 12% HB, top 45% ProS, top 48% WW, top 49% YW.
- Elite 7.79 IMF ratios a 179. Ratios a 105 on both WW and YW.



5L ADVANTAGE 3267-221Y - Maternal Grand sire of Lot 18





LOT 19
RIDGE SUMO 2099

- Another in the same pattern of these Body Builder sons: eye appeal with lots of depth of body and mass. Front pasture kind.
- Top 41% MILK, top 42% MARB, top 46% REA, top 49% STAY.
- 79 lb. BW to 1131 at yearling. Ratios a 117 on his impressive 5.05 IMF.



LOT 20
RIDGE SUMO 2079

- Correct built and stout made with a big, square hip. Top-end female producing genetic profile.
- Top 1% STAY, top 5% HB, top 21% REA, top 22% MARB, top 29% ProS.
- 104 WW ratio coupled with a 13.6 in. REA for growth and cutability.



*RED MRLA RESOURCE 137E
Influential Sire & Paternal Brother to the
Dam of Lot 20*

19 **RIDGE SUMO 2099**

BD: 2/10/22 Reg: 4621851 A - 100% AR Tattoo: 2099

5L BLOCKADE 2218-30B	5L DEFENDER 560-30Z	BW: 79
5L BODY BUILDER 4434-68D	5L OPAL 656-2218	AWW: 639
5L RED BIRD 411-4434	5L CRAFTSMAN 1134-150X	AYW: 1131
RED U-2 MAGNUM 332B	5L RED BIRD 1312-411	WDA: 3.11
RED U2 LASS 499D	RED U2 MAXIM 168Z	
RED U-2 LASS 326B	RED U-2 RENEE 136L	
	RED HOWE MAGNUM 169W	
	RED U2 LASS 330W	

DMPPA	Dam's Age		Adj. IMF	Adj. REA	Adj. BF	CC Score								
99	7		5.05	13.38	0.31	21/31 - 68%								
CED	BW	WW	YW	ADG	DMI	MILK	ME	HPG	CEM	MARB	YG	CW	REA	FAT
11	0.2	53	81	0.17	1.77	27	2	10	4	0.43	-0.03	12	0.14	0

20 **RIDGE SUMO 2079**

BD: 2/6/22 Reg: 4621891 A - 100% AR Tattoo: 2079

5L BLOCKADE 2218-30B	5L DEFENDER 560-30Z	BW: 91
5L BODY BUILDER 4434-68D	5L OPAL 656-2218	AWW: 660
5L RED BIRD 411-4434	5L CRAFTSMAN 1134-150X	AYW: 1152
MRLA RELOAD 56C	5L RED BIRD 1312-411	WDA: 3.14
MRLA MISS 7351E	S A V RESOURCE 1441	
RED MRLA MISS 3316A	RED MRLA MISS 641Y	
	RED MRLA 61X	
	RED MRLA MISS 727Y	

DMPPA	Dam's Age		Adj. IMF	Adj. REA	Adj. BF	CC Score								
97	6		3.43	13.6	0.28	20/29 - 69%								
CED	BW	WW	YW	ADG	DMI	MILK	ME	HPG	CEM	MARB	YG	CW	REA	FAT
6	1.1	64	98	0.22	1.89	22	2	12	3	0.55	-0.05	3	0.26	0.02



LOT 21 - RIDGE SUMO 2104

21

RIDGE SUMO 2104

BD: 2/11/22 Reg: 4621843 A - 100% AR Tattoo: 2104

5L BLOCKADE 2218-30B
5L BODY BUILDER 4434-68D
 5L RED BIRD 411-4434
 5L ADVANTAGE 3267-221Y
RIDGE DORA 2040-5007
 RIDGE DORA 280-2040

5L DEFENDER 560-30Z BW: 87
 5L OPAL 656-2218 AWW: 664
 5L CRAFTSMAN 1134-150X AYW: 1231
 5L RED BIRD 1312-411 WDA: 3.37
 BUF CRK THE RIGHT KIND U199
 5L ADINA 195-3267
 5L TRADESMAN 1715-6237
 RIDGE DORA 366-280ET **GGP**

DMPPA	Dam's Age		Adj. IMF		Adj. REA		Adj. BF		CC Score					
100	8		4.87		16.31		0.49		26/33 - 79%					
CED	BW	WW	YW	ADG	DMI	MILK	ME	HPG	CEM	MRB	YG	CW	REA	FAT
9	0.1	69	106	0.23	1.93	24	5	13	5	0.37	-0.07	26	0.5	0.01

- Massive built from all angles. These Body Builder sons are stamped with power.
- Top 4% REA, top 20% WW, top 30%, top 41% CW.
- Big time performer: 104 ratio for WW, 103 for YW, 113 for IMF, and 115 for REA.

23

RIDGE SUMO 2040

BD: 2/2/22 Reg: 4621969 A - 100% AR Tattoo: 2040

5L BLOCKADE 2218-30B
5L BODY BUILDER 4434-68D
 5L RED BIRD 411-4434
 5L ADVANTAGE 3267-221Y
RIDGE SARA 8044-6045
 RIDGE CASEY 028-8044

5L DEFENDER 560-30Z BW: 89
 5L OPAL 656-2218 AWW: 627
 5L CRAFTSMAN 1134-150X AYW: 1036
 5L RED BIRD 1312-411 WDA: 2.86
 BUF CRK THE RIGHT KIND U199
 5L ADINA 195-3267
 5L GRAND EXPRESS 453-5655
 RIDGE CASEY 871-028 **GGP**

DMPPA	Dam's Age		Adj. IMF		Adj. REA		Adj. BF		CC Score					
104	7		5.34		12.5		0.31		26/31 - 84%					
CED	BW	WW	YW	ADG	DMI	MILK	ME	HPG	CEM	MRB	YG	CW	REA	FAT
6	0.7	63	89	0.16	1.84	27	3	13	1	0.35	-0.06	16	0.28	0

- If you feed out your own cattle, this lad can inject some marbling ability.
- Top 21% REA, top 34% MILK, top 42% WW.
- Heavy 627 lb. WW and a 5.34 IMF (ratio 124). Calves will grade out with premiums.

22

RIDGE SUMO 2102

BD: 2/10/22 Reg: 4621845 A - 100% AR Tattoo: 2102

5L BLOCKADE 2218-30B
5L BODY BUILDER 4434-68D
 5L RED BIRD 411-4434
 5L BOURNE 117-48A
RIDGE BLOCKANA 9160-8085
 RIDGE BLOCKANA R91-9160

5L DEFENDER 560-30Z BW: 94
 5L OPAL 656-2218 AWW: 649
 5L CRAFTSMAN 1134-150X AYW: 1183
 5L RED BIRD 1312-411 WDA: 3.18
 5L ADVANTAGE 3267-221Y
 5L ROXIE 854-117
 5L BLAZIN RED 1354-6166
 SHOCO BLOCKANA R91 **GGP**

DMPPA	Dam's Age		Adj. IMF		Adj. REA		Adj. BF		CC Score					
100	5		5.53		14.42		0.51		19/27 - 70%					
CED	BW	WW	YW	ADG	DMI	MILK	ME	HPG	CEM	MRB	YG	CW	REA	FAT
6	2.3	70	104	0.21	1.87	27	3	14	1	0.46	0.08	14	0.12	0.04

- Hits the marks from a growth performance and carcass quality standpoint.
- Top 17% WW, top 30% STAY, top 33% YW, top 38% MARB, top 40% MILK.
- 5.53 IMF ratios a 128. Almost 1200 lb. on YW with ratio of 102 for WW.



RIDGE CASEY 028-8044 - Maternal Granddam of Lot 23



LOT 24
RIDGE FOREMAN 2528

- He's stout in his build and will add pounds at any point you market your cattle.
- Top 9% YW, top 14% WW, top 15% MILK, top 24% CED, top 29% HB, CW, top 32% ProS.
- 76 lb. at birth with explosive growth performance: 111 ratio on weaning, 112 ratio on yearling, and 115 ratio on REA.



5L BOURNE 117-48A
Paternal Grand sire of Lots 24-27



LOT 25
RIDGE FOREMAN 2529

- Great looking on the profile while still maintaining all his functional pieces.
- Top 3% YW, top 4% WW, top 10% CW, top 28% GM, top 33% MARB.
- Excels in growth with a 103 WW ratio and a 104 YW ratio.



5L FOREMAN 2174-370E
Sire of Lots 24-28

24 **RIDGE FOREMAN 2528**

BD: 2/1/22 Reg: 4621655 A - 100% AR Tattoo: 2528

5L BOURNE 117-48A 5L ADVANTAGE 3267-221Y BW: 76
5L FOREMAN 2174-370E 5L ROXIE 854-117 AWW: 706
 5L ADINA 1551-2174 0 C C EMBLAZON 854E AYW: 1337
 RIDGE COMPASS 7087 5L ADINA 525-1551 WDA: 3.41
RIDGE BLANCHE 7601-0005 RRA IMPACT 505
 RIDGE BLANCHE 1123-7601 RIDGE LILA 8132-0017
 5L ADVANTAGE 3267-221Y RIDGE SHEILA 9015-1123

DMPPA		Dam's Age		Adj. IMF		Adj. REA		Adj. BF		CC Score				
104	3	3.38	16.28	0.39	13/23	57%								
CED	BW	WW	YW	ADG	DMI	MILK	ME	HPG	CEM	MRB	YG	CW	REA	FAT
15	-2.5	71	120	0.3	2.04	30	6	15	7	0.42	0.09	28	0.17	0.03

25 **RIDGE FOREMAN 2529**

BD: 2/2/22 Reg: 4621653 A - 100% AR Tattoo: 2529

5L BOURNE 117-48A 5L ADVANTAGE 3267-221Y BW: 76
5L FOREMAN 2174-370E 5L ROXIE 854-117 AWW: 653
 5L ADINA 1551-2174 0 C C EMBLAZON 854E AYW: 1249
 RIDGE COMPASS 7087 5L ADINA 525-1551 WDA: 3.17
RIDGE REDBIRD 1109-0069 RRA IMPACT 505
 5L REDBIRD D250-1109 RIDGE LILA 8132-0017
 5L BLAZIN RED 1354-6166 SBR RUBY 250

DMPPA		Dam's Age		Adj. IMF		Adj. REA		Adj. BF		CC Score				
101	3	4.18	13.44	0.35	11/23	48%								
CED	BW	WW	YW	ADG	DMI	MILK	ME	HPG	CEM	MRB	YG	CW	REA	FAT
10	0.6	79	131	0.32	1.98	25	4	15	1	0.47	0.16	36	0.11	0.03

LOT 26 - RIDGE FOREMAN 2530



5L ADVANTAGE 3267-221Y
3rd Generation Sire of Lots 24-28

- Combines look and power in a striking package. He'll get your attention. Look at that muscular quarter!
- Top 17% REA, CW, top 18% MILK, top 20% WW, top 23% YW, top 28% MARB, top 34% GM.
- Mashed the scales for a 109 WW ratio and 104 YW ratio. 5.24 IMF and 15.3 in. REA are near the tops of the pen in both traits.

LOT 27 - RIDGE FOREMAN 2533



RIDGE COMPASS 7087
Maternal Grandsire of Lots 24-27

- Big middled, high performing anchor of the 5L Foreman sire group.
- Top 12% WW, top 13% YW, top 19% MILK, top 23% MARB, top 30% REA, top 34% CED.
- Excellent in his individual performance: 110 WW ratio, 107 YW ratio, 102 IMF ratio, 103 REA ratio.

26

RIDGE FOREMAN 2530

BD: 2/4/22 Reg: 4621651 A - 100% AR Tattoo: 2530

5L BOURNE 117-48A	5L ADVANTAGE 3267-221Y	BW: 91
5L FOREMAN 2174-370E	5L ROXIE 854-117	AWW: 696
5L ADINA 1551-2174	O C C EMBLAZON 854E	AYW: 1239
RIDGE COMPASS 7087	5L ADINA 525-1551	WDA: 3.17
RIDGE FIREFLY 724-002Z	RRA IMPACT 505	
5L FIREFLY 1651-724	RIDGE LILA 8132-0017	
	5L CRAFTSMAN 1134-150X	
	5L FIREFLY 174-1651 ET	

DMPPA	Dam's Age		Adj. IMF	Adj. REA	Adj. BF	CC Score								
104	3		5.24	15.34	0.28	10/23 - 43%								
CED	BW	WW	YW	ADG	DMI	MILK	ME	HPG	CEM	MRB	YG	CW	REA	FAT
8	1.4	69	109	0.25	2.07	29	6	14	1	0.5	0	32	0.3	0

27

RIDGE FOREMAN 2533

BD: 2/5/22 Reg: 4621647 A - 100% AR Tattoo: 2533

5L BOURNE 117-48A	5L ADVANTAGE 3267-221Y	BW: 88
5L FOREMAN 2174-370E	5L ROXIE 854-117	AWW: 698
5L ADINA 1551-2174	O C C EMBLAZON 854E	AYW: 1278
RIDGE COMPASS 7087	5L ADINA 525-1551	WDA: 3.27
RIDGE SANDI 102T-0001	RRA IMPACT 505	
DAHLKE MISSION SANDI 102T	RIDGE LILA 8132-0017	
	LJC MISSION STATEMENT P27	
	DAHLKE NYACK SANDY	

DMPPA	Dam's Age		Adj. IMF	Adj. REA	Adj. BF	CC Score								
104	3		4.4	14.51	0.38	11/23 - 48%								
CED	BW	WW	YW	ADG	DMI	MILK	ME	HPG	CEM	MRB	YG	CW	REA	FAT
14	-0.7	73	117	0.28	2.18	29	9	13	6	0.53	-0.02	13	0.22	0.01



LOT 28
RIDGE GOT R DONE 2602

- Smooth made with that easy keeping look to him. He made the grade on performance traits.
- Top 1% MILK, top 3% CED, top 9% GM, top 14% MARB, top 24% YW, top 25% REA, top 27% CEM.
- Over 1200 lb. at yearling combined with a 120 IMF ratio (5.57) and 106 REA ratio (14.4 in.)
- Dam is a **CORNERSTONE COW**.



5L TOPGUN 560-65B

Sire of influence throughout the offering!



LOT 29
RIDGE SIGNATURE 2608

- Lots of eye appeal with plenty of power in this 5L Signature son.
- Top 5% MILK, top 15% STAY, HB.
- 14.0 REA and over 4.5 on his IMF make him a scan data standout.



RIDGE LARKABA 742-7151

Dam of Lot 29

28 **RIDGE GOT R DONE 2602**
BD: 2/25/22 Reg: 4642885 A - 100% AR Tattoo: 2602

BECKTON LIKABLE C643 L3	BECKTON LIKABLE U130 L2	BW: 90
5L GOT R DONE 2146-313F	BECKTON MINOLA X107 L	AWW: 654
5L DYNABELLE 1804-2146	5L TOPGUN 560-65B	AYW: 1210
RED YY RED KNIGHT 640F	5L DYNABELLE 921-1804	WDA: 3.37
MLK CRK LAKOTA 709	RED YY 23L TOPPER 408D	
MLK CRK LAKOTA 301	RED TOP GOLDIE 40U	
	MLK CRK FOUNDATION 110	
	MLK CRK LAKOTA 112-RAMB	

DMPPA	Dam's Age		Adj. IMF	Adj. REA	Adj. BF	CC Score								
104	16		5.57	14.44	0.34	32/35 - 91%								
CED	BW	WW	YW	ADG	DMI	MILK	ME	HPG	CEM	MRB	YG	CW	REA	FAT
18	-0.7	64	110	0.29	1.22	35	3	13	8	0.61	0.01	20	0.24	0.02

29 **RIDGE SIGNATURE 2608**
BD: 3/1/22 Reg: 4642865 A - 100% AR Tattoo: 2608

5L SIGNATURE 5615	5L NORSEMAN KING 2291	BW: 102
5L SIGNATURE 2846-266V	5L RUBY 199-01	AWW: 584
5L LASSIE 873-2846	5L FIRE KING 32-6262	AYW: 1178
5L NORMANDY CANYON 6024	5L LASSIE 238-873	WDA: 3.3
RIDGE LARKABA 742-7151	LCHMN GRANDCANYON 1244G	
BLUE RIDGE LARKABA	NORSEMAN 1312 PJM	
	BLUE RIDGE LOGGER	
	BLUE RIDGE GALENA 160	

DMPPA	Dam's Age		Adj. IMF	Adj. REA	Adj. BF	CC Score								
103	16		4.58	13.96	0.35	31/35 - 89%								
CED	BW	WW	YW	ADG	DMI	MILK	ME	HPG	CEM	MRB	YG	CW	REA	FAT
9	0.8	59	93	0.22	1.25	33	-4	12	5	0.19	0.01	14	0.11	0.01

30

RIDGE TOP GUN 2510

BD: 1/28/22 Reg: 4621689 A - 100% AR Tattoo: 2510

5L TOPGUN 560-65B
RIDGE TOPGUN 9513
 RIDGE AQUILA 552-8066
 RIDGE EMPIRE 0028
RIDGE BLOCKANA 8085-0412
 RIDGE BLOCKANA 9160-8085

5L ADVANTAGE 3267-221Y
 5L BLACK ADINA 525-560
 5L NORMANDY CANYON 6024
 RIDGE AQUILA 213-552
 5L GRAND EXPRESS 453-5655
 BARGER F7
 5L BOURNE 117-48A
 RIDGE BLOCKANA R91-9160

BW: 67
 AWW: 659
 AYW: 1227
 WDA: 3.1


DMPPA	Dam's Age		Adj. IMF		Adj. REA		Adj. BF		CC Score					
101	3		4.01		15.33		0.3		12/23 - 52%					
CED	BW	WW	YW	ADG	DMI	MILK	ME	HPG	CEM	MRB	YG	CW	REA	FAT
17	-5.2	53	78	0.16	1.52	26	-3	12	9	0.28	-0.01	12	0.18	0.01

- Soars to the top of this group when you combine his build and calving ease genetic profile.
- Top 5% BW, top 8% CED, top 21% CEM, top 35% HB, top 40% REA.
- 67 lb. birth weight to ratioing 103 for WW and YW, this dude has some curve bending potential.



LOT 30 - RIDGE TOP GUN 2510

31

RIDGE BUCKAROO 2514

BD: 1/29/22 Reg: 4621681 A - 100% AR Tattoo: 2514

5L WRANGLER 1974-166E
5L BUCKAROO 677-24G
 5L ADINA 945-677
 MLK CRK STEWARD 6264
RIDGE AQUILA 4336-0133
 RIDGE AQUILA 552-4336

5L GAME ON 703-50C
 5L SUNBURST 6120-1974
 5L BOURNE 117-48A
 5L ADINA 3267-945
 MLK CRK ADVOCATE 4304
 MLK CRK SUN GAL 2122
 MLK CRK EXPRESS 9127
 RIDGE AQUILA 213-552

BW: 71
 AWW: 668
 AYW: 1225
 WDA: 3.1


DMPPA	Dam's Age		Adj. IMF		Adj. REA		Adj. BF		CC Score					
102	3		4.2		13.13		0.31		12/23 - 52%					
CED	BW	WW	YW	ADG	DMI	MILK	ME	HPG	CEM	MRB	YG	CW	REA	FAT
12	-1.8	67	109	0.26	1.77	27	4	12	6	0.44	0.14	15	-0.11	0.03

- Brings balanced genetics and a strong individual growth profile.
- Top 24% YW, STAY, top 25% WW, top 27% HB, top 34% MILK.
- Measures up with a 105 WW ratio and 102 YW ratio.



RIDGE AQUILA 552-8066 - Paternal Granddam of Lot 30


32

RIDGE EMBLAZON 2505

BD: 1/25/22 Reg: 4621699 A - 100% AR Tattoo: 2505

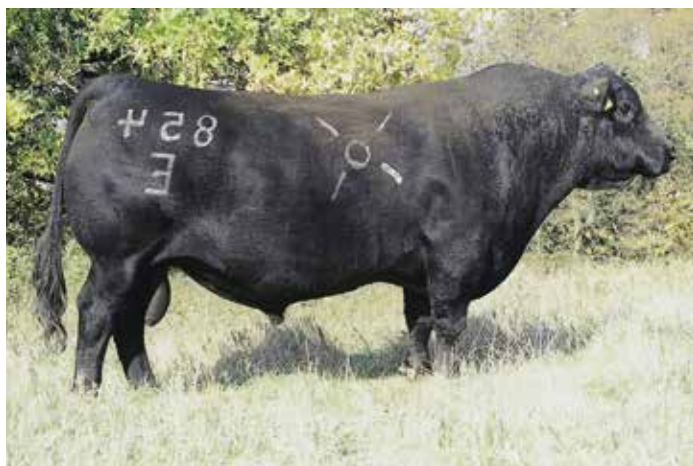
O C C EMBLAZON 854E
5L EMBLAZON 117-51F
 5L ROXIE 854-117
 RIDGE OAK CANYON 3506
RIDGE BLACKBIRD 2103-0062
 RIDGE BLACKBIRD 9008-2103

D H D TRAVELER 6807
 DIXIE ERICA OF C H 1019
 5L SIGNATURE 5615
 XXX ROXIE 854 MR
 5L NORMANDY CANYON 6024
 BAR-V MISS DESIGN 022B
 5L LEGEND 1553-425V
 RIDGE BLACKBIRD 285-9008

BW: 72
 AWW: 684
 AYW: 1172
 WDA: 2.98


DMPPA	Dam's Age		Adj. IMF		Adj. REA		Adj. BF		CC Score					
103	3		3.8		13.35		0.31		13/23 - 57%					
CED	BW	WW	YW	ADG	DMI	MILK	ME	HPG	CEM	MRB	YG	CW	REA	FAT
15	-3.3	48	74	0.17	1.87	26	6	16	5	0.31	0.03	0	0.02	0.03

- Heifer safe option that adds some maternal traits to sire the keeping kind.
- Top 17% CED, top 23% BW, top 39% STAY, top 45% MILK.
- Explosive growth to weaning yielded a 107 ratio.



O C C EMBLAZON 854E - Legendary Paternal Grandsire of Lot 32



LOT 33 - RIDGE PRAGMATIC 2101



RIDGE SHEILA 009-2088 - Paternal Granddam of Lots 33-35



RIDGE STEWARD 1047 - Maternal Brother to Lot 35



AHF LAKOTA 170Y - Maternal Granddam of Lot 35

33 **RIDGE PRAGMATIC 2101**

BD: 2/10/22 Reg: 4621847 A - 100% AR Tattoo: 2101

5L TOPGUN 560-65B
RIDGE PRAGMATIC 6098
 RIDGE SHEILA 009-2088

5L LEGEND 1553-425V
RIDGE CASEY 9071-4050
 RIDGE CASEY 155-9071

5L ADVANTAGE 3267-221Y
 5L BLACK ADINA 525-560
 5L LEGEND 1553-425V
 RIDGE SHEILA 009

5L LAKOTA LEGEND 7074
 5L HAZEL 45L-1553
 5L SIGNATURE 5615
 RIDGE CASEY F7-155

BW: 84
 AWW: 651
 AYW: 1247
 WDA: 3.41

GGP

DMPPA	Dam's Age	Adj. IMF	Adj. REA	Adj. BF	CC Score
104	9	3.14	13.82	0.27	30/35 - 86%

CED	BW	WW	YW	ADG	DMI	MILK	ME	HPG	CEM	MRB	YG	CW	REA	FAT
12	-1.4	61	94	0.21	1.8	27	-2	19	5	0.27	0.01	16	0.27	0.03

- Big time herd bull look with this guy. He catches your attention every time in the pens.
- Top 21% REA, top 39% MILK, top 41% HB, top 49% WW.
- Ratios of 102 for weaning and 107 for yearling. He'll add payweight to your calf crop.

34 **RIDGE PRAGMATIC 2043**

BD: 2/2/22 Reg: 4621963 A - 100% AR Tattoo: 2043

5L TOPGUN 560-65B
RIDGE PRAGMATIC 6098
 RIDGE SHEILA 009-2088

5L LEGEND 1553-425V
RIDGE DESIGN LASS 1134-3405
 RIDGE DESIGN LASS 7116-1134

5L ADVANTAGE 3267-221Y
 5L BLACK ADINA 525-560
 5L LEGEND 1553-425V
 RIDGE SHEILA 009

5L LAKOTA LEGEND 7074
 5L HAZEL 45L-1553
 MLK CRK SIGNATURE 9220
 RIDGE DESIGN LASS 515-7116

BW: 76
 AWW: 606
 AYW: 1170
 WDA: 3.15

GGP

DMPPA	Dam's Age	Adj. IMF	Adj. REA	Adj. BF	CC Score
99	10	3.72	13.31	0.48	27/35 - 77%

CED	BW	WW	YW	ADG	DMI	MILK	ME	HPG	CEM	MRB	YG	CW	REA	FAT
14	-2.8	59	98	0.24	1.51	26	-5	19	8	0.21	0.05	28	0.29	0.03

- A unique combination of calving ease and carcass yield in his genetic profile.
- Top 20% REA, top 27% HB, top 30% CED, top 32% CW, top 33% BW.
- Only 76 lb. at birth and still posts a 13.3 in. REA on his scan data.

35 **RIDGE PRAGMATIC 2057**

BD: 2/4/22 Reg: 4621935 A - 100% AR Tattoo: 2057

5L TOPGUN 560-65B
RIDGE PRAGMATIC 6098
 RIDGE SHEILA 009-2088

RED U2 MALBEC 195D
RIDGE LAKOTA 170Y-8129
 AHF LAKOTA 170Y

5L ADVANTAGE 3267-221Y
 5L BLACK ADINA 525-560
 5L LEGEND 1553-425V
 RIDGE SHEILA 009

RED U-2 RECKONING 149A
 RED U-2 MABEL 60A
 5L BLAZIN RED 1354-6166
 AHF LAKOTA 5133

BW: 81
 AWW: 660
 AYW: 1205
 WDA: 3.23

GGP

DMPPA	Dam's Age	Adj. IMF	Adj. REA	Adj. BF	CC Score
104	5	3.78	15.5	0.21	22/27 - 81%

CED	BW	WW	YW	ADG	DMI	MILK	ME	HPG	CEM	MRB	YG	CW	REA	FAT
10	-1.3	62	93	0.2	1.54	27	-7	16	6	0.37	-0.05	13	0.19	0

- High ranking on the Herd Builder Index makes him a great candidate for raising premium replacement heifers that can top any bred female sale.
- Top 14% HB, top 39% MILK, REA, top 44% ProS, top 47% WW.
- 104 ratio at weaning, 101 at yearling, and 110 ratio on his 15.5 in. REA.



**RIDGE
DECISION 1605**
Maternal Brother
to Dam of Lot 36



**RIDGE
ZEPPELIN 0531**
Maternal Brother
to Lot 36

36 **RIDGE RAD 2516**
BD: 1/29/22 Reg: 4621677 A - 100% AR Tattoo: 2516

5L DEFENDER 560-30Z RIDGE RAD 9075 RIDGE CASEY 978-8034	5L ADVOCATE 817-14W 5L BLACK ADINA 525-560 5L GRAND EXPRESS 453-5655 OTT-CASEY-F412-978	BW: 69 AWW: 638 AYW: 1145 WDA: 2.88
RED WINDY HILL ZEPPELIN 1240 RIDGE FUSCHIA 3668-0530 5L FUSCHIA 643-3668	RED MRLA 61X RED WINDY HILL M NALPOEON 50 5L EXPLORER 589-7414 5L FUSCHIA 27-643	

DMPPA	Dam's Age	Adj. IMF	Adj. REA	Adj. BF	CC Score									
100	3	3.96	14.23	0.33	12/23 - 52%									
CED	BW	WW	YW	ADG	DMI	MILK	ME	HPG	CEM	MRB	YG	CW	REA	FAT
14	-2	59	88	0.18	1.71	30	-3	11	7	0.6	0.02	21	0.16	0.01

- Low birth weight option with balance across the rest of his genetics.
- Top 17% MILK, MARB, top 29% CED, top 45% GM, WW.
- 69 lb. at birth and still weaned off in the top end of this offering.

38 **RIDGE RAD 2534**
BD: 2/5/22 Reg: 4621645 A - 100% AR Tattoo: 2534

5L DEFENDER 560-30Z RIDGE RAD 9075 RIDGE CASEY 978-8034	5L ADVOCATE 817-14W 5L BLACK ADINA 525-560 5L GRAND EXPRESS 453-5655 OTT-CASEY-F412-978	BW: 77 AWW: 662 AYW: 1065 WDA: 2.72
RED WINDY HILL ZEPPELIN 1240 RIDGE FUSCHIA 3668-0529 5L FUSCHIA 643-3668	RED MRLA 61X RED WINDY HILL M NALPOEON 50 5L EXPLORER 589-7414 5L FUSCHIA 27-643	

DMPPA	Dam's Age	Adj. IMF	Adj. REA	Adj. BF	CC Score									
102	3	3.86	13.37	0.2	11/23 - 48%									
CED	BW	WW	YW	ADG	DMI	MILK	ME	HPG	CEM	MRB	YG	CW	REA	FAT
15	-2.2	57	81	0.14	1.79	29	-2	11	7	0.43	-0.07	15	0.26	0

- Strong weaning growth for those who market their calves at that stage.
- Top 17% MILK, 19% CED, top 25% REA, top 42% MARB, top 43% BW.
- Tallied a 104 WW ratio as well as a strong 13.4 in. REA at scan.

37 **RIDGE RAD 2517**
BD: 1/30/22 Reg: 4621675 A - 100% AR Tattoo: 2517

5L DEFENDER 560-30Z RIDGE RAD 9075 RIDGE CASEY 978-8034	5L ADVOCATE 817-14W 5L BLACK ADINA 525-560 5L GRAND EXPRESS 453-5655 OTT-CASEY-F412-978	BW: 75 AWW: 628 AYW: 1130 WDA: 2.86
5L VIGILANTE 2674-11D RIDGE BLOCKANA 8151-0408 RIDGE BLOCKANA 3106-8151	5L BOURNE 117-48A 5L OPAL 930-2674 RIDGE OAK CANYON 3506 MLK CRK BLOCKANA 3106	

DMPPA	Dam's Age	Adj. IMF	Adj. REA	Adj. BF	CC Score									
100	3	6.73	13.2	0.23	10/23 - 43%									
CED	BW	WW	YW	ADG	DMI	MILK	ME	HPG	CEM	MRB	YG	CW	REA	FAT
15	-1.4	58	87	0.19	1.55	27	-1	11	6	0.51	-0.01	1	0.18	0.03

- Solid performing bull that is a marbling outlier. Will work great selling steers on premium grids.
- Top 19% CED, top 26% MARB, top 40% REA, top 41% MILK.
- 6.73 IMF ratios at a 156 in this sale offering.

39 **RIDGE RAD 2536**
BD: 2/8/22 Reg: 4621641 A - 100% AR Tattoo: 2536

5L DEFENDER 560-30Z RIDGE RAD 9075 RIDGE CASEY 978-8034	5L ADVOCATE 817-14W 5L BLACK ADINA 525-560 5L GRAND EXPRESS 453-5655 OTT-CASEY-F412-978	BW: 99 AWW: 651 AYW: 1254 WDA: 3.19
RED U2 RESOLVE 428E RIDGE MS ROBO 36E-0018 RED US MS ROBO 36E	RED U-2 RENOWN 193C RED U-2 MS ROBO 361A RED MINBURN COPENHAGEN 3Y RED FLYING K MS ROBO 80K	

DMPPA	Dam's Age	Adj. IMF	Adj. REA	Adj. BF	CC Score									
101	3	4.12	15.76	0.23	8/23 - 35%									
CED	BW	WW	YW	ADG	DMI	MILK	ME	HPG	CEM	MRB	YG	CW	REA	FAT
8	1	58	93	0.21	1.52	26	-5	9	2	0.2	-0.01	12	0.2	0.01

- An ideal candidate for use on mature cows to add power and pounds to steer calves.
- Top 32% REA, top 43% MILK.
- Solid performance ledger: 102 WW ratio, 105 YW ratio, 112 REA ratio, and a 4+ IMF.



5L DEFENDER 560-30Z
Paternal Grand sire of
Lots 36-39



**RIDGE
CASEY 978-8034**
Paternal Grand dam
of Lots 36-39



LOT 40 - RIDGE ARSON 2611

40

RIDGE ARSON 2611

BD: 3/14/22 Reg: 4642857 A - 100% AR Tattoo: 2611

RED SSS ARSENAL 271S	5L NORSEMAN KING 2291	BW: 85
RED SSS ARSON 85U	SSS DYLAN'S VALENTINE	AWW: 667
RED SSS SCAARA 951L	SSS TRAVELER 362J	AYW: 1060
SELL COPPERTOP 608	RED SSS SCAARA 16H	WDA: 2.99
OTT-MONA-758-970	BUF CRK COPPERTOP 75A	
OTT-MONA-303-758	BUF CRK SUNFLOWER 247	
	MSJ-HVN BUST-980-508	
	TONI 1	

DMPPA	Dam's Age	Adj. IMF	Adj. REA	Adj. BF	CC Score									
106	24	3.67	11.57	0.28	33/35 - 94%									
CED	BW	WW	YW	ADG	DMI	MILK	ME	HPG	CEM	MRB	YG	CW	REA	FAT
16	-4.1	30	45	0.1	1.43	32	-1	4	10	0.22	0.07	2	-0.17	0.02

- This dude can set your cow herd on fire with his look and substance.
- Top 3% CEM, top 7% MILK, top 8% STAY, top 11% CED, top 13% BW. Top 31% HB.
- Hit the scales hard at weaning, plus adds a 103 IMF ratio.
- Dam is a **CORNERSTONE COW**.



RED SSS ARSON 85U - Sire of Lot 40

ARSON SON WITH ELITE CALVING EASE CREDENTIALS!



LOT 41 - RIDGE REDMAN 2051

41

RIDGE REDMAN 2051

BD: 2/3/22 Reg: 4621947 A - 100% AR Tattoo: 2051

5L NORSEMAN KING 2291
RED RMJ REDMAN 1T
 CROWFOOT KURUBA 4033P

5L AVALANCHE 525-1014
RIDGE LILA 8132-0017
 RIDGE LILA 101-8132

VGW KING OF THE WEST
 NORSEMAN 1312 PJM
 O C C HUNTER 928H
 RED CROWFOOT KURUBA 2030M
 5L AMBUSH 587-5292
 5L ADINA 293-525
 5L GRAND EXPRESS 453-5655
 RIDGE LILA 979-101

BW: 91
 AWW: 671
 AYW: 1271
 WDA: 3.46

DMPPA		Dam's Age		Adj. IMF		Adj. REA		Adj. BF		CC Score				
106		13		4.39		13.1		0.43		32/35-91%				
CED	BW	WW	YW	ADG	DMI	MILK	ME	HPG	CEM	MRB	YG	CW	REA	FAT
15	-3.4	51	80	0.19	1.31	28	-1	11	9	0.48	-0.13	4	0.33	0



RED RMJ REDMAN 1T - Sire of Lot 41

- An elite opportunity presents itself in this bull with his outstanding phenotype and as unique of a genetic profile as you will find in this sale book.
- Top 5% HB, top 6% STAY, top 10% CEM, top 13% ProS, top 15% REA, top 20% CED, top 22% BW, top 31% MILK, top 33% MARB.
- 110 IMF ratio is one of the best in this sale. Big time weaning and growth performance as well.
- Dam is a **CORNERSTONE COW**.
- Sandbur Ridge Red Angus reserves the right to 200 units of semen for in herd use prior to delivery at no additional expense to the buyer.

REDMAN SON WITH THE HERD BULL LOOK!



LOT 42
RIDGE PASSPORT 2037

- Balances up a perfect profile with the ruggedness of a herd bull.
- Top 4% YW, top 5% WW, top 15% REA, top 18% MILK, GM, top 19% CW, top 26% MARB, top 31% ProS.
- Scale crusher: 111 WW ratio, 113 YW ratio, 110 REA ratio.



RIDGE COMPASS 7087
Sire of Lots 42-49



MLK CREEK SHEBA 403
Maternal Granddam of Lot 42

LOT 43
RIDGE PASSPORT 2080

- Soggy rascal with plenty of depth and rib, standing on a good foot.
- Top 18% WW, top 25% MILK, top 26% HB, top 31% YW, top 34% MARB.
- Performed strong with his 103 WW ratio, 104 YW ratio, and 107 REA ratio.

42 **RIDGE PASSPORT 2037**
BD: 2/1/22 Reg: 4621973 A - 100% AR Tattoo: 2037

RRA IMPACT 505
RIDGE COMPASS 7087
RIDGE LILA 8132-0017
5L ADVANTAGE 3267-221Y
BIRNIE SHEBA 403-905G
MLK CRK SHEBA 403

RED SSS SOLDIER 365W
RRA RACHEL 746 144
5L AVALANCHE 525-1014
RIDGE LILA 101-8132
BUF CRK THE RIGHT KIND U199
5L ADINA 195-3267
GLACIER CHATEAU 744
MLK CRK SHEBA 055

BW: 91
AWW: 709
AYW: 1347
WDA: 3.53

GGP

DMPPA	Dam's Age		Adj. IMF	Adj. REA	Adj. BF	CC Score								
103	4		3.44	15.59	0.4	20/25 - 80%								
CED	BW	WW	YW	ADG	DMI	MILK	ME	HPG	CEM	MRB	YG	CW	REA	FAT
8	2	78	129	0.32	1.85	29	4	12	4	0.52	0.02	31	0.32	0.01

43 **RIDGE PASSPORT 2080**
BD: 2/6/22 Reg: 4621889 A - 100% AR Tattoo: 2080

RRA IMPACT 505
RIDGE COMPASS 7087
RIDGE LILA 8132-0017
5L ADVANTAGE 3267-221Y
RIDGE SHEILA 1123-9506
RIDGE SHEILA 9015-1123

RED SSS SOLDIER 365W
RRA RACHEL 746 144
5L AVALANCHE 525-1014
RIDGE LILA 101-8132
BUF CRK THE RIGHT KIND U199
5L ADINA 195-3267
MUSHRUSH LTJULIAN LG S005
RIDGE SHEILA 009-9015

BW: 76
AWW: 658
AYW: 1246
WDA: 3.26

GGP

DMPPA	Dam's Age		Adj. IMF	Adj. REA	Adj. BF	CC Score								
97	4		3.64	15.07	0.39	19/25 - 76%								
CED	BW	WW	YW	ADG	DMI	MILK	ME	HPG	CEM	MRB	YG	CW	REA	FAT
14	-1.7	69	105	0.22	1.52	28	0	12	7	0.47	0.13	26	-0.01	0.02



RRA IMPACT 505
Paternal Grand sire of Lots 42-50

LOT 44 - RIDGE PASSPORT 2022

44 RIDGE PASSPORT 2022
BD: 1/31/22 Reg: 4622003 A - 100% AR Tattoo: 2022

RRA IMPACT 505
RIDGE COMPASS 7087
RIDGE LILA 8132-0017
5L BODY BUILDER 4434-68D
RIDGE MONA 740-9017
RIDGE MONA 303-740

RED SSS SOLDIER 365W
RRA RACHEL 746 144
5L AVALANCHE 525-1014
RIDGE LILA 101-8132
5L BLOCKADE 2218-30B
5L RED BIRD 411-4434
5L NORSEMAN KING 2291 TONI 1

BW: 93
AWW: 741
AYW: 1467
WDA: 3.84
GGP

DMPPA	Dam's Age	Adj. IMF	Adj. REA	Adj. BF	CC Score									
102	4	4.05	16.22	0.25	18/25 - 72%									
CED	BW	WW	YW	ADG	DMI	MILK	ME	HPG	CEM	MRB	YG	CW	REA	FAT
7	3.7	83	144	0.38	2.4	30	9	12	3	0.35	-0.14	47	0.7	-0.03

- This Compass son back on a Body Builder cow is perfect for adding plenty of pounds to his progeny.
- Top 1% WW, YW, REA, top 2% CW, top 10% GM, top 13% MILK.
- Some of the top ratios in the sale: 116 for WW, 123 for YW, and 115 for REA.

46 RIDGE PASSPORT 2004
BD: 1/26/22 Reg: 4622035 A - 100% AR Tattoo: 2004

RRA IMPACT 505
RIDGE COMPASS 7087
RIDGE LILA 8132-0017
RIDGE PROVISION 6013
RIDGE BLOCKANA 9004-9091
RIDGE BLOCKANA R91-9004

RED SSS SOLDIER 365W
RRA RACHEL 746 144
5L AVALANCHE 525-1014
RIDGE LILA 101-8132
5L ADVANTAGE 3267-221Y
RIDGE MONA 8162-2057
5L SIGNATURE 5615
SHOCO BLOCKANA R91

BW: 79
AWW: 666
AYW: 1253
WDA: 3.26
GGP

DMPPA	Dam's Age	Adj. IMF	Adj. REA	Adj. BF	CC Score									
98	4	5.68	13.06	0.32	18/25 - 72%									
CED	BW	WW	YW	ADG	DMI	MILK	ME	HPG	CEM	MRB	YG	CW	REA	FAT
10	0.5	70	116	0.29	1.8	29	2	13	4	0.51	-0.05	29	0.42	0

- Will add carcass merit to your stock without backing off the growth potential.
- Top 7% REA, top 15% YW, top 17% GM, top 19% MILK, top 20% WW, top 24% CW, top 26% MARB, top 31% ProS.
- 105 ratio on both WW and YW. Hard to beat his 5.68 IMF that ratios at 132!

45 RIDGE PASSPORT 2003
BD: 1/24/22 Reg: 4622037 A - 100% AR Tattoo: 2003

RRA IMPACT 505
RIDGE COMPASS 7087
RIDGE LILA 8132-0017
5L BOURNE 117-48A
RIDGE SARA 3027-8051
RIDGE CASEY 9071-3027

RED SSS SOLDIER 365W
RRA RACHEL 746 144
5L AVALANCHE 525-1014
RIDGE LILA 101-8132
5L ADVANTAGE 3267-221Y
5L ROXIE 854-117
ARO LEGEND 916
RIDGE CASEY 155-9071

BW: 84
AWW: 748
AYW: 1207
WDA: 3.27
GGP

DMPPA	Dam's Age	Adj. IMF	Adj. REA	Adj. BF	CC Score									
99	5	4.77	12.43	0.31	20/27 - 74%									
CED	BW	WW	YW	ADG	DMI	MILK	ME	HPG	CEM	MRB	YG	CW	REA	FAT
10	-0.8	70	108	0.24	2.12	30	6	15	3	0.65	0.11	25	0.23	0.05

- Big growth and IMF; perfect combo for making profitable feeder cattle.
- Top 11% MARB, top 14% MILK, top 16% WW, top 26% YW, REA.
- Whopping 117 WW ratio, plus a 101 at yearling. IMF ratio of 111 on his 4.77 scan.

47 RIDGE PASSPORT 2066
BD: 2/5/22 Reg: 4621917 A - 100% AR Tattoo: 2066

RRA IMPACT 505
RIDGE COMPASS 7087
RIDGE LILA 8132-0017
5L GAME ON 703-50C
BIRNIE COCA-619D-906G
BIRNIE COCA 264Z-619D

RED SSS SOLDIER 365W
RRA RACHEL 746 144
5L AVALANCHE 525-1014
RIDGE LILA 101-8132
5L DEFENDER 560-30Z
5L RUBY 51-703
5L ADVANTAGE 3267-221Y
BIRNIE COCA 129-264Z

BW: 88
AWW: 729
AYW: 1349
WDA: 3.55
GGP

DMPPA	Dam's Age	Adj. IMF	Adj. REA	Adj. BF	CC Score									
101	4	4.06	14.48	0.4	17/25-68%									
CED	BW	WW	YW	ADG	DMI	MILK	ME	HPG	CEM	MRB	YG	CW	REA	FAT
8	0.6	70	113	0.27	1.99	27	5	12	3	0.52	0.02	30	0.37	0.02

- Powerhouse growth bull, the calling card of this sire line.
- Top 11% REA, top 17% WW, top 18% YW, top 24% CW, top 26% MARB, top 33% MILK, GM.
- Ratioed 114 for WW, 113 for YW, and 102 for REA.



RIDGE AUTHENTIC 0021 - Maternal Brother to Dam of Lot 50

48

RIDGE PASSPORT 2111

BD: 2/16/22 Reg: 4621829 A - 100% AR Tattoo: 2111

RRA IMPACT 505
RIDGE COMPASS 7087
 RIDGE LILA 8132-0017
 RIDGE PROVISION 6013
RIDGE MONA 8075-8068
 RIDGE MONA 303-8075

RED SSS SOLDIER 365W
 RRA RACHEL 746 144
 5L AVALANCHE 525-1014
 RIDGE LILA 101-8132
 5L ADVANTAGE 3267-221Y
 RIDGE MONA 8162-2057
 RAVISHING 191 GR PRIX 66
 TONI 1

BW: 90
 AWW: 684
 AYW: 1092
 WDA: 2.98

GGP

DMPPA	Dam's Age					Adj. IMF	Adj. REA					Adj. BF	CC Score	
97	5					4.62	12.27					0.21	18/27 - 67%	
CED	BW	WW	YW	ADG	DMI	MILK	ME	HPG	CEM	MRB	YG	CW	REA	FAT
8	2.1	71	109	0.24	1.93	28	-1	14	3	0.54	0.07	30	0.21	0.02

- Will add value for you to weaning and have the feeders wanting his steers to sell on the grid.
- Top 16% WW, top 21% CW, top 23% MARB, top 26% YW, top 28% MILK, top 32% REA.
- 684 lb. WW ratios at 108, with a standout 4.62 IMF ratioing at 125.

50

RIDGE PASSPORT 2077

BD: 2/6/22 Reg: 4621895 A - 100% AR Tattoo: 2077

RRA IMPACT 505
RIDGE COMPASS 7087
 RIDGE LILA 8132-0017
 RED U2 MALBEC 195D
RIDGE LAKOTA 912-9104
 MLK CRK LAKOTA 912

RED SSS SOLDIER 365W
 RRA RACHEL 746 144
 5L AVALANCHE 525-1014
 RIDGE LILA 101-8132
 RED U-2 RECKONING 149A
 RED U-2 MABEL 60A
 5L GRAND EXPRESS 453-5655
 MLK CRK LAKOTA 066

BW: 76
 AWW: 658
 AYW: 1209
 WDA: 3.17

GGP

DMPPA	Dam's Age					Adj. IMF	Adj. REA					Adj. BF	CC Score	
99	4					4.35	12.49					0.3	18/25 - 72%	
CED	BW	WW	YW	ADG	DMI	MILK	ME	HPG	CEM	MRB	YG	CW	REA	FAT
9	-0.2	70	106	0.22	1.73	28	0	12	4	0.38	0	20	0.16	0

- Same quality and performance as his half brothers in a little different looking package.
- Top 6% STAY, top 10% HB, top 18% WW, top 26% MILK, top 32% YW, top 35% ProS.
- 103 WW ratio, 101 ratio for both YW and IMF.



49

RIDGE PASSPORT 2144

BD: 3/4/22 Reg: 4621765 A - 100% AR Tattoo: 2144

RRA IMPACT 505
RIDGE COMPASS 7087
 RIDGE LILA 8132-0017
 5L BODY BUILDER 4434-68D
RIDGE LILA 0017-9512
 RIDGE LILA 8132-0017

RED SSS SOLDIER 365W
 RRA RACHEL 746 144
 5L AVALANCHE 525-1014
 RIDGE LILA 101-8132
 5L BLOCKADE 2218-30B
 5L RED BIRD 411-4434
 5L AVALANCHE 525-1014
 RIDGE LILA 101-8132

BW: 82
 AWW: 775
 AYW: 1311
 WDA: 3.52

GGP

DMPPA	Dam's Age					Adj. IMF	Adj. REA					Adj. BF	CC Score	
109	4					3.86	14.41					0.29	21/25 - 84%	
CED	BW	WW	YW	ADG	DMI	MILK	ME	HPG	CEM	MRB	YG	CW	REA	FAT
10	0.1	73	119	0.28	2.43	33	10	12	4	0.44	-0.04	24	0.36	0.01

- All-around performer that still hammers the scales like all the bulls in this sire group do.
- Top 3% MILK, top 10% WW, YW, REA, top 40% MARB.
- Highest WW ratio in the entire sale at 122. Still dominates other traits with a 112 YW ratio, 104 IMF ratio, and 104 REA ratio.



LOT 51 - RIDGE TRUE NORTH 2002

51

RIDGE TRUE NORTH 2002

BD: 1/23/22 Reg: 4622039 A - 100% AR Tattoo: 2002

RIDGE COMPASS 7087
RIDGE TRUE NORTH 0089
 RIDGE AQUILA 552-8066

RRA IMPACT 505
 RIDGE LILA 8132-0017
 5L NORMANDY CANYON 6024
 RIDGE AQUILA 213-552
 5L SIGNATURE 5615
 5L MARTA 345-817
 GLACIER LOGAN 210
 MLK CRK LAKOTA Y46-HOBO

BW: 80
 AWW: 664
 AYW: 1328
 WDA: 3.56

5L ADVOCATE 817-14W
RIDGE LAKOTA 651-5302
 MLK CRK LAKOTA 651

DMPPA	Dam's Age		Adj. IMF	Adj. REA	Adj. BF	CC Score								
102	8		4.04	13.23	0.47	28/33 - 85%								
CED	BW	WW	YW	ADG	DMI	MILK	ME	HPG	CEM	MRB	YG	CW	REA	FAT
13	-1.3	60	101	0.25	1.69	31	2	11	8	0.46	0.04	32	0.2	0

- You won't miss this True North son if you sort the pens on sale day. He's top notch.
- Top 11% ProS, MILK, top 17% CW, top 20% GM, top 22% HB, STAY, top 34% REA.
- 104 WW ratio and 111 YW ratio highlight this fella's growth performance.



RIDGE TRUE NORTH 0089 - Sire of Lots 51-56





LOT 52
RIDGE TRUE NORTH 2038

- Stout made bull that your neighbors will notice when they drive by.
- Top 10% STAY, MILK, top 11% HB, top 20% REA, top 22% WW, top 24% ProS, top 28% YW.
- Power growth: 107 WW ratio, 106 YW ratio, and 103 REA ratio.



RIDGE AQUILLA 552-8066
Paternal Granddam of Lots 51-56



LOT 53
RIDGE TRUE NORTH 2058

- Stockman's kind with his added rib shape and practical build. Female making genetic profile.
- Top 3% STAY, top 5% HB, top 11% ProS, top 19% REA, top 22% CEM, top 45% YW.
- Curve bender in his performance: 80 lb. BW to 1250 lb. at yearling.

52 RIDGE TRUE NORTH 2038

BD: 2/1/22 Reg: 4621971 A - 100% AR Tattoo: 2038

RIDGE COMPASS 7087 RRA IMPACT 505 BW: 77
 RIDGE TRUE NORTH 0089 RIDGE LILA 8132-0017 AWW: 682
 RIDGE AQUILLA 552-8066 5L NORMANDY CANYON 6024 AYW: 1269
 5L BOURNE 117-48A RIDGE AQUILLA 213-552 WDA: 3.39
 RIDGE SARA 6045-8416 5L ADVANTAGE 3267-221Y
 5L ROXIE 854-117
 RIDGE SARA 8044-6045 5L ADVANTAGE 3267-221Y
 RIDGE CASEY 028-8044

DMPPA	Dam's Age		Adj. IMF	Adj. REA	Adj. BF	CC Score								
105	5		3.76	14.52	0.37	22/27 - 81%								
CED	BW	WW	YW	ADG	DMI	MILK	ME	HPG	CEM	MRB	YG	CW	REA	FAT
12	-1	68	107	0.24	1.71	31	3	13	5	0.35	-0.05	23	0.28	-0.01

53 RIDGE TRUE NORTH 2058

BD: 2/4/22 Reg: 4621933 A - 100% AR Tattoo: 2058

RIDGE COMPASS 7087 RRA IMPACT 505 BW: 80
 RIDGE TRUE NORTH 0089 RIDGE LILA 8132-0017 AWW: 598
 RIDGE AQUILLA 552-8066 5L NORMANDY CANYON 6024 AYW: 1251
 RED RMJ REDMAN 1T RIDGE AQUILLA 213-552 WDA: 3.36
 KLEIN FAYE 2212-421B 5L NORSEMAN KING 2291
 PIE FAYE 2212 CROWFOOT KURUBA 4033P
 PIE PRIME TIME 884
 PIE MS FAYE DUKE 509

DMPPA	Dam's Age		Adj. IMF	Adj. REA	Adj. BF	CC Score								
96	9		3.26	13.25	0.49	27/35 - 77%								
CED	BW	WW	YW	ADG	DMI	MILK	ME	HPG	CEM	MRB	YG	CW	REA	FAT
13	-1.5	57	101	0.27	1.41	26	-1	9	8	0.24	-0.05	18	0.31	0



LOT 54 - RIDGE TRUE NORTH 2064

54

RIDGE TRUE NORTH 2064

BD: 2/4/22 Reg: 4621921 A - 100% AR Tattoo: 2064

RIDGE COMPASS 7087	RRA IMPACT 505	BW: 79
RIDGE TRUE NORTH 0089	RIDGE LILA 8132-0017	AWW: 684
RIDGE AQUILA 552-8066	5L NORMANDY CANYON 6024	AYW: 1269
	RIDGE AQUILA 213-552	WDA: 3.39
RIDGE ADVANTAGE 6353	5L ADVANTAGE 3267-221Y	
RIDGE SARA 5102-8499	RIDGE CASEY 871-028	
RIDGE SARA 1005-5102	CROWFOOT RESOLUTION 3162A	
	RIDGE CASEY 155-1005	

DMPPA	Dam's Age		Adj. IMF	Adj. REA	Adj. BF	CC Score								
109	5		3.7	13.34	0.42	24/27 - 89%								
CED	BW	WW	YW	ADG	DMI	MILK	ME	HPG	CEM	MRB	YG	CW	REA	FAT
13	-0.9	64	109	0.28	1.79	32	5	11	8	0.3	0.05	25	0.02	-0.01

- Stout and powerfully made from end to end. Hard to poke a hole in his EPD profile.
- Top 7% MILK, top 14% STAY, top 17% HB, top 28% YW, top 30% ProS.
- One of the sale's heavyweights, ratioing 107 for WW and 106 for YW.



LOT 56 - RIDGE TRUE NORTH 2074

56

RIDGE TRUE NORTH 2074

BD: 2/6/22 Reg: 4621901 CAT 2 - 100% AR Tattoo: 2074

RIDGE COMPASS 7087	RRA IMPACT 505	BW: 87
RIDGE TRUE NORTH 0089	RIDGE LILA 8132-0017	AWW: 683
RIDGE AQUILA 552-8066	5L NORMANDY CANYON 6024	AYW: 1270
	RIDGE AQUILA 213-552	WDA: 3.41
S A V REGARD 4863	S A V RESOURCE 1441	
BECK MADAME PRIDE N180	S A V BLACK MAY 5530	
S A V MADAME PRIDE 5290	S A V 8180 TRAVELER 004	
	S A V MADAME PRIDE 0075	

DMPPA	Dam's Age		Adj. IMF	Adj. REA	Adj. BF	CC Score								
102	6		4.45	15.42	0.46	21/29 - 72%								
CED	BW	WW	YW	ADG	DMI	MILK	ME	HPG	CEM	MRB	YG	CW	REA	FAT
11	2.7	79	135	0.35	1.94	25	7	12	5	0.45	0.07	56	0.34	-0.01

- Like these other True North sons, he packs on the pounds and does so with added carcass merit.
- Top 1% CW, top 2% YW, top 3% GM, top 4% WW, top 14% REA, top 23% ProS.
- Rings the bell on all performance measures: ratios 107 on WW, 106 on YW, 103 on IMF, and 109 and REA.

55

RIDGE TRUE NORTH 2032

BD: 1/31/22 Reg: 4621983 A - 100% AR Tattoo: 2032

RIDGE COMPASS 7087	RRA IMPACT 505	BW: 77
RIDGE TRUE NORTH 0089	RIDGE LILA 8132-0017	AWW: 683
RIDGE AQUILA 552-8066	5L NORMANDY CANYON 6024	AYW: 1229
	RIDGE AQUILA 213-552	WDA: 3.31
FEDDES ATLAS X121	FEDDES ATLAS 12S	
RIDGE BLOCKANA 9508-2153	FEDDES LAKINA 106	
RIDGE BLOCKANA R91-9508	5L NORMANDY CANYON 6024	
	SHOCO BLOCKANA R91	

DMPPA	Dam's Age		Adj. IMF	Adj. REA	Adj. BF	CC Score								
101	11		3.64	11.76	0.49	30/35 - 86%								
CED	BW	WW	YW	ADG	DMI	MILK	ME	HPG	CEM	MRB	YG	CW	REA	FAT
12	1.1	60	98	0.24	1.91	31	3	11	7	0.31	0.17	26	-0.09	0.03

- Should be a great prospect to add broody heifers to your replacement pen.
- Top 11% MILK, top 33% STAY, top 34% HB, top 35% CW, top 49% YW.
- 107 WW ratio, 103 YW ratio show his strong growth curve.



LOT 57 - RIDGE STEWARD 2143

57

RIDGE STEWARD 2143

BD: 3/4/22 Reg: 4621767 A - 100% AR Tattoo: 2143

<p>MLK CRK STEWARD 6264</p> <p>RRA STEWARD 9216</p> <p>WCR MISS BLACKBIRD DE 510Y</p> <p>RED U-2 FOREIGNER 413B</p> <p>RIDGE TESS 6159-8427</p> <p>RIDGE TESS 2032-6159</p>	<p>MLK CRK ADVOCATE 4304</p> <p>MLK CRK SUN GAL 2122</p> <p>RED LAZY MC CC DETOUR 2W</p> <p>BLAIRS BLACKBIRD 107X</p> <p>U2 T.K.O.254Z</p> <p>RED U-2 ANEXA 8026U</p> <p>JACOBSON BLAZIN ON 0057</p> <p>RIDGE TESS 5309-2032</p>	<p>BW: 82</p> <p>AWW: 723</p> <p>AYW: 1281</p> <p>WDA: 3.51</p> <p style="text-align: center;"></p>
---	--	---

DMPPA	Dam's Age	Adj. IMF	Adj. REA	Adj. BF	CC Score
107	5	3.94	15.27	0.25	22/27 - 81%

CED	BW	WW	YW	ADG	DMI	MILK	ME	HPG	CEM	MRB	YG	CW	REA	FAT
9	-1	70	101	0.19	2.37	28	0	13	6	0.17	0.19	23	-0.11	0.04



RED U2 FOREIGNER 413B - Maternal Grandsire to Lot 57

- Striking profile with plenty of substance. He's a big-time herd bull prospect.
- Top 17% WW, top 30% MILK, top 44 YW.
- Top of the class for his performance ratios: 114 for WW, 110 for YW, 107 for IMF, and 109 for REA.

OUTCROSS GENETICS WITH MATERNAL EXCELLENCE!



BLAIRS BLACKBIRD 107X - Maternal Granddam of RRA Steward 9216





LOT 58 - RIDGE STEWARD 2154

58

RIDGE STEWARD 2154

BD: 3/8/22 Reg: 4621747 A - 100% AR Tattoo: 2154

<p>MLK CRK STEWARD 6264 RRA STEWARD 9216 WCR MISS BLACKBIRD DE 510Y</p> <p>5L BOURNE 117-48A RRA RACHEL 746 864 RRA RACHEL 246 746</p>	<p>MLK CRK ADVOCATE 4304 MLK CRK SUN GAL 2122 RED LAZY MC CC DETOUR 2W BLAIRS BLACKBIRD 107X</p> <p>5L ADVANTAGE 3267-221Y 5L ROXIE 854-117 UBAR GRAND CANYON 124 RRA RACHEL 246</p>	<p>BW: 85 AWW: 670 AYW: 1149 WDA: 3.16</p> <p style="text-align: center;"></p>
--	--	--

DMPPA	Dam's Age	Adj. IMF	Adj. REA	Adj. BF	CC Score
102	5	3.75	13.18	0.35	20/27 - 74%

CED	BW	WW	YW	ADG	DMI	MILK	ME	HPG	CEM	MRB	YG	CW	REA	FAT
8	-0.8	68	101	0.2	2.17	30	6	14	4	0.3	0.25	21	-0.19	0.06



RIDGE STEWARD 1033 - Full Brother to Lot 58

- Will add value to your operation through pounds at weaning.
- Top 14% MILK, top 23 % WW, top 42% YW.
- Tallied a 105 WW ratio and a 101 IMF ratio.





LOT 59 - RIDGE WAMSUTTER 2114

59 **RIDGE WAMSUTTER 2114**

BD: 2/19/22 Reg: 4621823 A - 100% AR Tattoo: 2114

RED U-2 AUTHENTIC 139A
RIDGE AUTHENTIC 0020
 RIDGE CASEY 9071-4050

RIDGE COMPASS 7087
RIDGE LAKOTA 8131-9030
 RIDGE LAKOTA 6143-8131

RED MINBURN COPENHAGEN 3Y
 RED U-2 STORMY 7202T
 5L LEGEND 1553-425V
 RIDGE CASEY 155-9071

RRA IMPACT 505
 RIDGE LILA 8132-0017
 MUSHRUSH LTJULIAN LG S005
 RIDGE LAKOTA 6016-6143

BW: 81
 AWW: 727
 AYW: 1237
 WDA: 3.3

GGP

DMPPA	Dam's Age	Adj. IMF	Adj. REA	Adj. BF	CC Score
103	4	4.31	15.64	0.28	19/25 - 76%

CED	BW	WW	YW	ADG	DMI	MILK	ME	HPG	CEM	MRB	YG	CW	REA	FAT
10	0.7	75	109	0.21	2.02	28	6	12	5	0.13	0.02	30	0.21	0

- Length of body and plenty of muscle on this dude. A definite power bull.
- Top 8% WW, top 25% YW, CW, top 28% MILK, top 30% REA.
- One of the performance winners of this sale, above 100 on all his ratios. Big 15.64 REA ratios 111.



LOT 60 - RIDGE WAMSUTTER 2059

60 **RIDGE WAMSUTTER 2059**

BD: 2/4/22 Reg: 4621931 A - 100% AR Tattoo: 2059

RED U-2 AUTHENTIC 139A
RIDGE AUTHENTIC 0020
 RIDGE CASEY 9071-4050

MLK CRK ADMIRAL 5286X
RIDGE SANDI 102T-9123
 DAHLKE MISSION SANDI 102T

RED MINBURN COPENHAGEN 3Y
 RED U-2 STORMY 7202T
 5L LEGEND 1553-425V
 RIDGE CASEY 155-9071

RIDGE ADMIRAL 3411
 MLK CRK VAL 277
 LIC MISSION STATEMENT P27
 DAHLKE NYACK SANDY

BW: 80
 AWW: 647
 AYW: 1230
 WDA: 3.21

GGP

DMPPA	Dam's Age	Adj. IMF	Adj. REA	Adj. BF	CC Score
101	4	3.35	11.3	0.33	12/25 - 48%

CED	BW	WW	YW	ADG	DMI	MILK	ME	HPG	CEM	MRB	YG	CW	REA	FAT
13	-0.1	66	107	0.26	1.73	26	6	12	7	0.17	0.08	28	0.19	0.03

- The quality continues with this calf. Another top-notch cowman's kind of bull.
- Top 28% WW, YW, top 31% CW, top 36% REA.
- 102 WW ratio and a 1230 lb. YW ratios at 103.



RIDGE AUTHENTIC 0020 - Sire of Lots 59-61

61 **RIDGE WAMSUTTER 2044**

BD: 2/2/22 Reg: 4621961 A - 100% AR Tattoo: 2044

RED U-2 AUTHENTIC 139A
RIDGE AUTHENTIC 0020
 RIDGE CASEY 9071-4050

5L BOURNE 117-48A
RIDGE LILA 8132-8030
 RIDGE LILA 101-8132

RED MINBURN COPENHAGEN 3Y
 RED U-2 STORMY 7202T
 5L LEGEND 1553-425V
 RIDGE CASEY 155-9071

5L ADVANTAGE 3267-221Y
 5L ROXIE 854-117
 5L GRAND EXPRESS 453-5655
 RIDGE LILA 979-101

BW: 73
 AWW: 624
 AYW: 1067
 WDA: 2.87

GGP

DMPPA	Dam's Age	Adj. IMF	Adj. REA	Adj. BF	CC Score
95	5	3.26	13.69	0.29	18/27 - 67%

CED	BW	WW	YW	ADG	DMI	MILK	ME	HPG	CEM	MRB	YG	CW	REA	FAT
13	-2.4	57	81	0.15	1.66	25	2	15	7	0.19	0.12	0	-0.23	0.03

- Practical, good-doing livestock best describe this set of Authentic 0020 sons.
- Top 39% BW, top 41% CED, top 48% CEM.
- 624 lb. WW and over 13.6 on his REA show his performance merits.



LOT 62 - RIDGE RED BOX 2614



MANN RED BOX 55C
Sire of Lots 62 & 63



RIDGE AQUILA 456-760
Dam of Lot 63



RIDGE COPENHAGEN 1610
Maternal Brother to Lot 63

62

RIDGE RED BOX 2614

BD: 3/19/22 Reg: 4642883 A - 100% AR Tattoo: 2614

SLGN WIDELOAD 920W
MANN RED BOX 55C
PELTON MISS AJA 0839U
SL NORMANDY CANYON 6024
RIDGE LARKABA 742-7151
BLUE RIDGE LARKABA

UBAR HIGH CAPACITY 224
MEADO-WEST PERSUASION
5L NORSEMAN KING 2291
PELTONS MISS IDA 0547R
LCHMN GRANDCANYON 1244G
NORSEMAN 1312 PJM
BLUE RIDGE LOGGER
BLUE RIDGE GALENA 160

BW: 88
AWW: 735
AYW: 1067
WDA: 3.04

DMPPA		Dam's Age		Adj. IMF		Adj. REA		Adj. BF		CC Score				
103		16		3.47		12.78		0.29		31/35 - 89%				
CED	BW	WW	YW	ADG	DMI	MILK	ME	HPG	CEM	MRB	YG	CW	REA	FAT
10	-1	54	78	0.15	1.59	30	10	11	4	0.24	0.04	17	0.15	0.02

- Added performance to weaning and ribeye in this Red Box son.
- Top 21% MILK, top 33% STAY, top 40% REA.
- 735 lb. WW is one of the highest in this sale. 12.8 in. REA ratios at 107.

63

RIDGE RED BOX 2613

BD: 3/18/22 Reg: 4642881 A - 100% AR Tattoo: 2613

SLGN WIDELOAD 920W
MANN RED BOX 55C
PELTON MISS AJA 0839U
SL NORMANDY CANYON 6024
RIDGE AQUILA 456-760
RIDGE AQUILA 836-456

UBAR HIGH CAPACITY 224
MEADO-WEST PERSUASION
5L NORSEMAN KING 2291
PELTONS MISS IDA 0547R
LCHMN GRANDCANYON 1244G
NORSEMAN 1312 PJM
GLACIER PIONEER 939
LONK AQUILA H836

BW: 80
AWW: 650
AYW: 1031
WDA: 2.91

DMPPA		Dam's Age		Adj. IMF		Adj. REA		Adj. BF		CC Score				
106		16		3.54		11.46		0.3		33/35 - 94%				
CED	BW	WW	YW	ADG	DMI	MILK	ME	HPG	CEM	MRB	YG	CW	REA	FAT
12	-2.4	47	67	0.12	1.67	29	8	11	6	0.22	0.17	10	-0.08	0.06

- Pair of Red Box sons that would look great working in the same operation.
- Top 33% MILK, top 39% BW
- 650 lb. at weaning and a 3.54 IMF on this steer maker.
- Dam is a **CORNERSTONE COW**.



LOT 64 - RIDGE MAX 2120

64

RIDGE MAX 2120

BD: 2/21/22 Reg: 4621811 A - 100% AR Tattoo: 2120

RED FLYING K MAX 159Y	RED ML MAX 862U	BW: 84
HRR MAX 8311	RED FLYING K ANITA 764T	AWW: 650
RED BAR-E-L BULL MEG 985W	RED TER-RON BLITZ 611N	AYW: 1135
5L ADVANTAGE 3267-221Y	RED BAR-E-L MEG 85N	WDA: 3.12
RIDGE BLANCHE 8024-7610	BUF CRK THE RIGHT KIND U199	
RIDGE SHEILA 009-8024	5L ADINA 195-3267	
	5L NORSEMAN KING 2291	
	RIDGE SHEILA 009	

DMPPA	Dam's Age			Adj. IMF	Adj. REA	Adj. BF	CC Score							
99	6			3.15	14.63	0.23	20/29 - 69%							
CED	BW	WW	YW	ADG	DMI	MILK	ME	HPG	CEM	MRB	YG	CW	REA	FAT
14	-1.3	64	91	0.17	1.09	22	-1	13	8	0.5	0.02	16	0.16	0.02

- Heavy muscled and carries himself with a herd bull presence. He'll be hard to miss on sale day.
- Top 9% HB, top 22% ProS, top 23% STAY, top 30% MARB, top 35% CEM.
- 102 on his WW ratio with a 14.6 in. REA (104 ratio).



RIDGE NEW FORCE 1148 - Maternal Brother to Lot 64



RIDGE SHEILA 009-8024 - Maternal Granddam of Lot 64





LOT 65 - RIDGE MAX 2145



RED FLYING K MAX 159Y - Paternal Grand sire of Lots 64 & 65



RED U2 RECKONING 149A - Paternal Grand sire of Lot 66

65 **RIDGE MAX 2145**

BD: 3/5/22 Reg: 4621763 A - 100% AR Tattoo: 2145

RED FLYING K MAX 159Y	RED ML MAX 862U	BW: 79
HRR MAX 8311	RED FLYING K ANITA 764T	AWW: 684
RED BAR-E-L BULL MEG 985W	RED TER-RON BLITZ 611N	AYW: 1296
	RED BAR-E-L MEG 85N	WDA: 3.55
RED U2 MALBEC 195D	RED U-2 RECKONING 149A	
RIDGE CENT 7130-8114	RED U-2 MABEL 60A	
RIDGE CENT 439-7130	5L NORMANDY CANYON 6024	
	RIDGE CENT 289-439	

DMPPA	Dam's Age		Adj. IMF	Adj. REA	Adj. BF	CC Score								
103	5		2.87	14.45	0.25	23/27 - 85%								
CED	BW	WW	YW	ADG	DMI	MILK	ME	HPG	CEM	MRB	YG	CW	REA	FAT
12	-0.9	54	83	0.18	1.86	27	-1	12	8	0.28	0.01	13	0.1	0.01

- Big bodied, big footed, and plenty of eye appeal to make your short list.
- Top 4% HB, top 7% STAY, top 27% CEM top 39% MILK.
- From 79 lb. BW to 1300 lb. YW. Also, ratios a 103 for REA.

66 **RIDGE PROPOSITION 2150**

BD: 3/7/22 Reg: 4621753 A - 100% AR Tattoo: 2150

RED U-2 RECKONING 149A	RED U-2 RECON 192Y	BW: 89
J2R PROPOSITION H007	RED U-2 ANEXA 271Y	AWW: 679
RED U2 LADY 498E	RED MINBURN COPENHAGEN 3Y	AYW: 1173
	RED U-2 LADY 115B	WDA: 3.23
5L SIGNATURE 2846-266V	5L SIGNATURE 5615	
RRA MELODY 906 103	5L LASSIE 873-2846	
RRA MELODY 4002 906	RED FINE LINE MULBERRY 26P	
	UBAR MELODY PRIX 4002	

DMPPA	Dam's Age		Adj. IMF	Adj. REA	Adj. BF	CC Score								
101	12		4.08	14.84	0.43	29/35 - 83%								
CED	BW	WW	YW	ADG	DMI	MILK	ME	HPG	CEM	MRB	YG	CW	REA	FAT
10	-1.1	59	85	0.16	1.53	29	-3	11	6	0.12	0.11	15	0.08	0.04

- High performer with added marbling ability and maternal genetics.
- Top 22% MILK, top 24% HB, top 29% STAY.
- Passed all his performance tests, especially with his 4.08 IMF (110 ratio) and 14.8 in. REA. (106 ratio).



LOT 67
COOKSLEY FALLOUT 2607

- The photo on this bull speaks to just how high quality he is. Genetic profile is special as well.
- Top 1% CW, top 4% YW, top 6% WW, top 7% GM, top 11% REA, top 22% ProS, top 27% MARB, top 35% STAY.
- One of the REA leaders in the offering at 15.4 in. Combines that with a solid 4.62 IMF and a 107 YW ratio.



BIEBER HARD DRIVE Y120
Maternal Grand sire of Lot 67



LOT 68
COOKSLEY FALLOUT 2624

- Impressive looking rascal with adequate substance.
- Top 10% CW, top 17% YW, top 21% WW, top 31% MARB, top 32% GM.
- Over 4.2 on his IMF adds carcass quality to the next generation.



RED LWNBRG HARVESTOR 103C
Paternal Grand sire of Lots 67-71

67 **COOKSLEY FALLOUT 2607**
BD: 2/22/22 Reg: 4705945 A - 100% AR Tattoo: 2607

RED LWNBRG HARVESTOR 103C
RED LWNBRG FALLOUT 100G
RED LWNBRG ROLLIN DEEP 85B
BIEBER HARD DRIVE Y120
TARA 4472 SCN
KAY 89-602 SCN

TED HARVESTOR 154A
RED TED MAGNUM 141Y
BIEBER ROLLIN DEEP Y118
RED TED OLES OSCAR 74Z
LACY GOLD BAR 8123
BIEBER LAURA 158W
5L GRAND EXPRESS 453-5655
PEGGY 602-337

BW: 74
AWW: 617
AYW: 1183
WDA: 3.26

DMPPA	Dam's Age		Adj. IMF	Adj. REA	Adj. BF	CC Score								
101	9		4.62	15.42	0.3	-								
CED	BW	WW	YW	ADG	DMI	MILK	ME	HPG	CEM	MRB	YG	CW	REA	FAT
14	-1.4	62	102	0.25	2.06	20	14	12	8	0.74	0.04	38	0.52	0.03

68 **COOKSLEY FALLOUT 2624**
BD: 2/20/22 Reg: 4705913 A - 100% AR Tattoo: 2624

RED LWNBRG HARVESTOR 103C
RED LWNBRG FALLOUT 100G
RED LWNBRG ROLLIN DEEP 85B
ROUSE MIGHTY PACKER A52
MS PACKER 8278 SCN
HANNA 171 SCN

TED HARVESTOR 154A
RED TED MAGNUM 141Y
BIEBER ROLLIN DEEP Y118
RED TED OLES OSCAR 74Z
BIEBER MIGHTY PACKER X178
ROUSE LENA X10
RAM 802 SCN
PANHANDLE SANDY 4200

BW: 78
AWW: 535
AYW: 1000
WDA: 2.7

DMPPA	Dam's Age		Adj. IMF	Adj. REA	Adj. BF	CC Score								
97	5		4.22	10.93	0.3	-								
CED	BW	WW	YW	ADG	DMI	MILK	ME	HPG	CEM	MRB	YG	CW	REA	FAT
14	-2.2	50	80	0.19	1.93	21	10	11	8	0.68	0.17	31	0.25	0.06

69

COOKSLEY FALLOUT 2601

BD: 2/24/22 Reg: 4705957 A - 100% AR Tattoo: 2601

RED LWNBRG HARVESTOR 103C TED HARVESTOR 154A BW: 60
 RED LWNBRG FALLOUT 100G RED TED MAGNUM 141Y AWW: 637
 RED LWNBRG ROLLIN DEEP 85B BIEBER ROLLIN DEEP Y118 AYW: 1152
 1DRA INTERNATIONAL 3041 BROWN HERITAGE U6509 WDA: 3.18
COOKSLEY JANE 5520 1DRA ELEANOR 714
 TESS 824-896 SCN 5L BLAZIN RAM 5166-7504 **GGP**
 TEAHON BIG GIRL 896

DMPPA	Dam's Age			Adj. IMF	Adj. REA	Adj. BF	CC Score							
103	8			4.43	12.41	0.31	-							
CED	BW	WW	YW	ADG	DMI	MILK	ME	HPG	CEM	MRB	YG	CW	REA	FAT
17	-5.5	51	89	0.23	1.93	24	11	10	10	0.71	0.18	34	0.18	0.05

- Nice made Fallout son that is good in his build and level as can be through his topline.
- Top 11% CW, top 15% GM, top 17% YW, top 27% MARB, top 28% STAY, top 31% WW, top 32% ProS.
- Above group average for both weaning and yearling weights across the scales.



LOT 69 - COOKSLEY FALLOUT 2601

70

COOKSLEY FALLOUT 2623

BD: 3/24/22 Reg: 4705915 B - 99.9% AR Tattoo: 2623

RED LWNBRG HARVESTOR 103C TED HARVESTOR 154A BW: 82
 RED LWNBRG FALLOUT 100G RED TED MAGNUM 141Y AWW: 657
 RED LWNBRG ROLLIN DEEP 85B BIEBER ROLLIN DEEP Y118 AYW: 1228
 BIEBER SPARTACUS A193 BIEBER ROUSE SAMURAI X22 WDA: 3.44
SARAH 7162 SCN BIEBER TILLY 233U
 COOKSLEY MARY 5503 SHERMAN 3023 SCN **GGP**
 TERRI 450 SCN

DMPPA	Dam's Age			Adj. IMF	Adj. REA	Adj. BF	CC Score							
100	6			3.57	14.23	0.23	-							
CED	BW	WW	YW	ADG	DMI	MILK	ME	HPG	CEM	MRB	YG	CW	REA	FAT
12	-0.7	67	115	0.3	2.11	22	12	10	6	0.65	0.13	47	0.27	0.03

- Certainly, carries the added eye appeal and presence that many of this sire group possess.
- Top 3% CW, top 4% YW, top 7% WW, top 15% GM, top 23% MARB.
- 106 for his WW ratio, 111 for YW, and a 14.2 in. REA ratios 113.



LOT 70 - COOKSLEY FALLOUT 2623

71

COOKSLEY FALLOUT 2626

BD: 2/28/22 Reg: 4705909 A - 100% AR Tattoo: 2626

RED LWNBRG HARVESTOR 103C TED HARVESTOR 154A BW: 67
 RED LWNBRG FALLOUT 100G RED TED MAGNUM 141Y AWW: 661
 RED LWNBRG ROLLIN DEEP 85B BIEBER ROLLIN DEEP Y118 AYW: 1181
 BIEBER H HUGHES W109 BASIN HOBO 0545 WDA: 3.26
HLH MS HUGHES 9033 4144 BASIN ROSE 06T0
 HLH MS NEBULA 7296 9033 BECKTON NEBULA M045 **GGP**
 HLH MS ICY 2030 7296

DMPPA	Dam's Age			Adj. IMF	Adj. REA	Adj. BF	CC Score							
100	9			3.62	13.1	0.35	-							
CED	BW	WW	YW	ADG	DMI	MILK	ME	HPG	CEM	MRB	YG	CW	REA	FAT
17	-4.6	54	75	0.13	1.91	21	10	13	10	0.44	0.17	33	0.11	0.04

- Light birth Fallout that grew into a big-time performance calf.
- Top 12% CW, top 17% WW, STAY, top 18% YW, top 28% HB, top 33% ProS.
- 107 for both WW and YW ratio. Strong 13.1 in. REA ratios at 104.



COOKSLEY HUGHES 011 SCN - Maternal Brother to Lot 69



LOT 72 - COOKSLEY HEAVY METAL 2618

72 **COOKSLEY HEAVY METAL 2618**

BD: 2/22/22 Reg: 4705923 A - 100% AR Tattoo: 2618

B LAZY T MR D043 G013
 B LAZY T MISS RS C028
 GALLS BLACK CAT 8619
MISS KATIE 083
 MS FUSION 8237 SCN

REDHILL T189 MEDAL 176A
 B LAZY T RANCH COW Z008
 5L RIGHT SIGNAL 1901-19A
 B LAZY T RANCH COW X069
 LWNBRG CROSS OVER 66B
 GALL'S MS DIANN 6191
 1DRA FUSION 5037
 1DRA REDBIRD 903

BW: 70
 AWW: 669
 AYW: 1201
 WDA: 3.1

DMPPA	Dam's Age		Adj. IMF		Adj. REA		Adj. BF		CC Score					
103	3		4.52		11.53		0.22		-					
CED	BW	WW	YW	ADG	DMI	MILK	ME	HPG	CEM	MRB	YG	CW	REA	FAT
15	-3.8	71	118	0.3	1.75	25	7	10	10	0.87	0.12	26	0.26	0.05

- Built to last combined with a balanced genetic profile to be successful in many situations.
- Top 21% CED, top 22% CEM, top 23% MARB, top 31% YW, top 32% BW, top 33% GM.
- 108 WW ratio, 109 YW ratio, and still scanned a 4.52 IMF.



REDHILL T189 MEDAL 176A - 3rd Generation Sire of Lots 72-74

CALVING EASE AND GROWTH HE DOES IT ALL!





LOT 73
COOKSLEY HEAVY METAL 2606

- Growthy bull with lots of substance and elite IMF scan.
- Top 17% CED, top 21% YW, top 27% WW, top 33% BW.
- Only 74 lb. at birth to a 112 WW ratio. 8.05 IMF ratios at 171, one of the top three in the whole sale.



LOT 74
COOKSLEY HEAVY METAL 2613

- Carries an individual performance ledger that is geared to sire growthy calves.
- Top 11% WW, top 18% YW, top 25% MARB, top 27% GM, top 33% CW.
- 121 WW ratio, 117 YW ratio, and 112 REA ratio is as stout as any bull in this sale.

73 **COOKSLEY HEAVY METAL 2606**
BD: 2/14/22 Reg: 4705947 A - 100% AR Tattoo: 2606

B LAZY T HEAVY MEDAL D043
B LAZY T MR D043 G013
B LAZY T MISS RS C028
BIEBER IRON WARRIOR C124
MISS WARRIOR 096
TESS 379-591 SCN

REDHILL T189 MEDAL 176A
B LAZY T RANCH COW Z008
5L RIGHT SIGNAL 1901-19A
B LAZY T RANCH COW X069
BIEBER ROUSE SAMURAI X22
BIEBER LINCOLN 189A
5L BLAZIN RAM 5166-7504
PEGGY 591-331

BW: 74
AWW: 692
AYW: 1097
WDA: 2.79

DMPPA	Dam's Age		Adj. IMF		Adj. REA		Adj. BF		CC Score					
105	3		8.05		9.55		0.34		-					
CED	BW	WW	YW	ADG	DMI	MILK	ME	HPG	CEM	MRB	YG	CW	REA	FAT
16	-3.3	67	104	0.23	1.84	21	4	10	9	0.62	0.22	24	-0.05	0.06

74 **COOKSLEY HEAVY METAL 2613**
BD: 2/15/22 Reg: 4705933 A - 100% AR Tattoo: 2613

B LAZY T HEAVY MEDAL D043
B LAZY T MR D043 G013
B LAZY T MISS RS C028
BIEBER IRON WARRIOR C124
MISS WARRIOR 093
MS NEBULA 6151 SCN

REDHILL T189 MEDAL 176A
B LAZY T RANCH COW Z008
5L RIGHT SIGNAL 1901-19A
B LAZY T RANCH COW X069
BIEBER ROUSE SAMURAI X22
BIEBER LINCOLN 189A
CRUMP NEBULA 4171
TESS 4448 SCN

BW: 80
AWW: 746
AYW: 1293
WDA: 3.33

DMPPA	Dam's Age		Adj. IMF		Adj. REA		Adj. BF		CC Score					
108	3		3.81		14.15		0.24		-					
CED	BW	WW	YW	ADG	DMI	MILK	ME	HPG	CEM	MRB	YG	CW	REA	FAT
13	-1.6	84	139	0.35	1.89	25	7	11	8	0.87	0.12	34	0.32	0.05



LOT 75 - RIDGE BRAVO 2603



COLEMAN BRAVO 6313 - Sire of Lots 75 & 76



RIDGE BANK NOTE 0516 - Maternal Brother to Lots 75 & 76

75 **RIDGE BRAVO 2603**

BD: 2/25/22 Reg: 4642859 CAT 2 – 100% AR Tattoo: 2603

COLEMAN CHARLO 0256
COLEMAN BRAVO 6313
 COLEMAN DONNA 714

RED YY RED KNIGHT 640F
MLK CRK LAKOTA 709
 MLK CRK LAKOTA 301

O C C PAXTON 730P
 BOHI ABIGALE 6014
 CONNEALY ONWARD
 COLEMAN DONNA 386

RED YY 23L TOPPER 408D
 RED TOP GOLDIE 40U
 MLK CRK FOUNDATION 110
 MLK CRK LAKOTA 112-RAMB

BW: 84
 AWW: 620
 AYW: 1135
 WDA: 3.16

GGP

DMPPA		Dam's Age		Adj. IMF		Adj. REA		Adj. BF		CC Score				
CED	BW	WW	YW	ADG	DMI	MILK	ME	HPG	CEM	MRB	YG	CW	REA	FAT
18	-2.1	63	99	0.23	1.75	25	6	13	9	0.25	0.16	10	-0.33	0.02

- Plenty of power and body in this sire prospect in an added look and stylish package. Heifer safe.
- Top 4% CED, top 19% CEM, top 42% WW, top 46% YW.
- 4.43 IMF puts him in the sale's top tier.
- Dam is a **CORNERSTONE COW**.

76 **RIDGE BRAVO 2604**

BD: 2/25/22 Reg: 4642861 CAT 2 – 100% AR Tattoo: 2604

COLEMAN CHARLO 0256
COLEMAN BRAVO 6313
 COLEMAN DONNA 714

RED YY RED KNIGHT 640F
MLK CRK LAKOTA 709
 MLK CRK LAKOTA 301

O C C PAXTON 730P
 BOHI ABIGALE 6014
 CONNEALY ONWARD
 COLEMAN DONNA 386

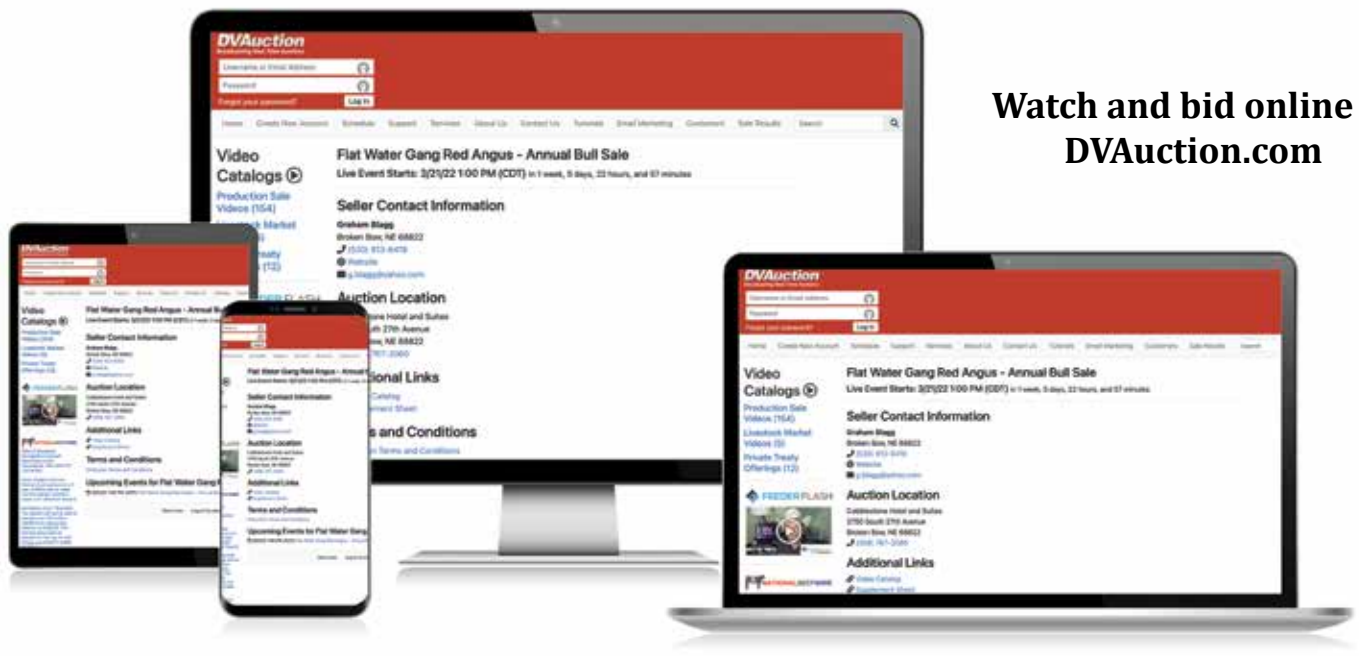
RED YY 23L TOPPER 408D
 RED TOP GOLDIE 40U
 MLK CRK FOUNDATION 110
 MLK CRK LAKOTA 112-RAMB

BW: 80
 AWW: 665
 AYW: 1106
 WDA: 3.08

GGP

DMPPA		Dam's Age		Adj. IMF		Adj. REA		Adj. BF		CC Score				
CED	BW	WW	YW	ADG	DMI	MILK	ME	HPG	CEM	MRB	YG	CW	REA	FAT
19	-4.2	49	79	0.19	1.75	25	6	13	9	0.21	0.14	-3	-0.38	0.03

- The calving ease and maternal ability of this Coleman Bravo son is appealing.
- Top 2% CED, top 10% CEM, top 12% BW, top 24% STAY, top 27% HB.
- 665 lb. at weaning, a 13.8 in. REA, and a 4.0 IMF are an impressive resume.
- Dam is a **CORNERSTONE COW**.



Watch and bid online at
DVAuction.com

Thank you for your interest!



INNOVATION
AgMarketing, LLC
PO Box Z
De Soto, KS 66018

Presorted
First Class
US Postage
PAID
SlateGroup



DVAuction

OFFERING 70 STOUT, SERVICE-AGE RED ANGUS BULLS
FLATWATERREDANGUSGANG.COM