

*experience the difference...*

# THE ADVANTAGE PRODUCTION SALE

OCTOBER 15, 2022 | 6:00 PM | SIOUX CITY, IA











WELCOME!

It is with great excitement that we welcome you back to Sioux City for our annual production sale. It is hard to believe this is our sixth year of having an auction, and even harder to believe how much has changed in these six years. When we started, our top priority was to offer our best open females, out of our best genetics, and provide top notch customer service. Though a lot has changed, these goals have not. This year we have put together a set of 60 heifers that, without a doubt, have exceeded our expectations. We know that sale season also means harvest, Kansas City prep, sporting events, and all the many activities Fall brings us, but we sincerely hope that you will be able to join us on October 15th.

Anyone that shows or sells cattle, knows that these things aren't possible without a good crew. And anyone that has tried to hire help lately, knows that is no easy task. Our "farm crew" has had to step up, take on new roles, & put in the extra work to make it all happen. They have done an excellent job getting ready for the sale, as well as keeping up with all the daily tasks around the farm and show barn. We are incredibly thankful for these guys, their spouses, and the friends that show up to help us out when we need an extra hand.

A sincere "thank you" to our customers. It is truly humbling that so many families put their trust in our program, and we appreciate each and every one of you. The memories made, and friendships formed have been priceless, and remain one of the greatest things about this industry.

The past year has been incredible with many success stories and trips to the backdrop, but one of the highlights of the summer was at The National Junior Angus Show with the engagement of Maddy & Chris. We couldn't be happier for them, and all the big life changes that lie ahead.

With that being said, we appreciate your interest in our program. Please do not hesitate in contacting anyone here at Udell Cattle Co. or one of the sale consultants if you have any questions. We would be honored for you to be a part of our team this upcoming year!

PS: We are hiring.

*Bret & Becky Udell*  
*On behalf of everyone at Udell Cattle Company*





It is once again a privilege and true honor to welcome you to the sixth edition of “The Advantage” Production Sale, hosted by Udell Cattle Company. This family owned operation was built with passion and a drive to succeed, beginning in the early years of Mitchell and Maddy’s junior show career. What started as a 4-H project has evolved into one of the elite multi-breed seedstock operations in the country, producing nationally competitive show heifers and seedstock year after year.

### **The Philosophy**

Proven cow families, aligning elite genetics, and quality phenotype... the trifecta when it comes down to Bret Udell and company mating cattle, regardless of breed type or composition. This is the common denominator that you can count on when navigating the pages between the covers of this sale catalog. The opportunity to invest in the “best of the best” that this firm raises annually is something that you can count on!

### **The Genetics**

There is no question that this firm has experienced as much success in the showing as any multi-breed operation in North America, a true testament to the breeding program. The donor battery that resides in Sioux City, Iowa needs no introduction, with many of those matriarchs being past National Champions themselves. Success will continue to be documented, whether it is in the form of banners and buckles, successful embryo transactions that result in high sellers or champions, or the impact that these females have on your individual program during the production stage of their lives.

### **The Commitment**

From start to finish you can count on continuous support, as you will become a part of the “family” at Udell Cattle Company. Hats off to the crew at Udell Cattle Company, as they put their heart and soul into providing every family exhibiting their genetics the best possible experience that it can be. Customer service is what sets this program apart and there is no question that the dedication and passion that this family and team provide is second to none. We encourage you to visit with them about the cattle with the goal of finding the right heifer for you or your junior exhibitor. The offering is diversified in terms of breeds represented. Regardless of which direction your focus leads you, rest assured that the cow family behind the females being offered are derivatives of the most proven and prolific pedigrees in North America. A set of cattle that are bred in the purple!

We welcome you to view this offering at your convenience before the sale and invite you to join us on October 15, 2022 at 6 PM for “The Advantage” Production Sale. CCI.Live will provide a live broadcast if you are unable to attend the sale in person. If you have questions, it is encouraged to contact any of the Udell Cattle Company team members or sale staff.

Come experience “The Advantage”!

*Graham Blagg*

*Jared Shipman*

*Tim Anderson*





## *Customer Service*

*Customer service and the day-to-day preparation of showing is something that we are very passionate about. We want to work with our customers and are always willing to lend a helping hand. If you would like to have your heifer clipped throughout the year prior to ANY show, you are welcome to bring the cattle back to Udell Cattle Company at no additional cost to be clipped by one of our talented team members. Advice relating to breeding, feeding, daily care, and/or any question you may have is always welcome. We are here to make your project a successful and enjoyable venture for your family.*

## *Daily Care*

*We have built this sale around being able to offer the highest quality of customer care as possible, in an effort to do so we offer the opportunity with a select few lots to remain under the care of Udell Cattle Company. As the sale approaches we will pinpoint a list of sale heifers that will be eligible to stay in the care and management of Udell Cattle Company. This does not mean that they must stay, but it is an option. This list is NOT a reflection of value or competitiveness and where possible we will do our best to help with any purchases. However, this will be a list of heifers that we would like to manage through their show and production careers for one reason or another. If the buyer wishes to leave their heifer, Udell Cattle Company will receive 1/3 embryo interest back in the said animal. Buyer pays the full auction price. Feed, daily care, and show costs will be pro-rated accordingly. We fully realize showing cattle is expensive; we are not looking to make a profit by caring for these show heifers but would like to evenly cover our costs.*



# Schedule of Events

**Friday, October 14th 2022**

*6:00 Friday Night Fiesta*

Enjoy an open house with food, drinks and an opportunity to see the cattle.

**Saturday, October 15th 2022**

*4:00 Pre-sale Dinner*

*6:00 The Advantage Production Sale*

## Sale Location

**4800 Buckwalter Drive  
Sioux City, IA 51108**

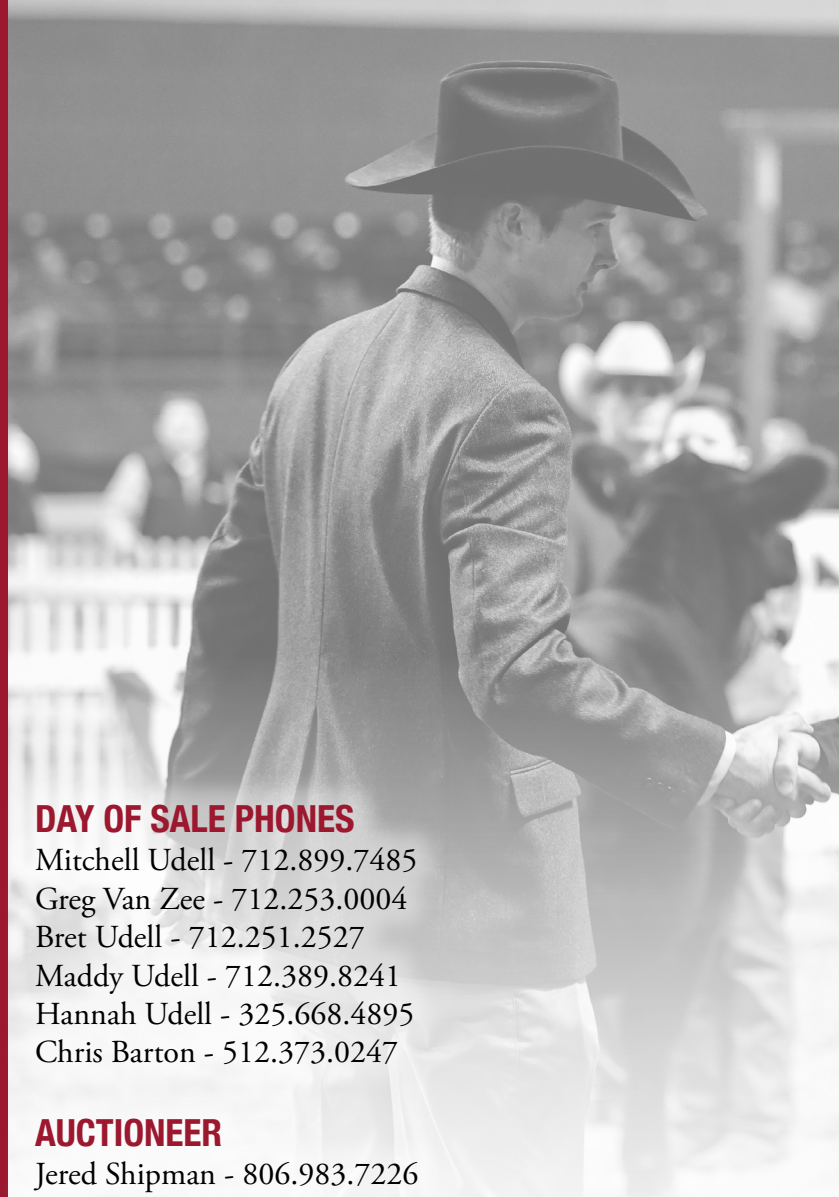
## Pre-sale Viewing

**To view The Advantage heifers  
before sale day, please contact  
Mitchell to set up a time and place.**

**Mitchell: 712.899.7485**

## Online Bidding

**If you're not able to be  
present on sale day, online  
bidding will be available  
through CCI.Live**



### DAY OF SALE PHONES

Mitchell Udell - 712.899.7485

Greg Van Zee - 712.253.0004

Bret Udell - 712.251.2527

Maddy Udell - 712.389.8241

Hannah Udell - 325.668.4895

Chris Barton - 512.373.0247

### AUCTIONEER

Jered Shipman - 806.983.7226

### SALE MANAGEMENT

Graham Blagg, Innovation AgMarketing - 530.913.6418

Tim Anderson, Innovation AgMarketing - 605.682.9343

### RING SERVICE

Austin Brandt, Lee AgriMedia - 712.621.1829

Kent Jaecke, Special Assignment - 405.408.2440

Mitchell Armitage, Special Assignment - 405.641.9438

### SALE CONSULTANTS

Cole Greiman - 641.494.4570

Matt Johnson - 712.540.1615

Cash Langford - 254.631.3618

Barb Ohlrichs - 402.371.0695

Wayne Ohlrichs - 402.649.6911

Jeff Paulsen - 563.212.9944

### LODGING

Hampton Inn & Suites - 712.587.6984

5555 Seargent Rd - Sioux City, IA 51106



### **HEALTH**

All of the cattle selling will be ready for immediate shipment and accompanied by proper health certificates. UCC has a full vaccination program.

### **SALE TERMS & CONDITIONS**

Cattle will sell under the suggested terms and conditions of the respective breed association.

### **PHONE BIDDING**

Please contact a sale representative prior to sale time in order to setup a bidder's number.

### **SALE LOCATION**

Sue Ann Farms  
4800 Buckwalter Drive  
Sioux City, IA 51108

### **INSURANCE**

All cattle sold will become the responsibility of the buyer as soon as they are sold. Insurance information will be available the day of the sale.

### **SUPPLEMENTAL INFORMATION**

A supplement sheet and sale order will be available with up-to-date information the day prior to the sale. All announcements made on the sale block as well as updates to the supplement sheet will take precedence over material listed in this catalog.

### **LIABILITY**

All persons attending the sale and related functions do so at their own risk. All parties involved with Udell Cattle Company assume no liability, legal or otherwise, for any accidents or injuries that may occur.

### **PHOTOGRAPHY & CATALOG DESIGN**

Maddy Udell - 712.389.8241

### **PAYMENT**

Terms of Sale are cash or good check with proper ID prior to load out, unless prior arrangements have been made.

### **REGISTRATION & TRANSFERS**

Registration papers will be transferred upon completion of payment for purchases. Please let the sale clerk know at the time of settlement how you wish to have your purchases transferred.

### **LOAD OUT/TRUCKING**

Load out will begin at the completion of sale. We ask that you pick up your purchases within a reasonable time. We are happy to assist you with trucking arrangements. However, we assume no responsibility for trucking rates.

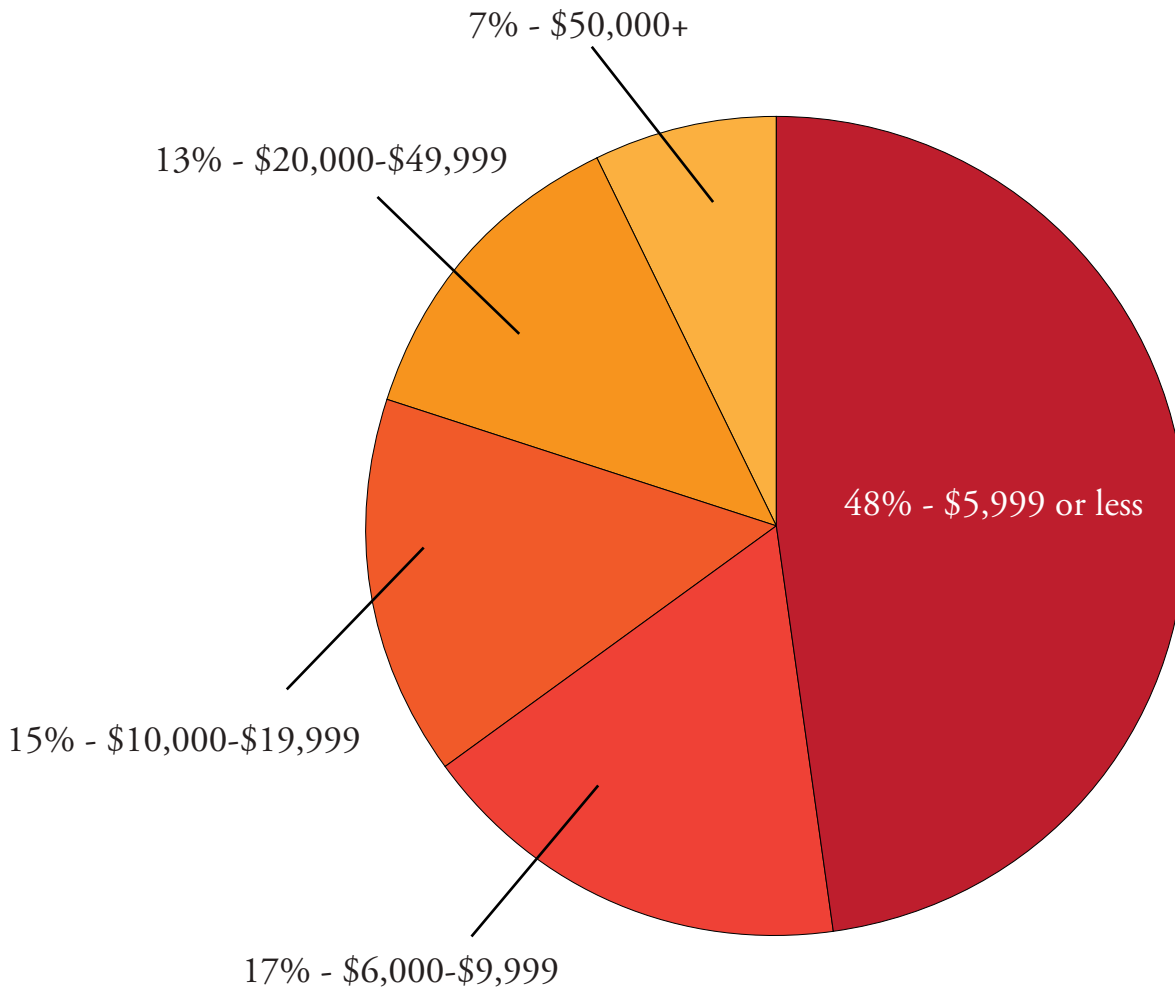
### **FLUSH RIGHTS**

Udell Cattle Company reserves the right to two successful flushes at the buyer's convenience and sellers expense. Also, Udell Cattle Company reserves the right to clone any female in the offering at our expense.



# Quality genetics in every price range!

65% of the heifers sold over the last three years by Udell Cattle Company have been purchased for under \$10,000... These females have created countless memories for families across the country. Congratulations to every junior exhibitor and/or breeder that has invested in a UDE heifer... Here are just a few of the many success stories!



*Willie Weis and the Lashmett family purchased UDE Queen Ruth 9088 in the 2019 edition of "The Advantage" Production Sale for **\$13,000**. This stunning daughter of 502 was certainly a popular female on sale day, and Willie saw the potential in not only her phenotype but also her pedigree. 9088 was not only a division winner at the 2020 NWSS for Millie Lashmett, but she has become a cornerstone donor in the program. Her first set of ET heifer calves yielded tremendous results with a \$28,000 heifer calf that went on to be selected as the 2022 IA Beef Expo Reserve Supreme Champion for Sloane Curtin. Congratulations to the folks involved this powerful young donor dam!*

**Daughter of UDE Queen Ruth 9088**





Lot 31 from “The Advantage” 2021 Production Sale was purchased by Sarah Armitage of Oklahoma for less than **\$5,000**. Sarah and her family identified the quality, remained patient, and put in tremendous time and effort to this Angus heifer. She was a many times breed champion in the state, and was selected as the 2022 Stillwater Showdown Grand Champion Angus and Reserve Grand Champion Heifer Overall. Congratulations to Sarah!

Lot 16 from “The Advantage” 2021 Production Sale was selected by the Johnson family of Chestnut Angus Farm in Minnesota. This female is a full sister to the 2020 IN State Fair Reserve Supreme Champion Heifer. UDE Phyllis 1143 was purchased for **\$9,300** last year. She was selected as the 2022 MN State Junior Angus Association Reserve Grand Champion for Dawson Johnson. She was also a class winner in a tough March class at the 2022 NJAS this summer in Kansas City. Congratulations Dawson!



Jeff Jackson and the Hunt family of Texas purchased UDE Keymura Katy 1054 last year for **\$6,000**! This daughter of “5009” was a bit greener at sale time last year but was made right. Jeff saw the future in this female and took a chance on the quality build and style that she possessed. Fast forward to February of 2022, she was selected as the Reserve Calf Champion at the San Antonio Livestock Exposition Junior Breeding Heifer Show, one of the largest breeding heifer shows in the country with over 1,000 head shown annually! This female was also selected Grand Champion Angus and Supreme Overall at the 2022 Texas Youth Expo. Congratulations Nolan!

UDE Thunder Girl 93J ET was a **\$9,000** selection in last year’s sale. She was a bit greener than her sister by Silveiras Style 9303, but the influence of JSUL Red Thunder 9051W is certainly powerful, especially if you’re patient with them as they mature. This daughter of S A V Bismarck 5682 has matured into a show stopping female for Tessa Ellensohn! She was the Grand Champion Chianina and 3rd Overall Female at the 2022 Plymouth County Cattle Battle. Congratulations Tessa!



UDE Smokette 245G was selected in 2020 for **\$7,800** in “The Advantage”. She was successfully campaigned by Sayler Jauer to several victories, but her most notable win was at the 2021 IA State Fair when she was slapped Reserve Grand Champion Charolais Heifer in the 4-H Breeding Heifer Show, one of the most competitive State Fair junior heifer shows in the country. Congratulations Sayler!



*Come Experience the Difference...*









**Lot 1**

**UDE Queen Ruth 2001**

AAA: 20423097 • DOB: 1.2.2022 • Tattoo: 2001 • PB Angus

**CFCC Blackjack 001**

**KR Casino 6243**

**Malsons Savannah 27Y**

**PVF Insight 0129**

**KDJ Queen Ruth 502**

**KDJ Queen Ruth**

We proudly introduce “The Advantage” class of 2022 with a set of ET flushmate sisters that are the result of one of the most popular matings we have created to date at Udell Cattle Company! The KR Casino 6243 x KDJ Queen Ruth 502 combination has been nothing short of incredible to say the least.

UDE Queen Ruth 2001 is the first of four full sisters that is an absolute carbon copy of UDE Queen Ruth 0204, the 2021 American Royal and 2021 NAILE Grand Champion for Rance Wheeler. We love the high tying neck attachment that comes directly out of the topside of her neatly laid in shoulder. From that point she transitions into a robust fore-rib and center body shape and is near ideal in her underline. A lot of special females from the “502” cow family have sported the coveted lot 1 tag, and this beauty is no exception!



**KDJ Queen Ruth 502, Dam of Lots 1-6**





**Lot 2**

## UDE Queen Ruth 2003

AAA: 20423098 • DOB: 1.8.2022 • Tattoo: 2003 • PB Angus

**CFCC Blackjack 001**

**KR Casino 6243**

**Malsons Savannah 27Y**

**PVF Insight 0129**

**KDJ Queen Ruth 502**

**KDJ Queen Ruth**

Possibly the most intriguing, and without doubt a crowd favorite from this particular mating! UDE Queen Ruth 2003 is simply flawless on the move, reaching off both ends with extreme flexibility, looseness of spine, and doing so with the authority needed to garner BIG attention. We absolutely love the squareness of build, hip and hind leg design, and three-dimensional body style that this female brings to the table. She combines some very unique pieces and does so in a smooth, angular, and lady like fashion. UDE Queen Ruth 2003 is so bold in her center rib and offers an impressive view from a three-quarter angle, only rivaled by her look from the side. UDE Queen Ruth 2003 has the pedigree, the phenotype, and the uniqueness to be a big time January prospect when it truly counts, and we believe that this female will uphold the tradition of the famed "502" cow family.



UDE Queen Ruth 0204, Full Sister to Lots 1-4





**Lot 3**

## UDE Queen Ruth 2004

AAA: 20423099 • DOB: 1.17.2022 • Tattoo: 2004 • PB Angus

**CFCC Blackjack 001**  
**KR Casino 6243**  
**Malsons Savannah 27Y**

**PVF Insight 0129**  
**KDJ Queen Ruth 502**  
**KDJ Queen Ruth**

UDE Queen Ruth 2004 is the super broody, bold ribbed, easy fleshing sister of this flush that has an immense amount of volume and capacity. There is no denying the consistency that this particular mating yields time after time. 2004 is the most like UDE Queen Ruth 9088, the sale feature from “The Advantage” 2019 Edition that was selected by Weis Cattle and competitively shown by the Lashmett family of Illinois that was a NWSS Division Champion in 2020. UDE Queen Ruth 9088 has entered production in a dominant fashion, producing the 2022 IA Beef Expo Reserve Supreme Champion for Sloane Curtin. Here is a female that is backed by a royal pedigree that will be worth the chips, especially once she enters production!



**UDE Queen Ruth 0204**  
**Full Sister to Lots 1-4**



**UDE Queen Ruth 9088**  
**Full Sister to Lots 1-4**



**UDE Queen Ruth 1001**  
**Full Sister to Lots 1-4**





**Lot 4**

**UDE Queen Ruth 2157**

**AAA: 20427282 • DOB: 2.2.2022 • Tattoo: 2157 • PB Angus**

**CFCC Blackjack 001**  
**KR Casino 6243**  
**Malsons Savannah 27Y**

**PVF Insight 0129**  
**KDJ Queen Ruth 502**  
**KDJ Queen Ruth**

UDE Queen Ruth 2157 is the most unique sister of this mating in the sale, in regard to having the “extras”... she has been blessed with the extra foot, extra bone, extra shape, and definitely the extra hair! This February prospect is one that we believe will be an absolute force this winter to jackpot, and certainly one that has the right length and depth of body to be an excellent summer heifer to gear for the 2023 NJAS or your State Fair of choice. This one deserves heavy consideration, there has not been a sister from this mating built quite like this one!



**KDJ Queen Ruth 502**  
**Dam of Lots 1-6**



**UDE Queen Ruth 1001**  
**Full Sister to Lots 1-4**





Lot **5**

**UDE Queen Ruth 2017**

AAA: 20423101 • DOB: 2.27.2022 • Tattoo: 2017 • PB Angus

**SCC Tradition on 24**  
**SCC SCH 24 Karat 838**  
**FCF Proven Queen 419**

**PVF Insight 0129**  
**KDJ Queen Ruth 502**  
**KDJ Queen Ruth**

UDE Queen Ruth 2017 is the first of two sisters by SCC SCH 24 Karat 838, a mating that combines two of the most impressive Louisville Champions of the last decade in “502” and “419” within the first 2 generations of their lineage. A three-quarter sister to this pair of ET flushmates was the 2022 IA Beef Expo Reserve Supreme Champion Breeding Heifer for Sloane Curtin. She was the \$24,000 sale feature for Weis and Lashmett. 2017 is high tying in her neck attachment, sleek shouldered, and offers extreme quality in terms of a very futuristic build.



**Lashmett Queen Ruth 1111**  
**3/4 Sister in Blood to Lots 5&6**



**UDE Queen Ruth 109E**  
**Maternal Sister to Lots 1-6**





**Lot 6**

## UDE Queen Ruth 2019

AAA: 20423102 • DOB: 3.4.2022 • Tattoo: 2019 • PB Angus

**SCC Tradition on 24**  
**SCC SCH 24 Karat 838**  
**FCF Proven Queen 419**

**PVF Insight 0129**  
**KDJ Queen Ruth 502**  
**KDJ Queen Ruth**

The March born SCC SCH 24 Karat 838 daughter that is a bit greener in terms of condition, but the pieces are certainly present. Extremely feminine and refined about her head and neck yet offers true pin width and shape. KDJ Queen Ruth 502 adds to her already illustrious resume with each set of ET calves that are born. To date she has produced females that have sold through "The Advantage" sales commanding prices of \$135,000, \$90,000, \$50,000, \$42,000, \$37,000, \$25,000, \$22,000, \$19,000, and several more from \$10,000 to \$15,000. Invest in a cow family that consistently yields results and it will pay dividends in the end!



**UDE Queen Ruth 9291**  
**Maternal Sister to Lots 1-6**



**UDE Queen Ruth 9064**  
**Maternal Sister to Lots 1-6**





**Lot 7**

**UDE Ellie 2005**

**AAA: 20427556 • DOB: 1.18.2022 • Tattoo: 2005 • PB Angus**

**Dameron First Class  
EXAR Blue Chip 1877B  
Greens Princess 1012**

**Plainview Lutton E102  
SLL Ellie 2201  
O G L Ellie 634-446**

As we transition to the next cow family, we felt that it was only fitting to start things off with a mating that has single handedly had as much success for the Udell Cattle Company program as any other! Ladies and gentlemen, we present one of the most unique females to ever carry the UDE prefix, UDE Ellie 2005. A full sister to the 2020 NJAS Grand Champion Owned Heifer, UDE Ellie 9230, owned by Sara Sullivan. That same female went on to be selected as the 2020 NAILE Grand Champion Angus Heifer of the Junior Show. UDE Ellie 9197, a flushmate sister to 9230 was successfully campaigned by KayLee Langford to countless division wins during her show

career. 9197 is now making waves in the donor pen for Randy James and Katie Songer, her first ET progeny will be born in the spring of 2023. Last year another FULL SISTER, UDE 1259 was the \$150,000 sale feature that was purchased by Sara Sullivan. UDE Ellie 2005 is the combination female in terms of type, bringing forward the unique attributes of her older sisters in a smoother design with simply more center body mass, depth of flank, and overall dimension at this stage of the game. She is so elegant about her front third, refined about her head, neck, and shoulder, while maintaining the extra stoutness of foot and bone work, and squareness of pin set that this mating has been noted for. An added bonus is that she has been blessed with the big hair, which only compliments her elite presence and functional build. One thing is for certain, never count out a “2201” daughter!



**UDE Ellie 9230  
Full Sister to Lot 7**





**Lot 8**

**UDE Ellie 2014**

**AAA: 20424150 • DOB: 2.21.2022 • Tattoo: 2014 • PB Angus**

**CFCC Blackjack 001**

**KR Casino 6243**

**Malsons Savannah 27Y**

**Plainview Lutton E102**

**SLL Ellie 2201**

**O G L Ellie 634-446**

Every single day of this heifer's life she has gotten better, a testament to the maturity pattern that one can expect from the SLL Ellie 2201 cow family. UDE Ellie 2014 is the February born daughter of KR Casino 8243 that has as much upside and potential as any when it's all said and done. No First Class, No Style, No Insight to be found in her pedigree...the sky is the limit when this girls show career is over and the mating flexibility is simply unrivaled. Couple this with the enormous foot, bone, and pin set that this female offers, while maintaining a smooth and angular build about her front third. She does this without sacrificing the late maturing growth pattern of the "2201" cow family... this is one unique creature.



**UDE Ellie 9197, Full Sister to Lot 7**



**UDE Ellie 9230, Full Sister to Lot 7**





Lot 9

UDE *Ellie* 2024

AAA: 20424512 • DOB: 4.1.2022 • Tattoo: 2024 • PB Angus

**Dameron First Class**

**Colburn Primo 5153**

**Silveiras Saras Dream 1339**

**Plainview Lutton E102**

**SLL Ellie 2201**

**O G L Ellie 634-446**



**UDE Ellie 153E**

**Full Sister to Lot 9**

UDE Ellie 2024 is the lone Colburn Primo 5153 sired daughter of SLL Ellie 2201 in this year's offering, but one that offers a striking resemblance to that of her full sister that was campaigned by the Steenhoek family a few years ago. UDE Ellie 153E was the 2018 NAILE Grand Champion Angus Heifer in the Junior Show for Chesney Steenhoek, she has entered production and is now a staple in the donor pen of the Angus division in Prairie City, Iowa. 2024 ties high at the top of her shoulder, has the neat feature and look about her front third, and feeds back into a tremendously bold and three-dimensional forerib and center body. She reads true and square off all four corners and offers optimum reach out of her front skeleton. Here is an April heifer that we believe will be a contender and one that is backed by a mating that has frequented the backdrop under the bright lights.





**Lot 10**

**UDE Blackbird 2002**

AAA: 20423103 • DOB: 1.2.2022 • Tattoo: 2002 • PB Angus

**SCC Tradition of 24**

**SCC SCH 24 Karat 838**

**FCF Proven Queen 419**

**EXAR Blue Chip 1877B**

**Hoffman H/G Blackbird 620**

**ALL PVF Blackbird 645**

Look, presence, style, quality, elegance...you name it, this female has it! UDE Blackbird 2002 initiates the powerful flush of SCC SCH 24 Karat 838 daughters from the 2017 NJAS Grand Champion Owned Heifer, Hoffman H/G Blackbird 620. Four full sisters to the \$300,000 UDE Blackbird 0153, the 2020 Hoosier Beef Expo Supreme Champion, 2021 KY Beef Expo Supreme Champion, and 2021 Cattlemen's Congress Reserve Grand Champion that was campaigned by the Ferree family of Indiana. UDE Blackbird 2002 is without a doubt the stoutest footed, biggest boned, and most flexible female that this mating has ever yielded at this stage of the game. We absolutely love the way that this female handles her hock and maintains a square and genuine build off all four corners. She is high tying in her neck attachment with tremendous extension from her shoulder forward, smooth at the point of shoulder, and from there opens up into a robust forerib and center body with excellent progression of depth through her rear rib and flank. We're high on this female and believe she is one of the most elite females to sell through "The Advantage" to date!



**UDE Blackbird 0153**

**Full Sister to Lots 10-13**





Lot **11**

*UDE Blackbird 2010*

AAA: 20423104 • DOB: 2.5.2022 • Tattoo: 2010 • PB Angus

**SCC Tradition of 24**  
**SCC SCH 24 Karat 838**  
**FCF Proven Queen 419**

**EXAR Blue Chip 1877B**  
**Hoffman H/G Blackbird 620**  
**ALL PVF Blackbird 645**

The first of two February born sisters to the \$300,000 high selling female from 2021 that was campaigned by the Ferree family. UDE Blackbird 2010 offers unparalleled foot and bone mass, with a robust rib cage that has the ideal progression of depth from her chest back to her rear rib and flank. We love the presence that this female carries herself with as she moves around the sale traps. She has “the look” that it takes to find the backdrop when it truly counts!



Hoffman H/G Blackbird 620, Dam of Lots 10-13





Lot **12**

*UDE Blackbird 2012*

AAA: 20423105 • DOB: 2.11.2022 • Tattoo: 2012 • PB Angus

**SCC Tradition of 24**  
**SCC SCH 24 Karat 838**  
**FCF Proven Queen 419**

**EXAR Blue Chip 1877B**  
**Hoffman H/G Blackbird 620**  
**ALL PVF Blackbird 645**

UDE Blackbird 2012 is the second of the two February 620 daughters. She is so long, smooth, and extended in terms of their general pattern, while maintaining the body depth and spring of rib that their prolific dam transmits to her progeny. Hoffman H/G Blackbird 620 was a force on the tan bark in 2017-2018 for Maddy. She was selected as the 2017 NJAS Grand Champion Owned Heifer, 2017 American Royal Grand Champion Junior Angus Heifer, and 2017 NAILE Reserve Grand Champion Angus Heifer. These sisters are backed by a true power cow!



UDE Blackbird 0153, Full Sister to Lots 10-13





Lot **13**

UDE *Blackbird* 2023

AAA: 20423106 • DOB: 3.21.2022 • Tattoo: 2023 • PB Angus

**SCC Tradition of 24**  
**SCC SCH 24 Karat 838**  
**FCF Proven Queen 419**

**EXAR Blue Chip 1877B**  
**Hoffman H/G Blackbird 620**  
**ALL PVF Blackbird 645**

UDE Blackbird 2023 is the youngest member of the flush, but don't let her immaturity fool you, this one has big potential! A late March born daughter of the multiple-time National Champion, Hoffman H/G Blackbird 620, this is the female that offers the most similarities to the Ferree owned UDE Blackbird 0153. Exotic in terms of her neck attachment, big up high, stout boned, and long sided. She is greener in her condition but with time and proper management this is the female that will come around the outside on the final turn out of nowhere... you've been warned.







**Lot 14**

**UDE Phyllis 2018**

**AAA: 20423107 • DOB: 3.1.2022 • Tattoo: 2018 • PB Angus**

**EXG RS First Rate S903 R3**

**Dameron First Class**

**Dameron Northern Miss 3114**

**SCC First-N-Goal GAF 114**

**FCF Phyllis 532**

**SCC Phyllis 051**

She was the talk of the business last December when she commanded \$140,000 for ½ embryo interest at “The Grand Event”. UDE Phyllis 2018 is possibly one of the most intriguing March born prospects, as she not only is a direct daughter of “532”, but she is by the iconic Dameron First Class. If you are searching for a true breeding piece, then hit the brakes... here she is! Her elegant look is further complimented by a flawless build at the surface. She is bold sprung with the appropriate progression of depth from chest to flank. 2018 offers these extra bells and whistles, while maintaining the sensible frame size and productive brood cow look that her dam personifies. This female has the credentials to be the next generation of the “Phyllis” line... don’t miss out.

FCF Phyllis 532 continues to be the reliable producer that her famed dam, SCC Phyllis 051 has been admired for by so many breeders over the years. It doesn’t matter how we mate “532”, the results end up being profitable for the partners behind this matriarch, or in some instances those that have made the investment in the frozen form. FCF Phyllis 532 is the dam of the reigning 2022 NJAS Grand Champion Owned Heifer that was shown by Josie Phillips this past summer in Kansas City. She is sired by PVF Blacklist 7077 and was raised in the Buck Creek Ranch program as the result of a successful embryo transaction.



**UDE Phyllis 1143**  
**Maternal Sister to Lots 14-20**



**UDE Phyllis 9129**  
**Maternal Sister to Lots 14-20**





## Lot 15 UDE Phyllis 2015

AAA: 20423108 • DOB: 2.24.2022 • Tattoo: 2015 • PB Angus

Gambles Hot Rod

**Silveiras Style 9303**

Silveiras Elba 2520

SCC First-N-Goal GAF 114

**FCF Phyllis 532**

SCC Phyllis 051

UDE Phyllis 2015 is a full sister to the \$105,000 high selling female, UDE Phyllis 9129, successfully campaigned by Kinnick Paulsen to several victories including a division win at the 2020 FWSS. 2015 is the older of two full sisters from the Style x 532 mating that possesses the signature “Phyllis” look of maternal excellence and quality. An ultra-feminine, chiseled featured female that offers a picture perfect outline from the side.



## Lot 16 UDE Phyllis 2029

AAA: 20423109 • DOB: 5.3.2022 • Tattoo: 2029 • PB Angus

Gambles Hot Rod

**Silveiras Style 9303**

Silveiras Elba 2520

SCC First-N-Goal GAF 114

**FCF Phyllis 532**

SCC Phyllis 051

Here is one that deserves serious consideration if you're looking for a female that will be a constant force within her division. UDE Phyllis 2029 is the May born prospect from the Style x Phyllis mating that is of elite status. We love the way that this female ties herself together about her front third, handles her hock on the move, and remains so square and true off all corners. She is young and understandably behind the others in terms of condition, but she should be at this stage of her life. She represents high quality livestock that is backed by generations of proven and predictable lineage. A big time prospect for the Early Summer Division!



## Lot 17 UDE Phyllis 2011

AAA: 20423110 • DOB: 2.07.2022 • Tattoo: 2011 • PB Angus

CFCC Blackjack 001

**KR Casino 6243**

Malsons Savannah 27Y

SCC First-N-Goal GAF 114

**FCF Phyllis 532**

SCC Phyllis 051

UDE Phyllis 2011 is the lone daughter of KR Casino 6243 from the influential FCF Phyllis 532 matriarch. A stunning February prospect that combines the elegance of the “532” line with the mass, dimension, and genuine power associated with that of KR Casino 6243. We believe in this cow family and are confident that this female's best days are to come!

# Lot 18

## UDE Phyllis 2027

AAA: 20423111 • DOB: 4.19.2022 • Tattoo: 2027 • PB Angus



UDE Phyllis 0223  
Full Sister to Lots 18-19

SCC Tradition of 24

SCC SCH 24 Karat 838

X

SCC First-N-Goal GAF 114

FCF Phyllis 532

FCF Proven Queen 419

SCC Phyllis 051



BCR Phyllis 092J  
Maternal Sister to Lots 15-20

# Lot 19

## UDE Phyllis 2028

AAA: 20423112 • DOB: 4.21.2022 • Tattoo: 2028 • PB Angus

This next pair of sisters by SCC SCH 24 Karat 838 are sure to turn heads on sale day in Sioux City! UDE Phyllis 2027 and UDE Phyllis 2028 are full sisters to the \$35,000 UDE Phyllis 0223. The Reiboldt family of Indiana purchased 0223 in the 2020 Edition of "The Advantage" sale and campaigned her to several victories. Her most notable win was at the 2021 Indiana State Fair when she was selected as the Grand Champion Angus Heifer and Reserve Supreme Champion Junior Breeding Heifer. Last year a trio of full sisters sold to Dawson Johnson, Gavin Henry, and Stephanie Krogh. UDE Phyllis 1143, shown by Dawson Johnson has been shown to countless victories, including being selected as the 2022 MN Junior Angus Field Day Reserve Grand Champion, as well as a class winner at the NJAS this past summer in Kansas City. Much like their full sisters at this stage of maturity, these two females have the elite features that will set them apart on the tan bark. Big footed, stout boned, long and extended about their front third, while maintaining the extra stoutness and shape that their sire group is so widely admired for. This mating has a proven track record when it comes to finding the backdrop... here is a pair of sisters that are bred in the purple!





**Lot 20**

**UDE Phyllis 241K**

**ASA: 4089338 • DOB: 4.10.2022 • Tattoo: 241K • 1/2 Simmental**

**WS Pilgrim H182U**

**Profit**

**WAGR Panarama 204Z**

**SCC First-N-Goal GAF 114**

**FCF Phyllis 532**

**SCC Phyllis 051**

UDE Phyllis 241K is the lone SimAngus female from the FCF Phyllis 532 cow family but is backed by a mating that needs no introduction! Our partners and friends, Adcock Land & Livestock have had tremendous success with 532 when it comes to mating to Simmental sires. 241K is a full sister to ALL Avail 939G, the 2021 IL State Fair Supreme Champion Simmental and Grand Champion Percentage Simmental Bull. He was also the 2020 NAILE Reserve Grand Champion Percentage Simmental Bull. ALL Phyllis 050H is another full sister that sold at Hartman Cattle Company in 2020 to Drew Brock for \$39,000. ALL/FCF Hot Topic 099H is the third full sib to 241K that has garnered major attention from breeders across the country when he was selected as the 2021 NAILE Grand Champion Percentage Simmental Bull. 241K is a sharp featured, ultra-attractive SimAngus show prospect that has an elite structural foundation. This April SimGenetic prospect is sure to be a favorite of many on sale day!



**ALL Avail 939G**  
**Full Brother to Lot 20**



**ALL/FCF Hot Topic 099H**  
**Full Brother to Lot 20**



**ALL Phyllis 198J**  
**Full Sister to Lot 20**





Lot 21

*UDE Forever Lady 2009*

AAA: Pending • DOB: 2.2.2022 • Tattoo: 2019 • PB Angus

**SCC Tradition of 24**

**SCC SCH 24 Karat 838**

**FCF Proven Queen 419**

**EXAR Lutton 1831**

**Lazy H Bar Forever Lady 7153**

**Lazy H Bar Forever Lady 326**

The “new kid” on the block in the Udell Cattle Company donor pen. Allow us to introduce a female that we are quite high on, and her progeny speak volumes for what we believe that she is capable of generating. Lazy H Bar Forever Lady 7153 is from a long line of prolific females tracing to the legendary Lazy H Bar Forever Lady 5001, the absolute cornerstone of Barry Hageman’s program. This is the initial set of embryo calves from 7153 that we have ever offered, all by the widely popular SCC SCH 24 Karat 838. These females have subtle differences but share in the fact that they all represent high quality Angus seedstock.

UDE Forever Lady 2009 is the oldest of the sisters and is unquestionably the stoutest Angus heifer in the entire offering! She is huge hipped, square built, and loaded with outward shape and dimension down her spine. She maintains a functional build with excellent flexibility in her lower joints. If you tend to gravitate towards power like we do, here is the one that will be at the top of your short list.



## 22 UDE Forever Lady 2013

AAA: Pending • DOB: 2.13.2022 • Tattoo: 2013 • PB Angus



*This pedigree applies to Lots 22-24*

**SCC Tradition of 24**

**SCC SCH 24 Karat 838**

**FCF Proven Queen 419**

**EXAR Lutton 1831**

**Lazy H Bar Forever Lady 7153**

**Lazy H Bar Forever Lady 326**

The next sister from “7153” possesses the signature “Forever Lady” body style in terms of overwhelming mass and volume through the center portion of her body. We love the soft, productive, ultra cowy look that this female offers. Of course she maintains the chiseled front third that SCC SCH 24 Karat 838 consistently stamps his progeny with.

## 23 UDE Forever Lady 2016

AAA: Pending • DOB: 2.25.2022 • Tattoo: 2016 • PB Angus



UDE Forever Lady 2016 is very functional, big ribbed, and offers a maternal look of balance and quality. She is longer and smoother in her muscle pattern yet maintains a square hip and pin set. As you'd expect from her sire group, she too is ultra-high quality about her front third with an elite presence about her.

## 24 UDE Forever Lady 2021

AAA: Pending • DOB: 3.08.2022 • Tattoo: 2021 • PB Angus



The youngest of this particular flush of ET calves and a favorite of many that have already toured the sale offering. UDE Forever Lady 2021 is elite in every sense of the word. From the ground up this female is built as square and true as any in the offering. She is so elegant about her front third, offering a maternal look of femininity about her head and neck. She is sensible in her frame size, robust about her rib cage, and as square pinned and smooth muscled as you can design one from this particular sire group. It would be amiss not to mention that the way that she handles her topline on the move and lays her tailhead in is near perfect. There are so many positives that she brings to the table, and we whole heartedly believe she is destined to be a force in the March class of the Early Spring Division.





## 25 UDE Keymura Katy 2006

AAA: 20423113 • DOB: 1.19.2022 • Tattoo: 2006 • PB Angus



**UDE Keymura Katy 1257**  
Full Sister to Lots 25-27



## 26 UDE Keymura Katy 2022

AAA: 20423114 • DOB: 3.8.2022 • Tattoo: 2022 • PB Angus



## 27 UDE Keymura Katy 2030

AAA: 20424001 • DOB: 5.10.2022 • Tattoo: 2030 • PB Angus

**SCC Tradition of 24**

**SCC SCH 24 Karat 838**

**FCF Proven Queen 419**

**X**

**SLL Dominance 349**

**SLL Keymura Katy 5008 "5009"**

**SLL Keymura Katy 3069**

The next trio of females are full sibs to the \$60,000 UDE Keymura Katy 1257 that led off the 2021 sale offering and was selected by Campbell Mogck of South Dakota. Much like their full sister from a year ago, this trio has the "wow factor" when you set foot in the pen with them. They are high tying, sleek shouldered, neat chested females that read with extreme femininity and quality about their front third. From their shoulders back they blend smoothly through their forerib and center body, offering an abundance of pin width and shape from behind. The dam of these three flushmates is the SLL Keymura Katy 5008 "5009" donor dam that has been a cornerstone producer year after year. In the 2021 Edition of "The Advantage" she produced 7 heifer calves that averaged north of \$21,000! UDE Keymura Katy 0298 was the \$50,000 selection of Kathryn Coleman of California, while UDE Keymura Katy 0252 was purchased for \$33,000 by the Moxley family of Maryland. 0252 was the Early Summer Heifer Calf Champion at the 2021 Cattlemen's Congress. A neat set of ET flush sisters by SCC SCH 24 Karat 838, led by the high end UDE Keymura Katy 2006, a female with exceptional eye appeal and future upside. These sisters have the qualifications to be highly competitive projects for any age exhibitor.



# Lot 28

## UDE Keymura Katy 2025

AAA: 20423115 • DOB: 4.2.2022 • Tattoo: 2025 • PB Angus



EXAR Blue Chip 1877B  
Conley No Limit  
Silveiras S Sis Sandy 2355



UDE Keymura Katy 0252  
Maternal Sister to Lots 25-29

SLL Dominance 349  
X SLL Keymura Katy 5008 "5009"  
SLL Keymura Katy 3069



UDE Keymura Katy 1054  
Maternal Sister to Lots 25-29

# Lot 29

## UDE Keymura Katy 2026

AAA: 20424002 • DOB: 4.5.2022 • Tattoo: 2026 • PB Angus

UDE Keymura Katy 2025 and UDE Keymura Katy 2026 are full sisters from the "5009" donor sired by Conley No Limit. A pair of full sisters sold in last year's sale to Circle M Farms and the Wernimont family for an average of \$5,600. A maternal sister to these five "5009" daughters by Conley Express 7211 sold for \$6,000 to Jeff Jackson and has been a dominant force in the state of Texas for the Hunt family, including a Reserve Division title at the 2022 San Antonio Livestock Exposition, and Grand Champion at the 2022 Texas Youth Livestock Expo. The same cow family also produced UDE Keymura 1108, a younger female that sold for under \$5,000 last year. The Armitage family of Oklahoma saw the potential in this female and with attentive management she found her way to several breed titles throughout the state, including being selected as the OSU Block & Bridle Reserve Supreme Champion Heifer in Ring B. This example is proof that quality females are sold throughout the entire offering at affordable figures. Come join us on October 15th in Sioux City, Iowa to experience "The Difference"!



# Lot 30

## UDE Saras Dream 2020

AAA: 20423116 • DOB: 3.5.2022 • Tattoo: 2020 • PB Angus



**EXAR Blue Chip 1877B**

**Conley No Limit**

**Silveiras S Sis Sandy 2355**

**Silveiras Style 9303**

**Silveiras Saras Dream 2335**

**EXG Saras Dream S609 R3**

There is no doubt that Silveiras Saras Dream 2335 has made a substantial impact on our program during her short tenure in Sioux City. We unfortunately lost her this past winter, but the legacy that “2335” created will live on through her daughters. “2335” is the dam of the \$600,000

world record selling UDE Saras Dream 1086, a female admired by all that had the opportunity to view her in person. Silveiras Saras Dream 2335 was the 2013 American Royal ROV Grand Champion Angus Heifer. This powerful female was an ET flushmate sister to Silveiras Saras Dream 1339, the dam of Colburn Primo 5153, CCC Saras Dram 5116, as well as countless other high sellers and National show ring champions. Most recently 1086 was selected as the Junior Yearling Division V Champion at the 2022 NJAS this past summer in Kansas City. UDE Saras Dream 2020 is sired by Conley No Limit, making her a three-quarter sister in blood to UDE Saras Dream 1086! She is massive through her center body, offering the same ultra-maternal brood cow power and style as the matrons that line her pedigree.



**Gambles Hot Rod**

**Silveiras Style 9303**

**Silveiras Elba 2520**

**C&C McKinley 3000 EXAR**

**WAM UDE Hannah 810**

**EXAR Saras Dream 71203**

# Lot 31

## UDE Hannah 2007

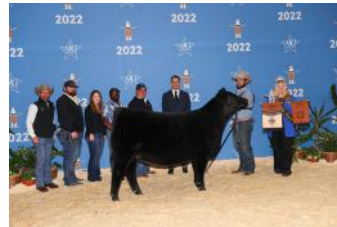
AAA: 20423881 • DOB: 1.2.2022 • Tattoo: 2007 • PB Angus

UDE Hannah 2007 is a super bold ribbed, easy fleshing, loose built female that is functional in her joint work, correct in her angles, and boasts a productive look of quality and balance that will always keep you in the game. UDE Hannah 2007 is very similar bred to Silveiras Saras Dream 2335 and Silveiras Saras Dream 1339, being sired by Silveiras Style 9303, and backed by the legendary influence of the great “Saras Dream” line. The maternal side of her pedigree incorporates a shot of Dameron First Class via the influence of C&C McKinley 3000 EXAR. A pedigree you can bank on!



# THE ADVANTAGE

## *Past Angus Champions*





# Lot 32

## UDE Hayleigh 5K

ASA: 4089339 • DOB: 1.3.2022 • Tattoo: 5K • PB Simmental



HPF/HILL Uprising C104

**SO Remedy 7F**

B&K Cream Soda 8D

LLSF Pays to Believe

**KDP Miss Hoya Hayleigh**

K-LER/RC Miss Hoya Saxa



**SO Remedy 7E**

Sire of Lots 32-33

# Lot 33

## UDE Hayleigh 17K

ASA: 4089340 • DOB: 1.17.2022 • Tattoo: 17K • PB Simmental

We had the opportunity to join forces in December of 2019 with Toby Noble and his family of Black Gold Simmentals of Saskatchewan and acquire a special female from the Paulsen Cattle Company "Divas & Donors" sale. KDP Miss Hoya Hayleigh was a special female as a calf and matured into one of the absolute most impressive Simmental females that has ever set foot at Udell Cattle Company. She was selected as the 2019 Kansas Beef Expo Reserve Supreme Champion Female as her first outing. She continued her winning ways through the summer and fall before being selected as the 2020 American Royal Grand Champion, 2020 NAILE Grand Champion, and 2021 Cattlemen's Congress Grand Champion! The triple-crown winning KDP Miss Hoya Hayleigh has matured into an equally as impressive female in production with a picture perfect udder design. The first two daughters of KDP Miss Hoya Hayleigh to be offered to the public in the states, sired by the \$530,000 SO Remedy 7F. This pair of January born prospects are spitting images of their dam at this age, offering impeccable body depth and shape, flexibility, and an ultra-broody in their overall design. We love the functionality that this pair of sisters represent on top of the fact that they are bred to the nines!





**Lot 34**

**UDE Hayleigh 250K**

**ASA: 4095023 • DOB: 5.5.2022 • Tattoo: 250K • PB Simmental**

**Profit**

**UDE Profit 67F "Code Red"**  
**TJSC Kansa 823B**

**LLSF Pays to Believe**

**KDP Miss Hoya Hayleigh**  
**K-LER/RC Miss Hoya Saxa**

UDE Hayleigh 250K is "Hayleigh's" natural born that is sired by the senior herd sire here at Udell Cattle Company. UDE Profit 67F, affectionally known as "Code Red" is the Profit son backed by TJSC Kansa 823B, the multiple time Reserve National Champion during the 2015-2016 show season. There is no doubt that this striking baldy female has the unique form and feature in terms of extension, stoutness, and overall balance. She is just a May baby but one that we anticipate to be one of the very best when it's all said and done, and genetics are certainly on her side. This will be no surprise to many, as her pedigree aligns the two most successful Purebred Simmental females ever campaigned by Udell Cattle Company!



**KDP Miss Hoya Hayleigh, Dam of Lots 32-34**



# Lot 35

## UDE Diamond 184K

ASA: 4089341 • DOB: 3.4.2022 • Tattoo: 184K • PB Simmental



W/C Relentless 32C

JSUL Something about Mary 8421

JBSF Proud Mary



TJSC Diamond 167E

Dam of Lots 35-40

MR HOC Broker

X

TJSC Diamond 167E

KLS Diamond W516



KLS Diamond W516

Grandam of Lots 35-40

# Lot 36

## UDE Diamond 166K

ASA: 4089342 • DOB: 3.6.2022 • Tattoo: 166K • PB Simmental

What can we say, TJSC Diamond 167E has earned her position as one of the most prolific and consistent producing females of Purebred stock in the donor pen here in Sioux City. It all makes perfect sense when you analyze the strong support staff that lines her pedigree. 167E is sired by the triple crown winning MR HOC Broker and is out of the 2011 NWSS Grand Champion Purebred Simmental Heifer, KLS Diamond W516. She is a full sister to the promotional AI sire known as "Meant to Be", as well as countless high sellers and show ring champions. 167E was the 2018 AJSA National Classic Reserve Grand Champion Purebred Owned Heifer, and it's apparent her dominant run was not just in the show ring. A year ago she produced the \$30,000 UDE Diamond 141J that was campaigned to countless titles by Jade Beeson. Most recently she was selected as the 2022 IA State Fair Grand Champion Simmental and 4th Overall Breeding Heifer. She topped off the summer as the 2022 IA State Fair Grand Champion Simmental of the Open Show the next week in Des Moines. This pair of daughters by JSUL Something About Mary 8421 offer the same maternal function, body shape, and structural correctness that their maternal sister personified at this age. A Diamond lasts forever!



# Lot 37

## UDE Diamond 56K

ASA: 4089343 • DOB: 1.7.2022 • Tattoo: 56K • PB Simmental



UDE Diamond 141J  
Maternal Sister to Lots 35-40

Yardley Utah Y361

W/C Relentless 32C

Miss Werning KP 8543U

X

MR HOC Broker

TJSC Diamond 167E

KLS Diamond W516



UDE Diamond 141J  
Maternal Sister to Lots 35-40

# Lot 38

## UDE Diamond 59K

ASA: 4089344 • DOB: 1.18.2022 • Tattoo: 59K • PB Simmental

UDE Diamond 56K and UDE Diamond 59K are the January prospects by W/C Relentless 32C from the prolific 167E donor. They are just what you'd expect from this mating, flexible in their movement, long sided, smooth in their muscle pattern, and ultra-extended with tremendous eye appeal. UDE Diamond 210J, a full sister to 56K and 59K, was purchased by Jackson Lettinga of Michigan in last year's sale.



# Lot 39

## UDE Diamond 143K

ASA: 4089345 • DOB: 4.2.2022 • Tattoo: 143K • PB Simmental



**Yardley Utah Y361**

**W/C Relentless 32C**

**Miss Werning KP 8543U**

**MR HOC Broker**

**TJSC Diamond 167E**

**KLS Diamond W516**

Here is the youngest of the W/C Relentless 32C sired daughters from 167E, and some may say she will be the best when it's all said and done. We certainly won't disagree, as the feature and form that she possesses is simply exquisite. She is so unique in her proportions, long and high tying in her neck attachment, while maintaining a smoothly laid in shoulder. She is square on the backside of her blade and offers genuine shape to her upper rib cage. She is an April prospect that is built true and square off all four corners. 143K has been blessed with the perfect blaze face to cap off her stunning look.

# Lot 40

## UDE Diamond 269K

ASA: 4089346 • DOB: 3.27.2022 • Tattoo: 269K • PB Simmental



**Rocking P Legendary C918**

**JBSF Berwick 41F**

**JBSF 402B**

**MR HOC Broker**

**TJSC Diamond 167E**

**KLS Diamond W516**

We have had a handful of daughters by JBSF Berwick 41F the last two years, and the common assessment of the sire group is that they are very functional, low input, high quality cattle that offer longevity and functionality... what more could you really ask for? Daughters of JBSF Berwick 41F have experienced a big year on the tan bark. Reserve Grand Champion Purebred at the 2022 AJSA National Classic, Supreme Champion Overall at the South Dakota Summer Spotlight, and Supreme Champion Junior Breeding Heifer at the NE State Fair would be just a few examples where they have found their way to the backdrop. A very complete full sister to 269K was purchased by Kolten Wynn of Indiana last year. As the JBSF Berwick 41F daughters have started to enter production they are receiving rave reviews in terms of udder quality and maternal excellence.



# Lot 41

## UDE Summer 111K

ASA: 4089347 • DOB: 2.21.2022 • Tattoo: 111K • PB Simmental



**HTP/SVF Duracell T52**

**THSF Lover Boy B33**

**RP/MP Right to Love 015U**

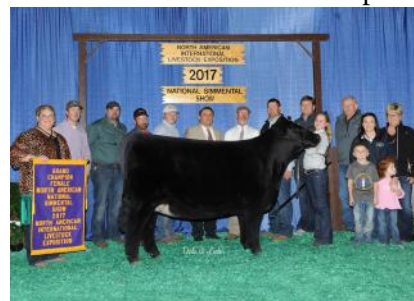
**CDI Innovator 325D**

**CCS/UDE Summer 138H**

**WHF Summer 365C**

Much like the Angus sector of the cowherd at Udell Cattle Company, the Simmental division is approached with the same breeding philosophy... align the elite cow families within the breed and the quality stock will always surface! UDE Summer 111K is a prime example of this procedure. 111K is sired by the 2016 NWSS Grand Champion

Purebred Simmental Bull, THSF Lover Boy B33, a FULL BROTHER to HPF Quantum Leap Z925. The dam of these two powerful promotional AI sires, RP/MP Right To Love 015U, is considered by many to be on the most impressive SimGenetic females to ever grace the tan bark. Combine this with the CDI Innovator 325D sired daughter of the legendary WHF Summer 365C, and the stars begin to align! American Royal, NAILE, and Denver Champions can be identified within the first two generations of her pedigree FOUR TIMES. Her sire, paternal granddam, maternal grandsire, and maternal granddam... all major livestock show champions among the toughest competition in the land. 111K is bred to be!



**WHF Summer 365C**  
**Grandam of Lot 41**

# Lot 42

## UDE My Oh My 244K

ASA: 4089348 • DOB: 4.9.2022 • Tattoo: 244K • PB Simmental



**MR TR Hammer 308A ET**

**ACLL Fortune 393D**

**Firefly 311A**

**MR HOC Broker**

**Silverstone My Oh My**

**JF Ebonys Joy 612S**

My Oh My is right! This powerful daughter of the \$185,000 ACLL Fortune 393D has the extra shape and style that her sire has been praised for injecting into his progeny time

after time. The dam of this April female is sired by MR HOC Broker and is supported by the very influential JF Ebonys Joy 612S matron that was a cornerstone in the Janssen program for many years. If you're searching for a Purebred that has the cow family with a bit extra shape and power... well, here is your girl!





Lot **43**

**UDE Flossy 62K**

ASA: 4089349 • DOB: 2.1.2022 • Tattoo: 62K • PB Simmental

W/C Relentless 32C

**JSUL Something About Mary 8241**

JBSF Proud Mary

TLLC One Eyed Jack

**UDE Flossy 27E**

Haras Miss Princess 100Z



**UDE Flossy 27E**  
**Dam of Lot 43**

UDE Flossy 62K, the decedent of the \$190,000 Hara's Miss Princess 100Z turned Purebred! This stunning daughter of UDE Flossy 227E has inherited the extra foot, bone, and frame size from her dam side of the pedigree while reaching Purebred status, however she maintains the softness and style that is always synonymous with the 100Z progeny year after year. The dam of this JSUL Something About Mary 8421 daughter was a past sale feature that sold to Amelia Miller of Illinois. She experienced great success with this female including a Reserve Division title at the 2017 NAILE. A full sister to the dam of 62K was also shown very successfully by Amelia Miller, UDE Princess 126F. A cow family that you can always bet on!



# Lot44 UDE Princess 138K

ASA: 4089350 • DOB: 2.10.2022 • Tattoo: 138K • 3/4 Simm



UDE Princess 3J  
Full Sister to Lots 44-48



UDE Princess 126F  
Maternal Sister to Lots 44-50

# Lot45 UDE Princess 159K

ASA: 4089351 • DOB: 3.5.2022 • Tattoo: 159K • 3/4 Simm



UDE Princess 159G  
Maternal Sister to Lots 44-50

# Lot46 UDE Princess 197K

ASA: 4089352 • DOB: 3.17.2022 • Tattoo: 197K • 3/4 Simm



UDE Flossy 27E  
Maternal Sister to Lots 44-50



UDE Norma Jean 114D  
Maternal Sister to Lots 44-50



## Lot 47 UDE Princess 290K

ASA: 4089353 • DOB: 4.15.2022 • Tattoo: 290K • 3/4 Simm



*This pedigree applies to Lots 44-48*

**W/C Relentless 32C**

**JSUL Something About Mary 8241**

**JBSF Proud Mary**

**MR HOC Broker**

**Haras Miss Princess 100Z**

**Haras Hairietta Clone H4W**

## Lot 48 UDE Princess 278K

ASA: 4089354 • DOB: 4.20.2022 • Tattoo: 278K • 3/4 Simm



**Haras Miss Princess 100Z**

**Dam of Lots 44-50**

Old Faithful... the SimGenetic mating that you can bet the farm on to be high quality seedstock every time! There is no doubt in our mind that the JSUL Something About Mary 8421 x Hara's Princess 100Z mating is foolproof! This mating averaged north of \$43,000 a year ago in "The Advantage" Production Sale. Just ask Brody Wenell about his full sister to these ET flushmates that has been on a roll all spring and summer. UDE Princess 3J was a many time breed champion and top 5 contender during the late winter and spring jackpot season for Mr. Wennell. She was a Reserve Division winner and 8th Overall Percentage Heifer at the 2022 AJSA National Classic in Madison this summer. She completed the summer run as the 2022 IA State Fair Grand Champion Percentage Simmental Heifer in the Open Show. Hara's Miss Princess 100Z is a cornerstone at Udell Cattle Company, continually adding to her already extensive resume with each mating, new and old alike. Some of the very first progeny from 100Z were sired by TLLC One Eyed Jack, WS Pilgrim H182U, Sandeen Upper Class, ACLL Fortune 393D, and W/C Loaded Up 119Y to name a few. Those females were successful for ASA Junior members like Amelia Miller, KayLee Langford, Millie Lashmett, Kinsly Altena, Olivia Beeson, Jaylee Happe, Jazlynn Hilbrands, Sayler Jauer, Kasey Krogh, Walker McDermott, Logan Mullion, Micah Reimer, and Tori Treinen. The impact that 100Z can have on a program is certainly hereditary, and her daughters follow in the massive tracks that she has left on the business. These five full sisters by JSUL Something About Mary 8421 have subtle differences, and there will be some that prefer one to another. They are different ages and most certainly in different stages of maturity and condition. Rest assured that this genetic combination aligns four of the all-time high generating females in the business in "8543U", "Proud Mary", "Hairietta", and "Princess 100Z".... the guess work is done, enjoy the success!





Lot **49**

*UDE Princess* 53K

ASA: 4089355 • DOB: 2.3.2022 • Tattoo: 53K • 5/8 Simmental

W/C Bankroll 811D  
**W/C Fort Knox 609F**  
 K-LER Dolly's Queen 609D  
 MR HOC Broker  
**Haras Miss Princess 100Z**  
 Haras Hairietta Clone H4W



**W/C Fort Knox 609F**  
**Sire of Lot 49**

A new mating from the famed 100Z donor that should appeal to a wide variety of junior exhibitors and cattle breeders alike! UDE Princess 53K is sired by the \$180,000 W/C Fort Knox 609F, a bull that has been praised for his unrivaled uniqueness of build. Normally we have taken the safest approach to mating 100Z because she will generally transmit power in the form of the “extras” to her progeny. From “Upper Class” to “Rebel” and “SAM” to “One Eyed Jack”, as well as every other bull in between that we have mated her to, she has carried the mail when it comes to contributing width, squareness, and genuine dimension to her offspring. When aligning two individuals like “Fort Knox” and “Princess 100Z” one can’t help but be excited about the possibilities. All we can say is... WHOA! Here is the donor cow of the bunch that is massive, bold, genuine, and stout. We love her foot size, bone circumference, and the robust turn to her rib cage. This is a female that has the “wow” factor and will follow in the footsteps of the dominant producing females that line her pedigree.





Lot **50**

*UDE Princess 137K*

ACA: 413813 • DOB: 2.6.2022 • Tattoo: 137K • 4% Chianina

**Walks Alone**

**Here I Am**

**Goretska 805**

**MR HOC Broker**

**Haras Miss Princess 100Z**

**Haras Hairietta Clone H4W**



**Here I am**

**Sire of Lot 50**

PLOT TWIST!?! Yes, we know she's different, but that's what makes this female so unique and ultimately elevates the true potential that she has to be a generator! UDE Princess 137K ET, the Low Chianina/quarter-blood Simmental by the legendary Here I Am and out of the \$190,000 Hara's Miss Princess 100Z. We realize that she won't be for everyone, but even the most critical will appreciate the attributes that this female brings forward. Unbelievable look, shape, width, squareness, and overall eye appeal. She is as flexible and true in the way that she handles her hind leg as you could ask her to be, while offering optimum reach out of her front end when on the move. She ties herself together with grace and class, yet has the extra punch needed to be a big time donor cow. She will certainly show... whether it be as a low chi or as a market heifer, the choice is ultimately yours. Regardless of which direction you decide to jump, rest assured that this one is a unique critter. However her true value is in production. I would be remiss if I didn't mention that this female is for an experienced exhibitor.



# Lot 51

## UDE *Young Love* 46K

ASA: 4089356 • DOB: 1.22.2022 • Tattoo: 46K • 3/4 Simmental



The success that cattle sired by LLSF Pays To Believe ZU194 have had in the show ring from start to finish would be hard to replicate. This is a sire group that has the potential to yield show heifers that can win their division as calves, maintain themselves through the summer, and still be a major player when they return as a heavy bred for the fall and winter show season. We use this as an example because this female is built very similar to the last two “Pays” heifers at Udell Cattle Company in terms of body style and maturity pattern. The dam of this stylish and cowy three-quarter blood is MMK Young Love 504D, the 2017 NAILE Reserve Grand Champion Percentage Heifer for Maddy. This female is bred to go the distance!

CNS Pays to Dream T759  
LLSF Pays to Believe ZU194  
LLSF Urababydoll U194  
MR HOC Broker  
MMK Young Love 504D  
KCC Enchantress 309



**MMK Young Love**  
**Dam of Lot 51**



Yardley Utah Y361  
W/C Relentless 32C  
Miss Werning KP 8543U  
TJSC Optimus Prime 12W  
Miss Prime A032  
Miss Lut

# Lot 52

## UDE *Miss Prime* 288K

ASA: 4089357 • DOB: 4.8.2022 • Tattoo: 288K • 3/4 Simmental

288K is an April three-quarter blood by W/C Relentless 32C that is backed by the TJSC Optimus Prime 12W daughter that Maddy showed in 2014, including a top five finish at the SDSU AGR Presidents Classic. Smooth made from end to end, square built, and flexible on the move. Her pedigree aligns the great Miss Werning KP 8543U with the high-income generating donor at Jones Show Cattle, KS Miss She's So Sweet 9. A high quality Foundation Simmental that will be competitive in the Late Spring Yearling Division.



# THE ADVANTAGE

## *Past Simmental Champions*







Lot **53**

*UDE Thunder Girl 8K*

ACA: 413808 • DOB: 1.19.2022 • Tattoo: 8K • 7.5% Chianina

For over a decade JSUL Red Thunder 9051W has maintained her status in the business as one of the all-time high income producing females in the Chianina breed. She has well over a Million Dollars in progeny sales and a resume of champions that is unparalleled. Her reign continues year after year as she generates high sellers and champions! In the 2021 Edition of "The Advantage" the Gensini family of Illinois selected UDE Stylin Thunder 22J for \$80,000. She was selected as the 2022 NWSS 3rd Overall Prospect Heifer and most recently was the IL State Fair Grand Champion Chianina Heifer and 5th Overall Junior Breeding Heifer. The Goettemoeller family has campaigned Miss Worthy 1H ET to the title of 2021 and 2022 National Junior Heifer Show Grand Champion Owned Heifer among countless other major stock show victories during her career. In production these "Red Thunder" daughters get the job done... plain and simple. UDE Glamour Girl 18B has been a big time generator for Sullivan Farms. Year after year the JSUL Red Thunder 9051W high sellers list expands. The docket of champions that have come from this dynamic matriarch is simply incomparable. She has produced more progeny that have sold for \$10,000-\$90,000 than possibly any other female in our donor pen, and we are confident that based on the quality represented in this set of ET flushmate sisters that the list of champions will only continue to expand. Champions at the National Western Stock Show, NAILE, FWSS, American Royal, National Junior Heifer Show, and nearly every major winter jackpot can be credited to her name. This year the opportunity to select from a burly January, one of two February prospects, or an April daughter of "Red Thunder" will present itself on October 15th... don't miss out on owning your piece of the legacy!



**UDE Black Thunder 5H**  
Full Sister to Lots 53-55



**UDE Thunder Girl 157G**  
Maternal Sister to Lots 53-56



**UDE Kate Spade 59D**  
Full Sister to Lots 53-55



# 54 UDE Thunder Girl 24K

ACA: 413809 • DOB: 2.4.2022 • Tattoo: 24K • 7.5% Chianina



UDE Moana 163E  
Full Sister to Lots 53-55



Miss Worthy 1H  
Full Sister to Lots 53-55

*This pedigree applies to Lots 53-55*

Gambles Hot Rod

**Silveiras Style 9303**

**X**

Silveiras Elba 2520

ASHW Who Da Man

**JSUL Red Thunder 9051W**

Sull 60

# 55 UDE Thunder Girl 71K

ACA: 413810 • DOB: 2.24.2022 • Tattoo: 71K • 7.5% Chianina



UDE She's Stylin 424B  
Full Sister to Lots 53-55



UDE Stylin' Thunder 22J  
Full Sister to Lots 53-55





Lot **56**

*UDE Thunder Girl 230K*

ACA: 413811 • DOB: 4.5.2022 • Tattoo: 230K • 7.5% Chianina

**EXAR Blue Chip 1877B**

**Conley No Limit**

**Silveiras S Sis Sandy 2355**

**ASHW Who Da Man**

**JSUL Red Thunder 9051W**

**SULL 60**

The youngest of the JSUL Red Thunder 9051W daughters in this year's offering, but one that deserves serious consideration if you're in the market for a Chianina heifer that has the credentials to go the distance! UDE Thunder Girl 230K is exotic in terms of her neck attachment, so elegant in terms of her balance and proportions. She is flawless in her movement and offers the signature "Red Thunder" look that has taken over the backdrop for the last decade!



**UDE Chanel 39D**

**Full Sister to Lots 53-55**



**UDE Stylin' 28F**

**Full Sister to Lots 53-55**



**UDE Stylish Lady 9D**

**Full Sister to Lots 53-55**





Lot **57**

*UDE Meg 22K*

ASA: AR 4343780 • DOB: 1.1.2022 • Tattoo: 22K • 1/2 Shorthorn

**EXAR Blue Chip 1877B**

**Conley No Limit**

**Silveiras S Sis Sandy 2355**

**SULL Muscle Man 9043**

**CYT Meg 3135 ET**

**K-Kim Meg 270N ET**



**CYT Meg 3135 ET**

**Dam of Lot 57**

“Baby Blue”... and we don’t mean the color of her eyes or the Colorado skies! The lone Shorthorn Plus female of this year’s offering that is backed by CYT Meg 3135 ET. Levi DeLong choose a sister to UDE Meg 22K by BSC Simplicity 22U in 2015. A maternal sister by Silveiras Style 9303 was selected by the Gensini family in 2018, while another Angus sired maternal sister by Colburn Primo 5153 was purchased by the Sitzman family in 2020. 22K is massive bodied, square hipped, and offers genuine shape and outward turn to her rib cage. She has muscle, base width, and offers a high quality look of balance from the side. A State Fair breed contender next summer, don’t miss out!





Lot **58**

*UDE Pearle 224K*

**RAAA: 4629579 • DOB: 3.1.2022 • Tattoo: 224K • Red Angus**

**WEBR Doc Holiday 2N**  
**WEBR Night Train 324**  
**BJF Lanas Equal 8021U**  
**RMS Bowie 0708**  
**MNS Pearle 3121**  
**PIE Miss Goodnight 8003**

A new endeavor for the crew, but it's hard to pass up on an opportunity to acquire a female of major significance within a certain breed or sector of the business. That is exactly what leads us to the next pair of red heads! We had the chance to purchase 1/2 embryo interest in the great MNS Pearle 3121 in the Fall of 2020. At the time she was the dam of the 2019-2020 reigning triple crown winning Red Angus female that was also the 2019 NAJRAE Grand Champion for Hadley Hartman. That female culminated her career as the 2020 American Royal Supreme Champion Junior Breeding Heifer with her first born heifer calf at side.



**EDG Finley 3121**  
**Maternal Sister to Lots 58-59**





Lot **59**

*UDE Pearle 220K*

**RAAA: 4629581 • DOB: 4.5.2022 • Tattoo: 220K • Red Angus**

**WEBR Doc Holiday 2N**  
**WEBR Night Train 324**  
**BJF Lanas Equal 8021U**  
**RMS Bowie 0708**  
**MNS Pearle 3121**  
**PIE Miss Goodnight 8003**

We instantly mated MNS Pearle 3121 back to WEBR Night Train 324 to create full sibs to the dominant EDG Finley 3121. Long story short, Brady got his wires crossed and the undefeated Champion was actually sired by a Power Eye x Cita son raised by Thomas Ranch... regardless Mr. Edge was right, the Night Train x Pearle mating is surefire, and this duo of sisters is enough to convince us that the Red Angus breed is here for the long-haul! This pair of MATERNAL sisters to EDG Finley 3121 are stamped with the signature build and body style that MNS Pearle 3121 consistently passes to her offspring. Other sisters have been selected as Division Champions at the NAJRAE and we believe that this pair has the structural integrity and quality to follow suite. 224K is the stouter, bolder, more massive of the two sisters, while 220K offers the sleek lady like look about her front third and maintains an optimum set to her hock and pastern with exceptional flexibility. Pick your poison, this pair of sisters are built for the big stage!



**MNS Pearle 3121**  
**Dam of Lots 58-59**





Lot **60**

UDE *Smokette* 97K

AICA: F1324551 • DOB: 2.1.2022 • Tattoo: 97K • PB Charolais

CCC WC Resource 417 P  
**CCC WC Redemption 7143 PLD**  
 WC Rolls Royce 3177  
 TR PZC MR Turton 0794 ET  
**LJR MS Smokette 1980**  
 TR MS Smokette 6758S ET



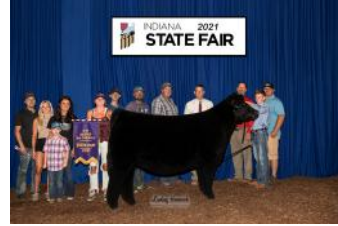
**UDE Smokette 245G**  
**Full Sister to Lot 60**

We round out the 2022 Edition of “The Advantage” production sale with a Purebred Charolais female sired by the \$85,000 CCC WC Redemption 7143 PLD that is supported by our “Smokette” daughter, LJR Ms Smokette 1980. A full sister was purchased in 2020 for \$8,000 by the Gruhn family, while another full sister sold in 2019 for \$7,800 and was successfully campaigned by the Jauer family. UDE Smokette 245G was selected as the 2020 IA State Fair Reserve Grand Champion Charolais Heifer for Sayler Jauer. 97K is an excellent female that is soft bodied, sound built, and offers a tick more shape and power than most from this mating have. We appreciate the symmetry and look of quality that she offers from the side, which collectively enhance her overall balance. High quality Charolais show heifer with the extra punch to generate show steers when the time comes!



# THE ADVANTAGE

## *Past Other Breed Champions*





*I*NNOVATION  
— AgMarketing, LLC —  
PO Box Z  
De Soto, KS 66018

UDELL  
*Cattle Co.*

