



The Annual Production Sale

THURSDAY | MARCH 17, 2022 | 1:00 PM

AT THE RANCH NEAR MONUMENT, KS



SMOKY Y RANCH
MONUMENT, KANSAS

SMOKY Y RANCH

MONUMENT, KANSAS

Dear Breeders and Friends,

On behalf of our entire family, we invite you to our Annual Spring Production Sale! We are excited to offer a select group of Age Advantage herd bulls, Yearling bulls, open commercial heifers, and first calf heifer commercial pairs.

With over 50 years of being in the cattle industry our goal is constant, as we strive to create a more versatile and well-rounded quality product. We take our role as your seedstock provider very seriously, and we continue to make investments in elite genetics to catapult our program in a forward moving direction. Phenotype, structural integrity, forage efficiency, longevity, and fertility go hand in hand. We run our registered cow herd just like you. The cattle that carry the S-Y brand are required to work for a living and they do not get any days off. Large pasture settings that require true athleticism and durability is the only thing that our cow herd has ever known.

It is our objective to continue to enhance the quality of our bull offering each year for you, our loyal and valued customers. As we push forward to expand our Registered Red Angus cow herd to provide quality in volume, we will keep the same disciplined approach to our herd management and selection criteria to ensure the cattle make the brand.

We want to thank all our customers for their support in our fall sale this last November. We are going to continue providing registered bulls, heifers, and an avenue for our customers to sell their Smoky Y influenced bred heifers in our upcoming fall sales. We hope to see you at the Ranch for our Annual Production Sale on the 17th of March at 1:00 PM, and we invite your entire family to the cattle display and supper the night before on the 16th starting at 4:00 PM. Videos and a live broadcast will be provided by DV Auction and Superior Livestock for those of you that are not able to attend the sale. Thank you for your interest and continued support of our program.

Sincerely,

Cody & Kelly Younkin





SMOKY Y RANCH

Est. 1978

Visit these websites for videos and updates

SMOKYYRANCHREDANGUS.COM
INNOVATIONAGMARKETING.COM



Fellow Red Angus Enthusiasts,

A brand forged in the commercial trenches of the business with multiple generations of Western Kansas ranching and land management supporting the S-Y. The Younkin family has called this home for many decades and as the generation turnover is in effect, it appears that it will stay in the family name for many more decades to come. This family understands the ultimate trials and tribulations with the relentless shortage of annual moisture, but they also know that when this country gets what it needs to survive or even thrive, it can be the ultimate oasis for the beef business. With that said, these cattle are built to fit the mold that is required to withstand the pressures of multiple environments.

The division of the cow herd would still heavily favor the commercial side, and so those cattle are treated just as many of you do on your operations. Low inputs with high expectations of vigor, performance, and shear weight when marketed annually in late winter or early spring. The S-Y cattle have topped the Burlington Livestock Sale for years with multiple repeat buyers with fed cattle experience and money made. Those same cattle are influenced by the genetics that you all have had the opportunity to appraise and implement into your very own programs since the Younkin Family made the investment in the seedstock sector of the business.

One of the absolute most notable traits of this annual sale offering would be the simple fact that well over 95% of the annual offering would be natural calves and not a result of an aggressive embryo transfer program focusing on a handful of individuals. These bulls represent every age demographic within the working cowherd that grazes over 30,000 acres of Western Kansas. The S-Y branded stock must hustle, when born they must want to survive, they have to keep up with their contemporaries to survive the elements and perform in order to earn a spot in this offering. Zero pre weaning assistance is offered on the ranch regarding supplementation in the form of creep, and when developed they are started slow to maintain hoof quality, fertility, and insure longevity in use. The Younkins have one of the very best nutritionists on board that understands all aspects of cattle development and endpoints, so invest with ultimate confidence in the product on March 17.

For those that have not made the trek to the ranch that sets 17 miles south of the Monument, Kansas metro area, it is something to take in especially for those that have a fond appreciation for ranching and the stock that it produces. Please consider this your personal invite to join us on St. Patrick's Day, at the Ranch. The hospitality will be plentiful and the fellowship enjoyable. Feel free to reach out to any of the Innovation Marketing team if you should have any questions about the offering on March 17.

Enjoy the Cattle.

Graham Blagg Jared Shipman Tim Anderson



SALE DAY CONTACTS

Cody Younkin - (303) 621-4970
Kelly Younkin - (785) 672-2354
Randall Younkin - (785) 953-0050

AUCTIONEER

Col. Jered Shipman - (806) 983-7226

SALE MANAGEMENT

Innovation AgMarketing LLC
Graham Blagg - (530) 913-6418
Tim Anderson - (605) 682-9343
InnovationAgMarketing.com

RING STAFF

Guy Peverley, The Stock Exchange - (785) 456-4390
Craig Talkington, CT Sales - (785) 623-1789
Stephen Russell, Kansas Livestock Assn - (785) 458-2650
Nick Wells, High Plains Journal - (785) 443-0233

SALE CONSULTANTS

Gerri Schumacher, STR Cattle Consulting & Services
(785) 623-1721

LIVESTOCK MORTALITY INSURANCE

James F. Bessler, Inc - (815) 762-2641

SALE ACCOMMODATIONS

Sleep Inn, Oakley - (785) 671-1111

SALE TERMS & CONDITIONS

All bulls sell under the suggested terms and conditions set forth by the Red Angus Association of America. All announcements from the sale block take precedence over any printed material.

BULLS SELLING

Smoky Y Ranch is retaining one-third semen interest on all bulls sold unless specified differently in the sale catalog. This gives Smoky Y Ranch the option to collect, use and market semen from the bull at their expense and at the buyers convenience.

AD AND CATALOG PRODUCTION

THM Promotions, LLC - Tracy McMurphy - (806) 679-0231

LIABILITY

All persons attending the sale do so at their own risk. Neither Smoky Y Ranch, nor any other person connected with the management of the sale, assumes any liability, legal or otherwise.

GUARANTEE

All bulls have passed a breeding soundness exam and are guaranteed to be breeders. Each animal becomes risk of buyer as soon as sold. All bulls selling for \$4000 or more are guaranteed against breeding injury for the first breeding season. A breeding season is defined as 90 days after turn out. Breeding injury is defined as an injury to penis or preputial tear with inability to extend. This is not an insurance policy. This guarantee does not cover non-breeding injury resulting from an accident or gross negligence. If any breeding injury occurs contact Smoky Y Ranch or Dr. Miller, or have your veterinarian contact Dr. Miller. If a replacement bull is available he will be provided, or if the buyer prefers, 1/2 of the purchase price value will be applied toward another bull in the next sale. Buyer keeps salvage value. Notification must be made prior to or during the first breeding season.

DELIVERY

Free delivery within a 500 mile radius of the ranch or a central location. We will assist with trucking arrangements on any purchases outside of the area. Any delivery over 500 miles will be discussed and pro-rated with the customer.

HERD HEALTH

All calves have been PI tested. All bulls in the sale will have been semen checked and passed a fertility and soundness exam. Health certificates can be issued on any animal in the sale, making them eligible for interstate shipment. The bulls and females in the sale have been pre-weaned and weaning vaccinated for respiratory disease. They have been poured, dewormed and ear notch tested for BVD. All females have been palpated and pelvic measured. All heifers are guaranteed open and have been tested for BVD and calfhood vaccinated.

BREEDING SOUNDNESS EXAM

Breeding soundness examination was performed by Dr. Miller - (620) 874-5169.

ULTRASOUND DATA

Ultrasound evaluation was performed by David Aborn - (417) 861-8407.

SPECIAL THANKS

We would like to thank our nutritionist, Dennis Holthaus, our veterinarian, Dr. Miller, our ultrasound technician, David Aborn. Thank you to our family and friends who help us prepare for the sale. Our event would not be possible without their hard work!





Sale Schedule

Wednesday, March 16, 2022

4:30 pm Cattle on display for viewing, dinner to follow

Thursday, March 17, 2022

11:00 am cattle on display

12:00 Noon Lunch Served

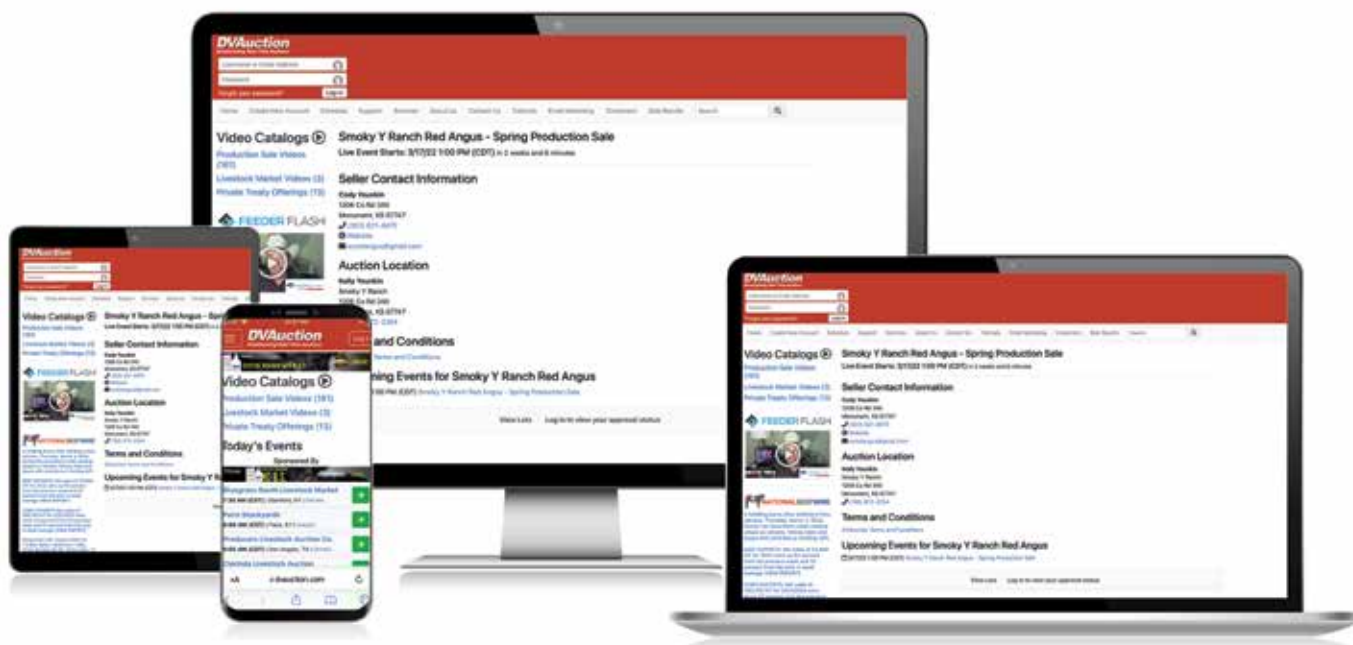
1:00 pm Sale

Sale Location

Smoky Y Ranch Production Facility
17 miles south of Monument, KS on C.R. 350, cross the
Smoky River, then 1/2 mile West. Watch for signs

Get Updates and Information at
SMOKYYRANCHREDANGUS.COM

Watch and Bid Online at DVAuction.com





HOW TO PARTICIPATE AS AN ABSENTEE BUYER

We have made preparations to bid and buy livestock through Superior Productions' "Call or Click-To-Bid" service for those unable to attend in person on sale day. Please note that all of the lots in the sale will also be available for viewing online prior to sale day at www.superiorlivestock.com.

HERE'S HOW IT WORKS

Turn in Bids Over the Phone. This is our traditional method of buying livestock. To get started simply go online to www.superiorlivestock.com and click on the tab titled "Register for a Buyer Number". Select the registration form for Superior Productions and print the registration form, fill it out and fax it in to Superior Productions at (817) 378-3380 with a signature on it, or scan and email the form to info@superiorauction.com. You can also mail it in to the address provided on the form. Upon receipt of this information Superior will call you with a buyer's number and the bid line phone number that you will use on sale day to place bids over the phone.

Click-To-Bid. This is Superior's online bidding platform for cattle buying. Please note that high speed internet is required – this is not for dial-up or satellite internet. Registration is free, but you must become a member of www.superiorclicktobid.com to sign up. Becoming a member is easy - just go to the homepage of www.superiorclicktobid.com and follow the out-lined steps to get started. Input your information and select a username and password. You will receive an e-mail confirming you are a member. From that point forward you just have to sign in and select the sale you would like to register for and once approved you will receive an e-mail confirming which sale you are now registered for.

Viewing the Auction. There are 2 places to view the sale broadcast live on the internet: www.superiorlivestock.com or www.superiorclicktobid.com. Just go to the home page of either website and select the auction. If you just want to watch the auction on your computer, smartphone or tablet go to www.superiorlivestock.com, but if you want to bid over the computer you must go to www.superiorclicktobid.com. Remember you can call in to bid on the internet, but you must be a member of www.superiorclicktobid.com to "clicktobid". Your computer must have Flash Media Player installed for this website to view the auction. If you have any questions, please call the Superior Productions office at 800-431- 4452.

*If you plan to bid by phone through Superior Livestock or 'Click-to-Bid', you must register at www.superiorlivestock.com prior to bidding.

WWW.SUPERIORLIVESTOCK.COM



8

LOT 1

SMOKY Y TRUMP 173H

BD: 11/15/20	Reg: 4426315	1	Tattoo: 173H	A - 100% AR
DAMAR TRUMP C512			Act. BW: 93	Adj. IMF: 6.22
RUST TRUMP 400E			Adj. WW: 662	Adj. REA: 15.54
ROJAS NAVARRE 6054			Adj. YW: 1271	Adj. Fat: 0.56
RED SSS BEDROCK 68H			ADG: 3.81	Scrotal: 42
WINDY HILL BLACKBIRD 1321A			Dam's Age: 8	
WINDY HILL BLACKBIRD 738T				

ProS	HB	GM	CED	BW	WW	YW	ADG	DMI	MLK	ME	HPG	CEM	STY	MRB	YG	CW	REA	FAT
70	52	18	12	0.1	49	74	0.15	0.96	25	-5	10	7	14	0.29	0.07	13	-0.15	0

Smoky Y Trump 173H leads the way in terms of mass, power, and substance, with the added length and eye appeal that we admire. We selected Rust Trump 400E from Rust Mountain View Ranch, as he combined two of the most elite individuals in the Red Angus breed. 400E is sired by Damar Trump C512 and backed by the National Champion female, Rojas Navarre 6054. The paternal granddam of this set of bulls is an ET flushmate to the widely used and popular AI sire, Rojas Rioja 6052. 173H posted a WW Ratio at 104, a YW Ratio at 109, an IMF Ratio at 126, and a REA Ratio at 108.



DAMAR TRUMP C512 - Paternal Grandsire of Lots 1-7



9

LOT 2

SMOKY Y MAGNITUDE 172H

BD: 11/10/20	Reg: 4426407	2	Tattoo: 172H	A - 100% AR
DAMAR TRUMP C512			Act. BW: 89	Adj. IMF: 4.09
RUST TRUMP 400E			Adj. WW: 631	Adj. REA: 14.64
ROJAS NAVARRE 6054			Adj. YW: 1200	Adj. Fat: 0.27
RED SSS TRAVERSE 387Z			ADG: 3.56	Scrotal: 48
SMOKY Y MAGGIE 1560C			Dam's Age: 6	
WINDY HILL STOCKMAN 1316A				

ProS	HB	GM	CED	BW	WW	YW	ADG	DMI	MLK	ME	HPG	CEM	STY	MRB	YG	CW	REA	FAT
75	51	24	10	0.3	53	83	0.19	1.19	24	-2	11	6	15	0.32	0.05	16	-0.06	0

Smoky y Magnitude 172H is a massive bodied, deep dark red stud that is sired by Rust Trump 400E. The dam of this powerful herd sire prospect is a top young daughter of Red SSS Traverse 387Z. He is a low input, easy fleshing bull that is smooth made, and offers an eye appealing look from every angle. A true herd sire prospect that offers balanced numbers to compliment his genuine mass and density.



ROJAS NAVARRE 6054 - Paternal Granddam of Lots 1-7



LOT 3

Smoky Y Trump 168H is another standout age advantage son of Rust Trump 400E that is backed by the influence of a productive young daughter of Red Lazy MC Detour 2W. This big scrotal, bold ribbed, powerful 400E son is built right from the ground up. With the influence of Detour and Traverse on the bottom side of his pedigree you can count on a strong influx of maternal excellence.

SMOKY Y TRUMP 168H

BD: 10/28/20	Reg: 4426515	3	Tattoo: 168H	A - 100% AR
DAMAR TRUMP C512			Act. BW: 79	Adj. IMF: 4.45
RUST TRUMP 400E			Adj. WW: 620	Adj. REA: 13.3
ROJAS NAVARRE 6054			Adj. YW: 1031	Adj. Fat: 0.4
RED LAZY MC CC DETOUR 2W			ADG: 2.56	Scrotal: 37
SMOKY Y QUEEN DETOUR 1765E			Dam's Age: 4	
SMOKY Y QUEEN ANNE 1422B				

ProS	HB	GM	CED	BW	WW	YW	ADG	DMI	MLK	ME	HPG	CEM	STY	MRB	YG	CW	REA	FAT
46	39	8	11	-0.3	50	76	0.16	1.08	25	-4	10	7	13	0.2	0.07	11	-0.06	0.02

SMOKY Y TRUMP 171H

BD: 11/3/20	Reg: 4426705	4	Tattoo: 171H	A - 100% AR
DAMAR TRUMP C512			Act. BW: 84	Adj. IMF: 4.06
RUST TRUMP 400E			Adj. WW: 617	Adj. REA: 13.45
ROJAS NAVARRE 6054			Adj. YW: -	Adj. Fat: 0.43
PZC TMAS RED SKY 2794			ADG: -	Scrotal: 40
SMOKY Y RABSTAR 1789E			Dam's Age: 5	
S00 LINE MS RABSTAR 5028				

ProS	HB	GM	CED	BW	WW	YW	ADG	DMI	MLK	ME	HPG	CEM	STY	MRB	YG	CW	REA	FAT
23	-3	26	11	-0.5	45	65	0.13	1.23	17	0	10	6	7	0.32	-0.07	19	0.27	-0.01

LOT 4

Smoky Y Trump 171H is a standout son of Rust Trump 400E that is from a stout made daughter of PZC TMAS Red Sky 2794 that traces to the Red Geis Knight Hawk 14'02 influence. We love the udder quality, structural integrity, and sound build that these Red Sky daughters offer in production.



LOT 5



SMOKY Y TRUMP 166H

BD: 10/21/20	Reg: 4426849	5	Tattoo: 166H	A - 100% AR
DAMAR TRUMP C512			Act. BW: 70	Adj. IMF: 3.61
RUST TRUMP 400E			Adj. WW: 600	Adj. REA: 15.38
ROJAS NAVARRE 6054			Adj. YW: -	Adj. Fat: 0.35
FEDDES OSCAR X28			ADG: -	Scrotal: 39
SMOKY Y MISS RAINDANCE A340			Dam's Age: 8	
CAMP 1A RAINDANCE Y157				

ProS	HB	GM	CED	BW	WW	YW	ADG	DMI	MLK	ME	HPG	CEM	STY	MRB	YG	CW	REA	FAT
50	8	42	16	-4.4	41	67	0.16	1.45	25	8	10	9	10	0.39	0.01	28	0.24	0

Smoky Y Trump 166H is a high calving ease, low birth weight son of Rust Trump 400E that is backed by a productive Feddes Oscar X28 daughter. He offers a moderate birth weight to compliment his breed leading calving ease. Recommended for use on heifers.



ROJAS RIOJA 6052 - Full Brother to Paternal Granddam of Lots 1-7

SMOKY Y TRUMP 174H

BD: 11/21/20	Reg: 4426855	6	Tattoo: 174H	A - 100% AR
DAMAR TRUMP C512			Act. BW: 84	Adj. IMF: 4.08
RUST TRUMP 400E			Adj. WW: 572	Adj. REA: 14.48
ROJAS NAVARRE 6054			Adj. YW: -	Adj. Fat: 0.17
PIE GET WESTERN 4061			ADG: -	Scrotal: 36
CAMP 1A BLOXY V105			Dam's Age: 13	
LCC BLOXY NA496				

ProS	HB	GM	CED	BW	WW	YW	ADG	DMI	MLK	ME	HPG	CEM	STY	MRB	YG	CW	REA	FAT
27	1	26	11	-0.5	49	73	0.15	1.33	17	2	10	6	8	0.25	-0.01	26	0.2	-0.01

Here is another age advantage herd sire prospect that comes from the Rust Trump 400E sire group. We admire his length, shape, and natural thickness. His dam is a 13-year-old PIE Get Western 4061 daughter that has always done a great job. Longevity and fertility is bred into his pedigree!

SMOKY Y TRUMP J95

BD: 2/5/21	Reg: 4554571	7	Tattoo: J95	A - 100% AR
DAMAR TRUMP C512			Act. BW: 68	Adj. IMF: 6.64
RUST TRUMP 400E			Adj. WW: 570	Adj. REA: 13.77
ROJAS NAVARRE 6054			Adj. YW: 1152	Adj. Fat: 0.25
PIE ONE OF A KIND 352			ADG: 3.62	Scrotal: 39
SMOKY Y MINOLA 1883F			Dam's Age: 3	
RED WINDY HILL MINOLA 1026X				

ProS	HB	GM	CED	BW	WW	YW	ADG	DMI	MLK	ME	HPG	CEM	STY	MRB	YG	CW	REA	FAT
63	20	43	15	-4.1	42	68	0.16	1.37	19	3	12	9	9	0.32	0.06	37	0.11	-0.01

This son of Rust Trump 400E is a calving ease standout with a 15 CED and a -4.1 BW. This data is complimented by a 68-pound birth weight. His dam is by the legendary PIE One Of A Kind 352. Balanced and proven genetics that are recommended for use on heifers.



12

LOT 8

SMOKY Y ROBUST 164H

BD: 10/18/20	Reg: 4426473	8	Tattoo: 164H	A - 100% AR
WEBR NIGHT TRAIN 324			Act. BW: 84	Adj. IMF: 5.01
TC RETURN POLICY 42D			Adj. WW: 641	Adj. REA: 14.02
TC KASHMIR 116X			Adj. YW: 1153	Adj. Fat: 0.36
PZCTMAS RED SKY 2794			ADG: 3.19	Scrotal: 41
SMOKY Y LAUREN 1782E			Dam's Age: 4	
RED WINDY HILL MISS 842U				

ProS	HB	GM	CED	BW	WW	YW	ADG	DMI	MLK	ME	HPG	CEM	STY	MRB	YG	CW	REA	FAT
57	39	18	9	1.1	60	94	0.21	1.5	21	3	10	6	14	0.29	0.02	15	0.01	0

Undoubtedly one of the true standout herd sire prospects to be offered in the Red Angus breed this spring! Smoky Y Robust 164H offers a build and body style just as his name implies. This lead off son of the NAILE Grand Champion, TC Return Policy 42D, is massive in terms of his rib cage, big ended, and square built. The dam of Robust is a productive young daughter of PZCTMAS Red Sky 2794. A must see on sale day if you're serious about adding an elite herd sire to your bull battery!



TC RETURN POLICY 42D - Sire of Lots 8-11

LOT 9



SMOKY Y RP 167H

BD: 10/23/20	Reg: 4426851	9	Tattoo: 167H	A - 100% AR
WEBR NIGHT TRAIN 324			Act. BW: 94	Adj. IMF: 3.55
TC RETURN POLICY 42D			Adj. WW: 613	Adj. REA: 13.34
TC KASHMIR 116X			Adj. YW: -	Adj. Fat: 0.24
PZCTMAS RED SKY 2794			ADG: -	Scrotal: 39
SY MS FAYE E790			Dam's Age: 5	
CAMP 1A MISS FAY A375				

ProS	HB	GM	CED	BW	WW	YW	ADG	DMI	MLK	ME	HPG	CEM	STY	MRB	YG	CW	REA	FAT
2	-17	19	8	1.8	53	78	0.15	1.58	20	5	10	4	6	0.27	-0.08	22	0.34	-0.01

Smoky Y RP 167H is another Return Policy son that is backed by the influence of a PZCTMAS Red Sky 2794 daughter. He is long bodied, smooth jointed, and sound footed. Another big scrotal age advantage bull that is ready for heavy service!

SMOKY Y RP J84

BD: 2/3/21	Reg: 4554543	11	Tattoo: J84	A - 100% AR
WEBR NIGHT TRAIN 324			Act. BW: 83	Adj. IMF: 4.08
TC RETURN POLICY 42D			Adj. WW: 635	Adj. REA: 12.27
TC KASHMIR 116X			Adj. YW: 1178	Adj. Fat: 0.26
H2R PROFITBUILDER B403			ADG: 3.39	Scrotal: 39
SMOKY Y BLAZER 1739E			Dam's Age: 4	
SMOKY Y BLAZER 1465B				

ProS	HB	GM	CED	BW	WW	YW	ADG	DMI	MLK	ME	HPG	CEM	STY	MRB	YG	CW	REA	FAT
41	10	31	12	-1.9	42	58	0.11	1.32	19	-1	10	7	9	0.41	0.05	25	0.08	0

J84 rounds out the powerful set of Return Policy sons with his added length, extension, and structural integrity. His dam is a top young daughter of H2R Profitbuilder B403. We used Profitbuilder with great success a few years ago, and several paternal brothers to the dam of J84 would have been featured lots in our past production sales.

SMOKY Y RP 176H

BD: 12/8/20	Reg: 4426373	10	Tattoo: 176H	A - 100% AR
WEBR NIGHT TRAIN 324			Act. BW: 85	Adj. IMF: 3.58
TC RETURN POLICY 42D			Adj. WW: 648	Adj. REA: 15.74
TC KASHMIR 116X			Adj. YW: -	Adj. Fat: 0.25
RED WINDY HILL ZEPPELIN 1240			ADG: -	Scrotal: 42
SMOKY Y MAXINE 1402B			Dam's Age: 7	
RED CRIPPS MAXINE 714T				

ProS	HB	GM	CED	BW	WW	YW	ADG	DMI	MLK	ME	HPG	CEM	STY	MRB	YG	CW	REA	FAT
46	27	19	12	-0.9	49	71	0.14	1.56	19	0	10	7	11	0.27	-0.05	23	0.32	0

This age advantage son of Return Policy is big topped, thick ended, and offers a 15+ inch REA to compliment his performance data. The dam of 176H is a productive daughter of Red Windy Hill Zeppelin 1240, that also raised Smoky Y Jax G622.



SMOKY Y JAX G622 - Maternal Brother to Lot 10



14

LOT 12

SYR COMING IN HOT J55

BD: 2/4/21	Reg: 4554567	12	Tattoo: J55	A - 100% AR
RRA AVIATOR 507		Act. BW: 82	Adj. IMF: 4.33	
NCJ COMING IN HOT 24E		Adj. WW: 660	Adj. REA: 14.58	
RED NCJ MINERVA 35C		Adj. YW: 1290	Adj. Fat: 0.27	
SIX MILE SIGNATURE 295B		ADG: 3.93	Scrotal: 39	
SIX MILE KASSIE 222E		Dam's Age: 4		
RED BAR-E-L KASSIE 129B				

ProS	HB	GM	CED	BW	WW	YW	ADG	DMI	MLK	ME	HPG	CEM	STY	MRB	YG	CW	REA	FAT
17	-9	26	10	-0.9	48	72	0.15	1.76	19	9	11	5	9	0.25	0	34	0.26	-0.01

NCJ Coming In Hot 24E is an exciting outcross Red Angus sire that we have sampled here at Smoky Y Ranch and the results have been nothing short of impressive! Here is a direct son of the great Coming In Hot that offers the eye appealing presence and style that we have come to expect from this sire group. SYR Coming In Hot J55 is backed by a top young female that is backed by the influence of the legendary Red Bar-E-L Kassie 117X cow family. This genetic line is responsible for countless National Champions, high sellers, and individuals of influence across the business. J55 offers a fresh and exciting pedigree that we believe has the chance to make a substantial impact on any program.



RED BAR-E-L KASSIE 117X - 3rd Generation Dam of Lot 12



15

LOT 13

SMOKY Y INFERNO J69

BD: 1/6/21	Reg: 4554493	13	Tattoo: J69	A - 100% AR
RRA AVIATOR 507			Act. BW: 87	Adj. IMF: 4.2
NCJ COMING IN HOT 24E			Adj. WW: 653	Adj. REA: 15.23
RED NCJ MINERVA 35C			Adj. YW: 1245	Adj. Fat: 0.26
RED SSS BEDROCK 68H			ADG: 3.7	Scrotal: 39
WINDY HILL STOCKMAN 1316A			Dam's Age: 8	
WINDY HILL MS STOCKMAN709T				

ProS	HB	GM	CED	BW	WW	YW	ADG	DMI	MLK	ME	HPG	CEM	STY	MRB	YG	CW	REA	FAT
35	8	27	10	0.1	47	77	0.19	1.67	23	11	9	7	11	0.27	0	24	0.15	-0.01

Smoky Y Inferno J69 is a great built son of NCJ Coming In Hot 24E, the outcross stud that traces to the RRA Aviator 507 influence. The bottom side of his pedigree combines Red SSS Bedrock 68H, descending from the Windy Hill Stockman cow family. A balanced herd sire prospect that boasts a REA Ratio at 105.



NCJ COMING IN HOT 24E - Sire of Lots 12-17



LOT 14

SYR COMING IN HOT J43

BD: 1/3/21	Reg: 4554485	14	Tattoo: J43	A - 100% AR
RRA AVIATOR 507		Act. BW: 80		Adj. IMF: 3.75
NCJ COMING IN HOT 24E		Adj. WW: 666		Adj. REA: 14.8
RED NCJ MINERVA 35C		Adj. YW: 1258		Adj. Fat: 0.45
RED WINDY HILL CASH 917W		ADG: 3.69		Scrotal: 40
RED WINDY HILL BELLE 1107Y		Dam's Age: 10		
RED PASQUA BELLE 22N				

ProS	HB	GM	CED	BW	WW	YW	ADG	DMI	MLK	ME	HPG	CEM	STY	MRB	YG	CW	REA	FAT
36	7	28	11	-0.7	51	77	0.16	1.79	18	14	10	7	11	0.33	0	31	0.18	-0.01

SYR Coming In Hot J43 is a dark cherry red, black muzzled herd sire prospect that is certainly one of the most eye appealing Coming In Hot sons in this set of bulls. Additionally, this sound footed, flexible built herd sire prospect is backed by the influence of Red Windy Hill Belle 1107Y, a female that has stood the test of time and continues to produce year after year. Here is a herd sire prospect that offers tremendous longevity and maternal excellence.

SYR COMING IN HOT J64

BD: 1/1/21	Reg: 4554481	15	Tattoo: J64	A - 100% AR
RRA AVIATOR 507		Act. BW: 85		Adj. IMF: 5.11
NCJ COMING IN HOT 24E		Adj. WW: 632		Adj. REA: 13.8
RED NCJ MINERVA 35C		Adj. YW: 1215		Adj. Fat: 0.38
RED WINDY HILL STOCKMAN 706T		ADG: 3.63		Scrotal: 41
WINDY HILL BLACKBIRD 1036X		Dam's Age: 11		
WINDY HILL BLACKBIRD 738T				

ProS	HB	GM	CED	BW	WW	YW	ADG	DMI	MLK	ME	HPG	CEM	STY	MRB	YG	CW	REA	FAT
29	8	20	13	-1.4	49	73	0.15	1.84	21	11	10	8	11	0.37	0.08	24	-0.03	0

SYR Coming In Hot J64 is a dense made, bold bodied stud that offers a double digit CED and a negative birth weight to compliment his build. The dam of J64 is a top Red Windy Hill Stockman 706T daughter that has produced a son working for Kurt Maurath, as well as several elite daughters that are working at the Smoky Y Ranch. She recorded an MPPA of 102 on 10 head. Longevity and consistency is bred into his pedigree!

SMOKY Y COMIN IN HOT J73

BD: 1/3/21	Reg: 4554515	16	Tattoo: J73	A - 100% AR
RRA AVIATOR 507		Act. BW: 88		Adj. IMF: 4.16
NCJ COMING IN HOT 24E		Adj. WW: 708		Adj. REA: 14.46
RED NCJ MINERVA 35C		Adj. YW: 1451		Adj. Fat: 0.32
RED SSS TRAVERSE 387Z		ADG: 4.64		Scrotal: 45
SMOKY Y ERICA 1557C		Dam's Age: 6		
RED WINDY HILL ERICA 1117Y				

ProS	HB	GM	CED	BW	WW	YW	ADG	DMI	MLK	ME	HPG	CEM	STY	MRB	YG	CW	REA	FAT
69	17	52	11	0.4	66	108	0.26	1.79	19	13	11	7	11	0.28	0.02	52	0.4	-0.01

J73 is another Coming In Hot son that is supported by a productive daughter of Red SSS Traverse 387Z. This big scrotal bull is one of the highest YW EPD bulls in the sale. Maternal excellence lines his performance driven pedigree.

SYR COMING IN HOT J75

BD: 1/3/21	Reg: 4554495	17	Tattoo: J75	A - 100% AR
RRA AVIATOR 507		Act. BW: 79		Adj. IMF: 4.72
NCJ COMING IN HOT 24E		Adj. WW: 560		Adj. REA: 13.07
RED NCJ MINERVA 35C		Adj. YW: 1079		Adj. Fat: 0.32
RED SSS BEDROCK 68H		ADG: 3.24		Scrotal: 40
SMOKY Y MS STOCKMAN 1418B		Dam's Age: 7		
WINDY HILL MS STOCKMAN606S				

ProS	HB	GM	CED	BW	WW	YW	ADG	DMI	MLK	ME	HPG	CEM	STY	MRB	YG	CW	REA	FAT
13	7	6	12	-1.8	29	36	0.04	1.48	18	6	9	8	10	0.22	0.01	20	0	-0.01

This next son of Coming In Hot would be one of the highest CE and lowest BW options from this sire group. His negative BW EPD complimented by his 79 pound actual birthweight suggests that he is suitable for use on heifers.



LOT 15



17

LOT 18

SMOKY Y COMIN IN HOT J81

BD: 1/27/21	Reg: 4554547	18	Tattoo: J81	A - 100% AR
NCJ COMING IN HOT 24E		Act. BW: 87	Adj. IMF: 4.64	
SIX MILE COMIN IN HOT 304G		Adj. WW: 664	Adj. REA: 14.32	
RED SIX MILE GLORIA 278E		Adj. YW: 1239	Adj. Fat: 0.41	
PZC TMAS RED SKY 2794		ADG: 3.59	Scrotal: 42	
SMOKY Y JULIE 1712E		Dam's Age: 4		
SMOKY Y JULIE 1415B				

ProS	HB	GM	CED	BW	WW	YW	ADG	DMI	MLK	ME	HPG	CEM	STY	MRB	YG	CW	REA	FAT
21	1	19	10	-0.1	48	69	0.13	1.7	22	8	12	6	8	0.27	-0.02	28	0.24	-0.01

A true sale feature to lead off the Six Mile Comin In Hot 304G sire group! J81 has been a standout since day one, and it comes to no surprise that he is backed by a role model daughter of PZC TMAS Red Sky 2794, one of the great breeding bulls that has influenced our program for nearly a decade. Two sisters to J81 have been retained in herd and there is no denying the quality that this cow family represents. J81 exhibits tremendous length and extension, a bold rib cage, and sets to the surface with confidence. He records a WW Ratio at 103, and an IMF Ratio of 107. Performance, eye appeal, and structural integrity all in one package!



SIX MILE COMIN IN HOT 304G - Sire of Lots 18-23



LOT 19

Smoky Y Getting Hot J103 is another true standout within the offering that offers tremendous phenotype combined with a balanced number profile. He offers a 14 CED and a -2.8 BW EPD, complimented by a moderate 81-pound birthweight. His dam is a top young daughter of Feddes Oscar X28, while his granddam has produced a son working for Gary Rolland. He ranks top 19% for CW and among the top third of the breed for CED and BW.

SMOKY Y GETTIN HOT J103

BD: 2/1/21	Reg: 4554549	19	Tattoo: J103	A - 100% AR
NCJ COMING IN HOT 24E		Act. BW: 79	Adj. IMF: 3.81	
SIX MILE COMIN IN HOT 304G		Adj. WW: 637	Adj. REA: 14.16	
RED SIX MILE GLORIA 278E		Adj. YW: 1192	Adj. Fat: 0.4	
FEDDES OSCAR X28		ADG: 3.46	Scrotal: 44	
SMOKY Y HEATHER 1740E		Dam's Age: 4		
SMOKY Y HEATHER 1416B				

ProS	HB	GM	CED	BW	WW	YW	ADG	DMI	MLK	ME	HPG	CEM	STY	MRB	YG	CW	REA	FAT
55	18	38	14	-2.8	41	62	0.14	1.55	19	6	11	8	11	0.4	0.07	31	0.06	0

SMOKY Y O'RILEY J165

BD: 2/22/21	Reg: 4554519	20	Tattoo: J165	A - 100% AR
NCJ COMING IN HOT 24E		Act. BW: 79	Adj. IMF: 4.6	
SIX MILE COMIN IN HOT 304G		Adj. WW: 710	Adj. REA: 13.49	
RED SIX MILE GLORIA 278E		Adj. YW: 1280	Adj. Fat: 0.34	
PZC TMAS RED SKY 2794		ADG: 3.56	Scrotal: 42	
SMOKY Y KAE 1501C		Dam's Age: 6		
WINDY HILL KAE 933W				

ProS	HB	GM	CED	BW	WW	YW	ADG	DMI	MLK	ME	HPG	CEM	STY	MRB	YG	CW	REA	FAT
17	-6	23	13	-2	44	64	0.13	1.61	23	4	11	8	6	0.26	-0.04	27	0.26	-0.01

LOT 20



Smoky Y O'Riley J165 is a true standout that offers the highly sought after dark cherry red hide color that we can all appreciate. A sound-built herd sire prospect that is eye appealing and offers tremendous structural integrity. He is a big scrotal herd sire prospect that is long sided, smooth made, and sets to the surface with comfort and flexibility. The dam of J165 is a beautiful PZC TMAS Red Sky 2794 daughter that is backed by top producing Windy Hill bred dam. Brothers to J165 are working for Tony Kuhlman, Sage Davis, and Schoen Farms Red Angus. Consistency is key and this bull is backed by generations of maternal excellence!

LOT 21



SMOKY Y HEAT SEEKER J110

BD: 2/27/21	Reg: 4554517	21	Tattoo: J110	A - 100% AR
NCJ COMING IN HOT 24E			Act. BW: 91	Adj. IMF: 4.37
SIX MILE COMIN IN HOT 304G			Adj. WW: 713	Adj. REA: 14.9
RED SIX MILE GLORIA 278E			Adj. YW: 1249	Adj. Fat: 0.34
RED SSS TRAVERSE 387Z			ADG: 3.35	Scrotal: 39
SMOKY Y FLOWER 1514C			Dam's Age: 6	
RED WINDY HILL FLOWER 1314A				

ProS	HB	GM	CED	BW	WW	YW	ADG	DMI	MLK	ME	HPG	CEM	STY	MRB	YG	CW	REA	FAT
46	23	23	10	0.3	51	72	0.13	1.6	19	6	12	6	12	0.28	0.02	33	0.16	-0.01

Smoky Y Heat Seeker J110 is another Six Mile Comin In Hot 304G son that is from a perfect uddered daughter of Red SSS Traverse 387Z. J110 is a performance standout that boasts a 108 WW Ratio, 104 YW Ratio, and scanned with an impressive REA to Ratio at 106. Pounds pay, and Heat Seeker has the credentials to add value to any program!

SMOKY Y GETTIN HOT J163

BD: 3/12/21	Reg: 4553305	22	Tattoo: J163	A - 100% AR
NCJ COMING IN HOT 24E			Act. BW: 76	Adj. IMF: 5.13
SIX MILE COMIN IN HOT 304G			Adj. WW: 662	Adj. REA: 13.61
RED SIX MILE GLORIA 278E			Adj. YW: 1208	Adj. Fat: 0.43
FEDDES OSCAR X28			ADG: 3.41	Scrotal: 39
SMOKY Y SAGE B462			Dam's Age: 7	
TR SAGE LT101				

ProS	HB	GM	CED	BW	WW	YW	ADG	DMI	MLK	ME	HPG	CEM	STY	MRB	YG	CW	REA	FAT
34	9	25	14	-2.8	44	63	0.12	1.6	20	5	10	8	9	0.36	0.09	29	0	0

We admire the natural dimension, density, and genuine base width that Smoky Y Gettin Hot J163 brings to the table. A performance standout that is long sided, sound footed, and flexible on the move. His dam is a daughter of Feddes Oscar X48 that has sons working for long time customer Cody James of Nara Visa, New Mexico, as well as several daughters that have been retained in herd. A low birth weight option that boasts a WW Ratio at 103, YW Ratio at 102, and an IMF Ratio at 106.

SMOKY Y STEAMBOAT J164

BD: 2/26/21	Reg: 4554563	23	Tattoo: J164	A - 100% AR
NCJ COMING IN HOT 24E			Act. BW: 93	Adj. IMF: 4.66
SIX MILE COMIN IN HOT 304G			Adj. WW: 750	Adj. REA: 14.23
RED SIX MILE GLORIA 278E			Adj. YW: 1298	Adj. Fat: 0.4
AHL FLASHBACK 446B			ADG: 3.41	Scrotal: 41
SIX MILE WITZEL 957E			Dam's Age: 4	
RED SIX MILE WITZEL 627A				

ProS	HB	GM	CED	BW	WW	YW	ADG	DMI	MLK	ME	HPG	CEM	STY	MRB	YG	CW	REA	FAT
25	7	19	9	0.9	56	80	0.15	1.61	18	5	10	5	10	0.22	0.05	35	0.1	-0.01

J164 is a son of NCJ Coming In Hot 24E that is supported by the strong maternal influence of the Six Mile Ranch program. The dam of J164 is a daughter of AHL Flashback 446B that is from the Red Six Mile Witzel 627A influence. This performance driven stud boasts a 750 pound adjusted weaning weight.



LOT 22



20

LOT 24

SMOKY Y GRANTLAND J102

BD: 2/16/21	Reg: 4554575	24	Tattoo: J102	A - 100% AR
PEAK DOT UNANIMOUS 586B			Act. BW: 80	Adj. IMF: 4.62
SIX MILE GRANTLAND 270G			Adj. WW: 687	Adj. REA: 15.26
RED SIX MILE BRIDGET 584A			Adj. YW: 1220	Adj. Fat: 0.25
BROWN COMMITMENT S7206			ADG: 3.32	Scrotal: 36
SMOKY Y MOLLY 1986G			Dam's Age: 2	
SMOKY Y MOLLY 1744E				

ProS	HB	GM	CED	BW	WW	YW	ADG	DMI	MLK	ME	HPG	CEM	STY	MRB	YG	CW	REA	FAT
80	36	44	11	-0.8	48	66	0.11	1.1	21	-5	10	6	12	0.54	0.04	28	0.09	0

We purchased the sire of the next three bulls from the Six Mile program to add an outcross pedigree component to our program. Six Mile Grantland 270G is the red hided stud that is sired by Peak Dot Unanimous 586B, the exciting black herd sire that Six Mile Ranch acquired from the famed Peak Dot Ranch. The structural integrity, foot shape, and depth of heal that this sire group brings to the table is hard to mimic. Smoky Y Grantland J102 is a standout among this set of bulls with his added dimension, shape, and performance. He came to the weaning pen with a WW Ratio at 104, a YW Ratio at 101, an IMF Ratio at 104, and a REA Ratio at 109. His two-year-old dam hit it out of the park during her rookie season of production. The granddam of J102 is also the dam of Smoky Y Full Deck J52, the lead off bull from the Venom sire group! Consistency, uniformity, and quality is bred into his pedigree... you can count on it!



SIX MILE GRANTLAND 270G - Sire of Lots 24-26



LOT 25

SMOKY Y GRANTLAND J141

BD: 1/20/21	Reg: 4553333	25	Tattoo: J141	A - 100% AR
PEAK DOT UNANIMOUS 586B			Act. BW: 82	Adj. IMF: 5.41
SIX MILE GRANTLAND 270G			Adj. WW: 621	Adj. REA: 14.53
RED SIX MILE BRIDGET 584A			Adj. YW: 1196	Adj. Fat: 0.31
PZCTMAS RED SKY 2794			ADG: 3.58	Scrotal: 40
SMOKY Y CHRIS 9403G			Dam's Age: 2	
CAMP 1A CHRIS 203Z				

ProS	HB	GM	CED	BW	WW	YW	ADG	DMI	MLK	ME	HPG	CEM	STY	MRB	YG	CW	REA	FAT
24	-6	30	10	0.4	48	72	0.15	1.44	20	1	10	6	6	0.31	0.02	28	0.16	0

Smoky Y Grantland J141 is an eye appealing herd sire prospect that is sired by Six Mile Grantland 270G and backed by a stunning two-year-old daughter of PZCTMAS Red Sky 2794. The granddam of J141 has produced several daughters that have been retained in herd, as well as a Red Zone son that was purchased by Paul Heath of Oklahoma. J141 offers an IMF Ratio at 112, and a REA Ratio at 102. A smooth made bull raised by a first calf heifer that offers tremendous carcass merit!

SMOKY Y GRANTLAND J139

BD: 1/30/21	Reg: 4553335	26	Tattoo: J139	A - 100% AR
PEAK DOT UNANIMOUS 586B			Act. BW: 75	Adj. IMF: 4.47
SIX MILE GRANTLAND 270G			Adj. WW: 629	Adj. REA: 14.01
RED SIX MILE BRIDGET 584A			Adj. YW: 1180	Adj. Fat: 0.26
SMOKY Y SHAMROCK 6102D			ADG: 3.43	Scrotal: 40
SMOKY Y MISS G974			Dam's Age: 2	
RED WINDY HILL MISS 1222Z				

ProS	HB	GM	CED	BW	WW	YW	ADG	DMI	MLK	ME	HPG	CEM	STY	MRB	YG	CW	REA	FAT
53	25	28	12	-1.6	45	66	0.13	1.29	20	-1	11	8	10	0.24	0	31	0.22	-0.01

Smoky Y Grantland J139 is another son of Six Mile Grantland 270G that is backed by the influence of PIE One Of A Kind 352 that traces to the maternal legend Red MRLA 61X herd sire. There is no denying the maternal excellence that lines his pedigree. A moderate birthweight bull that could be used in a series of different breeding scenarios.



PEAK DOT UNANIMOUS 586B
Paternal Grand sire of Lots 24-26

LOT 27



SIX MILE RUSTY 230G - Sire of Lots 27-32

SMOKY Y RUSTY J115

BD: 2/25/21 Reg: 4554529 **27** Tattoo: J115 A - 100% AR

RUST BULL 31B	Act. BW: 75	Adj. IMF: 4.49
SIX MILE RUSTY 230G	Adj. WW: 707	Adj. REA: 13.54
RED BAR-E-EL ROBERTA 191Z	Adj. YW: 1273	Adj. Fat: 0.31
BROWN PREMIER X7876	ADG: 3.54	Scrotal: 39
SMOKY Y EMULY 1685D		
SMOKY Y EMULY 1442B	Dam's Age: 5	



SMOKY Y RUSTY J107

BD: 2/17/21 Reg: 4553319 **28** Tattoo: J107 A - 100% AR

RUST BULL 31B	Act. BW: 76	Adj. IMF: 4.25
SIX MILE RUSTY 230G	Adj. WW: 617	Adj. REA: 14.62
RED BAR-E-EL ROBERTA 191Z	Adj. YW: 1167	Adj. Fat: 0.3
PZC TMAS RED ZONE 2795	ADG: 3.43	Scrotal: 38
SMOKY Y RIVA D675		
CAMP 1A RIVA Y167	Dam's Age: 5	

ProS	HB	GM	CED	BW	WW	YW	ADG	DMI	MLK	ME	HPG	CEM	STY	MRB	YG	CW	REA	FAT
79	29	50	13	-3.2	51	78	0.17	1.6	21	2	10	8	11	0.44	0.04	42	0.24	-0.01

Six Mile Rusty 230G was one of our selections that we added to our herd sire battery from the historic Six Mile Ranch program north of the border. Six Mile Rusty 230G was campaigned by Six Mile Ranch as a calf prior to our purchase. As you can tell from the reference photos, he offers tremendous length of body, eye appeal, and excellent shape and dimension. We admire the foot quality and flexibility that he brings to our breeding program. J115 is a moderate framed, big ribbed, easy fleshing herd sire prospect that is balanced numerically and offers a 13 CED and a -2.3 BW EPD to compliment his sensible 75-pound actual birth weight. He is a big spread bull that posted a WW Ratio at 108, and a YW Ratio at 106. Recommended for use on heifers, without sacrificing pounds of pay weight when it counts!

ProS	HB	GM	CED	BW	WW	YW	ADG	DMI	MLK	ME	HPG	CEM	STY	MRB	YG	CW	REA	FAT
36	13	23	14	-2.6	40	60	0.12	1.6	19	1	10	8	9	0.25	0.05	31	0.1	0

J107 is a moderate birthweight son of Six Mile Rusty 230G. The dam of this calving ease option is sired by the late PZC TMAS Red Zone 2795. We appreciate the udder quality and calf raising ability that comes hand in hand with the Red Zone daughters. This bull also offers tremendous carcass merit as he posted a WW Ratio at 109 and a YW Ratio at 105.



SIX MILE RUSTY 230G - Sire of Lots 27-32

SMOKY Y RUSTY J90

BD: 2/16/21	Reg: 4554545	31	Tattoo: J90	A - 100% AR
RUST BULL 31B			Act. BW: 83	Adj. IMF: 3.7
SIX MILE RUSTY 230G			Adj. WW: 627	Adj. REA: 13.93
RED BAR-E-EL ROBERTA 191Z			Adj. YW: 1104	Adj. Fat: 0.24
PIE OPTIMISM 3285			ADG: 2.97	Scrotal: 42
SMOKY Y MOLLY 1744E			Dam's Age: 4	
SMOKY Y MOLLY 1440B				

ProS	HB	GM	CED	BW	WW	YW	ADG	DMI	MLK	ME	HPG	CEM	STY	MRB	YG	CW	REA	FAT
55	38	17	12	-1.6	39	47	0.05	1.23	19	-4	11	8	12	0.33	0.01	22	0.08	-0.01

This moderate birthweight son of Six Mile Rusty 230G is from a PIE Optimism 3285 daughter that is from the Molly cow family. The granddam of J90, Smoky Y Molly 1440B, is the dam of Smoky Y Full Deck J52, the lead-off son of Red NCJ Lazy MCVenom 34Z in this year's offering. We love the consistency and productively of this cow family.

SMOKY Y RUSTY J156

BD: 3/17/21	Reg: 4553325	29	Tattoo: J156	A - 100% AR
RUST BULL 31B			Act. BW: 76	Adj. IMF: 4.16
SIX MILE RUSTY 230G			Adj. WW: 747	Adj. REA: 14.08
RED BAR-E-EL ROBERTA 191Z			Adj. YW: 1286	Adj. Fat: 0.32
PIE ONE OF A KIND 352			ADG: 3.36	Scrotal: 39
SMOKY Y MS SAGE F871			Dam's Age: 3	
SMOKY Y MISS SAGE A342				

ProS	HB	GM	CED	BW	WW	YW	ADG	DMI	MLK	ME	HPG	CEM	STY	MRB	YG	CW	REA	FAT
45	15	29	13	-2.4	58	85	0.17	1.77	22	5	11	8	9	0.26	-0.01	40	0.32	-0.01

Smoky Y Rusty J156 is a big spread son of 230G that is from a stout made PIE One Of A Kind 352 daughter. He offers a modest birth weight to compliment his 13 CED and -2.0 BW EPD while spreading to an adjusted weaning weight of 747 to record a WW Ratio at 117, making him the number one weaning weight bull of his contemporary group!

SMOKY Y RUSTY J99

BD: 2/17/21	Reg: 4554541	30	Tattoo: J99	A - 100% AR
RUST BULL 31B			Act. BW: 86	Adj. IMF: 4.31
SIX MILE RUSTY 230G			Adj. WW: 652	Adj. REA: 13.68
RED BAR-E-EL ROBERTA 191Z			Adj. YW: 1203	Adj. Fat: 0.31
PIE RIGHT KIND 3120			ADG: 3.43	Scrotal: 38
SMOKY Y MOONBEAM 1734E			Dam's Age: 4	
WINDY HILL MOONBEAM 1252Z				

ProS	HB	GM	CED	BW	WW	YW	ADG	DMI	MLK	ME	HPG	CEM	STY	MRB	YG	CW	REA	FAT
36	4	31	10	0.5	50	74	0.15	1.54	18	6	10	5	10	0.3	0.06	35	0.15	0

The Six Mile Rusty 230G sire group continues to impress us with their real-world functionality, moderate birth weights, and tremendous performance at weaning time. The dam and granddam of J99 have been reliable producers for our program with several daughters that have been kept back as replacements from both females.

SMOKY Y RUSTY J100

BD: 2/28/21	Non Registered	32	Tattoo: J100	COMM - COMM
RUST BULL 31B			Act. BW: 95	Adj. IMF: 4.17
SIX MILE RUSTY 230G			Adj. WW: 660	Adj. REA: 12.92
RED BAR-E-EL ROBERTA 191Z			Adj. YW: 1260	Adj. Fat: 0.24
RED ANGUS				Scrotal: 35
S-Y R08				
RED ANGUS				

Smoky Y Rusty J100 may not have a set of registration papers with the RAAA, but he does offer tremendous thickness, depth of rib, and structural integrity. He is certain to add pounds of pay weight to your next calf crop and enhance your bottom line!

SMOKY Y RUSTY J161

BD: 3/8/21	Reg: 4554569	33	Tattoo: J161	A - 100% AR
RUST BULL 31B			Act. BW: 77	Adj. IMF: 4.33
SIX MILE RUSTY 230G			Adj. WW: 676	Adj. REA: 13.35
RED BAR-E-EL ROBERTA 191Z			Adj. YW: 1211	Adj. Fat: 0.3
PIE ONE OF A KIND 352			ADG: 3.33	Scrotal: 41
SMOKY Y EMULY 1882F			Dam's Age: 3	
RED CRIPPS EMULY 621S				

ProS	HB	GM	CED	BW	WW	YW	ADG	DMI	MLK	ME	HPG	CEM	STY	MRB	YG	CW	REA	FAT
39	16	23	12	-2.1	46	68	0.14	1.59	22	5	10	8	10	0.2	-0.03	32	0.25	-0.02

Smoky Y Rusty J161 is a dense made, bold bodied, square ended herd sire prospect that is backed by the tried-and-true Emuly cow family. Several sons and daughters are derived from this particular genetic line, and the ability to performance is something that you can count on! Here is a moderate birth weight bull that recorded a sensible 77-pound actual birth weight.



24

LOT 34

SMOKY Y FULL DECK J52

BD: 1/2/21	Reg: 4554505	34	Tattoo: J52	A - 100% AR
RED LAZY MC COWBOY CUT 26U			Act. BW: 81	Adj. IMF: 3.32
RED NCJ LAZY MC VENOM 34Z			Adj. WW: 685	Adj. REA: 14.38
HXC JOLENE 301N			Adj. YW: 1336	Adj. Fat: 0.38
RED SSS TRAVERSE 387Z			ADG: 4.07	Scrotal: 41
SMOKY Y MOLLY 1440B			Dam's Age: 7	
WINDY HILL BLACKBIRD 1223Z				

ProS	HB	GM	CED	BW	WW	YW	ADG	DMI	MLK	ME	HPG	CEM	STY	MRB	YG	CW	REA	FAT
120	70	50	12	-0.1	69	106	0.23	0	23	0	0	8	15	0.3	0.08	25	0.06	0.01

POWERHOUSE ALERT! Ladies and Gentlemen, they cannot all be lot 1, but they can certainly have the quality to warrant this position in the catalog. Smoky Y Full Deck J52 is a tremendous bull both phenotypically and numerically. This lead off son of Red NCJ Lazy MC Venom 34Z is as dense bodied, stout ended, and three-dimensional as you can design one, all the while maintaining a build that is second to none. We love the functionality, efficiency, and masculinity that this herd sire prospect offers. He charts top 10% ProS, top 17% HB, top 21% GM, top 1% DMI, top 18% WW, and top 24% CEM. He posted a WW Ratio at 106 and a YW Ratio at 109. The dam of J52 is a productive Traverse daughter that has put several females back into the herd at Smoky Y Ranch. Pay close attention here... a sale feature!



RED NCJ LAZY MC VENOM 34Z - Sire of Lots 34-40

LOT 35



Smoky Y Rip Cord J36 is a bigger framed, long sided, powerhouse of a herd sire prospect sired by Red NCJ Lazy MC Venom 34Z. His dam is a daughter of Red SSS Traverse 387Z, one of the great maternal influencing herd sires that has ever walked the pastures of Smoky Y Ranch. J36 recorded a WW Ratio at 104, and a REA Ratio at 107. A great option if you're looking to add length and shape to your next calf crop, without sacrificing udder quality or maternal excellence. Four maternal sisters to J36 are working in herd at Smoky Y Ranch and other that was purchased by Jack Glenning of J Bar J Ranch in Lebanon, Missouri.

SMOKY Y VENOM J79

BD: 1/3/21	Reg: 4553311	35	Tattoo: J79	A - 100% AR
RED LAZY MC COWBOY CUT 26U		Act. BW: 88	Adj. IMF: 5.71	
RED NCJ LAZY MC VENOM 34Z		Adj. WW: 662	Adj. REA: 13.43	
HXC JOLENE 301N		Adj. YW: 1252	Adj. Fat: 0.39	
C-BAR EVOLUTION 107Y		ADG: 3.69	Scrotal: 39	
SMOKY Y VALENTINE 1569C		Dam's Age: 6		
SMOKY Y VALENTINE A366				

ProS	HB	GM	CED	BW	WW	YW	ADG	DMI	MLK	ME	HPG	CEM	STY	MRB	YG	CW	REA	FAT
37	1	36	11	-0.5	55	85	0.19	1.56	19	3	11	6	8	0.27	0.09	41	0.14	0

SMOKY Y RIP CORD J36

BD: 1/1/21	Reg: 4554509	36	Tattoo: J36	A - 100% AR
RED LAZY MC COWBOY CUT 26U		Act. BW: 88	Adj. IMF: 3.52	
RED NCJ LAZY MC VENOM 34Z		Adj. WW: 670	Adj. REA: 15.52	
HXC JOLENE 301N		Adj. YW: 1219	Adj. Fat: 0.16	
RED SSS TRAVERSE 387Z		ADG: 3.43	Scrotal: 42	
SMOKY Y FRIDA 1403B		Dam's Age: 7		
RED WINDY HILL FRIDA 1261Z				

ProS	HB	GM	CED	BW	WW	YW	ADG	DMI	MLK	ME	HPG	CEM	STY	MRB	YG	CW	REA	FAT
47	30	17	11	-0.2	49	64	0.1	1.4	22	-1	11	6	12	0.28	-0.01	27	0.19	-0.01

25



LOT 36

J79 is a super long sided, deep bodied, dense built son of Venom that is from a role model daughter of C-Bar Evolution 107Y. Joseph Bradley purchased a maternal brother to J79 in 2019 that was sired by PZC TMAS Red Sky 2794. He recorded a WW Ratio at 104, YW Ratio at 103, and an IMF Ratio at 124! Performance and carcass merit that will add value to any operation depending on how you market your feeder cattle.



LOT 37

Here is a big, stout, performance driven son of Venom that offers the look and style of a rugged range ready herd sire that will leave behind a tremendous set of daughters. This wide skulled, big ended stud offers an efficient and low input look. J31 is backed by a Smoky Y Olive 1500C, a PIE Right Kind 3120 daughter that has a son sired by SLGN Wideload 920W working for Leonard Owens. J31 recorded a REA Ratio of 108 with a 15+ inch REA.

SMOKY Y VENOM J31

BD: 1/6/21	Reg: 4553309	37	Tattoo: J31	A - 100% AR
RED LAZY MC COWBOY CUT 26U	Act. BW: 86	Adj. IMF: 3.99		
RED NCJ LAZY MC VENOM 34Z	Adj. WW: 606	Adj. REA: 15.17		
HXC JOLENE 301N	Adj. YW: 1205	Adj. Fat: 0.29		
PIE RIGHT KIND 3120	ADG: 3.74	Scrotal: 38		
SMOKY Y OLIVE 1500C	Dam's Age: 6			
CAMP 1A OLIVE X033				

ProS	HB	GM	CED	BW	WW	YW	ADG	DMI	MLK	ME	HPG	CEM	STY	MRB	YG	CW	REA	FAT
41	3	38	12	-0.9	44	67	0.14	1.28	18	0	9	7	8	0.32	0.05	33	0.16	0

SMOKY Y VENOM J44

BD: 1/1/21	Reg: 4554539	38	Tattoo: J44	A - 100% AR
RED LAZY MC COWBOY CUT 26U	Act. BW: 85	Adj. IMF: 6.24		
RED NCJ LAZY MC VENOM 34Z	Adj. WW: 684	Adj. REA: 13.64		
HXC JOLENE 301N	Adj. YW: 1314	Adj. Fat: 0.28		
PIE RIGHT KIND 3120	ADG: 3.93	Scrotal: 40		
SMOKY Y MAY 1750E	Dam's Age: 4			
RED WINDY HILL MAY 1038X				

ProS	HB	GM	CED	BW	WW	YW	ADG	DMI	MLK	ME	HPG	CEM	STY	MRB	YG	CW	REA	FAT
108	53	55	11	0.5	70	109	0.24	0	22	0	0	6	13	0.33	0.11	28	0.07	0.02



LOT 38

J44 is one of the stoutest, biggest ended, most shapely bulls in the offering. This powerful son of Red NCJ Lazy MC Venom 34Z is from a PIE Right Kind 3120 daughter. J44 is a performance standout that comes to the weaning pen with a recorded 106 WW Ratio. He also posted a 107 YW Ratio, while being the Number 1 bull in the offering for marbling with an IMF of 6.24 and an IMF Ratio at 144! He ranks top 14% Gm, top 21% ProS, top 16% WW, top 23% YW, and top 1% DMI.



LOT 39

27

SMOKY Y VENOM J62

BD: 1/2/21	Reg: 4554499	39	Tattoo: J62	2 - 100% AR
RED LAZY MC COWBOY CUT 26U			Act. BW: 85	Adj. IMF: 4.1
RED NCJ LAZY MC VENOM 34Z			Adj. WW: 645	Adj. REA: 14.58
HXC JOLENE 301N			Adj. YW: 1182	Adj. Fat: 0.34
RED CRIPPS 918W			ADG: 3.36	Scrotal: 41
SMOKY Y ERICA 1463B			Dam's Age: 7	
WINDY HILL ERICA 811U				

ProS	HB	GM	CED	BW	WW	YW	ADG	DMI	MLK	ME	HPG	CEM	STY	MRB	YG	CW	REA	FAT
40	21	20	12	-0.4	37	49	0.07	1.36	25	-4	11	7	10	0.31	-0.05	21	0.22	-0.01

We are more than pleased with the consistency that Venom brought to this set of sons when it comes to length, structural integrity, and natural dimension. This Venom son is a Black-Red Carrier herd sire prospect that is backed by a female bred in the Windy Hill program. He recorded a REA Ratio of 101. The dam of J62, Smoky Y Erica 1463B has been a reliable bull producer year after year. Sons of 1463B are working for Doug Geerdes, Paul Heath, and Jason Wells. Help yourself to a BRC stud that will add pounds and performance to your next calf crop!

SMOKY Y VENOM J28

BD: 1/1/21	Reg: 4554555	40	Tattoo: J28	A - 100% AR
RED LAZY MC COWBOY CUT 26U			Act. BW: 80	Adj. IMF: 4.32
RED NCJ LAZY MC VENOM 34Z			Adj. WW: 629	Adj. REA: 14.38
HXC JOLENE 301N			Adj. YW: 1213	Adj. Fat: 0.32
PIE ON THE MARK 5424			ADG: 3.64	Scrotal: 42
SIX MILE FANNY 420E			Dam's Age: 4	
RED SIX MILE FANNY 359C				

ProS	HB	GM	CED	BW	WW	YW	ADG	DMI	MLK	ME	HPG	CEM	STY	MRB	YG	CW	REA	FAT
36	7	30	13	-2.3	44	66	0.14	1.52	19	1	11	7	8	0.29	0.03	31	0.18	0

Smoky Y Venom J28 is an impressive son of Red NCJ Lazy MC Venom 34Z that is supported by a productive young female that we selected from the famed Six Mile program in Canada. He offers a balanced number profile with breed leading phenotype.

Structural Integrity and Natural Dimension



28

LOT 41

SMOKY Y RENOWN J33

BD: 1/11/21	Reg: 4554511	41	Tattoo: J33	A - 100% AR
RED U-2 RECKONING 149A			Act. BW: 89	Adj. IMF: 4.03
RED U-2 RENOWN 193C			Adj. WW: 643	Adj. REA: 16.82
RED U-2 ENVIOUS 147X			Adj. YW: 1242	Adj. Fat: 0.52
RED WINDY HILL ZEPPELIN 1240			ADG: 3.74	Scrotal: 43
SMOKY Y BLAZER 1563C			Dam's Age: 6	
WINDY HILL BLAZER 937W				

ProS	HB	GM	CED	BW	WW	YW	ADG	DMI	MLK	ME	HPG	CEM	STY	MRB	YG	CW	REA	FAT
57	25	32	11	0	44	66	0.14	1.2	21	-12	7	6	11	0.28	0.02	29	0.17	0

Smoky Y Renown J33 is the lead off son from the Red U-2 Renown 193C sire group, and arguably one of the stoutest and most dense herd sire prospects that we have ever offered! There is no denying the impact that Red U-2 Renown 193C has had on the breed and our program. A few years ago, we produced a Renown daughter, Smoky Y Gisele 1900G, that was selected by Hadley Hartman of Nebraska through the Black Label Event. That female was selected as the 2020 NWSS Reserve Grand Champion Red Angus Heifer. Renown continues to sire cattle with eye appeal, structural integrity, and genuine quality. J33 recorded an impressive 16.82 inch REA to Ratio at 116!



RED U-2 RENOWN 193C - Sire of Lots 41-46



LOT 42

J82 is another long bodied, sound-built son of Renown that is influenced by PIE Optimism 3285, the LSF Optimism 1107Y son that we selected from Pieper Red Angus. The dam of J82 produced Smoky Y Tundra 9148G, a Return Policy son that was purchased by Donald Gast. J82 recorded an IMF Ratio at 104 and a REA Ratio at 104.

SMOKY Y RENOWN J82

BD: 2/5/21	Reg: 4553313	42	Tattoo: J82	A - 100% AR
RED U-2 RECKONING 149A	Act. BW: 89	Adj. IMF: 4.79		
RED U-2 RENOWN 193C	Adj. WW: 622	Adj. REA: 14.63		
RED U-2 ENVIOUS 147X	Adj. YW: 1180	Adj. Fat: 0.37		
PIE OPTIMISM 3285	ADG: 3.49	Scrotal: 38		
SMOKY Y CHER CRYSTAL 1518C	Dam's Age: 6			
SMOKY Y CHER A345				

ProS	HB	GM	CED	BW	WW	YW	ADG	DMI	MLK	ME	HPG	CEM	STY	MRB	YG	CW	REA	FAT
67	30	37	12	-1.6	42	60	0.11	1.02	20	-8	7	7	12	0.38	0.02	27	0.17	0

SMOKY Y RENOWN J39

BD: 1/8/21	Reg: 4554501	43	Tattoo: J39	A - 100% AR
RED U-2 RECKONING 149A	Act. BW: 87	Adj. IMF: 3.63		
RED U-2 RENOWN 193C	Adj. WW: 574	Adj. REA: 13.65		
RED U-2 ENVIOUS 147X	Adj. YW: 1134	Adj. Fat: 0.28		
RED SSS TRAVERSE 387Z	ADG: 3.5	Scrotal: 41		
SMOKY Y ERICA 1477B	Dam's Age: 7			
RED WINDY HILL ERICA 1207Z				

ProS	HB	GM	CED	BW	WW	YW	ADG	DMI	MLK	ME	HPG	CEM	STY	MRB	YG	CW	REA	FAT
46	25	21	11	-0.8	37	48	0.07	1.08	19	-11	8	6	11	0.27	0.01	23	0.07	-0.01

29



LOT 43

J39 is a dark cherry red son of Renown that is from a productive young daughter of Red SSS Traverse 387Z. Maternal brothers to J39 is working for Fred Niermeier and Tom Schweizer, while a maternal sister was purchased by Axten McKenna. J39 is balanced numerically and phenotypically.



SYR FUSION 53H
Maternal Brother to Lot 43

LOT 44



SMOKY Y RENOWN J92

BD: 2/15/21	Reg: 4554551	44	Tattoo: J92	A - 100% AR
RED U-2 RECKONING 149A	Act. BW: 90	Adj. IMF: 4.59		
RED U-2 RENOWN 193C	Adj. WW: 665	Adj. REA: 13.94		
RED U-2 ENVIOUS 147X	Adj. YW: 1244	Adj. Fat: 0.28		
HCG BRANDING IRON	ADG: 3.61	Scrotal: 43		
SIX MILE FANCY LADY 295E	Dam's Age: 4			
RED PASQUIA FANCY LADY 59X				

ProS	HB	GM	CED	BW	WW	YW	ADG	DMI	MLK	ME	HPG	CEM	STY	MRB	YG	CW	REA	FAT
55	3	52	9	1.1	53	84	0.2	1.56	17	1	5	5	10	0.36	0.03	45	0.28	-0.01

J92 is another standout son of Red U-2 Renown 193C that is long bodied, dense made, and offers tremendous structural soundness. His dam is a young and productive daughter of HCG Branding Iron that we selected from the Six Mile Ranch program. He charts top 18% GM, top 2% CW, and top 4% Fat. He posted a WW Ratio at 101, YW Ratio at 103, and an IMF Ratio at 103.

SMOKY Y RENOWN J48

BD: 1/29/21	Reg: 4554523	45	Tattoo: J48	A - 100% AR
RED U-2 RECKONING 149A	Act. BW: 89	Adj. IMF: 4.51		
RED U-2 RENOWN 193C	Adj. WW: 614	Adj. REA: 14.44		
RED U-2 ENVIOUS 147X	Adj. YW: 1216	Adj. Fat: 0.24		
FEDDES OSCAR X28	ADG: 3.76	Scrotal: 37		
SMOKY Y BELLE 1658D	Dam's Age: 5			
RED WINDY HILL BELLE 1107Y				

ProS	HB	GM	CED	BW	WW	YW	ADG	DMI	MLK	ME	HPG	CEM	STY	MRB	YG	CW	REA	FAT
46	8	38	11	-0.4	46	71	0.16	1.48	19	-2	6	6	10	0.39	0.06	30	0.04	0

J48 combines two of the most impressive power bulls that we have ever utilized at Smoky Y Ranch! Sired by the great Red U-2 Renown 193C, this powerhouse is backed by a productive daughter of Feddes Oscar X28. His dam, Smoky Y Belle 1658D raised an Atomic son that was purchased by Mike Cole in 2019. J48 posted a REA Ratio at 100 and an IMF Ratio at 104.

SMOKY Y RENOWN J85

BD: 2/4/21	Reg: 4554565	46	Tattoo: J85	A - 100% AR
RED U-2 RECKONING 149A	Act. BW: 87	Adj. IMF: 5.62		
RED U-2 RENOWN 193C	Adj. WW: 641	Adj. REA: 13.73		
RED U-2 ENVIOUS 147X	Adj. YW: 1157	Adj. Fat: 0.4		
RED SIX MILE GRAND SLAM 130Z	ADG: 3.21	Scrotal: 41		
SIX MILE ABBY 512E	Dam's Age: 4			
RED SIX MILE ABBY 107Z				

ProS	HB	GM	CED	BW	WW	YW	ADG	DMI	MLK	ME	HPG	CEM	STY	MRB	YG	CW	REA	FAT
21	3	18	11	-0.7	38	51	0.08	1.24	21	-5	7	5	10	0.28	0.01	22	0.06	-0.01

Smoky Y Renown J85 is a perfect candidate for any program looking to enhance the carcass merit of their fed cattle through quality grade. J85 is a top-notch son of Red U-2 Renown 193C that is from Six Mile Abby 512E, a beautiful daughter of Grand Slam. He is one of the high IMF bulls in the entire sale with an adjusted IMF of 5.62 to Ratio at 130.





31

LOT 47

SMOKY Y SPARTAN J150

BD: 1/3/21	Reg: 4554593	47	Tattoo: J150	A - 100% AR
BIEBER SPARTACUS A193			Act. BW: 92	Adj. IMF: 9.24
BIEBER SPARTAN E639			Adj. WW: 685	Adj. REA: 14.75
BIEBER RENEE 477A			Adj. YW: 1339	Adj. Fat: 0.31
RED U-2 RENOWN 193C			ADG: 4.07	Scrotal: 39
SMOKY Y ANNE 1942G				
SMOKY Y QUEEN ANNE 1422B			Dam's Age: 2	



BIEBER SPARTAN E639 - Sire of Lots 47-54

ProS	HB	GM	CED	BW	WW	YW	ADG	DMI	MLK	ME	HPG	CEM	STY	MRB	YG	CW	REA	FAT
99	47	52	6	3.8	76	117	0.26	0	23	0	0	4	13	0.28	0.07	29	0.19	0.02

Smoky Y Spartan J150 is the lead off son of the widely used and industry impacting sire of influence Bieber Spartan E639. Spartan E639 is an industry leader when it comes to low birth weight, calving ease genetics without sacrificing performance, marbling, or carcass merit. J150 is a prime example of what we choose to incorporate these genetics into our breeding program. J150 ranks top 18% GM, top 6% WW, top 11% YW, top 1% DMI, and top 27% CW. He was raised by a tremendous two-year-old dam that is sired by Red U-2 Renown 193C from the Queen Annie cow family. J150 posted a WW Ratio at 107, a YW Ratio at 110, a REA Ratio at 104, and an incredible IMF of 9.24 to Ratio at 171! J150 will add value to any operation, regardless of how you market your cattle. A true beef bull with breed leading data.



LOT 48

Here is another big ended, wide based son of Bieber Spartan E639 that was raised by a hard working two-year-old dam sired by PZC TMAS Red Sky 2794. This stud posted a REA Ratio at 102 to compliment his genuine stoutness, and rugged build.

SMOKY Y SPARTAN J149

BD: 1/3/21	Reg: 4554579	48	Tattoo: J149	A - 100% AR
BIEBER SPARTACUS A193	Act. BW: 79	Adj. IMF: 3.57		
BIEBER SPARTAN E639	Adj. WW: 635	Adj. REA: 14.44		
BIEBER RENEE 477A	Adj. YW: 1198	Adj. Fat: 0.28		
PZC TMAS RED SKY 2794	ADG: 3.51	Scrotal: 42		
SMOKY Y YERICA 9308G	Dam's Age: 2			
RED WINDY HILL MISS 1209Z				

ProS	HB	GM	CED	BW	WW	YW	ADG	DMI	MLK	ME	HPG	CEM	STY	MRB	YG	CW	REA	FAT
12	1	11	11	-0.4	48	66	0.11	1.54	21	3	10	7	8	0.22	-0.03	23	0.2	-0.01

SMOKY Y SPARTAN J120

BD: 1/2/21	Reg: 4554603	49	Tattoo: J120	A - 100% AR
BIEBER SPARTACUS A193	Act. BW: 72	Adj. IMF: 5.37		
BIEBER SPARTAN E639	Adj. WW: 614	Adj. REA: 12.92		
BIEBER RENEE 477A	Adj. YW: 1153	Adj. Fat: 0.35		
SMOKY Y FUSION 7148E	ADG: 3.36	Scrotal: 39		
SYR HEATHER 1938G	Dam's Age: 2			
SMOKY Y HEATHER 1773E				

ProS	HB	GM	CED	BW	WW	YW	ADG	DMI	MLK	ME	HPG	CEM	STY	MRB	YG	CW	REA	FAT
29	8	22	13	-2.7	43	61	0.11	1.62	20	5	9	7	10	0.33	0.03	27	0.08	-0.01



LOT 49

Smoky Y Spartan J120 is a top calving ease option sired by Bieber Spartan E639 that was raised by a first calf heifer. J120 is smooth built, clean jointed, and offers a sensible 72-pound birth weight. He compliments his actual data with a 13 CED and a -2.7 BW EPD. Recommended for use on heifers.

SMOKY Y SPARTAN J138

BD: 1/1/21	Reg: 4496977	50	Tattoo: J138	A - 100% AR
BIEBER SPARTACUS A193		Act. BW: 89	Adj. IMF: 4.65	
BIEBER SPARTAN E639		Adj. WW: 554	Adj. REA: 13.6	
BIEBER RENEE 477A		Adj. YW: 1237	Adj. Fat: 0.31	
AHL FLASHBACK 446B		ADG: 4.25	Scrotal: 37	
SMOKY Y MOONBEAM 8811		Dam's Age: 3		
SMOKY Y MOONBEAM 1457B				

ProS	HB	GM	CED	BW	WW	YW	ADG	DMI	MLK	ME	HPG	CEM	STY	MRB	YG	CW	REA	FAT
13	2	11	11	-1	47	66	0.12	1.78	16	6	10	6	10	0.21	-0.05	25	0.25	-0.01

J138 is a long bodied, smooth made son of Bieber Spartan E639 that is backed by a young daughter of AHL Flashback 446B. He is an impressive marbling herd sire prospect that posted an IMF Ratio of 107.

SMOKY Y SPARTAN J148

BD: 1/2/21	Reg: 4496987	53	Tattoo: J148	A - 100% AR
BIEBER SPARTACUS A193		Act. BW: 76	Adj. IMF: 7.19	
BIEBER SPARTAN E639		Adj. WW: 632	Adj. REA: 16.28	
BIEBER RENEE 477A		Adj. YW: 1207	Adj. Fat: 0.42	
PZC TMAS RED SKY 2794		ADG: 3.58	Scrotal: 41	
SMOKY Y GALEE 804		Dam's Age: 3		
SMOKY Y GALEE A360				

ProS	HB	GM	CED	BW	WW	YW	ADG	DMI	MLK	ME	HPG	CEM	STY	MRB	YG	CW	REA	FAT
21	-3	24	13	-1.5	48	69	0.13	1.63	21	5	9	8	7	0.32	0	28	0.19	-0.01

J148 is another top performance driven son of Spartan that is backed by a prolific daughter of PZC TMAS Red Sky 2794. He charts among the top third of the business for both WW and YW. He offers a moderate birth weight of 76 and spreads to a WW Ratio at 102. He is one of the carcass standouts in the entire offering with an impressive IMF Ratio at 115 and a REA Ratio at 109.

SMOKY Y SPARTAN J126

BD: 1/3/21	Reg: 4554587	51	Tattoo: J126	A - 100% AR
BIEBER SPARTACUS A193		Act. BW: 85	Adj. IMF: 5.06	
BIEBER SPARTAN E639		Adj. WW: 608	Adj. REA: 12.19	
BIEBER RENEE 477A		Adj. YW: 1140	Adj. Fat: 0.29	
TMAS MR DETOUR 3003A		ADG: 3.31	Scrotal: 39	
SYR STOCKMAN 1917G		Dam's Age: 2		
WINDY HILL STOCKMAN 1316A				

ProS	HB	GM	CED	BW	WW	YW	ADG	DMI	MLK	ME	HPG	CEM	STY	MRB	YG	CW	REA	FAT
13	-2	15	11	0	40	58	0.11	1.51	19	5	8	7	8	0.22	0.02	24	0.11	0

J126 is a smooth made, sound footed son of Bieber Spartan E639 that was raised by a productive first calf heifer sired by TMAS MR Detour 3003A. He is further supported by the Windy Hill Stockman 1316A cow family that is also the matriarch that stands behind Smoky Y Inferno J69. Other sons of 1316A have been past sale features that are working for Roy Young, Northwest Red Angus, and Double A Land & Cattle. A consistent cow family that offers longevity and functionality.

SMOKY Y SPARTAN J127

BD: 1/1/21	Reg: 4554581	54	Tattoo: J127	A - 100% AR
BIEBER SPARTACUS A193		Act. BW: 75	Adj. IMF: 4.8	
BIEBER SPARTAN E639		Adj. WW: 639	Adj. REA: 14.27	
BIEBER RENEE 477A		Adj. YW: 1143	Adj. Fat: 0.33	
PIE ONE OF A KIND 352		ADG: 3.13	Scrotal: 37	
SMOKY Y QUEEN 1908G		Dam's Age: 2		
WINDY HILL QUEEN 1220Z				

ProS	HB	GM	CED	BW	WW	YW	ADG	DMI	MLK	ME	HPG	CEM	STY	MRB	YG	CW	REA	FAT
15	5	11	12	-2.4	46	63	0.1	1.64	21	7	11	7	9	0.21	0.03	29	0.09	-0.01

J127 is another standout son of Bieber Spartan E639 that was raised by a first calf heifer sired by PIE One Of A Kind 352. He charts among the top third of the breed for WW and posted a WW Ratio at 100. This Spartan son has a moderate birth weight of 75 pounds and could certainly be used on well managed heifers.

SMOKY Y SPARTAN J122

BD: 1/3/21	Reg: 4554583	52	Tattoo: J122	A - 100% AR
BIEBER SPARTACUS A193		Act. BW: 77	Adj. IMF: 5.81	
BIEBER SPARTAN E639		Adj. WW: 719	Adj. REA: 14.22	
BIEBER RENEE 477A		Adj. YW: 1261	Adj. Fat: 0.3	
PIE RIGHT KIND 3120		ADG: 3.37	Scrotal: 42	
SMOKY Y ALANA 9306G		Dam's Age: 2		
RED WINDY HILL MISS 1247Z				

ProS	HB	GM	CED	BW	WW	YW	ADG	DMI	MLK	ME	HPG	CEM	STY	MRB	YG	CW	REA	FAT
38	14	24	12	-1.2	54	73	0.12	1.26	22	2	10	6	10	0.28	0.04	32	0.15	0

Smoky Y Spartan J122 is a top Bieber Spartan E639 son is a calving ease prospect that spreads to an impressive weaning weight to ratio at 112. He continued to impress with a YW Ratio at 103, an IMF Ratio at 108, and a REA Ratio at 101. He ranks among the top 15% of the breed for WW.





LOT 55

SMOKY Y MOONSHINE J27

BD: 1/26/21	Reg: 4553301	55	Tattoo: J27	A - 100% AR
CROWFOOT 6004S	Act. BW: 88	Adj. IMF: 3.54		
RED CROWFOOT MOONSHINE 8081U	Adj. WW: 678	Adj. REA: 14.27		
RED CROWFOOT BRNDINA 6359S	Adj. YW: 1318	Adj. Fat: 0.27		
LJC MISSION STATEMENT P27	ADG: 4	Scrotal: 42		
SMOKY Y MISS SAGE A342	Dam's Age: 8			
CAMP 1A MISS SAGE S132				

ProS	HB	GM	CED	BW	WW	YW	ADG	DMI	MLK	ME	HPG	CEM	STY	MRB	YG	CW	REA	FAT
67	46	21	11	-0.9	70	109	0.25	1.43	18	1	10	7	14	0.23	0.02	22	0.2	0.01

SMOKY Y MOONSHINE J26

BD: 1/3/21	Reg: 4553327	56	Tattoo: J26	A - 100% AR
CROWFOOT 6004S	Act. BW: 83	Adj. IMF: 6.1		
RED CROWFOOT MOONSHINE 8081U	Adj. WW: 633	Adj. REA: 15.07		
RED CROWFOOT BRNDINA 6359S	Adj. YW: 1263	Adj. Fat: 0.37		
RED U-2 RENOWN 193C	ADG: 3.93	Scrotal: 41		
SMOKY Y R CRYSTAL F84	Dam's Age: 3			
CAMP 1A CC CRYSTAL Y150				

ProS	HB	GM	CED	BW	WW	YW	ADG	DMI	MLK	ME	HPG	CEM	STY	MRB	YG	CW	REA	FAT
32	5	28	10	0.3	52	75	0.15	1.54	20	1	9	5	9	0.26	0.04	36	0.24	0

We have sampled several bulls over the years that have left a true legacy on the business. Red Crowfoot Moonshine 8081U is a prime example of what a Red Angus beef bull should look like. Tremendous length, depth, thickness, and a bull that consistently sires cattle with a look of quality and eye appeal. Moonshine has experienced heavy use at the Smoky Y Ranch because of the udder quality, maternal excellence, and longevity that he injects into his daughters. J27 and J26 are both direct sons of the now deceased Moonshine. J27 offers tremendous eye appeal and style, with the signature Moonshine hip and hind leg design. We love his length, depth of rib, and proud presence that he exudes. J27 recorded a WW Ratio at 107, YW Ratio at 109, and a REA Ratio at 101. Help yourself to one of these Moonshine sons, you will love the daughters you keep back as replacements, we guarantee it!



RED CROWFOOT MOONSHINE 8081U - Sire of Lots 55-56 & Paternal Grandsire of Lots 57-65

LOT 57



We retained a son of Red Crowfoot Moonshine 8081U that is out of our Red Cripps Heather 917W cow family to be used in herd. Smoky Y Shiver 7151E has done an absolutely incredible job for our program and is following in the footsteps of his dominant breed leading sire, Red Crowfoot Moonshine 8081U. J136 is a Shiver son that is from a top young daughter of Silveiras Mission Nexus 1378. We appreciate the moderate birth weight and explosive performance that this herd sire prospect brings to the table!

SMOKY Y SHIVER J136

BD: 1/12/21	Reg: 4554617	57	Tattoo: J136	A - 100% AR
RED CROWFOOT MOONSHINE 8081U	Act. BW: 76	Adj. IMF: 3.76		
SMOKY Y SHIVER 7151E	Adj. WW: 692	Adj. REA: 13.84		
RED CRIPPS HEATHER 917W	Adj. YW: 1310	Adj. Fat: 0.23		
SILVEIRAS MISSION NEXUS 1378	ADG: 3.85	Scrotal: 40		
SYR CORA 1962	Dam's Age: 2			
COCKBURN CORA 254Z				

ProS	HB	GM	CED	BW	WW	YW	ADG	DMI	MLK	ME	HPG	CEM	STY	MRB	YG	CW	REA	FAT
42	6	35	12	-1.4	49	77	0.18	1.6	22	5	11	7	8	0.32	-0.05	29	0.36	-0.01

SMOKY Y SHIVER J121

BD: 1/10/21	Reg: 4553337	58	Tattoo: J121	A - 100% AR
RED CROWFOOT MOONSHINE 8081U	Act. BW: 77	Adj. IMF: 4.99		
SMOKY Y SHIVER 7151E	Adj. WW: 590	Adj. REA: 14.39		
RED CRIPPS HEATHER 917W	Adj. YW: 1201	Adj. Fat: 0.39		
PZC TMAS RED SKY 2794	ADG: 3.81	Scrotal: 36		
SMOKY Y VAL G973	Dam's Age: 2			
SMOKY Y VALENTINE 1569C				

ProS	HB	GM	CED	BW	WW	YW	ADG	DMI	MLK	ME	HPG	CEM	STY	MRB	YG	CW	REA	FAT
21	-10	31	11	-0.5	46	72	0.16	1.52	19	4	12	6	6	0.26	0.03	31	0.17	0

35



LOT 58

Smoky Y Shiver J121 is an eye appealing son of Shiver 7151E that is backed by a fist calf heifer dam sired by PZC TMAS Red Sky 2794 from the Valentine cow family. This smooth made, moderate birth weight herd sire prospect offers an IMF Ratio at 104. He is a clean made, sharp fronted bull that offers the look and style of a top tier calving ease prospect.



LOT 59

Here is another moderate birth weight son of Shiver that is from a hard working two-year-old dam. He is smooth made, clean shouldered, flat jointed, and boasts a moderate 75-pound birth weight. These physical features are further complimented by a 12 CED and a -1.4 BW EPD. He came to the weaning pen with a WW Ratio at 107. He also recorded a YW Ratio at 104 and a REA Ratio at 101.

SMOKY Y SHIVER J142

BD: 1/17/21	Reg: 4554609	59	Tattoo: J142	A - 100% AR
RED CROWFOOT MOONSHINE 8081U		Act. BW: 75	Adj. IMF: 4.44	
SMOKY Y SHIVER 7151E		Adj. WW: 687	Adj. REA: 14.22	
RED CRIPPS HEATHER 917W		Adj. YW: 1262	Adj. Fat: 0.32	
L83 CLINT EASTWOOD 76C		ADG: 3.58	Scrotal: 37	
SYR MS EXTRA 9324G		Dam's Age: 2		
SIX MILE MS EXTRA 380E				

ProS	HB	GM	CED	BW	WW	YW	ADG	DMI	MLK	ME	HPG	CEM	STY	MRB	YG	CW	REA	FAT
42	14	28	12	-1.4	54	79	0.15	1.59	22	7	12	6	10	0.28	0.05	37	0.2	0

SMOKY Y SHIVER J145

BD: 1/17/21	Reg: 4496973	60	Tattoo: J145	A - 100% AR
RED CROWFOOT MOONSHINE 8081U		Act. BW: 72	Adj. IMF: 4.02	
SMOKY Y SHIVER 7151E		Adj. WW: 664	Adj. REA: 14.61	
RED CRIPPS HEATHER 917W		Adj. YW: 1320	Adj. Fat: 0.25	
AHL FLASHBACK 446B		ADG: 4.09	Scrotal: 40	
SMOKY Y JULIE F87		Dam's Age: 3		
RED WINDY HILL JULIE 1254Z				

ProS	HB	GM	CED	BW	WW	YW	ADG	DMI	MLK	ME	HPG	CEM	STY	MRB	YG	CW	REA	FAT
30	23	7	13	-1.9	54	73	0.12	1.39	20	2	11	7	10	0.19	-0.06	21	0.24	-0.01



LOT 60

Smoky Y Shiver J145 is a product of the program! Sired by Smoky Y Shiver 7151E, this rugged and masculine herd sire prospects is supported by a young and productive daughter of AHL Flashback 446B from the Windy Hill Julie influence. He boasts a 72-pound actual birth weight and spreads to a WW Ratio at 109. He also offers a YW Ratio of 103 and a REA Ratio at 104.



LOT 61

SMOKY Y SHIVER J146

BD: 1/20/21	Reg: 4554605	61	Tattoo: J146	A - 100% AR
RED CROWFOOT MOONSHINE 8081U	Act. BW: 87	Adj. IMF: 4.2		
SMOKY Y SHIVER 7151E	Adj. WW: 643	Adj. REA: 16.26		
RED CRIPPS HEATHER 917W	Adj. YW: 1271	Adj. Fat: 0.26		
RED U-2 RECKONING 149A	ADG: 3.91	Scrotal: 39		
SYR SYRINGA 9312G	Dam's Age: 2			
SIX MILE SYRINGA 396E				

ProS	HB	GM	CED	BW	WW	YW	ADG	DMI	MLK	ME	HPG	CEM	STY	MRB	YG	CW	REA	FAT
51	11	40	10	0.8	49	76	0.17	1.42	23	2	9	7	9	0.31	0.05	37	0.27	0.01

Consistency is key, and there is no denying the impact that Smoky Y Shiver 7151E is making on our program. J146 is another Shiver son that is clean cut about his lines from the side, smooth made, and proud featured. We appreciate the job that his first calf heifer dam sired by Red U-2 Reckoning 149A did during her rookie season in production. He posted a YW Ratio at 104 and a REA Ratio at 115!

SMOKY Y ROCKIN RED J140

BD: 1/20/21	Reg: 4554607	62	Tattoo: J140	A - 100% AR
RED CROWFOOT MOONSHINE 8081U	Act. BW: 81	Adj. IMF: 7.62		
SMOKY Y SHIVER 7151E	Adj. WW: 750	Adj. REA: 14.47		
RED CRIPPS HEATHER 917W	Adj. YW: 1385	Adj. Fat: 0.3		
CRUMP POWDER RIVER 7787	ADG: 3.96	Scrotal: 41		
SYR LASSIE LIN 9336G	Dam's Age: 2			
SIX MILE LASSIE LIN 53E				

ProS	HB	GM	CED	BW	WW	YW	ADG	DMI	MLK	ME	HPG	CEM	STY	MRB	YG	CW	REA	FAT
60	7	54	11	-0.1	63	98	0.22	1.66	27	8	11	6	9	0.41	0.04	48	0.36	0

Smoky Y Rockin Red J140 is another standout son of Smoky Y Shiver 7151E that was raised by a first calf heifer that is sired by Crump Powder River 7787. He is a true standout numerically that charts top 29% ProS, top 11% GM, top 3% WW, top 3% YW, top 5% ADG, top 14% Milk, top 20% Marb, and top 5% CW. This stud posted a WW Ratio at 115, a YW Ratio at 114, an IMF Ratio at 141, and a REA Ratio at 102. A true outlier!

SMOKY Y SHIVER J128

BD: 1/17/21	Reg: 4554585	63	Tattoo: J128	A - 100% AR
RED CROWFOOT MOONSHINE 8081U	Act. BW: 90	Adj. IMF: 3.62		
SMOKY Y SHIVER 7151E	Adj. WW: 605	Adj. REA: 14.08		
RED CRIPPS HEATHER 917W	Adj. YW: 1216	Adj. Fat: 0.32		
KJHT POWER TAKE OFF	ADG: 3.81	Scrotal: 38		
SYR MOONBEAM 9303G	Dam's Age: 2			
WINDY HILL MOONBEAM 1252Z				

ProS	HB	GM	CED	BW	WW	YW	ADG	DMI	MLK	ME	HPG	CEM	STY	MRB	YG	CW	REA	FAT
35	7	28	9	2.5	50	77	0.17	1.5	19	7	10	5	10	0.22	0.04	34	0.16	0

Smoky Y Shiver J128 is a performance standout that was raised by a first calf heifer that is sired by the National Champion, KJHT Power Take Off that is further influenced by the maternal impact of Red MRLA 61X. He ranks top 18% WW, top 18% YW, and top 20% ADG.

SMOKY Y SHIVER J151

BD: 1/19/21	Reg: 4554589	64	Tattoo: J151	A - 100% AR
RED CROWFOOT MOONSHINE 8081U	Act. BW: 82	Adj. IMF: 3.61		
SMOKY Y SHIVER 7151E	Adj. WW: 618	Adj. REA: 13.37		
RED CRIPPS HEATHER 917W	Adj. YW: 1145	Adj. Fat: 0.25		
RED U-2 RENOWN 193C	ADG: 3.28	Scrotal: 39		
SMOKY Y LAKOTA 1985G	Dam's Age: 2			
SMOKY Y LAKOTA 1432B				

ProS	HB	GM	CED	BW	WW	YW	ADG	DMI	MLK	ME	HPG	CEM	STY	MRB	YG	CW	REA	FAT
22	8	14	9	0.9	44	58	0.08	1.41	20	0	10	5	9	0.28	0.02	25	0.13	0

J151 is from the Shiver sire group and is the result of another excellent job done by a first calf heifer dam. The dam of J151 is sired by Red U-2 Renown 193C, a popular sire option that we have used to heavily impact our program. He is supported by the widely popular and prolific Lakota tribe.

SMOKY Y SHIVER J131

BD: 1/12/21	Reg: 4554597	65	Tattoo: J131	A - 100% AR
RED CROWFOOT MOONSHINE 8081U	Act. BW: 88	Adj. IMF: 4.16		
SMOKY Y SHIVER 7151E	Adj. WW: 551	Adj. REA: 12.62		
RED CRIPPS HEATHER 917W	Adj. YW: 1162	Adj. Fat: 0.15		
RED U-2 RENOWN 193C	ADG: 3.81	Scrotal: 38		
SMOKY Y BLAZER 1948G	Dam's Age: 2			
SMOKY Y BLAZER 1563C				

ProS	HB	GM	CED	BW	WW	YW	ADG	DMI	MLK	ME	HPG	CEM	STY	MRB	YG	CW	REA	FAT
30	3	27	9	1.9	41	61	0.13	1.39	17	-2	9	5	9	0.28	0.02	26	0.15	0

J131 is a sib in blood to J151 being sired by Shiver and backed by the maternal influence of a Red U-2 Renown 193C daughter. J131 was raised by a two-year-old dam that is from the Blazer cow family.



LOT 66



LOT 67



TJS ROAD BLOCK D008 - Sire of Lots 66-68

SMOKY Y ROAD BLOCK J66

BD: 1/22/21	Reg: 4554559	66	Tattoo: J66	A - 100% AR
5L BLOCKADE 2218-30B			Act. BW: 81	Adj. IMF: 4
TJS ROAD BLOCK D008			Adj. WW: 622	Adj. REA: 19.03
TJS RED HONESTY Z258			Adj. YW: 1263	Adj. Fat: 0.27
L83 SUPER DUTY 244Z			ADG: 4	Scrotal: 34
SIX MILE FAYE 914E			Dam's Age: 4	
RED SIX MILE FAYE 314Y				

ProS	HB	GM	CED	BW	WW	YW	ADG	DMI	MLK	ME	HPG	CEM	STY	MRB	YG	CW	REA	FAT
35	2	33	11	-0.8	45	72	0.17	1.73	22	11	11	7	8	0.33	0.03	30	0.15	0

We sampled TJS Road Block D008 in our AI program to incorporate the influence of 5L Blockade 2218-30B. If you are hunting a bull that is absolutely destined to sire cattle that grow fast and convert, or females that are the quality necessary to retain in herd as replacements, then your search is officially over! Smoky Y Road Block J66 is an absolute standout among this set of bulls when considering the amount of internal dimension, shape, and power that he brings to the equation on sale day. This Road Block son is backed by a L83 Super Duty 244Z daughter that we purchased from Six Mile Ranch of Canada. Power in the blood would be an understatement when describing J66. . . he is worth the trip to Oakey to see in person!

SMOKY Y ROAD BLOCK J71

BD: 1/3/21	Reg: 4553293	67	Tattoo: J71	A - 100% AR
5L BLOCKADE 2218-30B			Act. BW: 83	Adj. IMF: 4.17
TJS ROAD BLOCK D008			Adj. WW: 597	Adj. REA: 15.37
TJS RED HONESTY Z258			Adj. YW: 1194	Adj. Fat: 0.31
RED EGGEN MR BEEF 3P			ADG: 3.71	Scrotal: 39
RED MISS JORD NEW TREND 70W			Dam's Age: 12	
RED EGGEN NEW TREND 81S				

ProS	HB	GM	CED	BW	WW	YW	ADG	DMI	MLK	ME	HPG	CEM	STY	MRB	YG	CW	REA	FAT
42	19	24	12	-1.2	35	52	0.11	1.46	21	7	10	7	11	0.26	0.05	27	-0.02	-0.01

Smoky Y Road Block J71 is another TJS Road Block D008 son that offers tremendous body depth and upper rib cage shape, which has facilitated his natural shape and dimension from a muscle standpoint. This long hip, big ended stud is wide and square about his hip and pin set, while offering a rugged and masculine look from every angle. He posted a 109 REA Ratio. His dam is a productive 12-year-old female that has sons that have worked for Wildcat Creek Ranch, Dave McDaniel, Mary Wright, Terry Ostmeier, and Kolin Scheele. Consistency and longevity that you can count on!

SMOKY Y ROAD BLOCK J77

BD: 1/2/21	Reg: 4554497	68	Tattoo: J77	A - 100% AR
5L BLOCKADE 2218-30B			Act. BW: 77	Adj. IMF: 4.63
TJS ROAD BLOCK D008			Adj. WW: 609	Adj. REA: 14.66
TJS RED HONESTY Z258			Adj. YW: 1132	Adj. Fat: 0.21
RED CRIPPS 918W			ADG: 3.27	Scrotal: 42
SMOKY Y RITO NAPOLEON 1479B			Dam's Age: 7	
WINDY HIL RITO NAPOLEON 807U				

ProS	HB	GM	CED	BW	WW	YW	ADG	DMI	MLK	ME	HPG	CEM	STY	MRB	YG	CW	REA	FAT
36	21	15	13	-1.9	32	42	0.06	1.56	25	2	11	8	10	0.3	-0.04	20	0.17	-0.01

Smoky Y Road Block J77 would be a suitable option for use on well managed heifers. He posts an actual birth weight of 77 pounds and comes with a double digit CED figure. The dam of J77 has produced several females that have been put back into the herd here at Smoky Y Ranch. Consistency and longevity will result in larger profit margins!


LOT 69
SMOKY Y TYCOON J70

BD: 1/3/21	Reg: 4554595	69	Tattoo: J70	A - 100% AR
LSF SRR TYSON 3025A	Act. BW: 70	Adj. IMF: 5.49		
RED SSS TYCOON 225E	Adj. WW: 668	Adj. REA: 13.19		
RED SSS VALENTINE 335Z	Adj. YW: 1287	Adj. Fat: 0.43		
SMOKY Y WHO DAT 7221	ADG: 3.86	Scrotal: 40		
SMOKY Y LAUREN 1977G	Dam's Age: 2			
SMOKY Y LAUREN 1566C				

ProS	HB	GM	CED	BW	WW	YW	ADG	DMI	MLK	ME	HPG	CEM	STY	MRB	YG	CW	REA	FAT
36	15	21	13	-2.9	47	66	0.12	1.56	22	-3	8	8	10	0.26	0	29	0.22	-0.01

This son of Red SSS Tycoon 225E is backed by a hard working two-year-old dam that is influenced by the 1254Z and 153N cow families on the bottom side of his pedigree. His added length, dimension, and muscle shape is certainly easy to admire. He recorded a WW Ratio at 104, YW Ratio at 105, and an IMF Ratio at 127! Pounds pay and carcass merit that will add value to your program!

SMOKY Y TYCOON J124

BD: 1/2/21	Reg: 4554591	70	Tattoo: J124	A - 100% AR
LSF SRR TYSON 3025A	Act. BW: 79	Adj. IMF: 5.38		
RED SSS TYCOON 225E	Adj. WW: 616	Adj. REA: 13.27		
RED SSS VALENTINE 335Z	Adj. YW: 1206	Adj. Fat: 0.33		
SMOKY Y FORT APACHE 7191E	ADG: 3.67	Scrotal: 41		
SMOKY Y MOLLY 1937G	Dam's Age: 2			
SMOKY Y MOLLY 1440B				

ProS	HB	GM	CED	BW	WW	YW	ADG	DMI	MLK	ME	HPG	CEM	STY	MRB	YG	CW	REA	FAT
17	-1	18	11	-0.7	50	70	0.13	1.76	19	3	8	6	9	0.26	0.03	32	0.14	-0.01

J124 is a performance standout within the Red SSS Tycoon 225E sire group as he ranks among the top 11% for WW, top 17% YW, and top 30% ADG. He offers tremendous marbling with a 5.38 adjusted IMF.


RED SSS TYCOON 225E
Sire of Lots 69-73

SMOKY Y TYCOON J129

BD: 1/3/21	Reg: 4496985	71	Tattoo: J129	A - 100% AR
LSF SRR TYSON 3025A	Act. BW: 75	Adj. IMF: 5.32		
RED SSS TYCOON 225E	Adj. WW: 607	Adj. REA: 13.49		
RED SSS VALENTINE 335Z	Adj. YW: 1194	Adj. Fat: 0.26		
PZC TMS RED SKY 2794	ADG: 3.66	Scrotal: 42		
SMOKY Y RAINDANCE F89	Dam's Age: 3			
SMOKY Y MISS RAINDANCE A340				

ProS	HB	GM	CED	BW	WW	YW	ADG	DMI	MLK	ME	HPG	CEM	STY	MRB	YG	CW	REA	FAT
8	-16	24	14	-3.3	44	68	0.15	2	22	8	7	9	7	0.31	0.01	30	0.2	-0.01

Smoky Y Tycoon J129 is a suitable option for heifers with a 14 CED and a -3.3 BW EPD which are complimented by a moderate 75-pound birth weight. He scanned with impressive results as he posted a 5.32 adjusted IMF with a 13+ inch REA.

SMOKY Y TYCOON J134

BD: 1/1/21	Reg: 4554611	72	Tattoo: J134	A - 100% AR
LSF SRR TYSON 3025A	Act. BW: 85	Adj. IMF: 7.14		
RED SSS TYCOON 225E	Adj. WW: 652	Adj. REA: 15.29		
RED SSS VALENTINE 335Z	Adj. YW: 1275	Adj. Fat: 0.43		
RED SIX MILE JUSTICE 293D	ADG: 3.88	Scrotal: 43		
SMOKY Y PRIDE 9325G	Dam's Age: 2			
SIX MILE MS PRIDE 807E				

ProS	HB	GM	CED	BW	WW	YW	ADG	DMI	MLK	ME	HPG	CEM	STY	MRB	YG	CW	REA	FAT
33	1	32	10	1.2	51	79	0.17	1.84	23	8	8	6	10	0.31	0.05	37	0.23	0

J134 is another stout featured, big ended, wide based son of Tycoon that is from a two-year-old dam sired by Red Six Mile Justice 293D. He charts top 10% WW, top 9% YW, and top 11% ADG. He is a standout from a carcass merit standpoint with a 132 IMF Ratio and a 108 REA Ratio. A tremendous carcass merit sire!

SMOKY Y TYCOON J144

BD: 1/3/21	Reg: 4553331	73	Tattoo: J144	A - 100% AR
LSF SRR TYSON 3025A	Act. BW: 76	Adj. IMF: 5.04		
RED SSS TYCOON 225E	Adj. WW: 607	Adj. REA: 14.14		
RED SSS VALENTINE 335Z	Adj. YW: 1170	Adj. Fat: 0.34		
RED U-2 RENOWN 193C	ADG: 3.51	Scrotal: 42		
SMOKY Y LANA G947	Dam's Age: 2			
CAMP 1A MISS LANA S207				

ProS	HB	GM	CED	BW	WW	YW	ADG	DMI	MLK	ME	HPG	CEM	STY	MRB	YG	CW	REA	FAT
7	-13	20	11	-0.5	40	57	0.11	1.49	18	0	6	6	8	0.27	0.01	25	0.14	-0.01

J144 is a moderate birth weight son of Tycoon that offers balanced numbers across the board. His first calf heifer dam is by Renown and backed by a standout Camp 1A female. He recorded an IMF Ratio at 105. Carcass merit and proven low birth weight genetics!



LOT 74

SMOKY Y JOSIE WALES J72

BD: 1/29/21	Reg: 4554535	74	Tattoo: J72	A - 100% AR
PZCTMAS FIRESTORM 1800 ET			Act. BW: 80	Adj. IMF: 3.68
MCKY 8731 ET "JOSEY WALES"			Adj. WW: 676	Adj. REA: 15.87
RED BRYLOR JESSIE 33W			Adj. YW: 1301	Adj. Fat: 0.36
WEBR SHINE DOWN 435			ADG: 3.9	Scrotal: 36
SMOKY Y ROUX 1670D			Dam's Age: 5	
WINDY HILL BLACKBIRD 1235Z				

ProS	HB	GM	CED	BW	WW	YW	ADG	DMI	MLK	ME	HPG	CEM	STY	MRB	YG	CW	REA	FAT
124	79	45	11	-1.4	56	93	0.23	0	30	0	0	7	17	0.22	0.1	22	-0.12	0

In 2020 we made the trip to the National Western Stock Show to check out what new genetics were surfacing within the industry. When we walked through the barns on the hill at the NWSS we were quick to identify MCKY 8731 "Josey Wales" as one of the stoutest and most unique Red Angus herd sire prospects that we had ever laid eyes on! We had to use this bull in our breeding program, and that is exactly what we did. The dam of MCKY 8731 is the stunningly beautiful Red Brylor Jessie 33W matriarch that is a foundation breeding piece for McKay Cattle Company of Oklahoma. J72 is a prime example of what we were hoping to generate by utilizing the service of 8731. Moderate framed, square built, and dense from end to end. This big scrotal herd sire prospect exemplifies the herd sire fundamentals of body mass, muscularity, and structural integrity. He charts top 7% ProS, top 1% DMI, top 8% HB, and top 22% Stay. He posted a WW Ratio at 105, a YW Ratio at 106, and a REA Ratio at 110. A standout from every aspect!



MCKY 8731 ET "JOSEY WALES" - Sire of Lots 74-82



41

LOT 75

SMOKY Y JOSIE WALES J32

BD: 1/26/21	Reg: 4553329	75	Tattoo: J32	A - 100% AR
PZCTMAS FIRESTORM 1800 ET			Act. BW: 82	Adj. IMF: 4
MCKY 8731 ET "JOSEY WALES"			Adj. WW: 701	Adj. REA: 14.6
RED BRYLOR JESSIE 33W			Adj. YW: 1297	Adj. Fat: 0.29
SMOKY Y ONE DIRECTION 6137D			ADG: 3.71	Scrotal: 40
SMOKY Y OLIVE F830			Dam's Age: 3	
SMOKY Y OLIVE 1537C				



RED BRYLOR JESSIE 33W - Paternal Granddam of Lots 74-82

ProS	HB	GM	CED	BW	WW	YW	ADG	DMI	MLK	ME	HPG	CEM	STY	MRB	YG	CW	REA	FAT
77	60	17	11	-1.4	65	102	0.23	1.41	30	2	11	6	16	0.2	0.1	23	-0.02	0.01

Are you are looking for a Red Angus herd sire that has "the look"? Well, here he is! Smoky Y Josie Wales J32 is as phenotypically impressive of a Red Angus herd sire prospect that we have ever produced. We love the way that he ties his front third together and how he blends back into his forerib and center body from his neatly laid in shoulder design. The set to his hip and his hind leg is absolutely textbook, and he travels with a composed and confident stride. J2 is from a young and productive female from the Olive cow family. He charts a WW Ratio at 110, a YW Ratio at 107, and a REA Ratio at 103. A true sale feature!



LOT 76

Smoky Y Josie Wales J38 is another stout featured, bold bodied, dense made son of the many times National Champion, MCKY 8731 ET. He is supported by the influence of a top young Red SSS Traverse 387Z daughter. This performance standout recorded a 112 WW Ratio, a YW Ratio at 108, and yet maintains a moderate birth weight. He charts among the top 6% of the breed for CW and top 28% for REA.

SMOKY Y JOSIE WALES J38

BD: 2/3/21 Reg: 4554507		76	Tattoo: J38 A - 100% AR	
PZC TMAS FIRESTORM 1800 ET MCKY 8731 ET "JOSEY WALES" RED BRYLOR JESSIE 33W RED SSS TRAVERSE 387Z SMOKY Y BARBARA 1468B WINDY HILL BARBARA 1260Z			Act. BW: 88 Adj. IMF: 4.05 Adj. WW: 723 Adj. REA: 13.68 Adj. YW: 1326 Adj. Fat: 0.27 ADG: 3.77 Scrotal: 43 Dam's Age: 7	

ProS	HB	GM	CED	BW	WW	YW	ADG	DMI	MLK	ME	HPG	CEM	STY	MRB	YG	CW	REA	FAT
71	32	39	11	-0.4	54	80	0.16	1.13	21	-4	11	6	11	0.28	0.04	38	0.22	0

SMOKY Y JOSIE WALES J61

BD: 1/18/21	Reg: 4554573	77	Tattoo: J61	A - 100% AR
<p>PZC TMAS FIRESTORM 1800 ET</p> <p>MCKY 8731 ET "JOSEY WALES"</p> <p>RED BRYLOR JESSIE 33W</p> <p>BIEBER CL ATOMIC C218</p> <p>SMOKY Y ERICA 1820F</p> <p>SMOKY Y ERICA 1684D</p>				
		Act. BW: 72	Adj. IMF: 3.39	
		Adj. WW: 618	Adj. REA: 14.53	
		Adj. YW: 1143	Adj. Fat: 0.3	
		ADG: 3.27	Scrotal: 39	
		Dam's Age: 3		

ProS	HB	GM	CED	BW	WW	YW	ADG	DMI	MLK	ME	HPG	CEM	STY	MRB	YG	CW	REA	FAT
112	74	37	13	-2.5	54	84	0.19	0	27	0	0	7	17	0.29	0.1	14	-0.18	0.01

LOT 77

Smoky Y Josie Wales J61 is a big topped, thick ended son of MCKY 8731 ET that is from a beautiful daughter of Bieber CL Atomic C2118 that was raised by a first calf heifer. We sampled Atomic on heifers a few years ago and this resulted in several high selling bulls from this popular sire group. J61 ranks among the top 16% for ProS, top 12% HB, top 1% DMI, and top 26% Stay. Here is a moderate birth weight bull that offers a 13 CED and a -2.5 BW EPD that is further complimented by a 72-pound actual birth weight. J61 is suitable for use on well managed heifers.



SMOKY Y JOSIE WALES J87

BD: 1/31/21	Reg: 4554553	78	Tattoo: J87	A - 100% AR
PZC TMAS FIRESTORM 1800 ET		Act. BW: 83	Adj. IMF: 3.61	
MCKY 8731 ET "JOSEY WALES"		Adj. WW: 683	Adj. REA: 12.84	
RED BRYLOR JESSIE 33W		Adj. YW: 1176	Adj. Fat: 0.31	
SIX MILE GAME FACE 164Y		ADG: 3.07	Scrotal: 38	
SIX MILE URRISAL 410E		Dam's Age: 4		
RED SIX MILE URRISAL 798W				

ProS	HB	GM	CED	BW	WW	YW	ADG	DMI	MLK	ME	HPG	CEM	STY	MRB	YG	CW	REA	FAT
41	17	24	12	-1.1	44	59	0.09	1.09	19	-5	10	7	9	0.25	0.03	29	0.12	-0.01

J87 is a performance driven son of MCKY 8731 ET that is from a Six Mile Game Face 164Y sired dam that was bred in the Six Mile Ranch program. He posted a WW Ratio at 104 to compliment his added length of body, shape, and real world power!

SMOKY Y JOSIE WALES J53

BD: 1/26/21	Reg: 4553315	81	Tattoo: J53	A - 100% AR
PZC TMAS FIRESTORM 1800 ET		Act. BW: 88	Adj. IMF: 4.51	
MCKY 8731 ET "JOSEY WALES"		Adj. WW: 699	Adj. REA: 14.18	
RED BRYLOR JESSIE 33W		Adj. YW: 1271	Adj. Fat: 0.32	
PZC TMAS RED ZONE 2795		ADG: 3.57	Scrotal: 40	
SMOKY Y BLOCKANA 1526C		Dam's Age: 6		
FEDDES BLOCKANA 041				

ProS	HB	GM	CED	BW	WW	YW	ADG	DMI	MLK	ME	HPG	CEM	STY	MRB	YG	CW	REA	FAT
50	19	32	9	0.9	48	67	0.12	1.07	24	-2	9	6	11	0.31	0.01	29	0.19	0

J53 comes with an added shot of performance and power! He posted a WW Ratio at 110 and a YW Ratio at 105. His dam is backed by the PZC TMAS Red Zone 2795 sired daughter of the great Feddes Blockana 041. Power in the blood would be an understatement!

SMOKY Y JOSIE WALES J37

BD: 1/21/21	Reg: 4554537	79	Tattoo: J37	A - 100% AR
PZC TMAS FIRESTORM 1800 ET		Act. BW: 85	Adj. IMF: 3.53	
MCKY 8731 ET "JOSEY WALES"		Adj. WW: 594	Adj. REA: 14.84	
RED BRYLOR JESSIE 33W		Adj. YW: 1167	Adj. Fat: 0.23	
WCR POWER EYE 4316B		ADG: 3.57	Scrotal: 38	
SMOKY Y ERICA 1724E		Dam's Age: 4		
WINDY HILL ERICA 935S				

ProS	HB	GM	CED	BW	WW	YW	ADG	DMI	MLK	ME	HPG	CEM	STY	MRB	YG	CW	REA	FAT
57	20	37	13	-0.8	38	56	0.11	1.11	17	-7	10	6	10	0.35	0.03	28	0.08	-0.01

J37 is supported by a unique pedigree that combines some of the most elite female makers in the breed. Sired by the standout Firestorm son, MCKY 8731 ET, this stud is further influenced by Red Soo Line Power Eye 161X and the Angus sire, Wiwa Creek Rito 43'06. He charts top 14% ME, top 25% DMI, top 10% YG, and top 4% Fat.

SMOKY Y JOSIE WALES J40

BD: 1/28/21	Non Registered	82	Tattoo: J40	COMMERICAL
PZC TMAS FIRESTORM 1800 ET		Act. BW: 85	Adj. IMF: 3.68	
MCKY 8731 ET "JOSEY WALES"		Adj. WW: 650	Adj. REA: 14.74	
RED BRYLOR JESSIE 33W		Adj. YW: 1180	Adj. Fat: 0.33	
RED ANGUS		Scrotal: 38		
S-Y 1708				
RED ANGUS				

Here is a big topped, thick made son of MCKY 8731 ET that is out of a very high quality non-registered Red Angus female. He is a big scrotal bull that scanned with a 14+ inch REA and over a 3.6 for IMF. This bull will add value to any set of calves!

SMOKY Y JOSIE WALES J68

BD: 1/27/21	Reg: 4554561	80	Tattoo: J68	A - 100% AR
PZC TMAS FIRESTORM 1800 ET		Act. BW: 85	Adj. IMF: 4.37	
MCKY 8731 ET "JOSEY WALES"		Adj. WW: 645	Adj. REA: 14.72	
RED BRYLOR JESSIE 33W		Adj. YW: 1291	Adj. Fat: 0.35	
HCG BRANDING IRON		ADG: 4.03	Scrotal: 39	
SIX MILE BARBIE 931E		Dam's Age: 4		
RED SIX MILE BARBIE 446Y				

ProS	HB	GM	CED	BW	WW	YW	ADG	DMI	MLK	ME	HPG	CEM	STY	MRB	YG	CW	REA	FAT
57	0	57	10	0.4	52	84	0.21	1.47	17	4	9	5	9	0.37	0.05	46	0.26	-0.01

J68 is backed by a beautiful daughter of HCG Branding Iron that traces to the legendary Barbie cow family that calls home to Six Mile Ranch. He ranks top 23% WW, top 18% YW, top 15% ADG, top 23% CW, and top 15% Fat.





LOT 83



LOT 84



AHL FLASHBACK 446B

Sire of Lots 83-85 & Paternal Grand sire of Lots 86-103

SMOKY Y FLASHBACK J76

BD: 1/27/21	Reg: 4553323	83	Tattoo: J76	A - 100% AR
PZC TMAS FIRESTORM 1800 ET		Act. BW: 83		Adj. IMF: 4.17
AHL FLASHBACK 446B		Adj. WW: 620		Adj. REA: 13.68
AHL DUCHESS 42W		Adj. YW: 1190		Adj. Fat: 0.25
PIE OPTIMISM 3285		ADG: 3.56		Scrotal: 39
SMOKY Y MARLA E703		Dam's Age: 4		
CAMP 1A MARLA Y159				

ProS	HB	GM	CED	BW	WW	YW	ADG	DMI	MLK	ME	HPG	CEM	STY	MRB	YG	CW	REA	FAT
51	23	28	12	-0.8	46	66	0.12	1.61	17	5	11	7	11	0.33	0.03	32	0.21	0

Smoky Y Flashback J76 initiates the popular AHL Flashback 446B sire group with his genuine mass and balanced look from every angle evaluated. Flashback took the breed by storm when he sold for \$105,000 in the Western Heritage Sale at the National Western Stock Show. J76 is a prime example of the type and kind of bull that Flashback consistently sires year after year! This Flashback son is long bodied, square hipped, thick ended and offers a balanced number profile. The dam of J76 is a productive daughter of PIE Optimism 3285 that has done an excellent job each year.

SMOKY Y FLASH FLOOD J117

BD: 2/26/21	Reg: 4554521	84	Tattoo: J117	A - 100% AR
PZC TMAS FIRESTORM 1800 ET		Act. BW: 80		Adj. IMF: 4.27
AHL FLASHBACK 446B		Adj. WW: 684		Adj. REA: 14.49
AHL DUCHESS 42W		Adj. YW: 1264		Adj. Fat: 0.4
PIE ONE OF A KIND 352		ADG: 3.62		Scrotal: 39
SMOKY Y MS KNIGHT 1682D		Dam's Age: 5		
WINDY HILL MS KNIGHT 426P				

ProS	HB	GM	CED	BW	WW	YW	ADG	DMI	MLK	ME	HPG	CEM	STY	MRB	YG	CW	REA	FAT
47	16	31	14	-3.4	47	70	0.15	1.6	18	6	11	8	10	0.25	0	36	0.23	-0.01

Smoky Y Flash Flood J117 is another direct son of the great AHL Flashback 446B that offers tremendous length, stoutness, and eye appeal. We love the consistency that Flashback offers to our breeding program, and the female mates to this set of bulls are destined to make a substantial impact as they enter production. J117 is balanced numerically as he offers a 14 CED with a -3.4 BW EPD. He ranks top 24% for CEM, top 20% YG, top 9% CW, and top 3% Fat. J117 recorded a WW Ratio at 104, YW Ratio at 105, and a REA Ratio at 104.

SMOKY Y FLASHBACK J108

BD: 3/1/21	Reg: 4554557	85	Tattoo: J108	A - 100% AR
PZC TMAS FIRESTORM 1800 ET		Act. BW: 86		Adj. IMF: 4.52
AHL FLASHBACK 446B		Adj. WW: 607		Adj. REA: 13.42
AHL DUCHESS 42W		Adj. YW: 1176		Adj. Fat: 0.2
HCG BRANDING IRON		ADG: 3.55		Scrotal: 42
SIX MILE LASS 839E		Dam's Age: 4		
RED SIX MILE LASS 685W				

ProS	HB	GM	CED	BW	WW	YW	ADG	DMI	MLK	ME	HPG	CEM	STY	MRB	YG	CW	REA	FAT
28	-11	39	10	-0.7	46	74	0.18	2.05	19	15	8	5	10	0.34	0.1	43	0.08	-0.01

J108 is a performance driven son of AHL Flashback 446B that is backed by a stunning daughter of HCG Branding Iron that is from the Lass cow family. He charts top 12% WW, top 15% YW, and top 23% ADG.



45

LOT 86

SMOKY Y REGULATOR J57

BD: 1/29/21	Reg: 4554489	86	Tattoo: J57	A - 100% AR
AHL FLASHBACK 446B	Act. BW: 88	Adj. IMF: 3.84		
SMOKY Y REGULATOR 7301	Adj. WW: 755	Adj. REA: 14.34		
SMOKY Y MISS LANA A361	Adj. YW: 1339	Adj. Fat: 0.31		
RED MRLA 61X	ADG: 3.64	Scrotal: 40		
WINDY HILL BLAZER 1211Z	Dam's Age: 9			
WINDY HILL BLAZER 937W				

ProS	HB	GM	CED	BW	WW	YW	ADG	DMI	MLK	ME	HPG	CEM	STY	MRB	YG	CW	REA	FAT
53	28	25	11	-0.1	51	70	0.12	1.12	24	-4	9	6	11	0.24	0.02	32	0.21	0

Smoky Y Regulator J57 is a dense made, high performing son of Smoky Y Regulator 7301 that is backed by a stout made daughter of Red MRLA 61X. He charts top 19% WW, top 25% DMI, and top 20% ME. Here charts with a WW Ratio of 117, and a YW Ratio at 109. A true standout that is backed by a proven cow family. Pounds pay!

SMOKY Y REGULATOR J41

BD: 1/29/21	Reg: 4554487	87	Tattoo: J41	A - 100% AR
AHL FLASHBACK 446B	Act. BW: 86	Adj. IMF: 4.52		
SMOKY Y REGULATOR 7301	Adj. WW: 632	Adj. REA: 15.47		
SMOKY Y MISS LANA A361	Adj. YW: 1157	Adj. Fat: 0.24		
RED MRLA 61X	ADG: 3.27	Scrotal: 37		
RED WINDY HILL MISS 1209Z	Dam's Age: 9			
WINDY HILL MS GRAVITY 66N				

ProS	HB	GM	CED	BW	WW	YW	ADG	DMI	MLK	ME	HPG	CEM	STY	MRB	YG	CW	REA	FAT
31	27	4	11	-0.7	41	50	0.06	1.13	20	-3	9	7	12	0.19	0	18	0.09	0

We are impressed with the Smoky Y Regulator 7301 sire group because of the natural thickness, length of body, and added frame that these bulls offer. The paternal grandsire of these bulls is the six-figure valued AHL Flashback 446B. He charts top 23% ME, top 7% YG, and top 26% DMI. He posted a REA Ratio at 107 and an IMF Ratio at 104.

Regulators. Mount Up

SMOKY Y REGULATOR J51

BD: 1/21/21	Reg: 4554503	88	Tattoo: J51	A - 100% AR
AHL FLASHBACK 446B		Act. BW: 85	Adj. IMF: 5.22	
SMOKY Y REGULATOR 7301		Adj. WW: 685	Adj. REA: 14.6	
SMOKY Y MISS LANA A361		Adj. YW: 1231	Adj. Fat: 0.23	
RED SSS TRAVERSE 387Z		ADG: 3.41	Scrotal: 41	
SMOKY Y LAKOTA 1432B		Dam's Age: 7		
WINDY HILL BLAZER 1211Z				

ProS	HB	GM	CED	BW	WW	YW	ADG	DMI	MLK	ME	HPG	CEM	STY	MRB	YG	CW	REA	FAT
44	25	19	11	-0.6	47	62	0.09	1.34	23	0	10	7	11	0.28	0.03	28	0.12	0

This son of Regulator is among the top 23% for WW and top 26% for YG. He is from a top producing daughter of Red SSS Traverse 387Z that is from the Blazer cow family. He charts a WW Ratio at 106, and an impressive IMF Ratio at 120! A performance driven bull with carcass merit!

SMOKY Y REGULATOR J58

BD: 1/29/21	Reg: 4553289	89	Tattoo: J58	A - 100% AR
AHL FLASHBACK 446B		Act. BW: 86	Adj. IMF: 4.55	
SMOKY Y REGULATOR 7301		Adj. WW: 658	Adj. REA: 14.55	
SMOKY Y MISS LANA A361		Adj. YW: 1278	Adj. Fat: 0.27	
RED FINE LINE MULBERRY 26P		ADG: 3.86	Scrotal: 41	
CAMP 1A MARLA Y159		Dam's Age: 10		
LCC BLOXY NA496				

ProS	HB	GM	CED	BW	WW	YW	ADG	DMI	MLK	ME	HPG	CEM	STY	MRB	YG	CW	REA	FAT
47	8	39	11	-0.3	50	79	0.18	1.54	19	8	12	7	9	0.3	0.06	38	0.22	0

Smoky Y Regulator J58 is another standout from the Smoky Y Regulator 7301 sire group. He is supported by a beautiful daughter of the maternal legend, Red Fine Line Mulberry 26P. Top 18% WW, and top 27% YW.

SMOKY Y REGULATOR J89

BD: 2/22/21	Reg: 4553291	90	Tattoo: J89	A - 100% AR
AHL FLASHBACK 446B		Act. BW: 83	Adj. IMF: 3.64	
SMOKY Y REGULATOR 7301		Adj. WW: 653	Adj. REA: 13.49	
SMOKY Y MISS LANA A361		Adj. YW: 1224	Adj. Fat: 0.26	
1DRA HIGH CAPACITY 9007		ADG: 3.55	Scrotal: 39	
CAMP 1A VALENTINE Y168		Dam's Age: 10		
CAMP 1A VALENTINE 313N				

ProS	HB	GM	CED	BW	WW	YW	ADG	DMI	MLK	ME	HPG	CEM	STY	MRB	YG	CW	REA	FAT
13	-17	30	11	-0.4	48	72	0.15	1.52	22	6	10	6	6	0.25	0.06	36	0.12	0

J89 comes from a productive daughter of High Capacity. This Regulator son is stout made, long sided, and square built. He charts top 20% for WW and among the top third of the breed for YW.

SMOKY Y REGULATOR J50

BD: 2/1/21	Reg: 4553303	91	Tattoo: J50	A - 100% AR
AHL FLASHBACK 446B		Act. BW: 88	Adj. IMF: 4.46	
SMOKY Y REGULATOR 7301		Adj. WW: 654	Adj. REA: 11.75	
SMOKY Y MISS LANA A361		Adj. YW: 1125	Adj. Fat: 0.21	
RED FINE LINE MULBERRY 26P		ADG: 2.93	Scrotal: 38	
CAMP 1A M CHER CRYSTAL Y156		Dam's Age: 10		
CAMP1A CHER CRYSTAL 425P				

ProS	HB	GM	CED	BW	WW	YW	ADG	DMI	MLK	ME	HPG	CEM	STY	MRB	YG	CW	REA	FAT
23	13	10	10	-0.4	45	56	0.07	1.39	20	3	12	5	10	0.26	0.05	25	0.04	0

J50 is another bull that comes from the Regulator x Mulberry genetic combination. This stout made, long bodied herd sire prospect charts top third of the business for WW. He posted a WW Ratio at 103.



SMOKY Y OUTBACK 64H
Maternal Brother
to Lot 92

SMOKY Y REGULATOR J91

BD: 2/27/21	Reg: 4553297	92	Tattoo: J91	A - 100% AR
AHL FLASHBACK 446B		Act. BW: 88	Adj. IMF: 4.18	
SMOKY Y REGULATOR 7301		Adj. WW: 687	Adj. REA: 13.14	
SMOKY Y MISS LANA A361		Adj. YW: 1237	Adj. Fat: 0.19	
1DRA HIGH CAPACITY 9007		ADG: 3.43	Scrotal: 42	
SMOKY Y DINA A363		Dam's Age: 8		
CAMP 1A DINA U864				

ProS	HB	GM	CED	BW	WW	YW	ADG	DMI	MLK	ME	HPG	CEM	STY	MRB	YG	CW	REA	FAT
27	3	24	11	-0.1	47	68	0.13	1.58	21	6	10	6	9	0.26	0.05	35	0.13	0

Smoky Y Regulator J91 is backed by Smoky Y Dina A363, the dam of Smoky Y Outback 64H who now works for Troy Kuppetz. J91 charts top 22% for WW and top 12% for Fat. He offers a WW Ratio at 106, a YW Ratio at 103, and an IMF Ratio at 107.

SMOKY Y REGULATOR J46

BD: 1/30/21	Reg: 4553321	93	Tattoo: J46	A - 100% AR
AHL FLASHBACK 446B		Act. BW: 60	Adj. IMF: 4.62	
SMOKY Y REGULATOR 7301		Adj. WW: 617	Adj. REA: 13.19	
SMOKY Y MISS LANA A361		Adj. YW: 1139	Adj. Fat: 0.47	
WEBR SHINE DOWN 435		ADG: 3.26	Scrotal: 40	
SMOKY Y SAGE D621		Dam's Age: 5		
CAMP 1A MISS SAGE S132				

ProS	HB	GM	CED	BW	WW	YW	ADG	DMI	MLK	ME	HPG	CEM	STY	MRB	YG	CW	REA	FAT
44	23	20	18	-5.8	32	45	0.08	1.35	21	1	9	11	11	0.31	0.07	22	-0.05	0

A top calving ease prospect from the Smoky Y Regulator 7301 sire group. This sleep all night heifer bull is among the top 14% of the breed for CED and top 8% for BW. He further solidifies his role as a heifer safe option with a moderate 60-pound birth weight. Recommended for use on heifers.

SMOKY Y CODE RED J80

BD: 1/27/21	Reg: 4554527	94	Tattoo: J80	A - 100% AR
AHL FLASHBACK 446B			Act. BW: 87	Adj. IMF: 5.42
SMOKY Y CODE RED 7309			Adj. WW: 641	Adj. REA: 15.19
SMOKY Y BLOXY A354			Adj. YW: 1183	Adj. Fat: 0.34
RED SSS STATUS 106B			ADG: 3.39	Scrotal: 42
SMOKY Y JULIE 1600D			Dam's Age: 5	
SMOKY Y JULIE 1415B				

ProS	HB	GM	CED	BW	WW	YW	ADG	DMI	MLK	ME	HPG	CEM	STY	MRB	YG	CW	REA	FAT
30	12	18	14	-2.2	38	52	0.09	1.37	24	1	9	7	10	0.32	0.02	20	0.08	0

Smoky Y Code Red J80 leads off the Smoky Y Code Red 7309 sire group. He is backed by Smoky Y Julie 1600D, the dam of Smoky Y Atomic 8160F who was purchased by McMurphy Farms of Oklahoma a few years ago. J80 offers tremendous carcass data as he recorded an IMF Ratio at 125 with a REA Ratio at 105.



SMOKY Y ATOMIC 8160F - Maternal Brother to Lot 94

SMOKY Y CODE RED J30

BD: 1/22/21	Reg: 4554525	95	Tattoo: J30	A - 100% AR
AHL FLASHBACK 446B			Act. BW: 71	Adj. IMF: 4.45
SMOKY Y CODE RED 7309			Adj. WW: 603	Adj. REA: 12.87
SMOKY Y BLOXY A354			Adj. YW: 1152	Adj. Fat: 0.34
PZC TMAS RED ZONE 2795			ADG: 3.43	Scrotal: 39
SMOKY Y FRIDA 1643D			Dam's Age: 5	
RED WINDY HILL FRIDA 1261Z				

ProS	HB	GM	CED	BW	WW	YW	ADG	DMI	MLK	ME	HPG	CEM	STY	MRB	YG	CW	REA	FAT
35	21	15	14	-3.1	35	47	0.07	1.36	19	0	9	9	11	0.26	-0.01	21	0.13	-0.01

J30 is a heifer safe option from the Smoky Y Code Red 7309 sire group. He is backed by the influence of a top young daughter of PZC TMAS Red Zone 2795. He further solidifies his heifer safe capabilities with a moderate 71-pound birth weight.

SMOKY Y CODE RED J25

BD: 1/26/21	Reg: 4553317	96	Tattoo: J25	A - 100% AR
AHL FLASHBACK 446B			Act. BW: 87	Adj. IMF: 4.61
SMOKY Y CODE RED 7309			Adj. WW: 622	Adj. REA: 15.01
SMOKY Y BLOXY A354			Adj. YW: 1194	Adj. Fat: 0.27
SLGN YOUNG GUN 109Y			ADG: 3.57	Scrotal: 36
SMOKY Y MISS LANA D627			Dam's Age: 5	
CAMP 1A MISS LANA S207				

ProS	HB	GM	CED	BW	WW	YW	ADG	DMI	MLK	ME	HPG	CEM	STY	MRB	YG	CW	REA	FAT
33	3	31	11	-0.3	44	65	0.13	1.42	16	3	9	6	9	0.34	0.04	29	0.08	-0.01

J25 is a big ribeye area bull that is sired by Smoky Y Code Red 7309, another powerful son of AHL Flashback 446B. His dam is a productive young female sired by SLGN Young Gun 109Y. Here is a big REA bull that posted a REA Ratio of 106.

Here is a pair of stout made sons of Smoky Y Jawbone 7314. Jawbone is a son of the six-figure valuation AHL Flashback 446B. We appreciate the length of body, depth of rib, and fleshing ease that these Jawbone sons offer. They are both very balanced numerically, offering calving ease without sacrificing growth and performance. With the Flashback influence you can count on their daughters to have superior udder quality and true maternal prowess.

SMOKY Y JAWBONE J42

BD: 1/29/21	Reg: 4554479	97	Tattoo: J42	A - 100% AR
AHL FLASHBACK 446B			Act. BW: 81	Adj. IMF: 3.77
SMOKY Y JAWBONE 7314			Adj. WW: 665	Adj. REA: 12.98
CAMP 1A MISS FAY A375			Adj. YW: 1221	Adj. Fat: 0.38
WIWA CREEK RITO 43'06			ADG: 3.46	Scrotal: 38
WINDY HILL BLACKWOOD 945W			Dam's Age: 12	
RED LLB BLACKWOOD 242M				

ProS	HB	GM	CED	BW	WW	YW	ADG	DMI	MLK	ME	HPG	CEM	STY	MRB	YG	CW	REA	FAT
34	15	19	10	-0.1	41	51	0.07	1.19	19	-8	10	6	9	0.28	0.02	26	0.09	-0.01

SMOKY Y JAWBONE J47

BD: 1/29/21	Reg: 4553299	98	Tattoo: J47	A - 100% AR
AHL FLASHBACK 446B			Act. BW: 69	Adj. IMF: 5.29
SMOKY Y JAWBONE 7314			Adj. WW: 541	Adj. REA: 12.62
CAMP 1A MISS FAY A375			Adj. YW: 1078	Adj. Fat: 0.29
1DRA HIGH CAPACITY 9007			ADG: 3.36	Scrotal: 41
SMOKY Y HC VALENTINE A371			Dam's Age: 8	
CAMP 1A CH VALENTINE U870				

ProS	HB	GM	CED	BW	WW	YW	ADG	DMI	MLK	ME	HPG	CEM	STY	MRB	YG	CW	REA	FAT
17	4	13	15	-3.5	31	43	0.07	1.57	17	4	10	8	9	0.25	0.04	22	0.04	0



48

LOT 99

SMOKY Y FLASH J88

BD: 2/18/21	Reg: 4553287	99	Tattoo: J88	A - 100% AR
AHL FLASHBACK 446B			Act. BW: 92	Adj. IMF: 3.44
SMOKY Y FLASHBACK 9101G			Adj. WW: 605	Adj. REA: 13.84
SMOKY Y MAY 1462B			Adj. YW: 1210	Adj. Fat: 0.26
1DRA HIGH CAPACITY 9007			ADG: 3.77	Scrotal: 41
CAMP 1A GALEE Y1544			Dam's Age: 10	
BIEBER GALEE 7927				

ProS	HB	GM	CED	BW	WW	YW	ADG	DMI	MLK	ME	HPG	CEM	STY	MRB	YG	CW	REA	FAT
39	4	35	9	1.6	47	75	0.17	1.51	16	3	10	4	10	0.25	0.06	38	0.15	0

SMOKY Y FLASH J158

BD: 2/8/21	Reg: 4553307	100	Tattoo: J158	A - 100% AR
AHL FLASHBACK 446B			Act. BW: 80	Adj. IMF: 4.55
SMOKY Y FLASHBACK 9101G			Adj. WW: 625	Adj. REA: 13.95
SMOKY Y MAY 1462B			Adj. YW: 1171	Adj. Fat: 0.33
HXC CONQUEST 4405P			ADG: 3.41	Scrotal: 36
SMOKY Y M CHER CRYSTAL B450			Dam's Age: 7	
CAMP 1A M CHER CRYSTAL Y156				

ProS	HB	GM	CED	BW	WW	YW	ADG	DMI	MLK	ME	HPG	CEM	STY	MRB	YG	CW	REA	FAT
37	12	25	13	-2.5	45	64	0.12	1.4	21	3	10	7	10	0.32	0.05	27	0.1	0

The next trio of brothers continue the tradition that AHL Flashback 446B has started for our program at Smoky Y Ranch. Consistent, long-lasting females that have stood the test of timeline the pedigrees of these paternal brothers. The influence of Flashback will be forever lasting on our cowherd because of the type of female that he consistently produces. If you're looking for a set of paternal brothers to add uniformity to a set of feeder cattle without sacrificing pay weight, carcass merit, and maternal excellence!

SMOKY Y FLASH J101

BD: 2/26/21	Non Registered	101	Tattoo: J101	COMM - COMM
AHL FLASHBACK 446B			Act. BW: 82	Adj. IMF: 5.14
SMOKY Y FLASHBACK 9122G			Adj. WW: 640	Adj. REA: 14.49
SMOKY Y BLOXY 1528C			Adj. YW: 1250	Adj. Fat: 0.41
RED ANGUS			Scrotal: 41	
S-Y 103A				
RED ANGUS				



RED LAZY MC HOLLYWOOD 127C - Sire of Lots 104 & 105

SMOKY Y LARIO J86

BD: 3/2/21	Reg: 4553295	102	Tattoo: J86	B - 99.8% AR
AHL FLASHBACK 446B			Act. BW: 89	Adj. IMF: 3.96
SMOKY Y LARIO 7319			Adj. WW: 690	Adj. REA: 14.37
WINDY HILL MS STOCKMAN731T			Adj. YW: 1177	Adj. Fat: 0.24
MESSMER PACKER S008			ADG: 3.04	Scrotal: 40
SMOKY Y MISS REGUS A370			Dam's Age: 8	
CAMP 1A REGUS U871				

ProS	HB	GM	CED	BW	WW	YW	ADG	DMI	MLK	ME	HPG	CEM	STY	MRB	YG	CW	REA	FAT
42	18	24	10	0	47	63	0.1	1.15	16	1	11	7	10	0.28	0.03	30	0.2	0

SMOKY Y HOLLYWOOD J60

BD: 1/3/21	Reg: 4554513	104	Tattoo: J60	A - 100% AR
RED TER-RON PARKER 34A			Act. BW: 76	Adj. IMF: 4.3
RED LAZY MC HOLLYWOOD 127C			Adj. WW: 550	Adj. REA: 13.03
RED LAZY MC MISS FIREFLY 36Z			Adj. YW: 1071	Adj. Fat: 0.32
RED SSS TRAVERSE 387Z			ADG: 3.26	Scrotal: 42
SMOKY Y DUCHESS 1503C			Dam's Age: 6	
RED SSS DUCHESS 617X				

ProS	HB	GM	CED	BW	WW	YW	ADG	DMI	MLK	ME	HPG	CEM	STY	MRB	YG	CW	REA	FAT
41	30	10	13	-2.8	32	41	0.06	1.67	15	-6	11	8	11	0.3	0.04	21	0	-0.01

We lead off the Red Lazy MC Hollywood 127C sire group with a stout made, high performing son that is influenced by a tremendous daughter of Red SSS Traverse 387Z. He is a low birth weight bull that posted an actual birth weight of 76 pounds. He is certainly an option for use on well managed heifers or mature cows.

SMOKY Y LARIO J116

BD: 2/28/21	Non Registered	103	Tattoo: J116	COMM - COMM
AHL FLASHBACK 446B			Act. BW: 70	Adj. IMF: 4.24
SMOKY Y LARIO 7319			Adj. WW: 620	Adj. REA: 11.51
WINDY HILL MS STOCKMAN731T			Adj. YW: 1230	Adj. Fat: 0.29
RED ANGUS			Scrotal: 40	
S-Y A373				
RED ANGUS				

The next pair of bulls are sired by another standout son of AHL Flashback 446B that is from the Windy Hill Miss Stockman 731T matriarch. This pair of bulls are dense made, bold centered, and offer tremendous average daily gain and carcass data. We have said it once and we will continue to emphasize the maternal stability and consistency that these Flashback influenced cattle bring to the table. Big scrotal, high performing cattle that are ready for heavy service!

SMOKY Y HOLLYWOOD J78

BD: 1/3/21	Reg: 4554533	105	Tattoo: J78	A - 100% AR
RED TER-RON PARKER 34A			Act. BW: 81	Adj. IMF: 4.43
RED LAZY MC HOLLYWOOD 127C			Adj. WW: 634	Adj. REA: 15.15
RED LAZY MC MISS FIREFLY 36Z			Adj. YW: 1288	Adj. Fat: 0.22
SIX MILE & CO JAGGER 780A			ADG: 4.09	Scrotal: 40
SMOKY Y HEATHER 1623D			Dam's Age: 5	
RED CRIPPS HEATHER 706T				

ProS	HB	GM	CED	BW	WW	YW	ADG	DMI	MLK	ME	HPG	CEM	STY	MRB	YG	CW	REA	FAT
58	21	37	13	-2.4	44	69	0.16	1.67	27	-2	11	9	9	0.31	0.1	39	0.04	0

Here is another potential heifer bull option that comes with a favorable combination of CED and BW. He is backed by a Jagger daughter that is from the 706T matron. He posted a YW Ratio at 105, an IMF Ratio at 102, and a REA Ratio at 105.



LOT 106

SMOKY Y CHATEAU J49

BD: 1/1/21	Reg: 4554531	106	Tattoo: J49	A - 100% AR
LMAN KING ROB 8621	Act. BW: 87	Adj. IMF: 3.95		
GLACIER CHATEAU 744	Adj. WW: 677	Adj. REA: 15.01		
GLACIER REBALA	Adj. YW: 1302	Adj. Fat: 0.32		
SIX MILE & CO JAGGER 780A	ADG: 3.9	Scrotal: 42		
SMOKY Y NAPOLEON 1672D	Dam's Age: 5			
WINDY HILL M NAPOLEON 522R				

ProS	HB	GM	CED	BW	WW	YW	ADG	DMI	MLK	ME	HPG	CEM	STY	MRB	YG	CW	REA	FAT
52	16	36	11	-0.2	53	81	0.18	1.64	21	4	9	7	10	0.28	0.05	40	0.18	-0.01

Here is a direct son of the maternal legend, Glacier Chateau 744. He is supported by a powerful daughter of Jagger that traces to a Windy Hill bred dam. J49 posted a WW Ratio at 105, YW Ratio at 106, and a REA Ratio at 104. Longevity and performance bred into his lineage!

SMOKY Y KING ROB J104

BD: 2/2/21	Reg: 4554613	107	Tattoo: J104	A - 100% AR
LEACHMAN ROBUST 7222	Act. BW: 87	Adj. IMF: 3.66		
LMAN KING ROB 8621	Adj. WW: 682	Adj. REA: 14.62		
LEACHMAN ELEANOR	Adj. YW: 1329	Adj. Fat: 0.53		
RED TOWAW INDEED 104H	ADG: 4.04	Scrotal: 39		
A-1 SIERA INDEED 549X	Dam's Age: 11			
RED SIX MILE SIERA 257P				

ProS	HB	GM	CED	BW	WW	YW	ADG	DMI	MLK	ME	HPG	CEM	STY	MRB	YG	CW	REA	FAT
44	37	8	10	-0.6	58	92	0.21	1.35	26	5	10	7	13	0.09	0.12	23	0.05	0.03

We saved a retro pedigree to close out the 2022 offering, and there is no denying the consistency, quality, and maternal excellence that has influenced the breed for over 3 decades! We went way back into the semen tank to use LMAN King Rob 8621, an influential herd sire that would be 32 years old if he was still alive today! Help yourself to a pedigree that will simply never go out of style!



LMAN KING ROB 8621
32 Year old Sire of Lot 107



A-1 SIERA INDEED 549X
Dam of Lot 107



SMOKY Y CAST IRON 8107F
Maternal Brother to Lot 107

LOTS 201 – 240

COMMERCIAL FIRST CALF HEIFER PAIRS

Once again, we are proud to offer 40+ commercial first calf heifer pairs in lot groups of 5. This set of females is from the heart of the Smoky Y Commercial herd. Many of these females are backed by the same genetics as our registered herd and have been culled strictly for feet and leg issues, potential udder quality issues, or fertility. These females have been under the same management and vaccination program as the registered herd and sell in proper health. This is a tremendous set of females that will have videos available prior to the sale.

LOTS 300 - 410

COMMERCIAL REPLACEMENT HEIFERS

We have previously offered a fancy set of commercial open replacement heifers; this year we have more than we can retain ourselves. This is the deepest and highest quality set of commercial open heifer calves we have ever offered for sale. We are proud to offer the largest set of females to date! 120+ commercial open replacement heifers that are red and black hided will sell on March 17, 2022 following the bull sale. The females will be sorted by like kind, hide color, and frame size prior to the sale and lot tagged accordingly. They have had all the pre-breeding shots, been poured, de-wormed, PI Tested, bang vaccinated, and pelvic measured.

For further information call Cody Younkin (303) 621-4970 or Kelly Younkin (785) 672-2354.

51



Achieve it!

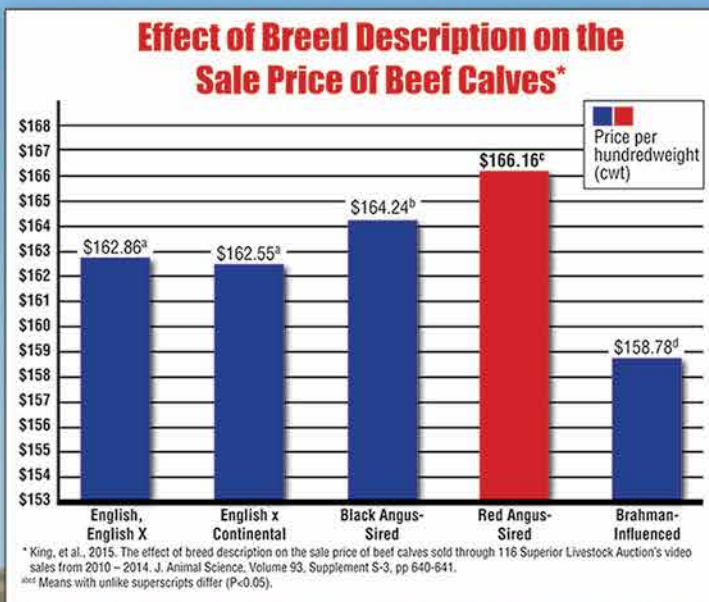
RETURN ON INVESTMENT

Red Angus genetics will improve your return on investment!



"For 10 to 15 years all the buyers ever talked about was black calves, and the black calves always brought more than everything else. Now I can honestly say that good Red Angus calves outsell the black calves and I know the Red Angus bred heifers will outsell black Angus bred heifers of equal quality every day."

— Jim Davis, Superior Livestock Auction



Independent research shows Red Angus-sired calves sold for a higher price than all other breed groups. Red Angus bulls make a positive difference in your breeding program's bottom line.

Invest in your future today!

Red Angus Marketing Programs

- Free-Enrollment Tag Programs
- Dedicated Feeder Calf Sales
- Free Marketing Assistance from RAAA Staff
- Red Angus Grids
 - Tyson's Choice+ Premium Grid
 - Greater Omaha's G.O. Red Grid

Contact the Association today for more information on achieving the most return on your Red Angus investment.

Ranch Tested. Rancher Trusted.

Red Angus

RedAngus.org
(940) 387-3502



Thank You to our Dedicated Crew



Brett Ayers



Mark Hill



Jason Racette



Tait Younkin







Innovation AgMarketing, LLC
PO Box Z
De Soto, KS 66018

Presorted
First Class
US Postage
PAID
SlateGroup

*"Our goal is constant, as we strive to create a more versatile and well rounded quality product.
We take our role as your seedstock provider very seriously."*

SMOKY Y RANCH
MONUMENT, KANSAS

