



The Dispersal
OF HEART FELT FARMS

JULY 24, 2021 - GETTYSBURG, PENNSYLVANIA

2:00 PM EQUIPMENT SALE | 4:00 PM CATTLE SALE

Sale Location

HEART FELT FARMS
270 APPLEWAY RD
GETTYSBURG, PA 17325

Sale Schedule

FRIDAY, JULY 23, 2021

Cattle and equipment on display all day

SATURDAY, JULY 24, 2021

8:00 AM – Cattle and equipment on display

12:00 PM – 5:00 PM Food Trucks available

2:00 PM – Equipment Auction

4:00 PM – Cattle Auction

(Semen & Embryos will follow the cattle)



Welcome friends and fellow cattle enthusiasts,

It is a bittersweet moment as we welcome you to The Dispersal of Heart Felt Farms on July 24, 2021, at the farm in Gettysburg, Pennsylvania. For nearly three decades I have lived on this farm, it has been a huge portion of my life and has been a great passion we have shared as a family. In February of 2006 we were able to hire Kyle Fleener, a young man that has taken our program to levels that I never could have imagined. In 2009 he was an integral part in my son, Kyle Delaplaine, exhibiting the Keystone International Livestock Show Supreme Champion Female.

During the development and growth of Heart Felt Farms we were able to experience tremendous success on a National Level with the direction of our talented leadership, Mr. Kyle Fleener. Over 15 National Grand and Reserve Grand Champions came through the show barn at Heart Felt Farms, including the widely popular triple crown winning KYLD Vegas 910W. Kyle and Kelsey both experienced tremendous show careers during their eligibility as junior exhibitors. Individuals such as KYLD Vegas 910W, AHFF Pit Crew 207Z, AHFF Nalanie 204Z, KYLD Blackbird 280Z, MAGS What It Takes, AHFF Nalanie 830U, AHFF Daytona, AHFF Dakota Thunder, EXLR Luvly, WLR Tainted Love, and CSS Candice would be some of the foundation breeding pieces that we had the privilege to breed, campaign, and build our program from. National Championship titles would be the common denominator of these powerful individuals.

Over the past few years, we have remained focused on the quality aspect of our operation, shifting the breeding program to offer a more diverse product for our customer base. By incorporating Angus, Simmental, Maine-Anjou, and Shorthorn genetics to the cow herd we have been able to provide more opportunities for a larger number of junior exhibitors. In addition to the success we have been fortunate to experience in the Limousin breed we have also found great success in many other circles that we are proud of.

It comes time to close the door on the last chapter of Heart Felt Farms. We appreciate the support, comradery, and friendships that we have made over the past 27 years in the business. The time has come to disperse the cow herd and the equipment on July 24, 2021 at the farm in Gettysburg, Pennsylvania. The equipment auction will begin at 2:00 PM and the cattle will follow at 4:00 PM. We hope you will join us on site or online at CCI. Live. If you have any questions about the offering, please reach out to myself, or any of the auction staff. Thank you so much for all the good times!

Sincerely,

Annette Delaplaine



SALE MANAGEMENT

Innovation AgMarketing, LLC
Graham Blagg: (530) 913-6418
Jered Shipman: (806) 983-7226
Tim Anderson: (605) 682-9343

AUCTION STAFF

Col. Jered Shipman, Auctioneer: (806) 983-7226
Mitchell Armitage, Ringman: (405) 641-9438

HEART FELT FARMS

Annette Delaplaine, Owner: (717) 752-5568
Kyle Fleener, Herdsman: (717) 304-9116

LIABILITY

All persons who attend this sale do so at their own risk, legal or otherwise, for their safety or for the behavior of the animals. The owners, sale management firm, and other sale staff assume no liability for personal injury, property loss, theft, or any accident that may occur.

TERMS & CONDITIONS

Cattle will sell under the standard terms and conditions recommended by their respective breed association. All sales are final, and the cattle will become the property of the buyer when the auctioneer says "SOLD". Announcements from the auction block on sale day regarding the cattle and equipment selling will take precedence over the information printed in this catalog. No cattle or equipment will be loaded until paid for in full.

HERD HEALTH

All cattle sell as is. The herd health on all cattle is in proper order and they are ready for interstate transportation. Heart Felt Farms herd veterinarian will be on site to write health papers the day of the sale. The herd bulls sell with a satisfactory breeding soundness exam. The breeding age female offering is 100% AI bred with NO BULL EXPOSURE. Some of the breeding age females have not been exposed at the time of the sale and are ready to be bred to your service sire of choice. The breeding records are provided under each specific lot. These breeding records DO NOT guarantee a pregnancy.

PAYMENT

U.S. Currency only, please contact Innovation AgMarketing, LLC immediately after the conclusion of the sale to receive payment instructions. All sales are final, and payment is to be made in cash or check. Master Card or Visa will be accepted with a 3% convenience fee.

REGISTRATION PAPERS

All cattle selling with registration papers from their respective breed association will be transferred to the buyer once full payment has been received.

YARDAGE

Cattle will be available to load out at the conclusion of the sale. Absolutely no cattle or equipment will be permitted to leave the premise of Heart Felt Farms without full payment. Any cattle that are not paid for and removed from the premises by August 7, 2021 will endure a \$10.00/day feed and yardage bill. Any other arrangements to be made must be discussed with owner and management prior to the auction.

FROZEN GENETIC OFFERING

All Semen and embryos will be available for pick-up at the farm the day of the sale. The frozen genetics have been professionally stored and managed. The semen and embryos sell without a guarantee. Following the sale, all semen and embryos will be transported to Trans Ova Genetics, Maryland to be shipped or picked-up. Semen and embryos will be released once payment is received. A detailed paid report will be provided to Trans Ova Genetics weekly to ensure that each buyer can have their frozen genetics shipped in a timely fashion. For shipping instructions please contact Trans Ova Genetics.

Trans Ova Genetics Maryland
7441 Sharpsburg Pike
Boonsboro, MD 21713
(240) 329-0159

VETERINARIAN

Dr. John Boyd and Dr. Sarah Link

TRUCKING

Dick Coleman: (765) 461-0954

LIVESTOCK MORTALITY INSURANCE

James Bessler, Inc.: (815) 762-2641

ACCOMMODATIONS

Hampton Inn Gettysburg: (717) 338-9121
Holiday Inn Express & Suites Gettysburg: (717) 420-2686
Gettysburg Hotel: (717) 337-2000

TRANSPORTATION

Harrisburg International Airport – 49 Miles
Baltimore/Washington International Airport – 67 Miles

ONLINE BIDDING & BROADCAST

Online broadcast and bidding will be available through CCI.Live
For assistance please contact: (516) 366-0734



Welcome friends,

It is indeed a privilege to welcome you to Heart Felt Farm's complete and total dispersion. Annette, along with her daughter Kelsey, son Kyle, and Kyle Fleener have built an awesome program over the years with the consistent investment in only the very best, highest quality seedstock and have therefore influenced each breed that they acquired with significance. They are a recognizable force in the Northeastern Quadrant of the United States and have maintained that competitive edge on the National level as well. The reputation is one of the highest level with respect from many competitive cattlemen across the country.

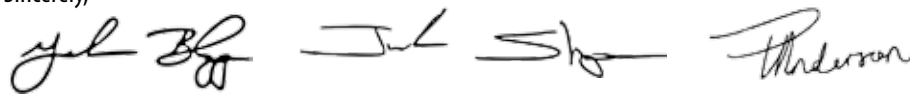
The success was initiated in the Limousin breed and as most of you know, those cattle and the national organization have made quite the change over the past two decades. Annette met that change head on and reaped the rewards with multiple champions to their program's honor and an imprint on the breed yet today. Even though they have downsized that sector of their program, the best of the best is still left for your appraisal on July 24.

With the successful journey started they moonlighted into other breeds of influence on the tan bark, making the investment in Angus, Maine Influence, Shorthorn, and club calf genetics and raised the bar there as well. There will be multiple females carrying the service of the elite sires of their breed affiliation. You will find cattle of significant pedigree, genetic merit, and near perfect phenotype throughout this entire liquidation along with a success saturated frozen offering as well.

Annette will be the first to tell you that if it weren't for Kyle Fleener's departure, this opportunity would not be a topic of discussion. As most of you know, she is a great business woman, and knowing the difficulty of finding new help with the skillset and diligence that Kyle has, if a very tough find in today's workforce. Kyle Fleener has ran this program for many years and has a huge part in the successful track record left behind. Annette has made the decision to disperse solely on that reason. One wise but very challenging decision leads us to this day on July 24. Nothing held back!

There is a substantial inventory of light use equipment that will be offered to initiate the auction, so make plans to call and view the equipment prior to sale day if you so wish or have interest. Everything must go! This is a complete and total dispersion of the Heart Felt program. Make plans to attend, but we also encourage you to contact any of the staff with Innovation AgMarketing with questions or concerns.

Sincerely,



Innovation AgMarketing



How to Bid Online

Tips and Tricks to Master Online Bidding

STEP 1. Use Chrome or Safari, a newer browser or download the CCI.live app at Google Play or Apple App store.

STEP 2. Open your app or go to the address of www.CCI.live in your browser. CCI.live can be used on a cell phone, tablet, laptop or desktop. Some older models may not be compatible and will show a yellow caution symbol if so.

STEP 3. Create an account and then request bidding credentials through CCI.live. Use the bank information listed on your check. Please use a correct phone and email address.

STEP 4. Once you are accepted for bidding credentials you will receive a text message and/or email notification. Proceed to "Get Buyer Number" on the actual sale page of your interest. Some sales may also require a passcode to obtain a buyer number. On these auctions, you will obtain passcodes from the sale office phone number for the specific auction you are interested in. Please closely read the terms!

STEP 5. You are ready to go! Make sure you understand, once you are logged in, have a buyer number and are watching the sale that you are on a highly sensitive web page. **Be careful when scrolling that you do not accidentally hit the bid button and watch children closely as they tend to grab cell phones and accidentally bid.**

TIPS FOR SUCCESSFUL BIDDING

- Make sure you have good service. Bidding and driving is not recommended. You should have two - three bars on your cellular devices. At home you should have an UPLOAD speed of 2 mg or more UP. Use this site to test your internet: www.speedtest.net.

REFRESH YOUR SCREEN AT SALE TIME

If you have logged in over an hour prior to sale time, you may need to login again. DO NOT let the computer set idle and then return and try to bid, the website may have logged you out.

CCI.live does not accept payment, you will pay the sale management, farm or ranch direct.

Help videos can be found at www.CCI.live



LOT 1 - AHFF PAY TO PLAY 002H

The Simmental program may have only been young at Heartfelt Farms, but the genetics that we have put together have quickly proven to be potent, this son of the National Champion Purebred bull in SC Pay the Price C11 has been impressive from day one. His aristocratic pedigree doesn't end there, his mother is one of our sale features in Hara's Princess 164F, one of the most eye appealing and elite phenotype Simmental features we have added to our battery. The Broker x Hairietta pedigree is synonymous with high valued show cattle and hitting the winners circle as often as any pedigree in the Percentage Simmental show ring over the past decade. 002H is a three-quarter blood Simmental herd sire prospect that is ultra-ruggedly designed, big bodied, powerful and sound, along with having a great temperament. I can assure you we were excited to inject his influence into our young Simmental cow herd and build upon his elite phenotype and genotype.

AHFF PAY TO PLAY 002H

Breed: 3/4 SM 1/4 AN

lot

1

REG: PENDING
BD: 3/19/20
HERD BULL

CNS PAYS TO DREAM T759
SC PAY THE PRICE C11
LLSF URABABYDOLL U194
MR HOC BROKER
HARA'S PRINCESS 164F
HARAS HAIRIETTA CLONE H4W



SC PAY THE PRICE C11

Two-Time NWSS Grand Champion and Sire of Lot 1



HARA'S PRINCESS 164F – Dam of Lot 1 that sells as Lot 6!



LOT 2 - AHFF FIRE FOX 605D

AHCC Fire Fox is a 5-year-old mature herd sire for Heartfelt Farms, he is an own son of the infamous Maine Anjou Sire in GOET I-80 and has been our go to for several of the past breeding seasons. His influence is seen throughout this offering with both progeny and pregnancies and you'll quickly notice that he consistently sires cattle with added eye appeal, heavy substance of bone and foot, and a big square hip. His pedigree is highlighted by generations of maternal with the influence of our time tested 473M donor. Full and maternal siblings to Fire Fox have been sale highlights and toppers including AHFF Foxxy 425B who Emilie Campbell won Grand Champion banners with at the Keystone International Livestock Exposition. We believe that the exponential potential of Fire Fox has only been slightly tapped, and that his ability to sire high valued, ultra-attractive offspring make him one of the most exciting herd sire prospects to ever come out of the Heart Felt program.



AHFF JOLENE 083H - Daughter that sells as Lot 27

AHFF FIRE FOX 605D

Breed: MAINTAINER

lot

2

REG: 469568

BD: 4/9/16

HERD BULL

COWAN'S ALI 4M
GOET 180
BPF MILEY 80T
ANGUS
AHFF 473M
ANGUS

6453D
FIRE
FOX



AHFF FIRE PRIDE 972F - Daughter that sells as Lot 39



LOT 3 - AHFF SHOCK TOP 018H
(Pictured December 2020)

The trend towards nontraditionally colored livestock is upward more than ever, and this son of the catalyst towards the movement, In God We Trust supports the hype. Shock Top is a unique creature, regardless of your vantage point he is destined to impress, ultra-bold about his upper skeleton, wide at the ground and fluid in his conformation. We think his potential is endless for raising high valued show stock on either end of the spectrum, haired or slick, heifers or steers. It may not be evident on sale day, but trust us when we say that the haircoat that Shock Top was blessed with is impressive. Place your trust in the ability for Shock Top to elevate your program, and consistency is certain with AHFF Hearts Of Candice 119Y ET on the bottom side of his pedigree.



IN GOD WE TRUST - Sire of Lot 3

AHFF SHOCK TOP 018H

Breed: 2.35% CA | 6.8% AN | 6.25% CH

lot

3

REG: 404205
BD: 4/23/20
HERD BULL

BUSINESS DONE RIGHT
IN GOD WE TRUST
HL 961
HI VIEW'S ACE OF DIAMONDS
AHFF HEARTS OF CANDICE 119Y ET
CS CANDICE



AHFF HEARTS OF CANDICE 119Y ET - Dam of Lot 3



LOT 4 - AHFF SIGHTLINE 023H

If you're looking for a future herd sire that is supported by breed leading genetics, then your inspection is well warranted here. A son of the purple banner certified Angus sire in PVF Insight 0129 a name that has been etched not only into the show cattle industry's Hall of Fame, but as a producer of industry relevant and commercially acceptable seedstock. The maternal lineage of AHFF Sightline 023H is impressive too, his dam, KYLD Blackbird 280Z is a National Champion herself, being selected Grand Champion Limousin Female for Kelsey Delaplaine at the 2013 North American Livestock Exposition. If you're looking to introduce added maternal function, soundness, consistent coat color and polled genetics to your cowherd in one generation then this is a very logical selection for your program.

AHFF SIGHTLINE 023H

Breed: LIM-FLEX

lot

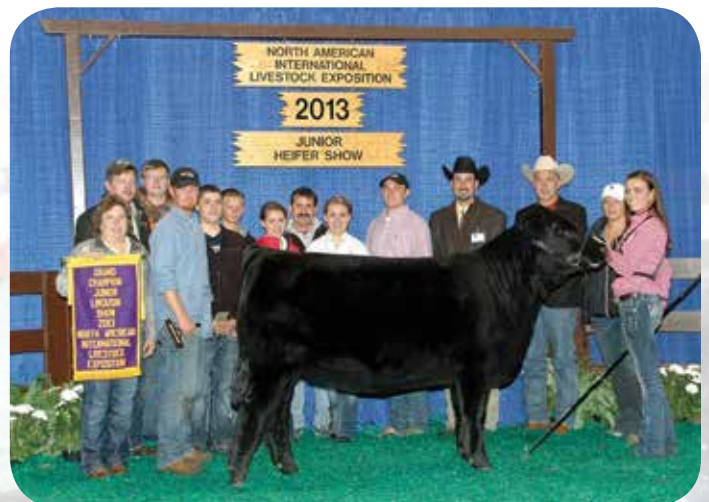
4

REG: PENDING
BD: 5/1/20
HERD BULL

S A V BRILLIANCE 8077
PVF INSIGHT 0129
PVF MISSIE 790
SCHILLING'S WALLACE
KYLD BLACKBIRD 280Z
KYLD BLACKBIRD 044X



*KYLD BLACKBIRD 044X - Maternal Grandam of Lot 4
that sells as Lot 42!*



*KYLD BLACKBIRD 280Z
2013 NAILE Grand Champion Junior Limousin Heifer and Dam of Lot 4*

LOT 5 - HARA'S PRINCESS 167F



Hairietta is one of the most dominant producing females that the industry has EVER seen. She has sold well over \$2 million in progeny sales, including bulls, females, and steers. To make a complete list of her accomplishments would take an entire catalog. Hairietta is the most successful female ever in the club calf and composite producing business. The Hairietta x Broker mating sets the standard for SimSolution show cattle and is the most consistent, high selling and winning mating of any breed. In 2018 her progeny would include: The 2018 NAILE Champion SimSolution Heifer Champion shown by Kolten Greenhorn, sired by Broker. 2018 World Beef Expo, Illinois State Fair, Kentucky State Fair and Michigan State Fair Champion Females, all sired by Broker. Other 2018 Top sellers include the \$140,000 High seller in Paulsen's Donors & Divas Sale, a \$50,000 female sold out of the pasture, other sold for \$25,000 and \$19,000 in the Sullivan Maternal Legends sale and a \$10,000 daughter in the Tree Lane Sale. In 2017, her daughter sired by Broker was slapped the Grand Champion SimSolution heifer in the NAILE Junior Show for Stewart Skiles of Texas. This heifer was also named Grand at Fort Worth and Houston! Another sister, to this champion, was named the 2017 Supreme Grand Champion heifer over all breeds at the Indiana State Fair! Hairietta has now had the Grand champion SimAngus female at Denver three times, NAILE three times and has also won Kansas City twice. She has produced champion heifers at most major Beef Expos and many Jackpot and State Fairs. High sellers during her lifetime would chart at \$190,000, \$150,000, \$140,000, \$100,000, \$86,000, \$60,000, along with several others between \$25,000 and \$45,000. Here is the unique opportunity to invest in several direct daughters and maternal granddaughters of the legendary Hairietta! **AI BRED 2/25/21 TO JSUL SOMETHING ABOUT MARY 8421 (ASA: 3565879). ESTIMATED DUE 12/4/21.**

HARA'S PRINCESS 167F

Breed: 1/2 SM 11/32 AN 3/32 MA 1/32 CA

lot

5

REG: 3739194

BD: 1/23/18

SVF STEEL FORCE S701

MR HOC BROKER

JM BF H25

WHO MADE WHO 411F

HARAS HAIRIETTA CLONE H4W

ANGUS



MR HOC BROKER - Sire of Lots 5 & 6



*2013 NWSS Grand Champion Percentage Simmental Heifer
Full sister to Lots 5 & 6*

HARA'S PRINCESS 164F

Breed: 1/2 SM 11/32 AN 3/32 MA 1/32 CA

lot

6

REG: 3739191

BD: 1/23/18

SVF STEEL FORCE S701
MR HOC BROKER
JM BF H25
WHO MADE WHO 411F
HARAS HAIRIETTA CLONE H4W
ANGUS

AI BRED 6/18/21 TO JSUL SOMETHING ABOUT MARY 8421 (ASA: 3565879).

LOT 6A: 4/14/21 BULL CALF Sired BY AHFF THE KING 847F ET

LOT 6 - HARA'S PRINCESS 164F



HARA'S RELENTLESS 159F

Breed: 1/2 SM 13/32 AN 3/32 MA

lot

7

REG: 3739187

BD: 1/27/18

YARDLEY UTAH Y361
W/C RELENTLESS 32C
MISS WERNING KP 8543U
WHO MADE WHO 411F
HARAS HAIRIETTA CLONE H4W
ANGUS

AI BRED 5/27/21 TO HERE I AM (CIAUSA: 384828). VET CONFIRMED SAFE IN CALF ON 7/12/21.

LOT 7 - HARA'S RELENTLESS 159F



HARA'S RELENTLESS 165F

Breed: 1/2 SM 13/32 AN 3/32 MA

lot

8

REG: 3739192

BD: 1/12/18

YARDLEY UTAH Y361
W/C RELENTLESS 32C
MISS WERNING KP 8543U
WHO MADE WHO 411F
HARAS HAIRIETTA CLONE H4W
ANGUS

AI BRED 6/27/21 TO HILB ORACLE C033R (ASA: 2993610).

LOT 8A & 8B: 3/13/21 TWIN BULL CALVES Sired BY GEFF COUNTY O

LOT 8 - HARA'S RELENTLESS 165F



2017 NAILE Grand Champion Percentage
Simmental Heifer and Full sister to Lots 5 & 6



2018 NAILE Grand Champion Percentage
Simmental Heifer and Full sister to Lots 5 & 6



W/C RELENTLESS 32C - Sire of Lots 7 & 8



LOT 9 - AHFF 009H



SILVEIRAS HARAS THE SHOW 5000 - Full brother to Sire of Lot 9



HARA'S RELENTLESS 159F - Dam of lot 9 that sells as Lot 7!

AHFF 009H

Breed: CROSSBRED

lot **9**

REG: UNREGISTERED
BD: 4/9/20

SILVEIRAS STYLE 9303
HARA'S MASON DIXON 426E
HARA'S DIXIE ERICA 1
W/C RELENTLESS 32C
HARA'S RELENTLESS 159F
HARAS HAIRIETTA CLONE H4W

AHFF 009H is a stout made low percentage Simmental female that is sired by Hara's Mason Dixon 426E, the Silveiras Style 9303 son out of the prolific Hara's Dixie Erica 1. 009H is a direct daughter of Hara's Relentless 159F from the immortal Hairietta cow family. **AI BRED 7/8/21 TO GOET I-80 (AMAA: 400082)**

The Dispersal at Heart Felt Farms



LOT 10 - HARA'S MISS EXECUTIVE 162F



W/C EXECUTIVE ORDER 8543B - Sire of Lots 10-12



LOT 11 - HARA'S MISS EXECUTIVE 163F



HARA'S DISTINCTION - Maternal Brother to Lot 10 & 11

There have been very few cow families that have come close to generating the amount that the WAG Hairietta 9145J female and her clones are responsible for. The list of great Hairietta-influenced cattle that have made a high sellers list, been admired from ringside, or been the crowd favorite at the backdrop is simply too long to list. It has been said by the most critical cattlemen that Hairietta 9145J's most valuable flushes were to Meyer 734, resulting in Miss USA, Miss America, Miss Meyer, and Miss Universe, as well as the highly proven flush to Steel Force that yielded the great Hara's Miss Platinum. This mating combines two of the highest dollar-generating females in the business with the influence of W/C Executive Order 8543B, the maternal brother to industry greats like W/C Relentless 32C and W/C Bankroll 811D. The \$8 Million producing 8543U continues to leave a lasting impression on the Simmental breed and beef business. Here is another pair of flushmate sisters that warrant your attention and a trip to Gettysburg!

HARA'S MISS EXECUTIVE 162F

Breed: 5/8 SM 9/32 AN 1/16 MA 1/32 CA

lot **10**
REG: 3739189
BD: 2/12/18

W/C UNITED 956Y
W/C EXECUTIVE ORDER 8543B
MISS WERNING KP 8543U
SVF STEEL FORCE S701
HARA'S MISS PLATINUM
WAG HAIRIETTA 9145J CAX

AI BRED 7/11/21 TO JSUL SOMETHING ABOUT MARY 8421 (ASA: 3565879).
LOT 10A: 3/6/21 BULL CALF SIRED BY COLBURN PRIMO 5153

HARA'S MISS EXECUTIVE 163F

Breed: 5/8 SM 9/32 AN 1/16 MA 1/32 CA

lot **11**
REG: 3739190
BD: 2/22/18

W/C UNITED 956Y
W/C EXECUTIVE ORDER 8543B
MISS WERNING KP 8543U
SVF STEEL FORCE S701
HARA'S MISS PLATINUM
WAG HAIRIETTA 9145J CAX

AI BRED 6/17/21 TO MR HOC BROKER (ASA: 2531081).
LOT 11A: 4/12/21 HEIFER CALF SIRED BY AHFF THE KING 847F ET



LOT 12 - HARA'S MISS EXECUTIVE 160F

Hara's Miss Executive 160F is another Executive Order sired granddaughter of the immortal Hairietta clone that is influenced by the \$200,000 MR TR Hammer 308A ET on her maternal side. Here is a stunning SimSolution female that offers royal lineage and sells with a sharp featured May heifer calf at side that is sired by the 2019 PA Farm Show Grand Champion Maintainer bull, The King!

HARA'S MISS EXECUTIVE 160F

Breed: 5/8 SM 5/16 AN 1/32 CA 1/32 MA

lot **12**

REG: 3739188

BD: 2/15/18

W/C UNITED 956Y
W/C EXECUTIVE ORDER 8543B
MISS WERNING KP 8543U
MR TR HAMMER 308A ET
HARA'S DREAMGIRL 26394D
HARAS HAIRIETTA CLONE H4W

SELLS WITH NO AI OR BULL EXPOSURE. READY TO BREED TO THE SERVICE SIRE OF YOUR CHOICE. LOT 12A: 5/2/21 HEIFER CALF Sired BY AHFF THE KING 847F ET.



MR TR HAMMER 308A ET - \$200,000 Maternal Grandsire of Lot 12



MISS USA – Famous Maternal Sister to Lots 5-8 and the Dams of Lots 9-12

LOT 13 - WOOD KEYMURA KATY 8077F



LLSF PAYS TO BELIEVE ZU194 - Sire of Lot 13



SULL KEYMURA'S FIRST 4086 – 2015 NAILE Grand Champion Angus Female and member of the famed Keymura Katy cow family!

LOT 14 - AHFF QUEEN KATY 015H

WOOD KEYMURA KATY 8077F

Breed: 1/2 SM 1/2 AN

lot **13**

REG: 3489016
BD: 3/28/18

CNS PAYS TO DREAM T759
LLSF PAYS TO BELIEVE ZU194
LLSF URABABYDOLL U194
WAR COWBOY UP 3102
SLL KEYMURA KATY R547
STEELE MISS KYMURA KATY

Wood Keymura Katy 8077F was the Heart Felt Farms selection from the 2019 Fort Worth Stock Show Cowtown Classic Simmental Sale. A powerful, bold bodied, deep sided, ultra-maternal half-blood SimAngus female that is backed by one of the absolute most proven and predictable cow families in the business, the legendary Keymura Katy line. This famous cow family has produced Junior National and State Fair champions for those that have invested in the genetics. 8077F is a maternal sister to the 2014 AJSA Summer Classic Reserve Grand Champion Percentage Simmental Heifer for Abby Wood. That MR HOC Broker sired female went on to be named the 2014 Kansas State Fair Supreme Champion Female Overall Breeds. A pair of flushmate sisters to 8077F averaged an impressive \$42,250 in the fall of 2018 for High Prairie Genetics. Here is a prime example of COW POWER!

AI BRED 6/21/21 TO JSUL SOMETHING ABOUT MARY 8421 (ASA: 3565879).

LOT 13A: 4/15/21 BULL CALF Sired BY AHFF THE KING 847F ET

AHFF QUEEN KATY 015H

Breed: MAINTAINER

lot **14**

REG: 513286
BD: 4/17/20

GOET I-80
AHFF THE KING 847F ET
SCC ROYAL BLACKBIRD GAF 116
LLSF PAYS TO BELIEVE ZU194
WOOD KEYMURA KATY 8077F
SLL KEYMURA KATY R547

AHFF Queen Katy 015H is a powerful Maintainer female that is backed by an elite conglomerate of notable matriarchs within the Angus breed. The sire of 015H is our 2019 Pennsylvania Farm Show Grand Champion Maintainer bull, AHFF The King 847F ET, an own son of I-80 that is backed by the 2012 National Junior Angus Show Grand Champion Owned Female, SCC Royal Blackbird GAF 116. SCC Royal Blackbird GAF 116 is a full sister to the popular First-N-Goal promotional AI sire for Stertzbach and Dameron. The dam of 015H traces to the influence of the great Keymura Katy cow family that has had a substantial impact on the Angus and Simmental breeds for those that have utilized the powerful lineage of SLL Keymura Katy R547. A stunning maintainer female that is out of a half-blood Simmental dam sired by multiple-time National Champion Pays to Believe... absolutely bred in the purple!

AI BRED ON 7/8/21 TO ML MVP 23E ET (AMAA: 486956)

LOT 15 - SS/DS KANDY KANE Y9S7



SS/DS KANDY KANE Y9S7

Breed: 1/2 SM 1/2 AN

lot **15**

REG: 2617206
BD: 3/24/11

O C C LEGEND 616L
B C LOOKOUT 7024
GIBBET HILL MIGNONNE E37
SAC MR MT 73G
DILLONS K217 MS KANDY
LF KANDY KISSES

SS/DS Kandy Kane Y9S7 is a tried-and-true half-blood brood cow that is sired by the maternal legend BC Lookout 7024. Y9S7 is a bold bodied, stout featured, powerful brood cow that has done an excellent job during her tenure in Gettysburg. A daughter is owned by Austin Miller of Saxonburg, Pennsylvania and a son is employed by JD Anderson. *AI BRED 6/28/21 TO WS REVIVAL (ASA: 2913874).*

AHFF 024H

Breed: CROSSBRED

lot **16**

REG: UNREGISTERED
BD: 5/6/20

GAMBLES HOT ROD
SILVEIRAS STYLE 9303
SILVEIRAS ELBA 2520
B C LOOKOUT 7024
SS/DS KANDY KANE Y9S7
DILLONS K217 MS KANDY

AHFF 024H is a daughter of Y9S7 that is sired by the dominant Silveiras Style 9303. Here is a sound built, angular low percentage SimAngus female with exceptional maternal quality. *AI BRED ON 7/8/21 TO ML MVP 23E ET (AMAA: 486956)*



LOT 16 - AHFF 024H

The Dispersal at Heart Felt Farms



AHFF FOXXXY 425B
2016 PA Farm Show Supreme Champion
Heifer and Maternal Sister to Lots 17-20



WS REVIVAL - Sire of Lots 17 & 18



LOT 17 - AHFF FOXY 921G



LOT 18 - AHFF FOXY 903G

AHFF 473M is a staple in the Heart Felt Farms program. Here is a pair of flushmate sisters that are sired by the \$160,000 WS Revival stud that took the breed by storm when he topped "The One" sale at the National Western Stock Show in 2015. AHFF 473M is the dam of resident herd sire, AHFF Fire Fox 605D, the 2017 PA Farm Show Grand Champion Maintainer Bull. A full sister to Fire Fox, AHFF Foxxxy 425B was named Grand Champion Maintainer Female at the 2014 Keystone International Livestock Exposition for Emilie Campbell. 425B was a many times Champion across the Eastern United States before being selected as the 2016 PA Farm Show Supreme Champion Female. Another maternal sister, AHFF Foxette 520C was the 2018 PA Farm Show Grand Champion Maintainer Female. The influence that 473M has had on the Heart Felt Farms program is immeasurable, she is a true matriarch. Study this pair of uniquely built half-blood SimSolution females that are both bred back to the popular GOET I-80.

AHFF FOXY 921G

Breed: 1/2 SM 7/32 AN 1/8 MA 1/8 SS

lot **17**

REG: 3627769

BD: 4/1/19

LLSF UPRISING Z925
WS REVIVAL
SS NOREEN
BHCS HEAT SEEKER 23G
AHFF 473
ANGUS

AI BRED 5/16/21 TO GOET I-80 (AMAA: 400082).
VET CONFRIMED SAFE IN CALF ON 7/12/21.

AHFF FOXY 903G

Breed: 1/2 SM 7/32 AN 1/8 MA 1/8 SS

lot **18**

REG: 3627768

BD: 2/6/19

LLSF UPRISING Z925
WS REVIVAL
SS NOREEN
BHCS HEAT SEEKER 23G
AHFF 473
ANGUS

AI BRED 5/13/21 TO GOET I-80 (AMAA: 400082). VET CONFRIMED SAFE IN CALF ON 7/12/21. **LOT 18A: 2/19/21 BULL CALF Sired BY HILB ORACLE C033R**

LOT 19 - AHFF FOXY 102J



ML MVP 23E ET - Sire of Lot 19

AHFF Foxy 102J and AHFF Foxy 105J blend the elite genetic profile of the 2018 American Royal and NAILE Grand Champion Maintainer Bull, ML MVP 23E ET with the proven and reliable maternal influence of AHFF 473. AHFF 473 is the Heat Seeker daughter that has been a cornerstone in our Maine-Anjou division. She is the dam of resident herd sire, AHFF Fire Fox 605D ET, a popular bull that was campaigned to numerous titles. His most notable accolades would include Reserve Champion Division I at the 2016 NAILE, as well as 2017 PA Farm Show Grand Champion Maintainer Bull. A full sister to Fire Fox, AHFF Foxxxy 425B was named Grand Champion Maintainer Female at the 2014 Keystone International Livestock Exposition for Emilie Campbell. Another maternal sister, AHFF Foxette 520C was the 2018 PA Farm Show Grand Champion Maintainer Female. This stunning pair of February 2021 born heifer calves are sure to turn heads on sale day!

AHFF FOXY 102J

Breed: MAINTAINER

lot **19**

REG: PENDING
BD: 2/12/21
ET HEFIER CALF

NMR MATERNAL MADE
ML MVP 23E ET
MISS GREEN VALLEY 535R
BHSC HEAT SEEKER
AHFF 473
ANGUS

LOT 19R: RECIP 3 | COMMERCIAL ANGUS | 2012 MODEL SELLS WITH NO AI OR BULL EXPOSURE. READY TO BREED TO THE SERVICE SIRE OF YOUR CHOICE.

AHFF FOXY 105J

Breed: MAINTAINER

lot **20**

REG: PENDING
BD: 2/14/21
ET HEFIER CALF

NMR MATERNAL MADE
ML MVP 23E ET
MISS GREEN VALLEY 535R
BHSC HEAT SEEKER
AHFF 473
ANGUS



LOT 20 - AHFF FOXY 105J

LOT 20R: RECIP 153C | COMMERCIAL LIMOUSIN X BRAUNVIEH | 2015 MODEL SELLS WITH NO AI OR BULL EXPOSURE. READY TO BREED TO THE SERVICE SIRE OF YOUR CHOICE.

The Dispersal at Heart Felt Farms

LOT 21 - AHFF SALTY SHELBY 991G



GOET 180 - Sire of Lots 21 - 24



MOORE SHELBY 283Y - Dam of Lot 22



LOT 22 - AHFF SWEET SHELBY 992G



2017 IL Junior Beef Association Jackpot Show Grand Champion Heifer – Full sister to Lots 21 & 22

Moore Shelby 283Y needs no introduction to the business when it comes to quality, consistency, and generating capabilities. 283Y was a member of the illustrious donor pen at Hudson Pines and left a lasting impact on the program's that employed her progeny. 991G and 992G are flushmate full sisters to the \$30,000 high selling female that sold in The Living Legacy XII to the Dearwester family and Jace Mixer. That powerful I-80 sired female was named calf champion at the NAILE Maine Anjou show. She continued her winning tradition being selected a champion in Denver and Supreme Champion Female at the Illinois Junior Beef Association Jackpot show. A maternal sister to 991G and 992G sired by the late Quantum Leap commanded \$22,000 to the Tanner family of Texas and was competitively campaigned throughout the Lone Star State. WLE CNS Shelby T335 was a foundation in the Moore Land & Cattle program of Jerseyville, Illinois and her impact is still seen today. 283Y has over 50 progenies recorded between the American Simmental Association and American Maine-Anjou Association. Here is an elite opportunity to acquire not just one, but two direct daughters of the immortal Moore Shelby 283Y.

AHFF SALTY SHELBY 991G

Breed: MAINE-ANJOU

lot **21**

REG: 511114
BD: 10/16/19

COWAN'S ALI 4M
GOET 180
BPF MILEY 80T
SLC SOONER 101M
MOORE SHELBY 283Y
WLE CNS SHELBY T335

AI BRED 12/24/20 TO GATEWAY FOLLOW ME F163 (AAA: 19334239).
ESTIMATED DUE 10/2/21.

AHFF SWEET SHELBY 992G

Breed: MAINE-ANJOU

lot **22**

REG: 511115
BD: 10/17/19

COWAN'S ALI 4M
GOET 180
BPF MILEY 80T
SLC SOONER 101M
MOORE SHELBY 283Y
WLE CNS SHELBY T335

AI BRED 12/16/20 TO GATEWAY FOLLOW ME F163 (AAA: 19334239).
ESTIMATED DUE 9/24/21.

LOT 24 - AHFF RAY RAY 623D



AHFF WAKA WAKA 918G

Breed: MAINE-ANJOU

lot **23**

REG: 502745

BD: 4/2/19

COWAN'S ALI 4M

GOET 180

BPF MILEY 80T

TNAT MR 48L

AHFF SHAKIRA 942W

IS X CA 30274

918G is a three-quarter blood Maine-Anjou direct daughter of I-80 that is backed by AHFF Shakira 942W, a granddaughter of Draft Pick. With today's outcross Maine-Anjou sire choices 918G becomes a logical investment!

ESTIMATED DUE LATE OCTOBER 2021 TO BK FULL BACK 64 (AAA: 19611355)

AHFF RAY RAY 623D

Breed: MAINTAINER

lot **24**

REG: 469569

BD: 6/28/16

COWAN'S ALI 4M

GOET 180

BPF MILEY 80T

KYLD VEGAS

AHFF SONNY RAYS 452B

BL MISS SONNY 2

623D is a stout featured, ultra-attractive four year old Maintainer female that is sired by GOET I-80 and backed by AHFF Sonny Rays 452B, the 2015 Keystone International Livestock Exposition for Colin Campbell. **AI BRED ON 5/13/21 TO BKMT GAME ON 227G ET (AMAA: 505128). VET CONFIRMED SAFE IN CALF ON 7/12/21.**



LOT 23 - AHFF WAKA WAKA 918G

LOT 25 - AHFF DOLLY GIRL 883F



HECK THE OUTSIDER 64A - Sire of Lot 25



LOT 25A

AHFF DOLLY GIRL 883F

Breed: 0.488% CA | 6.64% MA | 5.507% AN | 87.365% XX

lot **25**
REG: 394673
BD: 5/10/18

SVF/NJC BUILT RIGHT N48
HECK THE OUTSIDER 64A
64X (WITCHE DOCTOR)
KYLD VEGAS 910W
AHFF DOLLY 318A
AHFF DOLLY

883F is a direct daughter of 318A that is sired by the half-blood SimSolution stud HECK The Outsider 64A that is sired by SVF/NJC Built Right N48. She sells with a SimSolution heifer calf at side sired by the widely popular JSUL Something About Mary 8421!

AI BRED 5/12/21 TO WS REVIVAL (ASA: 2913874). VET CONFIRMED SAFE IN CALF ON 7/12/21. LOT 25A: 3/1/21 HEIFER CALF SIRED BY JSUL SOMETHING ABOUT MARY 8421



JSUL SOMETHING ABOUT MARY 8421 - Popular sire of Lot 25A



LOT 26 - AHFF CLEOPATRA 005H



AHFF THE KING 847F ET - Sire of Lot 26



AHFF WF Royal 707E ET
2017 NAILE Grand Champion Maintainer
Bull & 2018 PA Farm Show Supreme
Champion Bull



AHFF WF Royal 707E ET – Mature photo

AHFF CLEOPATRA 005H

Breed: MAINTAINER / 0.244% CA

lot **26**

REG: 513285
BD: 4/1/20

GOET I-80
AHFF THE KING 847F ET
SCC ROYAL BLACKBIRD GAF 116
HECK THE OUTSIDER 64A
AHFF DOLLY GIRL 883F
AHFF DOLLY 318A

005H is a stout featured daughter of The King and backed by the maternal influence of SVF/NJC Built Right N48 on the bottom side of her pedigree. A young female that combines a rare maternal combination of Maine-Anjou, Simmental, and Limousin genetics. Unlimited mating options here!

AI BRED ON 6/9/21 TO ML MVP 23E ET (AMAA: 486956)



LOT 27 - AHFF JOLENE 083H

AHFF JOLENE 083H

Breed: MAINTAINER

lot **27**

REG: 521438

BD: 9/3/20

GOET I-80

AHFF FIRE FOX 605D ET

AHFF 473M

TNAT MR 48L

AHFF RIHANNA 959W

SM X CA

AHFF Jolene 083H is a stylish, flawless built Maintainer female that is sired by our resident herd sire, Fire Fox! This stunning fall born show heifer prospect is backed by AHFF Rihanna 959W, a powerful female that is sired by a top Draft Pick son. Her added foot, bone, and dimension is what sets her into a league of her own. AHFF Jolene 083H offers a perfect disposition and has been shown very competitively by my great nephew, Landon Hahn. Landon would like to continue to show AHFF Jolene 083H through the Pennsylvania Farm Show at no additional expense to the buyer. We will get this female bred to the AI sire of your choice!

Terms announced sale day regarding possession. Please call for details.



AHFF FIRE FOX 605D ET - Sire of Lots 27 & 28



LOT 28 - AHFF FIRE QUEEN 955G



JSUL REVOLUTION 4383 ET - Sire of Lot 29



LOT 29 - JSUL WHO'S GAL 6453D

AHFF FIRE QUEEN 955G

Breed: MAINTAINER

lot **28**

REG: 502748
BD: 5/10/19

GOET I-80
AHFF FIRE FOX 605D ET
AHFF 473M
ANGUS
AHFF 325
ANGUS

955G is sired by our resident herd sire, Fire Fox, the GOET I-80 son that is backed by the 473M matriarch. A young, productive, great built Maintainer female that was AI bred to the NAILE Champion Maintainer bull, ML MVP 23E ET!

AI BRED ON 5/13/21 TO ML MVP 23E ET (AMAA: 486956). VET CONFIRMED SAFE IN CALF ON 7/12/21.

JSUL WHO'S GAL 6453D

Breed: 12.9% CA | 24.2% SS | 21.7% MA

lot **29**

REG: 384100
BD: 4/14/16

SULL RIGHT DIRECTION ET
JSUL REVOLUTION 4383 ET
JSUL JALYNN 344
ASHW WHO DA MAN
SSUL 6899
SSUL 232

JSUL Who's Gal 6453D ET is an exceptional daughter of JSUL Revolution 4383 ET that is backed by the everlasting influencer, ASHW Who Da Man, a deceased sire that continues to make a huge impact on the show heifer industry. Who Da Man semen when offered on the open market commands more than \$7,000 per unit! JSUL Revolution 4383 is a full sib to countless National Champions and donor females that have recorded five-figure progeny for Sullivan Farms. This uniquely designed female combines some of the truly elite cow families in the business together. She has been AI bred to Here I Am for a quick return on investment!

AI BRED 5/28/21 TO HERE I AM (CIAUSA: 384828). VET CONFIRMED SAFE IN CALF ON 7/12/21. LOT 29A: 3/19/21 HEIFER CALF SIRED BY GATEWAY FOLLOW ME F163

LOT 30 - CSS CANDICE



CSS Candice was a dominant force on the tank bark during her tenure on the show road, yet her true value has come in production. CSS Candice was the Reserve Overall Heifer Southeast Classic 2009, Reserve Overall Heifer PA Beef Expo 2009, Champion AOB Heifer MD State Fair 2009, and Champion AOB Heifer Eastern National 2009. Candice was bred by the Caldwell family of Illinois, a program that needs no introduction to the business. Candice is the maternal granddam of AHFF Shock Top 018H, the In God We Trust son of AHFF Hearts of Candice 119Y ET. Candice has been utilized extensively in the embryo transfer program at Heart Felt Farms. A pair of In God We Trust daughters lead off the Candice cow family, followed by a trio of Maintainer daughters sired by the 2018 American Royal and NAILE Grand Champion, ML MVP 23E ET. Consistency, uniformity, and eye-appeal best describe this set of females that will sell behind their dominant donor dam!

CSS CANDICE

Breed: SHORTHORN PLUS

lot **30**

REG: AR46647
BD: 4/2/08

CF TRUMP X
AF SL SIN CITY ET
NPS MIRAGE 544 ET
4D DOUBLE VISION
PAR MISS VISION 1131
MAINE X ANGUS

SELLS WITH NO AI OR BULL EXPOSURE & READY FOR EMBRYO TRANSPLANT. CSS CANDICE HAS AVERAGED 10 NUMBER 1 EMBRYOS ON HER LAST 3 CONVENTIONAL FLUSHES.



LOT 31 - AHFF HEARTS OF CANDICE 119Y

AHFF HEARTS OF CANDICE 119Y

Breed: SHORTHORN PLUS

lot **31**

REG: AR4308917
BD: 3/12/11

WERNACRES ACE HIGH 620
HI VIEW'S ACE OF DIAMONDS
HI-VIEW 2ND ZELDA
AF SL SIN CITY ET
CSS CANDICE
PAR MISS VISION 1131

AHFF Hearts of Candice 119Y is the second natural calf of Candice sired by Hi View's Ace of Diamonds. 119Y is the dam of the popular promotional sire produced at Heart Felt Farms known as Shock Top! She sells AI bred back to the sensational In God We Trust for a full sib mating to Shock Top. **AI BRED 2/25/21 TO IN GOD WE TRUST (CIAUSA: 382787). ESTIMATED DUE 12/4/21.**



LOT 32 - AHFF CANDICE 028H ET



AHFF Candice Rose 502C
2017 PA Farm Show Supreme Champion Female



NMR MATERNAL MADE - Sire of Lot 32

AHFF CANDICE 028H ET

Breed: MAINTAINER

lot **32**

REG: 513281
BD: 5/9/20

BPF MERCEDES BENZ 131U
NMR MATERNAL MADE
NMR 0-04X
AF SL SIN CITY ET
CSS CANDICE
PAR MISS VISION 1131

Here is a striking Maintainer female sired by the six-figure valued NMR Maternal Made. AHFF Candice 028H ET is a beautiful late spring born yearling heifer that is a direct daughter of CSS Candice. She is a sister to AHFF Candice Rose 502C, the 2017 PA Farm Show Supreme Champion Female. AHFF Candice 028H ET has been shown numerous times and has achieved great success for my great nephew, Eli Yocum. Eli would like to show this female through the Pennsylvania Farm Show at no additional expense to the buyer. We will get this female bred to the AI sire of your choice! She is without a doubt a future donor prospect that we believe will make a true impact on any program! 028H is a true sale highlight! **Terms announced sale day regarding possession. Please call for details. SELLS WITH NO AI OR BULL EXPOSURE. READY TO BREED TO THE SERVICE SIRE OF YOUR CHOICE.**



ML MVP 23E ET - Sire of Lot 33



LOT 33 - AHFF CANDICE 104J

AHFF CANDICE 104J

Breed: MAINTAINER

lot **33**

REG: PENDING
BD: 2/14/21
ET HEFIER CALF

NMR MATERNAL MADE
ML MVP 23E ET
MISS GREEN VALLEY 535R
AF SL SIN CITY ET
CSS CANDICE
PAR MISS VISION 1131

*LOT 33R: RECIP 23 | COMMERCIAL SIMANGUS | 2012 MODEL
SELLS WITH NO AI OR BULL EXPOSURE. READY TO BREED TO THE SERVICE SIRE OF
YOUR CHOICE.*

AHFF CANDICE 106J

Breed: MAINTAINER

lot **34**

REG: PENDING
BD: 2/14/21
ET HEFIER CALF

NMR MATERNAL MADE
ML MVP 23E ET
MISS GREEN VALLEY 535R
AF SL SIN CITY ET
CSS CANDICE
PAR MISS VISION 1131

*LOT 34R: RECIP 16 | COMMERCIAL ANGUS | 2013 MODEL
SELLS WITH NO AI OR BULL EXPOSURE. READY TO BREED TO THE SERVICE SIRE OF
YOUR CHOICE.*

AHFF STAR PLAYER 103J

Breed: MAINTAINER

lot **35**

REG: PENDING
BD: 2/13/21
ET BULL CALF

NMR MATERNAL MADE
ML MVP 23E ET
MISS GREEN VALLEY 535R
AF SL SIN CITY ET
CSS CANDICE
PAR MISS VISION 1131

*LOT 35R: RECIP 15-35 | COMMERCIAL SIMMENTAL | 2015 MODEL
SELLS WITH NO AI OR BULL EXPOSURE. READY TO BREED TO THE SERVICE SIRE OF
YOUR CHOICE.*



LOT 34 - AHFF CANDICE 106J



LOT 35 - AHFF STAR PLAYER 103J

LOT 36 - AHFF SUNKIST CANDICE 027H



IN GOD WE TRUST
Sire of Lots 36 & 37

AHFF SUNKIST CANDICE 027H

Breed: 2.35% CA | 6.8% AN | 6.25% CH

lot **36**

REG: 404204
BD: 5/9/20

BUSINESS DONE RIGHT
IN GOD WE TRUST
HL 961
AF SL SIN CITY ET
CSS CANDICE
PAR MISS VISION 1131

AI BRED ON 7/8/21 TO ML MVP 23E ET (AMAA: 486956)

AHFF CANDICE 101J

Breed: CHIANINA

lot **37**

REG: PENDING
BD: 2/12/21
ET HEFIER CALF

BUSINESS DONE RIGHT
IN GOD WE TRUST
HL 961
AF SL SIN CITY ET
CSS CANDICE
PAR MISS VISION 1131

*LOT 37R: RECIP 16-13 | COMMERCIAL ANGUS | 2016 MODEL
SELLS WITH NO AI OR BULL EXPOSURE. READY TO BREED TO THE SERVICE SIRE OF
YOUR CHOICE.*

LOT 37 - AHFF CANDICE 101J





LOT 38 - CF AUGUSTA
PRIDE 980 BS ET

CF AUGUSTA PRIDE 980 BS ET

Breed: SHORTHORN

lot **38**

REG: 4150461
BD: 3/25/09

CF TRUMP X
HD BLOODSTONE 603 ET
NPS DESERT ROSE 004
HS RODEO DRIVE 062WR
WHR RT RODEO AUGUSTA 2R17
SS AUGUSTA PRIDE 3127

CF Augusta Pride 980 BS ET was bred in the Cates Farm program at Modoc, Indiana and is a direct daughter of the legendary WHR RT Rodeo Augusta 2R17 matriarch at WHR Shorthorns in Texas. 2R17 has over 25 progenies recorded with the American Shorthorn Association and the influence of the famed Augusta Pride cow family lives on today. She is a direct daughter of the great breeding bull HD Bloodstone 603 ET, a sire of influence that has over 1400 progeny recorded since 2005 and continues to make an impact over 15 years later! She sells AI bred to the king of the ring, Colburn Primo 5153! **AI BRED 2/25/21 TO COLBURN PRIMO 5153 (AAA: 18217480). ESTIMATED DUE 12/4/21.**

AHFF FIRE PRIDE 972F

Breed: SHORTHORN PLUS

lot **39**

REG: AR4308921
BD: 5/21/19

GOET 180
AHFF FIRE FOX 605D ET
AHFF 473M
HD BLOODSTONE 603 ET
CF AUGUSTA PRIDE 980 BS ET
WHR RT RODEO AUGUSTA 2R17

AHFF Fire Pride is an exceptional Shorthorn Plus female sired by Fire Fox that is backed by the legendary Augusta Pride cow family! She is a stunning Shorthorn Plus female that we admire for her angular build, length, and extension. We firmly believe that her build will offer tremendous mating flexibility. **ESTIMATED DUE LATE OCTOBER 2021 TO BK FULL BACK 64 (AAA: 19611355).**



LOT 39 - AHFF FIRE
PRIDE 972F



LOT 40 - TMCK WINNING WAYS 305A

TMCK Winning Ways 305A was our selection from the Tubmill Creek Farms in 2013. She is a homozygous polled and homozygous black female that is from the famed PBRs Winning Ways 29W cow family. She is sired by AHCC Westwind W544, an absolute powerhouse that has left behind a sensational set of daughters in production. 305A was competitively campaigned with a major victory in 2013 when she was named Grand Champion Limousin Heifer at the Keystone International Livestock Exposition. Daughters of 305A have been purchased by Heidi Harnish and Kenneth Merrill. Only in dispersal sale setting are opportunities like this presented!

TMCK WINNING WAYS 305A

Breed: LIM-FLEX

lot
40

REG: LFF2038644

BD: 3/15/13

KAJO RESPONDER 120R
AHCC WESTWIND W544
AHCC MISS WULF HUNT R544
DHVO DEUCE 132R
PBRs WINNING WAYS 29W
TYE J ROYAL LASS

AI BRED 6/18/21 TO CONLEY EXPRESS 7211 (AAA: 18941522).

LOT 40A: 4/2/21 HEIFER CALF Sired BY AHFF FIRE FOX 605D



TMCK WINNING WAYS 306A
2013 KILE Grand Champion Limousin Heifer

LIMOUSIN



LOT 41 - TMCK STRAWBERRY PIE 6025X

TMCK Strawberry Pie 6025X is one of the most impressive females to ever come out of the Tubmill Creek Farms program. She is a homozygous polled and homozygous black female that stems from one of the most potent cow families in the breed. 6025X is a full sister to TMCK Durham Wheat, one of the featured herd sires at Highland Stock Farms in Canada and experienced an undefeated record in the show ring. Durham Wheat would be the sire of Riverstone Crown Royal and Riverstone Charmed, two of the most influential individuals in the history of the breed! Riverstone Charmed, affectionally known as "Larissa" is one of the absolute most DOMINANT producing Limousin females in history, generating more than a Million dollars in lifetime earnings. "Larissa" was the 2016 NAILE Supreme and many times National Champion for the Ratliff family of Kansas. Since she has entered production, she has produced countless National Champions and high sellers. A true investment opportunity to acquire a full sister to the legendary Durham Wheat that is nursing an excellent Follow Me heifer calf!

TMCK STRAWBERRY PIE 6025X

Breed: LIMOUSIN

lot

41

REG: NPF1963278

BD: 3/20/10

GPFF BLAQUE RULON
DHVO DEUCE 132R
AMY JO DHAN 20L
TNUH BLUE PRINT 245H
MAGS STRAWBERRY PIE
MAGS PIE IN THE SKY

AI BRED 5/14/21 TO BCII MLA NEXT UP 015 (AAA: 18287699). VET CONFIRMED SAFE IN CALF ON 7/12/21.

LOT 41A: 3/10/21 HEIFER CALF Sired BY GATEWAY FOLLOW ME F163

SPECIAL NOTE!

Lot 201 Embryos are full sisters in blood to the COUNTLESS National Champions sold by the Ratliff, Schaeffer, & Scheetz firms.



TMCK DURHAM WHEAT 6030X
Full brother to Lot 41



RIVERSTONE CHARMED 50C
"LARISSA" Popular daughter of TMCK Durham Wheat 6030X, a full brother to Lot 41



RATLIFF GABBY 901G ET
Full sister in blood to Lot 201 Embryos

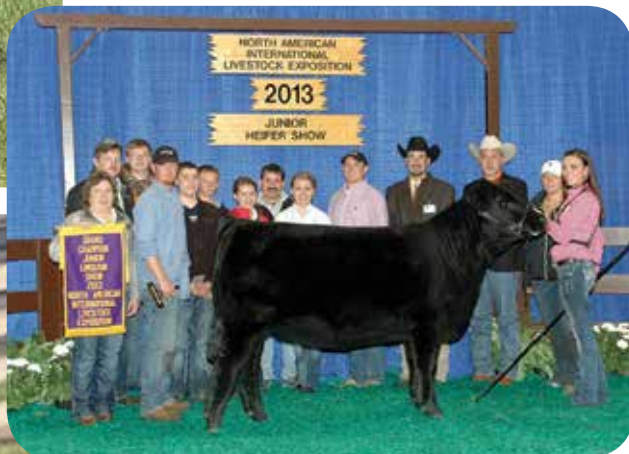


SZC TSSC LARISSA 49G
Full sister in blood to Lot 201 Embryos

The Dispersal at Heart Felt Farms



LOT 42 - KYLD BLACKBIRD 044X



KYLD BLACKBIRD 280Z
2013 NAILE Grand Champion Junior Limousin Heifer and
Daughter of Lot 42



LOT 43 - AHFF 951G

What a set of females to highlight the Limousin division of the Heart Felt Farms dispersal sale! KYLD Blackbird 280Z is an own daughter of Schilling's Wallace and backed by KYLD Blackbird 044X, tracing to the foundation EXLR Blackbird 7182R matron. The Blackbird cow family has proven to offer as much maternal power, stoutness, and eye-appeal as any in the breed. KYLD Blackbird 280Z was selected as the 2013 NAILE Grand Champion Junior Limousin Heifer for Kelsey Delaplaine. A popular son of KYLD Blackbird 280Z sired by SCC First-N-Goal is owned by Kenneth Merrill. Here is your opportunity to purchase two of the foundation females that helped to build the Limousin herd at Heart Felt Farms.

KYLD BLACKBIRD 044X

Breed: LIMOUSIN

lot
42

REG: NPF1964128
BD: 6/7/10

GPFF BLAQUE RULON
KRVN NASKAR 013N
WL JU JU GAL 149J
EF MAIN STAY 541M
EXLR BLACKBIRD 7182R
EXLR BLACKBIRD 5109J

AI BRED 6/28/21 TO SILVEIRAS STYLE 9303 (AAA: 16427563).
LOT 42A: 4/20/21 HEIFER CALF Sired BY AHFF FIRE FOX 605D

AHFF 951G

Breed: CROSSBRED

lot
43

REG: UNREGISTERED
BD: 5/6/19

GOET 180
AHFF FIRE FOX 605D ET
AHFF 473M
KRVN NASKAR 013N
KYLD BLACKBIRD 044X
EXLR BLACKBIRD 7182R

ESTIMATED DUE LATE OCTOBER 2021 TO BK FULL BACK 64 (AAA: 19611355).

LOT 44 - LFL ZOEY 2043Z



LFL ZOey 2043Z

Breed: LIM-FLEX

lot **44**

REG: LFF2016860

BD: 5/8/12

DUFF NEW EDITION 6108
RSKY WIPEOUT 0029
 WK GEORGINA 9375
 KRVN PACESETTER 053P
LFL WONDER WOMAN 9007W
 LFL BETTY JO 873H

LFL ZOey 2043Z is a massive bodied, stout featured daughter of RSKY Wipeout 0029, the Duff New Edition 6108 son that is from the N Bar Emulation EXT influence. The dam of RSKY Wipeout 0029, WK Georgina 9375, was an integral part of the development of the Duff program. 2043Z is an own daughter of LFL Wonder Woman 9007W, a foundation breeding piece in the Lawrence Family Limousin program. Garrett Miller successfully showed a daughter of 2043Z sired by PVF Insight 0129 throughout Pennsylvania. She sells with a stylish bull calf at side that is sired by the breed leading Gateway Follow Me F163 and bred back to the great Seldom Rest Sandman 6075 that is an own son of the legendary Silveiras S Sis Sandy 2354. A unique blend of some of the most proven genetics in the business! **AI BRED 5/13/21 TO SELDOM REST SANDMAN 6075 (AAA: 18585679). VET CONFIRMED SAFE IN CALF ON 7/12/21.**

LOT 44A: 3/1/21 BULL CALF SIRED BY GATEWAY FOLLOW ME F163

KELD ZOey 427B

Breed: LIM-FLEX

lot **45**

REG: LFF2057037

BD: 4/30/14

KYLD VEGAS 910W
AHFF PIT CREW 207Z
 AUTO TIARA 231T
 RSKY WIPEOUT 0029
LFL ZOey 2043Z
 LFL WONDER WOMAN 9007W

KELD Zoey 427B is a stout made daughter of the many times champion AHFF Pit Crew 207Z. The long list of accolades that Pit Crew accumulated would include championship banners at the 2013 PA Farm Show, 2013 NAILE, 2014 PA Farm Show, and 2014 KILE. RSKY Wipeout 2043Z was a past high seller from the Rosanky Cattle Company program that was Bruce Lawrence's selection to enhance the body mass and maternal excellence of his renowned Lim-Flex program in the panhandle of Texas. She sells with a powerful bull calf at side sired by Fire Fox.

SELLS WITH NO AI OR BULL EXPOSURE. READY TO BREED TO THE SERVICE SIRE OF YOUR CHOICE. LOT 45A: 4/22/21 BULL CALF SIRED BY AHFF FIRE FOX 605D



AHFF PIT CREW 207Z - Sire of Lot 45



LOT 45 - KELD ZOey 427B

LOT 46 - AHFF FANCY 007H



KYLD VEGAS 910W - Sire of Lot 46

LOT 47 - LFL FANCY PANTS 8006F



KYLD VEGAS 910W
Triple Crown Winning Limousin Bull



MAGS ZODIAC - Sire of Lot 47

AHFF FANCY 007H

Breed: LIM-FLEX

lot **46**

REG: LFF2326340
BD: 4/3/20

KRVN NASKAR 013N
KYLD VEGAS 910W
EXLR BLACKBIRD 7182R
MAGS ZODIAC
LFL FANCY PANTS 8006F ET
LFL WINNERS CIRCLE 9057 W

AHFF Fancy 007H is a direct daughter of LFL Fancy Pants 8006F that is sired by KYLD Vegas 910W, the National Triple Crown winning bull. Vegas was the 2010 KILE Grand Champion Limousin Bull, 2010 and 2011 NAILE Grand Champion Limousin Bull, 2011 All-American Futurity Grand Champion Bull, and the 2012 NWSS Grand Champion Limousin Bull. A young female that offers a royal pedigree lined with purple!
AI BRED 7/8/21 TO PVF INSIGHT 0129 (AAA: 16805884)

LFL FANCY PANTS 8006F

Breed: LIM-FLEX

lot **47**

REG: LFF2149877
BD: 2/16/18

MAGS WINSTON
MAGS ZODIAC
MAGS XANTHOUS
BASIN FRANCHISE P142
LFL WINNERS CIRCLE 9057 W
TARA JO 7132T

LFL Fancy Pants 8006F was our selection from the 2019 Cowtown Classic Limousin Sale from the storied Lawrence Family Limousin program of West Texas. A bold bodied, deep sided, sound footed female that is backed by the LFL Winners Circle 9057W matron that has 19 recorded progeny with the North American Limousin Foundation. The most notable brother to 8006F would be LFL Zander 2082Z, owned by May Farms. Other sisters are working for Farrar Farm Limousin, Tom Hogan, Tammy Shaw, Devillier Limousin, Bryant Ranch, and Cameron Swanson. A powerful and proven daughter of the breed leading MAGS Zodiac. A true Limousin genetic gem!
AI BRED 6/24/21 TO KYLD VEGAS 910W (LIM USA: NXM1938952).
LOT 47A: 4/22/21 HEIFER CALF Sired BY AHFF THE KING 847F ET



LOT 48 - U H A BLOSSOM 019

U H A BLOSSOM 019

Breed: ANGUS

lot **48**

REG: 19361258

BD: 1/25/19

DAMERON FIRST CLASS
COLBURN PRIMO 5153
SILVEIRAS SARAS DREAM 1339
S A V BISMARCK 5682
CHAMPION HILL BLOSSOM 114
CHAMPION HILL BLOSSOM 3483

U H A Blossom 019 is an impressive young Angus female that is sired by Colburn Primo 5153 that is backed by the strong maternal influence of SAV Bismarck 5682. 019 is derived from a powerful Champion Hill bred dam from the Blossom cow family. She has a bull calf at side sired by The King and sells AI bred back to Conley Express 7211. **AI BRED 5/13/21 TO CONLEY EXPRESS 7211 (AAA: 18941522). VET CONFIRMED SAFE IN CALF ON 7/12/21. LOT 48A: 3/10/21 BULL CALF Sired BY AHFF THE KING 847F ET**



COLBURN PRIMO 5153 - Sire of Lots 48 & 49

LOT 49 - COOL PINES LADY 4218



COOL PINES LADY 4218

Breed: ANGUS

lot
49

REG: 19175928
BD: 4/2/18

DAMERON FIRST CLASS
COLBURN PRIMO 5153
SILVEIRAS SARAS DREAM 1339
EXAR CLASSEN 1422B
COOL PINES LADY 1515
FANCY CHANCE LADY 65

Cool Pines Lady 4218 is sired by Colburn Primo 5153 that is backed by an own daughter of EXAR Classen 1422B that is backed by the Champion Hill Lady 4636 cow family. She sells with a stylish bull calf at side sired by the multi-facet powerhouse PVF Insight 0129. **SELLS WITH NO AI OR BULL EXPOSURE. READY TO BREED TO THE SERVICE SIRE OF YOUR CHOICE. LOT 49A: 3/26/21 BULL CALF SIRED BY PVF INSIGHT 0129**

AHFF RITA IN SIGHT 663D

Breed: ANGUS

lot
50

REG: 19062999
BD: 10/12/16

S A V BRILLIANCE 8077
PVF INSIGHT 0129
PVF MISSIE 790
C R A BEXTOR 872 5205 608
RITA 8E35 OF RITA 4R23 BEXTO
RITA 4R23 OF 5H26 RITO 9M9

AHFF Rita In Sight 663D is sired by one of the breed's most well-known sires, PVF Insight 0129 and backed by the famed Rita cow family. She is balanced phenotypically and on paper. Her heifer calf by Gateway Follow Me F163 shows exceptional eye-appeal and future. **AI BRED 5/13/21 TO CONLEY EXPRESS 7211 (AAA: 18941522). VET CONFIRMED SAFE IN CALF ON 7/12/21. LOT 50A: 3/1/21 HEIFER CALF SIRED BY GATEWAY FOLLOW ME F163**

LOT 50 - AHFF RITA IN SIGHT 663D



PVF INSIGHT 0129 - Sire of Lot 50





HARA'S DIXIE ERICA 1 - Dam of Lot 51



SILVEIRAS STYLE 9303 - Sire of Lot 51



SILVEIRAS HARA'S THE SHOW 5000
\$150,000 Full Brother to Pregnancy

STYLE X DIXIE ERICA PREGNANCY

Breed: ANGUS

lot **51**

UNSEXED PREGNANCY
ESTIMATED DUE DATE
12/31/21

GAMBLES HOT ROD
SILVEIRAS STYLE 9303
SILVEIRAS ELBA 2520
WAR COWBOY UP 3102
HARA'S DIXIE ERICA 1
DCC DIXIE ERICA 001

Potentially the most valuable opportunity within the entire sale offering! Here is the unique chance to invest in a pregnancy that combines two of the absolute most valuable individuals within the Angus business. Silveiras Style 9303 needs no introduction when it comes to discussing the lasting impact he has made on the industry. Hara's Dixie Erica 1 is another cornerstone female that has wrote her own chapter in the history books. This mating is a full sib to countless high sellers, champions, and most notable would be the \$150,000 full brother known as Silveiras Hara's The Show 5000. Bid with confidence on this elite opportunity!

LOT 51R: RECIP BK31 | COMMERCIAL ANGUS X SHORTHORN | 2015 MODEL



LOT 52 - AHFF 030H

AHFF 030H

Breed: CROSSBRED

lot **52**

GOET I80
AHFF FIRE FOX 605D ET
AHFF 473M

REG: UNREGISTERED
BD: 5/14/20

AHFF 12

SELLS WITH NO AI OR BULL EXPOSURE. READY TO BREED TO THE SERVICE SIRE OF YOUR CHOICE.

AHFF 036H

Breed: CROSSBRED

lot **53**

DAMERON FIRST CLASS
COOL PINES AHFF MB TOP FLIGHT
LEMENAGER CLA TRAVETT 135

REG: UNREGISTERED
BD: 5/22/20

611(COMMERCIAL ANGUS X SHORTHORN)

SELLS WITH NO AI OR BULL EXPOSURE. READY TO BREED TO THE SERVICE SIRE OF YOUR CHOICE.

AHFF 035H

Breed: CROSSBRED

lot **54**

DAMERON FIRST CLASS
COOL PINES AHFF MB TOP FLIGHT
LEMENAGER CLA TRAVETT 135

REG: UNREGISTERED
BD: 5/21/20

928 (COMMERCIAL ANGUS)

SELLS WITH NO AI OR BULL EXPOSURE. READY TO BREED TO THE SERVICE SIRE OF YOUR CHOICE.

AHFF 044H

Breed: CROSSBRED

lot **55**

DAMERON FIRST CLASS
COOL PINES AHFF MB TOP FLIGHT
LEMENAGER CLA TRAVETT 135

REG: UNREGISTERED
BD: 6/13/20

401 (COMMERCIAL ANGUS)

SELLS WITH NO AI OR BULL EXPOSURE. READY TO BREED TO THE SERVICE SIRE OF YOUR CHOICE.



LOT 56 - AHFF 962G

AHFF 962G

Breed: CROSSBRED

lot **56**

GOET I80
AHFF FIRE FOX 605D ET
AHFF 473M
ANGUS

REG: UNREGISTERED
BD: 5/11/19

BK31
SHORTHORN

AI BRED ON 5/12/21 TO ML MVP 23E ET (AMAA: 486956).

HONEY

Breed: CROSSBRED

lot **57**

UNREGISTERED SIMMENTAL

REG: UNREGISTERED

UNREGISTERED SIMMENTAL

BD: 5/5/13

Honey is a massive designed, powerful foundation Simmental that sells without papers. She has been AI bred to the legendary GOET I-80 for a Maintainer calf on board. There is no denying the shear mass, density, and dimension that this beautiful female offers. A true powerhouse within the offering!

AI BRED 2/25/21 TO GOET I-80 (AMAA: 400082). ESTIMATED DUE 12/4/21.



LOT 57 - HONEY

AHFF 26

Breed: CROSSBRED

lot **58**

UNREGISTERED ANGUS

REG: UNREGISTERED

UNREGISTERED ANGUS

BD: 3/5/12

AHFF 26 is a stylish Angus based female that is bold bodied, big topped, wide pinned and offers the maternal characteristics that we have put so much emphasis on within our breeding program. Her bull calf by Fire Fox is a stout one and she has been AI bred back to the popular Here I Am.

AI BRED 7/12/21 TO HERE I AM (CIAUSA: 384828).

LOT 58A: 4/16/21 BULL CALF Sired BY AHFF FIRE FOX 605D



LOT 58 - AHFF 26

AHFF 12

Breed: CROSSBRED

lot **59**

MEYER RANCH 734

3C MACHO M450 BZ

3C CROCUS H112 B

ANGUS

REG: UNREGISTERED

UNREGISTERED ANGUS

BD: 3/3/09

ANGUS

Here is a direct daughter of the legendary 3C Macho M450 BZ, arguably the most notable son of Meyer 734. The influence of the 734 daughters in club calf production has been unsurpassed and we believe that this mating to the great In God We Trust will make for a quick return on investment.

AI BRED 6/16/21 TO IN GOD WE TRUST (CIAUSA: 382787). VET CONFIRMED SAFE IN CALF ON 7/12/21. LOT 59A: 4/15/21 HEIFER CALF Sired BY AHFF FIRE FOX 605D



LOT 59 - AHFF 12

The Donkey Offering



Here are a pair of young Jenny donkey's that were purchased to be utilized to break show calves. They are 6 and 8 years old and have had their feet trimmed every 8 weeks since we have owned them. They both have good dispositions and are semi-halter broke. They have had a negative Coggins test and are ready for interstate transportation.

lot **60**

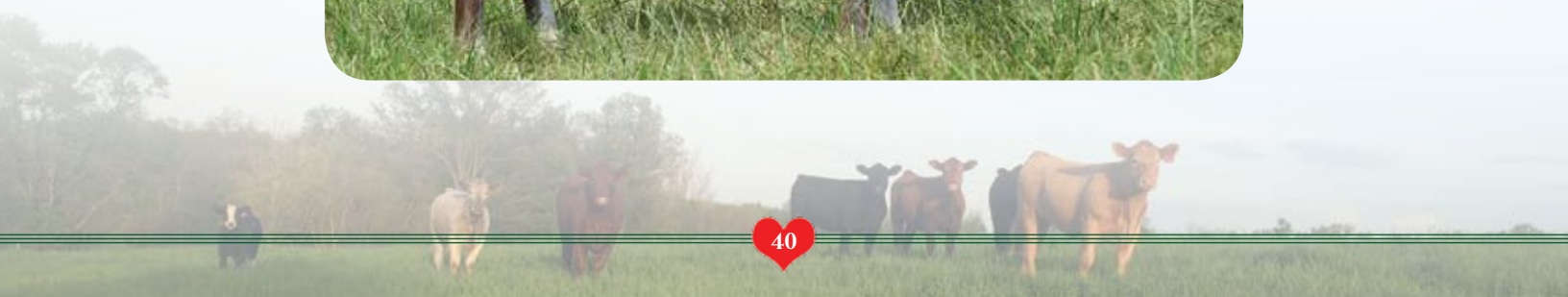
FUZZY

8-YEAR-OLD BREAKING DONKEY

lot **61**

SLICK

6-YEAR-OLD BREAKING DONKEY



LOT	COUNT	AI SIRE	BREED	NOTES
101	7 Units of Angus Semen	Silveiras Style 9303 (100AN2772) - 7 Units	ANGUS	
102	10 Units of Angus Semen	SAV Net Worth 4200 (1AN119) - 10 Units	ANGUS	
103	6 Units of Angus Semen	BCII Next Up 015 (175AN140) - 3 Units	ANGUS	
		BCII Next Up 015 (Black Top) - 1 Unit	ANGUS	
		Gateway Follow Me F163 (137AN5400) - 2 Units	ANGUS	
104	14 Units of Angus Semen	PVF Insight 0129 (1AN1313) - 10 Units	ANGUS	
		PVF Insight 0129 (1AN1313) - 2 Units	ANGUS	
		PVF Insight 0129 (1AN1313) - 2 Units	ANGUS	
105	9 Units of Angus Semen	SCC First-N-Goal GAF 114 (7AN374) - 3 Units	ANGUS	
		Silveiras Watchout 0514 (59AN1810) - 1 Unit	ANGUS	
		Conley Express 7211 - 1 Unit	ANGUS	
		Bushs Unbelievable 423 (109AN1486) - 4 Units	ANGUS	
106	8 Units of Angus Semen	Gambles Safe Bet (48AN1306) - 5 Units	ANGUS	
		Gambles Safe Bet (AN1306) - 3 Units	ANGUS	
107	6 Units of Angus Semen	TCA Eastwood (47AN2068) - 6 Units	ANGUS	
108	20 Units of Angus Semen	AHFF The Gambler (36AN1662) - 10 Units	ANGUS	
		AHFF The Gambler (36AN1662) - 10 Units	ANGUS	
109	4 Units of Club Calf Semen	TR MR Firewater 5792R ET (1CH959) - 4 Units	CHAROLAIS	
110	4 Units of Club Calf Semen	Heatwave (XX418) - 4 Units	CLUB CALF	
111	4 Units of Club Calf Semen	Heatwave (XX418) - 2 Units	CLUB CALF	
		Heatwave (XB113) Small Straws - 2 Units	CLUB CALF	
112	8 Units of Club Calf Semen	Here I Am (54CM129) - 8 Units	CLUB CALF	
113	7 Units of Club Calf Semen	In God We Trust - 5 Units	CLUB CALF	
		In God We Trust (137XX4797) - 2 Units	CLUB CALF	
114	9 Units of Club Calf Semen	Monopoly - 9 Units	CLUB CALF	
115	4 Units of Club Calf Semen	Man Among Boys (286XB125) - 4 Units	CLUB CALF	
116	6 Units of Club Calf Semen	BHCS Heat Seeker 23 (XX316) - 6 Units	CLUB CALF	
117	12 Units of Club Calf Semen	Unstoppable (54MA812) - 8 Units	CLUB CALF	
		Unstoppable (54MA812) - 4 Units	CLUB CALF	
118	4 Units of Club Calf Semen	Walks Alone (XB007) Green Top - 4 Units	CLUB CALF	
119	8 Units of Club Calf Semen	Who Made Who (CM59) - 8 Units	CLUB CALF	
120	30 Units of Club Calf Semen	Hi Ho Silver (54XB340) - 5 Units	CLUB CALF	
		Almost Famous (140CM0002) - 5 Units	CLUB CALF	
		BK Sting (109MA504) - 1 Unit	CLUB CALF	
		Bodacious (XB081) - 2 Units	CLUB CALF	
		Bojo (CM118) - 5 Units	CLUB CALF	
		Bojo (CM118) - 1 Unit	CLUB CALF	
		WNT Carnac 88P (75XX007) - 3 Units	CLUB CALF	
		Hannibal (49CM1375) - 3 Units	CLUB CALF	
		Hannibal (CM1375) - 3 Units	CLUB CALF	

LOT	COUNT	AI SIRE	BREED	NOTES
121	38 Units of Club Calf Semen	Indian Outlaw (XB043) - 2 Units	CLUB CALF	
		Italian Stallion - 1 Unit	CLUB CALF	
		Italian Stallion (XB284) - 1 Unit	CLUB CALF	
		I Am Legend (XX830) - 3 Units	CLUB CALF	
		SSUL I Da Man 2313Z (109XX453) - 2 Units	CLUB CALF	
		Johnny Walker Red (XX796) - 6 Units	CLUB CALF	
		Ready to Rumble (54MA848) - 4 Units	CLUB CALF	
		Rocky Balboa (179MA45) - 5 Units	CLUB CALF	
		Warrant	CLUB CALF	
		OHL Point Taken 80T (132XX3048) - 5 Units	CLUB CALF	
		Thriller (MA799) - 5 Units	CLUB CALF	
		Tin Man (XB5062) - 2 Units	CLUB CALF	
122	6 Units of Simmental Semen	MR HOC Broker (129SM601) - 6 Units	SIMMENTAL	
123	1 Unit of Simmental Semen	SVF/NJC Built Right N48 (14SM3049) - 1 Unit	SIMMENTAL	
124	18 Units of Simmental Semen	ZKCC Chopper 844U (SM195) - 2 Units	SIMMENTAL	
		FBF1 Combustible (179SM123) - 4 Units	SIMMENTAL	
		GWS Ebony's Trademark 6N (1SM91)	SIMMENTAL	
		Limestone Trifecta 714 (129SMX610) - 9 Units	SIMMENTAL	
		Step Up (SM2487) - 1 Unit	SIMMENTAL	
125	3 Units of Maine-Anjou Semen	Cowan's Ali 4M (MA618) - 3 Units	MAINE-ANJOU	
126	4 Units of Maine-Anjou Semen	BBBN X 483X (179MA80) - 4 Units	MAINE-ANJOU	
127	10 Units of Maine-Anjou Semen	BK Unlimited Power 472 (109MA473) - 10 Units	MAINE-ANJOU	
128	8 Units of Maine-Anjou Semen	BK Unlimited Power 472 (109MA473) - 8 Units	MAINE-ANJOU	
129	10 Units of Maine-Anjou Semen	GOET I-80 (109MA798) - 10 Units	MAINE-ANJOU	
130	12 Units of Maine-Anjou Semen	GOET I-80 (54MA798) - 6 Units	MAINE-ANJOU	
		GOET I-80 - 6 Units	MAINE-ANJOU	
131	15 Units of Maine-Anjou Semen	Mercedes Benz (MA1615) - 3 Units	MAINE-ANJOU	
		Mercedes Benz (MA882) - 3 Units	MAINE-ANJOU	
		Paddy O'Malley (MA3250) - 4 Units	MAINE-ANJOU	
		Comfort Zone (C. Zone) - 2 Units	MAINE-ANJOU	
		BKMT Game On 227G - 3 Units	MAINE-ANJOU	
132	12 Units of Maintainer Semen	ML MVP 23E (M5212) - 3 Units	MAINTAINER	
		ML MVP 23E (M5212) - 9 Units	MAINTAINER	
133A	10 Units of Maintainer Semen	ML MVP 23E (M5212) - 10 Units	MAINTAINER	
133B	10 Units of Maintainer Semen	ML MVP 23E (M5212) - 10 Units	MAINTAINER	
133C	10 Units of Maintainer Semen	ML MVP 23E (M5212) - 10 Units	MAINTAINER	
133D	10 Units of Maintainer Semen	ML MVP 23E (M5212) - 10 Units	MAINTAINER	
133E	10 Units of Maintainer Semen	ML MVP 23E (M5212) - 10 Units	MAINTAINER	
134	1 Unit of Limousin Semen	DHVO Duece 132R - 1 Unit	LIMOUSIN	
135	3 Units of Limousin Semen	GPFF Blaque Roulon (154LM205) - 3 Units	LIMOUSIN	

LOT	COUNT	AI SIRE	BREED	NOTES
136A	29 Units of Limousin Semen	KYLD Vegas 910W (36LM136) - 9 Units	LIMOUSIN	
		KYLD Vegas 910W (36LM136) - 7 Units	LIMOUSIN	
		KYLD Vegas 910W (36LM136) - 6 Units	LIMOUSIN	
		KYLD Vegas 910W (36LM136) - 5 Units	LIMOUSIN	
		KYLD Vegas 910W (36LM136) - 2 Units	LIMOUSIN	
136B	10 Units of Limousin Semen	KYLD Vegas 910W (36LM136) - 10 Units	LIMOUSIN	
136C	10 Units of Limousin Semen	KYLD Vegas 910W (36LM136) - 10 Units	LIMOUSIN	
136D	10 Units of Limousin Semen	KYLD Vegas 910W (36LM136) - 10 Units	LIMOUSIN	
136E	10 Units of Limousin Semen	KYLD Vegas 910W (36LM136) - 10 Units	LIMOUSIN	
136F	10 Units of Limousin Semen	KYLD Vegas 910W (36LM136) - 10 Units	LIMOUSIN	
136G	10 Units of Limousin Semen	KYLD Vegas 910W (36LM136) - 10 Units	LIMOUSIN	
136H	10 Units of Limousin Semen	KYLD Vegas 910W (36LM136) - 10 Units	LIMOUSIN	
136I	10 Units of Limousin Semen	KYLD Vegas 910W (36LM136) - 10 Units	LIMOUSIN	
136J	10 Units of Limousin Semen	KYLD Vegas 910W (36LM136) - 10 Units	LIMOUSIN	
136K	10 Units of Limousin Semen	KYLD Vegas 910W (36LM136) - 10 Units	LIMOUSIN	
137A	22 Units of Limousin Semen	AUTO Black Dakota 129J (36LM111) - 9 Units	LIMOUSIN	
		AUTO Black Dakota 129J (109LM421) - 9 Units	LIMOUSIN	
		AUTO Black Dakota 129J (LM44) - 4 Units	LIMOUSIN	
137B	10 Units of Limousin Semen	AUTO Black Dakota 129J (36LM111) - 10 Units	LIMOUSIN	
137C	10 Units of Limousin Semen	AUTO Black Dakota 129J (109LM421) - 10 Units	LIMOUSIN	
138A	10 Units of Limousin Semen	EXLR Dakota 353G (109LM346) - 10 Units	LIMOUSIN	
138B	9 Units of Limousin Semen	EXLR Dakota 353G (109LM346) - 1 Unit	LIMOUSIN	
		EXLR Dakota 353G (109LM346) - 6 Units	LIMOUSIN	
		EXLR Dakota 353G (Blank Top) - 2 Units	LIMOUSIN	
139	16 Units of Limousin Semen	LESF Asphalt 9N - 6 Units	LIMOUSIN	
		LESF Asphalt 9N (36LM180) - 10 Units	LIMOUSIN	
140	20 Units of Limousin Semen	TMCK Balancer 173U (36LM135) - 5 Units	LIMOUSIN	
		DVFC Cookie Monster (138LM1630) - 6 Units	LIMOUSIN	
		AUTO Dollar General 122R (59LM351) - 4 Units	LIMOUSIN	
		DVFC Warden 233K (LM782) - 5 Units	LIMOUSIN	
141	17 Units of Limousin Semen	EF Mainstay 541M (59LM326) - 9 Units	LIMOUSIN	
		EF Mainstay (59LM326) - 8 Units	LIMOUSIN	
142A	23 Units of Limousin Semen	WLR Direct Hit (179LM22) - 3 Units	LIMOUSIN	
142B		WLR Direct Hit (179LM22) - 10 Units	LIMOUSIN	
142C		WLR Direct Hit (179LM22) - 10 Units	LIMOUSIN	
143	14 Units of Limousin Semen	KRVN Naskar (109LM558) - 9 Units	LIMOUSIN	
		KRVN Naskar (59LM329) - 3 Units	LIMOUSIN	
		KRVN Naskar (59LM329) - 2 Units	LIMOUSIN	

LOT	COUNT	AI SIRE	BREED	NOTES
144A	10 Units of Limousin Semen	KYLD Daytona 730T (156LM218) - 10 Units	LIMOUSIN	
144B	10 Units of Limousin Semen	KYLD Daytona 730T (36LM126) - 6 Units	LIMOUSIN	
		KYLD Daytona 730T (36LM126) - 4 Units	LIMOUSIN	
144C	9 Units of Limousin Semen	KYLD Daytona 730T (156LM218) - 9 Units	LIMOUSIN	
144D	8 Units of Limousin Semen	KYLD Daytona 730T (36LM126) - 8 Units	LIMOUSIN	
145	12 Units of Limousin Semen	LH Rodemaster 338R (59LM371) - 10 Units	LIMOUSIN	
		LH Rodemaster 338R (59LM371) - 2 Units	LIMOUSIN	
146	22 Units of Limousin Semen	MAGS Landmark 4627W (59LM398) - 4 Units	LIMOUSIN	
		MAGS The General 1730U (59LM386) - 10 Units	LIMOUSIN	
		MAGS Wazolowski 8711W (59LM403) - 2 Units	LIMOUSIN	
		MAGS Wazolowski 8711W (59LM403) - 2 Units	LIMOUSIN	
		MAGS Xukalani 691X (109LM607)	LIMOUSIN	
147	20 Units of Limousin Semen	MAGS Winston 1802W (59LM397) - 9 Units	LIMOUSIN	
		MAGS Winston 1802W (59LM397) - 10 Units	LIMOUSIN	
		MAGS Winston 1802W (LM397) - 1 Units	LIMOUSIN	
148	23 Units of Limousin Semen	Carrouels Pure Power 4317P (109LM546) - 6 Units	LIMOUSIN	
		Wulfs Guardian 5074G (0071) - 1 Unit	LIMOUSIN	
		Wulfs Klint 5874K (34LM62) - 9 Units	LIMOUSIN	
		Wulfs Upgrade 0500U (156LM225) - 7 Units	LIMOUSIN	
149	19 Units of Shorthorn Semen	High View's Ace of Diamonds (SP2961)	SHORTHORN	
		HD Bloodstone 603 ET - 1 Unit	SHORTHORN	
		HD Bloodstone 603 ET - (5Queens Gold Link) - 1 Unit	SHORTHORN	
		4D Double Vision (Vision) - 1 Unit	SHORTHORN	
		WHR Sonny 8114 ET - 2 Units	SHORTHORN	
		SULL Achiever 8129 ET (Blank Top) - 9 Units	SHORTHORN	
150	18 Units of Hereford Semen	H Excel 8051 (HP84) - 8 Units	HEREFORD	
		H W4 Lights Out 2015 ET (HP90) - 8 Units	HEREFORD	
		Showtime Fireball 734 (Fire) - 2 Units	HEREFORD	

FROZEN GENETIC OFFERING

All Semen and embryos will be available for pick-up at the farm the day of the sale. The frozen genetics have been professionally stored and managed. The semen and embryos sell without a guarantee.

Following the sale, all semen and embryos will be transported to Trans Ova Genetics, Maryland to be shipped or picked-up. Semen and embryos will be released once payment is received. A detailed paid report will be provided to Trans Ova Genetics weekly to ensure that each buyer can have their frozen genetics shipped in a timely fashion. For shipping instructions please contact Trans Ova Genetics.

Trans Ova Genetics Maryland
7441 Sharpsburg Pike
Boonsboro, MD 21713
(240) 329-0159

LOT	COUNT	MATING	BREED	NOTES
201	4 IVF Reverse Sort Female Embryos	Silveiras Style 9303 x Riverstone Lucky Charm 50F	LIMFLEX	
202	5 Conv. Embryos	Schilling's Wallace x KYLD Blackbird 044X (DTMD2526)	LIMOUSIN	
203	2 IVF Unsexed Embryos	Silveiras Style 9303 x Hara's Dixie Erica (F044171)	ANGUS	
204	3 IVF Reverse Sort Female Embryos	Colburn Primo 5153 x Hara's Dixie Erica (1178-A)	ANGUS	
205	6 Conv. Embryos	Silveiras Style 9303 x Rita 8E35 of Rita 4R23 Bexto (26970)	ANGUS	
206A	4 IVF Embryos	EXAR Classen 1422B x Rita 8E35 of Rita 4R23 Bexto (26968)	ANGUS	
206B	3 IVF Embryos	EXAR Classen 1422B x Rita 8E35 of Rita 4R23 Bexto (26968)	ANGUS	
	1 IVF Embryo	EXAR Classen 1422B x Rita 8E35 of Rita 4R23 Bexto (26966)	ANGUS	
206C	4 IVF Embryos	EXAR Classen 1422B x Rita 8E35 of Rita 4R23 Bexto (26768)	ANGUS	
207A	4 IVF Embryos	Bush's Unbelievable 423 x Rita 8E35 of Rita 4R23 Bexto (27147)	ANGUS	
207B	4 IVF Embryos	Bush's Unbelievable 423 x Rita 8E35 of Rita 4R23 Bexto (27147)	ANGUS	
208	1 Conv. Embryo	Coneally Confidence 0100 x Rita 8E35 of Rita 4R23 Bexto (3215)	ANGUS	
	1 Conv. Embryo	PVF Insight 0129 x Rita 8E35 of Rita 4R23 Bexto (27150)	ANGUS	
209A	3 Conv. Embryos	Gambles Safe Bet x Rita 8E35 of Rita 4R23 Bexto (23527)	ANGUS	
209B	4 Conv. Embryos	Gambles Safe Bet x Rita 8E35 of Rita 4R23 Bexto (3402)	ANGUS	
210A	4 Conv. Embryos	GOET I-80 x Rita 8E35 of Rita 4R23 Bexto (23188)	MAINTAINER	
210B	4 Conv. Embryos	GOET I-80 x Rita 8E35 of Rita 4R23 Bexto (23188)	MAINTAINER	
210C	5 Conv. Embryos	GOET I-80 x Rita 8E35 of Rita 4R23 Bexto (23870)	MAINTAINER	
210D	3 Conv. Embryos	GOET I-80 x Rita 8E35 of Rita 4R23 Bexto (23871)	MAINTAINER	
211	5 IVF Embryos	ML MVP 23E x 473 (82154-1) - 4 IVF Embryos	MAINTAINER	
		ML MVP 23E x 473 (82154-2) - 1 IVF Embryo	MAINTAINER	
212	3 IVF Embryos	Silveiras Style 9303 x SVJ Forever Lady A648 (28412-1)	SIMANGUS	
213	7 Conv. Embryos	High View's Ace of Diamonds Ace of Diamonds x Candice (7093) - 5 Embryos	SHORTHORN PLUS	
		High View's Ace of Diamonds x Candice (7095) - 2 Embryos	SHORTHORN PLUS	
214	5 Conv. Embryos	HD Bloodstone 603 ET x Candice (7229)	SHORTHORN PLUS	
215A	4 Conv. Embryos	WHR Sonny 8114 ET x Candice	SHORTHORN PLUS	
215B	4 Conv. Embryos	WHR Sonny 8114 ET x Candice	SHORTHORN PLUS	
215C	4 Conv. Embryos	WHR Sonny 8114 ET x Candice	SHORTHORN PLUS	
215D	4 Conv. Embryos	WHR Sonny 8114 ET x Candice	SHORTHORN PLUS	
216A	5 Conv. Embryos	GOET I-80 x Candice	SHORTHORN PLUS	
216B	5 Conv. Embryos	GOET I-80 x Candice	SHORTHORN PLUS	
217	3 Conv. Embryos	In God We Trust x Candice (61310-1)	SHORTHORN PLUS	
218	3 Conv. Embryos	KRVN Naskar 013N x EXLR Blackbird 7182R (Blackbird E608)	LIMOUSIN	
	2 IVF Embryos	BCII MLA Next Up 015x EXLR Blackbird 7182R (91757-1)	LIMFLEX	
219	5 Conv. Embryos	MAGS Winston 1802W x EXLR Luvly 291T (7063)	LIMOUSIN	
220	5 Conv. Embryos	MAGS Xukalani 691X x WLR Tainted Love (1099LM5402)	LIMOUSIN	
	5 Conv. Embryos	KYLD Daytona 730T x JW Summitcrest Erica 4130 "Allie"	LIMOUSIN	
	3 Conv. Embryos	EXLR Native 7133N x EXLR Jenna 056M (412-52)	LIMOUSIN	
221	4 Conv. Embryos	AUTO Black Dakota 129J x EXLR Molly 343G (13555-2)	LIMOUSIN	
	1 Conv. Embryo	COLE Montana Sky x EXLR Molly 343G (14010 E1139)	LIMOUSIN	
	1 Conv. Embryo	BR Midland x GPFF Solitaire 161K (13453-2)	LIMFLEX	
	4 Conv. Embryos	EXLR Dakota 353G x Miss Wulfette 9051X (E1522 21023)	LIMOUSIN	
	3 Conv. Embryos	Carrouels Kokomo x CORL Dream of Me 158H (Black Top)	LIMOUSIN	

LOT	COUNT	MATING	BREED	NOTES
222	5 Conv. Embryos	MAGS Winston 1802W x AUTO Nalanie 217N (7112)	LIMOUSIN	
	5 Conv. Embryos	MAGS Winston 1802W x AUTO Nalanie 217N (7231)	LIMOUSIN	
	4 Conv. Embryos	MAGS Winston 1802W x AUTO Nalanie 217N (7232)	LIMOUSIN	
223A	5 Conv. Embryos	MAGS Winston 1802W x EXLR 255J (7113)	LIMOUSIN	
	5 Conv. Embryos	LESF Asphalt 9N x EXLR 255J (6729)	LIMOUSIN	
223B	5 Conv. Embryos	LESF Asphalt 9N x EXLR 255J (6731)	LIMOUSIN	
	3 Conv. Embryos	LESF Asphalt 9N x EXLR 255J (6732)	LIMOUSIN	
	2 Conv. Embryos	LESF Asphalt 9N x EXLR 255J (6733)	LIMOUSIN	
224	8 Conv. Embryos	SAV Bismarck 5682 x LFL My Girl 3077 (5839)	LIMFLEX	
	4 Conv. Embryos	LH Rodemaster 338R x LFL My Girl 3077 (10MY17)	LIMOUSIN	
	7 Conv. Embryos	KYLD Daytona 730T x LFL My Girl 3077 (5904)	LIMOUSIN	
	4 Conv. Embryos	Yellow Jacket x LFL My Girl 3077 (5962)	COMPOSITE	
225	5 Conv. Embryos	KYLD Daytona 730T x Bohi Sierra 65065 (2394)	LIMOUSIN	
	5 Conv. Embryos	KYLD Daytona 730T x Bohi Sierra 65065 (2395)	LIMOUSIN	
	5 Conv. Embryos	KYLD Daytona 730T x Bohi Sierra 65065 (2394)	LIMOUSIN	
	5 Conv. Embryos	KYLD Daytona 730T x Bohi Sierra 65065 (2395)	LIMOUSIN	
226	2 Conv. Embryos	EXLR New Generation 071M x JCL Eternity (12996-3)	LIMOUSIN	
	4 Conv. Embryos	EXLR New Generation 071M x JCL Eternity (13524-1)	LIMOUSIN	
	2 Conv. Embryos	EXLR New Generation 071M x JCL Eternity (13524-2)	LIMOUSIN	
	1 Conv. Embryo	MAGS Winston 1802W x KRVN Persian 192P (7193)	LIMOUSIN	
	1 Conv. Embryo	MAGS Winston 1802W x KRVN Persian 192P (7194)	LIMOUSIN	
227	4 Conv. Embryos	Connealy Consensus x Blaque Destiny 199T (110C194)	LIMOUSIN	
	1 Conv. Embryo	EBFL Ypsilanti 420Y x Blaque Destiny 199T (135E177)	LIMOUSIN	
	4 Conv. Embryos	BOHI Top Dollar 7144T x Blaque Destiny 199T (11DE220)	LIMOUSIN	
	3 Conv. Embryos	TW Fire N Ice x Blaque Destiny 199T (11JN141)	LIMOUSIN	
228	8 Conv. Embryos	KYLD Daytona 730T x SBLX Untouchable 101U (2396)	LIMOUSIN	
	1 Conv. Embryo	KYLD Daytona 730T x SBLX Untouchable 101U (2397)	LIMOUSIN	
	2 Conv. Embryos	MAGS Winston 1802W x SBLX Untouchable 101U (7114)	LIMOUSIN	
229	5 Conv. Embryos	BK Unlimited Power x KYLD Blackbird 003X (16810)	MAINETAINER	
	3 Conv. Embryos	BK Unlimited Power x EXLR Luvly 170T (2398)	MAINETAINER	
	7 Conv. Embryos	Thriller x 31097 (3400)	CLUB CALF	
230	5 Conv. Embryos	Yellow Jacket x 31433 (Hannibal) (2325)	CLUB CALF	
	5 Conv. Embryos	Yellow Jacket x 31433 (Hannibal) (2326)	CLUB CALF	
	5 Conv. Embryos	Point Taken x 31433 (Hannibal) (7092)	CLUB CALF	
231	4 Conv. Embryos	Hi Ho Silver x 500 Full Throttle (27146)	CLUB CALF	
	2 IVF Embryos	Italian Stallion x 500 Full Throttle (26966)	CLUB CALF	
	2 Conv. Embryos	Monopoly x 500 Full Throttle	CLUB CALF	
232	2 Conv. Embryos	HB Bloodstone x CF 20 Queens 571 TPX ET	SHORTHORN	
	3 Conv. Embryos	WHR Sonny 8114 ET x CF 20 Queens 571 TPX ET	SHORTHORN	

The Equipment Offering

Equipment List

- John Deere 5303 4WD Tractor with 522 Loader and bucket (860hrs)
- 2003 New Holland LS180 Hi-Flow Skid Loader (2600hrs)
- 2009 16' Bumper hitch car trailer with fold up ramps (freshly inspected, new floor and tires)
- 1999 Ford F350 4x4 7.3 Powerstroke Pickup (295,000 miles – 75-Gal fuel tank and toolbox in the bed)
- Eby custom made truck bed with removable sides
- H & S Inline Bale Wrapper
- New Holland 185 Manure Spreader – Double beaters and hydraulic bed
- Stoltzfus Feed Wagon -2 4 x 5.5 (44 openings)
- Stoltzfus Feed Wagon with hay basket – 24 x 7
- Round Bale Wagon
- 1999 60" Exmark zero turn lawn mower
- 8' Woods bushhog mower
- 5' Bobcat skid loader Bushhog mower
- 8' Diamond snowplow with skid loader attachment
- 36' Hay elevator (electric motor)
- 12' Lely Roterra 3pt Soil Conditioner
- Reveal 3 in 1 Arena & Ground Prep Tool
- Reveal 4 in 1 Arena & Ground Prep Tool
- 80" Mow Conveyor
- 2 - Brand new Net Wrap rolls
- 7 – 30" rolls of Winmore Plastic Wrap
- Moisture Tester
- 75 Gallon American Fuel Tank w/ Diamond plate toolbox for pickup bed
- Scooter
- Push Mower
- Propane Torpedo Heaters



The Equipment Offering

Cattle Handling and Feeding

- Custom Made Frey Cattle Chute and Alleyway System (30ft long, solid sided with double catwalk and 2 sliders)
- Riverode Sale Ring
- Riley Built hoof trimming table trailer (hydraulic pump 220V)
- Riverwind Barn Camera System (9 Cameras)
- J & L Hay Feeders
- Heavy Duty cattle panels 12'x6'
- 6 Freys Creep Feeders
- Large Creep Feeder
- Stainless Steel Milk Tank
- TruTest Platform Scale
- Shipper Tank W/Cannister
- Misc. Water Tanks
- Misc. Mineral Feeders

Show Cattle Equipment

- Large Portacool
- Sharpening Wheel for clipper blades
- 7 – 24" Fans
- 2 – 36" Schaefer Fans
- Sunbeam Shears
- Misc. Clipper parts
- MANY Miscellaneous Show Cattle Supplies

Custom Cattle Handling Facility



The Equipment Offering



The Equipment Offering



The Equipment Offering





Watch and bid online at [CCI.live](https://cci.live)