

THE FORT HAYS STATE UNIVERSITY
4th Annual Production Sale
MARCH 26, 2020 | 1 PM | HAYS, KS

Fort Hays State University Beef Unit



**FORT HAYS STATE
UNIVERSITY**

Forward thinking. World ready.

Forward Thinking. World Ready.





Hello Friends of Fort Hays State University;

On behalf of our students, faculty and staff at Fort Hays State University I welcome you to our Class of 2020 Bull and Heifer Sale! We have been quite fortunate in obtaining a quality cowherd to complement our previously existing genetics. The genetics we are offering perform in the country as well as in the show ring.

For those of you who are repeat customers let me extend my appreciation for being supporters of our educational efforts. If you are a new customer, I thank you for your interest in supporting our educational efforts at Fort Hays State University.

One of the most difficult tasks for any cattle operation is identifying genetics which complement their unique environment. Our sale offering is generated from a teaching herd selected phenotypically to produce sound, functional, easy fleshing cattle and genetically to provide an “optimal” genetic profile for cattle producers in the central plains.

We welcome buyers as well as friends and alumni of the institution curious to see what we are doing with our university beef herd. It is our goal to provide students with a unique educational opportunity. Our students and staff have been involved with every facet of producing this offering from calving to cataloging. I am very proud of the hard work and dedication our students, faculty and staff have put forth to produce these cattle.

When working with students it is necessary to be constantly vigilant of safety. These cattle have been fed and handled by our herdsman and students. I believe you will find the disposition of our cattle is excellent. Cattle without congenial dispositions do not stay very long at our university farm.

The primary focus of the Agriculture Department at Fort Hays State University is preparing students for successful and rewarding careers. I encourage everyone to take the opportunity to interact with our students. We are offering a really nice set of cattle March 26th. However, our best commodity is really bright, well-trained and hardworking students who are going to be important components in the future of the agriculture industry.

Very Sincerely,

Clyde Cranwell

C.D. Cranwell, Ph.D., PAS

Chair, Agriculture FHSU



Welcome to the 2020 Fort Hays State University 4th Annual Production Sale! It has been a challenging winter to say the least, but enthusiasm in the marketplace continues to surge. The Red Angus breed continues to gain momentum throughout all sectors of the beef business. There is no denying the impact of a Red Angus female and the maternal function that she can offer to a cowherd.

Over the last several years the Fort Hays State University breeding program has established itself as one of the premier Red Angus seedstock providers in the country. Through hands on learning experience, students are able to experience the seedstock business firsthand and every aspect of promotion that the business has to offer. This year the age-advantage bulls were sent to the Hy Plains Feedyard to be put on the GrowSafe feed system. GrowSafe's data platform is a fully integrated system that provides physical sensing and projecting analytics. Commercial applications built on the platform collect data across the animal production supply chain, enabling new insights, enhancing decision making and ultimately helping producers optimize profit on their operations.

The bulls that have been offered through the last three sales have gone out and worked with great success for customers. The staff and students at Fort Hays State University enjoy hearing about the success you have with your purchases and how they positively impact your bottom line. In the inaugural sale, Mann Red Box 55C was a sale feature. Red Box was sold with Larry Garten and was purchased Kirk Duff of Hobart, Oklahoma. He has since impacted the Red Angus breed like no other sire in recent history!

Consider this your invitation to join us on our NEW SALE DATE! The fourth annual FHSU Production Sale will be held on Thursday, March 26, 2020! All the cattle will have videos available for viewing online at DVAuction.com and are available at any time for viewing. If you have questions about the offering, please contact Ivan Anderson or any of the sale staff to visit about the cattle. We look forward to seeing you in Hays, Kansas on March 26th!

Enjoy the cattle,

A handwritten signature in black ink, appearing to read 'Ivan Anderson'.

A handwritten signature in black ink, appearing to read 'JL Sh'.

Innovation AgMarketing, LLC

THE FORT HAYS STATE UNIVERSITY 4TH ANNUAL PRODUCTION SALE
MARCH 26, 2020 AT 1:00 PM | FORT HAYS, KANSAS

SALE LOCATION

GPS Address: Fort Hays University Beef Unit
1301-1335 230th Avenue - Hays, KS 67601

SALE DAY PHONES

Ivan Anderson (402) 705-2192
Dr. Clyde Cranwell (785) 628-4196
Kevin Huser (785) 735-4000
Don Benjamin (785) 639-2215
FHSU Beef Unit Office (785) 628-8045

AUCTIONEER

Col. Jered Shipman (806) 983-7226

SALE MANAGEMENT

Graham Blagg (530) 913-6418

CONSULTANT

Gerri Schumacher, STR Cattle Consulting and Services
(785) 623-1721
Andee Marston (785) 250-4449

RING STAFF

Craig Talkington, Special Assignment (785) 623-1789
Delvin Heldermon, Special Assignment (405) 205-1116
Nick Wells, High Plains Journal (785) 443-0233

TERMS AND CONDITIONS

Cattle will sell under the Terms and Conditions as recommended by the Red Angus Association of America and American Simmental Association.

LIABILITY

All persons attending the sale do so at their own risk. The owners, sale management, and the sale staff assume no liability for property loss or any accident that may occur.

SUPPLEMENTAL INFORMATION

A supplemental sheet will be available sale day with complete with breeding soundness results and current weights. Announcements from the auction block regarding the bulls selling in this sale take precedence over information listed in the catalog.

SALE ORDER

A specific lot order will be available sale day.

HERD HEALTH

All cattle will be accompanied by proper health certificates for immediate shipment to any of the lower 48 states.

VETERINARIAN

Dr. Brandon Weidenhaft, DVM (785) 621-4662

VIDEOS

Bulls will be videoed prior to the sale day. Videos will be available for viewing at DVAuction.com and InnovationAgMarketing.com.

TRUCKING/YARDAGE

Free Trucking on all bulls within a 150-mile radius! Take your bull home sale day and receive \$50 off of your purchase price. Free yardage on all bulls until April 26, 2020. Bulls are welcome to stay at a \$5/day cost if prior arrangements are made with Ivan Anderson.

PHOTOGRAPHY & VIDEOGRAPHY

Legacy Livestock Imaging

CATALOG PREPARED BY

THM Productions (806) 679-0231

ONLINE BIDDING PROVIDED BY DVAUCTION.COM

We are pleased to bring you real-time internet bidding and a live broadcast of this sale through DVAuction.com. If you are unable to attend for any reason, you may bid online at dvauction.com. Please register for bidder number at www.dvauction.com anytime prior to 12 Noon on Tuesday, March 24 to accommodate the approval process. After this date/time, bidder approval may be delayed. Approved bidders will be issued bidder number and access prior to the sale. For questions or sale bookings call the Office M-F 8am-6pm CT: (402) 316-5460.

THE GROW SAFE DATA

GrowSafe's data platform is a fully integrated system providing physical sensing, predictive analytics and cognitive computing. Commercial applications built on the platform collect data across the animal production supply chain, enabling new insights, enhancing decision making and ultimately helping producers optimize profit on their operations.

DVAuction
Broadcasting Real-Time Auctions

GrowSafe
SYSTEMS®

RED ANGUS GUIDE TO EPDS

- HB** – HerdBuilder is a maternally focused selection index that predicts the probability of developing profitable cowherd traits while maximizing the value of marketed progeny. Expressed as dollars per cow exposure, HB is calculated based on the scenario that bulls are mated to heifers and cows, replacement heifers are retained, and all remaining progeny are marketed on a quality-based carcass grid. (Index/High Value)
- GM** – GridMaster is a terminally focused selection index that predicts the probability to increase the value of marketed calves. GM places selection pressure on growth, feedyard performance and carcass quality, predicting differences in profit as expressed per cow exposure. GM is calculated based on the scenario that bulls are mated to cows only, and all progeny are marketed on a quality-based carcass grid. (Index/High Value)
- CED** – Calving Ease Direct predicts differences in the percent of calves born unassisted out of 2-year-old dams. (Percent/High Value)
- BW** – Birth Weight predicts differences in actual birth weight of progeny. (Pounds/Low Value)
- WW** – Weaning Weight predicts differences in 205-day weaning weight. (Pounds/High Value)
- YW** – Yearling Weight predicts differences in 365-day yearling weight. (Pounds/High Value)
- ADG** – Average Daily Gain predicts differences in weight gain between 205 and 365 days of age. (Pounds/High Value)
- DMI** – Dry Matter Intake predicts differences in daily feed intake as measured in a feedlot during the post-weaning period. (Pounds/Low Value)
- MILK** – Milk predicts differences in weaning weight attributed to the milking ability of the animal's daughters. (Pounds/High Value)
- HPG** – Heifer Pregnancy predicts differences in the percent of daughters who are able to conceive and calve at 2 years of age following exposure to breeding. (Percent/High Value)
- CEM** – Calving Ease Maternal predicts differences in the percent of daughters who are able to calve unassisted as 2-year-old heifers. (Percent/High Value)
- STAY** – Stayability predicts differences in the ability of an animals' retained daughters to remain productive in the herd – calve every year – through 6 years of age. (Percent/High Value)
- MARB** – Marbling predicts differences in marbling score – amount of intramuscular fat measured at the 13th rib. (Marbling Score Units/High Value)
- YG** – Yield Grade predicts differences in USDA Yield Grade, which is calculated using CW, REA and Fat. (Yield Grade Units/Low Value)
- CW** – Carcass Weight predicts differences in actual hot carcass weight. (Pounds/High Value)
- REA** – Ribeye Area predicts differences in square inches of ribeye area measured at the 13th rib. (Square Inches/High Value)
- FAT** – Fat predicts differences in the depth of backfat measured between the 12th and 13th ribs. (Inches/Low Value)

Ranch Tested. Rancher Trusted.

Red Angus

For more information, visit RedAngus.org.





LOT 1 - FHSU RED BOX F513

FHSU Red Box F513 is a direct son of the \$30,000 Mann Red Box 55C stud that topped the inaugural production sale at Fort Hays State University. Red Box 55C was selected by Kirk Duff of Power Plus Genetics in Hobart, Oklahoma. Red Box has taken the breed by storm as one of the most sought after and popular Red Angus bulls in the business. Daughters of Red Box have topped the market over the last year, with the highest selling Red Angus heifer calf of all times, commanding \$71,000 in December of 2019. F513 is backed by a Wideload daughter maternally. He is a dark red, stout made, powerhouse that is tremendous in his balance, look, and style. A rugged made strong aged herd sire prospect that charts top 17% WW, top 23% YW, top 5% YG, top 17% CW, and top 4% REA. Pay attention here to the potential from an outstanding herd sire prospect that was gaining over 4-pounds per day on the Grow Safe system.

1

FHSU RED BOX F513



DOB: 9/26/18 REG: 4219468 CATEGORY 3 TATTOO: F513

SLGN WIDELOAD 920W

SLGN WIDELOAD 920W

MANN RED BOX 55C

MANN MS WIDELOAD 6086 513

PELTON MISS AJA 0839U

PELTON MISS JADE 9546S

WEIGHTS

GROW SAFE DATA

BW	AWW	ADG	AVG DMI	RFI	RFI RANK
82	625	4.10	29.98	1.81	21

EPD DATA

HB	GM	CED	BW	WW	YW	ADG	DMI	MILK
116	48	9	0.9	68	105	0.23	1.49	20
ME	HPG	CEM	STAY	MARB	YG	CW	REA	FAT
0	11	5	10	0.22	-0.04	30	0.37	-0.01

SC: 38 CM



MANN Red Box 55C - Sire of Lot 1



THE RED ANGUS 18-MONTH-OLD BULLS

SLGN Wideload
Paternal Grandsire
of Lots 1 - 8



2 FHSU CHARGER F5055

DOB: 11/26/18 REG: 4224306 CATEGORY B TATTOO: F5055

SLGN WIDELOAD 920W

MANN CHARGER 800 51A
PELTON MISS AJA 0839U

SLGN WIDELOAD 920W

MANN WIDELOAD 6055 85B
MANN COM55 EQUAL32T W55

WEIGHTS

BW	AWW	ADG	AVG DMI	RFI	RFI RANK
80	572	4.89	25.66	-0.86	7

GROW SAFE DATA

EPD DATA

HB	GM	CED	BW	WW	YW	ADG	DMI	MILK
98	48	12	-0.4	69	109	0.24	1.92	19
ME	HPG	CEM	STAY	MARB	YG	CW	REA	FAT
1	10	6	7	0.4	0.1	31	0.21	0.03

FHSU Charger F5055 is sired by Mann Charger 800 51A, the full brother to Red Box. The influence of Pelton Miss Aja 0839U is certainly impactful. Strong maternal lines support this powerful bull. He charts top 9% WW, top 12% YW, top 22% ADG, top 14% CW, and top 14% REA. **SC: 34 CM**

3 FHSU CHARGER F522

DOB: 10/16/18 REG: 4224318 CATEGORY 3 TATTOO: F522

SLGN WIDELOAD 920W

MANN CHARGER 800 51A
PELTON MISS AJA 0839U

KS MR SHAMWOW A914

MANN MS SWA914 252 560
MANN MS CASH X MARCIE50N Z52

WEIGHTS

BW	AWW	ADG	AVG DMI	RFI	RFI RANK
80	613	3.95	23.37	-2.84	1

GROW SAFE DATA

EPD DATA

HB	GM	CED	BW	WW	YW	ADG	DMI	MILK
154	49	11	0.8	73	114	0.26	1.64	20
ME	HPG	CEM	STAY	MARB	YG	CW	REA	FAT
-2	11	6	14	0.21	-0.02	33	0.34	-0.01

F522 is another son of Red Box's full brother, Mann Charger 800 51A. The dam of this shapely, big hipped Category 3-HybRED SimAngus bull. He is top 23% GridMaster, top 4% WW, top 6% YW, top 15% ADG, top 6% YG, top 10% CW, and top 5% REA. He came to the weaning pen at 613-pounds and offers a WW Ratio of 137! He was the number 1 RFI bull on test, with an RFI of -2.84. A surefire option to add pounds of pay weight! **SC: 36 CM**

4 FHSU CHARGER F260

DOB: 11/15/18 REG: 4224308 CATEGORY 3 TATTOO: F260

SLGN WIDELOAD 920W

MANN CHARGER 800 51A
PELTON MISS AJA 0839U

FORT HAYS COW

WEIGHTS

BW	AWW	ADG	AVG DMI	RFI	RFI RANK
78	568	4.70	26.43	-1.68	3

GROW SAFE DATA

SIRE EPD DATA

HB	GM	CED	BW	WW	YW	ADG	DMI	MILK
126	47	13	-0.7	74	119	0.28	2.58	19
ME	HPG	CEM	STAY	MARB	YG	CW	REA	FAT
2	11	7	11	0.31	0.11	34	0.18	0.03

FHSU Charger F260 is a half-blood Red Angus strong aged bull that is by Mann Charger 800 51A. He is a dense made, thick topped, wide pinned bull that has added shape. He offers a sensible birth weight of 78-pounds. A sound option for use on well-managed virgin heifers. **SC: 35 CM**

5 FHSU MANN 804 856

DOB: 10/1/18 REG: 4102932 CATEGORY 2 TATTOO: F56

SLGN WIDELOAD 920W

MANN WIDELOAD 801 07C
PELTON MISS ADITA 0824U

PELTONS LEAGUE 215P

PELTON MISS BETH 1442U
PELTONS MISS LEA 9839R

WEIGHTS

BW	AWW	ADG	AVG DMI	RFI	RFI RANK
80	525	3.06	23.04	0.51	11

GROW SAFE DATA

EPD DATA

HB	GM	CED	BW	WW	YW	ADG	DMI	MILK
141	48	10	0.3	68	108	0.25	1.59	22
ME	HPG	CEM	STAY	MARB	YG	CW	REA	FAT
5	10	5	14	0.28	0.14	41	0.18	0.03

FHSU Mann 804 856 is a strong aged Red Angus bull that is ready for heavy service. He is by Wideload and backed by a productive Peltons League 215P daughter that originated in the famed Pelton program. He offers a sensible birth weight and offers excellent growth in addition. He charts top 11% WW, top 13% YW, top 21% ADG, top 2% CW, and top 18% REA. **SC: 35 CM**



THE RED ANGUS 18-MONTH-OLD BULLS

6 FHSU MANN 201 851



DOB: 9/24/18 REG: 4102944 CATEGORY 2 TATTOO: F51

SLGN WIDELOAD 920W

SLGN WIDE OPEN 931W

MANN WIDELOAD 801 07C

MANN MS WIDEOPEN 7113 Z01

PELTON MISS ADITA 0824U

PELTON MS BR.CHEROKEE 113T

WEIGHTS

GROW SAFE DATA

BW	AWW	ADG	AVG DMI	RFI	RFI RANK
65	574	4.34	29.23	1.41	19

EPD DATA

HB	GM	CED	BW	WW	YW	ADG	DMI	MILK
122	47	14	-1.9	60	97	0.23	1.42	22
ME	HPG	CEM	STAY	MARB	YG	CW	REA	FAT
2	11	7	10	0.26	0.11	40	0.2	0.02

FHSU Mann 201 851 is another Wideload son that is from the SLGN Wide Open 931W sired female from the iconic Pelton program. This bull offers tremendous real-world spread, starting at 68-pounds and weaning off at over 574-pounds of pay weight. He offers a top 28% CED, top 2% CW, and top 15% REA rankings among the breed. The number 1 calving ease prospect in the offering that will not sacrifice pounds at weaning time.

SC: 34 CM



WS Beef Maker R13 - Maternal Grand sire of Lot 7

7 FHSU MANN 370 871



DOB: 11/25/18 REG: 4102982 CATEGORY 3 TATTOO: F71

SLGN WIDELOAD 920W

WS BEEF MAKER R13

MANN WIDELOAD 801 07C

PELTON MISS 933A

PELTON MISS ADITA 0824U

PLC MS HOLLISTER 30S

WEIGHTS

GROW SAFE DATA

BW	AWW	ADG	AVG DMI	RFI	RFI RANK
80	503	3.88	21.83	-0.51	8

EPD DATA

HB	GM	CED	BW	WW	YW	ADG	DMI	MILK
174	50	13	-0.1	66	100	0.21	1.13	17
ME	HPG	CEM	STAY	MARB	YG	CW	REA	FAT
1	11	6	15	0.32	-0.19	38	0.7	-0.03

FHSU Mann 370 871 is a leading son of Wideload that is from a top WS Beef Maker R13 daughter. He is a Category 3-HybRED SimAngus bull that will add pounds, performance, and genuine shape. With a sensible 79-pound birth weight, he is a logical option for use on well-managed heifers. Top 9% GridMaster, top 16% WW, top 28% YW, top 1% YG, top 4% CW, top 1% REA, and top 1% Fat. A heifer safe option with excellent carcass merit. **SC: 35.5 CM**



Lee's 3108 - Dam of Lot 8

8 FHSU F3108



DOB: 10/20/18 REG: 4228642 CATEGORY 3 TATTOO: F3108

SLGN WIDELOAD 920W

PIEPER RED ANGUS BULL

MANN CHARGER 800 51A

LEE'S 3108

PELTON MISS AJA 0839U

PIEPER RED ANGUS BULL

WEIGHTS

GROW SAFE DATA

BW	AWW	ADG	AVG DMI	RFI	RFI RANK
78	588	4.03	26.81	-0.88	6

EPD DATA

HB	GM	CED	BW	WW	YW	ADG	DMI	MILK
126	47	13	-0.7	74	119	0.28	2.58	19
ME	HPG	CEM	STAY	MARB	YG	CW	REA	FAT
2	11	7	11	0.31	0.11	34	0.18	0.03

FHSU F3108 is a low birth weight, calving ease option by Mann Charger 800 51A. F3108 is a smooth made, well-balanced, good bodied bull that boasts a 78-pound actual birth weight. An excellent option for use on well-managed virgin heifers. **SC: 39 CM**





THE RED ANGUS 18-MONTH-OLD BULLS

9

FHSU 02C F667



DOB: 9/15/18 REG: 4102986 CATEGORY 3 TATTOO: F667

FEDDES OSCAR X28

KS MR SHAMWOW A914

MANN OSCARX28 318 02C

FHSU MANN MS SWA914 800 667

MANN MS WIDELOAD 810 318

PELTON MISS AJA 0839U

WEIGHTS

GROW SAFE DATA

BW	AWW	ADG	AVG DMI	RFI	RFI RANK
68	597	4.78	27.84	-2.01	2

EPD DATA

HB	GM	CED	BW	WW	YW	ADG	DMI	MILK
172	49	14	-1.6	67	107	0.25	1.55	25
ME	HPG	CEM	STAY	MARB	YG	CW	REA	FAT
0	11	7	15	0.36	0.03	32	0.17	0

FHSU F90 is an own son of the walking sire at Fort Hays State University, Mann Oscar X28 318 02C. The dam of F90 is a daughter of KS MR Shamwow A914, and traces to the iconic Pelton Miss Aja 0839U. Miss Aja 0839U is the dam of the \$30,000 and worldly popular Mann Red Box 55C. He ranks top 21% GridMaster, top 29% CED, top 14% WW, top 15% YW, top 20% ADG, top 30% Milk, top 16% YG, top 12% CW, and top 20% REA. A well-rounded Category 3-HybRED herd sire prospect with added carcass merit. He was the second highest RFI bull while gaining nearly 5-pounds per day on a growing ration. A great combination of performance and feed efficiency.

SC: 38 CM



10

FHSU 02C F660



DOB: 9/20/18 REG: 4102994 CATEGORY 3 TATTOO: F660

FEDDES OSCAR X28

MANN KAHUNA 925 01B

MANN OSCARX28 318 02C

FHSU MANN MS KAHUNA 370 660

MANN MS WIDELOAD 810 318

PELTON MISS 933A

WEIGHTS

GROW SAFE DATA

BW	AWW	ADG	AVG DMI	RFI	RFI RANK
73	555	3.77	25.86	1.12	18

EPD DATA

HB	GM	CED	BW	WW	YW	ADG	DMI	MILK
164	49	14	-1.3	59	93	0.21	1.31	22
ME	HPG	CEM	STAY	MARB	YG	CW	REA	FAT
2	11	8	15	0.48	0.01	25	0.15	0

FHSU F95 is another Oscar X28 son that is backed by the influence of Mann Kahuna 925 01B, a walking sire at FHSU that has tremendous thickness, shape, and depth. His dam traces to the Pelton Miss 933A female maternally and excellent udder quality supports this herd sire prospect. He ranks top 29% GridMaster, top 10% YG, and top 24% REA. A heifer safe option with a sensible 73-pound birth weight. **SC: 36 CM**



Pelton Miss Aja 0839U - Maternal Granddam of Lot 9

11

FHSU 02C F5145



DOB: 11/1/18 REG: 4224312 CATEGORY B TATTOO: F5145

FEDDES OSCAR X28

SLGN WIDELOAD 920W

MANN OSCARX28 318 02C

MANN MS WIDELOAD 7145 539

MANN MS WIDELOAD 810 318

PELTON MISS OLIVA 0928T

WEIGHTS

GROW SAFE DATA

BW	AWW	ADG	AVG DMI	RFI	RFI RANK
76	583	4.50	24.98	-1.19	4

EPD DATA

HB	GM	CED	BW	WW	YW	ADG	DMI	MILK
132	48	13	-1.8	63	100	0.23	1.48	18
ME	HPG	CEM	STAY	MARB	YG	CW	REA	FAT
3	11	7	11	0.45	0.18	26	-0.16	0.02

FHSU 02C 5145 is another strong calving ease option that boasts a 76-pound actual birth weight. This smooth shouldered, clean jointed option is backed by a young and productive SLGN Wideload 920W daughter from the Miss Olivia 0928T cow family. He offers a double digit CED and negative BW EPD that is accompanied by a top 28% WW ranking. **SC: 34 CM**



Feddes Oscar X28 Paternal Grandsire of Lots 9 - 11



THE RED ANGUS 18-MONTH-OLD BULLS

LOT 12 - FHSU MANN 153 F76



12 FHSU MANN 153 F76



DOB: 10/5/18 REG: 4102938 CATEGORY 2 TATTOO: F76

BRYLOR WRAZ MAKN WAVES 39X

BUF CRK LANCER R017

MANN KAHUNA 925 01B

MANN MS R017 904 Y53

JKC MISSY 63W

FSR N.KING ESTHER-ET 907W

WEIGHTS

GROW SAFE DATA

BW	AWW	ADG	AVG DMI	RFI	RFI RANK
78	539	4.74	29.52	0.09	10

EPD DATA

HB	GM	CED	BW	WW	YW	ADG	DMI	MILK
141	49	12	-0.5	65	103	0.24	1.16	20
ME	HPG	CEM	STAY	MARB	YG	CW	REA	FAT
1	10	5	12	0.28	0.06	31	0.22	0.01

Mann Kahuna 925 01B is a stout featured, heavy structured, big hipped son of Brylor WRAZ Makin Waves 39X, from the Bieber Makin Hay 9913 breed icon. Maternally, F76 is from the influence of BUF CRK Lancer R017 and 5L Norseman King 2291. Here is a strong-aged herd bull prospect that offers balanced data, and a moderate birth weight! **SC: 38 CM**

13 FHSU KAHUNA F261



DOB: 11/5/18 REG: 4224310 CATEGORY A TATTOO: F261

BRYLOR WRAZ MAKN WAVES 39X

MANN WIDELOAD 008 35A

MANN KAHUNA 925 01B

MANN MS WL008 263 562

JKC MISSY 63W

MANN MS EQUAL32T 7201 Z63

WEIGHTS

GROW SAFE DATA

BW	AWW	ADG	AVG DMI	RFI	RFI RANK
68	510	4.21	24.34	1.81	20

EPD DATA

HB	GM	CED	BW	WW	YW	ADG	DMI	MILK
137	47	9	0.6	55	84	0.18	1.01	20
ME	HPG	CEM	STAY	MARB	YG	CW	REA	FAT
5	9	6	14	0.38	0.06	18	-0.01	0.01

FHSU Kahuna F261 is another top Kahuna son that is from the influence of Mann Wideload 008 35A maternally. He is strong topped, thick ended, and loaded with shape from end to end. A sensible 68-pound birth weight makes this stud a logical option for use on well-managed heifers. **SC: 36 CM**



Brylor WRAZ Makn Waves 39X
Paternal Grandsire of Lots 12 - 14

14 FHSU KAHUNA F8452



DOB: 10/2/18 REG: 4224320 CATEGORY A TATTOO: F8452

BRYLOR WRAZ MAKN WAVES 39X

MANN WIDELOAD 008 35A

MANN KAHUNA 925 01B

MANN MS WL008 268 573

JKC MISSY 63W

MANN EQUAL32T 7096 Z68

WEIGHTS

GROW SAFE DATA

BW	AWW	ADG	AVG DMI	RFI	RFI RANK
76	613	4.39	26.65	0.55	13

EPD DATA

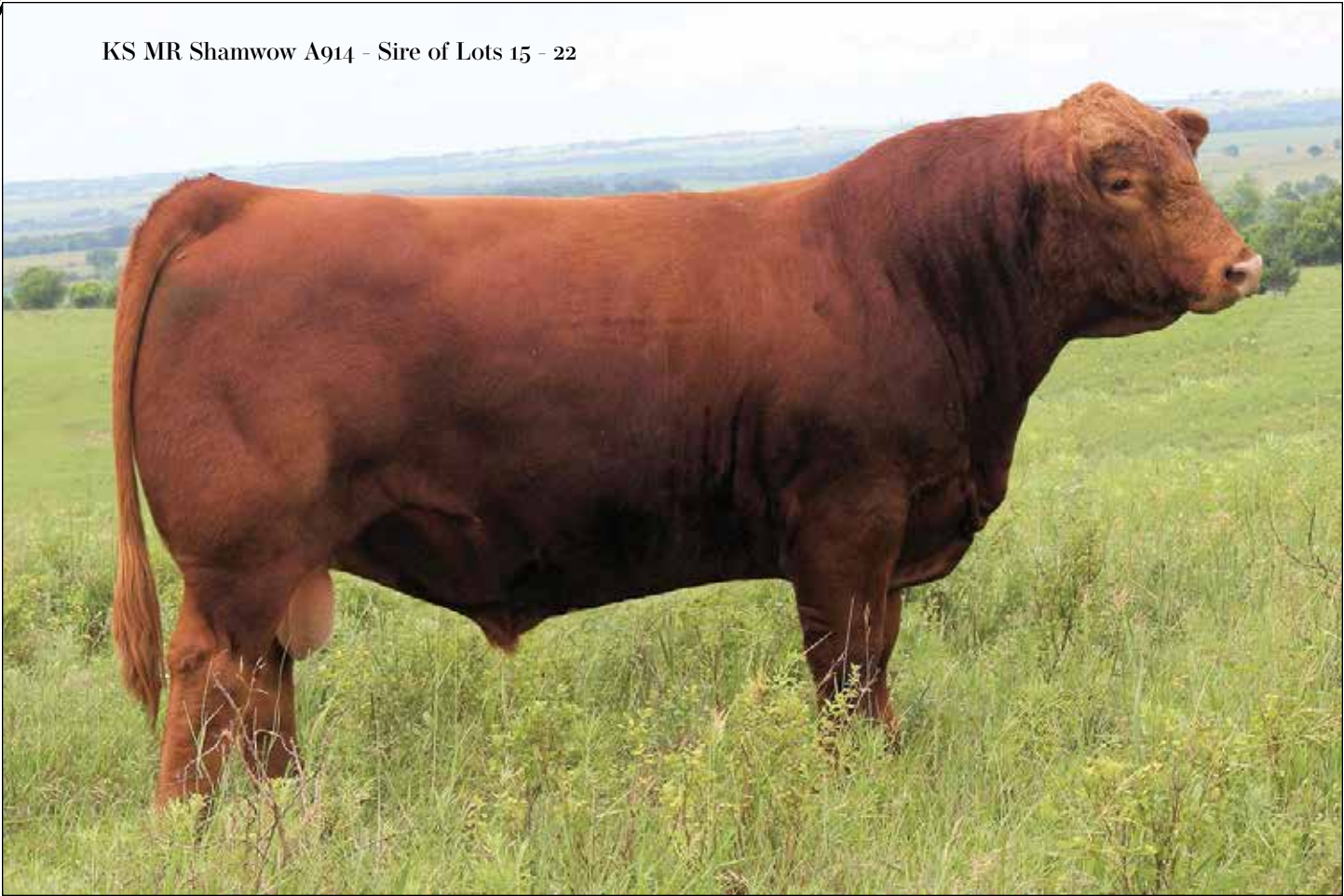
HB	GM	CED	BW	WW	YW	ADG	DMI	MILK
138	48	9	0.6	63	98	0.22	1.42	21
ME	HPG	CEM	STAY	MARB	YG	CW	REA	FAT
5	10	6	13	0.34	0.06	24	0.1	0.01

FHSU Kahuna F8452 is a stout made, big ended Category 1A Red Angus bull that is by Mann Kahuna 925 01B and backed by the influence once again of a young and productive Mann Wideload 008 35A daughter. He offers a big spread of 76-pounds at birth to over 600-pounds at weaning time, with a 114 WW Ratio. Numerically he excels with added carcass merit, as he ranks among the top 25% YG, top 34% CW, top 32% REA, and top 20% Fat. **SC: 36.5 CM**



THE SIMMENTAL 18-MONTH-OLD BULLS

KS MR Shamwow A914 - Sire of Lots 15 - 22



KS MR Shamwow A914 is the red-hided powerhouse Purebred Simmental herd sire at Fort Hays State University. He is a three-dimensional, shapely, long bodied bull that offers exceptional length and style. Shamwow has sired elite Simmental and SimAngus cattle in our program, with countless daughters being retained in herd. The udder quality, maternal instinct, and genuine fleshing ability that the Shamwow daughters possess is simply second to none. From a carcass quality, performance, and terminal perspective there is no doubt that A914 checks all of the boxes. KS MR Shamwow A914 ranks top 1% GridMaster, top 1% WW, top 1% YW, top 11% DMI, top 6% ADG, top 21% ME, top 4% Herd Builder, top 22% Stay, top 1% YG, top 1% CW, top 1% REA, and top 1% Fat. Elite phenotype, real-world performance, and breed enhancing genomics support these Shamwow sons. Add the heterosis advantage to your program and watch the pay weight of your next calf crop pay dividends!

15 FHSU SHAMWOW F131

DOB: 10/14/18 REG: 3690723 SIMANGUS TATTOO: F131

BCLR SHAMWOW W611
KS MR SHAMWOW A914 **131**
MFSR LABEL 712X

WEIGHTS			GROW SAFE DATA				
BW	AWW		ADG	AVG DMI	RFI	RFI RANK	
78	539		4.5	28.66	1.1	17	
EPD DATA							
CE	BW	WW	YW	MCE	MILK	MWW	STAY
11.6	0.3	64.6	99.1	5.7	21.7	76.7	16.3
CW	YG	MARB	BF	REA	API	TI	
36.8	-0.2	0.2	-0.051	0.58	123.5	67.8	

16 FHSU SHAMWOW F321

DOB: 11/28/18 REG: 3690725 SIMANGUS TATTOO: F321

BCLR SHAMWOW W611
KS MR SHAMWOW A914 **321**
MFSR LABEL 712X

WEIGHTS			GROW SAFE DATA				
BW	AWW	ADG	AVG DMI	RFI	RFI RANK		
75	588	5.16	31.02	1.01	16		
EPD DATA							
CE	BW	WW	YW	MCE	MILK	MWW	STAY
12	-0.1	70.4	107.5	5.7	23.8	76.4	16.2
CW	YG	MARB	BF	REA	API	TI	
36.5	-0.2	0.2	-0.051	0.58	126.6	71.9	

SC: 38.5 CM



17 FHSU SHAMWOW F412

DOB: 11/25/18 REG: 3690727 SIMANGUS TATTOO: F412

BCLR SHAMWOW W611

KS MR SHAMWOW A914

MFSR LABEL 712X

412

WEIGHTS

GROW SAFE DATA

BW	AWW	ADG	AVG DMI	RFI	RFI RANK
76	598	4.61	26.19	-0.37	9

EPD DATA

CE	BW	WW	YW	MCE	MILK	MWW	STAY
11.8	0.5	74.3	113.2	5.6	23.8	77.2	15.9

CW	YG	MARB	BF	REA	API	TI
39.1	-0.25	0.2	-0.061	0.7	126.7	74

SC: 36 CM

20 FHSU SHMAWOW F465

DOB: 10/23/18 REG: 3690737 SIMANGUS TATTOO: F465

BCLR SHAMWOW W611

KS MR SHAMWOW A914

MFSR LABEL 712X

465

WEIGHTS

GROW SAFE DATA

BW	AWW	ADG	AVG DMI	RFI	RFI RANK
78	538	4.81	26.46	-1.15	5

EPD DATA

CE	BW	WW	YW	MCE	MILK	MWW	STAY
11.5	0.7	68.5	104.6	5.6	22	77.2	15.9

CW	YG	MARB	BF	REA	API	TI
39.1	-0.25	0.2	-0.061	0.7	123.7	70

SC: 35 CM

18 FHSU SHAMWOW F452

DOB: 10/20/18 REG: 3690729 SIMANGUS TATTOO: F452

BCLR SHAMWOW W611

KS MR SHAMWOW A914

MFSR LABEL 712X

452

WEIGHTS

GROW SAFE DATA

BW	AWW	ADG	AVG DMI	RFI	RFI RANK
78	655	5.53	32.91	0.55	12

EPD DATA

CE	BW	WW	YW	MCE	MILK	MWW	STAY
11.3	0.9	79.3	120.5	5.6	24.6	77.2	15.9

CW	YG	MARB	BF	REA	API	TI
39.1	-0.25	0.2	-0.061	0.7	127.4	76.5

SC: 35 CM

21 FHSU SHAMWOW F473

DOB: 11/3/18 REG: 3690731 SIMANGUS TATTOO: F473

BCLR SHAMWOW W611

KS MR SHAMWOW A914

MFSR LABEL 712X

473

WEIGHTS

GROW SAFE DATA

BW	AWW	ADG	AVG DMI	RFI	RFI RANK
80	564	5.51	29.7	0.68	14

EPD DATA

CE	BW	WW	YW	MCE	MILK	MWW	STAY
11.1	1.2	73.8	112.5	5.6	22.8	77.2	15.9

CW	YG	MARB	BF	REA	API	TI
39.1	-0.25	0.2	-0.061	0.7	124.4	72.7

SC: 38 CM

19 FHSU SHAMWOW F455

DOB: 10/9/18 REG: 3690735 SIMANGUS TATTOO: F455

BCLR SHAMWOW W611

KS MR SHAMWOW A914

MFSR LABEL 712X

455

WEIGHTS

GROW SAFE DATA

BW	AWW	ADG	AVG DMI	RFI	RFI RANK
80	665	-	-	-	-

EPD DATA

CE	BW	WW	YW	MCE	MILK	MWW	STAY
11	1.2	78.4	119.2	5.6	23.9	77.2	15.9

CW	YG	MARB	BF	REA	API	TI
39.1	-0.25	0.2	-0.061	0.7	126	75.4

SC: 36 CM

22 FHSU SHAMWOW F484

DOB: 10/21/18 REG: 3690733 SIMANGUS TATTOO: F484

BCLR SHAMWOW W611

KS MR SHAMWOW A914

MFSR LABEL 712X

484

WEIGHTS

GROW SAFE DATA

BW	AWW	ADG	AVG DMI	RFI	RFI RANK
79	662	5.05	33.36	0.84	15

EPD DATA

CE	BW	WW	YW	MCE	MILK	MWW	STAY
11.3	0.9	80.1	121.8	5.6	24.8	77.2	15.9

CW	YG	MARB	BF	REA	API	TI
39.1	-0.25	0.2	-0.061	0.7	127.6	77

SC: 39 CM



THE RED ANGUS YEARLING BULLS



LOT 23 - FHSU 809 51A 957G

FHSU 809 51A 957G leads off the stout set of yearling bulls that are from the Mann Charger 800 51A sire group. 957G is a deep, dark red, big boned, heavy muscled, wide topped herd sire prospect that offers a rugged and masculine look. This big scrotal bull is backed by a Pelton bred dam on his maternal side. He is a performance-oriented bull that ranks top 11% WW, top 12% YW, top 17% ADG, top 4% YG, top 20% CW, and top 8% REA. He came to the weaning pen with over 800-pounds of pay weight and boasts a WW Ratio of 106. A stout made herd sire prospect that will add value to your calf crop!

23 FHSU 809 51A 957G

DOB: 3/29/19 REG: 4217660 CATEGORY 3 TATTOO: 957G

SLGN WIDELOAD 920W

MANN CHARGER 800 51A

PELTON MISS AJA 0839U

NEO-SHO DIRECT TICKET M517

MANN MS TICKET 6143 809

PELTON MISS ERIN 9648S

WEIGHTS

BW	AWW
80	802

EPD DATA

HB	GM	CED	BW	WW	YW	ADG	DMI	MILK
143	48	10	0	66	105	0.25	1.78	24
ME	HPG	CEM	STAY	MARB	YG	CW	REA	FAT
-1	11	5	13	0.31	-0.04	26	0.25	-0.01

SC: 33 CM



SLGN Wideload 920W
Paternal Grand sire of Lots 23 - 32



Damar Majestic Tarmily B430 - Dam of Lot 25

24 FHSU 310 942G

DOB: 3/30/19 REG: 4229322 CATEGORY 3 TATTOO: 942G

SLGN WIDELOAD 920W

MANN CHARGER 800 51A

PELTON MISS AJA 0839U

FORT HAYS SIMAGNUS COW

WEIGHTS

BW	AWW
95	755

SIRE EPD DATA

HB	GM	CED	BW	WW	YW	ADG	DMI	MILK
128	48	10	0.7	66	103	0.23	1.49	21
ME	HPG	CEM	STAY	MARB	YG	CW	REA	FAT
0	11	75	12	0.22	-0.04	29	0.35	-0.01

942G is a powerful Charger son that is backed by a powerful SimAngus female maternally that offers exceptional udder quality and maternal power. This blaze faced stud will sire cattle with added length, shape, and thickness. **SC: 35 CM**

26 FHSU 7157 51A 953G

DOB: 5/1/19 REG: 4217646 CATEGORY 3 TATTOO: 953G

SLGN WIDELOAD 920W

MANN CHARGER 800 51A

PELTON MISS AJA 0839U

PELTON WAR PATH 40N

PELTON MS WARPATH 157T

WEIGHTS

BW	AWW
78	779

EPD DATA

HB	GM	CED	BW	WW	YW	ADG	DMI	MILK
118	46	12	-0.7	61	93	0.19	1.5	20
ME	HPG	CEM	STAY	MARB	YG	CW	REA	FAT
-2	10	6	11	0.42	0.14	28	0.09	0.03

Mann Charger 800 51A is the sire of 953G. Charger 800 51A is most commonly known as the full brother to the popular Mann Red Box 55C, the stud that topped our inaugural sale at \$30,000 to Duff Cattle Company. 953G is another big spread bull that has a 78-pound birth weight and spreads to nearly 78-pounds of pay weight at weaning time with a 103 WW Ratio. He ranks top 24% CW and top 35% REA. **SC: 33 CM**

25 FHSU CHARGER 1430 955G

DOB: 4/15/19 REG: ARA PENDING CATEGORY A TATTOO: 955G

SLGN WIDELOAD 920W

MANN CHARGER 800 51A

PELTON MISS AJA 0839U

RED SOO LINE MOMENTUM 7051

DAMAR MAJESTIC TARMILY B430

RED SOO LINE BIRDIE 7034

WEIGHTS

BW	AWW
76	550

SIRE EPD DATA

HB	GM	CED	BW	WW	YW	ADG	DMI	MILK
126	47	13	-0.7	74	119	0.28	2.58	19
ME	HPG	CEM	STAY	MARB	YG	CW	REA	FAT
2	11	7	11	0.31	0.11	34	0.18	0.03

955G is a big hipped Charger son that is backed by a tremendous young female that was bred in the historic Damar program of Wisconsin. Damar Majestic Tarmily B430 is a stout featured, big hipped, wide bodied daughter of Red Soon Line Momentum 7051, an own son of the legendary Red Soo Line Baneberry 5238. Baneberry is one of the Red Angus breed's all-time greatest females. 955G is backed by proven lineage to accompany his visual performance and quality. **SC: 31 CM**

27 FHSU 7161 51A 938G

DOB: 3/28/19 REG: 4217648 CATEGORY B TATTOO: 938G

SLGN WIDELOAD 920W

MANN CHARGER 800 51A

PELTON MISS AJA 0839U

BROWN VACATION H7106

PELTON MISS VAC 0927T

PELTONS MISS JERI 0668P

WEIGHTS

BW	AWW
83	696

EPD DATA

HB	GM	CED	BW	WW	YW	ADG	DMI	MILK
156	47	12	-0.2	67	103	0.22	1.66	22
ME	HPG	CEM	STAY	MARB	YG	CW	REA	FAT
2	11	6	15	0.21	-0.04	23	0.28	0

FHSU 7161 51A 938G is another standout from the Charger sire group. He is backed by a Pelton bred dam from the Brown Vacation H7106 sire influence. He ranks top 25% WW, top 33% YW, top 5% YG, top 12% REA, and top 9% Fat. **SC: 28 CM**



THE RED ANGUS YEARLING BULLS



LOT 30 - FHSU 5082 07C 946G

28 FHSU CHARGER 265 943G

DOB: 4/9/19 REG: 4224314 CATEGORY A TATT00: 943G

SLGN WIDELOAD 920W

MANN CHARGER 800 51A

PELTON MISS AJA 0839U

BECKTON EPIC U368 KM

DAMAR DEIDRA C100

DAMAR DEIDRA Z056

WEIGHTS

BW	AWW
74	639

EPD DATA

HB	GM	CED	BW	WW	YW	ADG	DMI	MILK
155	48	12	-1	64	104	0.25	1.7	22
ME	HPG	CEM	STAY	MARB	YG	CW	REA	FAT
1	10	7	14	0.35	0.11	25	0.11	0.03

FHSU Charger 265 943G is another standout performance son from the Charger sire group. His dam is by Beckton Epic U368 KM and from the Damar Diedra cow line. He ranks top 23% WW, top 20% YW, top 18% ADG, top 30% CW, and top 30% REA. He offers a sensible 75-pound birth weight and is an option for use on well-managed heifers. **SC: 29 CM**

29 FHSU CHARGER 932G

DOB: 3/23/19 REG: 4227754 CATEGORY 3 TATT00: 932G

SLGN WIDELOAD 920W

MANN CHARGER 800 51A

PELTON MISS AJA 0839U

WEIGHTS

BW	AWW
80	720

SIRE EPD DATA

HB	GM	CED	BW	WW	YW	ADG	DMI	MILK
126	47	13	-0.7	74	119	0.28	2.58	19
ME	HPG	CEM	STAY	MARB	YG	CW	REA	FAT
2	11	7	11	0.31	0.11	34	0.18	0.03

932G is a stout made Charger son that boasts an impressive weaning weight of 720 pounds. His dam is a productive commercial Red Angus female with excellent udder quality. He is a big spread bull that is sure to add pounds of pay weight at weaning time. **SC: 33 CM**



30 FHSU 5082 07C 946G

DOB: 4/20/19 REG: 4217654 CATEGORY A TATTOO: 946G

SLGN WIDELOAD 920W

MANN WIDELOAD 801 07C

PELTON MISS ADITA 0824U

SLGN WIDELOAD 920W

MANN MS WIDELOAD 101 457

PELTON MISS PEGGY 6030Y

WEIGHTS

BW	AWW
78	736

EPD DATA

HB	GM	CED	BW	WW	YW	ADG	DMI	MILK
125	47	13	-1	64	103	0.24	1.49	19
ME	HPG	CEM	STAY	MARB	YG	CW	REA	FAT
3	7	6	11	0.25	0.12	40	0.2	0.02

FHSU 5082 07C 946G is a leading son of Mann Wideload 801 07C that is backed by the influence of Pelton Miss Peggy 6030Y, a productive female that traces to the maternal powerhouse Beckton Julian GG B571. With a 79-pound actual birth weight, 946G spread to well over 700-pounds of pay weight in the weaning pen. He is a big bodied, soggy made bull that ranks top 22% WW, top 21% YW, top 23% ADG, top 3% CW, and top 15% REA.

SC: 32 CM

31 FHSU 5092 07C 934G

DOB: 4/1/19 REG: 4217656 CATEGORY B TATTOO: 934G

SLGN WIDELOAD 920W

MANN WIDELOAD 801 07C

PELTON MISS ADITA 0824U

SLGN WIDELOAD 920W

MANN MS WIDELOAD 7092 533

PELTON MISS CELE 0930T

WEIGHTS

BW	AWW
73	562

EPD DATA

HB	GM	CED	BW	WW	YW	ADG	DMI	MILK
131	48	13	-1	60	95	0.22	1.03	15
ME	HPG	CEM	STAY	MARB	YG	CW	REA	FAT
1	7	6	12	0.27	0.03	32	0.25	0.01

FHSU 5092 7C 934G is a line bred SLGN Wideload 920W son that is backed by Pelton Miss Cele 0930T. He is a low birth weight, heifer safe option that will add consistency and uniformity to your calf crop. A strong heifer safe yearling bull that boasts a double-digit CED and negative BW EPD. He ranks top 25% DMI, top 16% YG, top 12% CW, top 11% REA, and top 15% Fat.

SC: 28 CM

32 FHSU 07C 950G

DOB: 3/28/19 REG: 4224322 CATEGORY 3 TATTOO: 950G

SLGN WIDELOAD 920W

MANN WIDELOAD 801 07C

PELTON MISS ADITA 0824U

PELTON GOOD ONE 208S

MANN MS GOODONE208S 133 908

PELTON MS GOOD ONE 133S

WEIGHTS

BW	AWW
78	679

EPD DATA

HB	GM	CED	BW	WW	YW	ADG	DMI	MILK
133	48	11	-0.2	65	98	0.21	1.28	16
ME	HPG	CEM	STAY	MARB	YG	CW	REA	FAT
3	6	5	13	0.38	0.07	35	0.25	0.01

FHSU 07C 950G is a stout made Category 3 HybRED SimAngus bull that is sired by Mann Wideload 801 07C. His dam, Mann Ms Goodone 208S 133 908 is backed by individuals of influence within the Red Angus breed, such as BFCK Cherokee Canyon 4912, and two shots of Brown Ms Abigrace L7730, the highest dollar generating female in the history of the breed, producing in excess of \$3 Million in progeny sales over her lifetime. Strong maternal lines back this powerful herd sire prospect. He ranks top 21% WW, top 35% YW, top 28% YG, top 7% CW, top 10% REA, and top 29% Fat.

SC: 32 CM

This sale will be broadcast live on the internet.

DVAuction
Broadcasting Real-Time Auctions

Real time bidding & proxy bidding available.





THE RED ANGUS YEARLING BULLS



C-Bar Stony W914 - Maternal Granddam of Lot 33



C-Bar Legit 133 - Maternal Brother to Dam of Lot 33

33 FHSU 02C 939G

DOB: 3/21/19 REG: 4224324 CATEGORY B TATTOO: 939G

FEDDES OSCAR X28

C-BAR CONTOUR 107X

MANN OSCARX28 318 02C

BRA MISS STONY 628

MANN MS WIDELOAD 810 318

C-BAR STONY W914

WEIGHTS

BW	AWW
74	623

EPD DATA

HB	GM	CED	BW	WW	YW	ADG	DMI	MILK
162	49	15	-2.8	60	98	0.24	1.55	20
ME	HPG	CEM	STAY	MARB	YG	CW	REA	FAT
2	10	8	14	0.61	0.17	23	-0.11	0.03

FHSU 02C 939G is a standout calving ease prospect that is sire by the resident herd sire, Mann Oscar X28 318 02C. His dam, Miss Stony 628 is an own daughter of C-Bar Contour 107X and from the legendary C-Bar Stony W914 matron. W914 is the dam of the highest marbling bull in recent history of the Red Angus breed, C-Bar Legit 133E, that topped the C-Bar Bull Sale at \$60,000 to Kolle Red Angus of Texas. 939G ranks top 26% GridMaster, top 22% CED, top 10% Marb, and remains balanced in his growth figures. **SC: 28 CM**

34 FHSU WIDELOAD 930G

DOB: 3/13/19 REG: 4227752 CATEGORY 1A TATTOO: 930G

SLGN WIDELOAD 920W

JKC WHISTLER 404

PELTON WIDELOAD 78B

JKC MISSY 63W

PELTON MISS JAYLA 0508S

3JG R509

WEIGHTS

BW	AWW
65	588

EPD DATA

HB	GM	CED	BW	WW	YW	ADG	DMI	MILK
161	48	10	-1	60	101	0.25	1.68	22
ME	HPG	CEM	STAY	MARB	YG	CW	REA	FAT
5	8	6	16	0.43	0.07	24	0.13	0.02

FHSU Wideload 930G is sired by Wideload and backed by the influence of JKC Whistler 404 maternally. He offers a sensible 65-pound birth and a calving ease figure suitable for use on well-managed virgin heifers. He is supported by balanced numbers and ranks top 18% for ADG. **SC: 30 CM**

35 FHSU SHAMWOW 944G

DOB: 4/1/19 REG: 3690739 SIMANGUS TATTOO: 944G

BCLR SHAMWOW W611

KS MR SHAMWOW A914

106

MFSR LABEL 712X

WEIGHTS

BW	AWW
80	600

EPD DATA

CE	BW	WW	YW	MCE	MILK	MWW	STAY
10.9	0.7	72.5	111	5.8	23.5	76.3	16.9
CW	YG	MARB	BF	REA	API	TI	
34.7	-0.15	0.2	-0.043	0.48	126	71.9	

FHSU Shamwow 944G is a SimAngus yearling bull by our resident herd sire, Shamwow. He is a stout featured, heavy structured, long sided bull that will add performance and vigor to your calf crop. **SC: 34**



KR MR Shamwow A914 - Sire of Lot 35



LOT	COLOR	AGE
36A	BLACK	April
36B	BLACK	April
36C	BLACK	April
36D	BLACK	April
36E	BLACK	April
37A	RED	April
37B	RED	April
37C	RED	April
37D	RED	April
37E	RED	April
38A	RED	April
38B	RED	April
38C	RED	April
38D	RED	April
38E	RED	April

LOT	COLOR	AGE
39A	RED	April
39B	RED	April
39C	RED	April
39D	RED	April
39E	RED	April
40A	RED	April
40B	RED	April
40C	RED	April
40D	RED	April
40E	RED	April

The heifers have been calfhood vaccinated and have their Vibrio Lepto Vaccination's prior to sale. They have also had the following prior to the sale:

- Ivermax and Safeguard
- Inforce 3
- Bovishield Gold One Shot
- Vission 7 with Spur



INNOVATION
AgMarketing, LLC
PO Box Z
De Soto, KS 66018

Presorted
First Class
US Postage
PAID
SlateGroup



OFFERING 35 RED ANGUS BULLS & 25 COMMERCIAL RED ANGUS FEMALES



**FORT HAYS STATE
UNIVERSITY**

Forward thinking. World ready.