



The Black and White Sale
CODY CATTLE COMPANY
2020 BULL SALE • MARCH 2 IN COURTLAND, KANSAS AT 1 P.M.

CCC

CODY CATTLE COMPANY

Welcome!

2019 is a year that many of us aren't soon to forget. From Mother Nature challenging us nearly the whole year, to markets that were unfavorable, it was a tough year. The one thing that we can all take away from 2019 is that if we can survive it, we will make it moving forward.

Observing the calf markets this past fall, it's never been more apparent that quality sells. Buyers are looking for load lots from reputable genetics that will perform in the feedlot and are paying a premium for them. We feel that this set of bulls will help meet those demands.

Lindsay and I's motto is that we don't just want to grow our herd in numbers, but we also want to grow in quality. When flipping through the catalog, I hope that you will appreciate the commitment we've made to making the best stock we know how to make. Every year we invest heavily to produce the best genetics we can. A large part of our offering is either an embryo transfer bull or likely is out of an ET cow. We're very proud of this set and stand behind them 100 percent.

Come early and tour the bulls and our cow herd (enjoy a steak,) then stick around afterwards for a crawfish boil and entertainment. Please feel free to call and discuss the bulls.

- Cody Runft



THE RUNFT FAMILY

CODY CATTLE COMPANY

CODY, LINDSAY, WHITLEY AND RANCE RUNFT
P.O. BOX 197 • SCANDIA, KS 66966
CODY • 316-640-0733
LINDSAY • 785-614-2861
COLBY BAKER, HERDSMAN • 913-370-1152
WWW.CODYCATTLECOMPANY.COM

GUEST CONSIGNORS

DOUB CHAROLAIS, INDIANA
ANDREW DOUB • 317-440-0525

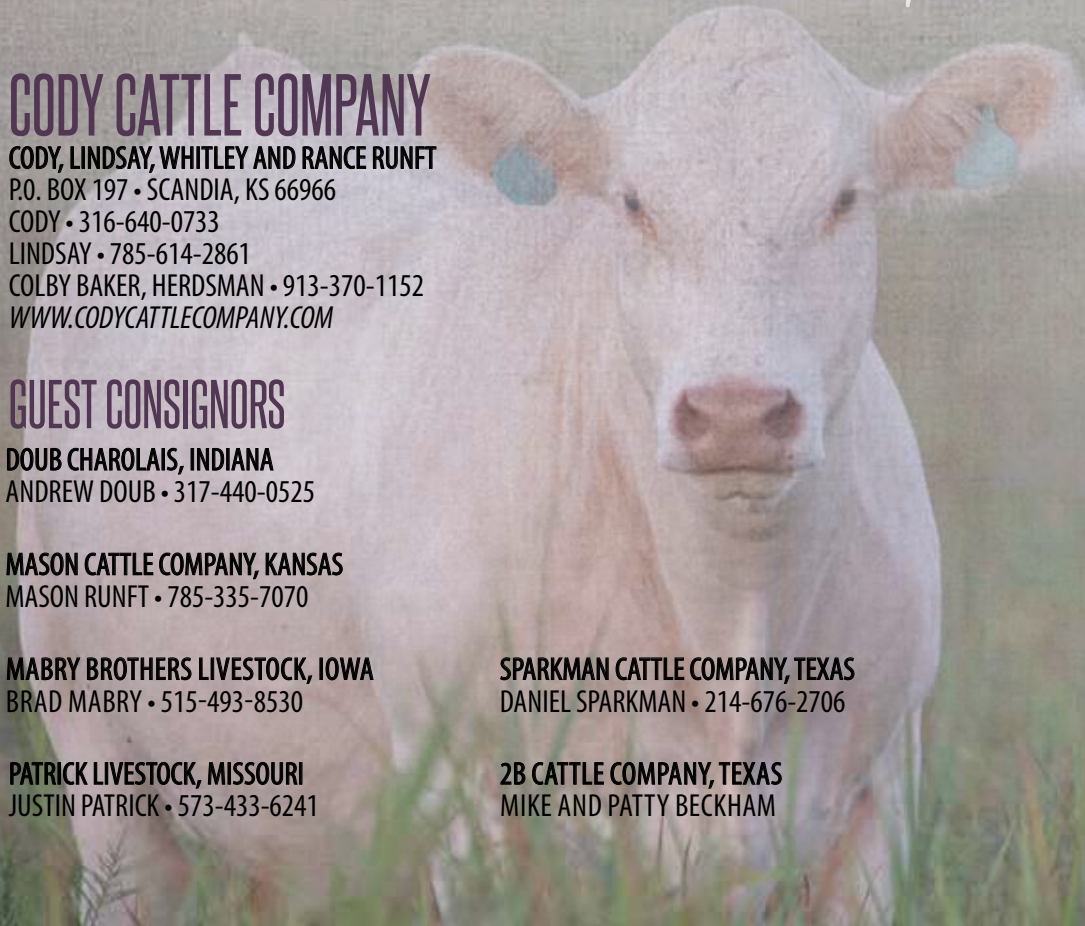
MASON CATTLE COMPANY, KANSAS
MASON RUNFT • 785-335-7070

MABRY BROTHERS LIVESTOCK, IOWA
BRAD MABRY • 515-493-8530

PATRICK LIVESTOCK, MISSOURI
JUSTIN PATRICK • 573-433-6241

SPARKMAN CATTLE COMPANY, TEXAS
DANIEL SPARKMAN • 214-676-2706

2B CATTLE COMPANY, TEXAS
MIKE AND PATTY BECKHAM



SALE INFORMATION

THE BLACK AND WHITE SALE

SELLING CHAROLAIS AND SIMGENETICS BULLS • MARCH 2 IN COURTLAND, KANSAS AT 1 P.M.

SALE LOCATION

Hanel Black Simmentals Sale Facility
340 US-36 - Courtland, KS 66939

SALE DAY PHONES

Cody Runft • 316-640-0733
Lindsay Runft • 785-614-2861
Brad Mabry • 515-493-8430
Colby Baker • 913-370-1152
Mason Runft • 785-335-7070

SALE MANAGEMENT

Innovation AgMarketing
Graham Blagg • 530-913-6418

SALE STAFF

Auctioneer
Col. Jered Shipman • 806-983-7226

RING STAFF

Brett Sayre, KLA • 573-881-1876
JW Brune, Special Assignment • 785-865-6624
Guy Peverley, The Stock Exchange • 785-456-4390
Kent Jaecke, Special Assignment • 405-408-2440

CONSULTANTS

Brett Sayre • 573-881-1876
Gerri Schumacher • 785-623-1721
Neil Bouray • 402-879-5566
Andrew Doub • 317-440-0525

SALE BOOK DESIGN

Lindsay Runft, Prairie Public Relations
prairiepr.com • 785-614-2861
Tracy McMurphy, THM Promotions LLC
806-679-0231

PHOTOGRAPHY FOR CCC

Huncovsky Marketing (bull pictures)
huncovsky.com • 785-320-6054
ALM Photography and Design (bull pictures)
allisonlynnmanchester.com • 219-76-0594
Grant Company LLC (pasture pictures)
grantcompany.net • 816-708-2647
Carrie Heitman Photography (family/sale pictures)
carrieheitmanphotography.com

LIVESTOCK MORTALITY INSURANCE

Sheila Jensen • 785-262-1116

VETERINARIAN

Hanel Vet Clinic • 785-374-4550

TERMS & CONDITIONS

All cattle will sell under the terms and conditions of their respective breed association. All sales are final.

RETAINED SEMEN INTEREST

Cody Cattle Company will retain 1/3 semen interest in all CCC bulls selling unless otherwise stated. The buyer of bull will get 100% salvage value for the bull when his service is done.

ANNOUNCEMENTS

A supplement sheet will be available sale day with updated information, corrections and additional information. This sheet and any announcements made sale day, from the auction block during the sale, will take precedence over printed material associated with the sale. Anyone attending this sale attends at their own risk. Cody Cattle Company, Hanel Black Simmentals, and the sales team will not be held responsible for any personal injury from attending this sale.

VIDEO PREVIEW OF SALE CATTLE

Videos of the sale cattle available online the week prior to the sale.

LIVE BROADCAST OF SALE



VIDEO AUCTION

All cattle will sell while being viewed on large screen monitors in the sale facility. There will be multiple large screens playing videos of the animals while the respective animal is being auctioned. Cattle will not come into the sale ring during the auction and we will not travel through equipment during the auction. Please make plans to arrive early and preview the sale offering prior to selling.

SALE ORDER

Hanel Black Simmentals will offer approximately 85 SimGenetics bulls, beginning at lot 1. Cody Cattle Company and consignors will follow that offering with approximately 60 Charolais bulls, beginning with lot 101.

TRUCKING

Free delivery within 200 miles and \$50 sale credit if bull purchase is picked up the day of sale. Otherwise, please contact the sales team for assistance with transportation for your cattle purchases. We will work with volume buyers and those outside the 200-mile delivery range. Dick Coleman is an approved and recommended professional trucking option. (765) 461-0954.

AIR TRAVEL

Wichita Airport • 2 hours and 30 minutes from sale site
Kansas City International Airport • 3 hours and 20 minutes from sale site

ACCOMMODATIONS

Holiday Inn Express & Suites Concordia • 785-243-2700

HERD HEALTH

All cattle will be accompanied by a valid health certificate for immediate shipment anywhere in the continental United States.

A Tradition of Excellence
**SUCCESS IN DENVER
SUCCESS IN YOUR HERD**



2020 NWSS CHAMPION PEN OF THREE BULLS



2020 NWSS CHAMPION PEN OF FIVE BULLS



2019 NWSS CHAMPION PEN OF FIVE BULLS



2018 NWSS CHAMPION PEN OF FIVE BULLS



2017 NWSS RESERVE CHAMPION PEN OF THREE BULLS



2016 NWSS RESERVE CHAMPION PEN OF THREE BULLS



2015 NWSS CHAMPION PEN OF THREE BULLS



Spring
BULLS

UP THE LIMIT



CCC MESCALITO 9038 P

101

CCC MESCALITO 9038 P

M930975

BW 80 • AdjWW 806 • ScanWT 1454

2/1/19

SIRE LT ROYAL BLEND 7216 P
WC UP THE LIMIT 1128 P ET
SCC MISS 3027 ET

SCAN DATA
Adj. IMF 4.71
Adj. BF 0.27
Adj. REA 16.08

DAM CCC WC RESOURCE 417 P
WC CCC SWEETHEART 6166 P ET
BALDRIDGE SWEETHEART 7M

CE	BW	WW	YW	MILK	MCE	MTL	SC	TSI
7.5	-0.09	40.2	65	15.2	8.3	35.2	1.2	205.4



LEFT TO RIGHT: LOT 101, LOT 121, LOT 102

Quite possibly the most unique bull we've ever produced in terms of hip, hind leg, and quality. This good-looking prospect is big legged, big nuted, and offers a killer look. We feel that he not only offers production value to our future bull sales but will also generate show ring stock. *Selling 1/2 semen interest and choice of spring or fall possession.*

Bulls were ultrasounded on January 30, 2020.

All bulls that do not have an Adjusted YW will have an Actual Scan Weight printed in the catalog.

INFERNO



CCC 2B GUNSLINGER 9030 P

102

CCC 2B GUNSLINGER 9030 P

M930782

BW 75 • Adj WW 862 • Scan WT 1590

1/30/19

LT RUSHMORE 8060 PLD

SIRE WC INFERNO 6561 P

WC ASTA 0505 P

M6 SLEEP EASY 734 PLD

DAM M&M MS SLEEP EASY 4518 PLD

M&M MS WIND STORM 2030 PLD

SCAN DATA

Adj. IMF 3.64

Adj. BF 0.36

Adj. REA 21.06

CE	BW	WW	YW	MILK	MCE	MTL	SC	TSI
7.2	-1.59	44.9	74.2	17.9	4.5	40.3	1	217.9

Over the top would be the best way to describe this bull in every aspect. Unmatched natural performance, width, dimension, and mass on a flexible skeleton. We've never offered a more genuine "beef" bull that will certainly have an impact on our herd for years to come. *Selling 1/2 semen interest and choice of spring or fall possession. Presented with 2B Cattle Company*



BULLS SUBMITTED FOR 50K AND HOMOZYGOUS POLLED TESTING

LOTS 101, 102, 106, 121



103

CCC INFINITE 9034 P

M930783

BW 79 • Adj WW 831 • Scan WT 1464

2/1/19

LT RUSHMORE 8060 PLD

SIRE WC INFERNO 6561 P

WC ASTA 0505 P

LT BLUE VALUE 7903 ET

DAM CCC VALUABLE MOLLY 06 PLD

D&D MS MOLLY 2842 PLD

SCAN DATA

Adj. IMF 3.59

Adj. BF 0.25

Adj. REA 17.27

CE	BW	WW	YW	MILK	MCE	MTL	SC	TSI
9.25	-1.24	44.4	74	15.1	8.2	37.3	1.1	218.7

The crew at HBS reminds me regularly that I missed this bull early on, and he should have made the trip to Denver. Without a doubt they are correct; 9034's 10-year-old Blue Value dam grew this bull to be the 2nd heaviest WW calf. When you see this bull you instantly appreciate his mass, performance, and structural correctness. Good stock here.

RUSHMORE/RUSH HOUR



CCC TELEPHONE ROMEO 9023 P

104

CCC TELEPHONE ROMEO 9023 P

M930974

BW 66 • Adj WW 802 • Scan WT 1401

1/23/19

SIRE LT RIO BRAVO 3181 P
WC RUSH HOUR 6114 P ET
LT BRENDA'S EASE 3055PLD

SCAN DATA
Adj. IMF 4.33
Adj. BF 0.32
Adj. REA 18.95

DAM LT BLUE VALUE 7903 ET
WC CCC SWEETHEART 6103 P ET
BALDRIDGE SWEETHEART 7M

CE	BW	WW	YW	MILK	MCE	MTL	SC	TSI
9.3	-2.92	37.6	61.8	14.9	5.7	33.7	1.1	209.6

We feel that this bull has the potential to be a calving ease and female-making specialist. 9023 is backed by maternal greatness, offers a flat shoulder and clean joints with a square profile.



REFERENCE SIRE • LT RUSHMORE 8060



105

CCC RUSH 9011 P

M933291

BW 78 • Adj WW 698 • Scan WT 1360

1/11/19

SIRE LT RIO BRAVO 3181 P
LT RUSHMORE 8060 PLD
LT BRENDA'S EASE 3055PLD

SCAN DATA
Adj. IMF 0.19
Adj. BF 3.69
Adj. REA 16.46

DAM LT BLUEGRASS 4017 P
CCC GRASS STAINED EDGE 03 PLD
D&D CCC MS EDGE 2819 P

CE	BW	WW	YW	MILK	MCE	MTL	SC	TSI
10.7	-2.81	27.8	52.6	16.9	4.4	30.8	1	200.3

This is as straight of an old-school LT breeding as we have. This bull possesses a lot of strengths that Lindskov-Thiel emphasizes. 9011 has good feet, good attitude, good growth, good combination of both terminal and maternal abilities — all around good bull.

RESOURCE



CCC WC RESOURCE 417 P

These are the last of the full sibs to Resource that CCC will ever offer. These things are both big-league good, and they both remind me a whole bunch of their famous full sib. 9048 was on a worse recip, but has absolutely turned the crank since weaning time. With Resource fighting Father Time, we feel it mandatory to keep walking rights on 9040, and hope he continues to progress our herd as Resource has.



106

CCC ROUND THAT BEND 9040 P ET

EM930691

BW 79 • Adj WW 851 • Scan WT 1296

2/2/19

SIRE LT RIO BRAVO 3181 P
LT RUSHMORE 8060 PLD
LT BRENDA'S EASE 3055PLD

SCAN DATA
Adj. IMF 3.91
Adj. BF 0.38
Adj. REA 17.58

DAM WC CCC BLUE GIRL 1528 P
CCC BAD GIRLFRIEND U146 P ET

CE	BW	WW	YW	MILK	MCE	MTL	SC	TSI
7.95	-1.85	31.4	52.3	23.5	4.6	39.1	1	199.6



107

CCC ANOTHER ONE 9048 P ET

EM930785

BW 79 • Adj WW 838 • Scan WT 1314

2/6/19

SIRE LT RIO BRAVO 3181 P
LT RUSHMORE 8060 PLD
LT BRENDA'S EASE 3055PLD

SCAN DATA
Adj. IMF 4.11
Adj. BF 0.29
Adj. REA 15.89

DAM WC CCC BLUE GIRL 1528 P
CCC BAD GIRLFRIEND U146 P ET

CE	BW	WW	YW	MILK	MCE	MTL	SC	TSI
7.95	-1.85	31.4	52.3	23.5	4.6	39.1	1	199.6

9040 is a full sib to Resource. His full brother has proven to be one of the safest and most elite sires in the Charolais breed. Resource is one of the few sires that can offer maternal value, carcass strengths, and show ring appeal. We believe 9040 has the same potential as his famous brother.

Selling 1/2 semen interest and fall possession.

RESOURCE



CCC PL HALLELUJAH 9101 P ET

108

CCC PL HALLELUJAH 9101 P ET

EM930723

BW 79 • Adj WW 774 • Scan WT 1266

3/16/19

SIRE **LT RUSHMORE 8060 PLD**
CCC WC RESOURCE 417 P
WC CCC BLUE GIRL 1528 P

SCAN DATA
Adj. IMF 3.93

DAM **WCR PRIME CUT 764 PLD**
OBG ELVIRA 4303 PLD
BALDRIDGE ELVIRA 120M ET

Adj. BF 0.32
Adj. REA 16.17

CE	BW	WW	YW	MILK	MCE	MTL	SC	TSI
6.75	-0.25	35.7	59.6	9	4.4	26.8	0.9	204.5

My old running buddy and best friend, Justin Patrick, bought some embryos from from Hechts out of their 4303 donor, and this stud is a result. We got him in a little later than ideal, but this bull has flat put it on. I don't believe that we offer a bull that's as impressive as him — get on top of him and study how much shape and dimension he comes out of his blades with and carries it back to a stout pin set. Don't let this bull's youth deter you from taking home this powerhouse.

Presented with Patrick Livestock

109

CCC RESOURCE 9022 P

M930779

BW 86 • Adj WW 777 • Scan WT 1406

1/23/19

SIRE **LT RUSHMORE 8060 PLD**
CCC WC RESOURCE 417 P
WC CCC BLUE GIRL 1528 P

SCAN DATA
Adj. IMF 4.47

DAM **LT BLUE VALUE 7903 ET**
CCC MS BLUE BUD 502 TW P
CCC MS BUD'S AVIGNON 209 PLD

Adj. BF 0.19
Adj. REA 17.09

CE	BW	WW	YW	MILK	MCE	MTL	SC	TSI
8.2	-1.07	36	53.6	15.5	6.6	33.5	1	199.6



CCC REVIVAL 8121 P ET • FULL SIB TO LOTS 112, 114, 115

RESOURCE

110

MCC GRADUATION PRESENT 900 P

M933315

BW 75 • Adj WW 745 • Scan WT 1100

2/12/19

LT RUSHMORE 8060 PLD
SIRE CCC WC RESOURCE 417 P
 WC CCC BLUE GIRL 1528 P
 WC CCC FULL METALJACKET1127PET
DAM MCC MS TRACER 751 P
 MJR MISS SMOKY'S ALI-B 018

SCAN DATA
 Adj. IMF 4.25
 Adj. BF 0.28
 Adj. REA 15.99

CE	BW	WW	YW	MILK	MCE	MTL	SC	TSI
6.7	-0.8	33	47	12	6	28	0.7	192.1

Presented by Mason Cattle Company

111

MCC THX BROTHER 901 P

M933313

BW 85 • Adj WW 770 • Scan WT 1130

2/15/19

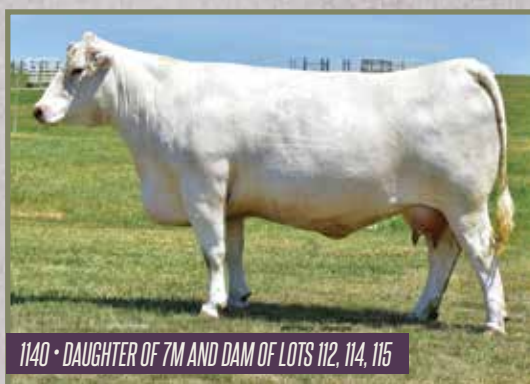
LT RUSHMORE 8060 PLD
SIRE CCC WC RESOURCE 417 P
 WC CCC BLUE GIRL 1528 P
 CCC WEST COVINA S106 P ET
DAM CCC MS MASON'S COVINA 107 P
 RCR MS IMPRESSIVE M797

SCAN DATA
 Adj. IMF 4.15
 Adj. BF 0.28
 Adj. REA 16.12

CE	BW	WW	YW	MILK	MCE	MTL	SC	TSI
4.6	-0.2	32	50	14	3.3	30	0.6	196.4

Presented by Mason Cattle Company

My 6'5" "little" brother has brought the goods with these two Resource sons. They are fault free, performance driven bulls with look that check all the boxes. I'm sure that he'd appreciate all the help he can get on these bulls to help him further his college "education."



1140 • DAUGHTER OF 7M AND DAM OF LOTS 112, 114, 115

112

CCC RESOURCE 9041 P ET

EM930706

BW 66 • Adj WW 754 • Scan WT 1166

2/2/19

LT RUSHMORE 8060 PLD
SIRE CCC WC RESOURCE 417 P
 WC CCC BLUE GIRL 1528 P
 WC-WCCC ROCKETFUEL 7109
DAM WC CCC SWEETHEART 1140 P
 BALDRIDGE SWEETHEART 7M

SCAN DATA
 Adj. IMF 5.41
 Adj. BF 0.25
 Adj. REA 15.17

CE	BW	WW	YW	MILK	MCE	MTL	SC	TSI
9.65	-2.15	34.7	49	14.5	6.9	31.8	1	194.4

113

CCC RESOURCED 9025 P

M930780

BW 80 • Adj WW 732 • Scan WT 1298

1/24/19

LT RUSHMORE 8060 PLD
SIRE CCC WC RESOURCE 417 P
 WC CCC BLUE GIRL 1528 P
 LT LEDGER 0332 P
DAM CCC MS LEDGER'S COVINA 223 P
 CCC MS INXS'S COVINA 223 PLD

SCAN DATA
 Adj. IMF 4.22
 Adj. BF 0.36
 Adj. REA 18

CE	BW	WW	YW	MILK	MCE	MTL	SC	TSI
6.4	-1.33	34.3	57.4	14.7	4.9	31.9	1	204.8

114

CCC RESOURCE 9051 P ET

EM930712

BW 79 • Adj WW 701 • Scan WT 1117

2/7/19

LT RUSHMORE 8060 PLD
SIRE CCC WC RESOURCE 417 P
 WC CCC BLUE GIRL 1528 P
 WC-WCCC ROCKETFUEL 7109
DAM WC CCC SWEETHEART 1140 P
 BALDRIDGE SWEETHEART 7M

SCAN DATA
 Adj. IMF 3.77
 Adj. BF 0.28
 Adj. REA 16.08

CE	BW	WW	YW	MILK	MCE	MTL	SC	TSI
9.65	-2.15	34.7	49	14.5	6.9	31.8	1	194.4

115

CCC RESOURCE 9057 P ET

EM930714

BW 87 • Adj WW 768 • Scan WT 1219

2/8/19

LT RUSHMORE 8060 PLD
SIRE CCC WC RESOURCE 417 P
 WC CCC BLUE GIRL 1528 P
 WC-WCCC ROCKETFUEL 7109
DAM WC CCC SWEETHEART 1140 P
 BALDRIDGE SWEETHEART 7M

SCAN DATA
 Adj. IMF 4.32
 Adj. BF 0.26
 Adj. REA 16.59

CE	BW	WW	YW	MILK	MCE	MTL	SC	TSI
9.65	-2.15	34.7	49	14.5	6.9	31.8	1	194.4

RESOURCE



116

CCC MBL OKIE 9085 P ET

EM930726

BW 79 • Adj WW 799 • Scan WT 1264

3/7/19

SIRE LT RUSHMORE 8060 PLD
CCC WC RESOURCE 417 P
 WC CCC BLUE GIRL 1528 P
 TR PZC RAPID FIRE 9775 ET
 DAM **WC KENDALL 5173 P ET**
 WCCC MISS ALLIANCE 428

SCAN DATA
 Adj. IMF 3.81
 Adj. BF 0.24
 Adj. REA 15.16

CE	BW	WW	YW	MILK	MCE	MTL	SC	TSI
5.9	-0.15	33.5	55.5	15.7	5.4	32.4	0.9	202

One of the multiple Resource x 5173 bulls we are offering. A very astute and well-respected cattleman from Oklahoma came and went through the bulls around Thanksgiving and this was his favorite out of everything. He kind of chuckled when he asked why he wasn't in the with the Denver bulls. I told him that at the time of selection he wasn't as manned up and mature as the January/February bulls. The closer we get to sale time the more I realize how right he was.

Presented with Mabry Brothers Livestock



117

CCC MBL COPPERHEAD ROAD 9047 P ET

EM930692

BW 80 • Adj WW 915 • Scan WT 1494

2/6/19

SIRE LT RUSHMORE 8060 PLD
CCC WC RESOURCE 417 P
 WC CCC BLUE GIRL 1528 P
 TR PZC RAPID FIRE 9775 ET
 DAM **WC KENDALL 5173 P ET**
 WCCC MISS ALLIANCE 428

SCAN DATA
 Adj. IMF 3.38
 Adj. BF 0.52
 Adj. REA 17.58

CE	BW	WW	YW	MILK	MCE	MTL	SC	TSI
5.9	-0.15	33.5	55.5	15.7	5.4	32.4	0.9	202

9047 weaned off with the most impressive weight of 915 lbs. He is extremely opened up, deep in his center rib and packs a lot of red meat. He's backed by 2 of my favorite white animals, Resource and 5173 — the 2017 National Champion Female.

Presented with Mabry Brothers Livestock



5173, THE 2017 NATIONAL CHAMPION FEMALE • DAM OF LOTS 116-121, 126, 128

RESOURCE



CCC MBL RESURRECTION 840 P • FULL SIB TO LOTS 116-120



REDEMPTION • FULL SIB IN BLOOD TO LOTS 116-120

118

CCC MBL RESOURCE 9054 P ET

EM930713

BW 85 • Adj WW 774 • Scan WT 1307

2/7/19

SIRE LT RUSHMORE 8060 PLD
CCC WC RESOURCE 417 P
WC CCC BLUE GIRL 1528 P

SCAN DATA
Adj. IMF 3.85

DAM TR PZC RAPID FIRE 9775 ET
WC KENDALL 5173 P ET
WCCC MISS ALLIANCE 428

Adj. BF 0.42
Adj. REA 21.59

CE	BW	WW	YW	MILK	MCE	MTL	SC	TSI
5.9	-0.15	33.5	55.5	15.7	5.4	32.4	0.9	202

He was developed with the Denver bulls and was supposed to be in the Pen of 5. He came down with Hairy Heel wart around Christmas time and wouldn't track like he should. We now have him cured; and we believe that you'll appreciate his balanced, quality look and the punch he has to offer. *Presented with Mabry Brothers Livestock*

119

CCC MBL RESOURCE 9070 P ET

EM930721

BW 84 • Adj WW 735 • Scan WT 1146

2/16/19

SIRE LT RUSHMORE 8060 PLD
CCC WC RESOURCE 417 P
WC CCC BLUE GIRL 1528 P

SCAN DATA
Adj. IMF 4.32

DAM TR PZC RAPID FIRE 9775 ET
WC KENDALL 5173 P ET
WCCC MISS ALLIANCE 428

Adj. BF 0.25
Adj. REA 15.22

CE	BW	WW	YW	MILK	MCE	MTL	SC	TSI
5.9	-0.15	33.5	55.5	15.7	5.4	32.4	0.9	202

Presented with Mabry Brothers Livestock

120

CCC MBL RESOURCE 9049 P ET

EM930711

BW 70 • Adj WW 797 • Scan WT 1240

2/16/19

SIRE LT RUSHMORE 8060 PLD
CCC WC RESOURCE 417 P
WC CCC BLUE GIRL 1528 P

SCAN DATA
Adj. IMF 4.3

DAM TR PZC RAPID FIRE 9775 ET
WC KENDALL 5173 P ET
WCCC MISS ALLIANCE 428

Adj. BF 0.46
Adj. REA 14.11

CE	BW	WW	YW	MILK	MCE	MTL	SC	TSI
5.9	-0.15	33.5	55.5	15.7	5.4	32.4	0.9	202

Presented with Mabry Brothers Livestock

CODY, LINDSAY AND WHITLEY RUNFT • 2019 BLACK AND WHITE SALE



MONUMENTAL



CCC MBL JINGLE N GO 9055 P

121

CCC MBL JINGLE N GO 9055 P ET

EM930689

BW 85 • Adj WW 799 • Scan WT 1447

2/7/19

SIRE **WC MONUMENTAL 5524 P**
WC ASTA 0505 P
TR PZC RAPID FIRE 9775 ET
DAM **WC KENDALL 5173 P ET**
WCCC MISS ALLIANCE 428

SCAN DATA
Adj. IMF 4.14
Adj. BF 0.4
Adj. REA 18.44

CE	BW	WW	YW	MILK	MCE	MTL	SC	TSI
6.65	0.75	40.8	71.3	16.1	6.2	36.4	1.1	214.9

High quality stock here. 9055 is good-fronted, great-balanced, and has plenty of power with a soft hair coat and excellent EPD profile. 5173 strikes again, and this is quite possibly her best work yet. *Presented with Mabry Brothers Livestock*



122

CCC POWELL 9003 P

EM930687

BW 87 • Adj WW 727 • Scan WT 1235

1/1/19

SIRE **WC MONUMENTAL 5524 P**
WC ASTA 0505 P
WC-WCCC ROCKETFUEL 7109
DAM **WC CCC SWEETHEART 1140 P**
BALDRIDGE SWEETHEART 7M

SCAN DATA
Adj. IMF 4.44
Adj. BF 0.33
Adj. REA 17.08

CE	BW	WW	YW	MILK	MCE	MTL	SC	TSI
10.4	-1.25	42	64.8	14.9	7.7	35.8	1.2	207.4

9003 got foot rot on us at weaning time (treated with everything known to man) and it never broke open and drained. It is now a hard abscess, and he doesn't favor it. It is located on the inside of his back right foot. We sell him with the same guarantee as the rest of the bulls.

MONUMENTAL

123

CCC JOSHUA 9005 P ET

EM930688

BW 85 • Adj WW 763 • Scan WT 1348

1/3/19

SIRE **WC MONUMENTAL 5524 P**
WC ASTA 0505 P

SCAN DATA
Adj. IMF 3.25

DAM **WC CCC SWEETHEART 1140 P**
BALDRIDGE SWEETHEART 7M

Adj. BF 0.31
Adj. REA 18.37

CE	BW	WW	YW	MILK	MCE	MTL	SC	TSI
10.4	-1.25	42	64.8	14.9	7.7	35.8	1.2	207.4

125

CCC MONUMENTAL 9056 P ET

EM930786

BW 88 • Adj WW 824 • Scan WT 1292

2/7/19

SIRE **WC MONUMENTAL 5524 P**
WC ASTA 0505 P

SCAN DATA
Adj. IMF 4.05

DAM **WC CCC SWEETHEART 1140 P**
BALDRIDGE SWEETHEART 7M

Adj. BF 0.32
Adj. REA 17.22

CE	BW	WW	YW	MILK	MCE	MTL	SC	TSI
10.4	-1.25	42	64.8	14.9	7.7	35.8	1.2	207.4

124

CCC GARNEY MAN 9037 P ET

EM930699

BW 83 • Adj WW 818 • Scan WT 1394

2/1/19

SIRE **WC MONUMENTAL 5524 P**
WC ASTA 0505 P

SCAN DATA
Adj. IMF 3.68

DAM **WC CCC SWEETHEART 1140 P**
BALDRIDGE SWEETHEART 7M

Adj. BF 0.23
Adj. REA 20.26

CE	BW	WW	YW	MILK	MCE	MTL	SC	TSI
10.4	-1.25	42	64.8	14.9	7.7	35.8	1.2	207.4

126

CCC MBL MONUMENTAL 9068 P ET

EM930787

BW 90 • Adj WW 811 • Scan WT 1297

2/12/19

SIRE **WC MONUMENTAL 5524 P**
WC ASTA 0505 P

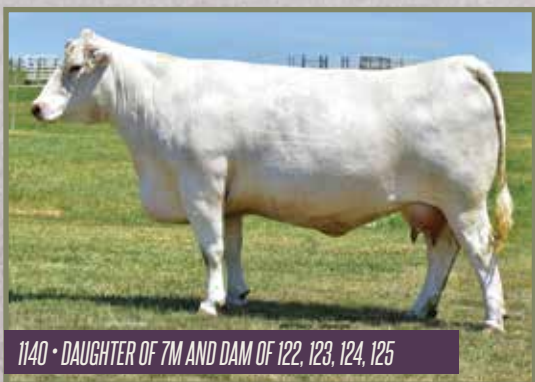
SCAN DATA
Adj. IMF 4.21

DAM **WC KENDALL 5173 P ET**
WCCC MISS ALLIANCE 428

Adj. BF 0.25
Adj. REA 16.37

CE	BW	WW	YW	MILK	MCE	MTL	SC	TSI
6.65	0.75	40.8	71.3	16.1	6.2	36.4	1.1	214.9

9068 is a full sib to Lot 121, one of the bulls in our 2020 NWSS Champion Pen of 3. This bull is stout, powerful, wide and just flat good.



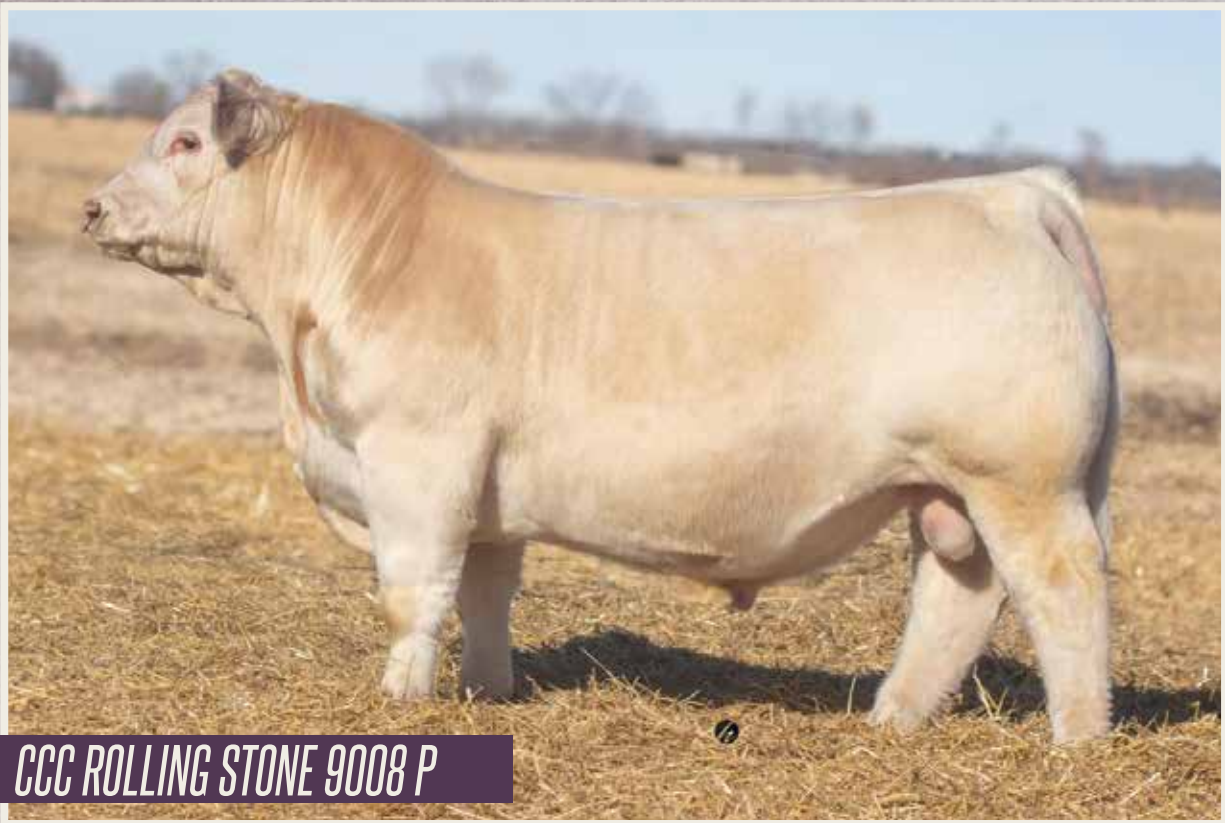
1140 • DAUGHTER OF 7M AND DAM OF 122, 123, 124, 125

Monumental x 1140: Excellent build, hard footed, good looking with plenty of punch would be a good way to summarize these future herd sires — Lots 122-125.

CODY AND RANCE CODY RUNFT • FALL 2019



MILESTONE



CCC ROLLING STONE 9008 P

127

CCC ROLLING STONE 9008 P

M930777

BW 82 • Adj WW 772 • Scan WT 1344

1/6/19

SIRE WC BENELLI 2134 P ET
WC MILESTONE 5223 P
 WC LADY BLUE 0506 P

SCAN DATA
 Adj. IMF 3.62
 Adj. BF 0.28
 Adj. REA 19.34

DAM LT RUSHMORE 8060 PLD
CCC MS ALMOST LEDGER 224 PLD
 CCC ABANDONED BLUE LUCY 02 PLD

CE	BW	WW	YW	MILK	MCE	MTL	SC	TSI
5	0.19	32.8	61.3	21.4	5.4	37.8	1	207.9

9008 is a heavy structured, rugged, powerful son of Milestone that reads balanced in his EPD profile. He's a full brother to our 2nd high seller in the 2019 sale, Resurgence.



CCC RESURGENCE 803 P • FULL SIB TO LOT 127

MILESTONE



CCC RECKONING STONE 9045 P

128

CCC MBL RECKONING STONE 9045 P

M930977

BW 81 • Adj WW 812 • Scan WT 1495

2/4/19

SIRE WC BENELLI 2134 P ET
WC MILESTONE 5223 P
WC LADY BLUE 0506 P

SCAN DATA
Adj. IMF 3.42
Adj. BF 0.27
Adj. REA 20.49

DAM LT LEDGER 0332 P
WC CCC MISS LEDGER 4555 P ET
WCCC MS IMPRESSED 6510

CE	BW	WW	YW	MILK	MCE	MTL	SC	TSI
3.95	0.82	39.5	72.1	13.1	7.5	32.8	1.1	215.9

129

CCC MILES 9017 P ET

EM930694

BW 92 • Adj WW 807 • Scan WT 1407

1/16/19

SIRE WC BENELLI 2134 P ET
WC MILESTONE 5223 P
WC LADY BLUE 0506 P

SCAN DATA
Adj. IMF 3.2
Adj. BF 0.36
Adj. REA 19.35

DAM TR PZC RAPID FIRE 9775 ET
WC KENDALL 5173 P ET
WCCC MISS ALLIANCE 428

CE	BW	WW	YW	MILK	MCE	MTL	SC	TSI
4.55	1.25	31.7	61.4	15.1	7.8	30.9	1	208.7

His dam is what we are trying to replicate in terms of female production and efficiency. She is a huge bellied, square, heavy milking female that flat gets it done. When you combine that with Milestone's power and performance, 9045 has a lot to offer.

THE NEXT GENERATION OF CODY CATTLE COMPANY • FALL 2019



MILESTONE



130

CCC MILES 9018 P ET

EM930695

BW 87 • Adj WW 701 • Scan WT 1272

1/16/19

SIRE WC BENELLI 2134 P ET
WC MILESTONE 5223 P
 WC LADY BLUE 0506 P
 TR PZC RAPID FIRE 9775 ET
 DAM **WC KENDALL 5173 P ET**
 WCCC MISS ALLIANCE 428

SCAN DATA
 Adj. IMF 3.57
 Adj. BF 0.21
 Adj. REA 15.64

CE	BW	WW	YW	MILK	MCE	MTL	SC	TSI
4.55	1.25	31.7	61.4	15.1	7.8	30.9	1	208.7

131

CCC MILES 9028 P

M930781

BW 81 • Adj WW 763 • Scan WT 1166

1/28/19

SIRE WC BENELLI 2134 P ET
WC MILESTONE 5223 P
 WC LADY BLUE 0506 P
 LT RUSHMORE 8060 PLD
 DAM **M&M MS RUSHMORE 6055 ET**
 M&M MS STEALTH 8512 ET

SCAN DATA
 Adj. IMF 3.84
 Adj. BF 0.2
 Adj. REA 17.08

CE	BW	WW	YW	MILK	MCE	MTL	SC	TSI
7.7	-0.77	32.9	58.8	21.9	6	38.3	1.1	205.4

132

CCC MILES 9035 P ET

EM930697

BW 90 • Adj WW 817 • Scan WT 1304

2/1/19

SIRE WC BENELLI 2134 P ET
WC MILESTONE 5223 P
 WC LADY BLUE 0506 P
 LT BLUE VALUE 7903 ET
 DAM **WC CCC BLUE GIRL 1528 P**
 CCC BAD GIRLFRIEND U146 P ET

SCAN DATA
 Adj. IMF 3.51
 Adj. BF 0.21
 Adj. REA 14.85

CE	BW	WW	YW	MILK	MCE	MTL	SC	TSI
0.7	1.95	36.2	62.1	18.5	7.8	36.6	0.9	207.5

This would be a maternal brother to Resource. This bull offers added length and extension with good looks and plenty of power.

133

CCC MILES 9066 P ET

EM930717

BW 91 • Adj WW 817 • Scan WT 1315

2/11/19

SIRE WC BENELLI 2134 P ET
WC MILESTONE 5223 P
 WC LADY BLUE 0506 P
 WC-WCCC ROCKETFUEL 7109
 DAM **WC CCC SWEETHEART 1140 P**
 BALDRIDGE SWEETHEART 7M

SCAN DATA
 Adj. IMF 3.62
 Adj. BF 0.25
 Adj. REA 17.07

CE	BW	WW	YW	MILK	MCE	MTL	SC	TSI
8.3	-0.75	32.9	55	13.9	9.3	30.3	1.1	201.2

134

CCC CARRY ON 9072 P

M930979

BW 82 • Adj WW 764 • Scan WT 1466

2/16/19

SIRE WC BENELLI 2134 P ET
WC MILESTONE 5223 P
 WC LADY BLUE 0506 P
 LT RUSHMORE 8060 PLD
 DAM **WC CCC SWEETHEART 4162 P ET**
 BALDRIDGE SWEETHEART 7M

SCAN DATA
 Adj. IMF 4.1
 Adj. BF 0.33
 Adj. REA 19

CE	BW	WW	YW	MILK	MCE	MTL	SC	TSI
7.55	-1.06	32.8	58.7	20.3	6.1	36.6	1	205.3

ADDITIONAL SIRES



136

CCC VALUED 9009 P

M930778

BW 85 • Adj WW 775 • Scan WT 1275

1/7/19

SIRE LT BLUEGRASS 4017 P
LT BLUE VALUE 7903 ET
LT UNLIMITED MAID 7184 P

SCAN DATA

Adj. IMF 3.73

DAM WC CCC SWEETHEART 7109 P ET
BALDRIDGE SWEETHEART 7M

Adj. BF 0.3

Adj. REA 15.23

CE	BW	WW	YW	MILK	MCE	MTL	SC	TSI
11.775	-0.99	31.3	51	18.2	9.3	33.8	1.1	197.3

Heavy structured, powerfully constructed with a herd bull look. This maternally bred sire still emphasizes the terminal strengths known to the Charolais breed.

138

CCC D&D MAVERICK 9203 PLD ET

EM932754

BW • Adj WW • Scan WT 1073

2/16/19

SIRE LT-WC TEMPLETON 1483 PLD ET
WC CCC MAVERICK 5117 P ET
BALDRIDGE SWEETHEART 7M

SCAN DATA

Adj. IMF 3.51

DAM D&D MS COVERGIRL 1101 PLD ET
D&D MISS COVERGIRL

Adj. BF 0.2

Adj. REA 15.12

CE	BW	WW	YW	MILK	MCE	MTL	SC	TSI
3.9	1.7	36	57	5	7.6	23	0.8	193.9

Andrew Doub sent us an ultra-complete, stylish yet stout Maverick son. If you follow his program you'll realize this bull's dam goes back to the great matrons that have kept Doub Charolais a force in the breed. *Presented with Doub Charolais*

135

CCC FAMILY VALUES 9004 P

M930776

BW 88 • Adj WW 699 • Scan WT 1113

1/3/19

SIRE LT BLUEGRASS 4017 P
LT BLUE VALUE 7903 ET
LT UNLIMITED MAID 7184 P

SCAN DATA

Adj. IMF 4.73

DAM LT RIO BRAVO 3181 P
EOTT LADY ELOISE 41Z
3G WHIMSICAL WIND

Adj. BF 0.22

Adj. REA 15.09

CE	BW	WW	YW	MILK	MCE	MTL	SC	TSI
8.7	0.05	25.4	46	14.5	10.8	27.2	1.2	195.4

137

CCC COMFORT 9020 P

P1243931

BW 86 • Adj WW 698 • Scan WT 1237

1/20/19

SIRE M6 FRESH AIR 8165 P ET
M6 COMFORT ZONE 227 P
M6 MS 104 DUKE 540 P ET

SCAN DATA

Adj. IMF 4.16

DAM CCC WC RESOURCE 417 P
CCC MS RESOURCE 714 PLD
CCC MS WESTERN JACKET 422 P

Adj. BF 0.2

Adj. REA 15.77

CE	BW	WW	YW	MILK	MCE	MTL	SC	TSI
9.5	-0.27	27.4	48.3	13.8	5.7	27.5	0.8	197

139

CCC MAJOR 9079 P

P1244000

BW 80 • Adj WW 773 • Scan WT 1246

3/10/19

SIRE WC PARAMOUNT 4120 P ET
CCC MAJOR IMPACT 613 P
CCC MS LONG RUSH 405 P

SCAN DATA

Adj. IMF 4.53

DAM LT RUSHMORE 8060 PLD
M&M MS RUSHMORE 6058ET
M&M MS STEALTH 8512 ET

Adj. BF 0.19

Adj. REA 13.9

CE	BW	WW	YW	MILK	MCE	MTL	SC	TSI
14.6	-2.92	30.2	50.3	19.9	6.1	34.9		198.2

COWS TO GRASS ON THE SMOKY HILLS • JEWELL COUNTY, KANSAS





Fall
BULLS

RUSHMORE



140

CCC TRIED AND TRUE 8507 P

P1244013

BW 70 • AdjWW 863 • ScanWT 1630

9/2/18

SIRE LT RIO BRAVO 3181 P
LT RUSHMORE 8060 PLD
 LT BRENDA'S EASE 3055PLD
 LT BLUE VALUE 7903 ET

SCAN DATA
 Act. IMF 4.22
 Act. BF 0.27
 Act. REA 19.26

DAM **WC CCC SWEETHEART 6644 P ET**
 WC CCC SWEETHEART 1140 P

CE	BW	WW	YW	MILK	MCE	MTL	SC	TSI
14	-3.03	37	49.1	20.5	6.6	39	1.2	196.7

Due to time and Mother Nature, we were very limited on the pictures available, and we only got our stud of the fall bulls pictured. We feel that these bulls speak for themselves.

8507 is a full sib in blood to Watje's bull that went to Minnesota for them last year. Graham Blagg came through the bulls and asked why this thing wasn't halter broke. We named him Tried and True because his mating is proven; it consistently works.

141

CCC RUSHMORE 8501 P

P1244007

BW 69 • AdjWW 811 • ScanWT 1390

9/1/18

SIRE LT RIO BRAVO 3181 P
LT RUSHMORE 8060 PLD
 LT BRENDA'S EASE 3055PLD
 LT BLUE VALUE 7903 ET

SCAN DATA
 Act. IMF 4.15
 Act. BF 0.24
 Act. REA 16.21

DAM **CCC MS BLUE SKEET 653 PLD**
 BROBERG'S MS SKEET B130

CE	BW	WW	YW	MILK	MCE	MTL	SC	TSI
11.2	-2.21	31.4	53.1	19	6	34.7	0.9	199.4

142

CCC RUSHMORE 8600 P ET

EM933114

BW 74 • AdjWW 790 • ScanWT 1550

9/2/18

SIRE LT RIO BRAVO 3181 P
LT RUSHMORE 8060 PLD
 LT BRENDA'S EASE 3055PLD
 RC BUDSMYDAD 225 POLLED

SCAN DATA
 Act. IMF 3.49
 Act. BF 0.23
 Act. REA 16.60

DAM **BALDRIDGE SWEETHEART 7M**
 BALDRIDGESWEETHEART444ET

CE	BW	WW	YW	MILK	MCE	MTL	SC	TSI
14	-4	28.5	47.8	21	4.5	35.3	1	194.5

ADDITIONAL SIREs

143

CCC 2B MIKEY 8502 P

M930729

BW 70 • Adj WW 783 • Scan WT 1620

9/1/18

SIRE LT RUSHMORE 8060 PLD
CCC WC RESOURCE 417 P
WC CCC BLUE GIRL 1528 P

SCAN DATA
Act. IMF 3.65
Act. BF 0.25
Act. REA 18.52

DAM M&M MS BENELLI 2134 P ET
M&M MS BENELLI 4539 PLD ET
M&M MS WYO WIND4610PLDET

CE	BW	WW	YW	MILK	MCE	MTL	SC	TSI
5.45	-1.22	37.1	55.3	16.2	4.9	34.7	0.9	198.9

Presented with 2B Cattle Company

144

CCC SC RESOURCE 853

M932732

BW 89 • Adj WW 748 • Scan WT 1305

10/31/18

SIRE LT RUSHMORE 8060 PLD
CCC WC RESOURCE 417 P
WC CCC BLUE GIRL 1528 P

DAM RF-DEP SMOKIN GUN 972
SC SMOKIN GRID 620
TR MS GRIDMAKER 9502W TW

CE	BW	WW	YW	MILK	MCE	MTL	SC	TSI
0	3.1	42	65	16	1.4	37	0.8	205.2

Presented with Sparkman Cattle Company

145

CCC MONUMENTAL 8607 P ET

EM930914

BW 78 • Adj WW 786 • Scan WT 1530

9/7/18

SIRE LT RUSHMORE 8060 PLD
WC MONUMENTAL 5524 P
WC ASTA 0505 P

SCAN DATA
Act. IMF 3.63
Act. BF 0.32
Act. REA 17.18

DAM DR STEALTH 574
M&M MS STEALTH 8512 ET
BALDRIDGESWEETHEART444ET

CE	BW	WW	YW	MILK	MCE	MTL	SC	TSI
9.5	-0.9	43.3	68.1	20.2	6.6	41.8	1.2	210.5

146

CCC RUSH 8500 P

P1249319

BW 71 • Adj WW 769 • Scan WT 1440

9/1/18

SIRE LT BLUEGRASS 4017 P
LT BLUE VALUE 7903 ET
LT UNLIMITED MAID 7184 P

DAM LT RUSHMORE 8060 PLD
WC CCC SWEETHEART 6151 P ET
WC CCC SWEETHEART 1140 P

CE	BW	WW	YW	MILK	MCE	MTL	SC	TSI
12.6	-2.5	28	46	17	10.1	31	1.3	194.74

147

CCC RUSH 8513 P

P1249321

BW 73 • Adj WW 782 • Scan WT 1260

9/8/18

SIRE LT RUSHMORE 8060 PLD
WC TOTAL RUSH 3044 P
WC QUEEN 1120 P

SCAN DATA
Act. IMF 4.02
Act. BF 0.18
Act. REA 18.45

DAM LT BLUE VALUE 7903 ET
WC CCC SWEETHEART 6550 P
WC CCC SWEETHEART 2179 P ET

CE	BW	WW	YW	MILK	MCE	MTL	SC	TSI
11.2	-2	32	54	19	9.5	35	1.3	198.6

BROCK HANEL AND CODY RUNFT • 2019 BLACK AND WHITE SALE



MILESTONE

148

CCC MILES 8503 P

M930730

BW 71 • Adj WW 786 • Scan WT 1390

9/1/18

SIRE **WC BENELLI 2134 P ET**
WC MILESTONE 5223 P
WC LADY BLUE 0506 P

SCAN DATA
Act. IMF 3.68
Act. BF 0.18
Act. REA 17.81

DAM **WC CCC ELVIRA 4573 P ET**
WCCC MS WIND 440 ET

CE	BW	WW	YW	MILK	MCE	MTL	SC	TSI
4.3	0.17	38.2	71.1	11.2	6.9	30.3	1.3	216.8

149

CCC MILES 8505 P

M930731

BW 71 • Adj WW 788 • Scan WT 1605

9/1/18

SIRE **WC BENELLI 2134 P ET**
WC MILESTONE 5223 P
WC LADY BLUE 0506 P

SCAN DATA
Act. IMF 3.70
Act. BF 0.25
Act. REA 19.28

DAM **CCC MS BLUE RUSH 522 P**
CCC ABANDONED BLUE LUCY 02 PLD

CE	BW	WW	YW	MILK	MCE	MTL	SC	TSI
6.2	-0.53	33.1	61.5	19.3	5.6	35.9	1	208.5

150

CCC MILES 8604 P ET

EM930740

BW 84 • Adj WW 792 • Scan WT 1510

9/5/18

SIRE **WC BENELLI 2134 P ET**
WC MILESTONE 5223 P
WC LADY BLUE 0506 P

SCAN DATA
Act. IMF 3.48
Act. BF 0.22
Act. REA 16.01

DAM **WC KENDALL 5173 P ET**
WCCC MISS ALLIANCE 428

CE	BW	WW	YW	MILK	MCE	MTL	SC	TSI
4.55	1.25	31.7	61.4	15.1	7.8	30.9	1	208.7

151

CCC TRADEMARK 8512 P

M930910

BW 72 • Adj WW 759 • Scan WT 1320

9/27/18

SIRE **LT LEDGER 0332 P**
WC TRADEMARK 5608 P ET
TTR CLARICE S1685

SCAN DATA
Act. IMF 3.34
Act. BF 0.21
Act. REA 17.55

DAM **BROBERG'S MS SKEET B134**
BC MS EXCLUSIVE R30

CE	BW	WW	YW	MILK	MCE	MTL	SC	TSI
6.6	-0.15	31.3	55.5	10	7.8	25.6	1	201

COLBY BAKER AND MASON RUNFT • 2020 NATIONAL WESTERN STOCK SHOW



PRECISELY BRED. PROFESSIONALLY DEVELOPED.
PERFORMANCE GUARANTEED.

ADDITIONAL SIRES

152

CCC RESOURCE 850 P

P1249831

BW 81 • Adj WW 764 • Scan WT 1610

9/10/18

SIRE LT RUSHMORE 8060 PLD
CCC WC RESOURCE 417 P
WC CCC BLUE GIRL 1528 P

SCAN DATA
Act. IMF 3.60
Act. BF 0.18
Act. REA 18.54

DAM D&D INXS
JCC MS INXS SAMMY V175P
TS JAID'S SAMANTHA L39P

CE	BW	WW	YW	MILK	MCE	MTL	SC	TSI
5.1	0.8	30	46	14	5.9	29	0.8	190.75

153

CCC RESOURCE 851 P

P1249804

BW 72 • Adj WW 757 • Scan WT 1535

9/1/18

SIRE LT RUSHMORE 8060 PLD
CCC WC RESOURCE 417 P
WC CCC BLUE GIRL 1528 P

SCAN DATA
Act. IMF 4.38
Act. BF 0.23
Act. REA 18.05

DAM CCC BUD LIGHT 904 PLD ET
JCC MISS SAMMY'S BUD LITE 364
JCC MS INXS SAMMY V175P

CE	BW	WW	YW	MILK	MCE	MTL	SC	TSI
3.9	-0.4	30	47	13	4.2	28	0.6	193.13

154

CCC RUSHED 8514 P

M933103

BW 72 • Adj WW 776 • Scan WT 1400

9/28/18

SIRE LT RUSHMORE 8060 PLD
WC TOTAL RUSH 3044 P
WC QUEEN 1120 P

SCAN DATA
Act. IMF 3.31
Act. BF 0.19
Act. REA 14.44

DAM LT BLUE VALUE 7903 ET
CCC MS BLUE SKEET 655 PLD
BROBERG'S MS SKEET B134

CE	BW	WW	YW	MILK	MCE	MTL	SC	TSI
10.1	-1.55	30.8	51.9	19	9.5	34.4	1	197.1

155

CCC ZONED OUT 8517 P

M933104

BW 78 • Adj WW 776 • Scan WT 1450

10/4/18

SIRE M6 FRESH AIR 8165 P ET
M6 COMFORT ZONE 227 P
M6 MS 104 DUKE 540 P ET

SCAN DATA
Act. IMF 4.67
Act. BF 0.23
Act. REA 17.12

DAM WC TOTAL RUSH 3044 P
CCC MS MORE RUSH 656 PLD
CCC MS RUSHMORE'S VALUE 214 P

CE	BW	WW	YW	MILK	MCE	MTL	SC	TSI
11.1	-1.03	29.9	55.2	20.7	5.3	35.7	1	203

156

CCC SC PRIME TIME 857

M932731

BW 77 • Adj WW 677 • Scan WT 1300

11/29/18

SIRE M6 NEW STANDARD 842 P ET
SKS EASY MONEY A25
BPC MISS CHARLOT BU42 P
WCR SIR PRIMEPLUS 580 P

SCAN DATA
Act. IMF 3.61
Act. BF 0.22
Act. REA 17.40

DAM **TR MS PRIMEPLUS 9614W**
TR MS WYOMING WIND 5598R

CE	BW	WW	YW	MILK	MCE	MTL	SC	TSI
1.8	1.3	35	70	15	0.8	33	1.1	216.1

Presented with Sparkman Cattle Company

ADDITIONAL SALE INFORMATION

BULL GUARANTEE

Unless otherwise noted, all the breeding age bulls will have passed a breeding soundness exam prior to pick up/delivery. In addition to the standard Terms and Conditions of the American Simmental Association and the American International Charolais Association we will provide the first breeding season (the 90-day period immediately following turn out) guarantee on all yearling and older bulls. This guarantee is not an insurance or mortality policy, but a guarantee on functional fertility. It is not a substitute or replacement for poor management. Buyer assumes all risks for injury due to running bulls together or management decisions outside genetic control. For the guarantee to apply, we ask that you contact us as soon as a condition is observed and before the animal is sold. We will work with you to determine whether the animal is returned or sold for slaughter. We will attempt to provide a suitable replacement. If one cannot be provided of equal or greater value, we will issue a sale credit to be used in a future sale for the full purchase price less the salvage value of the animal.



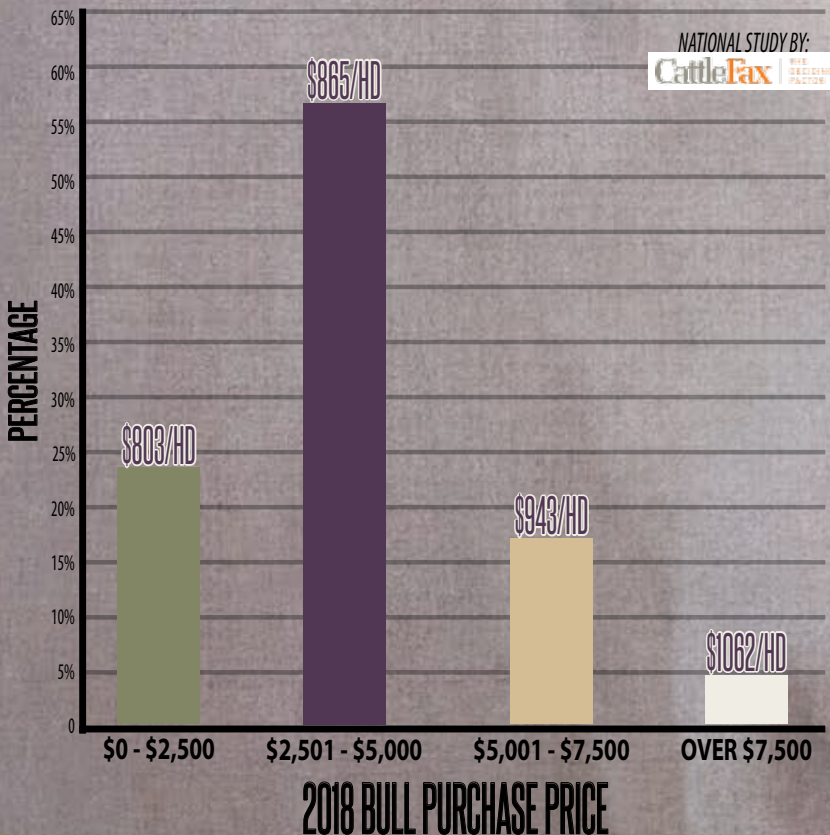
Watch the Sale Live Online...

View the sale from your phone, tablet, or desktop computer and bid with confidence! Visit www.CCI.live for complete sale information and online registration. If this is your first time to CCI.live, visit the web page and get approved for bidding at least three hours prior to sale time. With good internet speeds you can enjoy the sale from any location and bid with confidence.

CCI.LIVE

ONLINE BIDDING - Catalog - Videos - Sale Order - Plus More!

AVERAGE VALUE OF CALF FOR BULL PURCHASE PRICE



INVEST IN GENETICS.
INVEST IN YOUR RANCH'S
BOTTOM LINE.

A Heartfelt Thank You
TO ALL THE BIDDERS, BUYERS AND SUPPORTERS
INAUGURAL BLACK AND WHITE BULL SALE • MARCH 4, 2019

