

Thursday, February 6, 2020 :: 1pm CST :: On the Ranch - Mercer, ND

9th Annual
RUST MOUNTAIN VIEW
ACE IN THE HOLE
Bull Sale

49 bulls on offer

Simmental :: SimAngus

Red Angus :: Angus

**INCLUDING A LARGE GROUP
OF EXTRA-AGE BULLS**





a family operation



9th Annual RUST MOUNTAIN VIEW ACE IN THE HOLE Bull Sale

Thursday, February 6, 2020 :: 1pm CST :: On the Ranch

As I have sat down and visited with ranchers/friends/family close and far away I have come to the realization that almost everyone that I have talked to this year has experienced some sort of trial or complication dealing with the weather, health or something similar. So I think the keyword for 2019 will be perseverance! I know I am supposed to be welcoming you to our 2020 bull sale, and we will get to that shortly, but I want to share with you two bible verses that really comfort and inspire me to get up every morning with a positive attitude and try to become the best husband, father, and man that I can possibly be as we go through these trying times. The first one is Romans 5:3-5 and it states, "Not only so but we also rejoice in our sufferings, because we know that suffering produces perseverance; perseverance, character, and hope. And hope does not disappoint us, because God has poured out his love into our hearts by the Holy Spirit, whom he has given us." The second verse is James 1:2-4 and it states, "Consider it pure joy, my brothers, whenever you face trials of many kinds, because you know that the testing of your faith develops perseverance. Perseverance must finish its work so that you may be mature and complete, not lacking anything." So I think for me as I read Romans 5:3-5, I realize that if I have hope I can conquer anything, no matter how big or small the trial is. And what greater hope do we have than Jesus Christ himself! The James 1:2-4 verses I really focus on the end of the reading where it states, "we will not lack anything. Now this doesn't mean that God will grant you every wish that you have or that there won't be severe trials as you go through this world but he will grant you everything that you need to make it through these trials. What a great promise and sense of peace that is! As you go through your work day today please take comfort in knowing that these promises that God has granted to you are all possible with a personal relationship with him! So take advantage of this free opportunity, walk with God, and have the sense of peace and comfort that he has promised you during these challenging times! If you decide you want to take advantage of this opportunity please talk to one of us at RMVR. It would be a privilege of ours to help start you towards the path of peace and perseverance!



So I will quit with my preaching now and officially invite you to our 2020 "Ace In The Hole" Bull Sale. If you are in need of a bull, or just want to show up and enjoy dinner in a positive, friendly environment, and talk with other ranchers, farmers, and business owners about the previous year please do so because one thing I can guarantee is the coffee will be hot and the food will be outstanding!

This year will mark the fourth year we will be offering Age Advantage bulls and we are extremely happy with how the process is going and will continue to offer them each and every year going forward. In fact we will have quite a few to offer in the 2021 bull sale season as we have completely switched our registered herd to May and June calving. Don't worry if you prefer yearling bulls we will have you covered there also, as those calves will all be embryo transfer calves either raised here at the ranch or at our cooperator herds.

Calving time is our favorite time of year as we see the potential of our new calf crop for next year's bull and female sales. We have taken great time and efforts in choosing our herd sire selections, so we can thus produce the most optimal cattle possible for you the customer. We have really concentrated our efforts on developing our bull program with you, our buyers, in mind. We strive for consistency throughout our bull pen. We have many full siblings through the use of ET (embryo transfer) which allows for even more uniformity and balance in your herd. We are also firm believers that if we can't use them on our commercial cows we don't sell them. Whether we sell 15 bulls or 150 bulls it doesn't matter to us, **QUALITY** is king! Selection of the bulls is rigorous, with no exceptions, or excuses made for any bull! My Dad jokes about it often that if he sees the Gator in the bull pen driving around that we will be sorting off bulls and banding later in the day, and I have to say that he is fairly accurate with this observation! We are extremely proud of the offering we are bringing to you and are sure there is a bull in our pen that will meet or exceed your expectations!

Thank you for taking the time to sit down, read, and view our sale catalog. We truly do appreciate you the customer and your interest in our program. It takes many aspects in a bull sale to make it successful with the number one being the customer. Please at any time let us know how we can better assist you prior to the sale and after the sale. We value your opinions and we will do our very best to try to accommodate your needs and requests to make everyone more profitable and successful.

If you have any questions about the sale offering don't hesitate to call. Or if you are in the area we always enjoy visitors and would love to give you a tour of the ranch. The coffee is always on and hot! Thanks again for your interest in our program!

Rust Mountain View Ranch



Sale Day Information

SALE DAY PHONES

Josh Rust, Rust Mountain View Ranch	(701) 391-9769
Jesse Rust, Rust Mountain View Ranch	(701) 391-8228
John Rust, Rust Mountain View Ranch	(701) 400-1653
Sheldon Laib, Rust Mountain View Ranch	(701) 527-2073
Jay Hennessy, Rust Mountain View Ranch	(701) 720-4685
Scott Bohrsen, Bohrsen Marketing Services	(403) 370-3010
Matt Criddle, Bohrsen Marketing Services	(306) 539-6934
Graham Blagg, Innovation AgMarketing LLC	(530) 913-6418

PROFESSIONAL SALE REPRESENTATIVES

Auctioneer – Col. Ryan Dorran	(403) 507-6483
Special Assignment – Kris Petersen	(701) 339-0305
CCI.Live – Christy Collins	(516) 366-0734
Cattle Business Weekly – Tony Heins	(701) 400-4435
Hi Point Sales & Marketing - Garrett Thomas	(936) 714-4591
KK Seedstock - Keith Kissee	(817) 821-6263
MC Marketing Management - Kiley McKinna	(402) 350-3447

INSURANCE

Stockmans Insurance - Jason Frey (701) 300-0845

HOTEL ACCOMMODATIONS

North Shore Inn & Suites - 430 5th Ave SW Garrison, ND 58540 - (701) 463-7202 - Additional Lodging in Bismarck, ND

FULLY GUARANTEED

We stand behind our bulls. Shall a bull fail to be a satisfactory breeder, he will be replaced with another bull of equal quality or a credit will be given. No refunds.

ANNOUNCEMENTS & SALE TERMS

Announcements made from the auction block during the sale take precedence over printed material in the catalog or other printed material associated with this sale. Anyone attending this sale attends at his or her own risk. Breeders and sale force will not be held responsible for any personal injury for attending this sale.

-We highly recommend you insure your purchase on sale day, if they stay at our ranch.

-All cattle sell under the Suggested Terms and Conditions of the American Simmental Association.

EPD'S

The EPD's listed are the current EPD's at time of print. Please note the EPD's may change from the time the sale catalog is printed until registration papers are transferred.

DELIVERY

\$100 discount if bulls are picked up sale day. Rust will assist in lining up the most economical delivery method possible.

VIDEOS

Videos on all sale cattle will be available on CCI.Live.com or RustMountainViewRanch.com

SEMEN INTERESTS

Rust Mountain View Ranch is retaining 1/3 semen interest in all sale bulls and reserves the right to collect any bulls at their expense and the buyers convenience.

FOR OUR CANADIAN FRIENDS

DELIVERY & IMPORTATION

If any of our Canadian customers have interest in specific bulls, Rust Mountain View Ranch will test the bulls prior to the sale at our expense so we can have delivery to Canada within the week of the sale. Rust will cover all importing expenses and delivery to the border crossing. Contact Rust or BMS for further information and to request specific bulls to be tested and paper work started prior to the sale.

PAYMENT

U.S. Currency only, contact Rust's immediately after the sale to receive wire transfer information.

Schedule of Events

Wednesday, February 5th

- Sale cattle available for viewing

Thursday, February 6th

9:00am Carmel Rolls and coffee served

11:30am Complimentary lunch

1:00pm - CST

9th Annual "Ace In The Hole" Sale

836 7th Ave NW - Mercer, ND

Bid online sale day through..



Welcome from Bohrsen Marketing

This family run program at Rust Mountain View Ranch has once again brought you an awesome set of bulls and elevated their quality to an even higher level. This long standing ranch was established 70+ years ago and has built their purebred program for the past 22 years. They pride themselves on quality to offer to the cattle industry and this set of bulls is very deep in quality and worth your thorough consideration to purchase your next herdbuilding bull(s) from.

Simmental, Angus and Red Angus enthusiasts will have a deep and impressive offering to review and study in the next 50 lots. The dedication that the Rust family have put forward is to be commended as they are daily studying these progressive breeds and the leading genetics in them in order to boast their program forward. Their dedication is evident as they continually source and add the most elite donor females and herd bulls to better you, their valued customer by acquiring the very best seedstock available.

86% of the bulls on offer are ET bulls from the very best donors in the breed, that is impressive stats and dedication to produce the very best genetics in their respected breeds. For as strong as this offering is with high end cattle, we do want to promote that it is a people business first and the Rust family has continued repeat customers because of the strong customer satisfaction they give. This family operation fully stands behind their program and treats their customers like gold to ensure that you have a serviceable bull that you are happy with in case a breeding problem arises.

The trip to Mercer will pay dividends for your program as the high quality set of cattle with so many ET calves sell in all price ranges and the selection benefits you to obtain outstanding bulls. If you can't make it sale day, please contact Josh Rust, Matt Criddle or Scott Bohrsen to visit about the offering. We look forward to seeing you on sale day at Rust Mountain View Ranch.

Best regards,

Scott Bohrsen

Welcome from Innovation Ag/Marketing

Fellow Cattlemen and Cattlewomen,

It is with great pleasure to welcome you to the Rust Mountain View Ranch 9th Annual "Ace In The Hole" Bull sale. Again, this year I am excited to work alongside Bohrsen Marketing Services in representing one of the premier multi-breed programs in North America. There is no denying the focus and diligence that Josh and the entire Rust family has when it comes to forward progression and staying true to their goal of constantly improving their product for their customer base.

A strong emphasis has been placed on the maternal aspect, with a large portion of the offering stemming from the most elite donor dams in the industry. These females represent the most proven and elite genetics in the industry. A large number of the bulls in this year's offering the result of Rust Mountain View Ranch's extensive embryos transfer program. This technology has allowed for full and half sib brothers to highlight the sale offering, in turn providing a more uniform product to choose from. The herd bull battery that walks in Mercer, North Dakota sire many of the larger sire groups. Again, we emphasize that these herd sires stem from generations of proven lineage to add predictability and profitability to your operations bottom line. The chance to select from full and half sib brothers will provide the opportunity to capitalize on uniformity and consistency within your calf crop.

The cattle for this event are selected based on visual appraisal of quality and performance. They offer a rugged, masculine, and three-dimensional build with the athleticism that is necessary to not only survive, but rather thrive in the toughest elements. They are beef bulls that are built to last and offer pedigree that is saturated with maternal strength and consistency.

The customer comes first at Rust Mountain View Ranch, plain and simple! The Rust family stands behind their product 100% and puts strong emphasis on customer satisfaction! Consider this your invitation to join us on February 6, 2020 in Mercer, North Dakota for hospitality and the Rust Mountain View Ranch 9th Annual "Ace In The Hole" Bull Sale. Videos of the offering will be available online at CCI.Live for your convenience. If you have any questions please feel free to contact any of the sale staff to visit about the offering.

Enjoy the cattle,

Best regards,

Graham Blagg



Thank You



HENNESSY FAMILY

Donation

We will again be donating 1.5% of the sale gross to Todd and Kamaya Singer and their ministry. By doing the donation this way everyone has an opportunity in a small way to contribute to their mission. Plus it will help me sleep better at night knowing that I am not the one deciding which bull to donate!

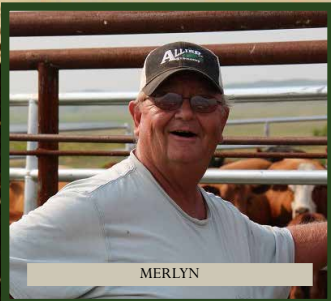
They work for CRU and mentor young men and women at the University of North Dakota in Grand Forks and surrounding colleges. It is a great ministry and this is just a little way that Rust Mountain View Ranch can help. I will have Todd go into more detail about his ministry.

Josh Rust

Directions to Rust Mountain View Ranch

From Mercer, ND:

- Go 3 miles north on only paved road heading north which is Highway #33.
- On east side of the road you will see a sign that says Rust Mountain View Ranch turn east there on gravel road and go 1.5 miles to a T in road.
- There you will see a house a quarter mile to the north and that is the yard.
- The actual address of the sale is 836 7th Ave NW, Mercer ND 58559.
- Visit the website 'Contact Us' Page for a Google Map of the Ranch location



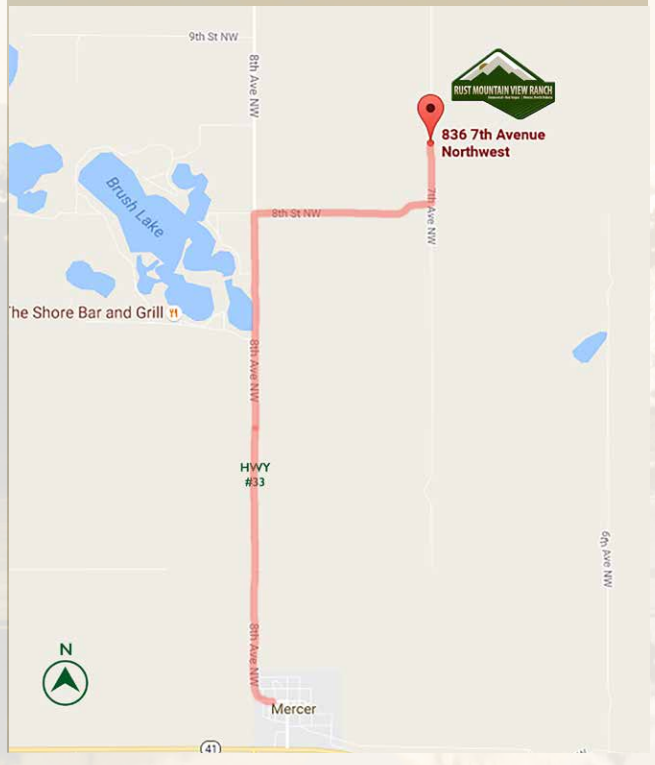
MERLYN



SHeldon



HERKIE



We are the Todd & Kamaya Singer Family. We currently work with Cru where we get the opportunity to work with college students in and around Grand Forks ND. We have the opportunity to mentor and challenge college students as they grow in their faith and as we share the love of Christ with them! Huge thank you to Rust Mountain View Ranch over the years as they have continued to partner with us in our ministry!

Todd and Kamaya Singer





Rust Legal Tender 7G Simmental Bull

homo polled /// homo black /// 3586431 /// 2019-01-23 /// bw-ET /// adj ww-707

Rust Legal Tender 7G has developed to an elite herd sire and puts it all together from phenotype to genotype with a solid set of EPD's. We pride ourselves on cow families and 74E is rising to be one of our strongest production donors in our arsenal. She is the kind to build around as her first progeny are true features which included a high selling daughter in our 2019 Production Sale to Outlaw Cattle. Currency is the \$435,000 (1/3 interest) bull with an impressive spread from BW to WW and is sound, free-moving with a hard to fault phenotype. Invest with confidence here as Legal Tender is a true sale feature and one of our very best.

ce 8.6
bw 3.0
ww 81.0
yw 121.9
adg 0.26
mce 4.1
milk 13.6
mww 54.1
stay 17.6
doc 12.7

WBFS SIGNIFICANT B132
RUBY'S CURRENCY 7134E
RUBYS JILL 035X
MUIRHEADS BROKER 221Z
MUIRHEADS 410B NLC 74E
MS NLC 144Y 410B



Maternal Sib: 918G



Sire: Ruby's Currency 7134E



Rust Certin Dollar 502G Simmental Bull

polled /// black /// 3586502 /// 2019-02-19 /// bw-ET /// adj ww-762

Big time herd bull and one that is sure to gain a tonne of friends at the NWSS with his impressive design while being backed by an incredible pedigree. Flawless in his design and one that will impress you the more you study him as he is extremely hard to fault. His dam, 707E is a true impressive donor that we will continue to flush more and build around as she is a full sib to 202Z who has produced over \$600,000 in progeny sales. A full sib heifer to Certin Dollar was a feature female selling to Millington last fall and this is a pedigree that you can invest with confidence. A true standout bull here and one we are very proud to offer to the industry.

ce 11.2
bw 2.6
ww 72.1
yw 108.7
adg 0.23
mce 5.2
milk 24.0
mww 59.9
stay 17.9
doc 9.5

WBFS SIGNIFICANT B132
RUBY'S CURRENCY 7134E
RUBYS JILL 035X
WHEATLAND STOUT 930W
RUST FLIRT 4 CERTIN 707E
RF FLIRTIN FOR CERTIN37U



Full Sister: Rust Flirt 4 Sure 9504G



Full Sib to Dam: RF Certainly Flirtin 202Z

REMINGTON LOCK N LOAD54U
TJSC BOONE PICKENS 46C
TJSC KNOCKOUT 121Y

SVS CAPTAIN MORGAN 11Z
RF NOT JUST A FLIRT 404B
RF CERTAINLY FLIRTIN 202Z

ce 10.8
bw 2.0
ww 67.7
yw 105.7
adg 0.24
mce 4.4
milk 18.0
mww 51.8
stay 16.4
doc 9.6



\$28,000 Full brother: *Rust Hydro 8F*



Dam: *RF Not Just A Flirt 404B*

WCS MR HUSKER 3076A
W/C HUSKER 838C
MISS WERNING 534R

YARDLEY HIGH REGARD W242
HARRELL ANGEL 5870C
W/C MISS ANGEL 2870Z

ce 9.1
bw 1.8
ww 65.4
yw 93.3
adg 0.17
mce 2.3
milk 17.6
mww 50.3
stay 10.7
doc 15.1



\$9,000 maternal sib: *Rust Net Profit 29F*



\$7,500 maternal sibling: *Rust Ms Angel 9507G*



RF Rust Backdraft 981G Simmental Bull

homo polled /// homo black /// 3601233 /// 2019-01-16 /// bw-93 /// adj ww-805

One of the great bulls we have ever offered and we truly feel he has the world of potential to enhance the great Simmental breed. A full brother topped our sale at \$28,000 last year plus a full sister commanded \$62,000 at Friday Night Lights. His \$44,000 dam, also produced the \$65,000 RF Stimulus that doesn't miss and is leaving near-perfect udder, awesome footed and sound made progeny. Backdraft himself is one of the most complete herd sires we have ever offered and we will be utilizing him in our own program to move it forward. It is difficult finding homo/homo black baldy bulls of this calibre and we feel we have a hot commodity with Backdraft.



Rust Shell Shocker 511G Simmental Bull

homo polled /// homo black /// 3586492 /// 2019-02-26 /// bw-ET /// adj ww-766

Lot 4 & 8 are full ET brothers. These homo/homo herd sires are as cool made and intriguing as we feel we have produced and they combine many of the best cow families in the industry. A maternal brother to 8543U on the top side combined with the famous Angel cow family on the bottom side has resulted in a stacked pedigree that is sure to produce with consistency and quality. They are sure to be admired for his attractive front end, level top, excellent hair, sound structure and great movement with good calving ease and solid growth. We feel Shell Shocker has the pedigree and phenotypic qualities to make a big time impact for the successful buyer.

S
Y
I
M
M
E
N
T
A
L
S

S
Y
I
M
-
A
N
G
U
S

S
E
I
M
-
A
N
G
U
S

S
E
I
M
M
E
N
T
A
L
E

R
Y
E
A
R
L
I
N
G
S

B
Y
E
A
R
L
I
N
G
S



Rust Dark Angel 507G Simmental Bull

homo polled /// homo black /// 3586497 /// 2019-02-24 /// bw-ET /// adj ww-812

Lot 5 & 6 are full ET brothers. We think our 2020 bull offering is hands down the very best and Dark Angel may be the feature and lead bull to sell in our sale as he is a future great one in our minds. His full brother, 5G displays the same impressive qualities and they are out of one of the very best cows in our program who never misses. Check out the calving ease numbers on these homo/homo studs as they are in the top 1% for CE and top 4% for BW. Strong feet, athletic movement on a sound structure combined with a near flawless phenotype and backed by an incredible 8543 x Angel pedigree will take the guess work out of these outstanding breeding pieces.

ce 17.3
bw -1.5
ww 65.4
yw 90.4
adg 0.16
mce 8.4
milk 19.0
mww 51.7
stay 17.4
do 10.8

CCRANCHOR 9071B
W/C NIGHTWATCH 84E
MISSWERNING KP 8543U

YARDLEY HIGH REGARD W242
HARRELL ANGEL 5870C
W/C MISS ANGEL 2870Z



Dam of Lot 4-8: *Ha*



Rust Night Watch 5G Simmental Bull

homo polled /// homo black /// 3586416 /// 2019-01-14 /// bw-ET /// adj ww-724

Lot 5 & 6 are full ET brothers. We think our 2020 bull offering is hands down the very best and Dark Angel may be the feature and lead bull to sell in our sale as he is a future great one in our minds. His full brother, 5G displays the same impressive qualities and they are out of one of the very best cows in our program who never misses. Check out the calving ease numbers on these homo/homo studs as they are in the top 1% for CE and top 4% for BW. Strong feet, athletic movement on a sound structure combined with a near flawless phenotype and backed by an incredible 8543 x Angel pedigree will take the guess work out of these outstanding breeding pieces.

ce 16.8
bw -1.7
ww 63.6
yw 87.9
adg 0.15
mce 7.8
milk 23.3
mww 55.0
stay 18.1
doc 11.2

CCRANCHOR 9071B
W/C NIGHTWATCH 84E
MISSWERNING KP 8543U

YARDLEY HIGH REGARD W242
HARRELL ANGEL 5870C
W/C MISS ANGEL 2870Z



Maternal sib: *Profit Margin 16F*



Maternal sib: *Rust Bank Statement 20F*

CLRS AFTER SHOCK 604 A
CLRS DIVIDEND 405D
CLRS BONNIA 405 B

YARDLEY HIGH REGARD W242
HARRELL ANGEL 5870C
W/C MISS ANGEL 2870Z

ce 11.8
bw 0.7
ww 71.0
yw 105.4
adg 0.21
mce 4.4
milk 14.7
mww 50.2
stay 14.3
doc 13.2



Harrell Angel 5870C



Rust Dividend 512G Simmental Bull

homo polled /// homo black /// 3586489 /// 2019-02-26 /// bw-ET /// adj ww-714

5870C is one of our most influential donors that has been such a great producer and she is the result of Lots 4-8 and a handful of exceptional sires they are. Lot 7 is sired by the \$52,000 Dividend who is backed by another strong footed and udder cow family. His progeny have come to the front of the pack throughout the country and reports are tremendous as they are thick, attractive and big bodied ... much like this outstanding bull. This homo/homo herd sire puts it all together in a dense and attractive package.

WCS MR HUSKER 3076A
W/C HUSKER 838C
MISS WERNING 534R

YARDLEY HIGH REGARD W242
HARRELL ANGEL 5870C
W/C MISS ANGEL 2870Z

ce 7.6
bw 1.2
ww 60.4
yw 87.4
adg 0.17
mce 1.7
milk 25.8
mww 56.0
stay 12.4
doc 15.1



Grandam: W/C Miss Angel 2870Z



Maternal sib: Rust Ms Angel 9500G



Rust Husker 510G Simmental Bull

homo polled /// homo black /// 3586491 /// 2018-03-08 /// bw-ET /// adj ww-728

Lot 4 & 8 are full ET brothers. These homo/homo herd sires are as cool made and intriguing as we feel we have produced and they combine many of the best cow families in the industry. A maternal brother to 8543U on the top side combined with the famous Angel cow family on the bottom side has resulted in a stacked pedigree that is sure to produce with consistency and quality. They are sure to be admired for his attractive front end, level top, excellent hair, sound structure and great movement with good calving ease and solid growth.

SYEARLING
SIMMENTAL

SYEARLING
SIMMENTAL

SYEARLING
SIMMENTAL

SYEARLING
SIMMENTAL

SYEARLING
SIMMENTAL

SYEARLING
SIMMENTAL



Rust Husker 24G Simmental Bull

homo polled /// homo black /// 3586445 /// 2019-02-24 /// bw-ET /// adj ww-649

Lot 9 & 10 are full ET brothers. These low birthweight herd sires are strong footed, sound made, complete made individuals that are backed by maternal greatness with outstanding udder quality. Whether you want to incorporate them in your heifer pen to enhance calving ease or in the cowherd to lower birthweights, you will definitely want to keep every single daughter as they are certain to be the kind to build a program around. They're homo/homo and have the stamp of quality that can enhance hair, muscle shape, attractiveness and overall calving ease with maternal to bring your program forward.

ce	6.1	WCS MR HUSKER 3076A
bw	2.4	W/C HUSKER 838C
ww	59.0	MISSWERNING 534R
yw	86.5	MR HOC BROKER
adg	0.17	RF DEBUT 413B
mce	2.1	RF DEBUT 229Z
milk	24.6	
mww	54.1	
stay	16.0	
doc	3.7	



Dam: RF Debut 413B



Grandsire: Mr HOC Broker



Rust Husker 20G Simmental Bull

homo polled /// homo black /// 3586444 /// 2019-02-21 /// bw-ET /// adj ww-691

Lot 9 & 10 are full ET brothers. These low birthweight herd sires are strong footed, sound made, complete made individuals that are backed by maternal greatness with outstanding udder quality. Whether you want to incorporate them in your heifer pen to enhance calving ease or in the cowherd to lower birthweights, you will definitely want to keep every single daughter as they are certain to be the kind to build a program around. They're homo/homo and have the stamp of quality that can enhance hair, muscle shape, attractiveness and overall calving ease with maternal to bring your program forward.

ce	6.9	WCS MR HUSKER 3076A
bw	3.3	W/C HUSKER 838C
ww	67.8	MISSWERNING 534R
yw	100.5	MR HOC BROKER
adg	0.20	RF DEBUT 413B
mce	3.2	RF DEBUT 229Z
milk	18.3	
mww	52.1	
stay	10.2	
doc	5.8	



Maternal sib: RF Debut 604D



Mat sib to sire: Miss Werning KP 8543U

3D BLK FULL THROTTLE 483
LFE COMMISSIONER 811Z
LFE BS LASS 189X

W/C UNITED 956Y
W/C RJ MISS 8543 6114D
MISS WERNING KP 8543U

ce	9.5
bw	1.8
ww	71.1
yw	112.5
adg	0.26
mce	4.6
milk	21.3
mww	56.8
stay	12.5
doc	13.6



\$25,000 maternal sib: *Rust Mayhem 31F*



\$7,250 maternal sib: *Rust Bullet 22F*

3D BLK FULL THROTTLE 483
LFE COMMISSIONER 811Z
LFE BS LASS 189X

W/C UNITED 956Y
W/C RJ MISS 8543 6114D
MISS WERNING KP 8543U

ce	8.6
bw	1.2
ww	70.3
yw	111.8
adg	0.26
mce	4.4
milk	21.1
mww	56.2
stay	14.9
doc	15.3



Maternal sib: *Rust MS United Dream 820F*



\$22,000 mat sib: *Rust Miss Dream 7404E*



Rust Commissioner 501G Simmental Bull

homo polled /// homo black /// 3586500 /// 2019-02-18 /// bw-ET /// adj ww-753

Lot 11 & 12 are full ET brothers. 6114D is an awesome donor that is a direct daughter of the famous 8543 who has produced millions in direct progeny sales. Last year, 6114D produced a \$25,000 high seller and she has done a great job again on these Commissioner sons. Commissioner was one of our mainstay herd sires that did a great job siring feature sons each sale season and daughters that were awesome udder, easy keeping and the kind you want a pasture full of. These two sons are a prime example of the strong breeding capabilities he has incorporated into our program.



Rust Commissioner 508G Simmental Bull

polled /// black /// 3586501 /// 2019-02-25 /// bw-ET /// adj ww-748

Lot 11 & 12 are full ET brothers. 6114D is an awesome donor that is a direct daughter of the famous 8543 who has produced millions in direct progeny sales. Last year, 6114D produced a \$25,000 high seller and she has done a great job again on these Commissioner sons. Commissioner was one of our mainstay herd sires that did a great job siring feature sons each sale season and daughters that were awesome udder, easy keeping and the kind you want a pasture full of. These two sons are a prime example of the strong breeding capabilities he has incorporated into our program.

S
Y
I
M
M
E
N
T
A
L
S

S
Y
I
M
-
A
N
G
U
S

S
E
I
M
-
A
N
G
U
S

S
E
I
M
M
E
N
T
A
L
E

R
Y
E
A
R
L
I
N
G
S

B
Y
E
A
R
L
I
N
G
S

Dam of Lot 14 & 15 :: W/C Angel 7143E



Rust Currency 10G Simmental Bull

homo polled /// homo black /// 3586430 /// 2019-02-03 /// bw-ET /// adj ww-701

Unfortunately we didn't snap a picture of Rust Currency 10G but he is certainly a strong quality individual backed by a deep pedigree. His sire, the \$435,000 (1/3 interest) Currency has left an impressive sire group and they have dimension, structural soundness and a spread from bw to ww. Her donor dam, 7143E carries an outstanding pedigree with Relentless on top of the many time Champion 2870Z. This homo/homo herd sire is worth a close look when videos pop up online or feel free to travel to the ranch.

ce 10.5
bw 1.9
ww 73.8
yw 104.3
adg 0.19
mce 4.1
milk 17.1
mww 53.9
stay 12.8
doc 16.2

WBF SIGNIFICANT B132
RUBY'S CURRENCY 7134E
RUBYS JILL 035X
W/C RELENTLESS 32C
W/C ANGEL 7143E
W/C MISS ANGEL 2870Z



Sire: Ruby's Currency 7134E



Grandam of Lot 14-15: W/C Miss Angel 2870Z



Rust Lover Boy 517G Simmental Bull

homo polled /// red /// 3586517 /// 2019-02-28 /// bw-ET /// adj ww-848

Lover Boy is a past Denver NWSS Grand Champion Bull and is commended for his outstanding feet and structure with extra depth and natural dimension. This red herd sire is out of the great 7143E donor who is stacked pedigree and one that offers a complete outcross twist to the red Simmental sector. This homozygous polled red bull is obviously stacked pedigree but check out the calving ease numbers that come with that, he is a 15.4 on CE and negative BW number. He is soggy made, bold ribbed, extended through the front end and intriguing in his type.

ce 15.4
bw -0.4
ww 65.1
yw 87.9
adg 0.14
mce 7.4
milk 18.1
mww 50.6
stay 14.7
doc 10.8

HTP/SVF DURACELL T52
THSF LOVER BOY B33
RP/MP RIGHT TO LOVE 015U
W/C RELENTLESS 32C
W/C ANGEL 7143E
W/C MISS ANGEL 2870Z



Sire: THSF Lover Boy B33



Grandam: RP/MP Right To Love 015U

TNT 90 PROOF Z401
WFL WESTCOTT 24C
WFL SWEET LICIOUS 1044X

IPU REVOLUTION 172U
BEECH BROS YARA 122Y
BEECH BROS UNNA 817U

ce 0.6
bw 4.7
ww 77.6
yw 112.6
adg 0.22
mce -1.9
milk 22.2
mww 61.0
stay 12.6
doc 10.9



\$10,500 Maternal sib: **Rust Miss Yara 9307G**



\$13,500 Maternal Sib: **Rust Bull 18C**

WBF LUCKY DUECE S035
WBF REST EASY U085
WBF DANCER P735

WFL WESTCOTT 24C
RF FLIRT 728E
RF FLIRT 434B

ce 13.2
bw -2.4
ww 57.7
yw 85.7
adg 0.18
mce 5.8
milk 29.1
mww 57.9
stay 16.5
doc -3.7



\$55,000 dam: **RF Flirt 728E**



Sire: **WBF Rest Easy U085**



Rust Westcott 303G Simmental Bull

homo polled /// red /// 3586533 /// 2019-03-04 /// bw-ET /// adj ww-691

303G is a farm favorite and admired for the sweep to his lower rib with extra stoutness and natural muscling while still being up-headed for all the power he does possess. His dam, Yara 122Y always has a feature lot in our sales and they always sell amongst the very top of the sale with countless number of progeny commanding \$10,000+. The \$165,000 Westcott is a true breeding legend that also sired our lead bull two years ago, Rio Grande that brought \$60,000. These are the type of bulls we are proud to offer to the commercial and purebred cattle industries.



Rust Rest Easy 520G Simmental Bull

homo polled /// red /// 3586507 /// 2019-03-05 /// bw-ET /// adj ww-785

We feel we have created a special individual in 520G as he combines the calving ease of his sire with the maternal greatness and power of his awesome donor dam. This homo polled feature is impressive in his design and hard to fault while weaning off amongst the top of his contemporary group. His dam is out of a full sister to RF Merchant, who is recognized for many of the best production females in Canada. 520G is a true herd sire that can have a positive influence on the most progressive programs.

S
Y
I
M
M
E
N
T
A
L
S

S
Y
I
M
-
A
N
G
U
S

S
E
I
M
-
A
N
G
U
S

S
E
I
M
M
E
N
T
A
L
E

R
E
D
A
N
G
U
S

B
Y
E
A
R
L
I
N
G
S



Rust Depth Charge 4G Simmental Bull

polled /// red /// 3586422 /// 2019-01-13 /// bw-ET /// ww-758

Lot 18 & 19 are full ET brothers. We purchased the sire of Lots 18 & 19, Depth Charge for \$25,000 to incorporate calving ease and maternal strength in some of our power genetics. The \$55,000 dam, Certainly Flirtin 740E is a great young donor that is out of the famous 202Z who continues to have progeny top sales all over the continent. Lots 18 & 19 are powerful in their type and will add muscle shape, softness, scrotal, power and overall maternal to their progeny.

ce 7.1
bw 2.5
ww 78.0
yw 114.9
adg 0.23
mce 2.1
milk 16.4
mww 55.4
stay 15.7
doc 14.2

W/C HOCHCC REDANSWER 33B
W/C DEPTH CHARGE 0266E
MISSWERNING 0266X

WFL WESTCOTT 24C
RF CERTAINLY FLIRTIN 740E
RF CERTAINLY FLIRTIN 202Z



\$55,000 dam of Lots 18 - 21



Rust Depth Charge 3G Simmental Bull

homo polled /// red /// 3586423 /// 2019-01-10 /// bw-ET /// adj ww-748

Lot 18 & 19 are full ET brothers. We purchased the sire of Lots 18 & 19, Depth Charge for \$25,000 to incorporate calving ease and maternal strength in some of our power genetics. The \$55,000 dam, Certainly Flirtin 740E is a great young donor that is out of the famous 202Z who continues to have progeny top sales all over the continent. Lots 18 & 19 are powerful in their type and will add muscle shape, softness, scrotal, power and overall maternal to their progeny.

ce 5.7
bw 2.6
ww 78.9
yw 116.7
adg 0.24
mce 1.2
milk 17.9
mww 57.3
stay 18.6
doc 14.2

W/C HOCHCC REDANSWER 33B
W/C DEPTH CHARGE 0266E
MISSWERNING 0266X

WFL WESTCOTT 24C
RF CERTAINLY FLIRTIN 740E
RF CERTAINLY FLIRTIN 202Z



Sire: W/C Depth Charge 0266E



Grandam: RF Certainly Flirtin 202Z

WBF LUCKY DUECE S035
WBF REST EASY U085
WBF DANCER P735

WFL WESTCOTT 24C
RF CERTAINLY FLIRTIN 740E
RF CERTAINLY FLIRTIN 202Z

ce 16.2
bw -2.3
ww 57.7
yw 85.7
adg 0.18
mce 6.0
milk 24.9
mww 53.7
stay 18.7
doc 6.1



RF Certainly Flirtin 740E



Rust Rest Easy 25G Simmental Bull

homo polled /// red /// 3586448 /// 2019-02-28 /// bw-ET /// adj ww-781

Lot 20 & 21 are full ET brothers. Here are two of our very best red bulls and we think they are a true testament to what we try to produce for our valued customers. They represent a big time cow family on the bottom side that is recognized for awesome udders, strong feet, soundness and overall production ability. Their sire, Rest Easy is a proven calving ease sire that can be used with confidence in the heifer pen and not sacrifice maternal and performance. They have an awesome spread of high teens for CE with a negative BW but also boasted an actual WW amongst the top of their calf-crop. Two features here that we think are extremely good and hard to fault.

WBF LUCKY DUECE S035
WBF REST EASY U085
WBF DANCER P735

WFL WESTCOTT 24C
RF CERTAINLY FLIRTIN 740E
RF CERTAINLY FLIRTIN 202Z

ce 18.3
bw -2.2
ww 56.8
yw 85.5
adg 0.18
mce 7.4
milk 30.1
mww 58.5
stay 18.1
doc 3.7



Sire: WBF Rest Easy U085



Rust Rest Easy 18G Simmental Bull

homo polled /// red /// 3586449 /// 2019-02-20 /// bw-ET /// adj ww-743

Lot 20 & 21 are full ET brothers. Here are two of our very best red bulls and we think they are a true testament to what we try to produce for our valued customers. They represent a big time cow family on the bottom side that is recognized for awesome udders, strong feet, soundness and overall production ability. Their sire, Rest Easy is a proven calving ease sire that can be used with confidence in the heifer pen and not sacrifice maternal and performance. They have an awesome spread of high teens for CE with a negative BW but also boasted an actual WW amongst the top of their calf-crop. Two features here that we think are extremely good and hard to fault.



Great Grandam: RF Flirtin For Certin 37U

SYEARLING
SIMMENTAL

SYEARLING
SIMMENTAL

SYEARLING
SIMMENTAL

SYEARLING
SIMMENTAL

SYEARLING
SIMMENTAL

SYEARLING
SIMMENTAL



22

Rust Rest Easy 518G Simmental Bull

homo polled /// black /// 3586514 /// 2019-03-01 /// bw-ET /// adj ww-695

Lot 22 & 23 are full ET brothers. These two bulls are as complete of sure fire calving ease sires that we can make and they are backed by awesome maternal pedigrees. We concentrated on mating some of our best genetics to offer quality cattle that are low bw and will still add production value. With them both being around 20 on CE and an impressive -4.3 for BW epd, you can surely use them with ease in the heifer pen and rest easy throughout the night checks. With their dam being a full sister to the \$205,000 Bank Roll, you can invest with confidence that you are getting the very best of the breed in these awesome individuals.

ce 19.7
bw -4.4
ww 47.3
yw 63.4
adg 0.10
mce 9.2
milk 31.1
mww 54.7
stay 19.5
doc 0.7

WBF LUCKY DUECE S035
WBF REST EASY U085
WBF DANCER P735
W/C LOADED UP 1119Y
W/C RJ TEXAS DOLL 7058E
MISSWERNING KP 8543U



Dam: W/C RJ Texas Doll 7058E



Grandam: Miss Werning KP 8543U



23

Rust Rest Easy 514G Simmental Bull

homo polled /// black /// 3586515 /// 2019-02-26 /// bw-ET /// adj ww-667

Lot 22 & 23 are full ET brothers. These two bulls are as complete of sure fire calving ease sires that we can make and they are backed by awesome maternal pedigrees. We concentrated on mating some of our best genetics to offer quality cattle that are low bw and will still add production value. With them both being around 20 on CE and an impressive -4.3 for BW epd, you can surely use them with ease in the heifer pen and rest easy throughout the night checks. With their dam being a full sister to the \$205,000 Bank Roll, you can invest with confidence that you are getting the very best of the breed in these awesome individuals.

ce 20.8
bw -4.3
ww 46.5
yw 62.7
adg 0.10
mce 10.0
milk 33.4
mww 56.6
stay 19.5
doc 1.8

WBF LUCKY DUECE S035
WBF REST EASY U085
WBF DANCER P735
W/C LOADED UP 1119Y
W/C RJ TEXAS DOLL 7058E
MISSWERNING KP 8543U



Sire: WBF Rest Easy U085



Grandsire: W/C Loaded Up 1119Y

NCB COBRA 47Y
NGDB STRUCTURE 34D
NGDB LOUISE 411 B

SVF STEEL FORCE S701
GCC DIXIE ERICA 106Y
O C C DIXIE ERICA 873P

ce 10.7
bw 0.2
ww 63.3
yw 93.9
adg 0.19
mce 4.3
milk 20.2
mww 51.8
stay 16.5
doc 8.7



Dam: GCC Dixie Erica 106Y



Sire: NGDB Structure 34D

NCB COBRA 47Y
NGDB STRUCTURE 34D
NGDB LOUISE 411 B

SVF STEEL FORCE S701
GCC DIXIE ERICA 106Y
O C C DIXIE ERICA 873P

ce 16.0
bw 0.5
ww 64.7
yw 96.9
adg 0.20
mce 7.9
milk 23.6
mww 55.9
stay 15.0
doc 8.7



Grandam: NGDB Louise 411B



Grandsire: NCB Cobra 47Y



24

Rust Master Designed 23G SimAngus Bull

homo polled /// homo black /// 3586454 /// 2019-02-23 /// bw-ET /// adj ww-843

Master Designed is truly a special individual and quite possibly the best animal ever bred and raised here. That is a big statement but one that we feel reigns true as he has an impeccable pedigree with strong EPD's and a phenotype that is near perfect and impossible to fault. 106Y is a picture perfect donor that is awesome udder, strong footed and ideal for the times. His sire, Structure is an outcross, curve-bending, impressive phenotype bull that is out of an impeccable \$46,000 dam that is noted for her udder, foot and structural quality. Please stop by the pen at NWSS or join us on sale day to view Master Designed as he is the real deal in our mind and one we will be using a ton of moving forward in our own program.



25

Rust Structure 14G SimAngus Bull

homo polled /// homo black /// 3586453 /// 2019-02-16 /// bw-ET /// adj ww-715

Rust Structure 14G is an impressive individual that we think rivals his Lot 24 brother very closely and has all the tools to be an awesome breeding bull. We commented on his Lot 24 brother being one of the best bulls we have ever raised so 14G is in steep competition in a battle for brotherly popularity but he holds his own extremely well. We don't want him to get overshadowed by his impressive brother as he has the same impressive parts to his phenotype and being out of some of the very best, outcross cattle in the entire industry like Cobra, Structure, Louise 411B & Dixie Erica 106Y!

SY
E
A
R
L
I
N
G
S

SY
E
A
R
L
I
N
G
S

SY
E
A
R
L
I
N
G
S

SY
E
A
R
L
I
N
G
S

SY
E
A
R
L
I
N
G
S

SY
E
A
R
L
I
N
G
S



Rust Loaded Up 19G SimAngus Bull

homo polled /// black /// 3586450 /// 2019-02-20 /// bw-ET /// adj ww-701

Rust Loaded Up 19G is a specially bred individual as he is out of the proven Loaded Up and one of the most impressive donors we own that has an impressive ability to be as good looking as you can make one and highly productive to boot. Dixie Erica 106Y exemplifies the strength of donors we are determined to build around as she is awesome footed, strong udder, moderate, easy fleshing and beautiful in her overall design. She is a donor that is on the rise for being one of our most influential in years to come and it is because of her ability to raise bulls like Lot 26 and his maternal brothers in Lots 24 & 25.

ce 13.0
bw 0.5
ww 59.2
yw 83.4
adg 0.15
mce 5.1
milk 14.8
mww 44.4
stay 17.7
doc 16.8

REMINGTON LOCK N LOAD54U
W/C LOADED UP 1119Y
AUBREYS BLACK BLAZE III
SVF STEEL FORCE S701
GCC DIXIE ERICA 106Y
O C C DIXIE ERICA 873P



Dam: GCC Dixie Erica 106Y



Full sib: RF Dixie Erica 858F



Rust Breakthrough 22G SimAngus Bull

polled /// black /// 3586447 /// 2019-02-22 /// bw-ET /// adj ww-697

Here is a big bodied, hairy, stout made individual that goes back to our \$32,500 Breakthrough and the great Joys Elegance. Joys Elegance was Denver NWSS Grand Champion Female in the Junior Show and has gone on and been an extremely productive donor raising multiple high sellers and banner winning progeny. The strengths of this pedigree are impressive as Joy on the bottom side combined with the beautiful udder, strong footed W31 on the top side is sure to leave a beautiful set of production daughters.

ce 13.7
bw 0.4
ww 56.7
yw 87.2
adg 0.19
mce 7.6
milk 35.0
mww 63.4
stay 16.5
doc 14.1

SAV HARVESTOR 0338
RUST BREAKTHROUGH 4043
TNT MISS W31
3C MACHO M450 BZ
AJE/JF ANT JOYS ELEGANCE
BHS JF ANTOINETTES JOY



Dam: AJE/JF Ant Joys Elegance



\$40,000 maternal sib: CD Joys Elegance 6107

SAV HARVESTOR 0338
RUST BREAKTHROUGH 4043
TNT MISSW31

SVS CAPTAIN MORGAN 11Z
RF NOT JUST A FLIRT 404B
RF CERTAINLY FLIRTIN 202Z

ce 9.8
bw 1.9
ww 65.7
yw 105.4
adg 0.25
mce 3.7
milk 27.1
mww 60.0
stay 17.4
doc 15.3



\$28,000 maternal brother: *Rust Hydro 8F*



Dam: *RF Not Just A Flirt 404B*

SAV HARVESTOR 0338
RUST BREAKTHROUGH 4043
TNT MISSW31

SVS CAPTAIN MORGAN 11Z
RF NOT JUST A FLIRT 404B
RF CERTAINLY FLIRTIN 202Z

ce 11.4
bw 2.8
ww 72.1
yw 114.5
adg 0.27
mce 4.6
milk 23.8
mww 59.8
stay 16.4
doc 11.8



\$62,000 maternal sib: *RF/Rust Flirt 827F*



\$62,000 maternal sib: *RF/Rust Flirt 827F*



28

Rust Breakthrough 503G SimAngus Bull

homo polled /// homo black /// 3586484 /// 2019-02-20 /// bw-ET /// adj ww-694

Lot 28 & 29 are full ET brothers. A couple of homo/homo features here with a pedigree that you can invest in with confidence. On the top side, W31 was a highly productive donor that never missed and her largest accomplishment was raising the \$32,500 Breakthrough. The 404B on the bottom needs no introductions as she raised the \$28,000 feature high seller last year and also has progeny demanding a \$62,000 daughter and a \$65,000 son. Lot 28 is a good looking dude that is moderate, tanky and big bodied and the Lot 29 is a power individual that is double digit CE and triple digit YW ... an impressive spread that is backed by pedigrees and phenotypes like no other.



29

Rust Breakthrough 500G SimAngus Bull

homo polled /// homo black /// 3586485 /// 2019-02-17 /// bw-ET /// adj ww-822

Lot 28 & 29 are full ET brothers.

SYEARLING
SIMMENTAL

SYEARLING
SIMMENTAL

SEXTON
SIMMENTAL

SEXTON
SIMMENTAL

REARLING
SIMMENTAL

BLACK
REARLING
SIMMENTAL

SEAMENTAL

SEAMENTAL

SEAMENTAL

SEAMENTAL

REARLING

BLACKLING



30

Rust Lock N Load 406F SimAngus Bull

homo polled /// homo black /// 3435057 /// 2018-04-01 /// bw-ET /// adj ww-622

Pretty darn interesting package we have here with an extra age bull that is backed by two of the greats in two different breeds to form this awesome SimAngus herd sire. 406F's dam, 6566 is a cornerstone donor for us that is a full sib to the famous SAV Blackcap May 4136 who is the most influential cow ever to grace the North Dakota pastures of Schaff Angus Valley. This prolific dam has produced an ever growing list of AI sires in the Angus breed including Resource, Renown, Pedigree, Sensation, Seedstock, President, Rainfall, Rairdance and so many more.

ce 11.1
bw 0.2
ww 64.9
yw 104.5
adg 0.25
mce 6.0
milk 15.7
mww 48.1
stay 16.6
doc 11.5

REMINGTON ON TARGET 2S
REMINGTON LOCK N LOAD 54U
BAR 15 MISS KNIGHT 78E-51G
SAV 8180 TRAVELER 004
SAV BLACKCAP MAY 6566
SAV MAY 2397



Dam: SAV Blackcap May 6566



Full sib to dam: SAV Blackcap May 4136



31

Rust Loaded Up 135F SimAngus Bull

homo polled /// red /// 3435161 /// 2018-06-01 /// bw-84 /// adj ww-661

Invest in this 3/4 Red SimAngus herd sire with confidence that he will increase calving ease and maternal strength in your program. He is dark, big nuted with natural body dimension and is an impressive individual in the extra-age section. Loaded Up 79C on the top side is a calving ease sensation and a full brother to the \$205,000 Bankroll. On the bottom side is an impressive cornerstone female that is out of the awesome M68 who was our mainstay Simmental donor for years on end. This guy wraps it all together and one to check out closely.

ce 12.4
bw 0.2
ww 56.0
yw 82.3
adg 0.16
mce 6.2
milk 25.4
mww 53.4
stay 15.8
doc 9.0

W/C LOADED UP 1119Y
W/C LOADED UP 79C
MISS WERNING KP 8543U
RED COCKBURN RIBEYE 308U
RUST MISS 396A
TNT MISS SADIE M68



W/C Loaded Up 79C: Sire



Full sib to sire: W/C Bankroll

HARVIE JDFWALLBANGER111X
SYS CAPTAIN MORGAN 11Z
SUNNYVALLEY BLK JENNA 88U

MR HOC BROKER
RF SCREAM 215Z
RF SCREAM 39X

ce 6.4
bw 3.8
ww 78.0
yw 118.3
adg 0.25
mce 3.6
milk 20.1
mww 59.0
stay 12.7
doc 12.2



Full sib: BGS/BM Captain Scream



Dam: RF Scream 215Z

HARVIE JDFWALLBANGER111X
SYS CAPTAIN MORGAN 11Z
SUNNYVALLEY BLK JENNA 88U

MR HOC BROKER
RF SCREAM 215Z
RF SCREAM 39X

ce 6.4
bw 3.8
ww 78.0
yw 118.3
adg 0.25
mce 3.6
milk 20.1
mww 59.0
stay 12.7
doc 12.2



Maternal sib: Rust Scream 6105D



Full sib to dam: Blairs Scream 530E



32

Rust Captain Morgan 405F Simmental Bull

homo polled /// red /// 3435060 /// 2018-04-01 /// bw-ET /// adj ww-642

Lot 32 & 33 are full ET brothers. We work hard to have feature bulls of every age group and here a couple outstanding extra-age ET bulls that will be sure to impress come sale day. They are full sibs to the great Captain Scream that was a many time Champion and semen is still commanding the \$500/dose range. Their dam, RF Scream 215Z was the Agribition Reserve Grand Champion Female and lead off female in the inaugural Friday Night Lights that has generated a couple hundred thousand in progeny sales. Her positive impact on our program and the industry has been noticed and we feel that it'll continue to increase with outstanding progeny like Lot 32 & 33.



33

Rust Captain Morgan 408F Simmental Bull

homo polled /// black /// 3435062 /// 2018-04-03 /// bw-ET /// adj ww-622

Lot 32 & 33 are full ET brothers.

Y
E
A
R
L
I
N
G
S
S
I
M
M
E
N
T
A
L

Y
E
A
R
L
I
N
G
S
S
I
M
M
E
N
T
A
L

Y
E
A
R
L
I
N
G
S
S
I
M
M
E
N
T
A
L

Y
E
A
R
L
I
N
G
S
S
I
M
M
E
N
T
A
L

Y
E
A
R
L
I
N
G
S
S
I
M
M
E
N
T
A
L

Y
E
A
R
L
I
N
G
S
S
I
M
M
E
N
T
A
L

SEAMLESS

SEAMLESS

SEAMLESS

SEAMLESS

SEAMLESS

SEAMLESS



34

Rust Dividend 114F Simmental Bull

homo polled /// homo black /// 3435104 /// 2018-05-23 /// bw-102 /// adj ww-741

A twist on pedigree and an extremely complete made bull that we rank amongst the top of the offering. This homo/homo herd sire prospect is filled with quality from a strong set of EPD's to an outcross but highly proven pedigree and an attractive phenotype that you can appreciate. He is right in all the important places with a strong foot, sound structure, attractive front end, natural dimension and overall hard to fault.

ce 8.7
bw 2.8
ww 74.1
yw 112.0
adg 0.24
mce 4.0
milk 18.8
mww 55.8
stay 17.3
doc 8.5

CLRS AFTER SHOCK 604A
CLRS DIVIDEND 405D
CLRS BONNIA 405 B

M.A.C. BANKER 356A
SILVERSTONE SHAMOO 191D
SILVERSTONE GFS SHAMOO



Sire: CLRS Dividend 405D



Great Grandam: Double D BLK Chyna



35

Rust Dividend 108F Simmental Bull

homo polled /// homo black /// 3435108 /// 2018-03-02 /// bw-89 /// adj ww-710

Dividend on top of Commissioner with the great N341 on the bottom side stacks up a pedigree full of maternal greatness and overall quality. We are very high on the Dividend progeny and when you combine it with a cornerstone female like 601D, all the guess work is taken out. A strong set of EPD's compliments Lot 35 as he will also add extra stoutness, muscle, scrotal, length, depth and overall power in a true herd bull physique.

ce 8.5
bw 1.5
ww 73.9
yw 114.4
adg 0.25
mce 4.0
milk 19.3
mww 56.2
stay 17.8
doc 12.5

CLRS AFTER SHOCK 604A
CLRS DIVIDEND 405D
CLRS BONNIA 405 B

LFE COMMISSIONER 811Z
RUST MISS 601D
GIBBS 9128W MABELLE N341



Grandsire: LFE Commissioner 811Z



Mat sib to dam: Gibbs 1100Y HY Deacon

WCS MR HUSKER 3076A
W/C HUSKER 838C
MISSWERNING 534R

TNT GUNNER N208
TNT MISSW168
OPPSWIS GM2

ce 5.8
bw 3.7
ww 70.2
yw 100.5
adg 0.19
mce 2.3
milk 26.2
mww 61.2
stay 16.3
doc 14.8



Dam: TNT Miss W168



Mat sib to sire: Miss Werning KP 8543U



Rust Husker 124F Simmental Bull

homo polled /// homo black /// 3435145 /// 2018-05-26 /// bw-106 /// adj ww-766

Lot 36 was our highest performing bull from the summer born program and one that is awesome pedigreed to boot. He is dense made and pushes the scales down with his core power of depth of body, flank, internal dimension and overall length from nose to tail. His sire, Husker 838C is a maternal sib to the legendary 8543U and has been an important walking bull to move our program forward. His dam, W168 is a donor female that is royally bred and is a female we would want a herd of as she produces a big performing calf every year.

RED SOO LINE POWER EYE 161X
DAMAR TRUMP C512
DAMAR OH BABY W168

FEDDES GRANITE Z132
RUST MISS 532C
C-BAR SIERAY27

ced 13.0
bw -1.0
ww 54.0
yw 86.0
adg 0.20
mce x
milk 22.0
mww -
stay 16.0
doc -



Sire: Damar Trump C512



Sire: Damar Trump C512



Rust Trump 400F Red Angus Bull

3931751 /// 2018-03-22 /// bw-ET /// adj ww-587

Our Red Angus section isn't huge but we do pride ourselves on sheer quality and genetics that you can invest in with confidence. Lot 37 is a prime example of that and an ET bull that is out of the NWSS & NAILE Grand Champion Trump Bull. On the bottom side, 532C is an up and coming donor that is bred for profit and backed by awesome calving ease and maternal genetics. Check out the CE and BW numbers on Lot 37 as he is impressive there and can work successfully in the heifer pen with his sons being highly marketable and daughters to retain at the top of the herd.

SYEARLING
SIMMENTAL

SYEARLING
SIMMENTAL

SYEARLING
SIMMENTAL

SYEARLING
SIMMENTAL

REARLING
RED ANGUS

REARLING
RED ANGUS



38

Rust Wideload 34G Red Angus Bull

4114488 /// 2019-03-22 /// bw-ET /// adj ww-724

We feel we have a special one here and one that is amongst the best Red Angus we have raised. Our \$76,000 12W donor cow absolutely doesn't miss and she produced two awesome bulls this year (Lot 38 and a feature bull at the Red Angus Renaissance in the Denver Sale) along with our \$15,000 daughter that topped our sale last fall. 12W is the dam of the \$60,000 Bingo bull and was also the grandam of the \$72,000 high selling heifer for Duff Cattle Co this fall. Lot 38 is a true curve bender with strong calving ease and strong growth pattern. When you lay eyes on this feature herd sire, you will be hard to find a hole in him and we are very proud of this guy and excited for his future.

ced 10.0
bw -0.4
ww 53.0
yw 85.0
adg 0.20
mce x
milk 26.0
mww -
stay 16.0
doc -

SLGN WIDELOAD 920W
PELTON WIDELOAD 78B
PELTON MISS JAYLA 0508S

RED BRYLOR/WSP KARWEIK
WSF MSYANKEE 13T 12W
FINE LINEYANKEE 13T



Dam: WSF MsYankee 13T 12W



Maternal sib: Red Blair's Bingo 581B



39

Rust Blue Collar 16G Red Angus Bull

4114526 /// 2019-02-19 /// bw-90 /// adj ww-634

The \$76,000 Blue Collar has sure created quite a stir around here and was also a popular sire group in the U2 Dispersal where they topped at \$23,500 and \$19,500. His sons are equally as impressive and Lot 39 is a prime example of the quality he transmits. He is dark red, deep made, hairy, structurally sound with extra muscle and dimension throughout. On the bottom side is one of the very best Red Angus flushes we have had with many Rambo x W14 females working in the continent for many leading producers and the common report is awesome udders and highly productive females. We think that Lot 39 is a high quality individual.

ced 9.0
bw 0.5
ww 56.0
yw 89.0
adg 0.20
mce x
milk 22.0
mww -
stay 19.0
doc -

RED U-2 RECKONING 149A
RED U2 BLUE COLLAR 295E
RED U-2 ANEXA 439A

FCC RAMBO 502
RUST MISS MTX 7222E
NSFR MTX W14



Sire: Red U2 Blue Collar 295E



Grandam: NSFR MTX W14

CFCC BLACK JACK 001
KR CASINO 6243
MALSONS SAVANNAH 27Y

SAV 8180TRAVELER 004
SAV BLACKCAP MAY 6566
SAV MAY 2397

ced -2.0
bw 4.8
ww 68.0
yw 115.0
radg 0.21
cem 7.0
milk 29.0
mww -
stay -
doc -



Dam: SAV Blackcap May 6566



Sire: KR Casino 6243

CFCC BLACK JACK 001
KR CASINO 6243
MALSONS SAVANNAH 27Y

SAV 8180TRAVELER 004
SAV BLACKCAP MAY 6566
SAV MAY 2397

ced 6.0
bw 1.9
ww 42.0
yw 69.0
radg 0.15
cem 7.0
milk 28.0
mww -
stay -
doc -



Grandam: Malsons Savannah 27Y



Full sib to dam: SAV Blackcap May 4136



Rust Casino 200G Black Angus Bull

19484791 /// 2019-02-23 /// bw-ET /// adj ww-733

Lot 40 & 41 are full ET brothers. All of our Angus bulls on offer are ET calves and out of the very best donors that we can find in the world. 6566 is a cornerstone donor for us that is a full sib to the famous SAV Blackcap May 4136 who is the most influential cow ever to grace the North Dakota pastures of Schaff Angus Valley. This prolific dam has produced an ever growing list of AI sires in the Angus breed including Resource, Renown, Pedigree, Sensation, Seedstock, President, Rainfall, Raindance and so many more. On the top side, Casino is one of the most popular breeding bulls in the business that is gaining steam with every calf and these two are a prime example of his sheer quality.



Rust Casino 216G Black Angus Bull

19484798 /// 2019-03-03 /// bw-ET /// adj ww-697

Lot 40 & 41 are full ET brothers.

S
Y
E
A
R
L
I
N
G
S

S
Y
E
A
R
L
I
N
G
S

S
Y
E
A
R
L
I
N
G
S

S
Y
E
A
R
L
I
N
G
S

R
Y
E
A
R
L
I
N
G
S

B
Y
E
A
R
L
I
N
G
S



42

Rust Renovation 550F Black Angus Bull

19483243 /// 2018-12-18 /// bw-ET /// adj ww-719

Lot 42 & 43 are full ET brothers. When we got into the Angus seedstock we wanted to acquire the very best donors in the breed and we were fortunate enough to buy half interest in the incredible 1019 from Brooking Angus Ranch. She is a maternal sib to the \$125,000 Bank Note and her long list of accomplishments and high selling progeny continues to grow. The mating to Renovation is big time and we encourage you to see them in the flesh as they are incredible individuals. We would like to use some of these genetics in our own program moving forward as they are powerful yet attractive and they have the scrotal, depth, dimension and overall performance with calving ease numbers to make a huge impact for the successful buyers.

ced	8.0
bw	0.4
ww	56.0
yw	98.0
radg	0.22
cem	9.0
milk	20.0
mww	-
stay	-
doc	-

SAV RENOWN 3439
SAV RENOVATION 6822
SAV MADAME PRIDE 0151

SOO LINE MOTIVE 9016
SOO LINE ROSE 1019
EA ROSE 918



Dam of Lots 42-49: S



43

Rust Renovation 551F Black Angus Bull

19483244 /// 2018-12-24 /// bw-ET /// adj ww-683

Lot 42 & 43 are full ET brothers.

ced	7.0
bw	0.9
ww	45.0
yw	87.0
radg	0.24
cem	7.0
milk	23.0
mww	-
stay	-
doc	-

SAV RENOWN 3439
SAV RENOVATION 6822
SAV MADAME PRIDE 0151

SOO LINE MOTIVE 9016
SOO LINE ROSE 1019
EA ROSE 918



Full sib to dam: Br

COLEMAN CHARLO 0256
 SAV RAINDANCE 6848
 SAV BLACKCAP MAY 4136

SOO LINE MOTIVE 9016
 SOO LINE ROSE 1019
 EA ROSE 918

ced 11.0
 bw -0.1
 ww 45.0
 yw 87.0
 radg 0.26
 cem 9.0
 milk 27.0
 mww -
 stay -
 doc -



oo Line Rose 1019



44

Rust Raindance 32G Black Angus Bull

19483534 /// 2019-03-19 /// bw-ET /// adj ww-649

Lot 44 - 48 are full ET brothers. Here are 5 full brothers that we think have worlds of potential. Their dam, 1019 is as good as it gets and one that is flat out incredible in her production ability and beautiful phenotype that is backed by one of the best pedigrees in the world. Their sire, Raindance is a calving ease sensation that is out of one of the most popular flushes in the world and a direct son of the world-renowned 4136. We have stacked some of the best Angus pedigrees in existence to create these special bulls and they have worlds of promise and we would like to utilize one of them in our own program to move it forward. These are the real deal in our mind and the consistency and quality in this flush is incredible.

ced 8.0
 bw -0.2
 ww 56.0
 yw 103.0
 radg 0.27
 cem 2.0
 milk 34.0
 mww -
 stay -
 doc -

COLEMAN CHARLO 0256
 SAV RAINDANCE 6848
 SAV BLACKCAP MAY 4136

SOO LINE MOTIVE 9016
 SOO LINE ROSE 1019
 EA ROSE 918



ooking Rose 201



45

Rust Raindance 13G Black Angus Bull

19483523 /// 2019-02-15 /// bw-ET /// adj ww-638

Lot 44 - 48 are full ET brothers.

SYEARLING
SIMMENTAL

SYEARLING
SIMMENTAL

SYEARLING
SIMMENTAL

SYEARLING
SIMMENTAL

SYEARLING
SIMMENTAL

SYEARLING
SIMMENTAL

SEAMLESS

SEAMLESS

SEAMLESS

SEAMLESS

SEAMLESS

SEAMLESS



46

Rust Raindance 28G Black Angus Bull

19483822 /// 2019-03-08 /// bw-ET /// adj ww-669

Lot 44 - 48 are full ET brothers.

ced	2.0
bw	2.4
ww	63.0
yw	121.0
radg	0.34
cem	-2.0
milk	25.0
mww	-
stay	-
doc	-

COLEMAN CHARLO 0256
 SAV RAINDANCE 6848
 SAV BLACKCAP MAY 4136
 SOO LINE MOTIVE 9016
 SOO LINE ROSE 1019
 EA ROSE 918



\$100,000 Grandam of Lot



47

Rust Raindance 33G Black Angus Bull

19483824 /// 2019-03-17 /// bw-ET /// adj ww-749

Lot 44 - 48 are full ET brothers.

ced	4.0
bw	1.5
ww	63.0
yw	120.0
radg	0.28
cem	3.0
milk	30.0
mww	-
stay	-
doc	-

COLEMAN CHARLO 0256
 SAV RAINDANCE 6848
 SAV BLACKCAP MAY 4136
 SOO LINE MOTIVE 9016
 SOO LINE ROSE 1019
 EA ROSE 918



Maternal sib to dam: Brood

COLEMAN CHARLO 0256
 SAV RAINDANCE 6848
 SAV BLACKCAP MAY 4136

SOO LINE MOTIVE 9016
 SOO LINE ROSE 1019
 EA ROSE 918

ced 3.0
 bw 1.2
 ww 58.0
 yw 117.0
 radg 0.31
 cem 4.0
 milk 24.0
 mww -
 stay -
 doc -



ots 42-49: EA Rose 918



Rust Raindance 12G Black Angus Bull

19483530 /// 2019-02-11 /// bw-ET /// adj ww-661

Lot 44 - 48 are full ET brothers.

CONNEALY CAPITALIST 028
 LD CAPITALIST 316
 LD DIXIE ERICA 2053

SOO LINE MOTIVE 9016
 SOO LINE ROSE 1019
 EA ROSE 918

ced 12.0
 bw -1.5
 ww 49.0
 yw 86.0
 radg 0.22
 cem 11.0
 milk 30.0
 mww -
 stay -
 doc -



oking Bank Note 4040



Rust Capitalist 1G Black Angus Bull

19483251 /// 2019-01-05 /// bw-ET /// adj ww-739

Throw this feature in your heifer pen with confidence and be sure to keep every daughter to enhance your program. He has outstanding calving ease numbers and still performed well at the very top of his contemporary group and is a true curve bender that we all seek. His donor dam needs no introduction and his sire is amongst the most popular in the breed. Capitalist females are in production and the good news keeps on coming with that sire as they're beautiful udder, highly maternal and very productive. These 1019 sons excite us and it'll be interesting to see which ones are the crowd favorites on sale day as it is too close to call.

SYEARLING
SIMMENTAL

SYEARLING
SIMMENTAL

SEXTON
SIMMENTAL

SEXTON
SIMMENTAL

REARLING
REARLING

BLACK ANGUS
REARLING



ced	6.0
bw	1.3
ww	69.0
yw	117.0
radg	0.22
cem	15.0
milk	20.0
mww	-
stay	-
doc	-

CONNEALY CAPITALIST 028
 LD CAPITALIST 316
 LD DIXIE ERICA 2053
 SAV CONVERSATION
 EA EMBLYNETTE 7599
 EA EMBLYNETTE 4145



Sire: LD Capitalist 316



Dam: EA Emblynette 7599

Rust Capitalist 9G Black Angus Bull

19483242 /// 2019-02-03 /// bw-78 /// ww-691

EA Emblynette 7599 was our \$20,000 high selling pick from the highly respected Ellingson Angus program. She is wide based, easy fleshing, feminine and put together in a balanced, athletic package. Her powerhouse dam is a maternal sister to Ellingson Format 2205, the \$42,000 Alta Genetics sire whose young daughters have produced some of the premier lots in Ellingson's past few sales. Her \$36,000 valued grandam is a leader in their donor pen and represents some of the freshest genetics available from the world revered Emblynette cow family. The mating to Capitalist clicked and we feel this a standout individual out of a great young cow that is destined to be flushed in the future.



WHAT'S YOUR TIME WORTH?

Spend your time out of the office and let us manage your breed association data entry; from birth to transfer records, we've got you covered!

Professional. Affordable. Reliable.



DATA GENIE
 CATTLE DATA REPORTING SERVICE

Leoma Wells, owner // 559.696.4941
 cattledatagenie@gmail.com
 facebook.com/cattledatagenie

BIDDING AND APPLICABLE LAW: All cattle listed in this offering comply with prevailing sale terms and conditions as set forth by the laws of the state wherein the sale is conducted. There are no warranties, expressed or implied, by either the auctioneer or consignor, except as set forth herein, as to the merchantability of fitness for any particular purpose of any animal offered in this sale. The right to bid or the right to reject the final bid, if done before the hammer falls, is reserved for all sellers unless otherwise announced from the sale block or as prohibited by law in the state wherein the sale is being conducted.

ANNOUNCEMENTS: Any change of information other than in the catalog will be announced from the auction block and such announcements shall take precedence over printed material. All statements made from the auction block or those made by the seller (in private treaty), must be documented by seller if requested by the buyer at time of sale.

TERMS: Terms of sale are cash unless satisfactory credit arrangements have been made with the seller previous to the sale of any animal so affected.

PURCHASER'S RISK: Each animal becomes the property of and therefore is also the risk of the purchaser as soon as it is sold; except it shall be the obligation of the seller to see that animals are fed and cared for free of charge to purchaser, until loaded for shipment or until the expiration of twenty-four (24) hours after the sale, whichever occurs first.

HEALTH REQUIREMENTS: 1) All cattle entered for sale must meet the health regulations of the state in which they are sold. All other agreements regarding the health of the animal will be between the buyer and seller and should be documented in writing. 2) If sale cattle are returned to the seller for an adjustment, they must meet the health requirements of the state they are returned to.

CERTIFICATE OF REGISTRY: Each animal, which is catalogued, offered and sold as a registered animal, shall have a certificate of registry available at time of sale. When an animal is sold as "eligible for registry" or "registry applied for", the seller shall be responsible for obtaining the certificate of registry and for the proper transfer of the certificate to the purchaser including full payment of transfer fees.

IDENTIFICATION: Each animal, at time of sale, must have a readable tattoo or brand corresponding to that shown on the certificate of registration.

AUTHENTICITY OF PEDIGREE: When an animal, through parental validation, is determined to have an ancestry other than that reported on the registration certificate, the buyer shall be entitled to a refund of the purchase price from the seller upon return of the animal to the farm of the seller at the seller's expense. The animal in question, at the buyer's option, may be exchanged for another animal of equal value, or if agreeable with the buyer, the seller may have the certificate returned to the buyer. Any adjustment provided herein, if selected, shall absolve the seller from further liability for authenticity of pedigree to the buyer.

BREEDING GUARANTEES AND DEFINITIONS: 1. Females are guaranteed to be breeders, with the exception of: a) Female calves sold at side of dam b) Injury or disease occurring to the animal after time of sale c) Gross negligence or willful misconduct on the part of the purchaser d) Females used in ovum transplant after time of sale e) Cows sold with calf at side or a female that calve

2. Bulls are guaranteed to be breeders (definition as the ability to settle healthy cows by the time the bull is 18 months of age)

3. Any guarantees with respect to the ability to freeze semen shall be made by separate agreement between buyer and seller.

4. Safe in calf females are females that have been diagnosed pregnant by a competent veterinarian, and are pregnant at time of sale.

5. A bred female is a female known to have been served by a bull either by natural breeding or artificial insemination, but it does not necessarily mean that the female is safe in calf to that service.

6. A pasture-bred female is a female that has been pastured with a designated bull and has been exposed for the time stated, but it does not necessarily mean that this female is safe in calf to that bull.

7. An open female is a non-pregnant animal. 8. Calves sold off their dams (split pairs) shall carry the full breeding guarantee.

PRIVILEGE OF PURCHASER TO EXAMINE: The purchaser of a female animal may have her examined within twenty-four (24) hours after the fall of the hammer and prior to removal from sale premises. The pregnancy status of breeding status of a female so examined, when found not to be as represented at the time of sale, is cause for the female to be returned to the seller as unsold.

EMBRYO TRANSFER: 1. Sellers should provide upon request a complete history of embryo transfer activity for any female offered for sale. 2. Withholding information on the existence of frozen embryos at the time of sale would be considered an unethical practice.

OPTIONS & PRIVILEGES OF RETURN OR ADJUSTMENT: The following adjustments do not preclude the right of the buyer and seller to mutually agree upon other terms and conditions for settlement of any dispute.

1. All claims for adjustment or refund must be made in writing either six (6) months from the date of sale or no later than when the animal reaches 24 months of age whichever occurs later, with the exception of claims involving misrepresentation of service sire or as otherwise provided herein.

2. In the event an animal is claimed to be a non-breeder, the animal may be returned to the farm of the seller, at the buyer's expense, if in good physical condition, and the return is in compliance with the health requirements of the seller's state. The seller shall be entitled to a six (6) month trial period following the return of the animal in which to prove the animal is a breeder. If at the end of six (6) months the seller is unable to prove the animal is a breeder, the seller shall, at the option of buyer, replace the animal with another equal value or refund the purchase price. Either option shall be deemed full satisfaction and settlement.

3. If a female is sold as "safe in calf" to a given sire or sires on a specified date or dates and proves not to be as represented, the buyer is entitled to a refund of the purchase price from the seller upon return of the animal and resulting progeny thereof to the farm of the seller at the seller's expense.

4. If a female is sold as "open" and proves to be with calf at time of sale and examined pregnant within sixty (60) days after sale, the buyer may return the animal to the farm of the seller prior to calving for a refund of the full purchase price or for another animal of equal value, whichever acceptable to the buyer. It shall be the obligation of the seller to bear any expenses incurred for transportation of the animal in question to the farm of the seller.

GENETIC TESTING AND TRAIT TRAC STATUS: Sellers must identify the TraitTrac status and the results of any qualitative genetic testing performed on any animals or genetic material offered for sale. The ASA considers it an unethical practice to misrepresent or fail to disclose the TraitTrac status or qualitative genetic test results of any animal or genetic material.

DISCLOSURE OF MATERIAL INFORMATION: Sellers must disclose all material information concerning any animal or genetic material offered for sale. For the purposes of these Sale Terms and Conditions, "Material Information" is defined as any information which would be likely to affect the value of the animal or genetic material if the information were known to the public. Material Information includes, but is not limited to, information related to genetic tests, blood tests, ultrasound pregnancy results, disease tests, pregnancy and fertility test results, information related to the sex and age of in utero calves or embryos, and information related to the fertilization status of in utero calves, including whether the calf was conceived via artificial insemination or natural service. The ASA considers it an unethical practice to misrepresent or fail to disclose any Material Information concerning an animal or genetic material offered for sale.

LIMITATIONS OF OBLIGATIONS: These sale terms and conditions constitute a binding legal obligation between the buyer and seller of any animal or genetic material sold under these terms and conditions. However, the ASA, its directors, officers, employees and agents do not assume any obligation, legal or otherwise, to enforce the sale terms and conditions agreed to between buyer and seller.

Rust Mountain View Ranch Aggressive Incentive Program

- To qualify for this Aggressive Incentive Program the individual or ranch must meet the following criteria.
- Bulls individuals purchase price must exceed \$3,250 per bull. For example, buy 3 bulls above \$3,250 per each bull and you will receive a 4% discount. If you buy 4 bulls and 3 are above \$3,250 each but the 4th bull is purchased at \$3,000 you will receive the 4% discount on the 3 bulls, but the 4th bull would not qualify for a discount.
 - All purchases must go to the same individual or ranch. Bulls can not be lumped together between neighbors or friends.
 - At any time Rust Mountain View Ranch believes this Aggressive Incentive Program is being abused by any individual or ranch, the Incentive Program will no longer

apply to that individual or ranch.

3 Bulls – 4% Discount

4 Bulls – 5% Discount

5 Bulls – 6% Discount

6 Bulls – 7% Discount

7 Bulls – 8% Discount

8 Bulls – 9% Discount

9 Bulls – 10% Discount

10 Bulls Plus – 15% Discount

building a program on MATERNAL GREATNESS



RF Certainly Flirtin 202Z & RF Not Just A Flirt 404B at side - 2014 Agribition Supreme Champion Female & FarmFair Supreme Champion Female

RF Certainly Flirtin 202Z is grandam of Lots 18-21 & 28-29

RF Not Just A Flirt 404B is the dam of Lots 28 & 29

RF Certainly Flirtin 740E is the dam of Lots 18 - 21



Harrell Angel 5870C

Dam of Lots 4 - 8



RF Debut 413B

Dam of Lots 9 & 10



W/C Angel 7143E

Dam of Lots 14 & 15



GCC Dixie Erica 106Y

Dam of Lot 24 - 26



SAV Blackcap May 6566

Dam of Lots 40 & 41



Soo Line Rose 1019

Dam of Lots 42 - 49

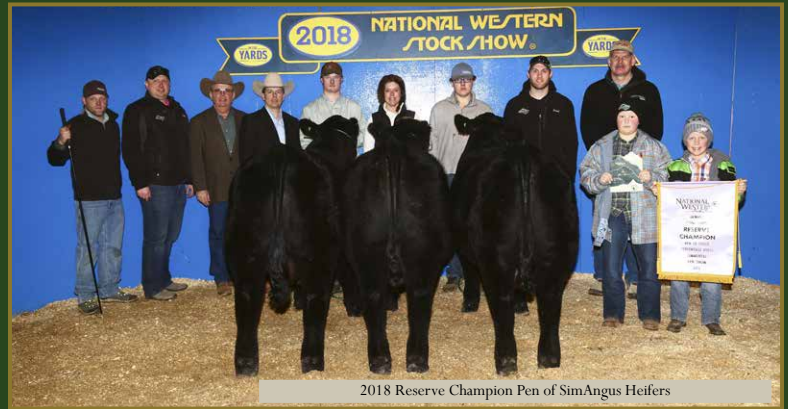
80% OF THE SALE OFFERING ARE ET CALVES FROM OUR LEADING DONORS & 100% OF THE OFFERING IS BACKED BY FEMALES THAT ARE STRONG FOOTED, SOUND STRUCTURE, HIGHLY PRODUCTIVE WITH TOP QUALITY UDDERS!



2019 Grand Champion Pen of Purebred Simmental Heifers



2018 Grand Champion Pen of SimAngus Heifers



2018 Reserve Champion Pen of SimAngus Heifers



2017 Grand Champion Red Angus Bull



2018 Reserve Champion Pen of SimAngus Heifers



2016 Grand Champion Pen of Purebred Simmental Heifers

National Western Stock Show
SUCCESS

RETURN UNDELIVERABLE MAIL TO:



BOHRSON
MARKETING SERVICES

RR4 - Site 7 - Box 28
Olds, AB T4H 1T8



RETURN POSTAGE GUARANTEED
PORT DE RETOUR GARANTI

