

# *The Female Sale*

AT BADGER CREEK VOL. I



FOUNDATION OF THE HERD  
OCTOBER 5, 2019



**W**elcome to The Female Sale at Badger Creek Cattle Company Vol. 1. All of us here at B/C welcome you to the ranch. Since the transition to Badger Creek Cattle Company from Eby Ranch, the goals and traditions have remained the same. Our slogan embodies the program goals we have set forth: "Production with a Purpose".

In an effort to grow and build upon the cowherd that carries the B/C brand we made the decision to seek the strongest and most maternal "**Foundation**" cows in order to expand our Angus and Sim-Angus cow base. With acquisitions such as the entire Boss Cattle Company cowherd, and a large number of females from Duff Cattle Company, the Angus cow base has grown exponentially. We made two substantial purchases on the Simmental side of the equation as well, buying the entire White Star Cattle Company herd, and a large group of females from Hillstown Farm in Illinois. We have been breeding up from these females for the last 3-4 years and feel like we now have the inventory of daughters and granddaughters of these productive females in the herd, and now it's your opportunity to own the factory that we have built our future from. These cows are in the most productive stage of their lives, they have been bred for longevity and maternal ability, I encourage you to stop by the ranch anytime to see the progeny that these females have standing here in the pasture.

All of the females in the sale will sell with a service from our herd sire battery. It is our belief that a true production female should be able to produce both sons and daughters, and we have built our sire lineup with the same mind set. All of the bulls that we A.I. and flush to, run the pastures here at the ranch, they have to cover cows in the pastures and collect at the stud.

We are excited about this offering and know that these spring bred cows, bred heifers, and fall calving cows are proven producers with all of them coming straight from the heart of the herd. These females are "The Foundation of the Herd", we look forward to seeing all of you on October 5th at the ranch.

Please plan to stay a little later on sale day and join us for a country shrimp boil!

**RESPECTFULLY,**

**W**elcome friends to the inaugural female sale at Badger Creek Cattle Company! It is with great enthusiasm that we invite you to join us on October 5th in Emporia, Kansas. This sale has been in the works for the last several years as the team at Badger Creek has remained focused and purely dedicated to building the most elite cowherd in all the land. Through substantial investments in breed leading females and herd sires, the future generations of cattle that will carry the B/C brand will embody the fundamentals of beef cattle production and remain productive in their kind.

This is an offering unlike any that will be offered this fall, as nearly every member of the donor pen at Badger Creek will be offered to the public. These matrons have proven themselves in the pasture and left an impact on the program, it is now time for their value to benefit someone else's herd. The cows that will sell bred or have a calf at side on sale day have been AI'ed and exposed to the very best bulls that Badger Creek has acquired or raised, representing the Angus and Simmental breeds. We are confident that there are females among this offering that have never flushed, but will positively impact other operations embryo transplant program.

We strongly encourage you to visit the ranch prior to sale day, not only to view this offering, but to tour the ranch and go through the weaned calves to see what this set of cows is capable of producing and raising! There will be several bull calves that are out of cows selling that will highlight the annual bull sale in February, and females that will fill the void their mothers will leave in the cowherd. The crew at Badger Creek is lead by Clint Woodrow, a talented breeder and cattlemen. Glenn Woodrow and Chance Stout are two gentlemen that are fully devoted to the cowherd and day-to-day operations; they know the cows like the back of their hand.

The videos of the sale cattle will be available in the weeks leading up to the sale and we invite you to study the footage if you are unable to attend the sale in person. If you are able to make the date, we will have the cattle on display starting the day before the sale. Lunch will be served at 12 noon and the auction sale will begin at 1 PM on October 5. CCI. Live will provide a live broadcast with real time bidding capabilities. We look forward to seeing you ring side at Badger Creek Cattle Company!

**ENJOY THE OFFERING,**



## foun•da•tion

*noun*

1. the lowest load-bearing part of a building, typically below ground level.
2. an underlying basis or principle.

---

The key to success is a good  
**FOUNDATION**

---

# *Schedule of Events*

1 0 . 4 . 1 9

CATTLE ON DISPLAY

---

1 0 . 5 . 1 9

8AM | COFFEE & DONUTS

12PM | LUNCH

1PM | THE FEMALE SALE VOL.I

6PM | FELLOWSHIP — COUNTRY SHRIMP BOIL

FOUNDATION OF THE  
**HERD**



## LOCATION

*The Badger Creek Cattle Company Sale Facility*

1668 Road 235 Emporia, KS

From I-35, take Burlingame Road, exit 131. Go north on Burlingame Road 6 miles to Road 230, there will be a Badger Creek Sign on the right. Turn right on Road 230 and follow signs to Badger Creek.

## AUCTIONEER

Col. Jered Shipman – (806) 983-7226

## SALE DAY PHONES

Clint Woodrow – (620) 794-7601

Graham Blagg – (530) 913-6418

Chance Stout – (620) 803-9494

Glenn Woodrow – (618) 316-0039

Jered Shipman – (806) 983-7226

## MARKETING TEAM



Graham Blagg – (530) 913-6418

## SALE CONSULTANTS

Bob Dwyer – (309) 337-1404

Dalton Lundy – (502) 727-6898

Brian Mackenzie – (403) 627-8266

Mike Marlow – (405) 880-0108

Kent McCune – (817) 602-8629

John Peterson – (402) 873-2224

Buddy Robertson – (580) 747-7000

Dallas Woltemath – (308) 390-6400

## RING STAFF

J.W. Brune, Lee AgriMedia – (785) 865-6624

Scott Farmer, Special Assignment – (817) 597-1731

Bryce Farmer, Special Assignment – (817) 694-4049

Jeff Mafi, American Angus Association – (816) 344-4266

Clay Schaardt, Special Assignment – (402) 862-5903

Craig Talkington, Special Assignment – (785) 623-1789

## LIABILITY

All persons who attend this sale do so at their own risk, legal or otherwise, for their safety or for the behavior of the animals. The owners, sale management firms, and the sale staff assume no liability for property loss or any accident that may occur.

## SUPPLEMENTAL INFORMATION

All announcements from the auction block take precedence over information printed in this book. A supplement sheet with updated information will be provided on sale day.

## HERD HEALTH

Veterinarian | Scott Gordon – (620) 342-6515

## TERMS & CONDITIONS

All cattle sell under the terms and conditions of the American Angus Association and the American Simmental Association. Payment will be accepted in the form of cash, cashier's check or check. All cattle must be paid for prior to release. Innovation AgMarketing, LLC will require full payment promptly. All funds are to be paid to Innovation AgMarketing, LLC in U.S. currency. Wire transfers will also be accepted and will be required by foreign buyers within 10 business days after the sale in U.S. currency. No cattle will be transferred or released without full payment. In the event that you need expedited registration paper transfers please make plans to pay in full on sale day. Badger Creek Cattle Company or Innovation AgMarketing, LLC will assume no liability for any cattle after the auctioneer says sold. All sales are final. Livestock insurance will be available on sale day and is something that we strongly recommend.

## TRANSPORTATION

Dick Coleman, Indiana – (785) 461-0954

James Harris, Texas – (903) 804-8217

Henry Stockdale, Tennessee – (931) 381-9694

## ACCOMMODATIONS

Hampton Inn – (620) 342-4445

Fairfield Inn – (620) 341-9393

Holiday Inn Express – (620) 343-7756

Candlewood Suites – (620) 412-9040

## PRINT MEDIA & PHOTOGRAPHY



ALM Photography & Design – Allison Manchester

(219) 776-0594 – [allisonlynnmanchester@gmail.com](mailto:allisonlynnmanchester@gmail.com)



*Watch the Sale Live Online...*

View the sale from your phone, tablet, or desktop computer and bid with confidence! Visit [www.CCI.live](http://www.CCI.live) for complete sale information and online registration. If this is your first time to CCI.live, visit the web page and get approved for bidding at least three hours prior to sale time. With good internet speeds you can enjoy the sale from any location and bid with confidence.

**ONLINE BIDDING - Catalog - Videos - Sale Order - Plus More!**



**FEATURED**

*Foundation Females*









**LOT 1**

ANGUS SPRING CALVING COW

**EBY BONNIE 2162**

AAA 17189930 • DOB: 02/26/12 • TATTOO: 2162

**SIRE**

CONNEALY REFLECTION  
CONNEALY IMPRESSION  
PEARL PAMMY OF CONANGA 194

**DAM**

C A FUTURE DIRECTION 5321  
AMBROSE BONNIE P14  
BRANCH BONNIE M9

CED	BW	WW	YW	M	CW	
13	-0.4	47	88	34	35	
MARB	RE	FAT	\$M	\$EN	\$F	\$B
0.38	0.54	0.033	50	-5	84	122

OPEN & READY TO FLUSH

Eby Bonnie 2162 is a breath taking female and unanimously surfaced during the debate as to which female would wear the lot 1 tag on sale day. Introducing arguably the most phenotypically impressive Angus female that has ever set foot on the ranch. 2162 is sired by Connealy Impression and from the famed Bonnie cow line. She is unmatched in terms of substance, stoutness, internal dimension, and overall presence. 2162 has been a reliable producer leaving behind daughters that mirror her captivating brood cow look. 2162 sells open and ready to flush to the bull of your choice. We have had great success mating 2162 to bulls such as KR Casino 6243, J&J Weigh Up 294, and Duff Napoleon 232. The sky is the limit with this powerful individual and we are confident that she will make a lasting impact for her new owner, just as she has done for Badger Creek Cattle Company!





**ANGUS SPRING CALVING COW**

## LOT 2

## LAGRAND LUCY 0065

AAA 16835024 • DOB: 01/16/10 • TATTOO: 0065

**SIRE** O C C KANGA 886K  
O C C PROTOTYPE 847P  
O C C DIXIE ERICA 867K

**DAM** HYLINE RIGHT TIME 338  
LAGRAND LUCY 4151  
ROTH LUCY 0431

CED	BW	WW	YW	M	CW
13	-1.2	28	53	14	6

MARB	RE	FAT	\$M	\$EN	\$F	\$B
-0.01	0.46	-0.021	38	21	45	68

AI BRED 03/27/2019 TO KR CASINO 6243 DUE 01/04/2020, CHECKED SAFE

LaGrand Lucy 0065 is a female that has been a major attraction to our program during her tenure in Emporia, Kansas. There is no denying the captivating phenotype, flawless structural build, and second to none profile that 0065 possesses. She is a direct daughter of the legendary OCC Prototype 847P and from the LaGrand Lucy 4151 matron. 0065 has worked tremendously to Simmental and Angus bulls alike, and we have found great success flushing 0065 to bulls such as BPS Structure 308A, resulting in a stout set of half-blood bulls that were popular on sale day this past February. Regardless of your production goals, rest assured 0065 is a female that can do it all when it comes to generating females and bulls alike! It is our effort to offer up the very best... here is your chance at a major impact donor on October 5, 2019!



**B-C STRUCTURE 8067F | SON OF 0065**







**LOT 3**

**LOT 3**

ANGUS SPRING CALVING COW

**MVF HI LITE 27X**

AAA 17176199 • DOB: 01/03/10 • TATTOO: 27X

**SIRE**

BOYD NEW DAY 8005  
GDAR GAME DAY 449  
G D A R MISS WIX 474

**DAM**

MVF DATELINE 345R  
MVF HI LITE 232U  
MVF HI LITE 23N

CED	BW	WW	YW	M	CW	
8	2.5	61	111	26	41	
MARB	RE	FAT	\$M	\$EN	\$F	\$B
0.2	0.49	0.019	63	-15	71	100

PASTURE BRED 06/08/2019 TO KR CASINO 6243 DUE 03/17/2020, CHECKED SAFE

MVF Hi Lite 27X originated in the Mountain View Farms program and was offered for sale in their 2010 Dispersal Sale. 27X was successfully campaigned to the backdrop at the 2010 Canadian Western Agribition where she was selected Reserve Grand Champion Angus female as a heifer calf. She comes to us from the Hi Lite cow family, a line of females rich in tradition. 27X is sired by the great GDAR Game Day 449 and traces to Vermillion Dateline 7078 on the bottom side of her lineage. 27X has consistently been the dam of sale topping herd bulls, such as lots 49 and 50 in the 2019 Badger Creek Cattle Company bull sale. Look to 27X if your production goals are based around generating an elite set of females to build a cow herd around.



**B/C THUNDERSTRUCK 7450 — SON OF 27X**



**B/C HONCHO 7290 — SON OF 27X**





**LOT 4**

LOT 4

ANGUS SPRING CALVING COW

MVF TIBBIE 151X

AAA 17176201 • DOB: 02/07/10 • TATTOO: 151X

SIRE

HF KODIAK 5R  
HF TIGER 5T  
HF ECHO 84R

DAM

GDAR SVF TRAVELER 234D  
MVF TIBBIE 813P  
MVF TIBBIE 52F

CED	BW	WW	YW	M	CW
12	1	50	85	40	39

MARB	RE	FAT	SM	SEN	SF	SB
0.13	0.69	0.034	65	-13	72	99

AI BRED 05/14/2019 TO DUFF NAPOLEON 232 DUE 02/21/2020, CHECKED SAFE

MVF Tibbie 151X is a truly unique female that originated in the Mountain View Farms program of Swan River, Manitoba, Canada. Her dam, Tibbie 813P, sold as the lot 1 female in this historic Angus event. 151X is backed by generations of excellence, as he maternal grandam, MVF Tibbie 52F was the Reserve Grand Champion Female at the 1999 National Angus Show and the Canadian Western Agribition. In 2000, 52F commanded \$14,500 to Stewart Cattle Company. Her dam, 813P was a proven producer during her tenure at Mountain View Farms, raising a \$10,000 heifer calf in 2009 that sold to Chance Jackson. Countless high sellers and champions have originated from this powerful cow family. 151X has been a tremendous producer and has worked exceptionally well in both our Angus and SimAngus programs. We anticipate for the 151X daughters that have been retained in herd to make a lasting impact on both breeds of cattle that will carry the B/C brand.





**LOT 5**

**ANGUS SPRING CALVING COW**  
**BOSS MISS PROWLER 2300**  
 AAA 17721945 • DOB: 09/30/12 • TATTOO: 2300

**SIRE** HF KODIAK 5R  
 HF PROWLER 43U  
 HF ROSEBUD 98P

**DAM** S A V 004 CAPACITY 5234  
 LADY OF PEAK DOT 818T  
 LADY OF PEAK DOT 263M

CED	BW	WW	YW	M	CW
7	1.4	47	73	21	31

MARB	RE	FAT	\$M	\$EN	\$F	\$B
0.76	0.35	0.043	53	2	52	105

AI BRED 04/19/2019 TO KR CASINO 6243 DUE 01/27/2020, CHECKED SAFE

Boss Miss Prowler 2300 is the lead off daughter of HF Prowler 43U that will certainly be a highlight within our inaugural female sale offering. 2300 is without question a phenotypic gem among the cowherd. She is an own daughter of Lady of Peak Dot 818T, a powerful matron that was a leading donor in the Peak Dot Ranch program. 818T has been a steady producer that has left behind a string of daughters in the program that are top tier females. 818T and 2300 have both worked exceptional when flushed to Angus and Simmental sires. We encourage you to study the heritage of this cow family and the influence t that they have made in our program and the impact that 2300 is capable of making for her new owner!



LADY OF PEAK DOT 818T — DAM OF 2300



SPRING BRED

# *Foundation Females*





LOT 7



**ANGUS SPRING CALVING COW**  
**LOT 6 BOSS MISS PROWLER 236**  
 AAA 17465524 • DOB: 03/08/12 • TATTOO: 236

**SIRE** HF KODIAK 5R  
 HF PROWLER 43U  
 HF ROSEBUD 98P

**DAM** S A V 004 PREDOMINANT 4438  
 ROSE OF PEAK DOT 643T  
 ROSE OF PEAK DOT 441N

CED	BW	WW	YW	M	CW	
3	1.6	46	76	29	30	
MARB	RE	FAT	\$M	\$EN	\$F	\$B
0.4	0.37	0.015	50	-8	70	108

AI BRED 04/22/2019 TO WIWA CREEK RUSH LAKE 71'12 DUE 01/30/2020, CHECKED SAFE

**ANGUS SPRING CALVING COW**  
**LOT 7 BOSS MISS PROWLER 240**  
 AAA 17465526 • DOB: 03/12/12 • TATTOO: 240

CED	BW	WW	YW	M	CW	
3	1.6	46	76	29	30	
MARB	REA	FAT	\$M	\$EN	\$F	\$B
0.4	0.37	0.015	50	-8	70	108

PASTURE BRED 06/08/2019 TO J&J WEIGH UP 294 DUE 03/17/2020, CHECKED SAFE

Boss Miss Prowler 240 is another powerful female from a stout flush that combined HF Prowler 43U and Rose of Peak Dot 643T. 240 is a role model Angus cow that is thick, wide, bold, and deep in her rib design. She is a three-dimensional type female that we have admired since the first time we saw her in terms of her udder design and body type. Her mating to J&J Weigh Up 294 is a surefire opportunity to capitalize on your investment and reap the benefits that the Prowler daughters can offer!



HF PROWLER 43U — SIRE OF LOTS 5 - 11

Boss Miss Prowler 236 is the first of this powerful set of flushmate sisters that are from one of the most phenotypically appealing Angus females to ever grace the Peak Dot Ranch program, Rose of Peak Dot 643T. These flush sisters embody the basic fundamentals and maternal function that 643T personified. They are sensibly sized, bold ribbed, powerfully constructed cattle that offer superior quality. 236 is a prime example of why the 643T progeny have been in such high demand and offer so much generating potential.

**ANGUS SPRING CALVING COW**  
**LOT 8 BOSS MISS PROWLER 255**  
 AAA 17465529 • DOB: 03/18/12 • TATTOO: 255

CED	BW	WW	YW	M	CW	
4	1	45	73	29	30	
MARB	REA	FAT	\$M	\$EN	\$F	\$B
0.4	0.37	0.015	51	-7	68	106

AI BRED 04/21/2019 TO KR CASINO 6243 DUE 01/29/2020, CHECKED SAFE

Boss Miss Prowler 255 is another direct daughter of HF Prowler 43U and backed by the influence of the legendary 004, as a direct daughter of 643T. She is moderate in her frame size, efficient in her body type, and always raised a heavy weaning calf. She sells safe in calf to the great KR Casino 6243.





OCC JUANADA 734P — DAM OF LOT 9



**LOT 9** ANGUS SPRING CALVING COW  
**BOSS MISS PROWLER 239**  
AAA 17470155 • DOB: 03/12/12 • TATTOO: 239

**SIRE** HF KODIAK 5R  
HF PROWLER 43U  
HF ROSEBUD 98P

**DAM** O C C LEGACY 839L  
O C C JUANADA 734P  
O C C JUANADA 700J

CED	BW	WW	YW	M	CW	
10	0.1	43	74	18	20	
MARB	REA	FAT	\$M	\$EN	\$F	\$B
0.37	0.16	0.044	50	5	55	86

PASTURE BRED 05/24/2019 TO J&J WEIGH UP 294 DUE 03/02/2020, CHECKED SAFE

Boss Miss Prowler 239 is a powerful HF Prowler 43U daughter that is maternally supported by OCC Juanada 734P, an OCC Legacy 839L daughter that traces to OCC Juanada 700J. She is massive in her body type, stoutness, and overall dimension. This female is truly a power cow!

**LOT 10** ANGUS SPRING CALVING COW  
**BOSS MISS PROWLER 271**  
AAA 17676962 • DOB: 09/06/12 • TATTOO: 271

**SIRE** HF KODIAK 5R  
HF PROWLER 43U  
HF ROSEBUD 98P

**DAM** S A V 004 PREDOMINANT 4438  
MIA OF PEAK DOT 401T  
MIA OF PEAK DOT 283M

CED	BW	WW	YW	M	CW	
5	1.2	51	83	25	26	
MARB	REA	FAT	\$M	\$EN	\$F	\$B
0.42	0.22	0.02	56	-8	70	106

PASTURE BRED 04/27/2019 TO B-C ADK RUBICON 6025D DUE 02/04/2020, CHECKED SAFE

Boss Miss Prowler 271 is another top HF Prowler daughter that we admire for her sheer stoutness and quality. Her dam is backed by the influence of the great SAV Traveler 004, a true breed legend. This summer 271 weaned a stout, big centered, great built daughter of J&J Weigh Up 294 that is a standout in the replacement pasture.

**LOT 11** ANGUS SPRING CALVING COW  
**BOSS MISS PROWLER 285**  
AAA 17676968 • DOB: 09/11/12 • TATTOO: 285

**SIRE** HF KODIAK 5R  
HF PROWLER 43U  
HF ROSEBUD 98P

**DAM** P A R HOMER 32  
PAR BELLE 655  
P A R BROADSIDE 350

CED	BW	WW	YW	M	CW	
10	0.2	36	68	16	19	
MARB	REA	FAT	\$M	\$EN	\$F	\$B
0.3	0.11	0.023	62	11	68	96

AI BRED 04/30/2019 TO KR CASINO 6243 DUE 02/07/2020, CHECKED SAFE

The HF Prowler 43U sired cattle have been extremely valuable in production. They are easy keeping; efficient, low-input type cattle that offer exceptional calf raising abilities and fertility. Here is another super productive female that embraces the influence of Homer on the bottom side of her pedigree.

**LOT 12** ANGUS SPRING CALVING COW  
**B/C MISS 248 7162**  
AAA 19101187 • DOB: 03/03/17 • TATTOO: 7162

**SIRE** DUFF DISTINCTION 9105  
DUFF NAPOLEON 232  
DUFF EUR 443 MERLE 808

**DAM** HF PROWLER 43U  
BOSS MISS PROWLER 248  
BSUM MS VENTURE EXT 604

CED	BW	WW	YW	M	CW	
8	0.9	48	74	16		
MARB	REA	FAT	\$M	\$EN	\$F	\$B
			76	15	-	-

AI BRED 04/16/2019 TO KR CASINO 6243 DUE 01/24/2020, CHECKED SAFE

B/C Miss 248 7162 is sired by the late Duff Napoleon 232 sire, a bull that has as much popularity in South America as any Angus bull from the United States. Napoleon is well noted for his athletic body type, stoutness, soundness, and overall symmetry. Napoleon has worked exceptionally well across breeds, whether it be Angus, Simmental, or Red Angus females he is mated to. 7162 is a daughter of the HF Prowler 43U daughter, 248, a female that will also sell on October 5th. She has weaned standout February heifer calf by J&J Weigh Up 294.



**LOT 13**

ANGUS SPRING CALVING COW

## LOT 13 BOSS MISS LINK 0160

AAA 17467492 • DOB: 09/01/10 • TATTOO: 160

### SIRE

O C C HEADLINER 661H  
O C C MISSING LINK 830M  
O C C DIXIE ERICA 946K

### DAM

P A R BLACK HOMER 03  
PAR LASSIE A95  
P A R DOCTOR GIRL 520

CED	BW	WW	YW	M	CW
7	0.5	42	69	21	16
MARB	REA	FAT	\$M	\$EN	\$F
-0.09	0.3	0.021	59	13	59
\$B	71				

AI BRED 04/01/2019 TO KR CASINO 6243 DUE 01/09/2020, CHECKED SAFE

Boss Miss Link 0160 is a true producer. She is the dam of B/C Lassie 8293, our consignment that sold in the 2018 Falls View Production Sale, commanding a \$10,000 hammer price. The power and impact that OCC Missing Link 830M has made on the beef business is nothing short of legendary. Boss Miss Link 0160 is a direct daughter of 830M and from the Homer influence on the maternal side. 0160 embodies fleshing ability, body mass, and longevity. She is a sound built and powerful Angus matron that is due up early to the popular and proven KR Casino 6243!



**B/C LASSIE 8293 - DAUGHTER OF 0160**



**KR CASINO 6243**





LOT 14



LOT 15

LOT 14

ANGUS SPRING CALVING COW

**BOSS MISS LINK 0156**

AAA 17467491 • DOB: 09/01/10 • TATTOO: 156

**SIRE**

OCC HEADLINER 661H  
OCC MISSING LINK 830M  
OCC DIXIE ERICA 946K

**DAM**

OCC HUNTER 928H  
PAR MISS BLACKBIRD 525  
PAR EMBLAZON 50

CED	BW	WW	YW	M	CW	
7	-0.2	39	64	18	11	
MARB	REA	FAT	\$M	\$EN	\$F	\$B
-0.12	0.42	0.016	38	16	55	69

AI BRED 04/22/2019 TO BPS STRUCTURE 308A DUE 01/30/2020, CHECKED SAFE

0156 is a direct daughter of the legendary OCC Missing Link 830M. She also offers the genetic power of OCC Hunter 928H and OCC Emblazon 854E on the maternal half of her lineage. She is safe AI for an early due date to the late BPS Structure 308A!

LOT 15

ANGUS SPRING CALVING COW

**BOSS MISS LINK 0164W**

AAA 17467488 • DOB: 09/01/10 • TATTOO: 164

**SIRE**

OCC HEADLINER 661H  
OCC MISSING LINK 830M  
OCC DIXIE ERICA 946K

**DAM**

DDA CLEARWATER 98D  
DDA MABEL 6102  
MABEL 207 DDA

CED	BW	WW	YW	M	CW	
6	1.1	37	56	19	8	
MARB	REA	FAT	\$M	\$EN	\$F	\$B
0.01	0.22	0.042	54	17	50	65

PASTURE BRED 07/18/2019 TO KR CASINO 6243 DUE 04/26/2020, CHECKED SAFE

Boss Miss Link 0164 is one of three flush sisters in this offering. Elegant, long fronted, and smooth shouldered through her front third, and symmetrically balanced is the first thing that comes to mind when evaluating this female. She is an impressively big centered female, and like her sisters operates off of a functional and sound foot design. Another female that we have been fortunate to have in herd and has left a maternal impact that will be carried on through future generations.

**LOT 16**

ANGUS SPRING CALVING COW

**BOSS MISS HOSS 120**

AAA 17191081 • DOB: 08/23/11 • TATTOO: 120

**SIRE**DCC NEW LOOK 101  
BOSS HOSS 8132  
P A R'S EUREKA'S GIRL 144**DAM**O C C HUNTER 928H  
PAR MISS BLACKBIRD 525  
P A R EMBLAZON 50

CED	BW	WW	YW	M	CW	
9	0	34	55	14	15	
MARB	REA	FAT	\$M	\$EN	\$F	\$B
-0.05	0.37	0.009	42	20	58	74

AI BRED 04/02/2019 TO J&amp;J WEIGH UP 294 DUE 01/10/2020, CHECKED SAFE

Boss Hoss 8132 semen has become very rare and a valuable asset to have. Hoss 8132 is a direct son of the legendary New Look 101 from the 144 matron. On the south side of her pedigrees she offers the influence of Emblazon and Hunter. She sells safe in calf to the great J&J Weigh Up 294, a herd sire that should maintain her efficient phenotype and aid in her numeric values.

**LOT 17**

ANGUS SPRING CALVING COW

**BOSS MISS HOSS 160**

AAA 17193440 • DOB: 09/11/11 • TATTOO: 160

**SIRE**DCC NEW LOOK 101  
BOSS HOSS 8132  
P A R'S EUREKA'S GIRL 144**DAM**JAUER DOCTOR 7022 21  
JAUER 7022 DOCTOR 0158 398  
JAUER FREIGHTLINER 0158 672

CED	BW	WW	YW	M	CW	
6	2.3	45	71	18	13	
MARB	REA	FAT	\$M	\$EN	\$F	\$B
0.09	0.24	0.016	55	16	63	84

PASTURE BRED 07/03/2019 TO KR CASINO 6243 DUE 04/11/2020, CHECKED SAFE

Boss Miss Hoss 160 is a strong producing daughter of the legendary Boss Hoss 8132 stud that created a stir in the Boss program. She too is a great calf raiser that puts it all into her progeny year after year. This year her heifer calf was a big boned, soggy centered, easy keeping type female that offers exceptional balance by the popular and proven KR Casino 6243.

**J&J WEIGH UP 294 —SERVICE SIRE****LOT 18**

ANGUS SPRING CALVING COW

**BOSS MISS HOSS 154**

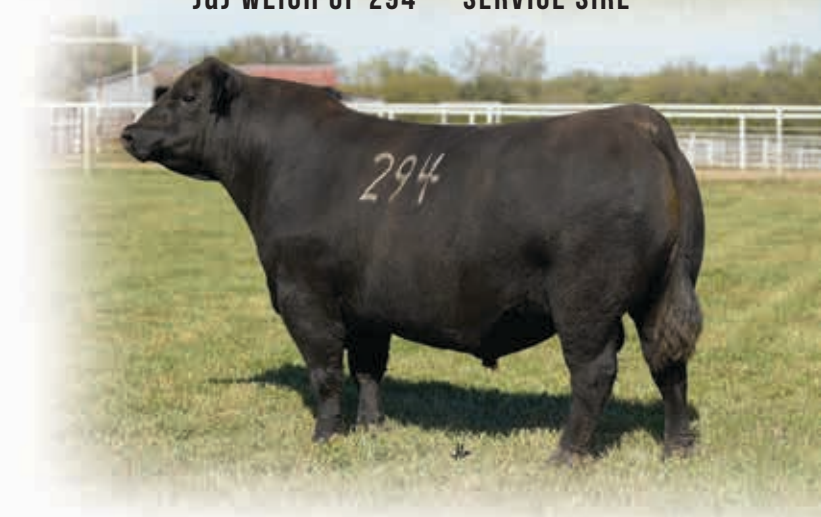
AAA 17193441 • DOB: 09/10/11 • TATTOO: 154

**SIRE**DCC NEW LOOK 101  
BOSS HOSS 8132  
P A R'S EUREKA'S GIRL 144**DAM**O C C ANCHOR 771A  
JAUER ANCHOR 799 196  
JAUER BROADSIDE 799 3121

CED	BW	WW	YW	M	CW	
8	1.4	33	54	15	7	
MARB	REA	FAT	\$M	\$EN	\$F	\$B
0.12	0.16	0.006	38	19	59	81

PASTURE BRED 05/14/2019 TO EBY LOCK N LOAD 463B DUE 02/21/2020, CHECKED SAFE

Boss Miss Hoss 154 is another own daughter of the great Boss Hoss and from a direct daughter of OCC Anchor 771A. She is moderate and efficient in her frame size, massive ribbed, and tremendous in her fleshing ability. She raised a bold centered half-blood female by Pays to Dream and is bred back to Lock N Load 463B for a February due date.







**LOT 19** ANGUS SPRING CALVING COW  
**BOSS MISS BASELINE 112**  
 AAA 17178383 • DOB: 03/31/11 • TATTOO: 112

**SIRE** O C C EMBLAZON 854E  
 DCC BASELINE 511  
 E&B LADY POPATOP 351

**DAM** DUFF NEW EDITION 6108  
 BOSS MISS NEW EDITION 920  
 O C C DIXIE ERICA 762K

CED	BW	WW	YW	M	CW	
8	1.3	35	56	18	-	
MARB	REA	FAT	\$M	\$EN	\$F	\$B
-	-	-	52	17	-	-

AI BRED 04/01/2019 TO KR CASINO 6243 DUE 01/09/2020, CHECKED SAFE

Boss Miss Baseline 112 is the lead off Baseline daughter and one that we sure appreciate. 112 offers a flawless udder design, accompanied by a tremendous set of feet and legs. She is a low maintenance body type and is backed by generations of excellence. Her dam is a Duff New Edition 6108 sired female from the matron, OCC Dixie Erica 762K. A true example of power in the blood!

**LOT 20** ANGUS SPRING CALVING COW  
**BOSS MISS BASELINE 190**  
 AAA 17178404 • DOB: 10/10/11 • TATTOO: 190

**SIRE** O C C EMBLAZON 854E  
 DCC BASELINE 511  
 E&B LADY POPATOP 351

**DAM** DUFF NEW EDITION 6108  
 BOSS MISS NEW EDITION 952  
 DCC DIXIE ERICA 001

CED	BW	WW	YW	M	CW	
6	1.9	46	73	23	-	
MARB	REA	FAT	\$M	\$EN	\$F	\$B
-	-	-	57	11	-	-

PASTURE BRED 04/04/2019 TO B-C ADK RUBICON 6025D DUE 01/12/2020, CHECKED SAFE

Boss Miss Baseline 190 is sired by DCC Baseline 511 and backed by the influence of the Dixie Erica cow family. Her New Edition dam was a top producer in the Boss program. This summer 190 weaned off a standout heifer calf that is sired by our resident herd sire, J&J Weigh Up 294. 190 is a tried and true producer that always brings a big calf to the weaning pen.

**LOT 21**

ANGUS SPRING CALVING COW

**BOSS MISS BASELINE 0107**

AAA 17178014 • DOB: 04/08/10 • TATTOO: 107

**SIRE**O C C EMBLAZON 854E  
DCC BASELINE 511  
E&B LADY POPATOP 351**DAM**O C C EUREKA 865E  
P A R'S EUREKA'S GIRL 144  
PAR WIDESPREAD TRADEMARK 6A1

CED	BW	WW	YW	M	CW	
9	0.7	38	60	22	11	
MARB	REA	FAT	\$M	\$EN	\$F	\$B
0.08	0.24	0.021	60	14	51	71

PASTURE BRED 05/14/2019 TO HILB ORACLE C033R DUE 02/21/2020, CHECKED SAFE.

0107 is another super uddered Baseline daughter that is from a Eureka bred dam. She is massive in her overall design and wide-bodied. This female weaned off a powerful Poker Face heifer calf and is bred back Simmental to our resident herd sire, HILB Oracle C033R for a February due date!

**LOT 22**

ANGUS SPRING CALVING COW

**BOSS MISS EDITION 040**

AAA 17179609 • DOB: 02/18/10 • TATTOO: 40

**SIRE**O C C GENESIS 872G  
DUFF NEW EDITION 6108  
O C C DIXIE ERICA 814G**DAM**O C C EUREKA 865E  
P A R'S EUREKA'S GIRL 144  
PAR WIDESPREAD TRADEMARK 6A1

CED	BW	WW	YW	M	CW	
4	2.4	45	68	16	22	
MARB	REA	FAT	\$M	\$EN	\$F	\$B
0.13	0.24	0.022	46	18	58	80

PASTURE BRED 05/19/2019 TO B/C ORACLE E7224 DUE 02/26/2020, CHECKED SAFE

040 is a sound built, strong maternal female that was produced in the Boss program. She offers a pedigree saturated with foundation OCC genetics that offer so much reliability and functionality. This female weaned a stout February bull calf by WIWI Lake Rush Creek 71'12 and is bred back for a February due date to B/C Oracle 7016E, an up and coming stud that is a flush mate brother to „Judy“, one of the most dominant females ever produced in the Badger Creek program.

**B/C POKERFACE 7141 — SON OF LOT 22****LOT 23**

ANGUS SPRING CALVING COW

**BOSS MISS NL 8106 080**

AAA 17178204 • DOB: 03/05/10 • TATTOO: 80

**SIRE**DCC NEW LOOK 101  
DUFF 807 NEW LOOK 8106  
DALTONS RITA 807 OF 2T1 6807**DAM**TC STOUT 407  
MILL IRON MISS KATRINA 7510  
FAYES MISS KATRINA 3181

CED	BW	WW	YW	M	CW	
7	1.2	33	59	21	-	
MARB	REA	FAT	\$M	\$EN	\$F	\$B
-	-	-	63	12	-	-

PASTURE EXPOSED 05/22/19 THROUGH 07/20/19 TO B/C PROSPERITY 7453 &amp; B/C CARRY ON 7460. BRED 06/23/2019, DUE 04/01/2020, CHECKED SAFE

Boss Miss NL 8106 080 is sired by Duff 807 New Look 8106 and maternally supported by a TC Stout 407 daughter. 080 is a moderate, big ribbed, super productive female that rounded out the summer raising a stout made daughter of the great KR Casino 6243.

**LOT 24**

ANGUS SPRING CALVING COW

**DUFF EB 733 BLACKBIRD 0546**

AAA 17013268 • DOB: 10/24/10 • TATTOO: 546

**SIRE**DUFF NEW ATTRACTION 6110  
DUFF E BLAST 8138  
DUFF EMB814G DIXIE ERICA 624**DAM**O C C NEXT STEP 762N  
DUFF NS 773G BLACKBIRD 733  
O C C BLACKBIRD 773G

CED	BW	WW	YW	M	CW	
4	1.4	32	54	18	-	
MARB	REA	FAT	\$M	\$EN	\$F	\$B
-	-	-	36	17	-	-

PASTURE BRED 05/29/2019 TO J&amp;J WEIGH UP 294 DUE 03/07/2020, CHECKED SAFE

The E Blast daughters continue to prove their worth each time they wean a set of calves. This female offers exceptional udder quality, mass, and efficiency. Her OCC and Power Plus saturated pedigree will be strongly complimented by the phenotype, function, and number profile that the J&J Weigh Up 294 sire offers.



**LOT 25**

ANGUS SPRING CALVING COW

**DUFF EB 776K DIXIEERICA 161**

AAA 17082980 • DOB: 01/01/11 • TATTOO: 161

**SIRE**DUFF NEW ATTRACTION 6110  
DUFF E BLAST 8138  
DUFF EMB814G DIXIE ERICA 624**DAM**O C C EMBLAZON 854E  
O C C DIXIE ERICA 776K  
O C C DIXIE ERICA 716D

CED	BW	WW	YW	M	CW	
8	-0.2	31	48	19	10	
MARB	REA	FAT	\$M	\$EN	\$F	\$B
-0.03	0.4	0.019	41	18	60	77

AI BRED 04/30/2019 TO KR CASINO 6243 DUE 02/07/2020, CHECKED SAFE

161 is a female to pay attention to on sale day! She is sired by the great E Blast and backed by an OCC bred female. She offers an exciting pedigree that is lined with influential individuals in the beef industry such as; N Bar Emulation EXT, Dixie Erica 814G, Emblazon 854E, and 6807. She sells safe AI to the \$49,500 KR Casino 6243!

**OCC DIXIE ERICA 776K — DAM OF LOT 25****LOT 26**

ANGUS SPRING CALVING COW

**DUFF DIXIE ERICA 1599**

AAA 19000023 • DOB: 10/10/13 • TATTOO: 1599

**SIRE**LOVANA  
G D A R RAINMAKER 340  
LADY BLACKBIRD 987 G D A R**DAM**O C C PAXTON 730P  
O C C DIXIE ERICA 657T  
O C C DIXIE ERICA 636M

CED	BW	WW	YW	M	CW	
11	-2.4	20	38	19	-10	
MARB	REA	FAT	\$M	\$EN	\$F	\$B
0.16	0.07	0.009	55	19	46	69

PASTURE EXPOSED TO B/C PROSPERITY 7453, B/C CARRY ON 7460.

BRED 07/20/2019, DUE 04/28/2020, CHECKED SAFE

Duff Dixie Erica 1599 is sired by GDAR Rainmaker 340 and is out of a foundation female that originated in the Ohlde Cattle Company program that is a direct daughter of the great Paxton. Udder quality, fleshing ability, and longevity are built into her pedigree!

**LOT 28**

ANGUS SPRING CALVING COW

**BOSS MISS STIMULUS 131**

AAA 17217128 • DOB: 08/28/11 • TATTOO: 131

**SIRE**DUFF NEW EDITION 6108  
DUFF STIMULUS 856  
O C C JUANADA 927K**DAM**P A R HOMER 32  
P A R BLACKBIRD LADY  
P A R TRAVELING RITO 21

CED	BW	WW	YW	M	CW	
10	0.2	36	67	20	27	
MARB	REA	FAT	\$M	\$EN	\$F	\$B
0.26	0.3	0.008	59	11	81	112

AI BRED 05/07/2019 TO KR CASINO 6243 DUE 02/14/2020, CHECKED SAFE

Boss Miss Stimulus 131 is sired by Duff Stimulus 856 and from a Homer influenced female. This great uddered, stout boned, wide based female combines the influence of legendary cow families such as; Juanada 927K and Blackbird Lady.

**LOT 27**

ANGUS SPRING CALVING COW

**B/C BLACKCAP 198 6253**

AAA 19498986 • DOB: 11/08/16 • TATTOO: 6253

**SIRE**BAR WICK EUREKA 943 310  
DUFF HONCHO 426  
DUFF BI 619 LADYPOP 1017**DAM**DCC NEW LOOK 101  
DUFF NL 6296 BLACKCAP 198  
BAX ERICA MARISA 296-172

CED	BW	WW	YW	M	CW	
8	-0.1	34	52	18		
MARB	REA	FAT	\$M	\$EN	\$F	\$B
			61	17		

AI BRED 04/08/2019 TO KR CASINO 6243.

PASTURE EXPOSED TO B-C ADK RUBICON 6025D 04/27/2019 - 07/08/2019.

Honcho topped the 2018 Power Plus Genetics sale at \$55,000 for 1/2 interest to JC Ranch Cattle. He sets the bar in terms of center body mass, depth, and overall dimension. Honcho is a true athlete in terms of his muscularity, structural integrity, and overall stride. Look to Honcho females to be true cowherd changers that will add body and capacity to your replacement pen. Study the internal dimension that this young and productive Honcho daughter brings forth!

**DUFF HONCHO 426 — SIRE OF LOT 27**



**LOT 29** **ANGUS SPRING CALVING COW**  
**BOSS MISS GOLD STANDARD 396**  
 AAA 7896323 • DOB: 9/29/13 • TATTOO: 396

**SIRE** GCC TOTAL RECALL 806T  
 GCC GOLD STANDARD X615  
 O C C JUANADA 925R

**DAM** HF KODIAK 5R  
 HF BLACKBIRD 63X  
 HF BLACKBIRD 97S

CED	BW	WW	YW	M	CW
15	-1.3	27	56	16	9
MARB	REA	FAT	\$M	\$EN	\$F
-0.03	0.38	0.004	37	60	78

AI BRED 04/24/2019 TO KR CASINO 6243 DUE 02/01/2020, CHECKED SAFE

B/C Miss 248 7162 is sired by the late Duff Napoleon 232 sire, a bull that has as much popularity in South America as any Angus bull from the United States. Napoleon is well noted for his athletic body type, stoutness, soundness, and overall symmetry. Napoleon has worked exceptionally well across breeds, whether it be Angus, Simmental, or Red Angus females he is mated to. 7162 is a daughter of the HF Prowler 43U daughter, 248, a female that will also sell on October 5th. She has weaned standout February heifer calf by J&J Weigh Up 294.



ANGUS SPRING CALVING COW

# LOT 30 B/C MISS 6014

AAA 18501564 • DOB: 01/04/16 • TATTOO: 6014

**SIRE** RITO 707 OF IDEAL 3407 7075  
S A V RESOURCE 1441  
S A V BLACKCAP MAY 4136

**DAM** HF PROWLER 43U  
BOSS MISS PROWLER 285  
PAR BELLE 655

CED	BW	WW	YW	M	CW	
5	2.2	53	101	18	-	
MARB	REA	FAT	\$M	\$EN	\$F	\$B
-	-	-	61	-7	-	-

AI BRED 04/16/2019 TO J&J WEIGH UP 294 DUE 01/24/2020, CHECKED SAFE

B/C Miss 6014 is sired by the proven and popular SAV Resource 1441, a sire that has left behind a string of daughters working in top herds nation wide. 6014 is backed by the influential HF Prowler 43U and from the Belle cow family. She is an easy fleshing, bold ribbed, stout made female that is bred up early for a calf to J&J Weigh Up 294, one of the most exciting and consistent sires in the Badger Creek Cattle Company line-up.



ANGUS SPRING CALVING COW

# LOT 32 B/C ROSEBUD 6010

AAA 18501593 • DOB: 01/03/16 • TATTOO: 6010

**SIRE** RITO 707 OF IDEAL 3407 7075  
S A V RESOURCE 1441  
S A V BLACKCAP MAY 4136

**DAM** MVF VRD DATELINE 34P  
MVF ROSEBUD 457W  
MVF ROSEBUD 301P

CED	BW	WW	YW	M	CW	
-	-	-	-	-	-	
MARB	REA	FAT	\$M	\$EN	\$F	\$B
-	-	-	-	-	-	-

PASTURE BRED 05/07/2019 TO HILB ORACLE C033R DUE 02/14/2020, CHECKED SAFE

B/C Rosebud 6010 is sired by the maternal icon that was produced in the SAV program, SAV Resource 1441, a true breeding bull! She is sound built, good footed, and three-dimensional in her rib design. 6010 finished the summer by weaning a stout January bull calf by Wiwi Creek Rush Lake 71'12.



ANGUS SPRING CALVING COW

# LOT 31 B/C TIBBIE 6075

AAA 18501571 • DOB: 01/17/16 • TATTOO: 6075

**SIRE** RITO 707 OF IDEAL 3407 7075  
S A V RESOURCE 1441  
S A V BLACKCAP MAY 4136

**DAM** HF TIGER 5T  
HF TIBBIE 232Y  
HF TIBBIE 312W

CED	BW	WW	YW	M	CW	
3	3.3	60	113	22	-	
MARB	REA	FAT	\$M	\$EN	\$F	\$B
-	-	-	51	-16	-	-

OBSERVED BRED 04/22/2019 TO WIWA CREEK RUSH LAKE 71'12 DUE 01/30/2020, CHECKED SAFE

6075 is an exceptional SAV Resource 1441 sired female. She is tremendous in her body shape, big hipped, and loaded with maternal power. Her HF Tiger 5T sired dam is a productive female. Her mating to the standout calving ease and phenotype sire, Wiwa Creek Rush Lake 71'12.

ANGUS SPRING CALVING COW

# LOT 33 B/C DUCHESS 6009

AAA 18501600 • DOB: 01/02/16 • TATTOO: 6009

**SIRE** RITO 707 OF IDEAL 3407 7075  
S A V RESOURCE 1441  
S A V BLACKCAP MAY 4136

**DAM** S A V IRON MOUNTAIN 8066  
DUCHESS OF PEAK DOT 936X  
DUCHESS OF PEAK DOT 556R

CED	BW	WW	YW	M	CW	
1	4.2	60	106	20	-	
MARB	REA	FAT	\$M	\$EN	\$F	\$B
-	-	-	52	-14	-	-

PASTURE BRED 07/01/2019 TO KR CASINO 6243 DUE 04/09/2020, CHECKED SAFE

6009 combines the maternal stability of SAV Resource 1441 with that of SAV Iron Mountain 8066. She is a high performing, long sided, powerful and dimensional female. She weaned a heavy March bull calf this year and will be a top producer for any program!

**LOT 34**

ANGUS SPRING CALVING COW

**B/C MISS QUEEN 7050**

AAA 19111468 • DOB: 01/28/17 • TATTOO: 7050

**SIRE**

S A V PIONEER 7301

S A V PEDIGREE 4834

S A V BLACKCAP MAY 4136

**DAM**

DUFF MAY DREAM LOOK 8063

D L S MISS QUEEN DL 192

D L S MISS QUEEN B1 922

CED	BW	WW	YW	M	CW	
6	2	63	109	24	-	
MARB	REA	FAT	\$M	\$EN	\$F	\$B
-	-	-	57	-9	-	-

AI BRED 04/16/2019 TO KR CASINO 6243 DUE 01/24/2020, CHECKED SAFE

B/C Miss Queen 7050 is a tremendous young female that is sired by SAV Pedigree 4834 and backed by a Dream Look 8063 daughter, 192. She is long sided, feminine, refined, and super attractive in her balance and eye-appeal. We admire this female due to her stunning phenotype and added functionality. A true sale feature and an up and coming producer that we know will generate based on the quality of her J&J Weigh Up 294 heifer calf.

**LOT 34****LOT 35**

ANGUS SPRING CALVING COW

**EBY FORMERA 1012**

AAA 16938636 • DOB: 02/14/11 • TATTOO: 1012

**SIRE**

G A R GRID MAKER

S A V BISMARCK 5682

S A V ABIGALE 0451

**DAM**

LEACHMAN RIGHT TIME

VAF FORMERA 6544 OF 3312 RT

FINKS FORMERA 3312 9146 036

CED	BW	WW	YW	M	CW	
9	0.9	46	79	24	29	
MARB	REA	FAT	\$M	\$EN	\$F	\$B
0.32	0.41	0.02	70	4	81	115

PASTURE EXPOSED 05/22/19 THROUGH 07/20/19 TO B/C PROSPERITY 7453 & B/C CARRY ON 7460. BRED 05/29/2019, DUE 03/07/2020, CHECKED SAFE

EBY Formera 1012 is without a doubt one of the more impressive females in the sale offering. Sired by the great SAV Bismarck 5682 and backed by the influence of Leachman Right Time, this stunning female is a true producer. Unmatched in her rib shape, depth of body, and overall substance, 1012 has been the epitome of efficiency and maternal power. She has weaned off a stout bull calf by KR Casino 6243, and we expect her to be a profitable investment for her new owner. A true power cow!

**LOT 36**

ANGUS SPRING CALVING COW

**B/C BLANCHE 7121**

AAA 19101174 • DOB: 02/21/17 • TATTOO: 7121

**SIRE**

COLEMAN CHARLO 0256

B/C BLAIR BADGER 5023

DUFF AMIGO 927K JUANADA 071

**DAM**

W C C MASTER CHIEF A31

B/C MISS BLANCHE 5034

EBY MISS BLANCHE 0071

CED	BW	WW	YW	M	CW	
-	-	-	-	-	-	
MARB	REA	FAT	\$M	\$EN	\$F	\$B
-	-	-	-	-	-	-

AI BRED 04/16/2019 TO KR CASINO 6243 DUE 01/24/2020, CHECKED SAFE

7121 is sired by B/C Blair Badger 5023 and from the Blanche cow family that traces to Blanche 0070. She offers a proven and reliable genetic base with low-birth and calving ease genetics.

**LOT 37**

ANGUS SPRING CALVING COW

**HOFFMAN PRINCESS 652**

AAA 18627215 • DOB: 04/01/16 • TATTOO: 652

**SIRE**

DAMERON FIRST CLASS

C&amp;C MCKINLEY 3000 EXAR

RAC WINNIE 7456

**DAM**

GREENS PREMIUM 7578

GREENS PRINCESS 1054

GREENS PRINCESS 7418

CED	BW	WW	YW	M	CW	
0	4.7	49	76	4	24	
MARB	REA	FAT	\$M	\$EN	\$F	\$B
0.17	0.56	-0.009	17	-5	67	99

AI BRED 05/07/2019 TO KR CASINO 6243 DUE 02/14/2020, CHECKED SAFE

Princess 652 is a royal bred female that is from the Greens Princess cow family, one of the most widely known and respected females to ever grace Express Ranches in Yukon, Oklahoma. Greens Princess 1012, is the dam of countless high sellers, show ring winners, herd sires, donor dams, and individuals of influence throughout the Angus breed. 1012 is one of the most decorated and highest generating Denver Champion females of all time! 652 is a daughter of 1054, a full sister to 1012 that was a featured female in the Hoffman Ranch program of Nebraska. She is sired by C&C McKinley 3000 EXAR, the six-figure valued son of Dameron First Class. She sells safe AI to KR Casino 6243, a past National Champion himself, making the resulting progeny truly bred in the purple on both sides!

**LOT 38**

ANGUS SPRING CALVING COW

**HOFFMAN DD WENDY 6234**

AAA 18499922 • DOB: 03/12/16 • TATTOO: 6234

**SIRE**

RITO 9M25 OF RITA 5F56 PRED

TEX DEMAND 2791

EMPRESS OF HOLIDAY 7004

**DAM**

SILVEIRAS STYLE 9303

BAAR USA WENDY 416

BAAR USA WENDY 5133

CED	BW	WW	YW	M	CW	
15	-1.7	45	67	21	18	
MARB	REA	FAT	\$M	\$EN	\$F	\$B
0.79	0.28	0.021	62	13	47	102

PASTURE BRED 06/23/2019 TO KR CASINO 6243 DUE 04/01/2020, CHECKED SAFE

Wendy 6234 is a member of the famous BAAR USA Wendy cow family that traces to the legendary Broken Arrow Wendy 040 matron. This young and productive female is sired by TEX Demand 2791, a herd sire that was selected by Hoffman Ranch from the Teixeira Cattle Company program of California. This female ranks among the top 2% of the breed for CED, top 5% BW, top 3% CEM, top 10% \$EN, and top 25% Marbling. She will sell safe in calf on October 5th to the \$49,500 American Royal ROV Champion Bull, KR Casino 6243!



ANGUS SPRING CALVING COW

# LOT 39 B/C BLACKCAP 0669 5108

AAA 18487185 • DOB: 10/28/15 • TATTOO: 5108

**SIRE** W C C MASTER CHIEF W121  
W C C MASTER CHIEF A31  
WCC FOREVER LADY S6

**DAM** O C C EMBLAZON 854E  
SANDPOINT BLACKCAP 0669  
WELLINGTON BLACKCAP W691

CED	BW	WW	YW	M	CW	
10	0.7	37	64	19	14	
MARB	REA	FAT	\$M	\$EN	\$F	\$B
0.38	0.27	0.017	44	11	64	99

AI BRED 04/01/2019 TO B-C ADK RUBICON 6025D DUE 01/09/2020, CHECKED SAFE

B/C Blackcap 0669 5108 is a young and productive daughter of the late WCC Master Chief A31 sire that was a walking herd sire at the ranch. Master Chief was purchased from the Wilson Cattle Company program of Cloverdale, IN and is from the famed Forever Lady cow line. 5108 is backed by the moderate and powerful Sandpoint Blackcap 0669, a daughter of OCC Emblazon 854E. Study the generations of cow families that line her pedigree.

ANGUS SPRING CALVING COW

# LOT 40 WHITE STAR BLACKCAP 126C

AAA 18473870 • DOB: 09/02/15 • TATTOO: 126C

**SIRE** CONNEALY IMPRESSION  
MAR INNOVATION 251  
MAR FINAL KAHUNA 856

**DAM** O C C EMBLAZON 854E  
SANDPOINT BLACKCAP 0968  
SANDPOINT BLACKCAP 6889

CED	BW	WW	YW	M	CW	
	2.3	57	100	25	31	
MARB	REA	FAT	\$M	\$EN	\$F	\$B
0.44	0.46	0.004		0	84	126

PASTURE BRED 05/22/2019 TO B-C ADK RUBICON 6025D DUE 02/29/2020, CHECKED SAFE

Blackcap 126C is the lone MAR Innovation 251 daughter in the sale. Innovation is a member of the impressive line-up at Genex Beef. 126C is supported maternally by the Blackcap cow family and the influence of OCC Emblazon 854E.

ANGUS SPRING CALVING COW

# LOT 41 WSCC CHEERLEADER 12B

AAA 17902350 • DOB: 01/13/14 • TATTOO: 12B

**SIRE** CONNEALY ONWARD  
SITZ UPWARD 307R  
SITZ HENRIETTA PRIDE 81M

**DAM** CONNEALY FRONTLINE  
LS F REBA 754 LG314  
CHAMPION HILL REBA 754

CED	BW	WW	YW	M	CW	
6	2.8	54	100	29	38	
MARB	REA	FAT	\$M	\$EN	\$F	\$B
0.32	0.49	-.002	66	-8	86	124

AI BRED 04/17/2019 TO J&J WEIGH UP 294 DUE 01/25/2020, CHECKED SAFE

12B is a stout and powerful Sitz Upward 307R daughter from the influence of Connealy Frontline and N Bar Emulation EXT on the bottom side. She is balanced both phenotypically and numerically.

ANGUS SPRING CALVING COW

# LOT 42 EBY GAMMER 053 3079

AAA 18074481 • DOB: 10/15/13 • TATTOO: 3079

**SIRE** BASIN PAYWEIGHT 6S06  
BASIN PAYDAY 4478  
BASIN PRIDE P032

**DAM** O C C EMBLAZON 854E  
SANDPOINT GAMMER 053  
THREE TREES GAMMER 5597

CED	BW	WW	YW	M	CW	
5	1.7	55	100	22	-	
MARB	REA	FAT	\$M	\$EN	\$F	\$B
-	-	-	54	-1		

AI BRED 04/17/2019 TO J&J WEIGH UP 294 DUE 01/25/2020, CHECKED SAFE

3079 is sired by Basin Payday 4478 and from a massive centered OCC Emblazon 854E daughter that was produced in the Sand Point program. She is AI bred to the calving ease and phenotype stud, B/C Blair Badger 5023 for a quick return on investment!

ANGUS SPRING CALVING COW

# LOT 43 WHITE STAR ROCKETTE 48Z

AAA 17319644 • DOB: 01/31/12 • TATTOO: 48Z

**SIRE** HARB ONWARD 786 J H  
VAR ROCKY 80029  
VERMILION LASS 0029

**DAM** LCC FOCUS 6964K  
WHITE STAR CHEERLEADER 57P  
LS F REBA 754 LG314

CED	BW	WW	YW	M	CW	
0	4	56	108	31	43	
MARB	REA	FAT	\$M	\$EN	\$F	\$B
0.5	0.55	0	55	-18	82	129

AI BRED 04/01/2019 TO B/C BLAIR BADGER 5023 DUE 01/09/2020, CHECKED SAFE

Rockette 48Z is a big time performance female that is sired by VAR Rocky 80029 and from a Focus bred dam. 48Z charts among the top 25% for WW, top 15% YW, top 20% RADG, top 20% HP, top 15% Milk, top 15% MW, top 15% MH, and top 20% CW.





**ANGUS SPRING CALVING COW**  
**LOT 44 LOOKOUT RUBY 39Y**  
 AAA 17805496 • DOB: 02/10/11 • TATTOO: 39Y

**SIRE** TRES MARIAS 6301 ZORZAL  
 WAF ZORZAL 321U  
 TRES MARIAS 6582 CUMELLEN5632

**DAM** B HILLS FRL DURATION 606  
 EASTONDALE RUBY 70'08  
 WWED 8180 RUBY 80P

CED	BW	WW	YW	M	CW	
2	2.3	43	73	11	-	
MARB	REA	FAT	\$M	\$EN	\$F	\$B
-	-	-	27	3		

AI BRED 04/01/2019 TO WIWA CREEK RUSH LAKE 71'12 DUE 01/09/2020, CHECKED SAFE

This female offers an outcross type pedigree, being sired by WAF ZORZAL 321U and backed by a Duration sired female. She is extended; flat shouldered, long sided and offers tremendous stoutness to her hip and pin set.

**ANGUS SPRING CALVING COW**  
**LOT 45 BOSS MISS LOOKOUT 0154**  
 AAA 17261503 • DOB: 09/27/10 • TATTOO: 154

**SIRE** MCC LOOK OUT 530  
 LEE'S LOOKOUT 7504  
 EMULOUS BLACKBIRD C A R 226

**DAM** BALDRIDGE JETHRO 75J  
 MARCYS 04 PRIDE 166-4  
 MARCYS 96 PRIDE 116-6

CED	BW	WW	YW	M	CW	
5	1.3	31	53	26	7	
MARB	REA	FAT	\$M	\$EN	\$F	\$B
0.34	0.09	0.015	59	6	56	87

AI BRED 05/19/2019 TO J&J WEIGH UP 294 DUE 02/26/2020, CHECKED SAFE

Boss Miss Lookout 0154 is a descendant of the great Lookout and from the influence of a stout Baldrige bred cow that is from the famed Pride cow family. She has raised an exceptional half-blood SimAngus heifer calf this year that is sired by the legendary CNS Pays To Dream T759. She will sell safe in calf to the exceptional J&J Weigh Up 294.







**LOT 46** ANGUS SPRING CALVING COW  
**KAR BLACKBIRD 1034**  
 AAA 17035822 • DOB: 09/05/10 • TATTOO: 1034

**SIRE** BON VIEW NEW DESIGN 1407  
 LCC NEW STANDARD  
 LCC SUNSET K3118

**DAM** BOYD ON TARGET 1083  
 K M BLACKBIRD 743  
 K M BLACKBIRD 1254

CED	BW	WW	YW	M	CW	
-1	3.3	49	90	31	33	
MARB	REA	FAT	\$M	\$EN	\$F	\$B
0.43	0.57	-0.013	68	1	96	141

PASTURE BRED 06/18/2019 TO KR CASINO 6243 DUE 03/27/2020, CHECKED SAFE

KAR Blackbird 1034 is by the Bon View New Design 1407 son, LCC New Standard. His dam is by the iconic Boyd On Target 1083. She will sell October 5th safe in calf to the great breeding sire, KR Casino 6243.

**LOT 47** ANGUS SPRING CALVING COW  
**WHITE STAR PEN REBA 36X**  
 AAA 16699073 • DOB: 01/30/10 • TATTOO: 36X

**SIRE** S A V FINAL ANSWER 0035  
 HARB PENDLETON 765 J H  
 H A R B BLACK LADY 375 J H

**DAM** CONNEALY FRONTLINE  
 L S F REBA 754 LG314  
 CHAMPION HILL REBA 754

CED	BW	WW	YW	M	CW	
8	1.6	52	94	22	40	
MARB	REA	FAT	\$M	\$EN	\$F	\$B
0.3	0.22	0.041	57	-6	101	129

PASTURE BRED 06/13/2019 TO KR CASINO 6243 DUE 03/22/2020, CHECKED SAFE

HARB Pendleton 765 J H is the son of SAV Final Answer 0035. 36X is a direct daughter of 36X. Her dam is the stout made Connealy Frontline and from a Champion Hill Reba bred female.







**LOT 48** SIMMENTAL SPRING CALVING COW  
**JSSC CAROLINA 004C**  
 ASA 3021592 • PB SM • DOB: 02/15/2015 • TATTOO: 004C

**SIRE** JS SURE BET 4T  
 JSSC WIDE BODY 090W  
 WHCC ANGELS DREAM

**DAM** GWS EBONY'S TRADEMARK 6N  
 KRIEGERS CAROLINA 35Z  
 WHCC CAROLINA PQ1

CE	BW	WW	YW	M
10.8	1.8	65.9	94.7	20.4

CW	MARB	REA	BF	API	TI
18.2	-0.12	0.65	-0.107	117.3	64.1

**OPEN & READY TO FLUSH | OWNED WITH THE SHEFFIELD FAMILY OF TEXAS**



JSSC Carolina 004C is without a doubt one of the most impressive females on the ranch. She is sired by the late JSSC Wide Body, a Purebred bull that had been used exclusively by Joe Seale and Foster Bros. Farms in Texas, until recently when semen has commanded upwards of \$1,000 per unit and \$750 per IVF slot. JSSC Carolina 004C was selected by the Badger Creek Cattle Company and the Sheffield family as the high selling open female in the 2015 Black Label Event. Carolina was a competitive female on the tan bark throughout the state of Texas. During the spring of 2017 she was crowned Grand Champion Purebred Simmental at the Fort Worth Stock Show & Rodeo, and later Reserve Grand Champion Purebred Simmental at the San Antonio Livestock Exposition. Her dam, Carolina 35Z has been a mainstay producer for Joe Seale and his family and continues to produce at the highest levels year after year. Countless maternal sisters have been sale toppers and champions for the Seale family and continue to make an impact for the families and breeders that made the investment into the Carolina cow line. Here is your opportunity to acquire a direct daughter of the late Wide Body, a sire that has experienced as many champions and high sellers as any other bull in the business based on the number of units of semen actually used. Without question a true sale feature!



**B-C STRUCTURE 6250D**  
**MATERNAL BROTHER TO LOT 49**



**KB PRINCESS 7229 257**  
**DAM OF LOT 49**

**LOT 49** SIMMENTAL SPRING CALVING COW  
**B-C PRINCESS 7007E**  
 ASA 3398415 • 1/2 SM 1/2 AN • DOB: 01/04/2017 • TATT00: 7007E

**SIRE** LLSF UPRISING Z925  
 HILB ORACLE C033R  
 SS BABYS BREATH P035

**DAM** CONNEALY CONSENSUS 7229  
 KB PRINCESS 7229 257  
 EXAR PRINCESS 5464

CE	BW	WW	YW	M	
12.3	0.7	65.5	94.5	19.7	
CW	MARB	REA	BF	API	TI
18.7	0.24	0.54	-0.056	121.2	69.3

**AI BRED 04/16/2019 TO CNS PAYS TO DREAM T759 DUE 01/24/2020, CHECKED SAFE**

Hilbrands Cattle Company program in Denver, HILB Oracle C033R. Her dam is KB Princess 7229 257, a Connealy Consensus 7229 daughter that is a member of the legendary Princess cow family, tracing to the Denver Champion Greens Princess 1012 on the bottom side of her lineage. Greens Princess 1012 is one of the highest dollar generating females in the Express program and has left behind sons and daughters that have impacted the beef industry. 7007E is a homozygous polled half-blood female that is sure to make the short list of even the most critical on sale day!

**LOT 50** SIMMENTAL SPRING CALVING COW  
**B-C MISS 3031A 7123E**  
 ASA 3601040 • 1/2 SM 1/2 AN • DOB: 02/22/2017 • TATT00: 7123E

**SIRE** LLSF UPRISING Z925  
 HILB ORACLE C033R  
 SS BABYS BREATH P035

**DAM** MR HOC BROKER  
 B/C MISS BROKER 3031A  
 O C C MISS EUREKA 394N

CE	BW	WW	YW	M	
11.8	0.2	54.9	76.6	21.8	
CW	MARB	REA	BF	API	TI
16.2	0.27	0.46	-0.062	110.8	64

**PASTURE BRED 05/29/2019 TO EBY/ADKS 5B DEACON 308A DUE 03/07/2020, CHECKED SAFE**

7123E is an attractive Oracle sired baldy female that is backed by generations of elite cow families. Her sire is from the Baby's Breath line, while her dam combines the influence of Broker and OCC Eureka 865E. Her sire, Oracle, was produced in the Hilbrands Cattle Company program and topped The One sale at the National Western Stock Show. 7123E is a 3/4 blood Simmental female that sells safe in calf to Deacon, one of the most consistent Lock N Load sons we have ever used!





ACW IRONHIDE 395Y — SIRE OF LOTS 51 & 52

**LOT 51** SIMMENTAL SPRING CALVING COW  
**MADL IRON LADY 503D**  
ASA 3072203 • 3/4 SM 1/4 AN • DOB: 04/17/2015 • TATTOO: 503C

**SIRE** REMINGTON LOCK N LOAD54U  
ACW IRONHIDE 395Y  
DKF MISS NEW DEAL 205P

**DAM** HTP SVF IN DEW TIME  
RS DEW ALL THAT 503Z  
RS SHES ALL THAT 3R

CE	BW	WW	YW	M	
11.4	0	59.5	91	21.1	
CW	MARB	REA	BF	API	TI
27.5	0.01	0.64	-0.065	117.6	61.2

AI BRED 04/21/2019 TO BPS STRUCTURE 308A DUE 01/29/2020, CHECKED SAFE

Iron Lady 503C is sired by the late ACW Ironhide 395Y, a multiple time National Champion SimAngus bull that has left behind a set of females that are irreplaceable. Her dam is a Purebred cow that is sired by HTP SVF In Dew Time. This baldy 3/4 blood female is one that we admire from a phenotype standpoint especially. Great footed, long sided, smooth made, and offers a look of femininity and class.

**LOT 52** SIMMENTAL SPRING CALVING COW  
**B-C BELLA 6200D**  
ASA 3227418 • 5/8 SM 5/16 AN • DOB: 09/14/2016 • TATTOO: 6200D

**SIRE** REMINGTON LOCK N LOAD54U  
ACW IRONHIDE 395Y  
DKF MISS NEW DEAL 205P

**DAM** THSF BLACK PEARL  
MTTR MISS BELLA 42Y  
BOVINE BELLA T92

CE	BW	WW	YW	M	
11.9	0.3	63.5	95.7	18.1	
CW	MARB	REA	BF	API	TI
35.4	-0.03	0.71	-0.065	111.7	61.9

PASTURE BRED 05/29/2019 TO B/C ORACLE E7224 DUE 03/07/2020, CHECKED SAFE

6200D is another Ironhide daughter that is from a productive THSF Black Pearl daughter of the Bella cow family. She offers balanced figures to accompany her productive body type. Study the Ironhide females; they are certainly at the top of our list when it comes to females that consistently generate.



**LOT 53**

SIMMENTAL SPRING CALVING COW

**WHITESTAR DREAMLADY 11A**

ASA 2839076 • 1/2 SM 1/2 AN • DOB: 01/07/2013 • TATTOO: 11A

**SIRE**CNS DREAM ON L186  
CNS PAYS TO DREAM T759  
MLF BL JESSIE K336**DAM**G A R RETAIL PRODUCT  
KCS ORPHA 5043  
WARDS ORPHA 316

CE	BW	WW	YW	M	
16.7	0.1	53	84.3	19	
CW	MARB	REA	BF	API	TI
23.9	0.39	0.42	-0.032	125.8	66.6

PASTURE BRED 05/29/2019 TO HILB ORACLE C033R DUE 03/07/2020, CHECKED SAFE

Dream Lady 11A is an own daughter of one of the breeds most well respected sires, CNS Pays To Dream T759. Her dam is a Retain Product sired female. She is moderate in her frame size, long hiped, and offers a three-dimensional build. She sells safe in calf to the great breeding baldy Purebred, HILB Oracle C033R!

**LOT 54**

SIMMENTAL SPRING CALVING COW

**BC/WSCC MS HAMMER 133D**

ASA 3251549 • 3/4 SM 1/4 AN • DOB: 09/10/2016 • TATTOO: 133D

**SIRE**MR NLC UPGRADE U8676  
MR TR HAMMER 308A ET  
SVF/HS EXPECTING A DREAM**DAM**MR NLC UPGRADE U8676  
RRJS MISS UPGRADE 702Y  
RR MISS MORRISON 8020

CE	BW	WW	YW	M	
10.4	1.6	71.6	115.6	22.8	
CW	MARB	REA	BF	API	TI
36.1	0.17	0.71	-0.087	121.3	71.3

PASTURE BRED 06/03/2019 TO EBY/ADKS 5B DEACON 308A DUE 03/12/2020, CHECKED SAFE

Ms Hammer 133D is a double-bred MR NLC Upgrade U8676 daughter. Sired by MR TR Hammer 308A ET, this female combines the line-bred advantage of consistency from females such as SVF/HS Expecting a Dream and MS NLC Mojo S6119. Top 15% YW, top 15% ADG, top 15% BF, top 25% WW, and top 25% CW.

**LOT 55**

SIMMENTAL SPRING CALVING COW

**TNGL DEANA Z504**

ASA 2768978 • PB SM • DOB: 09/10/2012 • TATTOO: Z504

**SIRE**ELLINGSON LEGACY M229  
MR NLC UPGRADE U8676  
MS NLC MOJO S6119 B**DAM**STF DOMINIQUE R170  
TNGL DEANA U229  
DST MISS N83

CE	BW	WW	YW	M	
10	2.4	72.3	109.6	17.1	
CW	MARB	REA	BF	API	TI
35	0.11	0.86	-0.115	120.2	73

PASTURE BRED 03/25/2019 TO B/C ORACLE7016E DUE 01/02/2020, CHECKED SAFE

Deana Z504 is an own daughter of MR NLC Upgrade U8676 and from an STF Dominique R170 dam. She is a big centered, stout made Purebred female that offers exceptional shape, dimension, and capacity. Numerically she is balanced across the board and offers mating flexibility. She is mated to B/C Oracle 7016E for a January due date.

**LOT 56**

SIMMENTAL SPRING CALVING COW

**WHITE STAR OLIVET 35A**

ASA 2839083 • 3/4 SM 1/4 AN • DOB: 02/04/2013 • TATTOO: 35A

**SIRE**NICHOLS LEGACY G151  
ELLINGSON LEGACY M229  
ELLINGSON MS PSTOCK K58**DAM**PELTON FORCE 67T  
WSCC CHEERLEADER 58X  
PF 104 FORMERA 3089

CE	BW	WW	YW	M	
13	0.2	66.4	101.4	26.6	
CW	MARB	REA	BF	API	TI
35.6	0.05	0.95	-0.095	123.3	67.7

AI BRED 04/05/2019 TO J&amp;J WEIGH UP 294 DUE 01/13/2020, CHECKED SAFE

Olivet 35A is backed by the influence of Pelton Force 67T on her maternal side. Pelton 67T is a sire that has a group of daughters selling in this sale. She is a stout constructed, long made female that offers a shot more frame size and performance.

**LOT 57**

SIMMENTAL SPRING CALVING COW

**WHITE STAR CLASSYGAL47D**

ASA 3228623 • 1/2 SM 1/2 AN • DOB: 02/01/2016 • TATTOO: 47D

**SIRE**TRIPLE C SINGLETARY S3H  
WHITESTAR SINGLETARY B59  
KIM MAC ERIANNA 1746**DAM**MR NLC UPGRADE U8676  
WHITE STAR CLASSY 37A  
KCS PLAYMATE 5093

CE	BW	WW	YW	M	
11.2	1.4	69.9	109.1	24.3	
CW	MARB	REA	BF	API	TI
33	0.51	0.75	-0.041	135.2	78.4

PASTURE BRED 05/22/2019 TO HILB ORACLE C033R DUE 02/29/2020, CHECKED SAFE

47D is a granddaughter of Triple C Singletary 53H and backed by Upgrade on the bottom side of her lineage. She offers a balanced number profile with 10 traits of economical importance charting among the top 30% of the breed!

SIMMENTAL SPRING CALVING COW

# LOT 58 WSCC CHEERLEADER 86D

ASA 3228632 • 3/4 SM 1/4 AN • DOB: 03/05/2016 • TATTOO: 86D

**SIRE** SDS IN FORCE 112Y  
CCR IN FORCE 1063A  
CCR MS 3091 MATRIX 1063Y

**DAM** SS GOLDMINE L42  
WSCC CHEERLEADER 51A  
WSCC CHEERLEADER 18Y

CE	BW	WW	YW	M	
9.9	0.3	50.2	67.2	27.7	
CW	MARB	REA	BF	API	TI
7.9	0.32	0.31	-0.089	125.1	62.6

PASTURE BRED 06/06/2019 TO HILB ORACLE C033R DUE 03/15/2020, CHECKED SAFE

86D is sired by CCR in Force and from an SS Goldmine L42 bred dam. She is a heavy milking 3/4-blood female that is among the top 10% of the breed for her Milk EPD.

SIMMENTAL SPRING CALVING COW

# LOT 59 WSCC CRIMSON GAL 17D

ASA 3228617 • 3/4 SM 1/4 AN • DOB: 01/03/2016 • TATTOO: 17D

**SIRE** CNS DREAM ON L186  
WLE UNO MAS X549  
SHAWNEE MISS 770P

**DAM** CCR FRONTIER 0053Z  
WSCC FRONTIER GAL 89B  
CCR MS GRADUATE 2106Z

CE	BW	WW	YW	M	
13.9	-1.2	72.3	101.4	22.1	
CW	MARB	REA	BF	API	TI
22.6	0.29	0.74	-0.077	130.9	77.7

PASTURE BRED 06/01/2019 TO HILB ORACLE C033R DUE 03/10/2020, CHECKED SAFE

Crimson Gal 17D is a daughter of the Select Sires calving ease specialist, WLE Uno Mas X549. Her dam is by CCR Frontier 0053Z and from a SDS Graduate 006X daughter. Numerically she charts top 25% CE, top 20% BW, top 25% WW, top 15% YG, top 10% Doc, top 20% BF, top 10% Shr, and top 15% TI.

SIMMENTAL SPRING CALVING COW

# LOT 60 B-C RBY OF TIFFANY 5089C

ASA 3126975 • 1/2 SM 1/2 AN • DOB: 09/21/2015 • TATTOO: 5089C

**SIRE** REMINGTON LOCK N LOAD54U  
EBY/ADKS 5B DEACON 308A  
CNS BLACK STAR T702

**DAM**

CE	BW	WW	YW	M	
13.4	-0.2	52	79.1	20.6	
CW	MARB	REA	BF	API	TI
19.8	0.12	0.52	-0.064	109.7	59.8

PASTURE BRED 05/14/2019 TO HILB ORACLE C033R DUE 02/21/2020, CHECKED SAFE

B-C Ruby of Tiffany 5089C is a super productive and powerful daughter of EBY/ADKS 5B Deacon 308A. She is one of the few Deacon daughters in the offering. Udder quality, structure, and body mass is what Deacon has become well noted for. Deacon is a direct son of CNS Black Star T702, an elite Simmental matron within the breed.

SIMMENTAL SPRING CALVING COW

# LOT 61 WSCC CHEERLEADER 80Y

ASA 2638274 • 1/2 SM 1/2 AN • DOB: 04/14/2011 • TATTOO: 80Y

**SIRE** CNS DREAM ON L186  
WLE MR T716  
WLE TALLULAH N716

**DAM** R R SCOTCHCAP 9440  
S C C ELEANOR 9440 114  
S C C ELEANOR DIVINITY

CE	BW	WW	YW	M	
17.2	-1	53.9	80.4	23.5	
CW	MARB	REA	BF	API	TI
18.7	0.18	0.35	-0.041	129.7	63.4

AI BRED 4/16/19 TO HILB ORACLE C033R DUE 01/24/2020, CHECKED SAFE

80Y combines the influence of legendary individuals within two different breeds, such as Dream On and Scotch Cap. She is a long sided, smooth made type female that has recently weaned one of the stoutest and heaviest bull calves in the set by Rubicon, the Pilgrim sired maternal brother to the legendary Broker.

SIMMENTAL SPRING CALVING COW

# LOT 62 LLSF CALL GIRL X242

ASA 2539357 • PB SM • DOB: 01/06/2010 • TATTOO: X242

**SIRE** CNS DREAM ON L186  
HTP/SVF DURACELL T52  
HTP SVF HONEYDEW

**DAM** TMPF KEEP DREAMIN  
JBS PRECIOUS DREAM P242  
JBS MISS BANKROLL M411

CE	BW	WW	YW	M	
10.8	2.2	66.2	93.5	19	
CW	MARB	REA	BF	API	TI
21.5	-0.15	0.78	-0.12	103.3	63

AI BRED 05/20/2019 TO KR CASINO 6243 DUE 02/27/2020, CHECKED SAFE

LLSF Call girl X242 is a Purebred Simmental that offers a balanced pedigree top and bottom. She is sired by HTP/SVF Duracell T52, a top son of CNS Dream On T52. Her dam is by TMPF Keep Dreamin, the Black Joker sired maternal brother to Dream On. She sells AI bred to the multiple time National Champion, KR Casino 6243, due in February with a half-blood calf!

SIMMENTAL SPRING CALVING COW

# LOT 63 ZEIS MAGNITUDE X80

ASA 2559769 • 1/2 SM 1/2 AN • DOB: 01/05/2010 • TATTOO: X80

**SIRE** OCC EMBLAZON 854E  
OCC MAGNITUDE 805M  
OCC POLLYANNA 878G

**DAM** JDJ INTIMIDATOR 080K  
ZEIS MISS ZEL U448  
ZEIS MISS RAVEN D74

CE	BW	WW	YW	M	
8.3	1.4	60.5	87.6	18.5	
CW	MARB	REA	BF	API	TI
19.8	0.1	0.17	-0.024	108.6	60.1

PASTURE BRED 06/08/2019 TO HILB ORACLE C033R DUE 03/17/2020, CHECKED SAFE

X80 is an Angus sired half-blood Simmental female that is backed by Zeis Miss el U448. Her sire is the maternal great, OCC Magnitude 805M, an OCC Pollyanna 878G son of OCC Emblazon 854E. Other influential individuals such as N BAR Emulation EXT and DHD Traveler 6807 are identified throughout her lineage. She is due in mid March to the baldy Purebred stud, HILB Oracle C033R.



SIMMENTAL SPRING CALVING COW

## LOT 64 WSCC CHEERLEADER 61Y

ASA 2638275 • 1/2 SM 1/2 AN • DOB: 02/14/2011 • TATTOO: 61Y

**SIRE** ELLINGSON LEGACY M229  
OLF ODIN U5  
OLF LADY TRIATHLON S655

**DAM** TWIN VALLEY PRECISION E161  
WHITESTARCHEERLEADER 48P  
K M RUBY 1269

CE	BW	WW	YW	M	
17.5	-0.8	59.8	96.8	26.8	
CW	MARB	REA	BF	API	TI
24.4	0.19	0.56	-0.038	124.7	68

PASTURE BRED 05/14/2019 TO HILB ORACLE C033R DUE 02/21/2020, CHECKED SAFE

Cheerleader 61Y is another female that descends from the Ellingson Legacy M229 influence. Her dam is an Angus cow by Twin Valley Precision E161 that is from the Ruby cow line. This female ranks among the top 5% CE, top 25% BW, top 1% ME, and top 15% Milk.

SIMMENTAL SPRING CALVING COW

## LOT 65 WSCC CHEERLEADER 58X

ASA 2664365 • 1/2 SM 1/2 AN • DOB: 02/26/2010 • TATTOO: 58X

**SIRE** HOOKS SHEAR FORCE 38K  
PELTON FORCE 67T  
PELTONS MISS BEE 0114K

**DAM** TC FREEDOM 104  
PF 104 FORMERA 3089  
PF FORMERA 9174

CE	BW	WW	YW	M	
11.1	0.5	56.6	85.2	25.4	
CW	MARB	REA	BF	API	TI
22.4	0.36	0.61	-0.024	131.6	67.3

PASTURE BRED 05/14/2019 TO EBY LOCK N LOAD 463B DUE 02/21/2020, CHECKED SAFE

Cheerleader 58X is a stout and powerful daughter of Pelton Force 67T. She is a good footed, sound built female that has raised a high performing and heavy weaning calf each year.

SIMMENTAL SPRING CALVING COW

## LOT 66 WSCC CHEERLEADER 35X

ASA 2664366 • 1/2 SM 1/2 AN • DOB: 01/30/2010 • TATTOO: 35X

**SIRE** HOOKS SHEAR FORCE 38K  
PELTON FORCE 67T  
PELTONS MISS BEE 0114K

**DAM** STEVENSON MONEYMAKER R185  
WHITESTARCHEERLEADER15U  
LCC BLACKCAP LG875

CE	BW	WW	YW	M	
10.5	-0.3	56.1	89.6	24.6	
CW	MARB	REA	BF	API	TI
19.5	0.39	0.37	-0.029	138.9	68.6

PASTURE BRED 04/22/2019 TO EBY LOCK N LOAD 463B DUE 01/30/2020, CHECKED SAFE

35X is another daughter of Pelton Force 67T that boasts exceptional figures. She offers an impressive 138.9 API and excels from a calving ease and carcass standpoint. She is a larger framed, powerful, and rugged female that will always bring a heavy calf to the weaning pen!

SIMMENTAL SPRING CALVING COW

## LOT 67 WHITE STAR LOLA 42W

ASA 2495654 • 3/4 SM 1/4 AN • DOB: 02/12/2009 • TATTOO: 42W

**SIRE** HOOKS SHEAR FORCE 38K  
PELTON FORCE 67T  
PELTONS MISS BEE 0114K

**DAM** LCC FOCUS 6964K  
WHITESTAR BLACKSTART 52R  
DX MS BLACKSTART

CE	BW	WW	YW	M	
10.2	0.6	56.4	83.8	28.7	
CW	MARB	REA	BF	API	TI
16.1	0.24	0.61	-0.066	125	64.8

PASTURE BRED 05/29/2019 TO HILB ORACLE C033R DUE 03/07/2020, CHECKED SAFE

Lola 42W is a daughter of Pelton Force 67T. This baldy female is a strong milking female that is a heavy calf raiser. She boasts balanced growth and carcass figures to accompany her functional build.

SIMMENTAL SPRING CALVING COW

## LOT 68 WSCC CHEERLEADER 64X

ASA 2664364 • 1/2 SM 1/2 AN • DOB: 03/08/2010 • TATTOO: 64X

**SIRE** HOOKS SHEAR FORCE 38K  
PELTON FORCE 84T  
PELTONS MISS BEE 0114K

**DAM** CONNEALY FREIGHTLINER  
K M PRINCESS 2162  
K M PRINCESS 1379

CE	BW	WW	YW	M	
11.1	1	61	94.8	21.8	
CW	MARB	REA	BF	API	TI
31.1	0.38	0.62	-0.03	140.3	69.7

PASTURE EXPOSED 05/22/19 THROUGH 07/20/19 TO B/C PROSPERITY 7453 & B/C CARRY ON 7460. BRED 06/08/2019, DUE 03/17/2020, CHECKED SAFE

Cheerleader 64X is another Pelton Force 84T. Her dam is by Connealy Freightliner and is a member of the Princess cow family. She offers balanced traits across the board numerically and charts top 20% for API.

SIMMENTAL SPRING CALVING COW

## LOT 69 WSCC CHEERLEADER

ASA 2638277 • PB SM • DOB: 04/02/2011 • TATTOO: 75Y

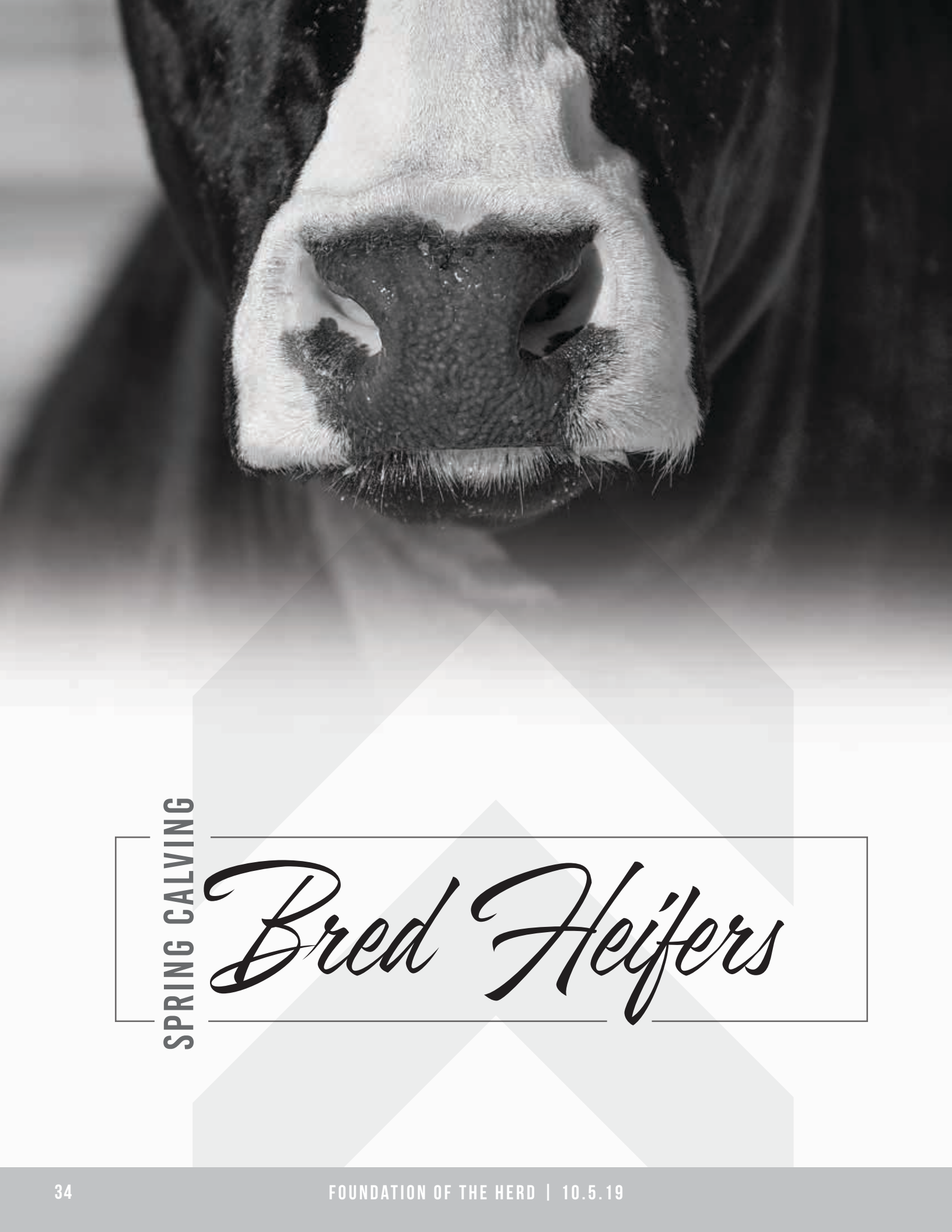
**SIRE** ELLINGSON LEGACY M229  
WHITE STAR CITATION U173  
3C KIZER R5539 B

**DAM** PELTON FORCE 67T  
WHITESTARCHEERLEADER 55W  
TAYLORS AUNT GEMIMA

CE	BW	WW	YW	M	
7	1.5	55.5	80.2	27.8	
CW	MARB	REA	BF	API	TI
26	0.03	0.83	-0.122	124	62.4

PASTURE EXPOSED 05/22/19 THROUGH 07/20/19 TO B/C PROSPERITY 7453, B/C CARRY ON 7460, AND B/C CASINO 8300. BRED 05/24/2019, DUE 03/02/2020, CHECKED SAFE

75Y is another granddaughter of Ellingson Legacy M229 and from a top Pelton Force 67T daughter. She is a Purebred Simmental that offers added performance and stoutness.



SPRING CALVING

# *Bred Heifers*





**WIWA CREEK RUSH LAKE 71'12**  
**SIRE OF LOT 70**

**ANGUS SPRING CALVING BRED HEIFER**  
**LOT 70 B/C BLACKBIRD LADY 8211**  
AAA 19312974 • DOB: 02/25/18 • TATTOO: 8211

**SIRE** SOO LINE MOTIVE 9016  
WIWA CREEK RUSH LAKE 71'12  
WIWA CREEK PRIDE 63'10

**DAM** HF PROWLER 43U  
BOSS MS BLACKBIRD LADY 4133  
BOSS MISS STIMULUS 131

CED	BW	WW	YW	M	CW	
6	2	52	93	17		
MARB	REA	FAT	\$M	\$EN	\$F	\$B
			63	-6		

AI BRED 05/08/2019 TO DUFF NAPOLEON 232 DUE 02/15/2020, CHECKED SAFE

Our good friend Bryan Mackenzie of Brylor Ranch from Pincher Creek, Alberta helped us in locating and purchasing Wiwa Creek Rush Lake 71'12 when we decided to find a top son of Soo Line Motive 9016. Rush Lake has exceeded our expectations when it comes to siring cattle with stoutness, power, length, and added substance. 8211 is backed by a top HF Prowler 43U daughter that offers the influence of Stimulus. This mating to Duff Napoleon 232 is sure to be a match that will add substance and dimension in a single generation!

**ANGUS SPRING CALVING BRED HEIFER**  
**LOT 71 B/C MISS BONNIE 8178**  
AAA 19321516 • DOB: 02/18/18 • TATTOO: 8178

**SIRE** CONNEALY FOREFRONT  
TC FREEDOM 104  
T C RUBY 9095

**DAM** LEACHMAN RIGHT TIME  
FINK BONNIE 5464 2496 RT  
FINKS BONNIE 2496 9326 323

CED	BW	WW	YW	M	CW	
6	2	48	85	24	30	
MARB	REA	FAT	\$M	\$EN	\$F	\$B
0.36	0.28	-0.005	48	-6	78	115

AI BRED 05/08/2019 TO DUFF NAPOLEON 232 DUE 02/15/2020, CHECKED SAFE

B/C Miss Bonnie 8178 is sired by the time tested TC Freedom 104 and backed by Fink Bonnie 5465 2496 RT. 8178 is from a Fink bred female that originated in one of the top multi-breed seedstock outfits in North America. She is due early spring to Duff Napoleon 232, a sire that will continue to have a lasting impact on our program for years to come!



**DUFF NAPOLEON 232 — SERVICE SIRE**



**LOT 72**

**SIMMENTAL SPRING CALVING BRED HEIFER**

**LOT 72 B-C MISS 8146F**

ASA 3518563 • 1/2 SM 1/2 AN • DOB: 02/10/2018 • TATTOO: 8146F

**SIRE**

REMINGTON LOCK N LOAD54U  
BOSS LOCK N LOAD 517  
O C C JUANADA 734P

**DAM**

HARVIE JDF SPLASH 108B  
B-C MISS 3030 6104D  
BOSS MISS HOSS 3030

CE	BW	WW	YW	M	
12.2	0.3	56.4	85.2	19.3	
CW	MARB	REA	BF	API	TI
20	0.12	0.5	-0.04	107.4	61.2

**AI BRED 05/08/2019 TO DUFF NAPOLEON 232 DUE 02/15/2020, CHECKED SAFE**

8138F is an exceptional double bred half-blood Simmental female that is sired by a past sale topping bull that we used with great success. Boss Lock N Load 517 is an own son of the \$10,000 OCC Juanada 734P female that was selected by the JC Ranch program. Lock N Load 517 sold for \$8,250 that was purchased by the Neis Brothers program at Eudora, Kansas. This cherry red baldy female is bold ribbed, wide based, and loaded with maternal power!



**BOSS LOCK N LOAD 517C — SIRE OF LOT 72**





**LOT 73**

**LOT 73** **B-C LUCY 8068F**  
 SIMMENTAL SPRING CALVING BRED HEIFER  
 ASA 3440343 • 1/2 SM 1/2 AN • DOB: 01/22/2018 • TATTOO: 8068F

**SIRE** MR NLC UPGRADE U8676  
 BPS STRUCTURE 308A  
 PRS INDEPENDENCE W343

**DAM** O C C PROTOTYPE 847P  
 LAGRAND LUCY 0065  
 LAGRAND LUCY 4151

CE	BW	WW	YW	M	
10.5	1.2	63.6	95.4	22.2	
CW	MARB	REA	BF	API	TI
29.7	0.24	0.63	-0.053	116.4	67.5

AI BRED 05/08/2019 TO HILB ORACLE C033R DUE 02/15/2020, CHECKED SAFE

B-C Lucy 8068F is a standout female among the SimAngus bred heifer offering. She is sired by the late BPS Structure 308A stud and backed by the sensation LaGrand Lucy 0065 donor, a featured female that sells as lot 2 in the offering. There is no denying the impact the Lucy 0065 has made on the program and will continue to make moving forward in the Angus and SimAngus sectors of her new owners program. Study the mass, dimension, and structural integrity that 8068F offers. She is safe in calf to Oracle.

**LOT 74** **B-C PETUNIA 8054F**  
 SIMMENTAL SPRING CALVING BRED HEIFER  
 ASA 3518542 • 1/2 SM 1/2 AN • DOB: 01/20/2018 • TATTOO: 8054F

**SIRE** MR NLC UPGRADE U8676  
 BPS STRUCTURE 308A  
 PRS INDEPENDENCE W343

**DAM** GAMBLES SAFE BET  
 EBY PETUNIA 087 3065  
 KENSINGTON PETUNIA 087

CE	BW	WW	YW	M	
10.6	1.2	65.1	98	22.4	
CW	MARB	REA	BF	API	TI
29.7	0.24	0.63	-0.053	117.9	68.5

AI BRED 05/07/2019 TO HILB ORACLE C033R DUE 02/14/2020, CHECKED SAFE

8054F is a big ribbed, sound built half-blood Structure daughter. She offers balanced numbers across the board, and ranks among the top 1% of the breed for MWW. Another Structure daughter safe in calf to Oracle for a 3/4-blood calf due in February!



**LOT 75**

SIMMENTAL SPRING CALVING BRED HEIFER

**LOT 75**

**B-C BLK GLOW 8116F**

ASA 3518555 • PB SM • DOB: 02/05/2018 • TATTOO: 8116F

**SIRE**

LLSF UPRISING Z925  
HILB ORACLE C033R  
SS BABYS BREATH P035

**DAM**

CCR SANTA FE 9349Z  
WHITE STAR BLK GLOW 26D  
WCC CHEERLEADER 8B

CE	BW	WW	YW	M	
11.1	0.9	66.6	94.8	22.4	
CW	MARB	REA	BF	API	TI
21.5	0.02	0.82	-0.117	122.4	69.6

AI BRED 05/08/2019 TO DUFF NAPOLEON 232 DUE 02/15/2020, CHECKED SAFE

B-C Black Glow 8116F is a Purebred sired by HILB Oracle C033R that is backed by a CCR Santa Fe 9349Z daughter from the Cheerleader cow family. She is a long fronted, attractive made female that is great built and offers a look of longevity and function.



**HILB ORACLE C033R — SIRE OF LOTS 75-77**

SIMMENTAL SPRING CALVING BRED HEIFER

**LOT 76**

**B-C MISS 8059F**

ASA 3601041 • 1/2 SM 1/2 AN • DOB: 01/20/2018 • TATTOO: 8059F

**SIRE**

LLSF UPRISING Z925  
HILB ORACLE C033R  
SS BABYS BREATH P035

**DAM**

HF PROWLER 43U  
BOSS MISS PROWLER 2300  
LADY OF PEAK DOT 818T

CE	BW	WW	YW	M	
11.7	0	59	85.2	21.6	
CW	MARB	REA	BF	API	TI
18.6	0.26	0.3	-0.05	117.3	66.3

AI BRED 05/08/2019 TO DUFF NAPOLEON 232 DUE 02/15/2020, CHECKED SAFE

B-C Miss 8059F is a direct daughter of Boss Miss Prowler 2300, the featured HF Prowler 43U daughter in the offering that will sell as lot 5. She is much like her dam in terms of body mass, look, and design. The impact that her dam, 2300 has made is unparalleled and we are confident that 8059F will follow in her footsteps.

SIMMENTAL SPRING CALVING BRED HEIFER

**LOT 77**

**B-C PRIDE 8196F**

ASA 3518926 • 3/4 SM 1/4 AN • DOB: 02/22/2018 • TATTOO: 8196F

**SIRE**

LLSF UPRISING Z925  
HILB ORACLE C033R  
SS BABYS BREATH P035

**DAM**

EBY/ADKS 5B DEACON 308A  
B-C PRIDE 2087 5100C

CE	BW	WW	YW	M	
11.4	0.9	58.6	84.3	22.3	
CW	MARB	REA	BF	API	TI
15.6	0.09	0.65	-0.097	109.9	62

AI BRED 05/07/2019 TO DUFF NAPOLEON 232 DUE 02/14/2020, CHECKED SAFE

z





**LOT 78**



**B-C ADK RUBICON 6025D — SIRE OF LOT 78**

**LOT 78** SIMMENTAL SPRING CALVING BRED HEIFER  
**B-C IMAGE LADY 8219F**  
 ASA 3439362 • PB SM • DOB: 02/26/2018 • TATTOO: 8219F

**SIRE** WS PILGRIM H182U  
 B-C ADK RUBICON 6025D  
 JM BF H25

**DAM** TJ SHARPER IMAGE 809U  
 WHITESTAR IMAGE LADY 30A  
 WHITE STAR WALLFLOWER11P

CE	BW	WW	YW	M	
9	2.3	65.9	93.8	20.1	
CW	MARB	REA	BF	API	TI
26.2	0	0.49	-0.092	110.5	65.6

**AI BRED 05/31/2019 TO DUFF NAPOLEON 232 DUE 03/09/2020, CHECKED SAFE**

B-C Image Lady 8219F is one of the first daughters of B-C ADK Rubicon 6025D to offered at public auction. Rubicon is the WS Pilgrim H182U son that is out of the matron H25, making him a maternal brother to one of the most dominant sires that the breed has ever seen, MR HOC Broker. Her dam is a TJ Sharper Image 809U daughter that offers an exceptional profile and udder design. This female is mated to Duff Napoleon 232, a truly impressive low birth weight Angus sire that is noted for the females that he has left behind.

**LOT 79** SIMMENTAL SPRING CALVING BRED HEIFER  
**OS KASSIE F9**  
 ASA 3445191 • 1/2 SM 1/2 AN • DOB: 02/12/2018 • TATTOO: F9

**SIRE** O C C LEGEND 616L  
 B C LOOKOUT 7024  
 GIBBET HILL MIGNONNE E37

**DAM** MR NLC UPGRADE U8676  
 WS OS BLACK JADA  
 BFSC MY FAIR JADE 95T

CE	BW	WW	YW	M	
10	1.2	68.7	100.1	18	
CW	MARB	REA	BF	API	TI
27.6	0.25	0.77	-0.045	121.7	70.3

**AI BRED 05/26/2019 TO HILB ORACLE C033R DUE 03/04/2020, CHECKED SAFE**

Kassie F9 is an exceptional bred heifer that is sired by BC Lookout 7024. She is backed by a MRNLC Upgrade U8676 daughter that is from the Black Jade 950N cow line. There is no doubt that this female is a donor in the making. F9 is a massive centered, bold ribbed, big-hipped female that is long sided, smooth shouldered and offers a look of quality through her front third that is second to none! Her mating to Oracle is sure to generate a 3/4 Simmental that is a quick return on investment for her new owner!



**LOT 79**

**LOT 80** **OS ERIN F12**  
 SIMMENTAL SPRING CALVING BRED HEIFER  
 ASA 3445192 • 1/2 SM 1/2 AN • DOB: 02/23/2018 • TATTOO: F12

**SIRE** O C C LEGEND 616L  
 B C LOOKOUT 7024  
 GIBBET HILL MIGNONNE E37

**DAM** JF MILESTONE 999W  
 OS/WS ADELE A07  
 HSF CHELSEA X045

CE	BW	WW	YW	M	
10.1	1.2	65.4	99.5	19	
CW	MARB	REA	BF	API	TI
27.4	0.22	0.52	-0.035	126.3	67.4

AI BRED 05/25/2019 TO HILB ORACLE C033R DUE 03/03/2020, CHECKED SAFE

Erin E12 is an exceptional half-blood female that is sired by a maternal legend in the Angus breed, BC Lookout 7024. The dam of this big centered, easy fleshing female is a Milestone daughter that is backed by a Mo Better daughter. This female is safe in calf to HILB Oracle C033R and is due in March.

**LOT 81** **TSF MICHELLE F15**  
 SIMMENTAL SPRING CALVING BRED HEIFER  
 ASA 3401285 • PB SM • DOB: 01/05/2018 • TATTOO: F15

**SIRE** CNS PAYS TO DREAM T759  
 LLSF PAYS TO BELIEVE ZU194  
 LLSF URABABYDOLL U194

**DAM** SHS NAVIGATOR N2B  
 DLS IM YOUR GIRL R532  
 DLS EVENING QUEEN

CE	BW	WW	YW	M	
6.5	2.4	66.3	97.7	19.1	
CW	MARB	REA	BF	API	TI
37	-0.04	0.86	-0.098	106.5	64.8

AI BRED 05/31/2019 TO DUFF NAPOLEON 232 DUE 03/09/2020, CHECKED SAFE

Michelle F15 is a direct daughter of LLSF Pays To Believe ZU194 and backed by a SHS Navigator N28 sired female that traces to PVF-BF BF26 Black Joker. She is a Purebred Simmental female that is safe in calf to Duff Napoleon 232 due in early March.





FALL CALVING

# *Foundation Females*





**LOT 82**

**ANGUS FALL CALVING COW**  
**LOT 82 BARBARA OF PEAK DOT 869X**  
 AAA 16866504 • DOB: 03/18/10 • TATT00: 869X

**SIRE** D H D TRAVELER 6807  
 DUFF ENCORE 702  
 O C C DIXIE ERICA 814G

**DAM** S A V 004 PREDOMINANT 4438  
 BARBARA OF PEAK DOT 301T  
 BARBARA OF PEAK DOT 927H

CED	BW	WW	YW	M	CW	
3	1.8	39	72	12	8	
MARB	REA	FAT	\$M	\$EN	\$F	\$B
0.12	0.36	0.022	24	-3	52	76

PASTURE BRED 01/03/2019 TO DUFF CARRY ON 252 DUE 10/13/2019, CHECKED SAFE

Barbara of Peak Dot 896X is a truly unique female among the group of Fall calving females. She is a good looking, attractive female that we have flushed in order to create more females that just like her. 896X is an ultra attractive female. We love her balance, presence, and mature cow size. Her flush to Napoleon and has left behind a string of very productive and attractive daughters. Be sure to have this Duff Encore 702 female on your short list sale day, she is the money making kind!



**DUFF CARRY ON 252 — SERVICE SIRE**



**DUFF ENCORE 702 — SIRE OF LOT 82**





ANGUS FALL CALVING COW

## LOT 83 AKERS ELDORENE 0056

AAA 16667340 • DOB: 01/03/10 • TATTOO: 56

**SIRE** O C C FOCUS 813F  
O C C PAXTON 730P  
O C C BLACKBIRD 736K

**DAM** DIAMOND BENCHMARK 3R65  
KCS ELDORENE 7579  
LEACHMAN R H ELDORENE 315

CED	BW	WW	YW	M	CW
7	1	39	68	20	11
MARB	REA	FAT	\$M	\$EN	\$F
0.28	0.27	0.032	64	13	52
					\$B
					81

PASTURE BRED 01/06/2019 TO DUFF CARRY ON 252 DUE 10/16/2019, CHECKED SAFE

Akers Eldorene 0056 is without a doubt a female that will stop you in your tracks! Sired by the great OCC Paxton730P, one of the most renown Angus bull that is noted and respected for his ability to generate elite females. 0056 is a massive centered, moderate framed type female that offers super udder quality and foot structure. She is massive in the shape and turn to her center body and has been a role model Angus female in production. This mating to Duff Carry On 252 is sure to generate power, substance, and a presence that is second to none, regardless of the sex of the resulting progeny. A true sale feature!



LOT 84

ANGUS FALL CALVING COW

LOT 84

BOSS MISS HOSS 126

AAA 17178390 • DOB: 08/26/11 • TATTOO: 126

**SIRE** DCC NEW LOOK 101  
BOSS HOSS 8132  
P A R'S EUREKA'S GIRL 144

**DAM** DDA GLORY 37D  
DDA ESTER 684  
DDA ESTER 4020

CED	BW	WW	YW	M	CW
7	1.1	32	57	17	17

MARB	REA	FAT	SM	SEN	SF	SB
0.13	0.25	0.02	42	17	56	78

PASTURE BRED 01/03/2019 TO DUFF CARRY ON 252 DUE 10/13/2019, CHECKED SAFE

Boss Miss Hoss 126 is the lead off fall calving daughter of Hoss. There is no denying this stunning females presence. She is perfect about her head and neck in terms of how we want our Angus females to look. In terms of body mass and dimension, she is incredible from a fleshing ability and production standpoint. Her feet and legs allow her to move effortlessly. Her dam is by DDA Glory 37D and offers exceptional udder quality and function. Her mating to Duff Carry On 252 is sure to be a home run for generating elite Angus genetics that offer efficiency, function, and maternal power!





**LOT 85** **ANGUS FALL CALVING COW**  
**BOSS MISS HOSS 125**  
 AAA 17178388 • DOB: 08/26/11 • TATTOO: 125

**SIRE** DCC NEW LOOK 101  
 BOSS HOSS 8132  
 P A R'S EUREKA'S GIRL 144

**DAM** DDA EMBLAZON 27C  
 DDA NINA 632  
 DDA NINA 062

CED	BW	WW	YW	M	CW	
10	0.1	32	50	16		
MARB	REA	FAT	\$M	\$EN	\$F	\$B
		59	20			

PASTURE BRED 01/11/2019 TO DUFF CARRY ON 252 DUE 10/21/2019, CHECKED SAFE

Boss Miss Hoss 125 is a smooth made, angular and attractive daughter of the great Boss Hoss 8132. She is from the influence of OCC Emblazon 854E on the bottom side of her lineage. She sells due in the fall safe in calf to Duff Carry On 252, a great mating that is sure to compliment her feminine and maternal look with a shot of added substance and power!



OCC DIXIE ERICA 841M — DAM OF LOT 87



LOT 86

ANGUS FALL CALVING COW

LOT 86

DUFF NL 6296 BLACKCAP 198

AAA 17037829 • DOB: 01/05/11 • TATTOO: 198

SIRE

O C C GENESIS 872G  
DCC NEW LOOK 101  
O C C DIXIE ERICA 814G

DAM

BAX ELITE 16-4182  
BAX ERICA MARISA 296-172  
BAX MARISA ADINA 172-455

CED	BW	WW	YW	M	CW	
10	0.1	30	48	15	8	
MARB	REA	FAT	\$M	\$EN	\$F	\$B
0.04	0.28	0.015	53	19	65	85

BULL CALF BORN 08/28/2019 BY KR CASINO 6243.

Duff NL 6296 Blackcap 198 is a direct daughter of DCC New Look 101. She is moderate in her frame size, sound structured and offers tremendous depth of body. The mating to KR Casino 6243 is sure to add power and a new twist of genetic make-up to this powerful cow line!



DCC NEW LOOK 101 — SIRE OF LOTS 86 - 88

ANGUS FALL CALVING COW

LOT 87

DUFF NL 841M DIXIEERICA 149

AAA 17037857 • DOB: 12/28/10 • TATTOO: 149

SIRE

O C C GENESIS 872G  
DCC NEW LOOK 101  
O C C DIXIE ERICA 814G

DAM

O C C JUST RIGHT 619J  
O C C DIXIE ERICA 841M  
O C C DIXIE ERICA 916G

CED	BW	WW	YW	M	CW	
11	0.5	38	60	15	15	
MARB	REA	FAT	\$M	\$EN	\$F	\$B
-0.01	0.5	0.016	45	19	63	83

PASTURE BRED 01/03/2019 TO DUFF CARRY ON 252 DUE 10/13/2019, CHECKED SAFE

Duff NL 841M Dixie Erica 149 is a tremendous female that offers a look of quality and elegance. She is sired by the legendary DCC New Look 101, an own son of the matron 814G. Her famous dam is the OCC Just Right 619J daughter, OCC Dixie Erica 841M. In terms of cow power, she is line bred to the hilt! If consistency and maternal function are on your priority list, then make certain 149 is on your short list sale day! Her mating to the maternal super star, Duff Carry On 252 that is due this fall is sure to generate stoutness, power, and eye appeal!

ANGUS FALL CALVING COW

LOT 88

DUFF NL 741G BLACKBIRD 1080

AAA 17037864 • DOB: 01/29/11 • TATTOO: 1080

SIRE

O C C GENESIS 872G  
DCC NEW LOOK 101  
O C C DIXIE ERICA 814G

DAM

D H D TRAVELER 6807  
O C C BLACKBIRD 741G  
BLACKBIRD OF R R 1204

CED	BW	WW	YW	M	CW	
12	-0.1	32	49	19	12	
MARB	REA	FAT	\$M	\$EN	\$F	\$B
0.01	0.35	0.013	42	18	54	73

PASTURE BRED 02/15/2019 TO DUFF CARRY ON 252 DUE 11/25/2019, CHECKED SAFE

The Duff New Look 101 and DHD Traveler 6807 combination makes this female just that more intriguing from a breeding piece standpoint. She is a moderate framed daughter of 741G that is a nice profiling, moderate framed, bold centered female that is sound built. She is super refined in her teat placement and offers plenty of milk flow. She will calve to Duff Carry On 252 later this fall!





**ANGUS FALL CALVING COW**  
**LOT 89 DUFF NE 425 DIXIEERICA 0148**  
 AAA 16974938 • DOB: 02/10/10 • TATTOO: 148

**SIRE** O C C GENESIS 872G  
 DUFF NEW EDITION 6108  
 O C C DIXIE ERICA 814G

**DAM** O C C LEGEND 616L  
 DCC BG MS LEGEND 0425  
 O C C DIXIE ERICA 700G

CED	BW	WW	YW	M	CW	
14	-1.3	29	42	17	1	
MARB	REA	FAT	\$M	\$EN	\$F	\$B
0.12	0.14	0.043	40	19	36	55

PASTURE BRED 01/06/2019 TO DUFF CARRY ON 252 DUE 10/16/2019, CHECKED SAFE

Duff NE 425 Dixie Erica 0148 is sired by Duff New Edition 6108 and certainly follows suit to the type and kind of female that we have based our cowherd around. There is no denying her power and capacity. She is due in middle October to Duff Carry On 252.

**ANGUS FALL CALVING COW**  
**LOT 90 BOSS MISS ATTRACTION 0165**  
 AAA 17261344 • DOB: 10/23/10 • TATTOO: 0165

**SIRE** DUFF NEW ATTRACTION 6110  
 CFC 849 NEW ATTRACTION  
 KG GUSSIE OF CS 4200

**DAM** O C C NEXT STEP 762N  
 CFC ELLNORA 741  
 KOUPALS ELLNORA 5310

CED	BW	WW	YW	M	CW	
5	1.3	41	67	22	-	
MARB	REA	FAT	\$M	\$EN	\$F	\$B
-	-	-	74	7	-	-

PASTURE BRED 02/05/2019 TO DUFF CARRY ON 252 DUE 11/15/2019, CHECKED SAFE

Boss Miss Attraction 0165 is a featured fall calving Angus cow that is sired by New Attraction and backed by the influence of OCC Next Step 762N. She is safe in calf to Duff Carry On 252, one of the most proven female making herd sires we have ever turned out!



**B-C STRUCTURE 7317E — SON OF LOT 89**



**B/C RUSH LAKE 7028 — SON OF LOT 90**

ANGUS FALL CALVING COW

# LOT 91 BOSS MISS INSTINCT 0132

AAA 17178185 • DOB: 09/20/10 • TATTOO: 0132

**SIRE** O C C MISSING LINK 830M  
DUFF BASIC INSTINCT 6501  
O C C DIXIE ERICA 814G

**DAM** O C C HELMSMAN 880H  
JAUER HELMSMAN 972 3213  
JAUER FOCUS 972 461

CED	BW	WW	YW	M	CW	
3	1.7	42	64	13	10	
MARB	REA	FAT	\$M	\$EN	\$F	\$B
-0.05	0.45	0.002	57	19	63	81

HEIFER CALF BORN 08/28/2019 BY J&J WEIGH UP 294.

Boss Miss Instinct 0132 offers an OCC saturated pedigree that combined Duff Basic Instinct 6501 and a top Jauer bred dam. She will sell with a heifer calf at side by J&J Weigh Up 294, an exciting mating that will combine elite cow families and eye-appealing phenotypes.

ANGUS FALL CALVING COW

# LOT 92 BOSS MISS INSTINCT 065

AAA 17179200 • DOB: 02/28/10 • TATTOO: 065

**SIRE** O C C MISSING LINK 830M  
DUFF BASIC INSTINCT 6501  
O C C DIXIE ERICA 814G

**DAM** O C C EUREKA 865E  
P A R'S EUREKA'S GIRL 144  
PAR WIDESPREAD TRADEMARK 6A1

CED	BW	WW	YW	M	CW	
-1	3.6	48	80	13	19	
MARB	REA	FAT	\$M	\$EN	\$F	\$B
-0.05	0.46	0.004	44	16	74	92

PASTURE BRED 02/05/2019 TO DUFF CARRY ON 252 DUE 11/15/2019, CHECKED SAFE

Boss Miss Instinct 065 is a true power cow! 065 is sired by Duff Basic Instinct 6501 and from an OCC Eureka 865E daughter of PAR Widespread Trademark 6A1. Her substance, mass, and internal dimension is impressive. She embodies the type and kind of production cows that we have built our cowherd around. Here is your opportunity to acquire a female of this caliber safe in calf to the now deceased Duff Carry On 252.

ANGUS FALL CALVING COW

# LOT 93 DUFF BI 625 ERROLINE 165

AAA 17037824 • DOB: 01/01/11 • TATTOO: 165

**SIRE** O C C MISSING LINK 830M  
DUFF BASIC INSTINCT 6501  
O C C DIXIE ERICA 814G

**DAM** DCC NEW LOOK 101  
DUFF NL ERROLINE 625  
B E B ERROLINE 111

CED	BW	WW	YW	M	CW	
4	2.6	48	75	15	16	
MARB	REA	FAT	\$M	\$EN	\$F	\$B
-0.11	0.46	0.02	45	16	70	84

PASTURE BRED 12/13/2018 TO EBY LOCK N LOAD 463B DUE 09/22/2019, CHECKED SAFE

Duff BI 625 Erroline 165 combines Duff Basic Instinct 6501 with DCC New Look 101. She is a super attractive, well built female that is chiseled through her front third. She we calve by sale day to the Purebred Simmental stud, Eby Lock N Load 463B.

ANGUS FALL CALVING COW

# LOT 94 BOSS MISS JET STREAM 165

AAA 18452258 • DOB: 09/13/11 • TATTOO: 165

**SIRE** O C C JET STREAM 825J  
DUFF JETSET 7122  
O C C REVOLUTION ROSE 887H

**DAM** O C C LEGACY 839L  
O C C JUANADA 734P  
O C C JUANADA 700J

CED	BW	WW	YW	M	CW	
7	0.8	36	62	21	8	
MARB	REA	FAT	\$M	\$EN	\$F	\$B
0.11	0.33	0.04	51	10	51	72

BULL CALF BORN 08/15/2019 BY EBY LOCK N LOAD 463B.

Boss Miss Jet Stream 165 is a member of the famed OCC Juanada cow line. She is sired by Duff Jet Set 7122, combining the influence of OCC Revolution Rose 867H. Her dam is the 734P matron, a top-producing donor in the JC Ranch program that was selected for a \$10,000 hammer price.

ANGUS FALL CALVING COW

# LOT 95 BOSS MISS PROWLER 196

AAA 17183490 • DOB: 11/06/11 • TATTOO: 196

**SIRE** HF KODIAK 5R  
HF PROWLER 43U  
HF ROSEBUD 98P

**DAM** O C C BROADSIDE 876B  
PAR BLACKBIRD LADY 555  
P A R BLACK A20

CED	BW	WW	YW	M	CW	
11	-0.3	33	62	16	-	
MARB	REA	FAT	\$M	\$EN	\$F	\$B
-	-	-	62	12	-	-

PASTURE BRED 01/03/2019 TO DUFF CARRY ON 252 DUE 10/13/2019, CHECKED SAFE

Boss Miss Prowler 196 is an own daughter of HF Prowler 43U that is from the Blackbird cow family by OCC Broadside 876B. She is a moderate, bold made, wide centered cow that is sound footed, good uddered, and offers an efficient and productive look. Another top Angus female safe in calf to the now deceased Duff Carry On 252!



LOT 95





LOT 96

MATERNAL GRAND DAM OF LOTS 62 & 71



LOT 97

**LOT 96** **ANGUS FALL CALVING COW**  
**BUFORD BLACKCAP Z25**  
 AAA 17209709 • DOB: 03/30/12 • TATTOO: Z25

**SIRE** B C LOOKOUT 7024  
 LIMESTONE LOOKOUT U807  
 COLEMAN EVERELDA ENTENSE 533

**DAM** 3F EMBLAZON 705  
 BUFORD BLACKCAP 0219  
 BUF BLACKCAP 8139

CED	BW	WW	YW	M	CW
7	2	39	79	22	22
MARB	REA	FAT	\$M	\$EN	\$F
0.52	0.48	-0.005	58	1	75
\$B	122				

AI BRED 12/13/2018 TO HILB ORACLE C033R DUE 09/22/2019, CHECKED SAFE

Z25 is a moderate framed granddaughter of the legendary BC Lookout 7024 and OCC Emblazon 854E. This female is a member of the proven Blackcap cow family and offers a look of quality and balance. There is no denying the structural correctness, shape, and internal dimension that this female possesses. Due by sale day to the great baldy Simmental sire, HILB Oracle C033R for a half blood calf!

**LOT 97** **ANGUS FALL CALVING COW**  
**WHITE STAR QUEENIE 89X**  
 AAA 16901915 • DOB: 09/02/10 • TATTOO: 89X

**SIRE** SITZ TRAVELER 8180  
 S A V FINAL ANSWER 0035  
 S A V EMULOUS 8145

**DAM** BON VIEW NEW DESIGN 1407  
 MILL BRAE 1407 QUEEN 5099  
 MILL BRAE RT QUEEN 8009

CED	BW	WW	YW	M	CW
6	0.8	53	89	26	23
MARB	REA	FAT	\$M	\$EN	\$F
0.48	0.46	0.025	63	-1	75
\$B	117				

PASTURE BRED 01/31/2019 TO B/C ORACLE7016E DUE 11/10/2019, CHECKED SAFE

Queenie 89X is a moderate and super attractive daughter of SAV Final Answer 0035 that is from a Bon View New Design 1407 cow that originated in the Mill Brae program. She is safe to B/C Oracle7016E, the 3/4-blood Simmental stud that is backed by the legendary H25 matron.

ANGUS FALL CALVING COW

# LOT 98 DUCHESS OF PEAK DOT 936X

AAA 16866503 • DOB: 03/17/10 • TATTOO: 936X

**SIRE** TC GRIDIRON 258  
S A V IRON MOUNTAIN 8066  
S A V MADAME PRIDE 3249

**DAM** BASIN PRIME CUT 354K  
DUCHESS OF PEAK DOT 556R  
DUCHESS OF PEAK DOT 354C

CED	BW	WW	YW	M	CW	
1	4.3	50	78	20	32	
MARB	REA	FAT	\$M	\$EN	\$F	\$B
0.33	0.36	0.005	52	-4	69	105

HEIFER CALF BORN 08/17/2019 BY EBY LOCK N LOAD 463B.

936X is an SAV Iron Mountain 8066 daughter. She has been a productive female that is sound footed, good uddered, and is raising a stout March bull calf. Her daughter will also be in the sale, B/C Duchess 6009. 6009 is a young SAV Resource 1441 daughter that is a spring calving female. A powerful combination of proven SAV Genetics! She will sell with a sensational heifer calf at side by Eby Lock N Load 463B. Her heifer calf is one that certainly deserves your attention sale day!



ANGUS FALL CALVING COW

# LOT 99 BOSS MISS PATRON 306

AAA 17676990 • DOB: 01/27/13 • TATTOO: 306

**SIRE** ALSTON 5384 CATRIEL F  
BELVIN TRES MARIAS PATRON205  
TRES MARIAS6764ROSANEGRA5214

**DAM** DCC BASELINE 511  
BOSS MISS BASELINE 9137  
JAUER ANCHOR 799 196

CED	BW	WW	YW	M	CW	
3	2	42	71	19	-	
MARB	REA	FAT	\$M	\$EN	\$F	\$B
-	-	-	61	15	-	-

PASTURE BRED 01/06/2019 TO DUFF CARRY ON 252 DUE 10/16/2019, CHECKED SAFE

Boss Miss Patron 306 is sired by the sensation of South America, Belvin Tres Marias Patron 205 and from a DCC Baseline 511 bred dam. This female is a long sided, feminine featured female that offers added extension and refinement. The mating to Duff Carry On 252 is certain to be a great combination to compliment her look and style with his added power and shape.



BELVIN TRES MARIAS PATRON 205 — SIRE OF LOT 99





**LOT 100**

**SIMMENTAL FALL CALVING COW**

# **LOT 100 3MS/SVF YASMIN Y203**

ASA 2594197 • PB SM • DOB: 02/03/2011 • TATTOO: Y203

## **SIRE**

HC HUMMER 12M  
TNT EVER READY R232  
RC MISS LEGACY 058N

## **DAM**

SVF/NJC BUILT RIGHT N48  
HTP BT SVF SAZERAC T99  
MYERS QUEEN SAZERAC P94

CE	BW	WW	YW	M	
8.7	1.3	59.9	80.9	18.4	
CW	MARB	REA	BF	API	TI
19.9	0.01	0.69	-0.117	115.5	63.6

**BULL CALF BORN 08/23/2019 BY EBY LOCK N LOAD 463B.**

Yasmin Y203 is from the legendary cow family that needs no introduction to the Simmental breed, Myers Queen Sazerac P94. Her dam, HTP BT SVF Sazerac T99 is an own daughter of the legendary SVF/ NJC Built Right N48 sire that has become one of the most dominant and proven Simmental bulls in the business. Y203 is a striking baldy female that offers a look of presence and style, combined with an abundance of stoutness, body mass, and fleshing ability. This Purebred female offers an exceptional udder design and will be a true highlight on sale day. She will sell with a bull calf at side by EBY Lock N Load 463B also known as, "Bullet", a Remington Lock N Load son that we used with great succes at the ranch until his untimely death this summer. Y203 is a true example of power in the blood!



**EBY LOCK N LOAD 463B — SERVICE SIRE**





**LOT 101**

SIMMENTAL FALL CALVING COW

## LOT 101 EBY MISS PRIDE 2019Z

ASA 2696591 • 1/2 SM 1/2 AN • DOB: 02/02/2012 • TATTOO: 2019Z

**SIRE** THSF MR PRECISE 456P  
THSF BLACK PEARL  
THSF 433P

**DAM** G A R GRID MAKER  
SCR PRIDE 50606  
POPO AGIE PRIDE J34

CE	BW	WW	YW	M	
8.3	3.5	76.3	117	19.5	
CW	MARB	REA	BF	API	TI
36.4	0.04	0.46	-0.03	104.5	66.3

PASTURE BRED 02/11/2019 TO EBY LOCK N LOAD 463B DUE 11/21/2019, CHECKED SAFE

Miss Pride 2019Z is without a doubt one of the most phenotypically stunning cows on the ranch. She is sired by the late THSF Black Pearl and from a stout and functional Angus cow that was sired by GAR Grid Maker. She is massive in her type and kind, feminine, and balanced. She will calve to EBY Lock N Load 463B, also known as Bullet this fall for a 3/4 blood calf.



**THSF BLACK PEARL — SIRE OF LOT 101**





LOT 102
SIMMENTAL FALL CALVING COW

SS/TBT KIM 200Y
ASA 2619782 • 1/2 SM 1/2 AN • DOB: 10/15/2011 • TATT00: 200Y

**SIRE** TCF/RCC TEMPTATION GJ640  
SHS NAVIGATOR N2B  
ROCKY HILLS JO

**DAM** S A V 8180 TRAVELER 004  
S A V BLACKCAP MAY 7744  
S A V BLACKCAP MAY 4546

CE	BW	WW	YW	M
4.8	2.1	65.7	103.2	19.2

CW	MARB	REA	BF	API	TI
31.7	0.2	0.25	-0.037	109	64.7

PASTURE BRED 01/07/2019 TO EBY LOCK N LOAD 463B DUE 10/17/2019, CHECKED SAFE

Kim 200Y is a stout made, powerful, attractive half-blood Simmental female that offers tremendous quality and balance. She is sired by SHS Navigator N2B and backed by an own member of the SAV Blackcap May cow family, sired by the legendary SAV 8180 Traveler 004. She offer exceptional performance data and is a true power cow. She will calve to fall to Eby Lock N Load 463B for a resulting 3/4-blood calf.

**SIMMENTAL FALL CALVING COW**  
**LOT 103 BC/WSCC MS STEEL 139D**  
 ASA 3251537 • PB SM • DOB: 09/13/2016 • TATTOO: 139D

**SIRE** SVF STEEL FORCE S701  
 LLSF STEEL FORCE Z182  
 LLSF CAYENNE UP401

**DAM** 3C HYDRO H303 B  
 3C CROCUS P4558 BLK  
 3C CROCUS K574 BLK Z

CE	BW	WW	YW	M	
6.7	4.1	69.1	96.4	15.9	
CW	MARB	REA	BF	API	TI
22	-0.2	0.82	-0.123	101.4	60.4

PASTURE BRED 01/21/2019 TO B/C ORACLE 7016E DUE 10/31/2019, CHECKED SAFE

139D is a Steele Force granddaughter that is from the famed Crocus cow family. This red head is a powerful, big boned, stout constructed female that will calve this fall to B/C Oracle7016E.



SVF STEEL FORCE S701 — PATERNAL GRANDSIRE OF LOTS 103 & 104

**SIMMENTAL LATE FALL CALVING COW**  
**LOT 104 BC/WSCC MS STEEL 146D**  
 ASA 3251552 • 1/2 SM 1/2 AN • DOB: 09/20/2016 • TATTOO: 146D

**SIRE** SVF STEEL FORCE S701  
 LLSF STEEL FORCE Z182  
 LLSF CAYENNE UP401

**DAM** VAR ROCKY 80029  
 WHITE STAR MAIDEN 86Y  
 MILL BRAE FF JOANIE 3159

CE	BW	WW	YW	M	
10.3	1.7	70.6	107.7	22.1	
CW	MARB	REA	BF	API	TI
38.6	0.17	0.67	-0.041	110.8	69.2

PASTURE EXPOSED TO B-C ADK RUBICON 6025D 04/27/2019 - 07/08/2019

146D is another daughter of LLSF Steel Force Z182. She is backed by strong Angus genetics on the bottom side of her pedigree. She is big ribbed and stout made, with the added extension.

**SIMMENTAL FALL CALVING COW**  
**LOT 105 WHITE STAR BLK GLOW 57D**  
 ASA 3228626 • 5/8 SM 3/8 AN • DOB: 02/11/2016 • TATTOO: 57D

**SIRE** S D S IN FORCE 112Y  
 CCR IN FORCE 1063A  
 CCR MS 3091 MATRIX 1063Y

**DAM** WHITE STAR GRANITE Z59  
 WSCC GRANITE LADY 61B  
 WSCC CHEERLEADER 35X

CE	BW	WW	YW	M	
9.4	1.3	67.1	98.1	24.6	
CW	MARB	REA	BF	API	TI
26.5	0.48	0.42	-0.04	140.5	75

BULL CALF BORN 09/01/2019 BY HILB ORACLE C033R.

Black Glow 57D is sired by CCR In Force 1063A. She boasts an impressive number profile to accompany her functionality. She ranks top 15% Stay, 20% API, top 20% Marb, and top 25% TI.

*Watch the Sale  
Live Online...*



View the sale from your phone, tablet, or desktop computer and bid with confidence! Visit [www.CCI.live](http://www.CCI.live) for complete sale information and online registration. If this is your first time to CCI.live, visit the web page and get approved for bidding at least three hours prior to sale time. With good internet speeds you can enjoy the sale from any location and bid with confidence.

**CCI.LIVE**



SIMMENTAL FALL CALVING COW  
**LOT 106 B-C BLACKCAP 6260D**  
 ASA 3227417 • 1/2 SM 1/2 AN • DOB: 10/09/2016 • TATTOO: 6260D

**SIRE** REMINGTON LOCK N LOAD54U  
 EBY/ADKS 5B DEACON 308A  
 CNS BLACK STAR T702

**DAM** LIMESTONE LOOKOUT U807  
 BUFORD BLACKCAP Z25  
 BUFORD BLACKCAP 0219

CE	BW	WW	YW	M	
14.3	-1.1	49.8	75.7	21.1	
CW	MARB	REA	BF	API	TI
19.8	0.2	0.52	-0.035	115.5	61.3

PASTURE BRED 01/03/2019 TO B/C PROSPERITY 7453 DUE 10/13/2019, CHECKED SAFE

B-C Blackcap 6260D is sired by Deacon, the Lock N Load sired herd sire from the famed CNS Black Star T702 matron. Deacon sires cattle that are sound built, three-dimensional, high performing cattle that are efficient in production. Will calve shortly after sale day to Prosperity!



**LOT 106**

SIMMENTAL FALL CALVING COW  
**LOT 108 WSCC BLACKBIRD 85C**  
 ASA 3108377 • 1/2 SM 1/2 AN • DOB: 03/26/2015 • TATTOO: 85C

**SIRE** CCR 3201 TIME 3073X  
 CCR/WSCC 3073X A61  
 WHITE STAR GLITTER 56W

**DAM** RITO 2B94 OF RITA 6K20BW  
 SFG MISS 026X  
 SCC MISS BANDOLIER 037

CE	BW	WW	YW	M	
10	1	69.6	101.7	21.9	
CW	MARB	REA	BF	API	TI
22.3	0.4	0.63	-0.035	131.8	74.9

PASTURE BRED 01/11/2019 TO DUFF CARRY ON 252 DUE 10/21/2019, CHECKED SAFE

Blackbird 85C is a high indexing female that offers double digit calving ease and balanced carcass figures. She is a bigger framed, long sided female that offers exceptional performance.



**LOT 107**

SIMMENTAL FALL CALVING COW  
**LOT 107 ADKS/B-C TEASER 498B**  
 ASA 3365763 • PB SM • DOB: 10/18/2014 • TATTOO: 498B

**SIRE** HSF BETTER THAN EVER  
 GLS NEW DIRECTION X184  
 GLS N6

**DAM** RCC SLING SHOT R5083  
 RCC TOTAL TEASE T324N  
 JF BLACKBIRD LADY 324N

CE	BW	WW	YW	M	
10.8	1	63.5	96.8	19.6	
CW	MARB	REA	BF	API	TI
21.3	-0.11	0.7	-0.11	112.3	64.2

BULL CALF BORN 08/31/2019 BY EBY LOCK N LOAD 463B.

Teaser 498B is one of the lone Purebred Simmental females in the offering and certainly one that needs to be studied for all angles. She is massive in her foot and bone design, flawless in her joint work, and offers tremendous dimension from a body and substance perspective. She too is a long fronted, attractive profiling female that offers balance and symmetry. Sired by New Direction and backed by a Sling Shot bred cow, she offers an outcross pedigree to popular AI sires that carry the Dream On influence. This mating to the late, "Bullet", EBY Lock N Load 463B has resulted in a Purebred bull calf that will be a quick turn on investment!

SIMMENTAL FALL CALVING COW  
**LOT 109 RRJS MISS UPGRADE 702Y**  
 ASA 2743451 • 1/2 SM 1/2 AN • DOB: 10/01/2011 • TATTOO: 702Y

**SIRE** ELLINGSON LEGACY M229  
 MR NLC UPGRADE U8676  
 MS NLC MOJO S6119 B

**DAM** N BAR EMULATION EXT  
 RR MISS MORRISON 8020  
 RR MISS MORRISON 5109

CE	BW	WW	YW	M	
12.3	0.9	71.3	113.3	23.1	
CW	MARB	REA	BF	API	TI
32.8	0.36	0.59	-0.045	135.3	76

HEIFER CALF BORN 08/25/2019 BY HILB ORACLE C033R.

Two of the most influential sires in the beef industry can be identified in her pedigree. Although from two different breeds, they certainly prove complimentary of one another. A direct daughter of MR NLC Upgrade U8678, one of the breeds impact sires based on registrations, and out of a direct daughter of the Angus legend, N Bar Emulation EXT. 702Y boasts a genetic profile that charts top 25% WW, top 20% YW, top 20% ADG, top 25% MWW, top 25% API, and top 20% TI.

SIMMENTAL FALL CALVING COW

# LOT 110 BROOKS MISS TITUS A7

ASA 2765754 • 5/8 SM 3/8 AN • DOB: 01/27/2013 • TATTOO: A7

**SIRE** MYTTY IN FOCUS  
HOOKS TITUS 31T  
HOOKS PASSION 17P

**DAM** BLACK IRISH KANSAS  
MISS KANSAS K 11G  
MISS MICK K 48E

CE	BW	WW	YW	M	
8.7	1.6	67.3	107.5	20.8	
CW	MARB	REA	BF	API	TI
28.7	0.16	0.65	-0.079	118	67.6

BULL CALF BORN 08/28/2019 BY HILB ORACLE C033R.

Miss Titus A7 is a baldy female that offers added length and extension. She is a heavy milking female that has a baldy bull calf at side by HILB Oracle C033R.

SIMMENTAL FALL CALVING COW

# LOT 113 WHITE STAR BLK GLOW 60W

ASA 2495649 • 1/2 SM 1/2 AN • DOB: 04/10/2009 • TATTOO: 60W

**SIRE** HOOKS SHEAR FORCE 38K  
PELTON FORCE 84T  
PELTONS MISS BEE 0114K

**DAM** R R SCOTCHCAP 9440  
S C C ELEANOR 9440 114  
S C C ELEANOR DIVINITY

CE	BW	WW	YW	M	
16.9	-1	49.3	74.1	27.4	
CW	MARB	REA	BF	API	TI
19.1	0.26	0.38	-0.037	135.4	63

PASTURE BRED 01/07/2019 TO EBY LOCK N LOAD 463B DUE 10/17/2019, CHECKED SAFE

60W is a half-blood female that is sired by Pelton Force 84T. She is an attractive, well balanced, sound built cow that we admire for her feminine brood cow look. She is exceptional on her feet and legs and offers a look of longevity. Her mating to the late Purebred sire, Eby Lock N Load 463B, is sure to generate power and balance.

SIMMENTAL FALL CALVING COW

# LOT 111 WSCC CHEERLEADER 43X

ASA 2664361 • 1/2 SM 1/2 AN • DOB: 02/15/2010 • TATTOO: 43X

**SIRE** HOOKS SHEAR FORCE 38K  
PELTON FORCE 67T  
PELTONS MISS BEE 0114K

**DAM** EXAR 263C  
WHITESTARCHIEERLEADER29U  
L S F REBA 754 LG314

CE	BW	WW	YW	M	
12.3	0.1	60	93.9	29	
CW	MARB	REA	BF	API	TI
26.9	0.39	0.57	-0.033	141.2	71.5

PASTURE BRED 02/01/2019 TO EBY LOCK N LOAD 463B DUE 11/11/2019, CHECKED SAFE

Cheerleader 43X is a long sided, feminine, and extended daughter of Pelton Force 67T. She offers a balanced number profile with exceptional indexes. This smooth shouldered, attractive profiling half blood Simmental sells bred to the late EBY Lock N Load 463B stud that we lost this last winter.

SIMMENTAL FALL CALVING COW

# LOT 114 WHITE STAR DREAM GAL 34W

ASA 2495652 • 1/2 SM 1/2 AN • DOB: 01/31/2009 • TATTOO: 34W

**SIRE** HOOKS SHEAR FORCE 38K  
PELTON FORCE 84T  
PELTONS MISS BEE 0114K

**DAM** TC FREEDOM 104  
PF 104 FORMERA 3089  
PF FORMERA 9174

CE	BW	WW	YW	M	
13.4	0.3	60.5	91.3	28.1	
CW	MARB	REA	BF	API	TI
29.5	0.44	0.6	-0.03	141.8	72.4

PASTURE BRED 01/03/2019 TO DUFF CARRY ON 252 DUE 10/13/2019, CHECKED SAFE

Dream Gal 34W is a bigger framed, stout made, powerful daughter of Pelton Force 84T. She is a productive, sound footed, and efficient female that has a lot of life left in her. A high indexing female that offers mating versatility.

SIMMENTAL FALL CALVING COW

# LOT 112 WSCC CHEERLEADER 65X

ASA 2664363 • 1/2 SM 1/2 AN • DOB: 03/14/2010 • TATTOO: 65X

**SIRE** HOOKS SHEAR FORCE 38K  
PELTON FORCE 84T  
PELTONS MISS BEE 0114K

**DAM** CIRCLE S 1418 IDEAL 7085  
J A K MS 708D C M L40  
BLACKCAP MISSIE 901

CE	BW	WW	YW	M	
15.8	-1.8	50.9	71.7	22.7	
CW	MARB	REA	BF	API	TI
22.3	0.36	0.37	-0.033	134.8	66.4

PASTURE BRED 01/16/2019 TO DUFF CARRY ON 252 DUE 10/26/2019, CHECKED SAFE

Cheerleader 65X is a powerful, bigger framed, long sided daughter of Pelton Force 84T. She boasts balanced figures and is safe in calf to Duff Carry On 252.









FOR YOUR REFERENCE

# *The Bull Battery*



**KR CASINO 6243**

ANGUS • AAA 18624063



**J&J WEIGH UP 294**

ANGUS • AAA 18004546



**B/C BLAIR BADGER 5023**

ANGUS • AAA 18380793



**WIWA CREEK RUSH LAKE 71'12**

ANGUS • AAA 17716084



**DUFF NAPOLEON 232**

ANGUS • AAA 17780630 • DECEASED



**DUFF CARRY ON 252**

ANGUS • AAA 17542203 • DECEASED



**B/C** *Production with a Purpose*



**HILB ORACLE C033R**

PB SM • ASA 2993610



**B-C ORACLE 7016E**

3/4 SM 1/4 AN • ASA 3439884



**EBY LOCK N LOAD 463B**

PB SM • ASA 2943089 • DECEASED



**EBY/ADKS 5B DEACON 308A**

PB SM • ASA 2764838



**BPS STRUCTURE 308A**

PB SM • ASA 2756409 • DECEASED



**B-C ADK RUBICON 6025D**

PB SM • ASA 3160940



PO Box Z  
DeSoto, KS 66018

# BADGER CREEK

*Cattle Company*

