



804
3303
3K


Spring SORT

SATURDAY | APRIL 29 | 1:00 P.M.

TABLE OF CONTENTS

4	DONORS
12	PB SM OPENS
23	% SM OPENS
28	ANGUS OPENS
30	ORB OPENS
34	COW/CALF PAIRS
47	BRED FEMALES
56	FROZEN GENETICS





Welcome to the 2023 edition of the Spring Sort at Shipwreck Cattle Company. We feel like we have put our very best effort in assembling a set of cattle suitable for anybody's inquiry and investment. The cattle between the pages of this sale book carry a load in terms of proven matriarch cow power, proven income potential, and significant documented backdrop history.

This edition of The Spring Sort will include every mature female solely owned by Shipwreck Cattle Company that is three years of age and older. It may not be astronomical in number, but the quality will be very deep in terms of phenotype and cow family. Generators like WAGR Chanel 5073C, NFF Wicked B125, SWC HOC Annie K 214C, and the youthful dam of SWC Red Wave 376J are all included in this offering. This decision was not an easy one to arrive at, but we feel it is the best to hold things together and remain in the business with the stock and the people we enjoy. The combination of the continuation of last summer's record drought and an extremely demanding professional schedule, pushed us to this decision. We are keeping a handful of "J" model females, our partnership interests, and each cow carrying an ET pregnancy to move forward with.

It takes an army to put these events on and to provide customer service that has allowed us to continue to build every year. We have a great group of people that have worked with us throughout the years and share the same goals in regard to bringing the goods year in and year out. We are very appreciative and enjoy the relationships that have been established and look forward to many more, so thank you to each of you that have helped along the way as genetic partners and contributors to these sales. However, I would be remiss if I didn't give a big thanks to a young man that has been with us for over two years. He has become very instrumental in the big picture of our future endeavors and plans today and beyond. Jeremy Colon is a Florida native that grew up with some livestock-oriented people that influenced his life path. He is raw talent backed by a strong mind, perseverance, and a desire to be the best. Jeremy is a replica of many that are in this business, many that lead, many that own, and many that have achieved their wildest goals. I think this young man represents everything good that this industry is about and can do for any young person that has the right mind and attitude. Jeremy was the piece that we were missing to see things through and reach the finish line with success. Thank you, Jeremy, for the long hours, quality craftsmanship, the positive influence on our sons, and the success that our family and customers have experienced since you have been with us.

Jeremy cannot go at this alone, he does have a great support staff including Wyatt Baker, Brecken Shipman, and countless assets that show up when pictures and stock shows are upon us. Wyatt helped us after school through High School and lends a hand when he is home from college. This young

man says very little, but will do anything asked of him, and do it just like you want it done. He favors his mother's passion for the stock and enjoys being involved in the daily routine. He is an intelligent young man that has a knack for being on time and reliable day in and day out. Wyatt and Jeremy will both admit that my oldest son, Brecken, is part of the prep team as well. Brecken spends most of his down time in the barn either assisting the team with sale and show prep, or flying solo when the other two have days off. He is a young man that can carry out daily expectations and bear a big load in doing so. In today's society, finding young people that can withstand pressure and expectation can be rare, but not if they are brought up in ag life. The future is certainly bright for these two young men, and I know that anything short of complete success will not be tolerated by either. Thank you, gentlemen, for all that you do as well.

Family becomes more and more important to me as my wife, and I will celebrate 20 years of marriage on the 24th of May. There's no doubt that I outkicked my coverage when she said yes nearly 22 years ago, and it has exceeded my expectations of what our lives have been since. With three very active gentlemen and a full-time job, Haley juggles the day to day schedule with school, athletic practices, and making sure to get them to Ft. Worth, San Antonio, Houston, and Austin heifer and steer shows while I am working in February and March. She gives all that she has and more towards our household and making sure her men are well taken care of. She is no doubt the rock that holds us in place daily and spiritually and we appreciate her selflessness more than we could ever express. In the marriage contract, I gained another family in a great set of in-laws that are supportive and instrumental of all we do from the care of the cow herd, to running errands, to assisting with transportation to practices and games, to making sure that they make as many of the boy's functions as possible including the stock shows.

We have a great following of loyal customers. The feedback is strong and pleasing every year and the fact that the cattle that leave this place go on to produce and generate for these families is certainly satisfying. This business is about the people and the junior show project. A project that teaches accountability, work ethic, and decision making. This experience allows one to be exposed to a large, supportive family that thrive on the success of our ag youth. It is an experience that changes lives in a positive manner and allows for legacies to be built. The project is why we host these marketing events and is why I do what I do professionally with a team that grew up with the same experience.

We hope that each of you can join us on April 29. If you cannot be there sale day, please know that you are welcome to come view the stock anytime and bid over the phone or on CCI.Live. Please call with any questions that you may have as well. Thank you once again for your support and interest.

Jerred Shipman



JERED, HALEY, BRECKEN, BODIE, & BURKE SHIPMAN

Sale Location

6945 CR 206
GRANDVIEW, TEXAS 76050

*Cattle are available for viewing any time prior to sale day.
Please call Jered Shipman or Jeremy Colon to schedule.*

SALE DAY CONTACTS

Jered Shipman 806.983.7226
Graham Blagg 530.913.6418 *Sale Manager*
Tim Anderson 605.682.9343 *Sale Manager*
Haley Shipman 817.851.4004
Brecken Shipman 806.983.4228
Jeremy Colon 407.756.9690
Jordan Richburg 386.837.8599
Curt Metzler 682.365.1363
Keenan Nixon 806.292.6173
Brant Shores 806.676.7493
Kent McCune 817.602.8629
Jeff Jackson 254.897.9116
Brett Schiller 618.946.9515
Jeremie Ruble 406.581.7940
Thomas Lundy 502.471.0354
Steve Bonham 405.823.2972 *Auctioneer*

RING STAFF

Clint Minchew 903.879.6463 *Special Assignment*
Mitchell Armitage 405.641.9438 *Special Assignment*
Scott Farmer 817.597.1731 *Special Assignment*
Craig Talkington 785.623.1789 *Special Assignment*
Ralph Means 817.235.9708 *Weekly Livestock Reporter*

TRUCKING

Dick Coleman 765.461.0954

LIVESTOCK INSURANCE

James Bessler 815.762.2641

PHOTO/VIDEOGRAPHY

John Reasor 423.290.6002

CATALOG/ADVERTISING

Megan Favorite 580.770.1302

SALE LOCATION DIRECTIONS

FROM THE WEST: via I-20 or from the North via I-35W: I-35W south to Exit 17 the 2258 Rd Exit. Cross back over I-35W after exiting then from stop sign proceed approx. 4.7 miles east to County Road 206, turn right or south on 206. Continue 1.1 miles to trailer parking on left or 1.3 miles to sale site.

FROM HILLSBORO/I-35W: Take Exit 15 the Grandview/ Maypearl 916 Rd exit. Turn right on 916 and continue approx. 4.8 miles to County Road 206. Turn left/north on to 206 go 1.5 miles to stop sign, then turn back left/north continue 0.4 miles to sale site or 0.6 miles to trailer parking.

FROM WAXAHACHIE/I-35E: Take Highway 66 to Maypearl to the 157/66 JCT. Turn right/North on 157 continue approx. 5.5 miles to 2258. Turn left/ West on 2258 and continue 4.1 miles to County Road 206. Turn left/ South on to 206 and continue 1.1 miles to trailer parking or 1.3 miles to sale site.

FROM DALLAS: US 67 highway south to Venus, TX. At the Venus stoplight, (the US67/157 JCT), turn left/South on 157. Take 157 to 2258, turn right/West on 2258 and continue 4.1 miles to County Road 206 on left. Turn left/ South on to 206 and continue 1.1 miles to trailer parking or 1.3 miles to sale site.



Live Online Bidding
CHRISTY COLLINS 405.400.9505

If you bid in person, through a buyer representative, or online you are responsible for the business conducted at the final hammer price, no exceptions! You bid, you buy, you pay, it's as simple as that! If you chose to view on CCI.Live, you do not have to be logged in to just WATCH the sale, only log in if you intend to purchase. If you are logged in that is an act of intent to engage in business, so make sure your device is in your possession out of the reach of children, pets, UFOs, and not in your pocket on your person. Any purchase made will be expected to be settled for in a timely manner as previously stated.



HOLIDAY INN EXPRESS

325 Village Park Dr, Alvarado, TX 817.783.7573

COMFORT INN & SUITES

400 Village Park Dr, Alvarado, TX 817.783.2900



MASSEY BBQ 201 N Pkwy Dr. Alvarado, TX
Burleson, TX offers every amenity needed from a large selection of lodging, dining, shopping, and has a very active downtown. Some of our favorites include; Hard Eight for steaks and Frescos for second to none Tex-Mex. There are multiple other places to dine and all major hotel chains are represented. Burleson, Hillsboro, Waxahachie, and Midlothian are all approximately 20-30 minutes from the sale site.



We are located just under an hour from DFW Intl. and Dallas Love Field.



Des Moines, Iowa • July 7-13

TERMS & CONDITIONS

All cattle sell under the terms and conditions of their respective breed association. If you intend to exhibit any of the open heifers at any state, regional, or national events with ownership deadlines please plan to pay day of sale with cash, good check, wire transfer, or if you must use a credit card, please plan for a 5% buyer's premium with use of that card (5% of the purchase price). Otherwise, all other purchases must be paid in full using any of the same methods of payment within 30 days following the sale so that all transfers can be handled in a timely fashion. Shipwreck Cattle Company and Innovation Ag Marketing are not lending institutions, so therefore any purchases not settled for in this time frame will be assessed a 10% buyer's premium unless other arrangements have been made.

BRED LOTS

The cattle that sell as confirmed bred stock have been confirmed by Dr. Joseph Blount. Joseph does the lion share of our embryo work along with all of our pregnancy ultrasounding. If he says they are bred then that's what it is, he doesn't miss. All cattle selling as such will be reconfirmed prior to sale day. Seller assumes no responsibility for loss of pregnancy once the auctioneer says sold.

EMBRYO & SEMEN LOTS

If you purchase semen and/or embryos, those will be released upon payment. All frozen genetics must be paid for and shipped within 30 days post sale day. We are not responsible for any embryos and semen after this time period. Terms of sale will be stated within the lot information for each allotment of semen and each set of embryos offered through this event.

Grandview, Texas

GRANDVIEW TEXAS



Selling Choice of Lot 1A and 1B.

We present to you, the “poster pair” of the Simmental website and the pair that has been the centerpiece of most of our sale promotion for years. We purchased three daughters of the legendary 3C Melody M688 BZ in the summer of 2015 from Wager and CK Cattle. This direct daughter of MR HOC Broker is one that Brecken showed in his first outing to the AJSA Summer Classic in 2016. Chanel was a class winner and division contender with a female that went on to win that day known as JBSF Proud Mary. We were fourth in that division and went on to finish 11th in the overall top 20. WAGR Chanel 5073C had a successful career with her final win as the 2017 FWSSR Champion Simmental Female of the open show. She has since gone on to generate multiple cattle that have commanded that ten to twenty thousand dollar figure

FULL INTEREST & FULL POSSESSION.

through the Black Label and Spring Sort Sale series. Her cattle are consistently plenty in terms of shape, stoutness, and substance. In fact, I have mated this female to too much power over the years instead of sticking with the flatter, trendier sire choices available. Her very first was sired by CCR Anchor that sells as lot 1B. One can tell that 5073C can carry the power to her progeny. We are looking forward to the future arrivals of matings to Copacetic, Reckoning, and Remedy. We think that sires such as those will be the go to for the power she contributes to any mating. She does sell open and ready for reproduction. She has been worked with success by Blount Veterinary Services and Yackley Ranch both of which are successful and Shipwreck preferred TransOva satellite facilities.



Estelle 373E is the first natural calf of Chanel and a past class winner in the Bred and Owned division at the 2018 AJSA National Classic.

We are probably a little late to the game with this female in terms of having a certified track record laid out, however the calf reports from the coop herds and those that have purchased embryos from this female are very positive, as we had hoped.

The surface area this one covers with her big feet is remarkable. She is quite possibly the biggest boned female on the place with impeccable skeletal integrity. This one does not disappoint with her rib shape, body depth, and true skeletal width. A female that is simply balanced with the extras. We expect great things from the calves on the way by Profit, Change is Coming, and Reckoning.

In full transparency, after losing her first calf from a traumatic calving process, we have learned that she is a challenge to breed back A.I. but will settle to a bull. She works well in IVF and has been worked by Blount Veterinary Services of Hamilton, TX and Yackley Ranch or South Dakota.

She sells safe in calf to calve late summer to a son of W/C Bankroll from an PVF Insight sired Angus dam. The resulting calf will be a three quarter with a strong possibility of a blaze face.

1a

WAGR CHANEL 5073C

4/1/15 :: PB SM :: 3021973 :: 5073C

MR HOC BROKER

3C MELODY M668 BZ

SVF STEEL FORCE S701
JM BF H25
HART SUBZERO G322
3C CROCUS G374 BZ

BW	WW	YW	M	Offered by:
4.6	64.7	89.5	27.9	Shipwreck Cattle Company

PE TO FBFS SWC JORDAN 23J (ASA 4114248) FROM 2/11/23 TO 3/16/23

1b

BLC1 ESTELLE 373E

3/17/17 :: PB SM :: 3261841 :: 373E

CCR ANCHOR 9071B

WAGR CHANEL 5073C

CCR COWBOY CUT 5048Z
CCR MS BARB 2120Z
MR HOC BROKER
3C MELODY M668 BZ

BW	WW	YW	M	Offered by:
1.0	74.5	108.6	25	Shipwreck Cattle Company

PE TO WSFC SUGAR DADDY 04J (ASA 3931247) FROM 7/1/22 TO 10/1/22



Selling Choice of Lot 2A and 2B.

This is the second of the trio of sisters that we purchased from Lanny and Chris. A Pilgrim daughter from Melody that has been very productive and profitable. Naturally we always favored the kind and look of her Broker sister, but this female has left us two daughters that we have utilized in the program that have done nothing but generate cash flow.

5076C is huge and good at the surface with plenty of bone, length, and frame. She is very sound in her kind and is extra awesome for a Pilgrim female about her front third. She has been very proficient at producing stout, heavy, physically impressive bulls with the exception of her first natural calf by Executive Order.

That first natural calf is referred to as Evelyn 476E that has been featured in Sim Magic on Ice for the past 3 years with a lifetime embryo average of over \$2000/ embryo. 476E is owned with Hidden Oaks Cattle of Canton, TX. This mating to "E.O." was so ideal in terms of power in width and body that we elected to aspirate her back that way and gathered up the lone calf in the mating and tagged her as Gwendolyn 376G that sells as lot 2B.

5076C is a contributor. She is without question a generator and has plenty of miles left for the long haul. She sells safe in calf to Next Level which should yield her very best yet.

2a WAGR MELODY 5076C

4/2/15 :: PB SM :: 3021975 :: 5076C

WS PILGRIM H182U

3C MELODY M668 BZ

CNS DREAM ON L186
WS MARLA 276M
HART SUBZERO G322
3C CROCUS G374 BZ

BW	WW	YW	M	<i>Offered by:</i> Shipwreck Cattle Company
5.3	69.2	93.8	23.5	

AI TO NEXT LEVEL (ASA 3981484) ON 11/10/22. SAFE AI.



BLC1 EVELYN 476E - Daughter of WAGR Melody 5076C & full sister to 376G

FULL INTEREST & FULL POSSESSION.

376G made herself a vital part of our operation when she entered production. She raised SWC Red Wave 376J that went on to command \$85,000 to 1 Eleven Cattle Company and the Red Wave Group. We then offered two aspirations on this female and she gathered up another \$30,000. Probably one of the most remarkable things about this female is her undeniable fertility. Red Wave was calved the first week of March. Her 2022 calf by Right Time was born in mid January, she calved early December last fall and sells safe in calf to Countertime for an October calf this fall. Granted all this has been done on exposure to a bull but it is impressive to note and vital to have.

Gwendolyn is not going to be the fattest cow in the pen, but I guarantee she will produce with the very best of them and return everything in value and quality through her progeny. She is from a powerful cow family that has remarkable maternal strength and comes with the influence of 8543U through the sire side of her lineage. Two of South Dakota's very best intertwined in a very productive red head.

She sells with a December 12, 2022 heifer calf by the Dew North x "Boots" son, GCC Black Dew 161H, that we selected from Griswold Cattle Company in 2021.



SWC RED WAVE 376J - 2021 Black Label \$85,000 son of Lot 2B

26 SWC GWENDOLYN 376G

4/2/19 :: PB SM :: 3753758 :: 376G

W/C EXECUTIVE ORDER 8543B

WAGR MELODY 5076C

W/C UNITED 956Y
MISS WERNING KP 8543U
WS PILGRIM H182U
3C MELODY M668 BZ

BW	WW	YW	M
0.6	75.4	109.3	23.4

Offered by:

Shipwreck Cattle Company

PE TO KCC1 COUNTERTIME 872H (ASA 3806012). SAFE TO PE DUE 10/3/23



This may be one of the most underrated females in the business. NFF Wicked B125 was produced in the Nelson program of Minnesota and the selected by Nate Ruby and I from the "Livin the Dream" sale series. Nate and I marketed multiple daughters from this female by Battle Cry with a mating average well over \$10,000. The Battle Cry selected by the Culpepper family of Texas went on to be reserve Simmental female at both San Antonio and Houston junior heifer shows.

Her next successful mating was to HCCO Classic 431C, a son of MR CCF Vision that was from a Pilgrim female. SWC Wicked Fran ended up being selected by Jim Bloomberg as Champion Female at the Fort Worth Stock Show Junior Show and commanded a \$30,000 hammer price from the Sandidge Family of Illinois. At the 2023 Cattleman's Congress, a direct son of Wicked Fran by SO Remedy 7F was a sale feature that commanded a \$25,000 gavel price.

Her 2021 natural calf by Right Time was most definitely a standout and will go to work in the Graham Farms program of Kansas and her 2022 natural is offered as lot 3B. This female's ability to generate and produce needs no second guess or pondering, if you like big bodied, productive females that are proven then it's a simple no brainer.

3a

NFF WICKED B125

3/24/14 :: PB SM :: 2884112 :: B125

NFF UPGRADE Z083

NFF WICKED Z119

MR NLC UPGRADE U8676
 NFF 5136 W097
 RUBY NFF EXCALIBUR 002X
 RCC-NFF WICKED

BW	WW	YW	M
2.1	79.3	124.4	20.6

Offered by:

Shipwreck Cattle Company & Ruby Cattle Co



SWC WICKED FRAN 502F - Daughter of lot 3A
2020 FWSSR Champion Simmental Female.



2019 San Antonio Livestock Exposition
Reserve Grand Champion - Daughter of Lot 3A

PE TO KCC1 COUNTERTIME 872H (ASA 3806012). SAFE TO PE DUE 10/3/23

A true standout from the time she arrived last fall. 500K has had the length and size working in her favor since day one and she maintains that advantage yet today. In a show ring filled with age advantaged stock, this true September will hold her own in any September class.

She is without question the stoutest of the B125 daughters in every aspect of evaluation. More foot, more bone, more power, and more performance. Yet, she keeps it gathered in a very sound, smooth, maternal looking package that should draw the attention of the most critical cowboys. Change is Coming definitely brought change and a new look to this already proven cow family. The expected future for this female is certainly bright.



Selling Choice of Lot 3A and 3B.
FULL INTEREST & FULL POSSESSION.

In the event the winning bidder chooses 3B, Shipwreck Cattle Co will retain the right to two successful aspirations with at least 5 grade 1, freezable embryos per aspiration at the buyer's convenience and the sellers expense within the first two years after entering production.

36 SWC KEEPIN' IT WICKED 500K
9/5/22 :: PB SM :: 4187030 :: 500K

HOLTkamp CLAC CHANGE IS COMING

NFF WICKED B125

WLE COPACETIC E02
MISS SUGAR SHAKE 84D
NFF UPGRADE Z083
NFF WICKED Z119

BW	WW	YW	M
1.5	81.7	122.7	21.1

Offered by:
Shipwreck Cattle Company



The Annie K 330Y cow family has been a mainstay for us, and we will continue to build from the past National Champion through her daughters and granddaughters.

Annie K 214C has wrote her page as well. Her cattle are consistent in the fundamentals. Balanced in look, body, shape, and performance.

A daughter of Counter Attack, SWC Annie Rose 091F, was a past spring sale feature that commanded a \$30,000 hammer price to Munson Cattle of Shallowater, TX

This past December, an ET bull calf by King of Diamonds, was selected by Justin Noseff with Circle N Ranch of Lubbock, TX in a private treaty acquisition

SWC Game Day 514G, the 2019 natural calf by KCC1 Exclusive, is owned in partnership with Walrod Cattle Co of Randolph, KS. Many of the calves by Game Day have been favorites of Garren's bull customers and the females have a high retention rate within his program. We were fortunate to have one natural calf by Game Day that sold privately to the Cochrane Family of Mississippi late last fall.

The quality, predictability, and the fundamental soundness of the creatures from this female are invaluable. She works very well in IVF and breeds back A.I. every time. This mating to the hot Tecumseh sire should yield only greatness with a high probability of a breed changing herd sire on the way.

4a SWC HOC ANNIE K 214C

10/6/15 :: 3/4 SM 1/4 AN :: 3100809 :: 214C

JSSC WIDE BODY 090W

ACW ANNIE K 330Y

JS SURE BET 4T
WHCC ANGELS DREAM
REMINGTON LOCK N LOAD 54U
REMINGTON ANNIE K 150T

BW	WW	YW	M	Offered by:
2.5	73.5	107.4	18.9	Shipwreck Cattle Company

STCC TECUMSEH 058J (ASA 3958195) ON 12/6/22. SAFE AI. DUE 9/14/23 WITH A BULL CALF.



SWC ANNIE ROSE 091F - Daughter of lot 4A
Past Spring Sort Sale Feature owned with Munson Cattle.

We elected to use Change is Coming based on the quality of his dam and the knowledge of the complimentary relationship in the Copacetic x Broker combination. It didn't hurt that one of the best cattlemen in the nation bred the calf either. We did anticipate this one to come out with more white but you can consider that bullet dodged.

This solid black female may very well be 214C's best daughter yet. She doesn't offer any freaky, out there pieces, but she is balanced, correct, and displays ideal build and skeletal integrity to the highest degree. She has a disposition that's suitable for any showman and will be the generating kind.

Selling Choice of Lot 4A and 4B.

**FULL INTEREST &
FULL POSSESSION.**

In the event the winning bidder chooses 4B, Shipwreck Cattle Co will retain the right to two successful aspirations with at least 5 grade 1, freezable embryos per aspiration at the buyer's convenience and the sellers expense within the first two years after entering production.



ACW ANNIE K 330Y - Matriarch of the "Annie K" cow family!

46

SWC ANNIE K 614K

10/18/22 :: PB SM :: 4187029 :: 614K

HOLTKAMP CLAC CHANGE IS COMING

SWC HOC ANNIE K 214C

WLE COPACETIC E02
MISS SUGAR SHAKE 84D
JSSC WIDE BODY 090W
ACW ANNIE K 330Y

BW	WW	YW	M
1.7	73.4	105.8	21.4

Offered by:

Shipwreck Cattle Company



As we stay with the Annie K cow family, we offer two sisters from the \$26,000 Dylan K 330D donor female that is employed in the Meyring Cattle outfit of Alliance, NE. Dylan K 330D is massive, scale crushing daughter of Hammer. In last year's Spring Sort, a full sister to lot 6 was selected by Wyatt Gandy. That female has matured into a very attractive, stout, square made female with plenty of look and presence. That female has stood in the top end of an extremely competitive class at every major with the two heifers that consistently claimed division honors. There is zero doubt in my mind that Wyatt's female will produce one better than her or her dam in time. Lot 5 is one of the first Bet on Red females to be offered for sale at public auction. She will not disappoint from a standpoint of power and shape as she may be one of the widest built creatures in the entire set with all the junk in her trunk. She is one with the chrome and look to be a diversified breeding piece that can produce powerhouse females or show steers when she enters the productive phase of her tenure.

5

CRSS ALAINA

9/1/22 :: PB SM :: 4168837 :: 3K

W/C BET ON RED 481H

SWC DYLAN K 330D

W/C FORT KNOX 609F
W/C ANGEL 7113E
MR TR HAMMER 308A ET
ACW ANNIE K 330Y

BW	WW	YW	M
1.6	76.4	118.1	18.5

Offered by:

Superior Simmentals



SWC DYLAN K 330D - Dam of Lots 5 & 6



These daughters of Berwick are like wine as they mature, they only get better. 230K is very intriguing in her look and build. She's so extended and elegant in her front third with a very sharp pattern. One that is ideal in her pin set, awesome on her running gear and still has the shape of muscle and body to contribute to the next generation. As I mentioned before, I am certain that this one will be just like her big sister that the Gandy family selected a year ago and will have limitless opportunities to enhance the next generation.

6

APL KATIE K 230K

10/22/22 :: PB SM :: 4187171 :: 230K

JBSF BERWICK 41F

SWC DYLAN K 330D

ROCKING P LEGENDARY C918
JBSF 402B
MR TR HAMMER 308A ET
ACW ANNIE K 330Y

BW	WW	YW	M
3.3	78.6	125.0	17.7

Offered by:

A Plus Livestock



Full sister to Lot 6



The next pair of sisters set the standard in terms of skeletal quality, eye appeal, and overall presence, but after all they are from the current “who’s who” mating of the Simmental breed! Allow us to introduce you to “the sisters” that hail from the JSUL Something About Mary 8421 x Peine/GS Rosie 677D mating! It doesn’t matter which segment of the business you are from – we can all agree that the SAM x 677D mating is the most dominant Purebred genetic combination with the most illustrious track record both in the show ring and sale ring. High sellers from this mating include females that have sold for \$260,000, \$80,000, \$77,000, \$60,000, & most recently JSUL Rosie Sam 0505H commanded \$52,000 in the 2023 Embryos on Snow. JSUL Rosie Sam 0505H was the leading purebred in Sara Sullivan’s string for the AJSA Classic last summer in Madison, Wisconsin. The direct daughter of JSUL Something About Mary 8421 won the senior yearling division before going on to receive the slap for Grand Champion Bred & Owned Simmental Female. The success doesn’t end here, as JSUL TSSC Lady In Black 2181K continued the legacy created by her dam and sisters that came before her in a dominant fashion this past fall when she was selected as the 2022 American Royal Grand Champion Purebred Simmental Heifer after winning the Spring Calf Division. She ended the winter show season as the 2023 FWSS Reserve Grand Champion Purebred Simmental Heifer and will most definitely be a force to reckon with this summer and fall.

7 JSUL SWC ROSIE 2614K

11/15/22 :: PB SM :: 4187493 :: 2614K

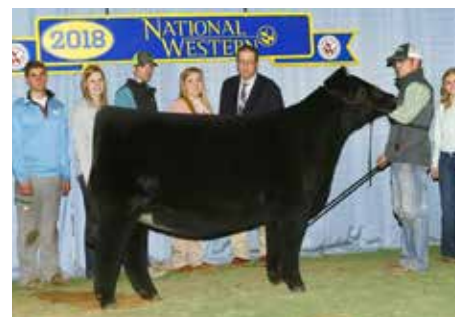
JSUL SOMETHING ABOUT MARY 8421

PEINE/GS ROSIE 677D

W/C RELENTLESS 32C
JBSF PROUD MARY
LLSF ADDICTION AY792
GUNN Z27 DO BLACK ROSE

BW	WW	YW	M
2.7	78.5	119.7	20

Offered by:
Shipwreck Cattle Company & Sullivan Farms



PEINE/GS ROSIE 677D - Dam of Lot 7 & 8

JSUL SWC Rosie 2614K offers a flawless design with a very futuristic build. We love the way that she handles herself on the move with so much reach out of her front skeleton and sets to the surface with a big stout foot design. A major contender when it counts the most – this female is the real deal!

JSUL SWC Rosie 2557K is an outlier in terms of stoutness, shape, and overall dimension. She remains so square and three dimensional from behind with tremendous pin width. Her presence is simply undeniable, exuding a certain arrogance about her that constantly draws your attention. The only decision you will have to make on April 29 in Grandview, Texas is which of these sisters best suits your preference – bid with the utmost confidence!



JSUL TSSC ROSIE LEAP 1000J - Maternal Sister to Lot 7 & 8
2022 KILE Supreme Champion Breeding Heifer



JSUL TSSC LADY IN BLACK 2181K - Full Sister to Lot 7 & 8
2022 American Royal Grand Champion Purebred Simmental Heifer

8

JSUL SWC ROSIE 2557K

10/26/22 :: PB SM :: 4187491 :: 2557K

JSUL SOMETHING ABOUT MARY 8421

PEINE/GS ROSIE 677D

W/C RELENTLESS 32C
JBSF PROUD MARY
LLSF ADDICTION AY792
GUNN Z27 DO BLACK ROSE

BW	WW	YW	M
2.7	78.5	119.7	20

Offered by:

Shipwreck Cattle Company & Sullivan Farms



A really complete, sound built daughter of THSF Lover Boy B33 that is backed by the legendary JBSF Proud Mary herself – yes you read that correctly! Check out the basic build and quality that this FULL SISTER to Bloomberg's 2022 NAILE Reserve Grand Champion Purebred Simmental Heifer. Of course it is no secret what influence her maternal brother, JSUL Something About Mary 8421 has had on the business. She is also a full sister in blood to countless high sellers, show ring champions, and individuals of influence that are working across the country.

Her dam, JBSF Proud Mary is one of the highest dollar generating females in the Simmental breed! A unique opportunity to get your hands on the hottest genetics in the game!



2022 NAILE Reserve Grand Champion PB Simmental Heifer - Full Sister To Lot 9

9 JSUL SWC PROUD MARY 2524K

9/26/22 :: PB SM :: 4187492 :: 2524K

THSF LOVER BOY B33

JBSF PROUD MARY

HTP/SVF DURACELL T52
RP/MP RIGHT TO LOVE 015U
YARDLEY HIGH REGARD W242
BROOKS STEELMAGNOLIA X57

BW	WW	YW	M
0.7	78.1	116.3	25.9

Offered by:

Shipwreck Cattle Company & Sullivan Farms



JBSF PROUD MARY – Dam of Lot 9



JSUL SOMETHING ABOUT MARY 8421
Legendary Maternal Brother to Lot 9

10

HWGW MISS KIT K201-D123

10/10/22 :: PB SM :: 4185791 :: K201

SO REMEDY 7F

SC SHASHA D123

HPF/HILL UPRISING C104
 B&K CREAM SODA 8D
 LLSF/VLF REACTOR A40
 SC SHASHA Z162

BW	WW	YW	M	Offered by:
2.9	84.7	126.3	21.2	Walrod Cattle Company

There is no question how dominant the Remedy sire group has proven to be over the past two years. I also believe that the best is yet to come from this young breed enhancer as more and more continue to sample his influence. This is one unique creature by Remedy from a double dose of power on the bottom side of her lineage. Her dam influence includes two underrated power sires with maternal prowess. Both High Voltage and Milestone did a lot of the same things. They made cattle powerful with length, size, and scale. Those two sires made cattle stout in terms of muscle shape and substance of bone, but yet the daughters have proven to be very wet and ideal in udder design and milk volume.

K201 is dead sexy and centerfold in her kind. Long, smooth, and high tying in the front third with certain volume of body and true base width at the ground. This one's potential as a senior yearling could be wicked good.



11

HWGW MISS KIRI K20-E16

11/5/22 :: PB SM :: 4185794 :: K20

UDE PROFIT 67F

HWGW ELIZABETH E16-B28

PROFIT
 TJC KANSA 823B
 TL BOTTOMLINE
 SFI GW QUEEN OF HEARTS

BW	WW	YW	M	Offered by:
3.5	73.3	106.7	20.1	Walrod Cattle Company

If you are looking for a female that is rich in power, dimension, and substance then lot 11 should be on the short list. The stock by the UDE Profit 67E sire group referred to as "Code Red" may not be many in number but they are dense in quality and power. He consistently makes them with extra shape of muscle and body with above average bone, and sound skeletal build. K20 has had many friends and admirers from the early traffic. They are drawn to her extra body and power in look from the profile. As she moves, she is seamless and collected with noticeable base width and substance of bone. She is certainly the kind that can generate breed changing herd sires or good looking females with the extras in terms of power. Her disposition makes her even more appealing for any exhibitor of any level of skill set.





12

JARR GENESIS K272

9/4/22 :: PB SM :: 4183115 :: K272

JSUL SOMETHING ABOUT MARY 8421

LKCC MISS GENESIS 72G

W/C RELENTLESS 32C
JBSF PROUD MARY
PROFIT
MISS A295

BW	WW	YW	M
2.8	82.5	120.9	16.4

Offered by:

Richburg Cattle Company



LKCC MISS GENESIS 72G
Dam of Lot 12

This September born daughter of S.A.M. comes from the very first bred heifer acquisition made by the Richburg family. In her first year of production her natural calf was by BCR Perfect Vision that commanded an \$11,000 hammer price through the Black Label. This daughter of S.A.M. is definitely Jordan's favorite to date of all the females that this cow has produced. She offers a hard hitting presence while maintaining function, power, femininity and class. We believe in this one's future as much as any ever produced or offered for appraisal from this young but aggressive and knowledgeable operation.



13

3BCC KYLIE 960K

10/5/22 :: PB SM :: 4186504 :: 960K

WHF/JS/CCS DOUBLE UP G365

GSC SCARLET 960G

W/C DOUBLE DOWN 5014E
WHF SUMMER 365C
W/C RELENTLESS 32C
WELSH'S SCARLET 161Z

BW	WW	YW	M
1.4	78.4	101.1	20.9

Offered by:

3B Cattle Company

Another female loaded with the goods. She is sired by one of the most popular young bulls in the business and from a direct daughter of Relentless from the Gerdes employed Welsh's Scarlet 161Z donor family.

A female that comes with extra pen presence with an unforgettable look. She comes to you with extra top, hip, and bone. She is one that is long necked, high in her pin set, and very cool in the set and travel off of her hindleg. We thought her build was awesome enough and her hair was leaving her that we elected to shear her for picture day.

14

DMCC KERRIGAN 173K

10/1/22 :: 1/2 SM 1/2 AN :: 4188381 :: DMCC 173K

PENNERS-CC DOUBLE BLACK 2257**DMCC ELEANOR 9E**

P R BLACK FRIDAY 0244
 P R 629 205-554
 YARDLEY HIGH REGARD W242
 AUBREYS BLACKBLAZE II 5T

BW	WW	YW	M
2.4	70.2	104.0	22.0

Offered by:

Shipwreck and Diamond M Cattle Co.

The next duo of females arrived in Grandview later than desired, but they do represent the Diamond M program to the highest degree. When we initially laid this book out this heifer was a Purebred, but due to good management on Matt's part he had some uncertainty and so DNA was submitted to settle his mind. The upside is that she is from a full sister to the National Champion Dam of lot 15 but she did come back as a high end Percentage female. Regardless, she carries the right sire influence to go the distance in the competitive percentage and ORB division. This baldy daughter of Penners-CC Double Black 2257 definitely has the dominant look and kind of her sire group contemporaries. She is very much extended and elegant throughout her front third and especially about the shape of her skull and ear set. Kerrigan defines grace and style with a very ideal transition from blade to spine, with suitable outward turn to her upper rib, and an underline that completes the flawless profile. This female is green, fresh, sharp featured, and very desirable in her hair quality.



15

DMCC KIMBER 165K

9/30/22 :: PB SM :: 4187470 :: DMCC 165K

HOLTKAMP CLAC CHANGE IS COMING**DMCC DESTINY 222D**

WLE COPACETIC E02
 MISS SUGAR SHAKE 84D
 YARDLEY HIGH REGARD W242
 AUBREYS BLACKBLAZE II 5T

BW	WW	YW	M
0.7	70.1	102.9	23.7

Offered by:

Shipwreck and Diamond M Cattle Co.

Another female by Change is Coming that just so happens to from the 2018 National Champion Female known as DMCC Destiny 222D. 222D is one of finest daughters of High Regard and a very elite maternal sister to Secret Weapon. Destiny was certainly impressive in terms of build, look, substance, and overall quality. One knew that she was destined for excellence in production as indicated by Lot 15. This October born female has the power, depth, and brood cow look that will gather the attention of anyone that seeks quality with proven matriarch appeal such as she represents.



DMCC Destiny 222D
 Donor dam of Lot 15





16

APL MISS KYRA 207K

9/14/22 :: PB SM :: PENDING :: 207K

W/C RELENTLESS 32C

APL MISSY 607D

YARDLEY UTAH Y361
MISS WERNING KP 8543U
CCR ANCHOR 9071B
WLE MISSY X407

BW	WW	YW	M
	69.6	91.6	18.1

Offered by:

A Plus Livestock



SWC/TO EVERYTHING NICE
\$60,000 Maternal Sister to Dam of Lot 16

We believe this big boned cool featured female will find a great home. She has the pieces, parts, with the ideal construction to bring it all together as she matures. Her dam is from a prolific cow family that was bred in the Wesner Livestock program and help to build volume one of the Circle M story, known as "770P". With 770P and 8543U involved, what other numbers are necessary for the recipe to success?



17

SWC KANDY 673K

10/14/22 :: PB SM :: 4187028 :: 673K

WHF/JS/CCS DOUBLE UP G365

SWC HAPPENIN NOW 273H

W/C DOUBLE DOWN 5014E
WHF SUMMER 365C
KCC1 EXCLUSIVE 116E
WAGR CHANEL 5073C

BW	WW	YW	M
2.1	76.3	101.7	18.5

Offered by:

Shipwreck Cattle Company

Another daughter of WHF/JS/CCS Double Up G365 from a youthful daughter of the lot 1A donor dam by KCC1 Exclusive 116E. At this stage she is moderate in size, complete in her kind, and great structured. These 5073C descendants' trend to be later maturing and so this one, post yearling, should make an ideal bred female and be competitive as a senior yearling. Regardless, she will be one to add to any productive cowherd that seeks predictability.

18

DXSC KHLOE 921K

9/21/22 :: PB SM :: 4174203 :: 921K

WHF/JS/CCS DOUBLE UP G365

W/C DOUBLE DOWN 5014E

WHF SUMMER 365C

SWC NFFS WICKED HANNA 825H

JBSF BERWICK 41F

NFF WICKED B125

BW	WW	YW	M	Offered by:
2.3	80	113.2	20.4	DeBerry Family

This female is from a past sale feature of the 2021 Edition of the Spring Sort. Her dam is a daughter of the lot 3A donor cow and by the late JBSF Berwick 41F. SWC NFFS Wicked Hanna 825H was raised in the Nixon Family Farms program and was selected by the DeBerry Family of Olton, TX at a fairly hefty hammer price. Wicked Hanna went on that summer to place in her division at the 2021 AJSA Summer Classic and was selected into the overall Top 20. Lot 18's dam matured into a very stout, massive, brood cow that is ideal in her udder design and obviously gave all she had to her first born.



SWC NFFS WICKED HANNA 825H
Dam of Lot 18

921K is a very elegant lady that offers the extra length, depth, and the sound pattern it takes to make the finish line. In full disclosure this female was born in between her A.I. and bull exposure date, so DNA is pending. If she does not type to the Reserve National Champion, then she will be a SimAngus female. DNA results will be available by sale day.



19

CRSS SHELBY

10/14/22 :: PB SM :: 4168839 :: 4K

SO REMEDY 7F

HPF/HILL UPRISING C104

B&K CREAM SODA 8D

TNGL A GEMSTONE A527

JF MILESTONE 999W

SILVERSTONE LPC MISS AWE

BW	WW	YW	M	Offered by:
1.6	80.7	128.7	22.7	Superior Simmentals

Another daughter of the \$530,000 SO Remedy 7F that carries the influence of Milestone on the bottom side. This solid black female defines balance and symmetry with age-appropriate body and muscle shape. Very practical, very complete.





20 MTZ LADY KAI K2205

7/14/22 :: PB SM :: 4126797 :: K2205

JBSF BERWICK 41F

JCBB LADY E3301

ROCKING P LEGENDARY C918
JBSF 402B
DMCC COUNTERATTACK 8C
SANDEEN LADY 3301

BW	WW	YW	M
2.1	69.3	107.5	21

Offered by:

Metzler Cattle



MTZ LADY JEWEL J2102 - AKA "DUECE" - Full sister to Lot 20

In the 2021 version of the Black Label, Curt Metzler and Family offered a female by JBSF Berwick from the donor that they selected from the 2017 Black Label from Bird Cattle Company. The heifer known as MTZ Lady Jewel J2101 was selected by the DeBerry Family at a \$40,000 hammer price and was then shown and exhibited by MaKenzie DeBerry. The female referred to as "Deuce" went on to be the Champion Simmental Female at the Ft Worth Stock Show and Rodeo Junior Show and gathered Makenzie a scholarship when she claimed Champion honors at the San Antonio Livestock Exposition Simmental Junior show as well. "Deuce" was the ideal show heifer in many ways, she had an awesome disposition, a killer look, and awesome hair.

Another full sister claimed the honors of Champion Simmental Female of the 2023 San Angelo Stock Show only adding to the upside of this tremendous mating.

Their donor dam JCBB Lady E3301, also referred to as "Lady Bird", was campaigned by Mason Metzler. E3301 was Reserve Champion Simmental at HLSR as a calf and maintained a highly competitive edge as a big heifer throughout her Texas Major career, but her real contribution is in her ability to influence awesome stock that can compete.

With the unexpected demise of "Deuce" this past January, the intrigue found in this summer born full sister rises daily. This awesome built baldy has the potential to follow big sister's footsteps with poise and presence. K2205 will be highly competitive in the summer division this Summer in Des Moines and will have the extra age and maturity advantage if she remains in Texas to withstand that combined division on the Texas Major circuit. She is worthy of any competitive family's consideration and investment in time and cash to get her to meet your end goals.

A female with a surplus of power and look! She is one that I have admired and appreciated since she stepped off the trailer. There have been so many of these cattle that show that have had the true shape and dimension removed to enhance skeletal flexibility, but one like this will make you think otherwise. Her cow family is definitely loaded for bear when it comes to width of skeleton and shape of body and muscle, but I think very few have offered all of that in combination with the class and style that this beast offers.

She is textbook in her structure, burly in design, but smooth in her transitions. There is no question to how valuable one like her is to the business and what she will contribute once in production. Serious attention required on lot 21.



DAF REBA C85 - Dam of Lot 21 & Maternal Granddam of Lot 24
2016 NWSS Grand Champion Percentage Simmental Heifer

21

JSUL SWC REBA 2601K

9/11/22 :: 3/4 SM 1/4 AN :: 4187489 :: 2601K

THSF LOVER BOY B33

DAF REBA C85

HTP/SVF DURACELL T52

RP/MP RIGHT TO LOVE 015U

SILVEIRAS STYLE 9303

DAF REBA U16

BW	WW	YW	M
2.1	78.6	116.9	24.7

Offered by:

Shipwreck Cattle Company & Sullivan Farms



22

3BCC SWC KALI 613K

10/28/22 :: 3/4 SM 1/4 AN :: 4186503 :: 613K

KCC1 COUNTERTIME 872H

HILB MISS MOANA F13B

ES RIGHT TIME FA110-4
KCC1 HAVANA 83E
PVF BLACKLIST 7077
HILB FAIRY TALE B5

BW	WW	YW	M
0.8	80	123.1	16

Offered by:

3B Cattle Company



KCC1 COUNTERTIME 872H

Sire of Lots 22 & 23

With technology and the fast paced world we live in, all of us want everything “right now”. The virtues of patience and teaching patience to our kids is a daily struggle, it’s nearly non-existent. The same can be said in breeding livestock too. Jason Hoffman stated one time that “too good, too soon, is generally not the best case scenario when selecting stock”. There’s a ton of truth in that statement as not all animals hit their peak at the same time. Some genetics, like the sire of this female and the next, do require some patience and time to truly see what they have the ability to do. The Countertime sired cattle from females that are big centered and dense just like this one’s dam, are the kind that he seemed to work best with in his first set of calves. We still haven’t perfected what type of cows he needs to go to every time a straw of semen is used but it appears for maximizing marketability at a younger age, cattle like the dam of this female will work more often than not. I do believe that this pair of Countertime sisters will gather fans and attention prior to and on April 29. Kali has always impressed with her flexibility of skeleton, the amount of center body shape, and the true width that she has to offer. We do like her kind and her disposition is awesome as well.

23

HWGW MISS KAI K9-A16

10/3/22 :: 3/4 SM 1/4 AN :: 4185793 :: K9

KCC1 COUNTERTIME 872H

A16

ES RIGHT TIME FA110-4
KCC1 HAVANA 83E
MR HOC BROKER
FCC BLACKCAP LADY 3811

BW	WW	YW	M
2.3	71.6	106.9	18

Offered by:

Walrod Cattle Company

A star faced daughter of KCC1 Countertime that is the right kind. This female goes back to an Angus female that would have made an impact on the Foster Brother Farms program when we were in Lockney. FCC Blackcap 3811 was a wide, dense, impressive display of moderate framed cow power and she worked very well to Simmental sires.

The influence of KCC1 Havana 83E, ES Right Time FA4-110, Broker, and proven Angus genetics that highlighted the FBF and DUFF programs would be intertwined in this young female. Foot size, bone, density of body and muscle, in an attractive good haired package only adds to the appeal and future that this one has.

24 JSUL SWC FANCY REBA 2543K

10/24/22 :: 3/4 SM 1/4 AN :: 4187490 :: 2543K

THSF LOVER BOY B33

JSUL REBA'S FANCY 8375F

HTP/SVF DURACELL T52
RP/MP RIGHT TO LOVE 015U
FHEN HALFTIME A127
DAF REBA C85

BW	WW	YW	M	Offered by:
1.2	74.8	111.6	25.5	Shipwreck Cattle Company & Sullivan Farms

Lot 24 would be a three-quarter sister to the lead of female in the percentage division. Her dam is a daughter of the highly decorated sire known as FHEN Halftime and a maternal sister to lot 21. The pedigree hosts a multitude of championship accomplishments and back drop opportunities and then you add the influence of the sire group, and the rest speaks for itself. This female is dense bodied and quite possibly leads the pen in depth from spine to navel. She is very good and correct in her lines and transitional points while being flawless in motion. With her pedigree there is no doubt that she is one of the good ones.



JSUL REBA'S FANCY 8375F
Dam of Lot 24



25 HWGW MISS KLEO K22-E6

11/1/22 :: 3/4 SM 1/4 AN :: 4185795 :: K22

SFI LEAD OFF H35Z

HWGW ESTER E6-812

WLE COPACETIC E02
SFI ENCHANTING LADY
WLE/LWSC REVOLUTION A409
MISS FIRST LOOK FLASHY

BW	WW	YW	M	Offered by:
1.4	79.3	115.7	22.1	Walrod Cattle Company

The sire of this next female was campaigned by the Schaae Family with much success in the percentage bull division. He is from the proven and complimentary genetic cross of modern day, Copacetic blended with the time tested and proven Broker. We like the look and kind of this three quarter female. She is deep, square, wide pinned, and has the extra substance to her near perfect running gear. This female ties high out of the top side of her shoulder and is very maternal in her look throughout.





26

JARR BARB ROSE K226

10/3/22 :: 3/4 SM 1/4 AN :: 4183116 :: K226

DMCC COUNTER ATTACK 8C

UDE BARB ROSE 126G

REMINGTON SECRET WEAPON 185
CARD FOREVER 61A
WS PILGRIM H182U
HARRELL BARB ROSE 313A

BW	WW	YW	M
0.8	66.7	96.4	20.1

Offered by:

Richburg Cattle Company



UDE BARB ROSE 126G
Dam of Lot 26

The Richburg family started putting together some very elite females in the past three years. The dam of this female was their selection from the very first Signature Collection bred heifer offering. She is by Pilgrim and from the past many time champion known as Harrell Barb Rose 313A. This past fall UDE Barb Rosed 126G produced a natural calf by W/C Relentless 32C that commanded a \$25,000 price tag through the Black Label. The maternal granddam, 313A, is one of the most highly decorated percentage

Simmental females of her time with a proven track record of success in production. She was very dominant on the jackpot, state, and regional levels but also claimed Champion Percentage female honors at the 2014 American Royal, the 2015 AJSA Summer Classic, and the 2015 Simmental Breeders Sweepstakes. DMCC Counter Attack has become the sire of choice to offer a more chiseled and refined look to any cow he is introduced to. Those facts are evident as one places evaluation on this very unique creature that is offered as lot 26. She is big and flexible at the surface with a double shot of the big hoof fact with added bone and handles herself correctly on the go. Virtually fault free in her build with plenty of shape throughout to mature into a highly competitive senior yearling.



27

CRSS KYLEE

10/9/22 :: 3/4 SM 1/4 AN :: 4168840 :: 2K

MR HOC BROKER

RUBYS RHYTHM 8F31

SVF STEEL FORCE S701
JM BF H25
SILVEIRAS STYLE 9303
RUBY NFF RHYTHM 012X

BW	WW	YW	M
2.4	70.1	102.6	16.2

Offered by:

Superior Simmentals

When one finds a young, direct daughter of MR HOC Broker, that female gathers serious consideration by many good cattle connoisseurs, and rightfully so. The dam of this baldy was selected from the Ruby Cattle Company program and as a calf she was the Champion Percentage female of the Western Regional. As a mature female, it is definitely a challenge to deny that she is worthy of serious and inquisitive attention by any that enjoy the good ones. Kylee has established a fan club from the early boots on the ground that have walked through this set of opens. She is an eye catching, very well constructed individual that brings the proven Broker x Style blend with the influence of the Rhythm matriarch. Bred in the purple and bred for the tan bark!

28

APL KARINA 266K

11/6/22 :: 1/2 SM 1/2 AN :: 4187099 :: 266K

RUST DREAM STRUCK 502H**APL CLOVA INSIGHT 566F**

NGDB STRUCTURE 34D
 MISS WERNING KP 8543U
 PVF INSIGHT 0129
 BAR N CLOVA PRIDE 203Z

BW	WW	YW	M	Offered by:
1.4	78.2	114.7	22.5	A Plus Livestock

A solid black SimAngus breeding piece that comes sired by a son of 8543U and supported by a daughter of the proven PVF Insight 0129. Karina is stout featured, good footed, extra sharp in her design, with plenty of rib and muscle. This female is super maternal by pedigree with extra power in person.



29

CRSS ASHLEY

10/9/22 :: 3/8 SM 5/8 AN :: 4168838 :: 5K

GCC GOLD STANDARD X615**CRSS APRIL**

GCC TOTAL RECALL 806T
 O C C JUANADA 925R
 WLE COPACETIC E02
 SWC DYLAN K 330D

BW	WW	YW	M	Offered by:
-0.8	67.7	106.2	19.5	Superior Simmentals

Curtis Stevens gave \$17,000 in the 2018 Cowtown Classic held in conjunction with the Ft. Worth Stock Show for SWC Dylan K 330D to make her first home away from Texas in Centerfield, Utah. Curtis utilized the donor for a couple of year before offering her back through the Black Label where she commanded an appreciated \$26,000 price tag and now works in the Meyring Cattle Co program of Alliance, Nebraska.

This Gold Standard female is from a Copacetic two year old in Curtis' program. Her moderation of frame and square dense build is indicative of her sire group but I can help but think that maturity is this female's best ally with size and scale of her maternal granddam to take into consideration. Genetically, age and maturity will yield a beast that will impress the older she gets.





As we switch breeds and get into the breed that leads the beef business, we initiate with one that offers so much in terms of beef cattle shape and power. Her sire is the very same as the heifer exhibited by Braxton Cole. Braxton's heifer may quite possibly be the most decorated female in the history of Supreme Championship honors in the Texas Major circuit. The cattle by PVF Marvel 9185 seem to be loaded with extra power in muscle and bone and shear dimension on top of that. As this female readily caught my eye at Garren and Heidi's I was obviously drawn to her very impressive shape and brood cow look in her rough on the cow. Once she arrived in Grandview and got dialed in, this female became sharper featured through her front third than initially expected but still had that shape and power that engaged my initial attention. She's an Angus female that will either be appreciated or hated depending on the evaluator you draw at the chosen place of exhibition, but one will love her earning potential and mating flexibility when she enters production.

30 MISS HWGW KATE 832K

10/3/22 :: ANGUS :: 20628131 :: 832K

PVF MARVEL 9185

HFSEERICA 832

PVF BLACKLIST 7077
PVF MISSIE5245
PVF INSIGHT 0129
DAMERON ERICA 383

BW	WW	YW	M
4.1	70	123	18

Offered by:

Walrod Cattle Company



DAMERON ERICA 383 - Maternal Granddam of Lot 30

31

SULL LUCY 2505K

11/7/22 :: ANGUS :: 20629054 :: 2505K

KR CASINO 6243**W A LUCY 640**CFCC BLACK JACK 001
MALSONS SAVANNAH 27Y
SILVEIRAS STYLE 9303
PVF LUCY 1107

BW	WW	YW	M	Offered by:
3.3	64	115	28	Shipwreck Cattle Company

The reason for the popularity of the KR Casino sire group can be noted in this individual that happens to be from a proven successful donor dam. WA Lucy 640 had a very successful show career herself as she was selected 3rd Overall Female at the 2017 Angus Junior National Heifer Show, and then went on to claim multiple division honors at the 2017 North American International Livestock Exposition, the 2018 National Western Stock Show and the 2018 Fort Worth Stock Show and Rodeo ROV shows as well. A style daughter with extra presence and quality to surface at the top of a very dense Angus donor battery in the Sullivan program should be noted as well. This heifer calf would be a maternal sister to the recently crowned Supreme Champion Female at the Kentucky Beef Expo that was selected from the Schaeffer and Tice Sale last Fall by Craig McCallum. She is one that will have depth and quality to give to those that she competes against. Her smooth stylish look and presence will grab the attention of many evaluators and when she enters production, she will generate with kind and genetics she has to her own right.



WA LUCY 640 - Dam of Lot 31



32

SWC FOREVER LADY 764K

11/20/22 :: ANGUS :: PENDING :: 764K

BC ROBUST 0807**KCC FOREVER LADY 64G**BC SURVEYOR 680D
BC 327-8 CP BELLE 0-807
S&R ROUNDTABLE J328
LAZY H BAR SIMPLY FOREVER5129

BW	WW	YW	M	Offered by:
4.5	63	99	20	Shipwreck Cattle Company

BC Robust may not be sire of trend setting Angus show stock but I do believe that he will be referenced as the sire of trend setting good stock just as his breeder intended. We do like this big bodied, cool designed daughter from our KCC Forever Lady 64G donor dam as she is the first, we have offered from this female. The future is bright for 64G and only expect things to get intense on the value of her progeny moving forward. 764K is awesome in her disposition and should be suitable for any first-time exhibitor.

KCC FOREVER LADY 64G
Donor Dam of Lot 32



We like the power and kind of this registered low Chi female and we do believe that she is one with certain generating potential to take to any breed of choice or genetic combination. She offers as much flexibility as anything in the offering as to what she could do to generate in production.

As far as the now goes, I legitimately believe that she competes in the ORB division in the state of Texas. Her genetics and hair quality will allow her to go to multiple jackpots and still be more than ready for any Texas Major as a bred female next spring. The sires she stacks in her pedigree have influenced many high quality Chi, Maine, and Hybrid show cattle both in the maternal or market divisions across the country.

33

RVAN KAYCEE

4/5/22 :: CHIANINA :: P 414834 :: K61

LDSC UNLEASHED ET

RVAN U NEED ME 10X

BK UNLIMITED POWER 472
MISS WHISKEY DREAMS 30Z ET
U NEED ME
RVAN ANGUS 97

BW	WW	YW	M
1.3	52	80	16

Offered by:

Shipwreck Cattle Company



LDSC UNLEASHED ET - Sire of Lot 33

34

KGB 8815F LADY LOGIC 421K

11/10/22 :: POLLED HEREFORD :: 44447404 :: 421K

CHEZ/PUGH/HARA LOGIC 8815F ET**GK 824 LADY EXCELL 421 ET**CRR 719 CATAPULT 109
R SWEET RED WINE 039
AH JDH CRACKER JACK 26U ET
H LADY EXCELL 824 ET

BW	WW	YW	M
5	55	94	23

Offered by:

Shipwreck Cattle Company

Phenotypically, a very impressive Polled Hereford female from an incredibly great built dam. Her dam is a standout in the set of Hereford cows that the Blagg family sent to Grandview when they left the liberal confines of California. A mature female that was selected from the Hoffman program that has done nothing short of generating on her progeny. This natural calf by the CHEZ/PUGH/HARA Logic



H WMS THOMAS COUNTY 1443 ET
\$150,000 Product of the 824 cow family

8815F has been impressive since day one. A female loaded with the desired pigment and nearly red to the ground with a color that is dark and rich. This creature is loaded with look, balance, substance, and shape. We believe strongly in what the future holds for this female and recommend her suitable for any showman of any age or skillset.



35

PWBW LADY LUCK 221K

4/7/22 :: RED ANGUS :: 4649351 :: 221K

WGLS 830**PWBW EXECUTIVE LADY**DUFF CAESAR
PZC SWEET TALKIN 5027 ET
SIX MILE TAURUS 519A
BCRR EXECUTIVE LADY 534R

BW	WW	YW	M
12	54	82	24

Offered by:

Shipwreck Cattle Company

This April female will have the credentials to be very competitive as a mature bred female next Spring. She's pretty solid and very hard to fault as she is big and bold in her rib design and ties her head and neck high out of the top of blade. She is impeccable and smooth in motion with added substance for the breed at the surface.





36

WSRC KATY 2201

11/5/22 :: BEEFMASTER :: P324057 :: 2201

CJ GUNSLINGER

JK 575/9

CJ'S GAME CHANGER
CJ'S DIAMOND EMERALD
CHRK RUGER RED LABEL
DESIRE

BW	WW	YW	M	Offered by:
-0.1	45	74.5	8.7	Richburg Cattle Company

It's not often that we get to offer an American animal but when we do it's definitely one that people need to take notice of as they are most likely suitable for high level competition. Jordan found this heifer at a neighbors place in the metro area of Groom, TX. This red hided female is very impressive in her kind and is awesome on the go. From her crazy long neck to her gigantic feet and all that's near perfection in between, makes this Beefmaster diva one of serious consideration for any competitive family. Her sire was a syndicated stud that met an untimely demise. However he is a bull of obvious genetic value as well as he is in the top 1% for \$T, \$M, WW, and YW. Semen is limited and his quality for both phenotype and genotype is definitely in demand. Granted, EPD values may not be necessary for a family that wants to go up and down the show road, but the fact that this female has the look, build, and kind of a competitive show heifer only adds to her value in production. We are certain that she will have many followers once this sale book hits the internet and the mailboxes.

SPRING PAIRS & FALL BREDS





40

MISS RJ DAISY 066H ET

4/21/20 :: PB SM :: 3810803 :: 066H

W/C RELENTLESS 32C

W/C RJ MISS DERBY GIRL

YARDLEY UTAH Y361
MISS WERNING KP 8543U
YARDLEY HIGH REGARD W242
MISS WERNING KP 8543U

BW	WW	YW	M
2.0	73	100.9	20.3

Offered by:

Shipwreck Cattle Company

BULL CALF BY OMF JOURNEYMAN J24. BORN 2/14/23 - 72# BW - TAG 266L

This daughter of Relentless offers a double shot of 8543U. She is moderate in size, square in build, and balanced in kind with impeccable udder quality. She is sells with a herdsire by OMF Journeyman J24 at side.

BULL CALF BY KCC1 COUNTERTIME 872H. BORN 2/4/23 - 68# BW - TAG 233L

When I sold the Shoal Creek Production Sale, I took our middle son Bodie with me and this was his second pick from that set of sale stock. This Innovator daughter is awesome in production and her first calf by OMF Epic is in the replacement pen. This gal is plenty moderate, but she has a big heart when it comes to taking care of and raising a calf. Without a doubt one that is very strong on the basic fundamentals with a near perfect balance to her udder and quality teat placement. She sells with a son of KCC1 Countertime 872H.

BULL CALF BY OMF JOURNEYMAN J24. BORN 2/10/23 - 82# BW - TAG 261L

This daughter of Broker is from the 2017 American Royal Champion Purebred Simmental Female that would be responsible for many high selling sale features annually through the Black Label for the Clanton and Bar O Families of Kansas. In fact, the maternal granddam of this productive three year old is a full sister to the proven udder king known as TJ High Calibre. 061H is a past class winner and top 10 qualifier at the 2021 South Central Regional. This cow is stout featured and comes with extra length and extension while nursing a very high quality son of OMF Journeyman J24.

BULL CALF BY OMF JOURNEYMAN J24. BORN 2/10/23 - 70# BW - TAG 211L

A female that was blessed with an awesome look and kind from her early stages in life. I selected this female from the 2020 Black Labe sale because of her pedigree and build. She still today is super attractive, very good about her front third, suitable in her body and muscle mass, with stout bone work and big, awesome feet. She carries the influence of the great Profit and is a maternal granddaughter of the proven Angus matriarch most commonly referred to as "056". Heartbreaker's first calf by Epic is in the replacement pen and she sells with a herd sire at side by OMF Journeyman J24.

41

SC KNOCKOUT 233H

3/17/20 :: PB SM :: 3699709 :: 233H

CDI INNOVATOR 325D**SC KNOCKOUT 233F**

TJ MAIN EVENT 503B
CDI MS SHEAR FORCE 49U
HTP/SVF DURACELL T52
HPF/BORNE KNOCKOUT Y030

BW	WW	YW	M
1.8	87.8	129.4	24.1

Offered by:

Shipwreck Cattle Company

42

BAR O HARLEE 061H

2/28/20 :: PB SM :: 3766845 :: 061H

MR HOC BROKER**CRSS LADY DONE IT**

SVF STEEL FORCE S701
JM BF H25
MR CCF 20-20
SS/SVF SHES JUST RIGHT

BW	WW	YW	M
2.4	73.4	105.3	19.4

Offered by:

Shipwreck Cattle Company

43

FUS HEARTBREAKER 11H

3/29/20 :: 5/8 SM 3/8 AN :: 3753558 :: 11H

DMCC COUNTER ATTACK 8C**MMK HEARTLESS 128F**

REMINGTONSECRETWEAPON185
CARD FOREVER 61A
PROFIT
T T A PRECISION 056 OF 124

BW	WW	YW	M
-0.3	62.5	92.7	17.7

Offered by:

Shipwreck Cattle Company



WLE SHEZ IT C056 - Dam of Lot 44

44

SWC BAR O HARLEY 1015H

3/20/20 :: PB SM :: 3878647 :: 1015H

W/C BANKROLL 811D

WLE SHEZ IT C056

W/C LOADED UP 1119Y
MISS WERNING KP 8543U
MR TR HAMMER 308A ET
CIRCLE T SHEZ IT W056

BW	WW	YW	M
2.7	79.2	117.3	20.2

Offered by:

Shipwreck Cattle Company

BULL CALF BY WINC INNOVATOR 100J. BORN 3/26/23 - 70# BW - TAG 315L

This is a very cool built, stout looking daughter of W/C Bankroll 811D and is from the Hilltop employed donor, WLE Shez It 056C.



**LOT 45 - BULL CALF BY WINC
INNOVATOR 100J. BORN
3/29/23 - 68# BW - TAG 365L**

CNS Pays to Dream left a very productive set of daughters nationwide. They were not always the stoutest of the Dream On derivatives but they are functional in production without question. 165G is on her third bull calf, but she is a damn good bull mom as her first son by EGL Firesteel is employed by Kearns Cattle Co in the heifer pasture of Northwest Nebraska and her stellar 2022 born son of KCC1 Countertime is one of the better bulls in the private treaty pen. I am certain that the bull at side will fit into the top end of the ranks wherever this pair does go. A cow that I simply appreciate the fundamentals in and one that only makes money.

**LOT 46 - BULL CALF BY SWC
GAME DAY 514G. BORN
3/30/23 - 74# BW - TAG 385L**

A very productive female with a very nice blaze faced bull calf at side. 9285G will not be the fattest girl in the pen but she will be productive and give all she has at the end of the day.

45

SWC ANNIE G 165G

4/10/19 :: PB SM :: 3753759 :: 165G

CNS PAYS TO DREAM T759

SWC HOC ANNIE K 165C

CNS DREAM ON L186
MLF BL JESSIE K336
WAGR EARTHQUAKE 236Z
ACW ANNIE K 330Y

BW	WW	YW	M	Offered by:
2.5	72.7	115.2	16.7	Shipwreck Cattle Company

46

UDE 9285G

4/29/19 :: 3/4 SM 1/4 AN :: 3753283 :: 9285G

HARA'S DISTINCTION 10C

WHISKEY LULLABYE

MR TR HAMMER 308A ET
HARA'S MISS PLATNIUM
MR HOC BROKER
KLS MAJICALLY OBSESSED

BW	WW	YW	M	Offered by:
3.0	74.8	112.1	18.1	Shipwreck Cattle Company



47

HWGW ELLA E53-B26

11/10/17 :: PB SM :: 3378576 :: E53

SFI PERFECT TIMING A6

SFI GW GO FOR BROKE

SVF DREAM MASTER T50
SFI LUVY DUVY X13N
MR HOC BROKER
SFI YOU DEW IT GIRL

BW	WW	YW	M	Offered by:
0.7	61.6	90	24	Shipwreck Cattle Company

BULL CALF BY OMF JOURNEYMAN J24. BORN 2/12/23 - 84# BW - TAG 253L

HWGW Ella E53-B26 was our selection from a spring 2018 online sale of Walrod Cattle Company. We selected the November born female for Bodie's first show heifer. Her attitude and his lack of care made for a pretty good team. The team was able to claim Champion Owned Female honors at the 2019 South Central Regional. As we introduce more power to this female at breeding time the results became stronger and easily marketable. All of her stock have been easy to sell but her 2022 natural heifer calf by SWC Game Day 514G sold to the Cochrane family of Mississippi and this bull calf she is nursing by OMF Journeyman J24 is as impressive of a calf we may have on the place. I expect bigger things from this female moving forward as she nurses a bull calf that will put any program on the map.

Shipwreck Cattle Company does retain half interest in this bull calf at the side of E53.



48

KERSTEN 113G

2/16/19 :: PB AN :: 19864604 :: 113G

S A V BISMARCK 5682

G A R GRID MAKER
S A V ABIGALE 0451
COLBURN PRIMO 5153
LAZY H BAR FOREVER LADY 361

LAZY H BAR FOREVER LADY 7113

BW	WW	YW	M
-0.2	69.9	107.4	14.1

Offered by:

Shipwreck Cattle Company

BULL CALF BY W/C VIP 005G. BORN 2/10/23 - 64# BW - TAG 213L

My Angus genetic weakness would be that I am an absolute sucker for a direct daughter of S A V Bismarck 5682 and then this one traces back to the very prolific Lazy H Bar Forever Lady 5001. Amazing to own, very hard to let go of, and it will be a very tough find again to search for one bred like this bob eared breeding piece. She is a loose built, big centered ground pounder that's nursing a SimAngus herd bull by W/C VIP 005G.

49

TRIPLE K LADY 147E

8/23/17 :: PB AN :: 19576391 :: 147E

S A V BISMARCK 5682

G A R GRID MAKER
S A V ABIGALE 0451
NORTHERN IMPROVEMENT 4480 GF
OBAR GAMBLES LADY 1056

TOP LINE LADY 0411

BW	WW	YW	M
-1.1	52	87	20

Offered by:

Shipwreck Cattle Company

HEIFER CALF BY BC ROBUST 0807. BORN 2/10/23 - 76# BW - TAG 247L

Here is another direct daughter of S A V Bismarck 5682 that is huge centered, sound built, and awesome to look at. She is nursing a heifer calf by BC Robust 0807 that will be better than her dam.



50 HSC SWC CADDO 046C

4/17/15 :: 3/4 SM 1/4 AN :: 3023328 :: 046C

WS PILGRIM H182U

LIMESTONE VALE BAR W966

CNS DREAM ON L186
WS MARLA 276M
SVF STEEL FORCE S701
SHAMROCK VALE BAR EXT 1174

BW	WW	YW	M	Offered by:
2.8	69.8	93.2	17.5	Hilmes Cattle Company

BULL CALF BY HOLT NIGHT VISION 457H. BORN 3/16/23 – 76# BW – TAG 332L

The pilgrim x W966 mating has yielded some great brood cows that have proven to be valuable breeding pieces. Caddo 046C's calling wasn't the show ring like her Notable sister HSC SWC Aria 001A, who was successfully campaigned by the Kersten family and the eventual winner of the Nebraska State Fair. However, she followed suit as a productive matriarch capable of ginnin' out calf crops of high end replacements and show prospects. 046C has never had a bad one, just a consistent producer of solid, functional and profitable cattle. Her tattoo is found on the bottom side of numerous females in this offering and now you have the chance to feel her impact on your operation.~



KCC1 ENTERPRISE 519E - Sire of Lot 51-54

This covey of Enterprise daughters are another reason you should look up 046C on April 29th. These moderate low input types of females are the productive kind sought after in the arid plains and the southwest. Bid with confidence as their consistent quality is backed by a tried and true donor dam.

51

HSC SWC JANE 013J

2/26/21 :: PB SM :: 4183148 :: 013J

KCC1 ENTERPRISE 519E

HSC SWC CADD0 046C

MR TR HAMMER 308A ET
TKCC VICTORIA 57A
WS PILGRIM H182U
LIMESTONE VALE BAR W966

BW	WW	YW	M	Offered by:
2.3	75.9	106.8	15	Hilmes Cattle Company

HEIFER CALF (ASA 4189753) BY WHF/JS/CCS DOUBLE UP G365.
BORN 3/12/23 - 58# BW - TAG 313L

52

HSC SWC JASMINE 014J

2/26/21 :: PB SM :: 4183149 :: 014J

KCC1 ENTERPRISE 519E

HSC SWC CADD0 046C

MR TR HAMMER 308A ET
TKCC VICTORIA 57A
WS PILGRIM H182U
LIMESTONE VALE BAR W966

BW	WW	YW	M	Offered by:
2.3	75.9	106.8	15	Hilmes Cattle Company

HEIFER CALF (ASA 4189754) BY WHF/JS/CCS DOUBLE UP G365.
BORN 3/23/23 - 65# BW - TAG 314L

53

HSC SWC JOY 015J

2/27/21 :: PB SM :: 4183150 :: 015J

KCC1 ENTERPRISE 519E

HSC SWC CADD0 046C

MR TR HAMMER 308A ET
TKCC VICTORIA 57A
WS PILGRIM H182U
LIMESTONE VALE BAR W966

BW	WW	YW	M	Offered by:
2.3	75.9	106.8	15	Hilmes Cattle Company

BULL CALF (ASA 4189755) BY HSC CX4 ANCHOR DOWN H006.
BORN 3/26/23 - 60# BW - TAG 315L

54

HSC SWC JUBILEE 016J

2/28/21 :: PB SM :: 4183151 :: 016J

KCC1 ENTERPRISE 519E

HSC SWC CADD0 046C

MR TR HAMMER 308A ET
TKCC VICTORIA 57A
WS PILGRIM H182U
LIMESTONE VALE BAR W966

BW	WW	YW	M	Offered by:
2.3	75.9	106.8	15	Hilmes Cattle Company

HEIFER CALF (ASA 4189756) BY HSC CX4 ANCHOR DOWN H006.
BORN 4/1/23 - 62# BW - TAG 316L



55 HSC SWC ROSIN 052J

5/10/21 :: PB SM :: 3961676 :: 052J

W/C BANKROLL 811D

HSC SWC CADD0 046C

W/C LOADED UP 1119Y
MISS WERNING KP 8543U
WS PILGRIM H182U
LIMESTONE VALE BAR W966

BW	WW	YW	M
2.2	75	102.3	19.5

Offered by:

Hilmes Cattle Company

DUE 4/28/23 TO WOLF CREEK PLAINSMAN (AAA 16455884).

There's perhaps no better example of the "power in the blood" impact that 046C can transmit than these two look alike females. They exemplify the same brood cow character, functional build, and show stopping eye appeal as their mother. Rosin and Bow are twin embryo daughters sired by the great W/C Bankroll and poised to be the next great producers of their generation.



56 HSC SWC BOW 053J

5/10/21 :: PB SM :: 3961677 :: 053J

W/C BANKROLL 811D

HSC SWC CADD0 046C

W/C LOADED UP 1119Y
MISS WERNING KP 8543U
WS PILGRIM H182U
LIMESTONE VALE BAR W966

BW	WW	YW	M
2.2	75	102.3	19.5

Offered by:

Hilmes Cattle Company

DUE 4/28/23 TO WOLF CREEK PLAINSMAN (AAA 16455884).

57

HSC JUSTICE 030J

3/5/21 :: 3/4 SM 1/4 AN :: 4183153 :: 030J

WS PILGRIM H182U

CNS DREAM ON L186
 WS MARLA 276M
 W/C LOADED UP 1119Y
 SHULTZ MS CLASS 414 42

HSC FF CHLOE 008E

BW	WW	YW	M	Offered by:
1.6	74.9	102.1	18.5	Hilmes Cattle Company

HEIFER CALF (ASA 4189757) BY THSF LOVER BOY B33.
BORN 3/10/23 – 61# BW – TAG 330L

The supreme percentage female at the 2019 Oklahoma Youth Expo is no stranger to the spotlight. Her time on the tanbark is proof of that, as indicated by her photo finish. Her legacy however, is bolstered annually with her offspring that are making names for themselves. This Pilgrim daughter should be no exception. Ultra-feminine in look, striking poise, with a wide square pin set and beautiful udder. Not to mention that hot red ticket at her side is liable to pay for the package this fall.



HSC FF CHLOE 008E - Donor Dam of lot 55 - 2019 OYE Supreme Champion Female - \$150,000 Product of the 824 cow family

58

HSC SSTF XTRAVAGANT 031J

3/3/21 :: PB SM :: 3961675 :: 031J

RUBY'S CURRENCY 7134E

WBF SIGNIFICANT B132
 RUBYS JILL 035X
 JS SURE BET 4T
 SVF STAR STRUCK S199

FBFS XTRAVEGANT 053X

BW	WW	YW	M	Offered by:
2.6	84.5	130.6	24.1	Hilmes Cattle Company

HEIFER CALF (ASA 4189758) BY WHF/JS/CCS DOUBLE UP G365.
BORN 3/10/23 – 65# BW – TAG 331L

Extended, elegant, exquisite and with a shot of Extravagant 053X. 053X continues to produce the type and kind that keep you in the business. This total outcross daughter is a true breeding piece that should carry on the same qualities that has made her dam such a productive female for myself and late friend and business partner, Scotty Turner.



FBFS XTRAVEGANT 053X - Dam of lot 58



59

JPV MISS LULU 84F

3/19/18 :: PB SM :: 3542127 :: JPV 84F

W/C RELENTLESS 32C

JPVF MISS STELLA 440

YARDLEY UTAH Y361

MISS WERNING KP 8543U

REMINGTON LOCK N LOAD54U

W/C MISS BELLA 15Y

BW	WW	YW	M	Offered by:
2.4	73.2	105.9	17.4	Shipwreck Cattle Company

PE KCC1 COUNTERTIME 872H (ASA 3806012) FROM 12/20/22-1/20/23. DUE 10/16/23.

84F is built stout from the surface. She is certainly a big footed, huge boned individual the is super flexible on the go and offers extra length and extension throughout her build. One that offers smooth transitions, spinal integrity and big pin set. Her 2022 fall born bull calf by Double Up will be easily marketed in the fall and she sells safe in calf to KCC1 Countertime.



BRED TO HSC SSTF WAY MAKER 023H (AA 3573631) 11/17/22. DUE 8/24/23.

Powerful, proven, and predictable pretty well sums up 502. Powerful in her build, bold ribbed while navigating with authority. Proven in production, mothering two \$20,000 heifers as well as several herd bulls to average north of \$5,000. Her latest calf crop by Relentless, Good Times, and First Class is quite possibly her most impressive. Predictable in her ability to, time after time, produce functional, useful cattle that can contend in the ring but more importantly hold it down in terms of production. A hard one to part with for sure but a great opportunity awaits.

60 WGR ERROLINE 225 502
1/5/15 :: PB AN :: 18206406 :: 502

PVF INSIGHT 0129

WGR ERROLINE 604 225F

S A V BRILLIANCE 8077
P V F MISSIE 790
S A V BISMARCK 5682
F A F 5175 004

BW	WW	YW	M
-1.7	70	117	20

Offered by:

Hilmes Cattle Company



FBFS SWC JORDAN 23J - Service sire to Lots 61-63

This trio of fall bred pairs are the right kind. These Angus dams are very solid in their fundamentals of production. Stout, prolific ranch bred matrons that offer plenty of milk while maintaining superior fleshing ability. The calves at side are sired by GCC Black Dew 161H, a stud that represents a strong genetic blend of GSC GCCO Dew North 102C and the dominant female with a household name known as "Boots". The Simgenetic calves at the side of these females are very impressive in weight and kind. These pairs have been on pasture all winter and spring long with average to below average supplementation. The cows are bred back to FBFS SWC Jordan 23J (ASA#4114248) that is a son of Profit and from the 2019 San Antonio Champion and the 2017 Black Label \$70,000 high selling female, FBFS Exclamation 045E. We are expecting great things from this young herdsire prospect and are looking forward to the stock that he sires.

61

B3R E232 LADY W446 C216

10/4/17 :: PB AN :: 19082751 :: E232

B3R WESTERN SWING W446

GARDENS WAVE
B3R R215 KEP MISS N117 M077
B3R GRASS MASTER Z187
B3R Z079 LADY W118 T053

B3R C216 LADY Z187 Z079

BW	WW	YW	M
2.6	41	79	13

Offered by:

Shipwreck Cattle Company

PE FBFS SWC JORDAN 23J (ASA 4114248) FROM 1/25/23 - 3/1/23. DUE 11/23/23

HEIFER CALF BY GCC BLACK DEW 161H (ASA 3838533). BORN 11/4/22.

62

B3R E260 BLACKBIRD W233 S040

10/6/17 :: PB AN :: 19082719 :: E260

B3R W233 ELECTOR TENDTN R310

B3R TENDER TEN R065
B3R R310 DAISY 0128 0135
G A R RETAIL PRODUCT
B3R N123 8082 BLACKBIRD 203

B3R S040 BLKBRD GARRP N123

BW	WW	YW	M
0.5	55	97	24

Offered by:

Shipwreck Cattle Company

PE FBFS SWC JORDAN 23J (ASA 4114248) FROM 1/25/23 - 3/1/23. DUE 11/03/23

HEIFER CALF BY GCC BLACK DEW 161H (ASA 3838533). BORN 10/30/22.

63

B3R D298 BLACKCAP Z180 U066

11/4/16 :: PB AN :: 18752148 :: D298

B3R Z180 HEIFER SAFE

B3R W233 ELECTOR TENDTN R310
B3R X189 BLACKBIRD T232 T037
B3R N193 854E EMBLAZON 9180
B3R S051 BLACKCAP P060 N159

B3R U066 BLACKCAP N193 S051

BW	WW	YW	M
-1.0	40	68	27

Offered by:

Shipwreck Cattle Company

PE FBFS SWC JORDAN 23J (ASA 4114248) FROM 1/25/23 - 3/1/23. DUE 11/23/23

BULL CALF BY GCC BLACK DEW 161H (ASA 3838533). BORN 10/27/22.

64 KMEM FOREVER LADY 220H

11/22/20 :: PB AN :: 20039424 :: 220H

SSF ON POINT 4028

EXAR FOREVER LADY 4240

COLBURN PRIMO 5153
PLUM CREEK ANNIE LU 4472
RITO 6EM3 OF 4L1 EMBLAZON
EXAR FOREVER LADY 5563

BW	WW	YW	M	Offered by:
0.1	67.7	110.4	15.8	Shipwreck Cattle Company

PE KCC1 COUNTERTIME 872H (ASA 3806012) FROM 12/20/22-1/20/23. DUE 10/16/23.

This young attractive daughter of the past Embryos on Snow sale Feature referred to as On Point is from a very successfully campaigned female in her own right. This young angus female is undeniably attractive and has so much upside potential down the road. She sells safe in calf to KCC1 Countertime 872H.



65 KR SAVANNAH 0923

9/26/20 :: PB AN :: 19974145 :: 923

KR MOJO 8520

KR SAVANNAH 8904F

PANTHER CR INCREDIBLE 6704
KR PRINCESS 6394
7/S SPLASH 415
MALSONS SAVANNAH 27Y

BW	WW	YW	M	Offered by:
-1.5	68	122	31	Shipwreck Cattle Company

BRED TO S&R STABILITY J824 (AAA 19190096) ON 11/10/22. SAFE AI DUE 8/19/23.

This member of the same family that produced KR Casino is a very productive and fertile young Angus matron from the KR Mojo sire group. She sells with a calf on the way by S&R Stability.



KR CASINO 6243
Influential Maternal Brother to Lot 65





66 SWC WICKED JANE 440J

4/14/21 :: PB SM :: 4035933 :: 440J

JBSF BERWICK 41F

ROCKING P LEGENDARY C918

JBSF 402B

NFF WICKED B125

NFF UPGRADE Z083

NFF WICKED Z119

BW	WW	YW	M
3.2	77.9	120.9	20

Offered by:

Shipwreck Cattle Company

BRED TO SEXED FEMALE SWC RED WAVE 376J (ASA 3937607) ON 11/16/22. SAFE AI DUE 8/25/23. A full sister to this female is a future donor in the Blount Farms program as she was their selection from the 2021 Black Label offering. We think that many will be impressed with 440J's brood cow look and the many similarities that she has when compared to her dam that is offered as lot 3A. Bold, stout, substantial, and her broody build are definite qualities that can be found in this lead off bred creature.



67 SWC ANNIE DIAMOND 414J

4/2/21 :: PB SM :: 3981149 :: 414J

TJSC KING OF DIAMONDS

LLSF PAYS TO BELIEVE ZU194

KLS DIAMOND W516

SWC HOC ANNIE K 214C

JSSC WIDE BODY 090W

ACW ANNIE K 330Y

BW	WW	YW	M
2.3	71.6	102.6	20.4

Offered by:

Shipwreck Cattle Company

BRED TO SWC RED WAVE 376J (ASA 3937607) ON 12/7/22. SAFE AI DUE 9/15/23. King of Diamonds worked very well on the Lot 4A donor dam, SWC HOC Annie K 214C and this would be the only daughter of the entire aspiration. A baldy purebred that will have baldy making potential and it is very likely that she will have a blaze faced heifer calf this fall. 414J's bold and dense body shape with extra bone will complement the calving ease stud that she carries the service to.

68

MOORE FIRESTORM 17J

3/3/21 :: PB SM :: 3969598 :: 17J

RUBY'S CURRENCY 7134E**WAGR PLAYMATE 438A**

WBF SIGNIFICANT B132
 RUBYS JILL 035X
 MR HOC BROKER
 WAGR LULLABY 703T

BW	WW	YW	M	Offered by:
3.0	81.6	121.8	24.9	Shipwreck Cattle Company

BRED TO WHF/JS/CCS DOUBLE UP G365 (ASA 3658592) ON 11/16/22.

SAFE AI DUE 8/25/23. Here is a bigger framed, longer bodied blaze face female by Currency and from the Broker x Melody combination on the bottom side. The cow power and build of this animal will go the distance in production. Sells safe in calf to the hottest heifer bull in the land, Double Up.



69

NFFS SWC JULIANAS TIARA 531J

5/12/21 :: PB SM :: 3934729 :: 531J

JSSC WIDE BODY 090W**KCC1 TIARA 131Z**

JS SURE BET 4T
 WHCC ANGELS DREAM
 WAGR DRIVER 706T
 CNS TIARA P405

BW	WW	YW	M	Offered by:
1.2	69.4	93.3	21.7	Shipwreck Cattle Company

BRED TO SEXED FEMALE SWC RED WAVE 376J (ASA 3937607) ON 11/20/22.

SAFE AI DUE 8/29/23. A high probability that this blaze faced red head will have another blaze faced red head on the way. This female is a full sister to the Bird Cattle Company donor known as 131D. 131D is the dam of the \$38,000 high selling red head from the 2022 Black Label. She is also responsible for a female in the 2021 Black Label that commanded a \$20,000 dollar hammer price with a lifetime female progeny average that calculates well over the twenty grand mark. 531J has the same resume, she's just younger is the only difference. We think that she is a bit more elegant than big sister and does have the blaze marking.





70

CRSS CLARITY

9/22/21 :: PB SM :: 4020331 :: 21J

SO REMEDY 7F

SS/SVF SHES JUST RIGHT

HPF/HILL UPRISING C104
B&K CREAM SODA 8D
MCM TOP GRADE 018X
PRS LADY DONE RIGHT W214

BW	WW	YW	M
0.1	76.1	124.2	25.9

Offered by:

Shipwreck Cattle Company

BRED TO SEXED FEMALE SWC RED WAVE 376J (ASA 3937607) ON 11/18/22.

SAFE AI DUE 8/27/23. We present a maternal sister to the 2017 American Royal Champion Purebred Female that happens to be sired by the 2021 National Champion SO Remedy 7F and from the full sister to TJ High Calibre. Definitely one that is bred in the purple! 21J is a stout boned, big footed female with extension and extra body shape.



71

HILL HEART OF TAHATI J13G

3/27/21 :: 3/4 SM 1/4 AN :: 3881457 :: J13G

HILB ORACLE C033R

HILB MISS MOANA F13B

LLSF UPRISING Z925
SS BABYS BREATH P035
PVF BLACKLIST 7077
HILB FAIRY TALE B5

BW	WW	YW	M
1.7	78.3	113.7	16

Offered by:

3B Cattle Company

BRED TO SEXED FEMALE SWC RED WAVE 376J (ASA 3937607) ON 11/18/22.

SAFE AI DUE 8/27/23. Here is the maternal sister to lot 22. Megan Brown selected the dam of this female in a past Passion for Perfection sale that went on to be the Champion Percentage Pair of the 2021 South Central Regional. If your desire is to have one that is multi-generational dense and bold in their center body with true shape and skeletal width, then set your satchel down here.

3BCC SWC KALI 613K - Maternal sister to Lot 71 - Sells as Lot 22

72

3BCC JULES 108J

11/11/21 :: PB SM :: 4187717 :: 108J

GSC SAVAGE 9G

SC BEYOND BELIEF C21

W/C RELENTLESS 32C
 WELSH'S SCARLET 161Z
 CNS PAYS TO DREAM T759
 LLSF URABABYDOLL U194

BW	WW	YW	M	Offered by:
2.8	78.1	110.1	19.1	3B Cattle Company

BRED TO WHF/JS/CCS DOUBLE UP G365 (ASA 3658592) ON 11/15/22.

PE WITH GSC SAUGAHATCHEE 161C (ASA 3138197) FROM 1/17/23-3/20/23.

Megan Brown sent us some good stock for this marketing event. This daughter of GSC Savage from the full sister to the legendary sires known as SC Pay the Price and LLSF Pays To Believe. She is also a maternal sister to a duo of females that were offered a year ago and were selected by the Mosely Family of Texas and the Woodward Family of Oklahoma, both of which had multiple successful outings for those families in highly contested breed shows.

The wild pieces that this one offers through her front skeleton, overall pattern, and balance can be utilized in a variety of mating choices to create the next top shelf breeding piece.



73

3BCC JASMIN 104J

12/16/21 :: 1/2 SM 1/2 AN :: 4187716 :: 104J

COLBURN PRIMO 5153

3BCC DAYDREAMING

DAMERON FIRST CLASS
 SILVEIRAS SARAS DREAM 1339
 PROFIT
 S&S ONE DREAM S61

BW	WW	YW	M	Offered by:
2.3	72.8	105	13.2	3B Cattle Company

BRED TO WHF/JS/CCS DOUBLE UP G365 (ASA 3658592) ON 11/15/22.

PE WITH GSC SAUGAHATCHEE 161C (ASA 3138197) FROM 1/17/23-3/20/23.

A very eccentric, bad to the bone built SimAngus female from the Brown Family! Primo x Profit, both of which have sired some of the best of the best without the other. In this scenario, the blend of both appears to be the obvious way to go. I'm not sure that there is one better built than this female in this set of fall bred females. She's worthy of consideration to go to the Summer Classic in the Senior Yearling Division.





74

HSC CRAZY CARRIE 1056J

9/7/21 :: PB SM :: 4084826 :: 1056J

TMAS CAN'T TOUCH THIS 8531F

MR TR HAMMER 308A ET
J6RA 606B

FBFS XTRAVAGANT 053X

JS SURE BET 4T
SVF STAR STRUCK S199

BW	WW	YW	M
4.3	85.6	131.4	15.8

Offered by:

Shipwreck Cattle Company

BRED TO HOLT NIGHT VISION 457H (ASA 3802475) ON 1/17/23.

SAFE AI DUE 10/26/23. Another piece of evidence that anything works on 053X. This time yielded a sharp featured, heavy structured, wide pinned and densely made female. We've always valued her unique traits and tried her in the show ring. She wasn't always easy to show as she lived up to her name, Crazy Carrie. The Ft. Worth Stock Show highlighted her show potential this year where she won the fall division. She's certainly not tapped into her potential and I feel she's capable of a strong run at the National Classic in Des Moines this summer with a more experienced showman.



75

3BCC JADE 109J

10/30/21 :: PB SM :: 4187715 :: 109J

W/C VIP 005G

CDI CEO 281D
MISS WERNING KP 8543U

GSC SCARLET 960G

W/C RELENTLESS 32C
WELSH'S SCARLET 161Z

BW	WW	YW	M
1.4	75	103.4	22.3

Offered by:

3B Cattle Company

BRED TO THSF LOVER BOY B33 (ASA 32983443) ON 1/15/23.

PE WITH GSC SAUGAHATCHEE 161C (ASA 3138197) FROM 1/17/23-3/20/23.

Lot 75 is a big bodied, broody designed female that is built wide from the ground up. Her dam is a maternal sister to GSC CGGO Dew North 102C.

76

SWC JOSELYN 957J

9/12/21 :: PB SM :: 4179359 :: 957J

SO REMEDY 7F

HPF/HILL UPRISING C104
B&K CREAM SODA 8D
CCR ANCHOR 9071B
WAGR CHANEL 5073C

BLC1 ESTELLE 373E

BW	WW	YW	M	Offered by:
1.3	79.7	124.7	22.8	Shipwreck Cattle Company

BRED TO HOLT NIGHT VISION 457H (ASA 3802475) ON 1/18/23.

SAFE AI DUE 10/27/23. This female has been a standout among her contemporaries for frame size and weight per day of age since weaning time. One that will produce those stout, rugged herd bulls with added size and performance.

78

BRAMLETS/DBLG EMMY J196

9/22/21 :: PB SM :: 4027663 :: J196

TJSC KING OF DIAMONDS

LLSF PAYS TO BELIEVE ZU194
KLS DIAMOND W516
TNGL GRAND FORTUNE Z467
BRAMLETS BEAUTIFUL Y100

BRAMLETS IMAGE D622

BW	WW	YW	M	Offered by:
2.5	73.5	106.9	23.2	Shipwreck Cattle Company

BRED TO HOLT NIGHT VISION 457H (ASA 3802475) ON 12/9/23.

SAFE AI DUE 9/17/23 WITH A HEIFER CALF. We love the flat, smooth, ultra sound kind this female is. Her structure, bone, and ability to go flawlessly will benefit any breeding program.

80

MEGS PENNY

10/14/21 :: 3/4 SM 1/4 AN :: 4032245 :: 121J

MG/GSC AUTHORITY W14C

CDI AUTHORITY 77X
OBCC MS TAILOR 14TW
FLYING B CUT ABOVE
Y1 MISS YARDLEY W60

JPLF MISS B437

BW	WW	YW	M	Offered by:
2.6	74.8	111.3	21.1	Shipwreck Cattle Company

BRED TO SEXED FEMALE SWC RED WAVE 376J (ASA 3937607) ON 12/6/22.

SAFE AI DUE 9/14/23. A very stout, good bodied, three-quarter blood female with extra foot and bone. The stock by Authority are known for the shear width, dimension, and body shape they have to offer to any breeding scenario.

77

RUBYS RHYTHM 1J37

10/15/21 :: PB SM :: 4037735 :: 1J37

RUBY/SWC GENTLEMAN'S JACK

TLLC ONE EYED JACK
SWC RUBY YETTI 143Y
RUBY SWC BATTLE CRY 431B
RHYTHM 418P

RUBY NFF RHYTHM 715E

BW	WW	YW	M	Offered by:
2.7	70.1	107.1	15.5	Shipwreck Cattle Company

BRED TO WHF/JS/CCS DOUBLE UP G365 (ASA 3658592) ON 11/19/22.

SAFE AI DUE 8/28/23. A very elegant, sharp featured baldy female that ties a double shot of the Ruby matriarch 143Y and a single dose of the legend, 418P.

79

RS&T SHINING TOUCH J012

11/18/21 :: PB SM :: 4020256 :: J012

TMAS CAN'T TOUCH THIS 8531F

MR TR HAMMER 308A ET
J6RA 606B
HTP SVF IN DEW TIME
JJ BLACK OBSESSION

RS&T OBESESSION GAL B120

BW	WW	YW	M	Offered by:
3.1	83.3	122.8	19.3	Shipwreck Cattle Company

BRED TO SEXED FEMALE SWC RED WAVE 376J (ASA 3937607) ON 11/16/22.

SAFE AI DUE 8/25/23. It's easy to appreciate a female with this much shape and her kind. The maternal side of this breeding piece is influenced by a full sister to the Jones Show Cattle and Campbell Land & Cattle donor female known as KLS Diamond W516. Pay attention here on one with the goods.

81

MISS CORE YETTI 121J

9/27/21 :: 1/2 SM 1/2 AN :: 4050922 :: 121J

S A V BISMARCK 5682

G A R GRID MAKER
S A V ABIGALE 0451
W/C RELENTLESS 32C
SWC RUBY YETTI 143Y

RUBY SWC YETTI G9065

BW	WW	YW	M	Offered by:
0.1	74.2	109.7	15.5	Shipwreck Cattle Company

BRED TO HOLT NIGHT VISION 457H (ASA 3802475) ON 12/9/23. SAFE AI DUE

9/17/23 WITH A BULL CALF. SimGenetics are best with the timeless proven genetic blend of the proven goods. As I mentioned in the Angus section, I am a sucker for the daughters of the great SAV Bismarck 5682 and this one happens to be back to a Relentless sired daughter of the proven Ruby matriarch known as Yetti 143Y. Maternal prowess through and through.



82

HSC PRINCESS 002J

1/5/21 :: 1/2 SM 1/2 AN :: 3938355 :: 002J

KCC1 EXCLUSIVE 116E

J&J PRINCESS 619

MR TR HAMMER 308A ET
TKCC VICTORIA 57A
FB CATALYST 3032 OF J&J
EXAR PRINCESS 5662

BW	WW	YW	M
0.6	72.4	106.9	10.6

Offered by:

Shipwreck Cattle Company

BRED TO HOLT NIGHT VISION 457H (ASA 3802475) ON 12/23/22.

SAFE AI DUE 10/1/23. This SimAngus breeding piece is anything short of awesome in terms of quality and kind on the profile. She has always been super sharp in her front third features with exceptional levelness from blade to pin set, an awesome rear leg, and plenty of turn to her hip with shape throughout. Her kind offers mating flexibility in several scenarios.

83

BLC1 JUST A ROBIN 411J

5/10/21 :: PB RA :: 4580691 :: 411J

KJHT POWER TAKE OFF

WR MS ROBIN 11B

RED SOO LINE POWER EYE 161X
SRA PAINTBUCKET
WEBR DR. PHIL
GT CITA 4060

BW	WW	YW	M
0.5	57	94	28

Offered by:

Shipwreck Cattle Company

BRED TO HOLT NIGHT VISION 457H (ASA 3802475) ON 12/23/22.

SAFE AI DUE 10/1/23. The lone Red Angus fall bred female from the proven WR MS Robin 11B donor female owned with the Nixon Family. These red offers substantial surface area at the surface with extra substance of bone, a rare find in the breed for certain. A Red Angus female with muscle, body, substance, and skeletal integrity.

A black cow is grazing in a field of tall grass. In the background, there is a large, leafy tree and a line of trees under a bright sky. The image has a soft, slightly faded appearance.

Frozen Genetics

**EMBRYOS
& SEMEN**



NFF WICKED B125 - Dam of Lot 100 Embryos



RECKONING 711F - Sire of Lot 100 Embryos

100

EMBRYOS

PB SM :: 3 REVERSE SORT FEMALE EMBRYOS

RECKONING 711F

NFF WICKED B125

W/C RELENTLESS 32C
RWA KRISHA-ET
NFF UPGRADE Z083
NFF WICKED Z119

BW	WW	YW	M	Offered by:
2.2	72.85	105.85	17.1	Shipwreck Cattle Company

This mating would be maternal sibs to the 2020 FWSSR Junior Show Champion Simmental Female exhibited by Bodie Shipman and now owned by Bar QH Simmentals of Illinois. For those that have followed the SWC prefix and program you know the general contribution of the stock from the NFF Wicked B125 donor dam. These cattle are consistently good in their center body, awesome structured, very balanced, and make awesome junior and senior yearling cattle that are competitive and then return in production. Selling three reverse sorted, IVF sexed female embryos by the past many time champ, Reckoning.



JCBB LADY 3301 - 2018 HLSR Reserve Grand Champion Simmental Female - Full sister to Lot 101 A&B Embryos



MTZ LADY JEWEL J2102 - AKA "DUECE"
Full sister to Lot 101 A&B Embryos

The Counter Attack sire embryos would be full sibs the Metzler Cattle Co matriarch that was reserve at the 2018 HLSR Junior Simmental Show as calf and already produced a female that won both 2022 Fort Worth and San Antonio Junior Shows to her own claim. The Red Bird sired embryos should be as good or better than the sire choices before. We see the first Red Bird stock around the country as loaded for bear when it comes to substance, shape, and look. He may be the red hided sire of choice to replace his distinguished sire in nearly any mating in the future. Tie in with confidence. Bird doesn't like to sell the frozen goods very often so take advantage.

101a EMBRYOS

PB SM :: 3 CONVENTIONAL EMBRYOS

DMCC COUNTER ATTACK 8C

SANDEEN LADY 3301

REMINGTONSECRETWEAPON185
CARD FOREVER 61A
SVF/NJC BUILT RIGHT N48
WMCC SHAGGY

BW	WW	YW	M	Offered by:
-0.5	57.9	85.5	22.45	Bird Cattle Co.

101b EMBRYOS

PB SM :: 3 CONVENTIONAL EMBRYOS

W/C RED BIRD 269J

SANDEEN LADY 3301

W/C BANKROLL 811D
W/C MISS ANGEL 2870Z
SVF/NJC BUILT RIGHT N48
WMCC SHAGGY

BW	WW	YW	M
0.85	66.75	97.45	20.45



HOC DREAM TIARA 131D - \$33,000 Dam to Lot 102 A&B Embryos



TRCC PANDEMIC - Sire of Lot 102A Embryos



W/C RELENTLESS 32C - Sire of Lot 102B Embryos

HOC Dream Tiara was Bird's selection and past high selling bred female of the bred division at the Black Label a few years back. The progeny that Bird has sold privately and through the Black Label have a lifetime average north of \$20,000. Families such as the Arthur of Oklahoma, DeBerry and Shipman of Texas have invested in the goods over the past three years. It is of my opinion that these two mating will be even better than the ones of the past as these two studs offer more center, more dimension, and more substance throughout and their progeny nationwide tells that story.

102a

EMBRYOS

PB SM :: 3 CONVENTIONAL FEMALE EMBRYOS

TRCC PANDEMIC

W/C BANKROLL 811D
RF 29E

HOC DREAM TIARA 131D

JSSC WIDE BODY 090W
KCC1 TIARA 131Z

BW	WW	YW	M
1.4	71.8	101.45	21.65

Offered by:

Bird Cattle Co.

102b

EMBRYOS

PB SM :: 3 CONVENTIONAL EMBRYOS

W/C RELENTLESS 32C

YARDLEY UTAH Y361
MISS WERNING KP 8543U

HOC DREAM TIARA 131D

JSSC WIDE BODY 090W
KCC1 TIARA 131Z

BW	WW	YW	M
3.15	74.8	96.5	17.6

103

EMBRYOS

PB SM :: 3 IVF REV. SORT FEMALE EMBRYOS

JSSC WIDE BODY 090W

SWC GWENDOLYN 376G

JS SURE BET 4T
WHCC ANGELS DREAM
W/C EXECUTIVE ORDER 8543B
WAGR MELODY 5076C

BW	WW	YW	M	Offered by:
0.6	73.05	102.4	22.35	Shipwreck Cattle Company

These would be the rare embryos by JSSC Wide Body 090W from the proven SWC Gwendolyn 376G donor dam offered as lot 2B. The consistency of the stock by the late Seals herdsire is known as they maintain a desirable amount of body, shape, and look. This pedigree will be stacked with proven matriarchs with two proven, high quality red females up close in the lineage. High probability of being red hided and quality is certain.



SWC GWENDOLYN 376G - Donor Dam of Embryos - Sells as Lot 2B

104

EMBRYOS

1/2 SM 1/2 AR :: 3 IVF EMBRYOS - FEMALE SEMEN

ROJAS RIOJA

BLC1 EVELYN 476E

PZC TMAS FIRESTORM 1800 ET
SIX MILE LAKOTA 112Y
W/C EXECUTIVE ORDER 8543B
WAGR MELODY 5076C

BW	WW	YW	M	Offered by:
0.4	67.65	91.6	27.45	Shipwreck Cattle Company

The demand for the right red hided SimAngus is out there but that one is still yet to come. We are more than certain that this mating is that one. When one talks about look, power, body, and skeletal integrity, it's included on both sides of the equation in this mating. Proven stock from proven cow families will never go out of style. The resulting progeny are eligible for registry with American Simmental Association and with the Red Angus Association of America as well.



BLC1 EVELYN 476E - Donor Dam of Embryos



JCBB MISSY U409-02 - Donor Dam of Lot 105 Embryos



JS FLIRT A WAY 76H - Donor Dam of Lot 106 Embryos

105

EMBRYOS

PB SM :: 3 CONVENTIONAL EMBRYOS

W/C RED BIRD 269J

JCBB MISSY U409-02

W/C BANKROLL 81D
W/C MISS ANGEL 2870Z
DMCC COUNTER ATTACK 8C
WLE MISSY U409

BW	WW	YW	M
1.3	70.35	99.9	20

Offered by:

Bird Cattle Co. & Circle N Ranch



W/C RED BIRD 269J
Sire of Lot 105 & 107B Embryos

Bird pictured this female a year ago and passed it around to a few folks. If you make a trip to West Texas or the Lubbock area, one should call Brandon and go get their eyes full of this very impressive red baldy. She is by the female making stud known as Counter Attack and from the proven U409 donor dam that was bred in the Wesner program, utilized by Joe Horstman, and then purchased by Bird on one of last of the great sale series once experienced at the

North American. 770P, the legendary donor dam that built the entire Circle M Volume 1 program and impacted the breed in so many great ways, would be the maternal granddam of this incredible beast.

106

EMBRYOS

PB SM :: 3 IVF NON SORTED EMBRYOS

NEXT LEVEL

JS FLIRT A WAY 76H

KRJ DAKOTA OUTLAW G974
KRD CAEDENCE C37
W/C RELENTLESS 32C
JS FLIRT A-WAY 59Y

BW	WW	YW	M
4	81.05	119.55	22.45

Offered by:

Shipwreck Cattle Company

We partnered with Dylan Sheffield to acquire this breeding piece. A certain SC rep tipped us off about this female selling in a sale he was hosting and we are appreciative today of the assist from Colby Tabor. This female would have competed in the toughest class possibly in all of Simmental exhibition history. Eight heifers in this class were at every show and all 8 of them either won or were eighth at some point and all of those will impact the programs that own them and potentially the breed for a number of years. This mating to Next Level is top level as those calf reports of significant quality and kind continually buzz through business. Very strong maternal with the hottest young sire in the business.

107a

EMBRYOS

3/4 SM 1/4 AN :: 3 IVF NON SORTED EMBRYOS

ES RIGHT TIME FA110-4

SWC HOC ANNIE K 214C

ES RIGHT TIME FA110-4
WAGR MS CONFEDERATE 9032G
JSSC WIDE BODY 090W
ACW ANNIE K 330Y

BW	WW	YW	M
2.55	78.95	120.35	19.8

Offered by:

Shipwreck Cattle Company

107b

EMBRYOS

PB SM :: 3 IVF NON SORTED EMBRYOS

W/C RED BIRD 269J

SWC HOC ANNIE K 214C

W/C BANKROLL 811D
W/C MISS ANGEL 2870Z
JSSC WIDE BODY 090W
ACW ANNIE K 330Y

BW	WW	YW	M
2	73.95	108.1	19

107c

EMBRYOS

PB SM :: 3 IVF NON SORTED EMBRYOS

CKCC CASH IS KING 0813H ET

SWC HOC ANNIE K 214C

SWSN CASH FLOW 81E
HF SERENA
JSSC WIDE BODY 090W
ACW ANNIE K 330Y

BW	WW	YW	M
3.4	79.5	114.8	18.2

107d

EMBRYOS

PB SM :: 3 IVF REVERSE SORT FEMALE EMBRYOS

WHF/JS/CCS DOUBLE UP G365

SWC HOC ANNIE K 214C

W/C DOUBLE DOWN 5014E
WHF SUMMER 365C
JSSC WIDE BODY 090W
ACW ANNIE K 330Y

BW	WW	YW	M
1.95	78	106.9	19.85



SWC HOC ANNIE K 214c - Dam of Lot 107 A-D Embryos



ES RIGHT TIME FA110-4
Sire of Lot 107A Embryos



CKCC CASH IS KING 0813 ET
Sire of Lot 107C Embryos



WHF/JS/CCS DOUBLE UP G365
Sire of Lot 107D Embryos

The donor selling as Lot 4A has had a significant impact on our program for years. Not to be repetitive with the footnote at the front of the sale book, but this is a fundamental beast that is a generator. The Right Time cattle are significant across the scales and are later maturing as far as coming into that desired look, the bulls are easy to trade and the females are worth of retention. Red Bird was a sire of choice to make good stock regardless of color and with the initial calf reports this could be the very best mating to date on this matriarch. The "Cash Is King" progeny at VanHove's are loaded for bear in terms of power, substance, and shear dimension and we definitely don't expect much different on 214C as well. Finally, we did reverse sort the mating to the hottest calving sire in the business and certainly expect those cattle by the past Reserve National Champion to blend well with a combination of two great, elite cow families with a winning generating reputation.



FLY SHEEZA TX LADY 8015C - 2016 TJSSA Grand Champion Purebred Simmental Female - Dam of Lot 108 A&B Embryos

This female would be a new face in the crowd since she sold years ago in the 2016 Black Label. In that very sale she was the \$30,000 high selling open that was purchased by the Culpepper Family of Gonzales, TX. She went on to win the 2016 Ft Worth Junior Show, the 2016 TJSSA State Futurity, and had multiple division titles to her name as well. My opinion of this female is one of the rarest kinds based on pedigree that one can find. She has always been huge at the surface, comparable on bone, with so much width and mass throughout. A High Regard daughter that is certainly a blend of shape and beauty. We have not grabbed a mature photo of this female, but her video will encourage one to tie into something fresh from County Road 206. Pandemic is a mating suggested by Graham himself and if you study the Werning program at all, it's a risk worth investing in as the possibilities are endless. Summitcrest is a bull that was owned by Zane Ward saturated in old school good stuff and the resulting heifer calves should be the right kind.

108a EMBRYOS

PB SM :: 3 IVF EMBRYOS - FEMALE SEMEN

TRCC PANDEMIC

FLY SHEEZA TX LADY 8015C

W/C BANKROLL 811D
RF 29E
YARDLEY HIGH REGARD W242
FLY SHEZA TEXAS LADY

BW	WW	YW	M	Offered by:
1.65	71.15	111.5	20.8	Shipwreck Cattle Company

108b EMBRYOS

PB SM :: 3 REVERSE SORT FEMALE EMBRYOS

SUMMITCREST

FLY SHEEZA TX LADY 8015C

SC PAY THE PRICE C11
VOLK BLAZE D619
YARDLEY HIGH REGARD W242
FLY SHEZA TEXAS LADY

BW	WW	YW	M
2.7	70.85	109.2	20.15



W/C LOADED UP 1119Y - Sire of Lot 109C Embryos



DUELLO BROKERS LUCY 4114 - Dam of Lot 109 A-C Embryos

109a EMBRYOS

3/4 SM 1/4 AN :: 3 CONVENTIONAL EMBRYOS

W/C RED BIRD 269J

DUELLO BROKERS LUCY 4114

W/C BANKROLL 811D
W/C MISS ANGEL 2870Z
MR HOC BROKER
WB PVF LUCY 1052

BW	WW	YW	M
2.05	79.6	124.7	20.7

Offered by:

Bird Cattle Co.

109b EMBRYOS

5/8 SM 1/4 AN 1/8 CS :: 3 CON. EMBRYOS - FEMALE SEMEN

TRCC PANDEMIC

DUELLO BROKERS LUCY 4114

W/C BANKROLL 811D
RF 29E
MR HOC BROKER
WB PVF LUCY 1052

BW	WW	YW	M
1.3	77.05	124.45	22

109c EMBRYOS

3/4 SM 1/4 AN :: 3 CONVENTIONAL EMBRYOS

W/C LOADED UP 1119Y

DUELLO BROKERS LUCY 4114

REMINGTON LOCK N LOAD54U
AUBREYS BLACK BLAZE III
MR HOC BROKER
WB PVF LUCY 1052

BW	WW	YW	M
2.3	79.3	125.35	22

Duello Brokers Lucy 4114 was Bird's selection from the Western Elite. Dr. Dave may be one of the most talented stock breeding minds of all time and certainly a cowboy that knows how to make it work with a ton of risk involved. This female is responsible for females that have averaged north of \$15,000. Her stock have plenty of the extras in term of build, power, flexibility, and kind. These three mating have a lot of things in common and a ton of legitimacy behind them. Buy with confidence and reap the benefits of the proven blend of Broker and Loaded Up.



WR MS ROBIN 11B - Dam of Lot 110 Embryos



BLC1 NFF TAKE OFF ROBIN 014H - Maternal sib to embryos selling

110

EMBRYOS

1/2 SM 1/2 AR :: 3 REV. SORTED - FEMALE EMBRYOS

JSSC WIDE BODY 090W

WR MS ROBIN 11B

JS SURE BET 4T
WHCC ANGELS DREAM
WEBR DR PHIL
GT CITA 4060

BW	WW	YW	M
0.1	65	95.35	23.05

Offered by:

Shipwreck Cattle Company

WR MS Robin 11B has been a very productive matriarch for our family. This mating to JSSC Wide Body will be eligible for dual registration with American Simmental and the Red Angus Association of America.

KCC1 Countertime 872H is the 2021 high selling bull at Kearns Cattle Co where he set the record pace with a \$240,000 hammer price. His first set of bulls marketed at the 2023 Kearns Cattle Co Bull sale averaged on the plus side of \$10,000. Since the interest in this lad has surged so we are offering 50 units of conventional and 50 units of sexed female semen. The very first daughter marketed last fall commanded a \$37,000 hammer price through the Black Label and his service is offered in this sale as well. He has matured into quite the specimen and has been admired by some of the business' best eyes. Joseph Blount was impressed, so for an outside opinion give him a call at 936.615.6044. He is out on cows this time of year at Dylan Sheffield's place, so if you want to set your eyes on him give Dylan a shout.



KCC1 COUNTERTIME 872H

200a-j KCC1 COUNTERTIME 872H
PB SM :: 3806012 :: 2/26/20

ES RIGHT TIME FA110-4
KCC1 HAVANA 83E

WELSHS DEW IT RIGHT067T
ES A110
MR TR HAMMER 308A ET
TKCC VICTORIA 57A

BW	WW	YW	M	Offered by:
2.4	86.2	137	17.5	Countertime Group

SELLING 50 UNITS OF CONVENTIONAL SEMEN IN PACKAGES OF 5

201a-y KCC1 COUNTERTIME 872H
PB SM :: 3806012 :: 2/26/20

ES RIGHT TIME FA110-4
KCC1 HAVANA 83E

WELSHS DEW IT RIGHT067T
ES A110
MR TR HAMMER 308A ET
TKCC VICTORIA 57A

BW	WW	YW	M	Offered by:
2.4	86.2	137	17.5	Shipwreck Cattle Company

SELLING 30 UNITS OF SEXED FEMALE SEMEN IN PACKAGES OF 3



TRCC PANDEMIC

202a-f TRCC PANDEMIC

3/4 SM 1/4 CS :: 3748285 :: 2/27/20

W/C BANKROLL 811D
RF 29E

W/C LOADED UP 1119Y
MISS WERNING KP 8543U
RLYF ROLL TIDE A429
170

BW	WW	YW	M
0	69	107.8	21.7

Offered by:
Bird Cattle Co.

SELLING 18 UNITS OF SEXED FEMALE IN PACKAGES OF 3

The initial calf reports have been good on the calves by Pandemic and as the late and spring and summer goes on, we are certain that the buzz will gain momentum as they mature. I did have the opportunity to see this bull prior to his promotional photo and this thing is legit in his foot size, bone dimension, back shape, pin set, quarter depth, and flare of stifle. Pandemic was big in his upper rib as well as being flexible and collected in motion. Don't base your livelihood on a photo taken by a hater at a bull stud, base it on the pre stud facts and on the calves themselves. If you want to make them eccentric and out there this is the one to invest in.



W/C RED BIRD 269J

203a-j w/c RED BIRD 269J

PB SM :: 3974327 :: 2/9/21

W/C BANKROLL 811D
W/C MISS ANGEL 2870Z

W/C LOADED UP 1119Y
MISS WERNING KP 8543U
REMINGTON LOCK N LOAD54U
MISS WERNING KP 8543U

BW	WW	YW	M
1.5	74.1	108.3	19.1

Offered by:
Bird Cattle Co.

SELLING 50 UNITS OF CONVENTIONAL SEMEN IN PACKAGES OF 5

When I laid eyes on this bull at Werning Cattle Company's 2022 Production Sale, my first call was to Brandon Bird. It took some time twisting after he just bought Pandemic 30 days prior, but after he had the chance to put his eyes on him he thanked me for convincing him it was the thing to do. Red Bird is royally bred with only the best of the best of the W/C in the pedigree box up close. He is so big and good at the surface, huge featured in his skeleton, awesome in his shape and body with a near perfect build. This specimen works on cows of any color and the calf reports tell us that they are burly but chiseled in their look. Another opportunity to improve your program 5 straws at a time.



SWC RED WAVE 376J

SWC Red Wave 376J was the high selling sale feature of the 2021 Black Label gathering an \$85,000 hammer price. He was marketed as a calf as a low birth weight sire with look and cow family. In his first set of calves, the calving ease is certain as well as the quality. This will be the only semen offered this breeding season on this elite calving ease sire with quality phenotype.

204a-t swc RED WAVE 376J

PB SM :: 3937607 :: 3/7/21

CONLEY HIGH RISE F3
SWC GWENDOLYN 376G

TJ HIGH CALIBRE 556B
CONLEY SHEZA STAR D3
W/C EXECUTIVE ORDER 8543B
WAGR MELODY 5076C

BW	WW	YW	M
-1.4	64.1	88.9	23.3

Offered by:

Shipwreck Cattle Company

SELLING 100 UNITS OF CONVENTIONAL SEMEN IN PACKAGES OF 10

205a-e swc RED WAVE 376J

PB SM :: 3937607 :: 3/7/21

CONLEY HIGH RISE F3
SWC GWENDOLYN 376G

TJ HIGH CALIBRE 556B
CONLEY SHEZA STAR D3
W/C EXECUTIVE ORDER 8543B
WAGR MELODY 5076C

BW	WW	YW	M
-1.4	64.1	88.9	23.3

Offered by:

Shipwreck Cattle Company

SELLING 15 UNITS OF SEXED FEMALE SEMEN IN PACKAGES OF 3



STCC TECUMSEH 058J

206a-j STCC TECUMSEH 058J

PB SM :: 3958195 :: 4/4/21

VCL FORESIGHT

HF SERENA

MR CCF 20-20
HCCO COUNTESS 412D
MR NLC UPGRADE U8676
MISS KNOCKOUT 74T

BW	WW	YW	M
3.9	83.8	123	17.4

Offered by:

Shipwreck Cattle Company

SELLING 10 UNITS OF CONVENTIONAL SEMEN IN 1 UNIT INCREMENTS

Tecumseh will have multiple high seller carrying his DNA come this fall when the first calves are marketed. His is the son of VCL Foresight from the legendary money earner known as HF Serena that was successfully marketed by Hartman Cattle Co and acquired by Brad and Meg Freking. The demand for this semen will increase as time goes on with the calf reports across the country showing to be extremely favorable.



NEXT LEVEL

207a-e NEXT LEVEL

PB SM :: 3981484 :: 3/12/21

KRJ DAKOTA OUTLAW G974

KRDL CAEDENCE C37

RUBYS TURNPIKE 771E
BRKC DAPHNE DY37
WLE BIG DEAL A617
KRDL FAE Y46

BW	WW	YW	M
4.2	90.1	133.9	4.1

Offered by:

Shipwreck Cattle Company

SELLING 10 UNITS OF SEXED FEMALE SEMEN IN PACKAGES OF 2

Next Level is the hottest sire choice in the business to produce Simmental influenced cattle with a top shelf look and build. He is a very impressive sire choice that has a high probability of making blaze or baldy marked stock with flawless symmetry and transitions with added shape and density throughout. He's owned by some of the most critical eyes in the business with evident track records of success, so why wouldn't you acquire sexed heifer semen for your future IVF needs.



MR CCF 20-20

SELLING 6 UNITS OF CONVENTIONAL SEMEN IN 1 UNIT INCREMENTS

20-20 is a stud that was good to ideal when he first arrived on the scene and is still good today as he consistently sires the goods. Multiple high selling sale features nationwide with daughters in working cowherds bringing the goods to the weaning pen every year. He can sire champions that go out and do the right things to generate for their ownership when they complete their show careers and enter the productive stages of life. 20-20 is comparable to Broker in regard to consistency of stock and how well they can complement one another when used in combination. This stuff is rare, so gather it up right here.

208a-f **MR CCF 20-20**
PB SM :: 2964446 :: 9/14/14

MR CCF VISION
HTP SVF DEW THE STROKE

MR NLC UPGRADE U8676
GCF MISS ELSA
WLE POWER STROKE
HTP SVF HONEYDEW

BW	WW	YW	M
1.7	82.2	113.4	9.5

Offered by:

Shipwreck Cattle Company



W/C STYLE 69E "FAMILY TRADITION"

209a-b w/c STYLE 69E

1/2 SM 1/2 AN :: 3336318 :: 2/27/17

SILVEIRAS STYLE 9303
MISS WERNING KP 8543U

GAMBLES HOT ROD
 SILVEIRAS ELBA 2520
 WAGR DREAM CATCHER 03R
 MISS WERNING 534R

BW	WW	YW	M	Offered by:
-1.9	50.3	74.8	20.2	Shipwreck Cattle Company

SELLING 4 UNITS OF CONVENTIONAL SEMEN IN PACKAGES OF 2

W/C Style 69E or known as "Family Tradition", has been a hard working sire for the Owen Brothers Cattle Co program along with Reimann Ranches for a number of years, but he really proved himself this past December with a record selling daughter that had a full brother as one of the higher sellers in the Hartman Cattle Co bull sale. Again, he's a rare find, but very suitable to utilize for those "out there" kind.



OMF HARD RIGHT H21

210a-c OMF HARD RIGHT H21

PB SM :: 3790968 :: 2/12/20

OMF EPIC E27
HOOKS ANGEL 11A

WS ALL-AROUND Z35
 OMF TIME LESS B100
 MCM TOP GRADE 018X
 HOOK'S XPONENTIAL 20X

BW	WW	YW	M	Offered by:
1.7	87.2	131.2	23	Shipwreck Cattle Company

SELLING 6 UNITS OF CONVENTIONAL SEMEN IN PACKAGES OF 3

OMF Hard Right H21 is the past \$60,000 sale feature from the 2021 Oak Meadow Farms Production Sale that was selected by Hartman and CK Cattle. In his first class of bulls to be marketed this year, they were received with enthusiasm and satisfaction. They offer tons of shape, power, and athleticism. They have the growth and are sensible into the world at birth..



W/C RELENTLESS 32C

SELLING 3 UNITS OF SEXED FEMALE SEMEN IN 1 UNIT INCREMENTS

It's definitely not a secret that the Relentless cattle have been successful. They consistently are blessed with bone, length, look, and some extra shape of muscle throughout. He is the sire of multiple champions and the opportunity to purchase sexed female semen on this sire is somewhat rare.

211a-e w/c RELENTLESS 32C
PB SM :: 3045559 :: 2/27/15

YARDLEY UTAH Y361
MISS WERNING KP 8543U

GCC HARD AS STEEL 144W
MISS YARDLEY T170
WAGR DREAM CATCHER 03R
MISS WERNING 534R

BW	WW	YW	M
3.5	75	97.9	13.6

Offered by:

Shipwreck Cattle Company



DAMAR NEXT D852 "LEXUS"

212a

DAMAR NEXT D852

PB AR :: 3598408 :: 9/5/16

SILVEIRAS MISSION NEXUS 1378

DAMAR MIMI W085

LJC MISSION STATEMENTP27
SILVEIRAS DAORV 8399
RED FINE LINE MULBERRY 26P
DFRA TARMILY N512

BW	WW	YW	M
-3.2	58.0	90.5	6.6

Offered by:

Shipwreck Cattle Company

SELLING 2 UNITS OF CONVENTIONAL SEMEN IN 1 PACKAGE

Damar Next D852 otherwise referred to as "Lexus", is a proven calving ease sire in the Red Angus breed. His semen is rare to find and his stock ideal in their kind.



TC/HOC LONE STAR

213a-e

TC/HOC LONE STAR

PB AR :: 4638677 :: 2/16/22

EGL GCC RED EAGLE E7194

TC ADELLE F2

RED U-2 RIFF 1213C
TJS SARABEL A74
RED RAINBOW TRANSCENDENCE 29B
BIEBER ADELLE 311Y

BW	WW	YW	M
0.4	68.0	100	23

Offered by:

Hidden Oaks Cattle & TC Reds

SELLING 15 UNITS OF CONVENTIONAL SEMEN IN PACKAGES OF 3

Allow us to introduce you to the \$37,000 high selling bull from the TC Reds annual bull sale in February. There is no denying the sheer substance, mass, power, and dimension that Lone Star possesses. A true outlier in terms of skeletal quality, TC/HOC Lone Star is a breeding bull with an extremely bright future. The dam of Lone Star is a member of the famed "Adelle" cow family that calls home to TC Reds. His dark cherry red hide color further compliments the elite form and functionality that he seamlessly combines. This is the initial semen offering from the newest member of the Hidden Oaks Cattle herd sire battery!



BLOUNT

VETERINARY SERVICES

Central Texas Satellite Center for **TRANS OVA**
genetics

HAMILTON, TX

UPCOMING ASPIRATION DATES

APRIL 17 TH	JUNE 12 TH
MAY 1 ST	JUNE 26 TH
MAY 15 TH	JULY 10 TH
MAY 30 TH	JULY 24 TH

SERVICES OFFERED:

IVF, Conventional Flushing, Fresh and Frozen Transfers, Donor Housing.



Joseph Blount, DVM
936-615-6044
Jeff Wallace
817-319-7077

TRANS OVA Trans Ova Genetics
genetics 712-722-3576



SHIPWRECK
- CATTLE COMPANY -

6945 CR 206
GRANDVIEW, TX 76050

FIRST CLASS MAIL
PRESORTED
POSTAGE PAID
BY SLATE GROUP



They Sell!

Choice of WAGR Chanel 5073C & BLC1 Estelle 373E