

J A R E D   W E R N I N G   C A T T L E

# FROZEN

**genetic sale**

APRIL 2023

GENETIC OPPORTUNITIES SELL OUT OF OUR  
**leading producers**

INCLUDING 8543U, 2870Z, 7114E, 9005G, 7110E, 609D AND MORE!

**flushes, semen + embryos**



04-10-2023-jwc-froz

**JW** *INNOVATION*  
AgMarketing, LLC



# ONE NEXT

## SALE TERMS

*Buyer pays \$ times the number of units selling.*

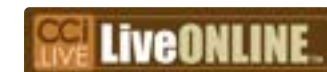
*Buyer is responsible for all shipping and storage costs following the conclusion of the auction.*

*Majority of embryos and semen will be stored at TransOva Iowa or 605 Sires*

## MONDAY, APRIL 10

**7:00 PM CENTRAL TIME**

*The sale will be broadcasted on CCI.live*



# 4

**MISS WERNING KP 8543U**

*Selling 1 IVF flush cycle on Miss Werning KP 8543U*

# 6

**W/C MISS ANGEL 2870Z**

*Selling 1 IVF flush cycle and an exciting set of embryos on W/C Miss Angel 2870Z*

# 8

**W/C ANGEL 7114E**

*Selling 1 IVF flush cycle and five exciting sets of embryos on W/C Angel 7114E*

# 10

**W/C HARRELL ANGEL 7110E**

*Selling one set of embryos out of W/C Harrell Angel 7110E, sired by Next Level*

# 18

**ANGUS EMBRYOS**

*Selling embryos out of the top Angus donors at JWC*

# 24

**SEMEN**

*Selling semen on 7 of the newest bulls in the Simmental and Angus breeds*

## JARED WERNING CATTLE

**JARED WERNING**

*605.933.1661*

**KASSI RICE**

*319.939.7476*

## INNOVATION

**GRAHAM BLAGG**

*530.913.6418*

**TIM ANDERSON**

*605.682.9343*

**JERED SHIPMAN**

*806.983.7226*

## ON THE COVER

**HOFFMAN PEG 9539**

*Dam of Lot 9 Embryos*





*MISS  
WERNING  
KP 8543U*

# ivf Cycle

1

## LOT 1 | SELLING IVF CYCLE

In the industry there are great cows and then there are legends...Miss Werning KP 8543U would be one of the few that would be classified as LEGEND-ARY. Generating more than \$8 Million in actual progeny sales, 8543U is the highest valued Simmental donor in the business and continues to make a substantial impact on every segment of the industry. 8543U has produced as many promotional AI sires of impact as any other female in the breed. Sons of major influence would include W/C Relentless 32C, W/C Bankroll 811D, W/C Bullseye 3046A, W/C Executive Order 8543B, W/C Executive 187D, and W/C Night Watch 84E. Top daughters are working in some of the most established

cow herds in North America. We are proud to welcome this once in a lifetime female home, and to celebrate we are releasing one IVF slot, to be utilized with the buyer's choice of sire.

**OPEN AND READY TO FLUSH.  
SELLER GUARANTEES A  
MINIMUM OF 6 TRANSFERABLE  
EMBRYOS, 2 60 DAY  
PREGNANCIES WITH A CAP OF  
10 EMBRYOS.**



*MISS WERNING KP 8543U*

**WAGR DREAM CATCHER 03R x MISS WERNING 534R**

2446017

*W/C MISS ANGEL 2870Z*

REMINGTON LOCK N LOAD 54U x MISS WERNING KP 8543U



2446017

**W/C MISS ANGEL 2870Z** is the pin up girl of the JWC, the maternal source of a large majority of the genetics you see offered in this first edition of our genetic sale. She has always been a special individual, and we think that phenotypically she is as elite of a mature female as we have ever produced, in person she takes one's breath away, and we feel honored to have her wandering the pastures of Hutchinson County. The heritability of her phenotype has proven to be potent and fortified, her daughters are consistently blessed with an authentic and enviable structural build, and an outline that leaves nothing further to be desired. If you cannot already tell, we think a lot about the maternal base that supports these frozen treasures. She is the kind of female that anything she touches turns to gold and this is evident by the long line of sons and daughters by various sires that stand at the forefront of the business, for programs around the world. Needless to mention the prominent list of grandprogeny that are paving the future. A true matriarch stands behind these two exclusive genetics opportunities, ones that shall not be taken lightly for their program changing capabilities.

*W/C* ●  
**miss  
angel**  
*2870Z*

**2a** SELLING IVF CYCLE

**2b** CONVENTIONAL NON-SEXED EMBRYOS

*TRCC PANDEMIC*  
SIRE OF LOT 2B EMBRYOS





# W/C ANGEL 7114E

W/C RELENTLESS 32C x W/C MISS ANGEL 2870Z

*ASA 3729750*

The spotlight of the JWC is turning towards the maternal power of this Relentless daughter that has been a honey hole of goodness! W/C Angel 7114E is the full sister to the \$130,000 mother of Bet On Red, Angel 7113E and the 3rd Overall Purebred Female at the 2019 AJSA Classic for Sara Sullivan, Angel 7110E. She is proving to be one of the most consistent generating females in program history, producing with surefire reliability and impressing in production, regardless of sire choice. You will also recognize her as the dam of the high selling lot from our Inaugural sale, the \$43,000 half interest Bankroll 811D daughter that Harrell Cattle Company of Illinois purchased. Claim you're stake in the early years of the next living legend for our program.



3a  
*IVF CYCLE*

OPEN AND READY TO FLUSH.  
SELLER GUARANTEES A MINIMUM  
OF 6 TRANSFERABLE EMBRYOS,  
2 60 DAY PREGNANCIES WITH A  
CAP OF 10 EMBRYOS.

3b  
*7114E EMBRYOS*

3 SEXED FEMALE  
TRCC PANDEMIC  
X W/C ANGEL 7114E

3c  
*7114E EMBRYOS*

3 CONVENTIONAL NON-SEXED  
OMF JOURNEYMAN J24  
X W/C ANGEL 7114E

3d  
*7114E EMBRYOS*

3 CONVENTIONAL NON-SEXED  
WINC MAHOMES 979G  
X W/C ANGEL 7114E

3e  
*7114E EMBRYOS*

3 SEXED FEMALE  
WEIS ALL ME 10F  
X W/C ANGEL 7114E

3f  
*7114E EMBRYOS*

3 CONVENTIONAL NON-SEXED  
KR CASINO 6243  
X W/C ANGEL 7114E



W / C  
Harrell  
Angel  
7110E is  
another proof  
positive indicator  
of the reliability of  
the W/C Relentless  
32C combination with  
W/C Angel 2870Z. She  
was competitive during  
the 2019 show season for  
Sara Sullivan where she  
was selected as the AJSA  
National Classic 3rd  
Overall Purebred Heifer.  
Now in production,  
7110E has emerged as  
one of the absolute most  
consistent and reliable  
producing daughters of  
the great 2870Z. This is  
driven by the fact that  
she is supported by  
multiple generations of  
females that have made  
a significant impact in  
the beef business. 7110E  
has shown to reliably  
inject skeletal quality  
and flexibility with  
impeccable feature and  
balance. The 2023 drop,  
Next Level sired cattle that  
represent his freshman  
class are turning heads  
and already driving  
demand for those making  
breeding decisions for  
this coming year. An  
exciting mating that has  
the potential to put you  
at the front of the game.

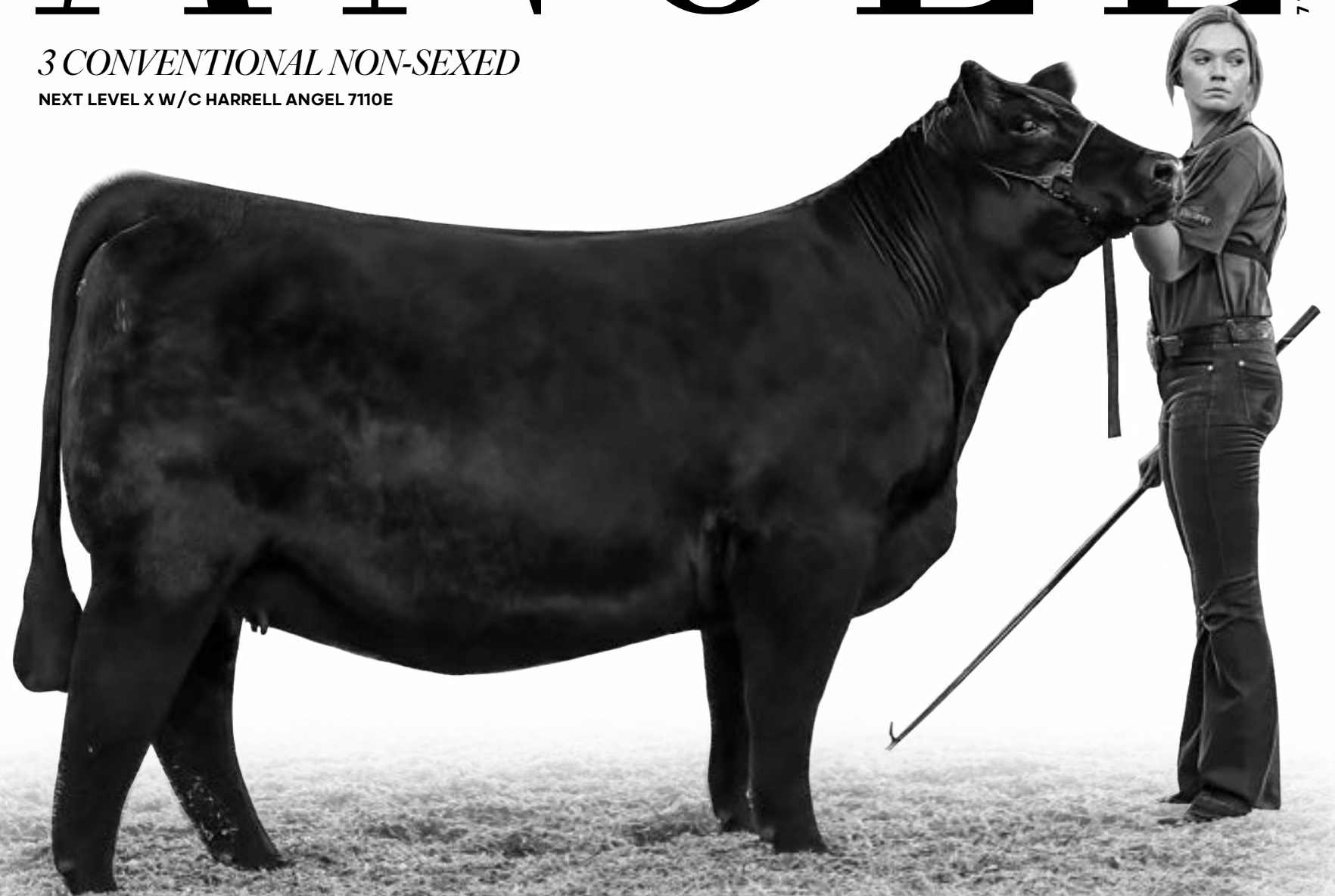
W/C RELENTLESS 32C x W/C MISS ANGEL 2870Z

ASA  
3479706

# W/C HARRELL ANGEL 7110E

3 CONVENTIONAL NON-SEXED

NEXT LEVEL X W/C HARRELL ANGEL 7110E



W/C ANGEL

9005G

*W/C ANGEL 9005G*

JS SURE BET 4T x W/C MISS ANGEL 2870Z

ASA **3831797**

The \$60,000 half interest high selling bred heifer of the 2021 sale season. This JS Sure Bet daughter is as uniquely built of a Purebred Simmental female as you will ever see, anyone that has seen this specimen in person will share the fact that seldom do livestock come with this kind of silhouette and design. The genetic tree that 9005G stems from has seen many bountiful harvests, the Angel cow family has developed a reputation for consistently pushing the boundaries for elite phenotypic traits and generating ability and you will find that the early progeny of 9005G dictate that she is the next legend in line from the tribe.



9005G EMBRYOS

**3  
sexed  
female**



*W/C Relentless 32C x W/C Angel 9005G*





K-LER

# DOLLY'S queen

W/C EXECUTIVE ORDER 8543B X GW MISS GRPD 028X

609D

6 An opportunity to secure genetics directly from the source of the breed influencing W/C Fort Knox 609F that commanded a \$180,000 price tag for two thirds in 2018 and the \$60,000 W/C Need 4 Speed 1016H that sold to Hilbrands and Harts. K-LER Dolly's Queen 609D is a female that has outreached any potential we could have ever imagined after purchasing her from the Kaehler Family in "The One" sale in Denver. She combines form and function and produces with a phenotypic value that is completely unrivaled, her progeny have become renowned as Simmental stock that lay outside the norm and push the boundaries, the kind that it takes to demand exuberant valuations.

ASA 3133208

6A

3 SEXED FEMALE EMBRYOS  
SIRE TRCC PANDEMIC  
DAM K-LER DOLLY'S QUEEN 609D

6B

3 CONVENTIONAL NON-SEXED  
SIRE MR SR 71 RIGHT NOW E1538  
DAM K-LER DOLLY'S QUEEN 609D

6C

3 CONVENTIONAL NON-SEXED  
SIRE OMF JOURNEYMAN J24  
DAM K-LER DOLLY'S QUEEN 609D



# hpf sazerac

H P F  
S a z e r a c  
Z07Z was the  
Grand Champion  
Simmental Female at  
the 2014 National Classic,  
Grand Champion Female at the  
Simmental Breeders Sweepstakes  
and Grand Champion Simmental Fe-  
male at the 2014 Indiana State Fair. She  
is the dam of the \$27,000 half interest female,  
W/C Sazzy 6010D that Hicks and King bought in  
2018. And has matured into a picture-perfect matron  
that we look forward to propagating deeper from going  
forward. We know we can trust in the reliability of her pedi-  
gree as it is generations deep in cow power from one of the most  
historic programs in breed history.

**HPF SAZERAC Z074**

HTP/SVF DURACELL T52 x CLRWTR SAZERAC W94B

ASA **2717347**

## 074



**7A** **3 CONVENTIONAL NON-SEXED**  
SIRE W/C RELENTLESS 32C  
DAM HPF SAZERAC Z074

**7B** **3 CONVENTIONAL NON-SEXED**  
SIRE TJSC KING OF DIAMONDS  
DAM HPF SAZERAC Z074

JCC

# MISSIE

***PENNERS-CC DOUBLE BLACK 2257***  
***XPVF MISSIE 2078***

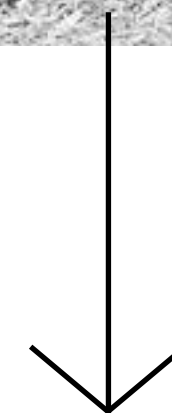
AAA 19266871



***CRUELLA***

**MANY TIME CHAMPION DAUGHTER  
CAMPAIGNED BY AUSTIN FOSS FAMILY**

The Missie cow family has been one of the Angus breeds most reliable sources of maternal value, show ring eye appeal, structural integrity and profitability. This Penners-CC Double Black 2257 daughter combines all the ideals that we are building the program around, and we see her as a leading matron of the Angus program for the future. She is built with the outlier feature and kind that is recognized with banners in the showing, yet her lineage lacks the presence of any of the common pedigrees that you will find winning the breeds highest accolades. The closest tie to a “showring” pedigree would be via her maternal great granddam, P V F Miss Raptor 024 who is the maternal granddam of the legendary PVF Insight 0129.



8a

***3 SEXED FEMALE***

SIRE ROSE MC ENCORE 0463  
DAM JCC MISSIE 810

8b

***3 SEXED FEMALE***

SIRE COLLISON ALPHA  
DAM JCC MISSIE 810





aaa

1 9 4 5 0 7 2 3

PLUM CREEK REFRESH 561A x ECR 2604 PEG 4144

# hoffman PEG

9539



A stunning female in the flesh. She is one of the most ideally built females we have laid our eyes on, and defines maternal perfection in our opinion. Hoffman Peg 9539 is a direct daughter of ECR 2604 Peg 4144, one of the most successful Angus Show heifers that Shayne Myer's would have ever showed. You may recognize her three quarter maternal sister, Kaylee Langford's Reserve Champion British Female at the 2019 San Antonio Stock Show & Rodeo. Peg 9539 is generating daughters that are consistently stamped with unbelievable presence and wow factor, and a structural build that goes further than the tan bark, the udder quality and maternal that these females will have as they enter production is what they will be most desired for. She has become a source of versatile quality, regardless of which world you're from you can appreciate the immense amount of eye appeal, structural soundness, length of spine and pin width that she brings to the equation. This female represents the forefront of our breeding program and we are giving you access to the gene pool that we are trusting to elevate our program into the future.

9a

**3 CONVENTIONAL NON-SEXED**

*Riverstone Vegas 49H x Hoffman Peg 9539*

9b

**3 CONVENTIONAL NON-SEXED**

*Collison Alpha x Hoffman Peg 9539*

# jsul *JALYNN* rose

10

JSUL Jalynn Rose 8249U needs no introduction to the business. Her impact her been nothing short of substantial. This Who Da Man daughter will go down as one of the most dominant show cattle producing females of all time. She would be one of the most versatile generators of show cattle in the past decade, proving her surefire ability to click with sire choices geared towards both show steer and heifer production. Sons have been dominant winners across the country at the county fair, state fair and major show level. She has been successfully mated Chianina, Maine Anjou, Angus and Simmental with great success. Her daughters are making a hand in production, they continue to solidify their spot in the donor pens of the nation's most progressive show cattle operations. Consistency is key and these genetics are potent!

*8249U*



*3 SEXED FEMALE EMBRYOS*

**COLLISON ALPHA x JSUL JALYNN ROSE 8249U**



ASA 3808091

W/C FORT KNOX 609F x W/C ANGEL 7113E

W/C Bet on Red 481H won the hearts of cattle enthusiasts at every stage of development, including the summer and fall months leading up to his sale day in the spring of 2021. W/C Bet on Red 481H was the most talked about red baldy herd sire prospect we have ever been apart of, and he went on to command a record setting \$192,500 to Griswold Cattle Company and Maple Lane Farms. The combination of phenotype, pedigree, and presence that he was able to offer is what promptly secured his spot as one of the most heavily used rookie AI sires during the spring of 2021. He broke sales records and continues to see exponential demand as his progeny inherit his undeniable outlier phenotype. High sellers from his rookie calf crop include \$60,000, \$50,000, \$35,000 & \$18,500.

- CONVENTIONAL SEMEN
- 11A 5 UNITS OF BET ON RED
  - 11B 5 UNITS OF BET ON RED
  - 11C 10 UNITS OF BET ON RED
  - 11D 10 UNITS OF BET ON RED



BET  
ON  
RED



Truly one of the most exciting herd sires that has ever been raised in our program! Red Bird was the \$90,000 red sensation out of the 2022 Spring Bull Season that Brandon Bird added to the nation's most elite Red Simmental sire battery. The pedigree of Red Bird combines two of the most notable individuals in the history of our program, and you could perhaps say the entire breed. This purebred comes from the crossing of the \$205,000 W/C Bankroll and the proven generator and National Champion, W/C Miss Angel 2870Z meaning there are two direct shots of the highest generating female in the history of the breed, 8543U. Those that have seen this stud in person will agree, it wouldn't matter what hide color he was born with, he is a phenotypic outlier! He is built with the "Angel" phenotype that has promoted this cow family into the breed changing kind, we think that the brightest days of the Red Bird legacy are yet to come!

Red Bird has only been released to the public in a very limited fashion. The plan remains to market this semen on a very exclusive basis. The first progeny of Red Bird are on the ground, they exceed any expectation we could have ever had, and we are using him heavy in the 2023 breeding roster.

CONVENTIONAL SEMEN

- 12A 3 UNITS
- 12B 3 UNITS
- 12C 3 UNITS
- 12D 3 UNITS
- 12E 3 UNITS
- 12F 3 UNITS

# RED BIRD



ASA 3974327

W/C BANKROLL 811D X W/C MISS ANGEL 2870Z



TRCC Pandemic is the uniquely built, dark cherry red, soft haired son of the \$205,000 W/C Bankroll 811D. Those that have inspected TRCC Pandemic in the flesh have commented that he maintains the signature Bankroll presence, style, and shape, while offering more frame, length, and squareness of pin set than that of his extremely proven sire. Pandemic sets the bar when it comes to skeletal quality, form, and function. He is flawless in the way he ties his long sleek neck high into the top side of his neatly laid in shoulder, while transitioning into a full forerib and bold center rib cage. We love the hip and hind leg quality that Pandemic exemplifies as he sets to the surface with confidence. The first calf reports indicate that he has transmitted the quality, shape, look, and stoutness that was expected, with the added hair quality as a bonus! The eccentric look and wild features are proving to be highly heritable!

# PAND EMIC

*W/C BANKROLL 811D x RF 29E*  
**ASA 3748285**

SEXED FEMALE SEMEN

- 13a 3 units
- 13b 3 units
- 13c 3 units
- 13d 3 units
- 13e 3 units
- 13f 3 units





*W/C JWC TRIDENT 9727J*

BAR CK 4118B 8102F x W/C MISS WERNING 9727G

*ASA 3974393*



**CONVENTIONAL SEMEN** We have always focused on building the cowherd with phenotype at the pinnacle, and when possible injecting EPD superiority, so when we had the chance to do both by locking down W/C JWC Trident 9727J it didn't take a second thought. He filled the gap when it came looking for an elite outcross, sure fire caving ease, curve bending herd bull. Not only has he proven to sire extreme calving ease and low birthweights, but reads to inject an extra shot of growth and performance as the cattle mature. The phenotype of the progeny we have on the ground well exceed any expectation, as the cattle have an ideal hind leg, shaggy hair coat and striking look. Trident has the potential be one of the most versatile and complete breeding pieces in program history. In person he maintains the moderate, sound structured yet ground pounding stature that we found so appealing when we acquired him. This homozygous polled stud ranks top 20% CE, top 20% BW, top 40% WW, top 25% YW, top 10% ADG, top 20% MCE, top 15% Marb, top 10% API and top 15% TI.

*14A*

**5 UNITS**

*14B*

**5 UNITS**

*14C*

**5 UNITS**

*14D*

**5 UNITS**

*14E*

**10 UNITS**

*14F*

**10 UNITS**

*14G*

**10 UNITS**

TRIDENT





15

# HARDWIRE

*W/C FORT KNOX 609F x W/C ANGEL 7113E*

ASA 3808092

The solid red hided, homozygous polled, full brother to Bet On Red that was purchased by Sloup Simmentals. He combines the likes of the \$180,000 2/3 interest W/C Fort Knox 609F and the \$130,000 ½ interest W/C Angel 7113E in the first generation of his pedigree. Some preferred the added frame size, balance and smoothness of transitions that Hardwire was built with. Yet he still had the cool feature, bone substance, hair quality and intrigue of his high selling brother. Apart from phenotype, look into the set of EPD's he tabulates with positive calving ease, marbling and indexes.

*15a 10 units | 5b 10 units | 15c 10 units*

CONVENTIONAL SEMEN



# mainstream

W/C MAINSTAY 355F x W/C MISS WERNING 885F

ASA 3974315



We proudly introduce the high selling bull from our Inaugural Production Sale that sold to our good friends at Freidel farms & Mogck brothers. An absolute STUD to say the very least! Mainstream 885J is a rugged, stout featured, bold bodied half-blood herd sire prospect that is built to last! This homozygous black and homozygous polled bull comes with an elite performance-oriented number profile to compliment his added shape, length, and dimension. A must use sire if you're serious about enhancing the real world, profit driven credentials of your cow-herd! Mainstream ranks top 10% WW, top 5% YW, top 4% ADG, top 15% MWW, top 10% CW, and top 10% REA.



CONVENTIONAL semen

16a 5 UNITS  
5 UNITS 16b



17

We are steadily building the Angus division of JWC with individuals that we deem beyond the norm, unequivocally unique and genetically potent, we aren't in a hurry to grow numbers, just quality. Little did we know that this plan included an Angus bull that we have come to know as Double Run. The son of S&R Stability J824 that brings together true beef cattle shape and power, with a build of incredible athleticism, feature and kind. He is the kind that built the business, being super genuine and symmetrical, wide at his base and proud in his gait. Unfortunately the inventory on Double Run remains low at this time, he is still with us and maturing impressively, and we hope to build his frozen bank shortly, but as of now this semen sells on a very, very limited basis.



# DOUBLE RUN

S&R STABILITY J824 X BLACK ACE NEXT UP 763E ET

**AAA** 20139127

1 UNIT

17A

1 UNIT

17B

1 UNIT

17C

