



**FLAT WATER GANG** *Red Angus*  
**ANNUAL BULL SALE**

**MARCH 21, 2022 AT 1 PM IN BROKEN BOW, NE**

at the One Box Convention Center in the Cobblestone Hotel & Suites



*Where Maternal Matters!*

## *Sale Location*

Join us for a video auction at The One Box Convention Center at the Cobblestone Hotel & Suites  
2750 South 27th Avenue - Broken Bow, NE 68822 - Phone: (308) 767-2060

NEW in 2022!

Bulls on display at Broken Bow Livestock  
614 N B Street, Broken Bow, NE 68822

## *Sale Schedule*

**March 21, 2022**

9:00 am Bulls on Display

12:00 pm Lunch served at the Cobblestone Hotel & Suites

**1:00 pm Flat Water Gang Annual Bull Sale**

For more information and updates visit

**FLATWATERREDANGUSGANG.COM**

**DVAuction**  
Broadcasting Real-Time Auctions



We believe in the power of long-lasting, maternally-focused, easy-fleshing bulls  
that will put the COW back in your cowherd.

# Welcome to the Sale!

Welcome to the Flat Water Red Angus Gang's 13th Annual Bull Sale. It is with great excitement and pride that we bring this set of bulls to sale day for your evaluation and consideration. We are making a small but very beneficial change on this year's sale. The bulls will be available for viewing at Broken Bow Livestock market.

Cooksley Red Angus membership number is 25621, and they became association members in 1989. Sandbur Ridge membership number is 48779, and they became association members in 1996. The point of this is to let, you, our customers, friends, neighbors and fellow cattlemen know that we have been working on and striving towards problem free, well balanced, multi-faceted, cattle production for 33 and 26 years respectively. This commitment of time, research and investment is to bring you the best, most well-balanced product available in the industry today.

We have seen a steady improvement in our cow herds using a balanced approach to seedstock production. The fertility of the cow herds, the ability to breed, wean a calf, survive multiple years of harsh weather and do it all over again year after year for 10 years and more is evidenced by the number of older cows represented in the catalog. We have seen a steady improvement in the scrotal circumference's and strength of the semen evaluation, in our yearling bulls, as well. The commitment to our customers to deliver the best product we can for the long-term profitability of your operation remains unwavering and our most important objective.

The bulls have been developed for sustainability and soundness. We are very pleased with the expertise and service we receive from Mitch Ziebell and the entire crew at the Darr Bull Development Center, near Cozad NE. Mitch and crew are very accommodating to having visitors stop in and look over the bulls. There are several breeds of bulls developed annually at Darr and we encourage you to stop in and look things over if you are near the area.

We are genuinely thankful and appreciative of the people that we serve and the relationships we have. Please reach out to us with any questions. Our goal is your success and we would enjoy helping you find the right bull for your operation.

Thank you for your interest and we look forward to seeing you on sale day and all throughout the year!

*The Flat Water Red Angus Gang*



COOKSLEY  
RED ANGUS  
Ben & Jilleen Cooksley  
(308) 872-1007

SANDBUR RIDGE  
RED ANGUS  
Ross & Dani Knott  
(402) 843-8726



*Fellow Red Angus Enthusiasts,*

It is our pleasure to welcome you to the 2022 edition of the Flat Water Gang Red Angus Bull Sale in the heart of cattle country, Broken Bow, Nebraska! Despite many of the challenges that we have faced over the course of the past 2 years it is safe to say that exciting times in the beef business are on the horizon and red hided cattle continue to surge in demand!

This offering of bulls is comprised of the efforts and years of strategic breeding decisions that have been made by both Ross Knott and Ben Cooksley, with the common goal of improving their customer's bottom line. Seems simple, right? Fast moving trends, and fads may come and go in the cattle industry, but one thing you can count on with this set of Red Angus herd sire prospect is that they are backed by a female that has earned her keep the old fashioned way! These bulls are supported by females that are required to calve unassisted, re-breed within the same interval, raise a big calf, and maintain their flesh while doing so. Flat Water Gang Red Angus is truly where "Maternal Matters"!

Sandbur Ridge Red Angus and Cooksley Red Angus take great pride in the fundamental basic principles of hoof quality, skeletal integrity, fertility, pounds of calf weaned, and overall balance and phenotype. The sires of these bulls are selected after much evaluation and pressure application to traits of industry importance that affect the outcome of the end product phase for each and every operation. A problem free calving experience, growth achievement to weaning time, and ultimate carcass improvement are all factored in this offering. The people backing the bulls are very disciplined and customer service focused as they have a devout understanding of the seriousness of your bull selection and the impact this purchase will have on your program over the next 10 years, literally.

We have listed the age of the dams that are responsible for this year's offering to give you a better understanding of the longevity, durability, and fertility that these cattle represent. Genetics don't cost, they pay... so invest in the type and kind of cattle that will leave a lasting impact on your program for decades to come.

We invite you to Broken Bow the 21st of March for the annual Flatwater Gang offering. We are sure that your expectations will be met by the cattle in this offering. However, if you need any assistance or information prior to the sale please feel free to reach out to any of the sale staff to assist with your prospective purchases. NEW in 2022, the bulls will be on display at Broken Bow Livestock. They will still sell on video at the One Box Convention Center that is attached to the Cobblestone Inn & Suites.

**Graham Blagg Jered Shipman Tim Anderson**  
*Innovation Ag Marketing, LLC*



# 75+ Red Angus Bulls

## Sale Day Contacts:

Ross Knott: (402) 843-8726  
Ben Cooksley: (308) 872-1007  
Graham Blagg: (530) 913-6418

## Auctioneer:

Col. Scott Weishaar: (701) 872-5299

## Sale Management:

Graham Blagg: (530) 913-6418  
Jered Shipman: (806) 983-7226  
Tim Anderson: (605) 682-9343  
Innovationagmarketing.com

## Ring Staff:

Randy Rasby, Livestock Plus: (308) 539-6195  
Chris Beutler, Livestock Digital: (402) 380-8244  
Jake St. Amant, Tri State Livestock News: (308) 568-9084

## Consultants:

Andrew Gaffney, Broken Bow Livestock: (308) 872-1105

## Special Guests:

Nolan Woodruff, Commercial Marketing Specialist: (805) 861-0996

## Accommodations in Broken Bow:

Cobblestone Hotel & Suites: (308) 767-2060  
The Arrow Hotel: (308) 872-6662

## Cattle Viewing:

The bulls will be available to be inspected on Sunday, March 20 and Monday, March 21 at Broken Bow Livestock. Please call for me details if you would like to view the bulls prior to the dates listed.

## Broken Bow Livestock

614 N B Street - Broken Bow, NE 68822

## Delivery and Load-out:

We are offering free delivery to all points in Nebraska. Delivery to other states will be at the lowest cost possible from the seller's base operation. Bulls not delivered by April 15 will incur a \$5 per day feeding cost thereafter. A \$100 credit will be offered for bulls taken home on sale day by the new owner.

## In Herd Semen Use:

Seller(s) reserves the right to in herd semen use on all bulls in the offering. Collection will be negotiated with the new owner. All costs associated with the collection of in herd use semen to be covered by the seller.

## Photography:

John Reasor: (423) 290-6002

## Advertising and Catalog Design:

THM Promotions - Tracy McMurphy - (806) 679-0231

## GGP 50K:

Over 10 years of genomics research is distilled in the new GGP 50K. Detects gene markers that have the greatest influence on economically important traits and the most impact on key traits that cattle inherit from their parents. All bulls with the GGP logo on their pedigree box have had DNA submitted and are on file at the Red Angus Association of America.



## Bull Guarantee:

Unless otherwise noted, all the breeding age bulls will have passed a breeding soundness exam prior to pick up/delivery. In addition to the standard Terms and Conditions of the Red Angus Association of America, we will provide the first breeding season (the 90-day period immediately following turn out) guarantee on all yearling and older bulls. This guarantee is not an insurance or mortality policy, but a guarantee on functional fertility. It is not a substitute or replacement for poor management. Buyer assumes all risks for injury due to running bulls together or management decisions outside genetic control. For the guarantee to apply, we ask that you contact us as soon as a condition is observed and before the animal is sold. We will work with you to determine whether the animal is returned or sold for slaughter. We will attempt to provide a suitable replacement. If one cannot be provided of equal or greater value, we will issue a sale credit to be used in a future sale for the full purchase price less the salvage value of the animal.

## Terms and Conditions:

The Auctioneer will settle any bidding disputes and his decision on such matters will be final. All sales are cash in U.S. funds unless prior arrangements have been made with the sellers. Any announcements made on sale day take precedence over printed material. Health certificates will be furnished for shipment anywhere in the United States. Any death or injury after the animal is sold is at the buyers' risk. Anyone attending this sale attends at his/her own risk. A retained interest by the seller will be designated as such in the sale. The buyer receives full possession and full salvage value on all bulls with a retained ownership interest. All registered cattle sell under the suggested Sale Terms and Conditions set forth by the Red Angus Association of America.

## Online Bidding:

We are pleased to bring you real-time internet bidding and a live broadcast of this sale through DVAuction.com. If you are unable to attend for any reason, you may bid online at dvauction.com. Please register for bidder number at www.dvauction.com anytime prior to 12 Noon on Friday, March 18 to accommodate the approval process. After this date/time, bidder approval may be delayed. Approved bidders will be issued bidder number and access prior to the sale. For questions or sale bookings call the Office M-F 8am-6pm CT: (402) 316-5460.





## The Cornerstone Cow

The Cornerstone cow program is a tool for producers to utilize when selecting seed stock for their operation. The word Cornerstone is an architectural term meaning the first stone set in construction. The stone in which all the building depends. For our purpose, the Cornerstone Cow is a measure of the following:

**Fertility + Production + Longevity = Profitability**

This scoring model ranks the components of fertility, production to weaning, and longevity, within a herd and age group of females. The categories being scored are based upon the actual data submitted to the American Red Angus Association as a part of total herd reporting.

By scoring our cow herd we are attempting to provide you with an easy-to-understand value for each female in our herd. The Table below summarizes the scores for each age group of cows in production:

Age of Female	Best Possible Score	Top 25%	Top 50%
9 + years old	35	26.25	17.5
8 years old	33	24.75	16.5
7 years old	31	23.25	15.5
6 years old	29	21.75	14.5
5 years old	27	20.25	13.5
4 years old	25	18.75	12.5
3 years old	23	17.25	11.5
2 years old	21	15.75	10.5

The definitions on the next page explain the criteria that is used in the scoring model.



**MPPA**

7	108 or higher
6	105-107.9
5	103-104.9
4	100-102.9
3	97-99.9
2	94-96.9
1	93.9 or Less

**MOST PROBABLE PRODUCING ABILITY (MPPA)** – An estimate of a cow’s future productivity for a trait (such as progeny weaning ratio) based on her past productivity. For example, a cow’s MPPA for weaning ratio is calculated from the cow’s average progeny weaning ratio, the number of her progeny with weaning record, and the repeatability of weaning weight.

**CALVING INTERVAL**

6	368 or less*
5	369-375
4	376-397**
3	398-417
2	418-439
1	440 or more

**CALVING INTERVAL** – The amount of time (days or months) between the birth of a calf and the birth of a subsequent calf, both from the same cow. \*Calving interval of 368 or less is assigned to Donor females that are 6 years old and older. \*\*Calving Interval of 376 to 397 is assigned to Donor Females that are 5 years old and younger.

**RATIO CHANGE**

6	+15 or more
5	+7 thru +14
4	0 thru +6
3	-1 thru -7
2	-8 thru -14
1	-15 or less

**RATIO CHANGE** – The difference between the birth weight ratio within a known population to the weaning weight ratio within the same population of individuals. Ratio change for this measure is the difference between the cows actual average birth ratio of all her calves and the weaning ratio of all her calves.

**AGE**

8	9 plus
7	8
6	7
5	6
4	5
3	4
2	3
1	2

**AGE OF COWS** – Cows can live for over 20 years, but on commercial farms the age at slaughter varies considerably. Farms with poor management, high-yielding cattle or high disease rates will slaughter their animals at a much younger age, normally after four lactations (around 5-6 years old), but sometimes after 2 or 3. Cows should be able to consistently breed and rebreed through about 8 years of age and performance should be maintained until around 12 years of age, that is when you might see a steeper decline in reproductive performance.

**# OF NATURAL CALVES**

8	8 plus
7	7
6	6
5	5
4	4
3	3
2	2
1	1

**NATURAL CALVES** – These are the calves that are conceived either by artificial insemination or natural service. These calves are carried by the dam and raised by the dam within the population of the operation. The number of natural calves is an indicator of the cow’s ability to raise a calf and rebreed within their environment over a longer period.





LOT 1 - RIDGE RAZOR 1034

1

### RIDGE RAZOR 1034

BD: 2/1/21    Reg: 4454311    A - 100% AR    Tattoo: 1034

DKF ELIMINATOR 15A	S A V ELIMINATOR 9105	BW: 81
<b>RED DKF RAZOR 55C</b>	RED DKF MISS POWER 17P	AWW: 681
DKF MISS NET WORTH 21A	S A V NET WORTH 4200	AYW: 1259
	DKF MISS POWER UP 95X	WDA: 3.37
5L CRITICAL MASS 189Y	5L TOP LANCE 233-8566	
<b>RIDGE CASEY 8034-3032</b>	5L TESS 1134-416	
RIDGE CASEY 978-8034	5L GRAND EXPRESS 453-5655	
	OTT-CASEY-F412-978	

DMPPA	Dam's Age	SC	Adj. IMF	Adj. REA	Adj. BF	CC Score								
102	8	38.0	4	13.64	0.38	29/35 - 83%								
CED	BW	WW	YW	ADG	DMI	MILK	ME	HPG	CEM	MRB	YG	CW	REA	FAT
14	-1.5	63	95	0.2	1.72	30	4	16	6	0.28	0.22	14	-0.14	0.06
34%		38%		9%		3%								



Red DKF Razor 55C - Sire of Lot 1

- Ridge Razor 1034 is a true power bull that is backed by an 8-year-old dam that is from the influence of the famed OTT-Casey-F412-978 cow family.
- His is an extra stout boned, bold ribbed, deep sided bull that offers tremendous fleshing ease and shape.
- A true sale feature that is backed by generations of elite cow families!

# THE LONE RAZOR SON






LOT 2 - RIDGE BODY BUILDER 1010

**2** **RIDGE BODY BUILDER 1010**

BD: 1/25/21    Reg: 4454263    A - 100% AR    Tattoo: 1010

5L BLOCKADE 2218-30B	5L DEFENDER 560-30Z	BW: 85
<b>5L BODY BUILDER 4434-68D</b>	5L OPAL 656-2218	AWW: 677
5L RED BIRD 411-4434	5L CRAFTSMAN 1134-150X	AYW: 1328
5L LEGEND 1553-425V	5L RED BIRD 1312-411	WDA: 3.5
<b>RIDGE CASEY 9071-4050</b>	5L LAKOTA LEGEND 7074	
RIDGE CASEY 155-9071	5L HAZEL 45L-1553	
	5L SIGNATURE 5615	
	RIDGE CASEY F7-155	



5L Blockade 2218-30B - Paternal Grand sire of Lots 2 - 5

DMPPA	Dam's Age		SC	Adj. IMF	Adj. REA	Adj. BF	CC Score							
104	7		38.5	4.76	14.55	0.3	28/35 - 85%							
CED	BW	WW	YW	ADG	DMI	MILK	ME	HPG	CEM	MRB	YG	CW	REA	FAT
12	0.1	69	111	0.26	2.14	25	5	13	4	0.52	0.08	26	0.3	0.04
	18%	19%	24%				18%		25%			35%	16%	

- Ridge Body Builder 1010 is the lead off son from the 5L Body Builder 4434-68D sire group.
- His dam is a member of the "Casey" cow family that has set the pace for functionality and maternal prowess at Sandbur Ridge Red Angus.
- A big scrotal bull that is a standout from a carcass merit standpoint with an impressive 4.76 IMF.

# SONS OF BODY BUILDER

LOT 3  
RIDGE BODY  
BUILDER 1604



**3** **RIDGE BODY BUILDER 1604**  
BD: 2/25/21 Reg: 4478853 A - 100% AR Tattoo: 1604

5L BLOCKADE 2218-30B  
**5L BODY BUILDER 4434-68D**  
5L RED BIRD 411-4434

RED YY RED KNIGHT 640F  
**MLK CRK LAKINA 801**  
MLK CRK LAKINA 156

5L DEFENDER 560-30Z  
5L OPAL 656-2218  
5L CRAFTSMAN 1134-150X  
5L RED BIRD 1312-411

RED YY 23L TOPPER 408D  
RED TOP GOLDIE 40U  
MLK CRK CAPSTONE 901  
MLK CRK LAKINA 156

BW: 78  
AWW: 669  
AYW: 1095  
WDA: 3.05

**GGP**

DMPPA	Dam's Age		SC	Adj. IMF		Adj. REA		Adj. BF		CC Score				
103	13		34.0	4.12		13.98		0.22		31/35 - 88%				
CED	BW	WW	YW	ADG	DMI	MILK	ME	HPG	CEM	MRB	YG	CW	REA	FAT
12	-1.7	61	94	0.2	1.97	25	6	12	6	0.54	0.03	20	-0.04	-0.01
43%				39%				21%		30%		3%		

- Here is a moderate birthweight son of Body Builder that is backed by a tremendous daughter of Red YY Red Knight 640F that is 13 years old and boasts a DMPPA of 103.
- You can count on the maternal function and longevity of this herd bull prospects daughters to be second to none.

**5** **RIDGE BODY BUILDER 1036**  
BD: 2/2/21 Reg: 4454315 A - 100% AR Tattoo: 1036

5L BLOCKADE 2218-30B  
**5L BODY BUILDER 4434-68D**  
5L RED BIRD 411-4434

5L LEGEND 1553-425V  
**RIDGE BLACKBIRD 9008-2103**  
RIDGE BLACKBIRD 285-9008

5L DEFENDER 560-30Z  
5L OPAL 656-2218  
5L CRAFTSMAN 1134-150X  
5L RED BIRD 1312-411

5L LAKOTA LEGEND 7074  
5L HAZEL 45L-1553  
5L SIGNATURE 5615  
RIDGE BLACKBIRD 366-285ET

BW: 92  
AWW: 645  
AYW: 1323  
WDA: 3.45

**GGP**

DMPPA	Dam's Age		SC	Adj. IMF		Adj. REA		Adj. BF		CC Score					
103	9		39.0	5.04		13.57		0.3		30/35 - 86%					
CED	BW	WW	YW	ADG	DMI	MILK	ME	HPG	CEM	MRB	YG	CW	REA	FAT	
9	0.5	64	112	0.3	2.04	25	5	14	4	0.52	0	34	0.47	0.02	
35%				17%		7%		49%		8%		25%		19% 13% 4%	

- 1036 is a performance standout from the Body Builder sire group as he ranks among the top 17% for WW and top 7% ADG.
- He is a big scrotal bull that sells with an ADJ IMF of 5.04 to Ratio of 114.
- Backed by a cow from the Blackbird family that has stood the test of time!

**4** **RIDGE BODY BUILDER 1056**  
BD: 2/6/21 Reg: 4454353 A - 100% AR Tattoo: 1056

5L BLOCKADE 2218-30B  
**5L BODY BUILDER 4434-68D**  
5L RED BIRD 411-4434

MLK CRK EXPRESS 9127  
**RIDGE AQUILA 8066-5145**  
RIDGE AQUILA 552-8066

5L DEFENDER 560-30Z  
5L OPAL 656-2218  
5L CRAFTSMAN 1134-150X  
5L RED BIRD 1312-411

5L GRAND EXPRESS 453-5655  
MLK CRK SHEBA 043  
5L NORMANDY CANYON 6024  
RIDGE AQUILA 213-552

BW: 82  
AWW: 689  
AYW: 1347  
WDA: 3.58

**GGP**

DMPPA	Dam's Age		SC	Adj. IMF		Adj. REA		Adj. BF		CC Score					
95	6		37.0	5.46		14.93		0.4		22/31 - 71%					
CED	BW	WW	YW	ADG	DMI	MILK	ME	HPG	CEM	MRB	YG	CW	REA	FAT	
11	-1.8	64	103	0.24	1.93	23	3	13	6	0.48	0.02	28	0.31	0.01	
49%				33%		34%		36%		48%		23%		32% 24% 30% 15% 45%	

- 1056 is a Body Builder son that is backed by a daughter of MLK CRK Express 9127 that is from the Aquila cow family.
- He combines several generations of the very bet 5L genetics.
- A powerful individual that is balanced numerically and offers tremendous carcass data.



LOT 4 - RIDGE BODY BUILDER 1056

6

**RIDGE BARRICADE 1063**

BD: 2/8/21 Reg: 4454367 A - 100% AR Tattoo: 1063

5L BARRICADE 534-07D 5L BLOCKADE 2218-30B BW: 77  
 RIDGE BARRICADE 9004 5L ADINA 560-534 AWW: 653  
 5L FUSCHIA 643-3668 5L EXPLORER 589-7414 AYW: 1180  
 5L ADVANTAGE 3267-221Y BUF CRK THE RIGHT KIND U199 WDA: 3.19  
 RIDGE SARA 863-5307 5L ADINA 195-3267  
 OTT-CASEY-F7-863 SELL COPPERTOP 608   
 BARGER F7

DMPPA	Dam's Age		SC	Adj. IMF		Adj. REA		Adj. BF		CC Score				
102	6		35.5	3.5		13.32		0.35		24/31 - 77%				
CED	BW	WW	YW	ADG	DMI	MILK	ME	HPG	CEM	MRB	YG	CW	REA	FAT
13	-3.2	57	79	0.14	1.35	28	-3	14	5	0.16	0.07	10	-0.09	0.01
46%	24%				44%	23%	22%	11%						36%

- Ridge Barricade 1063 is a son of Ridge Barricade 9004 that is backed by the influence of the great OTT-Casey-F7-863.
- He is balanced numerically and offers the extra stoutness of body and shape that we appreciate.
- His combination of actual birth weight, BW and CE EPD's make him a suitable option for heifers.



LOT 6 - RIDGE BARRICADE 1063

7

**RIDGE BARRICADE 1105**

BD: 2/19/21 Reg: 4454445 A - 100% AR Tattoo: 1105

5L BARRICADE 534-07D 5L BLOCKADE 2218-30B BW: 86  
 RIDGE BARRICADE 9004 5L ADINA 560-534 AWW: 675  
 5L FUSCHIA 643-3668 5L EXPLORER 589-7414 AYW: 1258  
 5L ADVANTAGE 3267-221Y BUF CRK THE RIGHT KIND U199 WDA: 3.4  
 RIDGE LAKOTA 9085-5037 5L ADINA 195-3267   
 RIDGE LAKOTA 7132-9085 MUSHRUSH LTJULIAN LG S005  
 RIDGE LAKOTA 2290-7132

DMPPA	Dam's Age		SC	Adj. IMF		Adj. REA		Adj. BF		CC Score				
97	6		36.5	3.72		14.39		0.31		22/31 - 71%				
CED	BW	WW	YW	ADG	DMI	MILK	ME	HPG	CEM	MRB	YG	CW	REA	FAT
9	-2.2	70	108	0.24	1.38	25	-3	14	5	0.12	0.08	41	0.38	0.03
42%	15%	24%	40%	44%			22%	7%				4%	8%	

- 1105 is another Barricade son that is backed by the influence of the Lakota cow family.
- He is a performance standout that charts among the elite 15% of the breed for WW and top 24% for YW.
- His performance is complimented by tremendous carcass data that puts him among the top 4% for CW and top 8% for REA.



LOT 7 - RIDGE BARRICADE 1105

8

**RIDGE BARRICADE 1028**

BD: 2/1/21 Reg: 4454299 A - 100% AR Tattoo: 1028

5L BARRICADE 534-07D 5L BLOCKADE 2218-30B BW: 88  
 RIDGE BARRICADE 9004 5L ADINA 560-534 AWW: 755  
 5L FUSCHIA 643-3668 5L EXPLORER 589-7414 AYW: 1318  
 5L LEGEND 1553-425V 5L LAKOTA LEGEND 7074 WDA: 3.56  
 RIDGE SHEILA 009-2088 5L HAZEL 45L-1553  
 RIDGE SHEILA 009 BUF CRK BARNEY 3474   
 B&C 018-560 OF B3R 602

DMPPA	Dam's Age		SC	Adj. IMF		Adj. REA		Adj. BF		CC Score				
107	9		38.0	3.49		15.67		0.31		33/35 - 94%				
CED	BW	WW	YW	ADG	DMI	MILK	ME	HPG	CEM	MRB	YG	CW	REA	FAT
10	-2.5	72	111	0.24	1.69	28	-3	15	4	0.09	-0.02	38	0.56	0.01
36%	12%	20%	36%			25%	21%	3%			11%	7%	2%	41%

- Here is a dark cherry red herd sire option that comes from the influence of the Sheila cow family.
- He is a big scrotal bull that offers 15+ inch REA and charts top 2% of the breed for REA.
- He posted a WW of 755 and ranks top 12% of the breed for WW.



LOT 8 - RIDGE BARRICADE 1028



LOT 9 - RIDGE REAL DEAL 1637

9

### RIDGE REAL DEAL 1637

---

BD: 3/17/21    Reg: 4478903    A - 100% AR    Tattoo: 1637

5L DEFENDER 560-30Z  
**5L THE REAL DEAL 1687-143B**  
5L FIREFLY 275-1687

MLK CRK FLAGSTONE  
**RIDGE CASEY 004-571**  
RIDGE CASEY 863-004

5L ADVOCATE 817-14W  
5L BLACK ADINA 525-560  
5L DESTINATION 893-6215  
5L FIREFLY 2573-275

MLK CRK CUB 722  
MLK CRK LAKOTA 850  
HOLDEN HI HO 753  
OTT-CASEY-F7-863

BW: 68  
AWW: 609  
AYW: 1175  
WDA: 3.22



5L Defender 560-30Z - Paternal Grandsire of Lots 9 - 12

DMPPA	Dam's Age		SC	Adj. IMF	Adj. REA	Adj. BF	CC Score							
106	16		35.0	4.1	12.05	0.26	33/35 - 94%							
CED	BW	WW	YW	ADG	DMI	MILK	ME	HPG	CEM	MRB	YG	CW	REA	FAT
18	-3.6	50	76	0.16	1.89	33	8	8	10	0.46	0.01	12	0.07	0.01
3%	18%				3%			7%	36%	23%				29%

- Here is a son of 5L The Real Deal 1687-143B that is a top calving ease prospect that is from the matriarch Casey cow family.
- He boasts a moderated birth weight of 68 pounds and offers a CED of 18 that positions him among the top 3% of the breed.
- A top tier calving ease option that we recommend for use on heifers.



**LOT 10**  
**RIDGE REAL**  
**DEAL 1635**



**10**

**RIDGE REAL DEAL 1635**

BD: 3/16/21 Reg: 4478899 A - 100% AR Tattoo: 1635

5L DEFENDER 560-30Z	5L ADVOCATE 817-14W	BW: 75
<b>5L THE REAL DEAL 1687-143B</b>	5L BLACK ADINA 525-560	AWW: 638
5L FIREFLY 275-1687	5L DESTINATION 893-6215	AYW: 1147
	5L FIREFLY 2573-275	WDA: 3.17
MLK CRK FLAGSTONE	MLK CRK CUB 722	
<b>RIDGE CASEY 004-571</b>	MLK CRK LAKOTA 850	
RIDGE CASEY 863-004	HOLDEN HI HO 753	
	OTT-CASEY-F7-863	

DMPPA	Dam's Age		SC	Adj. IMF		Adj. REA		Adj. BF		CC Score				
106	16		34.0	4.1		13.78		0.32		33/35 - 94%				
CED	BW	WW	YW	ADG	DMI	MILK	ME	HPG	CEM	MRB	YG	CW	REA	FAT
17	-2.9	54	91	0.23	1.89	33	8	9	9	0.4	0.04	18	0.01	0
7%	29%		49%		3%		17%		35%			15%		

- 1635 is another top calving ease option that is sired by 5L The Real Deal 1687-143B.
- Another top herd sire prospect that is supported by the "Casey" cow family at Sandbur Ridge Red Angus.
- He charts top 7% CED, top 29% BW, and top 3% Milk.
- Recommended for use on heifers.

**12**

**RIDGE REAL DEAL 1639**

BD: 3/19/21 Reg: 4478907 A - 100% AR Tattoo: 1639

5L DEFENDER 560-30Z	5L ADVOCATE 817-14W	BW: 80
<b>5L THE REAL DEAL 1687-143B</b>	5L BLACK ADINA 525-560	AWW: 542
5L FIREFLY 275-1687	5L DESTINATION 893-6215	AYW: 1022
	5L FIREFLY 2573-275	WDA: 2.82
MLK CRK FLAGSTONE	MLK CRK CUB 722	
<b>RIDGE CASEY 004-571</b>	MLK CRK LAKOTA 850	
RIDGE CASEY 863-004	HOLDEN HI HO 753	
	OTT-CASEY-F7-863	

DMPPA	Dam's Age		SC	Adj. IMF		Adj. REA		Adj. BF		CC Score				
106	16		33.0	4.11		13.05		0.26		33/35 - 94%				
CED	BW	WW	YW	ADG	DMI	MILK	ME	HPG	CEM	MRB	YG	CW	REA	FAT
17	-5.9	39	66	0.17	1.89	33	8	8	9	0.36	0.08	13	0	0.02
8%	3%				3%		14%							

- Here is another ET brother to 1608 that is from the great Ridge Casey 004-571 female.
- 1639 is a top calving ease option that charts among the top 8% of the breed for CED and top 3% for BW.
- Recommended for use on heifers.

**11**

**RIDGE REAL DEAL 1608**

BD: 2/28/21 Reg: 4478861 A - 100% AR Tattoo: 1608

5L DEFENDER 560-30Z	5L ADVOCATE 817-14W	BW: 80
<b>5L THE REAL DEAL 1687-143B</b>	5L BLACK ADINA 525-560	AWW: 679
5L FIREFLY 275-1687	5L DESTINATION 893-6215	AYW: 1109
	5L FIREFLY 2573-275	WDA: 3.09
MLK CRK FLAGSTONE	MLK CRK CUB 722	
<b>RIDGE CASEY 004-571</b>	MLK CRK LAKOTA 850	
RIDGE CASEY 863-004	HOLDEN HI HO 753	
	OTT-CASEY-F7-863	

DMPPA	Dam's Age		SC	Adj. IMF		Adj. REA		Adj. BF		CC Score				
106	16		34.5	4.63		13.67		0.23		33/35 - 94%				
CED	BW	WW	YW	ADG	DMI	MILK	ME	HPG	CEM	MRB	YG	CW	REA	FAT
15	-4.2	50	78	0.18	1.89	33	8	9	8	0.33	0.01	14	0.15	0.02
15%	12%				3%		27%		23%			42%	47%	

- 1608 is among the top 15% for CED, top 12% BW, and top 3% Milk.
- He is an Embryo Transfer born calf from the 004-571 donor.
- His dam boasts a 106 DMPPA and offers exceptional longevity.





LOT 13 - RIDGE RAD 1522

13

**RIDGE RAD 1522**

BD: 2/2/21      Reg: 4454615      A - 100% AR      Tattoo: 1522

5L DEFENDER 560-30Z

5L ADVOCATE 817-14W

BW: 66

**RIDGE RAD 9075**

5L BLACK ADINA 525-560

AWW: 611

RIDGE CASEY 978-8034

5L GRAND EXPRESS 453-5655

AYW: 1223

RRA GUARDIAN 762

5L DEFENDER 560-30Z

WDA: 3

**RIDGE MONA 2057-9041**

RRA RACHEL 246 746

RIDGE MONA 8162-2057

5L ZENITH 1425-5767

RIDGE MONA 620-8162

DMPPA	Dam's Age	SC	Adj. IMF	Adj. REA	Adj. BF	CC Score								
100	2	34.5	4.83	14.7	0.21	12/23 - 52%								
CED	BW	WW	YW	ADG	DMI	MILK	ME	HPG	CEM	MRB	YG	CW	REA	FAT
19	-5.5	52	84	0.2	1.66	30	-1	11	8	0.35	-0.1	4	0.25	0
2%	4%				9%	28%			24%		3%		23%	16%

- 1522 is a direct son of Ridge Rad 9075, the 5L Defender 560-30Z son that is from the influence of the great "Casey" cow family.
- He boasts a 19 CED that is further complimented by a 66 pound actual birth weight.
- Another top heifer safe option that is supported by an elite cow family.



5L Defender 560-30Z - Paternal Grandsire of Lot 13

# THE INFLUENCE OF 5L DEFENDER



LOT 15 - RIDGE ADVANTAGE 1159

**14** **RIDGE BOURNE 1521**

BD: 2/1/21 Reg: 4454613 A - 100% AR Tattoo: 1521

5L ADVANTAGE 3267-221Y  
**5L BOURNE 117-48A**  
 5L ROXIE 854-117

RIDGE OAK CANYON 3506  
**RIDGE DESTINY 464-9147**  
 RRA DESTINY Z29 464

BUF CRK THE RIGHT KIND U199  
 5L ADINA 195-3267  
 5L SIGNATURE 5615  
 XXX ROXIE 854 MR

5L NORMANDY CANYON 6024  
 BAR-V MISS DESIGN 022B  
 RRA SIGNATURE 266V 128  
 3J MS MONARCH Z29

BW: 83  
 AWW: 686  
 AYW: 1291  
 WDA: 3.21

**GGP**

DMPPA	Dam's Age	SC	Adj. IMF	Adj. REA	Adj. BF	CC Score								
104	2	37.0	4.16	13.9	0.27	12/23 - 52%								
CED	BW	WW	YW	ADG	DMI	MILK	ME	HPG	CEM	MRB	YG	CW	REA	FAT
13	-0.2	77	123	0.29	1.58	31	4	15	6	0.35	0.07	27	0.31	0.04
49%	5%	6%	10%	8%	6%							33%	15%	

- 1521 is by 5L Bourne 117-48A, a sire that we have used with tremendous success at Sandbur Ridge Red Angus.
- He was raised by a productive young 2 year old female that is from the Destiny cow family that calls home to Rich Red Angus in Iowa.
- He charts top 5% WW, top 6% YW, top 10% ADG, top 8% Milk, and top 6% HPG.

**15** **RIDGE ADVANTAGE 1159**

BD: 3/30/21 Reg: 4454553 A - 100% AR Tattoo: 1159

5L ADVANTAGE 3267-221Y  
**RIDGE ADVANTAGE 5305**  
 OTT-CASEY-F7-863

5L ZODIAC 1134-372Z  
**RIDGE DORA 2040-4413**  
 RIDGE DORA 280-2040

BUF CRK THE RIGHT KIND U199  
 5L ADINA 195-3267  
 SELL COPPERTOP 608  
 BARGER F7

5L RIPTIDE 453-85X  
 5L TESS 5166-1134  
 5L TRADESMAN 1715-6237  
 RIDGE DORA 366-280ET

BW: 78  
 AWW: 650  
 AYW: 1261  
 WDA: 3.5

**GGP**

DMPPA	Dam's Age	SC	Adj. IMF	Adj. REA	Adj. BF	CC Score								
99	7	36.0	4.89	12.42	0.27	25/33 - 76%								
CED	BW	WW	YW	ADG	DMI	MILK	ME	HPG	CEM	MRB	YG	CW	REA	FAT
16	-4.5	55	87	0.2	1.31	29	-1	14	10	0.29	0.14	24	-0.13	0.01
8%	9%				40%	14%	28%	12%	8%			43%		41%

- 1159 is another grandson of the great 5L Advantage 3267-221Y, one of the most influential sires in the business.
- The dam of this top calving ease prospect is from the influence of 5L Zodiac 1134-372Z.
- Recommended for use on heifers.



*5L Bourne 117-48A  
 Sire of Lot 14 & Paternal Grand sire  
 of Lots 16-19*



**LOT 16**  
**RIDGE FOREMAN 1515**

- Ridge Foreman 1515 is a standout phenotypically that is extra shapely, bold bodied, and square pinned.
- He is sired by Foreman and backed by a Blockade daughter on the bottom side of his pedigree.
- He charts top 2% for WW, top 2% YW, top 2% ADG, and top 1% CW.
- A carcass merit and performance standout with a 6+ IMF!

**16** **RIDGE FOREMAN 1515**  
BD: 1/30/21 Reg: 4454601 A - 100% AR Tattoo: 1515

5L BOURNE 117-48A  
**5L FOREMAN 2174-370E**  
5L ADINA 1551-2174  
5L BLOCKADE 2218-30B  
**RIDGE FUSCHIA 3668-9005**  
5L FUSCHIA 643-3668

5L ADVANTAGE 3267-221Y  
5L ROXIE 854-117  
O C C EMBLAZON 854E  
5L ADINA 525-1551  
5L DEFENDER 560-30Z  
5L OPAL 656-2218  
5L EXPLORER 589-7414  
5L FUSCHIA 27-643

BW: 83  
AWW: 670  
AYW: 1311  
WDA: 3.25

DMPPA	Dam's Age	SC	Adj. IMF	Adj. REA	Adj. BF	CC Score								
103	2	34.0	6.34	13.65	0.22	12/23 - 52%								
CED	BW	WW	YW	ADG	DMI	MILK	ME	HPG	CEM	MRB	YG	CW	REA	FAT
12	0.3	80	134	0.34	2.31	26	8	14	4	0.63	0.08	49	0.44	0.02
	2%	2%	2%		44%		10%	10%		1%	5%			

**17** **RIDGE FOREMAN 1524**  
BD: 2/2/21 Reg: 4454619 A - 100% AR Tattoo: 1524

5L BOURNE 117-48A  
**5L FOREMAN 2174-370E**  
5L ADINA 1551-2174  
5L BODY BUILDER 4434-68D  
**RIDGE BELLE 2034-9009**  
RIDGE BELLE 548-2034

5L ADVANTAGE 3267-221Y  
5L ROXIE 854-117  
O C C EMBLAZON 854E  
5L ADINA 525-1551  
5L BLOCKADE 2218-30B  
5L RED BIRD 411-4434  
5L TRADESMAN 1715-6237  
RIDGE BELLE 016-548

BW: 85  
AWW: 731  
AYW: 1316  
WDA: 3.32

DMPPA	Dam's Age	SC	Adj. IMF	Adj. REA	Adj. BF	CC Score								
107	2	40.0	6.76	14.36	0.3	14/23 - 61%								
CED	BW	WW	YW	ADG	DMI	MILK	ME	HPG	CEM	MRB	YG	CW	REA	FAT
14	-1	76	124	0.3	2.53	27	11	16	7	0.64	0.14	20	0.03	0.04
	29%	5%	5%	7%		29%	2%	9%						



**LOT 17**  
**RIDGE FOREMAN 1524**

- What a combination of growth, performance, carcass merit, and maternal stability that is offered in Ridge Foreman 1524!
- 1524 was raised by a first calf heifer dam by Body Builder that posted a DMPPA of 107.
- This big scrotal bull is an impressive CE option that came to the weaning pen with tremendous performance and also ranks top 5% for WW and top 5% YW.
- He is a big scrotal bull that posted a 6.76 IMF and a 14+ inch REA.





LOT 18 - RIDGE FOREMAN 1525

18

**RIDGE FOREMAN 1525**

BD: 2/3/21 Reg: 4454621 A - 100% AR Tattoo: 1525

5L BOURNE 117-48A  
**5L FOREMAN 2174-370E**  
 5L ADINA 1551-2174  
 5L BODY BUILDER 4434-68D  
**RIDGE AQUILA 4336-9050**  
 RIDGE AQUILA 552-4336

5L ADVANTAGE 3267-221Y BW: 81  
 5L ROXIE 854-117 AWW: 623  
 O C C EMBLAZON 854E AYW: 1160  
 5L ADINA 525-1551 WDA: 2.88  
 5L BLOCKADE 2218-30B  
 5L RED BIRD 411-4434  
 MLK CRK EXPRESS 9127  
 RIDGE AQUILA 213-552

DMPPA	Dam's Age		SC	Adj. IMF		Adj. REA		Adj. BF		CC Score				
100	2		37.0	5.55		11.93		0.18		10/23 - 43%				
CED	BW	WW	YW	ADG	DMI	MILK	ME	HPG	CEM	MRB	YG	CW	REA	FAT
15	-1	70	111	0.26	2.13	24	7	14	6	0.51	0.08	20	0.1	0.03
20%		15%	19%	28%	12%		26%							

- Here is another standout son of Foreman that is backed by the influence of a hard working first calf heifer dam sired by Body Builder and from the Aquila cow family.
- He is a top calving ease prospect that also charts top 15% for WW, top 19% for YW, and top 12% for HPG.
- 1524 is a high IMF bull with a 5.55 adjusted IMF on ultrasound day.

19

**RIDGE FOREMAN 1503**

BD: 1/22/21 Reg: 4454577 A - 100% AR Tattoo: 1503

5L BOURNE 117-48A  
**5L FOREMAN 2174-370E**  
 5L ADINA 1551-2174  
 RIDGE PROVISION 6013  
**RIDGE HOB0 9027-9014**  
 RIDGE HOB0 016-9027

5L ADVANTAGE 3267-221Y BW: 69  
 5L ROXIE 854-117 AWW: 595  
 O C C EMBLAZON 854E AYW: 1240  
 5L ADINA 525-1551 WDA: 2.99  
 5L ADVANTAGE 3267-221Y  
 RIDGE MONA 8162-2057  
 5L SIGNATURE 5615  
 SIXL MS HOB0 016

DMPPA	Dam's Age		SC	Adj. IMF		Adj. REA		Adj. BF		CC Score				
98	2		36.0	5.17		12.81		0.34		10/23 - 43%				
CED	BW	WW	YW	ADG	DMI	MILK	ME	HPG	CEM	MRB	YG	CW	REA	FAT
17	-3.5	65	106	0.26	1.73	28	2	18	8	0.46	0.24	34	-0.09	0.04
7%		20%	31%	28%	25%	25%	45%	1%	27%	36%	14%			

- 1503 is a long bodied, big ribbed son of Foreman that is backed by a second dose of the legendary 5L Advantage 3267-221Y on the bottom side of his lineage.
- Another standout bull that was raised by a first calf heifer and ranks top 7% for CE and top 20% for BW without sacrificing performance and pounds at weaning time.
- Recommended for use on heifers.



*5L Bourne 117-48A  
 Paternal Grand sire of Lots 16 - 19*



LOT 20 - RIDGE EMBLAZON 1519

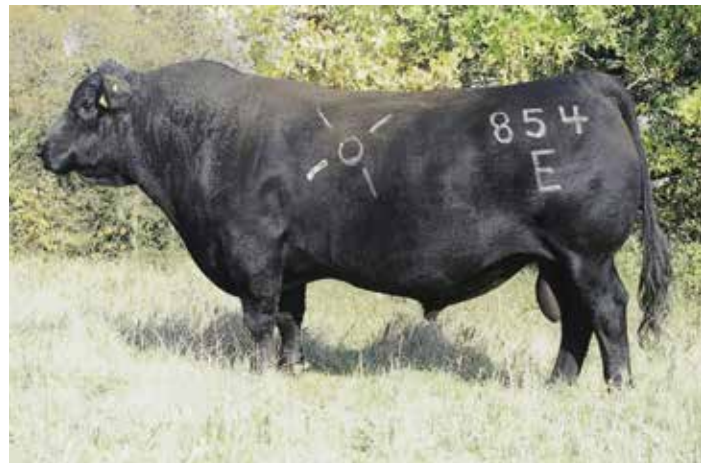
**20** **RIDGE EMBLAZON 1519**

BD: 1/30/21    Reg: 4454609    A - 100% AR    Tattoo: 1519

O C C EMBLAZON 854E    D H D TRAVELER 6807    BW: 72  
 5L EMBLAZON 117-51F    DIXIE ERICA OF C H 1019    AWW: 609  
 5L ROXIE 854-117    5L SIGNATURE 5615    AYW: 1140  
    XXX ROXIE 854 MR    WDA: 2.82  
 5L BODY BUILDER 4434-68D    5L BLOCKADE 2218-30B  
**RIDGE MONA 2049-9012**    5L RED BIRD 411-4434  
 RIDGE MONA 711-2049    5L TRADESMAN 1715-6237  
    RIDGE MONA 970-711   

DMPPA	Dam's Age	SC	Adj. IMF	Adj. REA	Adj. BF	CC Score								
99	2	34.0	4.77	11.97	0.18	10/23 - 43%								
CED	BW	WW	YW	ADG	DMI	MILK	ME	HPG	CEM	MRB	YG	CW	REA	FAT
15	-2.8	59	92	0.2	1.85	23	0	13	6	0.43	0.05	22	0.1	0.01
16%	31%						35%	21%		43%	44%			39%

- The influence that O C C Emblazon 854E has had on the beef cattle industry is hard to mimic.
- The body mass, fleshing ease, and forage efficient body style that they offer has been the primary reasons so many ranchers have looked to Emblazon daughters to enhance their cow herd.
- Recommended for use on heifers.



OCC Emblazon 854E - Paternal Grand sire of Lot 20

# BACKED BY EMBLAZON



LOT 21 - RIDGE GRAND EXPRESS 1006

**21** RIDGE GRAND EXPRESS 1006

BD: 1/21/21 Reg: 4454255 A - 100% AR Tattoo: 1006

5L NORSEMAN EXPRESS  
**5L GRAND EXPRESS 453-5655**  
 5L RUBY 01-453  
 5L ADVANTAGE 3267-221Y  
**RIDGE SARA 863-5304**  
 OTT-CASEY-F7-863

5L NORSEMAN KING 2291  
 5L MARTHA 197-159  
 5L NORSEMAN KING 2291  
 5L RUBY 199-01  
 BUF CRK THE RIGHT KIND U199  
 5L ADINA 195-3267  
 SELL COPPERTOP 608  
 BARGER F7

BW: 92  
 AWW: 703  
 AYW: 1261  
 WDA: 3.38

**GGP**

DMPPA	Dam's Age		SC	Adj. IMF		Adj. REA		Adj. BF		CC Score				
103	6		36.0	4.12		16.01		0.26		25/31 - 81%				
CED	BW	WW	YW	ADG	DMI	MILK	ME	HPG	CEM	MRB	YG	CW	REA	FAT
10	0.2	70	107	0.23	1.61	25	-2	12	5	0.39	-0.03	24	0.36	0.01
		16%	26%	45%	50%		26%	27%			11%	44%	10%	33%

- 1006 is a big-time powerhouse herd sire prospect sired by the great 5L Grand Express 453-5655 and backed by a top daughter of 5L Advantage 3267-221Y that is from the OTT-Casey-F7-863 tribe.
- He is a performance standout that ranks top 16% WW and top 10% REA.
- Phenotypically he is a true standout that is as rugged and masculine of a herd sire prospect in the offering!



5L Advantage 3267-221Y - Maternal Grand sire of Lots 21 & 22

**22** RIDGE GRAND EXPRESS 1002

BD: 1/17/21 Reg: 4454247 A - 100% AR Tattoo: 1002

5L NORSEMAN EXPRESS  
**5L GRAND EXPRESS 453-5655**  
 5L RUBY 01-453  
 5L ADVANTAGE 3267-221Y  
**RIDGE SARA 8044-6045**  
 RIDGE CASEY 028-8044

5L NORSEMAN KING 2291  
 5L MARTHA 197-159  
 5L NORSEMAN KING 2291  
 5L RUBY 199-01  
 BUF CRK THE RIGHT KIND U199  
 5L ADINA 195-3267  
 5L GRAND EXPRESS 453-5655  
 RIDGE CASEY 871-028

BW: 76  
 AWW: 703  
 AYW: 1199  
 WDA: 3.23

**GGP**

DMPPA	Dam's Age		SC	Adj. IMF		Adj. REA		Adj. BF		CC Score				
106	5		39.0	4.2		14.27		0.28		18/29 - 62%				
CED	BW	WW	YW	ADG	DMI	MILK	ME	HPG	CEM	MRB	YG	CW	REA	FAT
10	-1.5	66	95	0.18	1.77	24	-3	17	7	0.24	-0.05	22	0.39	0.01
		27%				23%	1%	46%			7%	8%	26%	

- Ridge Grand Express 1002 is another Grand Express son that is from the "Casey" influence on the maternal side of his pedigree.
- We appreciate the balanced number profile and tremendous carcass data that he brings to the equation.
- His 5-year-old dam boasts a DMPPA of 105.

**23** RIDGE GRAND EXPRESS 1003

BD: 1/18/21 Reg: 4454249 A - 100% AR Tattoo: 1003

5L NORSEMAN EXPRESS  
**5L GRAND EXPRESS 453-5655**  
 5L RUBY 01-453  
 RIDGE TROUBADOUR 0014  
**RIDGE MONA 631-2026**  
 RIDGE MONA 758-631

5L NORSEMAN KING 2291  
 5L MARTHA 197-159  
 5L NORSEMAN KING 2291  
 5L RUBY 199-01  
 5L TRADESMAN 1715-6237  
 RIDGE CASEY 028-215  
 TR JULIAN MT212  
 OTT-MONA-303-758

BW: 84  
 AWW: 680  
 AYW: 1149  
 WDA: 3.1

**GGP**

DMPPA	Dam's Age		SC	Adj. IMF		Adj. REA		Adj. BF		CC Score				
102	9		36.5	3.66		13.44		0.26		30/35 - 86%				
CED	BW	WW	YW	ADG	DMI	MILK	ME	HPG	CEM	MRB	YG	CW	REA	FAT
16	-2.2	56	76	0.12	1.49	24	-7	18	10	0.34	0.05	20	0.15	0.02
		14%		42%				14%	1%	4%	40%		42%	

- Here is a Grand Express son that is certainly a calving ease herd sire option with tremendous carcass and growth figures.
- His 9-year-old dam continues to produce highly marketable, efficient cattle and offer longevity.



LOT 24 - RIDGE NEW FORCE 1148

**24** **RIDGE NEW FORCE 1148**  
 BD: 3/9/21 Reg: 4454531 A - 100% AR Tattoo: 1148

5L NEW FORCE 762-262B  
**5L NEW FORCE 284-57D**  
 5L RED BIRD 32-284  
 5L ADVANTAGE 3267-221Y  
**RIDGE BLANCHE 8024-7610**  
 RIDGE SHEILA 009-8024

5L DEFENDER 560-30Z  
 5L KRISHNA 2120-762  
 5L DEFENDER 560-30Z  
 5L RED BIRD 411-32  
 BUF CRK THE RIGHT KIND U199  
 5L ADINA 195-3267  
 5L NORSEMAN KING 2291  
 RIDGE SHEILA 009

BW: 78  
 AWW: 639  
 AYW: 1182  
 WDA: 3.18

DMPPA	Dam's Age		SC	Adj. IMF	Adj. REA	Adj. BF	CC Score							
99	4		37.5	5.89	13.35	0.27	17/27 - 63%							
CED	BW	WW	YW	ADG	DMI	MILK	ME	HPG	CEM	MRB	YG	CW	REA	FAT
15	-3.4	56	86	0.19	1.26	27	-5	16	7	0.64	0	16	0.07	0
19%	21%				35%	29%	17%	2%	44%	9%	18%			11%

- What a bull! There is no doubt that Ridge New Force 284-57D is one of the true standout herd sire prospects that we have offered to date!
- His dam is a top young daughter of 5L Advantage 3267-221Y that is backed by the Ridge Sheila 009 matron.
- He is a moderate birth weight bull that charts top 19% for CED, top 21% for BW, and offers the real-world data to further support these predictors.
- A big scrotal herd bull that posted a 5.89 IMF to ratio 133!

**25** **RIDGE TOP GUN 1533**  
 BD: 2/24/21 Reg: 4454637 A - 100% AR Tattoo: 1533

5L TOPGUN 560-65B  
**MLK CRK TOP GUN 8270**  
 MLK CRK RED TOP 654  
 RIDGE PROVISION 6013  
**RIDGE JUANA 118Y-9057**  
 AHF JUANA 118Y

5L ADVANTAGE 3267-221Y  
 5L BLACK ADINA 525-560  
 RIDGE LEGEND 2069  
 MLK CRK RED TOP 4108  
 5L ADVANTAGE 3267-221Y  
 RIDGE MONA 8162-2057  
 RED SIX MILE SAKIC 832S  
 AHF JAUNA 4105

BW: 66  
 AWW: 601  
 AYW: 1091  
 WDA: 2.76

DMPPA	Dam's Age		SC	Adj. IMF	Adj. REA	Adj. BF	CC Score							
99	2		33.9	5.37	12.56	0.22	11/23 - 48%							
CED	BW	WW	YW	ADG	DMI	MILK	ME	HPG	CEM	MRB	YG	CW	REA	FAT
17	-5.6	42	60	0.11	1.09	25	-4	16	9	0.3	0.13	5	-0.34	0.02
7%	3%				23%	21%	2%	11%						47%

- 1533 is a direct son of MLK CRK Top Gun 8270 that is backed by Ridge Provision 6013.
- He recorded a moderate 66-pound actual birth weight that is supported by a CED figure that ranks him among the top 7% of the breed for CED and a BW EPD that is among the top 3%
- Recommended for use on heifers.

26

**RIDGE EXPRESS 1019**

BD: 1/27/21 Reg: 4454281 A - 100% AR Tattoo: 1019

5L GRAND EXPRESS 453-5655 5L NORSEMAN EXPRESS BW: 94  
 5L RUBY 01-453 AWW: 710  
**MLK CRK EXPRESS 9127** BJR PROOF 224-159 AYW: 1252  
 MLK CRK SHEBA 043 MLK CRK SHEBA 869 WDA: 3.38  
 5L TRAILBLAZER 1766-188V 5L TRAVLIN EXPRESS 1892-6295  
**MLK CRK RED TOP 382** 5L SERENA 3234-1766  
 MLK CRK RED TOP 1010 TR JULIAN WT951  
 MLK CRK RED TOP 828

DMPPA	Dam's Age		SC	Adj. IMF	Adj. REA	Adj. BF	CC Score							
103	8		35.0	3.73	14.53	0.28	30/35 - 86%							
CED	BW	WW	YW	ADG	DMI	MILK	ME	HPG	CEM	MRB	YG	CW	REA	FAT
13	-0.5	66	102	0.22	1.62	23	2	12	8	0.32	0.07	32	0.38	0.04
45%	26%	36%					43%	30%	29%			18%	8%	

- Performance, power, shape, and length. Here is a herd sire prospect that will add pound at weaning and sire a tremendous set of larger framed feeder cattle.
- 1019 posted an adjusted weaning weight of 710 pounds to compliment his genetic predictor for carcass merit and performance.



LOT 26 - RIDGE EXPRESS 1019

27

**RIDGE EXPRESS 1037**

BD: 2/2/21 Reg: 4454317 A - 100% AR Tattoo: 1037

5L GRAND EXPRESS 453-5655 5L NORSEMAN EXPRESS BW: 65  
 5L RUBY 01-453 AWW: 547  
**MLK CRK EXPRESS 9127** BJR PROOF 224-159 AYW: 1081  
 MLK CRK SHEBA 043 MLK CRK SHEBA 869 WDA: 2.86  
 MLK CRK EXPRESS 9141 5L GRAND EXPRESS 453-5655  
**MLK CRK BLOCKANA 3106** MLK CRK SHEBA 079  
 MLK CRK BLOCKANNA 777 BUF CRK GIULIANI L851  
 MLK CRK BLOCKANNA 065

DMPPA	Dam's Age		SC	Adj. IMF	Adj. REA	Adj. BF	CC Score							
102	8		33.0	4.33	12.41	0.18	27/35 - 74%							
CED	BW	WW	YW	ADG	DMI	MILK	ME	HPG	CEM	MRB	YG	CW	REA	FAT
16	-3.4	52	75	0.14	1.15	19	-3	9	9	0.38	0.12	28	-0.02	0.01
8%	21%			27%			21%		14%			28%	35%	

- Ridge Express 1037 is a well-designed, sound-built herd sire prospect that is among the top 8% of the breed for CED and top 21% for BW.
- He offers a tremendous look of quality and structural integrity.



LOT 27 - RIDGE EXPRESS 1037

28

**RIDGE EXPRESS 1013**

BD: 1/25/21 Reg: 4454269 A - 100% AR Tattoo: 1013

5L GRAND EXPRESS 453-5655 5L NORSEMAN EXPRESS BW: 73  
 5L RUBY 01-453 AWW: 618  
**MLK CRK EXPRESS 9127** BJR PROOF 224-159 AYW: 1164  
 MLK CRK SHEBA 043 MLK CRK SHEBA 869 WDA: 3.09  
 5L ADVOCATE 817-14W 5L SIGNATURE 5615  
**RIDGE LAKOTA 651-5302** 5L MARTA 345-817  
 MLK CRK LAKOTA 651 GLACIER LOGAN 210  
 MLK CRK LAKOTA Y46-HOBO

DMPPA	Dam's Age		SC	Adj. IMF	Adj. REA	Adj. BF	CC Score							
102	6		34.0	4.09	12.94	0.27	26/31 - 84%							
CED	BW	WW	YW	ADG	DMI	MILK	ME	HPG	CEM	MRB	YG	CW	REA	FAT
15	-5.1	51	72	0.13	1.31	24	-6	13	9	0.55	0.08	22	0.05	0.01
17%	6%			40%			16%	23%	18%	20%			41%	

- Here is another MLK CRK Express 9127 son that is a standout option for use on heifers.
- This calving ease option posted an actual birth weight of 73 pounds to compliment his 15 CED and -5.1 BW EPD.



MLK CRK Express 9127 - Sire of Lots 26 - 28

LOT 29  
RIDGE  
STEWARD 1047



**29** **RIDGE STEWARD 1047**  
 BD: 2/3/21 Reg: 4454335 A - 100% AR Tattoo: 1047

MLK CRK ADVOCATE 4304  
**MLK CRK STEWARD 6264**  
 MLK CRK SUN GAL 2122

RED U2 MALBEC 195D  
**RIDGE LAKOTA 170Y-8129**  
 AHF LAKOTA 170Y

5L SECRET AGENT 117-229Z  
 MLK CRK SHEBA 1014  
 MLK CRK EXPRESS 9141  
 MLK CRK SUN GAL 880

RED U-2 RECKONING 149A  
 RED U-2 MABEL 60A  
 5L BLAZIN RED 1354-6166  
 AHF LAKOTA 5133

BW: 85  
 AWW: 667  
 AYW: 1197  
 WDA: 3.1

DMPPA	Dam's Age	SC	Adj. IMF	Adj. REA	Adj. BF	CC Score								
105	3	33.5	5.54	15.38	0.24	22/25 - 88%								
CED	BW	WW	YW	ADG	DMI	MILK	ME	HPG	CEM	MRB	YG	CW	REA	FAT
9	1.2	64	92	0.17	1.47	23	-2	10	5	0.45	0.06	8	0.14	0.04
34%			26%			39%		45%		45%				

- 1047 is a long bodied, shapely herd sire prospect that is backed by the influence of a young and productive daughter of Red U2 Malbec 195D.
- He is a carcass standout that posted an IMF Ratio at 125 and a REA Ratio at 110.

**31** **RIDGE STEWARD 1103**  
 BD: 2/18/21 Reg: 4454441 A - 100% AR Tattoo: 1103

MLK CRK ADVOCATE 4304  
**MLK CRK STEWARD 6264**  
 MLK CRK SUN GAL 2122

RED MINBURN COPENHAGEN 3Y  
**RED US MS ROBO 36E**  
 RED FLYING K MS ROBO 80K

5L SECRET AGENT 117-229Z  
 MLK CRK SHEBA 1014  
 MLK CRK EXPRESS 9141  
 MLK CRK SUN GAL 880

RED RMJ REDMAN 1T  
 MINBURN MAY 112M  
 RED TROPHY ROBOBULL 28D  
 RED FLYING K MISS COPPER 32Z

BW: 86  
 AWW: 694  
 AYW: 1211  
 WDA: 3.26

DMPPA	Dam's Age	SC	Adj. IMF	Adj. REA	Adj. BF	CC Score								
101	4	38.5	4.08	11.72	0.38									
CED	BW	WW	YW	ADG	DMI	MILK	ME	HPG	CEM	MRB	YG	CW	REA	FAT
9	0.5	57	89	0.2	1.52	25	0	8	5	0.28	0.23	22	-0.21	0.04
			50%			33%								

- 1103 is another Steward son that is from a productive young female sired by Red Minburn Copenhagen 3Y.
- We appreciate the added shape, length, and dimension that he brings to the table.
- He is a carcass merit standout that we believe will leave behind a high quality set of replacement females.

**30** **RIDGE STEWARD 1155**  
 BD: 3/19/21 Reg: 4454545 A - 100% AR Tattoo: 1155

MLK CRK ADVOCATE 4304  
**MLK CRK STEWARD 6264**  
 MLK CRK SUN GAL 2122

5L NEW FORCE 284-57D  
**RIDGE BONNEBELL 6073-8414**  
 RIDGE BONNEBELL 382-6073

5L SECRET AGENT 117-229Z  
 MLK CRK SHEBA 1014  
 MLK CRK EXPRESS 9141  
 MLK CRK SUN GAL 880

5L NEW FORCE 762-262B  
 5L RED BIRD 32-284  
 5L ADVANTAGE 3267-221Y  
 AXTELL BONNEBELL 138-382

BW: 83  
 AWW: 685  
 AYW: 1208  
 WDA: 3.24

DMPPA	Dam's Age	SC	Adj. IMF	Adj. REA	Adj. BF	CC Score									
103	3	33.0	6.26	13.7	0.31	16/25 - 64%									
CED	BW	WW	YW	ADG	DMI	MILK	ME	HPG	CEM	MRB	YG	CW	REA	FAT	
8	0.6	73	113	0.25	1.57	24	2	13	2	0.69	0.09	29	0.11	0.02	
9%			16%			33%		46%		15%		6%		26%	

- 1155 is a standout both phenotypically and from a carcass merit standpoint.
- He is by Steward 6264 and backed by a productive young daughter of New Force.
- He posted an impressive IMF of 6.26 to Ratio at 141. He further solidifies this by ranking among the top 6% for Marb.





**LOT 32**  
**RIDGE STEWARD 1033**

- Here is a high-quality calving ease prospect with extra length and style.
- He offers a moderate birthweight of 65 pounds and further compliments it with a -4.7 BW EPD.
- His dam is a beautiful daughter of 5L Bourne 117-9216 that was raised in the Rich Red Angus program of Iowa.

**32** **RIDGE STEWARD 1033**

BD: 2/1/21 Reg: 4454309 A - 100% AR Tattoo: 1033

MLK CRK STEWARD 6264 MLK CRK ADVOCATE 4304 BW: 65  
**RRA STEWARD 9216** MLK CRK SUN GAL 2122 AWW: 650  
 WCR MISS BLACKBIRD DE 510Y RED LAZY MC CC DETOUR 2W  
 BLAIRS BLACKBIRD 107X AYW: 1214  
 5L BOURNE 117-48A 5L ADVANTAGE 3267-221Y WDA: 3.12  
**RRA RACHEL 746 864** 5L ROXIE 854-117  
 RRA RACHEL 246 746 UBAR GRAND CANYON 124  
 RRA RACHEL 246

DMPPA	Dam's Age	SC	Adj. IMF	Adj. REA	Adj. BF	CC Score								
101	3	36.0	3.3	14.43	0.3	21/25 - 84%								
CED	BW	WW	YW	ADG	DMI	MILK	ME	HPG	CEM	MRB	YG	CW	REA	FAT
14	-4.7	63	95	0.2	2.04	29	2	13	7	0.11	0.2	23	0	0.06
33%	8%	37%				19%	46%	21%	43%			48%		

**33** **RIDGE STEWARD 1039**

BD: 2/2/21 Reg: 4454321 A - 100% AR Tattoo: 1039

MLK CRK STEWARD 6264 MLK CRK ADVOCATE 4304 BW: 88  
**RRA STEWARD 9216** MLK CRK SUN GAL 2122 AWW: 749  
 WCR MISS BLACKBIRD DE 510Y RED LAZY MC CC DETOUR 2W  
 BLAIRS BLACKBIRD 107X AYW: 1399  
 5L RIGHT KIND 1942-62B BUF CRK THE RIGHT KIND U199 WDA: 3.62  
**RIDGE SARA 4098-8135** 5L FUCHSIA 2687-1942  
 RIDGE CASEY 1074-4098 5L LEGEND 1553-425V  
 RIDGE CASEY 004-1074

DMPPA	Dam's Age	SC	Adj. IMF	Adj. REA	Adj. BF	CC Score								
108	3	37.5	4.12	14.36	0.31	23/25 - 92%								
CED	BW	WW	YW	ADG	DMI	MILK	ME	HPG	CEM	MRB	YG	CW	REA	FAT
9	-0.5	68	109	0.26	1.76	29	-1	12	5	0.28	0.21	41	0.13	0.05
		20%	22%	28%		15%	30%	38%				4%	47%	



**LOT 33**  
**RIDGE STEWARD 1039**

- 1039 is performance standout that charts among the top 20% of the breed for WW and top 22% for YW.
- This powerful son of RRA Steward 9216 is backed by the famed "Casey" cow family that we will continue to reference throughout the sale offering.
- He came to the weaning pen with over 740 pounds of pay weight.
- His dam is a top 3-year-old dam that posted a DMPPA of 108.



**LOT 34**  
**RIDGE STEWARD 1054**

- Ridge Steward 1054 is a bid ribbed, deep sided powerhouse herd sire prospect that offers a nice blend of calving ease and performance.
- He is a high IMF bull that also offers a 13+ inch REA.
- His pedigree is lined with countless females that offer superior udder quality and longevity.

**34** **RIDGE STEWARD 1054**  
BD: 2/5/21 Reg: 4454349 A - 100% AR Tattoo: 1054

MLK CRK STEWARD 6264 MLK CRK ADVOCATE 4304 BW: 74  
**RRA STEWARD 9216** MLK CRK SUN GAL 2122 AWW: 626  
 WCR MISS BLACKBIRD DE 510Y RED LAZY MC CC DETOUR 2W  
 BLAIRS BLACKBIRD 107X AYW: 1250  
 5L BOURNE 117-48A 5L ADVANTAGE 3267-221Y WDA: 3.19  
**RRA RACHEL D018 802** 5L ROXIE 854-117  
 RRA RACHEL 415 D018 5L DEFENDER 560-30Z  
 RRA RACHEL 746 415

DMPPA	Dam's Age	SC	Adj. IMF	Adj. REA	Adj. BF	CC Score								
101	4	36.5	4.43	13.07	0.28	20/25 - 80%								
CED	BW	WW	YW	ADG	DMI	MILK	ME	HPG	CEM	MRB	YG	CW	REA	FAT
11	-2.9	64	103	0.25	2.01	26	3	13	5	0.35	0.17	28	0.01	0.04
29%	34%	34%	35%		39%	49%	22%					29%		

**35** **RIDGE STEWARD 1004**  
BD: 1/19/21 Reg: 4454251 A - 100% AR Tattoo: 1004

MLK CRK STEWARD 6264 MLK CRK ADVOCATE 4304 BW: 79  
**RRA STEWARD 9216** MLK CRK SUN GAL 2122 AWW: 690  
 WCR MISS BLACKBIRD DE 510Y RED LAZY MC CC DETOUR 2W  
 BLAIRS BLACKBIRD 107X AYW: 1255  
 5L NEW FORCE 284-57D 5L NEW FORCE 762-262B WDA: 3.22  
**RIDGE SARA 6355-8435** 5L RED BIRD 32-284  
 RIDGE SARA 0280-6355 5L ADVANTAGE 3267-221Y  
 RIDGE CASEY 871-028

DMPPA	Dam's Age	SC	Adj. IMF	Adj. REA	Adj. BF	CC Score								
108	3	33.0	4.71	13.75	0.27	23/25 - 92%								
CED	BW	WW	YW	ADG	DMI	MILK	ME	HPG	CEM	MRB	YG	CW	REA	FAT
10	0.2	76	118	0.26	1.8	29	-2	11	6	0.22	0.09	24	0	0.01
		5%	10%	25%		14%	24%					45%		31%



**LOT 35**  
**RIDGE STEWARD 1004**

- 1004 is a stout made, powerful, and performance driven son of RRA Steward 9216 that is backed by a daughter of Sara that is from the "Casey" cow family.
- His dam is a powerful young three-year-old dam with a DMPPA of 108.
- He is a big IMF herd sire option that offers nearly a 14-inch REA to compliment.
- Carcass merit, performance, and calving ease all in one!





**LOT 36**  
**RIDGE STEWARD 1057**

- Ridge Steward 1057 is a direct son of RRA Steward 9216 that is from a young and productive Face Off daughter that is a three-year-old female.
- He charts top 7% for WW and top 9% YW.
- A big REA bull that scanned with a 14+ inch eye.

**36** **RIDGE STEWARD 1057**

BD: 2/6/21 Reg: 4454355 A - 100% AR Tattoo: 1057

MLK CRK STEWARD 6264  
**RRA STEWARD 9216**  
WCR MISS BLACKBIRD DE 510Y

ARO FACE OFF 532  
**RIDGE ADVANCETTER 6053-8128**  
PR ADVANCETTER L 06053

MLK CRK ADVOCATE 4304  
MLK CRK SUN GAL 2122  
RED LAZY MC CC DETOUR 2W  
BLAIRS BLACKBIRD 107X

RED SSS FACE OFF 739A  
ARO MISS EXPRESS 911  
P R TRAVELDGE 9044  
P R LADY 9083 7091

BW: 84  
AWW: 643  
AYW: 1199  
WDA: 3.08

DMPPA	Dam's Age	SC	Adj. IMF	Adj. REA	Adj. BF	CC Score								
101	3	34.0	3.8	14.13	0.25	19/25 - 76%								
CED	BW	WW	YW	ADG	DMI	MILK	ME	HPG	CEM	MRB	YG	CW	REA	FAT
9	1.6	75	119	0.27	1.72	21	-6	10	7	0.33	0.11	26	0.19	0.04
		7%	9%	17%			16%	46%				34%	34%	

**37** **RIDGE STEWARD 1014**

BD: 1/26/21 Reg: 4454271 A - 100% AR Tattoo: 1014

MLK CRK STEWARD 6264  
**RRA STEWARD 9216**  
WCR MISS BLACKBIRD DE 510Y

RIDGE ADVANTAGE 6353  
**RIDGE SARA 5102-8499**  
RIDGE SARA 1005-5102

MLK CRK ADVOCATE 4304  
MLK CRK SUN GAL 2122  
RED LAZY MC CC DETOUR 2W  
BLAIRS BLACKBIRD 107X

5L ADVANTAGE 3267-221Y  
RIDGE CASEY 871-028  
CROWFOOT RESOLUTION 3162A  
RIDGE CASEY 155-1005

BW: 90  
AWW: 739  
AYW: 1381  
WDA: 3.54

DMPPA	Dam's Age	SC	Adj. IMF	Adj. REA	Adj. BF	CC Score								
109	3	35.5	3.66	14.96	0.26	22/25 - 88%								
CED	BW	WW	YW	ADG	DMI	MILK	ME	HPG	CEM	MRB	YG	CW	REA	FAT
7	1.1	86	134	0.3	1.9	28	0	12	4	0.2	0.18	34	0.05	0.04
		1%	2%	7%			21%	34%	29%			12%		



**LOT 37**  
**RIDGE STEWARD 1014**

- 1014 is a rugged, masculine made herd sire prospect that is supported by the influence of the "Casey" cow family.
- He is among the top 1% of the breed for WW, top 1% for YW, and top 7% ADG.
- Another powerful bull that offers an adjusted weaning weight of 739 pounds of pay weight.



LOT 38 - RIDGE RIGHT KIND 1425

## 38

### RIDGE RIGHT KIND 1425

BD: 3/3/21    Reg: 4517815    A - 100% AR    Tattoo: 1425

5L RIGHT KIND 1942-62B <b>RIDGE RIGHT KIND 8146</b> RIDGE ROSE 2065-4430  5L INDEPENDENCE 560-298Y <b>RIDGE SARA 4445-6425</b> RIDGE SARA 2073-4445	BUF CRK THE RIGHT KIND U199 5L FUCHSIA 2687-1942 5L CRITICAL MASS 189Y RIDGE ROSE 8035-2065  BUF CRK THE RIGHT KIND U199 5L BLACK ADINA 525-560 RIDGE TROUBADOUR 0014 RIDGE SARA 9060-2073	BW: 87 AWW: 748 AYW: 1223 WDA: 3.39 
---	--	--

DMPPA	Dam's Age				SC	Adj. IMF	Adj. REA	Adj. BF	CC Score					
109	5				39.0	3.94	13.97	0.22						
CED	BW	WW	YW	ADG	DMI	MILK	ME	HPG	CEM	MRB	YG	CW	REA	FAT
13	-1.5	63	99	0.23	1.48	30	4	14	5	0.45	-0.02	12	0.16	0
43%	36%	42%	50%		13%		9%		39%	11%		40%	23%	

- Ridge Right Kind 1425 is another standout that traces back to the legendary BUF CRK The Right Kind U199, one of the most influential breeding bulls in the history of the Red Angus breed.
- The dam of 1425 is influenced by 5L Independence 560-298Y, an elite carcass and calving ease sire.

## 39

### RIDGE GUARDIAN 1024

BD: 1/30/21    Reg: 4454291    A - 100% AR    Tattoo: 1024

5L DEFENDER 560-30Z <b>RRA GUARDIAN 762</b> RRA RACHEL 246 746  5L SIERRA MIST 01-09A <b>5L SYBILLI 1791-3386</b> 5L SYBILLI 2554-1791	5L ADVOCATE 817-14W 5L BLACK ADINA 525-560 UBAR GRAND CANYON 124 RRA RACHEL 246  5L TRADESMAN 1715-6237 5L SIERRA 249-01 5L ALPINE 1807-31W 5L SYBILLI 9137-2554	BW: 76 AWW: 610 AYW: 1311 WDA: 3.38 
--	--	--

DMPPA	Dam's Age				SC	Adj. IMF	Adj. REA	Adj. BF	CC Score					
101	5				35.5	4.01	14.82	0.43	23/29 - 79%					
CED	BW	WW	YW	ADG	DMI	MILK	ME	HPG	CEM	MRB	YG	CW	REA	FAT
14	-1.8	66	116	0.31	1.85	27	5	12	7	0.24	0.1	20	0.06	0.03
28%	49%	26%	12%	5%		28%		26%						

- Ridge Guardian 1024 is a stout made son of RRA Guardian 762 that is backed by the strong influence of 5L genetics that line his pedigree.
- He offers a favorable combination of IMF and REA, while maintaining excellent calving ease and birth weight.
- Recommended for use on heifers.



**LOT 40**  
**COOKSLEY EXCELLENCE 1716**

- Cooksley Excellence 1716 is a true standout by KCC Excellence 139-774 that is backed by the influence of Andras Fusion R236 and Bieber Romero 9136 on the bottom side of his lineage.
- He charts top 18% CED, top 8% BW, top 2% CEM, top 4% YG, and top 4% Fat.
- Recommended for use on heifers.

**40** **COOKSLEY EXCELLENCE 1716**  
BD: 2/15/21 Reg: 4518435 A - 100% AR Tattoo: 1716

LJC MERLIN 937Z  
**KCC EXCELLENCE 139-774**  
139 1KCC

1DRA FUSION 5037  
**MISS RUTH 9422 SCN**  
BIEBER MISS RED 316X

LJC MERLIN T179  
TR CARRIE WT937  
SCHULER ENVY 7342T  
KCC MISS BV 2105-528

ANDRAS FUSION R236  
1DRA HANNAH 127  
BIEBER ROMERO 9136  
BIEBER MISS RED 116U

BW: 68  
AWW: 600  
AYW: 1041  
WDA: 2.64

**GGP**

DMPPA	Dam's Age	SC	Adj. IMF	Adj. REA	Adj. BF	CC Score								
98	2	33	3.87	13.44	0.12									
CED	BW	WW	YW	ADG	DMI	MILK	ME	HPG	CEM	MRB	YG	CW	REA	FAT
18	-4.7	51	88	0.23	1.42	27	-1	7	11	0.37	-0.08	10	0.18	-0.01
3%	8%			50%		32%	29%		2%		4%		37%	4%

**41** **COOKSLEY EXCELLENCE 1721**  
BD: 2/24/21 Reg: 4518445 A - 100% AR Tattoo: 1721

LJC MERLIN 937Z  
**KCC EXCELLENCE 139-774**  
139 1KCC

1DRA FUSION 5037  
**MISS RUTH 9416 SCN**  
1DRA REDBIRD 903

LJC MERLIN T179  
TR CARRIE WT937  
SCHULER ENVY 7342T  
KCC MISS BV 2105-528

ANDRAS FUSION R236  
1DRA HANNAH 127  
BIEBER MAKE MIMI 7249  
1DRA REDBIRD 703

BW: 76  
AWW: 745  
AYW: 1365  
WDA: 3.54

**GGP**

DMPPA	Dam's Age	SC	Adj. IMF	Adj. REA	Adj. BF	CC Score								
107	2	35.5	4.39	16.45	0.35									
CED	BW	WW	YW	ADG	DMI	MILK	ME	HPG	CEM	MRB	YG	CW	REA	FAT
16	-3.5	69	120	0.32	1.79	30	3	5	10	0.49	-0.06	31	0.54	0.01
14%	20%	18%	8%	4%		11%			5%	30%	5%	20%	2%	29%



**LOT 41**  
**COOKSLEY EXCELLENCE 1721**

- Here is another standout son of Excellence that is backed by the Fusion influence.
- He was raised by a standout first calf heifer that posted a DMPPA of 107.
- This big scrotal bull is elite numerically and posted an impressive IMF of 4.39 and a REA of 16.45
- Recommended for use on heifers.



LOT 42 - COOKSLEY EXCELLENCE 1724

**42** **COOKSLEY EXCELLENCE 1724**  
 BD: 2/16/21 Reg: 4518451 A - 100% AR Tattoo: 1724

LJC MERLIN 937Z  
**KCC EXCELLENCE 139-774**  
 139 1KCC

BIEBER IRON WARRIOR C124  
**MISS WARRIOR 9415 SCN**  
 CHOAT BOSS 2505-140Y

LJC MERLINT179  
 TR CARRIE WT937  
 SCHULER ENVY 7342T  
 KCC MISS BV 2105-528

BIEBER ROUSE SAMURAI X22  
 BIEBER LINCOLN 189A  
 S A PICTURE PERFECT 73 633  
 BC BOSS

BW: 62  
 AWW: 636  
 AYW: 1153  
 WDA: 2.93

**GGP**

DMPPA	Dam's Age	SC	Adj. IMF	Adj. REA	Adj. BF	CC Score								
100	2	35	4.53	12.75	0.21									
CED	BW	WW	YW	ADG	DMI	MILK	ME	HPG	CEM	MRB	YG	CW	REA	FAT
19	-3.8	62	100	0.24	1.44	27	-2	10	10	0.5	0	13	0.12	0.01
1%	16%	41%	40%	39%		31%	27%		4%	28%	18%		50%	29%

- Cooksley Excellence 1724 is an elite heifer safe option that comes to the sale with a 19 CED and a -3.8 BW EPD to compliment his 62-pound actual birth weight.
- His dam is a beautiful young daughter of Bieber Iron Warrior C124.
- Another high IMF herd sire option that is suitable for use on heifers.



LOT 43 - COOKSLEY EXCELLENCE 1726

**43** **COOKSLEY EXCELLENCE 1726**  
 BD: 3/13/21 Reg: 4518455 A - 100% AR Tattoo: 1726

LJC MERLIN 937Z  
**KCC EXCELLENCE 139-774**  
 139 1KCC

BIEBER IRON WARRIOR C124  
**PEGGY 7168 SCN**  
 BROWN MS P707 Y7692

LJC MERLINT179  
 TR CARRIE WT937  
 SCHULER ENVY 7342T  
 KCC MISS BV 2105-528

BIEBER ROUSE SAMURAI X22  
 BIEBER LINCOLN 189A  
 BECKTON NEBULA P P707  
 BROWN MS COMMITMENT W7968

BW: 79  
 AWW: 678  
 AYW: 1049  
 WDA: 2.88

**GGP**

DMPPA	Dam's Age	SC	Adj. IMF	Adj. REA	Adj. BF	CC Score								
99	4	35	5.21	13.32	0.26									
CED	BW	WW	YW	ADG	DMI	MILK	ME	HPG	CEM	MRB	YG	CW	REA	FAT
13	-4.8	59	95	0.22	1.59	28	2	13	6	0.64	0	16	0.34	0.03
46%	7%					26%	45%	19%		9%	16%		12%	

- The Excellence x Iron Warrior combination does it again! An elite calving ease bull that offers a -4.8 BW EPD.
- Suitable for use on heifers without sacrificing performance or carcass merit.



KCC Excellence 139-774 - Sire of Lots 40 - 44

**44** **COOKSLEY EXCELLENCE 1729**  
 BD: 2/16/21 Reg: 4518461 A - 100% AR Tattoo: 1729

LJC MERLIN 937Z  
**KCC EXCELLENCE 139-774**  
 139 1KCC

BIEBER IRON WARRIOR C124  
**MISS WARRIOR 9419 SCN**  
 PEGGY 7200 SCN

LJC MERLINT179  
 TR CARRIE WT937  
 SCHULER ENVY 7342T  
 KCC MISS BV 2105-528

BIEBER ROUSE SAMURAI X22  
 BIEBER LINCOLN 189A  
 BIEBER IRON WARRIOR C124  
 BCRP PEACHA 4121B

BW: 72  
 AWW: 601  
 AYW: 1161  
 WDA: 2.95

**GGP**

DMPPA	Dam's Age	SC	Adj. IMF	Adj. REA	Adj. BF	CC Score								
98	2	33.5	3.81	13.9	0.18									
CED	BW	WW	YW	ADG	DMI	MILK	ME	HPG	CEM	MRB	YG	CW	REA	FAT
16	-4.5	62	100	0.24	1.46	27	2	10	10	0.4	-0.07	30	0.6	0.01
10%	9%	41%	40%	39%		34%	44%		5%	4%	24%	1%	45%	

- 1729 is a three-quarter sib to 1724 and 1726, the calving ease and carcass merit genetic combination that has yielded tremendous results.
- 1729 was also raised by a two-year-old dam and recorded an actual birth weight of 72 pounds.



**LOT 45**

**COOKSLEY STOCKMAN 1722**

- Cooksley Stockman 1722 leads off the Bieber Stockman G270 sire group with tremendous look, style, and structural integrity.
- He is among the elite 1% of the breed for CED, top 20% BW, top 17% WW, top 1% CEM, and top 30% CW.
- Recommended for use on heifers without sacrificing any pay weight, performance, or maternal longevity.
- His dam is backed by a 13-year-old dam that has stood the test of time.

**45 COOKSLEY STOCKMAN 1722**

BD: 3/14/21 Reg: 4518447 A - 100% AR Tattoo: 1722

PIE STOCKMAN 4051 LSF SAGA 1040Y BW: 60  
**BIEBER STOCKMAN G270** PIE LAKOTA 046 AWW: 668  
 BIEBER ROSE 327D BIEBER SPARTACUS A193 AYW: 1222  
 BIEBER ROSE 507A WDA: 3.35  
 BECKTON CODY KH M390 BECKTON CODY K G701  
**MARS M390 406 803** BECKTON TAMARA J124 HR  
 MARS CHEROKEE 002 406 BFCK CHEROKEE CNYN 4912  
 9004 H17 022 LALA

DMPPA	Dam's Age	SC	Adj. IMF	Adj. REA	Adj. BF	CC Score								
98	13	35	3.6	13.07	0.25									
CED	BW	WW	YW	ADG	DMI	MILK	ME	HPG	CEM	MRB	YG	CW	REA	FAT
22	-3.5	69	103	0.21	1.42	27	4	9	12	0.35	0.14	28	0.13	0.04
1%	20%	17%	34%			30%			1%			30%	47%	

**46 COOKSLEY STOCKMAN 1706**

BD: 3/8/21 Reg: 4518415 A - 100% AR Tattoo: 1706

PIE STOCKMAN 4051 LSF SAGA 1040Y BW: 86  
**BIEBER STOCKMAN G270** PIE LAKOTA 046 AWW: 636  
 BIEBER ROSE 327D BIEBER SPARTACUS A193 AYW: 1115  
 BIEBER ROSE 507A WDA: 3.11  
 BIEBER H HUGHES W109 BASIN HOBO 0545  
**HLH MS HUGHES 9033 4144** BASIN ROSE 06T0  
 HLH MS NEBULA 7296 9033 BECKTON NEBULA M045  
 HLH MS ICY 2030 7296

DMPPA	Dam's Age	SC	Adj. IMF	Adj. REA	Adj. BF	CC Score								
99	7	34.5	4.14	11.42	0.26									
CED	BW	WW	YW	ADG	DMI	MILK	ME	HPG	CEM	MRB	YG	CW	REA	FAT
14	-1.5	78	118	0.24	1.77	26	6	11	8	0.47	0.25	30	0.02	0.06
29%	3%	10%	35%			43%			21%	34%		21%		



**LOT 46**

**COOKSLEY STOCKMAN 1706**

- Here is a moderate framed, bold centered, easy fleshing son of Bieber Stockman G270 that is backed by the influence of Basin Hobo 0545 on the bottom side of his pedigree.
- He is an elite calving ease option that maintains a top 3% WW and top 10% YW EPD profile.



*PIE STOCKMAN 4051  
Paternal Grand sire of Lots 45-52*



**LOT 47**  
**COOKSLEY STOCKMAN 1727**

- 1727 is a standout son of Bieber Stockman G270 that is a standout phenotypically.
- He is among the elite 1% of the breed for WW, YW, ADG, and CW.
- A true sale feature that will turn heads on sale day, and rightfully so!

**47** **COOKSLEY STOCKMAN 1727**  
BD: 3/20/21 Reg: 4518457 A - 100% AR Tattoo: 1727

PIE STOCKMAN 4051  
**BIEBER STOCKMAN G270**  
BIEBER ROSE 327D  
BIEBER LET'S ROLL B563  
**MS ROLL 8275 SCN**  
BIEBER KRISTIN 142Z

LSF SAGA 1040Y  
PIE LAKOTA 046  
BIEBER SPARTACUS A193  
BIEBER ROSE 507A  
BIEBER ROLLIN DEEP Y118  
BASIN PRIMROSE 2043  
BIEBER ROUSE SAMURAI X22  
BIEBER KRISTIN 187X

BW: 76  
AWW: 658  
AYW: 1233  
WDA: 3.32  
**GGP**

DMPPA	Dam's Age	SC	Adj. IMF	Adj. REA	Adj. BF	CC Score																
99	3	35.5	3.96	13.42	0.22		CED	BW	WW	YW	ADG	DMI	MILK	ME	HPG	CEM	MRB	YG	CW	REA	FAT	
							12	-0.6	89	146	0.36	1.97	25	9	9	7	0.58	0.17	47	0.23	0.04	
									1%	1%	1%						39%	16%	1%	26%		

**48** **COOKSLEY STOCKMAN 1707**  
BD: 3/24/21 Reg: 4518417 A - 100% AR Tattoo: 1707

PIE STOCKMAN 4051  
**BIEBER STOCKMAN G270**  
BIEBER ROSE 327D  
BIEBER GLADIATOR C386  
**MS GLADIATOR 8260 SCN**  
BIEBER KRISTIN 190C

LSF SAGA 1040Y  
PIE LAKOTA 046  
BIEBER SPARTACUS A193  
BIEBER ROSE 507A  
BIEBER SPARTACUS A193  
BIEBER LAURA 158W  
BIEBER ROLLIN DEEP Y118  
BIEBER KRISTIN 142Z

BW: 85  
AWW: 702  
AYW: 1158  
WDA: 3.12  
**GGP**

DMPPA	Dam's Age	SC	Adj. IMF	Adj. REA	Adj. BF	CC Score															
103	3	37.5	3.62	13.59	0.26		CED	BW	WW	YW	ADG	DMI	MILK	ME	HPG	CEM	MRB	YG	CW	REA	FAT
							11	0.1	79	128	0.31	2.09	28	10	9	6	0.61	0.17	34	0.08	0.03
									3%	3%	5%							12%	13%		



**LOT 48**  
**COOKSLEY STOCKMAN 1707**

- 1707 is another Stockman son that is backed by a Bieber Gladiator C386 daughter. We appreciate his balanced number profile and the added performance he offers.
- He ranks top 3% for WW, top 3% YW, and top 5% ADG.

**LOT 49**  
**COOKSLEY**  
**STOCKMAN**  
**1702**



**49** ..... **COOKSLEY STOCKMAN 1702** .....  
BD: 3/9/21 Reg: 4518407 A - 100% AR Tattoo: 1702

PIE STOCKMAN 4051 LSF SAGA 1040Y BW: 76  
**BIEBER STOCKMAN G270** PIE LAKOTA 046 AWW: 678  
 BIEBER ROSE 327D BIEBER SPARTACUS A193 AYW: 1097  
 BIEBER ROSE 507A WDA: 3.05  
 MUSHRUSH IMPRESSIVE CA U236 BUF CRK LANCER R017  
**MS IMPRESSIVE 3007 SCN** MUSHRUSH MADAM LT R265  
 CBR MISS DAKOTA 167-1324 SODAK OSCAR 3406/T324  
 CBR MISSGOLDY 167-9106

DMPPA	Dam's Age		SC	Adj. IMF		Adj. REA		Adj. BF		CC Score				
98	8		30	3.94		14.25		0.3						
CED	BW	WW	YW	ADG	DMI	MILK	ME	HPG	CEM	MRB	YG	CW	REA	FAT
13	-3.1	68	102	0.22	1.72	25	8	10	8	0.4	0.23	20	-0.01	0.07
48%		25%	22%	36%	47%		35%							

- 1702 is from the Stockman sire group and is backed by the influence of Mush Rush Red Angus genetics that trace to the great BUF CRK Lancer R017.
- He is backed by a proven 8-year-old female that does an excellent job year after year.
- A low-birth-weight option that is suitable for use on heifers.

**51** ..... **COOKSLEY STOCKMAN 1714** .....  
BD: 3/8/21 Reg: 4518431 A - 100% AR Tattoo: 1714

PIE STOCKMAN 4051 LSF SAGA 1040Y BW: 84  
**BIEBER STOCKMAN G270** PIE LAKOTA 046 AWW: 624  
 BIEBER ROSE 327D BIEBER SPARTACUS A193 AYW: 1066  
 BIEBER ROSE 507A WDA: 2.98  
 BROWN JYJ REDEMPTION Y1334 BECKTON NEBULA P P707  
**JANE 4485 SCN** JYJ MS JOLENE W16   
 ABBY 446-222 LCC ABOVE & BEYOND 1300J

DMPPA	Dam's Age		SC	Adj. IMF		Adj. REA		Adj. BF		CC Score				
99	7		35	4.28		12.47		0.21						
CED	BW	WW	YW	ADG	DMI	MILK	ME	HPG	CEM	MRB	YG	CW	REA	FAT
10	-0.8	78	126	0.3	1.82	26	12	8	6	0.55	0.09	43	0.28	0.02
4%		4%	7%	46%		20%		3%		18%		48%		

- 1714 is a performance standout from the Stockman sire group with an EPD profile that charts him among the top 4% of the breed for WW and YW.
- He is another high IMF option that offers tremendous length, shape, and dimension.

**50** ..... **COOKSLEY STOCKMAN 1718** .....  
BD: 2/20/21 Reg: 4518439 A - 100% AR Tattoo: 1718

PIE STOCKMAN 4051 LSF SAGA 1040Y BW: 72  
**BIEBER STOCKMAN G270** PIE LAKOTA 046 AWW: 651  
 BIEBER ROSE 327D BIEBER SPARTACUS A193 AYW: 1180  
 BIEBER ROSE 507A WDA: 3.11  
 1DRA FUSION 5037 ANDRAS FUSION R236  
**MS FUSION 8588 SCN** 1DRA HANNAH 127  
 CHOAT BOSS 2505-140Y S A PICTURE PERFECT 73 633  
 BC BOSS

DMPPA	Dam's Age		SC	Adj. IMF		Adj. REA		Adj. BF		CC Score				
99	3		36	4.61		13.92		0.28						
CED	BW	WW	YW	ADG	DMI	MILK	ME	HPG	CEM	MRB	YG	CW	REA	FAT
17	-3.5	63	104	0.25	1.86	28	8	12	10	0.5	0.19	19	-0.03	0.05
5%		20%	36%	33%	31%	27%		32%		4%		28%		

- Bieber Stockman G270 and backed by the great Andras Fusion R236.
- He offers an impressive 4.61 IMF.
- He charts top 5% of the breed for CED and top 4% CEM.

**52** ..... **COOKSLEY STOCKMAN 1711** .....  
BD: 3/11/21 Reg: 4518425 B - 95.1% AR Tattoo: 1711

PIE STOCKMAN 4051 LSF SAGA 1040Y BW: 82  
**BIEBER STOCKMAN G270** PIE LAKOTA 046 AWW: 698  
 BIEBER ROSE 327D BIEBER SPARTACUS A193 AYW: 1135  
 BIEBER ROSE 507A WDA: 3.15  
 CHAT 832U GLACIER CHATEAU 744  
**BIEBER DURHEIM 352Z** FEMALE 832H   
 BD3P DURHEIM 909 5L RED DIRECTION 691-6046  
 DURHEIM 562

DMPPA	Dam's Age		SC	Adj. IMF		Adj. REA		Adj. BF		CC Score				
100	9		36.5	4.37		12.79		0.22						
CED	BW	WW	YW	ADG	DMI	MILK	ME	HPG	CEM	MRB	YG	CW	REA	FAT
11	-0.5	67	99	0.2	1.8	27	6	9	8	0.5	0.12	32	0.18	0.03
22%		43%		34%		37%		28%		17%		37%		

- 1711 is by Stockman G270 and backed by the long-lasting influence of the legendary Glacier Chateau 744, a true legend within the breed.
- He is among the top 22% for WW, top 28% Marb, and top 17% CW.



**LOT 53**  
**COOKSLEY HUGH 1709**

- 1709 is a non-registered Red Angus bull that offers performance, body shape, and structural soundness.
- He is a moderate birth weight bull that is among the top third of the breed for WW, DMI, ME, and Milk.
- He is an elite carcass sire that charts top 3% for Marb and top 4% CW.

**53** **COOKSLEY HUGH 1709**  
BD: 3/21/21 Reg: 4518421 3 - 50% AR Tattoo: 1709

**COOKSLEY RED ANGUS**

1DRA INTERNATIONAL 3041  
**MS HERITAGE 5533 SCN**  
ANNA 3218 SCN

BROWN HERITAGE U6509  
1DRA ELEANOR 714  
RIDGE EMPIRE 0028  
CHOAT SHEILA 459-31Y

BW: 84  
AWW: 691  
AYW: 1085  
WDA: 3.04

DMPPA		Dam's Age		SC	Adj. IMF		Adj. REA		Adj. BF		CC Score			
109		6		35	3.84		11.77		0.16					
CED	BW	WW	YW	ADG	DMI	MILK	ME	HPG	CEM	MRB	YG	CW	REA	FAT
11	0.4	65	96	0.19	1.15	26	0	9	7	0.76	0.28	41	0	0.06
29%				27%	44%	33%	44%	3%	4%					

**54** **COOKSLEY HUGH 1713**  
BD: 3/9/21 Reg: 4518429 3 - 50% AR Tattoo: 1713

**COOKSLEY RED ANGUS**

BECKTON EPIC R397 K  
**MLK CRK THELMA 414**  
MLK CRK THELMA 435

BECKTON EPIC K F075  
BECKTON KIT F468 JL  
VGW TITLEIST 1106  
MLK CRK THELMA 076

BW: 82  
AWW: 603  
AYW: 1113  
WDA: 3.1

DMPPA		Dam's Age		SC	Adj. IMF		Adj. REA		Adj. BF		CC Score			
99		7		35.5	4.09		12.07		0.2					
CED	BW	WW	YW	ADG	DMI	MILK	ME	HPG	CEM	MRB	YG	CW	REA	FAT
12	0.2	62	101	0.25	0.43	20	0	10	8	0.54	0.19	50	0.31	0.05
42%		38%		35%	2%	33%	26%	21%	1%	15%				



**LOT 54**  
**COOKSLEY HUGH 1713**

- 1713 is another non-registered Red Angus bull that is backed by a Beckton bred dam produced in the Milk Creek Red Angus program.
- He is a dark red hided, long bodied, smooth made herd sire prospect that is balanced numerically.
- He charts top 1% of the breed for CW.






LOT 55 - COOKSLEY FALLOUT 1712

**55** **COOKSLEY FALLOUT 1712**  
 BD: 3/9/21 Reg: 4518427 A - 100% AR Tattoo: 1712

RED LWNBRG HARVESTOR 103C  
**RED LWNBRG FALLOUT 100G**  
 RED LWNBRG ROLLIN DEEP 85B  
 1DRA INTERNATIONAL 3041  
**RUTH 6212 SCN**  
 CHOAT EYES MARIE 302-126X

TED HARVESTOR 154A  
 RED TED MAGNUM 141Y  
 BIEBER ROLLIN DEEP Y118  
 RED TED OLES OSCAR 74Z  
 BROWN HERITAGE U6509  
 1DRA ELEANOR 714  
 5L ZENITH 1425-5767  
 KDS EYES MARIE 302

BW: 76  
 AWW: 625  
 AYW: 1201  
 WDA: 3.31  


DMPPA	Dam's Age	SC	Adj. IMF	Adj. REA	Adj. BF	CC Score								
98	5	36	4.36	13.4	0.28									
CED	BW	WW	YW	ADG	DMI	MILK	ME	HPG	CEM	MRB	YG	CW	REA	FAT
11	-1.2	66	124	0.36	1.78	24	11	12	7	0.48	0.17	44	0.22	0.04
	26%	5%	1%					37%		32%		4%	28%	

- Cooksley Fallout 1712 is a standout among the class of 2021 herd sire prospects bred at Cooksley Red Angus.
- He is sired by Fallout and backed by the influence of International 3041, the Brown Heritage U6509 son.
- 1712 offers a moderate birth weight of 76 pounds and spreads to a WW EPD that charts him among the top 26% for WW, top 5% for YW, and top 1% for ADG.
- He is a high IMF option that will add style, presence, and shape to any set of females.



Red LWNBRG Harvestor 103C - Paternal Grand sire of Lots 55 - 58



LOT 56 - COOKSLEY FALLOUT 1708

**56** **COOKSLEY FALLOUT 1708**  
 BD: 2/18/21 Reg: 4518419 A - 100% AR Tattoo: 1708

RED LWNBRG HARVESTOR 103C  
**RED LWNBRG FALLOUT 100G**  
 RED LWNBRG ROLLIN DEEP 85B

BIEBER IRON WARRIOR C124  
**MISS WARRIOR 9412 SCN**  
 BROWN MS 806 U7737

TED HARVESTOR 154A  
 RED TED MAGNUM 141Y  
 BIEBER ROLLIN DEEP Y118  
 RED TED OLES OSCAR 74Z

BIEBER ROUSE SAMURAI X22  
 BIEBER LINCOLN 189A  
 LJC LANCER 806  
 BROWN MS LIL SAM P7909

BW: 82  
 AWW: 609  
 AYW: 1078  
 WDA: 2.74

**GGP**

DMPPA	Dam's Age	SC	Adj. IMF	Adj. REA	Adj. BF	CC Score								
98	2	37	3.9	13.13	0.21									
CED	BW	WW	YW	ADG	DMI	MILK	ME	HPG	CEM	MRB	YG	CW	REA	FAT
9	-0.5	66	107	0.26	2.01	19	13	5	5	0.6	0.16	32	0.15	0.04
			27%	26%	28%				13%	18%	42%			

- 1708 is another Fallout 100G son that is backed by the influence of the great Bieber Iron Warrior C124.
- He charts top third of the breed for WW, YW, and ADG.
- Top 13% Marb and top 18% CW.



LOT 57 - COOKSLEY FALLOUT 1728

**57** **COOKSLEY FALLOUT 1728**  
 BD: 2/26/21 Reg: 4518459 A - 100% AR Tattoo: 1728

RED LWNBRG HARVESTOR 103C  
**RED LWNBRG FALLOUT 100G**  
 RED LWNBRG ROLLIN DEEP 85B

ROUSE MIGHTY PACKER A52  
**LENA 6154 SCN**  
 TESS 4477 SCN

TED HARVESTOR 154A  
 RED TED MAGNUM 141Y  
 BIEBER ROLLIN DEEP Y118  
 RED TED OLES OSCAR 74Z

BIEBER MIGHTY PACKER X178  
 ROUSE LENA X10  
 RAM 802 SCN  
 TERRI 340 SCN

BW: 76  
 AWW: 632  
 AYW: 1136  
 WDA: 3.12

**GGP**

DMPPA	Dam's Age	SC	Adj. IMF	Adj. REA	Adj. BF	CC Score								
105	5	34.5	4.26	12.68	0.21									
CED	BW	WW	YW	ADG	DMI	MILK	ME	HPG	CEM	MRB	YG	CW	REA	FAT
14	-0.1	73	129	0.35	2.1	27	8	12	7	0.67	0.26	52	0.25	0.07
			36%	9%	3%	1%	35%	39%	7%	1%	23%			

- An extra high-quality bull sired by Fallout that is backed by the great Rouse Mighty Packer A52.
- A moderate birth weight bull that offers explosive growth and performance.
- He ranks top 9% for WW, top 3% YW, top 1% ADG, top 7% Marb, top 1% CW, and top 23% REA.



**58** **COOKSLEY FALLOUT 1701**  
 BD: 3/19/21 Reg: 4518405 A - 100% AR Tattoo: 1701

RED LWNBRG HARVESTOR 103C  
**RED LWNBRG FALLOUT 100G**  
 RED LWNBRG ROLLIN DEEP 85B

1DRA INTERNATIONAL 3041  
**COOKSLEY JANE 5520**  
 TESS 824-896 SCN

TED HARVESTOR 154A  
 RED TED MAGNUM 141Y  
 BIEBER ROLLIN DEEP Y118  
 RED TED OLES OSCAR 74Z

BROWN HERITAGE U6509  
 1DRA ELEANOR 714  
 5L BLAZIN RAM 5166-7504  
 TEAHON BIG GIRL 896

BW: 84  
 AWW: 709  
 AYW: 1103  
 WDA: 3.09

**GGP**

DMPPA	Dam's Age	SC	Adj. IMF	Adj. REA	Adj. BF	CC Score								
102	6	30	3.46	12.56	0.18									
CED	BW	WW	YW	ADG	DMI	MILK	ME	HPG	CEM	MRB	YG	CW	REA	FAT
9	-1.1	60	105	0.28	1.97	25	11	10	4	0.49	0.12	37	0.19	0.03
			47%	31%	16%	48%				30%	8%	34%		

- 1701 is another quality son of Fallout that is a performance standout.
- He charts among the top third of the breed for both WW and YW.
- 1701 came to the weaning pen with over 700 pounds of pay weight at weaning.



LOT 59 - RIDGE COPENHAGEN 1610

**59** **RIDGE COPENHAGEN 1610**  
 BD: 3/13/21 Reg: 4478865 A - 100% AR Tattoo: 1610

RED RMJ REDMAN 1T  
**RED MINBURN COPENHAGEN 3Y**  
 MINBURN MAY 112M

SL NORMANDY CANYON 6024  
**RIDGE AQUILA 456-760**  
 RIDGE AQUILA 836-456

5L NORSEMAN KING 2291  
 CROWFOOT KURUBA 4033P  
 CRESCENT CREEK MAIN EVENT 6H  
 MINBURN MAY 90G

LCHMN GRANDCANYON 1244G  
 NORSEMAN 1312 PJM  
 GLACIER PIONEER 939  
 LONK AQUILA H836

BW: 89  
 AWW: 659  
 AYW: 1086  
 WDA: 3.04

DMPPA	Dam's Age	SC	Adj. IMF	Adj. REA	Adj. BF	CC Score								
106	14	38.0	3.69	13.32	0.17	33/35 - 94%								
CED	BW	WW	YW	ADG	DMI	MILK	ME	HPG	CEM	MRB	YG	CW	REA	FAT
8	0.4	61	95	0.22	1.36	26	-6	9	4	0.19	0.14	25	-0.03	0.03
46%		44%		44%		16%		41%						

- Ridge Copenhagen 1610 is an eye appealing, long sided, ultra-attractive profiling son of Red Minburn Copenhagen 3Y that is backed by the great 5L Normandy Canyon 6024 on the maternal side of his pedigree.
- A tremendous performance sire that is backed by a 14-year-old dam that posts a DMPPA of 106.



**60** **RIDGE COPENHAGEN 1624**  
 BD: 3/21/21 Reg: 4478889 A - 100% AR Tattoo: 1624

RED RMJ REDMAN 1T  
**RED MINBURN COPENHAGEN 3Y**  
 MINBURN MAY 112M

SL NORMANDY CANYON 6024  
**RIDGE AQUILA 456-760**  
 RIDGE AQUILA 836-456

5L NORSEMAN KING 2291  
 CROWFOOT KURUBA 4033P  
 CRESCENT CREEK MAIN EVENT 6H  
 MINBURN MAY 90G

LCHMN GRANDCANYON 1244G  
 NORSEMAN 1312 PJM  
 GLACIER PIONEER 939  
 LONK AQUILA H836

BW: 98  
 AWW: 655  
 AYW: 1120  
 WDA: 3.14

DMPPA	Dam's Age	SC	Adj. IMF	Adj. REA	Adj. BF	CC Score								
106	14	36.5	3.7	11.69	0.31	33/35 - 94%								
CED	BW	WW	YW	ADG	DMI	MILK	ME	HPG	CEM	MRB	YG	CW	REA	FAT
12	-2	49	78	0.18	1.36	26	-6	9	7	0.13	0.24	25	-0.16	0.05
46%		44%		44%		16%		41%						

- 1624 is another performance driven son of Copenhagen that is backed by the 456-760 donor dam.
- Both 1610 and 1624 are ET flushmate brothers from the proven producing female that offers tremendous udder quality, foot shape, heal depth, and structural integrity.
- Power in the blood with this pair of brothers would be an understatement!

*Red RMJ Redman 1T*  
 Paternal Grand sire of Lots 59-60 &  
 Sire of Lots 61-65



LOT 61 - RIDGE REDMAN 1027

**61** RIDGE REDMAN 1027  
 BD: 1/31/21 Reg: 4454297 A - 100% AR Tattoo: 1027

5L NORSEMAN KING 2291 VGW KING OF THE WEST BW: 71  
**RED RMJ REDMAN 1T** NORSEMAN 1312 PJM AWW: 601  
 CROWFOOT KURUBA 4033P O C C HUNTER 928H AYW: 1157  
 RED CROWFOOT KURUBA 2030M  
 MUSHRUSH LTJULIAN LG S005 TR JULIAN LT142 WDA: 3.03  
**RIDGE SHEILA 9015-1123** MUSHRUSH LOGA N288  
 RIDGE SHEILA 009-9015 5L SIGNATURE 5615  
 RIDGE SHEILA 009

DMPPA	Dam's Age		SC	Adj. IMF		Adj. REA		Adj. BF		CC Score				
101	10		37.5	3.79		14.5		0.36		32/35 - 91%				
CED	BW	WW	YW	ADG	DMI	MILK	ME	HPG	CEM	MRB	YG	CW	REA	FAT
20	-6.8	30	50	0.13	0.88	28	-8	8	11	0.26	0.1	-5	-0.03	0.06
1%	1%			13%	25%	13%		1%						

- 1027 is an eye appealing son of Red RMJ Redman 1T that is backed by the Sheila cow family.
- He is an elite calving ease prospect that is among the elite 1% of the breed for CED, BW, and CEM.
- A true standout that is recommended for use on heifers.

**62** RIDGE REDMAN 1001  
 BD: 1/17/21 Reg: 4454245 A - 100% AR Tattoo: 1001

5L NORSEMAN KING 2291 VGW KING OF THE WEST BW: 78  
**RED RMJ REDMAN 1T** NORSEMAN 1312 PJM AWW: 646  
 CROWFOOT KURUBA 4033P O C C HUNTER 928H AYW: 1145  
 RED CROWFOOT KURUBA 2030M  
 5L GRAND EXPRESS 453-5655 5L NORSEMAN EXPRESS WDA: 3.08  
**RIDGE CASEY 315-4023** 5L RUBY 01-453  
 RIDGE CASEY 978-315 GLACIER PIONEER 939  
 OTT-CASEY-F412-978

DMPPA	Dam's Age		SC	Adj. IMF		Adj. REA		Adj. BF		CC Score				
102	7		39.5	3.76		15.85		0.24		27/33 - 82%				
CED	BW	WW	YW	ADG	DMI	MILK	ME	HPG	CEM	MRB	YG	CW	REA	FAT
12	-1.8	59	98	0.24	1.55	23	-2	13	7	0.18	-0.04	10	0.29	0.02
49%	45%	35%			24%	23%					8%	17%		

- Another stout made son of Redman that is backed by a tremendous daughter of 5L Grand Express 453-5655.
- His dam is a 7-year-old female that records a DMPPA of 102.
- He is a big REA bull that scanned with a 15+ ribeye area.

**63** RIDGE REDMAN 1606  
 BD: 2/26/21 Reg: 4478857 A - 100% AR Tattoo: 1606

5L NORSEMAN KING 2291 VGW KING OF THE WEST BW: 66  
**RED RMJ REDMAN 1T** NORSEMAN 1312 PJM AWW: 643  
 CROWFOOT KURUBA 4033P O C C HUNTER 928H AYW: 1053  
 RED CROWFOOT KURUBA 2030M  
 MLK CRK FLAGSTONE MLK CRK CUB 722 WDA: 2.93  
**RIDGE CASEY 004-571** MLK CRK LAKOTA 850  
 RIDGE CASEY 863-004 HOLDEN HI HO 753  
 OTT-CASEY-F7-863

DMPPA	Dam's Age		SC	Adj. IMF		Adj. REA		Adj. BF		CC Score				
106	16		37.0	4.48		12.94		0.34		33/35 - 94%				
CED	BW	WW	YW	ADG	DMI	MILK	ME	HPG	CEM	MRB	YG	CW	REA	FAT
18	-5.5	37	51	0.09	1.05	30	-5	7	11	0.2	0	1	0.03	0.02
2%	4%				21%	10%	17%		2%		20%			

- An elite calving ease sire of that offers a 66-pound birth weight to compliment his 18 CED and -5.5 BW.
- His dam is backed by the elite "Casey" cow family and is a 16 year old female that recorded a DMPPA of 106.
- Recommended for use on heifers.

**64** RIDGE REDMAN 1015  
 BD: 1/26/21 Reg: 4454273 A - 100% AR Tattoo: 1015

5L NORSEMAN KING 2291 VGW KING OF THE WEST BW: 79  
**RED RMJ REDMAN 1T** NORSEMAN 1312 PJM AWW: 647  
 CROWFOOT KURUBA 4033P O C C HUNTER 928H AYW: 1217  
 RED CROWFOOT KURUBA 2030M  
 5L LEGEND 1553-425V 5L LAKOTA LEGEND 7074 WDA: 3.24  
**RIDGE MONA 2057-4412** 5L HAZEL 45L-1553  
 RIDGE MONA 8162-2057 5L ZENITH 1425-5767  
 RIDGE MONA 620-8162

DMPPA	Dam's Age		SC	Adj. IMF		Adj. REA		Adj. BF		CC Score				
100	7		35.5	3.44		16.64		0.27		28/33 - 85%				
CED	BW	WW	YW	ADG	DMI	MILK	ME	HPG	CEM	MRB	YG	CW	REA	FAT
17	-5.2	40	75	0.22	1.3	27	-5	13	10	0.01	-0.11	0	0.36	0.02
7%	5%				39%	33%	17%	21%	5%		2%		10%	47%

- 1015 is another standout son of Redman that is backed by the Legend influence from the 5L program in Montana.
- He is among the top 7% of the breed for CE, top 5% BW, top 5% CEM, top 2% YG, and top 10% REA.
- Recommended for use on heifers.

**65** RIDGE REDMAN 1040  
 BD: 2/3/21 Reg: 4454323 A - 100% AR Tattoo: 1040

5L NORSEMAN KING 2291 VGW KING OF THE WEST BW: 77  
**RED RMJ REDMAN 1T** NORSEMAN 1312 PJM AWW: 689  
 CROWFOOT KURUBA 4033P O C C HUNTER 928H AYW: 1228  
 RED CROWFOOT KURUBA 2030M  
 MUSHRUSH LTJULIAN LG S005 TR JULIAN LT142 WDA: 3.27  
**RIDGE GRANDIOSE 9032-1073** MUSHRUSH LOGA N288  
 RIDGE GRANDIOSE 7112-9032 5L NORSEMAN KING 2291  
 RIDGE GRANDIOSE 435-7112

DMPPA	Dam's Age		SC	Adj. IMF		Adj. REA		Adj. BF		CC Score				
104	10		35.6	3.64		15.15		0.27		33/35 - 94%				
CED	BW	WW	YW	ADG	DMI	MILK	ME	HPG	CEM	MRB	YG	CW	REA	FAT
17	-5.9	42	70	0.18	1.13	30	-8	13	9	0.13	0.01	-5	0.06	0.03
7%	3%				26%	9%	12%	15%	9%		22%			

- 1040 is a powerhouse Redman son that is backed by the famed Julian influence on the bottom side.
- He is a moderate birth weight bull that offers a 17 CED to rank among the top 7% of the breed.
- A top option for use on heifers!

66

**RIDGE COMPASS 1083**

BD: 2/13/21 Reg: 4454403 A - 100% AR Tattoo: 1083

RRA IMPACT 505  
**RIDGE COMPASS 7087**  
 RIDGE LILA 8132-0017  
 5L ADVANTAGE 3267-221Y  
**RIDGE SARA 004-5311**  
 RIDGE CASEY 863-004

RED SSS SOLDIER 365W  
 RRA RACHEL 746 144  
 5L AVALANCHE 525-1014  
 RIDGE LILA 101-8132  
 BUF CRK THE RIGHT KIND U199  
 5L ADINA 195-3267  
 HOLDEN HI HO 753  
 OTT-CASEY-F7-863

BW: 89  
 AWW: 593  
 AYW: 1169  
 WDA: 3.12

**GGP**

DMPPA	Dam's Age		SC	Adj. IMF		Adj. REA		Adj. BF		CC Score				
97	6		35.5	4.03		12.48		0.19		21/31 - 68%				
CED	BW	WW	YW	ADG	DMI	MILK	ME	HPG	CEM	MRB	YG	CW	REA	FAT
10	-1.3	52	80	0.17	1.25	26	-2	16	5	0.17	0.13	22	-0.08	0.02
				34%	41%	26%	3%							

- 1083 is a performance driven son of Ridge Compass 7087 that is backed by the great 5L Advantage 3267-221Y influence.
- He is a high IMF bull that is influenced by the legendary OTT-Casey-F7863 matron.

67

**RIDGE GOLD ROBBER 1620**

BD: 3/18/21 Reg: 4478881 A - 100% AR Tattoo: 1620

LMAN KING ROB 8621  
**LCHMN GOLD ROBBER 1909E**  
 LEACHMAN LARKABA 6384  
 MUSHRUSH LTJULIAN LG 5005  
**RIDGE LAKOTA 7132-9085**  
 RIDGE LAKOTA 2290-7132

LEACHMAN ROBUST 7222  
 LEACHMAN ELEANOR  
 LEACHMAN SOLID GOLD  
 LCHMN LARKABA 2252  
 TR JULIAN LT142  
 MUSHRUSH LOGA N288  
 FEDDES GRAND 430  
 BLUE RIDGE LAKOTA 290

BW: 78  
 AWW: 630  
 AYW: 1183  
 WDA: 3.28

**GGP**

DMPPA	Dam's Age		SC	Adj. IMF		Adj. REA		Adj. BF		CC Score				
99	12		34.5	3.32		13.91		0.25		30/35 - 86%				
CED	BW	WW	YW	ADG	DMI	MILK	ME	HPG	CEM	MRB	YG	CW	REA	FAT
15	-4.4	50	87	0.23	0.82	33	3	15	9	0.24	0.16	21	0.06	0.05
				21%	10%	44%	10%	2%	49%	6%	14%			

- 1620 is a Gold Robber son, influenced by the legendary LMAN King Rob 821 and traces to the TR Julian LT142 sire line.
- He charts top 10% BW, top 10% DMI, top 2% Milk, and top 6% HPG.



Ridge Compass 7087 - Sire of Lot 66

68

**RIDGE GOLD ROBBER 1623**

BD: 3/20/21 Reg: 4478887 A - 100% AR Tattoo: 1623

LMAN KING ROB 8621  
**LCHMN GOLD ROBBER 1909E**  
 LEACHMAN LARKABA 6384  
 MUSHRUSH LTJULIAN LG 5005  
**RIDGE LAKOTA 7132-9085**  
 RIDGE LAKOTA 2290-7132

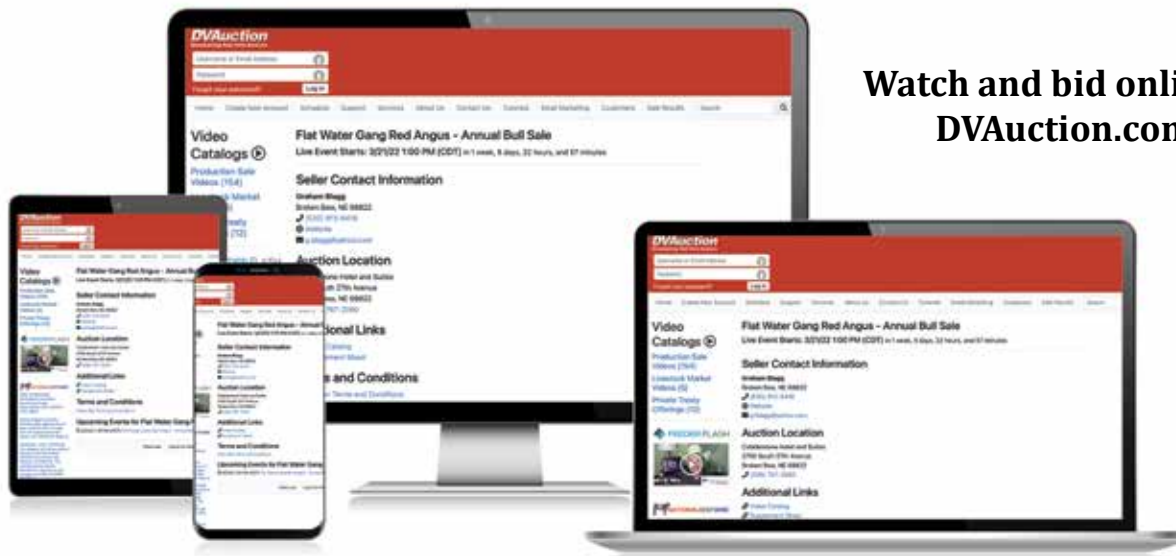
LEACHMAN ROBUST 7222  
 LEACHMAN ELEANOR  
 LEACHMAN SOLID GOLD  
 LCHMN LARKABA 2252  
 TR JULIAN LT142  
 MUSHRUSH LOGA N288  
 FEDDES GRAND 430  
 BLUE RIDGE LAKOTA 290

BW: 72  
 AWW: 586  
 AYW: 1025  
 WDA: 2.86

**GGP**

DMPPA	Dam's Age		SC	Adj. IMF		Adj. REA		Adj. BF		CC Score				
99	12		34.0	3.91		12.35		0.25		30/35 - 86%				
CED	BW	WW	YW	ADG	DMI	MILK	ME	HPG	CEM	MRB	YG	CW	REA	FAT
14	-5.1	47	81	0.22	0.82	33	3	14	9	0.38	0.1	17	0.07	0.03
				24%	6%	10%	2%	49%	10%	11%				

- 1623 is a flushmate brother to 1620 sired by the influence of the great LMAN King Rob 8621.
- The dam of this pair of flushmate brothers is a tremendous female that has stood the test of time.
- Top 2% of the breed for Milk.



Watch and bid online at  
**DVAuction.com**



LOT 69 - RIDGE DECISION 1605



LOT 71 - RIDGE BANK NOTE 1622

**69** RIDGE DECISION 1605

BD: 2/26/21 Reg: 4478855 2 - 100% AR Tattoo: 1605

BAR-E-L NATURAL LAW 52Y  
**PM EXECUTIVE DECISION 5'17**  
 PM BLOSSOM 124'13  
 5L EXPLORER 589-7414  
**5L FUSCHIA 643-3668**  
 5L FUSCHIA 27-643

S A V BISMARK 5682  
 BAR-E-L MAGNOLIA 143K  
 HF THUNDERBIRD 146Y  
 POPLAR MEADOWS BLOSSOM 5'10  
 O C C HUNTER 928H  
 XXX MATTIE 589 HM  
 5L PRIME TIME 2559  
 5L FUCHSIA 45-27

BW: 94  
 AWW: 733  
 AYW: 1081  
 WDA: 3.06

**GGP**

DMPPA	Dam's Age	SC	Adj. IMF	Adj. REA	Adj. BF	CC Score								
108	13	32.5	4.09	13.74	0.17	31/35 - 89%								
CED	BW	WW	YW	ADG	DMI	MILK	ME	HPG	CEM	MRB	YG	CW	REA	FAT
11	0.9	78	127	0.31	1.16	29	-9	9	7	0.45	0.1	48	0.17	0
	4%	4%	5%	27%	16%	12%				39%		1%	38%	12%

- Ridge Decision 1605 leads off the Black-Red Carrier division of the 2022 sale offering with extreme style, presence, and shape.
- His dam is 13 year-old daughter of 5L Explorer 589-7414 that was a member of the donor pen at Sandbur Ridge Red Angus.
- Here is an outcross sire option that is among the top 4% for WW, top 4% for YW, top 5% ADG, top 16% Milk, top 1% for CW, and top 12% Fat.
- A true standout phenotypically that is among the most powerful bulls in the entire sale.

**71** RIDGE BANK NOTE 1622

BD: 3/18/21 Reg: 4478885 2 - 100% AR Tattoo: 1622

CONNEALY EARNAN 076E  
**BROOKING BANK NOTE 4040**  
 E A ROSE 918  
 5L LEGEND 1553-425V  
**RIDGE DESIGN LASS 1134-3405**  
 RIDGE DESIGN LASS 7116-1134

CONNEALY CONSENSUS  
 BRAZILA OF CONANGA 3991  
 S A V FINAL ANSWER 0035  
 E A ROSE 738  
 5L LAKOTA LEGEND 7074  
 5L HAZEL 45L-1553  
 MLK CRK SIGNATURE 9220  
 RIDGE DESIGN LASS 515-7116

BW: 78  
 AWW: 612  
 AYW: 1113  
 WDA: 3.09

**GGP**

DMPPA	Dam's Age	SC	Adj. IMF	Adj. REA	Adj. BF	CC Score								
100	8	35.0	3.63	14.24	0.26	27/35 - 77%								
CED	BW	WW	YW	ADG	DMI	MILK	ME	HPG	CEM	MRB	YG	CW	REA	FAT
12	0.6	80	128	0.3	2.05	18	8	14	9	0.32	0.13	37	0.28	0.04
	3%	3%	6%					8%	17%		7%	18%		

- 1622 is a top son of Brooking Bank Note 4040 that is backed to the influence of 5L Legend 1553-425V.
- He is a bold ribbed, deep sided, powerhouse Black-Red Carrier herd sire prospect that is destined to leave an impact on any program that employs his influence.
- Top 3% WW, top 3% YW, top 6% ADG, and top 8% HPG.

**70** RIDGE DECISION 1607

BD: 2/28/21 Reg: 4478859 2 - 100% AR Tattoo: 1607

BAR-E-L NATURAL LAW 52Y  
**PM EXECUTIVE DECISION 5'17**  
 PM BLOSSOM 124'13  
 5L EXPLORER 589-7414  
**5L FUSCHIA 643-3668**  
 5L FUSCHIA 27-643

S A V BISMARK 5682  
 BAR-E-L MAGNOLIA 143K  
 HF THUNDERBIRD 146Y  
 POPLAR MEADOWS BLOSSOM 5'10  
 O C C HUNTER 928H  
 XXX MATTIE 589 HM  
 5L PRIME TIME 2559  
 5L FUCHSIA 45-27

BW: 102  
 AWW: 735  
 AYW: 1180  
 WDA: 3.3

**GGP**

DMPPA	Dam's Age	SC	Adj. IMF	Adj. REA	Adj. BF	CC Score								
108	13	31.5	3.23	12.39	0.19	31/35 - 89%								
CED	BW	WW	YW	ADG	DMI	MILK	ME	HPG	CEM	MRB	YG	CW	REA	FAT
10	2.3	82	128	0.29	1.16	29	-9	10	6	0.35	0.01	47	0.45	0
	2%	3%	11%	27%	16%	12%					21%	1%	5%	12%

- 1607 is a flushmate brother to 1605 that is from the 5L Fuschia 643-3668 donor dam.
- He is a long sided, smooth made herd sire prospect that is big hipped, square built.
- He came to the weaning pen with over 700 pounds of performance.



LOT 70 - RIDGE DECISION 1607



Brooking Bank Note 4040 - Sire of Lots 71 & 72

### 74 RIDGE DATELINE 1615

BD: 3/17/21 Reg: 4478873 2 - 100% AR Tattoo: 1615

CONNEALY DATELINE D H D TRAVELER 6807 BW: 87  
 VERMILION DATELINE 7078 EILA EILA OF CONANGA AWW: 676  
 VERMILION BLACKBIRD 5044 LEACHMAN RIGHT TIME AYW: 1118  
 VERMILION BLACKBIRD 3525 WDA: 3.13

MEMORY POWER 621 PEN POWER PLAY 304  
 AQUILA 366 SHOSHONE LASS 321  
 AQUILA 065 MEMORY POWER 621 GGP  
 AKC 433

DMPPA	Dam's Age	SC	Adj. IMF	Adj. REA	Adj. BF	CC Score								
108	28	36.5	4.23	13.28	0.2									
CED	BW	WW	YW	ADG	DMI	MILK	ME	HPG	CEM	MRB	YG	CW	REA	FAT
13	-1.6	53	79	0.16	1.31	20	9	10	10	0.46	0.14	34	0.06	0.02
43%			40%			4%		36%		12%				

- Ridge Dateline 1615 is another son from the Aquilla 366 donor dam, that if she were still alive would be 28 years old!
- The genetics that back both 1615 and 1616 ET flushmate brothers have stood the test of time, primarily why we went back in the tank and put them embryos on.
- The longevity, foot quality, udder design, fleshing ease, and fertility that back their lineage would be second to none.

### 72 RIDGE BANK NOTE 1627

BD: 3/23/21 Reg: 4478895 2 - 100% AR Tattoo: 1627

CONNEALY EARNAN 076E CONNEALY CONSENSUS BW: 94  
 BROOKING BANK NOTE 4040 BRAZILA OF CONANGA 3991 AWW: 657  
 E A ROSE 918 S A V FINAL ANSWER 0035 AYW: 1174  
 E A ROSE 738 E A ROSE 738 WDA: 3.28

5L LEGEND 1553-425V 5L LAKOTA LEGEND 7074  
 RIDGE DESIGN LASS 1134-3405 5L HAZEL 45L-1553  
 RIDGE DESIGN LASS 7116-1134 MLK CRK SIGNATURE 9220 GGP  
 RIDGE DESIGN LASS 515-7116

DMPPA	Dam's Age	SC	Adj. IMF	Adj. REA	Adj. BF	CC Score												
100	8	35.5	3.88	14.31	0.41	27/35 - 77%												
CED	BW	WW	YW	ADG	DMI	MILK	ME	HPG	CEM	MRB	YG	CW	REA	FAT				
10	-1.7	68	105	0.24	2.05	18	8	13	8	0.29	0.14	40	0.48	0.07				
21%			29%			42%			16%			35%			5%		4%	

- 1627 is another stout made Bank Note son that is backed by the 5L Legend 1553-425V daughter.
- He charts among the top 21% for WW, top 29% for YW, top 16% HPG, and top 5% CW.

### 75 RIDGE TRAVELER 1613

BD: 3/16/21 Reg: 4478869 2 - 100% AR Tattoo: 1613

D H D TRAVELER 6807 Q A S TRAVELER 23-4 BW: 97  
 ALBERDA TRAVELER 416 BEMINDFUL MAID D H D 0807 AWW: 617  
 ALBERDA QUEEN KIMBERLY 222 V D A R NEW TREND 315 AYW: 1089  
 ALBERDA QUEEN KIMBERLY 169 WDA: 3.04

MEMORY POWER 621 PEN POWER PLAY 304  
 AQUILA 366 SHOSHONE LASS 321  
 AQUILA 065 MEMORY POWER 621 GGP  
 AKC 433

DMPPA	Dam's Age	SC	Adj. IMF	Adj. REA	Adj. BF	CC Score								
108	28	36.5	4.56	12.45	0.2									
CED	BW	WW	YW	ADG	DMI	MILK	ME	HPG	CEM	MRB	YG	CW	REA	FAT
14	-1.4	46	68	0.14	0.91	21	3	10	6	0.5	0.25	12	-0.27	0.06
30%			14%			49%		28%						

- Ridge Traveler 1613 is a grandson of the maternal legend, D H D Traveler 6807, a sire that would be one of the most influential breeding bulls in the business.
- 1613 is a maternal brother to the 1615 and 1616 herd sire prospects that sell as 73 and 74.
- Pay attention to this powerful set of Black-Red Carrier herd sire prospects that have the chance to make a monumental impact on any program!

### 73 RIDGE DATELINE 1616

BD: 3/17/21 Reg: 4478875 2 - 100% AR Tattoo: 1616

CONNEALY DATELINE D H D TRAVELER 6807 BW: 96  
 VERMILION DATELINE 7078 EILA EILA OF CONANGA AWW: 666  
 VERMILION BLACKBIRD 5044 LEACHMAN RIGHT TIME AYW: 1217  
 VERMILION BLACKBIRD 3525 WDA: 3.38

MEMORY POWER 621 PEN POWER PLAY 304  
 AQUILA 366 SHOSHONE LASS 321  
 AQUILA 065 MEMORY POWER 621 GGP  
 AKC 433

DMPPA	Dam's Age	SC	Adj. IMF	Adj. REA	Adj. BF	CC Score								
108	28	37.0	5.35	12.79	0.3									
CED	BW	WW	YW	ADG	DMI	MILK	ME	HPG	CEM	MRB	YG	CW	REA	FAT
12	-0.2	53	77	0.15	1.31	20	9	10	10	0.51	0.14	24	0.03	0.04
40%			6%			26%		43%						

- Here is Vermillion Dateline 7078 son, arguably one of the most influential Angus sires in the business.
- The daughters sired by 1616 will be worth their weight in gold to be placed back into the program.
- He is a big IMF herd sire option that offers balanced data and charts among the top 6% of the breed for CEM.



LOT 73 - RIDGE DATELINE 1616

**INNOVATION**  
AgMarketing, LLC

PO Box Z  
De Soto, KS 66018

Presorted  
First Class  
US Postage  
**PAID**  
SlateGroup



OFFERING 75 STOUT, SERVICE-AGE RED ANGUS BULLS  
**FLATWATERREDANGUSGANG.COM**

**DVAuction**