

MONDAY, MARCH 28, 2022

1 PM | SWEETWATER, OK



THE 2022 MCENTIRE RED ANGUS

PARTNERS IN PROGRESS

Bull Sale

REGISTERED BULLS & OPEN FEMALES | COMMERCIAL PAIRS & OPEN HEIFERS





Sale Location

At the Ranch - 10623N 1710 Road
Sweetwater, Oklahoma 73666
From Sweetwater OK take Hwy 30 North 3 miles,
then go 1 mile west and 3/4 of a mile North.

Sale Schedule

Sunday - March 27, 2022
Bulls available for viewing all day
Monday - March 28, 2022
9:00 am - Bulls on Display
11:30 am - Lunch Served
1:00 pm - Partners in Progress Sale

Welcome friends and neighbors to our 10th annual Partners in Progress Production sale here at McEntire Red Angus. We hope you know how much we appreciate everyone who supports our program. We love the cattle business and the families that it brings to our Ranch. It's what we do day in and day out, except for a few sporting events with the kids every so often!

We are excited about the offering of bulls we have for you this spring. These bulls were weaned on the 1st of October and developed here at the ranch. We have had them on a high roughage ration on a 110-day test. The carcass ultrasound data came back with great results, as you will be able to see in the bull information listed with each lot.

We understand that the Red Angus Breed is becoming more and more popular and that you have many options when it comes to choosing your herd bulls. We invite you out to the ranch to look over the bulls and heifers and hopefully you will find something that will bring value to your own operation and move your program forward. Good Bulls make great cows and our mating decisions have been based on producing next generation females to be more efficient and productive than their mothers. The Red Angus cattle have been known for good dispositions, calving ease, adaptability, and keeping your operation in the black! A good set of Red Angus tagged calves will top the sale no matter where you go.

We will be selling a nice set of herd bull prospects that we feel will make a great addition to a seed stock producer or to a commercial cattle operation. We will also be selling 90 commercial straight Red Angus replacement heifers and 50 commercial Red Angus Pairs. These heifers have been on a complete vaccination program and will be checked by Dr. Richard Prather one week prior to the sale for reproductive soundness. We will be selling these heifers and pairs in a gate cut of five head or more.

We would like to invite you to come out to the ranch on Sunday night before the sale and enjoy supper and a social. We would love to get to know you and your family! We will eat around 6:00 pm.

Please join us sale day at 11:30 am for lunch. The sale will start promptly at 1:00 pm CST. Again this year, the sale will be broadcasted live on CCI.Live for those of you that are unable to attend the sale. If you have any questions about the sale, please feel free to contact us or any of the sale staff to visit about the offering. Be sure and check out our website at www.mcentireredangus.com to view videos of all the lots in the sale. We will not sell in catalog order this year. Therefore, please be sure and look on our Facebook page or on CCI.live for the sale order on sale day. Thank you for your interest, and we look forward to doing business with you.

See you at the sale!

Randy McEntire



McEntire Red Angus

Randy, Crystal, Chloe and Rance McEntire

Eugene & Pam McEntire

Randy: 580-729-9036

MCENTIREREDANGUS.COM

INNOVATION

— AgMarketing, LLC —

Welcome to the McEntire Red Angus 2022 Annual Partners in Progress Sale! It is a pleasure to work with the McEntire family and their program. There is no question that this operation is committed to producing a high-quality product for their valued customers. Randy, Crystal, and their family have assembled a tremendous foundation of brood cows to build from. Structure, longevity, fleshing ability, and performance are priorities. This highly functional, no-nonsense cow herd has been further enhanced through elite herd sire selection. Many of the walking herd sires at McEntire Red Angus are breed-leading sires that offer exceptional phenotype, genomics, and numeric profiles. The cowherd has adapted to the arid conditions of Western Oklahoma and thrives on the natural resources. These cattle can go to different environments, adapting, and thriving because of the strict selection criteria that the cattle are put through day in and day out.

The McEntire family is fully committed to their product and their customers. They will be offering 68 stout, yearling and age advantage Red Angus bulls, as well as 26 head of foundation building registered females. A tremendous set of commercial Red Angus open females, and 50 commercial Red Angus pairs will sell following the registered offering. Consistency within sire groups is present, and the McEntire family is proud to offer large sire groups to better serve their customers with large selections of 1/2 brothers to improve uniformity of their customers calf crop. The registered females are from the heart of the program and offer foundation-building traits. Many of these females are from top producing females that have endured the conditions and excelled. The commercial offering is a top shelf set of commercial Red Angus females that offer tremendous promise as brood cow prospects.

Consider this your invitation to join us on Monday, March 28th in Sweetwater, Oklahoma for the McEntire Red Angus 2022 Partners in Progress sale! Lunch will be served at 11:30 and the sale will begin at 1:00 PM CST. Again, this year the sale will be broadcasted live on CCI.Live for those of you that are unable to attend the sale. If you have any questions about the sale, please feel free to contact any of the sale staff to visit about the offering.

Enjoy the Cattle!

Graham Blagg Jared Shipman Tim Anderson



AUCTIONEER

Steve Bonham (405) 823-2972

RING STAFF

Craig Talkington, CT Sales (785) 623-1789
Juston Stelzer, Special Assignment (817) 992-7059
Ryan Denton, Special Assignment (918) 629-3004

SALE MANAGEMENT BY

Graham Blagg (530) 913-6418
Jered Shipman (806) 983-7226
Tim Anderson (605) 682-9343
InnovationAgMarketing.com

SALE DAY PHONES

Randy McEntire (580) 729-9036 or (580) 497-6331
Crystal McEntire (806) 203-0122 or (580) 729-9117
Dale Dunlap (806) 205-1558

ACCOMMODATIONS

Sayre, OK - 20 Minutes from Sweetwater
Americ Inn - (580) 928-2700
Elk City, OK 35 minutes from Sweetwater
Hampton Inn (580) 225-2553
Holiday Inn Express (580) 303-4556

VIEW CATALOG AND VIDEOS ONLINE

Catalog and videos will be available online at
www.mcentireredangus.com.

ADVERTISING AND CATALOG DESIGN

THM Promotions, LLC - Tracy McMurphy (806) 679-0231

PHOTOGRAPHY

Shannon Cook (405) 714-5087

SALE ORDER

Cattle WILL NOT sell in catalog order this year. A sale order will be available prior to the sale.

TERMS & CONDITIONS

Cattle sell under the standard terms and conditions as recommended by the Red Angus Association of America.

SEMEN INTEREST

McEntire Red Angus will retain 1/2 semen interest in all bulls sold.

SEMEN TEST

All bulls will be semen and Trichomonas tested prior to the sale and are guaranteed to be fertile.

INCENTIVES

Free delivery within 150 miles of the ranch on bulls selling for \$3,500 or more and free nation-wide delivery on purchases greater than \$20,000. This does not include heifers. All trucking on females are the buyer's responsibility, but we will be glad to assist with trucking plans. If bulls cannot be taken sale day or arrangements have not been made with us within the first week for delivery, the seller can house bulls until pick up at a rate of \$4/day, however we will not be responsible for sickness or injury.

LIABILITY & ACCIDENTS

Every precaution will be exercised to protect the safety and comfort of those attending the sale. Neither the owners, auctioneer or any sale staff assume any responsibility in this matter and disclaim any liability, legal or otherwise, in the event of accident or loss of property. All persons attending the sale do so at their own risk. We are not responsible for typographical errors.

GUARANTEE

All bulls selling over \$4,000 will carry a first breeding season guarantee. The first breeding season ends August 1 of the year of purchase. Any request for a replacement bull needs to be made by this date. Death loss is the buyer's risk and mortality insurance is available on all bulls at the sale. Anything selling over \$5,000 is recommended to buy Livestock Mortality Insurance and McEntire Red Angus will pay 2% of the premium. Normal care and adequate nutrition need to be provided for maximum potential to be reached. It is recommended that bulls receive supplemental feed after the breeding season until they have reach maturity.

HERD HEALTH

All cattle sold through the sale are on a complete health program and will be accompanied by the health papers for shipment anywhere in the United States.

ONLINE BIDDING

Watch the Sale Live Online...

View the sale from your phone, tablet, or desktop computer and bid with confidence! Visit www.CCI.live for complete sale information and online registration. If this is your first time to CCI.live, visit the web page and get approved for bidding at least three hours prior to sale time. With good internet speeds you can enjoy the sale from any location and bid with confidence.



CCI.LIVE

ONLINE BIDDING - Catalog - Videos - Sale Order - Plus More!



The Blockout Sire Group



6

Lot 1

Lot 1

4MC STRONG SIDE 0403

DOB: 9/20/20 RAAA: 4413319 A - 100% AR Tattoo: 403

5L BLOCKADE 2218-30B	5L DEFENDER 560-30Z	Act. BW: 76
9 MILE BLOCKOUT 7102	5L OPAL 656-2218	Adj. WW: 704
C-BAR ISABEL 513C	C-BAR-RJ GENESIS A31	Adj. YW: 1111
	C-BAR ISABEL Y101	ADG: 2.54
RED BILTRITE CANYON 69S	RED LAZY MC CANYON 33L	WDA: 3.02
4MC PRECIOUS SUE 2118	RED LAZY MC LAKIMA 59K	DMPPA: 104
RED NORTHLINE PRECIOUS 0089W	RED NORTHLINE REV 341R	
	RED NORTHLINE LUCY 88N	

Adj. REA: 9.91 Adj. IMF: 3.79 Adj. BF: 0.11 Scrotal: 37

Pro S	HB	GM	CED	BW	WW	YW	ADG	DMI	MILK
86	46	40	13	-2.7	56	97	0.26	1.83	19
ME	HPG	CEM	STAY	MARB	YG	CW	REA	FAT	
6	13	6	15	0.28	-0.1	27	0.37	-0.02	



9 MILE BLOCKOUT 7102 - SIRE OF LOTS 1-21

- The 9 Mile Blockout 7102 sire group initiates our 2022 offering with a dominant presence in terms of performance, carcass merit, shape, and genuine quality.
- 4MC Strong Side 0403 is one of the stoutest and most unique individuals ever produced at McEntire Red Angus, while maintaining the sound structural build and functionality that is a requirement for our program.
- Strong Side boasts a moderate 76 pound birth weight and came to the weaning pen with over 700 pounds of pay weight.
- We admire the combination of length, shape, and eye-appeal that he brings to the equation. A true sale feature!

The Blockout Sire Group



Lot 2

Lot
2

4MC BLOCKOUT 0275

DOB: 4/1/20 RAAA: 4262955 A - 100% AR Tattoo: 275

5L BLOCKADE 2218-30B
9 MILE BLOCKOUT 7102
C-BAR ISABEL 513C

5L DEFENDER 560-30Z
5L OPAL 656-2218
C-BAR-RJ GENESIS A31
C-BAR ISABEL Y101

Act. BW: 82
Adj. WW: 732
Adj. YW: 1252

HXC CONQUEST 4405P
TKP LASA MADONNA 112
TKP LASA MADONNA 9165

BECKTON JULIAN GG B571
HXC ELLIE MAY MA638
LCB HOSS A444N
PIE LASA 694

ADG: 3.24
WDA: 3.42
DMPPA: 106

Adj. REA: 13.22 Adj. IMF: 3.64 Adj. BF: 0.24 Scrotal: 44

Pro S	HB	GM	CED	BW	WW	YW	ADG	DMI	MILK
37	17	20	9	-1.5	74	115	0.26	2.22	26
ME	HPG	CEM	STAY	MARB	YG	CW	REA	FAT	
19	9	5	14	0.32	-0.01	28	0.26	0	



5L BLOCKADE 2218-30B - PATERNAL GRANDSIRE OF LOTS 1-21

- 0275 is a performance driven son of 9 Mile Blockout 7102 that is supported by a top daughter of HXC Conquest 4405P.
- He is balanced numerically as he charts top 8% for WW, top 13% YW, top 15% YG, top 30% CW, and top 21% REA.
- He posted a WW Ratio at 117, and a YW Ratio at 106.

The Blockout Sire Group

Lot 3



- 4MC Blockout 0400 is a powerful made, smooth built son of Blockout that is backed by the influence of a tremendous PIE Get R Done 684 dam.
- He boasts a 12 CED and a -2.8 BW EPD which are complimented by a moderate 76 pound birth weight.
- Recommended for use on well managed heifers.

Lot 3

4MC BLOCKOUT 0400

DOB: 9/17/20 RAAA: 4413999 A - 100% AR Tattoo: 400

5L BLOCKADE 2218-30B
9 MILE BLOCKOUT 7102
 C-BAR ISABEL 513C
 PIE GET R DONE 684
PIE MS D C CRICKET 0284
 PIE MS D C CRICKET 7184

5L DEFENDER 560-30Z
 5L OPAL 656-2218
 C-BAR-RJ GENESIS A31
 C-BAR ISABEL Y101
 PIE CHICAWA 366
 PIE RED RUBY 4094
 PIE PACIFIC 3173
 PIE MS D C CRICKET 1079

Act. BW: 76
 Adj. WW: 597
 Adj. YW: 909
 ADG: 1.93
 WDA: 2.43
 DMPPA: 105

Adj. REA: 9.68 Adj. IMF: 4.13 Adj. BF: 0.12 Scrotal: 38

Pro S	HB	GM	CED	BW	WW	YW	ADG	DMI	MILK
73	54	19	12	-2.8	56	83	0.17	2.26	25
ME	HPG	CEM	STAY	MARB	YG	CW	REA	FAT	
11	14	6	17	0.19	-0.06	41	0.47	-0.02	

Lot 4

4MC BLOCKOUT 0407

DOB: 9/25/20 RAAA: 4414009 A - 100% AR Tattoo: 407

5L BLOCKADE 2218-30B
9 MILE BLOCKOUT 7102
 C-BAR ISABEL 513C
 RED LAZY MC REDMAN 20X
4MC RED RAVE 2121
 RED NORTHLINE RAVE

5L DEFENDER 560-30Z
 5L OPAL 656-2218
 C-BAR-RJ GENESIS A31
 C-BAR ISABEL Y101
 RED RMJ REDMAN 1T
 RED FLOTRE GOLD 47R
 RED NORTHLINE REV 341R
 RED NORTHLINE GAL 161N

Act. BW: 77
 Adj. WW: 685
 Adj. YW: 1061
 ADG: 2.35
 WDA: 2.9
 DMPPA: 105

Adj. REA: 11.77 Adj. IMF: 4.71 Adj. BF: 0.15 Scrotal: 41

Pro S	HB	GM	CED	BW	WW	YW	ADG	DMI	MILK
105	63	42	13	-0.4	77	126	0.31	2.11	26
ME	HPG	CEM	STAY	MARB	YG	CW	REA	FAT	
13	12	7	17	0.33	-0.03	40	0.51	0	

Lot 4



- 0407 is a performance standout among the Blockout sire group.
- Numerically he charts top 4% WW, top 4% YW, top 6% ADG, top 25% Stay, top 5% CW, top 3% REA, and top 24% ProS.
- He is a big spread bull that started at 77 pounds and spread to a WW Ratio of 107, YW Ratio at 113, IMF Ratio at 113, and a REA Ratio at 111.
- Without a doubt one of the true carcass merit standouts within this year's offering.

The Blockout Sire Group



Lot 5

- 4MC Blockout 0397 is one of the stoutest and most performance-oriented herd sire prospects to wear the 4MC brand in Sweetwater, Oklahoma.
- 0397 charts among the top 1% of the breed for WW, YW, ADG, CW, and Fat.
- He recorded an impressive adjusted weaning weight of 793 to Ratio at 124, while maintaining his performance through a YW Ratio at 125.
- He is a big REA bull with a REA Ratio at 123.
- A sale feature that deserves serious consideration if your program is looking to enhance performance and carcass merit.

Lot 5

4MC BLOCKOUT 0397

DOB: 9/15/20 RAAA: 4413995 A - 100% AR Tattoo: 397

5L BLOCKADE 2218-30B
9 MILE BLOCKOUT 7102
 C-BAR ISABEL 513C
 RED SVR GANGSTER 14S
DELTA
 STAR G DELTA RAE W962

5L DEFENDER 560-30Z
 5L OPAL 656-2218
 C-BAR-RJ GENESIS A31
 C-BAR ISABEL Y101
 RED GEIS HI HO 180'04
 RED DWAJO DUCHESS 75M
 RRA LAMONI 716
 PE DELTA RAE N319

Act. BW: 80
 Adj. WW: 793
 Adj. YW: 1179
 ADG: 2.4
 WDA: 3.24
 DMPPA: 106

Adj. REA: 13.05 Adj. IMF: 3.96 Adj. BF: 0.2 Scrotal: 43

Pro S	HB	GM	CED	BW	WW	YW	ADG	DMI	MILK
65	19	46	8	3.1	99	162	0.39	2.31	25
ME	HPG	CEM	STAY	MARB	YG	CW	REA	FAT	
16	11	4	12	0.28	-0.09	47	0.58	-0.02	

Lot 6

4MC BLOCKOUT 0389

DOB: 9/5/20 RAAA: 4413981 A - 100% AR Tattoo: 389

5L BLOCKADE 2218-30B
9 MILE BLOCKOUT 7102
 C-BAR ISABEL 513C
 LSF OPTIMISM 1107Y
4MC RED WING 4179
 DJH RED WING

5L DEFENDER 560-30Z
 5L OPAL 656-2218
 C-BAR-RJ GENESIS A31
 C-BAR ISABEL Y101
 BECKTON EPIC R397 K
 LSF COUNTESS 925R U8133
 LCHMN GRANDCANYON 1244G
 DJH CHERABELL 513

Act. BW: 73
 Adj. WW: 586
 Adj. YW: 851
 ADG: 1.65
 WDA: 2.33
 DMPPA: 98

Adj. REA: 10.27 Adj. IMF: 4.05 Adj. BF: 0.05 Scrotal: 40

Pro S	HB	GM	CED	BW	WW	YW	ADG	DMI	MILK
78	41	37	11	-0.2	74	119	0.28	1.8	19
ME	HPG	CEM	STAY	MARB	YG	CW	REA	FAT	
9	14	6	13	0.26	0	39	0.47	0.01	



Lot 6

- 0389 is by Blockout and backed by the influence by a top daughter of LSF Optimism 1107Y that traces to the immortal influence of Grand Canyon.
- He ranks top 8% WW, top 9% YW, top 15% ADG, top 8% HPG, top 6% CW, and top 4% REA.
- 0389 is a moderate birthweight bull that will add pounds of performance when it counts!



The Blockout Sire Group

Lot 7



- 0396 is among the standout sons of 9 Mile Blockout 7102, one of the largest and most consistent sire groups ever offered at McEntire Red Angus.
- His PIE Real Deal 809 dam posted a DMPPA of 104.
- A strong age advantage bull that is big ribbed, deep sided, and balanced numerically.
- He posted a WW Ratio at 105, a YW Ratio at 101, IMF Ratio at 104, and a REA Ratio at 108.

Lot 7

4MC BLOCKOUT 0396

DOB: 9/15/20 RAAA: 4413993 A - 100% AR Tattoo: 396

5L BLOCKADE 2218-30B
9 MILE BLOCKOUT 7102
 C-BAR ISABEL 513C
 PIE REAL DEAL 809
REAL KARUBA
 JDRA KARUBA 673

5L DEFENDER 560-30Z
 5L OPAL 656-2218
 C-BAR-RJ GENESIS A31
 C-BAR ISABEL Y101
 PIE GRIDMASTER 589
 PIE MS GRAND C 036
 LCC VAQUERO 1412J
 JDRA KARUBA 432

Act. BW: 78
 Adj. WW: 672
 Adj. YW: 952
 ADG: 1.74
 WDA: 2.61
 DMPPA: 104

Adj. REA: 11.44 Adj. IMF: 4.34 Adj. BF: 0.13 Scrotal: 38

Pro S	HB	GM	CED	BW	WW	YW	ADG	DMI	MILK
56	29	27	10	-0.2	75	120	0.28	2.37	22
ME	HPG	CEM	STAY	MARB	YG	CW	REA	FAT	
14	12	4	14	0.3	-0.04	33	0.32	-0.01	

Lot 8

4MC BLOCKOUT 1217

DOB: 3/5/21 RAAA: 4508997 A - 100% AR Tattoo: 1217

5L BLOCKADE 2218-30B
9 MILE BLOCKOUT 7102
 C-BAR ISABEL 513C
 BIBER FUSION C194
4MC LASA MADONNA 741
 4MC LASA MADONNA 5171

5L DEFENDER 560-30Z
 5L OPAL 656-2218
 C-BAR-RJ GENESIS A31
 C-BAR ISABEL Y101
 ANDRAS FUSION R236
 BIBER LAKOTA 210Z
 RED LAZY MC REDMAN 20X
 TKP LASA MADONNA 112

Act. BW: 73
 Adj. WW: 803
 Adj. YW: 1344
 ADG: 3.37
 WDA: 3.63
 DMPPA: 112

Adj. REA: 15.48 Adj. IMF: 4.89 Adj. BF: 0.32 Scrotal: 37

Pro S	HB	GM	CED	BW	WW	YW	ADG	DMI	MILK
70	33	37	12	0.9	76	119	0.27	2.56	26
ME	HPG	CEM	STAY	MARB	YG	CW	REA	FAT	
16	10	6	15	0.35	0.04	50	0.58	0.02	

Lot 8



- 1217 is one of the standout yearling sons on 9 Mile Blockout 7102 that offers an excellent blend of low birth weight and performance driven genetics.
- He ranks top 6% WW, top 9% YW, top 1% CW, and top 2% REA.
- He is one of the heaviest weaning weight bulls in the entire sale with a 800+ pound weaning weight to post a WW Ratio at 121.
- YW Ratio at 112 and REA Ratio at 106.
- A sale feature from the Blockout sire group!

The Blockout Sire Group



Lot 9

- Here is a big scrotal, deep bodied, easy fleshing Blockout son that is backed by a top Cutting Edge daughter.
- 4MC Blockout 1133 charts top 1% of the breed for WW, YW, ADG, CW, and REA.
- A performance driven herd sire prospect that posted a WW Ratio at 116, YW Ratio at 104, and a REA Ratio at 110.

Lot 9

4MC BLOCKOUT 1133

DOB: 2/6/21 RAAA: 4508835 A - 100% AR Tattoo: 1133

5L BLOCKADE 2218-30B
9 MILE BLOCKOUT 7102
C-BAR ISABEL 513C

5L DEFENDER 560-30Z
5L OPAL 656-2218
C-BAR-RJ GENESIS A31
C-BAR ISABEL Y101

Act. BW: 79
Adj. WW: 775
Adj. YW: 1248

HAYCOW CUTTING EDGE 055
4MC DELLA 526
DELLA

LAFINS CUTTING EDGE 2075
HAYCOW 370 PRINCESS 5002
RED NORTHLINE FAT TONY 605U
BAR G DELLA W104

ADG: 2.95
WDA: 3.39
DMPPA: 103

Adj. REA: 16.1 Adj. IMF: 4.76 Adj. BF: 0.24 Scrotal: 39

Pro S	HB	GM	CED	BW	WW	YW	ADG	DMI	MILK
109	43	67	12	3.9	89	146	0.36	2.11	23
ME	HPG	CEM	STAY	MARB	YG	CW	REA	FAT	
9	14	6	13	0.33	-0.07	62	0.78	-0.02	

Lot 10

4MC BLOCKOUT 1205

DOB: 2/20/21 RAAA: 4508975 A - 100% AR Tattoo: 1205

5L BLOCKADE 2218-30B
9 MILE BLOCKOUT 7102
C-BAR ISABEL 513C

5L DEFENDER 560-30Z
5L OPAL 656-2218
C-BAR-RJ GENESIS A31
C-BAR ISABEL Y101

Act. BW: 78
Adj. WW: 707
Adj. YW: 1272

4MC SAGA 530
4MC SUNBURST 7257
SUNBURST

LSF SAGA 1040Y
RED SOO LINE STAR 7037
PIE REAL DEAL 809
5L SUNBURST X1142-2518

ADG: 3.52
WDA: 3.43
DMPPA: 102

Adj. REA: 14.1 Adj. IMF: 4.17 Adj. BF: 0.28 Scrotal: 35

Pro S	HB	GM	CED	BW	WW	YW	ADG	DMI	MILK
60	32	28	10	-1.1	75	115	0.25	2.48	22
ME	HPG	CEM	STAY	MARB	YG	CW	REA	FAT	
12	9	4	16	0.35	-0.02	39	0.49	0.01	



Lot 10

- This darker red, big bodied, loose built son of 9 Mile Blockout 7102 is a dense made, thick ended herd sire prospect with breed leading performance.
- Top 7% WW, top 14% YW, top 13% YG, top 5% CW, and top 3% REA.
- 1205 posted a WW Ratio at 106 and a YW Ratio at 106.

The Blockout Sire Group

Lot
11

4MC BLOCKOUT 1242

DOB: 2/15/21 RAAA: 4509039 A - 100% AR Tattoo: 1242

5L BLOCKADE 2218-30B	5L DEFENDER 560-30Z	Act. BW: 82
9 MILE BLOCKOUT 7102	5L OPAL 656-2218	Adj. WW: 686
C-BAR ISABEL 513C	C-BAR-RJ GENESIS A31	Adj. YW: 1224
	C-BAR ISABEL Y101	ADG: 3.36
RED LAZY MC REDMAN 20X	RED RMJ REDMAN 1T	WDA: 3.34
4MC LASA MADONNA 5171	RED FLOTRE GOLD 47R	DMPPA: 103
TKP LASA MADONNA 112	HXC CONQUEST 4405P	
	TKP LASA MADONNA 9165	

Adj. REA: 15.15 Adj. IMF: 5.38 Adj. BF: 0.2 Scrotal: 34

Pro S	HB	GM	CED	BW	WW	YW	ADG	DMI	MILK
85	51	34	10	-1.1	68	111	0.27	2.2	24
ME	HPG	CEM	STAY	MARB	YG	CW	REA	FAT	
12	11	5	18	0.3	-0.14	30	0.56	-0.02	

- A carcass driven bull from the Blockout sire group that posted an IMF Ratio at 108 and a REA Ratio at 104.
- Backed by a top daughter of Red Lazy MC Redman 20X that posted a DMPPA of 103.

Lot
12

4MC BLOCKOUT 1112

DOB: 2/16/21 RAAA: 4508799 A - 100% AR Tattoo: 1112

5L BLOCKADE 2218-30B	5L DEFENDER 560-30Z	Act. BW: 82
9 MILE BLOCKOUT 7102	5L OPAL 656-2218	Adj. WW: 794
C-BAR ISABEL 513C	C-BAR-RJ GENESIS A31	Adj. YW: 1344
	C-BAR ISABEL Y101	ADG: 3.43
4MC COWBOY KIND 569	PIE THE COWBOY KIND 343	WDA: 3.61
4MC MISS CUB 791	PIE PENNY 0353	DMPPA: 107
4MC MISS CUB 271	PIE HOSS 7384	
	CCR MIS CUB 658-713	

Adj. REA: 18.07 Adj. IMF: 4.48 Adj. BF: 0.38 Scrotal: 37

Pro S	HB	GM	CED	BW	WW	YW	ADG	DMI	MILK
75	39	36	11	-0.1	75	119	0.28	2.51	26
ME	HPG	CEM	STAY	MARB	YG	CW	REA	FAT	
17	10	5	16	0.45	0	37	0.46	0.01	

- 1112 ranks among the top 7% WW, top 9% YW, top 17% ADG, top 8% CW, and top 4% REA.
- He posted a WW Ratio at 119 and a REA Ratio at 124.
- His dam posted a DMPPA of 107.

Lot
13

4MC BLOCKOUT 1034

DOB: 1/26/21 RAAA: 4508655 A - 100% AR Tattoo: 1034

5L BLOCKADE 2218-30B	5L DEFENDER 560-30Z	Act. BW: 70
9 MILE BLOCKOUT 7102	5L OPAL 656-2218	Adj. WW: 626
C-BAR ISABEL 513C	C-BAR-RJ GENESIS A31	Adj. YW: 1085
	C-BAR ISABEL Y101	ADG: 2.85
4MC GODFATHER 230	RED SVR GANGSTER 14S	WDA: 2.81
4MC HYYWT 8159	PIE BOTEET 702	DMPPA: 97
4MC HYYWT 489	MASTER TILLY	
	4MC HYYWT 2107	

Adj. REA: 15.71 Adj. IMF: 4.3 Adj. BF: 0.33 Scrotal: 35

Pro S	HB	GM	CED	BW	WW	YW	ADG	DMI	MILK
90	68	22	11	-0.5	68	99	0.2	1.89	21
ME	HPG	CEM	STAY	MARB	YG	CW	REA	FAT	
7	12	6	19	0.34	-0.08	26	0.45	0	

- 1034 is a low-birth-weight son of 9 Mile Blockout 7102 that recorded an actual birth weight of 70 pounds.
- He posted a REA Ratio at 108 to compliment his top 5% REA EPD value.
- A potential option for use on heifers.

Lot
14

4MC BLOCKOUT 1110

DOB: 2/16/21 RAAA: 4508795 A - 100% AR Tattoo: 1110

5L BLOCKADE 2218-30B	5L DEFENDER 560-30Z	Act. BW: 82
9 MILE BLOCKOUT 7102	5L OPAL 656-2218	Adj. WW: 643
C-BAR ISABEL 513C	C-BAR-RJ GENESIS A31	Adj. YW: 1251
	C-BAR ISABEL Y101	ADG: 3.8
4MC GODFATHER 230	RED SVR GANGSTER 14S	WDA: 3.43
4MC LUNA 5156	PIE BOTEET 702	DMPPA: 103
DJH LUNA	PERKS GTO 406R	
	HVR JILLIAN 430	

Adj. REA: 16.7 Adj. IMF: 4.05 Adj. BF: 0.27 Scrotal: 38

Pro S	HB	GM	CED	BW	WW	YW	ADG	DMI	MILK
77	62	15	10	0.2	67	96	0.18	1.94	23
ME	HPG	CEM	STAY	MARB	YG	CW	REA	FAT	
10	9	5	19	0.36	-0.06	21	0.21	-0.02	

- 1110 offers a tremendous combination of carcass data with a 16+ inch REA to compliment his 4.05% IMF.
- He charts top 6% Stay and top 5% YG and posted a REA Ratio at 114.



4MC COWBOY KIND 569 - INFLUENTIAL MATERNAL GRANDSIRE OF LOT 12

Lot
15

4MC BLOCKOUT 1233

DOB: 2/17/21 RAAA: 4509021 A - 100% AR Tattoo: 1233

5L BLOCKADE 2218-30B	5L DEFENDER 560-30Z	Act. BW: 82
9 MILE BLOCKOUT 7102	5L OPAL 656-2218	Adj. WW: 594
C-BAR ISABEL 513C	C-BAR-RJ GENESIS A31	Adj. YW: 1083
	C-BAR ISABEL Y101	ADG: 3.05
4MC RAMBO 590	4MC RAMBO 3148	WDA: 2.91
4MC FIREFLY 7170	4MC RAVISHING 383	DMPPA: 98
4MC FIREFLY 417	PIE CODE RED 9058	
	4MC FIRE FLY	

Adj. REA: 10.98 Adj. IMF: 4.11 Adj. BF: 0.21 Scrotal: 37

Pro S	HB	GM	CED	BW	WW	YW	ADG	DMI	MILK
102	70	32	11	0.4	70	107	0.23	2.1	22
ME	HPG	CEM	STAY	MARB	YG	CW	REA	FAT	
9	13	5	19	0.37	-0.02	36	0.35	-0.01	

- 1233 is a top indexing sire option from the 9 Mile Blockout 7102 sire group.
- The dam of 1233 is backed by the influence of 4MC Rambo 590 and PIE Code Red 9058 on the bottom side of his pedigree.
- Top 15% WW, top 17% HB, top 15% HPG, top 7% Stay, top 10% YG, and top 10% CW.

The Blockout Sire Group

Lol
16

4MC BLOCKOUT 1196

DOB: 2/28/21 RAAA: 4508959 A - 100% AR Tattoo: 1196

5L BLOCKADE 2218-30B	5L DEFENDER 560-30Z	Act. BW: 76
9 MILE BLOCKOUT 7102	5L OPAL 656-2218	Adj. WW: 623
C-BAR ISABEL 513C	C-BAR-RJ GENESIS A31	Adj. YW: 1201
	C-BAR ISABEL Y101	
4MC SAGA 530	LSF SAGA 1040Y	ADG: 3.6
4MC SUES TRAPPER 762	RED 500 LINE STAR 7037	WDA: 3.27
44MC SUES TRAPPER 258	RED SVR GANGSTER 145	DMPPA: 98
	CCR MONU 636-212	

Adj. REA: 12.58 Adj. IMF: 5.1 Adj. BF: 0.18 Scrotal: 35

Pro S	HB	GM	CED	BW	WW	YW	ADG	DMI	MILK
89	55	34	11	-0.8	65	103	0.24	1.96	18
ME	HPG	CEM	STAY	MARB	YG	CW	REA	FAT	
8	8	5	19	0.4	-0.02	27	0.27	0	

- 1196 is a low-birth-weight option from the Blockade sire group that traces to the influence of LSF Suga 1040Y.
- He posted an impressive IMF Ratio at 103.
- Recommended for use on heifers.

Lol
19

4MC BLOCKOUT 1207

DOB: 3/1/21 RAAA: 4508979 A - 100% AR Tattoo: 1207

5L BLOCKADE 2218-30B	5L DEFENDER 560-30Z	Act. BW: 76
9 MILE BLOCKOUT 7102	5L OPAL 656-2218	Adj. WW: 660
C-BAR ISABEL 513C	C-BAR-RJ GENESIS A31	Adj. YW: 1214
	C-BAR ISABEL Y101	
PIE NEW TERRITORY 523	ANDRAS NEW DIRECTION R240	ADG: 3.45
4MC DELLA 8163	PIE CENTENNIAL FORTUNE 3330	WDA: 3.23
4MC DELLA 526	HAYCOW CUTTING EDGE 055	DMPPA: 101
	DELLA	

Adj. REA: 14.97 Adj. IMF: 5.21 Adj. BF: 0.33 Scrotal: 38

Pro S	HB	GM	CED	BW	WW	YW	ADG	DMI	MILK
91	35	56	11	3.3	91	151	0.37	2.28	21
ME	HPG	CEM	STAY	MARB	YG	CW	REA	FAT	
11	13	5	13	0.24	-0.09	61	0.88	-0.01	

- 1207 is an impressive 9 Mile Blockout 7102 son that is from a PIE New Territory 523 dam from the Della cow family.
- He is among the elite 1% of the breed for WW, YW, ADG, CW, and REA.
- He is a moderate birth weight bull that offers tremendous carcass merit.

Lol
17

4MC BLOCKOUT 1071

DOB: 2/3/21 RAAA: 4508721 A - 100% AR Tattoo: 1071

5L BLOCKADE 2218-30B	5L DEFENDER 560-30Z	Act. BW: 78
9 MILE BLOCKOUT 7102	5L OPAL 656-2218	Adj. WW: 699
C-BAR ISABEL 513C	C-BAR-RJ GENESIS A31	Adj. YW: 1157
	C-BAR ISABEL Y101	
9 MILE FRANCHISE 6305	SPUR FRANCHISE OF GARTON	ADG: 2.85
4MC MONU 847	C-BAR ABIGRACE Y11	WDA: 3.03
1182 4MC	GMRA MR MIMI 6178	DMPPA: 100
	CCR MONU 823-522	

Adj. REA: 13.26 Adj. IMF: 3.96 Adj. BF: 0.2 Scrotal: 33

Pro S	HB	GM	CED	BW	WW	YW	ADG	DMI	MILK
120	68	51	11	0	67	116	0.3	2.3	26
ME	HPG	CEM	STAY	MARB	YG	CW	REA	FAT	
14	13	6	20	0.45	-0.02	36	0.4	0	

- 1071 is among the elite 10% for ProS, top 20% HB, top 19% GM, top 13% YW, top 4% Stay, top 9% CW, and top 7% REA.
- He is supported by a beautiful young daughter of the \$105,000 9 Mile Franchise 6305.

Lol
20

4MC BLOCKOUT 1211

DOB: 2/20/21 RAAA: 4508985 A - 100% AR Tattoo: 1211

5L BLOCKADE 2218-30B	5L DEFENDER 560-30Z	Act. BW: 78
9 MILE BLOCKOUT 7102	5L OPAL 656-2218	Adj. WW: 740
C-BAR ISABEL 513C	C-BAR-RJ GENESIS A31	Adj. YW: 1379
	C-BAR ISABEL Y101	
PIE NEW TERRITORY 523	ANDRAS NEW DIRECTION R240	ADG: 3.99
4MC MINOLA 794	PIE CENTENNIAL FORTUNE 3330	WDA: 3.73
4MC MINOLA 334	MASTER TILLY	DMPPA: 106
	MINOLA	

Adj. REA: 16.16 Adj. IMF: 5.37 Adj. BF: 0.3 Scrotal: 37

Pro S	HB	GM	CED	BW	WW	YW	ADG	DMI	MILK
93	58	35	13	1	85	137	0.33	2.58	20
ME	HPG	CEM	STAY	MARB	YG	CW	REA	FAT	
13	13	6	17	0.43	0.1	40	0.17	0.01	

- 1211 is among the top 1% of the breed for WW and YW, top 3% ADG, and top 5% CW.
- He recorded a WW Ratio at 111, an IMF Ratio at 108, and a REA Ratio at 111.
- A three-quarter brother in blood to lots 19 and 21.

Lol
18

4MC BLOCKOUT 1208

DOB: 3/1/21 RAAA: 4508981 A - 100% AR Tattoo: 1208

5L BLOCKADE 2218-30B	5L DEFENDER 560-30Z	Act. BW: 75
9 MILE BLOCKOUT 7102	5L OPAL 656-2218	Adj. WW: 652
C-BAR ISABEL 513C	C-BAR-RJ GENESIS A31	Adj. YW: 1197
	C-BAR ISABEL Y101	
JEFFRIES REDDINGTON 865C	ANDRAS NEW DIRECTION R240	ADG: 3.4
4MC SHOCKER SUE 834	JEFFRIES W563	WDA: 3.2
4MC SHOCKER SUE 695	4MC GODFATHER 230	DMPPA: 99
	SHOCKER SUE	

Adj. REA: 14.59 Adj. IMF: 6.31 Adj. BF: 0.34 Scrotal: 36

Pro S	HB	GM	CED	BW	WW	YW	ADG	DMI	MILK
63	53	11	12	0.5	70	110	0.25	2.18	19
ME	HPG	CEM	STAY	MARB	YG	CW	REA	FAT	
10	13	5	16	0.13	-0.12	27	0.52	-0.01	

- 1208 is a moderate birth weight bull a 12 CED to compliment his 75-pound actual birth weight.
- A standout from a marbling standpoint that recorded a 6.31% IMF to Ratio at 127.
- His dam is a top young daughter of Jeffries Reddington 865C.

Lol
21

4MC BLOCKOUT 1218

DOB: 3/9/21 RAAA: 4508999 B - 99.8% AR 0.2% XX Tattoo: 1218

5L BLOCKADE 2218-30B	5L DEFENDER 560-30Z	Act. BW: 72
9 MILE BLOCKOUT 7102	5L OPAL 656-2218	Adj. WW: 758
C-BAR ISABEL 513C	C-BAR-RJ GENESIS A31	Adj. YW: 1297
	C-BAR ISABEL Y101	
PIE NEW TERRITORY 523	ANDRAS NEW DIRECTION R240	ADG: 3.36
4MC DAISE RED 811	PIE CENTENNIAL FORTUNE 3330	WDA: 3.46
4MC DAISE RED 669	PIE VENTURE 442	DMPPA: 100
	4MC DAISE RED 418	

Adj. REA: 13.61 Adj. IMF: 5.47 Adj. BF: 0.38 Scrotal: 38

Pro S	HB	GM	CED	BW	WW	YW	ADG	DMI	MILK
55	30	25	11	-0.2	84	132	0.3	2.63	21
ME	HPG	CEM	STAY	MARB	YG	CW	REA	FAT	
13	14	4	13	0.24	-0.05	43	0.63	0.01	

- 1218 is another prime example of why the Blockout x New Territory mating works so well in terms of performance driven Red Angus seedstock that offer balanced numbers and carcass data.
- Top 1% WW, top 2% YW, top 1% REA, and top 3% CW.
- He posted a WW Ratio at 114, YW Ratio at 108, and IMF Ratio at 110.

The Blockout Sire Group

Lot 22



Lot 22

4MC 20M BLOCKOUT 113

DOB: 2/28/21 RAAA: 4527203 A - 100% AR Tattoo: 113

9 MILE BLOCKOUT 7102
4MC BLOCKOUT 997
 4MC MISS BECKTON
 BIEBER FUSION C194
4MC RASPBERRY 8139
 PIE RASPBERRY 1206

5L BLOCKADE 2218-30B
 C-BAR ISABEL 513C
 MCPHEE PACIFIC PRIDE 4127
 TJS FIREFLY U851
 ANDRAS FUSION R236
 BIEBER LAKOTA 210Z
 LSF SAND HILLS 9008W
 PIE RASPBERRY CANYON 7230

Act. BW: 95
 Adj. WW: 694
 Adj. YW: 1504
 ADG: 5.05
 WDA: 3.67
 DMPPA: 107

Adj. REA: 14.53 Adj. IMF: 5.31 Adj. BF: 0.43 Scrotal: 35

Pro S	HB	GM	CED	BW	WW	YW	ADG	DMI	MILK
114	67	47	9	2.4	82	130	0.3	1.71	24
ME	HPG	CEM	STAY	MARB	YG	CW	REA	FAT	
8	10	6	18	0.38	0.07	42	0.42	0.03	

- 113 is a standout phenotypically that brings so many favorable traits and qualities to the table in terms of foot, bone, shape, and style.
- He charts top 15% ProS, top 2% WW, top 3% YW, top 7% ADG, top 4% ADG, and top 6% REA.
- He recorded a WW Ratio at 112, YW Ratio at 111, IMF Ratio at 114, and REA Ratio at 104.

Lot 23

4MC 20M BLOCKOUT 109

DOB: 2/21/21 RAAA: 4527201 A - 100% AR Tattoo: 109

9 MILE BLOCKOUT 7102
4MC BLOCKOUT 997
 4MC MISS BECKTON
 PIE CODE RED 9058
4MC LEGEND 8104
 HLH MS LEGEND 9057 4381

5L BLOCKADE 2218-30B
 C-BAR ISABEL 513C
 MCPHEE PACIFIC PRIDE 4127
 TJS FIREFLY U851
 VGW GAME PLAN 508
 PIE STORMY 541
 JCB LEGEND 262Z
 HLH LANCERS MS 7212 9057

Act. BW: 94
 Adj. WW: 662
 Adj. YW: 1298
 ADG: 3.96
 WDA: 3.21
 DMPPA: 105

Adj. REA: 14.81 Adj. IMF: 4.5 Adj. BF: 0.21 Scrotal: 38

Pro S	HB	GM	CED	BW	WW	YW	ADG	DMI	MILK
92	54	38	11	0.4	64	101	0.23	1.69	23
ME	HPG	CEM	STAY	MARB	YG	CW	REA	FAT	
4	12	7	15	0.24	-0.03	40	0.41	-0.01	

- Another standout from the 997 sire group that is backed by a daughter of the maternal great PIE Code Red 9058.
- He is balanced numerically and from a carcass merit standpoint.
- 109 posted a WW Ratio at 107 and a REA Ratio at 106.





Lot 24

Lot
24

4MC FRANCHISE 1093

DOB: 2/9/21 RAAA: 4508763 A - 100% AR Tattoo: 1093

SPUR FRANCHISE OF GARTON
9 MILE FRANCHISE 6305
C-BAR ABIGRACE Y11

PIE PROSPECT 5110
4MC JORDAN 9104
4MC JORDAN 7122

SPUR FRANCHISE 7070
H & H IRENE LASS 0135
TR COLT 45 UT806
C-BAR & BROWN ABIGRACE T712
LSF PROSPECT 2035Z
PIE RASPBERRY 0296
PIE THE COWBOY KIND 343
HLH MS JORDAN 1119 4071

Act. BW: 77
Adj. WW: 708
Adj. YW: 1352
ADG: 4.01
WDA: 3.49
DMPPA: 102

Adj. REA: 15.33 Adj. IMF: 6.33 Adj. BF: 0.47 Scrotal: 40

Pro S	HB	GM	CED	BW	WW	YW	ADG	DMI	MILK
106	60	46	12	-2.2	62	112	0.31	1.68	33
ME	HPG	CEM	STAY	MARB	YG	CW	REA	FAT	
8	14	9	15	0.42	0.09	23	0.25	0.04	



9 MILE FRANCHISE 6305 - SIRE OF LOTS 24-34

- 4MC Franchise 1093 leads off the 9 Mile Franchise 6305 sire group with a dominant presence in terms of mass, shape, and quality.
- He is backed by a top young daughter of PIE Prospect 5110 that traces to the influence of PIE The Cowboy Kind 343.
- He offers tremendous spread from birth to weaning and charts top 17% YW, top 5% ADG, and top 2% Milk.
- 1093 records a WW Ratio at 106, YW Ratio at 113, IMF Ratio at 128, and a REA Ratio at 105.
- He posted a WW Ratio at 105, YW Ratio at 116, IMF Ratio at 126, and REA Ratio at 108.



Lot 25

Lot 25

4MC FRANCHISE 1105

DOB: 2/15/21 RAAA: 4508787 A - 100% AR Tattoo: 1105

SPUR FRANCHISE OF GARTON SPUR FRANCHISE 7070 Act. BW: 74
 9 MILE FRANCHISE 6305 H & H IRENE LASS 0135 Adj. WW: 697
 C-BAR ABIGRACE Y11 TR COLT 45 UT806 Adj. YW: 1389
 9 MILE BLOCKOUT 7102 C-BAR & BROWN ABIGRACE T712 ADG: 4.31
 4MC MS RIGHT KIND 9181 5L BLOCKADE 2218-30B WDA: 3.61
 HLH MS RIGHT KIND 0172 4157 C-BAR ISABEL 513C DMPPA: 102
 BUF CRK THE RIGHT KIND U199
 HLH MS LANCE 6128 0172

Adj. REA: 15.73 Adj. IMF: 6.25 Adj. BF: 0.46 Scrotal: 40

Pro S	HB	GM	CED	BW	WW	YW	ADG	DMI	MILK
112	54	59	12	-2.8	66	115	0.31	2.21	30
ME	HPG	CEM	STAY	MARB	YG	CW	REA	FAT	
10	11	8	16	0.48	0	39	0.46	0.01	



C-BAR ABIGRACE Y11 - PATERNAL GRANDDAM OF LOTS 24-34

- 4MC Franchise 1105 is a ground pounder in terms of body, mass, and density!
- Without a doubt one of the true female makers in the entire offering that offers so much function and practicality in terms of efficiency.
- He posted a WW Ratio at 105, YW Ratio at 116, IMF Ratio at 126, and REA Ratio at 108.

The Franchise Sire Group

Lot
26

4MC FRANCHISE 1070

DOB: 2/3/21 RAAA: 4508719 A - 100% AR Tattoo: 1070

SPUR FRANCHISE OF GARTON
9 MILE FRANCHISE 6305
C-BAR ABIGRACE Y11

PIE THE COWBOY KIND 343
4MC REAL DALLES 8207
REAL DALLES

SPUR FRANCHISE 7070
H & H IRENE LASS 0135
TR COLT 45 UT806
C-BAR & BROWN ABIGRACE T712
BUF CRK THE RIGHT KIND U199
PIE CASCADE 561
PIE REAL DEAL 809
TPIE JULY DALLES 831

Act. BW: 61
Adj. WW: 631
Adj. YW: 1089
ADG: 2.85
WDA: 2.83
DMPPA: 97

Adj. REA: 12.78 Adj. IMF: 5.19 Adj. BF: 0.45 Scrotal: 39

Pro S	HB	GM	CED	BW	WW	YW	ADG	DMI	MILK
117	60	57	16	-3.8	61	103	0.27	1.84	30
ME	HPG	CEM	STAY	MARB	YG	CW	REA	FAT	
5	9	11	15	0.41	0.04	43	0.49	0.02	

- 4MC Franchise 1070 is a standout from a calving ease and low birth standpoint.
- 1070 recorded an actual BW of 61 pounds and charts among the top 11% for CED and top 16% BW.
- Recommended for use on heifers.

Lot
27

4MC FRANCHISE 1096

DOB: 2/10/21 RAAA: 4508769 A - 100% AR Tattoo: 1096

SPUR FRANCHISE OF GARTON
9 MILE FRANCHISE 6305
C-BAR ABIGRACE Y11

PIE SENECA 7213
4MC MISS RED 9116
4MC MISS RED 354

SPUR FRANCHISE 7070
H & H IRENE LASS 0135
TR COLT 45 UT806
C-BAR & BROWN ABIGRACE T712
RREDS SENECA 731C
PIE ROBIN 3416
RED LAZY MC REDMAN 20X
4MC RED WING

Act. BW: 60
Adj. WW: 577
Adj. YW: 1086
ADG: 3.17
WDA: 2.77
DMPPA: 95

Adj. REA: 16.1 Adj. IMF: 5.11 Adj. BF: 0.36 Scrotal: 37

Pro S	HB	GM	CED	BW	WW	YW	ADG	DMI	MILK
99	60	39	12	-3.7	48	83	0.22	1.51	27
ME	HPG	CEM	STAY	MARB	YG	CW	REA	FAT	
1	13	8	15	0.37	0.03	21	0.4	0.04	

- 1096 is another calving ease option for use on heifers from the Franchise sire group.
- He charts top 17% BW, top 7% REA, and among the top third of the breed for 6 other traits of economic importance.
- A moderate birth weight of 60 pounds without sacrificing carcass merit or performance.

Lot
28

4MC FRANCHISE 1097

DOB: 2/11/21 RAAA: 4508771 A - 100% AR Tattoo: 1097

SPUR FRANCHISE OF GARTON
9 MILE FRANCHISE 6305
C-BAR ABIGRACE Y11

4MC CATTLEMAN 6112
4MC HVYWT 9202
4MC HVYWT 2107

SPUR FRANCHISE 7070
H & H IRENE LASS 0135
TR COLT 45 UT806
C-BAR & BROWN ABIGRACE T712
PIE THE COWBOY KIND 343
5L ADINA 1526-2068
RED LAZY MC REDMAN 20X
4MC HVYWT

Act. BW: 62
Adj. WW: 613
Adj. YW: 1078
ADG: 2.9
WDA: 2.73
DMPPA: 97

Adj. REA: 13.42 Adj. IMF: 5.49 Adj. BF: 0.5 Scrotal: 37

Pro S	HB	GM	CED	BW	WW	YW	ADG	DMI	MILK
107	66	41	14	-3.8	48	81	0.21	1.68	31
ME	HPG	CEM	STAY	MARB	YG	CW	REA	FAT	
4	9	10	18	0.52	0.12	22	0.14	0.04	

- 1097 combines a 14 CED with a -3.8 BW to compliment his 62 pound actual birth weight.
- He charts top 7% of the breed for CEM and recorded an IMF Ratio of 111.
- A suitable option for heifers.

Lot
29

4MC FRANCHISE 1200

DOB: 2/28/21 RAAA: 4508965 A - 100% AR Tattoo: 1200

SPUR FRANCHISE OF GARTON
9 MILE FRANCHISE 6305
C-BAR ABIGRACE Y11

PIE NEW TERRITORY 523
4MC GOLDI 8175
4MC GOLDI 5107

SPUR FRANCHISE 7070
H & H IRENE LASS 0135
TR COLT 45 UT806
C-BAR & BROWN ABIGRACE T712
ANDRAS NEW DIRECTION R240
PIE CENTENNIAL FORTUNE 3330
PIE THE COWBOY KIND 343
TKP GOLDI 037

Act. BW: 79
Adj. WW: 714
Adj. YW: 1326
ADG: 3.81
WDA: 3.54
DMPPA: 103

Adj. REA: 14.97 Adj. IMF: 5.75 Adj. BF: 0.41 Scrotal: 36

Pro S	HB	GM	CED	BW	WW	YW	ADG	DMI	MILK
85	31	54	10	-4.1	65	110	0.28	2	30
ME	HPG	CEM	STAY	MARB	YG	CW	REA	FAT	
6	12	6	12	0.47	0.06	40	0.38	0.02	

- 1200 offers tremendous spread from birth to weaning as he recorded an actual birth weight of 79 pounds and spread to over 700 at weaning time with a WW Ratio at 107.
- He is another standout Franchise son that posted an IMF Ratio at 116.
- His -4.1 BW EPD combined with his phenotype make him a suitable option for use on well managed heifers.

Lot
30

4MC FRANCHISE 1216

DOB: 2/20/21 RAAA: 4508995 A - 100% AR Tattoo: 1216

SPUR FRANCHISE OF GARTON
9 MILE FRANCHISE 6305
C-BAR ABIGRACE Y11

4MC SAGA 553
4MC BONNE BELL 746
4MC BONNE BELL

SPUR FRANCHISE 7070
H & H IRENE LASS 0135
TR COLT 45 UT806
C-BAR & BROWN ABIGRACE T712
LSF SAGA 1040Y
RED FAYETTE
HXC CONQUEST 4405P
PIE BONNE BEL 8469

Act. BW: 75
Adj. WW: 624
Adj. YW: 1183
ADG: 3.49
WDA: 3.2
DMPPA: 99

Adj. REA: 14.84 Adj. IMF: 5.66 Adj. BF: 0.39 Scrotal: 40

Pro S	HB	GM	CED	BW	WW	YW	ADG	DMI	MILK
124	75	49	14	-4.9	52	90	0.23	1.61	32
ME	HPG	CEM	STAY	MARB	YG	CW	REA	FAT	
4	9	9	19	0.61	0.17	23	0.07	0.05	

- 4MC Franchise 1216 is one of the standout calving ease options in the offering that combines balanced and elite figures across the board.
- He charts top 7% ProS, top 12% HB, top 23% GM, top 7% BW, top 5% Milk, top 9% CEM, top 8% Stay, and top 12% Marb.

Lot
31

4MC FRANCHISE 1241

DOB: 2/15/21 RAAA: 4509037 A - 100% AR Tattoo: 1241

SPUR FRANCHISE OF GARTON
9 MILE FRANCHISE 6305
C-BAR ABIGRACE Y11

LSF PROSPECT 2035Z
4MC RED MINOLA 532
4MC RED MINOLA 3120

SPUR FRANCHISE 7070
H & H IRENE LASS 0135
TR COLT 45 UT806
C-BAR & BROWN ABIGRACE T712
LSF NIGHT CALVER 9921W
LSF BLACKBIRD N3080 X0406
PIE REDMOND 725
BAR G MINOLA W776

Act. BW: 80
Adj. WW: 711
Adj. YW: 1198
ADG: 3.85
WDA: 3.1
DMPPA: 108

Adj. REA: 13.5 Adj. IMF: 4.6 Adj. BF: 0.29 Scrotal: 37

Pro S	HB	GM	CED	BW	WW	YW	ADG	DMI	MILK
134	62	72	9	-4	63	111	0.3	1.9	36
ME	HPG	CEM	STAY	MARB	YG	CW	REA	FAT	
8	12	8	17	0.54	0.1	49	0.46	0.03	

- Here is a high indexing son of 9 Mile Franchise 6305 that is backed by the influence of a daughter of LSF Prospect 2035Z.
- He ranks top 3% ProS, top 3% GM, top 7% ADG, top 1% CW, and top 4% REA.
- A low-birth-weight bull with a -4 BW EPD that spreads to a WW Ratio at 107.

The Franchise Sire Group

Lot
32

4MC FRANCHISE 1250

DOB: 2/17/21 RAAA: 4509051 A - 100% AR Tattoo: 1250

SPUR FRANCHISE OF GARTON	SPUR FRANCHISE 7070	Act. BW: 76
9 MILE FRANCHISE 6305	H & H IRENE LASS 0135	Adj. WW: 589
C-BAR ABIGRACE Y11	TR COLT 45 UT806	Adj. YW: 1110
PIE THE COWBOY KIND 343	C-BAR & BROWN ABIGRACE T712	ADG: 3.26
4MC GOLDI 5107	BUF CRK THE RIGHT KIND U199	WDA: 3.04
TKP GOLDI 037	PIE CASCADE 561	DMPPA: 99
	BHR GOLDEN BOY 453B	
	TKP GOLDI 8154	

Adj. REA: 14.28 Adj. IMF: 5.31 Adj. BF: 0.34 Scrotal: 36

Pro S	HB	GM	CED	BW	WW	YW	ADG	DMI	MILK
123	57	67	12	-4.5	54	98	0.27	1.76	30
ME	HPG	CEM	STAY	MARB	YG	CW	REA	FAT	
6	10	9	16	0.56	-0.01	34	0.36	0	

- 1250 is another high indexing son of Franchise that charts among the top 7% for ProS.
- He is backed by the strong maternal influence of PIE The Cowboy Kind 343, arguably one of the most influential bulls on the 4MC breeding program in terms of consistency and generating power.
- A high IMF bull that recorded an IMF Ratio at 107.



AHL FLASHBACK 446B - MATERNAL GRANDSIRE OF LOT 34

Lot
33

4MC FRANCHISE 1227

DOB: 2/18/21 RAAA: 4509119 A - 100% AR Tattoo: 1227

SPUR FRANCHISE OF GARTON	SPUR FRANCHISE 7070	Act. BW: 75
9 MILE FRANCHISE 6305	H & H IRENE LASS 0135	Adj. WW: 573
C-BAR ABIGRACE Y11	TR COLT 45 UT806	Adj. YW: 1157
PIE THE COWBOY KIND 343	C-BAR & BROWN ABIGRACE T712	ADG: 3.65
4MC SEREOLA SUE 516	BUF CRK THE RIGHT KIND U199	WDA: 3.18
4MC SEREOLA SUE 389	PIE CASCADE 561	DMPPA: 105
	LSF SAGA 1040Y	
	PIE SEREOLA 7400	

Adj. REA: 14.76 Adj. IMF: 6.11 Adj. BF: 0.5 Scrotal: 38

Pro S	HB	GM	CED	BW	WW	YW	ADG	DMI	MILK
102	38	64	13	-4.1	56	99	0.27	1.84	33
ME	HPG	CEM	STAY	MARB	YG	CW	REA	FAT	
8	9	9	13	0.45	0.03	41	0.49	0.02	

- Here is another calving ease option from the 9 Mile Franchise 6305 sire group.
- He offers a -4.1 BW EPD with a 13 CED to compliment his moderate 75-pound birth weight. IMF Ratio at 111 and REA Ratio at 109.
- A heifer safe option that will add carcass merit and quality.

Lot
34

4MC FRANCHISE 1219

DOB: 1/27/21 RAAA: 4509123 A - 100% AR Tattoo: 1219

SPUR FRANCHISE OF GARTON	SPUR FRANCHISE 7070	Act. BW: 70
9 MILE FRANCHISE 6305	H & H IRENE LASS 0135	Adj. WW: 561
C-BAR ABIGRACE Y11	TR COLT 45 UT806	Adj. YW: 1065
AHL FLASHBACK 446B	C-BAR & BROWN ABIGRACE T712	ADG: 3.14
4MC QUEEN 8118	PZC TMAS FIRESTORM 1800 ET	WDA: 2.76
4MC QUEEN	AHL DUCHESS 42W	DMPPA: 99
	PIE GRIDMASTER 8066	
	PIE QUEEN 8259	

Adj. REA: 12.31 Adj. IMF: 4.88 Adj. BF: 0.4 Scrotal: 40

Pro S	HB	GM	CED	BW	WW	YW	ADG	DMI	MILK
100	60	40	13	-4	52	85	0.21	1.94	28
ME	HPG	CEM	STAY	MARB	YG	CW	REA	FAT	
5	10	9	17	0.47	0.16	34	0.18	0.05	

- 1219 is a top calving ease option that is backed by a beautiful young daughter of AHL Flashback 446B female of Chloe's that is from the Queen cow line.
- Recommended for use on heifers.



The New Territory Sire Group



Lot 35

Lot
35

4MC NEW TERRITORY 0146

DOB: 1/30/20 RAAA: 4263183 A - 100% AR Tattoo: 146

ANDRAS NEW DIRECTION R240	ANDRAS IN FOCUS B152	Act. BW: 82
PIE NEW TERRITORY 523	ANDRAS KURUBA B111	Adj. WW: 654
PIE CENTENNIAL FORTUNE 3330	C-BAR COLT 121Y	Adj. YW: 1227
PIE THE COWBOY KIND 343	TPIE CENTENNIAL FORTUNE 996	ADG: 3.57
4MC MISS BECKTON 7238E	BUF CRK THE RIGHT KIND U199	WDA: 3.11
4MC MISS BECKTON	PIE CASCADE 561	DMPPA: 106
	MCPHEE PACIFIC PRIDE 4127	
	TJS FIREFLY U851	

Adj. REA: 13.44 Adj. IMF: 5.45 Adj. BF: 0.26 Scrotal: 43

Pro S	HB	GM	CED	BW	WW	YW	ADG	DMI	MILK
85	38	48	8	2.4	91	144	0.33	2.15	23
ME	HPG	CEM	STAY	MARB	YG	CW	REA	FAT	
7	10	4	14	0.52	0.2	46	0.08	0.03	



PIE NEW TERRITORY 523 - SIRE OF LOTS 35-43

- 4MC New Territory 0146 is a standout age advantage sire option that is unmatched in terms of power, substance, and mass.
- This ultra-masculine, rugged designed herd sire prospect is a big scrotal, square made herd sire prospect that is sure to turn heads on sale day.
- He ranks among the elite 1% of the breed for WW, YW and CW, top 2% ADG, and top 25% GM.
- He recorded a WW Ratio at 105, YW Ratio at 104, and an impressive IMF Ratio at 137.
- A true sale feature that is ready for heavy service!

The New Territory Sire Group

Lot 36



- Here is another standout phenotypically that is sired by PIE New Territory 523 and backed by LSF Saga 1040Y.
- He charts top 3% WW, top 5% YW, top 15% ADG, top 3% CW, and top 8% REA.
- 1174 posts a WW Ratio at 114, a YW Ratio at 110, an IMF Ratio at 106, and a REA Ratio at 113.
- A low-birth-weight bull that offers tremendous spread, power, and shape!

Lot 36

4MC NEW TERRITORY 1174

DOB: 2/18/21 RAAA: 4508915 A - 100% AR Tattoo: 1174

ANDRAS NEW DIRECTION R240
PIE NEW TERRITORY 523
PIE CENTENNIAL FORTUNE 3330
LSF SAGA 1040Y
4MC BONNE BELL 6134
4MC BONNE BELL

ANDRAS IN FOCUS B152
ANDRAS KURUBA B111
C-BAR COLT 121Y
TPIE CENTENNIAL FORTUNE 996
BECKTON EPIC R397 K
LSF MINOLA T7172 W9041
HXC CONQUEST 4405P
PIE BONNE BEL 8469

Act. BW: 77
Adj. WW: 761
Adj. YW: 1316
ADG: 3.47
WDA: 3.58
DMPPA: 109

Adj. REA: 16.5 Adj. IMF: 5.25 Adj. BF: 0.44 Scrotal: 40

Pro S	HB	GM	CED	BW	WW	YW	ADG	DMI	MILK
93	55	38	12	0.1	79	124	0.28	1.52	27
ME	HPG	CEM	STAY	MARB	YG	CW	REA	FAT	
3	10	6	16	0.27	0.11	43	0.39	0.04	

Lot 37

4MC NEW TERRITORY 1177

DOB: 2/15/21 RAAA: 4508921 A - 100% AR Tattoo: 1177

ANDRAS NEW DIRECTION R240
PIE NEW TERRITORY 523
PIE CENTENNIAL FORTUNE 3330
LSF SAGA 1040Y
4MC RAVISHING 383
RAVISHING MS RAMBO 638

ANDRAS IN FOCUS B152
ANDRAS KURUBA B111
C-BAR COLT 121Y
TPIE CENTENNIAL FORTUNE 996
BECKTON EPIC R397 K
LSF MINOLA T7172 W9041
ROY ROGERS 5604
4L MS RAMBO R726

Act. BW: 79
Adj. WW: 735
Adj. YW: 1236
ADG: 3.13
WDA: 3.37
DMPPA: 109

Adj. REA: 16.33 Adj. IMF: 4.59 Adj. BF: 0.43 Scrotal: 35

Pro S	HB	GM	CED	BW	WW	YW	ADG	DMI	MILK
84	50	34	14	-0.3	82	130	0.3	1.81	28
ME	HPG	CEM	STAY	MARB	YG	CW	REA	FAT	
6	10	8	14	0.31	0.22	42	0.18	0.06	

Lot 37



- 1177 is a big ribbed, deep sided, loose built herd sire prospect that is from the New Territory sire group.
- He charts top 4% WW, top 3% YW, and top 3% CW.
- 1177 recorded an impressive WW Ratio at 110, a YW Ratio at 103, and a REA Ratio at 112.

The New Territory Sire Group



Lot 38

- 1180 is an ultra-attractive, well designed herd sire prospect sire by PIE New Territory 523 and from the influence a top Red SVR Gangster 145 daughter with a DMPPA of 106.
- He charts top 2% WW, top 2% YW, and top 3% CW.
- 1180 offers an impressive WW Ratio at 111 and an IMF Ratio at 109.

Lot 38

4MC NEW TERRITORY 1180

DOB: 2/13/21 RAAA: 4508927 A - 100% AR Tattoo: 1180

ANDRAS NEW DIRECTION R240 PIE NEW TERRITORY 523 PIE CENTENNIAL FORTUNE 3330	ANDRAS IN FOCUS B152 ANDRAS KURUBA B111 C-BAR COLT 121Y TPIE CENTENNIAL FORTUNE 996	Act. BW: 82 Adj. WW: 742 Adj. YW: 1129
RED SVR GANGSTER 145 4MC AMY GANG 240 PIE AMY 9360	RED GEIS HI HO 180'04 RED DWAJO DUCHESS 75M LCB HOSS A444N PIE LO KRUGGER 1159	ADG: 2.41 WDA: 3.05 DMPPA: 106

Adj. REA: 14.84 Adj. IMF: 5.42 Adj. BF: 0.34 Scrotal: 40

Pro S	HB	GM	CED	BW	WW	YW	ADG	DMI	MILK
70	41	29	9	1	81	120	0.24	1.58	25
ME	HPG	CEM	STAY	MARB	YG	CW	REA	FAT	
2	9	5	14	0.39	0.31	42	-0.05	0.06	

Lot 39

4MC NEW TERRITORY 1189

DOB: 2/5/21 RAAA: 4508945 A - 100% AR Tattoo: 1189

ANDRAS NEW DIRECTION R240 PIE NEW TERRITORY 523 PIE CENTENNIAL FORTUNE 3330	ANDRAS IN FOCUS B152 ANDRAS KURUBA B111 C-BAR COLT 121Y TPIE CENTENNIAL FORTUNE 996	Act. BW: 82 Adj. WW: 767 Adj. YW: 1279
LSF OPTIMISM 1107Y 4MC VOSS CUB 6265 VOSS CUB	BECKTON EPIC R397 K LSF COUNTESS 925R U8133 VOS CUB 336-936 CCR MIS CUB 658-713	ADG: 3.2 WDA: 3.46 DMPPA: 110

Adj. REA: 14.78 Adj. IMF: 4.91 Adj. BF: 0.33 Scrotal: 40

Pro S	HB	GM	CED	BW	WW	YW	ADG	DMI	MILK
138	95	43	11	1.1	84	129	0.29	1.6	26
ME	HPG	CEM	STAY	MARB	YG	CW	REA	FAT	
5	13	6	21	0.31	0.04	45	0.45	0.02	



Lot 39

- Here is another performance driven son of PIE New Territory 523 that is one of the highest indexing herd sire options in the entire sale.
- 1189 charts top 1% WW, top 3% YW, top 2% ProS, top 2% HB, top 1% Stay, top 2% CW, and top 5% REA.
- He recorded a WW Ratio at 115 and a YW Ratio at 106 to compliment his genuine power and shape.



The New Territory Sire Group



ANDRAS NEW DIRECTION R240 - PATERNAL GRANDSIRE OF LOTS 35-43

Lot
40

4MC NEW TERRITORY 1021

DOB: 1/21/21 RAAA: 4509061 A - 100% AR Tattoo: 1021

ANDRAS NEW DIRECTION R240	ANDRAS IN FOCUS B152	Act. BW: 78
PIE NEW TERRITORY 523	ANDRAS KURUBA B111	Adj. WW: 810
PIE CENTENNIAL FORTUNE 3330	C-BAR COLT 121Y	Adj. YW: 1282
	TPIE CENTENNIAL FORTUNE 996	ADG: 2.93
BROWN L806 T7351	LJC LANCER 806	WDA: 3.43
LADY	BROWN MS LIL SAM P7909	DMPPA: 113
CH LADY 738T	5L DESTINATION 893-6215	
	BROWN MS LADY H7566	

Adj. REA: 13.28 Adj. IMF: 5.32 Adj. BF: 0.33 Scrotal: 37

Pro S	HB	GM	CED	BW	WW	YW	ADG	DMI	MILK
108	39	69	14	2.3	87	141	0.34	1.74	28
ME	HPG	CEM	STAY	MARB	YG	CW	REA	FAT	
6	10	6	13	0.57	0.09	49	0.3	0.01	

- 1021 is a performance standout that ranks top 1% of the entire breed for WW, YW, and CW, top 2% ADG, top 17% Marb, and top 16% REA.
- An impressive weaning weight of 800+ pounds that recorded a WW Ratio at 122.
- Performance, carcass merit, and a strong maternal pedigree support this herd sire prospect!

Lot
41

4MC NEW TERRITORY 1038

DOB: 1/27/21 RAAA: 4508663 A - 100% AR Tattoo: 1038

ANDRAS NEW DIRECTION R240	ANDRAS IN FOCUS B152	Act. BW: 82
PIE NEW TERRITORY 523	ANDRAS KURUBA B111	Adj. WW: 695
PIE CENTENNIAL FORTUNE 3330	C-BAR COLT 121Y	Adj. YW: 1250
	TPIE CENTENNIAL FORTUNE 996	ADG: 2.75
RED LAZY MC REDMAN 20X	RED RMJ REDMAN 1T	WDA: 3.41
4MC HVYWT 2107	RED FLOTRE GOLD 47R	DMPPA: 102
4MC HVYWT	PIE GRIDMASTER 589	
	PIE HVYWT 8289	

Adj. REA: 13.5 Adj. IMF: 4.2 Adj. BF: 0.3 Scrotal: 37

Pro S	HB	GM	CED	BW	WW	YW	ADG	DMI	MILK
83	51	33	10	-2.6	65	91	0.16	1.8	23
ME	HPG	CEM	STAY	MARB	YG	CW	REA	FAT	
3	13	6	15	0.56	0.2	37	0.09	0.05	

- This New Territory son is long sided, big ended, and square built.
- He recorded a WW Ratio at 104 to compliment his added power and performance.

Lot
42

4MC NEW TERRITORY 1066

DOB: 2/2/21 RAAA: 4508711 A - 100% AR Tattoo: 1066

ANDRAS NEW DIRECTION R240	ANDRAS IN FOCUS B152	Act. BW: 78
PIE NEW TERRITORY 523	ANDRAS KURUBA B111	Adj. WW: 712
PIE CENTENNIAL FORTUNE 3330	C-BAR COLT 121Y	Adj. YW: 1247
	TPIE CENTENNIAL FORTUNE 996	ADG: 3.34
LSF PROSPECT 2035Z	LSF NIGHT CALVER 9921W	WDA: 3.37
4MC MISS CANYON 610	LSF BLACKBIRD N3080 X0406	DMPPA: 105
PIE MS CANYON 145	HXC MAGNUM 4464P	
	PIE MS CANYON 9028	

Adj. REA: 14 Adj. IMF: 5.55 Adj. BF: 0.45 Scrotal: 40

Pro S	HB	GM	CED	BW	WW	YW	ADG	DMI	MILK
118	73	45	12	-2.5	70	112	0.26	1.56	28
ME	HPG	CEM	STAY	MARB	YG	CW	REA	FAT	
3	14	6	17	0.47	0.13	32	0.22	0.04	

- 1066 is a 12 CED with a -2.5 BW herd sire option that recorded a moderate 78 pound birth weight.
- He recorded a WW Ratio at 107, YW Ratio at 104, and an IMF Ratio at 112.
- Recommended for use on heifers.

Lot
43

4MC NEW TERRITORY 1067

DOB: 2/2/21 RAAA: 4508713 A - 100% AR Tattoo: 1067

ANDRAS NEW DIRECTION R240	ANDRAS IN FOCUS B152	Act. BW: 84
PIE NEW TERRITORY 523	ANDRAS KURUBA B111	Adj. WW: 728
PIE CENTENNIAL FORTUNE 3330	C-BAR COLT 121Y	Adj. YW: 1256
	TPIE CENTENNIAL FORTUNE 996	ADG: 3.28
GMRA MR MIMI 6178	BIEBER MAKE MIMI 7249	WDA: 3.37
1182 4MC	GMRA ANGIE ROSE 120	DMPPA: 103
CCR MONU 823-522	BJR MONU 4X-303	
	AQUILA MAIDEN 823	

Adj. REA: 14 Adj. IMF: 4.93 Adj. BF: 0.22 Scrotal: 37

Pro S	HB	GM	CED	BW	WW	YW	ADG	DMI	MILK
84	35	49	10	1.9	84	130	0.29	1.83	25
ME	HPG	CEM	STAY	MARB	YG	CW	REA	FAT	
9	10	5	13	0.46	0.21	50	0.1	0.03	

- 1067 is another standout performance sire that offers an elite number profile ranking him among the elite 1% for WW and CW, top 3% YW, and top 11% ADG.
- A true performance sire that posted an impressive set of data.
- WW Ratio at 109 and YW Ratio at 105.

The Pie Seneca Sire Group

Lot
44

4MC SENECA 1025

DOB: 1/21/21 RAAA: 4508637 A - 100% AR Tattoo: 1025

RREDS SENECA 731C PIE SENECA 7213 PIE ROBIN 3416	BIEBER ROLLIN DEEP Y118 RREDS ASTER 309A RAVISHING JACKHAMMER 41 PIE ROBIN 9272	Act. BW: 82 Adj. WW: 642 Adj. YW: 1170
CRS DIAMND FRANKLIN 988 HLH MS FRANKIN 8042 4331 HLH MS MIMI 6079 8042	ARO TRIPLE PLAY 503 RRS CHEROKEE ROBIN 4017 BIEBER MAKE MIMI 7249 HLH MS DATA 2152 6079	ADG: 3.3 WDA: 3.16 DMPPA: 94

Adj. REA: 14.33 Adj. IMF: 4.32 Adj. BF: 0.27 Scrotal: 39

Pro S	HB	GM	CED	BW	WW	YW	ADG	DMI	MILK
75	44	31	11	-0.1	77	122	0.28	1.76	14
ME	HPG	CEM	STAY	MARB	YG	CW	REA	FAT	
6	12	5	14	0.2	0.07	42	0.49	0.04	

- 4MC Seneca 1025 is a powerful grandson of the very popular RREDS Seneca 731C, one of the truly great breeding bulls in the Red Angus breed.
- He charts top 4% WW, top 7% YW, top 3% CW, and top 3% REA.

Lot
45

4MC SENECA 1073

DOB: 2/4/21 RAAA: 4508725 A - 100% AR Tattoo: 1073

RREDS SENECA 731C PIE SENECA 7213 PIE ROBIN 3416	BIEBER ROLLIN DEEP Y118 RREDS ASTER 309A RAVISHING JACKHAMMER 41 PIE ROBIN 9272	Act. BW: 84 Adj. WW: 624 Adj. YW: 1133
LSF OPTIMISM 1107Y 4MC OPTIMISM 458 REAL DALLES	BECKTON EPIC R397 K LSF COUNTESS 925R U8133 PIE REAL DEAL 809 TPIE JULY DALLES 831	ADG: 3.18 WDA: 3.08 DMPPA: 91

Adj. REA: 12.83 Adj. IMF: 4.78 Adj. BF: 0.31 Scrotal: 41

Pro S	HB	GM	CED	BW	WW	YW	ADG	DMI	MILK
96	82	13	11	-0.4	73	112	0.24	1.68	16
ME	HPG	CEM	STAY	MARB	YG	CW	REA	FAT	
6	11	6	21	0.18	0.14	31	0.19	0.04	

- 4MC Seneca 1073 is another son of PIE Seneca 7213 that is among the top 6% for HB, top 9% WW, top 18% YW, top 2% Stay, and top 19% CW.
- He is backed by a productive LSF Optimism 1107Y dam that traces to the PIE Real Deal 809 influence.

Lot
46

4MC SENECA 1078

DOB: 2/5/21 RAAA: 4508735 A - 100% AR Tattoo: 1078

RREDS SENECA 731C PIE SENECA 7213 PIE ROBIN 3416	BIEBER ROLLIN DEEP Y118 RREDS ASTER 309A RAVISHING JACKHAMMER 41 PIE ROBIN 9272	Act. BW: 74 Adj. WW: 609 Adj. YW: 1195
CRS DIAMND FRANKLIN 988 HLH MS FRANKLIN 7020 4277 HLH ABBIE 5074 7020	ARO TRIPLE PLAY 503 RRS CHEROKEE ROBIN 4017 LCC ABOVE & BEYOND 1300J HLH MS SHY ANN 2156 5074	ADG: 3.66 WDA: 3.26 DMPPA: 92

Adj. REA: 14.65 Adj. IMF: 5.43 Adj. BF: 0.44 Scrotal: 37

Pro S	HB	GM	CED	BW	WW	YW	ADG	DMI	MILK
89	59	30	14	-1.1	72	113	0.26	1.57	15
ME	HPG	CEM	STAY	MARB	YG	CW	REA	FAT	
4	13	7	16	0.35	0.17	31	0.2	0.06	

- 1078 is moderate birth weight bull that posted an average daily gain of 3.66 pounds and recorded impressive ultrasound data.
- He offers an IMF Ratio at 109 to compliment his balanced number profile.
- Recommended for use on heifers.

Lot
47

4MC SENECA 1107

DOB: 2/15/21 RAAA: 4508791 A - 100% AR Tattoo: 1107

RREDS SENECA 731C PIE SENECA 7213 PIE ROBIN 3416	BIEBER ROLLIN DEEP Y118 RREDS ASTER 309A RAVISHING JACKHAMMER 41 PIE ROBIN 9272	Act. BW: 78 Adj. WW: 719 Adj. YW: 1409
BECKTON WARRIOR Z287 N6 HLH MS WARRIOR 8110 4371 HLH LADY LANCE 5105 8110	BECKTON WARRIOR U636 J5 BECKTON LYDIA 5069 NB BUF CRK LANCE R102 HLH MS POWER 2055 5105	ADG: 4.31 WDA: 3.87 DMPPA: 98

Adj. REA: 18.46 Adj. IMF: 4.14 Adj. BF: 0.28 Scrotal: 39

Pro S	HB	GM	CED	BW	WW	YW	ADG	DMI	MILK
79	47	32	12	-1.5	77	128	0.32	1.66	19
ME	HPG	CEM	STAY	MARB	YG	CW	REA	FAT	
6	12	4	16	0.23	0.14	34	0.09	0.02	

- 1107 is a big spread performance bull that recorded a moderate birthweight of 78 pounds. He came to the weaning pen with over 700 pounds of performance to record a WW Ratio at 108 and a YW Ratio at 117.
- He is one of the largest REA bulls in the offering with an 18+ inch eye to post a REA Ratio at 126.
- Top 5% WW, top 3% YW, and top 4% ADG.

Lot
48

4MC SENECA 1150

DOB: 2/10/21 RAAA: 4508867 A - 100% AR Tattoo: 1150

RREDS SENECA 731C PIE SENECA 7213 PIE ROBIN 3416	BIEBER ROLLIN DEEP Y118 RREDS ASTER 309A RAVISHING JACKHAMMER 41 PIE ROBIN 9272	Act. BW: 80 Adj. WW: 699 Adj. YW: 1190
LSF ENDEAVOR 1431Y POKE MS ENDEAVOR 0233 4224 HLH MS MIMI ET 851 0233	LCHMN ENTERPRISE 1370H BUF CRK KANSAS L033 BIEBER MAKE MIMI 7249 HLH LIGHTN LASS 119 851	ADG: 3.07 WDA: 3.25 DMPPA: 98

Adj. REA: 12.8 Adj. IMF: 4.2 Adj. BF: 0.24 Scrotal: 37

Pro S	HB	GM	CED	BW	WW	YW	ADG	DMI	MILK
58	35	23	8	1.3	85	139	0.34	1.85	19
ME	HPG	CEM	STAY	MARB	YG	CW	REA	FAT	
8	11	5	13	0.23	0.12	28	0.13	0.03	

- 4MC Seneca 1150 is among the top 1% for WW, top 1% YW, and top 2% ADG.
- He posted a WW Ratio at 105 to compliment his added length, shape, and pay weight.

Lot
49

4MC SENECA 1166

DOB: 2/28/21 RAAA: 4508899 A - 100% AR Tattoo: 1166

RREDS SENECA 731C PIE SENECA 7213 PIE ROBIN 3416	BIEBER ROLLIN DEEP Y118 RREDS ASTER 309A RAVISHING JACKHAMMER 41 PIE ROBIN 9272	Act. BW: 77 Adj. WW: 650 Adj. YW: 1149
BECKTON JORDAN U520 HLH MS JORDAN 1090 4084 HLH MS PACKER 6086 1090	TR JULIAN RT561 BECKTON SUFFEINA P643 J MESSMER PACKER 5008 HLH MS SHY ANN 981 6086	ADG: 3.12 WDA: 3.16 DMPPA: 93

Adj. REA: 15.36 Adj. IMF: 4.28 Adj. BF: 0.23 Scrotal: 41

Pro S	HB	GM	CED	BW	WW	YW	ADG	DMI	MILK
96	67	29	12	-1.3	70	108	0.24	1.45	15
ME	HPG	CEM	STAY	MARB	YG	CW	REA	FAT	
4	10	6	19	0.27	0.17	37	0.25	0.05	

- 1166 is a calving ease prospect that offers a moderate birth weight of 77 pounds.
- Top 15% WW, top 10% Stay, and top 8% CW.
- Recommended for use on heifers.

The Weigh Up Sire Group



Lot 50

Lot
50

4MC WEIGH UP 0390

DOB: 9/8/20 RAAA: 4413983 A - 100% AR Tattoo: 390

BIEBER HIGH ROLLER C553	BIEBER ROLLIN DEEP Y118	Act. BW: 77
PIE WEIGH UP 8157	BASIN PRIMROSE 24T9	Adj. WW: 639
PIE JULY DALLES 425	LSF SAGA 1040Y	Adj. YW: 863
4MC SAGA 530	PIE JULY DALLES 2032	ADG: 1.39
4MC KARUBA 7316	LSF SAGA 1040Y	WDA: 2.28
4MC KARUBA 4192	RED SOO LINE STAR 7037	DMPPA: 102
	LSF OPTIMISM 1107Y	
	REAL KARUBA	

Adj. REA: 10.01 Adj. IMF: 3.85 Adj. BF: 0.09 Scrotal: 39

Pro S	HB	GM	CED	BW	WW	YW	ADG	DMI	MILK
113	86	26	12	-2.8	73	110	0.23	2.19	26
ME	HPG	CEM	STAY	MARB	YG	CW	REA	FAT	
11	10	7	22	0.58	0.17	27	0.1	0.05	



PIE WEIGH UP 8157 - SIRE OF LOTS 50-55

- 4MC Weigh Up 0390 is a standout sired by PIE Weight Up 8157 that is massive in terms of his center body shape, big ended, and square built.
- He posts a moderate 77-pound birth weight to compliment his 12 CED and -2.8 BW EPD.
- Top 16% ProS, top 4% HB, top 10% WW, top 21% YW, top 1% Stay, and top 16% Marb.

The Weigh Up Sire Group



Lot 51

- Here is a smooth made, clean jointed son of PIE Weigh Up 8157 that is backed by a top daughter of 4MC Godfather 230 that recorded a DMPPA of 107.
- He ranks top 1% WW, top 6% YW, top 11% HB, and top 11% Marb.
- WW Ratio at 110, YW Ratio at 103, IMF Ratio at 104, and REA Ratio at 103.

Lot 51

4MC WEIGH UP 0391

DOB: 9/10/20 RAAA: 4413985 A - 100% AR Tattoo: 391

BIEBER HIGH ROLLER C553
PIE WEIGH UP 8157
 PIE JULY DALLES 425
 4MC GODFATHER 230
4MC FIREFLY 7314
 4MC FIREFLY 4189

BIEBER ROLLIN DEEP Y118
 BASIN PRIMROSE 24T9
 LSF SAGA 1040Y
 PIE JULY DALLES 2032
 RED SVR GANGSTER 14S
 PIE BOTEET 702
 LSF OPTIMISM 1107Y
 5L FIREFLY 2275-5528

Act. BW: 79
 Adj. WW: 703
 Adj. YW: 967
 ADG: 1.64
 WDA: 2.58
 DMPPA: 107

Adj. REA: 10.94 Adj. IMF: 4.36 Adj. BF: 0.18 Scrotal: 43

Pro S	HB	GM	CED	BW	WW	YW	ADG	DMI	MILK
98	75	23	10	-0.8	86	123	0.23	1.96	26
ME	HPG	CEM	STAY	MARB	YG	CW	REA	FAT	
9	11	7	19	0.62	0.17	25	0.02	0.04	

Lot 52

4MC WEIGH UP 0402

DOB: 9/19/20 RAAA: 4414003 A - 100% AR Tattoo: 402

BIEBER HIGH ROLLER C553
PIE WEIGH UP 8157
 PIE JULY DALLES 425
 4MC SAGA 530
4MC REBELLE 7325
 4MC REBELLA 4190

BIEBER ROLLIN DEEP Y118
 BASIN PRIMROSE 24T9
 LSF SAGA 1040Y
 PIE JULY DALLES 2032
 LSF SAGA 1040Y
 RED SOO LINE STAR 7037
 LSF OPTIMISM 1107Y
 5L REBELLA 4007-2748

Act. BW: 77
 Adj. WW: 579
 Adj. YW: 888
 ADG: 1.92
 WDA: 2.28
 DMPPA: 93

Adj. REA: 9.59 Adj. IMF: 3.95 Adj. BF: 0.08 Scrotal: 35

Pro S	HB	GM	CED	BW	WW	YW	ADG	DMI	MILK
98	65	32	12	0	76	115	0.24	2.21	24
ME	HPG	CEM	STAY	MARB	YG	CW	REA	FAT	
11	11	8	18	0.37	0.12	46	0.37	0.03	



Lot 52

- 4MC Weigh Up 0402 is a big bodied, deep ribbed son of Weigh Up that is backed by a Saga daughter that is further influenced by Optimism on the bottom side of his pedigree.
- Top 6% WW, top 14% YW, top 2% CW, and top 9% REA.
- A moderate birth weight bull that is recommended for use on well managed heifers.



The Weigh Up Sire Group



Lot 53



Lot 54



Lot
53

4MC WEIGH UP 1209

DOB: 2/20/21 RAAA: 4508983 A - 100% AR Tattoo: 1209

BIEBER HIGH ROLLER C553 BIEBER ROLLIN DEEP Y118 Act. BW: 78
PIE WEIGH UP 8157 BASIN PRIMROSE 24T9 Adj. WW: 819
 LSF SAGA 1040Y
 PIE JULY DALLES 425 PIE JULY DALLES 2032 Adj. YW: 1377
 PIE NEW TERRITORY 523 ANDRAS NEW DIRECTION R240 ADG: 3.48
4MC MISS CHERRY 828 PIE CENTENNIAL FORTUNE 3330 WDA: 3.65
 PIE HOSS 7384
 4MC MISS CHEERY 3114 CCR MISS CHERRY 1260-714 DMPPA: 104

Adj. REA: 16.72 Adj. IMF: 4.47 Adj. BF: 0.21 Scrotal: 38

Pro S	HB	GM	CED	BW	WW	YW	ADG	DMI	MILK
86	41	44	10	4	97	150	0.33	2.46	27
ME	HPG	CEM	STAY	MARB	YG	CW	REA	FAT	
13	12	6	14	0.5	0.23	57	0.12	0.03	

- 4MC Weigh Up 1209 is a big footed, stout boned, performance driven sire option that charts top 1% WW, top 1% YW, top 1% CW, and top 2% ADG.
- He is a performance standout that posted a WW Ratio at 123, a YW Ratio at 115, and a REA Ratio at 114.

Lot
54

4MC WEIGH UP 1220

DOB: 3/1/21 RAAA: 4509001 A - 100% AR Tattoo: 1220

BIEBER HIGH ROLLER C553 BIEBER ROLLIN DEEP Y118 Act. BW: 75
PIE WEIGH UP 8157 BASIN PRIMROSE 24T9 Adj. WW: 665
 LSF SAGA 1040Y
 PIE JULY DALLES 425 PIE JULY DALLES 2032 Adj. YW: 1233
 LSF OPTIMISM 1107Y BECKTON EPIC R397 K ADG: 3.55
4MC REAL DALLES 552 LSF COUNTESS 925R U8133 WDA: 3.4
 PIE REAL DEAL 809
 REAL DALLES TPIE JULY DALLES 831 DMPPA: 101

Adj. REA: 14 Adj. IMF: 4.04 Adj. BF: 0.25 Scrotal: 41

Pro S	HB	GM	CED	BW	WW	YW	ADG	DMI	MILK
108	62	46	10	0.7	78	120	0.26	2.1	26
ME	HPG	CEM	STAY	MARB	YG	CW	REA	FAT	
11	11	7	17	0.38	0.05	52	0.44	0	

- 1220 comes from the Weigh Up sire group and offers tremendous shape, length, and power.
- He is among the top 4% of the breed for WW, top 8% YW, top 1% CW, and top 5% REA.
- A long sided, sound footed bull with breed leading performance.

Lot
55

4MC WEIGH UP 1199

DOB: 2/28/21 RAAA: 4508963 B - 99.8% AR 0.2% XX Tattoo: 1199

BIEBER HIGH ROLLER C553 BIEBER ROLLIN DEEP Y118 Act. BW: 74
PIE WEIGH UP 8157 BASIN PRIMROSE 24T9 Adj. WW: 660
 LSF SAGA 1040Y
 PIE JULY DALLES 425 PIE JULY DALLES 2032 Adj. YW: 1204
 PIE NEW TERRITORY 523 ANDRAS NEW DIRECTION R240 ADG: 3.4
4MC BRASKA 702 PIE CENTENNIAL FORTUNE 3330 WDA: 3.27
 PIE THE COWBOY KIND 343
 4MC BRASKA 5125 SOR BRASKA FIT870 DMPPA: 99

Adj. REA: 12.14 Adj. IMF: 4.12 Adj. BF: 0.33 Scrotal: 33

Pro S	HB	GM	CED	BW	WW	YW	ADG	DMI	MILK
85	34	51	13	0.8	91	145	0.34	2.24	23
ME	HPG	CEM	STAY	MARB	YG	CW	REA	FAT	
12	12	7	12	0.42	0.23	60	0.15	0.03	

- 1199 ranks among the top 1% of the entire breed for WW, YW, ADG, and CW.
- He is a moderate birth weight bulls that offers a 74-pound birth to compliment his 13 CED EPD.
- A suitable option for use on heifers.

The Code Red Sire Group



Lot 56

Lot
56

4MC CODE RED 1024

DOB: 1/21/21 RAAA: 4508635 A - 100% AR Tattoo: 1024

VGW GAME PLAN 508	LCC IMF B054M	Act. BW: 74
PIE CODE RED 9058	VGW PT- DORY 0361	Adj. WW: 677
PIE STORMY 541	LCB HOSS A444N	Adj. YW: 1299
9 MILE FRANCHISE 6305	PIE STORMY BEEFMAKER 327	ADG: 3.87
4MC LASA 944	SPUR FRANCHISE OF GARTON	WDA: 3.31
4MC LASA 5137	C-BAR ABIGRACE Y11	DMPPA: 101
	PIE THE COWBOY KIND 343	
	PIE LASA 9141	

Adj. REA: 15.49 Adj. IMF: 4.55 Adj. BF: 0.35 Scrotal: 41

Pro S	HB	GM	CED	BW	WW	YW	ADG	DMI	MILK
138	86	52	12	-2.4	69	112	0.27	1.61	29
ME	HPG	CEM	STAY	MARB	YG	CW	REA	FAT	
1	11	9	19	0.39	0.08	42	0.17	0	



PIE CODE RED 9058 - SIRE OF LOT 56

- 4MC Code Red 1024 is a top performing son of PIE Code Red 9058 that is backed by a young and productive daughter of 9 Mile Franchise 6305.
- He is among the elite 2% of the breed for ProS, top 4% HB, top 18% GM, top 18% WW, top 18% YW, top 9% Stay, and top 3% CW.
- WW Ratio at 102, YW Ratio at 108, and REA Ratio at 106.
- A big footed, stout made son of Code Red that is a true sale feature!

The Convoy Sire Group



PIE CONVOY 7058 - SIRE OF LOTS 57-60

Lot
59

4MC CONVOY 1060

DOB: 2/1/21 RAAA: 4508699 A - 100% AR Tattoo: 1060

PFFR CONVOY 9Z	HXC CONQUEST 4405P	Act. BW: 68
PIE CONVOY 7058	PFFR SUN CAN 8X	Adj. WW: 651
PIE JULY DALLES 5182	LSF OPTIMISM 1107Y	Adj. YW: 1219
	PIE JULY DALLES 197	ADG: 3.53
9 MILE FRANCHISE 6305	SPUR FRANCHISE OF GARTON	WDA: 3.12
4MC SUNBURST 903	C-BAR ABIGRACE Y11	DMPPA: 99
4MC SUNBURST 7257	4MC SAGA 530	
	SUNBURST	

Adj. REA: 15.82 Adj. IMF: 6.74 Adj. BF: 0.36 Scrotal: 42

Pro S	HB	GM	CED	BW	WW	YW	ADG	DMI	MILK
94	51	44	12	-3.9	59	94	0.21	1.69	29
ME	HPG	CEM	STAY	MARB	YG	CW	REA	FAT	
10	9	8	17	0.57	-0.08	20	0.55	0.02	

- 4MC Convoy 1060 is a long bodied, smooth made son of Convoy that offers a 12 CED and a -3.9 BW EPD to compliment his moderate 68-pound birth weight.
- He is a standout with an IMF Ratio at 136 and a REA Ratio at 108.
- Recommended for use on heifers.

Lot
57

4MC TIGHT END 0182

DOB: 2/8/20 RAAA: 4263115 A - 100% AR Tattoo: 182

PFFR CONVOY 9Z	HXC CONQUEST 4405P	Act. BW: 78
PIE CONVOY 7058	PFFR SUN CAN 8X	Adj. WW: 521
PIE JULY DALLES 5182	LSF OPTIMISM 1107Y	Adj. YW: 1044
	PIE JULY DALLES 197	ADG: 3.26
PIE THE COWBOY KIND 343	BUF CRK THE RIGHT KIND U199	WDA: 2.61
4MC FIRE FLY 7196	PIE CASCADE 561	DMPPA: 101
4MC FIRE FLY	5L LEGEND DESIGN 2415-7057	
	5L FIREFLY 2436-3208	

Adj. REA: 11.68 Adj. IMF: 3.7 Adj. BF: 0.19 Scrotal: 38

Pro S	HB	GM	CED	BW	WW	YW	ADG	DMI	MILK
89	43	46	12	-4.2	43	76	0.2	0.96	27
ME	HPG	CEM	STAY	MARB	YG	CW	REA	FAT	
0	10	7	14	0.46	-0.03	10	0.1	0	

- 0182 is a top calving ease prospect with a -4.2 BW to accompany his 78-pound birth weight.
- He is smooth made, clean jointed, and sound built.
- A top age advantage bull ready for heavy service!

Lot
58

4MC CONVOY 1047

DOB: 1/29/21 RAAA: 4508677 A - 100% AR Tattoo: 1047

PFFR CONVOY 9Z	HXC CONQUEST 4405P	Act. BW: 82
PIE CONVOY 7058	PFFR SUN CAN 8X	Adj. WW: 742
PIE JULY DALLES 5182	LSF OPTIMISM 1107Y	Adj. YW: 1401
	PIE JULY DALLES 197	ADG: 4.1
4MC KING OF THE COWBOYS 706	PIE THE COWBOY KIND 343	WDA: 3.6
4MC ADINA 960	4MC HVYWT 5163	DMPPA: 104
5L ADINA 1526-2068	5L MTN WINCH 2814-5106	
	5L ADINA 3012-1526	

Adj. REA: 15.12 Adj. IMF: 5.48 Adj. BF: 0.24 Scrotal: 40

Pro S	HB	GM	CED	BW	WW	YW	ADG	DMI	MILK
87	57	30	8	-0.3	70	105	0.22	1.72	30
ME	HPG	CEM	STAY	MARB	YG	CW	REA	FAT	
11	8	6	19	0.38	0.01	29	0.2	-0.01	

- 4MC Convoy 1047 is another Convoy son that offers tremendous body shape, depth, and fleshing ease.
- He is a performance standout that posted a WW Ratio at 111, YW Ratio at 117, and an IMF Ratio at 111.
- He is backed by a productive young daughter of the \$105,000 4MC King of the Cowboys

Lot
60

4MC CONVOY 1120

DOB: 3/10/21 RAAA: 4508811 A - 100% AR Tattoo: 1120

PFFR CONVOY 9Z	HXC CONQUEST 4405P	Act. BW: 74
PIE CONVOY 7058	PFFR SUN CAN 8X	Adj. WW: 682
PIE JULY DALLES 5182	LSF OPTIMISM 1107Y	Adj. YW: 1224
	PIE JULY DALLES 197	ADG: 3.37
PIE THE COWBOY KIND 343	BUF CRK THE RIGHT KIND U199	WDA: 3.19
4MC LAKOTA 974	PIE CASCADE 561	DMPPA: 101
4MC LAKOTA 5133	LSF SAGA 1040Y	
	TPIE LAKOTA 8194	

Adj. REA: 15.71 Adj. IMF: 4.96 Adj. BF: 0.27 Scrotal: 38

Pro S	HB	GM	CED	BW	WW	YW	ADG	DMI	MILK
96	63	33	11	-0.7	66	104	0.24	1.44	25
ME	HPG	CEM	STAY	MARB	YG	CW	REA	FAT	
6	10	7	18	0.39	0.03	22	0.1	0	

- 4MC Convoy 1120 is a stout made, performance driven on of Convoy that is backed by a productive young daughter of PIE The Cowboy Kind 343.
- He is a big REA bull with a REA Ratio at 108.



4MC KING OF THE COWBOYS 706 - \$105,000 MATERNAL GRANDSIRE OF LOT 58

The Yearling Bulls

Lot
61

4MC COWBOY KIND 1252

DOB: 2/24/21 RAAA: 4509055 A - 100% AR Tattoo: 1252

BUF CRK THE RIGHT KIND U199
PIE THE COWBOY KIND 343
PIE CASCADE 561

BUF CRK LANCER R017
BUF CRK SHOSHONE R353
PIE CODE RED 9058
TPIE CASCADE 561

Act. BW: 74
Adj. WW: 637
Adj. YW: 1177

PIE THE COWBOY KIND 343
4MC MONU 550
1182 4MC

BUF CRK THE RIGHT KIND U199
PIE CASCADE 561
GMRA MR MIMI 6178
CCR MONU 823-522

ADG: 3.37
WDA: 3.23
DMPPA: 103

Adj. REA: 15.62 Adj. IMF: 5.48 Adj. BF: 0.32 Scrotal: 37

Pro S	HB	GM	CED	BW	WW	YW	ADG	DMI	MILK
97	54	44	13	0.9	62	107	0.28	1.64	28
ME	HPG	CEM	STAY	MARB	YG	CW	REA	FAT	
11	10	9	17	0.49	0.02	17	0.07	0	

- Here is a direct son of the powerful sire of influence PIE The Cowboy Kind 343.
- He is a trait leader for performance, length, and shape.
- A moderate birth weight bull that recorded a 74-pound actual birth weight.
- He posted an IMF Ratio at 110 and a REA Ratio at 107.



PIE THE COWBOY KIND 343 - SIRE OF LOT 61

Lot
62

4MC PROSPECT 1077

DOB: 2/5/21 RAAA: 4508733 A - 100% AR Tattoo: 1077

LSF PROSPECT 2035Z
PIE PROSPECT 5110
PIE RASPBERRY 0296

LSF NIGHT CALVER 9921W
LSF BLACKBIRD N3080 X0406
TPIE WAGONMASTER 753
PIE RASPBERRY 5197

Act. BW: 82
Adj. WW: 688
Adj. YW: 1224

BUF CRK THE RIGHT KIND U199
HLH MS RIGHT KIND 0172 4157
HLH MS LANCE 6128 0172

BUF CRK LANCER R017
BUF CRK SHOSHONE R353
BUF CRK LANCE R102
HLH GOLDIE 750 6128

ADG: 3.35
WDA: 3.33
DMPPA: 107

Adj. REA: 15.63 Adj. IMF: 4.69 Adj. BF: 0.27 Scrotal: 36

Pro S	HB	GM	CED	BW	WW	YW	ADG	DMI	MILK
84	67	17	9	0.8	70	109	0.24	1.16	27
ME	HPG	CEM	STAY	MARB	YG	CW	REA	FAT	
8	12	6	19	0.28	0.15	17	0.05	0.05	

- 1077 is a son of PIE Prospect 5110 that is backed by a productive daughter of BUF CRK The Right Kind U199, one of the most influential sires in the business.
- He recorded a REA Ratio at 107.



BUF CRK THE RIGHT KIND U199 - MATERNAL GRANDSIRE OF LOT 62

Lot
63

4MC REDDINGTON 1009

DOB: 1/13/21 RAAA: 4508609 A - 100% AR Tattoo: 1009

ANDRAS NEW DIRECTION R240
JEFFRIES REDDINGTON 865C
JEFFRIES W563

ANDRAS IN FOCUS B152
ANDRAS KURUBA B111
RED FINE LINE MULBERRY 26P
JEFFRIES LA ANN L42-P298

Act. BW: 78
Adj. WW: 719
Adj. YW: 1273

9 MILE FRANCHISE 6305
4MC ADINA 945
4MC ADINA 5126

SPUR FRANCHISE OF GARTON
C-BAR ABIGRACE Y11
PIE THE COWBOY KIND 343
5L ADINA 1526-2068

ADG: 3.45
WDA: 3.23
DMPPA: 103

Adj. REA: 14.83 Adj. IMF: 5.22 Adj. BF: 0.47 Scrotal: 40

Pro S	HB	GM	CED	BW	WW	YW	ADG	DMI	MILK
113	66	47	13	-2.1	64	106	0.26	1.75	21
ME	HPG	CEM	STAY	MARB	YG	CW	REA	FAT	
1	12	8	16	0.52	0.13	30	0.12	0.03	

- 4MC Reddington 1009 is a top indexing son of Jeffries Reddington 865C that is from a productive young daughter of 9 Mile Franchise 6305.
- He is among the top 15% for ProS, top 24% HB, top 25% Marb, and top 23% CW.
- WW Ratio at 108, YW Ratio at 106, and IMF Ratio at 105.



Lot 63

The Yearling Bulls



JEFFRIES REDDINGTON 865C - SIRE OF LOT 63 & 64



Lot 66

Lot 64

4MC REDDINGTON 1014

DOB: 1/14/21 RAAA: 4508617 A - 100% AR Tattoo: 1014

ANDRAS NEW DIRECTION R240
JEFFRIES REDDINGTON 865C
JEFFRIES W563

BIEBER FUSION C194
4MC DALLES 9142
4MC DALLES 6259

ANDRAS IN FOCUS B152
ANDRAS KURUBA B111
RED FINE LINE MULBERRY 26P
JEFFRIES LA ANN L42-P298

ANDRAS FUSION R236
BIEBER LAKOTA 210Z
LSF OPTIMISM 1107Y
4MC REDMAN DALLES 4MC

Act. BW: 68
Adj. WW: 536
Adj. YW: 1115
ADG: 3.6
WDA: 2.77
DMPPA: 92

Adj. REA: 13.24 Adj. IMF: 5.33 Adj. BF: 0.32 Scrotal: 35

Pro S	HB	GM	CED	BW	WW	YW	ADG	DMI	MILK
103	65	37	13	-2.9	46	71	0.16	1.23	14
ME	HPG	CEM	STAY	MARB	YG	CW	REA	FAT	
-3	13	7	16	0.48	0.15	23	-0.11	0.02	

- 4MC Reddington 1014 is a long bodied, smooth made son of Reddington that is further influenced by Bieber Fusion C194.
- He ranks among the top third of the breed for ProS, HB, BW, ME, and Marb.
- 1014 is a high IMF bull that recorded an IMF Ratio at 108.

Lot 65

4MC RAMBLER 0180

DOB: 2/8/20 RAAA: 4263119 A - 100% AR Tattoo: 0180

WEBR NIGHT TRAIN 324
MF RAMBLER 7191
WCC LUCY 531

4MC SAGA 530
4MC SUNBURST 7257
SUNBURST

WEBR DOC HOLLIDAY 2N
BJF LANA'S EQUAL 8021U
LCC NEW CHAPTER A705L
JRA JAMES 3250

LSF SAGA 1040Y
RED SOO LINE STAR 7037
PIE REAL DEAL 809
5L SUNBURST X1142-2518

Act. BW: 80
Adj. WW: 565
Adj. YW: 1095
ADG: 3.3
WDA: 2.74
DMPPA: 102

Adj. REA: 10.92 Adj. IMF: 4.52 Adj. BF: 0.19 Scrotal: 43

Pro S	HB	GM	CED	BW	WW	YW	ADG	DMI	MILK
96	64	32	11	-0.7	59	90	0.2	1.44	25
ME	HPG	CEM	STAY	MARB	YG	CW	REA	FAT	
1	9	6	18	0.52	0.13	19	-0.06	0.03	

- We purchased MF Rambler 7191 from McMurphy Farms to incorporate the high-quality look and presence that he offered to our program, without sacrificing performance or shape.
- 0180 is a bold ribbed, deep sided, easy fleshing herd sire prospect that is supported by a granddaughter of LSF Saga 1040Y.
- He posted an IMF Ratio at 114.

Lot 66

4MC RAMBLER 0354

DOB: 3/2/20 RAAA: 4373111 A - 100% AR Tattoo: 0354

WEBR NIGHT TRAIN 324
MF RAMBLER 7191
WCC LUCY 531

LSF SAGA 1040Y
4MC RED VILARI 517
4MC RED VILARI 324

WEBR DOC HOLLIDAY 2N
BJF LANA'S EQUAL 8021U
LCC NEW CHAPTER A705L
JRA JAMES 3250

BECKTON EPIC R397 K
LSF MINOLA T7172 W9041
RED LAZY MC REDMAN 20X
VOSS VILARI

Act. BW: 78
Adj. WW: 578
Adj. YW: 1093
ADG: 3.21
WDA: 2.92
DMPPA: 98

Adj. REA: 12.61 Adj. IMF: 3.86 Adj. BF: 0.21 Scrotal: 44

Pro S	HB	GM	CED	BW	WW	YW	ADG	DMI	MILK
109	80	30	12	-0.7	51	85	0.21	1.13	24
ME	HPG	CEM	STAY	MARB	YG	CW	REA	FAT	
1	14	8	18	0.35	0.1	14	-0.19	0.01	

- 4MC Rambler 0354 is another standout son of MF Rambler 7191 that is from the influence of Saga.
- He is balanced numerically and offers low birth weight genetics.
- 0354 is a bold ribbed, deep sided, easy fleshing herd sire prospect that is sound built and very complete.



Lot 65

The Yearling Bulls



Lot 68

Lot
67

4MC SAGA 1143

DOB: 2/9/21 RAAA: 4508855 A - 100% AR Tattoo: 1143

LSF SAGA 1040Y
4MC SAGA 575
4MC ANN GANG 231
ANDRAS FUSION R236
4MC RUBY 531
PIE RUBY 3143

BECKTON EPIC R397 K
LSF MINOLA T7172 W9041
RED SVR GANGSTER 145
WW ANNABELLE 81025
ANDRAS IN FOCUS B175
ANDRAS BELLE B167
TPIE WAGONMASTER 753
PIE CADSAM 6082

Act. BW: 74
Adj. WW: 673
Adj. YW: 1207
ADG: 3.34
WDA: 3.29
DMPPA: 99

Adj. REA: 14.23 Adj. IMF: 4.05 Adj. BF: 0.24 Scrotal: 38

Pro S	HB	GM	CED	BW	WW	YW	ADG	DMI	MILK
101	79	22	13	-2.7	53	87	0.21	1.02	24
ME	HPG	CEM	STAY	MARB	YG	CW	REA	FAT	
0	9	8	20	0.35	0.19	11	-0.28	0.04	

- 4MC Saga 1143 is a big bodied, deep sided herd sire prospect that is backed by a daughter of Andras Fusion R2336.
- He recorded a sensible 74-pound birth weight to compliment his 13 CED and -2.7 BW EPD.
- Recommended for use on heifers.



LSF SAGA 1040Y - PATERNAL GRANDSIRE OF LOTS 67

Lot
68

4MC GUARDIAN 1234

DOB: 2/22/21 RAAA: 4509023 A - 100% AR Tattoo: 1234

RRA GUARDIAN 762
RIDGE GUARDIAN 9079
MLK CRK VAL 277
LSF PROSPECT 2035Z
4MC COPPERTOP 559
PIE COPPERTOP 0341

5L DEFENDER 560-30Z
RRA RACHEL 246746
MLK CRK EXPRESS 9141
MLK CRK VAL 886
LSF NIGHT CALVER 9921W
LSF BLACKBIRD N3080 X0406
VGW GAME PLAN 508
PIE COPPERTOP 601

Act. BW: 78
Adj. WW: 662
Adj. YW: 1211
ADG: 3.43
WDA: 3.32
DMPPA: 104

Adj. REA: 13.99 Adj. IMF: 4.28 Adj. BF: 0.3 Scrotal: 34

Pro S	HB	GM	CED	BW	WW	YW	ADG	DMI	MILK
69	62	7	12	-0.6	53	84	0.2	1.52	31
ME	HPG	CEM	STAY	MARB	YG	CW	REA	FAT	
8	16	7	16	0.19	0.14	16	0	0.04	

- 4MC Guardian 1234 is the lone son of Ridge Guardian 9079 that is from a top producing daughter of LSF Prospect 2035Z that posted a DMPPA of 104.
- He offers a moderate 78-pound birth weight to compliment his added shape and dimension.



RIDGE GUARDIAN 9079 - SIRE OF LOT 68

BELOW YOU WILL FIND DESCRIPTIONS OF THE EPD DATA LISTED IN THIS SALE CATALOG.

Expected Progeny Difference (EPD), is the prediction of how future progeny of each animal are expected to perform relative to the progeny of other animals listed in the database. EPDs are expressed in units of measure for the trait, plus or minus. Interim EPDs may appear on young animals when their performance has yet to be incorporated into the American Angus Association National Cattle Evaluation (NCE) procedures. This EPD will be preceded by an "I", and may or may not include the animal's own performance record for a particular trait, depending on its availability, appropriate contemporary grouping, or data edits needed for NCE.

ProS - Profitability and Sustainability is an all-purpose index that predicts average economic differences in all segments in the beef supply chain. This index is a combination of the breeding objectives modeled in the HerdBuilder and GridMaster selection indexes. In this index, replacement heifers are retained from within the herd and all remaining progeny are fed out to slaughter and sold on a quality-based grid. Traits included in this index include calving ease, growth, HPG, STAY, Mature Weight, Dry Matter Intake and carcass traits. The resulting index is expressed in dollars per head born (Index/High Value).

HB - HerdBuilder is a maternal selection index that predicts the economic differences of animals for traits that are important from conception through weaning. Expressed as dollars per head born, HB is calculated based on the scenario that bulls are mated to heifers and cows, replacement heifers are retained and all remaining progeny are marketed at weaning. Traits included in the HB index include Calving Ease Direct, Calving Ease Maternal, Weaning Weight, Milk, Mature Weight, Heifer Pregnancy and Stayability (Index/High Value).

GM - GridMaster is a selection index that predicts the average economic difference of non-replacement calves through the postweaning phase of production. GM places selection pressure on growth, feedyard performance and carcass traits. Expressed as dollars per head born, GM is calculated based on the scenario that progeny are fed out to slaughter and marketed on a quality-based carcass grid. Traits included in GM include Average Daily Gain, Carcass Weight, Dry Matter Intake, Marbling, Back Fat and Rib Eye Area (Index/High Value).

CED - Calving Ease Direct predicts differences in the percent of calves born unassisted out of 2-year-old dams. (Percent/High Value)

BW - Birth Weight predicts differences in actual birth weight of progeny. (Pounds/Low Value)

WW - Weaning Weight predicts differences in 205-day weaning weight. (Pounds/High Value)

YW - Yearling Weight predicts differences in 365-day yearling weight. (Pounds/High Value)

ADG - Average Daily Gain predicts differences in weight gain between 205 and 365 days of age. (Pounds/High Value)

DMI - Dry Matter Intake predicts differences in daily feed intake as measured in a feedlot during the post-weaning period. (Pounds/Low Value)

MILK - Milk predicts differences in weaning weight attributed to the milking ability of the animal's daughters. (Pounds/High Value)

ME - Maintenance Energy predicts the difference in maintenance energy requirements. (Mcal per Month/Low Value)

HPG - Heifer Pregnancy predicts differences in the percent of daughters who are able to conceive and calve at 2 years of age following exposure to breeding. (Percent/High Value)

CEM - Calving Ease Maternal predicts differences in the percent of daughters who are able to calve unassisted as 2-year-old heifers. (Percent/High Value)

STAY - Stayability predicts differences in the ability of an animals' retained daughters to remain productive in the herd – calve every year – through 6 years of age. (Percent/High Value)

MARB - Marbling predicts differences in marbling score – amount of intramuscular fat measured at the 13th rib. (Marbling Score Units/High Value)

YG - Yield Grade predicts differences in USDA Yield Grade, which is calculated using CW, REA and Fat. (Yield Grade Units/Low Value)

CW - Carcass Weight predicts differences in actual hot carcass weight. (Pounds/High Value)

REA - Ribeye Area predicts differences in square inches of ribeye area measured at the 13th rib. (Square Inches/High Value)

FAT - Fat predicts differences in the depth of backfat measured between the 12th and 13th ribs. (Inches/Low Value)

RED ANGUS BREED AVERAGES

Pro S	HB	GM	CED	BW	WW	YW	ADG	DMI	MILK
86	51	36	13	-1.7	61	99	0.23	1.44	25
ME	HPG	CEM	STAY	MARB	YG	CW	REA	FAT	
3	11	7	15	0.42	0.06	23	0.13	0.02	

4000

THE FEMALE

Offering





Lot 75

Lot 75

4MC MS SHINE 1134

DOB: 2/6/21 RAAA: 4508837 A - 100% AR Tattoo: 1134

LSF SAGA 1040Y
4MC SAGA 575
 4MC ANN GANG 231
 RED CROWFOOT MOONSHINE 8081U
HLH MS SHINE 6079 4295
 HLH MS DATA 2152 6079

BECKTON EPIC R397 K
 LSF MINOLA T7172 W9041
 RED SVR GANGSTER 14S
 WW ANNABELLE 81025
 CROWFOOT 6004S
 RED CROWFOOT BRNDINA 6359S
 SHOCO DATA
 HLH MS CAP 720 2152

Act. BW: 74
 Adj. WW: 592
 DMPPA: 103

- 4MC Ms Shine 1134 is a beautiful profiling daughter of 4MC Saga 575 that is backed by a top daughter of Red Crowfoot Moonshine 8081U, a true maternal legend within the breed.
- She is balanced numerically as she combines an elite phenotype with a pedigree that you can count on.
- A high-quality profile accompanies this brood cow prospect!

Pro S	HB	GM	CED	BW	WW	YW	ADG	DMI	MILK
68	55	13	10	0.1	64	99	0.22	1.22	22
ME	HPG	CEM	STAY	MARB	YG	CW	REA	FAT	
2	11	7	15	0.28	0.21	17	-0.27	0.04	

BORN TO *Shine*

The Females



RREDS SENECA 731C - PATERNAL GRANDSIRE OF LOTS 76-82

Lot
76

4MC MS EMCÉE 1152

DOB: 2/12/21 RAAA: 4508871 A - 100% AR Tattoo: 1152

RREDS SENECA 731C
PIE SENECA 7213
PIE ROBIN 3416

BECKTON EMCÉE Z686 V2
HLH MS EMCÉE 1207 4309
HLH MS TR EPIC618 6100 1207

BIEBER ROLLIN DEEP Y118
RREDS ASTER 309A
RAVISHING JACKHAMMER 41
PIE ROBIN 9272

BECKTON EMCÉE S466
BECKTON LARKEISA P268 V
TR EPIC ST618
HLH TEE ARA 079 6100

Act. BW: 72
Adj. WW: 559
DMPPA: 95

Pro S	HB	GM	CED	BW	WW	YW	ADG	DMI	MILK
65	52	12	12	-0.8	63	101	0.24	1.55	19
ME	HPG	CEM	STAY	MARB	YG	CW	REA	FAT	
4	9	6	17	0.27	0.12	15	0.04	0.04	

- 1152 is a maternal granddaughter of RREDS Seneca 731C, one of the great breeding bulls that the Red Angus breed has seen in the last decade.
- Smooth made, angular, and built for the long haul!

Lot
78

4MC SEREOLA 1159

DOB: 2/12/21 RAAA: 4508885 A - 100% AR Tattoo: 1159

RREDS SENECA 731C
PIE SENECA 7213
PIE ROBIN 3416

RED SSS TRAPPER 683X
4MC SEREOLA TRAP 227
PIE SEREOLA 7400

BIEBER ROLLIN DEEP Y118
RREDS ASTER 309A
RAVISHING JACKHAMMER 41
PIE ROBIN 9272

RED FLYING K AMBUSH 121U
RED SSS KURUBA 344S
PERKS ADVANCE 121R
LCHMN SEREOLA J1173

Act. BW: 80
Adj. WW: 628
DMPPA: 102

Pro S	HB	GM	CED	BW	WW	YW	ADG	DMI	MILK
44	41	3	6	2.3	76	116	0.25	1.98	17
ME	HPG	CEM	STAY	MARB	YG	CW	REA	FAT	
8	11	3	16	0.03	0.01	35	0.4	0.01	

- 4MC Sereola 1159 is a performance standout that ranks among the top 5% for WW and top 13% for YW.
- She posted a WW Ratio at 103.

Lot
77

4MC MS FOREFRONT 1155

DOB: 3/1/21 RAAA: 4508877 A - 100% AR Tattoo: 1155

RREDS SENECA 731C
PIE SENECA 7213
PIE ROBIN 3416

LSF RAB FOREFRONT Y7005
HLH MS FOREFRONT 0205 4403
HLH MS NEB 6168 0205

BIEBER ROLLIN DEEP Y118
RREDS ASTER 309A
RAVISHING JACKHAMMER 41
PIE ROBIN 9272

BECKTON NEBULA P P707
BROWN MS ABIGRACE L7730
BECKTON NEBULA P P707
HLH MAJORETTE 092 6168

Act. BW: 72
Adj. WW: 573
DMPPA: 94

Pro S	HB	GM	CED	BW	WW	YW	ADG	DMI	MILK
80	38	42	8	-0.7	69	109	0.25	1.61	16
ME	HPG	CEM	STAY	MARB	YG	CW	REA	FAT	
2	12	4	14	0.5	0.19	33	0.03	0.04	

- 4MC Ms Forefront 1155 is another granddaughter of Seneca that is backed by the Forefront influence on the maternal side of her pedigree.
- She ranks top third of the breed for WW, YW, ADG, Marb, and CW.

Lot
79

4MC AMY 1162

DOB: 2/14/21 RAAA: 4508891 A - 100% AR Tattoo: 1162

RREDS SENECA 731C
PIE SENECA 7213
PIE ROBIN 3416

PIE THE COWBOY KIND 343
4MC AMY 5111
5L AMY L293-319

BIEBER ROLLIN DEEP Y118
RREDS ASTER 309A
RAVISHING JACKHAMMER 41
PIE ROBIN 9272

BUF CRK THE RIGHT KIND U199
PIE CASCADE 561
5L SIGNATURE 5615
JW BAR AMY L293

Act. BW: 74
Adj. WW: 544
DMPPA: 91

Pro S	HB	GM	CED	BW	WW	YW	ADG	DMI	MILK
104	50	53	8	1.9	76	131	0.34	1.74	16
ME	HPG	CEM	STAY	MARB	YG	CW	REA	FAT	
7	11	5	16	0.39	0.07	37	0.32	0.02	

- 4MC Amy 1162 is a performance standout that charts top 5% for WW, top 2% YW, top 2% ADG, and top 8% CW.
- Her dam is a direct daughter of the maternal legend, PIE The Cowboy Kind 343.

Lot
80

4MC LUCY 1165

DOB: 3/3/21 RAAA: 4508897 A - 100% AR Tattoo: 1165

RREDS SENECA 731C
PIE SENECA 7213
PIE ROBIN 3416

BIEBER ROLLIN DEEP Y118
RREDS ASTER 309A
RAVISHING JACKHAMMER 41
PIE ROBIN 9272

Act. BW: 74

Adj. WW: 481

PIE REAL DEAL 809
4MC LUCY 3136
5L LUCY 1893-5058

PIE GRIDMASTER 589
PIE MS GRAND C 036
5L LOGANS ALLIEANCE 3225
5L LUCY A128-1893

DMPPA: 93

Pro S	HB	GM	CED	BW	WW	YW	ADG	DMI	MILK
68	55	14	9	-0.6	58	89	0.2	1.74	17
ME	HPG	CEM	STAY	MARB	YG	CW	REA	FAT	
5	12	4	18	0.24	0.12	26	0.11	0.03	

- 1165 is a member of the Lucy cow family that traces back to the matriarch known as 5L Lucy 1893-5058.
- She is sired by the top Seneca son that is backed by PIE Robin 3416.
- A unique pedigree that is lined with maternal greats!

Lot

4MC MS JORDAN 1172

DOB: 2/13/21 RAAA: 4508911 A - 100% AR Tattoo: 1172

RREDS SENECA 731C
PIE SENECA 7213
PIE ROBIN 3416

BIEBER ROLLIN DEEP Y118
RREDS ASTER 309A
RAVISHING JACKHAMMER 41
PIE ROBIN 9272

Act. BW: 80

Adj. WW: 625

BECKTON JORDAN U520
HLH MS JORDAN 1164 4140
HLH MSLANCER 908 1164

TR JULIAN RT561
BECKTON SUFFEINA P643 J
BECKTON LANCER F442 T
HLH MS RAMI 734 908

DMPPA: 93

Pro S	HB	GM	CED	BW	WW	YW	ADG	DMI	MILK
92	42	51	11	-0.4	80	134	0.34	1.47	17
ME	HPG	CEM	STAY	MARB	YG	CW	REA	FAT	
5	8	5	16	0.22	-0.02	42	0.56	0.01	

- 4MC Ms Jordan 1172 is another Seneca granddaughter that is a standout numerically.
- She ranks top 3% WW, top 2% YW, top 2% ADG, top 4% CW, and top 2% REA.

Lot

4MC MS JORDAN 1076

DOB: 2/4/21 RAAA: 4508731 A - 100% AR Tattoo: 1076

RREDS SENECA 731C
PIE SENECA 7213
PIE ROBIN 3416

BIEBER ROLLIN DEEP Y118
RREDS ASTER 309A
RAVISHING JACKHAMMER 41
PIE ROBIN 9272

Act. BW: 76

Adj. WW: 649

BECKTON JORDAN U520
HLH MS JORDAN 1119 4071
HLH MS TR EPIC618 5220 1119

TR JULIAN RT561
BECKTON SUFFEINA P643 J
TR EPIC ST618
HLH SHY ANN 3035 5220

DMPPA: 95

Pro S	HB	GM	CED	BW	WW	YW	ADG	DMI	MILK
98	60	38	9	-0.1	74	119	0.28	1.43	17
ME	HPG	CEM	STAY	MARB	YG	CW	REA	FAT	
4	11	4	18	0.34	0.17	34	0.11	0.04	

- 4MC Ms Jordan 1076 is among the top 8% for WW, top 9% YW, and top 14% CW.
- She is a three-quarter sister in blood to 1172, offering the Seneca x Beckton Jordan genetic combination.
- She is a performance standout that recorded a WW Ratio at 107.

Lot
83

4MC STAR 1027

DOB: 1/22/21 RAAA: 4508641 A - 100% AR Tattoo: 1027

LSF PROSPECT 2035Z
PIE PROSPECT 5110
PIE RASPBERRY 0296

LSF NIGHT CALVER 9921W
LSF BLACKBIRD N3080 X0406
TPIE WAGONMASTER 753
PIE RASPBERRY 5197

Act. BW: 73

Adj. WW: 514

SPRING VIEW SHADY 2905
4MC STAR 4135
RED SOO LINE STAR 7037

EARLY SUNSET SHADY 1M
EASTONDALE MAYFLOWER 23H
RED DWAJO GLADIATOR 32L
RED SOO LINE STAR CHIEF 5421

DMPPA: 89

Pro S	HB	GM	CED	BW	WW	YW	ADG	DMI	MILK
96	98	-1	11	-2.2	50	72	0.14	0.9	17
ME	HPG	CEM	STAY	MARB	YG	CW	REA	FAT	
-1	12	7	22	0.33	0.12	-3	-0.12	0.05	

- 4MC Star 1027 is a daughter of PIE Prospect 5110 that charts top 1% for HB and top 1% Stay.
- She is a big ribbed, easy fleshing female that has the makings of the tremendous brood cow prospect.

Lot

4MC HVYWT 1163

DOB: 3/3/21 RAAA: 4508893 A - 100% AR Tattoo: 1163

LSF PROSPECT 2035Z
PIE PROSPECT 5110
PIE RASPBERRY 0296

LSF NIGHT CALVER 9921W
LSF BLACKBIRD N3080 X0406
TPIE WAGONMASTER 753
PIE RASPBERRY 5197

Act. BW: 75

Adj. WW: 560

RED SVR GANGSTER 145
4MC HVYWT 432
4MC HVYWT

RED GEIS HI HO 180'04
RED DWAJO DUCHESS 75M
PIE GRIDMASTER 589
PIE HVYWT 8289

DMPPA: 93

Pro S	HB	GM	CED	BW	WW	YW	ADG	DMI	MILK
121	97	24	14	-3.4	45	69	0.15	1.08	23
ME	HPG	CEM	STAY	MARB	YG	CW	REA	FAT	
5	12	10	22	0.4	0.11	13	0.22	0.06	

- 4MC Hvywt 1163 is a daughter of PIE Prospect 5110 that is backed by a beautiful daughter of Red SVG Gangster 145.
- She ranks top 1% for HB and top 1% Stay.
- A true standout among the female offering.



Lot
85

4MC YOICA 1221

DOB: 3/2/21 RAAA: 4509003 A - 100% AR Tattoo: 1221

SPUR FRANCHISE OF GARTON
9 MILE FRANCHISE 6305
C-BAR ABIGRACE Y11

SPUR FRANCHISE 7070
H & H IRENE LASS 0135
TR COLT 45 UT806
C-BAR & BROWN ABIGRACE T712

Act. BW: 72
Adj. WW: 534

4MC PROSPECT 423
4MC YOICA 7204

LSF PROSPECT 2035Z
4MC SILKWOOD 201
TPIE 541 8339
PIE YOICA 0277

DMPPA: 92

4MC NORTHERN YOICA 2101

Pro S	HB	GM	CED	BW	WW	YW	ADG	DMI	MILK
104	56	48	11	-3.5	47	84	0.23	1.79	31
ME	HPG	CEM	STAY	MARB	YG	CW	REA	FAT	
6	11	8	16	0.6	0.03	18	0.23	0.03	

- 4MC Yoica 1221 is a direct daughter of the \$105,000 9 Mile Franchise 6305, a sire group that is certainly well known for the superior udder quality, function, and fertility that the daughters offer when in production.
- She is balanced numerically and charts among the top 13% of the breed for Marb.



9 MILE FRANCHISE 6305 - SIRE OF LOT 85

Lot
86

4MC DELLA 1062

DOB: 1/31/21 RAAA: 4508703 A - 100% AR Tattoo: 1052

PFFR CONVOY 9Z
PIE CONVOY 7058
PIE JULY DALLES 5182

HXC CONQUEST 4405P
PFFR SUN CAN 8X
LSF OPTIMISM 1107Y
PIE JULY DALLES 197

Act. BW: 82
Adj. WW: 574

PIE THE COWBOY KIND 343
4MC DELLA 957

BUF CRK THE RIGHT KIND U199
PIE CASCADE 561
HAYCOW CUTTING EDGE 055
DELLA

DMPPA: 98

4MC DELLA 526

Pro S	HB	GM	CED	BW	WW	YW	ADG	DMI	MILK
88	36	52	9	2.1	64	104	0.25	1.50	29
ME	HPG	CEM	STAY	MARB	YG	CW	REA	FAT	
8	10	6	14	0.42	-0.33	33	0.36	-0.01	

- 4MC Della 1062 is a top indexing daughter of PIE Convoy 7058 that is backed by a daughter of PIE The Cowboy Kind 343.
- She is big centered, sound built, and offers the look of a role model brood cow prospect.



PIE NEW TERRITORY 523 - SIRE OF LOTS 87-88

Lot
87

4MC MOONSTER 1065

DOB: 2/2/21 RAAA: 4508709 A - 100% AR Tattoo: 1065

ANDRAS NEW DIRECTION R240
PIE NEW TERRITORY 523
PIE CENTENNIAL FORTUNE 3330

ANDRAS IN FOCUS B152
ANDRAS KURUBA B111
C-BAR COLT 121Y
TPIE CENTENNIAL FORTUNE 996

Act. BW: 72
Adj. WW: 623

RED SVR GANGSTER 14S
4MC MOONSTER 244

RED GEIS HI HO 180'04
RED DWAJO DUCHESS 75M
RED NORTHLINE CRUSH 59R
RED MOON MADISON 34R

DMPPA: 97

Pro S	HB	GM	CED	BW	WW	YW	ADG	DMI	MILK
71	58	13	10	-0.3	71	111	0.25	1.44	19
ME	HPG	CEM	STAY	MARB	YG	CW	REA	FAT	
-2	10	5	16	0.15	0.13	26	0.15	0.04	

- 4MC Moonster 1065 is another female that is backed by the New Territory x Gangster genetic combination.
- She is among the top 12% of the breed for WW and top 18% YW.

Lot
88

4MC SHOCKER SUE 1184

DOB: 2/28/21 RAAA: 4508935 A - 100% AR Tattoo: 1184

ANDRAS NEW DIRECTION R240
PIE NEW TERRITORY 523
PIE CENTENNIAL FORTUNE 3330

ANDRAS IN FOCUS B152
ANDRAS KURUBA B111
C-BAR COLT 121Y
TPIE CENTENNIAL FORTUNE 996

Act. BW: 79
Adj. WW: 638

4MC GODFATHER 230
4MC SHOCKER SUE 695
SHOCKER SUE

RED SVR GANGSTER 14S
PIE BOTEET 702
GMRA MR MIMI 6178
CCR SHOCKER 658-535

DMPPA: 106

Pro S	HB	GM	CED	BW	WW	YW	ADG	DMI	MILK
63	40	22	8	1	73	105	0.21	1.68	26
ME	HPG	CEM	STAY	MARB	YG	CW	REA	FAT	
5	11	4	15	0.26	0.15	41	0.09	0.02	

- 4MC Shocker Sue 1184 is another standout New Territory daughter that is backed by the Gangster influence through 4MC Godfather 230.
- She ranks top 10% WW, top 29% YW, and top 4% CW.



9 MILE BLOCKOUT 7102 - SIRE OF LOT 91

Lot
89

4MC MISS CUB 1019

DOB: 1/19/21 RAAA: 4508627 A - 100% AR Tattoo: 1019

PIE NEW TERRITORY 523 ANDRAS NEW DIRECTION R240
4MC NEW TERRITORY 8106 PIE CENTENNIAL FORTUNE 3330
4MC MONU 550 PIE THE COWBOY KIND 343
PIE HOSS 7384 LCB HOSS A444N
4MC MISS CUB 271 PIE MADONNA ADVANCE 4504
CCR MIS CUB 658-713 BUF CRK CHEROKEE N009
AKC 658

Act. BW: 68
Adj. WW: 562
DMPPA: 95

Pro S	HB	GM	CED	BW	WW	YW	ADG	DMI	MILK
67	40	27	13	-1.6	54	89	0.22	1.56	22
ME	HPG	CEM	STAY	MARB	YG	CW	REA	FAT	
5	8	7	15	0.47	0.13	14	-0.14	0.03	

- 4MC Miss Cub 1019 is a daughter of New Territory that is backed by PIE Hoss 7384.
- She is a moderate birth weight female that is balanced numerically and phenotypically.

Lot
90

4MC LILLIE DEAL 1138

DOB: 2/6/21 RAAA: 4508845 B - 99.9% AR 0.1% XX Tattoo: 1138

4MC SAGA 5172 LSF SAGA 1040Y
4MC NEW TERRITORY 7191 4MC MOONSTER 244
TKP MIATY 325 C-BAR COLT 121Y
TKP MIATY 1372
4MC RED BULL 2100 RED LAZY MC REDMAN 20X
4MC LILLIE DEAL 498 4MC MISS BECKTON
LILLIE DEAL PIE REAL DEAL 809
WFL LILLIE 7124

Act. BW: 76
Adj. WW: 574
DMPPA: 101

Pro S	HB	GM	CED	BW	WW	YW	ADG	DMI	MILK
80	75	5	11	-1.1	56	83	0.17	1.25	25
ME	HPG	CEM	STAY	MARB	YG	CW	REA	FAT	
0	9	7	19	0.12	0	17	0.26	0.02	

- 4MC Lillie Deal 1138 is a New Territory daughter that is square built, smooth made, and sound at the surface.
- She charts top 11% HB, top 6% Stay, top 16% YG, and top 21% REA.

Lot
91

4MC REAL LASA 1214

DOB: 2/26/21 RAAA: 4508991 A - 100% AR Tattoo: 1214

5L BLOCKADE 2218-30B 5L DEFENDER 560-30Z
9 MILE BLOCKOUT 7102 5L OPAL 656-2218
C-BAR ISABEL 513C C-BAR-RJ GENESIS A31
C-BAR ISABEL Y101
4MC CATTLEMAN 6112 PIE THE COWBOY KIND 343
4MC REAL LASA 821 5L ADINA 1526-2068
4MC REAL LASA 3142 PIE REAL DEAL 809
PIE LASA 9141

Act. BW: 72
Adj. WW: 554
DMPPA: 96

Pro S	HB	GM	CED	BW	WW	YW	ADG	DMI	MILK
85	46	39	12	-0.9	66	106	0.25	1.79	20
ME	HPG	CEM	STAY	MARB	YG	CW	REA	FAT	
7	10	5	16	0.31	-0.06	33	0.41	-0.01	

- 4MC Real Lasa 1214 is a daughter of 9 Mile Blockout 7102 that is backed by a top daughter of 4MC Cattleman 6112.
- She is among the top third of the breed for WW and YW.
- Top 6% YG, top 14% CW, and top 7% REA.

Lot
92

4MC 20M BOTEET 125

DOB: 4/24/21 RAAA: 4527199 A - 100% AR Tattoo: 125

9 MILE BLOCKOUT 7102 5L BLOCKADE 2218-30B
4MC BLOCKOUT 976 C-BAR ISABEL 513C
4MC MOON 3135 FAT RAMBO
RED MOON MADISON
4MC VENTURE 6187 PIE VENTURE 442
4MC BOTEET 888 4MC BELLESTIE 4101
4MC BOTEET 5173 RED LAZY MC REDMAN 20X
PIE BOTEET 702

Act. BW: 90
Adj. WW: 596
DMPPA: 103

Pro S	HB	GM	CED	BW	WW	YW	ADG	DMI	MILK
60	38	22	8	2.6	67	110	0.27	1.91	20
ME	HPG	CEM	STAY	MARB	YG	CW	REA	FAT	
5	11	4	14	0.22	0.11	31	0.32	0.05	

- 125 is a big bodied, easy keeping daughter of 9 Mile Blockout 976, the same powerful sire group that initiated the bull offering.
- She is among the top third of the breed for both WW and YW.
- Top 19% CW and top 13% REA.



Lot 93

Lot 93

4MC 20M SILKWOOD 117

DOB: 3/5/21 RAAA: 4527229 A - 100% AR Tattoo: 117

9 MILE BLOCKOUT 7102
4MC BLOCKOUT 976
 4MC MOON 3135
 4MC GODFATHER 230
4MC SILKWOOD 8226
 5L SILKWOOD 896-2348

5L BLOCKADE 2218-30B
 C-BAR ISABEL 513C
 FAT RAMBO
 RED MOON MADISON
 RED SVR GANGSTER 14S
 PIE BOTEET 702
 5L TRADITION 203-6145
 5L SILKWOOD 1644-896

Act. BW: 76
 Adj. WW: 565
 DMPPA: 97

Pro S	HB	GM	CED	BW	WW	YW	ADG	DMI	MILK
74	49	25	11	0.1	67	103	0.22	1.41	20
ME	HPG	CEM	STAY	MARB	YG	CW	REA	FAT	
3	13	5	15	0.31	-0.05	18	0.13	-0.02	

- Silkwood 117 is a beautiful daughter of 4MC Blockout 976, the son of 9 Mile Blockout 7102 that we used with great success.
- The dam of 117 is a daughter of 4MC Godfather 230 that traces to the influence of 5L Tradition 203-6145.
- She is among the top third of the breed for both WW and YW.

Lot 94

4MC 20M LUCY 101

DOB: 1/29/21 RAAA: 4527195 A - 100% AR Tattoo: 101

9 MILE BLOCKOUT 7102
4MC BLOCKOUT 997
 4MC MISS BECKTON
 BIEBER FUSION C194
4MC LUCY 870
 4MC LUCY 3136

5L BLOCKADE 2218-30B
 C-BAR ISABEL 513C
 MCPHEE PACIFIC PRIDE 4127
 TJS FIREFLY U851
 ANDRAS FUSION R236
 BIEBER LAKOTA 210Z
 PIE REAL DEAL 809
 5L LUCY 1893-5058

Act. BW: 67
 Adj. WW: 647
 DMPPA: 104

Pro S	HB	GM	CED	BW	WW	YW	ADG	DMI	MILK
102	48	54	13	-2.5	60	95	0.22	1.69	24
ME	HPG	CEM	STAY	MARB	YG	CW	REA	FAT	
5	11	8	15	0.45	0.05	44	0.38	0.01	

- Lucy 101 is a high indexing daughter of 4MC Blockout 997 that is backed by a daughter of Bieber Fusion C194 that posted a DMPPA of 104.
- She ranks top 15% GM, top 2% CW, and top 8% REA.

DAUGHTERS OF *Blockout*

The Females



RIDGE GUARDIAN 9079 - SIRE OF LOTS 96-98

Lot
95

4MC 20M GET VOLTAGE 118

DOB: 3/5/21 RAAA: 4527213 A - 100% AR Tattoo: 118

9 MILE BLOCKOUT 7102	5L BLOCKADE 2218-30B	Act. BW: 76
4MC BLOCKOUT 997	C-BAR ISABEL 513C	
4MC MISS BECKTON	MCPHEE PACIFIC PRIDE 4127	Adj. WW: 616
PIE NEW TERRITORY 523	TJS FIREFLY U851	DMPPA: 100
4MC GET VOLTAGE 8178	ANDRAS NEW DIRECTION R240	
4MC GET VOLTAGE 555	PIE CENTENNIAL FORTUNE 3330	
	LSF SAGA 1040Y	
	4MC GET VOLTAGE 260	

Pro S	HB	GM	CED	BW	WW	YW	ADG	DMI	MILK
83	53	30	8	1.7	82	127	0.28	2.05	20
ME	HPG	CEM	STAY	MARB	YG	CW	REA	FAT	
8	12	5	16	0.35	0.09	37	0.3	0.03	

- 118 comes from the Blockout 997 sire group that is among the elite 2% for WW and top 4% for YW.
- She is also an elite carcass driven female that ranks top 8% CW and top 16% REA.
- Her New Territory dam traces to the Saga influence on the bottom side of her pedigree.

Lot
96

4MC CUB WAIT 1232

DOB: 2/17/21 RAAA: 4509019 B - 93.8% AR 6.2% XX Tattoo: 1232

RRA GUARDIAN 762	5L DEFENDER 560-30Z	Act. BW: 76
RIDGE GUARDIAN 9079	RRA RACHEL 246 746	
MLK CRK VAL 277	MLK CRK EXPRESS 9141	Adj. WW: 573
PIE THE COWBOY KIND 343	MLK CRK VAL 886	DMPPA: 95
4MC CUB WAIT 546	BUF CRK THE RIGHT KIND U199	
CUB WAIT	PIE CASCADE 561	
	VOS CUB 336-936	
	CCR CAN'T WAIT 319-827	

Pro S	HB	GM	CED	BW	WW	YW	ADG	DMI	MILK
58	31	27	10	0.8	55	90	0.21	1.34	28
ME	HPG	CEM	STAY	MARB	YG	CW	REA	FAT	
7	11	6	14	0.19	0.07	28	0.07	0.01	

- We purchased Ridge Guardian 9079 to incorporate the strong maternal influence that the Sandbur Ridge Red Angus firm is known for.
- This Guardian daughter is backed by the strong influence of PIE The Cowboy Kind 343 on the bottom side of her lineage.

Lot
97

4MC MADISON KIND 1243

DOB: 3/10/21 RAAA: 4509041 A - 100% AR Tattoo: 1243

RRA GUARDIAN 762	5L DEFENDER 560-30Z	Act. BW: 78
RIDGE GUARDIAN 9079	RRA RACHEL 246 746	
MLK CRK VAL 277	MLK CRK EXPRESS 9141	Adj. WW: 636
PIE THE COWBOY KIND 343	MLK CRK VAL 886	DMPPA: 104
4MC MADISON KIND 585	BUF CRK THE RIGHT KIND U199	
RED MOON MADISON	PIE CASCADE 561	
	RED NORTHLINE CRUSH 59R	
	RED MOON MADISON 34R	

Pro S	HB	GM	CED	BW	WW	YW	ADG	DMI	MILK
77	39	38	10	0.5	59	102	0.26	1.48	27
ME	HPG	CEM	STAY	MARB	YG	CW	REA	FAT	
6	8	5	16	0.28	0.03	26	0.19	0.01	

- 1243 is another top replacement female that is from the Guardian x The Cowboy Kind genetic combination.
- She is among the top third of the breed for CW, YG, REA, and Fat.
- A carcass merit standout that is from the Madison cow family.

Lot
98

4MC SHOCKER 1244

DOB: 3/11/21 RAAA: 4509043 A - 100% AR Tattoo: 1244

RRA GUARDIAN 762	5L DEFENDER 560-30Z	Act. BW: 72
RIDGE GUARDIAN 9079	RRA RACHEL 246 746	
MLK CRK VAL 277	MLK CRK EXPRESS 9141	Adj. WW: 499
LSF PROSPECT 2035Z	MLK CRK VAL 886	DMPPA: 100
4MC SHOCKER 566	LSF NIGHT CALVER 9921W	
CCR SHOCKER 636-332	LSF BLACKBIRD N3080 X0406	
	BJR SHOCKER 073	
	AKC RAM'S CHLOEE 934	

Pro S	HB	GM	CED	BW	WW	YW	ADG	DMI	MILK
88	59	29	14	-4.8	30	50	0.13	0.87	30
ME	HPG	CEM	STAY	MARB	YG	CW	REA	FAT	
3	11	7	18	0.56	0.13	0	-0.24	0.03	

- The standout low birth, high calving ease female of the entire sale offering.
- She boasts a 14 CED and -4.8 BW EPD to compliment her moderate birth weight.
- She is among the top 7% for BW, top 12% DMI, top 10% Milk, top 17% Stay, and top 18% Marb.

The Females



Lot
99

4MC SURE THING 1017

DOB: 1/15/21 RAAA: 4508623 2 - 100% AR Tattoo: 1017

RED ANGUS

4MC RED ANGUS BULL

RED ANGUS

9 MILE FRANCHISE 6305

4MC SURE THING 9107

4MC SURE THING 593

SPUR FRANCHISE OF GARTON
C-BAR ABIGRACE Y11
PIE CODE RED 9058
WW SURE THING 824

Act. BW: 72

Adj. WW: 568

DMPPA: 102

Pro S	HB	GM	CED	BW	WW	YW	ADG	DMI	MILK
73	61	12	10	0	55	94	0.25	0.79	27
ME	HPG	CEM	STAY	MARB	YG	CW	REA	FAT	
-15	10	6	14	0.17	0.05	0	-0.19	0.01	

- 1017 is backed by a tremendous daughter of the \$105,000 9 Mile Franchise 6305 that posted a DMPPA of 102.
- Balanced, proven genetics, and a phenotype that offers excellent longevity.

Lot
100

4MC 20M JORDAN 108

DOB: 2/18/21 RAAA: 4527235 2 - 100% AR Tattoo: 108

RED ANGUS

4MC RED ANGUS BULL

RED ANGUS

PIE VENTURE 442

4MC JORDAN 8235

HLH MS JORDAN 1186 4231

RED SSS OLY 554T
PIE ROSIE 254
BECKTON JORDAN U520
HLH MSTR EPIC618 5184 1186

Act. BW: 78

Adj. WW: 533

DMPPA: 95

Pro S	HB	GM	CED	BW	WW	YW	ADG	DMI	MILK
73	24	49	12	-1.1	68	118	0.32	0	22
ME	HPG	CEM	STAY	MARB	YG	CW	REA	FAT	
0	0	7	8	0.3	0.08	9	-0.12	0.01	

- 108 is another performance standout that is backed by the productive young daughter of PIE Venture 442.
- She is a big ribbed, easy keeping, and offers the look of a true brood cow prospect.

The Commercial Offering

100+ COMMERCIAL RED ANGUS OPEN REPLACEMENT HEIFERS
50+ COMMERCIAL RED ANGUS FIRST-CALF HEIFER PAIRS



MARCH 28, 2022 IN SWEETWATER, OK



How to Bid Online

Tips and Tricks to Master Online Bidding

STEP 1. Use Chrome or Safari, a newer browser or download the CCI.live app at Google Play or Apple App store.

STEP 2. Open your app or go to the address of www.CCI.live in your browser. CCI.live can be used on a cell phone, tablet, laptop or desktop. Some older models may not be compatible and will show a yellow caution symbol if so.

STEP 3. Create an account and then request bidding credentials through CCI.live. Use the bank information listed on your check. Please use a correct phone and email address.

STEP 4. Once you are accepted for bidding credentials you will receive a text message and/or email notification. Proceed to "Get Buyer Number" on the actual sale page of your interest. Some sales may also require a passcode to obtain a buyer number. On these auctions, you will obtain passcodes from the sale office phone number for the specific auction you are interested in. Please closely read the terms!

STEP 5. You are ready to go! Make sure you understand, once you are logged in, have a buyer number and are watching the sale that you are on a highly sensitive web page. **Be careful when scrolling that you do not accidentally hit the bid button and watch children closely as they tend to grab cell phones and accidentally bid.**

TIPS FOR SUCCESSFUL BIDDING

- Make sure you have good service. Bidding and driving is not recommended. You should have two - three bars on your cellular devices. At home you should have an UPLOAD speed of 2 mg or more UP. Use this site to test your internet: www.speedtest.net.

REFRESH YOUR SCREEN AT SALE TIME

If you have logged in over an hour prior to sale time, you may need to login again. **DO NOT** let the computer set idol and then return and try to bid, the website may have logged you out.

CCI.live does not accept payment, you will pay the sale management, farm or ranch direct.

Help videos can be found at www.CCI.live

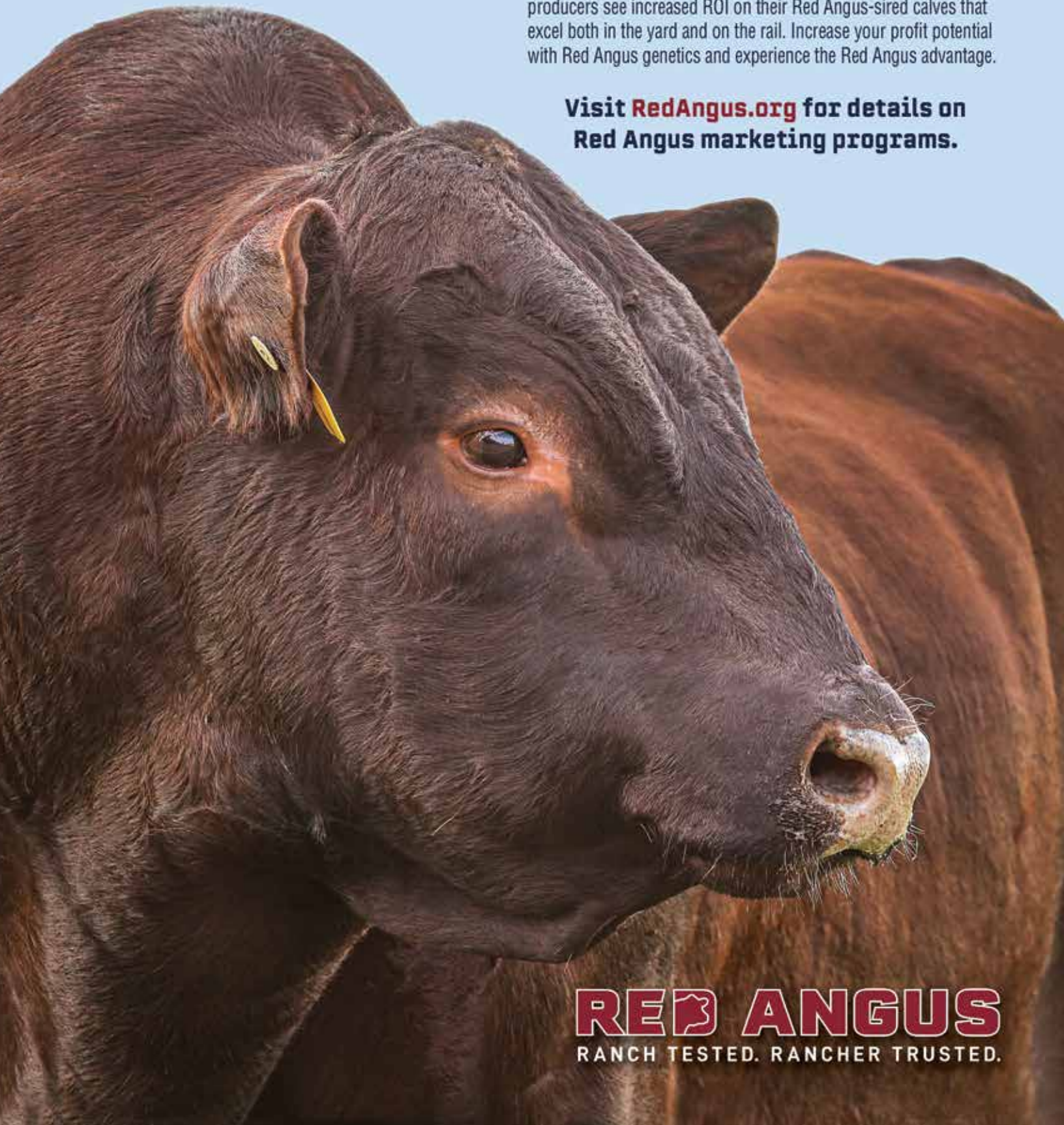


PROFIT. REPEAT.

Generate repeated profits with Red Angus bulls.

Year after year, despite unpredictable market conditions, cattle producers see increased ROI on their Red Angus-sired calves that excel both in the yard and on the rail. Increase your profit potential with Red Angus genetics and experience the Red Angus advantage.

Visit RedAngus.org for details on Red Angus marketing programs.



RED ANGUS
RANCH TESTED. RANCHER TRUSTED.

McEntire Red Angus

10623 N. 1710 Road
Sweetwater, OK 73666

Presorted
First Class
US Postage
PAID
SlateGroup



MCENTIREREDANGUS.COM

