



CLEAR VISION
FALL PRODUCTION SALE

November 20, 2021 | 6:00 PM

Winder, Georgia

Sale Schedule

NOVEMBER 13-17, 2021

Cattle on display at the
NAILE in Louisville, KY

NOVEMBER 19, 2021

Cattle available for viewing at the
C&C Farms Sale Facility in Winder, GA

NOVEMBER 20, 2021

9:00 AM – Cattle available for viewing
6:00 PM – Clear Vision Production Sale

Sale Location

GPS ADDRESS

C&C Farms Sale Facility
1632 Geiger Road
Winder, GA 30680

AN OFFERING THAT IS BOLD AND

Unique

Fellow breeders and guests,

We welcome you to our Fall Production Sale at C&C Farms. We certainly feel this is our very best set of females and bulls we have ever offered with top shelf frozen genetics as well. The marketplace is buzzing with opportunity for buyers and sellers alike and in that light some pretty good cattle get overlooked for their potential contribution based on genetics and cow family. Therefore, Steven and I urge y'all to study with utmost attention to detail in this select offering.

C&C Farms has developed a very solid reputation over the years. We know that our pursuit for excellence and perseverance to win have led to many backdrop photos for us and our clients alike. Our humble family operation is just that with no investor or outside money paying the bills. We have been through the highs and the definite lows over the years, and we have never wavered or lost sight of the end zone. We have maintained a dominant presence over the years on the tan bark and have earned the utmost respect from our peers and fellow breeders. Bulls like Vision, 20-20, The Duke, and Clarified (to name a few) have raised the bar for multiple programs nationwide with a whole lot of repeat use. Between the covers of this book, one will notice two primary cow families being Fantasy and Jestress. These two matriarchs have made us what we are today and with several daughters in production, we feel very secure with our breeding program that we will remain in the forefront for years to come.

We are very excited about this offering as we feel it is one of the very best, we have ever assembled. A huge thank you to our guest breeders and genetic partners that make this event possible with their quality stock. This year has had its challenges for our family, and we can't thank our closest friends and family enough for all the prayers, support, and assistance through those times. There's no doubt that the good lord has had his watchful eye and graceful hand on our family, without our faith and family, the rest doesn't matter.

Respectfully,

Dwight Cooper



The Cooper Family



The Metzger Family



The Templeton Family



The Palmer Family



C & C FARMS
Dwight, Sandy, & Cindy Cooper
Steven & Carly Cooper
Jefferson, GA



METZGER CATTLE COMPANY
Jerod, Tracy, Madison,
& Tucker Metzger
Rockfield, KY



T BART LLC
Trent Templeton Family
Sedalia, MO
Mike Thiel Family
Chilton, WI



PALMER CATTLE CO.
William Palmer Family
Springboro, PA



CIRCLE T FARM
Buddle Ogles
Murfreesboro, TN

The Clear Vision Sale Group



INNOVATION

— AgMarketing, LLC —

Ladies and Gentlemen,

It is certainly a pleasure to welcome you to the 2021 Fall Edition of the Clear Vision Sale hosted by C&C Farms. The Cooper family has put their absolute, best foot forward without question. The sale partners that they surround themselves with have assembled an excellent set that is very complimentary to what was produced on the Georgia pastures owned by the Coopers.

Dwight and Company have dominated the field in the SEC region. They have proved to be resilient in their relentless pursuit of the good stuff in the business. Bulls like Vision, 20-20, Duke, and Clarified have influenced the business within the breed and this offering consistently. Multiple sons and daughters by 20-20 have bested the marketing field this year and they continue to chip away in C&C fashion. The cattle produced here are what they are from day one with no extras offered and that's why they continue to get better everyday they are alive with max potential realized at the right point of maturity. These cattle are consistently sound with the right skeletal design, good feet, great running gear, with the right amount of body and power to maintain overall balance and kind. They are simply the kind that win and the kind that build programs in the continuation of their great cows that back each lot in this offering.

This is your opportunity to add a shot of the Fantasy, Jestress, and many of the great cow families in the program to yours. There's no doubt that the stock in the offering, live or frozen, can gather banners and generate ROI post show career, so don't let this offering pass you by if you are on your search for excellence in stock and people. Consider this your open invitation to join us in North Georgia on the Saturday prior to Thanksgiving for the very best ever offered at C&C.

Enjoy the cattle,

Graham Blagg Jared Shipman Tim Anderson

SALE DAY PHONES

Dwight Cooper: (706) 215-1251
Steven Cooper: (706) 215-2285
Cindy Cooper: (706) 224-6768
Jerod Metzger: (270) 779-6260
Trent Templeton: (660) 620-6788
William Palmer: (814) 282-1493
Buddle Ogles: (615) 849-6510
Dalton Lundy: (502) 727-6898

SALE MANAGEMENT

Innovation AgMarketing, LLC
Graham Blagg: (530) 913-6418
Jered Shipman: (806) 983-7226
Tim Anderson: (605) 682-9343

AUCTIONEER

Col. Jered Shipman: (806) 983-7226

PROFESSIONAL RING SERVICE

Dick Carmichael, Special Assignment:
(615) 584-0997
Shane Ryan, Special Assignment:
(309) 371-7490

DIRECTIONS

From Atlanta, GA:

Take I-85 North to Exit 137. Take a RIGHT from Exit 137 on to 129. Go up 129 and turn RIGHT on Galilee Church Road, then turn LEFT on W.H. Hays Road. Then, turn LEFT on Geiger Road. The sale facility will be approximately 1 mile down Geiger Road on the right.

From Commerce, GA:

Take 129 toward Jefferson. Take a LEFT from 129 onto Galilee Church Road then turn LEFT on to W.H. Hays Road. Then, turn LEFT on to Geiger Road. The sale facility will be approximately 1 mile down Geiger Road on the right.

From Athens, GA:

Take a LEFT from 129 onto Galilee Church Road then turn LEFT on to W.H. Hays Road. Then, turn LEFT on to Geiger Road. The sale facility will be approximately 1 mile down Geiger Road on the right.

ACCOMMODATIONS

Hampton Inn - Commerce, GA: (706) 335-6161
Holiday Inn Express - Commerce, GA:
(706) 336-0070

Comfort Suites - Commerce, GA: (706) 336-0000
Holiday Inn - Athens, GA: (706) 549-4433

TERMS & CONDITIONS

All lots sell in accordance with the suggested guidelines of the American Simmental Association. Announcements made sale day from the block during the sale take precedence over printed material in this catalog. Payment will be accepted in the form of cash, cashier's check, or check. All cattle must be paid for prior to release. All funds are to be paid to Innovation AgMarketing, LLC in U.S. currency. No cattle will be transferred, delivered, or released without full payment. In the event you need expedited registration paper transfers please make plans to pay in full on sale day. All sales are final.

INSPECTION

Sale cattle will be available for inspection at the sale site all day on Friday and up to sale time on Saturday. Select sale cattle will be on display at the NAILE in Louisville, Kentucky the week prior to the sale.

INSURANCE

Jame Secondino-Krieger (812) 208-0956
James F. Bessler, Inc. (815) 276-2641

LIABILITY

All persons attending this sale do so at their own risk. The owners, auction service, or sale staff assume no liability for accidents or property loss. Cattle become the property of the buyer when sold.

HEALTH PAPERS

Interstate Health Papers will be available on all cattle selling. Canadian buyers are appreciated and welcomed, but all tests and board will be at cost.

ANNOUNCEMENTS

All announcements from the block will have precedence over the materials printed in this catalog. The auctioneer will settle all bidding disputes.

TRUCKING

We will assist in your trucking needs. We will have reliable truckers on site. Trucking will be coordinated at the best rates and in a timely manner in consistency with settlement.
Dick Coleman: (765) 461-0954

REGISTRATIONS

All cattle with a registration number listed for their respective breed will be transferred to the new owner in a timely manner following settlement.

ONLINE BROADCAST

Online Broadcasting will be provided by CCI.live



Bid Live Online CCI.live
"Gavel's Down, The Best in Online Marketing"
(516) 366-0734 CCI.live.schedule@cci.live



2016 SIMMENTAL BREEDERS SWEEPSTAKES SUPREME CHAMPION

The Legacy of Jestress 9015

MISS CCF JESTRESS B79 - *Dam of Lot X*





2017 AJSA NATIONAL CLASSIC GRAND CHAMPION PERCENTAGE
COW CALF PAIR



2017 SIMMENTAL BREEDERS
SWEEPSTAKES GRAND CHAMPION
PERCENTAGE COW CALF PAIR



MISS CCF TGF JESTRESS
Full Sister to Lot X



MISS CCF TRINITY
Full Sister to Lot X





Let X - MR CCF PRIORITY

MR CCF Priority is one of the truly unique individuals to ever surface from the C&C Farms program, and there is no denying the sheer quality, mass, dimension, and earning capabilities that this elite SimAngus herd sire prospect offers. The C&C Farms/McDaniel partnership donor, Miss CCF Jestress B79, will forever be known as one of the most intriguing and dominant SimAngus females to ever grace an American Simmental Association PTP showing. Her body, her mass, and her style is what set her into a league of her own on the tan bark. Affectionally known as "Diddo", the perfect marked blaze faced SimAngus female has evolved into one of the most prolific females in the business. "Diddo" herself was the 2016 Simmental Breeders Sweepstakes Supreme Champion Overall, 2017 AJSA National Classic Grand Champion Percentage Cow/Calf Pair, and 2017 Simmental Breeders Sweepstakes Grand Champion Cow/Calf Pair. She recorded countless victories within breed and overall, across the Southeast during her time on the road. Now in production, her sons and daughters have followed suite time after time, familiarizing themselves with the backdrop. Her most recent victories would include the Grand and Reserve Grand Overall Females at the 2021 Georgia National Fair, as well as the 2021 American Royal Reserve Grand Champion Percentage Simmental Female. MR CCF Priority was selected as the 2021 Simmental Breeders Sweepstakes Grand Champion Percentage Simmental Bull this past summer, and fully intend to continue his campaign through next year's show season. Here is the chance to jump aboard... ladies and gentlemen we present MR CCF Priority! **Terms announced sale day.**

Let
X

MR CCF PRIORITY

BD: 10/12/20 ASA: 3913948E TATTOO: H102 BW: 79

W/C UNITED 956Y FBF1 COMBUSTIBLE
W/C EXECUTIVE ORDER 8543B **MISS CCF JESTRESS B79**
 MISS WERNING KP 8543U JAS JESTRESS 9015

AGE ADVANTAGE BULL | 5/8 SM 3/8 AN

CE	BW	WW	YW	MCE	MILK	MWW
15.6	-0.9	79.2	122	7.5	18.7	58.2
STAY	DOC	CW	MARB	REA	API	TI
10.8	12.4	32.1	0.19	0.79	122.9	78.4

Let
XA

3 CONVENTIONAL EMBRYOS

W/C UNITED 956Y FBF1 COMBUSTIBLE
W/C EXECUTIVE ORDER 8543B **MISS CCF JESTRESS B79**
 MISS WERNING KP 8543U JAS JESTRESS 9015

EMBRYOS | 5/8 SM 3/8 AN

CE	BW	WW	YW	MCE	MILK	MWW
15.6	-0.9	79.2	122	7.5	18.7	58.2
STAY	DOC	CW	MARB	REA	API	TI
10.8	12.4	32.1	0.19	0.79	122.9	78.4

Guaranteeing 1 60-day pregnancy if transferred by a certified technician.



Lot 1 - MISS CCF JESTRESS H301



WLE COPACETIC E02

Sire of Lot 1



2021 AMERICAN ROYAL RESERVE
GRAND CHAMPION PERCENTAGE
SIMMENTAL - *Full Sister to Lot 1*



2021 KS BEEF EXPO RESERVE
SUPREME CHAMPION
Full Sister to Lot 1

It is with great excitement and a bit of hesitation that we offer a piece of the great Miss CCF Jestress H301 for appraisal on the 20th of November, however it is a firm commitment to bring our best to the auction. We could write a chapter book about the influence and the impact that Miss CCF Jestress B79 has had on our program. Her ability to generate at the highest level, regardless of our sire choice has been nothing short of astonishing. Miss CCF Jestress H301 is argued as one of the best daughters of the great "Diddo" that we have ever laid a leather lead on. She is sired by the National Champion stud WLE Copacetic E02 and personifies the structural build that we strive to produce in each mating. A full sister to H301 was recently slapped Reserve Grand Champion Percentage Simmental Female at the American Royal for Kelton Arthur. That same female was Reserve Supreme Champion at the KS Beef Expo this past December. Another full sister followed H031 to the winner's circle in Perry, Georgia where they went one-two overall breeds at the Georgia National Fair. Look, presence, cow family significance, structural integrity... the list goes on and on, H031 checks all the boxes! Here is the unique opportunity to hitch your wagon to a female of elite status prior to entering the production phase of her life. **Terms announced sale day.**

Lot
1

MISS CCF JESTRESS H301

BD: 1/4/20 ASA: 3737561 TATTOO: H301 BW: 79

HPF QUANTUM LEAP Z952
WLE COPACETIC E02
CMFM JOY 02ZB

FBF1 COMBUSTIBLE
MISS CCF JESTRESS B79
JAS JESTRESS 9015

FEATURED LOT | 5/8 SM 3/8 AN

CE	BW	WW	YW	MCE	MILK	MWW
14.7	1.1	79.7	121.5	6.9	18.6	58.4
STAY	DOC	CW	MARB	REA	API	TI
12.4	9.1	34.4	0.13	0.79	118.3	74.7



2021 GA NATIONAL FAIR RESERVE SUPREME CHAMPION
Full Sister to Lot 1



Lot 2A - MR CCF BILLS PAID

Finding a herd bull prospect that carries the same massive physic, explosive muscle shape and ultra-dense body composition as Bills Paid J306 will be a difficult task. He is a very impressive bovine that is for sure, to be able to carry all the product he possesses with the ease that he does makes him unique among contemporaries in the breed. The Pays To Believe ZU194 progeny have proven to be versatile, they are accepted on either end of the industry, have true shape and performance and the daughters are expectational mothers. Then you look to the maternal pedigree that supports Bills Paid J306 and it doesn't leave much further to be desired, the B79 Jestress female has emerged as perhaps the most potent daughter of the 9015 matron we have had the privilege of propagating. A herd bull that will make a positive impact regardless of your selection criteria. **Please contact the Innovation AgMarketing team or C&C Farms for details.**

Lot
2A

MR CCF BILLS PAID

BD: 1/8/21 ASA: 3913949 TATTOO: J306 BW: 77

CNS PAYS TO DREAM T759
LLSF PAYS TO BELIEVE ZU194
LLSF URABABYDOLL U194

FBF1 COMBUSTIBLE
MISS CCF JESTRESS B79
JAS JESTRESS 9015

SPRING YEARLING BULL | 3/4 SM 1/4 AN

CE	BW	WW	YW	MCE	MILK	MWW
12.6	1.6	77.2	115.8	6.7	18.3	56.9
STAY	DOC	CW	MARB	REA	API	TI
11.9	13.4	34.9	0.23	0.81	117.5	74.5



MISS CCF JESTRESS B79 - Dam of Lot 1

It Pays to Believe



Let 2B

MR CCF HONCHO

Check this young stud out! His dam is the 'Diddo' donor and he is sired by Pays To Believe. Honcho is one cool dude. His rugged masculine look combined with overall complete build has us excited about what the future holds. Huge footed, big legged, and awesome fronted. His maternal sisters having been pulling in banners all over the show circuit. Supreme & Reserve Supreme Champion Females at the 2021 GA National Fair, Reserve Champion Percentage Female at the 2021 American Royal Jr. Show. Let this 3/4 blood make you your next generation of Purebred seedstock. Add the cocky look and big swinging belly, and we think this guy has the combination features to do it all!

Let 2B

MR CCF HONCHO

BD: 3/15/21 ASA: 3950098 TATTOO: J312 BW: 79

CNS PAYS TO DREAM T759
LLSF PAYS TO BELIEVE ZU194
LLSF URABABYDOLL U194

FBF1 COMBUSTIBLE
MISS CCF JESTRESS B79
JAS JESTRESS 9015

SPRING YEARLING BULL | 3/4 SM 1/4 AN

CE	BW	WW	YW	MCE	MILK	MWW
12.5	1.7	77.1	115.7	6.7	18.4	56.9
STAY	DOC	CW	MARB	REA	API	TI
12.3	13.4	34.8	0.23	0.81	120.4	74.1

Let 2C

MISS CCF BLOSSOM

BD: 1/10/21 ASA: 3913950 TATTOO: J307 BW: 69

CNS PAYS TO DREAM T759
LLSF PAYS TO BELIEVE ZU194
LLSF URABABYDOLL U194

FBF1 COMBUSTIBLE
MISS CCF JESTRESS B79
JAS JESTRESS 9015

OPEN HEIFER | 3/4 SM 1/4 AN

CE	BW	WW	YW	MCE	MILK	MWW
12.6	1.6	77.2	115.8	6.7	18.3	56.9
STAY	DOC	CW	MARB	REA	API	TI
11.9	13.4	34.9	0.23	0.81	117.5	74.5

Blossom J307 is a direct daughter of the past North American Champion Simmental Bull, LLSF Pays To Believe ZU294 and out of our young and potent donor, Jestress B79, the mother to many of the featured and most accoladed animals to come out of the C&C program of recent. She is a 3/4 blood January female that has developed to sustain the hype of this cow family, she is big bodied, perfect outlined and far surpasses the structural integrity that we deem necessary to be successful. As you ponder an investment here, note the opportunity for rapid return as this one enters production and the prospect of her Purebred progeny. **Seller retains the right to one successful flush with a minimum of six transferable embryos.**

Let 2D

3 CONVENTIONAL EMBRYOS

CNS PAYS TO DREAM T759
LLSF PAYS TO BELIEVE ZU194
LLSF URABABYDOLL U194

FBF1 COMBUSTIBLE
MISS CCF JESTRESS B79
JAS JESTRESS 9015

EMBRYOS | 3/4 SM 1/4 AN

CE	BW	WW	YW	MCE	MILK	MWW
12.7	1.7	77.75	116.6	6.85	18.35	57.15
STAY	DOC	CW	MARB	REA	API	TI
11.75	13.45	34.7	0.23	0.82	119.6	74.5

Guaranteeing 1 60-day pregnancy if transferred by a certified technician.

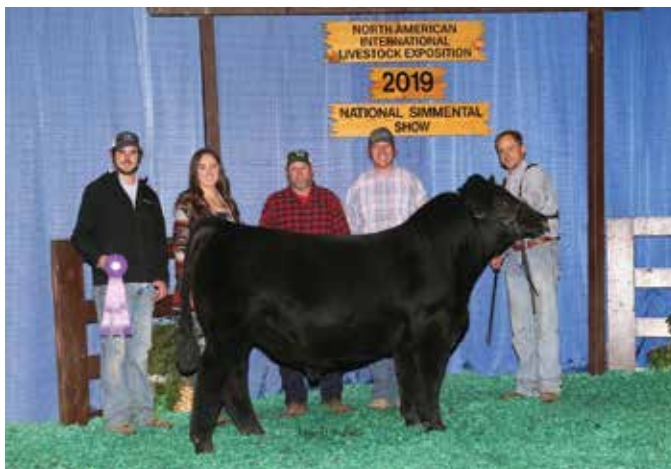


Let 2C - MISS CCF BLOSSOM



Lot 3 - MISS CCF BREATHLESS

The lineup of Jestress B79 progeny in this sale is impressive. This Duke daughter didn't want to show off her up headed, eye catching presence on picture day but trust us, you won't be disappointed when you see her on sale day. She is the definition of sound and good footed. We feel this one exemplifies what it means to be fancy and broody in one package. At the end of the day, her type are the ones that make it in the real world. ***Seller retains the right to one successful flush with a minimum of six transferable embryos.***



MR CCF THE DUKE - *Sire of Lot 3*

<div>Lot</div> <div>3</div>	MISS CCF BREATHLESS						
	BD: 3/14/21		ASA: 3949664		TATTOO: J56		BW: 79
	MR CCF VISION			FBF1 COMBUSTIBLE			
	MR CCF THE DUKE			MISS CCF JESTRESS B79			
	HTP SVF DEW THE STROKE			JAS JESTRESS 9015			
OPEN HEIFER 3/4 SM 1/4 AN							
CE	BW	WW	YW	MCE	MILK	MWW	
13.6	1.3	74.4	110.6	6.4	15.2	52.3	
STAY	DOC	CW	MARB	REA	API	TI	
13.3	12.1	31.7	0.12	0.87	117.5	70.3	

Lot 4 - MISS CCF LOVER



MISS CCF MAMA D D361 - Dam of Lot 4



Lot
4

MISS CCF LOVER

BD: 3/18/21 ASA: 3949663 TATTOO: J54 BW: 80

HPF QUANTUM LEAP Z952
WLE COPACETIC E02
CMFM JOY 02ZB

MR CCF 20-20
MISS CCF MAMA D D361
JAS JESTRESS 9015

OPEN HEIFER | 5/8 SM 3/8 AN

CE	BW	WW	YW	MCE	MILK	MWW
15.1	0.6	81.7	122.2	6.8	18.2	59
STAY	DOC	CW	MARB	REA	API	TI
11.8	7	32.9	0.28	0.81	129.5	80.1

This Copacetic daughter was not afraid to pose for the camera on picture day. She's an eye catcher when you walk in the pen simply just because it's hard to poke a hole in her. Put this one on the move and watch her glide. She is awesome in her hip and pin set. She will be fun to show! Her dam Miss CCF Mama D was one of the high selling heifers in our first online sale. The 9015 daughters are flat getting it done and keeping the Jestress legacy going through their progeny!

Lot
5

MISS CCF SHIMMER

BD: 3/10/21 ASA: 3949662 TATTOO: J51 BW: 79

HTP/SVF DURACELL T52
HPF QUANTUM LEAP Z952
RP/MP RIGHT TO LOVE 015U

FBF1 COMBUSTIBLE
MISS AF BLAZE
JAS JESTRESS 9015

OPEN HEIFER | 3/4 SM 1/4 AN

CE	BW	WW	YW	MCE	MILK	MWW
14.3	1.4	82.4	123	6.4	18.6	59.8
STAY	DOC	CW	MARB	REA	API	TI
12.8	8.9	42.3	0.24	0.89	127.3	78.5

Not only does this one have a pedigree for the times but she looks as well! Out of the Blaze donor, a full sib to the "Diddo" donor out of one of the most popular Simmental bulls in the business, HPF Quantum Leap Z952. It's pretty easy to find this one in the sale group. There are not many holes you can pick in this female. She is awesome in her skeletal build, with a great turn to her rib. Her feet and legs are phenomenal! Promising future with a proven pedigree.



Lot 5 - MISS CCF SHIMMER



Lot 6 - MISS CCF SALT AND PEPPER



MISS CCF SUGAR AND SPICE - *Dam of Lot 6*

Lot
6

MISS CCF SALT AND PEPPER

BD: 2/4/21 ASA: 3916529 TATTOO: J47 BW: 82

MR CCF VISION
MR CCF THE DUKE
HTP SVF DEW THE STROKE

FBF1 COMBUSTIBLE
MISS CCF SUGAR AND SPICE
JAS JESTRESS 9015

OPEN HEIFER | 3/4 SM 1/4 AN

CE	BW	WW	YW	MCE	MILK	MWW
12.9	1.4	76.5	116	5.9	15.3	53.5
STAY	DOC	CW	MARB	REA	API	TI
14.6	12.1	34.3	0.11	0.85	117.7	71.7

If this is the quality that MR CCF The Duke is putting into his first progeny, boy are we in for a fun ride. Salt and Pepper has already made her debut at the backdrop, along with her mother, as they claimed the Reserve Champion Percentage Cow/Calf Pair title at the 2021 Simmental Breeders Sweepstakes. Her dam commanded \$20,000 for half interest back in the 2021 Clear Vision Spring Production Sale. We look at her type as one that can stay in great shape on air. Stout made, an abundance of center rib, and sound on the move, with just enough look to catch your eye!

Lot
7

CIRCLE T CHILLING

BD: 2/8/21 ASA: PENDING TATTOO: J20 BW: 78

MR CCF VISION
MR CCF THE DUKE
HTP SVF DEW THE STROKE

FHEN HALFTIME A127
MISS CCF JESTRESS F328
MISS CCF JESTRESS B79

OPEN HEIFER | 3/4 SM 1/4 AN

CE	BW	WW	YW	MCE	MILK	MWW
12.95	1.5	74.1	111	6.45	17.85	54.85
STAY	DOC	CW	MARB	REA	API	TI
14.85	11.75	32.65	0.18	0.83	122.7	71.6

This could be one of the sleepers in the sale, but boy is she made cool! The Jestress B79 daughters are proving to be more than just banner hangers! You have to be productive out in the field and they are doing that. This Duke daughter is beautiful in her skeletal design and super sound! Give this one time and feed and we think she could be special!



Lot 7 - CIRCLE T CHILLING



Lot 8A - MISS CCF J52

This one grabs our attention every time we walk in the pen. So big bodied and super sound. When you think of cow power, she would fit the bill. Ones that are so easy keeping are the money-making kind. Along with the brood cow potential she still carries the showing eye appeal with plenty of arrogance.



RECKONING 711F - *Sire of Lot 8A & 8B*



Lot 8B - MISS CCF J53

The ones that are this cocky are what makes picture days fun! This Reckoning posed for the camera and strutted her stuff! Jewel is one elegant creature. Super sound in her structure, big center ribbed and a neck and head that could be seen for miles. Check her out on sale day. She's an eye catcher! ***Seller retains the right to one successful flush with a minimum of six transferable embryos.***

<i>Lot</i> 8A		MISS CCF LIKE A LADY				
BD:	3/21/21	ASA:	PENDING	TATTOO:	J52	BW: 82
W/C RELENTLESS 32C		MR HOC BROKER				
RECKONING 711F		MISS CCF JESTRESS E12				
RWA KRISHA-ET		JAS JESTRESS 9015				

OPEN HEIFER | 5/8 SM 3/8 AN

CE	BW	WW	YW	MCE	MILK	MWW
11.5	1.2	73.25	101.1	5.15	16.2	52.8
STAY	DOC	CW	MARB	REA	API	TI
13.35	5.75	30.35	0.36	0.54	125.1	74

<i>Lot</i> 8B		MISS CCF JEWEL				
BD:	3/15/21	ASA:	PENDING	TATTOO:	J53	BW: 83
W/C RELENTLESS 32C		MR HOC BROKER				
RECKONING 711F		MISS CCF JESTRESS E12				
RWA KRISHA-ET		JAS JESTRESS 9015				

OPEN HEIFER | 5/8 SM 3/8 AN

CE	BW	WW	YW	MCE	MILK	MWW
11.5	1.2	73.25	101.1	5.15	16.2	52.8
STAY	DOC	CW	MARB	REA	API	TI
13.35	5.75	30.35	0.36	0.54	125.1	74



Lot 9 - WPCC DEANNA J116

Look how square and neat this one is built, she is a daughter of the most talked about sire in the Simmental breed, the Relentless son out of the triple crown winner JBSF Proud Mary. His name is JSUL Something About Mary 8421 and this marks an early opportunity to get in on his influence, if he continues to consistently make offspring at the caliber of Denna J116 he will go down in the history books of the breed. We like how dense this one is built, she has natural dimension underneath her good hair coat, couple that with the maternal power you will receive from the Broker x Jestress 9015 female on the bottom side and we think this is a big-time opportunity.



JSUL SOMETHING ABOUT MARY 8421 - *Sire of Lot 9*

<div>Lot</div> <div>9</div>	WPCC DEANNA J116						
	BD: 3/20/21		ASA: PENDING		TATTOO: J116		BW: 85
	W/C RELENTLESS 32C			MR HOC BROKER			
	JSUL SOMETHING ABOUT MARY 8421			MISS CCF DEANNA D116			
	JBSF PROUD MARY			JAS JESTRESS 9015			
OPEN HEIFER 3/4 SM 1/4 AN							
CE	BW	WW	YW	MCE	MILK	MWW	
12.5	1.35	75.75	108.65	5.1	18.5	56.3	
STAY	DOC	CW	MARB	REA	API	TI	
11.7	7.05	28.45	0.26	0.62	119.9	74.2	



Lot 10 - MISS CCF EMPRESS E40



Lot 11 - MISS CCF VISIONARY G382

Lot 10 **MISS CCF EMPRESS E40**
 BD: 9/2/17 ASA: 3373891 TATTOO: E40 BW: 79
 SVF STEEL FORCE S701 B C LOOKOUT 7024
MR HOC BROKER **JAS JESTRESS 9015**
 JM BF H25 GAMBLES JESTRESS 9035

COW | 1/2 SM 1/2 AN

CE	BW	WW	YW	MCE	MILK	MWW
12.3	1.1	75.1	112.3	6.1	17.6	55.1
STAY	DOC	CW	MARB	REA	API	TI
10.2	4.1	32.8	0.35	0.47	119.7	76

Empress E40 started off her show career with a bang when she was slapped Reserve Champion Percentage Female at the 2018 Simmental Breeders Sweepstakes Open Show. From there she has only kept developing into one impressive individual. While feeding she catches the eye of everyone who steps in the pen. She is one whale of a cow. With the long line of champions and donors in her pedigree we would expect no less from Empress! She is raising one heck of a MR CCF The Duke bull calf that is showing tons of potential. DONOR QUALITY!!

Lot 11 **MISS CCF VISIONARY**
 BD: 3/5/19 ASA: 3950194 TATTOO: G382 BW: 78
 MR NLC UPGRADE U8676 B C LOOKOUT 7024
MR CCF VISION **JAS JESTRESS 9015**
 GCF MISS ELSA GAMBLES JESTRESS 9035

COW | 1/2 SM 1/2 AN

CE	BW	WW	YW	MCE	MILK	MWW
15.5	0	81.8	124.1	8	18	58.8
STAY	DOC	CW	MARB	REA	API	TI
9.2	11.8	36.6	0.44	0.72	131.8	84.6

When we had the idea of mating MR CCF Vision to 9015, we knew that we could make a fancy show heifer but also thought that this cross would have donor potential. Well, our idea has become reality! This is one impressive young female! So broody in her appearance but with the looks of a lady, awesome in her skeletal build with the foot size and structure to match. The WLE Copacetic E02 heifer calf at her side indicates that we could be making a mistake by selling this one... but we strive to offer our best!

Lot 10A **MR CCF/TGF J98**
 BD: 9/7/21 ASA: 3960138 TATTOO: J98 BW: 75
 MR CCF VISION MR HOC BROKER
MR CCF THE DUKE **MISS CCF EMPRESS E40**
 HTP SVF DEW THE STROKE JAS JESTRESS 9015

BULL CALF | 3/4 SM 1/4 AN

CE	BW	WW	YW	MCE	MILK	MWW
11.8	1.6	74.95	109.1	5.65	17.45	54.85
STAY	DOC	CW	MARB	REA	API	TI
11.4	6.8	30.1	0.2	0.74	115	72.1



MR HOC BROKER
Sire of Lot 10

Lot 11A **MISS CCF J95**
 BD: 10/6/21 ASA: 3956208 TATTOO: J95 BW: 78
 HPF QUANTUM LEAP Z952 MR CCF VISION
WLE COPACETIC E02 **MISS CCF VISIONARY**
 CMFM JOY 02ZB JAS JESTRESS 9015

HEIFER CALF | 5/8 SM 3/8 AN

CE	BW	WW	YW	MCE	MILK	MWW
14.5	0.9	84.1	126.5	7	20.8	62.7
STAY	DOC	CW	MARB	REA	API	TI
10.6	7.6	33.3	0.24	0.81	125.1	80.6



MR CCF VISION
Sire of Lot 11



Lot 12 - MISS CCF JESTRESS G56



Lot 13 - MISS CCF IMAGINE THAT

Lot 12	MISS CCF JESTRESS G56			
	BD: 1/4/19	ASA: 3568925	TATT00: G56	BW: 78
	FBF1 COMBUSTIBLE		B C LOOKOUT 7024	
	FBF1/SF IGNITION		JAS JESTRESS 9015	
	FBF1 GORGEOUS LADY		GAMBLES JESTRESS 9035	

COW | 1/2 SM 1/2 AN

CE	BW	WW	YW	MCE	MILK	MWW
16.1	-0.2	67	102.4	7.8	13.4	46.9
STAY	DOC	CW	MARB	REA	API	TI
14.1	13.1	34	0.4	0.42	134.3	74

The FBF1/SF Ignition mating on the 9015 donor female has proven time and time again to make the kind of cattle that can catch a judges eye but also become the front pasture type when they enter production. Not all cattle have to win banners to be profitable. She carries the hind leg that the Ignition progeny are known for, with her mother's front one third. Her Duke calf at side will not disappoint!

<div>Lot</div> <div>13</div>	MISS CCF IMAGINE THAT				
	BD: 9/15/19	ASA: 3680952	TATTOO: G403	BW: 73	
	MR TR HAMMER 308A ET		B C LOOKOUT 7024		
	KCC1 DEFIANT 540D		JAS JESTRESS 9015		
	EBS DREAM MOSAIC		GAMBLES JESTRESS 9035		

COW | 1/2 SM 1/2 AN

CE	BW	WW	YW	MCE	MILK	MWW
15	-0.3	74.2	113.7	7.3	18.3	55.4
STAY	DOC	CW	MARB	REA	API	TI
12.7	8.3	34.7	0.51	0.6	140.2	82.3

"Imagine That nothing lasts forever" yes, a little corny but also true! It has become more and more difficult to let loose of these 9015 daughters. The JAS Jestress 9015 donor has been a huge part of our program over the last decade. These will be some of the last direct progeny to sell out of the prolific donor. This KCC1 Defiant 540D daughter is so sound and elegant in her build. She's the eye-catching kind. With the pedigree to back it up. Not to mention her API is a 140! Get in on a good thing before it's too late!

<div>Lot</div> <div>12A</div>	MISS CCF J56				
	BD: 9/9/21	ASA: PENDING	TATTOO: J56	BW: 76	
	MR CCF VISION	FBF1/SF IGNITION			
	MR CCF THE DUKE	MISS CCF JESTRESS G56			
	HTP SVF DEW THE STROKE	JAS JESTRESS 9015			

HEIFER CALF | 3/4 SM 1/4 AN

CE	BW	WW	YW	MCE	MILK	MWW
13.7	0.95	70.9	104.15	6.5	15.35	50.75
STAY	DOC	CW	MARB	REA	API	TI
13.35	11.3	30.7	0.23	0.72	122.7	71.2

<div>Lot</div> <div>13A</div>	MR CCF J97				
	BD: 9/2/21	ASA: 3956207	TATTOO: J97	BW: 80	
	MR CCF VISION	KCC1 DEFIANT 540D			
	MR CCF THE DUKE	MISS CCF IMAGINE THAT			
	HTP SVF DEW THE STROKE	JAS JESTRESS 9015			

BULL CALF | 3/4 SM 1/4 AN

CE	BW	WW	YW	MCE	MILK	MWW
12.7	1.4	75.8	111.7	6.3	17.5	55
STAY	DOC	CW	MARB	REA	API	TI
12.6	8.9	31.1	0.28	0.8	124.2	75.3



Bid Live Online CCI.live

"Gavel's Down, The Best in Online Marketing"

(516) 366-0734 CCI.live schedule@cci.live



Lot 14 - MISS CCF SPADE G37



Lot 15 - MISS CCF JESTRESS G412

Lot 14	BD: 3/12/19	ASA: 3950189	TATT00: G37	BW: 84
MR CCF VISION	FBF1 COMBUSTIBLE			
MR CCF 20-20	MISS AF SPADE			
HTP SVF DEW THE STROKE	JAS JESTRESS 9015			

COW | 3/4 SM 1/4 AN

CE	BW	WW	YW	MCE	MILK	MWW
14	2.1	82.1	122.9	6	9.6	50.6
STAY	DOC	CW	MARB	REA	API	TI
14.1	11.8	29.7	0.19	0.97	123.1	75.9

A 20-20 daughter out of a full sister to the famed Jestress B79 "Diddo" donor! Great in her overall design and built with a structure that will keep her an important member of the cowherd for years to come! Awesome pedigreed with loads of potential!

Lot 15	BD: 4/12/19	ASA: 3950193	TATT00: G412	BW: 79
MR CCF VISION	MR HOC BROKER			
MR CCF 20-20	MISS CCF JESTRESS C102			
HTP SVF DEW THE STROKE	JAS JESTRESS 9015			

COW | 3/4 SM 1/4 AN

CE	BW	WW	YW	MCE	MILK	MWW
12.1	2	79.6	113.7	5.2	11.6	51.3
STAY	DOC	CW	MARB	REA	API	TI
12	6.8	27.5	0.21	0.87	115.4	74.2

This first calver is doing a great job with her WLE Copacetic E02 heifer calf. Her dam was campaigned by Daniel Dobbs and grabbed her fair share of banners during her show career. The 20-20 daughters are proving themselves to be awesome replacement cattle!

Lot 14A	BD: 9/12/21	ASA: 3956215	TATT00: J90	BW: 79
W/C RELENTLESS 32C	MR CCF 20-20			
RECKONING 711F	MISS CCF SPADE G37			
RWA KRISHA-ET	MISS AF SPADE			

BULL CALF | 3/4 SM 1/4 AN

CE	BW	WW	YW	MCE	MILK	MWW
12.2	2	76	106.4	5	12.2	50.1
STAY	DOC	CW	MARB	REA	API	TI
15.7	11.1	29.6	0.2	0.91	122.9	71.5

Lot 15A	BD: 9/3/21	ASA: 3956209	TATT00: J94	BW: 79
HPF QUANTUM LEAP Z952	MR CCF 20-20			
WLE COPACETIC E02	MISS CCF JESTRESS G412			
CMFM JOY 02ZB	MISS CCF JESTRESS C102			

HEIFER CALF | 3/4 SM 1/4 AN

CE	BW	WW	YW	MCE	MILK	MWW
13	1.7	82.6	120.8	5.7	17.7	58.9
STAY	DOC	CW	MARB	REA	API	TI
11.9	5	28.8	0.13	0.89	117.1	75.4



MISS CCF
JESTRESS C102
Dam of Lot 15



Lot 16 – MISS CCF BREAKING HEARTS

As we set out each year to assemble a group of females to offer for the Clear Visions sale we know it's going to be a difficult task, there are some females that are just too special that you could not replace, so letting go of them is not a decision made lightly. However with that being said we realize the only way to make this event a success is to dig deep and offer our most valuable genetics, so here exists one of those opportunities in Miss CCF Breaking Hearts. One of the most impressive daughters of MR HOC Broker you will ever lay your eyes on, and that's quite the claim when you begin to think about the influence that bull has made on the entire industry, let alone the Simmental Breed. A Purebred member of our donor pen that stems from a cow family that needs no introduction to any Simmental enthusiast, the Sheza Fantasy matriarch has been a dominate influence for close to two decades, and has proven to blend perfectly with the modern day, popular sire choices. Coming out of the Fall Calf Division, Breaking Hearts was crowned Reserve Champion Female at the 2015 Simmental Breeders Sweepstakes, along with Third and Fourth Overall honors at the both the Georgia National Show and National Fair, respectively. Progeny by several different sires out of Breaking Hearts have featured on winners and high sellers lists alike, including a 20-20 daughter that was the \$20,000 selection of the Allen family. We truly could not feel more fortunate to have felt the influence of this female throughout the herd, so as to give our customers an opportunity to share this, we are offering her whilst still in the prime of production. **Offering half interest with the option to double. Please call for flush records and details pertaining to the Miss CCF Breaking Hearts partnership opportunity.**

***Lot* 16** **MISS CCF BREAKING HEARTS**
 BD: 9/2/14 ASA: 2953944 TATTOO: B300 BW: 84
 SVF STEEL FORCE S701 HTP SVF IN DEW TIME
MR HOC BROKER **MISS CCF FANTASY U18**
 JM BF H25 SVF SHEZA FANTASY N906

COW | PB SM

CE	BW	WW	YW	MCE	MILK	MWW
6.4	4.1	62.7	87.3	1.6	16.5	47.7
STAY	DOC	CW	MARB	REA	API	TI
11.9	3.4	11.3	-0.15	0.7	88.6	57

***Lot* 16A** **MR CCF J102**
 BD: 10/12/21 ASA: 3956212 TATTOO: J102 BW: 75
 MR CCF VISION MR HOC BROKER
MR CCF THE DUKE **MISS CCF BREAKING HEARTS**
 HTP SVF DEW THE STROKE MISS CCF FANTASY U18

BULL CALF | PB SM

CE	BW	WW	YW	MCE	MILK	MWW
9.7	2.3	66.7	93.8	3.5	17.4	51.3
STAY	DOC	CW	MARB	REA	API	TI
12.3	6.3	19.5	-0.06	0.85	107.1	64.9



Lot 17 - MISS CCF RED EYE G89

<div>Lot</div> <div>17</div>	MISS CCF RED EYE				
	<hr/>				
	BD: 10/16/19	ASA: 3950192	TATTOO: G89	BW: 80	
	<hr/>				
	<hr/>				
	WS PILGRIM H182U		MR HOC BROKER		
	MR CCF SLEEP EASY		MISS CCF BREAKING HEARTS		
	MISS CCF SHEZA BONNIEY61		MISS CCF FANTASY U18		

COW | PB SM

CE	BW	WW	YW	MCE	MILK	MWW
8.6	2.8	60.1	84	2.5	16.9	46.9
STAY	DOC	CW	MARB	REA	API	TI
11.3	5.5	15.7	-0.05	0.64	96.6	59.7

Well, her name speaks for itself. When Breaking Hearts laid down and calved in 2019, she gave us this single red eyed baldy beauty. Yes, it's different! But she is one good looking bovine! The added center rib with her mother's perfect hind leg. Beautiful in her head, neck, and jaw line... not to mention the great job that this first calf heifer is doing with her Duke heifer calf!

Lot 18	MISS CCF SOUL G45			
	BD: 2/23/19	ASA: 3950191	TATTOO: G45	BW: 80
	MR CCF VISION	MR HOC BROKER		
	MR CCF 20-20	MISS CCF BREAKING HEARTS		
	HTP SVF DEW THE STROKE	MISS CCF FANTASY U18		

COW | PB SM

CE	BW	WW	YW	MCE	MILK	MWW
9.7	2.9	73.9	104.1	3.3	11.1	48.1
STAY	DOC	CW	MARB	REA	API	TI
12.8	6.3	16.4	-0.06	1	107	68.1

A direct daughter out of the Breaking Hearts donor. When we were debating on which pairs to include in the sale, there was some discussion as to whether we should be keeping this one in the herd. The 20-20 daughters are just all-around good cattle. Beautiful in her head and neck, while being super sound and flexible. You will hear us talk a lot regarding udder quality, but this one flat gets it done. Just look at her Reckoning 711F heifer calf at side this is one high caliber female that is backed with proven genetics!

<div>Lot</div> <div>17A</div>	MISS CCF J93				
	BD: 9/7/21	ASA: 3956214	TATTOO: J93	BW: 82	
	MR CCF VISION	MR CCF SLEEP EASY			
	MR CCF THE DUKE	MISS CCF RED EYE			
	HTP SVF DEW THE STROKE	MISS CCF BREAKING HEARTS			

HEIFER CALF | PB SM

CE	BW	WW	YW	MCE	MILK	MWW
9.8	2.6	67.9	95.6	3.9	17	50.8
STAY	DOC	CW	MARB	REA	API	TI
11.9	7.5	21.5	0	0.82	109.2	66.4

<div>Lot</div> <div>18A</div>	MISS CCF J92				
	BD: 9/5/21	ASA: 3956213	TATTOO: J92	BW: 79	
	W/C RELENTLESS 32C	MR CCF 20-20			
	RECKONING 711F	MISS CCF SOUL G45			
	RWA KRISHA-ET	MISS CCF BREAKING HEARTS			

HEIFER CALF | PB SM

CE	BW	WW	YW	MCE	MILK	MWW
10.3	2.1	71.2	95.9	3.6	13.1	48.9
STAY	DOC	CW	MARB	REA	API	TI
15.1	8.3	22.9	0.07	0.92	121	69.9



Lot 19 - MISS CCF DREAMER J608



MISS CCF SHEZA LOOKER
Maternal Grandam of Lot 19



MISS CCF SHEZA DREAMER
Dam of Lot 19



Lot 20 - MISS CCF BONNIE J603



MISS CCF SHEZA BONNIE Y61
Dam of Lot 20



CTS SHEZA BONNIE TWO T18G
Maternal Sister to Lot 20

<i>Lot</i> 19	MISS CCF DREAMER J608					
	BD: 1/6/21	ASA: 3953532	TATTOO: J608	BW: 80		
	YARDLEY UTAH Y361	STF SHOCKING DREAM SJ14				
	W/C RELENTLESS 32C	MISS CCF SHEZA DREAMER				
	MISS WERNING KP 8543U	MISS CCF SHEZA LOOKER				

OPEN HEIFER | PB SM

CE	BW	WW	YW	MCE	MILK	MWW
10.2	2.9	68.2	92.6	3.2	16.5	50.5
STAY	DOC	CW	MARB	REA	API	TI
12.7	10.1	18.8	0.05	0.77	113.1	67.4

When we mated the Sheza Dreamer donor to Relentless we had high hopes for what the outcome could be. Fancy comes to mind when studying this female. This Purebred is elite up through her head and neck, awesome in her rib shape and impressive on the move. Just imagine this one as a bred!

<i>Lot</i> 20	MISS CCF BONNIE J603					
	BD: 2/10/21	ASA: 3953531	TATTOO: J603	BW: 79		
	MR CCF VISION	GAMBLES HOT ROD				
	MR CCF THE DUKE	MISS CCF SHEZA BONNIE Y61				
	HTP SVF DEW THE STROKE	MISS CCF SHEZA LOOKER				

OPEN HEIFER | 3/4 SM 1/4 AN

CE	BW	WW	YW	MCE	MILK	MWW
9.5	1.4	59.1	88.4	3.5	15.8	45.3
STAY	DOC	CW	MARB	REA	API	TI
12.8	7.2	31.4	0.06	0.75	101.8	59.1

This fancy 3/4 blood has caught the eye of many around the farm. Bonnie is very complete in her build. This one took after her dam when it comes to structure. Good footed and flexible on the move. This young baldy Duke daughter is just one breeding away from making some ultra-attractive Purebred progeny.

Lot
21

T-T MAYFLOWER J98

BD: 1/10/21 ASA: 3947311 TATTOO: J98 BW: 77

MR CCF VISION

WS PILGRIM H182U

MR CCF 20-20

MISS CCF MAYFLOWER

HTP SVF DEW THE STROKE

MISS CCF SHEZA BONNIEY61

OPEN HEIFER | PB SM

CE	BW	WW	YW	MCE	MILK	MWW
11.45	1.9	71.9	100.9	3.85	11.3	47.25
STAY	DOC	CW	MARB	REA	API	TI
11.9	8.55	20.4	0.06	0.94	117.7	71.2

The mother of T-T Mayflower J98 was the top selling pair in the Inaugural Clear Visions sale demanding \$10,500, that initial investment has proven to be a good one for us as her position in the T-T cowherd continues to be very profitable. J98 has a royal pedigree, it is stacked on both sides and we think her phenotypic quality needs to be seen in the showring. She is a big growth, stout, sound female that keeps impressing us as she matures. Another Purebred that we are very excited to see exhibited, however we know that some of her best days could be still yet to come as she's turned out to pasture.



Lot 21 - T-T MAYFLOWER J98

Lot
22

T-T SUPERSTAR J145

BD: 2/16/21 ASA: 3947313 TATTOO: J145 BW: 75

MR CCF VISION

HTP/SVF DURACELL T52

MR CCF 20-20

MISS CCF SHEZA SUPERSTAR

HTP SVF DEW THE STROKE

MISS CCF SHEZA BONNIEY61

OPEN HEIFER | PB SM

CE	BW	WW	YW	MCE	MILK	MWW
11.8	1.2	71.9	102.3	4.4	11.1	46.9
STAY	DOC	CW	MARB	REA	API	TI
14.7	9.9	19.7	0.12	1	125.6	73.6

Miss CCF Superstar has worked extremely well for us and this daughter of her's is no exception. J145 is a beautiful baldy Purebred that is awesome on the profile. She is big bodied, sound, good haired, and has that cocky show heifer look. She has a great disposition and will make a tremendous cow when her show career is comes to an end. As an added bonus she is a full sister to MR CCF Clarified that is doing an outstanding job for Schick-Haefner Cattle Company.



Lot 22 - T-T SUPERSTAR J145

MR CCF CLARIFIED

Full Brother to Lot 22



MISS CCF
SHEZA SUPERSTAR

Dam of Lots 22-23

Lot
23

T-T SUPERSTAR J147

BD: 3/6/21 ASA: 3947314 TATTOO: J147 BW: 81

MR TR HAMMER 308A ET

HTP/SVF DURACELL T52

KCC1 EXCLUSIVE 116E

MISS CCF SHEZA SUPERSTAR

TKCC VICTORIA 57A

MISS CCF SHEZA BONNIEY61

OPEN HEIFER | PB SM

CE	BW	WW	YW	MCE	MILK	MWW
11.9	0.6	69.7	100.8	5.2	16.5	51.3
STAY	DOC	CW	MARB	REA	API	TI
15.5	9.5	18.1	0.23	0.89	133.5	76.1

This young Superstar female has a front end that is hard to replicate in these Purebred Simmental females. She is still green but the parts are coming together very nicely. She is cool headed, ties in high at the point of her shoulder, sound and very good haired. J147 is quickly developing into an exciting show heifer prospect, and with a good feeding program we think the future will be very bright for this daughter of KCC1 Exclusive 116E.



Lot 23 - T-T SUPERSTAR J147



Lot 24 - T-T BLACKBIRD J06



RWA KRISHA ET - *Maternal Sister to Lot 24 & Dam of the Many Times Champion Percentage Simmental Bull, Reckoning 711F*



RECKONING 711F - *NAILE, NWSS, & Cattlemen's Congress Grand Champion Product of the Champion Hill Blackbird 8003 cow family!*

<div>Lot</div> <div>24</div>	T-T BLACKBIRD J06			
	BD: 4/16/21	ASA: 3947316	TATTOO: J06	BW: 80
	W/C LOADED UP 1119Y	S A V BRAVE 8320		
	W/C BANKROLL 811D	CHAMPION HILL BLACKBIRD 8003		
	MISS WERNING KP 8543U	S A V BLACKBIRD 5296		

OPEN HEIFER | 1/2 SM 1/2 AN

CE	BW	WW	YW	MCE	MILK	MWW
8.7	2.8	85.4	129	4.8	22.7	65.3
STAY	DOC	CW	MARB	REA	API	TI
13.4	10.4	46.7	0.35	0.84	123.2	80.7

8003 is the lead donor and matriarch within the T-T program. This female is huge ribbed, great fronted, and has all the eye appeal to show very competitively. Her full sister won her class as a calf at the 2020 AJSA National Classic in South Dakota and was named the Reserve Champion Percentage Female at the Ozark Empire for Hailey Eads. This female has a first-year showman attitude, with senior year quality. She will be on display at the North American, so you can trust she will be ready to show at any time.



Lot 25
T-T BLACKBIRD J03

Lot 25 **T-T BLACKBIRD J03**

BD: 3/8/21 ASA: 3947315 TATTOO: J03 BW: 76

W/C LOADED UP 1119Y S A V BRAVE 8320
W/C BANKROLL 811D **CHAMPION HILL BLACKBIRD 8003**
 MISS WERNING KP 8543U S A V BLACKBIRD 5296

OPEN HEIFER | 1/2 SM 1/2 AN

CE	BW	WW	YW	MCE	MILK	MWW
8.7	2.8	85.4	129	4.8	22.7	65.3
STAY	DOC	CW	MARB	REA	API	TI
13.4	10.4	46.7	0.35	0.84	123.2	80.7

This young female has 8003 stamped all over her! Just like her maternal siblings, she is sweet fronted, awesome structured, has plenty of rib shape, and all the look you could ask of a great Percentage heifer. Lianna Durrer campaigned a full sister with lots of success last year in Virginia and was named Supreme Champion Female on multiple occasions. J03 is little kid broke and a lot of fun to be around.

Lot 26 **T-T BLACKBIRD J04**

BD: 4/13/21 ASA: 3947318 TATTOO: J04 BW: 83

MR TR HAMMER 308A ET S A V BRAVE 8320
KCC1 EXCLUSIVE 116E **CHAMPION HILL BLACKBIRD 8003**
 TKCC VICTORIA 57A S A V BLACKBIRD 5296

OPEN HEIFER | 1/2 SM 1/2 AN

CE	BW	WW	YW	MCE	MILK	MWW
8.7	2.4	86.1	131.2	4.2	17.1	60.1
STAY	DOC	CW	MARB	REA	API	TI
14	9	39.3	0.42	0.75	129.8	83.1

The backing of T-T 8003 does it again. We were excited to see how KCC1 Exclusive 116E would work on her and man are we glad we decided to flush her this way. J04 is so cool looking from the profile with added muscle shape and dimension. She is sound, good middled and has a great disposition to boot. 8003 is a no miss type female and J04 may be one of her greatest accomplishments to date. Check her out on display at the 2021 North American International Livestock Exposition.



Lot 26
T-T BLACKBIRD J04



Lot 27 - T-T BLACKBIRD J203



FBF1 BLACKBIRD A203 - Dam of Lot 27



DAUGHTER OF A203

Lot
27

T-T BLACKBIRD J203

BD: 4/14/21

ASA: 3947317

TATTOO: J203

BW: 79

W/C LOADED UP 1119Y

SS/PRS HIGH VOLTAGE 244X

W/C BANKROLL 811D

FBF1 BLACKBIRD

MISS WERNING KP 8543U

CHAMPION HILL BLACKBIRD 8003

OPEN HEIFER | 3/4 SM 1/4 AN

CE	BW	WW	YW	MCE	MILK	MWW
11.1	1.7	82.3	120.6	5.8	22	63.1
STAY	DOC	CW	MARB	REA	API	TI
12.7	11.7	34.9	0.26	0.88	121	78.9

J203 has been a farm favorite literally since birth. When she hit the ground we knew she was special and hasn't disappointed. Like her full siblings, she is huge boned, stout made, great fronted, and ties it all together into a very balanced package. She will be a ton of fun to show and has all the potential to hang many banners and become a front pasture female that the neighbors will envy. Check her out in Louisville as she will be a member of the team we have on display.



Lot 28 - T-T BLACKBIRD F12

Lot
28

T-T BLACKBIRD F12

BD: 4/25/18 ASA: 3436035 TATTOO: F12 BW: 80

CNS PAYS TO DREAM T759

S A V BRAVE 8320

SC PAY THE PRICE C11

CHAMPION HILL BLACKBIRD 8003

LSF URABABYDOLL U194

S A V BLACKBIRD 5296

COW | 1/2 SM 1/2 AN

CE	BW	WW	YW	MCE	MILK	MWW
5.9	3.5	86.5	131.1	3.3	18.9	62.1
STAY	DOC	CW	MARB	REA	API	TI
12.2	11.3	49.8	0.36	0.73	116.5	79.6

Lot
28A

T-T BLACKBIRD J12

BD: 9/15/21 ASA: 3954909 TATTOO: J12 BW: 79

W/C RELENTLESS 32C

SC PAY THE PRICE C11

T-T RELENTLESS G71

T-T BLACKBIRD F12

MISS CCF SHEZA SUPERSTAR

CHAMPION HILL BLACKBIRD 8003

HEIFER CALF | 3/4 SM 1/4 AN

CE	BW	WW	YW	MCE	MILK	MWW
8	2.7	76.4	110.2	3.1	18.1	56.3
STAY	DOC	CW	MARB	REA	API	TI
12.8	11.4	32.2	0.28	0.76	115.7	73.1

Talk about an awesome female! T-T Blackbird F12 is the type we strive to raise and honestly we shouldn't be selling, however we have made the commitment to offering our very best for this sale so here she is. She is the kind that can be mated to the really attractive bulls that aren't packing as much punch and make a guy look smart. F12 is sound, long bodied, good fronted, with a ton of compacity and rib shape to boot. Future donor with a heifer calf at side that looks to have the right parts.



CHAMPION HILL BLACKBIRD 8003 - Dam of Lots 24 - 28



Lot 29 - CIRCLE T ALLIE



OBCC CMFM DEPLORABULL D148 - \$100,000 Sire of Lot 29



WHF:PRS:HPF ALLEY 247Y - 3rd Generation Dam of Lot 29

Lot
29

CIRCLE T ALLIE

BD: 12/15/20 ASA: 3948405 TATTOO: H15 BW: 86

W/C EXECUTIVE ORDER 8543B
OBCC CMFM DEPLORABULL D148
LAZYH/ADKINS BLKSTAR Z15

MR CCF 20-20
TYLERTOWN
PF/B&K/AF ALLEY 355C

OPEN HEIFER | PB SM

CE	BW	WW	YW	MCE	MILK	MWW
11.6	1.6	78.4	115.1	5.9	18.9	58.1
STAY	DOC	CW	MARB	REA	API	TI
14.1	2.5	19.6	0.04	0.92	121.5	75.6

Oh man does this one get our blood pumping! This Deplorable daughter is flat good and has the build to compete at any level. She is extra massive about the center body and boldness to her rib shape. Walk out into the pen with this one and she is jaw dropping in her presence, this is the kind that is fun to admire. When we stopped by Circle T to look through his sale cattle we knew we had to have her. This late fall female could be a lot of fun next Summer!



Lot 30A - TNM JADE 105J

We love the added presence and feature of this direct daughter of the \$400,000 Profit, she truly is one of the most balanced and complete females we may have raised, and she ties together two sides of the industry both phenotypically and genetically. Her powerful body shape transitions effortlessly into a super attractive head and neck set, with a pair of big fluffy ears that come out high off the top of her skull, couple this with the big feet and bones that she moves with ease and we think this one is pretty special. The CCR Cowboy Cut daughter that you find in the first generation maternally, is an impressive bovine that visitors always want more information about, you can trust her influence will continue to be featured in the stock that come out of our program.



Lot 30B - TNM 123J



PROFIT - \$400,000 Sire of Lot 30A & 30B

The younger litter mate to Jade 105J, this April, Purebred is one that has massive upside potential, and if you're willing to be patient the rewards could pay dividends. We love the loose structure, big bone density, long eloquent front third and concave underline of this Profit daughter. This one will age like a fine wine, and offers a pedigree that is versatile enough for many different production goals, you may be buying a show heifer today, but the prospect of this one entering the donor pen should be the next thought.

<i>Lot</i> 30A	M2C JADE 105J			
	BD: 3/6/21	ASA: 3896777	TATTOO: 105J	BW: 69
WS PILGRIM H182U	CCR COWBOY CUT 5048Z			
PROFIT	CCR MS 7355 COWBOY 5097C			
WAGR PANARAMA 204Z	CCR MS NEWSLINE 7355T			

OPEN HEIFER | PB SM

CE	BW	WW	YW	MCE	MILK	MWW
9.4	2.8	78	110.8	6	21.5	60.4
STAY	DOC	CW	MARB	REA	API	TI
16.7	7.6	21.5	0.2	0.65	128.9	77

<div>Lot</div> <div>30B</div>	M2C 123J			
	BD: 4/9/21	ASA: PENDING	TATTOO: 123J	BW:
	WS PILGRIM H182U		CCR COWBOY CUT 5048Z	
	PROFIT		CCR MS 7355 COWBOY 5097C	
	WAGR PANARAMA 204Z		CCR MS NEWSLINE 7355T	

OPEN HEIFER | PB SM

CE	BW	WW	YW	MCE	MILK	MWW
9.4	2.8	78	110.8	6	21.5	60.4
STAY	DOC	CW	MARB	REA	API	TI
16.7	7.6	21.5	0.2	0.65	128.9	77



Lot 31 - M2C EMILY 102J



SVF ABOVE &
BEYOND T87
*Matriarch of Metzger
Cattle Company*



MR CCF
LEDGER G702
Sire of Lot 32

Lot
31

M2C EMILY 102J

BD: 2/11/21
ASA: 3896774
TATTOO: 102J
BW: 74

WS PILGRIM H182U M2C/PHF SNIPER 492B
PROFIT **M2C EMILY 734E**
WAGR PANARAMA 204Z M2C PHF CALLIE 568C

OPEN HEIFER | PB SM

CE	BW	WW	YW	MCE	MILK	MWW
8.2	3.6	79.4	114.9	4.5	20.3	60
STAY	DOC	CW	MARB	REA	API	TI
11.9	4.5	21.3	0.06	0.77	110.2	73.6

A Purebred daughter of one the of most acclaimed Simmental bulls of recent history, the \$400,000 Profit stud that has sired as many championship accolades as any, and his progeny are now proving the power in the blood by forming the backbone of breeding programs nationwide. Emily 102J is a powerful February born show heifer prospect that we think offers so much more than just a pretty outline and fun year in the showing. The prospect of this one as a member of the cowherd and furthermore the donor pen should be a decision not made lightly. Maternally she stems from a cow family that is tried and true for our operation, her mother M2C Emily 734E was a successful show heifer for Madison and the aspirations we have for her future as a cornerstone breeding piece are high. If you're searching for one that's future is much brighter than just the lights of the showing, then your appraisal will be well warranted here.

Lot
32

M2C JANET 124J

BD: 5/4/21
ASA: 3952115
TATTOO: 124J
BW: 76

TL LEDGER M2C EASTON 742E
MR CCF LEDGER G702 **M2C GENE 923G**
MISS CCF SHEZA BONNIEY61 M2C EMILY 734E

OPEN HEIFER | 3/4 SM 1/4 AN

CE	BW	WW	YW	MCE	MILK	MWW
9.9	1.5	66.3	101.4	4.8	18.8	51.9
STAY	DOC	CW	MARB	REA	API	TI
13.5	8.4	27.9	0.12	0.63	109.9	65.1

M2C Janet 124J is the long bodied, ultra-attractive and flexible jointed daughter of our impressive herd sire, MR CCF Ledger G702 that is quickly leaving his mark on our cowherd. As a May calf this one may not be to the same level of maturity as some of the rest of the offering, however we think that as she develops her quality will impress even the most astute cattle enthusiasts.



Lot 33 - M2C DAISY DUKE 106J

This initial calf crop of MR CCF The Duke progeny have us excited to keep using his influence at the breeding box, the combination of power, dimension and structural integrity he is delivering is impressive. You will notice the sire of significance on the maternal side of Daisy Duke 106J to be Profit, and then turn to her maternal Grand Dam and see another member of Simmental royalty, the SVF Above & Beyond T87 matron. In short we just hope you realize the maternal power that has equated to what we will bring to Jefferson, Georgia.



MR CCF THE DUKE
Sire of Lot 33



Lot 34 - WPCC GEMSTONE J056

A late March born Purebred daughter of W/C Relentless 32C that has the big belly, shapely rib cage and big, soft running gear. We love the stoutness and body shape Gemstone J056 combines with the good looks and soft hair type. You'll notice the One Eyed Jack female on the bottom side of her pedigree, with this comes udder quality and mothering ability.



TNGL A GEMSTONE A527
Maternal Grandam of Lot 34

<div><i>Lot</i> 33</div>		M2C DAISY DUKE 106J				
BD: 4/3/21		ASA: 3896775		TATTOO: 106J		BW: 76
MR CCF VISION			PROFIT			
MR CCF THE DUKE			M2C GENA 916G			
HTP SVF DEW THE STROKE			SVF ABOVE & BEYOND T87			
OPEN HEIFER PB SM						
CE	BW	WW	YW	MCE	MILK	MWW
9.3	2.9	78	113.8	4.3	19.9	58.9
STAY	DOC	CW	MARB	REA	API	TI
12.7	7.7	22.9	0.04	0.81	113.3	73.4

Lot
34

WPCC GEMSTONE J056

BD: 3/26/21

ASA: 3952214

TATTOO: J056

BW: 77

YARDLEY UTAH Y361

W/C RELENTLESS 32C

MISS WERNING KP 8543U

TLLC ONE EYED JACK

FSCI MS GEMSTONE JK D056

TNGL A GEMSTONE A527

OPEN HEIFER

PB SM

CE	BW	WW	YW	MCE	MILK	MWW
9.1	2.7	72.7	99.9	1.5	19	55.3
STAY	DOC	CW	MARB	REA	API	TI
9.8	10.6	15.6	0.12	0.88	111.9	72.1



Lot 35 - S/P RIGHT IN LOVE J484



S/P TRUE LOVE F789
Maternal Sister to Lot 35



HPF RIGHT TO LOVE 283C
Dam of Lot 35



S/P TRUE LOVE F789
*2020 AJSA National Classic Reserve Grand
Champion Purebred – Maternal Sister to Lot 35*

We love the unique, seamless outline of this Purebred daughter of LLSF Pays To Believe ZU194 and believe that her build is a difficult one to replicate. From the profile you have to admire the elongated neck, swoop to her middle third and neat chest floor of Right In Love J484, on the move she only continues to add positive adjectives to our description of her. However, once you begin investigating the maternal lineage that supports her it becomes evident that this quality does not come from chance, HPF Right To Love 283C was our selection out of the historic Hudson Pines Dispersal. She stems from a long line of matriarchal females in the Simmental breed, and she herself has written quite the chapter for our program. A maternal sister sired by W/C Executive Order 8543B was the impressive baldy female campaigned by Sara Sullivan that was selected as the 2020 AJSA National Classic Reserve Grand Champion Purebred in Brookings, South Dakota. S/P True Love F789 has evolved into an absolute beauty of a mature cow for Bloomberg Cattle. There is no denying the influence of the great RP/MP Right To Love 015U, and the impact that she has had on the breed. We think this April female is special, and has the ability to be a cornerstone type female in any program.

<i>Lot</i> 35		S/P RIGHT IN LOVE J484				
BD: 4/17/21	ASA: 3952213	TATTOO: J484	BW: 74			
CNS PAYS TO DREAM T759		W/C WIDE TRACK 694Y				
LLSF PAYS TO BELIEVE ZU194		HPF RIGHT TO LOVE 283C				
LLSF URABABYDOLL U194		RP/MP RIGHT TO LOVE 015U				

OPEN HEIFER | PB SM

CE	BW	WW	YW	MCE	MILK	MWW
8.4	3.4	85.7	129.7	4.2	20.8	63.5
STAY	DOC	CW	MARB	REA	API	TI
11.4	12.7	38.7	0.16	0.86	121.9	80.5

<i>Lot</i> 35A&B		3 OR 6 EMBRYOS				
HPF/HILL UPRISING C104		W/C WIDE TRACK 694Y				
SO REMEDY 7F		HPF RIGHT TO LOVE 283C				
B&K CREAM SODA 8D		RP/MP RIGHT TO LOVE 015U				

EMBRYOS | PB SM

CE	BW	WW	YW	MCE	MILK	MWW
9.2	3.1	86.2	134.1	3.8	21	64
STAY	DOC	CW	MARB	REA	API	TI
11.7	14.5	38.6	-0.01	0.86	116	77.6

Offering 3 or 6 Non-Sorted IVF embryos. Guaranteeing 1 60-day pregnancy per 3 embryos if transferred by a certified technician.



Lot 36 - MISS CCF LIBERTY

If there was ever a cow family that has done it all it would be the Hairietta family line. Here is a Purebred daughter out of our Steel Force America donor by MR CCF The Duke, a full sib to the popular and now deceased MR CCF 20-20. Talk about a successful pedigree on top and bottom side. Liberty is green but loaded with potential. From the ground up she is sound, has the lower depth and is cool fronted. Patience, feed, and a little time is all she needs.

Lot
36

MISS CCF LIBERTY

BD: 4/20/21 ASA: 3949665 TATTOO: J57 BW: 80

MR CCF VISION
MR CCF THE DUKE
HTP SVF DEW THE STROKE

SVF STEEL FORCE S701
MISS CCF AMERICA X3
HARAS MISS AMERICA

OPEN HEIFER | PB SM

CE	BW	WW	YW	MCE	MILK	MWW
10.8	1.9	68.5	94.7	4.7	15	49.2
STAY	DOC	CW	MARB	REA	API	TI
10.6	5.4	17	-0.02	0.82	107.8	66.9



HARAS MISS USA

Full sister to Maternal Grandam of Lot 36



Mark your calendar for our
CLEAR VISION
SPRING PRODUCTION SALE
March 11, 2021



Lot 37 - L/P QUEEN OF DENIAL J109

A Purebred daughter of the one of the breeds most talked about sires, JSUL Something About Mary 8421, in this first calf crop he has already sired a \$100,000 Percentage that sold earlier this Fall. The dam of J109 is a Mr. Vision daughter that originated in the SVJ program, if you trace her pedigree back a couple of generations you will find perhaps one of the most influential females of where we are today in the Simmental breed, HART Hollywood Queen 700, a female that has over 270 direct progeny listed in the breeds registry. Phenotypically we aren't sure there is much you would want to change about this one, so dense and massive, rugged bone design and the eye appeal necessary to be noticed.



CNS QUEEN ME S613
Maternal Grandam to Lot 37

If you're open to working with one that might be in one of the smaller divisions at the AJSA National Junior Heifer Show, then your attention here would be well warranted! Here is a stylish May born daughter of the National Champion TJSC Hammer Time 35D that is striking from any vantage point. This Purebred is shapely about her mid-section and square about her stance, we love her baldy face and the presence she struts with.



Lot 38 - WPCC J036



CAJS SWEET EMOTION 42Z
Maternal Grandam of Lot 38

Lot
37

L/P QUEEN OF DENIAL J109

BD: 3/12/21
ASA: 3912973
TATTOO: J109
BW: 76

W/C RELENTLESS 32C
JSUL SOMETHING ABOUT MARY 8421
JBSF PROUD MARY

MR CCF VISION
SVJ QUEEN OF DENIAL E109
CNS QUEEN ME S613

Lot
38

L/P EMOTION J036

BD: 5/6/21
ASA: PENDING
TATTOO: J036
BW: 82

MR TR HAMMER 308A ET
TJSC HAMMER TIME 35D
TJSC SO SWEET 104X

W/C LOADED UP 1119Y
FSCI MS LOADED UP D036
CAJS SWEET EMOTION 42Z

OPEN HEIFER PB SM						
CE	BW	WW	YW	MCE	MILK	MWW
10.8	3.2	80.6	114	4.6	17.9	58.2
STAY	DOC	CW	MARB	REA	API	TI
11.5	11.7	23.9	0.07	0.85	114.3	75.3

OPEN HEIFER PB SM						
CE	BW	WW	YW	MCE	MILK	MWW
12.1	1.3	70.45	105.1	5.25	18.15	53.35
STAY	DOC	CW	MARB	REA	API	TI
13.7	10.6	29.75	-0.01	0.9	119.4	69.9



Lot 39 - WPCC MARY J518

A Purebred daughter of the promotional sire, JSUL Something About Mary that has created quite the stir with his rookie calf crop, and out of a beautiful FBF1 Combustible female. This solid black late February born heifer calf leaves nothing further to be desired in regards to stoutness of feature and dimension, yet the way she collects herself on the move is impressive. We think this one is very unique from the standpoint of her build, and offers a pedigree that is versatile enough to mate to many of the popular options the industry is trending towards.



2019 SIMMENTAL BREEDERS
SWEEPSTAKES GRAND CHAMPION
COW-CALF PAIR

Dam of Lot 40

Out of the 2018 GA National Fair Supreme Champion Female and 2019 Champion Purebred Pair at the Simmental Breeders Sweepstakes! Its exciting when champions can prove to make high quality offspring. Glory exemplifies a lot of what we thought her mother was as a show heifer. Long, level, big center ribbed, and good footed. Here at C&C we used MR CCF The Duke heavily this past breeding season. With the quality of his first offspring, we will continue to do so. Check this one out on sale day.



Lot 40 - MISS CCF J50

Lot 39		WPCC MARY J518				
BD: 2/28/21		ASA: 3912974		TATTOO: J518		BW: 72
W/C RELENTLESS 32C			FBF1 COMBUSTIBLE			
JSUL SOMETHING ABOUT MARY 8421			WPCC KHLOE 518C			
JBSF PROUD MARY			SS/TBT KHLOE 200Y			
OPEN HEIFER PB SM						
CE	BW	WW	YW	MCE	MILK	MWW
10.7	3.1	76.3	113.1	4.2	16	54.1
STAY	DOC	CW	MARB	REA	API	TI
14.4	11.5	34.2	0	0.8	115.1	70.6

<div>Lot 40</div>		MISS CCF/TGF GLORY				
BD: 4/6/21		ASA: 3954107		TATTOO: J50		BW: 82
MR CCF VISION			LLSF PAYS TO BELIEVE ZU194			
MR CCF THE DUKE			HF-PAYS TO SHINE			
HTP SVF DEW THE STROKE			HLVW SECRET SHINE 101A			
OPEN HEIFER PB SM						
CE	BW	WW	YW	MCE	MILK	MWW
10.85	1.7	71.85	103	5.45	19.95	55.8
STAY	DOC	CW	MARB	REA	API	TI
12.05	11.7	28.6	0.08	0.94	118.8	72.5



Lot 41 - WPCC REBA J517

A massive bodied half blood female that screams cow power and maternal, WPCC Reba J517 is a direct daughter of National Champion Percentage Simmentals on either side of her pedigree, her sire, FHEN Halftime A127 won Louisville in 2014 and her mother DAF Reba C85 was a many times champion for Sara Sullivan. Full siblings to J517 have headlined the Percentage Simmental show string for Sara since and today lies your opportunity to follow suite. We love the body shape, structure and power of this January female, and feel that her new showman best have some space left on the walls to hang the banners she will collate.



2017 NWSS GRAND CHAMPION
PERCENTAGE FEMALE

Full Sister to Dam of Lot 41



2016 NWSS GRAND CHAMPION
PERCENTAGE FEMALE - Dam of Lot 41



2021 AMERICAN ROYAL SUPREME
CHAMPION JUNIOR BREEDING
HEIFER - Maternal Sister to Lot 41

Lot
41

WPCC REBA J517

BD: 1/30/21 ASA: PENDING TATTOO: J517 BW: 80

S A V BRILLIANCE 8077
FHEN HALFTIME A127
R&R MISS CUT ABOVE Y127

SILVEIRAS STYLE 9303
DAF REBA C85
DAF REBA U16

OPEN HEIFER | 1/2 SM 1/2 AN

CE	BW	WW	YW	MCE	MILK	MWW
11.05	2.45	70.65	113.4	5.9	20.95	56.25
STAY	DOC	CW	MARB	REA	API	TI
18.7	12.2	32.35	0.27	0.57	130.5	70.4



Lot 42 - MISS CCF PEARL



2019 GA NATIONAL FAIR 3RD OVERALL JUNIOR
BREEDING HEIFER - *Dam of Lot 42*

Lot
42

MISS CCF PEARL

BD: 3/23/21 ASA: 3949665 TATTOO: J57 BW: 83

MR CCF VISION
MR CCF THE DUKE
HTP SVF DEW THE STROKE

MR CCF COMMON COURTESY
MISS CCF PANDA
X23

OPEN HEIFER | 5/8 SM 1/4 CS 1/8 AN

CE	BW	WW	YW	MCE	MILK	MWW
11.5	1.8	74.9	107.5	5.5	18	55.4
STAY	DOC	CW	MARB	REA	API	TI
10.3	8.3	23.7	0.13	0.78	119.3	74.9

This 3/4 blood female is a head turner! Her mother was campaigned by Madyson McDaniel and had much success! Most importantly she has become a unique asset in our donor program. Study Pearl and her overall build. The Duke progeny are giving that extra look but still have some added broodiness, and structure that will last for years to come. This Panda daughter is green but has a very bright future. Not to mention she's one breeding away from making a Purebred!





Lot 44 - WPCC STAR STRUCK G235



SVJ SHE'S THE DREAM B796

Maternal Sister to Dam of Lot 44

Lot 43 **MISS CCF DENY ME**
 BD: 3/20/19 ASA: 3950190 TATTOO: G39 BW: 79
 MR HOC BROKER SS GOLDMINE L42
MR CCF COMMON COURTESY **MISS CCF P06**
 JAS JESTRESS 9015 HF GFI QUEENOFDENIAL C42

COW | 3/4 SM 1/4 AN

CE	BW	WW	YW	MCE	MILK	MWW
11.6	2	67.1	98.3	5.4	22.1	55.6
STAY	DOC	CW	MARB	REA	API	TI
13.7	7.8	17.5	0.18	0.54	112.5	67.2

Out of one of the most consistent donors we have ever worked with, Miss CCF P06. When young females like G39 begin their years in production the way she has, it's hard to part with them. We just wish we had 100 more built and bred just like her. Her sire, MR CCF Common Courtesy is a MR HOC Broker x Jestress 9015 that was sold for \$7,500 this past year to the Elmore Family in South Carolina. Sound, good built, and perfect udder quality... what more can you ask for in a first calf heifer?

Lot 44 **WPCC STAR STRUCK G235**
 BD: 4/15/19 ASA: 3952212 TATTOO: G235 BW: 68
 HILB ORACLE C033R YARDLEY HIGH REGARD W242
HILB/SHER DATA BREACH **SVJ SHINING STAR E235**
 SHER GLITTER TIME 012X SVJ SHE'S THE DREAM Y728

COW | PB SM

CE	BW	WW	YW	MCE	MILK	MWW
11.5	0.8	74.9	111.8	4.8	23.6	61
STAY	DOC	CW	MARB	REA	API	TI
13.8	15.4	24.5	0.07	0.83	122.9	75.8

WPCC Star Struck G235 is a stout made, big centered daughter of the National Champion Data Breach. The dam of G235 is a maternal sister to the \$100,000 red donor dam, SVJ She's The Dream B796, who raised the NAILE, NWSS, and FWSS Grand Champion Percentage Simmental Female for Sullivan Farms and Buck Creek Ranch. She sells with a sharp featured Hammer Time heifer calf at side!

Lot 43A **MR CCF J91**
 BD: 9/20/21 ASA: 3956210 TATTOO: J91 BW: 84
 MR CCF VISION MR CCF COMMON COURTESY
MR CCF THE DUKE **MISS CCF DENY ME**
 HTP SVF DEW THE STROKE MISS CCF P06

BULL CALF | PB SM

CE	BW	WW	YW	MCE	MILK	MWW
10.7	2.8	72.8	105	5.3	19.3	55.1
STAY	DOC	CW	MARB	REA	API	TI
13.1	8.7	22.4	0.11	0.78	121	72.4

Lot 44A **WPCC STAR J23**
 BD: 9/26/21 ASA: 3952229 TATTOO: J23 BW: 67
 MR TR HAMMER 308A ET HILB/SHER DATA BREACH
TJSC HAMMER TIME 35D **WPCC STAR STRUCK G235**
 TJSC SO SWEET 104X SVJ SHINING STAR E235

HEIFER CALF | PB SM

CE	BW	WW	YW	MCE	MILK	MWW
11	1.5	74.2	111.3	3.5	19.9	57
STAY	DOC	CW	MARB	REA	API	TI
13.6	13.2	27	0.08	0.78	120.7	74.1

MR CCF COMMON COURTESY

Sire of Lot 43





Lot 45 - MM SHADOE 5121

You can check the inventory records around the ranch and not find too many Purebred Angus females on the charts, so when you do find one, just realize they have had to pull their weight, or be very easy on the eyes to hold their spot at the feed bunk. A direct daughter of the Angus phenom EXAR Blue Chip 1877B, a sire that has immortally left his mark on the Angus breed as the producer of high selling and award winning seedstock. We purchased Shadoe 5121 from the Grimes Family of Ohio, as a centerpiece for building the Percentage Simmental program here at C&C. The BC Lookout female on the maternal side of 5121 remains a mainstay donor female for Maplecrest Farms, and her Grandam is the infamous Gambles Shadoe 3117 that was Reserve Grand Champion Female at the Angus Junior Nationals for the Schnoor Family. There are generations of the Angus breeds most potent cow families aligned in the pedigree of 5121.



GAMBLE SHADOE 3117 - Maternal Grandam to Lot 45

<div>Lot</div> <div>45</div>	MM SHADOE 5121			
	BD: 9/7/14	ASA: 3375952	TATTOO: 5121	BW: 75
	DAMERON FIRST CLASS		B C LOOKOUT 7024	
	EXAR BLUE CHIP 1877B		GAMBLES SS SHADOE 6011	
	GREENS PRINCESS 1012		GAMBLES SHADOE 3117	

COW | PB AN

CE	BW	WW	YW	MCE	MILK	MWW
7.5	-0.1	61.1	82.9	3.7	14.2	44.7
STAY	DOC	CW	MARB	REA	API	TI
13.3	11	31.9	0.46	0.09	103.3	59.3

<div>Lot</div> <div>45A</div>	MR CCF J103			
	BD: 10/22/21	ASA: 3956211	TATTOO: J103	BW: 73
	MR CCF VISION		EXAR BLUE CHIP 1877B	
	MR CCF THE DUKE		MM SHADOE 5121	
	HTP SVF DEW THE STROKE		GAMBLES SS SHADOE 6011	

BULL CALF | 1/2 SM 1/2 AN

CE	BW	WW	YW	MCE	MILK	MWW
9.9	0.5	66.7	92.4	4.5	16	49.7
STAY	DOC	CW	MARB	REA	API	TI
12.9	10.3	29.6	0.26	0.55	115.5	68.2



Bid Live Online CCI.live

"Gavel's Down, The Best in Online Marketing"

(516) 366-0734 CCI.live schedule@cci.live



How to Bid Online

Tips and Tricks to Master Online Bidding

STEP 1. Use Chrome or Safari, a newer browser or download the CCI.live app at Google Play or Apple App store.

STEP 2. Open your app or go to the address of www.CCI.live in your browser. CCI.live can be used on a cell phone, tablet, laptop or desktop. Some older models may not be compatible and will show a yellow caution symbol if so.

STEP 3. Create an account and then request bidding credentials through CCI.live. Use the bank information listed on your check. Please use a correct phone and email address.

STEP 4. Once you are accepted for bidding credentials you will receive a text message and/or email notification. Proceed to "Get Buyer Number" on the actual sale page of your interest. Some sales may also require a passcode to obtain a buyer number. On these auctions, you will obtain passcodes from the sale office phone number for the specific auction you are interested in. Please closely read the terms!

STEP 5. You are ready to go! Make sure you understand, once you are logged in, have a buyer number and are watching the sale that you are on a highly sensitive web page. **Be careful when scrolling that you do not accidentally hit the bid button and watch children closely as they tend to grab cell phones and accidentally bid.**

TIPS FOR SUCCESSFUL BIDDING

- Make sure you have good service. Bidding and driving is not recommended. You should have two - three bars on your cellular devices. At home you should have an UPLOAD speed of 2 mg or more UP. Use this site to test your internet: www.speedtest.net.

REFRESH YOUR SCREEN AT SALE TIME

If you have logged in over an hour prior to sale time, you may need to login again. DO NOT let the computer set idle and then return and try to bid, the website may have logged you out.

CCI.live does not accept payment, you will pay the sale management, farm or ranch direct.

Help videos can be found at www.CCI.live



The Bulls



Lot 101 - HBE G-MONEY

Lot
101

HBE G-MONEY

BD: 1/2/20 ASA: 3721528 TATTOO: H51 BW: 87

W/C LOADED UP 1119Y

MR CCF 20-20

W/C BANKROLL 811D

T-T BLACKBIRD E51

MISS WERNING KP 8543U

CHAMPION HILL BLACKBIRD 8003

AGE ADVANTAGE BULL | 3/4 SM 1/4 AN

CE	BW	WW	YW	MCE	MILK	MWW
9.5	2.6	91.5	138.5	4.8	19.7	65.4
STAY	DOC	CW	MARB	REA	API	TI
14.6	11	49.2	0.31	1.1	127.8	84

G-Money was born in the showbarn and knew he was a show bull since birth! His dam E51 was shown by Hailey Eads very successfully and has become a lead donor. E51 was Reserve Percentage Female at the 2018 South Central Regionals and Champion 4-H Percentage Female at the 2019 Missouri State Fair. G-Money followed along in his mother's footsteps and has had many great days in the showing, highlights include his recognition as the Champion B&O Percentage Bull at the 2020 Simmental Junior Nationals and the Champion FFA Percentage Bull at the 2021 Missouri State Fair. G-Money is moderate framed, long bodied, big footed and extremely sound, with extra muscle shape and dimension. He is a true stand out and been a barn favorite anywhere he has been shown. Check him out on display at the 2021 NAILE.



CHAMPION HILL BLACKBIRD 8003 - Maternal Grandam of Lot 101



T-T BLACKBIRD J06

Maternal Sister to Dam of Lot 101, sired by W/C Bankroll 811D



Lot 102 - MR CCF THE INFLUENCE

Lot
102

MR CCF THE INFLUENCE

BD: 11/10/19 ASA: 3949690 TATTOO: G524 BW: 79

HPF QUANTUM LEAP Z952

FBF1 COMBUSTIBLE

WLE COPACETIC E02

MISS AF BLAZE

CMFM JOY 02ZB

JAS JESTRESS 9015

AGE ADVANTAGE BULL | 5/8 SM 3/8 AN

CE	BW	WW	YW	MCE	MILK	MWW
14.6	1.1	80.1	122.5	6.7	18.9	58.9
STAY	DOC	CW	MARB	REA	API	TI
13.7	7.3	39.3	0.2	0.79	127.2	76.6

MR CCF The Influence stands alone as the sole two-year-old member of this year's Clear Visions bull offering, he is a phenotypically impressive, high performing and extra ruggedly designed son of the WLE Copacetic E02 bull that is quickly writing his name among the most utilized bulls of the current day. The Influence is a litter mate to the featured heifer calves that the Hazelbaker and Seay Families selected out of the 2020 edition of Clear Visions and we think the set of replacements he could generate will be head turning to say the least.



WLE COPACETIC E02 - Sire of Lot 102



CMFM JOY 02ZB - Paternal Grandam of Lot 102



Lot 103 - MR CCF LIKEWISE

Lot
103

MR CCF LIKEWISE

BD: 2/2/20 ASA: 3949685 TATTOO: H129 BW: 79

HPF QUANTUM LEAP Z952
WLE COPACETIC E02
CMFM JOY 02ZB

FBF1 COMBUSTIBLE
MISS CCF JESTRESS B79
JAS JESTRESS 9015

AGE ADVANTAGE BULL | 5/8 SM 3/8 AN

CE	BW	WW	YW	MCE	MILK	MWW
14.8	1.1	79.7	121.3	7	18.9	58.7
STAY	DOC	CW	MARB	REA	API	TI
12.6	9	34.4	0.14	0.79	121.1	74.6

Likewise is a bull with a pedigree for the times. Sired by the popular WLE Copacetic and his dam is the Jestress B79 donor. This bull is extended in every way possible. Long spined and powerful out through his hip. Extremely extended up through his front 1/3. With all of this extension, he still maintains his balance with the structure that will make him last for years.



MISS CCF
JESTRESS B79
Dam of Lot 103



2016 SIMMENTAL
BREEDERS
SWEEPSTAKES
SUPREME
CHAMPION



2017 AJSA
NATIONAL
CLASSIC GRAND
CHAMPION
PERCENTAGE COW
CALF PAIR



2017 SIMMENTAL
BREEDERS
SWEEPSTAKES
GAND CHAMPION
PERCENTAGE COW
CALF PAIR



Lot 104 - MR CCF CHANGE UP

Talk about a stout, rugged bull that is super sound, big footed and could cover a large set of cows. Change up is what we like to think of as a multipurpose bull that should add some look along with some growth, power and performance to his calf crops.



W/C EXECUTIVE ORDER 8543B

Sire of Lot 104



Lot 105 - MR CCF UNDERCOVER

Undercover is backed by one heck of a proven winning pedigree. The Executive Order x Jestress B79 mating has been one the most consistent matings we have had here at C&C. State and national winners, with the most recent being Champion Percentage Simmental Bull at the 2021 Simmental Breeders Sweepstakes. This young bull hasn't been awarded the accolades in the showing but sure has the all of the right pieces and the genetic background to enhance anyone's herd.

<i>Lot</i> 104	MR CCF CHANGE UP			
	BD: 2/12/20	ASA: 3949683	TATTOO: H127	BW: 79
	W/C UNITED 956Y	FBF1 COMBUSTIBLE		
	W/C EXECUTIVE ORDER 8543B	MISS CCF JESTRESS B79		
	MISS WERNING KP 8543U	JAS JESTRESS 9015		

AGE ADVANTAGE BULL | 5/8 SM 3/8 AN

CE	BW	WW	YW	MCE	MILK	MWW
15.6	-1	78.5	121.1	7.5	19.1	58.3
STAY	DOC	CW	MARB	REA	API	TI
10.9	12.4	32.7	0.17	0.8	124.6	77.5

<div>Lot</div> <div>105</div>	MR CCF UNDERCOVER			
	BD: 9/12/20	ASA: 3949684	TATTOO: H158	BW: 79
	W/C UNITED 956Y	FBF1 COMBUSTIBLE		
	W/C EXECUTIVE ORDER 8543B	MISS CCF JESTRESS B79		
	MISS WERNING KP 8543U	JAS JESTRESS 9015		

AGE ADVANTAGE BULL | 5/8 SM 3/8 AN

CE	BW	WW	YW	MCE	MILK	MWW
15.6	-1	78.5	121.1	7.5	19.1	58.3
STAY	DOC	CW	MARB	REA	API	TI
10.9	12.4	32.7	0.17	0.8	124.6	77.5



Lot 106 - MR CCF MASTERMIND

Mastermind is fun to look at out in the field. He grabs your attention with his overall composition. It's just hard to pick a big hole in this one. His mother was Reserve Champion Percentage Female in the 2016 NAILE Jr. Show and has gone on to be a donor female for our program, she is consistently making high quality cattle with a unique look.



MR CCF 20-20 - *Sire of Lot 106*



Lot 107 - MR CCF RECKLESS

An investment made here would be anything but reckless, because this homozygous polled son of MR CCF 20-20 would be a great addition to any cowherd that pays attention to structural integrity, udder quality and longevity. You will hear us harp on about how much we like these 20-20 cattle regardless of sex, because we truly believe that we will feel his influence for generations to come in our cowherd. He goes back to the Jestress cow family on the bottom side, it does not get anymore from the heart of our breeding program than this. **Retaining 1/3 Semen Interest.**



MISS CCF JESTRESS C12 - *Dam of Lot 107*

<div><i>Lot</i></div> <div>106</div>	MR CCF MASTERMIND			
	BD: 9/16/20	ASA: 3949686	TATTOO: H121	BW: 79
	MR CCF VISION	FBF1/SF IGNITION		
	MR CCF 20-20	MISS CCF JESTRESS C12		
	HTP SVF DEW THE STROKE	JAS JESTRESS 9015		

AGE ADVANTAGE BULL | 3/4 SM 1/4 AN

CE	BW	WW	YW	MCE	MILK	MWW
14.6	0.6	75.2	108.7	6.2	9.8	47.4
STAY	DOC	CW	MARB	REA	API	TI
14.7	10.6	24.7	0.14	0.81	123.9	71.8

<div>Lot</div> <div>107</div>	MR CCF RECKLESS			
	BD: 9/15/20	ASA: 3949687	TATTOO: H141	BW: 79
	MR CCF VISION	FBF1/SF IGNITION		
	MR CCF 20-20	MISS CCF JESTRESS C12		
	HTP SVF DEW THE STROKE	JAS JESTRESS 9015		

AGE ADVANTAGE BULL | 3/4 SM 1/4 AN

CE	BW	WW	YW	MCE	MILK	MWW
14.6	0.6	75.2	108.7	6.2	9.8	47.4
STAY	DOC	CW	MARB	REA	API	TI
14.7	10.6	24.7	0.14	0.81	123.9	71.8



Lot 110 - MR CCF SHARP SHOOTER

<i>Lot</i> 108	BD: 2/15/20	ASA: PENDING	TATTOO: H189	BW: 82
--------------------------	-------------	--------------	--------------	--------

MR CCF VISION
MR CCF 20-20
HTP SVF DEW THE STROKE

MR HOC BROKER
MISS CCF DIANA D117
JAS JESTRESS 9015

AGE ADVANTAGE BULL | High Percent

CE	BW	WW	YW	MCE	MILK	MWW
12.8	1.4	80.55	117.6	5.5	11.6	51.85
STAY	DOC	CW	MARB	REA	API	TI
11.95	5.8	23.35	0.14	0.89	117.4	74.3

MR CCF Clear-Sighted is a stylish 20-20 son that is backed by Miss CCF Diana D117, the MR HOC Broker daughter of the great JAS Jestress 9015. He is smooth made, sound footed, and built to last! H189 combines the most proven cow families of C&C Farms.

<i>Lot</i> 110	BD: 9/15/20	ASA: 3949688	TATTOO: H124	BW: 80
--------------------------	-------------	--------------	--------------	--------

MR CCF VISION
MR CCF 20-20
HTP SVF DEW THE STROKE

MR HOC BROKER
MISS CCF BREAKING HEARTS
MISS CCF FANTASY U18

AGE ADVANTAGE BULL | PB SM

CE	BW	WW	YW	MCE	MILK	MWW
9.8	2.9	73.8	103.7	3.1	11.4	48.3
STAY	DOC	CW	MARB	REA	API	TI
13.2	6.3	16.6	-0.05	1	110.9	68.1

This 20-20 son has a cocky look about him. He is stout, big centered and sound on his feet and legs. His dam is the Breaking Hearts donor who we are selling half interest in, in this sale. His maternal sisters brought \$19,500, \$15,000, and \$6,500 back in the Spring Clear Vision Sale. Add this young bull to your operation to increase longevity and correctness in the cowherd.

<i>Lot</i> 109	BD: 1/10/20	ASA: 3949689	TATTOO: H125	BW: 80
--------------------------	-------------	--------------	--------------	--------

MR CCF VISION
MR CCF 20-20
HTP SVF DEW THE STROKE

MR HOC BROKER
MISS CCF BREAKING HEARTS
MISS CCF FANTASY U18

AGE ADVANTAGE BULL | PB SM

CE	BW	WW	YW	MCE	MILK	MWW
9.8	2.9	73.8	103.7	3.1	11.4	48.3
STAY	DOC	CW	MARB	REA	API	TI
13.2	6.3	16.6	-0.05	1	110.9	68.1

Essential is a stout made bull sired by MR CCF 20-20 and out of the Breaking Hearts donor. A solid black Purebred bull that is impressive in his overall muscle shape while still maintaining a nice look from the side.



MISS CCF BREAKING HEARTS - *Dam of Lots 109 - 110*



Lot 111 - MR CCF H157



MR CCF VISION - *Sire of Lot 111*



MISS CCF SHEZA BONNIE Y61 - *Dam of Lot 111*



MR CCF H157

BD: 9/9/20 ASA: 3949693 TATTOO: H157 BW: 79

MR NLC UPGRADE U8676

GAMBLES HOT ROD

MR CCF VISION

MISS CCF SHEZA BONNIEY61

GCF MISS ELSA

MISS CCF SHEZA LOOKER

AGE ADVANTAGE BULL | 3/4 SM 1/4 AN

CE	BW	WW	YW	MCE	MILK	MWW
9.7	1.5	67.4	101.2	3.9	15.6	49.2
STAY	DOC	CW	MARB	REA	API	TI
10.3	8.4	31.4	0	0.84	97.7	63

H157 is a direct son of MR CCF Vision, the sire of the great MR CCF 20-20. The dam of this stout featured Fall Yearling herd sire prospect is the past Clear Vision sale feature and National Champion, Miss CCF Sheza Bonnie Y61. A powerful SimAngus mating!



Lot 112 - MR CCF H156

H156 is the stout featured, performance driven son of the \$250,000 TL Ledger. This Purebred herd sire prospect is backed by the widely popular and proven Miss CCF Sheza Looker cow family. A powerful herd bull that will add pounds, look, and generations of predictable lineage to any cowherd!



MISS CCF SHEZA DREAMER

Dam of Lot 112



Lot 113 - T-T 20-20 H98

This striking baldy has herd bull written all over him. J98 will make a great AI/pasture sire for a Purebred operation looking to keep consistency in their calf crop. His mother was a previous high selling pair out of the Inaugural Clear Vision sale and we think this is her best son to date. He is sound, good looking, stout, and possesses that herd bull look.

<div>Lot</div> <div>112</div>	MR CCF H156			
	BD: 9/18/20	ASA: 3949692	TATTOO: H156	BW: 80
	STF SHOCKING DREAM SJ14			
	MISS CCF SHEZA DREAMER			
PROFIT	MISS CCF SHEZA LOOKER			
TL LEDGER				
MISS STAR ABOVE				

AGE ADVANTAGE BULL | PB SM

CE	BW	WW	YW	MCE	MILK	MWW
10.6	2.2	64.8	93.3	5.7	17.7	50
STAY	DOC	CW	MARB	REA	API	TI
13.3	6	15.3	-0.04	0.56	110.3	64.1

<div>Lot</div> <div>113</div>	T-T 20-20 H98			
	BD: 12/10/20	ASA: 3947320	TATTOO: H98	BW: 76
	MR CCF VISION	WS PILGRIM H182U		
	MR CCF 20-20	MISS CCF MAYFLOWER		
	HTP SVF DEW THE STROKE	MISS CCF SHEZA BONNIEY61		

AGE ADVANTAGE BULL | PB SM

CE	BW	WW	YW	MCE	MILK	MWW
11.45	1.9	71.9	100.9	3.85	11.3	47.25
STAY	DOC	CW	MARB	REA	API	TI
11.9	8.55	20.4	0.06	0.94	117.7	71.2



Lot 114 - T-T EXCLUSIVE J146



MISS CCF SHEZA SUPERSTAR
Dam of Lot 114



KCCI EXCLUSIVE I16E
Sire of Lot 114



MISS CCF SHEZA BONNIE Y61
Maternal Granddam of Lot 114

Lot
114

T-T EXCLUSIVE J146

BD: 3/3/21 ASA: 3947310 TATTOO: J146 BW: 77

MR TR HAMMER 308A ET
KCC1 EXCLUSIVE 116E
TKCC VICTORIA 57A

HTP/SVF DURACELL T52
MISS CCF SHEZA SUPERSTAR
MISS CCF SHEZA BONNIE Y61

SPRING YEARLING BULL | PB SM

CE	BW	WW	YW	MCE	MILK	MWW
11.9	0.6	69.7	100.8	5.2	16.5	51.3
STAY	DOC	CW	MARB	REA	API	TI
15.5	9.5	18.1	0.23	0.89	133.5	76.1

Show bull, AI sire, herd bull, we think this awesome young Superstar son has the parts to do all those things very well. J146 has been a stand out in the pasture from a young age. He has the added power you would expect from a Purebred bull, while still being good jointed and sound. J146 has a great disposition with a killer look from the side. Like his maternal brother, MR CCF Clarified we believe he has a bright future and you won't be disappointed when you see him in person. We look forward to visiting with you about him in person at our stalls in Louisville, where we will have him on display.



Lot 115 - MR CCF MASTERPLAN

<div>Lot</div> <div>115</div>	MR CCF MASTERPLAN			
	BD: 2/10/20	ASA: 3949691	TATTOO: H123	BW: 80
	MR NLC UPGRADE U8676	WLE POWER STROKE		
	MR CCF VISION	HTP SVF DEW THE STROKE		
	GCF MISS ELSA	HTP SVF HONEYDEW		

AGE ADVANTAGE BULL | PB SM

CE	BW	WW	YW	MCE	MILK	MWW
12.6	2	80.6	116.9	5.7	16.9	57
STAY	DOC	CW	MARB	REA	API	TI
12.6	11.9	26.9	-0.05	1.04	118.5	74.5

A full brother to Mr CCF The Duke and the deceased Mr CCF 20-20. Sired by the popular Mr CCF Vision. Masterplan is a sleek, smooth made and sound coming 2 year old. A bull that should give some added value along with a consistent and proven pedigree.



HTP SVF DEW THE STROKE - Dam of Lot 115

<div>Lot</div> <div>116</div>	MR CCF H134			
	BD: 2/15/20	ASA: 3949694	TATTOO: H134	BW: 79
	MR HOC BROKER	EXAR BLUE CHIP 1877B		
	MR CCF COMMON COURTESY	MM SHADOE 5121		
	JAS JESTRESS 9015	GAMBLES SS SHADOE 6011		

AGE ADVANTAGE BULL | 1/4 SM 3/4 AN

CE	BW	WW	YW	MCE	MILK	MWW
10.3	0.9	70.8	102.4	5.1	15.9	51.2
STAY	DOC	CW	MARB	REA	API	TI
12.3	7.5	32.9	0.41	0.28	118.8	71.8

This set of bulls are all out of proven donors or sires from the C&C program. You will find predictable genetics in these young herd sires. They have matured well, are sound structured, and ready to go to work. All bulls have passed a Breeding Soundness Exam and are ready for cows.

*I*NNOVATION
AGGREGATING LLC
PO Box Z
Desoto, KS 66018

Presorted
First Class
US Postage
PAID
SlateGroup

Bringing our best to town!

Open Show Heifers | Proven Donors | Fall Pairs | Age Advantage Bulls | Frozen Genetics

