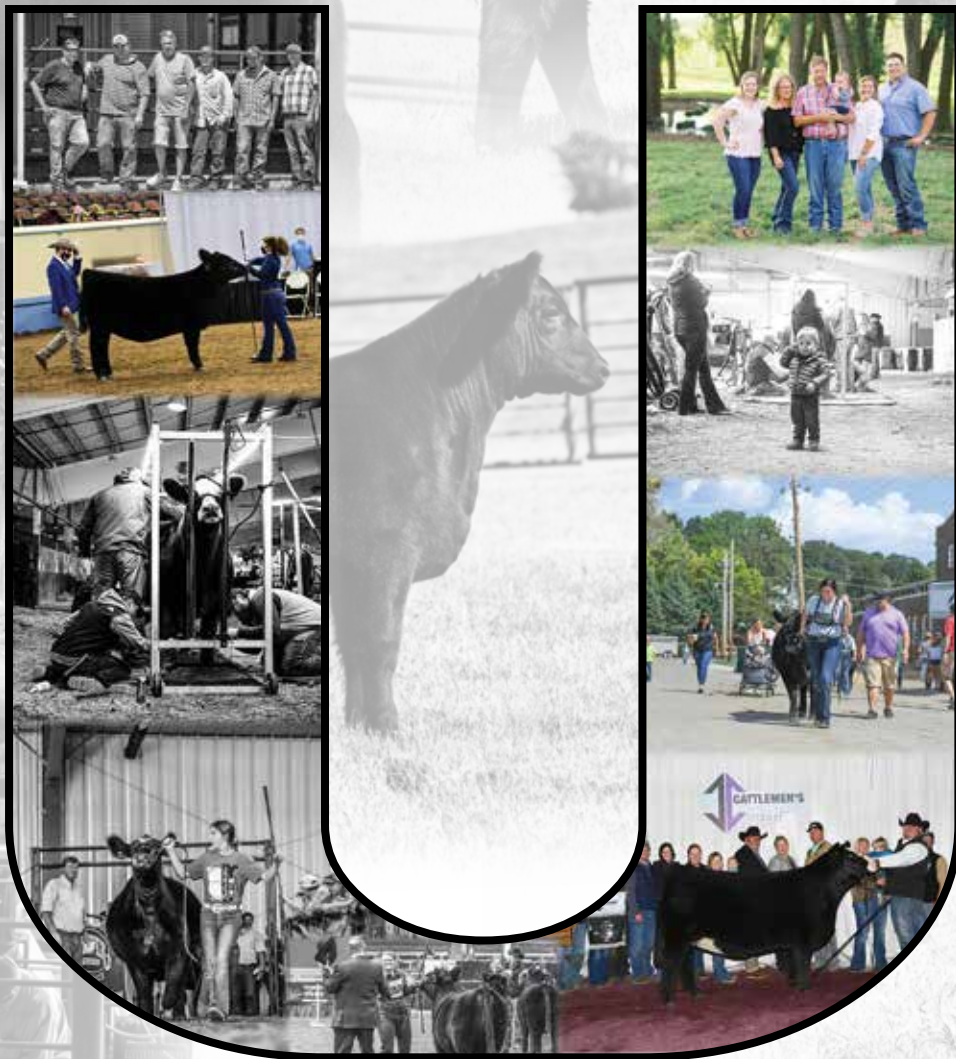


The Advantage

5th Annual Production Sale



October 16, 2021 • 6:00 PM • Sioux City, IA



WELCOME!

It is with great excitement, that we welcome you to Sioux City for our 5th annual production sale. Year after year, we have offered our very best open females, out of our very best genetics, and this year is no different. We are ecstatic about the 58 heifers we have to offer you this Fall, and believe this is a set that you will enjoy seeing in person.

Each year, we are humbled by the customers and their families that trust in our program, and we appreciate each and every one of you. No matter what your goal is, we truly enjoy working with all of you, and the memories and friendships made to this point have been priceless.

The past two years have been filled with so much uncertainty. One thing that we have never doubted though, is the commitment our crew has to our program. We can honestly say it would not be possible without every single one of them and their spouses. It is all hands on deck all year long. From making breeding decisions, working cows, running the show barn, calving, treating, breaking calves, washing, clipping... The list could go on and on. We know the sacrifices everyone has to make to make this sale and operation as a whole successful, and we really couldn't be more thankful for all of you.

We appreciate your interest in our program, and ask that you do not hesitate in contacting anyone here at Udell Cattle Co. or one of our sale consultants if you have any questions. We would be honored for you to be a part of our team this upcoming year.

Bret and Becky Udell

On Behalf of the entire UCC Family and Crew



INNOVATION

— AgMarketing, LLC —

Welcome to the fifth edition of “The Advantage” Production Sale, hosted by Udell Cattle Company. There is no question that this program has experienced as much success in the showing as any multi-breed operation in North America; a testament to the breeding program and dedication of the Udell family and their talented crew. The donor battery that resides in Sioux City, Iowa needs no introduction, with many of those matriarchs being past National Champions themselves. The accomplished class of 2020 has endured a highly successful run to date for their new owners and we are excited about their future that is on the horizon as the Fall and Winter show season approaches.

The accomplishments are unparalleled by the set of cattle that sold through The Advantage Production Sale in 2020. From countless local jackpot show champions to the 2021 Cattlemen’s Congress Reserve Grand Champion Angus Female for the Ferree family, and most recently the Indiana State Fair Reserve Supreme Champion Female that was campaigned by the Reiboldt family... the list of accolades would be difficult to duplicate. The Udell family takes great pride in the genetics that they provide to their loyal and valued customer base.

Over the last few years strong emphasis has remained on the maternal lineage that supports the sale offering. Several females that were shown by Mitchell and Maddy have become pillars in the donor program. In 2020 the Udell family bred the 2020 National Junior Angus Show Grand Champion Owned Female for Sara Sullivan, she sold as lot 24 in The Advantage 2019 marketing event. The legacy of the SLL Ellie 2201 cow family can be identified in this year’s offering as lots 11 through 14.

This summer the Goettemoeller family campaigned a JSUL Red Thunder 9051W daughter that was purchased as an embryo in Embryos on Snow to the Grand Champion title at the National Junior Chianina Show in Chickasha, Oklahoma. She was also selected as the 3rd Overall Female at the 2021 Indiana State Fair. 9051W continues to add chapters to the history books with each passing year, a true matriarch within the show cattle industry.

Once again, a strong Angus line-up will highlight the 2021 event, and there will be several high-quality females that will represent the Simmental, Percentage Simmental, Chianina, Maintainer, and Maine Angus sectors of the Udell breeding program. Regardless of which breed you are after, rest assured that the cow family behind them represents the most proven and prolific pedigrees in North America. A set of cattle that are bred in the purple!

Customer service is what sets this program apart and there is no question that the dedication and passion that this family and team provide to the junior show families is second to none. We encourage you to visit with them about the cattle with the goal of finding the right heifer for you or your junior exhibitor. We welcome you to view this powerful offering at your convenience before the sale and invite you to join us on October 16, 2021 at 6 PM for The Advantage Production Sale. CCI.Live will provide a live broadcast if you are unable to attend the sale in person. If you have questions it is encouraged to contact any of the Udell Cattle Company team members or sale staff.

Enjoy the cattle,

Graham Blagg

Ferod Shipman

Tim Anderson

The Advantage

Day of Sale Information

DAY OF SALE PHONES

Mitchell Udell - 712.899.7485
Marc Wermersen - 712.251.6456
Greg Van Zee - 712.253.0004
Bret Udell - 712.251.2527
Maddy Udell - 712.389.8241
Hannah Udell - 325.668.4895

AUCTIONEER

Jered Shipman - 806.983.7226

SALE MANAGEMENT

Graham Blagg, Innovation AgMarketing - 530.913.6418
Tim Anderson, Innovation AgMarketing - 605.682.9343

RING SERVICE

Austin Brandt, Lee AgriMedia - 712.621.1829
Kent Jaecke, Special Assignment - 405. 408.2440
Mitchell Armitage, Special Assignment - 405. 641.9438

SALE CONSULTANTS

Chris Barton - 512.373.0247
Colton Barton - 512.966.2617
Cole Greiman - 641.494.4570
Matt Johnson - 712.540.1615
Cash Langford - 254.631.3618
Wayne Ohlrichs - 402.371.0695
Barb Ohlrichs - 402.649.6911
Jeff Paulsen - 563.212.9944

PHOTOGRAPHY & CATALOG DESIGN

Maddy Udell - 712.389.8241

HEALTH All of the cattle selling will be ready for immediate shipment and accompanied by proper health certificates. UCC has a full vaccination program.

LODGING

Hampton Inn & Suites - 712.587.6984 5555
Seargent Rd - Sioux City, IA 51106

SALE TERMS & CONDITIONS Cattle will sell under the suggested terms and conditions of the respective breed association.

PHONE BIDDING Please contact a sale representative prior to sale time in order to setup a bidder's number.

SALE LOCATION

Sue Ann Farms
4800 Buckwalter Drive - Sioux City, IA 51104

INSURANCE

All cattle sold will become the responsibility of the buyer as soon as they are sold. Insurance information will be available the day of the sale.

SUPPLEMENTAL INFORMATION

A supplement sheet and sale order will be available with up-to-date information the day prior to the sale. All announcements made on the sale block as well as updates to the supplement sheet will take precedence over material listed in this catalog.

LIABILITY

All persons attending the sale and related functions do so at their own risk. All parties involved with Udell Cattle Company assume no liability, legal or otherwise, for any accidents or injuries that may occur.

PAYMENT

Terms of Sale are cash or good check with proper ID prior to load out, unless prior arrangements have been made.

REGISTRATION & TRANSFERS

Registration papers will be transferred upon completion of payment for purchases. Please let the sale clerk know at the time of settlement how you wish to have your purchases transferred.

LOAD OUT/TRUCKING

Load out will begin at the completion of sale. We ask that you pick up your purchases within a reasonable time. We are happy to assist you with trucking arrangements. However, we assume no responsibility for trucking rates.

FLUSH RIGHTS

Udell Cattle Company reserves the right to two successful flushes at the buyer's convenience and sellers expense. Also, Udell Cattle Company reserves the right to clone any female in the offering at our expense.

ONLINE BIDDING

The sale will be broadcast on CCI.live



The Advantage

Schedule of Events

Friday, October 15th 2021

6:00 PM - Friday Night Fiesta

Saturday, October 16th 2021

4:00 PM - Pre Sale Dinner

6:00 PM - *The Advantage*

Sale Location

4800 Buckwalter Drive
Sioux City, IA 51108

Pre-sale Viewing

To view The Advantage heifers before sale day, please contact either Mitchell or Marc to set up a time and place.

Mitchell: 712.899.7485

Marc: 712.251.6456



Customer Service

Customer service and the day-to-day preparation of showing is something that we are very passionate about. We want to work with our customers and are always willing to lend a helping hand. If you would like to have your heifer clipped throughout the year prior to ANY show, you are welcome to bring the cattle back to Udell Cattle Company at no additional cost to be clipped by one of our talented team members. Advice relating to breeding, feeding, daily care, and/or any question you may have is always welcome. We are here to make your project a successful and enjoyable venture for your family.

Daily Care

We have built this sale around being able to offer the highest quality of customer care as possible, in an effort to do so we offer the opportunity with a select few lots to remain under the care of Udell Cattle Company. As the sale approaches we will pinpoint a list of sale heifers that will be eligible to stay in the care and management of Udell Cattle Company. This does not mean that they must stay, but it is an option. This list is NOT a reflection of value or competitiveness and where possible we will do our best to help with any purchases. However, this will be a list of heifers that we would like to manage through their show and production careers for one reason or another. If the buyer wishes to leave their heifer, Udell Cattle Company will receive 1/3 embryo interest back in the said animal. Buyer pays the full auction price. Feed, daily care, and show costs will be pro-rated accordingly. We fully realize showing cattle is expensive; we are not looking to make a profit by caring for these show heifers but would like to evenly cover our costs



Lot 1 | UDE QUEEN RUTH 1001

AAA: 20104639 | DOB: 1.13.2021 | Tattoo: 1001 | PB Angus

CFCC Blackjack 001

KR Casino 6243

Malsons Savannah 27Y

PVF Insight 0129

KDJ Queen Ruth 502

KDJ Queen Ruth

We initiate the 2021 offering with a female that is a true outlier in any crowd. Her foot, her bone, and her three dimensional build is simply incredible. Since day one this unique built Angus female has portrayed the look and presence of a breed impacting donor prospect, and we are confident that with her maternal support staff she will do just that. Her full sister was the first one through the ring in 2020, commanding \$37,000 to the Wheeler family of Missouri. She went on to be a dominant force within division throughout the Winter and through the Summer show season. UDE Queen Ruth 1001 defies the odds, and we wholeheartedly believe that this female has the credentials to be an individual of influence for years to come.



UDE Queen Ruth 0204
Full Sister to Lot 1



KDJ Queen Ruth 502
Dam of Lots 1-6



UDE Queen Ruth 9088
Full Sister to Lot 1



Lot 2 | UDE QUEEN RUTH 1009

AAA: 20104642 | DOB: 1.19.2021 | Tattoo: 1009 | PB Angus

EXG RS First Rate S903 R3

Dameron First Class

Dameron Northern Miss 3114

PVF Insight 0129

KDJ Queen Ruth 502

KDJ Queen Ruth

There is no denying the influence that Dameron First Class and his progeny have had on the business. Plain and simple he is the most dominant and decorated sire of influence that the Angus breed has ever seen in terms of producing show heifers of elite status. Her full sister sold for \$22,000 to the Mogck family of South Dakota in 2020. Here is a true breeding piece that is backed by the legendary KDJ Queen Ruth 502 matriarch. If you're serious about hanging your hat on an Angus female that will competitively show and dominantly generate... well, here's your darlin'!



KDJ Queen Ruth 502
Dam of Lots 1-6



UDE Queen Ruth 9064
Maternal Sister to Lots 1-6



Dameron First Class
EXAR Blue Chip 1877B
Greens Princess 1012

PVF Insight 0129
KDJ Queen Ruth 502
KDJ Queen Ruth

Lot 3 | UDE QUEEN RUTH 1015
 AAA: 20106152 | DOB: 1.19.2021 | Tattoo: 1015 | PB Angus

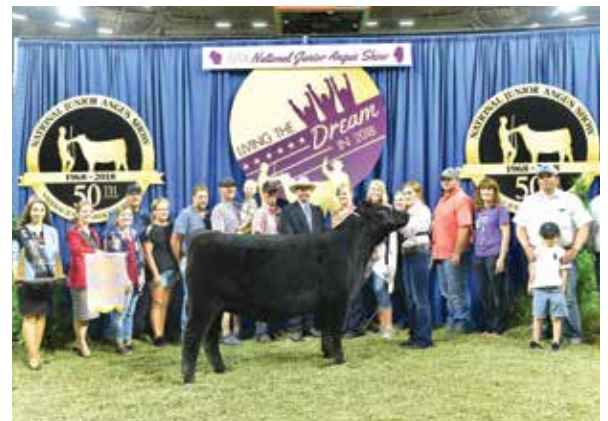


Lot 4 | UDE QUEEN RUTH 1026
 AAA: 20106154 | DOB: 2.1.2021 | Tattoo: 1026 | PB Angus



Lot 5 | UDE QUEEN RUTH 1135
 AAA: 20106155 | DOB: 3.9.2021 | Tattoo: 1135 | PB Angus

An exciting opportunity to invest in a trio of full sisters to the \$135,000 high selling female from The Advantage Production Sale in 2019, selling to Sara Sullivan. The EXAR Blue Chip 1877B sire group has flat worked in for us in Sioux City. KDJ Queen Ruth 502 was a dominant show heifer for Maddy and has evolved into a pillar for our donor pen. The amount of body, stoutness, and genuine shape that the Queen Ruth daughters possess is remarkable, and this trio is no different. We love the foot size, the added bone, and the balance that this set of flush sisters offer. Sure, there are slight differences in the three phenotypically that will sort the cattle on sale day. We will leave it up to you to decide which age class and female best suites your personal preference for the long haul. At the end of the day, they'll always be Queen Ruth daughters!



UDE Queen Ruth 109E
Maternal Sister to Lots 1-6



Lot 6 | UDE QUEEN RUTH 1221
AAA: 20104648 | DOB: 4.20.2021 | Tattoo: 1221 | PB Angus



UDE Queen Ruth 0204
Maternal Sister to Lots 1-6

SCC Tradition of 24
SCC SCH 24 Karat 838
FCF Proven Queen 419

PVF Insight 0129
KDJ Queen Ruth 502
KDJ Queen Ruth

The 24 Karat x Queen Ruth mating has resulted in a female that is an absolute outlier in terms of look, style, stoutness, and presence. The most intriguing part about this female is that she combines the influence of SCC Phyllis 419 “Lady Vi” with KDJ Queen Ruth 502, two of the most decorated Angus show heifers of the past decade. Power in the blood... we think so!





Lot 7 | UDE SARAS DREAM 1086

AAA: 20106161 | DOB: 2.14.2021 | Tattoo: 1086 | PB Angus

Dameron First Class

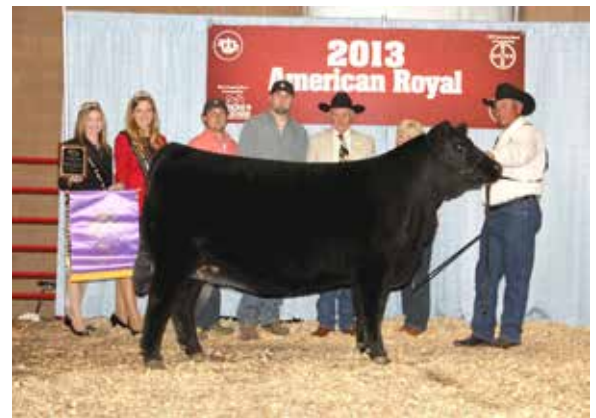
EXAR Blue Chip 1877B

Greens Princess 1012

Silveiras Style 9303

Silveiras Saras Dream 2335

EXG Saras Dream S609 R3



Silveiras Saras Dream 2335

Dam of Lots 7-10

We proudly introduce the newest member of our donor pen, Silveiras Sara's Dream 2335. She was the 2015 American Royal ROV Grand Champion Angus Heifer and is a full sister to the great Silveiras Sara's Dream 1339, most famously known as the dam of Colburn Primo 5153 and his band of dominantly competitive sisters. This February born bombshell is one of the most unique show heifer/donor prospects to ever carry the UDE prefix, plain and simple. This EXAR Blue Chip 1877B sired female is worth the trip to Sioux City to see in person. We believe that her silhouette is incredible, and we consider her basic build flawless. Her potential is unrivaled, and she can be yours on the 16th of October!



UDE Sara's Dream 1092 is a lot like her dam in terms of the overwhelming amount of body mass, shape, density, and dimension that she offers from end to end. She is so maternal in the sweep to her rib cage, bold up high, and genuine at the surface. 1092 is the type you can anchor a cow family around!

Lot 8 | UDE SARAS DREAM 1092

AAA: 20106162 | DOB: 2.21.2021 | Tattoo: 1092 | PB Angus

Dameron First Class
EXAR Blue Chip 1877B
Greens Princess 1012

X

Silveiras Style 9303
Silveiras Saras Dream 2335
EXG Saras Dream S609 R3

Here is another wide bodied, bold centered brood cow in the making from the great Silveiras Sara's Dream 2335. UDE Sara's Dream 1096 is a carbon copy of her February born sister. The genuine mass and authentic structural base that supports this set of Blue Chip daughters is truly remarkable.



Lot 9 | UDE SARAS DREAM 1096

AAA: 20106163 | DOB: 3.5.2021 | Tattoo: 1096 | PB Angus



Lot 10 | UDE SARAS DREAM 1074
AAA: 20106160 | DOB: 3.3.2021 | Tattoo: 1074 | PB Angus

Dameron First Class
EXAR Blue Chip 1877B
Greens Princess 1012

Silveiras Style 9303
Silveiras Saras Dream 2335
EXG Saras Dream S609 R3



EXG Saras Dream S609 R3
Grandam of Lots 7-10

UDE Sara's Dream 1074 is a stunning March born prospect that continues to improve day after day. The elegant design that she boasts about her front third is further complimented by the bold and maternal sweeping rib design. Her natural capacity is further accentuated by her elevated chest floor. 1074 has been on the short lists of many of the early visitors through the cattle, and we certainly can see why. Study the futuristic look that this eye-catching Sara's Dream descendant portrays.



PVF Insight 0129
PVF Blacklist 3070
PVF Blackbird 3070

Plainview Lutton E102
SLL Ellie 2201
O G L Ellie 634-446

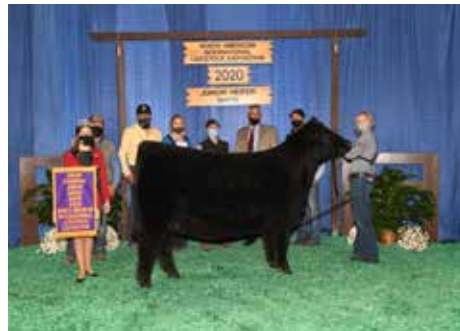
Lot 11 | UDE ELLIE 1102

AAA: 20110348 | DOB: 3.17.2021 | Tattoo: 1102 | PB Angus

UDE Ellie 1102 is the initiating lot from the famed SLL Ellie 2201 tribe. Some would argue around the farm that SLL Ellie 2201 is the most uniquely built breeding piece to walk the pastures of Udell Cattle Company. This stylish March born daughter of PVF Blacklist 7077 offers the signature 2201 look in terms of length, extension, and maturity pattern. SLL Ellie 2201 daughters have proven that they have what it takes to go the distance as breds, producing two NAILE Champions from two different sires over a three year period. 1102 is one that definitely fits the mold!



UDE Ellie 153E
Maternal Sister to Lots 11-13



UDE Ellie 9230
Full Sister to Lots 12-13



UDE Ellie 9197
Full Sister to Lots 12-13



UDE Ellie 9197
Full Sister to Lots 12-13



UDE Ellie 9230
Full Sister to Lots 12-13



UDE Ellie 9197
Full Sister to Lots 12-13



Dameron First Class
EXAR Blue Chip 1877B
Greens Princess 1012

Plainview Lutton E102
SLL Ellie 2201
O G L Ellie 634-446

Lot 12 | UDE ELLIE 1270

AAA: 20110587 | DOB: 4.3.2021 | Tattoo: 1270 | PB Angus

Lot 13 | UDE ELLIE 1259

AAA: 20110586 | DOB: 4.15.2021 | Tattoo: 1259 | PB Angus

The next pair of flush sisters come from one of the most successful matings to ever carry the UDE prefix. The EXAR Blue Chip 1877B x SLL Ellie 2201 mating yielded two of the most popular Angus heifer calves to sell during the 2019 sale season. UDE Ellie 9230 is the \$100,000 sister that is a true outlier for stoutness, look, and sheer presence, a truly unique individual. UDE Ellie 9230 was the 2020 NWSS Division Champion for Sara Sullivan, prior to being named 2020 NJAS Grand Champion Owned Female. She capped off her career with a victory in Freedom Hall when she was selected as the 2020 Grand Champion Junior Angus Female for Sara Sullivan. UDE Ellie 9197 was the \$32,000 full sister that sold to our friends North of the border in Canada. She was the Reserve Supreme Champion Heifer Overall at the 2019 Kansas Beef Expo, Supreme Champion Overall at the 2020 Kentucky Beef Expo, and was a division winner at the 2020 NWSS. Let's not forget their maternal sister that was the 2018 NAILE Grand Champion Heifer in the Junior show shown by the Steenhoek family. This female was a favorite of many on the 2018 show circuit and has become a role model matriarch in production. We could throw a book of adjectives at this pair of sisters to portray the quality that they offer... we'll let you decide the best way to describe them.



Dameron First Class
EXAR Blue Chip 1877B
Greens Princess 1012

Colburn Primo 5153
UDE Ellie 95E
SLL Ellie 2201

Lot 14 | UDE ELLIE 1081

AAA: PENDING | DOB: 2.27.2021 | Tattoo: 1081 | PB Angus

UDE Ellie 95E is a full sister to UDE Ellie 153E, one of the leading Angus donors for the Steenhoek family. UDE Ellie 153E was the 2018 NAILE Grand Champion Angus Heifer. A popular champion on the green chips for Chesney Steenhoek, Ellie has become the leading Angus donor for the Steenhoek family producing an \$18,000 heifer calf sired by Gateway Follow Me F163 in 2020. This EXAR Blue Chip 1877B daughter is a three-quarter sister in blood to the 2020 NJAS and NAILE Grand Champion female. There is no denying the sheer quality that this February show heifer prospect possess... Bred in the purple!

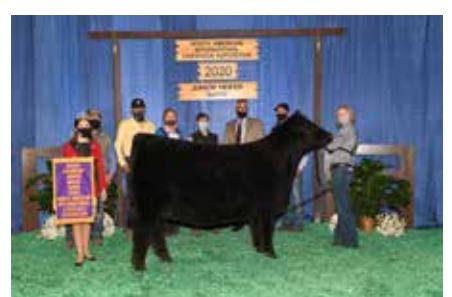


UDE Ellie 153E

Full Sister to Dam of Lot 14

The Advantage

Past Angus Champions





SCC Tradition of 24
SCC SCH 24 Karat 838
FCF Proven Queen 419

SCC First-N-Goal GAF 114
FCF Phyllis 532
SCC Phyllis 051

Lot 15 | UDE PHYLLIS 1008

AAA: 20104641 | DOB: 1.8.2021 | Tattoo: 1008 | PB Angus

FCF Phyllis 532, the next generation female from the elite SCC Phyllis 051 cow family that has solidified her spot as one of the great producing Angus females in the business. FCF Phyllis 532 is the stunning SCC First-N-Goal GAF 114 daughter of 051 that is owned by Udell Cattle Company, Adcock Land & Livestock, and Four Corner Farms. To date she has averaged over \$43,000 on five daughters sold over the last two years. 532 is the dam of UDE Phyllis 9129, one of the most unique females of any breed ever produced in Sioux City. 9129 was the \$115,000 selection of Campbell and Paulsen in 2019 and was successfully campaigned by Kinnick Paulsen to countless victories that include being named a Division Champion at the 2020 FWSS, Supreme Champion Heifer Heart of Iowa Blowout, and Supreme Champion Heifer Sneak-A-Peak Preview. UDE Phyllis 0223 is a full sister to the trio of flush sisters selling on October 16th. She was selected for \$35,000 by the Reiboldt family of Indiana in last year's sale. Recently she was named Grand Champion Angus at the 2021 Indiana State Fair and was ultimately slapped as the Reserve Supreme Champion Female Overall Breeds. This set of flushmate sisters offer the same unique style and elite feature that the Phyllis line has become so widely admired for. Big things are on the horizon for 532... here is the opportunity to tie into one of three sisters that coined the term "outlier".



UDE Phyllis 0223
Full Sister to Lots 15-17



Lot 16 | UDE PHYLLIS 1143
AAA: 20104646 | DOB: 3.8.2021 | Tattoo: 1143 | PB Angus



Lot 17 | UDE PHYLLIS 1150
AAA: 20104647 | DOB: 3.13.2021 | Tattoo: 1150 | PB Angus





SMA Watchout 482
Conley Express 7211
DPL Sandy 3040

SCC First-N-Goal GAF 114
FCF Phyllis 532
SCC Phyllis 051

Lot 18 | UDE PHYLLIS 1070
AAA: 20113809 | DOB: 3.2.2021 | Tattoo: 1270 | PB Angus

Lot 19 | UDE PHYLLIS 1077
AAA: 20113811 | DOB: 3.7.2021 | Tattoo: 1259 | PB Angus

Here is another pair of FCF Phyllis 532 daughters, this time sired by Conley Express 7211. Much like the maternal sisters that have come before them, this duo has the distinct 532 look from every angle. This pair of sisters have all the extra bells and whistles when it comes to form and feature. They are long fronted, high tying in their neck attachment, elevated in their chest floor and transition into a bold, three-dimensional rib design. Their unique look of style is what sets this pair of 532 daughters apart. Pick your poison... either will get the job done!



UDE Phyllis 9129
Maternal Sister to Lots 15-19



UDE Phyllis 9129
Maternal Sister to Lots 15-19



UDE Phyllis 9129
Maternal Sister to Lots 15-19



Lot 20 | UDE KEYMURA KATY 1002
 AAA: 20104640 | DOB: 1.4.2021 | Tattoo: 1002 | PB Angus

EXG RS First Rate S903 R3

Dameron First Class

Dameron Northern Miss 3114

SLL Dominance 349

SLL Keymura Katy 5008 "5009"

SLL Keymura Katy 3069

UDE Keymura Katy 1002 is the lone Dameron First Class daughter from the famed "5009" donor that cut a wide swath in 2020 and is back in 2021 for a repeat performance. 1002 is the uniquely bold centered, stout boned, big footed, wide pinned January born that defines the fundamentals that we put in place when making breeding decisions and acquiring new genetics. 1002 is a full sister to the \$50,000 UDE Keymura Katy 0298 that was purchased by the Coleman family of California. Coleman's heifer was most recently a class winner at the 2021 Atlantic National. UDE Keymura Katy 0252 sold for \$33,000 and was the Summer Heifer Calf Champion in the Junior Show at the 2021 Cattlemen's Congress in Oklahoma City. She went on to be Reserve Grand Champion Angus at the 2021 Maryland Junior Angus Association. The third heifer, UDE Keymura Katy 0243, was the \$22,000 selection of our good friends Wayne and Barb Ohlrichs, some of the best breeders in the business. Without a doubt one of the most consistent matings that we have had born in Sioux City. Invest in the future of your program here!



UDE Keymura Katy 0252
Full Sister to Lot 20



UDE Keymura Katy 0298
Full Sister to Lot 20



SMA Watchout 482
Conley Express 7211
DPL Sandy 3040

SLL Dominance 349
SLL Keymura Katy 5008 “5009”
SLL Keymura Katy 3069

Lot 21 | UDE KEYMURA KATY 1059
AAA: 20104644 | DOB: 2.24.2021 | Tattoo: 1059 | PB Angus

Lot 22 | UDE KEYMURA KATY 1054
AAA: 20104643 | DOB: 2.26.2021 | Tattoo: 1054 | PB Angus

The next pair of “5009” daughters are sired by Conley Express 7211. While they are a bit different in their type and kind, both females boast the fundamentals and form that their SLL Dominance 349 sired dam portrays. 1059 is the bold, deep, stout, wide centered female that will suit folks that prefer a stout, cowy, three-dimensional prospect that is built for the long haul. 1054 is the uniquely sleek, long sided, extended female that offers a striking silhouette from the profile. She has been blessed as one of the best haired females in the offering, and we anticipate she will be ready to hit the ring early and often.





EXAR Blue Chip 1877B

Conley No Limit

Silveiras S Sis Sandy 2355

SLL Dominance 349

SLL Keymura Katy 5008 "5009"

SLL Keymura Katy 3069



Lot 23 | UDE KEYMURA KATY 1155

AAA: 20105733 | DOB: 3.23.2021 | Tattoo: 1155 | PB Angus

Lot 24 | UDE KEYMURA KATY 1185

AAA: 20105745 | DOB: 4.1.2021 | Tattoo: 1185 | PB Angus

Conley No Limit was the talk of the Mile High city a few years ago when Tim Schaeffer teamed up with Conley Cattle to promote the most intriguing son of EXAR Blue Chip 1877B we had ever seen. The maternal side of No Limit really needs no introduction. The KNC Cabin Creek Sandy 804 is one of the most, if not the most decorated cow families in the Angus breed. We decided to take No Limit to some of our power cows to add another shot of "cow family" and style to the equation. This duo has the form and feature to run at the highest level. Both sisters are eccentric in the way their neck ties in at the top side of their blade, while portraying the look of balance from the side that can be found at the backdrop. These females will be ultra-competitive as show heifers, and even more valuable in production. The options are endless here!



Lot 25 | UDE KEYMURA KATY 1257
AAA: 20110704 | DOB: 3.26.2021 | Tattoo: 1257 | PB Angus

SCC Tradition of 24
SCC SCH 24 Karat 838
FCF Proven Queen 419

SLL Dominance 349
SLL Keymura Katy 5008 "5009"
SLL Keymura Katy 3069

Special, unique, stunning... the descriptive adjectives can go on and on, but at the end of the day the 24 Karat sire group strikes again in Sioux City! We love the body mass, the power, and genuine substance that "5009" stamps her progeny with time after time. UDE Keymura Katy 1257 is no exception to the mold! Here is a tremendous profiling show heifer prospect that is not just another pretty face. While her feature is unique, her body shape, squareness, and dimension collectively make her a true player.





Lot 26 | UDE BLACKBIRD 1168

AAA: 20105738 | DOB: 3.9.2021 | Tattoo: 1168 | PB Angus

Dameron First Class

GCC New Game 5654C

DUFF NE 9375 Georgina 845

EXAR Blue Chip 1877B

Hoffman H/G Blackbird 620

ALL PVF Blackbird 645

UDE Blackbird 1168, the lone maternal sister to the \$300,000 record setting Angus show heifer that topped The Advantage Production Sale in 2020 to the Ferree family of Indiana. UDE Blackbird 0153 was the 2021 Cattlemen's Congress Reserve Grand Champion Female, KY Beef Expo Supreme Champion, Hoosier Beef Expo Supreme Champion, and the Atlantic National Reserve Grand Champion in the Junior show. Much like her sister, 1168 is more than just a silhouette that is admired from the profile. Her squareness, pin width, and genuine upper rib shape remind us of her big sister from a year ago. GCC New Game was a NWSS Division Champion as a calf, while his full sister was the Supreme Champion at the Ohio Beef Expo for the Jones family a few years back. New Game has worked as an alternative to Dameron First Class with great success. Of course, many remember the dam of 1168 as the 2017 NJAS Grand Champion, however Hoffman H/G Blackbird 620 has secured her place as a pillar in the donor pen. Three daughters averaged over \$110,000 in 2020, while embryos commanded as much as \$8,500 per egg! We truly believe the 620 legacy will be everlasting at Udell Cattle Company.... You never know, this may be the last time we ever offer a direct daughter for sale!



Hoffman H/G Blackbird 620
Dam of Lot 26



UDE Blackbird 0153
Maternal Sister to Lot 26



EXAR Blue Chip 1877B
Conley No Limit
Silveiras S Sis Sandy 2355

Papa Equator 2928
Lazy H Bar Forever Lady 934
Lazy H Bar Forever Lady 5001

Lot 27 | UDE FOREVER LADY 1049

AAA: 20105736 | DOB: 2.2.2021 | Tattoo: 1049 | PB Angus

UDE Forever Lady 1049 is the result of an embryo purchase we made from Plendl's Legacy Female Sale in 2019. Lazy H Bar Forever Lady 934 is the donor dam of this sharp featured Conley No Limit daughter. 934 is the Papa Equator 2928 sired daughter of the legendary Lazy H Bar Forever Lady 5001. 934 has produced daughters that have sold for \$22,000, \$16,000, \$12,000, and \$10,000. UDE Forever Lady 1049 combines the influence of Lazy H Bar Forever Lady 5001 with the great Silveiras S Sis Sandy 2355, and Greens Princess 1012. 1049 is an ultra-complete, smooth made, angular female that is loose built and flawless on the move.



Northern Improvement 4480
EXAR Lutton 1831
EXAR Saras Dream 9809

Dameron First Class
Lazy H Bar Forever Lady 326
Lazy H Bar Forever Lady 5001

Lot 28 | UDE FOREVER LADY 1241

AAA: 20120933 | DOB: 4.4.2021 | Tattoo: 1241 | PB Angus

Here is an April female that will be a contender in the Late Spring division in our mind. A direct daughter of the great EXAR Lutton 1831, backed by the influence of the Dameron First Class x Forever Lady 5001 mating. She is neatly chiseled about her front third, elevated in her chest floor, flat shouldered, and sets to the surface with comfort and ease. She is a big footed, stout boned, square built female that is sure to be one several short lists come sale day.



Lot 29 | UDE IMPRESSIVE 1167

AAA: 20105736 | DOB: 3.6.2021 | Tattoo: 1167 | PB Angus

UDE Impressive 1167 is the lone daughter of Gateway Follow Me F163 in the offering. This bold bodied March daughter of UDE Princess 138E is neat headed and necked, clean in her lines, and sets down with the extra foot size and bone mass we can all appreciate. Her maternal grandam is KAF Century Missy 164, the 2015 American Royal Reserve Grand Champion Angus Female. KAF Century Missy 164 is the dam of the 2018 NAILE Reserve Grand Champion, Kruse Missie Primo 147 that was campaigned by Jake Nikkel of Kansas. Kruse Missie Primo 147 was a many times champion for the Nikkel family throughout the 2017-2018 show season.



Lot 30 | UDE ZOHEY 1097

AAA: 20105724 | DOB: 3.2.2021 | Tattoo: 1097 | PB Angus

UDE Zoey 1097 is sired by Silveiras Style 9303 and backed by the influence of BCII Miss Zoey 2614. Her two-year-old dam, UDE Zoey 9809 is sired by EXAR Blue Chip 1877B. In 2020, the maternal grandam of 1097 sold for \$14,000 to Bentley Lott of Oklahoma. 1097 is true and square in her basic build, bold ribbed, and offers the look of balance and eye appeal that we have come to expect from our Zoey descendants!

C&C McKinley 3000 EXAR
Gateway Follow Me F163
Dunk-W Maxine HR 505C

SMA Watchout 482
UDE Impressive 138E
KAF Century Missie 164



KAF Century Missie 164
Grandam of Lot 29



Kruse Missie Primo 147
Maternal Sister to Dam of Lot 29

Gambles Hot Rod
Silveiras Style 9303
Silveiras Elba 2520

EXAR Blue Chip 1877B
UDE Zoey 9809
BCII Miss Zoey 2614



B C Lookout 7024
Circle M Tejas
J&J Queen 414

Dameron First Class
SULL Keymura's First 4086
SLL ES Keymura Katy 0084

Lot 31 | UDE KEYMURA 1108

AAA: 20104645 | DOB: 2.20.2021 | Tattoo: 1108 | PB Angus
SULL Keymura's First 4086 was a true matriarch within the Angus sector of our program. 4086 was our selection in 2014 from the Maternal Legends sale at Sullivan Farms. 4086 is a direct daughter of First Class that is backed by the prolific SLL ES Keymura Katy 0084 donor dam. 4086 was the 2015 NAILE Grand Champion Angus Heifer and created her own legacy in production. UDE Keymura 9005 was purchased in 2019 by Wade Rodgers and the Noonan family for \$42,000 that went on to be selected as the 2020 Iowa State Fair Grand Champion Angus and Third Overall Junior Breeding Heifer. A full sister, UDE Keymura 9002 topped the 2020 Signature Collection Female sale at \$20,000. She is sired by Circle M Tejas, the most notable son of the legendary J&J Queen 414. Here is a truly rare opportunity to own a direct daughter of the late 4086... Power in the blood!



Sull Keymura's First 4086
Grandam of Lot 31



UDE Keymura 9005
Maternal Sister to Lot 31



SCC Tradition of 24
SCC SCH 24 Karat 838
FCF Proven Queen 419

S Expedition 788
WL 788 Miss Queedy 595-1135
WL 2385 Miss Queedy 206-595

Lot 32 | VAN Z MISS Q 152

AAA: 20111990 | DOB: 2.25.2021 | Tattoo: 152 | PB Angus
152 is a sleek made, big centered, sound structured daughter of the popular SCC SCH 24 Karat 838. The dam of this bold sprung, square pinned February born prospect is sired by S Expedition 788, and from a powerful Ambush dam from the Queedy cow family that has been a role model brood cow for Greg and Kim Van Zee. Pay attention to the futuristic look and style that 152 possesses.





Lot 33 | UDE PRINCESS 7J

ASA: 3922925 | DOB: 1.4.2021 | Tattoo: 7J | 3/4 Simmental

W/C Relentless 32C	MR HOC Broker
JSUL Something About Mary 8421	x Haras Miss Princess 100Z
JBSF Proud Mary	Haras Hairietta Clone H4W

Hara's Princess 100Z is the \$190,000 half-blood female that is a staple in the SimSolution donor pen at Udell Cattle Company. To date her daughters have averaged \$38,000 through The Advantage Production Sales. Last year Hara's Princess 101Z produced a heifer calf sired by EC Rebel 156F that sold for \$77,000 to Red River Farms in Texas. UDE Princess 14H is another Princess 101Z daughter that sold for \$22,500 to Golden Acres Simmentals in The Advantage Production Sale in 2020. She has been very competitive for Brody Wenell in the state of Iowa. In 2018 UDE Princess 126F, sold for \$60,000 to Amelia Miller. She was successfully campaigned to countless victories during the 2018-2019 show season. 126F was the 2018 American Royal and NAILE Spring Calf Champion, among countless other victories during her time on the road. UDE Flossy 27E sold in 2017 for \$40,000 to Amelia Miller of Illinois. Other success stories from the 100Z matriarch would include the \$16,000 UDE Princess 159G, by Pilgrim that was selected by Olivia Beeson and was one of the most dominant Percentage Simmental heifers in the state of Iowa in 2020. UDE Princess 62H was the \$14,500 female that sold to Jazlynn Hilbrands of Minnesota, she was sired by ACLL Fortune 393D. UDE Norma Jean 114D is the Upper Class sired daughter of 100Z that was the many times Texas Major Champion for Kaylee Langford. We sampled JSUL Something About Mary 8421 and could not be more pleased with the results. This trio of flush mate sisters are massive in terms of their center body shape, bold up high, stout footed, big boned, and well-designed from the side. This flush was an absolute homerun in our book in terms of the consistency of quality. These females are huge bodied, soft made, highly maternal females that have as much length, extension, and future as any female ever produced by 101Z. Pay attention here if you are on the hunt for a Percentage Simmental female that will run hard early and often... these girls are ready for war!



Lot 34 | UDE PRINCESS 3J

ASA: 3922921 | DOB: 1.6.2021 | Tattoo: 3J | 3/4 Simmental



Lot 35 | UDE PRINCESS 5J

ASA: 3922923 | DOB: 1.10.2021 | Tattoo: 57J | 3/4 Simmental



UDE Norma Jean 114D
Maternal Sister to Lots 33-36



UDE Norma Jean 114D
Maternal Sister to Lots 33-36



Haras Miss Princess 100Z
Dam of Lots 33-36



UDE Flossy 27E
Maternal Sister to Lots 33-36



UDE Princess 159G
Maternal Sister to Lots 33-36



UDE Princess 126F
Maternal Sister to Lots 33-36



Lot 36 | UDE PRINCESS 57J

ASA: 3922928 | DOB: 1.10.2021 | Tattoo: 57J | 3/4 Simmental

Here is a uniquely stout and powerful three-quarter blood Percentage Simmental that is sired by the great W/C Relentless 32C. Without a doubt one of the biggest hipped, widest pinned, most three-dimensional daughters to ever be registered to 101Z. We love her length of spine, presence, and flexibility on the move. She is going to be a bigger framed female as she matures, which will certainly allow for mating flexibility when considering some of today's more popular AI choices.

Yardley Utah Y361
W/C Relentless 32C
Miss Werning KP 8543U

MR HOC Broker
Haras Miss Princess 100Z
Haras Hairietta Clone H4W



UDE Princess 14H
Maternal Sister to Lots 33-36



UDE Princess 159G
Maternal Sister to Lots 33-36



UDE Princess 126F
Maternal Sister to Lots 33-36



Lot 37 | UDE CHIA 205J

ASA: 3922980 | DOB: 3.21.2021 | Tattoo: 205J | 3/4 Simmental

W/C Relentless 32C

JSUL Something About Mary 8421

JBSF Proud Mary

Northern Improvement 4480

UDE Chia 1Y

JSUL Red Thunder 9051W



**UDE Chia 1Y
Dam of Lot 37**

UDE Chia 205J is another daughter of JSUL Something About Mary 8421 that comes from a different, but equally as prolific cow family. UDE Chia 1Y was the first natural born calf that the great JSUL Red Thunder 9051W had as a two year old female. The Red Thunder influence has been dominant in the Chianina division over the past several years, producing high sellers, Major Show Champions, Junior National and State Fair Champions, and females that have become leading donors for programs across the country. 205J is unique in her assembly, bold in her upper rib cage, and square pinned, yet transitions seamlessly from end to end. A big time Percentage show heifer from a predominant cow family.

The Advantage

Past Simmental Champions





CNS Pays to Dream T759
LLSF Pays to Believe ZU194
LLSF Urababydoll U194

MR HOC Broker
TJSC Diamond 167E
KLS Diamond W516

Lot 38 | UDE DIAMOND 141J
 ASA: 3922944 | DOB: 3.2.2021 | Tattoo: 141J | PB Simmental

Lot 39 | UDE DIAMOND 156J
 ASA: 3922946 | DOB: 3.18.2021 | Tattoo: 156J | PB Simmental

We begin the Purebred Simmental division with a pair of flush mate sisters that are from the exciting young donor dam, TJSC Diamond 167E. Diamond 167E was division champion at the 2017 NAILE. She continued her winning ways through the summer when she was selected as the 2018 AJSA National Classic Reserve Grand Champion Purebred Female in St. Paul, Minnesota. 167E is sired by the Triple Crown winning MR HOC Broker and backed by the legendary KLS Diamond W516 donor dam. Without a doubt, KLS Diamond W516 is one of the most important Simmental donors in the history of the breed. Diamond was the 2011 NWSS Grand Champion Purebred Simmental Heifer for Jake Bloomberg and has evolved into a dominant producer of high sellers, champions, AI promotional sires, and donor cows for countless programs in North America. This pair of sisters are sired by LLSF Pays to Believe ZU194, a bull we have found great success with his daughters in the show ring and production. These flush sisters would be three-quarter sisters in blood to the 2019 NAILE Grand Champion Bull, King of Diamonds. The baldy full sisters are built for the long haul, they are the kind that we believe will make competitive breds.



TJSC Diamond 167E
Dam of Lots 38-47



W/C Relentless 32C
JSUL Something About Mary
JBSF Proud Mary

MR HOC Broker
TJSC Diamond 167E
KLS Diamond W516

Lot 40 | UDE DIAMOND 125J
 ASA: 3922938 | DOB: 2.10.2021 | Tattoo: 125J | PB Simmental



Lot 41 | UDE DIAMOND 122J
 ASA: 3922936 | DOB: 3.6.2021 | Tattoo: 122J | PB Simmental



Lot 42 | UDE DIAMOND 110J
 ASA: 3922932 | DOB: 3.14.2021 | Tattoo: 110J | PB Simmental
 36

The Diamond cow family has worked to every bull she has ever been flushed to with tremendous success. Diamond 167E is most definitely following in the footsteps of her prolific donor dam. A full brother to Diamond 167E, "Meant to Be" is the Broker sired promotional AI sire for Paulsen, Campbell, and Rodgers that has created a major stir across the industry. With the success that MR HOC Broker x KLS Diamond W516 mating has consistently had, we decided that combining the elite cow families that support JSUL Something About Mary 8421 would only add stability and consistency to the equation. S.A.M combines the influence of the 8 million dollar production 8543U, with the great JBSF Mary, a female that is well on her way to being multi-million dollar producing female herself. This is a flush of Purebred females that we are certainly proud of. The consistency and quality that these sisters offer is second to none!



TJSC Diamond 167E
Dam of Lots 38-47



Lot 43 | UDE DIAMOND 137J

ASA: 3922942 | DOB: 3.17.2021 | Tattoo: 137J | PB Simmental

Lot 44 | UDE DIAMOND 113J

ASA: 3922934 | DOB: 3.20.2021 | Tattoo: 113J | PB Simmental



TJSC Diamond 167E
Dam of Lots 38-47



KLS Diamond W516
Grandam of Lots 38-47



Yardley Utah Y361
W/C Relentless 32C
Miss Werning KP 8543U

MR HOC Broker
TJSC Diamond 167E
KLS Diamond W516

Lot 45 | UDE DIAMOND 210J

ASA: 3922982 | DOB: 4.1.2021 | Tattoo: 210JI PB Simmental

UDE Diamond 210J is a three-quarter sister in blood to the S.A.M sired females that sell as lots 40-44. It's no secret that W/C Relentless 32C sired females have endured as much success in the show ring over the past 5 years as any other sire group. 210J is a prime example of what happens when elite cow families line one's pedigree. She is flawless in her movement, bold in her rib shape, and balances with an elite look of quality and style from the profile. We like the futuristic look and maturity pattern that this April female possesses. Diamond continues to be one of the leading Simmentals donors in the industry for dollars generated!



Rocking P Legendary C918
JBSF Berwick 41F
JBSF 402B

MR HOC Broker
TJSC Diamond 167E
KLS Diamond W516

Lot 46 | UDE DIAMOND 130J

ASA: 3922940 | DOB: 3.6.2021 | Tattoo: 130J | PB Simmental

JBSF Berwick 41F topped the 14th Annual Embryos on Snow sale in 2020 when he commanded \$109,000 for one-third interest to F4 Land & Cattle of Texas. The Berwick sire group has impressed us with the functionality, structural integrity, and doability that the cattle offer. They are big footed, stout boned, and wide based, yet offer a maternal look of balance. We like the Berwick sire group and believe that their true value will come into play once they enter production.



HPF/HILB Uprising C104
SO Remedy 7F
B&K Cream Soda 8D

MR HOC Broker
TJSC Diamond 167E
KLS Diamond W516

Lot 47 | UDE DIAMOND 268J

ASA: 3922986 | DOB: 4.5.2021 | Tattoo: 268J | PB Simmental

UDE Diamond 268J is sired by the \$530,000 half-interest SO Remedy 7F stud that was also selected as the 2021 Cattlemen's Congress Grand Champion Purebred Simmental Bull. This blaze faced daughter of Remedy from the 167E donor dam is attractive in her pattern, smooth made, big footed, and flexible when set into motion. It is evident that 167E is following in the footsteps of her dam, the famous matriarch of the Diamond tribe.



SVF Steel Force S701
MR HOC Broker
JM BF H25

WS Pilgrim H182U
4/B Miss Pilgrim 323C
4/B Miss 184X 211A

Lot 48 | UDE MISS 265J

ASA: 3922984 | DOB: 4.6.2021 | Tattoo: 265J | PB Simmental

UDE Miss 265J is a full sister to one of our favorite Purebred females we offered in 2020, UDE Miss 348H. UDE Miss 348H sold for \$10,500 to Brandon Weber in Florida and has been shown with tremendous success, being selected as the 2021 Florida State Fair Grand Champion Purebred Simmental Heifer. Much like her sister, 265J offers an elite look of balance and presence when on the move. This solid black Purebred is so sleek made through her front third, flat shouldered, clean jointed and ties together seamlessly from end to end. She remains square and three-dimensional in her pin set yet maintains the maternal muscle pattern that is desired. Pay close attention here... this mating flat works!



Profit
EC Rebel 156
 DSFF Countess 357D
 TJ High Calibre 556B
UDE Kansa 702E
 TJSC Kansa 823B



UDE Kansa 702E
 Dam of Lots 38-47

Lot 49 | UDE KANSA 37J

ASA: 3922926 | DOB: 3.3.2021 | Tattoo: 37J | PB Simmental

UDE Kansa 37J is sired by the \$200,000 EC Rebel 156F, the Profit son that sired our top selling Percentage Simmental Female in 2020 that sold for \$77,000 to Red River Farms. UDE Kansa 702E is a maternal sister to UDE Kansa 40F, the Profit sired female that was purchased by Fletcher Larsen in 2018 and was a division champion at the NAILE and American Royal. Kansa 40F is now a donor for the Larsen family. TJSC Kansa 823B was Reserve Grand Champion Purebred Simmental Female at the 2015 AJSA National Classic, 2015 American Royal, 2015 NAILE, and 2016 NWSS. Rebel does it again with this unique built Simmental female that is sure to catch your eye on sale day!



Profit
EC Rebel 156
 DSFF Countess 357D
 MR HOC Broker
UDELL Farrah's Surprise 170B
 Farrah 15W



UDELL Farrahs Surprise
 Dam of Lot 50

Lot 50 | UDE BLACKBERRY 196J

ASA: 3922948 | DOB: 3.24.2021 | Tattoo: 196J | PB Simmental

UDE Blackberry 196J is the other Purebred sired by EC Rebel 156F. The dam of 196J is the MR HOC Broker sired daughter from our Farrah 15W donor, a past champion herself. 196J is very unique in her pattern from the side, offering an exceptional look of symmetry. She is so stout up high, and remains square and level from hooks to pins, while exemplifying a near perfect hip and hind leg design. This feminine featured, clean chested, high tying female is sure to impress with her proud presence. A true sale feature!



Lot 51 | UDE BELLE 245J

ASA: 3922983 | DOB: 4.2.2021 | Tattoo: 245J | PB Simmental

UDE Belle 245J is sired by resident senior herd sire, UDE Profit 67F, affectionally known as "Code Red". The dam of 67F is the many times Reserve National Champion, TJSC Kansa 823B. This red head is long fronted, clean chested, and good in her lines. We appreciate the functionality, quality, and consistency that "Code Red" sires year after year. The dam of 245J is a top Broker daughter that traces back to Harkers Dynasty Belle, the dam of the 2020 OYE Reserve Supreme Champion Percentage Female for the Bailey family.

Profit
UDE Profit 67F "Code Red"
TJSC Kansa 823B
MR HOC Broker
Princess Belle 003E
Harkers Dynasty Belle



UDE Profit 67F "Code Red"



Lot 52 | UDE DREAMY 158J

ASA: PENDING | DOB: 2.24.2021 | Tattoo: 158J | PB Simmental

Here is a dark cherry red Purebred that is a prime example of the type and kind that the Bailey's Ms Dreamy 946W cow family has become so widely famous for producing. The dam of this beauty is the \$195,000 Profit sired daughter of the great 946W matriarch. In 2018 she was selected as the Grand Champion Purebred Simmental Female at the AJSA National Classic in St. Paul, Minnesota. Bailey's Ms Dreamy 946W is one of the most prolific donors in the breed, generating past the million dollar mark with no lapse in momentum. She is a big footed, stout constructed February that offers the quality build and body style that is takes to be competitive. Bred for success!

W/C Relentless 32C
JSUL Something About Mary 8421
JBSF Proud Mary
Profit
Bailey's Profit's Dream
Bailey's Ms Dreamy 946W



Bailey's Profit's Dream
Dam of Lot 52



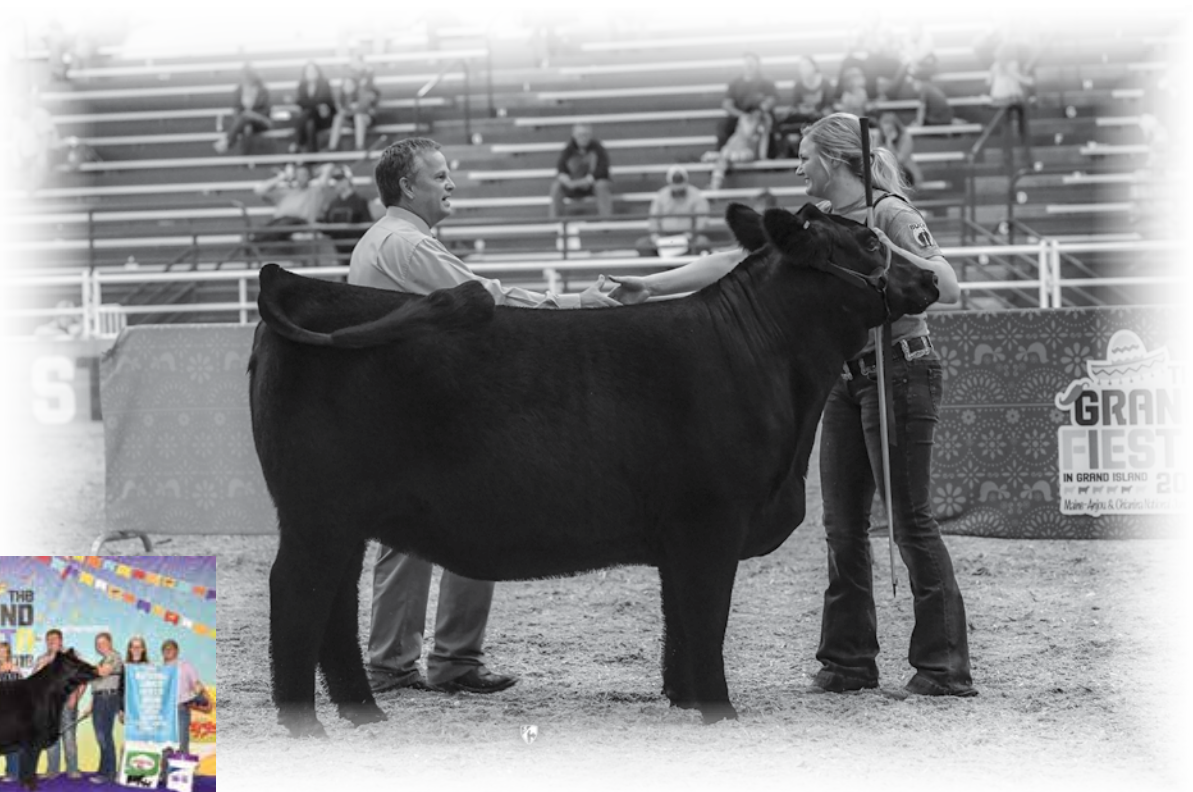
Gambles Hot Rod
Silveiras Style 9303
Silveiras Elba 2520

Goet I-80
BBR Beyonce 499B
CGMC Sedgwicks Erica

Lot 53 | UDE BEYONCE 48J

AMAA: 522132 | DOB: 2.2.2021 | Tattoo: 48J | Maine-Angus

BBR Beyonce 499B does it again! This time, a stunning Maine-Angus female sired by the tried and true, Silveiras Style 9303. The Maine Angus division continues to experience growth in size, quality, and attendance with each passing year at the National Junior Show. Strong leadership, quality genetics, and an elite junior program deserves the credit for these surging numbers. UDE Beyonce 48J is a maternal sister to the \$10,250 Conley Express sired female that has been successfully shown by the Weaver family. Much like her sister and dam, 48J is a smooth shouldered, proud headed, attractive profiling female that blends into a bold rib design, square pin set, and sets to the surface with confidence. Do not let a lack in numbers within our Maine-Angus division dictate the level of quality... she is a true sale feature!



UDE Eleanor 92E



Lot 54 | UDE STYLIN' THUNDER 22J

ACA: 408627 | DOB: 3.2.2021 | Tattoo: 22J | 7.47% Chianina

Gambles Hot Rod
Silveiras Style 9303 **X**
Silveiras Elba 2520

ASHW Who Da Man
JSUL Red Thunder 9051W
Sull 60

Ole faithful... the mating that seems to always work! The Style x Red Thunder combination has been our go to Chianina mating that has yet to let us down. Red Thunder has continued her reign as one of the most dominant show heifer producing donor dams of all time. The Style mating delivered again in 2020, yielding the \$50,000 sale feature, UDE Black Thunder 5H. She was selected as the 2020 Jordan Mack Memorial Jackpot Show Reserve Supreme Champion Overall for Jade Beeson. Most recently Spencer Goettemoeller and family raised the 2021 Chianina Junior National Grand Champion Female with a Style x Red Thunder daughter that was the result of an embryo purchase through Embryos on Snow. That same heifer was selected as the Grand Champion Chianina at the 2021 Indiana State Fair and completed the show as the 3rd Overall Junior Breeding Heifer. Other full sisters to 22J would include the decorated 2019 NWSS Grand Champion Prospect Heifer, 2018 4th Overall Heifer at the Winter Warm Up as well as 3rd Overall at the 2018 Badger Kick Off, sired by Style. Another daughter, sired by Primo, was Grand at the Jordan Mack Memorial show and sold for \$43,000 in Udell's sale in the fall of 2018. UDE Kate Spade 59D ET Sold to Whitney Walker for \$45,000 and named Champion Prospect Female 2017 Denver. UDE Stylish Lady 9D ET sold to Abbie Collins for \$90,000 and was named Supreme Female at the 2017 Scarlet and Gray, Reserve Chi 2017 Fort Worth and Supreme Female Ohio State Fair 2017. UDE Moana 162E sold to Sammi Schrag and named Champion Female 2017 Jordan Mack Memorial. UDE She's Stylin, \$27,500 Shown by Vada Vickland and named 4th Overall Heifer Denver Prospect Show 2015, Champion Chi Female in the Junior and Open Shows at the NAILE in 2015 and Champion Chi female at the 2016 NWSS. UDE Chanel 39D ET sold to Skiles Family for \$55,000 and named Champion Female 2016 Kansas Beef Expo. UDE Vera 98D ET sold to Elliston Morey and named Champion Chi 2016 Badger Kick Off Classic. The list goes on and on... If you are on the hunt for a big time Chi heifer... look no further!



Lot 55 | UDE THUNDER 131J

ACA: 408631 | DOB: 3.8.2021 | Tattoo: 131J | 7.47% Chianina

It's hard to argue with the success that the Style x Red Thunder mating has had over the last 5 years, however we have mated Red Thunder to several different young gun Angus bulls with high hopes. We present, UDE Thunder 131J ET, sired by Conley No Limit. Here is an extra stout, square, three-dimensional female that has the signature Red Thunder look about her front third. The added mass, shape, and hair quality that this female offers is second to none! We wouldn't argue if you thought she was better suited to be managed and shown as a market heifer. Rest assured she will generate like a Red Thunder when her time on the road comes to a close!

EXAR Blue Chip 1877B
Conley No Limit
Sileiras S Sis Sandy 2355

ASHW Who Da Man
JSUL Red Thunder 9051W
Sull 60



UDE Black Thunder 5H
Maternal Sister to Lots 54-58



Miss Worthy 1H ET
Maternal Sister to Lots 54-58



UDE Thunder Girl 157G
Maternal Sister to Lots 54-58



Lot 56 | UDE BLACK THUNDER 27J

ACA: 408628 | DOB: 1.21.2021 | Tattoo: 27J | 7.47% Chianina

UDE Black Thunder 27J ET is the eldest of the Red Thunder daughters to sell this fall. This elite featured female is bold, stout, and balanced from every angle. She is a full sister to the \$8,500 UDE Red Thunder 322H that was selected by the Furrow family of Sioux City last year. 24 Karat progeny are continuing their reign in the show ring across the country. Here is your chance to jump aboard one of the hottest genetic combinations in the business!

SCC Tradition of 24
SCC SCH 24 Karat 838
FCF Proven Queen 419

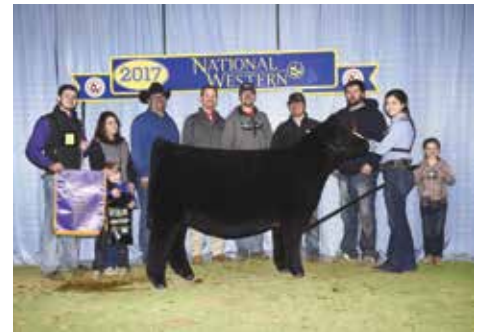
ASHW Who Da Man
JSUL Red Thunder 9051W
Sull 60



UDE Chanel 39H
Maternal Sister to Lots 54-58



UDE Stylin' 28F
Maternal Sister to Lots 54-58



UDE Kate Spade 59D
Maternal Sister to Lots 54-58



G A R Grid Maker
SAV Bismarck 5682
S A V Abigale 0451

ASHW Who Da Man
JSUL Red Thunder 9051W
Sull 60



Lot 57 | UDE THUNDER GIRL 78J ET
ACA: 408629 | DOB: 3.21.2021 | Tattoo: 78J | 7.47% Chianina

Lot 58 | UDE THUNDER GRIL 93J ET
ACA: 408630 | DOB: 3.4.2021 | Tattoo: 93J | 7.47% Chianina

COW POWER! Sure, this duo doesn't have the extra bells and whistles as the other three sisters when it comes to the exotic features that they possess. We know they were not blessed with the quality of hair coat as their maternal sisters either. However, they do not need these extras to look good! The S A V Bismarck 5682 sired females in this year's offering are destined to follow in the footsteps of their prolific donor dam. This duo is stout made, wide based, bold ribbed, square pinned, and built for speed. They are easy doing, and practical in their build, while maintaining a distinguished and strong maternal look. Pay attention to the genuine quality and the potential upside that this pair of flush sisters offer. These are the kind of females that will carry the legacy of Red Thunder on to the next generation! If you are in the hunt for a big time Chi heifer... look no further!



UDE Moana 162E
Maternal Sister to Lots 54-58



UDE Stylish Lady 9D
Maternal Sister to Lots 54-58



UDE She's Stylin 424B
Maternal Sister to Lots 54-58

The Advantage

Past Chianina Champions



*I*NNOVATION
— AgMarketing, LLC —
PO Box Z
De Soto, KS 66018



UDELL 
Cattle Co.