

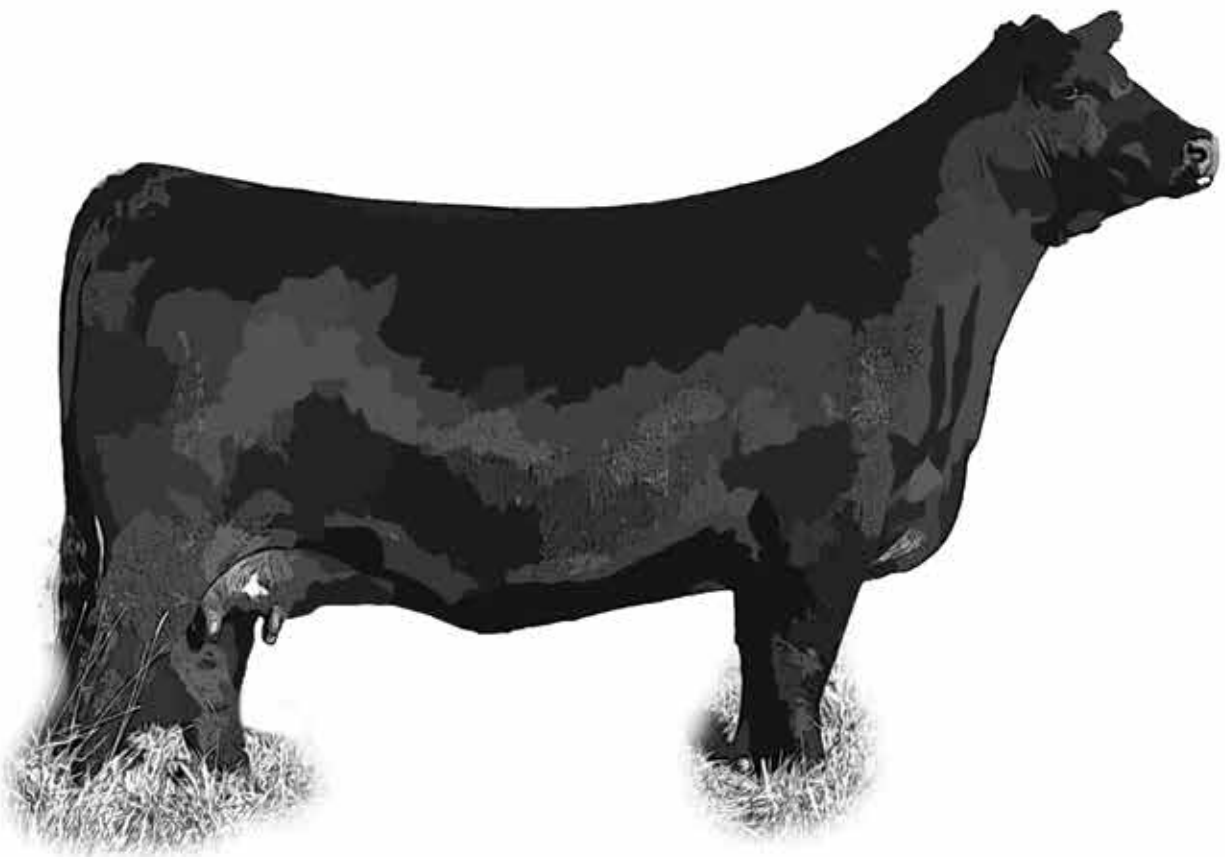


The 10th Anniversary

"NO SECRETS"

ELITE ANGUS FEMALE SALE

Saturday, September 25, 2021 at 1:30 pm PST



A rustic wooden structure, possibly a bar or shed, with a shingle roof and a sign that reads "K BAR D". The structure is built with vertical wooden planks and is situated on a gravel surface. The sign is a dark, rectangular piece of wood with the text "K BAR D" painted in white. The background shows a larger wooden building and some greenery.

K BAR D



To begin, Camille and I are elated to introduce our firstborn cowgirl, Everett Mae, who arrived in this world just in time for sale day! Named after my grandfather Everett Thornburgh who embodied the spirit of the American cowboy, we are looking forward to our daughter carrying on the family tradition and legacy.

We would like to thank those of you who continue to support us here at K Bar D each year as buyers, fans, friends, and family, and also welcome those of you who are newcomers. For the past several years we have embarked on a mission within the cattle business to become and remain an industry leader which has been rewarding and prosperous. We trust you will notice the background of our program is based on cow power that exudes a balance of EPD traits and exceptional phenotype, thus 'bridging the gap between the ring and the rail!'

This year we are again showcasing the Wendy tribe and Princess 6358 influence. In 2019 and 2020 we greatly expanded our embryo transplant volumes, adding nearly 30 additional calves in 2021. This crop includes multiple daughters of our decorated Wendy 151E, the only Angus female to win her division in Denver three consecutive years -- 2018, 2019, and 2020. We are also offering several daughters of Princess 6358 who claimed ROV Cow-Calf Champion of 2019. Not only are these intensely selected ET calves available in our lineup this year, but also an elite set of natural born females, bringing you a dynamite bunch to select from that we are more than proud of.

Once again, we extend our sincere gratitude to our customers and followers of K Bar D, and thank you for your confidence in our program.

*Best,
Kimeric, Camille, and Everett DeLashmutt
K Bar D Ranch*

Sale Location - K Bar D Ranch
3220 Northwest Way | Redmond, OR 97756

Friday, September 24, 2021
Pre-sale viewing of cattle all day.
Refreshments available.

Saturday, September 25, 2021
8:00 AM – Preview of sale offering
12:00 PM – Lunch served
1:30 PM – K Bar D's 10th Annual
'No Secrets' Female Sale!



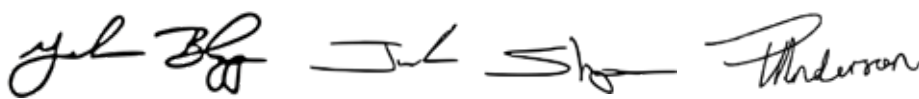
*I*NNOVATION — AgMarketing, LLC —

To Cattlemen and women, from near and far we extend our warmest welcome to this 10th Edition of the “No Secrets” Female Sale, one that has truly been a decade in the making. If through your journeys you have not had the pleasure of meeting Kim or Camille please take this as your opportunity to learn about the program that they have dedicated their lives towards building. If you have then just know that the same enthusiasm they take towards the Angus Breed and their defined production goals shines evident through the assembly of females they have slated for sale, September 25th.

This collection of females has been cherry picked from the soul of the program, many are the result of the meticulous and deliberate embryo transfer program in Redmond. You will quickly notice that as you read through the pages of this sale book, there have been just a small number of cow families that Kim has pinpointed as elite and has gone on to capitalize upon. In an effort to deliver a product that is surefire, constant selection pressure has been placed on the cow families that are involved with breeding decisions, it has become evident throughout the entire cowherd of the K Bar D that a scrupulous and conscientious culling process has been employed since day one. Generations of cow power back the stylish group of open heifer calves that highlight this offering, you can trust that regardless of your choice, or whether or not you place a leather lead on them, the biggest asset they will make for you is once they enter the production stage of their career.

The Wendy cow family has undoubtedly put the K Bar D program on the map, and then gone on to cement their position as one of the nation’s most premier sources of real-world Angus seedstock. The Wendy influence is nostalgic, sure there are monumental cow families that have built operations of influence around the nation, but seldom do they as potently and consistently as the Wendy matriarch has. America’s most prestigious Angus firms have realized the power of this tribe and employed them in the cowherd, however here at K Bar D remains the number one destination as an entry portal into the Wendy family. However do not disregard the other influences you will notice paving their own trails in the program, this diverse set of females suggests that the bridge between the showing and the real world may not be as distant as some may think.

We challenge you to reach out, or just make the trip to Deschutes County to inspect the sale offering, and the entire cowherd, we can promise you that your investment in time could pay dividends.

Handwritten signatures of Kim and Camille, likely the individuals mentioned in the text.

Sale Day Contacts

Kim DeLashmutt: (503) 887-6861
Camille DeLashmutt: (503) 704-9803

Sale Location

3220 Northwest Way | Redmond, OR 97756

Auctioneer

Col. Jered Shipman: (806) 983-7226

Sale Management:

Graham Blagg: (530) 913-6418
Tim Anderson: (605) 682-9343
Jered Shipman: (806) 983-7226

Ring Service

John Dickinson: (916) 806-1919
Special Assignment
Jared Patterson: (208) 312-2386
America Angus Association Regional Manager
Kyle Colyer: (208) 250-3924
Best in the West

Sale Consultants

Steve Kruse: (402) 239-8678
Seth Leachman: (406) 591-5651
Dick Hubman: (541) 601-5495
Fletcher Nichols: (712) 898-2455
Bill Conley: (816) 248-5533

Lodging

Sleep Inn – Redmond, OR: (541) 504-1500
Comfort Inn & Suites – Redmond, OR
(541) 548-8900
Best Western Plus Rama Inn – Redmond, OR
(541) 548-8080
Motel 6 – Redmond, OR: (541) 923-2100

Air Transportation

Redmond Municipal Airport, Roberts Field, services flights from Alaska Airlines, United & United Express, and Delta Airlines. Please contact these airlines for flights and times.

Special Terms

K Bar D reserves the right to flush any female sold in the sale, with a minimum of six viable embryos. This will be at the new buyer's convenience and the seller's expense.

Photography & Videography

Shannon Cook: (405) 714-5087
Ideal Video Productions, Wyatt Durst
(785) 541-0904

Catalog & Advertisement Design

THM Productions: (806) 679-0231

Liability

All persons who attend this sale do so at their own risk, legal or otherwise, for their safety or for the behavior of the animals. The owners, sale management firm, and other sale staff assume no liability for personal injury, property loss, theft, or any accident that may occur.

Terms & Conditions

Cattle will sell under the standard terms and conditions recommended by the American Angus Association. All sales are final, and the cattle will become the property of the buyer when the auctioneer says "SOLD". Announcements from the auction block on sale day regarding the cattle and equipment selling will take precedence over the information printed in this catalog. No cattle will be loaded until paid for in full.

Payment

U.S. Currency only. All sales are final, and payment is to be made in cash or check. Master Card or Visa will be accepted with a 3% convenience fee.

Registration Papers

All registration papers from the American Angus Association will be transferred to the buyer once full payment has been received. Please provide transfer information at buyer registration.

Livestock Mortality Insurance

James Bessler, Inc.: (815) 762-2641

Online Broadcast

Online broadcast and bidding will be available through CCI.Live. For assistance please contact: (516) 366-0734



A True Matriarch





K BAR D WENDY 151E
DAM OF LOTS 1 - 4

K Bar D Wendy 151E is a staple in the K Bar D program, where the "Wendy" name is synonymous with maternal function... plain and simply the "Wendy" line has earned much respect from the nation's top producers because they embody the basics. K Bar D Wendy 151E is the only Angus female to win her division at the National Western Stock Show three consecutive years in a row: as a calf, a bred, and with her first calf at side! The first daughter of 151E available to the public sold in 2020 to Korie Kersten of Gretna, Nebraska for \$15,000. 151E is the daughter of PVF Insight 0129 that is from the foundation donor dam in the program, K Bar D Wendy 1010. Fast forward to 2021... K Bar D Ranch and MB Angus, LLC proudly present what we believe is the most dynamic set of flush sisters to ever be offered across the auction block in Redmond, Oregon. Join the tradition of excellence on September 25th.



LOT 1A - K BAR D WENDY 5J

We decided to try something outside the box when mating K Bar D Wendy 151E. KR Mojo 8520 became the logical outcross option for us due to the rave reviews from top cattlemen across the country. He is a calving ease phenom with elite level EPDs across the board. He is a moderate framed sire and son of the legendary sire Panther Cr Incredible 6704. Mojo displays thickness, power, and structure. He is within the top 15% of the breed in Calving Ease. He is within the top 5% for weaning & top 3% for yearling weight EPDs. He is also in the top 3% for \$F, top 15% \$W, top 3% \$F, top 25% \$B, and top 20% \$C. We proudly present the privilege to pick and choose between lots 1A and 1B. K Bar D Wendy 5J is an absolute powerhouse that is massive in foot design, bold in her rib cage, and wide about her upper hip and pin set. To put it simply she is a donor dam matriarch in the making. K Bar D Wendy 6J, her full sister that is lot 1B has stolen the show since day one. She boasts a stunning profile, neat chest floor, high neck attachment, and further compliments her angular and refined presence with a bold rib cage and near perfect hip and hind leg design. The choice is yours!

Selling 1/2 Interest in the choice.

1A

K BAR D WENDY 5J

DOB: 1/20/21 Reg: 20106052 Tattoo: K5J

Panther Cr Incredible 6704

KR Mojo 8520

KR Princess 6394

PVF Insight 0129

K Bar D Wendy 151E

K Bar D Wendy 1010

Musgrave Invision

Panther Cr JH Blackbird 409

Kramers Apollo 317

KR Princess 4386

S A V Brilliance 8077

PVF Missie 790

Vermilion Pony X Press

K Bar D Wendy K1T

\$EN: -24

\$M: 70

\$W: 68

\$F: 103

\$G: 21

\$B: 124

\$C: 231

CED	BW	WW	YW	CEM	MILK	CW	MARB	RE	FAT
7	1.8	70	129	12	23	52	-0.06	0.78	0.02

Offering the choice of Lot 1A or 1B



K Bar D Wendy 151E - Donor Dam of Lot 1A - 4A



LOT 1B - K BAR D WENDY 6J

The Choice is Yours!

1B

K BAR D WENDY 6J

DOB: 1/22/21 Reg: 20106053 Tattoo: K6J

Panther Cr Incredible 6704
KR Mojo 8520
 KR Princess 6394
 PVF Insight 0129
K Bar D Wendy 151E
 K Bar D Wendy 1010

Musgrave Invision
 Panther Cr JH Blackbird 409
 Kramers Apollo 317
 KR Princess 4386
 S A V Brilliance 8077
 PVF Missie 790
 Vermilion Pony X Press
 K Bar D Wendy K1T

\$EN: -29
 \$M: 59
 \$W: 67
 \$F: 127
 \$G: 24
 \$B: 151
 \$C: 255

CED	BW	WW	YW	CEM	MILK	CW	MARB	RE	FAT
9	1.9	72	138	12	23	66	-0.13	1.13	0.00

Offering the choice of Lot 1A or 1B



KR Mojo 8520 - Sire of Lots 1A & 1B

Elite Open Angus Females



LOT 2A
K BAR D WENDY 63H



Stevenson Turning Point
Sire of Lots 2A - 2E

LOT 2B
K BAR D WENDY 65H



K Bar D Wendy 1010
Maternal Grandam of Lots 1A - 4A and
Third Generation Dam of Lots 5A - 7



K Bar D Wendy 151E is the cover girl of the K Bar D, we think that phenotypically she is as elite of an Angus female as we have ever produced. In person she takes one's breath away, and we feel honored to have her wandering the pastures of Deschutes County. The heritability of her phenotype has proven to be potent and fortified, her daughters are consistently blessed with an authentic and enviable structural build, and an outline that leaves nothing further to be desired. If you cannot already tell, we think a lot about the maternal base that supports this group of 151E daughters by Stevenson Turning Point. The five daughters that resulted in this mating are impressive. 87J and 70J are the extra level, square pinned set of sisters, who are long spined and balanced. If you fancy one that is up headed and eye catching then the appeal of the 86J will more than satisfy, a bonus is her sweeping underline and elevated chest floor. The ultra-cow prospect of 65H is one that we predict will go on to produce herd bulls that are extra stout featured and powerful. 63H hits us as the combination female of the sisters, her impeccable structural build, bold rib cage, striking presence and overall balance leave us wondering why we would let go of such a unique individual. All five sisters offer the opportunity to tie into breeding pieces that's future is only beginning when they leave the showing!

2A

K BAR D WENDY 63H

DOB: 8/28/20 Reg: 20104795 Tattoo: K63H

Plattemere Weigh Up K360
Stevenson Turning Point
Stevenson Pride I167x
PVF Insight 0129
K Bar D Wendy 151E
K Bar D Wendy 1010

Sitz Upward 307R
Barbara of Plattemere 337
S A V Bismarck 5682
FSHK Pride 180
S A V Brilliance 8077
PVF Missie 790
Vermilion Pony X Press
K Bar D Wendy K1T

\$EN: -5
\$M: 64
\$W: 63
\$F: 95
\$G: 36
\$B: 130
\$C: 233

CED	BW	WW	YW	CEM	MILK	CW	MARB	RE	FAT
13	-0.5	57	99	13	23	41	0.17	0.94	-0.02

2B

K BAR D WENDY 65H

DOB: 9/5/20 Reg: 20005416 Tattoo: K65H

Plattemere Weigh Up K360
Stevenson Turning Point
Stevenson Pride I167x
PVF Insight 0129
K Bar D Wendy 151E
K Bar D Wendy 1010

Sitz Upward 307R
Barbara of Plattemere 337
S A V Bismarck 5682
FSHK Pride 180
S A V Brilliance 8077
PVF Missie 790
Vermilion Pony X Press
K Bar D Wendy K1T

\$EN: -5
\$M: 64
\$W: 63
\$F: 95
\$G: 36
\$B: 130
\$C: 233

CED	BW	WW	YW	CEM	MILK	CW	MARB	RE	FAT
13	-0.5	57	99	13	23	41	0.17	0.94	-0.02

Elite Open Angus Females

2C

K BAR D WENDY 70J

DOB: 1/19/21 Reg: 20104611 Tattoo: K70J

Plattemere Weigh Up K360
Stevenson Turning Point

Stevenson Pride I167x

PVF Insight 0129

K Bar D Wendy 151E

K Bar D Wendy 1010

Sitz Upward 307R
Barbara of Plattemere 337
S A V Bismarck 5682
FSHK Pride 180
S A V Brilliance 8077
PVF Missie 790
Vermilion Pony X Press
K Bar D Wendy K1T

\$EN: -2
\$M: 84
\$W: 83
\$F: 91
\$G: 37
\$B: 128
\$C: 250

CED	BW	WW	YW	CEM	MILK	CW	MARB	RE	FAT
15	-0.9	67	109	9	27	47	0.24	0.95	0.01

Bold, sound built, and balanced. 70J offers the signature 151E look from the profile.



LOT 2C - K BAR D WENDY 70J

2D

K BAR D WENDY 86J

DOB: 3/4/21 Reg: 20104516 Tattoo: K86J

Plattemere Weigh Up K360
Stevenson Turning Point

Stevenson Pride I167x

PVF Insight 0129

K Bar D Wendy 151E

K Bar D Wendy 1010

Sitz Upward 307R
Barbara of Plattemere 337
S A V Bismarck 5682
FSHK Pride 180
S A V Brilliance 8077
PVF Missie 790
Vermilion Pony X Press
K Bar D Wendy K1T

\$EN: -22
\$M: 77
\$W: 97
\$F: 105
\$G: 33
\$B: 138
\$C: 256

CED	BW	WW	YW	CEM	MILK	CW	MARB	RE	FAT
11	0.9	80	133	12	33	65	0.13	0.99	0.00

Here is the sister that has all the extra bells and whistles! Big time show heifer prospect in our mind. *Selling 1/2 interest.*



LOT 2D - K BAR D WENDY 86J

2E

K BAR D WENDY 87J

DOB: 3/6/21 Reg: 20104503 Tattoo: K87J

Plattemere Weigh Up K360
Stevenson Turning Point

Stevenson Pride I167x

PVF Insight 0129

K Bar D Wendy 151E

K Bar D Wendy 1010

Sitz Upward 307R
Barbara of Plattemere 337
S A V Bismarck 5682
FSHK Pride 180
S A V Brilliance 8077
PVF Missie 790
Vermilion Pony X Press
K Bar D Wendy K1T

\$EN: -12
\$M: 70
\$W: 72
\$F: 101
\$G: 41
\$B: 142
\$C: 254

CED	BW	WW	YW	CEM	MILK	CW	MARB	RE	FAT
15	-0.3	65	109	12	24	50	0.25	1.13	-0.01

87J offers a very futuristic look, she is chisel necked, big bodied, fluid on the move and extra docile. We anticipate her to be the most competitive as a senior yearling.



LOT 2E - K BAR D WENDY 87J

The Legacy of Wendy



LOT 3 - K BAR D WENDY 71J

3

K BAR D WENDY 71J

DOB: 1/20/21 Reg: 20108492 Tattoo: K71J

SMA Watchout 482
Conley Express 7211
 DPL Sandy 3040
 PVF Insight 0129
K Bar D Wendy 151E
 K Bar D Wendy 1010

Silveiras Watchout 0514
 2K Beauty 961
 Silveiras Style 9303
 K N C Cabin Creek Sandy 804
 S A V Brilliance 8077
 PVF Missie 790
 Vermilion Pony X Press
 K Bar D Wendy K1T

\$EN: -20
 \$M: 37
 \$W: 50
 \$F: 75
 \$G: 14
 \$B: 88
 \$C: 151

CED	BW	WW	YW	CEM	MILK	CW	MARB	RE	FAT
4	2.7	57	95	9	21	28	-0.25	0.58	-0.03

The combination of Conley Express 7211 and our K Bar D Wendy 151E donor female resulted in this sharp featured, longer tying, and deep bodied January female. The anticipation for the Express 7211 progeny has been high, and the expectations have been realized. With the influence of one of our most premier and decorated Wendy descendants it is hard to not have high hopes for this one. We think she will continue to develop into a very profitable venture for her new owner.



Conley Express 7211 - Sire of Lot 3



K Bar D Wendy 151E - 2020 NWSS Grand Champion Angus Cow-Calf Pair - Dam of Lots 1 - 4

Elite Open Angus Females



LOT 4 - K BAR D WENDY 39J

4

K BAR D WENDY 39J

DOB: 3/24/21 Reg: 20104684 Tattoo: K39J

OCC Legend 616L
B C Lookout 7024
 Gibbet Hill Mignonne E37
 PVF Insight 0129
K Bar D Wendy 151E
 K Bar D Wendy 1010

OCC Emblazon 854E
 OCC Blackbird 632J
 Papa Equator 2928
 Gibbet Hill Mignonne TR 29
 S A V Brilliance 8077
 PVF Missie 790
 Vermilion Pony X Press
 K Bar D Wendy K1T

\$EN: -14
 \$M: 56
 \$W: 66
 \$F: 69
 \$G: 26
 \$B: 95
 \$C: 179

CED	BW	WW	YW	CEM	MILK	CW	MARB	RE	FAT
6	2.3	64	104	2	24	31	-0.07	0.86	-0.04

We are never afraid around the K Bar D to try something a little unorthodox or stray from the mainstream, and with the undeniable consistency that K Bar D Wendy 151E is proving to generate we decided to kick it old school with the mating to B C Lookout 7024. K Bar D Wendy 39J is long and thin necked, big footed and has the long maternal muscle pattern that we deem desirable. This is the type of female that we place our full faith in to take our cowherd into the future, and the prospect of her as a member of your cowherd should be strongly considered.



K BAR D Wendy 151E - Dam of Lots 1 - 4



B C Lookout 7024 - Sire of Lot 4 & 4A Embryos

4A

BC LOOKOUT X WENDY 151 EMBRYOS

Offering 3 or 5 Conventional Embryos sired by B C Lookout 7024 from the great K Bar D Wendy 151E!

Sire: B C Lookout 7024 (AAA: 14791623) | Dam: K Bar D Wendy 151E (AAA: 18850309)

Seldom do we offer the opportunity to the public to purchase frozen genetics out of K Bar D Wendy 151E, we think so much of this female that we hold onto almost everything we have propagated out of her. However, in an effort to offer our best, here lies an opportunity to purchase a package of embryos that will be full siblings to the Lot 4 female, sired by B C Lookout 7024.

Guaranteeing 1 pregnancy per 3 embryos or 2 pregnancies per 5 embryos if the embryos are transferred by a certified technician.



LOT 5A - K BAR D WENDY 73J

This trio of siblings help justify the excitement we have for the K Bar D Wendy 149E female who is cementing her position in the donor battery and being sired by the versatile Stevenson Turning Point adds value that goes way beyond just being standout show heifer prospects. A full sister to this trio was a sale highlight in the 2020 "No Secrets" when she became the selection of Hartman Cattle Company, of Tecumseh Nebraska, we look forward to seeing what her influence will produce in their program. K Bar D Wendy 149E is a direct daughter of PVF Insight 0129 and goes back to the infamous K Bar D Wendy K1T in her maternal lineage, making her a three-quarter sibling to K Bar D Wendy 151E. It often comes up in discussion as to which of these sisters is our choice, however as they develop and mature, we find it increasingly difficult to decide as to where we would rest our selection. 73J is maternal in her muscle pattern, flat and smooth jointed, fluid in her movement and sets down square on all four points of her skeleton. 76J is the powerful, bold sprung and nice haired sibling, that leaves nothing to the imagination when it comes to an awesome look and presence. Do not let the lack of age count as a discredit of 85J as she presents a strong case as a sale highlight. Her structure is impeccable, carrying herself smooth and comfortably on the move. Her body composition continues to mature in shape, and her look is eye catching to say the least.

5A

K BAR D WENDY 73J

DOB: 1/24/21 Reg: 20104505 Tattoo: K73J

Plattemere Weigh Up K360
Stevenson Turning Point
 Stevenson Pride I167x
 PVF Insight 0129
K Bar D Wendy 149E
 K Bar D Wendy 19B

Sitz Upward 307R
 Barbara of Plattemere 337
 S A V Bismarck 5682
 FSHK Pride 180
 S A V Brilliance 8077
 PVF Missie 790
 K Bar D Joe Canada 18Y
 K Bar D Wendy 1010

\$EN: -16
 \$M: 64
 \$W: 65
 \$F: 103
 \$G: 40
 \$B: 143
 \$C: 249

CED	BW	WW	YW	CEM	MILK	CW	MARB	RE	FAT
15	0.4	65	108	13	20	49	0.33	0.91	0.01



Stevenson Turning Point - Sire of Lots 5A - 5C and 6A - 6B

Elite Open Angus Females



LOT 5B - K BAR D WENDY 76J

5B

K BAR D WENDY 76J

DOB: 1/26/21 Reg: 20104509 Tattoo: K76J

Plattemere Weigh Up K360
Stevenson Turning Point
 Stevenson Pride I167x
 PVF Insight 0129
K Bar D Wendy 149E
 K Bar D Wendy 19B

Sitz Upward 307R
 Barbara of Plattemere 337
 S A V Bismarck 5682
 FSHK Pride 180
 S A V Brilliance 8077
 PVF Missie 790
 K Bar D Joe Canada 18Y
 K Bar D Wendy 1010

\$EN: -12
 \$M: 58
 \$W: 60
 \$F: 88
 \$G: 41
 \$B: 128
 \$C: 224

CED	BW	WW	YW	CEM	MILK	CW	MARB	RE	FAT
13	-0.1	59	98	11	20	34	0.3	1.02	0.01

5C

K BAR D WENDY 85J

DOB: 3/3/21 Reg: 20104502 Tattoo: K85J

Plattemere Weigh Up K360
Stevenson Turning Point
 Stevenson Pride I167x
 PVF Insight 0129
K Bar D Wendy 149E
 K Bar D Wendy 19B

Sitz Upward 307R
 Barbara of Plattemere 337
 S A V Bismarck 5682
 FSHK Pride 180
 S A V Brilliance 8077
 PVF Missie 790
 K Bar D Joe Canada 18Y
 K Bar D Wendy 1010

\$EN: -11
 \$M: 53
 \$W: 62
 \$F: 101
 \$G: 37
 \$B: 138
 \$C: 232

CED	BW	WW	YW	CEM	MILK	CW	MARB	RE	FAT
12	-0.2	62	107	10	19	45	0.23	0.97	0.00



LOT 5C - K BAR D WENDY 85J



LOT 6A - K BAR D WENDY 26J

K Bar D Wendy 29E was a feature in our 2017 sale, she is a Poker Face 1304 daughter that has gone on to produce the lot 1 females in both 2019 and 2020. She was a NWSS 2019 ROV Class Winner before entering the donor battery as a two year old for K Bar D and our partners MB Angus, LLC. K Bar D Wendy 13H was the lot 1 female in 2020, half interest in her sold for \$15,000 to Kathryn Coleman of California. 13H has experienced great success on the tan bark, as a calf she was reserve in the Winter Calf division in Reno, and then went on to be slapped as the 2021 Western Regional Angus Futurity Reserve Grand Champion PGS Female. 26J and 38J are an intriguing pair of flush sisters that offer an elite combination of phenotype, calving ease, and performance genetics. Again, we will be retaining one of these two females in herd to carry on the tradition to the next generation, the ball is in your court!

6A

K BAR D WENDY 26J

DOB: 3/17/21 Reg: 20104676 Tattoo: K26J

Plattmere Weigh Up K360
Stevenson Turning Point
 Stevenson Pride I167x
 Greene Pokerface 1304
K Bar D Wendy 29E
 K Bar D Wendy 19B

Sitz Upward 307R
 Barbara of Plattmere 337
 S A V Bismarck 5682
 FSHK Pride 180
 Silveiras Style 9303
 Gohr Covergirl 1124
 K Bar D Joe Canada 18Y
 K Bar D Wendy 1010

\$EN: 0
 \$M: 79
 \$W: 67
 \$F: 94
 \$G: 50
 \$B: 144
 \$C: 266

CED	BW	WW	YW	CEM	MILK	CW	MARB	RE	FAT
16	-1.2	57	101	13	25	44	0.55	0.87	0.00

Offering the choice of Lot 6A or 6B



K Bar D Wendy 29E - Donor Dam of Lot 6A & 6B



LOT 6B - K BAR D WENDY 38J

The Choice is Yours!

6B

K BAR D WENDY 38J

DOB: 3/24/21 Reg: 20104682 Tattoo: K38J

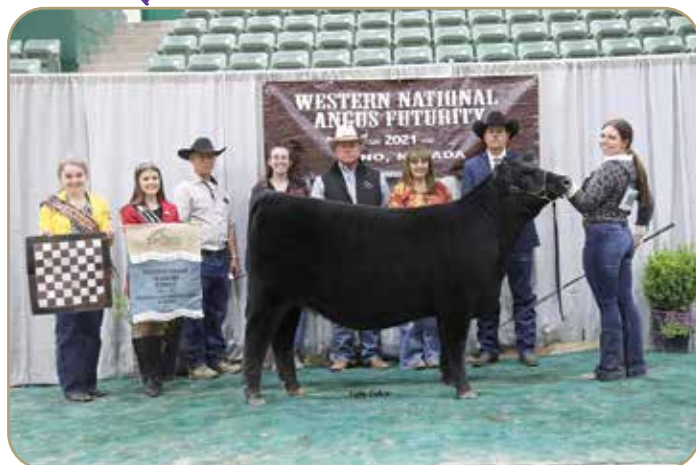
- Plattemere Weigh Up K360
- Stevenson Turning Point**
- Stevenson Pride I167x
- Greene Pokerface 1304
- K Bar D Wendy 29E**
- K Bar D Wendy 19B

- Sitz Upward 307R
- Barbara of Plattemere 337
- S A V Bismarck 5682
- FSHK Pride 180
- Silveiras Style 9303
- Gohr Covergirl 1124
- K Bar D Joe Canada 18Y
- K Bar D Wendy 1010

- \$EN: -11
- \$M: 73
- \$W: 69
- \$F: 99
- \$G: 43
- \$B: 142
- \$C: 257

CED	BW	WW	YW	CEM	MILK	CW	MARB	RE	FAT
11	0.9	66	118	12	23	50	0.6	0.39	0.05

Offering the choice of Lot 6A or 6B



*2021 Western Regional Angus Futurity Reserve Grand Champion
PGS Female - Full Sister to Lots 6A & 6B*

Elite Open Angus Females



LOT 7
K BAR D WENDY 23J



PVF Insight 0129 - Sire of Lot 7

LOT 8
K BAR D WENDY 19J



K Bar D Bull Dozer 47G - Sire of Lot 8



7

K BAR D WENDY 23J

DOB: 3/8/21 Reg: 20104674 Tattoo: K23J

S A V Brilliance 8077
PVF Insight 0129
P V F Missie 790
W K Identity 2024
K Bar D Wendy 22D
K Bar D Wendy 19B

S A V Bismarck 5682
S A V Blackcap May 5270
P V F New Horizon 001
P V F Miss Raptor 024
Koupals B&B Identity
W K Barbarmere 8059
K Bar D Joe Canada 18Y
K Bar D Wendy 1010

\$EN: -24
\$M: 58
\$W: 73
\$F: 92
\$G: 30
\$B: 121
\$C: 215

CED	BW	WW	YW	CEM	MILK	CW	MARB	RE	FAT
1	2.3	63	105	3	33	45	0.01	1	-0.02

K Bar D Wendy 23J in an own daughter of PVF Insight 0129 and out of the K Bar D Wendy 22D female, making her a close relation to the K Bar D Wendy 149E donor female, the mother of the lot 5 trio of females. Wendy 22D and 149E are maternal sisters out of the Wendy 19B donor, she happens to also be the mother of K Bar D On Point 25F, a sire that is quickly rising to fame. In fact, a daughter of On Point was just named Grand Champion Angus female at the New York State Fair for the Trowbridge Family. She presents her case with extra growth, being a performance leader of the sale offering, along with the highest expected progeny difference for ribeye area. She is the type of female that regardless of which vantage point you view her, showing or production, has a promising outlook.

8

K BAR D WENDY 19J

DOB: 2/22/21 Reg: 20104670 Tattoo: K19J

Stevenson Turning Point
K Bar D Bull Dozer 47G
Silveiras Princess 6358
Vermilion Pony X Press
K Bar D Wendy 22G
K Bar D Wendy K1T

Plattemere Weigh Up K360
Stevenson Pride I167x
P V F Insight 0129
EXAR Princess 1416
Vermilion X Factor
Vermilion Erica 7204
BR Midland
Double Bar Wendy 9A

\$EN: -7
\$M: 57
\$W: 56
\$F: 96
\$G: 43
\$B: 139
\$C: 237

CED	BW	WW	YW	CEM	MILK	CW	MARB	RE	FAT
9	0.4	53	90	6	23	45	0.39	0.77	-0.01

Phenotypically K Bar D Wendy 19J has elevated herself into the upper echelon of this year's "No Secrets" offering. We struggle to find an element of her build we would want to change. Her sire K Bar D Bull Dozer 47G is a Turning Point son and out of our Silveiras Princess 6358 donor female who aligns perfectly with the direction our program is headed. The added look and feature that Bull Dozer is transmitting is obvious in 19J. The mother of lot 8 is an impressive first calf heifer, we have big aspirations for her as she is a full sister to the infamous K Bar D Wendy 1010. We love the way this one is constructed, her movement is fluid and effortless, her capacious center third perfectly balances with either end of her skeleton. Her outline is complimented with a traditional Angus head and high tying neck junction. We have high ambitions for this one to hang banners for her new home, grab on and enjoy the ride!

Elite Open Angus Females



LOT 9
K BAR D WENDY 20J



K Bar D Joe Canada 18Y
Influential Sire owned with Krebs Ranch

LOT 10
K BAR D WENDY 27J



Stevenson Turning Point
Paternal Grand sire of Lot 10



9 **K BAR D WENDY 20J**
DOB: 2/25/21 Reg: 20104671 Tattoo: K20J

Stevenson Turning Point
K Bar D Turning Point 5F
K Bar D Savannah 38D
BC 7022 Raven 7965
K Bar D Wendy 8W
K Bar D Wendy K1T

Plattemere Weigh Up K360
Stevenson Pride I167x
K Bar D In The Bank 28B
K Bar D Savannah 3B
B C Marathon 7022
O C C Blackbird 796F
BR Midland
Double Bar Wendy 9A

\$EN: -11
\$M: 54
\$W: 26
\$F: 96
\$G: 57
\$B: 153
\$C: 252

10 **K BAR D WENDY 27J**
DOB: 3/17/21 Reg: 20104678 Tattoo: K27J

K Bar D Joe Canada 18Y
K Bar D Joe Canada 45G
Malsons Dolly 1B
Plattemere Weigh Up K360
K Bar D Wendy 15D
K Bar D Wendy K1T

Soo Line Alternative 9127W
Malsons Savannah 102W
HF Tiger 5T
Bear Mtn Dolly 2020
Sitz Upward 307R
Barbara of Plattemere 337
BR Midland
Double Bar Wendy 9A

\$EN: -12
\$M: 70
\$W: 59
\$F: 86
\$G: 22
\$B: 108
\$C: 210

CED	BW	WW	YW	CEM	MILK	CW	MARB	RE	FAT
2	5.4	45	90	8	22	33	0.68	0.82	-0.02

K Bar D Wendy 20J has the added presence and intrigue that sets her apart, she is aware of her good looks as she struts around the pen and sets down her big and square feet comfortably. Her long and sleek neck elevates high from the top side of her blade, and her later maturity pattern projects our vision of her as a big and powerful show heifer that will catch the eye of even the most demanding stockman. It is of no surprise to us that 20J has a show stopping look, her pedigree is littered with members that have had success of their own in the ring. Her dam, K Bar D Wendy 8W, was Reserve Winter Calf at the National Western Stock Show, and being a granddaughter of K Bar D Wendy K1T closely links her to many banner winners for our program. The Sire of 20J, K Bar D Turning Point 5F was purchased by Pam Bailey and Wes Hughes of Kansas. He is a maternal brother to Daisy Trowbridge's selection from our 2020 sale who was recently selected as the Grand Champion Angus female at the 2021 New York State Fair ROV show. We think the appeal of this female goes much further than just phenotype.

CED	BW	WW	YW	CEM	MILK	CW	MARB	RE	FAT
12	-0.3	49	101	9	32	36	-0.01	0.55	-0.01

The influence of Wendy will always be the backbone of the K Bar D program, it's hard to deny the sheer maternal power that this cow family consistently generates, generation after generation. The dam of 27J in K Bar D Wendy 15D, was the high selling female in the 2017 edition of the "No Secrets" demanding at \$49,000 hammer price for half interest, to our friends at MB Angus, LLC. This makes lot 10 a granddaughter of the K Bar D Wendy K1T matron whose influence is profound among this 10th edition of the "No Secrets" Female Sale. K Bar D Wendy 27J is a great cow prospect, and her true value will be recognized as she enters the production phase for her new owner. Consider evaluating her genomic profile before dismissing 27J, there are several highlights of her tabulations, she is among the elite first percentile for Calving Ease Direct, a top 10% BW figure that bends towards a top 40% YW figure, and a top 10% for \$F.

Elite Open Angus Females



LD Capitalist 316 - Sire of Lot 11



K Bar D Wendy 1057
Maternal Grandam of Lot 11

LOT 11 - K BAR D WENDY 15J



K Bar D On Point 25F - Sire of Lot 12



LOT 12 - K BAR D WENDY 25J

11 K BAR D WENDY 15J

DOB: 2/14/21 Reg: 20104667 Tattoo: K15J

Connealy Capitalist 028
LD Capitalist 316
LD Dixie Erica 2053
J&J Weigh Up 294
K Bar D Wendy 23G
K Bar D Wendy 1057

S A V Final Answer 0035
Prides Pita of Conanga 8821
C A Future Direction 5321
LD Dixie Erica Oar 0853
Plattemere Weigh Up K360
J & J Miss Georgina 294
BR Midland
Double Bar Wendy 9A

\$EN: -31
\$M: 45
\$W: 65
\$F: 105
\$G: 46
\$B: 151
\$C: 241

CED	BW	WW	YW	CEM	MILK	CW	MARB	RE	FAT
8	0.3	73	128	11	17	51	0.47	0.78	0.00

15J is a bold centered, productive, well-balanced daughter of LD Capitalist 316. Capitalist has reserved his own chapter in the history books due to his unique balance of phenotype, calving ease, and performance. The dam of this top show heifer/brood cow prospect is sired by the recently acquired herd sire at ZWT Ranch, J&J Weigh Up 294. The dam of K Bar D Wendy 15J is a full sibling to our recently crowned Champion at the 2020 World of Bulls Sale in Galt, California. Unlimited mating flexibility awaits this big numbered Wendy descendant when her time on the show road comes to a close!

12 K BAR D WENDY 25J

DOB: 3/11/21 Reg: 20104675 Tattoo: K25J

Stevenson Turning Point
K Bar D On Point 25F
K Bar D Wendy 19B
K Bar D Smokin' Joe 27D
K Bar D Wendy 9F
K Bar D Wendy K12U

Plattemere Weigh Up K360
Stevenson Pride I167x
K Bar D Joe Canada 18Y
K Bar D Wendy 1010
K Bar D Joe Canada 18Y
K Bar D Wendy 1057
BC 7022 Raven 7965
K Bar D Wendy 508

\$EN: -18
\$M: 46
\$W: 41
\$F: 103
\$G: 39
\$B: 143
\$C: 231

CED	BW	WW	YW	CEM	MILK	CW	MARB	RE	FAT
4	3.9	65	116	8	12	51	0.34	0.48	-0.04

What could be better than a member of the Wendy cow family? A TRIPLE shot of the prolific cow family! K Bar D Wendy 25J is sired On Point, the Turning Point son from the influence of 19B. On the maternal side of her lineage 25J combines Smokin' Joe with the BC 7022 Raven 7965 daughter, K Bar D Wendy K12U. A full sister to 25J was purchased in 2020 by King Farms Cattle of Malin, Oregon. 25J reads later in her maturity pattern, but one that is flawless at the surface and has the pieces to be competitive, regardless of when you begin campaigning her.



Silveiras Princess 6358 - Dam of Lot 13 Embryos and Lots 14-15

13 BISMARCK X PRINCESS 6358 EMBRYOS

Offering 4 Conventional Embryos sired by S A V Bismarck 5682 from the prolific Silveiras Princess 6358!

Sire: S A V Bismarck 5682 (AAA: 15109865) | Dam: Silveiras Princess 6358 (AAA: 18546983)

Elite Lineage. Proven Results. Time Tested. Some of the first things that come to mind when we evaluate this mating and begin to think about the possibilities and impact that the resulting progeny can have over the next decade in the Angus business. Bismarck needs absolutely no introduction; he is a maternal giant plain and simple. Silveiras Princess 6358 was the lead member of the Champion Cow-Calf Championships at the 2019 National Western Stock Show and the American Royal and she traces to her third-generation dam, the late and great \$400,000 valuation Greens Princess 1012. A pedigree lined with individuals of influence!

Guaranteeing 2 pregnancies per 4 embryos if the embryos are transferred by a certified technician.

Elite Lineage, Proven Results

Elite Open Angus Females



LOT 14A - K BAR D PRINCESS 62H



LOT 14B - K BAR D PRINCESS 77J

The influence of Stevenson Turning Point is extremely evident in this 10th edition of the "No Secrets" Female sale, with 14 direct daughters and 10 granddaughters in this offering alone. He is a proven generator of the right kind. His progeny bridges the gap between the real-world production kind and the fancy featured, outlier type phenotype that is required for purple banners on the tanbark. His initial mating to our Silveiras Princess 6358 donor has proven to be surefire and the results are the kind that we think you can build cowherds and families around. We are offering 3 opportunities to secure a female of this mating. K Bar D Princess 62H is the extra dense, most mature sister of the flush. We think that her added body, muscle, and bone density make her the bull raising kind. The lot B option, K Bar D Princess 77J is super eloquent and striking from the side. Her eye appeal is undeniable and her transition from a swooping underline to her elevated chest floor aligns perfectly with the precedent set by banner winning show heifers at the highest level. We feel that it would be unjust to let all of the flush sisters leave the ranch, so in the fairest way possible we are offering choice between the lot C and D females. The similarities between these February born sisters is uncanny, as both have the awesome look that the Princess cow family is renowned for yet take it one step further with a functional muscle pattern and real world build that you can cornerstone a cow family atop of.



Silveiras Princess 6358 - 2019 NWSS Grand Champion Cow-Calf Pair - Dam of Lots 13-15

14A K BAR D PRINCESS 62H

DOB: 9/2/20 Reg: 20005417 Tattoo: K62H

Plattemere Weigh Up K360
Stevenson Turning Point
 Stevenson Pride I167x
 PVF Insight 0129
Silveiras Princess 6358
 EXAR Princess 1416

Sitz Upward 307R
 Barbara of Plattemere 337
 S A V Bismarck 5682
 FSHK Pride 180
 S A V Brilliance 8077
 PVF Missie 790
 Dameron First Class
 Exar Princess 7879

\$EN: -10
 \$M: 58
 \$W: 49
 \$F: 100
 \$G: 43
 \$B: 143
 \$C: 243

CED	BW	WW	YW	CEM	MILK	CW	MARB	RE	FAT
11	-0.3	51	92	10	20	40	0.49	0.69	0.03

14B K BAR D PRINCESS 77J

DOB: 2/6/21 Reg: 20104508 Tattoo: K77J

Plattemere Weigh Up K360
Stevenson Turning Point
 Stevenson Pride I167x
 PVF Insight 0129
Silveiras Princess 6358
 EXAR Princess 1416

Sitz Upward 307R
 Barbara of Plattemere 337
 S A V Bismarck 5682
 FSHK Pride 180
 S A V Brilliance 8077
 PVF Missie 790
 Dameron First Class
 Exar Princess 7879

\$EN: -2
 \$M: 77
 \$W: 61
 \$F: 89
 \$G: 36
 \$B: 125
 \$C: 239

CED	BW	WW	YW	CEM	MILK	CW	MARB	RE	FAT
13	-0.5	58	92	7	19	40	0.38	0.59	0.04

Elite Open Angus Females



LOT 14C - K BAR D PRINCESS 79J



C&C Priority 1428B
Full Brother to Maternal Granddam
of Lots 14A - 15E



LOT 14D - K BAR D PRINCESS 80J

*The Choice
is Yours!*

14C K BAR D PRINCESS 79J

DOB: 2/9/21 Reg: 20104506 Tattoo: K79J

Plattemere Weigh Up K360
Stevenson Turning Point
Stevenson Pride I167x
PVF Insight 0129
Silveiras Princess 6358
EXAR Princess 1416

Sitz Upward 307R
Barbara of Plattemere 337
S A V Bismarck 5682
FSHK Pride 180
S A V Brilliance 8077
PVF Missie 790
Dameron First Class
Exar Princess 7879

\$EN: -15
\$M: 63
\$W: 70
\$F: 113
\$G: 45
\$B: 157
\$C: 267

CED	BW	WW	YW	CEM	MILK	CW	MARB	RE	FAT
13	-1.1	58	107	9	30	55	0.46	0.93	0.03

Offering the choice of Lot 14C or 14D

14D K BAR D PRINCESS 80J

DOB: 2/15/21 Reg: 20104510 Tattoo: K80J

Plattemere Weigh Up K360
Stevenson Turning Point
Stevenson Pride I167x
PVF Insight 0129
Silveiras Princess 6358
EXAR Princess 1416

Sitz Upward 307R
Barbara of Plattemere 337
S A V Bismarck 5682
FSHK Pride 180
S A V Brilliance 8077
PVF Missie 790
Dameron First Class
Exar Princess 7879

\$EN: -12
\$M: 62
\$W: 60
\$F: 110
\$G: 48
\$B: 158
\$C: 267

CED	BW	WW	YW	CEM	MILK	CW	MARB	RE	FAT
9	1	57	100	12	24	51	0.55	0.79	0.02

Offering the choice of Lot 14C or 14D



LOT 15A - K BAR D PRINCESS 72J

The acquisition of the Silveiras Princess 6358 female has already led to many distinguishable moments for our program in the show ring, including her prestigious Champion Cow-Calf banner at the 2019 National Western Stock Show, and then Reserve in the same division in 2020, to our K Bar D Wendy 151E. However, it is quickly becoming evident that her influence is going to go much further than just what she has contributed to our trophy case. Her daughters are consistently stamped with unbelievable presence and wow factor, and a structural build that goes further than the tan bark. The udder quality and maternal function that these females will have as they enter production is what they will be most desired for. This mating with K Bar D On Point 25F has not missed, all four of the heifer calves we are offering for your appraisal will be three quarter siblings to the lot 14 collection of females. However, these benefit from a more direct shot of our renowned Wendy cow family, through their paternal granddam in K Bar D Wendy 19B. Lot A is K Bar D Princess 72J, she is a combination female, regardless of which world you're from you can appreciate the immense amount of eye appeal, structural soundness, length of spine and pin width that she brings to the equation. The lot B female, K Bar D Princess 75J screams brood cow to us. She may not be the fanciest featured of the sisters, but she makes up for it in ribcage dimension and topline skeletal width. The big bodied, cowy prospect in 84J will be one that makes you wonder what her bull calf crop and replacement heifers will do for a program. She is long and deep, with enough look to catch the eye of the most discriminating. The fancy outlined, and smooth jointed sister is K Bar D Princess 83J. She floats towards the top of our list of show heifer prospects and the journey she could take a junior on could be very memorable. These females represent the forefront of our breeding program, and we are giving you access to the gene pool that we are trusting to elevate our program into the future.

15A K BAR D PRINCESS 72J

DOB: 1/23/21 Reg: 20104512 Tattoo: K72J

Stevenson Turning Point
K Bar D On Point 25F
 K Bar D Wendy 19B
 PVF Insight 0129
Silveiras Princess 6358
 EXAR Princess 1416

Plattmere Weigh Up K360
 Stevenson Pride I167x
 K Bar D Joe Canada 18Y
 K Bar D Wendy 1010
 S A V Brilliance 8077
 PVF Missie 790
 Dameron First Class
 Exar Princess 7879

\$EN: -1
 \$M: 55
 \$W: 44
 \$F: 76
 \$G: 37
 \$B: 114
 \$C: 203

CED	BW	WW	YW	CEM	MILK	CW	MARB	RE	FAT
14	-0.3	45	71	11	19	24	0.41	0.53	0.03

Elite Open Angus Females

15B K BAR D PRINCESS 75J

DOB: 1/25/21 Reg: 20104511 Tattoo: K75J

Stevenson Turning Point
K Bar D On Point 25F

K Bar D Wendy 19B
PVF Insight 0129

Silveiras Princess 6358
EXAR Princess 1416

Plattemere Weigh Up K360
Stevenson Pride I167x
K Bar D Joe Canada 18Y
K Bar D Wendy 1010
S A V Brilliance 8077
PVF Missie 790
Dameron First Class
Exar Princess 7879

\$EN: -18
\$M: 51
\$W: 47
\$F: 90
\$G: 38
\$B: 129
\$C: 218

CED	BW	WW	YW	CEM	MILK	CW	MARB	RE	FAT
7	2.5	54	92	9	21	39	0.42	0.49	0.02

75J is a stout made, bold centered, elite brood cow prospect.



LOT 15B - K BAR D PRINCESS 75J

15C K BAR D PRINCESS 84J

DOB: 3/3/21 Reg: 20104514 Tattoo: K84J

Stevenson Turning Point
K Bar D On Point 25F

K Bar D Wendy 19B
PVF Insight 0129

Silveiras Princess 6358
EXAR Princess 1416

Plattemere Weigh Up K360
Stevenson Pride I167x
K Bar D Joe Canada 18Y
K Bar D Wendy 1010
S A V Brilliance 8077
PVF Missie 790
Dameron First Class
Exar Princess 7879

\$EN: -23
\$M: 61
\$W: 60
\$F: 98
\$G: 43
\$B: 142
\$C: 245

CED	BW	WW	YW	CEM	MILK	CW	MARB	RE	FAT
7	1.7	65	110	10	20	47	0.42	0.81	0.01

84J personifies the maternal fundamentals that we strive for in each mating.



LOT 15C - K BAR D PRINCESS 84J

15D K BAR D PRINCESS 83J

DOB: 3/3/21 Reg: 20104513 Tattoo: K83J

Stevenson Turning Point
K Bar D On Point 25F

K Bar D Wendy 19B
PVF Insight 0129

Silveiras Princess 6358
EXAR Princess 1416

Plattemere Weigh Up K360
Stevenson Pride I167x
K Bar D Joe Canada 18Y
K Bar D Wendy 1010
S A V Brilliance 8077
PVF Missie 790
Dameron First Class
Exar Princess 7879

\$EN: -16
\$M: 70
\$W: 63
\$F: 102
\$G: 31
\$B: 133
\$C: 243

CED	BW	WW	YW	CEM	MILK	CW	MARB	RE	FAT
6	2.1	61	104	7	25	50	0.19	0.71	0.02

Here is the sleek made, ultra-feminine sister that will become familiar with the backdrop!
Selling ½ interest.



LOT 15D - K BAR D PRINCESS 83J

These Females are On Point

Elite Open Angus Females



LOT 17
K BAR D BLACKCAP 22J



G A R 044 Traveler 2328
\$280,000 Third Generation Dam



LOT 16
K BAR D SARAS DREAM 18J



EXG Saras Dream S609 R3
Legendary Third Generation Dam

16 K BAR D SARAS DREAM 18J

DOB: 2/15/21 Reg: 20121236 Tattoo: K18J

Stevenson Turning Point
K Bar D Turning Point 5F
K Bar D Savannah 38D
Silveiras Style 9303
Gohr CEF Saras Dream 7004
EXAR Saras Dream 3775

Plattemere Weigh Up K360
Stevenson Pride I167x
K Bar D In The Bank 28B
K Bar D Savannah 3B
Gambles Hot Rod
Silveiras Elba 2520
Dameron First Class
EXG Saras Dream S609 R3

\$EN: -22
\$M: 46
\$W: 56
\$F: 105
\$G: 40
\$B: 145
\$C: 234

CED	BW	WW	YW	CEM	MILK	CW	MARB	RE	FAT
7	2.6	58	105	8	26	44	0.42	0.66	0.03

Sharp featured and sleek made, a beautiful profiling female that has the look necessary to stop them in their tracks and take a second look. 18J is sired by resident herd sire, K Bar D Turning Point 5F, the Turning Point son that is backed by the famed Malsons Savannah cow family. She is further supported on the bottom side of her pedigree by influence of the late EXG Sara's Dream S609 R3, a female that has had as much influence on the Angus breed as any in the last 10 years. 18J is a unique built Angus female that combines the most prominent cow lines in the business... enjoy the ride!

17 K BAR D BLACKCAP 22J

DOB: 3/8/21 Reg: 20104673 Tattoo: K22J

Stevenson Turning Point
K Bar D Turning Point 5F
K Bar D Savannah 38D
EXAR Denver 2002B
Vintage Blackcap 4256
V A R Blackcap 9303

Plattemere Weigh Up K360
Stevenson Pride I167x
K Bar D In The Bank 28B
K Bar D Savannah 3B
EXAR Upshot 0562B
Exar Royal Lass 1067
N Bar Emulation EXT
G A R 044 Traveler 2328

\$EN: -18
\$M: 39
\$W: 56
\$F: 86
\$G: 27
\$B: 113
\$C: 186

CED	BW	WW	YW	CEM	MILK	CW	MARB	RE	FAT
11	0.8	48	85	7	31	35	0.16	0.55	0.03

The notoriety of the Blackcap dynasty is justified by the influence that these females have made for the Angus breed, globally. K Bar D Blackcap 22J is an own daughter of K Bar D Turning Point 5F, the sire of several sale highlights in our 2020 "No Secrets" female sale, including K Bar D Savannah 6H. 6H was recently selected Grand Champion Female at the New York State Fair ROV show for Daisy Trowbridge. The maternal lineage of 22J is littered with household names, including the \$280,000 full sister to Grid Maker in G A R 044 Traveler 2328, a female that many would perhaps still describe as the ideal Angus female. 22J is a balanced and functional show heifer prospect that is destined to make a great breeding piece.

Elite Open Angus Females



LOT 18 - K BAR D ERICA K2J

18 K BAR D ERICA K2J

DOB: 1/13/21 Reg: 20104662 Tattoo: K2J

Stevenson Turning Point
K Bar D Carhartt 48G
 Silveiras Princess 6358
 K Bar D Mo' Joe 17C
K Bar D Erica 34G
 QV Erica 2034

Plattmehere Weigh Up K360
 Stevenson Pride I167x
 PVF Insight 0129
 EXAR Princess 1416
 K Bar D Joe Canada 18Y
 K Bar D Wendy 8W
 S A V Final Answer 0035
 QV Erica 6147

\$EN: -7
 \$M: 60
 \$W: 37
 \$F: 79
 \$G: 54
 \$B: 133
 \$C: 233

K Bar D Erica K2J is an own daughter of our resident senior herd sire in K Bar D Carhartt 48G, who is a littermate to K Bar D Bull Dozer 47G. This pedigree is the result of stacking generations of the Angus breeds most visually appealing members, guaranteeing a consistent and predictable outcome. Proof exists with K Bar D Erica K2J, she is long and level spined, eloquent about her head and extended in the way her neck ties high at the top of her shoulder blade. The composition of the middle third of her body is bold and deep, and the structural integrity that forms her foundations is flexible and effortless. We believe that this one is a CATCH!

CED	BW	WW	YW	CEM	MILK	CW	MARB	RE	FAT
12	0.2	38	78	12	25	25	0.68	0.64	-0.01



Bid Live Online CCI.live

“Gavel’s Down, The Best in Online Marketing”

(516) 366-0734 CCI.live.schedule@cci.live

Maternal Bred Angus Heifers



LOT 19
K BAR D WENDY 54H



K Bar D Wendy 1010
Foundation Matriarch and Dam of Lot 20

LOT 20
K BAR D WENDY 16H



K Bar D Native Joe 32D
Full Brother to Lot 20



19 K BAR D WENDY 54H
DOB: 3/1/20 Reg: 19877197 Tattoo: K54H

KR Cadillac Jack
KR Synergy
Dickaus 2U66 FW 416
Plattmeyer Weigh Up K360
K Bar D Wendy 15D
K Bar D Wendy K1T

CFCC Black Jack 001
WK Blackbird 5066
Summitcrest Focus 2U66
Dickaus FW Cash 239
Sitz Upward 307R
Barbara of Plattmeyer 337
BR Midland
Double Bar Wendy 9A

\$EN: -15
\$M: 75
\$W: 69
\$F: 86
\$G: 42
\$B: 128
\$C: 241

CED	BW	WW	YW	CEM	MILK	CW	MARB	RE	FAT
5	1.7	64	113	12	27	42	0.49	0.61	0.03

K Bar D Wendy 54H is a perfect representation of the breeding goals of our program, she blends the gap of performance Angus seedstock and the ultra-attractive phenotype that would appeal the most astute of cattlemen and women. We take pride in generating this type of female through our breeding program, built correct from the ground up, with the running gear that will outlast her breeding tenure, and the easy feeding type that regardless of environment will prosper and return profit. The KR Synergy cattle continue to impress us the more that we are around them, his daughters are just beginning to enter production and its already obvious that his influence will remain strong in our cowherd for years to come. The maternal power of the dominant Wendy cow family is strong in 54H. *AI BRED ON 5/13/21 TO K BAR D BULL DOZER 47G (AAA: 19574605). PE FROM 5/31/21 TO 7/2/21 TO K BAR D BULL DOZER 47G (AAA: 19574605).*

20 K BAR D WENDY 16H
DOB: 2/17/20 Reg: 19795782 Tattoo: K16H

Soo Line Alternative 9127W
K Bar D Joe Canada 18Y
Malsons Savannah 102W
Vermilion Pony X Press
K Bar D Wendy 1010
K Bar D Wendy K1T

HF Kodiak 5R
TLA Rosebud 4R
S A V 8180 Traveler 004
Malsons Savannah 51N
Vermilion X Factor
Vermilion Erica 7204
BR Midland
Double Bar Wendy 9A

\$EN: -16
\$M: 63
\$W: 75
\$F: 91
\$G: 35
\$B: 126
\$C: 226

CED	BW	WW	YW	CEM	MILK	CW	MARB	RE	FAT
8	0.6	61	105	7	33	46	0.29	0.49	-0.01

K Bar D Wendy 16H is an ultra-functional and extra dense daughter of K Bar D Joe Canada 18Y, and out of our standout Wendy donor in 1010. This mating has produced one of the most intriguing animals to come out of the K Bar D program in the AI Stud, K Bar D Native Joe 32D that is now owned in conjunction with Genex, Sunset Sunrise Farms, and Dameron Angus. Here presents an opportunity to tie into a female that represents some of the most potent genetic prowess that the K Bar D has to offer, it's no secret that we are offering some of our most valuable breeding pieces for your appraisal. The opportunity for return on investment here will be quick and bountiful. *AI BRED ON 5/13/21 TO K BAR D BULL DOZER 47G (AAA: 19574605). PE FROM 5/31/21 TO 7/2/21 TO K BAR D BULL DOZER 47G (AAA: 19574605).*

Maternal Bred Angus Heifers



LOT 21 K BAR D WENDY 9H

K Bar D Wendy 9H is a huge middled, functionally orientated daughter of the maternal legend in J&J Weigh Up 294, she is exactly what we envisioned when selecting this mating for K Bar D Wendy 3F, a direct daughter of the Wendy 1010 matriarch. This is the type of female that screams longevity and high productivity, we can promise her udder quality and structural integrity will be of the utmost quality. If your selection criteria incorporates genomic data then you will realize that 9H possesses the leading \$EN, Birth Weight and Marbling figures of our entire offering. *AI BRED ON 4/28/21 TO LD CAPITALIST 316 (AAA: 17666102). PE FROM 5/31/21 TO 7/2/21 TO K BAR D BULL DOZER 47G (AAA: 19574605).*



J&J Weigh Up 294 - Sire of Lot 21



LOT 22 K BAR D BLACKCAP 25H

K Bar D Blackcap 25H is a direct daughter of resident senior herd sire K Bar D On Point 25F, a Turning Point son that is leaving a very strong impression on the replacement pen here in Redmond. His daughters are stamped with a low maintenance, easy keeping growth pattern, they are the kind that will have an extended career in the cowherd because of the structural build that comes standard issue. 25H's mother, Vintage Blackcap 4256 has been a mainstay in the donor battery for us, she has yielded several sale features, including a \$25,000 daughter that was the selection of Sierra Ranches, the return on investment will be recognized quickly here.

AI BRED ON 6/6/21 TO K BAR D BULL DOZER 47G (AAA: 19574605). PE FROM 5/31/21 TO 7/2/21 TO K BAR D BULL DOZER 47G (AAA: 19574605).

21 K BAR D WENDY 9H

DOB: 2/6/20 Reg: 19795731 Tattoo: K9H

Plattemere Weigh Up K360
J&J Weigh Up 294
J & J Miss Georgina 294
K Bar D Joe Canada 18Y
K Bar D Wendy 3F
K Bar D Wendy 1010

Sitz Upward 307R
Barbara of Plattemere 337
TC Romeo 917
J&J Miss Georgina 927
Soo Line Alternative 9127W
Malsons Savannah 102W
Vermilion Pony X Press
K Bar D Wendy K1T

\$EN: 6
\$M: 59
\$W: 53
\$F: 65
\$G: 46
\$B: 111
\$C: 203

CED	BW	WW	YW	CEM	MILK	CW	MARB	RE	FAT
8	-1.5	47	82	7	22	18	0.69	0.36	0.05

22 K BAR D BLACKCAP 25H

DOB: 3/17/20 Reg: 19795727 Tattoo: K25H

Stevenson Turning Point
K Bar D On Point 25F
K Bar D Wendy 19B
EXAR Denver 2002B
Vintage Blackcap 4256
V A R Blackcap 9303

Plattemere Weigh Up K360
Stevenson Pride 1167x
K Bar D Joe Canada 18Y
K Bar D Wendy 1010
EXAR Upshot 0562B
Exar Royal Lass 1067
N Bar Emulation EXT
G A R 044 Traveler 2328

\$EN: -8
\$M: 57
\$W: 55
\$F: 82
\$G: 45
\$B: 126
\$C: 220

CED	BW	WW	YW	CEM	MILK	CW	MARB	RE	FAT
12	-0.1	52	85	14	23	36	0.51	0.5	-0.01

The Angus Pair

The pedigree that supports K Bar D Erica 17F is stacked with several of the legends that have built the infamous cowherd of St. Anthony, North Dakota. She is a daughter of S A V Revenue 2854, the Rito 9969 son out of the Abigale 5650 matron, who is a maternal sister to S A V Bismarck and has generated more than \$750,000. Maternally you will find the influence of several other of the breeds most notable members in S A V Final Answer, Bando 598, and Papa Forte. This young 3-year-old is only at the beginning of her illustrious breeding tenure, and with a pedigree like hers it is inevitable that she will make a cornerstone type female for a program. We have done the hard yards here, and Erica 17F will be accompanied by her May born heifer calf sired by K Bar D Turning Point 5F, a fancy featured, carbon copy of her mother, she represents an exciting beginning to this cow family for their new owners.

23

K BAR D ERICA 17F

DOB: 2/24/18 Reg: 19178045 Tattoo: K17F

S A V 707 Rito 9969
S A V Revenue 2854
 S A V Abigale 5650
 S A V Final Answer 0035
QV Erica 2034
 QV Erica 6147

Rito 707 of Ideal 3407 7075
 BR Polly 8077-472
 S A V 8180 Traveler 004
 S A V Abigale 0451
 Sitz Traveler 8180
 S A V Emulous 8145
 S A F 598 Bando 5175
 LCC Bon View Erica LH590

\$EN: -15
 \$M: 59
 \$W: 58
 \$F: 83
 \$G: 39
 \$B: 122
 \$C: 217

23A

K BAR D ERICA 64J

DOB: 5/24/21 Reg: Pending Tattoo: K64J

Stevenson Turning Point
K Bar D Turning Point 5F
 K Bar D Savannah 38D
 S A V Revenue 2854
K Bar D Erica 17F
 QV Erica 2034

Plattemere Weigh Up K360
 Stevenson Pride I167x
 K Bar D In The Bank 28B
 K Bar D Savannah 3B
 S A V 707 Rito 9969
 S A V Abigale 5650
 S A V Final Answer 0035
 QV Erica 6147

CED	BW	WW	YW	CEM	MILK	CW	MARB	RE	FAT
-1	3.4	56	92	7	30	38	0.47	0.45	0.03

PE FROM 5/25/21 TO 7/25/21 TO K BAR D BULL DOZER 47G (AAA: 19574605).

Thank you to our amazing crew who makes it all happen!



Jessica Smelser - K Bar D Herdsman



2021 Sale Photo Crew





LOT 24
K BAR D BULL DOZER 12J

We by no means focus on raising Angus show steer prospects, however sometimes there is just too much promise in a couple of individuals that we feel it would be unjust to not offer them for public appraisal. Bull Dozer 12J is wide backed, big hipped and stout featured, he is also very eye appealing, and balances like a good show steer should. There is always an added premium on offer for good Purebred breed steers, and the scholarship opportunities that exist for juniors showing banner winning Angus steers can be hefty.



*K Bar D Bull Dozer 47G
Sire of Lot 24*



LOT 25
K BAR D ON TO IT 33J

Although the selection of show steer prospects may be small, we believe that there is a bright future ahead for them both. K Bar D On to it 33J is the perfectly built, intriguing outlined calf that as he matures will power up and feed well. All that is required here is the feed scoop, the foundations are built, and we have full faith in him being the type for the long run, his structural integrity and cool looks will prevail, an added bonus is his great hair type!

24 **K BAR D BULL DOZER 12J**
DOB: 2/8/21 Reg: 20104669 Tattoo: K12J

- Stevenson Turning Point
- K Bar D Bull Dozer 47G**
- Silveiras Princess 6358
- K Bar Unity 31E
- K Bar D Wendy 49G**
- K Bar D Wendy 151E

- Plattemere Weigh Up K360
- Stevenson Pride I167x
- PVF Insight 0129
- EXAR Princess 1416
- K Bar D Unity 29C
- K Bar D Savannah 3B
- PVF Insight 0129
- K Bar D Wendy 1010

25 **K BAR D ON TO IT 33J**
DOB: 3/20/21 Reg: 20114322 Tattoo: K33J

- Stevenson Turning Point
- K Bar D Turning Point 5F**
- K Bar D Savannah 38D
- PVF Insight 0129
- K Bar D Wendy 16E**
- K Bar D Wendy 19B

- Plattemere Weigh Up K360
- Stevenson Pride I167x
- K Bar D In The Bank 28B
- K Bar D Savannah 3B
- S A V Brilliance 8077
- PVF Missie 790
- K Bar D Joe Canada 18Y
- K Bar D Wendy 1010

Showring Ready!

INNOVATION
AgMarketing, LLC
PO Box Z
DeSoto, KS 66018

Presorted
First Class
US Postage
PAID
SlateGroup

The secret is out....

