

NEW SALE LOCATION!  
HEARTLAND REGIONAL STOCKYARDS

# C-BAR

**80+ BULLS**

YEARLING & AGE ADVANTAGED

**ANNUAL BULL SALE**

MONDAY | MARCH 22, 2021 | 1 PM | PLAINVILLE, KS





*Dear Friends in the cattle world,*

We are excited to be entering a new era in history, a year ago we were just beginning to get a grasp on the reality of shutting down. Today we have discovered how blessed and free we have been and are working to find that normal we took for granted. I myself have found a new appreciation for simple basics of life, food-shelter-health. I have been lucky enough to bury myself into the landscape with our cattle and the good life of caring for them while disappearing from public for the most part. I have also witnessed selfless dedication, courage, and sacrifice on the part of my wife. As a most vital health care professional I have seen her work every day for over a year without a break, even on days when she didn't go into the hospital I think her phone was never silent for more than a couple hours with a task needing immediate attention. And yes that means 24 hours a day. She is my Hero. I hope we can thank all of the caretakers who have worked so hard this past year.

I also want to give credit and thanks for everyone who contributes to make C-Bar Red Angus what it is today. Ray and Joyce Dowd have been friends and partners for longer than I can remember. Nathan and Neil Smith are so vital to getting these ET calves raised properly and are a couple of the best livestock men around. Jacinda and Dylan with the Diamond L herd are continuing to grow and raise some of the best ones. Wyatt, Ed and Jenifer Durst have been a great asset in raising calves, developing calves, and assisting with the marketing as well. Also Graham Blagg and all the crew with Innovation Ag and the excellent job they do in organizing this presentation and running everything smoothly.

We are very happy this year to be working with all the folks at Heartland Regional Stockyards. Our desire is to provide the best opportunity for our customers to evaluate our product and find genetics that will serve them well. We are exploring the idea of continuing to work with our customers and provide marketing opportunities thru special sales of Red Angus and C-Bar genetics with Heartland, let us know what you think, be happy to get your input.

Be sure to check out the Top Dollar Angus program, we think this is one of the best value added opportunities we can offer you.

Enjoy the cattle and please call if you have questions, we will be glad to assist you in any way we can. I believe this is one of the soundest, most docile and problem free sets of red angus bulls to be found.

Remember to keep God and Family first.

Sincerely,

*Steve Maier*



### *Red Angus Enthusiasts,*

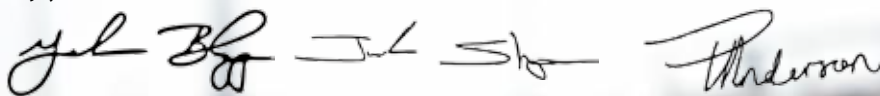
Welcome to the Annual bull sale at C-Bar Red Angus. The C-Bar program has been built entirely on cow families that are stacked generations deep with proven and predictable genetics. Genetics that represent a potent proven program that has stayed the course for many successful years. Steve knows and understands the seedstock business as well as any of our clients and is especially passionate about his work. Once again, this sale features multiple full and half-brothers that represent the progressive-minded thought process that built this program.

Steve Maier and his family have bred and assembled one of the elite sets of Red Angus bulls for you to invest in. The responsible donor base for these herdsires has been selected for big, sound feet, text book udders, body mass, and fleshing ability without sacrificing pounds and performance. These cattle are not bred on the extremes but rather with balance in mind to insure profitability here at C-Bar and in your respective program as well.

The bulls have been developed in a manner to host longevity for you as you make your investment. Steve is not only hard on the physical characteristics but has been diligent in recording the data needed to further prove positive his quest for the ideal. This program has yielded many bulls over the years that have gone out and influenced some of the breed's most elite programs as well as being accepted by nearly every bull stud in the business. The genetics that back this set of bulls will enable one to tie into gene pools of consistency to improve the uniformity of your next calf crop. Performance and ultrasound data serve as a tools to producers to study the information that is provided and to be confident and comfortable in your buying decision. This program has been built on generations of A.I. and embryo transfer, so the fertility of your potential replacements will be as phenomenal as their steer mates' performance on grass and in the yard up to harvest.

The industry buzz is one of optimistic nature with the market forecast as positive as we have analyzed in recent years. Cattlemen and cattle women alike, you should take great pride in the fact that our nation is the largest supplier of protein in the world with the safest standards in the world. The world population prefers our product, that's no secret, but we must continue to strive for perfection and not fall in a content state. That's why each of you that are serious about the business and desire to be an industry leader, need to be at the Heartland Stockyards in Plainville, Kansas on March 22 to invest in the future of your program and the beef business.

Enjoy the cattle!



**INNOVATION**  
— AgMarketing, LLC —

## SALE DETAILS & CONTACTS

### SALE DAY PHONES

Steve Maier - (785) 623-9736  
Cynthia Maier - (785) 481-1004  
Graham Blagg - (530) 913-6418  
Tim Anderson - (605) 682-9343

### AUCTIONEER

Col. Jered Shipman – (806) 983-7226

### SALE MANAGEMENT

#### *Innovation AgMarketing*

Graham Blagg - (530) 913-6418  
Tim Anderson - (605) 682-9343  
InnovationAgMarketing.com

### SALE CONSULTANT

Gerri Schumacher - (785) 623-1712

### RING STAFF

Stephen Russell- Kansas Stockman - (785) 458-2650  
Nick Wells- High Plains Journal - (785) 443-0233  
J.W. Brune – Lee AgriMedia - (785) 865-6624

### SALE LOCATION/DIRECTIONS

New Location for 2021: Heartland Regional Stockyard in  
907 NW 3rd Street NW - Plainville, KS 67663

### COOPERATOR HERDS

Ray Dowd, RJ Farms - (620) 874-5765  
Diamond L Genetics

### SPECIAL GUESTS

Barrett Simon - (316) 452-1792  
Red Angus Association of America

### ACCOMMODATIONS

The nearest hotels are located in Hays, Kansas approximately 25 miles from the Heartland Regional Stockyard.

### INCENTIVES

A \$50 discount will be given per bull loaded out on sale day or the day after. Bulls must be loaded out from the Heartland Regional Stockyards no later than Tuesday night. Any bulls not scheduled for pick up from Plainville, Kansas will be transported back to Brownell Kansas to C-Bar Ranch on Tuesday the 23rd of March. For more information about trucking please make arrangements at the settlement desk following the sale. Bulls may stay at C-Bar until April 1st without charge, and thereafter will be assessed a fee for boarding and feed on a daily basis.

### INSURANCE

C-Bar Red Angus will pay half of the insurance premium on sale cattle if you wish to insure your purchase on sale day. More information will be available sale day!

### SIGHT UNSEEN PURCHASE

All bull purchases made on order or over the internet with Trusted Performance breeders are 100% satisfaction guaranteed upon delivery.

### TRAVEL

Wichita International Airport - 200 miles from sale location  
Kansas City International Airport - 300 miles from the sale location

### INTERNET BROADCASTING

Complete sale videos and lot preview available online at:  
www.DV Auction.com. Please register prior to sale day. If you have questions or trouble registering to bid call (402) 316-5460.

### ADVERTISING AND CATALOG PRODUCTION

THM Promotions, LLC - Tracy McMurphy - (806) 679-0231

### VIDEOGRAPHY

Ideal Video Productions - Wyatt Durst - (785) 541-0904

### SCAN DATA

The Age Advantage Two-Year-Old Bulls scan data is actual data that was recorded on January 20, 2021.

### *Sale Schedule*

#### ***Sunday, March 21, 2021***

Bulls available for viewing all day

#### ***Monday, March 22, 2021***

9:00 am - Bulls available for viewing  
1:00 pm - C-Bar Red Angus Annual Bull Sale

### *New Sale Location*

#### ***Heartland Regional Stockyard***

907 NW 3rd St NW, Plainville, KS 67663  
(785) 688-4080

# SALE TERMS & CONDITIONS

## 1. BIDDING

The Auctioneer in charge will settle any disputes as to bids, and his decision on such matters shall be final.

## 2. TERMS

Terms of sale are cash unless satisfactory credit arrangements have been made with Sale Management prior to sale.

## 3. PURCHASER'S RISK

Each animal becomes the risk of the Buyer as soon as sold, but it shall be the obligation of the Seller to see that animals are fed and cared for free of charge to Buyer, until loaded for shipment or until the expiration of 48 hours after the sale, whichever occurs sooner.

## 4. HEALTH

All animals are eligible for interstate shipment, except as otherwise announced. Interstate health papers will be furnished for each animal requiring tuberculosis and brucellosis tests in accordance with Federal Regulations.

## 5. ANNOUNCEMENTS

Any changes from information of any kind in this catalog will be announced from the auction box and such announcements shall take precedence.

## 6. DEFAULT

In the event the Buyer defaults on payment, the Buyer shall be responsible for all costs, including attorney's costs, incurred by Sale Management or Seller in connection with collecting, or attempting to collect, payment due.

## 7. BREEDING GUARANTEE

All animals are guaranteed by the seller as outlined in the Red Angus Association of America Code of Ethical Sale Practices.

## 8. CONTRACT

The above terms and conditions of sale shall constitute a contract between the buyer and seller of each animal and shall be equally binding upon both. Each sale or resale of an animal constitutes a separate transaction.

## 9. LIABILITIES

All persons who attend the sale do so at their own risk. The seller, the sale manager, and the auction facility assume no liability for accidents that may occur. It is to be clearly understood that the sale manager and their representatives act only as a medium between the buyer and seller.

**DVAuction**  
Broadcasting Real-Time Auctions

*View the Sale Videos and Bid Online at:*  
**WWW.DVAUCTION.COM**



# *C-Bar Abigrace Y11* DECEASED



The immortal impact of C-Bar Abigrace Y11 will be everlasting throughout the industry and Red Angus breed. Y11 is a female we lost too soon, however the daughters we have from Y11 will carry the torch as we progressively move into the future. We are proud to have had the opportunity to utilize a female that was the caliber of Y11 during her tenure in the donor pen at Brownell, Kansas. We invite you to join us on March 22, 2021 as we offer one of the deepest and most dynamic offering of Red Angus bulls to ever carry the C-Bar prefix. Study the maternal stability and power that backs each of these bulls throughout the catalog!

# 32

**GRANDSONS WILL SELL  
ON MARCH 22, 2021 IN  
THE C-BAR RANCH ANNUAL  
BULL SALE**

# 7

**DAUGHTERS RETAINED IN HERD  
AT C-BAR RANCH TO BUILD THE  
NEXT GENERATION OF ELITE RED  
ANGUS SEEDSTOCK**



**C-BAR ABIGRACE 636D - THE HEIR APPARENT**



**9 MILE FRANCHISE 6305**



**\$105,000**

**9 MILE FRANCHISE 6305  
THE MOST FAMOUS SON OF THE LATE Y11**



LOT 1



Domain 9414G and Domain 9417G lead off an impressive offering of Red Angus Age-Advantage bulls that are supported by some of the most prolific maternal lines in the history of the C-Bar program. The dam of this pair of herd sire candidates is the result of the famous Spur Franchise of Garton x C-Bar Abigrace Y11 mating that yielded the \$105,000 9 Mile Franchise 6305. This pair of flush brothers rank among the top 9% of the breed for ProS, top 6% GM, 10% ADG, top 7% Marb, top 17% CW, and top 12% REA. Their impressive dam sets the standard in terms of structural integrity, body dimension, foot design, and udder quality. 9414G and 9417G are stout featured, rugged, three-dimensional herd sire prospects that are a prime example of what you have come to expect from the seedstock that originate in Brownell, Kansas. Opportunity awaits on March 22, 2021.

Lot  
**1**

## DMDL DOMAIN 9414G

BD: 9/17/19 | Reg: 4240966 | A- 100% AR | Tattoo: 9414G



BECKTON DOMINOR T122 Z1

**3SCC DOMAIN A163**

3SCC EUCLA X723

SPUR FRANCHISE OF GARTON

**C-BAR ABIGRACE 635D**

C-BAR ABIGRACE Y11

### MEASUREMENTS

BW: 85      IMF: 7.29  
AWW: 679      REA: 18.05  
BF: 0.3



3SCC DOMAIN A163 - Sire of Lots 1 - 3

PRS	HB	GM	CED	BW	WW	YW	ADG	DMI	MLK	ME	HPG	CEM	STY	MRB	YG	CW	REA	FAT
147	79	68	14	-2.8	62	108	0.29	1.78	25	1	13	6	16	0.65	0.11	29	0.31	0.05
9%	47%	6%	30%	30%	40%	22%	10%	84%	47%	49%	23%	69%	48%	7%	79%	17%	12%	97%

*The Age Advantage Two-Year-Old Bulls scan data is actual data that was recorded on January 20, 2021.*



LOT 2



C-BAR ABIGRACE 635D - Dam of Lots 1 & 2



C-BAR ABIGRACE Y11 - Legendary maternal granddam of countless individuals throughout the offering!

Lot  
**2**

**DMDL DOMAIN 9417G**

BD: 9/20/19 | Reg: 4240974 | A- 100% AR | Tattoo: 9417G



BECKTON DOMINORT122 Z1

**3SCC DOMAIN A163**

3SCC EUCLA X723

SPUR FRANCHISE OF GARTON

**C-BAR ABIGRACE 635D**

C-BAR ABIGRACE Y11

**MEASUREMENTS**

BW: 90      IMF: 5.75  
AWW: 689      REA: 17.26  
BF: 0.35

PRS	HB	GM	CED	BW	WW	YW	ADG	DMI	MLK	ME	HPG	CEM	STY	MRB	YG	CW	REA	FAT
147	79	68	14	-2.8	62	108	0.29	1.78	25	1	13	6	16	0.65	0.11	29	0.31	0.05
9%	47%	6%	30%	30%	40%	22%	10%	84%	47%	49%	23%	69%	48%	7%	79%	17%	12%	97%



LOT 2



Lot  
**3**

## DMDL DOMAIN 9413G

BD: 9/16/19 | Reg: 4240980 | A- 100% AR | Tattoo: 9413G

BECKTON DOMINORT122 Z1

**3SCC DOMAIN A163**

3SCC EUCLA X723

LSF SAGA 1040Y

**C-BAR ABIGRACE 417B**

C-BROWN&KM ABIGRACE T715

### MEASUREMENTS

BW: 95      IMF: 5.27  
AWW: 703      REA: 16.98  
BF: 0.27



C-BAR ABIGRACE 417B - Dam of Lot 3

PRS	HB	GM	CED	BW	WW	YW	ADG	DMI	MLK	ME	HPG	CEM	STY	MRB	YG	CW	REA	FAT
141	86	55	13	-1.8	63	107	0.27	1.5	23	1	13	4	18	0.59	0.12	21	0.14	0.05

14% 32% 17% 49% 48% 34% 24% 16% 59% 70% 54% 16% 95% 14% 13% 85% 44% 39% 96%

9413G is another age advantage son of the great 3SCC Domain A163. The dam of 9413G is a maternal sister to El Grande, sired by LSF Saga 1040Y. C-Bar Abigrace 417B is an ultra-feminine, long hippped, square built female that has quickly elevated herself as one of the elite donors in the C-Bar program. 9413G charts top 14% ProS, top 17% GM, top 16% ADG, top 16% HPG, top. 14% Stay, and top 13% Marb.

*Domain by Abigrace*



LOT 4



C-BAR BIG RIVER 119E - Sire of Lots 4 - 8



C-BAR ABIGRACE 633D - Dam of Lot 4

Lot  
4

## C-BAR BIG RIVER 9053G

BD: 9/18/19 | Reg: 4373617 | A- 100% AR | Tattoo: 9053G



### MEASUREMENTS

BW: 74      IMF: 6.26  
AWW: 495      REA: 16.75  
BF: 0.26

PIE ONE OF A KIND 352

**C-BAR BIG RIVER 119E**

JEFFRIES MS JOLINE Z243

SPUR FRANCHISE OF GARTON

**C-BAR ABIGRACE 633D**

C-BAR ABIGRACE Y11

PRS	HB	GM	CED	BW	WW	YW	ADG	DMI	MLK	ME	HPG	CEM	STY	MRB	YG	CW	REA	FAT
131	54	76	13	-3.3	66	114	0.3	1.98	30	6	11	9	10	0.64	0.02	38	0.47	0.02
26%	90%	2%	40%	22%	24%	13%	7%	94%	11%	90%	43%	10%	96%	8%	27%	5%	3%	56%

C-Bar Big River 119E needs no introduction as one of the truly elite sons to ever be born sired by PIE One Of A Kind 352. 9053G is a standout age advantage son of C-Bar Abigrace 633D, a black-red carrier beauty that is a member of arguably the most successful flush in the history of C-Bar Ranch. 633D is a full sister to the \$105,000 9 Mile Franchise 6305, and many have acclaimed her as the stoutest and most three-dimensional daughter of the late Y11. 9053G resembles his sire in terms of length, structural integrity, body shape, and muscle expression. He is a long sided, square hipped, sound footed stud that is athletic on the move. He charts top 2% GM, top 22% BW, top 13% YW, top 7% ADG, top 10% CEM, top 8% Marb, top 5% CW, and top 3% REA. Recommended for use on heifers.



LOT 6



Lot  
**5**

## C-BAR BIG RIVER 9054G

BD: 9/20/19 | Reg: 4373619 | A- 100% AR | Tattoo: 9054G



PIE ONE OF A KIND 352

### C-BAR BIG RIVER 119E

JEFFRIES MS JOLINE Z243

STEVENSON ROCKMOUNT RX933

### C-BAR ABIGRACE 562C

C-BAR ABIGRACEY11

#### MEASUREMENTS

BW: 76 IMF: 4.3  
AWW: 527 REA: 17.48  
BF: 0.25

9054G and 9059G are full sib brothers sired by the great C-Bar Big River 119E and backed by the influence of the late Y11. There is no question that this set of brothers combine two of the absolute most elite females in the history of the C-Bar program in Jeffries Ms Joline Z243 and C-Bar Abigrace Y11. 562C is a stunning black-red carrier female that was pictured as a two-year-old in her working clothes. She is an ultra-feminine, smooth made, angular female that sets the standard for udder quality, foot shape, and style. This mating to the powerhouse Big River was a huge success! 9054G and 9059G rank among the top 6% for GM, top 10% WW, top 6% YW, top 4% ADG, top 4% CW, and top 5% REA. Recommended for use on heifers.

PRS	HB	GM	CED	BW	WW	YW	ADG	DMI	MLK	ME	HPG	CEM	STY	MRB	YG	CW	REA	FAT
128	60	68	13	-2.1	72	122	0.31	1.76	28	5	13	9	10	0.46	0.04	39	0.42	0.02
30%	85%	6%	35%	42%	10%	6%	4%	82%	21%	80%	25%	17%	96%	35%	39%	4%	5%	56%

Lot  
**6**

## C-BAR BIG RIVER 9059G

BD: 11/27/19 | Reg: 4373629 | A- 100% AR | Tattoo: 9059G



PIE ONE OF A KIND 352

### C-BAR BIG RIVER 119E

JEFFRIES MS JOLINE Z243

STEVENSON ROCKMOUNT RX933

### C-BAR ABIGRACE 562C

C-BAR ABIGRACEY11

#### MEASUREMENTS

BW: 81 IMF: 7.05  
AWW: 643 REA: 16.7  
BF: 0.29



C-BAR ABIGRACE 562C - Dam of Lots 5 & 6

PRS	HB	GM	CED	BW	WW	YW	ADG	DMI	MLK	ME	HPG	CEM	STY	MRB	YG	CW	REA	FAT
128	60	68	13	-2.1	72	122	0.31	1.76	28	5	13	9	10	0.46	0.04	39	0.42	0.02
30%	85%	6%	35%	42%	10%	6%	4%	82%	21%	80%	25%	17%	96%	35%	39%	4%	5%	56%



# THE AGE ADVANTAGE BULLS



C-BAR STONY 7010E - Dam of Lot 7



C-BAR ABIGRACE 555C - Dam of Lot 8

**Lot 7**

## DMDL BIG RIVER 9424G



BD: 11/24/19 Reg: 4240990 A- 100% AR Tattoo: 9424G

PIE ONE OF A KIND 352

### C-BAR BIG RIVER 119E

JEFFRIES MS JOLINE Z243

5L INDEPENDENCE 560-298Y

### C-BAR STONY 7010E

C-BAR STONY W928

### MEASUREMENTS

BW: 84 IMF: 4.81  
AWW: 780 REA: 15.47  
BF: 0.3

**Lot 8**

## DMDL BIG RIVER 9428G



BD: 12/1/19 Reg: 4241010 A- 100% AR Tattoo: 9428G

PIE ONE OF A KIND 352

### C-BAR BIG RIVER 119E

JEFFRIES MS JOLINE Z243

C-BAR ELDORADO 114Z

### C-BAR ABIGRACE 555C

C-BAR ABIGRACE 255Z

### MEASUREMENTS

BW: 95 IMF: 6.08  
AWW: 787 REA: 17.66  
BF: 0.23

PRS	HB	GM	CED	BW	WW	YW	ADG	DMI	MLK	ME	HPG	CEM	STY	MRB	YG	CW	REA	FAT
104	56	48	14	-3.1	65	103	0.24	1.56	26	5	11	8	11	0.49	-0.03	22	0.25	0
71%	89%	29%	33%	24%	28%	32%	37%	65%	44%	84%	50%	23%	92%	30%	11%	39%	19%	14%

9424G is a dark red, smooth made son of Big River that is supported by the maternal influence of the famed Stony cow family. The dam of 9424G is the impressive C-Bar Stony 7010E, an own daughter of the foundation female, W928. He charts an impressive EPD profile that combines low birth and high growth genetics. 9424G ranks top 11% for YG and top 19% for REA. Recommended for use on heifers.

PRS	HB	GM	CED	BW	WW	YW	ADG	DMI	MLK	ME	HPG	CEM	STY	MRB	YG	CW	REA	FAT
122	59	63	12	-1.7	72	119	0.29	1.54	24	5	10	8	11	0.6	0.01	26	0.18	0
40%	86%	9%	64%	51%	9%	8%	9%	64%	63%	86%	63%	32%	90%	12%	25%	27%	31%	17%

DMDL Big River 9428G is another standout from the Big River sire group and is supported by the maternal stability of 'triple nickel'. C-Bar Abigrace 555C is the El Dorado sired daughter of 255Z, tracing to the legendary Brown Ms Abigrace L7730, the highest dollar generating female in the history of the Red Angus breed!



# THE AGE ADVANTAGE BULLS



COLLIER FINISHED PRODUCT - Sire of Lots 9 & 10

Collier Finished Product is a smooth patterned, dark cherry red, big soft bodied stud that is sound structured and easy on the move. As a herd sire, Finished Product exemplifies calving ease, performance, carcass merit and stayability. 9423G and 9420G are flush mate brothers sired by Collier Finished Product and further supported by arguably the most elite cow family at C-Bar Ranch. The dam of this pair of strong aged herd sire prospects is C-Bar Stony 803F, the Spur Franchise of Garton sired daughter from the cover girl of the C-Bar program, A302. This pair of full brothers rank top 13% ProS, top 18% GM, top 16% GM, top 16% CED, top 21% BW, top 15% CW, and top 11% REA.

Lot  
9

## DMDL FINISHED PRODUCT 9420G



BD: 11/22/19 | Reg: 4241008 | A- 100% AR | Tattoo: 9420G

COLLIER FINAL PRODUCT B389

### COLLIER FINISHED PRODUCT

COLLIER AMY B385

SPUR FRANCHISE OF GARTON

### C-BAR STONY 803F

C-BAR MS STONY A302

### MEASUREMENTS

BW: 82 IMF: 5.51  
AWW: 753 REA: 17.5  
BF: 0.32

PRS	HB	GM	CED	BW	WW	YW	ADG	DMI	MLK	ME	HPG	CEM	STY	MRB	YG	CW	REA	FAT
142	87	55	15	-3.4	59	101	0.26	1.79	24	1	13	9	15	0.44	0.06	30	0.32	0.03
13%	29%	18%	16%	21%	52%	37%	22%	84%	58%	49%	18%	18%	49%	39%	54%	15%	11%	82%



LOT 9

Lot  
10

## DMDL FINISHED PRODUCT 9423G



BD: 11/23/19 | Reg: 4241002 | A- 100% AR | Tattoo: 9423G

COLLIER FINAL PRODUCT B389

### COLLIER FINISHED PRODUCT

COLLIER AMY B385

SPUR FRANCHISE OF GARTON

### C-BAR STONY 803F

C-BAR MS STONY A302

### MEASUREMENTS

BW: 88 IMF: 4.64  
AWW: 714 REA: 16.81  
BF: 0.25

PRS	HB	GM	CED	BW	WW	YW	ADG	DMI	MLK	ME	HPG	CEM	STY	MRB	YG	CW	REA	FAT
142	87	55	15	-3.4	59	101	0.26	1.79	24	1	13	9	15	0.44	0.06	30	0.32	0.03
13%	29%	18%	16%	21%	52%	37%	22%	84%	58%	49%	18%	18%	49%	39%	54%	15%	11%	82%



LOT 10

Lot  
11

## DRST 984



BD: 10/7/19 | Reg: 4244608 | A- 100% AR | Tattoo: 984

5L DEFENDER 560-30Z

### C-BAR DEFENDER 209E

C-BAR JOLENE 400B

BIEBER HARD DRIVE Y120

### DRST EMERALD 706E

OOF ANASCO 0895

### MEASUREMENTS

BW: 83 IMF: 4.75  
AWW: 715 REA: 14.58  
BF: 0.2

PRS	HB	GM	CED	BW	WW	YW	ADG	DMI	MLK	ME	HPG	CEM	STY	MRB	YG	CW	REA	FAT
118	54	64	13	-2.2	66	101	0.22	1.71	22	3	10	5	13	0.78	-0.16	22	0.44	-0.03
46%	90%	8%	37%	41%	26%	36%	52%	79%	75%	65%	65%	87%	79%	2%	1%	42%	4%	1%



C-BAR MS STONY A302 - Maternal Granddam of Lots 9 & 10



Lot  
**12**

## DMDL ELDORADO 9406G

BD: 9/8/19 | Reg: 4240984 | A- 100% AR | Tattoo: 9406G

C-BAR ANTICIPATION 101W

**C-BAR ELDORADO 114Z**

C-BAR STONY W914

C-BAR CONTOUR 107X

**JEFFRIES MS JOLINE Z243**

BROWN MS BIG SKY U7877

### MEASUREMENTS

BW: 71 IMF: 5.12  
AWW: 748 REA: 20.52  
BF: 0.26

PRS	HB	GM	CED	BW	WW	YW	ADG	DMI	MLK	ME	HPG	CEM	STY	MRB	YG	CW	REA	FAT
115	62	53	14	-3	61	92	0.19	1.39	22	2	11	8	12	0.79	-0.02	14	0.23	0.01
52%	82%	20%	24%	27%	45%	59%	72%	48%	78%	61%	47%	26%	86%	2%	14%	72%	22%	41%

9406G leads off a new pen of bulls that are sure to catch your attention on sale day. 9406G is sired by C-Bar El Dorado 114Z and backed by the stunning Jeffries Ms Joline Z243 matron. 9406G is a maternal brother to countless individuals of influence that would include the \$50,000 Big River, \$40,000 Whiskey River, and countless sons and daughters that are working in top seedstock programs across the North American continent. 9406G charts top 20% GM, top 24% CED, top 27% BW, top 2% Marb, top 14% YG, and top 22% REA.



C-BAR  
ELDORADO 114Z  
Sire of Lot 12

Lot  
**13**

## C-BAR SPUR 9057G

BD: 9/21/19 | Reg: 4373625 | A- 100% AR | Tattoo: 9057G

SPUR FRANCHISE 7070

**SPUR FRANCHISE OF GARTON**

H & H IRENE LASS 0135

C-BAR ELDORADO 114Z

**C-BAR BRANDY 626D**

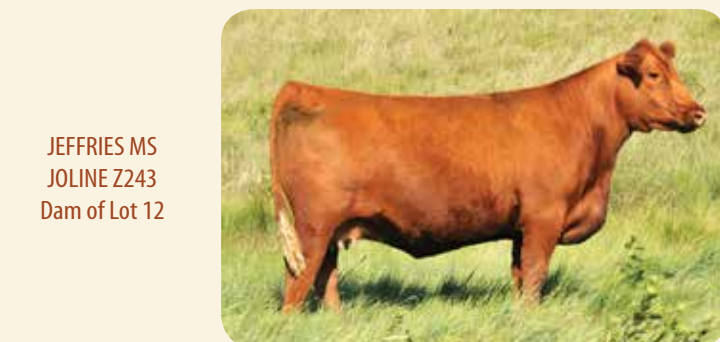
C-BAR W982

### MEASUREMENTS

BW: 68 IMF: 5.14  
AWW: 594 REA: 15.43  
BF: 0.27

PRS	HB	GM	CED	BW	WW	YW	ADG	DMI	MLK	ME	HPG	CEM	STY	MRB	YG	CW	REA	FAT
149	75	75	13	-2.4	64	104	0.25	2.09	25	-2	12	9	12	0.72	-0.06	37	0.61	0.01
8%	58%	3%	44%	37%	32%	30%	28%	97%	51%	32%	29%	16%	86%	3%	7%	5%	1%	28%

C-Bar Spur 9057G is a direct son of Spur Franchise of Garton that is backed by the strong maternal influence of W982. He charts top 8% ProS, top 3% GM, top 16% CEM, top 3% Marb, top 7% YG, top 5% CW, and top 1% REA.



JEFFRIES MS  
JOLINE Z243  
Dam of Lot 12



C-BAR  
BIG RIVER 119E  
Maternal Brother  
to Lot 12

Lot  
**14**

## C-BAR FINISHED PRODUCT 9058G

BD: 11/4/19 | Reg: 4373627 | A- 100% AR | Tattoo: 9058G

COLLIER FINAL PRODUCT B389

**COLLIER FINISHED PRODUCT**

COLLIER AMY B385

RED BCC CRIMSON JEWELS 102U

**C-BAR ABIGRACE A364**

BROWN C- ABIGRACE S602

### MEASUREMENTS

BW: 84 IMF: 4.12  
AWW: 625 REA: 15.88  
BF: 0.23

PRS	HB	GM	CED	BW	WW	YW	ADG	DMI	MLK	ME	HPG	CEM	STY	MRB	YG	CW	REA	FAT
114	89	25	17	-4.9	46	77	0.19	1.32	24	-6	10	10	16	0.35	0.12	9	-0.07	0.04
54%	24%	80%	4%	6%	90%	84%	71%	41%	56%	12%	66%	6%	37%	61%	84%	87%	85%	91%

C-Bar Finished Product 9058G is sired by the multi-trait leader, Collier Finished Product, and backed by the great C-Bar Abigrace A364. 9058G is a maternal brother to the C-Bar Blakes Bonanza 180C, one of the most decorated National Champion Bulls of the last decade! 9058G charts top 24% HB, top 4% CED, top 6% BW, top 12% ME, and top 6% CEM.



SPUR FRANCHISE  
OF GARTON - Sire of  
Lot 13



C-BAR BLAKES  
BONANZA 180C  
Maternal Brother to  
Lot 14





C-BAR ABIGRACE 633D - Dam of Lot 15



LASO LEANNA BC114R - Dam of Lot 16 & 17

Lot  
**15**

**DMDL DOMAIN 9408G**

BD: 9/12/19 | Reg: 4240968 | 2- 100% AR | Tattoo: 9408G

BECKTON DOMINOR T122 Z1

**3SCC DOMAIN A163**

3SCC EUCLA X723

SPUR FRANCHISE OF GARTON

**C-BAR ABIGRACE 633D**

C-BAR ABIGRACE Y11

## MEASUREMENTS

BW: 90 IMF: 7.31  
AWW: 698 REA: 18.07  
BF: 0.31

PRS	HB	GM	CED	BW	WW	YW	ADG	DMI	MLK	ME	HPG	CEM	STY	MRB	YG	CW	REA	FAT
153	77	76	14	-3	59	105	0.29	1.81	27	1	13	6	15	0.69	0.14	35	0.32	0.05
6%	52%	2%	26%	27%	50%	28%	10%	86%	35%	50%	23%	67%	49%	5%	90%	7%	11%	99%

DMDL Domain 9408G leads off a tremendous set of age-advantage black-red carrier herd sire prospects that are supported by the most elite cow families on the ranch. 9408G is sired by the industry leading 3SCC Domain A163 and backed by the stunning C-Bar Abigrace 633D, the black-red carrier full sister to the \$105,000 9 Mile Franchise 6305. 9408G is a stout made, thick ended, deep sided stud that ranks top 6% for ProS, top 2% GM, top 10% ADG, top 5% Marb, and top 11% REA.

C-Bar Spur 9052G and C-Bar Spur 9051G are flush mate brothers sired by the carcass merit specialist, Spur Franchise of Garton. They are supported by the great Laso Leanna BC114R matriarch that was our selection from the famed Lautenslager Red Angus program of Washington. This pair of black-red carrier herd sire prospects ranks among the elite 1% of the breed for ProS, top 10% HB, top 1% GM, top 15% ADG, top 4% Milk, top 9% Stay, top 2% Marb, top 2% CW, and top 2% REA. This pair of brothers are low birth weight, high growth individuals that are sure to add carcass merit to your operation and increase your bottomline!

Lot  
**16**

**C-BAR SPUR 9052G**

BD: 9/18/19 | Reg: 4373615 | 2- 100% AR | Tattoo: 9052G

SPUR FRANCHISE 7070

**SPUR FRANCHISE OF GARTON**

H & H IRENE LASS 0135

BASIN HOBO 79E

**LASO LEANNA BC114R**

LASO LEANNA BC 114

## MEASUREMENTS

BW: 74 IMF: 6.42  
AWW: 594 REA: 17.71  
BF: 0.33

PRS	HB	GM	CED	BW	WW	YW	ADG	DMI	MLK	ME	HPG	CEM	STY	MRB	YG	CW	REA	FAT
186	99	87	14	-3	59	103	0.28	2.06	32	-1	9	9	19	0.76	0.02	42	0.51	0.02
1%	10%	1%	31%	27%	52%	32%	15%	96%	4%	36%	90%	18%	9%	2%	30%	2%	2%	59%

Lot  
**17**

**C-BAR SPUR 9051G**

BD: 9/18/19 | Reg: 4373613 | 2- 100% AR | Tattoo: 9051G

SPUR FRANCHISE 7070

**SPUR FRANCHISE OF GARTON**

H & H IRENE LASS 0135

BASIN HOBO 79E

**LASO LEANNA BC114R**

LASO LEANNA BC 114

## MEASUREMENTS

BW: 76 IMF: 6.44  
AWW: 541 REA: 18.87  
BF: 0.24

PRS	HB	GM	CED	BW	WW	YW	ADG	DMI	MLK	ME	HPG	CEM	STY	MRB	YG	CW	REA	FAT
186	99	87	14	-3	59	103	0.28	2.06	32	-1	9	9	19	0.76	0.02	42	0.51	0.02
1%	10%	1%	31%	27%	52%	32%	15%	96%	4%	36%	90%	18%	9%	2%	30%	2%	2%	59%





C-BAR ABIGRACE 563C - Dam of Lot 18



C-BAR ABIGRACE 562C - Dam of Lot 19

Lot  
**18**

## C-BAR BIG RIVER 9055G

BD: 9/20/19 | Reg: 4373621 | 2-100% AR | Tattoo: 9055G



PIE ONE OF A KIND 352

### C-BAR BIG RIVER 119E

JEFFRIES MS JOLINE Z243

STEVENSON ROCKMOUNT RX933

### C-BAR ABIGRACE 563C

C-BAR ABIGRACE Y11

#### MEASUREMENTS

BW: 67	IMF: 4.15
AWW: 507	REA: 15.96
	BF: 0.17

PRS	HB	GM	CED	BW	WW	YW	ADG	DMI	MLK	ME	HPG	CEM	STY	MRB	YG	CW	REA	FAT
130	69	61	14	-2.6	69	117	0.3	1.7	26	4	13	9	12	0.49	0.04	31	0.29	0.02
28%	71%	11%	30%	33%	16%	10%	7%	77%	39%	76%	25%	12%	89%	30%	42%	14%	14%	56%

C-Bar Big River 9055G is a stout featured, long bodied son of the \$50,000 Big River. The dam of 9055G is the powerful C-Bar Abigrace 563C matron that is an own daughter of the legendary Y11. 9055G charts top 11% GM, top 16% WW, top 10% YW, top 7% ADG, top 14% CW, and top 14% REA. Recommended for use on heifers.

Lot  
**19**

## C-BAR BIG RIVER 9056G

BD: 9/21/19 | Reg: 4373623 | 2-100% AR | Tattoo: 9056G



PIE ONE OF A KIND 352

### C-BAR BIG RIVER 119E

JEFFRIES MS JOLINE Z243

STEVENSON ROCKMOUNT RX933

### C-BAR ABIGRACE 562C

C-BAR ABIGRACE Y11

#### MEASUREMENTS

BW: 63	IMF: 4.73
AWW: 532	REA: 18.12
	BF: 0.29

PRS	HB	GM	CED	BW	WW	YW	ADG	DMI	MLK	ME	HPG	CEM	STY	MRB	YG	CW	REA	FAT
128	60	68	13	-2.1	72	122	0.31	1.76	28	5	13	9	10	0.46	0.04	39	0.42	0.02
30%	85%	6%	35%	42%	10%	6%	4%	82%	21%	80%	25%	17%	96%	35%	39%	4%	5%	56%

C-Bar Big River 9056G is another Big River son that is backed by the Rockmount x Y11 influence. A powerful black-red carrier that is dense from end to end. He charts top 10% for WW, top 6% YW, top. 4% ADG, top 4% CW, and top 5% REA. Recommended for use on heifers.



# THE AGE ADVANTAGE BULLS



The next five bulls may sell as non-registered Red Angus age advantage bulls, but they still sell with the same C-Bar Ranch breeding season guarantee that you have come to count on. The dams of these bulls are registered Red Angus females but paperwork hasn't been kept up so they sell as commercials. This set of bulls are ready for heavy service. They are sound footed, long sided, deep bodied bulls that are sired by C-Bar Signature 1032D, the direct son of the great Six Mile Signature 295B and backed by the famous C-Bar Abigrace 264Z, a past sale feature that was selected by the historic Bowling Ranch of Oklahoma. 264Z traces to the iconic Brown Ms Abigrace L7730, the highest dollar generating female in the Red Angus business. Here is a great opportunity to tie to a set of paternal brothers that are supported by an elite cow family. Consistency and uniformity will add true value to your bottomline!

Lot  
**20**

## C-BAR SIGNATURE 91G

BD: 10/8/19 | NON-REGISTERED | RED ANGUS | Tattoo: 91G

SIX MILE SIGNATURE 295B  
**C-BAR SIGNATURE 1032D**  
C-BAR ABIGRACE 264Z

### MEASUREMENTS

BW:	IMF: 5.59
AWW:	REA: 16.93
	BF: 0.3



SIX MILE SIGNATURE 295B - Paternal Grandsire of Lots 20 - 24

Lot  
**21**

## C-BAR SIGNATURE 92G

BD: 10/13/19 | NON-REGISTERED | RED ANGUS | Tattoo: 92G

SIX MILE SIGNATURE 295B  
**C-BAR SIGNATURE 1032D**  
C-BAR ABIGRACE 264Z

### MEASUREMENTS

BW:	IMF: 4.46
AWW:	REA: 14.39
	BF: 0.18

Lot  
**23**

## C-BAR SIGNATURE 96G

BD: 11/9/19 | NON-REGISTERED | RED ANGUS | Tattoo: 96G

SIX MILE SIGNATURE 295B  
**C-BAR SIGNATURE 1032D**  
C-BAR ABIGRACE 264Z

### MEASUREMENTS

BW:	IMF: 4.55
AWW:	REA: 17.41
	BF: 0.26

Lot  
**22**

## C-BAR SIGNATURE 93G

BD: 10/14/19 | NON-REGISTERED | RED ANGUS | Tattoo: 93G

SIX MILE SIGNATURE 295B  
**C-BAR SIGNATURE 1032D**  
C-BAR ABIGRACE 264Z

### MEASUREMENTS

BW:	IMF: 6.17
AWW:	REA: 16.44
	BF: 0.27

Lot  
**24**

## C-BAR SIGNATURE 97G

BD: 12/10/19 | NON-REGISTERED | RED ANGUS | Tattoo: 97G

SIX MILE SIGNATURE 295B  
**C-BAR SIGNATURE 1032D**  
C-BAR ABIGRACE 264Z

### MEASUREMENTS

BW:	IMF: 4.32
AWW:	REA: 15.99
	BF: 0.23



# TWO-YEAR-OLD RED ANGUS BULLS

LOT 25



9 MILE  
FRANCHISE 6305  
Sire of Lot 25



C-BAR  
STONY W914  
Dam of Lot 25

LOT 26



C-BAR ABIGRACE 264Z - Dam of Lot 26

Lot  
25

**C-BAR FEARLESS 9143G**

BD: 1/29/19 | Reg: 4216702 | A- 100% AR | Tattoo: 9143G



SPUR FRANCHISE OF GARTON

**9 MILE FRANCHISE 6305**

C-BAR ABIGRACE Y11

RED FINE LINE MULBERRY 26P

**C-BAR STONY W914**

BROWN-CBAR MS STONY ML P7500

## MEASUREMENTS

BW: 91	AIMF: 5.6
AWW: 749	AREA: 17.3
AYW: 1234	ABF: 0.41

PRS	HB	GM	CED	BW	WW	YW	ADG	DMI	MLK	ME	HPG	CEM	STY	MRB	YG	CW	REA	FAT
145	76	69	14	-4.7	51	92	0.25	1.67	25	1	13	9	13	0.64	0.05	27	0.39	0.04
10%	55%	5%	26%	7%	79%	59%	29%	75%	47%	49%	17%	9%	76%	8%	46%	24%	6%	93%

9143G leads off a powerful pen of age-advantage Red Angus herd sire prospects. This calving ease specialist is sired by the \$105,000 9 Mile Franchise 6305 and backed by the legendary C-Bar Stony W914. W914 is the dam of the \$60,000 C-Bar Legit, the highest marbling Red Angus bull that we have EVER seen in the business. 9143G charts among the elite 10% for ProS, top 5% GM, top 7% BW, top 17% HPG, top 9% CEM, top 8% Marb, and top 6% REA. A stout featured W914 son that offers unmatched carcass merit, calving ease, and reliable maternal lineage. Pay attention to 9143G on sale day!

Lot  
26

**C-BAR OVERFLOW 9008G**

BD: 1/19/19 | Reg: 4216148 | A- 100% AR | Tattoo: 9008G



PIE ONE OF A KIND 352

**C-BAR BIG RIVER 119E**

JEFFRIES MS JOLINE Z243

HXC CONQUEST 4405P

**C-BAR ABIGRACE 264Z**

C-BAR ABIGRACE W9100

## MEASUREMENTS

BW: 87	AIMF: 5.42
AWW: 750	AREA: 15.33
AYW: 1262	ABF: 0.22

PRS	HB	GM	CED	BW	WW	YW	ADG	DMI	MLK	ME	HPG	CEM	STY	MRB	YG	CW	REA	FAT
100	52	48	13	-2.6	72	112	0.25	1.75	31	7	8	9	11	0.57	-0.01	23	0.23	0
76%	92%	28%	40%	33%	11%	16%	30%	82%	5%	94%	92%	12%	94%	16%	17%	35%	22%	20%

C-Bar Overflow 9008G has the look, style, and presence that is simply unmatched within this exciting genetic offering of elite Red Angus herd sire prospects. 9008G is as high tying, clean made, and attractive as any bull that will pass through the ring on March 22. 9008G is sired by the \$50,000 C-Bar Big River 119E and further influenced by the great C-Bar Abigrace 264Z on his maternal side. He is a wide hiped, square pinned, dense made herd sire prospect that we believe will follow in the footsteps of his sire and paternal grandsire. 9008G charts top 22% WW, top 16% YW, top 5% Milk, top 12% CEM, top 16% Marb, top 17% YG, and top 22% REA. A special sale feature!

MARCH 22, 2021 - BROWNELL, KANSAS



# TWO-YEAR-OLD BLACK-RED CARRIER BULLS

LOT 27



ICC PAY  
RAISE 4886  
Sire of Lot 27



C-BAR  
ABIGRACE 636D  
Dam of Lot 27

LOT 28



MUSGRAVE AVIATOR - Sire of Lot 28



Lot  
27

**C-BAR DIVIDEND 9134G**

BD: 1/24/19 Reg: 4216684 2- 100% AR Tattoo: 9134G



MILL COULEE PAY RAISE  
**ICC PAY RAISE 4886**  
ICC BLACKBIRD 0739  
SPUR FRANCHISE OF GARTON  
**C-BAR ABIGRACE 636D**  
C-BAR ABIGRACE Y11

## MEASUREMENTS

BW: 85	AIMF: 5.02
AWW: 679	AREA: 13.01
AYW: 1116	ABF: 0.25

PRS	HB	GM	CED	BW	WW	YW	ADG	DMI	MLK	ME	HPG	CEM	STY	MRB	YG	CW	REA	FAT
150	73	78	12	-1.3	70	125	0.35	1.81	24	-5	13	8	11	0.45	0.1	45	0.37	0.03
7%	63%	2%	61%	58%	15%	4%	1%	85%	61%	17%	21%	28%	93%	37%	75%	1%	7%	76%

C-Bar Dividend 9134G is a standout black-red carrier age-advantage herd sire prospect that is sired by the outcross ICC Pay Raise 4886 and backed by the 636D matriarch that is the result of the Spur Franchise of Garton x Y11 mating that also yielded the \$105,000 9 Mile Franchise 6305. 9134G is an ultra-attractive smooth made herd sire prospect that ranks among the top 7% for ProS, top 2% GM, top 15% WW, top 4% YW, top 1% ADG, top 17% ME, top 1% CW, and top 7% REA.

Lot  
28

**C-BAR AVIATOR 8151F**

BD: 1/21/18 Reg: 4045190 2- 100% AR Tattoo: 8151F



KOUPALS B&B IDENTITY  
**MUSGRAVE AVIATOR**  
MCATL FOREVER LADY 1429-138  
BASIN HOB0 79E  
**LASO LEANNA BC114R**  
LASO LEANNA BC 114

## MEASUREMENTS

BW: 79	AIMF: 6.19
AWW: 625	AREA: 14.29
AYW: 1178	ABF: 0.29

PRS	HB	GM	CED	BW	WW	YW	ADG	DMI	MLK	ME	HPG	CEM	STY	MRB	YG	CW	REA	FAT
199	120	79	17	-4.7	48	82	0.21	1.49	27	-6	10	12	20	0.81	0.16	35	0.07	0.03
1%	2%	4%	8%	9%	87%	78%	61%	54%	34%	17%	67%	2%	5%	3%	87%	14%	52%	73%

C-Bar Aviator 8151F is an elite and proven sire that deserves serious consideration if you are looking to incorporate outcross black-red carrier genetics into your operation. The dam of 815F is the elite Laso Leanna BC114R matron, argued as the most impressive daughter of the great Basin Hobo 79E. 8151F is a proven sire that we have used heavily in herd. As we continue to expand our evolving embryo transfer program, we felt that his use was better suited in a seedstock operation that relies more heavily on natural service sires. 8185F charts among the elite 1% for ProS, top 2% HB, top 4% GM, top 8% CED, top 9% BW, top 5% Stay, top 3% Marb, and top 14% CW. A calving ease specialist that will add phenotype, and an elite number profile to any operation.



LOT 30



3SCC DOMAIN A163 - Sire of Lot 30 & 32



C-BAR ABIGRACE 637D - Dam of Lot 30

Lot  
**30**

**C-BAR DOMAIN 0205H**



BD: 1/15/20 | Reg: 4378933 | A- 100% AR | Tattoo: 0205H

BECKTON DOMINOR T122 Z1

**3SCC DOMAIN A163**

3SCC EUCLA X723

SPUR FRANCHISE OF GARTON

**C-BAR ABIGRACE 637D**

C-BAR ABIGRACEY11

**MEASUREMENTS**

BW: 82	AIMF: 4.5
AWW: 691	AREA: 13.99
AYW: 1181	ABF: 0.23

We are excited to introduce the lead off yearling herd sire prospect of our 2021 offering, C-Bar Domain 0205H. There is no denying the fact that 0205H has remained a standout since day one! 3SCC Domain A163 has been sampled in our program with tremendous success. 0205H is from 637D, the stunning black-red carrier full sister to 9 Mile Franchise 6305. 0205H is an elite carcass merit sire that offers trend setting phenotype combined with the fundamental credentials of a true herd sire prospect.

PRS	HB	GM	CED	BW	WW	YW	ADG	DMI	MLK	ME	HPG	CEM	STY	MRB	YG	CW	REA	FAT
160	79	81	12	-1.6	67	118	0.32	1.83	27	1	13	4	16	0.7	0.07	34	0.44	0.04
3%	47%	1%	64%	53%	23%	8%	2%	87%	32%	53%	19%	93%	36%	4%	57%	9%	4%	94%





COLLIER FINISHED PRODUCT - Sire of Lot 31

# The Finished Product



Lot  
**31**

## C-BAR FINISHED PRODUCT 003H



BD: 1/18/20 | Reg: 4378909 | A- 100% AR | Tattoo: 003H

COLLIER FINAL PRODUCT B389  
**COLLIER FINISHED PRODUCT**

COLLIER AMY B385

SPUR FRANCHISE OF GARTON

**C-BAR STONY 803F**

C-BAR MS STONY A302

### MEASUREMENTS

BW: 94	AIMF: 4.37
AWW: 654	AREA: 14.66
AYW: 1181	ABF: 0.17

PRS	HB	GM	CED	BW	WW	YW	ADG	DMI	MLK	ME	HPG	CEM	STY	MRB	YG	CW	REA	FAT
148	94	55	15	-3.4	59	101	0.26	1.79	24	1	16	9	15	0.44	0.06	30	0.32	0.03
8%	16%	18%	16%	21%	52%	37%	22%	84%	58%	49%	4%	18%	49%	39%	54%	15%	11%	82%

C-Bar Finished Product 003H is another standout yearling that is from the influence of the legendary C-Bar Ms Stony A302, the cover girl for C-Bar Ranch. 003H is a deep bodied, loose built, sound footed herd sire prospect that is sired by the industry leading Collier Finished Product. An elite carcass merit herd sire prospect that is supported by the stunning phenotype and textbook udder quality of A302.

Lot  
**32**

## C-BAR DOMAIN 0212H

BD: 1/19/20 | Reg: 4378947 | A- 100% AR | Tattoo: 0212H

BECKTON DOMINOR T122 Z1  
**3SCC DOMAIN A163**

3SCC EUCLA X723

C-BAR ELDORADO 114Z

**LASO LEANNA X23B**

LASO LEANNA BC114R

### MEASUREMENTS

BW: 93	AIMF: 4.52
AWW: 674	AREA: 14.39
AYW: 1236	ABF: 0.27

PRS	HB	GM	CED	BW	WW	YW	ADG	DMI	MLK	ME	HPG	CEM	STY	MRB	YG	CW	REA	FAT
158	92	66	15	-2.2	58	100	0.26	1.44	23	0	11	6	19	0.76	0.12	19	0.04	0.04
4%	19%	7%	17%	41%	56%	39%	23%	53%	71%	39%	43%	78%	6%	2%	84%	51%	63%	88%

0212H is the Domain sired son of Laso Leanna X23B, the El Dorado sired daughter of the foundation Laso Leanna BC114R. 0212H is a deep bodied, thick ended herd sire prospect that ranks among the elite for ProS, Grid Master, and Marbling.





LOT 33

PIE JUST RIGHT 540 - Sire of Lots 33 - 36



LOT 34

LOT 33

## C-BAR JUST RIGHT 0223H

BD: 2/14/20 | Reg: 4378969 | A- 100% AR | Tattoo: 0223H



PIE THE COWBOY KIND 343  
**PIE JUST RIGHT 540**  
 RAISLAND LAKOTA 311-158  
 SPUR FRANCHISE OF GARTON  
**C-BAR STONY 720E**  
 C-BAR MS STONY A302

### MEASUREMENTS

BW: 89      AIMF: 4.57  
 AWW: 738      AREA: 15.45  
 AYW: 1260      ABF: 0.19

PRS	HB	GM	CED	BW	WW	YW	ADG	DMI	MLK	ME	HPG	CEM	STY	MRB	YG	CW	REA	FAT
131	69	62	14	-2.6	65	112	0.29	1.73	27	2	11	9	12	0.47	-0.04	29	0.44	0.01
25%	71%	9%	28%	33%	28%	16%	8%	80%	31%	63%	44%	11%	86%	33%	10%	18%	4%	31%

0223H is a powerful, long sided son of PIE Just Right 540 that is backed by the maternal power and stability of C-Bar Ms Stony A302. He offers low birth weight, calving ease genetics without sacrificing pounds and pay weight. He offers an exceptional combination of genomic values that will add value to any operation.

## C-BAR JUST RIGHT 0225H

BD: 2/20/20 | Reg: 4378973 | A- 100% AR | Tattoo: 0225H



PIE THE COWBOY KIND 343  
**PIE JUST RIGHT 540**  
 RAISLAND LAKOTA 311-158  
 SPUR FRANCHISE OF GARTON  
**C-BAR STONY 720E**  
 C-BAR MS STONY A302

### MEASUREMENTS

BW: 91      AIMF: 4.76  
 AWW: 758      AREA: 16.67  
 AYW: 1259      ABF: 0.27

PRS	HB	GM	CED	BW	WW	YW	ADG	DMI	MLK	ME	HPG	CEM	STY	MRB	YG	CW	REA	FAT
131	69	62	14	-2.6	65	112	0.29	1.73	27	2	11	9	12	0.47	-0.04	29	0.44	0.01
25%	71%	9%	28%	33%	28%	16%	8%	80%	31%	63%	44%	11%	86%	33%	10%	18%	4%	31%

Here is a personal favorite of Steve's. 0225H is an ultra-complete, stout boned, big footed herd sire prospect that offers a balanced and symmetrical look from the profile. He is wide hiped, square pinned, and offers a high tying look about his front third. He also has one of the best combination scans for IMF and REA. He is a maternal grandson of the legendary A302 matriarch. Just imagine the females that 0225H will leave behind!



LOT 34



# THE YEARLING BULLS

LOT 35



C-BAR MS STONY A302

Maternal Granddam of Lots 33 - 36



Lot  
**35**

**C-BAR JUST RIGHT 0222H**

BD: 2/10/20 | Reg: 4378967 | A- 100% AR | Tattoo: 0222H



PIE THE COWBOY KIND 343

**PIE JUST RIGHT 540**

RAISLAND LAKOTA 311-158

SPUR FRANCHISE OF GARTON

**C-BAR STONY 720E**

C-BAR MS STONY A302

## MEASUREMENTS

BW: 90	AIMF: 4.06
AWW: 676	AREA: 15.15
AYW: 1183	ABF: 0.18

Lot  
**36**

**C-BAR JUST RIGHT 002H**

BD: 1/7/20 | Reg: 4378907 | A- 100% AR | Tattoo: 002H



PIE THE COWBOY KIND 343

**PIE JUST RIGHT 540**

RAISLAND LAKOTA 311-158

SPUR FRANCHISE OF GARTON

**C-BAR STONY 7007E**

C-BAR MS STONY A302

## MEASUREMENTS

BW: 72	AIMF: 3.87
AWW: 703	AREA: 15.6
AYW: 1226	ABF: 0.16

PRS	HB	GM	CED	BW	WW	YW	ADG	DMI	MLK	ME	HPG	CEM	STY	MRB	YG	CW	REA	FAT
131	69	62	14	-2.6	65	112	0.29	1.73	27	2	11	9	12	0.47	-0.04	29	0.44	0.01
25%	71%	9%	28%	33%	28%	16%	8%	80%	31%	63%	44%	11%	86%	33%	10%	18%	4%	31%

C-Bar Just Right 002H is a standout among the PIE Just Right 540 sire group. He is backed by a full sister to the great 9 Mile Franchise 6305. He is a dense made, thick ended, deep sided bull that offers a combination of calving ease, low birth, and high growth genetics. 002H offers tremendous carcass merit to accompany his exceptional marbling and ribeye area EPD.

PRS	HB	GM	CED	BW	WW	YW	ADG	DMI	MLK	ME	HPG	CEM	STY	MRB	YG	CW	REA	FAT
133	70	63	14	-2.1	66	114	0.3	1.73	27	2	11	9	12	0.47	-0.04	29	0.44	0.01
23%	68%	9%	31%	42%	24%	13%	7%	80%	34%	62%	44%	10%	86%	33%	10%	17%	4%	31%

002H is a dense bodied, big topped, thick ended son of Just Right that is a full brother in blood to the three flush mate brothers that proceed him in catalog order. If your program is searching to add consistency, structural integrity, and a maternal backing that is second to none, then look no further. 002H is a well-balanced, powerful individual that offer a tremendous combination of growth, calving ease, and carcass merit.

LOT 36





# THE YEARLING BULLS

0404H and 0405H are standout flush mate brothers sired by the \$105,000 9 Mile Franchise 6305. They are tremendous calving ease prospects that individually boast sensible and moderate birth weights, while reading with the data that indicates they both would be suitable for use on virgin heifers. They are attractive profiling, smooth made, well-balanced bulls that are clean jointed and sound footed. Look to this pair of flush mate brothers if you are hunting a pair of heifer safe bulls that are backed by an elite cow family. Recommended for use on heifers.

Lot  
**37**

## C-BAR DMDL FRANCHISE 0404H



BD: 2/14/20 | Reg: 4378897 | A- 100% AR | Tattoo: 0404H

SPUR FRANCHISE OF GARTON

### 9 MILE FRANCHISE 6305

C-BAR ABIGRACEY11

BUF CRK THE RIGHT KIND U199

### LASO DYNAMO Z132D

LASO DYNAMO U115Z

#### MEASUREMENTS

BW: 75	AIMF: 3.84
AWW: 650	AREA: 15.87
AYW: 1289	ABF: 0.21



LOT 37

PRS	HB	GM	CED	BW	WW	YW	ADG	DMI	MLK	ME	HPG	CEM	STY	MRB	YG	CW	REA	FAT
134	63	71	13	-4	56	101	0.28	1.48	30	-1	14	9	10	0.48	0.03	32	0.32	0.01
21%	81%	4%	40%	13%	64%	36%	12%	57%	9%	33%	8%	15%	96%	31%	35%	13%	11%	48%

Lot  
**38**

## C-BAR DMDL FRANCHISE 0405H



BD: 2/15/20 | Reg: 4378901 | A- 100% AR | Tattoo: 0405H

SPUR FRANCHISE OF GARTON

### 9 MILE FRANCHISE 6305

C-BAR ABIGRACEY11

BUF CRK THE RIGHT KIND U199

### LASO DYNAMO Z132D

LASO DYNAMO U115Z

#### MEASUREMENTS

BW: 85	AIMF: 5.24
AWW: 727	AREA: 14.82
AYW: 1252	ABF: 0.21



LOT 38

PRS	HB	GM	CED	BW	WW	YW	ADG	DMI	MLK	ME	HPG	CEM	STY	MRB	YG	CW	REA	FAT
134	63	71	13	-4	56	101	0.28	1.48	30	-1	14	9	10	0.48	0.03	32	0.32	0.01
21%	81%	4%	40%	13%	64%	36%	12%	57%	9%	33%	8%	15%	96%	31%	35%	13%	11%	48%

Lot  
**39**

## C-BAR SPUR 0201H



BD: 1/10/20 | Reg: 4378925 | 2- 100% AR | Tattoo: 0201H

SPUR FRANCHISE 7070

### SPUR FRANCHISE OF GARTON

H & H IRENE LASS 0135

BASIN HOB0 79E

### LASO LEANNA BC114R

LASO LEANNA BC 114

#### MEASUREMENTS

BW: 84	AIMF: 4.06
AWW: 666	AREA: 15.32
AYW: 1106	ABF: 0.21

PRS	HB	GM	CED	BW	WW	YW	ADG	DMI	MLK	ME	HPG	CEM	STY	MRB	YG	CW	REA	FAT
186	99	87	14	-3	59	103	0.28	2.06	32	-1	9	9	19	0.76	0.02	42	0.51	0.02
1%	10%	1%	31%	27%	52%	32%	15%	96%	4%	36%	90%	18%	9%	2%	30%	2%	2%	59%

C-Bar Spur 0201H is a stout featured son of the legendary carcass sire, Spur Franchise of Garton. He is a black-red carrier standout that offers trait leading figures for ProS, HB, GM, Milk, Marbling, CW, and REA. The dam of 0201H is the legendary Laso Leanna BC114R, argued as the most impressive Basin Hobo 79E daughter in existence.

Lot  
**40**

## C-BAR SPUR 0210H



BD: 1/19/20 | Reg: 4378923 | A- 100% AR | Tattoo: 0210H

SPUR FRANCHISE 7070

### SPUR FRANCHISE OF GARTON

H & H IRENE LASS 0135

C-BAR ELDORADO 114Z

### C-BAR BRANDY 626D

C-BAR W982

#### MEASUREMENTS

BW: 84	AIMF: 4.20
AWW: 802	AREA: 16.23
AYW: 1260	ABF: 0.29

PRS	HB	GM	CED	BW	WW	YW	ADG	DMI	MLK	ME	HPG	CEM	STY	MRB	YG	CW	REA	FAT
144	70	74	13	-2.5	64	105	0.25	2.09	25	-2	10	9	12	0.72	-0.06	38	0.61	0.01
11%	69%	3%	44%	35%	31%	29%	28%	97%	51%	32%	68%	16%	86%	3%	43%	5%	1%	31%

C-Bar Aviator 015H is a red hided son of C-Bar Aviator 8151F, the standout herd sire prospect that sells as lot 28 in this year's offering. 8151F was used extensively in herd at C-Bar and this initial sampling has exceeded our expectations. They are long sided, deep flanked, big hiped, sound footed cattle that have eye appeal and carcass merit. 015H is among the elite for his ProS, HB, GM, and Marbling genomics.



# THE YEARLING BULLS

0211H and 0208H are flush mate brothers sired by Domain that are backed by the influence of the Saga sired daughter of T715, a direct maternal granddaughter of the \$3 Million production Brown Ms Abigrace L7730. This pair of brothers excel from a standpoint of calving ease, growth, and carcass merit. They rank among the elite for ProS, Herd Builder, and Grid Master.



C-BAR ABIGRACE 417B - Dam of Lot 41 & 42



Lot  
**41**

## C-BAR DOMAIN 0211H

BD: 1/19/20 | Reg: 4378945 | A- 100% AR | Tattoo: 0211H

BECKTON DOMINOR T122 Z1

### 3SCC DOMAIN A163

3SCC EUCLA X723

LSF SAGA 1040Y

### C-BAR ABIGRACE 417B

C-BROWN&KM ABIGRACE T715

### MEASUREMENTS

BW: 90 | AIMF: 3.48

AWW: 693 | AREA: 14.8

AYW: 1161 | ABF: 0.19

PRS	HB	GM	CED	BW	WW	YW	ADG	DMI	MLK	ME	HPG	CEM	STY	MRB	YG	CW	REA	FAT
145	90	55	13	-1.8	63	107	0.27	1.5	23	1	15	4	18	0.59	0.12	21	0.14	0.05
11%	24%	17%	49%	48%	34%	24%	16%	59%	70%	54%	6%	95%	14%	13%	85%	44%	39%	96%



Lot  
**42**

## C-BAR DOMAIN 0208H

BD: 1/17/20 | Reg: 4378939 | A- 100% AR | Tattoo: 0208H

BECKTON DOMINOR T122 Z1

### 3SCC DOMAIN A163

3SCC EUCLA X723

LSF SAGA 1040Y

### C-BAR ABIGRACE 417B

C-BROWN&KM ABIGRACE T715

### MEASUREMENTS

BW: 95 | AIMF: 4.03

AWW: 690 | AREA: 16.63

AYW: 1235 | ABF: 0.19

PRS	HB	GM	CED	BW	WW	YW	ADG	DMI	MLK	ME	HPG	CEM	STY	MRB	YG	CW	REA	FAT
145	90	55	13	-1.8	63	107	0.27	1.5	23	1	15	4	18	0.59	0.12	21	0.14	0.05
11%	24%	17%	49%	48%	34%	24%	16%	59%	70%	54%	6%	95%	14%	13%	85%	44%	39%	96%



Lot  
**43**

## C-BAR DOMAIN 0204H

BD: 1/12/20 | Reg: 4378931 | A- 100% AR | Tattoo: 0204H

BECKTON DOMINOR T122 Z1

### 3SCC DOMAIN A163

3SCC EUCLA X723

RED FINE LINE MULBERRY 26P

### C-BAR STONY W928

BROWN-CBAR MS STONY ML P7500

### MEASUREMENTS

BW: 87 | AIMF: 4.05

AWW: 717 | AREA: 14.85

AYW: 1193 | ABF: 0.26

PRS	HB	GM	CED	BW	WW	YW	ADG	DMI	MLK	ME	HPG	CEM	STY	MRB	YG	CW	REA	FAT
130	97	33	14	-2.3	56	89	0.21	1.26	20	2	14	6	20	0.41	0.13	15	-0.04	0.04
27%	12%	63%	28%	39%	66%	63%	59%	36%	88%	57%	12%	76%	5%	46%	88%	70%	81%	91%

C-Bar Domain 0204H is another direct son of the Genex standout, 3SCC Domain A163. 0204H is backed by the Mulberry influenced daughter of P7500, another famous matriarch that is responsible for much of the genetic advancements at C-Bar Ranch. He tops the charts for traits of economic importance in any operation.



# THE YEARLING BULLS



The next trio of bulls to come through the ring are also from the 3SCC Domain A163 sire group. 0217H, 0220H, and 0215H are ET flush mate brothers from the impressive C-Bar Mimi 727E female that has reserved her place in the donor pen here in Brownell. 727E is the result of a highly anticipated mating that included Six Mile Signature 295B and C-Bar Miss Mimi 458B, one of the most picture-perfect daughters of the legendary Damar Mimi W085. Here is a set of brothers from an outcross cow family that should complement the Abigrace and Stony cow lines with tremendous success.

Lot  
**44**

## C-BAR DOMAIN 0217H

BD: 1/24/20 | Reg: 4378957 | A- 100% AR | Tattoo: 0217H

BECKTON DOMINOR T122 Z1

### 3SCC DOMAIN A163

3SCC EUCLA X723

SIX MILE SIGNATURE 295B

### C-BAR MIMI 727E

C-BAR MISS MIMI 458B

### MEASUREMENTS

BW: 100	AIMF: 4.33
AWW: 652	AREA: 14.84
AYW: 1120	ABF: 0.2

PRS	HB	GM	CED	BW	WW	YW	ADG	DMI	MLK	ME	HPG	CEM	STY	MRB	YG	CW	REA	FAT
122	76	46	11	-0.5	62	102	0.25	1.38	20	-1	13	3	16	0.5	0.09	19	0.08	0.03
40%	55%	33%	66%	73%	38%	35%	33%	47%	88%	36%	18%	96%	35%	27%	69%	53%	53%	77%



C-BAR MIMI 727E - Dam of Lot 44

Lot  
**45**

## C-BAR DOMAIN 0220H

BD: 1/30/20 | Reg: 4378963 | A- 100% AR | Tattoo: 0220H

BECKTON DOMINOR T122 Z1

### 3SCC DOMAIN A163

3SCC EUCLA X723

SIX MILE SIGNATURE 295B

### C-BAR MIMI 727E

C-BAR MISS MIMI 458B

### MEASUREMENTS

BW: 94	AIMF: 4.14
AWW: 619	AREA: 15.05
AYW: 1209	ABF: 0.21

PRS	HB	GM	CED	BW	WW	YW	ADG	DMI	MLK	ME	HPG	CEM	STY	MRB	YG	CW	REA	FAT
122	76	46	11	-0.5	62	102	0.25	1.38	20	-1	13	3	16	0.5	0.09	19	0.08	0.03
40%	55%	33%	66%	73%	38%	35%	33%	47%	88%	36%	18%	96%	35%	27%	69%	53%	53%	77%

Lot  
**46**

## C-BAR DOMAIN 0215H

BD: 1/20/20 | Reg: 4378953 | A- 100% AR | Tattoo: 0215H

BECKTON DOMINOR T122 Z1

### 3SCC DOMAIN A163

3SCC EUCLA X723

SIX MILE SIGNATURE 295B

### C-BAR MIMI 727E

C-BAR MISS MIMI 458B

### MEASUREMENTS

BW: 98	AIMF: 3.56
AWW: 631	AREA: 16.48
AYW: 1091	ABF: 0.19

PRS	HB	GM	CED	BW	WW	YW	ADG	DMI	MLK	ME	HPG	CEM	STY	MRB	YG	CW	REA	FAT
122	76	46	11	-0.5	62	102	0.25	1.38	20	-1	13	3	16	0.5	0.09	19	0.08	0.03
40%	55%	33%	66%	73%	38%	35%	33%	47%	88%	36%	18%	96%	35%	27%	69%	53%	53%	77%



# THE YEARLING BULLS



DAMAR MIMI W085 - Maternal Granddam of Lot 48



JEFFRIES MS JOLINE Z243 - Dam of Lot 49



PIE ONE OF A KIND 352 - Sire of Lot 49

Lot  
**47**

**C-BAR-RJ BIG RIVER 0302H**

BD: 1/24/20 | Reg: 4378981 | A- 100% AR | Tattoo: 0302H

PIE ONE OF A KIND 352

**C-BAR BIG RIVER 119E**

JEFFRIES MS JOLINE Z243

BROWN BLW LEGEND A1965

**C-BAR-RJ ABIGRACE 7363E**

BROWN MS CONQUEST Z7869

## MEASUREMENTS

BW: 78	AIMF: 4.35
AWW: 733	AREA: 14.67
AYW: 1190	ABF: 0.23

PRS	HB	GM	CED	BW	WW	YW	ADG	DMI	MLK	ME	HPG	CEM	STY	MRB	YG	CW	REA	FAT
113	60	53	12	-1.6	71	115	0.27	1.65	27	8	12	8	11	0.59	0.04	23	0.15	0.01
55%	84%	20%	52%	53%	11%	12%	16%	73%	27%	94%	41%	26%	90%	13%	42%	38%	38%	42%

C-Bar-RJ Big River 0203H is another standout Big River son that is as impressive on paper as he is visually. 0302H is a stout made, long sided stud that is backed by the Abigrace cow family. He ranks among the elite for performance on paper, charting an impressive WW Ratio of 105, YW Ratio of 102, and REA Ratio of 109. Recommended for use on heifers.

Lot  
**48**

**C-BAR-RJ BIG RIVER 0312H**

BD: 2/17/20 | Reg: 4379001 | A- 100% AR | Tattoo: 0312H

PIE ONE OF A KIND 352

**C-BAR BIG RIVER 119E**

JEFFRIES MS JOLINE Z243

C-BAR ANTICIPATION 101W

**C-BAR-RJ MIMI 404B**

DAMAR MIMI W085

## MEASUREMENTS

BW: 90	AIMF: 3.76
AWW: 731	AREA: 15.42
AYW: 1273	ABF: 0.19

PRS	HB	GM	CED	BW	WW	YW	ADG	DMI	MLK	ME	HPG	CEM	STY	MRB	YG	CW	REA	FAT
117	65	51	12	-3.2	59	90	0.19	1.35	25	7	11	9	13	0.61	-0.01	20	0.17	0
49%	77%	23%	59%	24%	51%	62%	71%	44%	47%	92%	46%	18%	78%	11%	16%	47%	32%	13%

C-Bar-RJ Big River 0312H is a powerful son of the \$50,000 Big River stud that is backed by the impressive Anticipation daughter of Damar Mimi W085. He is among the elite in the breed for Marbling, Yield Grade, and REA.

Lot  
**49**

**C-BAR-RJ ONE OF A KIND 0311H**

BD: 2/16/20 | Reg: 4378999 | A- 100% AR | Tattoo: 0311H

BUF CRK THE RIGHT KIND U199

**PIE ONE OF A KIND 352**

PIE FAYETTE 1160

C-BAR CONTOUR 107X

**JEFFRIES MS JOLINE Z243**

BROWN MS BIG SKY U7877

## MEASUREMENTS

BW: 93	AIMF: 3.73
AWW: 728	AREA: 14.6
AYW: 1337	ABF: 0.24

PRS	HB	GM	CED	BW	WW	YW	ADG	DMI	MLK	ME	HPG	CEM	STY	MRB	YG	CW	REA	FAT
111	66	46	13	-2.7	74	115	0.26	1.81	27	9	12	9	12	0.45	-0.03	29	0.38	0
58%	76%	34%	47%	32%	7%	12%	26%	85%	29%	98%	37%	9%	89%	37%	11%	19%	7%	20%

0311H is a long sided, stout featured son of the legendary PIE One Of A Kind 352 sire line. He is an own son of the great Jeffries Ms Joline Z243, a cornerstone female that has sons and daughters working in seedstock programs nationwide. He is a trait leader for performance both at weaning and yearling, along with exceptional carcass traits that will add significant value to any operation.



Lot  
**50**

## C-BAR-RJ FRANCHISE 0310H

BD: 2/15/20 | Reg: 4378997 | A- 100% AR | Tattoo: 0310H



SPUR FRANCHISE OF GARTON

### 9 MILE FRANCHISE 6305

C-BAR ABIGRACE Y11

C-BAR ELDORADO 114Z

### C-BAR ABIGRACE 555C

C-BAR ABIGRACE 255Z

#### MEASUREMENTS

BW: 94	AIMF: 6.19
AWW: 730	AREA: 15.91
AYW: 1253	ABF: 0.23



C-BAR  
MISS MIMI 458B  
Dam of Lots 53  
& 54

PRS	HB	GM	CED	BW	WW	YW	ADG	DMI	MLK	ME	HPG	CEM	STY	MRB	YG	CW	REA	FAT
137	64	73	13	-3.8	61	110	0.3	1.68	28	1	12	9	11	0.56	0.03	31	0.34	0.02
18%	79%	3%	41%	15%	42%	19%	6%	76%	20%	54%	38%	16%	91%	17%	36%	13%	10%	59%

0301H is a tremendous calving ease specialist that is sired by the great 9 Mile Franchise 6305 and backed by the Stony W909 matron, tracing to P7500. He is among the elite in the breed for ProS, GM, WW, YW, Milk, Marb, CW, and REA. He boasts an impressive WW Ratio of 108. He offers an impressive 6.19 IMF to add to his already impressive resume. A big time marbling herd sire prospect.

Lot  
**51**

## C-BAR FRANCHISE 005H

BD: 1/21/20 | Reg: 4379005 | A- 100% AR | Tattoo: 005H



SPUR FRANCHISE OF GARTON

### 9 MILE FRANCHISE 6305

C-BAR ABIGRACE Y11

RED BCC CRIMSON JEWELS 102U

### C-BAR ABIGRACE A361

BROWN C- ABIGRACE S602

#### MEASUREMENTS

BW: 82	AIMF: 3.81
AWW: 699	AREA: 15.09
AYW: 1232	ABF: 0.21



PRS	HB	GM	CED	BW	WW	YW	ADG	DMI	MLK	ME	HPG	CEM	STY	MRB	YG	CW	REA	FAT
122	73	49	15	-3.9	56	97	0.26	1.51	30	-6	10	10	12	0.34	0.06	26	0.26	0.03
39%	62%	27%	14%	14%	65%	45%	23%	60%	9%	14%	69%	4%	87%	64%	55%	26%	18%	80%

005H is by the great Franchise, a logical option if your program is searching for a sleep all night heifer safe herd sire prospect. He charts top 14% CED, top 14% BW, top 4% CEM, and top 18% REA. His low birth, calving ease genetics are further complimented by balanced and impressive ultrasound data. Recommended for use on heifers.

Lot  
**52**

## C-BAR-RJ FRANCHISE 0301H

BD: 1/12/20 | Reg: 4378979 | A- 100% AR | Tattoo: 0301H



SPUR FRANCHISE OF GARTON

### 9 MILE FRANCHISE 6305

C-BAR ABIGRACE Y11

HXC ALLEGIANCE 5502C

### C-BAR STONY 8106F

C-BAR STONY W909

#### MEASUREMENTS

BW: 81	AIMF: 4.27
AWW: 753	AREA: 11.8
AYW: 1192	ABF: 0.19

PRS	HB	GM	CED	BW	WW	YW	ADG	DMI	MLK	ME	HPG	CEM	STY	MRB	YG	CW	REA	FAT
161	84	77	12	-2.2	68	117	0.31	1.88	32	3	13	8	14	0.61	0.07	40	0.44	0.03
3%	37%	2%	55%	41%	20%	10%	5%	89%	3%	64%	17%	21%	68%	11%	59%	3%	4%	85%

0301H is another calving ease option sired by Franchise that is further influenced by the Stony cow family. He offers a WW Ratio of 108 to accompany his impressive number profile. He charts top 3% ProS, top 2% GM, top 10% YW, top 5% ADG, top 3% Milk, top 11% Marb, top 3% CW, and top 4% REA. Recommended for use on heifers.

Lot  
**53**

## C-BAR FRANCHISE 0221H

BD: 2/2/20 | Reg: 4378965 | A- 100% AR | Tattoo: 0221H



SPUR FRANCHISE OF GARTON

### 9 MILE FRANCHISE 6305

C-BAR ABIGRACE Y11

C-BAR ANTICIPATION 101W

### C-BAR MISS MIMI 458B

DAMAR MIMI W085

#### MEASUREMENTS

BW: 99	AIMF: 4.66
AWW: 730	AREA: 14.7
AYW: 1226	ABF: 0.19

PRS	HB	GM	CED	BW	WW	YW	ADG	DMI	MLK	ME	HPG	CEM	STY	MRB	YG	CW	REA	FAT
128	64	63	13	-3.5	58	101	0.27	1.67	31	4	12	9	12	0.49	0	28	0.34	0.01
31%	79%	9%	38%	19%	58%	37%	17%	75%	5%	74%	27%	10%	89%	30%	19%	20%	10%	38%

Lot  
**54**

## C-BAR FRANCHISE 0214H

BD: 1/20/20 | Reg: 4378951 | A- 100% AR | Tattoo: 0214H



SPUR FRANCHISE OF GARTON

### 9 MILE FRANCHISE 6305

C-BAR ABIGRACE Y11

C-BAR ANTICIPATION 101W

### C-BAR MISS MIMI 458B

DAMAR MIMI W085

#### MEASUREMENTS

BW: 86	AIMF: 4.55
AWW: 693	AREA: 12.78
AYW: 1090	ABF: 0.22

PRS	HB	GM	CED	BW	WW	YW	ADG	DMI	MLK	ME	HPG	CEM	STY	MRB	YG	CW	REA	FAT
128	64	63	13	-3.5	58	101	0.27	1.67	31	4	12	9	12	0.49	0	28	0.34	0.01
31%	79%	9%	38%	19%	58%	37%	17%	75%	5%	74%	27%	10%	89%	30%	19%	20%	10%	38%



# THE YEARLING BULLS

9 MILE  
FRANCHISE 6305  
Sire of Lots 50 - 57



Lot  
**55**

## C-BAR FRANCHISE 001H

BD: 1/6/20 | Reg: 4378905 | A- 100% AR | Tattoo: 001H



SPUR FRANCHISE OF GARTON

9 MILE FRANCHISE 6305

C-BAR ABIGRACE Y11

5L INDEPENDENCE 560-298Y

C-BAR STONY 7010E

C-BAR STONY W928

### MEASUREMENTS

BW: 64      AIMF: 4.58  
AWW: 714      AREA: 14.34  
AYW: 1076      ABF: 0.2

PRS	HB	GM	CED	BW	WW	YW	ADG	DMI	MLK	ME	HPG	CEM	STY	MRB	YG	CW	REA	FAT
121	65	55	15	-5.2	57	99	0.26	1.7	30	1	14	9	11	0.44	0.02	27	0.31	0.02
42%	77%	17%	14%	5%	59%	42%	24%	78%	9%	51%	15%	9%	92%	39%	28%	22%	12%	51%

C-Bar Franchise 001H is the first-born bull of the 2020 calf crop. He is sired by the tried-and-true calving ease specialist that sets the standard for carcass merit, 9 Mile Franchise 6305. 001H is out of a hard-working three-year old dam that is sired by the industry leading 5L Independence 560-298Y. 001H ranks top 17% GM, top 14% CED, top 5% BW, top 9% HPG, and top 12% REA. A logical heifer safe option that offers calving ease, carcass merit, and a strong maternal backing. Recommended for use on heifers.



C-BAR STONY 7010E - Dam of Lot 55

Lot  
**56**

## C-BAR FRANCHISE 0207H

BD: 1/17/20 | Reg: 4378937 | A- 100% AR | Tattoo: 0207H

SPUR FRANCHISE OF GARTON

9 MILE FRANCHISE 6305

C-BAR ABIGRACE Y11

RED FINE LINE MULBERRY 26P

C-BAR STONY W928

BROWN-CBAR MS STONY ML P7500

### MEASUREMENTS

BW: 71      AIMF: 4.45  
AWW: 679      AREA: 13.21  
AYW: 1168      ABF: 0.29

PRS	HB	GM	CED	BW	WW	YW	ADG	DMI	MLK	ME	HPG	CEM	STY	MRB	YG	CW	REA	FAT
123	80	43	15	-4.5	51	89	0.23	1.57	28	3	14	10	14	0.32	0.03	23	0.26	0.02
39%	46%	40%	22%	9%	79%	65%	42%	66%	20%	69%	11%	6%	68%	69%	35%	36%	18%	66%

0207H is another recommended heifer safe option that boasts a moderate 71-pound birth weight. He charts with a top 22% CED, top 9% BW, top 11% HPG, and top 18% REA. A direct son of the legendary W928, one of Mulberry's top daughters!

Lot  
**57**

## C-BAR FRANCHISE 0202H

BD: 1/11/20 | Reg: 4378927 | A- 100% AR | Tattoo: 0202H



SPUR FRANCHISE OF GARTON

9 MILE FRANCHISE 6305

C-BAR ABIGRACE Y11

C-BAR ELDORADO 114Z

C-BAR ABIGRACE 555C

C-BAR ABIGRACE 255Z

### MEASUREMENTS

BW: 80      AIMF: 5.1  
AWW: 620      AREA: 14.24  
AYW: 1090      ABF: 0.18

PRS	HB	GM	CED	BW	WW	YW	ADG	DMI	MLK	ME	HPG	CEM	STY	MRB	YG	CW	REA	FAT
137	64	73	13	-3.8	61	110	0.3	1.68	28	1	12	9	11	0.56	0.03	31	0.34	0.02
18%	79%	3%	41%	15%	42%	19%	6%	76%	20%	54%	38%	16%	91%	17%	36%	13%	10%	59%

Here is another standout calving ease option that offers tremendous carcass merit. 0202H is a Franchise son from 555C that ranks among the elite 3% for GM, top 15% BW, top 19% YW, top 18% ProS, top 16% CEM, top 17% Marb, top 13% CW, and top 10% REA. He boasts an impressive 116 IMF Ratio.



Lot  
**58**

## C-BAR DOMAIN 0209H

BD: 1/17/20 Reg: 4378941 2- 100% AR Tattoo: 0209H



BECKTON DOMINOR T122 Z1

### 3SCC DOMAIN A163

3SCC EUCLA X723

SPUR FRANCHISE OF GARTON

### C-BAR ABIGRACE 637D

C-BAR ABIGRACE Y11

#### MEASUREMENTS

BW: 89 AIMF: 4.17  
AWW: 714 AREA: 15.92  
AYW: 1265 ABF: 0.32

PRS	HB	GM	CED	BW	WW	YW	ADG	DMI	MLK	ME	HPG	CEM	STY	MRB	YG	CW	REA	FAT
160	79	81	12	-1.6	67	118	0.32	1.83	27	1	13	4	16	0.7	0.07	34	0.44	0.04
3%	47%	1%	64%	53%	23%	8%	2%	87%	32%	53%	19%	93%	36%	4%	57%	9%	4%	94%

0209H is the Domain sired black-red carrier herd sire prospect that is sure to turn heads on sale day with his eye appeal and balance. 0209H is a direct son of the stunning C-Bar Abigrace 637D, the black-red carrier full sister to the great 9 Mile Franchise 6305. 0209H charts among the elite for ProS, GM, YW, ADG, Marb, and REA. 0209H is a stout featured herd sire prospect that boasts a REA Ratio of 107.



LOT 58

Lot  
**59**

## C-BAR BIG RIVER 0206H

BD: 1/16/20 Reg: 4378935 2- 100% AR Tattoo: 0206H



PIE ONE OF A KIND 352

### C-BAR BIG RIVER 119E

JEFFRIES MS JOLINE Z243

SPUR FRANCHISE OF GARTON

### C-BAR ABIGRACE 637D

C-BAR ABIGRACE Y11

#### MEASUREMENTS

BW: 73 AIMF: 5.27  
AWW: 755 AREA: 16.9  
AYW: 1314 ABF: 0.27

PRS	HB	GM	CED	BW	WW	YW	ADG	DMI	MLK	ME	HPG	CEM	STY	MRB	YG	CW	REA	FAT
137	58	80	10	-1.8	74	127	0.33	2	30	7	12	7	11	0.64	-0.05	37	0.58	0.01
18%	87%	2%	78%	48%	8%	3%	2%	94%	9%	91%	34%	45%	93%	8%	7%	5%	1%	28%

Recommended for heifers.



LOT 59

Lot  
**60**

## C-BAR BIG RIVER 0213H

BD: 1/19/20 Reg: 4378949 2- 100% AR Tattoo: 0213H



PIE ONE OF A KIND 352

### C-BAR BIG RIVER 119E

JEFFRIES MS JOLINE Z243

SPUR FRANCHISE OF GARTON

### C-BAR ABIGRACE 637D

C-BAR ABIGRACE Y11

#### MEASUREMENTS

BW: 65 AIMF: 5.43  
AWW: 670 AREA: 13.66  
AYW: 1206 ABF: 0.24

PRS	HB	GM	CED	BW	WW	YW	ADG	DMI	MLK	ME	HPG	CEM	STY	MRB	YG	CW	REA	FAT
137	58	80	10	-1.8	74	127	0.33	2	30	7	12	7	11	0.64	-0.05	37	0.58	0.01
18%	87%	2%	78%	48%	8%	3%	2%	94%	9%	91%	34%	45%	93%	8%	7%	5%	1%	28%

0206H and 0213H are the black-red carrier studs that are sired by the \$50,000 Big River and from the maternal influence of the legendary C-Bar Abigrace Y11. 0206H is a low birth weight, high growth herd sire prospect that is one of the most impressive marbling bulls within the entire offering, boasting an IMF Ratio of 120 and a REA Ratio of 114. He ranks among the elite 2% for GM, top 8% WW, top 3% YW, top 2% ADG, top 8% Marb, and top 1% REA. 0213H is much like his flush brother in terms of his phenotype and ultrasound data. 0213H is a logical calving ease option that boasts an IMF Ratio of 123. He charts top 2% GM, top 8% WW, top 3% YW, top 2% ADG, top 8% Marb, top 7% YG, and top 1% REA. Power in the blood! Recommended for heifers.



C-BAR ABIGRACE 637D - Dam of Lots 58 - 60



# THE YEARLING BULLS



SPUR FRANCHISE OF GARTON - Sire of Lot 61



LOT 62

Lot  
**61**

**C-BAR SPUR 0203H**

BD: 1/12/20 Reg: 4378929 2- 100% AR Tattoo: 0203H



SPUR FRANCHISE 7070  
**SPUR FRANCHISE OF GARTON**  
H & H IRENE LASS 0135  
BASIN HOB0 79E  
**LASO LEANNA BC114R**  
LASO LEANNA BC 114

## MEASUREMENTS

BW: 90	AIMF: 4.99
AWW: 683	AREA: 14.85
AYW: 1167	ABF: 0.25

PRS	HB	GM	CED	BW	WW	YW	ADG	DMI	MLK	ME	HPG	CEM	STY	MRB	YG	CW	REA	FAT
186	99	87	14	-3	59	103	0.28	2.06	32	-1	9	9	19	0.76	0.02	42	0.51	0.02
1%	10%	1%	31%	27%	52%	32%	15%	96%	4%	36%	90%	18%	9%	2%	30%	2%	2%	59%

C-Bar Spur 0203H is a trait leader for ProS and GM, ranking among the elite 1% of the breed for both values. He is an own son of BC114R, the stunning Basin Hobo 79E daughter produced in the Lautenschlager & Sons program of Washington. He charts top 2% Marb, top 2% CW, top 2% REA, and top 10% Stay. 0203H boasts an IMF Ratio of 113.

Lot  
**62**

**C-BAR JUST RIGHT 0218H**

BD: 1/26/20 Reg: 4378959 2- 100% AR Tattoo: 0218H



PIE THE COWBOY KIND 343  
**PIE JUST RIGHT 540**  
RAISLAND LAKOTA 311-158  
EF COMMANDO 1366  
**C-BAR ABIGRACE 730E**  
C-BAR ABIGRACEY11

## MEASUREMENTS

BW: 101	AIMF: 4.45
AWW: 746	AREA: 14.6
AYW: 1311	ABF: 0.24

PRS	HB	GM	CED	BW	WW	YW	ADG	DMI	MLK	ME	HPG	CEM	STY	MRB	YG	CW	REA	FAT
130	69	60	15	-3.1	66	115	0.31	1.8	28	1	11	9	12	0.49	0.05	28	0.27	0.02
28%	71%	11%	19%	24%	26%	12%	5%	85%	21%	54%	47%	10%	88%	30%	48%	20%	16%	68%

0218H is a powerful category 2 black-red carrier herd sire prospect that is sired by PIE Just Right 540. The dam of 0218H is the Commando x Y11 daughter, 730E. He is an attractive profiling bull that offers exceptional performance and shape. He charts top 10% GM, top 16% CE, top 11% YW, top 4% ADG, top 9% CEM, top 19% CW, and top 16% REA.

## Taking The Guesswork Out

### Genetic Verification of High-Value Cattle

Have You  
Worked Hard to  
Build A  
Reputation  
Herd?

Let Us Help You  
Prove It!

Contact us for a  
free, no-obligation  
consultation.

Jared Wareham,  
general manager  
660-492-2777  
jared@topdollarangus.com

Kacey Jacobson,  
field representative  
701-391-4646  
kacey@topdollarangus.com





Lot  
**63**

## C-BAR AVIATOR 006H

BD: 1/25/20 | Reg: 4378911 | A- 100% AR | Tattoo: 006H



MUSGRAVE AVIATOR

**C-BAR AVIATOR 8151F**

LASO LEANNA BC114R

5L INDEPENDENCE 560-298Y

**C-BAR MIMI 8134F**

C-BAR MISS MIMI 458B

### MEASUREMENTS

BW: 64	AIMF: 3.76
AWW: 745	AREA: 15.32
AYW: 1256	ABF: 0.49

PRS	HB	GM	CED	BW	WW	YW	ADG	DMI	MLK	ME	HPG	CEM	STY	MRB	YG	CW	REA	FAT
158	91	67	16	-4.9	59	97	0.24	1.47	27	-2	12	10	15	0.7	0.04	26	0.15	0.01
4%	20%	6%	10%	6%	51%	46%	41%	56%	31%	28%	32%	7%	51%	4%	39%	27%	38%	26%

The next three bulls to pass through the ring are sired by the lot 28 sale feature, C-Bar Aviator 8151F. 006H is powerful individual that charts among the top 3% ProS, top 5% GM, top 10% CED, top 6% BW, top 7% CEM, and top 4% Marb. Recommended for use on heifers.



C-BAR MIMI 8134F - Dam of Lot 63

Lot  
**64**

## C-BAR-RJ AVIATOR 0303H

BD: 2/20/20 | Reg: 4378983 | A- 100% AR | Tattoo: 0303H



MUSGRAVE AVIATOR

**C-BAR AVIATOR 8151F**

LASO LEANNA BC114R

SPUR FRANCHISE OF GARTON

**C-BAR-RJ BONN-BONN 8301F**

DAMAR BONN-BONN X198

### MEASUREMENTS

BW: 68	AIMF: 4.21
AWW: 731	AREA: 14.52
AYW: 1182	ABF: 0.16

PRS	HB	GM	CED	BW	WW	YW	ADG	DMI	MLK	ME	HPG	CEM	STY	MRB	YG	CW	REA	FAT
175	102	73	15	-3.7	56	93	0.23	1.75	25	-2	12	11	17	0.71	0.06	34	0.38	0.03
1%	7%	4%	18%	17%	64%	56%	44%	81%	46%	30%	34%	3%	27%	4%	50%	8%	7%	77%

0303H is a powerful herd sire prospect that is sired by 8151F and backed by the Spur Franchise of Garton sired daughter from the Damar Bonn-Bonn X198. He charts top 1% ProS, top 7% HB, top 3% GM, top 18% CED, top 17% BW, top 3% CEM, top 4% Marb, top 7% CW, and top 7% REA. He offers a REA Ratio of 108 and a WW Ratio of 104. Recommended for use on heifers.

Lot  
**65**

## C-BAR-RJ AVIATOR 0304H

BD: 2/26/20 | Reg: 4378985 | A- 100% AR | Tattoo: 0304H



MUSGRAVE AVIATOR

**C-BAR AVIATOR 8151F**

LASO LEANNA BC114R

5L INDEPENDENCE 560-298Y

**C-BAR ABIGRACE 835F**

C-BAR ABIGRACE 411B

### MEASUREMENTS

BW: 62	AIMF: 4.72
AWW: 716	AREA: 13.53
AYW: 1247	ABF: 0.21

PRS	HB	GM	CED	BW	WW	YW	ADG	DMI	MLK	ME	HPG	CEM	STY	MRB	YG	CW	REA	FAT
153	83	70	17	-5.3	54	91	0.23	1.49	26	-4	10	10	15	0.79	0.05	22	0.13	0.01
6%	39%	5%	6%	4%	70%	59%	42%	58%	44%	22%	74%	7%	55%	2%	43%	41%	41%	42%

0304H is another smooth made calving ease prospect that is sired by 8151F and backed by the Abigrace cow family. He charts top 5% ProS, top 4% GM, top 6% BW, top 8% CEM, and top 2% Marb. He offers an IMF Ratio of 110. Recommended for use on heifers.



# THE YEARLING BULLS



C-BAR ABIGRACE 637D - Dam of Lot 66



DAMAR MIMI W085 - Maternal Granddam of Lot 68 & 69

The importance of full brothers and large sire groups shines through once again in terms of consistency and uniformity. 0216H and 0219H are flush mate brothers sired by the \$50,000 C-Bar Big River 119E and further influenced by the great Y11 through the direct relation to C-Bar Abigrace 637D. 0216H boasts an IMF Ratio of 107. 0219H is another standout from the Big River x 637D mating. This pair of brothers rank among the elite 2% for GM, top 8% YW, top 3% ADG, top 8% Marb, top 7% YG, top 5% CW, and top 1% REA. An elite pair of herd sire prospects that offer tremendous carcass merit.

0307H and 0308H are full brothers in blood, sired by the \$50,000 C-Bar Big River 119E. This pair of brothers in blood are backed by a pair of C-Bar Anticipation 101W daughters from the legendary Damar Mimi W085. The brothers combine the influence of Jeffries Ms Joline Z243, Brown Ms Abigrace L7730, and Damar Mimi W085. An elite maternal pedigree that stacks generations of elite cow families top and bottom. 0308H recorded a REA Ratio of 103. This pair of brothers boasts tremendous growth, performance, and strong maternal traits. Here is another opportunity to add consistency and uniformity.

Lot  
**66**

## C-BAR BIG RIVER 0216H

BD: 1/23/20 Reg: 4378955 A- 100% AR Tattoo: 0216H



PIE ONE OF A KIND 352  
**C-BAR BIG RIVER 119E**  
JEFFRIES MS JOLINE Z243  
SPUR FRANCHISE OF GARTON  
**C-BAR ABIGRACE 637D**  
C-BAR ABIGRACE Y11

### MEASUREMENTS

BW: 83 AIMF: 4.73  
AWW: 598 AREA: 13.9  
AYW: 1140 ABF: 0.22

PRS	HB	GM	CED	BW	WW	YW	ADG	DMI	MLK	ME	HPG	CEM	STY	MRB	YG	CW	REA	FAT
137	58	80	10	-1.8	74	127	0.33	2	30	7	12	7	11	0.64	-0.05	37	0.58	0.01
18%	87%	2%	78%	48%	8%	3%	2%	94%	9%	91%	34%	45%	93%	8%	7%	5%	1%	28%

Lot  
**68**

## C-BAR-RJ BIG RIVER 0308H

BD: 2/14/20 Reg: 4378993 A- 100% AR Tattoo: 0308H



PIE ONE OF A KIND 352  
**C-BAR BIG RIVER 119E**  
JEFFRIES MS JOLINE Z243  
C-BAR ANTICIPATION 101W  
**C-BAR-RJ MIMI 7302E**  
DAMAR MIMI W085

### MEASUREMENTS

BW: 88 AIMF: 4.06  
AWW: 776 AREA: 15.3  
AYW: 1114 ABF: 0.24

PRS	HB	GM	CED	BW	WW	YW	ADG	DMI	MLK	ME	HPG	CEM	STY	MRB	YG	CW	REA	FAT
125	74	51	12	-1.8	65	104	0.24	1.51	26	7	13	9	13	0.55	0.01	22	0.12	0
35%	60%	24%	53%	48%	28%	31%	36%	60%	42%	93%	19%	18%	75%	19%	25%	42%	43%	15%

Lot  
**67**

## C-BAR BIG RIVER 0219H

BD: 1/27/20 Reg: 4378961 A- 100% AR Tattoo: 0219H



PIE ONE OF A KIND 352  
**C-BAR BIG RIVER 119E**  
JEFFRIES MS JOLINE Z243  
SPUR FRANCHISE OF GARTON  
**C-BAR ABIGRACE 637D**  
C-BAR ABIGRACE Y11

### MEASUREMENTS

BW: 83 AIMF: 4.33  
AWW: 701 AREA: 15.01  
AYW: 1005 ABF: 0.23

PRS	HB	GM	CED	BW	WW	YW	ADG	DMI	MLK	ME	HPG	CEM	STY	MRB	YG	CW	REA	FAT
137	58	80	10	-1.8	74	127	0.33	2	30	7	12	7	11	0.64	-0.05	37	0.58	0.01
18%	87%	2%	78%	48%	8%	3%	2%	94%	9%	91%	34%	45%	93%	8%	7%	5%	1%	28%

Lot  
**69**

## C-BAR-RJ BIG RIVER 0307H

BD: 2/12/20 Reg: 4378991 A- 100% AR Tattoo: 0307H

PIE ONE OF A KIND 352  
**C-BAR BIG RIVER 119E**  
JEFFRIES MS JOLINE Z243  
C-BAR ANTICIPATION 101W  
**C-BAR-RJ MIMI 404B**  
DAMAR MIMI W085

### MEASUREMENTS

BW: 90 AIMF: 3.55  
AWW: 582 AREA: 11.85  
AYW: 1074 ABF: 0.13

PRS	HB	GM	CED	BW	WW	YW	ADG	DMI	MLK	ME	HPG	CEM	STY	MRB	YG	CW	REA	FAT
117	65	51	12	-3.2	59	90	0.19	1.35	25	7	11	9	13	0.61	-0.01	20	0.17	0
49%	77%	23%	59%	24%	51%	62%	71%	44%	47%	92%	46%	18%	78%	11%	16%	47%	32%	13%



# THE YEARLING BULLS



9 MILE FRANCHISE 6305 - Sire of Lots 70 & 71

The next pair of yearling flush mate brothers that we will drive through the ring on March 22 are sired by 9 Mile Franchise 6305, the largest sire group represented within our 2021 offering. The dam of this pair of eye-appealing bulls are from the great T715, the dam of El Grande, a member of the illustrious herd sire battery at Pieper Red Angus of Hay Springs, Nebraska. 0309H boasts a REA Ratio of 109. This pair of brothers are dense, long sided, smooth made, and sound footed. They rank top 7% GM, top 9% ADG, top 7% YG, top 10% CW, and top 1% REA.

0306H and 004H are red hided studs that are sired by resident herd sire at C-Bar Ranch, C-Bar Aviator 8151F, a member of this year's offering that sells as lot 28. 8151F is a standout black-red carrier that we appreciate for his athletic build, powerful muscle shape, and eye-appealing look. This pair of brothers are out of the Anticipation sired daughter of Damar Mimi W805. C-Bar-RJ Mimi 560C is a full sister to 458B. They are members of the legendary Damar Mimi W085 tribe that has made a substantial impact on the Red Angus breed and beef business as a whole. This pair of full brothers rank among the top 4% for ProS, top 7% HB. Top 16% GM, top 10% CED, top 10% BW, top 2% CEM, top 15% Stay, and top 6% Marb.

Lot  
**72**

## C-BAR-RJ AVIATOR 0306H

BD: 2/27/20 | Reg: 4378989 | A- 100% AR | Tattoo: 0306H

MUSGRAVE AVIATOR  
**C-BAR AVIATOR 8151F**

LASO LEANNA BC114R

C-BAR ANTICIPATION 101W

**C-BAR-RJ MIMI 560C**

DAMAR MIMI W085

### MEASUREMENTS

BW: 68 | AIMF: 4.38  
AWW: 611 | AREA: 12.77  
AYW: 1129 | ABF: 0.15

PRS	HB	GM	CED	BW	WW	YW	ADG	DMI	MLK	ME	HPG	CEM	STY	MRB	YG	CW	REA	FAT
158	102	56	16	-4.4	43	71	0.18	1.38	24	-1	13	11	18	0.67	0.06	17	0.02	0.01
4%	7%	16%	10%	10%	94%	90%	80%	47%	56%	38%	23%	2%	15%	6%	55%	60%	67%	44%

Lot  
**70**

## C-BAR-RJ FRANCHISE 0309H

BD: 2/14/20 | Reg: 4378995 | A- 100% AR | Tattoo: 0309H

SPUR FRANCHISE OF GARTON  
**9 MILE FRANCHISE 6305**

C-BAR ABIGRACE Y11

LJC MISSION STATEMENT P27

**C-BROWN&KM ABIGRACE T715**

BROWN MS ABIGRACE P7905

### MEASUREMENTS

BW: 98 | AIMF: 4.32  
AWW: 708 | AREA: 16.16  
AYW: 1268 | ABF: 0.29

PRS	HB	GM	CED	BW	WW	YW	ADG	DMI	MLK	ME	HPG	CEM	STY	MRB	YG	CW	REA	FAT
130	64	66	11	-2.8	56	103	0.29	1.87	28	4	13	6	13	0.4	-0.05	33	0.59	0.01
27%	79%	7%	70%	30%	63%	33%	9%	89%	20%	76%	21%	61%	77%	49%	7%	10%	1%	44%

Lot  
**73**

## C-BAR AVIATOR 004H

BD: 1/18/20 | Reg: 4379561 | A- 100% AR | Tattoo: 004H

MUSGRAVE AVIATOR  
**C-BAR AVIATOR 8151F**

LASO LEANNA BC114R

C-BAR ANTICIPATION 101W

**C-BAR-RJ MIMI 556C**

DAMAR MIMI W085

### MEASUREMENTS

BW: 84 | AIMF: 4.26  
AWW: 582 | AREA: 12.11  
AYW: 893 | ABF: 0.13

PRS	HB	GM	CED	BW	WW	YW	ADG	DMI	MLK	ME	HPG	CEM	STY	MRB	YG	CW	REA	FAT
165	104	61	13	-1.5	56	91	0.22	1.38	26	-1	13	9	18	0.67	0.06	23	0.1	0.01
2%	5%	11%	47%	55%	64%	61%	55%	47%	42%	38%	23%	15%	15%	6%	54%	38%	48%	44%

Lot  
**71**

## C-BAR FRANCHISE 0226H

BD: 2/20/20 | Reg: 4378975 | A- 100% AR | Tattoo: 0226H

SPUR FRANCHISE OF GARTON  
**9 MILE FRANCHISE 6305**

C-BAR ABIGRACE Y11

LJC MISSION STATEMENT P27

**C-BROWN&KM ABIGRACE T715**

BROWN MS ABIGRACE P7905

### MEASUREMENTS

BW: 82 | AIMF: 4.49  
AWW: 730 | AREA: 13.79  
AYW: 1241 | ABF: 0.23

PRS	HB	GM	CED	BW	WW	YW	ADG	DMI	MLK	ME	HPG	CEM	STY	MRB	YG	CW	REA	FAT
130	64	66	11	-2.8	56	103	0.29	1.87	28	4	13	6	13	0.4	-0.05	33	0.59	0.01
27%	79%	7%	70%	30%	63%	33%	9%	89%	20%	76%	21%	61%	77%	49%	7%	10%	1%	44%

Lot  
**74**

## C-BAR 012H

BD: 3/29/20 | UNREGISTERED | 75% RA | Tattoo: 012H

RED U-2 RECKONING 149A  
**C-BAR RECKONING 843F**

C-BAR MS STONY A305

### MEASUREMENTS

BW: 78  
AWW: 727



# THE YEARLING BULLS

Lot  
**75**

## C-BAR AVIATOR 015H

BD: 4/17/20 | Reg: 4378923 | A- 100% AR | Tattoo: 015H



MUSGRAVE AVIATOR

### C-BAR AVIATOR 8151F

LASO LEANNA BC114R

5L INDEPENDENCE 560-298Y

### C-BAR STONY 7011E

C-BAR STONY W928

### MEASUREMENTS

BW: 72	AIMF: 4.22
AWW: 731	AREA: 13.77
AYW: 1142	ABF: 78



RRA BLAIRS BLACKBIRD 107X - Maternal Great Granddam of Lot 77

PRS	HB	GM	CED	BW	WW	YW	ADG	DMI	MLK	ME	HPG	CEM	STY	MRB	YG	CW	REA	FAT
153	95	58	16	-3.8	56	92	0.23	1.42	24	-3	11	10	17	0.63	0.04	20	0.07	0.01
6%	15%	14%	12%	15%	66%	59%	48%	51%	61%	26%	43%	8%	33%	9%	43%	47%	55%	31%

015H is another son of C-Bar Aviator 8151F that is backed by the young and productive C-Bar Stony 7011E, the Independence sired daughter of C-Bar Stony W928. He charts top 6% ProS, top 16% HB, top 13% GM, top 11% CED, top 17% BW, top 8% CEM, and top 10% Marb. Here is a low birth weight option that came to the weaning pen with over 730 pounds of pay weight. Recommended for use on heifers.

Lot  
**77**

## C-BAR-RJ AVIATOR 0305H

BD: 2/20/20 | Reg: 4378987 | 2- 100% AR | Tattoo: 0305H

MUSGRAVE AVIATOR

### C-BAR AVIATOR 8151F

LASO LEANNA BC114R

RED SSS OLY 554T

### RRA BLAIRS BLACKBIRD 510Y 429

WCR MISS BLACKBIRD DE 510Y

### MEASUREMENTS

BW: 75	AIMF: 3.76
AWW: 656	AREA: 13.38
AYW: 1087	ABF: 141

PRS	HB	GM	CED	BW	WW	YW	ADG	DMI	MLK	ME	HPG	CEM	STY	MRB	YG	CW	REA	FAT
148	95	53	15	-4.8	49	85	0.22	1.45	24	-6	10	11	16	0.56	0.11	19	0.06	0.04
8%	14%	21%	20%	7%	84%	72%	50%	54%	64%	12%	68%	2%	40%	17%	82%	51%	58%	88%

0305H is another standout son of C-Bar Aviator 8151F that is backed by the influence of the iconic Blairs Blackbird 107X. He charts top 8% ProS, top 14% HB, top 19% GM, top 20% CED, top 6% BW, top 2% CEM, and top 19% Marb. A low birth weight herd sire prospect that is suitable for use on virgin heifers. Recommended for use on heifers.



C-BROWN&KM ABIGRACE T715 - Dam of Lot 76

Lot  
**76**

## C-BAR FRANCHISE 0227H

BD: 2/25/20 | Reg: 4378977 | A- 100% AR | Tattoo: 0227H



SPUR FRANCHISE OF GARTON

### 9 MILE FRANCHISE 6305

C-BAR ABIGRACE Y11

LJC MISSION STATEMENT P27

### C-BROWN&KM ABIGRACE T715

BROWN MS ABIGRACE P7905

### MEASUREMENTS

BW: 89	AIMF: 3.52
AWW: 619	AREA: 12.58
AYW: 981	ABF: 70

PRS	HB	GM	CED	BW	WW	YW	ADG	DMI	MLK	ME	HPG	CEM	STY	MRB	YG	CW	REA	FAT
130	64	66	11	-2.8	56	103	0.29	1.87	28	4	13	6	13	0.4	-0.05	33	0.59	0.01
27%	79%	7%	70%	30%	63%	33%	9%	89%	20%	76%	21%	61%	77%	49%	7%	10%	1%	44%

0227H is a smooth made, well-balanced, attractive son of 9 Mile Franchise 6305. He is a maternal brother to El Grande, a past high seller that is employed by Pieper Red Angus. He charts top 25% ProS, top 6% GM, top 8% ADG, top 19% Milk, top 7% YG, top 10% CW, and top 1% REA.

Lot  
**78**

## C-BAR JUST RIGHT 0224H

BD: 2/18/20 | Reg: 4378971 | 2- 100% AR | Tattoo: 0224H



PIE THE COWBOY KIND 343

### PIE JUST RIGHT 540

RAISLAND LAKOTA 311-158

SPUR FRANCHISE OF GARTON

### C-BAR ABIGRACE 762E

C-BROWN&KM ABIGRACE T715

### MEASUREMENTS

BW: 90	AIMF: 4.66
AWW: 724	AREA: 15.21
AYW: 1235	ABF: 109

PRS	HB	GM	CED	BW	WW	YW	ADG	DMI	MLK	ME	HPG	CEM	STY	MRB	YG	CW	REA	FAT
134	67	68	12	-1.8	65	112	0.29	1.89	27	2	11	8	12	0.53	-0.08	30	0.54	0
21%	75%	6%	55%	48%	28%	16%	8%	90%	31%	63%	58%	26%	84%	22%	4%	15%	2%	20%

C-Bar Just Right 0224H is a performance standout from the PIE Just Right 540 sire group. The dam of 0224H is the Franchise of Garton sired daughter of the legendary T715. He boasts an IMF Ratio of 106 and a REA Ratio of 102. He charts top 19% ProS, top 5% GM, top 15% YW, top 7% ADG, top 20% Marb, top 4% YG, top 15% CW, and top 2% REA.



Lot  
**79**

## C-BAR JUST RIGHT 008H

BD: 2/3/20 | Reg: 4378913 | 2- 100% AR | Tattoo: 008H



PIE THE COWBOY KIND 343

### PIE JUST RIGHT 540

RAISLAND LAKOTA 311-158

STEVENSON ROCKMOUNT RX933

### C-BAR ABIGRACE 564C

C-BAR ABIGRACE Y11

#### MEASUREMENTS

BW: 65      AIMF: 4.33  
AWW: 629      AREA: 13.82  
AYW: 1131      ABF:

PRS	HB	GM	CED	BW	WW	YW	ADG	DMI	MLK	ME	HPG	CEM	STY	MRB	YG	CW	REA	FAT
120	72	48	16	-2.7	66	113	0.3	1.68	30	1	13	10	11	0.35	0.01	25	0.31	0.02
43%	65%	28%	11%	32%	25%	14%	7%	76%	12%	51%	23%	5%	90%	61%	25%	29%	12%	52%

C-Bar Just Right 008H is another PIE Just Right 540 that is backed by the famed C-Bar Abigrace Y11. 008H is among the top 10% for CED, top 14% YW, top 7% ADG, top 13% Milk, top 4% CEM, and top 12% REA. A low birth weight herd sire prospect that is suitable for use on virgin heifers.



C-BAR ABIGRACE 564C - Dam of Lot 79

Lot  
**80**

## C-BAR AVIATOR 009H

BD: 2/14/20 | Reg: 4378915 | 2- 100% AR | Tattoo: 009H



MUSGRAVE AVIATOR

### C-BAR AVIATOR 8151F

LASO LEANNA BC114R

SPUR FRANCHISE OF GARTON

### C-BAR STONY 802F

C-BAR MS STONY A302

#### MEASUREMENTS

BW: 74      AIMF: 3.55  
AWW: 661      AREA: 12.9  
AYW: 1152      ABF: 87

PRS	HB	GM	CED	BW	WW	YW	ADG	DMI	MLK	ME	HPG	CEM	STY	MRB	YG	CW	REA	FAT
169	98	71	14	-2.8	53	91	0.24	1.65	24	-2	12	10	17	0.65	0.03	31	0.38	0.03
1%	11%	4%	23%	30%	75%	60%	39%	74%	63%	28%	33%	6%	31%	7%	36%	14%	7%	73%

C-Bar Aviator 009H is sired by C-Bar Aviator 8151F that is backed by the influence of the great C-Bar Ms Stony A302. He charts top 1% ProS, top 12% HB, top 4% GM, top 6% CEM, top 7% Marb, and top 7% REA. Recommended for use on heifers.



C-BAR MS STONY A302 - Maternal Granddam of Lot 80

Lot  
**81**

## C-BAR AVIATOR 010H

BD: 2/19/20 | Reg: 4378917 | 2- 100% AR | Tattoo: 010H



MUSGRAVE AVIATOR

### C-BAR AVIATOR 8151F

LASO LEANNA BC114R

SIX MILE SIGNATURE 295B

### C-BAR MIMI 726E

C-BAR-RJ MISS MIMI 461B

#### MEASUREMENTS

BW: 73      AIMF: 4.31  
AWW: 658      AREA: 14.89  
AYW: 1168      ABF: 100

PRS	HB	GM	CED	BW	WW	YW	ADG	DMI	MLK	ME	HPG	CEM	STY	MRB	YG	CW	REA	FAT
141	87	54	13	-2.2	51	85	0.21	1.41	22	-4	12	8	16	0.55	0.02	20	0.16	0.01
14%	28%	19%	35%	41%	78%	72%	61%	50%	79%	22%	39%	21%	45%	19%	31%	47%	35%	36%

C-Bar Aviator 010H is sired by 8151F and is backed by the maternal influence of the legendary Damar Mimi W085. He charts among the elite 14% for ProS, top 17% GM, top 22% ME, top 23% CEM, and top 19% Marb. He offers a moderate birth weight suitable for use on heifers. He boasts an IMF Ratio of 105 and a REA Ratio of 107. Recommended for use on heifers.

Lot  
**82**

## C-BAR AVIATOR 014H

BD: 4/9/20 | Reg: 4378921 | 2- 100% AR | Tattoo: 014H



MUSGRAVE AVIATOR

### C-BAR AVIATOR 8151F

LASO LEANNA BC114R

SPUR FRANCHISE OF GARTON

### C-BAR STONY 804F

C-BAR MS STONY A302

#### MEASUREMENTS

BW: 68      AIMF: 4.32  
AWW: 695      AREA: 11.02  
AYW: 1121      ABF: 81

PRS	HB	GM	CED	BW	WW	YW	ADG	DMI	MLK	ME	HPG	CEM	STY	MRB	YG	CW	REA	FAT
169	98	72	15	-4	51	88	0.23	1.65	24	-2	12	10	17	0.65	0.03	31	0.38	0.03
1%	11%	4%	15%	13%	78%	65%	44%	74%	58%	28%	33%	4%	31%	7%	36%	14%	7%	73%

014H is from the powerful Aviator 8151F sire group. He is backed by the impressive C-Bar Ms Stony A302. He charts among the elite 1% for ProS, top 12% HB, top 4% GM, top 15% CED, top 13% BW, top 4% CEM, top 7% Marb, and top 7% REA. A moderate birth weight bull that is suitable for use on heifers. He also charts an IMF Ratio of 106. Recommended for use on heifers.





C-BAR BLAKES BONANZA 180C - Full brother to Dam of Lot 83

Lot  
**83**

## C-BAR FRANCHISE 007H

BD: 1/31/20 | Reg: 4379563 | A- 100% AR | Tattoo: 007H



SPUR FRANCHISE OF GARTON  
**9 MILE FRANCHISE 6305**  
C-BAR ABIGRACE Y11  
LSF SAGA 1040Y  
**BLAKE'S ABBY 782E**  
C-BAR ABIGRACE A364

### MEASUREMENTS

BW: 58 | AIMF:  
AWW: 548 | AREA:  
AYW: | ABF:

PRS	HB	GM	CED	BW	WW	YW	ADG	DMI	MLK	ME	HPG	CEM	STY	MRB	YG	CW	REA	FAT
115	67	48	16	-6	51	91	0.25	1.6	31	-2	12	11	11	0.39	0.07	22	0.23	0.04
52%	74%	29%	8%	2%	80%	60%	29%	69%	6%	31%	26%	2%	92%	51%	60%	41%	22%	89%

007H is the Franchise sired son from the full sister to the multiple-time National Champion, C-Bar Blake's Bonanza 180C. He is a sleep all night calving ease prospect who not only has genomic predictions of calving ease but has the phenotype you can place trust in. Recommended for use on heifers.

Lot  
**84**

## C-BAR AVIATOR 013H

BD: 3/23/20 | Reg: 4379559 | 2- 100% AR | Tattoo: 013H



MUSGRAVE AVIATOR  
**C-BAR AVIATOR 8151F**  
LASO LEANNA BC114R  
5L INDEPENDENCE 560-298Y  
**ADHM MISS STONY 6025D**  
C-BAR MISS MIMI 458B

### MEASUREMENTS

BW: 75 | AIMF:  
AWW: 570 | AREA:  
AYW: | ABF:

PRS	HB	GM	CED	BW	WW	YW	ADG	DMI	MLK	ME	HPG	CEM	STY	MRB	YG	CW	REA	FAT
157	92	65	16	-4	55	91	0.23	1.47	26	-2	11	10	16	0.7	0.06	25	0.04	0
4%	20%	7%	11%	13%	68%	60%	48%	56%	43%	28%	48%	7%	39%	4%	56%	31%	63%	24%

013H is a heifer safe option that offers tremendous calving ease and low birth genetics. He charts among the elite in the breed for ProS, HB, GM, CED, BW, CEM, and Marbling. Recommended for use on heifers.

This sale will be broadcast live on the internet.

**DVAuction**  
Broadcasting Real-Time Auctions

Real time bidding & proxy bidding available.



# Top Dollar Angus Feeder Program



Top Dollar Angus is a genetic-certification and marketing company focused exclusively on the top 25% of the industry in carcass and growth Angus and Red Angus-influenced feeder cattle. Top Dollar Angus is a program similar to other popular branded-beef programs, except that Top Dollar Angus does its "branding" in the feeder cattle and calf market.

Qualified herds must have two or more generations of Angus (Black or Red) genetics with growth and carcass traits objectively ranking in the top 25% of the breed based on documented historical sire use. DNA evaluation, conducted by Zoetis or GeneSeek, is another workable method to qualify. Once your cattle have met the necessary requirements, they will be marketed under the Top Dollar Angus brand and logo, and will be promoted aggressively to a large number of feed yards and buyers. In today's market, Top Dollar Angus cattle are seeing premiums ranging from \$30 to \$70 per head above the average market.

Why the premium? Cattle feeders know that Top Dollar Angus cattle perform better and have higher grid-based carcass rewards compared to other cattle. This puts more dollars per head into the cattle feeder's pocket, which can be passed back to the producer in the form of premiums paid above market price.



Top Dollar Angus helps take the guess work and surprises out of growing and feeding cattle. Feed yards are tired of unpredictable performance and wide-ranging profitability results from group to group on cattle they purchase. Cattle often look the same and have the same colored hides, but are very different genetically. That's why the genetic certification of high-end Angus and Red Angus feeder cattle is here! The industry must differentiate the best Angus and Red Angus genetics from average cattle, and that's what Top Dollar Angus will do for you!

If you have consistently invested in high-performance Angus or Red Angus genetics, Top Dollar Angus will make your cattle stand out from the pack and get you the premiums you deserve. No matter how you market your cattle, our goal is to create more demand and higher prices for your calves.



**Jared Wareham, general manager**  
**jared@topdollarangus.com**  
**660-492-2777**  
**www.topdollarangus.com**



STEVE & CYNTHIA MAIER  
34042 CC ROAD  
BROWNELL, KS 67521

Presorted  
First Class  
US Postage  
**PAID**  
SlateGroup

