

*The Black & White Sale*  
**HANEL'S BLACK SIMMENTALS**  
2021 BULL SALE • MARCH 1 IN COURTLAND, KANSAS AT 1 P.M.





# HANEL'S BLACK SIMMENTALS

Brock, Angie, Maddy, Gage, & Kollins Hanel  
Lannie Hanel



Welcome to the 3rd Annual Hanel's Black Simmentals Bull Sale. Having sold bulls for over 20 years through private treaty, we are excited to share the opportunity to buy into our Simmental program. Our bulls epitomize performance and have a proven history to produce a consistent calf crop year in and year out. We produce honest, hard-working cattle that adhere to the standards we place on our own females for performance and function.

We are honored to have Cody Cattle Company joining us in our Black and White Bull Sale. This year there will be around 180 Simmental, SimAngus, SimChar, Angus and Charolais bulls in the offering. Every bull selling in this offering will enhance your bottom line with increased performance and carcass traits.

As I sit here and talk about 2020 there have been many life and cultural changes that have taken place in this country that my family and employees have never witnessed. One thing we have learned is if you don't value what you do every day and take pride in what you accomplish in a day then there is no reason to do what you do. This operation has the upmost respect for our cattle and our beef industry. Nowhere will you find more passionate and hardworking cattle enthusiasts than this operation. When you lay eyes on our operation you will see that in seconds, and we expect that out of our genetics. With 2020 gone and 2021 upon us the future seems extremely bright for the cattle industry.

These bulls selling are exactly what the beef industry is asking us as producers to enhance our operations to the next level. This set of bulls will rival any set of bulls across the entire world. These bulls will add pounds to your calf crop and are among the top bulls to sell this spring for carcass quality for the represented breeds. These bulls will add value to your calf crop no matter how you market them. Please let me know before you sell calves out of these bulls so I can assist in the marketing process to insure you get top market value for you calf crop. We harvest thousands of calves each year from these genetics and the data is second to none. I invite you out to the ranch to look at our offering and join us for a steak lunch before the sale. I hope to see you on sale day Monday, March 1, 2021.

Also, mark your calendar for the 5th Annual Female Production Sale on Monday, November 1, 2021.

Sincerely,  
Brock Hanel, DVM







The beef business is a wide open industry with multiple facets and marketing opportunities. If you want to put in the work, investment, and passion anyone can be successful with some business sense. The Black and White Bull Sale would be representative of all that and then some being backed by good cowboys and their families with breeding programs that have influenced the industry for multiple decades.

Real world, real time, real results, based on the real market place. We have been paid for weight since the birth of the cattle market and that trend doesn't appear to be coming to an end soon. The performance and weight that is represented in this set is evident that these two families know what's up with the bottom-line. Hanel and Runft are invested in pounds, performance, and diversified production merit. The cow families that back these studs make this offering even more unique to the business. All that said, is why you are here to continue doing business or start doing business with these good progressive, young cattlemen.

Hanel dominates and delivers on customer service and his understanding of the feeding and animal health industries allows him to attempt to reinvest in these genetics by buying or bidding on your calves sired by the bulls of the Black and White Bull Sale. Cody Cattle brings a wealth of complimentary knowledge in terms of the physical/ fundamental phenotype of a beef animal and knowing how to blend the right genetics, nutrition, and management to get to the end goal. Together, they complement one another to the highest degree, and that makes them a force to reckon with for years to come in the bull business. They desire and love feeding, and harvest data and they want to hear customer success stories, as they know that is what this is truly all about. A satisfied customer base is a customer base that can be counted on for the future.

We invite you to make plans to attend this year's event in scenic Courtland, KS just off of US HWY 36 at the HBS Sale Pavilion. The hospitality, fellowship, and food are second to none as well. Feel free to call the Hanel, Runft, or the Innovation Ag Marketing families with any inquiries about the cattle represented between the covers of this book or for more information on the calf buy-back programs they are passionate about.

Enjoy the stock.

A handwritten signature in black ink, appearing to read 'G Blagg'.

Graham Blagg

A handwritten signature in black ink, appearing to read 'J Shipman'.

Jered Shipman

A handwritten signature in black ink, appearing to read 'Tim Anderson'.

Tim Anderson



**FARM & SALE LOCATION**

Hanel's Black Simmentals  
340 US-36 - Courtland, KS 66939

**SALE DAY PHONES**

Brock Hanel 785-275-1060  
Lannie Hanel 785-275-2727  
Eric Harms 785-374-3115  
Braden Field 785-577-1924

**SALE MANAGEMENT**

INNOVATION AGMARKETING  
Graham Blagg 530-913-6418  
Jered Shipman 806-983-7226  
Tim Anderson 605-682-9343

**AUCTIONEER**

Col. Jered Shipman 806-983-7226

**RING STAFF**

Brett Sayre, KLA 573-881-1876  
JW Brune, Lee Agrimedia 785-865-6624  
Guy Peverley, The Stock Exchange 785-456-4390  
Kent Jaecke, Special Assignment 405-408-2440  
Craig Talkington, Special Assignment 785-623-1789

**CONSULTANTS**

Neil Bouray 402-879-5566  
Jarrid Herman 785-564-0869  
Zach Sumpter 785-545-6175

**LIVESTOCK MORTALITY INSURANCE**

Sheila Jensen 785-262-1116

**ACCOMMODATIONS**

Holiday Inn Express & Suites Concordia 785-243-2700

**VETERINARIAN**

Hanel Vet Clinic 785-374-4550

**VIDEO PREVIEW OF SALE CATTLE**

Videos of the sale cattle available online the week prior to the sale.

**TERMS & CONDITIONS**

All cattle will sell under the terms and conditions of their respective breed association. All sales are final.

**ANNOUNCEMENTS**

A supplement sheet will be available sale day with updated information, corrections and additional information. This sheet and any announcements made sale day, from the auction block during the sale, will take precedence over printed material associated with the sale. Anyone attending this sale attends at their own risk. Hanel's Black Simmentals or the sales team will not be held responsible for any personal injury from attending this sale.

**VIDEO AUCTION**

All cattle will sell while being viewed on large screen monitors in the sale facility. There will be multiple large screens playing videos of the animals while the respective animal is being auctioned. Cattle will not come into the sale ring during the auction and we will not travel through equipment during the auction. Please make plans to arrive early and preview the sale offering prior to selling.

**TRUCKING**

The sales team will be able to help you with transportation for your cattle purchases. We will also have professional transporters available sale day.

**AIR TRAVEL**

Wichita Airport - 2 hours and 30 minutes from sale site  
Kansas City International Airport - 3 hours and 20 minutes from sale site

**SALE BOOK PREPARED BY**

THM Promotions, Tracy McMurphy 806-679-0231

**PHOTOGRAPHY**

Morgan Meisenheimer 240-772-2759

**VIDEOGRAPHY**

Ideal Video Productions



# *Watch the Sale Live Online...*

View the sale from your phone, tablet, or desktop computer and bid with confidence! Visit [www.CCI.live](http://www.CCI.live) for complete sale information and online registration. If this is your first time to CCI.live, visit the web page and get approved for bidding at least three hours prior to sale time. With good internet speeds you can enjoy the sale from any location and bid with confidence.

# CCI.LIVE

**ONLINE BIDDING** - Catalog - Videos - Sale Order - Plus More!

## BULL GUARANTEE

Unless otherwise noted, all the breeding age bulls will have passed a breeding soundness exam prior to pick up/delivery. In addition to the standard Terms and Conditions of the American Simmental Association and the American International Charolais Association we will provide the first breeding season (the 90-day period immediately following turn out) guarantee on all yearling and older bulls. This guarantee is not an insurance or mortality policy, but a guarantee on functional fertility. It is not a substitute or replacement for poor management. Buyer assumes all risks for injury due to running bulls together or management decisions outside genetic control. For the guarantee to apply, we ask that you contact us as soon as a condition is observed and before the animal is sold. We will work with you to determine whether the animal is returned or sold for slaughter. We will attempt to provide a suitable replacement. If one cannot be provided of equal or greater value, we will issue a sale credit to be used in a future sale for the full purchase price less the salvage value of the animal.

## VOLUME DISCOUNT

Purchase 5 or more Bulls and receive 5% off your total purchase price.

## SEMEN INTEREST

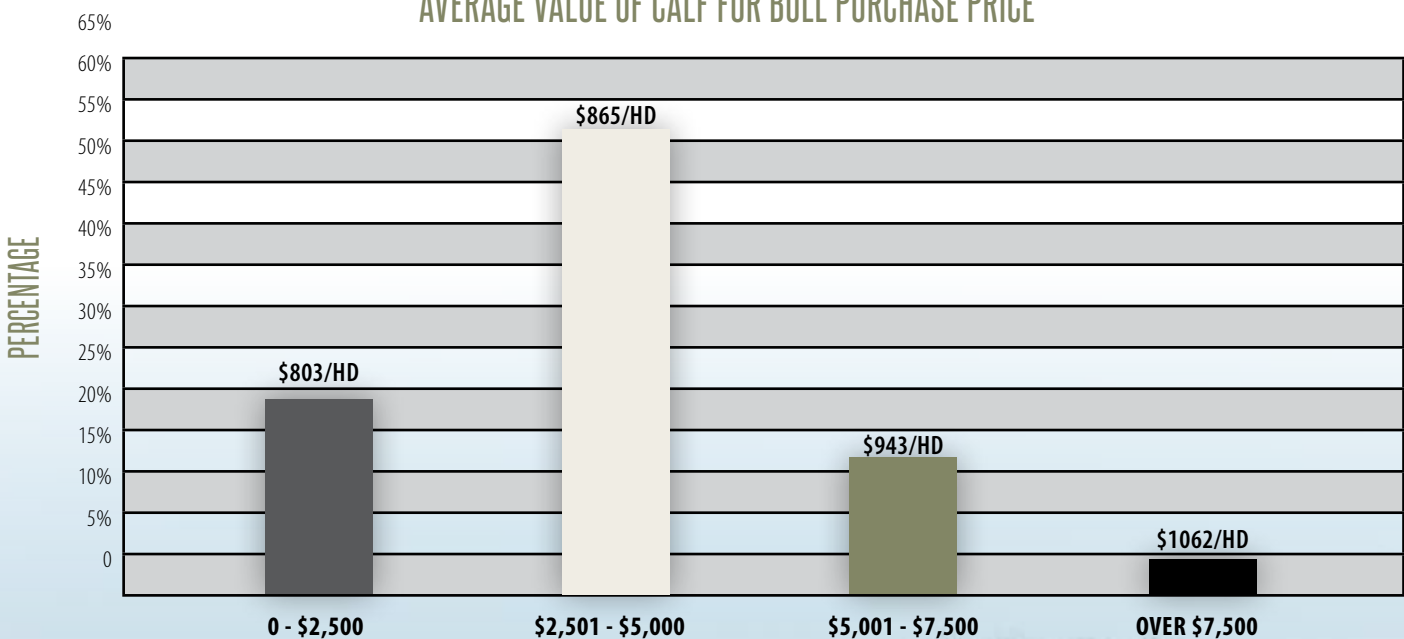
Retaining 1/3 semen interest in all bulls selling, unless otherwise noted or announced.

## TRUCKING

Free delivery within 200 miles and \$50 sale credit if bull purchase is picked up the day of sale. Otherwise, please contact the sales team for assistance with transportation for your cattle purchases. We will work with volume buyers and those outside the 200-mile delivery range. Dick Coleman is an approved and recommended professional trucking option. (765) 461-0954.

## INVEST IN GENETICS. INVEST IN YOUR RANCH'S BOTTOMLINE

### AVERAGE VALUE OF CALF FOR BULL PURCHASE PRICE



**CattleFax**

2020 BULL PURCHASE PRICE

### SALE SCHEDULE

**FEBRUARY 27 & 28, 2021**

Cattle on display all weekend prior to the sale.

**MARCH 1, 2021**

Cattle on Display - 9:00 AM

Steak Lunch Served - 12:00 PM

**BLACK & WHITE SALE BEGINS - 1:00 PM**



# THE DIVIDEND SONS

LOT 1



Hanel's Money Maker H0058 leads off a powerful and rugged set of sons that are sired by CLRS Dividend 405D, the \$52,500 record selling bull from the 2017 "Bred for Balance" Bull Sale! The first calf reports have held up to the expectations that breeders from coast to coast and border to border had for this tremendous bull. We offered a select group of Dividend daughters in our Fall 2020 Female Sale, with several females being selected by respected breeding programs within the region. Money Maker sets the standard for power, substance, dimension, and shape. He offers real-world function, with breed leading performance and style. H0058 ranks among the elite 4% for WW, top 4% YW, top 10% ADG, top 15% MWW, top 25% Doc, top 10% CW, top 10% Shr, and top 15% TI. He is a true beef bull that is sure to add value to any operations bottom line! Money Maker is homozygous black and homozygous polled. Hanel's Black Simmentals will utilize Money Maker extensively within herd.

1

**HANELS MONEY MAKER H0058**

**3832989**

**BW: 89 • Adj WW: 732 • Scan Wt: 1370**

**PB SM • 1/19/20**

**SIRE** CLRS AFTER SHOCK 604 A  
**CLRS DIVIDEND 405D**  
CLRS BONNIA 405 B

**DAM** ELLINGSON OLIE W908  
**HANELS MISS OLIE A3200**  
HANELS MISS FOCUS X0202

**SCAN DATA** Adj. IMF: 4.37 • Adj. BF: 0.35 • Adj. REA: 18.27

CE	BW	WW	YW	ADG	MCE	MLK	MW	STY	DOC	CW	YG	MRB	BF	REA	API	TI
10.8	1.9	94.2	144.7	0.32	5.3	22.9	69.9	17.1	13.4	43.9	-0.27	0.13	-0.07	0.77	137.8	87.1
50%	55%	4%	4%	10%	60%	55%	15%	40%	25%	10%	99%	45%	95%	75%	30%	15%

# MONEY MAKER

# THE DIVIDEND SONS



CLRS DIVIDEND 405D - SIRE OF LOTS 1 - 9

2

**HANELS DIVIDEND H0017**

**3832936**

BW: 82 • Adj WW: 647 • Scan Wt: 1220

PB SM • 1/8/20

SIRE CLRS AFTER SHOCK 604 A

DAM CCR FRONTIER 0053Z

CLRS DIVIDEND 405D

BROOKS MISS FRONTIER F19

CLRS BONNIA 405 B

BROOKS MISS AUGUSTUS D19

SCAN DATA Adj. IMF: 3.86 • Adj. BF: 0.19 • Adj. REA: 15.79

CE	BW	WW	YW	ADG	MCE	MLK	MW	STY	DOC	CW	YG	MRB	BF	REA	API	TI
11.8	0.4	85.9	132	0.29	5.7	20.7	63.6	13.4	18.1	34.8	-0.32	0.18	-0.06	0.83	124.8	81.2
35%	25%	20%	15%	15%	50%	75%	40%	85%	2%	30%	95%	35%	95%	65%	55%	30%

Hanel Dividend H0017 is a performance standout that comes from the Dividend sire group and is from a productive Frontier bred dam that is a hard working two-year-old. H0017 boasts a WW Ratio of 106 and charts top 20% WW, top 15% YW, top 15% ADG, top 2% Doc, and top 15% Shr. He will add pounds to your calf crop at weaning time.

3

**HANELS DIVIDEND H0012**

**3846067**

BW: 76 • Adj WW: 646 • Scan Wt: 1230

PB SM • 1/6/20

SIRE CLRS AFTER SHOCK 604 A

DAM CCR COWBOY CUT 5048Z

CLRS DIVIDEND 405D

HANELS MISS CUT F8047

CLRS BONNIA 405 B

HANELS MISS LEGEND C5014

SCAN DATA Adj. IMF: 3.71 • Adj. BF: 0.22 • Adj. REA: 17.41

CE	BW	WW	YW	ADG	MCE	MLK	MW	STY	DOC	CW	YG	MRB	BF	REA	API	TI
12.3	0.3	83.1	126.3	0.27	5.6	20.6	62.6	18.2	14.6	36.7	-0.29	0.22	-0.06	0.79	148.1	84.5
30%	25%	25%	25%	25%	55%	75%	45%	25%	15%	25%	99%	25%	95%	70%	15%	20%

H0012 is a powerful and performance focused son of Dividend that is from a hard working two-year-old dam, sired by the breeds leader in registrations, CCR Cowboy Cut 5048Z. He boasts over a 17-inch REA, while offering a moderate 76-pound actual birth weight. H0012 charts balanced figures from birth to yearling. He ranks top 25% BW, top 25% WW, top 25% YW, top 15% Doc, top 1% Shr, top 15% API, and top 20% TI.

# DIVIDEND

# THE DIVIDEND SONS

4

**HANELS DIVIDEND H0047**

**3832939**

BW: 85 • Adj WW: 605 • Scan Wt: 1290

PB SM • 1/17/20

SIRE CLRS AFTER SHOCK 604 A

DAM ELLINGSON OLIE W908

CLRS DIVIDEND 405D

HANELS MISS OLIE Z2200

CLRS BONNIA 405 B

S619 VENOM HBS

SCAN DATA Adj. IMF: 4.19 • Adj. BF: 0.24 • Adj. REA: 17.13

CE	BW	WW	YW	ADG	MCE	MLK	MW	STY	DOC	CW	YG	MRB	BF	REA	API	TI
11	1	76.8	118.6	0.26	5.5	22.6	60.9	16.8	12.4	34.8	-0.35	0.02	-0.09	0.73	126	75.1
50%	35%	50%	40%	35%	55%	55%	55%	45%	35%	30%	85%	80%	60%	85%	55%	60%

H0047 is a standout Dividend son that is backed by the influence of Ellingson Ollie W908. He scanned with a 4.2 IMF and over a 17-inch REA. He ranks among the elite in the breed for average daily gain.

7

**HANELS DIVIDEND H0088**

**3832911**

BW: 96 • Adj WW: 698 • Scan Wt: 1310

3/4 SM 1/4 AN • 1/27/20

SIRE CLRS AFTER SHOCK 604 A

DAM JMB TRACTION 292

CLRS DIVIDEND 405D

M4 MS ATTRACTION Y85F

CLRS BONNIA 405 B

SFI BETTY SUE Y85T

SCAN DATA Adj. IMF: 4.42 • Adj. BF: 0.19 • Adj. REA: 16.71

CE	BW	WW	YW	ADG	MCE	MLK	MW	STY	DOC	CW	YG	MRB	BF	REA	API	TI
10.4	1.9	88.4	139.1	0.32	3.4	20.8	65	15.9	12	45.3	-0.2	0.23	-0.04	0.74	128.5	81.4
75%	80%	10%	10%	15%	95%	70%	25%	35%	50%	15%	60%	65%	50%	35%	50%	35%

H0088 is a homozygous polled three-quarter blood SimAngus bull that will add pounds to your calf crop at weaning. He charts top 10% WW, top 10% YW, top 15% ADG, top 25% MWW, and top 15% CW. He is a true performance standout with a WW Ratio of 116.

5

**HANELS DIVIDEND H0069**

**3832978**

BW: 90 • Adj WW: 655 • Scan Wt: 1200

PB SM • 1/20/20

SIRE CLRS AFTER SHOCK 604 A

DAM TRIPLE C INVASION R47K

CLRS DIVIDEND 405D

HANELS MISS VASION X022

CLRS BONNIA 405 B

T712 NUGGET HBS

SCAN DATA Adj. IMF: 4 • Adj. BF: 0.17 • Adj. REA: 15.37

CE	BW	WW	YW	ADG	MCE	MLK	MW	STY	DOC	CW	YG	MRB	BF	REA	API	TI
10.4	1.7	76.8	113.4	0.23	4	19.7	58.1	18.2	12.7	29.4	-0.32	0.12	-0.08	0.67	131.2	75.9
55%	50%	50%	50%	60%	85%	80%	70%	25%	30%	50%	95%	50%	80%	95%	40%	55%

H0069 is another Purebred Simmental son of Dividend that is backed a tried-and-true daughter of Invasion. He boasts an impressive 4.0 IMF and offers a WW Ratio of 107. This bull will add value to a productive set of Angus based cows that need a shot of heterosis and carcass merit.

8

**HANELS DIVIDEND H0097**

**3832896**

BW: 88 • Adj WW: 530 • Scan Wt: 1140

3/4 SM 1/4 CH • 1/31/20

SIRE CLRS AFTER SHOCK 604 A

DAM CCC WC RESOURCE 417 P

CLRS DIVIDEND 405D

HANELS MISS SOURCE E7073

CLRS BONNIA 405 B

HANELS MISS VASION W906

SCAN DATA Adj. IMF: 3.62 • Adj. BF: 0.17 • Adj. REA: 16.6

CE	BW	WW	YW	ADG	MCE	MLK	MW	STY	DOC	CW	YG	MRB	BF	REA	API	TI
11.4	1.4	76.7	107.3	0.19	4.2	16.1	54.4	14.7	12.4	33.4	-0.47	0.08	-0.10	1.01	114.4	71.4
65%	70%	45%	70%	95%	90%	95%	80%	50%	45%	50%	3%	95%	4%	5%	80%	75%

H0097 is a three-quarter blood Simmental that has an added shot of power and substance. His dam is sired by CCCWC Resource 417 P, arguably one of the most widely used bulls in the data base at AICA. He is sure to add pounds of performance, shape, and genuine dimension to your calf crop. Pounds pay!

6

**HANELS DIVIDEND H0086**

**3832937**

BW: 90 • Adj WW: 587 • Scan Wt: 1170

3/4 SM 1/4 AN • 1/26/20

SIRE CLRS AFTER SHOCK 604 A

DAM BASIN PAYWEIGHT 1682

CLRS DIVIDEND 405D

BROOKS PAYWEIGHT F91

CLRS BONNIA 405 B

SFI BETTY SUE Y85T

SCAN DATA Adj. IMF: 3.89 • Adj. BF: 0.16 • Adj. REA: 14.58

CE	BW	WW	YW	ADG	MCE	MLK	MW	STY	DOC	CW	YG	MRB	BF	REA	API	TI
12.5	1.2	79	125.3	0.29	6.7	18.3	57.7	13.5	14.8	40.6	-0.08	0.24	-0.03	0.41	124.1	76.4
50%	65%	35%	30%	30%	55%	85%	60%	65%	15%	25%	90%	65%	65%	90%	60%	55%

H0086 is a powerful three-quarter blood son of CLRS Dividend 405D that is backed by a powerful daughter of the breed leading Basin Payweight 1682. He is big bodied, deep sided, and bold sprung. He ranks top 15% for Doc, and top 25% CW.

9

**HANELS DIVIDEND H0049**

**3832929**

BW: 84 • Adj WW: 672 • Scan Wt: 1380

3/4 SM 1/4 CH • 1/17/20

SIRE CLRS AFTER SHOCK 604 A

DAM CCC WC RESOURCE 417 P

CLRS DIVIDEND 405D

HANELS RESOURCE E7084

CLRS BONNIA 405 B

HANELS MISS EXPRES X0206

SCAN DATA Adj. IMF: 4.22 • Adj. BF: 0.29 • Adj. REA: 15.94

CE	BW	WW	YW	ADG	MCE	MLK	MW	STY	DOC	CW	YG	MRB	BF	REA	API	TI
10.7	1.2	81.2	114.8	0.21	3.8	20.7	61.3	13.4	10.7	37.5	-0.45	0.05	-0.09	1.04	111.5	73.9
70%	65%	25%	50%	85%	95%	70%	45%	65%	70%	35%	4%	95%	4%	4%	85%	65%

H0049 is another three-quarter blood Simmental bull that is from a productive Resource daughter. The calves sired by this bull will be heavy weaning, long sided, and offer tremendous growth. He charts top 25% WW, top 4% YG, top 4% BW, and top 4% REA. He offers tremendous carcass merit.



# THE DRIFTWOOD SONS

LOT 10



The TJ 41Z matron has solidified her place in the donor pen due to the consistency of quality, performance, and the fundamentals in which she transcends to her progeny. We proudly introduce Harms Hardwood, one of the most intriguing purebred Simmental bulls to sell this spring. He is a homozygous black Purebred that is sired by VJT Driftwood E55, the powerful Grade Break son from Rust Miss 452B. On his maternal side, Hardwood is backed by the influence of TJ Easy Money 101W and WHF Desperado. Hardwood offers an outcross pedigree to the modern genetic lines within the Simmental breed, with only a single shot of legacy identified in his pedigree five generations removed. He came to the weaning pen with over 760-pounds of weaning weight performance. A maternal brother sired by the \$71,000 Ruby's Turnpike 771E. He charts top 10% WW, top 4% YW, top 4% ADG, top 15% MWW, top 15% YG, top 10% BF, top 20% REA, top 20% Shr, and top 20% TI. This pair of maternal brothers from the TJ 41Z donor are sure to make an impact on the business.



TJ 41Z - DONOR DAM OF LOTS 10 & 11

10

**HARMS HARDWOOD**

**3823338**

BW: 87 • Adj WW: 765 • Scan Wt: 1380

PB SM • 1/13/20

SIRE LRS GRADE BREAK 114B  
VJT DRIFTWOOD E55  
RUST MISS 452B

DAM TJ EASY MONEY 101W  
TJ 41Z  
TJ 16L

SCAN DATA Adj. IMF: 3.48 • Adj. BF: 0.14 • Adj. REA: 21.27

CE	BW	WW	YW	ADG	MCE	MLK	MW	STY	DOC	CW	YG	MRB	BF	REA	API	TI
9	2.3	91.5	148.4	0.36	3.6	25.1	70.8	15.9	9.8	42.5	-0.46	0.2	-0.10	1.05	137.5	87.9
75%	65%	10%	3%	2%	90%	35%	15%	55%	70%	10%	35%	30%	20%	20%	30%	10%

11

**HARMS SNOWMAN**

**3823339**

BW: 94 • Adj WW: 780 • Scan Wt: 1250

PB SM • 1/30/20

SIRE WBF SIGNIFICANT B132  
RUBYS TURNPIKE 771E  
RUBYS MISS CLEO 240Z

DAM TJ EASY MONEY 101W  
TJ 41Z  
TJ 16L

SCAN DATA Adj. IMF: 3.84 • Adj. BF: 0.21 • Adj. REA: 15.86

CE	BW	WW	YW	ADG	MCE	MLK	MW	STY	DOC	CW	YG	MRB	BF	REA	API	TI
12.2	2.1	91.5	145	0.33	5.1	23.9	69.6	14.8	12.4	41.6	-0.5	0.06	-0.12	1.05	131.5	85
30%	60%	10%	4%	4%	65%	45%	15%	70%	35%	15%	15%	70%	10%	20%	40%	20%

# THE DRIFTWOOD SONS

LOT 12



12

**HANELS DRIFTWOOD H0066**

**3832988**

BW: 85 • Adj WW: 668 • Scan Wt: 1280

PB SM • 1/20/20

SIRE LRS GRADE BREAK 114B  
VJT DRIFTWOOD E55  
RUST MISS 452B

DAM HANELS LEGEND S605  
HANELS MISS LEGEND C5014  
HANELS MISS FWD A3000

SCAN DATA Adj. IMF: 3.9 • Adj. BF: 0.22 • Adj. REA: 18.08

CE	BW	WW	YW	ADG	MCE	MLK	MW	STY	DOC	CW	YG	MRB	BF	REA	API	TI
8.6	1.9	92.7	152.5	0.37	4.9	22.6	68.9	19.4	7.9	50.7	-0.38	0.25	-0.09	1.05	147.9	89.9
80%	55%	5%	2%	1%	70%	55%	20%	15%	90%	2%	75%	20%	60%	20%	15%	10%

Hanel Driftwood H0066 is a powerful Purebred Simmental son of VJT Driftwood E55 and is backed by the maternal influence of Nichols Legacy G151 and Connealy Forward. He is bold ribbed, big topped, thick ended and three-dimensional from end to end. He posted exceptional ultrasound data, scanning with over an 18-inch ribeye area and a 3.9 IMF. H0066 is a performance standpoint that boasts a YW Ratio of 111. He ranks top 5% WW, top 2% YW, top 1% ADG, top 20% MWW, top 15% Stay, top 2% CW, top 20% REA, top 15% API, and top 10% TI.

13

**HANELS DRIFTWOOD H0044**

**3832898**

BW: 93 • Adj WW: 662 • Scan Wt: 1200

PB SM • 1/16/20

SIRE LRS GRADE BREAK 114B  
VJT DRIFTWOOD E55  
RUST MISS 452B

DAM HANELS AXIS A3012  
HANELS MISS AXIS E7108  
HANELS MISS LEGEND W9122

SCAN DATA Adj. IMF: 3.39 • Adj. BF: 0.19 • Adj. REA: 17.29

CE	BW	WW	YW	ADG	MCE	MLK	MW	STY	DOC	CW	YG	MRB	BF	REA	API	TI
5.4	4	91.4	150.4	0.37	2.6	22.7	68.3	18.2	7.2	45.4	-0.42	0.16	-0.09	1.08	132.5	84
99%	95%	10%	2%	1%	95%	55%	20%	25%	95%	10%	55%	40%	40%	15%	40%	20%

Driftwood H0044 is backed by a young and productive Axis daughter. He is among the elite 10% for WW, top 2% YW, top 1% ADG, top 20% MWW, top 10% CW, top 15% REA, and top 20% TI. He scanned with an impressive 17+ inch ribeye area. A surefire option to add pay weight to your program and increase your bottom line.

14

**HANELS DRIFTWOOD H0081**

**3833011**

BW: 94 • Adj WW: 660 • Scan Wt: 1300

PB SM • 1/21/20

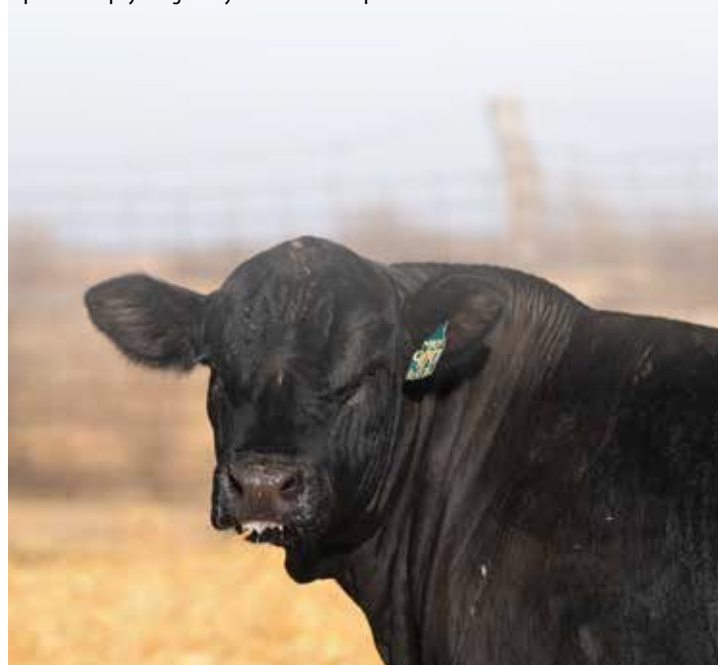
SIRE LRS GRADE BREAK 114B  
VJT DRIFTWOOD E55  
RUST MISS 452B

DAM TNT TANKER U263  
HANELS MISS TANKER Y1030  
TAYLORS BLACK FAE FD31

SCAN DATA Adj. IMF: 3.86 • Adj. BF: 0.26 • Adj. REA: 16.15

CE	BW	WW	YW	ADG	MCE	MLK	MW	STY	DOC	CW	YG	MRB	BF	REA	API	TI
4.2	5	95.7	157.8	0.39	2.8	26.1	73.9	15.9	6.4	52.1	-0.41	0.13	-0.10	1.07	124.3	84.6
99%	99%	3%	1%	1%	95%	30%	10%	55%	95%	2%	60%	45%	40%	15%	60%	20%

H0081 is another Purebred herd sire prospect that is performance driven. He boasts an impressive WW Ratio of 109 and ranks among the top 3% WW, top 1% YW, top 1% ADG, top 10% MWW, top 2% CW, top 15% REA, and top 20% TI. H0081 will add pounds of pay weight to your next calf crop.





# THE DRIFTWOOD SONS

LOT 15



H0055 is a long sided, thick ended bull that offers breed leading performance. He charts among the top 4% for WW, top 1% YW, top 1% ADG, top 2% CW, top 25% Marb, and top 10% TI. H0055 stands out phenotypically and from a carcass merit standpoint. He offers a 4.66 IMF and over a 17-inch REA. He boasts an impressive 117 IMF Ratio, 106 WW Ratio, and 106 REA Ratio. H0055 will increase your operation's profitability.

15

**HANELS DRIFTWOOD H0055**

**3832859**

**BW: 87 • Adj WW: 699 • Scan Wt: 1340**

**1/2 SM 1/2 AN • 1/18/20**

**SIRE** LRS GRADE BREAK 114B

**DAM** FIA 118 DAYBREAK

**VJT DRIFTWOOD E55**

**FIA CLARITY C33**

RUST MISS 452B

FIA INFOCUS X3

**SCAN DATA** Adj. IMF: 4.66 • Adj. BF: 0.21 • Adj. REA: 17.26

CE	BW	WW	YW	ADG	MCE	MLK	MW	STY	DOC	CW	YG	MRB	BF	REA	API	TI
10.6	1.6	92.8	166.4	0.46	5.2	24.7	71.1	13.4	8	58.4	-0.17	0.44	-0.04	0.84	137.7	89.9
75%	75%	4%	1%	1%	80%	35%	10%	65%	95%	2%	70%	25%	65%	20%	30%	10%





# THE DRIFTWOOD SONS

16

**HANELS DRIFTWOOD H0043**

**3832963**

**BW: 86 • Adj WW: 677 • Scan Wt: 1030 5/8 SM 3/8 AN • 1/16/20**

SIRE LRS GRADE BREAK 114B

DAM SYDGEN LIBERTY GA 8627

VJT DRIFTWOOD E55

HANELS MISS LIB A3005

RUST MISS 452B

HANELS MISS LEGEND W983

SCAN DATA Adj. IMF: 5.33 • Adj. BF: 0.24 • Adj. REA: 18.16

CE	BW	WW	YW	ADG	MCE	MLK	MW	STY	DOC	CW	YG	MRB	BF	REA	API	TI
7.6	2.9	96.4	159.8	0.4	4.2	25.4	73.5	17.3	9	56.7	-0.27	0.3	-0.06	0.99	135.2	87.8
95%	95%	2%	1%	1%	90%	25%	4%	20%	85%	3%	40%	50%	35%	10%	35%	15%

H0043 is a tremendous SimAngus herd sire prospect that boasts a 115 WW Ratio, a true performance standout. He also excelled on ultrasound day with a 5.33 ADJ IMF and over an 18-inch ADJ REA. H0043 is a performance and carcass driven herd sire prospect that will without a doubt sire calves that demand a huge premium!

17

**HANELS DRIFTWOOD H0077**

**3832964**

**BW: 83 • Adj WW: 649 • Scan Wt: 1280 3/4 SM 1/4 AN • 1/21/20**

SIRE LRS GRADE BREAK 114B

DAM CONNEALY FORWARD

VJT DRIFTWOOD E55

HANELS MISS FWD A3000

RUST MISS 452B

HANELS MISS HUMMER Y1610

SCAN DATA Adj. IMF: 4.19 • Adj. BF: 0.22 • Adj. REA: 16.58

CE	BW	WW	YW	ADG	MCE	MLK	MW	STY	DOC	CW	YG	MRB	BF	REA	API	TI
10.5	1.2	90.2	147.9	0.36	5.9	24.2	69.3	18	8.3	50.1	-0.3	0.31	-0.06	0.99	141.3	86.8
75%	65%	10%	4%	3%	70%	35%	10%	15%	90%	10%	30%	50%	25%	10%	25%	15%

H0077 is a three-quarter blood SimAngus stud that charts among the top 4% for YW, top 3% ADG, top 10% WW, top 10% MWW, top 15% Stay, top 10% REA, top 25% API, and top 15% TI. He posts a WW Ratio of 108, an IMF Ratio of 106, and a REA Ratio of 101. He checks all the boxes!

18

**HANELS DRIFTWOOD H0065**

**3832961**

**BW: 89 • Adj WW: 642 • Scan Wt: 1310 3/4 SM 1/4 AN • 1/20/20**

SIRE LRS GRADE BREAK 114B

DAM SYDGEN LIBERTY GA 8627

VJT DRIFTWOOD E55

HANELS MISS LIB A3009

RUST MISS 452B

HANELS MISS LEGEND W9122

SCAN DATA Adj. IMF: 4.01 • Adj. BF: 0.24 • Adj. REA: 16.16

CE	BW	WW	YW	ADG	MCE	MLK	MW	STY	DOC	CW	YG	MRB	BF	REA	API	TI
8.3	2	90.1	150.9	0.38	4.5	23.2	68.3	17	8.2	52.4	-0.31	0.31	-0.07	1.01	135.6	85.5
95%	80%	10%	3%	2%	90%	45%	15%	25%	90%	5%	25%	50%	25%	5%	35%	20%

Here is another performance driven SimAngus bull that is sure to catch your attention sale day. He is thick topped, wide based, and big hipped. H0065 charts top 10% WW, top 3% YW, top 2% ADG, top 15% MWW, top 5% CW, top 25% YG, top 5% REA, and top 20% TI. He posts a WW Ratio of 106 and an IMF Ratio of 102.

19

**HANELS DRIFTWOOD H0114**

**3833069**

**BW: 85 • Adj WW: 724 • Scan Wt: 1370 3/4 SM 1/4 AN • 2/3/20**

SIRE LRS GRADE BREAK 114B

DAM CONNEALY STIMULUS 8419

VJT DRIFTWOOD E55

HANELS MISS STIM A3038

RUST MISS 452B

HANELS MISS VASION W940

SCAN DATA Adj. IMF: 4.53 • Adj. BF: 0.18 • Adj. REA: 18.75

CE	BW	WW	YW	ADG	MCE	MLK	MW	STY	DOC	CW	YG	MRB	BF	REA	API	TI
7.6	3.5	87.9	141	0.33	4.8	26.1	70	18.8	7.3	37.2	-0.34	0.37	-0.07	0.9	136.9	83.8
95%	95%	10%	10%	10%	85%	25%	10%	10%	95%	35%	20%	35%	25%	15%	35%	25%

H0114 is sired by Driftwood and backed by an ultra-productive female that raised a stout set of twin bull calves this year. Last year she produced a United son that was purchased by Kelly McGuire. He scanned with over a 4.5 IMF and an impressive 18.75 ADJ REA. H0114 will add carcass value and performance to any program. Numerically he ranks top 10% WW, top 10% YW, top 10% ADG, top 10% MWW, top 10% Stay, top 20% YG, top 15% REA, and top 25% TI.

20

**HANELS DRIFTWOOD H0063**

**3832903**

**BW: 93 • Adj WW: 634 • Scan Wt: 1310 3/4 SM 1/4 CH • 1/19/20**

SIRE LRS GRADE BREAK 114B

DAM LT-WC TEMPLETON 1483 PLD ET

VJT DRIFTWOOD E55

HANELS MISS TEMPLE D6047

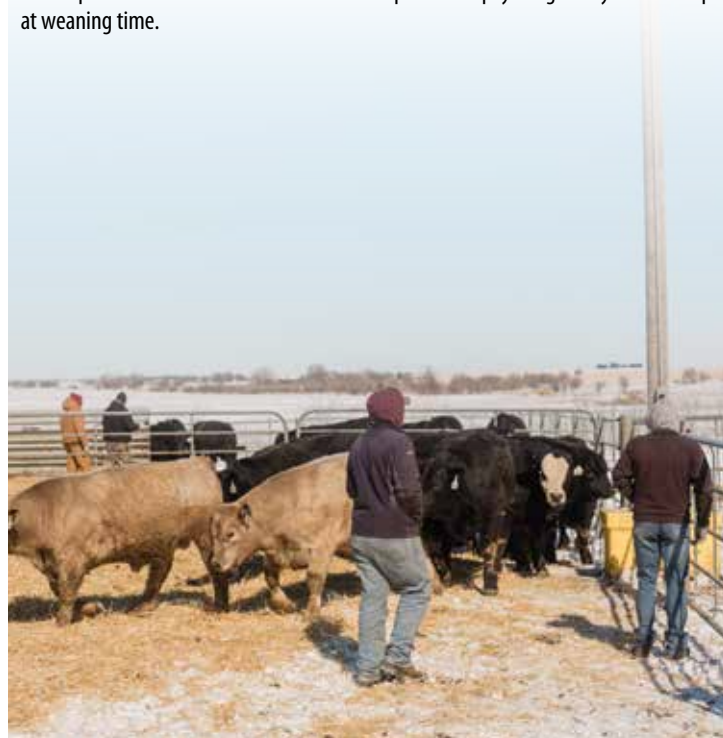
RUST MISS 452B

HANELS MISS POWER Z2066

SCAN DATA Adj. IMF: 3.43 • Adj. BF: 0.17 • Adj. REA: 16.16

CE	BW	WW	YW	ADG	MCE	MLK	MW	STY	DOC	CW	YG	MRB	BF	REA	API	TI
6.6	4.6	93.6	146.9	0.33	4.3	22.4	69.1	15.4	5.4	43	-0.49	0.14	-0.10	1.19	117	80.2
99%	99%	4%	4%	10%	90%	55%	10%	45%	99%	20%	2%	85%	2%	1%	75%	40%

H0063 posts a WW Ratio of 105 and scanned with over a 16-inch REA. He charts among the top 4% WW, top 4% YW, top 10% ADG, top 10% MWW, top 2% YG, top 2% BF, and top 1% REA. His dam is a stout featured daughter of Templeton. This three-quarter blood Simmental bull will add pounds of pay weight to your calf crop at weaning time.



# THE BLUEPRINT SONS

LOT 21



21

**HANELS BLUEPRINT H0041**

**3833074**

BW: 90 • Adj WW: 631 • Scan Wt: 1340

3/4 SM 1/4 AN • 1/15/20

SIRE LRS GRADE BREAK 114B

DAM TJ FRANCHISE 451D

QB BLUEPRINT D47

TJ MISS 63F

RUST MISS 452B

TJ 42A

SCAN DATA Adj. IMF: 3.35 • Adj. BF: 0.22 • Adj. REA: 18.78

CE	BW	WW	YW	ADG	MCE	MLK	MW	STY	DOC	CW	YG	MRB	BF	REA	API	TI
9.9	3.6	93.4	146.7	0.33	7.1	26	72.7	15.8	6.9	46.8	-0.32	0.22	-0.06	0.98	127.1	83.3
80%	99%	4%	4%	10%	45%	25%	5%	40%	95%	15%	25%	65%	25%	10%	55%	25%

Hanel's Blueprint H0041 sired by QB Blueprint D47, a Purebred Simmental stud offers tremendous eye appeal, stoutness, and performance. Blueprint is a full brother to Driftwood, backed by the proven and prolific Rust Miss 452B. H0041 leads off a powerful trio of Blueprint sons that offer tremendous thickness, shape, and expression. He is a homozygous black and homozygous polled three-quarter blood SimAngus that ranks among the top 4% WW, top 4% YW, top 10% ADG, top 5% MWW, top 15% CW, top 25% YG, top 25% BF, top 10% REA, and top 25% TI. He offers a REA Ratio of 106. H0041 is a performance standout that is certain to add value to any operation!



QB BLUEPRINT D47 - SIRE OF LOT 21 - 23

22

**HANELS BLUEPRINT H0016**

**3833073**

BW: 83 • Adj WW: 620 • Scan Wt: 1310

3/4 SM 1/4 AN • 1/8/20

SIRE LRS GRADE BREAK 114B

DAM LRS TOP TEN 104A

QB BLUEPRINT D47

HANELS MISS TEN F8007

RUST MISS 452B

ES X51

SCAN DATA Adj. IMF: 3.56 • Adj. BF: 0.19 • Adj. REA: 16.63

CE	BW	WW	YW	ADG	MCE	MLK	MW	STY	DOC	CW	YG	MRB	BF	REA	API	TI
8.8	3.2	89.3	144.1	0.34	5.1	17.7	62.3	13.1	6.9	32.8	-0.4	0.19	-0.08	0.93	118.6	80.1
90%	95%	10%	5%	10%	80%	90%	35%	70%	95%	50%	10%	75%	10%	10%	70%	40%

Hanel's Blueprint H0016 is another three-quarter blood SimAngus herd sire prospect that is backed by a hard working two-year-old dam that is sired by LRS Top Ten F8007. He charts among the top 10% for WW, top 5% YW, top 10% ADG, top 10% YG, top 10% BF, and top 10% REA.

23

**HARMS MONGO**

**3823341**

BW: 93 • Adj WW: 728 • Scan Wt: 1320

PB SM • 1/24/20

SIRE LRS GRADE BREAK 114B

DAM CCR COWBOY CUT 5048Z

QB BLUEPRINT D47

HANELS MISS CUT F8013

RUST MISS 452B

TJ 59X

SCAN DATA Adj. IMF: 4.07 • Adj. BF: 0.1 • Adj. REA: 17.49

CE	BW	WW	YW	ADG	MCE	MLK	MW	STY	DOC	CW	YG	MRB	BF	REA	API	TI
7.2	3.9	93.6	146.5	0.33	6	24.4	71.2	15.2	6.7	41.7	-0.41	0.24	-0.08	1.07	132.4	87.2
90%	90%	5%	3%	4%	45%	40%	15%	65%	95%	15%	60%	25%	80%	15%	40%	15%

H006 is the lone Purebred sired by Blueprint in this year's offering. He is backed by a full sister to TJ Northward 573C, a member of the distinguished line-up at ST Genetics. Here is a homozygous black and homozygous polled herd sire prospect that is from the prolific TJ 59X cow family. He ranks top 5% WW, top 3% YW, top 4% ADG, top. 15% MWW, top 15% CW, top. 25% Marb, top 15% REA, and top 15% TI. He posted a 17.49 ADJ REA and a REA Ratio of 109.



# THE TURNPIKE SONS



RUBYS TURNPIKE 771E  
SIRE OF LOTS 24 & 25



LOT 24



TJ 59X - MATERNAL GRANDDAM OF LOT 23  
AND DAM OF LOTS 24 - 29

Turn The Corner and Right Turn are flush mate brothers sired by the \$71,000 Ruby's Turnpike 771E, a breed leader for performance and structural integrity. The dam of this pair of flush mate brothers is the tried-and-true TJ 59X matriarch that is now working in the Wilder Cattle Company program in Farmersville, Texas. 59X has over 70 registered progeny recorded in the American Simmental Association database. Sons are working in top programs for Dennis Lauritzen, Mark Eggers, Don Barrett, Brook's Simmentals, Clifton Goodlie, and David Forshee. Some of the most well-known 59X sons would include TJ Northward 573C, TJ Money Man. 227A, and TJ Cornhusker 226A. Right Turn charts top 5% WW, top 4% YW, top 5% ADG, top 15% Milk, top 4% MWW, top 10% BF, top and 15% REA. He boasts a 749-pound adjusted weaning weight and posts a 110 IMF Ratio. His flush mate brother, Turn The Corner, is another performance standout among the offering, charting top 10% for WW, top 5% YW, top 10% ADG, top 15% Milk, top 5% MWW, top 15% YG, top 10% BF, and top 15% REA. Tie to a cow family that you can hang your hat on for consistency!

24

FIELD'S RIGHT TURN

3798789

BW: 81 • Adj WW: 749 • Scan Wt: 1335 3/4 SM 1/4 AN • 1/20/20

SIRE WBF SIGNIFICANT B132  
RUBYS TURNPIKE 771E  
RUBYS MISS CLEO 240Z

DAM PVF-J 4P14 HYB ROOKIE  
TJ 59X  
TJ MS 26R

SCAN DATA Adj. IMF: 4.2 • Adj. BF: 0.33 • Adj. REA: 17.13

CE	BW	WW	YW	ADG	MCE	MLK	MW	STY	DOC	CW	YG	MRB	BF	REA	API	TI
9	3	91.9	148	0.35	6.7	27.3	73.2	13.4	7.2	40.9	-0.36	0.08	-0.08	0.9	115	80.2
90%	95%	5%	4%	5%	55%	15%	4%	65%	95%	25%	15%	95%	10%	15%	80%	40%

25

FIELD'S TURN THE CORNER

3798785

BW: 93 • Adj WW: 732 • Scan Wt: 1290 3/4 SM 1/4 AN • 1/27/20

SIRE WBF SIGNIFICANT B132  
RUBYS TURNPIKE 771E  
RUBYS MISS CLEO 240Z

DAM PVF-J 4P14 HYB ROOKIE  
TJ 59X  
TJ MS 26R

SCAN DATA Adj. IMF: 3.43 • Adj. BF: 0.23 • Adj. REA: 17.06

CE	BW	WW	YW	ADG	MCE	MLK	MW	STY	DOC	CW	YG	MRB	BF	REA	API	TI
9	2.8	89.8	145	0.34	6.7	27.3	72.1	13.4	7.2	39	-0.36	0.08	-0.08	0.87	114.5	79.2
90%	90%	10%	5%	10%	55%	15%	5%	65%	95%	30%	15%	95%	10%	15%	80%	45%



# THE BIG TIMBER SONS



**KOCH BIG TIMBER 685D**  
SIRE OF LOTS 26 - 27

H0092 and H0034 are flush mate brothers sired by Koch Big Timber 685D, and from the proven matriarch 59X. This pair of brothers are loaded with dimension and power from end to end. Heavy weaning, long bodied, sound structured three-quarter blood SimAngus bulls that offer the consistency of a proven cow family, along with the carcass merit necessary to sire progeny that top the market. H0092 charts an IMF ratio of 109 while H0034 posted a 17+ inch ADJ REA.

**26**

**HANELS BIG TIMBER H0092**

**3833029**

**BW: 87 • Adj WW: 590 • Scan Wt: 1105 3/4 SM 1/4 AN • 1/29/20**

SIRE HOOK'S YELLOWSTONE 97Y  
**KOCH BIG TIMBER 685D**  
KOCH MS HOOKS BOY

DAM PVF-J 4P14 HYB ROOKIE  
**TJ 59X**  
TJ MS 26R

SCAN DATA **Adj. IMF: 4.45 • Adj. BF: 0.2 • Adj. REA: 14.25**

CE	BW	WW	YW	ADG	MCE	MLK	MW	STY	DOC	CW	YG	MRB	BF	REA	API	TI
12.3	-1.4	78.7	119.4	0.25	8.4	33.8	73.1	14.5	6.6	28.4	-0.17	0.24	-0.04	0.51	129.6	80.8
50%	20%	35%	40%	60%	25%	1%	4%	55%	99%	65%	70%	65%	65%	75%	50%	35%

**27**

**HANELS TIMBER H0034**

**3832918**

**BW: 83 • Adj WW: 619 • Scan Wt: 1200 3/4 SM 1/4 AN • 1/14/20**

SIRE HOOK'S YELLOWSTONE 97Y  
**KOCH BIG TIMBER 685D**  
KOCH MS HOOKS BOY

DAM PVF-J 4P14 HYB ROOKIE  
**TJ 59X**  
TJ MS 26R

SCAN DATA **Adj. IMF: 3.86 • Adj. BF: 0.25 • Adj. REA: 17.09**

CE	BW	WW	YW	ADG	MCE	MLK	MW	STY	DOC	CW	YG	MRB	BF	REA	API	TI
12.3	-1.1	81.1	122.8	0.26	8.4	33.8	74.2	14.5	6.6	32.3	-0.17	0.24	-0.04	0.56	130.1	82
50%	25%	25%	35%	50%	25%	1%	3%	55%	99%	55%	70%	65%	65%	70%	45%	30%

**28**

**HARMS HEADLINER**

**3823340**

**BW: 79 • Adj WW: 681 • Scan Wt: 1100 1/2 SM 1/2 AN • 1/19/20**

SIRE MR NLC UPGRADE U8676  
**TJ MAIN EVENT 503B**  
TJ MISS NEW DAY U14

DAM PVF-J 4P14 HYB ROOKIE  
**TJ 59X**  
TJ MS 26R

SCAN DATA **Adj. IMF: 4.36 • Adj. BF: 0.3 • Adj. REA: 14.83**

CE	BW	WW	YW	ADG	MCE	MLK	MW	STY	DOC	CW	YG	MRB	BF	REA	API	TI
10.5	1.1	90	137.3	0.3	6.6	33.9	78.85	13.75	8.95	42.9	-0.28	0.15	-0.06	0.82	123.3	82.4
75%	65%	10%	10%	25%	55%	1%	1%	60%	85%	20%	35%	80%	35%	25%	60%	30%

Headliner is sired by the must use SimAngus sire in the industry, TJ Main Event 503B. The Main Event progeny are being well-received from all facets of the business, experiencing heavy use across the country. Headliner is a big spread half-blood Simmental herd sire prospect that is an own son of the iconic TJ 59X. He boasts a moderate birth weight to accompany his added performance and shape. H004 recorded an impressive IMF Ratio of 107. Here is a double digit CE bull that will add pay weight to your next calf crop.



**TJ NORTHWARD**  
MATERNAL  
BROTHER TO LOTS  
24 - 28



**TJ CORNHUSKER**  
MATERNAL  
BROTHER TO LOTS  
24 - 28

# THE MAIN EVENT SONS



LOT 29

29

**HANELS MAIN EVENT H0084**

**3845897**

BW: 85 • Adj WW: 595 • Scan Wt: 1160

1/2 SM 1/2 AN • 1/25/20

SIRE MR NLC UPGRADE U8676

DAM CONNEALY CAPITALIST 028

TJ MAIN EVENT 503B

HANELS MISS CAP E7049

TJ MISS NEW DAY U14

HANELS MISS FREE B4006

SCAN DATA Adj. IMF: 4.05 • Adj. BF: 0.26 • Adj. REA: 15.14

CE	BW	WW	YW	ADG	MCE	MLK	MW	STY	DOC	CW	YG	MRB	BF	REA	API	TI
12	1.6	82.8	129.4	0.29	5.5	24.2	66.3	16.3	12.9	42.9	-0.28	0.24	-0.06	0.88	131.9	79
55%	75%	20%	20%	30%	75%	35%	20%	30%	35%	20%	35%	65%	35%	15%	45%	45%

Hanel Main Event H0084 is one of the most intriguing bulls in the entire offering due to his skeletal quality, body shape, density, and genuine dimension from end to end. TJ Main Event 503B is one of the most widely used half-blood SimAngus bulls within the industry. H0084 is backed by a productive young daughter of Connealy Capitalist 028. He offers a tremendous blend of performance, marbling, and muscle shape in a well-balanced and attractive package. He is a big scrotal, deep bodied herd sire prospect that charts top 20% WW, top 20% YW, top 20% MWW, top 20% CW, and top 15% REA.



TJ MAIN EVENT 503B - SIRE OF LOTS 28 - 32

30

**HANELS MAIN EVENT H0052**

**3832867**

BW: 82 • Adj WW: 602 • Scan Wt: 1240

1/2 SM 1/2 AN • 1/18/20

SIRE MR NLC UPGRADE U8676

DAM S A V FINAL ANSWER 0035

TJ MAIN EVENT 503B

HANELS MISS ANSWER B4001

TJ MISS NEW DAY U14

HANELS MISS OLIE Z2011

SCAN DATA Adj. IMF: 3.68 • Adj. BF: 0.18 • Adj. REA: 16.55

CE	BW	WW	YW	ADG	MCE	MLK	MW	STY	DOC	CW	YG	MRB	BF	REA	API	TI
14.1	-0.7	85.9	130.8	0.28	6.9	26.6	69.5	17.2	12.6	41.6	-0.24	0.2	-0.06	0.73	137.3	83.3
30%	30%	15%	20%	35%	50%	20%	10%	20%	40%	25%	45%	70%	35%	35%	35%	25%

H0095 is backed by a productive Pale Face daughter. He is a stout made three-quarter blood SimAngus that posted a WW Ratio of 105 and an IMF Ratio of 104. He ranks among the top 15% WW, top 25% YW, top 20% Milk, top 10% MWW, top 20% CW, top 10% YG, top 4% BF, and top 10% REA.

31

**HANELS MAIN EVENT H0118**

**3832990**

BW: 90 • Adj WW: 634 • Scan Wt: 1260

5/8 SM 3/8 AN • 2/3/20

SIRE MR NLC UPGRADE U8676

DAM TNT AXIS X307

TJ MAIN EVENT 503B

HANELS MISS AXIS A3241

TJ MISS NEW DAY U14

ES X51

SCAN DATA Adj. IMF: 4.24 • Adj. BF: 0.16 • Adj. REA: 16.91

CE	BW	WW	YW	ADG	MCE	MLK	MW	STY	DOC	CW	YG	MRB	BF	REA	API	TI
10.7	2	94.2	141.5	0.3	4.4	25.6	72.7	15.6	13.8	42.4	-0.33	0.12	-0.07	0.94	124.2	83
70%	80%	3%	10%	25%	90%	25%	5%	40%	25%	20%	20%	85%	25%	10%	60%	25%

This SimAngus bull will add heterosis to any program. H0118 is sired by TJ Main Event 503B and backed by a stellar Axis daughter that has produced several top bulls. H0118 has maternal brothers working for William Ramsey and Heath Allen. He posted a WW Ratio of 106, IMF Ratio of 107, and REA Ratio of 103.

32

**HANELS MAIN EVENT H0095**

**3832907**

BW: 81 • Adj WW: 636 • Scan Wt: 1240

3/4 SM 1/4 AN • 1/30/20

SIRE MR NLC UPGRADE U8676

DAM HANELS PALE FACE A3024

TJ MAIN EVENT 503B

HANELS MISS PALE D6121

TJ MISS NEW DAY U14

HANELS MISS OLIE Y1005

SCAN DATA Adj. IMF: 4.1 • Adj. BF: 0.2 • Adj. REA: 16.06

CE	BW	WW	YW	ADG	MCE	MLK	MW	STY	DOC	CW	YG	MRB	BF	REA	API	TI
13.5	0	85.5	128	0.27	6	26.5	69.2	16.1	12.6	44.2	-0.4	0.08	-0.10	0.95	126.9	79.9
35%	40%	15%	25%	40%	65%	20%	10%	35%	40%	20%	10%	95%	4%	10%	55%	40%

H0095 is a higher percentage SimAngus bull that is sure to add pay weight. He offers a WW Ratio of 105 among his contemporaries. H0095 ranks top 15% WW, top 25% YW, top 10% MWW, top 10% YG, top 20% CW, top 4% BF, and top 10% REA.



# THE PAY DIRT SONS



LOT 33

33

**HANELS PAY DIRT H0068**

**3833028**

**BW: 77 • Adj WW: 621 • Scan Wt: 1200**

**1/2 SM 1/2 AN • 1/20/20**

SIRE BASIN PAYWEIGHT 1682

DAM S A V ANGUS VALLEY 1867

CCR PAY DIRT 2340C

HANELS MISS VALLEY C5020

CCR MS SINGLETARY 2340Z

HANELS MISS OLIE Z2058

SCAN DATA Adj. IMF: 4.03 • Adj. BF: 0.32 • Adj. REA: 15.63

CE	BW	WW	YW	ADG	MCE	MLK	MW	STY	DOC	CW	YG	MRB	BF	REA	API	TI
12.7	-1.2	79.7	129	0.31	8.3	22.3	62.1	14.3	11.9	42.8	-0.06	0.45	-0.02	0.45	142.7	85.6
45%	25%	30%	25%	20%	25%	55%	40%	55%	50%	20%	95%	25%	75%	85%	25%	20%

Hanel Pay Dirt H0068 is sired by the impressive CCR Pay Dirt 2340C stud that was labeled as the best prospect in a superb draft of 1682 sons at the Cow Camp spring 2017 sale. Pay Dirt ranks in the top 15% of the breed for API with a great combination of performance, carcass weight and carcass quality. He offers a perfect blend of growth, power, and end product with the tremendous body, muscle and fleshing ability. Pay Dirt was DNA tested homozygous black and homozygous polled. H0068 offers a sensible birth weight of 77-pounds. He charts a WW Ratio of 102, IMF Ratio of 104, BF Ratio of 152, and REA Ratio of 101.



CCR PAY DIRT 2340C - SIRE OF LOTS 33 - 36

34

**HANELS PAY DIRT H0110**

**3833006**

**BW: 95 • Adj WW: 596 • Scan Wt: 1210**

**5/8 SM 3/8 AN • 2/2/20**

SIRE BASIN PAYWEIGHT 1682

DAM HANELS AXIS A3012

CCR PAY DIRT 2340C

HANELS MISS AXIS D6084

CCR MS SINGLETARY 2340Z

HANELS MISS TOTAL A3501

SCAN DATA Adj. IMF: 5.22 • Adj. BF: 0.24 • Adj. REA: 15.41

CE	BW	WW	YW	ADG	MCE	MLK	MW	STY	DOC	CW	YG	MRB	BF	REA	API	TI
7.1	3	85.8	134.6	0.3	4.5	18.7	61.5	16.9	12.4	38.9	-0.16	0.42	-0.04	0.61	133.5	82.4
99%	95%	15%	15%	25%	90%	85%	40%	25%	45%	30%	70%	30%	65%	60%	40%	30%

H0110 is another stout featured Pay Dirt son that is backed by a productive Axis daughter that has two daughters that have been retained in herd. H0110 ranks top 15% WW, top 15% YW, top 25% ADG, and top 25% Stay. He is the number one marbling bull within his contemporary group with a 5.22 ADJ IMF and an astonishing IMF Ratio of 132, while still scanning with over a 15-inch REA. Here is a herd sire prospect that will inject carcass merit into any program and add value to your bottomline!

35

**HANELS PAY DIRT H0169**

**3832870**

**BW: 79 • Adj WW: 675 • Scan Wt: 1140**

**1/2 SM 1/2 AN • 2/23/20**

SIRE BASIN PAYWEIGHT 1682

DAM S A V BISMARCK 5682

CCR PAY DIRT 2340C

HANELS MISS BIS B4016

CCR MS SINGLETARY 2340Z

HANELS MISS HUMMER Y1610

SCAN DATA Adj. IMF: 4.52 • Adj. BF: 0.23 • Adj. REA: 14.37

CE	BW	WW	YW	ADG	MCE	MLK	MW	STY	DOC	CW	YG	MRB	BF	REA	API	TI
13.3	-0.9	78.9	120.6	0.26	7.9	21.9	61.3	16.8	11.3	36.1	-0.1	0.43	-0.02	0.49	145.2	83.9
40%	25%	35%	40%	50%	35%	60%	45%	25%	60%	40%	85%	30%	90%	80%	20%	25%

H0169 is backed by productive daughter of the maternal icon, SAV Bismarck 5682. H0169 has a maternal brother working for Tipton Grain and Cattle, as well as several maternal sisters that have been retained in herd. He posts an IMF Ratio of 111 while charting top 25% BW, top 35% WW, top 25% Stay, top 20% API, and top 25% TI.

36

**HANELS PAY DIRT H0075**

**3832950**

**BW: 85 • Adj WW: 623 • Scan Wt: 1190**

**1/2 SM 1/2 AN • 1/20/20**

SIRE BASIN PAYWEIGHT 1682

DAM TJ NEW TIME LINE 113X

CCR PAY DIRT 2340C

TJ MISS 611E

CCR MS SINGLETARY 2340Z

T J MISS NEW DAY S15

SCAN DATA Adj. IMF: 3.89 • Adj. BF: 0.32 • Adj. REA: 15.44

CE	BW	WW	YW	ADG	MCE	MLK	MW	STY	DOC	CW	YG	MRB	BF	REA	API	TI
12.1	0.3	87.3	140.2	0.33	6.3	25	68.5	14.6	13.3	49.2	-0.08	0.45	-0.01	0.67	142.7	88.5
55%	50%	15%	10%	10%	60%	30%	15%	50%	30%	10%	90%	25%	90%	50%	25%	10%

H0075 is a stout featured, heavy weaning son of Pay Dirt that is backed by the young and productive female that was our pick from the Triangle J program female sale. A maternal sister to H0075 sired by Boulder has been retained in herd. H0075 ranks top 15% WW, top 10% YW, top 10% ADG, top. 15% MWW, top 10% CW, top 25% Marb, top 25% API, and top 10% TI. He offers a WW Ratio of 103 and a BF Ratio of 139!



# THE BOULDER SON

**LOT 37**



H0040 is sired by CCR Boulder 1339A, one of the best SimAngus bulls to sell in 2015 that reads extremely well on paper with a balanced and eye-appealing look. Boulder offers breed leading performance posting his own 130 BWR, 105 WWR, 109 YWR, 143 IMFR, and 110 REA. He is a moderate framed, big ribbed, deep flanked stud with loads of muscle. H0040 is backed by a powerful and productive Pale Face daughter that has produced a female selected by Ray Swearingen in our fall female sale. He charts top 30% MCE, top 20% Stay, top 15% Doc, top 10% YG, top 10% BF, and top 25% REA. He also posts a REA Ratio of 105.

**37**

**HANELS BOULDER H0040**

**3832887**

**BW: 85 • Adj WW: 634 • Scan Wt: 1310 3/4 SM 1/4 AN • 1/15/20**

**SIRE** HOOVER DAM

**CCR BOULDER 1339A**

CCR MS L TAYLOR 1339Y

**DAM** HANELS PALE FACE A3035

**HANELS MISS PALE D6091**

HANELS MISS LEGEND U827

**SCAN DATA Adj. IMF: 3.71 • Adj. BF: 0.28 • Adj. REA: 17.2**

CE	BW	WW	YW	ADG	MCE	MLK	MW	STY	DOC	CW	YG	MRB	BF	REA	API	TI
12.8	-0.1	72.2	113.9	0.26	8.1	15.2	51.3	17.2	15.1	26.1	-0.4	0.35	-0.09	0.79	138.8	77.7
45%	40%	60%	55%	50%	30%	99%	90%	20%	15%	75%	10%	40%	10%	25%	30%	50%



CCR BOULDER 1339A - SIRE OF LOT 37

# THE MR. F806 SONS

## LOT 38



Hanels Frontier H0186 is sired by BC1 MR. F806, a tremendous Frontier son that is backed by the maternal influence of Mytty In Focus. F806 was raised by our good friends at Burken Cattle Company. F806 offers more frame, length, and extension than most of his contemporaries from the Frontier sire line. H0186 is a soggy made, bold centered, big hiped, rugged herd sire prospect. He boasts an impressive WW Ratio of 109, an IMF Ratio of 127, and a BF Ratio of 129. F806 ranks top 10% Milk, top 20% MWW, top 20% Doc, and top 25% Shr. H1086 is a SimAngus herd sire to consider if your program emphasizes female retention in herd.

### 38

**HANELS FRONTIER H0186**

**3832977**

**BW: 82 • Adj WW: 715 • Scan Wt: 1260 1/2 SM 1/2 AN • 2/28/20**

**SIRE** CCR FRONTIER 0053Z

**DAM** SITZ NEW DESIGN 458N

**BC1 MR. F806**

**HANELS MISS DESIGN X018**

BC1 A377

S606 LEGACY H51 HBS

**SCAN DATA** Adj. IMF: 5.12 • Adj. BF: 0.31 • Adj. REA: 15.64

CE	BW	WW	YW	ADG	MCE	MLK	MW	STY	DOC	CW	YG	MRB	BF	REA	API	TI
12	0.6	74.6	115.1	0.25	6.8	29.3	66.6	13.9	14.7	28.2	-0.19	0.36	-0.04	0.54	130.1	78.8
55%	55%	50%	50%	60%	50%	10%	20%	60%	20%	70%	65%	40%	65%	75%	45%	45%



CCR FRONTIER 0053Z - PATERNAL GRANDSIRE OF LOTS 38 - 41



# THE MR. F806 SONS

39

**HANELS FRONTIER H0161**

**3832973**

**BW: 81 • Adj WW: 677 • Scan Wt: 1200 3/4 SM 1/4 AN • 2/20/20**

SIRE CCR FRONTIER 0053Z

DAM HC HUMMER 12M

BC1 MR. F806

HANELS MISS HUMMER X009

BC1 A377

T702 BEEF HBS

SCAN DATA Adj. IMF: 3.74 • Adj. BF: 0.17 • Adj. REA: 15.23

CE	BW	WW	YW	ADG	MCE	MLK	MW	STY	DOC	CW	YG	MRB	BF	REA	API	TI
14.1	-0.6	68.6	101.6	0.21	7.5	26.9	61.2	17.5	12.5	21.9	-0.33	0.23	-0.07	0.65	132.3	73.7
30%	30%	75%	80%	85%	40%	20%	45%	20%	45%	85%	20%	65%	25%	50%	45%	65%

H0161 is another powerful SimAngus herd sire prospect that is sired by F806. His Hummer dam, X009, has produced two daughters that sold for \$4,100 and \$3,700 respectively to Logan Marple and Jim Bolte. Several others retained in herd at Hanel's Black Simmentals. Here is the first opportunity to purchase a direct son of X009, a proven producer that consistently generates. He is balanced numerically, posting a 14.1 CE, ranking him among the top 30% for CE.

40

**HANELS FRONTIER H0152**

**3832975**

**BW: 96 • Adj WW: 686 • Scan Wt: 1320 3/4 SM 1/4 AN • 2/16/20**

SIRE CCR FRONTIER 0053Z

DAM HC POWER DRIVE 88H

BC1 MR. F806

HANELS MISS POWER X0615

BC1 A377

MSR 038K OF 7007 FF

SCAN DATA Adj. IMF: 3.5 • Adj. BF: 0.23 • Adj. REA: 17.64

CE	BW	WW	YW	ADG	MCE	MLK	MW	STY	DOC	CW	YG	MRB	BF	REA	API	TI
9.9	2.7	76.3	114.5	0.24	5.1	26.7	64.8	17.4	13.4	18.9	-0.36	0.15	-0.07	0.74	120.1	72.1
80%	90%	45%	50%	65%	80%	20%	25%	20%	30%	90%	15%	80%	25%	35%	70%	75%

H0152 is a homozygous black three-quarter blood Simmental. His Power Drive dam is as consistency as any female in our program. A son of X0615 sired by United was purchased by Martin Fletchall, a daughter by Double B4252 works at Double H Cattle Company in South Dakota, and a select few other females have been retained in herd at HBS. H0152 charts a WW Ratio of 114 and a REA Ratio of 108.

41

**HANELS FRONTIER H0150**

**3832913**

**BW: 84 • Adj WW: 669 • Scan Wt: 1200 3/4 SM 1/4 AN • 2/16/20**

SIRE CCR FRONTIER 0053Z

DAM TNT AXIS X307

BC1 MR. F806

HANELS MISS AXIS E7051

BC1 A377

BROOKS MISS RENE

SCAN DATA Adj. IMF: 3.99 • Adj. BF: 0.24 • Adj. REA: 17

CE	BW	WW	YW	ADG	MCE	MLK	MW	STY	DOC	CW	YG	MRB	BF	REA	API	TI
11.5	1.2	78.2	114.5	0.23	5.9	24.2	63.3	17.1	14.5	22.7	-0.33	0.21	-0.06	0.78	127.5	76.3
60%	65%	35%	50%	70%	70%	35%	30%	25%	20%	85%	20%	70%	35%	30%	55%	55%

H0150 is another F806 son that is backed by a tremendous young Axis daughter that has already put one daughter back into production at Hanel's Black Simmentals. H0150 charts with a WW Ratio of 12 and a REA Ratio of 104.





# THE COWBOY CUT SONS

LOT 42



The largest sire group in the offering are by resident herd sire, Hanel Cowboy Cut D6208, a tremendously powerful son of the breed leading Cowboy Cut and backed by the maternal influence of ES X51, a productive Eichacker bred female. CCR Cowboy Cut 5048Z is the breeds number one sire for registrations. Cowboy Cut cemented his position among the greatest individuals of influence within the Simmental breed! He continues to be the go-to sire for calves with tremendous look and breed-leading numbers. Sons continue to top sales across the country, and daughters are admired for their feminine, yet broody, appearance. Cattlemen appreciate the added structural integrity, mass and muscle, and attractive package Cowboy Cut stamps on his progeny. Hanel Cowboy Cut H0100 leads off a powerful set of sons influence by Cowboy Cut. H0100 is backed a Premium Beef sired dam that has produced a daughter working for Doug Stensaas, a Beacon daughter that is employed at Double H Cattle Company in South Dakota, and one daughter that we retained in herd. H0100 posts an IMF Ratio of 102 to accompany his balanced figures.

42

**HANELS COWBOY CUT H0100**

**3832947**

**BW: 86 • Adj WW: 635 • Scan Wt: 1280**

**PB SM • 1/31/20**

SIRE CCR COWBOY CUT 5048Z

DAM GW PREMIUM BEEF 021TS

**HANELS COWBOY CUT D6208**

**HANELS MISS BEEF C5004**

ES X51

HANELS MISS NLC Z2230

SCAN DATA Adj. IMF: 4.1 • Adj. BF: 0.26 • Adj. REA: 15.89

CE	BW	WW	YW	ADG	MCE	MLK	MW	STY	DOC	CW	YG	MRB	BF	REA	API	TI
11.5	1.3	77.9	115.6	0.24	5.9	23.5	62.4	18.9	14.7	24.8	-0.36	0.13	-0.07	0.77	136.2	78.2
40%	40%	45%	45%	50%	50%	50%	45%	20%	15%	70%	85%	45%	95%	75%	30%	45%



CCR COWBOY CUT 5048Z - PATERNAL GRANDSIRE OF LOTS 42 - 57

# THE COWBOY CUT SONS

43

**HANELS COWBOY CUT H0190**

**3832863**

BW: 84 • Adj WW: 708 • Scan Wt: 1260

PB SM • 2/29/20

SIRE CCR COWBOY CUT 5048Z  
**HANELS COWBOY CUT D6205**  
ES X51

DAM HANELS AXIS A3012  
**HANELS MISS AXIS D6071**  
HANELS MISS OLIE Z2011

SCAN DATA Adj. IMF: 3.6 • Adj. BF: 0.23 • Adj. REA: 18.31

CE	BW	WW	YW	ADG	MCE	MLK	MW	STY	DOC	CW	YG	MRB	BF	REA	API	TI
11.2	2	83.7	124.1	0.25	5.6	22.6	64.4	19.9	13.1	31.9	-0.38	0.08	-0.08	0.86	136.4	79.7
45%	60%	25%	30%	40%	55%	55%	35%	10%	25%	40%	75%	60%	60%	55%	30%	35%

Hanel Cowboy Cut H0190 is another powerful and performance driven son of D6205 that is from an Axis bred dam. D6071 produced a stout made Main Event sired son that was purchased by Colin Schwenka of Nebraska last year. Here is a bull that is certain to add pay weight to your calf crop, as he boasts an impressive WW Ratio of 108, an Ultrasound Weight Ratio of 109, and a REA Ratio of 112. Power in the blood!

44

**HANELS COWBOY CUT H0198**

**3832876**

BW: 88 • Adj WW: 651 • Scan Wt: 1160

PB SM • 3/7/20

SIRE CCR COWBOY CUT 5048Z  
**HANELS COWBOY CUT D6205**  
ES X51

DAM HANELS DOUBLE DOWN Y1211  
**HANELS MISS DOWN B4054**  
HANELS MISS OLIE Y1033

SCAN DATA Adj. IMF: 3.4 • Adj. BF: 0.2 • Adj. REA: 15.3

CE	BW	WW	YW	ADG	MCE	MLK	MW	STY	DOC	CW	YG	MRB	BF	REA	API	TI
10.5	2.6	77.2	116.7	0.25	5.4	23.4	61.9	19.5	13	30.2	-0.36	0.14	-0.08	0.76	134.4	76.3
55%	70%	50%	45%	40%	60%	50%	50%	15%	25%	50%	85%	45%	80%	80%	35%	50%

H0198 is backed by the B4054 female that is sired by Double Down. A three-quarter brother to H0198 was purchased by Einer Schou, while a daughter by Axis was selected by our good friend and long-time customer Matt McCain and his family. He ranks top 15% Stay, top 25% Doc, and top 35% API.

45

**HANELS COWBOY CUT H0196**

**3832987**

BW: 89 • Adj WW: 715 • Scan Wt: 1240

PB SM • 3/4/20

SIRE CCR COWBOY CUT 5048Z  
**HANELS COWBOY CUT D6205**  
ES X51

DAM NLC BREAK FREE 72W  
**HANELS MISS FREE B4214**  
HANELS MISS OLIE Z2205

SCAN DATA Adj. IMF: 3.46 • Adj. BF: 0.24 • Adj. REA: 16.94

CE	BW	WW	YW	ADG	MCE	MLK	MW	STY	DOC	CW	YG	MRB	BF	REA	API	TI
11.8	2.6	86	130.9	0.28	6.7	23.1	66	19.7	13.5	31	-0.41	0.13	-0.08	0.91	140.1	82
35%	70%	20%	15%	20%	35%	55%	30%	10%	20%	45%	60%	45%	60%	45%	25%	25%

H0196 is performance driven son of D6205 that is backed by a Break Free dam that produced a Beacon son that sold to Novak Farms two years ago and a Pay Dirt daughter we retained in herd. H0196 boasts a WW Ratio of 109 and a REA Ratio of 103. He ranks among the top 20% WW, top 15% YW, top 20% ADG, top 10% Stay, top 20% Doc, top 25% API, and top 25% TI.

46

**HANELS COWBOY CUT H0135**

**3833055**

BW: 92 • Adj WW: 703 • Scan Wt: 1260

PB SM • 2/10/20

SIRE CCR COWBOY CUT 5048Z  
**HANELS COWBOY CUT D6205**  
ES X51

DAM ELLINGSON OLIE W908  
**HANELS MISS OLIE C5001**  
HANELS MISS LIB A3009

SCAN DATA Adj. IMF: 4.28 • Adj. BF: 0.28 • Adj. REA: 18.18

CE	BW	WW	YW	ADG	MCE	MLK	MW	STY	DOC	CW	YG	MRB	BF	REA	API	TI
11.7	1.5	82.3	124.7	0.26	5.8	24.4	65.6	19.2	13.6	36.4	-0.35	0.14	-0.08	0.86	139.3	81
40%	45%	30%	25%	35%	50%	40%	30%	15%	20%	25%	85%	45%	80%	55%	25%	30%

H0135 is a stout made, wide based, thick ended Purebred from the C5001 female that is a direct daughter of Ellingson Olie W908. H0135 posted impressive ultrasound data with a IMF Ratio of 106, BF Ratio of 117, and REA Ratio of 111. He came to the weaning pen with over 700-pounds of performance and recorded a 107 WW Ratio. He charts top 30% WW, top 25% YW, top 25% CW, top 25% API, and top 30% TI.

47

**HANELS COWBOY CUT H0145**

**3833031**

BW: 99 • Adj WW: 607 • Scan Wt: 1105

PB SM • 2/14/20

SIRE CCR COWBOY CUT 5048Z  
**HANELS COWBOY CUT D6205**  
ES X51

DAM ELLINGSON OLIE W908  
**HANELS MISS OLIE C5005**  
HANELS MISS STET A3046

SCAN DATA Adj. IMF: 3.29 • Adj. BF: 0.19 • Adj. REA: 15.71

CE	BW	WW	YW	ADG	MCE	MLK	MW	STY	DOC	CW	YG	MRB	BF	REA	API	TI
9.6	3.7	81.7	123	0.26	5.3	21.5	62.3	18.6	12.7	32.6	-0.37	0.12	-0.08	0.8	130	76.8
70%	90%	30%	30%	35%	60%	65%	45%	20%	30%	40%	80%	50%	60%	70%	45%	50%

H0145 is a high performing Purebred Simmental sired by D6250 that is backed by an Ellingson Olie W908 dam. He ranks among the top 30% for WW and YW, top 20% Stay, and top 30% Doc.

48

**HANELS COWBOY CUT H0197**

**3832921**

BW: 84 • Adj WW: 621 • Scan Wt: 1160

PB SM • 3/6/20

SIRE CCR COWBOY CUT 5048Z  
**HANELS COWBOY CUT D6205**  
ES X51

DAM TNT TANKER U263  
**HANELS MISS TANKER A3036**  
HANELS MISS LUCKY X014

SCAN DATA Adj. IMF: 3.64 • Adj. BF: 0.27 • Adj. REA: 16.22

CE	BW	WW	YW	ADG	MCE	MLK	MW	STY	DOC	CW	YG	MRB	BF	REA	API	TI
10	2.1	81.1	123	0.26	7.1	21.7	62.1	18.8	14.9	29.6	-0.41	0.04	-0.09	0.8	129.9	76.9
60%	60%	35%	30%	35%	25%	65%	50%	20%	10%	50%	60%	75%	40%	70%	45%	50%

H0197 is a stout featured, high performing Cowboy Cut derivative that is backed by a productive Tanker daughter. A maternal brother to H0197 sired by Pay Dirt was selected by Martin Fletchall last year. He charts among the top 30% for YW, top 25% MCE, top 20% Stay, top 10% Doc, and top 15% Shr.



# THE COWBOY CUT SONS

49

**HANELS COWBOY CUT H0153**

**3832899**

**BW: 84 • Adj WW: 588 • Scan Wt: 1090 3/4 SM 1/4 CH • 2/16/20**

SIRE CCR COWBOY CUT 5048Z  
**HANELS COWBOY CUT D6205**  
ES X51

DAM LT-WC TEMPLETON 1483 PLD ET  
**HANELS MISS TEMPLE D6060**  
HANELS MISS MFEST A3507

SCAN DATA Adj. IMF: 3.15 • Adj. BF: 0.25 • Adj. REA: 16.74

CE	BW	WW	YW	ADG	MCE	MLK	MW	STY	DOC	CW	YG	MRB	BF	REA	API	TI
12	2	75.2	106	0.19	6.8	16.9	54.4	17.3	10.3	26.2	-0.38	0.11	-0.08	0.78	120	70.2
55%	80%	50%	70%	95%	50%	95%	80%	20%	75%	75%	15%	90%	15%	30%	70%	80%

H0153 is powerhouse three-quarter blood Simmental that is backed by a young and productive Templeton daughter. He is a big topped, thick ended, muscular bull that will add pounds of performance and profit to any progressive outfit. He recorded a REA Ratio of 102 and ranks among the top 15% of the breed for YG.

50

**HANELS COWBOY CUT H0136**

**3832881**

**BW: 97 • Adj WW: 729 • Scan Wt: 1240 PB SM • 2/10/20**

SIRE CCR COWBOY CUT 5048Z  
**HANELS COWBOY CUT D6205**  
ES X51

DAM KAPPES IRONMAN W619  
**KAPPES UNITY R381 Z92**  
KAPPES UNITY R381

SCAN DATA Adj. IMF: 4.04 • Adj. BF: 0.24 • Adj. REA: 16.3

CE	BW	WW	YW	ADG	MCE	MLK	MW	STY	DOC	CW	YG	MRB	BF	REA	API	TI
8.3	4.7	88.6	129	0.25	6.3	28.2	72.5	17.5	14.4	28.5	-0.39	0.11	-0.09	0.79	126	80
80%	99%	15%	20%	40%	40%	20%	10%	35%	15%	55%	70%	55%	60%	70%	55%	35%

H0136 is a long bodied, heavy weaning son of D6205 that is backed by the influence of a productive Kappes bred dam. Z92 has produced a son that is working for Green Acres, as well as countless daughters that have been put back into production at Hanel's Black Simmentals. He charts top 15% WW, top 20% YW, top 20% Milk, top 10% MWW, top 15% Doc, top 25% Shr, and top 35% TI. H0136 recorded a WW Ratio of 111.

51

**HANELS COWBOY CUT H0172**

**3832949**

**BW: 83 • Adj WW: 660 • Scan Wt: 1130 3/4 SM 1/4 AN • 2/24/20**

SIRE CCR COWBOY CUT 5048Z  
**HANELS COWBOY CUT D6205**  
ES X51

DAM TJ POWER GRID 363Y  
**TJ MISS 592E**  
TJ 95Y

SCAN DATA Adj. IMF: 4.31 • Adj. BF: 0.33 • Adj. REA: 13.91

CE	BW	WW	YW	ADG	MCE	MLK	MW	STY	DOC	CW	YG	MRB	BF	REA	API	TI
11.4	2.1	80.8	122.7	0.26	7.3	24.5	64.8	18.9	15	29.4	-0.26	0.14	-0.05	0.72	127.4	75
65%	85%	30%	35%	50%	45%	35%	25%	10%	15%	65%	40%	85%	50%	40%	55%	60%

Hanel Cowboy Cut H0172 is from the D6205 sire group and backed by TJ miss 592E, a TJ Power Grid 363Y daughter bred in the Triangle J program. He offers an IMF Ratio of 107.

52

**HANELS COWBOY CUT H0124**

**3833022**

**BW: 100 • Adj WW: 686 • Scan Wt: 1320 PB SM • 2/7/20**

SIRE CCR COWBOY CUT 5048Z  
**HANELS COWBOY CUT D6208**  
ES X51

DAM HANELS AXIS A3012  
**HANELS MISS AXIS D6134**  
HANELS MISS HUMMER X037

SCAN DATA Adj. IMF: 4.15 • Adj. BF: 0.15 • Adj. REA: 17.49

CE	BW	WW	YW	ADG	MCE	MLK	MW	STY	DOC	CW	YG	MRB	BF	REA	API	TI
9	4.3	91.8	132.7	0.26	4.6	22.5	68.4	19.5	12.7	30.4	-0.39	0.11	-0.08	0.9	132.7	81.8
75%	95%	10%	15%	35%	75%	60%	20%	15%	30%	45%	70%	55%	80%	45%	40%	30%

H0124 is the first son of Hanel Cowboy Cut D6208, a flush mate brother to D6205, sired by Cowboy Cut and from our Eichacker bred donor dam. H0124 charts among the elite 10% for WW, top 15% YW, top 35% ADG, top 20% MWW, top 15% Stay, and top 30% TI. H0124 posts a WW Ratio of 114, an IMF Ratio of 105, and a REA Ratio of 107. Performance, carcass merit, and maternal power all wrapped into one here!

53

**HANELS COWBOY CUT H0125**

**3833032**

**BW: 77 • Adj WW: 656 • Scan Wt: 1205 3/4 SM 1/4 AN • 2/7/20**

SIRE CCR COWBOY CUT 5048Z  
**HANELS COWBOY CUT D6208**  
ES X51

DAM CONNEALY CONFIDENCE 0100  
**HANELS MISS CON D6207**  
BDV BRIDGET T69

SCAN DATA Adj. IMF: 4.13 • Adj. BF: 0.43 • Adj. REA: 18.32

CE	BW	WW	YW	ADG	MCE	MLK	MW	STY	DOC	CW	YG	MRB	BF	REA	API	TI
14.4	0.1	82.4	121	0.24	8.7	25.1	66.3	17.6	12.8	29.6	-0.24	0.16	-0.04	0.73	132.7	78.9
25%	45%	25%	40%	65%	20%	30%	20%	20%	40%	65%	45%	80%	65%	35%	40%	45%

Hanel Cowboy Cut H0125 is another heavy weaning son of D6208 that is from a young Connealy Confidence 0100 bred dam. Last year she raised a stout made son by Dividend that was purchased by Dan Pruitt. H0125 ranks among the top 25% CE, top 25% WW, top 20% MCE, top 20% MWW, and top 20% Stay. He boasts a sensible birth weight of 77 pounds and spreads to a WW Ratio of 109 and a REA Ratio of 112 with over an 18-inch REA. Recommended for use on well managed heifers.

54

**HANELS COWBOY CUT H0130**

**3832974**

**BW: 94 • Adj WW: 644 • Scan Wt: 1300 PB SM • 2/8/20**

SIRE CCR COWBOY CUT 5048Z  
**HANELS COWBOY CUT D6208**  
ES X51

DAM HANELS LEGEND S605  
**HANELS MISS LEGEND X002**  
HANELS MISS DESIGN U826

SCAN DATA Adj. IMF: 4.19 • Adj. BF: 0.23 • Adj. REA: 16.37

CE	BW	WW	YW	ADG	MCE	MLK	MW	STY	DOC	CW	YG	MRB	BF	REA	API	TI
9.8	3	84.7	127.7	0.27	5.7	21.6	63.9	20.5	13.3	30.6	-0.34	0.18	-0.07	0.76	139.7	80.9
65%	80%	20%	20%	25%	50%	65%	40%	10%	25%	45%	90%	35%	80%	80%	25%	30%

H0130 is backed by the prolific X002 female that is sired by Hanel Legend S605. A maternal sister is working for Adam Reedy. H0130 has a WW Ratio of 105, IMF Ratio of 108, and REA Ratio of 106. He will increase the profitability of any operation.

# THE COWBOY CUT SONS

55

**HANELS COWBOY CUT H0093**

**3833056**

**BW: 85 • Adj WW: 633 • Scan Wt: 1150**

**PB SM • 1/29/20**

SIRE CCR COWBOY CUT 5048Z

DAM ELLINGSON OLIE W908

**HANELS COWBOY CUT D6208**

**HANELS MISS OLIE B4200**

ES X51

HANELS MISS FRONT Z2237

SCAN DATA Adj. IMF: 4.22 • Adj. BF: 0.25 • Adj. REA: 14.85

CE	BW	WW	YW	ADG	MCE	MLK	MW	STY	DOC	CW	YG	MRB	BF	REA	API	TI
12	1.8	84.6	124.6	0.25	6.6	24.3	66.6	19.6	13.4	32.1	-0.36	0.1	-0.07	0.84	138.4	81
35%	55%	20%	25%	40%	35%	45%	25%	15%	25%	40%	85%	55%	80%	60%	25%	30%

Hanel Cowboy Cut H0093 is from the D6208 sire group and backed by the B4200 female that has been the ultimate replacement generator, putting three daughters back into the HBS program. He charts a WW Ratio of 105 and an IMF Ratio of 107. H0093 ranks among the top 20% for WW, top 25% YW, top 15% Stay, top 25% Doc, and top 25% API.

56

**HANELS COWBOY CUT H0201**

**3833035**

**BW: 91 • Adj WW: 685 • Scan Wt: 1135**

**3/4 SM 1/4 AN • 3/5/20**

SIRE CCR COWBOY CUT 5048Z

DAM ELLINGSON OLIE W908

**HANELS COWBOY CUT D6208**

**HANELS MISS OLIE Z2061**

ES X51

HANELS MISS DESIGN W913

SCAN DATA Adj. IMF: 3.92 • Adj. BF: 0.25 • Adj. REA: 17.17

CE	BW	WW	YW	ADG	MCE	MLK	MW	STY	DOC	CW	YG	MRB	BF	REA	API	TI
10.6	2.9	83.4	126.5	0.27	5.2	26.1	67.7	17.7	13.2	33.6	-0.33	0.15	-0.07	0.79	124.4	76.3
75%	95%	20%	25%	40%	80%	25%	15%	20%	35%	50%	20%	80%	25%	25%	60%	55%

H0201 is a long bodied, thick topped, stylish three-quarter blood bull that is among the top 20% for WW and top 25% YW. A full brother was purchased last year by Pruitt Farms. A maternal brother is working for Caleb Ramsey, and several maternal sisters have been retained in herd. He posted a REA Ratio of 104.

57

**HANELS COWBOY CUT H0166**

**3832861**

**BW: 84 • Adj WW: 778 • Scan Wt: 1250**

**PB SM • 2/21/20**

SIRE CCR COWBOY CUT 5048Z

DAM TNT TANKER U263

**HANELS COWBOY CUT F8103**

**HANELS MISS TANKER B4017**

HANELS MISS LEGEND W9122

R508 JOKER HBS

SCAN DATA Adj. IMF: 3.76 • Adj. BF: 0.27 • Adj. REA: 17.9

CE	BW	WW	YW	ADG	MCE	MLK	MW	STY	DOC	CW	YG	MRB	BF	REA	API	TI
10.3	1.4	87.6	129.6	0.26	7	30.6	74.3	22.5	11.2	34.6	-0.5	-0.01	-0.10	1.12	138.5	81.6
60%	45%	15%	20%	35%	30%	10%	5%	1%	50%	30%	15%	85%	40%	10%	25%	30%

H0166 is sired by Hanel Cowboy Cut F8103 and from a powerhouse Tanker dam that has stood the test of time. A full brother in blood was purchased last year by Mike Hossle. H0166 charts an impressive WW Ratio of 112 and a REA Ratio of 109. He ranks top 15% WW, top 20% YW, top 10% Milk, top 5% MWW, top 1% Stay, top 15% YG, top 10% REA, and top 25% API.





# THE WIDE TRACK SONS

LOT 58



The next five bulls are direct sons of the legendary W/C Wide Track 694Y, a sire that has been praised for the abundance of red meat, product, and genuine shape that he was able to inject into his progeny. This set of flushmate brothers hold true to the stereotype and continues the tradition of Wide Track. A maternal brother sired by CCR Cowboy Cut 5408Z was purchased by Dennis Lauritzen, with several sisters being retained in herd by HBS. The dam that stands behind this powerful set of flush brothers is sired by the legendary Bon View New Design 878. Here is the opportunity to tie together a powerful and performance driven set of brothers that will add length, pounds, and real-world practicality to your next calf crop.

58

**HANELS WIDE TRACK H0033**

**3833076**

**BW: 79 • Adj WW: 635 • Scan Wt: 1300**

**3/4 SM 1/4 AN • 1/14/20**

SIRE 3C W/C RIGHT TRACK W9462  
**W/C WIDE TRACK 694Y**  
MISS WERNING 694S

DAM BON VIEW NEW DESIGN 878  
**HANELS MISS DESIGN U826**  
HANELS BLACK KELLY

SCAN DATA **Adj. IMF: 3.91 • Adj. BF: 0.22 • Adj. REA: 17.5**

CE	BW	WW	YW	ADG	MCE	MLK	MW	STY	DOC	CW	YG	MRB	BF	REA	API	TI
8.7	3.5	74.1	119.1	0.28	3.8	17.5	54.5	16.8	11.4	36.7	-0.28	0.22	-0.07	0.7	119.8	70.5
90%	95%	55%	40%	35%	95%	90%	80%	25%	60%	40%	35%	65%	25%	45%	70%	80%



# THE WIDE TRACK SONS



W/C WIDE TRACK 694Y - SIRE OF LOTS 58 - 62

59

**HANELS WIDE TRACK H0083**

**3832858**

BW: 87 • Adj WW: 591 • Scan Wt: 1140 3/4 SM 1/4 AN • 1/23/20

SIRE 3C W/C RIGHT TRACK W9462 DAM BON VIEW NEW DESIGN 878  
W/C WIDE TRACK 694Y HANELS MISS DESIGN U826  
MISS WERNING 694S HANELS BLACK KELLY

SCAN DATA Adj. IMF: 3.89 • Adj. BF: 0.23 • Adj. REA: 14.19

CE	BW	WW	YW	ADG	MCE	MLK	MW	STY	DOC	CW	YG	MRB	BF	REA	API	TI
8.7	3.6	74.5	119.6	0.28	3.7	17.5	54.7	16.8	11.4	38	-0.28	0.22	-0.07	0.72	119.8	70.7
90%	99%	50%	40%	35%	95%	90%	80%	25%	60%	35%	35%	65%	25%	40%	70%	80%

61

**HANELS WIDE TRACK H0079**

**3832930**

BW: 93 • Adj WW: 587 • Scan Wt: 1205 3/4 SM 1/4 AN • 1/21/20

SIRE 3C W/C RIGHT TRACK W9462 DAM BON VIEW NEW DESIGN 878  
W/C WIDE TRACK 694Y HANELS MISS DESIGN U826  
MISS WERNING 694S HANELS BLACK KELLY

SCAN DATA Adj. IMF: 3.72 • Adj. BF: 0.14 • Adj. REA: 16.68

CE	BW	WW	YW	ADG	MCE	MLK	MW	STY	DOC	CW	YG	MRB	BF	REA	API	TI
8.7	3.4	72.4	116.6	0.28	3.7	17.5	53.6	16.8	11.4	36.5	-0.28	0.22	-0.07	0.7	119.3	69.7
90%	95%	60%	50%	35%	95%	90%	85%	25%	60%	40%	35%	65%	25%	45%	70%	80%

60

**HANELS WIDE TRACK H0064**

**3832902**

BW: 92 • Adj WW: 632 • Scan Wt: 1340 3/4 SM 1/4 AN • 1/20/20

SIRE 3C W/C RIGHT TRACK W9462 DAM BON VIEW NEW DESIGN 878  
W/C WIDE TRACK 694Y HANELS MISS DESIGN U826  
MISS WERNING 694S HANELS BLACK KELLY

SCAN DATA Adj. IMF: 4.31 • Adj. BF: 0.19 • Adj. REA: 16.15

CE	BW	WW	YW	ADG	MCE	MLK	MW	STY	DOC	CW	YG	MRB	BF	REA	API	TI
8.7	3.9	77.9	124.4	0.29	3.7	17.5	56.4	16.8	11.4	39.6	-0.28	0.22	-0.07	0.74	120.6	72.4
90%	99%	40%	30%	30%	95%	90%	70%	25%	60%	30%	35%	65%	25%	35%	65%	70%

62

**HANELS WIDE TRACK H0059**

**3833077**

BW: 80 • Adj WW: 626 • Scan Wt: 1160 3/4 SM 1/4 AN • 1/19/20

SIRE 3C W/C RIGHT TRACK W9462 DAM BON VIEW NEW DESIGN 878  
W/C WIDE TRACK 694Y HANELS MISS DESIGN U826  
MISS WERNING 694S HANELS BLACK KELLY

SCAN DATA Adj. IMF: 3.85 • Adj. BF: 0.12 • Adj. REA: 17.48

CE	BW	WW	YW	ADG	MCE	MLK	MW	STY	DOC	CW	YG	MRB	BF	REA	API	TI
8.7	3.5	74.1	119.1	0.28	3.8	17.5	54.5	16.8	11.4	36.7	-0.28	0.22	-0.07	0.7	119.8	70.5
90%	95%	55%	40%	35%	95%	90%	80%	25%	60%	40%	35%	65%	25%	45%	70%	80%

# WIDE TRACK



# THE BLACK HAWK SONS



HOOK'S BLACK HAWK 50B - SIRE OF LOTS 63 - 64

63

**HANELS BLACKHAWK H0402**

**3846066**

BW: 84 • Adj WW: 783 • Scan Wt: 1330

PB SM • 1/8/20

SIRE HOOK'S XAVIER 14X  
**HOOK'S BLACK HAWK 50B**  
HOOK'S YVETTE 100Y

DAM HANELS BEEF C5007  
**HANELS MISS BEEF F8100**  
HANELS MISS PALE D6117

SCAN DATA Adj. IMF: 4.65 • Adj. BF: 0.29 • Adj. REA: 14.98

CE	BW	WW	YW	ADG	MCE	MLK	MW	STY	DOC	CW	YG	MRB	BF	REA	API	TI
12.8	0.8	84.8	131.1	0.29	8.5	20.7	62.5	18.6	13.4	39.3	-0.34	0.21	-0.06	1.02	149.5	85.2
25%	30%	20%	15%	15%	10%	75%	45%	20%	25%	20%	90%	30%	99%	20%	15%	20%

Black Hawk is the only bull in the Simmental database that combines calving ease and growth at his levels with accuracies over 0.80 for all growth traits. His muscle relative to stature further separates him as one of the unique proven sires in the Simmental population. There are two sons sired by Black Hawk that will sell on March 1 in Courtland, Kansas. H0402 is backed by F8100, a Beef C5007 daughter. He offers an impressive IMF of 4.65 and came to the weaning pen with over 780-pounds of performance.

64

**HANELS BLACK HAWK H0098**

**3833047**

BW: 90 • Adj WW: 662 • Scan Wt: 1210

3/4 SM 1/4 AN • 1/31/20

SIRE HOOK'S XAVIER 14X  
**HOOK'S BLACK HAWK 50B**  
HOOK'S YVETTE 100Y

DAM LRS TOP TEN 104A  
**HANELS MISS TEN F8023**  
HANELS MISS PALE D6129

SCAN DATA Adj. IMF: 3.55 • Adj. BF: 0.16 • Adj. REA: 17.85

CE	BW	WW	YW	ADG	MCE	MLK	MW	STY	DOC	CW	YG	MRB	BF	REA	API	TI
14.3	0	84.9	130.6	0.29	8.2	17.8	60.2	18	11.8	41.1	-0.31	0.18	-0.06	0.97	137.3	81.1
25%	40%	15%	20%	30%	30%	90%	50%	15%	55%	25%	25%	75%	35%	10%	35%	35%

Hanel Black Hawk H0098 is one of two sons of Hooks Black Hawk 50B sons to sell. H0098 is a standout calving ease bull that ranks among the top 25% for CE, top 15% WW, top 20% YW, top 25% CW, top 25% YG, top 10% REA, and top 15% Shr. He recorded a REA Ratio of 109.



# THE TREASURE SONS

LOT 65



Hanels Treasure H0053 is sired by MGR Treasure, a leader within the industry. Treasure has passed every test displaying over 1,700 progeny records for BW, and over 500 carcass ultrasound records, being tested in some of the breed's toughest contemporary groups. Treasure consistently stamps his progeny with an attractive design, extra length and superior foot quality. Treasure is the only sire in the main sire summary at his accuracy point to achieve his level of birth weight and growth. A maternal sister to H0053 sired by Cowboy Cut is employed by the Matt McCain family. H0053 is a performance driven half-blood SimAngus bull that will add profitability and consistency to any program.

65

**HANELS TREASURE H0053**

**3832941**

**BW: 88 • Adj WW: 643 • Scan Wt: 1215**

**1/2 SM 1/2 AN • 1/18/20**

**SIRE** V A R DISCOVERY 2240

**DAM** MR NLC SUPERIOR S6018

**MGR TREASURE**

**HANELS MISS NLC Z2239**

**SIH IMPRESSION OF 6108 1614**

**BDV BRIDGET T69**

**SCAN DATA Adj. IMF: 3.27 • Adj. BF: 0.21 • Adj. REA: 16.03**

CE	BW	WW	YW	ADG	MCE	MLK	MW	STY	DOC	CW	YG	MRB	BF	REA	API	TI
11.7	0.3	79.7	129.7	0.31	9.7	16.6	56.4	15.9	12	37.6	-0.11	0.43	-0.03	0.48	140.9	82.7
60%	50%	30%	20%	20%	10%	95%	70%	35%	50%	35%	85%	30%	75%	80%	25%	30%





# THE TREASURE SONS



MGR TREASURE - SIRE OF LOTS 65 - 69

66

**HANELS TREASURE H0060**

**3832908**

BW: 80 • Adj WW: 562 • Scan Wt: 1120 1/2 SM 1/2 AN • 1/19/20

SIRE V A R DISCOVERY 2240

DAM HANELS AXIS A3012

MGR TREASURE

HANELS MISS AXIS D6168

SJH IMPRESSION OF 6108 1614

HANELS MISS OLIE Y1025

SCAN DATA Adj. IMF: 4.11 • Adj. BF: 0.18 • Adj. REA: 13.67

CE	BW	WW	YW	ADG	MCE	MLK	MW	STY	DOC	CW	YG	MRB	BF	REA	API	TI
14.5	-1.5	72.9	123	0.31	11.4	13.4	49.8	15.7	12.6	35.7	-0.05	0.53	-0.02	0.36	146.3	81.6
25%	20%	60%	35%	20%	3%	99%	95%	40%	40%	40%	95%	15%	90%	95%	20%	35%

H0060 is another Treasure son that offers impressive CE and low birth genetics yet spreads to breed leading performance figures. Here is another big spread half-blood bull that is from an Axis daughter. He charts top 25% CE, top 20% BW, top 20% ADG, top 3% MCE, top 15% Marb, and top 20% API. Recommended for use on heifers.

67

**HANELS TREASURE H0089**

**3833052**

BW: 85 • Adj WW: 639 • Scan Wt: 1300 1/2 SM 1/2 AN • 1/27/20

SIRE V A R DISCOVERY 2240

DAM HANELS DOUBLE DOWN Y1211

MGR TREASURE

HANELS MISS DOWN C5065

SJH IMPRESSION OF 6108 1614

HANELS MISS OLIE Z2017

SCAN DATA Adj. IMF: 4.39 • Adj. BF: 0.23 • Adj. REA: 15.13

CE	BW	WW	YW	ADG	MCE	MLK	MW	STY	DOC	CW	YG	MRB	BF	REA	API	TI
14.3	-1.3	76.4	127.7	0.32	10.2	17.2	55.3	16.3	12.5	40.6	-0.05	0.59	-0.02	0.37	155.8	87
25%	20%	45%	25%	15%	10%	90%	75%	30%	45%	25%	95%	10%	75%	95%	10%	15%

H0089 is backed by a stout made Double Down cow that produced a son that was selected by Tom Blazek and daughters that are working for Scott Greene and Jeff Pruitt. H0089 boasts a sensible birth weight that is accompanied by a CE that ranks him among the top 25% of the breed and top 20% for BW. He also charts top 25% YW, top 15% ADG, top 10% MCE, top 30% Stay, top 10% Marb, and top 10% API. He offers an impressive IMF Ratio of 109.

68

**HANELS TREASURE H0057**

**3833072**

BW: 83 • Adj WW: 651 • Scan Wt: 1330 3/8 SM 5/8 AN • 1/18/20

SIRE V A R DISCOVERY 2240

DAM ELLINGSON OLIE W908

MGR TREASURE

HANELS MISS OLIE Y1025

SJH IMPRESSION OF 6108 1614

HANELS MISS DESIGN U821

SCAN DATA Adj. IMF: 3.98 • Adj. BF: 0.23 • Adj. REA: 15.56

CE	BW	WW	YW	ADG	MCE	MLK	MW	STY	DOC	CW	YG	MRB	BF	REA	API	TI
14.7	-0.9	84.6	142.1	0.36	12.1	15.4	57.6	15.8	12.3	45.4	-0.03	0.55	-0.02	0.41	151.7	88.8
25%	25%	20%	10%	3%	2%	99%	65%	40%	45%	15%	95%	15%	90%	90%	15%	10%

H0057 is a big spread low percentage SimAngus bull that is backed by the Y1025 matron. A sister by Broadway was purchased by Kenny Griess, and three other daughters have been retained in herd at HBS. He charts top 25% CE, top 25% BW, top 20% WW, top 10% YW, top 3% ADG, top 2% MCE, top 15% CW, top 15% Marb, top 15% API, and top 10% TI. He posts a WW Ratio of 108 and an IMF Ratio of 101. His sensible 83-pound birth weight combined with his predictors suggests he will be suitable for use on well managed heifers.

69

**HANELS TREASURE H0085**

**3833049**

BW: 87 • Adj WW: 583 • Scan Wt: 1150 1/2 SM 1/2 AN • 1/25/20

SIRE V A R DISCOVERY 2240

DAM HANELS PALE FACE A3024

MGR TREASURE

HANELS MISS PALE D6129

SJH IMPRESSION OF 6108 1614

HANELS MISS POWER X0615

SCAN DATA Adj. IMF: 4.12 • Adj. BF: 0.2 • Adj. REA: 16.06

CE	BW	WW	YW	ADG	MCE	MLK	MW	STY	DOC	CW	YG	MRB	BF	REA	API	TI
14	-0.3	78.7	128.6	0.31	10.4	16.5	55.8	13.9	12.6	34.3	-0.08	0.49	-0.02	0.41	144.1	84.7
30%	35%	35%	25%	20%	10%	95%	75%	60%	40%	45%	90%	20%	75%	90%	20%	20%

Here is a big spread bull that offers a 14 CE and spreads to an impressive 128 YW. He charts top 20% ADG, top 10% MCE, top 20% Marb, top 20% API, and top 20% TI. H0085 posted a 104 IMF Ratio.

# THE BLACKHAWK SONS

LOT 70



CONNELLY BLACKHAWK 6198 - SIRE OF LOTS 70 & 71

## BLACKHAWK

70

**HANELS BLACKHAWK H0002**

**3832893**

BW: 61 • Adj WW: 680 • Scan Wt: 1400 1/2 SM 1/2 AN • 1/1/20

SIRE CONNELLY ARMORY DAM HANELS DOUBLE B4252  
**CONNELLY BLACKHAWK 6198** **HANELS MISS DOUBLE F8156**  
 PRECIOUS OF CONANGA 380X HANELS MISS LEGEND X002

SCAN DATA Adj. IMF: 4.81 • Adj. BF: 0.24 • Adj. REA: 16.58

CE	BW	WW	YW	ADG	MCE	MLK	MW	STY	DOC	CW	YG	MRB	BF	REA	API	TI
11.7	0.7	88.4	144.3	0.35	6.6	22.6	66.7	16.2	14	53.9	-0.02	0.34	-0.02	0.5	139.2	85.5
60%	55%	10%	5%	5%	55%	50%	20%	35%	25%	4%	99%	40%	90%	80%	30%	20%

Hanels Blackhawk H0002 is the lead-off son of Connelly Blackhawk 6198 and is backed by the maternal influence of a standout two-year-old Double daughter. He ranks among the elite 10% for WW, top 5% YW, top 5% ADG, top 20% MWW, top 4% CW, top CW, top 30% API, and top 20% TI. He boasts a sensible birth weight of 61-pounds and scanned with an IMF Ratio of 119 and a REA Ratio of 101. He is a true beef bull that offers calving ease, vigor, and rapid growth. H0002 is recommended for use on heifers and is certain to add profitability to any set of calves.

71

**HANELS BLACKHAWK H008**

**3832885**

BW: 77 • Adj WW: 587 • Scan Wt: 1200 3/8 SM 5/8 AN • 1/5/20

SIRE CONNELLY ARMORY DAM W/C UNITED 956Y  
**CONNELLY BLACKHAWK 6198** **HANELS MISS UNITED F8086**  
 PRECIOUS OF CONANGA 380X HANELS MISS LEGEND W901

SCAN DATA Adj. IMF: 4.67 • Adj. BF: 0.3 • Adj. REA: 14.77

CE	BW	WW	YW	ADG	MCE	MLK	MW	STY	DOC	CW	YG	MRB	BF	REA	API	TI
13.1	-1.4	82.6	139.3	0.35	7.4	17.9	59.2	13.4	12.2	56.4	0.02	0.27	-0.01	0.47	129.5	81
40%	20%	25%	10%	5%	40%	90%	55%	65%	45%	3%	99%	55%	95%	85%	50%	35%

Hanels Blackhawk H008 is a powerful son of Connelly Blackhawk 6198 and from a hard-working two-year-old dam that is sired by W/C United 956Y. He offers a moderate 77-pound birth weight to accompany his double digit CED figure and negative birth weight. He spreads to impressive growth figures, ranking top 25% for WW, top 10% YW, top 5% ADG, and top 3% CW. He posted an IMF Ratio of 116 and BF Ratio of 116.



# THE YEARLING BULLS



CONNELLY LEGENDARY 644L - SIRE OF LOTS 72 & 73

72

**HANELS LEGENDARY H0018**

**3832871**

BW: 72 • Adj WW: 607 • Scan Wt: 1280

1/2 SM 1/2 AN • 1/8/20

SIRE QUAKER HILL RAMPAGE 0A36

DAM DIKEMANS DOUBLE DOWN 26W

CONNELLY LEGENDARY 644L

HANELS MISS DOWN B4505

JAZZED OF CONANGA 4660

BDV BRIDGET T69

SCAN DATA Adj. IMF: 3.55 • Adj. BF: 0.22 • Adj. REA: 16.91

CE	BW	WW	YW	ADG	MCE	MLK	MW	STY	DOC	CW	YG	MRB	BF	REA	API	TI
14.7	-2.1	74.3	113.8	0.25	7.6	17.1	54.2	15.1	13.4	44.7	-0.18	0.58	-0.03	0.78	152.6	86.5
25%	15%	50%	55%	60%	40%	95%	80%	45%	30%	15%	65%	10%	65%	30%	10%	15%

We incorporated the use of Connealy Legendary 644L into our program because we felt he was the most unique son of Rampage. He offers as much BW to WW spread as any bull in the breed with a MH EPD of a moderate +0.1! Legendary is moderate in size, big-hipped and super sound with tons of eye-appeal and added muscle. He will add end-product merit. H0018 is from a productive daughter of Double Down. He charts top 25% CE, top 15% BW, top 15% CW, top 10% Marb, top 10% API, and top 15% TI. Recommended for use on heifers.

73

**HANELS LEGENDARY H0090**

**3845898**

BW: 80 • Adj WW: 659 • Scan Wt: 1300

1/2 SM 1/2 AN • 1/28/20

SIRE QUAKER HILL RAMPAGE 0A36

DAM GLS INTEGRATE Z3

CONNELLY LEGENDARY 644L

HANELS MISS INT E7040

JAZZED OF CONANGA 4660

HANELS MISS AXIS A3241

SCAN DATA Adj. IMF: 4.07 • Adj. BF: 0.29 • Adj. REA: 13.83

CE	BW	WW	YW	ADG	MCE	MLK	MW	STY	DOC	CW	YG	MRB	BF	REA	API	TI
12.9	0.4	96.8	150.8	0.34	6.2	15.6	62.8	10.1	14.1	59.3	-0.15	0.45	-0.03	0.88	139.5	93
45%	50%	2%	3%	10%	65%	95%	35%	90%	25%	2%	75%	25%	65%	15%	30%	4%

Here is a half-blood SimAngus bull that tops the charts in terms of performance. H0090 ranks top 2% WW, top 3% YW, top 10% ADG, top 2% CW, top 15% REA, and top 4% TI. He boasts a WW Ratio of 105.

74

**HANELS COMRADE H0030**

**3832926**

BW: 80 • Adj WW: 602 • Scan Wt: 1260

1/2 SM 1/2 AN • 1/13/20

SIRE CONNEALY CONSENSUS 7229

DAM TRIPLE C INVASION R47K

CONNELLY COMRADE 1385

HANELS MISS VASION W919

HAPPY GEE OF CONANGA 919

S606 LEGACY H51 HBS

SCAN DATA Adj. IMF: 4.74 • Adj. BF: 0.21 • Adj. REA: 15.58

CE	BW	WW	YW	ADG	MCE	MLK	MW	STY	DOC	CW	YG	MRB	BF	REA	API	TI
15.3	-1.7	65.9	104.1	0.24	5.7	18.9	51.9	15.9	14.2	25.6	-0.21	0.37	-0.04	0.58	140	76.2
20%	15%	85%	75%	65%	70%	85%	90%	35%	20%	75%	55%	35%	65%	65%	30%	55%

Comrade H0030 is a big bodied, deep sided son of Connealy Comrade that offers tremendous calving ease and low birth genetics. His sensible birth weight is complimented by an impressive set of scan data that his highlighted by an IMF Ratio of 118. Recommended for use on heifers.

75

**HANELS CAPITALIST H0400**

**3845896**

BW: 74 • Adj WW: 722 • Scan Wt: 1120

3/4 SM 1/4 AN • 2/14/20

SIRE CONNEALY CAPITALIST 028

DAM CCR COWBOY CUT 5048Z

HANELS CAPITALIST F8097

HANELS MISS CUT E7074

HANELS MISS MFEST A3507

ES X51

SCAN DATA Adj. IMF: 3.39 • Adj. BF: 0.31 • Adj. REA: 15.86

CE	BW	WW	YW	ADG	MCE	MLK	MW	STY	DOC	CW	YG	MRB	BF	REA	API	TI
13.3	0.5	78.4	115.9	0.23	5.9	21.8	61.7	18.6	12.6	31.1	-0.18	0.23	-0.04	0.54	136.1	76.5
40%	55%	35%	50%	70%	70%	60%	40%	10%	40%	55%	65%	65%	65%	75%	35%	55%

Hanel Capitalist H0400 is a paternal grandson of Connealy Capitalist 028 that is supported by the maternal influence of the legendary CCR Cowboy Cut 5048Z. H0400 is also backed by the prolific X51 matron that was bred in the Eichacker Simmentals program of South Dakota. A big spread bull that offers a sensible 74-pound birth weight and spreads to over 700-pounds at weaning. Recommended for use on heifers.

# THE YEARLING BULLS

76

**HANELS CAPITALIST F8102**

**3832954**

BW: 80 • Adj WW: 683 • Scan Wt: 1150

3/4 SM 1/4 AN • 3/3/20

SIRE CONNEALY CAPITALIST 028

DAM HANELS DOUBLE DOWN Y1211

**HANELS CAPITALIST F8102**

**HANELS MISS DOWN C5084**

HANELS MISS LUCKY X0604

KAPPES UNITY R381 Z92

SCAN DATA Adj. IMF: 3.9 • Adj. BF: 0.22 • Adj. REA: 15.44

CE	BW	WW	YW	ADG	MCE	MLK	MW	STY	DOC	CW	YG	MRB	BF	REA	API	TI
10.2	1.6	75.4	117.1	0.26	5	25.3	62.9	17.6	12.8	34.3	-0.22	0.24	-0.05	0.6	127.3	74.6
80%	75%	50%	45%	50%	80%	30%	35%	20%	40%	45%	55%	65%	35%	60%	55%	60%

H0193 is a big topped, bold ribbed, thick ended grandson of Connealy Capitalist 028 and backed by the Double Down influence maternally. He records a balanced set of data that ranks in the top 20% for Stay. A sound footed, rugged designed bull that is built to last.

77

**HANELS CAPITALIST H0156**

**3833026**

BW: 83 • Adj WW: 666 • Scan Wt: 1200

3/4 SM 1/4 AN • 2/17/20

SIRE CONNEALY CAPITALIST 028

DAM HANELS PALE FACE A3035

**HANELS CAPITALIST F8102**

**HANELS MISS PALE D6110**

HANELS MISS LUCKY X0604

HANELS MISS LEGEND X083

SCAN DATA Adj. IMF: 4.33 • Adj. BF: 0.28 • Adj. REA: 15.8

CE	BW	WW	YW	ADG	MCE	MLK	MW	STY	DOC	CW	YG	MRB	BF	REA	API	TI
9.9	2.4	80.6	128.2	0.3	4.6	21.3	61.5	17.2	12.5	39	-0.21	0.2	-0.05	0.63	125.1	75.5
80%	90%	30%	25%	25%	85%	65%	40%	20%	45%	30%	55%	70%	35%	55%	60%	60%

H0156 is a high performing Connealy Capitalist 028 grandson that is among the top 30% for WW, top 25% YW, top 25% ADG, top 20% Stay, and top 30% CW. He boasts a WW Ratio of 110 and an IMF Ratio of 110. Performance and carcass merit wrapped into one!

78

**HANELS CAPITALIST H0174**

**3833001**

BW: 86 • Adj WW: 703 • Scan Wt: 1080

5/8 SM 3/8 AN • 2/26/20

SIRE CONNEALY CAPITALIST 028

DAM W/C UNITED 956Y

**HANELS CAPITALIST F8102**

**HANELS MISS UNITED F8032**

HANELS MISS LUCKY X0604

HANELS MISS BEEF C5028

SCAN DATA Adj. IMF: 3.45 • Adj. BF: 0.25 • Adj. REA: 16.31

CE	BW	WW	YW	ADG	MCE	MLK	MW	STY	DOC	CW	YG	MRB	BF	REA	API	TI
10.4	2	84	135.9	0.32	4.9	22.3	64.3	14.4	11.5	42	-0.12	0.25	-0.03	0.57	125	79.2
75%	80%	20%	15%	15%	85%	55%	30%	55%	60%	20%	80%	60%	75%	65%	60%	45%

H0174 is from the Connealy Capitalist 028 influence and backed by a hard-working two-year-old daughter of W/C United 956Y. He ranks top 20% WW, top 15% YW, top 15% ADG, and top 20% CW. He posted a WW Ratio of 107.

79

**HANELS 2020 H0154**

**3832932**

BW: 87 • Adj WW: 606 • Scan Wt: 1130

PB SM • 2/17/20

SIRE HANELS PER VISION 2020

DAM SVF/NJC MO BETTER M217

**HANELS 2020 F8067**

**HANELS MISS MO Z2232**

HANELS MISS OLIE Z2200

COTT MANDRA 257M

SCAN DATA Adj. IMF: 3.53 • Adj. BF: 0.23 • Adj. REA: 16.51

CE	BW	WW	YW	ADG	MCE	MLK	MW	STY	DOC	CW	YG	MRB	BF	REA	API	TI
9.9	2.3	74	120.5	0.29	4.3	24.2	61.1	17.8	10.3	39.5	-0.34	0.05	-0.09	0.76	125.8	72.9
65%	65%	60%	35%	15%	80%	45%	55%	30%	65%	15%	90%	70%	60%	80%	55%	70%

H0154 is from the F8067 herd sire and backed by the Mo Better influence of Z2232. A maternal brother sired by Blueprint was purchased by Raymond Mason last year, and Doug Stensaas purchased a Cowboy Cut sired maternal brother the year prior. He charts top 35% YW, top 15% ADG, top 30% Stay, and top 15% CW.

80

**HANELS PALE FACE H0137**

**3833060**

BW: 92 • Adj WW: 703 • Scan Wt: 1205

5/8 SM 3/8 AN • 2/10/20

SIRE HANELS PALE FACE A3024

DAM HANELS HOOVER DAM A3029

**HANELS PALE FACE F8154**

**HANELS MISS HOOVER D6078**

HANELS MISS STIM A3038

HANELS MISS STIM B4037

SCAN DATA Adj. IMF: 3.23 • Adj. BF: 0.28 • Adj. REA: 15.67

CE	BW	WW	YW	ADG	MCE	MLK	MW	STY	DOC	CW	YG	MRB	BF	REA	API	TI
10.2	2.8	82.5	118.7	0.23	5	28.7	69.9	17.5	11.9	32.8	-0.29	0.28	-0.06	0.78	128.8	78.6
80%	90%	25%	45%	70%	80%	10%	10%	20%	50%	50%	35%	55%	35%	30%	50%	45%

H0137 is sired by resident herd sire, Pale Face, and backed by a Hoover Dam bred female that produced a Top Ten daughter that is working in the 4S Land and Cattle Company program. He posts an impressive WW Ratio of 116. H0137 ranks top 25% for WW, top 10% Milk, top 10% MWW, and top 30% REA.

81

**HANELS UNITED H0149**

**3832997**

BW: 70 • Adj WW: 659 • Scan Wt: 1180

5/8 SM 3/8 AN • 2/15/20

SIRE HANELS UNITED D6034

DAM LRS TOP TEN 104A

**HANELS UNITED F8133**

**HANELS MISS TEN D6009**

HANELS MISS HUMMER W923

HANELS MISS DAY B4088

SCAN DATA Adj. IMF: 3.73 • Adj. BF: 0.22 • Adj. REA: 15.34

CE	BW	WW	YW	ADG	MCE	MLK	MW	STY	DOC	CW	YG	MRB	BF	REA	API	TI
14.6	-2	83.3	127.2	0.27	8.7	23.6	65.2	13.2	10.5	39.6	-0.24	0.31	-0.05	0.78	137.6	85.9
25%	15%	20%	25%	40%	20%	40%	25%	70%	70%	30%	45%	50%	50%	30%	35%	20%

H0149 is sired by the junior herd sire, Hanel United F8133. His dam is a super productive Top Ten daughter. He ranks among the top 25% for CE, top 15% BW, top 20% WW, top 25% YW, top 20% MCE, top 25% MWW, and top 20% TI. He boasts a sensible birth weight of 70-pounds and spreads to a WW Ratio of 108. Recommended for use on heifers.



# THE SIMCHAR BULLS



LOT 82



CCC WC RESOURCE 417 P  
SIRE OF LOTS 82 - 84, AND PATERNAL GRANDSIRE OF LOT 85

82

**HANELS RESOURCE H0091**

**3832958**

BW: 82 • Adj WW: 596 • Scan Wt: 1200 1/2 SM 1/2 CH • 1/29/20

SIRE LT RUSHMORE 8060 PLD  
CCC WC RESOURCE 417 P  
WC CCC BLUE GIRL 1528 P

DAM HC HUMMER 12M  
HANELS MISS HUMMER W923  
GW MISS LUCKY STRIKE 309

SCAN DATA Adj. IMF: 3.85 • Adj. BF: 0.2 • Adj. REA: 15.51

CE	BW	WW	YW	ADG	MCE	MLK	MW	STY	DOC	CW	YG	MRB	BF	REA	API	TI
12.7	1.7	75.8	93.3	0.11	5	26.6	64.4	11.6	9.9	34.2	-0.74	0.03	-0.14	1.54	105.3	70.9
45%	75%	45%	90%	99%	80%	20%	25%	80%	80%	45%	1%	95%	1%	1%	90%	75%

We initiate the SimChar section of the catalog with a tremendous half-blood sired by the industry leading CCC WC Resource 417 P that has solidified his place in the industry as one of the truly elite breeding bulls. A full brother was purchased last year by Raymond Mason. Here is a long bodied, thick made bull that is sure to add pounds of pay weight to your next calf crop and increase their carcass quality and profitability. He charts among the top 1% for YG, top 1% BF, and top 1% REA. Put this smoky hided stud to work today if you are serious about adding pay weight to your feeder cattle!

83

**HANELS RESOURCE H0106**

**3832935**

BW: 87 • Adj WW: 638 • Scan Wt: 1190 1/2 SM 1/2 CH • 2/1/20

SIRE LT RUSHMORE 8060 PLD  
CCC WC RESOURCE 417 P  
WC CCC BLUE GIRL 1528 P

DAM MR NLC SUPERIOR S6018  
HANELS MISS NLC Z2235  
BDV BRIDGET T69

SCAN DATA Adj. IMF: 3.22 • Adj. BF: 0.24 • Adj. REA: 15.21

CE	BW	WW	YW	ADG	MCE	MLK	MW	STY	DOC	CW	YG	MRB	BF	REA	API	TI
9.8	2.8	82	101.4	0.12	3.2	24.5	65.4	12.9	10.1	38.3	-0.74	-0.15	-0.14	1.55	94.4	68
80%	90%	25%	80%	99%	95%	35%	25%	70%	75%	35%	1%	99%	1%	1%	99%	85%

H0106 is another stout featured, long bodied, thick ended son of Resource that is backed by a productive MR NLC Superior S6018 daughter. Last year she produced a Main Event son that was purchased by David Forshee. He ranks top 25% YW, top 25% MWW, top 1% YG, top 1% BF, and top 1% REA. He posted a WW Ratio of 106.

84

**HANELS RESOURCE H0062**

**3832971**

BW: 94 • Adj WW: 621 • Scan Wt: 1190 1/2 SM 1/2 CH • 1/19/20

SIRE LT RUSHMORE 8060 PLD  
CCC WC RESOURCE 417 P  
WC CCC BLUE GIRL 1528 P

DAM SAND RANCH HAND  
HANELS MISS RANCH X003  
HANEL/KSU MISS DREAMGIRL

SCAN DATA Adj. IMF: 3.45 • Adj. BF: 0.18 • Adj. REA: 13.91

CE	BW	WW	YW	ADG	MCE	MLK	MW	STY	DOC	CW	YG	MRB	BF	REA	API	TI
10.9	3.3	82	104.1	0.14	4.7	21.8	62.8	10.9	11	38.1	-0.76	-0.03	-0.15	1.55	98.3	70.7
70%	95%	25%	75%	99%	85%	60%	35%	85%	65%	35%	1%	99%	1%	1%	95%	80%

H0062 is another half-blood Simmental that is sired by the breed leading Charolais sire, CCC WC Resource 417 P. Resource has solidified his position as an elite breeding bull within the beef cattle industry. H0062 ranks top 25% WW, top 1% YG, top 1% BF, and top 1% REA. A terminal cross sire that will add tremendous value to a set of feeder cattle out of a british based cow herd.

85

**HANELS RESOURCE H0189**

**3833019**

BW: 95 • Adj WW: 803 • Scan Wt: 1330 3/4 SM 1/4 CH • 2/29/20

SIRE CCC WC RESOURCE 417 P  
HANELS RESOURCE F8126  
HANELS MISS LEGEND U8147

DAM HANELS PALE FACE A3035  
HANELS MISS PALE D6117  
KAPPES UNITY R381 Z92

SCAN DATA Adj. IMF: 4.14 • Adj. BF: 0.24 • Adj. REA: 19.2

CE	BW	WW	YW	ADG	MCE	MLK	MW	STY	DOC	CW	YG	MRB	BF	REA	API	TI
8.7	5	96.6	139.3	0.27	5.3	21	69.2	14.6	11.5	43.3	-0.57	0.03	-0.11	1.34	110.2	78.4
90%	99%	2%	10%	40%	80%	65%	10%	50%	60%	20%	1%	95%	1%	1%	85%	45%

H0189 is a performance standout sired by Resource and supported by a stout made Pale Face daughter. A maternal sister to H0189 was purchased by Max McCain. H0189 ranks top 2% for WW, top 10% YW, top 10% MWW, top 1% YW, top 1% BF, and top 1% REA. He scanned with a massive REA and posted a 117 REA Ratio. He is a big-time performance stud that came to the weaning pen with over 800-pounds of performance and recorded a WW Ratio of 122. Whether you sell your calves at weaning or retain ownership, pay close attention to the profit potential that H0189 offers.

# THE AGE ADVANTAGE BULLS

LOT 86



We initiate the Fall Strong Aged bulls with a set of flush mate brothers that are sired by the iconic CCR Cowboy Cut 5048Z. Cowboy Cut continues to make a substantial impact on the Simmental breed and the beef cattle industry due to his consistency and ability to sire cattle that perform in a wide variety of different environments. The dam of this powerful set of flush brothers is Hanel's Miss Legend W983, a tremendous granddaughter of Nichols Legacy S605 that is backed by the influence of SAV 5175 Bando 1024 on her maternal side. G9515 is a prime example of the length of body, stoutness of hip, power and shape that this set of flush brothers represent. If your program is looking to add heterosis and turn out a set of bulls that will add a terminal compliment to a productive set of Angus based cows, pay close attention here. We have begun to utilize more embryo transfer in order to provide larger selections of full and half-brothers to add consistency and profitability to your bottomline.

86

**HANELS COWBOY CUT G9515**

**3696372**

**BW: 99 • Adj WW: 626 • Act. YW: 1480**

**PB SM • 8/27/19**

**SIRE** TRIPLE C SINGLETARY S3H

**DAM** HANELS LEGEND S605

**CCR COWBOY CUT 5048Z**

**HANELS MISS LEGEND W983**

CCR MS 4045 TIME 7322T

R512 BANDO HBS

**SCAN DATA** Adj. IMF: 5.05 • Adj. BF: 0.1 • Adj. REA: 17.25

CE	BW	WW	YW	ADG	MCE	MLK	MW	STY	DOC	CW	YG	MRB	BF	REA	API	TI
9.9	3.1	88.8	131.2	0.26	5.5	28.2	72.6	20.8	15.4	39.4	-0.32	0.23	-0.07	0.86	144.1	85
65%	80%	15%	15%	35%	55%	20%	10%	4%	10%	20%	95%	25%	95%	55%	20%	20%

COWBOY CUT



# THE AGE ADVANTAGE BULLS



CCR COWBOY CUT 5048Z  
SIRE OF LOTS 86 - 92  
AND PATERNAL GRANDSIRE  
OF LOTS 93 - 101

87

**HANELS COWBOY CUT G9516**

**3696385**

BW: 82 • Adj WW: 602 • Act. YW: 1450

PB SM • 8/28/19

SIRE TRIPLE C SINGLETARY S3H  
CCR COWBOY CUT 5048Z  
CCR MS 4045 TIME 7322T

DAM HANELS LEGEND S605  
HANELS MISS LEGEND W983  
R512 BANDO HBS

SCAN DATA Adj. IMF: 3.83 • Adj. BF: 0.3 • Adj. REA: 16.31

CE	BW	WW	YW	ADG	MCE	MLK	MW	STY	DOC	CW	YG	MRB	BF	REA	API	TI
9.9	3.1	88.8	131.2	0.26	5.5	28.2	72.6	20.8	15.4	39.4	-0.32	0.23	-0.07	0.86	144.1	85
65%	80%	15%	15%	35%	55%	20%	10%	4%	10%	20%	95%	25%	95%	55%	20%	20%

88

**HANELS COWBOY CUT G9505**

**3696396**

BW: 82 • Adj WW: 638 • Act. YW: 1380

PB SM • 8/22/19

SIRE TRIPLE C SINGLETARY S3H  
CCR COWBOY CUT 5048Z  
CCR MS 4045 TIME 7322T

DAM HANELS LEGEND S605  
HANELS MISS LEGEND W983  
R512 BANDO HBS

SCAN DATA Adj. IMF: 3.6 • Adj. BF: 0.24 • Adj. REA: 16.72

CE	BW	WW	YW	ADG	MCE	MLK	MW	STY	DOC	CW	YG	MRB	BF	REA	API	TI
9.9	3.1	88.8	131.2	0.26	5.5	28.2	72.6	20.8	15.4	39.4	-0.32	0.23	-0.07	0.86	144.1	85
65%	80%	15%	15%	35%	55%	20%	10%	4%	10%	20%	95%	25%	95%	55%	20%	20%

89

**HANELS COWBOY CUT G9510**

**3696397**

BW: 88 • Adj WW: 626 • Act. YW: 1380

PB SM • 8/23/19

SIRE TRIPLE C SINGLETARY S3H  
CCR COWBOY CUT 5048Z  
CCR MS 4045 TIME 7322T

DAM HANELS LEGEND S605  
HANELS MISS LEGEND W983  
R512 BANDO HBS

SCAN DATA Adj. IMF: 4.28 • Adj. BF: 0.24 • Adj. REA: 16.94

CE	BW	WW	YW	ADG	MCE	MLK	MW	STY	DOC	CW	YG	MRB	BF	REA	API	TI
9.9	3.1	88.8	131.2	0.26	5.5	28.2	72.6	20.8	15.4	39.4	-0.32	0.23	-0.07	0.86	144.1	85
65%	80%	15%	15%	35%	55%	20%	10%	4%	10%	20%	95%	25%	95%	55%	20%	20%

90

**HANELS COWBOY CUT G9507**

**3696400**

BW: 80 • Adj WW: 644 • Act. YW: 1450

PB SM • 8/22/19

SIRE TRIPLE C SINGLETARY S3H  
CCR COWBOY CUT 5048Z  
CCR MS 4045 TIME 7322T

DAM HANELS LEGEND S605  
HANELS MISS LEGEND W983  
R512 BANDO HBS

SCAN DATA Adj. IMF: 4.05 • Adj. BF: 0.33 • Adj. REA: 16.39

CE	BW	WW	YW	ADG	MCE	MLK	MW	STY	DOC	CW	YG	MRB	BF	REA	API	TI
9.9	3.1	88.8	131.2	0.26	5.5	28.2	72.6	20.8	15.4	39.4	-0.32	0.23	-0.07	0.86	144.1	85
65%	80%	15%	15%	35%	55%	20%	10%	4%	10%	20%	95%	25%	95%	55%	20%	20%

91

**HANELS COWBOY CUT G9504**

**3696402**

BW: 78 • Adj WW: 640 • Act. YW: 1440

PB SM • 8/21/19

SIRE TRIPLE C SINGLETARY S3H  
CCR COWBOY CUT 5048Z  
CCR MS 4045 TIME 7322T

DAM HANELS LEGEND S605  
HANELS MISS LEGEND W983  
R512 BANDO HBS

SCAN DATA Adj. IMF: 4.24 • Adj. BF: 0.4 • Adj. REA: 15.59

CE	BW	WW	YW	ADG	MCE	MLK	MW	STY	DOC	CW	YG	MRB	BF	REA	API	TI
9.9	3.1	88.8	131.2	0.26	5.5	28.2	72.6	20.8	15.4	39.4	-0.32	0.23	-0.07	0.86	144.1	85
65%	80%	15%	15%	35%	55%	20%	10%	4%	10%	20%	95%	25%	95%	55%	20%	20%

92

**HANELS COWBOY CUT G9508**

**3696413**

BW: 81 • Adj WW: 662 • Act. YW: 1485

PB SM • 8/22/19

SIRE TRIPLE C SINGLETARY S3H  
CCR COWBOY CUT 5048Z  
CCR MS 4045 TIME 7322T

DAM HANELS LEGEND S605  
HANELS MISS LEGEND W983  
R512 BANDO HBS

SCAN DATA Adj. IMF: 4.16 • Adj. BF: 0.27 • Adj. REA: 15.39

CE	BW	WW	YW	ADG	MCE	MLK	MW	STY	DOC	CW	YG	MRB	BF	REA	API	TI
9.9	3.1	88.8	131.2	0.26	5.5	28.2	72.6	20.8	15.4	39.4	-0.32	0.23	-0.07	0.86	144.1	85
65%	80%	15%	15%	35%	55%	20%	10%	4%	10%	20%	95%	25%	95%	55%	20%	20%

# THE AGE ADVANTAGE BULLS

93

**HANELS COWBOY CUT G9530**

**3696370**

BW: 90 • Adj WW: 590 • Act. YW: 1260

PB SM • 9/22/19

SIRE CCR COWBOY CUT 5048Z  
**HANELS COWBOY CUT D6208**  
ES X51

DAM ELLINGSON OLIE W908  
**HANELS MISS OLIE A3209**  
BROOKS MISS RENE

SCAN DATA Adj. IMF: 3.88 • Adj. BF: 0.15 • Adj. REA: 16.83

CE	BW	WW	YW	ADG	MCE	MLK	MW	STY	DOC	CW	YG	MRB	BF	REA	API	TI
10.6	3	84.6	123.1	0.24	5.3	24.2	66.5	20.5	13	29.1	-0.45	0.07	-0.09	0.92	134.3	78.7
55%	80%	20%	30%	50%	60%	45%	25%	10%	25%	50%	40%	65%	40%	40%	35%	40%

G9530 leads off the D6208 sire group with stoutness and power. A long bodied, thick ended, big footed strong aged bull that is ready for heavy service. He charts top 20% WW, top 30% YW, top 25% MWW, top 10% Stay, and top 25% Shr. A maternal brother was selected by Tim Sjogren in the sale last year.

94

**HANELS COWBOY CUT G9519**

**3696374**

BW: 84 • Adj WW: 590 • Act. YW: 1410

PB SM • 9/9/19

SIRE CCR COWBOY CUT 5048Z  
**HANELS COWBOY CUT D6208**  
ES X51

DAM HANELS DOWN C5067  
**HANELS MISS DOWN E7204**  
HANELS MISS UNITED B4551

SCAN DATA Adj. IMF: 3.85 • Adj. BF: 0.25 • Adj. REA: 17.67

CE	BW	WW	YW	ADG	MCE	MLK	MW	STY	DOC	CW	YG	MRB	BF	REA	API	TI
10.1	2.9	84.6	126.2	0.26	5.5	21.8	64.1	17.6	13.3	29.3	-0.29	0.15	-0.06	0.71	132.2	80
60%	80%	20%	25%	35%	55%	65%	40%	35%	25%	50%	99%	40%	95%	85%	40%	35%

Hanel Cowboy Cut G9519 is a big ended, long sided, sound-built bull with substance and eye appeal. He charts top 20% WW, top 25% YW, top 35% ADG, top 35% Stay, top 25% Doc, and top 20% Shr.

95

**HANELS COWBOY CUT G9534**

**3696395**

BW: 90 • Adj WW: 608 • Act. YW: 1430

PB SM • 9/24/19

SIRE CCR COWBOY CUT 5048Z  
**HANELS COWBOY CUT D6208**  
ES X51

DAM WHEATLAND HIGH OCTANE 169Y  
**HANELS MISS OCTANE C5243**  
BDV BRIDGET 69

SCAN DATA Adj. IMF: 3.35 • Adj. BF: 0.3 • Adj. REA: 15.86

CE	BW	WW	YW	ADG	MCE	MLK	MW	STY	DOC	CW	YG	MRB	BF	REA	API	TI
9.1	3.6	82.9	120.4	0.23	4	23.4	64.8	18.2	14.1	29.2	-0.44	0.06	-0.08	1.01	125.7	76.5
75%	90%	25%	35%	60%	85%	50%	35%	25%	15%	50%	45%	70%	80%	25%	55%	50%

G9534 is a powerful Purebred Simmental that will add tremendous density and power to a set of Angus based cows. He charts top 25% WW, top 35% YW, top 25% Stay, top 15% Doc, and top 25% REA. Darren Schmitt selected a maternal brother to G9534 in the sale last year that was sired by Top Ten.

96

**HANELS COWBOY CUT G9523**

**3696404**

BW: 91 • Adj WW: 612 • Act. YW: 1350

PB SM • 9/13/19

SIRE CCR COWBOY CUT 5048Z  
**HANELS COWBOY CUT D6208**  
ES X51

DAM MR NLC SUPERIOR S6018  
**HANELS MISS NLC X008**  
R508 JOKER HBS

SCAN DATA Adj. IMF: 3.65 • Adj. BF: 0.2 • Adj. REA: 16.39

CE	BW	WW	YW	ADG	MCE	MLK	MW	STY	DOC	CW	YG	MRB	BF	REA	API	TI
8.7	3.2	79.2	113.1	0.21	4.6	26.7	66.2	19.6	12.2	29.9	-0.42	-0.03	-0.09	0.89	121.6	72.5
80%	85%	40%	55%	75%	75%	25%	30%	15%	40%	50%	55%	90%	60%	50%	65%	70%

G9523 is a big hipped, thick quartered bull that is rugged and masculine in his basic build. He ranks top 25% Milk, top 15% Stay, and top 20% Shr. Two years ago, a maternal brother was purchased by Trent Sorenson. Pounds pay!

97

**HANELS COWBOY CUT G9527**

**3696405**

BW: 87 • Adj WW: 604 • Act. YW: 1380

PB SM • 9/17/19

SIRE CCR COWBOY CUT 5048Z  
**HANELS COWBOY CUT D6208**  
ES X51

DAM HANELS PALE FACE A3024  
**HANELS MISS PALE D6225**  
HANELS MISS HUMMER W9605

SCAN DATA Adj. IMF: 4.74 • Adj. BF: 0.27 • Adj. REA: 16.32

CE	BW	WW	YW	ADG	MCE	MLK	MW	STY	DOC	CW	YG	MRB	BF	REA	API	TI
11.7	2.3	82.8	119.2	0.23	5.7	23.9	65.3	17.7	13.2	27.6	-0.39	0.09	-0.08	0.82	131.4	78.8
40%	65%	25%	40%	60%	50%	45%	30%	30%	25%	60%	70%	60%	60%	65%	40%	40%

G9527 is a product of the program! He is sired by D6208 and backed by a Pale Face daughter that never misses. He ranks top 25% WW, top 25% Doc, and top 20% Shr.

98

**HANELS COWBOY CUT G9528**

**3696411**

BW: 84 • Adj WW: 612 • Act. YW: 1360

3/4 SM 1/4 CH • 9/18/19

SIRE CCR COWBOY CUT 5048Z  
**HANELS COWBOY CUT D6208**  
ES X51

DAM LT-WC TEMPLETON 1483 PLD ET  
**HANELS MISS TEMPLE C5214**  
HANELS MISS HUMMER Z2046

SCAN DATA Adj. IMF: 4.15 • Adj. BF: 0.2 • Adj. REA: 15.37

CE	BW	WW	YW	ADG	MCE	MLK	MW	STY	DOC	CW	YG	MRB	BF	REA	API	TI
11.5	2.8	80.7	110.4	0.19	6.3	21.3	61.6	16.2	10.6	26.4	-0.43	0.09	-0.09	0.89	116.3	72.4
60%	90%	30%	60%	95%	60%	65%	40%	35%	70%	75%	5%	90%	10%	15%	75%	70%

G9528 is a powerhouse of a three-quarter blood Simmental bull. His Templeton sired dam has previously produced two daughters that have been retained in herd. If you are searching for an older bull to cover a larger number of cows and want to inject more power, substance, and carcass merit into your program, then look no further. He ranks top 5% YG, top 10% BF, and top 15% REA.



# THE AGE ADVANTAGE BULLS

99

**HANELS COWBOY CUT G9526**

**3696414**

BW: 80 • Adj WW: 617 • Act. YW: 1500

PB SM • 9/15/19

SIRE CCR COWBOY CUT 5048Z  
**HANELS COWBOY CUT D6208**  
ES X51

DAM HANELS PALE FACE A3035  
**HANELS MISS PALE D6141**  
T748 EXPRESSWAY HBS

SCAN DATA Adj. IMF: 3.85 • Adj. BF: 0.25 • Adj. REA: 18.09

CE	BW	WW	YW	ADG	MCE	MLK	MW	STY	DOC	CW	YG	MRB	BF	REA	API	TI
11.1	1.8	74.9	110.6	0.22	7	18.5	55.9	16.3	12.3	25	-0.33	0.11	-0.07	0.69	126.8	74.4
45%	55%	60%	60%	65%	30%	90%	80%	50%	35%	70%	90%	55%	95%	90%	50%	60%

G9526 is a long sided, deep quartered son of D6208. His dam is sired by Pale Face and further influenced by KSU Expressway 33R. He charts balanced figures and scan data across the board. G9526 is one of the larger REA bulls in the fall division.

100

**HANELS COWBOY CUT G9539**

**3696415**

BW: 82 • Adj WW: 596 • Act. YW: 1290

3/4 SM 1/4 AN • 9/30/19

SIRE CCR COWBOY CUT 5048Z  
**HANELS COWBOY CUT D6208**  
ES X51

DAM ELLINGSON OLIE W908  
**HANELS MISS OLIE Y1202**  
HANELS MISS DESIGN W950

SCAN DATA Adj. IMF: 3.79 • Adj. BF: 0.26 • Adj. REA: 16.12

CE	BW	WW	YW	ADG	MCE	MLK	MW	STY	DOC	CW	YG	MRB	BF	REA	API	TI
11.7	1.9	81.1	122.6	0.26	5.8	23.6	64.1	18.4	13.2	33.5	-0.31	0.17	-0.07	0.76	128.6	76.2
60%	80%	25%	35%	50%	70%	40%	30%	15%	35%	50%	25%	80%	25%	30%	50%	55%

G9539 is from the influence of Cowboy Cut and backed by a productive Olie daughter. He charts top 25% WW, top 35% YW, top 15% Stay, top 25% YG, and top 25% BF.

101

**HANELS COWBOY CUT G9518**

**3696418**

BW: 98 • Adj WW: 602 • Act. YW: 1252

PB SM • 9/8/19

SIRE CCR COWBOY CUT 5048Z  
**HANELS COWBOY CUT D6208**  
ES X51

DAM HANELS PALE FACE A3024  
**HANELS MISS PALE E7520**  
HANELS MISS FREE C5241

SCAN DATA Adj. IMF: 4.76 • Adj. BF: 0.17 • Adj. REA: 14.38

CE	BW	WW	YW	ADG	MCE	MLK	MW	STY	DOC	CW	YG	MRB	BF	REA	API	TI
10.3	4.1	88.7	130.1	0.26	5.1	22.5	66.8	17.5	13.7	27.7	-0.39	0.1	-0.08	0.85	129.6	80.5
60%	95%	15%	20%	35%	65%	60%	25%	35%	20%	60%	70%	55%	80%	60%	45%	35%

Hanel Cowboy Cut G9518 is a performance standout from the Cowboy Cut sire line. He charts top 15% WW, top 20% YW, top 25% MWW, top 20% Doc, and top 25% Shr. He boasts an impressive IMF of 4.76 and comes from a productive young daughter of Pale Face.



# THE AGE ADVANTAGE BULLS

LOT 102



G33 is a tremendous half-blood herd sire prospect that is among the top 25% of the breed for BW and offers a double-digit CE EPD that supports a sensible 69-pound birth weight. His maternal pedigree traces to the strong influence of OCC Missing Link 830M. Here is a long bodied, square made, sound footed bull that can be used on well managed heifers. A standout among the Strong Aged bulls that is ready for heavy service.

102

WCCC/HANEL CASH G33

3725127

BW: 69 • Adj WW: 632 • Act. YW: 1560

1/2 SM 1/2 AN • 9/2/19

SIRE CNS PAYS TO DREAM T759

DAM LD MISSING LINK 9011

SC PAY IN CASH C15

ACR EVER ENTENSE 5108

LLSF URABABYDOLL U194

A CROSS EVER ENTENSE A1537

SCAN DATA Adj. IMF: 4.62 • Adj. BF: 0.24 • Adj. REA: 16.56

CE	BW	WW	YW	ADG	MCE	MLK	MW	STY	DOC	CW	YG	MRB	BF	REA	API	TI
12.8	-1	65.1	99.2	0.21	6	18.6	51.1	14.4	9.5	36.5	-0.1	0.39	-0.01	0.58	132.1	74.3
45%	25%	85%	85%	85%	65%	85%	90%	55%	85%	40%	85%	35%	90%	65%	45%	65%





# THE AGE ADVANTAGE BULLS

## 103

### WSCC/HANEL CASH G43

### 3725128

BW: 76 • Adj WW: 602 • Act. YW: 1470

1/2 SM 1/2 AN • 9/3/19

SIRE CNS PAYS TO DREAM T759

DAM SCHURRTOP MC 2500

SC PAY IN CASH C15

WHITE STAR BLACK GLOW56T

LLSF URABABYDOLL U194

K M PRINCESS 69A

SCAN DATA Adj. IMF: 4.24 • Adj. BF: 0.34 • Adj. REA: 15.52

CE	BW	WW	YW	ADG	MCE	MLK	MW	STY	DOC	CW	YG	MRB	BF	REA	API	TI
10.3	0.2	58.3	89.5	0.2	6.3	20.2	49.3	11.1	8.2	29.8	-0.09	0.41	-0.02	0.38	118.7	69
75%	45%	95%	95%	90%	60%	75%	95%	85%	90%	60%	90%	30%	75%	95%	70%	85%

G43 is another Pay In Cash son that is from the famed Princess cow family. He charts among the top 30% of the breed for Marb. He is another half-blood herd sire prospect that offers a sensible birth weight and could be used on heifers and production age cows.

## 105

### WSCC/HANEL CAL G31

### 3725126

BW: 79 • Adj WW: 674 • Act. YW: 1540

3/4 SM 1/4 AN • 9/1/19

SIRE HOOK'S XAVIER 14X

DAM HOOKS ABSOLUTE 75A

HOOK'S CALCULATOR 5C

E07

HOOKS ADORA 9A

PVF J.T. B42

SCAN DATA Adj. IMF: 3.71 • Adj. BF: 0.15 • Adj. REA: 18.91

CE	BW	WW	YW	ADG	MCE	MLK	MW	STY	DOC	CW	YG	MRB	BF	REA	API	TI
11.5	1.6	84.1	126.7	0.27	7.1	22.7	64.7	18.3	3.1	41.1	-0.44	0.37	-0.07	1.2	141.7	83.9
60%	75%	20%	25%	40%	45%	50%	25%	15%	99%	25%	5%	35%	15%	1%	25%	25%

G31 is a son of Hooks Calculator 5C that is backed by a Hooks Absolute 75A daughter. Here is a powerful three-quarter blood Simmental that charts among the top 20% for WW, top 25% YW, top 15% Stay, top 25% CW, top 5% YG, top 15% BF, top 1% REA, top 25% Shr, top 25% API, and top 25% TI. G31 is homozygous polled.

## 104

### HANELS BOULDER G9533

### 3696421

BW: 59 • Adj WW: 586 • Act. YW: 1190

5/8 SM 3/8 AN • 8/15/19

SIRE HOOVER DAM

DAM CCR COWBOY CUT 5048Z

CCR BOULDER 1339A

HANELS MISS CUT E7500

CCR MS L TAYLOR 1339Y

HANELS MISS DESIGN U826

SCAN DATA Adj. IMF: 4.46 • Adj. BF: 0.19 • Adj. REA: 16.13

CE	BW	WW	YW	ADG	MCE	MLK	MW	STY	DOC	CW	YG	MRB	BF	REA	API	TI
13.6	-0.3	75.1	115.5	0.25	8.7	22.4	59.9	18.5	16.2	24.9	-0.34	0.5	-0.07	0.75	151.6	83.9
35%	35%	50%	50%	60%	20%	55%	50%	10%	10%	80%	20%	20%	25%	35%	15%	25%

G9533 is the lone son of Boulder in the Fall division. He is backed by a young daughter of Cowboy Cut that is further influenced by the great Bon View New Design 878. He offers a 13.6 CE and negative BW EPD to accompany his moderate 59-pound actual birth weight. He charts among the top 20% for MCE, top 10% Stay, top 10% Doc, top 20% YG, top 20% Marb, top 25% BF, top 20% Shr, top 15% API, and top 25% TI. Recommended for use on heifers.



CCR BOULDER 1339A - SIRE OF LOT 104



# THE ANGUS BULLS

LOT 106



Hanels Blackhawk H0003 leads off the Angus division. He is sired by the great Connealy Blackhawk 6198, one of the breed's most elite growth sires while keeping BW in check. He will add frame size, performance, body length and stoutness. He offers strong maternal qualities too, ranking in the top 1 percent for \$W with elite SC, DOC and HP. Blackhawk will sire scale-crushing feeder cattle and high-quality, maternal, strong daughters. He charts top 15% WW, top 20% YW, top 20% YH, top 15% SC, top 20% HP, top 15% MH, and top 25% \$W.

106

**HANELS BLACKHAWK H0003**

**19815207**

**BW: 85 • AdjWW: 602 • Scan Wt: 1180**

**Angus • 1/15/20**

SIRE CONNEALY ARMORY

DAM KOUPALS B&B IDENTITY

**CONNEALY BLACKHAWK 6198**

**MILL BRAE IDENT MAID 5098**

PRECIOUS OF CONANGA 380X

MILL BRAE OBJ MAID 8265

SCAN DATA **Adj. IMF: 3.98 • Adj. BF: 0.34 • Adj. REA: 15.0**

CE	BW	WW	YW	RADG	CEM	MLK	MW	STY	MRB	FAT	REA	\$B	\$C
6	1.2	69	121	0.25	6	24	75	45	0.63	0.034	0.43	133	231
55%	50%	15%	20%	40%	75%	60%	30%	45%	40%	80%	75%	45%	45%





# THE ANGUS BULLS

107

**HANELS BLACKHAWK H0001**

**19815205**

**BW: 86 • Adj WW: 621 • Scan Wt: 1215**

**Angus • 1/10/20**

SIRE CONNEALY ARMORY

DAM HOOVER DAM

CONNEALY BLACKHAWK 6198

MILL BRAE HD ELBA 5028

PRECIOUS OF CONANGA 380X

MILL BRAE FP ELBA 2053

SCAN DATA Adj. IMF: 4.15 • Adj. BF: 0.26 • Adj. REA: 14.2

CE	BW	WW	YW	RADG	CEM	MLK	MW	STY	MRB	FAT	REA	\$B	\$C
5	2.2	72	126	0.26	5	26	78	49	0.41	0.006	0.56	133	234
60%	75%	10%	15%	35%	85%	40%	25%	35%	70%	45%	50%	45%	60%

H0001 is another stout made, bold centered son of Blackhawk. He is from an ultra-productive daughter of Hoover Dam that was bred in the historic Mill Brae program. He charts top 10% WW, top 15% YW, top 20% YH, top 25% SC, top 20% HP, top. 25% MW, top 25% MH, top 15% \$W, and top 25% \$F.



JINDRA ACCLAIM - SIRE OF LOT 110

108

**HANELS BLACKHAWK H0007**

**19815211**

**BW: 82 • Adj WW: 623 • Scan Wt: 1160**

**Angus • 1/27/20**

SIRE CONNEALY ARMORY

DAM TOKACH UPDATE 9009

CONNEALY BLACKHAWK 6198

MILL BRAE TU ANNIE 6190

PRECIOUS OF CONANGA 380X

MILL BRAE IF JOANIE 9206

SCAN DATA Adj. IMF: 4.18 • Adj. BF: 0.32 • Adj. REA: 14.7

CE	BW	WW	YW	RADG	CEM	MLK	MW	STY	MRB	FAT	REA	\$B	\$C
8	0.5	67	121	0.23	7	29	67	43	0.74	0.001	0.42	131	226
35%	35%	20%	20%	60%	65%	11%	40%	50%	30%	50%	75%	50%	50%

H0007 is a powerful big spread son of Blackhawk that is backed by a tremendous young female that we acquired from the historic Mill Brae program. He offers a top 35% CE, top 35% BW, top 20% WW, top 20% YW, and top 20% \$W. A multi-purpose herd sire prospect that can work in a wide variety of situations.

110

**HANELS BAKERS ACCLAIM G114**

**19574804**

**BW: 67 • Adj WW: 705 • Adj. YW: 1380**

**Angus • 9/1/19**

SIRE JINDRA 3RD DIMENSION

DAM CONNEALY FORWARD

JINDRA ACCLAIM

BAKERS ERICAMERE 2009

JINDRA BLACKBIRD LASSY 1111

BAKERS ERICAMERE 7126

SCAN DATA Adj. IMF: 5.2 • Adj. BF: 0.17 • Adj. REA: 14.24

CE	BW	WW	YW	RADG	CEM	MLK	MW	STY	MRB	FAT	REA	\$B	\$C
7	0.5	63	116	0.29	10	27	69	55	0.63	0.14	0.49	160	260
45%	35%	35%	25%	15%	35%	35%	35%	20%	40%	55%	65%	15%	20%

G114 is the lone son of the industry sensation, Jindra Acclaim. He is backed by a tremendous daughter of Connealy Forward. Here is a Strong Aged Angus bull that is ready for heavy service. He boasts a moderate birth weight and spreads to a top 25% YW, top 15% RADG, top 20% CW, top 5% \$F, top 15% \$B, and top 20% \$C.

109

**HANELS LEGENDARY H0008**

**19815210**

**BW: 84 • Adj WW: 622 • Scan Wt: 1080**

**Angus • 2/3/20**

SIRE QUAKER HILL RAMPAGE 0A36

DAM TOKACH UPDATE 9009

CONNEALY LEGENDARY 644L

MILL BRAE TU ANNIE 3279

JAZZED OF CONANGA 4660

MILL BRAE IF ANNIE 7-46

SCAN DATA Adj. IMF: 5.82 • Adj. BF: 0.31 • Adj. REA: 15.7

CE	BW	WW	YW	RADG	CEM	MLK	MW	STY	MRB	FAT	REA	\$B	\$C
8	0.5	61	105	0.22	10	19	48	39	0.9	-0.008	0.69	149	252
35%	35%	35%	45%	70%	35%	90%	65%	60%	15%	25%	30%	25%	25%

Hanel's Legendary H008 is sired by Connealy Legendary 644L and from a tremendous young female that was bred in the Mill Brae program. He is CAB certified based on his numeric predictors as he ranks top 15% Marb, top 30% REA, top 10% \$G, top 25% \$B, and top 25% \$C.



CONNEALY LEGENDARY 644L - SIRE OF LOT 109

# A SPECIAL OPPORTUNITY

## LOT X

SO Remedy 7F is without a doubt the most intriguing individual to surface within the industry. His superior skeletal quality, foot shape, structural integrity and presence are simply unmatched. SO Remedy 7F was showcased in the Hartman Cattle Company round pen display at the Cattlemen's Congress in Oklahoma City, Oklahoma with astonishing reviews. SO Remedy 7F has been admired by the most critical cattlemen for his flawless phenotype, proud presence and elite herd sire characteristics. SO Remedy 7F sold for \$530,000 for 50% domestic semen interest. He was then selected as the 2021 Cattlemen's Congress Grand Champion Purebred Simmental Bull. This will be the FIRST opportunity to select a heifer calf sired by the legendary SO Remedy 7F sire. The dam of this set of ET heifer calves are backed by our young and exciting donor dam sired by the \$435,000 Ruby's Currency 7134E. M4 Heartbreaker D35G is a tremendous female that was a class winner at the Kansas State Fair. D35G has been acclaimed as one of the best built, most flawless designed females by some of the most astute cattlemen in the industry. Here is the opportunity to get in on the ground floor of one of the most exciting genetic packages EVER offered by Hanel's Black Simmentals. For more details about this elite opportunity please contact Brock Hanel at (785) 275-1060.



SIRE: SO REMEDY 7F (ASA: 3419044)



DAM: M4 HEARTBREAKER D35G (ASA: 3606197)





# THANKS TO OUR GUEST BREEDERS



ERIC, AVERIE AND EDEN HARMS



BRADEN, LAUREN, AND TATUM FIELD



## How to Bid Online

Tips and Tricks to Master Online Bidding

**STEP 1.** Use Chrome or Safari, a newer browser or download the CCI.live app at Google Play or Apple App store.

**STEP 2.** Open your app or go to the address of [www.CCI.live](http://www.CCI.live) in your browser. CCI.live can be used on a cell phone, tablet, laptop or desktop. Some older models may not be compatible and will show a yellow caution symbol if so.

**STEP 3.** Create an account and then request bidding credentials through CCI.live. Use the bank information listed on your check. Please use a correct phone and email address.

**STEP 4.** Once you are accepted for bidding credentials you will receive a text message and/or email notification. Proceed to "Get Buyer Number" on the actual sale page of your interest. Some sales may also require a passcode to obtain a buyer number. On these auctions, you will obtain passcodes from the sale office phone number for the specific auction you are interested in. Please closely read the terms!

**STEP 5.** You are ready to go! Make sure you understand, once you are logged in, have a buyer number and are watching the sale that you are on a highly sensitive web page. **Be careful when scrolling that you do not accidentally hit the bid button and watch children closely as they tend to grab cell phones and accidentally bid.**

### TIPS FOR SUCCESSFUL BIDDING

- Make sure you have good service. Bidding and driving is not recommended. You should have two - three bars on your cellular devices. At home you should have an **UPLOAD** speed of 2 mg or more UP. Use this site to test your internet: [www.speedtest.net](http://www.speedtest.net).

### REFRESH YOUR SCREEN AT SALETIME

If you have logged in over an hour prior to sale time, you may need to login again. **DO NOT** let the computer set idle and then return and try to bid, the website may have logged you out.

CCI.live does not accept payment, you will pay the sale management, farm or ranch direct.

Help videos can be found at [www.CCI.live](http://www.CCI.live)

## **We Want Your Feeder Calves!**

**Add Value to your program today.**

**We believe in our genetics and want to buy back your SimGenetic feeder cattle.**

### **ASK ABOUT OUR PROGRAM**

- 20,000 head capacity
- State of the art facilities
- Bull Customer feeder calf premium buy back

**PREMIUM FEEDERS, INC - Premium for Performance**

**Brock Hanel: (785) 275-1060**





*Thank you to our Meat Sponsors!*



*We hope to see you sale day!*

