



The Black Label

Shipwreck Cattle Co
10.13.2018
Grandview, Texas



WELCOME *to the* SALE

THE 2018 EDITION OF THE BLACK LABEL



SHIPWRECK CATTLE

Jered, Haley, Brecken, Bodie & Burke Shipman
6945 CR 206 :: Grandview, Texas 76050
806.983.7226
Email: shipwreckcattle@gmail.com

Welcome to the fall 2018 edition of The Black Label! 2018 has been a great year for those that have purchased Black Label stock over the years. We feel that this year's set is definitely one of deep quality, pedigree, and supported by some of the best cow families the breed has to offer. The representation of sires and service sires are definitely breed leading and breed influencing genetics. The cowherd is strong with a deep bench amongst the breeders of The Black Label. So, please come join us October 13 at 4 p.m.

Production agriculture is all I have ever known. One can participate in a multitude of ways, even the action of. With input costs at an all-time high and depressed prices, it raises reason for concern, however history does repeat itself. For those of us that were fortunate enough to be taught actual American history and its economic impacts along the way, we know that opportunity exists in its biggest and scariest way. Whether you inherit a production or animal agriculture entity, or you are leveraged to the max to give yourself and your children the dream of freedom in Agriculture, you must develop the drive to hustle if you are to succeed. Each and every part of The Black Label from the owners, to the employees, to the sale staff wouldn't be here presenting you this offering without hustle. The hustle to bring you, our loyal and future customers the best we can to help you and your young people accomplish the goals and dreams you all have set forth.

Over the years, we have sold cattle from \$1750 to \$75000, and the cattle that have had the most success consistently are the cattle that have sold between \$5000 and \$29000. However, the value class that has had multiple class winners and division contenders have been from \$3000 and up with a heifer purchased last year for \$3250 that went on to win her class at San Antonio, Houston, and ended up Reserve Calf at Houston. The point is, success can be experienced on all levels and price points. For those that think that they cannot come to The Black Label and buy of one of notable quality within your budget, you are sadly mistaken. This group of breeders has dominated the Texas Major scene with highlighted Supreme honors at San Antonio, and just a week ago at the West Texas Fair in Abilene both Champion and Reserve females, along with multiple division Champions, came from last year's sale. There's a core of talented breeders involved to enhance your buying and investment experience.

The beef business is good, healthy, and in demand as we experience large economic growth in our nation. The world economy seems to be in good standing, as well, as we continue to export more and more of the best and safest protein in the world. Each of the owners, partners, and herdsman and women enjoy what they do. They are extremely passionate about producing great cattle, but are more focused on making sure you and your family are satisfied and profitable moving forward. Thanks to all that have supported us over the years, as we have enjoyed serving you and your families. Without LOYALTY, none of this would be possible year in and year out, so thanks to you all once again.

Be sure to attend the Red River Farms first annual Production sale in Grand Saline, TX on October 14. We are excited about their escalated involvement in the seedstock business. The Mullion family and their constituents are first class and truly genuine people. They have an outstanding program, so plan on making it a Texas weekend and attend both events.

Enjoy the people and the stock,

Jered Shipman



FOSTER BROTHERS FARMS

David & Jody Foster :: Lockney, TX
David 806.983.7221
Jody 806.983.7225
Joe Seale 936.201.8272
Hoyt McInvale 903.539.1576



SEALE SHOW CATTLE

Joe, Josie B., Nolan B. & Waylon Lee Seale
San Augustine, TX
936.201.8272



HIDDEN OAKS CATTLE

David Berry :: Canton, TX
903.848.0470



BIRD CATTLE CO

Brandon Bird :: Lubbock, TX
806.781.1894



HILMES CATTLE CO

Casey & Laken Hilmes :: Fort Cobb, OK
405.443.9131



WALTER CATTLE COMPANY

Kyle Walter :: Elk City, OK
580.210.9189



SOUTHERN JEWEL CATTLE CO.

Casey Buzzard :: Victoria, TX
979.215.6349



SHIPWRECK CATTLE

Jered, Haley, Brecken, Bodie & Burke Shipman
Grandview, TX
806.983.7226

BAR-O- CATTLE COMPANY

Ottensmeier Family :: Oskaloosa, KS
913.787.4523

SCHEDULE *of* EVENTS

FRIDAY, OCTOBER 12, 2018

Cattle Available for Viewing *ALL Day*

SATURDAY, OCTOBER 13, 2018

Cattle Available for Viewing *ALL Day*

12:00 Noon

Lunch will be provided

The *Black Label* 4:00pm

Dinner will be served

Following the Sale



OCTOBER 13

THE Black Label

VOLUME IX

SELLING PUREBRED SIMMENTAL, SIMANGUS, ANGUS CHAROLAIS, HEREFORD, CHI & MAINE Females & Bulls

SALE DATE

Saturday, October 13, 2018

SALE LOCATION

Shipwreck Cattle Company | 6945 CR 206 | Grandview, TX

AUCTIONEER

Jered Shipman 806.983.7226

SALE CONTACTS

Graham Blagg 530.913.6418
 Todd Alford 706.207.9454
 Holly Alford 706.270.3994

LIVESTOCK PRESS REPRESENTATIVES

Ralph Means :: Weekly Livestock Reporter 817.235.9708
 Scott Farmer :: Special Assignment 817.597.1731
 Mitchell Armitage :: Special Assignment 405.641.9438

BUYER REPRESENTATIVES

Jered Shipman 806.983.7226
 Todd Alford 706.207.9454
 Graham Blagg 530.913.6418
 Joe Seale 936.201.8272
 Jerod Metzger 270.779.6260
 Michael Bell 281.639.5719
 Wes Barker 512.227.1480
 Casey Hilmes 405.443.9131
 Wade Fisher 254.319.5349
 Dalton Lundy 502.727.6898
 Owen MacFarlane 530.949.8920
 Hoyt McInvale 903.539.1576
 Levi Douglas 979.255.1664
 Hunter Aggen 507.923.0815

TRUCKING

The sales team and consignors will be able to help you with transportation for your cattle purchases. We will also have professional transporters available sale day.

Mark Howard 865.300.3636
 Cole Clanton 913.787.4523
 Lynn Zanbergen 417.991.9116

LIVESTOCK INSURANCE

Graham Blagg 530.913.6418

INTERNET BIDDING

CCI Live
 Christy Collins 580.305.0001

ANNOUNCEMENTS

A supplement sheet will be available sale day with updated information, corrections and additional information. This sheet and any announcements made sale day and from the auction block during the sale will take precedence over printed material associated with this sale. Anyone attending this sale attends at their own risk. Shipwreck Cattle or any other breeders and sales team will not be held responsible for any personal injury incurred attending this sale.

TERMS & CONDITIONS

All cattle sell under terms and conditions of their respective breed association. Terms of Sale will be cash or check! We ask that you do not write a hot check as we will and we have successful prosecution history. We will not extend credit to any one person without contractual obligation. WE ARE NOT A BANK AND HAVE NO INTEREST IN DOING SO. If you have questions regarding payment, we ask that you contact Jered, Graham or Todd and they will be happy to assist you.

AIR TRAVEL

We are located just under an hour from DFW International or Dallas Love Field. Serviced by all major airlines.

DIRECTIONS TO SALE SITE:

Coming from the West via I-20 or from the North via I-35W: I-35W south to Exit 17 the 2258 Rd Exit. Cross back over I-35W after exiting then from stop sign proceed approx. 4.7 miles east to County Road 206, turn right or south on 206. Continue 1.1 miles to trailer parking on left or 1.3 miles to sale site.

Coming from the south / Hillsboro via I-35W: Take Exit 15 the Grandview/Maypearl 916 Rd exit. Turn right on 916 and continue approx. 4.8 miles to County Road 206. Turn left/north on to 206 go 1.5 miles to stop sign, then turn back left/north continue 0.4 miles to sale site or 0.6 miles to trailer parking.

From Waxahachie / I-35E: Take Highway 66 to Maypearl to the 157/66 JCT. Turn left/North on 157 continue approx. 5.5 miles to 2258. Turn left/West on 2258 and continue 4.1 miles to County Road 206. Turn left/ South on to 206 and continue 1.1 miles to trailer parking or 1.3 miles to sale site.

From Dallas: US 67 highway south to Venus, TX. At the Venus stoplight, which is the US67/157 JCT, turn left/South on 157. Take 157 to 2258, turn left/West on 2258 and continue 4.1 miles to County Road 206 on left. Turn left/ South on to 206 and continue 1.1 miles to trailer parking or 1.3 miles to sale site.

LODGING

Comfort Inn & Suites Alvarado 817.783.2900
 400 Village Park Drive • Alvarado, TX 76009
 Holiday Inn Express, LaQuinta & many other in Alvarado.

PHOTOGRAPHY / VIDEOGRAPHY

Morgan Meisenheimer 240.772.2759
 Katie Smith 229.220.3017
 Ideal Video Production 254.319.5349
 Erick Schmidt 830.263.0166

ADVERTISING & SALE BOOK PRODUCTION

Holly Alford 706.270.3994



View Online Sale Book & Videos of the sale offering at:

WWW.CCI.LIVE

THE "YASMIN" DAUGHTER



Lot 1



FWSS 2015 CHAMPION | Full sister to Lot 1



FBFS YASMIN 063Y | The dam of Lot 1

Lot **1 BAR -O- FELICIA 812F**

CNS PAYS TO DREAM T759
LLSF PAYS TO BELIEVE ZU194
 LLSF URABABYDOLL U194

FBFS UNTOUCHABLE 633U
FBFS YASMIN 063Y
 SVF STAR STRUCK S199

Breed: PB SM | Reg#: 3445753 | Birth Date: 2/10/18 | Tattoo: BARO 812F

CE	BW	WW	YW	Milk	API	TI
9.5	2.2	65.6	97.2	15.9	118.2	68.8

In 2014, there was a pair of heifer calves that sold through this very sale. Their dam, FBFS Yasmin 063Y, was selected through the North American sale in Louisville by the Ottensmeier family a few years before from the Foster Bros. Farms program. FBFS Yasmin 063Y is the red headed maternal sister to the 2012 NWSS Grand Champion Purebred Bull, FBFS Wheel Man 649W. That pair of sisters went on to find tremendous success, with one in particular that was a little greener on sale day, but the parts and pieces were certainly there. She was purchased by the Culpepper family, and with their foresight and diligence, "Sadie" went on to be crowned Grand Champion Purebred Simmental at the 2015 Fort Worth Stock Show. Bar -O- Felicia 812F is cut from the same cloth as her sisters from years prior, offering an exceptional amount of foot and substance of bone, robust rib shape, and the square hip and pin set that complete her three-dimensional build. From the side her neck ties in high to the topline of her shoulder, while she exemplifies a poised look of balance from the stand. This star headed beauty is backed by generations of elite cow families that have produced champions on the National, Regional, and State levels time after time. Here is a true sale highlight and a prime example of what the Black Label sale can offer... multi-generational success, join the tradition on 10.13.18!

THE "CAROLINA 35Z" DAUGHTER



Lot 2

JSSC CAROLINA 804F

CNS DREAM ON L186
CNS PAYS TO DREAM T759
 MLF BL JESSIE K336
 GWS EBONYS TRADEMARK 6N
KRIEGERS CAROLINA 35Z
 WHCC CAROLINA PQ1

Breed: PB SM | Reg#: 3449495 | Birth Date: 1/1/18 | Tattoo: 804F

CE	BW	WW	YW	Milk	API	TI
10.2	2.2	63.5	94.5	17.4	113	66.6

The The Seale family has been involved with the Black Label Event since the establishment. There is more meaning to the saying "it's all about the family", it encompasses not just the cattle, but also the people behind the offering. Years of dedication and disciplined breeding decisions have resulted in the success that the cattle carrying the JSSC prefix have endured at every level of competition. Here is another prime example of what a strong maternal foundation will offer. Carolina 35Z has been a potent producer for Seale Show Cattle and results have been noted time after time. Two years ago a Wide Body purebred created a stir and commanded \$31,000 to the Sheffield Family of Weatherford, Texas. The female affectionately known as "Carl", endured a successful career that was capped off by a big win in Cowtown when she was crowned Grand Champion Simmental Female at the 2017 FWSS Jr. Show. Just this last year 35Z did it again, this time with a blaze faced beauty of a daughter by 1143Y that commanded \$27,000 in the Black Label to the Turner family and the \$10,000 bred full sister to 804F that sold through The Hunt. Strong cow family emphasis has resulted in females that compete on the tan bark, but at the end of the day will make substantial impacts on the programs for the young people or breeders that have added them to their arsenal. From the influence of the great Carolina 35Z, we present the stunning January born 804F for your appraisal!



FWSS 2017 CHAMPION | Maternal sister to Lot 2



JSSC CAROLINA 631D | Maternal sister to Lot 2, sold in Black Label 2017



Lot **3** **SJCC FRENCH KISS F010**

REMINGTON LOCK N LOAD54U
W/C LOADED UP 1119Y
 AUBREYS BLACK BLAZE III

LLSF UPRISING Z925
SJCC DENALI D042
 MLF BL JESSIE K336

Breed: PB SM | Reg#: 3443927 | Birth Date: 2/26/18 | Tattoo: F010

CE	BW	WW	YW	Milk	API	TI
9.8	1.7	63.6	95.8	18.2	113.8	65.6

The K336, "Jesse", cow family has been one of the most functional and quality driven genetic lines in the Simmental breed for years. With products such as Pays to Dream and producers such as Hudson Pines, Hearthstone Farms, and Schick Cattle Company all finding donors and foundation cattle from this lineage, it is no wonder when you combine that with the game changing sires, Uprising and Loaded Up, you make amazing things happen. Start at the poll on this great haired heifer and work your way all the way down to the dewclaws to find the parts you like the best. We could talk all day but I will let you check her out on October 13th and be the judge.

Entered in the 2018 NAILE in Louisville, Kentucky open show.



KLS DIAMOND W516
2011 NWSS Grand Champion
and granddam of Lots 4-7

Lot **4** **SJCC FAIRYTALE F005**

REMINGTON LOCK N LOAD54U
W/C LOADED UP 1119Y
 AUBREYS BLACK BLAZE III
 TJSC OPTIMUS PRIME 12W
CSCX DIAMOND 472Z
 KLS DIAMOND W516

Breed: PB SM | Reg#: 3443924 | Birth Date: 1/25/18 | Tattoo: F005

CE	BW	WW	YW	Milk	API	TI
11.6	1.5	66.3	93.7	15.3	116	66.2

This exceptional baldy female is the product of our great CSCX Diamond 472Z donor that is a full sib and flush-mate to the A.I. sire CSCX Bandwagon. This show prospect shows a ton of promise no matter where she fits into your program. The more ways you study her, the more reasons you will find to appreciate a female of this caliber. As you view Fairytale from the side and see the sleek lines, balance and the right angles everywhere, your mouth will start to water. Move in behind her and she blows you away with her power and three dimensional shape.

THE "DIAMOND" COW FAMILY



Lot **5 SJCC FIRECRACKER F039**

YARDLEY IMPRESSIVE T371
YARDLEY HIGH REGARD W242
 MISS YARDLEY T68

TJSC OPTIMUS PRIME 12W
CSCX DIAMOND 472Z
 KLS DIAMOND W516

Breed: PB SM | Reg#: 3443948 | Birth Date: 5/13/18 | Tattoo: F039

CE	BW	WW	YW	Milk	API	TI
7.8	2.3	67.8	100.4	18.7	107.2	67

I can see a great future in this youngest female that we are offering to you today. When Shipman came out to look at our calves, this is one that he said he had to have in the Black Label Sale. Being a May calf, she is perfect aged for the Texas major show season. As this one ages, it reinforces all the qualities that are looked for when selecting the next addition to your Simmental program. High Regard has proven himself time and again as a great addition to any program that is progressive enough to read structure, quality, and durability. CSCX Diamond 472Z is our "no miss" donor that continues to ignite our program and produce the females that raise the bar to the next level. I don't know if I can say enough about the confidence we have in this young heifer, phenotype and genotype can come together as they have in our SJCC Firecracker F039.



GRAND CHAMPION AT THE AJSA SUMMER CLASSIC
 | Maternal sister to Lot 4, 5, 6 & 7

Selling Choice in
LOT 6 OR LOT 7

Lot **6** **SJCC FRISKY F033**

MR TR HAMMER 308A ET
TKCC CLASSIFIED
FORD RJ DOLLY Y83

TJSC OPTIMUS PRIME 12W
CSCX DIAMOND 472Z
KLS DIAMOND W516

Breed: PB SM | Reg#: 3443943 | Birth Date: 4/24/18 | Tattoo: F033

CE	BW	WW	YW	Milk	API	TI
7.6	2.2	74.5	110.9	18.1	117.2	73.3

The decision posed before you is one that I personally have struggled with since these two heifers came into this world. While there is a slight age difference, the similarities are endless when you start comparing these elite females out in the pasture. On the physical plane, their attributes are not limited to being long sided, sound structured, and very extended through their front one third. These heifers also show the promise of power and balance, as well as stand on a great foundation of feet and legs. As you start to look at the genetic fuel that powers these two divas, you can see where their predictability comes into play. CSCX Diamond 472Z has both KLS Diamond W516 and TJSC Optimus Prime 12W backing her pedigree with more purple banners than most others today. The masculine side of her pedigree is brought to you by the Kearns program that produced TKCC Classified, the \$70,00 herd sire for Hudson Pines Farms. The possibilities are endless with these two dynamic females.

They are entered in the 2018 NAILE in Louisville, Kentucky open show.

Lot **7** **SJCC FALL FOR YOU F037**

MR TR HAMMER 308A ET
TKCC CLASSIFIED
FORD RJ DOLLY Y83

TJSC OPTIMUS PRIME 12W
CSCX DIAMOND 472Z
KLS DIAMOND W516

Breed: PB SM | Reg#: 3443946 | Birth Date: 5/6/18 | Tattoo: F037

CE	BW	WW	YW	Milk	API	TI
7.6	2.2	74.5	110.9	18.1	117.2	73.3



Lot 6
Entered in the 2018
NAILE open show in
Louisville, Kentucky.



Lot 7
Entered in the 2018
NAILE open show in
Louisville, Kentucky.

THE U409 COW FAMILY

WLE MISSY U409
| Dam of Lots 8 & 9



JCBB MISSY E3856
A U409 daughter,
High-Seller in the spring
2018 Black Label.



LAH SIXTEEN STEP 628D
| A Two-Step son of U409



LAH MISSY 528C | \$12,500 Wheelman
daughter of U409, maternal sib to Lots 8 & 9



LAH GRAND TIEMPO 612D
| A Grandmaster son of U409



LAH CRAFT BREW 675D
| A 3/4 sib to Lots 8 & 9

Lot **8**

JCBB MISSY F16

MR TR HAMMER 308A ET
TKCC CLASSIFIED
 FORD RJ DOLLY Y83
 CNS DREAM ON L186
WLE MISSY U409
 SHAWNEE MISS 770P

Breed: PB SM | Reg#: 3443759 | Birth Date: 4/7/18 | Tattoo: F16

CE	BW	WW	YW	Milk	API	TI
7.2	1.6	70	101.2	23.1	122.5	72

The great WLE Missy U409 continues to be the matriarch of the Bird Cattle Company donor pen. U409 has secured her position as one of the breed's most dominant producing donor dams. Countless sisters, daughters, and granddaughters highlight donor pens at leading programs across the country. The most popular brother to U409 is the great WLE Uno Mas, who has led the Select Sires Simmental line-up for years. Other brothers include that National Champion, Twang, and the other Select Sires headliner, Revolution. A flush of U409 fall heifer calves highlighted the 2018 Black Label Spring Edition that were sired by the Bird Cattle Company and Diamond M Cattle Company herd sire, DMCC Counter Attack. Those heifer calves were selected by top breeding programs and junior exhibitors from around the nation. This flush of heifer calves by the \$70,000 Hudson Pines herd sire, TKCC Classified, may very well be the most elite offering of daughters from the great U409 donor dam to date. These females are big footed, stout boned, massive through their mid rib, and square and powerful in their pin set. What sets them apart from a breeding standpoint is that they combine two of the breed's most notable cow families, in the Shawnee Miss 770P and the dam of Classified, FORD RJ Dolly Y83. Between these two cow families there has been several million dollars in actual progeny sales! Consider this a monumental investment opportunity to tie into what could very well be the breed's next young superstar!



Lot 8

Lot **9**

JCBB MISSY F127

MR TR HAMMER 308A ET
TKCC CLASSIFIED
 FORD RJ DOLLY Y83
 CNS DREAM ON L186
WLE MISSY U409
 SHAWNEE MISS 770P

Breed: PB SM | Reg#: 3443760 | Birth Date: 4/2/18 | Tattoo: F127

CE	BW	WW	YW	Milk	API	TI
7.2	1.6	70	101.2	23.1	122.5	72



Lot 9

THE GLAMOUR "T20" GRANDDAUGHTER



ANGELS GLAMOUR T20 | Granddam of Lot 10



JSSC YOVELA 032Y | Dam of Lot 10

Lot **10** **JSSC ANGELS GLAMOUR 812F**

SANDEEN UPPER CLASS 2386

CAE UPPER CLASS 420B

FBFS SLOW MELT 089S

JS BURNING UP 33R

JSSC YOVELA 032Y

ANGELS GLAMOUR T20

Breed: PB SM | Reg#: 3449504 | Birth Date: 1/16/18 | Tattoo: 812F

CE	BW	WW	YW	Milk	API	TI
10.6	2.7	65.3	94.1	21.7	116	65.4

*A*ngels Glamour 812F is the result of another multi-generational success story. A foundation matron in the Seale Show Cattle program, Angels Glamour R20 has generated as many influential individuals as any, being the dam of the late JSSC Wide Body 90W. Wide Body is responsible for siring as many champions and high sellers with extremely limited use as any herd sire in the Simmental breed. His influence is potent and semen has commanded as much as \$1,500 per unit when it is made available to the public. 812F is sired by the Upper Class x Slow Melt stud, 420B. Her dam is the 2013 San Antonio Grand Champion Simmental female, JSSC Yovela 032Y. The influence of T20 and her dam R20 can be identified throughout past and present Black Label offerings. Rich in tradition and history, here is an opportunity to acquire the powerful genetics from the Angels Dream cow line!



Lot **11** **JSSC BROOKE 824F**

SANDEEN UPPER CLASS 2386
CAE UPPER CLASS 420B
 FBFS SLOW MELT 089S

JSSC MR. Z 025Z
JSSC BROOKE 427B
 LUCAS MS MEYER 838P

Breed: P B S M | Reg#: 3449515 | Birth Date: 3/1/18 | Tattoo: 824F

CE	BW	WW	YW	Milk	API	TI
11.6	1.3	62.7	90.9	23.3	122	66.8

*B*rooke 824F is another top prospect from Seale Show Cattle. This female is built right from the ground up with the added volume and capacity to make an impact when her career on the tan bark comes to a close. Her sire is from the Upper Class x Slow Melt mating that proved to be so successful in Lockney. The Wheel Man x T20 son, JSSC Mr. Z 025Z, sires her dam, while tracing to the legendary Meyer 734 on the south side of her maternal lineage. Her substantial advantages all begin at the surface with her added foot size, structural correctness, and sheer volume, while her ancestry adds to the predictability of what she is capable of... study the history that supports this bald faced female and it will paint a clear picture of what the future holds!



SANDEEN UPPER CLASS 2386
 | Paternal grandsire of Lot 11



FBFS WHEEL MAN 649W
 | Maternal great grandsire of Lot 11

THE "LEGEND 138B" DAUGHTER



OBCC LEGEND 138B | Dam of Lot 12



OBCC CMFM DEPLORABULL D148 | Sire of Lot 12

Lot **12** **OBCC JSSC LEGEND M10F**

W/C EXECUTIVE ORDER 8543B

OBCC CMFM DEPLORABULL D148

LAZYH/ADKINS BLKSTAR Z15

FBFS WHEEL MAN 649W

OBCC LEGEND 138B

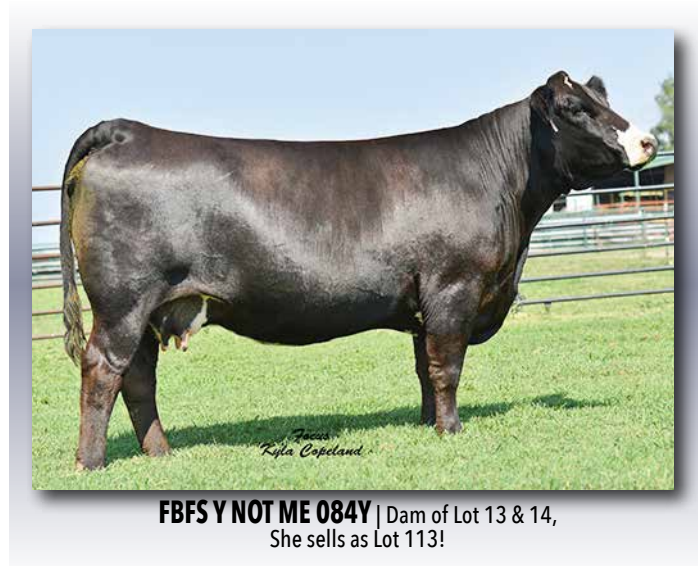
OBCC LEGEND S12X

Breed: PB SM | Reg#: 3452557 | Birth Date: 3/16/18 | Tattoo: M10F

CE	BW	WW	YW	Milk	API	TI
11.7	0.8	63.3	94	25.5	121.3	68.8

*P*roven and predictable... this March Purebred female is the result of an exciting mating which combines several individuals of influence within the Simmental breed. For starters her look is captivating, her build is fault free, and her smooth, angular, and attractive presence is hard to ignore. This poised young lady is one of the first daughters of the \$100,000 valuation OBCC CMFM Deplorabull to ever be offered at public auction. On the bottom side, she is backed by the Wheelman sired S12X daughter, which happens to be a full sister to the \$78,000 Owen Brothers female that was selected by Circle M and KenCo. That female went on to be crowned Reserve Grand Champion at the American Royal, among many national division victories along the way! The influence of Wheelman is seen again in a dominant fashion. We can't help but believe that this Purebred has the potential to find the backdrop and the pedigree to allow her to maximize her full potential both in the ring and when her times come to enter production!

THE "Y NOT ME" COW FAMILY



Lot 13 FBFS FRANCINE 030F

Breed: PB SM | Reg#: 3447186 | Birth Date: 3/4/18 | Tattoo: 030F

Lot 14 FBFS FRANCIS 048F

W/C UNITED 956Y
W/C EXECUTIVE ORDER 8543B
 MISS WERNING KP 8543U

SVF STONEHENGE R95
FBFS Y NOT ME 084Y
 FBFS SLACKS BETTER 047S

Breed: PB SM | Reg#: 3447187 | Birth Date: 3/15/18 | Tattoo: 048F

CE	BW	WW	YW	Milk	API	TI
10.6	0.1	68.9	109.3	22.1	127.1	74.5

Here is an exciting pair of sisters sired by the powerful W/C Executive Order. Their popular 3/4 sire is taking the breed by storm with his ability to inject so much softness, rib shape, and genuine capacity into his progeny. Executive Order is the result of the United x 8543U mating that has produced countless females in donor pens at some of the breed's most established programs. Their dam is the powerful FBFS Y Not Me 084Y that is a featured donor in this event. The late SVF Stonehenge R95, a bull that has left behind a productive set of females across the breed, sires 084Y. These females have the credentials to find major success in the ring, as they possess the added eye-appeal, symmetry, rib shape, and overall balance. This pair operates with a sound, functional structural. The choice is yours on October 13th as to which of this pair of sisters best fits your taste. Will it be the striking baldy that is unmatched from the side? Or will it be the added dimension, shape, and power of the solid black sister. Regardless of which female you prefer, rest assured of the maternal strength and cow families that back this dynamic pair!

THE "KNOCKOUT 035C" DAUGHTERS



Lot 15
Entered in the 2018
NAILE in Louisville,
Kentucky open show.



Lot 16

Lot **15** **SJCC FADED LOVE F026**

W/C UNITED 956Y
W/C EXECUTIVE ORDER 8543B
MISS WERNING KP 8543U

JF MILESTONE 999W
CMFM KNOCKOUT 035C
MISS KNOCKOUT 74T

Breed: PB SM | Reg#: 3443937 | Birth Date: 4/1/18 | Tattoo: F026

CE	BW	WW	YW	Milk	API	TI
11.1	0.5	73.4	111.8	23.2	126.4	74.8

Wow, how can you shove any more cow power into a single pedigree? On the maternal side, this young April donor prospect has both Knockout 74T and the Werning 8543U backing her future. As you analyze her Grand sires, you'll see her production influence comes from both Milestone and United, and a breeder can't help but say, "Huh, I better go take a look at that one." F026 is the natural calf produced by our CMFM Knockout 035C donor. We believe that if you can make one this good without Dream On influence, imagine how good she can make one with a little in there. Take your time analyzing Faded Love, she doesn't disappoint.



SJCC DADDY'S GIRL | This dominating Uprising daughter was campaigned by the Tanner Family.

Lot **16** **SJCC FANCY FREE F032**

HEADS UP 20X ET
LLSF UPRISING Z925
LLSF UNTOUCHABLE U925

JF MILESTONE 999W
CMFM KNOCKOUT 035C
MISS KNOCKOUT 74T

Breed: PB SM | Reg#: 3443942 | Birth Date: 4/23/18 | Tattoo: F032

CE	BW	WW	YW	Milk	API	TI
7.2	2.9	74.9	112.9	21.1	104.3	69.1

Here at Southern Jewel Cattle Company, there is one sire that has produced all the cattle that have hung banners at the Texas majors for our junior program participants, Uprising. Here is just one more that possesses the quality necessary to stand at the back drop, sired by Uprising and backed with cow power of the Knockout lineage. The soft middle and balance of Fancy Free are just the beginning of the reasons to look hard at this show prospect. Top notch hair quality, a baldy face and a great gentle attitude all guarantee a pleasurable experience for any family wanting to enjoy success as you haul up and down the show road.

Lot **17** **SJCC FRANCESCA F020**

HEADS UP 20X ET
LLSF UPRISING Z925
 LLSF UNTOUCHABLE U925
 SVF STEEL FORCE S701
SVJ LOOKING UP A354
 CNS QUEEN ME S613

Breed: PB SM | Reg#: 3443932 | Birth Date: 3/20/18 | Tattoo: F020

CE	BW	WW	YW	Milk	API	TI
7.9	2.1	69.9	104.1	17.7	99.7	66.4

As you reach back into pedigree memory and think about some of the stand out and stand alone quality driven females with in the breed, Queen Me will always have a seat at the table. When we acquired our Queen Me daughter from SVJ farms, we had progeny like this one in mind. It's not very often that power and structure as well as attractiveness all come together in a single package, but it worked this time. Francesca has been a standout female since she came into this world and I believe she will be one until the day she leaves it.



2018 FWSS CHAMPION | Uprising daughter was campaigned by the Bowen Family.



Lot 17
 Entered in the 2018 NAILE in Louisville, Kentucky open show.

Lot **18** **SJCC FASHIONISTA F022**

HEADS UP 20X ET
LLSF UPRISING Z925
 LLSF UNTOUCHABLE U925
 SVF STEEL FORCE S701
SVJ LOOKING UP A354
 CNS QUEEN ME S613

Breed: PB SM | Reg#: 3443934 | Birth Date: 4/1/18 | Tattoo: F022

CE	BW	WW	YW	Milk	API	TI
7.9	2.1	69.9	104.1	17.7	99.7	66.4

Some heifers just have that "thing" and Fashionista is one of those "it" girls. She is the type that as you walk through the group, you seem to always find yourself looking back at her. She is built like a cow is supposed to be; sound first, then a soft middle, a maternal shoulder and head structure and lastly a super pretty baldy face. Much like her full sister, SJCC FRANCESCA F020, she is the total package.



Lot 18
 Entered in the 2018 NAILE in Louisville, Kentucky open show.

FEMALES WITH COW POWER



MISS WERNING KP 8543U | Paternal granddam of Lot 19 & 20, now approaching \$5 million in progeny sales.



KENCO STEEL MAGNOLIA | Maternal sister to Lot 20

Lot **19** **SSTF HSC FREESTYLE F811**

W/C LOADED UP 1119Y
W/C BANKROLL 811D
 MISS WERNING KP 8543U

HHSF 734 AMMO 732Y
SSTF JAMMO 408A
 JDP HHSF JADAY4

Breed: PB SM | Reg#: 3445883 | Birth Date: 3/5/18 | Tattoo: F811

CE	BW	WW	YW	Milk	API	TI
12.3	-0.3	54.8	76	22.4	123.6	64.7

A favorite among early visitors to Fort Cobb, this perfect blaze faced Purebred female is sure to draw your attention when she crosses the sale block. Sired by the \$205,000 W/C Bankroll, this female is backed by an exceptional Ammo daughter that doesn't miss. What makes Freestyle F811 so unique is her captivating presence. She offers a faultless foundation, which allows for her added flexibility and looseness of spine. She lays in near perfectly at the point of her shoulder, remains bold through her fore rib and center body, with the right sweep back to her flank. Her hip is long and square, while her pin set is wide. On the standstill this female is hypnotizing, and she only continues to impress when she is on the move. Her later maturing pattern suggests that she will only get better with age, don't miss out on a truly unique Purebred show heifer prospect!

Lot **20** **KENCO SWC GLAMOROUS 365F**

REMINGTON ON TARGET 2S
REMINGTON LOCK N LOADS4U
 BAR15 MISS KNIGHT78E-51G

SAC MR MT 73G
SAFN SHES GLAMOROUS
 SAC MISS JET TOP 29G

Breed: PB SM | Reg#: Pending | Birth Date: 4/19/18 | Tattoo: 365F

CE	BW	WW	YW	Milk	API	TI
10.65	1.90	65.95	104.30	21.9	116.5	65.4

What a breeding piece! This direct daughter of 299L by Lock N Load is true to sire group. The Lock N Load's have been tremendously big centered and chubby bellied for nearly every operation that used him and so is this one. They have been sale highlights and sale toppers in a lot of places. This baldy is very intriguing from the ground up and should turn heads on sale day. These April born females will have pics and video prior to and on sale day. Look her up!

THE LOADED UP'S



LOT 21



LOT 22



LOT 23

Lot 21 SSTF HSC FOUNDATION F808

REMINGTON LOCK N LOAD54U
W/C LOADED UP 1119Y
AUBREYS BLACK BLAZE III

SS EBONYS GRANDMASTER
SWEETHEARTS 2CUTE Z20
HHSF 2SWEETX46

Breed: PB SM | Reg#: 3445881 | Birth Date: 3/1/18 | Tattoo: F808

CE	BW	WW	YW	Milk	API	TI
12.8	-0.4	54.4	76.8	21.2	123.3	61.9

Foundation F808 is a top purebred prospect that is sure to catch your attention with her poised look of confidence. She offers a sound structural base and the pieces needed to make a competitive show prospect. Her length and extension through her front third is only further enhanced by her neatness of chest floor, and the gentle sweep to her lower rib. She is strong topped, level hiped, and sets to the surface with an attractive hind leg, which completes her well balanced look!

Lot 22 SSTF HSC FRAMEWORK F809

REMINGTON LOCK N LOAD54U
W/C LOADED UP 1119Y
AUBREYS BLACK BLAZE III

SS EBONYS GRANDMASTER
HHSF 2C ARABELLA 314Y
AKERS PRIDE N3148

Breed: PB SM | Reg#: 3445882 | Birth Date: 3/1/18 | Tattoo: F809

CE	BW	WW	YW	Milk	API	TI
10.1	1	58.1	83.8	20.3	120.9	64

It is hard to deny a baldy! Framework 809F is sure to catch the eye of even the most selective on sale day with her enhanced balance and eye-appeal. She ties her long, flat neck high atop her neatly laid in shoulder set, while being wide topped, square pinned, and offering a flawless structural foundation. Her Grandmaster dam has been a consistent producer and we anticipate when this female's time in the ring comes to and end that she will make a valuable addition to any young persons evolving program!

Lot 23 JCBB MISS F965

REMINGTON LOCK N LOAD54U
W/C LOADED UP 1119Y
AUBREYS BLACK BLAZE III

WS PILGRIM H182U
B&R MISS D965
BT MISS MEYER U440

Breed: PB SM | Reg#: 3443781 | Birth Date: 2/10/18 | Tattoo: F965

CE	BW	WW	YW	Milk	API	TI
11.2	1.3	60.4	84.5	17.7	116.6	65.1

This stunning baldy purebred is one that is sure to turn heads in Grandview on the 13th. Her sire, W/C Loaded Up 1119Y needs no introduction to the business, as a proven sire of champions over a multitude of different breeds. JCBB Miss F965 is backed by a Pilgrim x Meyer 734 daughter that originated in the famed Felt Farms program in Nebraska. Her advantages begin at the surface with her added foot and bone, with an attractive set to her hip and hind leg, and the right sweep, spring, and depth to her rib shape only solidify her bulletproof balance. Her neck attachment is high out of her shoulder with the proud look of confidence that further enhances her show heifer candidacy. Make sure to have this one on your short list sale day, because the backdrop is in her future!



JCBB Perfection F432 is a standout from the Dinero sire group! DMCC Dinero 2D is sired by High Regard and out of the clone to Loaded Up's dam, Aubrey's Black Blaze III. DMCC Dinero was a past sale feature and high seller from Diamond M Cattle Company in Hiawatha, Kansas that was selected by Bird Cattle Company. Dinero's rookie calf crop has exceeded all expectations, as he is siring cattle with the added look, substance, and style needed to be successful at any level. This blaze-faced female offers a classy, lady like look about her front third, with a three-dimensional shape to her rib design, an the ultra attractive set to her hip and hind leg. Her mobility allows her to grace the sale traps with the utmost poise. This female's Callaway dam has become a role model brood cow and we anticipate F432 to follow in her footsteps when her time wearing a leather halter comes to an end.



SC PAY THE PRICE C11 | Sire of Lot 25

Lot 24

Lot **24 JCBB PERFECTION F432**

YARDLEY HIGH REGARD W242
DMCC DINERO 2D
 DMCC BLAZE 5T CLONE
 SS MR CALLAWAY
PCGF PERFECTION B432
 ZEIS LOOKOUT X610

Breed: PB SM | Reg#: 3443782 | Birth Date: 3/12/18 | Tattoo: F432

CE	BW	WW	YW	Milk	API	TI
7.6	2	59.9	86.3	22.7	108.6	61.4

Lot **25 GTM/HSC FEELS SO RIGHT 871F**

CNS PAYS TO DREAM T759
SC PAY THE PRICE C11
 LLSF URABABYDOLL U194
 FLYING B CUT ABOVE
GMBS RUFFLES 271Z
 DOUBLE R MISS BEAUTY

Breed: PB SM | Reg#: 3437059 | Birth Date: 1/15/18 | Tattoo: 871F

CE	BW	WW	YW	Milk	API	TI
9.3	1.7	64.5	93.9	18.8	106.3	63.5

Here is a top Purebred prospect that we admire for her length of side, extension, and overall balance. She was shy on picture day, but don't hold that against her or the future that she holds. Study this female's video and you will quickly understand the sheer quality that she offers. Her sire is the back-to-back 2017-2018 National Western Stock Show Grand Champion Purebred bull, SC Pay The Price! His progeny are taking the breed by storm with their high quality builds, and unparalleled balance. This female is certainly no exception!



Lot 26



Maternal brother to Lot 26

Lot **26** **WLTR MIRANDA 3F**

SS/PRS HIGH VOLTAGE 244X
WLTR NASHVILLE 22A ET
 LLSF CAYENNE UP401
 SS EBONY'S GRANDMASTER
WLTR SRG HOPE 30B ET
 DDH PAMELA 8W

Breed: PB SM | Reg#: 3435320 | Birth Date: 3/2/18 | Tattoo: 3F

CE	BW	WW	YW	Milk	API	TI
10	1.6	63.4	89.9	22.1	115.5	65.4

This PB female is a maternal sib to the WLTR Timeless 11E bull that was Res Calf Champion at the 2017 American Royal and now resides as a Jr Herd Sire at Farmer Cattle Company in Ennis, TX. This Nashville daughter has a lot to offer in terms of phenotype and a solid family tree. A purebred female with a "percentage look", this female certainly has us excited about the opportunities for her future. Her power and exquisite design are complimented by amazing structural integrity. This is the kind of female that checks an awful lot of the boxes when compiling a breed advancing package.



Lot 27



GRAND CHAMPION AJSA SUMMER CLASSIC
 Maternal sister to the dam of Lot 27

Lot **27** **MMR SWC YOLANDA 804F**

HARKERS ICON
ROCKING P LEGENDARY C918
 RP/MP VALENTINE 127X
 SS EBONY'S GRANDMASTER
MMR YOLANDA 104D
 CMB YOLANDA Y658

Breed: PB SM | Reg#: 3452498 | Birth Date: 5/2/18 | Tattoo: 804F

CE	BW	WW	YW	Milk	API	TI
8.9	1.6	59.8	86.9	19.6	111.1	60.2

Derived from the famed Yolanda cow family that has produced countless high sellers and champions at the highest levels for the Wallace and Moriondo families. Yolanda Y658 was a champion herself, being named Reserve Grand Champion Female at the AJSA Summer Classic in Lima, OH. Since her retirement from the show road, she has become one of the most potent Simmental donors in the business when it comes to raising females capable of garnering purple, including wins at the NAILE, FWSS, and AJSA Summer Classic to name a few. 104D, is a maternal sister to these popular champions shown by some of the most astute show families in the business. 104D is a hard working two year old that knocked it out of the park with this special Purebred female in her freshman season. From a long line of proven winners, we anticipate 804F to keep up with the winning traditions!



TRIPLE CROWN WINNING MR HOC BROKER
| Full brother to the dam of Lots 28 & 29

Lot **28** **BAR -O- FERGIE 811F**

Breed: PB SM | Reg#: Pending | Birth Date: 3/5/18 | Tattoo: 811F

Lot **29** **BAR -O- FRANCESCA 815F**

MR NLC UPGRADE U8676
MR TR HAMMER 308A ET
SVF/HS EXPECTING A DREAM
SVF STEEL FORCE S701
SWC M2C ZEREASA 825Z
JM BF H25

Breed: PB SM | Reg#: Pending | Birth Date: 2/19/18 | Tattoo: 815F

CE	BW	WW	YW	Milk	API	TI
9.55	1.85	73.75	114.15	19.05	108.8	69.1

MR HOC Broker, a household name among Simmental enthusiasts from coast to coast and border to border. In fact, no other sire has accomplished what Broker has with the same level of consistency at the National, Regional, and State level, year after year. His dam, the late H25, was a potent producer, and there have been countless daughters employed by top programs across the country. This pair of bald-faced beauties are from the full sister to the great Triple Crown winning Broker that is working in the Bar -O- program in Kansas. SWC M2C Zereasa 825Z backs this duo of Hammer sired females that are destined for successful careers on the tan bark; however their ultimate value will come when their time on the show road comes to a close and they enter production. These females are sound built, well balanced, and offer the right shape and sweep to their rib cage. There is no denying the elegance, symmetry, and cow power that this pair of sisters possesses. Power is in the blood!





Lot 30

Lot **30** **SWC RUBY WICKED FAE 230F**

MR HOC BROKER
RUBY SWC BATTLE CRY 431B
 SWC RUBY YETTI 143Y

NFF UPGRADE Z083
NFF WICKED B125
 NFF WICKED Z119

Breed: PB SM | Reg#: 3447050 | Birth Date: 2/28/18 | Tattoo: 230F

CE	BW	WW	YW	Milk	API	TI
11.8	0.8	78.7	114.8	16.2	118.4	73.3

This mating has been proven time and again by our partner's, Ruby Cattle Co. At the 2017 Livin' The Dream Sale a full sister sold for \$7,750 and at the 2018 National Sale held in conjunction with the Fort Worth Stock Show and Rodeo another full sister sold for \$15,000 going to the progressive Culpepper family. The Wicked donor herself is one that stems from a winning tradition and is loaded with substantial quality both top and bottom. The blend with the line bred H25 descendant by Broker and from one of our most prolific donor dams, Yetti, only further proves the predictability of this female. I believe this is one of the best of the mating from a build and structure standpoint. She too, may have the most sweep to her rib with more than adequate shape. If you want to tie into an open heifer with guesswork removed and solid investment future, then you should strongly consider Wicked Fae.



RUBY SWC WICKED E756 | Full sib to Lot 30

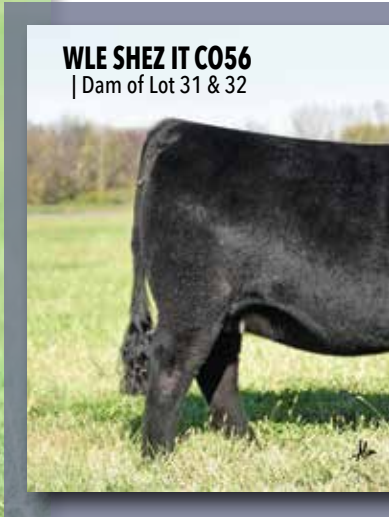


NFF WICKED B125 | Dam of Lot 30



NFF WICKED B125 | Dam of Lot 30

Shez It 056C was a feature in our genetic offering a year ago. A Hammer daughter owned jointly with Bar O Cattle Co that was a class winner and top 10 finisher at the AJSA Summer Classic in Des Moines, IA. She hails from a profitable breeding piece at Wesner Livestock Enterprises and in her sophomore year of production she has yet to disappoint. We offer two sisters sired by two maternal brothers from the Ruby/ Shipwreck donor 143Y. Both sires have been high sellers for Ruby Cattle Co. Both brothers have and continue to prove themselves as contributing breeding bulls for the respective programs as well as the breeders that have used them.



Lot **31** BLC1 BAR O FELICITY 317F

MR HOC BROKER
RUBY SWC BATTLE CRY 431B
 SWC RUBY YETTI 143Y

MR TR HAMMER 308A ET
WLE SHEZ IT C056
 CIRCLE T SHEZ IT W056

Breed: PB SM | Reg#: 3447145 | Birth Date: 3/4/18 | Tattoo: 317F

CE	BW	WW	YW	Milk	API	TI
10.4	1.6	82.9	123.0	16.1	113.4	73.5

317F is true to sire group as she is sound, flexible, and fault free on the profile like most Battle Cry sired stock. She has the combined bone and foot size of her parents with a balance of rib and muscle. Disposition is suitable for any age exhibitor.



Lot **32** BLC1 BAR O FRESCA 356F

TLLC ONE EYED JACK
RUBY/SWC GENTLEMAN'S JACK
 SWC RUBY YETTI 143Y

MR TR HAMMER 308A ET
WLE SHEZ IT C056
 CIRCLE T SHEZ IT W056

Breed: PB SM | Reg#: 3447146 | Birth Date: 3/25/18 | Tattoo: 356F

CE	BW	WW	YW	Milk	API	TI
10.2	1.95	69.95	106.65	21.70	113.5	67.8

356F has been a favorite of many that have stopped by throughout the summer. People have admired her flat, angular build, and big hair. If our summer hadn't been so relentless, in regard to the heat, there's no telling how hairy this thing would be. A very unique purebred Simmental female that represents the Freshman class of cattle sired by Jack.

SWC HOC *Annie K* 165C

| Dam of Lot 34, 35 & 36



ACW ANNIE K 330Y

| The legendary dam of Lot 33 and granddam of 34 & 35.



SWC HOC ANNIE K 247C

| Annie K 330Y daughter



ANNIE K 240C

| Annie K 330Y daughter



FFS SWC ELEGANT LADY E280

| Annie K 330Y daughter



LOT 33

THE ANNIE K'S



LOT 34



LOT 35

Annie K 165C is the only direct daughter of 330Y sired by the Mohnen Angus Simmental herdsire, WAGR Earthquake. The power of both sides of her lineage is very evident as you analyze her physical presence and maturity. We are confident that we have not yet tapped her greatest potential to date but feel that each mating brings us closer to where we want to be. This female breeds with so much power that raw performance while stamping each one with plenty of top, hip, bone, and foot. We are proud to offer this trio and feel that they will too compete and go into production yielding the results you desire.

Lot 33 SWC HOC ANNIE K 286F

YARDLEY UTAH Y361
W/C RELENTLESS 32C
 MISS WERNING KP 8543U
 WAGR EARTHQUAKE 236Z
SWC HOC ANNIE K 165C
 ACW ANNIE K 330Y

Breed: PB SM | Reg#: 3447047 | Birth Date: 2/4/18 | Tattoo: 286F

CE	BW	WW	YW	Milk	API	TI
7.3	3.6	75	105.6	16.1	127.1	74.8

286F has been a standout since birth. Jet black and blazed from day one and accented by shape and look. As she has matured, the pieces remained while being enhanced by boldness and sheer substance. You will be hard pressed to find one with any more power with that good of a front one third.

Lot 34 SWC HOC ANNIE K 114F

YARDLEY UTAH Y361
W/C RELENTLESS 32C
 MISS WERNING KP 8543U
 WAGR EARTHQUAKE 236Z
SWC HOC ANNIE K 165C
 ACW ANNIE K 330Y

Breed: PB SM | Reg#: 3447048 | Birth Date: 2/5/18 | Tattoo: 114F

CE	BW	WW	YW	Milk	API	TI
7.3	3.6	75	105.6	16.1	127.1	74.8

114F, like her sister, is extra extended at every angle. Over the past few weeks we have watched this one get better and better and strongly believe that if you have the time and patience that a year from now you will be more than happy with the end result. The sleeper.

Lot 35 SWC HOC ANNIE K 465F

SVF STEEL FORCE S701
MR HOC BROKER
 JM BF H25
 WAGR EARTHQUAKE 236Z
SWC HOC ANNIE K 165C
 ACW ANNIE K 330Y

Breed: PB SM | Reg#: 3447049 | Birth Date: 4/10/18 | Tattoo: 465F

CE	BW	WW	YW	Milk	API	TI
5	4	72.9	109.3	15.9	103.6	65.8

465F would be the natural calf from 165C sired by Broker. The last mating, we did on her maternal grandmother was to Captain, a son of Broker, and both of those females were very high-quality individuals with one selected by Rust Mountain View Ranch and the other by the F4 Land and Cattle. This pudgy, stout built blaze faced female has a brilliant disposition and is a load when you talk width and substance. She too is one that we believe will be easy to mate and generate the results you desire.



Lot **36**

FIRE & ICE 302F

LLSF PAYS TO BELIEVE ZU194
OBCC BLACKLIST 915B
 FBFS WAKANDA 620W
 JF MILESTONE 999W
MS CMFM SIOUX 151A
 GCC SIOUX STEEL 151W

Breed: PB SM | Reg#: Pending | Birth Date: 3/8/18 | Tattoo: 302F

CE	BW	WW	YW	Milk	API	TI
8.45	2.65	72.45	105.0	16.2	107.7	68.2

We sure like this heifer for several obvious reasons, and as much as we would like to take credit for this work of near perfection, we must tip our hand to the Circle M crew. Her dam was one of my father-in-law's selections from the dispersal that worked out to our advantage. The pedigree that backs this one is quite awesome too, a Blacklist, which ties the undefeated champion Pays To Believe to the dominant and proven S600 cow family, Milestone and the incredibly productive GCC Sioux 151W. Sioux 151W has been influential in the Circle M, GB Cattle, and the Gerdes programs over the years with awesome, big time results.

This female's construction is one that is difficult to replicate. Sure one might come to Grandview and say she may needs to be a half frame score bigger or a rib longer, or the two small white rings around her back two are not ideal, but after that one would be searching for awhile trying to find some way to fault her, seriously. Her head and neck are more than plenty good, and her actual neck set out of her shoulder is textbook. Her lines, structure, balance, joint soundness, and foot are flawless. But what we like most is the fact that she comes out of the top of her shoulder and gets progressively wider while maintaining a square, full look with ideal rib shape. We're not saying she's a great one, we're just stating that it is difficult in today's industry to find one with this legit build and type.

BLACK LABEL CHAMPIONS

Black Label CHAMPIONS



2017 American Royal Grand Champion Simmental Female.
Congratulations to the Ottsmeier Family!



2018 San Antonio Stock Show Supreme Champion Female
Congratulations to the Tanner Family!



2015 FWSS & 2016 San Angelo Grand Champion Simmental Female. Congratulations to the Culpepper Family!

2016 FWSS Grand Champion Simmental Female. Congratulations to the Culpepper Family!

2017 FWSS Grand Champion Simmental Female. Congratulations to the Sheffield Family!

2018 FWSS Champion
Congratulations to the Bowen Family

DRIVEN *by* RESULTS

THE RED'S



Lot 37 SJCC FOXY LADY F029

HTP/SVF DURACELL T52
HPF QUANTUM LEAP Z952
 RP/MP RIGHT TO LOVE 015U
 LLSF UPRISING Z925
SJCC DENALI D042
 MLF BL JESSIE K336

Breed: PB SM | Reg#: 3443940 | Birth Date: 4/13/18 | Tattoo: F029

CE	BW	WW	YW	Milk	API	TI
9.5	1.9	67.8	101.7	18.4	115.6	69.3

There is something about the really good red ones that has the ability to get my motor running like nothing else. Foxy lady is that sexy, big bellied, sound structured female that we are all looking for with a bonus "look at me" ticket because of her color. I have more people ask me about our red ones than any others and that is because you always notice and remember a good red one. Foxy Lady is out of our young donor SJCC Denali D042 who was Reserve Champion at Houston in 2017 and had her show career cut short because hurricane Harvey caused her to abort her pregnancy. We are so happy that we were able to maintain a couple of IVF pregnancies especially since she is able to top produce quality like this one.

Lot 38 HSC SWC STARBURST 046F

W/C UNITED 956Y
W/C EXECUTIVE ORDER 8543B
 MISS WERNING KP 8543U
 WS PILGRIM H182U
HSC SWC CADD0 046C
 LIMESTONE VALE BAR W966

Breed: 3/4 SM 1/4 AN | Reg#: 3445884 | Birth Date: 3/7/18 | Tattoo: 046F

CE	BW	WW	YW	Milk	API	TI
13.1	-0.3	68.5	102.4	20.7	122.6	71.9

Starburst 046F is the red baldy W/C Executive Order sired female that traces to the famed Limestone Vale Bar W966 donor. She is backed by a hard working two-year old Pilgrim sired female that has done an outstanding job during her rookie season in production. Her lineage combines breed icons such as; 8543U on the sire side and W966 on the bottom. 8543U is now approaching \$5 Million in progeny sales and continues to be a top producer. 046F is a well-balanced, super attractive 3/4 blood female that is neat fronted, big bodied, and sound built. Her disposition is second to none and a female that we highly recommend for a young showman starting out!

Lot 39 BAR -O- FELICITY 813F

REMINGTON LOCK N LOAD54U
W/C HOC HCC RED ANSWER 33B
 MISS WERNING KP 8543U
 FBFS UNTOUCHABLE 633U
FBFS YASMIN 063Y
 SVF STAR STRUCK S199

Breed: PB SM | Reg#: 3445754 | Birth Date: 2/5/18 | Tattoo: 813F

CE	BW	WW	YW	Milk	API	TI
12.3	0.7	63.8	96.7	19	129.7	69.5

This red headed beauty is the definition of three-dimensional! Her power, substance, and true shape has been admired since day one. Her sire is the Hidden Oaks Herd Sire, W/C Red Answer, a red-baldy full brother to W/C Bullseye. Her dam is the FBFS Yasmin 063Y donor that has been the tried and true producer regardless of how she has been mated. Let's not soon to forget the W/C Red Answer females that have been successfully campaigned by Katy Berry on the Texas Major circuit, as well as most recently Strone Sulak's cherry red-baldy that was purchased through the sale last year that was a class winner in San Antonio and Houston. Study the structural correctness, body mass, and symmetry that this female offers!



Lot 40

A special sale feature that we couldn't be more excited about is none other than LMC SSC Rosalinda 853F from the famed LMC Daydream 5Z/173 donor dam that has made a substantial impact on the Simbrah breed. The popular Daydream donor dam is sired by the 2011 International Champion, LMC Rhino and from the many time Major Champion Female LMC WFC Ms. Dream Girl. Daydream's most recognized daughter is the 2018 ASA National Grand Champion Simbrah Female at the Fort Worth Stock Show that was shown by the Culpepper family of Gonzales, Texas. That female hung several banners along the way after she commanded \$25,000 at The Black Label Event in the fall of 2016. A maternal sister to this female was selected for \$17,000 by the Morris family this past spring in The Black Label and has endured a successful career in a short amount of time being named Grand Champion Simbrah and 3rd Overall at the Cowntown Showdown in Fort Worth, Texas. LMC SSC Catalina is another top daughter from Daydream that was selected by the Fuchs family. She was recently named Grand Champion Simbrah & American Breeds Heifer before being slapped Reserve Supreme Grand Champion Female at the Washington County Fair. There is no denying the impact that the Daydream cattle have in the ring for the junior families leading them. Study the quality, structural integrity, and striking presence that this gorgeous red head offers! Rosalinda is eligible for the La Muneca Junior Program benefits, which includes the Simbrah-Simmental Superbowl and 2 units of semen to AI Rosalinda to until your junior graduates from high school. A big time opportunity to add the power of the Daydream cow family to your show string or donor pen!

Lot **40** **LMC SSC ROSALINDA 853F**

LMC BLACK PERFECTO 3R/37
 LMC BBS PRIMO 5X/139
 BBS JENNIE WALKER
 LMC RHINO 5W/367
 LMC DAYDREAM 5Z/173
 LMC WFC MS. DREAM GIRL

Breed: 5/8 SM 3/8 BR | Reg#: 3449817 | Birth Date: 2/4/18 | Tattoo: 853F

CE	BW	WW	YW	Milk	API	TI
8.6	2.3	61.5	88.6	18.5	82.1	52.4



LMC DAYDREAM 5Z/173 | Dam of Lot 40



LMC SCC YOLANDA | This 2016 sale feature & 2018 National Champion Simbrah female was shown by the Culpepper Family.

THE PERCENTAGE SIMMENTAL'S



Lot **41 HSC FOCAL POINT 502F**

REMINGTON LOCK N LOAD54U
W/C LOADED UP 1119Y
 AUBREYS BLACK BLAZE III
 PVF INSIGHT 0129
WGR ERROLINE 225 502
 WGR ERROLINE 604 225F

Breed: 1/2 SM 1/2 AN | Reg#: Pending | Birth Date: 3/5/18 | Tattoo: 502F

CE	BW	WW	YW	Milk	API	TI
----	----	----	----	------	-----	----

HSC FF LOADED WITH CLASS
 2018 TJSSA Futurity Grand Champion
 % Simmental Female.
 Congratulations to the Culpepper Family!

*C*asey, Laken, & the girls have brought another true sale highlight to Grandview, Texas for your appraisal! Last year, the star of the show was none other than the Lot 1 Loaded with Class, a.k.a. "L.C.", a half-blood female that topped the percentage division at \$47,000 to the Culpepper family. In her first and only outing to date she was crowned Grand Champion Percentage Heifer at the 2018 TJSSA State Futurity. HSC Focal Point 502F sets the standards when it comes to class, style, and elegance. Her unique features start at the surface with a flawless foot design and leg structure, up headed and feminine about her head and neck and transcends into a robust rib design. Her hip and hind leg set is only further complimented by her squareness of pin set. 502F combines breed-leading qualities into an ultra-complete package, making her a legitimate contender if your aspirations are to chase the \$10,000 on the River Walk, Race for the Roses in Louisville next summer, or make a valiant run in the Mile High City!

THE DONNA'S



Lot 42



LOT 43



LOT 44

- Lot* **42** **JCBB DONNA F92**
 Breed: 3/4 SM 1/4 AN | Reg#: 3443762 | Birth Date: 4/4/18 | Tattoo: F92
- Lot* **43** **JCBB DONNA F34**
 Breed: 3/4 SM 1/4 AN | Reg#: 3443763 | Birth Date: 4/3/18 | Tattoo: F34
- Lot* **44** **JCBB DONNA F234**
 Breed: 3/4 SM 1/4 AN | Reg#: 3443764 | Birth Date: 4/11/18 | Tattoo: F234

Here is a trio of full sisters sired by the Bird Cattle Company and Diamond M Cattle Company herd sire, DMCC Counter Attack. The Counter Attack sired cattle have been a hit to say the least, recording banners at the Texas Majors and high sellers through the last two Black Label Events. The Metzler family of Grandview, Texas purchased JCBB Lady E3301 through the sale last fall, she went on to be a class winner at the Fort Worth Stock Show and Reserve Grand Champion Simmental Female at the Houston Livestock Show & Rodeo. This spring a cherry red baldy out of U409 and sired by Counter Attack topped the sale at \$19,000 to Rust Mountain View Ranch in North Dakota. There is no denying the quality of build, look, and unparalleled quality that the Counter Attack sire group possesses. Here are three females that are the first progeny from the \$60,000 Sandeen Donna 4232, the Lock N Load percentage female that was a past high seller in the renowned Sandeen Genetics female sale. F92 is the gorgeous red headed baldy that offers the candid Counter Attack look and presence. She's long fronted, neat chested, with the right sweep and turn to her rib cage. She offers a flawless set to her hip and hind leg, which completes her balanced phenotype. F34 is the solid black sister that is upheaded, super feminine and refined about her head and neck, with the lines needed to be a big league contender as a yearling. Finally, F234 is the sister that was blessed with a splash of chrome to derive attention every time she enters the ring. She may be the most chiseled about her front third, with as much natural turn and spring to her rib cage as any. Powerful from behind with tremendous width of pins and sets down with added bone and substance. Regardless of which sister you prefer from this flush, rest assured there is a dynamic cow base that backs these females several generations deep!

REMINGTONSECRETWEAPON185
DMCC COUNTER ATTACK 8C
 CARD FOREVER 61A

REMINGTON LOCK N LOAD54U
SANDEEN DONNA 4232
 SANDEEN DONNA 8386

CE	BW	WW	YW	Milk	API	TI
9.7	0.5	60.1	88.6	16.6	103.5	62.6



Lot 45

WLTR EVIE 5F

W/C LOADED UP 1119Y
JASS ON THE MARK 69D
 JASS SABLE'S TIME 53X

FBF1 COMBUSTIBLE
WLTR ELLIANNA 16C
 5166

Breed: 3/4 SM 1/4 AN | Reg#: 3435322 | Birth Date: 5/5/18 | Tattoo: 5F

CE	BW	WW	YW	Milk	API	TI
13.4	0.7	58.2	84.6	17.3	104.2	60

There are times in this business when one hits the ground and well..... You just know!!!! From day one, this young lady has not disappointed. One of the youngest females in the offering, this On The Mark daughter exudes quality! From her flawless silhouette, to her impeccable structural integrity, this baldy female has all the tools to be highly successful on any level, and in any facet of the industry. We feel the potential represented in this female is truly limitless. Her versatility within production only adds to her value. This female has been extremely popular with visitors all summer and fall, and she is available only because of our commitment to offer you our best in this prestigious venue!!! We invite you all to come to Grandview and see this one in person. This is a female you won't want to miss!!!



Lot 46

JCBB FANCY F6082

REMINGTON LOCK N LOAD54U
W/C LOADED UP 1119Y
 AUBREYS BLACK BLAZE III

MCC BLACKBIRD 2046 6082

Breed: 1/2 SM 1/2 AN | Reg#: 3443780 | Birth Date: 1/12/18 | Tattoo: F6082

CE	BW	WW	YW	Milk	API	TI
12.9	0.4	53.9	76.4	17.7	109.1	61.6

The success of Loaded Up sired cattle that have crossed the sale block in Grandview, TX has been outstanding, with the most recent victory being at the TJSSA Summer Classic in College Station, Texas where Loaded With Class a.k.a "L.C" was crowned Grand Champion Percentage Female for the Culpepper family. Here is another prime example of how Loaded Up "clicks" when mated to a productive, big centered Angus female. This motley-faced beauty is sound, big bodied, and offers a look about her head and neck that can't be argued. She is a true show heifer prospect that we feel will be a contender in the percentage Simmental division on the Regional and National Level, but also a player when it comes to the ORB division at the Texas Majors.



Lot 47 JCBB FALLON F 129

W/C BULLSEYE 3046A
SWC DUE DILLIGENCE D70
 JF WS EBONY'S JOY 7003T
 MR SB CHOPPER 223Z
LEEF DESTINY 129B
 SJF COUNTESS 129Y

Breed: 3/4 SM 1/4 AN | Reg#: 3443786 | Birth Date: 5/4/18 | Tattoo: F129

CE	BW	WW	YW	Milk	API	TI
13.7	0.7	58.2	83.2	19.7	116.5	64.1

JCBB Fallon F129 is sired by the late SWC Due Diligence D70, the W/C Bullseye sired son of JF WS Ebony's Joy 7003T. Her dam is a tremendous Chopper sired female that is backed by a Driver cow on the bottom side of her pedigree. Exceptional maternal strength on both sides of her lineage supports this classy May born female. Berkley Bird showed her dam with tremendous success. She offers extreme extension and refinement from her shoulder forward, with the right muscle pattern and structural build necessary to go the distance. A must see on sale day if your looking for a younger age division that is sure to be a contender as a bred in the ORB division in San Antonio and Houston!

Lot 48 JCBB FIONA F550

YARDLEY HIGH REGARD W242
DMCC DINERO 2D
 DMCC BLAZE 5T CLONE
 FBF1 COMBUSTIBLE
RUBYS JUANADA 550C
 FCC JUANADA 742P

Breed: 3/4 SM 1/4 AN | Reg#: 3443785 | Birth Date: 5/6/18 | Tattoo: F550

CE	BW	WW	YW	Milk	API	TI
9.2	2.4	63.4	94.3	21.5	95.5	59

Want to add a splash of color to your show string? The look is over and there is no denying he quality present! Here is another Dinero that is made as good as any of them when it comes to structural integrity, balance, and overall dimension. Just a May baby, but she sure is one that will turn heads and create a conversation. Her dam is a productive two-year old that originated in the Ruby Cattle Company herd and is backed by the famed Angus cow family that traces to Juanada

of Rollin Rock 0355. The Juanada cow family needs no introduction as a generationally superior cow line that has worked for years in a series of different environments. In the ORB division at the Texas Majors consider this approach; a high quality female that is as sound built and balanced as any, with the maternal advantage and a shot of color to stand out from the crowd of 50 plus heifers crowded into the ring! Females like this are hard to make, don't shy away from the potential here!



DMCC DINERO 2D | Sire of Lot 48



Lot **49** **JSSC MISSY 832F**

GAMBLES HOT ROD
BCLL HOT ROD 7714
 SCHELKES MISS LAURA 627
 FBFS WHEEL MAN 649W
LAH MISSY 536C
 WLE MISSY U409

Breed: 1/2 SM 1/2 AN | Reg#: 3449521 | Birth Date: 4/1/18 | Tattoo: 832F

CE	BW	WW	YW	Milk	API	TI
8.4	3	66.5	98.3	15.9	102.9	63.6

A striking April half-blood female whose dam is royally bred; being sired by the National Champion FBFS Wheel Man 649W and out of by the great WLE Missy U409 donor. 832F is sired by the Hot Rod son, 7714, and has been blessed with the poised and attractive look, flawless build, a bright future, and tremendous hair quality as an added bonus! Study the pedigree, the influence, and the potential here!

Lot **50** **JSSC OBCC DELIGHTFUL 276F**

CCR COWBOY CUT 5048Z
CCR ANCHOR 9071B
 CCR MS BARB 2120Z
 FBFS WHEEL MAN 649W
HPF/BORNEDELIGHTFUL 276D
 HPF MISS DELIGHTFUL X339

Breed: 3/4 SM 1/4 AN | Reg#: 3452558 | Birth Date: 2/19/18 | Tattoo: 276F

CE	BW	WW	YW	Milk	API	TI
12.9	1.7	68.5	98.0	23.0	126.5	71.7

The impact of Wheel Man shines through yet again as his daughters are proving their worth in production. Sired by the calving ease super star, CCR Anchor 9071B, this female not only offers a sound structural base, three-dimensional rib shape, but also boasts a balanced number profile across the board. The maternal lineage that supports her is from the famed Delightful P17L cow family. This female's maternal grandam is the \$70,000 valuation HPF Delightful X339, which is now employed at Bonnell Farms of Indiana. X339 has been admired for her added foot size, substance, and shear dimension. A top 3/4 blood prospect that is a single unit away from generating highly marketable Purebred progeny!



FBFS WHEEL MAN 649W



SWC HSC BACKDROP 012B | Dam of Lot 51

The Influence of
FBFS WHEEL MAN 649W

The influence of Wheel Man and his supporting dam, SVF Star Struck S199, on this offering, is undeniable. His daughters and sisters are top notch producers in several programs across the nation. The semen is in limited supply, so buy the influence when you can.

Lot **51** **BAR -O- FANCY 814F**

MCM TOP GRADE 018X
 TJ HIGH CALIBRE 556B
 PRS LADY DONE RIGHT W214
 FBFS WHEEL MAN 649W
SWC HSC BACKDROP 012B
 SWC REVOLUTION DOLL 902X

Breed: 3/4 SM 1/4 AN | Reg#: Pending | Birth Date: | Tattoo: 814F

CE	BW	WW	YW	Milk	API	TI
11.55	1.65	74.65	114.75	19.05	119.1	71.1

Here is another Black Label Event success story that goes far beyond the backdrop...in fact her name says it all! SWC HSC Backdrop 012B was a high seller in the 2015 Black Label Event purchased by the Ottensmeier family of Kansas. She was a Wheel Man sired female from a highly productive GCC Total Recall dam. She excelled on the tan bark, being named Reserve Grand Champion Percentage Simmental at the 2016 Fort Worth Stock Show as a heifer calf. Although she endured success under the bright lights, her true accolades had yet to be accomplished. Introducing the first ET heifer calf to be offered from SWC HSC Backdrop 012B, a.k.a "Reyna", is Bar-O- Fancy 814F. Her sire is the \$400,000 TJ High Caliber 556B. Study the extension, elegance, and structural integrity that this stunning 3/4-blood female offers. If you're serious about leading a percentage female that will compete at the highest levels and be a dominant force at the Texas Majors in the ORB division, then be sure to look up this "Fancy" lady on sale day!



**OYE 2017 GRAND CHAMPION
SIMMENTAL FEMALE** | 3/4 sib to Lot 52



WLTR LYDIA 39U ET | Dam of Lot 52



GRAND OLE OPRY | Full sib to Lot 52

Lot **52** **WLTR KELSEA 4F ET**

SS/PRS HIGH VOLTAGE 244X

WLTR NASHVILLE 22A ET
LLSF CAYENNE UP401

3C MACHO M450 BZ

WLTR LYDIA 39U ET
J&J QUEEN 414

Breed: 3/4 SM 1/4 AN | Reg#: 3435321 | Birth Date: 4/5/18 | Tattoo: 4F

CE	BW	WW	YW	Milk	API	TI
10.8	1.8	68.2	96.1	20.9	111.4	67

This 3/4 sib to the 2017 Oklahoma Youth Expo Grand Champion Simmental Female is also a full sister to our newest AI prospect, Grand Ole Opry, and to our Lot 41 from last year's sale that sold for \$19,000. This young lady is cut from the same mold. Her dam needs no introduction, and her sire Nashville, the high seller from the first Spring Edition of this event, continues to produce high quality offspring throughout the country. This April female will be one of the younger females in the offering, but certainly won't disappoint in terms of quality. This is the kind of female that will compete at a high level as a calf but will continue to impress and could be a dominant force as a yearling. All the guesswork has been removed here folks!!! Predictable, proven pedigree with unlimited potential.....she has it all!!!



Lot 53



Lot 54

Lot 53 **WLTR MOANA 2F**

YARDLEY UTAH Y361
W/C RELENTLESS 32C
 MISS WERNING KP 8543U

DJ SALUTION S502
WLTR TIARRA 31W
 WLTR CORDOVA 0329

Breed: 3/4 SM 1/4 AN | Reg#: 3435318 | Birth Date: 2/20/18 | Tattoo: 2F

CE	BW	WW	YW	Milk	API	TI
10.6	0.7	60.9	81.7	19.9	110.5	64.4

This powerhouse female packs a lot of punch in one package. We think this percentage female has an enormous amount of potential not only on the tan bark, but in production as well. Her dam, a standout on any herd visit, is a no nonsense, consistent producer here at Walter Cattle Company, and this female is her best to date. So much look, power, and structural integrity combined with a solid pedigree. This Relentless daughter has a really bright future!!



RGRS XCLAMATION 4X | 2011 Champion SimAngus
 Female at Kansas City and Tulsa, dam of Lot 54.

Lot 54 **WLTR STEEL MAGNOLIA 1F**

CNS DREAM ON L186
SVF STEEL FORCE S701
 SVF SHEZA BEAUTY L901

SS ON STAR RJ13
RGRS XCLAMATION 4X
 OSU RAQUEL 6165

Breed: 3/4 SM 1/4 AN | Reg#: 3435319 | Birth Date: 2/9/18 | Tattoo: 1F

CE	BW	WW	YW	Milk	API	TI
9.4	1.9	63.1	92.4	16.8	87	56.5

This female's pedigree oozes purple!!! We all know the potency and solid predictability of the Steel Force progeny. This female's dam was the Res. Grand Champion Percentage female at both the Tulsa State Fair and the American Royal in 2011, and her maternal Granddam was a highly successful Angus donor in our program for many years who herself racked up numerous championships in her time in the ring. Although a victim of BOLT, we love the type and kind demonstrated in this female. Very elegant and hard to poke a hole in, she should have no problem following in her family's footsteps of success!!!



LOT 55



LOT 56



LOT 57

Lot 55 MMR SWC EVERGREEN 805F

HARKERS ICON
ROCKING P LEGENDARY C918
RP/MP VALENTINE 127X

BC EAGLE EYE 110-7
WALLACE EVERGREEN 1105
SANDPOINT WAR EVERGREEN 3023

Breed: 1/2 SM 1/2 AN | Reg#: 3452500 | Birth Date: 3/10/18 | Tattoo: 805F

CE	BW	WW	YW	Milk	API	TI
9.6	0.7	61.2	93.9	18.6	101.4	59.8

805F is an ultra attractive daughter from the exciting Rocking P, Bloomberg, Moriondo, and Wallace herd sire, while backed by the famed Evergreen cow family. This striking half blood is built near perfect at the ground with exceptional foot and bone, the right angles, and the futuristic look that make her a big league contender as a bred. Legendary's rookie calf crop has made a mark and there is no denying the impact of the highly productive Wallace bred female, 1105. The impact that this female's paternal grandam has had on the Simmental breed and the cattle business as a whole is just as her son's name implies... legendary! The sky is the limit with a female of this caliber!

Lot 56 MMR SWC EBONY 815F

HARKERS ICON
ROCKING P LEGENDARY C918
RP/MP VALENTINE 127X

SS EBONYS GRANDMASTER
MISS EBONY 15A

Breed: 3/4 SM 1/4 AN | Reg#: 3452499 | Birth Date: 3/17/18 | Tattoo: 815F

CE	BW	WW	YW	Milk	API	TI
9.6	1.5	61.5	92.1	18.6	106.8	60.4

Legendary did it again! 815F is from the productive Grandmaster daughter, 15A, who was a force to be reckoned with in the ring. She endured a successful show career, highlighted by her 3rd Overall finish at the 2014 AJSA Summer Classic in Louisville. Much like her dam, 815F is ultra smooth and extended about her front third, without sacrificing the fundamental correctness of rib shape, body mass, structural integrity, and fleshing ability. She remains so natural in her topline when on the move, yet poses with the high caliber look from the stand, much like her mother. Imagine the mating flexibility and return on investment potential that this female offers!

Lot 57 MMR SWC MS FROG 808F

SVF STEEL FORCE S701
RRJS STEEL FORCE 134U
RR IDESSA 7375

TUELL COWMAKER A3032
TUELL MS CIWNJWE 608D

RRIT MISS UPGRADE 619X
Breed: 1/2 SM 1/2 AN | Reg#: 3452983 | Birth Date: 4/10/18 | Tattoo: 808F

CE	BW	WW	YW	Milk	API	TI
14.8	-0.7	61.0	93.6	19.5	123.3	69.1

Another smooth made, well balanced percentage female that is sure to turn heads! Her lines, quality of build, and added volume through her center rib indicate that this female has the credentials to endure a successful career on the tan bark. She is upheaded, smooth shouldered and transitions so well into her fore-rib and center body. She has been a true standout since the beginning. "Frog" is the popular Steel Force son that Justin Johnson of Prestige Cattle Co. utilized extensively a few years back, resulting in multiple high selling females and the Tulsa State Fair Grand Champion Simmental Female!



ROCKING P LEGENDARY C918 | Sire of Lot 55 & 56



FBFS BRILLIANT STAR 013B | Dam of Lot 58

Lot **58** **FBFS FIRST DATE 020F**

MR CCF VISION
HCCO CLASSIC 431C
SJF COUNTESS 431A

SANDEEN UPPER CLASS 2386
FBFS BRIALLANT STAR 013B
SVF STAR STRUCK S199

Breed: 3/4 SM 3/16 AN 1/16 AR | Reg#: 3447201 | Birth Date: 2/14/18 | Tattoo: 020F

CE	BW	WW	YW	Milk	API	TI
11.6	1.6	70.4	104.8	17.2	111.3	67.6

The sire of Lot 58, HCCO Classic 431C was the pick of Hartman Cattle Company's 2016 Bull Sale offering by the crew at Diamond A Farms. His structural build is flawless, as he possesses an athletic, rugged, herd sire look. The dam of 020F was a past Black Label sale feature from the rookie Upper Class sire group that took the breed by storm. Her dam, 013B is backed by the legendary Star Struck S199 donor dam. Her unsurpassed rib shape, correctness of lines, and overall capacity was breath taking. She was a true foundation building type female! 020F is the result of this exciting mating that has yielded a strip faced Purebred that is neat featured, flat shouldered, and offers the same rib capacity as her impressive dam. This female offers tremendous upside from both a show and donor prospect standpoint.

Lot **59** **BLC1 HSC FARAH 360F**

MR TR HAMMER 308A ET
TKCC CLASSIFIED
FORD RJ DOLLY Y83

REMINGTON LOCK N LOAD54U
EBY MISS 1052 360A
EBY MISS 4094 1052

Breed: 3/4 SM 1/4 AN | Reg#: 3447051 | Birth Date: 2/1/18 | Tattoo: 360F

CE	BW	WW	YW	Milk	API	TI
7.1	2.7	74.6	119	19.4	120.5	73.5

360F is a daughter of TKCC Classified from a direct daughter of Lock N Load bred in the Eby program. A true reputation of mass, dimension, and maternal prowess. Big, good footed with great joints, flex, and give off all four corners. A judging coach that evaluated a significant jackpot in Oklahoma last year made the general statement that in order to make a high percent Simmental sound you have to breed the muscle out of them, not true Mr. Judging Coach. 360F is the example of a sound, stout, broody, breeding piece, who happens to be a three-quarter blood female. We do concede that she is not the centerfold or the runway model in the offering, but one that offers enough look and the power needed to mate with a multitude of flatter, prettier bulls that the breed has to offer.





Lot 60

Lot **60** **NXT SWC LIBERTY UNITED F084**

TNTTUITION U238
W/C UNITED 956Y
 MISS WERNING 956W
 THSF MR PRECISE 456P
THSF MS LIBERTY S600
 THSF PRESTIGE

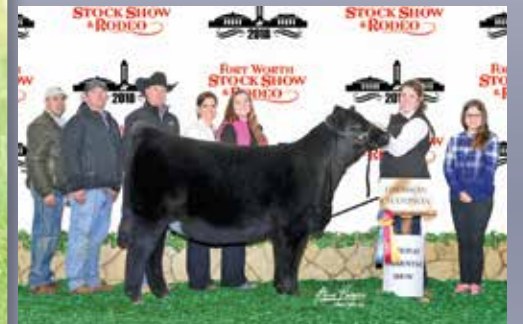
Breed: 3/4 SM 1/4 AN | Reg#: 3429220 | Birth Date: 1/4/18 | Tattoo: F804

CE	BW	WW	YW	Milk	API	TI
11.6	1.1	79.4	126.2	20.5	114	71.6

*F*084 is the United daughter from one of The Black Label's founding cow families, THSF Miss Liberty S600. She is a maternal sister to Exclamation, whose progeny averaged over \$47,000 just a year ago! This female is very good in her pro le as one studies her angles and transitional points. A higher percentage female with Dream On breeding flexibility and from one of the most proven cow families from the Foster Brother program. We are thankful for the Drach Family's business and loyalty, as this is a result of flush purchased several sales ago. Here is your opportunity to tie to another substantial breeding piece with broad-spectrum impact in the near future.



FBFS X-CLAMATION 76X
 Maternal sister to Lot 60



FBFS EXCLAMATION 045E
 2018 FWSS National Simmental Show Calf Champion. Congratulations to the McInvale Family! High-selling female from Black Label 2017 and a maternal sister to Lot



THSF MS LIBERTY S600 | Dam of Lot 60



Lot 61

Lot **61** **KENCO SWC MISSY 716F**

O C C LEGEND 616L
BC LOOKOUT 7024
 GIBBET HILL MIGNONNE E37
 SVF/NJC BUILT RIGHT N48
WLE MISSY X407
 SHAWNEE MISS 770P

Breed: 1/2 SM 1/2 AN | Reg#: Pending | Birth Date: 4/20/18 | Tattoo: 716F

CE	BW	WW	YW	Milk	API	TI
12.40	0.60	58.95	83.60	23.35	122.8	63.5

The dam of this female is featured in the donor line up at Kenco Cattle Co. She was their selection out of the Black Label in 2016. X407 is rich in pedigree sired by the female making Built Right and from the Shawnee Miss 770P donor dam that highlighted Wesner and Circle M programs. She would be a more than maternal sister to the Select Sires stud Uno Mas and the great U409. This heifer has had maternal sibs highlight the 2014 Ft Worth National Sale and the 2018 Ft Worth National sale where a maternal sister by Vision was the high selling female at over \$30,000. The Lookout cattle have been consistently stout, deep, sound, and just simply loaded with quality. This female is no different. She is flawless, square, and just good livestock. Here's an April born Simangus female with a bright future on the tan bark and in production.

Lot **62** **KENCO SWC FALLON 621F**

O C C LEGEND 616L
BC LOOKOUT 7024
 GIBBET HILL MIGNONNE E37
 W/C UNITED 956Y
OBCC MISS H25 910B
 JM BF H25

3/8 SM | Reg#: Pending | Birth Date: 4/16/18 | Tattoo: 621F

BW	WW	YW	Milk
0.85	66.95	103.3	18.85

As previously stated, the Lookout sire group is stamped with look and shape, and when you add another great cow and cow family, they tend to be top shelf seedstock. We realize that this female is too low percentage to show at the National level, however we definitely believe her quality, eye appeal, and genetic merit allow her to be a super competitive AOB or, in Texas, a heifer that will surface towards the top of the ORB division especially as a sappy bred. This upheaded, beautiful fronted female has a big sweeping rib cage and is plenty sound, good footed, and built. Her dam was selected by Kenco and Sloup from the Owen Brothers program. The H25 cow line has had a load of influence in the breed through bulls like Broker, High Voltage, Tailgater, and many more. The predictability and profitability of the progeny from H25 cannot be denied and the same could be said of United and the cow family that supports him. A very unique blend with extraordinary results.



SWC/TO EVERYTHING NICE | 2018 Cowtown
 Classic high-selling female; maternal sister to Lot 61



WLE MISSY X407 | Dam of Lot 61



Lot **63** **JCBB SMOKIN HOT F78**

SVF STEEL FORCE S701
MR HOC BROKER
 JM BF H25

JCBB 222Z

Breed: 1/2 SM 1/2 AN | Reg#: 3443770 | Birth Date: 4/2/18 | Tattoo: F78

CE	BW	WW	YW	Milk	API	TI
9	1	55.1	77.9	15.7	90.7	57.3



JCBB SMOKIN' HOT D222 | Supreme Champion
 Female Panhandle Parade of Breeds

JCBB Smokin' Hot F78 is just as her name implies! Here is the result of the tried and true mating that may be the most potent combination in the beef cattle industry, MR HOC Broker mated to a productive, big ribbed Angus cow. Two years ago, 222Z produced the Lot 1 and \$20,000 high selling SimAngus heifer in The Hunt sale. Enter, F78 the full sister to the 2017 Lot 1 female, another poised half-blood that combines function with form! Her ultra maternal look from the side combined with the added shot of power and substance makes this female a standout among her contemporaries. Sure, she may not sell with the indexes to garner breed-leading percentiles, but what she does offer is phenotypic excellence. From a sire group that has produced more champions than any other in recent years, we present... Smokin' Hot!

Congratulations **BIRD FAMILY!**





Lot 64 FBF FIRST KISS 047F ET

REMINGTON LOCK N LOAD54U
W/C LOADED UP 1119Y
 AUBREYS BLACK BLAZE III
 FBF TURNING POINT 514T
BMS XCELLANCE
 FBF SALLY 115S

Chi / % Simmental | Reg#: 394777 | Birth Date: 3/14/2018 | Tattoo: 047F

BW	WW	YW	Milk
1.3	59	86	17

Sired by the trusted W/C Loaded Up 1119Y, this show stopping, dual registered prospect is one that has turned heads since the day she hit the ground. Elegant, long fronted, up headed, with the neat chest that transitions into the gently sweeping rib design that aids in her balanced look. This female papers percentage Simmental and Chi. She will be a force in the ORB division if she stays in Texas.



Lot 65 FBF FIONA 010F

GAMBLES HOT ROD
SILVEIRAS STYLE 9303
 SILVEIRAS ELBA 2520
 FBF TURNING POINT 514T
FBF A BIT OF SUGAR 146A
 BMS YOYO

Chi | Reg#: 394778 | Birth Date: 2/5/2018 | Tattoo: 010F

BW	WW	YW	Milk
0.5	51	80	18

FBF Fiona 010F is a show heifer deluxe! Upheaded, angular, feminine and refined with the attractive set to her hip and hind leg, with the looseness of skeleton and soundness to develop into a show-stopping yearling a year from now. Her sire, Style, has sired more champions and high sellers among a wider range of breeds than any other Angus sire in the history of the breed. This Chi female has the credentials to be dominant on the show road and make her fair share of trips to the backdrop!



Lot **66**

JCBB FINESSE F453

BK ICE PICK 472J
IRISH WHISKEY
 NTC 615 EVER READY

MIMMS COW 4267

Maintainer | Reg#: 491809 | Birth Date: 4/14/2018 | Tattoo: F453

JCBB Finesse F453 is the result of an embryo purchase from the famed Embryos on Snow sale from Dr. Mike Mimms of Hereford, Texas. This mating is responsible for the \$100,000 high-selling heifer calf that was sold by Bushy Park Farms to the Walker Family in Arkansas. That same heifer was successfully campaigned by Mason Walker being crowned Reserve Grand Champion Maintainer at the 2016 American Royal, Grand Champion Maintainer at the 2016 NAILE, and Reserve Grand Champion at the 2017 NWSS. F453 offers the same key characteristics of her dominant full sister. She is tremendous from the side, as she exemplifies elegance and grace. She has been admired from day one and is a female that we believe not only will find great success at the end of a leather lead, but her production value is unmatched.



Lot **67**

JCBB FLASHY F305

BPF MERCEDES BENZ 131U
NMR MATERNAL MADE
 NMR 0-04X

JCBB LADY 9152

Maintainer | Reg#: 491811 | Birth Date: 4/5/2018 | Tattoo: F305

Here is an ultra attractive Maternal Made daughter that papers as a Maintainer and is eligible for show in the ORB division at the Texas Majors. JCBB Flashy F305 is a super upheaded and attractive through her front third, neat chested, and near flawless on the move. This April born heifer calf was blessed with tremendous hair quality, and combined with her added looks this female has the potential to be a big league contender!



2017 NWSS Res Champion Maintainer

2016 NAILE Champion Maintainer



TR MS MONTELLA 1572Y | Dam of Lot 68 & 69



2016 NWSS CHAMPION FEMALE
Full sister to Lots 68 & 69



SUPREME FEMALE SD STATE FAIR
Full sister to Lots 68 & 69

Lot **68** **TR JCBB MONTELLA F408 ET**

Charolais | Reg#: EF1259319 | Birth Date: 4/12/2018 | Tattoo: F408

Lot **69** **TR JCBB MONTELLA F825 ET**

TR MR FIRE WATER 5792RET | GERRARD MONTEZUMA 6T
TR PZC MR TURTON 0794 ET | **TR MS MONTELLA 1572Y**
 THOMAS MS IMPRESSIVE0641 | TR MS WYOMING WIND 5604R

Charolais | Reg#: EF1259320 | Birth Date: 4/08/2018 | Tattoo: F825

BW	WW	YW	Milk
1.9	26	46	8

The Charolais division of The Black Label Event may be few in numbers, but the quality is superior. Here is a tremendous pair of full sisters from the famed TR MS Montella 1572Y donor dam that has been a cornerstone Charolais producer for Thomas Ranch and Maple Lane Farm. 1572Y was the 2013 NWSS Grand Champion Charolais Female and the \$100,000 high selling female in the historic Thomas Ranch Dispersal. In her first calf crop she generated two heifer calves that sold for \$60,000 and \$28,000, which included the 2014 American Royal Calf Champion. Embryos from Montella 1572Y have commanded as much as \$2,700 per egg! The famed TR MR Turton, one of the most impressive breeding bulls that the breed has ever seen and the top son of the legendary TR MR Fire Water, sires this duo of April heifer calves. Elegant, flat-shouldered shouldered, neat chested, long hipped, smooth muscled and flawless in their basic build. If you're serious about making a hard run at the purple banner then this pair is a must see on the 13th of October!



Lot **70**

CHEZ MISS FAYE 8613F

HYALITE ON TARGET 936
R LEADER 6964
 R MISS REVOLUTION 1009
 DKF RO CASH FLOW 0245 ET
CHEZ MISS DEVINE WINE 668D ET
 R SWEET RED WINE 039

Hereford | Reg#: 43942935 | Birth Date: 2/21/2018 | Tattoo: 8613F

BW	WW	YW	Milk
+1.9	+61	+96	+28

*A*n exciting Polled Hereford female from one of the breeds most elite cow families, R Sweet Red Wine! CHEZ Miss Faye 8613F is sired by the exciting genetic package, R Leader, who combines a tremendous EPD profile that is further enhanced by his phenotype, presence, and style! This female's young dam is sired by Cash Flow, a proven sire that has produced high sellers and champions at the highest levels, including the 2016 NJHA Grand Champion Polled Hereford. That same Cash Flow daughter went on to be crowned Supreme Grand Champion Overall Breeds at the renowned San Antonio Stock Show & Rodeo for the Braman family. 8613F is backed by a proven cow family that has produced hundreds of thousands of dollars in progeny sales, as well as Junior National Champions, Denver Champions, and AI sires. The only Hereford in the offering but certainly one that we feel has a big future!



R SWEET RED WINE 039
 Maternal grandam of Lot 70



**2014 NJHE GRAND CHAMPION
 HORNED FEMALE**
 Maternal sister to the dam of Lot 70



**2014 NWSS GRAND CHAMPION
 POLLED FEMALE**
 Maternal sister to the dam of Lot 70



Lot 71

KNA BARBARA F810

PVF INSIGHT 0129
KRAMERS ENFORCE 5006
 KRAMERS EVERGREEN ERICA 1558
 SILVEIRAS STYLE 9303
DDA BARBARA 1447
 DDA BARBARA 0813

Angus | Reg#: 19193769 | Birth Date: 1/23/2018 | Tattoo: F810

BW	WW	YW	Milk
I+2.0	I+52	I+85	I+25

A big time Angus show heifer prospect sired by the \$87,500 top selling bull in the Kramer Angus Bull Sale, this female exemplifies balanced, eye-appeal, and style! She starts at the surface with the added foot and bone work, while offering an elite profile. Her front third extension combined with the added mass and volume through her mid rib is quick to be noted. She was blessed with excellent hair quality and plenty of it as an added bonus to aid her show ring presence. The bottom half of her pedigree is supported by her pathfinder granddam, DDA Barbara 0411, and further enhanced by the influence of one of the most dominant Angus sires among show ring enthusiasts, Silveiras Style 9303! Study the quality of build, genuine performance, structural stoutness, and overall poise that this exciting Angus prospect brings forth. Her days at the backdrop are sure to come!



Lot 72

JCBB FAITH F28

CONNELLY CAPITALIST 028
LD CAPITALIST 316
 LD DIXIE ERICA 2053
 H C A FINAL DRIVE 35X
CARDINAL ESTELLA 28D
 CARDINAL ESTELLA 28B

Angus | Reg#: 19208907 | Birth Date: 2/2/18 | Tattoo: F28

BW	WW	YW	Milk
I+6	I+56	I+95	I+26

Here is a tremendous Angus prospect sired by LD Capitalist and back to a Cardinal bred female that is a granddaughter of the great SAV Final Answer. She is precisely the type and kind of Angus female that we strive to produce in order to inject a strong dose of maternal function into the base of our evolving SimGenetic program. Massive through her mid rib, yet still neat chested and long fronted with the ideal Angus female head. Her added substance of bone and foot is what sets her apart from the crowd, and we believe on the halter she will endure her fair share of success. Our lone Angus in the barn this summer in Lubbock, but certainly a favorite of many that have been through the offering!



2018 TJSSA Futurity Grand Champion % Simmental Female. Congratulations to the Culpepper Family!



2017 OYE Grand Champion Simmental Female. Congratulations to the Carter Family!



2017 Champion Charolais Female at San Antonio & Houston, 2016 FWSS Champion Charolais Female. Never beat in breed at a Texas Major show. Congratulations Shipman Family!



2018 OYE Supreme Grand Champion Female Overall Breeds. Congratulations Cunningham Family!

NFF WICKED B125 EMBRYOS



NFF WICKED B125
Dam of Lots 200A - 200C



RUBY SWC BATTLE CRY 431B | Sire of Lot 200A



DMCC COUNTER ATTACK | Sire of Lot 200B



KR CASINO 6243 | Sire of Lot 200C

The **BATTLE CRY** mating is obviously proven with positive result. These embryos are reverse sorted females.

COUNTER ATTACK was bred in the Diamond M program of Kansas and was selected by Bird Cattle Co in one of the first, reinvented Diamond M production sales. A young herdsire that is stamping his progeny with that desired look with a great neck, hip, hindleg, and overall build. The mating to B125 should be awesome when you talk about the foot, body, and productive cow look that she possesses. They are made with sexed semen, so heifer calves should be on the way.

WK CASINO needs little introduction in the Angus circles as he commanded Reserve Champion honors at both Kansas City and Denver in the past show season. An Angus bull that we thought, finally offered enough of the look and shape that we appreciate. His rookie calf crop looks great at Badger Creek and feel strongly about the Simangus side with this unique breeding bull. A bull that was bred by a cowboy that knows, bought buy a good cattleman, and being sampled by good cattlemen nationwide. They should be heifer embryos as they were reverse sorted for females.

Lot **200A**

3 IVF Reverse Sorted Heifer Embryos | PB SM
BATTLE CRY X WICKED B125

MR HOC BROKER
RUBY SWC BATTLE CRY 431B
SWC RUBY YETTI 143Y

NFF UPGRADE Z083
NFF WICKED B125
NFF WICKED Z119

Projected EPDs

CE	BW	WW	YW	Milk	API	TI
11.85	0.75	78.75	114.75	16.2	118.4	73.3

Selling 3 IVF Reverse Sorted Heifer Embryos, guaranteeing one pregnancy if work is performed by a certified embryologist.

Lot **200B**

3 IVF Heifer Sexed Embryos | PB SM
COUNTER ATTACK X WICKED B125

REMINGTONSECRETWEAPON185
DMCC COUNTER ATTACK 8C
CARD FOREVER 61A

NFF UPGRADE Z083
NFF WICKED B125
NFF WICKED Z119

Projected EPDs

CE	BW	WW	YW	Milk	API	TI
13.65	0.7	63.95	92.4	18.6	122.6	70.1

Selling 3 IVF Heifer Sexed Embryos, guaranteeing one pregnancy if work is performed by a certified embryologist.

Lot **200C**

3 IVF Reverse Sorted Heifer Embryos | 1/2 SM 1/2 AN
CASINO X WICKED B125

CFCC BLACK JACK 001
KR CASINO 6243
MALSONS SAVANNAH 27Y

NFF UPGRADE Z083
NFF WICKED B125
NFF WICKED Z119

Projected EPDs

CE	BW	WW	YW	Milk	API	TI
9	1.8	69.45	109.8	27.05	110	69.5

Selling 3 IVF Reverse Sorted Heifer Embryos, guaranteeing one pregnancy if work is performed by a certified embryologist.

SWC HOC ANNIE K 165C EMBRYOS



SWC HOC ANNIE K 165C
Dam of Lot 201A, 201B & 201C



CCR STOCKMAN 8033E | Sire of Lot 201A



WLE COPACETIC E02
Sire of Lot 201B



OBCC CMFM DEPLORABLE D148
Sire of Lot 201C

STOCKMAN The \$45,000 high selling bull from the 2018 Cow Camp Ranch Bull Sale was admired by many but after the dust settled and the hammer fell, the progressive operations of Chrisman and Broken Bar M of Nebraska owned the bull. I thought he was practical, big centered, square ended, great footed, very athletic, and prior to BOLT, trendsetting in his numeric profile. He blends two of the most dominant cow families in the Bruner Family's program with the great Apple and the 7322T, the dam of Cowboy Cut. He's proven, documented, and foolproof from a breeder's perspective. 165C, is one, we have realized that contributes more added power and substance than we may actually need. Stockman should complement her stoutness and look with his flex and agility. Here again, bulls or females from this mating will be good property to advance to the next generation.

COPACETIC your 2018 Sweepstakes Reserve Grand Champion Percentage Bull and quite possibly one of the best SimGenetic bulls to be campaigned in some time sires these embryos from 165C. We believe his design and type only compliments the substance and predictability of this great daughter of the 2014 National Champion SimAngus female, Annie K 330Y.

DEPLORABLE Again, this well designed herdsire with his flawless pattern and build should only enhance this three-quarter blood female's broodiness and bold skeletoned presence. We expect big time results from this mating.

Lot 201A 3 IVF Non-Sexed Embryos | 5/8 SM 3/8 AN
STOCKMAN X ANNIE K 165C

CCR WIDE RANGE 9005A
CCR STOCKMAN 8033E
CCR MS 7322 BRILL 3370A

WAGR EARTHQUAKE 236Z
SWC HOC ANNIE K 165C
ACW ANNIE K 330Y

Projected EPDs

CE	BW	WW	YW	Milk	API	TI
9	2.05	76.65	117.95	16.65	119.5	71.3

Selling 3 IVF Non-Sexed Embryos, guaranteeing one pregnancy if work is performed by a certified embryologist.

Lot 201B 3 IVF Heifer Sexed Embryos | 3/4 SM 1/4 AN
COPACETIC X ANNIE K 165C

HPF QUANTUM LEAP Z952
WLE COPACETIC E02
CMFM JOY 02ZB

WAGR EARTHQUAKE 236Z
SWC HOC ANNIE K 165C
ACW ANNIE K 330Y

Projected EPDs

CE	BW	WW	YW	Milk	API	TI
8.25	2.6	73.45	110.4	16.85	111.3	68.5

Selling 3 IVF Heifer Sexed Embryos, guaranteeing one pregnancy if work is performed by a certified embryologist.

Lot 201C 3 IVF Heifer Sexed Embryos | PB SM
DEPLORABLE X ANNIE K 165C

W/C EXECUTIVE ORDER 8543B
OBCC CMFM DEPLORABLE D148
LAZY H/ADKINS BLKSTAR Z15

WAGR EARTHQUAKE 236Z
SWC HOC ANNIE K 165C
ACW ANNIE K 330Y

Projected EPDs

CE	BW	WW	YW	Milk	API	TI
10.7	1.75	73.3	113.7	19.7	132.4	76.4

Selling 3 IVF Heifer Sexed Embryos, guaranteeing one pregnancy if work is performed by a certified embryologist.

WLE SHEZ IT C056
Dam of Lot 202A & 202B



W/C BANKROLL 811D | Sire of Lot 202A



CHESTNUT MAKING BANK 207 | Sire of Lot 202B



COLEMAN BRAVO 6313 | Sire of Lot 202C



OBCC CMFM DEPLORABLE D148 | Sire of Lot 202D

Lot 202A

3 IVF Reverse Sorted Heifer Embryos | PB SM
BANKROLL X SHEZ IT C056

W/C LOADED UP 1119Y
W/C BANKROLL 811D
MISS WERNING KP 8543U

MR TR HAMMER 308A ET
WLE SHEZ IT C056
CIRCLE T SHEZ IT W056

Projected EPDs

CE	BW	WW	YW	Milk	API	TI
11.9	1.2	66.45	97.3	21.6	124.7	69.7

Selling 3 IVF Reverse Sorted Heifer Embryos, guaranteeing one pregnancy if work is performed by a certified embryologist.

Lot 202B

3 IVF Non-Sexed Embryos | 1/2 SM 1/2 AN
MAKING BANK X SHEZ IT C056

BARSTOW BANKROLL B73
CHESTNUT MAKING BANK 207
BUSSMUS QUEEN 14

MR TR HAMMER 308A ET
WLE SHEZ IT C056
CIRCLE T SHEZ IT W056

Projected EPDs

CE	BW	WW	YW	Milk	API	TI

Selling 3 IVF Non-Sexed Embryos, guaranteeing one pregnancy if work is performed by a certified embryologist.

*S*hez It 056C is evidently a very productive young female with a bright future and we believe in her ability and these matings we chose. The **BANKROLL** sire group has as much buzz in the breed as any. They are sappy, stout, sound, three dimensional, with performance. We feel that 056C's extra length and extension will only make the end result more appealing.

A video, picture, and a registration number of **MAKING BANK** were sent to me by Jason Hoffman on an Angus bull that he and Knox Brothers acquired from Chestnut Angus in Minnesota. We have been searching for an Angus bull to use with look and beef industry merit and we felt he was one that we needed to utilize making better SimAngus cattle with substance and shape. Regardless of whether the calves are bulls or females we believe that they will be a positive impact.

When it came down to crunch time on one final mating to this productive hammer daughter, we decided to go with the \$400,000 plus valuated Charlo stud, **COLEMAN BRAVO**. His physical presence is about as ideal in terms of body and mass as any one Angus bull we have evaluated in some time. He too is about as well put together in terms of pattern, skeleton, and balance. It stands to reason when he is further backed by the great cow families that Larry and Dee have promoted and propagated for many years. This mating is loaded with positive and predictable qualities, both top and bottom. Non sorted conventionally produced seedstock setting in nitrogen awaiting you to transfer this superior, on of a kind SimAngus mating.

DEPLORABULL needs no introduction to the breed and its followers. An Executive Order son from the Blackstar cow family that is heifer acceptable and nice numbered. We missed out on the ground floor investment, but were thankful semen was offered this summer for us to use. Again, a conventional IVF mating with either sex being able to make a positive impact on a program and the breed!

Lot 202C

3 IVF Non-Sexed Embryos | PB SM
BRAVO X SHEZ IT C056

COLEMAN CHARLO 0256
COLEMAN BRAVO 6313
COLEMAN DONNA 714

MR TR HAMMER 308A ET
WLE SHEZ IT C056
CIRCLE T SHEZ IT W056

Projected EPDs

CE	BW	WW	YW	Milk	API	TI

Selling 3 IVF Non-Sexed Embryos, guaranteeing one pregnancy if work is performed by a certified embryologist.

Lot 202D

3 IVF Non-Sexed Embryos | PB SM
DEPLORABLE X SHEZ IT C056

W/C EXECUTIVE ORDER 8543B
OBCC CMFM DEPLORABLE D148
LAZY H/ADKINS BLKSTAR Z15

MR TR HAMMER 308A ET
WLE SHEZ IT C056
CIRCLE T SHEZ IT W056

Projected EPDs

CE	BW	WW	YW	Milk	API	TI
11.7	1.35	70.55	100.9	22.05	125.5	72.7

Selling 3 IVF Non-Sexed Embryos, guaranteeing one pregnancy if work is performed by a certified embryologist.

POWERFUL EMBRYOS



WAGR MISS VISION 6057D | Dam of Lot 203



Ruby's Currency | Sire of Lot 203

Lot **203**

WBF SIGNIFICANT B132
RUBY'S CURRENCY 7134E
RUBYS JILL 035X

3 IVF Non-Sexed Embryos |

CURRENCY X VISION 6057D

MR CCF VISION
WAGR MISS VISION 6057D
3C MELODY M668 BZ

Projected EPDs

CE	BW	WW	YW	Milk	API	TI
8.45	2.60	76.15	112.40	19.40	120.9	74.0

Lot 203 is an unbelievable opportunity to purchase one of the freshest matings we have created lately. Ruby's Currency is the past high selling bull of the 2018 Hartman Bull sale and is one of the hottest sires in the industry. The donor dam is a product of mating Vision to the legendary 3C Melody M668. Expect the resulting babies of this mating to be ultra balanced, super correctly made, kitty cat sound, and down right bad to the bone. We are committed to pushing the envelope to make the next generation even better and we believe this donor female has huge upside potential.

3 IVF Non-Sexed Embryos, guaranteeing one pregnancy if work is performed by a certified embryologist.



3C MELDOY M668 BZ | Granddam of Lot 204A & 204B



KCC1 EXCLUSIVE 116E | Sire of Lot 204A

Lot **204A**

MR TR HAMMER 308A ET
KCC1 EXCLUSIVE 116E
TKCC VICTORIA 57A

3 IVF Non-Sexed Embryos | P B S M

EXCLUSIVE X MELODY 5084C

WS PILGRIM H182U
WAGR MELODY 5084C
3C MELODY M668 BZ

Projected EPDs

CE	BW	WW	YW	Milk	API	TI
9	2.55	70.3	102.35	19.2	124.6	73.4

3 IVF Non-Sexed Embryos, guaranteeing one pregnancy if work is performed by a certified embryologist.



RUBY'S TURNPIKE 771E | Sire of Lot 204B

Lot **204B**

WBF SIGNIFICANT B132
RUBYS TURNPIKE 771E
RUBYS MISS CLEO 240Z

3 IVF Non-Sexed Embryos | P B S M

TURNPIKE X MELODY 5084C

WS PILGRIM H182U
WAGR MELODY 5084C
3C MELODY M668 BZ

Projected EPDs

CE	BW	WW	YW	Milk	API	TI
8.2	3.45	75.4	111.95	20	124.9	74.4

3 IVF Non-Sexed Embryos, guaranteeing one pregnancy if work is performed by a certified embryologist.

Three years ago we were privileged to tie into 3 direct daughters of the great and productive 3C Melody, 2 Pilgrims and a Broker by the name of Chanel. Chanel and 5076C were worked as two year olds with much success. The embryos from 5076C and 5073C averaged very well with good transfer results. We feel that 5084C is the refined, smooth made, pretty sister of the three. The mating to the two power bulls that were featured as high selling yearlings this past bull season are very suitable to her phenotype. After seeing Exclusive off of cows this summer, I was even more impressed for a bull with that much power and substance to have that much flex and athleticism. Turnpike is another we liked in Denver, at Ruby's bull sale, and the summer reports of those that looked at him in the pastures of Werning Cattle Co were very favorable. Another power bull with a different genetic twist that we expect big things from. This female produced a Bottomline bull calf this year that will be a feature in our spring bull sale. Buy with confidence in this opportunity to tie into genetics from another daughter of Melody.

LMC DAYDREAM 5Z/173 EMBRYOS



LMC DAYDREAM 5Z/173
Dam of Lot 205



LMC BBS PRIMO 5X/139 | Sire of Lot 205



LMC SCC YOLANDA | Maternal sister to Lot 205 embryos



LMC SSC ROSALINDA 853F | Maternal sister to Lot 205 embryos

Lot 205 PRIMO 5X/139 X DAYDREAM 5Z 173

3 IVF Reverse Sorted Heifer Embryos | 5/8 SM 3/8 BR

LMC BLACK PERFECTO 3R/37
LMC BBS PRIMO 5X/139
BBS JENNIE WALKER

LMC RHINO 5W/367
LMC DAYDREAM 5Z/173
LMC WFC MS. DREAM GIRL

Projected EPDs

CE	BW	WW	YW	Milk	API	TI
8.6	2.3	61.7	87.85	18.55	82.3	52.4

The LMC Daydream Group is excited to be offering this pro table donor's influence in the Black Label Event at Shipwreck Cattle Company in Grandview, TX on October 13, 2018. Daydream is a product of two International Champions in LMC Rhino and LMC WFC Ms. Dream Girl. To date, Daydream has endured a steady run of success as a producer for the partnership. Yolanda, one of the 2016 Black Label Event high selling females, commanded \$25,000 to the Culpepper family. Yolanda endured a successful career that was capped off when she was slapped the 2018 ASA National Champion Simbrah Female at the Fort Worth Stock Show. This past spring another Daydream daughter known as Ginessa hit the scene. She was selected by the Morris family for \$17,000 and was recently named Grand Champion Simbrah and 3rd Overall Breeds at the Cowtown Showdown in Fort Worth, Texas. LMC SSC Catalina is another top daughter from Daydream that was selected by the Fuchs family. She was recently named Grand Champion Simbrah & American Breeds Heifer before being slapped Reserve Supreme Grand Champion Female at the Washington County Fair. Cherokee Cattle Company in Fouke, Arkansas recently added LMC SSC Eldorado to their program and we are excited to watch him make an impact for the Hewitt family. We are proud to offer this unique opportunity sired by the great LMC BBS Primo stud that is backed by BBS Jennie Walker, the 2009 Grand Champion at the San Antonio Stock Show and Rodeo. Jennie is also the dam of the 2016 & 2018 Grand Champion Female in San Antonio where those young people were awarded a \$10,000 Scholarship. There is no denying the impact that Daydream has made on the Simbrah breed and this mating to LMC BBS Primo may prove to be the most valuable to date. A full sister to these embryos, LMC SSC Rosalinda, sells as lot 40!

RED WRAZ MARTA 42Y EMBRYOS



RED WRAZ MARTA 42Y
Dam of Lot 206A & 206B



MANN RED BOX 55C
Sire of Lot 206A



PZC TMAS FIRESTORM 1800
Sire of Lot 206B

Lot **206A**
SLGN WIDELOAD 920W
MANN RED BOX 55C
PELTON MISS AJA 0839U

3 Conventional Embryos | Red Angus
RED BOX X MARTA 42Y
RED SMW SMACK 31U
RED WRAZ MARTA 42Y
RED TOPLINE MARTA 807

Projected EPDs

CE	BW	WW	YW	Milk
10	0.5	53	85	25

Selling 3 Conventional Embryos, guaranteeing one pregnancy if work is performed by a certified embryologist.

RED WRAZ Marta 42Y has been considered as one of the Red Angus breed's most unique and predictable matrons. Her sire is a son of the popular Red Lazy MC Smash 7S that sired the \$41,000 high selling female at the historic Wildcat Creek Ranch, Red Eggen Miss Smash 117S that resides in Hereford, Texas. Marta 42Y is a unique breeding piece that was a major donor for the renowned Blairs.Ag program. An opportunity to acquire genetics from a female of this caliber sired by Firestorm and Red Box! Firestorm needs no introduction to the Red Angus breed, as one of the most dominant sires in the history of the breed producing countless National Champions, high sellers, and breed impacting individuals. In fact, Firestorm has been the sire of several Texas Major Champions including the 2017 Reserve Supreme Overall Breeds in San Antonio that was also a Denver Champion, and the 2018 Grand Champion Red Angus at the FWSS Jr. Breeding Heifer Show. Red Box was the 2017 Fort Hays State University Bull Sale high seller, commanding \$30,000 to Power Plus Genetics. Red Box has taken the breed by storm with semen being offered only at public auction and commanding upwards of \$300 per unit! Whether you are a long time breeder or a newly acquainted Red Angus enthusiast this genetic opportunity is sure to be a quick return on investment!

Lot **206B**
RED SIX MILE SAKIC 832S
PZC TMAS FIRESTORM 1800 ET
GT CITA 4060

3 Conventional Embryos | Red Angus
FIRESTORM X MARTA 42Y
RED SMW SMACK 31U
RED WRAZ MARTA 42Y
RED TOPLINE MARTA 807

Projected EPDs

CE	BW	WW	YW	Milk
15	0	46	76	28

Selling 3 Conventional Embryos, guaranteeing one pregnancy if work is performed by a certified embryologist.



Lot 74



W/C HOC HCC RED ANSWER 33B
Late sire of Lot 74

Lot **74**

HOC EISENHOWER 230E

REMINGTON LOCK N LOAD54U
W/C HOC HCC RED ANSWER 33B
MISS WERNING KP 8543U

TRIPLE C SINGLETARY S3H
CCR GEMMA 2300Z
CCR 5065R MO BETTA7009T

Breed: PB SM | Reg#: 3401150 | Birth Date: 9/16/17 | Tattoo: 230E

CE	BW	WW	YW	Milk	API	TI
9.6	1.5	61.5	92.1	18.6	106.8	60.4

Introducing HOC Eisenhower 230E, the black hided, bald faced stud sired by the late W/C Red Answer. His dam was a selection from the established Cow Camp Ranch cowherd that is noted as one of the largest and most productive Simmental cowherds in the country. No-nonsense, problem free, highly maternal cows back the brand and it shines through to the bull production aspect of their program. Eisenhower is a true breeding bull, offering a large correctly shaped foot, stoutness of bone, yet smoothness of joints. His angulation is superb, as he moves with tremendous athleticism. He offers a balanced, yet rugged look about his head and neck, with a tremendous blend of genuine upper rib shape and depth of body. His hip is long and square and comes to an extra wide pin set. In addition to his quality phenotype, 230E is balanced numerically, charting in the top 15% of the breed for YG and REA, top 20% Marb, and offering triple digits at a year, yet still holding a double digit CED figure. Eisenhower puts a tremendous amount of unique breeding pieces to the table as he combines phenotype, pedigree, and real-world performance. Look to Eisenhower if you're in the market for a top shelf Purebred herd sire to add to your arsenal!

Selling full possession and 50% semen interest in one they believe in.



Lot 75

SWC EASY STREET 914E

MR CCF VISION
MR CCF 20-20
 HTP SVF DEW THE STROKE

JSSC WIDE BODY 090W
SWC HOC ANNIE K 214C
 ACW ANNIE K 330Y

Breed: PB SM | Reg#: 3460115 | Birth Date: 9/6/17 | Tattoo: 914E

CE	BW	WW	YW	Milk	API	TI
14.4	0.50	67.45	105.1	24.2	121.0	69.5

714E is a direct son of our Wide Body x Annie K direct daughter and donor dam, 214C. This is the result of her freshman year n production and we think she did quite well producing a purebred, calving ease stud. This bull has always had just excellent feet, he too is great on all four corners with just enough skeleton to balance up right. Easy Jet is not shy on muscle or body and has a great disposition. A nice blend of pedigree, balance, and kind.



SWC HOC ANNIE K 214C
 Dam of Lot 75



Lot 76

SWC EMPIRE 715E

MR CCF VISION
HCCO CLASSIC 431C
 SJF COUNTESS 431A

MR HOC BROKER
MS TR KATINKA 4715B ET
 TR MS KATINKA 3208N

Breed: 5/8 SM 3/8 AN | Reg#: 3460114 | Birth Date: 9/2/2017 | Tattoo: 715E

CE	BW	WW	YW	Milk	API	TI
9.55	1.65	67.35	99.35	17.55	104.6	67.9

715E is a direct son of HCCO Classic, a past high seller in the Hartman Bull Sale selected by Diamond A Farms of Illinois. Classic, himself, has always been a loose built, sound made creature of substance and balance. He has sired cattle consistent across the board regardless of pedigree blend or breed affiliation. This son is from a young direct Daughter of the great Katinka Angus cow family that has had a lasting impact and major influence on Thomas Ranch and many other leading seedstock firms in the nation that have employed her influence. His maternal grandsire, Broker, is not new to the scene either, with countless champions, high sellers, and just good doing, fast growing cattle with beef industry merit. We have always admired this stud from day one, his ruggedness, masculinity, performance, and look is quite impressive.



HCCO CLASSIC 431C
 Sire of Lot 76



Lot **77**

SWC EAST BOUND 711E

REMINGTON LOCK N LOAD54U
W/C LOADED UP 1119Y
 AUBREYS BLACK BLAZE III
 WEBR DR PHIL
WR MS ROBIN 11B
 GT CITA 4060

Breed: 1/2 SM 1/2 AR | Reg#: 3460116 | Birth Date: 9/1/17 | Tattoo: 711E

CE	BW	WW	YW	Milk	API	TI
11.5	-0.1	56.2	86.2	21.9	113.6	60.7

711E This red bull has had many friends over the last few months. A rare, red baldy SimAngus bull by the proven Loaded Up and from our lead Red Angus Donor dam, 11B. WR MS Robin 11B would have been reserve female a couple years back at Ft. Worth and she too is responsible for the two High Selling Red Angus Females from our Spring sale going to Presley Rushing of Texas and the Lind family of Minnesota. This direct daughter of Cita 4060 is making her mark for Shipwreck Cattle Co and it's still early in her productive career. For those looking for a big ribbed, sound built, productive beef bull that's red in color and blends two great breeds, then East Bound should have strong consideration on your part sale day.



SWC ROBIN 751E | Maternal sister to Lot 77



WR MS ROBIN 11B | Dam of Lot 77



SWC ROBIN 767E | Maternal sister to Lot 77



Lot **300** A-J
DMCC COUNTER ATTACK 8C

Sire **REMINGTON SECRET WEAPON185**

Dam: **CARD FOREVER 61A**

Selling 50 Units of Sexed Heifer Semen
 out of DMCC Counter Attach 8C.
 5 units at a time.



JCBB MISSY E3856

Full sib to Lot 78,
 High-Seller in the spring
 2018 Black Label.

Lot **78**

JCBB REDMAN E340

REMINGTON SECRET WEAPON185
DMCC COUNTER ATTACK 8C
 CARD FOREVER 61A

CNS DREAM ON L186
WLE MISSY U409
 SHAWNEE MISS 770P

Breed: PB SM | Reg#: 3380586 | Birth Date: 9/07/17 | Tattoo: E340

CE	BW	WW	YW	Milk	API	TI
12.2	0.6	61.5	82.5	19.1	118.2	67.1

Introducing Red Man, an exciting Counter Attack son from the famed WLE Missy U409 cow family. There is no denying the impact that U409 and her dominant donor dam, the late 770P have had on the Simmental business. U409 is responsible for several herd bull prospects produced by Horstman Cattle Company including Grand Tiempo, Sixteen Step, and Craft Brew to name a few maternal brothers to Red Man. U409 also produced the 2014 NAILE Grand Champion Percentage Simmental Female shown by the Sennett Family of Indiana. Shawnee Miss 770P has generated several million dollars in actual progeny sales during the course of her successful lifetime. The Bird Cattle Co. & Diamond M Cattle Co. stud, Counter Attack, is the sire of the 2018 Houston Livestock Show & Rodeo Reserve Grand Champion Simmental Female shown by Mason Metzler of Grandview, Texas, sires Red Man. When considering the lineage that backs Red Man on the north and south sides of his pedigree, countless influential individuals can be quickly identified. Here is a powerful, rugged made Purebred that is ready for promotion and heavy service!

Offering 100% semen interest and full possession.



Lot 79

Lot **301** A-D
JSSC WIDE BODY 090W

Sire: JS SURE BET 4T

Dam: WHCC ANGELS DREAM

Selling 8 Units of Conventional Semen
out of JSSC Wide Body 090W.
2 units at a time



TIARA 130Z | Full sister to dam of Lot 79,
sold to Red River Farms in
Circle M's Dispersal for \$50,000.

Lot **79** **HOC DREAM TIARA 131D**

JS SURE BET 4T
JSSC WIDE BODY 090W
WHCC ANGELS DREAM

WAGR DRIVER 706T
KCC1 TIARA 131Z
CNS TIARA P405

PB SM | Reg#: 3251639 | Birth Date: 9/16/2016 | Tattoo: 131D

CED	BW	WW	YW	Milk	API	TI
9.6	3	68.9	101	18.4	118.8	67

*H*OC Dream Tiara 131D is from the famed CNS Tiara P405 donor that is a staple in the Kearns Cattle Company donor pen. 131D is a striking dark cherry red daughter of the late Wide Body, one of the most influential sires of his generation that has produced as many or more high sellers and champions than any other sire with extremely limited use. Wide Body semen is in high demand and limited supply, commanding as much as \$1,500 per unit when offered. Hidden Oaks Cattle Company selected her dam a few years back from Tom and Zach Kearns. Sired by the maternal legend, WAGR Driver 706T, the breed leading son of the iconic Melody. She combines some very influential females that have made substantial impacts on the programs they represent, including; R20, Melody, and Tiara. 131D is an ultra attractive, stout made, big ribbed, high volume purebred female that is capable of generating elite Purebred and SimAngus cattle depending on the direction of your breeding program. Look to this female to add quality, cow family, and proven results!

Aled and PE to W/C HOC HCC Red Answer 33B 4/1/18-7/1/18. Safe in calf.



Lot **80**

J6RA MS. TAMI E301

SVF STEEL FORCE S701

MR HOC BROKER
JM BF H25

J6 RED ANGUS

1/2 SM 1/2 AR | Reg#: 3310552 | Birth Date: 3/20/2017 | Tattoo: E301

CED	BW	WW	YW	Milk	API	TI
7.7	2	57.6	81.2	14.8	77	52.3

*A*n exceptional Red-Baldy half blood female sired by the triple crown winning MR. HOC Broker! Although she doesn't rank among the breed's most elite for BW, growth, or her indexes, one must realize her structural quality, phenotype, fleshing ability, and real-world application has value that far out weighs a low accuracy predictor. This stunning red head is big footed, sound built, and one that is capable of generating high end show heifers or percentage bulls depending on the focus of your program and how one decides to mate her. Broker continues to reign as one of the most influential sires of proven show ring champions and high sellers. However, when the buckles and banners on the wall fade, the set of productive, revenue deriving daughters that are working in the pasture and donor pens across North America will remain his greatest accolade!

Aled and PE to W/C HOC HCC Red Answer 33B 4/1/18-7/1/18. Safe in calf.



RED ANSWER daughter purchased in 2017 Black Label. A three time class winner and 2018 Houston Livestock Show & Rodeo Reserve Calf Champion. Congratulations Sulak family!



Lot 81

Lot **81** **HSC JCO EAKLY 27E**

WS PILGRIM H182U

PROFIT

WAGR PANARAMA 204Z

SVF STEEL FORCE S701

LIMESTONE VALE BAR W966

SHAMROCK VALE BAR EXT 1174

3/4 SM 1/4 AN | Reg#: 3286756 | Birth Date: 3/7/2017 | Tattoo: 27E

CED	BW	WW	YW	Milk	API	TI
8.4	2	58.5	84.3	19.9	101.4	57.4

An exciting 3/4 blood female that is sired by the \$400,000 Hartman herd sire, Profit, and backed by the famed W966 donor. W966's most recognized daughter is a 3/4 sister in blood to 27E, HSC Aria 001A. Aria 001A was selected for \$30,000 by the Kersten family of Gretna, NE to serve as a foundation breeding piece in their progressive outfit. Aria 001A has since produced females that have commanded as much as \$15,000 in The Event, and a top herd sire prospect that commanded \$20,000 selling to the progressive Outback Ranch in Millican, Texas. W966 also produced the Chamberlain sired SWC Zeductive 166Z female that is now working in the Bar -O- Cattle Company program. 166Z was a past Division champion at the FWSS National Simmental Show in 2014. This Profit sired female is big footed, stout hiped, and has an abundance of center body shape and capacity. With the influence of W966 and the famed Melody combined within her pedigree, 27E offers as much earning potential as any. A must see bred heifer on sale day if you're serious about producing elite Simmental and SimAngus cattle!

AI BRED 6/8/18 TO HOC DAKOTA 111D (ASA: 3227853). PE 6/16/18-7/10/18 TO HOC DAKOTA (ASA: 3227853)



SWC ZEDUCTIVE 166Z | Maternal sister to Lot 81



HOC DAKOTA 111D
Service sire of Lots 81 - 84

THE LUCY UP DAUGHTER'S



HDCC LUCY UP
Dam of Lots 82, 83 & 84



LOT 83



LOT 84



MR CCF 20-20 | AI Sire of Lots 82, 83 & 84

Lot **82** **SWC TO ETTA 742E**

3/4 SM 1/4 AN | Reg#: 3326124 | Birth Date: 2/10/2017 | Tattoo: 742E

Lot **83** **SWC TO EVENING STAR 714E**

3/4 SM 1/4 AN | Reg#: 3326123 | Birth Date: 2/5/2017 | Tattoo: 714E

Lot **84** **SWC TO ELISE 793E**

REMINGTON LOCK N LOAD54U
W/C LOCK N LOAD 1143Y
AUBREYS BLACK BLAZE III

MR NLC UPGRADE U8676

HDCC LUCY UP
EXAR LUCY 9817

3/4 SM 1/4 AN | Reg#: 3326122 | Birth Date: 2/5/2017 | Tattoo: 793E

CED	BW	WW	YW	Milk	API	TI
13.7	-0.4	62.3	94.6	17.2	118.4	66

We like these females by the full brother to Loaded Up, W/C Lock N Load 1143Y that's employed at Sandeen Genetics. The 1143Y sire group has been more than acceptable from a performance, body, and do ability standpoint. I believe that the fertility and the ability to be productive brood cows is also in place within the 1143Y sire group.

Their dam was a sale feature in the first "The Hunt" sale offering that went to Fenton Farms of Mississippi. Lucy Up was a trendsetter on paper as a yearling, but even after BOLT she remains in the top half of the breed for 13 traits. She is an Upgrade carried by a Round Up daughter bred in the Legendary Express Ranches Program.

Like their dam this trio of flush sisters are big footed, flexible, mobile creatures with plenty of body, shape, and look. All three of them are A.I. bred and ultrasounded safe with heifer calves, one 20-20 (2964446) and 2 of them safe to our new calving ease sire, Dakota (3227853).

LOTS 82 and 83 were both AI BRED 4/29/18 TO HOC DAKOTA (ASA: 3227853). PE 6/16/18-7/10/18 TO HOC DAKOTA (ASA: 3227853). Both are ULTRASOUNDED SAFE AI WITH A HEIFER CALF PREGNANCY.

Lot 84 was AI BRED 4/29/18 TO MR CCF 20-20 (ASA: 2964446). PE 6/16/18-7/10/18 TO HOC DAKOTA (ASA: 3227853). ULTRASOUNDED SAFE AI WITH A HEIFER CALF PREGNANCY.



Lot 85



WLTR LYDIA | Full sister to the dam of Lot 85



WLTR RENEGADE | Full brother to the dam of Lot 85



TKCC CLASSIFIED | Sire of Lot 85

Lot **85** **WLTR UNDER WRAPS 7E**

MR TR HAMMER 308A ET
TKCC CLASSIFIED
 FORD RJ DOLLY Y83
 3C MACHO M450 BZ
WLTR LEXUS 38U ET
 J&J QUEEN 414

7E brings a ton of value to the table. She would be one of the older Classifieds to be offered at public auction. Her dam is a full sister to the great Lydia and Renegade, both past National Champions. This female is one we really do not want to part with, but she is being offered. She will sell bred to our new calving ease herdsire, Dakota, with an ultrasounded heifer pregnancy.

AI BRED 4/29/18 TO HOC DAKOTA (ASA: 3227853). PE 6/16/18-7/10/18 TO HOC DAKOTA (ASA: 3227853). ULTRASOUNDED SAFE AI WITH A HEIFER CALF PREGNANCY.

3/4 SM 1/4 AN | Reg#: 3271815 | Birth Date: 3/18/2017 | Tattoo: 7E

CED	BW	WW	YW	Milk	API	TI
6.5	3	79.2	118.8	17.9	116.3	75

Lot 86

KNA MISS JOY E712

SILVEIRAS CONVERSION 8064
SAC CONVERSATION
 LAFLINS FARRAH 0252
 FLYING B CUT ABOVE
CLRWTR SHADY LADY
 CLRWTR JOYS SHADES

1/2 SM 1/2 AN | Reg#: 3260213 | Birth Date: 1/1/2017 | Tattoo: E712

CED	BW	WW	YW	Milk	API	TI
11.2	0.5	57.7	90.9	26.4	112.9	62.8

An exciting half-blood female produced in the Knapper program of Indiana. Sired by SAC Conversation, the outcross pedigreed Angus sire that offers extreme look, class, and eye-appeal. Her dam, CLRWTR Shady Lady, most recently produced the AJSA Central Regional Grand Champion Purebred Bred & Owned Female this past summer shown by Olivia McGurk. She capped off the summer with wins at the Indiana State Fair and Simmental Breeders Sweepstakes, being Grand Champion Bred & Owned and Grand Champion Purebred in the Junior Show at each event. The maternal power that this cow family offers is second to none. She sells safe in calf to the calving ease superstar from yesteryear, SS Goldmine L42. A huge opportunity to acquire foundation genetics from the Shady Lady cow family!

AI BRED 4/23/18 TO SS GOLDMINE L42 (ASA: 2106737). SAFE AI



Lot 87

KNA ARKDALE PRIDE E719

MR NLC UPGRADE U8676
MR TR HAMMER 308A ET
 SVF/HS EXPECTING A DREAM
 B C LOOKOUT 7024
LIMESTONE ARKDALEPRIDE U1847
 WK ARKDALE PRIDE 255

1/2 SM 1/2 AN | Reg#: 3269774 | Birth Date: 1/8/2017 | Tattoo: E719

CED	BW	WW	YW	Milk	API	TI
11.3	1.2	72.6	112.8	19.5	115.9	72.4

E719 is a striking baldy half blood female that is from the famed Arkdale Pride cow family. Her dam is the productive BC Lookout sired female that was produced in the historic Limestone program. Sired by the proven Hammer, there is no denying the potential that this exciting percentage female offers. She too offers balanced traits numerically to accompany her extra three-dimensional body shape. This female is the definition of a brood cow prospect and selling safe AI to the popular calving ease option, CCR Anchor should yield exciting results from a future donor!

AI BRED 4/13/18 TO CCR ANCHOR 9071B (ASA: 2882759). SAFE AI





LIMESTONE VALE BAR W828
Dam of Lots 88, 89 & 90

THE VALE BAR'S



LOT 90

Lot **88** **SWC BAR -0- ELECTRA E202**

5/8 SM 3/8 AN | Reg#: 3448183 | Birth Date: 2/7/2017 | Tattoo: E202

Lot **89** **SWC BAR -0- ELIZA E211**

5/8 SM 3/8 AN | Reg#: 3448185 | Birth Date: 2/10/2017 | Tattoo: E211

Lot **90** **SWC BAR -0- ELVIRA E218**

CCR COWBOY CUT 5048Z

CCR ANCHOR 9071B

CCR MS BARB 2120Z

SVF STEEL FORCE S701

LIMESTONE VALE BAR W828

SHAMROCK VALE BAR EXT 1174

5/8 SM 3/8 AN | Reg#: 3448184 | Birth Date: 2/8/2017 | Tattoo: E218

CED	BW	WW	YW	Milk	API	TI
16	-0.4	61	87	25.3	139.8	72.2

Anchor, the Owen Brothers and Werning calving ease herdsire of choice, is proving himself to be an outstanding breeding bull. He enhances look, body, practicality, and low low sleep all night birthweights. This trio of flush mate sisters are from the Limestone Vale Bar W828 Simangus donor female. Extra body, depth, and structural correctness are dominating traits in these three. Each of them is carrying an A.I. sired bull calf by MR CCF 20-20 (2964446).

AI BRED 5/10/18 TO MR CCF 20-20 (ASA: 2964446).
PE 6/16/18-7/10/18 TO HOC DAKOTA (ASA: 3227853)
ULTRASOUNDED SAFE AI WITH A BULL CALF PREGNANCY



CCR ANCHOR | Sire of Lots 88, 89 & 90



FBFS BONAFIDE 027B
| Sire of Lot 91

LOT 91

Lot **91**

JSSC DIXIE 643D

SANDEEN UPPER CLASS 2386

FBFS BONAFIDE 027B

FBFS X-CLAMATION 76X

JSSC 218X

1/2 SM 1/2 AN | Reg#: 3229342 | Birth Date: 9/12/2016 | Tattoo: 643D

CED	BW	WW	YW	Milk	API	TI
12.1	0.6	52.9	75.9	19.1	91	55.7

643D is a striking, well balanced bred female sired by a past Black Label Event featured lot, FBFS Bonafide 027B. The \$80,000 valuation sire is the result of the potent Upper Class x Xclamation mating. Her structural integrity, flexibility, and practicality is unmatched. Her added quality, balance, and style should prove valuable from a mating standpoint. An exciting percentage female that is certain to be a standout in production!

PE 4/25/18-6/15/18 TO JSSC CURRENCY 003C (ASA: 3021590). VET CHECKED 3 MONTHS SAFE 7/31/18.

Lot **92**

JSSC CAROLINA 639D

SANDEEN UPPER CLASS 2386

FBFS BEN 015B

SVF STAR STRUCK S199

GWS EBONY'S TRADEMARK 6N

KRIEGER'S CAROLINA 35Z

WHCC CAROLINA PQ1

PB SM | Reg#: 3229360 | Birth Date: 9/9/2016 | Tattoo: 639D

CED	BW	WW	YW	Milk	API	TI
9.1	2.7	67.1	99.3	19.7	120	66.5

Here is a huge opportunity to purchase a direct daughter from the potent Carolina 35Z cow. This female is sired by the Upper Class son known as, "Ben", who walks the pastures of Lockney. Ultra big bodied, sound built, and easy fleshing, this Purebred female is one that not only impresses phenotypically but has the pedigree to make a valuable addition to any operation!

AI BRED 4/25/18 TO CNS PAYS TO DREAM T759 (ASA: 2419373). VET CHECKED 3 MONTHS SAFE 7/31/18.



FBFS BEN 015B
| Sire of Lot 92

JSSC CAROLINA 631D
Maternal sisterto Lot 92,
sold in Black Label Fall 2017



Lot 93

FBFS 022E

JSSC WIDE BODY 090W
JSSC CURRENCY 003C
 KRIEGERS CAROLINA 35Z
 FBFS STEEL FORCE 122Z
FBFS CINDERELLA 007C
 SVF KRIZ ANTOINETTE T47

PB SM | Reg#: 3275318 | Birth Date: 3/4/2017 | Tattoo: 022E

CED	BW	WW	YW	Milk	API	TI
11.9	2.6	67.9	98.8	20.1	108.8	62

FBFS 022E is sired by the 35Z son, JSSC Currency 003C. Currency is an own son of the late Wide Body, arguably one of the most influential sire son this event. On the bottoms side of her pedigree she is from the Steel Force x S600 son, 122Z and further supported by the influence of the famed Antoinette T47 cow family. There is no question that this female has a maternal heritage that few will compare to! Not to mention she is big ribbed, deep sided, easy fleshing, and offers a highly productive presence.

AI BRED 6/4/18 TO OBCC BLACKLIST 915B (ASA: 2955302). PE 6/4/18-8/7/18 TO HOOK'S EQUALIZER 72E (ASA: 3253801)



Lot 94

FBFS EVERY DREAM 015E

TJ EASY MONEY 101W
TJ CORNHUSKER 226A
 TJ 59X
 JSSC YES MAN 002Y
FBFS 043C
 FBF BLACKCAP 704Y

5/8 SM 3/8 AN | Reg#: 3447239 | Birth Date: 2/1/2017 | Tattoo: 015E

CED	BW	WW	YW	Milk	API	TI
10.1	1.3	66.9	101	23.4	123.4	68.8

015E is one of the higher indexing percentage females in the bred offering. She is sired by the Triangle J stud, Cornhusker and backed by the tremendous Yes Man 002Y daughter that is from the influence of the legendary OCC Emblazon 854E. With cow makers such as Sure Bet, Lucky Dice, and Emblazon saturating her pedigree, there is no doubt that this female is destined to be a big time producer!

AI BRED 6/4/18 TO OBCC BLACKLIST 915B (ASA: 2955302). PE 6/4/18-8/7/18 TO HOOK'S EQUALIZER 72E (ASA: 3253801)



PARTI GIRL 292-984Y
Dam of Lot 95



WLTR RENEGADE | Sire of Lot 95



OBCC CMFM DEPLORABLE D148
Service sire of Lot 95, 96 & 97.

Lot 95 JSSC PARTI GIRL 303A

3C MACHO M450 BZ
WLTR RENEGADE 40U ET
J&J QUEEN 414

SVF STEEL FORCE S701
PARTI GIRL 292-984U
PARTISOVER BURGESS 292

1/2 SM 1/2 AN | Reg#: 3107017 | Birth Date: 9/5/2013 | Tattoo: 303A

CED	BW	WW	YW	Milk	API	TI
10.6	2.5	65.7	95.4	19.1	114.3	66.3

303A is a powerful double bred half blood female sired by the 2011 National Champion Percentage Simmental Bull at the 2011 NWSS, WLTR Renegade 40U. His most recognized full sister would be the Walter Cattle Company foundation donor, Lydia! On the bottom side, she is backed by an ultra productive Steele Force bred female that doesn't miss. A productive young female that is certain to be a valuable addition!

AI BRED 7/2/18 TO OBCC CMFM DEPLORABULL D148 (ASA: 3150188). SAFE AI

Lot 96 JSSC ELSA 719E

SANDEEN UPPER CLASS 2386
CAE UPPER CLASS 420B
FBFS SLOW MELT 089S

ETR MATILDA A628

1/2 SM 1/2 AN | Reg#: 3286893 | Birth Date: 3/1/2017 | Tattoo: 719E

CED	BW	WW	YW	Milk	API	TI
13.1	0.1	53.1	74.8	20.9	104.4	60

719E is another Upper Class 420B sired half blood female that comes from Seale Show Cattle. Her angular front third is further enhanced by the added mass and volume that she offers through the center portion of her rib. Sound built, smooth made, and backed by an exceptionally productive dam.

AI BRED 3/27/18 TO OBCC CMFM DEPLORABULL D148 (ASA: 3150188). PE 4/1/18-6/15/18 TO JSSC CURRENCY 003C (ASA: 3021590). VET CHECKED 4 MONTHS SAFE 7/31/18.

Lot 97 JSSC MISS UC 722E

SANDEEN UPPER CLASS 2386
CAE UPPER CLASS 420B
FBFS SLOW MELT 089S

351

1/2 SM 1/2 AN | Reg#: 3286895 | Birth Date: 3/1/2017 | Tattoo: 722E

CED	BW	WW	YW	Milk	API	TI
13.6	-0.3	52	73.2	21.1	105.4	60

722E is another impressive half-blood female that is derived from the Upper Class stud. Big ribbed, easy fleshing, and built to last, this female offers the longevity of skeleton needed to make a productive brood cow. Being AI Bred to the \$100,000 valuation Deplorabull is an added value with tremendous upside!

AI BRED 3/27/18 TO OBCC CMFM DEPLORABULL D148 (ASA: 3150188). VET CHECKED 4 MONTHS SAFE 7/31/18.

Lot 98 FBFS DATE NIGHT 178D

SANDEEN UPPER CLASS 2386
FBFS BONAFIDE 027B
 FBFS X-CLAMATION 76X
 CONNEALY FINAL PRODUCT
WHITE STAR JOANIE 90Z
 WHITE STAR JOANIE 87X

1/2 SM 1/2 AN | Reg#: 3447238 | Birth Date: 10/26/2016 | Tattoo: 178D

CED	BW	WW	YW	Milk	API	TI
12.9	-0.2	64.5	99.9	23.2	117.3	66.7

178D is a powerful, well-built baldy-faced female that is sired by the \$80,000 valuation FBFS Bonafide, the popular son of the 2011 NAILE National Champion Simmental Female. A highly productive Final Product dam that originated in the White Star program in Kansas supports her. A true brood cow in the making here!

AI BRED 6/4/18 TO HOOK'S EQUALIZER 72E (ASA: 3253801). PE 6/4/18-8/1/18 TO OBCC BLACKLIST 915B (ASA: 2955302)

Lot 99 SWC NDS AK ERIKA 051E

WCS MR PENDLETON 909W
WCS DEADWOOD 4010B
 WCS MS DESIGN 9050W
 SVF STEEL FORCE S701
STEEL N UR LOVE
 JM BF H25

3/4 SM 1/4 AN | Reg#: 3284842 | Birth Date: 2/3/2017 | Tattoo: 051E

CED	BW	WW	YW	Milk	API	TI

Here's a daughter of Broker's full sister, YW29. She is sired by the Western Cattle Source and Werning owned herdsire, WCS Deadwood. This one has the look, substance, and lineage to make a great addition to any program. Sells safe A.I. with a herdsire on the way.

AI BRED 5/10/18 TO HOC DAKOTA 111D (ASA: 3227853). PE 6/16/18-7/10/18 TO HOC DAKOTA (ASA: 3227853). ULTRASOUNDED SAFE AI WITH A BULL CALF PREGNANCY

Lot 100 JCBB ROSETTA E151

REMINGTONSECRETWEAPON185
DMCC COUNTER ATTACK 8C
 CARD FOREVER 61A
 SANDEEN SALUTE OR SURREN
FBFS ROSETTA 151Z
 FCC ROSETTA 267Z

1/2 SM 15/32 AN 1/32 CS | Reg#: 3285566 | Birth Date: 4/1/2017 | Tattoo: E151

CED	BW	WW	YW	Milk	API	TI
14	0.1	54.8	81.5	20.3	112.5	63.8

151E will be one of the few Counter Attack bred females to be offered this fall. She sells bred to Dakota with a bull calf. This upheaded, long sided, good made breeding piece is great in motion. We like her look and balance and only feel that Dakota will enhance her make with added body and dimension.

AI BRED 4/30/18 TO HOC DAKOTA (ASA: 3227853). PE 6/16/18-7/10/18 TO HOC DAKOTA (ASA: 3227853). ULTRASOUNDED

Lot 101 SWC EXPOSA 119E

REMINGTON LOCK N LOAD54U
W/C HOC HCC RED ANSWER 33B
 MISS WERNING KP 8543U
 JM REMINGTON 40X-S11
SWC MS XPOSA 019X
 RSKY 0464 MS EUREKA 6519

3/4 SM 1/4 AN | Reg#: 3353344 | Birth Date: 1/21/2017 | Tattoo: 119E

CED	BW	WW	YW	Milk	API	TI
13.6	-0.3	62.1	89.9	24.4	121	66.3

119E is a direct daughter of the now deceased Hidden Oaks and Werning herdsire Red Answer. Red Answer would be a direct son of Lock N Load from the great 8543. Her dam is sired by a descendant of H25 and backed by a daughter of OCC Eureka. This female has turned heads by those that have been through this set the summer. She sells safe in calf to Dakota with an ultrasounded heifer pregnancy.

AI BRED 5/10/18 TO HOC DAKOTA 111D (ASA: 3227853). PE 6/16/18-7/10/18 TO HOC DAKOTA (ASA: 3227853). ULTRASOUNDED SAFE AI WITH A HEIFER CALF PREGNANCY



JCBB LADY E3301

This direct daughter of Counter Attack was the 2018 Houston Livestock Show & Rodeo Reserve Grand Champion Simmental Female. Congratulations to the Metzler Family!

102 CMFM BELLA 731E

HTP/SVF DURACELL T52
SS/PRS HIGH VOLTAGE 244X
 KENCO MILEY COTTONTAIL
 EXAR SUDDEN IMPACT 1537
K/F BELLA IMPACT 503Z
 PAF 7684 DATELINE E129

1/2 SM 1/2 AN | Reg#: 3391013 | Birth Date: 2/3/2017 | Tattoo: 731E

CED	BW	WW	YW	Milk	API	TI
12.4	0.1	70.8	106	24.1	117.3	74.2

731E is a super stout, broody, high performing individual from a phenomenal Angus dam. She sells safe to 20-20 with a bull pregnancy. AI BRED 4/29/18 TO MR CCF 20-20 (ASA: 2964446). PE 6/16/18-7/10/18 TO HOC DAKOTA (ASA: 3227853) ULTRASOUNDED SAFE AI WITH A BULL CALF PREGNANCY

*Watch the Sale
Live Online...*

View the sale from your phone, tablet, or desktop computer and bid with confidence! Visit www.CCI.live for complete sale information and online registration. If this is your first time to CCI.live, visit the web page and get approved for bidding at least three hours prior to sale time. With good internet speeds you can enjoy the sale from any location and bid with confidence.

CCI.LIVE
 ONLINE BIDDING - Catalog - Videos - Sale Order



LOT 103



LOT 104



LOT 105

Lot **103** **JSSC REV ROSE 642D**

SANDEEN UPPER CLASS 2386
FBFS BONAFIDE 027B
 FBFS X-CLAMATION 76X

JAUER ANCHOR 841 4101
FCC REVOLUTION ROSE 3413
 JAUER 7111 TRAVELER 544 9239

1/2 SM 1/2 AN | Reg#: 3229362 | Birth Date: 9/19/2016 | Tattoo: 642D

CED	BW	WW	YW	Milk	API	TI
12.5	1.6	52.3	77.1	21.5	92.4	54.5

642D is sired by the \$80,000 FBFS Bonafide 027B, the result of the famed Upper Class x X-Clamation mating. Sisters to Bonafide are working in top programs across North America, including Diamond A Farms of Illinois. Her highly productive, sensibly sized, easy keeping Jauer bred female on the bottom side only adds value from a maternal function standpoint. A brood cow in the making backed by generations of productive females!

AI BRED 12/15/17 TO W/C LOCK N LOAD 1143Y (ASA: 2684560).
PE 1/1/18-2/15/18 TO JSSC CURRENCY 003C (ASA: 3021590).
SAFE AI

Lot **104** **JSSC 107Y**

Sire: OCC PRIORITY 882P

Dam: 983N (COMMERCIAL ANGUS)

OCC Priority 882P is a top OCC Eureka 865E son from the Ohlde Cattle Company program of Kansas that worked in the Foundation Cattle Company program of Missouri. His dam is an EXT from the famed Dixie Erica program. This female follows the type and kind of cattle that her lineage is so renowned for, moderate, big ribbed, easy fleshing and sound built. A highly productive commercial Angus female that should prove her worth when mated to Simmental bulls to generate highly sought after percentage cattle!

AI BRED 12/15/17 TO W/C LOCK N LOAD 1143Y (ASA: 2684560).
PE 1/1/18-2/14/18 TO CAE UPPER CLASS 420B (ASA: 2901542).
SAFE AI

Lot **105** **JSSC 662E**

Sire: RSKY NEXT STEP 1153

Dam: ANGUS

This well-balanced, attractive RSKY Next Step 1153 maternal granddaughter is one that is sure to turn heads. Well built, moderate in frame, and super easy fleshing, this female has a bright future ahead as a revenue-deriving female when it comes to making half-blood SimAngus cattle with the look, productivity, and function that can't be denied. Just imagine the possibilities that are to come!

AI BRED 12/15/17 TO W/C LOCK N LOAD 1143Y (ASA: 2684560).
PE 1/1/18-2/15/18 TO JSSC CURRENCY 003C (ASA: 3021590).
SAFE AI





Lot 107

FBFS
STEEL FORCE



LOT 106



LOT 110



Lot 109



FBFS STEEL FORCE 122Z | Sire of Lots 106-111

1 2 2 Z DAUGHTER'S

Lot 106 JSSC MS 122Z STEEL 650D

SVF STEEL FORCE S701
FBFS STEEL FORCE 122Z
THSF MS LIBERTY S600

JSSC MS SPOILER 305A

1/2 SM 1/2 AN | Reg#: 3229353 | Birth Date: 10/16/2016 | Tattoo: 650D

CED	BW	WW	YW	Milk	API	TI
11.2	1.5	58.1	85	17.2	86	55.1

605D possesses an attractive, well-balanced look from the profile with the added bells and whistles. Her sire, 122Z is the result of the powerful Steel Force x S600 mating, which most notably produced the 2011 NAILE Grand Champion Purebred, FBFS X-Clamation 76X, who in turn most recently produced the \$75,000 2017 Black Label high seller. Power in the pedigree here!

PE 4/25/18-6/15/18 TO JSSC CURRENCY 003C (ASA: 3021590). VET CHECKED 3 MONTHS SAFE 7/31/18.

Lot 107 JSSC MS 122Z STEEL 655D

SVF STEEL FORCE S701
FBFS STEEL FORCE 122Z
THSF MS LIBERTY S600

212Z

1/2 SM 1/2 AN | Reg#: 3229350 | Birth Date: 11/4/2016 | Tattoo: 655D

CED	BW	WW	YW	Milk	API	TI
13.4	-0.2	53.7	78.2	18.2	90.2	54.9

Another top Fall calving female that is sired by the Steel Fore x S600 son, 122Z. This female is another high volume, big centered matron that is sure to be a highly productive and easy fleshing cow.

AI BRED 12/15/17 TO W/C LOCK N LOAD 1143Y (ASA: 2684560). PE 1/1/18-2/15/18 TO JSSC CURRENCY 003C (ASA: 3021590). LIKELY SAFE AI

Lot 108 JSSC MS 122Z STEEL 645D

SVF STEEL FORCE S701
FBFS STEEL FORCE 122Z
THSF MS LIBERTY S600

JSSC MISS 213Z

1/2 SM 1/2 AN | Reg#: 3229359 | Birth Date: 10/6/2016 | Tattoo: 645D

CED	BW	WW	YW	Milk	API	TI
11.9	1	56.9	83.1	17.5	87.4	55.1

645D offers a balanced profile, added substance, and the longevity of skeleton that is a prerequisite. She is another top daughter from the female maker, 122Z.

AI BRED 12/15/17 TO W/C LOCK N LOAD 1143Y (ASA: 2684560). PE 1/1/18-2/15/18 TO JSSC CURRENCY 003C (ASA: 3021590). SAFE AI

Lot 109 JSSC MS 122Z STEEL 661D

SVF STEEL FORCE S701
FBFS STEEL FORCE 122Z
THSF MS LIBERTY S600

133Z

1/2 SM 3/8 AN 1/8 CS | Reg#: 3229361 | Birth Date: 10/16/2016 | Tattoo: 661D

CED	BW	WW	YW	Milk	API	TI
12.9	0.2	53.9	78.1	17.7	87.4	53.8

Here is a highly productive half-blood female that is sired by the Steel Force x S600 son, 122Z. A highly productive Angus female that is easy fleshing and sound footed backs 661D. Big ribbed, deep sided, ad balanced from the side, this set of Fall calving females is sure to impress!

AI BRED 12/14/17 TO W/C LOCK N LOAD 1143Y (ASA: 2684560). PE 1/1/18-2/15/18 TO JSSC CURRENCY 003C (ASA: 3021590).

Lot 110 JSSC MS 122Z STEEL 658D

SVF STEEL FORCE S701
FBFS STEEL FORCE 122Z
THSF MS LIBERTY S600

SANDEEN SALUTE OR SURREN
JSSC MISS.A 301A
JSSC MISS Y 121Y

3/4 SM 3/16 AN 1/16 CS | Reg#: 3229352 | Birth Date: 11/9/2016 | Tattoo: 658D

CED	BW	WW	YW	Milk	API	TI
13.1	-0.3	55.2	80.8	19.2	92.8	53.9

658D is a powerful 3/4 blood female that combines a unique pedigree stacked with influential individuals from the Seale and Foster Brothers programs. Sired by 122Z, who is from the potent S600 donor dam, 658D also has a powerful maternal pedigree. Her dam, Miss A 301A, is sired by the Sandeen stud, Salute or Surrender and backed by a productive Wide Body daughter. This female combines the influence of S600 and R20. A safe bet that this female has the credentials to be a big league producer that is just a single unit of semen away from generating Purebreds!

AI BRED 12/14/17 TO OBCC CMFM DEPLORABULL D148 (ASA: 3150188). PE 1/1/18-2/15/18 TO JSSC CURRENCY 003C (ASA: 3021590).

Lot 111 JSSC MS 122Z STEEL 648D

SVF STEEL FORCE S701
FBFS STEEL FORCE 122Z
THSF MS LIBERTY S600

JSSC MS WHEELMAN 083A

1/2 SM 1/4 AN 1/4 CS | Reg#: 3229348 | Birth Date: 10/7/2016 | Tattoo: 648D

CED	BW	WW	YW	Milk	API	TI
11.1	1.6	56.9	82.3	16.5	82.2	53

648D is sired by FBFS Steel Force 122Z and backed by a productive young Wheel Man daughter. A pedigree that combines females such as S600 and S199 with the double shot of the legendary Steel Force for added consistency and predictability!

AI BRED 12/15/17 TO OBCC CMFM DEPLORABULL D148 (ASA: 3150188). PE 1/1/18-2/15/18 TO JSSC CURRENCY 003C (ASA: 3021590). SAFE AI



Lot **112** **LSB RANCH DIVA 703Y**

ELLINGSON LEGACY M229
MR NLC UPGRADE U8676
 MS NLC MOJO S6119 B

HTP SVF IN DEW TIME
SVF SHEZA GLORY T909
 SVF SHEZA GLORY N901

PB SM | Reg#: 2693581 | Birth Date: 9/4/2011 | Tattoo: 703Y

CED	BW	WW	YW	Milk	API	TI
12.8	2.5	77.4	114.9	18.6	124.3	75

Here's a full sister to the great Josie cow that has worked so well for Ethan Wood and his family. Each time we have invited Ethan to place some of Josie's genetics back into The Black Label it has been like pulling teeth, so we bring you a full sister loaded with many of the great attributes of her sister. This productive female has worked well in IVF and should continue to do so for her new owners. She raised a real good Broker female they will be retaining to replace this under-utilized Donor female.

Sells open and ready to go.



EZ LUCY LU 001A
 2014 AJSA 3rd Overall Purebred Heifer,
 Lot 112 is a full sister to the dam of EZ Lucy Lu 001A



TJSSA Futurity Grand Champion Purebred Female.
 Congratulations Wood Family!
 A member of the same cow family as Lot 112.



Lot **113** **FBFS Y NOT ME 084Y**

HC HUMMER 12M
SVF STONEHENGE R95
 LF KANDY KISSES

SVF/NJC MO BETTER M217
FBFS SLACKS BETTER 047S
 CRCC PRIDES LASS 2613M

PB SM | Reg#: 2600208 | Birth Date: 2/5/2011 | Tattoo: 084Y

CED	BW	WW	YW	Milk	API	TI
6.8	2.3	62.2	99	20.5	113.6	63.7

Y Not Me has been employed in the saturated donor battery at Foster Brothers. If she wasn't 7, she would not be for sale. She is a total and complete outcross to any LEGACY genetics, she can be mated to anything good the breed has to offer. A real good made blaze faced female that brings the hard to find influence of Stonehenge with the proven twist of Mo Better and the great, late Power Drive. Her cattle by Executive Order are impressive and will be bad ass bred heifers and future donor dams. There's so much more this rare bred female can be mated to both purebred, percentage, and angus. The art of "the hustle" is offered here without question.

AI BRED 6/6/18 TO HOOK'S EQUALIZER 72E (ASA: 3253801). PE 6/4/18-8/1/18 TO OBCC BLACKLIST 915B (ASA: 2955302)



SHIPWRECK
- CATTLE COMPANY -
6945 CR 206
Grandview, Texas 76050

Return Service Requested

TIME DATED MATERIAL | DO NOT DELAY



View Online Sale Book & Videos of the sale offering at:
WWW.CCILIVE.COM